

Tsuji K, <u>Ishikawa Y</u> and Imamura T	Technique for differentiating alveolar soft part sarcoma from other tumors in paraffin-embedded tissue: comparison of immunohistochemistry for TFE3 and CD147 and of reverse transcription polymerase chain reaction for ASPSCR1-TFE3 fusion transcript	Hum Pathol	43	356-363	2012
Kabeya M, Furuta R, Kawabata K, Takahashi S and <u>Ishikawa Y</u>	Prevalence of human papillomavirus in mobile tongue cancer with particular reference to young patients	Cancer Sci	103	161-168	2012
Inamura K, Fujiwara M, Togashi Y, Nomura K, Mukai H, Fujii Y, Yamamoto S, Yonese J, Fukui I and <u>Ishikawa Y</u>	Diverse fusion patterns and heterogeneous clinicopathologic features of renal cell carcinoma with t(6;11) translocation	Am J Surg Pathol	36	35-42	2012
Fujiwara T, Hiramatsu M, Isagawa T, Ninomiya H, Inamura K, Ishikawa S, Ushijima M, Matsuura M, Jones HM, Shimane M, Nomura H, <u>Ishikawa Y</u> and Aburatani Y	ASCL1-coexpression profiling but not single gene expression profiling defines lung adenocarcinomas of neuroendocrine nature with poor prognosis	Lung Cancer	75	119-125	2012
Takeuchi K, Soda M, Togashi Y, Suzuki R, Sakata S, Hatano S, Asaka R, Hamanaka W, Ninomiya H, Uehara H, Lim Choi Y, Satoh Y, Okumura S, Nakagawa K, Mano H and <u>Ishikawa Y</u>	RET, ROS1 and ALK fusions in lung cancer	Nat Med	18	378-381	2012
Sugawara E, Togashi Y, Kuroda N, Sakata S, Hatano S, Asaka R, Yuasa T, Yonese J, Kitagawa M, Mano H, <u>Ishikawa Y</u> and Takeuchi K	Identification of anaplastic lymphoma kinase fusions in renal cancer: Large-scale immunohistochemical screening by the intercalated antibody-enhanced polymer method	Cancer	118	4427-4436	2012

Thunnissen E, Beasley MB, Borczuk AC, Brambilla E, Chirieac LR, Dacic S, Flieder D, Gazdar A, Geisinger K, Hasleton P, <u>Ishikawa Y</u> , Kerr KM, Lantejoul S, Matsuno Y, Minami Y, Moreira AL, Motoi N, Nicholson AG, Noguchi M, Nonaka D, Pelosi G, Petersen I, Rekhtman N, Roggli V, Travis WD, Tsao MS, Wistuba I, Xu H, Yatabe Y, Zakowski M, Witte B and Kuik DJ	Reproducibility of histopathological subtypes and invasion in pulmonary adenocarcinoma. An international interobserver study	Mod Pathol	25	1574-1583	2012
Deardorff MA, Bando M, Nakato R, Watrin E, Itoh T, Minamino M, Saitoh K, Komata M, Katou Y, Clark D, Cole KE, De Baere E, Decroos C, Di Donato N, Ernst S, Francey LJ, Gyftodimou Y, Hirashima K, Hullings M, <u>Ishikawa Y</u> , Jaulin C, Kaur M, Kiyono T, Lombardi PM, Magnaghi-Jaulin L, Mortier GR, Nozaki N, Petersen MB, Seimiya H, Siu VM, Suzuki Y, Takagaki K, Wilde JJ, Willems PJ, Prigent C, Gilllessen-Kaesbach G, Christianson DW, Kaiser FJ, Jackson LG, Hirota T, Krantz ID and Shirahige K	HDAC8 mutations in Cornelia de Lange syndrome affect the cohesin acetylation cycle	Nature	489	313-317	2012

Nakano K, Takahashi S, Yuasa T, Nishimura N, Mishima Y, Sakajiri S, Yokoyama M, Tsuyama N, <u>Ishikawa Y</u> and Hatake K	Feasibility and efficacy of combined cisplatin and irinotecan chemotherapy for poorly differentiated neuroendocrine carcinomas	Jpn J Clin Oncol	42	697-703	2012
Yamamoto S, Kawakami S, Yonese J, Fujii Y, Urakami S, Masuda H, Numao N, <u>Ishikawa Y</u> and Kohno A	Long-term oncological outcome and risk stratification in men with high-risk prostate cancer treated with radical prostatectomy	Jpn J Clin Oncol	42	541-547	2012
Satoh Y, Sugai S, Uehara H, Mun M, Sakao Y, Okumura S, Nakagawa K, <u>Ishikawa Y</u> , Miki Y and Miyata S	Clinical impact of intraoperative detection of carcinoembryonic antigen mRNA in pleural lavage specimens from nonsmall cell lung cancer patients	Thorac Cardiovasc Surg	In press		2012
Komai Y, Kawakami S, Numao N, Fujii Y, Saito K, Kubo Y, Koga F, Kumagai J, Yamamoto S, Yonese J, <u>Ishikawa Y</u> , Fukui I and Kihara K	Extended biopsy based criteria incorporating cumulative cancer length for predicting clinically insignificant prostate cancer	BJU Int	In press		2012
Travis WD, Brambilla E, Noguchi M, Nicholson A, Geisinger K, Yatabe Y, <u>Ishikawa Y</u> , Wistuba I, Flieder DB, Franklin W, Gazdar A, Hasleton PS, Henderson DW, Kerr KM, Petersen I, Roggli V, Thunnissen E, Tsao M	Diagnosis of lung cancer in small biopsies and cytology: Implications of the 2011 International Association for the Study of Lung Cancer/American Thoracic Society/European Respiratory Society Classification	Arch Pathol Lab Med	137	668-684	2013

Travis WD, Brambilla E, Noguchi M, Nicholson A, Geisinger K, Yatabe Y, <u>Ishikawa Y</u> , Wistuba I, Flieder DB, Franklin W, Gazdar A, Hasleton PS, Henderson DW, Kerr KM, Nakatani Y, Petersen I, Roggli V, Thunnissen E, Tsao M	Diagnosis of Lung Adenocarcinoma in Resected Specimens: Implications of the 2011 International Association for the Study of Lung Cancer/American Thoracic Society/European Respiratory Society Classification	Arch Pathol Lab Med	137	685-705	2013
Zhou H, Tamura T, Kusaka Y, Suganuma N, Subhannachart P, Vijitsanguan C, Noisiri W, Hering KG, Akira M, Itoh H, Arakawa H, <u>Ishikawa Y</u> , Kumagai S, Kurumatani N.	Development of a guideline on reading CT images of malignant pleural mesothelioma and selection of the reference CT films	Eur J Radiol	81	4203-4210	2012
Nagashima T, Sakao Y, Mun M, <u>Ishikawa Y</u> , Nakagawa K, Masuda M, Okumura S	A Clinicopathological Study of Resected Small-Sized Squamous Cell Carcinomas of the Peripheral Lung: Prognostic Significance of Serum Carcinoembryonic Antigen Levels	Ann Thorac Cardiovasc Surg	In press		2012
Numao N, Kawakami S, Sakura M, Yoshida S, Koga F, Saito K, Masuda H, Fujii Y, Yamamoto S, Yonese J, <u>Ishikawa Y</u> , Fukui I, Kihara K	Characteristics and clinical significance of prostate cancers missed by initial transrectal 12-core biopsy	BJU Int	109	665-671	2012
Asada K, Ando T, Niwa T, Nanjo S, Watanabe N, Okochi-Takada E, Yoshida T, <u>Miyamoto K</u> , Enomoto S, Ichinose M, Tsukamoto T, Ito S, Tatematsu M, Sugiyama T and Ushijima T	FHL1 on chromosome X is a single-hit gastrointestinal tumor-suppressor gene and contributes to the formation of an epigenetic field defect	Oncogene	32	2140-2149	2012

Harada H, <u>Miyamoto K</u> , Yamashita Y, Nakano K, Miyata Y, Taniyama K, Ohdan H and Okada M	Methylation of breast cancer susceptibility gene 1 (BRCA1) predicts recurrence in patients with curatively resected stage I non-small cell lung cancer	Cancer	119	792-798	2012
Harada H, <u>Miyamoto K</u> , Yamashita Y, Nakano K, Kimura M, Miyata Y, Taniyama K, Ohdan H and Okada M	Implication of DNA methylation profiling in oral epithelium for lung cancer screening	ISRN Pulmonology	In press		2012
Imaoka T, Nishimura M, <u>Daino K</u> , Kokubo T, Doi K, Iizuka D, Nishimura Y, Okutani T, Takabatake M, Kakinuma S and Shimada Y	Influence of age on the relative biological effectiveness of carbon ion radiation for induction of rat mammary carcinoma	Int J Radiat Oncol Biol Phys	In press		2012
Masuda Y, Suzuki M, Kawai H, Suzuki F and <u>Kamiya K</u>	Asymmetric nature of two subunits of RAD18, a RING-type ubiquitin ligase E3, in the human RAD6A-RAD18 ternary complex	Nucleic Acids Research	40	1065-1076	2012
Masuda Y, Suzuki M, Kawai H, Hishiki A, Hashimoto H, Masutani C, Hishida T, Suzuki F, <u>Kamiya K</u> .	En bloc transfer of polyubiquitin chains to PCNA in vitro is mediated by two different human E2-E3 pairs	Nucleic Acids Research	40	10394- 10407	2012
Gent SC, Fujii Y, Maeda J, Genet MD, <u>Miyagawa K</u> and Kato TA	Hyperthermia inhibits homologous recombination and sensitizes cells to ionizing radiation in a time- and temperature- dependent manner	J Cell Physiol	In press		2013
Hosoya N, Okajima M, Kinomura A, Fujii Y, Hiyama T, Sun J, Tashiro S and <u>Miyagawa K</u>	Synaptonemal complex protein SYCP3 impairs mitotic recombination by interfering with BRCA2	EMBO Rep	13	44-51	2012
Enomoto A, Kido N, Ito M, Takamatsu N and <u>Miyagawa K</u>	Serine-Threonine Kinase 38 is regulated by Glycogen Synthase Kinase-3 and modulates oxidative stress-induced cell death	Free Radical Biol Med	52	507-515	2012

Hayashi T, Morishita Y, Khattree R, Misumi M, Sasaki K, Hayashi I, Yoshida K, Kajimura J, Kyoizumi S, Imai K, Kusunoki Y and Nakachi K	Evaluation of systemic markers of inflammation in atomic-bomb survivors with special reference to radiation and age effects	FASEB J	26	4765-4773	2012
Cologne J, Preston DL, Imai K, Misumi M, Yoshida K, Hayashi T and Nakachi K	Conventional case- cohort design and analysis for studies of interaction	Int J Epidemiol	41	1174-1186	2012
Wang C, Nakamura S, Oshima M, Mochizuki-Kashio M, Nakajima- Takagi Y, Osawa M, Kusunoki Y, Kyoizumi S, Imai K, Nakachi K and Iwama A	Compromised hematopoiesis and increased DNA damage following non-lethal ionizing radiation of a human hematopoietic system reconstituted in immunodeficient mice	Int J Radiat Biol	89	132-137	2012
Taga M, Eguchi H, Shinohara T, Takahashi K, Ito R, Yasui W, Nakachi K, Kusunoki Y, Hamatani K	Improved PCR amplification for molecular analysis using DNA from long-term preserved formalin-fixed, paraffin-embedded lung cancer tissue specimens	Int J Clin Exp Pathol	6	76-79	2012
Hamatani K, Mukai M, Takahashi K, Hayashi Y, Nakachi K, Kusunoki Y	Rearranged anaplastic lymphoma kinase (ALK) gene in adult-onset papillary thyroid cancer among atomic-bomb survivors	Thyroid	22	1153-1159	2012

# MOLECULAR DIAGNOSTICS OF ESOPHAGEAL AND GASTRIC CANCERS

Wataru Yasui, Naohide Oue, Kazuhiro Sentani, and Dongfeng Tan

## INTRODUCTION

Gastric cancer is the fourth most common cancer worldwide, and mortality from gastric cancer is second only to that of lung cancer.<sup>1</sup> The areas with the highest rates of gastric cancer are in Eastern Asia, South America, and Eastern Europe. Of note, approximately 60% of all gastric cancers occur in Japan, China, and Korea. The incidence of gastric cancer is declining worldwide, mainly due to changes in eating habits such as decreased consumption of high-salt diets and availability of fresh fruits and vegetables throughout the year. One of the most important etiologic factors is *Helicobacter pylori* (HP) infection. Infection with HP causes chronic atrophic gastritis and intestinal metaplasia, conditions that are considered as predisposing to cancer development. In Japan and to some degree in Korea, screening for early disease by double-contrast barium X-ray followed by endoscopy has been widely performed. Advances in endoscopic diagnosis and treatment have enabled us to offer excellent long-term survival for patients with early cancer. However, in other parts of the world, the majority of gastric cancers are diagnosed as advanced disease after symptoms appear, and prognosis of advanced cancer remains poor.

Esophageal cancer is the sixth most common human malignant disease worldwide, with more than 400,000 new cases per year.<sup>2</sup> Two major types, squamous cell carcinoma (SCC) and adenocarcinoma, account for over 95% of esophageal cancers. SCC commonly occurs in developing countries and is typically associated with consumption of tobacco and alcohol. Adenocarcinoma typically occurs

in white men in developed countries, and the important etiologic factors are obesity, chronic gastro-esophageal reflux, and Barrett esophagus. Although endoscopic screening is useful for early cancer detection, 50% of superficial esophageal cancers (those confined to the submucosa) have nodal metastasis. Most esophageal cancers are diagnosed at an advanced stage, and prognosis after surgical resection with neoadjuvant chemoradiotherapy remains unsatisfactory; the 5-year survival rate is <50% after curative surgery.

Cancer is a chronic proliferative disease that develops and progresses by accumulation of multiple genetic and epigenetic alterations. Great efforts have been made to clarify the precise molecular mechanisms of esophageal and gastric carcinogenesis. Multiple alterations include abnormalities in tumor suppressor genes, oncogenes, growth factors and receptors, DNA mismatch repair genes, cell adhesion molecules, and matrix metalloproteinases.<sup>3-6</sup> In recent years, the role of microRNA (miRNA) in epigenetic regulation and biologic function in cancers has been extensively studied.<sup>7</sup> Better knowledge of molecular carcinogenesis will lead to new methods of diagnosis and treatment. At present, although molecular-targeted therapy has been introduced widely against a variety of cancers, for esophago-gastric and gastric cancers only trastuzumab against HER2 has been approved for clinical use in advanced cases. Molecular diagnosis still remains challenging in the practical setting. This chapter describes molecular diagnosis of gastric and esophageal cancers and possible clinical implications (Table 29.1).

TABLE 29-1 Molecular Diagnosis of Esophageal and Gastric Cancers and Its Clinical Implication

Diagnosis	Method	Implication
DNA methylation-targeted diagnosis	Methylation-specific PCR and bisulfite sequencing	Detection, aggressiveness, prognosis, and serum marker
Molecular target	IHC and FISH/DISH	Target detection and patient selection
Micrometastasis	RT-PCR and OSNA	Detection of cancer cells and CTC
miRNA-based diagnosis	RT-PCR and microarray	Detection, aggressiveness, prognosis, and serum marker
Genetic polymorphism	Sequencing and RFLP	Cancer risk, efficacy, and toxicity of chemotherapy

IHC, immunohistochemistry; FISH, fluorescence in situ hybridization; DISH, dual-color silver-enhanced in situ hybridization; CTC, circulating tumor cell; OSNA, one-step nucleic acid amplification; RFLP, restriction fragment length polymorphism; PCR, polymerase chain reaction; RT-PCR, reverse transcription-polymerase chain reaction.

## MOLECULAR DIAGNOSIS OF GASTRIC CANCER

### Molecular Pathologic Diagnosis Routinely Implemented

From 1993 to 2000, a project was implemented to perform molecular diagnosis using histopathologic samples from the gastrointestinal tract as a routine service.<sup>8,9</sup> This system of molecular diagnosis was designed mainly for the differential diagnosis of benign and malignant tumors, diagnosis of the degree of malignancy, and identification of susceptibility to multiple primary cancers (Fig. 29.1). Molecular examination was performed on about 5,000 gastric lesions, and much useful information in addition to histopathologic findings was obtained. During routine microscopic observation, pathologists observed cancer, adenoma/dysplasia, borderline lesions, and suspicious lesions of neoplasia. The sections were immunostained for molecular markers (including p53,

TGF- $\alpha$ , EGF, EGFR, c-met, c-erbB2/HER2, cyclin E, p27, and CD44) for differential diagnosis and/or evaluation of degree of malignancy. With polymerase chain reaction (PCR)-single-strand conformation polymorphism and PCR-restriction fragment length polymorphism, deletion and mutation of *APC* and *p53* genes were examined by the pathologist using portions of formalin-fixed, paraffin-embedded, hematoxylin and eosin-stained sections. For detection of genetic instability, human mutL homolog 1 (hMLH1) staining was used for screening, and genetic instability was assessed by microsatellite assay using four loci of CA repeats and two poly(A) tracts. Ten percent of histologically diagnosed adenomas were diagnosed as adenoma with malignant potential and 2% were considered suspicious for adenocarcinoma. Adenocarcinoma was identified in more than 20% of histologically diagnosed borderline lesions. Twelve percent of adenocarcinomas were regarded as showing high-grade malignancy, and their prognosis

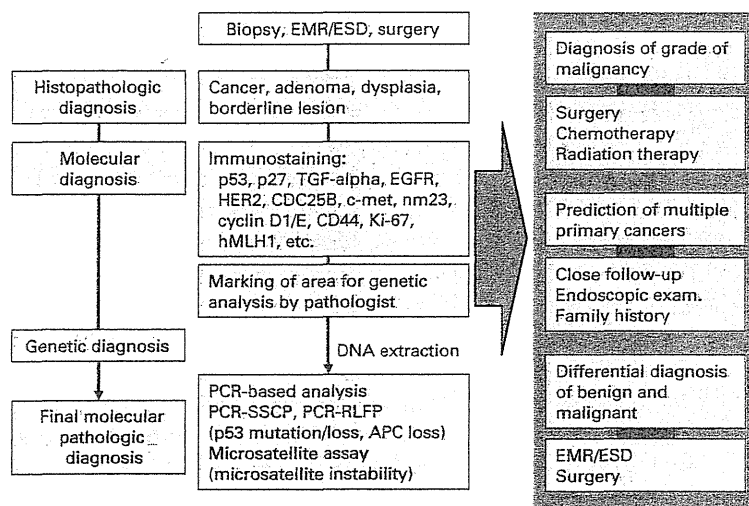


FIGURE 29-1 Proposed workflow of molecular evaluation of esophageal and gastric cancers. EMR (endoscopic mucosal resection), ESD (endoscopic submucosal dissection), PCR (polymerase chain reaction), SSCP (single strand conformation polymorphism), RFLP (restriction fragment length polymorphism), APC (adenomatous polyposis coli)



tended to be poor on follow-up observation. About 4% of gastric cancers were judged to have high-frequency microsatellite instability (MSI-H) by microsatellite assay, and half of the patients showing MSI-H were confirmed to have clinically synchronous or asynchronous multiple primary cancers. Detailed methods and results were described elsewhere.<sup>8,9</sup> This system may be applicable to molecular diagnosis in the future if appropriate molecular and genetic markers are selected.

### DNA Methylation–Targeted Molecular Diagnosis

DNA methylation is the most important event among various epigenetic alterations in cancers. To regulate gene expression at the transcriptional level, DNA methylation, histone modification, and chromatin remodeling function as an on–off switch, while transcription factors act as a volume switch.<sup>10</sup> Hypermethylation of CpG islands is associated with gene silencing of many tumor suppressors, including hMLH1, p16, CDH1 (E-cadherin), RAR- $\beta$ , RUNX3, and O<sup>6</sup>-methylguanine-DNA methyltransferase (MGMT) in gastric cancer. Aberrant DNA methylation is readily detected in cancer-derived DNA in the serum of patients with gastric cancer. Many reports have indicated that aberrant DNA methylation is a useful diagnostic marker and a prognostic indicator.<sup>11–14</sup> DNA methylation of p16 and of CDH1 was detected in the serum of 20% to 50% of gastric cancer patients, whereas none of the controls without cancer showed aberrant methylation.<sup>11–14</sup> Some of the DNA methylation is associated with tumor stage and prognosis. For instance, gastric cancer patients with CDH1 methylation showed significantly poorer prognosis than those without aberrant methylation<sup>15</sup> RUNX3 methylation was detected in the peripheral circulation of 30% of gastric cancer patients and was concordant with tumor stage and lymphatic and vascular invasion.<sup>16</sup> After surgical removal of gastric cancer, RUNX3 methylation in serum decreases significantly. Detection of aberrant DNA methylation in serum is a useful and effective tool in cancer screening, monitoring, and prognosis.

Infection with HP, a potent gastric carcinogenic factor, has been shown to induce aberrant DNA methylation in gastric mucosa and produce a predisposed field of cancerization.<sup>17</sup> Methylation levels of p16, LOX, FLNc, HRASLS, HAND1, THBD, and p41ARC in gastric mucosa are higher in HP-positive individuals than in HP-negative persons among healthy volunteers.<sup>18</sup> Among HP-negative individuals, methylation levels in non-neoplastic mucosa are higher in gastric cancer cases than in controls.<sup>19,20</sup> Furthermore, significant increasing levels of methylation are present in the following order: healthy volunteers, single gastric cancer cases, and multiple gastric cancer cases. Among HP-positive individuals, methylation levels are highly variable. The evidence indicates that the measurement of methylation levels among individuals without current HP infection is a promising risk marker for gastric

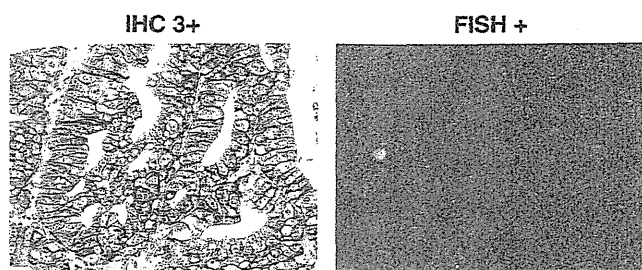
cancer and can be used in molecular diagnosis to predict future risk of gastric cancer.

Endoscopy followed by pathologic examination has been proven to be useful for the detection and diagnosis of gastric cancer; however, the diagnostic power depends on the technical skill of the endoscopist, although the sensitivity and specificity are generally high. Detection of molecular markers in stomach juice or gastric washes is a possible non-invasive approach to screen for gastric cancer. There is evidence that methylation analysis of DNA recovered from gastric washes can be used to detect gastric cancer.<sup>21</sup> The methylation status of six genes (*MINT25*, *RORA*, *GDNF*, *ADAM23*, *PRDM5*, and *MLF1*) in gastric washes differs significantly between patients with gastric cancer and those without. *GDNF* and *MINT25* are the most sensitive molecular markers of early cancer, while *PRDM5* and *MLF1* are potential markers of epigenetic field defects. There is a close association between the methylation levels in tissue samples and gastric washes. *MINT25* methylation in gastric washes shows the best sensitivity (90%) and specificity (96%) and may have value as a powerful molecular tool for screening of gastric cancer. Genomic variations of HP can be analyzed in samples recovered from gastric washes.<sup>22</sup> Antibiotic-resistant HP is correlated with 23S rRNA single-nucleotide polymorphisms (SNPs). Gastric wash–based PCR and pyrosequencing are useful for detecting SNPs and diagnosing drug resistance.

### Molecular Diagnosis for Molecular-Targeted Therapy

Molecular-targeted therapy refers to drugs (inhibitor or monoclonal antibody) that selectively inhibit specific molecular pathways that are involved in the development, progression, and metastasis of cancers. A number of biologic agents modulating different signaling pathways are currently in clinical development, such as agents targeting angiogenesis, growth factor receptor, cell cycle regulator, matrix metalloproteinase, and mammalian target of rapamycin (mTOR).<sup>23–25</sup> Several randomized multicenter phase III studies are underway in molecularly unselected patients with gastric cancer, considering cetuximab for EGFR, lapatinib for EGFR/HER2, panitumumab for EGFR, everolimus for mTOR, and ramucirumab for VEGFR-2. Furthermore, a stromal cell–targeted strategy, such as anti-stromal therapy with imatinib for PDGFR, has been advocated.<sup>26</sup>

To date, only trastuzumab, an anti-HER2 monoclonal antibody, has been approved for use in combination with chemotherapy to treat HER2-positive advanced gastric and esophago-gastric junction cancers, on the basis of the results of the ToGA (Trastuzumab for Gastric Cancer) trial.<sup>27</sup> Molecular diagnosis of HER2 status is made by immunohistochemistry (IHC) and fluorescence in situ hybridization (FISH) or dual-color silver-enhanced in situ hybridization (DISH). DISH is an alternative to FISH



**FIGURE 29-2** Evaluation of HER2 in gastro-esophageal junctional and gastric adenocarcinoma. **A:** Immunohistochemistry reveals diffuse and strong membranous expression of HER2 protein in a gastric cancer. **B:** Fluorescence in situ hybridization confirms amplification of the *HER2* gene (red signal), indicating this patient may benefit from targeted therapy of Herceptin.

with the same accuracy (concordance rate is 97%), and signals can be observed under conventional light microscopy.<sup>28</sup> Tumors showing as IHC 3+ (strong membrane staining in over 10% of cancer cells) and FISH/DISH positive (HER2:CEP17 ratio >2) are regarded as HER2 positive (Fig. 29.2) and subjected to trastuzumab therapy. Because HER2 status in gastric cancer shows marked heterogeneity, it is recommended that the order of testing for HER2 is IHC followed by FISH/DISH. IHC 2+ (moderate membrane staining in >10% of cancer cells) is judged as borderline or equivocal, and subsequent HER2 amplification should be confirmed by FISH/DISH. Total HER2-positive rate is 12% to 18%, with 20% to 30% as the differentiated type and 3% to 6% as the undifferentiated type. However, evaluation of HER2 status by this method may not be definitive for patient selection, because not all HER2-positive patients respond to trastuzumab treatment.

### Molecular Diagnosis of Micrometastasis and Circulating Tumor Cells

Lymph node metastasis is an important determinant of patient outcome. Routine pathologic examination of representative sections of the cut surface may overlook micrometastasis. Molecular detection of mRNAs for cytokeratin (CK) 19 and CEA by RT-PCR is useful for detecting micrometastasis. In recent years, the sentinel lymph node concept has been validated for gastrointestinal cancer in addition to breast cancer.<sup>29</sup> The sentinel node is defined as the first node to receive lymphatic drainage from the primary tumor. According to this concept, lymph node dissection can be avoided if no metastases are detected in the sentinel node. Therefore, examination for micrometastasis in the sentinel node must be made intraoperatively during sentinel node navigation surgery. The real-time multiplex RT-PCR assay for the expression of CK19, CK20, and CEA is more sensitive and accurate than histopathologic diagnosis and generates results within 80 minutes intraoperatively.<sup>30</sup> A more rapid molecular diagnosis system has been developed using

one-step nucleic acid amplification (OSNA).<sup>31,32</sup> The OSNA system consists of homogenization of lymph node tissue followed by a reverse transcription loop-mediated isothermal amplification (RT-LAMP) and the quantification of a target mRNA, CK19, directly from the lysate. RT-LAMP measurement of CK19 mRNA is performed using an RD-100i gene amplification detector (Sysmex, Kobe, Japan). The whole procedure takes approximately 30 minutes to obtain a final result. The OSNA system is effective and efficient for intraoperative molecular diagnosis during sentinel node navigation surgery in gastric cancer.

Circulating tumor cells (CTCs) are considered a reflection of tumor aggressiveness because hematogenous spreading of CTCs from a primary tumor is a crucial step in the metastatic cascade leading to the formation of metastatic tumor.<sup>33</sup> Molecular methods can detect CTCs in blood with high sensitivity and specificity and can be a useful tool for judging tumor stage, predicting distant metastasis and patient survival, and monitoring the response to cancer therapy.<sup>34</sup> Although clinical relevance remains to be verified in large-scale clinical trials, many detection methods have been established including the above-mentioned RT-PCR-based method.<sup>33</sup> The detection of free cancer cells in the peritoneal cavity has important therapeutic and prognostic implications. The RT-PCR-based technique with the same markers as CTCs, such as CK19 and CEA, is useful for detecting free cancer cells in peritoneal lavage fluid.<sup>35</sup> The clinical significance of establishing the presence of peritoneal metastasis has been assessed by several studies and most have confirmed the predictive value of molecular detection of peritoneal metastasis and recurrence using peritoneal washes.<sup>35</sup>

### miRNA-based Molecular Diagnosis

The role of miRNA in cancer development and progression through epigenetic gene regulation has become a recent focus in cancer research.<sup>6,7</sup> Mature RNAs are composed of 19–25 nucleotides that are cleaved from 60- to 110-nucleotide pre-miRNA precursors by RNase III Dicer.<sup>36</sup> Single-stranded miRNAs bind through partial sequence homology to the 3'-untranslated region of potentially hundreds of target genes and cause degradation of mRNAs and inhibition of translation. miRNAs possess either anti-tumorigenic or oncogenic properties depending on the target genes.<sup>37</sup> In gastric cancer, many miRNAs are expressed differentially, and unique miRNAs are associated with the development, progression, and prognosis of gastric cancer by modulating several biologic pathways.<sup>38</sup> By miRNA microarray analysis, 22 miRNAs were upregulated and 13 were downregulated in gastric cancer in comparison with corresponding non-neoplastic gastric tissue.<sup>39</sup> miR-125b, miR-199a, and miR-433 are important miRNAs involved in cancer progression, while low expressions of let-7g and miR-433 and high expression of miR-214 are independent

unfavorable prognostic markers. miR-146a targeting EGFR and interleukin-1 receptor-associated kinase (IRAK1) is an independent prognostic factor in gastric cancer.<sup>40</sup> miR-148a functions as a tumor metastasis suppressor in gastric cancer, and downregulation of miR-148a contributes to lymph node metastasis and progression.<sup>41</sup> Furthermore, miR-335 also acts as a metastasis suppressor in gastric cancer by targeting Bcl-w and specificity protein 1 (SP-1).<sup>42</sup> The metastasis-associated miR-516a-3p appears to be a potential therapeutic target for inhibiting peritoneal dissemination of scirrhus-type gastric cancer.<sup>43</sup> miR-486 targets olfactomedin 4 (OLFM4), and genomic loss and downregulation of miR-486 are associated with gastric cancer progression.<sup>44</sup> Downregulation of miR-125a-5p targeting HER2 is associated with invasion, metastasis, and poor prognosis of gastric cancer, and its growth inhibitory effect is enhanced in combination with trastuzumab.<sup>45</sup> Therefore, these miRNAs as tumor biomarkers are potential targets for molecular diagnosis in gastric cancer.

As in protein-coding genes, miRNA genes are also transcriptionally regulated by DNA methylation and chromatin remodeling. DNA methylation of *miR-34b* and *miR-129* genes causes downregulation in gastric cancer and is associated with poor clinicopathologic features.<sup>46</sup> In stomach carcinogenesis, a mucosal field with HP infection is a condition predisposing to cancer development. Methylation levels of three miRNA genes (*miR-124a-1*, *miR-124a-2*, and *miR-124a-3*) are higher in gastric mucosa with HP infection than in gastric mucosa without HP infection, and the methylation levels are higher in non-cancerous gastric mucosa taken from gastric cancer patients than in those from healthy individuals.<sup>47</sup> Methylation-associated silencing of miR-34b and miR-34c is detected in a majority of gastric cancers, and the methylation levels are higher in gastric mucosa from patients with multiple gastric cancers than in mucosa from patients with single gastric cancer or mucosa from HP-positive healthy individuals.<sup>48</sup> Thus, methylation-associated silencing of miRNAs contributes to the formation of field defects and may serve as a predictive marker of gastric cancer risk.

miRNAs are stable in human circulation in a cell-free form and may be a powerful new class of blood-based biomarkers for gastric cancer.<sup>49</sup> Stability of extracellular miRNAs is believed to be due to vesicular encapsulation in exosomes and/or binding with argonaute 2 (Ago2) to make Ago2-miRNA complexes.<sup>49</sup> By genome-wide serum miRNA expression profiling, five miRNA signatures (miR-1, miR-20a, miR-27a, miR-34a, and miR-423-5p) for gastric cancer diagnosis have been identified.<sup>50</sup> The levels of the five miRNAs in serum assessed by quantitative RT-PCR are correlated with tumor stage, and the sensitivity and specificity of gastric cancer detection by the five miRNAs as biomarkers are 80% and 81%, respectively. The plasma concentrations of miRNAs (miR-17-5p, miR-21, miR-106a, and miR-106b)

are significantly higher in gastric cancer patients than in non-cancerous controls, and the plasma concentrations of these miRNAs are reduced after surgery.<sup>51</sup>

### Diagnosis of Gastric Cancer Risk and Chemotherapeutic Efficacy

Stomach carcinogenesis is modulated by such genetic polymorphisms as mucosal protection by HP infection inflammatory response, carcinogen detoxification and antioxidant protection, DNA damage repair, and cell proliferation. Therefore, genetic polymorphisms are increasingly used for molecular assessment of gastric cancer risk.<sup>6,52,53</sup> Variations of IL-1 $\beta$  (*IL1B*) and IL-1 receptor antagonist (*IL1RN*) genes affect IL-1 $\beta$  production and gastric acid secretion, causing an increased risk of chronic hypochlorhydric response to HP infection and gastric cancer risk.<sup>54</sup> Upon HP infection, CagA in gastric epithelial cells interacts with src homology 2 domain-containing protein tyrosine phosphatase (SHP-2) and transduces signal to downstream molecules participating in atrophic gastritis and stomach carcinogenesis.<sup>55</sup> Frequent G/A SNP in the intron 3 of the *PTPN11* gene encoding SHP-2 is associated with gastric atrophy in the Asian population.<sup>53</sup> Genetic polymorphisms significantly associated with gastric cancer risk include cyclin D1, CDH1, EGFR, p16<sup>INK4A</sup>, p21<sup>WAF1/CIP1</sup>, and HER2.<sup>53</sup> A genome-wide study using Japanese and Korean cohorts found that genetic variation in prostate stem cell antigen (PSCA) is associated with susceptibility to diffuse-type gastric cancer.<sup>56</sup> Furthermore, the same group recently found that *MUC1* is the second major susceptibility gene for diffuse-type gastric cancer, and the SNPs (rs2070803 and rs4072037) in the *MUC1* gene might be used to identify individuals at risk for this type of gastric cancer.<sup>57</sup>

Genetic polymorphisms are also associated with therapeutic efficacy and toxicity of anti-cancer drugs. Pharmacogenomics in gastric cancer has provided a number of putative biomarkers and genetic polymorphisms for the prediction of tumor response to chemotherapies and for prediction of toxicity, and these are summarized in the review by Nishiyama and Eguchi.<sup>58</sup> Polymorphisms of thymidylate synthetase (TYMS) and variation of glutathione-S-transferase pi 1 (GSTP1) are associated with responses to the 5-FU-based regimen and platinum-containing therapy, respectively, in gastric cancer. Nucleotide excision repair modulates platinum-based chemotherapeutic efficacy by removing drug-produced DNA damage. Polymorphisms of excision repair cross-complementing 1 (ERCC1) (rs11615C > T) and ERCC2 (rs13181T > G) predict clinical outcomes of oxaliplatin-based chemotherapy in gastric cancer and are useful prognostic factors.<sup>59</sup> In regard to chemotherapeutic toxicity, among the various polymorphisms in the dihydropyrimidine dehydrogenase (*DPYD*) gene, exon 14-skipping mutation (*DPYD\*2A*) is a prominent genotype marker

related to deficiency of enzyme activity resulting in severe toxicity caused by 5-FU-based therapy. Another important consideration regarding drug toxicity is the polymorphism of UDP-glucuronosyltransferase 1A1 (*UGT1A1*) gene (*UGT1A1\*28*), which reduces enzyme activity and results in irinotecan toxicity, especially neutropenia. Molecular examination of such genetic polymorphisms is directly connected to personalized cancer prevention and treatment.

### Novel Molecular Markers Identified through Transcriptome Dissection

Many molecules and genes have been identified as novel diagnostic and therapeutic targets in patients with gastric cancer through transcriptome dissection by using microarray and other techniques. Serial analysis of gene expression (SAGE) is a powerful tool for the global analysis of gene expression in a quantitative manner.<sup>60,61</sup> A comparison of SAGE data between gastric cancers and systemic normal tissues in combination with quantitative RT-PCR, IHC, and biologic studies has identified many genes, including regenerating islet-derived family, member 4 (*Reg IV*) and *OLFM4*, as candidate diagnostic markers and therapeutic targets.<sup>62,63</sup> *Reg IV* is expressed in about 30% of gastric cancers, and *Reg IV* protein is detectable in sera of about 30% of gastric cancer patients.<sup>64</sup> *Reg IV*, induced by *CDX2*, participates in 5-FU resistance in gastric cancer. *CDX2* also induces multidrug resistance 1 (*MDR1*) gene, resulting in resistance to chemotherapy.<sup>65</sup> There is an intestinal phenotype of gastric cancer defined by the expression of *MUC2*, *CDX2*, and/or *CD10*. Molecular detection of intestinal phenotype predicts chemoresistance in gastric cancer. *OLFM4* is detected in 60% of gastric cancers, with a significant association with the gastric phenotype defined by the expression of gastric-type mucins such as *MUC5AC* and *MUC6*.<sup>66</sup> Combined measurement of *Reg IV* and *OLFM4* protein levels in sera shows a sensitivity of 57% and specificity of 95% for detecting gastric cancer. *MMP-10* is one of the cancer-specific genes identified by SAGE data analysis, with serum *MMP-10* diagnostic sensitivity and specificity of 94% and 85%, respectively, indicating that *MMP-10* is suitable for gastric cancer screening.<sup>67</sup> *CLDN18* (encoding claudin-18, a major component of tight junction in the stomach) is reduced in HP-positive atrophic gastritis, intestinal metaplasia, gastric adenoma, and the intestinal phenotype of gastric cancer.<sup>68</sup> *CLDN18* knockout mice show atrophic gastritis and spasmolytic polypeptide-expressing metaplasia (SPEM) through paracellular H<sup>+</sup> leakage, upregulation of proinflammatory cytokines, and loss of parietal cells.<sup>69</sup> Therefore, the detection of loss of *CLDN* expression is a predictive marker of a precancerous condition. Cell surface and secreted proteins are potential drug targets and tumor markers when they are overexpressed in cancer. The CAST (*Escherichia coli* ampicillin trap) method

systemically and efficiently detects gene expression profiles encoding transmembrane and secreted proteins. By this method, several genes that are upregulated in gastric cancer have been identified, including desmocollin 2 (*DSC2*).<sup>70</sup> Because *DSC2* expression is induced by *CDX2* and is significantly associated with the *MUC2*-positive intestinal phenotype, *DSC2* is also a novel diagnostic marker for chemoresistant gastric cancer of the intestinal phenotype. In short, information obtained from transcriptome dissection greatly contributes to our understanding of the molecular characteristics of gastric cancer and will be connected to new developments in diagnosis and treatment.

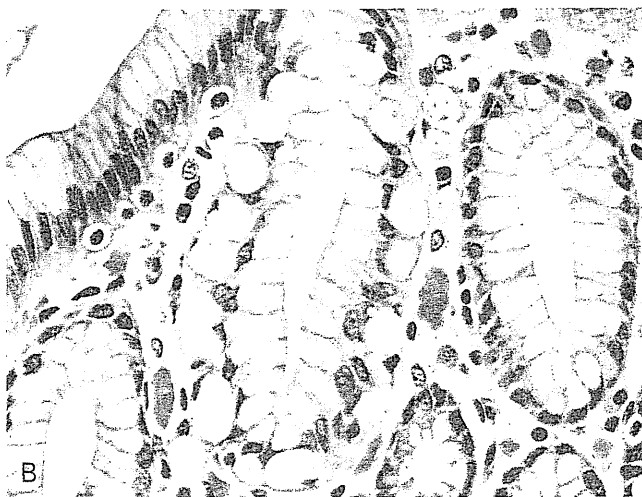
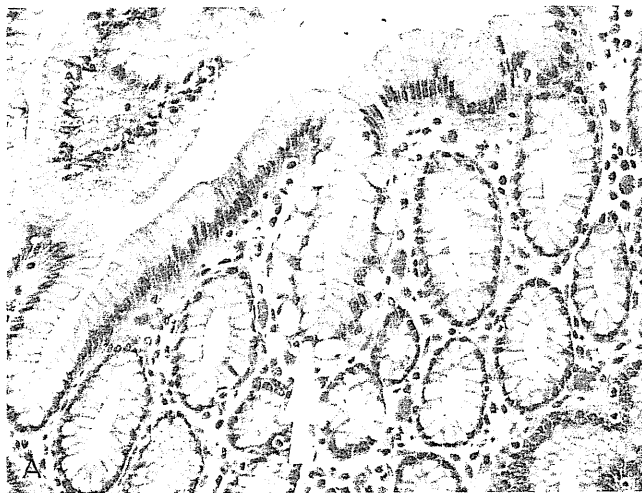
### Molecular Testing to Assess Hereditary Gastric Cancer Syndrome

It is estimated that about 10% to 15% of gastric cancers are familial, though the majority of gastric cancers are classified as sporadic. Among the familial gastric malignancies, hereditary diffuse gastric cancer (HDGC) syndrome is the most important condition that leads to familial gastric cancer. Other hereditary cancer syndromes, such as hereditary non-polyposis colorectal cancer, familial adenomatous polyposis, Peutz-Jeghers syndrome, Li-Fraumeni syndrome, and hereditary breast and ovarian cancer, are also associated with a significantly higher risk compared with the general population for developing gastric cancer.<sup>71-73</sup> HDGC patients typically present with diffuse-type signet-ring cell gastric cancer. In addition to a high susceptibility of developing gastric cancer, HDGC patients also have an increased risk of lobular breast carcinoma.

It is now known that germline mutations of *CDH1* gene, encoding E-cadherin, plays an essential role in HDGC.<sup>71-75</sup> Specifically, *CDH1* germline mutations occur in approximately 30% to 40% of HDGC and missense mutations, such as c.1748T>G(p.Leu583Arg), are frequent. *CDH1* mutation has also been found to have synergistic effect along with other genetic alterations. To examine the synergistic effect of the loss of E-cadherin and p53 on gastric cancer development, a mouse line was established in which E-cadherin and p53 were specifically inactivated in the gastric parietal cell lineage.<sup>71</sup> Mouse diffuse gastric cancer developed at 100% penetrance within a year, frequently associated with lymph node metastasis. Gene expression profiling study of diffuse gastric cancer in DCKO mice resembled those of human HDGC. In addition, the mesenchymal markers and epithelial-mesenchymal transition-related genes were highly expressed in mouse diffuse gastric cancer as in human HDGC. Thus, genetically engineered mouse model of diffuse gastric cancer is very useful for clarifying the mechanism underlying gastric carcinogenesis and provides potentially a novel approach to management of HDGC.

The penetrance of *CDH1* is 70% to 80%, and the average age for the diagnosis of gastric cancer is 37 years.

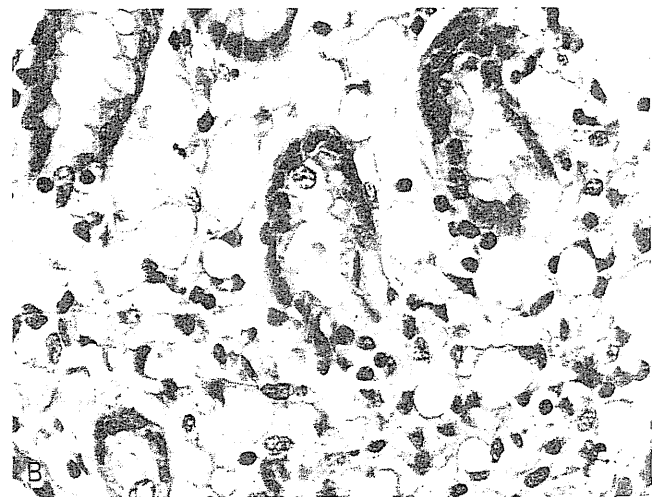
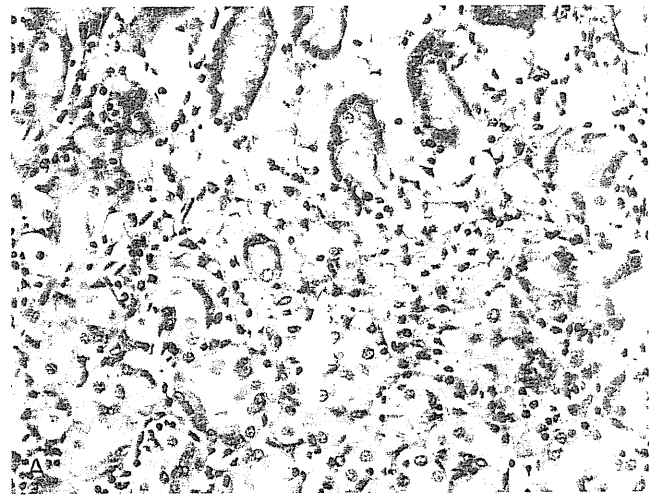
Currently, there is no consensus regarding who should be tested for *CDH1* mutation.<sup>75</sup> Though age is an important factor, it has been reported that the age at onset and aggressiveness of gastric carcinoma is highly variable, which has to be included in counseling on mutation testing and potentially planning prophylactic gastrectomies.<sup>72</sup> Since early gastric cancer of HDGC is not readily identified by endoscopic examination, prophylactic gastrectomy is the sole preventive treatment for *CDH1* mutation carriers. Because of the occult nature of this special type of specimen, examination of the entire mucosa of prophylactic gastrectomy specimens is essential. Analysis of prophylactic gastric resection specimens has led to the detection of in situ signet-ring cell carcinomas. Usually multiple (20 to >100) foci of in situ signet-ring cell carcinoma (SRCC) and invasion in the superficial lamina propria can be detected by careful examination (Fig. 29.3). Frequently, the foci of carcinoma are very small (Fig. 29.4), and cytokeratin and PAS staining may highlight the signet-ring cells and facilitate the diagnosis.<sup>76</sup>



**FIGURE 29-3** In situ signet-ring cell carcinoma in the superficial epithelium of a gastrectomy specimen from a *CDH1* mutation carrier. **A:** Serial sections of a representative SRCC (arrowed) at intermediate power magnification ( $\times 200$ ). **B:** Higher magnification of Figure 29.3A ( $\times 400$ ).

It is reported that SRCC arises from the upper isthmus of the neck region of the gastric mucosa.<sup>72</sup> In addition, de novo germline *CDH1* mutation is reported in an HDGC kindred presenting with early-onset diffuse gastric cancer.<sup>74</sup> The incident case was a woman with a personal history of Hodgkin lymphoma and diffuse gastric cancer, who was then confirmed to have a germline mutation in *CDH1* (c.1792 C > T (R598X)). The patient's mother had the same *CDH1* germline mutation, while neither maternal grandparent was found to carry this mutation, indicating that the proband's mother's mutation is of de novo origin. This report highlights the importance of recognition of the HDGC syndrome and of testing for *CDH1* germline mutations in young individuals with diffuse gastric cancer without a family history of the disease.

Does *CDH1* represent a target for treatment of HDGC? This is another area with several studies.<sup>71,73</sup> Using cells stably expressing WT E-cadherin and two HDGC-associated missense mutations, a recent study



**FIGURE 29-4** Invasive diffuse gastric carcinoma with signet-ring cell morphology from a gastrectomy specimen from a *CDH1* mutation carrier. **A:** Notice that the size of the invasive focus is small (arrowed), frequently <0.5 mm in size, and located in the superficial lamina propria, intermediate magnification ( $\times 200$ ). **B:** Higher magnification of Figure 29.4A ( $\times 400$ ).



shows that upon DMSO treatment, mutant E-cadherin can be restored and stabilized at the cell membrane, which is associated with altered expression of Arf6 and PIPKI $\alpha$ .<sup>73</sup> Modulation of Arf6 expression partially mimics the effect of chemical chaperones (CCs), indicating that the cellular effects observed upon CCs treatment are mediated by Arf6. The investigators concluded that direct influence of CCs in cellular trafficking machinery and its effects are of crucial importance in the context of juxtamembrane E-cadherin missense mutations associated with HDGC, and they proposed that this influence should be considered when exploring the therapeutic potential of this type of chemicals in genetic diseases associated with protein misfolding.<sup>73</sup>

## MOLECULAR DIAGNOSIS OF ESOPHAGEAL CANCER

### General Concept of the Molecular Basis of Esophageal Cancer

The principle of molecular diagnosis of esophageal cancer is the same as that of gastric cancer. There are differences and similarities in the genes and molecules involved in the development and progression between gastric cancer and esophageal cancer. Furthermore, among esophageal cancers, SCC and adenocarcinomas preceded by Barrett esophagus also show distinct and similar molecular characteristics that are important in molecular diagnosis for the selection of biomarkers suitable for each histologic type of esophageal cancer.<sup>1,77,80</sup> Esophageal SCC develops in sequential steps through normal squamous epithelium, basal cell hyperplasia, dysplasia, and SCC, whereas esophageal adenocarcinoma is believed to develop through the dysplasia–carcinoma sequence in Barrett esophagus, by serial accumulation of genetic and epigenetic alterations.<sup>79</sup>

### Genetic and Epigenetic Alterations in Esophageal Cancer and Diagnostic Implications

In esophageal SCC, mutation of the *p53* gene occurs at an early stage of carcinogenesis and is found in 40% to 60% of SCC and less commonly in non-cancerous mucosa adjacent to the cancer.<sup>77,78</sup> EGFR overexpression, partly due to gene amplification, is correlated with tumor progression, minimal response to chemotherapy, and poor prognosis. Gene amplification and overexpression of cyclin D1 are detected in 25% to 50% of esophageal SCC and cyclin D1 is an independent prognostic marker confirmed by multivariate analysis.<sup>77,78</sup> Homozygous deletion and hypermethylation of the *p16<sup>INK4a</sup>* gene are found in 50% to 60% of esophageal SCC and cause dysregulation of the G<sub>1</sub>/S checkpoint and abnormal proliferation, resulting in metastasis and poor prognosis.<sup>79</sup> Loss of FHIT expression occurs even in normal-appearing squamous epithelium that has been

heavily exposed to environmental carcinogens such as tobacco and alcohol.

In esophageal adenocarcinoma, *p53* mutation is also an early event in carcinogenesis, as it is detected in Barrett esophagus and dysplasia.<sup>77,80</sup> Alterations in transcription of FHIT and *p16<sup>INK4a</sup>* also occur in adenocarcinoma at an early stage. HER2 amplification and overexpression are found in 20% to 30% of esophago-gastric and Barrett esophagus-related adenocarcinomas. In Barrett esophagus and esophageal adenocarcinoma, lack of *p27* expression is associated with malignant transformation and poor prognosis.<sup>80</sup>

In regard to epigenetic alterations in esophageal SCC, genes including *APC*, *CDH1*, *p16<sup>INK4a</sup>*, *RAR $\beta$* , and Ras association domain family protein 1 (*RASSF1A*) are highly methylated.<sup>79</sup> *CDH1* methylation is observed in 70% of esophageal SCC and is associated with invasion, metastasis, and poor prognosis. Hypermethylation of *RAR $\beta$*  and *RASSF1A* that causes cell cycle deregulation is found in 50% to 60% of esophageal SCC. As in SCC, esophageal adenocarcinoma is also characterized by frequent methylation of *APC*, *CDH1*, and *p16<sup>INK4a</sup>*.<sup>79</sup> *CDH1* methylation and reduced expression are associated with metastatic ability. Hypermethylation of *p14<sup>ARF</sup>* and *p15<sup>INK4b</sup>* is uncommon in Barrett esophagus-associated carcinogenesis. The lower frequency (10%) of hMLH1 methylation is consistent with the lower prevalence of MSI in esophageal adenocarcinoma compared with gastric and colorectal adenocarcinomas. MGMT inactivation by DNA methylation is frequently found in Barrett esophagus (40%) and esophageal adenocarcinoma (60%), whereas 20% of normal squamous epithelia show MGMT methylation.

The aberrant methylations mentioned above can be used as biomarkers for the molecular diagnosis of esophageal cancer. Methylation profiles of multiple genes including *APC*, *CDH1*, *MGMT*, *p16*, and *RUNX3* serve as indicators of the neoplastic progression of Barrett esophagus and are independent prognostic factors for esophageal adenocarcinoma.<sup>81,82</sup> DNA methylation detected in serum is useful for screening and monitoring of esophageal cancers. *P16* methylation is found in the sera of 10% to 20% of esophageal SCC patients and correlates with poor prognosis.<sup>83–85</sup> *APC* methylation is observed in the sera of 25% of esophageal adenocarcinoma patients and in the sera of <10% of esophageal SCC patients, and high serum levels of *APC* methylation are significantly associated with reduced patient survival.<sup>86</sup>

### Molecular Diagnosis of Micrometastasis and CTCs

Sentinel node mapping for esophageal cancer is relatively complicated compared with that for gastric cancer, but it provides useful information on individualized selective lymphadenectomy, which reduces morbidity and maintains the quality of life for esophageal cancer patients.<sup>87</sup> Detection rates of sentinel nodes by the <sup>99m</sup>Tc–tin colloid method or fluorescent dye imaging have

been reported to be satisfactory; the sensitivity is 90% to 100% for clinical stage T1 to T3 patients and 45% for patients who received neoadjuvant chemoradiation therapy, respectively.<sup>88,89</sup> A sensitive real-time RT-PCR system, using CK19, CK20, SCC antigen, and CEA as marker mRNAs, efficiently detects micrometastasis in sentinel nodes. CTCs in the blood can also be detected in esophageal cancer patients by the RT-PCR-based molecular method. CEA mRNA is detected in the sera of 60% of esophageal SCC patients and is correlated with tumor invasion, vessel involvement, nodal metastasis, and advanced stage.<sup>90,91</sup> The presence of CTCs detected by CEA expression is an independent factor for a shortened hematogenous disease-free interval. CTC positivity is correlated with reduced E-cadherin expression in the primary tumor. Detection of CTC by the RT-PCR-based method is useful for predicting recurrence in patients with esophageal SCC.

### miRNA-Based Molecular Diagnosis

Altered expression pattern of miRNAs has potential clinical applications toward developing biomarkers to identify the presence and progression of esophageal cancer and to assess tumor chemosensitivity and radiosensitivity.<sup>92,93</sup> In esophageal SCC, expressions of miR-10b, miR-92a, miR-93, miR-192, miR-194, and miR-205 are increased in tumor tissues compared with normal esophageal mucosa, while expressions of miR-100, miR-125b, miR-133a, miR-133b, miR-143, miR-145, miR-203, miR-205, and miR-375 are reduced. Overexpression of miR-21, miR-23a, miR-26a, miR-96, miR-103, miR-107, miR-128b, and miR-129 detected in esophageal SCC is correlated with prognosis. Increased expression of miR-200c correlates not only with poor prognosis but also with diminished sensitivity to chemotherapy in patients with esophageal SCC. Increased expression of miR-296 is also associated with chemoresistance. Detection of circulating miRNAs provides a new complementary tumor marker for esophageal SCC. The plasma level of miR-21 is higher and that of miR-375 is lower in SCC patients than in controls.<sup>94</sup> High plasma concentrations of miR-21 show significant correlation with recurrence.

On the other hand, increased expression of miR-21, miR-192, miR-195, and miR-223 and reduced expression of miR-203 are found in esophageal adenocarcinoma.<sup>93</sup> The levels of miR-30e and miR-200a correlate with survival of esophageal adenocarcinoma patients, whereas reduced miR-375 expression is associated with shorter survival.<sup>95</sup> Overexpression of miR-148 enhances the effect of cisplatin and 5-FU, providing a basis for the potential use of miRNAs to predict or improve the response to chemotherapy.<sup>96</sup> During the progression from normal mucosa to adenocarcinoma via Barrett esophagus, sequential upregulation of miR-21, miR-93, miR-192, and miR-194 is observed.<sup>97</sup> Upregulation of miR-192 and miR-215 and downregulation of miR-203, miR-205, and let7c are

a “progression signature” for the progression from Barrett esophagus to adenocarcinoma and may serve as molecular markers for neoplastic progression.<sup>98</sup>

### Genetic Polymorphism and Esophageal Cancer Risk

Many studies have evaluated genetic polymorphism and esophageal cancer risk, with a majority of these studies conducted in Asian countries.<sup>99-101</sup> Meta-analyses of ALDH2, MTHFR, CYP1A1, CYP2E1, GSTP1, GSTM1, and GSTT1 have found significant correlations between ALDH2\*1\*2 and CYP1A1 Val allele and increased risk of esophageal cancer. *ALDH2* is a polymorphic gene, and individual genotypes determine blood concentrations of acetaldehyde after drinking, whereas *CYP1A1* is involved in the activation of major classes of tobacco procarcinogens such as polycyclic aromatic hydrocarbons and aromatic amines. Increased risk of esophageal SCC is associated with ALDH2\*1\*2 and p53 codon 72 Pro/Pro genotypes. GSTP1 (Ile105Val) is a risk factor for Barrett esophagus and adenocarcinoma in Caucasian males.<sup>100</sup> GSTP1 is the major isoform expressed in the esophagus and eliminates DNA oxidative products. In addition to protein-coding genes, pre-miRNAs also possess polymorphisms that affect esophageal cancer risk.<sup>92</sup> For instance, C-T SNP in pre-miR-196a (rs11614913) and G > C variant in pre-miR-146a increase esophageal SCC in the Chinese population.<sup>92</sup> These findings are applicable to molecular diagnosis in identifying individuals at high risk for developing esophageal cancer.

### Novel Molecular Markers Identified through SAGE Data Analysis

Although conventional serum tumor markers such as SCC antigen and CYFRA21-1 (fragment of CK19) have been used clinically as biomarkers, they have low sensitivity and low specificity. To search for novel biomarkers for esophageal cancer, a SAGE library was generated from esophageal SCC and compared with the library from normal esophageal mucosa.<sup>102</sup> Many upregulated and downregulated genes were identified that might be candidate diagnostic markers and therapeutic targets (Table 29.2). ADAM metalloproteinase with thrombospondin type 1 motif 16 (ADAMTS16) was the most upregulated gene in esophageal SCC. ADAMTS16 is expressed in 40% of esophageal SCC at high levels, as shown by quantitative RT-PCR, whereas SCCA1-encoding SCC antigen is expressed in only 20% of esophageal SCC. ADAMTS protein is secreted from cancer cells, and knockdown of ADAMTS16 inhibits cell growth and invasion ability. Thus, ADAMTS16 could be a novel diagnostic and therapeutic target in patients with esophageal SCC. SAGE data provide a list of genes associated with the development and progression of esophageal cancer.

**TABLE 29-2** The 10 Most Upregulated and Downregulated Tags/Genes in Esophageal Squamous Cell Carcinoma in Comparison with Normal Esophagus by Sage Data Analysis

Upregulated Tag Sequence	Tags per Million		Symbol	Description
	SCC	Normal Esophagus		
TCCCCTACAT	2564 <sup>a</sup> (37) <sup>b</sup>	0 (0)	<i>ADAMTS16</i>	ADAM metalloproteinase with thrombospondin type 1 motif, 16
GAAATAAAGC	2495 (36)	0 (0)	<i>IGHG1</i>	Immunoglobulin heavy constant gamma 1 (G1m marker)
TTCCGGTTGGT	2148 (31)	0 (0)	<i>OGFOD1</i>	2-Oxoglutarate and iron-dependent oxygenase domain containing 1
AGGCATTGAA	5336 (77)	20 (1)	<i>NUTF2</i>	Nuclear transport factor 2
CAGTTACAAA	5544 (80)	40 (2)	<i>RYBP</i>	RING1 and YY1 binding protein
TGGAAATGAC	1317 (19)	0 (0)	<i>COL1A1</i>	Collagen, type I, alpha 1
ACCAAAAACC	1663 (24)	20 (1)	<i>COL1A1</i>	Collagen, type I, alpha 1
GGCAGCACAA	1455 (21)	20 (1)	<i>NBEAL2</i>	Neurobeachin-like 2
TTTATTAGAA	1455 (21)	20 (1)	<i>CCDC75</i>	Coiled-coil domain containing 75
AGCCAAAAAA	2980 (43)	40 (2)	<i>MAP3K12</i>	Nuclear casein kinase and cyclin-dependent kinase substrate 1
GTGGCCACGG	0 (0)	25283 (1277)	<i>S100A9</i>	S100 calcium binding protein A9 (calgranulin B)
GGCAGAGAAG	0 (0)	8454 (427)	<i>KRT4</i>	Keratin 4
ATGAGCTGAC	0 (0)	3762 (190)	<i>CSTB</i>	Cystatin B (stefin B)
			<i>XPO7</i>	Exportin 7
GAAGCACAAG	0 (0)	2475 (125)	<i>KRT6C</i>	Keratin 6C
TAATTTGCAT	0 (0)	2455 (124)	<i>EMP1</i>	Epithelial membrane protein 1
			<i>GNA13</i>	Guanine nucleotide binding protein (G protein), alpha 13
AAAGCGGGGC	0 (0)	2356 (119)	<i>KRT13</i>	Keratin 13
TGTGTTGAGA	0 (0)	2257 (114)	<i>EEF1A1</i>	Eukaryotic translation elongation factor 1 alpha 1
CACAAACGGT	0 (0)	2079 (105)	<i>TSPAN9</i>	Tetraspanin 9
			<i>RPS27</i>	Ribosomal protein S27
TGGTGTTGAG	0 (0)	1841 (93)	<i>RPS18</i>	Ribosomal protein S18
GCCAATCCAG	0 (0)	1802 (91)	<i>CRNN</i>	Cornulin

<sup>a</sup>The absolute tag counts are normalized to 1,000,000 total tags/sample.

<sup>b</sup>Number in parentheses indicates the absolute tag counts.

## REFERENCES

- Ohgaki H, Matsukura N. Stomach cancer. In: Stewart BW, Kleihues P, ed. *World Cancer Report*. Lyon: IARC Press; 2003:194-197.
- Boffetta P, Hainaut P. Oesophageal cancer. In: Stewart BW, Kleihues P, ed. *World Cancer Report*. Lyon: IARC Press; 2003:223-231.
- Ushijima T, Sasako M. Focus on gastric cancer. *Cancer Cell*. 2004;5:121-125.
- Yasui W, Oue N, Aung PP, et al. Molecular-pathological prognostic factors of gastric cancer: a review. *Gastric Cancer*. 2005;8:86-94.
- Yasui W, Sentani K, Motoshita J, et al. Molecular pathobiology of gastric cancer (review). *Scand J Surg*. 2006;95:225-231.
- Yasui W, Sentani K, Sakamoto N, et al. Molecular pathology of gastric cancer: research and practice. *Pathol Res Pract*. 2011;207:608-612.
- Calin GA, Croce CM. MicroRNA-cancer connection: the beginning of a new tale. *Cancer Res*. 2006;66:7390-7394.
- Yasui W, Yokozaki H, Shimamoto F, et al. Molecular-pathological diagnosis of gastrointestinal tissues and its contribution to cancer histopathology. *Pathol Int*. 1999;49:763-774.
- Yasui W, Oue N, Kuniyasu H, et al. Molecular diagnosis of gastric cancer: present and future. *Gastric Cancer*. 2001;4:113-121.
- Yasui W, Oue N, Ono S, et al. Histone acetylation and gastrointestinal carcinogenesis. *Ann NY Acad Sci*. 2003;983:220-231.
- Lee TL, Leung WK, Chan MW, et al. Detection of gene promoter hypermethylation in the tumor and serum of patients with gastric carcinoma. *Clin Cancer Res*. 2002;8:1761-1766.
- Kanyama Y, Hibi K, Nakayama H, et al. Detection of p16 promoter hypermethylation in serum of gastric cancer patients. *Cancer Sci*. 2003;94:418-420.
- Leung WK, To KF, Chu ES, et al. Potential diagnostic and prognostic values of detecting promoter hypermethylation in the serum of patients with gastric cancer. *Br J Cancer*. 2005;92:2190-2194.
- Ikoma H, Ichikawa D, Daito I, et al. Clinical application of methylation specific-polymerase chain reaction in serum of patients with gastric cancer. *Hepatogastroenterology*. 2007;54:946-950.



15. Ikoma H, Ichikawa D, Koike H, et al. Correlation between serum DNA methylation and prognosis of gastric cancer patients. *Anticancer Res.* 2006;26:2313-2316.
16. Sakakura C, Hamada T, Miyagawa K, et al. Quantitative analysis of tumor-derived methylated RUNX3 sequences in the serum of gastric cancer patients. *Anticancer Res.* 2009;29:2619-2625.
17. Nakajima T, Yamashita S, Maekita T, et al. The presence of a methylation fingerprint of *Helicobacter pylori* infection in human gastric mucosa. *Int J Cancer.* 2009;124:905-910.
18. Maekita T, Nakazawa K, Mihara M, et al. High levels of aberrant DNA methylation in *Helicobacter pylori*-infected gastric mucosae and its possible association with gastric cancer risk. *Clin Cancer Res.* 2006;12:989-995.
19. Nakajima T, Maekita T, Oda I, et al. High methylation levels in gastric mucosae significantly correlate with higher risk of gastric cancers. *Cancer Epidemiol Biomarkers Prev.* 2006;15:2317-2321.
20. Ushijima T. Epigenetic field for cancerization. *J Biochem Mol Biol.* 2007;40:142-150.
21. Watanabe Y, Kim HS, Castoro RJ, et al. Sensitive and specific detection of early gastric cancer with DNA methylation analysis of gastric washes. *Gastroenterology.* 2009;136:2149-2159.
22. Baba S, Oishi Y, Watanabe Y, et al. Gastric wash-based molecular testing for antibiotic resistance in *Helicobacter pylori*. *Digestion.* 2011;84:299-305.
23. Ohtsu A. Chemotherapy for metastatic gastric cancer: past, present, and future. *J Gastroenterol.* 2008;43:256-564.
24. Zagouri F, Papadimitriou CA, Dimopoulos MA, et al. Molecular targeted therapies in unresectable metastatic gastric cancer. *Cancer Treat Rev.* 2011;37:599-610.
25. Fornaro L, Lucchesi M, Caparello, et al. Anti-HER2 agents in gastric cancer: from bench to bedside. *Nat Rev Gastroenterol Hepatol.* 2011;8:369-383.
26. Sumida T, Kitadai Y, Shinagawa K, et al. Anti-stromal therapy with imatinib inhibits growth and metastasis of gastric carcinoma in an orthotopic mouse model. *Int J Cancer.* 2011;128:2050-2062.
27. Bang YJ, Custem EV, Feyereislova A, et al. Trastuzumab in combination with chemotherapy versus chemotherapy alone for treatment of HER2-positive advanced gastric and gastro-oesophageal junction cancer (ToGA): a phase 3, open-label, randomized controlled trial. *Lancet.* 2010;376:687-697.
28. Koh YW, Lee HJ, Lee JW, et al. Dual-color silver-enhanced in situ hybridization for assessing *HER2* gene amplification in breast cancer. *Modern Pathol.* 2011;24:794-800.
29. Takeuchi H, Ueda M, Oyama T, et al. Molecular diagnosis and translymphatic chemotherapy targeting sentinel lymph nodes of patients with early gastrointestinal cancers. *Digestion.* 2010;82:187-191.
30. Shimizu Y, Takeuchi H, Sakakura Y, et al. Molecular detection of sentinel node micrometastases in patients with clinical N0 gastric carcinoma with real-time multiplex reverse transcription-polymerase chain reaction assay. *Ann Surg Oncol.* 2012;19:469-477.
31. Yaguchi Y, Sugawara H, Tsujimoto H, et al. One-step nucleic acid amplification (OSNA) for the application of sentinel node concept in gastric cancer. *Ann Surg Oncol.* 2011;18:2289-2296.
32. Muto Y, Matsubara H, Tanizawa T, et al. Rapid diagnosis of micrometastasis of gastric cancer using reverse transcription loop-mediated isothermal amplification. *Oncol Rep.* 2011;26:789-794.
33. Sun YF, Yang XR, Zhou J, et al. Circulating tumor cells: advances in detection methods, biological issues, and clinical relevance. *J Cancer Res Clin Oncol.* 2011;137:1151-1173.
34. Takeuchi H, Kitagawa Y. Circulating tumor cells in gastrointestinal cancer. *J Hepatobiliary Pancreat Sci.* 2010;17:577-582.
35. Fujiwara Y, Doki Y, Taniguchi H, et al. Genetic detection of free cancer cells in the peritoneal cavity of the patient with gastric cancer: present status and further perspectives. *Gastric Cancer.* 2007;10:197-204.
36. Bartel DP. MicroRNAs: genomics, biogenesis, mechanism, and function. *Cell.* 2004;116:281-297.
37. Spizzo R, Nicoloso MS, Croce CM, et al. SnapShot: microRNAs in cancer. *Cell.* 2009;137:586.
38. Wu WK, Lee CW, Cho CH, et al. MicroRNA dysregulation in gastric cancer: a new player enters the game. *Oncogene.* 2010;29:5761-5771.
39. Ueda T, Volinia S, Okumura H, et al. Relation between microRNA expression and progression and prognosis of gastric cancer: a microRNA expression analysis. *Lancet Oncol.* 2010;11:136-146.
40. Kogo R, Mimori K, Tanaka F, et al. Clinical significance of miR-146a in gastric cancer cases. *Clin Cancer Res.* 2011;17:4277-4284.
41. Zheng B, Liang L, Wang C, et al. MicroRNA-148a suppresses tumor cell invasion and metastasis by downregulating ROCK1 in gastric cancer. *Clin Cancer Res.* 2011;17:7574-7583.
42. Xu Y, Zhao F, Wang Z, et al. Micro-RNA-335 acts as a metastasis suppressor in gastric cancer by targeting Bcl-w and specificity protein 1. *Oncogene.* 2012;31:1398-1407.
43. Takei T, Takigahira M, Mihara K, et al. The metastasis-associated microRNA miR-516a-3p is a novel therapeutic target for inhibiting peritoneal dissemination of human scirrhous gastric cancer. *Cancer Res.* 2011;71:1442-1453.
44. Oh HK, Das K, Ooi CH, et al. Genomic loss of miR-486 regulated tumor progression of the OLFM4 antiapoptotic factor in gastric cancer. *Clin Cancer Res.* 2011;17:2657-2667.
45. Nishida N, Mimori K, Fabbri M, et al. MicroRNA-125a-5p is an independent prognostic factor in gastric cancer and inhibits the proliferation of human gastric carcinoma cells in combination with trastuzumab. *Clin Cancer Res.* 2011;17:2725-2733.
46. Tsai KW, Wu CW, Hu LY, et al. Epigenetic regulation of miR-34b and miR-129 expression in gastric cancer. *Int J Cancer.* 2011;129:2600-2610.
47. Ando T, Yoshida T, Enomoto S, et al. DNA methylation of microRNA genes in gastric mucosa of gastric cancer patients: its possible involvement in the formation of epigenetic field defect. *Int J Cancer.* 2009;124:2367-2374.
48. Suzuki H, Yamamoto E, Nojima M, et al. Methylation-associated silencing of microRNA-34b/c in gastric cancer and its involvement in an epigenetic field defect. *Carcinogenesis.* 2010;31:2066-2073.
49. Arroyo JD, Chevillet JR, Kroh EM, et al. Argonaute2 complexes carry a population of circulating microRNAs independent of vesicles in human plasma. *Proc Natl Acad Sci U S A.* 2011;108:5003-5008.
50. Liu R, Zhang C, Hu Z, et al. A five-microRNA signature identified from genome-wide serum microRNA expression profiling serves as a fingerprint for gastric cancer diagnosis. *Eur J Cancer.* 2011;47:784-791.
51. Tsujiura M, Ichikawa D, Komatsu S, et al. Circulating microRNAs in plasma of patients with gastric cancers. *Br J Cancer.* 2010;102:1174-1179.
52. Gonzalez CA, Sala N, Capella G. Genetic susceptibility and gastric cancer risk. *Int J Cancer.* 2002;100:249-260.
53. Hamajima N, Naito M, Kondo T, et al. Genetic factors involved in the development of *Helicobacter pylori*-related gastric cancer. *Cancer Sci.* 2006;97:1129-1138.
54. El-Omar EM, Carrington M, Chow WH, et al. Interleukin-1 polymorphisms associated with increased risk of gastric cancer. *Nature.* 2000;404:398-402.
55. Hatakeyama M. Anthropological and clinical implications for the structural diversity of the *Helicobacter pylori* CagA oncoprotein. *Cancer Sci.* 2011;102:36-43.
56. The Study Group of Millennium Genome Project for Cancer. Genetic variation in PSCA is associated with susceptibility to diffuse-type gastric cancer. *Nat Genet.* 2008;40:730-740.
57. Saeki N, Saito A, Choi IJ, et al. A functional single nucleotide polymorphism in mucin 1, at chromosome 1q22 determines susceptibility to diffuse-type gastric cancer. *Gastroenterology.* 2011;140:892-902.
58. Nishiyama M, Eguchi H. Pharmacokinetics and pharmacogenomics in gastric cancer chemotherapy. *Adv Drug Deliv Rev.* 2009;61:402-407.
59. Yin M, Yan J, Martinez-Balibrea E, et al. ERCC1 and ERCC2 polymorphisms predict clinical outcomes of oxaliplatin-based chemotherapies in gastric and colorectal cancer: a systemic review and meta-analysis. *Clin Cancer Res.* 2011;17:1632-1640.
60. Yasui W, Oue N, Ito R, et al. Search for new biomarkers of gastric cancer through serial analysis of gene expression and its clinical implications. *Cancer Sci.* 2004;95:385-392.
61. Oue N, Hamai Y, Mitani Y, et al. Gene expression profile of gastric carcinoma: identification of genes and tags potentially involved in invasion, metastasis, and carcinogenesis by serial analysis of gene expression. *Cancer Res.* 2004;64:2397-2405.
62. Yasui W, Oue N, Sentani K, et al. Transcriptome dissection of gastric cancer: identification of novel diagnostic and therapeutic targets from pathology specimens. *Pathol Int.* 2009;59:121-136.

63. Yasui W, Sentani K, Sakamoto N, et al. Histological and serological tumor markers of gastric cancer. In: Hellberg D, ed. *Histological and Serological Tumor Markers and Gene Expression and Their Clinical Usefulness in Cancers*. New York, NY: Nova Biomedical Books; 2009:93-111.
64. Mitani Y, Oue N, Matsumura S, et al. Reg IV is a serum biomarker for gastric cancer patients and predicts response to 5-fluorouracil-based chemotherapy. *Oncogene*. 2007;26:4383-4393.
65. Takakura Y, Hinoi T, Oue N, et al. CDX2 regulates multidrug resistance 1 gene expression in malignant intestinal epithelium. *Cancer Res*. 2010;70:6767-6778.
66. Oue N, Sentani K, Noguchi T, et al. Serum olfactomedin 4 (GW112, hGC-1) in combination with Reg IV is a highly sensitive biomarker for gastric cancer patients. *Int J Cancer*. 2009;125:2383-2392.
67. Aung PP, Oue N, Mitani Y, et al. Systematic search for gastric cancer-specific genes based on SAGE data: melanoma inhibitory activity and matrix metalloproteinase-10 are novel prognostic factors in patients with gastric cancer. *Oncogene*. 2006;25:2546-2557.
68. Sanada Y, Oue N, Mitani Y, et al. Down-regulation of the claudin-18 gene, identified through serial analysis of gene expression data analysis, in gastric cancer with an intestinal phenotype. *J Pathol*. 2006;208:633-642.
69. Hayashi D, Tamura A, Tanaka H, et al. Deficiency of claudin-18 causes paracellular H<sup>+</sup> leakage, up-regulation of interleukin-1beta, and atrophic gastritis in mice. *Gastroenterology*. 2012;29:1649-1659.
70. Anami K, Oue N, Noguchi T, et al. Search for transmembrane protein in gastric cancer by the *Escherichia coli* ampicillin secretion trap: expression of DSC2 in gastric cancer with intestinal phenotype. *J Pathol*. 2010;221:275-284.
71. Shimada S, Mimata A, Sekine M, et al. Synergistic tumour suppressor activity of E-cadherin and p53 in a conditional mouse model for metastatic diffuse-type gastric cancer. *Gut*. 2012;64:344-353.
72. Sereno M, Aguayo C, Guillén Ponce C, et al. Gastric tumours in hereditary cancer syndromes: clinical features, molecular biology and strategies for prevention. *Clin Transl Oncol*. 2011;13:599-610.
73. Figueiredo J, Simões-Correia J, Söderberg O, et al. ADP-ribosylation factor 6 mediates E-cadherin recovery by chemical chaperones. *PLoS One*. 2011;6(8):e23188.
74. Shah M, Salo-Mullen E, Stadler Z, et al. De novo CDH1 mutation in a family presenting with early-onset diffuse gastric cancer. *Clin Genet* 2011. In press.
75. Kluijft I, Siemerink EJ, Ausems MG, et al.; on behalf of the Dutch Working Group on Hereditary Gastric Cancer. CDH1-related hereditary diffuse gastric cancer syndrome: clinical variations and implications for counseling. *Int J Cancer* 2011. In press.
76. Lee A, Rees H, Owen DA, et al. Periodic acid-Schiff is superior to hematoxylin and eosin for screening prophylactic gastrectomies from CDH1 mutation carriers. *Am J Surg Pathol* 2010 34(7):1007-1013
77. Kuwano H, Kato H, Miyazaki T, et al. Genetic alterations in esophageal cancer. *Surg Today*. 2005;35:7/18.
78. Lin DC, Du XL, Wang MR. Protein alterations in ESCC and clinical implications: a review. *Dis Esophagus*. 2009;22:9-20.
79. Sato F, Meltzer SJ. CpG island hypermethylation in progression of esophageal and gastric cancer. *Cancer*. 2006;106:483-493.
80. Moyes LH, Going JJ. Still waiting for predictive biomarkers in Barrett's oesophagus. *J Clin Pathol*. 2011;64:742-750.
81. Schulmann K, Sterian A, Berki A, et al. Inactivation of p16, RUNX3, and HPP1 occurs early in Barrett's-associated neoplastic progression and predicts progression risk. *Oncogene*. 2005;24:4138-4148.
82. Brock MV, Gou M, Akiyama Y, et al. Prognostic importance of promoter hypermethylation of multiple gene in esophageal adenocarcinoma. *Clin Cancer Res*. 2003;9:2912-2919.
83. Hibi K, Taguchi M, Nakayama H, et al. Molecular detection of p16 promoter methylation in the serum of patients with esophageal squamous cell carcinoma. *Clin Cancer Res*. 2001;7:3135-3138.
84. Ikoma D, Ichikawa D, Ueda Y, et al. Circulating tumor cells and aberrant methylation as tumor markers in patients with esophageal cancer. *Anticancer Res*. 2007;27:535-539.
85. Fujiwara S, Noguchi T, Takeno S, et al. Hypermethylation of p16 gene promoter correlates with loss of p16 expression that results in poorer prognosis in esophageal squamous cell carcinoma. *Dis Esophagus*. 2008;21:125-131.
86. Kawakami K, Brebender J, Lord RV, et al. Hypermethylated APC DNA in plasma and prognosis of patients with esophageal adenocarcinoma. *J Natl Cancer Inst*. 2000;92:1805-1811.
87. Takeuchi H, Kitagawa Y. Sentinel node navigation surgery for esophageal cancer. *Gen Thorac Cardiovasc Surg*. 2008;56:393-396.
88. Uenosono Y, Arigami T, Yanagida S, et al. Sentinel node navigation surgery is acceptable for clinical T1 and N0 esophageal cancer. *Ann Surg Oncol*. 2011;18:2003-2009.
89. Yuasa Y, Seike J, Yoshida T, et al. Sentinel lymph node biopsy using intraoperative indocyanine green fluorescence imaging navigated with preoperative CT lymphography for superficial esophageal cancer. *Ann Surg Oncol*. 2012;19:486-493.
90. Nakashima D, Natsugoe S, Matsumoto M, et al. Clinical significance of circulating tumor cells in blood by molecular detection and tumor markers in esophageal cancer. *Surgery*. 2003;133:162-169.
91. Setoyama T, Natsugoe S, Okumura H, et al. Isolated tumor cells in blood and E-cadherin expression in oesophageal squamous cell cancer. *Br J Cancer*. 2007;94:984-991.
92. David S, Meltzer SJ. MicroRNA involvement in esophageal carcinogenesis. *Curr Opin Pharmacol*. 2011;11:612-616.
93. Mathe EA, Nguyen GH, Bowman ED, et al. MicroRNA expression in squamous cell carcinoma and adenocarcinoma of the esophagus: association with survival. *Clin Cancer Res*. 2009;15:6193-6200.
94. Komatsu S, Ichikawa D, Takeshita H, et al. Circulating microRNAs in plasma of patients with oesophageal squamous cell carcinoma. *Br J Cancer*. 2011;105:104-111.
95. Hu Y, Correa AM, Hoque A, et al. Prognostic significance of differentially expressed miRNAs in esophageal cancer. *Int J Cancer*. 2011;128:132-143.
96. Hummel R, Watson DI, Smith C, et al. Mir-148 improves response to chemotherapy in sensitive and resistant oesophageal adenocarcinoma and squamous cell carcinoma cells. *J Gastrointest Surg*. 2011;15:429-438.
97. Feber A, Xi L, Luketich JD, et al. MicroRNA expression profiles of esophageal cancer. *J Thorac Cardiovasc Surg*. 2008;135:255-260.
98. Fassan M, Volinia D, Palatini J, et al. MicroRNA expression profiling in human Barrett's carcinogenesis. *Int J Cancer*. 2011;129:1661-1670.
99. Hiyama T, Yoshihara M, Tanaka S, et al. Genetic polymorphisms and esophageal cancer risk. *Int J Cancer*. 2007;121:1643-1658.
100. Bull LM, White DL, Bray M, et al. Phase I and II enzyme polymorphisms as risk factors for Barrett's esophagus and esophageal adenocarcinoma: a systematic review and meta-analysis. *Dis Esophagus*. 2009;22:571-587.
101. Li T, Suo Q, He D, et al. Esophageal cancer risk is associated with polymorphisms of DNA repair genes *MSH2* and *WRN* in Chinese population. *J Thorac Oncol*. 2012 7(2):448-52.
102. Sakamoto N, Oue N, Noguchi T, et al. Serial analysis of gene expression of esophageal squamous cell carcinoma: ADAMTS16 is upregulated in esophageal squamous cell carcinoma. *Cancer Sci*. 2010;101:1038-1044.

# Cytokeratin Expression Profiling in Gastric Carcinoma: Clinicopathologic Significance and Comparison with Tumor-Associated Molecules

Hokuto Takami Kazuhiro Sentani Miho Matsuda Naohide Oue  
Naoya Sakamoto Wataru Yasui

Department of Molecular Pathology, Hiroshima University Graduate School of Biomedical Sciences,  
Hiroshima, Japan

## Key Words

Gastric cancer · Cytokeratin · Mucin phenotype ·  
Tumor-associated molecules

## Abstract

**Objective:** The expressions of cytokeratin (CK) 7 and 20 have been studied in various primary and metastatic carcinomas, and their determination may help distinguish the site of origin of metastatic carcinomas. However, little is known about the molecular basis that determines variations in CK patterns in gastric cancers (GCs). The aim of the present study was to analyze the CK expression patterns in a large number of GCs and to investigate how the CK patterns correlate with clinicopathologic parameters, histology, mucin phenotype or several tumor-related molecules. **Methods and Results:** We immunohistochemically examined the CK7/CK20 patterns, mucin expression profiles (MUC5AC, MUC6, MUC2 and CD10), and the cancer-related molecules (CDX2, p53, EGFR and  $\beta$ -catenin), using a tissue microarray with 870 GCs. The GCs were divided into four patterns; 17% of CK7+/CK20+, 57% of CK7+/CK20–, 9% of CK7–/CK20+ and 17% of CK7–/CK20–. GCs with the CK7–/CK20– pattern demonstrated a close relation to undifferentiated adenocarci-

noma. CK7 expression was significantly correlated with the expression of MUC5AC and MUC6, while CK20 expression was correlated with MUC2 and CDX2. There were statistically significant associations between CK expression patterns and mucin phenotypes. **Conclusion:** These results indicate that the CK7/CK20 expression patterns in GCs demonstrated different clinicopathologic features and molecular signatures.

Copyright © 2012 S. Karger AG, Basel

## Introduction

Gastric cancer (GC) is one of the most common malignancies worldwide and often metastasizes to other organs, including the liver, lung and ovary [1]. In metastatic carcinomas of unknown primary site, identification of the origin as the stomach or other primary site is very difficult because of the heterogeneous histology of GC. This heterogeneity may be partly due to the fact that GC is caused by exogenous (nitrosamines and *Helicobacter pylori*) and endogenous (E-cadherin mutation) factors [2]. To identify these phenotypical differences at a morphologic level in a comparable and reproducible manner, it is

## KARGER

Fax +41 61 306 12 34  
E-Mail [karger@karger.ch](mailto:karger@karger.ch)  
[www.karger.com](http://www.karger.com)

© 2012 S. Karger AG, Basel  
1015–2008/12/0793–0154\$38.00/0

Accessible online at:  
[www.karger.com/pat](http://www.karger.com/pat)

Wataru Yasui, MD, PhD  
Department of Molecular Pathology  
Hiroshima University Graduate School of Biomedical Sciences  
1-2-3 Kasumi, Minami-ku, Hiroshima 734-8551 (Japan)  
Tel. +81 82 257 5145, E-Mail [wyasui@hiroshima-u.ac.jp](mailto:wyasui@hiroshima-u.ac.jp)

necessary to have a novel classification system that recognizes all types of GCs adequately. In addition to classification by histology (the Lauren classification, the Japanese Classification of Gastric Carcinoma, etc.), GCs may also be classified into four phenotypes by the mucin expression profile: G type (gastric phenotype), I type (intestinal phenotype), GI type (gastric and intestinal mixed phenotype) and N type (neither gastric nor intestinal phenotype) [2, 3]. The G type is considered to behave more aggressively than the I type. Mutations of *p53* and loss of heterozygosity of the adenomatous polyposis coli gene occur more frequently in the I type than in the G type, while microsatellite instability and alterations in the *p73* gene are more common in the G type than in the I type. Microsatellite instability in the G type is usually associated with inactivation of hMLH1 following the promoter hypermethylation. The caudal-related homeobox gene 2 (CDX2) acts as an intestine-specific transcription factor and is expressed in I type GCs at high levels. CDX2 upregulates the expression of goblet-specific MUC2 [4].

Cytokeratin (CK), an intermediate filament observed mainly in epithelial cells, is an important cytoskeletal component involved in fixation of the nucleus and maintenance of cell morphology. CK consists of 20 subtypes, whose expression depends primarily on the epithelial cell type and the degree of differentiation [5]. The expression of CK8, CK18 and CK19 is observed at all levels of gastric mucosa, but CK20 expression is limited to mature superficial foveolar epithelium [6–8]. CK7 expression is absent in normal gastric mucosa but is observed in chronic mucosal irritation conditions such as *H. pylori* gastritis in the basal localization [9]. There are many reports of CK expression in various organs and the findings suggest that the CK expression profiles of metastatic cancers correspond to those of the primary sites [10–12]. In particular, in the gastrointestinal tract, colorectal carcinomas demonstrate a CK7-/CK20+ expression pattern, whereas adenocarcinomas of foregut origin demonstrate a CK7+/CK20- expression pattern [10–13]. Profiles for CK expression patterns may be helpful; however, the total number of GCs in each previous report about the expression of CK subtypes is one hundred cases at most [5, 6, 9, 12–21].

The aim of the present study was to analyze the CK expression patterns in a large number of GCs and to investigate how the CK expression patterns correlate with clinicopathologic parameters, histology, mucin phenotypes or several tumor-related molecules. Because the functional and biological properties of the GCs may re-

fect the tumors' ability to produce certain CKs, it would be of interest to determine which factors are best correlated with the CK immunophenotype.

## Materials and Methods

### *Tissue Samples and Tissue Microarray Construction*

The surgical pathology files of the Hiroshima University Hospital and its affiliated hospitals were used to randomly select 870 GCs from 51 adenocarcinomas of the esophagogastric junction (AEG) and 819 distal GCs (corpus or antrum). Surgically resected specimens were routinely fixed in 10% buffered formalin and examined macroscopically. Tumor staging was performed according to the Union Internationale Contre le Cancer (UICC) system [22]. There were 403 T1, 257 T2, 184 T3 and 26 T4 in these 870 cases. Nodal metastasis was present in 366 patients (42%). Tumor staging revealed 500 stage I, 152 stage II, 154 stage III and 64 stage IV. GCs were histologically classified as 507 intestinal type and 363 diffuse type according to the Lauren classification system. The 507 intestinal type GCs included 63 papillary, 173 well-differentiated tubular and 271 moderately differentiated tubular adenocarcinomas. The 363 diffuse type GCs consisted of 297 poorly differentiated adenocarcinomas, 52 signet-ring cell carcinomas and 14 mucinous adenocarcinomas according to the WHO histological classification. In addition, the GCs were classified as 63 papillary (pap), 173 well differentiated tubular (tub1), 271 moderately differentiated tubular (tub2), 75 solid type poorly differentiated (por1), 222 non-solid type poorly differentiated (por2) adenocarcinomas and 52 signet-ring cell carcinoma (sig) and 14 mucinous adenocarcinomas (muc) according to the Japanese Classification of Gastric Carcinoma [23]. In accordance with the Ethical Guidelines for Human Genome/ Gene Research enacted by the Japanese Government, tissue specimens were collected and used after approval from the Ethical Review Committee of the Hiroshima University School of Medicine and from the ethical review committees of collaborating organizations.

The two most representative portions to be sampled for the tissue microarrays (TMAs) were carefully selected from different intratumoral areas in each case and marked on the HE-stained slide. Two superficial areas in mucosal GCs, and one superficial area and one deep area in GCs that had invaded beyond the submucosa were selected. A 2-mm-diameter tissue core of each donor block was punched out and transferred to a recipient block with a maximum of 48 cores using a tissue microarrayer (AZUMAYA KIN-1, Tokyo, Japan). 5- $\mu$ m-thick sections were cut from the recipient block and transferred to glass slides. HE staining was performed on TMA for confirmation of the tumor tissue. Each tissue-array block contained 21 cases of GC and four cases of non-neoplastic stomach samples.

### *Immunohistochemistry*

A Dako Envision Kit (Dako, Carpinteria, Calif., USA) was used for immunohistochemical analysis of all markers. In brief, sections were pretreated by microwaving (500 W) in a citrate buffer (pH 6.0) for 15 min to retrieve antigenicity. After endogenous peroxidase activity was blocked with 3% H<sub>2</sub>O<sub>2</sub>-methanol for 10 min, sections were incubated with normal goat serum (Dako) for