

Fig.1

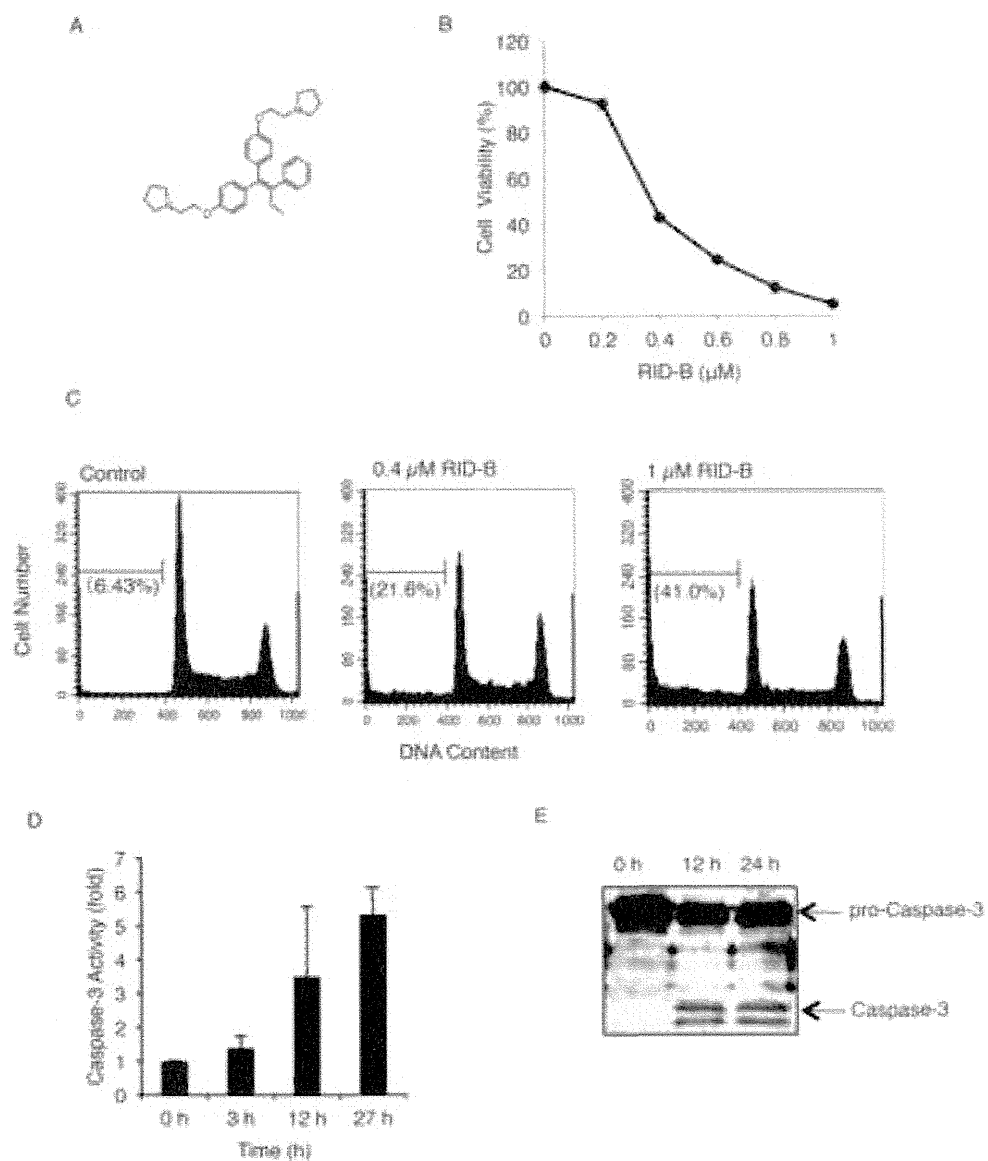


Fig.2

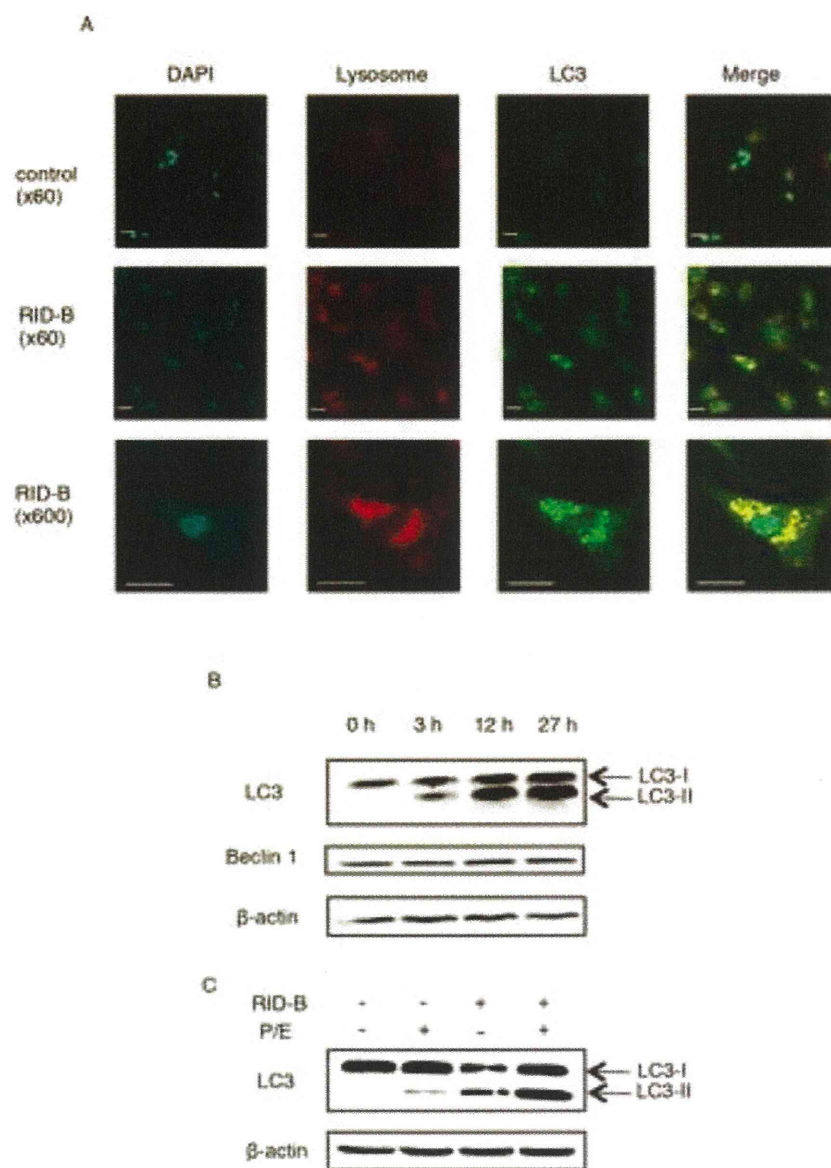
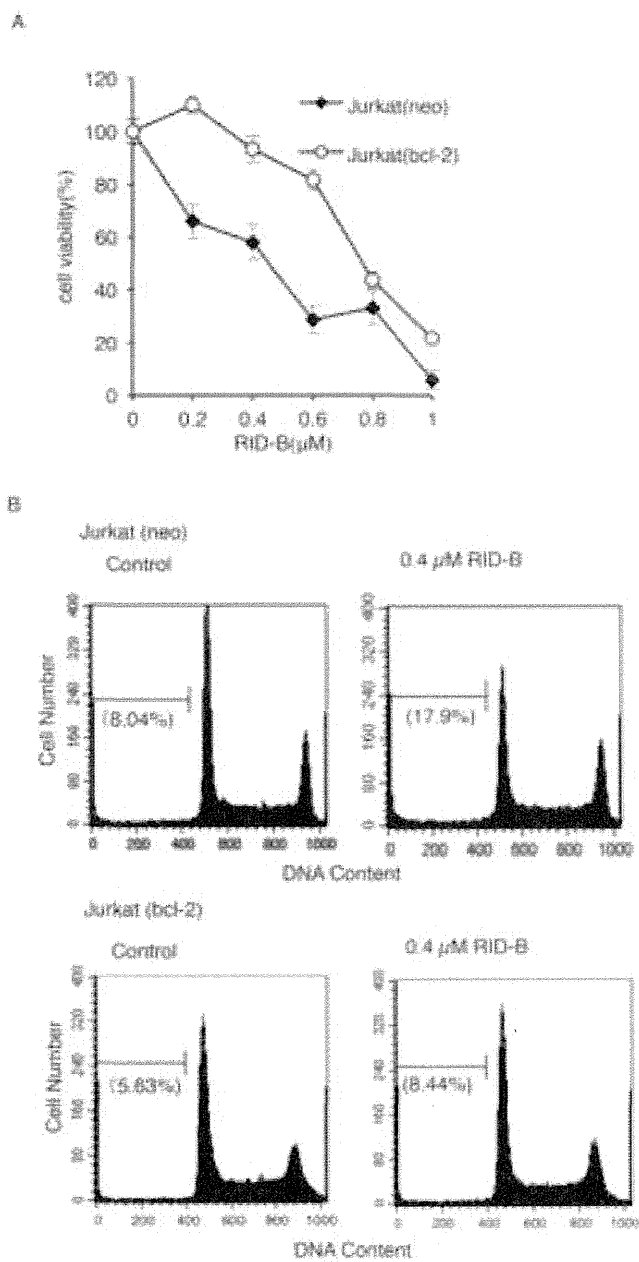


Fig.3





**Highlights**

- **A novel tamoxifen derivative, Ridaifen-B induces apoptosis and autophagy.**
- **Estrogen receptor is not involved in Ridaifen-B induced apoptosis and autophagy.**
- **Ridaifen-B induced apoptosis is inhibited by Bcl-2.**
- **RID-B-induced autophagy is independent of Bcl-2.**
- **RID-B-induced autophagy different from RID-B-induced apoptosis.**

