

	(928)	173.12(8; 100), 159.10(99)			
23.49	471.27 (700)	313.20(60), 213.15(35), 199.14(45), 187.14(45), 173.11(11; 100)			
			24.09	329.20 (1400)	211.12(35), 199.12(8; 100), 181.11(45), 169.12(60)
		437.24(30), 419.24(30), 351.18(60),			
24.26	483.24 (1720)	325.19(17; 100), 307.18(55), 259.15(55), 223.12(60), 211.13(80), 171.10(50)			
			24.26	517.28 (400)	517(40; 100), 499.24(20), 146.06(20)
24.46	503.27 (1000)	503(43; 100), 439.26(10), 363.19(12), 252.18(15), 243.15(25)	24.44	501.28 (870)	501(71; 100), 457.26(5), 423.33(7), 403.23(50), 385.21(30), 371.27(15), 359.25(13)
			24.67	517.28 (780)	517(40; 100), 499.24(20), 146.03(15)
		465.24(30), 447.27(20), 377.20(20),			
24.68	483.26 (1400)	325.17(50), 311.20(20; 100), 293.19(55), 265.14(55), 251.14(40), 223.12(95), 211.12(80), 195.10(55), 185.12(60), 171.10(70), 159.10(40)			
24.95	515.27 (850)	497.23(75), 469.25(50), 365.15(40), 265.13(40), 227.09(65), 211.12(65), 179.08(65), 133.09(65)	24.93	513.28 (323)	
			25.1	521.27 (896)	521(10; 100), 502.30(40)
25.18	485.29 (800)	313.22(30), 295.23(45), 255.20(30), 209.10(30), 201.11(45), 187.11(45), 173.11(13; 100), 157.04(40), 131.07(30)			
			25.2	519.33 (520)	519(82; 100), 501.31(20), 373.27(5)
25.47	485.26 (900)	327.17(55), 309.19(55), 237.14(55), 223.12(65), 213.13(55), 197.11(90), 185.11(8; 100), 159.10(80), 133.09(90)			
25.94	485.26 (850)	327.18(85), 311.18(85), 293.20(60), 243.13(60), 255.12(75), 183.11(7; 100), 159.10(99), 133.09(60)			
26.12	515.27 (570)	323.17(70), 277.17(60), 249.12(85), 227.10(85), 201.13(7; 100), 185.09(99),	26.13	513.27 (550)	513(17; 100), 483.28(65), 467.27(40), 439.31(25), 385.17(25)

		159.09(85)			
26.51	515.27 (600)	497.25(16; 100), 469.31(45), 455.22(30), 229.12(25), 199.13(25), 191.08(30), 177.07(45), 161.13(30)	26.46	513.27 (750)	513(45), 483.27(88; 100), 465.26(15)
26.63	499.24 (750)	499(17; 100), 465.20(30), 437.23(25), 377.21(25), 247.14(25), 237.13(30), 211.11(35), 187.10(35), 177.07(40), 159.09(65), 145.09(25)	26.77	497.25 (193)	
27.19	465.23 (1500)	465(30), 363.20(30), 325.17(85), 307.16(55), 283.14(45), 265.15(70), 249.13(55), 223.12(95), 211.12(95), 197.10(70), 183.09(17; 100), 171.09(85), 157.09(65), 147.09(60)			
			27.21	499.26 (1032)	499(75; 100), 427.26(25)
27.46	483.29 (700)	465.27(35), 447.26(35), 311.22(8; 100), 293.17(99), 251.15(50), 241.16(50), 199.12(65), 185.11(90), 159.10(65), 133.07(35)			
			28.03	499.25 (900)	499(70; 100), 455.34(10), 426.23(15)
28.04	465.24 (1200)	465(30), 283.15(50), 265.15(65), 251.13(55), 235.12(65), 223.12(11; 100), 199.12(55), 185.12(85), 171.09(75), 159.10(75), 143.08(45)			
28.71	545.27 (470)	545(27; 100), 481.30(25), 421.23(13), 395.21(25), 363.19(20), 303.20(15), 243.15(45), 203.13(15), 173.07(20), 159.09(20), 135.07(15)	28.7	543.28 (800)	543(48; 100), 499.35(10), 445.23(50), 427.21(30), 413.24(13)
	527.27 (1087)	527(35), 509.25(30), 481.27(70), 431.25(35), 395.22(14; 100), 369.20(35), 335.19(35), 309.19(35), 243.15(45), 229.13(75), 199.08(45), 187.09(50), 173.08(45), 159.09(30), 145.08(30)			
28.8	483.25 (900)	325.18(75), 311.24(65), 265.15(8; 100), 237.13(65), 223.12(99), 211.13(90), 197.11(80), 171.09(80), 143.09(65)			

			28.9	485.27 (700)	485(83; 100), 469.27(5), 441.27(5), 427.25(10), 387.23(45), 369.22(30), 355.25(5), 339.24(3)
		515(40), 497.29(30), 479.24(30), 461.22(30), 433.24(40), 377.16(30),			
29.19	515.29 (1190)	265.15(30), 349.17(40), 269.16(50), 247.13(10; 100), 215.12(70), 201.14(85), 171.09(60), 159.09(60), 147.07(50)	29.18	513.27 (884)	513(25), 481.28(115; 100), 466.32(5)
		437.25(30), 313.22(55), 295.23(10; 100), 255.17(50), 227.15(50),			
29.33	455.24 (1446)	199.13(60), 173.11(90), 161.12(90), 147.10(60)			
			29.49	483.22 (883)	483(25; 100), 389.24(30), 371.24(25), 351.24(22)
				487.29 (730)	487(88; 100), 427.27(5), 389.24(55), 371.24(50), 355.22(20)
			29.56	497.26 (1652)	497(211; 100), 479.28(3), 439.30(3), 419.26(15), 401.24(5), 383.19(5), 351.23(5), 327.18(12), 311.19(3), 281.14(2)
29.5	471.27 (1295)	435.27(35), 349.18(30), 313.21(40), 295.22(60), 215.16(50), 187.14(50), 173.11(10; 100), 159.08(60), 145.10(50)			
		463.27(35), 325.18(65), 307.18(55),			
29.58	481.26 (2282)	251.15(75), 225.13(75), 211.13(11; 100), 199.10(65), 183.09(85), 171.09(55), 145.09(75)			
		437.24(30), 419.26(25), 343.17(30), 333.19(50), 325.17(65), 307.14(60),			
29.84	483.24 (900)	265.15(40), 223.12(12; 100), 211.12(65), 201.11(50), 183.09(65), 169.07(65), 159.10(75), 145.09(40) 499(70), 413.20(35), 293.18(35),	29.92	481.24 (562)	481(25; 100), 466.29(25), 421.22(20), 383.21(50), 365.20(25), 349.15(35), 335.16(25)
		499.27			
29.88	(945)	267.16(50), 259.16(50), 239.14(45), 223.14(55), 195.10(14; 100), 183.09(45), 135.10(45)			
		449.25(10), 309.19(38; 100),			
31.16	483.26 (500)	294.19(15), 253.18(12), 223.12(25), 201.12(20), 171.10(20), 157.08(15)			

			31.26	483.26 (700)	483(48; 100), 455.27(10), 423.34(10), 385.21(85), 367.20(60), 339.21(10), 323.21(10)
31.28	467.24 (1200)	309.19(11; 100), 293.22(35), 223.11(45), 199.12(65), 183.10(75), 173.11(75), 161.05(35), 145.09(65)			
			31.74	485.28 (600)	485(57; 100), 441.33(5), 387.23(75), 369.22(45), 353.20(10), 341.25(5)
31.75	469.26 (1100)	336.21(20), 311.20(16; 100), 293.21(85), 237.11(25), 223.12(40), 197.11(35), 185.12(35), 171.10(35), 161.11(30), 145.10(20)			
31.89	467.22 (1400)	363.20(20), 345.18(20), 335.21(40), 293.18(20), 277.12(20), 265.13(35), 249.13(40), 223.13(20; 100), 193.07(40), 183.10(40), 169.07(25)			
			31.92	483.26 (687)	483(40), 429.24(30), 385.20(19; 100), 367.22(30)
33.6	481.28 (650)	417.30(50), 309.17(50), 269.16(8; 100), 255.14(65), 221.11(65), 211.11(85), 199.13(65), 169.09(65)			
33.81	485.28 (520)		33.79	483.25 (2185)	483(45), 409.25(35; 100)
		407.27(20), 389.24(20), 379.26(15), 325.18(60), 307.17(40), 283.14(35), 467.25 265.13(32; 100), 247.12(35), (2368) 223.12(95), 211.13(70), 197.11(50), 183.10(70), 169.09(70), 159.07(30), 133.09(30)			
34.97	485 (149)		34.96	483.30 (450)	483(69; 100), 441.29(10), 423.30(10), 313.21(5)
	467.28 (800)	467(30), 311.20(12; 100), 293.19(45), 225.14(45), 211.11(35), 185.11(35), 173.12(45), 145.09(35)			
35.11	499.29 (420)		35.09	497.27 (1500)	497(70), 423.25(101; 100), 381.30(5), 363.20(5), 279.18(5), 211.15(5)
	481.28 (2200)	445.24(15), 379.24(15), 349.19(15), 325.17(65), 307.19(35), 283.16(35), 267.15(55), 265.14(80), 245.14(30),			

		223.13(95), 211.13(20; 100), 197.11(50), 183.09(70), 157.09(50), 143.07(25)			
35.34	487.28 (400)		35.33	485.27 (1836)	485(241; 100), 441.30(10), 397.23(5), 353.25(5)
		451.26(30), 433.29(40), 363.24(30), 309.19(13; 100), 291.19(40), 469.26 271.18(30), 249.19(40), 239.14(80), (2100) 223.13(55), 209.10(45), 199.13(80), 183.10(70), 171.09(85), 157.08(45), 145.08(30), 133.08(40) 451.31(30), 377.21(30), 355.26(30), 323.15(40), 295.21(45), 263.14(55), 35.58 465.23 (950) 253.16(45), 221.10(11; 100), 209.11(95), 199.12(70), 183.09(65), 169.08(85), 157.08(65), 133.10(45)			
			36.06	627.34 (950)	565.35(5), 525.31(80), 483.31(68; 100)
		293.21(65), 239.16(40), 223.13(65), 36.08 467.28 (988) 201.15(13; 100), 197.11(70), 185.12(65), 173.10(65), 159.10(85), 145.09(45), 121.09(45)			
			36.52	481.27 (685)	
36.56	483.30 (250)				
		309.18(39; 100), 294.18(10), 465.26 267.16(12), 253.12(15), 223.12(25), (1100) 197.11(25), 187.13(15), 157.08(20), 146.09(10)			
			37.05	483.30 (500)	
37.06	485.32 (145)				
		467(30), 449.26(85), 379.22(30), 467.29 311.20(9; 100), 293.20(80), 278.15(45), (800) 237.14(80), 225.13(55), 197.12(55), 187.13(65), 171.09(35), 159.10(35), 135.11(45)			

表4 カッコンにおける正負イオン検出データ(ESI)

Positive			Negative		
RT	m/z (Int)	Product Ions (Int)	RT	m/z (Int)	Product Ions (Int)
2.15	343.16 (696)		2.06	341.06 (2166)	
				401.09 (341+A cO)	341.09(40), 221.06(50), 179.05(147; 100), 161.04(50), 149.04(15), 143.03(25), 131.03(15)
			9.29	205.06 (2125)	
11.58	595.23 (650)	433.22(35), 415.13(50), 397.12(8; 100), 379.11(35), 367.09(75), 313.08(50)	11.16	593.10 (488)	593(29; 100), 473.08(60), 430.10(20), 310.04(15), 282.03(20)
11.85	579.23 (2488)	417.16(50), 399.13(95), 381.12(18; 100), 363.11(40), 351.11(60), 321.11(40), 297.12(85), 267.09(30)	11.47	577.10 (1995)	577(234; 100), 487.12(5), 457.07(95), 439.04(5), 429.11(15), 415.08(10), 294.04(10), 266.04(15), 237.06(5), 222.06(3)
			11.92	607.13 (495)	607(81; 100), 487.09(65), 444.09(10), 324.05(10), 295.06(10), 281.03(5)
			12.02	709.16 (592)	709(44; 100), 457.08(60)
			12.32	415.07 (1300)	
				637.12 (1025)	415.07(328; 100), 295.05(5), 252.03(8)
12.69	579.23 (2300)	297.10(20), 255.08(14; 100)	12.48	577.12 (400)	577(40), 417.13(7), 325.07(10), 295.04(58; 100), 267.06(35)
13.04	433.13 (2962)	397.11(40), 397.14(40), 367.06(30), 351.15(30), 337.12(50), 323.13(70), 313.10(95), 297.08(30), 283.10(24; 100)	12.67	431.02 (3043)	431(30), 341.05(7), 323.04(5), 311.02(75), 293.03(20), 283.02(816; 100), 255.05(15), 227.06(10)
13.32	565.23 (500)		12.94	563.11 (500)	563(30), 311.04(63; 100), 283.04(20)
			13.17	739.18 (274)	739(57; 100), 397.09(10), 295.05(30), 267.05(15)
13.62	565.23 (2700)	433.21(75), 415.21(65), 397.17(65), 379.09(25), 367.06(65), 351.14(25),	13.24	563.08 (2210)	563(25), 341.05(10), 311.03(332; 100), 293.04(7), 283.04(30), 255.06(5),

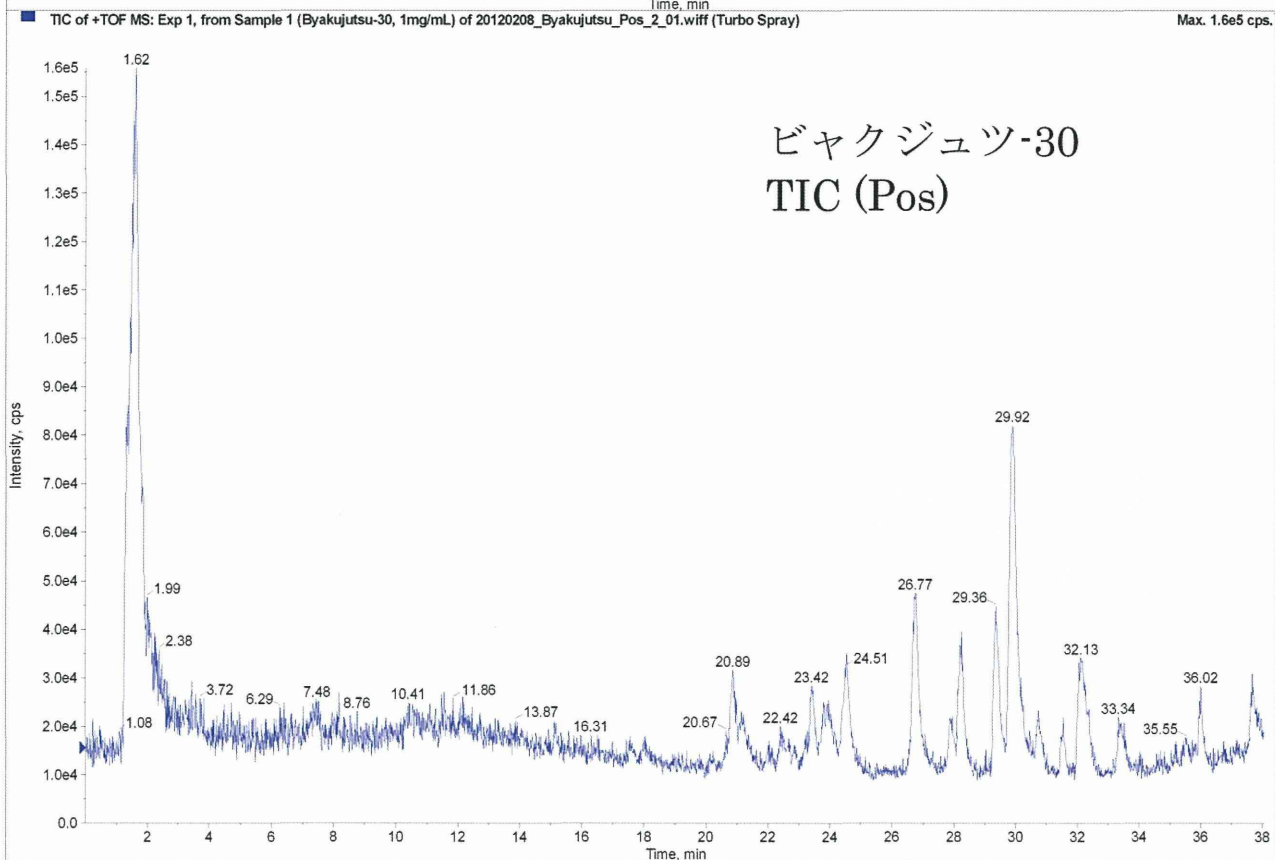
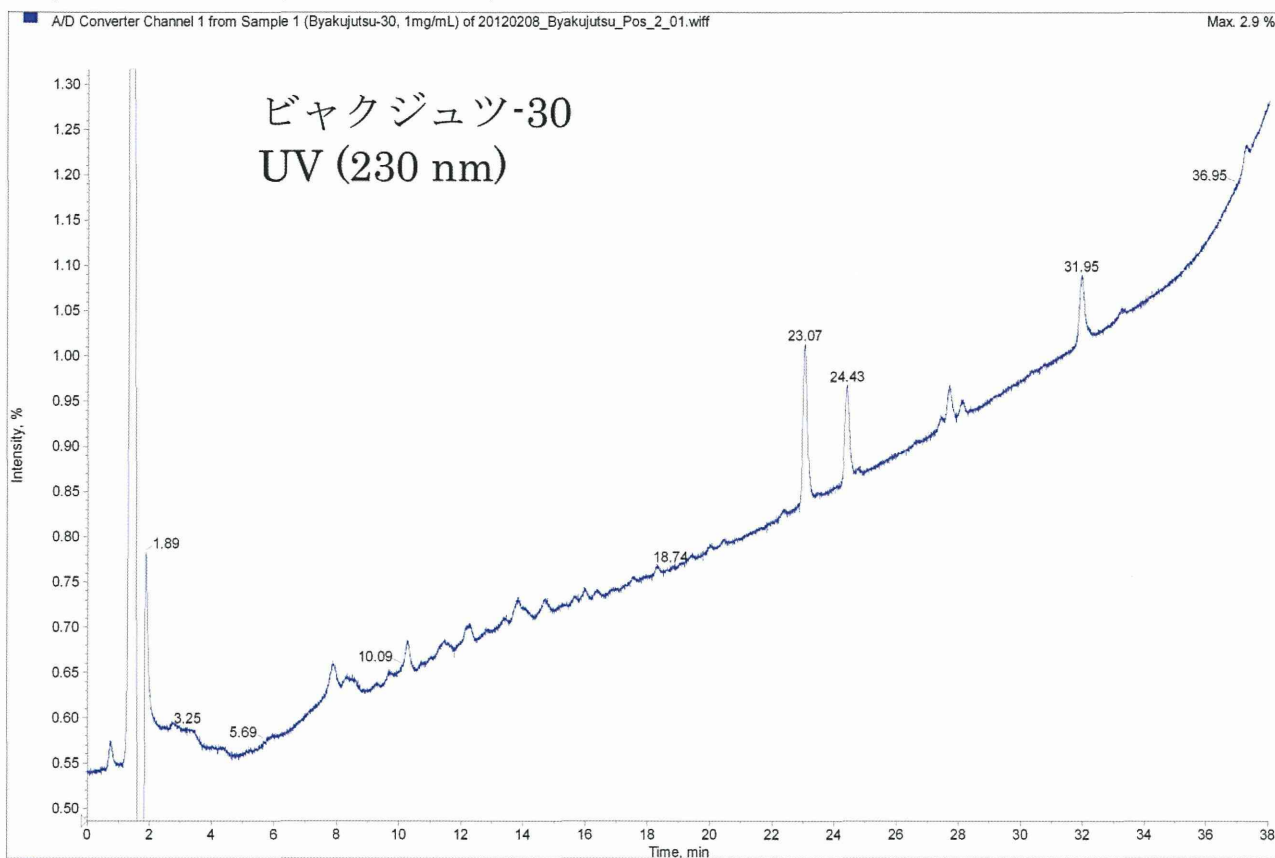
		337.13(55), 313.10(11; 100), 283.09(25)			227.06(5)
14.23	579.24 (1600)	417.16(15), 399.13(45), 381.12(35), 363.11(20), 351.11(30), 321.11(25), 297.12(18; 100), 267.08(15)	13.88	577.11 (1500)	577(70), 397.09(20), 361.06(5), 333.08(7), 307.06(20), 295.04(82; 100), 277.04(5), 267.05(40), 253.05(5)
			14.14	529.00 (400)	
14.53	417.13 (3913)	399.15(10), 381.13(25), 363.11(30), 351.11(27), 321.10(35), 307.12(40), 297.10(80), 281.12(25), 267.09(68; 100), 240.10(20)	14.22	415.02 (3184)	415(25), 325.06(10), 307.06(15), 295.02(95), 277.03(40), 267.01(882; 100), 253.03(15), 223.06(10), 209.06(3)
14.54	549.21 (1600)	417.16(40), 399.14(11; 100), 381.12(65), 363.12(45), 321.11(45), 297.12(85), 267.11(40)	14.21	547.04 (1100)	
			14.38	529.00 (480)	
14.89	549.18 (3172)	417.14(95), 399.14(45; 100), 381.12(85), 363.11(60), 351.11(75), 321.09(50), 297.10(85), 267.08(50)	14.59	547.04 (2848)	547(35), 325.05(15), 295.02(807; 100), 277.03(10), 267.03(70), 223.06(5)
15.07	447.15 (3309)	411.14(50), 393.13(50), 381.13(30), 365.13(30), 351.10(50), 337.13(35), 327.11(95), 297.10(44; 100), 283.10(20)	14.77	445.04 (3100)	445(40), 430.08(7), 391.06(5), 355.07(12), 337.06(10), 325.03(90), 310.02(50), 307.05(25), 297.06(60), 282.02(503; 100), 253.04(7), 225.05(10), 209.06(5)
15.33	579.24 (1000)	447.15(55), 429.17(90), 411.13(55), 381.15(55), 351.12(45), 327.11(7; 100)	15.01	577.10 (1100)	577(25), 355.07(8), 325.05(218; 100), 297.07(12), 282.04(15), 225.05(3)
15.78	579.26 (800)	255.09 (18; 100)	15.49	577.11 (750)	577(12; 100), 327.05(50), 325.06(60), 295.05(35)
	847.25 (192)			845.15 (364)	845(55), 755.14(35), 725.12(38; 100), 635.07(20), 605.08(17)
			15.85	529.13 (668)	529(82; 100), 267.06(43), 249.05(45)
16.23	417.14 (3000)	255.08(80; 100), 227.10(13), 199.10(25), 181.08(10), 145.06(5), 137.05(8)	15.92	415.06 (2200)	
				475.03 (2848)	415.07(30), 253.01(878; 100), 223.03(5), 195.04(3)

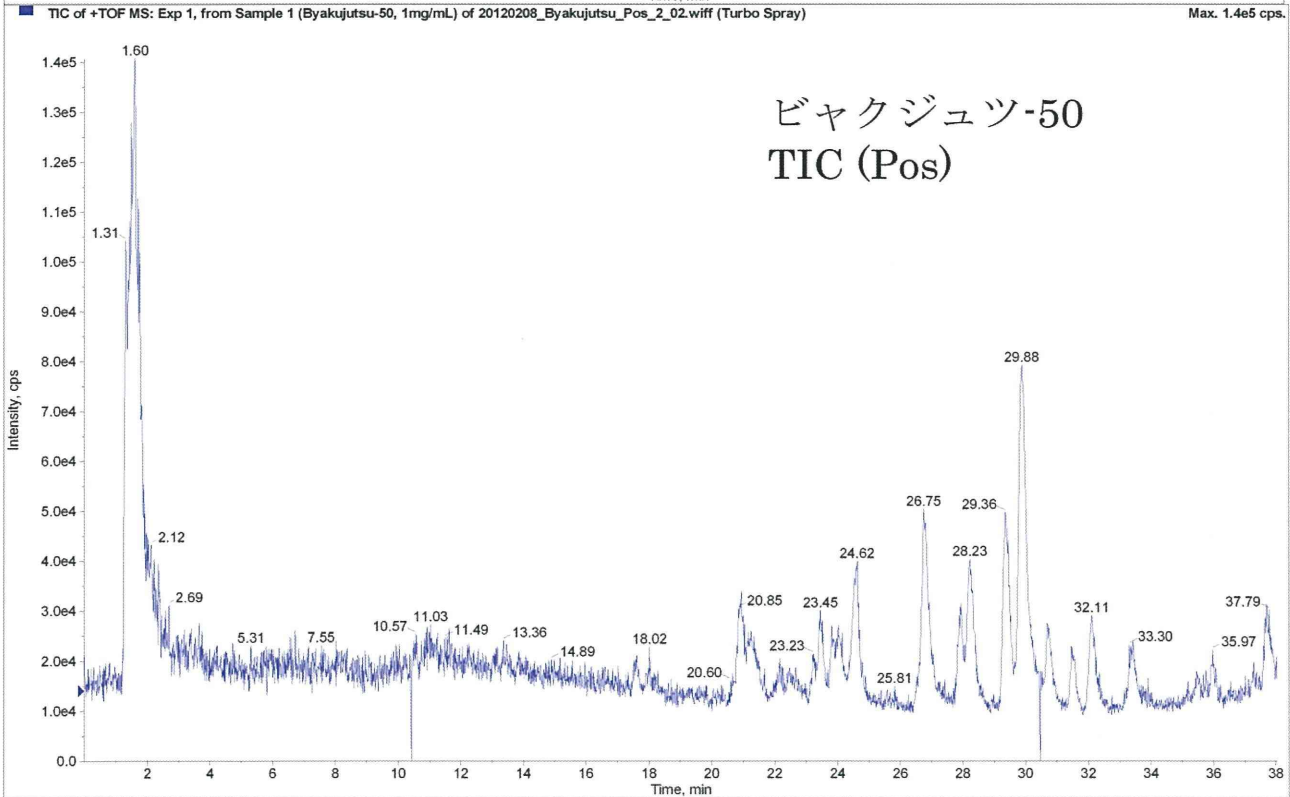
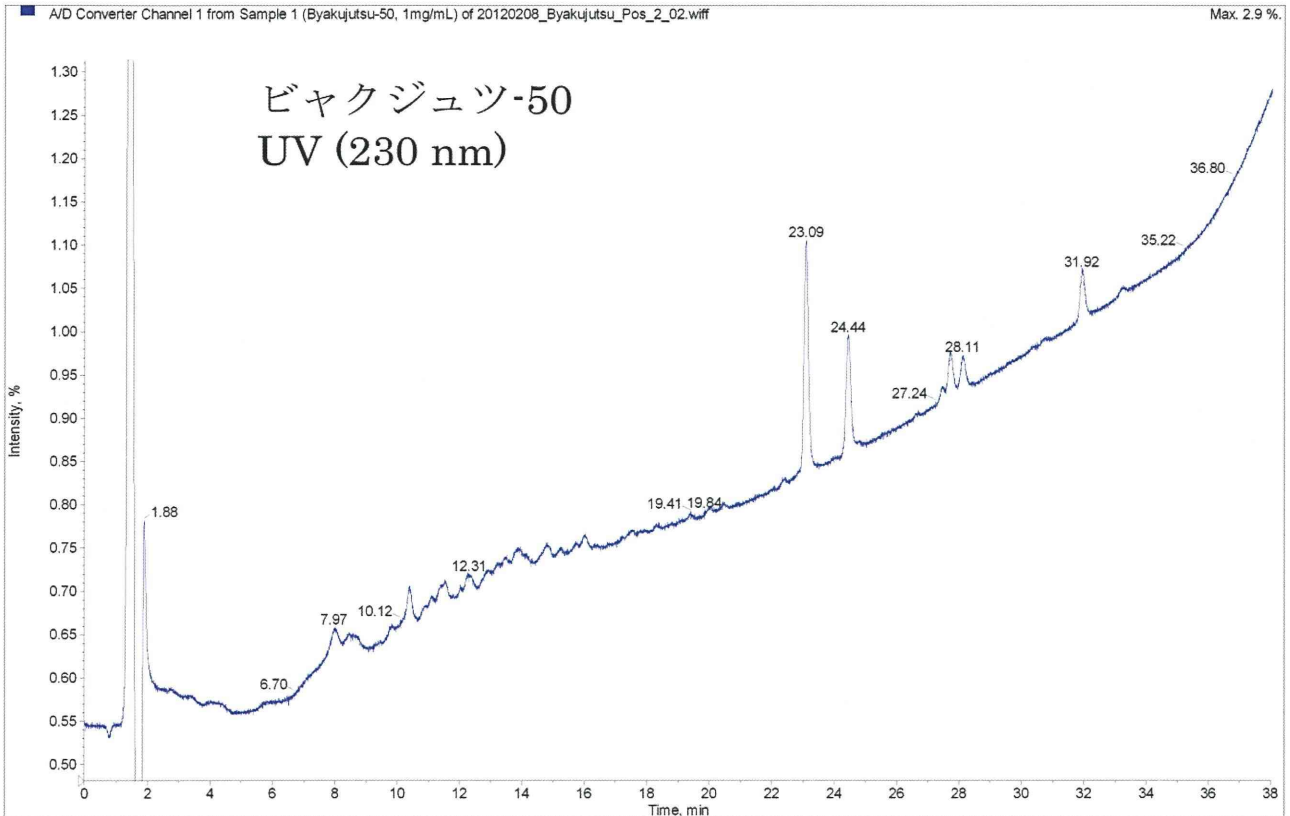
16.73	565.23 (2073)	433.15(45), 415.15(60), 397.13(45), 379.12(30), 367.11(40), 337.08(45), 313.10(13; 100), 283.10(30)		16.5	563.07 (2187)	563(25), 341.05(10), 311.03(284; 100), 283.04(23)
				16.58	505.08 (1420)	445.09(25), 430.08(10), 283.03(374; 100), 268.02(45), 239.02(8), 211.03(5)
16.84	447.16 (1700)	285.10(30; 100), 270.07(23), 253.07(15)				
16.87	433.14 (1000)	379.12(50), 337.08(65), 313.10(6; 100), 283.08(65)		16.66	431.07 (1250)	431(20), 341.06(5), 311.07(183; 100), 283.07(50)
				16.9	605.13 (1679)	605(15), 297.06(221; 100), 253.07(70)
17.07	461.18 (853)					
	607.26 (486)					
17.21	417.15 (1400)	381.13(60), 363.12(45), 321.10(75), 297.11(7; 100), 281.11(45), 267.09(99)		17.04	415.07 (3641)	415(10), 295.05(75), 277.04(15), 267.05(121; 100), 223.06(5)
				17.18	531.07 (387)	415.08(10), 253.04(70; 100)
17.52	417.15 (1350)	255.10(7; 100)		17.37	415.08 (1300)	415(85), 347.08(7), 295.05(35), 267.05(25), 252.03(64; 100), 223.03(15), 195.04(10)
17.75	417.15 (1400)	307.16(65), 297.12(7; 100), 267.09(90)		17.66	415.08 (1200)	415(3), 295.04(65), 277.04(3), 267.04(203; 100), 223.06(3)
18.08	637.24 (244) Soyas apoge nol A-Glc			17.79	635.16 (400)	
	475.19 (900)					
				18.11	459.09 (699)	
					635.16 (1028)	
18.32	503.16	255.10(13;100)				

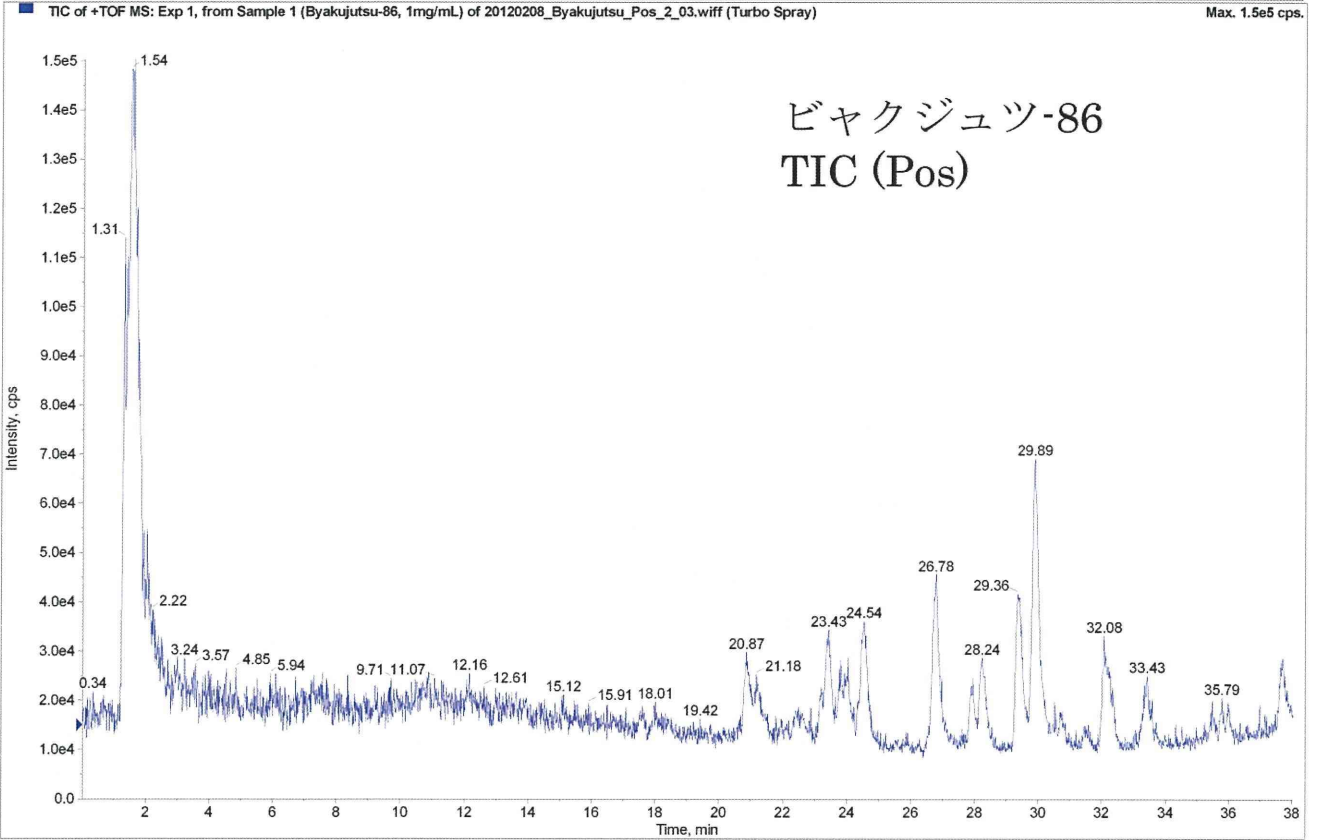
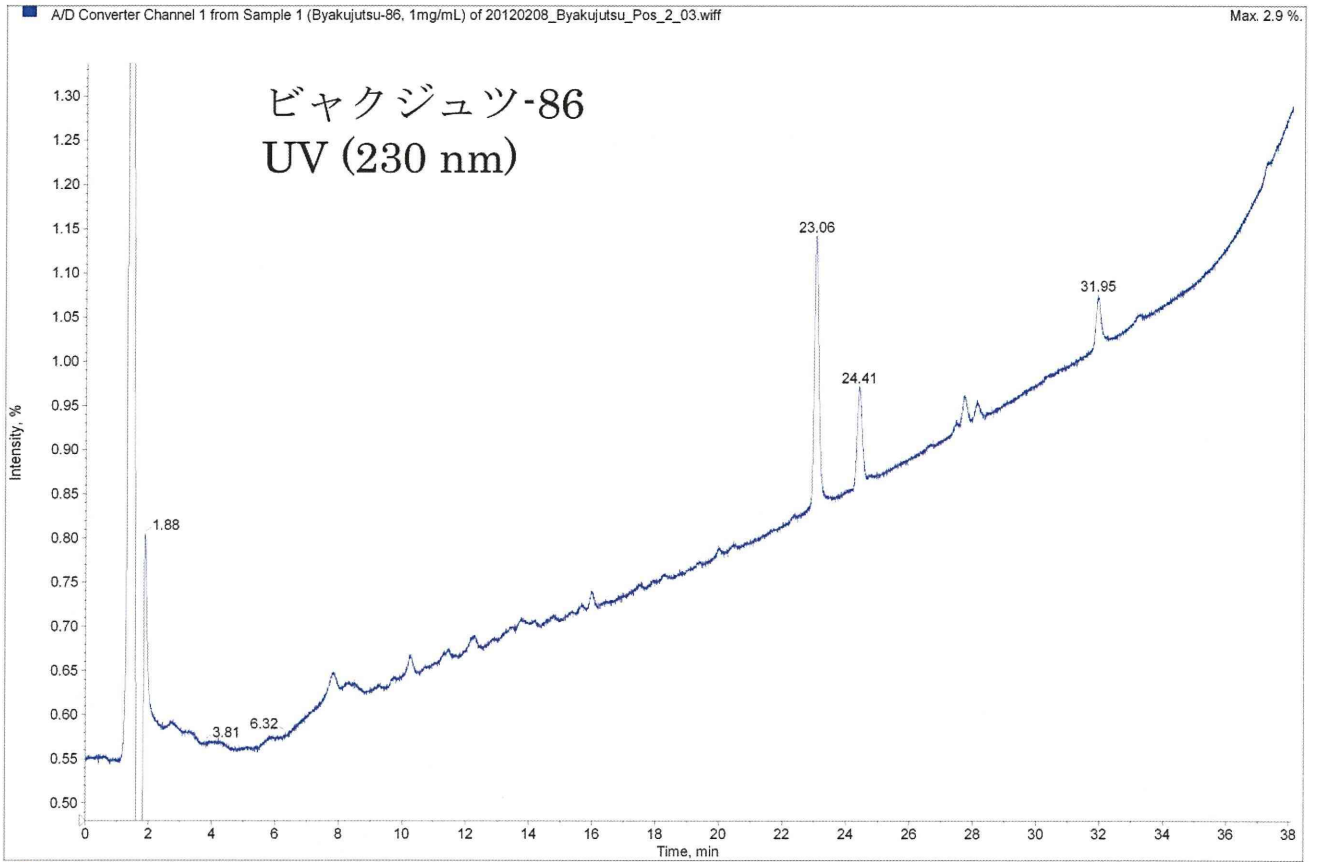
	(898)				
18.43	433.15 (1500)	271.09(29; 100)		18.46	431 (3157) 269.03(4; 100)
					491.1 (891) 431.08(55), 269.02(130; 100)
18.77	563.24 (2071)	431.17(70), 413.16(85), 395.13(80), 377.11(55), 365.12(75), 335.12(40), 311.12(13; 100)		18.47	561.11 (500)
				18.82	561.11 (1792) 561(20), 339.08(10), 309.05(282; 100), 281.06(20), 266.04(20), 237.03(3)
19.1	515.15 (429)			19.1	513.06 (388) 457.08(60), 253.04(8; 100)
19.12	431.16 (900)	311.15(6; 100)		19.15	429.09 (924) 429(20), 321.06(5), 309.06(81; 100), 291.05(10), 281.07(50), 266.04(45)
				19.58	251.05 (200)
				19.89	251.05 (750)
				20.15	269.03 (330) 212.07(18; 100), 166.91(50), 148.10(35), 141.00(30)
20.06	459.17 (680)	255.08(7; 100)		20.17	457.11 (238)
					517.09 (370) 457.08(85), 253.03(81; 100), 224.04(7)
20.7	475.19 (1720)	295.14(40), 267.14(11; 100), 253.12(75)		20.75	473.08 (2005) 311.10(8; 100)
				21.09	574.26 (2-, 434)
				21.27	577.11 (550) 577(25), 355.07(10), 325.05(108;100), 297.05(7), 282.04(8)
				21.58	489.08 (1881) 267.04(489; 100), 252.02(25), 223.03(5), 195.05(2)
21.63	431.16 (1790)	269.11(62; 100), 254.09(15), 237.08(10), 226.11(12), 213.12(7)		21.59	429.10 (233)
				21.77	501.25 (2-, 180) 934.40(17; 100), 811.44(25)

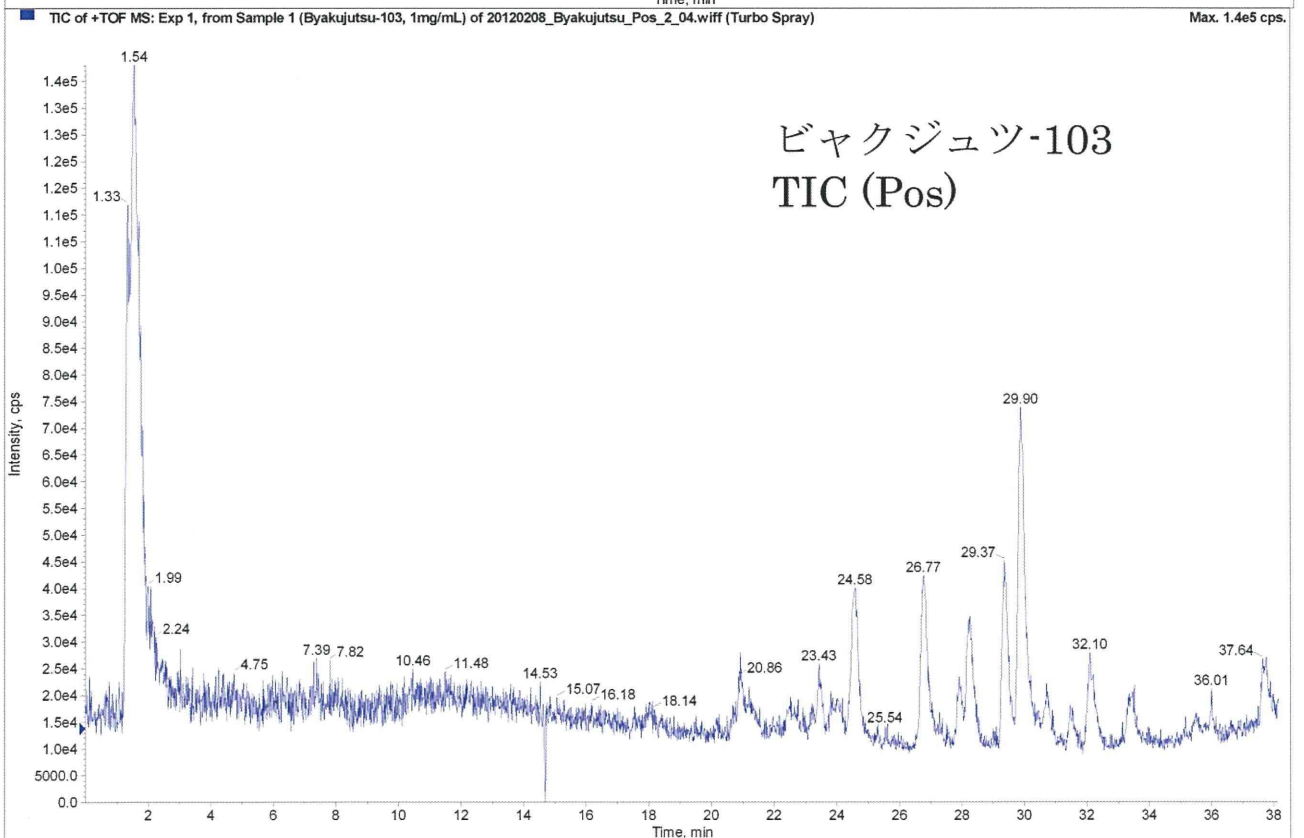
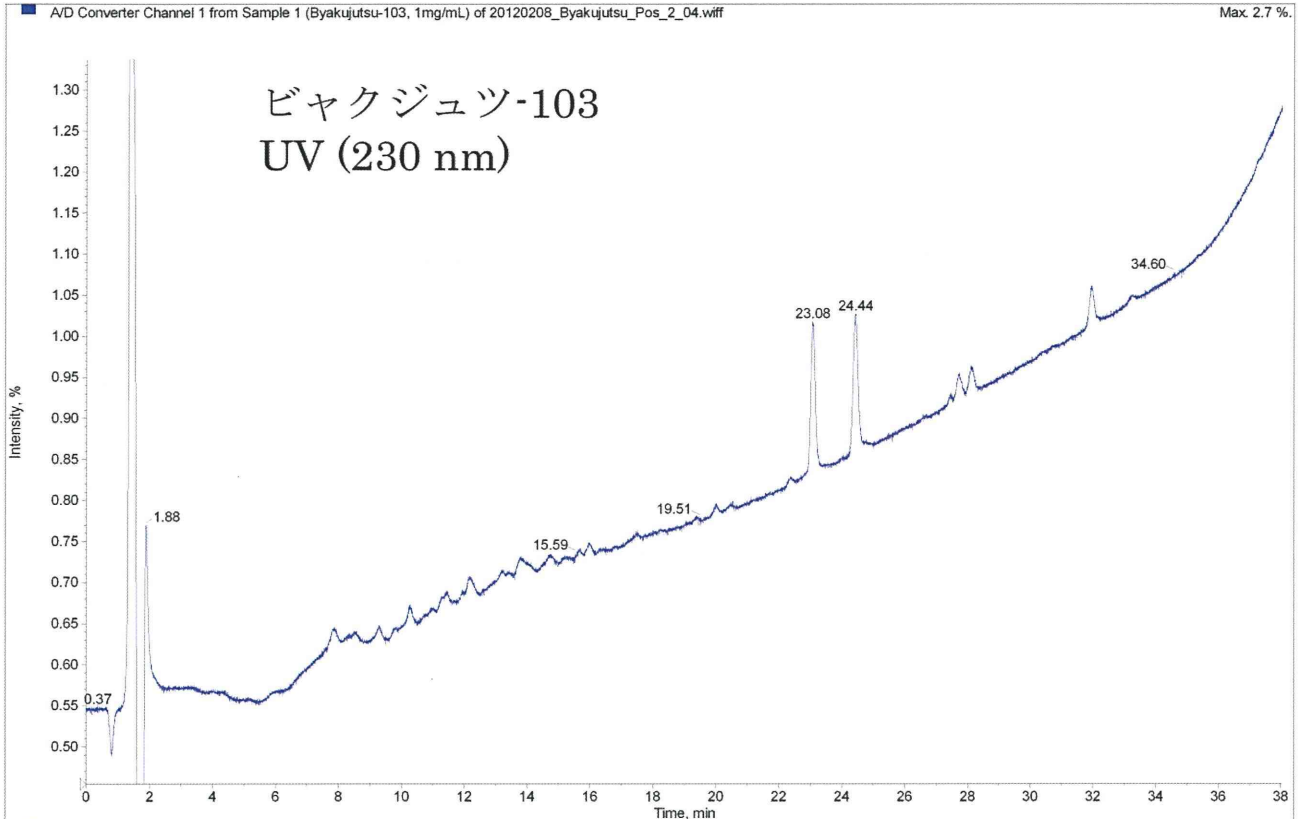
				22.32	489.12 (400)	267.06(36; 100), 252.03(25)
22.43	431.17 (800)			22.35	429.11 (77)	
22.49	255.09 (2450) Daidze in	255(35), 227.10(40), 199.09(21; 100), 181.09(80), 153.09(40), 137.04(65), 132.98(60)		22.44	253.01 (2608)	253(204; 100), 224.04(30), 208.05(25), 196.05(15), 180.05(8), 169.06(5), 133.02(15)
23.17	285.10 (1094)			23.03	283.04 (870)	268.02(23; 100), 239.01(40), 211.03(60)
				23.1	493.23 (2-, 669)	
23.3	579.23 (700)	285.10(17; 100)		23.12	577.12 (700)	520(19; 100), 357.13(35)
				23.26	827.41 (209)	
28.9	269.11 (1958) Formo neneti n			28.77	267.04 (1449)	252.03(30; 100), 223.03(80), 195.04(45), 166.91(40), 146.91(15)

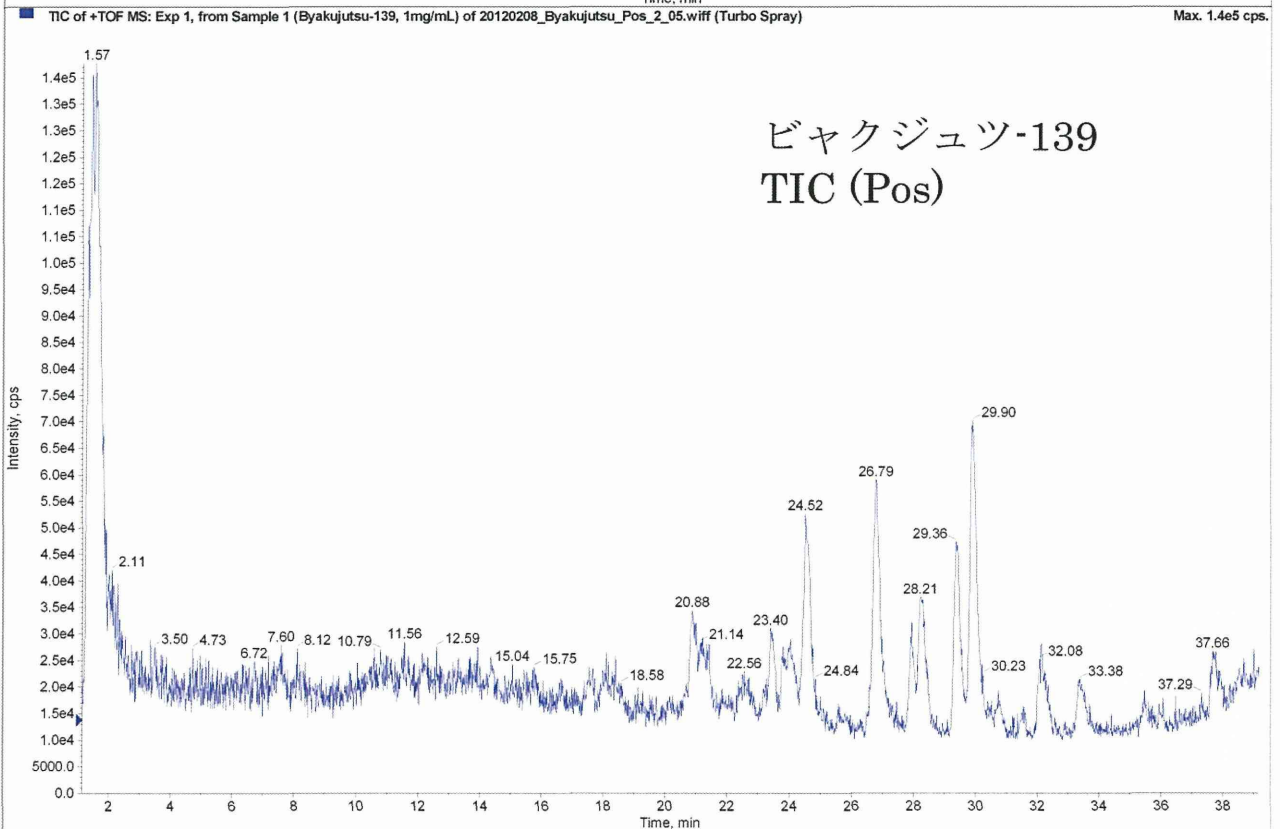
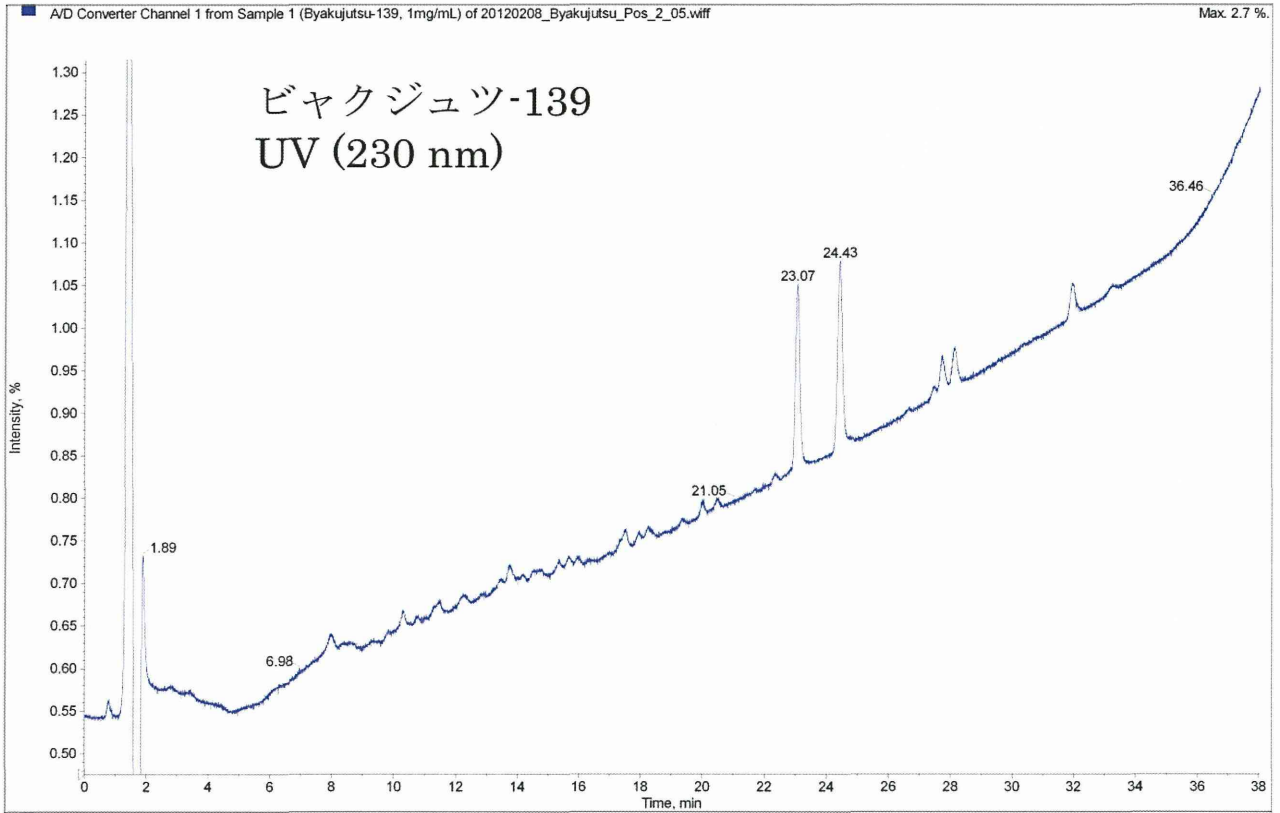
ビヤクジュツ TIC (Positive mode)

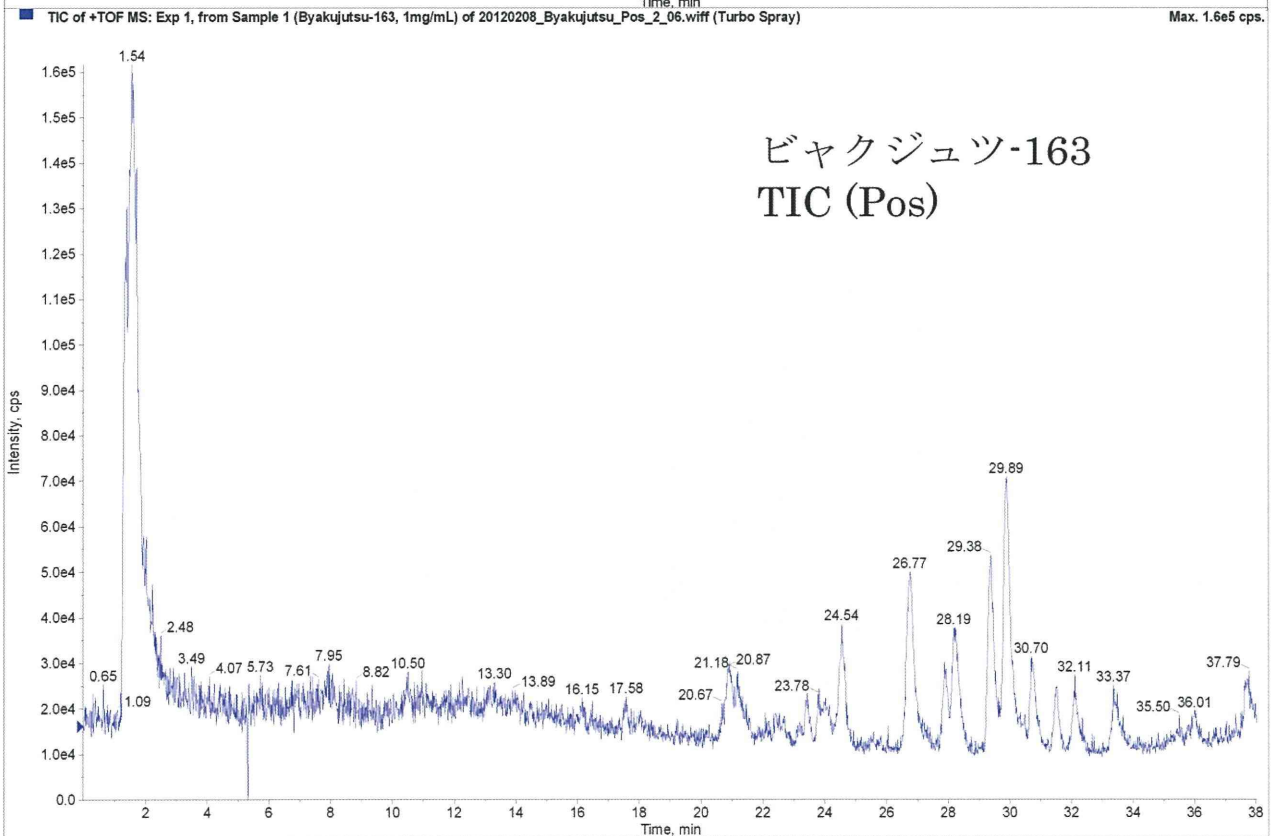
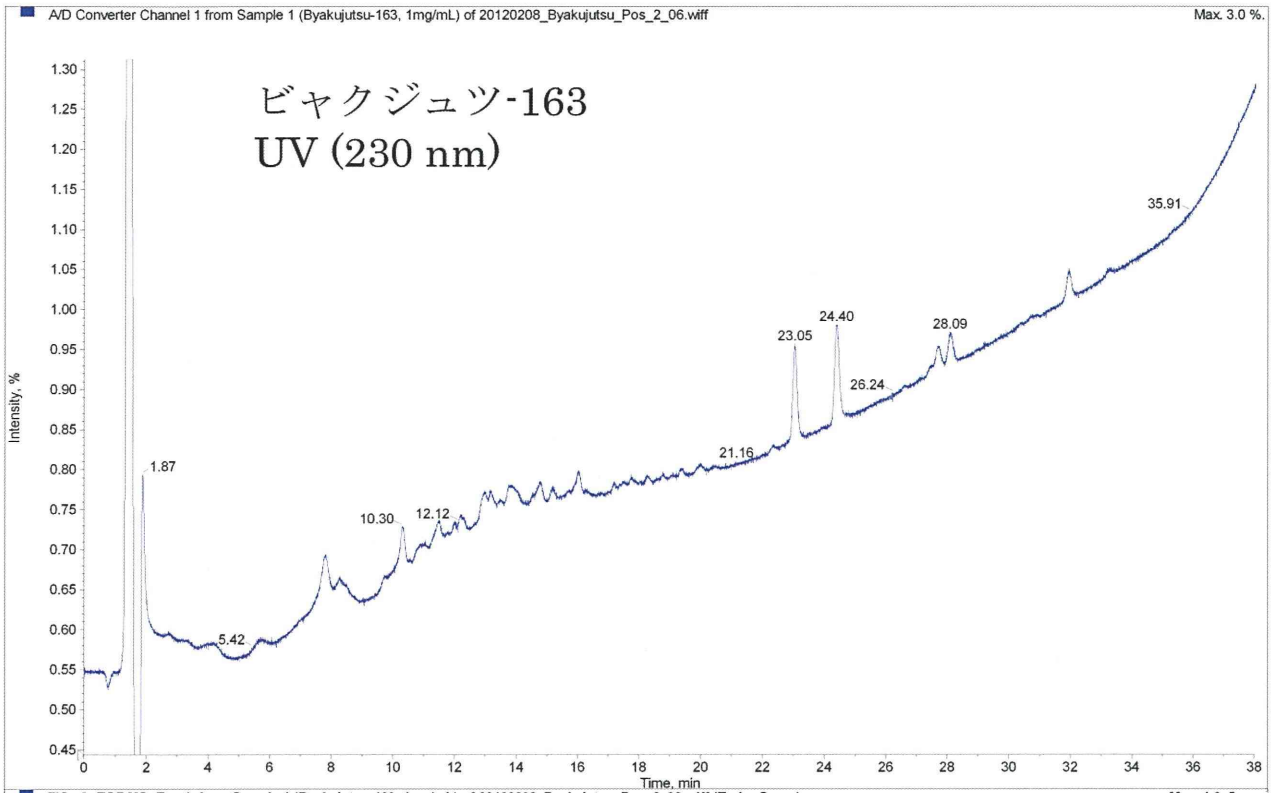


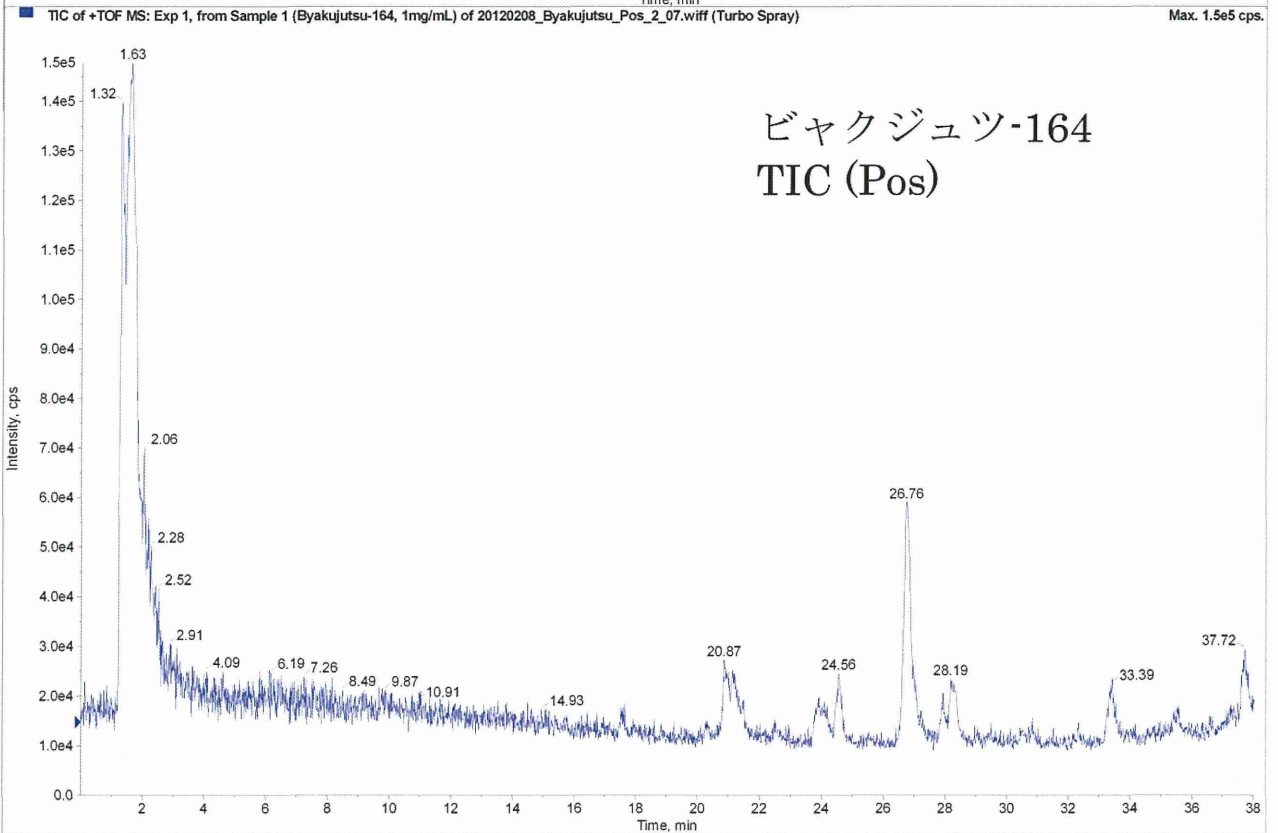
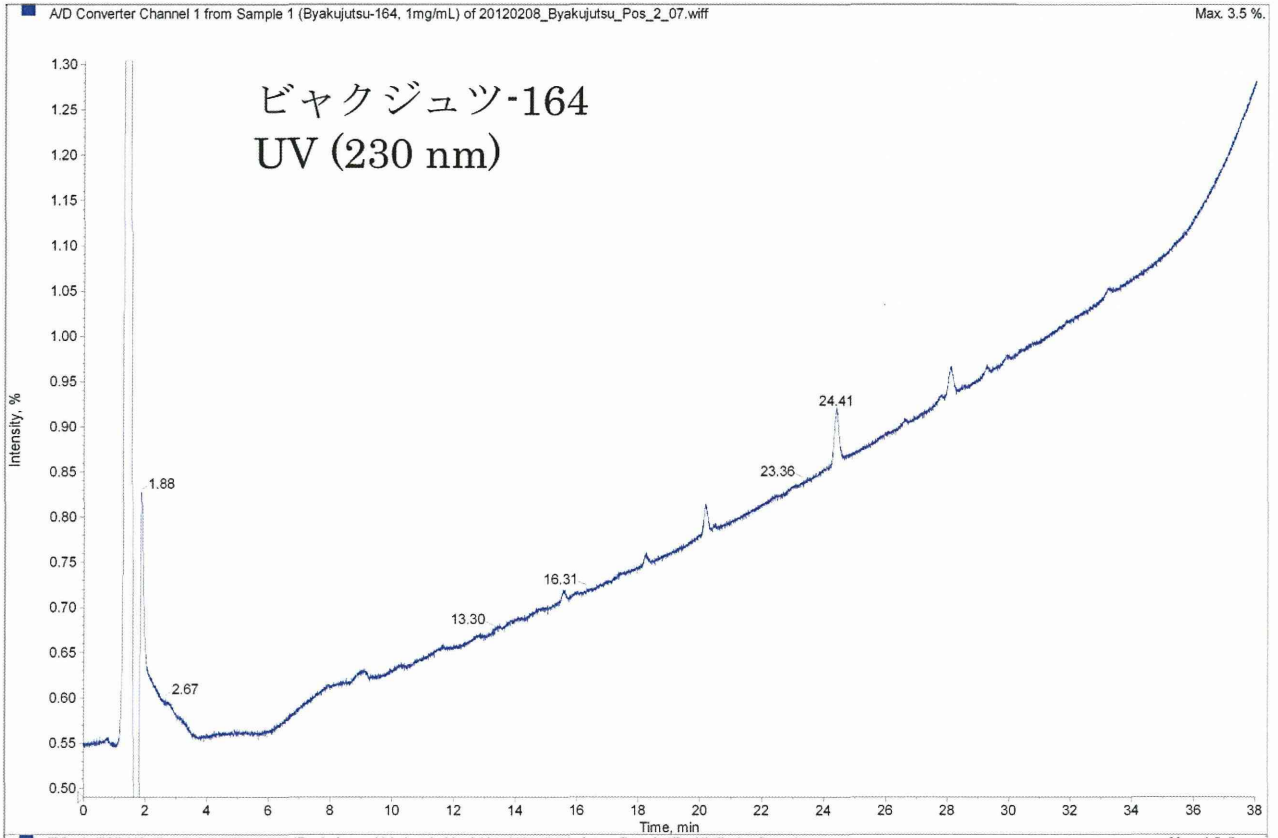


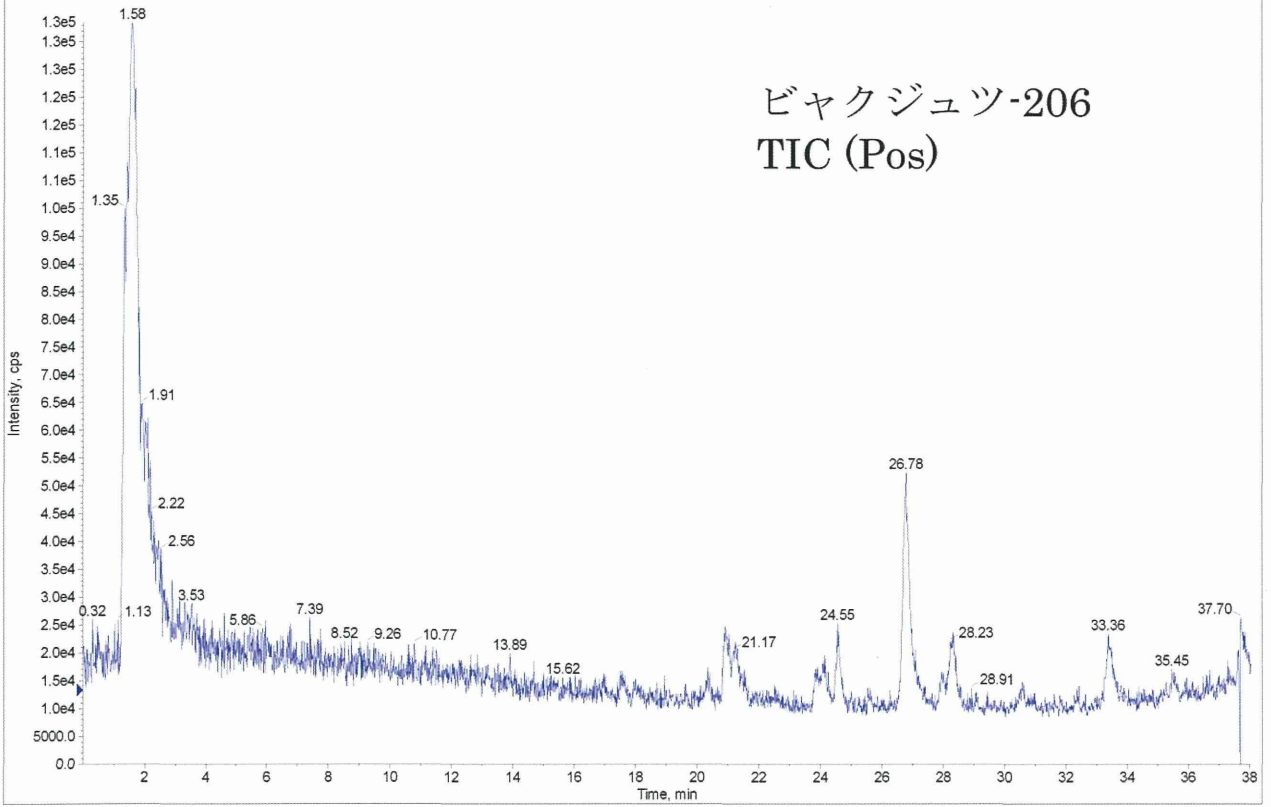
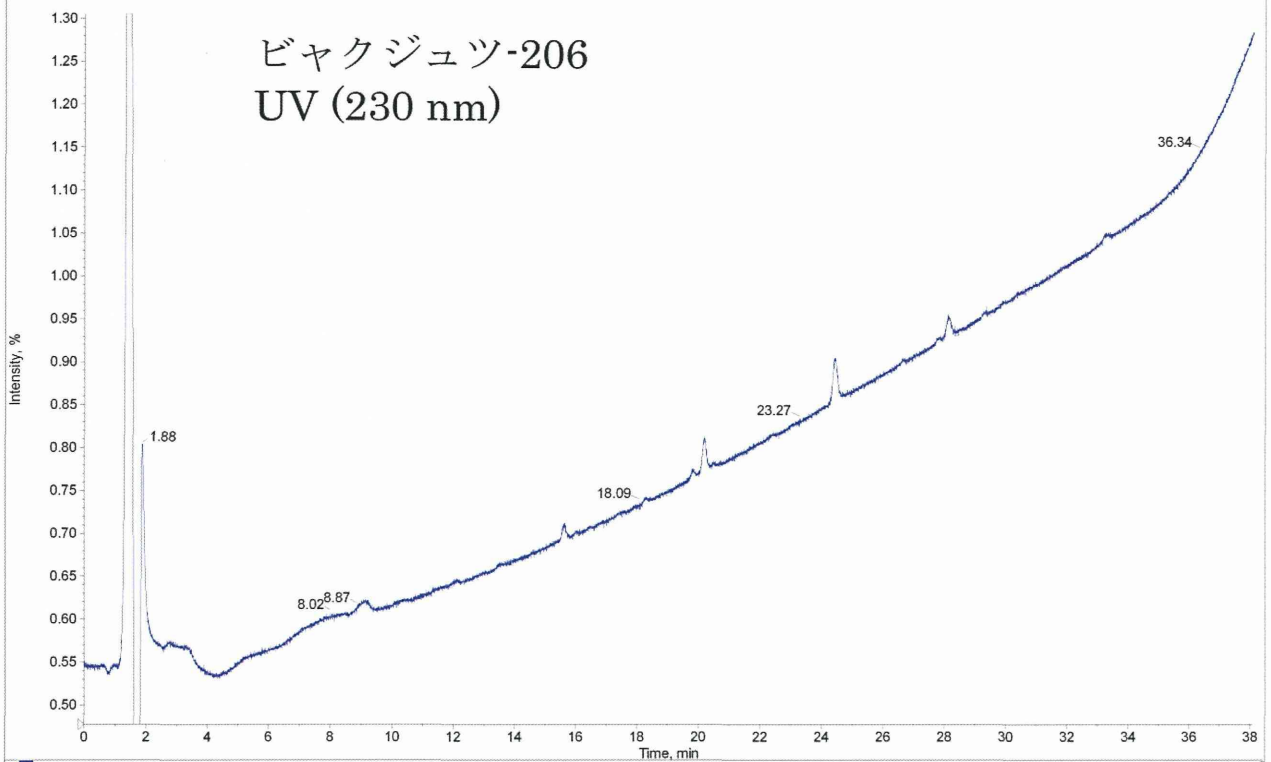


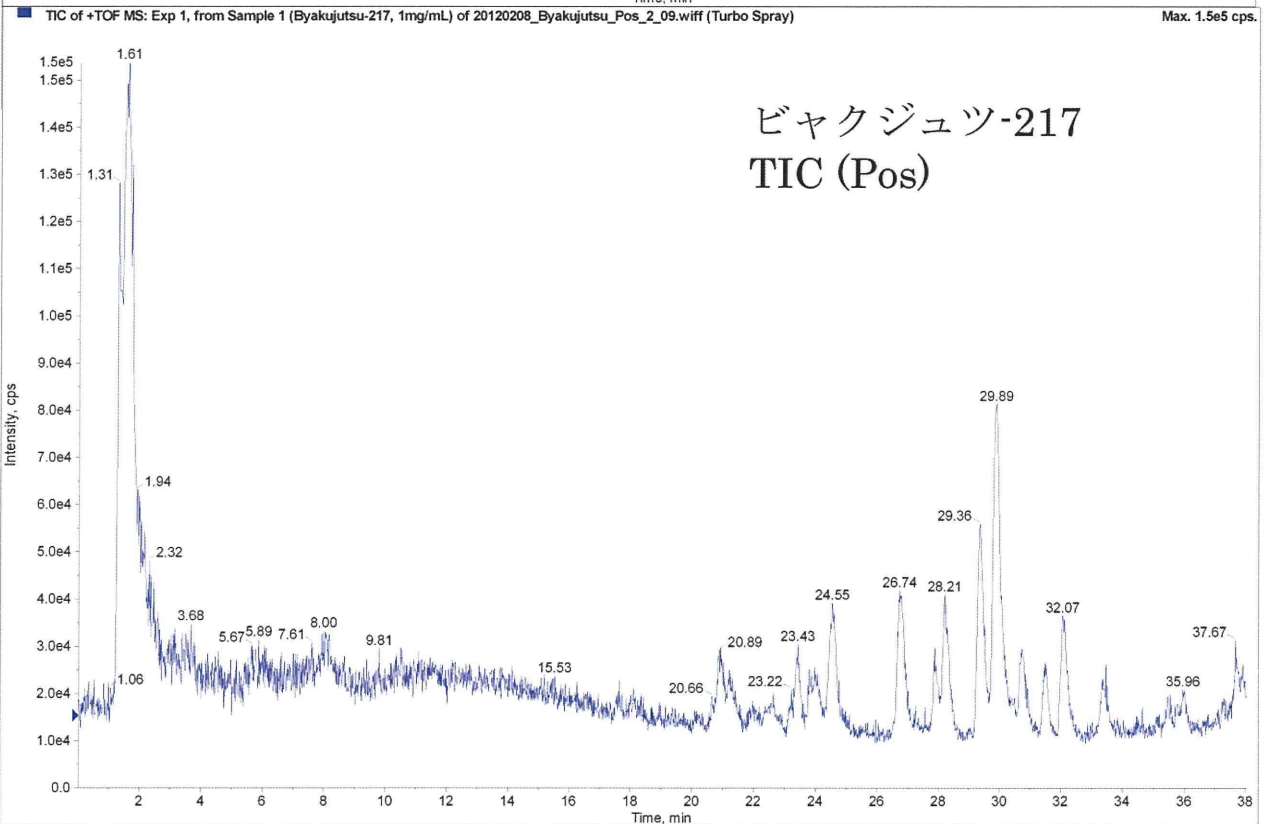
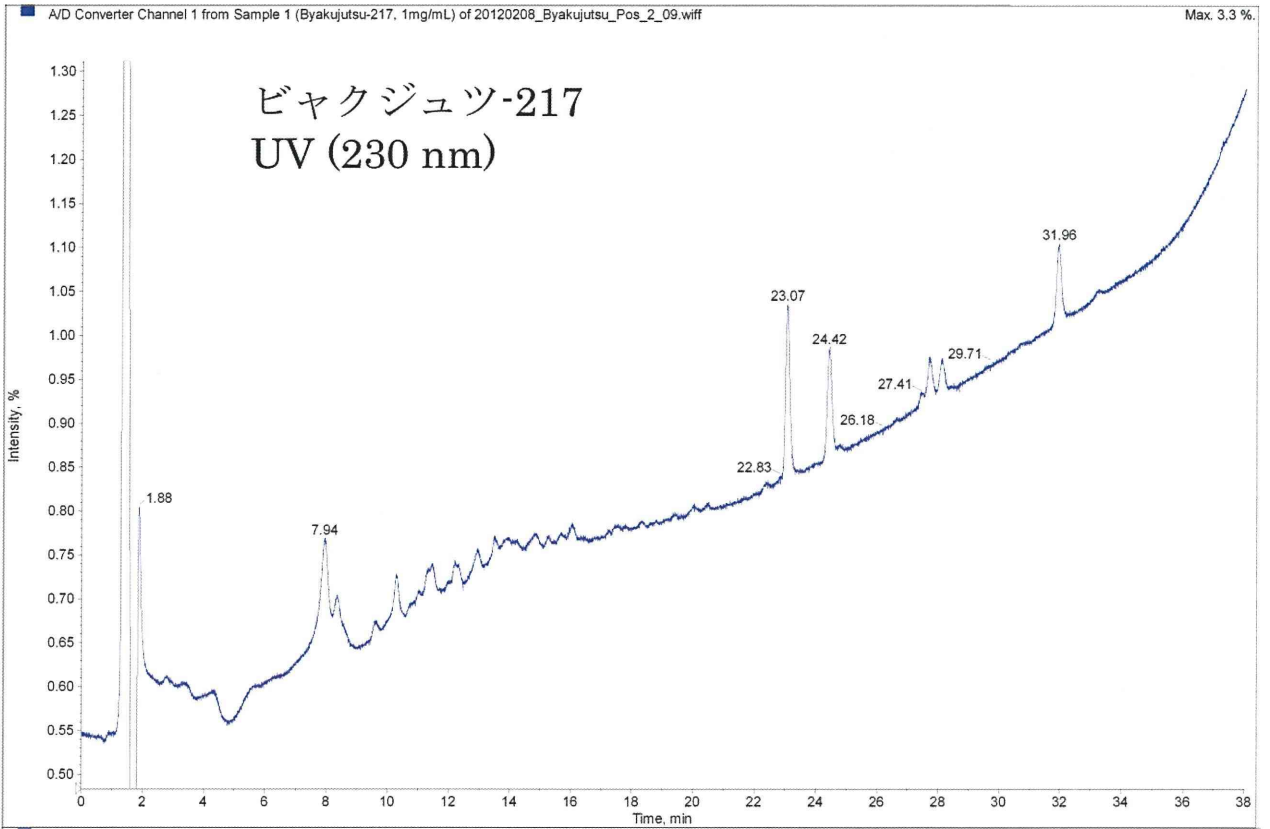












ビヤクジュツ TIC (Negative mode)

