

発表者氏名	論文タイトル名	発表誌名	巻号	ページ	出版年
M. Kiga, F. Tanzawa, S. Iwasaki, F. Inaba, K. Fujiwara, H. Iwadare, T. Echigo, Y. Nakamura, T. Shibata, K. Suzuki, I. Yasumatsu, A. Nakayama, Y. Sasazawa, <u>E. Tashiro</u> , M. Imoto & S. Kurakata	Antitumor effects of novel highly hydrophilic and non-ATP-competitive MEK1/2 inhibitor, SMK-17.	<i>Anti-cancer drugs</i>	23	119-130	2012
<u>E. Tashiro</u> & M. Imoto	Target identification of bioactive compounds.	<i>Bioorganic & Medicinal Chemistry</i>	20	1910-1921	2012
H. Kobayashi, Y. Ogura, M. Sawada, R. Nakayama, K. Takano, Y. Minato, Y. Takemoto, <u>E. Tashiro</u> , H. Watanabe & M. Imoto	Involvement of 14-3-3 proteins in the second epidermal growth factor-induced wave of Rac1 activation in the process of cell migration.	<i>The Journal of Biological Chemistry</i>	286	39259-39268	2011
Y. Yamada, <u>E. Tashiro</u> , S. Taketani, M. Imoto & T. Kataoka	Mycotrienin II, a translation inhibitor that prevents ICAM-1 expression induced by pro-inflammatory cytokines.	<i>The Journal of Antibiotics</i>	64	361-366	2011
T. Kawamura, K. Matsubara, H. Otake, <u>E. Tashiro</u> , K. Shindo, RC. Yanagita, K. Irie and M. Imoto	Generation of 'Unnatural Natural Product' library and identification of a small molecule inhibitor of XIAP.	<i>Bioorg. Med. Chem.</i>	19	4377-4385	2011
M. Kitagawa, M. Misawa, S. Ogawa, <u>E. Tashiro</u> & M. Imoto	A new, convenient cell-based screening method for small-molecule glycolytic inhibitors.	<i>Biosci. Biotechnol. Biochem.</i>	75	367-369	2011
K. Yamamoto, <u>E. Tashiro</u> & M. Imoto	Quinotrierixin inhibited ER stress-induced XBP1 mRNA splicing through inhibition of protein synthesis.	<i>Biosci. Biotechnol. Biochem.</i>	75	284-288	2011
M. Sawada, S. Kubo, K. Matsumura, Y. Takemoto, H. Kobayashi, <u>E. Tashiro</u> , T. Kitahara, H. Watanabe & M. Imoto	Synthesis and anti-migrative evaluation of moverastin derivatives.	<i>Bioorg. Med. Chem. Lett.</i>	21	1385-1389	2011
M. Kitagawa, S. Ikeda, <u>E. Tashiro</u> , T. Soga & M. Imoto	Metabolomic identification of the target of the filopodia protrusion inhibitor glucopiericidin A.	<i>Chemistry and Biology</i>	17	989-998	2010
T. Kawamura, T. Fujimaki, N. Hamanaka, K. Torii, H. Kobayashi, Y. Takahashi, M. Igarashi, N. Kinoshita, Y. Nishimura, <u>E. Tashiro</u> & M. Imoto	Isolation and structure elucidation of a novel androgen antagonist, arabilin, produced by Streptomyces sp. MK756-CF1.	<i>The Journal of Antibiotics</i>	63	601-605	2010

研究成果の刊行物・別刷

PINK1 stabilized by mitochondrial depolarization recruits Parkin to damaged mitochondria and activates latent Parkin for mitophagy

Noriyuki Matsuda,¹ Shigeto Sato,² Kahori Shiba,³ Kei Okatsu,¹ Keiko Saisho,¹ Clement A. Gautier,⁴ Yu-shin Sou,¹ Shinji Saiki,² Sumihiro Kawajiri,² Fumiaki Sato,³ Mayumi Kimura,¹ Masaaki Komatsu,^{1,5} Nobutaka Hattori,² and Keiji Tanaka¹

¹Laboratory of Frontier Science, Tokyo Metropolitan Institute of Medical Science, Setagaya-ku, Tokyo 156-8506, Japan

²Department of Neurology and ³Research Institute for Diseases of Old Age, Juntendo University School of Medicine, Bunkyo-ku, Tokyo 113-8421, Japan

⁴Center for Neurologic Diseases, Brigham and Women's Hospital, Harvard Medical School, Boston, MA 02115

⁵Precursory Research for Embryonic Science and Technology, Japan Science and Technology Agency, Kawaguchi 332-0012, Japan

Parkinson's disease (PD) is a prevalent neurodegenerative disorder. Recent identification of genes linked to familial forms of PD such as *Parkin* and *PINK1* (*PTEN-induced putative kinase 1*) has revealed that ubiquitylation and mitochondrial integrity are key factors in disease pathogenesis. However, the exact mechanism underlying the functional interplay between Parkin-catalyzed ubiquitylation and PINK1-regulated mitochondrial quality control remains an enigma. In this study, we show that PINK1 is rapidly and constitutively degraded under steady-state conditions in a mitochondrial membrane potential-dependent manner and that a loss in

mitochondrial membrane potential stabilizes PINK1 mitochondrial accumulation. Furthermore, PINK1 recruits Parkin from the cytoplasm to mitochondria with low membrane potential to initiate the autophagic degradation of damaged mitochondria. Interestingly, the ubiquitin ligase activity of Parkin is repressed in the cytoplasm under steady-state conditions; however, PINK1-dependent mitochondrial localization liberates the latent enzymatic activity of Parkin. Some pathogenic mutations of PINK1 and Parkin interfere with the aforementioned events, suggesting an etiological importance. These results provide crucial insight into the pathogenic mechanisms of PD.

Introduction

Parkinson's disease (PD) is a very common movement disorder characterized by dopaminergic neuronal loss. The majority of PD cases are sporadic; however, the discovery of genes linked to rare familial forms of this disease has provided important insight into the molecular mechanisms of disease pathogenesis (Moore et al., 2005; Hardy et al., 2006). In 2000, we and others found that dysfunction of an E3 ubiquitin ligase (Imai et al., 2000; Shimura et al., 2000; Zhang et al., 2000) termed Parkin causes autosomal recessive juvenile Parkinsonism (Kitada et al., 1998). Since then, a multitude of papers have been published, but the mechanism by which dysfunction of Parkin causes autosomal recessive juvenile

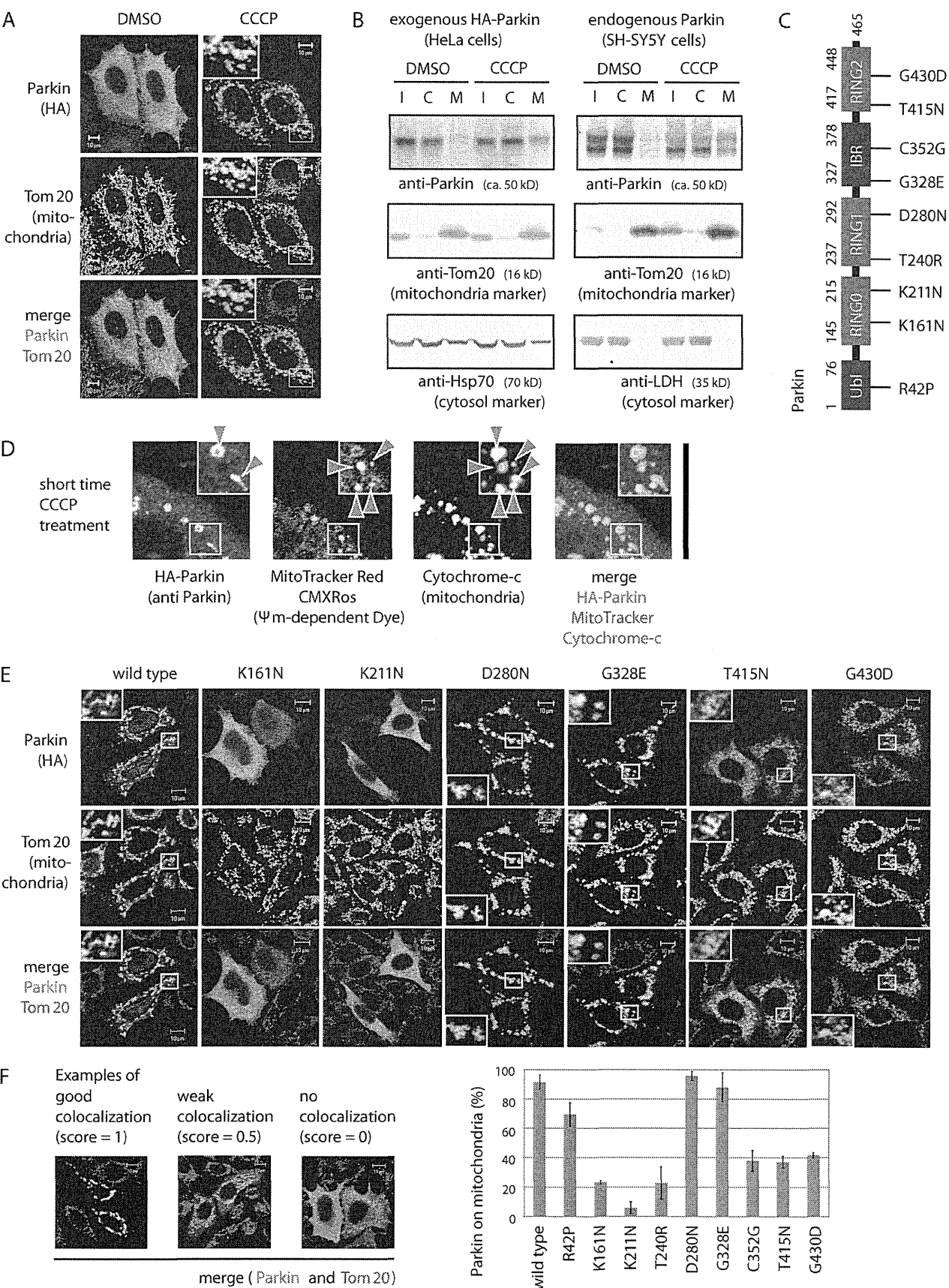
Parkinsonism has largely remained obscure, and claims of pathogenicity remain controversial (Lim, 2007; Matsuda and Tanaka, 2010). In addition, *PINK1* (*PTEN-induced putative kinase 1*) was identified in 2004 as the gene responsible for another form of early-onset PD (Valente et al., 2004). PINK1 functions in mitochondrial maintenance, suggesting that mitochondrial integrity is another key factor in disease pathogenesis (Dodson and Guo, 2007; Schapira, 2008). Intriguingly, genetic studies using *Drosophila melanogaster* revealed that PINK1 and Parkin function in the same pathway, with PINK1 functioning upstream of Parkin (Clark et al., 2006; Park et al., 2006; Yang et al., 2006). Little is known about how PINK1

Correspondence to Noriyuki Matsuda: matsuda-nr@igakuken.or.jp; or Keiji Tanaka: tanaka-kj@igakuken.or.jp

Abbreviations used in this paper: CCCP, carbonyl cyanide m-chlorophenylhydrazine; MEF, mouse embryonic fibroblast; Mt-GFP, mitochondria-targeting GFP; PD, Parkinson's disease.

© 2010 Matsuda et al. This article is distributed under the terms of an Attribution-Noncommercial-Share Alike-No Mirror Sites license for the first six months after the publication date (see <http://www.rupress.org/terms>). After six months it is available under a Creative Commons License (Attribution-Noncommercial-Share Alike 3.0 Unported license, as described at <http://creativecommons.org/licenses/by-nc-sa/3.0/>).

Supplemental Material can be found at:
<http://jcb.rupress.org/content/suppl/2010/04/18/jcb.200910140.DC1.html>



regulates Parkin, and our knowledge, especially in mammals, of their relationship is limited. In this study, we describe the mechanism underlying the functional interplay between ubiquitylation catalyzed by Parkin and mitochondrial quality control regulated by PINK1.

Results and discussion

Parkin localizes to and ubiquitylates mitochondria with low membrane potential

We initially sought to study the subcellular localization and E3 activity of Parkin using HeLa cells, which reportedly lack a functional *Parkin* gene (Denison et al., 2003). In support of that study, we found that endogenous Parkin was barely detectable in HeLa cells even when PRK8, the best-characterized specific anti-Parkin antibody (Pawlyk et al., 2003), was used (Fig. S1 A). Consequently, HA-Parkin was exogenously introduced into HeLa cells. Under steady-state conditions, HA-Parkin was diffusely localized throughout the cytosol and did not overlap with mitochondria, whereas Parkin was rapidly recruited to the mitochondria when HeLa cells were treated with the mitochondrial uncoupler CCCP (carbonyl cyanide *m*-chlorophenylhydrazone; Fig. 1 A), as reported by Narendra et al. (2008). Next we tried to confirm the redistribution of Parkin from the cytoplasm to the mitochondria using a biochemical approach. In fractionation experiments, detection of Parkin in the mitochondria-rich fraction was faint, probably because Parkin was weakly associated with the mitochondria and thus unstable during fractionation. Inclusion of the cross-linker DSP (dithiobis[succinimidyl propionate]) significantly strengthened the signal and further confirmed redistribution of exogenous (Fig. 1 B, left) and endogenous (Fig. 1 B, right) Parkin from the cytoplasm to a mitochondria-enriched fraction. (Note that endogenous Parkin in SH-SY5Y cells is detectable as a doublet, which is consistent with a previous study [Pawlyk et al., 2003].) To more convincingly demonstrate that Parkin is selectively recruited to depolarized mitochondria, we used MitoTracker red CMXRos, which accumulates in mitochondria with an intact membrane potential. Incomplete treatment with CCCP can generate cells in which healthy and damaged mitochondria coexist. Under these conditions, signals of Parkin and MitoTracker were mutually exclusive, and Parkin selectively localized on mitochondria with lower MitoTracker red staining (Fig. 1 D), indicating that Parkin was selectively targeted to mitochondria whose membrane potential had been lost.

Subsequently, we performed immunofluorescence staining using an antiubiquitin antibody. Under normal conditions, the ubiquitin signal was spread throughout the cell. In contrast,

when cells were treated with CCCP, the ubiquitin signal was concentrated in the mitochondria (Fig. 2, A and B). Mitochondrial ubiquitylation was only observed in Parkin-expressing cells (Fig. 2 A and Fig. S1 B) and disappeared when Parkin mutants deficient in E3 activity (T415N and G430D) were introduced (Fig. 2 A). Triple staining using mitochondria-targeting GFP (Mt-GFP), anti-Parkin, and anti-ubiquitin antibodies further confirmed the colocalization of Parkin, ubiquitin, and mitochondria after CCCP treatment (Fig. 2 C). Staining with single antibodies or Mt-GFP alone indicated that the aforementioned merged data were not derived from channel cross talk (Fig. S1, C and D). These results demonstrate that Parkin ubiquitylates mitochondria in response to a reduction in mitochondrial membrane potential.

Disease-relevant mutations of Parkin impair mitochondrial localization

To confirm that translocation of Parkin to depolarized mitochondria is etiologically important, we selected nine pathogenic mutations and examined their subcellular localization (Fig. 1 C). In vitro experiments have previously shown that two of the mutations (T415N and G430D) in the RING2 domain abolish E3 activity of Parkin, whereas E3 activity is unaffected by the other mutations (Hampe et al., 2006; Matsuda et al., 2006). These mutants were serially introduced into HeLa cells, followed by CCCP treatment, and their subcellular localization was examined. Parkin with the D280N or G328E mutation in RING1 or the IBR (in between RING) domain, respectively, was recruited to the mitochondria in a manner similar to wild-type Parkin (Fig. 1, E and F). In contrast, the other pathogenic mutations altered to some degree the mitochondrial localization of Parkin; in particular, the K161N, K211N, and T240R mutations, which lie in or near the RING0 domain in the linker region (Hristova et al., 2009), severely compromised the mitochondrial localization of Parkin (Fig. 1, E and F). The aforementioned results suggest that mitochondrial localization of Parkin is pathologically significant and that the RING0 domain is important for the translocation of Parkin to the damaged mitochondria.

Parkin exerts E3 activity only when the mitochondrial membrane potential decreases

As shown in Fig. 2 C and Fig. S1 B, mitochondrial ubiquitylation was dependent on Parkin translocation to the mitochondria. Thus, we tried to determine whether the subcellular localization of Parkin modulates its E3 activity. To address this issue, we monitored the E3 activity of Parkin using an

Figure 1. Mitochondrial localization of Parkin is etiologically important. (A) HeLa cells expressing HA-Parkin were treated with CCCP or DMSO (control) and then immunostained with the indicated antibodies. (B) HeLa cells stably expressing HA-Parkin or intact SH-SY5Y cells were treated with CCCP or DMSO and subjected to fractionation experiments. I, C, and M indicate input, cytosol-rich supernatant, and mitochondria-rich membrane pellet, respectively. (C) Schematic diagram of disease-relevant mutants of Parkin used in this study. IBR, in between RING; Ubl, ubiquitin like. (D) Polarized mitochondria stained with MitoTracker red (red arrowheads) were not labeled by Parkin. In contrast, damaged mitochondria marked by Parkin (green arrowheads) were not stained with MitoTracker red. (E) HeLa cells expressing HA-Parkin with various pathogenic mutations were treated with CCCP, followed by immunocytochemistry. (A, D, and E) Higher magnification views of the boxed areas are shown in the insets. (F) Parkin colocalization with mitochondria was analyzed in >100 cells per mutation. Example figures indicative of robust colocalization (counted as 1), weak colocalization (counted as 0.5), and no colocalization (counted as 0) are shown. Error bars represent the mean \pm SD values of at least three experiments. Bars: (A, E, and F) 10 μ m; (D) 30 μ m.

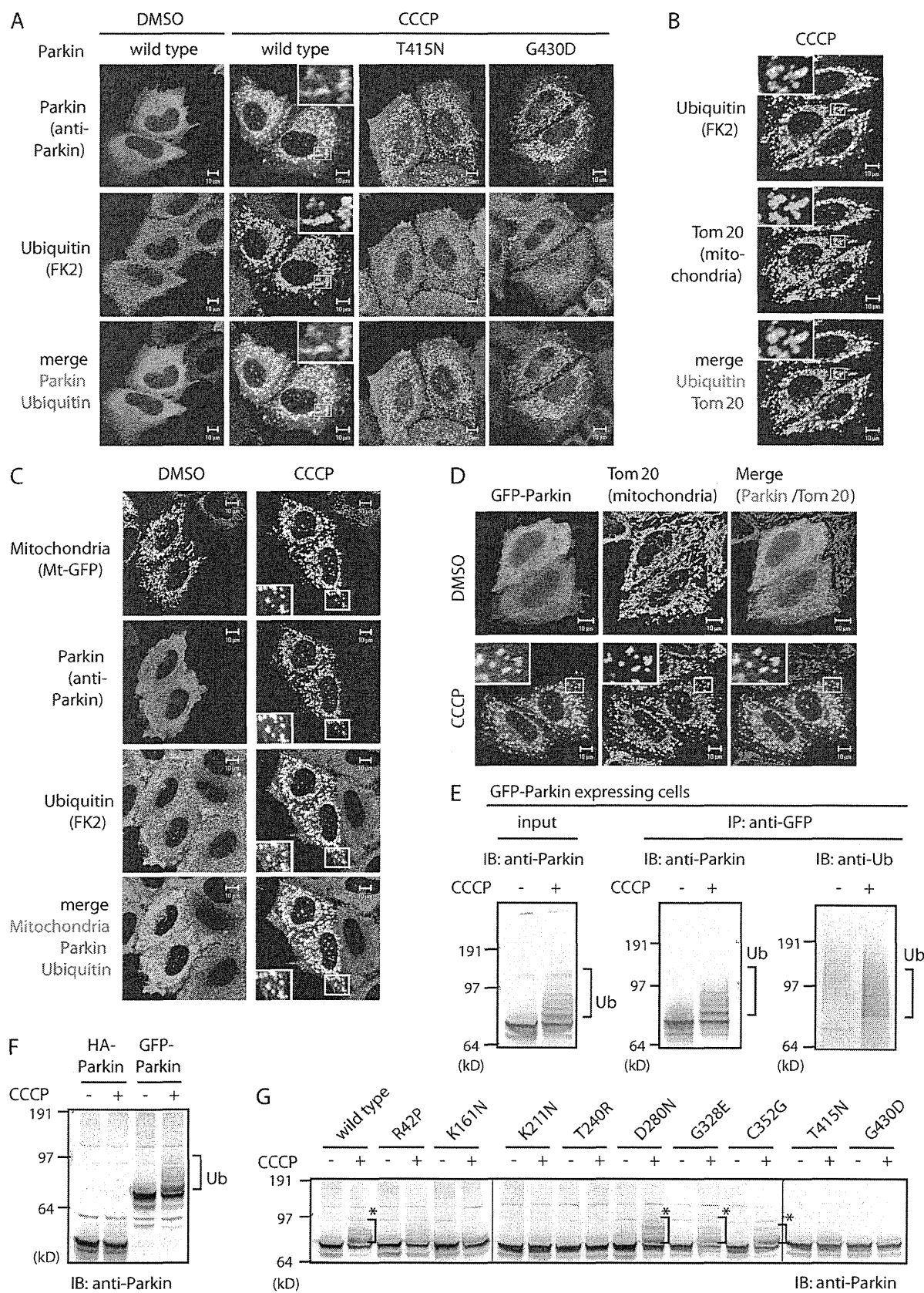


Figure 2. **Parkin exerts E3 activity only when the mitochondrial membrane potential is decreased.** (A) HeLa cells expressing wild-type Parkin or E3-inactivating mutations were treated with CCCP and then immunostained with the indicated antibodies. When E3-inactivating mutations were introduced into Parkin, the mitochondrial ubiquitylation signal disappeared. (B and C) HeLa cells expressing HA-Parkin (B) or expressing both Mt-GFP and HA-Parkin (C)

artificial substrate fused to Parkin. In vitro experiments have shown that Parkin can ubiquitylate an N-terminally fused lysine-rich protein as a pseudosubstrate (Matsuda et al., 2006). Similar ubiquitylation of pseudosubstrates even in the cytoplasm under normal conditions in vivo would be evidence that the E3 activity is constitutive; otherwise, E3 activity of Parkin is dependent on mitochondrial retrieval. A GFP tag is lysine rich and thus a good candidate for an in vivo pseudosubstrate, whereas an HA tag possesses no lysine residues and thus cannot function as a pseudosubstrate. GFP- and HA-Parkin expressed in HeLa cells treated with CCCP were both recruited to damaged mitochondria (Figs. 1 A and 2 D), but interestingly, a higher molecular mass population of only GFP-Parkin was observed (Fig. 2 F). Immunoprecipitation experiments demonstrated that GFP-Parkin was indeed ubiquitylated (Fig. 2 E). This was not based on autoubiquitylation of Parkin itself because mitochondria-associated HA-Parkin did not undergo ubiquitylation after CCCP treatment (Fig. 2 F and not depicted). Moreover, ubiquitylation of GFP-Parkin was absent in the T415N and G430D mutants, which lack E3 activities, suggesting that ubiquitylation of GFP-Parkin is not derived from other E3s (Fig. 2 G). The K161N and K211N mutants that impaired mitochondrial localization also inhibited ubiquitylation of GFP-Parkin (Fig. 2 G). Collectively, the aforementioned results indicate that Parkin ubiquitylates fused GFP only when it is retrieved to the mitochondria, suggesting that the latent E3 activity of Parkin is dependent on decreased mitochondrial membrane potential.

PINK1 localization is stabilized by damaged mitochondria

Recessive mutations in the human *PINK1* gene are also the cause of autosomal recessive early-onset PD (Valente et al., 2004). We next examined whether the subcellular localization of PINK1 was affected by mitochondrial membrane potential. As reported previously (Valente et al., 2004; Beilina et al., 2005; Takatori et al., 2008), N-terminal Myc- or N-terminal Flag-tagged PINK1 clearly localized to the mitochondria, whereas C-terminal Flag- or C-terminal V5-tagged PINK1 mainly localized to the cytoplasm (Fig. 3 A and not depicted). Exogenous nontagged PINK1 also localized to the cytoplasm under steady-state conditions (Fig. 3 B), suggesting that mitochondrial localization of PINK1 is an artifact of the N-terminal epitope. More importantly, similar to Parkin, untagged PINK1 and C-terminal Flag- or C-terminal V5-tagged PINK1 localized to the mitochondria after CCCP treatment (Fig. 3, A and B; and not depicted). These results suggest that the subcellular localization of PINK1 is also regulated by the mitochondrial membrane potential.

We next sought to determine the subcellular localization of endogenous PINK1. Immunocytochemical experiments

showed, as reported previously (Zhou et al., 2008), that the endogenous PINK1 signal was barely detectable in HeLa cells under steady-state conditions. However, a decrease in mitochondrial membrane potential resulted in a mitochondria-associated PINK1 signal (Fig. 3, C and D). We found that CCCP treatment promoted the gradual accumulation of endogenous PINK1 in immunoblots as well (Fig. 3 E) and the presence of endogenous PINK1 in a mitochondria-enriched fraction (Fig. 3 F). More importantly, when CCCP was washed out, the accumulated endogenous PINK1 rapidly disappeared (within 30 min) both in the presence and absence of cycloheximide (Fig. 3 G and not depicted). Moreover, the N-terminal 34 aa of PINK1 sufficiently recruited GFP to the mitochondria even in the absence of CCCP (Fig. 3 H). These results support the hypothesis in which PINK1 is constantly transported to the mitochondria but is rapidly degraded in a membrane potential-dependent manner. We speculate that PINK1 is stabilized by a decrease in mitochondrial membrane potential and, as a result, accumulates in depolarized mitochondria.

PINK1 normally exists as either a long (~60 kD) or a short (~50 kD) protein. Because the canonical mitochondria-targeting signal (matrix-targeting signal) is cleaved after import into the mitochondria, the long form has been designated as the precursor and the short form as the mature PINK1 (Beilina et al., 2005; Silvestri et al., 2005). The short (processed) form of PINK1 was clearly detected when untagged PINK1 was over-expressed (Fig. 3 E, sixth lane); however, this form of endogenous PINK1 was rarely detectable after CCCP treatment (Fig. 3 E, the first through the fifth lanes). Our subcellular localization study of endogenous PINK1 after CCCP treatment showed that the long form was recovered in the mitochondrial fraction (Fig. 3 F), suggesting that it is not the preimport precursor form. Moreover, by monitoring the degradation process of PINK1 after recovery of membrane potential, we realized that the short form of PINK1 transiently appeared soon after CCCP was washed out and then later disappeared (Fig. 3 G), suggesting that the processed form of PINK1 is an intermediate in membrane potential-dependent degradation. In conclusion, these results imply that PINK1 cleavage does not reflect a canonical maturation process accompanying mitochondrial import as initially thought.

PINK1 retrieves Parkin from the cytoplasm to the mitochondria

Because previous studies revealed that PINK1 functions upstream of Parkin (Clark et al., 2006; Park et al., 2006; Yang et al., 2006; Exner et al., 2007), we next examined the potential role of PINK1 in the mitochondrial recruitment of Parkin. To obtain clear-cut conclusions, we set up our experimental system using mouse embryonic fibroblasts (MEFs) derived from control

were treated with CCCP or DMSO (control) and then immunostained with the indicated antibodies. (D) Localization of GFP-Parkin to the mitochondria after CCCP treatment. (A–D) Higher magnification views of the boxed areas are shown in the insets. (E) HeLa cell lysates expressing GFP-Parkin were immunoprecipitated by anti-GFP antibody, followed by immunoblotting with the indicated antibodies. (F) Straight immunoblotting of HA- and GFP-Parkin in the absence or presence of CCCP. Note the slower migrating ladders derived from ubiquitylation (Ub) in only the GFP-Parkin with CCCP lane. (G) GFP-Parkin-expressing HeLa cells with various pathogenic mutations (Fig. 1 C) were treated with CCCP and subjected to immunoblotting. Asterisks show ubiquitylation of GFP-Parkin. Vertical black lines indicate that intervening lanes have been spliced out. IB, immunoblot; IP, immunoprecipitation. Bars, 10 μ m.

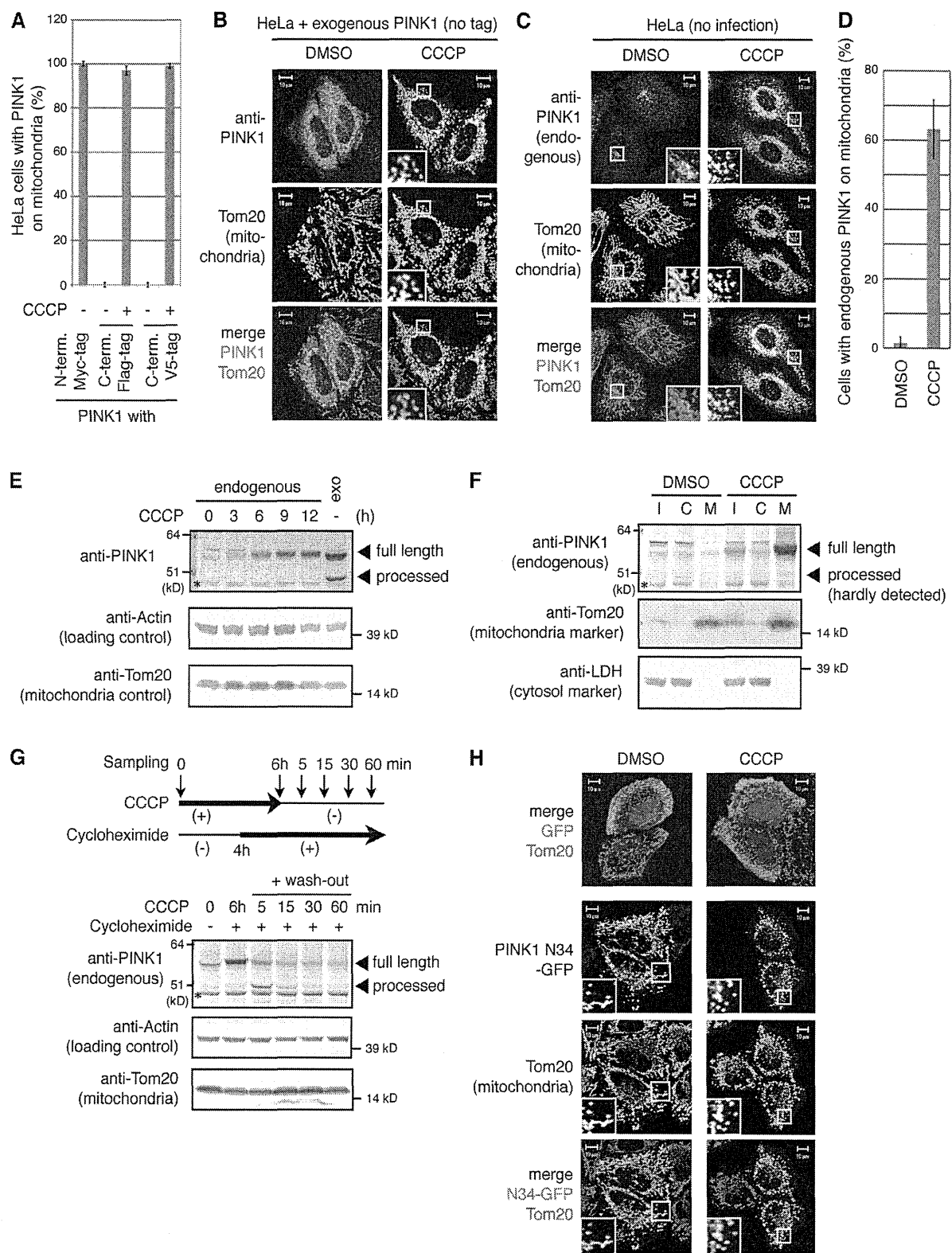


Figure 3. PINK1 is constitutively degraded in a mitochondrial membrane potential–dependent manner and localizes to depolarized mitochondria. (A) The number of HeLa cells with N-terminal– or C-terminal–tagged PINK1 localized to the mitochondria was counted in >100 cells. (B and C) Exogenous non-tagged PINK1 (B) or endogenous PINK1 (C) in HeLa cells was immunostained with the indicated antibodies. (D) The number of HeLa cells with endogenous PINK1 localized to the mitochondria was counted as in A. (A and D) Error bars represent the mean \pm SD values of least three experiments. (E) Endogenous PINK1 gradually accumulated after CCCP treatment. The first through the fifth lanes show endogenous PINK1, and the sixth lane shows overexpressed untagged PINK1. Note that the asterisk indicates a cross-reacting band because it was not affected by overproduction of untagged PINK1. (F) Subcellular fractionation of endogenous PINK1. Intact SH-SY5Y cells were treated with CCCP or DMSO and subjected to fractionation experiments (same sample as

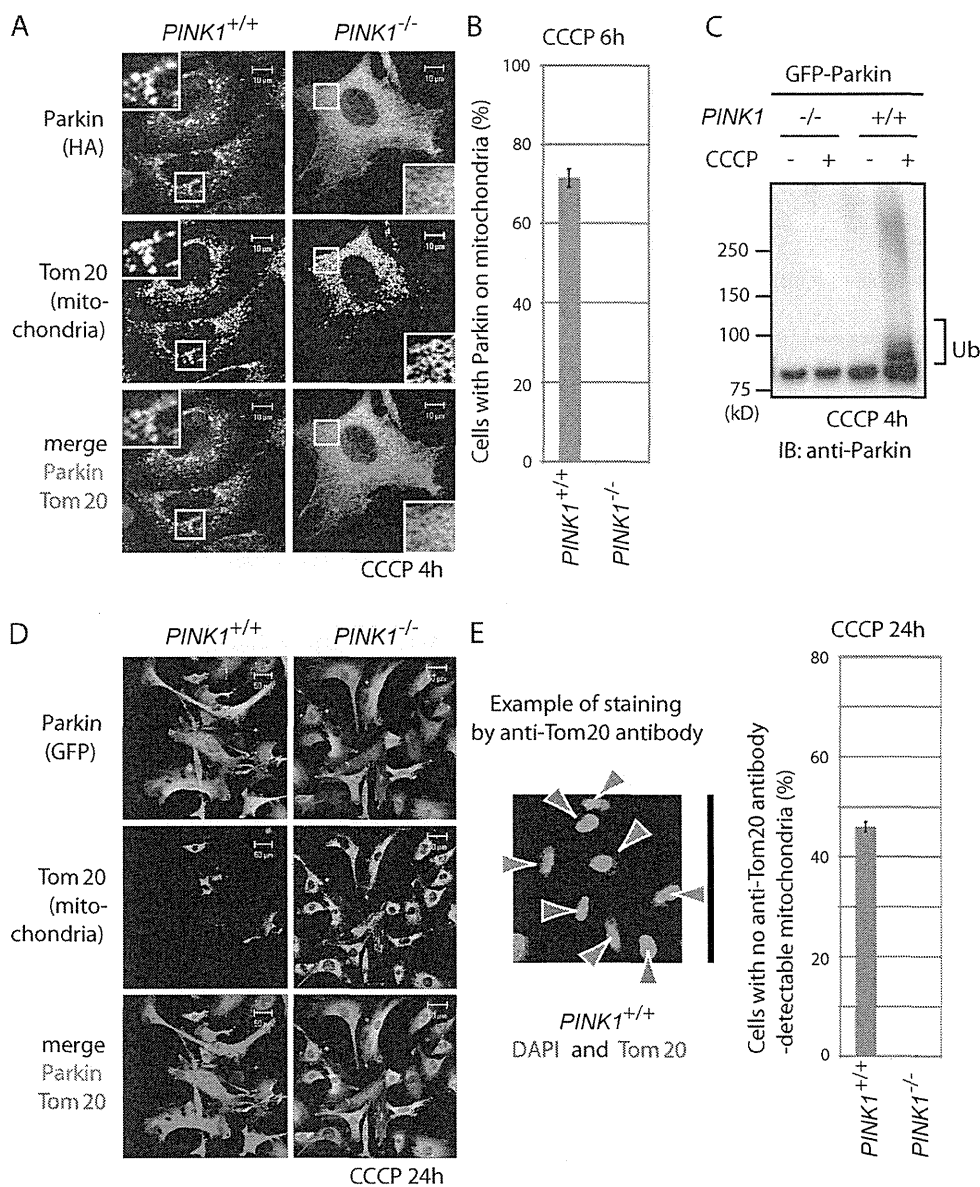


Figure 4. PINK1 recruits cytoplasmic Parkin to damaged mitochondria. (A) *PINK1* knockout (*PINK1*^{-/-}) or control (*PINK1*^{+/+}) MEFs were transfected with HA-Parkin, treated with CCCP, and subjected to immunocytochemistry with the indicated antibodies. Higher magnification views of the boxed areas are shown in the insets. (B) The number of MEFs with Parkin localized to the mitochondria was counted as in Fig. 3 A. (C and D) Neither activation of Parkin nor mitochondrial degradation was observed in *PINK1*^{-/-} MEFs. MEFs stably expressing GFP-Parkin were treated with CCCP for 4 h and subjected to immunoblotting (C) or for 24 h, followed by immunocytochemistry (D). IB, immunoblot; Ub, ubiquitylation. (E) The number of MEFs without anti-Tom20 antibody-detectable mitochondria, and red arrowheads indicate cells harboring anti-Tom20 antibody-detectable mitochondria. (B and E) Error bars represent the mean ± SD values of least three experiments. Bars: (A) 10 μm; (D) 50 μm; (E) 150 μm.

(*PINK1*^{+/+}) or *PINK1* knockout (*PINK1*^{-/-}) mouse (Gautier et al., 2008). Endogenous Parkin is undetectable in MEFs (Fig. S1 A); consequently, HA- or GFP-Parkin was introduced into these cells by retroviral transfection (Kitamura et al., 2003). In control MEFs (*PINK1*^{+/+}), Parkin was selectively recruited to the mitochondria after CCCP treatment (Fig. 4 A) and subsequently

resulted in the disappearance of the mitochondria (Fig. 4, D and E). This mitochondrial clearance was considerably impeded by *Atg7* (essential gene for autophagy) knockout (Fig. S2; Komatsu et al., 2005), suggesting that Parkin degrades mitochondria by selective autophagy as reported previously (Narendra et al., 2008). In sharp contrast, Parkin was not

Fig. 1 B). I, C, and M indicate input, cytosol-rich supernatant, and the mitochondria-rich membrane pellet, respectively. (G) HeLa cells were treated with CCCP and cycloheximide as depicted, followed by immunoblotting with the indicated antibodies. LDH, lactate dehydrogenase. (F and G) Asterisks indicate a cross-reacting band. (H) N-terminal 34 aa of PINK1 recruited GFP to the mitochondria both in the absence and presence of CCCP. The top panel shows control HeLa cells expressing only GFP. (B, C, and H) Higher magnification views of the boxed areas are shown in the insets. Bars, 10 μm.

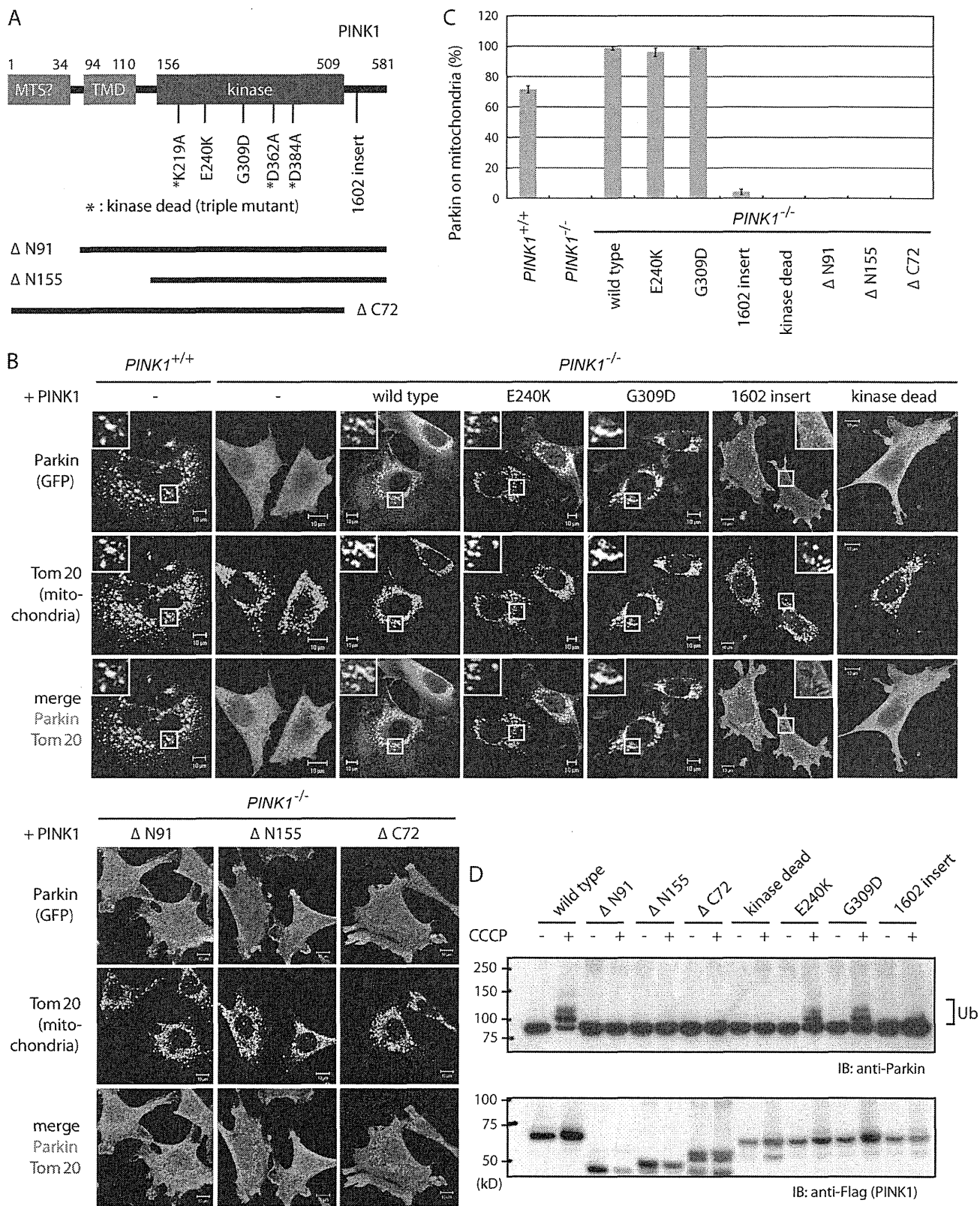


Figure 5. Kinase activity and mitochondrial targeting of PINK1 is imperative for mitochondrial localization of Parkin. (A) Schematic depiction of pathogenic and deletion mutants of PINK1 used in this study. MTS, mitochondria-targeting sequence; TMD, transmembrane domain. (B) Subcellular localization of Parkin in *PINK1*^{-/-} cells complemented by various pathogenic and deletion mutants of PINK1-Flag. Cells were treated with CCCP. Higher magnification views of the boxed areas are shown in the insets. (C) The number of cells with Parkin-positive mitochondria was counted as in Fig. 3 A. Error bars represent the mean ± SD values of least three experiments. (D) *PINK1*^{-/-} MEFs complemented by various PINK1 mutants were treated with CCCP and subjected to immunoblotting using anti-Parkin or anti-Flag (tag of PINK1) antibodies. IB, immunoblot; Ub, ubiquitylation. Bars, 10 μm.

translocated to the mitochondria in *PINK1* knockout (*PINK1*^{-/-}) MEFs after CCCP treatment (Fig. 4, A and B). Subsequent activation of Parkin and mitochondrial degradation were also completely impeded (Fig. 4, C–E). To exclude the possible role of retroviral integration of Parkin in the aforementioned phenotype, we checked whether reintroduction of PINK1 rescued this phenotype. Untagged or C-terminal Flag-tagged PINK1 complemented the mislocalization of Parkin in *PINK1*^{-/-} MEFs (Fig. 5, B and C; and not depicted), confirming that the aforementioned defects were caused by the loss of PINK1.

To examine whether pathogenic mutations of PINK1 affect its mitochondrial localization, we expressed PINK1 mutants harboring the missense mutations E240K and G309D, or a CAA nucleotide insertion behind C1602 (referred to hereafter as 1602-insert) in *PINK1*^{-/-} MEFs. Similar to wild-type PINK1, these PINK1 mutants colocalized with mitochondria after CCCP treatment (Fig. S3). Next, GFP-Parkin was introduced into these cells to examine whether pathogenic mutations of PINK1 affect the mitochondrial localization and activation of Parkin. The E240K and G309D mutants restored the mitochondrial localization and activation of Parkin as well as wild-type PINK1, whereas recruitment of Parkin to the mitochondria by the 1602-insert mutant was abolished (Fig. 5, B–D), suggesting that the pathology of this PINK1 mutation is mislocalization and consequent inactivation of Parkin.

Mitochondrial localization and kinase activity of PINK1 are essential for translocation of Parkin to damaged mitochondria

Finally, we investigated the role of various PINK1 domains (Fig. 5 A) in the mitochondrial recruitment of Parkin. PINK1 is composed of an atypical N-terminal mitochondrial localization signal and transmembrane domain, a kinase domain in the middle, and a conserved C-terminal domain (Zhou et al., 2008). Deletion of the N-terminal 91 aa abolished the mitochondrial localization of PINK1 (Zhou et al., 2008). We also confirmed that the Δ N91 and Δ N155 mutants did not target to the mitochondria even after CCCP treatment (Fig. S3). We also generated a mutant containing the triple K219A, D362A, and D384A mutations that abolish kinase activity (Beilina et al., 2005) and a C-terminal domain deletion mutant associated with PINK1 dysfunction (Sim et al., 2006; Yang et al., 2006). The kinase-dead and Δ C72 mutants of PINK1 colocalized with damaged mitochondria similar to wild type (Fig. S3). When introduced into *PINK1*^{-/-} cells harboring GFP-Parkin, the mutants were unable to complement the mislocalization and inactivation of Parkin (Fig. 5, B–D), even though the mutant PINK1 proteins were expressed (Fig. 5 D and Fig. S3). These results indicate that the kinase activity and mitochondrial targeting of PINK1 are essential for the mitochondrial recruitment of Parkin.

Conclusion

In summary, we have shown that (a) PINK1 is a Parkin-recruitment factor that recruits Parkin from the cytoplasm to damaged mitochondria in a membrane potential-dependent manner for mitochondrial degradation, (b) endogenous PINK1 is constitutively degraded at the mitochondria, but its localization

is specifically linked to a decrease in membrane potential, (c) under steady-state conditions, the E3 activity of Parkin is repressed in the cytoplasm but is liberated by PINK1-dependent mitochondrial localization, and (d) the aforementioned phenomena are presumably etiologically important in part because they were impeded for the most part by disease-linked mutations of PINK1 or Parkin. We believe that these results provide solid insight into the molecular mechanisms of PD pathogenesis not only for familial forms caused by *Parkin* and *PINK1* mutations but also major sporadic forms of PD.

Materials and methods

Cell culture and transfection

MEFs derived from embryonic day 12.5 embryos of *PINK1* knockout mice (provided by J. Shen, Harvard Medical School, Boston, MA) were mechanically dispersed by repeated passage through a P1000 pipette tip and plated with MEF media containing DME, 10% FCS, β -mercaptoethanol (Sigma-Aldrich), 1 \times nonessential amino acids, and 1 mM L-glutamine. Various stable transformants of MEFs were established by infecting MEFs with recombinant retroviruses. HA-Parkin, GFP-Parkin, PINK1 (provided by Y. Nakamura, T. Iwatsubo, and S. Takatori, University of Tokyo, Bunkyo-ku, Tokyo, Japan), or various PINK1 mutants were cloned into a pMXs-puro vector. Retrovirus packaging cells, PLATE (provided by T. Kitamura, University of Tokyo; Kitamura et al., 2003), were transfected with the aforementioned vectors and were cultured at 37°C for 24 h. After changing the medium, cells were further incubated at 37°C for 24 h, and the viral supernatant was collected and used for infection. MEFs were plated on 35-mm dishes at 24 h before infection, and the medium was replaced with the aforementioned undiluted viral supernatant with 8 μ g/ml polybrene (Sigma-Aldrich). 2 d later, transformants were selected by the medium containing 10 μ g/ml puromycin.

Cell fractionation and immunoprecipitation

To depolarize the mitochondria, HeLa and SH-SY5Y cells were treated with 10 μ M CCCP, and MEFs were treated with 30 μ M CCCP. For fractionation experiments, HeLa and SH-SY5Y cells were treated with CCCP for 1–5 h and subsequently treated with 1 mM DSP (Thermo Fisher Scientific) in PBS for 1 h on ice, inactivated by 10 mM glycine in PBS three times, and suspended in chappell-perry buffer (0.15 M KCl, 20 mM Hepes-NaOH, pH 8.1, 5 mM MgCl₂, and protease and phosphatase inhibitor [Roche]). Cells were disrupted by five passages through a 25-gauge needle (with 1-ml syringe), debris was removed by centrifugation at 1,000 g for 7 min, and the supernatant was subjected to 10,000 g for 10 min to separate the mitochondria-rich fraction from the cytosol-rich fraction. Immunoblotting and immunoprecipitation were performed by conventional methods. To detect the ubiquitylation of GFP-Parkin, the cell lysate of HeLa cells (10 μ M CCCP for 1 h) or MEFs (30 μ M CCCP for 3 h) was collected in the presence of 10 mM N-ethylmaleimide to protect ubiquitylated Parkin from deubiquitylation enzymes. To monitor the degradation of endogenous PINK1, HeLa cells were treated with 10 μ M CCCP and 50 μ g/ml cycloheximide as depicted in Fig. 3 G and were subjected to immunoblotting.

Immunocytochemistry

To depolarize the mitochondria, HeLa cells (provided by A. Tanaka and R. Youle, National Institutes of Health, Bethesda, MD) were treated with 10 μ M CCCP for 1 h (exogenous Parkin and PINK1) or 5 h (endogenous PINK1), and MEFs were treated with 30 μ M CCCP for 3–4 h (Figs. 4 A and 5 B; and Fig. S3 B) or 24 h (Fig. 4 D and Fig. S2 A). For immunofluorescence experiments, cells were fixed with 4% paraformaldehyde, permeabilized with 50 μ g/ml digitonin, and stained with primary antibodies described in the next section and with the following secondary antibodies: mouse and/or rabbit Alexa Fluor 488, 568, and 647 (Invitrogen). N-terminal 34 aa of PINK1 were fused to GFP to stain mitochondria in the triple staining experiments. To monitor the mitochondrial membrane potential, MEFs were treated with 50 nM MitoTracker red CMXRos (Invitrogen) for 15 min, washed three times, and incubated for an additional 10 min before fixation, as reported previously (Narendra et al., 2008). Cells were imaged using a laser-scanning microscope (LSM510 META; Carl Zeiss, Inc.) with a Plan-Apochromat 63 \times NA 1.4 oil differential interference contrast objective lens. Image contrast and brightness were adjusted in Photoshop (Adobe).

Antibodies

Antibodies used in this study are as follows: antiactin (AC-40; Sigma-Aldrich), anti-cytochrome c (δ H2.B4; BD), anti-Flag (M2; Sigma-Aldrich), anti-GFP (3E6 [Wako Chemicals USA, Inc.]; or A6455 [Invitrogen]), anti-HA (12CA5; Roche), anti-Hsp70 (MBL), anti-lactate dehydrogenase (Abcam), anti-Parkin (#2132 [Cell Signaling Technology] for immunocytochemistry; or PRK8 [Sigma-Aldrich] for immunoblotting), anti-PINK1 (Novus), anti-Tom20 (FL-145 and F-10; Santa Cruz Biotechnology, Inc.), antiubiquitin (P4D1 [Santa Cruz Biotechnology, Inc.]; or FK2 [MBL]), and anti-V5 (Invitrogen).

Online supplemental material

Fig. S1 shows various control experiments for immunoblotting and immunocytochemistry. Fig. S2 shows that Parkin promoted degradation of depolarized mitochondria via autophagy. Fig. S3 shows the subcellular localization of pathogenic and deletion mutants of PINK1 after CCCP treatment. Online supplemental material is available at <http://www.jcb.org/cgi/content/full/jcb.200910140/DC1>.

We thank Dr. T. Kitamura for providing the PLATE cells, Drs. A. Tanaka and R. Youle for NIH HeLa cells, Dr. J. Shen for *PINK1* knockout MEFs, and Drs. Y. Nakamura, T. Iwatsubo, and S. Takatori for plasmids.

This work was supported by Grants-in-Aid for Young Scientist (B) (to N. Matsuda, K. Shiba, and S. Saiki) and by Specially Promoted Research (to K. Tanaka) from the Ministry of Education, Culture, Sports, Science and Technology of Japan and Health and Labor Science Research grants (to N. Hattori and K. Tanaka).

Note added in review. While our manuscript was under review, Geisler et al. (2010), Narendra et al. (2010), and Vives-Bauza et al. (2010) independently published results that are consistent with those described herein.

Submitted: 26 October 2009

Accepted: 22 March 2010

References

- Beilina, A., M. Van Der Brug, R. Ahmad, S. Kesavapany, D.W. Miller, G.A. Petsko, and M.R. Cookson. 2005. Mutations in PTEN-induced putative kinase 1 associated with recessive parkinsonism have differential effects on protein stability. *Proc. Natl. Acad. Sci. USA*. 102:5703–5708. doi:10.1073/pnas.0500617102
- Clark, I.E., M.W. Dodson, C. Jiang, J.H. Cao, J.R. Huh, J.H. Seol, S.J. Yoo, B.A. Hay, and M. Guo. 2006. *Drosophila* pink1 is required for mitochondrial function and interacts genetically with parkin. *Nature*. 441:1162–1166. doi:10.1038/nature04779
- Denison, S.R., F. Wang, N.A. Becker, B. Schüle, N. Kock, L.A. Phillips, C. Klein, and D.I. Smith. 2003. Alterations in the common fragile site gene Parkin in ovarian and other cancers. *Oncogene*. 22:8370–8378. doi:10.1038/sj.onc.1207072
- Dodson, M.W., and M. Guo. 2007. Pink1, Parkin, DJ-1 and mitochondrial dysfunction in Parkinson's disease. *Curr. Opin. Neurobiol.* 17:331–337. doi:10.1016/j.conb.2007.04.010
- Exner, N., B. Treske, D. Paquet, K. Holmström, C. Schiesling, S. Gispert, I. Carballo-Carbajal, D. Berg, H.H. Hoepken, T. Gasser, et al. 2007. Loss-of-function of human PINK1 results in mitochondrial pathology and can be rescued by parkin. *J. Neurosci.* 27:12413–12418. doi:10.1523/JNEUROSCI.0719-07.2007
- Gautier, C.A., T. Kitada, and J. Shen. 2008. Loss of PINK1 causes mitochondrial functional defects and increased sensitivity to oxidative stress. *Proc. Natl. Acad. Sci. USA*. 105:11364–11369. doi:10.1073/pnas.0802076105
- Geisler, S., K.M. Holmström, D. Skujat, F.C. Fiesel, O.C. Rothfuss, P.J. Kahle, and W. Springer. 2010. PINK1/Parkin-mediated mitophagy is dependent on VDAC1 and p62/SQSTM1. *Nat. Cell Biol.* 12:119–131. doi:10.1038/ncb2012
- Hampe, C., H. Ardila-Osorio, M. Fournier, A. Brice, and O. Corti. 2006. Biochemical analysis of Parkinson's disease-causing variants of Parkin, an E3 ubiquitin-protein ligase with monoubiquitylation capacity. *Hum. Mol. Genet.* 15:2059–2075. doi:10.1093/hmg/ddl131
- Hardy, J., H. Cai, M.R. Cookson, K. Gwinn-Hardy, and A. Singleton. 2006. Genetics of Parkinson's disease and parkinsonism. *Ann. Neurol.* 60:389–398. doi:10.1002/ana.21022
- Hristova, V.A., S.A. Beasley, R.J. Rylett, and G.S. Shaw. 2009. Identification of a novel Zn²⁺-binding domain in the autosomal recessive juvenile Parkinson-related E3 ligase parkin. *J. Biol. Chem.* 284:14978–14986. doi:10.1074/jbc.M808700200
- Imai, Y., M. Soda, and R. Takahashi. 2000. Parkin suppresses unfolded protein stress-induced cell death through its E3 ubiquitin-protein ligase activity. *J. Biol. Chem.* 275:35661–35664. doi:10.1074/jbc.C000447200
- Kitada, T., S. Asakawa, N. Hattori, H. Matsumine, Y. Yamamura, S. Minoshima, M. Yokochi, Y. Mizuno, and N. Shimizu. 1998. Mutations in the parkin gene cause autosomal recessive juvenile parkinsonism. *Nature*. 392:605–608. doi:10.1038/33416
- Kitamura, T., Y. Koshino, F. Shibata, T. Oki, H. Nakajima, T. Nosaka, and H. Kumagai. 2003. Retrovirus-mediated gene transfer and expression cloning: powerful tools in functional genomics. *Exp. Hematol.* 31:1007–1014.
- Komatsu, M., S. Waguri, T. Ueno, J. Iwata, S. Murata, I. Tanida, J. Ezaki, N. Mizushima, Y. Ohsumi, Y. Uchiyama, et al. 2005. Impairment of starvation-induced and constitutive autophagy in Atg7-deficient mice. *J. Cell Biol.* 169:425–434. doi:10.1083/jcb.200412022
- Lim, K.L. 2007. Ubiquitin-proteasome system dysfunction in Parkinson's disease: current evidence and controversies. *Expert Rev. Proteomics*. 4:769–781. doi:10.1586/14789450.4.6.769
- Matsuda, N., and K. Tanaka. 2010. Does impairment of the ubiquitin-proteasome system or the autophagy-lysosome pathway predispose individuals to neurodegenerative disorders such as Parkinson's disease? *J. Alzheimers Dis.* 19:1–9.
- Matsuda, N., T. Kitami, T. Suzuki, Y. Mizuno, N. Hattori, and K. Tanaka. 2006. Diverse effects of pathogenic mutations of Parkin that catalyze multiple monoubiquitylation in vitro. *J. Biol. Chem.* 281:3204–3209. doi:10.1074/jbc.M510393200
- Moore, D.J., A.B. West, V.L. Dawson, and T.M. Dawson. 2005. Molecular pathophysiology of Parkinson's disease. *Annu. Rev. Neurosci.* 28:57–87. doi:10.1146/annurev.neuro.28.061604.135718
- Narendra, D., A. Tanaka, D.F. Suen, and R.J. Youle. 2008. Parkin is recruited selectively to impaired mitochondria and promotes their autophagy. *J. Cell Biol.* 183:795–803. doi:10.1083/jcb.200809125
- Narendra, D.P., S.M. Jin, A. Tanaka, D.F. Suen, C.A. Gautier, J. Shen, M.R. Cookson, and R.J. Youle. 2010. PINK1 is selectively stabilized on impaired mitochondria to activate Parkin. *PLoS Biol.* 8:e1000298. doi:10.1371/journal.pbio.1000298
- Park, J., S.B. Lee, S. Lee, Y. Kim, S. Song, S. Kim, E. Bae, J. Kim, M. Shong, J.M. Kim, and J. Chung. 2006. Mitochondrial dysfunction in *Drosophila* PINK1 mutants is complemented by parkin. *Nature*. 441:1157–1161. doi:10.1038/nature04788
- Pawlyk, A.C., B.I. Giasson, D.M. Sampathu, F.A. Perez, K.L. Lim, V.L. Dawson, T.M. Dawson, R.D. Palmiter, J.Q. Trojanowski, and V.M. Lee. 2003. Novel monoclonal antibodies demonstrate biochemical variation of brain parkin with age. *J. Biol. Chem.* 278:48120–48128. doi:10.1074/jbc.M306889200
- Schapiro, A.H. 2008. Mitochondria in the aetiology and pathogenesis of Parkinson's disease. *Lancet Neurol.* 7:97–109. doi:10.1016/S1474-4422(07)70327-7
- Shimura, H., N. Hattori, S. Kubo, Y. Mizuno, S. Asakawa, S. Minoshima, N. Shimizu, K. Iwai, T. Chiba, K. Tanaka, and T. Suzuki. 2000. Familial Parkinson disease gene product, parkin, is a ubiquitin-protein ligase. *Nat. Genet.* 25:302–305. doi:10.1038/77060
- Silvestri, L., V. Caputo, E. Bellacchio, L. Atorino, B. Dallapiccola, E.M. Valente, and G. Casari. 2005. Mitochondrial import and enzymatic activity of PINK1 mutants associated to recessive parkinsonism. *Hum. Mol. Genet.* 14:3477–3492. doi:10.1093/hmg/ddi377
- Sim, C.H., D.S. Lio, S.S. Mok, C.L. Masters, A.F. Hill, J.G. Culvenor, and H.C. Cheng. 2006. C-terminal truncation and Parkinson's disease-associated mutations down-regulate the protein serine/threonine kinase activity of PTEN-induced kinase-1. *Hum. Mol. Genet.* 15:3251–3262. doi:10.1093/hmg/ddl398
- Takatori, S., G. Ito, and T. Iwatsubo. 2008. Cytoplasmic localization and proteasomal degradation of N-terminally cleaved form of PINK1. *Neurosci. Lett.* 430:13–17. doi:10.1016/j.neulet.2007.10.019
- Valente, E.M., P.M. Abou-Sleiman, V. Caputo, M.M. Muqit, K. Harvey, S. Gispert, Z. Ali, D. Del Turco, A.R. Bentivoglio, D.G. Healy, et al. 2004. Hereditary early-onset Parkinson's disease caused by mutations in PINK1. *Science*. 304:1158–1160. doi:10.1126/science.1096284
- Vives-Bauza, C., C. Zhou, Y. Huang, M. Cui, R.L. de Vries, J. Kim, J. May, M.A. Tocilescu, W. Liu, H.S. Ko, et al. 2010. PINK1-dependent recruitment of Parkin to mitochondria in mitophagy. *Proc. Natl. Acad. Sci. USA*. 107:378–383. doi:10.1073/pnas.0911187107
- Yang, Y., S. Gehrke, Y. Imai, Z. Huang, Y. Ouyang, J.W. Wang, L. Yang, M.F. Beal, H. Vogel, and B. Lu. 2006. Mitochondrial pathology and muscle and dopaminergic neuron degeneration caused by inactivation of *Drosophila* Pink1 is rescued by Parkin. *Proc. Natl. Acad. Sci. USA*. 103:10793–10798. doi:10.1073/pnas.0602493103

- Zhang, Y., J. Gao, K.K. Chung, H. Huang, V.L. Dawson, and T.M. Dawson. 2000. Parkin functions as an E2-dependent ubiquitin- protein ligase and promotes the degradation of the synaptic vesicle-associated protein, CDCrel-1. *Proc. Natl. Acad. Sci. USA*. 97:13354–13359. doi:10.1073/pnas.240347797
- Zhou, C., Y. Huang, Y. Shao, J. May, D. Prou, C. Perier, W. Dauer, E.A. Schon, and S. Przedborski. 2008. The kinase domain of mitochondrial PINK1 faces the cytoplasm. *Proc. Natl. Acad. Sci. USA*. 105:12022–12027. doi:10.1073/pnas.0802814105

Matsuda et al., <http://www.jcb.org/cgi/content/full/jcb.200910140/DC1>

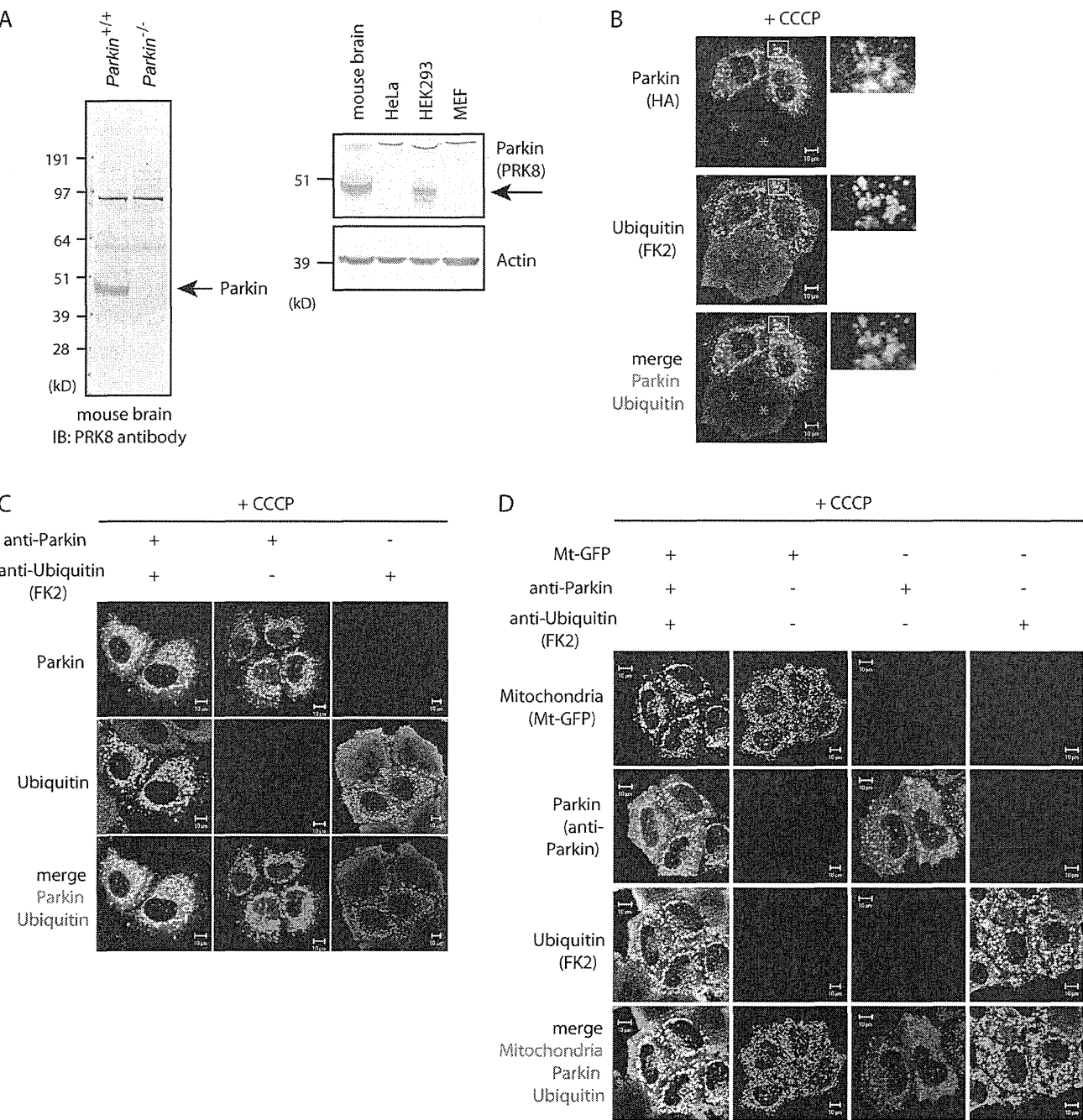


Figure S1. **Various control experiments for immunoblotting and immunocytochemistry.** (A) Expression of endogenous Parkin in HeLa cells and MEFs. (left) Immunoblotting of wild-type (*Parkin*^{+/+}) and Parkin knockout (*Parkin*^{-/-}) mouse brain shows the high specificity of the PRK8 anti-Parkin antibody. (right) Lysates of mouse brain (positive control), MEFs, HeLa, and HEK293 cells were subjected to immunoblotting using the PRK8 anti-Parkin antibody. Actin was used as a loading control. IB, immunoblot. (B) Ubiquitylation of mitochondria after CCCP treatment was observed only in Parkin-expressing cells. HeLa cells without exogenous Parkin (indicated by red asterisks) showed no signs of mitochondrial ubiquitylation. Higher magnification views of the boxed areas are shown on the right. (C and D) Merged data shown in Fig. 2 (A and C) are not derived from channel cross talk. HeLa cells were stained with Mt-GFP or each antibody alone and were aligned with the original figure as a control for channel cross talk. Bars, 10 μm.

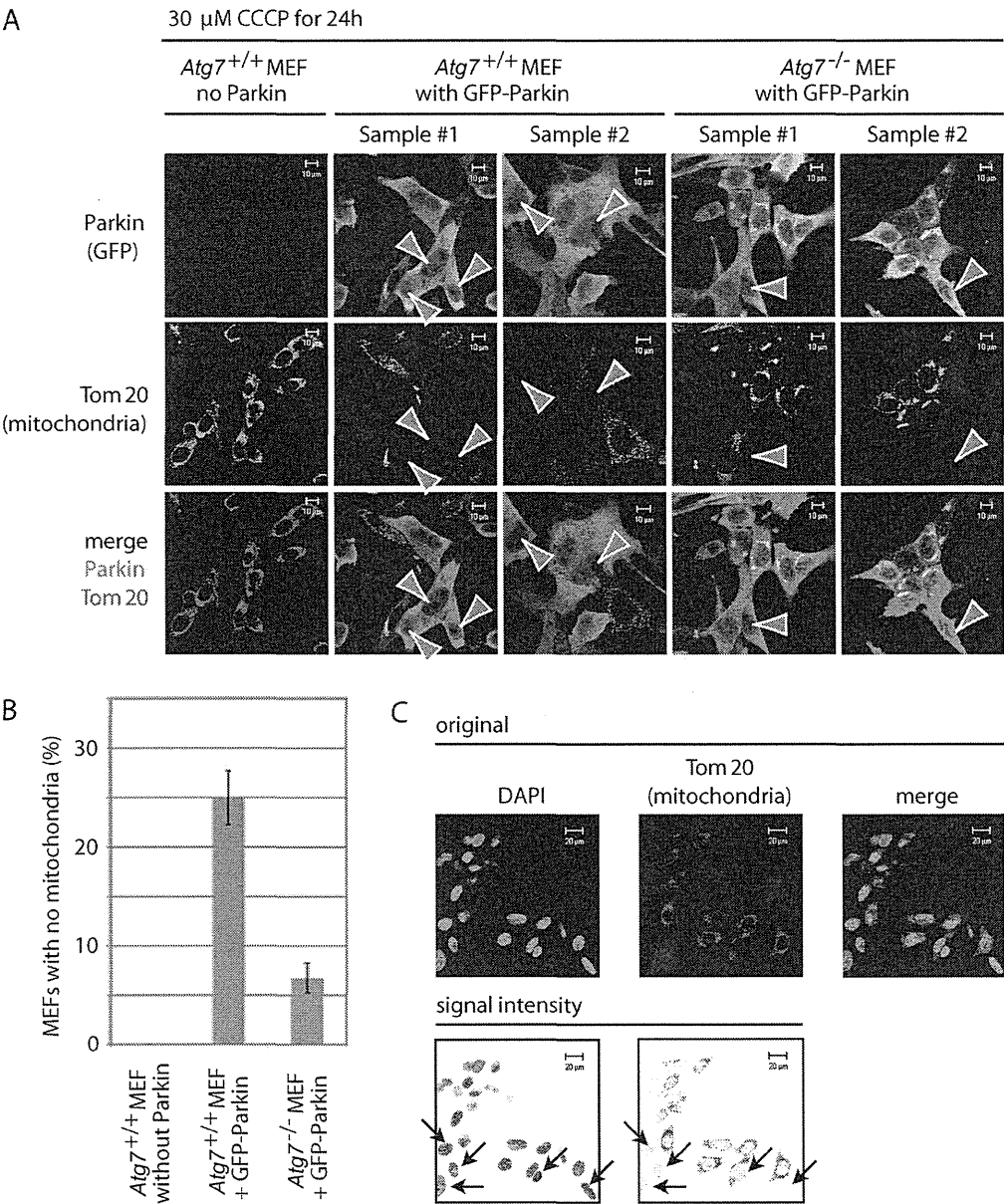


Figure S2. **Parkin promotes degradation of depolarized mitochondria via autophagy.** (A) Immunocytochemistry of Parkin and mitochondria after a 24-h treatment with CCCP. In Parkin-expressing *Atg7*^{+/+} cells, a significant proportion of cells contained no mitochondria (red arrowheads), whereas *Atg7* knockout resulted in a considerable decrease in the proportion of such cells (red arrowheads). (B) The number of mitochondria-deficient MEFs in >100 cells was counted. Error bars represent the mean \pm SD values of least three experiments. (C) Example of mitochondria-deficient cells. *Atg7*^{+/+} cells were treated with CCCP for 16 h and subjected to staining with DAPI and anti-Tom20 (mitochondria marker). Arrows indicate cells lacking mitochondria. Bars: (A) 10 μ m; (C) 20 μ m.

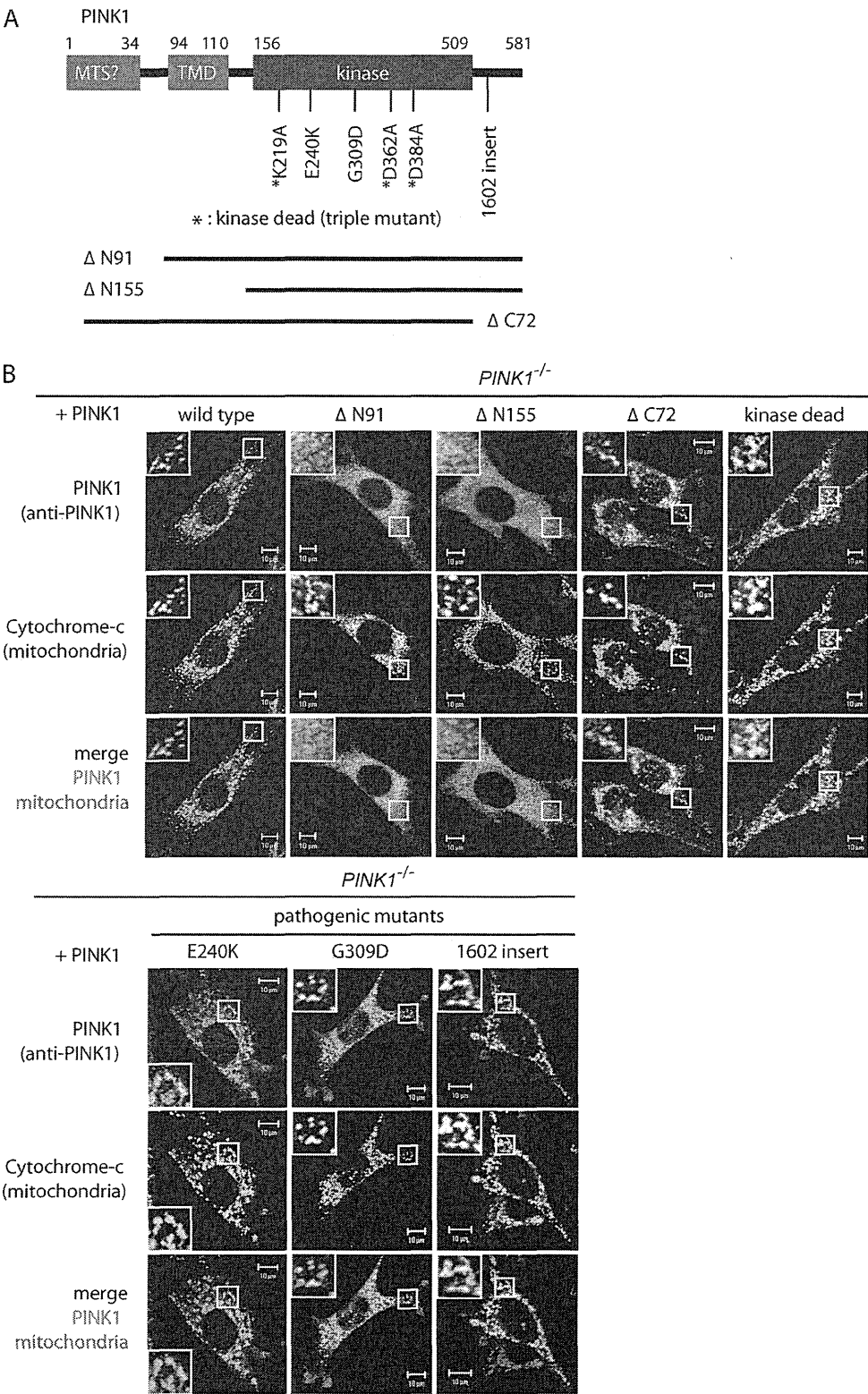
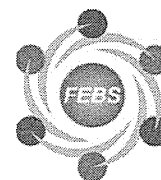


Figure S3. **Subcellular localization of pathogenic and deletion mutants of PINK1 after CCCP treatment.** (A) Schematic diagram of disease-relevant missense and deletion mutants used in this study. MTS, mitochondria-targeting sequence; TMD, transmembrane domain. (B) Subcellular localization of mutant PINK1 proteins in *PINK1* knockout (*PINK1*^{-/-}) MEFs. *PINK1*^{-/-} MEFs transformed with various pathogenic missense and deletion mutants of PINK1-Flag were treated with CCCP and subjected to immunocytochemistry. Higher magnification views of the boxed areas are shown in the insets. Bars, 10 μm.

journal homepage: www.FEBSLetters.org

PINK1 is recruited to mitochondria with parkin and associates with LC3 in mitophagy

Sumihiro Kawajiri^{a,1}, Shinji Saiki^{a,1}, Shigeto Sato^a, Fumiaki Sato^b, Taku Hatano^a, Hiroto Eguchi^a, Nobutaka Hattori^{a,*}

^a Department of Neurology, Juntendo University School of Medicine, 2-1-1 Hongo, Bunkyo-ku, Tokyo 113-8421, Japan

^b Research Institute for Disease of Old Age, Juntendo University School of Medicine, 2-1-1 Hongo, Bunkyo-ku, Tokyo 113-8421, Japan

ARTICLE INFO

Article history:

Received 16 December 2009

Revised 29 January 2010

Accepted 2 February 2010

Available online 12 February 2010

Edited by Jesus Avila

Keywords:

PTEN-induced putative kinase 1

Parkin

Mitophagy

Autophagy

Parkinson's disease

ABSTRACT

Mutations in *PTEN-induced putative kinase 1 (PINK1)* cause recessive form of Parkinson's disease (PD). PINK1 acts upstream of parkin, regulating mitochondrial integrity and functions. Here, we show that PINK1 in combination with parkin results in the perinuclear mitochondrial aggregation followed by their elimination. This elimination is reduced in cells expressing PINK1 mutants with wild-type parkin. Although wild-type PINK1 localizes in aggregated mitochondria, PINK1 mutants localization remains diffuse and mitochondrial elimination is not observed. This phenomenon is not observed in autophagy-deficient cells. These results suggest that mitophagy controlled by the PINK1/parkin pathway might be associated with PD pathogenesis.

Structured summary:

MINT-7557195: *PINK1* (uniprotkb:Q9BXM7) physically interacts (MI:0915) with *LC3* (uniprotkb:Q9GZQ8) by anti tag coimmunoprecipitation (MI:0007)

MINT-7557109: *LC3* (uniprotkb:Q9GZQ8) and *PINK1* (uniprotkb:Q9BXM7) colocalize (MI:0403) by fluorescence microscopy (MI:0416)

MINT-7557121: *tom20* (uniprotkb:Q15388) and *PINK1* (uniprotkb:Q9BXM7) colocalize (MI:0403) by fluorescence microscopy (MI:0416)

MINT-7557138: *parkin* (uniprotkb:O60260), *PINK1* (uniprotkb:Q9BXM7) and *tom20* (uniprotkb:Q15388) colocalize (MI:0403) by fluorescence microscopy (MI:0416)

MINT-7557173: *LC3* (uniprotkb:Q9GZQ8) physically interacts (MI:0915) with *PINK1* (uniprotkb:Q9BXM7) by anti bait coimmunoprecipitation (MI:0006)

© 2010 Federation of European Biochemical Societies. Published by Elsevier B.V. All rights reserved.

1. Introduction

Parkinson's disease (PD) is a neurodegenerative disease characterized by loss of dopaminergic neurons in the substantia nigra. Mitochondrial dysfunction has been proposed as a major factor in the pathogenesis of sporadic and familial PD [1]. In particular, the identification of mutations in *PTEN-induced putative kinase 1 (PINK1)* has strongly implicated mitochondrial dysfunction in the pathogenesis of PD [2].

PINK1 contains an N-terminal mitochondrial targeting sequence (MTS) and a serine/threonine kinase domain [2].

Several studies have shown that *PINK1* acts upstream of parkin in the same genetic pathway [3,4]. Overexpression of *PINK1* promotes mitochondrial fission [5]. Fission followed by selective fusion segregates dysfunctional mitochondria and permits their removal by autophagy [6]. Parkin is associated with mitochondrial elimination in cultured cells treated with the mitochondrial uncoupler carbonyl cyanide *m*-chlorophenylhydrazone (CCCP) [7], but little is known about the biological function of *PINK1* in this context. Likewise, although co-overexpressed both *PINK1* and parkin colocalized with mitochondria [8] and are associated with mitochondrial autophagy (mitophagy) [9], the exact mechanism of the mitochondrial elimination via autophagy has not been examined.

Here, we describe the characterization of mitophagy induced by co-overexpressing both proteins and report that the phenomenon is dependent on *PINK1* kinase activity and mitochondrial localization.

Abbreviations: CCCP, carbonyl cyanide *m*-chlorophenylhydrazone; 3-MA, 3-methyladenine; MEFs, mouse embryonic fibroblasts; MTS, mitochondrial targeting sequence; PD, Parkinson's disease; *PINK1*, *PTEN-induced putative kinase 1*; UPS, ubiquitin-proteasome system

* Corresponding author. Address: Department of Neurology, Juntendo University School of Medicine, 2-1-1 Hongo, Bunkyo-ku, Tokyo, 113-8421, Japan. Fax: +81 3 5800 0547.

E-mail address: nhattori@juntendo.ac.jp (N. Hattori).

¹ Joint first authors.

Furthermore, we found that PINK1 interacts with LC3–phospholipid conjugate (LC3-II), a well established marker for autophagosomes [10]. These results provide novel insights into the pathogenesis of PD.

2. Materials and methods

2.1. Antibodies

Anti-FLAG antibodies (M2, polyclonal) and anti-LC3B antibody (rabbit) were obtained from Sigma. Anti-actin antibody (mouse) was from Millipore. Anti-Tom20 antibody (rabbit) was from Santa Cruz Biotechnology. Anti-LDH antibody (goat) was from Abcam. Anti-LC3 antibody (rabbit) was from MBL. Secondary antibodies, conjugated to horseradish peroxidase, were from GE HealthCare Bio-Sciences and Alexa Fluor 488, 546, 594, and 647 conjugated secondary antibodies were from Invitrogen-Molecular Probes.

2.2. Plasmids

A cDNA encoding wild-type PINK1 was amplified with appropriate primers and ligated into the BamHI sites of the (C-terminal tagged) 3xFLAG pCMV-10™ expression plasmid (Sigma). Mutations in PINK1 were introduced by site-directed mutagenesis (Stratagene) according to manufacturer’s instructions. GFP-parkin was subcloned into pcDNA3.1 (Invitrogen).

2.3. Cell culture

HeLa, HEK293 cells and Atg7^{+/+} and ^{-/-} mouse embryonic fibroblasts (MEFs) (a gift from Dr. Komatsu) were grown in DMEM (Sigma) supplemented with 10% FBS (Sigma) and 1% penicillin–streptomycin (Invitrogen) at 37 °C and 5% CO₂. For pharmacological studies, E64d, pepstatin A, rapamycin, 3-MA, and CCCP (Sigma) were added at indicated times and concentrations.

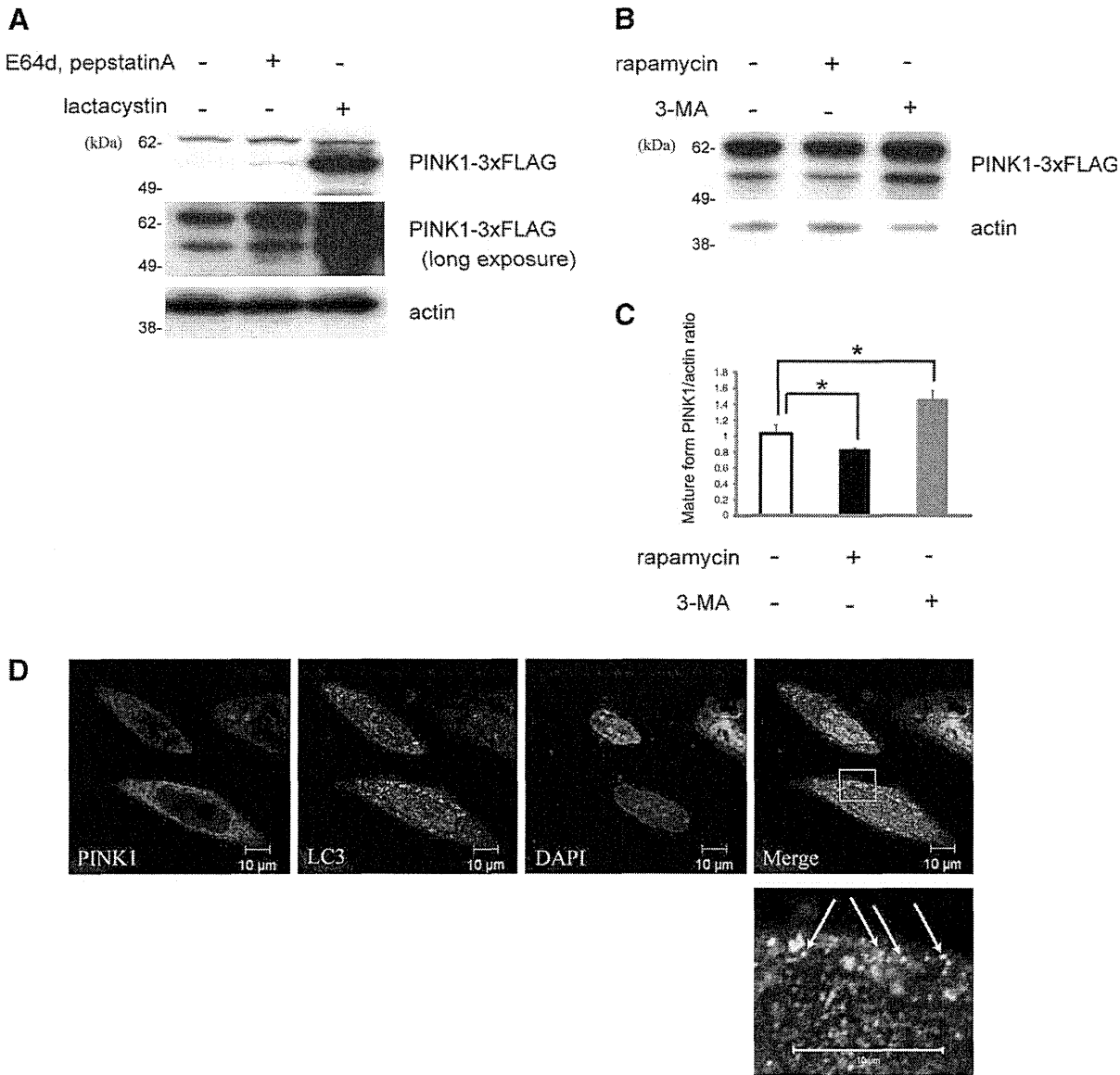


Fig. 1. PINK1 is degraded by autophagy as well as by the ubiquitin–proteasome system. (A and B) PINK1 levels in HEK293 cells stably expressing PINK1-3xFLAG treated or untreated with E64d (10 μg/ml) + pepstatin A (10 μg/ml) or lactacystin (10 μM) (A), and 3-MA (10 mM) or rapamycin (200 nM) (B), for 24 h were analyzed by immunoblotting with anti-FLAG antibodies (M2). The bottom panels show actin as loading control. (C) Quantification of (B); **P* < 0.05. Error bars indicate standard deviation of at least three experiments. (D) Immunocytochemistry of HeLa cells transiently overexpressing PINK1-3xFLAG, 24 h after transfection. PINK1 or LC3 are in red or green, respectively. The boxed area is shown in the bottom image at a higher magnification. Bars, 10 μm.

2.4. Cell transfection and establishment of stable cell lines

Cells were transfected with the indicated plasmids using Lipofectamine 2000 (Invitrogen) and Lipofectamine LTX with PLUS Reagent (Invitrogen) according to manufacturer's instructions. For stable overexpression of PINK1, HEK293 cells were transfected with PINK1 plasmids and then selected using G418.

2.5. Immunocytochemistry

Cells were fixed with 4% paraformaldehyde, permeabilized with 1× PBS containing 0.5% Triton X-100, and incubated in PBS containing 10% FBS and 1% BSA. Cells were then incubated overnight with primary antibodies, followed by incubation with secondary antibodies for 1 h. Cells were then mounted with Vectashield containing DAPI (Vector Laboratories). Cells were visualized using a ZEISS LSM510 confocal microscope.

2.6. Cell fractionation

Cells were fractionated using the mitochondrial isolation kit for cultured cells (Pierce) according to manufacturer's instructions.

2.7. Immunoprecipitation and immunoblotting

Cells were lysed on ice in lysis buffer [10 mM Tris–HCl (pH 7.5), 150 mM NaCl, 1 mM EDTA, 1% NP-40, and protease inhibitors (complete, Mini, EDTA-free, (Roche Applied Science))]. Cell lysates were immunoprecipitated using Dynabeads protein G (Invitrogen) according to manufacturer's instructions and immunoblotting was performed previously described elsewhere [11].

3. Results and discussion

3.1. PINK1 is degraded by autophagy as well as by the ubiquitin–proteasome system (UPS)

Previous studies have shown that PINK1 is degraded by the UPS [12], but it remains unclear whether autophagy also affects its degradation. We, therefore, tested whether PINK1 could be degraded via the UPS and/or autophagy, using HEK293 cells stably expressing PINK1-3xFLAG. Immunoblot analysis identifies PINK1 in two bands. The upper band represents full-length PINK1 (~66 kDa), whereas the lower band represents the mature form of PINK1 (~55 kDa), in which the MTS has been removed [13,14]. As others

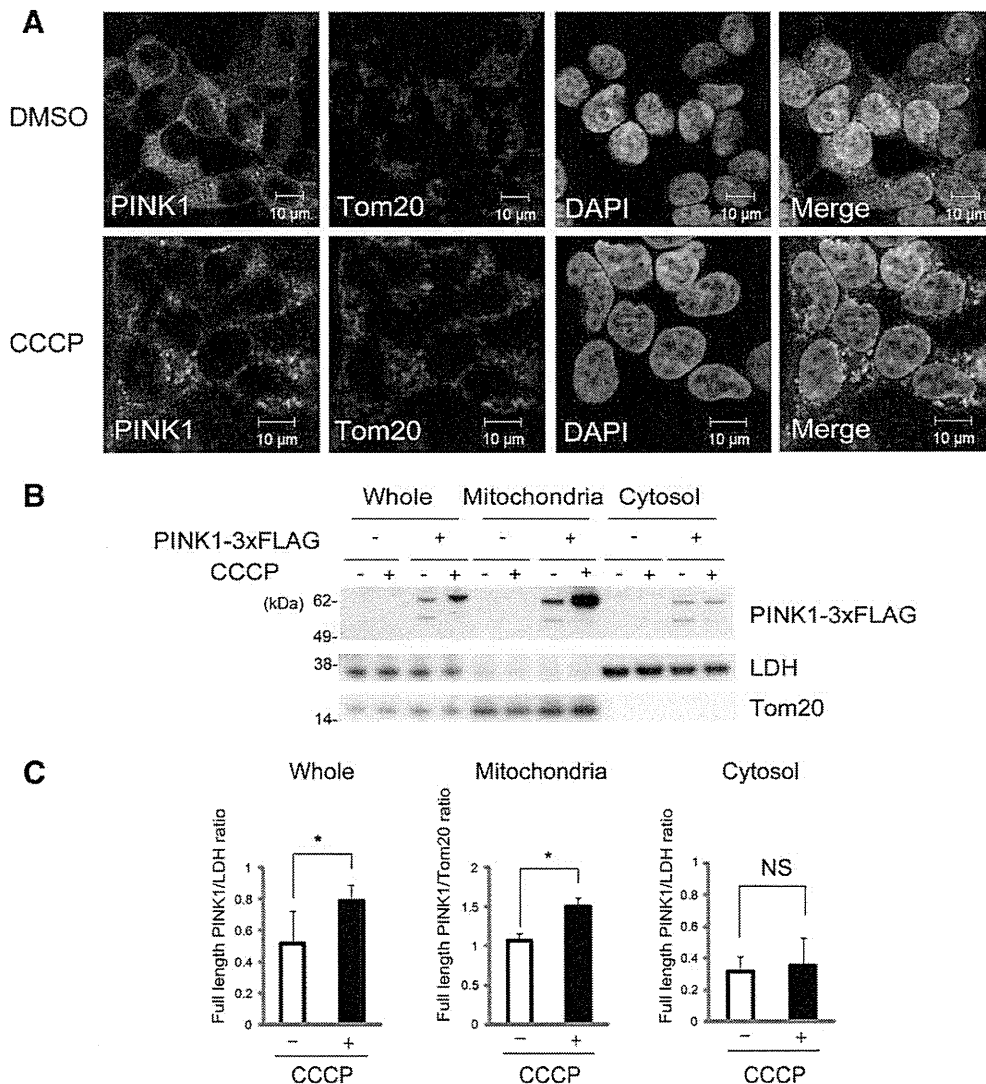


Fig. 2. PINK1 is recruited to depolarized mitochondria. (A) Immunocytochemistry of HEK293 cells stably expressing PINK1-3xFLAG treated with DMSO or CCCP (10 μ M) for 3 h. PINK1 or Tom20 are in green or red, respectively. Bars, 10 μ M. (B) HEK293 cells stably expressing 3xFLAG-empty vector or PINK1-3xFLAG treated with DMSO or CCCP (10 μ M) for 3 h were fractionated and immunoblotted for FLAG, Tom20, and LDH. (C) Quantification of (B); * P < 0.05. NS, non-significant. Error bars indicate standard deviation of at least three experiments.

have shown [12], levels of mature form PINK1 were increased by treatment with a proteasome inhibitor (lactacystin) (Fig. 1A). Also, they were increased by lysosome protease inhibitors (E64d + pepstatin A), which block autophagic flux (Fig. 1A). Next, we investigated the effects of other autophagy modulators (rapamycin and 3-methyladenine (3-MA)) on levels of PINK1. As expected, rapamycin treatment decreased mature form PINK1 levels, although 3-MA treatment increased them (Fig. 1B and C). Immunocytochemistry of HeLa cells transiently overexpressing PINK1-3xFLAG demonstrated partial colocalization of PINK1 with endogenous LC3 (an autophagosomal marker) (Fig. 1D). These data suggested that PINK1 is degraded via autophagy as well as by the UPS.

3.2. PINK1 is recruited to depolarized mitochondria

In cultured cells treated with CCCP, parkin is selectively recruited to degraded mitochondria and promotes mitophagy [7]. PINK1 and parkin function in the same genetic pathway to regulate mitochondrial integrity [3,4]. To investigate the interaction between depolarized mitochondria and PINK1, we tested for a change of PINK1 localization following treatment with CCCP. In HEK293 cells stably expressing PINK1, mitochondria stained with antibody against Tom20, a receptor protein of the mitochondrial outer membrane, were aggregated around the nucleus and fragmented and showed marked accumulation of PINK1 (Fig. 2A). The mitochondrial translocation of PINK1, caused by CCCP, was also assayed by immunoblotting. Levels of full-length PINK1 in the mitochondrial fraction were increased by CCCP treatment (Fig. 2B and C).

3.3. Mitochondrial elimination is accomplished by overexpression of wild-type PINK1 in combination with parkin

PINK1 has been reported to promote parkin translocation to mitochondria [8]. To further investigate the molecular interaction between PINK1 and parkin, the following experiments with HeLa cells overexpressing both PINK1 and parkin were performed. Twenty-four hours after transfection, mitochondrial aggregation and recruitment of PINK1 and parkin to the aggregated mitochondria

were observed only in cells positive for GFP-parkin and PINK1-3xFLAG. Moreover, parkin completely colocalized with aggregated mitochondria (Fig. 3A and B). Partial colocalization of wild-type PINK1 with parkin has been previously reported in cells overexpressing both PINK1 and parkin; however, the association with mitochondria was not examined [15]. Also, parkin colocalization with PINK1 in aggregated mitochondria has been previously reported [8]. To confirm the exact effect of both PINK1 and parkin on mitochondria, we examined the fate of the degraded mitochondria, 48 h after transfection. In cells overexpressing both PINK1 and parkin, the mitochondria were completely absent, while mitochondria were still present in cells overexpressing either PINK1 or parkin (Fig. 3C). These data indicate that both PINK1 and parkin might be indispensable for mitochondrial elimination.

3.4. PINK1 mutants remain diffusely distributed and are not recruited to mitochondria, resulting in reduced mitochondrial elimination

PD-associated mutations in PINK1 have been found in both the kinase and C-terminal domains [2,16]. Among these mutations, G309D, L347P, and G409V are expected to cause a reduction in the kinase activity of PINK1 [13,14,17]. Therefore, we generated PINK1 mutants with G309D, L347P and G409V and two deletion mutants without the MTS (Δ N: deleted amino acids 156–581 and Δ KD: deleted amino acids 156–509) and performed similar transfection experiments to those described above. Neither recruitment of parkin and/or mutant PINK1 to the mitochondria nor mitochondrial aggregation was detected 24 h after transfection (data not shown). Forty-eight hours after transfection, the G309D/L347P/G409V mutants preserved their mitochondrial localization, whilst less mitochondrial elimination was detected compared with those cells expressing both wild-type PINK1 and parkin. The Δ N/ Δ KD mutants were diffusely distributed without apparent colocalization to the mitochondria and no mitochondrial elimination was observed (Fig. 4A–C). Also, we confirmed mitochondrial elimination by immunoblotting. Levels of Tom20 were decreased in cells expressing both parkin and wild-type PINK1 but not in the cells expressing PINK1 mutants (Fig. 4D and E). These findings suggested that the

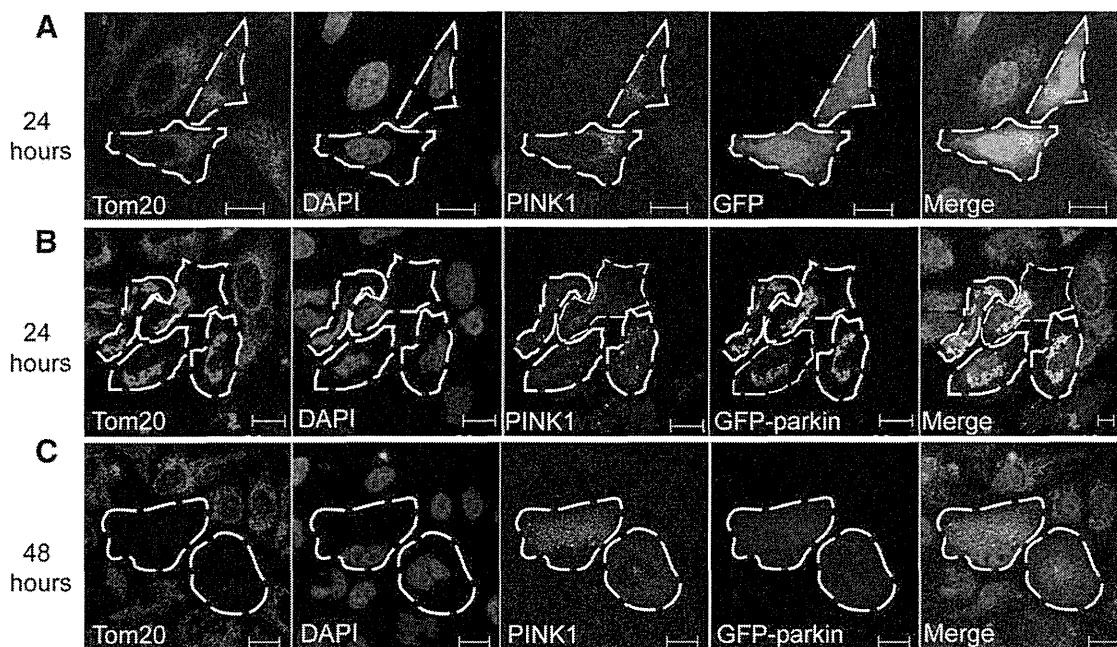


Fig. 3. Mitochondrial elimination is accomplished by overexpression of wild-type PINK1 in combination with parkin. (A and B) Immunocytochemistry of HeLa cells 24 h after transient co-overexpression of wild-type PINK1-3xFLAG (PINK1-WT) and GFP-empty vector (GFP) (A) or GFP-parkin (B) and 48 h after transient co-overexpression of PINK1-WT and GFP-parkin (C). Tom20, wild-type PINK1, or GFP are red, white, or green, respectively. Bars, 10 μ m.