

- Fukumoto Y, Sugimura K, Satoh K, Nochioka K, Miura Y, Aoki T, Tatebe S, Miyamichi-Yamamoto S, Shimokawa H. Percutaneous transluminal pulmonary angioplasty markedly ameliorates pulmonary hemodynamics and long-term prognosis of patients with distal-type chronic thromboembolic pulmonary hypertension.
- 2) European Society of Cardiology Congress 2012 (August 25-29, Munich, Germany)  
Sugimura K, Fukumoto Y, Satoh K, Miura Y, Nochioka K, Aoki T, Tatebe S, Yamamoto S, Shimokawa H. Remarkable effectiveness of percutaneous transluminal pulmonary angioplasty for hemodynamics and long-term prognosis in patients with distal-type chronic thromboembolic pulmonary hypertension.
  - 3) Satoh K, Fukumoto Y, Sugimura K, Miura Y, Nochioka K, Aoki T, Tatebe S, Takagi Y, Takahashi J, Shimokawa H. Plasma cyclophilin A level is a novel biomarker of coronary artery disease.
  - 4) American Heart Association (AHA) Scientific Sessions (November 3-7, 2012, Los Angeles, USA)  
Doe Z, Fukumoto Y, Sugimura K, Miura Y, Tatebe S, Yamamoto, Aoki T, Nohicoka K, Satoh K, SuvdN, Kondo M, Nakano M, Wakayama Y, Fukuda K, Nihei T, Kikuchi Y, Takahashi J, Shimokawa H. Rho kinase activity in circulating leukocytes as a novel bio marker of heart failure. (#12636)
  - 5) Ellawindy A, Satoh K, Tanaka S, Ikeda S, Shimizu T, Noda K, Fukumoto Y, Kobayashi K, Nakayama K, Shimokawa H. Spontaneous development of arrhythmogenic right ventricular cardiomyopathy in mice overexpressing dominant-negative Rho-kinase in vascular smooth muscle cells. (#10984)
  - 6) Miura Y, Sugimura K, Fukumoto Y, Satoh K, Nohicoka K, Aoki T, Tatebe S, Yamamoto S, Shimokawa H. Percutaneous transluminal pulmonary angioplasty markedly improves pulmonary hemodynamics and long-term prognosis of patients with distal-type chronic thromboembolic pulmonary hypertension. (#13752)
  - 7) Satoh K, Fukumoto Y, Sugimura K, Miura M, Nochioka K, Aoki T, Tatebe S, Yamamoto S, Shimizu T, Nakamura K, Ito H, Shimokawa H. Plasma cyclophilin A as a novel biomarker for pulmonary hypertension in humans. (#11189)
  - 8) Shimizu T, Tanaka S, Satoh K, Fukumoto Y, Shimokawa H. ROCK2 in vascular smooth muscle cells plays a crucial role for hypoxia-induced pulmonary hypertension in mice. (#12299)
  - 9) Tatebe S, Fukumoto Y, Sugimura K, Satoh K, Miura Y, Nohicoka K, Aoki T, Yamamoto S, Oikawa-Wakayama M, Kagaya Y, Shimokawa H. Prognostic significance of enhanced [18F]fluorodeoxyglucose accumulation in the right ventricular free wall in patients with pulmonary hypertension. (#10873)
  - 10) 佐藤公雄 Cyclophilin A Plays an Important Role in the Pathogenesis of Pulmonary Arterial Hypertension in Humans- Involvement of Rho-kinase Pathway - (アメリカ心臓協会・年次総会、2011年11月15日、米国オーランド)
  - 11) Cyclophilin A Mediates Pulmonary Vascular Remodeling by Rho-kinase Activation in Patients with Pulmonary Hypertension 佐藤公雄 Cyclophilin A Plays an Important Role in the Pathogenesis of Pulmonary Arterial Hypertension in Humans- Involvement of Rho-kinase Pathway - (アメリカ心臓協会・年次総会、2010年11月9日、米国シカゴ)  
European Society of Cardiology 2011 (August 27-31, 2011, Paris)
  - 12) Yamamoto S, Fukumoto Y, Sugimura K, Satoh K, Miura Y, Tatebe S, Nakano M, Oikawa M, Ishii T, Shimokawa H. Intensive immunosuppressive therapy improves pulmonary hemodynamics and prognosis in patients with pulmonary arterial hypertension associated with connective tissue disease.
  - 13) Sugimura K, Fukumoto Y, Satoh K, Miura Y, Tatebe S, Yamamoto S, Shimokawa H.

- Marked effectiveness of percutaneous transluminal pulmonary angioplasty in patients with distal-type chronic thromboembolic pulmonary hypertension.
- 14) Tatebe S, Fukumoto Y, Sugimura K, **Satoh K**, Miura Y, Nochioka K, Yamamoto S, Shimokawa H. Optical coherence tomography is superior to intravenous ultrasound for diagnosis of distal-type chronic thromboembolic pulmonary hypertension.
- 15) Tatebe S, Fukumoto Y, Sugimura K, **Satoh K**, Miura Y, Nochioka K, Yamamoto S, Shimokawa H. Clinical characteristics and prognosis of patients with post-capillary reactive pulmonary hypertension caused by left heart disease. American Heart Association (AHA) Scientific Sessions (November 12-16, 2011, Orlando, USA)
- 16) Aoki T, Fukumoto Y, Sugimura K, **Satoh K**, Miura Y, Nochioka K, Tatebe S, Miyamichi-Yamamoto S, Nakayama M, Shimokawa H. Prognostic impact of myocardial fibrosis in patients with heart failure -Comparison between preserved and reduced ejection fraction heart failure- (#12377)
- 17) Aoki T, Fukumoto Y, Sugimura K, **Satoh K**, Miura Y, Nochioka K, Tatebe S, Miyamichi-Yamamoto S, Shimokawa H. Percutaneous transluminal pulmonary angioplasty markedly improves pulmonary hemodynamics in patients with distal-type chronic thromboembolic pulmonary hypertension. (#11867)
- 18) **Satoh K**, Fukumoto Y, Sugimura K, Miura Y, Nochioka K, Aoki T, Tatebe S, Yamamoto S, Shimizu T, Nakamura K, Shimokawa H. Cyclophilin A plays an important role in the pathogenesis of pulmonary arterial hypertension in humans -Involvement of Rho-kinase Pathway- (#10569)
- 19) Shimizu T, **Satoh K**, Tanaka S, Fukumoto Y, Shimokawa H. ROCK2 in vascular smooth muscle cells plays a crucial role for hypoxia-induced pulmonary hypertension in mice. (#9348)
- 20) 佐藤公雄 Cyclophilin A is an inflammatory mediator that promotes atherosclerosis. Young Investigator's Award. (アジア血管生物学学会・受賞講演 2010年11月21日、香港)
- 21) 佐藤公雄 Emerging Importance of the Erythropoietin/Erythropoietin Receptor System and Cyclophilin A as Novel Therapeutic Targets in Cardiovascular Medicine. 4th Scientific Meeting of Asian Society for Vascular Biology 招待講演 (2010年11月20日、香港)
- 22) 佐藤公雄 Cyclophilin A: a potential molecular marker of instability of atherosclerotic plaque and abdominal aortic aneurysm. Visiting AstraZeneca Mölndal R&D, Sweden 招待講演 (2010年9月2日、ストックホルム)
- 23) 佐藤公雄 Cyclophilin A Augments ROS production and Angiotensin II-induced Cardiac Hypertrophy in Mice. American Heart Association, Melvin L. Marcus Young Investigator's Award. (アメリカ心臓協会学会賞・受賞講演、2009年11月15日、米国オーランド)

## H. 知的所有権の出願・取得状況（予定を含む）

### 1. 特許取得

#### 【取得】

肺高血圧症のモデル動物作成法、肺高血圧症治療法、および治療薬物" 特許 国内特許出願;特願 2006-008242 機構整理番号 P038P02, 外国特許出願;独立行政法人科学技術振興機構 機構整理番号 P038P02US(PCT) 佐藤公雄, 下川宏明, 小野栄夫, 菅村和夫, 石井直人

#### 【出願状況】（計1件）

名称：サイクロフィリンAによる心血管疾患の検査方法  
 発明者：下川宏明、佐藤公雄  
 権利者：下川宏明、佐藤公雄（国立大学法人東北大学）  
 種類：特許  
 番号：特願 2012-239615  
 出願年月日：2012年10月30日  
 国内外の別：国内

[その他]  
ホームページ  
<http://www.cardio.med.tohoku.ac.jp/index.html>

2. 実用新案登録  
なし

## Ⅱ. 研究成果の刊行に関する一覧表

研究成果の刊行に関する一覧表

書籍

著者氏名	論文タイトル名	書籍全体の 編集者名	書 籍 名	出版社名	出版地	出版年	ページ
佐藤公雄、 下川宏明	エリスロポエチンの 血管内皮保護作用と 血管恒常性維持機構		BIO Clinica.	先端医学 社	東京	2013	448-452
佐藤公雄	血管と酸化ストレス	野出孝一	Angiotensin Research	先端医学 社	東京	2011	1-10
佐藤公雄	エリスロポエチンと 酸化ストレス応答性 サイクロフィリンA		Vascular Medicine	先端医学 社	東京	2010	35-45
佐藤公雄, 下川宏明	血管内皮機能検査		『血圧』	先端医学 社	東京	2011	1-5

雑誌

発表者氏名	論文タイトル名	発表誌名	巻号	ページ	出版年
Satoh K, et al.	Dipeptidyl Peptidase-4 Inhibitors.	<i>Circ J.</i>	77	1156-1157	2013
Satoh K, et al.	Plasma cyclophilin A is a novel biomarker for coronary artery disease.	<i>Circ J.</i>	77	447-455	2013
Tatebe S, et al.	Optical Coherence Tomography Is Superior to Intravascular Ultrasound for Diagnosis of Distal-Type Chronic Thromboembolic Pulmonary Hypertension.	<i>Circ J.</i>	77	1081-1083	2013
Kagaya Y, et al.	Current perspectives on protective roles of erythropoietin in cardiovascular system: erythropoietin receptor as a novel therapeutic target.	<i>Tohoku J Exp Med.</i>	227	83-91	2012
Nigro P, Satoh K, et al.	Cyclophilin A is an inflammatory mediator that promotes atherosclerosis in apolipoprotein E-deficient mice.	<i>J Exp Med.</i>	208	53-66	2011
Satoh K, et al.	Cyclophilin A promotes cardiac hypertrophy in apolipoprotein E-deficient mice.	<i>Arterioscler Thromb Vasc Biol.</i>	31	1116-1123	2011
Satoh K, et al.	Rho-kinase: important new therapeutic target in cardiovascular diseases.	<i>Am J Physiol.</i>	301	H287-296	2011
Satoh K, et al.	Vascular-derived reactive oxygen species for homeostasis and diseases.	<i>Nitric Oxide</i>	25	211-215	2011
Satoh K, et al.	Emergence of the Erythropoietin /Erythropoietin Receptor System as a Novel Cardiovascular Therapeutic Target.	<i>J Cardiovasc Pharmacol.</i>	58	570-574	2011
Tatebe S, et al.	Clinical Significance of Reactive Post-Capillary Pulmonary Hypertension in Patients With Left Heart Disease.	<i>CircJ.</i>	76	1235-1244	2012
Sugimura K, et al.	Percutaneous Transluminal Pulmonary Angioplasty Markedly Improves Pulmonary Hemodynamics and Long-Term Prognosis in Patients With Chronic Thromboembolic Pulmonary Hypertension.	<i>CircJ.</i>	76	485-488	2012
Rabieyousefi M, et al.	Indispensable roles of OX40L-derived signal and epistatic genetic effect in immune-mediated pathogenesis of spontaneous pulmonary hypertension.	<i>BMC Immunol.</i>	12	67-73	2011
Miyamichi-Yamamoto S, et al.	Intensive Immunosuppressive Therapy Improves Pulmonary Hemodynamics and Long-Term Prognosis in Patients With Pulmonary Arterial Hypertension Associated With Connective Tissue Disease.	<i>CircJ.</i>	75	2668-2674	2011
Aoki T, et al.	Prognostic Impact of Myocardial Interstitial Fibrosis in Non-Ischemic Heart Failure.	<i>CircJ.</i>	75	2605-2613	2011
Satoh K, et al.	Cyclophilin A: a promising new target in cardiovascular therapy (Review).	<i>Circ J.</i>	74	2249-2256	2010
Nakano M, et al.	OX40 ligand plays an important role in the development of atherosclerosis through vasa vasorum neovascularization.	<i>Cardiovasc Res.</i>	79	212-220	2010
Satoh K, et al.	Oxidative stress and vascular smooth muscle cell growth: A mechanistic linkage by cyclophilin A.	<i>Antioxidants &amp; Redox Signaling</i>	12	675-682	2010
Nigro P, Satoh K, et al.	PKC $\zeta$ decreases eNOS protein stability via inhibitory phosphorylation of ERK5.	<i>Blood</i>	116	1971-1979	2010
Satoh K, et al.	Cyclophilin A enhances vascular oxidative stress and the development of angiotensin II-induced aortic aneurysms.	<i>Nature Med.</i>	15	649-656	2009
Satoh K, et al.	Statin ameliorates hypoxia-induced pulmonary hypertension associated with down-regulated stromal cell-derived factor-1.	<i>Cardiovasc Res.</i>	81	226-234	2009

### Ⅲ. 研究成果の刊行物・別刷



## Plasma Cyclophilin A Is a Novel Biomarker for Coronary Artery Disease

Kimio Satoh, MD, PhD; Yoshihiro Fukumoto, MD, PhD; Koichiro Sugimura, MD, PhD; Yutaka Miura, MD, PhD; Tatsuo Aoki, MD, PhD; Kotaro Nochioka, MD, PhD; Shunsuke Tatebe, MD; Saori Miyamichi-Yamamoto, MD, PhD; Toru Shimizu, MD; Shizuka Osaki, BSc; Yusuke Takagi, MD, PhD; Ryuji Tsuburaya, MD, PhD; Yoshitaka Ito, MD, PhD; Yasuharu Matsumoto, MD, PhD; Masaharu Nakayama, MD, PhD; Morihiko Takeda, MD, PhD; Jun Takahashi, MD, PhD; Kenta Ito, MD, PhD; Satoshi Yasuda, MD, PhD; Hiroaki Shimokawa, MD, PhD

**Background:** Oxidative stress induces secretion of cyclophilin A (CyPA) from vascular smooth muscle cells and it plays a crucial role in the pathogenesis of atherosclerosis in mice. Therefore, we tested our hypothesis that plasma CyPA levels are increased in patients with coronary artery diseases (CAD).

**Methods and Results:** In 320 consecutive patients undergoing coronary angiography, we examined the relationship between plasma CyPA levels and the severity of CAD. We measured plasma CyPA by an immunoassay based on the sandwich technique. Plasma CyPA levels were significantly higher in patients with significant coronary stenosis compared to those without it ( $P < 0.001$ ). A positive correlation was noted between plasma CyPA levels and significant coronary stenosis. The average number of stenotic coronary arteries and the need for coronary intervention were significantly increased in the quartiles of higher CyPA levels (both  $P < 0.001$ ). Indeed, the plasma CyPA level significantly correlated with the presence of CAD (adjusted odds ratio for CAD, 6.20; 95% confidence interval, 3.14–12.27;  $P < 0.001$ ). Interestingly, plasma levels of CyPA increased according to the number of atherosclerotic risk factors, all of which induce oxidative stress. Furthermore, plasma levels of CyPA significantly reduced after medical treatment of risk factors. Finally, CyPA was strongly expressed in coronary atherosclerotic plaque in patients with myocardial infarction.

**Conclusions:** Plasma CyPA level is a novel biomarker for oxidative stress and CAD in humans. (*Circ J* 2013; 77: 447–455)

**Key Words:** Biomarker; Coronary artery disease; Oxidative stress

The development of atherosclerosis is initiated by activation of endothelial cells (EC), leading to expression of adhesion molecules for inflammatory cells.<sup>1</sup> A critical step in the progression of atherosclerosis is the development of an oxidizing environment because of the activation of macrophages that have become loaded with oxidized low-density lipoprotein (LDL) and other lipids. These macrophages produce abundant reactive oxygen species (ROS) and secrete several growth factors that contribute to the progression of atherosclerosis.<sup>2</sup> It has been widely recognized that oxidative stress, generated by excessive ROS, promotes coronary artery diseases (CAD).<sup>3</sup> Moreover, ROS induce the secretion of cyclophilin A (CyPA) from vascular smooth muscle cells

(VSMC)<sup>4,5</sup> and extracellular CyPA induces EC adhesion molecule expression and promotes VSMC proliferation and migration.<sup>6–8</sup>

### Editorial p 321

CyPA is a ubiquitously distributed protein belonging to the immunophilin family, and is recognized as the intracellular receptor for the immunosuppressive drug cyclosporin.<sup>9</sup> CyPA possesses peptidyl-prolyl isomerase activity and plays an important role in protein folding and trafficking of extracellular signal-regulated kinase 1/2<sup>10</sup> and apoptosis-inducing factor.<sup>11</sup> Although initially CyPA was thought to function primarily as

Received June 21, 2012; revised manuscript received September 10, 2012; accepted September 18, 2012; released online November 8, 2012 Time for primary review: 12 days

Department of Cardiovascular Medicine, Tohoku University Graduate School of Medicine, Sendai, Japan  
The Guest Editor for this article was Hiroyuki Daida, MD.

Mailing address: Hiroaki Shimokawa, MD, PhD, Professor and Chairman, Department of Cardiovascular Medicine, Tohoku University Graduate School of Medicine, Sendai 980-8574, Japan. E-mail: shimo@cardio.med.tohoku.ac.jp

ISSN-1346-9843 doi:10.1253/circj.CJ-12-0805

All rights are reserved to the Japanese Circulation Society. For permissions, please e-mail: [cj@j-circ.or.jp](mailto:cj@j-circ.or.jp)



an intracellular protein, recent studies have revealed that it can be secreted by cells in response to ROS. Extracellular CyPA is a potent leukocyte chemoattractant,<sup>12,13</sup> and importantly, plasma CyPA is significantly increased in patients with inflammatory diseases such as rheumatoid arthritis.<sup>14</sup> Furthermore, we have found that CyPA expression in mice is closely associated with the development of intimal thickening, aortic aneurysms, and atherosclerosis.<sup>8,15-17</sup> The secretion of CyPA is regulated by activation of Rho-kinase,<sup>7</sup> which plays a crucial role in inflammation, vascular contraction, and the development of atherosclerosis.<sup>18,19</sup> Thus, it seems plausible that the plasma levels of CyPA may discriminate between subjects at high or low risk for CAD.

An ELISA assay for CyPA has recently been developed, enabling measurement of the plasma levels of CyPA. In the present study, we tested our hypothesis that circulating CyPA is detectable in patients with CAD and that these levels are associated with the number of atherosclerosis risk factors, the severity of CAD and the need for future cardiovascular intervention.

## Methods

### Study Patients

We conducted a prospective observational study of the prognostic value of CyPA in patients with symptoms or signs of CAD who were referred to the Tohoku University Hospital in Sendai for elective coronary angiography (CAG) from November 2007 through October 2011. If patients underwent angiography more than once, our analysis was based only on data obtained at the time of the first angiographic study. Patients with valvular or congenital heart disease were excluded. A total of 320 consecutive patients who had angina pectoris and evidence of ischemia on exercise ECG or myocardial radionuclide imaging were enrolled. Patients with unstable angina or myocardial infarction (MI) were excluded. The institutional Ethical Review Board approved the study, and written informed consent was given by all participating patients.

### Coronary Angiography

At baseline, selective CAG was performed with recordings on the angiographic data system. Two experienced cardiologists, who were blinded to the patients' CyPA plasma levels, evaluated the angiograms. The degree of coronary stenosis was assessed in the direction that showed the most severe stenosis according to the American Heart Association standards. A narrowing of the lumen by more than 51% of the diameter was considered to indicate clinically significant stenosis. The patients were classified according to the severity of CAD as having no clinically significant organic stenosis, or 1-, 2-, or 3-vessel disease. The left anterior descending coronary artery, left circumflex coronary artery, and right coronary artery were examined to evaluate the number of stenotic coronary arteries as 0 to 3-vessel disease. Stenosis of the left main coronary artery was evaluated as 2-vessel disease. The relationship between the plasma CyPA level and the number of stenotic coronary arteries was analyzed using the average number of stenotic arteries to assess the severity of CAD.

### Immunostaining

We have described the CyPA immunostaining in detail elsewhere.<sup>6-8</sup> In brief, paraformaldehyde-fixed frozen sections were incubated overnight at 4°C with primary antibody<sup>20</sup> (CyPA polyclonal, 1:1,000 dilution; BIOMOL Research Laboratories). For detection of CyPA, peroxidase-conjugated streptavidin

(1:1,000 dilution; Jackson Immuno) and NovaRed substrate kit (SK-4800, Vector Laboratories, Burlingame, CA, USA), were used and counterstained with hematoxylin. As a negative control, species- and isotype-matched IgG were used in place of the primary antibody.

### Baseline Measurements

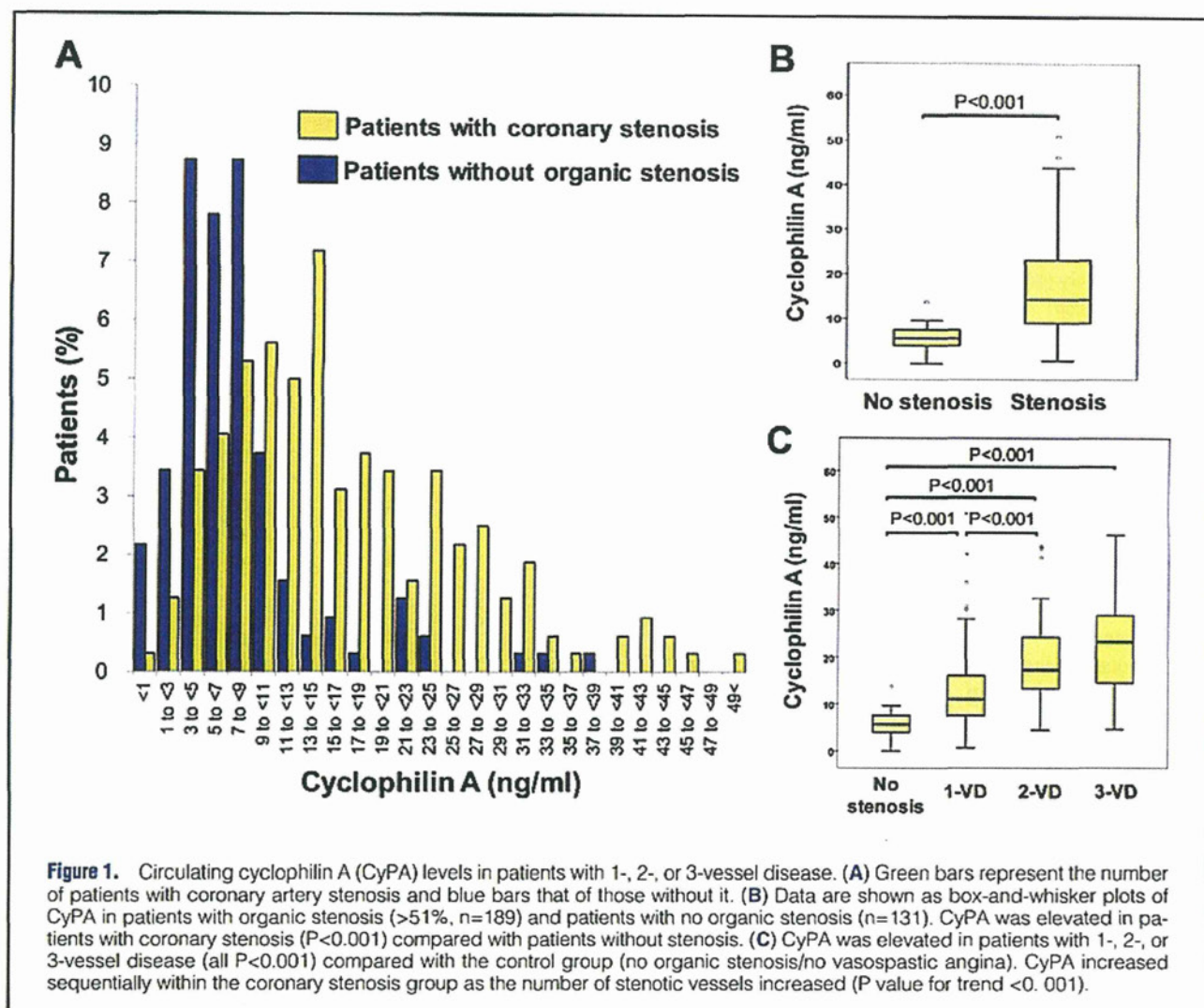
Information on vital status and data were obtained from the department's database system by means of a computerized search performed on December 7, 2011.<sup>21</sup> No patients were lost to follow-up and all patients had a recorded medical history that included details of any previous MI, previous revascularization, angina pectoris, hypertension, previous stroke or transient ischemic attacks, diabetes, and smoking status. The cardiovascular risk was assessed in terms of hypertension, diabetes, smoking, aging and dyslipidemia. Patients with hypertension were assessed as being at risk if their blood pressure was  $\geq 140/90$  mmHg or they had a history of antihypertensive drug use. Patients with diabetes mellitus were assessed as being at risk if their fasting glucose level was  $\geq 126$  mg/dl or they had a history of hypoglycemic drug or insulin use. Patients with dyslipidemia were assessed as being at risk if their LDL cholesterol was  $\geq 140$  mg/dl or their high-density lipoprotein cholesterol was  $\leq 40$  mg/dl, or they were taking a lipid-lowering drug. Before CAG, fasting blood samples for the measurement of CyPA were drawn from the antecubital vein of the patients who were resting supine. Plasma samples were collected using EDTA and centrifuged for 10 min at 2,500 g within 30 min of collection, and aliquots were stored at  $-80^{\circ}\text{C}$ . CyPA was measured with use of an immunoassay based on the sandwich technique according to the protocol (Human Cyclophilin A ELISA Kit, CSB-E09920h, Cusabio). The detection limit was 0.78 ng/ml. Across the entire analysis, duplicate measures of plasma CyPA level were highly correlated ( $r=0.92$ , Figure S1A). The values of high-sensitivity CRP (hsCRP) were measured with a sandwich technique (Roche Diagnostics). The values of other laboratory parameters were obtained from samples assayed in an autoanalyzer in the hospital.

### Statistical Analysis

Baseline characteristics of the study patients, grouped according to quartiles of CyPA, are presented as frequencies and percentages, and continuous variables as means and standard deviations, or medians and interquartile ranges for variables with skewed distributions. Baseline characteristics were compared among quartiles with use of the chi square test for discrete variables and the Wilcoxon or Kruskal-Wallis rank-sum test for continuous variables when appropriate.

Additional CyPA analyses were performed in subgroups defined according to the results of angiography. A Student's *t*-test was used for comparisons between 2 groups and Dunnett's multiple comparison of means was used for multi-group comparison after analysis of variance (ANOVA). Receiver-operating-characteristic (ROC) curves were constructed to assess the sensitivity and specificity of plasma CyPA measurements obtained before CAG and to compare the ability to diagnose the existence and severity of CAD.

Logistic regression was used to estimate the association between plasma CyPA levels and CAD status after adjustment for age, sex, smoking status, presence or absence of diabetes, presence or absence of hypertension, and LDL cholesterol level. hsCRP levels were added in subsequent models. Adjusted odds ratios (ORs) are reported both for plasma CyPA levels  $>15$  ng/ml and across quartiles. Model performance was as-



**Figure 1.** Circulating cyclophilin A (CyPA) levels in patients with 1-, 2-, or 3-vessel disease. (A) Green bars represent the number of patients with coronary artery stenosis and blue bars that of those without it. (B) Data are shown as box-and-whisker plots of CyPA in patients with organic stenosis (>51%, n=189) and patients with no organic stenosis (n=131). CyPA was elevated in patients with coronary stenosis ( $P<0.001$ ) compared with patients without stenosis. (C) CyPA was elevated in patients with 1-, 2-, or 3-vessel disease (all  $P<0.001$ ) compared with the control group (no organic stenosis/no vasospastic angina). CyPA increased sequentially within the coronary stenosis group as the number of stenotic vessels increased ( $P$  value for trend  $<0.001$ ).

essed according to discrimination, by means of the area under the ROC (c-statistic); calibration, as indicated by the Hosmer-Lemeshow goodness-of-fit statistic.<sup>22</sup> Analyses were performed with CyPA as a categorical variable with the lowest quartile serving as reference for the other 3 quartiles. All reported  $P$  values are 2-tailed, with  $P<0.05$  indicating statistical significance. Analyses were performed with SPSS, version 19.0 (Chicago, IL, USA) and JMP, version 9.02 (Cary, NC, USA).

## Results

### Plasma Levels of CyPA and Angiographic Status

Figure 1A shows the distribution of patients with and without coronary artery stenosis by the plasma level of CyPA. The plasma levels of CyPA were significantly higher in patients with coronary organic stenosis compared with those without stenosis (Figure 1B). Moreover, the CyPA level increased with the severity of angiographic CAD ( $P<0.001$ , Figure 1C).

All the cases were divided into quartile groups based on the plasma level of CyPA to examine its correlation with the number of stenotic coronary arteries. Table 1 shows the patients' clinical background and laboratory data according to the quartiles of CyPA. Patients with CyPA in the upper quartile were

older and were more likely to have clinically significant CAD ( $P<0.001$ , Table 1). The prevalence of both hypertension and diabetes was higher in the 4<sup>th</sup> quartile, and these patients showed a slightly reduced estimated glomerular filtration rate (eGFR). The number of stenotic coronary arteries was significantly increased in the higher quartiles of CyPA ( $P<0.001$ , Figure 2A). Furthermore, the requirement for cardiovascular intervention, such as percutaneous coronary intervention (PCI) and coronary artery bypass grafting (CABG), was significantly increased in the 4<sup>th</sup> quartile compared with the lower quartiles ( $P<0.001$ , Figure 2B). We calculated the ROC curves and c-statistic on the basis of the plasma CyPA levels. The ROC curves demonstrated that the plasma level of CyPA is useful for the diagnosis of coronary organic stenosis (c-statistic=0.802) and the requirement for cardiovascular intervention (c-statistic=0.793) (Figures 2C,D).

### Plasma Levels of CyPA and the Severity of CAD

CyPA was elevated in patients with traditional cardiovascular risk factors such as hypertension, diabetes, smoking, dyslipidemia and advanced age (all  $P<0.001$ , Figure 3). Division of the cohort into quartiles according to plasma CyPA level provided additional evidence of an association between plasma

**Table 1. Baseline Clinical Characteristics According to Quartiles of CyPA**

	1 <sup>st</sup> quartile (n=80)	2 <sup>nd</sup> quartile (n=80)	3 <sup>rd</sup> quartile (n=80)	4 <sup>th</sup> quartile (n=80)	P value
CyPA level (ng/ml)	0.0–6.1	6.2–9.6	9.7–17.4	17.5–50.9	
Age (years)					<0.001
Median	58	63	68	68	
Interquartile range	50–68	55–71	60–75	60–74	
Male sex (%)	60	61	66	76	0.122
Family history of IHD (%)	11	18	4	10	0.046
Medical history (%)					
Hypertension	56	59	75	88	<0.001
Diabetes	36	34	48	55	0.022
Dyslipidemia	51	51	70	80	<0.001
Current smoker (%)	28	34	49	59	<0.001
Angiographic findings (%)					<0.001
No coronary artery stenosis	71	61	20	13	
1-vessel disease	23	31	41	29	
2-vessel disease	3	4	24	31	
3-vessel disease	4	4	11	28	
Requirement for PCI or CABG during follow-up (%)	8	8	23	40	0.019
BMI*					0.003
Median	25	24	24	23	
Interquartile range	23–27	22–26	21–26	21–25	
eGFR (ml·min <sup>-1</sup> ·1.73m <sup>-2</sup> )	54±17	59±19	51±20	49±19	<0.001
Left ventricular ejection fraction (%)	65±10	66±8	59±12	63±12	0.090
Lipid status (mg/dl)					
LDL cholesterol	105±36	105±29	96±35	97±33	0.078
HDL cholesterol	47±13	49±12	49±12	49±14	0.837
Triglycerides	127±69	147±95	130±73	132±100	0.576
Hemoglobin A <sub>1c</sub>	6.4±1.4	6.3±0.8	6.4±0.9	6.6±1.2	0.067
hsCRP (mg/L)	2.3±3.2	1.7±2.6	2.3±3.1	1.8±2.8	0.103
Medication (%)					
Aspirin	16	30	51	71	<0.001
β-blocker	25	29	46	55	<0.001
Statin	39	35	56	70	<0.001
ACE inhibitor	28	24	31	39	0.212
ARB	24	26	28	33	0.654
Calcium-channel blocker	51	55	61	58	0.550

Data are shown as mean ± SD unless otherwise shown.

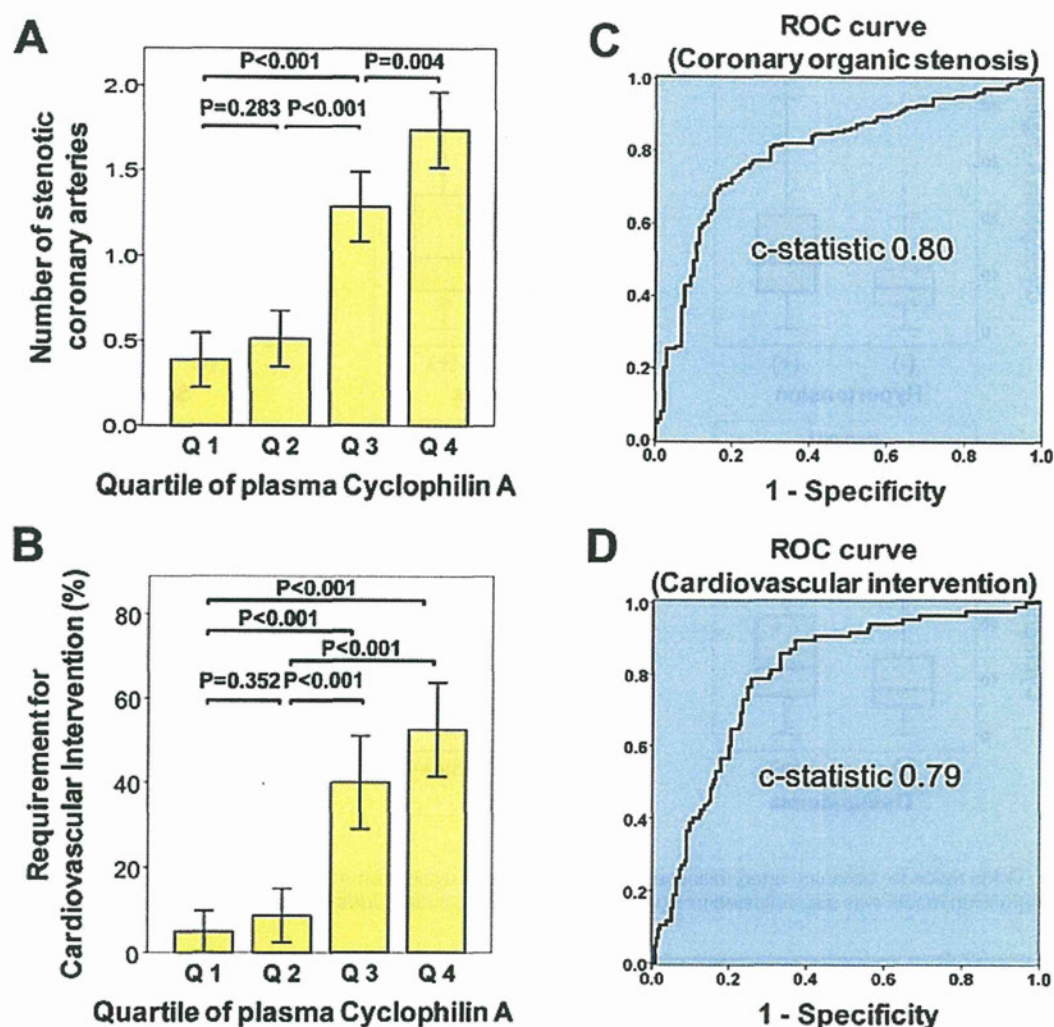
\*BMI=weight in kg/(height in m)<sup>2</sup>.

ACE, angiotensin-converting enzyme; ARB, angiotensin-receptor blocker; BMI, body mass index; CABG, coronary artery bypass grafting; CyPA, cyclophilin A; HDL, high-density lipoprotein; hsCRP, high-sensitivity C-reactive protein; IHD, ischemic heart disease; LDL, low-density lipoprotein; PCI, percutaneous coronary intervention.

CyPA and CAD (Table 2). In the analysis adjusted for age, sex, and traditional cardiovascular risk factors (smoking, diabetes, hypertension, dyslipidemia), quartiles 2, 3, and 4 of plasma CyPA were associated with an increased risk of CAD as compared with the quartile of lowest CyPA (OR, 1.73, 9.94, and 10.29; P-value for trend <0.001). This result remained significant after adjustment for traditional cardiovascular risk factors plus hsCRP levels (OR, 1.84, 10.53, and 10.78; P-value for trend <0.001). Several known cardiovascular risk factors were associated with CAD in logistic-regression models adjusted for age, sex, and body mass index (BMI) (Figure 4). Diabetes and hypertension were each linked to an increased risk of CAD. Each of the known risk factors, in addition to plasma CyPA, was combined in a single logistic-regression analysis (Figure 4). In this model, which included the hsCRP

level, plasma CyPA >15 ng/ml remained highly related with disease status (OR 6.20, P<0.001). Multivariable analysis demonstrated that, in addition to the established risk factors (age, sex, smoking, hypertension, diabetes and hsCRP), CyPA >15 ng/ml was significantly correlated with CAD (Table 3).

The inclusion of plasma CyPA resulted in significant improvement of the overall performance of the logistic-regression model. The c-statistic increased from 0.807 to 0.870 when plasma CyPA was added to known cardiovascular risk factors (age, sex, smoking, hypertension, diabetes, dyslipidemia). When the hsCRP level was included in the baseline model, the c-statistic increased from 0.807 to 0.873. The addition of plasma CyPA did not reduce model discrimination as assessed by goodness-of-fit statistics. CyPA added prognostic information above and beyond that provided by age, sex, family history



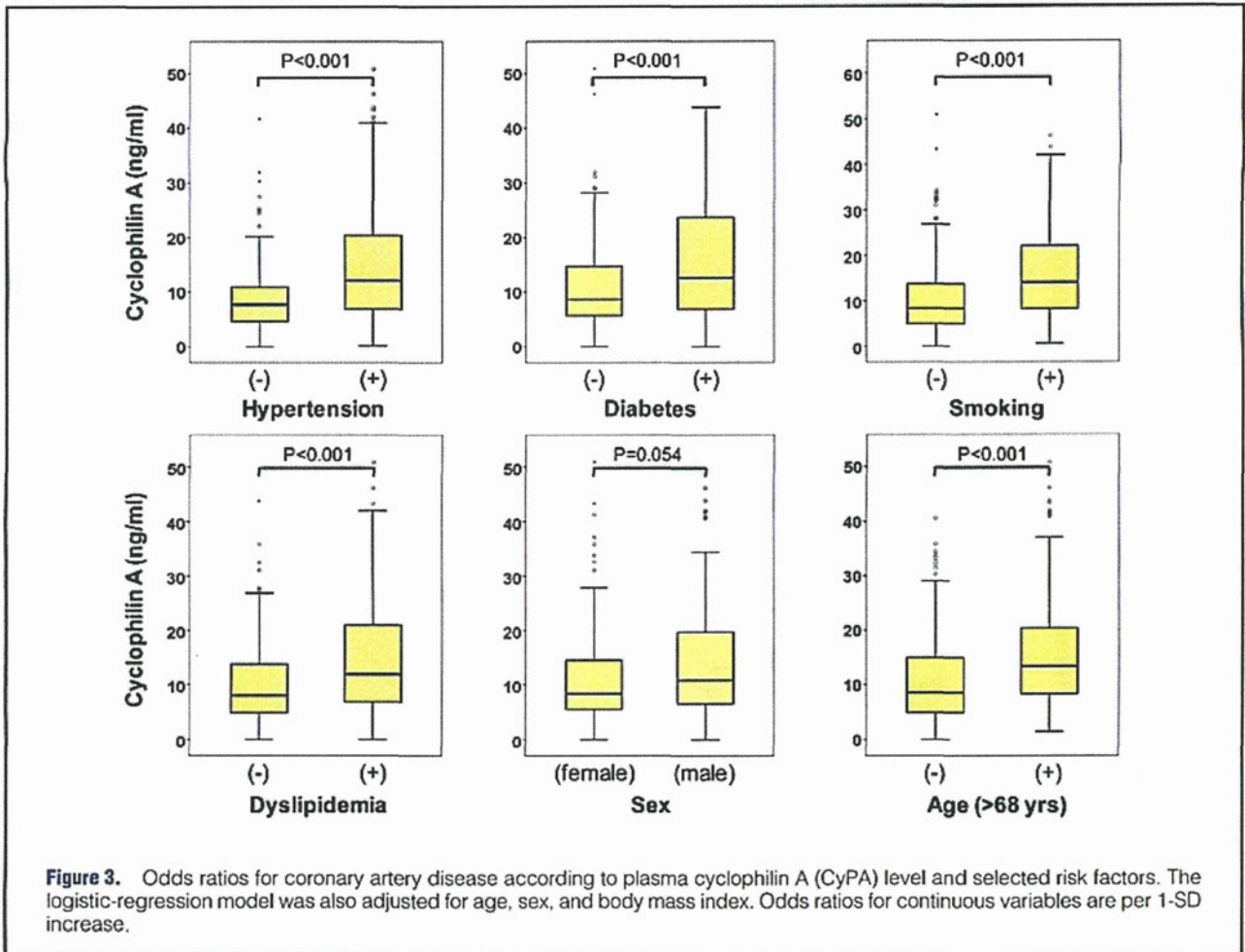
**Figure 2.** Number of stenotic coronary arteries and requirement for cardiovascular intervention according to quartiles of cyclophilin A (CyPA). Data from 320 patients with and without coronary stenosis are divided according to the quartiles of plasma CyPA levels. The CyPA levels were as follows: 1<sup>st</sup> quartile (Q1), <6.1 ng/ml; 2<sup>nd</sup> quartile (Q2), 6.2–9.6 ng/ml; 3<sup>rd</sup> quartile (Q3), 9.7–17.4 ng/ml; 4<sup>th</sup> quartile (Q4), >17.5 ng/ml.  $P < 0.001$  by the log-rank test for the overall comparison among the groups. (A) Number of stenotic coronary arteries according to quartiles of CyPA. CyPA was elevated in patients in Q3 ( $P < 0.001$ ) and Q4 ( $P < 0.001$ ) compared with Q1. The number of stenotic coronary arteries increased sequentially as the quartiles increased. (B) Requirement for cardiovascular intervention according to quartiles of CyPA. The requirement was higher in patients with Q4 compared with Q1 ( $P < 0.001$ ) and Q2 ( $P < 0.001$ ). Cardiovascular intervention included percutaneous coronary intervention (PCI) and coronary artery bypass grafting (CABG). (C, D) Receiver-operating-characteristic curves (ROC) and c-statistic for baseline measurements of CyPA. Also shown are the sensitivity and specificity of these measures. (C) ROC curve describing the diagnostic performance of CyPA to identify coronary organic stenosis >50% in at least 1 vessel as compared with the reference standard of invasive quantitative coronary angiography (CAG). The c-statistic was 0.80 (95% CI, 0.75–0.85). (D) ROC curve describing the diagnostic performance of CyPA to identify the requirement for future cardiovascular intervention as compared with the reference standard of invasive quantitative CAG. The c-statistic was 0.79 (95% CI, 0.74–0.85). CI, confidence interval.

with respect to ischemic heart disease, presence or absence of hypertension, diabetes, smoking status, BMI, eGFR, and plasma lipid level. Excluding the 141 patients with high hsCRP did not significantly change the results. In patients with hsCRP <1.000, the adjusted OR for CAD in the 4<sup>th</sup> quartile of CyPA, as compared with the 1<sup>st</sup> quartile, was 13.2 (95% confidence interval, 3.2–53.9,  $P < 0.001$ ). Additionally, CyPA (>15 ng/ml) remained a strong prognostic marker, with an adjusted OR of 5.9 (95% confidence interval, 2.3–14.8,  $P < 0.001$ ). Among pa-

tients with hsCRP >1.000, the same trend was observed, suggesting the potential usefulness of combining these biomarkers for CAD.

#### Plasma Levels of CyPA as a Biomarker of Therapeutic Outcome

Interestingly, the plasma level of CyPA increased according to the atherosclerotic risk factors such as sex, hypertension, diabetes mellitus, dyslipidemia, and smoking, all of which are



**Table 2. CAD Status According to Quartiles of Plasma CyPA**

	No. of patients	OR for CAD (95% CI)*	
		Adjusted for cardiovascular risk factors	Adjusted for cardiovascular risk factors and hsCRP
Quartile 1	80	1.00	1.00
Quartile 2	80	1.73 (0.78–3.85)	1.84 (0.82–4.14)
Quartile 3	80	9.94 (3.98–24.83)	10.53 (4.16–26.63)
Quartile 4	80	10.29 (3.95–26.79)	10.78 (4.13–28.14)
P value for trend		<0.001	<0.001

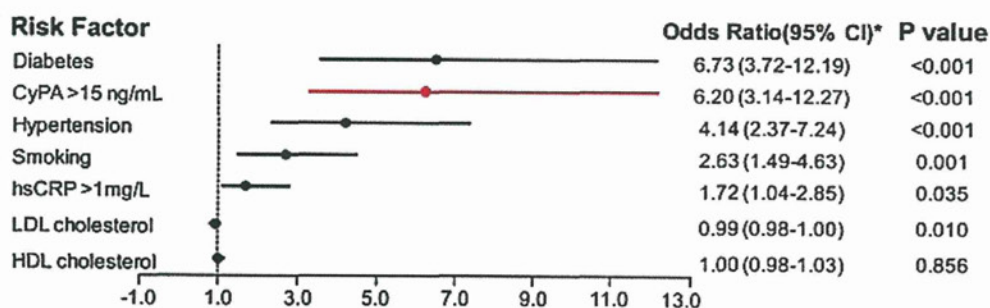
\*Cardiovascular risk factors included in the logistic-regression model were age, sex, smoking status, presence or absence of diabetes, presence or absence of hypertension, and presence or absence of dyslipidemia. CAD, coronary artery disease; CI, confidence interval; OR, odds ratio. Other abbreviations as in Table 1.

oxidative stress inducers (Figure 3). Therefore, plasma CyPA may be important as a biomarker of therapeutic outcome after controlling risk factors. To further confirm the role of plasma CyPA, we performed a follow-up study after the addition of drugs to control risk factors. After treatment in several individuals (n=42), the plasma obtained at baseline and follow-up (mean follow-up, 273 days) revealed a significant reduction after treatment (P=0.003, Figure 5A). Medical treatments that control atherosclerotic risk factors decreased plasma CyPA levels in patients with stable CAD, suggesting that plasma CyPA is useful for the evaluation of systemic oxidative stress

and the therapeutic effect of medication.

#### CyPA and Atherosclerotic Unstable Plaque

As demonstrated, ROS-induced secretory protein CyPA is a useful biomarker of CAD, so we hypothesized that secreted CyPA is highly accumulated in atherosclerotic plaque of coronary arteries. Indeed, we observed strong CyPA expression in coronary arteries in patients with MI (Figures 5B,C). Importantly, the strong expression of CyPA was localized just beneath the thin fibrous cap of atherosclerotic plaque.



**Figure 4.** Plasma levels of cyclophilin A (CyPA) and cardiovascular risk factors. Plasma levels of CyPA were significantly increased by the presence of hypertension, diabetes, smoking, dyslipidemia and advanced age of 68 years or older but not by sex difference. \*Adjusted with age, sex, and BMI.

**Table 3. Correlated Risk Factors for Coronary Stenosis**

	Univariable analysis			Multivariable analysis*		
	OR	95% CI	P value	OR	95% CI	P value
Age	1.08	1.05–1.10	<0.001	1.07	1.04–1.10	<0.001
Men	1.76	1.10–2.82	0.018	1.58	0.81–3.09	0.184
BMI	0.95	0.89–1.01	0.085			
Hypertension	5.34	3.19–8.93	<0.001	1.85	0.95–3.63	0.073
Smoking	2.44	1.52–3.90	<0.001	1.82	0.95–3.49	0.072
Dyslipidemia	4.03	2.49–6.51	<0.001	2.37	1.23–4.55	0.010
Diabetes	5.87	3.50–9.86	<0.001	4.71	2.53–8.78	<0.001
Family history of IHD	0.663	0.33–1.35	0.258			
CyPA >15 ng/ml	7.58	4.00–14.38	<0.001	4.14	2.00–8.57	<0.001
hsCRP >1 mg/L	1.77	1.12–2.79	0.014	1.58	0.87–2.86	0.135

\*Analysis was performed on 8 variables including age, sex, hypertension, smoking, dyslipidemia, diabetes mellitus, CyPA >15 ng/ml and hsCRP >1 mg/L. Abbreviations as in Tables 1,2.

## Discussion

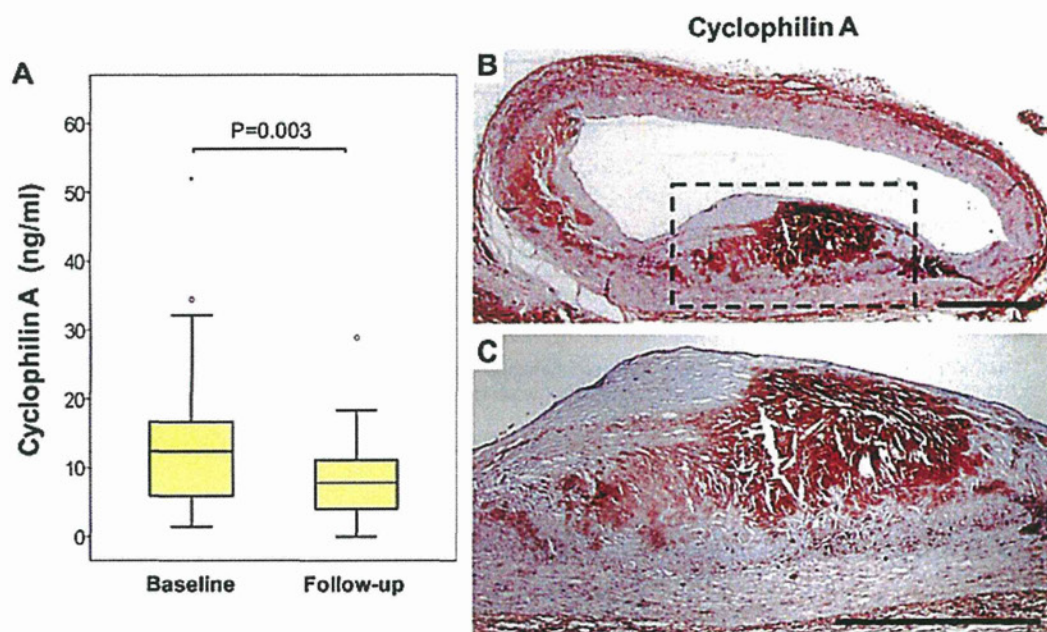
Our study demonstrated that the plasma level of CyPA in patients with stable CAD provides prognostic information on the severity of CAD and the requirement for cardiovascular intervention. The findings of the present study support our previous results in mice suggesting that CyPA augments the development of atherosclerosis.<sup>8,17,23</sup> Patients with high CyPA levels had a significantly higher prevalence of CAD on CAG than those with low levels of CyPA. A possible role for CyPA in atherosclerosis is becoming increasingly apparent. We have shown that knock-down of CyPA in EC reduced apoptosis induced in vitro by tumor-necrosis factor- $\alpha$  and that CyPA deficiency was associated with a marked decrease in EC apoptosis in the early stages of atherosclerosis.<sup>17</sup> The increase in vascular oxidative stress requires CyPA<sup>15</sup> which thereby sensitizes EC to apoptosis. In addition, CyPA secretion is regulated by Rho-kinase activation, which is important for VSMC contraction and atherosclerosis.<sup>19</sup> Consistently, plasma levels of CyPA were significantly increased in patients with CAD.

In the present study, plasma levels of CyPA were elevated in patients with angiographically verified coronary atherosclerosis. We have previously demonstrated that ROS inducers, such as mechanical stress, angiotensin II and dyslipidemia, promote the secretion of CyPA<sup>8,15,17</sup> in a Rho-kinase-dependent

manner.<sup>19,24</sup> It is well known that Rho-kinase is associated with activation of the NADPH oxidases, with resultant ROS production,<sup>25</sup> which plays a crucial role in the development of several cardiovascular diseases. In support of this notion, CyPA was elevated in patients with hypertension, diabetes, smoking, dyslipidemia, and advanced age in the present study. This is the first study that has examined the association between CyPA and ROS inducers, all of which are atherosclerotic risk factors in humans.

### Plasma CyPA and Atherosclerotic Risk Factors

In the present study, we further examined the prognostic importance of CyPA in patients with stable CAD. We found that CyPA is a prognostic marker for requirement of cardiovascular intervention such as PCI and CABG. The increased severity of CAD we observed among patients with elevated CyPA may be a consequence of a higher frequency of risk factors for atherosclerosis, all of which promote ROS production and CyPA secretion. All these mechanisms, while promoting an environment of oxidative stress, are likely to contribute to the increased plasma levels of CyPA in patients with severe CAD. Vascular ROS formation can be stimulated by mechanical stretch, pressure, shear stress, environmental factors such as hypoxia, and secreted factors such as angiotensin II.<sup>27–31</sup> In addition, extracellular CyPA induces ROS production in VSMC



**Figure 5.** Plasma levels of cyclophilin A (CyPA) after treatment and representative immunostaining for CyPA in atherosclerotic coronary plaque from a patient with acute myocardial infarction. (A) Plasma levels of CyPA at baseline and follow-up ( $n=42$ , mean follow-up, 273 days). (B,C) Coronary artery sample obtained from a patient with acute myocardial infarction showing strong CyPA expression just beneath the thin fibrous cap of atherosclerotic plaque. Bars=500 $\mu$ m.

and recruitment of inflammatory cells, resulting in augmentation of vascular ROS and atherosclerosis.<sup>17</sup> All these data comprise a proof-of-concept that circulating CyPA is a novel biomarker for CAD and also plays a crucial role in ROS augmentation. Several risk factors, such as hypertension, diabetes, smoking and aging, induce the generation of ROS and promote the secretion of CyPA. Circulating CyPA augments ROS production synergistically.<sup>24</sup> Therefore, secreted plasma CyPA, acting as a pro-inflammatory cytokine, synergistically augments ROS production, contributing to the onset of atherosclerosis and its progression.<sup>32</sup>

#### CyPA and Atherosclerotic Unstable Plaque

CyPA may play an important role in several stages of atherosclerosis. During fatty streak formation, it may play a role in lipid uptake via its effect on scavenger receptors.<sup>17</sup> In all stages, it may play a role in inflammation by promoting monocyte adhesion and recruitment, as well as by contributing to an oxidative environment. The data from Seizer et al that CyPA is secreted from foam cells suggest an important role in the later stages of atherosclerosis.<sup>33</sup> Indeed, we observed strong CyPA expression in the atherosclerotic plaque of patients with MI. Altogether, our data suggest that the agents that inhibit CyPA secretion might be candidates for suppressing the development of atherosclerosis. EMMPRIN, a putative CyPA receptor, has been identified as a tumor cell membrane protein that is expressed in VSMC, is activated by ROS and stimulates matrix metalloproteinase production.<sup>34</sup> A recent study demonstrated ROS-dependent increases in EMMPRIN,<sup>35</sup> which may be activated by the binding of extracellular CyPA.<sup>36</sup> Therefore, ROS-induced secretion of CyPA may also contribute to the development of unstable atherosclerotic plaque and plaque

rupture. We consider that the discovery of more selective and specific inhibitors of CyPA secretion may be an effective therapeutic approach for CAD.

#### Study Limitations

Several limitations should be mentioned. First, the study population was relatively small. However, even in this small population, plasma levels of CyPA closely related with the severity of CAD. Future analysis in a large population prospective cohort will further elucidate the importance of plasma CyPA in CAD. Second, as to the plasma levels of CyPA in patients with MI, we need to consider 2 different mechanisms that increase the plasma level of CyPA. One mechanism is oxidative stress-induced CyPA secretion from the vasculature and another is CyPA release from necrotic tissue after MI. Therefore, in the present study, we excluded patients with unstable CAD or MI and recruited patients with stable CAD. The plasma levels in patients with unstable CAD or MI need to be examined in future studies.

In conclusion, the present study indicates that the plasma CyPA level is a novel biomarker of CAD. Further studies are needed to further establish the clinical significance of CyPA in the pathogenesis of atherosclerotic cardiovascular disease.

#### Acknowledgments

This work was supported in part by a Grant-in-Aid for Scientific Research on Innovative Areas (Signaling Functions of Reactive Oxygen Species) (08107961), a Grant-in-Aid for Tohoku University Global COE for Conquest of Signal Transduction Diseases with Network Medicine, and Grants-in-Aid for Scientific Research (08101562, 09006924 and 10002019), all of which are from the Ministry of Education, Culture, Sports, Science and Technology, Tokyo, Japan and the Grants-in-Aid for Scientific Research from the Ministry of Health, Labour, and Welfare, Tokyo, Japan (10102895).

Japan Heart Foundation Research Grant, Mitsui Life Social Welfare Foundation and AstraZeneca Research Grant. We are grateful to the laboratory staff in the Department of Cardiovascular Medicine at the Tohoku University for their useful suggestions and technical assistance, especially that performed by Akemi Saito and Naomi Yamaki.

### Disclosures

Conflict of Interest: None declared.

### References

- Berk BC. Atheroprotective signaling mechanisms activated by steady laminar flow in endothelial cells. *Circulation* 2008; **117**: 1082–1089.
- Hansson GK. Inflammation, atherosclerosis, and coronary artery disease. *N Engl J Med* 2005; **352**: 1685–1695.
- Dzau VJ, Antman EM, Black HR, Hayes DL, Manson JE, Plutzky J, et al. The cardiovascular disease continuum validated: Clinical evidence of improved patient outcomes. Part I: Pathophysiology and clinical trial evidence (risk factors through stable coronary artery disease). *Circulation* 2006; **114**: 2850–2870.
- Jin ZG, Melaragno MG, Liao DF, Yan C, Haendeler J, Suh YA, et al. Cyclophilin A is a secreted growth factor induced by oxidative stress. *Circ Res* 2000; **87**: 789–796.
- Liao DF, Jin ZG, Baas AS, Daum G, Gygi SP, Aebersold R, et al. Purification and identification of secreted oxidative stress-induced factors from vascular smooth muscle cells. *J Biol Chem* 2000; **275**: 189–196.
- Jin ZG, Lungu AO, Xie L, Wang M, Wong C, Berk BC. Cyclophilin A is a proinflammatory cytokine that activates endothelial cells. *Arterioscler Thromb Vasc Biol* 2004; **24**: 1186–1191.
- Suzuki J, Jin ZG, Meoli DF, Matoba T, Berk BC. Cyclophilin A is secreted by a vesicular pathway in vascular smooth muscle cells. *Circ Res* 2006; **98**: 811–817.
- Satoh K, Matoba T, Suzuki J, O'Dell MR, Nigro P, Cui Z, et al. Cyclophilin A mediates vascular remodeling by promoting inflammation and vascular smooth muscle cell proliferation. *Circulation* 2008; **117**: 3088–3098.
- Handschumacher RE, Harding MW, Rice J, Drugge RJ, Speicher DW. Cyclophilin: A specific cytosolic binding protein for cyclosporin A. *Science* 1984; **226**: 544–547.
- Pan H, Luo C, Li R, Qiao A, Zhang L, Mines M, et al. Cyclophilin A is required for CXCR4-mediated nuclear export of heterogeneous nuclear ribonucleoprotein A2, activation and nuclear translocation of ERK1/2, and chemotactic cell migration. *J Biol Chem* 2008; **283**: 623–637.
- Zhu C, Wang X, Deinum J, Huang Z, Gao J, Modjtahedi N, et al. Cyclophilin A participates in the nuclear translocation of apoptosis-inducing factor in neurons after cerebral hypoxia-ischemia. *J Exp Med* 2007; **204**: 1741–1748.
- Arora K, Gwinn WM, Bower MA, Watson A, Okwumabua I, MacDonald HR, et al. Extracellular cyclophilins contribute to the regulation of inflammatory responses. *J Immunol* 2005; **175**: 517–522.
- Damsker JM, Bukrinsky MI, Constant SL. Preferential chemotaxis of activated human CD4+ T cells by extracellular cyclophilin A. *J Leukoc Biol* 2007; **82**: 613–618.
- Kim H, Kim WJ, Jeon ST, Koh EM, Cha HS, Ahn KS, et al. Cyclophilin A may contribute to the inflammatory processes in rheumatoid arthritis through induction of matrix degrading enzymes and inflammatory cytokines from macrophages. *Clin Immunol* 2005; **116**: 217–224.
- Satoh K, Nigro P, Matoba T, O'Dell MR, Cui Z, Shi X, et al. Cyclophilin A enhances vascular oxidative stress and the development of angiotensin II-induced aortic aneurysms. *Nat Med* 2009; **15**: 649–656.
- Weintraub NL. Understanding abdominal aortic aneurysm. *N Engl J Med* 2009; **361**: 1114–1116.
- Nigro P, Satoh K, O'Dell MR, Soe NN, Cui Z, Mohan A, et al. Cyclophilin A is an inflammatory mediator that promotes atherosclerosis in apolipoprotein E-deficient mice. *J Exp Med* 2011; **208**: 53–66.
- Shimokawa H, Takeshita A. Rho-kinase is an important therapeutic target in cardiovascular medicine. *Arterioscler Thromb Vasc Biol* 2005; **25**: 1767–1775.
- Satoh K, Fukumoto Y, Shimokawa H. Rho-kinase: Important new therapeutic target in cardiovascular diseases. *Am J Physiol Heart Circ Physiol* 2011; **301**: H287–H296.
- Satoh K, Kagaya Y, Nakano M, Ito Y, Ohta J, Tada H, et al. Important role of endogenous erythropoietin system in recruitment of endothelial progenitor cells in hypoxia-induced pulmonary hypertension in mice. *Circulation* 2006; **113**: 1442–1450.
- Nakayama M, Osaki S, Shimokawa H. Validation of mortality risk stratification models for cardiovascular disease. *Am J Cardiol* 2011; **108**: 391–396.
- Pencina MJ, D'Agostino RB Sr, D'Agostino RB Jr, Vasan RS. Evaluating the added predictive ability of a new marker: From area under the ROC curve to reclassification and beyond. *Stat Med* 2008; **27**: 157–172; Discussion 207–212.
- Satoh K, Nigro P, Zeidan A, Soe NN, Jaffre F, Oikawa M, et al. Cyclophilin A promotes cardiac hypertrophy in apolipoprotein E-deficient mice. *Arterioscler Thromb Vasc Biol* 2011; **31**: 1116–1123.
- Satoh K, Shimokawa H, Berk BC. Cyclophilin A: Promising new target in cardiovascular therapy. *Circ J* 2010; **74**: 2249–2256.
- Higashi M, Shimokawa H, Hattori T, Hiroki J, Mukai Y, Morikawa K, et al. Long-term inhibition of Rho-kinase suppresses angiotensin II-induced cardiovascular hypertrophy in rats in vivo: Effect on endothelial NAD(P)H oxidase system. *Circ Res* 2003; **93**: 767–775.
- Gao JY, Yasuda S, Tsuburaya R, Ito Y, Shiroto T, Hao K, et al. Long-term treatment with eicosapentaenoic acid ameliorates myocardial ischemia-reperfusion injury in pigs in vivo: Involvement of Rho-kinase pathway inhibition. *Circ J* 2011; **75**: 1843–1851.
- Griendling KK, FitzGerald GA. Oxidative stress and cardiovascular injury. Part II: Animal and human studies. *Circulation* 2003; **108**: 2034–2040.
- Taniyama Y, Griendling KK. Reactive oxygen species in the vasculature: Molecular and cellular mechanisms. *Hypertension* 2003; **42**: 1075–1081.
- Rao GN, Berk BC. Active oxygen species stimulate vascular smooth muscle cell growth and proto-oncogene expression. *Circ Res* 1992; **70**: 593–599.
- Baas AS, Berk BC. Differential activation of mitogen-activated protein kinases by H<sub>2</sub>O<sub>2</sub> and O<sub>2</sub><sup>-</sup> in vascular smooth muscle cells. *Circ Res* 1995; **77**: 29–36.
- Kikuchi Y, Ito K, Ito Y, Shiroto T, Tsuburaya R, Aizawa K, et al. Double-blind and placebo-controlled study of the effectiveness and safety of extracorporeal cardiac shock wave therapy for severe angina pectoris. *Circ J* 2010; **74**: 589–591.
- Thomas M, Gavrilu D, McCormick ML, Miller FJ Jr, Daugherty A, Cassis LA, et al. Deletion of p47phox attenuates angiotensin II-induced abdominal aortic aneurysm formation in apolipoprotein E-deficient mice. *Circulation* 2006; **114**: 404–413.
- Seizer P, Schonberger T, Schott M, Lang MR, Langer HF, Bigalke B, et al. EMMPRIN and its ligand cyclophilin A regulate MT1-MMP, MMP-9 and M-CSF during foam cell formation. *Atherosclerosis* 2010; **209**: 51–57.
- Guo H, Majumdar G, Jensen TC, Biswas C, Toole BP, Gordon MK. Characterization of the gene for human emmprin, a tumor cell surface inducer of matrix metalloproteinases. *Gene* 1998; **220**: 99–108.
- Haug C, Lenz C, Diaz F, Bachem MG. Oxidized low-density lipoproteins stimulate extracellular matrix metalloproteinase inducer (EMMPRIN) release by coronary smooth muscle cells. *Arterioscler Thromb Vasc Biol* 2004; **24**: 1823–1829.
- Yurchenko V, Zybarth G, O'Connor M, Dai WW, Franchin G, Hao T, et al. Active site residues of cyclophilin A are crucial for its signaling activity via CD147. *J Biol Chem* 2002; **277**: 22959–22965.

### Supplementary Files

#### Supplementary File 1

##### Data S1. CyPA and hsCRP

**Figure S1.** Reproducibility of plasma cyclophilin A (CyPA) measurements in duplicates.

**Figure S2.** Diagnostic performance of plasma cyclophilin A (CyPA) for coronary disease in patients in the higher and lower high-sensitivity C-reactive protein (hsCRP) subgroups.

**Figure S3.** Number of stenotic coronary arteries and the requirement for cardiovascular intervention according to quartiles of high-sensitivity C-reactive protein (hsCRP).

**Figure S4.** Gensini score according to quartiles of cyclophilin A (CyPA) and high-sensitivity C-reactive protein (hsCRP).

**Table S1.** Baseline Clinical Characteristics According to the hsCRP Levels and the Presence or Absence of Clinically Significant CAD

Please find supplementary file(s):  
<http://dx.doi.org/10.1253/circj.CJ-12-0805>





## Plasma Cyclophilin A Is a Novel Biomarker for Coronary Artery Disease

Kimio Satoh, MD, PhD; Yoshihiro Fukumoto, MD, PhD; Koichiro Sugimura, MD, PhD; Yutaka Miura, MD, PhD; Tatsuo Aoki, MD, PhD; Kotaro Nochioka, MD, PhD; Shunsuke Tatebe, MD; Saori Miyamichi-Yamamoto, MD, PhD; Toru Shimizu, MD; Shizuka Osaki, BSc; Yusuke Takagi, MD, PhD; Ryuji Tsuburaya, MD, PhD; Yoshitaka Ito, MD, PhD; Yasuharu Matsumoto, MD, PhD; Masaharu Nakayama, MD, PhD; Morihiko Takeda, MD, PhD; Jun Takahashi, MD, PhD; Kenta Ito, MD, PhD; Satoshi Yasuda, MD, PhD; Hiroaki Shimokawa, MD, PhD

### Supplementary File 1

#### Data S1. CyPA and hsCRP

##### Plasma Levels of hsCRP and Angiographic Status

It has been demonstrated that the plasma level of high-sensitivity C-reactive protein (hsCRP) predicts the future cardiovascular events and coronary artery disease (CAD).<sup>S1–S3</sup> Ridker et al have demonstrated that patients with low hsCRP (<1 mg/L) are at low risk and those with higher hsCRP (>1 mg/L) are at moderate or high risk for future cardiovascular events.<sup>S3</sup> We thus evaluated the role of cyclophilin A (CyPA) among patients with high and low levels of hsCRP. There was no correlation between plasma CyPA and hsCRP levels (Figure S1B). Table 4 shows the patients' clinical backgrounds and values of laboratory parameters according to hsCRP and the presence or absence of CAD. The patients with higher hsCRP (>1 mg/L, n=141) and those with lower hsCRP (<1 mg/L, n=179) did not show a significant difference in the plasma levels of CyPA (P=0.511). Furthermore, there was no significant difference between high and low hsCRP groups in their angiographic findings (P=0.602) or the requirement for cardiovascular intervention (P=0.348). However, the plasma levels of CyPA still revealed a strong correlation with the severity of CAD in each group (Figure S2). In both the subgroups of the population with low and high levels of hsCRP, the levels of CyPA were significantly higher in patients with severe CAD than in those without CAD. Further analysis revealed that the number of stenotic coronary arteries was slightly increased in the 4<sup>th</sup> quartile of hsCRP (Figure S3A). However, the P-value for the trend was small (P=0.107) compared with the quartiles of CyPA (P<0.001, Figure 2A). Moreover, the quartiles of hsCRP did not show a strong correlation with the requirement for future cardiovascular intervention (Figure S3B).

##### Plasma Levels of CyPA, hsCRP and Gensini Score

Because it has been demonstrated that the Gensini score shows the severity of CAD,<sup>S4,S5</sup> we evaluated the Gensini score (calculated according to the severity score for each coronary stenosis) in each patient and compared it with the level of CyPA or hsCRP. All cases were divided into quartile groups based

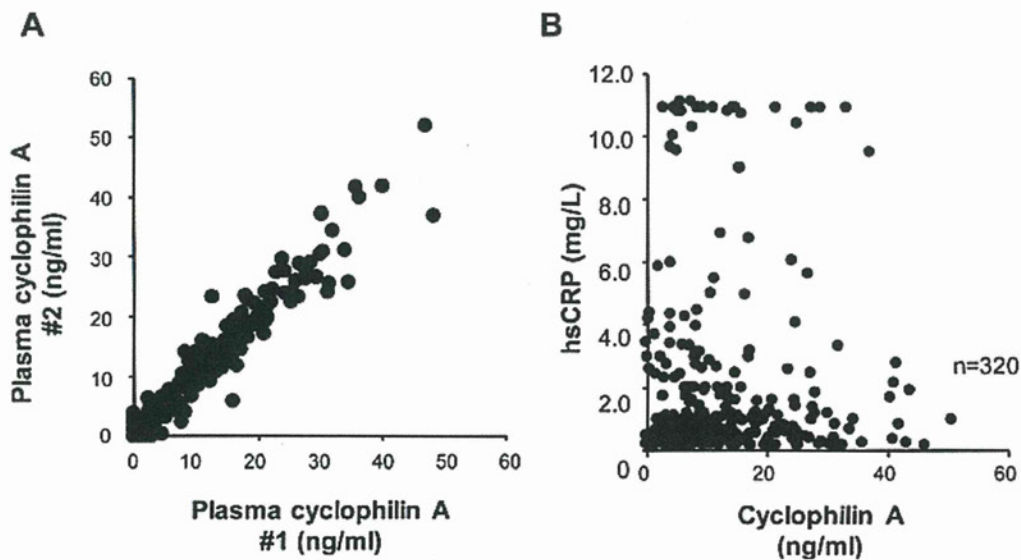
on the plasma level of CyPA to examine its correlation with the Gensini score. Table 1 shows the clinical background and laboratory data according to the quartiles of CyPA. The Gensini score was significantly increased in the higher quartiles of CyPA (P<0.001, Figure S4A). Furthermore, the Gensini score was significantly increased in the 4<sup>th</sup> quartile of hsCRP (P=0.007, Figure S4B). Importantly, the plasma level of CyPA was superior to the plasma level of hsCRP for evaluation of the severity of coronary atherosclerosis.

##### Predictive Value of Plasma CyPA and hsCRP Levels

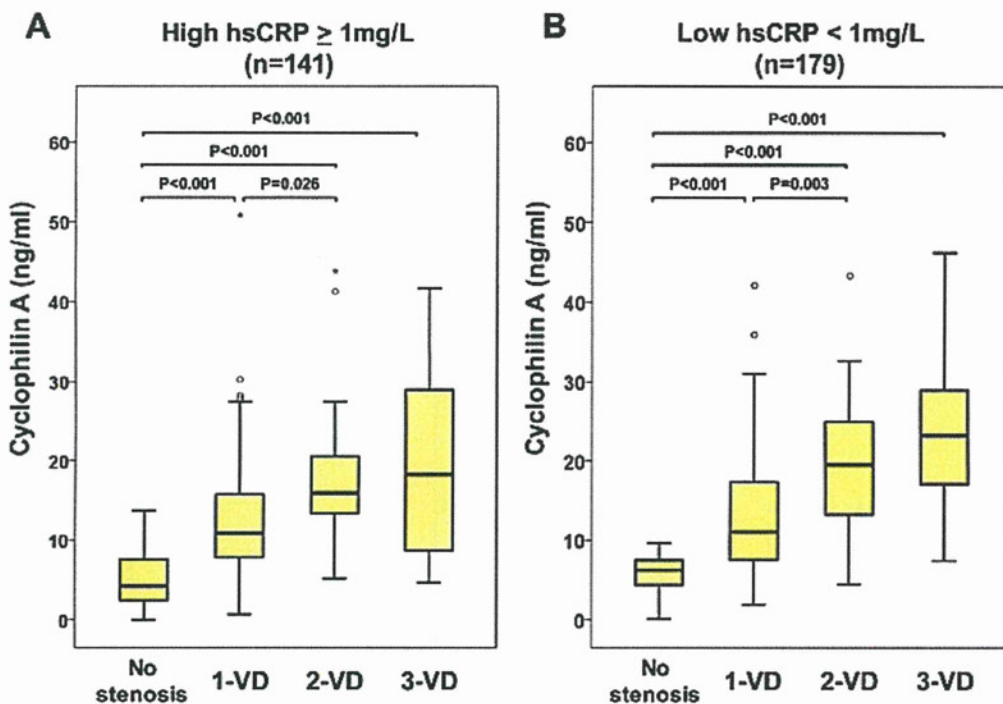
Among the 179 patients with low hsCRP, 95 (53.1%) had CAD (Table S1). Among these patients, the median CyPA level for subjects with CAD was elevated (17.1 ng/ml) and was significantly lower among patients without CAD (7.7 ng/ml, P<0.001). In contrast, among the 141 patients with high hsCRP, 94 (66.7%) had CAD (Table S1) and among these patients, the median CyPA level for subjects with CAD was elevated (16.1 ng/ml) and was significantly lower among patients without CAD (8.0 ng/ml, P<0.001). On the other hand, the quartiles of CyPA did not correlate with the plasma levels of hsCRP (P=0.103, Table 1).

#### References

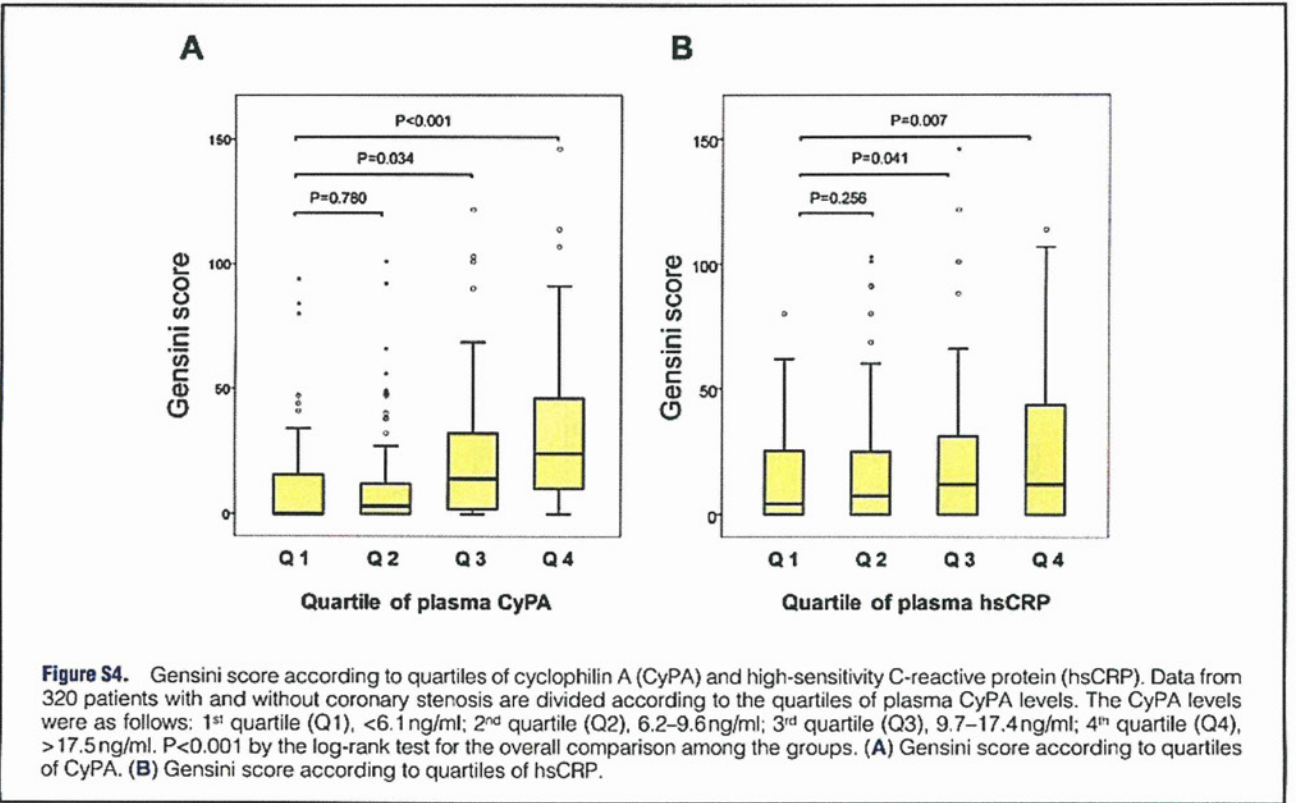
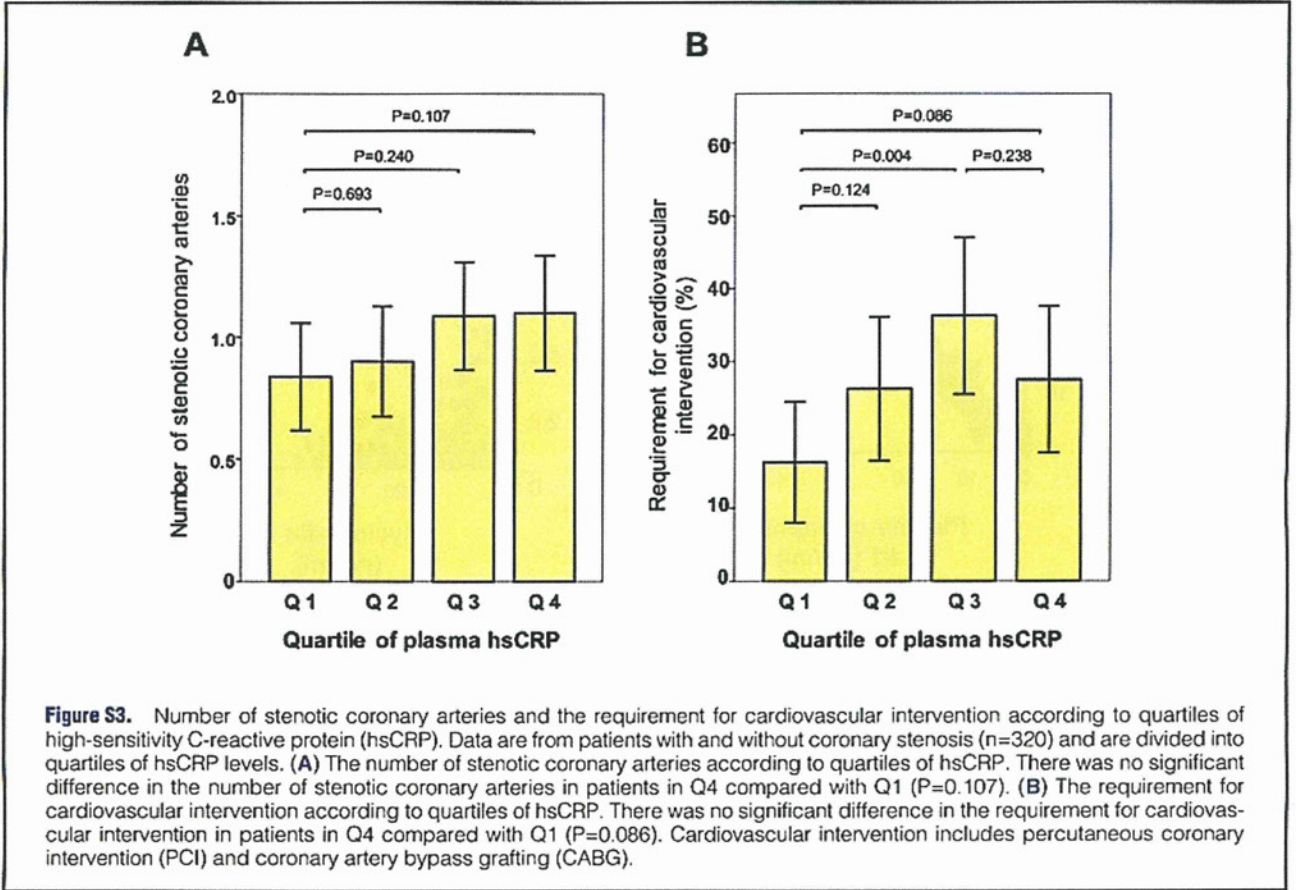
1. Memon L, Spasojevic-Kalimanovska V, Bogavac-Stanojevic N, Kalimanovska-Ostic D, Jelic-Ivanovic Z, Spasic S, et al. Association of C-reactive protein with the presence and extent of angiographically verified coronary artery disease. *Tohoku J Exp Med* 2006; **209**: 197–206.
2. Ridker PM. High-sensitivity C-reactive protein, inflammation, and cardiovascular risk: From concept to clinical practice to clinical benefit. *Am Heart J* 2004; **148**: S19–S26.
3. Ridker PM, Cook N. Clinical usefulness of very high and very low levels of C-reactive protein across the full range of framingham risk scores. *Circulation* 2004; **109**: 1955–1959.
4. Ozaki Y, Imanishi T, Taruya A, Aoki H, Masuno T, Shiono Y, et al. Circulating CD14<sup>+</sup>CD16<sup>+</sup> monocyte subsets as biomarkers of the severity of coronary artery disease in patients with stable angina pectoris. *Circ J* 2012; **76**: 2412–2418.
5. Gensini GG. A more meaningful scoring system for determining the severity of coronary heart disease. *Am J Cardiol* 1983; **51**: 606.



**Figure S1.** Reproducibility of plasma cyclophilin A (CyPA) measurements in duplicates. (A) Across the entire coronary disease case-control cohort, duplicate measures of plasma CyPA were highly correlated ( $r=0.92$ ). Depicted values reflect individual patient's absolute CyPA divided by the value of a standard plasma pool run on the same plate, thus normalizing results across assays. (B) Dotplots from the patients with and without coronary stenosis ( $n=320$ ) show no relationship between the levels of CyPA and high-sensitivity C-reactive protein (hsCRP).



**Figure S2.** Diagnostic performance of plasma cyclophilin A (CyPA) for coronary disease in patients in the higher and lower high-sensitivity C-reactive protein (hsCRP) subgroups. Data are shown as box-and-whisker plots of CyPA in patients with higher hsCRP ( $>1$  mg/L,  $n=141$ ) and lower hsCRP ( $<1$  mg/L,  $n=179$ ). (A) In patients with higher hsCRP, CyPA was elevated in patients with 3-vessel disease ( $P<0.001$ ), 2-vessel disease ( $P<0.001$ ) and 1-vessel disease ( $P<0.001$ ) compared with the no-stenosis group. (B) In patients with lower hsCRP, CyPA was elevated in patients with 1-vessel disease ( $P<0.001$ ), 2-vessel disease ( $P<0.001$ ), and 3-vessel disease ( $P<0.001$ ) disease compared with the no-stenosis group. Both in the lower and higher hsCRP groups, CyPA increased sequentially within the coronary stenosis groups as the number of stenotic vessels increased.



**Table S1. Baseline Clinical Characteristics According to the hsCRP Levels and the Presence or Absence of Clinically Significant CAD\***

	hsCRP $\geq$ 1 mg/L		P value	hsCRP <1 mg/L		P value
	No CAD (n=47)	CAD (n=94)		No CAD (n=84)	CAD (n=95)	
Age (years)			<0.001			<0.001
Median	59	69		57	69	
Interquartile range	52–66	62–75		50–64	62–76	
Male sex (%)	62	70	0.333	56	73	0.020
Family history of IHD (%)	9	3	0.173	15	15	0.891
Medical history (%)						
Hypertension	64	83	0.011	40	84	<0.001
Diabetes	21	65	<0.001	19	54	<0.001
Dyslipidemia	45	70	0.003	44	82	<0.001
Current smoker (%)	28	56	0.001	31	45	0.050
Angiographic findings (%)						0.602 <sup>†</sup>
No coronary artery stenosis	100	0		100	0	
1-vessel disease	0	50		0	58	
2-vessel disease	0	31		0	22	
3-vessel disease	0	19		0	20	
Requirement for PCI or CABG during follow up period (%)	0	47		0	40	0.348 <sup>†</sup>
BMI			0.957			0.007
Median	24	24		24	23	
Interquartile range	22–26	22–26		21–26	22–26	
eGFR (ml·min <sup>-1</sup> ·1.73m <sup>-2</sup> )			0.005			<0.001
Median	58	49		66	51	
Interquartile range	48–68	40–60		53–79	42–63	
Left ventricular ejection fraction (%)			<0.001			0.001
$\geq$ 60	96	84		93	81	
<60	4	16		7	19	
Lipid Status (mg/dl)						
LDL cholesterol	119 $\pm$ 41	100 $\pm$ 33	0.017	110 $\pm$ 25	90 $\pm$ 33	<0.001
HDL cholesterol	42 $\pm$ 10	45 $\pm$ 12	0.192	53 $\pm$ 13	51 $\pm$ 13	0.356
Triglycerides	134 $\pm$ 64	131 $\pm$ 88	0.886	137 $\pm$ 85	135 $\pm$ 92	0.853
Hemoglobin A <sub>1c</sub>	6.1 $\pm$ 0.7	6.8 $\pm$ 1.4	0.017	6.0 $\pm$ 0.8	6.5 $\pm$ 0.9	0.002
CyPA (ng/ml)						0.511 <sup>†</sup>
	8.0 $\pm$ 7.9	16.1 $\pm$ 10.1	<0.001	7.7 $\pm$ 5.2	17.1 $\pm$ 10.0	<0.001

\*Plus-minus values are means  $\pm$  SD.<sup>†</sup>P value is for the comparison between the groups with lower hsCRP and those with higher hsCRP.

BMI, body mass index; CABG, coronary artery bypass grafting; CAD, coronary artery disease; CyPA, cyclophilin A; eGFR, estimated glomerular filtration rate; HDL, high-density lipoprotein; hsCRP, high-sensitivity C-reactive protein; IHD, ischemic heart disease; LDL, low-density lipoprotein; PCI, percutaneous coronary intervention.