

図 (5 参考) 90 寝返りの評価日ごとの発生頻度・割合

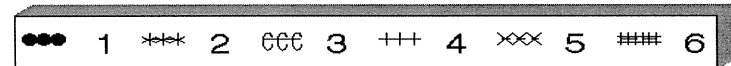
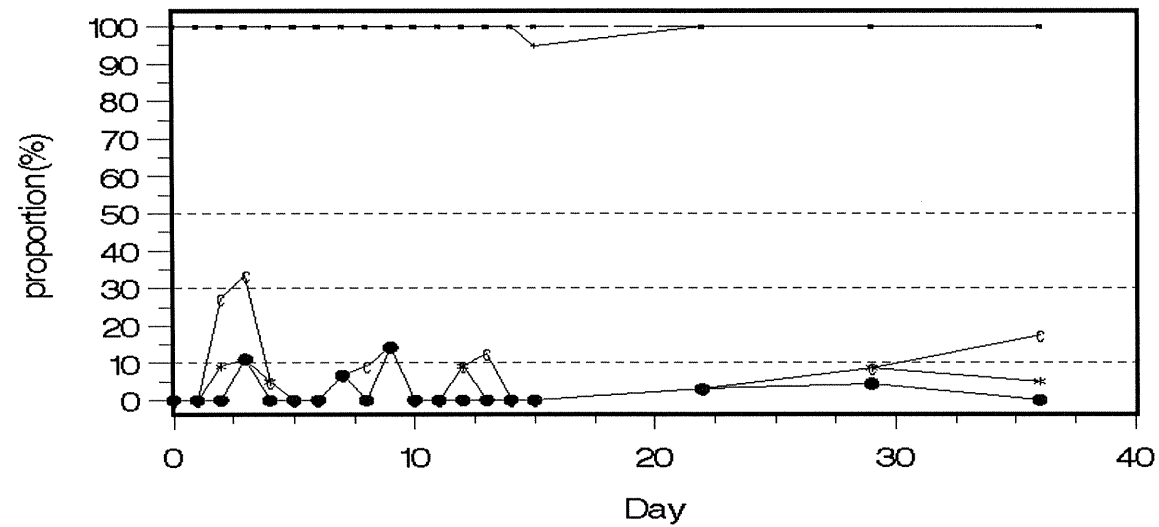
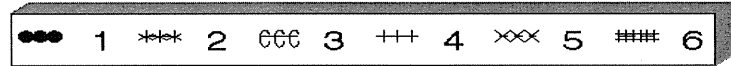
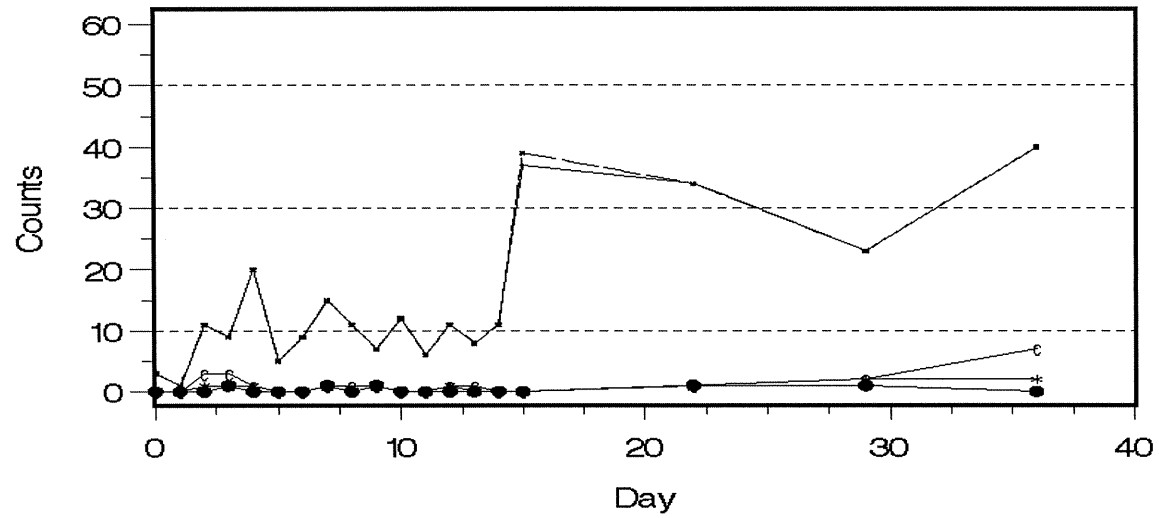


図 (5 参考) 91 血圧測定の評価日ごとの発生頻度・割合

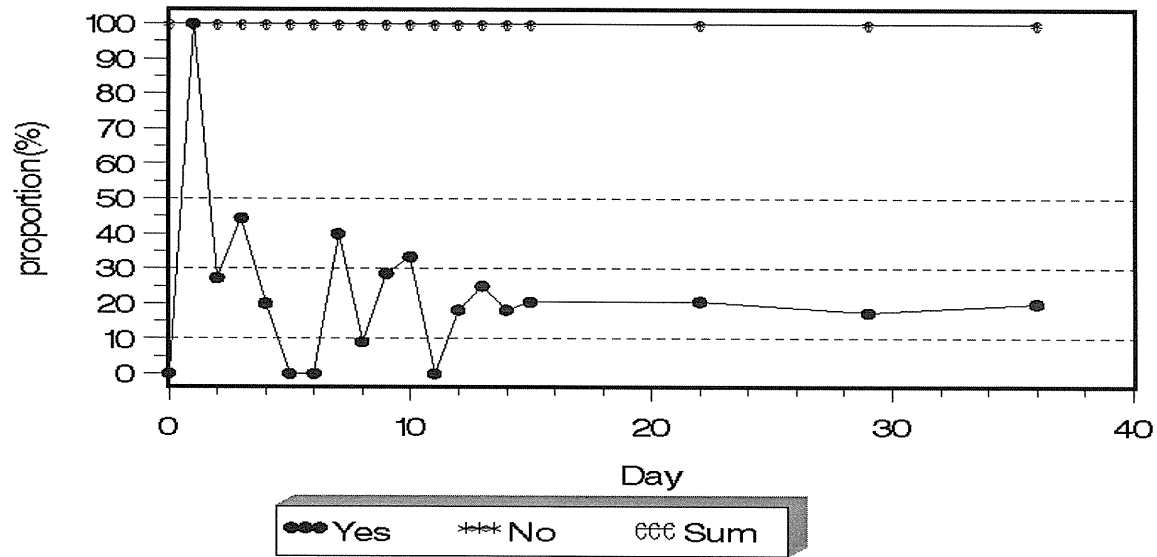
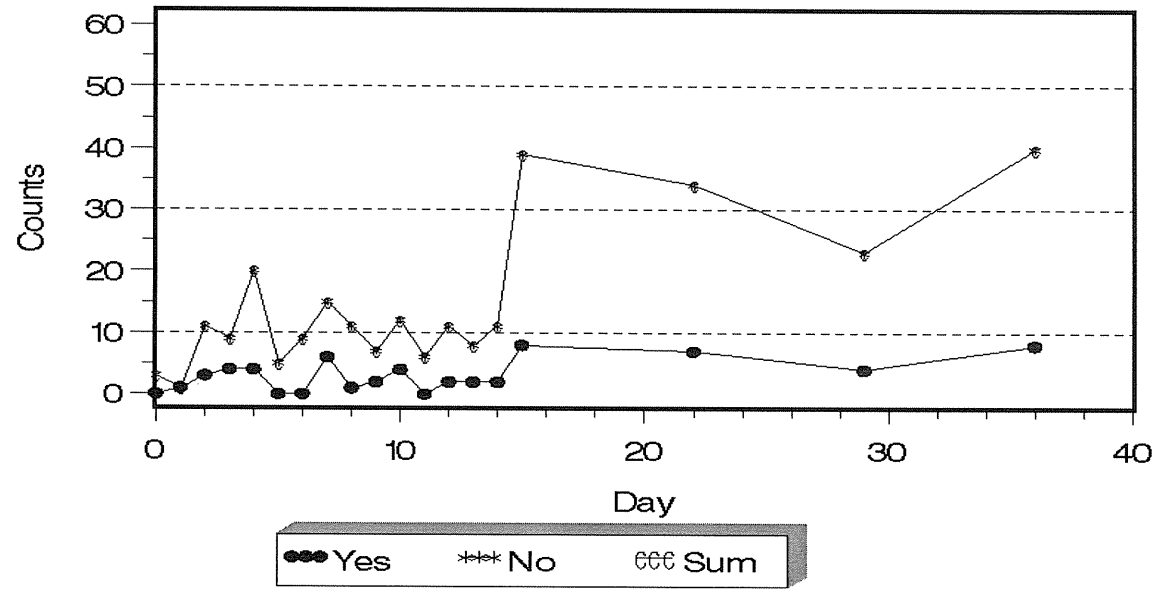


図 (5 参考) 92 床上安静の指示の評価日ごとの発生頻度・割合

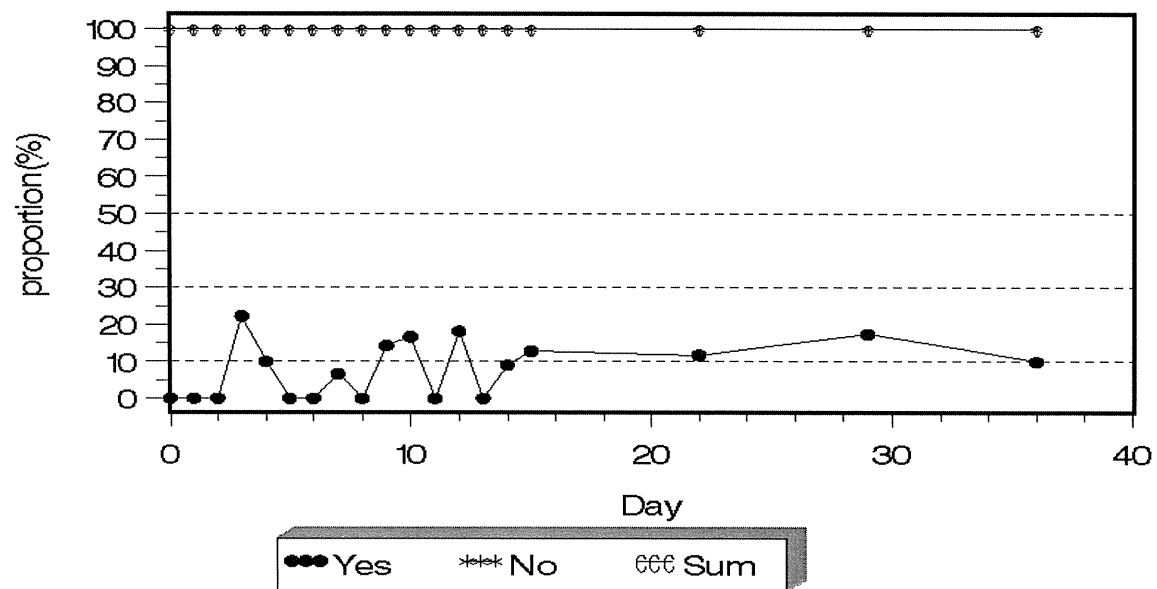
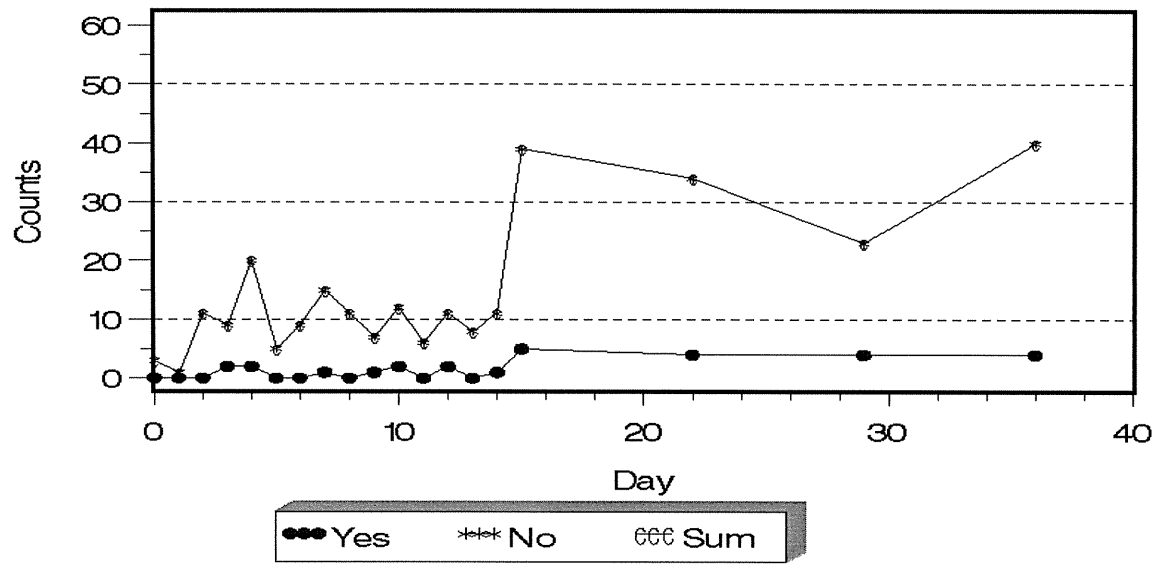


図 (5 参考) 93 どちらかの手を胸元の評価日ごとの発生頻度・割合

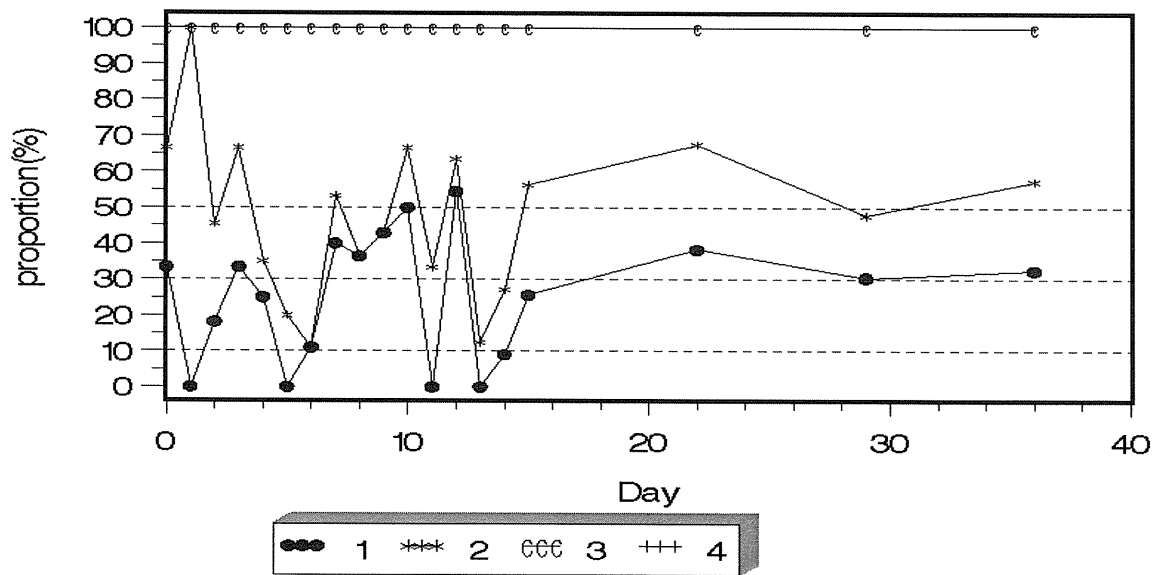
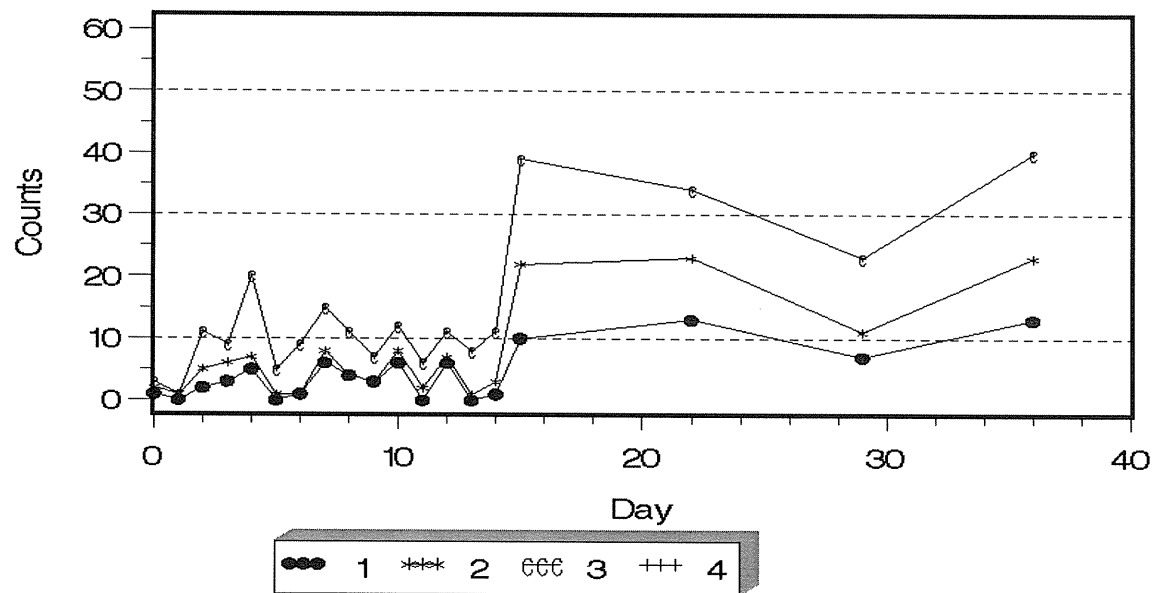


図 (5 参考) 94 寝返りの評価日ごとの発生頻度・割合

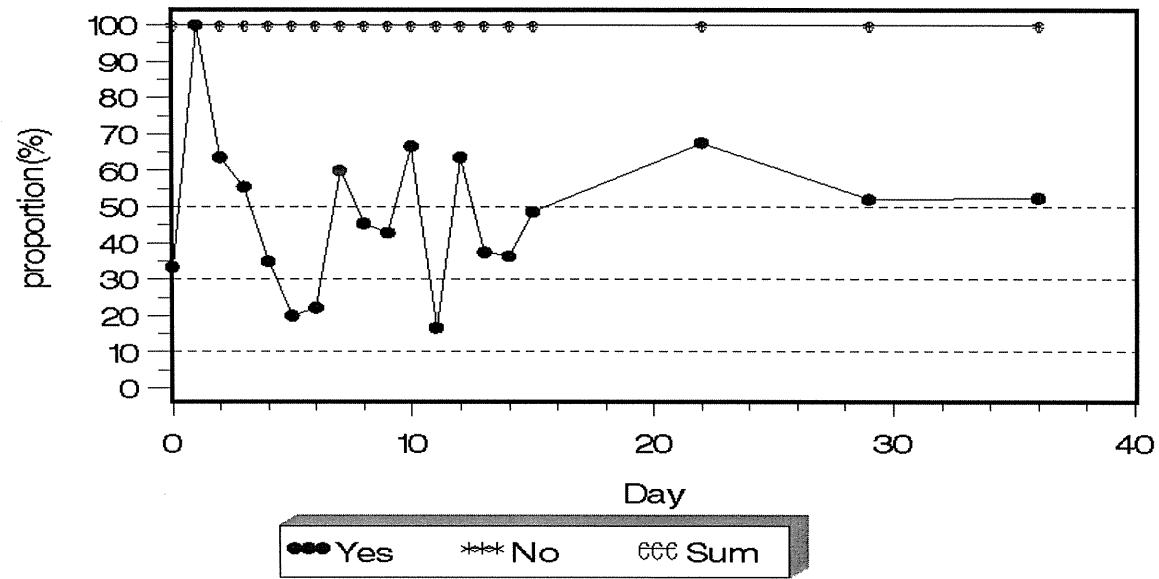
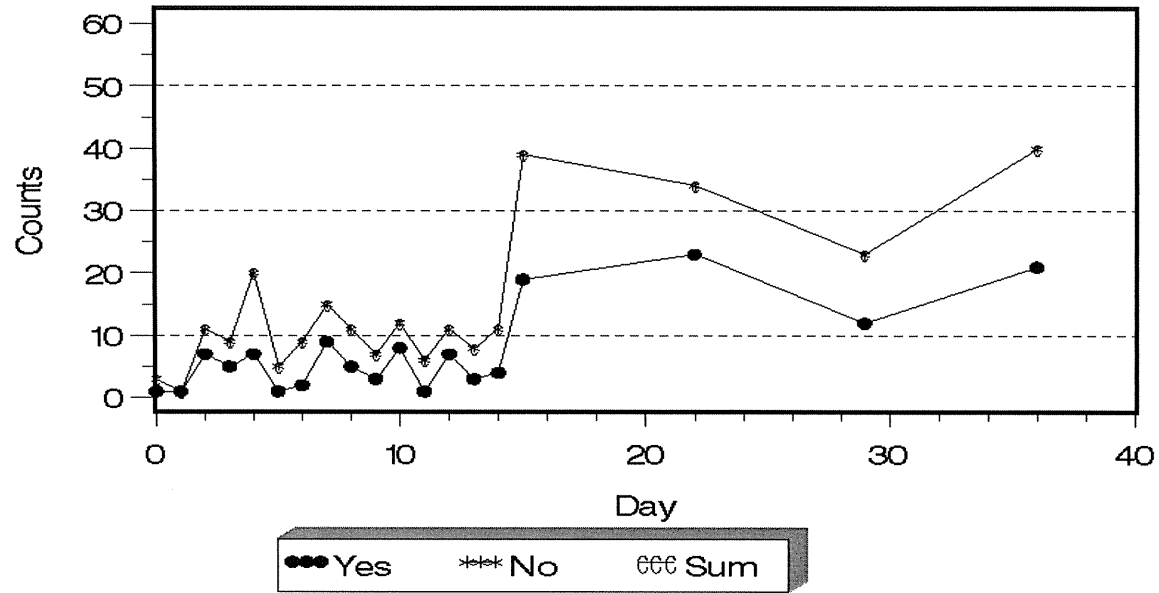


図 (5 参考) 95 起き上がりの評価日ごとの発生頻度・割合

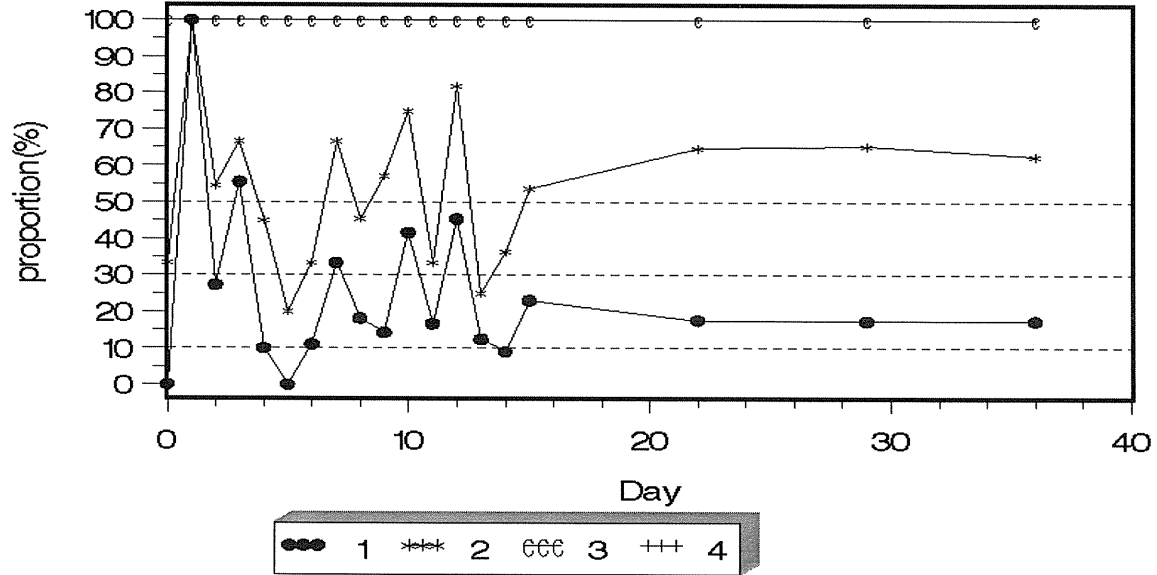
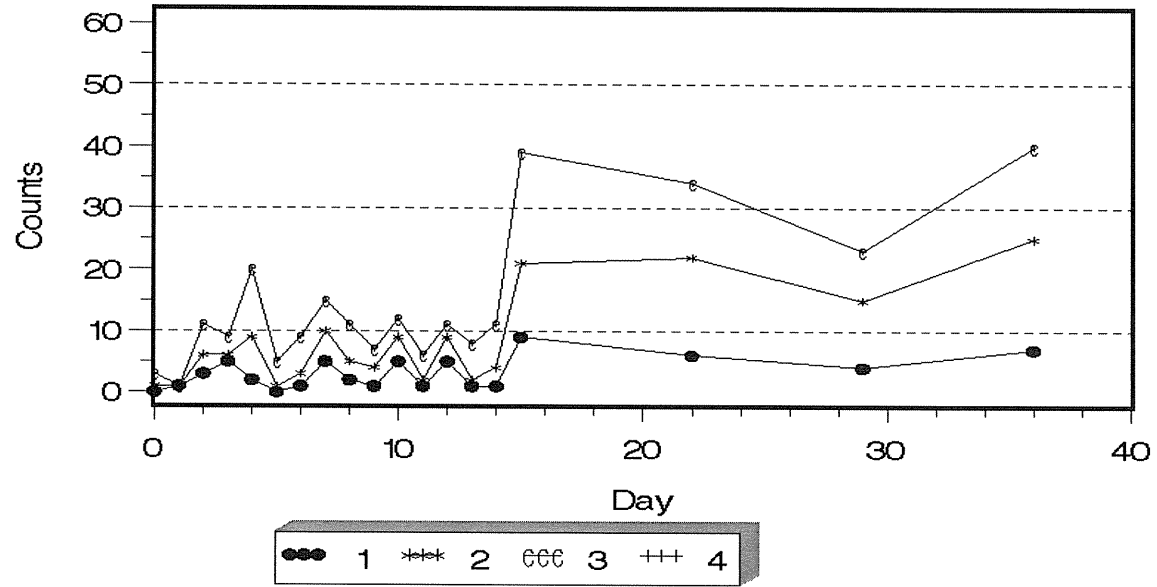


図 (5 参考) 96 座位保持の評価日ごとの発生頻度・割合

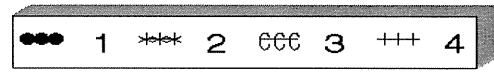
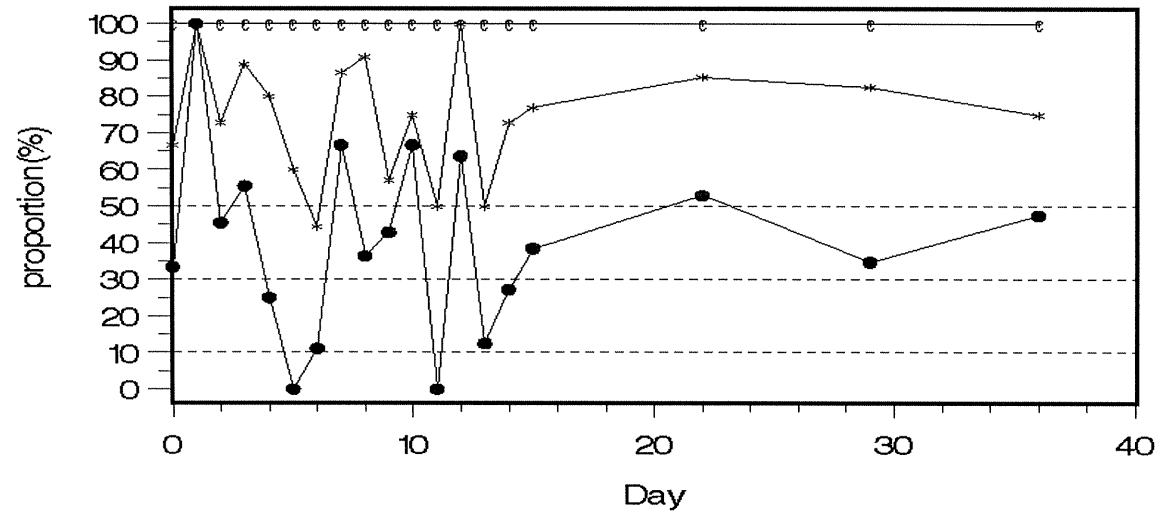
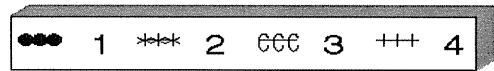
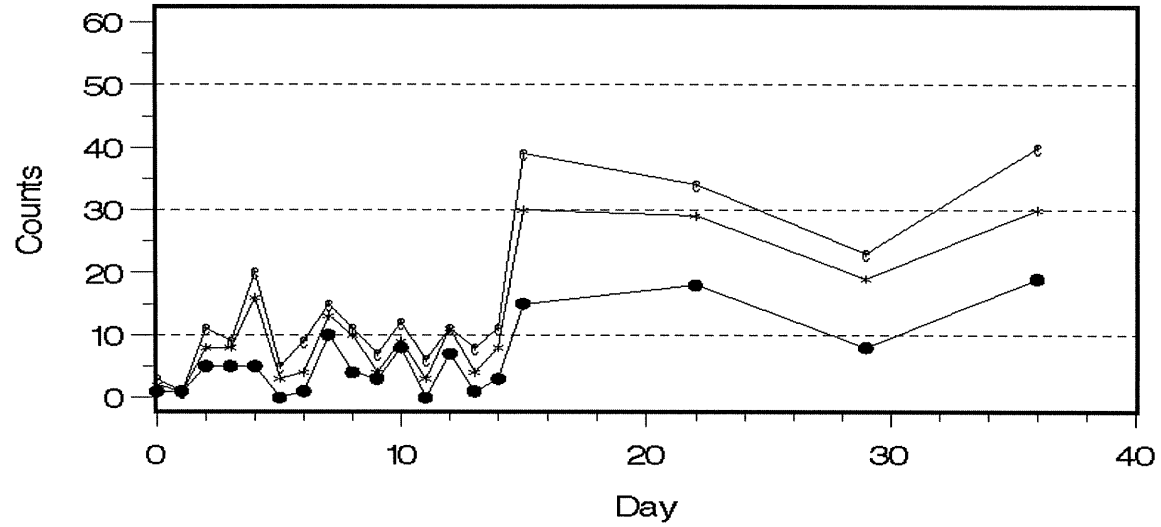


図 (5 参考) 97 移乗の評価日ごとの発生頻度・割合



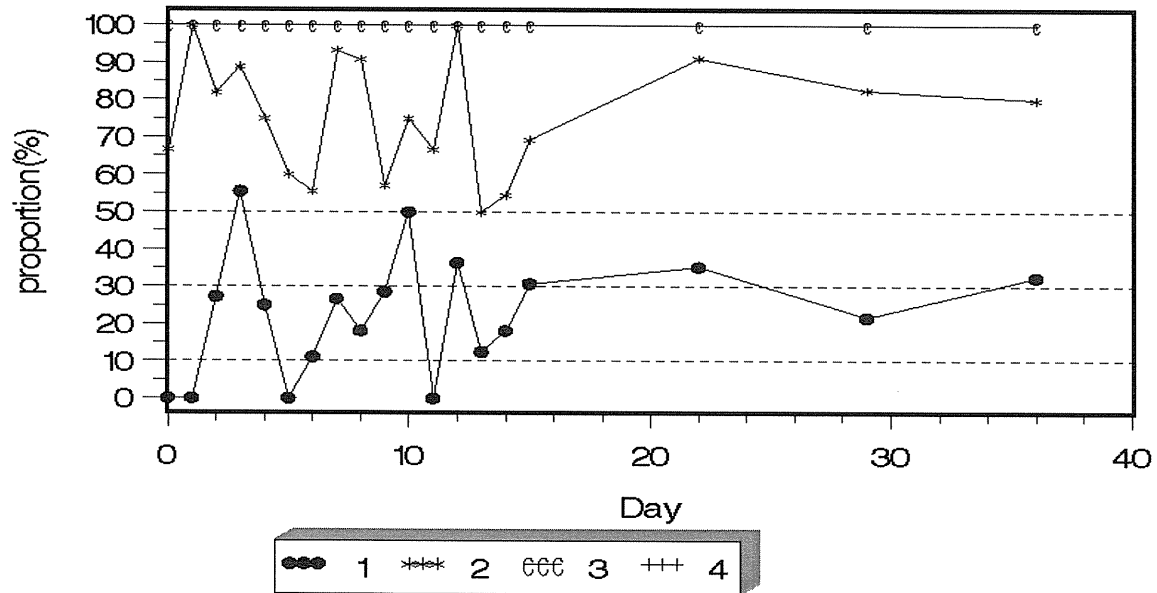
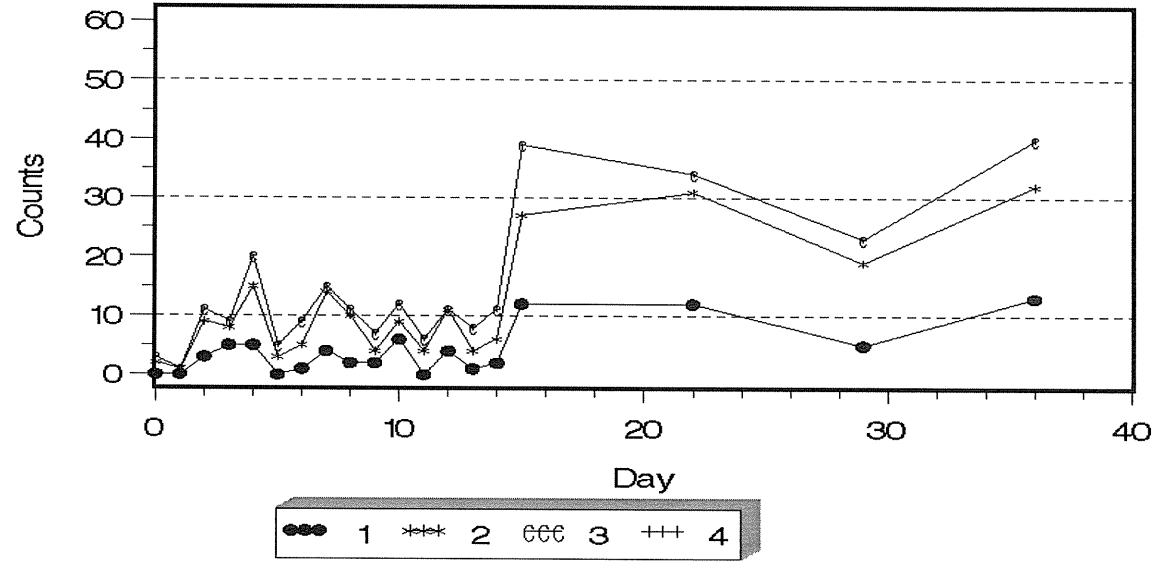


図 (5 参考) 98 移動方法の評価日ごとの発生頻度・割合

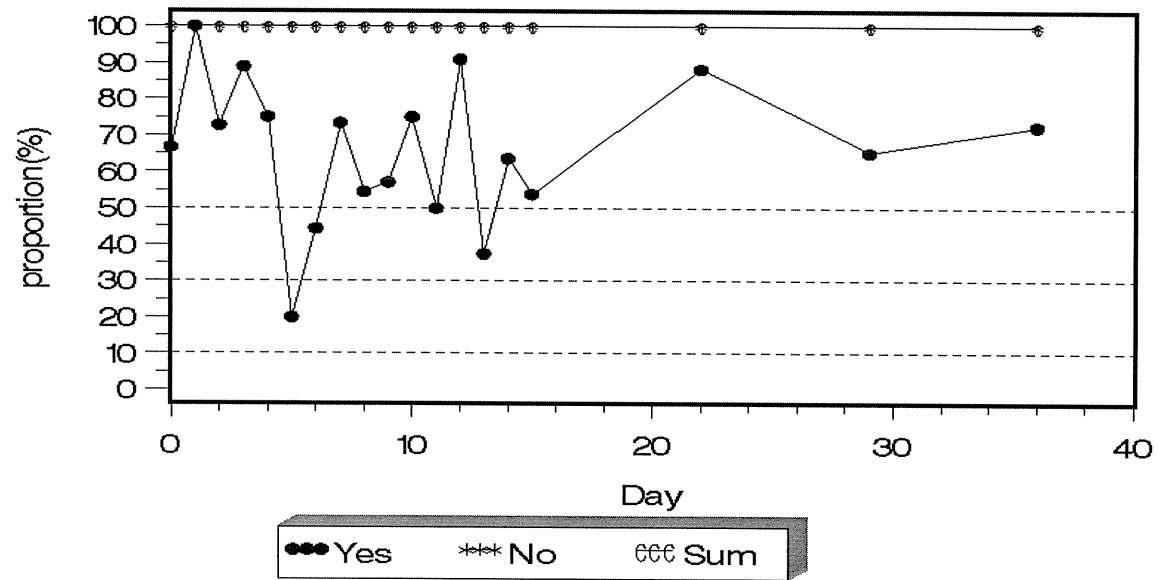
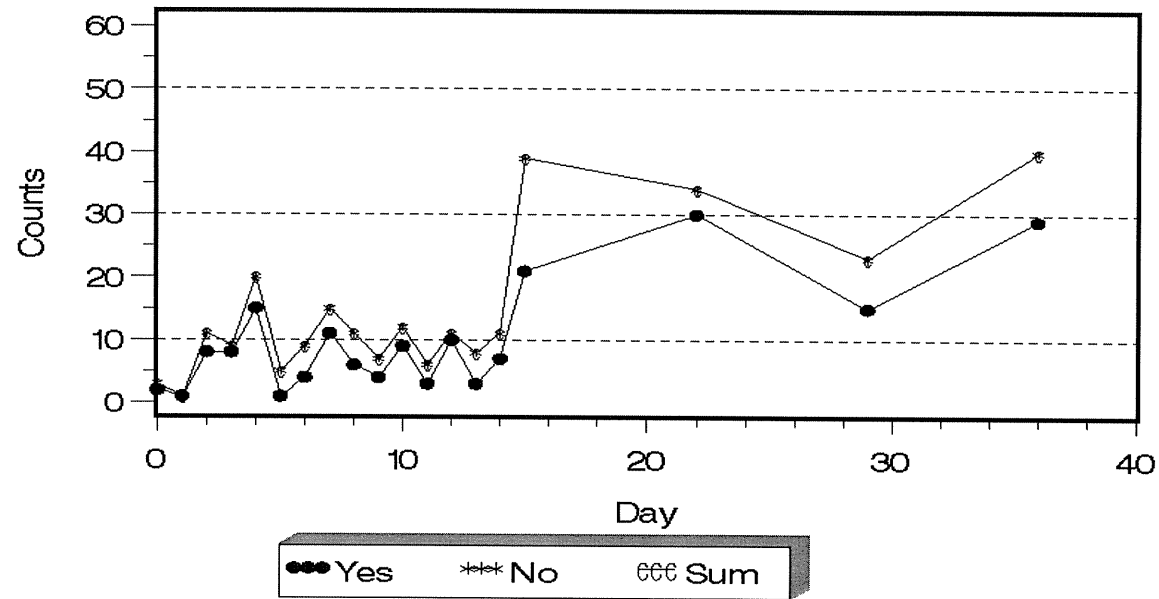


図 (5 参考) 99 口腔清潔の評価日ごとの発生頻度・割合

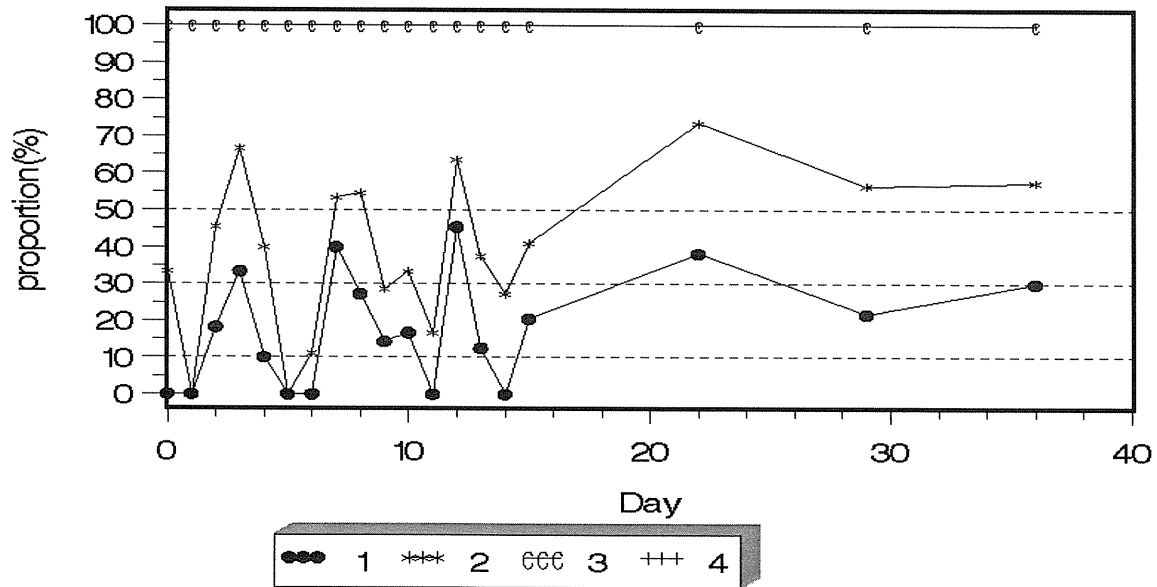
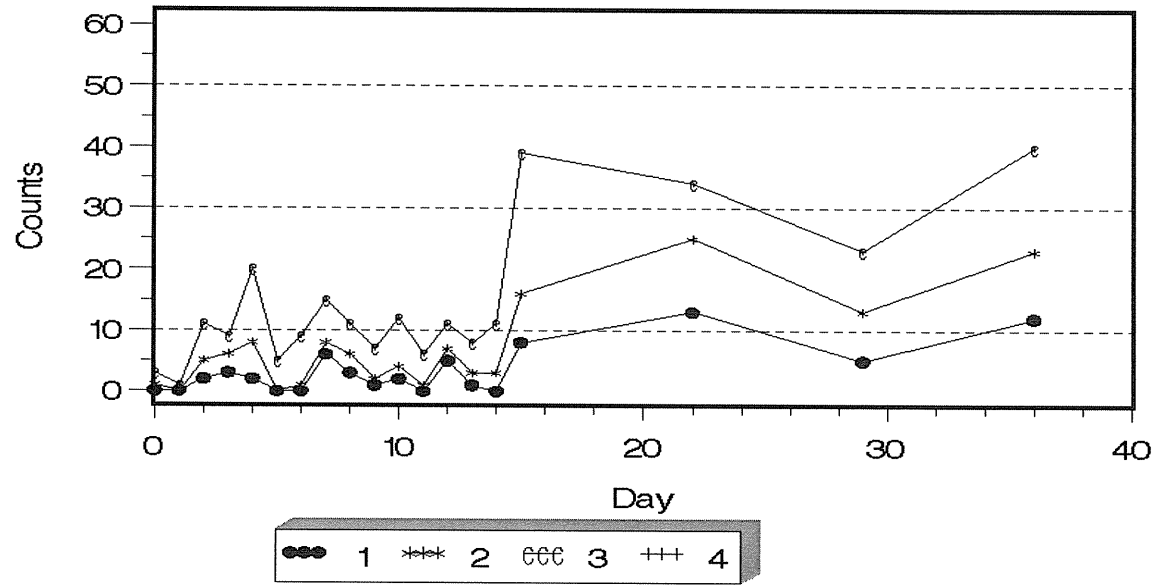


図 (5 参考) 100 食事摂取の評価日ごとの発生頻度・割合

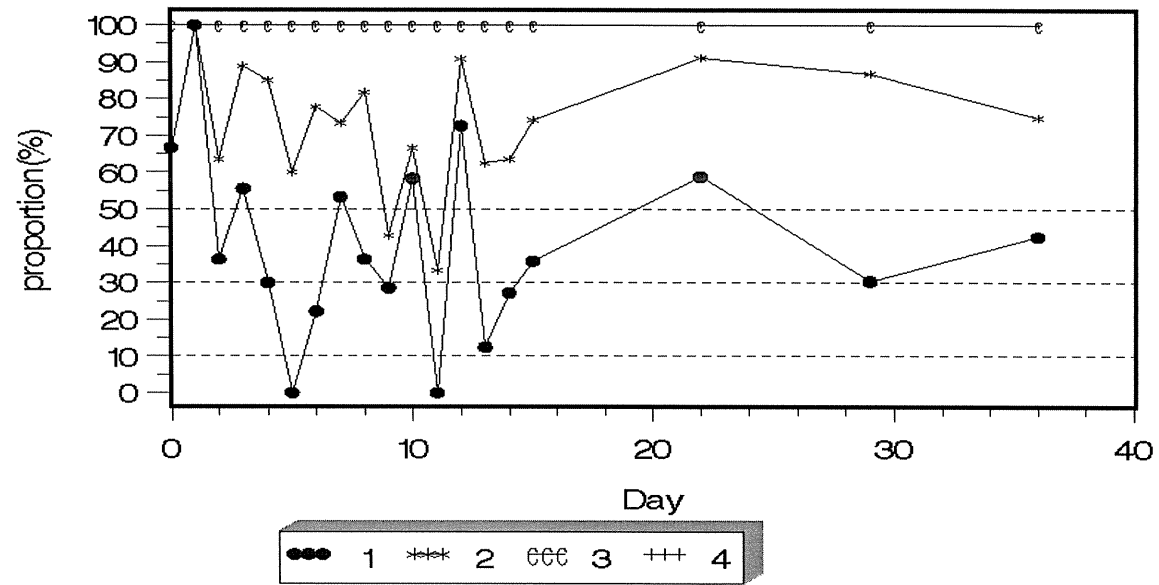
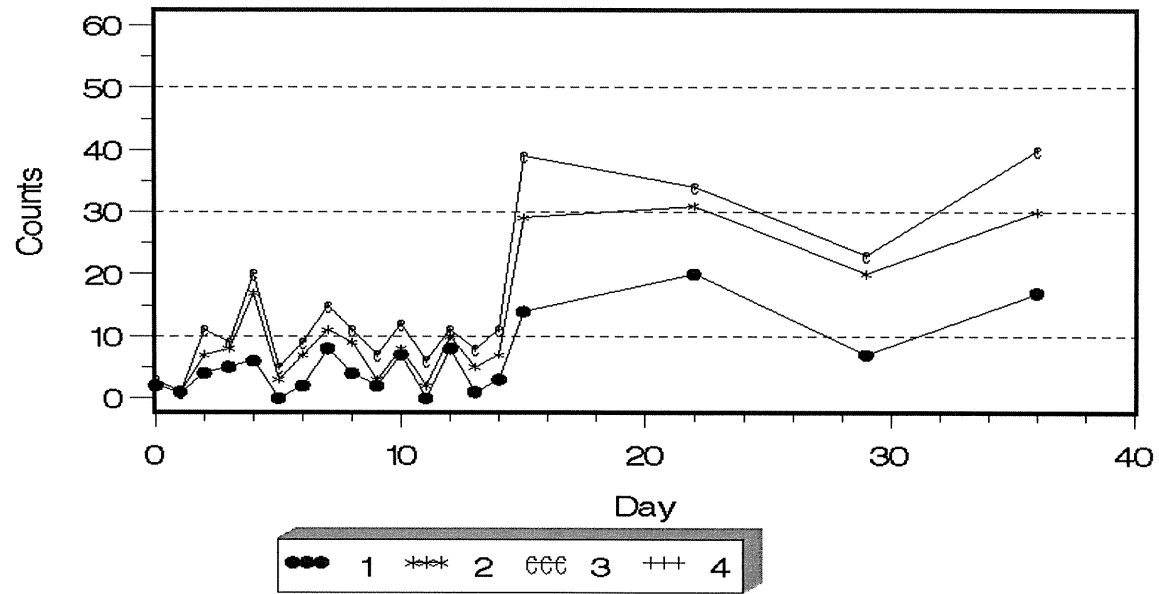


図 (5 参考) 101 衣服の着脱の評価日ごとの発生頻度・割合

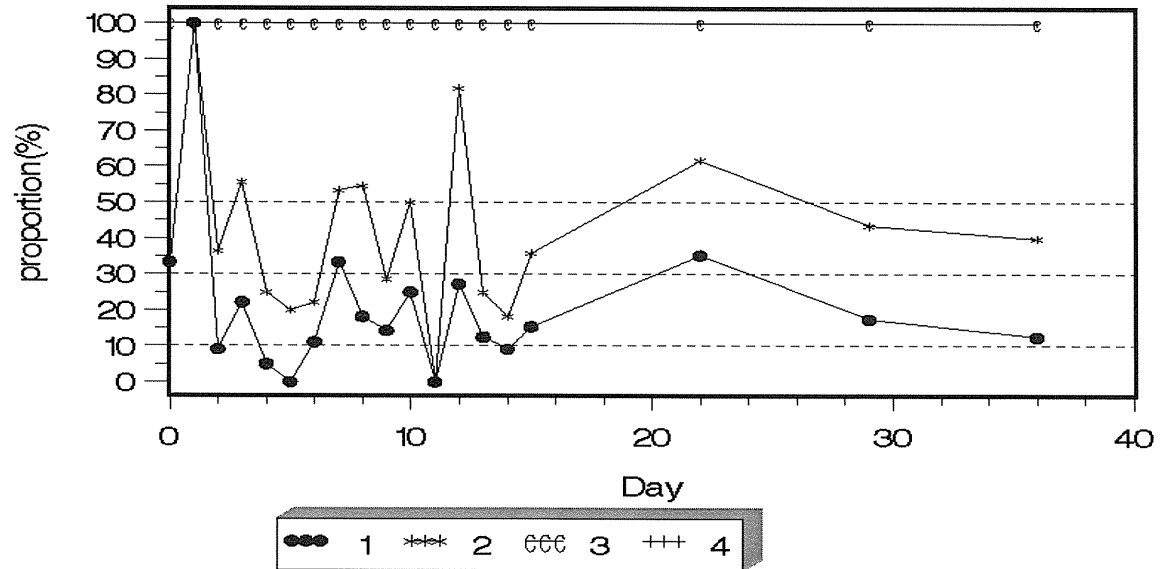
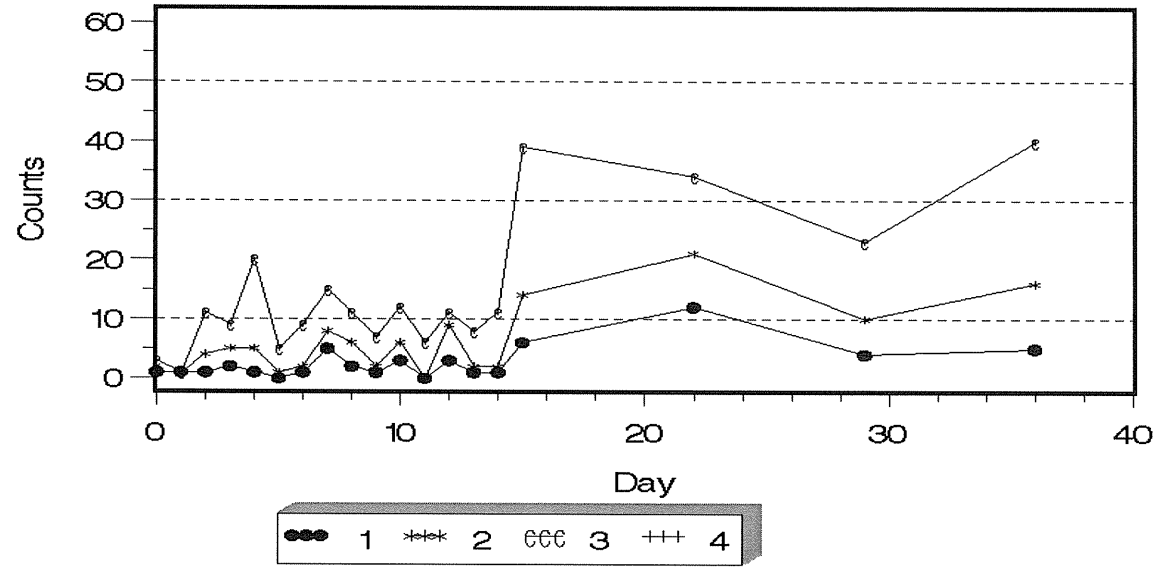


図 (5 参考) 102 他者への意思の伝達の評価日ごとの発生頻度・割合

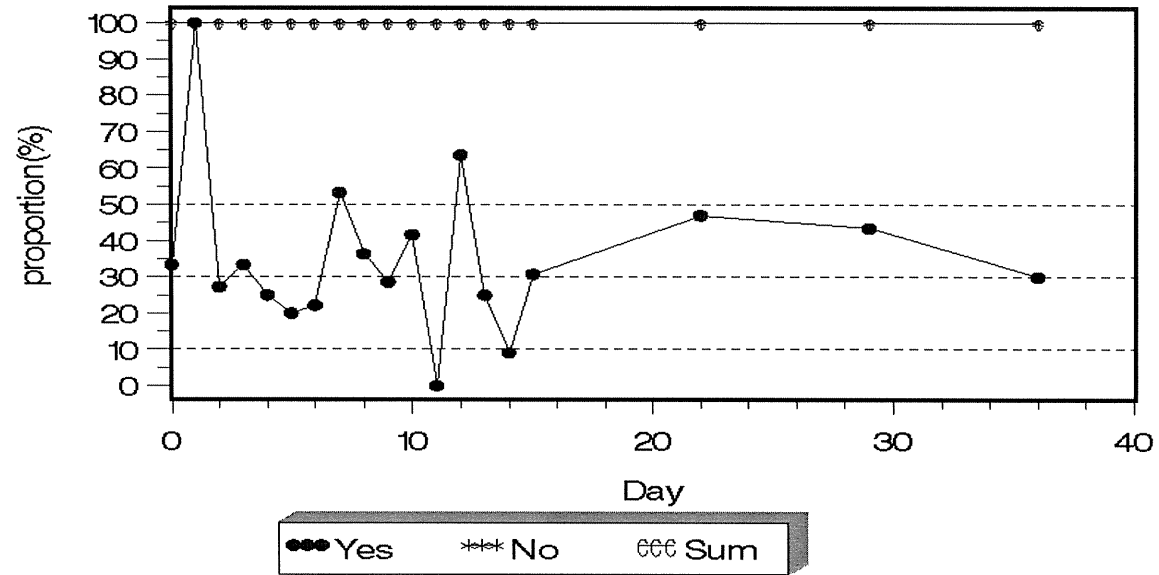
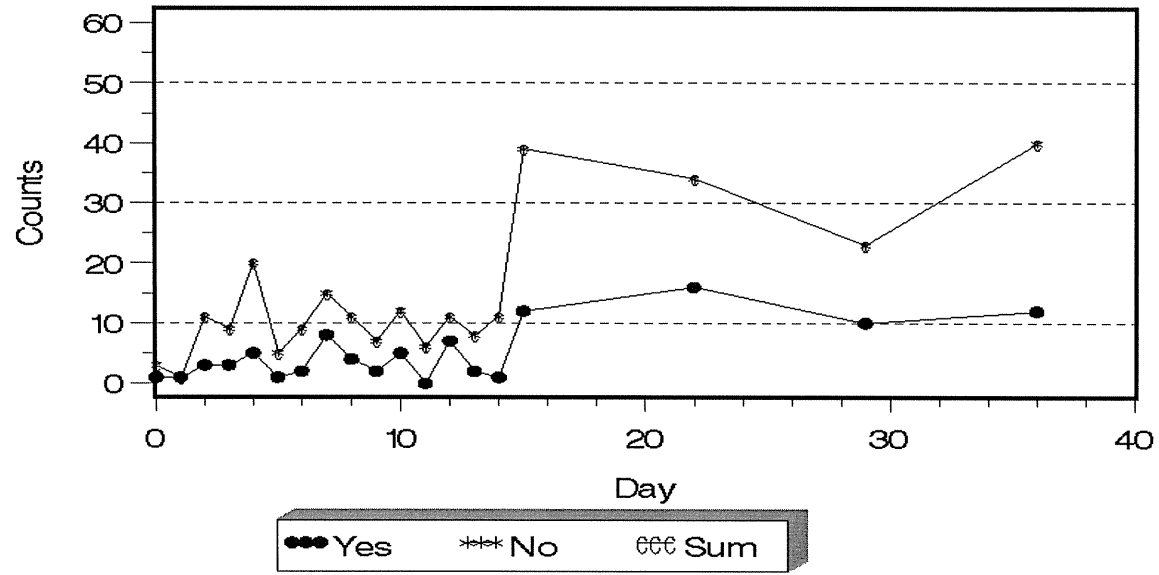


図 (5 参考) 103 診療・療養上の指示が通じるの評価日ごとの発生頻度・割合

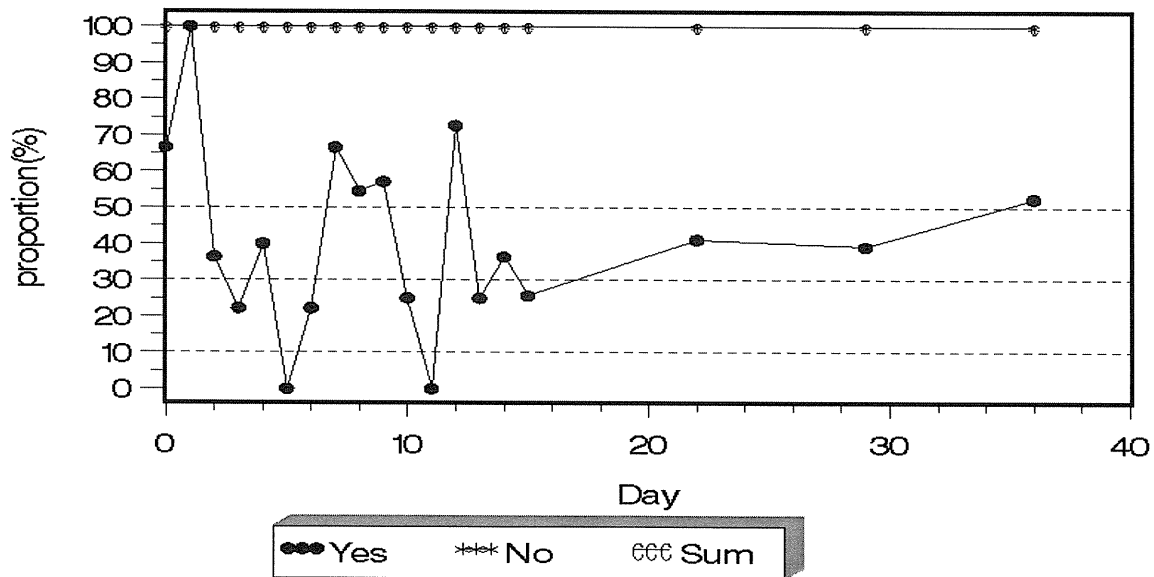
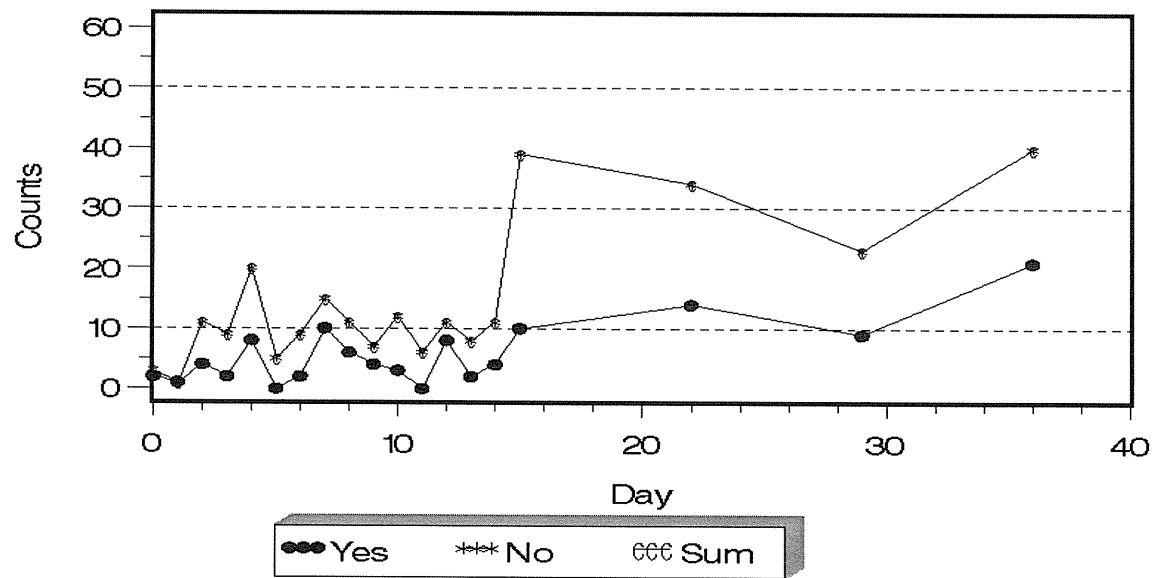


図 (5 参考) 104 危険行動への対応評価日ごとの発生頻度・割合

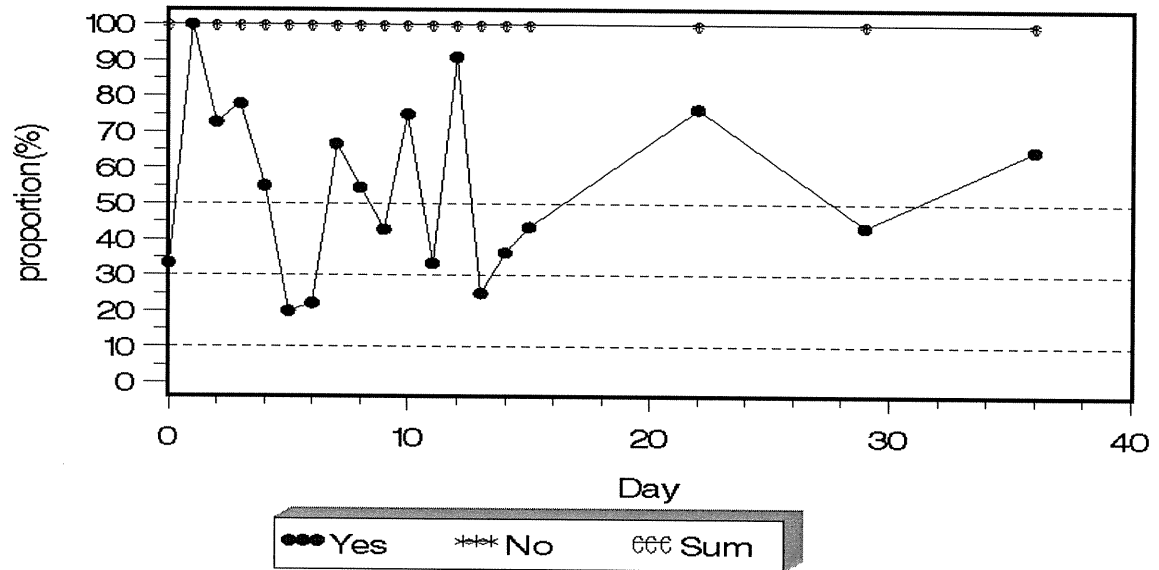
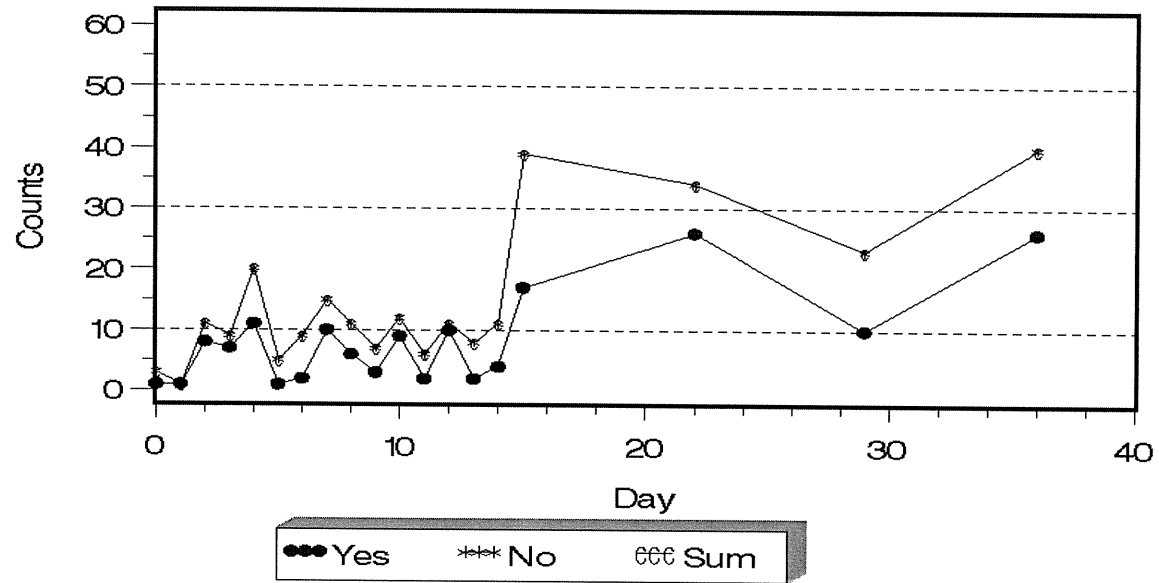


図 (5 参考) 105 重症患者の評価日ごとの発生頻度・割合



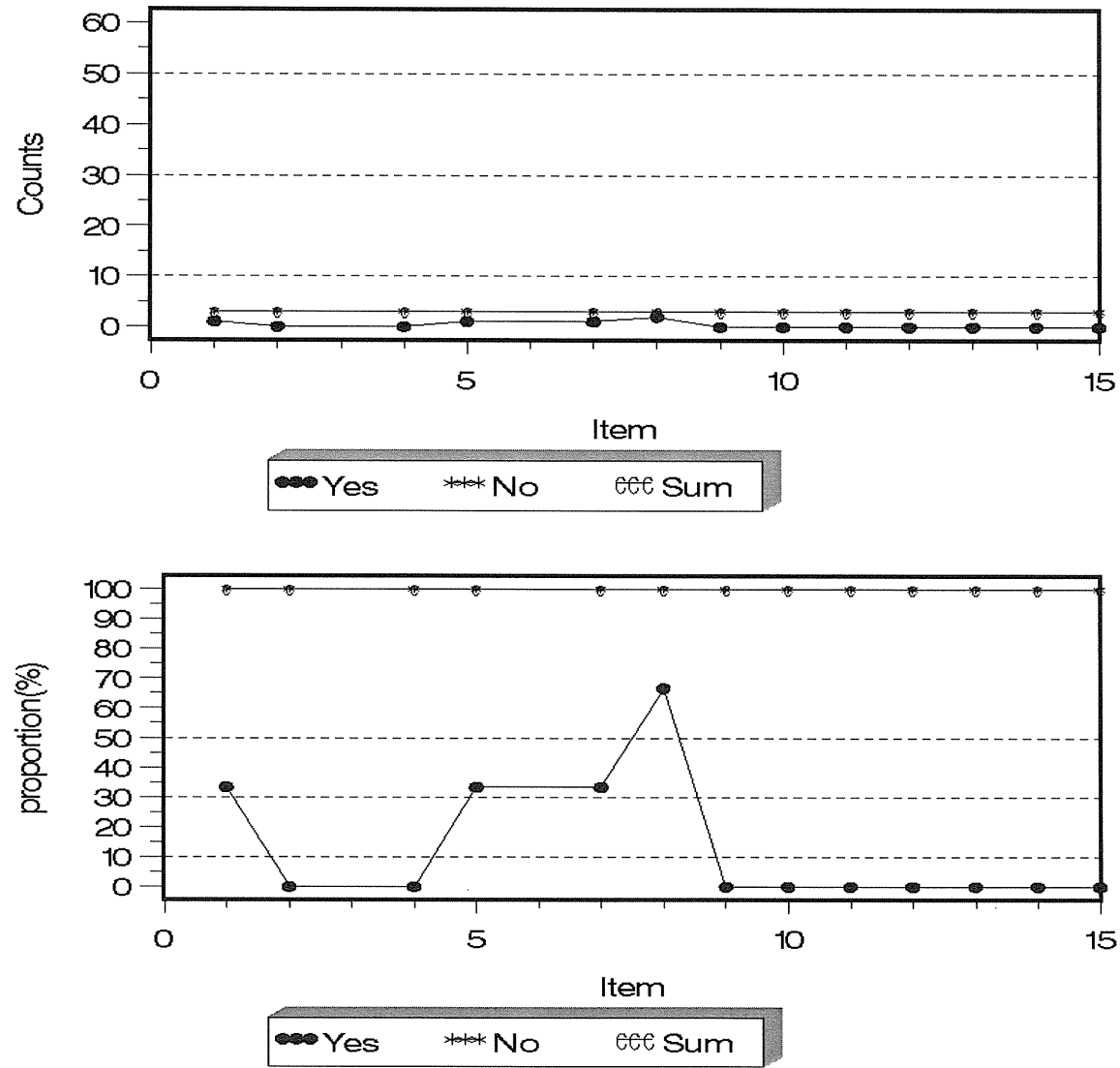


図 (5 参考) 106 看護必要度 A 項目 (あり・なし) の発生頻度・割合 (評価日 0)

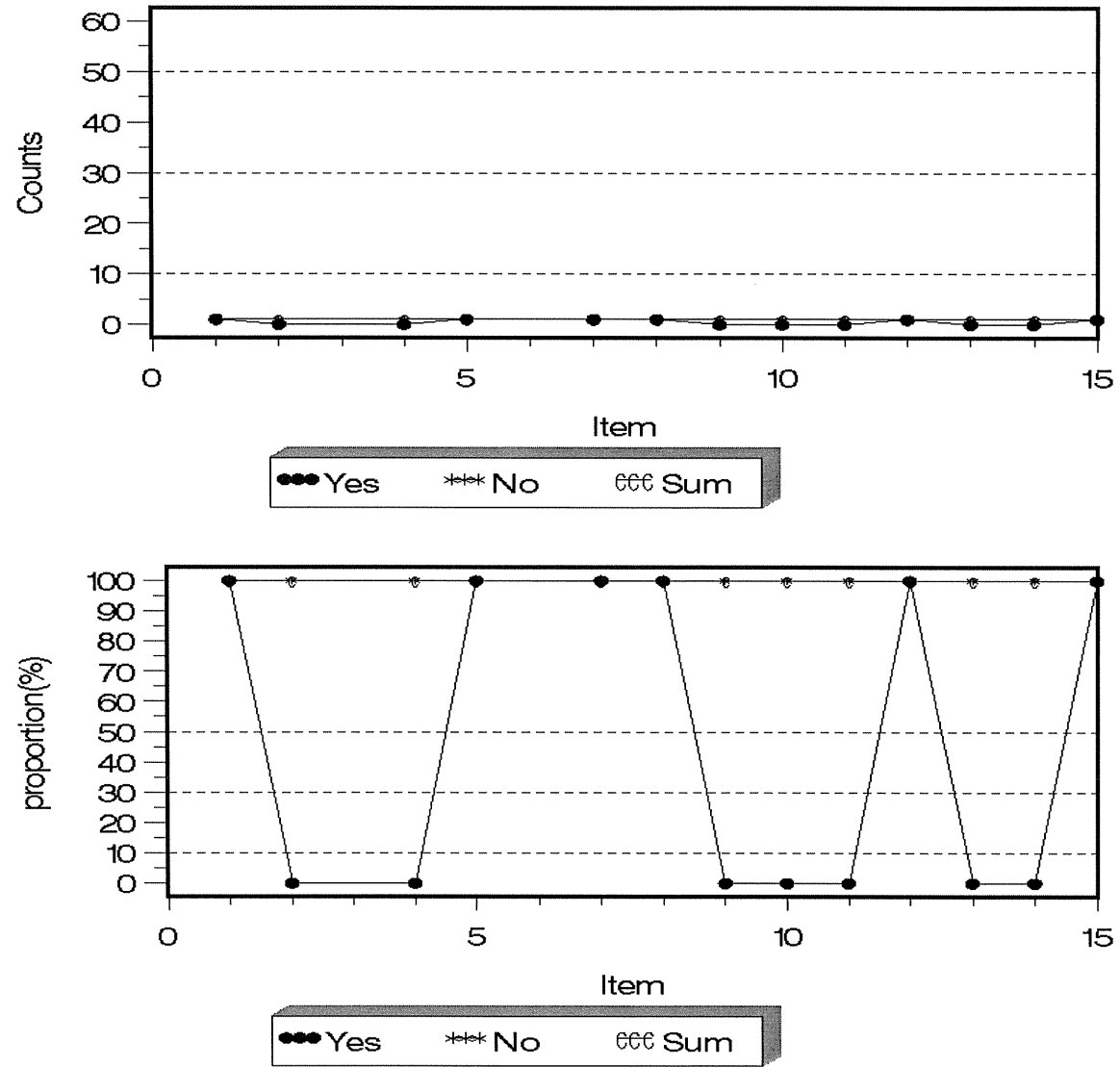


図 (5 参考) 107 看護必要度 A 項目 (あり・なし) の発生頻度・割合 (評価日 1)

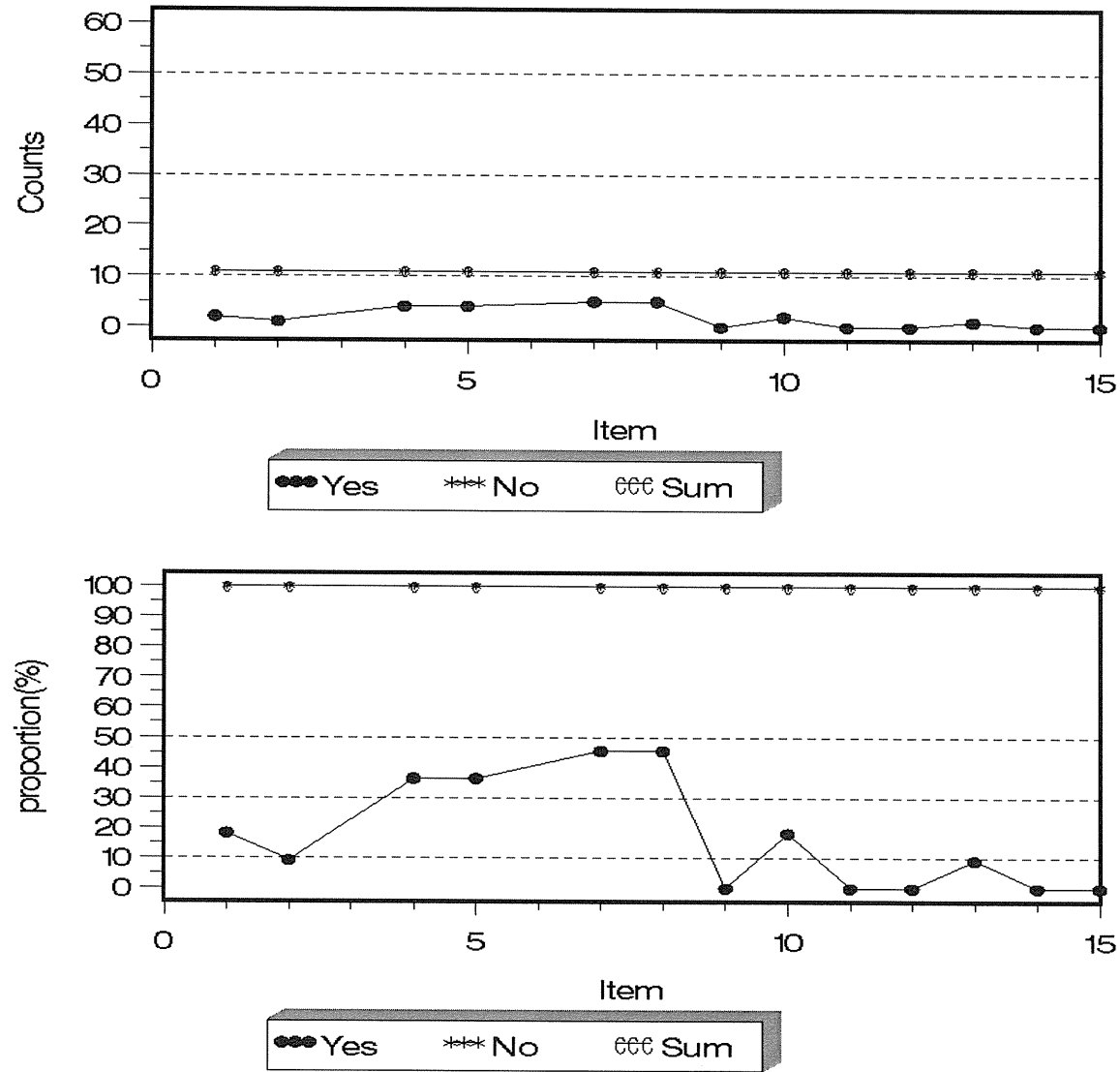


図 (5 参考) 108 看護必要度 A 項目 (あり・なし) の発生頻度・割合 (評価日 2)

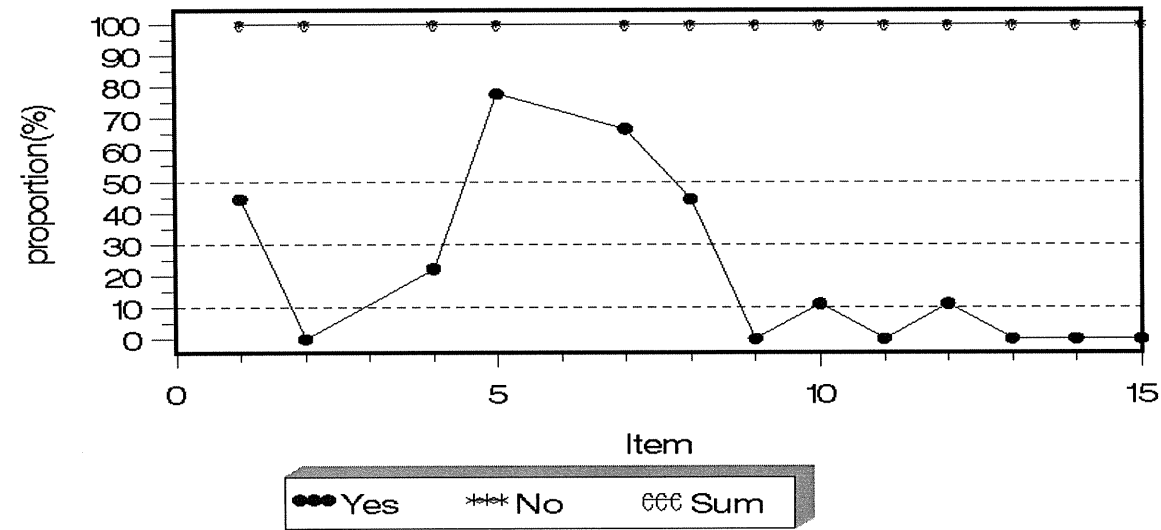
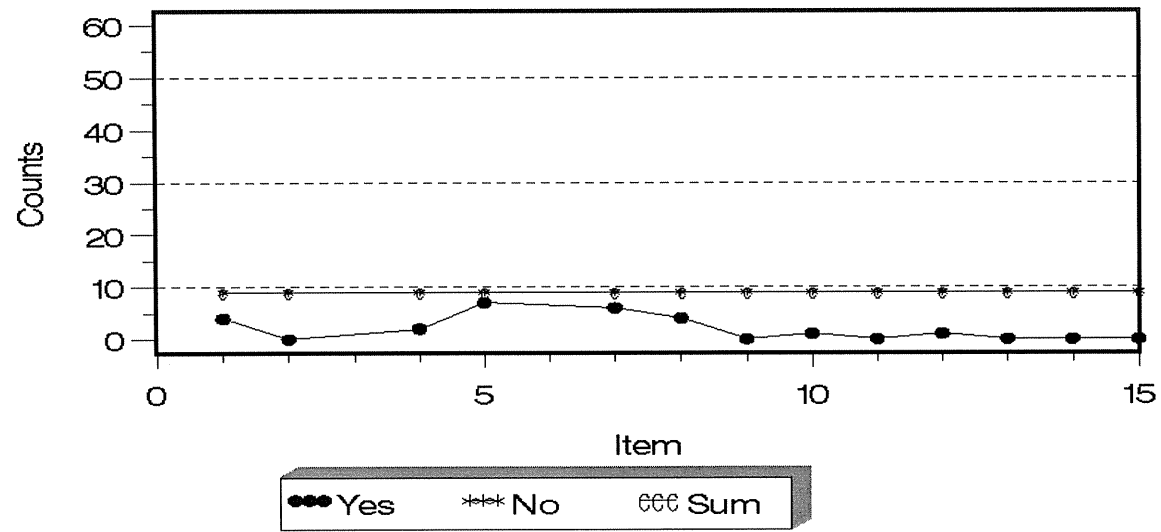


図 (5 参考) 109 看護必要度 A 項目 (あり・なし) の発生頻度・割合 (評価日 3)