

図 (5 参考) 10 人工呼吸器の装着の評価日ごとの発生頻度・割合

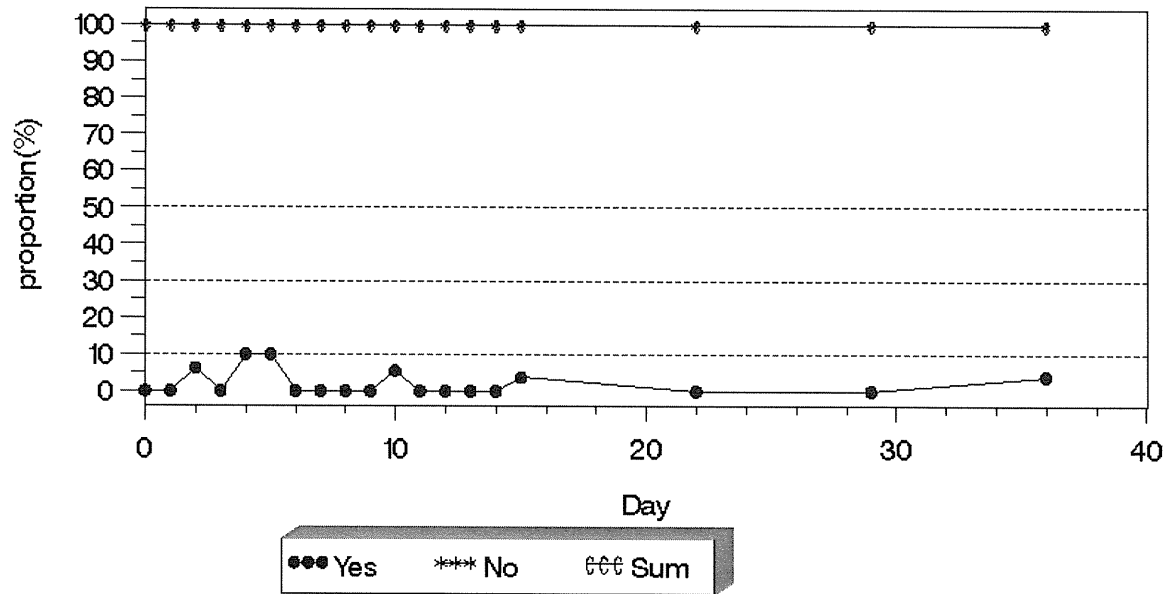
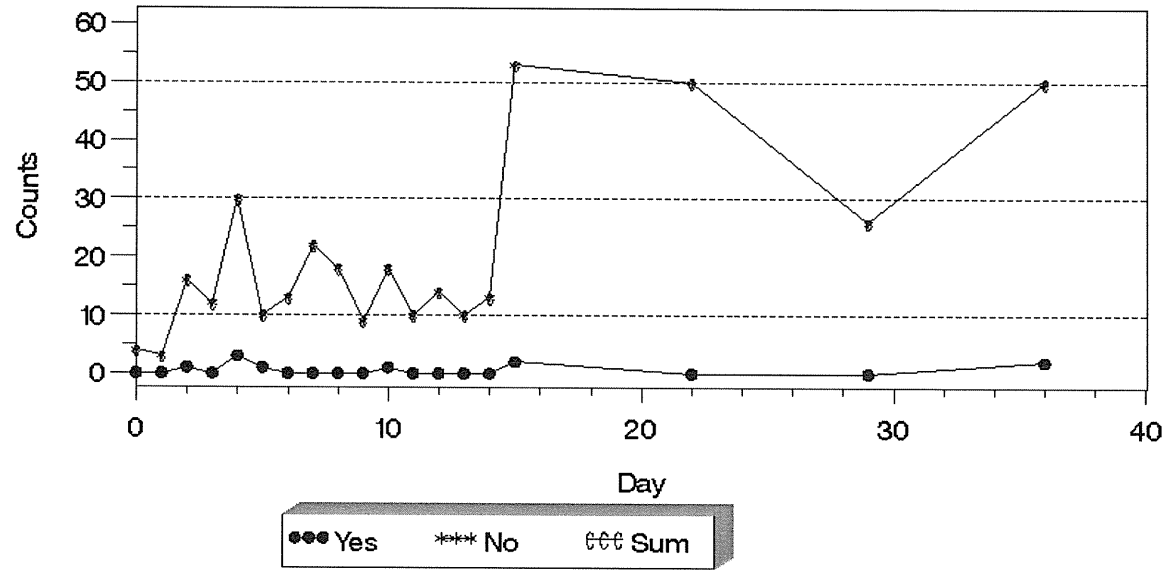


図 (5 参考) 11 輸血又は血液製剤の使用の評価日ごとの発生頻度・割合

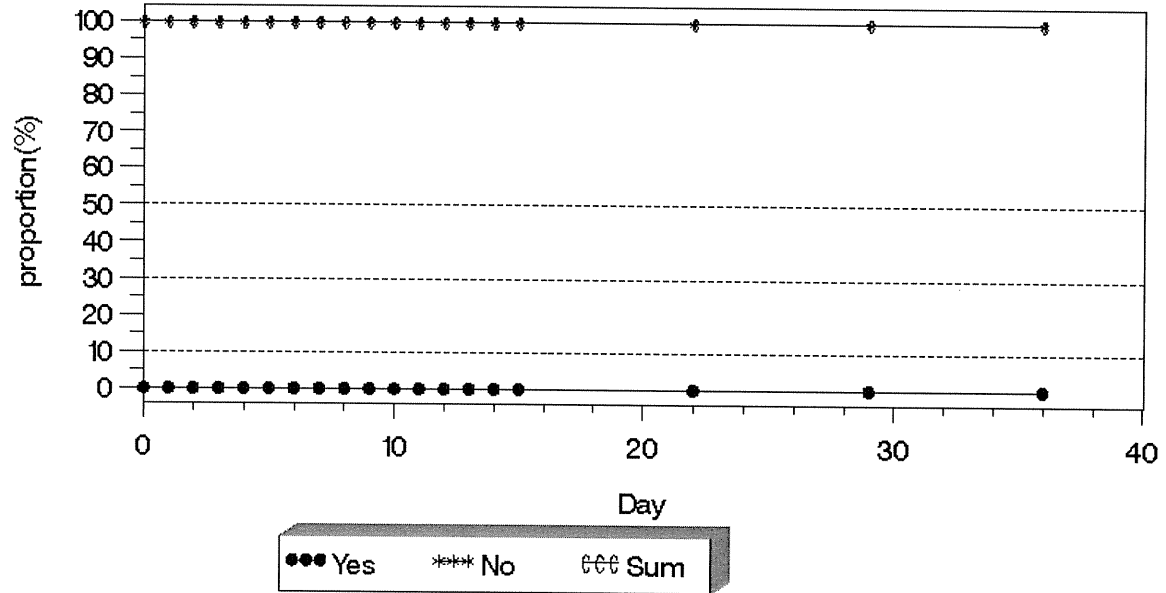
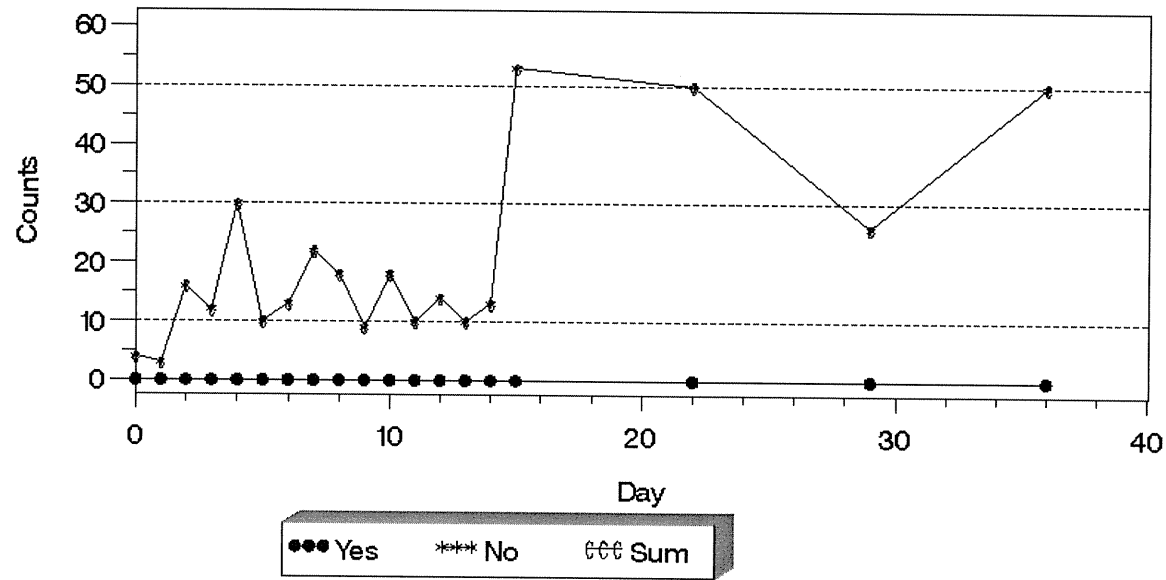


図 (5 参考) 12 肺動脈圧測定の評価日ごとの発生頻度・割合

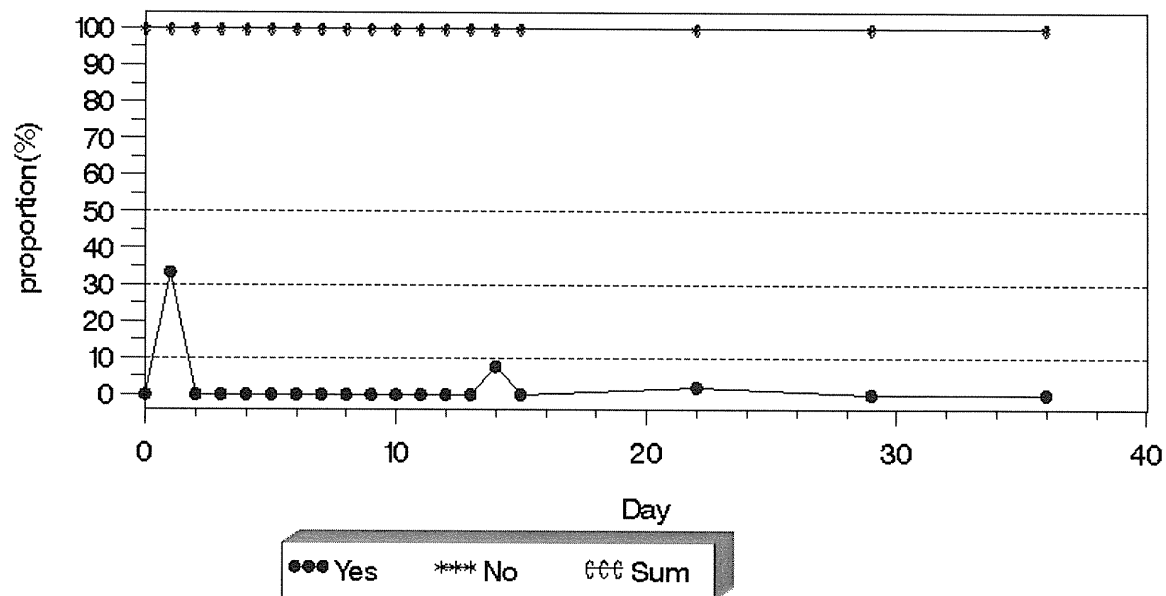
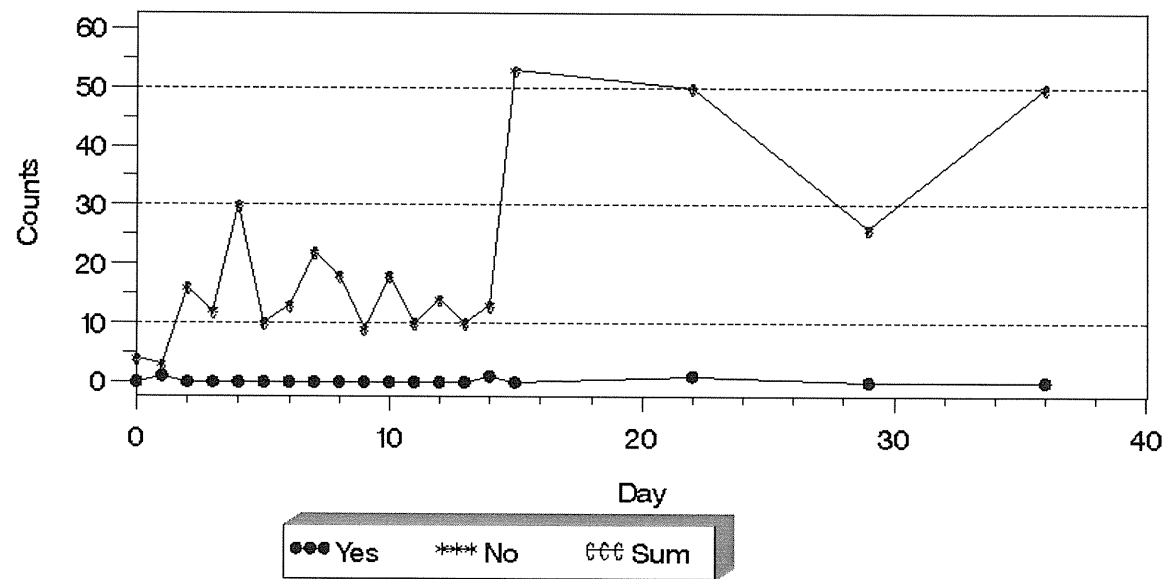


図 (5 参考) 13 特殊な治療法の評価日ごとの発生頻度・割合

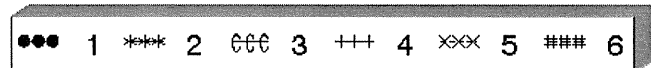
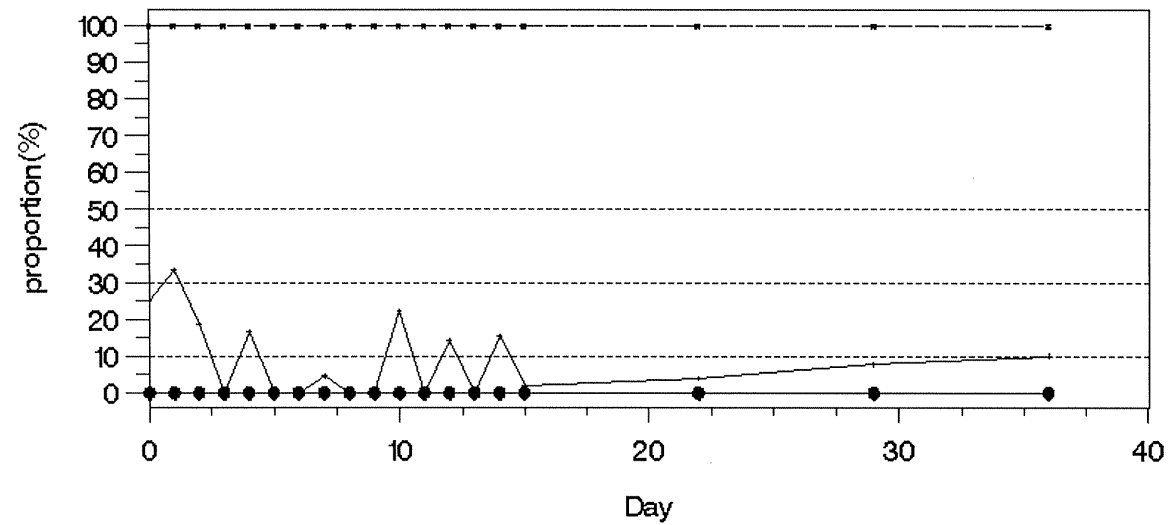
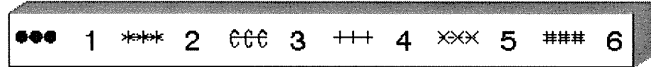
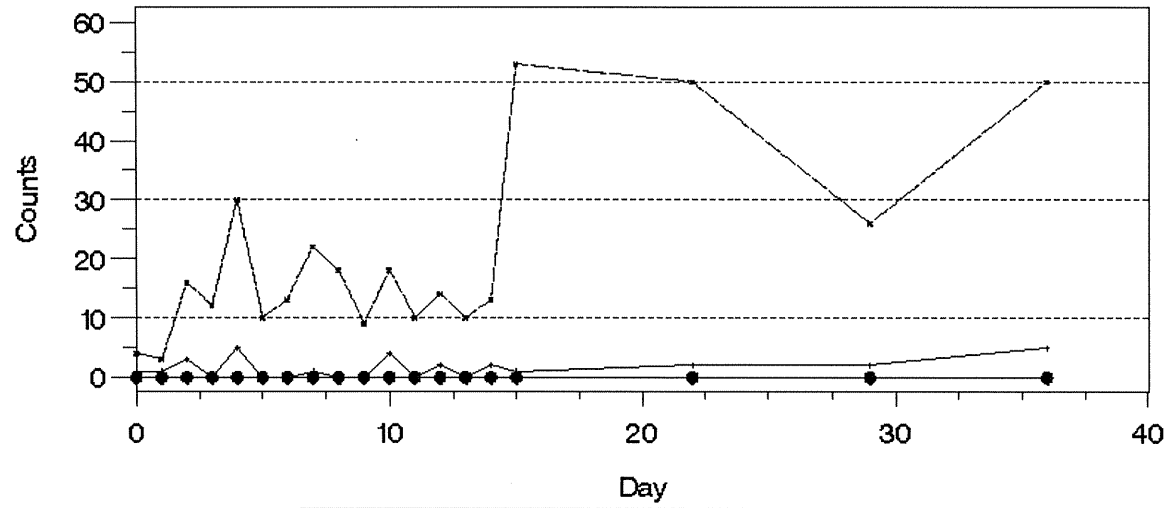


図 (5 参考) 14 点滴ライン同時3本以上の評価日ごとの発生頻度・割合

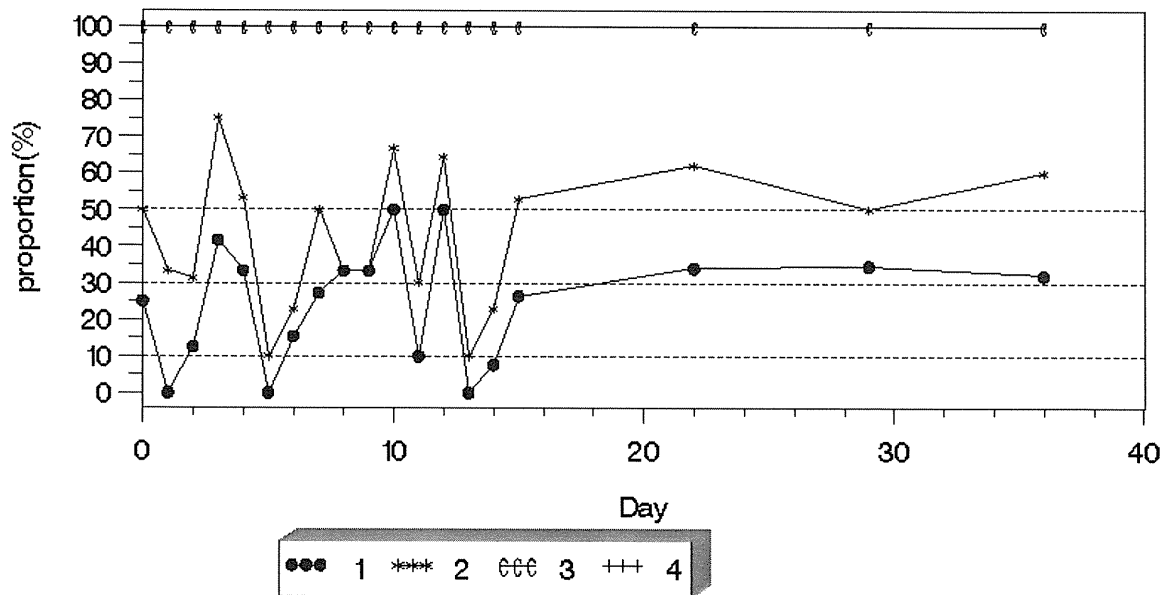
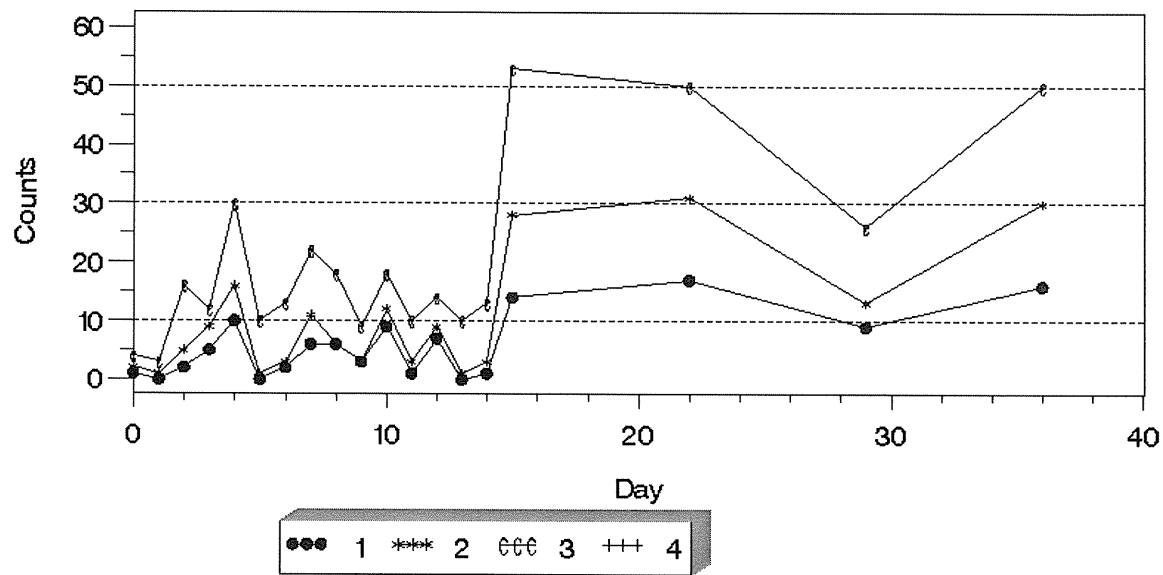


図 (5 参考) 15 寝返りの評価日ごとの発生頻度・割合

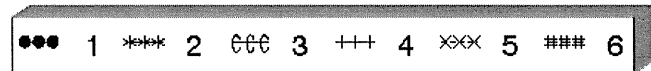
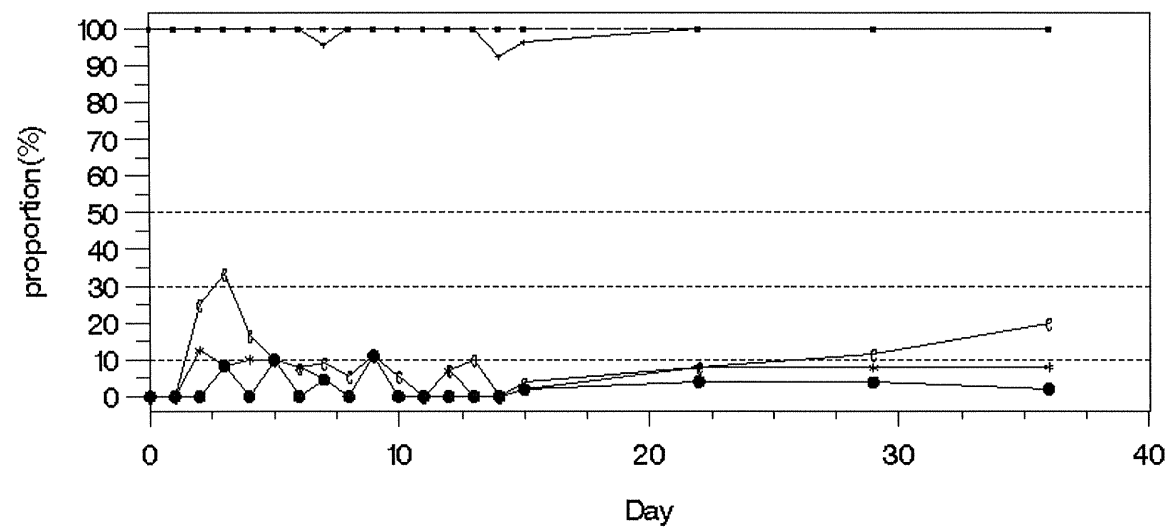
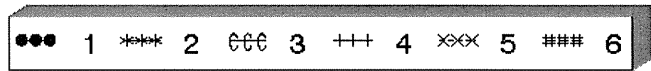
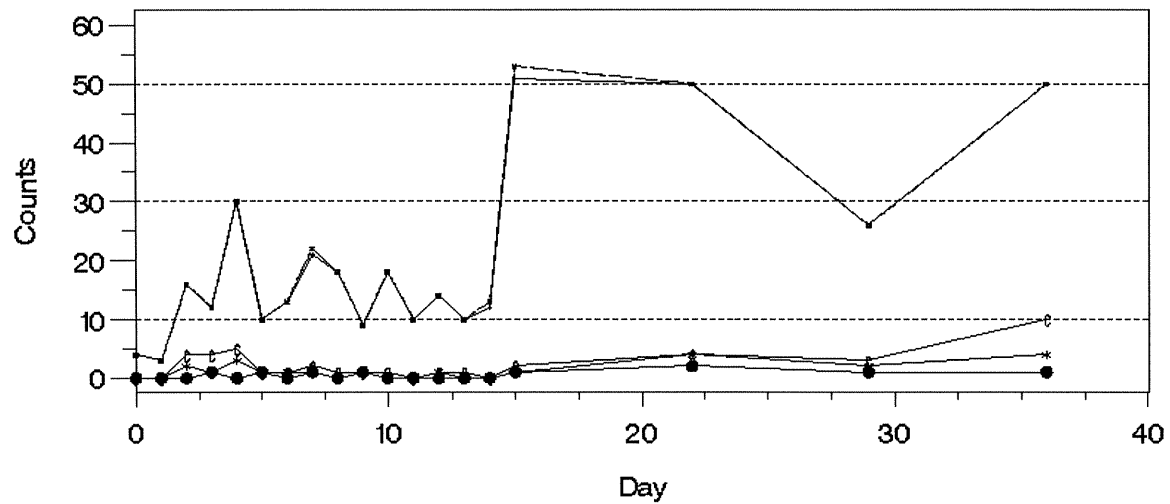


図 (5 参考) 16 血圧測定の評価日ごとの発生頻度・割合

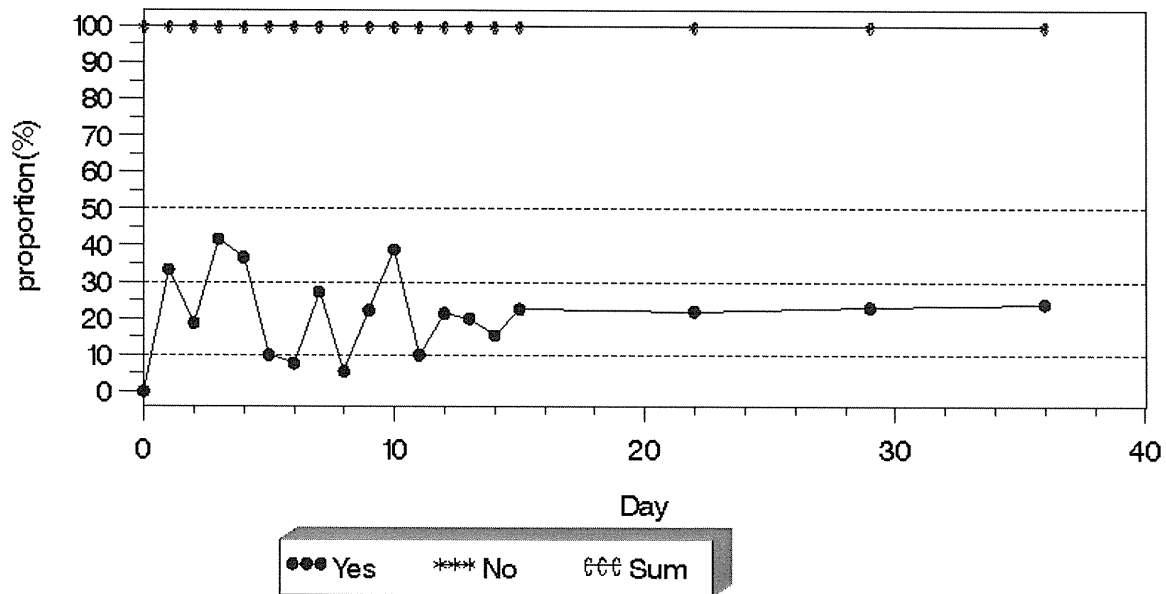
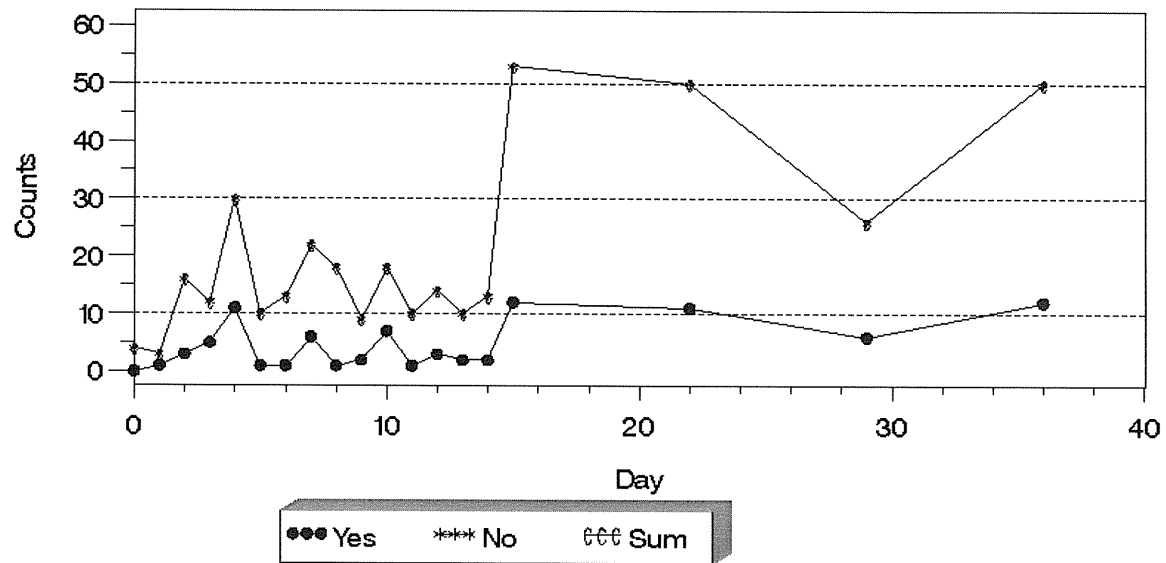


図 (5 参考) 17 床上安静の指示の評価日ごとの発生頻度・割合



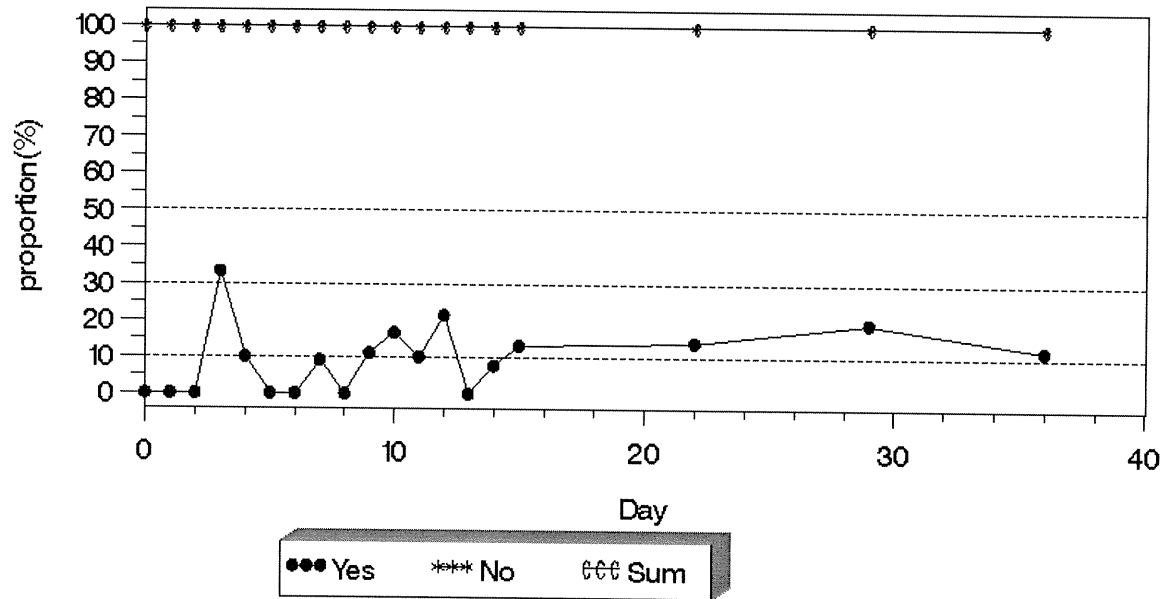
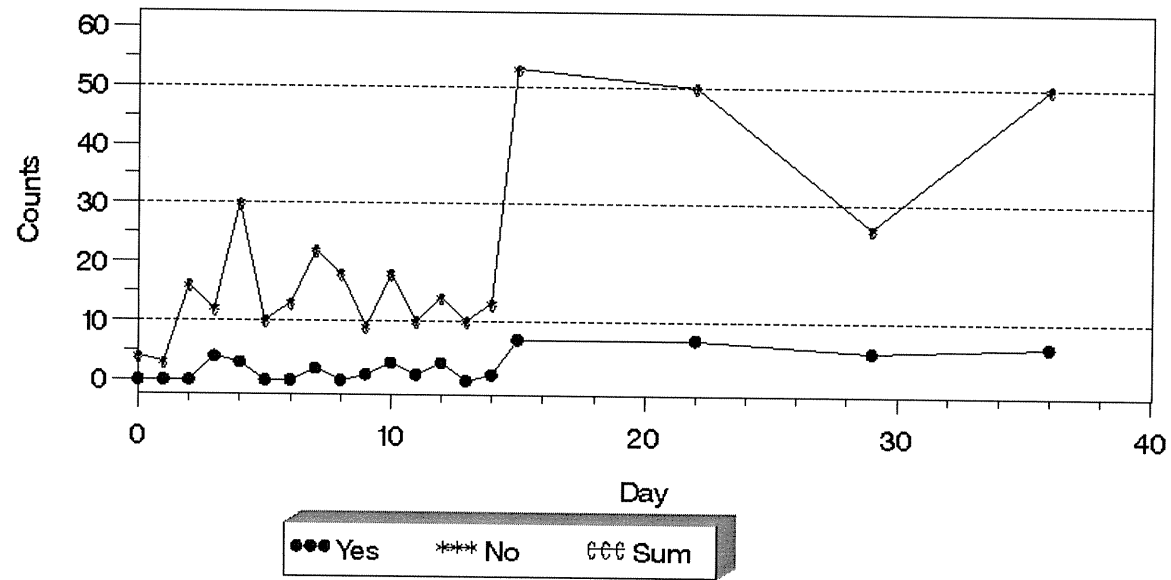


図 (5 参考) 18 どちらかの手を胸元の評価日ごとの発生頻度・割合

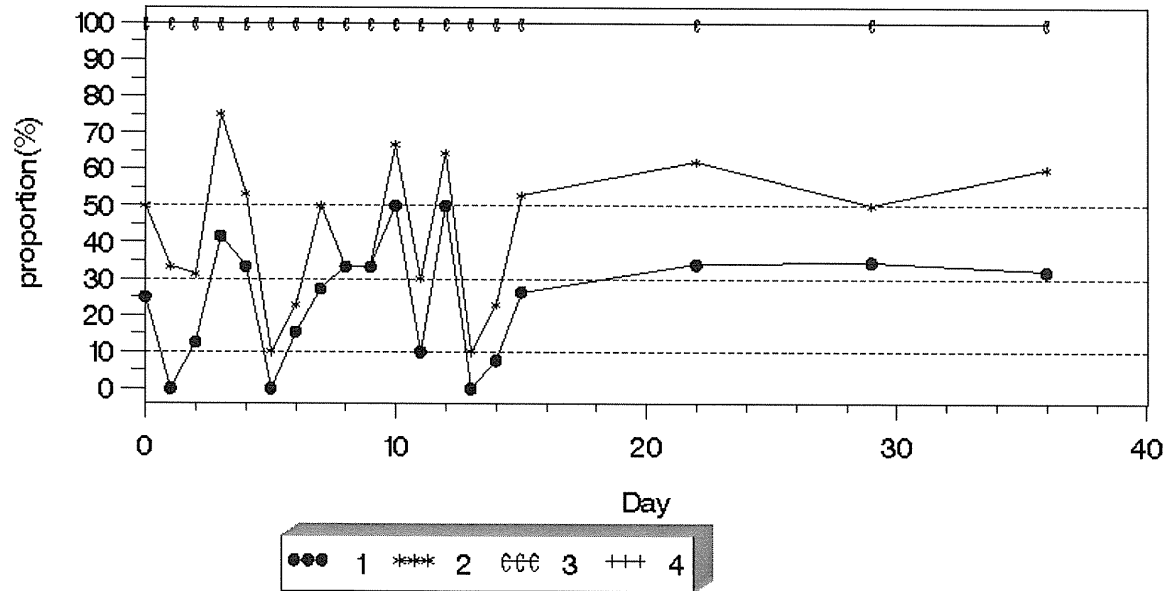
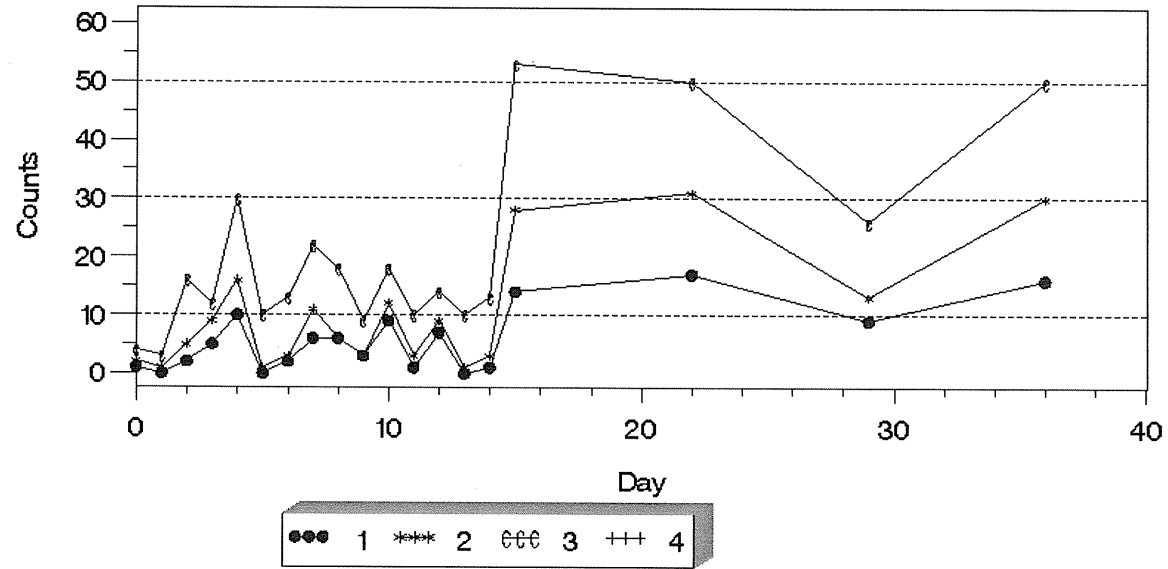


図 (5 参考) 19 寝返りの評価日ごとの発生頻度・割合

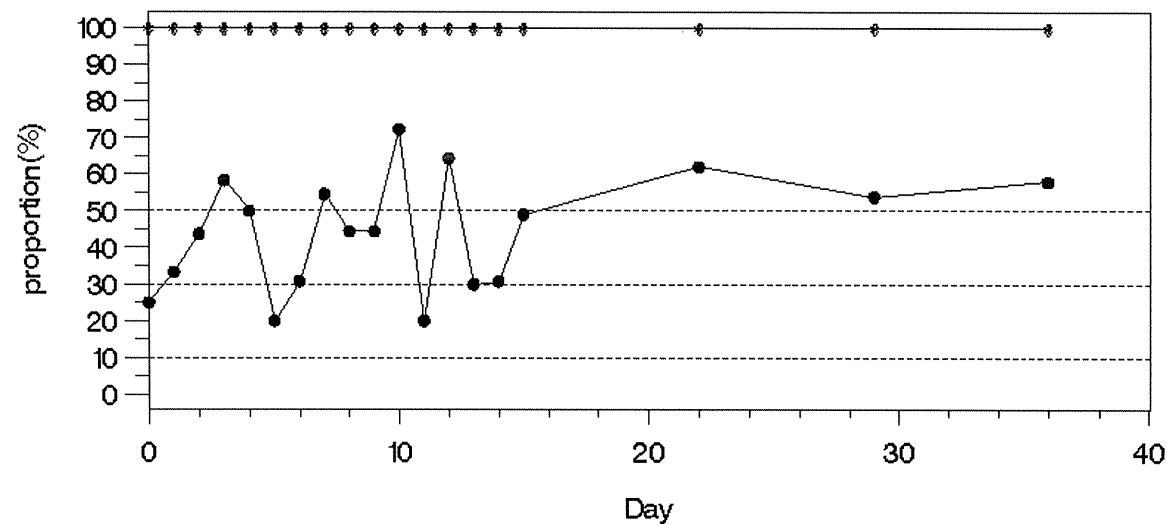
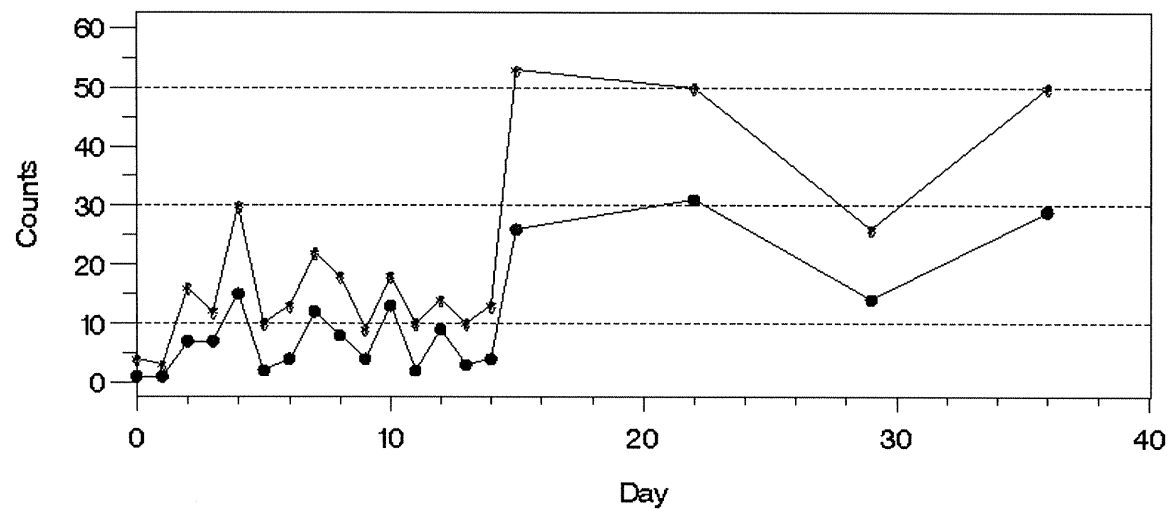


図 (5 参考) 20 起き上がりの評価日ごとの発生頻度・割合

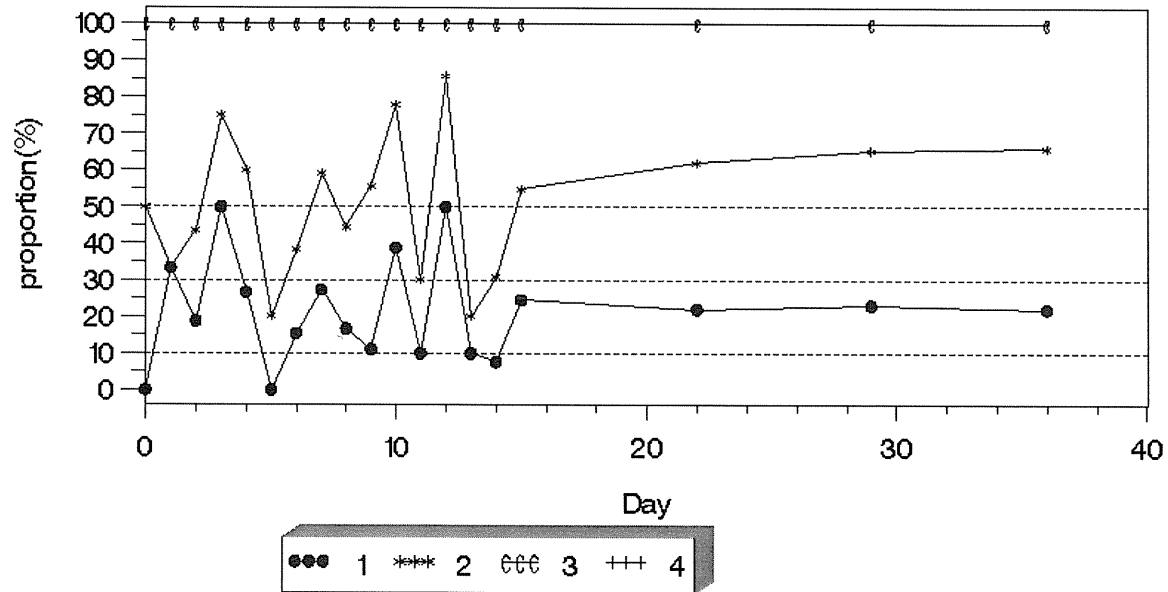
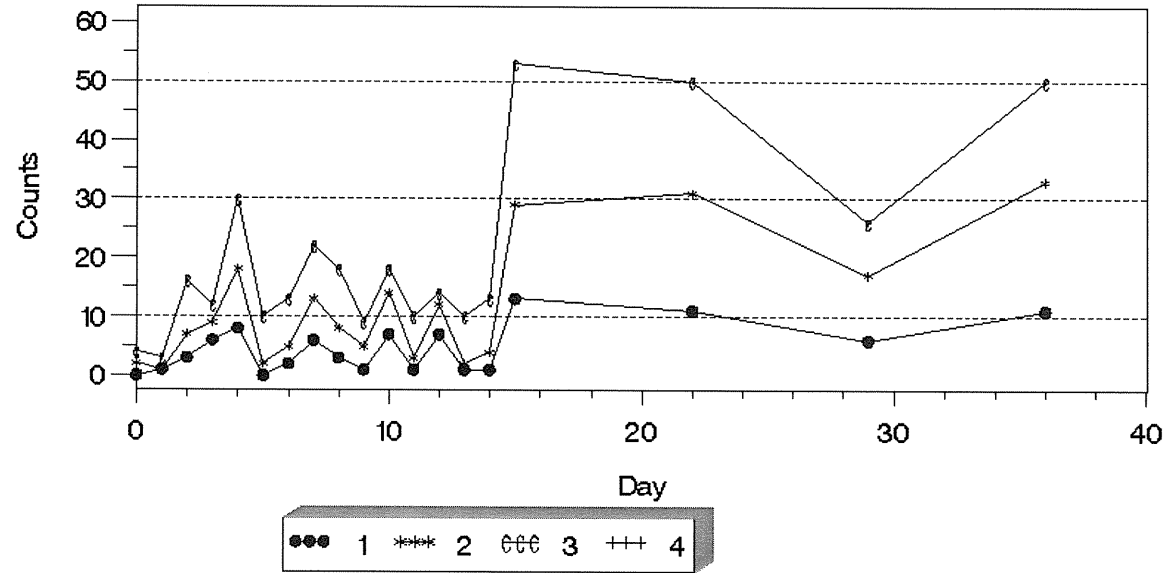


図 (5 参考) 21 座位保持の評価日ごとの発生頻度・割合

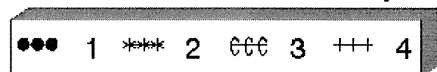
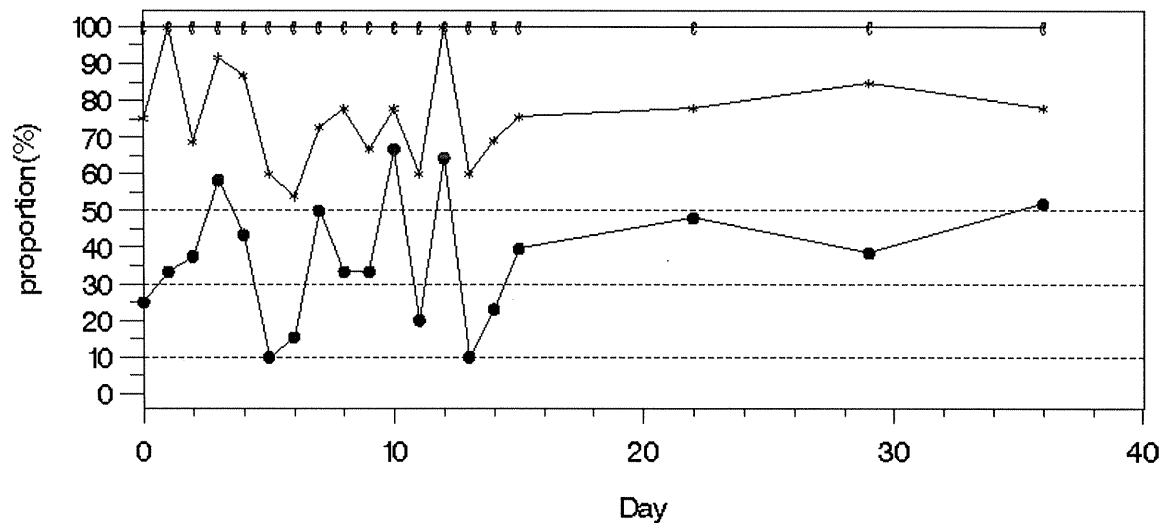
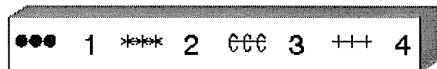
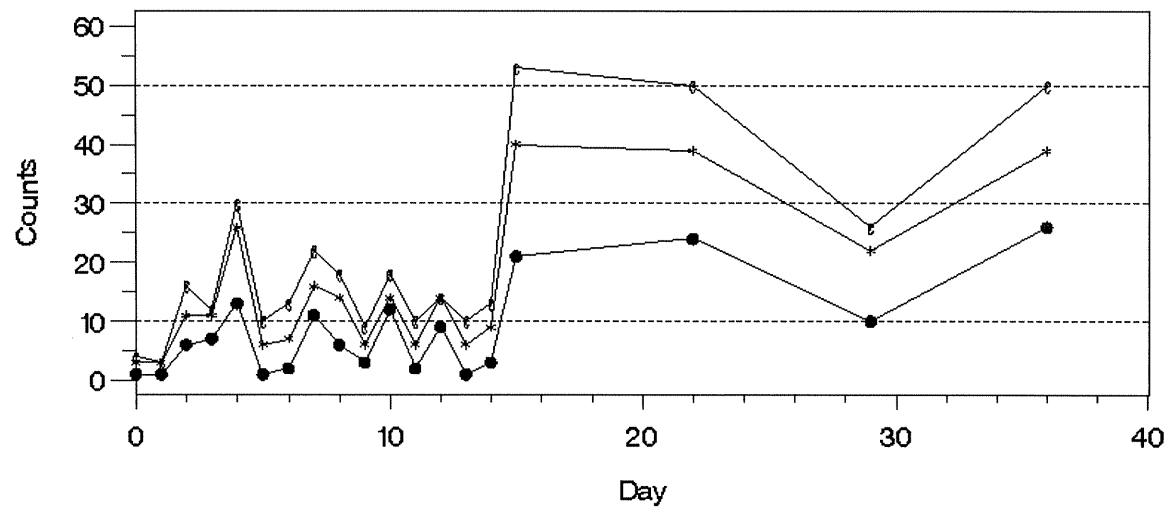


図 (5 参考) 22 移乗の評価日ごとの発生頻度・割合

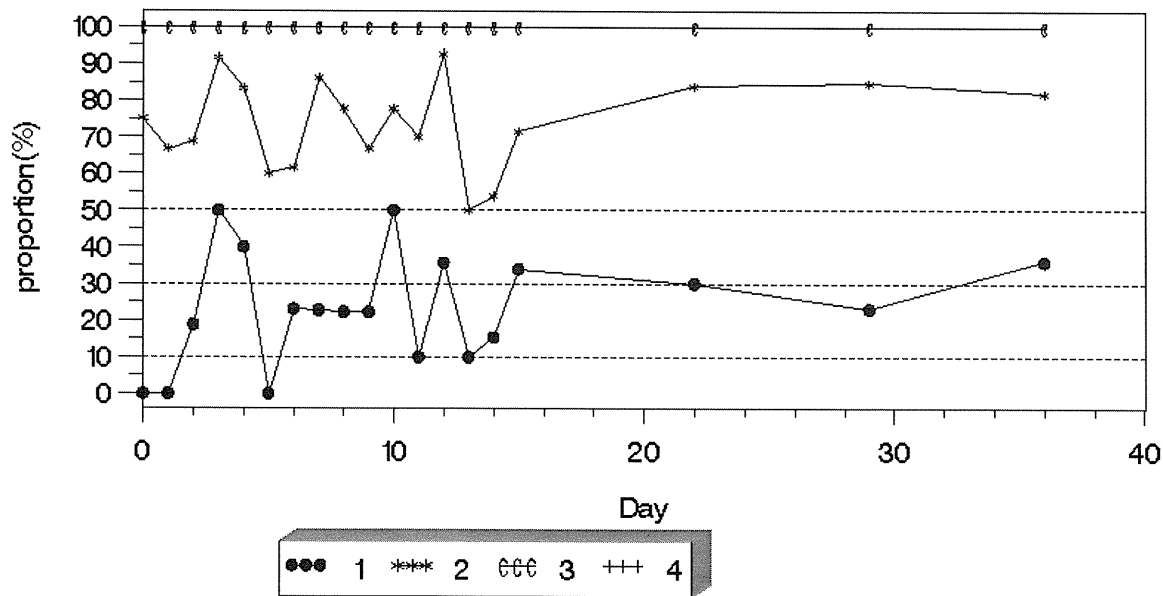
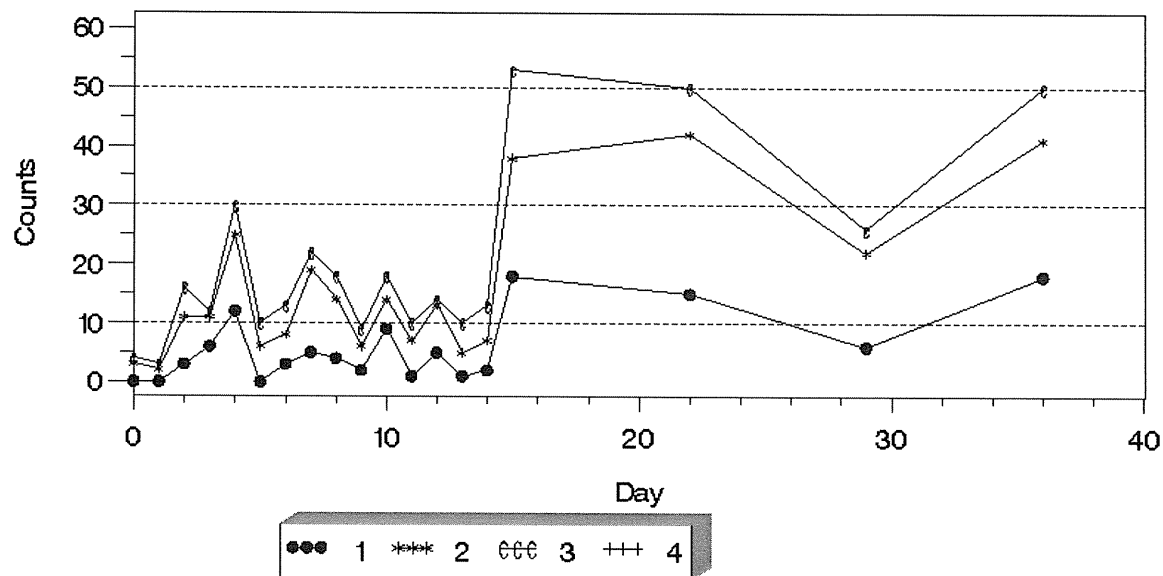


図 (5 参考) 23 移動方法の評価日ごとの発生頻度・割合

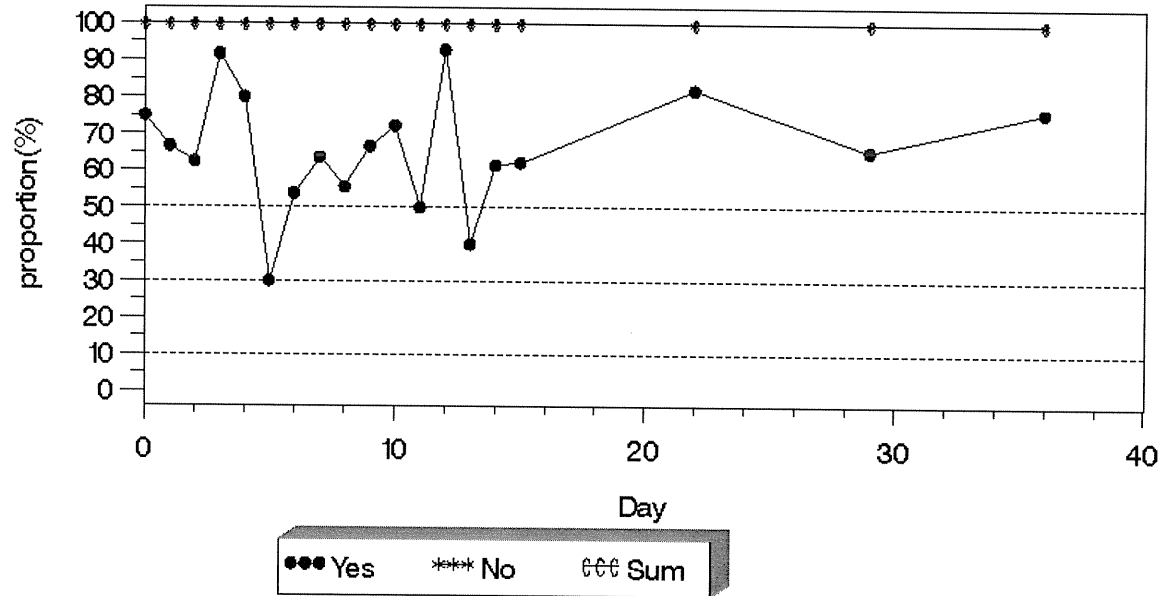
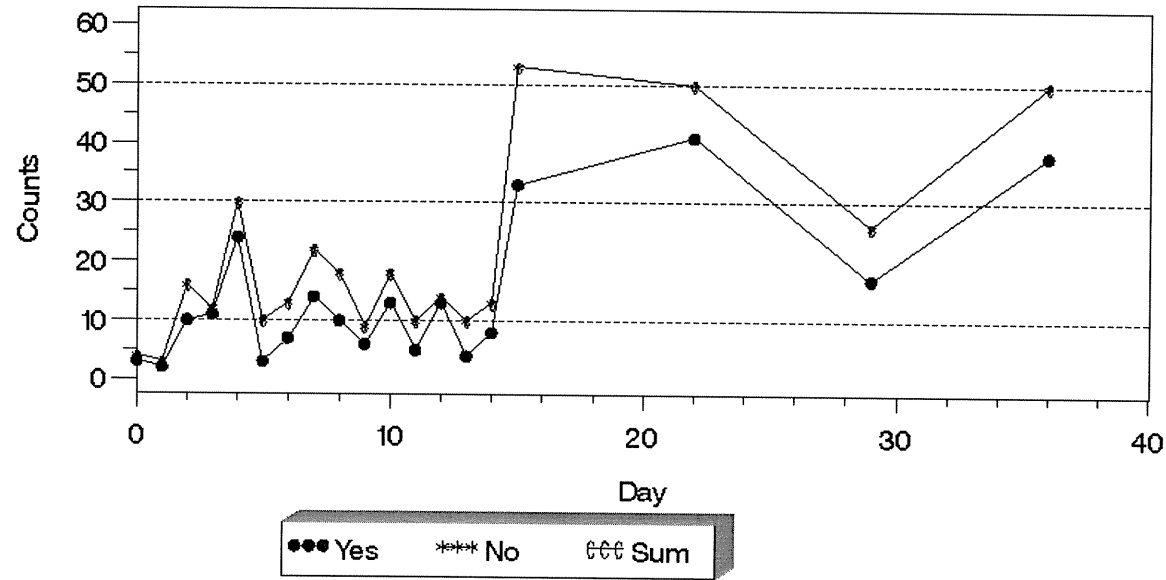


図 (5 参考) 24 口腔清潔の評価日ごとの発生頻度・割合

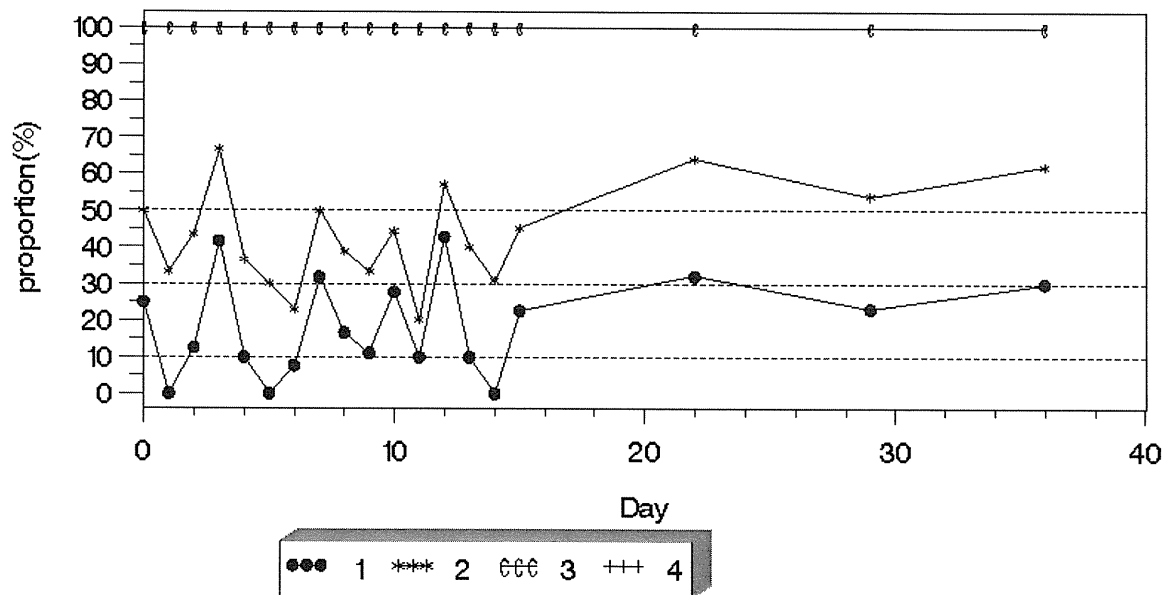
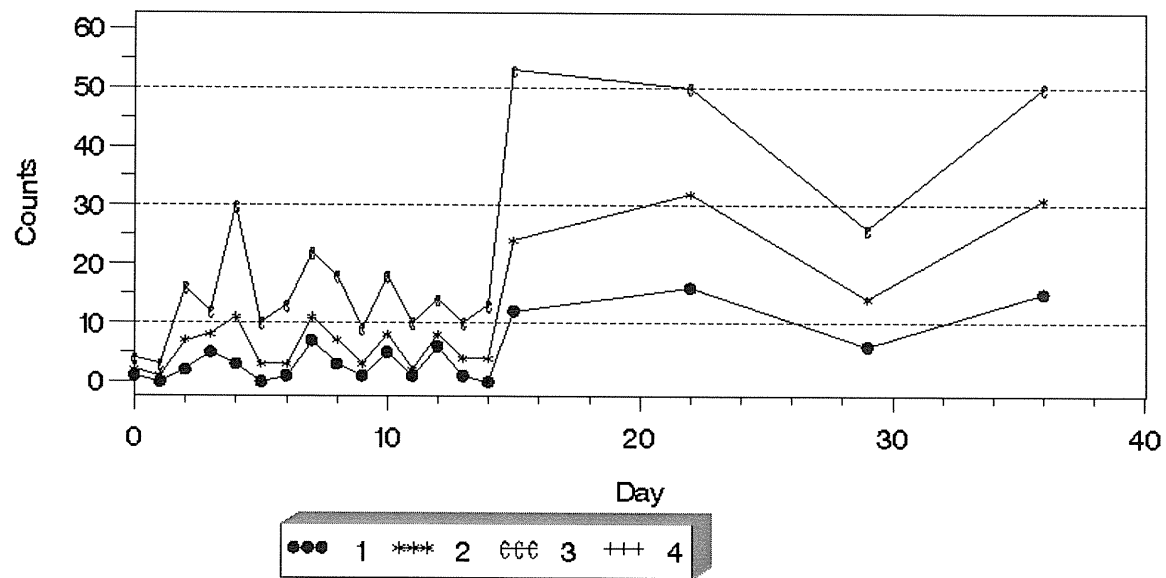


図 (5 参考) 25 食事摂取の評価日ごとの発生頻度・割合



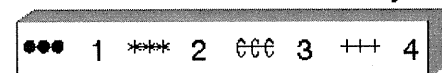
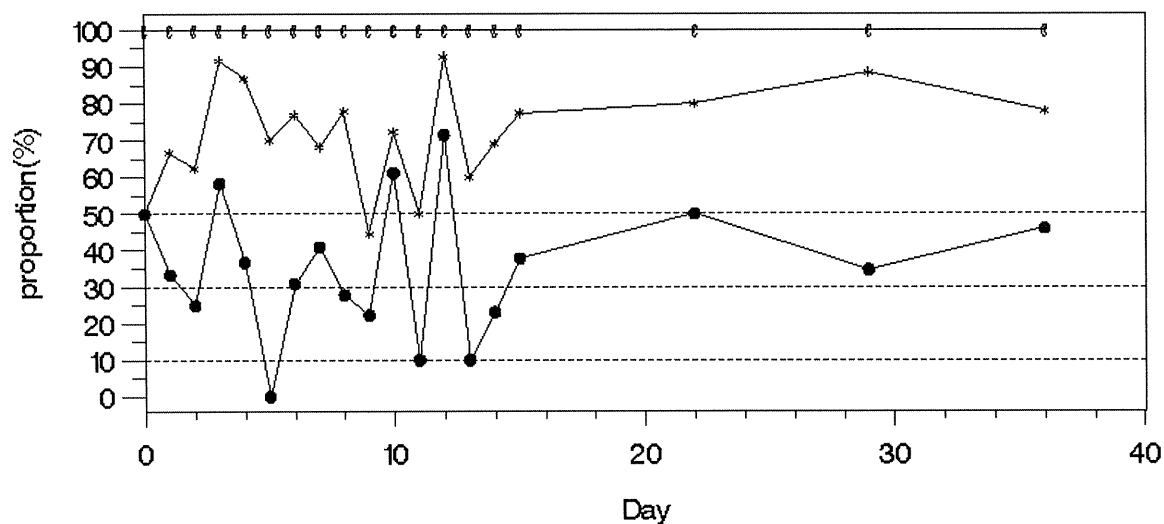
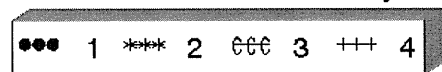
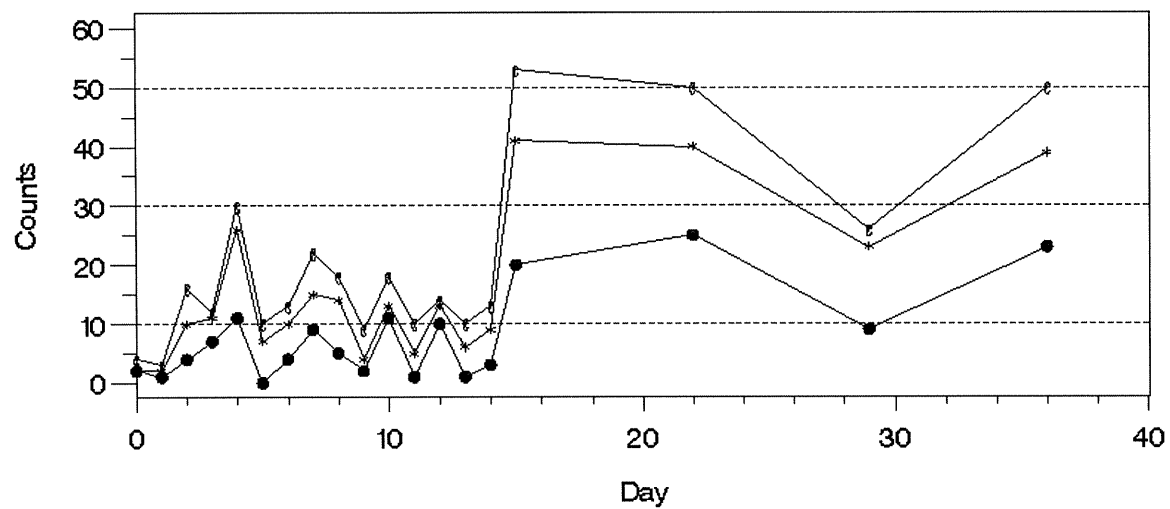


図 (5 参考) 26 衣服の着脱の評価日ごとの発生頻度・割合

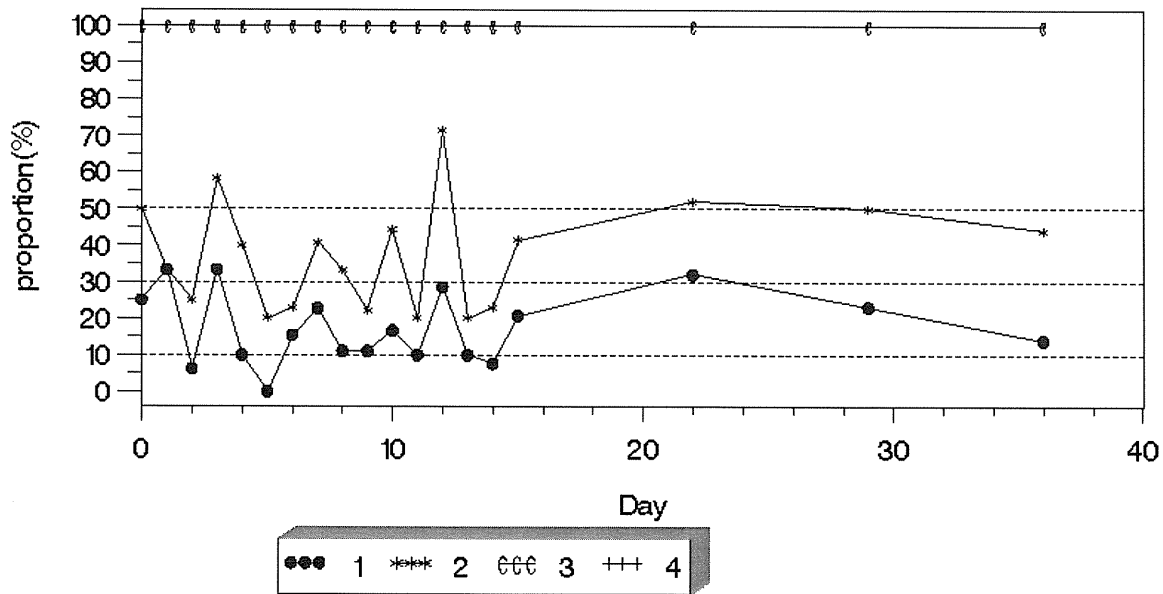
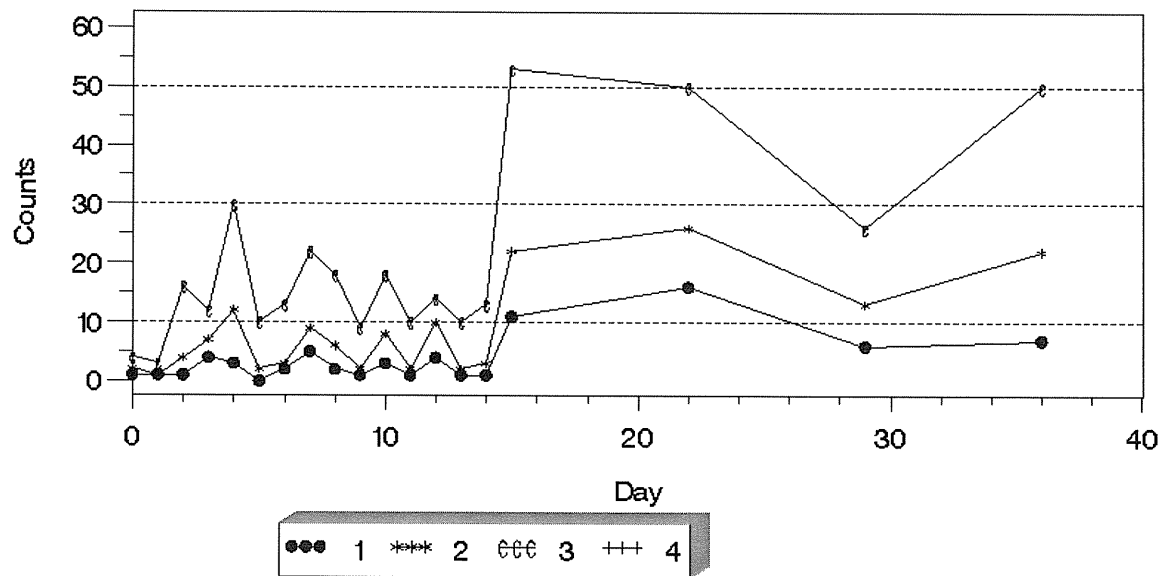


図 (5 参考) 27 他者への意思の伝達の評価日ごとの発生頻度・割合

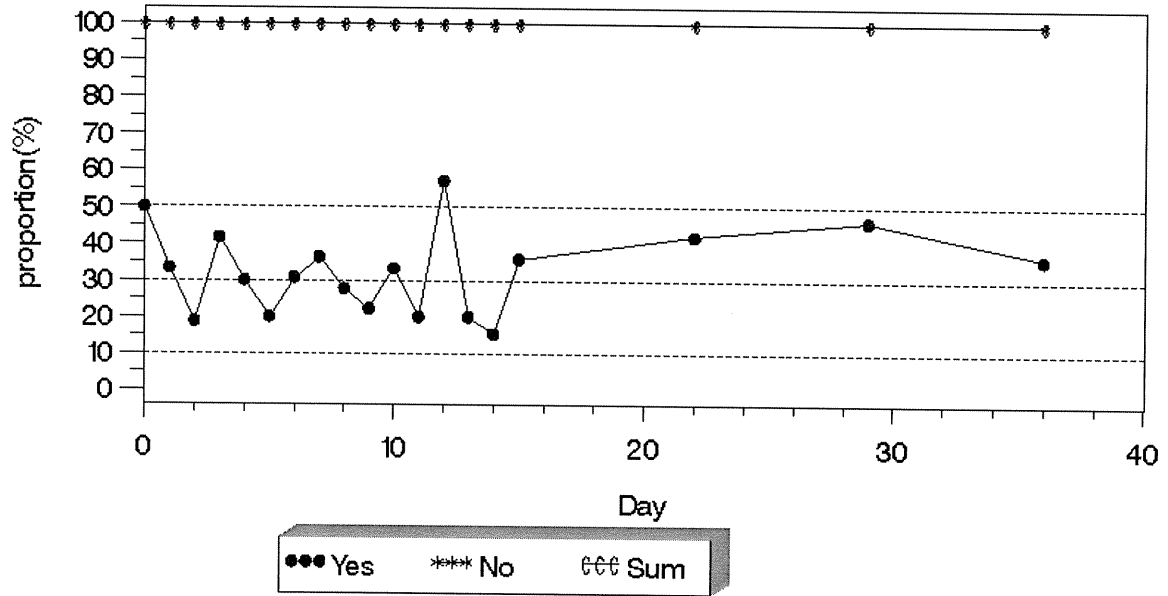
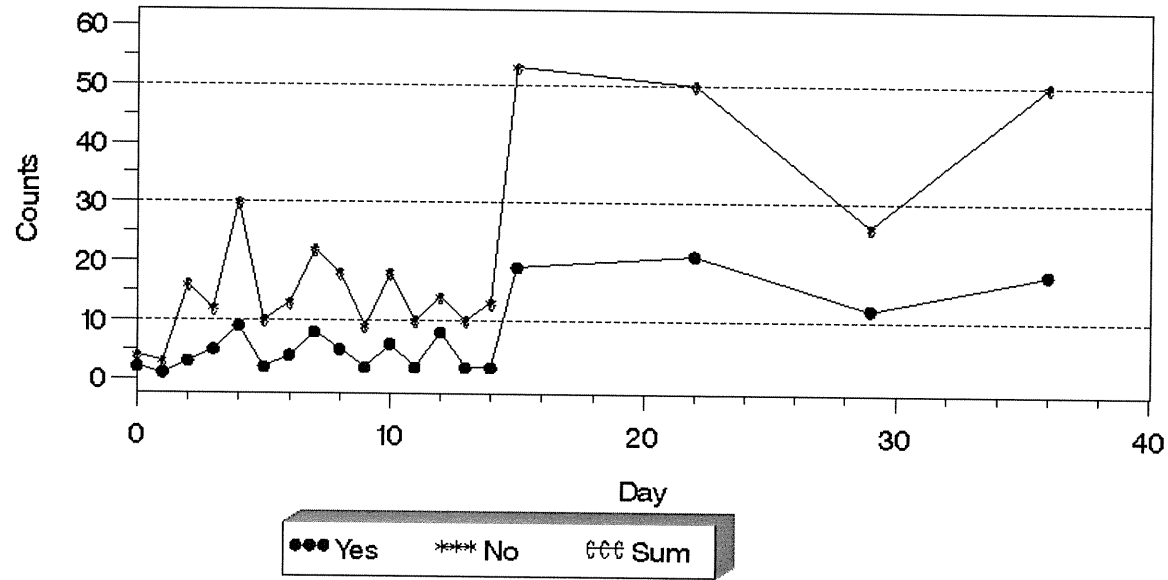


図 (5 参考) 28 診療・療養上の指示が通じるの評価日ごとの発生頻度・割合

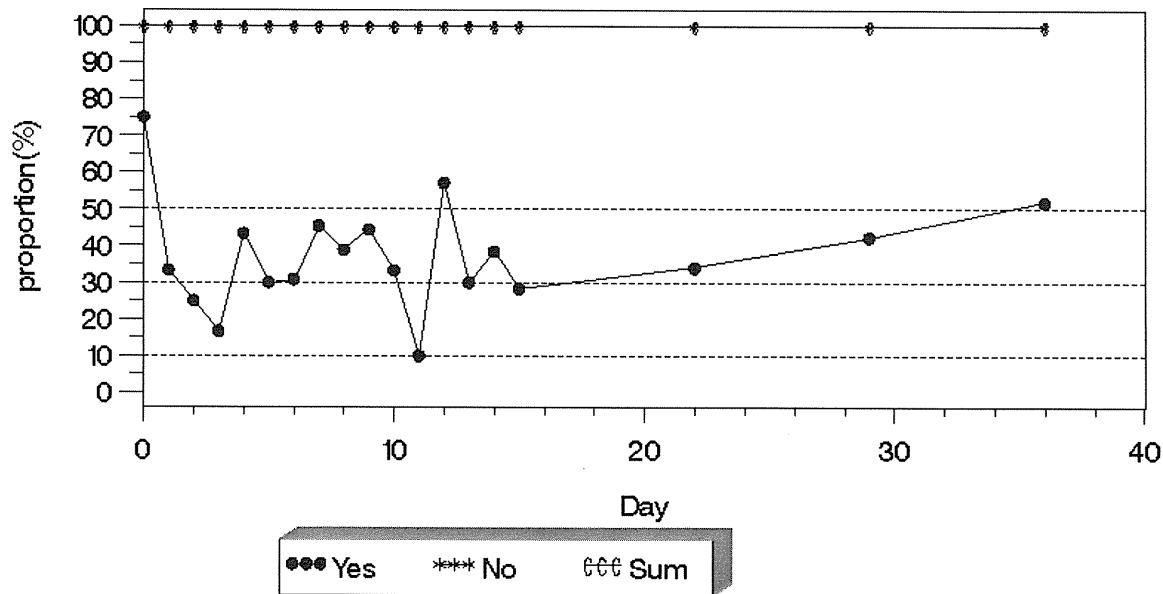
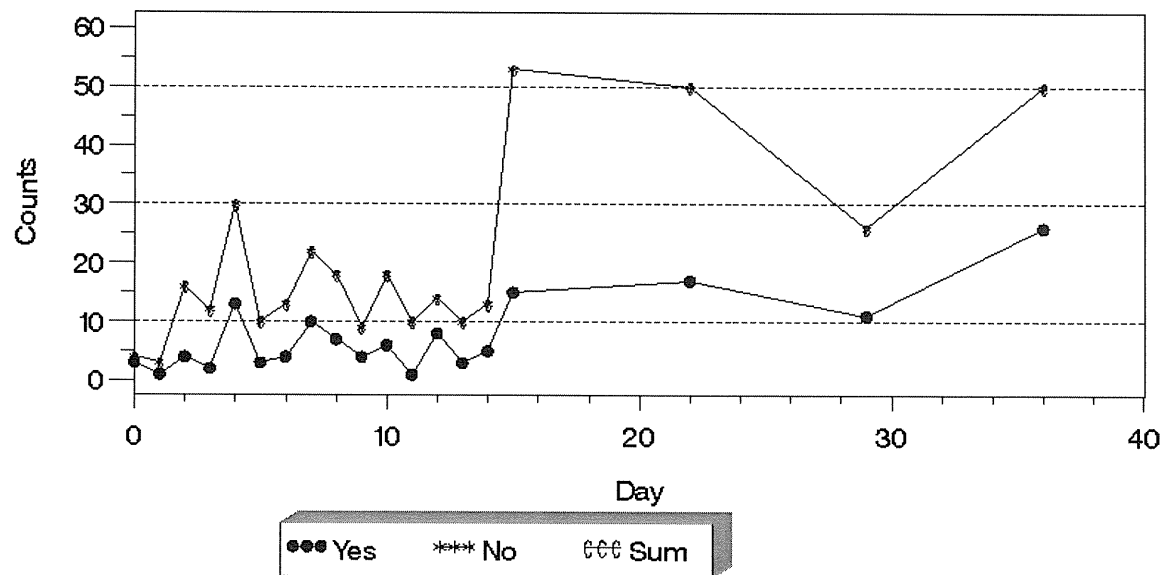


図 (5 参考) 29 危険行動への対応の評価日ごとの発生頻度・割合