

- type A の急性感染から慢性肝炎に発展しラミブジン投与で治癒したと思われる1症例. 肝臓 2005 ; 46 : 506-11.
- 10) 土屋薫, 朝比奈靖浩, 小貫優子ほか. B型急性肝炎経過中の異性パートナーから水平感染した genotype Ae型HBVによる若年者の重症B型急性肝炎の1例. 肝臓 2005 ; 46 : 549-56.
- 11) 大森格, 鳥居信之, 長谷川潔ほか. HBV genotype Aの急性肝炎に対するラミブジン投与症例の検討. 肝臓 2007 ; 48 : 145-52.
- 12) 内田俊和. 肝細胞障害. In : 「肝細胞の病理」内田俊和編. 東京 : HBJ 出版局 ; 1985, p29-34.
- 13) Stephen A. Acute viral hepatitis and chronic hepatitis. In : Biopsy interpretation of the liver, Edited by Stephen AG, Lydia MP. Philadelphia : Lippincott Williams&Wilkins ; 2009, p71-116.
- 14) Erhardt A, Blondin D, Hauck K et al. Response to interferon alfa hepatitis B virus genotype dependent : genotype A is more sensitive to interferon than genotype D. Gut 2005 ; 54 : 1009-13.
- 15) Orito E, Ichida I, Sakugawa H et al. Geographic distribution of hepatitis B virus (HBV) genotype in patients with chronic HBV infection in Japan. Hepatology 2001 ; 34 : 590-4.
- 16) Matsuura K, Tanaka Y, Hige S et al. Distribution of hepatitis B virus genotypes among hepatitis with chronic infection in Japan shifting toward an increase of genotype A. J Clin Microbil 2009 ; 47 : 1476-83.

Administration of interferon for chronic hepatitis resulting from acute HBV genotype A infection

Noboru Hirashima, Masanao Uraoka, Asako Kamiya, Misaki Yokoi,
Masayuki Saitoh, Dai tamaki, YoshimituRyuuge, Hisanori Watanabe,
Yuusuke Hibino, Masaaki Shimada, Tomoyuki Tsuzuki and Hiroaki Iwase

Abstract : On November 9, 2009, a 34-year-old male was admitted to our hospital for the treatment of HBs antigen-positive hepatopathy. He was positive for HBV DNA, but negative for IgM HBc antibody, HBc antibody and HIV antibody. On December 10, laboratory test showed following : the increase in transaminase levels (AST 754 IU/ml and ALT 1486 IU/ml), HBs antigen 92997 S/N, HBe antigen 1272 S/CO, HBe antibody 0 % INH, IgM HBc antibody 28 S/CO, HBc antibody 4.41 S/CO and HBV DNA 8.6 Log copies/ml. Liver biopsy revealed chronic hepatitis. The HBV genotype was type A. Therefore, we concluded that his HB virus-related acute hepatitis was already chronic. Interferon α at 600 MU/day was administrated for 2 weeks and continued at 300 MU twice for 22 weeks, 24 weeks in total. He became negative for HBs antigen in March 2010 and positive for HBs antibody in April 2010. We considered that the administration of interferon might be effective for acute HBV genotype A infection to prevent it from being a chronic condition.

Prevalence of type 2 diabetes mellitus in Japanese patients with hepatocellular carcinoma

NAOTA TAURA^{1,2}, TATSUKI ICHIKAWA¹, HISAMITSU MIYAAKI¹,
HIROSHI YATSUHASHI², HIROMI ISHIBASHI² and KAZUHIKO NAKAO¹

¹Department of Gastroenterology and Hepatology, Graduate School of Biomedical Sciences, Nagasaki University, Nagasaki 852-8501; ²Clinical Research Center, National Hospital Organization, Nagasaki Medical Center and Department of Hepatology, Graduate School of Biomedical Sciences Nagasaki University, Nagasaki 856-8562, Japan

Received August 19, 2010; Accepted October 1, 2010

DOI: 10.3892/etm.2010.167

Abstract. The possibility has been raised in a number of cohort and case-control studies that diabetes mellitus (DM) may increase the risk of liver cancer, as well as that of cancer at other sites. To verify this possibility, we conducted a retrospective cohort study to determine the prevalence of type 2 DM in Japanese patients with hepatocellular carcinoma (HCC). A total of 1,251 patients with HCC, diagnosed at two major liver centers in the Nagasaki area, were consecutively recruited and categorized according to the etiology of HCC into four groups: HCC-B, HCC-C, HCC-BC and HCC-nonBC cases. Type 2 DM was diagnosed on the basis of standard criteria. The prevalence rate of HCC-nonBC and HCC-C was significantly higher than that of HCC-B, while the prevalence rate of HCC-nonBC was significantly higher than that of HCC-C. The prevalence of type 2 DM in HCC-B, HCC-C and HCC-nonBC patients under 66 years of age was 11, 31 and 32%, respectively, vs. 24, 22 and 40%, respectively, in patients over 66 years of age. In patients over 66 years of age, the prevalence of type 2 DM in HCC-B and HCC-nonBC cases was increased, whereas the prevalence of type 2 DM in HCC-C cases was significantly decreased. Our findings indicate that the effects of the interaction between type 2 DM and HCV increase the prevalence of HCC.

Introduction

Of the three leading causes of death in Japan – malignant neoplasms, cardiovascular diseases and cerebrovascular diseases – malignant neoplasms have been the leading cause of death in Japan since 1981. For the last 30 years, liver cancer has been the third leading cause of death by malignant

neoplasms in men and, during the past decade, has ranked fifth in women (1-3). Hepatocellular carcinoma (HCC) accounts for 85-90% of cases of primary liver cancer, and chronic hepatitis B and C infections are the main cause of HCC. However, the prevalence of HCC in Japan in the liver of patients that are both hepatitis B surface antigen (HBsAg)- and hepatitis C virus (HCV)-RNA-negative has been increasing over the last 12 years (4).

Epidemiological findings have recently been reported proposing a link between type 2 diabetes mellitus (DM) and cancer in various organs (5,6). The possibility that DM may increase the risk of liver cancer, as well as cancer at other sites, has been raised in a number of cohorts and case-control studies (7-10). We carried out this retrospective study to determine the prevalence of type 2 DM in Japanese patients with HCC.

Patients and methods

Patients. A total of 1,251 patients with HCC diagnosed between January 1991 and December 2005 at the liver disease centers of the National Nagasaki Medical Center and Nagasaki University Hospital were consecutively recruited for this study. Informed consent was obtained from all patients. The diagnosis of HCC was based on the elevation of serum α -fetoprotein or des- γ -carboxy prothrombin levels, characteristic image findings obtained using ultrasonography, computerized tomography, magnetic resonance imaging and hepatic angiography, and/or histological diagnosis using tumor biopsy samples.

Etiology of HCC. The HCC cases were categorized according to etiology into four groups: HCC-B, hepatitis B virus surface antigen (HBsAg)-positive and hepatitis C virus (HCV)-RNA-negative; HCC-C, HCV-RNA-positive and HBsAg-negative; HCC-BC, both HBsAg- and HCV-RNA-positive; and HCC-nonBC, both HBsAg- and HCV-RNA-negative. A diagnosis of chronic HCV infection was based on the presence of both serum anti-HCV antibody and HCV-RNA detected by polymerase chain reaction (PCR), while a diagnosis of chronic hepatitis B virus (HBV) infection was based on the presence of HBsAg.

Correspondence to: Dr Naota Taura, Department of Gastroenterology and Hepatology, Graduate School of Biomedical Sciences, Nagasaki University, Sakamoto 1-7-1, Nagasaki 852-8501, Japan
E-mail: ntaura-gi@umin.ac.jp

Key words: hepatitis virus, hepatocellular carcinoma, diabetes mellitus

Table I. Characteristics of the HCC patients.

	HCC-B	HCC-C	HCC-BC	HCC-nonBC	Total
No.	248	809	29	165	1,251
Gender					
Male	191	566	19	121	897
Female	57	243	10	44	354
Ratio (male/female)	3.4	2.3	1.9	2.8	2.5
Age (IQR), in years	57 (15)	67 (9)	65 (12)	67 (14)	66 (11)
<66	190	341	17	71	619
≥66	58	468	12	94	632
Child-Pugh grade					
A	95	70	80	67	412
B	111	213	240	292	1,134
C	8	8	9	11	46

Gender: HCC-B vs. HCC-C, $p=0.031$. Age: HCC-B vs. HCC-C, $p<0.001$; HCC-B vs. HCC-BC, $p=0.022$; HCC-B vs. HCC-nonBC, $p<0.0001$; HCC-C vs. HCC-BC, $p=0.004$; HCC-BC vs. HCC-nonBC, $p=0.009$. IQR, interquartile range.

Diagnosis of type 2 DM. Type 2 DM was diagnosed on the basis of the presence of hyperglycemia (≥ 200 mg/dl) in at least two postabsorptive samples, overt glycosuria, or both; or active treatment with insulin, oral hypoglycemic agents, or both. No consideration was given to minor alterations in glucose metabolism, such as impaired glucose tolerance based on an oral glucose tolerance test, in accordance with World Health Organization criteria.

Statistical analysis. Data were analyzed by the Mann-Whitney U test for continuous ordinal data, and by the χ^2 test with Yates' correction and Fisher's exact test for associations between two qualitative variables. $p<0.05$ was considered statistically significant. Data analysis was performed with SPSS version 16.0 for Windows.

Results

Clinical features of the studied patients. As shown in Table I, of the 1,251 patients with HCC, 20% (248/1,251) were diagnosed with HCC-B, whereas 65% (809/1,251) had HCC-C and an additional 2% (29/1,251) had HCC associated with both viruses. In the remaining 165 patients (13%), no association was found between HCC and either of the viruses. Analyzing the patients with HCC by category revealed the male/female ratio in HCC-B, HCC-C, HCC-BC and HCC-nonBC to be 3.4, 2.3, 1.9 and 2.8, respectively. The male/female ratio in HCC-C was less than that in HCC-B. In addition, the median age of patients diagnosed with HCC-B, HCC-C, HCC-BC and HCC-nonBC was 57, 67, 65 and 67 years, respectively. The median age of patients diagnosed with HCC-B was significantly lower than that of the patients with other types of HCC. Among the patients with HCC, 25% (310/1,251) had type 2 DM, 3% (34/1,251) HCC-B, 16% (209/1,251) HCC-C, 1% (6/1,251) HCC-BC and 5% (61/1,251) HCC-nonBC.

Prevalence of type 2 DM by stratification according to etiology in patients with HCC. Cohorts of patients with HCC were divided according to etiology. Fig. 1 shows that the prevalence rate of type 2 DM in HCC-B, HCC-C, HCC-BC and HCC-nonBC was 14% (34/248), 26% (209/809), 37% (61/165) and 21% (6/29), respectively. The prevalence rate of HCC-nonBC and HCC-C was significantly higher than that of HCC-B (HCC-B vs. HCC-nonBC, $p\leq 0.001$; HCC-B vs. HCC-C, $p\leq 0.001$), while the prevalence rate of HCC-nonBC was significantly higher than that of HCC-C (HCC-C vs. HCC-nonBC, $p=0.003$).

The prevalence rate of type 2 DM was 25% in patients under 66 years of age (154/619) and 25% in patients over 66 years of age (156/632). Fig. 2 shows the age distribution of the prevalence rate for type 2 DM in HCC-B, HCC-C and HCC-nonBC cases. The prevalence rate of type 2 DM in HCC-B, HCC-C and HCC-nonBC was 11% (20/190), 31% (107/341) and 32% (23/71), respectively, in patients under 66 years of age, vs. 24% (14/58), 22% (102/468) and 40% (38/94), respectively, for those over 66 years of age. The prevalence rate of type 2 DM in HCC-B and HCC-nonBC patients over 66 years of age was increased, whereas that of HCC-C was significantly decreased.

Discussion

A nationwide health survey regarding the prevalence of DM in the general Japanese population conducted in 2006 indicated that the prevalence of DM in Japan was 12%. However, the prevalence rate of type 2 DM is higher in patients with HCC than in the general Japanese population. In this two major liver center-based cohort study designed to examine the prevalence of type 2 DM in HCC patients, 25% of patients with HCC had type 2 DM. Previous studies have suggested that DM is a potential risk factor for HCC (10-13). Inoue *et al* prospectively

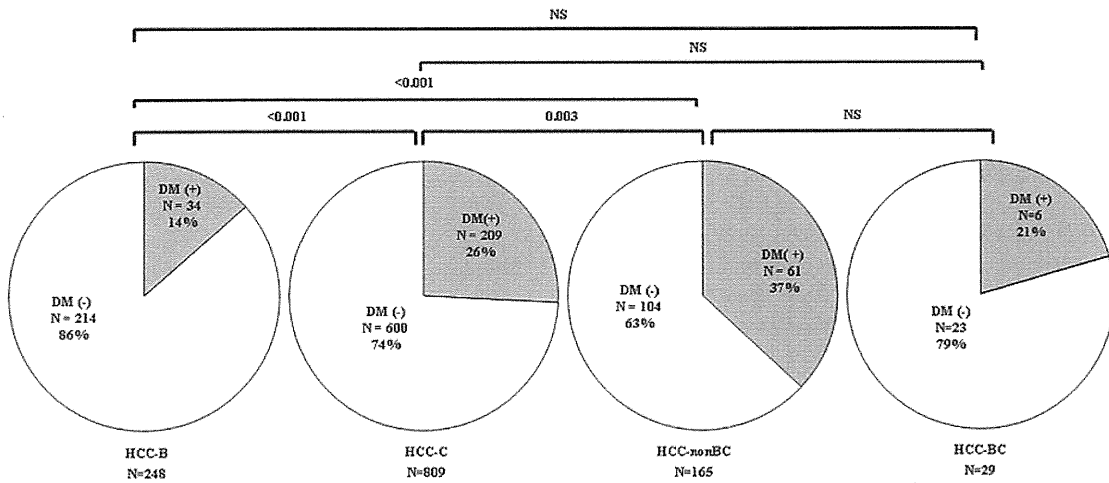


Figure 1. Prevalence rate of type 2 DM in HCC-B, HCC-C, HCC-BC and HCC-nonBC.

examined the association between a history of DM and the subsequent risk of cancer in a Japan Public Health Center-based prospective study, and found an increased risk of liver cancer in DM patients (12).

The present study found that the prevalence of type 2 DM was significantly higher in HCC-nonBC than in HCC-B and HCC-C patients. In particular, type 2 DM persisted in patients without chronic hepatitis virus infections; type 2 DM in these individuals may explain a relevant proportion of the observed cases of HCC. Previous studies have suggested that diabetes and/or non-alcoholic fatty liver disease account for at least a portion of these 'idiopathic' cases (14-16). Findings from the present study support the hypothesis that the presence of DM alone accounts for approximately 37% of cases of HCC-nonBC.

Investigations into the possible biological mechanisms of the association between type 2 DM and HCC-nonBC have been site-specific. However, these associations may be the result of metabolic and hormonal aberrations associated with type 2 DM, and common biological mechanisms may be at least partially associated with insulin and insulin-like growth factors (IGFs) (17).

The most obvious change in diabetic patients is reduced insulin sensitivity with compensatory hyperinsulinemia and elevated levels of IGF-1, which may in turn stimulate cell proliferation in the liver (18,19). At the same time, insulin activates the IGF-1 receptor, which is known to have a growth-promoting effect, including the modulation of cell cycle progression. Excess insulin may also indirectly affect the development of cancer by down-regulating the level of IGF-binding protein 1, which increases the level and bioavailability of total circulating IGF-1. Obesity and physical inactivity also cause hyperinsulinemia, and are thus also ultimately associated with cancer (17-20).

A survey of HCC-nonBC conducted between 1995 and 2003 in Japan by the Inuyama Hepatitis Research Group found that individuals with HCC-nonBC accounted for 9.3% of the general population (2). In the present study, we found the percentage of HCC-nonBC to be 14.1% in the Nagasaki area. Furthermore, the number and proportion of HCC-nonBC

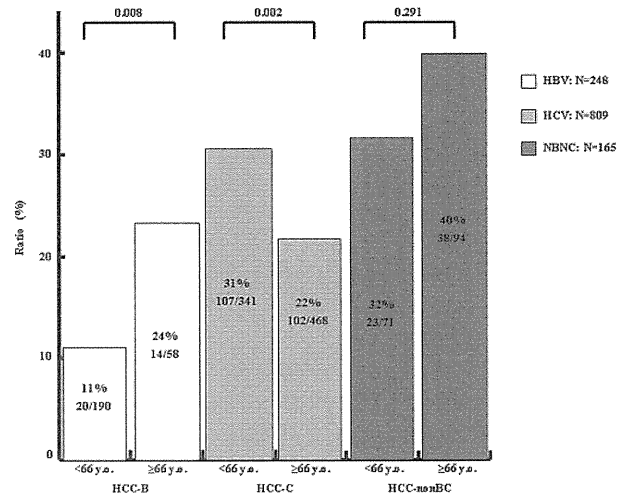


Figure 2. Age distribution for the prevalence rate of type 2 DM in HCC-B, HCC-C and HCC-nonBC.

cases gradually increased from 1981 to 2005 (4). According to an epidemiological study on DM by Nakano *et al.*, the number of patients with DM has been gradually increasing since the development of an automotive society and the Westernization of the Japanese diet (21). Since the prevalence of DM increases with age, the proportion of individuals with DM aged 60 or above has exceeded two-thirds of the estimated total number of patients in Japan (7.40 million in 2002), which has a rapidly aging society (21). In other words, the number of individuals with type 2 DM is increasing in Japan, and these individuals are at high risk for HCC. Thus, the number of HCC-nonBC cases will increase in the next decade in Japan.

Approximately 60% of liver cancer cases in Japan are anti-HCV-positive (4). An experimental study revealed that HCV infection itself induces insulin resistance through the disturbance of the insulin intracellular signaling pathway by the hepatitis virus core protein (22). Liver fat deposition may contribute to insulin resistance, which in turn leads to a loss of the restraining effect of insulin on the production of glucose

by hepatocytes, thereby causing diabetes (23). Steatosis occurs more frequently in patients with chronic HCV infection than in those with chronic HBV infection; this may explain the increased risk of DM among HCV patients (24). Although we proposed possible explanations for the correlation between HCV infection and the prevalence rate of type 2 DM in patients in this study, it is also possible that the mechanism is multifactorial. A previous study identified chronic hepatitis B as having no relationship to DM, and on the basis of the results of this study, we arrive at the same conclusion (25,26).

Several studies have indicated that the progression from chronic hepatitis to cirrhosis and HCC is accelerated by dual HCV infection (11,27). The strong effect of DM on HCC in the absence of hepatitis infection suggests that, in addition to the hepatitis C causal pathway, HCC is mediated through the reduction of IGF-1 factors or IGF binding protein-3, caused by hyperinsulinemia. This in turn stimulates the proliferation of cancer cells, as demonstrated by Lagiou *et al* (28). In the present study, the prevalence rate of DM in patients with HCC-C was significantly higher in patients older than 66 years of age. Our findings demonstrate that the effects of the interaction between DM and HCV further the incidence of HCC.

In conclusion, the prevalence of HCC-nonBC and HCC-C was significantly higher than that of HCC-B, while the prevalence of HCC-nonBC was significantly higher than that of HCC-C. In patients over 66 years of age, the prevalence of type 2 DM in HCC-B and HCC-nonBC cases was increased, whereas the prevalence of type 2 DM in HCC-C cases was significantly decreased. Our findings indicate that the interaction between type 2 DM and HCV increases the prevalence of HCC.

References

- Kiyosawa K and Tanaka E: Characteristics of hepatocellular carcinoma in Japan. *Oncology* 62: 5-7, 2002.
- Umemura T and Kiyosawa K: Epidemiology of hepatocellular carcinoma in Japan. *Hepatol Res* 37 (Suppl 2): 95-100, 2007.
- El-Serag HB: Hepatocellular carcinoma: an epidemiologic view. *J Clin Gastroenterol* 35: S72-S78, 2002.
- Taura N, Yatsubashi H, Nakao K, Ichikawa T and Ishibashi H: Long-term trends of the incidence of hepatocellular carcinoma in the Nagasaki prefecture, Japan. *Oncol Rep* 21: 223-227, 2009.
- Moore MA, Park CB and Tsuda H: Implications of the hyperinsulinaemia-diabetes-cancer link for preventive efforts. *Eur J Cancer Prev* 7: 89-107, 1998.
- El-Serag HB and Everhart JE: Diabetes increases the risk of acute hepatic failure. *Gastroenterology* 122: 1822-1828, 2002.
- Ajiki W, Tsukuma H and Oshima A: Cancer incidence and incidence rates in Japan in 1999: estimates based on data from 11 population-based cancer registries. *Jpn J Clin Oncol* 34: 352-356, 2004.
- Shintani Y, Fujie H, Miyoshi H, *et al*: Hepatitis C virus infection and diabetes: direct involvement of the virus in the development of insulin resistance. *Gastroenterology* 126: 840-848, 2004.
- Polesci J, Zucchetto A, Montella M, *et al*: The impact of obesity and diabetes mellitus on the risk of hepatocellular carcinoma. *Ann Oncol* 20: 353-357, 2009.
- El-Serag HB, Tran T and Everhart JE: Diabetes increases the risk of chronic liver disease and hepatocellular carcinoma. *Gastroenterology* 126: 460-468, 2004.
- Davila JA, Morgan RO, Shaib Y, McGlynn KA and El-Serag HB: Diabetes increases the risk of hepatocellular carcinoma in the United States: a population based case control study. *Gut* 54: 533-539, 2005.
- Inoue M, Iwasaki M, Otani T, Sasazuki S, Noda M and Tsugane S: Diabetes mellitus and the risk of cancer: results from a large-scale population-based cohort study in Japan. *Arch Intern Med* 166: 1871-1877, 2006.
- Fujino Y, Mizoue T, Tokui N and Yoshimura T: Prospective study of diabetes mellitus and liver cancer in Japan. *Diabetes Metab Res Rev* 17: 374-379, 2001.
- Wideroff L, Gridley G, Møller-Jensen L, *et al*: Cancer incidence in a population-based cohort of patients hospitalized with diabetes mellitus in Denmark. *J Natl Cancer Inst* 89: 1360-1365, 1997.
- Ichikawa T, Yanagi K, Motoyoshi Y, *et al*: Two cases of non-alcoholic steatohepatitis with development of hepatocellular carcinoma without cirrhosis. *J Gastroenterol Hepatol* 21: 1865-1866, 2006.
- Adami HO, Chow WH, Nyren O, *et al*: Excess risk of primary liver cancer in patients with diabetes mellitus. *J Natl Cancer Inst* 88: 1472-1477, 1996.
- Le Roith D: Seminars in medicine of the Beth Israel Deaconess Medical Center. Insulin-like growth factors. *N Engl J Med* 336: 633-640, 1997.
- Stuver SO, Kuper H, Tzonou A, *et al*: Insulin-like growth factor 1 in hepatocellular carcinoma and metastatic liver cancer in men. *Int J Cancer* 87: 118-121, 2000.
- Su TS, Liu WY, Han SH, *et al*: Transcripts of the insulin-like growth factors I and II in human hepatoma. *Cancer Res* 49: 1773-1777, 1989.
- Macaulay VM: Insulin-like growth factors and cancer. *Br J Cancer* 65: 311-320, 1992.
- Nakano T and Ito H: Epidemiology of diabetes mellitus in old age in Japan. *Diabetes Res Clin Pract* 77 (Suppl 1): 76-81, 2007.
- Davila JA, Morgan RO, Shaib Y, McGlynn KA and El-Serag HB: Hepatitis C infection and the increasing incidence of hepatocellular carcinoma: a population-based study. *Gastroenterology* 127: 1372-1380, 2004.
- Banerji MA, Buckley MC, Chaiken RL, Gordon D, Lebovitz HE and Kral JG: Liver fat, serum triglycerides and visceral adipose tissue in insulin-sensitive and insulin-resistant black men with NIDDM. *Int J Obes Relat Metab Disord* 19: 846-850, 1995.
- Czaja AJ, Carpenter HA, Santrach PJ and Moore SB: Host- and disease-specific factors affecting steatosis in chronic hepatitis C. *J Hepatol* 29: 198-206, 1998.
- Fraser GM, Harman I, Meller N, Niv Y and Porath A: Diabetes mellitus is associated with chronic hepatitis C but not chronic hepatitis B infection. *Isr J Med Sci* 32: 526-530, 1996.
- Chang KC, Tsai PS, Hsu MC, Hung SF, Tsai CC and Lu SN: Chronic hepatitis C increased the mortality rates of patients with hepatocellular carcinoma and diabetes mellitus in a triple hepatitis virus endemic community. *J Gastroenterol* 45: 636-645, 2010.
- Lai MS, Hsieh MS, Chiu YH and Chen TH: Type 2 diabetes and hepatocellular carcinoma: a cohort study in high prevalence area of hepatitis virus infection. *Hepatology* 43: 1295-1302, 2006.
- Lagiou P, Kuper H, Stuver SO, Tzonou A, Trichopoulos D and Adami HO: Role of diabetes mellitus in the etiology of hepatocellular carcinoma. *J Natl Cancer Inst* 92: 1096-1099, 2000.

Received: 2009.12.21
Accepted: 2010.07.07
Published: 2011.02.01

Authors' Contribution:

- A** Study Design
- B** Data Collection
- C** Statistical Analysis
- D** Data Interpretation
- E** Manuscript Preparation
- F** Literature Search
- G** Funds Collection

The incidence of hepatocellular carcinoma associated with hepatitis C infection decreased in Kyushu area

Naota Taura^{1ABCDEF}, Nobuyoshi Fukushima^{2ABCDEF}, Hiroshi Yatsuhashi^{1ABCDEF}, Yuko Takami^{3ABCDEF}, Masataka Seike^{4ABCDEF}, Hiroshi Watanabe^{5ABCDEF}, Toshihiko Mizuta^{6ABCDEF}, Yutaka Sasaki^{7ABCDEF}, Kenji Nagata^{8ABCDEF}, Akinari Tabara^{9ABCDEF}, Yasuji Komorizono^{10ABCDEF}, Akinobu Taketomi^{11ABCDEF}, Shuichi Matsumoto^{12ABCDEF}, Tsutomu Tamai^{13ABCDEF}, Toyokichi Muro^{14ABCDEF}, Kazuhiko Nakao^{15ABCDEF}, Kunitaka Fukuizumi^{16ABCDEF}, Tatsuji Maeshiro^{17ABCDEF}, Osami Inoue^{18ABCDEF}, Michio Sata^{2ABCDEF}

- ¹ Clinical Research Center, National Nagasaki Medical Center, Omura City, Nagasaki, Japan
- ² Division of Gastroenterology, Department of Medicine, Kurume University School of Medicine, Kurume City, Fukuoka, Japan
- ³ Department of Surgery, National Hospital Organization Kyushu Medical Center, Chuo-ku, Fukuoka City, Fukuoka, Japan
- ⁴ 1st Department of Internal Medicine, Oita University Faculty of Medicine, Hasama-machi, Yufu City, Oita, Japan
- ⁵ Department of Hepatology, Fukuoka Red Cross Hospital, Minami-ku, Fukuoka City, Fukuoka, Japan
- ⁶ Department of Internal Medicine, Saga University Faculty of Medicine, Saga City, Saga, Japan
- ⁷ Department of Gastroenterology and Hepatology, Graduate School of Medical Sciences, Kumamoto University, Kumamoto City, Kumamoto, Japan
- ⁸ Department of Internal Medicine II, Miyazaki Medical College, Kiyotake-cho, Miyazaki-gun, Miyazaki, Japan
- ⁹ 3rd Department of Internal Medicine, University of Occupational and Environmental Health, Kitakyusyu City, Fukuoka, Japan
- ¹⁰ Department of Hepatology, Nanpuh Hospital, Kagoshima City, Kagoshima, Japan
- ¹¹ Department of Surgery and Science, Graduate school of medical sciences, Kyushu University, Fukuoka City, Fukuoka, Japan
- ¹² Department of Internal Medicine, Fukuoka Tokusukai Medical Center, Kasuga City, Fukuoka, Japan
- ¹³ Digestive Disease and Life-Style Related Disease, Health Research Human and Environmental Sciences, Kagoshima University, Kagoshima City, Kagoshima, Japan
- ¹⁴ Department of Gastroenterology, National Hospital Organization Oita Medical Center, Oita City, Oita, Japan
- ¹⁵ Department of Gastroenterology and Hepatology, Nagasaki University School of Medicine, Nagasaki City, Nagasaki, Japan
- ¹⁶ Department of Gastroenterology, National Hospital Organization, Kyushu Medical Center, Fukuoka City, Fukuoka, Japan
- ¹⁷ 1st Department of Internal Medicine, Faculty of Medicine, University of the Ryukyus, Nakagami-gun, Okinawa, Japan
- ¹⁸ Department of Gastroenterology, Nagasaki Rousai Hospital, Sasebo City, Nagasaki, Japan

Source of support: Departmental sources

Background:	Summary The incidence of hepatocellular carcinoma (HCC) in Japan has still been increasing. The aim of the present study was to analyze the epidemiological trend of HCC in the western area of Japan, Kyushu.
Material/Methods:	A total of 10,010 patients with HCC diagnosed between 1996 and 2008 in the Liver Cancer study group of Kyushu (LCSK), were recruited for this study. Cohorts of patients with HCC were categorized into five year intervals. The etiology of HCC was categorized to four groups as follows; B: HBsAg positive, HCV-RNA negative, C: HCV-RNA positive, HBsAg negative, B+C: both of HBsAg and HCV-RNA positive, non-BC: both of HBsAg and HCV-RNA negative.
Results:	B was 14.8% (1,485 of 10,010), whereas 68.1% (6,819 of 10,010) had C, and 1.4% (140 of 10,010) had HCC associated with both viruses. The remaining 1,566 patients (15.6%) did not associate with both viruses. Cohorts of patients with HCC were divided into six-year intervals (1996–2001 and 2002–2007). The ratio of C cases decreased from 73.1% in 1996–2001 to 64.9% in 2002–2007. On the other hand, B and nonBC cases increased significantly from 13.9% and 11.3% in 1996–2001 to 16.2% and 17.6% in 2002–2007, respectively.
Conclusions:	The incidence of hepatocellular carcinoma associated with hepatitis C infection decreased after 2001 in Kyushu area. This change was due to the increase in the number and proportion of the HCC not only nonBC patients but also B patients.
key words:	hepatitis virus • hepatocellular carcinoma • Japan
Full-text PDF:	http://www.medscimonit.com/fulltxt.php?ICID=881375
Word count:	1778
Tables:	3
Figures:	2
References:	32
Author's address:	Hiroshi Yatsuhashi, Clinical Research Center, National Nagasaki Medical Center, 2-1001-1 Kubara, Omura City, Nagasaki, Japan, e-mail: yatsuhashi@nmc.hosp.go.jp

BACKGROUND

The three leading causes of death in Japan are malignant neoplasms, cardiovascular diseases, and cerebrovascular diseases. Since 1981, malignant neoplasms have been the leading cause of death in Japan. For the last 30 years, liver cancer has been the third leading cause of death from malignant neoplasms in men. In women, liver cancer has ranked fifth during the past decade [1]. Hepatocellular carcinoma (HCC) accounts for 85% to 90% of primary liver cancers [2] and the age-adjusted HCC mortality rate has increased in recent decades in Japan [3]. Similarly, a trend of increasing rates of HCC has been reported from several developed countries in North America, Europe and Asia [4,5]. HCC often develops in patients with liver cirrhosis caused by hepatitis B virus (HBV), hepatitis C virus (HCV), excessive alcohol consumption, or nonalcoholic fatty liver disease. Of the hepatitis viruses which cause HCC, HCV is predominant in Japan [6–9].

Although the age-adjusted incidence of HCC has increased in Japan, sequential changes in etiology of HCC patients between 2001 and 2008 are not fully understood [10]. To clarify factors affecting epidemiological changes in Japanese HCC patients, especially the recent trend of HCC, we analyzed the epidemiological trend of HCC in the western area of Japan, Kyushu area.

MATERIAL AND METHODS

Patients

A total of 10,010 patients with HCC diagnosed between 1996 and 2008 in the Liver Cancer study group of Kyushu (LCSK), were recruited for this study. The diagnosis of HCC was based on AFP levels and imaging techniques including ultrasonography (USG), computerized tomography (CT), magnetic resonance imaging (MRI), hepatic angiography (HAG), and/or tumor biopsy. The diagnostic criteria for HCC were either a confirmative tumor biopsy or elevated AFP (>20 ng/mL) and neovascularization in HAG and/or CT.

Etiology of HCC

A diagnosis of chronic HCV infection was based on the presence of HCV-RNA detected by polymerase chain reaction (PCR), whereas diagnosis of chronic HBV infection was based on the presence of hepatitis B surface antigen (HBsAg). The etiology of HCC was categorized to four groups as follows; **B**: HBsAg positive, HCV-RNA negative, **C**: HCV-RNA positive, HBsAg negative, **B+C**: both of HBsAg and HCV-RNA positive, **nonBC**: both of HBsAg and HCV-RNA negative.

Statistical analysis

The data were analyzed by the Mann-Whitney test for the continuous ordinal data, the χ^2 test with Yates' correction and the Fisher exact test for the association between two qualitative variables. The standard deviation was calculated based on the binomial model for the response proportion. $P < 0.05$ was considered statistically significant.

RESULTS

Clinical features of the studied patients

A total of 10,010 patients with HCC were diagnosed at our study group from 1996 to 2008. Table 1 show that the proportion of patients diagnosed with **B** was 14.8% (1,485 of 10,010), whereas 68.1% (6,819 of 10,010) had **C**, and an additional 1.4% (140 of 10,010) had HCC associated with both viruses. The remaining 1,566 patients (15.6%) did not associate with both viruses. In analysis of patients in HCC by category, the median age of patients at diagnosis of **B** was 57 years old significant younger than other types HCC (**C**: 69, **nonBC**: 70, **B+C** 65 years old).

As shown in Figures 1 and 2, the number and ratio of **B** cases remained unchanged from 1996 to 2001 and thereafter increased and plateaued, whereas **C** rapidly increased from 1996 to 2000 and thereafter decreased and plateaued. In addition, the number and ratio of the **nonBC** cases has increased continued gradually and continued in this study period.

Change of etiology in patients with HCC during the period 1996–2007 with 6-years intervals

Cohorts of patients with HCC were divided into six-year intervals (1996–2001 and 2002–2007). Table 2 show that the incident rate of **C** decreased significantly from 73.1% in 1996–2001 to 64.9% in 2002–2007 (1996–2001 vs. 2002–2007, $p < 0.001$). On the other hand, the incident rate of **B** and **nonBC** increased significantly from 13.9% and 11.3% in 1996–2001 to 16.2% and 17.6% in 2002–2007, respectively. Not only the incident rate but also number of **B** and **nonBC** became larger in same 6 years periods.

Table 3 shows that male/female ratio of **C** and **nonBC** decreased significantly from 2.2 and 4.0 in 1996–2001 to 1.8 and 2.7 in 2002–2007, respectively ($p < 0.001$). The ratio became clearly smaller, indicates an increase in female patients with **C** and **nonBC**. On the other hand, the male/female ratio of **B** patients did not significantly change during the period. The median age at diagnosis of **B**, **C**, and **nonBC** in six-year intervals were significant increase from 56 to 58, from 67 to 71 and from 68 to 71 years of age during the period.

DISCUSSION

Our study was the twenty-three major liver center-based study designed to examine the sequential change in the background of HCC patients during the past 13 years, 1996–2008. More than 80% of our patients had chronic HBV or HCV infections. During this observation period, the number and proportion of HCC-C reached a peak in 2000 and thereafter decreased and became stabilized. Previous studies from Japan reported that the proportion of the HCC patients with HCV infection had been increased and reached a plateau in the period of 1981–2001 [1,3,10–12]. However, in our study, the number and proportion of the HCC patients with HCV infection cases decreased in 2001–2008. The reason may be explained as follows; interferon therapy for chronic hepatitis C may have been associated with a decreased incidence of HCC [13–17]. Oral supplementation with a oral branched-chain amino acids has been useful in the prevention HCC [18]. Finally, the chronically HCV-infected

Table 1. The characteristic of HCC patients during the period of 1996–2008.

Age (y.o.)	B		C		nonB		B+C		Total
	Male	Female	Male	Female	Male	Female	Male	Female	
0–	1	0	0	1	0	0	0	0	2
10–	4	1	0	0	0	2	0	0	7
20–	6	2	1	0	1	1	0	0	11
30–	31	5	4	0	11	3	2	0	56
40–	204	22	130	12	32	15	12	0	427
50–	507	66	728	145	167	32	31	6	1,682
60–	287	118	1836	741	411	102	35	13	3,543
70–	140	64	1775	947	483	133	22	14	3,578
80–	9	18	271	214	97	65	1	4	679
90–	0	0	9	5	9	2	0	0	58
Total	1,189	296	4,754	2,065	1,211	355	103	37	10,010
	1,485 (4.8%)		6,819 (68.1%)		1,566 (15.6%)		140 (1.4%)		
Median	57	63	67	70	68	70	61	68	67
	57		69		70		65		
Mean	56	64	68	71	69	71	62	68	67
	58		68		68		63		
Range	1–87	14–89	27–94	0–93	28–96	17–90	36–82	55–82	0–96
	1–89		0–94		17–96		36–82		

Age: B vs. C $p \leq 0.001$; B vs. B+C $p \leq 0.001$; B vs. nonB $p \leq 0.001$; C vs. BC $p \leq 0.001$; C vs. nonBC $p = 0.043$; BC vs. nonB+C $p \leq 0.001$. IQR – interquartile range; SD – standard deviation.

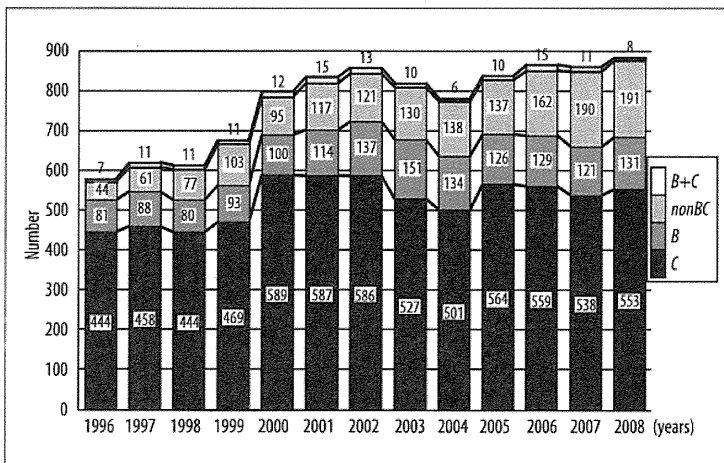


Figure 1. Sequential changes in the number of HCC patients categorized by etiology during the period 1996–2008.

population is aging in Japan. Yoshizawa et al. reported that age-specific prevalence for the presence of HCVAb among ~300,000 voluntary blood donors from Hiroshima in 1999 clearly increased with the age, reaching the highest proportion of 7% in individuals who were more than 70 years old [10,19]. In this study, the median age of the HCC patients with HCV infection steadily increased from 67 to 71 years of age during the studied period. In a word, HCV infected

people become older with years in Japan and they were regarded as a high risk for HCC.

The prevalence rate of HBV in Kyushu area has been reported to be higher than other area in Japan [1]. In Kyushu area, 95% of patients with chronic HBV infection had HBV genotype C except for Okinawa [20]. HBV genotype C is thought to be associated with higher incidence of HCC



This copy is for personal use only - distribution prohibited.

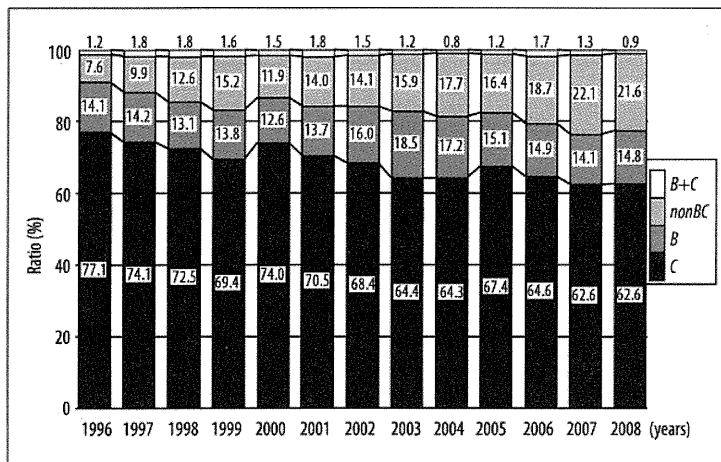


Figure 2. Sequential changes in the ratio of HCC patients categorized by etiology during the period 1996–2008.

Table 2. Change of etiology in patients with HCC during the period 1996–2007 with 6-years intervals.

Period	1996–2001	2002–2007	P value
Number	3,023	4,173	
Sex			
Male	2,162	2,849	
Female	861	1,324	
Ratio (male/female)	2.5	2.2	0.003
Age (y.o.) (IQR)	66 (14)	69 (12)	<0.001
Hepatitis virus (%)			
B	13.9	16.2	
C	73.1	64.9	
B+C	1.7	1.3	
nonBC	11.3	17.6	0.001

QR – interquartile range.

compared with other HBV genotypes [21]. In the present study, the incident rate of HCC patients with HBV infection became larger in this study period. To explain this change, we must consider from two viewpoints. The one is that the number of patients with HCC caused by HCV infection decreased, the other is that the proportion of chronic HBV infected patients who have reached the age of developing HCC is relatively high as described below.

Nationwide health survey for HBsAg in the over 40 years of age population had been done between 2002 and 2006 in Japan. This survey reports indicated that the average HBsAg prevalence was 1.2% in the total Japanese population patients with chronic HBV infection [10] and the age-specific prevalence of HBsAg was higher in the group aged between 50 (1.4%) and 55 years (1.5%). In the HCC patients with HBV genotype C, the mean age was 55 years in Japan [20]. This overlap between age-specific prevalence and hepatocellular carcinogenic age would be associated with the increase of HCC patients with HBV infection. Nucleoside analogue reverse transcriptase inhibitor (NARTI) therapy effectively reduces the incidence of HCC in chronic hepatitis B patients [22,23]. However, Interferon therapy for

Table 3. The median age and male/female ratio of HCC patients during the period of 1996–2007.

Period	1996–2001	2002–2007	P value
B			
Age (y.o.) (IQR)	56 (14)	58 (15)	0.001
Sex			
Male	331	519	
Female	88	157	
Ratio (male/female)	3.8	3.3	0.391
C			
Age (y.o.) (IQR)	67 (9)	71 (11)	<0.001
Sex			
Male	1,524	1,753	
Female	687	955	
Ratio (male/female)	2.2	1.8	0.002
nonBC			
Age (y.o.) (IQR)	68 (12)	71 (13)	<0.001
Sex			
Male	273	534	
Female	69	201	
Ratio (male/female)	4.0	2.7	0.012

QR – interquartile range.

chronic hepatitis C started from 1992, whereas NARTI therapy for HBV started from 2000 in Japan [24,25]. Hence, HBV associated HCC will probably decrease in Japan during the next 10 to 20 years.

The survey of HCC patients associated with nonBC infection in Japan was conducted by Inuyama Hepatitis Research Group from 1995 to 2003. The ratio of HCC patients with nonBC accounted 9.3% [1]. In the present study, the ratio of HCC patients with nonBC was 14.1%. Furthermore, the number and the proportion of HCC patients with nonBC have been gradually increasing in the periods. The current two studies account for the increase in number and proportion of HCC patients with nonBC. First, Lai et al. reported

that type 2 diabetes increases the risk of developing HCC in those who are HCV negative or have a high level of total cholesterol [26]. Second, Nakano et al. reported that epidemiological studies on diabetes mellitus revealed that the number of patients with diabetes mellitus is gradually increasing in Japan along with development of car society and westernization of food intake. Since prevalence of diabetes mellitus increases with aging, proportion of individuals with diabetes mellitus aged over 60 has exceeded two-third of estimated total number of patients (7.40 million in 2002) in Japan where aging of society is rapidly progressing [27]. In a word, the number of type 2 diabetes people is increasing in Japan and they were regarded as a high risk for HCC. Then, the number and the proportion of HCC patients with nonBC have been increased recent twelve years in Japan.

It is known that 2 to 4 decades of chronic HCV infection are required to develop cirrhosis and subsequent HCC [28–31]. The number of HCC cases has increased in Japan, because individuals infected with HCV during the past have grown old and have reached the cancer-bearing age. The prevalence of HCV infection in young Japanese individuals is low and the incidence of HCVAb is very low because of preventative actions against HCV infection such as the screening of blood products for HCV and the use of sterile medical equipment [32]. Additionally, we showed that the number and proportion of patients with HCC-C cases decreased, whereas the number and ratio of HCC-nonBC steadily increased during the studied period. These findings may be expected that the incidence of HCC patients with nonBC in Japan may continue to increase even after the consequence of the HCV epidemic level off, a country that is far advanced with regard to HCC patients with HCV infection, in the near future.

CONCLUSIONS

In summary, HCC patients had increased from 1996 to 2000 and this increase was originated from HCC patients with HCV infection. The number and proportion of HCC patients with HCV infection reached a peak in 2000 and thereafter decreased and became stabilized. The incidence of hepatocellular carcinoma associated with hepatitis C infection decreased after 2001 in Kyushu area. This change was due to the increase in the number and proportion of the HCC not only nonBC patients but also B patients.

REFERENCES:

- Umemura T, Kiyosawa K: Epidemiology of hepatocellular carcinoma in Japan. *Hepatol Res*, 2007; 37(Suppl.2): S95–100
- El-Serag HB, Rudolph KL: Hepatocellular carcinoma: epidemiology and molecular carcinogenesis. *Gastroenterology*, 2007; 132: 2557–76
- Kiyosawa K, Tanaka E: Characteristics of hepatocellular carcinoma in Japan. *Oncology*, 2002; 62: 5–7
- McGlynn KA, Tsao L, Hsing AW et al: International trends and patterns of primary liver cancer. *Int J Cancer*, 2001; 94: 290–96
- Bosch FX, Ribes J, Diaz M, Cleries R: Primary liver cancer: worldwide incidence and trends. *Gastroenterology*, 2004; 127: S5–16
- Hamasaki K, Nakata K, Tsutsumi T et al: Changes in the prevalence of hepatitis B and C infection in patients with hepatocellular carcinoma in the Nagasaki Prefecture, Japan. *J Med Virol*, 1993; 40: 146–49
- Kato Y, Nakata K, Omagari K et al: Risk of hepatocellular carcinoma in patients with cirrhosis in Japan. Analysis of infectious hepatitis viruses. *Cancer*, 1994; 74: 2234–38
- Shiratori Y, Shiina S, Imamura M et al: Characteristic difference of hepatocellular carcinoma between hepatitis B- and C- viral infection in Japan. *Hepatology*, 1995; 22: 1027–33
- Shiratori Y, Shiina S, Zhang PY et al: Does dual infection by hepatitis B and C viruses play an important role in the pathogenesis of hepatocellular carcinoma in Japan? *Cancer*, 1997; 80: 2060–67
- Kiyosawa K, Umemura T, Ichijo T et al: Hepatocellular carcinoma: recent trends in Japan. *Gastroenterology*, 2004; 127: S17–26
- Taura N, Yatsushashi H, Hamasaki K et al: Increasing hepatitis C virus-associated hepatocellular carcinoma mortality and aging: Long term trends in Japan. *Hepatol Res*, 2006; 34: 130–34
- Taura N, Hamasaki K, Nakao K et al: Aging of patients with hepatitis C virus-associated hepatocellular carcinoma: long-term trends in Japan. *Oncol Rep*, 2006; 16: 837–43
- Nishiguchi S, Kuroki T, Nakatani S et al: Randomised trial of effects of interferon-alpha on incidence of hepatocellular carcinoma in chronic active hepatitis C with cirrhosis. *Lancet*, 1995; 346: 1051–55
- Nishiguchi S, Shiomi S, Nakatani S et al: Prevention of hepatocellular carcinoma in patients with chronic active hepatitis C and cirrhosis. *Lancet*, 2001; 357: 196–97
- Kasahara A, Hayashi N, Mochizuki K et al: Risk factors for hepatocellular carcinoma and its incidence after interferon treatment in patients with chronic hepatitis C. Osaka Liver Disease Study Group. *Hepatology*, 1998; 27: 1394–402
- Ikeda K, Saitoh S, Arase Y et al: Effect of interferon therapy on hepatocellular carcinogenesis in patients with chronic hepatitis type C: A long-term observation study of 1,643 patients using statistical bias correction with proportional hazard analysis. *Hepatology*, 1999; 29: 1124–30
- Makiyama A, Itoh Y, Kasahara A et al: Characteristics of patients with chronic hepatitis C who develop hepatocellular carcinoma after a sustained response to interferon therapy. *Cancer*, 2004; 101: 1616–22
- Muto Y, Sato S, Watanabe A et al: Effects of oral branched-chain amino acid granules on event-free survival in patients with liver cirrhosis. *Clin Gastroenterol Hepatol*, 2005; 3: 705–13
- Yoshizawa H: Hepatocellular carcinoma associated with hepatitis C virus infection in Japan: projection to other countries in the foreseeable future. *Oncology*, 2002; 62: 8–17
- Orito E, Mizokami M: Hepatitis B virus genotypes and hepatocellular carcinoma in Japan. *Intervirology*, 2003; 46: 408–12
- Orito E, Mizokami M: Differences of HBV genotypes and hepatocellular carcinoma in Asian countries. *Hepatol Res*, 2007; 37: S33–35
- Matsumoto A, Tanaka E, Rokuhara A et al: Efficacy of lamivudine for preventing hepatocellular carcinoma in chronic. *Hepatol Res*, 2005; 32(3): 173–84
- Xu J, Shi J, Wang YP et al: Milder liver cirrhosis and loss of serum HBeAg do not imply lower risk for. *Med Sci Monit*, 2009; 15(6): CR274–79
- Hayashi N, Takehara T: Antiviral therapy for chronic hepatitis C: past, present, and future. *J Gastroenterol*, 2006; 41(1): 17–27
- Kumashiro R, Kuwahara R, Ide T et al: Subclones of drug-resistant hepatitis B virus mutants and the outcome of breakthrough hepatitis in patients treated with lamivudine. *Intervirology*, 2003; 46(6): 350–54
- Lai MS, Hsieh MS, Chiu YH, Chen TH: Type 2 diabetes and hepatocellular carcinoma: A cohort study in high prevalence area of hepatitis virus infection. *Hepatology*, 2006; 43: 1295–302
- Nakano T, Ito H: Epidemiology of diabetes mellitus in old age in Japan. *Diabetes Res Clin Pract*, 2007; 77(Suppl.1): S76–81
- Deuffic S, Poynard T, Valleron AJ: Correlation between hepatitis C virus prevalence and hepatocellular carcinoma mortality in Europe. *J Viral Hepat*, 1999; 6: 411–13
- El-Serag HB, Mason AC: Rising incidence of hepatocellular carcinoma in the United States. *N Engl J Med*, 1999; 340: 745–50
- Planas R, Balleste B, Antonio Alvarez M et al: A natural history of decompensated hepatitis C virus-related cirrhosis. A study of 200 patients. *J Hepatol*, 2004; 40: 823–30
- Davila JA, Morgan RO, Shaib Y et al: Hepatitis C infection and the increasing incidence of hepatocellular carcinoma: a population-based study. *Gastroenterology*, 2004; 127: 1372–80
- Sasaki F, Tanaka J, Moriya T et al: Very low incidence rates of community-acquired hepatitis C virus infection in company employees, long-term inpatients, and blood donors in Japan. *J Epidemiol*, 1996; 6: 198–203

PH

Original Article

Data mining reveals complex interactions of risk factors and clinical feature profiling associated with the staging of non-hepatitis B virus/non-hepatitis C virus-related hepatocellular carcinoma

Takumi Kawaguchi,¹ Tatsuyuki Kakuma,² Hiroshi Yatsuhashi,³ Hiroshi Watanabe,⁴ Hideki Saitsu,⁵ Kazuhiko Nakao,⁶ Akinobu Taketomi,⁷ Satoshi Ohta,⁸ Akinari Tabaru,⁹ Kenji Takenaka,¹⁰ Toshihiko Mizuta,¹¹ Kenji Nagata,¹² Yasuji Komorizono,¹³ Kunitaka Fukuizumi,¹⁴ Masataka Seike,¹⁵ Shuichi Matsumoto,¹⁶ Tatsuji Maeshiro,¹⁷ Hirohito Tsubouchi,¹⁸ Toyokichi Muro,¹⁹ Osami Inoue,²⁰ Motoo Akahoshi²¹ and Michio Sata:¹ The Liver Cancer Study Group of Kyushu

¹Department of Digestive Disease Information and Research and Department of Medicine, Kurume University School of Medicine, ²The Biostatistics Center, Medical School, Kurume University, Kurume, ³Department of Therapeutic Research, Clinical Research Center, National Hospital Organization Nagasaki Medical Center, Omura, ⁴Hepatology Division, Fukuoka Red Cross Hospital, ⁵Department of Surgery, Center for Liver Diseases, National Hospital Organization Kyushu Medical Center, Fukuoka, ⁶Department of Gastroenterology and Hepatology, Graduate School of Biomedical Sciences, Nagasaki University, Nagasaki, ⁷Department of Surgery and Science, Kyushu University, ⁸Division of Gastroenterology, National Kyushu Cancer Center, Fukuoka, ⁹Third Department of Internal Medicine, University of Occupational and Environmental Health, Japan, School of Medicine, Kitakyushu, ¹⁰Fukuoka City Hospital, Fukuoka, ¹¹Department of Internal Medicine, Saga University, Saga, ¹²Gastroenterology and Hematology, Internal Medicine, Faculty of Medicine, University of Miyazaki, Miyazaki, ¹³Hepatology, Nanpoh Hospital, Kagoshima, ¹⁴Department of Gastroenterology, National Hospital Organization Kyushu Medical Center, Fukuoka, ¹⁵Department of Internal Medicine I, Faculty of Medicine, Oita University, Yufu, ¹⁶Department of Internal Medicine, Fukuoka Tokushukai Medical Center, Fukuoka, ¹⁷Department of Infections, Respiratory, and Digestive Medicine Control and Prevention of Infectious Disease Faculty of Medicine, University of the Ryukyus, Okinawa, ¹⁸Department of Digestive and Life-style Related Disease, Kagoshima University Graduate School of Medical and Dental Sciences, Kagoshima, ¹⁹Department of Gastroenterology, National Hospital Organization Oita Medical Center, Oita, ²⁰Digestive Organ Center, Nagasaki Labour Welfare Hospital, Sasebo, and ²¹Department of Internal Medicine, Nishinohon Hospital, Kumamoto, Japan

Aim: Non-hepatitis B virus/non-hepatitis C virus-related hepatocellular carcinoma (NBNC-HCC) is often detected at an advanced stage, and the pathology associated with the staging of NBNC-HCC remains unclear. Data mining is a set of statistical techniques which uncovers interactions and meaningful patterns of factors from a large data collection. The aims of this study were to reveal complex interactions of the risk factors and clinical feature profiling associated with the staging of NBNC-HCC using data mining techniques.

Methods: A database was created from 663 patients with NBNC-HCC at 20 institutions. The Milan criteria were used as

staging of HCC. Complex associations of variables and clinical feature profiling with the Milan criteria were analyzed by graphical modeling and decision tree algorithm methods, respectively.

Results: Graphical modeling identified six factors independently associated with the Milan criteria: diagnostic year of HCC; diagnosis of liver cirrhosis; serum aspartate aminotransferase (AST); alanine aminotransferase (ALT); α -fetoprotein (AFP); and des- γ -carboxy prothrombin (DCP) levels. The decision trees were created with five variables to classify six groups of patients. Sixty-nine percent of the patients were

Correspondence: Dr Takumi Kawaguchi, Department of Digestive Disease Information and Research, Kurume University School of Medicine, 67 Asahi-machi, Kurume 830-0011, Japan. Email: takumi@med.kurume-u.ac.jp

Received 19 December 2010; revision 6 February 2011; accepted 22 February 2011.

within the Milan criteria, when patients showed an AFP level of 200 ng/mL or less, diagnosis of liver cirrhosis and an AST level of less than 93 IU/mL. On the other hand, 18% of the patients were within the Milan criteria, when patients showed an AFP level of more than 200 ng/mL and ALT level of 20 IU/mL or more.

INTRODUCTION

HEPATOCELLULAR CARCINOMA (HCC) is the fifth most common cancer and the third most common cause of cancer-related deaths worldwide.^{1–3} Chronic infection with hepatitis B virus (HBV) or hepatitis C virus (HCV) is a risk factor for HCC. Recent developments in the management of patients with viral hepatitis have resulted in early detection of HCC and improvement of prognosis.^{4–6}

The number of patients with non-HBV/non-HCV-related HCC (NBNC-HCC) has been increasing, and NBNC-HCC now accounts for 12–16% of all the HCC cases in Japan.^{8,9} A variety of factors are involved in the development and progression of this cancer including age, sex, alcoholic liver disease and diabetes mellitus.^{10–12} Therefore, neither early detection nor improved prognosis has been achieved in NBNC-HCC.⁶ Radical treatment is applicable to patients with NBNC-HCC who meet the Milan criteria;¹³ however, this cancer is often detected at an advanced stage. For earlier detection, it is important to understand the complex interactions of the risk factors and clinical feature profiling associated with the Milan criteria, a staging system for NBNC-HCC.

Data mining, a set of statistical techniques, uncovers meaningful patterns and interactions of variables from a large data collection even when there is no a priori hypothesis imposed.¹³ Graphical modeling is an exploratory multivariate analysis of data mining that reveals complex associations between variables.¹⁴ This analysis assumes that the response variable is influenced by multiple factors.¹⁵ Therefore, different from results of univariate analysis, an association between a risk factor and an outcome variable may disappear or appear because of the effects of another set of variables known as “confounding factors”.^{16,17} Furthermore, its findings are visualized as a graph, which provides an idea of how variables interact and denotes the conditional independence structure between random variables.¹⁵ Therefore, graphical modeling is now identified as a new approach to model clinical data.¹⁸

Decision tree making is another exploratory technique of data mining that represents a series of rules

Conclusion: Data mining disclosed complex interactions of the risk factors and clinical feature profiling associated with the staging of NBNC-HCC.

Key words: data mining, disease progression, hepatoma, non-viral hepatitis, tumor marker

for classification by identifying priorities.^{19–21} It is an explicit, quantitative and systematic approach to decision-making under conditions of uncertainty and allows clinicians to choose an option that maximizes the net benefit to the patient.²² Recently, decision trees were used to reveal the clinical feature profiling for staging of pancreatic cancer²³ and ovarian cancer.²⁴ However, decision trees have never been applied to identify the clinical feature profiling associated with the staging of NBNC-HCC.

The aims of this study were to reveal complex interactions of the risk factors and clinical feature profiling associated with the staging of NBNC-HCC using data mining techniques.

METHODS

Patient database

BETWEEN 1995 AND 2006, a total of 10 133 patients were diagnosed with HCC at 23 institutions located in Kyushu, a high morbidity area of HCC in Japan. Among them, 1363 patients were diagnosed with NBNC-HCC according to the negative results of both serum hepatitis B surface antigen and serum anti-HCV antibody or HCV RNA.

In order to examine the clinical variables associated with the staging of NBNC-HCC, a database of 663 patients with NBNC-HCC at 20 institutions was created on the basis of the following variables: diagnostic year of HCC; age; sex; family history of liver disease; past history of blood transfusion; alcohol intake; diagnosis of liver cirrhosis; diagnosis of liver disease; diagnosis of diabetes mellitus; serum aspartate aminotransferase (AST) level; serum alanine aminotransferase (ALT) level; serum α -fetoprotein (AFP) level; serum des- γ -carboxy prothrombin (DCP) level; size of HCC; and number of HCC.

For practical use, alcohol intake, serum AFP level and serum DCP level were categorized as follows. Alcohol intake: none; 60 g/day or less; 60–100 g/day; or more than 100 g/day. AFP level: 20 ng/mL or less; 20–200 ng/mL; or more than 200 ng/mL. DCP level: 40 mAU/mL or less; 40–100 mAU/mL; or more than 100 mAU/mL.

The study protocol conformed to the ethical guidelines of the 1975 Declaration of Helsinki, as reflected by the approval of the Ethics Committee of the Kurume University School of Medicine.

Diagnosis and staging of HCC

The diagnosis of HCC was based on the clinical practice manual proposed by the Japan Society of Hepatology,²⁵ by using serum AFP and DCP levels and imaging techniques including ultrasonography, computerized tomography, magnetic resonance imaging, hepatic angiography and/or tumor biopsy. The Milan criteria (single nodule ≤ 5 cm or three nodules < 3 cm) were used for the staging of HCC.²⁶

Data mining

An association between the Milan criteria and each risk factor was examined by Student's *t*-test and χ^2 -test. Because of the insufficient scientific evidence for testing specific clinical hypotheses, graphical modeling and decision trees were employed to explore complex associations between the Milan criteria and a set of risk factors.

MIM software (<http://www.hypergraph.dk/>) was used for graphical modeling. R package rpart (recursive partitioning and regression trees by Terry Therneau and Beth Atkinson; <http://www.mayo.edu/biostatistics>) was used to construct a decision tree algorithm. In order to evaluate the prediction error, the original data ($n = 663$) were randomly divided into a training dataset ($n = 442$) and a test dataset ($n = 221$). Ten-fold cross-validation was conducted to construct the initial tree on the basis of the training dataset; then, the optimal-size tree was constructed by examining a set of cost-complexity parameters. The overall prediction error rate as well as the sensitivity and specificity were calculated by applying the results of the decision tree algorithm to the test dataset.

RESULTS

Characteristics of patients with NBNC-HCC

THE PATIENTS' CHARACTERISTICS are summarized in Table 1. Family history of liver disease and history of blood transfusion were not noted in more than 80% of the patients. Approximately 40% of the patients did not have any etiology of chronic liver disease.

Univariate analysis of variables associated with the Milan criteria

Univariate analysis showed that diagnosis of liver cirrhosis, serum AST level, serum ALT level, serum AFP

Table 1 Characteristics of all patients

Variable	
<i>n</i>	663
Diagnostic year of HCC (years)	2002 \pm 3
Age (years)	68.1 \pm 9.9
Male/female	480/183
Family history of liver disease (yes/no/unclear)	79/547/37
History of blood transfusion (no/before 1989/after 1989/unclear)	584/29/22/28
Daily alcohol intake (none/ < 60 g/60–100 g/ > 100 g)	254/183/141/85
Etiology of chronic liver disease (none/alcohol/others)	296/188/179
Diagnosis of liver cirrhosis (yes/no)	260/403
Diagnosis of diabetes mellitus (no/yes without medication/yes with medication)	396/109/158
Serum AST level (U/L)	53.3 \pm 51.3
Serum ALT level (U/L)	51.8 \pm 49.9
Serum AFP level (ng/mL)	9397 \pm 71066
Serum DCP level (mAU/mL)	8003 \pm 37377
Size of HCC (cm)	5.0 \pm 3.4
Number of HCC	2.8 \pm 2.9

Data are expressed as the mean \pm standard deviation or the number of patients.

AFP, α -fetoprotein; ALT, alanine aminotransferase; AST, aspartate aminotransferase; DCP, des- γ -carboxy prothrombin; HCC, hepatocellular carcinoma.

level and serum DCP level were significantly associated with the Milan criteria (Table 2).

Graphical modeling

Complex interactions of the risk factors associated with the Milan criteria were visualized graphically (Fig. 1). Graphical modeling identified six independent factors directly associated with the Milan criteria: diagnostic year of HCC; diagnosis of liver cirrhosis; serum AST level; serum ALT level; serum AFP level; and serum DCP level (Fig. 1). Although alcohol intake, diagnosis of liver disease and diagnosis of diabetes mellitus were not directly associated with the Milan criteria, they were associated with the Milan criteria through diagnosis of liver cirrhosis (Fig. 1).

Decision tree algorithm

With the training dataset ($n = 442$), a decision tree algorithm was created by using five variables to classify six groups of patients (Fig. 2). A serum AFP level of 200 ng/mL or less was the cut-off value for the initial

Table 2 Univariate analysis of the variables associated with the Milan criteria

Variable	Statistical method	Test statistics	Degree of freedom (df)	P
Diagnostic year of HCC (years)	χ^2	13.4013	11	0.2679
Age (years)	Pooled	-1.07	661	0.2843
Sex	χ^2	0.2975	1	0.5854
Family history of liver disease	χ^2	1.7412	1	0.187
History of blood transfusion	χ^2	4.9527	2	0.084
Daily alcohol intake	χ^2	2.4158	3	0.4907
Liver cirrhosis	χ^2	28.9521	1	<0.0001
Diabetes mellitus	χ^2	0.926	2	0.6294
AST level (U/L)	Satterthwaite	3.06	387.51	0.0023
ALT level (U/L)	Satterthwaite	4.79	546.95	<0.0001
AFP level (ng/mL)	χ^2	63.1357	2	<0.0001
DCP level (mAU/mL)	χ^2	47.7161	2	<0.0001

Associations between the variables and the Milan criteria were analyzed by the indicated statistical methods. $P < 0.05$ was considered significant.

AFP, α -fetoprotein; ALT, alanine aminotransferase; AST, aspartate aminotransferase; DCP, des- γ -carboxy prothrombin; HCC, hepatocellular carcinoma.

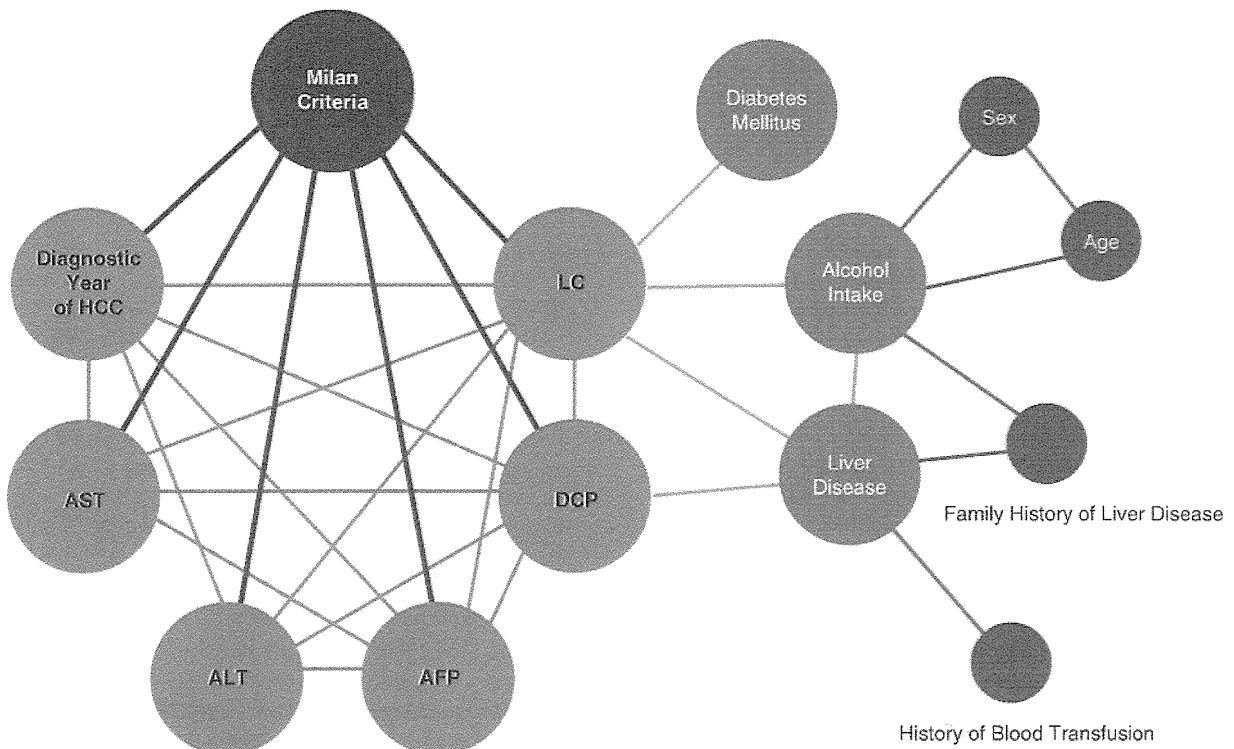


Figure 1 Graphical modeling of the interactions of the risk factors associated with the Milan criteria. AFP, α -fetoprotein; ALT, alanine aminotransferase; AST, aspartate aminotransferase; DCP, des- γ -carboxy prothrombin; HCC, hepatocellular carcinoma; LC, liver cirrhosis.

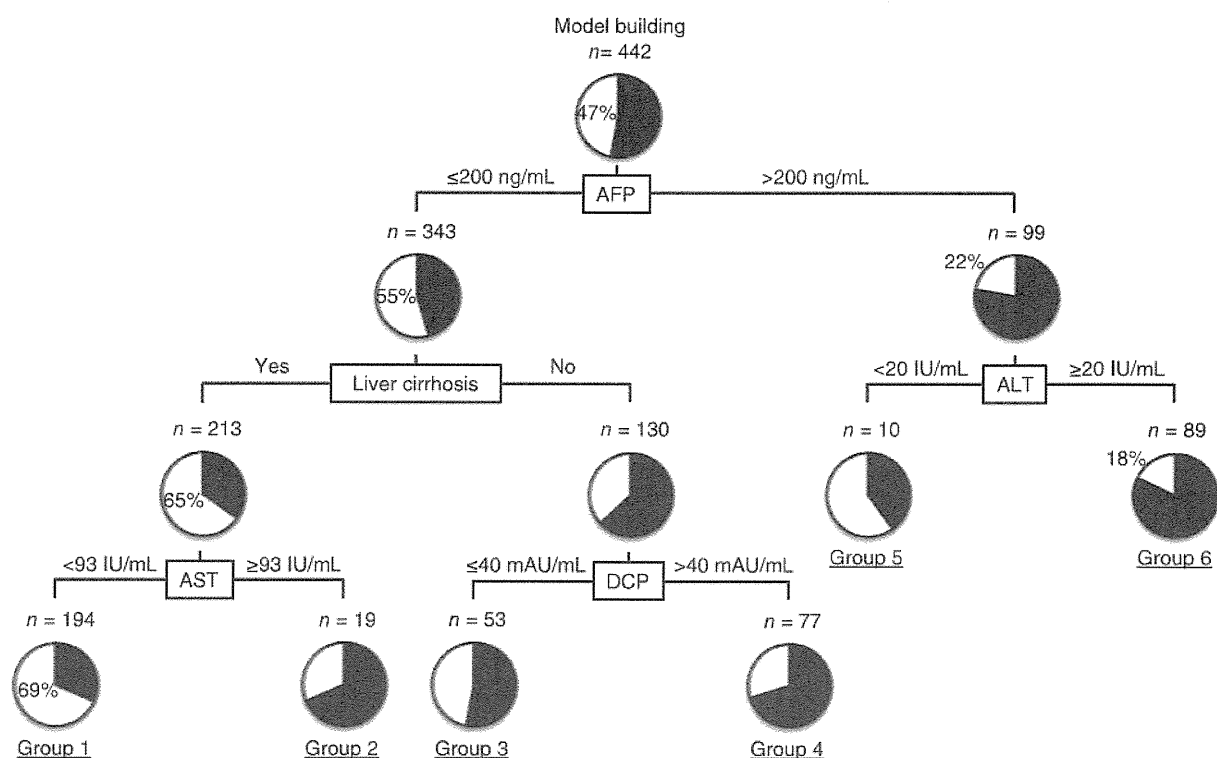


Figure 2 Decision tree algorithm of the variables associated with the Milan criteria. The patients were classified according to the indicated cut-off values of the variables. The pie graphs indicate the percentage of patients with HCC within (white)/beyond the Milan criteria in each group. AFP, α -fetoprotein; ALT, alanine aminotransferase; AST, aspartate aminotransferase; DCP, des- γ -carboxy prothrombin; HCC, hepatocellular carcinoma.

classification. Among the patients with an AFP level of 200 ng/mL or less, diagnosis of liver cirrhosis was used as the variable for the second division. Among the patients with liver cirrhosis, a serum AST level of less than 93 IU/mL was the cut-off value for the third division. Thus, 69% of the patients were within the Milan criteria, when the patients met all of the following conditions: AFP of 200 ng/mL or less; diagnosis of liver cirrhosis; and AST of less than 93 IU/mL (group 1; Fig. 2). On the other hand, only 18% of the patients were within the Milan criteria, when patients showed an AFP level of more than 200 ng/mL and an ALT level of 20 IU/mL or more (group 6; Fig. 2).

There were no significant differences in the patients' characteristics between the training dataset and the test dataset. Prediction error was obtained by applying the results of the decision tree algorithm to the test dataset. The sensitivity (proportion of patients with HCC correctly classified as beyond the Milan criteria) and specificity (proportion of patients with HCC correctly

classified as within the Milan criteria) were 72.1% (75/104) and 68.4% (80/117), respectively; the overall prediction error rate was 29.8% (66/221).

DISCUSSION

IN THIS STUDY, we revealed the complex interactions of the risk factors associated with staging of NBNC-HCC using graphical modeling. In addition, we presented a decision tree algorithm to identify clinical feature profiling associated with the staging of NBNC-HCC.

Various factors seem to be intricately related to the progression of NBNC-HCC. In this study, by graphical modeling, we identified six variables directly associated with the Milan criteria: serum AST level; serum ALT level; serum AFP level; serum DCP level; diagnosis of liver cirrhosis; and diagnostic year of HCC. Chronic hepatic inflammation modulates many of the signaling cascades involved in cell proliferation, survival and invasion of

HCC.^{27,28} Further, AFP and DCP are directly associated with HCC progression through the induction of cancer cell proliferation and angiogenesis, respectively.^{29,30} Thus, our results are in good accordance with previous basic investigations and suggest that hepatic inflammation as well as elevated AFP and DCP levels independently accelerate the progression of NBNC-HCC.

Diagnostic year of HCC was also directly associated with the Milan criteria in this study. Although the reason for this association is unclear, a progress in serum tumor markers is a possible explanation. Because sensitivities of AFP and DCP were improved during this study period (1995–2006),^{31–33} one would think that serum AFP and DCP levels are confounding factors for an association between diagnostic year of HCC and the Milan criteria.

Recently, lifestyle-related factors including alcohol intake and diabetes mellitus have been noted as risk factors for the development of NBNC-HCC.^{2,10–12,34–38} Previous *in vitro* studies showed that ethanol and glucose stimulate the proliferation and migration of HCC,^{39,40} indicating the direct association of alcohol intake and diabetes mellitus with NBNC-HCC progression. However, in this study, these factors were not directly associated with the Milan criteria. Although the reason for this discrepancy remains unclear, alcohol intake and diabetes mellitus were associated with the Milan criteria through diagnosis of liver cirrhosis in this study. Both ethanol consumption and diabetes mellitus can activate fibroblasts,^{41,42} which are crucial components of the tumor microenvironment promoting the growth and invasion of cancer cells.^{43,44} Thus, alcohol intake and diabetes mellitus may be associated with the clinical progression of NBNC-HCC through the tumor microenvironment.

Then, we created a decision tree algorithm to identify the clinical feature profiling associated with the staging of NBNC-HCC; the reproducibility of this model was confirmed by the independent validation datasets. Serum AFP level was selected for the initial classification, and serum DCP level was selected for the third division, creating groups 3 and 4. Although it is still unclear why the serum AFP level was associated with the Milan criteria to a greater extent than the serum DCP level, an association of the serum AFP level with the pathological features of HCC is a possible explanation. The AFP level is related to the number of HCC, whereas the DCP level is more specific to vascular invasion.^{45–47} In this study, the staging of HCC was evaluated by using the Milan criteria, which include number and size of HCC but not vascular invasion,²⁶ explaining why serum AFP level was selected for the initial classification.

Diagnosis of liver cirrhosis was selected for the second division in the decision tree algorithm. Although liver cirrhosis is a well-known major risk factor for the development of HCC,^{5,10,12,25,34,42} our result indicates that liver cirrhosis may suppress the progression of NBNC-HCC. We do not have any data accounting for the association between diagnosis of liver cirrhosis and suppression of the NBNC-HCC progression, the following is, however, a possible explanation for this contradiction. HCC surveillance may be performed more often in patients with liver cirrhosis than in those without liver cirrhosis,^{12,25} so HCC could be identified at an early stage in patients with liver cirrhosis.

A limitation of this study is that a relationship between progression of NBNC-HCC and non-alcoholic steatohepatitis (NASH) was not evaluated. The reason is that NASH-related HCC is often diagnosed as cryptogenic cirrhosis-related HCC because of reduction of hepatic triglycerides according to the progression of NASH, so-called “burned-out NASH”.⁴⁸ However, NASH is deeply involved in the development of HCC and a major reason for the increase in number of NBNC-HCC patients.^{8,49,50} Recently, visceral fat accumulation is also reported to be an independent risk factor for HCC recurrence after curative treatment.⁵¹ Thus, further study will be focused on a relationship between the progression of NBNC-HCC and NASH.

In conclusion, data mining disclosed complex associations of risk factors and clinical feature profiling associated with the staging of NBNC-HCC.

REFERENCES

- 1 El-Serag HB, Marrero JA, Rudolph L, Reddy KR. Diagnosis and treatment of hepatocellular carcinoma. *Gastroenterology* 2008; 134: 1752–63.
- 2 Kawaguchi T, Taniguchi E, Itou M, Sumie S, Yamagishi SI, Sata M. The pathogenesis, complications and therapeutic strategy for hepatitis C virus-associated insulin resistance in the era of anti-viral treatment. *Rev Recent Clin Trials* 2010; 5: 147–57.
- 3 Starley BQ, Calcagno CJ, Harrison SA. Nonalcoholic fatty liver disease and hepatocellular carcinoma: a weighty connection. *Hepatology* 2010; 51: 1820–32.
- 4 Chung H, Ueda T, Kudo M. Changing trends in hepatitis C infection over the past 50 years in Japan. *Intervirology* 2010; 53: 39–43.
- 5 Nordenstedt H, White DL, El-Serag HB. The changing pattern of epidemiology in hepatocellular carcinoma. *Dig Liver Dis* 2010; 42 (Suppl 3): S206–14.
- 6 Nouse K, Kobayashi Y, Nakamura S *et al.* Evolution of prognostic factors in hepatocellular carcinoma in Japan. *Aliment Pharmacol Ther* 2010; 31: 407–14.

- 7 Tanaka H, Imai Y, Hiramatsu N *et al.* Declining incidence of hepatocellular carcinoma in Osaka, Japan, from 1990 to 2003. *Ann Intern Med* 2008; 148: 820–6.
- 8 Taura N, Fukushima N, Yatsushashi H *et al.* The incidence of hepatocellular carcinoma associated with hepatitis C infection decreased in Kyushu area. *Med Sci Monit* 2010; 17: PH7–11.
- 9 Abe H, Yoshizawa K, Kitahara T, Aizawa R, Matsuoka M, Aizawa Y. Etiology of non-B non-C hepatocellular carcinoma in the eastern district of Tokyo. *J Gastroenterol* 2008; 43: 967–74.
- 10 Fattovich G, Stroffolini T, Zagni I, Donato F. Hepatocellular carcinoma in cirrhosis: incidence and risk factors. *Gastroenterology* 2004; 127: S35–50.
- 11 Hassan MM, Hwang LY, Hatten CJ *et al.* Risk factors for hepatocellular carcinoma: synergism of alcohol with viral hepatitis and diabetes mellitus. *Hepatology* 2002; 36: 1206–13.
- 12 Kiyosawa K, Umemura T, Ichijo T *et al.* Hepatocellular carcinoma: recent trends in Japan. *Gastroenterology* 2004; 127: S17–26.
- 13 Bellazzi R, Zupan B. Predictive data mining in clinical medicine: current issues and guidelines. *Int J Med Inform* 2008; 77: 81–97.
- 14 Kalisch M, Fellinghauer BA, Grill E *et al.* Understanding human functioning using graphical models. *BMC Med Res Methodol* 2010; 10: 14–23.
- 15 Edwards D. *Introduction to Graphical Modelling*. New York: Springer-Verlag, 2000.
- 16 Pielou EC. *The Interpretation of Ecological Data. A Primer on Classification and Ordination*, 1st edn. New York: John Wiley&Sons, Inc., 1984.
- 17 Legendre P, Legendre L. *Numerical Ecology*, 2nd edn. Amsterdam: Elsevier Science, 1998.
- 18 Tsai CL, Camargo CA Jr. Methodological considerations, such as directed acyclic graphs, for studying “acute on chronic” disease epidemiology: chronic obstructive pulmonary disease example. *J Clin Epidemiol* 2009; 62: 982–90.
- 19 Kurosaki M, Matsunaga K, Hirayama I *et al.* A predictive model of response to peginterferon ribavirin in chronic hepatitis C using classification and regression tree analysis. *Hepatol Res* 2010; 40: 251–60.
- 20 Kurosaki M, Sakamoto N, Iwasaki M *et al.* Pretreatment prediction of response to peginterferon plus ribavirin therapy in genotype 1 chronic hepatitis C using data mining analysis. *J Gastroenterol* 2010 (in press).
- 21 Pauker SG, Kassirer JP. The threshold approach to clinical decision making. *N Engl J Med* 1980; 302: 1109–17.
- 22 Lee A, Joynt GM, Ho AM, Keitz S, McGinn T, Wyer PC. Tips for teachers of evidence-based medicine: making sense of decision analysis using a decision tree. *J Gen Intern Med* 2009; 24: 642–8.
- 23 Guo J, Wang W, Liao P *et al.* Identification of serum biomarkers for pancreatic adenocarcinoma by proteomic analysis. *Cancer Sci* 2009; 100: 2292–301.
- 24 Warwick J, Vardaki E, Fattizzi N *et al.* Defining the surgical management of suspected early-stage ovarian cancer by estimating patient numbers through alternative management strategies. *BJOG* 2009; 116: 1225–41.
- 25 Kudo M, Okanoue T. Management of hepatocellular carcinoma in Japan: consensus-based clinical practice manual proposed by the Japan Society of Hepatology. *Oncology* 2007; 72 (Suppl 1): 2–15.
- 26 Mazzaferro V, Regalia E, Doci R *et al.* Liver transplantation for the treatment of small hepatocellular carcinomas in patients with cirrhosis. *N Engl J Med* 1996; 334: 693–9.
- 27 Hanahan D, Weinberg RA. The hallmarks of cancer. *Cell* 2000; 100: 57–70.
- 28 Sanz-Cameno P, Trapero-Marugan M, Chaparro M, Jones EA, Moreno-Otero R. Angiogenesis: from chronic liver inflammation to hepatocellular carcinoma. *J Oncol* 2010; article no.: 272170.
- 29 Inagaki Y, Tang W, Xu H *et al.* Des-gamma-carboxyprothrombin: clinical effectiveness and biochemical importance. *Biosci Trends* 2008; 2: 53–60.
- 30 Wang XW, Xie H. Alpha-fetoprotein enhances the proliferation of human hepatoma cells in vitro. *Life Sci* 1999; 64: 17–23.
- 31 Weitz IC, Liebman HA. Des-gamma-carboxy (abnormal) prothrombin and hepatocellular carcinoma: a critical review. *Hepatology* 1993; 18: 990–7.
- 32 Fujiyama S, Tanaka M, Maeda S, Ashihara H, Hirata R, Tomita K. Tumor markers in early diagnosis, follow-up and management of patients with hepatocellular carcinoma. *Oncology* 2002; 62 (Suppl 1): 57–63.
- 33 Marrero JA, Lok AS. Newer markers for hepatocellular carcinoma. *Gastroenterology* 2004; 127: S113–19.
- 34 El-Serag HB. Epidemiology of hepatocellular carcinoma in USA. *Hepatol Res* 2007; 37 (Suppl 2): S88–94.
- 35 El-Serag HB, Tran T, Everhart JE. Diabetes increases the risk of chronic liver disease and hepatocellular carcinoma. *Gastroenterology* 2004; 126: 460–8.
- 36 Kawaguchi T, Sata M. Importance of hepatitis C virus-associated insulin resistance: therapeutic strategies for insulin sensitization. *World J Gastroenterol* 2010; 16: 1943–52.
- 37 Kawaguchi T, Taniguchi E, Morita Y *et al.* Association of exogenous insulin or sulphonylurea treatment with an increased incidence of hepatoma in patients with hepatitis C virus infection. *Liver Int* 2010; 30: 479–86.
- 38 Tazawa J, Maeda M, Nakagawa M *et al.* Diabetes mellitus may be associated with hepatocarcinogenesis in patients with chronic hepatitis C. *Dig Dis Sci* 2002; 47: 710–15.
- 39 Brandon-Warner E, Sugg JA, Schrum LW, McKillop IH. Silibinin inhibits ethanol metabolism and ethanol-dependent cell proliferation in an in vitro model of hepatocellular carcinoma. *Cancer Lett* 2010; 291: 120–9.
- 40 Chang YJ, Chiu CC, Wu CH *et al.* Glucose-regulated protein 78 (GRP78) silencing enhances cell migration but does not influence cell proliferation in hepatocellular carcinoma. *Ann Surg Oncol* 2010; 17: 1703–9.

- 41 Flanders KC. Smad3 as a mediator of the fibrotic response. *Int J Exp Pathol* 2004; **85**: 47–64.
- 42 Gyamfi MA, Wan YJ. Pathogenesis of alcoholic liver disease: the role of nuclear receptors. *Exp Biol Med (Maywood)* 2010; **235**: 547–60.
- 43 Pietras K, Ostman A. Hallmarks of cancer: interactions with the tumor stroma. *Exp Cell Res* 2010; **316**: 1324–31.
- 44 Xing F, Saidou J, Watabe K. Cancer associated fibroblasts (CAFs) in tumor microenvironment. *Front Biosci* 2010; **15**: 166–79.
- 45 Hamamura K, Shiratori Y, Shiina S *et al*. Unique clinical characteristics of patients with hepatocellular carcinoma who present with high plasma des-gamma-carboxy prothrombin and low serum alpha-fetoprotein. *Cancer* 2000; **88**: 1557–64.
- 46 Miyaaki H, Nakashima O, Kurogi M, Eguchi K, Kojiro M. Lens culinaris agglutinin-reactive alpha-fetoprotein and protein induced by vitamin K absence II are potential indicators of a poor prognosis: a histopathological study of surgically resected hepatocellular carcinoma. *J Gastroenterol* 2007; **42**: 962–8.
- 47 Toyoda H, Kumada T, Kiriya S *et al*. Prognostic significance of simultaneous measurement of three tumor markers in patients with hepatocellular carcinoma. *Clin Gastroenterol Hepatol* 2006; **4**: 111–17.
- 48 Ong J, Younossi ZM, Reddy V *et al*. Cryptogenic cirrhosis and posttransplantation nonalcoholic fatty liver disease. *Liver Transpl* 2001; **7**: 797–801.
- 49 Ascha MS, Hanouneh IA, Lopez R, Tamimi TA, Feldstein AF, Zein NN. The incidence and risk factors of hepatocellular carcinoma in patients with nonalcoholic steatohepatitis. *Hepatology* 2010; **51**: 1972–8.
- 50 Hashimoto E, Yatsuji S, Kaneda H *et al*. The characteristics and natural history of Japanese patients with nonalcoholic fatty liver disease. *Hepatol Res* 2005; **33**: 72–6.
- 51 Ohki T, Tateishi R, Shiina S *et al*. Visceral fat accumulation is an independent risk factor for hepatocellular carcinoma recurrence after curative treatment in patients with suspected NASH. *Gut* 2009; **58**: 839–44.

Predictive Value of the Fibrosis Scores in Patients with Chronic Hepatitis C Associated with Liver Fibrosis and Metabolic Syndrome

Hisamitsu Miyaaki, Tatsuki Ichikawa, Naota Taura, Satoshi Miuma, Hidetaka Shibata, Hajime Isomoto, Fuminao Takeshima and Kazuhiko Nakao

Abstract

Objective We evaluated patients with chronic hepatitis C (CHC) and compared the clinical and pathological features of steatosis and metabolic syndrome to identify the risk factors for CHC with severe fibrosis.

Methods One hundred seventy-one patients with biopsy-confirmed CHC were included in the study: 90 males and 81 females, age 56.2 ± 12.8 years; 46 with obesity ($BMI \geq 25$ kg/m²); 51 with hypertension; 36 with type 2 diabetes mellitus; and 20 with hypertriglyceridemia.

Results Steatosis was detected in 79 patients (46%); 92 patients (54%) showed no steatosis. Seventy-four patients (43%) showed mild fibrosis and 97 patients (56%) showed severe fibrosis. The variables that were significantly associated with steatosis were obesity [odds ratio 2.160 (1.010-4.727), $p=0.046$] and type 2 diabetes [odds ratio 3.667 (1.559-8.430), $p=0.027$]. The variables that were significantly associated with severe fibrosis were older age [odds ratio 2.675 (1.309-5.464), $p=0.007$], obesity [odds ratio 2.156 (1.006-4.619), $p=0.048$] and type 2 diabetes [odds ratio 8.739 (2.845-26.846), $p=0.0002$]. Nagasaki (N) score (the total number of specific risk factors, namely an older age, obesity, and type 2 diabetes) was higher in the severe fibrosis group than in the mild fibrosis group (mild fibrosis: severe fibrosis= 1.48 ± 1.14 vs. 2.66 ± 0.94 , $p<0.001$).

Conclusion Metabolic syndrome factors, including obesity and diabetes, play a critical role in the pathogenesis of fibrosis in CHC. The N score was therefore found to be a significant predictor of severe fibrosis in CHC.

Key words: chronic hepatitis C, steatosis, liver fibrosis, type 2 diabetes mellitus, obesity

(Intern Med 50: 1137-1141, 2011)

(DOI: 10.2169/internalmedicine.50.4447)

Introduction

Hepatitis C virus (HCV) infection is one of the most common causes of chronic liver disease, affecting 2 million persons in Japan. It can lead to end-stage liver disease and hepatocellular carcinoma. Chronic HCV infection is associated with metabolic abnormalities, including insulin resistance (1-3). We recently reported that insulin resistance is associated with interferon signalling, which plays an important role in the clearance of chronic hepatitis C (CHC) during interferon therapy (4, 5). Previous studies have demonstrated the association between metabolic syndrome and he-

patic fibrosis in patients with hepatitis C (6-11). Steatosis is a frequent histological finding in chronic hepatitis C virus infection, one that affects disease progression and occurrence of hepatocellular carcinoma (7, 12-15). Hepatic steatosis is associated with metabolic syndrome and non-alcoholic steatohepatitis (NASH). We previously reported that risk factors for severe fibrosis in patients with NASH were metabolic syndrome, hypertension, and, in particular, diabetes mellitus (16). In this study, we evaluated patients with chronic hepatitis C (CHC) and compared the clinical and pathological features of metabolic syndrome to identify the risk factors for CHC with severe fibrosis.

Department of Gastroenterology and Hepatology, Nagasaki University Graduate School of Biomedical Sciences, Japan

Received for publication August 30, 2010; Accepted for publication February 20, 2011

Correspondence to Dr. Hisamitsu Miyaaki, miyaaki-hi@umin.ac.jp

Table 1. Clinical Data of the Patient Population

age	56.2 ± 12.8
Gender	male: female=90:81
HCV genotype (1:2)	123: 48
HCV viral load (Fmol/L)	5325 ± 5297
BMI (kg/m ²)	22.8 ± 2.9
BMI ≥ 25 (kg/m ²)	49 cases (29%)
Platelet (×10 ⁴ /mm ³)	15.9 ± 5.8
AST (IU/L)	72 ± 100
ALT (IU/L)	93 ± 110
Type 2 diabetes mellitus	36 cases (21%)
Hypertension	51 cases (30%)
Hyperlipidemia	20 cases (11%)

Table 2. Comparison between the Non-steatosis Group and Steatosis Group

	Steatosis n=79	Non-steatosis n=92	p value
Age (≥60 years old)	38 (48%)	45 (48%)	0.916*
Gender (male)	48 (60%)	42 (45%)	0.049*
HCV genotype 1	55 (69%)	68 (73%)	0.533*
HCV viral load (Fmol/L)	4611 ± 4872	5968 ± 5514	0.109
Platelet (×10 ⁴ /mm ³)	15.4 ± 5.7	16.2 ± 5.7	0.324
ALT (IU/L)	106 ± 139	82 ± 77	0.173
Obesity	30(38%)	19 (20%)	0.013*
Diabetes mellitus	24 (36%)	11(12%)	0.001*
Hypertension	33 (42%)	18 (20%)	0.002*
Hypertriglycerides	13 (17%)	7 (7%)	0.070*

* χ^2 test

liver biopsy tissue specimens were examined using Hematoxylin-Eosin, Azan-Mallory, and silver reticulum staining. The specimens were assessed by one reviewer blinded to patient clinical and biochemical data. The diagnosis of each case was independently and histologically confirmed by liver pathologists according to the Japanese chronic hepatitis classification (New Inuyama classification) (19). Fatty change in >5% of all areas was defined as steatosis. The patients were divided into two groups based on their degree of inflammation defined as mild activity and severe activity. Fibrosis staging was scored using a 5-grade scale: F0 indicated no fibrosis, F1 was defined as fibrous portal expansion, F2 was bridging fibrosis, F3 was bridging fibrosis with lobular distortion, and F4 indicated the presence of cirrhosis. The mild fibrosis group was defined as having a score of F0-2 and severe fibrosis was defined as a score of F3 or F4.

We defined the Nagasaki (N) score as the total number of risk factors for severe fibrosis. The risk factors were age (≥ 60 years old), obesity, and type 2 diabetes. In the N score, we doubled the presence of diabetes as a factor because the estimation value of DM was 2 times higher than that of the other factors (older age and obesity) in our logistic regression formula. Therefore, we defined N score as follows (20):

$$N \text{ score} = \text{age} (\geq 60 \text{ years old}) + \text{Obesity (BMI} \geq 25) + 2 \times \text{diabetes mellitus}$$

The N score was compared with other non-invasive predictors of fibrosis stage, such as the AST to platelet ratio index (APRI), and the platelet APRI was defined as follows:

$$\text{APRI} = \text{AST level (}/\text{ULN)} / \text{platelet count (10}^9\text{/L)} \times 100.$$

Statistical significance was determined by SPSS analytical software (IBM, Armonk, NY). We used Student's t-test and the chi-square test to perform analyses. A multivariate analysis was performed using binary logistic regression analysis.

Methods

This retrospective study included 171 consecutive patients with biopsy-confirmed CHC who were assessed between 1996 and 2008 in Nagasaki Universities and associated hospitals. Inclusion criteria were an increased serum aminotransferase level for at least 6 months; serum anti-HCV (ELIZA; third generation); positive HCV RNA (PCR); negative serum HBs; and no other cause of liver disease, such as alcohol intake >30d/d or autoimmune or metabolic disorders (genetic hemochromatosis). Obesity was defined as a body mass index (BMI) >25 according to the World Health Organization criteria (17). Type 2 diabetes was diagnosed according to International Diabetes Federation criteria (18) (fasting glucose >110 mg/dL, or previously diagnosed type 2 diabetes). Hypertension was also diagnosed according to International Diabetes Federation criteria (18) (systolic blood pressure >130 mmHg or diastolic blood pressure >85 mmHg). Hypertriglyceridemia was diagnosed if there was documented use of anti-hypertriglyceride medications, or if fasting triglyceride levels were >150 mg/dL. All

Results

Among the 171 patients, 90 males and 81 females were examined. The median body mass index (BMI) was 22.8 ± 2.9 kg/m². Type 2 diabetes was diagnosed in 21% of patients, hypertension in 30%, and hyperlipidemia in 11% (Table 1).

Histological findings

Steatosis was detected in 79 patients (46%). We found mild activity in 149 patients and severe activity in 22 patients. We found no fibrosis in 18 patients (11%) (F0); mild fibrosis in 56 patients (33%) (F1); moderate fibrosis in 33 patients (19%) (F2); bridging fibrosis in 30 patients (17%) (F3); and cirrhosis in 34 patients (20%) (F4).

Steatosis

The two steatosis groups are shown in Table 2. Males were significantly more common in the non-steatosis group than in the steatosis group (60% vs. 45%, p=0.049). The patients with obesity (38% vs. 20%, p=0.013), type 2 diabetes