

Original Article

Combination of hepatitis B viral antigens and DNA for prediction of relapse after discontinuation of nucleos(t)ide analogs in patients with chronic hepatitis B

Akihiro Matsumoto,¹ Eiji Tanaka,¹ Yoshiyuki Suzuki,² Mariko Kobayashi,² Yasuhito Tanaka,⁴ Noboru Shinkai,⁴ Shuhei Hige,⁶ Hiroshi Yatsushashi,⁸ Shinya Nagaoka,⁸ Kazuaki Chayama,⁹ Masataka Tsuge,⁹ Osamu Yokosuka,¹⁰ Fumio Imazeki,¹⁰ Shuhei Nishiguchi,¹¹ Masaki Saito,¹¹ Kei Fujiwara,⁵ Nobuyuki Torii,³ Naoki Hiramatsu,¹² Yoshiyasu Karino⁷ and Hiromitsu Kumada²

¹Department of Medicine, Shinshu University School of Medicine, Matsumoto, ²Department of Hepatology, Toranomon Hospital, ³Department of Internal Medicine and Gastroenterology, Tokyo Women's Medical University, Tokyo, ⁴Department of Virology and Liver Unit, Nagoya City University Graduate School of Medical Sciences, ⁵Gastroenterology Section, Nagoya Daini Red Cross Hospital, Nagoya, ⁶Department of Gastroenterology and Hepatology, Graduate School of Medicine, Hokkaido University, ⁷Department of Gastroenterology, Sapporo Kosei General Hospital, Sapporo, ⁸The Clinical Research Center, NHO Nagasaki Medical Center, Omura, ⁹Program for Biomedical Research, Division of Frontier Medical Science, Department of Medicine and Molecular Science, Graduate School of Biomedical Sciences, Hiroshima University, Hiroshima, ¹⁰Department of Medicine and Clinical Oncology, Graduate School of Medicine, Chiba University, Chiba, ¹¹Division of Hepatobiliary and Pancreatic Diseases, Department of Internal Medicine, Hyogo College of Medicine, Hyogo, and ¹²Department of Gastroenterology and Hepatology, Osaka University Graduate School of Medicine, Osaka, Japan

Aim: The factors associated with hepatitis recurrence after discontinuation of nucleos(t)ide analogs (NAs) in patients with chronic hepatitis B were analyzed to predict the risk of relapse more accurately.

Methods: A total of 126 patients who discontinued NA therapy were recruited retrospectively. The clinical conditions of a successful discontinuation were set as alanine aminotransferase (ALT) below 30 IU/L and serum hepatitis B virus (HBV) DNA below 4.0 log copies/mL.

Results: Relapse of hepatitis B were judged to occur when maximal serum ALT became higher than 79 IU/L or when maximal serum HBV DNA surpassed 5.7 log copies/mL following NA discontinuation since these values corresponded with mean values of ALT (30 IU/L) and HBV DNA (4.0 log copies/mL), respectively. At least 90% of patients with either detectable hepatitis B e antigen or serum HBV DNA higher than 3.0 log

copies/mL at the time of NA discontinuation relapsed within one year. In the remaining patients, higher levels of both hepatitis B surface and core-related antigens at the time of discontinuation, as well as a shorter course of NA treatment, were significantly associated with relapse by multivariate analysis.

Conclusions: It appears that negative results for hepatitis B e antigen and serum HBV DNA lower than 3.0 log copies/mL are essential for successful NA discontinuation, which may be attained by a longer treatment period. Levels of hepatitis B surface and core-related antigens are also significant factors independently associated with relapse of hepatitis.

Key words: discontinuation, hepatitis B core-related antigen, hepatitis B surface antigen, nucleos(t)ide analogs, relapse of hepatitis

Correspondence: Professor Eiji Tanaka, Department of Medicine, Gastroenterology Division, Shinshu University School of Medicine, 3-1-1 Asahi, Matsumoto, Nagano 390-8621, Japan. Email: etanaka@shinshu-u.ac.jp

Financial support

This research was supported in part by a research grant from the Ministry of Health, Labor and Welfare of Japan.

Received 7 August 2011; revision 31 August 2011; accepted 5 September 2011.

INTRODUCTION

HEPATITIS B VIRUS (HBV) infection is a major health concern that has an estimated 350 to 400 million carriers worldwide. Chronic infection with HBV can cause chronic hepatitis, and may eventually develop into liver cirrhosis and hepatocellular carcinoma.^{1–3} Over the last decade, major advances in the treatment of chronic hepatitis B have been made with nucleos(t)ide

analogs (NAs) such as lamivudine (LVD), adefovir dipivoxil (ADV), and entecavir (ETV).⁴ NAs are orally administered and are associated with low rates of adverse effects. Treatment with NAs shows strong suppression of HBV replication and consequently rapid improvement of elevated ALT levels. Furthermore, these drugs have been reported to lower the risk of complicating cirrhosis and hepatocellular carcinoma,^{5–7} and so NAs are becoming widely used to treat patients with chronic hepatitis B. On the other hand, NAs carry the risk of developing drug-resistance;⁸ drug-resistant viruses emerging during treatment may be associated with hepatitis flare-ups. Hepatitis B patients are also required to undergo prolonged treatment with NAs because early discontinuance often leads to relapse of hepatitis and ensuing hepatic failure following rises in alanine aminotransferase (ALT) level.^{9,10}

Serum HBV DNA is normally used to monitor the antiviral effect of NAs. HBV DNA decreases rapidly and becomes undetectable in the majority of patients who are treated with NAs,^{11–13} but relapse after discontinuation is not rare.^{14–17} Since it is also true that favorable virological and biochemical responses to NAs may continue indefinitely in some patients,^{9,15} reliable markers that can predict relapse of hepatitis after NA discontinuation are needed. Such markers would benefit not only patients who are considering discontinuation of NA treatment, but also clinicians, hospitals, and the medical economy.

In the present study, we assessed several factors associated with relapse of hepatitis after discontinuation of NAs in patients with chronic hepatitis B, including hepatitis B viral antigens, which have been reported as new and promising markers for monitoring the effect of antiviral agents, such as interferon and NAs.

METHODS

Patients

A TOTAL OF 126 patients with chronic hepatitis B who underwent and completed NA treatment between 2000 and 2010 were enrolled in this study. Patients were recruited retrospectively from 11 hospitals across Japan (Toranomon Hospital, Hokkaido University Hospital, Nagoya City University Hospital, Shinshu University Hospital, Hiroshima University Hospital, National Hospital Organization Nagasaki Medical Center, Chiba University Hospital, The Hospital of Hyogo College of Medicine, Japanese Red Cross Nagoya Daini Hospital, and Tokyo Women's Medical University Hospital, Sapporo Kosei General Hospital) and met the

following conditions: (i) serum ALT higher than 30 IU/L and serum HBV DNA higher than 4.0 log copies/mL were observed at least twice within the 6 months prior to administration of NAs; (ii) stored serum samples at initiation and discontinuation of NAs were available for measurements of viral markers; (iii) clinical outcomes were followed for at least 6 months after the discontinuation of NAs; and (iv) tests for hepatitis C and human immunodeficiency virus antibodies were negative. Hepatitis B surface antigen (HBsAg) was confirmed to be positive on at least two occasions at least 6 months apart in all patients before treatment. Patients complicated with hepatocellular carcinoma or signs of hepatic failure at treatment discontinuation were excluded from the study. Our cohort consisted of 83 men and 43 women with a median age of 46 (range, 19 to 79) years when NA administration was discontinued. Hepatitis B e antigen (HBeAg) was positive in 64 patients (51%) at the initiation of treatment and in 24 patients (19%) at its discontinuation. HBV genotype was A in two (2%) patients, B in five (4%), C in 102 (81%), and undetermined in 17 (13%). Thirty-five of the 126 patients in this study were younger than 35 years old. Although not recommended as the first line treatment for this group by Japanese guidelines,¹⁸ NA treatment was commenced since chronic active hepatitis had been persisting in all cases irrespective of their HBeAg status (26 positive and nine negative) at the initiation of treatment.

The decision to discontinue NAs was made by individual physicians using similar, but not uniform, conditions. Four patients who halted NAs for financial reasons were included. No patient underwent interferon treatment during or after NA treatment. The decision to recommence NA administration was also made by individual physicians, essentially when relapse of hepatitis became obvious. With few exceptions, patients were seen at least once a month during the first year after discontinuation of NAs, and at least once every several months afterwards. Stored serum samples were kept frozen at -20°C or below until assayed. This study was approved by the Ethics Committees of all participating institutions.

Hepatitis B viral markers

Serological markers for HBV, including HBsAg, HBeAg, and antibody to HBe (anti-HBe) were tested using commercially available enzyme immunoassay kits (Abbott Japan Co., Ltd, Tokyo, Japan; Fujirebio Inc., Tokyo, Japan; and/or Sysmex Co., Kobe, Japan) at each hospital. Quantitative measurement of HBsAg¹⁹ was done using a chemiluminescence enzyme immunoassay

(CLEIA)-based HISCL HBsAg assay manufactured by Sysmex Corporation (Kobe, Japan). The assay had a quantitative range of -1.5 to 3.3 log IU/mL. End titer was determined by diluting samples with normal human serum when initial results exceeded the upper limit of the assay range.

Serum concentration of HBV DNA was determined using an Amplicor HBV monitor kit (Roche, Tokyo, Japan),²⁰ which had a quantitative range of 2.6 to 7.6 log copies/mL. Serum HBV DNA was also determined using a COBAS TaqMan HBV kit (Roche, Tokyo, Japan)²¹ with a quantitative range of 2.1 to 9.0 log copies/mL in 43 patients whose serum samples were available at the time of NA discontinuation. According to the manufacturer's instructions, detection of a positive signal below the quantitative range was described as a positive signal, and no signal detection was described as a negative signal. Six HBV genotypes (A–F) were evaluated according to the restriction patterns of DNA fragments from the method reported by Mizokami *et al.*²²

Serum hepatitis B core-related antigen (HBcrAg) levels were measured using a CLEIA HBcrAg assay kit with a fully automated Lumipulse System analyzer (Fujirebio Inc., Tokyo, Japan) as described previously.^{23,24} Briefly, 150 μ L of serum was incubated with pretreatment solution and then added to a ferrite microparticle suspension in an assay cartridge. Ferrite particles were coated with a monoclonal antibody mixture against denatured HBcAg, HBeAg, and the 22 kDa precore protein. After incubation and washing, further incubation was carried out with alkaline phosphatase conjugated with two kinds of monoclonal antibodies against denatured HBcAg, HBeAg, and the 22 kDa precore protein. Following washing, a substrate solution was added to the test cartridge and then incubated. The relative chemiluminescence intensity was measured, and HBcrAg concentration was calculated by a standard curve generated using recombinant pro-HBeAg. The immunoreactivity of pro-HBeAg at 10 fg/mL was defined as 1 U/mL. We expressed HBcrAg in terms of log U/mL, with a quantitative range set at 3.0 to 6.8 log U/mL.

Statistical analyses

A linear regression model was used to examine for associations between mean and maximal values of both ALT and HBV DNA. Correlations between variables were calculated using the Spearman's rank correlation coefficient test. Each cut-off value was decided using receiver operating characteristic curve (ROC) analysis and results were evaluated by measuring the area under the curve (AUC). The Fisher's exact and Pearson's χ^2 tests

were adopted to test for differences between subgroups of patients. To compare continuous data, the Mann–Whitney *U*-test was used. The Kaplan–Meier method was used to estimate rates of non-relapse observations, and the log-rank test was used to test hypotheses concerning differences in non-relapse observations between selected groups. Multivariate analyses were performed using the Cox regression model. Variables associated with a *P*-value < 0.2 in univariate analyses were included in a stepwise Cox regression analysis to identify independent factors associated with relapse of hepatitis after discontinuation of NAs. All tests were performed using the IBM SPSS Statistics Desktop for Japan ver. 19.0 (IBM Japan Inc., Tokyo, Japan). *P*-values of less than 0.05 were considered to be statistically significant.

RESULTS

Definition of hepatitis relapse after discontinuation of NAs

THE CLINICAL CONDITIONS of a successful discontinuation of NAs were set at serum HBV DNA below 4.0 log copies/mL and ALT below 30 IU/L according to the Japanese guidelines for the treatment of hepatitis B.¹⁸ However, these criteria could not be directly applied to our cohort as post-therapy fluctuations in ALT and HBV DNA were difficult to evaluate consistently. In total, 26 (76%) of 34 patients with successful discontinuation of NAs showed transient abnormal levels of ALT and/or HBV DNA, especially during the early phase after cessation. We therefore used mean and maximal values of these markers to evaluate relapse of hepatitis B in this study; mean values were used to evaluate relapse of hepatitis as a whole, and maximal values were used to dynamically assess relapse during the follow-up period after NA discontinuation. Both ALT and HBV DNA were measured 11.0 times per year on average during the first year and 4.1 times per year on average thereafter.

The mean values of HBV DNA were significantly ($P < 0.001$) correlated with maximal values with a correlation coefficient of 0.853. Similarly, the mean values of ALT were significantly ($P < 0.001$) correlated with maximal values with a correlation coefficient of 0.940 (Fig. 1). The mean HBV DNA value of 4.0 log copies/mL corresponded to a maximal HBV DNA value of 5.7 by ROC analysis (AUC = 0.930, $P < 0.001$), and the mean ALT value of 30 IU/L corresponded to a maximal ALT value of 79 IU/L (AUC = 0.988, $P < 0.001$). These results suggested that patients having serum HBV DNA higher

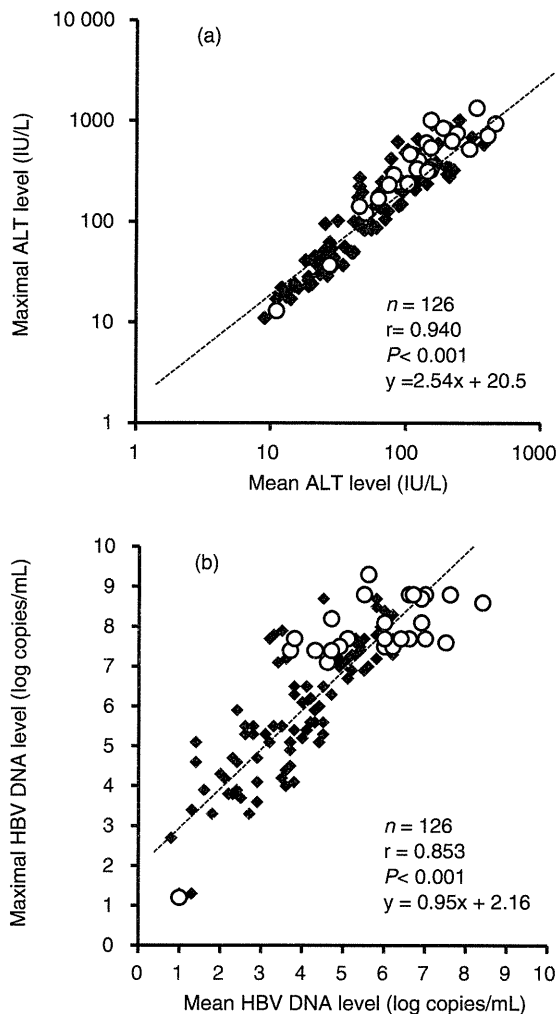


Figure 1 Correlation between maximal and mean levels of alanine aminotransferase (ALT) (a) and hepatitis B virus (HBV) DNA (b) after discontinuation of nucleos(t)ide analogs (NAs). Open circles indicate patients with detectable hepatitis B e antigen (HBeAg) and closed squares indicate patients without detectable HBeAg.

than 5.7 log copies/mL during the follow-up period after NA discontinuation were not likely to achieve the HBV DNA criterion of a successful discontinuation of below 4.0 log copies/mL. Similarly, it could be inferred that patients reaching ALT levels higher than 79 IU/L would also not likely achieve the ALT criterion of a successful discontinuation of below 30 IU/L.

Based on our findings, we judged that a relapse of hepatitis B occurred when serum ALT exceeded 79 IU/L or when serum HBV DNA exceeded 5.7 log copies/mL

following NA discontinuation. Accordingly, 92 (73%) of the 126 patients enrolled in the present study showed a relapse. We set the follow-up period as discontinuation to relapse for relapse patients and as discontinuation to the last recorded examination for patients without relapse. Whereas re-administration of NAs due to relapse was commenced in 70% of relapse patients in the follow-up period, none was performed in non-relapse patients during that time.

Elimination of cases likely to show relapse of hepatitis

As it is generally believed that patients who are positive for HBeAg and/or have a higher level of HBV DNA at discontinuation of NAs are likely to relapse, these factors were assessed first. The progression of analyses in the present study and the population structure of each analysis are shown in Figure 2.

The non-relapse rate was compared using the Kaplan–Meier method between 31 patients with HBV DNA equal to or higher than 3.0 log copies/mL and 95 patients with levels lower than 3.0 log copies/mL when NAs were discontinued (Fig. 3). The revised cut-off value of 3.0 log copies/mL was determined by ROC analysis (AUC = 0.709, $P < 0.001$). Thirty (97%) of 31 patients with HBV DNA equal to or higher than 3.0 log copies/mL relapsed within one year of discontinuation. On the other hand, approximately 30% of patients with levels lower than 3.0 log copies/mL showed prolonged non-relapse. Thus, the 31 patients with high HBV DNA at the time of discontinuation were eliminated from the following analyses.

In the remaining 95 patients, the non-relapse rate was compared using the Kaplan–Meier method between 10 patients with detectable HBeAg and 85 patients without HBeAg when NAs were discontinued (Fig. 4). Ninety percent of patients with HBeAg experienced relapse within one year, which was significantly ($P = 0.005$) higher than in cases without HBeAg. In patients without HBeAg, the non-relapse rate decreased rapidly during the first year to approximately 45%, and then decreased relatively slowly over the following 3 years to nearly 30%. It is noteworthy that this subgroup did not relapse afterwards. Since the relapse rate was high among patients with detectable HBeAg, they were excluded from the following analyses as well.

Factors associated with relapse of hepatitis after discontinuation of NAs

Additional factors associated with relapse of hepatitis were analyzed in the remaining 85 patients who were

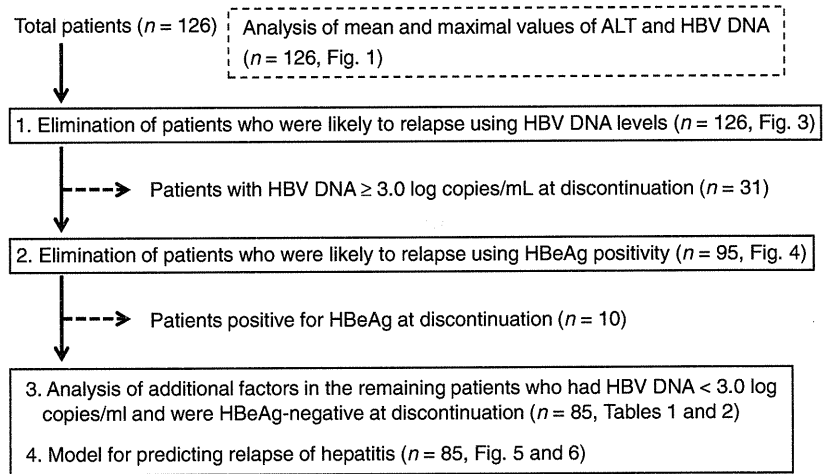


Figure 2 The progression of analyses in the present study and population structure of each analysis.

both negative for HBeAg and whose serum HBV DNA was lower than 3.0 log copies/mL at NA cessation. Table 1 shows the comparison of clinical and virological backgrounds between the 53 relapse and 32 non-relapse patients using univariate analysis. Age and gender distributions were similar between the groups. Approximately 75% of the 85 patients had HBV genotype C, but the distribution of genotypes did not differ between the groups. Approximately 90% of patients were being treated with LVD alone at the time of discontinuation, compared with 6% of patients being given ETV. The median duration of NA treatment was about two times longer in patients without relapse. Levels of both HBsAg

and HBcAg were significantly lower in non-relapse patients than in relapse patients at the time of NA discontinuation. The difference between serum HBsAg was also significant at the initiation of NAs, but not that of HBcAg. As only patients with HBV DNA lower than 3.0 log copies/mL were analyzed, the majority of these cases showed levels below the 2.6 log copies/mL lower detection limit of the Amplicor assay at NA discontinuation. We therefore also tested HBV DNA with a TaqMan assay, in 43 patients whose serum samples were available. The prevalence of patients having a negative detection signal did not differ between the two groups. The number of

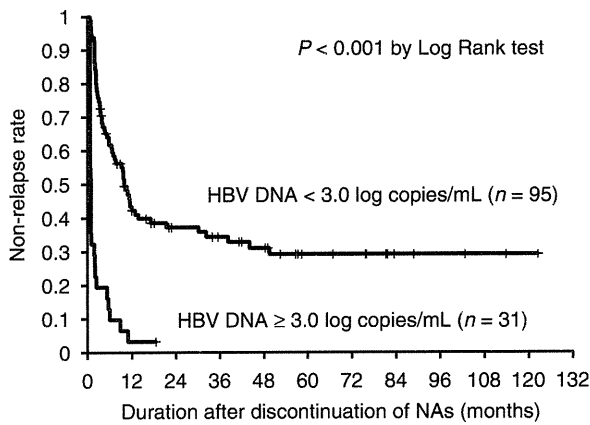


Figure 3 Comparison of non-relapse rates using the Kaplan-Meier method between 31 patients with serum hepatitis B virus (HBV) DNA equal to or higher than 3.0 log copies/mL and 95 patients with serum HBV DNA lower than 3.0 log copies/mL at the time of nucleos(t)ide analog (NA) discontinuation.

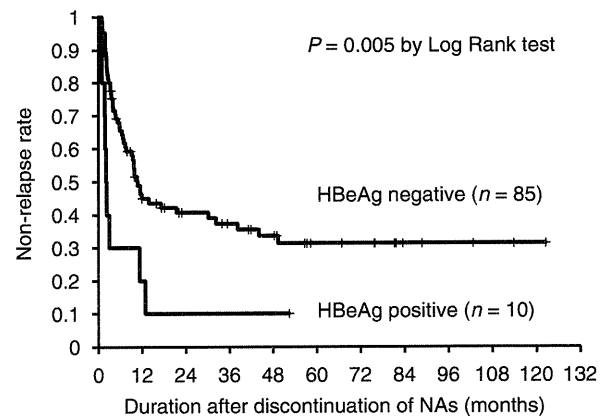


Figure 4 Comparison of non-relapse rates using the Kaplan-Meier method between 10 patients with detectable hepatitis B e antigen (HBeAg) and 85 patients without detectable HBeAg at the time of nucleos(t)ide analog (NA) discontinuation.

Table 1 Comparison of clinical and virological backgrounds between patients with and without relapse of hepatitis at initiation and discontinuation of nucleos(t)ide analogs (NAs)

Background	Non-relapse patients (n = 32)	Relapse patients (n = 53)	P-value
At initiation of NAs			
Age (years)†	47 (17–75)	48 (26–74)	>0.2
Gender (M : F)	23:9	32:21	>0.2
ALT (IU/L)†	183 (9–1182)	187 (20–2052)	>0.2
Genotype (A : B : C : UD)	1:2:21:8	0:3:44:6	0.193
HBeAg (positive)‡	11 (34%)	16 (30%)	>0.2
HBV DNA			
Amplicor assay (log copies/mL)†	6.2 (<2.6–>7.6)	6.5 (<2.6–>7.6)	0.099
HBsAg (log IU/mL)†	2.7 (0.1–4.3)	3.3 (1.6–3.9)	0.018
HBcrAg (log U/mL)†	5.2 (<3.0–>6.8)	5.6 (<3.0–>6.8)	>0.2
At discontinuation of NAs			
Age (years)†	50 (21–78)	49 (26–79)	>0.2
NAs (LVD : LVD+ADV : ETV : ADV)	28:1:3:0	50:0:2:1	>0.2
Duration of NA treatment (months)†	36 (4–129)	17 (4–84)	0.007
Follow-up period after discontinuation of NAs (months)†	45 (6–123)	12 (1–111)	0.002
ALT (IU/L)†	16 (7–38)	20 (9–65)	0.002
HBV DNA			
Amplicor assay (log copies/mL)†	<2.6 (<2.6–2.9)	<2.6 (<2.6–2.9)	>0.2
TaqMan assay (negative signal)‡	5 (23%) (n = 22)	3 (14%) (n = 21)	>0.2
TaqMan assay (negative or positive signal)‡	13 (59%) (n = 22)	13 (62%) (n = 21)	>0.2
HBsAg (log IU/ml)†	2.0 (<–1.5–4.3)	3.1 (0.6–4.0)	0.001
HBcrAg (log IU/mL)†	3.4 (<3.0–4.9)	4.3 (<3.0–>6.8)	0.003

†Data are expressed as the median (range)

‡Data are expressed as a positive number (%)

ADV; adefovir dipivoxil; ALT, alanine aminotransferase; ETV, entecavir; HBcrAg, hepatitis B core-related antigen; HBeAg, hepatitis B e antigen; HBsAg, hepatitis B surface antigen; LVD, lamivudine; UD, undetermined.

patients with a negative detection signal or a positive signal also did not vary significantly. The follow-up period after discontinuation of NAs was significantly shorter in patients with relapse than in those without because formal follow-up ended once patients relapsed. The median period of follow-up was 45 months in patients without relapse.

Multivariate analyses revealed that a shorter duration of NA treatment and higher levels of HBsAg and HBcrAg at discontinuation were significantly associated with the occurrence of hepatitis relapse (Table 2). The cut-off

values that showed the highest significance by ROC analysis were 1.9 log IU/mL for HBsAg (AUC = 0.707, $P = 0.001$), 4.0 log U/mL for HBcrAg (AUC = 0.692, $P = 0.003$), and 16 months (AUC = 0.674, $P = 0.007$) for treatment duration.

Model for predicting relapse of hepatitis using levels of HBsAg and HBcrAg

The existence of a second cut-off value was suggested by ROC analysis for both of HBsAg (2.9 log IU/mL) and HBcrAg (3.0 log IU/mL) to discriminate between

Table 2 Multivariate analysis of factors associated with relapse of hepatitis after discontinuation of nucleos(t)ide analogs (NAs)

Factor	Hazard ratio	95%CI	P-value
HBsAg at discontinuation \geq 1.9 log IU/mL	5.21	1.87–14.55	0.002
HBcrAg at discontinuation \geq 4.0 log U/mL	2.20	1.25–3.87	0.006
Duration of NA treatment \geq 16 months	0.54	0.31–0.93	0.027

CI, confidence interval; HBcrAg, hepatitis B core-related antigen; HBsAg, hepatitis B surface antigen.

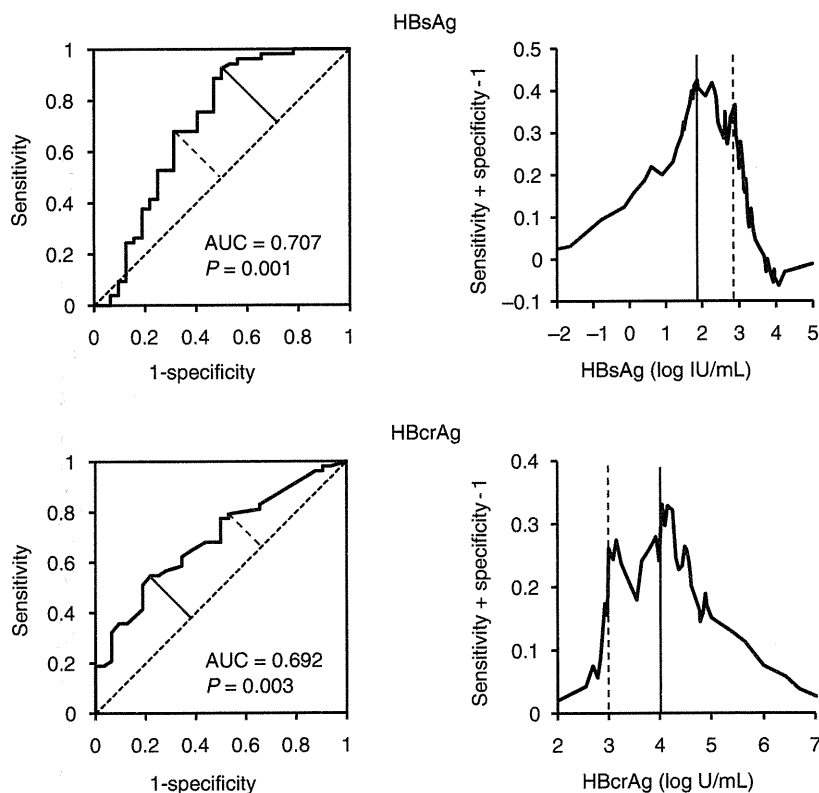


Figure 5 Receiver operating characteristic curve (ROC) analysis of hepatitis B surface antigen (HBsAg) and hepatitis B core-related antigen (HBcrAg) to discriminate between patients with and without hepatitis relapse. The existence of two inflection points is suggested for both HBsAg and HBcrAg. Short diagonal lines indicate main inflection points and short broken diagonal lines indicate second inflection points. Vertical lines indicate actual values of antigens that correspond to the main inflection points and vertical broken lines indicate actual values of antigens that correspond to the second inflection points.

patients with and without relapse (Fig. 5). Thus, we set cut-off values as 1.9 and 2.9 log IU/mL for HBsAg and 3.0 and 4.0 log U/mL for HBcrAg in our model for predicting hepatitis relapse.

We tentatively defined three groups using the sum of the scores for HBsAg and HBcrAg levels at the time of NA discontinuation for our model. Conversions were made by assigning a score of 0 for an HBsAg level lower than 1.9 log IU/mL, 1 for a level from 1.9 to 2.8 log IU/mL, and 2 for a level equal to or higher than 2.9 log IU/mL. HBcrAg was scored as 0 for a level lower than 3.0 log U/mL, 1 for a level from 3.0 to 3.9 log U/mL, and 2 for a level equal to or higher than 4.0 log U/mL. Overall, group 1 consisted of patients with a total score of 0, group 2 of patients with a total score of 1 or 2, and group 3 of patients with a total score of 3 or 4.

Patients whose HBV DNA was lower than 3.0 log copies/mL and in whom HBeAg was negative at the time of NA discontinuation were assigned to one of the three groups. Figure 6 shows the comparison of non-relapse rates among the three groups using Kaplan–Meier analysis, which differed significantly. The non-relapse rate was approximately 90% in group 1, as low as 10% in

group 3, and intermediate in group 2. When factors associated with relapse were analyzed in group 3 patients, an age of over 40 years at the time of discontinuation was calculated as a significant factor (hazard

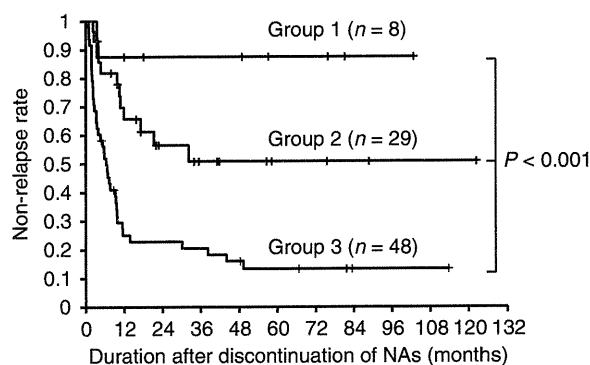


Figure 6 Comparison of non-relapse rates using the Kaplan–Meier method among three groups classified by the sum of the scores of hepatitis B surface antigen (HBsAg) and hepatitis B core-related antigen (HBcrAg) levels at the time of nucleos(t)ide analog (NA) discontinuation.

ratio = 5.25, range 2.37–11.65, $P < 0.001$). No significant factors were associated with relapse in group 2 patients.

DISCUSSION

THE EUROPEAN ASSOCIATION for the Study of the Liver recommends continuation of NA treatment until HBsAg is cleared.²⁵ Liu *et al.* came to a similar conclusion in their study of chronic hepatitis B patients treated with LVD.¹⁴ Indeed, the clearance of HBsAg is a reliable marker for the safe discontinuation of NAs, but the rate of patients who can clear HBsAg is relatively low (1–3%/year).^{26–28} Thus, additional factors associated with relapse of hepatitis B after discontinuation of NAs were analyzed in the present study to better identify candidates who could achieve drug-free status. Such studies are relatively few, possibly because patients who discontinue NAs prematurely often experience severe complicating relapse and hepatic failure.⁹ Although prospective studies are desirable to obtain accurate results, retrospective studies, such as ours, are also necessary to minimize the risk of adverse complications.

Since HBV cannot be completely eradicated in hosts, the primary goal in treating chronic hepatitis B is to convert symptomatic patients into inactive carriers in whom HBeAg is negative (usually anti-HBe-positive), serum HBV DNA is low, and serum ALT is normal.^{1,2,18,29} Thus, we set the clinical conditions of a successful discontinuation of NAs as serum HBV DNA level below 4.0 log copies/mL and ALT below 30 IU/L following NA cessation. Patients who satisfy these conditions are not recommended for treatment by the Japanese guidelines for hepatitis B,¹⁸ and it is also widely accepted that the risk of developing cirrhosis or complicating hepatocellular carcinoma is very low in such patients.^{30,31} We used our cohort's mean and maximal values of HBV DNA and ALT for relapse analyses. Mean values were useful for evaluating relapse of hepatitis as a whole since parameter levels often fluctuated after discontinuation, and maximal values were used to evaluate relapse in a real-time fashion during the follow-up period. It is noteworthy that the mean and maximal values correlated very closely for both HBV DNA and ALT. The mean HBV DNA value of 4.0 log copies/mL corresponded to the maximal HBV DNA value of 5.7 by ROC analysis, and similarly the mean ALT value of 30 IU/L corresponded to the maximal ALT value of 79 IU/L. Thus, relapse of hepatitis B was judged to occur when serum ALT became higher than 79 IU/L or when serum HBV DNA surpassed 5.7 log copies/mL after the time of NA discontinuation.

Such criteria may also be useful for physicians to detect relapse at an early phase and avoid the occurrence of severe reactivation or unnecessary discontinuation of NAs.

It is generally understood that patients with a higher level of HBV DNA at the time of NA discontinuation are likely to relapse, but this cut-off value has not been analyzed sufficiently. Our findings using ROC analysis showed that patients with levels lower than 3.0 log copies/mL have a good possibility to achieve successful discontinuation. The presence of HBeAg is also generally accepted as a reliable factor to predict relapse of hepatitis. Our study showed that patients with detectable HBeAg at the time of NA discontinuation were likely to relapse, even if their HBV DNA levels were lower than 3.0 log copies/mL. Therefore, we next analyzed additional factors associated with a relapse of hepatitis after discontinuation of NAs by selecting patients who met both of these criteria.

Nucleos(t)ide analog treatment produces a rapid decrease in serum HBV DNA by suppressing reverse transcription of pregenomic HBV RNA. However, the key intrahepatic HBV replicative intermediate, covalently closed circular DNA (cccDNA), tends to remain and is capable of reinitiating replication once NAs are ceased.³² Measurement of HBV cccDNA has been reported to be useful for monitoring and predicting responses to antiviral treatments.³³ However, its measurement is difficult in the clinical setting as it requires a liver biopsy. Due to the mechanism of action of NAs mentioned above, serum HBV DNA does not reflect intrahepatic HBV cccDNA in patients undergoing NA treatment.³⁴ To address this, quantitative measurement of HBV antigens has been reported to be useful for predicting the effect of antiviral treatment in patients with chronic hepatitis B. Although HBsAg is usually used as a serum marker for the diagnosis of HBV infection, several groups have shown that HBsAg levels can also be reflective of the response to peg-interferon in chronic hepatitis B.^{28,35,36} The HBcAg assay measures serum levels of HB core and e antigens simultaneously using monoclonal antibodies that recognize the common epitopes of these two denatured antigens. Since the assay measures all antigens transcribed from the pre-core/core gene, it is regarded as core-related.³⁷ Serum HBcAg has been reported to accurately reflect intracellular levels of HBV cccDNA even during NA treatment,^{24,34,38} and was found to be useful for identifying patients who were likely to show relapse of hepatitis after the discontinuation of NAs.^{39,40} It is possible that levels of HBsAg and HBcAg have different roles in

monitoring antiviral effects because the transcription of these two antigens are regulated by alternative enhancer-promoter systems in the HBV genome.³ Therefore, we analyzed both of these antigens to elucidate their ability to predict relapse of hepatitis after discontinuation of NAs.

Multivariate analysis demonstrated that levels of HBsAg and HBcrAg at the time of NA discontinuation were independent factors significantly associated with relapse of hepatitis. Thus, we believe these factors can also be applied for predicting relapse in patients whose HBV DNA is lower than 3.0 log copies/mL and whose HBeAg is negative at NA discontinuation. HBV DNA levels were further analyzed using a highly sensitive assay based on real-time polymerase chain reaction (PCR). However, even the level of a negative signal did not ensure successful discontinuation of NAs. The results obtained here indicate that the combined use of HBV-related antigens are useful makers for monitoring the effect of anti-viral treatment in ways different from HBV DNA. Finally, since prolonged NA administration was also a significant factor associated with safe discontinuation, physicians are advised to continue patient treatment for at least 16 months for the best possible outcome.

From our data, a tentative model for predicting relapse of hepatitis after discontinuation of NAs was constructed using levels of HBsAg and HBcrAg at discontinuation. A negative result for HBeAg and HBV DNA lower than 3.0 log copies/mL at the time of NA discontinuation are the essential conditions in this system. Levels of HBsAg and HBcrAg were each converted into scores from 0 to 2 partly because two cut-off values were needed for each antigen and partly because a scoring system may be more convenient for clinical use. The sum of the two scores, which ranged from 0 to 4, was used to prospect relapse. We found that group 1 patients who had a low score (0) could be recommended to discontinue NAs because nearly 90% of this group achieved successful discontinuation. Further analysis of factors associated with relapse are needed for group 2 patients who had middle range scores (1 or 2), since the odds of achieving successful discontinuation were approximately 50%. Continuation of NA treatment is recommended for group 3 patients having high scores (3 or 4) because nearly 90% of this group relapsed. However, this recommendation may be reconsidered in patients younger than 40 years; such cases tended to have a lower relapse rate in group 3. It is also noteworthy that relapse occurred mainly during the first and second years following NA discontinuation in

all groups, similarly to a report by Liu *et al.*¹⁴ Thus, clinicians should be vigilant in the early phase after discontinuation.

This study has several limitations. The patients who discontinued NAs were recruited retrospectively, and thus the decision to halt NA treatment was made by individual physicians without uniformly established criteria. Based on this, prospective studies are required to confirm our results. Furthermore, as over 90% of the patients we enrolled had genotype C and over 90% of cases were treated with LVD until discontinuation, the results obtained here can not be applied directly to other HBV genotypes or other types of NAs.

In conclusion, the present study showed that maximal levels of serum ALT and HBV DNA were useful for defining relapse patients after discontinuation of NAs. Along with serum HBV DNA of less than 3.0 log copies/mL and negative serum HBeAg, serum levels of HBsAg and HBcrAg at the time of NA discontinuation were able to predict relapse of hepatitis B and should therefore be considered when establishing uniform guidelines regarding the safe withdrawal of NA treatment. To this end, NA administration of more than 16 months is advisable to achieve successful discontinuation.

ACKNOWLEDGMENTS

THIS RESEARCH WAS supported in part by a research grant from the Ministry of Health, Labor and Welfare of Japan.

We thank Ms. Hiroe Banno for her secretarial assistance and thank Ms. Nozomi Kamijo and Ms. Etsuko Iigahama for their technical assistance. We also thank Mr Trevor Ralph for his English editorial assistance.

REFERENCES

- 1 Hoofnagle JH, Doo E, Liang TJ, Fleischer R, Lok AS. Management of hepatitis B: summary of a clinical research workshop. *Hepatology* 2007; 45: 1056–75.
- 2 Lok AS, McMahon BJ. Chronic hepatitis B. *Hepatology* 2007; 45: 507–39.
- 3 Lee WM. Hepatitis B virus infection. *N Engl J Med* 1997; 337: 1733–45.
- 4 Ghany M, Liang TJ. Drug targets and molecular mechanisms of drug resistance in chronic hepatitis B. *Gastroenterology* 2007; 132: 1574–85.
- 5 Liaw YF, Sung JJ, Chow WC *et al.* Lamivudine for patients with chronic hepatitis B and advanced liver disease. *N Engl J Med* 2004; 351: 1521–31.
- 6 Matsumoto A, Tanaka E, Rokuhara A *et al.* Efficacy of lamivudine for preventing hepatocellular carcinoma in chronic

- hepatitis B: a multicenter retrospective study of 2795 patients. *Hepatol Res* 2005; 32: 173–84.
- 7 Suzuki Y, Kumada H, Ikeda K *et al.* Histological changes in liver biopsies after one year of lamivudine treatment in patients with chronic hepatitis B infection. *J Hepatol* 1999; 30: 743–8.
 - 8 Lok AS, Zoulim F, Locarnini S *et al.* Antiviral drug-resistant HBV: standardization of nomenclature and assays and recommendations for management. *Hepatology* 2007; 46: 254–65.
 - 9 Honkoop P, de Man RA, Niesters HG, Zondervan PE, Schalm SW. Acute exacerbation of chronic hepatitis B virus infection after withdrawal of lamivudine therapy. *Hepatology* 2000; 32: 635–9.
 - 10 Honkoop P, de Man RA, Heijink RA, Schalm SW. Hepatitis B reactivation after lamivudine. *Lancet* 1995; 346: 1156–7.
 - 11 Chang TT, Gish RG, de Man R *et al.* A comparison of entecavir and lamivudine for HBeAg-positive chronic hepatitis B. *N Engl J Med* 2006; 354: 1001–10.
 - 12 Lai CL, Shouval D, Lok AS *et al.* Entecavir versus lamivudine for patients with HBeAg-negative chronic hepatitis B. *N Engl J Med* 2006; 354: 1011–20.
 - 13 Lai CL, Chien RN, Leung NW *et al.* A one-year trial of lamivudine for chronic hepatitis B. Asia Hepatitis Lamivudine Study Group. *N Engl J Med* 1998; 339: 61–8.
 - 14 Liu F, Wang L, Li XY *et al.* Poor durability of lamivudine effectiveness despite stringent cessation criteria: a prospective clinical study in hepatitis B e antigen-negative chronic hepatitis B patients. *J Gastroenterol Hepatol* 2011; 26: 456–60.
 - 15 Reijnders JG, Perquin MJ, Zhang N, Hansen BE, Janssen HL. Nucleos(t)ide analogues only induce temporary hepatitis B e antigen seroconversion in most patients with chronic hepatitis B. *Gastroenterology* 2010; 139: 491–8.
 - 16 Liaw YF, Leung N, Kao JH *et al.* Asian-Pacific consensus statement on the management of chronic hepatitis B: a 2008 update. *Hepatol Int* 2008; 2: 263–83.
 - 17 Leung N. Recent data on treatment of chronic hepatitis B with nucleos(t)ide analogues. *Hepatol Int* 2008; 2: 163–78.
 - 18 Kumada H, Okanoue T, Onji M *et al.* Guidelines for the treatment of chronic hepatitis and cirrhosis due to hepatitis B virus infection for the fiscal year 2008 in Japan. *Hepatol Res* 2010; 40: 1–7.
 - 19 Schuttler CG, Wend UC, Faupel FM, Lelie PN, Gerlich WH. Antigenic and physicochemical characterization of the 2nd International Standard for hepatitis B virus surface antigen (HBsAg). *J Clin Virol* 2010; 47: 238–42.
 - 20 Dai CY, Yu ML, Chen SC *et al.* Clinical evaluation of the COBAS AmpliCor HBV monitor test for measuring serum HBV DNA and comparison with the Quantiplex branched DNA signal amplification assay in Taiwan. *J Clin Pathol* 2004; 57: 141–5.
 - 21 Ronsin C, Pillet A, Bali C, Denoyel GA. Evaluation of the COBAS AmpliPrep-total nucleic acid isolation-COBAS TaqMan hepatitis B virus (HBV) quantitative test and comparison to the VERSANT HBV DNA 3.0 assay. *J Clin Microbiol* 2006; 44: 1390–9.
 - 22 Mizokami M, Nakano T, Orito E *et al.* Hepatitis B virus genotype assignment using restriction fragment length polymorphism patterns. *FEBS Lett* 1999; 450: 66–71.
 - 23 Kimura T, Rokuhara A, Sakamoto Y *et al.* Sensitive enzyme immunoassay for hepatitis B virus core-related antigens and their correlation to virus load. *J Clin Microbiol* 2002; 40: 439–45.
 - 24 Suzuki F, Miyakoshi H, Kobayashi M, Kumada H. Correlation between serum hepatitis B virus core-related antigen and intrahepatic covalently closed circular DNA in chronic hepatitis B patients. *J Med Virol* 2009; 81: 27–33.
 - 25 European Association for the Study of the Liver. EASL Clinical Practice Guidelines: management of chronic hepatitis B. *J Hepatol* 2009; 50: 227–42.
 - 26 Gish RG, Lok AS, Chang TT *et al.* Entecavir therapy for up to 96 weeks in patients with HBeAg-positive chronic hepatitis B. *Gastroenterology* 2007; 133: 1437–44.
 - 27 Marcellin P. Hepatitis B and hepatitis C in 2009. *Liver Int* 2009; 29 (Suppl 1): 1–8.
 - 28 Moucari R, Lada O, Marcellin P. Chronic hepatitis B: back to the future with HBsAg. *Expert Rev Anti Infect Ther* 2009; 7: 633–6.
 - 29 Yokosuka O, Kurosaki M, Imazeki F *et al.* Management of hepatitis B: consensus of the Japan Society of Hepatology 2009. *Hepatol Res* 2011; 41: 1–21.
 - 30 Iloeje UH, Yang HI, Su J, Jen CL, You SL, Chen CJ. Predicting cirrhosis risk based on the level of circulating hepatitis B viral load. *Gastroenterology* 2006; 130: 678–86.
 - 31 Chen CJ, Yang HI, Su J *et al.* Risk of hepatocellular carcinoma across a biological gradient of serum hepatitis B virus DNA level. *JAMA* 2006; 295: 65–73.
 - 32 Werle-Lapostolle B, Bowden S, Locarnini S *et al.* Persistence of cccDNA during the natural history of chronic hepatitis B and decline during adefovir dipivoxil therapy. *Gastroenterology* 2004; 126: 1750–8.
 - 33 Sung JJ, Wong ML, Bowden S *et al.* Intrahepatic hepatitis B virus covalently closed circular DNA can be a predictor of sustained response to therapy. *Gastroenterology* 2005; 128: 1890–7.
 - 34 Wong DK, Tanaka Y, Lai CL, Mizokami M, Fung J, Yuen MF. Hepatitis B virus core-related antigens as markers for monitoring chronic hepatitis B infection. *J Clin Microbiol* 2007; 45: 3942–7.
 - 35 Brunetto MR, Moriconi F, Bonino F *et al.* Hepatitis B virus surface antigen levels: a guide to sustained response to peginterferon alfa-2a in HBeAg-negative chronic hepatitis B. *Hepatology* 2009; 49: 1141–50.
 - 36 Moucari R, Mackiewicz V, Lada O *et al.* Early serum HBsAg drop: a strong predictor of sustained virological response

- to pegylated interferon alfa-2a in HBeAg-negative patients. *Hepatology* 2009; 49: 1151–7.
- 37 Tanaka E, Matsumoto A, Yoshizawa K, Maki N. Hepatitis B core-related antigen assay is useful for monitoring the antiviral effects of nucleoside analogue therapy. *Intervirology* 2008; 51 (Suppl 1): 3–6.
- 38 Hosaka T, Suzuki F, Kobayashi M *et al.* HBcrAg is a predictor of post-treatment recurrence of hepatocellular carcinoma during antiviral therapy. *Liver Int* 2010; 30: 1461–70.
- 39 Matsumoto A, Tanaka E, Minami M *et al.* Low serum level of hepatitis B core-related antigen indicates unlikely reactivation of hepatitis after cessation of lamivudine therapy. *Hepatol Res* 2007; 37: 661–6.
- 40 Shinkai N, Tanaka Y, Orito E *et al.* Measurement of hepatitis B virus core-related antigen as predicting factor for relapse after cessation of lamivudine therapy for chronic hepatitis B virus infection. *Hepatol Res* 2006; 36: 272–6.

ORIGINAL ARTICLE

Hepatitis B virus strains of subgenotype A2 with an identical sequence spreading rapidly from the capital region to all over Japan in patients with acute hepatitis B

Yoko Tamada,^{1,2} Hiroshi Yatsushashi,^{1,2} Naohiko Masaki,³ Makoto Nakamuta,⁴ Eiji Mita,⁵ Tatsuji Komatsu,⁶ Yukio Watanabe,⁷ Toyokichi Muro,⁸ Masaaki Shimada,⁹ Taizo Hijioka,¹⁰ Takeaki Satoh,¹¹ Yutaka Mano,¹² Toshiki Komeda,¹³ Masahiko Takahashi,¹⁴ Hiroshi Kohno,¹⁵ Hajime Ota,¹⁶ Shigeki Hayashi,¹⁷ Yuzo Miyakawa,¹⁸ Seigo Abiru,^{1,2} Hiromi Ishibashi^{1,2}

For numbered affiliations see end of article.

Correspondence to

Professor Hiroshi Yatsushashi, Clinical Research Center, NHO National Nagasaki Medical Center and Department of Hepatology, Nagasaki University Graduate School of Biomedical Sciences, Address: 2-1001-1 Kubara, Omura, Nagasaki 856-8562, Japan; yatsushashi@nmc.hosp.go.jp

Revised 3 October 2011
Accepted 5 October 2011

ABSTRACT

Objective To examine recent trends of acute infection with hepatitis B virus (HBV) in Japan by nationwide surveillance and phylogenetic analyses.

Methods During 1991 through 2009, a sentinel surveillance was conducted in 28 national hospitals in a prospective cohort study. Genotypes of HBV were determined in 547 patients with acute hepatitis B. Nucleotide sequences in the preS1/S2/S gene of genotype A and B isolates were determined for phylogenetic analyses.

Results HBV genotype A was detected in 137 (25% (accompanied by genotype G in one)) patients, B in 48 (9%), C in 359 (66%), and other genotypes in the remaining three (0.5%). HBV persisted in five with genotype A including the one accompanied by genotype G; another was co-infected with HIV type 1. The genotype was A in 4.8% of patients during 1991–1996, 29.3% during 1997–2002, and 50.0% during 2003–2008 in the capital region, as against 6.5%, 8.5% and 33.1%, respectively, in other regions. Of the 114 genotype A isolates, 13 (11.4%) were subgenotype A1, and 101 (88.6%) were A2, whereas of the 43 genotype B isolates, 10 (23.3%) were subgenotype B1, 28 (65.1%) were B2, two (4.7%) were B3, and three (7.0%) were B4. Sequences of 65 (64%) isolates of A2 were identical, as were three (23%) of A1, and five (18%) of B2, but none of the B1, B3 and B4 isolates shared a sequence.

Conclusions Acute infection with HBV of genotype A, subgenotype A2 in particular, appear to be increasing, mainly through sexual contact, and spreading from the capital region to other regions in Japan nationwide. Infection persisted in 4% of the patients with genotype A, and HBV strains with an identical sequence prevailed in subgenotype A2 infections. This study indicates the need for universal vaccination of young people to prevent increases in HBV infection in Japan.

Significance of this study

What is already known about this subject?

- ▶ In Japan, a national prevention programme was started in 1986 with selective vaccination of babies born to mothers who carry hepatitis B virus (HBV). Since then, the prevalence of hepatitis B surface antigen among younger generations has decreased sharply.
- ▶ However, retrospective studies indicate that the frequency of HBV genotype A is increasing among patients with acute hepatitis B (AHB) within the capital region of Japan.
- ▶ Infection with genotype A more often persists than infection with other genotypes.
- ▶ Because there is no reliable and comprehensive surveillance system for AHB in Japan, the incidence of AHB and factors responsible for changes over many years are not known.

What are the new findings?

- ▶ This is a prospective cohort study for surveillance of AHB throughout Japan in a national research programme.
- ▶ The incidence of AHB in Japan has not decreased, because genotype A infections have increased over time.
- ▶ Genotype A infections started to increase in the capital region of Japan, and then spread to other regions 5–6 years later.
- ▶ About 90% of genotype A found in AHB patients in Japan is subgenotype A2.
- ▶ Subgenotype A2 isolates from patients with AHB tend to preserve sequence identity over time, indicating that particular subgenotype A2 strains have been transmitted without undergoing mutations.

Hepatitis B virus (HBV) has been classified into 10 genotypes, designated A–J, based on a >8% divergence in the full-genome sequence.^{1–7} Different genotypes are associated with distinct clinical manifestations, such as severity and progression of

liver disease, as well as response to antiviral treatments.^{8–10} Some genotypes are subclassified: genotype A into at least two subgenotypes, A1 (Asian/African type) and A2 (European type)^{11–13};

Viral hepatitis

Significance of this study

How might it impact on clinical practice in the foreseeable future?

- ▶ It needs to be noted that subgenotype A2 infections are spreading among sexually active generations in Japan.
- ▶ Although selective vaccination has prevented mother-to-baby transmission of HBV since 1986, it does not contain sporadic infections in Japan.
- ▶ Herd vaccination of younger generations needs to be considered in Japan.

B into B1 (Japanese type) and B2 (Asian type)^{14 15}; and C into C1 (Southeast-Asian type) and C2 (East-Asian type).¹⁶ Subgenotypes also influence the replication of HBV and clinical manifestation.^{15 17 18}

According to a report from Japan in 2001,¹⁹ genotype C was the most prevalent (84.7%), followed by genotype B (12.2%) and A (1.7%), among patients with chronic hepatitis B. In 2002, genotype A became the most prevalent in patients with acute hepatitis B (AHB) around Tokyo, the capital region of Japan.^{20 21} Several reports have shown that infection with HBV genotype A is associated with particular sexual behaviours, such as homosexual activity and promiscuous sexual contacts, and tends to persist longer than that with HBV genotype C.^{22 23} These reports have raised concerns about the horizontal HBV infection in adults, which, in general, is considered to resolve spontaneously. However, adult-acquired HBV infection may result in chronic HBV infection in some instances.

Information on changes in genotype distribution over time, as well as genotype-specific clinical manifestations, may help in planning preventive measures and antiviral therapy strategies. Therefore it is important to examine how genotype A infection has spread in Japan, and what clinical and virological characteristics it possesses.

We have been conducting a nationwide, sentinel surveillance on acute viral hepatitis for more than 30 years. As part of this surveillance, a prospective cohort study has been conducted on 547 patients with AHB in 28 medical centres over the 19 years from 1991 to 2009. Geographical and longitudinal distributions of HBV genotypes/subgenotypes were surveyed, and their influence on clinical outcome was evaluated.

PATIENTS AND METHODS

Patients

A total of 681 patients with sporadic AHB were enrolled consecutively in a survey carried out by the Japan National Hospital Acute Hepatitis Study Group (JNHAHSG). They were admitted to 28 national hospitals from January 1991 to the end of December 2009. They were grouped geographically into two areas: the capital region (Gunma, Saitama, Tokyo and Kanagawa) and other regions (figure 1). Patients were also longitudinally categorised into three periods: 1st (1991–1996), 2nd (1997–2002) and 3rd (2003–2008). In addition, the year 2009 provided the most recent data. Of the 681 patients, 547 (80.3%) entered the study, for whom serum samples were available on admission and had been stored at -20°C .

The diagnosis of AHB was based on the following criteria: (1) acute onset of liver injury without a history of liver dysfunction; (2) detection of hepatitis B surface antigen (HBsAg) in the

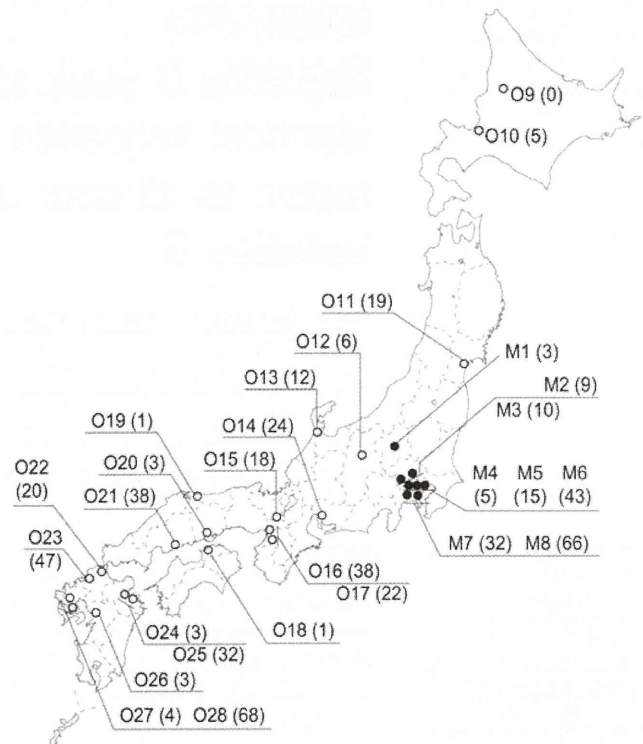


Figure 1 Locations of participating hospitals in Japan. Hospitals in the capital region (M1–M8) are indicated by eight closed circles, and those in other regions (O9–O28) by 20 open circles. Numbers in parentheses indicate the total number of enrolled subjects for each site. The hospitals are: M1, Nishigunma Hospital, Gunma; M2, Nishisaitama-Chuo Hospital, Saitama; M3, National Disaster Medical Center, Tokyo; M4, Tokyo Hospital, Tokyo; M5, Tokyo Medical Center, Tokyo; M6, National Center for Global Health and Medicine, Tokyo; M7, Sagami Hospital, Kanagawa; M8, Yokohama Medical Center, Kanagawa; O9, Asahikawa Medical Center, Hokkaido; O10, Hokkaido Medical Center, Hokkaido; O11, Sendai Medical Center, Miyagi; O12, Matsumoto Medical Center, Nagano; O13, Kanazawa Medical Center, Ishikawa; O14, Nagoya Medical Center, Aichi; O15, Kyoto Medical Center, Kyoto; O16, Osaka National Hospital, Osaka; O17, Osaka-Minami Medical Center, Osaka; O18, Zentsuji Hospital, Kagawa; O19, Yonago Medical Center, Tottori; O20, Okayama Medical Center, Okayama; O21, Kure Medical Center and Chugoku Cancer Center, Hiroshima; O22, Kokura Medical Center, Fukuoka; O23, Kyushu Medical Center, Fukuoka; O24, Beppu Medical Center, Oita; O25, Oita Medical Center, Oita; O26, Kumamoto Medical Center, Kumamoto; O27, Ureshino Medical Center, Saga; and O28, Nagasaki Medical Center, Nagasaki.

serum; (3) positivity for IgM antibody to HBV-core antigen (IgM anti-HBc) in high titres (detectable in sera diluted 10-fold); and (4) absence of past or family history of chronic HBV infection. Severe acute hepatitis (SAH) was defined as prothrombin time (PT) $\leq 40\%$ and hepatic encephalopathy of grade $\leq \text{I}$. Fulminant hepatitis (FH) was diagnosed from PT $\leq 40\%$ and hepatic encephalopathy of grade $\geq \text{II}$. Patients in whom HBsAg remained in the serum for > 6 months after onset were considered to have acquired chronic HBV infection. The following information was collected from each patient: year and age at onset, gender, residential area, HBsAg, IgM anti-HBc, alanine aminotransferase, total bilirubin, PT, severity of liver disease, mortality, routes of transmission, sexual behaviours, travelling abroad in recent past, HBV genotype, mutations in precore (PreC) and core promoter (CP) regions, and RNA of hepatitis D virus. Antibody to HIV type 1 (anti-HIV) was

determined in patients who were at high risk and gave consent to testing.

Informed consent was obtained from each patient. The study protocol conforms to the ethical guidelines of the 1975 Declaration of Helsinki and the Ministry of Education, Culture, Sports Science and Technology of Japan, and was approved by the ethics committee of each institution.

Extraction of HBV DNA

HBV DNA was extracted from serum (100 μ l) by the SMITEST EX-R&D Nucleic Acid Extraction Kit (MBL Co, Nagoya, Japan) and used for genotyping/subgenotyping and detecting mutations in PreC and CP regions.

HBV genotypes

Genotypes were determined in Nagasaki Medical Center with the SMITEST HBV Genotyping Kit (MBL) by hybridisation with type-specific probes immobilised on a solid-phase support.²⁴

Determination of HBV subgenotypes

For subgenotyping, HBV DNA was amplified by PCR with TaKaRa Ex Taq (Takara Bio, Shiga, Japan). PCR was performed with appropriate nested primers to amplify a ~1.2 kb sequence in the preS1/S2/S gene (nucleotides 2854–835 in the reference isolate (AB116077)). PCR products were purified, subjected to cycle sequencing reaction with the BigDye Terminator v1.1 (Applied Biosystems, Tokyo, Japan), and applied to the DNA sequencer (3100-Avant; Applied Biosystems).

Mutations in the PreC and CP regions

The A1896 mutation in the PreC region was detected by the enzyme-linked minisequence assay (SMITEST HBV PreC ELMA; Roche Diagnostics, Tokyo, Japan), and mutations in the CP region for T1762/A1764 by the enzyme-linked specific probe assay (SMITEST HBV Core Promoter Mutation Detection Kit; Roche Diagnostics). The results were recorded as 'wild-type' and 'mutant types' dominantly expressed by HBV isolates.²⁵

Phylogenetic analyses

Nucleotide sequences were aligned, and phylogenetic trees were constructed by the CLUSTAL W program v1.83 (DDBJ homepage: <http://clustalw.ddbj.nig.ac.jp/top-j.html>). The statistical validity was assessed by bootstrap resampling with 1000 replicates. Reference HBV strains were retrieved from the GenBank database.

Statistical analysis

Results were expressed as percentage or mean \pm SD. Statistical differences were evaluated by χ^2 and Fisher exact tests for categorical variables, and analysis of variance and Scheffe's test for quantitative variables, using the SPSS software. The 95% CI, for the difference in means, was calculated in analyses for quantitative variables. $p < 0.05$ was considered significant.

RESULTS

Distribution of HBV genotypes

HBV genotypes were determined in the 547 patients with AHB. The genotype was A in 137 (25.0%) patients (accompanied by G in one (0.2%)), B in 48 (8.8%), C in 359 (65.6%), D in one (0.2%), E in one (0.2%), and H in one (0.2%). Because HBV genotype G is a defective virus and cannot replicate by itself,^{26 27} the single patient with mixed genotypes A and G was included in the 137 patients with genotype A in further analyses. RNA of hepatitis

D virus was detected in three of the 453 (0.7%) patients. Anti-HIV was examined in patients at high risk of infection and detected in 14 of the 53 (26.4%) who gave consent to testing.

Demographic and clinical differences among patients infected with HBV of distinct genotypes

Demographic and clinical characteristics of patients with different genotypes are compared in table 1. There was no difference in mean age among patients with genotypes A, B and C. The proportion of men was higher in patients with genotype A than B or C (94.2% vs 79.2%, $p < 0.05$; or 56.0%, $p < 0.0001$), and in those with genotype B than C (79.2% vs 56.0%, $p < 0.05$).

Maximum levels of total bilirubin were higher in patients with genotype A than C (9.6 ± 7.6 vs 7.1 ± 6.2 mg/dl, $p < 0.05$), with a difference of 2.5 mg/dl (95% CI 0.93 to 4.08), whereas the highest alanine aminotransferase activity and lowest PT values did not differ among patients with distinct genotypes.

SAH developed in four (2.9%) patients with genotype A, four (8.3%) with genotype B, and 26 (7.2%) with genotype C. FH developed in one (2.1%) patient with genotype B and eight (2.2%) with genotype C; no patients with genotype A developed FH. Eight (1.5%) patients died, including one with genotype B and seven with genotype C. There were no significant differences among patients with different genotypes in the frequency of SAH or FH or mortality.

The outcome of AHB was traceable in 514 of the 547 (94.0%) patients. Chronic infection with persistence of HBsAg for >6 months developed in five of the 123 (4.1%) patients with genotype A (including the one accompanied by genotype G), none of the 46 (0%) with genotype B, and none of the 342 (0%) with genotype C; it was more common in patients with genotype A than C ($p < 0.05$). HBV infection persisted exclusively in the patients with genotype A, either alone (four patients) or together with genotype G (one).

Among the five patients who acquired chronic HBV infection, four (three with genotype A and one with mixed genotypes A and G) were examined for anti-HIV, and one with genotype A was found to be positive. HBV infection persisted in three (including the one with anti-HIV) of the five patients for >1 year after the onset, and the remaining two (both without anti-HIV) cleared HBsAg from the serum after retaining it for >6 months.

Mutations in the PreC and/or CP region were detected in 3.7% (4/109) of patients with genotype A, 15.4% (6/39) of those with genotype B, and 25.5% (79/310) of those with genotype C. They were significantly less common in patients with genotype A than B or C (A vs B, $p < 0.05$; A vs C, $p < 0.0001$). The only patient with genotype A who had the PreC mutation was simultaneously infected with genotype G.

Routes of transmission were identifiable in 275 of the 547 (50%) patients, and the main route was heterosexual contacts; those in the remaining patients could not be disclosed. The frequency of heterosexual activity did not differ among patients with distinct genotypes. However, homosexual activity was more common in patients with genotype A than B or C (21.2%, 0% and 0.8%, respectively (A vs B, $p < 0.001$; A vs C, $p < 0.0001$)). Among the 32 homosexual men, HBV genotype A was detected in 29 (91%). Consent to anti-HIV testing was given by 10 of the 29 patients, and four of these (40%) were positive.

Longitudinal changes in the distribution of genotypes

Figure 2 illustrates changes in the distribution of HBV genotypes through three 6-year periods over 18 years (1991–2008). In addition, data from 2009 are shown. HBV genotype A accounted

Viral hepatitis

Table 1 Demographic and clinical characteristics of patients with acute hepatitis who were infected with HBV of different genotypes (1991–2009)

Feature	Total (n=547)	HBV genotypes			
		A (n=137)† (25.0%)	B (n=48) (8.8%)	C (n=359) (65.6%)	Others (n=3)‡ (0.5%)
Age (years)	35.6±14.8	35.2±12.2	39.6±15.6	35.1±15.5	49.7±13.6
Male	367 (67.1%)	129 (94.2%)¶ * †† ***	38 (79.2%)†† *	201 (56.0%)	3 (100%)
ALT (IU/l)§	2553±1563	2289±1069	2557±1412	2342±1728	3333±2406
T-Bil (mg/dl)§	7.8±6.7	9.6±7.6††*	7.7±7.4	7.1±6.2	9.0±2.5
PT (%)§	74.6±22.6	75.2±15.9	73.8±24.5	74.7±24.5	15.8‡‡
Severe hepatitis	34 (6.2%)	4 (2.9%)	4 (8.3%)	26 (7.2%)	0 (0.0%)
Fulminant hepatitis	10 (1.8%)	0 (0.0%)	1 (2.1%)	8 (2.2%)	1 (33.3%)
Mortality	8 (1.5%)	0 (0.0%)	1 (2.1%)	7 (1.9%)	0 (0.0%)
HBsAg persisting >6 months	5/514 (1.0%)	5/123 (4.1%)††† *	0/46 (0.0%)	0/342 (0%)	0/3 (0.0%)
PreC/CP mutations					
PreC	43/461 (9.3%)	1/109 (0.9%)¶ * ††† *	6/39 (15.4%)	34/310 (11.0%)	2/3 (66.7%)
CP	69/461 (15.0%)	3/109 (2.8%)††† ***	0/39 (0.0%)††† *	63/310 (20.3%)	3/3 (100%)
PreC and/or CP	92/461 (20.0%)	4/109 (3.7%)¶ * ††† ***	6/39 (15.4%)	79/310 (25.5%)	3/3 (100%)
Transmission route					
Homosexual	32 (5.9%)	29 (21.2%)¶¶ ** ††† ***	0 (0.0%)	3 (0.8%)	0 (0.0%)
Heterosexual	217 (39.5%)	52 (38.0%)	25 (52.1%)	139 (39.6%)	1 (33.3%)
Medical procedure	16 (2.9%)	2 (1.5%)	2 (4.2%)	12 (3.3%)	0 (0.0%)
Other	10 (1.8%)	1 (0.7%)	1 (2.1%)	7 (1.9%)	1 (33.3%)
Undetermined	272 (49.7%)	53 (38.7%)††† *	20 (41.7%)	198 (55.2%)	1 (33.3%)
Anti-HIV	14/53 (26.4%)	11/35 (31.4%)	0/3 (0.0%)	3/15 (20.0%)	0/0

Values are mean±SD or number (%).

†One patient with genotype A was simultaneously infected with genotype G.

‡Each patient was infected with genotype D, E or H.

§Highest values during the clinical course are shown for ALT and T-Bil, and lowest values for PT.

Statistical analysis was performed to compare genotypes A, B and C.

¶Significantly different compared with genotype B.

††Significantly different compared with genotype C.

*p<0.05, **p<0.001, ***p<0.0001.

‡‡Data from the patient with genotype E only.

ALT, alanine aminotransferase; CP, core promoter; HBsAg, hepatitis B surface antigen; HBV, hepatitis B virus; PreC, precore; PT, prothrombin time; T-Bil, total bilirubin.

for 6% (9/150) in the 1st period, 15.4% (19/123) in the 2nd, and 39.4% (89/226) in the 3rd, with significant differences between 1st and 2nd ($p<0.05$), 2nd and 3rd ($p<0.0001$), and 1st and 3rd ($p<0.0001$). Conversely, AHB associated with genotype C decreased through three periods with significant differences, while AHB associated with genotype B did not change appreciably.

On the basis of these results, the yearly incidence in each of the three 6-year periods is calculated to be: 25.0 cases including 1.5 with genotype A in the 1st period; 20.5 cases including 3.2 with genotype A in the 2nd; and 37.7 cases including 14.8 with genotype A in the 3rd. Hence, the incidence of AHB had not changed markedly over the 12 years from 1991 to 2002, but increased thereafter until 2008. Of the increment in the 3rd period of 17.2 (37.7 minus 20.5) cases, there were 11.6 (14.8 minus 3.2) with genotype A; they accounted for 67% (11.6/17.2) of the recent increase in AHB.

Regional distributions and longitudinal changes in genotype A

Among the 183 patients from the capital region, the genotype was A in 65 (35.5%), B in 22 (12.0%), C in 94 (51.4%), E in one (0.5%), and H in one (0.5%) (table 2). Of the remaining 364 (66.5%) patients from other regions, by contrast, the genotype was A in 72 (19.8%), B in 26 (7.1%), C in 265 (72.8%), and D in one (0.3%). Genotype A was significantly more common in the capital than in other regions (35.5% vs 19.8%, $p<0.0001$). In the capital region, genotype A accounted for 4.8% (2/42) in the 1st period, 29.3% (12/41) in the 2nd, and 50.0% (42/84) in the 3rd. There were significant differences between the 1st and 2nd periods ($p<0.05$), 2nd and 3rd ($p<0.05$), and 1st and 3rd ($p<0.0001$). In other regions, by contrast, genotype A accounted for 6.5% (7/108) in the 1st period, 8.5% (7/82) in the 2nd, and

33.1% (47/142) in the 3rd. For the first time in other regions, genotype A increased in the 3rd period, in comparison with the 1st and 2nd (1st vs 3rd, $p<0.0001$; 2nd vs 3rd, $p<0.0001$).

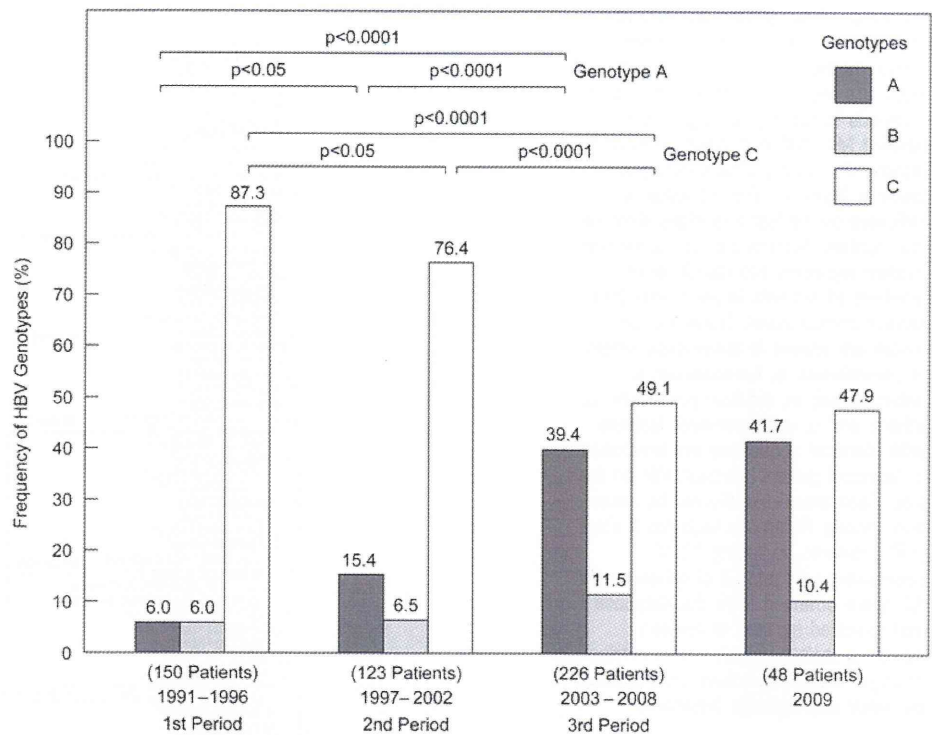
Subgenotypes of genotype A

Of the 137 genotype A isolates, amplification and sequencing of HBV DNA were feasible in 114 (83.2%); the isolate from the single patient with genotypes A and G was excluded. A phylogenetic tree was constructed, on the entire preS1/S2/S genes of ~1.2 kb, for these 114 isolates along with 34 genotype A isolates retrieved from the database (figure 3).

Of the 114 isolates in this study, 101 (88.6%) were subgenotype A2, and the remaining 13 (11.4%) were subgenotype A1. In a pair-wise comparison, the sequence divergence among the 101 subgenotype A2 isolates was 0–1.3%, and that among the 13 subgenotype A1 isolates spanned 0% to 2.3%. The sequence divergence between subgenotype A2 and A1 isolates ranged from 2.6% to 4.7%.

A sequence of 1203 nucleotides was possessed in common by three of the 101 (3%) isolates of subgenotype A2. For convenience, the group comprising these three isolates was labelled 'identical group I'. Likewise, an additional six 'identical groups' were found, and numbered from 'II' to 'VII'. They comprised 35 (35%), seven (7%), two (2%), three (3%), 12 (12%) and three (3%) of the 101 isolates of subgenotype A2. In contrast, only one identical group, designated 'VIII', was constructed by three of the 13 (23%) isolates of subgenotype A1.

Some isolates of subgenotype A1 and A2 were obtained from patients who had travelled to foreign countries in the recent past (5/13 (38.5%) patients with A1 to Africa, Philippines, Myanmar and China; and 5/101 (5.0%) patients with A2 to Europe, Thailand, Brazil and the USA).

Figure 2 Distribution of hepatitis B virus (HBV) genotypes in three periods.**Subgenotypes of genotype B**

Of the 48 isolates of genotype B, subgenotyping was feasible in 43 (90.0%). A phylogenetic tree was constructed on preS1/S2/S-gene sequences from these 43 isolates, along with those from 25 isolates of genotype B retrieved from the database (figure 4). Of the 43 isolates in this study, 10 (23.3%) were subgenotype B1, 28 (65.1%) were B2, two (4.7%) were B3, and three (7.0%) were B4. In a pair-wise comparison, the sequence divergence among 10 subgenotype B1 isolates ranged from 0.4% to 1.4%, and that among 28, two and three isolates of subgenotypes B2, B3 and B4 spanned 0–1.7%, 0.5% and 0.6–0.8%, respectively. The inter-subgenotype divergence among B1–B4 ranged from 0.6% to 4.4%.

One 'identical group' made up of five isolates was detected among the 28 of subgenotype B2; it was named 'IX'. In contrast, no 'identical group' was found in 10, two or three isolates of subgenotype B1, B3 or B4.

Some isolates of subgenotypes B2, B3 and B4 were obtained from patients who had travelled to foreign countries in the recent past (7/28 (25.0%) patients with B2 to China and other countries; 1/2 (50.0%) patients with B3 to a country unknown; and 1/3 (33.3%) patients with B4 to Vietnam). However, none of the 10 subgenotype B1 isolates was associated with travel to foreign countries.

Identical groups

The proportion of isolates that shared a sequence in identical groups was higher for subgenotype A2 (64.4%) than for A1, B1, B2, B3 or B4 (23.1%, 0%, 17.9%, 0% or 0%, respectively (A2 vs A1, $p<0.001$; A2 vs B1, $p<0.0001$; A2 vs B2, $p<0.0001$)).

Homosexual activity was more common in patients belonging to the seven identical groups than the non-identical group of subgenotype A2 (17/65 (26.2%) vs 3/36 (8.3%), $p<0.05$). Among the isolates in the seven identical groups of subgenotype A2, those in groups I, III and VII clustered locally during short periods of 2–7 years. In contrast, subgenotype A2 isolates in groups II and VI were scattered widely over longer periods of 11–16 years.

DISCUSSION

In Japan, as in most Asian countries, the persistent HBV carrier state had been established mainly through perinatal transmission from mother to baby and horizontal infection during infancy. In 1986, a national prevention programme was launched in Japan with selective vaccination of babies born to carrier mothers with hepatitis B e antigen (HBeAg). In 1995, this was extended to babies born to HBeAg-negative carrier mothers. As a result, the prevalence of HBsAg among younger people born since 1986 has decreased dramatically.^{28 29} However, there are an

Table 2 Changes in the distribution of genotype A compared between the capital region and other regions over three periods

Area	n	1st Period (1991–1996)	2nd Period (1997–2002)	3rd Period (2003–2008)	2009
Capital region	65/183 (35.5%)†***	2/42 (4.8%)‡* §***	12/41 (29.3%)†* §*	42/84 (50.0%)†*	9/16 (56.3%)
Other regions	72/364 (19.8%)	7/108 (6.5%)§***	7/82 (8.5%)§***	47/142 (33.1%)	11/32 (34.4%)
Total	137/547 (25.0%)	9/150 (6.0%)‡* §***	19/123 (15.4%)§***	89/226 (39.4%)	20/48 (41.7%)

Statistical analysis of the differences between the capital and other regions was performed, as well as through the 1st, 2nd and 3rd periods.

†Significantly different compared with other regions.

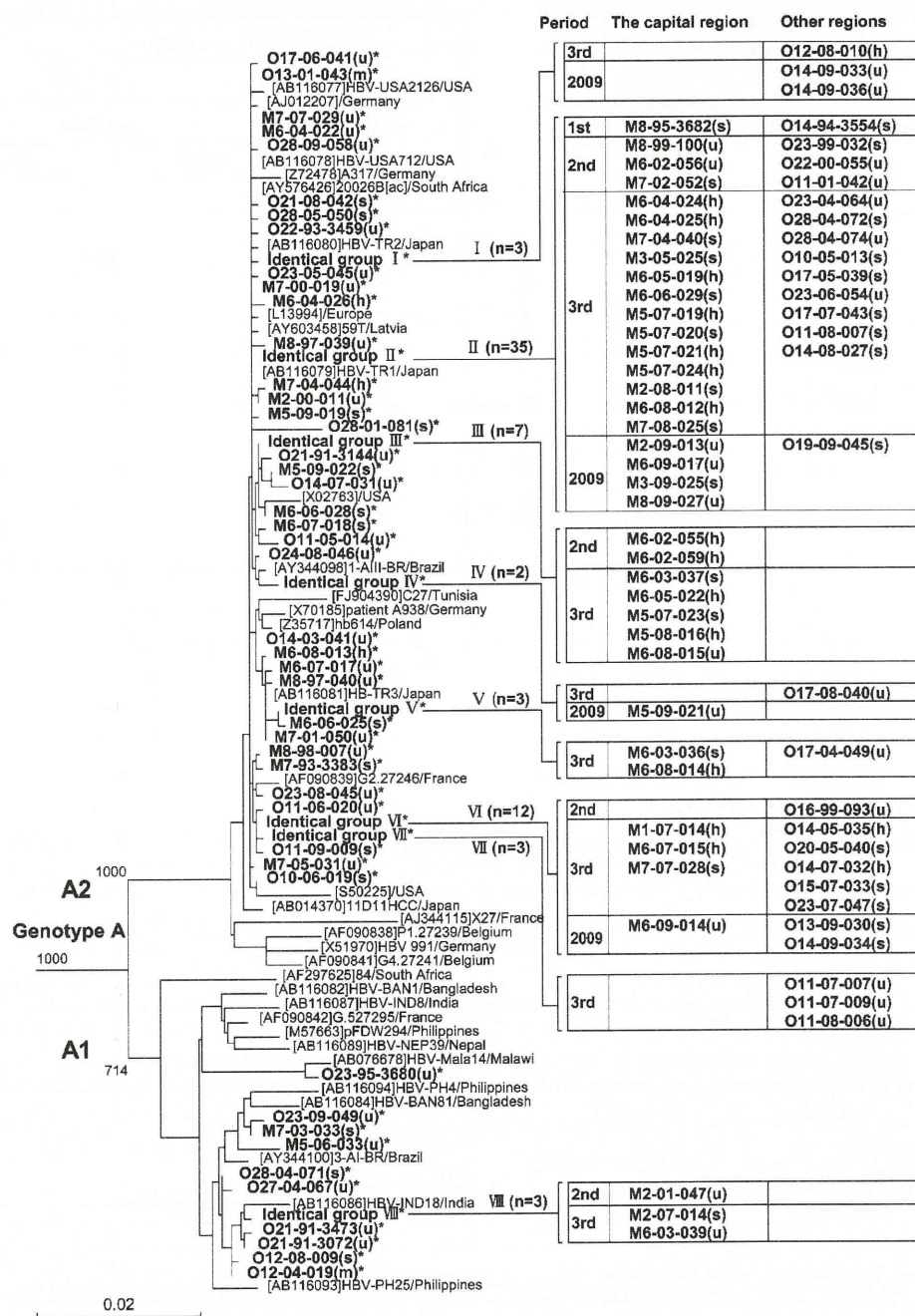
‡Significantly different compared with the 2nd period.

§Significantly different compared with the 3rd period.

* $p<0.05$, *** $p<0.0001$.

Viral hepatitis

Figure 3 Phylogenetic analysis of genotype A strains by the neighbour-joining method. Isolates obtained in this study are shown in bold with asterisks. Hospitals in the capital region are labelled M1–M8 and those in other regions O9–O28 (corresponding to those in figure 1). Year of onset is indicated by the last two digits after the first hyphen. Numbers after the second hyphen represent the identification numbers of patients in each year (not always consecutive). Transmission routes are shown in lower-case letters in parentheses: h, homosexual; s, heterosexual; m, medical procedure; o, others; and u, undetermined. Isolates with identical sequences are bracketed in 'Identical groups I through VIII' on the tree. Each bracket is divided by areas and periods. Reference hepatitis B virus (HBV) isolates, including 12 of subgenotype A1 and 22 of subgenotype A2, were obtained from the database and specified by their accession numbers, isolate names and countries of origin. Bootstrap values are indicated on major phylogenetic branches.



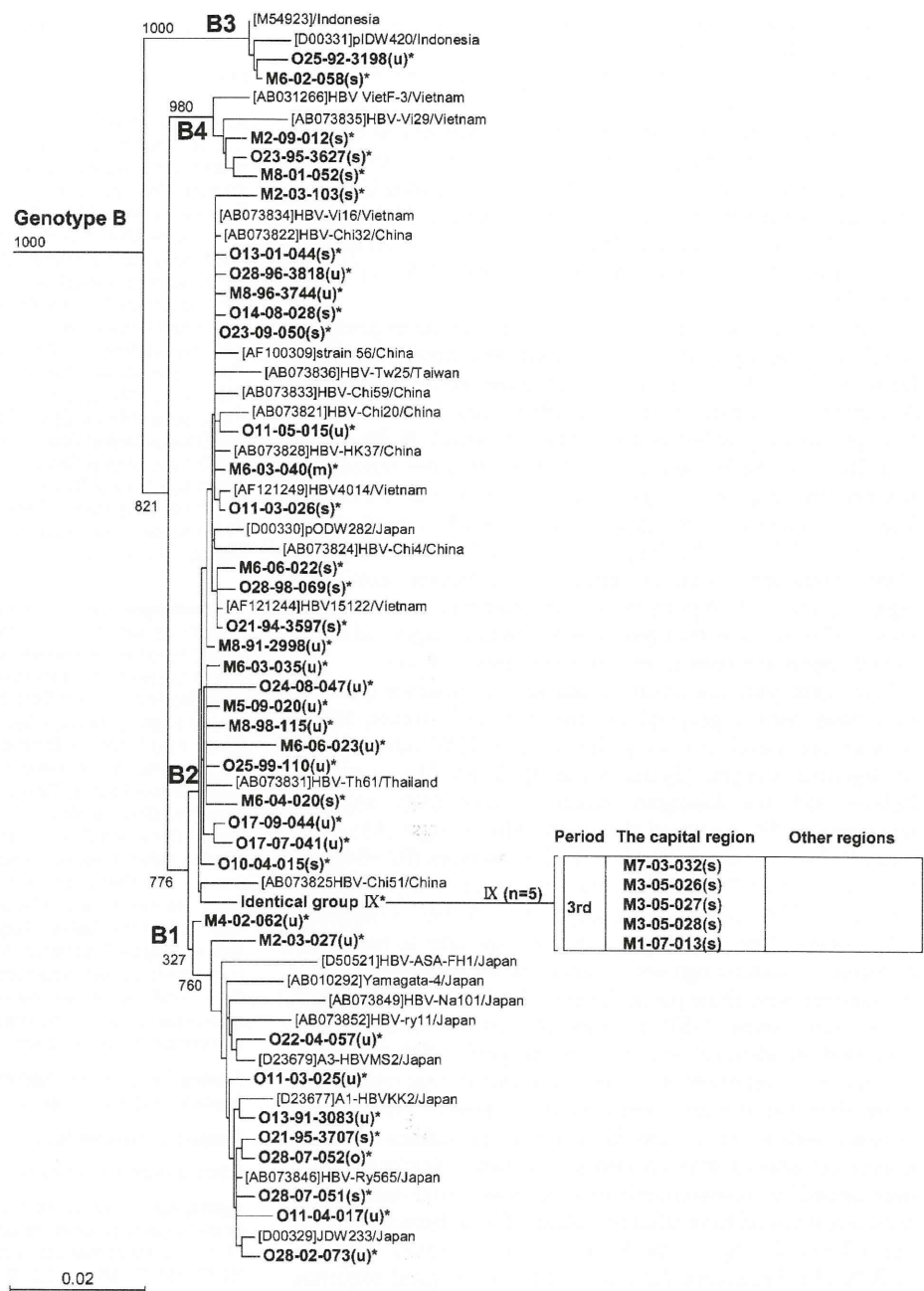
estimated one million HBV carriers in Japan at present.³⁰ Furthermore, many Japanese remain at increased risk of horizontal infection with HBV, because they have not received selective vaccination and therefore do not have the antibody to HBsAg. Because AHB is extremely under-reported and no national surveillance data are available in Japan, the incidence has not been determined accurately. In the USA, the incidence of AHB has decreased markedly since the adoption of a comprehensive immunisation strategy in 1991.^{31–32}

In the present study over 1991–2009, we conducted a nationwide, sentinel surveillance on AHB in Japan. In the 547 patients recruited over 19 years, genotype C was the most prevalent (65.6%), followed by genotype A (25.0%) and genotype B (8.8%). Demographic and clinical differences were observed among patients with genotypes A, B and C (table 1).

The proportion of men reached 94.2% for genotype A infection, higher than that for genotype B (79.2%) or C (56.0%) infection. In the analysis of the route of transmission, homosexual activity was reported by 21.2% of patients with genotype A; all were male. In general, sexual activity tends to be higher in men than women. The predominance of genotype A in men may be attributable to a high frequency of homosexual activity among men.

Although adult-acquired HBV infection persists at a high frequency of ~10% in European countries and the USA,³³ it rarely, if ever, becomes chronic in Japan. Recent studies suggest that the chance of a chronic outcome of AHB may differ by HBV genotype^{21–34}; it is more common for genotype A than other genotypes.^{22–35–36} In the present study, HBV infection persisted in 4.1% of patients with genotype A, in comparison with 0% of

Figure 4 Phylogenetic analysis of genotype B strains by the neighbour-joining method. Hepatitis B virus (HBV) isolates obtained in the present study are specified in the same manner as in figure 3, and isolates with an identical sequence are bracketed in 'Identical group IX' on the tree. Of them, 10 reference isolates of subgenotype B1 and 13, two and two of those of B2, B3 and B4, respectively, were retrieved from the database; they are specified as in figure 3.



those with genotype C. Remarkably, all five patients with AHB who acquired chronic infection possessed HBV genotype A, either alone (four patients) or together with HBV genotype G (one). Increasing genotype A infections may have changed the genotype distribution in patients with AHB and those with chronic HBV infection. In Japanese patients with chronic hepatitis B, the proportion of genotype A has doubled, from 1.7% in 1999–2000 to 3.5% in 2005–2006.³⁷

The genotype was A in 29 of the 32 (91%) homosexual men. Of the 29 homosexuals with genotype A, 10 gave consent to anti-HIV testing, and four of these (40%) were found to be positive. Of the five patients who acquired chronic HBV infection, anti-HIV was tested in four (three with genotype A and one with genotypes A and G), and one with genotype A was found to be positive. There is a possibility that co-infecting HIV in this patient with genotype A may have promoted chronic

HBV infection; HIV is known to prolong and aggravate HBV infection by compromising immune responses.³⁸

Patients with FH in this study were infected with either HBV genotype B (1/48 (2.1%)) or C (8/359 (2.2%)); no patients with genotype A developed FH. PreC and/or CP mutations were significantly less common in genotype A (1/109 (3.7%)) than B (6/39 (15.4%)) or C (279/310 (5.5%)) infection. The single patient with genotype A who had PreC mutation was simultaneously infected with HBV genotype G. There is a possibility that the PreC mutation in this patient was from HBV genotype G.²⁶ FH did not develop in any patients with genotype A, which may be attributable, at least in part, to the lack of PreC mutation in genotype A infections.³⁹

Previous reports have shown that genotype A is common in patients with AHB in Metropolitan Tokyo,^{20 21 40} as well as around Aichi located in the middle of Mainland Japan.²²

Viral hepatitis

Yotsuyanagi *et al*²³ reported that genotype A is more common in patients with AHB in the metropolitan region than in other regions. Sugauchi *et al*⁴¹ found that, in patients with AHB, the proportion with genotype A has increased over time. The present study indicates that the number of patients with AHB in Japan would not have decreased. We found that the proportion of patients with genotype A infection is increasing in the 28 national hospitals in Japan (6.0% in the 1st period, 15.4% in the 2nd, and 39.4% in the 3rd (figure 2)), with the prevalence much higher in the capital than other regions (35.5% vs 19.8% (table 2)).

In this study, there was a time lag in the increase in genotype A infection between the capital region and other regions of Japan (table 2). In the capital region, the prevalence of genotype A started to increase in the late 1990s, and kept increasing through the early 2000s (4.8% in the 1st period, 29.3% in the 2nd, 50.0% in the 3rd, and 56.3% in 2009). In other regions, by contrast, the frequency of genotype A did not change during the late 1990s, and increased significantly in the 2000s (6.5% in the 1st period, 8.5% in the 2nd, 33.1% in the 3rd, and 34.4% in 2009). Thus infiltration of genotype A infection into other regions occurred 5–6 years behind the epidemic in the capital region. This indicates that genotype A infection originated in the capital region and then spread to other areas of Japan.

Some genotypes are classified into several subgenotypes, and they have distinct geographical distributions.⁴² Hence, subgenotypes are useful in tracing the route of HBV infection. By phylogenetic analysis (figures 3 and 4), 88.6% of genotype A isolates had the European–American type (A2), and the remaining 11.4% possessed the Asian–African type (A1). Likewise, 76.7% of genotype B isolates had Asian types (B2–B4), and the remaining 23.3% possessed the type endemic to Japan (B1). Of the 157 HBV isolates of genotype A or B, 147 (93.6%) had subgenotypes foreign to Japan. They are thought to have been transmitted from foreign sex workers, and spread among certain populations who share particular sexual behaviours in Japan.⁴¹

Of note, some HBV isolates of distinct subgenotypes possessed an identical sequence in the preS1/S2/S gene. The isolates of subgenotype A2 were prominent in this regard, and more often had the same sequence than those of other subgenotypes, such as A1, B1 and B2. The high prevalence of subgenotype A2 isolates with an identical sequence would not have been caused by cross-contamination. If cross-contamination had occurred, it would have affected isolates of all subgenotypes, and not influenced subgenotype A2 isolates preferentially. As many as 35% of subgenotype A2 isolates had an identical sequence, and those with the same sequence increased to 56.3% in the recent 2009 survey in Metropolitan Tokyo. Furthermore, some subgenotype A2 isolates in groups I, III and VII clustered locally within short periods, whereas others in groups II and VI were scattered widely over a long period of time. On the basis of these results, it is tempting to speculate that some subgenotype A2 strains would have been transmitted from person to person without undergoing mutations for many years.

In summary, the present study indicates the following. (1) AHB in the 28 national hospitals in Japan has not decreased, because genotype A infections are increasing. (2) Genotype A infections started to increase in the capital region, and then spread to local areas 5–6 years later. (3) Approximately 90% of genotype A in patients with AHB is subgenotype A2. (4) Subgenotype A2 strains with an identical sequence are spreading among younger generations with high sexual activity. (5) On the basis of the results obtained, AHB in Japan is not decreasing, because HBV of subgenotype A2 is prevailing in particular

subpopulations at high risk. Finally, in order to prevent further increases in AHB in Japan, universal vaccination of young people deserves consideration.

Author affiliations

- ¹Clinical Research Center, NHO Nagasaki Medical Center, Nagasaki, Japan
- ²Department of Hepatology, Nagasaki University Graduate School of Biomedical Sciences, Nagasaki, Japan
- ³National Center for Global Health and Medicine, Tokyo, Japan
- ⁴NHO Kyushu Medical Center, Fukuoka, Japan
- ⁵NHO Osaka National Hospital, Osaka, Japan
- ⁶NHO Yokohama Medical Center, Kanagawa, Japan
- ⁷NHO Sagami Hospital, Kanagawa, Japan
- ⁸NHO Oita Medical Center, Oita, Japan
- ⁹NHO Nagoya Medical Center, Aichi, Japan
- ¹⁰NHO Osaka-Minami Medical Center, Osaka, Japan
- ¹¹NHO Kokura Medical Center, Fukuoka, Japan
- ¹²NHO Sendai Medical Center, Miyagi, Japan
- ¹³NHO Kyoto Medical Center, Kyoto, Japan
- ¹⁴NHO Tokyo Medical Center, Tokyo, Japan
- ¹⁵NHO Kure Medical Center and Chugoku Cancer Center, Hiroshima, Japan
- ¹⁶NHO Kanazawa Medical Center, Ishikawa, Japan
- ¹⁷NHO National Disaster Medical Center, Tokyo, Japan
- ¹⁸Miyakawa Memorial Research Foundation, Tokyo, Japan

Acknowledgements We thank participating physicians (MD) in the JNHAHSG for collaborating, with data and sample collection: Hideo Nishimura, Asahikawa Medical Center; Yukio Ohhara, Hokkaido Medical Center; Masakazu Kobayashi, and the late Takeshi Sodeyama, Matsumoto Medical Center; Fujio Makita, Nishigunma Hospital; Takeo Saoshiro, and Akira Saito, Nishisaitama-Chuo Hospital; Michiyasu Yagura, and the late Hideharu Harada, Tokyo Hospital; Keiichi Hirata, National Disaster Medical Center; Yoko Nakamura, Sagami Hospital; the late Hideo Morimoto, Kanazawa Medical Center; Noboru Hirashima, Higashi Nagoya National Hospital; Michio Kato, Osaka National Hospital; Tetsuo Yamamoto, Yonago Medical Center; Haruhiro Yamashita, Okayama Medical Center; Hirota Kouno and Eiichi Takezaki, Kure Medical Center and Chugoku Cancer Center; Toru Hayashi, and Shuji Oda, Zentsuji Hospital; Akihide Masumoto, Kokura Medical Center; Hironori Sakai, Beppu Medical Center; Koichi Honda, Oita Medical Center; Kazuhiro Sugi, Kumamoto Medical Center; Michiaki Koga, and Hiroaki Kawasoe, Ureshino Medical Center; Michitami Yano, and Manabu Daikoku, Nagasaki Medical Center. All the hospitals belong to National Hospital Organization (NHO). We appreciate the excellent technical assistance of Ms Rumiko Hamada, Ms Yuka Jiuchi, Ms Mika Fukuda and Ms Rumiko Nakao. Finally, we express our deep gratitude to the late Dr Koji Yano (Nagasaki Medical Center) for his contribution to the design and coordination of this study, and we dedicate this article to him.

Funding This study was supported by a grant-in-aid from the National Hospital Organization (grant number H21-NHO(Kan)-03).

Competing interests None.

Ethics approval Approved by the ethics committee of each institution.

Contributors YT, HY and HI designed data collection tools, monitored data collection for the whole study, wrote the statistical analysis plan, cleaned and analysed the data. YT, HY and YM drafted and revised the paper. HY, NM, MN, EM, TK, YW, TM, MS, TH, TS, YM, TK, MT, HK, HO, SH and SA collaborated in data and sample collection.

Provenance and peer review Not commissioned; externally peer reviewed.

REFERENCES

1. Arauz-Ruiz P, Norder H, Robertson BH, *et al*. Genotype H: a new Amerindian genotype of hepatitis B virus revealed in Central America. *J Gen Virol* 2002;**83**:2059–73.
2. Norder H, Courouce AM, Magnius LO. Complete genomes, phylogenetic relatedness, and structural proteins of six strains of the hepatitis B virus, four of which represent two new genotypes. *Virology* 1994;**198**:489–503.
3. Okamoto H, Tsuda F, Sakugawa H, *et al*. Typing hepatitis B virus by homology in nucleotide sequence: comparison of surface antigen subtypes. *J Gen Virol* 1988;**69**:2575–83.
4. Olinger CM, Jutavijittum P, Hubschen JM, *et al*. Possible new hepatitis B virus genotype, southeast Asia. *Emerg Infect Dis* 2008;**14**:1777–80.
5. Stuyver L, De Gendt S, Van Geyt C, *et al*. A new genotype of hepatitis B virus: complete genome and phylogenetic relatedness. *J Gen Virol* 2000;**81**:67–74.
6. Tran TT, Trinh TN, Abe K. New complex recombinant genotype of hepatitis B virus identified in Vietnam. *J Virol* 2008;**82**:5657–63.
7. Tatematsu K, Tanaka Y, Kurbanov F, *et al*. A genetic variant of hepatitis B virus divergent from known human and ape genotypes isolated from a Japanese patient and provisionally assigned to new genotype J. *J Virol* 2009;**83**:10538–47.

8. **Chu CJ**, Lok AS. Clinical significance of hepatitis B virus genotypes. *Hepatology* 2002;**35**:1274–6.
9. **Kao JH**. Hepatitis B viral genotypes: clinical relevance and molecular characteristics. *J Gastroenterol Hepatol* 2002;**17**:643–50.
10. **Miyakawa Y**, Mizokami M. Classifying hepatitis B virus genotypes. *Intervirology* 2003;**46**:329–38.
11. **Kimbi GC**, Kramvis A, Kew MC. Distinctive sequence characteristics of subgenotype A1 isolates of hepatitis B virus from South Africa. *J Gen Virol* 2004;**85**:1211–20.
12. **Kramvis A**, Weitzmann L, Owiredu WK, et al. Analysis of the complete genome of subgroup A' hepatitis B virus isolates from South Africa. *J Gen Virol* 2002;**83**:835–9.
13. **Sugauchi F**, Kumada H, Acharya SA, et al. Epidemiological and sequence differences between two subtypes (Ae and Aa) of hepatitis B virus genotype A. *J Gen Virol* 2004;**85**:811–20.
14. **Sugauchi F**, Kumada H, Sakugawa H, et al. Two subtypes of genotype B (Ba and Bj) of hepatitis B virus in Japan. *Clin Infect Dis* 2004;**38**:1222–8.
15. **Sugauchi F**, Orito E, Ichida T, et al. Epidemiologic and virologic characteristics of hepatitis B virus genotype B having the recombination with genotype C. *Gastroenterology* 2003;**124**:925–32.
16. **Tanaka Y**, Orito E, Yuen MF, et al. Two subtypes (subgenotypes) of hepatitis B virus genotype C: a novel subtyping assay based on restriction fragment length polymorphism. *Hepatal Res* 2005;**33**:216–24.
17. **Akuta N**, Suzuki F, Kobayashi M, et al. The influence of hepatitis B virus genotype on the development of lamivudine resistance during long-term treatment. *J Hepatol* 2003;**38**:315–21.
18. **Tanaka Y**, Hasegawa I, Kato T, et al. A case-control study for differences among hepatitis B virus infections of genotypes A (subtypes Aa and Ae) and D. *Hepatology* 2004;**40**:747–55.
19. **Orito E**, Ichida T, Sakugawa H, et al. Geographic distribution of hepatitis B virus (HBV) genotype in patients with chronic HBV infection in Japan. *Hepatology* 2001;**34**:590–4.
20. **Kobayashi M**, Arase Y, Ikeda K, et al. Viral genotypes and response to interferon in patients with acute prolonged hepatitis B virus infection of adulthood in Japan. *J Med Virol* 2002;**68**:522–8.
21. **Ogawa M**, Hasegawa K, Naritomi T, et al. Clinical features and viral sequences of various genotypes of hepatitis B virus compared among patients with acute hepatitis B. *Hepatal Res* 2002;**23**:167–77.
22. **Takeda Y**, Katano Y, Hayashi K, et al. Difference of HBV genotype distribution between acute hepatitis and chronic hepatitis in Japan. *Infection* 2006;**34**:201–7.
23. **Yotsuyanagi H**, Okuse C, Yasuda K, et al. Distinct geographic distributions of hepatitis B virus genotypes in patients with acute infection in Japan. *J Med Virol* 2005;**77**:39–46.
24. **Kato H**, Orito E, Sugauchi F, et al. Frequent coinfection with hepatitis B virus strains of distinct genotypes detected by hybridization with type-specific probes immobilized on a solid-phase support. *J Virol Methods* 2003;**110**:29–35.
25. **Orito E**, Mizokami M, Sakugawa H, et al. A case-control study for clinical and molecular biological differences between hepatitis B viruses of genotypes B and C. Japan HBV Genotype Research Group. *Hepatology* 2001;**33**:218–23.
26. **Kato H**, Orito E, Gish RG, et al. Hepatitis B e antigen in sera from individuals infected with hepatitis B virus of genotype G. *Hepatology* 2002;**35**:922–9.
27. **Sugiyama M**, Tanaka Y, Sakamoto T, et al. Early dynamics of hepatitis B virus in chimeric mice carrying human hepatocytes monoinfected or coinfecting with genotype G. *Hepatology* 2007;**45**:929–37.
28. **Koyama T**, Matsuda I, Sato S, et al. Prevention of perinatal hepatitis B virus transmission by combined passive-active immunoprophylaxis in Iwate, Japan (1981–1992) and epidemiological evidence for its efficacy. *Hepatal Res* 2003;**26**:287–92.
29. **Noto H**, Terao T, Ryou S, et al. Combined passive and active immunoprophylaxis for preventing perinatal transmission of the hepatitis B virus carrier state in Shizuoka, Japan during 1980–1994. *J Gastroenterol Hepatol* 2003;**18**:943–9.
30. **Tanaka J**, Kumagai J, Katayama K, et al. Sex- and age-specific carriers of hepatitis B and C viruses in Japan estimated by the prevalence in the 3,485,648 first-time blood donors during 1995–2000. *Intervirology* 2004;**47**:32–40.
31. **Daniels D**, Grytdal S, Wasley A. Surveillance for acute viral hepatitis—United States, 2007. *MMWR Surveill Summ* 2009;**58**:1–27.
32. **Goldstein ST**, Alter MJ, Williams IT, et al. Incidence and risk factors for acute hepatitis B in the United States, 1982–1998: implications for vaccination programs. *J Infect Dis* 2002;**185**:713–19.
33. **Sherlock S**. The natural history of hepatitis B. *Postgrad Med J* 1987;**63** Suppl 2:7–11.
34. **Mayerat C**, Mantegani A, Frei PC. Does hepatitis B virus (HBV) genotype influence the clinical outcome of HBV infection? *J Viral Hepat* 1999;**6**:299–304.
35. **Hayashi K**, Katano Y, Takeda Y, et al. Association of hepatitis B virus subgenotypes and basal core promoter/precore region variants with the clinical features of patients with acute hepatitis. *J Gastroenterol* 2008;**43**:558–64.
36. **Ozasa A**, Tanaka Y, Orito E, et al. Influence of genotypes and precore mutations on fulminant or chronic outcome of acute hepatitis B virus infection. *Hepatology* 2006;**44**:326–34.
37. **Matsuura K**, Tanaka Y, Hige S, et al. Distribution of hepatitis B virus genotypes among patients with chronic infection in Japan shifting toward an increase of genotype A. *J Clin Microbiol* 2009;**47**:1476–83.
38. **Bodsworth NJ**, Cooper DA, Donovan B. The influence of human immunodeficiency virus type 1 infection on the development of the hepatitis B virus carrier state. *J Infect Dis* 1991;**163**:1138–40.
39. **Li JS**, Tong SP, Wen YM, et al. Hepatitis B virus genotype A rarely circulates as an HBe-minus mutant: possible contribution of a single nucleotide in the precore region. *J Virol* 1993;**67**:5402–10.
40. **Suzuki Y**, Kobayashi M, Ikeda K, et al. Persistence of acute infection with hepatitis B virus genotype A and treatment in Japan. *J Med Virol* 2005;**76**:33–9.
41. **Sugauchi F**, Orito E, Ohno T, et al. Spatial and chronological differences in hepatitis B virus genotypes from patients with acute hepatitis B in Japan. *Hepatal Res* 2006;**36**:107–14.
42. **Norder H**, Courouce AM, Coursaget P, et al. Genetic diversity of hepatitis B virus strains derived worldwide: genotypes, subgenotypes, and HBsAg subtypes. *Intervirology* 2004;**47**:289–309.