

## Phenotype of the 202 Adenine Deletion in the *parkin* Gene: 40 Years of Follow-Up

Sharon Hassin-Baer, MD,<sup>1,2</sup> Nobutaka Hattori, MD, PhD,<sup>3</sup> Oren S. Cohen, MD,<sup>1,2</sup> Magdalena Massarwa, MD,<sup>1</sup> Simon D. Israeli-Korn, MA, MRCP (UK),<sup>1</sup> and Rivka Inzelberg, MD<sup>1,2\*</sup>

<sup>1</sup>The Sagol Neuroscience Center, Department of Neurology, Sheba Medical Center, Tel Hashomer, Israel; <sup>2</sup>Sackler Faculty of Medicine, Tel Aviv University, Tel Aviv, Israel; <sup>3</sup>Department of Neurology, Juntendo University Medical School, Tokyo, Japan

### ABSTRACT

**Background:** We describe the four decades follow-up of 14 *parkin* patients belonging to two large eight-generation-long in-bred Muslim-Arab kindreds.

**Results:** All patients had a single base-pair of adenine deletion at nucleotide 202 of exon 2 (202A) of the *parkin* gene (all homozygous, one heterozygous). Parkinson's disease onset age was 17–68 years. Special features were intractable axial symptoms (low back pain, scoliosis, camptocormia, antecollis), postural tremor, and preserved cognition.

**Conclusions:** The 202A deletion of the *parkin* gene causes early-onset Parkinson's disease with marked levodopa/STN-DBS-resistant axial features. Postural tremor and preserved cognition, even after 40 years of disease, were also evident. © 2011 Movement Disorder Society

**Key Words:** Parkinson's disease; genetics; *Parkin*; PARK2; follow-up

### Introduction

Mutations in the *parkin* gene (6q25.2-6q27, MIM 602544) are the most common cause of monogenic

autosomal recessive Parkinson's disease (PD).<sup>1,2</sup> The phenotype includes early onset of classic PD symptoms, but may vary with respect to additional atypical features.<sup>3–5</sup> Exonic deletions or multiplications and truncating or missense mutations have been described.<sup>1–6</sup> No reports point to ethnic clusters of specific *parkin* mutations. We describe four-decades follow-up of 14 *parkin* patients belonging to two large in-bred Muslim-Arab kindreds.

### Methods

PD patients of Arabic-origin with age of disease onset < 50 years were recruited from the Sheba Medical Center Movement Disorders Clinic. The Institutional Review Board approved the use of human subjects for this study. All patients and family members signed informed consent for participating in the study.

Participants were examined by a movement disorders specialist at 2–12 months intervals. Asymptomatic family members were examined once at the time of DNA collection. DNA was extracted from blood leukocytes. All exons of the *parkin* gene were screened for deletions, insertions, or point mutations by direct sequencing of the PCR products, sequenced on both strands as previously described.<sup>4</sup>

### Results

Thirteen of 14 PD patients and 15 family members consented to genetic testing. Patient characteristics are summarized in Table 1 (10 men, 4 women; mean age  $52 \pm 10$  years; range 35–73 years).

In all 13 patients, the same *parkin* mutation was found: a single base-pair deletion of adenine at nucleotide 202 of exon 2 (202A), causing an out-frame mutation with an early-stop codon (12 homozygous, 1 heterozygous) and one patient was not genotyped. The mutant *parkin* lacks a part of the Ubl domain and the entire region of the RING box, suggesting loss of activity of E3.

### Phenotype and Clinical Course

All patients belong to two large Muslim-Arab in-bred *hamulas* (kindreds). Each *hamula* can trace their ancestry to a few founders about eight generations ago. Family A traced back five generations and divided into three branches shown as Aa, Ab, and Ac Family B traced back eight generations.

Mean age  $\pm$  SD at PD onset was  $31 \pm 15$  years (range 17–68) and disease duration  $21 \pm 13$  (median 19, range 1–41 years) (Table 1). The first patient (B-VII-22) was seen in our clinic in 1963, aged 27 years. She complained of “bent trunk” and slowing since the age of 23. Her first cousin (B-VII-25) was examined in 1989, aged 19 years due to scoliosis and

\*Correspondence to: Dr. Rivka Inzelberg, The Sagol Neuroscience Center, Department of Neurology, Sheba Medical Center, Tel Hashomer, 52621, Israel; inzelber@post.tau.ac.il.

Relevant conflicts of interest/financial disclosures: Nothing to report. Full financial disclosures and author roles may be found in the online version of this article.

Received: 11 July 2010; Revised: 31 August 2010; Accepted: 3 September 2010

Published online 21 January 2011 in Wiley Online Library (wileyonlinelibrary.com). DOI: 10.1002/mds.23456

**Table 1.** Demographic characteristics and motor features of Parkinson's disease (PD) patients with the *parkin* 202A deletion

| Patient No. | <i>Parkin</i> 202A deletion | Gender | Age   | Age of onset | PD duration | H&Y stage | Presenting sign | Rest tremor | Rig. | Asym | Brad. | Post. Inst. | Gait dist. | Post. tremor |
|-------------|-----------------------------|--------|-------|--------------|-------------|-----------|-----------------|-------------|------|------|-------|-------------|------------|--------------|
| Aa-II-3     | HOM                         | M      | 58    | 17           | 41          | 3         | Hand tremor     | +           | +    | +    | +     | +           | +          | +            |
| Aa-II-8     | HOM                         | M      | 50    | 15           | 35          | 4         | Leg dystonia    | +           | +    | +    | +     | +           | +          | +            |
| Aa-II-10    | HOM                         | F      | 48    | 47           | 1           | 2         | Leg tremor      | +           | +    | +    | +     | +           | +          | +            |
| Aa-II-11    | HOM                         | M      | 47    | 30           | 17          | 3         | Leg tremor      | +           | +    | +    | +     | +           | +          | +            |
| Ab-IV-14    | NG                          | M      | 73    | 68           | 5           | 3         | Slow gait       | +           | +    | +    | +     | +           | +          | +            |
| Ab-V-7      | HOM                         | F      | 47    | 18           | 29          | 3         | Hand tremor     | +           | +    | +    | +     | +           | +          | +            |
| Ac-IV-5     | HOM                         | F      | 35    | 17           | 18          | 4         | Hand tremor     | +           | +    | +    | +     | +           | +          | +            |
| B-VII-8     | HOM                         | M      | 62    | 35           | 27          | 4         | Leg tremor      | +           | +    | +    | +     | +           | +          | +            |
| B-VII-10    | HOM                         | M      | 59    | 28           | 31          | 4         | Hand tremor     | +           | +    | +    | +     | +           | +          | +            |
| B-VII-13    | HOM                         | M      | 49    | 37           | 12          | 3         | Leg tremor      | +           | +    | +    | +     | +           | +          | +            |
| B-VII-17    | HOM                         | M      | 44    | 30           | 14          | 3         | Hand tremor     | +           | +    | +    | +     | +           | +          | +            |
| B-VII-22    | HOM                         | F      | 63    | 23           | 40          | 3         | Camptocormia    | +           | +    | +    | +     | +           | +          | +            |
| B-VII-25    | HOM                         | M      | 39    | 19           | 20          | 3         | Hand tremor     | +           | +    | +    | +     | +           | +          | +            |
| Aa-II-6     | HET                         | M      | 55    | 49           | 6           | 2         | Hand tremor     | +           | +    | +    | +     | +           | +          | +            |
| Mean±SD     |                             |        | 52±10 | 31±15        | 21±13       |           |                 |             |      |      |       |             |            |              |

HET, heterozygous; HOM, homozygous; NG, not genotyped; Rig, rigidity; Asym, asymmetry; Brad, bradykinesia; Post Inst, postural instability; Dist, disturbance; Post, postural.

bradykinesia. The diagnosis of juvenile-onset PD was made in both.

The presenting symptom was hand tremor (n = 6), leg tremor (n = 4), foot dystonia (n = 1), camptocormia (n = 1), and gait disturbances (n = 1). Bradykinesia and rigidity were present in all patients and rest tremor in all but one. Eleven had postural hand tremor, three limb dystonia (two at PD onset) and three reported sleep benefit (Table 1).

Atypical motor features included prominent levodopa-resistant axial symptoms (n = 10): recurrent falls at onset (n = 1), gait disturbances at onset (n = 1), scoliosis (n = 1), camptocormia (progressive to fixed 90° trunk flexion, n = 2), antecollis (n = 1), lower back pain (LBP) (n = 8) (Table 2). Camptocormia and

antecollis 5 years after onset were observed in a heterozygous carrier with an intermediate PD phenotype (onset 49 years) and very slow disease progression.

Pain was a predominant symptom (painful dystonia = 2, LBP = 8). Two patients manifested autonomic dysfunction with complaints of constipation (Table 1).

None of the patients developed significant cognitive impairment or dementia during follow-up of up to 40 years (median 19 years). Seven patients had depressive symptoms but none developed hallucinosis or psychosis.

**Response to Treatment and Progression**

Levodopa response was excellent for appendicular signs but only minor for axial signs. All patients devel-

**Table 2.** Nonmotor/atypical features and therapy-related features of Parkinson's disease (PD) patients with the *parkin* 202A deletion

| Patient No. | Psych. | Cognitive decline | Sleep benefit | Autonomic features | Additional axial features | Response to levodopa | Wearing off | Levodopa induced dyskinesia | UPDRS III (on/off) | DBS (Yr after PD onset) |
|-------------|--------|-------------------|---------------|--------------------|---------------------------|----------------------|-------------|-----------------------------|--------------------|-------------------------|
| Aa-II-3     |        | -                 |               |                    |                           | +                    | +           | +                           | 52                 |                         |
| Aa-II-8     | DEP    | -                 | +             |                    |                           | +                    | +           | +                           | 20/27              | +                       |
| Aa-II-10    |        | -                 | +             | constip            | LBP                       | NA                   | NA          | NA                          | 17/NA              |                         |
| Aa-II-11    |        | -                 |               |                    |                           | +                    |             |                             | 46                 |                         |
| Ab-IV-14    |        | -                 |               | constip            |                           | +                    | +           |                             | 38/41              |                         |
| Ab-V-7      | DEP    | -                 | +             |                    | LBP                       | +                    | +           | +                           | 14                 |                         |
| Ac-IV-5     | DEP    | -                 |               |                    |                           | +                    | +           | +                           | 48/61              | +                       |
| B-VII-8     | DEP    | -                 |               |                    | LBP                       | +                    | +           | +                           | 16/22              |                         |
| B-VII-10    | DEP    | -                 |               |                    | LBP                       | +                    | +           | +                           | 37/64              | +                       |
| B-VII-13    | DEP    | -                 |               |                    | LBP                       | +                    | +           |                             | 4/20               |                         |
| B-VII-17    |        | -                 |               |                    | LBP                       | +                    | +           |                             | 20/30              |                         |
| B-VII-22    | DEP    | -                 |               |                    | Camptocormia, LBP         | +                    | +           | +                           | 37/48              |                         |
| B-VII-25    |        | -                 |               |                    | Scoliosis, LBP            | +                    | +           | +                           | 16/28              |                         |
| Aa-II-6     |        | -                 |               |                    | Antecollis, Camptocormia  | NA                   | NA          | NA                          | NA                 |                         |

DEP, depression; constip, constipation; LBP, Lower back pain; NA, not applicable.

oped motor fluctuations. Despite consistently very slow disease progression, three patients developed severe motor fluctuations and underwent deep brain stimulation (STN-DBS) 14, 26, and 30 years after PD onset. Response to STN-DBS was modest with improvement in appendicular symptoms but no change in axial features, particularly postural instability, gait disorders, and LBP.

### Genotype and Phenotype of Nonparkinsonian Family Members

Fifteen family members were genotyped. Five had no mutations and 10 were heterozygous, of whom nine were asymptomatic (age range 28–40 years). One family member, (70 year-old female) with postural tremor only (onset 60 years, B-VI-5), showed A-G heterozygosity for the 202A *parkin* deletion. Tremor remained her sole symptom during 10 years of follow-up and was levodopa unresponsive.

### Discussion

The marked axial nature is the most striking feature of the *parkin* 202A deletion phenotype. This includes camptocormia, antecollis, scoliosis, and low back pain. Dystonia in PD manifests mainly in the limbs as equinovarus foot, striatal toe, ulnar deviation or hemidystonia and in the mid-line as blepharospasm or oromandibular dystonia.<sup>7</sup> Scoliosis, if considered a form of dystonia, is also seen. Camptocormia is a rare feature of PD and is attributed to dystonia or imbalance in muscle activity.<sup>3,6–8</sup> We postulate that LBP is part of the dystonic phenotype. In our patients, axial symptoms were painful and levodopa/STN-DBS unresponsive.

A second main characteristic of the 202A *parkin* deletion phenotype was the preserved cognition after several decades since PD onset. Lack of dementia characterizes parkin disease.<sup>9</sup> To our knowledge long term follow-up up to 40 years has not yet been described. It has been suggested that the lack of dementia in parkin disease may be related to the absence of Lewy body pathology.<sup>9</sup> Hayashi et al. reported neuropathologic findings in a Japanese patient with a mutation in the *parkin* gene.<sup>10</sup> Loss of pigmented neurons and gliosis were most pronounced in the medial and ventrolateral regions of the SN pars compacta and in the locus ceruleus. There was no clinical evidence of dementia and no Lewy bodies were identified. Some neurofibrillary tangles and senile plaques were observed in the cerebral cortex. Another study also found diffuse tau pathology but no Lewy bodies.<sup>11</sup> Neuropsychiatric disturbances are reportedly common in carriers for *parkin* or *PINK1* mutations.<sup>12,13</sup> The 202A phenotype commonly included depression.

There is controversy whether heterozygous carriers of *parkin* mutations are symptomatic and whether *parkin* is a susceptibility gene.<sup>14,15</sup> One of our heterozy-

gous patients (onset 49 years) developed a mild phenotype but with antecollis and camptocormia. Another heterozygous family member presented solely with postural tremor (onset 60 years) with no other parkinsonian features during 10 years of follow-up. While homozygous mutations in the *parkin* gene result in early-onset PD, heterozygous mutations in the *parkin* gene are identified in patients with later-onset disease, raising the possibility that heterozygous mutations may have a role beyond that of loss of function and confer an increased susceptibility to the disease.<sup>15</sup>

The risk of developing PD in individuals with mutations in the *parkin* gene is age-dependent and penetrance remains unclear. Our asymptomatic carriers were aged 28–40 years and need to be further followed. A recent study identified mutations in the *parkin* gene in 10% of probands with disease onset before age 50.<sup>16</sup> They estimated the cumulative incidence of PD to age 65 years in relatives of mutation carriers to be 7%, compared to 1.7% in noncarrier relatives, and 1.1% in relatives of controls.

Periquet and coworkers analyzed *parkin* gene inheritance to discriminate between single founder effects and independent recurrent events by the use of intra-genic and tightly flanking markers of the *parkin* gene region.<sup>17</sup> By studying a variety of *parkin* mutations in 48 European families they showed that the majority of exon rearrangements result from distinct mutational events, whereas point mutations may have arisen from a limited number of founders suggesting different mechanisms underlying these two groups of mutations. According to this hypothesis, the frequency of exon rearrangements would be expected, in the absence of selection, to increase with the passage of time because of new mutational events, whereas the frequency of point mutations as in our patients would be expected to remain stable, because new mutations would be rare. In this context, the 202A deletion, being a point mutation, could be related to a founder effect which persisted because of high rates of consanguinity in this population.

The fact that all patients in our two kindreds carry the same mutation suggests that it might be common among young-onset PD patients of Arabic descent. Indeed, the 202A deletion has also been observed among Jordanian patients.<sup>17</sup> However, the exact phenotype in this population has not been specified. While PD prevalence above the age of 65 years in Arab villages in Israel is similar to that of Western populations,<sup>18</sup> neither the prevalence of *parkin* mutations nor its impact on PD prevalence in young adults is known. In our studied population of Muslim Arab villages with large in-bred kindreds, carrier frequencies may be high.

Our phenotypic observations might be useful for raising the suspicion and recognition of carriers of the

*parkin* 202A deletion mutation among young-onset PD patients with Arabic ancestry. Postural tremor, prominent and/or painful axial features, slowness of progression of motor symptoms and preservation cognitive function are strong clues to *parkin* disease.

## References

- Lucking CB, Durr A, Bonifati V, et al. Association between early-onset Parkinson's disease and mutations in the parkin gene. *N Engl J Med* 2000;342:1560-1567.
- Kann M, Jacobs H, Mohrmann K, et al. Role of parkin mutations in 111 community-based patients with early-onset parkinsonism. *Ann Neurol* 2002;51:621-625.
- Inzelberg R, Hattori N, Nisipeanu P, et al. Camptocormia, axial dystonia, and parkinsonism: phenotypic heterogeneity of a parkin mutation. *Neurology* 2003;60:1393-1394.
- Nisipeanu P, Inzelberg R, Abo Mouch S, et al. Parkin gene causing benign autosomal recessive juvenile parkinsonism. *Neurology* 2001;56:1573-1575.
- Nisipeanu P, Inzelberg R, Blumen SC, et al. Autosomal-recessive juvenile parkinsonism in a Jewish Yemenite kindred: mutation of Parkin gene. *Neurology* 1999;53:1602-1604.
- Kitada T, Asakawa S, Hattori N, et al. Mutations in the parkin gene cause autosomal recessive juvenile parkinsonism. *Nature* 1998;392:605-608.
- De Yebenes JC PR, Taberno C. Symptomatic dystonias. In: Watts RL, Koller KW, editors. *Movement disorders neurologic principles and practice*. New York: McGrawHill; 1997. p 455-475.
- Djaldetti R, Mosberg-Galili R, Sroka H, Merims D, Melamed E. Camptocormia (bent spine) in patients with Parkinson's disease—characterization and possible pathogenesis of an unusual phenomenon. *Mov Disord* 1999;14:443-447.
- Inzelberg R, Polyniki A. Are genetic and sporadic Parkinson's disease patients equally susceptible to develop dementia? *J Neurol Sci* 2010;289:23-26.
- Hayashi S, Wakabayashi K, Ishikawa A, et al. An autopsy case of autosomal-recessive juvenile parkinsonism with a homozygous exon 4 deletion in the parkin gene. *Mov Disord* 2000;15:884-888.
- van de Warrenburg BP, Lammens M, Lucking CB, et al. Clinical and pathologic abnormalities in a family with parkinsonism and parkin gene mutations. *Neurology* 2001;56:555-557.
- Ephraty L, Porat O, Israeli-Korn SD, et al. Neuropsychiatric and cognitive features in autosomal-recessive early parkinsonism due to PINK1 mutations. *Mov Disord* 2007;22:566-569.
- Kubo S, Hattori N, Mizuno Y. Recessive Parkinson's disease. *Mov Disord* 2006;21:885-893.
- Inzelberg R, Hattori N, Mizuno Y. Dopaminergic dysfunction in unrelated, asymptomatic carriers of a single parkin mutation. *Neurology* 2005;65:1843.
- Klein C, Lohmann-Hedrich K, Rogaeva E, Schlossmacher MG, Lang AE. Deciphering the role of heterozygous mutations in genes associated with parkinsonism. *Lancet Neurol* 2007;6:652-662.
- Wang Y, Clark LN, Louis ED, et al. Risk of Parkinson disease in carriers of parkin mutations: estimation using the kin-cohort method. *Arch Neurol* 2008;65:467-474.
- Myhre R, Steinkjer S, Stormyr A, et al. Significance of the parkin and PINK1 gene in Jordanian families with incidences of young-onset and juvenile parkinsonism. *BMC Neurol* 2008;8:47.
- Glik A, Masarwa M, Abufal A, et al. Essential tremor might be less frequent than Parkinson's disease in North Israel Arab villages. *Mov Disord* 2009;24:119-122.

## LINGO1 Gene Analysis in Parkinson's Disease Phenotypes

Oswaldo Lorenzo-Betancor, MD,<sup>1,2</sup> Lluís Samaranch, PhD,<sup>1</sup> Elena García-Martín, MD, PhD,<sup>3,4</sup> Sebastián Cervantes, MD,<sup>1,2</sup> José A.G. Agúndez, MD, PhD,<sup>4,5</sup> Félix J. Jiménez-Jiménez, MD, PhD,<sup>6,7</sup> Hortensia Alonso-Navarro, MD, PhD,<sup>8</sup> Antonio Luengo, MD,<sup>9</sup> Francisco Coria, MD, PhD,<sup>10</sup> Elena Lorenzo, BSc,<sup>1</sup> Jaione Irigoyen, RN,<sup>2,11</sup> Pau Pastor, MD, PhD<sup>1,2,11\*</sup> The Iberian Parkinson's Disease Genetics Study Group Researchers

<sup>1</sup>Division of Neurosciences, Neurogenetics Laboratory, Center for Applied Medical Research, University of Navarra, Pamplona, Spain; <sup>2</sup>Department of Neurology, Clínica Universidad de Navarra, University of Navarra School of Medicine, Pamplona, Spain; <sup>3</sup>Biochemistry and Molecular Biology, School of Biological Sciences, University of Extremadura, Badajoz, Spain; <sup>4</sup>RIRAAF/RETICS, Redes Temáticas de Investigación Cooperativa en Salud, Instituto de Salud Carlos III, Spain; <sup>5</sup>Department of Pharmacology, Medical School, University of Extremadura, Badajoz, Spain; <sup>6</sup>Department of Medicine-Neurology, Hospital Príncipe de Asturias, Universidad de Alcalá, Madrid, Spain; <sup>7</sup>Department of Neurology, Hospital del Sureste, Arganda del Rey, Madrid, Spain; <sup>8</sup>Department of Neurology, Hospital La Mancha-Centro de Alcázar de San Juan, Ciudad Real, Spain; <sup>9</sup>Service of Neurology, Hospital Universitario La Princesa, Madrid, Spain; <sup>10</sup>Clinic for Nervous System Disorders and Service of Neurology, Hospital Universitario Son Dureta, Palma de Mallorca, Spain; <sup>11</sup>CIBERNED, Centro de Investigación Biomédica en Red de Enfermedades Neurodegenerativas, Instituto de Salud Carlos III, Spain

## ABSTRACT

**Background:** Parkinson's disease (PD) and essential tremor (ET) may share some etiopathogenic factors. A genome-wide association study has shown that *LINGO1* gene variants are associated with increased risk of ET. We hypothesized that *LINGO1* variants could increase susceptibility to PD. **Methods:** A large series of PD subjects and healthy controls were genotyped for rs9652490 and rs11856808 *LINGO1* single nucleotide polymorphisms (SNPs). **Results:** We found an increased frequency of the rs11856808<sup>TT</sup> genotype in PD compared with controls (odds ratio = 1.46; corrected *P* value = 0.02). A recessive genetic model was the best fit for rs11856808 influence on PD (recessive gene action test: corrected *P* value = 0.01). Stratification analysis showed that rs11856808<sup>TT</sup> genotype frequency was higher in the tremor-dominant PD and the classical PD (C-PD) subgroups (recessive gene action test for the C-PD subgroup: corrected *P* value = 0.004). **Discussion:** Our results indicate that *LINGO1* variants could increase risk of PD, specifically those presenting the non-rigid-akinetic phenotypes, which suggests that *LINGO1* may have a role in the etiology of tremor in PD at least in the Spanish population. ©2011 Movement Disorder Society

**Key Words:** Parkinson's disease; *LINGO1*; essential tremor; genetics; association study



Contents lists available at ScienceDirect

International Journal of Pediatric Otorhinolaryngology

journal homepage: [www.elsevier.com/locate/ijporl](http://www.elsevier.com/locate/ijporl)

## Prevalence of *GJB2* causing recessive profound non-syndromic deafness in Japanese children

Chieri Hayashi<sup>a,\*</sup>, Manabu Funayama<sup>b</sup>, Yuanzhe Li<sup>c</sup>, Kazusaku Kamiya<sup>a</sup>, Atsushi Kawano<sup>d</sup>, Mamoru Suzuki<sup>d</sup>, Nobutaka Hattori<sup>b,c</sup>, Katsuhisa Ikeda<sup>a</sup>

<sup>a</sup> Department of Otorhinolaryngology, Juntendo University School of Medicine, 2-1-1 Hongo, Bunkyo-ku, Tokyo 113-8421, Japan

<sup>b</sup> Research Institute for Diseases of Old Age, Juntendo University School of Medicine, Japan

<sup>c</sup> Department of Neurology, Juntendo University School of Medicine, Japan

<sup>d</sup> Department of Otorhinolaryngology, Tokyo Medical University School of Medicine, Tokyo, Japan

### ARTICLE INFO

#### Article history:

Received 14 June 2010

Received in revised form 18 October 2010

Accepted 2 November 2010

Available online 26 November 2010

#### Keywords:

Congenital deafness  
Cochlear implantation  
Japanese children  
p.P225L  
Connexin 26  
*GJB2*

### ABSTRACT

**Objective:** *GJB2* (gap junction protein, beta 2, 26 kDa: connexin 26) is a gap junction protein gene that has been implicated in many cases of autosomal recessive non-syndromic deafness. Point and deletion mutations in *GJB2* are the most frequent cause of non-syndromic deafness across racial groups. To clarify the relation between profound non-syndromic deafness and *GJB2* mutation in Japanese children, we performed genetic testing for *GJB2*.

**Methods:** We conducted mutation screening employing PCR and direct sequencing for *GJB2* in 126 children who had undergone cochlear implantation with congenital deafness.

**Results:** We detected 10 mutations, including two unreported mutations (p.R32S and p.P225L) in *GJB2*. We identified the highest-frequency mutation (c.235delC: 44.8%) and other nonsense or truncating mutations, as in previous studies. However, in our research, p.R143W, which is one of the missense mutations, may also show an important correlation with severe deafness.

**Conclusion:** Our results suggest that the frequencies of mutations in *GJB2* and *GJB6* deletions differ among cohorts. Thus, our report is an important study of *GJB2* in Japanese children with profound non-syndromic deafness.

© 2010 Elsevier Ireland Ltd. All rights reserved.

### 1. Introduction

People with any degree of sensory impairment may encounter problems such as discrimination within the education system or when looking for work, and a reduced life expectancy. Sensorineural hearing loss (SNHL) is the most common sensory impairment in developed societies [1,2], where one child in 1000 presents at birth with severe or profound deafness [3].

Recent advances in human genetics have indicated that more than half of congenital SNHL cases involve a genetic factor [4]. In 75–80% of genetic cases, SNHL is the result of autosomal recessive inheritance, and both parents have normal hearing [5]. Mutations of *GJB2* are the most frequent cause of autosomal recessive non-syndromic deafness. Indeed, previous studies have shown that *GJB2* mutations account for up to 50% of non-syndromic deafness cases [6]. Hearing-impaired subjects with biallelic *GJB2* mutations range widely but most commonly follow a severe to profound and non-progressive pattern [7–9]. About 100 different *GJB2* muta-

tions have been reported globally [the Connexin-Deafness homepage: <http://davinci.crg.es/deafness/>], and these mutations show a relatively high local dependence (founder effect). A high prevalence of c.35delG has been found among Caucasians; c.235delC among Eastern Asians, including Japanese [10–13]; c.167delT among Ashkenazi Jews [14]; p.R143W among certain Africans [15]; and p.W24X among Indians [16,17] and European Gypsies [18–20]. Some recent reports have indicated a genotype-phenotype correlation: children with two truncating mutations, such as c.35delG or c.235delC, are profoundly deaf, while children with a truncating and missense mutation, or two missense mutations, show better hearing [9,21,22]. Since improved speech performance after cochlear implantation in early childhood is usually observed in hearing-impaired subjects with *GJB2* mutations [23], the genetic testing of newborn babies will provide useful prognostic information when selecting appropriate treatment for such children.

In the present study, to clarify the frequency and genotype-phenotype correlation of *GJB2* mutations in children with profound non-syndromic deafness, we performed genetic testing for *GJB2* mutations involving 119 Japanese children who had undergone cochlear implantation with congenital deafness.

\* Corresponding author. Tel.: +81 3 5802 1229; fax: +81 3 5840 7103.  
E-mail address: [chieri-h@juntendo.ac.jp](mailto:chieri-h@juntendo.ac.jp) (C. Hayashi).

## 2. Materials and methods

### 2.1. Subjects

We enrolled 119 Japanese children, who were unrelated to each other, with non-syndromic deafness for genetic analysis. Of these, 107 were sporadic cases (with only one affected individual in the family); the remaining 12 patients were autosomal recessive cases (with normal hearing parents and at least two affected children). The study sample consisted of 70 males (58.8%) and 49 females (41.2%). All of their hearing impairment levels were severe (71–95 dB) to profound (>95 dB); impairments were detected between 0 and 3 years old. All children had undergone cochlear implantation at Tokyo Medical University School of Medicine.

All cases underwent otoscopic examination and audiometric testing. Subjective tests of hearing acuity were assessed based on the auditory brain-stem response (ABR) and auditory steady-state response (ASSR) in infants and children. Behavioral observation audiometry (BOA) was used as a subsidiary measure to ABR and ASSR. A detailed history was taken to exclude other possible causes of deafness (such as neonatal complications, bacterial meningitis or other infections, use of ototoxic medication, or head trauma). Extended pedigrees were elicited from each family to exclude interfamilial relations. Temporal bone computed tomography was used in children to exclude any anomalies. The control group was carefully chosen to determine the carrier frequency, and consisted of 150 unrelated individuals with normal hearing.

Informed consent was obtained from the parents or guardians when necessary, and these were approved by the Ethical Committees of Juntendo University School of Medicine.

### 2.2. Genetic analysis

All samples from the children and normal controls were extracted from peripheral blood using the QIAamp DNA Blood Mini Kit (QIAGEN, Germantown, MD, USA). The coding region of *GJB2* was amplified from DNA samples by the polymerase chain reaction (PCR) using the primers *GJB2*-F 5'-GTGTGCATTCGCTTTTCCAG-3' and *GJB2*-R 5'-GCCACTGAGCCTTGACA-3'. PCR products were sequenced using the PCR primers and sequence primers *GJB2*-A 5'-CCACGCCAGCGCTCTAGTG-3' and *GJB2*-B 5'-GAAGATGCTGCTGCTGTGTAGG-3'. The sequencing reaction products were electrophoresed on an ABI Prism 310 Analyzer (Applied Biosystems). When no mutation or a single heterozygous mutation in *GJB2* was confirmed, we performed the multiplex PCR assay and direct sequencing for the coding region of *GJB6*. Multiplex PCR was carried out according to the method of Del Castillo et al. [24] to confirm the presence of the del(*GJB6*-D13S1830) and del(*GJB6*-D13S1854) deletions in *GJB6*.

Samples with no mutation or a single heterozygous mutation in *GJB2* and *GJB6* were analyzed for the gene dosage using real-time quantitative PCR (qPCR) to detect exon rearrangements in *GJB2* and *GJB6*. qPCR was performed with TaqMan Gene Expression Assays (Hs00269615\_s1 for *GJB2*, and Hs00272726\_s1 for *GJB6*, Applied Biosystems) and the 7500 Fast Real-Time PCR System (Applied Biosystems).

We obtained blood samples from the family which had one of two unreported mutations, pP225L, and the unreported one was confirmed as follows. The samples were subjected to mutation screening by PCR and direct sequencing for *GJB2*. The PCR product was subcloned into pCR 2.1 vecto-TOPO by TOPO TA cloning (Invitrogen, Carlsbad, CA, USA), and independent subclones were sequenced employing M13forward (5'-TTGTAACGACGGCCAG) and reverse (5'-ACACAGCAACAGCTATG) primers. The sequence data using in this study have been submitted to the GenBank

databases under accession numbers X65361, AB098335, NM\_000816, and NM\_001037.

### 2.3. Statistical analysis

A Z-test was used to calculate the difference in the allele frequency. In all statistical analyses, P-values of 0.01 or less were considered significant.

## 3. Results

### 3.1. Mutation screening of *GJB2*

*GJB2* mutations were found in 45 of the 119 affected individuals, and, of these, 35 patients were homozygous or compound heterozygous (29.4%). *GJB2*-related deafness patients, who had two *GJB2* mutant alleles, were found in 7 of 12 familial cases (58.3%), and there were 28 of 107 sporadic cases (26.2%). Eight mutations, including two unreported ones (p.R32S and p.P225L), were identified in these patients (Table 1). Three mutations were truncating mutations [one was a nonsense mutation (p.Y136X), and two were frameshifts (c.235delC and c.176-191del)]. The remaining five were missense mutations (p.R143W, p.G45E, p.T86R, p.R32S, and p.P225L). Among these mutations, c.235delC was the most frequent. The c.235delC mutation accounted for 52.9% (37 of 70) of the *GJB2*-mutated alleles (Table 1).

We identified 10 subjects who had three or more mutations. All of them had p.G45E and p.Y136X, including one homozygous child. TA cloning and sequencing of subcloned PCR products revealed that all subjects had both mutations in the same allele (data not shown). G45E accompanied with Y136X has been reported as a pathogenic mutation in previous reports, especially in Japanese patients [11,25], although it remains unclear which mutation is more related to the pathogenicity.

We compared the allele frequency for each mutation with that in Ohtsuka's study [25] (Fig. 1). The frequency of c.235delC and three mutations (p.R143W, p.G45E/Y136X, and c.176-191del) in this study were significantly different from that in Ohtsuka's study ( $P < 0.01$ ). While the p.V37I mutation was reported to be the second most frequent autosomal recessive deafness allele in Asian countries [11,12], the present subjects did not follow this pattern.

In one subject, we identified a missense mutation, p.P225L, which has not previously been reported (Fig. 2). The sister and father of the proband had this mutation, while they showed a normal hearing function. The mother, with a normal hearing function, showed no mutation at this site, while she revealed only heterozygous p.G45E/Y136X mutation as a known pathogenic mutation of *GJB2*. The sequencing results of TA cloning further confirmed the existence of the pP225L nonsense mutation in this patient. We also identified another unreported mutation, p.R32S, in another subject. The patient had p.R32S/p.G45E/Y136X mutations. The amino acid positions of two unreported mutations

**Table 1**

Mutations identified in the *Cx26* gene, *GJB2* (NG\_008358.1), in child cases of congenital deafness.

| Nucleotide change | Amino acid change                  | Allele (%) |
|-------------------|------------------------------------|------------|
| c.235delC         | p.Leu79CysfsX3                     | 37 (52.9)  |
| c.427C>T          | p.Arg143Trp(p.R143W)               | 15 (21.4)  |
| c.134G>A/c.408C>A | p.Gly45Glu/p.Tyr136X(p.G45E/Y136X) | 10 (14.3)  |
| c.176_191del      | p.Gly59AlafsX18                    | 4 (5.7)    |
| c.257C>G          | p.Thr86Arg(p.T86R)                 | 2 (2.9)    |
| c.94C>A           | p.Arg32Ser <sup>a</sup> (p.R32S)   | 1 (1.4)    |
| c.674C>T          | p.Pro225Leu <sup>a</sup> (p.P225L) | 1 (1.4)    |
| Total mutations   |                                    | 70 (100)   |

<sup>a</sup> Novel mutations detected in this study.

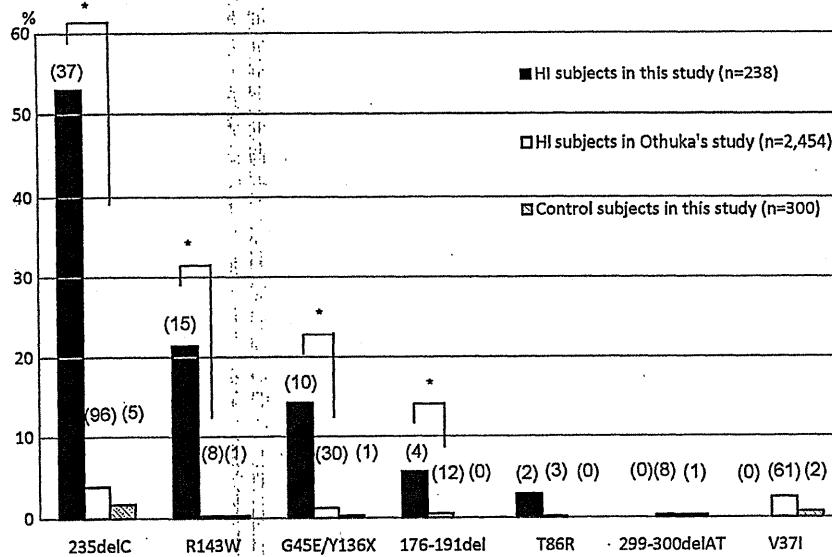


Fig. 1. Allele frequency for each mutation in three groups. A Z-test was used to assess the difference in frequency. Note the P-value of <0.01 between the two deafness groups for c.235delC, p.R143W, p.G45E/Y136X, and c.176-191del. \*P < 0.01.

(p.R32S and p.P225L) are highly conserved among various species, and we did not detect any of these mutations in 300 chromosomes in normal Japanese controls.

#### 4. Discussion

In this study, *GJB2*-related deafness patients accounted for 29.4% of non-syndromic deafness cases. This frequency was less than in a previous report, which pointed to a frequency of around 50% [6]. Familial cases were twice as prevalent as sporadic cases. In most of the previously reported studies, the prevalence of *GJB2* mutations was significantly higher in familial non-syndromic deafness than in sporadic cases [7,26,27]. The frequent mutations of *GJB2* (c.235delC, p.R143W, p.G45E/Y136X, and c.176-191del) in this study were partly different from previous reports [25]. It is assumed that all of our subjects had severe to profound deafness,

as they had received cochlear implants, whereas Ohtsuka's subjects had mild to profound deafness and included heterozygous mutations. A few studies have confirmed that some genotypes are correlated with clinical phenotypes in *GJB2*-related deafness. Further, truncating mutations are associated with a greater degree of deafness than non-truncating mutations [9,21,22]. For this reason, three of these cases might be truncating mutations. In contrast, p.R143W mutation was previously implicated in an extraordinarily high prevalence of profound deafness in Ghana [15,28] and Caucasians [9]. This missense mutation may also show an important correlation with severe deafness in Japan. On the other hand, an effect of geography on the allele frequency may have been present, because most of our subjects were from a different area compared to a previous report [25].

The relation between p.V37I mutation of *GJB2* and SNHL is controversial. While some reports suggest that this mutation is

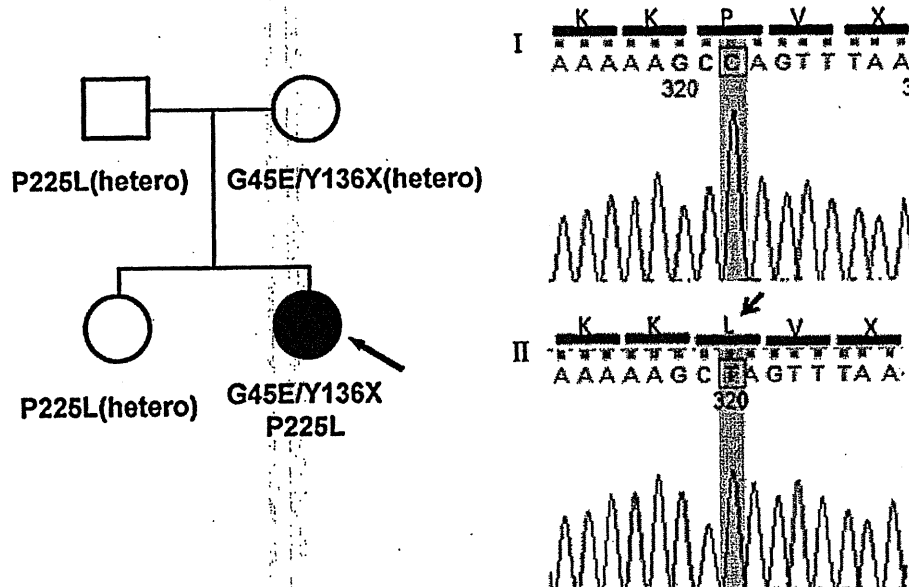


Fig. 2. (A) The pedigree and PCR direct sequencing results for the family; the arrow indicates the proband. (B) The sequencing results on TA cloning. Genomic PCR products were subcloned into a plasmid vector and sequenced separately (see Section 2). The sequences from independent clones are shown in the above two examples. I shows wild-type sequence, whereas II shows mutated sequence in which the proline residue is changed to leucine. Three of 8 subclones showed a missense mutation similar to that in II.

more common among individuals of Asian ancestry [11,12,29], others suggest that homozygous p.V37I is associated with slight/mild hearing loss [22,30,31]. In this study, no cases of homozygous p.V37I were observed. These findings support that this mutation is associated with mild hearing loss, because all of our subjects showed severe deafness.

The two unreported *GJB2* mutations, p.R32S and p.P225L, were not detected in normal hearing controls. These appeared in amino acid residues that were highly conserved. Additionally, three types of mutation were seen in arginine as the thirty-second amino acid, such as p.R32C, p.R32L, and p.R32H. Therefore, R32 is thought to be a mutation "hot spot." Thus, it is likely that these are pathological mutations, rather than rare or functionally neutral polymorphic changes. On the other hand, the mutation site of p.P225 located at the C-terminus of Connexin26 has not previously been reported. As the C-terminus region of connexins is thought to be an important region for intracellular molecular signaling and interaction with scaffolding proteins and the cytoskeleton [32–34], p.P225L mutation found in this study may affect important intracellular molecular networks to maintain the normal function of the cochlear gap junction.

## 5. Conclusion

In conclusion, this study identified significant genotypic features of Japanese children with profound non-syndromic deafness. Further research is required covering a broader range of genes in the subjects in this study with either single heterozygous or no mutation, in order to better understand the epidemiology of deafness in Japan.

## Acknowledgements

We thank all the subjects who participated in the present study. We also thank Ms. Naoko Tamura and Ms. Tomoko Kataoka (Tokyo Medical University School of Medicine), for recruiting families with non-syndromic deafness, and Ms. Junko Onoda (Juntendo University School of Medicine) for assisting in our experiments.

## References

- [1] A.C. Davis, The prevalence of deafness and reported hearing disability among adults in Great Britain, *Int. J. Epidemiol.* 18 (1989) 911–917.
- [2] D.H. Wilson, P.G. Walsh, L. Sanchez, The epidemiology of deafness in an Australian adult population, *Int. J. Epidemiol.* 28 (1999) 247–252.
- [3] N.E. Morton, Genetic epidemiology of deafness, *Ann. N. Y. Acad. Sci.* 630 (1991) 1631.
- [4] M.L. Marazita, L.M. Ploughman, B. Rawlings, E. Remington, K.S. Arnos, W.E. Nance, Genetic epidemiological studies of early-onset deafness in the U.S. school-age population, *Am. J. Med. Genet.* 46 (1993) 486–491.
- [5] V. Kalatzis, C. Petit, The fundamental and medical impacts of recent progress in research on hereditary hearing loss, *Hum. Mol. Genet.* 7 (1998) 1589–1597.
- [6] A. Kenneson, K. Van Naarden Braun, C. Boyle, *GJB2* (connexin 26) variants and nonsyndromic sensorineural hearing loss: a HuGE review, *Genet. Med.* 4 (2002) 258–274.
- [7] F. Denoyelle, S. Marlin, D. Weil, L. Moatti, P. Chauvin, E.N. Garabedian, et al., Clinical features of the prevalent form of childhood deafness, *DFNB1*, due to a connexin-26 gene defect: Implications for genetic counselling, *Lancet* 353 (1999) 1298–1303.
- [8] A. Murgia, E. Orzan, R. Polli, M. Martella, C. Vinanzi, E. Leonardi, et al., *Cx26* deafness: mutation analysis and clinical variability, *J. Med. Genet.* 36 (1999) 829–832.
- [9] R.L. Snoeckx, P.L. Huygen, D. Feldmann, S. Marlin, F. Denoyelle, J. Waligora, et al., *GJB2* mutations and degree of hearing loss: a multicenter study, *Am. J. Hum. Genet.* 77 (2005) 945–957.
- [10] Y. Fuse, K. Doi, T. Hasegawa, A. Sugii, H. Hibino, T. Kubo, Three novel connexin26 gene mutations in autosomal recessive non-syndromic deafness, *Neuro Report* 10 (1999) 1853–1857.
- [11] S. Abe, S. Usami, H. Shinkawa, P.M. Kelley, W.J. Kimberling, Prevalent connexin 26 gene (*GJB2*) mutations in Japanese, *J. Med. Genet.* 37 (2000) 41–43.
- [12] T. Kudo, K. Ikeda, S. Kure, Y. Matsubara, T. Oshima, K. Watanabe, et al., Novel mutations in the connexin 26 gene (*GJB2*) responsible for childhood deafness in the Japanese population, *Am. J. Med. Genet.* 90 (2000) 141–145.
- [13] H.J. Park, S.H. Hahn, Y.M. Chun, K. Park, H.N. Kim, Connexin 26 mutations associated with nonsyndromic hearing loss, *Laryngoscope* 110 (2000) 1535–1538.
- [14] P. Gasparini, R. Rabionet, G. Barbujani, S. Melchionda, M. Petersen, K. Brondum-Nielsen, et al., High carrier frequency of the 35delG deafness mutation in European populations, Genetic Analysis Consortium of *GJB2* 35delG, *Eur. J. Hum. Genet.* 8 (2000) 19–23.
- [15] G.W. Brobby, B. Muller-Myhok, R.D. Horstmann, Connexin 26 R143W mutation associated with recessive nonsyndromic sensorineural deafness in Africa, *N. Engl. J. Med.* 338 (1998) 548–550.
- [16] M. Maheshwari, R. Vijaya, M. Ghosh, S. Shastri, M. Kabra, P.S. Menon, Screening of families with autosomal recessive non-syndromic hearing impairment (ARNSHI) for mutations in *GJB2* gene: Indian scenario, *Am. J. Med. Genet. A* 120A (2003) 180–184.
- [17] M. RamShankar, S. Girirajan, O. Dagan, H.M. Ravi Shankar, R. Jalvi, R. Rangasayee, et al., Contribution of connexin26 (*GJB2*) mutations and founder effect to non-syndromic hearing loss in India, *J. Med. Genet.* 40 (2003) e68.
- [18] G. Minárik, V. Ferák, E. Feráková, A. Ficek, H. Poláková, L. Kádasi, High frequency of *GJB2* mutation W24X among Slovak Romany (Gypsy) patients with non-syndromic hearing loss (NSHL), *Gen. Physiol. Biophys.* 22 (2003) 549–556.
- [19] P. Seeman, M. Malíková, D. Rasková, O. Bendová, D. Groh, M. Kubáková, et al., Spectrum and frequencies of mutations in the *GJB2* (*Cx26*) gene among 156 Czech patients with pre-lingual deafness, *Clin. Genet.* 66 (2004) 152–157.
- [20] A. Alvarez, I. del Castillo, M. Villamar, L.A. Aguirre, A. González-Neira, A. López-Nevot, et al., High prevalence of the W24X mutation in the gene encoding connexin-26 (*GJB2*) in Spanish Romani (gypsies) with autosomal recessive non-syndromic hearing loss, *Am. J. Med. Genet. A* 137A (2005) 255–258.
- [21] K. Cryns, E. Orzan, A. Murgia, P.L. Huygen, F. Moreno, I. del Castillo, et al., A genotype-phenotype correlation for *GJB2* (connexin 26) deafness, *J. Med. Genet.* 41 (2004) 147–154.
- [22] T. Oguchi, A. Ohtsuka, S. Hashimoto, A. Oshima, S. Abe, Y. Kobayashi, et al., Clinical features of patients with *GJB2* (connexin 26) mutations: Severity of hearing loss is correlated with genotypes and protein expression patterns, *J. Hum. Genet.* 50 (2005) 76–83.
- [23] K. Fukushima, K. Sugata, N. Kasai, S. Fukuda, R. Nagayasu, N. Toida, et al., Better speech performance in cochlear implant patients with *GJB2*-related deafness, *Int. J. Pediatr. Otorhinolaryngol.* 62 (2002) 151–157.
- [24] F.J. Del Castillo, M. Rodríguez-Ballesteros, A. Alvarez, T. Hutchin, E. Leonardi, C.A. de Oliveira, et al., A novel deletion involving the connexin-30 gene, *del(GJB6-d13s1854)*, found in trans with mutations in the *GJB2* gene (connexin-26) in subjects with *DFNB1* non-syndromic deafness, *J. Med. Genet.* 42 (2005) 588–594.
- [25] A. Ohtsuka, I. Yuge, S. Kimura, A. Namba, S. Abe, L. Van Laer, et al., *GJB2* deafness gene shows a specific spectrum of mutations in Japan, including a frequent founder mutation, *Hum. Genet.* 112 (2003) 329–333.
- [26] J. Löffler, D. Nekahm, A. Hirst-Stadlmann, B. Gunther, H.J. Menzel, G. Utermann, et al., Sensorineural hearing loss and the incidence of *Cx26* mutations in Austria, *Eur. J. Hum. Genet.* 9 (2001) 226–230.
- [27] A. Pampanos, J. Economides, V. Iliadou, P. Neou, P. Leotsakos, N. Voyiatzis, et al., Prevalence of *GJB2* mutations in prelingual deafness in the Greek population, *Int. J. Pediatr. Otorhinolaryngol.* 65 (2002) 101–108.
- [28] C. Hamelmann, G.K. Amedofu, K. Albrecht, B. Muntau, A. Gelhaus, G.W. Brobby, et al., Pattern of connexin 26 (*GJB2*) mutations causing sensorineural deafness in Ghana, *Hum. Mutat.* 18 (2001) 84–85.
- [29] WangYC, C.Y. Kung, M.C. Su, C.C. Su, H.M. Hsu, C.C. Tsai, et al., Mutations of *Cx26* gene (*GJB2*) for prelingual deafness in Taiwan, *Eur. J. Hum. Genet.* 10 (2002) 495–498.
- [30] C. Huculak, H. Bruyere, T.N. Nelson, F.K. Kozak, S. Langlois, V37I connexin 26 allele in patients with sensorineural hearing loss: Evidence of its pathogenicity, *Am. J. Med. Genet. A* 140 (2006) 2394–2400.
- [31] H.H. Dahl, K. Saunders, T.M. Kelly, A.H. Osborn, S. Wilcox, B. Cone-Wesson, et al., Prevalence and nature of connexin 26 mutations in children with non-syndromic deafness, *Med. J. Aust.* 175 (2001) 191–194.
- [32] L.A. Elias, D.D. Wang, A.R. Kriegstein, Gap junction adhesion is necessary for radial migration in the neocortex, *Nature* 448 (2007) 901–907.
- [33] P.E. Martin, G. Blundell, S. Ahmad, R.J. Errington, W.H. Evans, Multiple pathways in the trafficking and assembly of connexin 26, 32 and 43 into gap junction intercellular communication channels, *J. Cell Sci.* 114 (2001) 3845–3855.
- [34] K.A. Schalper, N. Palacios-Prado, M.A. Retamal, K.F. Shoji, A.D. Martínez, J.C. Sáez, Connexin hemichannel composition determines the FGF-1-induced membrane permeability and free  $[Ca^{2+}]_i$  responses, *Mol. Biol. Cell* 19 (2008) 3501–3513.



# Genetic mutations and functions of PINK1

Sumihiro Kawajiri, Shinji Saiki, Shigeto Sato and Nobutaka Hattori

Department of Neurology, Juntendo University School of Medicine, 2-1-1 Hongo, Bunkyo-ku, Tokyo, 113-8421, Japan

Parkinson's disease (PD) is the second most common neurodegenerative disease. Mutations in *PINK1* (*PARK6*) are the second most frequent cause of autosomal recessive, young-onset PD, after *parkin* (*PARK2*). *PINK1* (a kinase with an N-terminal mitochondrial targeting sequence) provides protection against mitochondrial dysfunction and regulates mitochondrial morphology via fission/fusion machinery. *PINK1* also acts upstream of *parkin* (a cytosolic E3 ubiquitin ligase) in a common pathway. Recent studies have described *PINK1*/*parkin* function in the maintenance of mitochondrial quality via autophagy (mitophagy). *PINK1*/*parkin*-mediated mitophagy provides new insights into the etiology of PD and could be a suitable target for new treatment of PD. In this review, we discuss the molecular genetics and functions of *PINK1*, which could be key factors in novel rational therapy for sporadic PD as well as *PINK1*-linked PD.

## Parkinson's disease (PD)

PD is the second most common neurodegenerative disease worldwide after Alzheimer's disease. The prevalence of PD increases with age, and is estimated to be ~1% in those aged > 65 years [1]. The major clinical features are: (i) motor symptoms (called 'parkinsonism'), which include resting tremor, rigidity, bradykinesia (slowness in executing movement) and postural instability; and (ii) non-motor symptoms (e.g. cognitive dysfunction, autonomic nervous system dysfunction, sleep disorders). Pathological features include pronounced loss of dopaminergic neurons in the substantia nigra pars compacta and eosinophilic cytoplasmic inclusion containing  $\alpha$ -synuclein aggregates (known as Lewy bodies) in the remaining dopaminergic neurons. No treatment is available to suppress the progression of cell death, and the goal of current therapies is only to alleviate symptoms.

The pathogenesis of PD remains unclear, although mitochondrial dysfunction due to oxidative stress has been proposed to play a major part [2]. Most cases of PD are sporadic, but ~5–10% of PD cases are hereditary. Several genes (e.g.  *$\alpha$ -synuclein*, *parkin*, *PTEN-induced putative kinase 1* (*PINK1*), *DJ-1*, *leucine rich repeat kinase 2* (*LRRK2*)) have been identified as causative genes for familial Parkinson's disease (FPD) [3]. *PINK1*-linked PD (*PARK6*-linked PD) is the second most common autosomal recessive young-onset PD, after *parkin*-linked PD (*PARK2*-linked PD). Initial studies suggested that *PINK1* provided protection against mitochondrial dysfunction [4–6]. However, the exact function of *PINK1* remains unclear. Recent

evidence also suggests that *PINK1* plays a part in mitochondrial quality control via autophagy machinery, in collaboration with *parkin* (a cytosolic E3 ligase). In this review, we analyze the recent work published on *PINK1* function, which can be a key factor in novel rational therapy for sporadic PD as well as *PINK1*-linked PD.

## Clinical characteristics of *PINK1*-linked PD

### Clinical features

The clinical features of *PINK1*-linked PD include parkinsonism associated with a good response to levodopa (the precursor to the dopamine), frequent occurrence of levodopa-induced dyskinesias, and infrequent occurrence of dystonia at onset, similar to those of sporadic PD. The only distinctive features are the earlier age of onset and slower progression [7]. The age of onset of *PINK1*-linked PD is around the early thirties [8,9], whereas that of sporadic PD is after the age of 60 years<sup>1</sup>. Unlike *parkin*-linked PD, hyperreflexia and sleep benefit are not common in *PINK1*-linked PD. However, some patients with *PINK1*-linked PD exhibit foot dystonia at onset and sleep benefit, mimicking those with *parkin*-linked PD. Others with *PINK1*-linked PD show atypical clinical features associated with psychiatric problems and dementia, both of which are rare in patients with *parkin*-linked PD.

### Pathological features

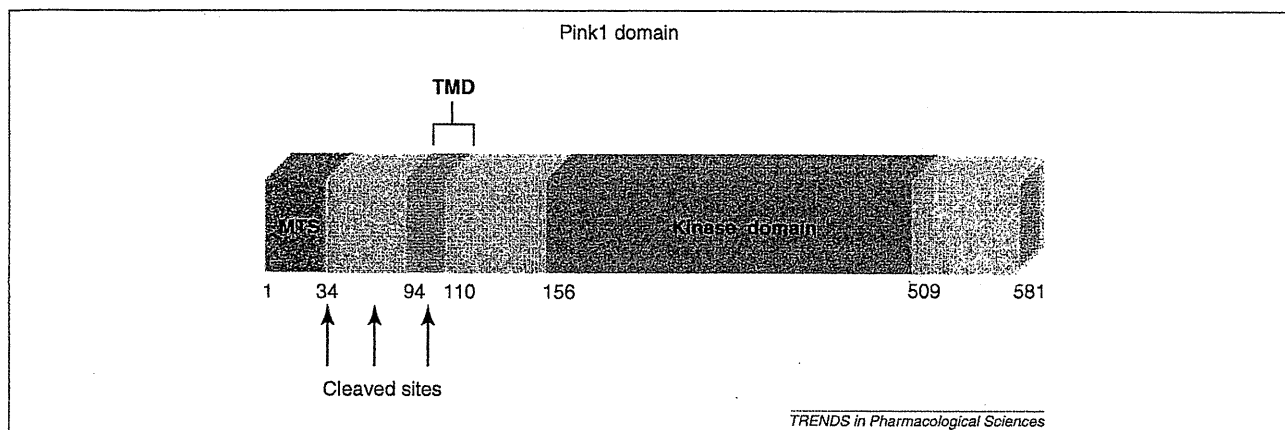
As mentioned above, accumulation of Lewy bodies is the pathological hallmark of sporadic PD. Lewy bodies were also detected in the brain of a *PINK1*-linked PD patient with compound heterozygous mutations (c.1252\_1488 del and c.1488 + 1G > A) [10], whereas they are absent in the brains of *parkin*-linked PD patients [11,12]. Other pathological changes seen in the PD patient with the compound heterozygous *PINK1*-mutations include neuronal loss in the substantia nigra pars compacta accompanied with astrocytic gliosis and moderate microgliosis. No apparent cell loss, Lewy bodies, or abnormal neurites are seen in the locus ceruleus. However, pathological examination has been reported in only one case of *PINK1*-linked PD, so further pathological studies are needed to determine the association between Lewy bodies and the pathogenesis of *PINK1*-linked PD.

## PINK1

### Molecular structure

The *PINK1* gene contains 8 exons spanning ~1.8 kilobases and encodes a 581-amino acid protein. The transcript is

Corresponding author: Hattori, N. (nhattori@juntendo.ac.jp).



**Figure 1.** Putative functional domains and motifs of PINK1. Possible cleaved sites consist of the end of mitochondrial targeting sequence (MTS), sites between MTS and the transmembrane domain (TMD), and sites in the TMD.

ubiquitously expressed and predicted to encode an N-terminal 34-amino acid mitochondrial targeting sequence (MTS), a transmembrane domain (TMD) (residues 94–110) and a highly conserved protein kinase domain (residues 156–509) showing a high degree of homology to the serine/threonine kinases of the  $Ca^{2+}$ /calmodulin family [13] (Figure 1). It is important to understand the topology and subcellular distribution of PINK1 when considering PINK1 functions. PINK1 is a mitochondrial membrane integral protein whose kinase domain localizes in the outer mitochondrial membrane and is accessible from the cytoplasm. The TMD is crucial for anchoring PINK1 to the mitochondrial membrane and to ensure that the kinase domain faces the cytoplasm [14]. Subcellular fractionation shows that overexpressed PINK1 is localized in the mitochondria and cytoplasm [15], although the localization of endogenous PINK1 is not clear. This is because PINK1 is so rapidly turned over under basal conditions [16,17] that the expression level of PINK1 is very low and no antibodies against endogenous PINK1 are available. A chimeric protein consisting of a fluorescence protein fused to the N-terminus of PINK1 localizes to the mitochondria. Thus, the putative MTS of PINK1 is sufficient for its mitochondrial localization [18]. PINK1 translocated to the mitochondria by MTS is processed at several sites, such as 34 and/or 77 amino acids at the N-terminus and another site in the TMD. PINK1 mainly includes the full-length form (~63 kDa) and the cleaved form (~55 kDa) [15,18–20] (Figure 1).

#### Human genetics

*PINK1* (*PARK6*) was identified in 2004 as a causative gene of autosomal recessive young-onset PD [13]. Since then, several mutations have been identified in PD patients in Europe and Japan [21]. With regard to the mode of inheritance (e.g. recessive form), loss of PINK1 function is proposed as the mechanism of *PINK1*-linked PD. The estimated prevalence of PINK1 mutations in different ethnicities is 1–8% of familial or young-onset PD [22]. Approximately 50 pathogenic mutations (missense mutations, genomic rearrangements, truncating mutations) have been identified in diverse populations. Most of the

mutations are observed in the serine/threonine kinase domain, suggesting that loss of kinase activity plays a crucial part in the pathogenesis of *PINK1*-linked PD. Although the genotype–phenotype correlation has not been confirmed, the mean age at onset in patients with single heterozygous mutations is higher than that in patients with homozygous mutations [9,23]. Homozygous mutations in *PINK1* invariably cause *PINK1*-linked PD, whereas heterozygous mutations have been suggested to be a susceptibility factor for sporadic PD [24].

#### PINK1 function

##### Kinase activity

As mentioned above, PINK1 is a serine/threonine kinase protein. Several studies have reported that pathogenic mutations in PINK1, such as p.K219A, p.G309D, p.L347P, p.D362A, p.D384A, p.G386A, p.G409 V, p.E417G, are associated with reduced kinase activity [5,15,18,25]. Furthermore, the C-terminus of PINK1 regulates its kinase activity, although there is controversy over whether it up-regulates or down-regulates [18,25] activity [25]. Mutations in the PINK1 C-terminus cause early-onset parkinsonism [26]. Therefore, we have to consider the effect of the C-terminus on kinase activity to be significant. TNF receptor-associated protein 1 (TRAP1), a mitochondrial chaperone, has been identified as a PINK1 substrate. PINK1 might provide protection against oxidative stress-induced apoptosis by the phosphorylation of TRAP1 [5]. Another candidate substrate of PINK1 is parkin. The linker region of parkin is phosphorylated by PINK1, and parkin phosphorylated by PINK1 promotes its mitochondrial translocation [27]. The activity of parkin E3 ligase functions to catalyze the K63-linked polyubiquitination of IKK $\gamma$ , which is a critical step in the cytoprotective signaling pathway that activates NF- $\kappa$ B, a ubiquitously expressed transcription of several pro-survival genes [18,28]. PINK1 is thought to modulate the phosphorylation status of another mitochondrial protein, Omi/HtrA2 (a gene product for *PARK13*), possibly through indirect mechanisms [6]. Rictor, a specific component of mammalian target of rapamycin complex 2 (mTORC2), is phosphorylated by overexpression of PINK1. Enhanced Akt through activation of mTORC2

provides cytoprotection [20,29]. These reports corroborate the fact that kinase activity has crucial roles in the pathogenesis of *PINK1*-linked PD.

#### Interaction with other PD-associated genes

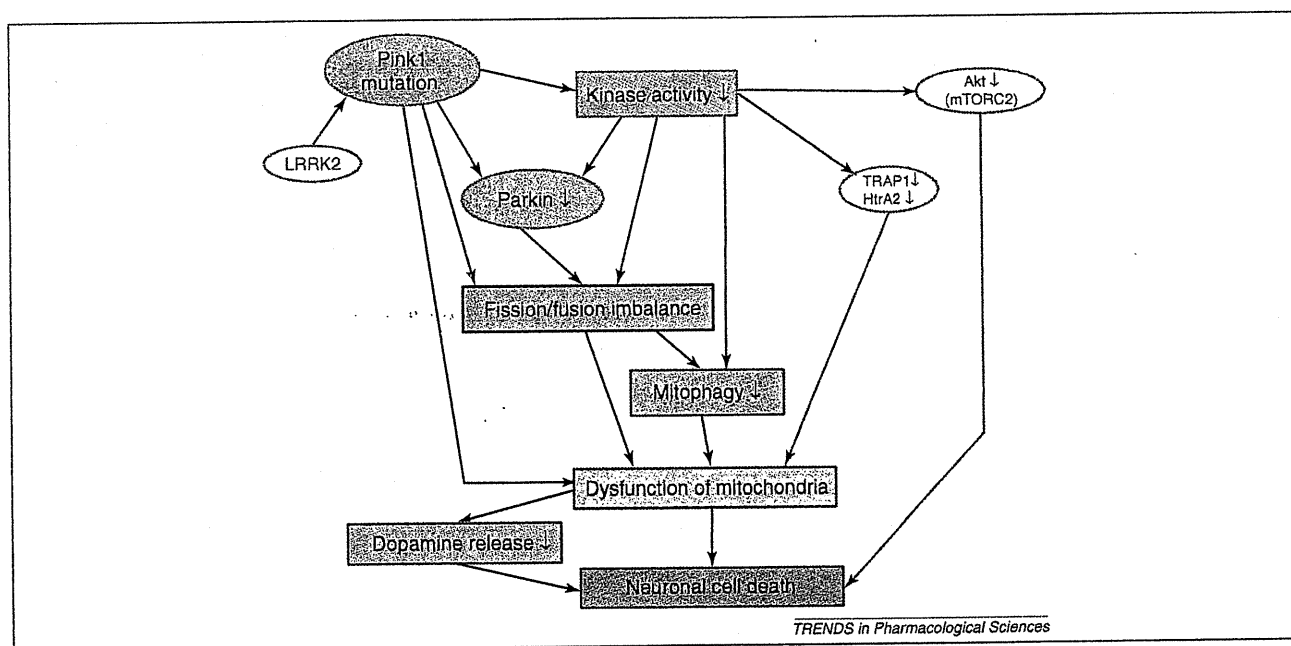
*PINK1*-deficient *Drosophila* and *PINK1*-linked PD patients show very similar phenotypes, in contrast to flies and patients whose symptoms are caused by *parkin* mutations. Moreover, overexpression of *parkin* rescues the phenotype of *PINK1*-deficient *Drosophila*, but not *vice versa* [30,31]. However, *Omi/HtrA2* is not an essential component of the *PINK1/parkin* pathway in *Drosophila* [32]. In cultured cells, *PINK1* knockdown phenotypes are also rescued by overexpression of *parkin*, but not *vice versa* [33]. *Parkin* stabilizes *PINK1* through direct interaction [34]. These results suggest that *PINK1* functions upstream of *parkin* in a common pathway. Furthermore, *parkin*, *PINK1*, and *DJ-1* form a ubiquitin E3 ligase complex that promotes the degradation of unfolded proteins [35]. In *Drosophila*, *DJ-1* can rescue the consequences of *PINK1* loss (except for infertility), but not the consequences of *parkin* loss. Furthermore, *parkin* cannot rescue *DJ-1* loss, suggesting that *DJ-1* may not be directly downstream of *PINK1* [26,36]. In human neuroblastoma cells, *parkin* protects against the loss of *DJ-1* and, although *DJ-1* does not alter *PINK1*-deficient mitochondrial phenotypes, *DJ-1* is active against rotenone-induced damage in the absence of *PINK1* [27,37]. These findings indicate that *DJ-1* works in parallel to the *PINK1/parkin* pathway to maintain mitochondrial function.

*PINK1* knockdown causes proteasome dysfunction, accompanied by increased  $\alpha$ -synuclein aggregation [38]. *PINK1*-deficient *Caenorhabditis elegans* exhibits a reduced length of mitochondrial cristae, increased sensitivity

to paraquat (a herbicide which causes oxidative stress and parkinsonism) and defective axonal outgrowth of a pair of canal-associated neurons. In the absence of *LRRK2*, all these phenotypic aspects can be suppressed [39]. Furthermore, in *Drosophila*, overexpression of *LRRK2* potentiates the bristle loss phenotype of *PINK1* [40]. These results suggest that loss of *LRRK2* suppresses the *PINK1* phenotype. Taken together, evidence suggests that dysfunction of several causative gene products might contribute to the pathogenesis for PD through a common pathway (Figure 2).

#### Mitochondrial regulation

**Mitochondrial function:** In cultured cells, overexpression of *PINK1* confers resistance to toxins against mitochondria such as staurosporine, 1-methyl-4-phenyl-1,2,3,6-tetrahydropyridine (MPTP), and rotenone, and *PINK1* expression provides resistance to MPTP-induced dopaminergic neuronal loss in mice [4,41]. Consistent with these reports, reduction of *PINK1* levels by RNA interference (RNAi) in cultured cells resulted in enhanced cell death in the presence of MPTP and rotenone [42]. In this regard, *PINK1*-deficient animal models and model-derived cells have provided important information on the endogenous function of *PINK1*. *PINK1*-deficient *Drosophila* showed degeneration of flight muscles, male sterility, and dopaminergic neuronal cells accompanied by mitochondrial abnormality, and shared phenotypic similarity with *parkin*-deficient *Drosophila* [30,31]. These models exhibit decreases in mitochondrial membrane potential ( $\Delta\psi_m$ ), mitochondrial DNA, complex I, ATP, and an increased proportion of swollen mitochondria and susceptibility to apoptotic stimuli. Concomitant defects in synaptic function are also observed [43]. These results suggest that



**Figure 2.** Proposed mechanism of *PINK1*-linked PD. Loss of *PINK1* on mitochondria inhibits *parkin* functions and induces mitochondrial fission/fusion imbalance, which in turn causes impaired mitophagy, resulting in mitochondrial dysfunction. The kinase activity of *PINK1* is important for mitophagy. Decreased dopamine release due to mitochondrial dysfunction induces neuronal cell death. Furthermore, *TRAP1* and *HtrA2* are not activated under reduced *PINK1* kinase activity, leading to mitochondrial dysfunction. Reduced *PINK1* kinase activity also results in failure of activation of *Akt*, leading to decreased cytoprotective function. *LRRK2* exacerbates loss of *PINK1*.

loss of PINK1 can cause dopaminergic neuronal cell death due to functional defects in mitochondria.

In contrast, *PINK1*- and *parkin*-deficient mice do not exhibit major abnormalities, whereas absence of PINK1 causes several deficits, including: (i) reduced synaptic dopamine release and plasticity in the striatum [44]; (ii) impaired mitochondrial respiration in the striatum at 3–4 months of age and in the cerebral cortex at 2 years [45]; and (iii) progressive weight loss and selective reduction of locomotor activity for spontaneous movements in old age [46]. These findings indicate that the mitochondria in *PINK1*-deficient models are more vulnerable to aging. Primary cultured neurons derived from *PINK1*-deficient mice showed increased intracellular calcium levels and vulnerability, with subsequent excess production of reactive oxygen species (ROS), decreased glucose availability, loss of  $\Delta\Psi_m$  and defects of complex I, causing pathological opening of the mitochondrial permeability transition pore [47]. In *PINK1*-deficient mouse embryonic fibroblasts (MEFs),  $\Delta\Psi_m$  and cellular ATP levels are lower than in wild-type MEFs. However, mitochondrial proton leak (which reduces membrane potential in the absence of ATP synthesis) is not altered by loss of PINK1. Instead, low activity of the respiratory chain (which produces membrane potential oxidizing substrates using oxygen) has been observed [48]. These results suggest that decreased  $\Delta\Psi_m$  caused by loss of PINK1 is not due to proton leak, but to respiratory chain defects [39].

Similar to *parkin*-deficient mice, *PINK1*-deficient mice do not show prominent phenotypes. However, results from *PINK1*-deficient mice indicate that dysfunction of mitochondrial proteins (e.g. complex I) and aging are important in the pathogenesis of *PINK1*-linked PD as well as in sporadic PD.

Samples obtained from patients with hereditary PD can provide important information regarding the pathogenesis of PD. Skin fibroblasts of patients homozygous for the p.G309D *PINK1* mutation show: (i) a mild decrease in complex I activity and a trend of superoxide elevation [49]; (ii) fragmented mitochondrial morphology [33]; and (iii) low expression of parkin and selective vulnerability to proteasomal stress-triggered caspase activation [41,50].

In samples obtained from mice and PD patients, as well as from cultured cells, loss of PINK1 causes mitochondrial dysfunction and vulnerability to cell death.

**Mitochondrial morphology:** In mammalian cultured cells (with the exception of COS7 cells), PINK1 knockdown phenotype shows fragmented mitochondria [33,51]. In human neuroblastoma cells transduced with a PINK1 shRNA lentivirus, the activity of dynamin-related protein 1 (Drp1), which is controlled by phosphatase calcineurin, enhances the effects of PINK1 upon mitochondrial morphology [52]. In contrast, transgenic *Drosophila* with PINK1 promotes mitochondrial fission in dopaminergic neurons, whereas complete ablation of PINK1 leads to excessive fusion [53]. Fis1 (mitochondrial fission 1 protein) may act in-between PINK1 and Drp1 in controlling mitochondrial fission [53]. Heterozygous loss-of-function mutations of Drp1 are largely lethal in a *PINK1* or *parkin* mutant background. Conversely, the degeneration of flight muscle and mitochondrial morphological changes which result

from mutations in *PINK1* and *parkin* are strongly suppressed by increasing the dosage of the Drp1 gene and by heterozygous loss-of-function mutations in OPA1 and Mfn2. In pseudopupil analyses, an eye phenotype associated with increased activity of the PINK1/parkin pathway is suppressed by perturbations that reduce mitochondrial fission but enhanced by perturbations that reduce mitochondrial fusion [54,55]. These results suggest that the PINK1/parkin pathway promotes mitochondrial fission, and that the loss of mitochondrial and tissue integrity in *PINK1* and *parkin* mutants is due to reduced mitochondrial fission in *Drosophila*. The cortical neurons of *PINK1*-deficient mice show reduced fission and increased aggregation of mitochondria only under stress [46]. Dopaminergic neuronal rat cells with a *PINK1* mutation (p.L347P) show mitochondrial fragmentation and dysfunction, which can be prevented by inhibitors of mitochondrial division [47,56].

There is controversy over whether PINK1 modulates mitochondrial fission or fusion. Fragmented mitochondria in *parkin* and/or *PINK1*-deficient *Drosophila* S2 cells are observed at day 2 after double-stranded RNA (dsRNA) treatment. At days 3 and 4 after dsRNA treatment, a dense network of fine thread-like mitochondria is observed. *PINK1*-deficient primary mouse hippocampal neurons show a decrease in the length of mitochondria and an increase in mitochondrial fragmentation. The mitochondrial phenotype observed in *parkin*- and *PINK1*-deficient cells can be rescued morphologically and functionally by increased expression of a dominant negative mutant of Drp1 [51]. Considering the discrepancy between cellular and fly models with low PINK1 expression, we might observe an acute manifestation of *parkin* or *PINK1* knockdown in cultured cells and the chronic phenotype influenced by compensatory effects in adult *Drosophila* (although the mitochondrial morphological change might be dependent upon cell lines). Otherwise, PINK1 might regulate and maintain a balance between fission and fusion depending upon certain conditions (e.g. phase, stress).

Mitochondrial fission and fusion are highly regulated processes that are critical for the maintenance of mitochondria (especially in neurons). Imbalance of mitochondrial fission and fusion machineries has increasingly been linked to neurodegeneration [57]. Based on this concept, PINK1 has a crucial role in the pathogenesis of PD.

**Mitophagy:** Recent studies have provided new insights about the PINK1/parkin pathway. It has been reported that parkin is translocated to depolarized mitochondria and that the parkin-labeled mitochondria are subsequently eliminated by autophagy (mitophagy) [58]. Several studies on this pathway were subsequently reported. Endogenous PINK1 is not detected under basal conditions because it is rapidly degraded [16]. However, reduction of  $\Delta\Psi_m$  induced by carbonyl cyanide *m*-chlorophenylhydrazone (CCCP), a mitochondrial uncoupler, results in gradual accumulation of endogenous PINK1 (full-length form) on mitochondria [17,59]. Interestingly, clearance of CCCP results in immediate disappearance of the accumulated endogenous PINK1 in the presence and absence of cycloheximide (an inhibitor of protein biosynthesis) by interfering with the translocation step of protein synthesis.

Likewise, CCCP treatment does not alter PINK1 mRNA levels [17]. These results suggest that PINK1 is stabilized by reduced  $\Delta\Psi_m$  and subsequently accumulates on depolarized mitochondria. By contrast, parkin is not translocated to the mitochondria in *PINK1*-deficient CCCP-treated MEFs, and subsequent mitochondrial clearance is also completely blocked, indicating that PINK1 is indispensable for parkin translocation to depolarized mitochondria. Parkin E3 ligase activity is suppressed under basal conditions, although the activity is increased in mitochondria with low  $\Delta\Psi_m$ . PINK1 accumulation induces recruitment of parkin to the depolarized mitochondria, and subsequently the mitochondria are eliminated by mitophagy. These processes are inhibited by pathogenic mutants of PINK1 or parkin [16,17,59]. Furthermore, elimination of parkin-labeled mitochondria is blocked in *Atg5*- or *Atg7*-deficient MEFs [58,59]. Moreover, MTS, kinase activity of PINK1, and the linker domain of parkin are indispensable for PINK1/parkin-mediated mitophagy [17,52,59].

In cells with normal  $\Delta\Psi_m$ , expression of PINK1 on the outer mitochondrial membrane or overexpression of PINK1 induces translocation of parkin to the mitochondria [60,61]. Furthermore, valinomycin- and hydrogen peroxide ( $H_2O_2$ )-induced stress result in mitochondrial localization of parkin in skin fibroblasts of healthy controls but not in those of PD patients with PINK1 mutations (p.Q456X) [56,62]. Valinomycin, but not  $H_2O_2$ , reduces  $\Delta\Psi_m$ . Taken together, it seems that PINK1 expression on the mitochondria, rather than low  $\Delta\Psi_m$ , is indispensable for parkin translocation to the mitochondria.

The mitochondrial inner membrane rhomboid protease presenilin-associated rhomboid-like protein (PARL) mediates cleavage of PINK1 in the TMD in a  $\Delta\Psi_m$ -dependent manner. In the absence of PARL, full-length PINK1 accumulates on the outer mitochondrial membrane, where it recruits parkin to the impaired mitochondria. Thus, the role of PARL in the PINK1/parkin pathway appears to include facilitating the rapid degradation of PINK1 by mediating the cleavage of PINK1 [19,20,63].

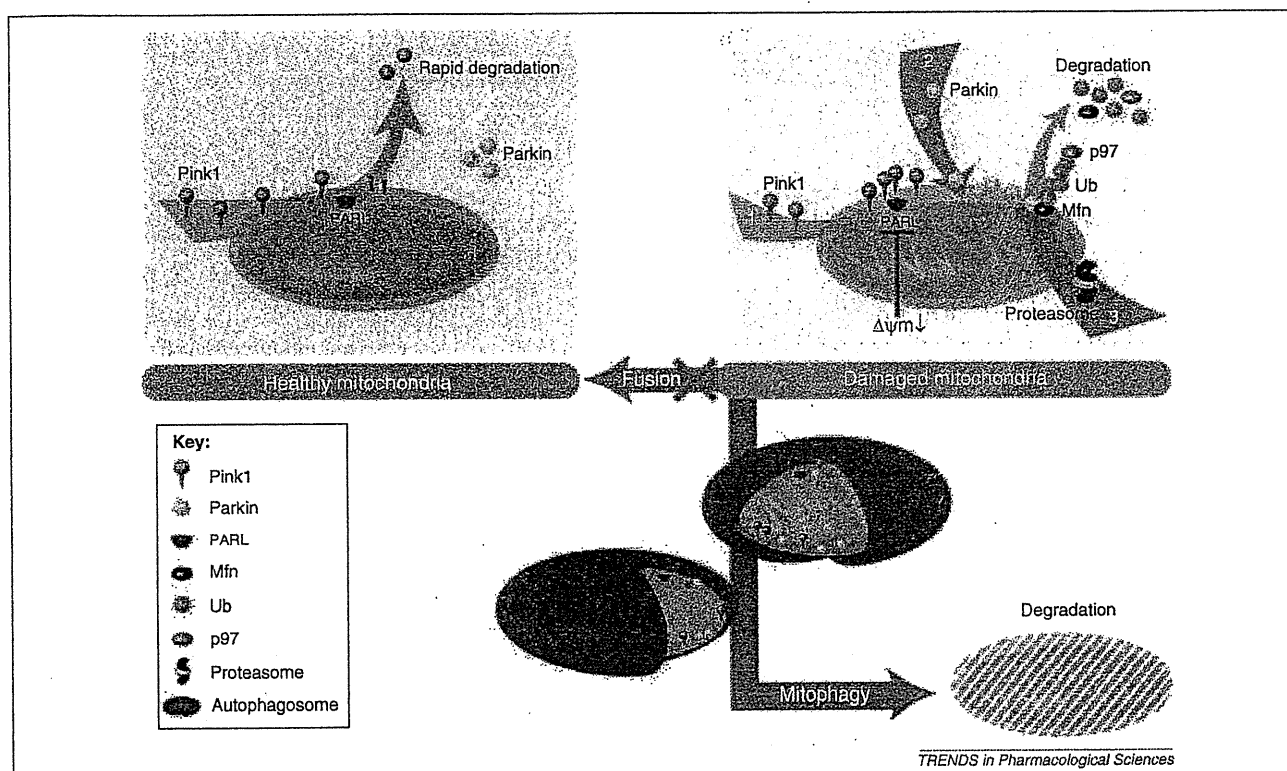
PINK1/parkin-mediated mitophagy involves the formation of linkage-specific polyubiquitin chains (K27 and K63) and requires the ubiquitin-autophagy adaptor p62/SQSTM1. VDAC1 is a mitochondrial target of parkin-dependent K27 ubiquitination, and VDAC1 ubiquitination in neuronal cells is dependent upon functional parkin. Because VDAC1 is a component of the mitochondrial permeability transition pore (mPTP), which is involved in apoptosis, a parkin-dependent, timely mitophagic clearance may prevent the release of pro-apoptotic factors from damaged mitochondria under physiological conditions [58,64]. By contrast, p62 is reported to be necessary for mitochondrial aggregation but not mitophagy, and mitochondrial-associated proteins other than VDAC1 and VDAC3 are K63-polyubiquitinated in a parkin-dependent manner [65,66]. Another candidate parkin substrate on the mitochondria is mitofusin (MFN), which is involved in mitochondrial fusion. *Drosophila* Marf (a fly MFN ortholog), which is localized on the outer surface of mitochondria, is ubiquitinated by parkin and accumulates in *parkin* mutants [67,68]. Mammalian cells contain two types of

MFN: MFN1 and MFN2. Treatment of cultured cells with CCCP results in ubiquitination of MFN1 and MFN2 in a PINK1/parkin-dependent manner [63,69]. Moreover, parkin-ubiquitinated MFN1 and MFN2 are degraded by the proteasome. The hexameric AAA-type ATPase, p97, is required downstream of PINK1 and parkin to promote the proteasomal turnover of ubiquitinated MFN. Parkin-promoted MFN degradation prevents refusion of damaged mitochondria with healthy mitochondria [64,70]. Fission followed by selective fusion segregates dysfunctional mitochondria and permits their removal by autophagy [71]. These reports suggest that mitochondrial fission may be a key factor in PINK1/parkin-mediated mitophagy. However, there is controversy over the substrates of parkin, making further investigations necessary.

### PINK1/parkin-mediated mitophagy model

Based on the collective results of the studies mentioned above, we propose the model illustrated in Figure 3 for PINK1/parkin-mediated mitophagy. PINK1 accumulated on the mitochondrial outer membrane due to the low  $\Delta\Psi_m$  or certain mitochondrial insults recruit parkin to the mitochondria. Parkin E3 ligase activity is subsequently activated and ubiquitinates MFN on the mitochondrial outer membrane. Ubiquitinated MFN assembles p97 and the complex is degraded by proteasome. Mitochondria lacking MFN, which cannot fuse with other healthy mitochondria, can be a target for mitophagy. The model advances our understanding of the pathogenic process of PD and the role of the direct associations between parkin and mitochondria, as well as between the PINK1/parkin pathway and autophagy. Mitochondrial dysfunction is also considered to be one of the main causes of the sporadic form of PD, and impaired autophagy leads to neurodegenerative diseases such as PD. However, to fully understand the molecular mechanisms of this pathway, further details are needed. For example, how does PINK1 recruit parkin to the damaged mitochondria? What is the mechanism responsible for parkin activation in the mitochondria? There is controversy over whether PINK1 phosphorylates parkin in this pathway [16,17,27,28,61,66]. PINK1 kinase activity is essential for parkin translocation to mitochondria [17,59]. Therefore, it is a feasible and attractive hypothesis that parkin is directly phosphorylated by PINK1. However, further investigations are needed.

Other candidate PINK1 substrates that recruit parkin or function as parkin receptors on the outer mitochondrial membrane also need to be investigated. In yeast, Atg32 (which has no known metazoan homolog) is identified as an outer mitochondrial membrane protein necessary for mitophagy [72,73], and contains a conserved WXXI/L/V motif for interaction with Atg8. Recent studies reported that another outer mitochondrial membrane protein, Nix (which has no yeast homolog and contains a WXXL-like motif), is crucial for PINK1/parkin-mediated mitophagy [68,74]. Does endogenous parkin contribute to mitophagy? Most reports on this pathway are conducted by overexpressing parkin. It remains unclear at this stage whether parkin deficiency or parkin partial knockdown down-regulates mitophagy. Furthermore, there is no information on whether  $\Delta\Psi_m$  of the brain is decreased in patients with



**Figure 3.** Proposed model of PINK1/parkin-mediated mitophagy. PINK1 on mitochondria is processed by PARL, which localizes in the mitochondrial inner membrane under basal conditions. The processed PINK1 is rapidly degraded by the proteasome. In the presence of a low membrane potential or certain insults to the mitochondria, PINK1 accumulates in the mitochondrial outer membrane. This results in translocation of parkin to the damaged mitochondria and subsequent activation of parkin-E3 ligase. Activated parkin ubiquitinates mitofusin (Mfn) on the mitochondrial outer membrane. This leads to the assembly of p97 on ubiquitinated Mfn and proteasomal degradation. Mitochondria lacking Mfn cannot fuse with other healthy mitochondria and become a target for mitophagy.

sporadic PD. As mentioned above, *PINK1*-deficient mice and MEFs as well as *PINK1* knockdown cells show decreased  $\Delta\Psi_m$ . However, skin fibroblasts derived from neither the nonsense (p.Q456X) nor the missense (p.V170G) mutation show significantly low  $\Delta\Psi_m$  [75]. There is no model of CCCP-induced human parkinsonism, unlike with MPTP- and rotenone-induced parkinsonism. In this regard, there is no evidence for translocation of parkin to mitochondria in cells treated with MPTP or rotenone. CCCP treatment does not reflect a human physiological condition. Therefore, there is a limitation in discussing the pathogenesis of PD using models based on CCCP treatment.

Is there any association between *PINK1*/parkin-mediated mitophagy and  $\alpha$ -synuclein? As discussed above,  $\alpha$ -synuclein is a major component of Lewy bodies (the hallmark of sporadic PD) and is considered to be a key protein in the pathogenesis of sporadic PD. There is no direct association between *PINK1*/parkin-mediated mitophagy and  $\alpha$ -synuclein, although wild-type and mutants of  $\alpha$ -synuclein are degraded by chaperone-mediated autophagy and macroautophagy, respectively [76,77]. Studies demonstrated that  $\alpha$ -synuclein inhibits autophagy [71,78], and that inhibition of mitochondrial fusion by  $\alpha$ -synuclein is rescued by *PINK1* and parkin [72,73,79]. To develop a novel therapeutic strategy for sporadic PD as well as *PINK1*- and *parkin*-linked PD, it is necessary to investigate the relationship between aggregation of  $\alpha$ -synuclein and dysfunction of *PINK1*/parkin-mediated mitophagy.

### Concluding remarks

PD is a progressive neurodegenerative disease for which the frequency increases with age. As 'developing nations' face rapidly aging populations, the prevalence of PD is expected to rise. PD patients in the advanced stage require great support from families and the medical community. However, curative therapies to suppress the progression are lacking. Therefore, it is important to elucidate the pathogenesis and establish novel and rational treatments. *PINK1* provides valuable clues regarding the molecular pathogenesis of PD because the pathomechanism for sporadic PD probably has certain common pathways with that of *PINK1*-linked PD. Based on the available information on *PINK1*, we propose the model shown in Figure 2 for the mechanisms involved in the development of *PINK1*-linked PD. *PINK1* mainly protects the mitochondria via mitophagy with parkin, and may subsequently suppress neuronal cell death due to reduced dopamine release. However, *PINK1* may have a cytoprotective function by activating Akt in the cytoplasm. We expect that a compound which inhibits this pathway could be established as a novel treatment for not only *PINK1*-linked PD but also sporadic PD. In particular, *PINK1*/parkin-mediated mitophagy (i.e. mitochondrial quality control via autophagic machinery that includes the combination of *PINK1* and parkin) could be viewed as the foundation for the design of novel therapies for PD, although several issues remain unresolved. If we could determine the precise mechanism of mitophagy which eliminates abnormal mitochondria, we

might regulate the clearance of deleterious mitochondria with new chemicals which target this pathway to maintain cell integrity and subsequently suppress cell death. However, further studies are required to elucidate the exact pathomechanism and develop effective therapies for hereditary PD and sporadic PD.

#### Acknowledgements

The authors thank Ms. Ayako Yamaguchi for preparation of the illustrations. The study was supported by the Takeda Scientific Foundation (Drs. Sato and Saiki) and (JSPS) Kakenhi (Dr. Hattori).

#### References

- de Lau, L.M. and Breteler, M.M. (2006) Epidemiology of Parkinson's disease. *Lancet Neurol.* 5, 525–535
- Schapira, A.H. (2008) Mitochondria in the aetiology and pathogenesis of Parkinson's disease. *Lancet Neurol.* 7, 97–109
- Hatano, T. et al. (2009) Pathogenesis of familial Parkinson's disease: new insights based on monogenic forms of Parkinson's disease. *J. Neurochem.* 111, 1075–1093
- Petit, A. et al. (2005) Wild-type PINK1 prevents basal and induced neuronal apoptosis, a protective effect abrogated by Parkinson disease-related mutations. *J. Biol. Chem.* 280, 34025–34032
- Pridgeon, J.W. et al. (2007) PINK1 protects against oxidative stress by phosphorylating mitochondrial chaperone TRAP1. *PLoS Biol.* 5, e172
- Plun-Favreau, H. et al. (2007) The mitochondrial protease HtrA2 is regulated by Parkinson's disease-associated kinase PINK1. *Nat. Cell Biol.* 9, 1243–1252
- Hatano, Y. et al. (2004) PARK6-linked autosomal recessive early-onset parkinsonism in Asian populations. *Neurology* 63, 1482–1485
- Ibanez, P. et al. (2006) Mutational analysis of the PINK1 gene in early-onset parkinsonism in Europe and North Africa. *Brain* 129, 686–694
- Kumazawa, R. et al. (2008) Mutation analysis of the PINK1 gene in 391 patients with Parkinson disease. *Arch. Neurol.* 65, 802–808
- Samaranch, L. et al. (2010) PINK1-linked parkinsonism is associated with Lewy body pathology. *Brain* 133, 1128–1142
- Hayashi, S. et al. (2000) An autopsy case of autosomal-recessive juvenile parkinsonism with a homozygous exon 4 deletion in the parkin gene. *Mov. Disord.* 15, 884–888
- van de Warrenburg, B.P. et al. (2001) Clinical and pathologic abnormalities in a family with parkinsonism and parkin gene mutations. *Neurology* 56, 555–557
- Valente, E.M. et al. (2004) Hereditary early-onset Parkinson's disease caused by mutations in PINK1. *Science* 304, 1158–1160
- Zhou, C. et al. (2008) The kinase domain of mitochondrial PINK1 faces the cytoplasm. *Proc. Natl. Acad. Sci. U.S.A.* 105, 12022–12027
- Beilina, A. et al. (2005) Mutations in PTEN-induced putative kinase 1 associated with recessive parkinsonism have differential effects on protein stability. *Proc. Natl. Acad. Sci. U.S.A.* 102, 5703–5708
- Lin, W. and Kang, U.J. (2008) Characterization of PINK1 processing, stability, and subcellular localization. *J. Neurochem.* 106, 464–474
- Narendra, D.P. et al. (2010) PINK1 is selectively stabilized on impaired mitochondria to activate Parkin. *PLoS Biol.* 8, e1000298
- Silvestri, L. et al. (2005) Mitochondrial import and enzymatic activity of PINK1 mutants associated to recessive parkinsonism. *Hum. Mol. Genet.* 14, 3477–3492
- Jin, S.M. et al. (2010) Mitochondrial membrane potential regulates PINK1 import and proteolytic destabilization by PARL. *J. Cell Biol.* 191, 933–942
- Deas, E. et al. (2011) PINK1 cleavage at position A103 by the mitochondrial protease PARL. *Hum. Mol. Genet.* 20, 867–879
- Hatano, Y. et al. (2004) Novel PINK1 mutations in early-onset parkinsonism. *Annu. Neurol.* 56, 424–427
- Klein, C. and Schlossmacher, M.G. (2007) Parkinson disease, 10 years after its genetic revolution: multiple clues to a complex disorder. *Neurology* 69, 2093–2104
- Li, Y. et al. (2005) Clinicogenetic study of PINK1 mutations in autosomal recessive early-onset parkinsonism. *Neurology* 64, 1955–1957
- Klein, C. et al. (2007) Deciphering the role of heterozygous mutations in genes associated with parkinsonism. *Lancet Neurol.* 6, 652–662
- Sim, C.H. et al. (2006) C-terminal truncation and Parkinson's disease-associated mutations down-regulate the protein serine/threonine kinase activity of PTEN-induced kinase-1. *Hum. Mol. Genet.* 15, 3251–3262
- Rohe, C.F. et al. (2004) Homozygous PINK1 C-terminus mutation causing early-onset parkinsonism. *Annu. Neurol.* 56, 427–431
- Kim, Y. et al. (2008) PINK1 controls mitochondrial localization of Parkin through direct phosphorylation. *Biochem. Biophys. Res. Commun.* 377, 975–980
- Sha, D. et al. (2010) Phosphorylation of parkin by Parkinson disease-linked kinase PINK1 activates parkin E3 ligase function and NF-kappaB signaling. *Hum. Mol. Genet.* 19, 352–363
- Murata, H. et al. (2011) A New Cytosolic Pathway from a Parkinson Disease-associated Kinase, BRPK/PINK1: ACTIVATION OF AKT VIA MTORC2. *J. Biol. Chem.* 286, 7182–7189
- Park, J. et al. (2006) Mitochondrial dysfunction in Drosophila PINK1 mutants is complemented by parkin. *Nature* 441, 1157–1161
- Clark, I.E. et al. (2006) Drosophila pink1 is required for mitochondrial function and interacts genetically with parkin. *Nature* 441, 1162–1166
- Yun, J. et al. (2008) Loss-of-function analysis suggests that Omi/HtrA2 is not an essential component of the PINK1/PARKIN pathway in vivo. *J. Neurosci.* 28, 14500–14510
- Exner, N. et al. (2007) Loss-of-function of human PINK1 results in mitochondrial pathology and can be rescued by parkin. *J. Neurosci.* 27, 12413–12418
- Shiba, K. et al. (2009) Parkin stabilizes PINK1 through direct interaction. *Biochem. Biophys. Res. Commun.* 383, 331–335
- Xiong, H. et al. (2009) Parkin, PINK1, and DJ-1 form a ubiquitin E3 ligase complex promoting unfolded protein degradation. *J. Clin. Invest.* 119, 650–660
- Hao, L.Y. et al. (2010) DJ-1 is critical for mitochondrial function and rescues PINK1 loss of function. *Proc. Natl. Acad. Sci. U.S.A.* 107, 9747–9752
- Thomas, K.J. et al. (2011) DJ-1 acts in parallel to the PINK1/parkin pathway to control mitochondrial function and autophagy. *Hum. Mol. Genet.* 20, 40–50
- Liu, W. et al. (2009) PINK1 defect causes mitochondrial dysfunction, proteasomal deficit and alpha-synuclein aggregation in cell culture models of Parkinson's disease. *PLoS ONE* 4, e4597
- Samann, J. et al. (2009) Caenorhabditis elegans LRK-1 and PINK-1 act antagonistically in stress response and neurite outgrowth. *J. Biol. Chem.* 284, 16482–16491
- Venderova, K. et al. (2009) Leucine-rich repeat kinase 2 interacts with Parkin, DJ-1 and PINK-1 in a Drosophila melanogaster model of Parkinson's disease. *Hum. Mol. Genet.* 18, 4390–4404
- Haque, M.E. et al. (2008) Cytoplasmic Pink1 activity protects neurons from dopaminergic neurotoxin MPTP. *Proc. Natl. Acad. Sci. U.S.A.* 105, 1716–1721
- Deng, H. et al. (2005) Small interfering RNA targeting the PINK1 induces apoptosis in dopaminergic cells SH-SY5Y. *Biochem. Biophys. Res. Commun.* 337, 1133–1138
- Morais, V.A. et al. (2009) Parkinson's disease mutations in PINK1 result in decreased Complex I activity and deficient synaptic function. *EMBO Mol. Med.* 1, 99–111
- Kitada, T. et al. (2007) Impaired dopamine release and synaptic plasticity in the striatum of PINK1-deficient mice. *Proc. Natl. Acad. Sci. U.S.A.* 104, 11441–11446
- Gautier, C.A. et al. (2008) Loss of PINK1 causes mitochondrial functional defects and increased sensitivity to oxidative stress. *Proc. Natl. Acad. Sci. U.S.A.* 105, 11364–11369
- Gispert, S. et al. (2009) Parkinson phenotype in aged PINK1-deficient mice is accompanied by progressive mitochondrial dysfunction in absence of neurodegeneration. *PLoS ONE* 4, e5777
- Gandhi, S. et al. (2009) PINK1-associated Parkinson's disease is caused by neuronal vulnerability to calcium-induced cell death. *Mol. Cell* 33, 627–638
- Amo, T. et al. (2011) Mitochondrial membrane potential decrease caused by loss of PINK1 is not due to proton leak, but to respiratory chain defects. *Neurobiol. Dis.* 41, 111–118
- Hoepken, H.H. et al. (2007) Mitochondrial dysfunction, peroxidation damage and changes in glutathione metabolism in PARK6. *Neurobiol. Dis.* 25, 401–411

- 50 Klinkenberg, M. *et al.* (2010) Enhanced vulnerability of PARK6 patient skin fibroblasts to apoptosis induced by proteasomal stress. *Neuroscience* 166, 422–434
- 51 Lutz, A.K. *et al.* (2009) Loss of parkin or PINK1 function increases Drp1-dependent mitochondrial fragmentation. *J. Biol. Chem.* 284, 22938–22951
- 52 Sandebring, A. *et al.* (2009) Mitochondrial alterations in PINK1 deficient cells are influenced by calcineurin-dependent dephosphorylation of dynamin-related protein 1. *PLoS ONE* 4, e5701
- 53 Yang, Y. *et al.* (2008) Pink1 regulates mitochondrial dynamics through interaction with the fission/fusion machinery. *Proc. Natl. Acad. Sci. U.S.A.* 105, 7070–7075
- 54 Deng, H. *et al.* (2008) The Parkinson's disease genes pink1 and parkin promote mitochondrial fission and/or inhibit fusion in *Drosophila*. *Proc. Natl. Acad. Sci. U.S.A.* 105, 14503–14508
- 55 Poole, A.C. *et al.* (2008) The PINK1/Parkin pathway regulates mitochondrial morphology. *Proc. Natl. Acad. Sci. U.S.A.* 105, 1638–1643
- 56 Cui, M. *et al.* (2010) Perturbations in mitochondrial dynamics induced by human mutant PINK1 can be rescued by the mitochondrial division inhibitor mdivi-1. *J. Biol. Chem.* 285, 11740–11752
- 57 Chan, D.C. (2006) Mitochondria: dynamic organelles in disease, aging, and development. *Cell* 125, 1241–1252
- 58 Narendra, D. *et al.* (2008) Parkin is recruited selectively to impaired mitochondria and promotes their autophagy. *J. Cell Biol.* 183, 795–803
- 59 Matsuda, N. *et al.* (2010) PINK1 stabilized by mitochondrial depolarization recruits Parkin to damaged mitochondria and activates latent Parkin for mitophagy. *J. Cell Biol.* 189, 211–221
- 60 Kawajiri, S. *et al.* (2010) PINK1 is recruited to mitochondria with parkin and associates with LC3 in mitophagy. *FEBS Lett.* 584, 1073–1079
- 61 Vives-Bauza, C. *et al.* (2010) PINK1-dependent recruitment of Parkin to mitochondria in mitophagy. *Proc. Natl. Acad. Sci. U.S.A.* 107, 378–383
- 62 Rakovic, A. *et al.* (2010) Effect of endogenous mutant and wild-type PINK1 on Parkin in fibroblasts from Parkinson disease patients. *Hum. Mol. Genet.* 19, 3124–3137
- 63 Whitworth, A.J. *et al.* (2008) Rhomboid-7 and HtrA2/Omi act in a common pathway with the Parkinson's disease factors Pink1 and Parkin. *Dis. Model. Mech.* 1, 168–174 discussion 173
- 64 Geisler, S. *et al.* (2010) PINK1/Parkin-mediated mitophagy is dependent on VDAC1 and p62/SQSTM1. *Nat. Cell Biol.* 12, 119–131
- 65 Okatsu, K. *et al.* (2010) p62/SQSTM1 cooperates with Parkin for perinuclear clustering of depolarized mitochondria. *Genes Cells* 15, 887–900
- 66 Narendra, D. *et al.* (2010) p62/SQSTM1 is required for Parkin-induced mitochondrial clustering but not mitophagy; VDAC1 is dispensable for both. *Autophagy* 6, 1090–1106
- 67 Ziviani, E. *et al.* (2010) *Drosophila* parkin requires PINK1 for mitochondrial translocation and ubiquitinates mitofusin. *Proc. Natl. Acad. Sci. U.S.A.* 107, 5018–5023
- 68 Poole, A.C. *et al.* (2010) The mitochondrial fusion-promoting factor mitofusin is a substrate of the PINK1/parkin pathway. *PLoS ONE* 5, e10054
- 69 Gegg, M.E. *et al.* (2010) Mitofusin 1 and mitofusin 2 are ubiquitinated in a PINK1/parkin-dependent manner upon induction of mitophagy. *Hum. Mol. Genet.* 19, 4861–4870
- 70 Tanaka, A. *et al.* (2010) Proteasome and p97 mediate mitophagy and degradation of mitofusins induced by Parkin. *J. Cell Biol.* 191, 1367–1380
- 71 Twig, G. *et al.* (2008) Fission and selective fusion govern mitochondrial segregation and elimination by autophagy. *EMBO J.* 27, 433–446
- 72 Kanki, T. *et al.* (2009) Atg32 is a mitochondrial protein that confers selectivity during mitophagy. *Dev. Cell* 17, 98–109
- 73 Okamoto, K. *et al.* (2009) Mitochondria-anchored receptor Atg32 mediates degradation of mitochondria via selective autophagy. *Dev. Cell* 17, 87–97
- 74 Ding, W.X. *et al.* (2010) Nix is critical to two distinct phases of mitophagy, reactive oxygen species-mediated autophagy induction and Parkin-ubiquitin-p62-mediated mitochondrial priming. *J. Biol. Chem.* 285, 27879–27890
- 75 Grunewald, A. *et al.* (2009) Differential effects of PINK1 nonsense and missense mutations on mitochondrial function and morphology. *Exp. Neurol.* 219, 266–273
- 76 Cuervo, A.M. *et al.* (2004) Impaired degradation of mutant alpha-synuclein by chaperone-mediated autophagy. *Science* 305, 1292–1295
- 77 Webb, J.L. *et al.* (2003) Alpha-Synuclein is degraded by both autophagy and the proteasome. *J. Biol. Chem.* 278, 25009–25013
- 78 Winslow, A.R. *et al.* (2010) alpha-Synuclein impairs macroautophagy: implications for Parkinson's disease. *J. Cell Biol.* 190, 1023–1037
- 79 Kamp, F. *et al.* (2010) Inhibition of mitochondrial fusion by alpha-synuclein is rescued by PINK1, Parkin and DJ-1. *EMBO J.* 29, 3571–3589





## Association of LRRK2 exonic variants with susceptibility to Parkinson's disease: a case-control study

Owen A Ross, Alexandra I Soto-Ortolaza, Michael G Heckman, Jan O Aasly, Nadine Abahuni, Grazia Annesi, Justin A Bacon, Soraya Bardien, Maria Bozi, Alexis Brice, Laura Brighina, Christine Van Broeckhoven, Jonathan Carr, Marie-Christine Chartier-Harlin, Efthimos Dardiots, Dennis W Dickson, Nancy N Diehl, Alexis Elbaz, Carlo Ferrarese, Alessandro Ferraris, Brian Fiske, J Mark Gibson\*, Rachel Gibson, Georgios M Hadjigeorgiou, Nobutaka Hattori, John P A Ioannidis, Barbara Jasinska-Myga, Beom S Jeon, Yun Joong Kim, Christine Klein, Rejko Kruger, Elli Kyrtazi, Suzanne Lesage, Chin-Hsien Lin, Timothy Lynch, Demetrius M Maraganore, George D Mellick, Eugénie Mutez, Christer Nilsson, Grzegorz Opala, Sung Sup Park, Andreas Puschmann, Aldo Quattrone, Manu Sharma, Peter A Silburn, Young Ho Sohn, Leonidas Stefanis, Vera Tadic, Jessie Theuns, Hiroyuki Tomiyama, Ryan J Uitti, Enza Maria Valente, Simone van de Loo, Demetrios K Vassilatis, Carles Vilariño-Güell, Linda R White, Karin Wirdefeldt, Zbigniew K Wszolek, Ruey-Meei Wu, Matthew J Farrer, on behalf of the Genetic Epidemiology Of Parkinson's Disease (GEO-PD) Consortium

### Summary

**Background** The leucine-rich repeat kinase 2 gene (*LRRK2*) harbours highly penetrant mutations that are linked to familial parkinsonism. However, the extent of its polymorphic variability in relation to risk of Parkinson's disease (PD) has not been assessed systematically. We therefore assessed the frequency of *LRRK2* exonic variants in individuals with and without PD, to investigate the role of the variants in PD susceptibility.

**Methods** *LRRK2* was genotyped in patients with PD and controls from three series (white, Asian, and Arab-Berber) from sites participating in the Genetic Epidemiology of Parkinson's Disease Consortium. Genotyping was done for exonic variants of *LRRK2* that were identified through searches of literature and the personal communications of consortium members. Associations with PD were assessed by use of logistic regression models. For variants that had a minor allele frequency of 0.5% or greater, single variant associations were assessed, whereas for rarer variants information was collapsed across variants.

**Findings** 121 exonic *LRRK2* variants were assessed in 15 540 individuals: 6995 white patients with PD and 5595 controls, 1376 Asian patients and 962 controls, and 240 Arab-Berber patients and 372 controls. After exclusion of carriers of known pathogenic mutations, new independent risk associations were identified for polymorphic variants in white individuals (M1646T, odds ratio 1.43, 95% CI 1.15–1.78;  $p=0.0012$ ) and Asian individuals (A419V, 2.27, 1.35–3.83;  $p=0.0011$ ). A protective haplotype (N551K-R1398H-K1423K) was noted at a frequency greater than 5% in the white and Asian series, with a similar finding in the Arab-Berber series (combined odds ratio 0.82, 0.72–0.94;  $p=0.0043$ ). Of the two previously reported Asian risk variants, G2385R was associated with disease (1.73, 1.20–2.49;  $p=0.0026$ ), but no association was noted for R1628P (0.62, 0.36–1.07;  $p=0.087$ ). In the Arab-Berber series, Y2189C showed potential evidence of risk association with PD (4.48, 1.33–15.09;  $p=0.012$ ).

**Interpretation** The results for *LRRK2* show that several rare and common genetic variants in the same gene can have independent effects on disease risk. *LRRK2*, and the pathway in which it functions, is important in the cause and pathogenesis of PD in a greater proportion of patients with this disease than previously believed. These results will help discriminate those patients who will benefit most from therapies targeted at *LRRK2* pathogenic activity.

**Funding** Michael J Fox Foundation and National Institutes of Health.

### Introduction

Parkinson's disease (PD) is generally thought of as a late-onset sporadic disorder. Nevertheless, genetic insights are helping to define the molecular causes of PD and have provided new models for the development of neuroprotective interventions. Mutations in the leucine-rich repeat kinase 2 gene (*LRRK2*) are now recognised as the most common genetic determinant of familial and sporadic PD.<sup>1</sup> *LRRK2* has 51 exons and encodes the 2527 aminoacid protein LRRK2, which has five conserved domains, including a Roc (Ras in complex proteins, Rab GTPase) domain and a catalytic core common to both tyrosine and serine-threonine kinases.

Pathogenic *LRRK2* variability has been identified by sequencing probands with familial parkinsonism, with results confirmed and occasionally extended within community or clinically-based patient-control series.<sup>2–6</sup> Seven definite pathogenic *LRRK2* mutations (encoding LRRK2 N1437H, R1441C, R1441G, R1441H, Y1699C, G2019S, and I2020T) have been described.<sup>7,8</sup> These mutations can be relatively common in patients from some ethnic origins, but are rare in ethnically matched controls. LRRK2 R1441G has been identified in more than 8% of patients with PD originating from the Basque region of northern Spain,<sup>9</sup> and LRRK2 G2019S has been reported in 30% of Arab-Berber patients

Lancet Neurol 2011; 10: 898–908

Published Online

August 31, 2011

DOI:10.1016/S1474-4422(11)70175-2

This online publication has been corrected.

The corrected version first appeared at the lancet.

com/neurology on September 19, 2011

See Comment page 869

\*Prof J Mark Gibson died in September, 2010

Department of Neuroscience (O A Ross PhD,

A I Soto-Ortolaza BSc,

J A Bacon BSc,

Prof D W Dickson MD,

Prof M J Farrer PhD), Division of Biostatistics

(M G Heckman MS, N N Diehl BS), and Department of Neurology

(Prof Z K Wszolek MD,

Prof R J Uitti MD), Mayo Clinic, Jacksonville, FL, USA;

Department of Neuroscience, Norwegian University of Science and Technology, Trondheim,

Norway (Prof J O Aasly MD);

Department of Neurology,

Goethe University Frankfurt am Main, Frankfurt am Main,

Germany (N Abahuni MD,

S van de Loo PhD); Institute of

Neurological Sciences, National Research Council, Cosenza, Italy

(Prof G Annesi PhD); Division of Molecular Biology and Human

Genetics (S Bardien PhD), and

Division of Neurology

(Prof J Carr MD), University of Stellenbosch, Cape Town, South

Africa; General Hospital of Syros,

Syros, Greece (M Bozi MD);

Université Pierre et

Marie Curie-Paris 6, Centre de

Recherche de l'Institut du

Cerveau et de la Moelle Épinrière,

UMR-S975, Paris, France

with PD.<sup>10,11</sup> *LRRK2* polymorphisms with more than 1% minor allele frequency have also been associated with PD in Asia, with the estimated attributable risk often dependent on ethnic origin. *LRRK2* R1628P and G2385R have each been recorded in 3–4% of individuals who are of Chinese descent and roughly double the risk of PD.<sup>12–15</sup>

However, most *LRRK2* variants have not been systematically studied. *LRRK2* might harbour more variants that are important determinants of PD pathogenicity and clinical risk. To address this possibility, with the Genetic Epidemiology of Parkinson's Disease (GEO-PD) Consortium, we assessed the frequency of *LRRK2* exonic variants in people with and without PD, and assessed the role of the variants in disease susceptibility.

## Methods

### Participants and procedures

All 35 GEO-PD sites (hospitals and centres), representing 22 countries and six continents, were invited to participate in this study. Patients were diagnosed by use of either the Gelb or the UK Parkinson's Disease Society Brain Bank criteria (the exclusion criterion of more than one affected relative was not included).<sup>16,17</sup> Controls at each site were healthy individuals who were not related to the patients; not all controls were given a detailed neurological examination but all were asked about any previous diagnosis or family history of a neurological disorder. All biological samples were gathered after ethics approval had been obtained from the Mayo Clinic Institutional Review Board Committee, and were used in accordance with the terms of the written informed consent provided by the participants.

*LRRK2* exonic variants were identified through searches of available literature up to April 1, 2010, from personal communications with consortium members, and from in-house sequencing studies that had identified novel variants (unpublished data; table 1). DNA was sourced from blood and was stored in a –20°C freezer. All samples were de-identified with an anonymous code from each site and only a minimal clinical dataset. Data were collected in batches but analysed as a single dataset. Genotyping was done on a MassArray iPLEX platform (Sequenom, San Diego, CA, USA) at the Mayo Clinic neurogenetics laboratory, FL, USA (except for the groups from Paris, France, and Antwerp, Belgium, who supplied genotype data and positive control genomic DNA<sup>2,3</sup>); all primer sequences are provided in the webappendix pp 1–4). Eight iPLEX variant combinations were used to incorporate 123 *LRRK2* coding variants (table 1). Positive control DNA was run for each variant; in the absence of a positive genomic control DNA, a synthetic positive control DNA sequence was generated by use of mismatch-primer PCR. A  $\chi^2$  test followed by Bonferroni correction was used to test for deviation from the Hardy–Weinberg equilibrium (HWE) in controls for

|                | Exon | Accession number | cDNA     | Aminoacid  | Domain  |
|----------------|------|------------------|----------|------------|---------|
| chr12:38905228 | 1    | ..               | 28G>A    | E10K       | ..      |
| chr12:38905349 | 1    | rs2256408        | 149G>A   | R50H       | ..      |
| chr12:38905627 | 2    | rs72546335       | 155C>T   | S52F       | ..      |
| chr12:38905696 | 2    | rs75054132       | 224G>A   | A75A       | ..      |
| chr12:38915703 | 4    | rs33995463       | 356T>C   | L119P      | ..      |
| chr12:38915711 | 4    | rs41286468       | 364T>C   | L122L      | ..      |
| chr12:38918058 | 5    | rs10878245       | 457T>C   | L153L      | ..      |
| chr12:38918147 | 5    | rs35517158       | 546A>G   | K182K      | ..      |
| chr12:38920612 | 6    | rs112794616      | 632C>T   | A211V      | ..      |
| chr12:38920663 | 6    | rs56108242       | 683G>C   | C228S      | ..      |
| chr12:38923625 | 7    | rs28365216       | 713A>T   | N238I      | ..      |
| chr12:38923737 | 7    | rs72546315       | 824C>T   | H275H      | ..      |
| chr12:38929923 | 8    | rs17490713       | 867T>C   | N289N      | ..      |
| chr12:38929949 | 8    | rs57355477       | 893T>C   | A298A      | ..      |
| chr12:38929992 | 8    | rs41286466       | 936G>T   | A312A      | ..      |
| chr12:38931342 | 9    | rs78501232       | 1000G>A  | E334K      | ..      |
| chr12:38931397 | 9    | rs36016791       | 1055delC | A352fsX357 | ..      |
| chr12:38931430 | 9    | rs72546336       | 1088A>G  | N363S      | ..      |
| chr12:38931438 | 9    | rs113065049      | 1096G>A  | V366M      | ..      |
| chr12:38933053 | 11   | rs34594498       | 1256C>T  | A419V      | ..      |
| chr12:38937411 | 12   | rs35847451       | 1383C>T  | S461S      | ..      |
| chr12:38939594 | 13   | rs75711334       | 1464A>T  | L488L      | ..      |
| chr12:38939673 | 13   | rs34090008       | 1543insG | P514fsX529 | ..      |
| chr12:38943875 | 14   | rs35328937       | 1561A>G  | R521G      | ..      |
| chr12:38943944 | 14   | rs79996249       | 1630 A>G | K544E      | ..      |
| chr12:38943967 | 14   | rs7308720        | 1653C>G  | N551K      | ..      |
| chr12:38954669 | 15   | rs77424631       | 1647G>A  | G558G      | ..      |
| chr12:38958002 | 17   | rs78154388       | 1987T>C  | S663P      | ..      |
| chr12:38958037 | 17   | rs72546319       | 2022A>C  | V674V      | ..      |
| chr12:38958213 | 17   | rs35611877       | 2198insA | L708fsX718 | Ankyrin |
| chr12:38958223 | 18   | ..               | 2134A>G  | M712V      | Ankyrin |
| chr12:38958236 | 18   | ..               | 2147C>T  | A716V      | Ankyrin |
| chr12:38958256 | 18   | rs10878307       | 2167A>G  | I723V      | Ankyrin |
| chr12:38963966 | 19   | rs34410987       | 2264C>T  | P755L      | Ankyrin |
| chr12:38964080 | 19   | rs35173587       | 2378G>T  | R793M      | Ankyrin |
| chr12:38964130 | 19   | rs72546337       | 2428A>G  | I810V      | Ankyrin |
| chr12:38964183 | 19   | rs76890302       | 2481T>C  | S827S      | Ankyrin |
| chr12:38967530 | 20   | ..               | 2611A>G  | K871E      | ..      |
| chr12:38973693 | 21   | rs58559150       | 2769G>C  | Q923H      | ..      |
| chr12:38973713 | 21   | ..               | 2789A>G  | Q930R      | ..      |
| chr12:38974935 | 22   | rs17519916       | 2830G>T  | D944Y      | ..      |
| chr12:38974962 | 22   | rs7966550        | 2857T>C  | L953L      | ..      |
| chr12:38975535 | 23   | rs75148313       | 2918G>A  | S973N      | ..      |
| chr12:38975635 | 23   | rs113217062      | 3018A>G  | I1006M     | LRR     |
| chr12:38975638 | 23   | rs55783828       | 3021C>T  | S1007S     | LRR     |
| chr12:38978415 | 24   | rs111341148      | 3200G>A  | R1067Q     | LRR     |
| chr12:38978502 | 24   | rs76535406       | 3287C>G  | S1096C     | LRR     |
| chr12:38978548 | 24   | rs78365431       | 3333G>T  | Q1111H     | LRR     |
| chr12:38978557 | 24   | rs35808389       | 3342A>G  | L1114L     | LRR     |
| chr12:38979194 | 25   | rs34805604       | 3364A>G  | I1122V     | LRR     |
| chr12:38979281 | 25   | rs74985840       | 3451G>A  | A1151T     | LRR     |
| chr12:38979324 | 25   | ..               | 3494T>C  | L1165P     | LRR     |

(Continues on next page)

|                                | Exon | Accession number | cDNA      | Aminoacid    | Domain |
|--------------------------------|------|------------------|-----------|--------------|--------|
| (Continued from previous page) |      |                  |           |              |        |
| chr12:38982935                 | 26   | ..               | 3574A>G   | I1192V       | LRR    |
| chr12:38984073                 | 27   | rs72546324       | 3647A>G   | H1216R       | LRR    |
| chr12:38984109                 | 27   | rs80179604       | 3683G>C   | S1228T       | LRR    |
| chr12:38984109                 | 27   | rs60185966       | 3683G>T   | S1228I       | LRR    |
| chr12:38985860                 | 28   | rs4640000        | 3784C>G   | P1262A       | LRR    |
| chr12:38988536                 | 29   | rs77018758       | 3960G>C/T | R1320S       | ..     |
| chr12:38988550                 | 29   | rs72546338       | 3974G>A   | R1325Q       | ..     |
| chr12:38988687                 | 29   | rs17466213       | 4111A>G   | I1371V       | Roc    |
| chr12:38988701                 | 29   | rs28365226       | 4125C>A   | D1375E       | Roc    |
| chr12:38989178                 | 30   | rs7133914        | 4193G>A   | R1398H       | Roc    |
| chr12:38989214                 | 30   | rs72546327       | 4229C>T   | T1410M       | Roc    |
| chr12:38989243                 | 30   | rs113589830      | 4258G>A   | D1420N       | Roc    |
| chr12:38989254                 | 30   | rs11175964       | 4269G>A   | K1423K       | Roc    |
| chr12:38989275                 | 30   | rs111435410      | 4290C>T   | A1430A       | Roc    |
| chr12:38989294                 | 30   | rs74163686       | 4309A>C   | N1437H       | Roc    |
| chr12:38990503                 | 31   | rs33939927       | 4321C>T   | R1441C       | Roc    |
| chr12:38990503                 | 31   | rs33939927       | 4321C>G   | R1441G       | Roc    |
| chr12:38990504                 | 31   | rs34995376       | 4322G>A   | R1441H       | Roc    |
| chr12:38990505                 | 31   | rs112998035      | 4323C>T   | R1441R       | Roc    |
| chr12:38990506                 | 31   | ..               | 4324G>C   | A1442P       | Roc    |
| chr12:38990519                 | 31   | rs74681492       | 4337C>T   | P1446L       | Roc    |
| chr12:38990530                 | 31   | rs111501952      | 4348G>A   | V1450I       | Roc    |
| chr12:38990569                 | 31   | rs35363614       | 4387insA  | R1462fsX1468 | Roc    |
| chr12:38990584                 | 31   | ..               | 4402A>G   | K1468E       | Roc    |
| chr12:38990630                 | 31   | rs113431708      | 4448G>A   | R1483Q       | Roc    |
| chr12:38994045                 | 32   | rs35507033       | 4541G>A   | R1514Q       | COR    |
| chr12:38994128                 | 32   | rs33958906       | 4624C>T   | P1542S       | COR    |
| chr12:38994170                 | 32   | rs17491187       | 4666C>A   | L1556I       | COR    |
| chr12:38995335                 | 33   | rs721710         | 4793T>A   | V1598E       | COR    |
| chr12:39000067                 | 34   | ..               | 4838T>C   | V1613A       | COR    |
| chr12:39000101                 | 34   | rs1427263        | 4872C>A   | G1624G       | COR    |
| chr12:39000112                 | 34   | rs33949390       | 4883G>C   | R1628P       | COR    |
| chr12:39000140                 | 34   | rs11176013       | 4911A>G   | K1637K       | COR    |
| chr12:39000166                 | 34   | rs35303786       | 4937T>C   | M1646T       | COR    |
| chr12:39000168                 | 34   | rs11564148       | 4939T>A   | S1647T       | COR    |
| chr12:39000188                 | 34   | rs111503579      | 4959A>G   | L1653L       | COR    |
| chr12:39001183                 | 35   | rs35801418       | 5096A>G   | Y1699C       | COR    |
| chr12:39001350                 | 35   | rs79909111       | 5163A>G   | S1721S       | COR    |
| chr12:39002106                 | 36   | rs11564176       | 5173C>T   | R1725X       | COR    |
| chr12:39002116                 | 36   | ..               | 5183G>T   | R1728L       | COR    |
| chr12:39002116                 | 36   | rs145364431      | 5183G>A   | R1728H       | COR    |
| chr12:39002455                 | 37   | rs111910483      | 5385G>T   | L1795F       | COR    |
| chr12:39002527                 | 37   | rs10878371       | 5457T>C   | G1819G       | COR    |
| chr12:39003324                 | 38   | ..               | 5605A>G   | M1869V       | COR    |
| chr12:39003325                 | 38   | rs35602796       | 5606T>C   | M1869T       | COR    |
| chr12:39003329                 | 38   | ..               | 5610G>T   | L1870F       | COR    |
| chr12:39003339                 | 38   | ..               | 5620G>T   | E1874X       | COR    |
| chr12:39015100                 | 39   | rs77428810       | 5822G>A   | R1941H       | MAPKKK |
| chr12:39020430                 | 41   | ..               | 6016T>C   | Y2006H       | MAPKKK |
| chr12:39020449                 | 41   | rs34015634       | 6035T>C   | I2012T       | MAPKKK |
| chr12:39020469                 | 41   | rs34637584       | 6055G>A   | G2019S       | MAPKKK |

(Continues on next page)

each site. Direct DNA sequencing was used to confirm genotyping for all variants with a frequency of less than 0.3% (n<50 carriers).

### Statistical analysis

All analyses were undertaken separately for the patients in the white, Asian, and Arab-Berber series. For common variants with a minor allele frequency of 0.5% or greater, single variant associations with PD were assessed by use of fixed-effects logistic regression models, in which genotypes were dichotomised as presence versus absence of the minor allele (dominant model), because *LRRK2* mutations cause an autosomal dominantly inherited form of PD and homozygotes for many of the variants are rare; additive models were also assessed. Models were adjusted for site in the white and Asian series. Sensitivity of results to the use of random-effects models was also assessed.<sup>18</sup> Odds ratios (ORs) and 95% CIs were estimated. Between-site heterogeneity was assessed with likelihood ratio tests for variant by site interaction in a logistic regression analysis, and also by estimation of the  $I^2$  statistic (a measure of the proportion of total variation in ORs between sites due to heterogeneity beyond chance).<sup>19</sup>

For variants with a minor allele frequency of less than 0.5% (rare variants), although we estimated the proportion of carriers separately in patients and controls, no statistical tests were used to evaluate associations with PD because of insufficient power. Instead, we collapsed information for rare variants, acknowledging that this has the potential limitation of mixing groups of variants with protective and risk effects, and evaluated the association between the presence of any rare variant and PD in a logistic regression analysis adjusted by site.<sup>20</sup> In an exploratory analysis, when collapsing data across variants, we also used the Sorts Intolerant From Tolerant (SIFT) prediction program<sup>21</sup> to assess only those substitutions predicted to be not tolerated.

Haplotype analysis was done by use of score tests for association with adjustment for site,<sup>22</sup> haplotypes of less than 0.5% frequency were not assessed. Any patient with a copy of the minor allele for any of the pathogenic variants that were noted in the study population (R1441C, R1441H, or G2019S) was excluded from all disease-association analyses to prevent confounding by the pathogenic variants; these patients were not excluded for any other portion of the analysis. Linkage disequilibrium between variants was assessed by use of  $r^2$  values in study controls, separately for each series. Single variant associations with age at onset were assessed with linear regression models, adjusting for site in the white and Asian series; regression coefficients and 95% CIs were estimated.

We adjusted for multiple testing by use of the single-step minP method,<sup>23</sup> with 10 000 within-site permutations of outcome labels to assess the level of significance that controls the family-wise error rate at

5%. After this adjustment, in the logistic regression disease-association analysis  $p \leq 0.0033$  was judged to be significant in the white series and  $p \leq 0.0038$  in the Asian series, whereas in the linear regression age at onset association analysis  $p \leq 0.0035$  was judged to be significant in the white series and  $p \leq 0.0037$  in the Asian series. The adjusted significance cutoff levels differed between the white and Asian series because of the different number of tests undertaken in each series, and the different correlation structures between variants within them. For the fairly small Arab-Berber series, no adjustment for multiple testing was made, and as such the results were judged to be exploratory. All statistical analyses were done by use of SAS software (version 9.2) or S-Plus (8.0.1).

#### Role of the funding source

The funding agencies did not play any part in the design of the study, collection, analysis, or interpretation of data, writing of the report, or the decision to submit the report for publication. The principal investigators (OAR and MJF) had access to all the data in this study. The corresponding author had final responsibility for the decision to submit.

#### Results

Data were gathered from June, 2008, to October, 2010. 23 sites from the GEO-PD Consortium, representing 15 countries and five continents, agreed to participate in this study and contributed clinical data from 8611 patients with PD and 6929 controls. We studied individuals in three series: white (6995 patients and 5595 controls), Asian (1376 patients and 962 controls), and Arab-Berber (240 patients and 372 controls). Table 2 shows the demographics for each series, and webappendix p 5 shows the sample size breakdown for each site. 123 LRRK2 variants were selected for genotype analysis, but two (R793M and L2466H) did not assay by use of iPLEX and were dropped from the study. The other 121 variants were genotyped in the entire patient-control series ( $n=15\,540$ ); genotyping was successful in all individuals. Call rates for all genotypes in the series were greater than 95%. Deviation from HWE in the controls for each site (all  $p > 0.05$ ) was noted for LRRK2 N2081D in the Norwegian series and was attributable to two patients with a rare homozygous genotype; all patients were retained in the analysis. However, N289N and P1262A were excluded from the analysis of the Arab-Berber series because of significant variation from HWE due to an increased number of rare minor allele homozygotes, which might have been attributable to the consanguineous nature of the population.

Four of 121 LRRK2 exonic variants were nonsense, 89 missense, and 28 silent. 48 variants, including four of the seven known pathogenic mutations, were not identified in the 15 540 patients and controls. For most of

|                                | Exon           | Accession number | cDNA        | Aminoacid    | Domain       |        |
|--------------------------------|----------------|------------------|-------------|--------------|--------------|--------|
| (Continued from previous page) |                |                  |             |              |              |        |
|                                | chr12:39020473 | 41               | rs35870237  | 6059T>C      | I2020T       | MAPKKK |
|                                | chr12:39020505 | 41               | rs78029637  | 6091A>T      | T2031S       | MAPKKK |
|                                | chr12:39026899 | 42               | rs111739194 | 6187delCTCTA | L2063X       | MAPKKK |
|                                | chr12:39026953 | 42               | rs33995883  | 6241A>G      | N2081D       | MAPKKK |
|                                | chr12:39028521 | 43               | rs10878405  | 6324G>A      | E2108E       | MAPKKK |
|                                | chr12:39028553 | 43               | rs12423862  | 6356C>T      | P2119L       | MAPKKK |
|                                | chr12:39031648 | 44               | rs111691891 | 6422C>T      | T2141M       | ..     |
|                                | chr12:39031736 | 44               | rs34869625  | 6510C>A      | G2170G       | WD40   |
|                                | chr12:39031792 | 44               | rs35658131  | 6566A>G      | Y2189C       | WD40   |
|                                | chr12:39036195 | 46               | rs12581902  | 6782A>T      | N2261I       | WD40   |
|                                | chr12:39043509 | 48               | rs113511708 | 7067C>T      | T2356I       | WD40   |
|                                | chr12:39043595 | 48               | rs34778348  | 7153G>A      | G2385R       | WD40   |
|                                | chr12:39043597 | 48               | rs33962975  | 7155A>G      | G2385G       | WD40   |
|                                | chr12:39043610 | 48               | rs79546190  | 7168G>A      | V2390M       | WD40   |
|                                | chr12:39044912 | 49               | rs78964014  | 7183G>A      | E2395K       | WD40   |
|                                | chr12:39044916 | 49               | rs111272009 | 7187insGT    | T2356fsX2360 | WD40   |
|                                | chr12:39044919 | 49               | rs3761863   | 7190C>T      | M2397T       | WD40   |
|                                | chr12:39044953 | 49               | rs60545352  | 7224G>A      | M2408I       | WD40   |
|                                | chr12:39047081 | 50               | ..          | 7397T>A      | L2466H       | WD40   |
|                                | chr12:39047119 | 50               | rs55633591  | 7435A>G      | N2479D       | WD40   |

Chr12=chromosome 12. Roc= Ras in complex. COR=C-terminal of Ras. MAPKKK=mitogen-activated protein kinase kinase kinase. LRR=leucine-rich repeat.

Table 1: LRRK2 exonic variants investigated in the study

|                      | Patients        | Controls        |
|----------------------|-----------------|-----------------|
| White series         | n=6995          | n=5595          |
| Age (years)          | 69 (12; 18-107) | 65 (15; 19-107) |
| Men                  | 4036 (58%)      | 2669 (48%)      |
| Age at onset (years) | 58 (12; 18-96)  | NA              |
| Asian series         | n=1376          | n=962           |
| Age (years)          | 63 (13; 20-91)  | 59 (11; 23-98)  |
| Men                  | 681 (49%)       | 319 (33%)       |
| Age at onset (years) | 54 (12; 20-89)  | NA              |
| Arab-Berber series   | n=240           | n=372           |
| Age (years)          | 66 (12; 27-87)  | 58 (11; 31-92)  |
| Men                  | 116 (48%)       | 190 (51%)       |
| Age at onset (years) | 57 (13; 20-82)  | NA              |

Data are mean (SD; range) or number (%), unless otherwise indicated. Information about sex was not available for six patients and eight controls in the Asian series, and 16 patients and 249 controls in the white series. Information about age was not available for eight patients and eight controls in the Asian series, 482 patients and 289 controls in the white series, and six patients and four controls in the Arab-Berber series. Information about the age at onset was not available for 14 patients in the Asian series and 801 patients in the white series. 71 controls in the Taiwan case-control series overlapped with a previous study of R1628P.<sup>15</sup> NA=not applicable.

Table 2: Characteristics of participants

(Prof A Brice MD, S Lesage PhD); Institut National de la Santé et de la Recherche Médicale (INSERM), U975, Paris, France (Prof A Brice, S Lesage); Centre National de la Recherche Scientifique (CNRS), UMR 7225, Paris, France (Prof A Brice, S Lesage); Assistance Publique-Hôpitaux de Paris (AP-HP), Hôpital de la Salpêtrière, Department of Genetics and Cytogenetics, Paris, France (Prof A Brice); Department of Neuroscience-Section of Neurology, University of Milano-Bicocca, San Gerardo Hospital, Monza, Italy (L Brighina MD, Prof C Ferrarese MD); Neurodegenerative Brain Diseases group, Department of Molecular Genetics, VIB, Antwerp, Belgium (Prof C Van Broeckhoven PhD, J Theuns PhD); Laboratory of Neurogenetics, Institute Born-Bunge and University of Antwerp, Antwerp, Belgium (Prof C Van Broeckhoven, J Theuns); University Lille Nord de France, Centre de Recherche Jean-Pierre Aubert, Lille, France (Prof M-C Chartier-Harlin MD,

the variants, the pair-wise linkage disequilibrium was weak ( $r^2 < 0.3$ ), with higher values noted with D' because of the low minor allele frequency for many of these variants (webappendix pp 6-17).