

Figure 1. Chemical structures of phenethylamines used in this study.

Table 1. Separation factor ( $\alpha$ ) and resolution factor ( $R_s$ ) for enantiomeric resolution of ( <i>R</i> )- and ( <i>S</i> )-D2PM using the chiral derivatization method. <sup>a</sup>		
Chiral derivatization reagents	$\alpha$	$R_s$
( <i>R</i> )-(-)-DBD-Py-NCS	1.190	3.450
( <i>R</i> )-(+)-NBD-Pro-COCl	0.244	0.888
GITC	1.070	1.420

<sup>a</sup>Mobile phase: H<sub>2</sub>O-CH<sub>3</sub>OH-FA (45:55:0.1, v/v/v).

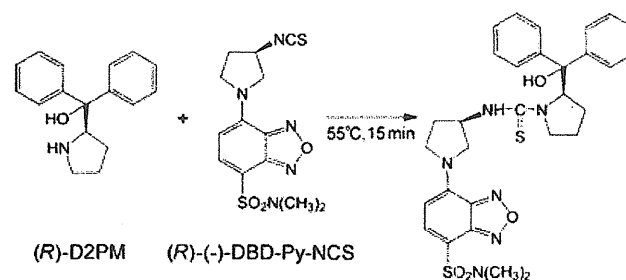


Figure 2. Derivatization reaction of (*R*)-D2PM with (*R*)-(-)-DBD-Py-NCS.

was maintained at 40°C. The eluent was monitored by an RF-10A<sub>XL</sub> fluorescence detector (Shimadzu). The wavelengths of the fluorescence detector were set at 450 nm (excitation) and 560 nm (emission). The flow rate of the mobile phase was 0.45 ml/min. Isocratic separations were achieved using H<sub>2</sub>O-CH<sub>3</sub>OH-FA (40:60:0.1 or 45:55:0.1, v/v/v) as the mobile phase unless otherwise mentioned. The injection volume was fixed at 2  $\mu$ l.

ESI-TOF-MS detection was performed using a Waters LCT Premier XE mass spectrometer (Waters, Milford, MA, USA). The profile data for positive ions of  $m/z$  100–1000 were recorded (*W*-mode, mass resolution:  $1.0 \times 10^4$ ). The capillary voltage was set at 3000 V, while the cone voltage was 10 V. Nitrogen was used as the drying gas. The desolvation gas flow rate was 650 L/h, and the cone gas flow rate was maintained at 50 L/h. The desolvation temperature was 350°C, and the source temperature was 120°C. A lock-mass of leucine enkephalin at a concentration of 2 ng/ml

in H<sub>2</sub>O-CH<sub>3</sub>CN-FA (50:50:0.1, v/v/v) for the positive ion mode ( $[M+H]^+$  = 556.2771) was used at a flow rate of 5  $\mu$ l/min via a lock-spray ionization source. Data were collected in the centroid mode, the lock spray frequency was set at 5 s, and the lock-mass data were averaged over 10 scans for correction.

#### Derivatization of phenethylamines by (*R*)-(-)-DBD-Py-NCS

One hundred microlitres of 2 mM (*R*)-(-)-DBD-Py-NCS in CH<sub>3</sub>CN and 5  $\mu$ l of triethylamine were added to 100  $\mu$ l of the sample solution containing phenethylamines (0–10  $\mu$ M) in H<sub>2</sub>O-CH<sub>3</sub>CN (50:50, v/v). The mixture was heated at 55°C for 15 min.<sup>[20]</sup> The solution was cooled at 5°C, and an aliquot (2  $\mu$ l) was injected into the UHPLC-FL and ESI-TOF-MS systems.

**Analysis of phenethylamines from the products distributed in the Japanese market**

The products distributed in the past as legal substances on the Japanese market were enantiomerically separated and analyzed for determination of phenethylamines. Product 1 (labelled as BDB, yellow powder, 1 mg) was dissolved in 1 ml of H<sub>2</sub>O–CH<sub>3</sub>OH (1:1, v/v), and product 2 (labelled as Honey Flash 2, colourless liquid) was diluted 10 times with H<sub>2</sub>O–CH<sub>3</sub>OH (1:1, v/v). The solution was sonicated for 10 min and then centrifuged at 500×g for 10 min. After centrifugation, 100 µl of the supernatant was derivatized by (R)-(–)-DBD-Py-NCS using the same procedure described above, and the supernatant was filtered through a Millex-LG filter (0.20 µm, 4 mm i.d.; Nihon Millipore, Tokyo, Japan). The solution was cooled at 5°C, and an aliquot (2 µl) was injected into the UHPLC–ESI-TOF-MS systems.

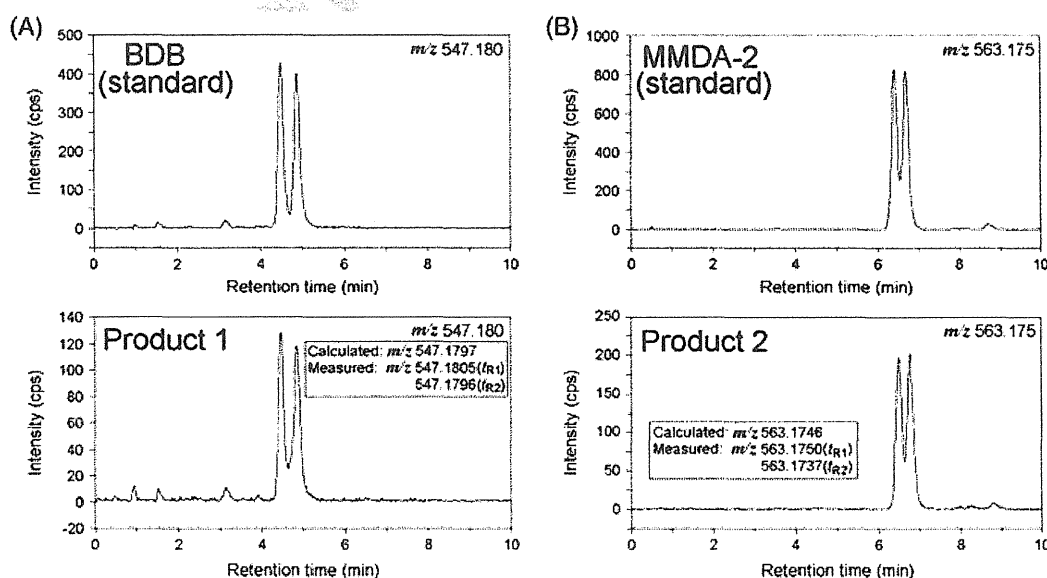
**Experimental animals**

Healthy male Dark-Agouti (DA) rats (5 weeks old) were purchased from Japan SLC, Inc. (Hamamatsu, Japan). Animal care and experiments were conducted according to the guidelines for the care and use of laboratory animals of the University of Shizuoka. The rats were housed at a constant temperature (24 ± 1°C) with an alternating 12-h light/dark cycle with free access to food and water. Racemic (*R/S* ratio = 1/1), (*R*)-, and (*S*)-D2PM dissolved in saline containing 5% (v/v) DMSO and 0.1 M HCl were orally administered to the rats for three weeks (40 mg/kg day). The control rats were orally administered saline instead of D2PM. One week after cessation of D2PM administration, hair specimens were collected from the rats. The collected hairs were washed with 1 ml of 0.1% SDS for 1 min by vortex mixing. After three rinses with distilled water in the same manner, the hair

**Table 2.** Retention time (*t<sub>R</sub>*), separation factor ( $\alpha$ ), and resolution factor (*R<sub>s</sub>*) for enantiomeric resolution of phenethylamines using (R)-(–)-DBD-Py-NCS as chiral derivatization reagent.

Samples	<i>m/z</i> ([M + H] <sup>+</sup> )	Mobile phase <sup>a</sup>	<i>t<sub>R</sub></i> (min)	$\alpha$	<i>R<sub>s</sub></i>
BDB	547.1797	A	4.48, 4.87	1.10	1.53
DOI	675.0920	B	17.92, 18.44	1.03	0.70
D2PM	607.2161	A	12.15, 14.52	1.19	3.45
<i>N</i> -Ethylcatinone	531.1848	B	13.28, 16.53	1.25	5.69
4FMP	507.1648	A	4.49, 4.79	1.07	1.24
bk-MBDB	575.1746	A	5.55, 6.83	1.16	3.84
bk-MDEA	575.1746	A	6.13, 7.58	1.25	4.43
<i>N</i> -Methyl-2FMP	521.1805	B	12.46, 13.15	1.06	1.40
4-Methylmethocatinone	531.1848	A	7.91, 10.02	1.28	5.28
MMDA-2	563.1746	B	6.41, 6.69	1.05	1.02
MPH	587.2110	A	8.38, 9.38	1.13	2.50
PMMA	533.2005	A	4.26, 4.52	1.07	1.13

<sup>a</sup>A: H<sub>2</sub>O–CH<sub>3</sub>OH–FA (45:55:0.1, v/v/v); B: H<sub>2</sub>O–CH<sub>3</sub>CN–FA (62:38:0.1, v/v/v).



**Figure 3.** Typical chromatograms obtained from real products containing phenethylamines by UHPLC–ESI-TOF-MS. Analyte: (A) product 1 (yellow powder); (B) product 2 (colourless liquid). Mobile phase: (A) H<sub>2</sub>O–CH<sub>3</sub>OH–FA (45:55:0.1, v/v/v); (B) H<sub>2</sub>O–CH<sub>3</sub>CN–FA (62:38:0.1, v/v/v). Other conditions are described in Experimental section.

specimens were dried in air. The dried hairs were then cut into small pieces (approximately 2–3 mm) with scissors.

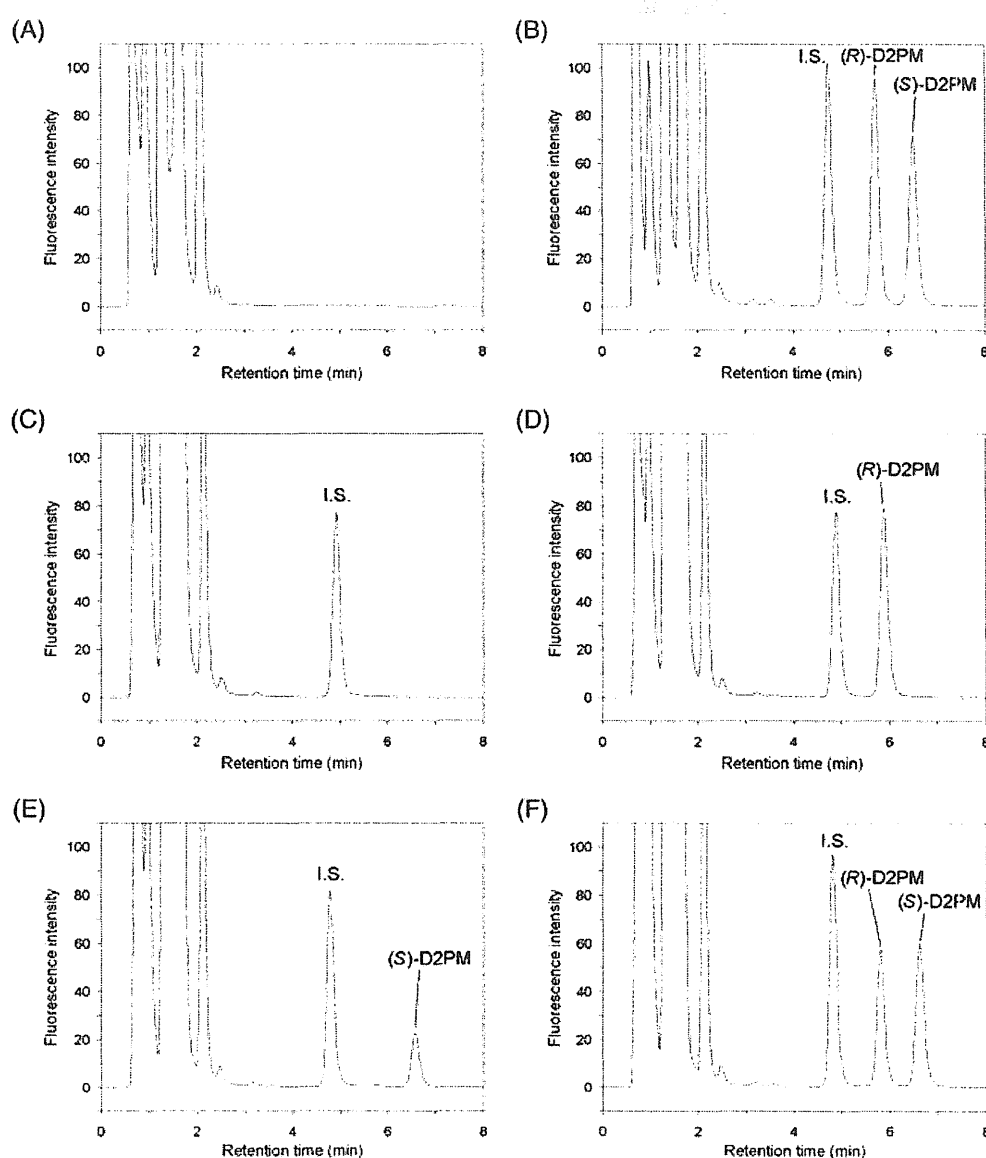
#### Acidic methanol extraction

A washed hair specimen (10 mg) was precisely weighed into a polypropylene tube, and 1.5 ml of CH<sub>3</sub>OH–TFA (50:1, v/v) containing 5 μM of PBH as the internal standard was added for extraction. After sonication for 1 h, the solutions were allowed to stand overnight at room temperature. One millilitre of the supernatant was transferred into another tube and evaporated to dryness under a gentle stream of nitrogen at 40°C. Next, 50 μl of H<sub>2</sub>O–CH<sub>3</sub>CN (50:50, v/v) and 3 μl of triethylamine were serially added to the tube and reacted with 50 μl of (*R*)-(-)-DBD-Py-NCS in CH<sub>3</sub>CN. The reaction mixture was heated at 55°C for 15 min.

The supernatant was then filtered using a Millex-LG filter, and an aliquot of the filtrate (2 μl) was injected into the UHPLC-FL system.

#### Calibration curves and method validation by UHPLC-FL

Calibration curves were obtained by spiking a series of extraction solvents containing blank rat hair with (*R*)- and (*S*)-D2PM to give concentrations of 1.8–880 ng/mg hair. The curves were constructed by plotting the peak area ratios of (*R*)-D2PM and (*S*)-D2PM relative to the internal standard against the injected amounts. The curves were plotted for five different concentrations. Positive control hair specimens (QCL and QCH: quality control for low and high concentration, respectively) were prepared from the drug-free hair specimens according to a reported protocol with some modifications of drug



**Figure 4.** Typical chromatograms obtained from blank rat hair extract without addition of internal standard (A); rat hair extract spiked with 5 μmol/L (*R*)-D2PM and (*S*)-D2PM (B); rat hair extract following saline dose (C); (*R*)-D2PM (D); (*S*)-D2PM (E); and (*R,S*)-D2PM (F) by UHPLC-FL. Mobile phase: H<sub>2</sub>O–CH<sub>3</sub>OH–FA (40:60:0.1, v/v/v). Conditions of FL are described in Section 2, and other conditions are the same as those in Figure 3.

**Table 3.** Intra- and inter-day validations of UHPLC-FL analysis of (R)- and (S)-D2PM from rat hair specimens.

Samples	(R)-D2PM		(S)-D2PM	
	Amount (ng/mg hair, mean $\pm$ SD)	CV (%)	Amount (ng/mg hair, mean $\pm$ SD)	CV (%)
Intra-day assay (n = 5)				
QCL	051.6 $\pm$ 1.93	3.74	053.9 $\pm$ 3.52	6.53
QCH	408.1 $\pm$ 11.1	2.73	432.3 $\pm$ 28.2	6.52
Inter-day assay (n = 5)				
QCL	052.3 $\pm$ 3.16	6.05	052.0 $\pm$ 2.13	4.11
QCH	395.7 $\pm$ 26.3	6.64	400.9 $\pm$ 20.3	5.05

SD: standard deviation; CV: coefficient of variation.

**Table 4.** Amounts of (R)- and (S)-D2PM detected from rat hair by UHPLC-FL.

Rat	Drug dose	Amounts of D2PM detected from rat hair	
		(ng/mg hair, mean $\pm$ SD, n = 5)	
		(R)-D2PM	(S)-D2PM
1	(R)-D2PM	195.52 $\pm$ 9.69	Not detected
2	(R)-D2PM	073.89 $\pm$ 4.51	Not detected
3	(S)-D2PM	Not detected	133.61 $\pm$ 8.370
4	(S)-D2PM	Not detected	052.67 $\pm$ 2.010
5	racemic-D2PM	125.39 $\pm$ 7.53	187.91 $\pm$ 12.63
6	racemic-D2PM	052.06 $\pm$ 6.40	080.26 $\pm$ 10.98
7	- <sup>a</sup>	Not detected	Not detected
8	- <sup>a</sup>	Not detected	Not detected

<sup>a</sup>The rats were administered saline instead of D2PM.

concentrations, soaking period, and rinse procedures.<sup>[24–26]</sup> Analyses were repeated five times a day and between days, and the precision (CVs, %) of intra- and inter-day assays was evaluated.

## Results and discussion

### Enantiomeric separation of phenethylamines using a chiral derivatization method

Figure 1 shows the chemical structures of phenethylamine-type abused drugs used in this study. We attempted to achieve rapid and simultaneous enantiomeric separation using a chiral fluorescent derivatization reagent, (R)-(-)-DBD-Py-NCS. In previous studies, (R)-(-)- and (S)-(+)-DBD-Py-NCS have proven to be very effective for total resolution of racemic mixtures of amino acids and thiol compounds by HPLC-FL.<sup>[27–29]</sup> The derivatization scheme for (R)-D2PM with (R)-(-)-DBD-Py-NCS is shown in Figure 2. Table 1 lists the separation factor ( $\alpha$ ) and resolution factor ( $R_s$ ) for enantiomeric resolution of (R)- and (S)-D2PM using (R)-(-)-DBD-Py-NCS, (R)-(+)-NBD-Pro-COCl, and GITC as chiral derivatization reagents. The best resolution between the enantiomers was obtained using (R)-(-)-DBD-Py-NCS ( $R_s = 3.45$ ). In addition, compared with using conventional HPLC, about 2 times faster enantioseparations of D2PM and MPH could be possible using UHPLC. Therefore, in this study, (R)-(-)-DBD-Py-NCS was used as the chiral derivatization reagent.

### Rapid enantiomeric separation and determination of phenethylamines from the products distributed in the Japanese market by UHPLC-ESI-TOF-MS

Table 2 lists the retention time ( $t_R$ ),  $m/z$ ,  $\alpha$ , and  $R_s$  for enantiomeric resolution of phenethylamines using (R)-(-)-DBD-Py-NCS as a chiral derivatization reagent. Enantiomeric separations of eight phenethylamines (BDB, D2PM, 4FMP, bk-MBDB, bk-MDEA, 4-methylmethocatinone, MPH, and PMMA) was achieved using H<sub>2</sub>O-CH<sub>3</sub>OH-FA (45:55:0.1, v/v/v) as the mobile phase. Also, DOI, N-ethylcatinone, N-methyl-FMP, and MDMA-2 were enantiomerically separated using H<sub>2</sub>O-CH<sub>3</sub>CN-FA (62:38:0.1, v/v/v) as the mobile phase.

The proposed method was applied to the determination of phenethylamine products obtained from an adult shop and via the Internet. The products were extracted with H<sub>2</sub>O-CH<sub>3</sub>OH, centrifuged, filtered, derivatized by (R)-(-)-DBD-Py-NCS, and then analyzed by UHPLC-ESI-TOF-MS. Typical chromatograms obtained from these products are shown in Figure 3. BDB and MDMA-2 were detected from products 1 and 2, respectively, and they were identified as racemic. High-resolution mass analysis by ESI-TOF-MS provided excellent accuracy in the determination of the  $m/z$  of the derivatives (less than 1.8 ppm). Since the products analyzed in this study contained simple racemic forms, it would be difficult to trace the manufacturing method or sources. However, in combination with impurity analysis of the products, the proposed method is expected to be applicable for such purposes.

### Analysis of D2PM in rat hair by UHPLC-FL

Hair specimens are suitable for retrospective analyses when blood and urine are no longer expected to contain the illicit drugs.<sup>[30–34]</sup> Hair is typically suitable for this kind of analysis for several months up to one year after ingestion. In addition, once incorporated into hair, drugs are protected by a cuticle layer and are almost independent of daily cleaning. The developed method was also applied to the analysis of illicit drugs in hair specimens in which rats were administered oral doses (40 mg/kg day) of D2PM continuously for three weeks. The hair specimens were analyzed by FL, which has a wide dynamic range and superior quantitative performance compared with ESI-TOF-MS.

Acidic methanol extraction was used for the analysis of D2PM-dosed rat hair specimens. CH<sub>3</sub>OH-TFA (50:1, v/v) was used as an extraction solvent since D2PM was extracted efficiently, and TFA is volatile. When CH<sub>3</sub>OH-5 M HCl (9:1, v/v) was used for extraction, HCl remained after removal of the solvent by nitrogen

gas. Therefore, the ratio of derivatization reaction decreased dramatically, and sufficient peak intensity of (*R*)-D2PM, (*S*)-D2PM, and PBH (internal standard) was not obtained (data not shown).

Figure 4A shows that no endogenous constituents of blank hair extracts eluted at the retention times of the peaks of (*R*)-D2PM, (*S*)-D2PM, or PBH. Adequate separation and detection were achieved within 7 min using H<sub>2</sub>O–CH<sub>3</sub>OH–FA (40:60: 0.1, v/v/v) as the mobile phase (Figures 4B–4F). Therefore, the developed method was found to be selective for (*R*)- and (*S*)-D2PM in hair specimens without interferences from normal endogenous hair constituents.

Calibration curves were obtained using blank hair spiked with (*R*)- and (*S*)-D2PM. The curves obtained by plotting the peak area ratios of (*R*)- and (*S*)-D2PM relative to the internal standard exhibited good linearity ( $r^2 > 0.999$ ). The precisions of different concentrations (QCL and QCH) were also evaluated by intra- and inter-day assays. As shown in Table 3, the precision of the intra- and inter-day assays were 2.73–6.53% and 4.11–6.64%, respectively; thus, reasonable precisions were obtained. The detection limits of (*R*)- and (*S*)-D2PM were 0.12 ng/mg hair and 0.21 ng/mg hair, respectively (signal-to-noise ratio (S/N)=3). Table 4 lists the amounts of (*R*)- and (*S*)-D2PM detected from rat hair. Although variability among individual rats was observed, (*R*)-form was detected from the rat dosed with (*R*)-form, (*S*)-form was detected from the rat dosed with (*S*)-form, and both (*R*)- and (*S*)-form were detected from the rat dosed with the racemic form, as expected.

Although conventional acidic methanol extraction requires long preparation times for hair specimens, by applying macropulverized extraction,<sup>[25,35]</sup> rapid enantiomeric separation and quantification of D2PM in hair was achieved. The proposed method should be useful for preventing widespread distribution of D2PM as a new illegal drug and is also expected to be appropriate for the analysis of human hair specimens from drug abusers.

## Conclusion

In this study, rapid enantiomeric separation of phenethylamine-type abused drugs was accomplished using (*R*)-(-)-DBD-Py-NCS as the chiral fluorescent derivatization reagent based on UHPLC. Enantiomeric separation of 12 phenethylamines was achieved. The proposed method was successfully applied to the analysis of products containing illicit drugs distributed in the Japanese market. Among the products, BDB and MDMA-2 were detected in racemic form. The method was also applied to the analysis of rat hair specimens in which the rats were administered oral doses of D2PM. The proposed method should be useful for preventing widespread distribution of D2PM as a new illicit drug and is also expected to be applicable to the analysis of human hair specimens from drug abusers.

## Acknowledgements

This work was supported in part by a health sciences research grant from the Ministry of Health Labour and Welfare, and a research grant from the Ministry of Education, Culture, Sports, Science and Technology, Japan.

## References

- [1] N. Uchiyama, N. Miyazawa, M. Kawamura, R. Kikura-Hanajiri, Y. Goda. Analysis of newly distributed designer drugs detected in

- the products purchased in fiscal year 2008. *Yakugaku Zasshi* **2010**, *130*, 263.
- [2] K. Doi, M. Miyazawa, H. Fujii, T. Kojima. The analysis of the chemical drugs among structural isomer. *Yakugaku Zasshi* **2006**, *126*, 815.
- [3] D.M. Wood, J. Buttun, S. Lidder, H. Ovska, J. Ramsey, D.W. Holt, P.I. Dargan. Detection of the novel recreational drug diphenyl-2-pyrrolidinemethanol (D2PM) sold 'legally' in combination with glaucine. *Clin. Toxicol.* **2008**, *46*, 393.
- [4] S. Lidder, P.I. Dargan, M. Sexton, J. Buttun, J. Ramsey, D.W. Holt, D.M. Wood. Cardiovascular toxicity associated with recreational use of diphenylprolinol (diphenyl-2-pyrrolidinemethanol [D2PM]). *J. Med. Toxicol.* **2008**, *4*, 167.
- [5] D. Enders, M.R.M. Hüttl, C. Grondal, G. Raabe. Control of four stereocentres in a triple cascade organocatalytic reaction. *Nature* **2006**, *441*, 861.
- [6] B.B. Lohray, V. Bhushan. Oxazaborolidines and dioxaborolidines in enantioselective catalysis. *Angew. Chem. Int. Edit. Engl.* **1992**, *31*, 729.
- [7] E.J. Corey, R.K. Bakshi, S. Shibata. Highly enantioselective borane reduction of ketones catalyzed by chiral oxazaborolidines – mechanism and synthetic implications. *J. Am. Chem. Soc.* **1987**, *109*, 5551.
- [8] M.R. Meyer, H.H. Maurer. Metabolism of designer drugs of abuse: An updated-review. *Curr. Drug Metabolism* **2010**, *11*, 468.
- [9] National Highway Traffic Safety Administration (NHTSA). Drugs and human performance fact sheets. *Methamphetamine and Amphetamine*. NHTSA, Washington, DC, **2004**, pp. 61–65.
- [10] C. Borst, U. Holzgrabe. Comparison of chiral electrophoretic separation methods for phenethylamines and application on impurity analysis. *J. Pharm. Biomed. Anal.* **2010**, *53*, 1201.
- [11] T.J. Ward, K.D. Ward. Chiral separations: Fundamental review 2010. *Anal. Chem.* **2010**, *82*, 4712.
- [12] T. Ikai, Y. Okamoto. Structure control of polysaccharide derivatives for efficient separation of enantiomers by chromatography. *Chem. Rev.* **2009**, *109*, 6077.
- [13] B. Preinerstorfer, M. Laemmerhofer, W. Lindner. Advances in enantioselective separations using electromigration capillary techniques. *Electrophoresis* **2009**, *30*, 100.
- [14] A. Ghassempour, H.Y. Aboul-Enein. Vancomycin degradation products as potential chiral selectors in enantiomeric separation of racemic compounds. *J. Chromatogr. A* **2008**, *1191*, 182.
- [15] T.E. Beesley, R.P.W. Scott. *Chiral Chromatography*. John Wiley & Sons Ltd, New York, USA, **1999**.
- [16] S. Ahuja. *Chiral Separation Methods for Pharmaceutical and Biotechnological Products*. John Wiley & Sons Ltd, New York, USA, **2010**.
- [17] V. Cucinotta, A. Contino, A. Giuffrida, G. Maccarrone, M. Messina. Application of charged single isomer derivatives of cyclodextrins in capillary electrophoresis for chiral analysis. *J. Chromatogr. A* **2010**, *1217*, 953.
- [18] V. Pérez-Fernández, M.Á. García, M.L. Marina. Characteristics and enantiomeric analysis of chiral pyrethroids. *J. Chromatogr. A* **2010**, *1217*, 968.
- [19] D. Guillaume, G. Bonvin, F. Badoud, J. Schappler, S. Rudaz, J.-L. Veuthey. Fast chiral separation of drugs using columns packed with sub-2- $\mu$ m particles and ultra-high pressure. *Chirality* **2010**, *22*, 320.
- [20] S. Inagaki, S. Taniguchi, H. Hirashima, T. Higashi, J.Z. Min, R. Kikura-Hanajiri, Y. Goda, T. Toyo'oka. HPLC enantioseparation of  $\alpha,\alpha$ -diphenyl-2-pyrrolidinemethanol and methylphenidate using a chiral fluorescent derivatization reagent and its application to the analysis of rat plasma. *J. Sep. Sci.* **2010**, *33*, 3137.
- [21] D. Guillaume, J. Ruta, S. Rudaz, J.-L. Veuthey. New trends in fast and high-resolution liquid chromatography: a critical comparison of existing approaches. *Anal. Bioanal. Chem.* **2008**, *397*, 1069.
- [22] T. Toyo'oka. Determination methods for biologically active compounds by ultra-performance liquid chromatography coupled with mass spectrometry: Application to the analyses of pharmaceuticals, foods, plants, environments, metabonomics, and metabolomics. *J. Chromatogr. Sci.* **2008**, *46*, 233.
- [23] R.N. Xu, L. Fan, M.J. Rieser, T.A. El-Shourbagy. Recent advances in high-throughput quantitative bioanalysis by LC-MS/MS. *J. Pharm. Biomed. Anal.* **2007**, *44*, 342.
- [24] S. Lee, H. Miyaguchi, E. Han, E. Kim, Y. Park, H. Choi, H. Chung, S. M. Oh, K.H. Chung. Homogeneity and stability of a candidate certified reference material for the determination of methamphetamine and amphetamine in hair. *J. Pharm. Biomed. Anal.* **2010**, *53*, 1037.

- [25] H. Miyaguchi, M. Kakuta, Y.T. Iwata, H. Matsuda, H. Tazawa, H. Kimura, H. Inoue. Development of a micropulverized extraction method for rapid toxicological analysis of methamphetamine in hair. *J. Chromatogr. A* **2007**, *1163*, 43.
- [26] M.J. Welch, L.T. Sniegoski, S. Tai. Two new standard reference materials for the determination of drugs of abuse in human hair. *Anal. Bioanal. Chem.* **2003**, *376*, 1205.
- [27] T. Toyo'oka. Fluorescent chiral derivatization reagents possessing benzofurazan structure for the resolution of optical isomers in HPLC: The synthesis, characteristics and application. *Curr. Pharm. Anal.* **2005**, *1*, 57.
- [28] T. Toyo'oka, Y.-M. Liu. Development of optically active fluorescent Edman-type reagents. *Analyst* **1995**, *120*, 385.
- [29] T. Toyo'oka, Y.-M. Liu. High-performance liquid chromatographic resolution of amino acid enantiomers derivatized with fluorescent chiral Edman reagents. *J. Chromatogr. A* **1995**, *689*, 23.
- [30] P. Kintz. Bioanalytical procedures for detection of chemical agents in hair in the case of drug-facilitated crimes. *Anal. Bioanal. Chem.* **2007**, *388*, 1467.
- [31] F. Musshoff, B. Madea. New trends in hair analysis and scientific demands on validation and technical notes. *Forensic Sci. Int.* **2007**, *165*, 204.
- [32] V.A. Boumba, K.S. Ziavrou, T. Vougiouklalis. Hair as a biological indicator of drug use, drug abuse or chronic exposure to environmental toxicants. *Int. J. Toxicol.* **2006**, *25*, 143.
- [33] P. Kintz, M. Villain, V. Cirimele. Hair analysis for drug detection. *Ther. Drug Monit.* **2006**, *28*, 442.
- [34] K. Srogi. Testing for drugs in hair—a review of chromatographic procedures. *Microchim. Acta* **2006**, *154*, 191.
- [35] S. Inagaki, H. Makino, T. Fukushima, J.Z. Min, T. Toyo'oka. Rapid detection of ketamine and norketamine in rat hair using micropulverized extraction and ultra-performance liquid chromatography–electrospray ionization mass spectrometry. *Biomed. Chromatogr.* **2009**, *23*, 1245.

UNCORRECTED PROOF

