

at least once after dose escalation was 20.0%, 40.0%, and 53.3%, respectively. The percentage of patients who showed clinical remission, CR-100 or CR-70 at the time of the last dose was 16.7%, 33.3%, and 40.0%, respectively.

### 3.4. Quality of life

#### 3.4.1. Induction trial

Induction therapy with adalimumab 160/80 mg or 80/40 mg significantly improved SF-36 MCS from Baseline to Week 4 compared with placebo. The mean change from Baseline for adalimumab 160/80 mg was 6.2 versus  $-1.6$  for placebo ( $p=0.0005$ ); for adalimumab 80/40 mg the mean change from Baseline was 5.5 versus  $-1.6$  for placebo ( $p=0.0002$ ). There was a trend toward a greater improvement in SF-36 PCS and IBDQ for patients in the adalimumab 160/80 mg group compared to placebo, although the changes were not significant

#### 3.4.2. Maintenance trial

In the mFAS, adalimumab 40 mg eow treatment led to significantly greater improvement from Week 0 to Week 8x in SF-36 MCS and IBDQ compared with placebo (12.0 versus 2.0,  $p=0.03$  and 34.8 versus 8.3,  $p=0.05$ , respectively); improvement was sustained. Although the difference between the 2 groups was not statistically significant through Week 52x, the improvement in SF-MCS scores from Week 0 to Week 52x was 9.6 with adalimumab 40 mg eow treatment versus 0.3 for placebo. The improvement in IBDQ from Week 0 to Week 52x was 27.9 for adalimumab-treated patients versus 1.8 for placebo-treated patients. The average IBDQ score at Week 52x for adalimumab-treated patients was 170.1, which is above the threshold of remission (170), whereas the average IBDQ at Week 52x for placebo-treated patients is below the remission threshold (Fig. 6).

SF-36 PCS scores did not differ significantly between the 2 treatment groups at Week 52x. However, from Week 0x through Week 52x, patients treated with adalimumab were

able to maintain the Week 0x improvement of 5.8 while patients treated with placebo showed a decrease in improvement from 2.4 at Week 0x to 0.2 at Week 52x.

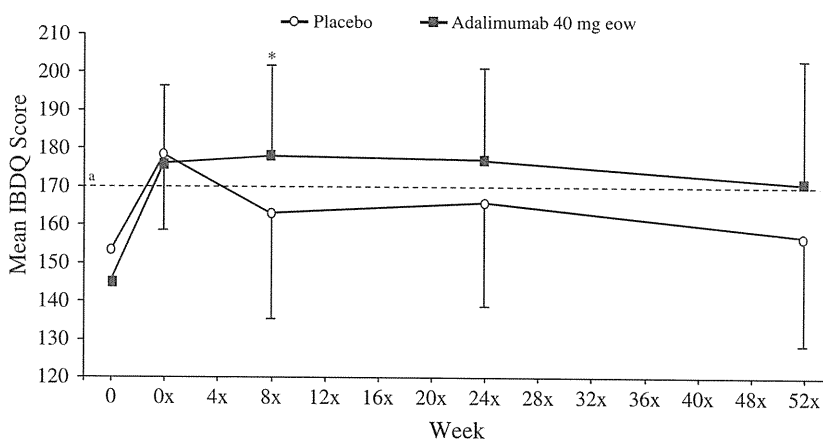
### 3.5. Pharmacokinetics and immunogenicity

Overall, during the induction phase the mean serum adalimumab concentrations from the adalimumab 160/80 mg dose groups were approximately twice those of the adalimumab 80/40 mg group (Fig. 7A). In the maintenance trial, serum concentrations in patients who remained on adalimumab 40 mg eow through Week 52x ( $n=15$ ) remained relatively constant from Week 4x to Week 52x (Fig. 7B–C). Mean serum concentrations tended to increase in patients who increased from adalimumab 40 mg eow to 80 mg eow (Fig. 7B–C).

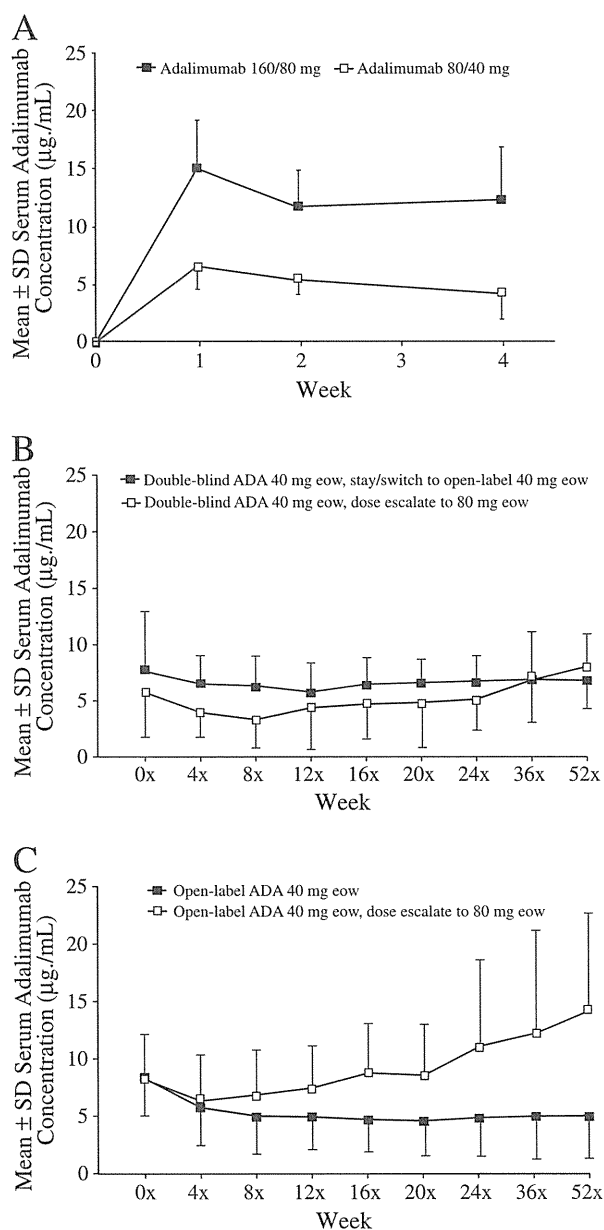
The overall AAA+ rate was 0% in the induction trial, and 6.1% in the maintenance trial (5 of 82 patients who received at least 1 dose of adalimumab in the trial). In the 5 patients who developed AAA, including 1 patient who increased from adalimumab 40 mg to 80 mg, the serum adalimumab concentrations decreased to below or near detectable limits of the assay by the end of the maintenance trial. Three of the 5 patients discontinued early from the trial due to adverse events (abdominal abscess in 1 patient, liver abscess in 1 patient, aggravation of CD in 1 patient) and 2 patients were not in clinical remission at Week 52x. None of the 5 patients were treated with concomitant immunosuppressant therapy.

### 3.6. Changes in C-reactive protein

Baseline CRP values from the induction and maintenance trials are reported in Table 1. The mean change in CRP values from Baseline to Week 52x was  $0.4 \pm 0.7$  mg/dL for placebo-treated versus  $-1.3 \pm 1.2$  mg/dL for adalimumab-treated patients (mFAS).



**Figure 6** Mean IBDQ scores by week in the maintenance trial. Analyses were conducted using last observation carried forward in the mFAS (patients who received adalimumab in the induction trial, entered the double-blind portion of maintenance trial and received at least 1 dose of study drug);  $n=22$  for placebo;  $n=21$  for adalimumab. Week 0 is Baseline of the induction trial; Week 0x is Baseline of the maintenance trial; "x" beside the week number designates the follow-on nature of the maintenance trial. \* $p=0.05$  versus placebo; all other  $p$ -values  $>0.05$ . <sup>a</sup>Cutoff point for IBDQ remission (IBDQ score  $\geq 170$ ). mFAS=modified full analysis set; eow = every other week; IBDQ = Inflammatory Bowel Disease Questionnaire.



**Figure 7** (A) Mean serum adalimumab concentrations in the (A) Induction trial; (B) Double-blind phase of the maintenance trial and (C) Open-label phase of the maintenance trial. Week 0 is Baseline of the induction trial; Week 0x is Baseline of the maintenance trial; "x" beside the week number designates the follow-on nature of the maintenance trial. n = 33 for adalimumab 160/80 mg; n = 34 for adalimumab 80/40 mg; n = 15 for double-blind adalimumab 40 mg eow, stay/switch to open-label adalimumab 40 mg eow; n = 10 for double-blind adalimumab 40 mg eow, dose escalate to adalimumab 80 mg eow; n = 19 for open-label adalimumab 40 mg eow; n = 13 for open-label 40 mg eow, dose escalate to 80 mg eow. ADA = adalimumab; eow = every other week; SD = standard deviation.

### 3.7. Safety

Serious adverse events (SAEs) were reported in 6.0% of adalimumab-treated patients versus 8.7% in the placebo group of the induction trial (FAS), and 8.0% of adalimumab-

treated patients versus 24.0% in the placebo group of the maintenance trial (FAS) (Table 3). Most SAEs were related to the underlying CD. No deaths, lupus-like syndromes, demyelinating diseases, or cases of tuberculosis were reported in either trial. The incidence of injection site pain was low and similar in all groups in both trials.

## 4. Discussion

The purpose of the present trials was to demonstrate that efficacy of adalimumab was numerically greater than placebo for the treatment of Japanese patients with CD. Due to the low prevalence of CD in Japan, these trials were of small size, however, were expected to demonstrate similar trends with regard to efficacy and safety of adalimumab as previously shown in Western patients.

Induction treatment with adalimumab increased remission and response rates at Week 4 compared with placebo treatment in Japanese patients with moderate to severe CD. The effect was more pronounced at the higher adalimumab dose (160/80 mg). In Japanese patients previously exposed to anti-TNF, only adalimumab 160/80 mg was able to induce clinical remission at Week 4. The results of this trial are consistent with induction results of adalimumab in Western patients from the CLASSIC I and GAIN clinical trials.<sup>5,16</sup>

Maintenance treatment with adalimumab increased the clinical remission and response rates at Week 52x compared with placebo treatment in this trial. These results are similar to maintenance results from the CHARM clinical trial.<sup>9</sup>

Only 1 maintenance regimen of adalimumab, 40 mg eow, was tested in a parallel blinded design in the maintenance trial. However, the efficacy of adalimumab 80 mg eow was explored in patients that had an inadequate response to adalimumab 40 mg eow in the open-label portion of the maintenance trial. From the 90 patients included at Week 0 of induction trial, 30 patients subsequently moved to the open-label arm and increased their dose of adalimumab to 80 mg eow, which corresponds to the reported dose-escalation rate of 27% in Western patients.<sup>17</sup> More than half of the Japanese patients who increased to adalimumab 80 mg eow achieved a clinical response CR-70, which is similar to data from Western studies in which 63% of the patients who increased to adalimumab 40 mg weekly dosing achieved CR-70 at any time after dose escalation.<sup>17</sup>

Adalimumab therapy resulted in a trend toward an improvement in quality of life, as measured by SF-36 MCS, SF-36 PCS, and IBDQ scores, in Japanese patients evaluated in these trials. The improvement of quality of life was most pronounced for SF-36 MCS and IBDQ scores.

Serum adalimumab concentrations reached a steady state following induction, and remained relatively constant from Week 4x to Week 52x in the maintenance trial, as was previously observed in studies of adalimumab in Western patients with CD.<sup>5,16</sup> The rate of immunogenicity through 1 year of treatment with adalimumab in the Japanese patients enrolled in these trials (6.1%) was slightly higher than the 2.6% rate observed in the CLASSIC II clinical trial in Western patients with CD.<sup>18</sup> A trend towards a lower plasma level of adalimumab and a higher rate of AAAs in Japanese patients compared with Western patients has already been noted in rheumatoid arthritis.<sup>19</sup> The difference of AAA

**Table 3** Treatment-emergent adverse events.<sup>a</sup>

	Induction trial			Maintenance trial		Any ADA set <sup>d</sup> Total N=90
	Full analysis set <sup>b</sup>			Full analysis set <sup>c</sup>		
	Placebo n=23	Adalimumab 80/40 mg n=34	Adalimumab 160/80 mg n=33	Placebo n=25	Adalimumab 40 mg eow n=25	
All adverse events	12 (52.2)	20 (58.8)	17 (51.5)	21 (84.0)	20 (80.0)	85 (94.4)
Serious adverse events	2 (8.7)	3 (8.8)	1 (3.0)	6 (24.0)	2 (8.0)	35 (38.9) <sup>e</sup>
Adverse events leading to discontinuation of therapy	1 (4.3)	2 (5.9)	1 (3.0)	6 (24.0)	1 (4.0)	21 (23.3)
Any infection	2 (8.7)	5 (14.7)	4 (12.1)	9 (36.0)	15 (60.0)	65 (72.2)
Serious infection	0 (0.0)	1 (2.9) <sup>f</sup>	0 (0.0)	2 (8.0)	1 (4.0)	6 (6.7)
Malignant adverse events	0 (0.0)	1 (2.9)	0 (0.0)	0 (0.0)	0 (0.0)	1 (1.1)
Injection-site-related pain	2 (8.7)	5 (14.7)	4 (12.1)	1 (4.0)	2 (8.0)	16 (17.8)
Related opportunistic infections (excluding tuberculosis)	0 (0.0)	0 (0.0)	1 (3.0)	0 (0.0)	0 (0.0)	1 (1.1)
Related congestive heart failure	0 (0.0)	0 (0.0)	0 (0.0)	0 (0.0)	0 (0.0)	0 (0.0)
Demyelinating disease	0 (0.0)	0 (0.0)	0 (0.0)	0 (0.0)	0 (0.0)	0 (0.0)
Tuberculosis	0 (0.0)	0 (0.0)	0 (0.0)	0 (0.0)	0 (0.0)	0 (0.0)
Related allergic reactions	0 (0.0)	0 (0.0)	0 (0.0)	0 (0.0)	0 (0.0)	2 (2.2)
Lupus-like syndrome	0 (0.0)	0 (0.0)	0 (0.0)	0 (0.0)	0 (0.0)	0 (0.0)
Death	0 (0.0)	0 (0.0)	0 (0.0)	0 (0.0)	0 (0.0)	0 (0.0)

Data are n (%).

ADA = adalimumab; eow = every other week.

<sup>a</sup> In the induction and maintenance trials, a treatment-emergent AE (TEAE) was defined as any AE with onset from 1st dose of study drug, with differing end points depending on whether the patient continued in the adalimumab development program or not. Specifically, for patients who continued in the adalimumab development program, the end-date for reporting TEAEs was at the trial end (Week 4 or 8 for induction trial; Week 52x for maintenance trial); for patients who discontinued the trial and did not continue in adalimumab development program, the end-date for reporting TEAEs was up to 70 days following the last study drug administration. For analysis in the any adalimumab set (combines induction and maintenance trial), a TEAE was defined as any AE with onset from 1st dose of adalimumab the patient ever received (which could have been in the induction trial for those randomized to adalimumab, or in the maintenance trial for those randomized to placebo in the induction trial) through an end-date up to the last dose received in the maintenance trial if the patient continued after Week 52x, or up to 70 days after the last dose of adalimumab if the patient discontinued either trial. Of note, for the any adalimumab set, events that occurred during the placebo period prior to receipt of any adalimumab were excluded.

<sup>b</sup> Patients enrolled in the induction trial who were randomly assigned to 1 of the 3 treatment groups and received at least 1 dose of study drug.

<sup>c</sup> Patients who entered the double-blind portion of the maintenance trial and received at least 1 dose of study drug.

<sup>d</sup> Patients who received at least 1 dose of adalimumab either, in the induction trial or, in the maintenance trial.

<sup>e</sup> SAEs included: 6 SAEs occurred in  $\geq 2$  patients, aggravation of Crohn's disease (20 patients), abdominal abscess (5 patients), ileus (2 patients), intestinal obstruction (2 patients), peritonitis (2 patients) malnutrition (2 patients). No SAE of malignancy, demyelinating disorder, tuberculosis was reported.

<sup>f</sup> Abdominal abscess developed 25 days after the last dose of study drug, considered by the investigator to be probably not related to adalimumab.

production between Japanese and Western patients may relate to the different distribution in the IgG1 allotype GM1<sup>2a</sup> across racial groups; 84% of Japanese carry the allotype GM1<sup>2a</sup>, compared with only 29% of Western Europeans. Circulating adalimumab, which is an IgG1 GM1<sup>2a</sup>, may reach a more optimal integration into the immunoregulatory network in GM1<sup>2a</sup>-carrying patients, and cause a higher rate of physiological anti-idiotypic antibodies.<sup>20</sup>

Adalimumab therapy was well-tolerated, and no deaths were reported in either the induction or maintenance trial. Adverse event profiles were similar to those reported in other clinical trials of adalimumab in Western patients with CD.

The similarity of the clinical remission and response rates in these small trials to the results of larger pivotal clinical trials of adalimumab in CD supports the use of

adalimumab for induction and maintenance of remission in Japanese patients with moderate to severely active CD. However, because of the limited number of patients enrolled, these trials lacked statistical power to conclusively demonstrate the efficacy of adalimumab in this population. A further limitation of these trials was the exclusion of patients who had previously been exposed to but had failed to respond to infliximab (primary non-responders). The response of such Japanese patients to adalimumab treatment cannot be estimated from the results. Nevertheless, the results of these 2 trials in Japanese patients with CD are consistent with results reported in prior clinical trials of adalimumab. Our findings show that adalimumab is an effective and well-tolerated therapeutic option for inducing and maintaining clinical remission of moderate to severe CD in this population.

## Conflict of interest statement

Disclosures of financial conflict of interest are summarized below:

- M Watanabe: Consulting and/or other fees from Abbott Japan, Ajinomoto Pharma, Asahi Kasei Kurary Medical, Eisai, JIMRO, Kyorin Pharmaceutical, Mitsubishi Tanabe Pharma, Otsuka Pharmaceutical, UCB Japan, ZERIA Pharmaceutical
- T Hibi: Consulting and/or other fees from Abbott Japan, Ajinomoto Pharma, Asahi Kasei Kurary Medical, AstraZeneca, Eisai, Janssen, JIMRO, Kyorin Pharmaceutical, Mitsubishi Tanabe Pharma, Mochida Pharmaceutical, Otsuka Pharmaceutical, UCB Japan, ZERIA Pharmaceutical
- KG Lomax: Employee of Abbott
- SK Paulson: Employee of Abbott
- J Chao: Employee of Abbott
- MS Alam: Former employee of Abbott
- A Camez: Employee of Abbott.

## Acknowledgements

*Sources of funding and role of the funding source:* This study was sponsored by Abbott Japan Co, Ltd., Tokyo, Japan and Eisai Co, Ltd., Tokyo, Japan. *Contributors:* The authors wish to thank Ashish Kumar, Ph.D., for conducting the statistical analysis and reviewing the manuscript; financial support for this service was provided by Abbott. The authors also wish to thank Eileen M. Burkart-Hartman, Ph.D., and Laurinda A. Cooker, Ph.D., of Abbott, for their assistance in the writing and editing of this manuscript. Support for this manuscript was funded by Abbott. The authors would like to thank the investigators who participated in these trials: S Motoya, Hokkaido P.W.F.A.C Sapporo-Kosei General Hospital; Y Kinouchi, Tohoku University Hospital; Y Suzuki, Toho University Sakura Medical Center; T Katsuno, Chiba University Hospital; K Ohtsuka, Showa University Northern Yokohama Hospital; S Okamura, Toyohashi Municipal Hospital; I Hirata, Fujita Health University Hospital; T Ando, Nagoya University Hospital; H Nakase, Kyoto University Hospital; N Oshitani, K Watanabe, Osaka City University Hospital; H Ito, Kitano Hospital, The Tazuke Kofukai Medical Research Institute; T Matsumoto, The Hospital of Hyogo College of Medicine; S Tanaka, Hiroshima University Hospital; H Inoue, Kagawa University Hospital; Y Sakai, Matsuyama Red Cross Hospital; T Matsumoto, Kyushu University Hospital; K Mitsuyama, Kurume University Hospital; N Tomiyasu, H Kumemura, Omuta City General Hospital; F Kinjo, University of the Ryukyus; T Hisamatsu, Keio University School of Medicine; T Matsui, Fukuoka University Chikushi Hospital; K Shiratori, Tokyo Women's Medical University Hospital; M Miyata, M Mizuno, Aichi Medical University Hospital; Y Fujiyama, A Andoh, Shiga University of Medical Science Hospital; J Kato, Okayama University Hospital; T Ashida, M Fujiya, Asahikawa Medical College Hospital; T Ohkusa, T Osada, Juntendo University Hospital; M Takazoe, Social Insurance Central General Hospital; H Hanai, Hamamatsu South Hospital; T Ichimori, Susaki Kuroshio Hospital; K Okawa, Osaka City General Hospital. *Statements of Authorship:* MW participated in the study design, carried out the studies, analyzed the data, and helped draft the manuscript. TH participated in the study design, carried out the studies, analyzed the data, and helped draft the manuscript. KGL

analyzed the data and helped draft the manuscript. SKP analyzed the data and helped draft the manuscript. JC analyzed the data and helped draft the manuscript. MSA participated in the study design, analyzed the data, and helped draft the manuscript. AC participated in the study design, carried out the studies, analyzed and reported the data, and helped draft the manuscript. All authors read and approved the final manuscript.

## References

1. Mizushima T, Ohno Y, Nakajima K, Kai Y, Iijima H, Sekimoto M, Nishida T, Nezu R, Ito T, Doki Y, Mori M. Malignancy in Crohn's disease: incidence and clinical characteristics in Japan. *Digestion* 2010;**81**:265–70.
2. Asakura H, Yao T, Matsui T, Koganei K, Fukushima T, Takazoe M, Hobara R, Nakano H, Okamura S, Matsueda K, Kashida H, Makiyama K, Hiwatashi N, Kashiwagi K, Hibi T. Efficacy of treatment with chimeric monoclonal antibody (infliximab) to tumor necrosis factor-alpha for Crohn's disease in Japan: evaluation by rapid turnover proteins, and radiologic and endoscopic findings. *J Gastroenterol Hepatol* 2001;**16**:763–9.
3. HUMIRA. Prescribing information. Abbott Park, IL: Abbott Laboratories; 2009.
4. Colombel JF, Sandborn WJ, Rutgeerts P, Enns R, Hanauer SB, Panaccione R, Schreiber S, Byczkowski D, Li J, Kent JD, Pollack PF. Adalimumab for maintenance of clinical response and remission in patients with Crohn's disease: the CHARM trial. *Gastroenterology* 2007;**132**:52–65.
5. Sandborn WJ, Rutgeerts P, Enns R, Hanauer SB, Colombel JF, Panaccione R, D'Haens G, Li J, Rosenfeld MR, Kent JD, Pollack PF. Adalimumab induction therapy for Crohn disease previously treated with infliximab: a randomized trial. *Ann Intern Med* 2007;**146**:829–38.
6. Papadakis KA. Crohn's disease: adalimumab improves quality of life. *Nat Rev Gastroenterol Hepatol* 2009;**6**:200–1.
7. Loftus EV, Feagan BG, Colombel JF, Rubin DT, Wu EQ, Yu AP, Pollack PF, Chao J, Mulani P. Effects of adalimumab maintenance therapy on health-related quality of life of patients with Crohn's disease: patient-reported outcomes of the CHARM trial. *Am J Gastroenterol* 2008;**103**:3132–41.
8. Ng SC, Plamondon S, Gupta A, Burling D, Kamm MA. Prospective assessment of the effect on quality of life of anti-tumour necrosis factor therapy for perineal Crohn's fistulas. *Aliment Pharmacol Ther* 2009;**30**:757–66.
9. Colombel JF, Sandborn WJ, Rutgeerts P, Kamm MA, Yu AP, Wu EQ, Pollack PF, Lomax KG, Chao J, Mulani PM. Comparison of two adalimumab treatment schedule strategies for moderate-to-severe Crohn's disease: results from the CHARM trial. *Am J Gastroenterol* 2009;**104**:1170–9.
10. Sugiyama Y. The Journal of the Japanese Society of Internal Medicine. *Intern Med* 2000;**89**:868–73.
11. Myren J, Bouchier I, Watkinson G, Softley A, Clamp S, de Dombal F. The O.M.G.E. multinational inflammatory bowel disease survey 1976–1982: a further report on 2657 cases. *Scan J Gastro* 1983;**18**:1–27.
12. Fukuhara S, Bito S, Green J, Hsiao A, Kurokawa K. Translation, adaptation, and validation of the SF-36 Health Survey for use in Japan. *J Clin Epidemiol* 1998;**51**:1037–44.
13. Fukuhara S, Ware Jr JE, Kosinski M, Wada S, Gandek B. Psychometric and clinical tests of validity of the Japanese SF-36 Health Survey. *J Clin Epidemiol* 1998;**51**:1045–53.
14. Hashimoto H, Green J, Iwao Y, Sakurai T, Hibi T, Fukuhara S. Reliability, validity, and responsiveness of the Japanese version of the Inflammatory Bowel Disease Questionnaire. *J Gastroenterol* 2003;**38**:1138–43.
15. Weisman MH, Moreland LW, Furst DE, Weinblatt ME, Keystone EC, Paulus HE, Teoh LS, Velagapudi RB, Noertersheuser PA,

- Granneman GR, Fischkoff SA, Chartash EK. Efficacy, pharmacokinetic, and safety assessment of adalimumab, a fully human anti-tumor necrosis factor-alpha monoclonal antibody, in adults with rheumatoid arthritis receiving concomitant methotrexate: a pilot study. *Clin Ther* 2003;25:1700–21.
16. Hanauer SB, Sandborn WJ, Rutgeerts P, Fedorak RN, Lukas M, MacIntosh D, Panaccione R, Wolf D, Pollack P. Human anti-tumor necrosis factor monoclonal antibody (adalimumab) in Crohn's disease: the CLASSIC-I trial. *Gastroenterology* 2006;130:323–33 quiz 591.
  17. Sandborn WJ, Colombel JF, Schreiber S, Plevy SE, Pollack PF, Robinson AM, Chao J, Mulani P. Dosage adjustment during long-term adalimumab treatment for Crohn's disease: clinical efficacy and pharmacoeconomics. [published online ahead of print May 10, 2010] *Inflamm Bowel Dis* 2010, doi:10.1002/ibd.21328.
  18. Sandborn WJ, Hanauer SB, Rutgeerts P, Fedorak RN, Lukas M, MacIntosh DG, Panaccione R, Wolf D, Kent JD, Bittle B, Li L, Pollack PF. Adalimumab for maintenance treatment of Crohn's disease: results of the CLASSIC II trial. *Gut* 2007;56:1232–9.
  19. Miyasaka N. Clinical investigation in highly disease-affected rheumatoid arthritis patients in Japan with adalimumab applying standard and general evaluation: the CHANGE study. *Mod Rheumatol* 2008;18:252–62.
  20. Van Loghem E. Allotypic markers. *Monogr Allergy* 1986;19:40–51.

## Predicting Ulcerative Colitis-Associated Colorectal Cancer Using Reverse-Transcription Polymerase Chain Reaction Analysis

Toshiaki Watanabe,<sup>1</sup> Takashi Kobunai,<sup>1,2</sup> Yoko Yamamoto,<sup>1</sup> Hiroki Ikeuchi,<sup>3</sup> Keiji Matsuda,<sup>1</sup> Soichiro Ishihara,<sup>1</sup> Keiji Nozawa,<sup>1</sup> Hisae Iinuma,<sup>1</sup> Takamitsu Kanazawa,<sup>4</sup> Toshiaki Tanaka,<sup>4</sup> Tadashi Yokoyama,<sup>4</sup> Tsuyoshi Konishi,<sup>4</sup> Kiyoshi Eshima,<sup>2</sup> Yohichi Ajioka,<sup>5</sup> Toshifumi Hibi,<sup>6</sup> Mamoru Watanabe,<sup>7</sup> Tetsuichiro Muto,<sup>8</sup> Hirokazu Nagawa<sup>4</sup>

### Abstract

**Background:** Widespread genetic alterations are present not only in ulcerative colitis (UC)-associated neoplastic lesions but also in the adjacent normal colonic mucosa. This suggests that genetic changes in nonneoplastic mucosa might be effective markers for predicting the development of UC-associated cancer (UC-Ca). This study aimed to build a predictive model for the development of UC-Ca based on gene expression levels measured by reverse-transcription polymerase chain reaction (RT-PCR) analysis in nonneoplastic rectal mucosa. **Patients and Methods:** Fifty-three UC patients were examined, of which 10 had UC-Ca and 43 did not (UC-NonCa). In addition to the 40 genes and transcripts previously shown to be predictive for developing UC-Ca in our microarray studies, 149 new genes, reported to be important in carcinogenesis, were selected for low density array (LDA) analysis. The expression of a total of 189 genes was examined by RT-PCR in nonneoplastic rectal mucosa. **Results:** We identified 20 genes showing differential expression in UC-Ca and UC-NonCa patients, including cancer-related genes such as *CYP27B1*, *RUNX3*, *SAMSN1*, *EDIL3*, *NOL3*, *CXCL9*, *ITGB2*, and *LYN*. Using these 20 genes, we were able to build a predictive model that distinguished patients with and without UC-Ca with a high accuracy rate of 83% and a negative predictive value of 100%. **Conclusion:** This predictive model suggests that it is possible to identify UC patients at a high risk of developing cancer. These results have important implications for improving the efficacy of surveillance by colonoscopy and suggest directions for future research into the molecular mechanisms of UC-associated cancer.

*Clinical Colorectal Cancer*, Vol. 10, No. 2, 134-41 © 2011 Elsevier Inc. All rights reserved.

**Keywords:** Dysplasia, Prediction, Neoplasia, Inflammatory bowel disease, *RUNX3*

### Introduction

Colon cancer is a well known complication of ulcerative colitis (UC) and the cumulative risk of developing UC-associated colon cancer increases with the duration and extent of the disease.<sup>1-3</sup> Therefore, patients with total colitis, whose disease has lasted over 7 years, are considered to be at high risk of developing cancer and are

recommended to undergo regular colonoscopy.<sup>1-3</sup> However, to improve the efficacy of surveillance, and provide more selective treatment strategies, more effective markers for identifying patients at a higher risk of developing cancer are urgently needed.

UC-associated colon cancer develops in a different way from sporadic colon cancer, and is sometimes called an "inflammation

<sup>1</sup>Department of Surgery, Teikyo University School of Medicine, Tokyo, Japan

<sup>2</sup>Tokushima Research Center, Taiho Pharmaceutical Co., Ltd., Tokushima, Japan

<sup>3</sup>Second Department of Surgery, Hyogo College of Medicine, Hyogo, Japan

<sup>4</sup>Department of Surgical Oncology, University of Tokyo, Tokyo, Japan

<sup>5</sup>Department of Pathology, Niigata University, Niigata, Japan

<sup>6</sup>Division of Gastroenterology and Hepatology, Department of Internal Medicine, Keio University School of Medicine, Tokyo, Japan

<sup>7</sup>Department of Gastroenterology, Tokyo Medical and Dental University, Tokyo, Japan

<sup>8</sup>The Cancer institute hospital of JFCR, Tokyo, Japan

Submitted: May 24, 2010; Revised: Aug 2, 2010; Accepted: Aug 27, 2010

Address for correspondence: Toshiaki Watanabe, MD, Department of Surgery, Teikyo University School of Medicine, 2-11-1 Kaga, Itabashi-ku, Tokyo, 173-8605, Japan

Fax: 81-3-5375-6097; e-mail contact: toshwatanabe@yahoo.co.jp

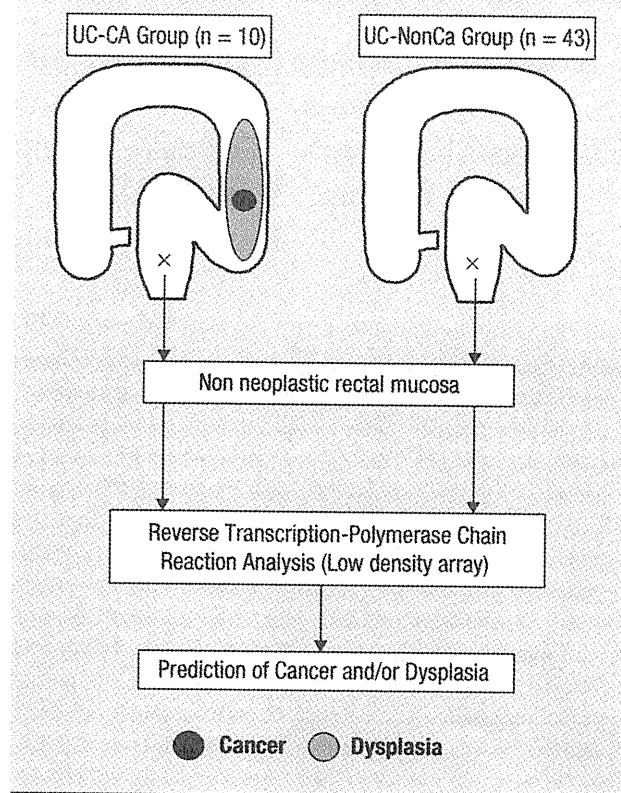
**Table 1 Characteristics of Patients in the 2 Groups**

Characteristic	UC-Ca Group (n = 10)	UC-NonCa Group (n = 43)
<b>Age at Biopsy, Years</b>		
Mean (Range)	51.9 (36-76)	47.1 (22-69)
SD	15.3	15.3
<b>Age at UC Diagnosis, Years</b>		
Mean (Range)	35.9 (21-55)	32.6 (17-52)
SD	13.4	10.3
<b>Sex, n</b>		
Male	7	27
Female	3	16
<b>Duration of Disease, Years</b>		
Mean (Range)	16.0 (7-27)	14.5 (7-30)
SD	6.2	6.9
<b>Extent of Disease, n</b>		
Total Colitis	10	43
Left-Sided Colitis	0	0
Proctosigmoiditis	0	0
Proctitis	0	0
<b>Degree of Inflammation, n</b>		
None	3	11
Mild	4	20
Moderate	3	11
Severe	0	1
<b>Medication, n</b>		
Mesalamine	8	38
Corticosteroids	1	5
6mp/Aza	0	0
CSA	0	0
<b>PSC, n</b>		
Present	0	0
Absent	10	43

*P* values for all characteristics group comparisons were not significant.  
 Abbreviations: 6MP/AZA = 6-mercaptopurine/azathioprine; Ca = cancer; CSA = cyclosporine A; PSC = primary sclerosing cholangitis; UC = ulcerative colitis.

dysplasia carcinoma sequence.<sup>4-6</sup> Dysplasia is often seen in patients with UC-associated cancer around or at a distance from cancer lesions and it is considered to be a precursor of cancer.<sup>1</sup> It has also been suggested that there are some differences in the genetic changes in sporadic and UC-associated colon cancers. Previous studies have shown that patients with UC-associated colon cancer have widespread genetic alterations not only in neoplastic lesions but also in the nonneoplastic colonic mucosa, referred to as a "field effect."<sup>7-12</sup> These studies suggested that genetic changes in the nonneoplastic mucosa might be effective markers for predicting the development of UC-associated colon cancer.

**Figure 1** Flow Chart Illustrating Sample Collection and Data Analysis Procedures. Samples were obtained from nonneoplastic rectal mucosa of patients with ulcerative colitis for RNA extraction. Gene expression was determined using TaqMan low density arrays based on real-time polymerase chain reaction (PCR) and used to carry out class prediction

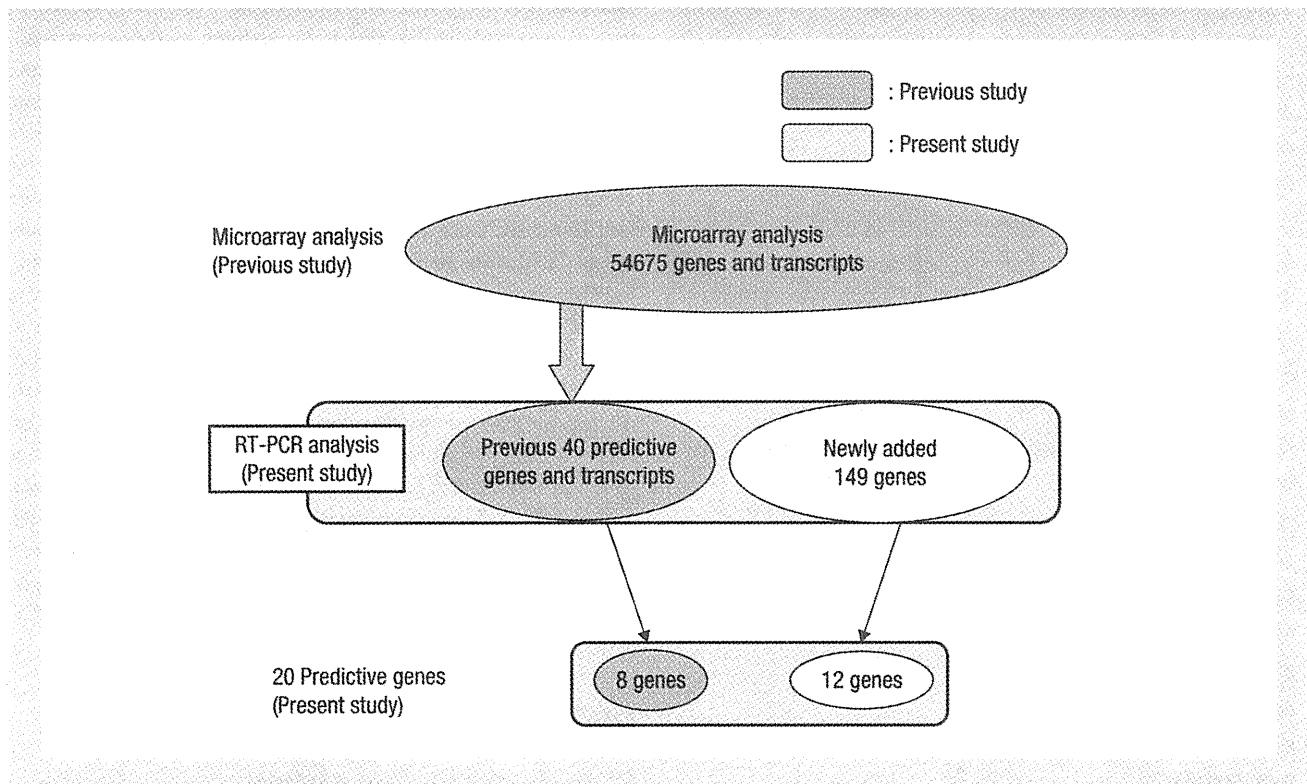


We previously performed DNA microarray analysis of the non-neoplastic colonic mucosa of UC patients and were able to build a predictive model for the development of UC-associated colon cancer.<sup>13</sup> However, microarray analysis is known to lack reproducibility as a means of analyzing gene expression quantitatively and it requires verification using an alternative quantitative method. This constraint still limits the use of microarrays in clinical practice. However, real time reverse transcription polymerase chain reaction (RT-PCR) is a more reliable method for quantifying gene expression and it is widely used to validate the expression levels of genes identified in microarray analyses.<sup>14-18</sup> Recently, RT-PCR analysis has been used in the prediction of outcomes in a variety of diseases. For example, studies have shown that RT-PCR analyses of selected genes can accurately predict outcomes for patients with diffuse large-B-cell lymphoma and lung cancer.<sup>15,16</sup>

Therefore, in this study, we aimed to clarify how well RT-PCR analysis could be used to predict the development of UC-associated colorectal cancer (UC-CRC). In addition to 40 genes and transcripts that we previously used in a predictive model, based on our microarray study, we selected an additional 149 genes that have been shown to be important in the development of cancer in various organs including the colon and rectum. We validated levels of expression of these genes by RT-PCR and

## Predicting Ulcerative Colitis-Associated Cancer

**Figure 2 Study Design.** In addition to the 40 discriminator genes and transcripts used in our previous study, 149 new genes that have been reported to be important in carcinogenesis were used in the low density array (LDA) analysis. Finally 20 genes were selected as predictor genes



we formulated a predictive model of UC-CRC based on these results. To the best of our knowledge, this is the first study to use gene expression profiles in nonneoplastic rectal mucosa, determined by RT-PCR, to predict the development of UC-CRC.

## Materials and Methods

### Patients and Samples

This study used the same set of 53 UC patients as our previous microarray study<sup>13</sup> and their characteristics are shown in Table 1. Informed consent was obtained from all patients for the collection of specimens, and the study protocol was approved by the local Ethics Committee. All UC patients had total colitis with their disease lasting more than 7 years; they were therefore considered to be at high risk of developing cancer and/or dysplasia. Of these 53 patients, 10 had UC-associated neoplastic lesions, including 8 adenocarcinomas and 2 dysplasias (UC-Ca group). Forty-three UC patients had no neoplastic lesions (UC-NonCa group). In all UC cases, specimens were obtained from the nonneoplastic rectal mucosa for RNA extraction (Figure 1). Samples were collected either from surgically resected specimens or during colonoscopy. Samples were snap-frozen in liquid nitrogen and stored at  $-80^{\circ}\text{C}$  until use. Parallel tumor specimens were formalin fixed and paraffin embedded for histologic examination. Samples were only used for RNA extraction when microscopic examination had verified that no neoplastic cells were present.

### RNA Isolation and RT-PCR Using TaqMan Low Density Arrays

Total RNA was isolated from each of the frozen samples using RNeasy Mini Kit (QIAGEN) and gene expression levels were determined using TaqMan real-time PCR (Applied Biosystems) as described previously.<sup>19</sup> RNA quantity and integrity were checked by spectrophotometry and Bioanalyzer microfluidic analysis (Agilent Technology). First-strand cDNA was synthesized from total RNA using the High Capacity cDNA Reverse Transcription kit (Applied Biosystems) in 50  $\mu\text{L}$  reaction volumes, using these cDNA samples for low density array (LDA) analysis according to the manufacturer's instructions. Each cDNA sample (100 ng per 2  $\mu\text{L}$ ) was added to 48  $\mu\text{L}$  RNase-free water and 50  $\mu\text{L}$  of  $2\times$  TaqMan Universal PCR Master Mix (Applied Biosystems). Final primer and probe concentration was 900  $\mu\text{M}$  and 250  $\mu\text{M}$ , respectively. The mixture was then transferred into a loading port on a LDA card. The card was centrifuged twice, sealed, and placed in an Applied Biosystems Prism 7900HT Sequence Detection System for PCR amplification using the following thermal cycler conditions: 2 minutes at  $50^{\circ}\text{C}$  and 10 minutes at  $94.5^{\circ}\text{C}$  for 40 cycles (30 seconds at  $97^{\circ}\text{C}$  and 1 minute at  $59.7^{\circ}\text{C}$ ). Forty genes identified in our previous microarray analysis as predictive of patients at risk for developing UC-Ca were chosen and the corresponding validated primer/probe sets were incorporated into the LDA. The LDAs included *ACTB*, *B2M*, *GAPDH*, *GUSB*, *HMBS*, *RPLP0*, *YWHAZ*, and 18S as reference genes, based on their



**Table 2** Classification of the Additional 149 Genes According to the KEGG Pathway Database

Pathways	No. of Genes within Each Pathway
Cytokine-Cytokine Receptors	29
Jak-STAT Signaling Pathway	22
MAPK Signaling Pathway	10
Pyrimidine Metabolism	10
Toll-like Receptor Signaling Pathway	9
Apoptosis	7
Cell Cycle	6
TGF- $\beta$ Signaling Pathway	6
Purine Metabolism	5
Regulation of Actin Cytoskeleton	5
Amyotrophic Lateral Sclerosis (ALS)	4
Neurodegenerative Disorders	4
Wnt Signaling Pathway	3
Calcium Signaling Pathway	2
One Carbon Pool By Folate	2
Ascorbate and Aldehyde Metabolism	1
$\beta$ -alanine Metabolism	1
Circadian Rhythm	1
Fluorine Degradation	1
Focal Adhesion	1
Folate Biosynthesis	1
$\gamma$ -hexachlorocyclohexane Degradation	1
Glutathione Metabolism	1
Huntington's Disease	1
Limonene and Pinene Degradation	1
Neuroactive Ligand-Receptor Interaction	1
Nitrogen Metabolism	1
Notch Signaling Pathway	1
Pantothenate and CoA Biosynthesis	1
Parkinson's Disease	1
Porphyrin and Chlorophyll Metabolism	1
Prion Disease	1
Prostaglandin and Leukotriene Metabolism	1
Stilbene, Coumarine, and Lignin Biosynthesis	1
Tight Junction	1

Abbreviations: CoA = ; Jak-STAT = ; KEGG = Kyoto Encyclopedia of Genes and Genomes ([www.genome.jp/kegg/pathway.html](http://www.genome.jp/kegg/pathway.html)); MAPK = mitogen-activated protein kinase; Wnt = wingless/int-1.

proven role as housekeeping genes.<sup>20,21</sup> In addition to the 40 genes and transcripts previously identified, 149 new genes that had been reported to be important in carcinogenesis were also included in the LDA analysis (Figure 2). Table 2 shows a classification of the newly selected genes according to the pathways in which they function.

### Data Processing and Statistical Analysis

To determine the stability of the selected reference genes, the geNORM algorithm (MS-Excel add-on-macro program) was used as described previously by Vandesompele et al.<sup>22</sup> This program calculates the gene stability measure *M* by determining the average pairwise variation between a particular reference gene and all other control genes. Using genes with *M* values below 1.5, a normalization factor was calculated based on the geometric mean of the expression levels of the selected genes. Relative gene expression was calculated by comparing  $\Delta$ CT as previously described.<sup>23</sup> Normalized data were loaded into the GeneSpring software version 7.3 (Agilent Technologies). To identify discriminator genes, whose expression levels differed significantly between patients with and without UC-Ca, expression levels were compared using unpaired *t* tests and the Benjamini and Hochberg false discovery rate (FDR) control procedure.<sup>24</sup> Two-dimensional hierarchical clustering was then applied to the log-transformed data for the discriminator genes obtained by RT-PCR, and variations in multigene expression between patients with and without UC-Ca were compared by principal component analysis (PCA). The discriminator genes identified in these analyses were then used in supervised class predictions, using the support vector machine and a leave-1-out cross-validation as previously described,<sup>13</sup> to test their ability to distinguish UC-Ca and UC-NonCa patients.

## Results

### Comparison of Gene Expression Levels Between the UC-Ca and UC-NonCa Groups

Of the 176 genes and 13 transcripts (189 in total) used in the LDA analysis, 7 genes were housekeeping genes. After excluding these 7 genes, we finally selected 20 genes whose expression levels were significantly different in the UC-Ca and UC-NonCa groups (*P* < .0052; FDR *P* value < .05) (Table 3). As shown in Figure 3, all 20 genes showed a fold change greater than 1.5 between the 2 groups. Five genes showed higher and 15 genes lower expression levels in patients in the UC-Ca group compared with those in the UC-NonCa group. Of these 20 genes, the following 8 were included in the 40 predictor genes and transcripts analyzed in our previous microarray study<sup>13</sup>: *GBP4*, *SAMS1*, *SLA*, *NOD27*, *SEPW1*, *EDIL3*, *NOL3*, and *LCP2*. Results of a hierarchical cluster analysis of the 20 genes are presented in Figure 4A. Visual inspection of the signal intensity map clearly showed the presence of a branch of the tree enriched for patients in the UC-Ca group (10 out of 18 patients), indicating that almost all patients were appropriately clustered into 2 distinct groups. We then used the 20 discriminator genes to generate a 3-dimensional plot of the data from a 20-dimensional plot (Figure 4B). PCA-based multidimensional scaling visualization separated samples in the UC-Ca and UC-NonCa groups into linearly separable gene expression data spaces.

### Class Prediction for the Development of UC-Associated Neoplasm

Using the 20 discriminator genes as predictors, we performed supervised class prediction for the UC-Ca and the UC-NonCa groups using the support vector machine (SVM) and leave-1-out cross-validation.<sup>25</sup> We were able to predict the development of UC-associated neoplasm

# Predicting Ulcerative Colitis-Associated Cancer

**Table 3** Twenty Discriminator Genes Distinguishing the UC-Ca and UC-NonCa Groups

Assay ID	Gene Symbol	Fold Change (UC/UC-Cancer)	P Value	Adjusted P Value (FDR P)	GenBank Accession Number	Description
Hs00180031_m1	IRF4	3.141	0.00145	0.0272	NM_002460	Interferon regulatory factor 4
Hs00223275_m1	SAMSN1	3.039	0.00109	0.0272	AF519621	SAM domain, SH3 domain, and nuclear localization signal 1
Hs00171065_m1	CXCL9	2.959	0.00194	0.0272	NM_002416	Chemokine (C-X-C motif) ligand 9
Hs00277129_m1	SLA	2.822	0.00115	0.0272	U44403	Src-like adaptor
Hs00188734_m1	PSCDBP	2.386	0.00166	0.0272	L06633	Pleckstrin homology, Sec7, and coiled-coil domain binding protein
Hs00252301_m1	SLAMF8	2.293	0.000459	0.0272	NM_020125	SLAM family member 8
Hs00164957_m1	ITGB2	2.256	0.00201	0.0272	L78790	Integrin, $\beta$ 2 (complement component 3 receptor 3 and 4 subunit)
Hs00258828_m1	URP2	2.223	0.00134	0.0272	BC004347	UNC-112-related protein 2
Hs00231709_m1	RUNX3	2.212	0.00306	0.0359	NM_004350	Runt-related transcription factor 3
Hs00175505_m1	LCP2	2.201	0.00412	0.0382	A1123251	Lymphocyte cytosolic protein 2 (SH2 domain containing leukocyte protein of 76 kDa)
Hs00168017_m1	CYP27B1	2.069	0.000698	0.0272	NM_000785	Cytochrome P450, family 27, subfamily B, Polypeptide 1
Hs00176719_m1	LYN	2.019	0.00516	0.0454	A1356412	v-yes-1 Yamaguchi sarcoma viral related oncogene homolog
Hs00168402_m1	IL2RB	1.847	0.00354	0.0373	NM_000878	Interleukin 2 receptor, $\beta$
Hs00364728_m1	GBP4	1.831	0.000429	0.0272	BG260886	Guanylate binding protein 4
Hs00260008_m1	NOD27	1.722	0.00177	0.0272	AA005023	Nucleotide-binding oligomerization domains 27
Hs00358724_g1	NOL3	0.566	0.00382	0.0373	BU785956	Nucleolar protein 3 (apoptosis repressor with CARD domain)
Hs00174781_m1	EDIL3	0.537	0.00269	0.0338	AA297258	EGF-like repeats and discoidin I-like domain 3
Hs00161621_m1	SEPW1	0.534	0.00194	0.0272	AW514401	Selenoprotein W, 1
Hs00609276_m1	GSN	0.499	0.00364	0.0373	NM_001127667	Gelsolin (amyloidosis, Finnish type)
Hs00193642_m1	PPP1R3C	0.251	0.00138	0.0272	N26005	Protein phosphatase 1, regulatory (inhibitor) subunit 3C

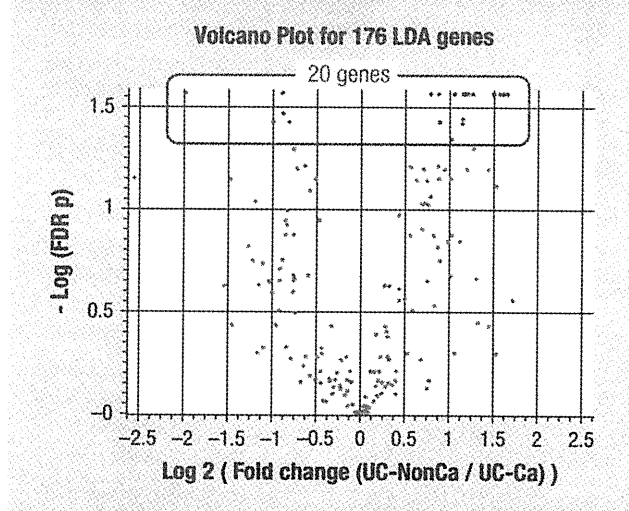
Abbreviations: Ca = cancer; EGF = endothelial growth factor; FDR = false discovery rate; ID = identifier; UC = ulcerative colitis.

with an accuracy of 83.0%. The sensitivity, specificity, positive predictive value (PPV), and negative predictive value (NPV) were 100.0%, 79.1%, 52.6%, and 100.0%, respectively. Nine patients, all in the UC-NonCa group, were misclassified. To determine the number of genes that provided the best separation between patients with and without UC-Ca, we next ranked the 20 genes on the basis of the significance of their FDR *P* values and made predictions using 19 genes, 18 genes, and so on, starting from the bottom of the rank-ordered list. Figure 5 shows the prediction rates using different numbers of discriminator genes and shows that the greatest accuracy, 83.0%, was obtained using 16 to 20 of the top-ranked genes.

## Discussion

Using quantitative RT-PCR analysis, we have been able to select 20 discriminator genes whose expression differed significantly between the UC-Ca and UC-NonCa groups. Two-way hierarchical clustering and PCA analyses using these 20 genes could distinguish patients in the UC-Ca and the UC-NonCa groups. In addition, based on the expression profiling of these 20 genes in nonneoplastic rectal mucosa by RT-PCR, we were able to build a predictive model which identified patients with UC-Ca or UC-NonCa with a high accuracy of 83.0%. This suggested that our predictive model may be useful for distinguishing patients with high and low risk for develop-

**Figure 3** Volcano Plot Showing the Fold Change and *P* Values for 176 Genes. There were 20 genes with a fold change greater than 1.5



ing UC-Ca and this may lead to improvements in the efficacy of surveillance in UC patients. By stratifying patients according to their risk of UC-Ca, intensive surveillance could be targeted at high risk patients, and lower risk patients could receive less intensive surveillance. However, it is also important that this type of predictive model does not miss patients at high risk of developing UC-Ca. To achieve this goal a predictive model needs to show not only a high accuracy rate but also a high NPV. In our model the NPV was 100.0%, showing that it would be expected to identify all high risk patients correctly. These results suggest that our model may be useful for improving the efficacy of surveillance colonoscopy for UC patients in the clinic.

In our previous study, we demonstrated a predictive model for UC-Ca using a microarray. However, in a microarray analysis it is difficult to evaluate the expression of all genes because of the detection limit for each probe. Genes with low expression levels have to be excluded from the analysis by the data-cleaning process used. In fact, in our previous study, we had to exclude the expression data for 26,181 out of an original 54,675 probes in the final analysis. It is therefore possible that some important genes may have been excluded by this process. To overcome these problems associated with the use of microarrays, we included an additional 149 genes, which have been shown by others to be important in colon cancer carcinogenesis, in the present RT-PCR analysis. By analyzing a total of 189 genes and transcripts, we were finally able to select 20 discriminator genes whose expression differed significantly between the UC-Ca and UC-NonCa groups and could therefore be used in a predictive model.

Of these 20 discriminator genes, 8 were common to the genes identified in our previous microarray study. These genes included *SAMS1*, *SEPW1*, *EDIL3*, and *NOL3*. *SAMS1* maps to human chromosome 21q in a region that frequently shows loss of heterozygosity (LOH) in lung cancer, and a recent study reported that *SAMS1* may act as a possible tumor suppressor gene for lung cancer.<sup>26</sup> *EDIL3* is a member of a family of extracellular matrix proteins

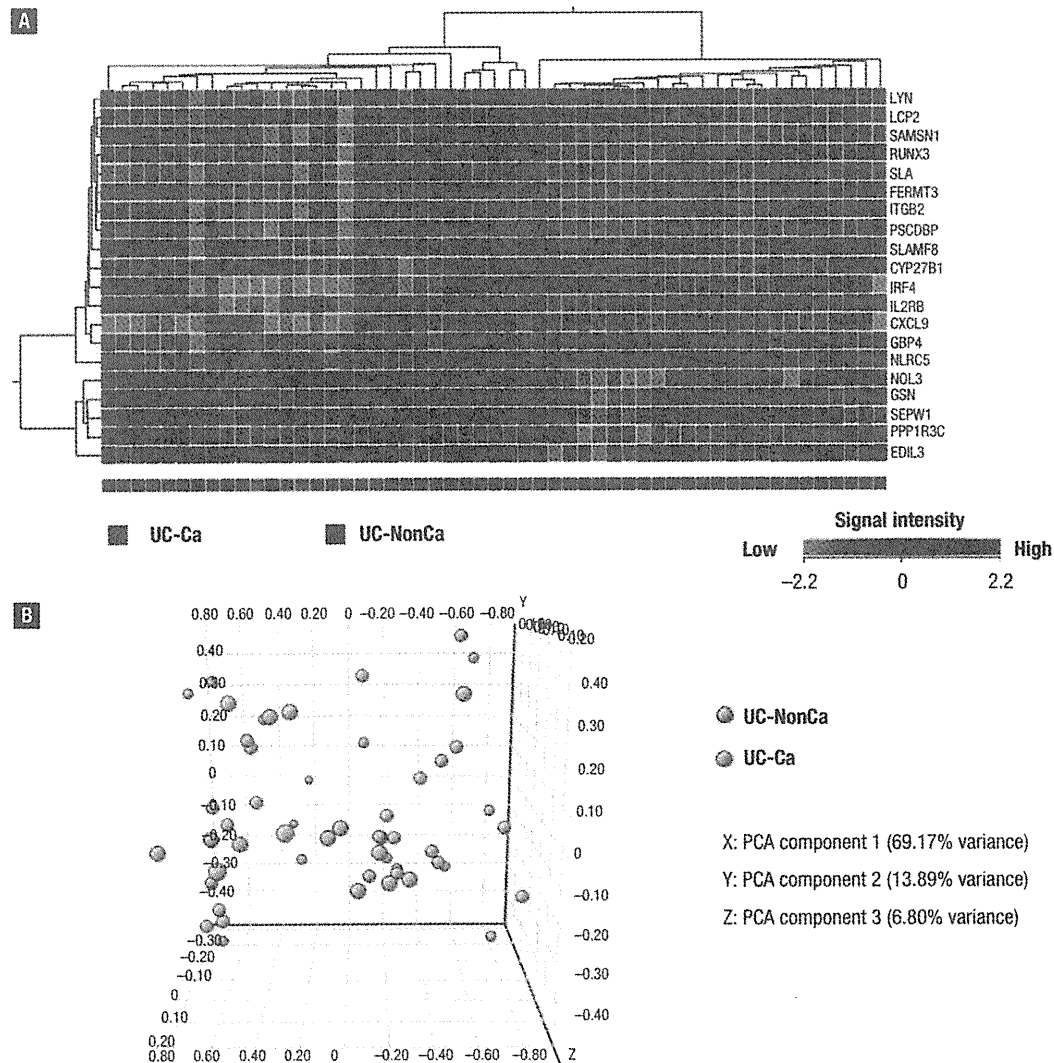
with multiple endothelial growth factor (EGF)-like repeats.<sup>27</sup> The molecular function of the *SEPW1* protein is unknown to date, but a role as an antioxidant has been proposed based on its ability to bind glutathione.<sup>28</sup> Other studies have demonstrated overexpression of *EDIL3* in hepatocellular carcinoma and *SEPW1* in breast cancer.<sup>27,29</sup> However, the roles of *SAMS1*, *EDIL3* and *SEPW1* in colorectal carcinogenesis remain unknown. *NOL3* is an inhibitor of apoptosis,<sup>30</sup> whose expression is markedly increased in the epithelium of primary human breast cancers compared with benign breast tissue and is also known to be high in colon cancers compared with adjacent benign colonic tissue.<sup>30</sup> Because the ability of cells to escape apoptosis is critical during carcinogenesis, *NOL3* may play an important role in UC-associated carcinogenesis.

This study also selected 12 new genes that were not among the previous 40 predictor genes identified. These genes included *CYP27B1*, *RUNX3*, *CXCL9*, *ITGB2*, and *LYN*. *CYP27B1* plays an important role in calcium homeostasis by catalyzing the synthesis of the active form of vitamin D. Vitamin D prevents proliferation and induces apoptosis in colon cells, and an insufficiency of this vitamin is associated with an increased risk of colorectal cancer.<sup>31</sup> Ogunkolade et al. showed that concentrations of *CYP27B1* mRNA were similar in colon cancer samples and in nonneoplastic colon samples from individuals without cancer, but were significantly lower in the nonneoplastic mucosa of patients with cancer.<sup>31</sup> They suggested that the downregulation of *CYP27B1* could contribute to cancer risk. Our study has also shown that *CYP27B1* expression in nonneoplastic colon tissue was significantly lower in patients with UC-Ca than in cancer-free patients. Together with the results from Ogunkolade et al., our results suggest that the downregulation of *CYP27B1* may indeed indicate an increased cancer risk in UC-Ca patients. *RUNX3* is involved in the transforming growth factor  $\beta$  (TGF- $\beta$ )-induced tumor suppressor pathway<sup>32,33</sup> and is known to act as a tumor suppressor gene in gastric cancer.<sup>34</sup> Previous studies reported that changes in *RUNX3* gene expression were also found in a number of cancers including breast, lung, hepatocellular, prostate, bile duct, pancreatic, and colon cancers.<sup>32-34</sup> However, to date, genetic changes in *RUNX3* have not been reported during UC-associated carcinogenesis and this study is the first to show the upregulation of *RUNX3* expression in UC patients. *CXCL9* is an antiangiogenic chemokine that has previously been shown to be overexpressed in colon cancer<sup>35</sup> and the expression of *ITGB2* has been shown to correlate with clinical course of colorectal cancer after surgery.<sup>36</sup> *LYN* is a member of the Src family tyrosine kinases (SFK) and a negative regulator of apoptosis in various cell types. *LYN* plays an important role in cellular proliferation and metastasis in many human malignancies and the overexpression of *LYN* in colon cancer cell lines has been shown to induce chemoresistance.<sup>37</sup> Although these genes have been reported to be closely related to carcinogenesis in various cancers, a relationship to UC-Ca has not been reported previously. This study suggests that these genes may have important roles in UC-associated carcinogenesis.

One possible limitation of this study is the relatively small number of patients used, so that we could not validate the accuracy of our predictive model. To further confirm the accuracy of the model, we

## Predicting Ulcerative Colitis-Associated Cancer

**Figure 4** Two-way Hierarchical Clustering and Principal Component Analysis. (A) Two-way hierarchical cluster analysis was used to order samples (columns) and array targets (rows). Red indicates overexpression, green indicates underexpression. Patients in the ulcerative colitis (UC)-associated cancer (UC-Ca) group and non-cancer (UC-NonCa) groups were clustered into 2 distinct groups. All patients were classified correctly on the basis of gene expression into either the UC-Ca or UC-NonCa group, except for 3 cases in the UC-NonCa group. At the bottom of the plot, red indicates the UC-Ca group and blue indicates the UC-NonCa group. (B) Principal component analysis. Discriminator genes were used to generate a 3-dimensional (from a 20-dimensional) plot of the data. principal component analysis (PCA)-based multidimensional scaling visualization separated samples in the UC-Ca (Red) and UC-NonCa (Green) groups into linearly separable gene expression data spaces



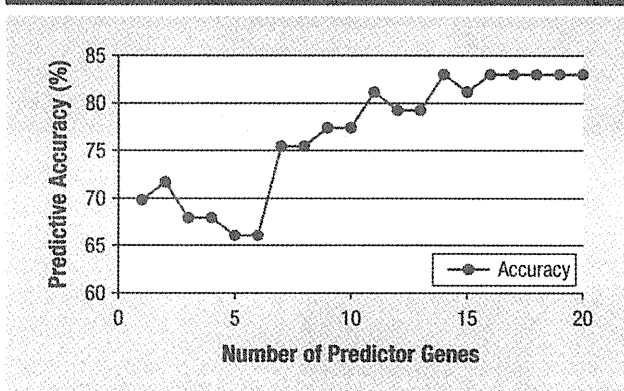
will need to validate the predictive value of the present model by use of an independent test set of patients to show clear robustness in a prospective trial. A second important point concerns the number of genes we have used for this predictive model. We derived this model using 20 discriminator genes, but in a clinical setting, using a smaller number of genes would be more practical. We therefore investigated using a smaller number of predictor genes and found that the same accuracy was obtained when we used 16, 17, 18, 19, or 20 of the top-ranked genes. This clearly suggested that we could reduce the

number of predictive genes to 16. However, using any fewer predictor genes resulted in reduced accuracy for the predictions made by the model.

### Conclusion

Based on the expression levels of 20 genes in the nonneoplastic rectal mucosa of UC patients, we have been able to predict the development of UC-Ca in patients with high accuracy. To our knowledge, this is the first study to show that RT-PCR analysis can be

**Figure 5** The Accuracy of Predictions Using Different Numbers of Predictor Genes. The greatest accuracy (83.0%) was obtained using 20, 19, 18, 17, or 16 top-ranked genes



useful for accurately predicting the development of UC-associated neoplasms. This model may be useful for improving the efficacy of surveillance in UC. However, as the number of patients in this study was limited, the results need to be validated in a prospective study with a larger number of patients. Furthermore, the role of discriminator genes in UC-associated carcinogenesis needs to be clarified and this may provide useful directions for future research into the molecular mechanisms of UC-associated cancer.

## Acknowledgement

This study was supported by a Grant-in-Aid for Scientific Research from the Ministry of Education, Culture, Sports, Science, and Technology of Japan; a grant from the Ministry of Health, Labor and Welfare of Japan, and Intractable Diseases, and Health and Labour Sciences Research Grants from Ministry of Health, Labor and Welfare of Japan.

The authors are indebted to Eriko Hashimoto and Riyo Kakimoto for technical and secretarial support.

## Disclosures

All authors have no conflicts of interest.

## References

- Riddell RH, Goldman H, Ransohoff DF, et al. Dysplasia in inflammatory bowel disease: standardized classification with provisional clinical applications. *Hum Pathol* 1983; 14:931-68.
- Eaden JA, Abrams KR, Mayberry JF. The risk of colorectal cancer in ulcerative colitis: a meta-analysis. *Gut* 2001; 48:526-35.
- Hata K, Watanabe T, Kazama S, et al. Earlier surveillance colonoscopy programme improves survival in patients with ulcerative colitis associated colorectal cancer: results of a 23-year surveillance programme in the Japanese population. *Br J Cancer* 2003; 89:1232-6.
- Vogelstein B, Fearon ER, Hamilton SR, et al. Genetic alterations during colorectal-tumor development. *N Engl J Med* 1988; 319:525-32.
- Brentnall TA, Crispin DA, Rabinovitch PS, et al. Mutations in the p53 gene: an early marker of neoplastic progression in ulcerative colitis. *Gastroenterology* 1994; 107:369-78.
- Tarmin L, Yin J, Harpaz N, et al. Adenomatous polyposis coli gene mutations in ulcerative colitis-associated dysplasias and cancers versus sporadic colon neoplasms. *Cancer Res* 1995; 55:2035-8.
- Hsieh CJ, Klump B, Holzmann K, et al. Hypermethylation of the p16INK4a promoter in colectomy specimens of patients with long-standing and extensive ulcerative colitis. *Cancer Res* 1998; 58:3942-5.
- Sato F, Harpaz N, Shibata D, et al. Hypermethylation of the p14 (ARF) gene in ulcerative colitis-associated colorectal carcinogenesis. *Cancer Res* 2002; 62:1148-51.
- Issa JP, Ahuja N, Toyota M, et al. Accelerated age-related CpG island methylation in ulcerative colitis. *Cancer Res* 2001; 61:3573-7.
- Brentnall TA, Crispin DA, Bronner MP, et al. Microsatellite instability in nonneoplastic mucosa from patients with chronic ulcerative colitis. *Cancer Res* 1996; 56:1237-40.
- Fujii S, Tominaga K, Kitajima K, et al. Methylation of the oestrogen receptor gene in non-neoplastic epithelium as a marker of colorectal neoplasia risk in longstanding and extensive ulcerative colitis. *Gut* 2005; 54:1287-92.
- Xie J, Itzkowitz SH. Cancer in inflammatory bowel disease. *World J Gastroenterol* 2008; 14:378-89.
- Watanabe T, Kobunai T, Toda E, et al. Gene expression signature and the prediction of ulcerative colitis-associated colorectal cancer by DNA microarray. *Clin Cancer Res* 2007; 13:415-20.
- Ding Y, Xu L, Jovanovic BD, et al. The methodology used to measure differential gene expression affects the outcome. *J Biomol Tech* 2007; 18:321-30.
- Lossos IS, Czerwinski DK, Alizadeh AA, et al. Prediction of survival in diffuse large-B-cell lymphoma based on the expression of six genes. *N Engl J Med* 2004; 350:1828-37.
- Chen HY, Yu SL, Chen CH, et al. A five-gene signature and clinical outcome in non-small-cell lung cancer. *N Engl J Med* 2007; 356:11-20.
- Endoh H, Tomida S, Yatabe Y, et al. Prognostic model of pulmonary adenocarcinoma by expression profiling of eight genes as determined by quantitative real-time reverse transcriptase polymerase chain reaction. *J Clin Oncol* 2004; 22:811-9.
- Chen CN, Lin JJ, Chen JJ, et al. Gene expression profile predicts patient survival of gastric cancer after surgical resection. *J Clin Oncol* 2005; 23:7286-95.
- Camos M, Esteve J, Jares P, et al. Gene expression profiling of acute myeloid leukemia with translocation t(8;16)(p11;p13) and MYST3-CREBBP rearrangement reveals a distinctive signature with a specific pattern of HOX gene expression. *Cancer Res* 2006; 66:6947-54.
- Bonanomi A, Kojic D, Giger B, et al. Quantitative cytokine gene expression in human tonsils at excision and during histoculture assessed by standardized and calibrated real-time PCR and novel data processing. *J Immunol Methods* 2003; 283:27-43.
- Pérez S, Royo LJ, Astudillo A, et al. Identifying the most suitable endogenous control for determining gene expression in hearts from organ donors. *BMC Mol Biol* 2007; 8:114.
- Vandesompele J, De Preter K, Patny F, et al. Accurate normalization of real-time quantitative RT-PCR data by geometric averaging of multiple internal control genes. *Genome Biol* 2002; 3:RESEARCH0034.
- Livak KJ, Schmittgen TD. Analysis of relative gene expression data using real-time quantitative PCR and the 2<sup>(-Delta Delta C)</sup> method. *Methods* 2001; 25:402-8.
- Green GH, Diggle PJ. On the operational characteristics of the Benjamini and Hochberg false discovery rate procedure. *Stat Appl Genet Mol Biol* 2007; 6:Article27
- Brown MP, Grundy WN, Lin D, et al. Knowledge-based analysis of microarray gene expression data by using support vector machines. *Proc Natl Acad Sci U S A* 2000; 97:262-7.
- Yamada H, Yanagisawa K, Tokumaru S, et al. Detailed characterization of a homozygously deleted region corresponding to a candidate tumor suppressor locus at 21q11-21 in human lung cancer. *Genes Chromosomes Cancer* 2008; 47:810-8.
- Luo JH, Ren B, Keryanov S, et al. Transcriptomic and genomic analysis of human hepatocellular carcinomas and hepatoblastomas. *Hepatology* 2006; 44:1012-24.
- Beilstein MA, Vendeland SC, Barofsky E, et al. Selenoprotein W of rat muscle binds glutathione and an unknown small molecular weight moiety. *J Inorg Biochem* 1996; 61:117-24.
- Hu Y, Sun H, Drake J, et al. From mice to humans: identification of commonly deregulated genes in mammary cancer via comparative SAGE studies. *Cancer Res* 2004; 64:7748-55.
- Mercier I, Vuolo M, Jasmin JF, et al. ARC (apoptosis repressor with caspase recruitment domain) is a novel marker of human colon cancer. *Cell Cycle* 2008; 7:1640-7.
- Ogunkolade BW, Boucher BJ, Fairclough PD, et al. Expression of 25-hydroxyvitamin D-1-alpha-hydroxylase mRNA in individuals with colorectal cancer. *Lancet* 2002; 359:1831-2.
- Lau QC, Raja E, Salto-Tellez M, et al. RUNX3 is frequently inactivated by dual mechanisms of protein mislocalization and promoter hypermethylation in breast cancer. *Cancer Res* 2006; 66:6512-20.
- Fukamachi H, Ito K. Growth regulation of gastric epithelial cells by Runx3. *Oncogene* 2004; 23:4330-5.
- Li QL, Ito K, Sakakura C, et al. Causal relationship between the loss of RUNX3 expression and gastric cancer. *Cell* 2002; 109:113-24.
- Erreni M, Bianchi P, Laghi L, et al. Expression of chemokines and chemokine receptors in human colon cancer. *Methods Enzymol* 2009; 460:105-21.
- Cavalieri D, Dolara P, Mini E, et al. Analysis of gene expression profiles reveals novel correlations with the clinical course of colorectal cancer. *Oncol Res* 2007; 16:535-48.
- Goldenberg-Furmanov M, Stein I, Pikarsky E, et al. Lyn is a target gene for prostate cancer: sequence-based inhibition induces regression of human tumor xenografts. *Cancer Res* 2004; 64:1058-66.

# The use of infliximab in the prevention of postsurgical recurrence in polysurgery Crohn's disease patients: a pilot open-labeled prospective study

Atsushi Sakuraba · Toshiro Sato ·  
Hidehiko Matsukawa · Susumu Okamoto ·  
Hiromasa Takaishi · Haruhiko Ogata · Yasushi Iwao ·  
Toshifumi Hibi

Accepted: 16 December 2011  
© Springer-Verlag 2012

## Abstract

**Purpose** Crohn's disease (CD) commonly recurs after surgery, and a number of patients need repeated surgery, especially smokers and those with repeated surgeries or penetrating disease. Whether infliximab prevents postsurgical recurrence in high-risk CD remains unknown. In the present pilot open-labeled study, we investigated the safety and efficacy of scheduled infliximab, which was started early after surgery, in maintaining remission of CD patients who have undergone multiple surgeries due to penetrating disease.

**Methods** Eleven patients (nine male, two female; age range, 26–48 years) who had undergone repeated surgeries (median, 4; range, 2–5) for penetrating disease were enrolled. Two to 4 weeks after surgery, the patients were started on intravenous infliximab (5 mg/kg) at an 8-week interval. The primary end points were the proportion of patients in clinical

remission at the end of the study, the rate of endoscopic/radiologic remission at 24 months, and the rate of adverse effects.

**Results** One patient dropped out due to non-compliance, and ten patients were eligible for analysis. Clinical remission was maintained in six of ten patients (60.0%) at the end of the study. At 24 months, four out of ten patients were in endoscopic or radiological remission (40.0%). Two patients experienced adverse effects (18.2%), one of whom elected to withdraw from the study.

**Conclusion** The findings of no major safety concern and possible clinical benefit in our study suggest that further investigation of infliximab as a treatment for prevention of postsurgical recurrence in high-risk CD is warranted.

**Keywords** Crohn's disease · Infliximab · Maintenance · Postsurgical recurrence

**Electronic supplementary material** The online version of this article (doi:10.1007/s00384-011-1398-y) contains supplementary material, which is available to authorized users.

A. Sakuraba (✉) · T. Sato · S. Okamoto · H. Takaishi · H. Ogata ·  
Y. Iwao · T. Hibi (✉)

Division of Gastroenterology and Hepatology, Department  
of Internal Medicine, School of Medicine, Keio University,  
35 Shinanomachi, Shinjuku,  
Tokyo 160-8582, Japan  
e-mail: asakurab@medicine.bsd.uchicago.edu  
e-mail: thibi@sc.itc.keio.ac.jp

A. Sakuraba  
Department of Internal Medicine, Kitasato Institute Hospital,  
Tokyo, Japan

H. Matsukawa  
Department of Internal Medicine, Kyouzai Tachikawa Hospital,  
Tokyo, Japan

## Abbreviations

CD	Crohn's disease
IBD	Inflammatory bowel disease
5-ASA	5-Aminosalicylic acid
CDAI	Crohn's disease activity index

## Introduction

Crohn's disease (CD) is a chronic inflammatory bowel disease (IBD) characterized by periods of remission interrupted by episodes of clinical relapse due to recurrent intestinal inflammation [1]. The pathogenesis of CD reflects dysregulated interaction among environmental factors, intestinal flora, and

genetic susceptibility factors within the immune system, which triggers inflammatory activities in the intestinal mucosa [2–4]. Lesions of CD are characterized by trans-mural inflammation of potentially any section of the digestive tract, leading to various intestinal and extra-intestinal manifestations that often need surgery [3, 5].

The natural behavior of Crohn's disease is characterized by recurring active disease interrupted with periods of inactive disease and remission [5]. Approximately 75% of patients with CD require surgery during their lifetime. Surgery is not curative, since the disease almost invariably recurs due to the pan-enteric nature of CD. More than 80% of patients with CD develop endoscopic recurrence 1 year after surgery if they are not given any prophylactic treatment [6]. Clinical relapse occurs in approximately 50% of patients 5 years after surgery. The rates of recurrence requiring re-surgery have been reported to be 25% to 35% at 5 years and 40% to 70% at 15 years [7]. The risk for recurrence is higher for ileocolonic disease (50% at 5 years) than for ileal disease and higher for perforating disease than nonperforating disease [8, 9]. Furthermore, penetrating disease, multiple surgeries, and smoking have been reported as risk factors of disease recurrence. There is concern that reoperative surgery for Crohn's disease leads to a higher rate of major postoperative complications and ultimately the development of short bowel syndrome.

Conventional medications including 5-aminosalicylic acid (5-ASA), prednisolone (PSL), and immunomodulators like azathioprine/mercaptopurine have been used for many years in the treatment of active CD [10]. 5-ASA, metronidazole, and immunomodulators are also used for the maintenance of remission [11, 12]. However, a certain number of patients will experience relapse that requires surgery. Therefore, there is a need for effective and well-tolerated therapies for prevention of relapse in CD. Recently, anti-tumor necrosis factor agents, including infliximab, have been shown to be effective in inducing and maintaining remission in CD [13]. Several studies have shown that infliximab is effective in the prevention of postsurgical relapse in CD. Reguiero et al. evaluated whether infliximab reduces postoperative recurrence in CD in a placebo-controlled study [14]. They reported that infliximab therapy (started within 4 weeks of surgery and continued for 1 year) was effective in preventing endoscopic and histological recurrence at 1 year after surgery. Yamamoto et al. showed that infliximab had suppressive effects on clinical and endoscopic recurrence in patients with early endoscopic lesions after 6 months of surgical resection [15]. Both of the studies showed favorable outcome towards infliximab in the prevention of relapse after surgery. However, in those studies, only a small number of patients had undergone multiple surgeries before infliximab. Emerging data suggest that patients with multiple surgeries or penetrating disease and smokers are at

high risk for postoperative CD recurrence [8, 9]. Whether infliximab can prevent recurrence in patients who are at high risk for re-surgery, such as those with a history of multiple surgeries and penetrating disease, remains elusive.

The present prospective pilot study was performed to evaluate the tolerability and efficacy of infliximab to prevent postsurgical recurrence in CD patients with a penetrating disease phenotype who have undergone multiple surgeries.

## Methods

This pilot study was an open-labeled, prospective study aimed at evaluating the safety and efficacy of infliximab to prevent postsurgical recurrence in CD patients who have undergone multiple surgeries. The study period was from April 2003 to June 2008. The protocol and patients' informed consent forms were reviewed and approved by the hospital's Institutional Review Board. The study was conducted in accordance with the Declaration of Helsinki, in compliance with the consolidated Good Clinical Practice guideline and the applicable regulatory requirements.

### Patient population

Male or nonpregnant female CD patients older than 12 years at Keio University Hospital, Kitasato Institute Hospital, and Kyousai Tachikawa Hospital who had undergone multiple surgeries ( $\geq 2$ ) were eligible. The latest surgery had to be radical (i.e., it completely removed the macroscopically involved intestine). Patients were screened and, if they met the criteria below, were recruited to the study.

Preoperative assessments with colonoscopy and barium studies were required to rule out active disease outside the operated location. Patients without sufficient preoperative evaluation were excluded. Patients with leukopenia (leukocyte count  $< 3,000/\mu\text{L}$ ), serious heart or kidney disease, coagulation/liver disorder, and infection were excluded. Those who developed surgical or postsurgical complications such as ileus, wound infection, or anastomosis leakage were not recruited. Chest X-ray and Mantoux tuberculin skin test were performed to exclude tuberculosis infection. Oral maintenance treatment was permitted if given at a stable dose for at least 8 weeks before the surgery for 5-ASA and immunomodulators (mercaptopurine), and was continued at the same dose postoperatively. Patients already receiving infliximab before surgery were excluded. Doses of PSL were allowed to be tapered by the clinician's decision after the surgery. Concomitant medications, used for other diseases than CD, which did not violate the protocol inclusion, were allowed.

## Treatment and follow-up

Infliximab (5 mg/kg) was started 2–4 weeks after surgery and continued every 8 weeks. Premedication of hydrocortisone (50 mg iv) was given to every patient before infusion. The duration of infusion of infliximab was 2 h in every case. With respect to the CD disease status, at each visit (every 8 weeks), diaries were reviewed, and clinical and laboratory assessments were performed to assess Crohn's disease activity index (CDAI).

## Outcomes

**Primary end point** The primary efficacy parameter was the rate of patients maintaining clinical remission at the end of the study period (June 2008). Patients were defined as having a clinical relapse when they experienced a  $\geq 50$  increase in CDAI compared to baseline. This criterion was applied, since the majority of patients were having frequent bowel movements, despite curative surgery, which may have contributed to high CDAI at baseline. When patients withdrew due to adverse effects, they were defined as treatment failure as well.

**Secondary end points** The secondary efficacy parameter was the rate of endoscopic or radiological remission at 24 months and the cumulative risk of surgery before and after the introduction of maintenance infliximab therapy. The endoscopic score developed by Rutgeerts was used to assess endoscopic remission [6]. Briefly, the scores were as follows: i0, no lesions; i1, five or fewer aphthous lesions; i2, more than five aphthous lesions with normal mucosa between the lesions or skip areas of larger lesions or lesions confined to the ileocolonic anastomosis; i3, diffuse aphthous ileitis with diffusely inflamed mucosa; and i4, diffuse inflammation with large ulcers, nodules, and/or narrowing. Endoscopic remission was defined by a score of i0 or i1. For those patients who could not be assessed by ileocolonoscopy, a double-contrast barium small-bowel follow-through study was performed. The results were assessed by the performing radiologist, and patients were defined as remission, when there was no sign of active lesions due to Crohn's disease. When there were aphthous, discrete, or longitudinal ulcers, strictures, or any other lesion related to Crohn's disease, it was regarded as recurrence. Ileocolonoscopy and double-contrast barium follow through were performed and scored by a blinded physician. The incidence and severity of adverse side effects were also analyzed during the study period.

## Statistical analysis

When appropriate, data are presented as mean  $\pm$  SE values. The survival curve was assessed by the Kaplan–Meier

method, and the rate of surgery pre- and post-infliximab was assessed by the Mann–Whitney test. For statistical analysis, data were processed by using SAS software (SAS Institute, Cary, NC, USA), and graphs were created with GraphPad Prism (GraphPad Software, La Jolla, CA, USA).  $P < 0.05$  was considered statistically significant.

## Results

### Participant flow and follow-up

A total of 11 patients who had undergone two or more surgeries were enrolled in the study. The median number of surgery per patient was 4 (range, 2–5; mean, 3.36). Of the 11 patients, none had operative or postoperative complications, and none was lost to follow-up. Nine patients (81.8%) were taking immunomodulators (mercaptopurine) preoperatively. The dose of mercaptopurine was 0.5 mg/kg which is the suggested dose in Japanese IBD patients defined in a previous study [16]. The two patients who were not taking mercaptopurine preoperatively had a history of intolerance in the past (nausea and liver dysfunction, respectively). Three patients were taking PSL preoperatively. The reasons for the most recent surgery were active disease with stricture and abscess in four, entero-cutaneous fistula in one, entero-cutaneous fistula with abscess in three, and entero-enteral fistula in three. Full patients' demography is presented in Table 1. Detailed characteristics of each patient are depicted in supplementary Fig. 1.

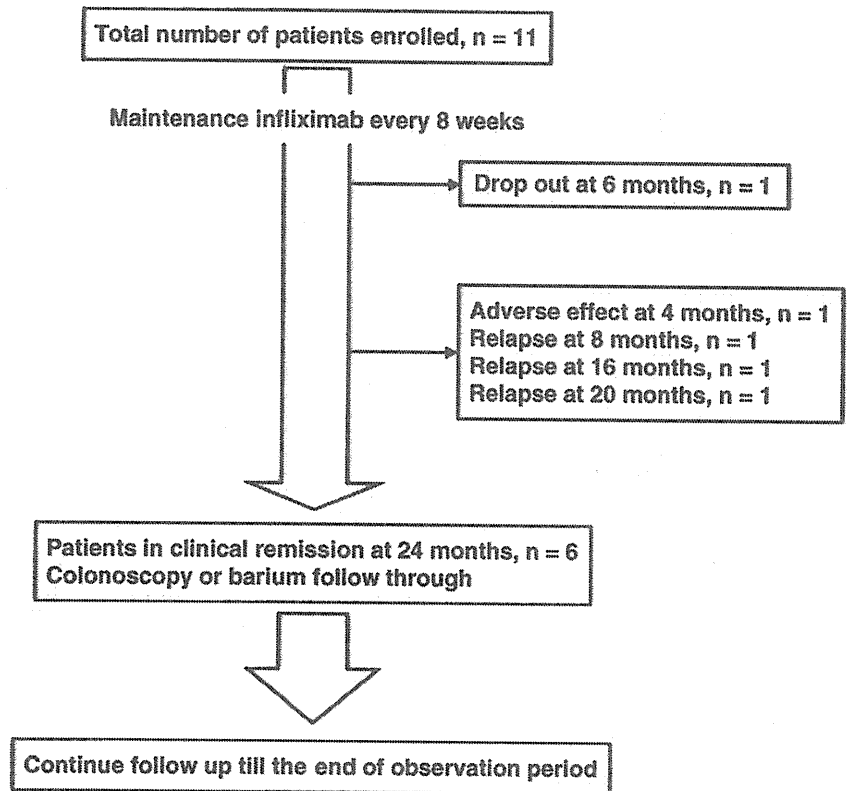
The flow chart of the study is shown in Fig. 1. One patient dropped out due to non-compliance after the third infliximab infusion (6 months) and withdrew from the study. Two patients developed infusion reactions (hypotension, dyspnea, and fever) at their second and third infusions, respectively. The former patient elected to withdraw from the study at 4 months. Treatment failure was defined as either disease relapse or withdrawal because of adverse effects.

**Table 1** Baseline characteristics

Characteristics	
Sex (male/female)	9:2
Age (years, range)	34.1 (26–48)
Duration of CD (months, range)	134.4 (48–204)
Disease location (ileum/ileocolonic)	4:7
Anal lesions ( <i>n</i> )	9
Number of previous surgeries (median, range)	4 (2–5)
Use of 5-ASA ( <i>n</i> )	11
Use of steroids ( <i>n</i> )	2
Use of immunomodulators (mercaptopurine) ( <i>n</i> )	9
Smokers ( <i>n</i> )	3



Fig. 1 Flowchart of the study



### Primary efficacy evaluation

As stated above, one patient dropped out due to non-compliance at 6 months and was removed from analysis (Fig. 2). As per protocol, six out of ten patients (60.0%) maintained clinical remission at the end of the study. The median follow-up period was 33 months (range, 4–65). One patient relapsed at 8 months, due to an entero-enteral fistula accompanied with bowel obstruction, and required re-surgery. This patient also developed an infusion reaction. One patient relapsed at 16 months due to a bleeding ulcer at the ileocolonic anastomosis. Another patient developed a gastric ulcer at 20 months which upon immunohistochemistry showed granulomas and was diagnosed that it was caused by Crohn's disease. Prior evaluation did not show any upper gastrointestinal lesion in this patient, and it was presumed that this lesion developed during infliximab treatment. Both of the patients were given three induction infusions (0, 2, 6 weeks) of infliximab followed by maintenance infusions every 6 weeks to re-induce and maintain remission. One patient who developed an infusion reaction at her second infusion (4 months) refused to continue the study.

### Secondary efficacy evaluation

Six patients who had maintained clinical remission either underwent ileocolonoscopy or double-contrast barium follow through by a blinded physician at 24 months. Of the

four patients who underwent ileocolonoscopy, one patient had multiple small ulcers on both sides of the ileocolonic anastomosis (i2), and another patient developed a fistula at the ileocolonic anastomosis. The two patients who underwent double-contrast barium follow through had no active lesions. As per protocol, four out of ten patients (40.0%) were in endoscopic or radiological remission at 24 months.

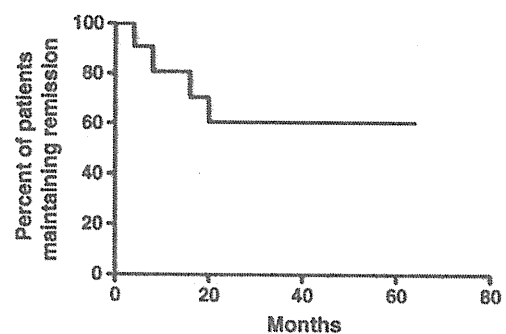


Fig. 2 Changes in the proportion of patients in clinical remission by maintenance infliximab shown with the Kaplan–Meier method. One patient dropped out due to non-compliance at 6 months and was removed from analysis. During the follow-up period (mean, 26.8 months; range, 4–65), six of ten patients (60.0%) maintained remission. One patient relapsed at 8 months, due to an entero-enteral fistula accompanied with bowel obstruction and required re-surgery. One patient relapsed at 16 months due to a bleeding ulcer at the ileorectal anastomosis. Another patient relapsed at 20 months due to a bleeding giant gastric ulcer caused by Crohn's disease. One patient withdrew from the study at 4 months due to infusion reaction

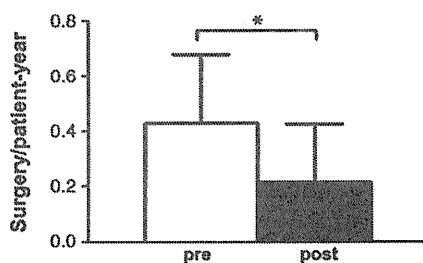
The cumulative risk of surgery before the current study was 0.43/patient-year (95% confidence interval (CI) 0.26 to 0.59) in the present patient population (Fig. 3). The risk decreased to 0.21/patient-year after the initiation of maintenance infliximab treatment (95% CI 0.30 to 0.73,  $P=0.015$ ). This suggests that infliximab, if given early after surgery, may prevent re-surgery in patients who are at high risk of relapse.

Regarding safety and tolerability, two patients experienced infusion reactions (18.2%), one of whom refused to continue the study, and the other was successfully treated with acetaminophen and chlorphenylamine. One patient (9.09%) dropped out due to non-compliance after the third infliximab infusion (6 months), though he did not have any side effects. No serious infection or malignancy occurred during the study period. However, one patient (9.09%) experienced herpes zoster infection after the sixth infliximab infusion, which was successfully treated with oral valaciclovir.

## Discussion

The present pilot study was performed to seek the efficacy and tolerability of scheduled infliximab in maintenance of remission of CD patients with a penetrating disease phenotype who have undergone multiple surgeries. We have shown that maintenance treatment with infliximab prevented clinical and endoscopic/radiological recurrence in 60% and 40% of patients who are at risk for recurrence, respectively.

Recently, several studies have shown that infliximab is effective against postoperative recurrence of CD. Reguiero et al. reported that infliximab prevented endoscopic recurrence at 1 year in more than 90% of patients [14]. Sorrentino et al. reported that patients treated with infliximab and low-dose methotrexate showed no endoscopic or clinical recurrence after 2 years [17]. No patient required re-surgery in their studies. In the present study, one patient required re-surgery due to recurrence of CD, and 60% of patients had maintained a clinical remission, which are contradictory to the previous reports. The patient population in our study



**Fig. 3** Changes in the cumulative numbers of surgeries before and after the introduction of maintenance infliximab therapy. The cumulative risk of surgery before the current study was 0.41/patient-year in the present patient population. The risk decreased to 0.21/patient-year after the induction of maintenance infliximab treatment ( $P=0.015$ )

may have carried a higher risk of recurrence; however, the cumulative risk of surgery in our series of patients still decreased from 0.43/patient-year before the current study to 0.21/patient-year after the introduction of maintenance infliximab. This suggests that infliximab, if given early after surgery, may prevent re-surgery in patients who are at high risk of recurrence.

In the present pilot study, we only included patients with penetrating disease phenotype who had a history of multiple surgeries. This population carries higher risk of disease recurrence and needs proper prophylaxis to avoid further surgery to prevent future complications, such as short bowel and malnutrition. Smoking and female gender are also risk factors for postsurgical recurrence, and, in fact, three of the patients who smoked did continue to do so after the surgery. One of the smokers and one of the females experienced recurrence, respectively, which may have affected the results of our study. Infliximab was administered 2 to 4 weeks after surgery and subsequently continued every 8 weeks. We chose this regimen, because it has been reported that endoscopic recurrence may occur early after surgery, and the main purpose of this study was to assess the efficacy of infliximab in maintaining surgically achieved remission, but not inducing remission. Thus, we started infliximab at an 8-week interval and not with the 0-, 2-, and 6-week induction schedule as in Reguiero's study [14]. Administering infliximab with an induction schedule may improve outcome and should be considered in future studies. We did not check serum infliximab level or antibody against it in the current study; however, this issue should be taken into account in future studies, since they may guide subsequent treatment decisions.

The recurrence rates were relatively higher in our patient population compared to previous studies; however, the history and characteristics of our patient population suggest that without proper prophylaxis, they were highly likely to experience recurrence and re-surgery. One explanation for the discrepancy in the recurrence rate is that we only included patients who have undergone multiple surgeries due to perforating disease, who may have had higher risk of recurrence. Furthermore, the follow-up period was longer in our study, which may have also accounted for the higher recurrence rate. Majority of the patients (9 out of 11) continued the preoperative dose of mercaptopurine in combination with infliximab to achieve as much clinical benefit as possible. Though the dose of mercaptopurine used in our patient population was low, we have previously confirmed its effectiveness in Japanese patients with IBD.

We are also aware that our pilot study only included 11 patients, and it is difficult to draw a firm conclusion from the results of our study. The number of participants was limited, since our inclusion criteria provided that they required multiple surgeries, penetrating disease phenotype, and should

not have had any postsurgical complications such as bowel obstruction, prolonged fever, wound infection, etc. Since our study was a pilot study, it also lacks a control group, such as placebo-treated patients. To confirm whether infliximab can prevent postsurgical recurrence in the current patient population, a larger comparative study with a placebo-treated control group is necessary.

The results of our study showed that postoperative scheduled infliximab maintained clinical remission and endoscopic/radiologic remission in 60% and 40% of the patients, respectively. Paradoxically, however, the results of our study also show that around half of the patients experience either clinical or endoscopic/radiologic recurrence after surgery despite prophylaxis with infliximab. This reminds us about the limitations of infliximab in preventing postsurgical recurrence in high-risk patients and the further need to seek a more efficacious prophylaxis.

In conclusion, we have conducted a pilot study to assess the tolerability and efficacy of maintenance infliximab treatment in CD patients, with a penetrating disease phenotype who had undergone multiple surgeries and who appeared to be at high risk for postsurgical recurrence. Though our study population was small, it showed that infliximab was well tolerated and prevented recurrence in more than half of the patients. This indicates that infliximab, if given early, may be capable of changing the natural history of CD patients who are at high risk of recurrence. A larger-sized, randomized, controlled study to firmly establish the safety and efficacy of infliximab in the prevention of recurrence of high-risk CD is warranted.

**Conflict of interest** TS, HM, SO, HT, HO, and YI have no conflict of interest. AS received research support from Mitsubishi-Tanabe Pharmaceutical Co. TH serves as a consultant for Mitsubishi-Tanabe Pharmaceutical Co.

## References

- Hanauer SB (2006) Inflammatory bowel disease: epidemiology, pathogenesis, and therapeutic opportunities. *Inflamm Bowel Dis* 12(Suppl 1):S3–S9
- Xavier RJ, Podolsky DK (2007) Unravelling the pathogenesis of inflammatory bowel disease. *Nature* 448:427–434
- Hibi T, Ogata H (2006) Novel pathophysiological concepts of inflammatory bowel disease. *J Gastroenterol* 41:10–16
- Sakuraba A, Sato T, Kamada N, Kitazume M, Sugita A, Hibi T (2009) Th1/Th17 immune response is induced by mesenteric lymph node dendritic cells in Crohn's disease. *Gastroenterology* 137:1736–1745
- Hanauer SB (1996) Inflammatory bowel disease. *N Engl J Med* 334:841–848
- Rutgeerts P, Geboes K, Vantrappen G, Beyls J, Kerremans R, Hiele M (1990) Predictability of the postoperative course of Crohn's disease. *Gastroenterology* 99:956–963
- Michelassi F, Balestracci T, Chappell R, Block GE (1991) Primary and recurrent Crohn's disease. Experience with 1379 patients. *Ann Surg* 214:230–238, Discussion 238–240
- Sutherland LR, Ramcharan S, Bryant H, Fick G (1990) Effect of cigarette smoking on recurrence of Crohn's disease. *Gastroenterology* 98:1123–1128
- Mekhjian HS, Switz DM, Watts HD, Deren JJ, Katon RM, Beman FM (1979) National Cooperative Crohn's Disease Study: factors determining recurrence of Crohn's disease after surgery. *Gastroenterology* 77:907–913
- Hanauer SB, Present DH (2003) The state of the art in the management of inflammatory bowel disease. *Rev Gastroenterol Disord* 3:81–92
- Hanauer SB (2004) Review article: aminosalicylates in inflammatory bowel disease. *Aliment Pharmacol Ther* 20(Suppl 4):60–65
- Guessous I, Juillerat P, Pittet V, Froehlich F, Burnand B, Mottet C, Felley C, Michetti P, Vader JP (2007) Evaluating appropriateness of treatment for Crohn's disease: feasibility of an explicit approach. *Digestion* 75:46–52
- Rutgeerts P, Feagan BG, Lichtenstein GR, Mayer LF, Schreiber S, Colombel JF, Rachmilewitz D, Wolf DC, Olson A, Bao W, Hanauer SB (2004) Comparison of scheduled and episodic treatment strategies of infliximab in Crohn's disease. *Gastroenterology* 126:402–413
- Regueiro M, Schraut W, Baidoo L, Kip KE, Sepulveda AR, Pesci M, Harrison J, Plevy SE (2009) Infliximab prevents Crohn's disease recurrence after ileal resection. *Gastroenterology* 136:441–450, e1; quiz 716
- Yamamoto T, Umegae S, Matsumoto K (2009) Impact of infliximab therapy after early endoscopic recurrence following ileocolonic resection of Crohn's disease: a prospective pilot study. *Inflamm Bowel Dis* 15:1460–1466
- Komiyama T, Yajima T, Kubota R, Iwao Y, Sakuraba A, Funakoshi S, Negishi K, Minami I, Tanaka Y, Mae H (2008) Lower doses of 6-mercaptopurine/azathioprine bring enough clinical efficacy and therapeutic concentration of erythrocyte 6-mercaptopurine metabolite in Japanese IBD patients. *J Crohns Colitis* 2:315–321
- Sorrentino D, Terrosu G, Avellini C, Maiero S (2007) Infliximab with low-dose methotrexate for prevention of postsurgical recurrence of ileocolonic Crohn disease. *Arch Intern Med* 167:1804–1807

## VIII. 研究班構成