

**Table 1. Patient Characteristics and *IL28B* Genotype**

	<i>IL28B</i> Major*	<i>IL28B</i> Minor†	P-value‡
Patients, n	54	34	
Age (SD), year	58.8 (10.0)	59.1 (10.3)	0.918§
Sex, n (%)			0.051 <sup>  </sup>
Male	13 (24.1)	15 (44.1)	
Female	41 (75.9)	19 (55.9)	
BMI (SD), kg/m <sup>2</sup>	22.7 (3.5)	23.5 (3.6)	0.193§
ALT (SD), IU/L	61.3 (50.7)	62.4 (44.7)	0.962§
γ-GTP (SD), IU/L	36.7 (25.9)	57.3 (52.4)	0.010§
LDL-cholesterol (SD), mg/dL	103.3 (29.8)	91.8 (26.9)	0.067§
Hemoglobin (SD), g/dL	14.1 (1.4)	14.4 (1.3)	0.186§
Platelet count (SD), ×10 <sup>3</sup> /μL	161 (6.4)	163 (4.4)	0.489§
Fibrosis stage, n (%)			0.532 <sup>  </sup>
F1, 2	38 (70.4)	26 (76.5)	
F3, 4	16 (29.6)	8 (23.5)	
Viral load (SD), ×10 <sup>6.3</sup> IU/mL	1.7 (1.4)	1.9 (2.0)	0.788§
%HCV core 70 & 91 a.a. double mutation¶	8.9	43.5	0.001 <sup>  </sup>
%ISDR wild**	43.5	51.7	0.486 <sup>  </sup>
Viral response, n (%)			<0.001 <sup>  </sup>
SVR	17 (31.5)	13 (38.2)	
TVR	26 (48.1)	3 (8.8)	
NVR	11 (20.4)	18 (52.9)	

Unless otherwise indicated, data are given as mean (SD).

\*rs8099917 TT and rs12979860 CC.

†rs8099917 TG and rs12979860 CT.

BMI, body mass index; ALT, alanine aminotransferase; γ-GTP, γ-glutamyl transpeptidase; LDL-C, low-density lipoprotein cholesterol; HCV, hepatitis C virus; ISDR, interferon sensitivity determining region; SVR, sustained virological response; TVR, transient virological response; NVR, nonvirological response.

‡Comparison between *IL28B* major and minor genotypes.

§Mann-Whitney U test.

<sup>||</sup>Chi-square test.

¶HCV core mutation was determined in 68 patients.

\*\*ISDR was determined in 75 patients.

the therapy. After extraction of total RNA from liver biopsy specimens, the messenger RNA (mRNA) expression of the positive and negative cytoplasmic viral sensor (*RIG-I*, *MDA5*, and *LGP2*), the adaptor molecule (*IPS-1*), the related ubiquitin E3-ligase (*RNF125*), the modulators of these molecules (*ISG15* and *USP18*), and *IFNλ* (*IL28A/B*) was quantified by real-time quantitative polymerase chain reaction (PCR) using target gene-specific primers. In brief, total RNA was extracted by the acid-guanidinium-phenol-chloroform method using Isogen reagent (Nippon Gene, Toyama, Japan) from the liver biopsy specimen, which was 0.2–0.4 cm in length and 13G in diameter. Complementary DNA (cDNA) was transcribed from 2 μg of total RNA template in a 140-μL reaction mixture using the SYBR RT-PCR Kit (Takara Bio, Otsu, Japan) with random hexamer. Real-time quantitative PCR was performed using Smart Cycler version II (Takara Bio) with the SYBR RT-PCR Kit (Takara Bio) according to the manufacturer's instructions. Assays were performed in duplicate and the expression levels

of target genes were normalized to the expressions of glyceraldehyde-3-phosphate dehydrogenase (*GAPDH*) gene and hydroxymethylbilane synthase (*HMBS*), an enzyme that is stable in the liver, as quantified using real-time quantitative PCR as internal controls. For accurate normalization, a set of two housekeeping genes was used in the present study. Sequences of the primer sets were as follows: *RIG-I*, 5'-AAAGCATGCA TGGTGTTCAGCA-3', 5'-TCATTCGTGCATGCTC ACTGATAA-3'; *MDA5*, 5'-ACATAACAGCAACATG GGCAGTG-3', 5'-TTTGGTAAGGCCTGAGCTGG AG-3'; *LGP2*, 5'-ACAGCCTTGCAAACAGTACAAC CTC-3', 5'-GTCCCAAATTTCCGGCTCAAC-3'; *IPS-1*, 5'-GGTGCCATCCAAAGTGCCTACTA-3', 5'-CAGC ACGCCAGGCTTACTCA-3'; *RNF125*, 5'-AGGGCA CATATTCGGACTTGTCA-3', 5'-CGGGTATTAAC GGCAAAGTGG-3'; *ISG15*, 5'-AGCGAACTCATCT TTGCCAGTACA-3', 5'-CAGCTCTGACACCGACA TGGA-3'; *USP18*, 5'-TGGTTCTGCTTCAATGACT CCAATA-3', 5'-TTTGGGCATTTCCATTAGCACT C-3'; *IFNλ*: 5'-CAGCTGCAGGTGAGGGA-3', 5'-G GTGGCCTCCAGAACCTT-3'; *GAPDH*, 5'-GCACC GTCAAGGCTGAGAAC-3', 5'-ATGGTGGTGAAGA CGCCAGT-3'; *HMBS*, 5'-AAGCGGAGCCATGTCT GGTAAC-3', 5'-GTACCCACGCGAATCACTCTCA-3'.

**Genotyping for *IL28B* (rs8099917 and rs12979860) Polymorphism.** Genetic polymorphism in a tagged SNP located near the *IL28B* gene (rs8099917 and rs12979860) was determined by direct sequencing of PCR-amplified DNA. In brief, after extraction from whole blood samples, genomic DNA was amplified by PCR. Sequences of the primer sets were: rs8099917, 5'-ATCCTCCTCTCATCCCTCA TC-3', 5'-GGTATCAACCCACCTCAAAT-3'; rs129 79860, 5'-GGACGAGAGGGCGTTAGAG-3', 5'-AG GGACCGCTACGTAAGTCAC-3'.

Both strands of the PCR products were sequenced by the dye terminator method using BigDye Terminator v3.1 Cycle Sequencing Kit (Applied Biosystems, Chiba, Japan); nucleotide sequences were determined by a capillary DNA sequencer ABI3730xl (Applied Biosystems). Homozygosity (rs8099917 GG and rs12979860 TT) or heterozygosity (rs8099917 TG and rs12979860 CT) of the minor sequence was defined as having the *IL28B* minor allele, whereas homozygosity for the major sequence (rs8099917 TT and rs12979860 CC) was defined as having the *IL28B* major allele.

**Western Blotting.** Western blotting was performed using samples from 14 patients (six from *IL28B* major patients and eight from *IL28B* minor patients) as described.<sup>19</sup> In brief, liver biopsy specimens of

approximately 10 mg were homogenized in 100  $\mu$ L of Complete Lysis-M (Roche Applied Science, Penzberg, Germany). Next, 30  $\mu$ g of protein was separated by NuPAGE 4%-12% Bis-Tris gels (Invitrogen, Carlsbad, CA) and blotted on polyvinylidene difluoride membranes. The membranes were immunoblotted with anti-RIG-I (Cell Signaling Technology, Danvers, MA) or anti-IPS-1 (Enzo Life Science, Farmingdale, NY), followed by anti- $\beta$ -actin (Sigma Aldrich, St. Louis, MO). After immunoblotting with horseradish peroxidase-conjugated secondary antibody, signals were detected by chemiluminescence (BM Chemiluminescence Blotting Substrate, Roche Applied Science, Mannheim, Germany). Optical densitometry was performed using ImageJ software (NIH, Bethesda, MD). Naive Huh7 cells were used for a positive control for full-length IPS-1, and cells transfected with HCV-1b subgenomic replicon<sup>20</sup> were used for a positive control for cleaved IPS-1.

**Definitions of Response to Therapy.** A patient negative for serum HCV-RNA during the first 6 months after completing PEG-IFN $\alpha$ -2b/RBV combination therapy was defined as a sustained viral responder (SVR), and a patient for whom HCV-RNA became negative at the end of therapy and reappeared after completion of therapy was defined as a transient virological responder (TVR). A patient for whom HCV-RNA became negative at the end of therapy (SVR + TVR) was defined as a virological responder (VR). A patient whose HCV-RNA did not become negative during the course of therapy was defined as an NVR. HCV-RNA was determined by TaqMan HCV assay (Roche Molecular Diagnostics).

**Statistical Analysis.** Categorical data were compared using the chi-square test and Fisher's exact test. Distributions of continuous variables were analyzed by the Mann-Whitney *U* test for two groups. All tests of significance were two-tailed and *P* < 0.05 was considered statistically significant.

## Results

**Patient Characteristics and IL28B Genotype.** Table 1 shows patient characteristics according to *IL28B* genotype. SNPs at rs8099917 and rs12979860 were 100% identical; 54 patients were identified as having the major alleles (rs8099917 TT/rs12979860 CC; *IL28B* major patients) and the remaining 34 had the minor alleles (rs8099917 TG/rs12979860 CT; *IL28B* minor patients). Patients having a minor homozygote (rs8099917 GG or rs12979860 TT) were not found in this study, which is consistent with a recent report

of the rarity of a minor homozygote in Japanese patients.<sup>3</sup> *IL28B* minor patients were significantly associated with a higher  $\gamma$ -glutamyl transpeptidase ( $\gamma$ -GTP) level and higher frequency of mutations at amino acid positions 70 and 91 of the HCV core region (glutamine or histidine mutation at amino acid position 70; methionine mutation at amino acid position 91). NVR rate was significantly higher in *IL28B* minor patients than in *IL28B* major patients.

**Gene Expression Involving Innate Immunity and IFN $\lambda$  in the Liver.** Hepatic expression levels of cytoplasmic viral sensors (*RIG-I*, *MDA5*, and *LGP2*) were significantly higher in *IL28B* minor patients than in *IL28B* major patients (Fig. 1). Similarly, expressions of *ISG15* and *USP18* were significantly higher in *IL28B* minor patients than in *IL28B* major patients (Fig. 1). In contrast, the hepatic expression of the adaptor molecule (*IPS-1*) was significantly lower in *IL28B* minor patients than that in *IL28B* major patients (Fig. 1). Hepatic expression of *RNF125* was similar among *IL28B* genotypes (Fig. 1). *IFN $\lambda$*  (*IL28A/B*) expression was higher in *IL28B* minor patients, but not statistically significant (Fig. 1). Because expression of *RIG-I* and *IPS-1* were negatively correlated, the expression ratio of *RIG-I/IPS-1* in *IL28B* minor patients was significantly higher than in *IL28B* major patients (Fig. 1).

Next, to assess the relationship between baseline hepatic gene expression and treatment efficacy, we compared levels of gene expression involving innate immunity and *IFN $\lambda$*  based on the final virological response (Fig. 2). Overall, hepatic expressions of cytoplasmic viral sensors and the *ISG15/USP18* system in NVR patients were significantly higher than those in VR patients. In a similar but opposite manner, hepatic expressions of *IPS-1* and *RNF125* in NVR patients were significantly lower than that in VR patients, and the expression of *IFN $\delta$*  was higher in NVR patients, but the differences were not statistically significant. Expression ratio of *RIG-I/IPS-1* was significantly higher in NVR patients than that in VR patients.

Because hepatic expressions of the *RIG-I/IPS-1* and *ISG15/USP18* systems were significantly related both to *IL28B* minor and NVR patients, *RIG-I* and *ISG15* expression levels and the *RIG-I/IPS-1* ratio between VR and NVR patients were further stratified by *IL28B* genotype (Fig. 3). Even in the subgroup of *IL28B* minor patients, the expressions of *RIG-I* and *ISG15* were significantly higher in NVR patients than those in VR patients. Similar tendencies were observed in a subgroup of *IL28B* major patients, in whom the *RIG-I/IPS-1* expression ratio was significantly higher in

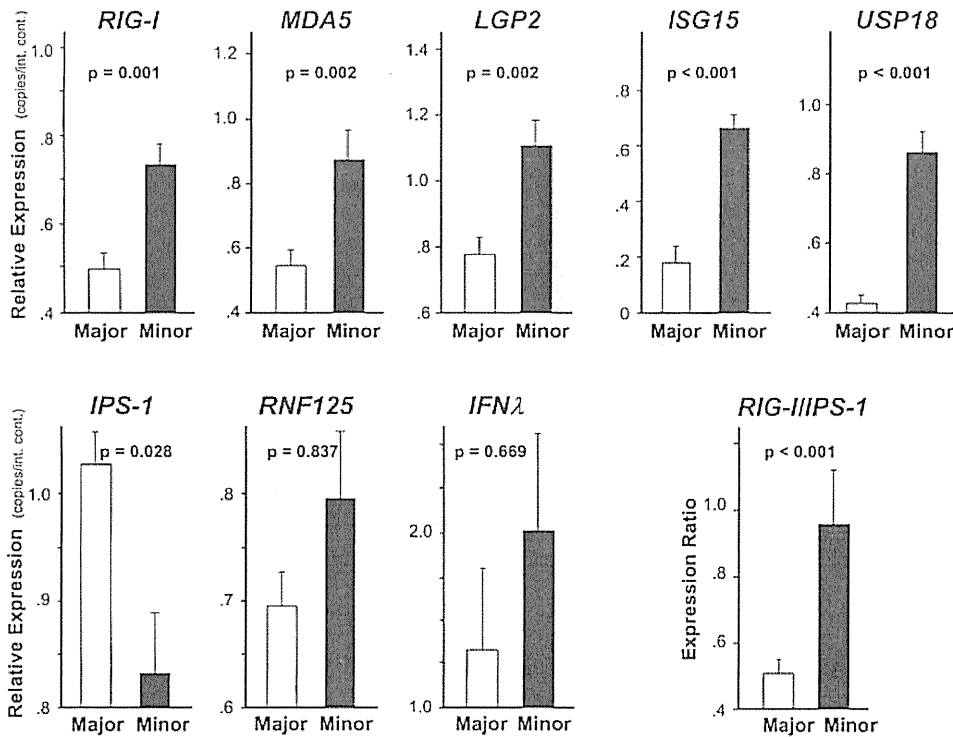


Fig. 1. Comparison of hepatic gene expression levels between *IL28B* major (rs8099917 TT/rs12979860 CC, n = 54) and *IL28B* minor patients (rs8099917 TG/rs12979860 CT, n = 34). Expression levels of cytoplasmic viral sensors (*RIG-I*, *MDA5*, and *LGP2*), modulators (*ISG15* and *USP18*), an adaptor (*IPS-1*), negative regulators (*RNF125*) and *IFNλ*, and expression ratio of the *RIG-I/IPS-1* are shown. Error bars indicate standard error. The *P*-values were determined by the Mann-Whitney *U* test.

NVR patients than in VR patients. However, in patients of the same virological response subgroup, *RIG-I* and *ISG15* expression levels and *RIG-I/IPS-1* ratio were higher in *IL28B* minor patients, and the difference in *ISG15* expression in subgroup of VR and NVR patients and that in *RIG-I/IPS-1* ratio in subgroup of VR patients was statistically significant between *IL28B* genotypes (Fig. 3).

**Receiver Operator Characteristic (ROC) Analysis.** To determine the usefulness of these gene quantifications and *IL28B* genotyping as predictors of NVR, an ROC analysis was conducted (Fig. 4A). The area under the ROC curve for *RIG-I* and *ISG15* expressions and *RIG-I/IPS-1* expression ratio was 0.712, 0.782, and 0.732, respectively, suggesting that quantification of these gene transcripts is useful for

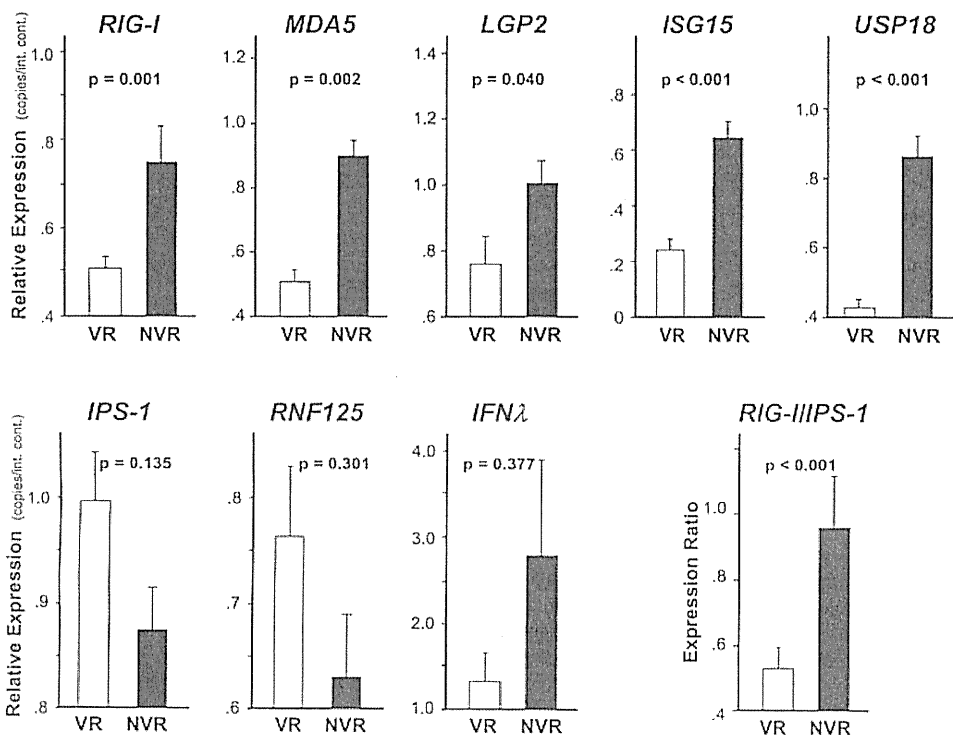


Fig. 2. Comparison of hepatic gene expression levels between virological responders (VR, n = 60) and nonvirological responders (NVR, n = 28). Expression levels of cytoplasmic viral sensors (*RIG-I*, *MDA5*, and *LGP2*), modulators (*ISG15* and *USP18*), an adaptor (*IPS-1*), negative regulators (*RNF125*) and *IFNλ*, and *RIG-I/IPS-1* expression ratio are shown. Error bars indicate standard error. The *P*-values were determined by the Mann-Whitney *U* test.

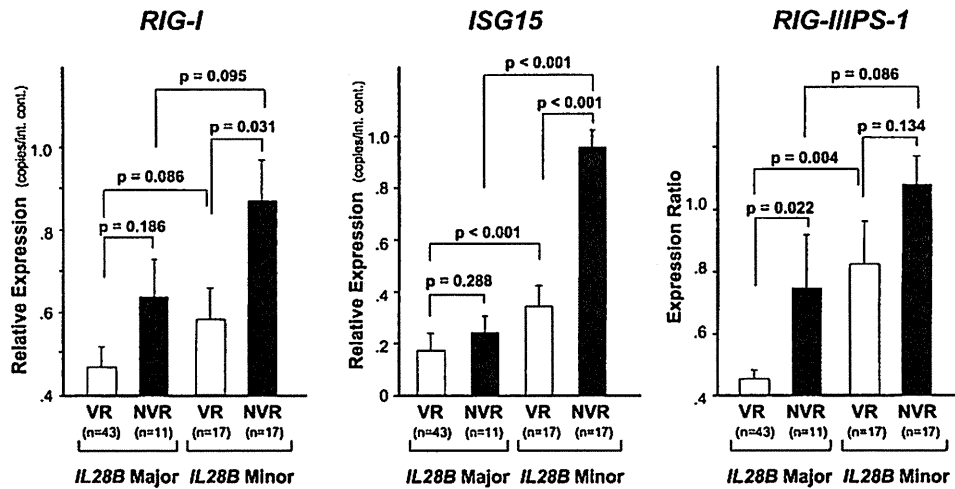


Fig. 3. Comparison of hepatic gene expression levels between virological responders (VR) and nonvirological responders (NVR) in subgroups of the *IL28B* genotype (*IL28B* Major, rs8099917 TT/rs12979860 CC; *IL28B* Minor, rs8099917 TG/rs12979860 CT). Expressions of *RIG-I* and *ISG15* as well as the *RIG-I/IPS-1* expression ratio are shown. Error bars indicate standard error. The numbers of patients in each subgroup are shown in the bottom of the figure.

prediction of NVR (Table 2). The area under the ROC curve for *IL28B* genotype was 0.662, which was lower compared with that for *RIG-I* and *ISG15* expressions and *RIG-I/IPS-1* ratio.

When we stratified the patients by the cutoff value for *RIG-I* and *ISG15* expressions and *RIG-I/IPS-1* ratio, no statistically significant difference was found in

NVR rates among *IL28B* genotypes within the same subgroup (Fig. 4B).

**Factors Associated with NVR.** In univariate analysis, age, platelet counts, double mutation at amino acid positions 70 and 91 of the HCV core region, *IL28B* minor allele, and hepatic expressions of *RIG-I*, *MDA5*, *LGP2*, *ISG15*, and *USP18*, and *RIG-I/IPS-1* ratio were significantly

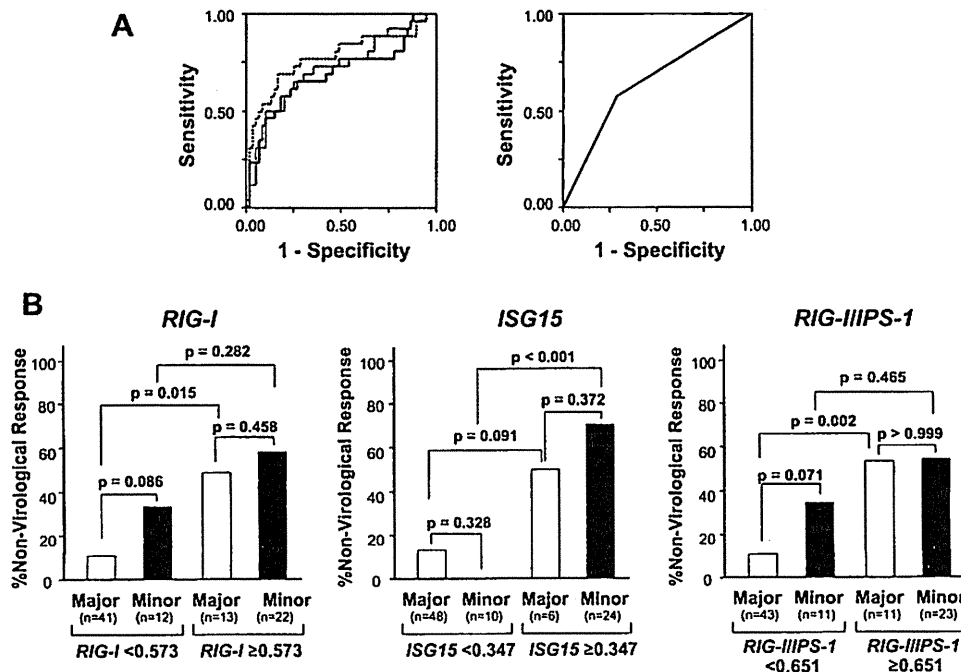


Fig. 4. (A) Receiver operator characteristics (ROC) curve for prediction of nonvirological response. ROC curves were generated to compare *RIG-I* (black line), *ISG15* (dotted line), and *RIG-I/IPS-1* ratio (gray line) (all in the left panel), and *IL28B* genotype (in the right panel). (B) Nonvirological response rate in *IL28B* major (rs8099917 TT/rs12979860 CC) and minor patients (rs8099917 TG/rs12979860 CT) in subgroups divided by the cutoff value of *RIG-I* and *ISG15* expression and the *RIG-I/IPS-1* ratio determined by ROC analysis. Cutoff values of *RIG-I* and *ISG15* expression are expressed as expression copy number normalized to the expression of an internal control. The numbers of patients in each subgroup are shown in the bottom of the figure.

**Table 2. Area Under the ROC Curves, Sensitivity, Specificity, and Negative as Well as Positive Predictive Values of Nonvirological Responses**

Variables	AUC	95% CI	Cutoff	Sensitivity	Specificity	NPV	PPV
RIG-I (copies/int. control)	0.712	0.584-0.840	0.573	0.679	0.733	0.830	0.543
ISG15 (copies/int. control)	0.782	0.666-0.899	0.347	0.714	0.833	0.862	0.667
RIG-I/IPS-1 (copies/int. control)	0.732	0.611-0.852	0.651	0.679	0.750	0.833	0.559
IL28B genotype	0.662	0.537-0.787	TG*/CT†	0.607	0.717	0.796	0.500

AUC, area under the curve; NPV, negative predictive value; PPV, positive predictive value.

\*Genotype at rs8099917.

†Genotype at rs12979860.

associated with NVR (Table 3). Among these, multivariate analysis identified old age, HCV core double mutant, and higher hepatic expressions of RIG-I and ISG15 as factors independently associated with NVR (Table 3).

**IPS-1 and RIG-I Protein Expression in the Liver.** Western blotting revealed that full-length and cleaved IPS-1 were variably present in all the samples from CH-C patients (Fig. 5A). Similar to mRNA

**Table 3. Factors Associated with Nonvirological Response**

Factors	Univariate Analysis		Multivariate Analysis*	
	Risk Ratio (95% CI)	P-value	Risk Ratio (95% CI)	P-value
Age (by every 10 year)	1.84 (1.10-3.14)	0.027	3.76 (1.19-11.7)	0.023
Sex				
Male	1			
Female	1.62 (0.59-4.42)	0.350		
BMI (by every 5 kg/m <sup>2</sup> )	0.87 (0.46-1.65)	0.672		
Fibrosis stage				
F1/F2	1			
F3/F4	1.82 (0.69-4.85)	0.228		
Degree of steatosis				
<10%	1			
≥10%	1.46 (0.43-5.03)	0.544		
Albumin (by every 1 g/dL)	0.41 (0.11-1.56)	0.190		
AST (by every 40 IU/L)	0.89 (0.53-1.56)	0.681		
ALT (by every 40 IU/L)	0.85 (0.57-1.32)	0.481		
γ-GTP (by every 40 IU/L)	1.32 (0.82-2.07)	0.235		
Fasting blood sugar (by every 100 mg/dL)	1.35 (0.74-2.45)	0.340		
Hemoglobin (by every 1 g/dL)	0.93 (0.67-1.31)	0.683		
Platelet counts (by every 10 <sup>4</sup> /μL)	0.90 (0.82-0.99)	0.037	0.92 (0.78-1.08)	0.296
HCV load (by every 100 KU/mL)	1.00 (1.00-1.00)	0.688		
Core 70 & 91 double mutation				
Wild	1		1	
Mutant	3.92 (1.14-13.5)	0.030	11.1 (1.40-88.7)	0.023
ISDR				
Nonwildtype	1			
Wildtype	1.38 (0.13-3.61)	0.513		
IL28B genotype				
Major allele†	1		1	
Minor allele‡	3.91 (1.52-10.0)	0.005	1.53 (0.20-11.9)	0.684
Hepatic gene expression (by every 0.1 copy/int. control)				
RIG-I	1.28 (1.10-1.50)	0.002	1.53 (1.07-2.22)	0.021
MDA5	1.53 (1.12-2.00)	0.001		
LGP2	1.34 (1.04-1.74)	0.026		
IPS-1	0.90 (0.78-1.04)	0.143		
RNF125	0.93 (0.83-1.04)	0.204		
ISG15	1.37 (1.16-1.62)	<0.001	1.28 (1.04-1.58)	0.021
USP18	1.67 (1.27-2.20)	<0.001		
IFNλ	1.02 (0.99-1.05)	0.170		
RIG-I/IPS-1 ratio (by every 0.1)	1.21 (1.07-1.36)	0.002		

Risk ratios for nonvirological response were calculated by the logistic regression analysis. BMI, body mass index; AST, aspartate aminotransferase; ALT, alanine aminotransferase; γ-GTP, gamma-glutamyl transpeptidase; HCV, hepatitis C virus; ISDR, IFN sensitivity determining region.

\*Multivariate analysis was performed with factors significantly associated with nonvirological response by univariate analysis except for MDA5, LGP2, USP18, and RIG-I/IPS-1 ratio, which were significantly correlated with RIG-I and ISG15.

†rs8099917 TT and rs12979860 CC.

‡rs8099917 TG and rs12979860 CT.

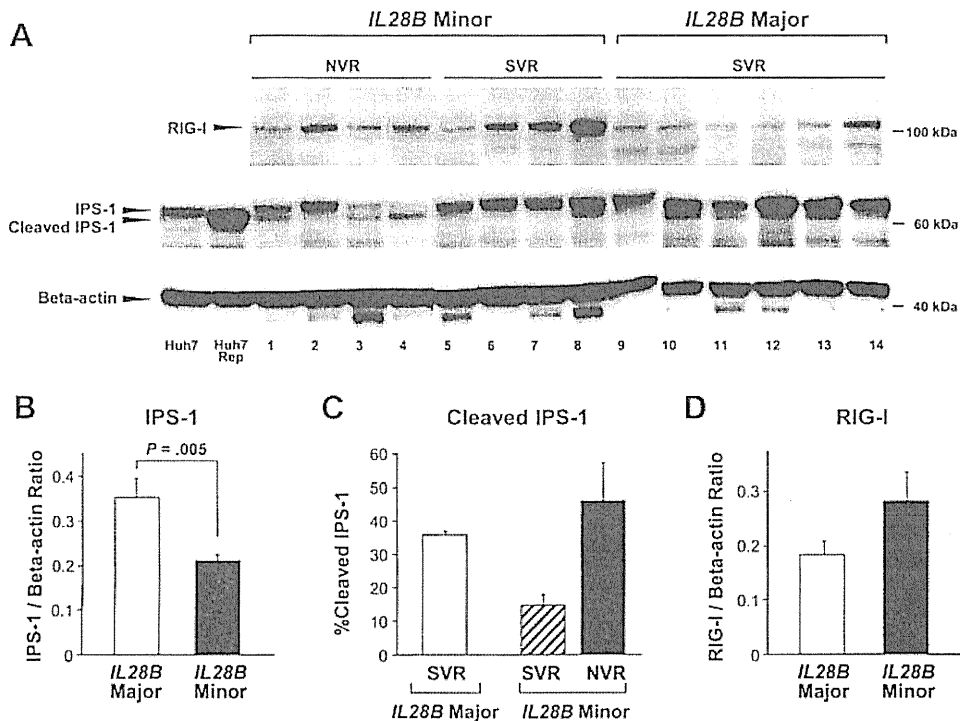


Fig. 5. (A) Western blotting for IPS-1 and RIG-I protein expression levels. Eight lanes contain samples from *IL28B* minor patients (lanes 1-8) and six lanes contain samples from *IL28B* major patients (lanes 9-14). Four lanes contain samples from nonvirological responders (NVR, lanes 1-4) and 10 lanes contain samples from sustained virological responders (SVR, lanes 5-14). Specific bands for RIG-I, full-length IPS-1, cleaved IPS-1, and  $\beta$ -actin are indicated by arrows. Naive Huh7 cells were used for a positive control for full-length IPS-1 (lane Huh7), and cells transfected with HCV-1b subgenomic replicon (Reference #20) were used for a positive control for cleaved IPS-1 (lane Huh7 Rep). (B) Total IPS-1 protein expression levels normalized to  $\beta$ -actin according to *IL28B* genotype. Error bars indicate standard error. *P*-value was determined by Mann-Whitney *U* test. (C) Percentage of cleaved IPS-1 products in total IPS-1 protein according to treatment responses stratified by *IL28B* genotype. Error bars indicate standard error. (D) RIG-I protein expression levels normalized to  $\beta$ -actin according to *IL28B* genotype. Error bars indicate standard error.

expression, total hepatic IPS-1 protein expression was significantly lower in *IL28B* minor patients than in *IL28B* major patients (Fig. 5B). With regard to *IL28B* minor patients, the percentage of cleaved IPS-1 protein in total IPS-1 in SVR was lower than that in NVR (Fig. 5C). In contrast to IPS-1 protein expression, hepatic RIG-I protein expression was higher in *IL28B* minor patients than that in *IL28B* major patients (Fig. 5D).

### Discussion

In the present study we found that the baseline expression levels of intrahepatic viral sensors and related regulatory molecules were significantly associated with the genetic variation of *IL28B* and final virological outcome in CH-C patients treated with PEG-IFN $\alpha$ /RBV combination therapy. Although the relationship between the *IL28B* minor allele and NVR in PEG-IFN $\alpha$ /RBV combination therapy is evident, mechanisms responsible for this association remain unknown. *In vitro* studies have suggested that cytoplasmic viral sensors, such as RIG-I and MDA5, play a

pivotal role in the regulation of IFN production and augment IFN production through an amplification circuit.<sup>7,8</sup> Our results indicate that expressions of *RIG-I* and *MDA5* and a related amplification system may be up-regulated by endogenous IFN at a higher baseline level in *IL28B* minor patients. However, HCV elimination by subsequent exogenous IFN is insufficient in these patients, as reported,<sup>19</sup> suggesting that *IL28B* minor patients may have adopted a different equilibrium in their innate immune response to HCV. Our data are further supported by recent reports of an association between intrahepatic levels of IFN-stimulated gene expression and PEG-IFN $\alpha$ /RBV response as well as with *IL28B* genotype.<sup>21-23</sup>

In contrast to cytoplasmic viral sensor (*RIG-I*, *MDA5*, and *LGP2*) and modulator (*ISG15* and *USP18*) expression, the adaptor molecule (*IPS-1*) expression was significantly lower in *IL28B* minor patients. Moreover, western blotting further confirmed IPS-1 protein downregulation in *IL28B* minor patients by revealing decreased protein levels. Because IPS-1 is one of the main target molecules of HCV evasion,<sup>9,18</sup>

transcriptional and translational *IPS-1* expression are probably suppressed by HCV with resistant phenotype, which may be more adaptive in *IL28B* minor patients than in *IL28B* major patients. When we analyzed the proportion of full-length or cleaved IPS-1 to the total IPS-1 protein in a subgroup of *IL28B* minor patients, cleaved IPS-1 product was less dominant in SVR than in NVR, whereas uncleaved full-length IPS-1 protein was more dominant in SVR than in NVR. Therefore, the ability of HCV to evade host innate immunity by cleaving IPS-1 protein and/or host capability of protection from IPS-1 cleavage is probably responsible for the variable treatment responses in *IL28B* minor patients.

Our results indicated a close association between *IL28B* minor patients with higher  $\gamma$ -GTP level and higher frequency of HCV core double mutants, which are known factors for NVR. In contrast, no significant association was observed between *IL28B* genotype and age, gender, or liver fibrosis, which are also known to be unfavorable factors for virological response to PEG-IFN $\alpha$ /RBV. Therefore, certain factors other than the *IL28B* genotype may independently influence virological response. To elucidate whether gene expression involving innate immunity independently associates with a virological response from the *IL28B* genotype, we performed further analysis in a subgroup and conducted a multivariate regression and ROC analyses. Our multivariate and ROC analyses demonstrate that higher expressions of *RIG-I* and *ISG15* as well as a higher ratio of *RIG-I/IPS-1* are independently associated with NVR, and quantification of these values is more useful in predicting final virological response to PEG-IFN $\alpha$ /RBV than determination of *IL28B* genotype in each individual patients. However, the SVR rates in our patients were similar among *IL28B* genotypes, which suggests more SVR patients with the *IL28B* minor allele were included in the present study than those in the general CH-C population. Hence, our data did not necessarily exclude the possibility of the *IL28B* genotype in predicting NVR, although our multivariate analysis could not identify the *IL28B* minor allele as an independent factor for NVR. Interestingly, an association between *IL28B* genotype and expressions of *RIG-I* and *ISG15* as well as *RIG-I/IPS-1* expression ratio is still observed even in patients with the same subgroup of virological response (Fig. 3).

In the present study, although hepatic *IFN $\lambda$*  expression was observed to be higher in *IL28B* minor and NVR patients, it was not statistically significant. Because *IL28B* shares 98.2% homology with *IL28A*, our primer could not distinguish the expression of

*IL28B* from that of *IL28A*, and moreover, we could not specify which cell expresses *IFN $\lambda$*  (i.e., hepatocytes or other immune cells that have infiltrated the liver). Therefore, the precise mechanisms underlying *IL28B* variation and expression of *IFN $\lambda$*  in relation to treatment response need further clarification by specifying type of *IFN $\lambda$*  and uncovering the producing cells.

In the present study we included genotype 1b patients because it is imperative to designate a virologically homogenous patient group to associate individual treatment responses with different gene expression profiles that direct innate immune responses. We have reported that the *RIG-I/IPS-1* ratio was significantly higher in NVR with HCV genotype 2.<sup>19</sup> However, our preliminary results indicated that baseline hepatic *RIG-I* and *ISG15* expression and the *RIG-I/IPS-1* expression ratio is not significantly different among *IL28B* genotypes in patients infected with genotype 2 (Supporting Figure). This may be related to the rarity of NVR with HCV genotype 2 and the lower effect of *IL28B* genotype on virological responses in patients infected with HCV genotype 2.<sup>24</sup> The association among treatment responses in all genotypes, the different status of innate immune responses, and *IL28B* genotype needs to be examined further.

Differences in allele frequency for *IL28B* SNPs among the population groups has been reported. The frequency of *IL28B* major allele among patients with Asian ancestry is higher than that among patients with European and African ancestry.<sup>25</sup> Because *IL28B* polymorphism strongly influences treatment responses within each population group,<sup>5</sup> our data obtained from Japanese patients can be applied to other population groups. However, the rate of SVR having African ancestry was lower than that having European ancestry within the same *IL28B* genotype.<sup>5</sup> Hence, further study is required to clarify whether this difference among the population groups with the same *IL28B* genotype could be explained by differences in expression of genes involved in innate immunity.

In a recent report, an SVR rate of telaprevir with PEG-IFN $\alpha$ /RBV was only 27.6% in *IL28B* minor patients.<sup>26</sup> Because new anti-HCV therapy should still contain PEG-IFN $\alpha$ /RBV as a platform for the therapy, our findings regarding innate immunity in addressing the mechanism of virological response and predicting NVR remain important in this new era of directly acting anti-HCV agents, such as telaprevir and boceprevir.

In conclusion, this clinical study in humans demonstrates the potential relevance of the molecules involved in innate immunity to the genetic variation

of *IL28B* and clinical response to PEG-IFN $\alpha$ /RBV. Both the *IL28B* minor allele and higher expressions of *RIG-I* and *ISG15* as well as higher *RIG-I/IPS-1* ratio are independently associated with NVR. Innate immune responses in *IL28B* minor patients may have adapted to a different equilibrium compared with that in *IL28B* major patients. Our data will advance both understanding of the pathogenesis of HCV resistance and the development of new antiviral therapy targeted toward the innate immune system.

## References

- Kiyosawa K, Sodeyama T, Tanaka E, Gibo Y, Yoshizawa K, Nakano Y, et al. Interrelationship of blood transfusion, non-A, non-B hepatitis and hepatocellular carcinoma: analysis by detection of antibody to hepatitis C virus. *HEPATOLOGY* 1990;12:671-675.
- Zeuzem S, Pawlotsky JM, Lukasiewicz E, von Wagner M, Goulis I, Lurie Y, et al. DITTO-HCV Study Group. International, multicenter, randomized, controlled study comparing dynamically individualized versus standard treatment in patients with chronic hepatitis C. *J Hepatol* 2005;43:250-257.
- Tanaka Y, Nishida N, Sugiyama M, Kurosaki M, Matsuura K, Sakamoto N, et al. Genome-wide association of *IL28B* with response to pegylated IFN-alpha and ribavirin therapy for chronic hepatitis C. *Nat Genet* 2009;10:1105-1109.
- Suppiah V, Moldovan M, Ahlenstiel G, Berg T, Weltman M, Abate ML, et al. *IL28B* is associated with response to chronic hepatitis C IFN-alpha and ribavirin therapy. *Nat Genet* 2009;10:1100-1104.
- Ge D, Fellay J, Thompson AJ, Simon JS, Shianna KV, Urban TJ, et al. Genetic variation in *IL28B* predicts hepatitis C treatment-induced viral clearance. *Nature* 2009;461:399-401.
- Biron CA. Initial and innate responses to viral infections—pattern setting in immunity or disease. *Curr Opin Microbiol* 1999;2:374-381.
- Yoneyama M, Kikuchi M, Natsukawa T, Shinobu N, Imaizumi T, Miyagishi M, et al. The RNA helicase *RIG-I* has an essential function in double-stranded RNA-induced innate antiviral responses. *Nat Immunol* 2004;5:730-737.
- Yoneyama M, Kikuchi M, Matsumoto K, Imaizumi T, Miyagishi M, Taira K, et al. Shared and unique functions of the DExD/H-box helicases *RIG-I*, *MDA5*, and *LGP2* in antiviral innate immunity. *J Immunol* 2005;175:2851-2858.
- Meylan E, Curran J, Hofmann K, Moradpour D, Binder M, Bartenschlager R, et al. Cardif is an adaptor protein in the *RIG-I* antiviral pathway and is targeted by hepatitis C virus. *Nature* 2005;437:1167-1172.
- Kawai T, Takahashi K, Sato S, Coban C, Kumar H, Kato H, et al. *IPS-1*, an adaptor triggering *RIG-I*- and *Mda5*-mediated type I interferon induction. *Nat Immunol* 2005;6:981-988.
- Seth RB, Sun L, Ea CK, Chen ZJ. Identification and characterization of MAVS, a mitochondrial antiviral signaling protein that activates NF-kappaB and IRF 3. *Cell* 2005;122:669-682.
- Xu LG, Wang YY, Han KJ, Li LY, Zhai Z, Shu HB. VISA is an adaptor protein required for virus-triggered IFN-beta signaling. *Mol Cell* 2005;19:727-740.
- Rothenfusser S, Goutagny N, DiPerna G, Gong M, Monks BG, Schoenemeyer A, et al. The RNA helicase *Lgp2* inhibits TLR-independent sensing of viral replication by retinoic acid-inducible gene-I. *J Immunol* 2005;175:5260-5268.
- Arimoto K, Takahashi H, Hishiki T, Konishi H, Fujita T, Shimotohno K. Negative regulation of the *RIG-I* signaling by the ubiquitin ligase *RNF125*. *Proc Natl Acad Sci U S A* 2007;104:7500-7505.
- Zhao C, Denison C, Huibregtse JM, Gygi S, Krug RM. Human *ISG15* conjugation targets both IFN-induced and constitutively expressed proteins functioning in diverse cellular pathways. *Proc Natl Acad Sci U S A* 2005;102:10200-10205.
- Schwer H, Liu LQ, Zhou L, Little MT, Pan Z, Hetherington CJ, et al. Cloning and characterization of a novel human ubiquitin-specific protease, a homologue of murine *UBP43* (*Usp18*). *Genomics* 2000;65:44-52.
- Malakhov MP, Malakhova OA, Kim KI, Ritchie KJ, Zhang DE. *UBP43* (*USP18*) specifically removes *ISG15* from conjugated proteins. *J Biol Chem* 2002;277:9976-9981.
- Li XD, Sun L, Seth RB, Pineda G, Chen ZJ. Hepatitis C virus protease NS3/4A cleaves mitochondrial antiviral signaling protein off the mitochondria to evade innate immunity. *Proc Natl Acad Sci U S A* 2005;102:17717-17722.
- Asahina Y, Izumi N, Hirayama I, Tanaka T, Sato M, Yasui Y, et al. Potential relevance of cytoplasmic viral sensors and related regulators involving innate immunity in antiviral response. *Gastroenterology* 2008;134:1396-1405.
- Tanabe Y, Sakamoto N, Enomoto N, Kurosaki M, Ueda E, Maekawa S, et al. Synergistic inhibition of intracellular hepatitis C virus replication by combination of ribavirin and interferon-alpha. *J Infect Dis* 2004;189:1129-1139.
- Honda M, Sakai A, Yamashita T, Nakamoto Y, Mizukoshi E, Sakai Y, et al. Hepatic *ISG* expression is associated with genetic variation in interleukin 28B and the outcome of IFN therapy for chronic hepatitis C. *Gastroenterology* 2010;139:499-509.
- Urban TJ, Thompson AJ, Bradic SS, Fellay J, Schuppan D, Cronin KD, et al. *IL28B* genotype is associated with differential expression of intrahepatic interferon-stimulated genes in patients with chronic hepatitis C. *HEPATOLOGY* 2010;52:1888-1896.
- Dill MT, Duong FHT, Vogt JE, Bibert S, Bochud PY, Terracciano L, et al. Interferon-induced gene expression is a stronger predictor of treatment response than *IL28B* genotype in patients with hepatitis C. *Gastroenterology* 2011;140:1021-1031.
- Yu ML, Huang CF, Huang JF, Chang NC, Yang JF, Lin ZY, et al. Role of interleukin-28B polymorphism in the treatment of hepatitis C virus genotype 2 infection in Asian patients. *HEPATOLOGY* 2011;53:7-13.
- Thomas DL, Thio CL, Martin MP, Qi Y, Ge D, O'hUigin C, Kidd J, et al. Genetic variation in *IL28B* and spontaneous clearance of hepatitis C virus. *Nature* 2009;461:798-802.
- Akuta N, Suzuki F, Hirakawa M, Kawamura Y, Yatsuji H, Sezaki H, et al. Amino acid substitution in hepatitis C virus core region and genetic variation near the interleukin 28B gene predict viral response to terapeutic pegIFN and ribavirin. *HEPATOLOGY* 2010;52:421-429.



## Pre-treatment prediction of response to pegylated-interferon plus ribavirin for chronic hepatitis C using genetic polymorphism in *IL28B* and viral factors

Masayuki Kurosaki<sup>1</sup>, Yasuhito Tanaka<sup>2</sup>, Nao Nishida<sup>3</sup>, Naoya Sakamoto<sup>4</sup>, Nobuyuki Enomoto<sup>5</sup>, Masao Honda<sup>6</sup>, Masaya Sugiyama<sup>2</sup>, Kentaro Matsuura<sup>2</sup>, Fuminaka Sugauchi<sup>2</sup>, Yasuhiro Asahina<sup>1</sup>, Mina Nakagawa<sup>4</sup>, Mamoru Watanabe<sup>4</sup>, Minoru Sakamoto<sup>5</sup>, Shinya Maekawa<sup>5</sup>, Akito Sakai<sup>6</sup>, Shuichi Kaneko<sup>6</sup>, Kiyooki Ito<sup>7</sup>, Naohiko Masaki<sup>7</sup>, Katsushi Tokunaga<sup>3</sup>, Namiki Izumi<sup>1,\*</sup>, Masashi Mizokami<sup>2,7</sup>

<sup>1</sup>Division of Gastroenterology and Hepatology, Musashino Red Cross Hospital, Tokyo, Japan; <sup>2</sup>Department of Virology, Liver Unit, Nagoya City University, Graduate School of Medical Sciences, Nagoya, Japan; <sup>3</sup>Department of Human Genetics, Graduate School of Medicine, University of Tokyo, Tokyo, Japan; <sup>4</sup>Department of Gastroenterology and Hepatology, Tokyo Medical and Dental University, Tokyo, Japan; <sup>5</sup>First Department of Internal Medicine, University of Yamanashi, Yamanashi, Japan; <sup>6</sup>Department of Gastroenterology, Kanazawa University, Graduate School of Medicine, Kanazawa, Japan; <sup>7</sup>Research Center for Hepatitis and Immunology, International Medical Center of Japan, Konodai Hospital, Ichikawa, Japan

**Background & Aims:** Pegylated interferon and ribavirin (PEG-IFN/RBV) therapy for chronic hepatitis C virus (HCV) genotype 1 infection is effective in 50% of patients. Recent studies revealed an association between the *IL28B* genotype and treatment response. We aimed to develop a model for the pre-treatment prediction of response using host and viral factors.

**Methods:** Data were collected from 496 patients with HCV genotype 1 treated with PEG-IFN/RBV at five hospitals and universities in Japan. *IL28B* genotype and mutations in the core and IFN sensitivity determining region (ISDR) of HCV were analyzed to predict response to therapy. The decision model was generated by data mining analysis.

**Results:** The *IL28B* polymorphism correlated with early virological response and predicted null virological response (NVR) (odds ratio = 20.83,  $p < 0.0001$ ) and sustained virological response (SVR) (odds ratio = 7.41,  $p < 0.0001$ ) independent of other covariates. Mutations in the ISDR predicted relapse and SVR independent of *IL28B*. The decision model revealed that patients with the minor *IL28B* allele and low platelet counts had the highest NVR (84%) and lowest SVR (7%), whereas those with the major *IL28B* allele and mutations in the ISDR or high platelet counts had the lowest NVR (0–17%) and highest SVR (61–90%). The model had high reproducibility and predicted SVR with 78% specificity and 70% sensitivity.

**Conclusions:** The *IL28B* polymorphism and mutations in the ISDR of HCV were significant pre-treatment predictors of response to PEG-IFN/RBV. The decision model, including these host and viral factors may support selection of optimum treatment strategy for individual patients.

© 2010 European Association for the Study of the Liver. Published by Elsevier B.V. All rights reserved.

### Introduction

Hepatitis C virus (HCV) infection is the leading cause of cirrhosis and hepatocellular carcinoma worldwide [1]. The successful eradication of HCV, defined as a sustained virological response (SVR), is associated with a reduced risk of developing hepatocellular carcinoma. Currently, pegylated interferon (PEG-IFN) plus ribavirin (RBV) is the most effective standard of care for chronic hepatitis C but the rate of SVR is around 50% in patients with HCV genotype 1 [2,3], the most common genotype in Japan, Europe, the United States, and many other countries. Moreover, 20–30% of patients with HCV genotype 1 have a null virological response (NVR) to PEG-IFN/RBV therapy [4]. The most reliable method for predicting the response is to monitor the early decline of serum HCV-RNA levels during treatment [5] but there is no established method for prediction before treatment. Because PEG-IFN/RBV therapy is costly and often accompanied by adverse effects such as flu-like symptoms, depression and hematological abnormalities, pre-treatment predictions of those patients who are unlikely to benefit from this regimen enables ineffective treatment to be avoided.

Recently, it has been reported through a genome-wide association study (GWAS) of patients with genotype 1 HCV that single nucleotide polymorphisms (SNPs) located near the *IL28B* gene are strongly associated with a response to PEG-IFN/RBV therapy in

**Keywords:** *IL28B*; ISDR; Peg-interferon; Ribavirin; Data mining; Decision tree.  
 Received 14 March 2010; received in revised form 22 June 2010; accepted 7 July 2010;  
 available online 19 September 2010

\* Corresponding author. Address: Division of Gastroenterology and Hepatology, Musashino Red Cross Hospital, 1-26-1 Kyonan-cho, Musashino-shi, Tokyo 180-8610, Japan. Tel.: +81 422 32 3111; fax: +81 422 32 9551.  
 E-mail address: nizumi@musashino.jrc.or.jp (N. Izumi).



# Research Article

**Table 1.** Baseline characteristics of all patients, and patients assigned to the model building or validation groups.

	All patients n = 496	Model group n = 331	Validation group n = 165
Gender: male	250 (50%)	170 (51%)	80 (48%)
Age (years)	57.1 ± 9.9	56.8 ± 9.7	57.5 ± 10.2
ALT (IU/L)	78.6 ± 60.8	78.1 ± 61.4	79.7 ± 59.6
GGT (IU/L)	59.3 ± 63.6	58.9 ± 62.0	60.2 ± 66.9
Platelets (10 <sup>9</sup> /L)	154 ± 53	153 ± 52	154 ± 56
Fibrosis: F3-4	121 (24%)	80 (24%)	41 (25%)
HCV-RNA: >600,000 IU/ml	409 (82%)	273 (82%)	136 (82%)
ISDR mutation: ≤1	220 (88%)	290 (88%)	145 (88%)
Core 70 (Arg/Gln or His)	293 (59%)/203 (41%)	197 (60%)/134 (40%)	96 (58%)/69 (42%)
Core 91 (Leu/Met)	299 (60%)/197 (40%)	200 (60%)/131 (40%)	99 (60%)/66 (40%)
<i>IL28B</i> : Minor allele	151 (30%)	101 (31%)	50 (30%)
SVR	194 (39%)	129 (39%)	65 (39%)
Relapse	152 (31%)	103 (31%)	49 (30%)
NVR	150 (30%)	99 (30%)	51 (31%)

ALT, alanine aminotransferase; GGT, gamma-glutamyltransferase; ISDR, interferon sensitivity determining region; Arg, arginine; Gln, glutamine; His, histidine; Leu, leucine; Met, methionine; Minor, heterozygote or homozygote of minor allele; SVR, sustained virological response; NVR, null virological response.

Japanese [6], European [7], and a multi-ethnic population [8,9]. The last three studies focused on the association of SNPs in the *IL28B* region with SVR [7–9] but we found a stronger association with NVR [6]. In addition to these host genetic factors, we have reported that mutations within a stretch of 40 amino acids in the NS5A region of HCV, designated as the IFN sensitivity determining region (ISDR), are closely associated with the virological response to IFN therapy: a lower number of mutations is associated with treatment failure [10–13]. Amino acid substitutions at positions 70 and 91 of the HCV core region (Core70, Core91) also have been reported to be associated with response to PEG-IFN/RBV therapy: glutamine (Gln) or histidine (His) at Core70 and methionine (Met) at Core91 are associated with treatment resistance [4,14]. The importance of substitutions in the HCV core and ISDR was confirmed recently by a Japanese multicenter study [15]. How these viral factors contribute to response to therapy is yet to be determined. For general application in clinical practice, host genetic factors and viral factors should be considered together.

Data mining analysis is a family of non-parametric regression methods for predictive modeling. Software is used to automatically explore the data to search for optimal split variables and to build a decision tree structure [16]. The major advantage of decision tree analysis over logistic regression analysis is that the results of the analysis are presented in the form of flow chart, which can be interpreted intuitively and readily made available for use in clinical practice [17]. The decision tree analysis has been utilized to define prognostic factors in various diseases [18–25]. We have reported recently its usefulness for the prediction of an early virological response (undetectable HCV-RNA within 12 weeks of therapy) to PEG-IFN/RBV therapy in chronic hepatitis C [26].

This study aimed to define the pre-treatment prediction of response to PEG-IFN/RBV therapy through the integrated analysis of host factors, such as the *IL28B* genetic polymorphism and various clinical covariates, as well as viral factors, such as mutations in the HCV core and ISDR and serum HCV-RNA load. In addition,

for the general application of these results in clinical practice, decision models for the pre-treatment prediction of response were determined by data mining analysis.

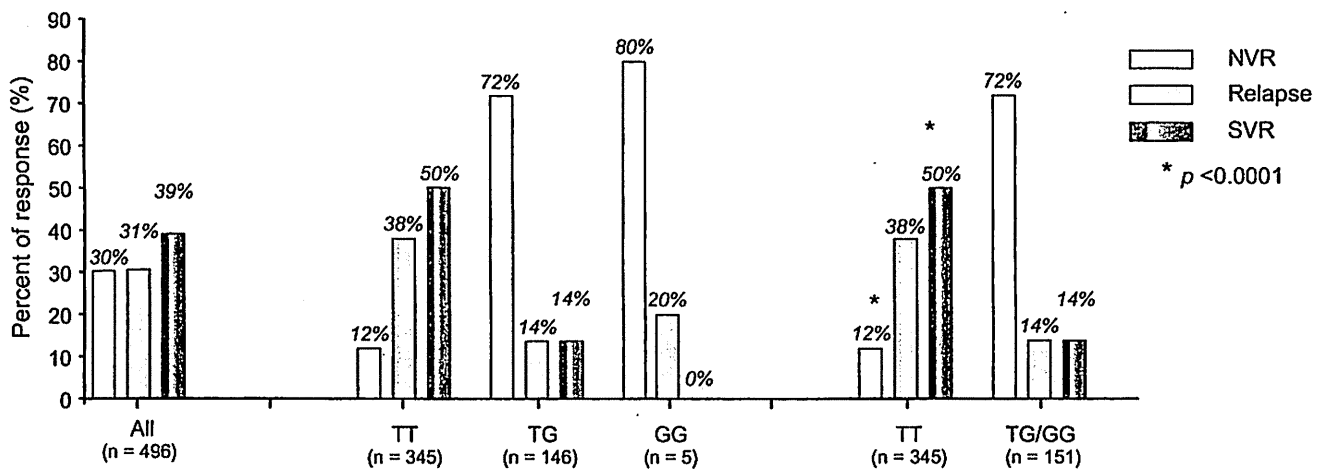
## Materials and methods

### Patients

This was a multicentre retrospective study supported by the Japanese Ministry of Health, Labor and Welfare. Data were collected from a total of 496 chronic hepatitis C patients who were treated with PEG-IFN alpha and RBV at five hospitals and universities throughout Japan. Of these, 98 patients also were included in the original GWAS analysis [6]. The inclusion criteria in this study were as follows (1) infection by genotype 1b, (2) lack of co-infection with hepatitis B virus or human immunodeficiency virus, (3) lack of other causes of liver disease, such as autoimmune hepatitis, and primary biliary cirrhosis, (4) completion of at least 24 weeks of therapy, (5) adherence of more than 80% to the planned dose of PEG-IFN and RBV for the NVR patients, (6) availability of DNA for the analysis of the genetic polymorphism of *IL28B*, and (7) availability of serum for the determination of mutations in the ISDR and substitutions of Core70 and Core91 of HCV. Patients received PEG-IFN alpha-2a (180 µg) or 2b (1.5 µg/kg) subcutaneously every week and were administered a weight adjusted dose of RBV (600 mg for <60 kg, 800 mg for 60–80 kg, and 1000 mg for >80 kg daily) which is the recommended dosage in Japan. Written informed consent was obtained from each patient and the study protocol conformed to the ethical guidelines of the Declaration of Helsinki and was approved by the institutional ethics review committee. The baseline characteristics are listed in Table 1. For the data mining analysis, 67% of the patients (331 patients) were assigned randomly to the model building group and 33% (165 patients) to the validation group. There were no significant differences in the clinical backgrounds between these two groups.

### Laboratory and histological tests

Blood samples were obtained before therapy and were analyzed for hematologic tests and for blood chemistry and HCV-RNA. Sequences of ISDR and the core region of HCV were determined by direct sequencing after amplification by reverse-transcription and polymerase chain reaction as reported previously [4,11]. Genetic polymorphism in one tagging SNP located near the *IL28B* gene (rs8099917) was determined by the GWAS or DigiTag2 assay [27]. Homozygosity (GG) or heterozygosity (TG) of the minor sequence was defined as having the *IL28B* minor allele, whereas homozygosity for the major sequence (TT) was



**Fig. 1. Association between the IL28B genotype (rs8099917) and treatment response.** The rates of response to treatment are shown for each rs8099917 genotype. The rate of null virological response (NVR), relapse, and sustained virological response (SVR) is shown. The *p* values are from Fisher's exact test. The rate of NVR was significantly higher ( $p < 0.0001$ ) and the rate of SVR was significantly lower ( $p < 0.0001$ ) in patients with the IL28B minor allele compared to those with the major allele.

defined as having the IL28B major allele. In this study, NVR was defined as a less than 2 log reduction of HCV-RNA at week 12 and detectable HCV-RNA by qualitative PCR with a lower detection limit of 50 IU/ml (Amplicor, Roche Diagnostic systems, CA) at week 24 during therapy. RVR (rapid virological response) and complete early virological response (cEVR) were defined as undetectable HCV-RNA at 4 weeks and 12 weeks during therapy and SVR was defined as undetectable HCV-RNA 24 weeks after the completion of therapy. Relapse was defined as reappearance of HCV-RNA after the completion of therapy. The stage of liver fibrosis was scored according to the METAVIR scoring system: F0 (no fibrosis), F1 (mild fibrosis: portal fibrosis without septa), F2 (moderate fibrosis: few septa), F3 (severe fibrosis: numerous septa without cirrhosis) and F4 (cirrhosis). Percentage of steatosis was quantified in 111 patients by determining the average proportion of hepatocytes affected by steatosis.

**Statistical analysis**

Associations between pre-treatment variables and treatment response were analyzed by univariate and multivariate logistic regression analysis. Associations between the IL28B polymorphism and sequences of HCV were analyzed by Fisher's exact test. SPSS software v.15.0 (SPSS Inc., Chicago, IL) was used for these analyses. For the data mining analysis, IBM-SPSS Modeler version 13.0 (IBM-SPSS Inc., Chicago, IL) software was utilized as reported previously [26]. The patients used for model building were divided into two groups at each step of the analysis based on split variables. Each value of each variable was considered as a potential split. The optimum variables and cut-off values were determined by a statistical search algorithm to generate the most significant division into two prognostic subgroups that were as homogeneous as possible for the probability of SVR. Thereafter, each subgroup was evaluated again and divided further into subgroups. This procedure was repeated until no additional significant variable was detected or the sample size was below 15. To avoid over-fitting, 10-fold cross validation was used in the tree building process. The reproducibility of the resulting model was tested with the data from the validation patients.

**Results**

**Association between the IL28B (rs8099917) genotype and the PEG-IFN/RBV response**

The rs8099917 allele frequency was 70% for TT ( $n = 345$ ), 29% for TG ( $n = 146$ ), and 1% for GG ( $n = 5$ ). We defined the IL28B major allele as homozygous for the major sequence (TT) and the IL28B minor allele as homozygous (GG) or heterozygous (TG) for the minor sequence. The rate of NVR was significantly higher (72% vs. 12%,  $p < 0.0001$ ) and the rate of SVR was significantly lower (14% vs. 50%,  $p < 0.0001$ ) in patients with the IL28B minor allele compared to those with the major allele (Fig. 1).

**Effect of the IL28B polymorphism, substitutions in the ISDR, Core70, and Core91 of HCV on time-dependent clearance of HCV**

Patients were stratified according to their IL28B allele type, the number of mutations in the ISDR, the amino acid substitutions in Core70 and Core91, and the rate of undetectable HCV-RNA at 4, 8, 12, 24, and 48 weeks after the start of therapy were analyzed (Fig. 2A–D). The rate of undetectable HCV-RNA was significantly higher in patients with the IL28B major allele than the minor allele, in patients with two or more mutations in the ISDR compared to none or only one mutation, in patients with arginine (Arg) at Core70 rather than Gln/His, and in patients with leucine (Leu) at Core91 rather than Met. The difference was most significant when stratified by the IL28B allele type. The rate of RVR and cEVR was significantly more frequent in patients with the IL28B major allele compared with those with the IL28B minor allele: 9% vs. 3% for RVR ( $p < 0.005$ ) and 57% vs. 11% for cEVR ( $p < 0.0001$ ). These findings suggest that IL28B has the greatest impact on early virological response to therapy.

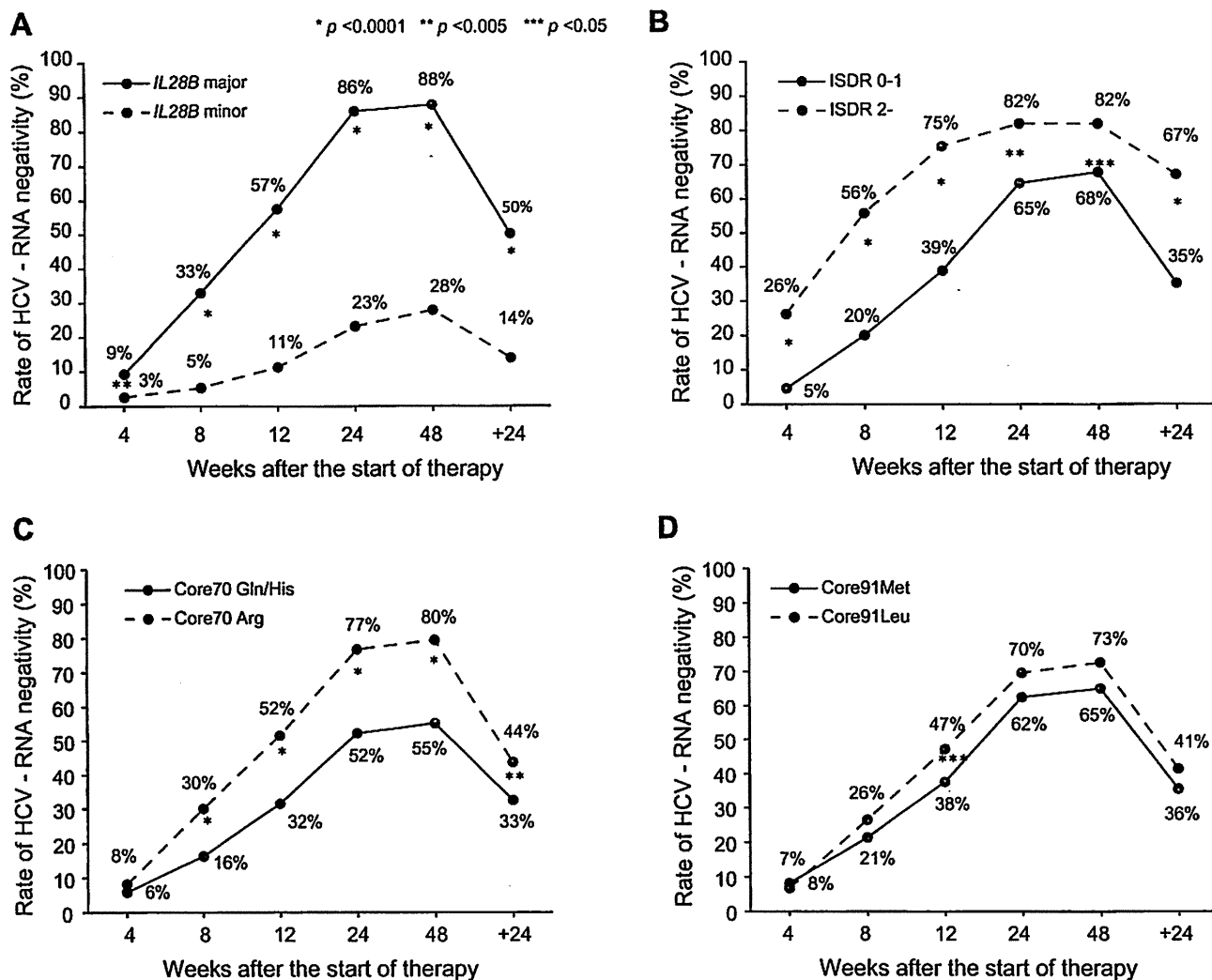
**Association between substitutions in the ISDR and relapse after the completion of therapy**

Patients were stratified according to the IL28B allele, number of mutations in the ISDR, and amino acid substitutions of Core70 and Core91, and the rate of relapse was analyzed (Fig. 3A and B). Among patients who achieved cEVR, the rate of relapse was significantly lower in patients with two or more mutations in the ISDR compared to those with only one or no mutations (15% vs. 31%,  $p < 0.005$ ) (Fig. 3 B). On the other hand, the relapse rate was not different between the IL28B major and minor alleles within patients who achieved RVR (3% vs. 0%) or cEVR (28% vs. 29%) (Fig. 3A). Amino acid substitutions of Core70 and Core91 were not associated with the rate of relapse (data not shown).

**Factors associated with response by multivariate logistic regression analysis**

By univariate analysis, the minor allele of IL28B ( $p < 0.0001$ ), one or no mutations in the ISDR ( $p = 0.03$ ), high serum level of

## Research Article



**Fig. 2.** Effect of *IL28B* mutations in the ISDR, Core70, and Core91 of HCV on time-dependent clearance of HCV. The rate of undetectable HCV-RNA was plotted for serial time points after the start of therapy (4, 8, 12, 24, and 48 weeks) and for 24 weeks after the completion of therapy. Patients were stratified according to (A) the *IL28B* allele (minor allele vs. major allele), (B) the number of mutations in the ISDR (0–1 mutation vs. 2 or more mutations), amino acid substitutions of (C) Core70 (Gln/His vs. Arg), and (D) Core91 (Met vs. Leu). The *p* values are from Fisher's exact test.

HCV-RNA ( $p = 0.035$ ), Gln or His at Core70 ( $p < 0.0001$ ), low platelet counts ( $p = 0.009$ ), and advanced fibrosis ( $p = 0.0002$ ) were associated with NVR. By multivariate analysis, the minor allele of *IL28B* (OR = 20.83, 95%CI = 11.63–37.04,  $p < 0.0001$ ) was associated with NVR independent of other covariates (Table 2). Notably, mutations in the ISDR ( $p = 0.707$ ) and at amino acid Core70 ( $p = 0.207$ ) were not significant in multivariate analysis due to the positive correlation with the *IL28B* polymorphism ( $p = 0.004$  for ISDR and  $p < 0.0001$  for Core70, Fig. 4).

Genetic polymorphism of *IL28B* also was associated with SVR (OR = 7.41, 95% CI = 4.05–13.57,  $p < 0.0001$ ) independent of other covariates, such as platelet counts, fibrosis, and serum levels of HCV-RNA. Mutation in the ISDR was an independent predictor of SVR (OR = 2.11, 95% CI = 1.06–4.18,  $p = 0.033$ ) but the amino acid at Core70 was not (Table 3).

### Factors associated with the *IL28B* polymorphism

Patients with the *IL28B* minor allele had significantly higher serum level of gamma-glutamyltransferase (GGT) and a higher

frequency of hepatic steatosis (Table 4). When the association between the *IL28B* polymorphism and HCV sequences was analyzed, Gln or His at Core70, that is linked to resistance to PEG-IFN and RBV therapy [4,14,15], was significantly more frequent in patients with the minor *IL28B* allele than in those with the major allele (67% vs. 30%,  $p < 0.0001$ ) (Fig. 4). Other HCV sequences with an IFN resistant phenotype also were more prevalent in patients with the minor *IL28B* allele than those with the major allele: Met at Core91 (46% vs. 37%,  $p = 0.047$ ) and one or no mutations in the ISDR (94% vs. 85%,  $p = 0.004$ ) (Fig. 4).

### Data mining analysis

Data mining analysis was performed to build a model for the prediction of SVR and the result is shown in Fig. 5. The analysis selected four predictive variables, resulting in six subgroups of patients. Genetic polymorphism of *IL28B* was selected as the best predictor of SVR. Patients with the minor *IL28B* allele had a lower probability of SVR and a higher probability of NVR than those with the major *IL28B* allele (SVR: 14% vs. 50%, NVR: 72% vs.

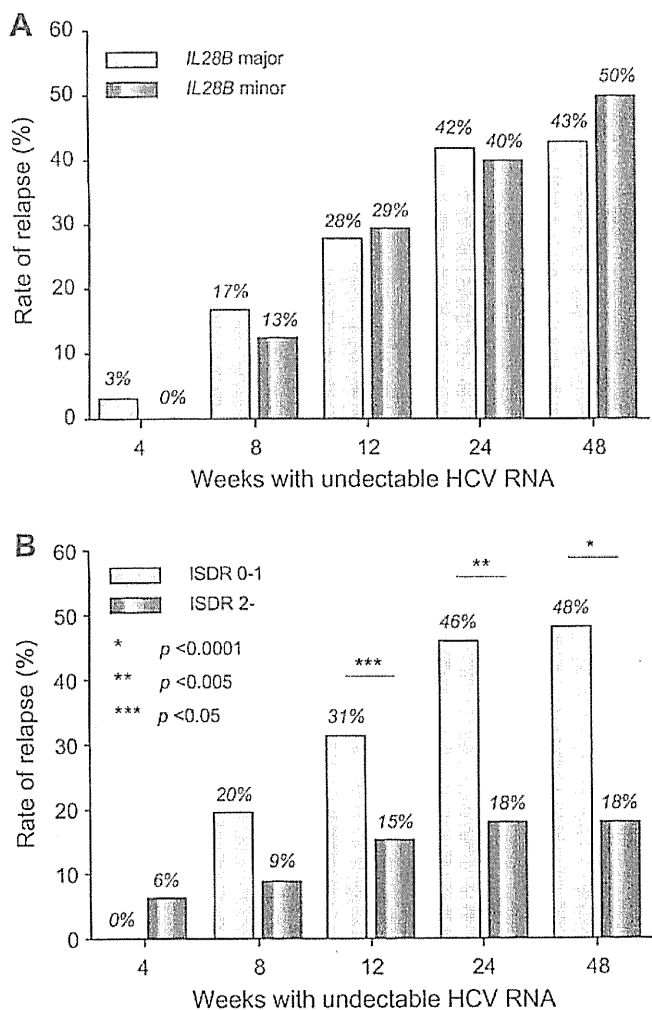


Fig. 3. Association between relapse and the *IL28B* allele or mutations in the ISDR. The rate of relapse was calculated for patients who had undetectable HCV-RNA at serial time points after the start of therapy (4, 8, 12, 24, and 48 weeks). Patients were stratified according to (A) the *IL28B* allele (minor allele vs. major allele) and (B) the number of mutations in the ISDR (0–1 mutation vs. 2 or more mutations). The *p* values are from Fisher's exact test.

12%). After stratification by the *IL28B* allele, patients with low platelet counts ( $<140 \times 10^9/L$ ) had a lower probability of SVR and higher probability of NVR than those with high platelet counts ( $\geq 140 \times 10^9/L$ ): for the minor *IL28B* allele, SVR was 7% vs. 19%, and NVR was 84% vs. 62%, and for the major *IL28B* allele, SVR was 32% vs. 66% and NVR was 16% vs. 8%. Among patients with the major *IL28B* allele and low platelet counts, those with two or more mutations in the ISDR had a higher probability of SVR and lower probability of relapse than those with one or no mutations in the ISDR (SVR: 75% vs. 27%, and relapse: 8% vs. 57%). Among patients with the major *IL28B* allele and high platelet counts, those with a low HCV-RNA titer ( $<600,000$  IU/ml) had a higher probability of SVR and lower probability of NVR and relapse than those with a high HCV-RNA titer (SVR: 90% vs. 61%, NVR: 0% vs. 10%, and relapse: 10% vs. 29%). The sensitivity and specificity of the decision tree were 78% and 70%, respectively. The area under the receiver operating characteristic (ROC) curve of the model was 0.782 (data not shown). The pro-

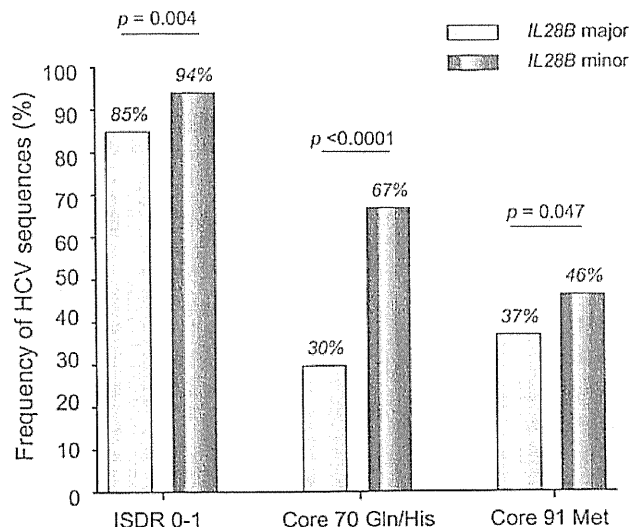


Fig. 4. Associations between the *IL28B* allele and HCV sequences. The prevalence of HCV sequences predicting a resistant phenotype to IFN was higher in patients with the minor *IL28B* allele than those with major allele. (A) 0 or 1 mutation in the ISDR of NS5A, (B) Gln or His at Core70, and (C) Met at Core91. *p* values are from Fisher's exact test.

portion of patients with advanced fibrosis (F3-4) was 39% (84/217) in patients with low platelet counts ( $<140 \times 10^9/L$ ) compared to 13% (37/279) in those with high platelet counts ( $\geq 140 \times 10^9/L$ ).

#### Validation of the data mining analysis

The results of the data mining analysis were validated with 165 patients who differed from those used for model building. Each patient was allocated to one of the six subgroups for the validation using the flow-chart form of the decision tree. The rate of SVR and NVR in each subgroup was calculated. The rates of SVR and NVR for each subgroup of patients were closely correlated between the model building and the validation patients ( $r^2 = 0.99$  and  $0.98$ ) (Fig. 6).

#### Discussion

The rate of NVR after 48 weeks of PEG-IFN/RBV therapy among patients infected with HCV of genotype 1 is around 20–30%. Previously, there have been no reliable baseline predictors of NVR or SVR. Because more potent therapies, such as protease and polymerase inhibitor of HCV [28,29] and nitazoxanide [30], are in clinical trials and may become available in the near future, a pre-treatment prediction of the likelihood of response may be helpful for patients and physicians, to support clinical decisions about whether to begin the current standard of care or whether to wait for emerging therapies. This study revealed that the *IL28B* polymorphism was the overwhelming predictor of NVR and is independent of host factors and viral sequences reported previously. The *IL28B* encodes a protein also known as IFN-lambda 3, which is thought to suppress the replication of various viruses including HCV [31,32]. The results of the current study and the findings of the GWAS studies [6–9] may provide the rationale for developing diagnostic testing or an IFN-lambda based therapy for chronic hepatitis C in the future.

## Research Article

**Table 2. Factors associated with NVR analyzed by univariate and multivariate logistic regression analysis.**

	Univariate			Multivariate		
	Odds ratio	95%CI	p value	Odds ratio	95%CI	p value
Gender: female	0.98	0.67-1.45	0.938	1.29	0.75-2.23	0.363
Age	1.01	0.97-1.01	0.223	0.99	0.97-1.02	0.679
ALT	1.00	1.00-1.00	0.867	1.00	0.99-1.00	0.580
GGT	1.004	1.00-1.01	0.029	1.00	1.00-1.00	0.715
Platelets	0.95	0.91-0.99	0.009	0.92	0.87-0.98	0.006
Fibrosis: F3-4	2.23	1.46-3.42	0.0002	1.97	1.09-3.57	0.025
HCV-RNA: $\geq 600,000$ IU/ml	1.83	1.05-3.19	0.035	2.49	1.17-5.29	0.018
ISDR mutation: $\leq 1$	2.14	1.08-4.22	0.030	0.96	0.78-1.18	0.707
Core 70 (Gln/His)	3.23	2.16-4.78	<0.0001	1.41	0.83-2.42	0.207
Core 91 (Met)	1.39	0.95-2.06	0.093	1.21	0.72-2.04	0.462
IL28B: Minor allele	19.24	11.87-31.18	<0.0001	20.83	11.63-37.04	<0.0001

ALT, alanine aminotransferase; GGT, gamma-glutamyltransferase; ISDR, interferon sensitivity determining region; Gln, glutamine; His, histidine; Met, methionine; Minor allele, heterozygote or homozygote of minor allele.

**Table 3. Factors associated with SVR analyzed by univariate and multivariate logistic regression analysis.**

	Univariate			Multivariate		
	Odds ratio	95%CI	p value	Odds ratio	95%CI	p value
Gender: female	0.81	0.56-1.16	0.253	0.86	0.55-1.35	0.508
Age	0.97	0.95-0.99	0.0003	0.99	0.96-1.01	0.199
ALT	1.00	1.00-1.00	0.337	1.00	1.00-1.01	0.108
GGT	1.00	1.00-1.00	0.273	1.00	1.00-1.00	0.797
Platelets	1.12	1.01-1.16	<0.0001	1.13	1.08-1.19	<0.0001
Fibrosis: F0-2	2.64	1.65-4.22	<0.0001	1.87	1.07-3.28	0.029
HCV-RNA: <600,000 IU/ml	2.49	1.55-3.98	0.0001	2.75	1.55-4.90	0.001
ISDR mutation: $\leq 2$	3.78	2.14-6.68	<0.0001	2.11	1.06-4.18	0.033
Core 70 (Arg)	1.61	1.11-2.28	0.012	0.84	0.52-1.35	0.470
Core 91 (Leu)	1.28	0.88-1.85	0.185	1.26	0.81-1.96	0.300
IL28B: Major allele	6.21	3.75-10.31	<0.0001	7.41	4.05-13.57	<0.0001

ALT, alanine aminotransferase; GGT, Gamma-glutamyltransferase; ISDR, interferon sensitivity determining region; Arg, arginine; Leu, leucine; Major allele, homozygote of major allele.

Among baseline factors, *IL28B* was the most significant predictor of NVR and SVR. Moreover, the *IL28B* allele type was also correlated with early virological response: the rate of RVR and cEVR was significantly high for the *IL28B* major allele compared to the *IL28B* minor allele: 9% vs. 3% for RVR and 57% vs. 11% for cEVR (Fig. 2). On the other hand, the relapse rate was not different between the *IL28B* genotypes within patients who achieved RVR or cEVR (Fig. 3). We believe that optimal therapy should be based on baseline features and a response-guided approach. Our findings suggest that the *IL28B* genotype is a useful baseline predictor of virological response which should be used for selecting the treatment regimen: whether to treat patients with PEG-IFN and RBV or to wait for more effective future therapy including direct acting antiviral drugs. On the other hand, baseline *IL28B* genotype might not be suitable for determining the treatment duration in patients who started PEG-IFN/RBV therapy

and whose virological response is determined because the *IL28B* genotype is not useful for the prediction of relapse. The duration of therapy should be personalized based on the virological response. Future studies need to explore whether the combination of baseline *IL28B* genotype and response-guided approach further improves the optimization of treatment duration.

The SVR rate in patients having the *IL28B* minor allele was 14% in the present study while it was 23% in Caucasians and 9% in African Americans in a study by McCarthy et al. [33]. On the other hand, the SVR rate in patients having the *IL28B* minor allele was 28% in genotypes 1/4 compared to 80% in genotypes 2/3 in a study by Rauch et al. [9]. These data imply that the impact of the *IL28B* polymorphism on response to therapy may be different in terms of race, geographical areas, or HCV genotypes, and that our data need to be validated in future studies including different populations and geographical areas before generalization.

Table 4. Factors associated with *IL28B* genotype.

	<i>IL28B</i> major allele n = 345	<i>IL28B</i> minor allele n = 151	p value
Gender: male	166 (48%)	84 (56%)	0.143
Age (years)	57 ± 10	57 ± 10	0.585
ALT (IU/L)	79 ± 60	78 ± 62	0.842
Platelets (10 <sup>9</sup> /L)	153 ± 54	155 ± 52	0.761
GGT (IU/L)	51 ± 45	78 ± 91	0.001
Fibrosis: F3-4	76 (22%)	45 (30%)	0.063
Steatosis:			
>10%	16/88 (18%)	13/23 (57%)	0.024
>30%	6/88 (7%)	6/23 (26%)	0.017
HCV-RNA: >600,000 IU/ml	284 (82%)	125 (83%)	1.000

ALT, alanine aminotransferase; GGT, gamma-glutamyltransferase.

Four GWAS studies have shown the association between a genetic polymorphism near the *IL28B* gene and response to PEG-IFN plus RBV therapy. The SNPs that showed significant association with response were rs12979860 [8] and rs8099917 [6,7,9]. There is a strong linkage-disequilibrium (LD) between these two SNPs as well as several other SNPs near the *IL28B* gene in Japanese patients [34] but the degree of LD was weaker in Caucasians and Hispanics [8]. Thus, the combination of SNPs is not useful for predicting response in Japanese patients but may improve the predictive value in patients other than Japanese who have weaker LD between SNPs.

Other significant predictors of response independent of *IL28B* genotype were platelet counts, stage of fibrosis, and HCV RVA load. A previous study reported that platelet count is a predictor of response to therapy [35], and the lower platelet count was related with advanced liver fibrosis in the present study. The association between response to therapy and advanced fibrosis independent of the *IL28B* polymorphism is consistent with a recent study by Rauch et al. [9].

There is agreement that the viral genotype is significantly associated with the treatment outcome. Moreover, viral factors such as substitutions in the ISDR of the NS5A region [10] or in the amino acid sequence of the HCV core [4] have been studied in relation to the response to IFN treatment. The amino acid Gln or His at Core70 and Met at Core91 are repeatedly reported to be associated with resistance to therapy [4,14,15] in Japanese patients but these data wait to be validated in different populations or other geographical areas. In this study, we confirmed that patients with two or more mutations in the ISDR had a higher rate of undetectable HCV-RNA at each time point during therapy. In addition, the rate of relapse among patients who achieved cEVR was significantly lower in patients with two or more mutations in ISDR compared to those with only one or no mutations (15% vs. 31%,  $p < 0.05$ ). Thus, the ISDR sequence may be used to predict a relapse among patients who achieved virological response during therapy, while the *IL28B* polymorphism may be used to predict the virological response before therapy. A higher number of mutations in the ISDR are reported to have close association with SVR in Japanese [11–13,15,36] or Asian [37,38] populations but data from Western countries have been controversial [39–42]. A meta-analysis of 1230 patients including 525 patients from Europe has shown that there was a positive correlation

between the SVR and the number of mutations in the ISDR in Japanese as well as in European patients [43] but this correlation was more pronounced in Japanese patients. Thus, geographical factors may account for the different impact of ISDR on treatment response, which may be a potential limitation of our study.

To our surprise, these HCV sequences were associated with the *IL28B* genotype: HCV sequences with an IFN resistant phenotype were more prevalent in patients with the minor *IL28B* allele than those with the major allele. This was an unexpected finding, as we initially thought that host genetics and viral sequences were completely independent. A recent study reported that the *IL28B* polymorphism (rs12979860) was significantly associated with HCV genotype: the *IL28B* minor allele was more frequent in HCV genotype 1-infected patients compared to patients infected with HCV genotype 2 or 3 [33]. Again, patients with the *IL28B* minor allele (IFN resistant genotype) were infected with HCV sequences that are linked to an IFN resistant phenotype. The mechanism for this association is unclear, but may be related to an interaction between the *IL28B* genotype and HCV sequences in the development of chronic HCV infection as discussed by McCarthy et al., since the *IL28B* polymorphism was associated with the natural clearance of HCV [44]. Alternatively, the HCV sequence within the patient may be selected during the course of chronic infection [45,46]. These hypotheses should be explored through prospective studies of spontaneous HCV clearance or by testing the time-dependent changes in the HCV sequence during the course of chronic infection.

How these host and viral factors can be integrated to predict the response to therapy in future clinical practice is an important question. Because various host and viral factors interact in the same patient, predictive analysis should consider these factors in combination. Using the data mining analysis, we constructed a simple decision tree model for the pre-treatment prediction of SVR and NVR to PEG-IFN/RBV therapy. The classification of patients based on the genetic polymorphism of *IL28B*, mutation in the ISDR, serum levels of HCV-RNA, and platelet counts, identified subgroups of patients who have the lowest probabilities of NVR (0%) with the highest probabilities of SVR (90%) as well as those who have the highest probabilities of NVR (84%) with the lowest probability of SVR (7%). The reproducibility of the model was confirmed by the independent validation based on a second group of patients. Using this model, we can rapidly develop an

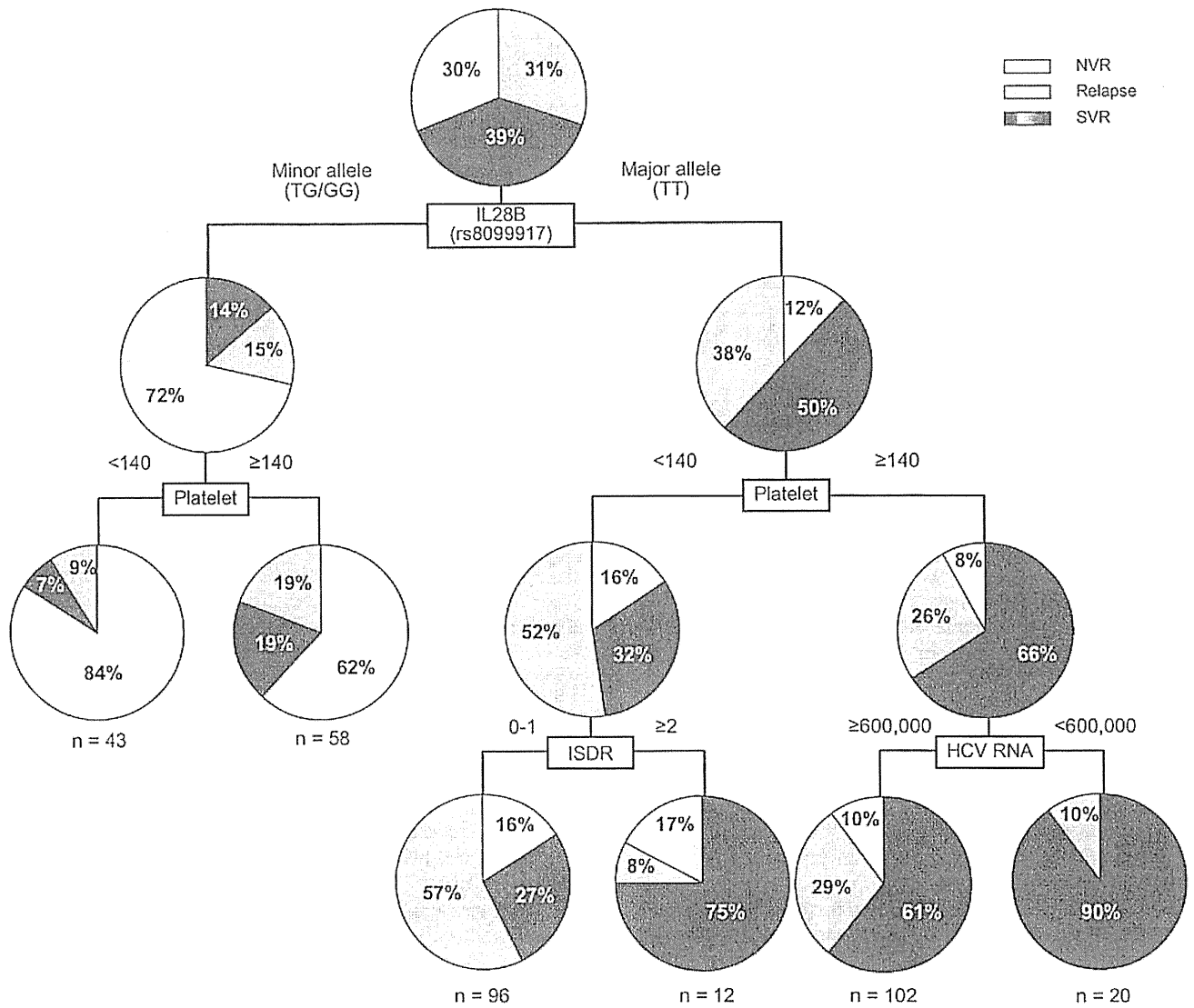


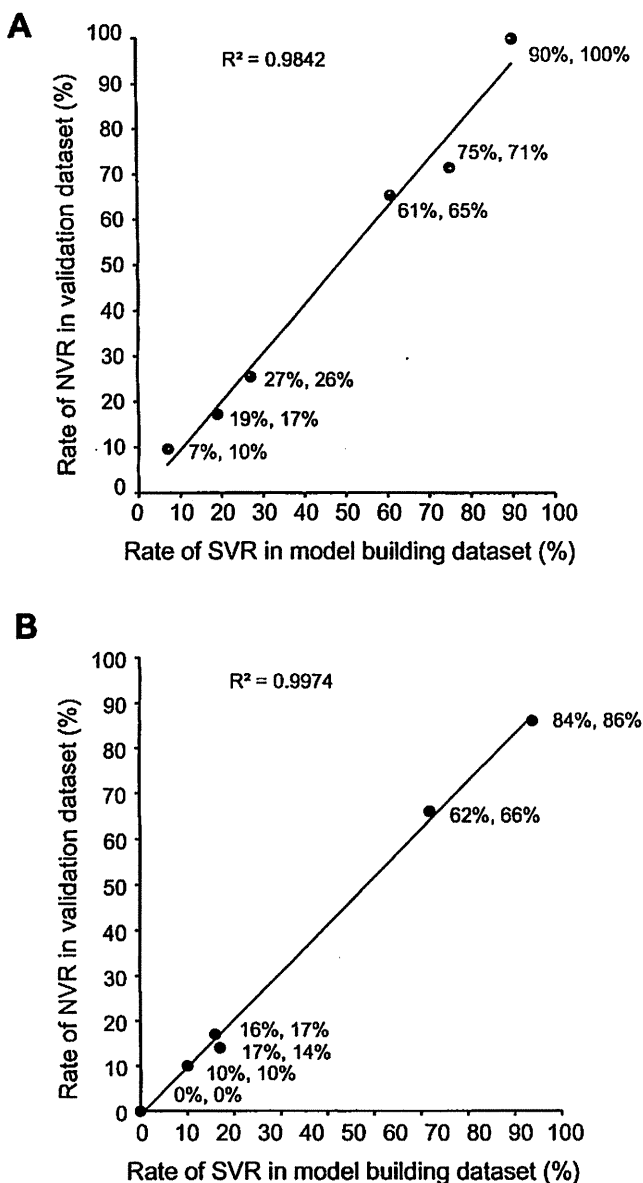
Fig. 5. Decision tree for the prediction of response to therapy. The boxes indicate the factors used for splitting. Pie charts indicate the rate of response for each group of patients after splitting. The rate of null virological response, relapse, and sustained virological response is shown.

estimate of the response before treatment, by simply allocating patients to subgroups by following the flow-chart form, which may facilitate clinical decision making. This is in contrast to the calculating formula, which was constructed by the traditional logistic regression model. This was not widely used in clinical practice as it is abstruse and inconvenient. These results support the evidence based approach of selecting the optimum treatment strategy for individual patients, such as treating patients with a low probability of NVR with current PEG-IFN/RBV combination therapy or advising those with a high probability of NVR to wait for more effective future therapies. Patients with a high probability of relapse may be treated for a longer duration to avoid a relapse. Decisions may be based on the possibility of a response against a potential risk of adverse events and the cost of the therapy, or disease progression while waiting for future therapy.

We have previously reported the predictive model of early virological response to PEG-IFN and RBV in chronic hepatitis C

[26]. The top factor selected as significant was the grade of steatosis, followed by serum level of LDL cholesterol, age, GGT, and blood sugar. The mechanism of association between these factors and treatment response was not clear at that time. To our interest, a recent study by Li et al. [47] has shown that high serum level of LDL cholesterol was linked to the *IL28B* major allele (CC in rs12979860). High serum level of LDL cholesterol was associated with SVR but it was no longer significant when analyzed together with the *IL28B* genotype in multivariate analysis. Thus, the association between treatment response and LDL cholesterol levels may reflect the underlining link of LDL cholesterol levels to *IL28B* genotype. Steatosis is reported to be correlated with low lipid levels [48] which suggest that *IL28B* genotypes may be also associated with steatosis. In fact, there were significant correlations between the *IL28B* genotype and the presence of steatosis in the present study (Table 4). In addition, the serum level of GGT, another predictive factor in our previous study, was signif-





**Fig. 6. Validation of the CART analysis.** Each patient in the validation group was allocated to one of the six subgroups by following the flow-chart form of the decision tree. The rate of (A) sustained virological response (SVR) and (B) null virological response (NVR) in each subgroup was calculated and plotted. The X-axis represents the rate of SVR or NVR in the model building patients and the Y-axis represents those in the validation patients. The rate of SVR and NVR in each subgroup of patients is closely correlated between the model building and the validation patients (correlation coefficient:  $r^2 = 0.98-0.99$ ).

icantly associated with *IL28B* genotype in the present study (Table 4). The serum level of GGT was significantly associated with NVR when examined independently but was no longer significant when analyzed together with the *IL28B* genotype. These observations indicate that some of the factors that we have previously identified may be associated with virological response to therapy through the underlining link to the *IL28B* genotype.

In conclusion, the present study highlighted the impact of the *IL28B* polymorphism and mutation in the ISDR on the pre-treatment prediction of response to PEG-IFN/RBV therapy. A decision model including these host and viral factors has the potential to

support selection of the optimum treatment strategy for individual patients, which may enable personalized treatment.

**Conflict of interest**

The authors who have taken part in this study declare that they do not have anything to disclose regarding funding or conflict of interest with respect to this manuscript.

**Financial support**

This study was supported by a grant-in-aid from the Ministry of Health, Labor and Welfare, Japan, (H19-kannen-013), (H20-kannen-006).

**References**

- [1] Ray Kim W. Global epidemiology and burden of hepatitis C. *Microbes Infect* 2002;4 (12):1219-1225.
- [2] Fried MW, Shiffman ML, Reddy KR, Smith C, Marinos G, Goncalves Jr FL, et al. Peginterferon alfa-2a plus ribavirin for chronic hepatitis C virus infection. *N Engl J Med* 2002;347 (13):975-982.
- [3] Manns MP, McHutchison JG, Gordon SC, Rustgi VK, Shiffman M, Reindollar R, et al. Peginterferon alfa-2b plus ribavirin compared with interferon alfa-2b plus ribavirin for initial treatment of chronic hepatitis C: a randomised trial. *Lancet* 2001;358 (9286):958-965.
- [4] Akuta N, Suzuki F, Sezaki H, Suzuki Y, Hosaka T, Someya T, et al. Association of amino acid substitution pattern in core protein of hepatitis C virus genotype 1b high viral load and non-virological response to interferon-ribavirin combination therapy. *Intervirology* 2005;48 (6):372-380.
- [5] Davis GL, Wong JB, McHutchison JG, Manns MP, Harvey J, Albrecht J. Early virologic response to treatment with peginterferon alfa-2b plus ribavirin in patients with chronic hepatitis C. *Hepatology* 2003;38 (3):645-652.
- [6] Tanaka Y, Nishida N, Sugiyama M, Kurosaki M, Matsuura K, Sakamoto N, et al. Genome-wide association of IL28B with response to pegylated interferon-alpha and ribavirin therapy for chronic hepatitis C. *Nat Genet* 2009;10:1105-1109.
- [7] Suppiah V, Moldovan M, Ahlenstiel G, Berg T, Weltman M, Abate ML, et al. IL28B is associated with response to chronic hepatitis C interferon-alpha and ribavirin therapy. *Nat Genet* 2009;10:1100-1104.
- [8] Ge D, Fellay J, Thompson AJ, Simon JS, Shianna KV, Urban TJ, et al. Genetic variation in IL28B predicts hepatitis C treatment-induced viral clearance. *Nature* 2009;461 (7262):399-401.
- [9] Rauch A, Kutalik Z, Descombes P, Cai T, Di Iulio J, Mueller T, et al. Genetic variation in IL28B is associated with chronic hepatitis C and treatment failure: a genome-wide association study. *Gastroenterology* 2010;138 (4):1338-1345.
- [10] Enomoto N, Sakuma I, Asahina Y, Kurosaki M, Murakami T, Yamamoto C, et al. Comparison of full-length sequences of interferon-sensitive and resistant hepatitis C virus 1b. Sensitivity to interferon is conferred by amino acid substitutions in the NS5A region. *J Clin Invest* 1995;96 (1):224-230.
- [11] Enomoto N, Sakuma I, Asahina Y, Kurosaki M, Murakami T, Yamamoto C, et al. Mutations in the nonstructural protein 5A gene and response to interferon in patients with chronic hepatitis C virus 1b infection. *N Engl J Med* 1996;334 (2):77-81.
- [12] Kurosaki M, Enomoto N, Murakami T, Sakuma I, Asahina Y, Yamamoto C, et al. Analysis of genotypes and amino acid residues 2209 to 2248 of the NS5A region of hepatitis C virus in relation to the response to interferon-beta therapy. *Hepatology* 1997;25 (3):750-753.
- [13] Shirakawa H, Matsumoto A, Joshita S, Komatsu M, Tanaka N, Umemura T, et al. Pretreatment prediction of virological response to peginterferon plus ribavirin therapy in chronic hepatitis C patients using viral and host factors. *Hepatology* 2008;48 (6):1753-1760.
- [14] Akuta N, Suzuki F, Kawamura Y, Yatsuji H, Sezaki H, Suzuki Y, et al. Predictive factors of early and sustained responses to peginterferon plus ribavirin combination therapy in Japanese patients infected with hepatitis C virus genotype 1b: amino acid substitutions in the core region and low-density lipoprotein cholesterol levels. *J Hepatol* 2007;46 (3):403-410.

## Research Article

- [15] Okanoue T, Itoh Y, Hashimoto H, Yasui K, Minami M, Takehara T, et al. Predictive values of amino acid sequences of the core and NSSA regions in antiviral therapy for hepatitis C: a Japanese multi-center study. *J Gastroenterol* 2009;44 (9):952–963.
- [16] Segal MR, Bloch DA. A comparison of estimated proportional hazards models and regression trees. *Stat Med* 1989;8 (5):539–550.
- [17] LeBlanc M, Crowley J. A review of tree-based prognostic models. *Cancer Treat Res* 1995;75:113–124.
- [18] Garzotto M, Beer TM, Hudson RG, Peters L, Hsieh YC, Barrera E, et al. Improved detection of prostate cancer using classification and regression tree analysis. *J Clin Oncol* 2005;23 (19):4322–4329.
- [19] Averbook BJ, Fu P, Rao JS, Mansour EG. A long-term analysis of 1018 patients with melanoma by classic Cox regression and tree-structured survival analysis at a major referral center: implications on the future of cancer staging. *Surgery* 2002;132 (4):589–602.
- [20] Leiter U, Buettner PG, Eigentler TK, Garbe C. Prognostic factors of thin cutaneous melanoma: an analysis of the central malignant melanoma registry of the German dermatological society. *J Clin Oncol* 2004;22 (18):3660–3667.
- [21] Valera VA, Walter BA, Yokoyama N, Koyama Y, Iiai T, Okamoto H, et al. Prognostic groups in colorectal carcinoma patients based on tumor cell proliferation and classification and regression tree (CART) survival analysis. *Ann Surg Oncol* 2007;14 (1):34–40.
- [22] Zlobec I, Steele R, Nigam N, Compton CC. A predictive model of rectal tumor response to preoperative radiotherapy using classification and regression tree methods. *Clin Cancer Res* 2005;11 (15):5440–5443.
- [23] Thabane M, Simunovic M, Akhtar-Danesh N, Marshall JK. Development and validation of a risk score for post-infectious irritable bowel syndrome. *Am J Gastroenterol* 2009;104 (9):2267–2274.
- [24] Wu BU, Johannes RS, Sun X, Tabak Y, Conwell DL, Banks PA. The early prediction of mortality in acute pancreatitis: a large population-based study. *Gut* 2008;57 (12):1698–1703.
- [25] Fonarow GC, Adams Jr KF, Abraham WT, Yancy CW, Boscardin WJ. Risk stratification for in-hospital mortality in acutely decompensated heart failure: classification and regression tree analysis. *Jama* 2005;293 (5):572–580.
- [26] Kurosaki M, Matsunaga K, Hirayama I, Tanaka T, Sato M, Yasui Y, et al. A predictive model of response to peginterferon ribavirin in chronic hepatitis C using classification and regression tree analysis. *Hepatol Res* 2010;40 (3):251–260.
- [27] Nishida N, Tanabe T, Takasu M, Suyama A, Tokunaga K. Further development of multiplex single nucleotide polymorphism typing method, the DigiTag2 assay. *Anal Biochem* 2007;364 (1):78–85.
- [28] Hezode C, Forestier N, Dusheiko G, Ferenci P, Pol S, Goeser T, et al. Telaprevir and peginterferon with or without ribavirin for chronic HCV infection. *N Engl J Med* 2009;360 (18):1839–1850.
- [29] McHutchison JG, Everson GT, Gordon SC, Jacobson IM, Sulkowski M, Kauffman R, et al. Telaprevir with peginterferon and ribavirin for chronic HCV genotype 1 infection. *N Engl J Med* 2009;360 (18):1827–1838.
- [30] Rossignol JF, Elfert A, El-Gohary Y, Keefe EB. Improved virologic response in chronic hepatitis C genotype 4 treated with nitazoxanide, peginterferon, and ribavirin. *Gastroenterology* 2009;136 (3):856–862.
- [31] Marcello T, Grakoui A, Barba-Spaeth G, Machlin ES, Kotenko SV, MacDonald MR, et al. Interferons alpha and lambda inhibit hepatitis C virus replication with distinct signal transduction and gene regulation kinetics. *Gastroenterology* 2006;131 (6):1887–1898.
- [32] Robek MD, Boyd BS, Chisari FV. Lambda interferon inhibits hepatitis B and C virus replication. *J Virol* 2005;79 (6):3851–3854.
- [33] McCarthy JJ, Li JH, Thompson A, Suchindran S, Lao XQ, Patel K, et al. Replicated association between an IL28B Gene Variant and a Sustained Response to Pegylated Interferon and Ribavirin. *Gastroenterology* 2010;138:2307–2314.
- [34] Tanaka Y, Nishida N, Sugiyama M, Tokunaga K, Mizokami M. A-interferons and the single nucleotide polymorphisms: a milestone to tailor-made therapy for chronic hepatitis C. *Hepatol Res* 2010;40:449–460.
- [35] Backus LI, Boothroyd DB, Phillips BR, Mole LA. Predictors of response of US veterans to treatment for the hepatitis C virus. *Hepatology* 2007;46 (1):37–47.
- [36] Mori N, Imamura M, Kawakami Y, Saneto H, Kawaoka T, Takaki S, et al. Randomized trial of high-dose interferon-alpha-2b combined with ribavirin in patients with chronic hepatitis C: correlation between amino acid substitutions in the core/NSSA region and virological response to interferon therapy. *J Med Virol* 2009;81 (4):640–649.
- [37] Hung CH, Lee CM, Lu SN, Lee JF, Wang JH, Tung HD, et al. Mutations in the NSSA and E2-PePHD region of hepatitis C virus type 1b and correlation with the response to combination therapy with interferon and ribavirin. *J Viral Hepat* 2003;10 (2):87–94.
- [38] Yen YH, Hung CH, Hu TH, Chen CH, Wu CM, Wang JH, et al. Mutations in the interferon sensitivity-determining region (nonstructural 5A amino acid 2209–2248) in patients with hepatitis C-1b infection and correlating response to combined therapy of pegylated interferon and ribavirin. *Aliment Pharmacol Ther* 2008;27 (1):72–79.
- [39] Zeuzem S, Lee JH, Roth WK. Mutations in the nonstructural 5A gene of European hepatitis C virus isolates and response to interferon alpha. *Hepatology* 1997;25 (3):740–744.
- [40] Squadrito G, Leone F, Sartori M, Nalpas B, Berthelot P, Raimondo G, et al. Mutations in the nonstructural 5A region of hepatitis C virus and response of chronic hepatitis C to interferon alpha. *Gastroenterology* 1997;113 (2):567–572.
- [41] Sarrazin C, Berg T, Lee JH, Teuber G, Dietrich CF, Roth WK, et al. Improved correlation between multiple mutations within the NSSA region and virological response in European patients chronically infected with hepatitis C virus type 1b undergoing combination therapy. *J Hepatol* 1999;30 (6):1004–1013.
- [42] Murphy MD, Rosen HR, Marousek GI, Chou S. Analysis of sequence configurations of the ISDR, PKR-binding domain, and V3 region as predictors of response to induction interferon-alpha and ribavirin therapy in chronic hepatitis C infection. *Dig Dis Sci* 2002;47 (6):1195–1205.
- [43] Pascu M, Martus P, Hohne M, Wiedenmann B, Hopf U, Schreier E, et al. Sustained virological response in hepatitis C virus type 1b infected patients is predicted by the number of mutations within the NSSA-ISDR: a meta-analysis focused on geographical differences. *Gut* 2004;53 (9):1345–1351.
- [44] Thomas DL, Thio CL, Martin MP, Qi Y, Ge D, O'Huigin C, et al. Genetic variation in IL28B and spontaneous clearance of hepatitis C virus. *Nature* 2009;461 (7265):798–801.
- [45] Kurosaki M, Enomoto N, Marumo F, Sato C. Evolution and selection of hepatitis C virus variants in patients with chronic hepatitis C. *Virology* 1994;205 (1):161–169.
- [46] Enomoto N, Kurosaki M, Tanaka Y, Marumo F, Sato C. Fluctuation of hepatitis C virus quasispecies in persistent infection and interferon treatment revealed by single-strand conformation polymorphism analysis. *J Gen Virol* 1994;75 (Pt 6):1361–1369.
- [47] Li JH, Lao XQ, Tillmann HL, Rowell J, Patel K, Thompson A, et al. Interferon-lambda genotype and low serum low-density lipoprotein cholesterol levels in patients with chronic hepatitis C infection. *Hepatology* 1904;51 (6):1904–1911.
- [48] Serfaty L, Andreani T, Giral P, Carbonell N, Chazouilleres O, Poupon R. Hepatitis C virus induced hypobetalipoproteinemia: a possible mechanism for steatosis in chronic hepatitis C. *J Hepatol* 2001;34 (3):428–434.

## Characterization of naturally occurring protease inhibitor-resistance mutations in genotype 1b hepatitis C virus patients

Hiroko Shindo · Shinya Maekawa · Kazuki Komase · Ryota Sueki · Mika Miura · Makoto Kadokura · Kuniaki Shindo · Fumitake Amemiya · Takatoshi Kitamura · Yasuhiro Nakayama · Taisuke Inoue · Minoru Sakamoto · Shun-ichi Okada · Yasuhiro Asahina · Namiki Izumi · Masao Honda · Shuichi Kaneko · Nobuyuki Enomoto

Received: 21 April 2011 / Accepted: 22 July 2011  
© Asian Pacific Association for the Study of the Liver 2011

### Abstract

**Background and aims** Protease inhibitor (PI)-resistant hepatitis C virus (HCV) variants may be present in substantial numbers in PI-untreated patients according to recent reports. However, influence of these viruses in the clinical course of chronic hepatitis C has not been well characterized.

**Methods** The dominant HCV nonstructural 3 (NS3) amino acid sequences were determined in 261 HCV genotype 1b-infected Japanese patients before pegylated interferon plus ribavirin (PEG-IFN/RBV) therapy, and investigated the patients' clinical characteristics as well as treatment responses including sustained virological response (SVR) rate. HCV-NS3 sequences were also determined in 39 non-SVR patients after completion of the therapy.

**Results** Four single mutations (T54S, Q80K, I153V, and D168E) known to confer PI resistance were found in 35 of 261 patients (13.4%), and double mutations (I153V plus

T54S/D168E) were found in 6 patients (2.3%). Responses to PEG-IFN/RBV therapy did not differ between patients with and without PI-resistance mutations (mutation group, SVR 48%; wild-type group, SVR 40%;  $P = 0.38$ ). On the other hand, two mutations appeared in two non-SVR patients after PEG-IFN/RBV therapy (I153V and E168D, 5.1%).

**Conclusions** PI-resistance-associated NS3 mutations exist in a substantial proportion of untreated HCV-1b-infected patients. The impact of these mutations in the treatment of PIs is unclear, but clinicians should pay attention to avoid further development of PI resistance.

**Keywords** HCV · Protease inhibitor · Naturally occurring viral resistance mutations

### Introduction

Hepatitis C virus (HCV) infects more than 170 million persons worldwide and thus represents a global health problem. At least 130 million infected individuals are chronic carriers of HCV and are at significant risk of developing liver cirrhosis and hepatocellular carcinoma [1]. The current standard treatment with pegylated interferon plus ribavirin (PEG-IFN/RBV) is complicated by frequent adverse reactions, and a sustained virologic response (SVR) can be achieved only in 50% of patients infected with the most prevalent genotype 1 [2]. In Japan, since 70% of patients are infected with intractable genotype 1b HCV, more effective treatments are urgently required.

A promising approach is the development of specifically targeted antiviral therapies for hepatitis C (STAT-C). HCV-specific protease inhibitors (PIs) target an essential step in HCV replication by blocking the nonstructural 3/4A (NS3/4A) protease-dependent cleavage of the HCV polyprotein

**Electronic supplementary material** The online version of this article (doi:10.1007/s12072-011-9306-7) contains supplementary material, which is available to authorized users.

H. Shindo · S. Maekawa (✉) · K. Komase · R. Sueki · M. Miura · M. Kadokura · K. Shindo · F. Amemiya · T. Kitamura · Y. Nakayama · T. Inoue · M. Sakamoto · S. Okada · N. Enomoto

First Department of Internal Medicine, University of Yamanashi, 1110, Shimokato, Chuo, Yamanashi 409-3898, Japan  
e-mail: maekawa@yamanashi.ac.jp

Y. Asahina · N. Izumi  
Division of Gastroenterology and Hepatology,  
Musashino Red Cross Hospital, Tokyo, Japan

M. Honda · S. Kaneko  
Department of Gastroenterology, Kanazawa University Graduate  
School of Medicine, Kanazawa, Japan

[1]. Among these NS3/4A PIs, telaprevir, boceprevir, SCH446211, danoprevir (ITMN-191), naldaprevir (SCH900 518), and TMC435 are now under clinical trials [1, 3–7]. In PROVE1 and PROVE2 studies [3, 4] undertaken in North America and Europe, the SVR rate was favorable (67 and 69%, respectively) in a triple therapy regimen including telaprevir. In addition, some studies have suggested that shortening of treatment duration may be possible for patients who achieve a rapid virologic response (RVR) [8, 9].

However the sole use of STAT-C drugs, such as PIs, promotes production and selection of drug-resistant variants in patients experiencing viral rebound during treatment [3, 10, 11] as well as in HCV replicon experiments [11, 12]. Therefore, these drugs should be used in combination with the PEG-IFN/RBV to prevent the appearance of drug-resistant variants. However, Kuntzen et al. [13] demonstrated the presence of these drug-resistant variants in high frequencies (8.6–16.2%) by population-based sequencing in patients not treated with the drugs [1, 13]. Gaudieri et al. [14] have suggested that regions of NS3 protease and NS5B polymerase are likely to be under HLA immune pressure and therapeutic selection, and that drug-resistant variants may occur naturally to escape the immune system. These observations seem quite astonishing and troubling, since a substantial number of patients may not respond to the new therapies such as STAT-C drugs.

In the present study, to assess the prevalence of NS3 mutations conferring PI resistance in HCV genotype 1b-infected Japanese patients who had not been previously treated with PIs, as well as to assess the influence of those mutations in response to PEG-IFN/RBV therapy, the dominant HCV-NS3 sequences were determined in 261 HCV-1b patients before starting the PEG-IFN/RBV therapy.

## Methods

### Patients

Serum samples were acquired from 261 HCV genotype 1b-infected adult Japanese patients before combination therapy with PEG-IFN (PEGINTRON<sup>®</sup>, Schering-Plough, Tokyo, Japan) plus RBV (REBETOL<sup>®</sup>, Schering-Plough) between 2004 and 2008 at the University of Yamanashi, Musashino Red Cross Hospital and Kanazawa University. The therapy was administered according to the standard PEG-IFN/RBV treatment protocol established for Japanese patients by a hepatitis study group of the Ministry of Health, Labor, and Welfare, Japan. Specifically, the patients were subcutaneously administered PEG-IFN $\alpha$ -2b, 1.5  $\mu$ g/kg body weight, once weekly and RBV 600–800 mg daily per os for 48 weeks. These patients were not infected with human immunodeficiency virus (HIV). The study was

approved by the ethics committees of all participating universities and the hospital, and the protocol conformed to the ethical guidelines of the 1975 Declaration of Helsinki as reflected in a priori approval by the Institutional Review Board at Massachusetts General Hospital. Written informed consent was obtained from each study participant.

### Amplification and sequencing of full-length HCV genomes

Viral loads were determined using the Amplicor HCV RNA kit, version 2.0 (Roche Diagnostics, Tokyo, Japan) or the Cobas TaqMan test (Roche Diagnostics). HCV RNA was extracted from pretreatment serum samples by the AGPC method using Isogen (Wako, Osaka, Japan) according to the manufacturer's protocol. Complementary DNA was synthesised using Superscript II (Invitrogen, Tokyo, Japan) and random primers (Invitrogen), and then amplified by two-step nested PCR using the primers listed in Supplementary Table 1. All samples were initially denatured at 95°C for 7 min, followed by 40 cycles of amplification with denaturation at 95°C for 15 s, annealing at 55°C for 15 s, and extension at 72°C for 45 s using the BD Advantage<sup>™</sup> 2 PCR Enzyme system (BD Biosciences Clontech, CA, USA). PCR amplicons were directly sequenced using BigDye Terminator version 3.1 (ABI, Tokyo, Japan) and universal M13 forward/reverse primers using an ABI prism 3130 sequencer (ABI).

### Sequence alignment and analysis

Sequences were determined in both directions, particularly for the ambiguous stretches, were assembled using the Vector NTI software (Invitrogen), and base-calling errors were corrected following the inspection of chromatograms. If mixed bases were detected as two different chromatogram peaks at the same residue, only the dominant base was called after evaluation of all overlapping fragments. A consensus sequence was generated from the alignment on the basis of the most common amino acid at each site.

### Determination of PI resistance mutations

Multiple viral NS3 mutations were observed in amino acid positions reported to confer PI resistance among 261 patients: V36, Q41, F43, T54, V55, Q80, R109, I153, R155, A156, D168, V170, and M175. NS3 amino acid mutations with proven PI resistance in previously published studies (Table 1) were designated as resistance proven mutations (e.g., V36M/A). Mutations in the PI-resistance site not known to confer drug resistance were designated resistance unproven mutations (e.g., V36I). Patients were allocated to two groups according to the presence of PI-resistance