

IV. 研究成果の刊行に関する一覧表

研究成果の刊行に関する一覧表

書籍

著者氏名	論文タイトル名	書籍全体の編集者名	書籍名	出版社名	出版地	出版年	ページ
Yamashita T, (金子)	Differentiation of Cancer Stem Cells	Stanley Shostak	Cancer Stem Cells - The Cutting Edge	InTech	Croatia	2011	337-350
古瀬純司	抗癌剤【肝胆膵】	渡邊昌彦, 國 土典広, 土岐 祐一郎	消化器外科 レビュー 2011	総合医学社	東京	2011	208-215
古瀬純司, 他	原発性肝癌に対する 化学療法	大村健二, 瀧 内比呂也	消化器癌化 学療法改訂3 版	南山堂	東京	2011	278-283
長島文夫, 古 瀬純司	血管新生阻害薬に共 通した有害事象とそ の対策. 肝障害(ウイ ルス性肝炎憎悪を含 む)	西田俊朗, 大津敦, 土井俊彦	血管新生阻 害薬のベス トマネジメ ント	金原出版	東京	2011	89-94
池田健次	肝癌に対する新規抗 癌剤ミリプラチン動 注療法の治療効果	犬山シホシワ ム記録刊行会	肝炎・肝癌の 新しい診断 と治療	メディカルリビ ュン	東京	2011	191-195
池田健次	肝細胞癌の治療	林紀夫 日比紀文 上西紀夫 下瀬川徹	Annual Review消化 器 2011	中外医薬社	東京	2011	195-212
宮山士朗	A-Pシャント・側副血 行路を有する肝細胞 癌に対するTACE	栗林幸夫、中 村健治、廣田 省三、吉岡哲 也	IVRマニユ アル第2版	医学書院	東京	2011	120-124

雑誌

発表者氏名	論文タイトル名	発表誌名	巻号	ページ	出版年
Shindo H, (本多)	Characterization of naturally occurring protease inhibitor-resistance mutations in genotype 1b hepatitis C virus patients.	Hepato Int	-	-	(in press)
Tanaka Y, (本多)	Genome-wide association study identified ITPA/DDRGK1 variants reflecting thrombocytopenia in pegylated interferon and ribavirin therapy for chronic hepatitis C.	Hum Mol Genet	20(17)	3507-3716	2011

Mizukoshi E, (本多、中本)	Comparative analysis of various tumor-associated antigen-specific t-cell responses in patients with hepatocellular carcinoma.	Hepatology	53(4)	1206-1216	2011
Honda M, (本多)	Malnutrition impairs interferon signaling through mTOR and FoxO pathways in patients with chronic hepatitis C.	Gastroenterology	141(1)	128-140	2011
Kurosaki M, (本多)	Pre-treatment prediction of response to pegylated-interferon plus ribavirin for chronic hepatitis C using genetic polymorphism in IL28B and viral factors.	J Hepatol	54(3)	439-448	2011
Yamashita T, (金子)	Molecular mechanisms of hepatocarcinogenesis in chronic hepatitis C virus infection.	J Gastroenterol Hepatol.	26(6)	960-964	2011
Sunagozaka H, (金子)	Identification of a secretory protein c19orf10 activated in hepatocellular carcinoma.	Int J Cancer	129(7)	1576-1585	2011
Nakamoto Y, (金子、中本)	Prolonged recurrence-free survival following OK432-stimulated dendritic cell transfer into hepatocellular carcinoma during transarterial embolization.	Clin Exp Immunol	163(2)	165-177	2011
Takata Y, (中本)	Frequency of CD45RO+ subset in CD4+CD25(high) regulatory T cells associated with progression of hepatocellular carcinoma.	Cancer Lett	307(2)	165-173	2011
Koizumi Y, (恩地)	Noninvasive diagnosis of liver fibrosis in patients with chronic hepatitis C by real-time tissue elastography: Establishment of the method for measurement.	Radiology	258	610-617	2011
Hirooka M, (恩地)	Hepatic elasticity in patients with ascites: evaluation with real-time tissue elastography	AJR Am J Roentgenol	196	W766-W771	2011
Shigematsu S, (恩地)	ZNF689 suppresses apoptosis of hepatocellular carcinoma cells through the down regulation of Bcl-2 family members.	Exp Cell Res	317	1851-1859	2011
Hirooka M, (恩地)	Splenic elasticity identified by real-time tissue elastography is a novel marker of portal hypertension.	Radiology	261	960-968	2011
Chiba T, (横須賀)	3-Deazaneplanocin A is a promising therapeutic agent for the eradication of tumor-initiating hepatocellular carcinoma cells.	Int J Cancer	-	-	(in press)

Ogasawara S, (横須賀)	Safety and tolerance of sorafenib in Japanese patients with advanced hepatocellular carcinoma.	Hepatol Int	5(3)	850-856	2011
Yokosuka O, (横須賀)	Management of hepatitis B: Consensus of the Japan Society of Hepatology 2009.	Hepatol Res	41(1)	1-21	2011
Kanda T, (横須賀)	Quantification of hepatitis C virus in patients treated with peginterferon-alfa 2a plus ribavirin treatment by COBAS TaqMan HCV test.	J Viral Hepat	18(7)	e292-297	2011
Fujisawa K, (寺井)	Senescence marker protein 30 (SMP30)/regucalcin (RGN) expression decreases with aging, acute liver injuries and tumors in zebrafish.	Biochem Biophys Res Commun	414	331-336	2011
寺井崇二、坂井田功	肝癌幹細胞を探る	分子消化器病学	8(1)	33-44	2011
Hikita H, (竹原)	Delayed-onset caspase-dependent massive hepatocyte apoptosis upon Fas activation in Bak/Bax-deficient mice.	Hepatology	54	240-251	2011
Tatsumi T, (竹原)	α -galactosylceramide activates antitumor immunity against liver tumor.	Hepatol Res	41	30-38	2011
Shimizu S, (竹原)	The let-7 family of microRNAs negatively regulates Bcl-xL expression and potentiates sorafenib-induced apoptosis in human hepatocellular carcinoma.	J Hepatol	52	698-704	2010
Furuse J, (古瀬)	Inhibitor of MEK1/2, selumetinib, for biliary tract cancer	Expert Rev Gastroenterol Hepatol	5(5)	579-581	2011
Kudo M, (古瀬)	Phase III study of sorafenib after transarterial chemoembolisation in Japanese and Korean patients with unresectable hepatocellular carcinoma	Eur J Cancer	47	2117-2127	2011
Iijima M, (古瀬)	Sorafenib-associated hand-foot syndrome in Japanese patients	Dermatol	38	261-266	2011
Kindler HL, (古瀬)	Axitinib plus gemcitabine versus placebo plus gemcitabine in patients with advanced pancreatic adenocarcinoma: a double-blind randomised phase 3 study	Lancet Oncol	12	256-262	2011

Okusaka T, (古瀬)	Phase II study of erlotinib plus gemcitabine in Japanese patients with unresectable pancreatic cancer	Cancer Sci	102(2)	425-231	2011
Suzuki E, (古瀬)	A phase I/II study of combined chemotherapy with mitoxantrone and uracil/tegafur for advanced hepatocellular carcinoma	Jpn J Clin Oncol	41(3)	328-333	2011
Morizane C, (古瀬)	Phase I/II study of gemcitabine as a fixed dose rate infusion and S-1 combination therapy (FGS) in gemcitabine-refractory pancreatic cancer patients	Cancer Chemother Pharmacol	-	-	(in press)
古瀬純司, 他	肝細胞がんに対する分子標的治療の現況	最新医学	66	89-94	2011
Kakazu E, (上野)	Plasma L-cystine/L-glutamate imbalance increases tumor necrosis factor-alpha from CD14+ circulating monocytes in patients with advanced cirrhosis.	PLoS One	6(8)	e23402	2011
Glaser S, (上野)	Knockout of the neurokinin-1 receptor reduces cholangiocyte proliferation in bile duct-ligated mice.	Am J Physiol Gastrointest Liver Physiol	301	G297-305	2011
Inoue J, (上野)	Enhanced replication of hepatitis B virus with frameshift in the precore region found in fulminant hepatitis patients.:	J Infect Dis	204	1017-1025	2011
嘉数英二、上野義之、下瀬川徹	肝硬変に出現する血漿アミノ酸不均衡が免疫機構に与える影響	肝・胆・膵	Vol 63 No.3	375-382	2011
Kajiwara A, (広石)	IL-4 and CpG therapy suppresses the outgrowth of tumors by activating tumor-specific Th1-Ttype immune responses.	Oncology Reports	-	-	(in press)
Miyashita M, (広石)	Genetic polymorphism in cyclooxygenase-2 promoter affects hepatic inflammation and fibrosis in patients with chronic hepatitis C.	Journal of Viral Hepatitis	-	-	(in press)
Inokuchi M, (広石)	Lymphotropic Hepatitis C Virus Has an Interferon-Resistant Phenotype.	Journal of Viral Hepatitis	-	-	(in press)
Tanaka H. (西口)	Cost-effectiveness analysis on the surveillance for hepatocellular carcinoma in liver cirrhosis patients using contrast-enhanced ultrasonography.	Hepatol Res	-	-	(in press)

Shimomura S., (西口)	Anticarcinogenic impact of interferon therapy on the progression of hepatocellular carcinoma in patients with chronic viral infection.	Hepatol Res	42	22-32	2012
Shimomura S. (西口)	Long-term interferon therapy after radiofrequency ablation is effective in treating patients with HCV-associated hepatocellular carcinoma.	Hepatol Int	5	559-566	2011
Enomoto H., (西口)	Role of Hepatoma-derived growth factor (HDGF) in Hepatocellular carcinoma.	Current Research in Gastroenterology & Hepatology	5	19-26	2011
Enomoto H., (西口)	The Role of Hepatoma-derived growth factor (HDGF) in cancer development and progression	Current Research in Cancer	5	11-25	2011
Nagai T, (工藤)	Sorafenib inhibits the hepatocyte growth factor-mediated epithelial mesenchymal transition in hepatocellular carcinoma.	Mol Cancer Ther	10	169-177	2011
Kudo K, (工藤)	Antitumor activity of BIBF 1120, a vascular endothelial growth factor-2 inhibitor and use of VEGFR2+pTYR+leucocyte as a pharmacodynamic biomarker.	Clin Cancer Res	17	1373-1381	2011
Kudo M (工藤)	Molecular targeted therapy for hepatocellular carcinoma: bench to bedside.	Digest Dis	29	273-277	2011
Kudo M (工藤)	Signaling pathway and molecular-targeted therapy for hepatocellular carcinoma.	Digest Dis	29	289-302	2011
Kudo M (工藤)	mTOR inhibitor for the treatment of hepatocellular carcinoma.	Digest Dis	29	310-315	2011
Kudo M (工藤)	Future treatment option for hepatocellular carcinoma: a focus on brivanib.	Digest Dis	29	316-320	2011
Ueshima K, (工藤)	Des- γ -carboxyprothrombin may be a promising biomarker to determine the therapeutic efficacy of Sorafenib for hepatocellular carcinoma.	Digest Dis	29	321-325	2011
Llovet JM, (工藤)	Tissue biomarkers as predictors of outcome and selection of transplant candidates with hepatocellular carcinoma.	Liver Transplant	17	S67-71	2011

Kudo M (工藤)	Hepatocellular Carcinoma in 2011 and Beyond: From the Pathogenesis to Molecular Targeted Therapy.	Oncology	81(suppl 1)	1-10	2011
Sakurai T, (工藤)	Signaling pathways governing tumor angiogenesis.	Oncology	81(suppl 1)	24-29	2011
Kudo M (工藤)	Adjuvant therapy after curative treatment for hepatocellular carcinoma.	Oncology	81(suppl 1)	50-55	2011
Kudo M (工藤)	Diagnostic imaging of hepatocellular carcinoma: Recent progress.	Oncology	81(suppl 1)	73-85	2011
Inuzuka T, (工藤)	Complete response of advanced hepatocellular carcinoma with multiple lung metastases treated with Sorafenib: A case report.	Oncology	81(suppl 1)	152-157	2011
Han KH, (工藤)	Asian consensus workshop report: Expert consensus guideline for the management of intermediate and advanced hepatocellular carcinoma in Asia.	Oncology	81(suppl 1)	158-164	2011
Kim SR, (工藤)	Correlation between insulin resistance and outcome of peginterferon and ribavirin therapy, hepatic steatosis, hepatic fibrosis in chronic hepatitis C-1b and high viral load.	Digestion	84(suppl 1)	5-9	2011
Kudo M (工藤)	Molecular targeted therapy for hepatocellular carcinoma: Sorafenib and beyond.	Curr Cancer Drug Tar	-	-	(in press)
Sherman M, (工藤)	The HCC BRIDGE study: Design of a longitudinal cohort study in hepatocellular carcinoma.	Liver Int	-	-	(in press)
Inaba Y, (工藤)	A randomized phase II study of TSU-68 in patients with hepatocellular carcinoma treated by transarterial chemoembolization.	Jpn J Clin Oncol	-	-	(in press)
Shimizu M, (森脇)	Acyclic retinoid inhibits diethylnitrosamine-induced liver tumorigenesis in obese and diabetic C57BLKS/J- +(db)/+Lepr(db) mice.	Cancer Prev Res	4	128-136	2011
Shimizu M, (森脇)	Preventive effects of (-)-epigallocatechin gallate on diethylnitrosamine-induced liver tumorigenesis in obese and diabetic C57BL/KsJ-db/db Mice.	Cancer Prev Res	4	396-403	2011

Shimizu M, (森脇)	Pitavastatin suppresses diethylnitrosamine-induced liver preneoplasms in male C57BL/KsJ- <i>db/db</i> obese mice.	BMC Cancer	11	281	2011
Shimizu M, (森脇)	Cancer chemoprevention with green tea catechins by targeting receptor tyrosine kinases.	Mol Nutr Food Res	55	832-843	2011
Shimizu M, (森脇)	Chemoprevention of hepatocellular carcinoma by acyclic retinoid.	Front Biosci	16	759-769	2011
Adachi S, (森脇)	Rho-kinase inhibitor upregulates migration by altering focal adhesion formation via the Akt pathway in colon cancer cells.	Eur J Pharmacol	650	145-150	2011
Adachi S, (森脇)	Ultraviolet irradiation can induce evasion of colon cancer cells from stimulation of epidermal growth factor.	J Biol Chem	286	26178-26187	2011
Adachi S, (森脇)	Ultraviolet enhances the sensitivity of pancreatic cancer cells to gemcitabine by activation of 5' AMP-activated protein kinase.	Biochem Biophys Res Commun	414	53-59	2011
Osawa Y, (森脇)	L-tryptophan-mediated enhancement of susceptibility to nonalcoholic fatty liver disease is dependent on the mammalian target of rapamycin.	J Biol Chem	286	34800-34808	2011
Osawa Y, (森脇)	Acid sphingomyelinase regulates glucose and lipid metabolism in hepatocytes through AKT activation and AMP-activated protein kinase suppression.	FASEB J	25	1133-1144	2011
Suetsugu A, (森脇)	Imaging the recruitment of cancer-associated fibroblasts by liver-metastatic colon cancer.	J Cell Biochem	112	949-953	2011
Tatsukawa H, (森脇)	Dual induction of caspase 3- and transglutaminase-dependent apoptosis by acyclic retinoid in hepatocellular carcinoma cells.	Mol Cancer	10	4	2011
Kinugasa H, (山本)	Risk factors for recurrence after transarterial chemoembolization for early-stage hepatocellular carcinoma.	J Gastroenterol	-	-	(in press)
Miyahara K, (山本)	Predicting the treatment effect of sorafenib using serum angiogenesis markers in patients with hepatocellular carcinoma.	J Gastroenterol Hepatol	26(11)	1604-1611	2011

Nouso K, (山本)	Prognostic importance of fucosylated alpha-fetoprotein in hepatocellular carcinoma patients with low alpha-fetoprotein.	J Gastroenterol Hepatol	26(7)	1195-1200	2011
Kobashi H, (山本)	Long-term outcome and hepatocellular carcinoma development in chronic hepatitis B or cirrhosis patients after nucleoside analog treatment with entecavir or lamivudine.	Hepatol Res	41(5)	405-416	2011
Tomoda T (山本)	Genetic risk of hepatocellular carcinoma in patients with hepatitis C virus: a case control study.	J Gastroenterol Hepatol	-	-	(in press)
Takayama H (山本)	Serum levels of platelet-derived growth factor-BB and vascular endothelial growth factor as prognostic factors for patients with fulminant hepatic failure.	J Gastroenterol Hepatol	26(1)	116-121	2011
Nakanishi Y, (山本)	Loss of runt-related transcription factor 3 expression leads hepatocellular carcinoma cells to escape apoptosis.	BMC Cancer	11(1)	3	2011
Miyatake H, (山本)	Effect of Previous Interferon Treatment on Outcome After Curative Treatment for Hepatitis C Virus-Related Hepatocellular Carcinoma.	Dig Dis Sci	-	-	(in press)
Kinugasa H (山本)	Hepatocellular carcinoma occurring in hepatobiliary fibropolycystic disease.	Hepatol Res	41(3)	277-281	2011
Kuwaki K (山本)	Prognostic model for hepatocellular carcinoma with time-dependent factors.	Acta Med Okayama	65(1)	11-19	2011
Hagihara H (山本)	Effect of pegylated interferon therapy on intrahepatic recurrence after curative treatment of hepatitis C virus-related hepatocellular carcinoma.	Int J Clin Oncol	16(3)	210-220	2011
池田健次	肝がんに対する化学療法	化学療法の領域	27	142-151	2011
今井規博、池田健次、瀬古裕也、松本直樹、川村祐介、保坂哲也、小林正宏、斎藤聡、瀬崎ひとみ、芥田憲夫、鈴木文孝、鈴木義之、荒瀬康司、熊田博光	慢性腎不全合併肝細胞癌に対するミリプラチン肝動脈塞栓化学療法の安全性と有効性	日消誌	108	1872-1878	2011

Miki D, (池田)	Variation in the DEPDC5 locus is associated with progression to hepatocellular carcinoma in chronic hepatitis C virus carriers.	Nat Genet	43(8)	797-800	2011
Kobayashi M, (池田)	Highly sensitive AFP-L3% assay is useful for predicting recurrence of hepatocellular carcinoma after curative treatment pre- and postoperatively.	Hepatol Res	41(11)	1036-1045	2011
Imai N, (池田)	Previous chemoembolization response after transcatheter arterial chemoembolization (TACE) can predict the anti-tumor effect of subsequent TACE with miriplatin in patients with recurrent hepatocellular carcinoma.	Oncology	80(3-4)	188-194	2011
Ikeda K, (池田)	Stage progression of small hepatocellular carcinoma after radical therapy: comparisons of radiofrequency ablation and surgery using the Markov model.	Liver Int	83(6)	1016-1022	2011
Kawamura Y, (池田)	Heterogeneous type 4 enhancement of hepatocellular carcinoma on dynamic CT is associated with tumor recurrence after radiofrequency ablation.	AJR	197	665-673	2011
Iwamoto H, (佐田)	Metronomic S-1 chemotherapy and vandetanib: an efficacious and non-toxic treatment for hepatocellular carcinoma.	Neoplasia	13	187-197	2011
Fujimoto K, (佐田)	Periostin, a matrix protein, has potential as a novel serodiagnostic marker for cholangiocarcinoma.	Oncol Rep	25	1211-1216	2011
Fujimoto K, (佐田)	Evaluation of the mean and entropy of apparent diffusion coefficient values in chronic hepatitis C: correlation with pathologic fibrosis stage and inflammatory activity grade.	Radiology	258	739-748	2011
Iizuka N, (佐田)	Efficient detection of hepatocellular carcinoma by a hybrid blood test of epigenetic and classical protein markers.	Clin Chim Acta	412	152-158	2011
Kawaguchi T, (佐田)	Data mining reveals complex interactions of risk factors and clinical feature profiling associated with the staging of non-hepatitis B virus/non-hepatitis C virus-related hepatocellular carcinoma.	Hepatol Res	41	564-571	2011
Taura N, (佐田)	The incidence of hepatocellular carcinoma associated with hepatitis C infection decreased in Kyushu area.	Med Sci Monit	17	PH7-11	2011

Kawaguchi T, (佐田)	Insulin resistance and chronic liver disease.	World J Hepatol	3	99-107	2011
Kawaguchi T, (佐田)	Development of intrahepatic cholangiocarcinoma after a 14-year follow-up of a patient with primary sclerosing cholangitis and ulcerative colitis.	Hepatol Res	41	1253-1259	2011
Ogasawara S, (小尾)	Safety and tolerance of sorafenib in Japanese patients with advanced hepatocellular carcinoma.	Hepatol Int	5(3)	850-856	2011
Miyayama S, (宮山)	Portal blood supply to locally progressed hepatocellular carcinoma after transcatheter arterial chemoembolization: observation on CT during arterial portography.	Hepatol Res	41	853-866	2011
Miyayama S, (宮山)	Microcoil embolization during abdominal vascular interventions through microcatheters with a tip of 2 French or less.	Jpn J Radiol	29	286-290	2011
Miyayama S, (宮山)	Efficacy of cone-beam computed tomography during transcatheter arterial chemoembolization for hepatocellular carcinoma.	Jpn J Radiol	29	371-377	2011
Miyayama S, (宮山)	Origins of feeding arteries of hepatocellular carcinoma located near the umbilical fissure of the left hepatic lobe: angiographic evaluation.	Cardiovasc Intervent Radiol	-	-	(in press)
Miyayama S, (宮山)	Arterial blood supply to the caudate lobe of the liver from the proximal branches of the right inferior phrenic artery in patients with recurrent hepatocellular carcinoma after chemoembolization.	Jpn J Radiol	-	-	(in press)
Miyayama S, (宮山)	Comparison of local control effects of superselective transcatheter arterial chemoembolization using epirubicin plus mitomycin C and miriplatin for hepatocellular carcinoma.	Jpn J Radiol	-	-	(in press)

V. 研究成果の刊行物・別刷

Differentiation of Cancer Stem Cells

Taro Yamashita, Masao Honda and Shuichi Kaneko

*Department of Gastroenterology,
Kanazawa University Hospital Kanazawa, Ishikawa,
Japan*

1. Introduction

Tumors originally develop from normal cells that acquire the ability to grow aberrantly and metastasize to distant organs (Hanahan and Weinberg, 2000). These malignant transformations are considered to be induced by the accumulation of multiple genetic/epigenetic changes (Yamashita et al., 2008b). Although considered monoclonal in origin, cancer is composed of heterogeneous cell populations. This heterogeneity is traditionally explained by the clonal evolution of cancer cells through a series of stochastic genetic events (clonal evolution model) (Fialkow, 1976; Nowell, 1976). In contrast, cancer cells and stem cells have similar capabilities with respect to self-renewal, limitless division, and the generation of heterogeneous cell populations. Recent evidence suggests that tumor cells possess stem cell features (cancer stem cells) to self-renew and give rise to relatively differentiated cells through asymmetric division, thereby forming heterogeneous populations (cancer stem cell model) (Clarke et al., 2006; Jordan et al., 2006). Accumulating evidence supports the notion that cancer stem cells can generate tumors more efficiently in immunodeficient mice than non-cancer stem cells in hematological malignancies and in various solid tumors (Al-Hajj et al., 2003; Bonnet and Dick, 1997; O'Brien et al., 2007; Ricci-Vitiani et al., 2007; Singh et al., 2004).

Cancer stem cells are considered to be resistant to chemotherapy and radiotherapy, which might be associated with the recurrence of the tumor after treatment (Boman and Huang, 2008; Dean et al., 2005; Diehn et al., 2009; Zou, 2008). These findings have led to the proposal of “destemming” cancer stem cells (Hill and Perris, 2007) in order to induce their differentiation into non-cancer stem cells or to eradicate cancer stem cells by inhibiting the signaling pathways responsible for their self-renewal. Recent studies have supported this proposal and suggest the utility of several factors to induce the differentiation of cancer stem cells and facilitate tumor eradication; however, it is still debatable whether the simple differentiation of cancer stem cells effectively eradicates tumors. Here, we summarize current knowledge on the differentiation of cancer stem cells and discuss the utility and limitation of differentiation therapy to eliminate cancer.

2. Cancer stem cell system

The consensus definition of a cancer stem cell is a cell within a tumor that possesses the capacity to self-renew and to generate the heterogeneous lineages of cancer cells that

comprise the tumor, as proposed by the AACR workshop in 2006 (Clarke et al., 2006). Thus, cancer stem cells can only be defined experimentally and their self-renewal ability is generally evaluated by the capacity of serially transplanted cells in immunodeficient mice. A cancer stem cell may give rise to one or two daughter cells that have essentially the same ability to replicate and generate differentiated non-cancer stem cells (Fig. 1 upper and lower left panels).

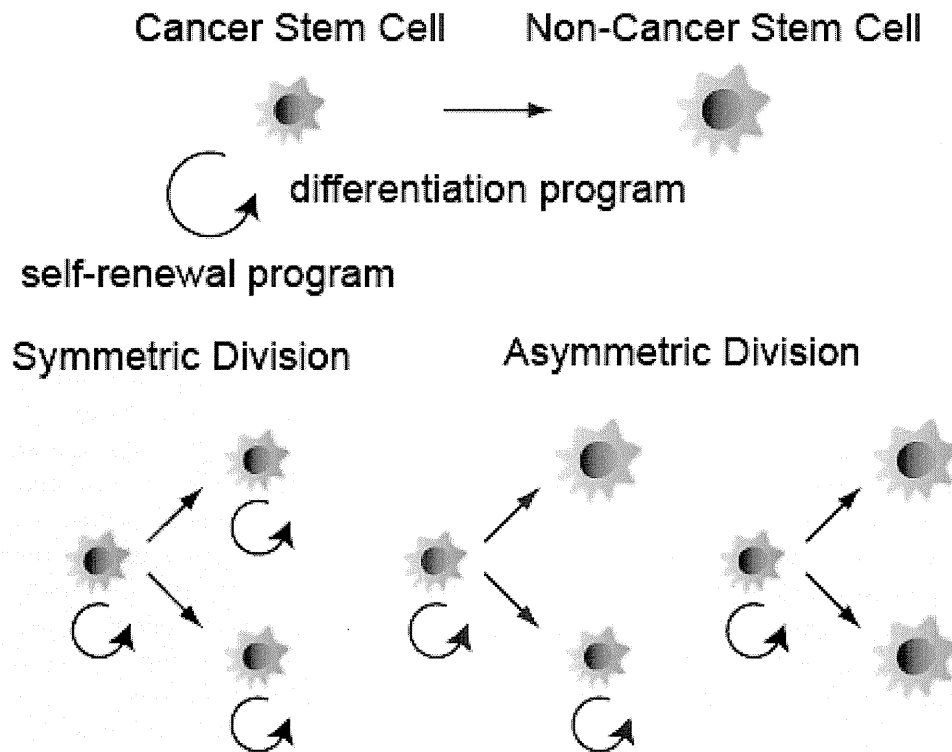


Fig. 1. Symmetric/asymmetric division of a cancer stem cell

Asymmetric cell division could be defined by the generation of one cancer stem cell and one progenitor cell with the loss of self-renewal capacity (Fig. 1 lower right panel). If both progenitors derived from a cancer stem cell lose the capacity of self-renewal by the induction of differentiation, the cancer stem cell population would be depleted and the tumor would subsequently shrink, according to the conventional cancer stem cell model.

2.1 Signaling pathways responsible for the self-renewal of cancer stem cells

A growing body of evidence suggests the similarities of normal stem cells and cancer stem cells in terms of their self-renewal and differentiation programs. Indeed, the self-renewal and differentiation programs in cancer stem cells are considered to be regulated by several signaling pathways that are activated in normal stem cells (Lobo et al., 2007). These signaling pathways seem to be activated during the process of normal organogenesis as well as carcinogenesis in a tissue-dependent manner (Pardal et al., 2003). Therefore, underscoring the significance of these signaling pathways on self-renewal and differentiation is critical for the development of treatment strategies specifically targeting cancer stem cells.

2.1.1 Wnt/ β -catenin signaling

Wnt/ β -catenin signaling has been studied primarily in developing embryos and was demonstrated to modulate cell proliferation, migration, and differentiation in a cellular context-dependent manner (Decaens et al., 2008; Giles et al., 2003; Moon et al., 2004; Ober et al., 2006). Wnt signaling is involved in the decision of stem cells to self-renew or differentiate during organogenesis, involving, for example, skin, intestine, bone marrow, kidney, and liver development (Moon et al., 2004; Thompson and Monga, 2007). Moreover, mutations of genes involved in Wnt/ β -catenin signaling have been reported in a wide variety of human cancers including colorectal cancer, gastric cancer, skin cancer, ovarian cancer, liver cancer, and leukemia (Giles et al., 2003; Merle et al., 2005; Takebe et al., 2010; Tan et al., 2008; Vermeulen et al., 2010; Woodward et al., 2007; Zhao et al., 2007).

Wnt signaling is mediated through a core set of proteins to activate the transcriptional programs responsible for cell proliferation and development (Fig. 2). In the absence of Wnt proteins, β -catenin is phosphorylated and degraded by the Axin-APC-GSK3 β complex. Once Wnt proteins bind to their receptor, Frizzled, the degradation complex is inactivated to stabilize β -catenin, which leads to its accumulation in the nucleus and interaction with T-cell factor (TCF) to activate the transcription of target genes (Moon et al., 2004).

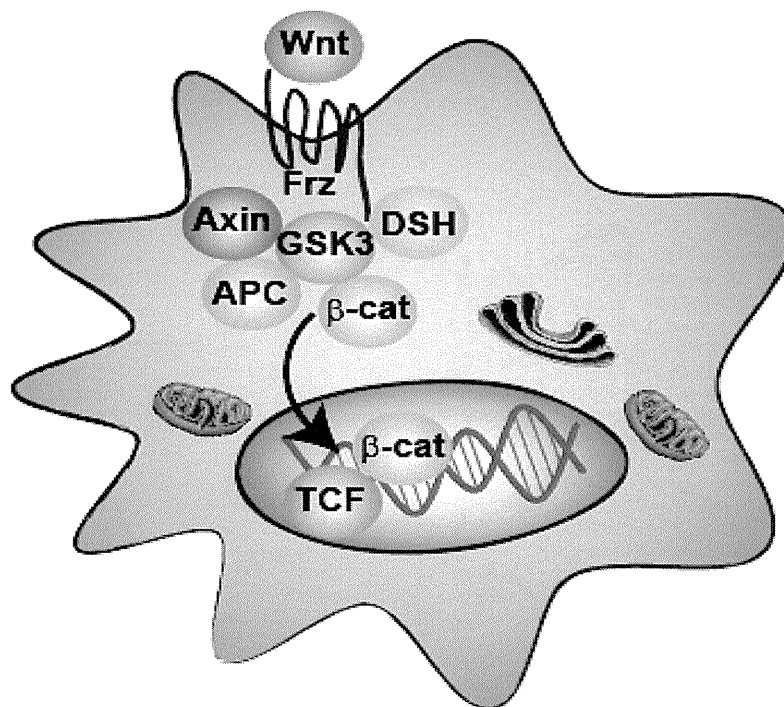


Fig. 2. Wnt/ β -catenin signaling. APC, adenomatous polyposis coli; β -cat, β -catenin; DSH, Dishevelled; Frz, Frizzled; GSK3, glycogen synthase kinase 3; TCF, T-cell factor

Recent studies have demonstrated that Wnt/ β -catenin signaling also plays a role in the maintenance of cancer stem cells, including colorectal cancer (Vermeulen et al., 2010), breast cancer (Li et al., 2003; Woodward et al., 2007), and liver cancer (Yang et al., 2008). We have recently demonstrated that Wnt/ β -catenin signaling augments self-renewal and inhibits the differentiation of liver cancer stem cells by the expression of the stem cell marker EpCAM, which results in the enrichment of the tumor-initiating cell population (Yamashita et al.,

2008a; Yamashita et al., 2009). We have further demonstrated that small molecules, which specifically inhibit the transcriptional activity of the TCF/ β -catenin complex, can suppress the cell proliferation of EpCAM-positive liver cancer cell lines, suggesting the utility of these compounds for the eradication of cancers via the inactivation of Wnt/ β -catenin signaling (Yamashita et al., 2007).

2.1.2 Hedgehog signaling

The Hedgehog signaling pathway was initially identified as a regulator of segmental patterning in *Drosophila* (Nusslein-Volhard and Wieschaus, 1980). Hedgehog signaling is activated in developing embryos, especially in the skeleton and neural tube, and regulates the cell proliferation, migration, and differentiation of stem cells (Varjosalo and Taipale, 2008). Several types of cancers are reported to have an activated hedgehog signaling pathway, including glioma (Clement et al., 2007), prostate cancer (Sanchez et al., 2005), breast cancer (Liu et al., 2006), pancreatic cancer (Li et al., 2007), and hematological malignancies (Zhao et al., 2009).

Hedgehog signaling is regulated by several proteins, including ligands (Sonic Hedgehog, Desert Hedgehog, and Indian Hedgehog), the Patched (Ptch) receptor, the Smoothened (Smo) transmembrane protein, and the zinc finger transcription factor Gli (Merchant and Matsui, 2010) (Fig. 3). In the absence of ligands, Ptch represses the activity of Smo and the Gli-mediated transcriptional program is constitutively suppressed (Gli-suppressed). Once ligands bind to Ptch, the repression of Smo is released and the Gli-mediated transcriptional program is activated (Gli-activated).

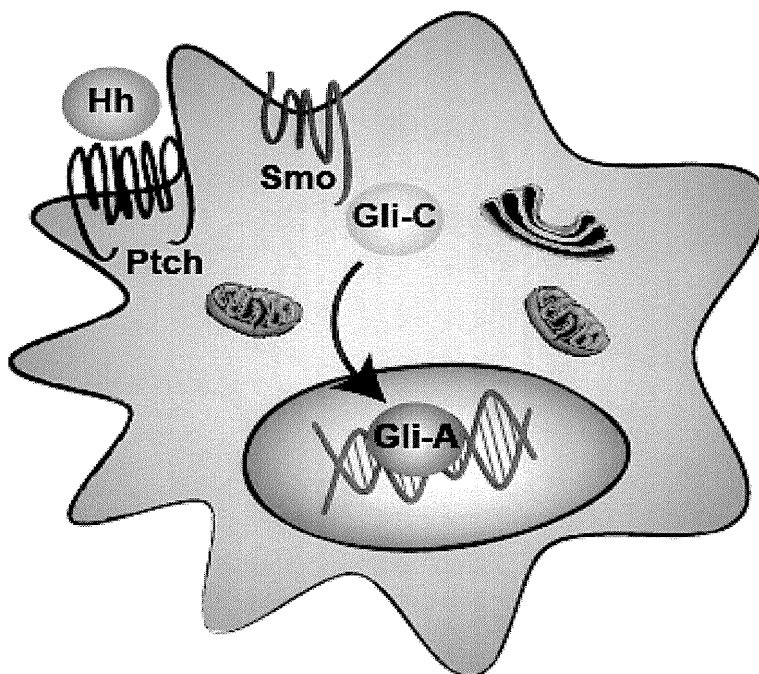


Fig. 3. Hedgehog signaling. Gli-C, Gli complex; Gli-A, Gli-activated; Hh, Hedgehog; Ptch, Patched; Smo, Smoothened

Accumulating evidence suggests that Hedgehog signaling regulates the self-renewal of cancer stem cells in several types of cancer, including glioblastoma and leukemia (Clement

et al., 2007; Zhao et al., 2009). Accordingly, Hedgehog signaling inhibitors have been clinically tested and might be beneficial for patients with advanced medulloblastoma or basal cell carcinoma, although Smo mutations in cancer cells confer resistance against such inhibitors (Rudin et al., 2009; Von Hoff et al., 2009; Yauch et al., 2009).

2.1.3 Notch signaling

Notch signaling has a pivotal role in regulating cell-to-cell communication during embryogenesis (Artavanis-Tsakonas et al., 1999), and is known to regulate stem cell fate in various organs (Androutsellis-Theotokis et al., 2006; Fre et al., 2005). Mammalian Notch ligands consist of the two structurally distinct families Delta-like ligands (DLLs) and Jagged ligands (JAGs), and these ligands are bound to the cell membrane (Fig. 4). The activation of Notch signaling is initiated by the binding of these membrane-bound ligands to Notch receptors, which results in the release of the Notch intracellular domain into the cytoplasm and nucleus by the γ -secretase complex to activate the Notch-specific transcriptional program.

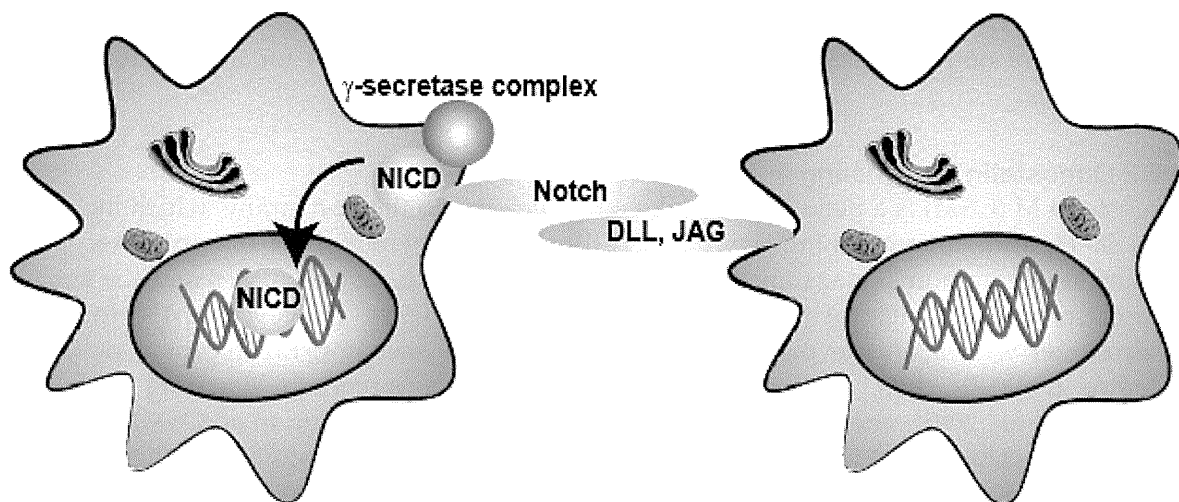


Fig. 4. Notch signaling. DLL, Delta-like ligand; JAG, Jagged; NICD, Notch intracellular domain

Notch signaling has been implicated in various types of cancers, including solid tumors and leukemia (Pannuti et al., 2010). A growing number of recent studies has demonstrated that the activation of the Notch signaling pathway can drive tumor growth via the expansion of the cancer stem cell population (Korkaya and Wicha, 2009; Peacock and Watkins, 2008; Wilson and Radtke, 2006). Indeed, the Notch signaling pathway has been demonstrated to be active in cancer stem cells and to play a critical role in the self-renewal of cancer stem cells (Fan and Eberhart, 2008; Fan et al., 2010; Wang et al., 2009). Thus, Notch signaling is considered to be a good target for pharmacological inhibition to eradicate cancer stem cells, and the effect of Notch inhibitors against Notch, including γ -secretase inhibitors or monoclonal antibodies, have been extensively evaluated (Pannuti et al., 2010).

2.2 Signaling pathways responsible for cancer stem cell differentiation

Although self-renewal pathways are considered to be critical targets for the eradication of cancer stem cells, it is still debatable if differentiation pathways are equally effective for their

eradication. Several recent studies have provided evidence of the utility and limitation of the cancer stem cell differentiation strategy by modulating the signaling pathways responsible for the differentiation of normal stem/progenitor cells.

2.2.1 Bone morphogenic protein signaling

Bone morphogenic protein (BMP) signaling is known to be activated during embryogenesis and to play a pivotal role in the differentiation of neural and intestinal stem cells (Varga and Wrana, 2005). BMPs belong to a subgroup of the transforming growth factor- β superfamily and activate signaling through the BMP-receptor (BMPR)-mediated phosphorylation of Smad proteins. Interestingly, recent studies have suggested the utility of BMPs to induce the differentiation of brain cancer stem cells and facilitate brain tumor eradication (Lee et al., 2008; Piccirillo et al., 2006). More recently, colorectal cancer stem cells have been shown to lack the expression of BMP4, and the administration of BMP4 enhanced the terminal differentiation, apoptosis, and chemosensitization of colorectal cancer stem cells (Lombardo et al., 2011). Interestingly, the effects of BMP4 on the differentiation of colorectal cancer stem cells appeared to be independent of the phosphorylation status of Smad, suggesting the importance of non-canonical signaling pathways activated by BMP4 for the differentiation of these cells.

2.2.2 Oncostatin M signaling

Oncostatin M (OSM) is a pleiotropic cytokine that belongs to the IL-6 family, which includes IL-6, IL-11, and leukemia inhibitory factor (LIF). These cytokines share the gp130 receptor subunit as a common signal transducer, and activate Janus tyrosine kinases and the signal transducer and activator of transcription 3 (STAT3) pathways. However, gp130 forms a heterodimer with a unique partner, for example, the IL6 receptor, LIF receptor, or OSM receptor (OSMR); thus, each cytokine uniquely induces a certain signaling pathway (Heinrich et al., 2003), and OSM is known to exploit distinct signaling in an OSMR-specific manner (Kinoshita and Miyajima, 2002). Of note, OSM is known to activate the hepatocytic differentiation program in hepatoblasts in an OSMR-specific manner (Kamiya et al., 1999; Kinoshita and Miyajima, 2002).

We recently identified that OSMR is expressed in a subset of liver cancer stem cells (Yamashita et al., 2010). Interestingly, OSMR-positive hepatocellular carcinoma (HCC) was characterized by the abundant expression of stem cell markers and poorly differentiated morphology, suggesting that OSMR is more likely to be expressed in HCC with stem/progenitor cell features (Yamashita et al., 2008a). Of note, the OSM-OSMR signaling pathway was maintained in these HCCs, and OSM induced hepatocytic differentiation in liver cancer stem cells (Fig. 5).

Unexpectedly, we identified that the hepatocytic differentiation of liver cancer stem cells by OSM resulted in enhanced cell proliferation *in vitro* and modest anti-tumor activity *in vivo* when administered alone. However, we have further demonstrated that OSM-mediated hepatocytic differentiation of liver cancer stem cells effectively suppresses HCC growth when combined with conventional chemotherapy. It is possible that OSM may boost the anti-tumor activity of 5-FU by "exhausting dormant cancer stem cells" through hepatocytic differentiation and active cell division (Fig. 6). A similar chemosensitization effect was observed in colorectal cancer stem cells differentiated by BMP4 administration (Lombardo et al., 2011).

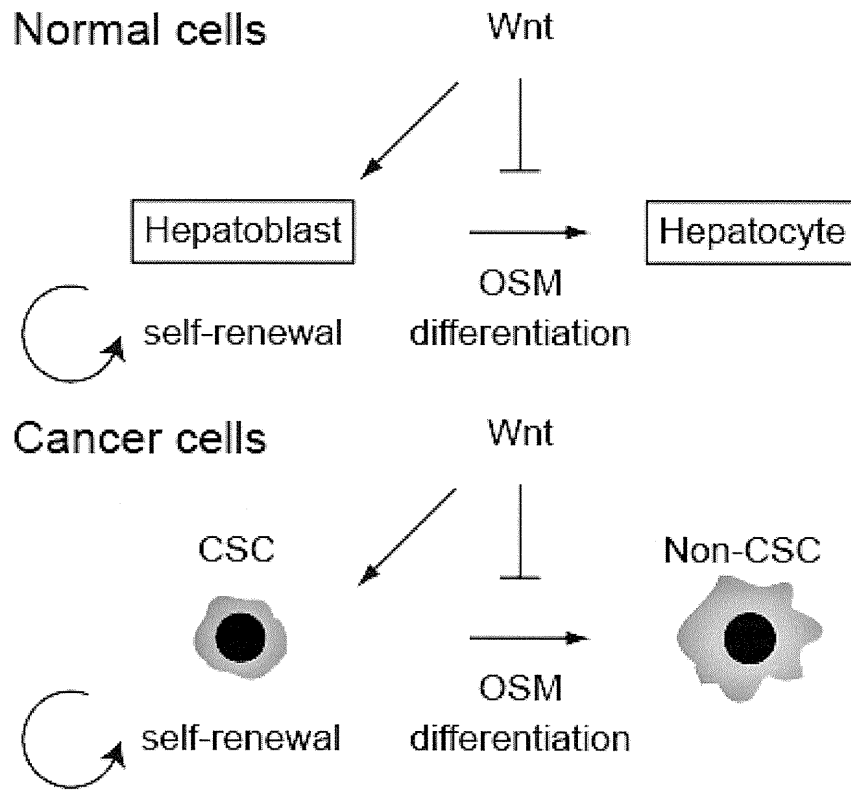


Fig. 5. Signaling pathways responsible for the self-renewal and differentiation of liver cancer stem cells. CSC, cancer stem cell; OSM, oncostatin M

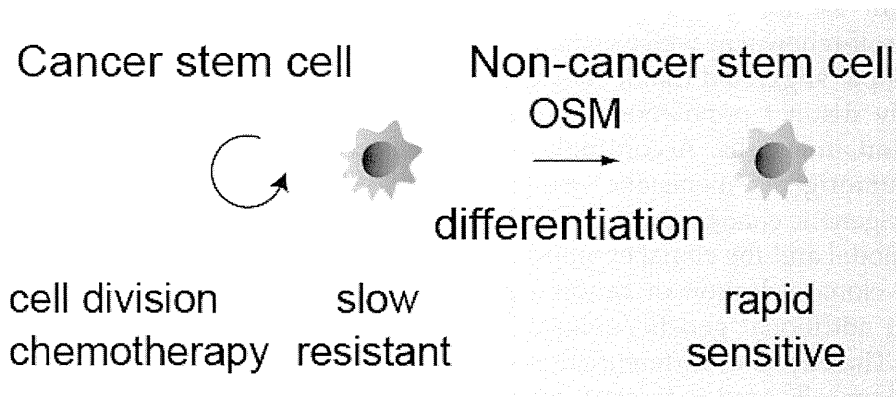


Fig. 6. Effect of oncostatin M (OSM) on exhausting dormant liver cancer stem cells

3. Limitation of cancer stem cell differentiation

As described above, some of the signaling pathways for the differentiation of normal stem cells may be maintained in cancer stem cells. To induce the differentiation of cancer stem cells by specific ligands, the expression of the corresponding receptors bound to ligands is clearly required, suggesting the importance of clarifying the mechanisms for receptor expression regulation. Interestingly, BMPRs and OSMR were detected in colorectal and liver

cancer stem cells, respectively, suggesting the possibility of ligand-induced differentiation therapy in the clinic. However, the expression of these receptors might be transcriptionally suppressed in a subset of cancers through methylation of their promoter regions (Deng et al., 2009; Kim et al., 2009; Lee et al., 2008). Indeed, a recent study suggested that BMP-mediated brain cancer stem cell differentiation failed in a subset of brain tumors in which BMP receptor promoters were methylated and silenced (Lee et al., 2008). Therefore, cancer stem cells may acquire resistance against differentiation therapy by additional epigenetic changes during the differentiation treatment.

It has been postulated that both normal stem cells and cancer stem cells are dormant and show slow cell cycles. Consistently, cancer stem cells are considered to be more resistant to conventional cytotoxic chemotherapeutic agents than non-cancer stem cells, possibly due to slow cell cycles as well as the increased expression of ATP-binding cassette (ABC) transporters, robust DNA damage responses, and activated anti-apoptotic signaling (Bao et al., 2006; Dean et al., 2005; Viale et al., 2009). Therefore, the induction of differentiation programs in cancer stem cells may result in cell proliferation of the tumor. Indeed, we recently demonstrated that differentiation of liver cancer stem cells by OSM increased cell proliferation, at least *in vitro* (Yamashita et al., 2010). Our data clearly suggested the necessity of conventional chemotherapy in addition to differentiation therapy to eradicate non-cancer stem cells originating from cancer stem cells. Furthermore, although the combination of OSM and conventional chemotherapy effectively inhibited tumor growth in our model, we did not observe tumor shrinkage (Yamashita et al., 2010). If both progenitors derived from a cancer stem cell lose their self-renewal capacity by the induction of differentiation, the tumor should subsequently shrink following the depletion of cancer stem cells. However, it is possible that ligand-based differentiation programs cannot completely inhibit the self-renewal programs of target cancer stem cells. Thus, the induction of differentiation in cancer stem cells with the eradication of non-cancer stem cells might not be sufficient for the eradication of the tumor, which may suggest the importance of inhibiting self-renewal as well as stimulating the differentiation of cancer stem cells.

A recent paper suggested that leukemia-initiating cells are composed of genetically diverse, functionally distinct populations (Notta et al., 2011), suggesting the clonal evolution of leukemia-initiating cells. Accordingly, cancer stem cells in solid tumors may also have a distinct tumorigenic/metastatic capacity as well as chemoresistance with certain genetic/epigenetic changes in each subclone as a result of clonal evolution. Thus, the cancer stem cell model and the clonal evolution model are not considered to be mutually exclusive. Therefore, clonal selection of cancer stem cells resistant to differentiation therapy might occur with additional genetic/epigenetic changes during treatment as a result of clonal evolution. The effects of differentiation therapy on the clonal evolution or genetic diversity of cancer stem cells need to be clarified in the future.

4. Conclusion

The recent re-emergence of the cancer stem cell hypothesis has provided novel insights on the effect of differentiation programs on cancer stem cells for the potential eradication of tumors. Although the activation of several signaling pathways by certain cytokines may be effective for the differentiation of cancer stem cells, their utility and limitation for tumor eradication should be clarified in future to provide novel therapeutic opportunities for cancer patients.