

- 28 Akuta N, Suzuki F, Kawamura Y *et al.* Predictive factors of early and sustained responses to peginterferon plus ribavirin combination therapy in Japanese patients infected with hepatitis C virus genotype 1b: Amino acid substitutions in the core region and low-density lipoprotein cholesterol levels. *J Hepatol* 2007; 46: 403–10.
- 29 Okanoue T, Itoh Y, Hashimoto H *et al.* Predictive values of amino acid sequences of the core and NS5A regions in antiviral therapy for hepatitis C: a Japanese multi-center study. *J Gastroenterol* 2009; 44: 952–63.
- 30 Mori N, Imamura M, Kawakami Y *et al.* Randomized trial of high-dose interferon-alpha-2b combined with ribavirin in patients with chronic Hepatitis C: correlation between Amino acid substitutions in the Core/NS5A region and virological response to interferon therapy. *J Med Virol* 2009; 81: 640–9.
- 31 Ishii K, Shinohara M, Sawa M *et al.* Interferon alpha receptor 2 expression by peripheral blood monocytes in patients with a high viral load of Hepatitis C virus genotype 1 showing substitution of Amino acid 70 in the core region. *Intervirology* 2010; 53: 105–10.
- 32 Larrea E, García N, Qian C, Civeira MP, Prieto J. Tumor necrosis factor alpha gene expression and the response to interferon in chronic hepatitis C. *Hepatology* 1996; 23: 210–17.
- 33 Reiberger T, Aberle JH, Kundi M *et al.* IP-10 correlates with hepatitis C viral load, hepatic inflammation and fibrosis and predicts hepatitis C virus relapse or non-response in HIV-HCV coinfection. *Antivir Ther* 2008; 13: 969–76.
- 34 Romero-Gomez M, Vilorio MD, Andrade RJ *et al.* Insulin resistance impairs sustained response rate to peginterferon plus ribavirin in chronic hepatitis C patients. *Gastroenterology* 2005; 128: 636–41.
- 35 Zografos TA, Liaskos C, Rigopoulou EI *et al.* Adiponectin: a new independent predictor of liver steatosis and response to IFN-alpha treatment in chronic Hepatitis C. *Am J Gastroenterol* 2008; 103: 605–14.
- 36 Welzel TM, Morgan TR, Bonkovsky HL *et al.* Variants in interferon-alpha pathway genes and response to pegylated interferon-alpha2a plus ribavirin for treatment of chronic Hepatitis C virus infection in the Hepatitis C antiviral long-term treatment against cirrhosis trial. *Hepatology* 2009; 49: 1847–58.
- 37 Hijikata M, Ohta Y, Mishihiro S. Identification of a single nucleotide polymorphism in the MxA gene promoter (G/T at nt -88) correlated with the response of hepatitis C patients to interferon. *Intervirology* 2000; 43: 124–7.
- 38 Knapp S, Yee L, Frodsham A *et al.* Polymorphisms in interferon-induced genes and the outcome of hepatitis C virus infection: roles of MxA, OAS-1 and PKR. *Genes Immun* 2003; 4: 411–19.
- 39 Matsuyama N, Mishihiro S, Sugimoto M *et al.* The dinucleotide microsatellite polymorphism of the IFNARI gene promoter correlates with responsiveness of hepatitis C patients to interferon. *Hepatol Res* 2003; 25: 221–5.
- 40 Naito M, Matsui A, Inao M *et al.* SNPs in the promoter region of the osteopontin gene as a marker predicting the efficacy of interferon-based therapies in patients with chronic hepatitis C. *J Gastroenterol* 2005; 40: 381–8.
- 41 Tsukada H, Ochi H, Maekawa T *et al.* A polymorphism in MAPKAPK3 affects response to interferon therapy for chronic hepatitis C. *Gastroenterology* 2009; 136: 1796–805, e6.
- 42 Ge DL, Fellay J, Thompson AJ *et al.* Genetic variation in IL28B predicts hepatitis C treatment-induced viral clearance. *Nature* 2009; 461: 399–401.
- 43 Suppiah V, Moldovan M, Ahlenstiel G *et al.* IL28B is associated with response to chronic hepatitis C interferon-alpha and ribavirin therapy. *Nat Genet* 2009; 41: 1100–4.
- 44 Tanaka Y, Nishida N, Sugiyama M *et al.* Genome-wide association of IL28B with response to pegylated interferon-alpha and ribavirin therapy for chronic hepatitis C. *Nat Genet* 2009; 41: 1105–9.
- 45 Thomas DL, Thio CL, Martin MP *et al.* Genetic variation in IL28B and spontaneous clearance of hepatitis C virus. *Nature* 2009; 461: 798–801.
- 46 Charlton MR, Pockros PJ, Harrison SA. Impact of obesity on treatment of chronic hepatitis C. *Hepatology* 2006; 43: 1177–86.
- 47 Gopal K, Johnson TC, Gopal S *et al.* Correlation between beta-lipoprotein levels and outcome of hepatitis C treatment. *Hepatology* 2006; 44: 335–40.
- 48 Guidi M, Muratori P, Granito A *et al.* Hepatic steatosis in chronic hepatitis C: impact on response to anti-viral treatment with peg-interferon and ribavirin. *Aliment Pharmacol Ther* 2005; 22: 943–9.
- 49 Bergmann JF, Vrolijk JM, van der Schaar P *et al.* g-Glutamyltransferase and rapid virological response as predictors of successful treatment with experimental or standard peginterferon-alpha-2b in chronic hepatitis C non-responders. *Liver Int* 2007; 27: 1217–25.
- 50 Sezaki H, Suzuki F, Kawamura Y *et al.* Poor response to pegylated interferon and ribavirin in older women infected with hepatitis C virus of genotype 1b in high viral loads. *Dig Dis Sci* 2009; 54: 1317–24.
- 51 Kogure T, Ueno Y, Fukushima K *et al.* Pegylated interferon plus ribavirin for genotype 1b chronic hepatitis C in Japan. *World J Gastroenterol* 2008; 21: 7225–4230.
- 52 Watanabe S, Enomoto N, Koike K *et al.* Prolonged treatment with pegylated interferon alpha 2b plus ribavirin improves sustained virological response in chronic hepatitis C genotype 1 patients with late response in a clinical real-life setting in Japan. *Hepatol Res* 2010; 40: 135–44.
- 53 Desmet VJ, Gerber M, Hoofnagle JH, Manns M, Scheuer PJ. Classification of chronic hepatitis – diagnosis, grading and staging. *Hepatology* 1994; 19: 1513–20.

- 54 Akuta N, Suzuki F, Hirakawa M *et al.* Amino acid substitutions in the hepatitis C virus core region of genotype 1b affect very early viral dynamics during treatment with telaprevir, peginterferon, and ribavirin. *J Med Virol* 2010; 82: 575–82.
- 55 Izopet J, Payen JL, Alric L *et al.* Baseline level and early suppression of serum HCV RNA for predicting sustained complete response to alpha-interferon therapy. *J Med Virol* 1998; 54: 86–91.
- 56 Poynard T, Marcellin P, Lee SS *et al.* Randomised trial of interferon alpha2b plus ribavirin for 48 weeks or for 24 weeks versus interferon alpha2b plus placebo for 48 weeks for treatment of chronic infection with hepatitis C virus. International Hepatitis Interventional Therapy Group (IHIT). *Lancet* 1998; 31: 1426–32.
- 57 Izumi N, Enomoto N, Uchihara M *et al.* Hepatic iron contents and response to interferon-alpha in patients with chronic hepatitis C. Relationship to genotypes of hepatitis C virus. *Dig Dis Sci* 1996; 41: 989–94.
- 58 Syed GH, Amako Y, Siddiqui A. Hepatitis C virus hijacks host lipid metabolism. *Trends Endocrinol Metab* 2010; 21: 33–40.

Amino Acid Substitution in HCV Core Region and Genetic Variation near the *IL28B* Gene Affect Viral Dynamics during Telaprevir, Peginterferon and Ribavirin Treatment

Norio Akuta^a Fumitaka Suzuki^a Miharuru Hirakawa^a Yusuke Kawamura^a
Hiromi Yatsuji^a Hitomi Sezaki^a Yoshiyuki Suzuki^a Tetsuya Hosaka^a
Masahiro Kobayashi^a Mariko Kobayashi^b Satoshi Saitoh^a Yasuji Arase^a
Kenji Ikeda^a Kazuaki Chayama^d Yusuke Nakamura^c Hiromitsu Kumada^a

^aDepartment of Hepatology, and ^bLiver Research Laboratory, Toranomon Hospital, ^cLaboratory of Molecular Medicine, Human Genome Center, Institute of Medical Science, University of Tokyo, Tokyo, and ^dDepartment of Medical and Molecular Science, Division of Frontier Medical Science, Programs for Biomedical Research, Graduate School of Biomedical Science, Hiroshima University, Hiroshima, Japan

Key Words

Hepatitis C virus · Core region · *IL28B* · Telaprevir · Peginterferon · Ribavirin · Viral dynamics

Abstract

Objectives: Genetic variation near the *IL28B* gene and substitution of aa 70 and 91 in the core region of HCV-1b are useful as predictors of treatment efficacy to telaprevir/pegylated interferon (PEG-IFN)/ribavirin, but its impact on viral dynamics is not clear. **Methods:** This study investigated predictive factors of viral dynamics during 12- or 24-week regimen of triple therapy in 80 Japanese adults infected with HCV-1b. **Results:** After 24 h of commencement of treatment, the proportion of patients with Arg70 and Leu91 substitutions in the core region who showed ≥ 3.0 log drop in HCV RNA level was significantly higher than that of patients with Gln70 (His70) and/or Met91. At 8 and 12 weeks, HCV RNA loss rate of patients with rs8099917 genotype TT near *IL28B* gene was significantly higher than that of patients with non-TT.

Multivariate analysis identified substitution of aa 70 and 91 as a predictor of ≥ 3.0 log fall in HCV RNA level at 24 h (Arg70 and Leu91) and SVR (Arg70), and rs8099917 (TT) as a predictor of HCV RNA loss at 12 weeks and SVR. **Conclusions:** This study identified genetic variation near *IL28B* gene and aa substitution of the core region as predictors of viral dynamics during triple therapy. Copyright © 2011 S. Karger AG, Basel

Introduction

Hepatitis C virus (HCV) usually causes chronic infection that can result in chronic hepatitis, liver cirrhosis, and hepatocellular carcinoma (HCC) [1, 2]. At present, treatments based on interferon (IFN), in combination with ribavirin, are mainstay for combating HCV infection. In Japan, HCV genotype 1b (HCV-1b) in high viral loads (>100 kIU/ml) accounts for more than 70% of HCV infections, making it difficult to treat patients with chronic hepatitis

KARGER

Fax +41 61 306 12 34
E-Mail karger@karger.ch
www.karger.com

© 2011 S. Karger AG, Basel
0300-5526/11/0000-0000\$38.00/0

Accessible online at:
www.karger.com/int

Norio Akuta, MD
Department of Hepatology, Toranomon Hospital
2-2-2 Toranomon, Minato-ku
Tokyo 105-0001 (Japan)
Tel. +81 44 877 5111, E-Mail akuta-gi@umin.ac.jp

C [3]. Such a background calls for efficient treatments of Japanese patients with chronic HCV infection.

Even with pegylated IFN (PEG-IFN) combined with ribavirin, a sustained virological response lasting over 24 weeks after the withdrawal of treatment is achieved in at most 50% of the patients infected with HCV-1b and high viral loads [4, 5]. Recently, a new strategy was introduced in the treatment of chronic HCV infection by means of inhibiting protease in the NS3/NS4 of the HCV polyprotein. Of these, telaprevir (VX-950) was selected as a candidate agent for treatment of chronic HCV infection [6]. Later, it was found that telaprevir, when combined with PEG-IFN and ribavirin, gains a robust antiviral activity [7, 8]. Two previous studies (PROVE1 and PROVE2) showed that the 12- and 24-week regimen of telaprevir/PEG-IFN/ribavirin could achieve sustained virological response rates of 35–60 and 61–69% in patients infected with HCV-1, respectively [9, 10]. Furthermore, a recent study (PROVE3) also showed that the 24- and 48-week regimen of triple therapy could achieve sustained virological response rates of 51 and 53% in HCV-1 infected patients in whom initial PEG-IFN/ribavirin treatment failed, respectively [11].

Amino acid (aa) substitutions at positions 70 and/or 91 in the HCV core region of patients infected with HCV-1b and high viral loads are pretreatment predictors of poor virological response to PEG-IFN plus ribavirin combination therapy [12–14], and also affect clinical outcome, including hepatocarcinogenesis [15, 16]. Furthermore, genetic variations near the *IL28B* gene (rs8099917, rs12979860) on chromosome 19 as host-related factor, which encodes IFN- λ -3, are pretreatment predictors of virological response to 48-week PEG-IFN plus ribavirin combination therapy in individuals infected with HCV-1 [17–20], and also affect clinical outcome, including spontaneous clearance of HCV [21]. A recent report identified genetic variation near *IL28B* gene and aa substitution of the core region as predictors of sustained virological response to triple therapy of telaprevir/PEG-IFN/ribavirin in Japanese patients infected with HCV-1b [22]. However, it is not clear at this stage whether genetic variation near the *IL28B* gene and aa substitution of the core region can be used before therapy to predict viral dynamics during triple therapy.

The present study included 80 patients with HCV-1b and high viral loads, who received the triple therapy of telaprevir with PEG-IFN plus ribavirin. The aims of the study were to identify the pretreatment factors that could predict viral dynamics during treatment, including viral-(aa substitutions in the HCV core and NS5A regions) and host-related factors (genetic variation near *IL28B* gene).

Patients and Methods

Study Population

Between May 2008 and September 2009, 81 patients infected with HCV were recruited to this study at the Department of Hepatology in Toranomon Hospital in metropolitan Tokyo. The study protocol was in compliance with the Good Clinical Practice Guidelines and the 1975 Declaration of Helsinki, and was approved by the institutional review board. Each patient gave an informed consent before participating in this trial. Patients were divided into two groups: 20 (25%) patients were allocated to a 12-week regimen of triple therapy [telaprevir (MP-424), PEG-IFN and ribavirin] (the T12PR12 group), and 61 patients (75%) were assigned to a 24-week regimen of the same triple therapy for 12 weeks followed by dual therapy of PEG-IFN and ribavirin for 12 weeks (the T12PR24 group).

Eighty of the 81 patients met the following inclusion and exclusion criteria: (1) Diagnosis of chronic hepatitis C. (2) HCV-1b confirmed by sequence analysis. (3) HCV RNA levels of ≥ 5.0 log IU/ml determined by the COBAS TaqMan HCV test (Roche Diagnostics, Tokyo, Japan). (4) Japanese (Mongoloid) ethnicity. (5) Age at study entry of 20–65 years. (6) Body weight ≥ 35 kg and ≤ 120 kg at the time of registration. (7) Lack of decompensated liver cirrhosis. (8) Negativity for hepatitis B surface antigen (HBsAg) in serum. (9) Negative history of HCC. (10) No previous treatment for malignancy. (11) Negative history of autoimmune hepatitis, alcohol liver disease, hemochromatosis, and chronic liver disease other than chronic hepatitis C. (12) Negative history of depression, schizophrenia or suicide attempts, hemoglobinopathies, angina pectoris, cardiac insufficiency, myocardial infarction or severe arrhythmia, uncontrollable hypertension, chronic renal dysfunction or creatinine clearance of ≤ 50 ml/min at baseline, diabetes requiring treatment or fasting glucose level of ≥ 110 mg/dl, autoimmune disease, cerebrovascular disorders, thyroidal dysfunction uncontrollable by medical treatment, chronic pulmonary disease, allergy to medication or anaphylaxis at baseline. (13) Hemoglobin level of ≥ 12 g/dl, neutrophil count $\geq 1,500/\text{mm}^3$, and platelet count of $\geq 100,000/\text{mm}^3$ at baseline. Pregnant or breast-feeding women or those willing to become pregnant during the study and men with a pregnant partner were excluded from the study. In this study, all of the 80 patients were evaluated for the pretreatment predictors for viral dynamics during triple therapy, and 77 of the 80 patients were followed up for at least 24 weeks after the completion of treatment. The treatment efficacy was evaluated by 24 weeks after the completion of therapy (sustained virological response), based on the COBAS TaqMan HCV test (Roche Diagnostics).

Telaprevir (MP-424; Mitsubishi Tanabe Pharma, Osaka, Japan) was administered at 750 or 500 mg three times a day at an 8-hour (q8) interval after the meal. PEG-IFN α -2b (PEG-Intron; Schering Plough, Kenilworth, N.J., USA) was injected subcutaneously at a median dose of 1.5 $\mu\text{g}/\text{kg}$ (range 1.3–2.0 $\mu\text{g}/\text{kg}$) once a week. Ribavirin (Rebetol; Schering Plough) was administered at 200–600 mg twice a day after breakfast and dinner (daily dose 600–1,000 mg).

PEG-IFN and ribavirin were discontinued or their doses reduced, as required, upon reduction of hemoglobin level, leukocyte count, neutrophil count or platelet count, or the development of adverse events. Thus, the dose of PEG-IFN was reduced by 50% when the leukocyte count decreased below 1,500/ mm^3 , neutro-

Table 1. Profile and laboratory data at commencement of telaprevir, peginterferon and ribavirin triple therapy in Japanese patients infected with HCV-1b

<i>Demographic data</i>	
Number of patients	80
Sex, M/F	43/37
Age, years*	55 (23–65)
History of blood transfusion	24 (20.0%)
Family history of liver disease	13 (16.3%)
Body mass index*	22.5 (13.2–32.4)
<i>Laboratory data*</i>	
Level of viremia, log IU/ml	6.8 (5.1–7.6)
Serum aspartate aminotransferase, IU/l	34 (15–118)
Serum alanine aminotransferase, IU/l	42 (12–175)
Serum albumin, g/dl	3.9 (3.3–4.6)
Gamma-glutamyl transpeptidase, IU/l	36 (9–229)
Leukocyte count, per mm ³	4,800 (2,800–8,100)
Hemoglobin, g/dl	14.3 (11.7–16.8)
Platelet count, × 10 ⁴ /mm ³	17.3 (9.5–33.8)
α-Fetoprotein, μg/l	4 (2–39)
Total cholesterol, mg/dl	180 (112–276)
Fasting plasma glucose, mg/dl	92 (64–125)
<i>Treatment</i>	
PEG-IFNα-2b dose, μg/kg*	1.5 (1.3–2.0)
Ribavirin dose, mg/kg*	11.5 (7.2–18.4)
Telaprevir dose, 1,500/2,250 mg/day	10/70
Treatment regimen (T12PR12 group/T12PR24 group)	20/60
<i>Amino acid substitutions in the HCV-1b</i>	
Core aa 70, arginine/glutamine (histidine)	47/33
Core aa 91, leucine/methionine	43/37
ISDR of NS5A, wild-type/non-wild-type	76/4
<i>Genetic variation near IL28B gene</i>	
rs8099917 genotype, TT/TG/GG/ND	46/30/2/2
rs12979860 genotype, CC/CT/TT/ND	43/31/2/4
<i>Past history of IFN therapy</i>	
Treatment naive	27
Relapsers to previous treatment	33
Nonresponders to previous treatment	20

Data are numbers and percentages of patients, except those denoted by *, which represent the median (range) values. ND = Not determined.

phil count below 750/mm³ or platelet count below 80,000/mm³; PEG-IFN was discontinued when these counts decreased below 1,000/mm³, 500/mm³ or 50,000/mm³, respectively. When hemoglobin decreased to <10 g/dl, the daily dose of ribavirin was reduced from 600 to 400, 800 to 600 and 1,000 to 600 mg, depending on the initial dose. Ribavirin was withdrawn when hemoglobin decreased to <8.5 g/dl. However, the dose of telaprevir (MP-424) remained the same, and its administration was stopped when the

discontinuation was appropriate for the development of adverse events. In those patients who discontinued telaprevir, treatment with PEG-IFNα-2b and ribavirin was also terminated.

Table 1 summarizes the profiles and laboratory data of the 80 patients at the commencement of treatment. They included 43 males and 37 females, aged 23–65 years (median 55 years).

Measurement of HCV RNA

The antiviral effects of the triple therapy on HCV were assessed by measuring plasma HCV RNA levels. In this study, HCV RNA levels during treatment were evaluated at least once every month before, during, and after therapy. Furthermore, to investigate the pretreatment predictors for viral dynamics, HCV RNA levels during treatment were evaluated at 7 time points; 24 h, 1, 2, 4, 6, 8 and 12 weeks after the commencement of treatment. HCV RNA levels during treatment were evaluated in 80 (100%), 80 (100%), 80 (100%), 79 (98.8%), 75 (93.8%), 74 (92.5%), and 69 (86.3%) of the 80 patients, at the above time intervals, respectively. HCV RNA concentrations were determined using the COBAS TaqMan HCV test (Roche Diagnostics). The linear dynamic range of the assay was 1.2–7.8 log IU/ml, and the undetectable samples were defined as loss of HCV RNA. Especially, falls in HCV RNA levels at 24 h relative to baseline were investigated as very early dynamics.

Detection of Amino Acid Substitutions in Core and NS5A Regions of HCV-1b

With the use of HCV-J (accession No. D90208) as a reference [23], the sequence of 1–191 aa in the core protein of HCV-1b was determined and then compared with the consensus sequence constructed on 80 clinical samples to detect substitutions at aa 70 of arginine (Arg70) or glutamine/histidine (Gln70/His70) and aa 91 of leucine (Leu91) or methionine (Met91) [12]. The sequence of 2209–2248 aa in the NS5A of HCV-1b (IFN sensitivity-determining region; ISDR) reported by Enomoto et al. [24] was determined, and the numbers of aa substitutions in ISDR were defined as wild-type (0, 1) or non-wild-type (≥2). In the present study, aa substitutions of the core region and NS5A-ISDR of HCV-1b were analyzed by direct sequencing [22].

Genetic Variation near IL28B Gene

Samples for genomewide association survey were genotyped using the Illumina HumanHap610-Quad Genotyping BeadChip. Genotyping data were subjected to quality control before the data analysis. Genotyping for replication and fine mapping was performed by use of the Invader assay, TaqMan assay, or direct sequencing as described previously [25, 26].

In this study, genetic variations near *IL28B* gene (rs8099917, rs12979860), reported as the pretreatment predictors of treatment efficacy and clinical outcome [17–22], were investigated.

Statistical Analysis

Nonparametric tests (χ^2 test and Fisher's exact probability test) were used to compare the characteristics of the groups. Univariate and multivariate logistic regression analyses were used to determine those factors that significantly contributed to viral dynamics and sustained virological response. The ORs and 95%CI were also calculated. All p values less than 0.05 by the two-tailed test were considered significant. Variables that achieved statistical significance ($p < 0.05$) on univariate analysis were entered into

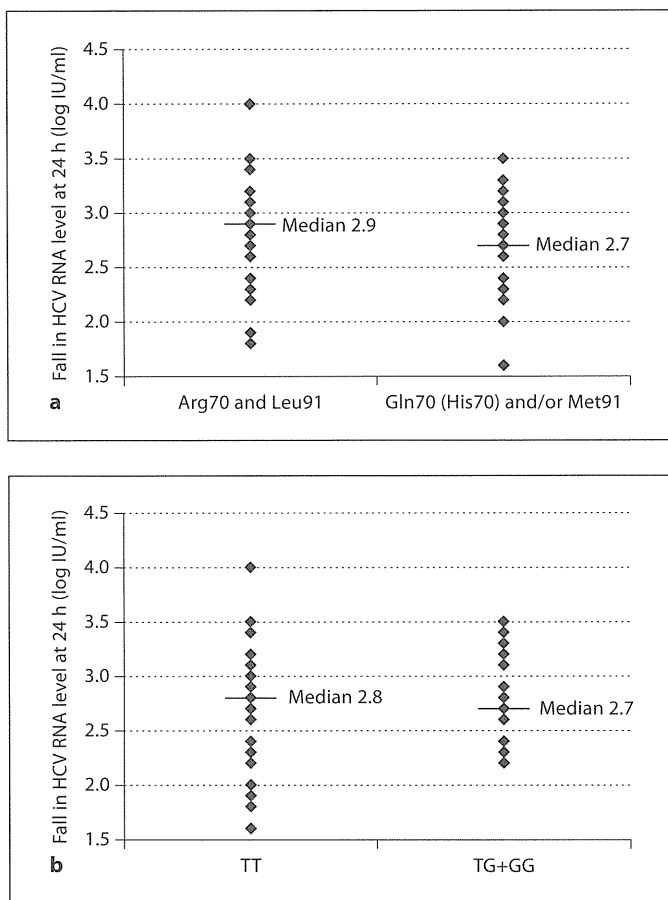


Fig. 1. **a** Very early dynamics according to amino acid substitutions in core region. After 24 h of commencement of the triple therapy, patients with Arg70 and Leu91 (median 2.9 log IU/ml; range 1.8–4.0 log IU/ml) significantly showed the steeper decline of HCV RNA level than those with Gln70 (His70) and/or Met91 (median 2.7 log IU/ml; range 1.6–3.5 log IU/ml). **b** Very early dynamics according to genetic variation near the *IL28B* gene. After 24 h of commencement of the triple therapy, the decline of HCV RNA level of patients with rs8099917 genotype TT (median 2.8 log IU/ml; range 1.6–4.0 log IU/ml) was not significantly different from that of patients with genotype TG and GG (median 2.7 log IU/ml; range 2.2–3.5 log IU/ml).

multiple logistic regression analysis to identify significant independent predictive factors. Each variable was transformed into categorical data consisting of two simple ordinal numbers for univariate and multivariate analyses. The potential pretreatment factors associated with treatment efficacy included the following variables: sex, age, history of blood transfusion, familial history of liver disease, body mass index, aspartate aminotransferase (AST), alanine aminotransferase (ALT), albumin, gamma-glutamyl transpeptidase (γ GTP), leukocyte count, hemoglobin, platelet count, HCV RNA level, α -fetoprotein, total cholesterol, fasting blood sugar, PEG-IFN dose/body weight, ribavirin dose/body

weight, telaprevir dose/day, treatment regimen of triple therapy, past history of IFN therapy, genetic variation near the *IL28B* gene, and amino acid substitution in the core region, and NS5A-ISDR. Statistical analyses were performed using the SPSS software (SPSS Inc., Chicago, Ill., USA).

Results

Virological Response to Therapy and Loss of HCV RNA during Treatment

Sustained virological response was achieved by 63.6% (49 of 77 patients). The disappearance rate of HCV RNA during treatment was 0% (0 of 80), 1.3% (1 of 80), 33.8% (27 of 80), 81.0% (64 of 79), 90.7% (68 of 75), 94.6% (70 of 74), and 89.9% (62 of 69) at 24 hours, 1, 2, 4, 6, 8, and 12 weeks, respectively.

*Very Early Dynamics according to Amino Acid Substitutions in Core Region and Genetic Variation near the *IL28B* Gene*

After 24 h of commencement of the triple therapy, the proportion of patients with Arg70 and Leu91 substitutions who showed ≥ 3.0 log drop in HCV RNA level (45.2%; 14 of 31 patients) was significantly higher than that of patients with Gln70 (His70) and/or Met91 (14.3%; 7 of 49) ($p = 0.004$). Thus, patients with Arg70 and Leu91 (median 2.9 log IU/ml; range 1.8–4.0 log IU/ml) significantly showed the steeper decline of HCV RNA level than those with Gln70 (His70) and/or Met91 (median 2.7 log IU/ml; range 1.6–3.5 log IU/ml) (fig. 1a).

After 24 h of commencement of treatment, the proportion of patients with rs8099917 genotype TT who showed ≥ 3.0 log drop in HCV RNA level (30.4%; 14 of 46 patients) was not significantly different from that of patients with genotype TG and GG (21.9%; 7 of 32). Thus, the decline of HCV RNA level of patients with genotype TT (median 2.8 log IU/ml; range 1.6–4.0 log IU/ml) was not significantly different from that of patients with genotype TG and GG (median 2.7 log IU/ml; range 2.2–3.5 log IU/ml) (fig. 1b).

Hence, the fall in HCV RNA level at 24 h was influenced by aa substitution patterns in the core region, but was independent of genetic variation near *IL28B* gene.

*Rates of Loss of HCV RNA according to Amino Acid Substitutions in Core Region and Genetic Variation near the *IL28B* Gene*

According to the substitution of core aa 70 and 91, the rate of HCV RNA loss of patients with Arg70 and Leu91 was not significantly different from that of patients with

Gln70 (His70) and/or Met91 at each time point (1, 2, 4, 6, 8 and 12 weeks).

According to genetic variation near the *IL28B* gene, the rate of HCV RNA loss at 1, 2, 4 and 6 weeks was not significantly different between rs8099917 genotype TT and non-TT (TG and GG). However, at 8 and 12 weeks, the rate of HCV RNA loss of patients with genotype TT was significantly higher than that of patients with genotype non-TT (fig. 2).

Predictive Factors Associated with ≥ 3.0 log Fall in HCV RNA Level at 24 Hours

Univariate analysis identified two parameters that correlated with ≥ 3.0 log fall in HCV RNA level at 24 h significantly: substitution of aa 70 and 91 (Arg70 and Leu91; OR 4.94, $p = 0.003$) and body mass index (≥ 25.0 ; OR 3.92, $p = 0.022$). Two factors were identified by multivariate analysis as independent parameters that either significantly ($p < 0.05$) or marginally ($p < 0.10$) influenced ≥ 3.0 log fall in HCV RNA level at 24 h [Arg70 and Leu91 (OR 3.99, $p = 0.015$) and body mass index ≥ 25.0 (OR 3.24, $p = 0.061$)] (table 2).

Predictive Factors Associated with Loss of HCV RNA at 2, 4 and 12 Weeks

Univariate analysis identified two parameters that correlated with loss of HCV RNA at 2 weeks significantly: platelet count ($\geq 15.0 \times 10^4/\text{mm}^3$; OR 6.99, $p = 0.014$) and level of viremia (< 7.0 log IU/ml; OR 3.13, $p = 0.045$). One factor was identified by multivariate analysis as independent parameter that either significantly or marginally influenced loss of HCV RNA at 2 weeks (platelet count $\geq 15.0 \times 10^4/\text{mm}^3$; OR 6.99, $p = 0.014$) (table 2).

Univariate analysis identified two parameters that correlated with loss of HCV RNA at 4 weeks significantly: history of blood transfusion (absence; OR 5.71, $p = 0.006$) and body mass index (≥ 20.0 ; OR 4.29, $p = 0.019$). Two factors were identified by multivariate analysis as independent parameters that either significantly or marginally influenced loss of HCV RNA at 4 weeks (history of blood transfusion: absence; OR 4.29, $p = 0.026$, and body mass index ≥ 20.0 ; OR 3.47, $p = 0.069$) (table 2).

Univariate analysis identified two parameters that correlated with loss of HCV RNA at 12 weeks significantly: sex (male; OR 9.52, $p = 0.043$) and genetic variation in rs8099917 (genotype TT; OR 9.00, $p = 0.048$). Two factors were identified by multivariate analysis as independent parameters that either significantly or marginally influenced loss of HCV RNA at 12 weeks (male sex; OR 11.0, $p = 0.036$, and rs8099917 genotype TT; OR 10.3, $p = 0.042$) (table 2).

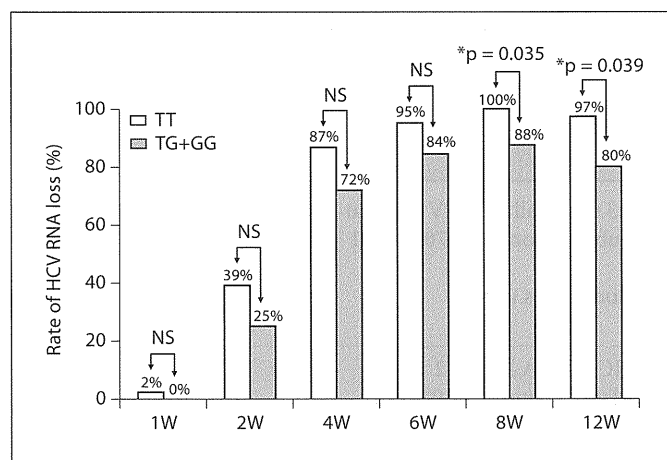


Fig. 2. Rates of loss of HCV RNA according to genetic variation near the *IL28B* gene. According to genetic variation near the *IL28B* gene, the rate of HCV RNA loss at 1, 2, 4 and 6 weeks was not significantly different between rs8099917 genotype TT and non-TT (TG and GG). However, at 8 and 12 weeks, the rate of HCV RNA loss of patients with genotype TT was significantly higher than that of patients with genotype non-TT.

Predictive Factors Associated with Sustained Virological Response

Univariate analysis identified three parameters that correlated with sustained virological response significantly: substitution of aa 70 (Arg70; OR 3.51, $p = 0.011$), and genetic variation in rs8099917 (genotype TT; OR 11.1, $p < 0.001$) and rs12979860 (genotype CC; OR 10.2, $p < 0.001$). Two factors were identified by multivariate analysis as independent parameters that either significantly or marginally influenced sustained virological response (rs8099917 genotype TT; OR 9.94, $p < 0.001$, and Arg70; OR 3.15, $p = 0.055$) (table 2).

Comparison of Factors Associated with Each Treatment Efficacy Identified by Multivariate Analysis

Table 3 shows independent parameters that either significantly or marginally influenced multivariate logistic regression for each evaluation of treatment efficacy. Multivariate analysis identified substitution of aa 70 and 91 as a predictor of ≥ 3.0 log fall in HCV RNA level at 24 h (Arg70 and Leu91) and sustained virological response (Arg70), and rs8099917 (TT) as a predictor of HCV RNA loss at 12 weeks and sustained virological response. Thus, genetic variation near *IL28B* gene and aa substitution of the core region affect viral dynamics of different phases during triple therapy.

Table 2. Factors associated with treatment efficacy of telaprevir, peginterferon and ribavirin triple therapy in Japanese patients infected with HCV-1b, identified by univariate and multivariate analysis

Factor	Category	Univariate logistic regression		Multivariate logistic regression		
		OR (95% CI)	p	OR (95% CI)	p	
A	≥3.0 log fall in HCV RNA at 24 h					
	Substitution of aa 70 and 91	1: Gln70 (His70) and/or Met91 2: Arg70 and Leu91	1 4.94 (1.70–14.4)	0.003	1 3.99 (1.31–12.2)	0.015
	Body mass index	1: <25.0 2: ≥25.0	1 3.92 (1.22–12.6)	0.022	1 3.24 (0.95–11.1)	0.061
B	HCV RNA loss at 2 weeks					
	Platelet count, × 10 ⁴ /mm ³	1: <15.0 2: ≥15.0	1 6.99 (1.49–32.8)	0.014	1 6.99 (1.49–32.8)	0.014
	Level of viremia, log IU/ml	1: ≥7.0 2: <7.0	1 3.13 (1.02–9.52)	0.045	– –	– –
C	HCV RNA loss at 4 weeks					
	History of blood transfusion	1: presence 2: absence	1 5.71 (1.66–19.6)	0.006	1 4.29 (1.86–15.6)	0.026
	Body mass index	1: <20.0 2: ≥20.0	1 4.29 (1.26–14.5)	0.019	1 3.47 (0.91–13.3)	0.069
D	HCV RNA loss at 12 weeks					
	Sex	1: female 2: male	1 9.52 (1.08–83.3)	0.043	1 11.0 (1.16–100)	0.036
	rs8099917 genotype	1: TG+GG 2: TT	1 9.00 (1.02–79.5)	0.048	1 10.3 (1.08–98.0)	0.042
E	Sustained virological response					
	rs8099917 genotype	1: TG+GG 2: TT	1 11.1 (3.68–33.5)	<0.001	1 9.94 (3.05–32.4)	<0.001
	Substitution of aa 70	1: Gln70 (His70) 2: Arg70	1 3.51 (1.33–9.26)	0.011	1 3.15 (0.97–10.2)	0.055
	rs12979860 genotype	1: CT+TT 2: CC	1 10.2 (3.33–3.13)	<0.001	– –	– –

Variables that achieved statistical significance ($p < 0.05$) on univariate analysis were entered into multiple logistic regression analysis to identify significant independent predictive factors.

The other significant predictors of HCV RNA loss were platelet count ($\geq 15.0 \times 10^4/\text{mm}^3$) at 2 weeks, history of blood transfusion (absence) at 4 weeks, and sex (male) at 12 weeks.

Discussion

Thompson et al. [27] reported that genetic variation near *IL28B* gene was also associated with increased on-treatment and sustained virological response and effectively predicted treatment outcome in treatment-naive HCV-1 patients treated with PEG-IFN plus ribavirin. However, HCV RNA loss at 4 weeks (rapid virological

response) was a strong predictor of sustained virological response regardless of genetic variation near the *IL28B* gene. This phenomenon probably explains why it might be important to identify the pretreatment factors that could predict viral dynamics during treatment. The present study is the first to identify the pretreatment factors that could predict viral dynamics during triple therapy in patients infected with HCV-1. These results should be interpreted with caution since races other than Japanese and the patients infected with HCV-1a were not included. Any generalization of the results should await confirmation by studies including patients of other races and with HCV-1a to explore whether genetic variation near *IL28B* gene and aa substitution

Table 3. Comparison of factors associated with treatment efficacy of telaprevir, peginterferon and ribavirin triple therapy in Japanese patients infected with HCV-1b identified by multivariate analysis

Factor	≥3.0 log fall in HCV RNA (at 24 h)	HCV RNA loss (at 2 weeks)	HCV RNA loss (at 4 weeks)	HCV RNA loss (at 12 weeks)	Sustained virological response
Core aa 70 and 91	Arg70 and Leu91 p = 0.015 3.99 (1.31–12.2)*				Arg70 p = 0.055 3.15 (0.97–10.2)*
<i>IL28B</i> rs8099917				genotype TT p = 0.042 10.3 (1.08–98.0)*	genotype TT p < 0.001 9.94 (3.05–32.4)*
Others	body mass index p = 0.061 3.24 (0.95–11.1)*	platelet count p = 0.014 6.99 (1.49–32.8)*	body mass index p = 0.069 3.47 (0.91–13.3)* history of blood transfusion p = 0.026 4.29 (1.86–15.6)*	sex p = 0.036 11.0 (1.16–100)*	

Only variables that achieved statistical significance ($p < 0.05$) or marginal significance ($p < 0.10$) on multivariate logistic regression are shown. * OR (95% CI).

of core region also affect viral dynamics during triple therapy.

Two studies showed that aa substitution of the core region and genetic variation near *IL28B* gene affected viral dynamics during treatment, and sustained virological response to 48-week PEG-IFN plus ribavirin therapy in patients infected with HCV-1 [27, 28]. Furthermore, a recent report also showed that aa substitutions of core region might be used to predict very early dynamics (within 48 h) after the start of triple therapy of telaprevir with PEG-IFN and ribavirin [29]. In the present study, multivariate analysis identified substitution of aa 70 and 91 as a predictor of ≥ 3.0 log fall in HCV RNA level at 24 hours (i.e. viral dynamics of very early phase) and sustained virological response, and rs8099917 as a predictor of HCV RNA loss at 12 weeks (i.e. viral dynamics of later phase) and sustained virological response. This study is the first to report that genetic variation near *IL28B* gene and aa substitution of the core region affect viral dynamics of different phases during triple therapy, and probably explains why the combination of these independent factors is very useful as pretreatment predictors of sustained virological response by triple therapy [22]. The underlying mechanisms of the different viral dynamics to treatment are still unclear, and further studies based on a larger number of patients are necessary to investigate the present results.

Previous data indicated that absence of advanced liver fibrosis and male gender were positive predictors of virological response to 48-week PEG-IFN plus ribavirin therapy [13, 28]. The present study also showed that higher levels of platelet count at 2 weeks, as a surrogate marker of milder liver fibrosis, and male gender at 12 weeks were significant positive predictors of HCV RNA loss during triple therapy. The other positive predictors were absence of history of blood transfusion at 4 weeks and higher levels of body mass index at 24 h and 4 weeks, but the underlying mechanisms are still unclear. Thus, this report identified the pretreatment factors that could predict viral dynamics during triple therapy, but this study, based on a small number of patients, might provide misleading results (e.g. possible type error). Further studies of a larger number of patients are required to explore predictors, including viral- and host-related factors.

The limitations of the present study were that aa substitutions in areas other than the core region and NS5A-ISR of the HCV genome, such as the interferon/ribavirin resistance determining region (IRRDR) [30], were not examined. Furthermore, HCV mutants with aa conversions for resistance to telaprevir during triple therapy, such as the 156S mutation [31], were also not investigated. In this regard, telaprevir-resistant HCV mutants were reported to be susceptible to IFN in both in vivo and in vitro studies [32, 33]. Thus, viral factors before and during triple therapy should be investigated in

future studies, and identification of these factors should facilitate the development of more effective therapeutic regimens.

In conclusion, this study identified genetic variation near *IL28B* gene and aa substitution of the core region as predictors of viral dynamics during triple therapy of telaprevir/PEG-IFN/ribavirin in Japanese patients infected with HCV-1b. Further large-scale prospective studies are necessary to investigate whether the present results relate to the efficacy of the triple therapy, and further under-

standing of the complex interaction between virus- and host-related factors should facilitate the development of more effective therapeutic regimens.

Acknowledgment

This study was supported in part by a Grant-in-Aid from the Ministry of Health, Labor and Welfare, Japan.

References

- Niederer C, Lange S, Heintges T, Erhardt A, Buschkamp M, Hürter D, Nawrocki M, Kruska L, Hensel F, Petry W, Häussinger D: Progress of chronic hepatitis C: results of a large, prospective cohort study. *Hepatology* 1998;28:1687–1695.
- Kenny-Walsh E: Clinical outcomes after hepatitis C infection from contaminated anti-D immune globulin: Irish Hepatology Research Group. *N Engl J Med* 1999;340:1228–1233.
- Tsubota A, Arase Y, Someya T, Suzuki Y, Suzuki F, Saitoh S, Ikeda K, Akuta N, Hosaka T, Kobayashi M, Kumada H: Early viral kinetics and treatment outcome in combination of high-dose interferon induction vs. pegylated interferon plus ribavirin for naive patients infected with hepatitis C virus of genotype 1b and high viral load. *J Med Virol* 2005;75:27–34.
- Manns MP, McHutchison JG, Gordon SC, Rustgi VK, Shiffman M, Reindollar R, Goodman ZD, Koury K, Ling MH, Albrecht JK: Peginterferon alfa-2b plus ribavirin compared with interferon alfa-2b plus ribavirin for initial treatment of chronic hepatitis C: a randomized trial. *Lancet* 2001;358:958–965.
- Fried MW, Shiffman ML, Reddy R, Smith C, Marinos G, Gonçalves FL, Häussinger D, Diago M, Carosi G, Dhumeaux D, Craxi A, Lin A, Hoffman J, Yu J: Peginterferon alfa-2a plus ribavirin for chronic hepatitis C virus infection. *N Engl J Med* 2002;347:975–982.
- Lin C, Kwong AD, Perni RB: Discovery and development of VX-950, a novel, covalent, and reversible inhibitor of hepatitis C virus NS3.4A serine protease. *Infect Disord Drug Targets* 2006;6:3–16.
- Modi AA, Hoofnagle JH: New therapies for hepatitis C. *Hepatology* 2007;46:615–617.
- Zeuzem S: Telaprevir, peginterferon alfa-2a, and ribavirin for 28 days in chronic hepatitis C patients. *J Hepatol* 2008;49:157–159.
- McHutchison JG, Everson GT, Gordon SC, Jacobson IM, Sulkowski M, Kauffman R, McNair L, Alam J, Muir AJ, PROVE1 Study Team: Telaprevir with peginterferon and ribavirin for chronic HCV genotype 1 infection. *N Engl J Med* 2009;360:1827–1838.
- Hézode C, Forestier N, Dusheiko G, Ferenci P, Pol S, Goeser T, Bronowicki JP, Bourlière M, Gharakhanian S, Bengtsson L, McNair L, George S, Kieffer T, Kwong A, Kauffman RS, Alam J, Pawlotsky JM, Zeuzem S, PROVE2 Study Team: Telaprevir and peginterferon with or without ribavirin for chronic HCV infection. *N Engl J Med* 2009;360:1839–1850.
- McHutchison JG, Manns MP, Muir AJ, Terrault NA, Jacobson IM, Afdhal NH, Heathcote EJ, Zeuzem S, Reesink HW, Garg J, Bsharat M, George S, Kauffman RS, Adda N, Di Bisceglie AM, PROVE3 Study Team: Telaprevir for previously treated chronic HCV infection. *N Engl J Med* 2010;362:1292–1303.
- Akuta N, Suzuki F, Sezaki H, Suzuki Y, Hosaka T, Someya T, Kobayashi M, Saitoh S, Watahiki S, Sato J, Matsuda M, Kobayashi M, Arase Y, Ikeda K, Kumada H: Association of amino acid substitution pattern in core protein of hepatitis C virus genotype 1b high viral load and non-virological response to interferon-ribavirin combination therapy. *Intervirology* 2005;48:372–380.
- Akuta N, Suzuki F, Kawamura Y, Yatsuji H, Sezaki H, Suzuki Y, Hosaka T, Kobayashi M, Kobayashi M, Arase Y, Ikeda K, Kumada H: Predictive factors of early and sustained responses to peginterferon plus ribavirin combination therapy in Japanese patients infected with hepatitis C virus genotype 1b: amino acid substitutions in the core region and low-density lipoprotein cholesterol levels. *J Hepatol* 2007;46:403–410.
- Donlin MJ, Cannon NA, Yao E, Li J, Wahed A, Taylor MW, Belle SH, Di Bisceglie AM, Aurora R, Tavis JE: Pretreatment sequence diversity differences in the full-length hepatitis C virus open reading frame correlate with early response to therapy. *J Virol* 2007;81:8211–8224.
- Akuta N, Suzuki F, Kawamura Y, Yatsuji H, Sezaki H, Suzuki Y, Hosaka T, Kobayashi M, Kobayashi M, Arase Y, Ikeda K, Kumada H: Amino acid substitutions in the hepatitis C virus core region are the important predictor of hepatocarcinogenesis. *Hepatology* 2007;46:1357–1364.
- Fishman SL, Factor SH, Balestrieri C, Fan X, Dibisceglie AM, Desai SM, Benson G, Branch AD: Mutations in the hepatitis C virus core gene are associated with advanced liver disease and hepatocellular carcinoma. *Clin Cancer Res* 2009;15:3205–3213.
- Ge D, Fellay J, Thompson AJ, Simon JS, Shianna KV, Urban TJ, Heinzen EL, Qiu P, Bertelsen AH, Muir AJ, Sulkowski M, McHutchison JG, Goldstein DB: Genetic variation in *IL28B* predicts hepatitis C treatment-induced viral clearance. *Nature* 2009;461:399–401.
- Tanaka Y, Nishida N, Sugiyama M, et al: Genome-wide association of *IL28B* with response to pegylated interferon-alpha and ribavirin therapy for chronic hepatitis C. *Nat Genet* 2009;41:1105–1109.
- Suppiah V, Moldovan M, Ahlenstiel G, Berg T, Weltman M, Abate ML, Bassendine M, Spengler U, Dore GJ, Powell E, Riordan S, Sheridan D, Smedile A, Fragomeli V, Müller T, Bahlo M, Stewart GJ, Booth DR, George J: *IL28B* is associated with response to chronic hepatitis C interferon-alpha and ribavirin therapy. *Nat Genet* 2009;41:1100–1104.
- Rauch A, Kutalik Z, Descombes P, et al: Genetic variation in *IL28B* is associated with chronic hepatitis C and treatment failure: a genome-wide association study. *Gastroenterology* 2010;138:1338–1345.
- Thomas DL, Thio CL, Martin MP, Qi Y, Ge D, O’Huigin C, Kidd J, Kidd K, Khakoo SI, Alexander G, Goedert JJ, Kirk GD, Donfield SM, Rosen HR, Tobler LH, Busch MP, McHutchison JG, Goldstein DB, Carrington M: Genetic variation in *IL28B* and spontaneous clearance of hepatitis C virus. *Nature* 2009;461:798–801.

- 22 Akuta N, Suzuki F, Hirakawa M, Kawamura Y, Yatsuji H, Sezaki H, Suzuki Y, Hosaka T, Kobayashi M, Kobayashi M, Saitoh S, Arase Y, Ikeda K, Chayama K, Nakamura Y, Kumada H: Amino acid substitution in HCV core region and genetic variation near *IL28B* gene predict viral response to telaprevir with peginterferon and ribavirin. *Hepatology* 2010;52:421–429.
- 23 Kato N, Hijikata M, Ootsuyama Y, Nakagawa M, Ohkoshi S, Sugimura T, Shimotohno K: Molecular cloning of the human hepatitis C virus genome from Japanese patients with non-A, non-B hepatitis. *Proc Natl Acad Sci USA* 1990;87:9524–9528.
- 24 Enomoto N, Sakuma I, Asahina Y, Kurosaki M, Murakami T, Yamamoto C, Ogura Y, Izumi N, Marumo F, Sato C: Mutations in the nonstructural protein 5A gene and response to interferon in patients with chronic hepatitis C virus 1b infection. *N Engl J Med* 1996;334:77–81.
- 25 Ohnishi Y, Tanaka T, Ozaki K, Yamada R, Suzuki H, Nakamura Y: A high-throughput SNP typing system for genome-wide association studies. *J Hum Genet* 2001;46:471–477.
- 26 Suzuki A, Yamada R, Chang X, et al: Functional haplotypes of PADI4, encoding citrullinating enzyme peptidylarginine deiminase 4, are associated with rheumatoid arthritis. *Nat Genet* 2003;34:395–402.
- 27 Thompson AJ, Muir AJ, Sulkowski MS, et al: Interleukin-28B Polymorphism Improves Viral Kinetics and Is the Strongest Pretreatment Predictor of Sustained Virologic Response in Hepatitis C Virus-1 Patients. *Gastroenterology* 2010;139:120–129.
- 28 Akuta N, Suzuki F, Kawamura Y, Yatsuji H, Sezaki H, Suzuki Y, Hosaka T, Kobayashi M, Kobayashi M, Arase Y, Ikeda K, Kumada H: Predictors of viral kinetics to peginterferon plus ribavirin combination therapy in Japanese patients infected with hepatitis C virus genotype 1b. *J Med Virol* 2007;79:1686–1695.
- 29 Akuta N, Suzuki F, Hirakawa M, Kawamura Y, Yatsuji H, Sezaki H, Suzuki Y, Hosaka T, Kobayashi M, Kobayashi M, Saitoh S, Arase Y, Ikeda K, Kumada H: Amino acid substitutions in the hepatitis C virus core region of genotype 1b affect very early viral dynamics during treatment with telaprevir, peginterferon, and ribavirin. *J Med Virol* 2010;82:575–582.
- 30 El-Shamy A, Nagano-Fujii M, Sasase N, Imoto S, Kim SR, Hotta H: Sequence variation in hepatitis C virus nonstructural protein 5A predicts clinical outcome of pegylated interferon/ribavirin combination therapy. *Hepatology* 2008;48:38–47.
- 31 Lin C, Gates CA, Rao BG, Brennan DL, Fulghum JR, Luong YP, Frantz JD, Lin K, Ma S, Wei YY, Perni RB, Kwong AD: In vitro studies of cross-resistance mutations against two hepatitis C virus serine protease inhibitors, VX-950 and BILN 2061. *J Biol Chem* 2005;280:36784–36791.
- 32 Forestier N, Reesink HW, Weegink CJ, McNair L, Kieffer TL, Chu HM, Purdy S, Jansen PL, Zeuzem S: Antiviral activity of telaprevir (VX-950) and peginterferon alfa-2a in patients with hepatitis C. *Hepatology* 2007;46:640–648.
- 33 Zhou Y, Müh U, Hanzelka BL, Bartels DJ, Wei Y, Rao BG, Brennan DL, Tigges AM, Swenson L, Kwong AD, Lin C: Phenotypic and structural analyses of hepatitis C virus NS3 protease Arg155 variants: sensitivity to telaprevir (VX-950) and interferon alpha. *J Biol Chem* 2007;282:22619–22628.

Amino Acid Substitution in HCV Core/NS5A Region and Genetic Variation Near *IL28B* Gene Affect Treatment Efficacy to Interferon plus Ribavirin Combination Therapy

Norio Akuta^a Fumitaka Suzuki^a Miharuru Hirakawa^a Yusuke Kawamura^a
Hitomi Sezaki^a Yoshiyuki Suzuki^a Tetsuya Hosaka^a Masahiro Kobayashi^a
Mariko Kobayashi^b Satoshi Saitoh^a Yasuji Arase^a Kenji Ikeda^a
Kazuaki Chayama^c Yusuke Nakamura^d Hiromitsu Kumada^a

^aDepartment of Hepatology, and ^bLiver Research Laboratory, Toranomon Hospital, Tokyo, ^cDepartment of Medical and Molecular Science, Division of Frontier Medical Science, Programs for Biomedical Research, Graduate School of Biomedical Science, Hiroshima University, Hiroshima, and ^dLaboratory of Molecular Medicine, Human Genome Center, Institute of Medical Science, University of Tokyo, Tokyo, Japan

Key Words

Hepatitis C virus · Interferon · Ribavirin · Core region · NS5A region · ISDR · IRRDR · *IL28B*

Abstract

Objective: To evaluate predictive factors of treatment efficacy to interferon (IFN)/ribavirin in patients infected with HCV genotype 1b (HCV-1b). **Methods:** This study investigated pretreatment predictors, including viral- (aa substitutions in core aa 70/91 and NS5A-ISDR/IRRDR) and host-related factors (genetic variation near *IL28B* gene), to 48-week IFN/ribavirin in 490 Japanese adults infected with HCV-1b. **Results:** The proportion of patients who showed end-of-treatment response (ETR), sustained virological response (SVR), and SVR after ETR was 76, 54, and 76%, respectively. There was a significant positive correlation between the number of aa substitutions in ISDR and those in IRRDR. Concerning the substitution of core aa 91, the number of aa substitutions in ISDR/IRRDR of patients with Leu91 was significantly higher

than that of patients with Met91. Furthermore, levels of viremia were influenced by aa substitutions in core aa 91 and ISDR/IRRDR. By multivariate analysis, rs8099917 genotype was an important predictor of ETR and SVR. With regard to viral factors, core aa 70/91 was an important predictor of ETR, and SVR after ETR. ISDR was an important predictor of SVR, and SVR after ETR. **Conclusion:** aa substitution in core/NS5A region and genetic variation near *IL28B* were important predictors of treatment efficacy to IFN/ribavirin.

Copyright © 2011 S. Karger AG, Basel

Introduction

Treatment of chronic hepatitis C virus (HCV) infection with interferon (IFN) combined with ribavirin carries potential serious side effects and is costly, especially when used long enough to achieve a high sustained virological response (SVR) in patients infected with HCV genotype 1b (HCV-1b) and high viral loads. For these rea-

KARGER

Fax +41 61 306 12 34
E-Mail karger@karger.ch
www.karger.com

© 2011 S. Karger AG, Basel
0300-5526/11/0000-0000\$38.00/0

Accessible online at:
www.karger.com/int

Norio Akuta, MD
Department of Hepatology, Toranomon Hospital
2-2-2 Toranomon, Minato-ku
Tokyo 105-0001 (Japan)
Tel. +81 ■■■■ ■■■■ ■■■■ ■■■■, E-Mail akuta-gi@umin.ac.jp

sons, those patients who do not achieve SVR need to be identified, so as to free them of unnecessary side effects and reduce costs, preferably before the start of the combination therapy.

Viral- and host-related factors are useful as predictors of treatment efficacy to 48-week IFN/ribavirin combination therapy. With regard to viral factors, amino acid (aa) substitutions at position 70 and/or 91 in the core region of HCV-1b are pretreatment predictors of virological response to combination therapy [1–4], and also affect clinical outcome, including hepatocarcinogenesis [5, 6]. Furthermore, the NS5A region of HCV-1b, including IFN-sensitivity-determining region (ISDR) [7, 8] and IFN/ribavirin resistance-determining region (IRRDR) [9, 10], are also useful as pretreatment predictors of virological response to combination therapy [11, 12]. With regard to host factors, genetic variations near *IL28B* gene (rs8099917, rs12979860) on chromosome 19, which encodes IFN- λ -3, are pretreatment predictors of virological response to combination therapy in individuals infected with HCV-1 [13–16], and also affect clinical outcome, including spontaneous clearance of HCV [17]. A recent report identified genetic variation near *IL28B* gene and aa substitution of the core region as predictors of SVR to triple therapy of telaprevir/pegylated (PEG)-IFN/ribavirin in Japanese patients infected with HCV-1b [18]. However, to our knowledge, there are no previous reports of IFN/ribavirin combination therapy based on multivariate analysis to investigate pretreatment predictors, including all of aa substitutions in core aa 70/91 and NS5A-ISDR/IRRDR, and genetic variation near *IL28B* gene.

The aim of the present study was to investigate predictive factors of treatment efficacy, including viral- (aa substitutions in core aa 70/91 and NS5A-ISDR/IRRDR) and host-related factors (genetic variation near *IL28B* gene), to 48-week IFN/ribavirin in Japanese adults infected with HCV-1b.

Patients and Methods

Study Population

A total of 1,249 HCV-1b-infected Japanese adult patients were consecutively recruited into the study protocol of combination therapy with IFN (PEG-IFN α -2b or IFN α -2b) plus ribavirin between December 2001 and January 2009 at Toranomon Hospital, Tokyo, Japan. Among these, 490 patients, who could complete a total of 48 weeks of combination therapy, were enrolled in this retrospective study, and fulfilled the following criteria: (1) negativity for hepatitis B surface antigen (HBsAg) in serum; (2) HCV-1b only confirmed by sequence analysis; (3) HCV-RNA levels of ≥ 5.0 log IU/ml determined by the COBAS TaqMan HCV test

(Roche Diagnostics, Tokyo, Japan) within the preceding 2 months of enrolment; (4) no hepatocellular carcinoma; (5) body weight >40 kg; (6) lack of coinfection with human immunodeficiency virus; (7) no previous treatment with antiviral or immunosuppressive agents within the preceding 3 months of enrolment; (8) none was an alcoholic; lifetime cumulative alcohol intake was <500 kg; (9) none had other forms of liver diseases, such as hemochromatosis, Wilson disease, primary biliary cirrhosis, alcoholic liver disease, or autoimmune liver disease, and (10) none of the females was pregnant or breastfeeding.

The study protocol was in compliance with the Good Clinical Practice Guidelines and the 1975 Declaration of Helsinki, and was approved by the institutional review board. Each patient gave their informed consent before participating in this trial.

The treatment efficacy was evaluated in terms of HCV-RNA negativity at the end of treatment (end-of-treatment response (ETR)) and 24 weeks after the completion of therapy (SVR), based on the COBAS TaqMan HCV test (Roche Diagnostics). SVR in patients who achieved ETR was defined as SVR after ETR. ETR, SVR, and SVR after ETR could be evaluated in 487 (99%), 448 (91%), and 321 (66%) of 490 patients, respectively.

422 (86%) patients received PEG-IFN α -2b at a median dose of 1.4 μ g/kg (range 0.7–1.9) subcutaneously each week plus oral ribavirin at a median dose of 11.1 mg/kg (range 3.7–15.1) daily for 48 weeks. The remaining 68 (14%) patients received 6 million units of IFN α -2b intramuscularly each day for 48 weeks (daily for the initial 2 weeks, followed by three times per week for 46 weeks), and oral ribavirin at a median dose of 11.3 mg/kg (range 6.8–13.4) daily for 48 weeks.

Table 1 summarizes the profiles and laboratory data of the 490 patients at the commencement of treatment. They included 310 males and 180 females aged 20–75 years (median 54).

Measurement of HCV RNA

The antiviral effects of treatment on HCV were assessed by measuring plasma HCV-RNA levels. In this study, HCV-RNA levels were evaluated at least once every month before, during, and after therapy. HCV-RNA concentrations were determined using the COBAS TaqMan HCV test (Roche Diagnostics). The linear dynamic range of the assay was 1.2–7.8 log IU/ml, and the undetectable samples were defined as negative.

Detection of aa Substitutions in Core, and NS5A Regions of HCV-1b

With the use of HCV-J (accession No. D90208) as a reference [19], the sequence of 1–191 aa in the core protein of HCV-1b was determined and then compared with the consensus sequence constructed on the previous study to detect substitutions at aa 70 of arginine (Arg70) or glutamine/histidine (Gln70/His70) and aa 91 of leucine (Leu91) or methionine (Met91) [1]. The sequence of 2,209–2,248 aa in the NS5A of HCV-1b (ISDR) reported by Enomoto et al. [7, 8] was determined, and the number of aa substitutions in ISDR was defined as wild-type (WT) (0, 1) or non-wild-type (non-WT) (≥ 2) in comparison with HCV-J. Furthermore, the sequence of 2,334–2,379 aa in the NS5A of HCV-1b (IRRDR) reported by El-Shamy et al. [9, 10] was determined and then compared with the consensus sequence constructed on the previous study. In the present study, aa substitutions of the core region and NS5A-ISDR/IRRDR of HCV-1b were analyzed by direct sequencing [10, 18].

Genetic Variation near *IL28B* Gene

Samples for genome-wide association survey were genotyped using the Illumina HumanHap610-Quad Genotyping BeadChip. Genotyping data were subjected to quality control before the data analysis. Genotyping for replication and fine mapping was performed by use of Invader assay, TaqMan assay, or direct sequencing as described previously [20, 21].

In this study, genetic variations near *IL28B* gene (rs8099917), reported as the pretreatment predictors of treatment efficacy in Japanese patients [14, 18], were investigated.

Statistical Analysis

Non-parametric tests (Mann-Whitney U test, χ^2 test and Fisher's exact probability test) were used to compare the characteristics of the groups. Correlation analysis was evaluated by the Spearman rank correlation test. Uni- and multivariate logistic regression analyses were used to determine those factors that significantly contributed to ETR, SVR, and SVR after ETR. The odds ratios (OR) and 95% confidence intervals (95% CI) were also calculated. All *p* values <0.05 by the two-tailed test were considered significant. Variables that achieved statistical significance (*p* < 0.05) on univariate analysis were entered into multiple logistic regression analysis to identify significant independent predictive factors. Each variable was transformed into categorical data consisting of two simple ordinal numbers for uni- and multivariate analyses. Potential predictive factors associated with ETR, SVR, and SVR after ETR included the following variables: sex, age, history of blood transfusion, familial history of liver disease, body mass index, aspartate aminotransferase (AST), alanine aminotransferase (ALT), albumin, γ -glutamyl transpeptidase (GGT), leukocyte count, hemoglobin, platelet count, level of viremia, α -fetoprotein, total cholesterol, high-density lipoprotein cholesterol, low-density lipoprotein cholesterol, triglycerides, uric acid, ribavirin dose/body weight, genetic variation near *IL28B* gene, and aa substitution in the core region, and NS5A-ISDR/IRRDR. Statistical analyses were performed using SPSS software (SPSS Inc., Chicago, Ill., USA).

Results

Response to Therapy

ETR was achieved by 372 of 487 (76%) patients, SVR by 244 of 448 (54%), and SVR after ETR by 244 of 321 (76%).

Number of aa Substitutions in NS5A-ISDR and NS5A-IRRDR

As a whole, 0, 1, and ≥ 2 aa substitutions in ISDR were found in 56% (227 of 406), 23% (95 of 406), and 21% (84 of 406) of patients, respectively. Thus, the percentage of patients with ≤ 1 aa substitution in ISDR (WT) was 79% (322 of 406). Furthermore, ≤ 3 , 4–5, and ≥ 6 aa substitutions in IRRDR were found in 36% (73 of 200), 34% (67 of 200), and 30% (60 of 200) of patients, respectively (fig. 1).

Table 1. Patient profile and laboratory data at commencement of the 48-week combination therapy of IFN + ribavirin in 490 patients infected with HCV-1b

<i>Demographic data</i>	
Number of patients	490
Male/female	310/180
Age, years	54 (20–75)
History of blood transfusion	169 (34%)
Family history of liver disease	96 (20%)
Body mass index, kg/m ²	22.6 (15.7–34.7)
<i>Laboratory data</i>	
Level of viremia, log IU/ml	6.4 (2.2–7.7)
Serum AST, IU/l	50 (16–296)
Serum ALT, IU/l	67 (12–836)
Serum albumin, g/dl	3.9 (3.1–4.7)
GGT, IU/l	44 (10–592)
Leukocyte count, n/mm ³	4,700 (1,200–10,900)
Hemoglobin, g/dl	14.4 (10.6–18.1)
Platelet count, $\times 10^4$ /mm ³	16.7 (6.4–37.5)
α -Fetoprotein, μ g/l	5 (1–459)
Total cholesterol, mg/dl	170 (96–284)
High-density lipoprotein cholesterol, mg/dl	46 (13–95)
Low-density lipoprotein cholesterol, mg/dl	100 (32–190)
Triglycerides, mg/dl	90 (33–416)
Uric acid, mg/dl	5.5 (2.3–9.4)
<i>Treatment</i>	
PEG-IFN α -2b/IFN α -2b	422/68
Ribavirin dose, mg/kg	11.2 (3.7–15.1)
<i>aa substitutions in the HCV-1b</i>	
Core aa 70, arginine/glutamine (histidine)	266/151
Core aa 91, leucine/methionine	246/169
ISDR of NS5A, 0/1/ ≥ 2	227/95/84
IRRDR of NS5A, $\leq 3/4-5/\geq 6$	73/67/60
<i>Genetic variation near IL28B gene</i>	
rs8099917 genotype, TT/TG/GG	150/65/4

Data represent number of patients with percentages in parentheses, or median (range) values.

The correlation between ISDR and IRRDR was analyzed. There was a significant positive correlation between the number of aa substitutions in ISDR and those in IRRDR (*r* = 0.308, *p* < 0.001) (fig. 2).

aa Substitutions in the Core Region and NS5A-ISDR/IRRDR

Concerning the substitution of core aa 70, the number of aa substitutions in ISDR of 256 patients with Arg70 (median 0) was not significantly different from that of 146 patients with Gln70 (His70) (median 0) (fig. 3a). Fur-

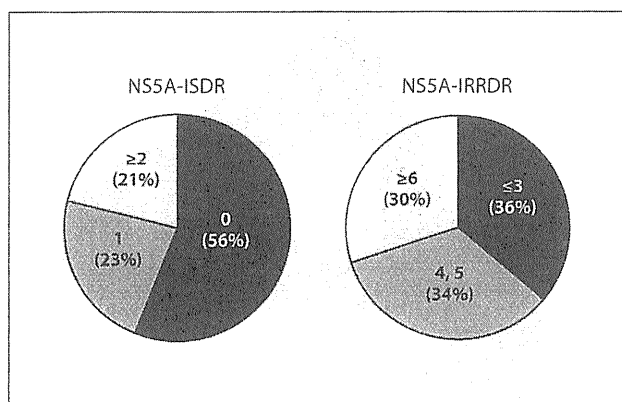


Fig. 1. The number of aa substitutions in NS5A-ISDR and NS5A-IRRDR. The percentage of patients with ≤ 1 aa substitution in ISDR (WT) was 79%.

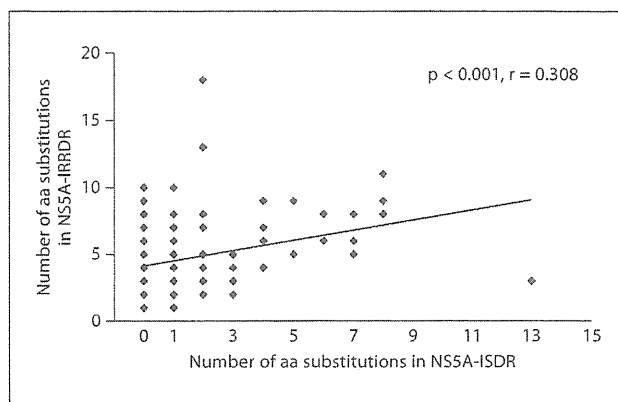


Fig. 2. Correlation between NS5A-ISDR and NS5A-IRRDR. There was a significant positive correlation between the number of aa substitutions in ISDR and that in IRRDR ($r = 0.308, p < 0.001$).

thermore, the number of aa substitutions in IRRDR of 123 patients with Arg70 (median 5) was also not significantly different from that of 77 patients with Gln70 (His70) (median 4) (fig. 3b).

Concerning the substitution of core aa 91, the number of aa substitutions in ISDR of 240 patients with Leu91 (median 1) was significantly higher than that of 161 patients with Met91 (median 0) ($p < 0.001$) (fig. 3c). Furthermore, the number of aa substitutions in IRRDR of 111 patients with Leu91 (median 5) was significantly higher than that of 89 patients with Met91 (median 3) ($p < 0.001$) (fig. 3d).

Viremia Level and aa Substitutions in Core Region/ISDR/IRRDR

Concerning the number of substitutions in ISDR, viremia levels of 321 patients with WT (median 6.5) were significantly higher than those of 84 patients with non-WT (median 5.7) ($p < 0.001$) (fig. 4a).

Concerning the number of substitutions in IRRDR, viremia levels of 140 patients with ≤ 5 substitutions (median 6.4) were significantly higher than those of 60 patients with ≥ 6 (median 6.1) ($p = 0.027$) (fig. 4b).

Concerning the substitution of core aa 70, viremia levels of 265 patients with Arg70 (median 6.4) were not significantly different from those of 151 patients with Gln70 (His70) (median 6.3) (fig. 4c).

Concerning the substitution of core aa 91, viremia levels of 169 patients with Met91 (median 6.5) were significantly higher than those of 245 patients with Leu91 (median 6.2) ($p = 0.028$) (fig. 4d).

Thus, levels of viremia were influenced by aa substitutions in core aa 91 and ISDR/IRRDR.

Treatment Response according to the Number of aa Substitutions in IRRDR

Concerning the number of aa substitutions in IRRDR, a significantly higher proportion of patients with ≥ 4 aa substitutions (58%) showed SVR compared to patients with ≤ 3 (42%) ($p = 0.039$). In contrast, the SVR rate was not significantly different between patients with ≤ 4 (49%) and those with ≥ 5 (57%) aa substitutions. Likewise, the SVR rate was not significantly different between patients with ≤ 5 (51%) and those with ≥ 6 (55%) aa substitutions (fig. 5a).

The ETR rate was not significantly different between patients with ≤ 3 (74%) and those with ≥ 4 (82%) aa substitutions, nor between patients with ≤ 4 (76%) and those with ≥ 5 (83%). Likewise, the ETR rate was not significantly different between those with ≤ 5 (79%) and those with ≥ 6 (80%) aa substitutions (fig. 5b).

The SVR rate after ETR was not significantly different between patients with ≤ 3 (61%) and those with ≥ 4 (74%) aa substitutions, nor between patients with ≤ 4 (67%) and those with ≥ 5 (72%). Likewise, they were not significantly different between patients with ≤ 5 (67%) and those with ≥ 6 (75%) aa substitutions (fig. 5c).

Thus, it was useful as predictor of SVR to categorize into two groups of ≤ 4 and ≥ 5 aa substitutions by univariate analysis. However, the ETR and SVR after ETR rates were not significantly different according to the number of aa substitutions in IRRDR.

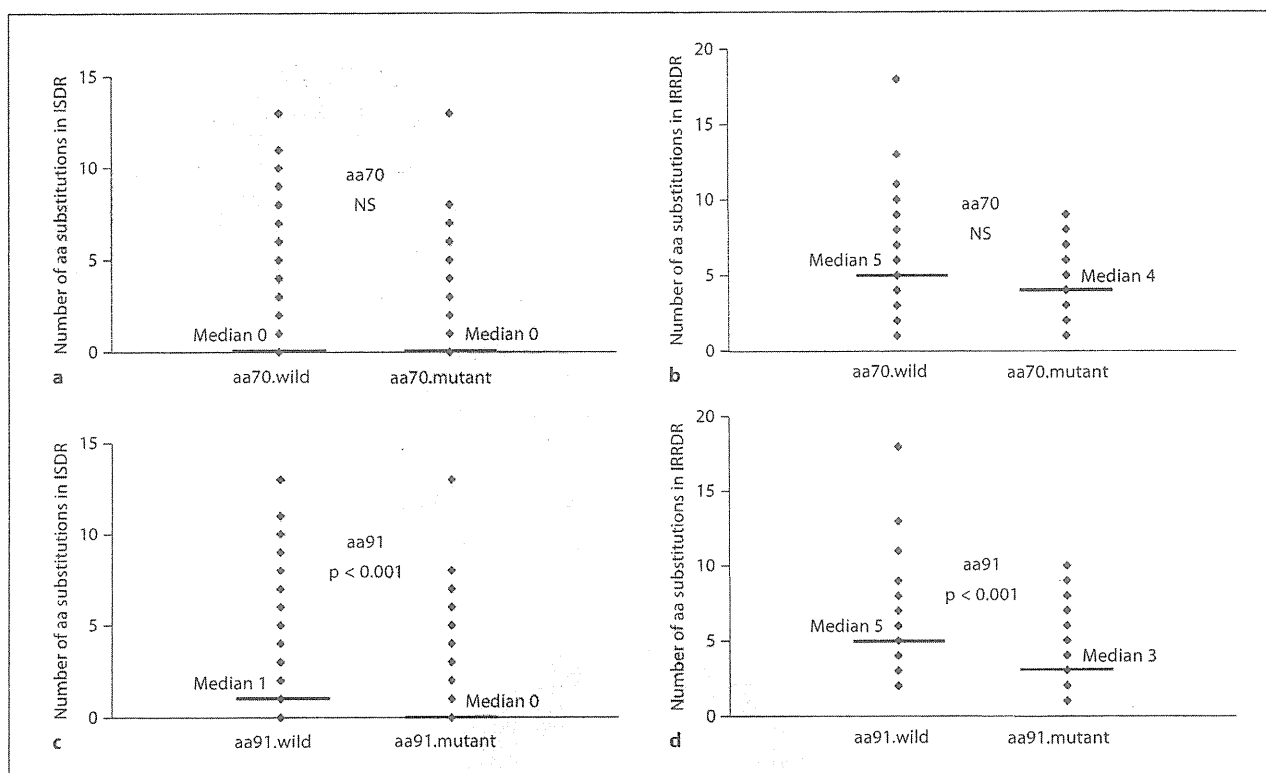


Fig. 3. aa substitutions in the core region and NS5A-ISDR/IRRDR. **a, b** Concerning the substitution of core aa 70, the number of aa substitutions in ISDR/IRRDR of patients with Arg70 was not significantly different from that of patients with Gln70 (His70). **c, d** Concerning the substitution of core aa 91, the number of aa substitutions in ISDR/IRRDR of patients with Leu91 was significantly higher than that of patients with Met91 ($p < 0.001$).

Predictors of SVR as Determined by Uni- and Multivariate Analyses

Univariate analysis identified 15 parameters that correlate with SVR: gender (male sex; $p < 0.001$), age (< 55 years; $p < 0.001$), ribavirin dose (≥ 11.0 mg/kg; $p = 0.006$), AST (< 58 IU/l; $p = 0.039$), leukocyte count ($\geq 4,500/\text{mm}^3$; $p = 0.043$), hemoglobin (≥ 14.0 g/dl; $p = 0.001$), platelet count ($\geq 15.0 \times 10^4/\text{mm}^3$; $p < 0.001$), GGT (< 50 IU/l; $p = 0.028$), uric acid (≥ 5.5 mg/dl; $p = 0.005$), level of viremia (< 6.0 log IU/ml; $p < 0.001$), α -fetoprotein (< 10 $\mu\text{g/l}$; $p < 0.001$), genetic variation in rs8099917 (genotype TT; $p < 0.001$), substitution of aa 70 (Arg70; $p < 0.001$), the number of aa substitutions in ISDR (non-WT; $p < 0.001$) and IRRDR (≥ 4 ; $p = 0.039$). Figure 6 shows the SVR rate according to aa substitution in the core/NS5A region and genetic variation near *IL28B* by univariate analysis.

Multivariate analysis that included the above variables identified 3 parameters that independently influenced

SVR: genetic variation in rs8099917 (genotype TT; $p < 0.001$), gender (male sex; $p < 0.001$), and the number of aa substitutions in ISDR (non-WT; $p = 0.027$) (table 2).

Predictors of ETR as Determined by Uni- and Multivariate Analyses

Univariate analysis identified 14 parameters that correlated with ETR: gender (male sex; $p = 0.001$), age (< 55 years; $p = 0.004$), AST (< 39 IU/l; $p = 0.027$), hemoglobin (≥ 14.0 g/dl; $p = 0.035$), platelet count ($\geq 15.0 \times 10^4/\text{mm}^3$; $p < 0.001$), albumin (≥ 3.9 g/dl; $p = 0.014$), GGT (< 50 IU/l; $p < 0.001$), uric acid (≥ 5.5 mg/dl; $p = 0.003$), level of viremia (< 6.0 log IU/ml; $p = 0.001$), low-density lipoprotein cholesterol (≥ 85 mg/dl; $p = 0.004$), α -fetoprotein (< 10 $\mu\text{g/l}$; $p < 0.001$), genetic variation in rs8099917 (genotype TT; $p < 0.001$), substitution of aa 70 (Arg70; $p < 0.001$), and the number of aa substitutions in ISDR (non-WT; $p = 0.021$). Figure 7 shows the ETR rate according to aa

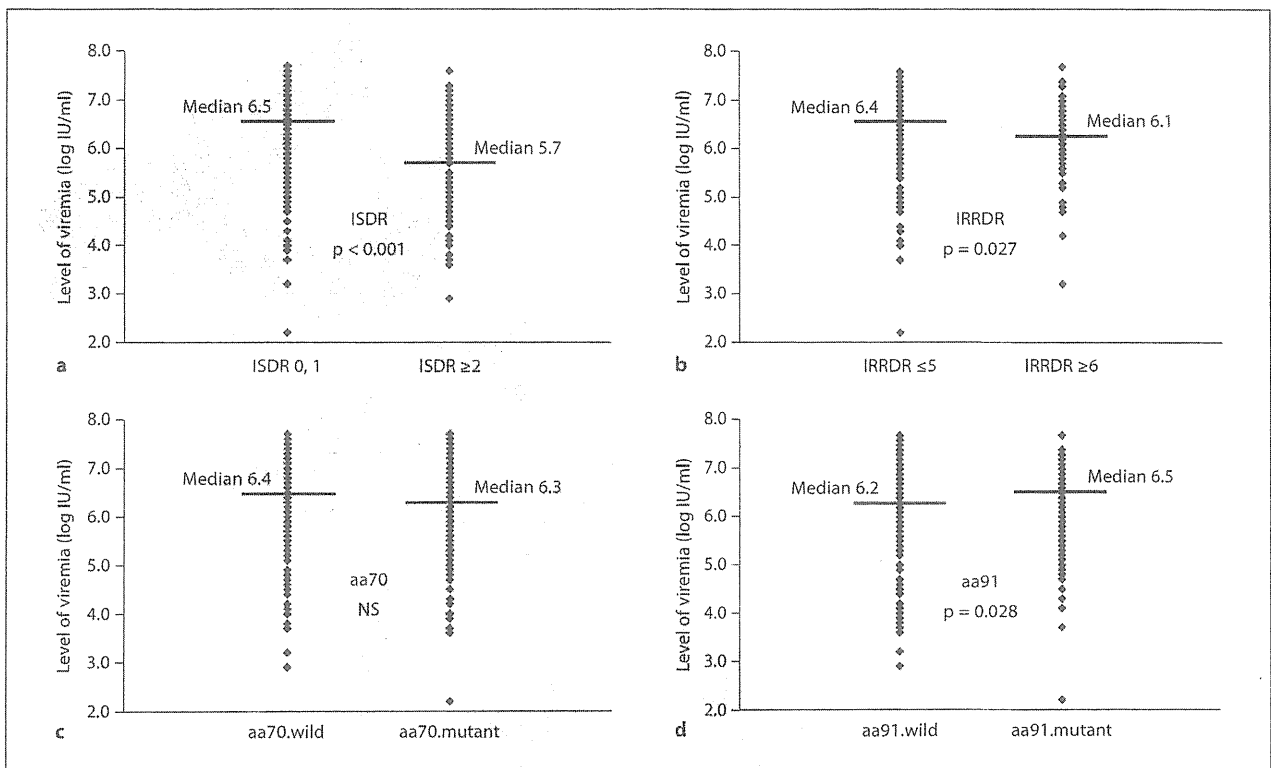


Fig. 4. Viremia level and aa substitutions in core region/ISDR/IRRDR. **a** Concerning the number of substitutions in ISDR, viremia levels of patients with WT were significantly higher than those of patients with non-WT ($p < 0.001$). **b** Concerning the number of substitutions in IRRDR, viremia levels of patients with ≤ 5 aa substitutions were significantly higher levels than those of patients with ≥ 6 ($p = 0.027$). **c** Concerning the substitution of

core aa 70, viremia levels of patients with Arg70 were not significantly different from those of patients with Gln70 (His70). **d** Concerning the substitution of core aa 91, viremia levels of patients with Met91 were significantly higher than those of patients with Leu91 ($p = 0.028$). Thus, levels of viremia might be influenced by aa substitutions in core aa 91 and ISDR/IRRDR.

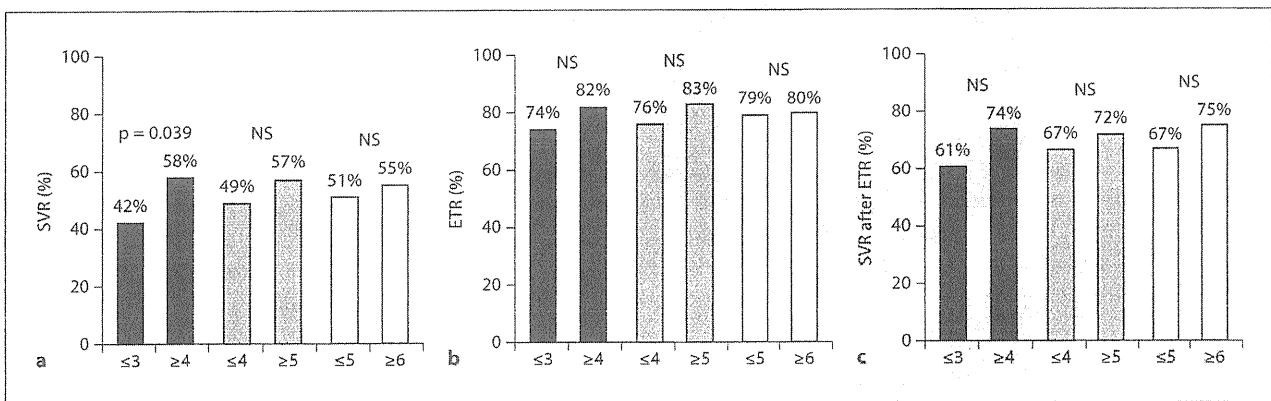


Fig. 5. Treatment response according to the number of aa substitutions in NS5A-IRRDR. **a** A significantly higher proportion of patients with ≥ 4 (58%) aa substitutions showed SVR compared to patients with ≤ 3 (42%) ($p = 0.039$), and it was useful as predictor

of SVR to categorize into two groups of ≤ 4 and ≥ 5 aa substitutions by univariate analysis. **b, c** ETR and SVR after ETR rates were not significantly different according to the number of aa substitutions in IRRDR.

Fig. 6. SVR rate according to aa substitution in core/NS5A region and genetic variation near *IL28B* by univariate analysis.

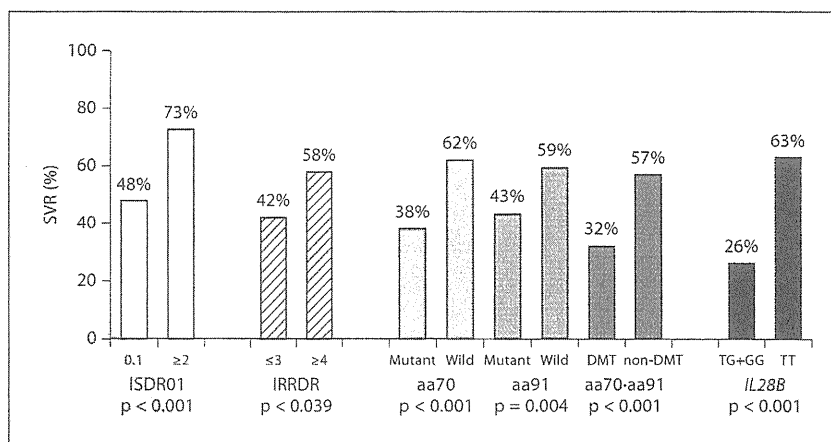


Fig. 7. ETR rate according to aa substitution in core/NS5A region and genetic variation near *IL28B* by univariate analysis.

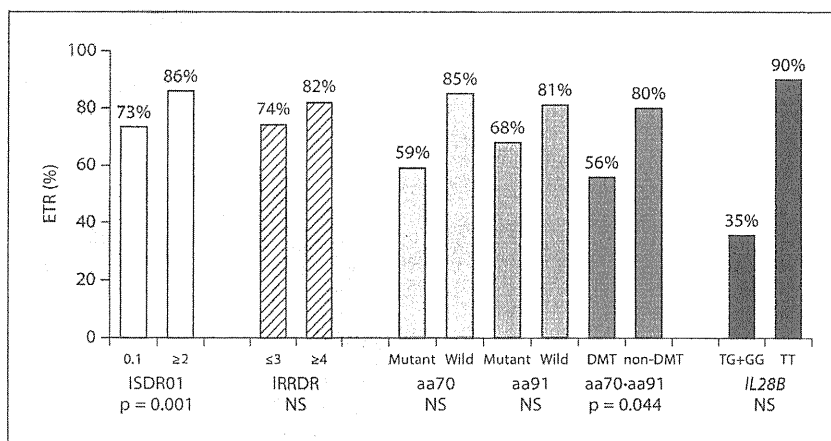


Table 2. Factors associated with SVR to 48-week IFN + ribavirin combination therapy in patients infected with HCV-1b, identified by multivariate analysis

Factor	Category	OR (95% CI)	p
rs8099917 genotype	1: TG+GG	1	<0.001
	2: TT	16.7 (4.54–61.3)	
Gender	1: Female	1	<0.001
	2: Male	10.5 (3.47–32.3)	
ISDR of NS5A	1: WT	1	0.027
	2: Non-WT	5.68 (1.22–26.3)	

Only variables that achieved statistical significance ($p < 0.05$) on multivariate logistic regression are shown.

Table 3. Factors associated with ETR response to 48-week IFN + ribavirin combination therapy in patients infected with HCV-1b, identified by multivariate analysis

Factor	Category	OR (95% CI)	p
rs8099917 genotype	1: TG+GG	1	<0.001
	2: TT	18.2 (6.29–52.6)	
Level of viremia log IU/ml	1: ≥6.0	1	0.001
	2: <6.0	9.20 (2.59–32.6)	
Core aa 70	1: Gln70 (His70)	1	0.004
	2: Arg70	4.68 (1.65–13.3)	
Serum albumin g/dl	1: <3.9	1	0.030
	2: ≥3.9	3.08 (1.11–8.47)	

Only variables that achieved statistical significance ($p < 0.05$) on multivariate logistic regression are shown.

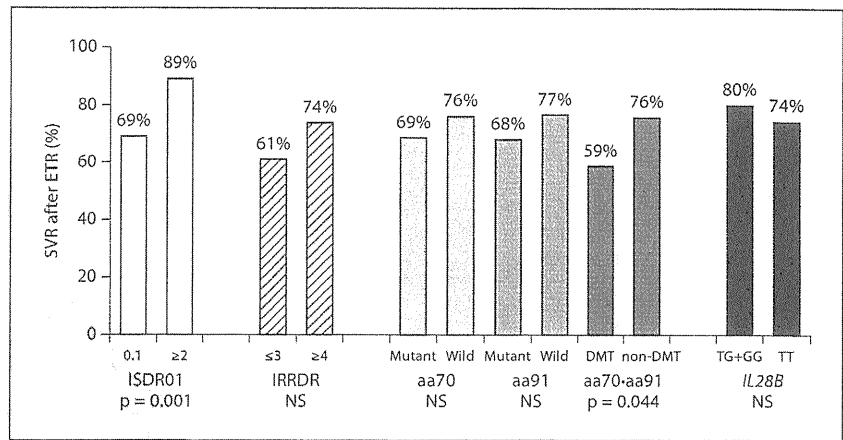


Fig. 8. SVR after ETR rate according to aa substitution in core/NS5A region and genetic variation near *IL28B* by univariate analysis.

substitution in the core/NS5A region and genetic variation near *IL28B* by univariate analysis.

Multivariate analysis that included the above variables identified 4 parameters that independently influenced ETR: genetic variation in rs8099917 (genotype TT; $p < 0.001$), level of viremia ($< 6.0 \log \text{ IU/ml}$; $p = 0.001$), substitution of aa 70 (Arg70; $p = 0.004$), and albumin ($\geq 3.9 \text{ g/dl}$; $p = 0.030$) (table 3).

Predictors of SVR after ETR as Determined by Uni- and Multivariate Analyses

Univariate analysis identified 11 parameters that influenced SVR after ETR: gender (male sex; $p < 0.001$), age (< 55 years; $p < 0.001$), ribavirin dose ($\geq 11.0 \text{ mg/kg}$; $p = 0.025$), leukocyte count ($\geq 4,500/\text{mm}^3$; $p = 0.033$), hemoglobin ($\geq 14.0 \text{ g/dl}$; $p = 0.025$), platelet count ($\geq 15.0 \times 10^4/\text{mm}^3$; $p = 0.001$), level of viremia ($< 6.0 \log \text{ IU/ml}$; $p = 0.020$), total cholesterol ($< 170 \text{ mg/dl}$; $p = 0.017$), α -fetoprotein ($< 10 \mu\text{g/l}$; $p = 0.004$), substitution of aa 70 and 91 (Arg70 and/or Leu91; $p = 0.044$), and the number of aa substitutions in ISDR (non-WT; $p = 0.001$). Figure 8 shows the SVR after ETR rate according to aa substitution in the core/NS5A region and genetic variation near *IL28B* by univariate analysis.

Multivariate analysis that included the above variables identified 6 parameters that independently influenced the SVR after ETR: gender (male sex; $p < 0.001$), ribavirin dose ($\geq 11.0 \text{ mg/kg}$; $p = 0.002$), the number of aa substitutions in ISDR (non-WT; $p = 0.012$), substitution of aa 70 and 91 (Arg70 and/or Leu91; $p = 0.023$), platelet count ($\geq 15.0 \times 10^4/\text{mm}^3$; $p = 0.033$), and α -fetoprotein ($< 10 \mu\text{g/l}$; $p = 0.042$) (table 4).

Comparison of Factors Associated with Treatment Efficacy Identified by Multivariate Analysis

Table 5 shows the variables that achieved statistical significance on multivariate logistic regression for each evaluation of treatment efficacy. Rs8099917 genotype was an important predictor of ETR and SVR. With regard to viral factors, core region was an important predictor of ETR, and SVR after ETR. Level of viremia was an important predictor of ETR. Thus, genetic variation near *IL28B* and viral factors (core region, ISDR, and level of viremia) were important predictors of treatment efficacy. Furthermore, gender, α -fetoprotein, albumin, and platelet count were also identified as other important predictors of treatment efficacy, in addition to genetic variation near *IL28B* and viral factors.

Discussion

Using multivariate analysis, the present study identified viral- (aa substitutions in core aa 70/91 and NS5A-ISDR/IRRDR) and host-related factors (genetic variation near *IL28B* gene) that influenced treatment efficacy to 48-week IFN/ribavirin combination therapy, which is in agreement with recent findings [22, 23]. Identification of these viral and host factors before the start of IFN/ribavirin combination therapy should help to select better therapeutic regimens, including triple therapy of telaprevir/PEG-IFN/ribavirin [24–26], for those patients who are less likely to achieve SVR.

According to the number of substitutions in ISDR, a previous report showed that levels of viremia were sig-

Table 4. Factors associated with SVR in patients who achieved ETR response to 48-week IFN + ribavirin combination therapy in patients infected with HCV-1b, identified by multivariate analysis

Factor	Category	OR (95% CI)	p
Gender	1: Female	1	<0.001
	2: Male	4.27 (2.15–8.55)	
Ribavirin dose, mg/kg	1: <11.0	1	0.002
	2: ≥11.0	2.95 (1.48–5.86)	
ISDR of NS5A	1: WT	1	0.012
	2: Non-WT	4.00 (1.35–11.8)	
Core aa 70 and 91	1: Gln70 (His70) and Met91	1	0.023
	2: Arg70 and/or Leu91	2.96 (1.16–7.52)	
Platelet count × 10 ⁴ /mm ³	1: <15.0	1	0.033
	2: ≥15.0	2.19 (1.07–4.50)	
α-Fetoprotein µg/l	1: ≥10	1	0.042
	2: <10	2.66 (1.04–6.80)	

Only variables that achieved statistical significance (p < 0.05) on multivariate logistic regression are shown.

Table 5. Comparison of factors associated with efficacy of 48-week IFN + ribavirin combination therapy in patients infected with HCV-1b, identified by multivariate analysis

Factor	ETR response (at 48 weeks)	SVR after ETR response	SVR
<i>IL28B</i>	rs8099917 p < 0.001, 18.2 (6.29–52.6) ^a		rs8099917 p < 0.001, 16.7 (4.54–61.3) ^a
Virus	Core aa 70 p = 0.004, 4.68 (1.65–13.3) ^a	Core aa 70 and 91 p = 0.023, 2.96 (1.16–7.52) ^a	
	Level of viremia p = 0.001, 9.20 (2.59–32.6) ^a	ISDR p = 0.012, 4.00 (1.35–11.8) ^a	ISDR p = 0.027, 5.68 (1.22–26.3) ^a
Others	Albumin p = 0.030, 3.08 (1.11–8.47) ^a	α-Fetoprotein p = 0.042, 2.66 (1.04–6.80) ^a	
		Platelet count p = 0.033, 2.19 (1.07–4.50) ^a	
		Gender p < 0.001, 4.27 (2.15–8.55) ^a	Gender p < 0.001, 10.5 (3.47–32.3) ^a
		Ribavirin dose p = 0.002, 2.95 (1.48–5.86) ^a	

Only variables that achieved statistical significance (p < 0.05) on multivariate logistic regression are shown.
^a OR (95% CI).

nificantly lower in patients with non-WT of ISDR than in those with WT [8]. The present study indicated that substitution of IRRDR and core aa 91, in addition to substitution of ISDR, also significantly influenced levels of viremia. Furthermore, there was a significant positive correlation between the number of aa substitutions in

ISDR and those in IRRDR, and the number of aa substitutions in ISDR/IRRDR of patients with Leu91 was significantly higher than that of patients with Met91. To our knowledge, this is the first report of the relationship between viremia levels and aa substitutions in core region/ISDR/IRRDR. This result might be interpreted to mean