

## The rs8099917 Polymorphism, When Determined by a Suitable Genotyping Method, Is a Better Predictor for Response to Pegylated Alpha Interferon/Ribavirin Therapy in Japanese Patients than Other Single Nucleotide Polymorphisms Associated with Interleukin-28B<sup>∇†</sup>

Kiyoaki Ito,<sup>1‡</sup> Katsuya Higami,<sup>1‡</sup> Naohiko Masaki,<sup>1</sup> Masaya Sugiyama,<sup>1</sup> Motokazu Mukaide,<sup>1</sup> Hiroaki Saito,<sup>1</sup> Yoshihiko Aoki,<sup>1</sup> Yo Sato,<sup>1</sup> Masatoshi Imamura,<sup>1</sup> Kazumoto Murata,<sup>1</sup> Hideyuki Nomura,<sup>2</sup> Shuhei Hige,<sup>3</sup> Hiroshi Adachi,<sup>4</sup> Keisuke Hino,<sup>5</sup> Hiroshi Yatsuhashi,<sup>6</sup> Etsuro Orito,<sup>7</sup> Satomi Kani,<sup>8</sup> Yasuhito Tanaka,<sup>8</sup> and Masashi Mizokami<sup>1\*</sup>

*The Research Center for Hepatitis and Immunology, National Center for Global Health and Medicine, Ichikawa, Japan<sup>1</sup>; The Center for Liver Diseases, Shin-Kokura Hospital, Kitakyushu, Japan<sup>2</sup>; Department of Internal Medicine, Hokkaido University Graduate School of Medicine, Sapporo, Japan<sup>3</sup>; Department of Virology and Liver Unit, Tonami General Hospital, Tonami, Japan<sup>4</sup>; Division of Gastroenterology, Department of Medicine, Kawasaki Medical School, Okayama, Japan<sup>5</sup>; Clinical Research Center, NHO Nagasaki Medical Center, Nagasaki, Japan<sup>6</sup>; Department of Gastroenterology and Hepatology, Nagoya Daini Red Cross Hospital, Nagoya, Japan<sup>7</sup>; and Nagoya City University Graduate School of Medical Sciences, Nagoya, Japan<sup>8</sup>*

Received 22 October 2010/Returned for modification 4 January 2011/Accepted 28 February 2011

We focused on determining the most accurate and convenient genotyping methods and most appropriate single nucleotide polymorphism (SNP) among four such polymorphisms associated with interleukin-28B (IL-28B) in order to design tailor-made therapy for patients with chronic hepatitis C virus (HCV) patients. First, five different methods (direct sequencing, high-resolution melting analysis [HRM], hybridization probe [HP], the InvaderPlus assay [Invader], and the TaqMan SNP genotyping assay [TaqMan]) were developed for genotyping four SNPs (rs11881222, rs8103142, rs8099917, and rs12979860) associated with IL-28B, and their accuracies were compared for 292 Japanese patients. Next, the four SNPs associated with IL-28B were genotyped by Invader for 416 additional Japanese patients, and the response to pegylated interferon/ribavirin (PEG-IFN/RBV) treatment was evaluated when the four SNPs were not in linkage disequilibrium (LD). HRM failed to genotype one of the four SNPs in five patients. In 2 of 287 patients, the results of genotyping rs8099917 by direct sequencing differed from the results of the other three methods. The HP, TaqMan, and Invader methods were accurate for determination of the SNPs associated with IL-28B. In 10 of the 708 (1.4%) patients, the four SNPs were not in LD. Eight of nine (88.9%) patients whose rs8099917 was homozygous for the major allele were virological responders, even though one or more of the other SNPs were heterozygous. The HP, TaqMan, and Invader methods were suitable to determine the SNPs associated with IL-28B. The rs8099917 polymorphism should be the best predictor for the response to the PEG-IFN/RBV treatment among Japanese chronic hepatitis C patients.

Hepatitis C virus (HCV) infection is a global health problem, with worldwide estimates of 120 to 130 million carriers (7). Chronic HCV infection can lead to progressive liver disease, resulting in cirrhosis and complications, including decompensated liver disease and hepatocellular carcinoma (25). The current standard of care treatment for suitable patients with chronic HCV infection consists of pegylated alpha 2a or 2b interferon (PEG-IFN) given by injection in combination with

oral ribavirin (RBV), for 24 or 48 weeks, dependent on HCV genotype. Large-scale treatment programs in the United States and Europe showed that 42 to 52% of patients with HCV genotype 1 achieved a sustained virological response (SVR) (3, 8, 13), and similar results were found in Japan. This treatment is associated with well-described side effects (such as a flu-like syndrome, hematologic abnormalities, and neuropsychiatric events) resulting in reduced compliance and fewer patients completing treatment (2). It is valuable to predict an individual's response before treatment with PEG-IFN/RBV to avoid these side effects, as well as to reduce the treatment cost. The HCV genotype, in particular, is used to predict the response: patients with HCV genotype 2 or 3 have a relatively high rate of SVR (70 to 80%) with 24 weeks of treatment, whereas those infected with genotype 1 have a much lower rate of SVR despite 48 weeks of treatment (8).

Recently, we reported from genome-wide association stud-

\* Corresponding author. Mailing address: The Research Center for Hepatitis and Immunology, National Center for Global Health and Medicine, 1-7-1, Konodai, Ichikawa 272-8516, Japan. Phone: 81-47-372-3501. Fax: 81-47-375-4766. E-mail: mmizokami@hospk.ncgm.go.jp.

‡ These authors contributed equally to the manuscript.

† Supplemental material for this article may be found at <http://jcm.asm.org/>.

∇ Published ahead of print on 9 March 2011.

TABLE 1. Characteristics of the patients examined

Parameter	Result for:	
	1st stage ( <i>n</i> = 292)	2nd stage ( <i>n</i> = 416)
Age (yr)	57.2 ± 10.2	56.6 ± 10.9
No. of patients male/female	145/147	194/222
No. (%) of patients in institution <sup>a</sup> :		
1	18 (6.2)	0 (0)
2	178 (61.0)	0 (0)
3	57 (19.5)	0 (0)
4	39 (13.3)	0 (0)
5	0 (0)	249 (59.9)
6	0 (0)	94 (22.6)
7	0 (0)	52 (12.5)
8	0 (0)	21 (5.0)

<sup>a</sup> Institutions: 1, The Research Center for Hepatitis and Immunology, National Center for Global Health and Medicine; 2, The Center for Liver Diseases, Shin-Kokura Hospital, Kitakyushu; 3, Tonami General Hospital, Tonami; 4, Department of Internal Medicine, Virology and Liver Unit, Hokkaido University Graduate School of Medicine, Sapporo; 5, Clinical Research Center, NHO Nagasaki Medical Center, Nagasaki; 6, Nagoya City University Graduate School of Medical Sciences, Nagoya; 7, Department of Gastroenterology and Hepatology, Nagoya Daini Red Cross Hospital; and 8, Division of Gastroenterology, Department of Medicine, Kawasaki Medical School, Okayama.

ies (GWAS) that several highly correlated common single nucleotide polymorphisms (SNPs), located in the vicinity of the lambda 3 interferon (IFN-λ3), coded for by the interleukin-28B (IL-28B) gene on chromosome 19, are implicated in non-virological response (NVR) to PEG-IFN/RBV among patients with HCV genotype 1 (21). At almost exactly the same time as our report, the association between response to PEG-IFN/

RBV and SNPs associated with IL-28B was reported from the results of GWAS by two other groups (6, 19). Determination of these SNPs associated with IL-28B before PEG-IFN/RBV treatment will provide extremely valuable information, because the patients predicted as showing NVR to PEG-IFN/RBV treatment could avoid the treatment. There are two questions to be asked before using these SNPs in clinical practice: (i) which methods for genotyping these SNPs are efficient, and (ii) which SNP is most informative in cases where the SNPs are not in linkage disequilibrium (LD)? We have developed five different methods for detecting the SNPs associated with IL-28B and compared their accuracies to establish the most efficient genotyping method. The response to PEG-IFN/RBV treatment was evaluated, when the SNPs associated with IL-28B were not in LD, to determine the best SNP to predict the response to PEG-IFN/RBV treatment.

#### MATERIALS AND METHODS

**Study population.** Samples were obtained from 708 Japanese chronic hepatitis C patients and divided into groups of 292 patients (145 males and 147 females; mean age, 57.2 years) and 416 patients (194 males and 222 females; mean age, 56.6 years) for the first and second stages (Table 1). In the first stage, we focused on analyzing the effective methods for determining the genotypes of four SNPs (rs11881222, rs8103142, rs12979860, and rs8099917) associated with IL-28B (Fig. 1A). Figure 2 shows the locations of these four SNPs in chromosome 19; rs11881222 and rs8103142 are located in the IL-28B gene, and rs12979860 and rs8099917 are located downstream from the IL-28B gene. The results of genotyping the four SNPs by five different methods, described below, were compared and evaluated for consistency. For this first stage, the 292 chronic hepatitis C patients were recruited from the National Center for Global Health and Medicine, Hokkaido University Hospital, Tonami General Hospital, and Shin-Kokura Hospital in Japan (Table 1). From the results of the first stage, the InvaderPlus assay was chosen as one of the best methods to determine the genotypes of the four SNPs associated with IL-28B and was used for genotyping 416 patients (Fig.

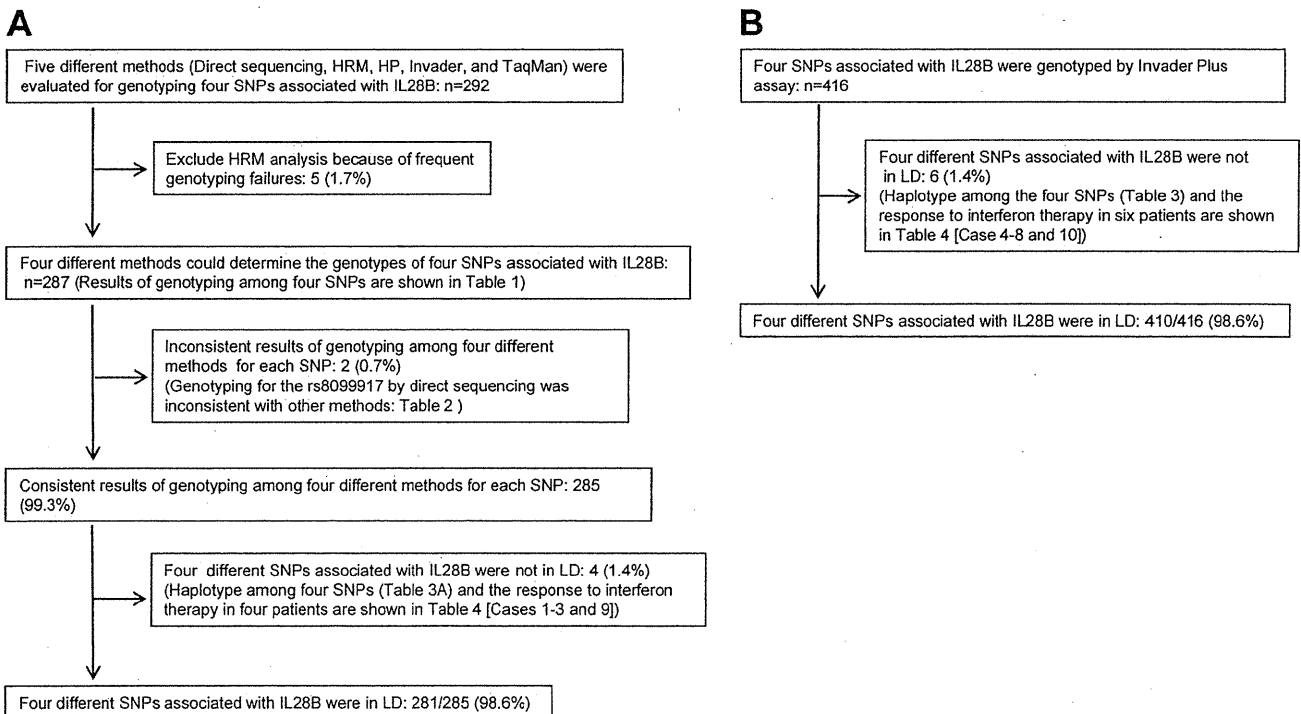


FIG. 1. Schema for the flowchart of the examinations.

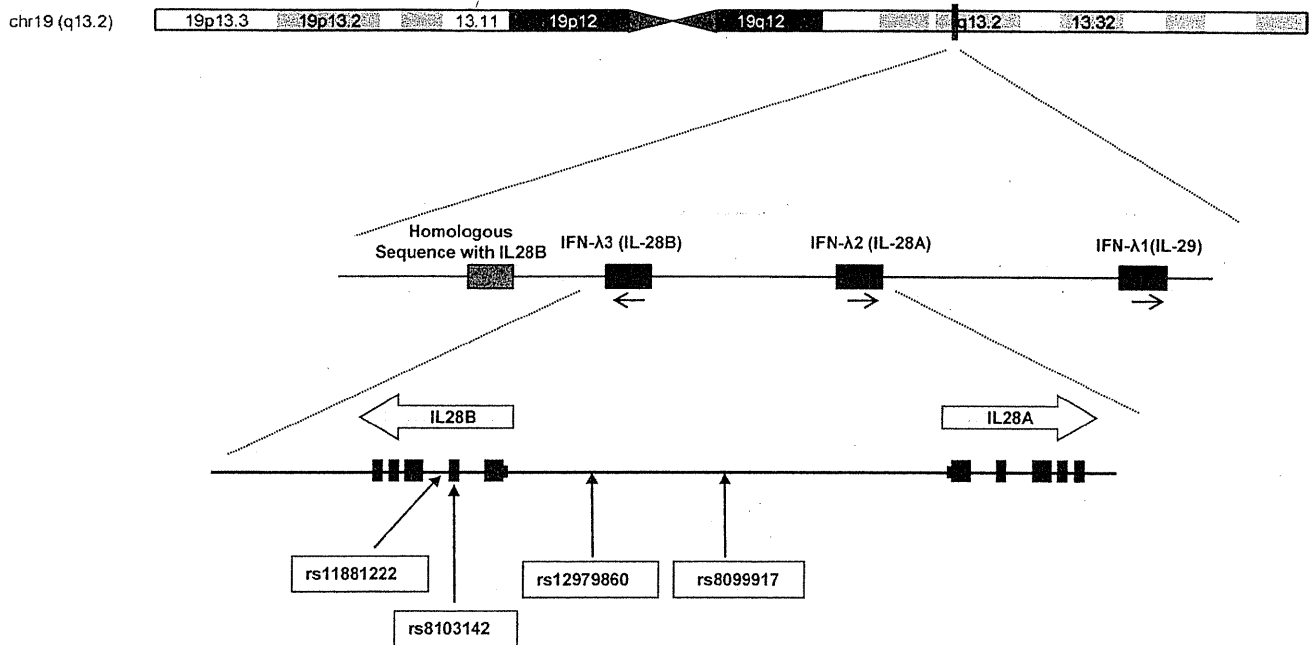


FIG. 2. Location of interferon lambda genes and the four SNPs (rs11881222, rs8103142, rs12979860, and rs8099917) associated with IL-28B, chr19, chromosome 19.

1B), recruited from NHO Nagasaki Medical Center, Nagoya City University Hospital, Nagoya Daini Red Cross Hospital, and Kawasaki Medical University Hospital in Japan, in the second stage (Table 1). We then focused on 10 patients whose four SNPs were found in the first and second stages not to be in LD and investigated the response to PEG-IFN/RBV treatment in detail for these patients. Informed consent was obtained from each patient who participated in the study. This study was conducted in accordance with provisions of the Declaration of Helsinki.

**Definition of treatment responses.** Nonvirological response (NVR) was defined as less than a 2-log-unit decline in the serum level of HCV RNA from the pretreatment baseline value within the first 12 weeks or detectable viremia 24 weeks after treatment. Virological response (VR) was defined in this study as the achievement of sustained VR (SVR) or transient VR (TVR); SVR was defined as undetectable HCV RNA in serum 6 months after the end of treatment, whereas TVR was defined as a reappearance of HCV RNA in serum after treatment was discontinued in a patient who had undetectable HCV RNA during

the therapy or had achieved a more than 2-log-unit decline within the first 12 weeks after treatment.

**DNA extraction.** Whole blood was collected from all participants and centrifuged to separate the buffy coat. Genomic DNA was extracted from the buffy coat with Genomix (Talent SRL, Italy).

**Five different genotyping methods.** Four SNPs (rs11881222, rs8103142, rs12979860, and rs8099917) (Fig. 2) were determined in 292 patients by five different genotyping methods. We developed the five methods (direct sequencing, high-resolution melting analysis [HRM], hybridization probe (HP), Invader-Plus assay (Invader), and the TaqMan SNP genotyping assay (TaqMan) to determine the genotypes of the rs11881222 and rs8103142 polymorphisms. We also developed four different methods (direct sequencing, HRM, HP, and Invader) to determine the genotypes of the rs12979860 and rs8099917 polymorphisms. The genotype of rs12979860 was also determined by the TaqMan genotyping method developed by Duke University, and the genotype of rs8099917 was also determined with the TaqMan predesigned SNP genotyping assay. Figures 3,

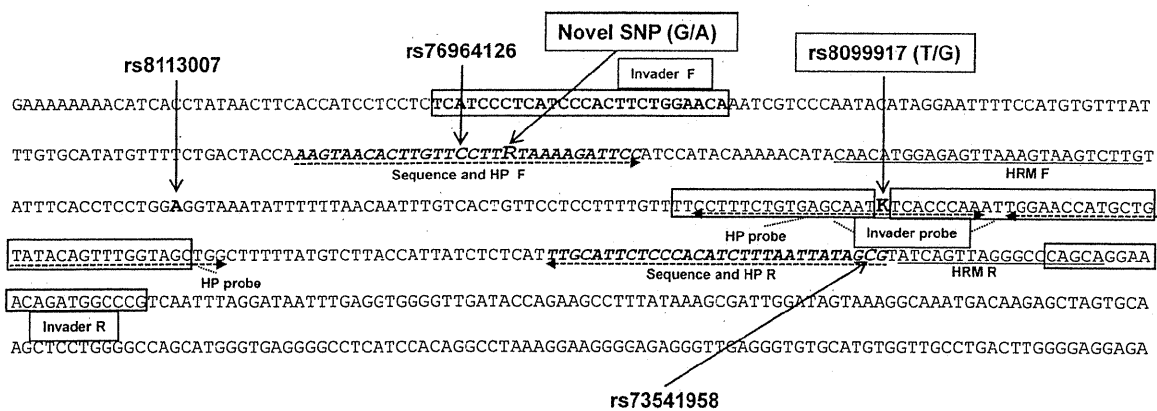


FIG. 3. The nucleotide sequence around rs8099917 is shown. Primers and probes for four different methods (Sequence, direct sequencing; HRM, high-resolution melting analysis; HP, hybridization probe; Invader, InvaderPlus assay) to determine rs8099917 polymorphism are shown. F, forward primer; R, reverse primer.

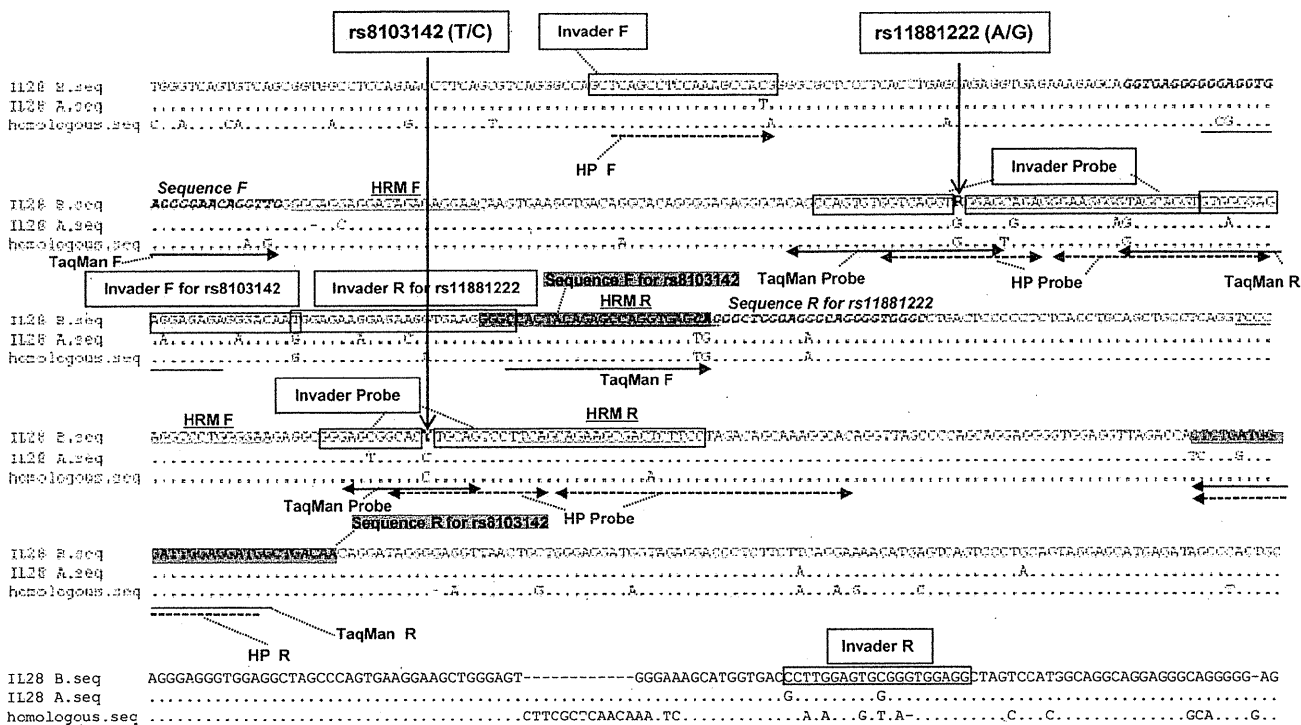


FIG. 4. The nucleotide sequence around rs1881222 and rs103142 is shown. Primers and probes for five different methods (Sequence, direct sequencing; HRM, high-resolution melting analysis; HP, hybridization probe; Invader, InvaderPlus assay; TaqMan, TaqMan assay) to determine rs1881222 and rs103142 polymorphisms are shown. F, forward primer; R, reverse primer.

4, and 5 show the primers and probes for each genotyping method. Because the sequence of IL-28B is very similar to those of IL-28A, IL-29, and a homologous sequence upstream of IL-28B, we had to design the primers and probe for each method to distinguish IL-28B from the other sequences. First, primers were designed with Visual OMP Nucleic Acid software, and then we confirmed that the candidate primers should not amplify sequences other than the target region by using UCSC Genome Browser. Next, we confirmed that the amplicon was resolved as a single band, when the PCR products amplified by the primers under evaluation were electrophoresed. Finally, we had to optimize each set of primers and probe for each method (Fig. 3 to 5; see the table in the supplemental material).

**Direct sequencing.** PCR was carried out with 12.5  $\mu$ l AmpliTaq Gold 360 master mix (Applied Biosystems), 10 pmol of each primer, and 10 ng of genomic DNA under the following thermal cycler conditions: stage 1, 94°C for 5 min; stage 2, 94°C for 30 s, 65°C for 30 s, 72°C for 45 s, for a total of 35 cycles; and stage 3, 72°C for 7 min. For sequencing, 1.0  $\mu$ l of the PCR products was incubated with the use of a BigDye Terminator v3.1 cycle sequencing kit (Applied Biosystems). After ethanol purification, the reaction products were applied to the Applied Biosystems 3130xl DNA analyzer.

**HRM analysis.** HRM analysis was performed on a LightCycler 480 (LC480; Roche Diagnostics) as described previously (5, 15, 24). We designed pairs of primers flanking each SNP (Fig. 3 to 5) to amplify DNA fragments shorter than 200 bp. PCR was performed in a 20- $\mu$ l volume containing 10  $\mu$ l LightCycler 480 high-resolution melting master mix (Roche Applied Science), 4 pmol of each primer, and 10 ng genomic DNA. The cycling conditions were as follows: SYBR green I detection format, 1 cycle of 95°C for 10 min and 50 cycles of 95°C for 5 s, 60°C for 10 s, and 72°C for 20 s, followed by an HRM step of 95°C for 1 min, 40°C for 1 min, and 74°C for 5 s and continuous acquisition to 90°C at 25 acquisitions per 1°C. HRM data were analyzed with Gene Scanning software (Roche Diagnostics).

**Hybridization probe.** We designed oligonucleotide primers and hybridization probes for the four SNPs (Fig. 3 to 5). All assays were performed with the LC480 as described previously (4, 18). The amplification mixture consisted of 4  $\mu$ l of 5 $\times$  reaction mixture (LightCycler 480 genotyping master; Roche Diagnostics), 5 pmol of each oligonucleotide primer, 3.2 pmol of each oligonucleotide probe, and 10 ng of template DNA in a final volume of 20  $\mu$ l. Samples were amplified

as follows: 45 cycles of denaturation at 95°C for 10 s, annealing at 60°C for 10 s, and extension at 72°C for 20 s. The generation of target amplicons for each sample was monitored between the annealing and elongation steps at 610 and 640 nm. Samples positive for target genes were identified by the instrument at the cycle number where the fluorescence attributable to the target sequences exceeded that measured as background. Those scored as positive by the instrument were confirmed by visual inspection of the graphical plot (cycle number versus fluorescence value) generated by the instrument.

**InvaderPlus assay.** The InvaderPlus assay, which combines PCR and the Invader reaction (11, 12), was performed with the LC480. The enzymes used in InvaderPlus are native *Taq* polymerase (Promega Corporation, Madison, WI) and Cleavase enzyme (Third Wave Technologies, Madison, WI). The reaction is configured to use PCR primers with a melting temperature ( $T_m$ ) of 72°C and Invader detection probe with a target-specific  $T_m$  of 63°C. The Invader oligonucleotide overlaps the probe by one nucleotide, forming at 63°C an overlap flap substrate for the Cleavase enzyme. The first step of InvaderPlus is PCR target amplification, in which the reaction is subjected to 18 cycles of a denaturation step (95°C for 15 s) and hybridization and extension steps (70°C for 1 min). At the end of PCR cycling, the reaction mixture is incubated at 99°C for 10 min to inactivate the *Taq* polymerase. Next, the reaction temperature is lowered to 63°C for 15 to 30 min to permit the hybridization of the probe oligonucleotide and the formation of the overlap flap structure. Data were analyzed by endpoint genotyping software (Roche Diagnostics).

**TaqMan assay.** The rs8099917 polymorphism was determined by using TaqMan predesigned SNP genotyping assays, as recommended by the manufacturer. The TaqMan assay for determination of the genotype of rs12979860 was kindly provided by David B. Goldstein at Duke University. We designed primers and probes for TaqMan genotyping assays for the other two SNPs. Each genomic DNA sample (20 ng) was amplified with TaqMan universal PCR master mix reagent (Applied Biosystems, Foster City, CA) combined with the specific TaqMan SNP genotyping assay mixture, corresponding to the SNP to be genotyped. The assays were carried out using the LC480 (Roche Applied Science) and the following conditions: 2 min at 50°C and 10 min at 95°C, followed by 40 cycles of 15 s at 95°C and 1 min at 60°C. Data were analyzed by endpoint genotyping software (Roche Diagnostics).

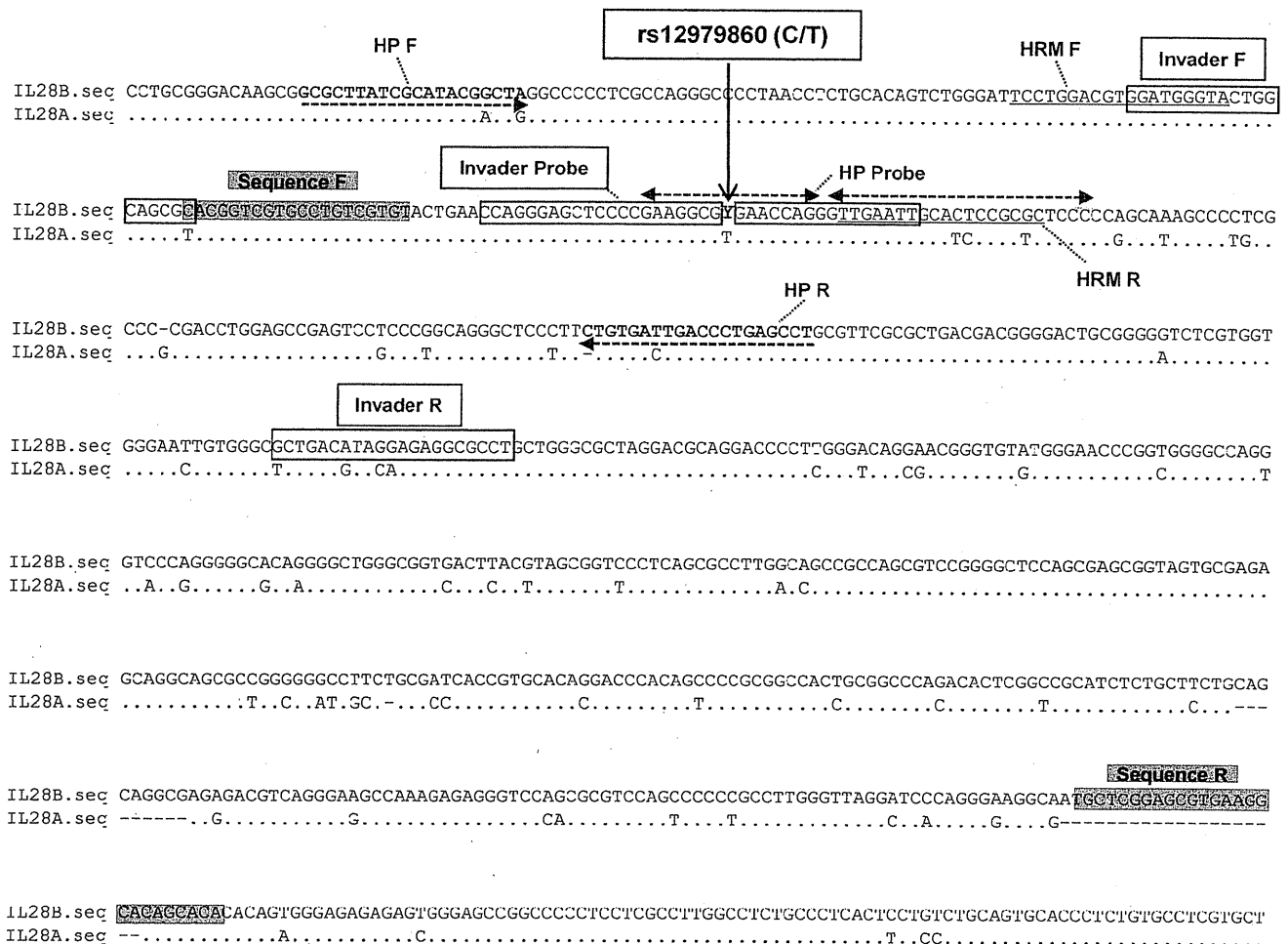


FIG. 5. The nucleotide sequence around rs12979860 is shown. Primers and probes for four different methods (Sequence, direct sequencing; HRM, high-resolution melting analysis; HP, hybridization probe; Invader, InvaderPlus assay) to determine rs12979860 are shown. F, forward primer; R, reverse primer.

**RESULTS**

**Genotyping for four SNPs associated with IL-28B was unsuccessful by HRM in five cases.** Figure 1A shows the patients' flowchart of the first stage. Genotyping of four SNPs (rs11881222, rs8103142, rs12979860, and rs8099917) was attempted by five different methods (direct sequencing, HRM, HP, Invader, and TaqMan) for 292 patients. In five cases, one of the four SNPs could not be genotyped by HRM. Therefore, we excluded the HRM method from further study. The genotyping failures by HRM involved two cases for rs11881222, two cases for rs8103142, and one case for rs8099917.

**Consistencies of four different methods to determine genotypes for four SNPs associated with IL-28B.** Consistencies among the results of genotyping by the remaining four methods were 100%, except for the results for rs8099917 (Table 2). For rs8099917, the results determined by direct sequencing were inconsistent with the other three methods in two cases (Tables 2 and 3). The HP, TaqMan, and Invader methods were accurate and reliable for genotyping the four SNPs associated with IL-28B. Invader was chosen for genotyping in the second stage, because the analysis time was the shortest and the sen-

TABLE 2. Determination of four SNPs associated with IL-28B by four different methods<sup>a</sup>

SNP	Genotype	No. (%) of cases with genotype by:			
		Direct sequencing	HP	Invader	TaqMan
rs11881222	AA	199 (69.3)	199 (69.3)	199 (69.3)	199 (69.3)
	AG	84 (29.3)	84 (29.3)	84 (29.3)	84 (29.3)
	GG	4 (1.4)	4 (1.4)	4 (1.4)	4 (1.4)
rs8103142	TT	199 (69.3)	199 (69.3)	199 (69.3)	199 (69.3)
	TC	84 (29.3)	84 (29.3)	84 (29.3)	84 (29.3)
	CC	4 (1.4)	4 (1.4)	4 (1.4)	4 (1.4)
rs12979860	CC	198 (69.0)	198 (69.0)	198 (69.0)	198 (69.0)
	CT	85 (29.6)	85 (29.6)	85 (29.6)	85 (29.6)
	TT	4 (1.4)	4 (1.4)	4 (1.4)	4 (1.4)
rs8099917	TT	204 (71.1)	202 (70.4)	202 (70.4)	202 (70.4)
	TG	79 (27.5)	81 (28.2)	81 (28.2)	81 (28.2)
	GG	4 (1.4)	4 (1.4)	4 (1.4)	4 (1.4)

<sup>a</sup> There was 100% consistency for rs11881222, rs8103142, and rs12979860, and there was 99.3% consistency for rs8099917.

TABLE 3. Inconsistency in two cases between rs8099917 genotyping by direct sequencing and three other methods

Case no.	rs8099917 genotype by <sup>a</sup> :			
	Direct sequencing	HP	Invader	TaqMan
1	<b>T/T</b>	T/G	T/G	T/G
2	<b>T/T</b>	T/G	T/G	T/G

<sup>a</sup> Homozygous genotypes are highlighted in boldface.

sitivity was the greatest of the three methods (HP, TaqMan, and Invader), as reported previously (20).

**Genotyping error for rs8099917 by direct sequencing due to novel SNP.** In two cases, the results of genotyping for rs8099917 by direct sequencing were inconsistent with the results by the other methods (Table 3). Direct sequencing determined the genotype for rs8099917 as T/T in cases 1 and 2; however, the other three genotyping methods (HP, Invader, and TaqMan) determined the genotypes for rs8099917 as T/G in both cases. Further study using alternative primers for direct sequencing revealed that the correct genotypes were T/G and revealed a novel minor SNP present in the forward primer binding site in these two cases (data on file) and which interfered with the PCR amplification step (Fig. 3).

**Distribution of haplotypes among four SNPs associated with IL-28B.** In the first stage, the four SNPs were in LD in 281 (98.6%) of 285 cases and not in LD in the remaining 4 (1.4%). The first stage revealed five different haplotypes (no. 1 to 5 in Table 4). In haplotypes 1 to 3, the four SNPs were in LD (haplotype 1, homozygous of the major allele among 4 SNPs;  $n = 198$  [69.5%]; haplotype 2, heterozygous among 4 SNPs;  $n = 79$  [27.7%]; and haplotype 3, homozygous of the minor allele among 4 SNPs;  $n = 4$  [1.4%]). In haplotype 4 (3 cases) rs11881222, rs8103142, rs12979860, and rs8099917 were AG, TC, CT, and TT, respectively. In haplotype 5 (one case), rs11881222, rs8103142, rs12979860, and rs8099917 were AA, TT, CT, and TT, respectively. Genotyping by the Invader method of the four SNPs associated with IL-28B in 416 patients in the second stage revealed that the four SNPs were not in LD in 6 cases (1.4%) (Table 4). A total of 410 (98.6%) of 416 cases were in LD for the four different SNPs. The second stage showed six different haplotypes (haplotypes 1 to 4, 6, and 7). Haplotypes 1 to 4 were detected in the first stage, but haplotypes 6 and 7 were not. The distribution of haplotypes was such that haplotypes 1, 2, 3, and 4 were found in 294 (70.7%), 110 (26.5%), 6 (1.4%), and 4 (1.0%) cases, respectively. In haplotype 6 (one case), rs11881222, rs8103142, rs12979860, and rs8099917 were AG, TT, CC, and TT, respectively. In haplotype 7 (one case), rs11881222, rs8103142, rs12979860, and rs8099917 were AA, TT, CT, and TG, respectively.

**Response to PEG-IFN/RBV treatment in 10 cases in which the four SNPs associated with IL-28B were not in LD.** In 7 (cases 1 to 7 [70%]) of the 10 cases where the four SNPs were not in LD, the haplotype was such that rs11881222, rs8103142, rs12979860, and rs8099917 were AG, TC, CT, and TT, respectively (Table 5). In nine cases (cases 1 to 9), rs8099917 was homozygous for the major allele, while one or more of the other SNPs were heterozygous. Eight (cases 1 to 8) of these

TABLE 4. Distribution of haplotypes among four SNPs associated with IL-28B in stages 1 and 2

Stage	Haplotype no.	Genotype for SNP:				No. (%) of cases with haplotype shown
		rs11881222	rs8103142	rs12979860	rs8099917	
1	1	AA	TT	CC	TT	198 (69.5)
	2	AG	TC	CT	TG	79 (27.7)
	3	GG	CC	TT	GG	4 (1.4)
	4	AG	TC	CT	TT	3 (1.0)
	5	AA	TT	CT	TT	1 (0.4)
2	1	AA	TT	CC	TT	294 (70.7)
	2	AG	TC	CT	TG	110 (26.5)
	3	GG	CC	TT	GG	6 (1.4)
	4	AG	TC	CT	TT	4 (1.0)
	6	AG	TT	CC	TT	1 (0.2)
	7	AA	TT	CT	TG	1 (0.2)

nine cases were viral responders who met the following criteria: HCV had disappeared during therapy, or HCV RNA had decreased more than 2 log copies/ml before 12 weeks after beginning of therapy, although some cases were under treatment or before determination of the final response to PEG-IFN/RBV. Case 9 was NVR due to poor adherence of PEG-IFN (<50% dose), even though rs8099917 was homozygous of the major allele. The haplotype of case 9 showed that rs11881222, rs8103142, rs12979860, and rs8099917 were AA, TT, CT, and TG, respectively. NVR in case 10 was reasonable from the genotypes of rs8099917 and rs12979860, because they were heterozygous, although rs11881222 and rs8103142 were homozygous for the major allele.

## DISCUSSION

The relationship between SNPs associated with IL-28B and the response to PEG-IFN/RBV therapy for chronic hepatitis C was found by SNP array, using GWAS technology, by three different groups throughout the world, including our own, in 2009 (6, 19, 21). Following these reports, many studies have confirmed the association between the response to PEG-IFN/RBV and SNPs associated with IL-28B (14, 16). Therefore, it is obvious that these SNPs may be valuable for predicting the response to PEG-IFN/RBV therapy. Recently, it was reported that various SNPs were associated with development of disease and response to therapy and correlated with adverse effects. Several SNPs, such as the UGT1A1 polymorphism for the treatment with irinotecan (1, 17), have already been exploited in clinical practice to avoid severe adverse effects. These tailor-made therapies are expected to become more common in clinical practice in the near future (9). The next step toward tailor-made therapy for PEG-IFN/RBV therapy against chronic hepatitis C involved the development of simple, accurate, and inexpensive methods to determine the genotype of SNPs and determination of the best SNP where the four SNPs associated with IL-28B were not in LD, so that they may be applied in clinical practice.

Genotyping of IL-28B SNPs is quite different from other SNPs, because the sequence of IL-28B is very similar to those of IL-28A, IL-29, and an additional homologous sequence upstream of IL-28B (Fig. 2). We had to design primers and probes for each method to distinguish IL-28B specifically. We

TABLE 5. Clinical characteristics of 10 cases in which the SNPs associated with IL-28B were not in LD

Case no. <sup>a</sup>	SNP of IL-28B <sup>b</sup>				Age (yr)	Gender	Genotype	Viral titer	Final response to PEG-IFN/RBV	VR or NVR	Period of disappearance of HCV
	rs11881222	rs8103142	rs12979860	rs8099917							
1	A/G	T/C	C/T	<b>T/T</b>	64	Female	1b	6.5	TR	VR	4 wk
2	A/G	T/C	C/T	<b>T/T</b>	72	Male	1b	2.9	SVR	VR	4 wk
3	A/G	T/C	C/T	<b>T/T</b>	64	Male	1b	7	ND <sup>c</sup>	VR	8 wk
4	A/G	T/C	C/T	<b>T/T</b>	51	Female	1b	7.2	Under treatment	VR	3.6 log units down after 12 wk
5	A/G	T/C	C/T	<b>T/T</b>	60	Female	2	5.8	Under treatment	VR	12 wk
6	A/G	T/C	C/T	<b>T/T</b>	56	Female	1b	5.9	Under treatment	VR	2.0 log units down after 2 wk
7	A/G	T/C	C/T	<b>T/T</b>	62	Male	1b	5.4	SVR	VR	4 wk
8	A/G	<b>T/T</b>	C/C	<b>T/T</b>	58	Male	1b	6.2	TR	VR	12 wk
9	A/A	<b>T/T</b>	C/T	<b>T/T</b>	68	Male	1b	7	NVR	NVR	— <sup>d</sup>
10	A/A	<b>T/T</b>	C/T	T/G	48	Female	1b	6	NVR	NVR	—

<sup>a</sup> All cases shown were treated with PEG-IFN/RBV.

<sup>b</sup> Homozygous genotypes are highlighted in boldface.

<sup>c</sup> ND, not determined. The final response to PEG-IFN/RBV was not determined in this patient because 6 months had not passed after the end of treatment.

<sup>d</sup> —, HCV did not disappear.

think that the results in this paper are especially applicable to IL-28B genotyping. In this study, only HRM failed to determine the genotype of SNPs associated with IL-28B. The reason HRM failed more frequently than the other genotyping methods is attributable to the characteristics of this specific method. Because HRM determines the genotype of each SNP by distinguishing the melting curve of an amplicon of around 200 bp, it may tend to be influenced by another SNP. As a matter of fact, minor SNPs around rs8099917 were found in cases of genotyping failure by HRM (data not shown). Although this specific characteristic of the HRM method is useful for detecting novel mutations or SNPs, it is not suitable for determination of the genotype of SNPs associated with IL-28B.

Direct sequencing erroneously reported the T/G genotype as T/T for the rs8099917 polymorphism. We found that the cause of this genotyping error was a novel rare SNP in the forward primer binding site used for amplification and direct sequencing (data on file). Because this novel SNP was not registered as an SNP in the NCBI database, the primer was designed at this site. Since the novel SNP correlated with the rs8099917 polymorphism in LD, adenine for the novel SNP is present on the same allele as guanine in the rs8099917 polymorphism. Therefore, the forward PCR primer (AAGTAACACTTGTTCCCTT GTAAAAGATTCC) could not anneal to the binding site, which was changed from guanine (G) to adenine (A) at the underlined nucleotide position: only the allele which has T at the rs8099917 was amplified, the genotype was determined as T/T. Rare sequence variations not registered in the database, might be present in the primer binding sites for amplification and might be the cause of erroneous direct sequencing. Ikegawa et al. reported that annealing efficiency in direct sequencing led to the mistyping of an SNP (10). Although our results in this paper are especially applicable to IL-28B genotyping, it should be recognized that allele-dependent PCR amplification and erroneous typing can occur when SNPs are genotyped by a PCR-based approach. Should SNPs associated with IL-28B be found not to be in LD, it would be preferable to confirm the genotype by another method.

In 10 cases, four SNPs associated with IL-28B were not in LD. In seven (70%) of the 10 cases, the haplotype showed that

rs11881222, rs8103142, rs12979860, and rs8099917 were AG, TC, CT, and TT, respectively. Only the rs8099917 polymorphism differed frequently from the other three SNPs. The reason for the high frequency of this haplotype is thought to be attributable to the location of these SNPs. The location of rs8099917 is downstream and quite far from the two SNPs (rs11881222 and rs8103142) in the IL-28B gene (Fig. 2). The SNPs rs11881222 and rs8103142 were almost perfectly in LD, because they are located close to each other.

It is well described that homozygosity for the major allele of SNPs associated with IL-28B is correlated with a better response to PEG-IFN/RBV treatment, and minor allele-positive patients are poor responders. However, the response to PEG-IFN/RBV remains unknown when several SNPs associated with IL-28B are not in LD. Because cases in which the SNPs are not in LD are quite rare, it was thought to be difficult to study such cases. In this study, 10 (1.4%) of 708 patients showed haplotypes in which the four SNPs were not in LD. We focused on the response to PEG-IFN/RBV therapy in these 10 cases (Table 5). We evaluated the response to PEG-IFN/RBV treatment from the viewpoint of virological response, because some patients had not completed their PEG-IFN/RBV treatment. (Case 3 was before determination for the final response after finishing the treatment, and cases 4 to 6 were under treatment.)

Thomas et al. reported that allele frequencies for rs12979860 varied among racial and ethnic groups (23). Indeed, the observation that the major allele is less frequent among individuals of African descent than those of European descent might explain the observed discrepancy in the frequencies of viral clearance in these two ethnic groups, where clearance occurs in 36.4% of HCV infections in individuals of non-African ancestry, but in only 9.3% of infections in individuals of African ancestry (22). We have recruited only Japanese chronic hepatitis C patients for this study. Since the distribution of haplotype and response to PEG-IFN/RBV treatment should vary among populations, further study will be necessary for any other populations except Japanese.

We have shown that the rs8099917 polymorphism determined by Invader assay should be the best predictor of the

response to PEG-IFN/RBV in Japanese chronic hepatitis C patients.

#### ACKNOWLEDGMENT

This study was supported by grants (22-302 and 21-113) from the National Center for Global Health and Medicine in Japan.

#### REFERENCES

1. Ando, Y., et al. 2000. Polymorphisms of UDP-glucuronosyltransferase gene and irinotecan toxicity: a pharmacogenetic analysis. *Cancer Res.* **60**:6921–6926.
2. Bruno, S., et al. 2004. Peginterferon alfa-2b plus ribavirin for naive patients with genotype 1 chronic hepatitis C: a randomized controlled trial. *J. Hepatol.* **41**:474–481.
3. Fried, M. W., et al. 2002. Peginterferon alfa-2a plus ribavirin for chronic hepatitis C virus infection. *N. Engl. J. Med.* **347**:975–982.
4. Froehlich, T., and O. Geulen. 2008. Hybridization probe pairs and single-labeled probes: an alternative approach for genotyping and quantification. *Methods Mol. Biol.* **429**:117–133.
5. Garritano, S., et al. 2009. Determining the effectiveness of high resolution melting analysis for SNP genotyping and mutation scanning at the TP53 locus. *BMC Genet.* **10**:5.
6. Ge, D., et al. 2009. Genetic variation in IL28B predicts hepatitis C treatment-induced viral clearance. *Nature* **461**:399–401.
7. Global Burden of Hepatitis C Working Group. 2004. Global burden of disease (GBD) for hepatitis C. *J. Clin. Pharmacol.* **44**:20–29.
8. Hadziyannis, S. J., et al. 2004. Peginterferon-alpha2a and ribavirin combination therapy in chronic hepatitis C: a randomized study of treatment duration and ribavirin dose. *Ann. Intern. Med.* **140**:346–355.
9. Iadonato, S. P., and M. G. Katze. 2009. Genomics: hepatitis C virus gets personal. *Nature* **461**:357–358.
10. Ikegawa, S., A. Mabuchi, M. Ogawa, and T. Ikeda. 2002. Allele-specific PCR amplification due to sequence identity between a PCR primer and an amplicon: is direct sequencing so reliable? *Hum. Genet.* **110**:606–608.
11. Lyamichev, V., et al. 1999. Polymorphism identification and quantitative detection of genomic DNA by invasive cleavage of oligonucleotide probes. *Nat. Biotechnol.* **17**:292–296.
12. Lyamichev, V. I., et al. 2000. Experimental and theoretical analysis of the invasive signal amplification reaction. *Biochemistry* **39**:9523–9532.
13. Manns, M. P., et al. 2001. Peginterferon alfa-2b plus ribavirin compared with interferon alfa-2b plus ribavirin for initial treatment of chronic hepatitis C: a randomised trial. *Lancet* **358**:958–965.
14. Montes-Cano, M. A., et al. 2010. Interleukin-28B genetic variants and hepatitis virus infection by different viral genotypes. *Hepatology* **52**:33–37.
15. Nguyen-Dumont, T., et al. 2009. Description and validation of high-throughput simultaneous genotyping and mutation scanning by high-resolution melting curve analysis. *Hum. Mutat.* **30**:884–890.
16. Rauch, A., et al. 2010. Genetic variation in IL28B is associated with chronic hepatitis C and treatment failure: a genome-wide association study. *Gastroenterology* **138**:1338–1345.e7.
17. Rouits, E., et al. 2004. Relevance of different UGT1A1 polymorphisms in irinotecan-induced toxicity: a molecular and clinical study of 75 patients. *Clin. Cancer Res.* **10**:5151–5159.
18. Stamer, U. M., B. Bayerer, S. Wolf, A. Hoeft, and F. Stuber. 2002. Rapid and reliable method for cytochrome P450 2D6 genotyping. *Clin. Chem.* **48**:1412–1417.
19. Suppiah, V., et al. 2009. IL28B is associated with response to chronic hepatitis C interferon-alpha and ribavirin therapy. *Nat. Genet.* **41**:1100–1104.
20. Tadokoro, K., et al. 2010. Rapid quantification of periodontitis-related bacteria using a novel modification of Invader PLUS technologies. *Microbiol. Res.* **165**:43–49.
21. Tanaka, Y., et al. 2009. Genome-wide association of IL28B with response to pegylated interferon-alpha and ribavirin therapy for chronic hepatitis C. *Nat. Genet.* **41**:1105–1109.
22. Thomas, D. L., et al. 2000. The natural history of hepatitis C virus infection: host, viral, and environmental factors. *JAMA* **284**:450–456.
23. Thomas, D. L., et al. 2009. Genetic variation in IL28B and spontaneous clearance of hepatitis C virus. *Nature* **461**:798–801.
24. Whitehall, V., et al. 2009. A multicenter blinded study to evaluate KRAS mutation testing methodologies in the clinical setting. *J. Mol. Diagn.* **11**:543–552.
25. Younossi, Z., J. Kallman, and J. Kincaid. 2007. The effects of HCV infection and management on health-related quality of life. *Hepatology* **45**:806–816.



## Factors predictive of sustained virological response following 72 weeks of combination therapy for genotype 1b hepatitis C

Kazuaki Chayama · C. Nelson Hayes · Kentaro Yoshioka · Hisataka Moriwaki · Takashi Okanoue · Shotaro Sakisaka · Tetsuo Takehara · Makoto Oketani · Joji Toyota · Namiki Izumi · Yoichi Hiasa · Akihiro Matsumoto · Hideyuki Nomura · Masataka Seike · Yoshiyuki Ueno · Hiroshi Yotsuyanagi · Hiromitsu Kumada

Received: 1 November 2010 / Accepted: 25 November 2010 / Published online: 19 January 2011  
© Springer 2011

### Abstract

**Background** Treatment of genotype 1b chronic hepatitis C virus (HCV) infection has been improved by extending peg-interferon plus ribavirin combination therapy to 72 weeks, but predictive factors are needed to identify those patients who are likely to respond to long-term therapy.

**Methods** We analyzed amino acid (aa) substitutions in the core protein and the interferon sensitivity determining region (ISDR) of nonstructural protein (NS) 5A in 840 genotype 1b chronic hepatitis C patients with high viral

load. We used logistic regression and classification and regression tree (CART) analysis to identify predictive factors for sustained virological response (SVR) for patients undergoing 72 weeks of treatment.

**Results** When patients were separately analyzed by treatment duration using multivariate logistic regression, several factors, including sex, age, viral load, and core aa70 and ISDR substitutions ( $P = 0.0003$ ,  $P = 0.02$ ,  $P = 0.01$ ,  $P = 0.0001$ , and  $P = 0.0004$ , respectively) were significant predictive factors for SVR with 48 weeks of treatment, whereas age, previous interferon treatment history, and ISDR substitutions ( $P = 0.03$ ,  $P = 0.01$ , and  $P = 0.02$ ,

**Electronic supplementary material** The online version of this article (doi:10.1007/s00535-010-0358-6) contains supplementary material, which is available to authorized users.

K. Chayama (✉) · C. N. Hayes  
Department of Medical and Molecular Science,  
Division of Frontier Medical Science,  
Programs for Biomedical Research,  
Graduate School of Biomedical Sciences,  
Hiroshima University, 1-2-3 Kasumi, Minami-ku,  
Hiroshima 734-8551, Japan  
e-mail: chayama@hiroshima-u.ac.jp

K. Yoshioka  
Division of Liver, Biliary Tract and Pancreas Diseases,  
Department of Internal Medicine,  
Fujita Health University, Nagoya, Japan

H. Moriwaki  
Department of Gastroenterology,  
Gifu University Graduate School of Medicine, Gifu, Japan

T. Okanoue  
Department of Gastroenterology and Hepatology,  
Saiseikai Suita Hospital, Suita, Japan

S. Sakisaka  
Department of Gastroenterology and Medicine,  
Fukuoka University School of Medicine, Fukuoka, Japan

T. Takehara  
Department of Gastroenterology and Hepatology,  
Osaka University Graduate School of Medicine, Osaka, Japan

M. Oketani  
Department of Digestive and Life-Style Related Disease,  
Health Research Course, Human and Environmental Sciences,  
Kagoshima University Graduate School of Medical and Dental  
Sciences, Kagoshima, Japan

J. Toyota  
Department of Gastroenterology,  
Sapporo Kosei General Hospital, Sapporo, Japan

N. Izumi  
Division of Gastroenterology and Hepatology,  
Musashino Red Cross Hospital, Musashino, Japan

Y. Hiasa  
Department of Gastroenterology and Metabolism,  
Ehime University Graduate School of Medicine,  
Matsuyama, Japan

respectively) were the only significant predictive factors with 72 weeks of treatment. Using CART analysis, a decision tree was generated that identified age, cholesterol, sex, treatment length, and aa70 and ISDR substitutions as the most important predictive factors. The CART model had a sensitivity of 69.2% and specificity of 60%, with a positive predictive value of 68.4%.

**Conclusions** Complementary statistical and data mining approaches were used to identify a subgroup of patients likely to benefit from 72 weeks of therapy.

**Keywords** CART analysis · Core protein · Decision tree · ISDR · LDL cholesterol

### Abbreviations

HCV	Hepatitis C virus
ISDR	Interferon sensitivity determining region
CART	Classification and regression tree analysis
SVR	Sustained virological response
NR	Non-viral response

### Introduction

Chronic hepatitis C virus (HCV) infection is a major global cause of chronic hepatitis, liver cirrhosis, and hepatocellular carcinoma [1–3]. The treatment of chronic hepatitis C has improved with the advent of peg-interferon (IFN) plus ribavirin combination therapy [4–7], but fewer than half of the patients with high viral loads of genotype 1b show a sustained virological response (SVR), defined as testing

negative for HCV RNA 24 weeks after cessation of the therapy. To overcome this limitation, recent therapeutic regimens have extended the treatment period to 72 weeks [8–11]. This extension is especially effective in patients whose HCV RNA declines relatively slowly [9–11]. Accordingly, recent treatment protocols have recommended extending the treatment period to 72 weeks in patients who become negative for HCV RNA after 12 weeks of treatment but before 24 weeks [10, 11]. This response-guided decision-making approach to therapy has resulted in improvements of the SVR rate [10, 11]. Following this approach, patients with a non-viral response (NR), i.e., patients who show very poor response to the therapy (defined as less than 2-log decline of HCV RNA during 12 weeks of treatment), should be advised to discontinue therapy because SVR is rare in such patients. While response-guided therapy is useful in determining the appropriate duration of treatment for patients who are likely to respond eventually, predictors that can be assessed before the start of therapy will aid in differentiating which difficult-to-treat patients are likely to achieve an SVR with extended therapy and which may be better served by considering alternative therapy options.

To predict NR, recent studies recommend analysis of amino acid (aa) substitutions in the HCV core protein at positions 70 and 91 [12, 13]. The substitution of arginine with glutamine or other amino acids at core protein aa 70 has been reported to be associated with NR, and this finding was confirmed by several other groups [14–16]. Analysis of core aa 70 has also been shown to be useful to predict the outcome of 72 weeks of combination therapy [17]. While many factors have been reported to be useful predictors of the effect of combination therapy [18–26], many of these factors are mutually interdependent. Furthermore, because almost all of these factors have been reported under conditions in which a majority of patients were receiving 48 weeks of treatment, it is necessary to consider the effect of the treatment period.

In this study, we compiled a database of clinical data from 840 patients from 16 national centers in Japan. We used logistic regression and classification and regression tree analysis (CART) to identify factors predictive of SVR for 48- and 72-week therapy and to assess which patients are most likely to benefit by long-term 72-week therapy.

### Methods

#### Study subjects

In this retrospective study, data from 840 patients with chronic hepatitis C treated at 16 different hospitals in Japan were analyzed for predictive factors for SVR based on

A. Matsumoto

Department of Medicine, Shinshu University  
School of Medicine, Matsumoto, Japan

H. Nomura

The Center for Liver Diseases, Shin-Kokura Hospital,  
Kokura, Japan

M. Seike

Department of Internal Medicine I, Faculty of Medicine,  
Oita University, Oita, Japan

Y. Ueno

Division of Gastroenterology,  
Tohoku University Graduate School of Medicine, Sendai, Japan

H. Yotsuyanagi

Department of Internal Medicine,  
Graduate School of Medicine, University of Tokyo,  
Tokyo, Japan

H. Kumada

Department of Hepatology, Toranomon Hospital, Tokyo, Japan

**Table 1** Patient characteristics for 48- and 72-week treatments

	All patients (n = 840)	48-Week therapy (n = 619) 73.69%	72-Week therapy (n = 221) 25.12%
Age (years)	54.4 ± 10.73	53.8 ± 11.21	56.2 ± 9.03
Gender (male/female)	449/391	357/262	92/129
Body weight (kg)	60.9 ± 10.8	61.3 ± 10.6	59.8 ± 11.4
Height (cm)	162.2 ± 9.1	162.7 ± 9.1	160.7 ± 9.0
BMI	23.0 ± 3.05	23.0 ± 2.92	23.0 ± 3.4
HCV core protein aa 70 (wild/mutant)	539/301	396/223	143/78
HCV core protein aa 91 (wild/mutant)	504/336	369/250	135/86
ISDR (0–1/≥2)	714/126	513/106	201/20
Hypertension (present/absent/ND)	538/113/189	395/78/146	143/35/43
Diabetes (present/absent/ND)	634/47/159	457/38/124	177/9/35
Transfusion (present/absent/ND)	505/227/108	379/162/78	126/65/30
Fibrosis stage (0–2/3–4/ND)	604/128/108	448/90/81	156/38/27
Activity stage (0–1/2–3/ND)	382/343/115	287/245/87	95/98/28
Steatosis (present/absent/ND)	158/344/338	119/250/250	39/94/88
AST (IU/l)	65 ± 49	66 ± 47	63 ± 53
ALT (IU/l)	68 ± 56	68 ± 56	66 ± 55
White blood cell count (/mm <sup>3</sup> )	4832 ± 1455	4882 ± 1488	4693 ± 1352
Hemoglobin (g/dl)	14.2 ± 1.36	14.3 ± 1.39	14.1 ± 1.29
Platelets (×10 <sup>4</sup> /mm <sup>3</sup> )	16.9 ± 5.18	17.0 ± 5.11	16.8 ± 5.35
γGTP (IU/l)	56 ± 59	59 ± 64	49 ± 42
Albumin (g/dl)	4.02 ± 0.348	4.01 ± 0.350	4.03 ± 0.343
Uric acid (mg/dl)	5.41 ± 1.29	5.46 ± 1.27	5.25 ± 1.35
Iron (μg/dl)	147.0 ± 69.65	151.0 ± 75.71	136.1 ± 47.45
Ferritin (μg/l)	173.9 ± 167.9	181.7 ± 175.7	153.0 ± 143.7
Fasting blood sugar (mg/dl)	99.8 ± 19.8	99.3 ± 19.1	101.2 ± 21.5
Alpha-fetoprotein (μg/l)	16.3 ± 50.4	14.2 ± 44.8	22.0 ± 62.7
Total cholesterol (mg/dl)	175 ± 32.3	173 ± 31.8	179 ± 33.4
LDL cholesterol (mg/dl)	100.8 ± 29.8	100.2 ± 30.3	102.5 ± 28.4
HDL cholesterol (mg/dl)	52.1 ± 15.5	51.4 ± 15.0	53.9 ± 16.6
Triglycerides (mg/dl)	103.2 ± 48.8	103.8 ± 46.1	101.7 ± 55.1
HCV-RNA (KIU/ml)	3239 ± 4669	3170 ± 4828	3427 ± 4205
Response to treatment (SVR/TR/NR)	465/246/129	341/164/114	124/82/15

*BMI* body mass index, *HCV* hepatitis C virus, *aa* amino acid, *ISDR* interferon sensitivity determining region, *AST* aspartate aminotransferase, *ALT* alanine aminotransferase, *γGTP* γ-glutamyl transpeptidase, *LDL* low-density lipoprotein, *HDL* high-density lipoprotein, *SVR* sustained virological response, *TR* transient response/relapsers, *NR* non-viral response, *ND* not determined

treatment duration. Inclusion criteria included testing positive for HCV RNA for longer than 6 months and testing negative for both hepatitis B virus surface antigen and anti-HIV antibody. Patients with confounding conditions such as hemochromatosis, Wilson's disease, primary biliary cirrhosis, alcoholic liver disease, and autoimmune liver disease were excluded. We excluded patients who were lost for follow up and those who did not show a high level of viremia for genotype 1b, as well as patients for whom we failed to determine both core and IFN sensitivity determining region (ISDR) of nonstructural protein (NS) 5A sequences; 385 patients were treatment-naïve. All

subjects gave their written informed consent to participate in the study according to the process approved by the ethics committee of each hospital and conforming to the ethical guidelines of the 1975 Declaration of Helsinki. Patient profiles are listed in Table 1.

All patients initially received weekly injections of peg-IFN-alpha-2b for 48 weeks (60 μg for body weight (BW) 35–45 kg, 80 μg for BW 46–60 kg, 100 μg for BW 61–75 kg, 120 μg for BW 76–90 kg, and 150 μg for BW 91–120 kg). Ribavirin was administered orally, and the dosage was determined based on the patient's BW (600 mg for <60 kg, 800 mg for 60–80 kg, and 1,000 mg

for >80 kg). Ribavirin dosage was reduced when hemoglobin levels were reduced to 10.0 g/dl and stopped if hemoglobin levels reached 8.5 g/dl. Successful treatment was ascertained based on SVR, defined as HCV RNA-negative 6 months after cessation of therapy. Using response-guided therapy, slow viral responders, i.e., patients for whom HCV RNA levels became negative after 12 weeks of therapy but before 24 weeks, and some non-responders were recommended for extension of therapy to 72 weeks.

Biochemical tests were performed at the individual hospitals, and pathological diagnosis was made by pathologists in each hospital according to the criteria of Desmet et al. [27]. Fibrosis and activity data were compared among hospitals to ensure that there were no systematic differences.

#### Analysis of viral titer and amino acid sequences in the core and ISDR region

The HCV RNA level was analyzed using reverse transcription polymerase chain reaction (RT-PCR)-based methods (Amplicor™ high-range test; Roche Diagnostics, Basel, Switzerland, or TaqMan RT-PCR test; Applied Biosystems, CA). The measurement ranges of these assays were 5–5000 KIU/ml and 1.2–7.8 log IU/ml, respectively. For values exceeding the measurable range, the limit value was used as an approximation. The values obtained by the Amplicor test were converted to logarithmic values [28].

Nucleotide and amino acid sequences of the core and the ISDR region were determined by direct sequencing of cDNA fragments amplified by PCR. Arginine and leucine were considered wild-type for core protein aa 70 and aa 91, respectively [12, 13]. The number of aa substitutions in the ISDR was determined by comparison with the reference sequence reported by Kato et al. [29] using the method of Enomoto et al. [30, 31].

#### Statistical analysis

Statistical analysis was performed using the R software package (<http://www.r-project.org>). The  $\chi^2$  or Fisher's exact and Mann–Whitney *U*-tests were used to detect significant associations. All statistical analyses were two-sided, and  $P < 0.05$  was considered significant. Simple and multiple logistic regression analyses were used to examine the association between viral substitutions and clinical factors, using  $P < 0.05$  as the criterion for inclusion in the initial multivariate model. Multivariate logistic regression analysis was performed using forward/backward stepwise selection based on the akaike information criterion (AIC) score and validated by bootstrapping, using the rms

package in R. Odds ratios (ORs) and 95% confidence intervals (CIs) were calculated for each factor.

#### CART analysis

CART analysis was used to generate a decision tree by classifying patients by SVR, based on a recursive partitioning algorithm with minimal cost-complexity pruning to identify optimal classification factors. The SimpleCart classifier in the WEKA data mining package [32] was used with a minimal terminal node size of 4 and trained with the variables listed in Table 1. Performance was assessed using tenfold cross-validation, and the sensitivity, specificity, and precision of the model were calculated. Receiver operating characteristic (ROC) curves were generated and results were compared with the logistic regression model.

## Results

#### Patient characteristics

Patients were partitioned into two groups based on whether they received 48 or 72 weeks of therapy (Table 1). In this study 465 patients achieved an SVR, whereas 375 patients were either non-responders or relapsers, yielding an overall SVR rate of 55.4%. The rate of SVR did not differ significantly between the 48- and 72-week treatment groups (55.3 vs. 56.4%, respectively;  $P = 0.81$ ), but the NR rate was significantly lower in patients who were treated for 72 weeks (18.3 vs. 6.4%;  $P = 9.3 \times 10^{-6}$ ).

#### Predictive factors for SVR

The association between SVR and individual clinical factors was assessed using logistic regression. A number of factors were significant at the  $P < 0.05$  level, including age, sex, viral load, aa70/ISDR substitutions, hypertension, fibrosis, steatosis, prior IFN treatment, low-density lipoprotein (LDL) cholesterol, total cholesterol, white blood cell count, platelet count, hemoglobin,  $\gamma$ -glutamyl transpeptidase ( $\gamma$ GTP), and albumin (Table 2). On multivariate logistic regression, only age, sex, core aa70, ISDR, LDL, and  $\gamma$ GTP were identified as significant independent predictors of SVR. Although length of treatment was not identified as a significant predictor in this analysis, exploratory analysis suggests the presence of potential interactions between treatment length and age and/or sex that are not captured by the first-order terms in the model. When second-order terms were selected a posteriori, however, a significant interaction was found between sex and treatment length ( $P = 0.0034$ ). When analyzed separately, independent predictive factors for SVR for 48 weeks

**Table 2** Factors associated with sustained virological response to combination therapy

Variable	Simple			Multiple			
	<i>n</i>	OR	<i>P</i>	<i>n</i>	OR	(95% CI)	<i>P</i>
Age	840	0.393	$3.16 \times 10^{-11}$ ***	517	0.386	(0.27–0.56)	$5.08 \times 10^{-7}$ ***
Sex (male vs. female)	840	0.521	$3.61 \times 10^{-6}$ ***	517	0.52	(0.35–0.78)	0.001459**
BMI (kg/m <sup>2</sup> )	834	0.8	0.1094				
Viral load (Log IU/ml)	840	0.761	0.001828**				
Core aa70 substitution	840	0.537	$1.98 \times 10^{-5}$ ***	517	0.507	(0.35–0.74)	0.000521***
Core aa91 substitution	840	0.818	0.1568				
ISDR (0–1 vs. $\geq 2$ )	840	2.36	$5.19 \times 10^{-5}$ ***	517	2.12	(1.19–3.77)	0.01037*
Hypertension	651	0.625	0.02389*				
Diabetes	681	0.794	0.4464				
Blood transfusion	732	1	0.9788				
Fibrosis (F0–1 vs. F2–4)	732	0.674	0.008287**				
Activity (A0–1 vs. A2–4)	725	0.779	0.09567				
Steatosis	502	0.645	0.03413*				
Prior IFN treatment	830	1.37	0.02648*				
HDL cholesterol (mg/dl)	493	0.761	0.1333				
LDL cholesterol (mg/dl)	529	1.46	0.03223*	517	1.61	(1.10–2.38)	0.01521*
Triglyceride (mg/dl)	726	0.913	0.5412				
Total cholesterol (mg/dl)	814	1.25	0.11				
AST (IU/l)	783	0.933	0.6316				
ALT (IU/l)	840	0.972	0.837				
WBC (/mm <sup>3</sup> )	836	1.55	0.001831**				
Hemoglobin (g/dl)	838	1.34	0.00276**				
Platelets ( $\times 10^4$ /mm <sup>3</sup> )	838	1.74	$7.92 \times 10^{-5}$ ***				
Gamma-GTP (IU/l)	823	0.735	0.0288*	517	0.656	(0.43–0.99)	0.04588*
Albumin (g/dl)	809	1.41	0.01699*				
Ferritin ( $\mu$ g/l)	532	0.898	0.5404				
Treatment period (weeks)	840	1.02	0.6095				

Simple and multiple logistic regression was used to examine the association between SVR and patient and viral factors. Factors with  $P < 0.05$  were considered for inclusion in the multiple regression model and the best model selected by backwards stepwise selection using AIC

\*\*\*  $P < 0.001$ , \*\*  $P < 0.01$ , \*  $P < 0.05$

IFN interferon, OR odds ratio, CI confidence interval, AIC akaike information criterion

of treatment included age, sex, viral load, core aa70, LDL, platelets, and white blood cell counts, whereas for 72 weeks of treatment only age, ISDR, and prior IFN treatment were significant, although LDL cholesterol was marginally significant (Table 3).

Among patients who underwent 48 weeks of therapy, 61% of patients with core aa 70 wild-type achieved an SVR compared to only 44% of patients with mutant core aa 70 ( $P = 1.8 \times 10^{-5}$ , Fig. 1a), whereas for 72-week patients, the ratio was 1:1 (Fig. 3a). Conversely, in the 48-week group, 71% of patients with two or more mutations in the ISDR were able to achieve an SVR compared to 52% with the wild-type ISDR, and in the 72-week group (Fig. 1b), 80% of patients with two or

more ISDR mutations achieved an SVR compared to 54% with zero or one ISDR mutations (Fig. 3b). Median baseline viral load was significantly lower in 48-week SVR patients compared to that in non-SVR patients ( $P = 0.001$ , Fig. 1c), whereas there was no significant difference between viral load and SVR in 72-week therapy patients ( $P = 0.625$ , Fig. 4c). There was a significant effect of age and treatment outcome among 48-week patients ( $P = 9.3 \times 10^{-6}$ , Fig. 2), but the difference was not significant among 72-week therapy patients. However, the proportion of patients achieving an SVR tended to decrease with age in both groups, particularly in females over age 70 years in the 72-week group (Figs. 2, 4).

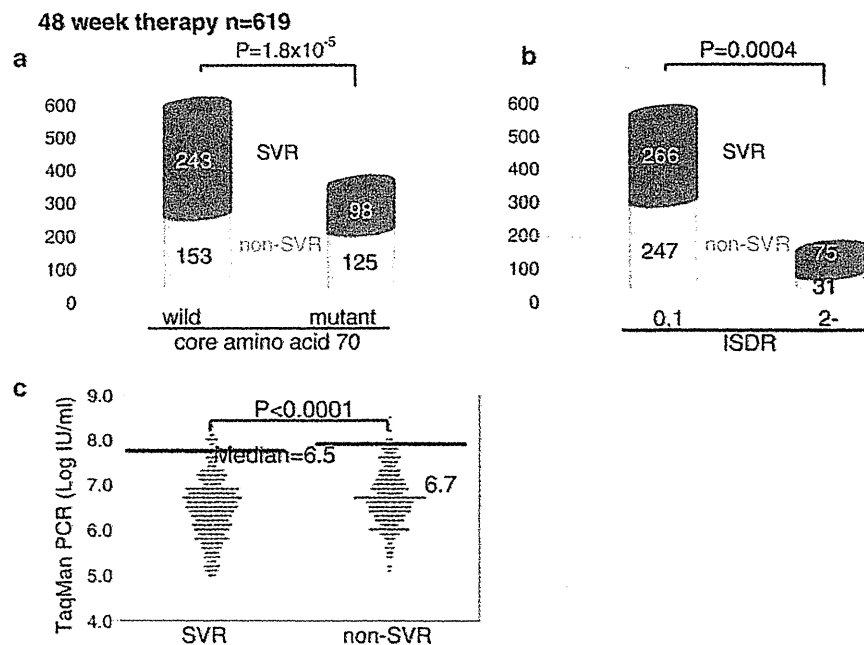
**Table 3** Independent factors associated with sustained virological response to 48- and 72-week peg-interferon plus ribavirin combination therapy

Variable	48 Weeks			72 Weeks			
	<i>n</i>	OR	<i>P</i>	<i>n</i>	OR	(95% CI)	<i>P</i>
Age	535	0.642	0.0165*	133	0.4	(0.176–0.91)	0.02877*
Sex (male vs. female)	535	0.481	0.000284**				
Viral load (Log IU/ml)	535	0.738	0.01033*				
Core aa70 substitution	535	0.454	$9.95 \times 10^{-5}$ **				
ISDR (0–1 vs. $\geq 2$ )	535	2.75	0.000358**	133	7	(1.35–36.2)	0.02047*
Fibrosis (F0–1 vs. F2–4)	535	0.66	0.03954*				
Prior IFN treatment				133	2.67	(1.22–5.85)	0.01431*
LDL cholesterol (mg/dl)				133	2.04	(0.952–4.35)	0.06673
WBC (/mm <sup>3</sup> )	535	1.53	0.03342*				
Platelets ( $\times 10^4$ /mm <sup>3</sup> )	535	1.54	0.03707*				

Simple and multiple logistic regression analysis was used to examine the association between SVR and patient/viral factors separately for patients receiving 48 and 72 weeks of treatment

\*\*  $P < 0.001$ , \*  $P < 0.05$

**Fig. 1** Viral factors for 48-week treatment. Relationships between sustained virological response (SVR) and a core amino acid 70 substitutions, b amino acid substitutions in the interferon sensitivity determining region, and c baseline viral titers grouped by SVR and non-SVR for patients treated for 48 weeks. PCR Polymerase chain reaction

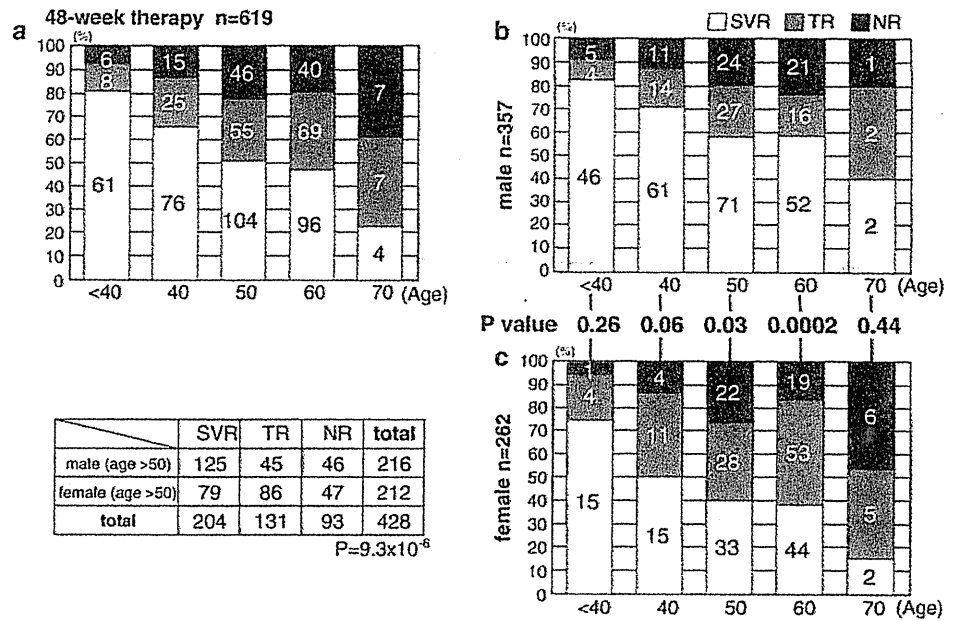


#### CART analysis

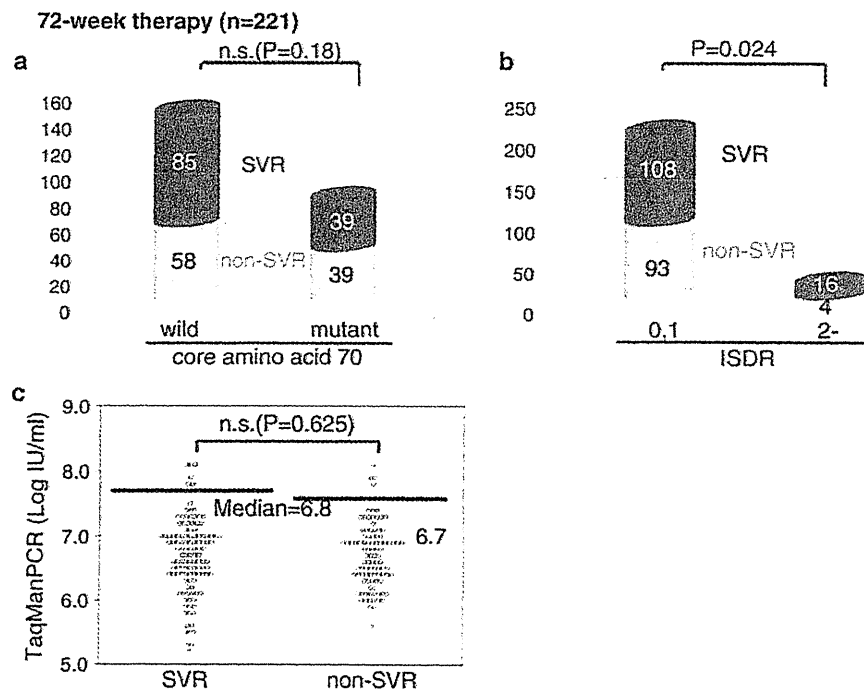
Figure 5 shows the decision tree generated by CART analysis. All variables were included during model construction, and the SimpleCart algorithm generated a tree based on the following fields: age, cholesterol, sex,  $\gamma$ GTP, 48 versus 72 weeks of treatment, and aa substitutions in the ISDR and at core aa70. Age was used as the first cutoff, and patients younger than 46.5 years were classified as having a high probability for SVR (78%). Total cholesterol was identified as the next decision point, and patients with cholesterol higher than 211.5 mg/dl were

classified as SVR if they were younger than 62.5 years (84%) and NR (65%) otherwise. Patients with cholesterol lower than 211.5 mg/dl were subdivided next by sex. Females who received 48 weeks of treatment were classified as NR (71%), whereas females receiving 72 weeks of treatment were classified as SVR if they were younger than 58.5 years (71%) or NR otherwise (64%). Males who were infected with aa70 wild-type were classified as SVR (62%), whereas males with aa70 substitutions were classified as NR if total cholesterol was less than 130 mg/dl (97%). Males with ISDR substitutions were classified as SVR (75%), and those with wild-type ISDR were classified

**Fig. 2** Relationship between age and response to treatment for 48-week therapy. Treatment outcomes by age in 10-year intervals are shown for **a** all patients, **b** males only, and **c** females only. *NR* non-viral response



**Fig. 3** Viral factors for 72-week treatment. Relationships between sustained virological response and **a** core amino acid 70 substitutions, **b** amino acid substitutions in the interferon sensitivity determining region, and **c** baseline viral titers grouped by SVR and non-SVR for patients treated for 72 weeks. *n.s.*, Not significant



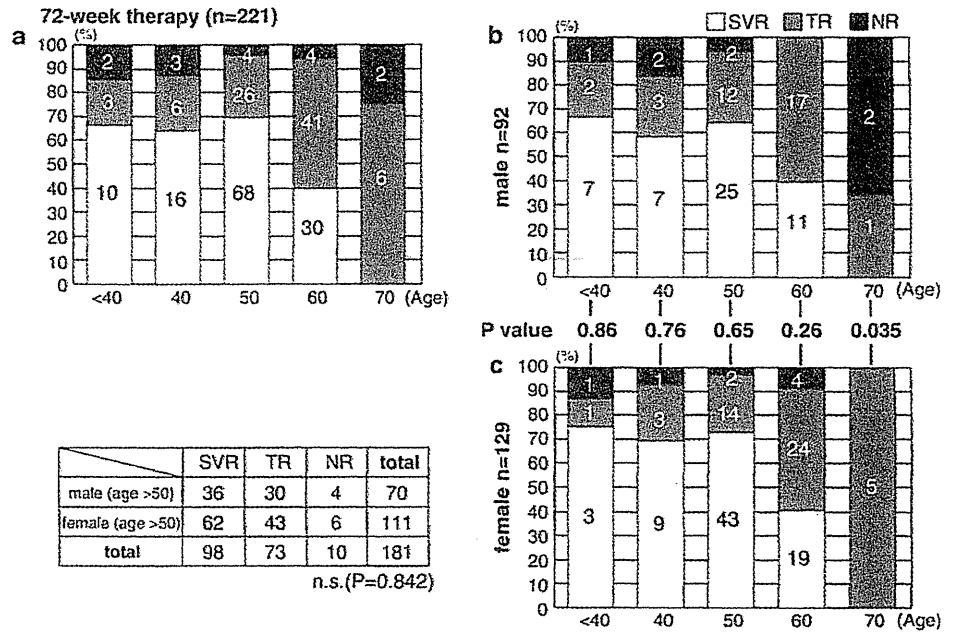
as SVR if  $\gamma$ GTP was less than 48.5 IU/l (57%) and NR otherwise (77%).

All factors selected during tree construction were found to be significant in univariate analysis, except for treatment length and cholesterol, and each remained significant in multivariate logistic regression. Although LDL was included in the multivariate logistic model, it was not selected

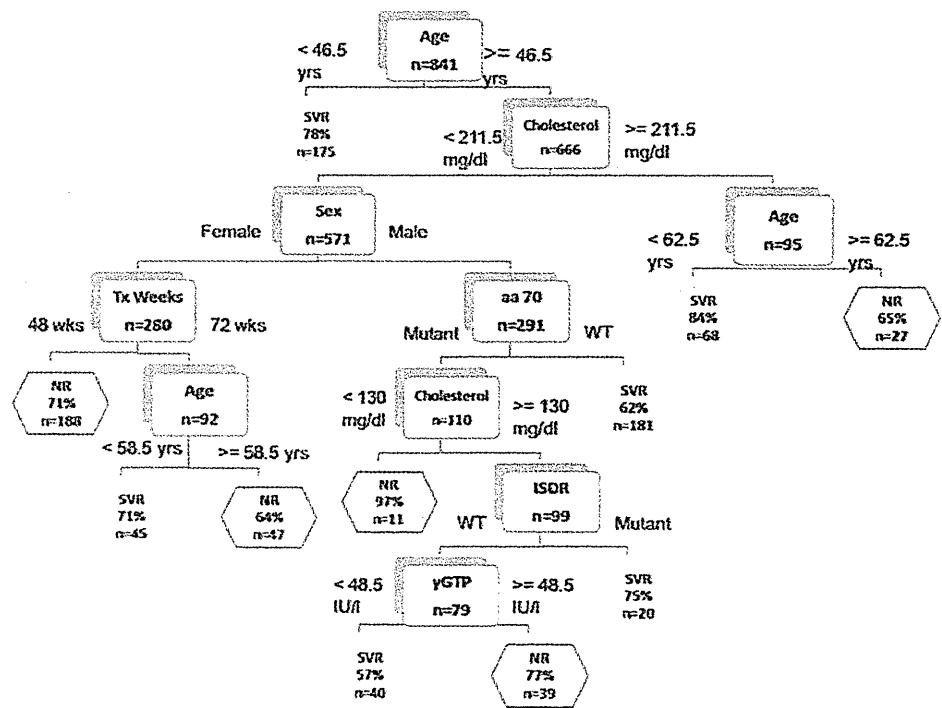
during tree construction. Tenfold cross-validation resulted in 65.2% correctly classified instances with a kappa statistic of 0.29. The true positive rate was 69.2%, the false positive rate was 39.7%, and precision was 68.4%.

To compare the performance of SVR prediction between the logistic and CART models, the WEKA Logistic classifier was used to perform tenfold validation based on the

**Fig. 4** Relationship between age and response to treatment for 72-week therapy. Treatment outcomes by age in 10-year intervals are shown for **a** all patients, **b** males only, and **c** females only



**Fig. 5** Decision tree for SVR prediction. Boxes represent branch points based on cutoff values for factors determined by the tree generation algorithm. Each branch contains two choices, and each path ends in a prediction for either SVR or NR with an associated probability. yrs Years, Tx treatment, ISDR interferon sensitivity determining region, aa amino acid, WT wild-type,  $\gamma$ GTP  $\gamma$ -glutamyl transpeptidase



multivariate logistic regression model above. The true positive rate for the logistic classifier was somewhat higher, at 73.1%, but with a slightly worse false-positive rate of 48%, and 63.7% correctly classified instances with a kappa statistic of 0.25 and precision 0.65. Receiver operating characteristic (ROC) curves were very similar, and the area under the curve was 0.677 for the CART model and 0.696 for the logistic model.

**Discussion**

Using two complementary approaches we identified several pretreatment factors predictive for SVR in patients treated for 48 and 72 weeks. Logistic regression and CART analysis both suggest that sex, age, cholesterol, and substitutions at core aa70 and ISDR are associated with SVR in patients with a high viral load of genotype 1b. Based on



the decision tree topology and a significant interaction between sex and treatment duration, it appears that 72 weeks of treatment may be most beneficial in women between the ages of 46 and 58 years who have low cholesterol. In general, patients who are younger, male, have cholesterol over 130 mg/dl, or who have wild-type core aa70 or mutant ISDR are the most likely to achieve an SVR.

Because each of the above values can be determined prior to treatment and are interpretable by clinicians, they may be useful as a guide when establishing a treatment regimen in the case of potentially difficult-to-treat patients. Once IFN treatment has been started, early and/or rapid viral response is likely to be the strongest predictor of SVR [33], and slow responders have been shown to be the most likely to benefit from extended treatment [34, 35]. However, because of the expense, low success rate, and potential side effects of IFN-based therapy, predictors available prior to treatment are also needed. Factors predictive of NR may help guide the decision to avoid or discontinue IFN therapy in patients with a low probability of SVR, and factors predictive of SVR may help identify subsets of patients who are likely to achieve an SVR if treated longer than the standard 48-week regimen.

Several other recent studies have examined predictors for SVR for 72 weeks of treatment, although nearly all focus on on-treatment predictors and conclude that 72-week therapy significantly improves SVR rates in slow responders [9, 10, 35]. Ferenci et al. [11] also showed that extension to 72 weeks decreased the relapse rate among early viral responders. In a large retrospective cohort study, Watanabe et al. [36] dissected a complex relationship between SVR and age, sex, and viral load similar to that reported here, although results are difficult to compare because they did not measure cholesterol or viral substitutions. While they recommend 72-week therapy for all slow-responding patients regardless of sex or age, they note that the SVR rate was surprisingly high among elderly female patients following 72-week treatment, noting that the SVR for 48-week treatment was typically low among older female patients in Japan, which they suggest could be related to the development of insulin resistance associated with menopause [36]. Other studies discourage the use of 72-week therapy for all patients except in the specific case of slow responders [8]. Moreover, in a large prospective study, Buti et al. [34] conclude that 48-week combination therapy should remain the standard of care even for slow responders, due to the increased cost and incidence of adverse events relative to a modest increase in the SVR rate. They clarify, however, that patients with a less than 2 log decline at week 8 and undetectable HCV RNA at week 24 are the most likely to benefit from 72-week treatment. Unfortunately they did not examine other predictors in a

multivariate analysis. Because each of these studies hinges on rapid versus slow viral response and an on-treatment predictor requiring up to 24 weeks of treatment to establish, pretreatment predictors of early viral kinetics, including those presented here (e.g., viral substitutions and baseline cholesterol levels [12]), may be useful for predicting the outcome of extended therapy prior to treatment [17].

The combination of multiple approaches to identify predictive factors should help improve confidence in the results and partially protect against the bias inherent in any single approach. Comparing the results of a standard analysis with an alternative technique may reveal which variables are robust and which are sensitive to methodological differences. There are many different classification tools, including neural networks, Bayesian networks, and support vector machines, but models based on these may be more difficult to interpret or apply in clinical practice. On the other hand, decision tree approaches such as C4.5 and CART are widely used in biomedical studies [37–39] and provide a simple and intuitive hierarchical format that in many cases can be used without a computer.

The lack of randomized assignment of patients to duration of treatment limits the conclusions that can be drawn from the present study, and additional predictive factors, particularly interleukin (IL) 28B single-nucleotide polymorphism (SNP) genotype and viral kinetics, should be included in future prospective studies. Comparison of ROC curves suggests that the performance of the two models in the present study is similar, although neither is sufficiently sensitive or specific for accurate clinical prediction based on the number of patients analyzed. Nonetheless the strong overlap between the variables selected by each method suggests that several patient factors, including age, sex, and cholesterol level, as well as several viral factors, including core aa70 and ISDR substitutions, are robust predictors for SVR. Differences in the variables selected between the two approaches suggest that several models with similar predictive ability are also possible. In the regression model, LDL cholesterol but not total cholesterol was an independent factor associated with SVR, whereas in the CART analysis total cholesterol was selected instead. This may be due to the hierarchical nature of decision tree models, which may yield better results in the face of missing data, higher-order interactions, or non-linear relationships. Comparison of separate models for 48 and 72 weeks also suggests that age and ISDR substitutions are important predictors of SVR for patients undergoing 72 weeks of treatment, whereas the decision tree suggests that the 72-week treatment length is important mainly for a subgroup of female patients. Without greater understanding of the role of HCV core and ISDR substitutions, it is difficult to interpret the role of these predictors, as well as

potential interactions with cholesterol level and other clinical factors. Further studies should be performed to investigate these interactions and to better characterize the subgroup of patients who are most likely to respond to long-term IFN therapy.

**Acknowledgments** This work was supported in part by Grants-in-Aid for scientific research and development from the Ministry of Health, Labor and Welfare and Ministry of Education, Culture, Sports, Science and Technology, Government of Japan. We thank Sakura Akamatsu and Mika Tszuno for their assistance.

**Conflict of interest** None of the authors have conflicts of interest to declare.

## References

- Hoofnagle JH. Hepatitis C: the clinical spectrum of disease. *Hepatology*. 1997;26:15S–20S.
- Di Bisceglie AM. Hepatitis C. *Lancet*. 1998;351:351–5.
- Marcellin P. Hepatitis C: the clinical spectrum of the disease. *J Hepatol*. 1999;31(Suppl 1):9–16.
- Manns MP, McHutchison JG, Gordon SC, Rustgi VK, Shiffman M, Reindollar R, et al. Peginterferon alfa-2b plus ribavirin compared with interferon alfa-2b plus ribavirin for initial treatment of chronic hepatitis C: a randomised trial. *Lancet*. 2001;358:958–65.
- Fried MW, Shiffman ML, Reddy KR, Smith C, Marinos G, Goncalves FL Jr, et al. Peginterferon alfa-2a plus ribavirin for chronic hepatitis C virus infection. *N Engl J Med*. 2002;347:975–82.
- Hadziyannis SJ, Sette H Jr, Morgan TR, Balan V, Diago M, Marcellin P, et al. Peginterferon-alpha2a and ribavirin combination therapy in chronic hepatitis C: a randomized study of treatment duration and ribavirin dose. *Ann Intern Med*. 2004;140:346–55.
- Jensen DM, Marcellin P, Freilich B, Andreone P, Di Bisceglie A, Brandao-Mello CE, et al. Re-treatment of patients with chronic hepatitis C who do not respond to peginterferon-alpha2b: a randomized trial. *Ann Intern Med*. 2009;150:528–40.
- Berg T, von Wagner M, Nasser S, Sarrazin C, Heintges T, Gerlach T, et al. Extended treatment duration for hepatitis C virus type 1: comparing 48 versus 72 weeks of peginterferon-alfa-2a plus ribavirin. *Gastroenterology*. 2006;130:1086–97.
- Sanchez-Tapias JM, Diago M, Escartin P, Enriquez J, Romero-Gomez M, Barcena R, et al. Peginterferon-alfa2a plus ribavirin for 48 versus 72 weeks in patients with detectable hepatitis C virus RNA at week 4 of treatment. *Gastroenterology*. 2006;131:451–60.
- Pearlman BL, Ehleben C, Saifee S. Treatment extension to 72 weeks of peginterferon and ribavirin in hepatitis C genotype 1-infected slow responders. *Hepatology*. 2007;46:1688–94.
- Ferenci P, Laferl H, Scherzer TM, Maieron A, Hofer H, Stauber R, et al. Peginterferon alfa-2a/ribavirin for 48 or 72 weeks in hepatitis C genotypes 1 and 4 patients with slow virologic response. *Gastroenterology*. 2010;138:503–12. 12 e1.
- Akuta N, Suzuki F, Kawamura Y, Yatsuji H, Sezaki H, Suzuki Y, et al. Predictive factors of early and sustained responses to peginterferon plus ribavirin combination therapy in Japanese patients infected with hepatitis C virus genotype 1b: amino acid substitutions in the core region and low-density lipoprotein cholesterol levels. *J Hepatol*. 2007;46:403–10.
- Akuta N, Suzuki F, Sezaki H, Suzuki Y, Hosaka T, Someya T, et al. Predictive factors of virological non-response to interferon-ribavirin combination therapy for patients infected with hepatitis C virus of genotype 1b and high viral load. *J Med Virol*. 2006;78:83–90.
- Okanoue T, Itoh Y, Hashimoto H, Yasui K, Minami M, Takehara T, et al. Predictive values of amino acid sequences of the core and NS5A regions in antiviral therapy for hepatitis C: a Japanese multi-center study. *J Gastroenterol*. 2009;44:952–63.
- Mori N, Imamura M, Kawakami Y, Saneto H, Kawaoka T, Takaki S, et al. Randomized trial of high-dose interferon-alpha-2b combined with ribavirin in patients with chronic hepatitis C: correlation between amino acid substitutions in the core/NS5A region and virological response to interferon therapy. *J Med Virol*. 2009;81:640–9.
- Ishii K, Shinohara M, Sawa M, Kogame M, Higami K, Sano M, et al. Interferon alpha receptor 2 expression by peripheral blood monocytes in patients with a high viral load of hepatitis C virus genotype 1 showing substitution of amino acid 70 in the core region. *Intervirology*. 2010;53:105–10.
- Akuta N, Suzuki F, Hirakawa M, Kawamura Y, Yatsuji H, Sezaki H, et al. A matched case-controlled study of 48 and 72 weeks of peginterferon plus ribavirin combination therapy in patients infected with HCV genotype 1b in Japan: amino acid substitutions in HCV core region as predictor of sustained virological response. *J Med Virol*. 2009;81:452–8.
- Sarrazin C, Herrmann E, Bruch K, Zeuzem S. Hepatitis C virus nonstructural 5A protein and interferon resistance: a new model for testing the reliability of mutational analyses. *J Virol*. 2002;76:11079–90.
- Jenke AC, Moser S, Orth V, Zilbauer M, Gerner P, Wirth S. Mutation frequency of NS5A in patients vertically infected with HCV genotype 1 predicts sustained virological response to peginterferon alfa-2b and ribavirin combination therapy. *J Viral Hepat*. 2009;16:853–9.
- Layden-Almer JE, Kuiken C, Ribeiro RM, Kunstman KJ, Perelson AS, Layden TJ, et al. Hepatitis C virus genotype 1a NS5A pretreatment sequence variation and viral kinetics in African American and white patients. *J Infect Dis*. 2005;192:1078–87.
- Vuillermoz I, Khattab E, Sablon E, Ottevaere I, Durantel D, Vieux C, et al. Genetic variability of hepatitis C virus in chronically infected patients with viral breakthrough during interferon-ribavirin therapy. *J Med Virol*. 2004;74:41–53.
- Puig-Basagoiti F, Forns X, Furci I, Ampurdanes S, Gimenez-Barcons M, Franco S, et al. Dynamics of hepatitis C virus NS5A quasispecies during interferon and ribavirin therapy in responder and non-responder patients with genotype 1b chronic hepatitis C. *J Gen Virol*. 2005;86:1067–75.
- Wohnsland A, Hofmann WP, Sarrazin C. Viral determinants of resistance to treatment in patients with hepatitis C. *Clin Microbiol Rev*. 2007;20:23–38.
- El-Shamy A, Nagano-Fujii M, Sasase N, Imoto S, Kim SR, Hotta H. Sequence variation in hepatitis C virus nonstructural protein 5A predicts clinical outcome of pegylated interferon/ribavirin combination therapy. *Hepatology*. 2008;48:38–47.
- El-Shamy A, Sasayama M, Nagano-Fujii M, Sasase N, Imoto S, Kim SR, et al. Prediction of efficient virological response to pegylated interferon/ribavirin combination therapy by NS5A sequences of hepatitis C virus and anti-NS5A antibodies in pre-treatment sera. *Microbiol Immunol*. 2007;51:471–82.
- Yang SS, Lai MY, Chen DS, Chen GH, Kao JH. Mutations in the NS5A and E2-PePHD regions of hepatitis C virus genotype 1b and response to combination therapy of interferon plus ribavirin. *Liver Int*. 2003;23:426–33.

27. Desmet VJ, Gerber M, Hoofnagle JH, Manns M, Scheuer PJ. Classification of chronic hepatitis—diagnosis, grading and staging. *Hepatology*. 1994;19:1513–20.
28. Chayama K, Suzuki F, Tsubota A, Akuta N, Someya T, Kobayashi M, et al. Evaluation of quantitative measurements of hepatitis C virus RNA to predict sustained response to interferon by genotype. *J Virol Methods*. 2001;95:33–45.
29. Kato N, Hijikata M, Ootsuyama Y, Nakagawa M, Ohkoshi S, Sugimura T, et al. Molecular cloning of the human hepatitis C virus genome from Japanese patients with non-A, non-B hepatitis. *Proc Natl Acad Sci U S A*. 1990;87:9524–8.
30. Enomoto N, Sakuma I, Asahina Y, Kurosaki M, Murakami T, Yamamoto C, et al. Comparison of full-length sequences of interferon-sensitive and resistant hepatitis-C virus 1b – sensitivity to interferon is conferred by amino-acid substitutions in the NS5A region. *J Clin Invest*. 1995;96:224–30.
31. Enomoto N, Sakuma I, Asahina Y, Kurosaki M, Murakami T, Yamamoto C, et al. Mutations in the nonstructural protein 5A gene and response to interferon in patients with chronic hepatitis C virus 1b infection. *N Engl J Med*. 1996;334:77–81.
32. Hall M, Frank E, Holmes G, Pfahringer B, Reutemann P, Witten IH. The WEKA data mining software: an update. *SIGKDD Explor*. 2009;11:10–8.
33. Zeuzem S, Berg T, Moeller B, Hinrichsen H, Mauss S, Wedemeyer H, et al. Expert opinion on the treatment of patients with chronic hepatitis C. *J Viral Hepat*. 2009;16:75–90.
34. Buti M, Lurie Y, Zakharova NG, Blokhina NP, Horban A, Teuber G, et al. Randomized trial of peginterferon alfa-2b and ribavirin for 48 or 72 weeks in patients with hepatitis C virus genotype 1 and slow virologic response. *Hepatology*. 2010;52:1201–7.
35. Farnik H, Lange CM, Sarrazin C, Kronenberger B, Zeuzem S, Herrmann E. Meta-analysis shows extended therapy improves response of patients with chronic hepatitis C virus genotype 1 infection. *Clin Gastroenterol Hepatol*. 2010;8:884–90.
36. Watanabe S, Enomoto N, Koike K, Izumi N, Takikawa H, Hashimoto E, et al. Prolonged treatment with pegylated interferon alpha 2b plus ribavirin improves sustained virological response in chronic hepatitis C genotype 1 patients with late response in a clinical real-life setting in Japan. *Hepatol Res*. 2010;40:135–44.
37. Kurosaki M, Matsunaga K, Hirayama I, Tanaka T, Sato M, Yasui Y, et al. A predictive model of response to peginterferon ribavirin in chronic hepatitis C using classification and regression tree analysis. *Hepatol Res*. 2010;40:251–60.
38. El Malki HO, El Mejdoubi Y, Souadka A, Mohsine R, Ifrine L, Abouqal R, et al. Predictive model of bilio cystic communication in liver hydatid cysts using classification and regression tree analysis. *BMC Surg*. 2010;10:16.
39. Augustin S, Muntaner L, Altamirano JT, Gonzalez A, Saperas E, Dot J, et al. Predicting early mortality after acute variceal hemorrhage based on classification and regression tree analysis. *Clin Gastroenterol Hepatol*. 2009;7:1347–54.

## Original Article

Pegylated interferon  $\alpha$ -2b plus ribavirin for Japanese chronic hepatitis C patients with normal alanine aminotransferase

Mosaburo Kainuma,<sup>1</sup> Norihiro Furusyo,<sup>1</sup> Koichi Azuma,<sup>2</sup> Eiji Kajiwara,<sup>9</sup> Kazuhiro Takahashi,<sup>5</sup> Hideyuki Nomura,<sup>6</sup> Yuichi Tanabe,<sup>7</sup> Takeaki Satoh,<sup>10</sup> Toshihiro Maruyama,<sup>11</sup> Makoto Nakamuta,<sup>8</sup> Kazuhiro Kotoh,<sup>3</sup> Shinji Shimoda,<sup>4</sup> Jun Hayashi<sup>1</sup> and the Kyushu University Liver Disease Study (KULDS) Group

<sup>1</sup>Department of General Internal Medicine, Kyushu University Hospital, Departments of <sup>2</sup>Medicine and Clinical Science, <sup>3</sup>Medicine and Bioregulatory Science, <sup>4</sup>Medicine and Biosystemic Science, Graduate School of Medical Science, Kyushu University, <sup>5</sup>Department of Medicine, Hamanomachi Hospital, <sup>6</sup>The Center for Liver Disease, Shin-Kokura Hospital, <sup>7</sup>Department of Medicine, Fukuoka City Hospital, <sup>8</sup>Department of Gastroenterology, Kyushu Medical Center, National Hospital Organization, Fukuoka, <sup>9</sup>Department of Internal Medicine, Nippon Steel Yawata Memorial Hospital Harunomachi, <sup>10</sup>Center for Liver Disease, National Hospital Organization Kokura Medical Center Harugaoka, and <sup>11</sup>Department of Medicine, Kitakyushu Municipal Medical Center, Kitakyushu, Japan

**Aim:** To investigate the efficacy and safety of a pegylated interferon (PEG-IFN)  $\alpha$ -2b plus ribavirin (RBV) combination treatment for patients with chronic hepatitis C virus (HCV) infection who have persistently normal alanine aminotransferase (NALT).

**Methods:** This multicenter study included 989 patients with HCV genotype 1 (114 with NALT and 875 with elevated ALT) who received weight-based doses of PEG-IFN  $\alpha$ -2b plus RBV for 48 weeks. We compared the sustained viral response (SVR) rates of patients with NALT and elevated ALT who received at least 80% or more of the target dosage of PEG-IFN  $\alpha$ -2b and 60% or more of the target RBV (minimum acceptable dosage).

**Results:** No significant difference was found in the overall SVR rate between the NALT (42.1%) and elevated ALT groups (37.3%). No significant difference in the SVR rates was found between NALT (63.3%) and elevated ALT group (61.6%)

patients who received minimum acceptable dosage. Multivariate analysis showed that age (<65 years old) and total cholesterol ( $\geq 220$  mg/dL) were significantly independent positive factors associated with an SVR in the NALT group. Twenty-four weeks after treatment, an ALT increase above the normal range was observed for 34.0% (18 of 53) of the non-responsive group of NALT patients.

**Conclusions:** The efficacy and safety of PEG-IFN  $\alpha$ -2b plus RBV combination therapy for patients with chronic HCV infection are similar for patients with NALT and those with elevated ALT levels. These results indicate that patients with NALT should be considered for treatment with PEG-IFN  $\alpha$ -2b plus RBV.

**Key words:** hepatitis C virus, normal alanine aminotransferase, pegylated interferon, ribavirin

## INTRODUCTION

IT IS WELL documented that hepatocellular carcinoma (HCC) caused by HCV infection develops at a high rate in patients with advanced chronic hepatitis (CH)

and liver cirrhosis.<sup>1</sup> Interferon (IFN) therapy for chronic hepatitis C is useful for eliminating hepatitis C virus (HCV)<sup>2,3</sup> and for reducing the progression of hepatic fibrosis,<sup>4</sup> and consequently the development of HCC.<sup>5</sup> Alanine aminotransferase (ALT) values are persistently normal for 20–40% of HCV patients,<sup>6–9</sup> with these patients generally having milder disease and a relatively favorable prognosis, and thus they have in the past been excluded from antiviral treatment.<sup>10,11</sup> However, the current American Association for the Study of Liver Disease (AASLD) practice guidelines recommend that

Correspondence: Professor Jun Hayashi, Department of General Internal Medicine, Kyushu University Hospital, Higashi-Ku, Fukuoka, 812-8582, Japan. Email: hayashij@gim.med.kyushu-u.ac.jp  
Received 7 June 2011; revision 29 August 2011; accepted 31 August 2011.