

**Figure 4** In patients treated with lamivudine for  $\geq 3$  years, the increased incidence of tyrosine-methionine-aspartate-aspartate (YMDD) motif mutant by hepatitis B virus (HBV) DNA (log copies/mL) level was 65% in patients maintaining an HBV DNA level of  $< 2.6$ , 78% in patients maintaining an HBV DNA level of 2.6–5.0, and 92% in patients maintaining an HBV DNA level of  $\geq 5.1$ , and that of BTH in the corresponding groups was 10%, 18%, and 77% ( $P < 0.001$ ). (a) Incidence of YMDD mutants over time ( $P = 0.0001$ ). (b) Incidence of breakthrough hepatitis over time ( $P < 0.0001$ ).

values, which might be due to decreased replication efficiency of the HBV mutants.

HBeAg, severe liver disease, high HBV DNA, and low ALT levels at the baseline were factors accelerating the development of BTH. This was in confirmation of previous results.<sup>17–19</sup> Development of BTH, however, was not influenced by HBV genotypes. This is probably due to the response in HBeAg-positive patients, which was comparable among those with different genotypes though it differed among HBeAg-negative patients.<sup>20</sup>

In a study of Japanese adult patients treated with lamivudine for  $> 12$  months, the YMDD motif mutation was detected in 26% patients, with 23, 16, and 21 patients

correspondingly positive for YIDD, YVDD, and YIDD + YVDD mutants. The occurrence of mutations steadily increased and two, five, and 52 patients with genotypes A, B, and C, respectively developed resistance.<sup>21</sup> Lamivudine retreatment could induce rapid re-emergence of YMDD motif mutants with associated viral and hepatic flares<sup>22</sup> and should be avoided. Next, we were interested to know if any difference in sensitivity existed in detecting YMDD mutants by the two different methods used in this study, PCR-RFLP and PCR-ELMA. We studied the rate of detection of YMDD motif mutant by both methods in 20 patients who received lamivudine for more than two years. The detection rate

**Table 4** Incidences of tyrosine-methionine-aspartate-aspartate (YMDD) mutant and breakthrough hepatitis (BTH) by hepatitis B virus (HBV) DNA and alanine transaminase (ALT) level in patients during lamivudine treatment for  $\geq 3$  years (234 patients)

HBV DNA† (Amplicor: log copies/mL)	ALT level (IU/L)†					
	$\leq 20$		21-30		31-40	
	YMDD	BTH	YMDD	BTH	YMDD	BTH
< 2.6	23/60 (38%)	4/60 (7%)	29/61 (48%)	5/61 (8%)	4/11 (36%)	1/11 (9%)
2.6-5.0	30/50 (60%)	2/50 (4%)	19/22 (86%)	4/22 (18%)	11/12 (92%)	5/12 (42%)
$\geq 5.1$	3/3 (100%)	1/3 (33%)	0/1 (0%)	0/1 (0%)	13/14 (93%)	12/14 (86%)

†The HBV DNA and ALT levels are shown based on the treatment duration of lamivudine.

between PCR-RFLP and PCR-ELMA was similar; eight patients (40%) and nine patients (45%), respectively.<sup>23</sup>

## CONCLUSION

**C**ORRELATION OF ALT and HBV DNA levels with YMDD motif mutant and viral breakthrough can be used as an indirect method of estimating susceptibility to develop lamivudine resistance. The low incidence of YMDD motif mutant and BTH associated with an HBV DNA level of < 2.6 log copies/mL and ALT level of  $\leq 30$  IU/L and an HBV DNA level of 2.6-5.0 log copies/mL and ALT level of  $\leq 20$  IU/L during only less than 3 year-treatments can be utilized as a clinically relevant tool to monitor patients' criteria in switching to other nucleoside analogue drugs. Using these simple methods, which can be easily pursued in clinical practice, it may be feasible in the future to switch from lamivudine to other nucleoside analogue drugs with low rates of inducing resistant mutants in CHBV patients. This is important considering the risk of continuous lamivudine treatment causing YMDD motif mutant and BTH.

## REFERENCES

- Dienstag JL, Schiff ER, Wright TL *et al.* Lamivudine as initial treatment for chronic hepatitis b in the United states. *N Engl J Med* 1999; 341: 1256-63.
- Lai CL, Ching CK, Tung AK *et al.* Lamivudine is effective in suppressing hepatitis B virus DNA in Chinese hepatitis B surface antigen carriers: a placebo-controlled trial. *Hepatology* 1997; 25: 241-4.
- Nevens F, Main J, Honkoop P *et al.* Lamivudine therapy for chronic hepatitis B: a six-month randomized dose-ranging study. *Gastroenterology* 1997; 113: 1258-63.
- Suzuki Y, Kumada H, Ikeda K *et al.* Histological changes in liver biopsies after one year of lamivudine treatment in patients with chronic hepatitis B infection. *J Hepatol* 1999; 30: 743-8.
- Li MW, Hou W, Wo JE, Liu KZ. Character of HBV (hepatitis B virus) polymerase gene rtM204V/I and rtL180M mutation in patients with lamivudine resistance. *J Zhejiang Univ Sci B* 2005; 6: 664-7.
- Pallier C, Castera L, Soulier A *et al.* Dynamics of hepatitis B virus resistance to lamivudine. *J Virol* 2006; 80: 643-53.
- Allen MI, Deslauriers M, Andrews CW *et al.* Identification and characterization of mutations in hepatitis B virus resistant to lamivudine. Lamivudine Clinical Investigation Group. *Hepatology* 1998; 27: 1670-7.
- Chayama K, Suzuki Y, Kobayashi M *et al.* Emergence and takeover of YMDD motif mutant hepatitis B virus during long-term lamivudine therapy and re-takeover by wild type after cessation of therapy. *Hepatology* 1998; 27: 1711-16.
- Honkoop P, Niesters HG, De Man RA, Osterhaus AD, Schalm SW. Lamivudine resistance in immunocompetent chronic hepatitis B. Incidence and patterns. *J Hepatol* 1997; 26: 1393-5.
- Gaillard RK, Barnard J, Lopez V *et al.* Kinetic analysis of wild-type and YMDD mutant hepatitis B virus polymerases and effects of deoxyribonucleotide concentrations on polymerase activity. *Antimicrob Agents Chemother* 2002; 46: 1005-13.
- Bottecchia M, Souto FJ, KM O *et al.* Hepatitis B virus genotypes and resistance mutations in patients under long term lamivudine therapy: characterization of genotype G in Brazil. *BMC Microbiol* 2008; 8: 11-20.
- Ayoub WS, Keeffe EB. Review article: current antiviral therapy of chronic hepatitis B. *Aliment Pharmacol Ther* 2008; 28: 167-77.
- Kumada H. Scientific Research Grant of Ministry of Health, Labour and Welfare Research of Hepatitis Overcome Urgent Strategy. Research Report of the Standardization of Viral

- Hepatitis treatment including Liver Cirrhosis (Japanese version). 2007.
- 14 Buster EH, van Erpecum KJ, Schalm SW *et al.* Treatment of chronic hepatitis B virus infection – Dutch national guidelines. *Neth J Med* 2008; 66: 292–306.
  - 15 Tadokoro K, Kobayashi M, Yamaguchi T *et al.* Classification of hepatitis B virus genotypes by the PCR-Invader method with genotype-specific probes. *J Virol Methods* 2006; 138: 30–9.
  - 16 Liu KZ, Hou W, Zumbika E, Ni Q. Clinical features of chronic hepatitis B patients with YMDD mutation after lamivudine therapy. *J Zhejiang Univ Sci B* 2005; 6: 1182–7.
  - 17 Chien RN, Liaw YF, Atkins M. Pretherapy alanine transaminase level as a determinant for hepatitis B e antigen seroconversion during lamivudine therapy in patients with chronic hepatitis B. Asian Hepatitis Lamivudine Trial Group. *Hepatology* 1999; 30: 770–4.
  - 18 Kumada H. Continued lamivudine therapy in patients with chronic hepatitis B. *Intervirol* 2003; 46: 377–87.
  - 19 Liaw YF. Therapy of chronic hepatitis B: current challenges and opportunities. *J Viral Hepat* 2002; 9: 393–9.
  - 20 Kobayashi M, Akuta N, Suzuki F *et al.* Virological outcomes in patients infected chronically with hepatitis B virus genotype A in comparison with genotypes B and C. *J Med Virol* 2006; 78: 60–7.
  - 21 Suzuki F, Tsubota A, Arase Y *et al.* Efficacy of lamivudine therapy and factors associated with emergence of resistance in chronic hepatitis B virus infection in Japan. *Intervirol* 2003; 46: 182–9.
  - 22 Kwon SY, Choe WH, Lee CH, Yeon JE, Byun KS. Rapid re-emergence of YMDD mutation of hepatitis B virus with hepatic decompensation after lamivudine retreatment. *World J Gastroenterol* 2008; 14: 4416–19.
  - 23 Matsuda M, Suzuki F, Suzuki Y *et al.* YMDD mutant in patients with chronic hepatitis B before treatment are not selected by lamivudine. *J Med Virol* 2004; 74: 361–6.

## Original Article

## Development of HCC in patients receiving adefovir dipivoxil for lamivudine-resistant hepatitis B virus mutants

Tetsuya Hosaka,<sup>1</sup> Fumitaka Suzuki,<sup>1</sup> Masahiro Kobayashi,<sup>1</sup> Miharuru Hirakawa,<sup>1</sup> Yusuke Kawamura,<sup>1</sup> Hiromi Yastuji,<sup>1</sup> Hitomi Sezaki,<sup>1</sup> Norio Akuta,<sup>1</sup> Yoshiyuki Suzuki,<sup>1</sup> Satoshi Saitoh,<sup>1</sup> Yasuji Arase,<sup>1</sup> Kenji Ikeda,<sup>1</sup> Yuzo Miyakawa<sup>2</sup> and Hiromitsu Kumada<sup>1</sup>

<sup>1</sup>Department of Hepatology, Toranomon Hospital, and <sup>2</sup>Miyakawa Memorial Research Foundation, Tokyo, Japan

**Aim:** To identify factors for the development of hepatocellular carcinoma (HCC) in the patients who receive adefovir add-on lamivudine for treatment of lamivudine-resistant hepatitis B virus (HBV) mutants.

**Methods:** A total of 247 patients who developed lamivudine-resistant HBV mutants, with an increase of HBV DNA  $\geq 1$  log copies/mL, received adefovir dipivoxil 10 mg add-on lamivudine 100 mg daily during a median of 115 weeks (range: 25–282 weeks). They were followed for the development of HCC by imaging modalities every 3–6 months.

**Results:** HCC developed in 18 of the 247 (7.3%) patients. Eight factors were in significant association with the development of HCC by the univariate analysis. They included age, cirrhosis, platelet counts, levels of bilirubin, aspartate aminotransferase (AST), alanine aminotransferase and  $\alpha$ -fetoprotein, as well as YMDD mutants at the start of

adefovir dipivoxil. By the multivariate analysis, AST levels, YIDD mutants, cirrhosis and age were independent factors for the development of HCC. By the Kaplan-Meier analysis, AST levels  $\geq 70$  IU/L, YIDD mutants, cirrhosis and age  $\geq 50$  years increased the risk of HCC ( $P = 0.018$ ,  $P = 0.035$ ,  $P = 0.002$  and  $P = 0.014$ , respectively). HCC developed more frequently in the patients with than without cirrhosis at the start of adefovir (10/59 [16.9%] vs. 8/188 [4.3%],  $P = 0.002$ ).

**Conclusion:** HCC can develop in cirrhotic patients receiving adefovir add-on lamivudine. Hence, the patients with baseline AST  $\geq 70$  IU/L and YIDD mutants would need to be monitored closely for HCC.

**Key words:** adefovir dipivoxil, chronic hepatitis B, hepatitis B virus, hepatocellular carcinoma, lamivudine, rescue therapy

## INTRODUCTION

WORLDWIDE, AN ESTIMATED 400 million people are infected with hepatitis B virus (HBV) persistently, and one million die of decompensated cirrhosis and/or hepatocellular carcinoma (HCC) annually.<sup>1,2</sup> Interferon (IFN) was introduced for treatment of chronic hepatitis B, and it has been replaced for pegylated-IFN.<sup>3</sup> Due to substantial side-effects and requirement for injection, however, IFN-based therapies are not favored.

In 1998, lamivudine was approved as the first nucleot(s)ide analogue for treatment of chronic hepatitis B,<sup>4</sup> and then adefovir in 2002.<sup>5</sup> Due to its lower costs and

safety records, lamivudine has gained a wide popularity for treatment of chronic hepatitis B. However, drug-resistant mutants arise in parallel with the duration of lamivudine, in 12.5% after 1 year, in 43.8% after 3 years, and 62.5–70.2% after 5 years.<sup>6,7</sup> For preventing breakthrough hepatitis induced by lamivudine-resistant HBV mutants, additional adefovir dipivoxil 10 mg daily has been recommended;<sup>8,9</sup> it is more effective than switching to adefovir monotherapy and has fewer chances of developing drug-resistant mutants.<sup>10,11</sup>

Since 1995, 930 patients with chronic hepatitis have been treated with lamivudine in the Department of Hepatology at the Toranomon Hospital in Metropolitan Tokyo.<sup>12</sup> HBV mutants with mutations in the thymosine-methionine-aspartic acid-aspartic acid (YMDD) motif elicited in the 247 (26.5%) patients, and they started to receive additional adefovir since December, 2002.<sup>13,14</sup> However, HCC developed in 18 (7.3%) of them during the combination therapy for 25–282 weeks; HCC has

Correspondence: Dr Tetsuya Hosaka, Department of Hepatology, Toranomon Hospital, 1-3-1, Kajigaya, Takatsu-ku, Kawasaki 213-8587, Japan. Email: hosa-p@toranomon.gr.jp

Received 25 April 2009; revision 6 June 2009; accepted 9 June 2009.

not been reported in any of the patients who have received adefovir add-on lamivudine for 5 years.<sup>15–17</sup> Hence, factors for the development of HCC in the patients receiving adefovir add-on lamivudine were sought for in a retrospective study.

## METHODS

### Patients

OVER A PERIOD of 13 years, from September 1995 to September 2007, 930 patients with chronic hepatitis B received long-term lamivudine treatment at the Department of Hepatology at the Toranomon Hospital in Metropolitan Tokyo. Drug-resistant YMDD mutants developed in 247 (26.5%) of them, accompanied by an increase in HBV DNA  $\geq 1$  log copies/mL, and they received adefovir 10 mg in addition to lamivudine 100 mg daily during the median of 115 weeks (range: 25–282 weeks). They have been followed for liver function and virological markers of HBV infection monthly, as well as blood counts and tumor markers including alpha-fetoprotein (AFP) and protein induced by vitamin K absence or antagonist-II (PIVKA-II). Cirrhosis was diagnosed by laparoscopy or liver biopsy, and in the patients who had not received them, by clinical data, imaging modalities and portal hypertension. HCC was diagnosed by hypervascularity on angiography and/or histological examination, characteristic features of computed tomography, magnetic resonance imaging and ultrasonography. An informed consent was obtained from each patient in this study, and the protocol conforms to the ethical guidelines of the 1975 Declaration of Helsinki as reflected in a *priori* approval by the institution's human research committee.

### Markers of HBV infection

Hepatitis B e antigen (HBeAg) was determined by enzyme-linked immunosorbent assay (ELISA) with commercial kits (HBeAg EIA, Institute of Immunology, Tokyo). HBV DNA was quantitated by the Amplicor monitor assay (Roche Diagnostics, Tokyo) with a dynamic range over 2.6–7.6 log copies/mL. Genotypes of HBV were determined serologically by the combination of epitopes expressed on the pre-S2 region product, which is specific for each of the seven major genotypes (A–G),<sup>18,19</sup> with use of commercial kits (HBV Genotype EIA, Institute of Immunology).

### Detection of YMDD mutants

YMDD mutants were determined by polymerase chain reaction (PCR)-based enzyme-linked mini-sequence

assay (PCR-ELIMA) with commercial kits (Genome Science Laboratories, Tokyo).

### Statistical analyses

Categorical variables were compared between groups by the  $\chi^2$  test, and non-categorical variables by the Mann-Whitney *U*-test. A *P*-value  $< 0.05$  was considered significant. Factors associated with HCC by univariate analysis were evaluated by the multivariate analysis by the stepwise Cox proportional hazard model. Development of HCC with time was analyzed by the Kaplan–Meier method, and differences were evaluated by the log-rank test. Data were analyzed by the SPSS software, version 11.0 (Chicago, IL).

## RESULTS

### Baseline characteristics of the patients who did and who did not develop hepatocellular carcinoma during adefovir add-on lamivudine treatment

TABLE 1 COMPARES characteristics at the start of adefovir between the 18 patients who developed HCC and the 229 who did not. Eight factors were associated with the development of HCC by the univariate analysis. They included age, cirrhosis, platelet counts, bilirubin, AST, alanine aminotransferase (ALT) and  $\alpha$ -fetoprotein (AFP) levels, as well as YMDD mutants. HCC developed more frequently in the patients with than without cirrhosis at the start of adefovir (10/59 [16.9%] vs. 8/188 [4.3%], *P* = 0.002). There were 61 (26.6%) patients who had cirrhosis at the start of adefovir. Of them, one of the 18 (2.2%) with HCC and 18 of the 229 (2.2%) without HCC presented with decompensation; no patients developed decompensation after the start of adefovir.

Rates of HBV DNA disappearance from serum ( $< 2.6$  log copies/mL) were: 55% (113/207) at 1 year, 71% (119/168) at 2 years, 77% (78/101) at 3 years and 85% (35/41) at 4 years. Rates of AST nomarlization ( $< 38$  IU/L) were: 87% (179/207) at 1 year, 90% (151/168) at 2 years, 92% (93/101) at 3 years and 95% (39/41) at 4 years; and those of ALT normalization ( $< 50$  IU/L) were: 88% (183/207) at 1 year, 91% (153/168) at 2 years, 93% (94/101) at 3 years and 98% (40/41) at 4 years. There were no differences in the rate of HBV DNA disappearance from serum between the patients with and without HCC: 57% (8/14) vs. 54% (105/193) at 1 year (*P* = 1.0); 86% (12/14) vs. 70% (107/154) at 2 years (*P* = 0.229); and 89% (8/9) vs.

**Table 1** Characteristics of patients who did and did not develop hepatocellular carcinoma (HCC) at the start of adefovir

	HCC developed (n = 18)	HCC did not develop (n = 229)	Differences P-value
Duration of lamivudine before the start of adefovir	128 (31–346)	144 (13–617)	0.321
Age (years)	52 (35–75)	45 (26–75)	0.008
Men	15 (83%)	183 (80%)	1.000
Cirrhosis	10 (56%)	51 (22%)	0.004
Platelets ( $\times 10^3/\text{mm}^3$ )	12.0 (4.6–19.7)	16.3 (3.1–31.9)	0.001
Albumin (g/dL)	3.6 (2.3–4.7)	3.9 (2.8–4.7)	0.073
Bilirubin (mg/dL)	0.8 (0.5–15.5)	0.7 (0.2–6.0)	0.046
Creatinine (mg/dL)	0.8 (0.5–1.0)	0.8 (0.4–1.6)	0.950
AST (IU/L)	119 (55–248)	66 (14–1413)	0.003
ALT (IU/L)	151 (61–576)	104 (13–1563)	0.035
AFP (ng/dL)	8 (2–130)	4 (1–282)	0.026
HBV genotypes			0.228
C	18 (100%)	189 (87%)	
Others	0	27 (13%)	
HBeAg	8 (44%)	132 (58%)	0.323
HBV DNA (log copies/mL)	7.1 (4.4–>7.6)	7.1 (<2.6–>7.6)	0.623
YMDD mutants			0.041
YIDD	13 (72%)	109 (45%)	
YVDD	5 (28%)	62 (25%)	
YI/VDD	0	56 (23%)	

†Values are the median with the range in parentheses or *n* with percent in parentheses.

AFP, alpha-fetoprotein; ALT, alaine aminotransferase; AST, aspartate aminotransferase; HBeAg, hepatitis B e antigen; HBV, hepatitis B virus.

92% (85/92) at 3 years ( $P = 0.555$ ). Rates of normalized AST levels in the patients with and without HCC were: 50% (7/14) vs. 90% (173/193) at 1 year ( $P < 0.001$ ); 79% (11/14) vs. 91% (140/154) at 2 year ( $P = 0.166$ ); and 67% (6/9) vs. 95% (87/92) at 3 year ( $P = 0.037$ ). Rates of ALT normalization in the patients with and without HCC were: 71% (10/14) vs. 90% (174/193) at 1 year ( $P = 0.037$ ); 79% (11/14) vs. 90% (139/154) at 2 year ( $P = 0.189$ ); and 56% (5/9) vs. 92% (85/92) at 3 year ( $P = 0.015$ ). Thus, normalization of AST and ALT was less frequent in the patients with than without HCC.

Characteristics of the 18 patients who developed HCC are compared between the baseline and at the development of HCC (Table 2). At the start of adefovir, 10 (56%) of them had developed cirrhosis and 16 (89%) had AST levels  $\geq 70$  IU/L. HBV DNA was not detectable in 10 (56%) of them at the development of HCC. Of the eight patients with detectable HBV DNA levels ( $\geq 2.6$  log copies/mL), five (63%) developed HCC within 1 year after the start of adefovir. AST was elevated ( $> 38$  IU/L) in eight patients, including four (50%) without detectable HBV DNA levels.

### Factors independently associated with the development of hepatocellular carcinoma

Eight factors associated with the development of HCC by the univariate analysis, including age, cirrhosis, platelet counts, bilirubin, AST, ALT and AFP levels, as well as YMDD mutants (Table 1), were evaluated by the multivariate analysis.  $\text{AST} \geq 70$  IU/L, YIDD mutants, age  $\geq 50$  years and cirrhosis at the baseline were independent risk factors for the development of HCC (Table 3). There were no differences in the distribution of YIDD, YVDD and the mixture thereof among the patients with distinct AST, ALT or HBV DNA levels or between those with and without cirrhosis at the start of adefovir. HBV mutants with mutations resistant to adefovir (rtA181T/S, rtN236T) occurred in two of the 247 (0.8%) patients; none of them developed HCC.

The median time between the elevation of HBV DNA  $> 5.0$  log copies/mL and the administration of adefovir was 124 (range: 0–815) days for the 13 patients who developed HCC and 147 (0–3268) days for the 166 patients who did not ( $P = 0.605$ ). The median time between the elevation of ALT  $> 43$  IU/L and the start of

Table 2 Characteristics of the 18 patients at commencement of adefovir (ADV) and development of hepatocellular carcinoma (HCC)

Patient no.	Age (years)	Sex	At the commencement of ADV						Period of ADV (years)	At the development of HCC		
			Liver disease	AST (IU/L)	ALT (IU/L)	HBeAg	HBV DNA (log copies/mL)	YMDD mutant		AST (IU/L)	ALT (IU/L)	HBV DNA (log copies/mL)
1	50	M	CH	248	576	-	6.9	I	4.5	26	27	<2.6
2	35	M	LC	217	164	+	7.5	I	1.6	54	34	<2.6
3	50	M	LC	192	272	+	>7.6	I	1.2	68	89	<2.6
4	61	M	CH	192	332	-	6.9	I	2.8	22	23	<2.6
5	65	M	CH	174	219	-	5.2	V	0.1	30	43	<2.6
6	58	M	CH	160	216	-	6.5	V	2.2	41	32	<2.6
7	53	M	LC	127	97	+	>7.6	I	0.5	55	41	3.2
8	75	M	LC	119	209	+	>7.6	V	1.1	121	125	2.6
9	58	F	CH	118	214	+	4.4	I	3.3	21	13	<2.6
10	48	M	CH	116	99	+	>7.6	I	3.3	32	36	<2.6
11	51	F	LC	111	130	-	5.3	I	0.9	88	95	<2.6
12	47	M	CH	85	138	+	>7.6	I	1.3	28	29	3.1
13	61	M	LC	81	65	-	5.6	I	0.2	32	27	2.9
14	59	F	LC	80	132	-	>7.6	V	0.1	32	41	3.2
15	40	M	LC	75	124	-	6.3	I	3.8	21	24	<2.6
16	48	M	CH	71	61	-	6.6	I	0.6	48	26	3.7
17	55	M	LC	55	76	+	7.3	I	0.2	50	64	5.4
18	43	M	LC	27	21	-	5.4	V	1.6	30	23	3.7

ALT, alaine aminotransferase; AST, aspartate aminotransferase; CH, chronic hepatitis; HBeAg, hepatitis B e antigen; HBV, hepatitis B virus; I, YIDD mutant; LC, cirrhosis; V, YVDD mutant.

**Table 3** Independent risk factors influencing the development of hepatocellular carcinoma

Factors	Category	Hazard ratio (95% CI)†	P-value
AST (IU/L)	1: < 70	1	0.016
	2: ≥ 70	6.21 (1.40–27.5)	
YMDD mutants	1: YVDD or YV/IDD	1	0.012
	2: YIDD	3.97 (1.36–11.6)	
Age (years)	1: < 50	1	0.023
	2: ≥ 50	3.24 (1.17–8.95)	
Cirrhosis	1: Absent	1	0.030
	2: Present	1.42 (1.04–1.96)	

†Confidence interval.

adefovir was 59 (0–896) days for the patients who developed HCC and 54 (0–3240) days for those who did not ( $P=0.330$ ). Hence, exacerbation of hepatitis was not a risk factor for the development of HCC.

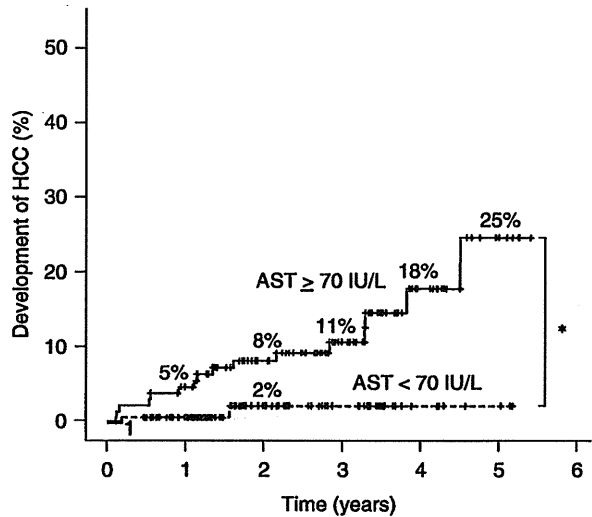
Age-specific risk factors for the development of HCC were evaluated by the multivariate analysis. In the patients < 50 years, platelet counts  $< 13 \times 10^3/\text{mm}^3$  was the only significant risk factor for HCC (hazard ratio 6.88 [95% confidence interval; 1.26–37.6]), while AST levels  $\geq 70$  IU/L was that in those  $\geq 50$  years (hazard ratio: 9.50 [95% confidence interval 1.20–74.9]).

**Factors increasing the cumulative incidence of hepatocellular carcinoma**

AST levels  $\geq 70$  IU/L at the start of adefovir increased the development of HCC during follow-ups ranging to 5 years (Fig. 1). HCC developed more frequently in the patients with YIDD mutants than in those with YVDD or the mixture of YVDD and YIDD mutants (Fig. 2). The cumulative incidence of HCC in the patients with YIDD mutants alone was: 4% at 1 year, 10% at 3 years and 43% at 5 years. In contrast, HCC never developed in the patients with the mixture of YIDD and YVDD mutants through 5 years of follow-up. HCC developed more frequently in the patients with cirrhosis and those aged  $\geq 50$  years (Figs 3,4, respectively).

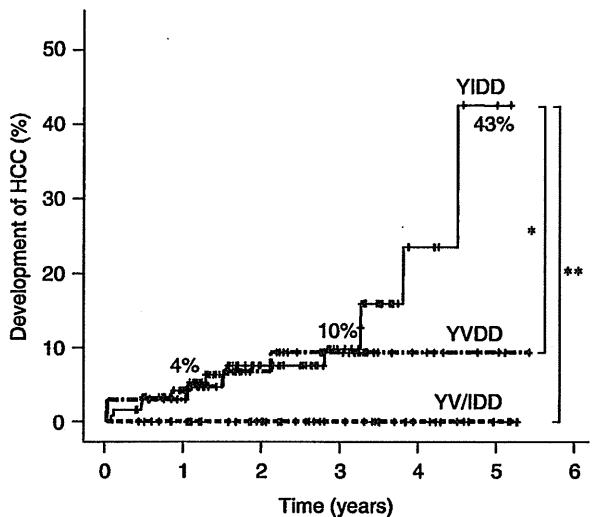
**DISCUSSION**

**H**CC DEVELOPED IN 18 of the 247 (7.3%) patients who had received adefovir add-on lamivudine during a long-term ranging to 5 years. There were some differences in the characteristics at the start of adefovir dipivoxil between the patients who did and who did not



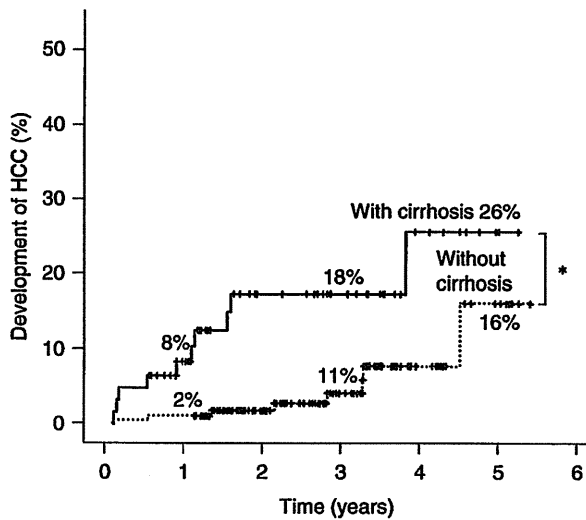
**Figure 1** Kaplan–Meier life-table for the cumulative incidence of hepatocellular carcinoma (HCC) during adefovir add-on lamivudine in the patients with different baseline aspartate aminotransferase (AST) levels. \* $P=0.009$ .

develop HCC. The patients who developed HCC were older, more frequently had signs of early cirrhosis with less platelet counts, as well as higher levels of AST, ALT and AFP, than those who did not develop HCC. By multivariate analysis, AST  $\geq 70$  IU/L, YIDD mutants in



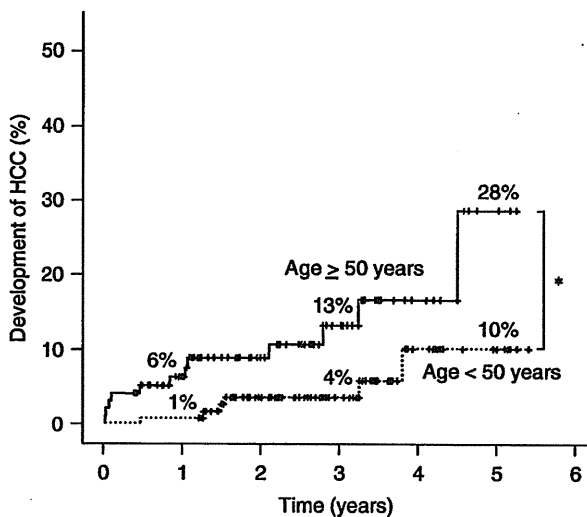
**Figure 2** Kaplan–Meier life-table for the cumulative incidence of hepatocellular carcinoma (HCC) during adefovir add-on lamivudine in the patients with distinct YMDD mutants. \* $P=0.035$ ; \*\* $P=0.003$ .





**Figure 3** Kaplan–Meier life-table for the cumulative incidence of hepatocellular carcinoma (HCC) during adefovir add-on lamivudine in the patients with and without cirrhosis at the baseline. \* $P = 0.002$ .

comparison with YVDD or the mixture of YVDD and YIDD mutants, age  $\geq 50$  years and cirrhosis were independent risk factors for the development of HCC. By the Kaplan–Meier life-table analysis, the cumulative incidence of HCC during 5 years in the patients receiving



**Figure 4** Kaplan–Meier life-table for the cumulative incidence of hepatocellular carcinoma (HCC) during adefovir add-on lamivudine in the patients aged  $\geq 50$  years and  $< 50$  years at the baseline. \* $P = 0.014$ .

adefovir add-on lamivudine was significantly higher in those with AST  $\geq 70$  IU/L, YIDD mutants, cirrhosis and aged  $\geq 50$  years at the start of adefovir.

A marked difference in the development of HCC between the present study (7.3% [18/247]) and two studies reported from Europe and the US (0/70 and 0/65, respectively)<sup>16,17</sup> would be accounted for, at least in part, by the age of patients who developed HCC in this study that was older than in those in previous reports (the median of 52 years vs. means of 36 and 47 years, respectively). This view would be supported by the age of patients with long-term adefovir add-on lamivudine that was higher in those with than without the development of HCC (52 vs. 45 years [median],  $P = 0.008$ ). HBV infection in Asia is acquired by the perinatal infection, while that in Western countries is gained after the adolescence  $\sim 20$  years after birth. Hence, the duration of HBV infection would have been  $> 20$  years longer in Japanese than Western patients. In addition, genotypes of HBV may give an additional account on the difference in development of HCC between them. All the 18 patients who developed HCC in this study were infected with genotype C; it is associated with HCC more closely than the other genotypes.<sup>20–23</sup> By contrast, by far the most patients from Western countries would have been infected with genotypes A and D.<sup>24,25</sup>

HCC developed more frequently in patients with than without cirrhosis at the start of adefovir (10/61 [16.4%] vs. 8/186 [4.3%],  $P = 0.002$ ). Hence, cirrhosis increased the risk of HCC in patients receiving adefovir add-on lamivudine. This view is supported by the development of HCC in 11 of the 94 (11.7%) patients with cirrhosis who received adefovir add-on lamivudine from Italy.<sup>10</sup> Although HCC did not develop in any of the 39 Italian patients with chronic hepatitis, it did in eight of the 186 (4.3%) Japanese patients in the present study. There were, however, marked differences in the median baseline ALT levels between Italian and Japanese patients (58 vs. 108 IU/L); the grade of liver inflammation would have been higher in the Japanese patients. In actuality, all the eight patients with chronic hepatitis who developed HCC had high AST and ALT levels at the start of adefovir (Table 2).

In the natural history of persistent HBV infection, HCC develops more frequently in the patients with persistently high ALT levels than in those with normal levels. Hence, necroinflammation in the liver would contribute to carcinogenesis.<sup>26,27</sup> Although adefovir add-on lamivudine may prevent virological breakthroughs, it would not be able to suppress the pre-

neoplastic state induced by exacerbation of hepatitis. It would be necessary therefore to identify the patients with chronic hepatitis at an increased risk for HCC during adefovir add-on lamivudine, such as those with cirrhosis or aged  $\geq 50$  years, and take special care of them toward early detection of HCC and immediate therapeutic intervention. They need to be monitored frequently for any increase in HBV DNA and aminotransferase levels that herald breakthrough hepatitis during lamivudine therapy.

In the present study, HCC developed more frequently in the patients with YIDD mutants than in those with YVDD or the mixture of YVDD and YIDD; there have been no studies correlating YMDD mutants and the development of HCC. No patients with the mixture of YVDD and YIDD mutants developed HCC, despite the predominance of YIDD mutants in the patients with HCC. This might have been due to the assay used for YMDD mutants by the commercial kit; it can miss YVDD mutants in samples in which YIDD mutants account for the great majority. By the assay method specific for either mutant, YIDD was detected either alone or accompanied by small amount of YVDD in the patients who have received adefovir add-on lamivudine treatment.<sup>28</sup> Sensitive and specific quantification of YIDD and YVDD mutants are necessary for further evaluating a role for YIDD mutants in hepatocarcinogenesis, as well as for identifying factors promoting the generation of both YIDD mutants and HCC.

Some points of clinical importance have emerged in the present study. First, patients who receive a long-term adefovir add-on lamivudine and have developed YMDD mutants need to be screened for HCC on the regular basis. This is required especially for the patients who have signs of cirrhosis and/or high AST levels, or aged  $\geq 50$  years. In these high-risk patients, adefovir has to be started promptly when HBV DNA levels increase, even before transaminase levels elevate in them. Secondly, it would be a matter of concern if adefovir is involved in the development of HCC. Should it be the case, tenofovir or newer potent antivirals, either as a monotherapy or add-on lamivudine, would deserve considerations. Thirdly, it needs to be evaluated if YIDD mutants have any significance in the development of HCC. Although nucleot(s)ide analogues may suppress hepatic inflammation and are expected to improve the prognosis of patients with chronic hepatitis B, they need to be monitored closely for HCC. The development of HCC has to be identified, as early as possible, for timely treatment toward longevity with minimal morbidity and improvement of the quality of life.

## ACKNOWLEDGEMENTS

THIS WORK WAS sponsored in part by grants from the Ministry of Health, Labour and Welfare of Japan.

## REFERENCES

- 1 Lee WM. Hepatitis b virus infection. *N Engl J Med* 1997; 337: 1733–45.
- 2 Ganem D, Prince AM. Hepatitis B virus infection – natural history and clinical consequences. *N Engl J Med* 2004; 350: 1118–29.
- 3 Dienstag JL. Hepatitis B virus infection. *N Engl J Med* 2008; 359: 1486–500.
- 4 Jarvis B, Faulds D. Lamivudine. A review of its therapeutic potential in chronic hepatitis B. *Drugs* 1999; 58: 101–41.
- 5 Dando T, Plosker G. Adefovir dipivoxil: a review of its use in chronic hepatitis B. *Drugs* 2003; 63: 2215–34.
- 6 Akuta N, Suzuki F, Kobayashi M *et al*. Virological and biochemical relapse according to YMDD motif mutant type during long-term lamivudine monotherapy. *J Med Virol* 2003; 71: 504–10.
- 7 Suzuki F, Suzuki Y, Tsubota A *et al*. Mutations of polymerase, precore and core promoter gene in hepatitis B virus during 5-year lamivudine therapy. *J Hepatol* 2002; 37: 824–30.
- 8 Keeffe EB, Dieterich DT, Han SH *et al*. A treatment algorithm for the management of chronic hepatitis B virus infection in the United States: an update. *Clin Gastroenterol Hepatol* 2006; 4: 936–62.
- 9 Lok AS, McMahon BJ. Chronic hepatitis B. *Hepatology* 2007; 45: 507–39.
- 10 Lampertico P, Vigano M, Manenti E, Iavarone M, Sablon E, Colombo M. Low resistance to adefovir combined with lamivudine: a 3-year study of 145 lamivudine-resistant hepatitis B patients. *Gastroenterology* 2007; 133: 1445–51.
- 11 Yatsuji H, Suzuki F, Sezaki H *et al*. Low risk of adefovir resistance in lamivudine-resistant chronic hepatitis B patients treated with adefovir plus lamivudine combination therapy: two-year follow-up. *J Hepatol* 2008; 48: 923–31.
- 12 Kumada H. Continued lamivudine therapy in patients with chronic hepatitis B. *Intervirology* 2003; 46: 377–87.
- 13 Hosaka T, Suzuki F, Suzuki Y *et al*. Factors associated with the virological response of lamivudine-resistant hepatitis B virus during combination therapy with adefovir dipivoxil plus lamivudine. *J Gastroenterol* 2007; 42: 368–74.
- 14 Hosaka T, Suzuki F, Suzuki Y *et al*. Adefovir dipivoxil for treatment of breakthrough hepatitis caused by lamivudine-resistant mutants of hepatitis B virus. *Intervirology* 2004; 47: 362–9.
- 15 Delaney WE IV. Progress in the treatment of chronic hepatitis B: long-term experience with adefovir dipivoxil. *J Antimicrob Chemother* 2007; 59: 827–32.

- 16 Hadziyannis SJ, Tassopoulos NC, Heathcote EJ *et al.* Long-term therapy with adefovir dipivoxil for HBeAg-negative chronic hepatitis B for up to 5 years. *Gastroenterology* 2006; 131: 1743–51.
- 17 Marcellin P, Chang TT, Lim SG *et al.* Long-term efficacy and safety of adefovir dipivoxil for the treatment of hepatitis B e antigen-positive chronic hepatitis B. *Hepatology* 2008; 48: 750–8.
- 18 Usuda S, Okamoto H, Iwanari H *et al.* Serological detection of hepatitis B virus genotypes by ELISA with monoclonal antibodies to type-specific epitopes in the preS2-region product. *J Virol Methods* 1999; 80: 97–112.
- 19 Usuda S, Okamoto H, Tanaka T *et al.* Differentiation of hepatitis B virus genotypes D and E by ELISA using monoclonal antibodies to epitopes on the preS2-region product. *J Virol Methods* 2000; 87: 81–9.
- 20 Livingston SE, Simonetti JP, Bulkow LR *et al.* Clearance of hepatitis B e antigen in patients with chronic hepatitis B and genotypes A, B, C, D, and F. *Gastroenterology* 2007; 133: 1452–7.
- 21 Kao JH, Chen PJ, Lai MY, Chen DS. Hepatitis B genotypes correlate with clinical outcomes in patients with chronic hepatitis B. *Gastroenterology* 2000; 118: 554–9.
- 22 Orito E, Ichida T, Sakugawa H *et al.* Geographic distribution of hepatitis B virus (HBV) genotype in patients with chronic HBV infection in Japan. *Hepatology* 2001; 34: 590–4.
- 23 Tsubota A, Arase Y, Ren F, Tanaka H, Ikeda K, Kumada H. Genotype may correlate with liver carcinogenesis and tumor characteristics in cirrhotic patients infected with hepatitis B virus subtype adw. *J Med Virol* 2001; 65: 257–65.
- 24 Chu CJ, Keeffe EB, Han SH *et al.* Hepatitis B virus genotypes in the United States: results of a nationwide study. *Gastroenterology* 2003; 125: 444–51.
- 25 Miyakawa Y, Mizokami M. Classifying hepatitis B virus genotypes. *Intervirology* 2003; 46: 329–38.
- 26 Chen CJ, Yang HI, Su J *et al.* Risk of hepatocellular carcinoma across a biological gradient of serum hepatitis B virus DNA level. *JAMA* 2006; 295: 65–73.
- 27 Wu CF, Yu MW, Lin CL *et al.* Long-term tracking of hepatitis B viral load and the relationship with risk for hepatocellular carcinoma in men. *Carcinogenesis* 2008; 29: 106–12.
- 28 Suzuki F, Kumada H, Nakamura H. Changes in viral loads of lamivudine-resistant mutants and evolution of HBV sequences during adefovir dipivoxil therapy. *J Med Virol* 2006; 78: 1025–34.

CLINICAL STUDIES

## HBcrAg is a predictor of post-treatment recurrence of hepatocellular carcinoma during antiviral therapy

Tetsuya Hosaka<sup>1</sup>, Fumitaka Suzuki<sup>1</sup>, Masahiro Kobayashi<sup>1</sup>, Miharu Hirakawa<sup>1</sup>, Yusuke Kawamura<sup>1</sup>, Hiromi Yatsuji<sup>1</sup>, Hitomi Sezaki<sup>1</sup>, Norio Akuta<sup>1</sup>, Yoshiyuki Suzuki<sup>1</sup>, Satoshi Saitoh<sup>1</sup>, Yasuji Arase<sup>1</sup>, Kenji Ikeda<sup>1</sup>, Mariko Kobayashi<sup>2</sup> and Hiromitsu Kumada<sup>1</sup>

<sup>1</sup> Department of Hepatology, Toranomon Hospital, Tokyo, Japan

<sup>2</sup> Research Institute for Hepatology, Toranomon Hospital, Tokyo, Japan

### Keywords

covalently closed circular DNA – HBcrAg – HCC recurrence · nucleot(s)ide analogue – portal vein invasion

### Correspondence

Tetsuya Hosaka, Department of Hepatology, Toranomon Hospital, 1-3-1 Kajigaya, Takatsu-ku, Kawasaki City 213 8587, Tokyo, Japan  
Tel: +81 44 877 5111  
Fax: +81 44 860 1623  
e-mail: hosa-p@toranomon.gr.jp

Received 13 February 2010

Accepted 15 August 2010

DOI:10.1111/j.1478-3223.2010.02344.x

### Abstract

**Background/Aims:** The recurrence rate of hepatitis B virus (HBV)-related hepatocellular carcinoma (HCC) is high even in patients receiving curative therapy. In this study, we analysed the risk factors for tumour recurrence after curative therapy for HBV-related HCC while under treatment with nucleot(s)ide analogues (NAs) by measuring serum HBcrAg and intrahepatic covalently closed circular DNA (cccDNA) levels to elucidate the viral status associated with HCC recurrence. **Methods:** We enrolled 55 patients who developed HCC during NA therapy and underwent either curative resection or percutaneous ablation for HCC. **Results:** Hepatocellular carcinoma recurred in 21 (38%) of the patients over a period of 2.2 (range, 0.2–7.4) years. In multivariate analysis, serum HBcrAg levels  $\geq 4.8 \log U/ml$  at the time of HCC diagnosis (hazard ratio, 8.96; 95% confidential interval, 1.94–41.4) and portal vein invasion (3.94, 1.25–12.4) were independent factors for HCC recurrence. The recurrence-free survival rates of the high cccDNA group were significantly lower than those of the low cccDNA group only in patients who underwent resection ( $P = 0.0438$ ). A positive correlation ( $P = 0.028$ ;  $r = 0.479$ ) was observed between the intrahepatic cccDNA and the serum HBcrAg levels at the incidence of HCC. **Conclusion:** HBcrAg is a predictor of the post-treatment recurrence of HCC during antiviral therapy. Serum HBcrAg and intrahepatic cccDNA suppression by NAs may be important to prevent HCC recurrence.

Worldwide, an estimated 400 million people are infected with hepatitis B virus (HBV) persistently, and one million people die of decompensated cirrhosis and/or hepatocellular carcinoma (HCC) annually (1, 2). Recently, oral nucleot(s)ide analogues (NAs) have been used as the mainstay therapeutic strategy against chronic hepatitis B. Five such antiviral agents have been approved, and range in the profundity and rapidity of HBV DNA suppression, barrier to resistance and side-effect profile (3–10). Lamivudine (LAM) was the first NA to be approved for treating chronic hepatitis B, followed by adefovir dipivoxil (ADV) and entecavir (ETV), in Japan. However, a major problem with long-term LAM treatment is the potential development of drug resistance, mainly caused by mutation of the tyrosine–methionine–aspartic acid–aspartic acid (YMDD) motif of reverse transcriptase (11, 12). For preventing breakthrough hepatitis induced by LAM-resistant mutants, additional ADV administration has been recommended (13, 14).

The methods for monitoring the treatment response include measurements of the serum alanine transaminase

(ALT) levels, HBV DNA levels, HBeAg and antibody levels, HBsAg and antibody levels and liver histology. Other serum markers have been reported to be useful for monitoring the effect of antiviral therapy (15, 16). Recently, a new assay was developed for detecting the HBcrAg, consisting of HBcAg, HBeAg and a 22 kDa precore protein coded with the precore/core gene (17, 18). Because NAs have no inhibiting action on the transcription and translation activities of viral mRNA, HBcAg- and HBeAg-related proteins continue to be produced for a certain period of time in spite of the achievement of adequate suppression of the viral DNA synthesis. Therefore, HBcrAg is a viral marker independent of HBV DNA for monitoring the antiviral effect of NAs (19). In addition, recent reports have indicated another interesting aspect of serum HBcrAg levels: these levels were found to be correlated with intrahepatic covalently closed circular DNA (cccDNA) levels and could be a surrogate marker of the intrahepatic cccDNA pool (20, 21). This phenomenon may be explained by the fact that the production of HBcrAg depends on the

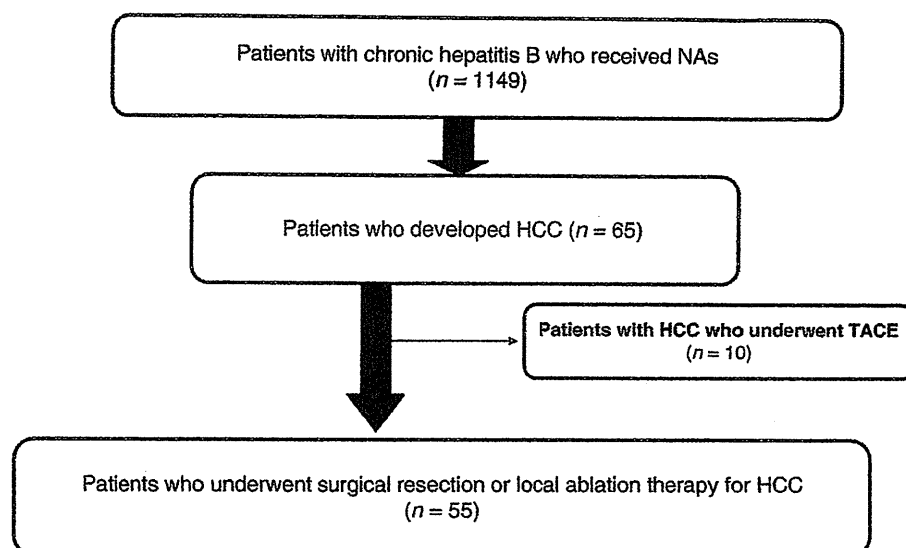


Fig. 1. The study protocol. HCC, hepatocellular carcinoma; NAs, nucleot(s)ide analogues; TACE, transcatheter arterial chemoembolization.

transcription of mRNA from cccDNA, and that cccDNA still remains in high levels during treatment with NAs.

Although patients with HBV-related cirrhosis have a significantly high risk of developing HCC, NA therapy can delay the progression of liver disease and reduce the risk of HCC in patients with cirrhosis by strong viral suppression (22, 23). Nevertheless, a few cases develop HCC during NA therapy at a constant rate (3–12%) (22, 24–26). The recurrence rate of HBV-related HCC after curative resection is estimated to be high, and is associated with viral factors, including HBeAg positivity and the viral load before surgery, besides host and tumour factors, but these findings were demonstrated in the absence of antiviral therapy (27–30). However, almost all patients, receiving NAs, showed negativity of serum HBV DNA. And so, we made the hypothesis that intrahepatic viral status, such as intrahepatic cccDNA and serum HBcrAg levels of its surrogate maker, might have an impact on tumour recurrence during NA therapy.

In this study, we examined the risk factors for tumour recurrence after curative resection and ablation for HBV-related HCC during NA therapy by measuring the serum HBcrAg and intrahepatic cccDNA levels with the aim to elucidate the viral status, persistent despite suppressive therapy, associated with HCC recurrence, in addition to the host and tumour factors reported in the past.

## Patients and methods

### Patients

Over a period of 13 years, from September 1995 to September 2008, 1149 patients with chronic hepatitis B received NA therapy, including LAM, ADV and ETV, at the Department of Hepatology, Toranomon Hospital, Metropolitan Tokyo. Of the 1149 patients, 65 developed

HCC after the start of NA therapy from February 2001 to June 2009. Of the 65 consecutive patients, 55 underwent radical therapy, including either resection or percutaneous ablation as the initial therapy for HCC. These 55 patients were enrolled in this cohort study (Fig. 1). The median duration from the start of NA therapy to the development of HCC was 2.2 (range, 0.2–7.4) years. The exclusion criteria were (i) patients co-infected with hepatitis C, delta or human immunodeficiency virus and (ii) a history of other liver diseases such as autoimmune hepatitis, alcoholic liver disease or metabolic liver disease.

The diagnosis of HCC was predominantly based on imaging, including dynamic computed tomography, magnetic resonance imaging and/or digital subtraction angiography. When the hepatic nodule did not show the typical imaging features, fine needle aspiration biopsy was performed, followed by histological examination and diagnosis. The physicians and surgeons usually discussed the preferred choice of treatment for each patient. Hepatic resection was mainly performed for patients categorized as Child–Pugh grade A or B liver function, and had no serious complications. Percutaneous ablation was performed for patients with surgical contraindications or for those who did not prefer to undergo hepatic resection by using two different devices: the cool-tip system (Tyco Healthcare Group LP, Burlington, VT, USA) and the radiofrequency tumour coagulation system (RTC system; Boston-Scientific Japan Co., Tokyo, Japan). The term curative treatment was used to indicate that no tumours were left in the remnant liver, irrespective of the width of the margin around the tumour, confirmed using intra-operative ultrasonography, combined ultrasonography and dynamic computed tomography 1 month after the resection or ablation. Serum samples were collected from all patients before and after

the treatment for HCC and stored in  $-80^{\circ}\text{C}$ . Liver tissue from patients who underwent resection was collected, rapidly frozen and stored in  $-80^{\circ}\text{C}$ . Written informed consent was obtained from each patient. The study protocol conformed to the ethical guidelines of the 1975 Declaration of Helsinki, as reflected in *a priori* approval by the institution's human research committee.

#### Antiviral therapy

Forty-seven patients received 100 mg LAM daily, and drug-resistant YMDD mutants developed in 26 (55%) of these patients, accompanied by an increase in HBV DNA  $\geq 1$  log copies/ml. Seventeen of the 26 patients received 10 mg ADV in addition to LAM (100 mg) daily. The remaining nine continued to receive LAM monotherapy because of the lack of approval for ADV administration in Japan at the time, but received ADV with LAM after approval was obtained during the HCC post-treatment period. Eight NA-naïve patients received 0.5 mg ETV daily. These antiviral therapies were continued after the resection or percutaneous ablation.

#### Follow-up and HCC recurrence

The patients were followed for liver function and virological markers of HBV infection monthly, as well as blood counts and tumour makers including  $\alpha$ -fetoprotein and des- $\gamma$ -carboxylprothrombin. They also underwent ultrasonography or helical dynamic computed tomography every 3 months. Cirrhosis was diagnosed by laparoscopy or liver biopsy or by the clinical data, imaging modalities and portal hypertension. The median observation period after HCC treatment for the entire cohort was 2.7 years (range, 0.3–8.4 years). HCC recurrence was diagnosed by the typical hypervascular characteristics on angiography and/or histological examination with fine needle biopsy specimens, in addition to certain features on computed tomography and ultrasonography.

#### Markers of HBV infection

HBcAg was determined by enzyme-linked immunosorbent assay using a commercial kit (HBeAg EIA; Institute of Immunology, Tokyo, Japan). HBV DNA was quantitated using the Amplicor monitor assay (Roche Diagnostics, Tokyo, Japan) with a dynamic range over 2.6–7.6 log copies/ml or COBAS TaqMan HBV v.2.0 (Roche Diagnostics) with a dynamic range over 2.1–9.0 log copies/ml. Serum HBV DNA levels were measured using the Amplicor assay at both the start of NA therapy and the diagnosis of HCC and using the TaqMan assay at the diagnosis of HCC. For statistical analysis, the value of that HBV DNA was tentatively set at 2.1 if HBV DNA levels were under 2.1 log copies/ml. HBV genotypes were determined serologically by the combination of epitopes expressed on the pre-S2 region product, which is specific for each of the seven major genotypes (A–G), using a commercial kit (HBV Genotype EIA; Institute of

Immunology). YMDD mutants were determined by polymerase chain reaction-based enzyme-linked mini-sequence assay using a commercial kit (Genome Science Laboratories, Tokyo, Japan).

#### HBcrAg measurement

Serum HBcrAg levels were measured using a CLIEIA HBcrAg assay kit (Fujirebio Inc., Tokyo, Japan) with a fully automated analyser system (Lumipulse System; Fujirebio Inc.) as described previously (21). In brief, 150  $\mu\text{l}$  of serum was incubated with 150  $\mu\text{l}$  of pretreatment solution containing 15% sodium dodecyl sulphate at  $60^{\circ}\text{C}$  for 30 min. After heat treatment, 120  $\mu\text{l}$  of pretreated specimen was added to a ferrite microparticle suspension in an assay cartridge. Ferrite particles were coated with monoclonal antibody mixture (HB44, HB61 and HB114) against denatured HBcAg, HBeAg and the 22 kDa precore protein. After 10 min of incubation at  $37^{\circ}\text{C}$  and washing, further incubation was carried out for 10 min at  $37^{\circ}\text{C}$  with alkaline phosphatase conjugated with two kinds of monoclonal antibodies (HB91 and HB110) against denatured HBcAg, HBeAg and the 22 kDa precore protein. After washing, 200  $\mu\text{l}$  of substrate solution [3-(2'-spiroadamantan)-4-methoxy-4-(3'-phosphoryloxy)phenyl-1,2-dioxetane disodium salt] (Applied Biosystems, Bedford, MA, USA) was added to the test cartridge, which was then incubated for 5 min at  $37^{\circ}\text{C}$ . The relative chemiluminescence intensity was measured, and the HBcrAg concentration was calculated by a standard curve generated using a recombinant pro-HBeAg (amino acids –10 to 183 of the precore/core gene product). The HBcrAg concentration was expressed in U/ml, which is defined as the immunoreactivity of 10 fg/ml of recombinant pro-HBeAg. In this study, the HBcrAg values were expressed as log U/ml, and the cut-off value was set at 3.0 log U/ml. For the statistical analyses, HBcrAg-negative cases were calculated as 3.0 log U/ml.

#### Intrahepatic cccDNA measurement

Intrahepatic cccDNA levels were analysed as described previously (21). In brief, liver specimens surrounding the tumour tissue were obtained and stored at  $-80^{\circ}\text{C}$  before DNA extraction. HBV DNA was extracted using a QIAamp DNA Mini Kit (Qiagen KK, Tokyo, Japan). The concentration of purified DNA was based on the absorbance at 260 nm. For this study, two oligonucleotide primers cccF2 (5'-cgctgtgcctctcatctga-3', nucleotides 1424–1444) and cccR4 (5'-gcacagctggaggcttga-3', nucleotides 1755–1737) and probe cccP2 (5'-VIC-accatttatgcctacag-MGB-3', nucleotides 1672–1655) were designed using PRIMER EXPRESS software (Applied Biosystems, Foster City, CA, USA) to flank the direct repeat region between the hepatitis B core and the polymerase gene. The use of cccF2 and cccR4, oligonucleotide primers spanning the direct repeat region of the HBV genome, allows the polymerase chain reaction of native viral DNA in the

Dane particle to block the amplification of products, because the partially double-stranded HBV DNA is disrupted in the direct repeat region. Twenty-five microlitres of extracted DNA (0.5 µg) was detected with the sequence detector system (ABI 7900HT; Applied Biosystems) in 50 µl of a PCR mixture containing TaqMan universal PCR Master Mix (Applied Biosystems), 300 nmol of each primer and 250 nmol of the probe. After initial activation of uracil-*N*-glycosylase at 50 °C for 2 min, AmpliTaq Gold (Applied Biosystems) was activated at 95 °C for 10 min. The subsequent PCR conditions consisted of 45 cycles of denaturation at 95 °C for 15 s, and annealing and extension at 60 °C for 90 s per cycle (SRL Inc., Tokyo, Japan).

### Statistical analyses

Standard statistical measures and procedures were used. Correlations between two variables were tested using Pearson's correlation analysis. Cox regression analysis was used to assess significant associations of the risk factors with tumour recurrence after HCC treatment. All factors found to be at least associated with recurrence ( $P < 0.05$ ) were tested by multivariate analysis. Independent factors, associated with HCC recurrence, were calculated using stepwise Cox regression analysis. The cumulative recurrence-free survival rates after HCC treatment were analysed using the Kaplan–Meier method, and differences in the curves were tested using the

log-rank test. A  $P$  value of  $< 0.05$  in a two-tailed test was considered significant. Data analysis was performed with SPSS version 11.0 (SPSS Inc., Chicago, IL, USA).

### Results

#### Patient characteristics at the start of NA therapy and HCC incidence

Table 1 presents a comparison of the patient characteristics at the start of NA therapy and the time of HCC diagnosis. Almost all the patients (93%) enrolled in this study had HBV genotype C. One patient had genotype B, and the genotypes of three patients could not be determined. The rate of HBV DNA disappearance from serum in all the patients was 64% (35/55; Amplicor monitor assay,  $< 2.6 \log$  copies/ml) and 51% (28/55; TaqMan assay,  $< 2.1 \log$  copies/ml), that of aspartate aminotransferase (AST) normalization ( $< 32$  IU/L) was 56% (31/55) and that of ALT normalization ( $< 42$  IU/L) was 71% (39/55) at the incidence of HCC. YMDD mutants were detected in 30 of 47 patients at the beginning of LAM monotherapy, and virological breakthrough (VBT), accompanied by an increase in HBV DNA ( $\geq 1 \log$  copies/ml), occurred in 26 patients with YMDD mutants by the diagnosis of HCC. Seventeen of these patients received ADV with LAM. No resistant mutation to ADV (rtA181T/S, rtN236T) occurred in patients receiving the combination therapy. Further, no drug-resistant mutant

**Table 1.** Patient characteristics at the start of nucleot(s)ide analogue therapy and the incidence of hepatocellular carcinoma

Characteristics	Start of NA therapy	Time of HCC Dx
Age (years)	51 (32–73)	54 (35–75)
Gender (male:female)	45:10	45:10
AST level (IU/L)	69 (27–195)	31 (16–207)
ALT level (IU/L)	78 (23–368)	29 (10–267)
Platelet count ( $10^5/\text{mm}^3$ )	11.4 (3.1–31.3)	12.9 (3.6–30.1)
Serum albumin level (g/dl)		3.8 (3.1–4.4)
Serum bilirubin level (mg/dl)		0.9 (0.4–2.4)
Prothrombin time (%)		90.8 (59–112)
Indocyanine green retention rate at 15 min (%)		14.5 (4–53)
Child–Pugh (A:B)		49:6
HBV genotype		
C	51 (93%)	51 (93%)
Others	4	4
HBeAg (+)	29 (53%)	23 (42%)
HBV DNA (log copies/ml)	7.1 ( $< 2.6$ to $> 7.6$ )	$< 2.1$ ( $< 2.1$ to 8.5)
HBcrAg level (log U/ml)	6.6 (3.3 to $> 6.8$ )	5.0 ( $< 3.0$ to $> 6.8$ )
Antiviral agents (LAM:LAM+ADV:ETV)	47:0:8	30:17:8
Duration of NA therapy before the incidence of HCC (years)		2.2 (0.2–7.4)
$\alpha$ -fetoprotein level (ng/dl)	6 (2–263)	4 (1–282)
Des- $\gamma$ -carboxylprothrombin level (mAU/ml)		22 ( $< 10$ –933)
Tumour diameter (mm)		22 (7–60)
Tumour number (solitary:multiple)		50:5
Portal vein invasion (positive:negative)		49:6
TNM stage (I:II:III:IV)		25: 24: 5: 1
HCC treatment (resection:ablation)		37:18

Values are expressed as the median and range (parenthetically) or the number and percentage (parenthetically).

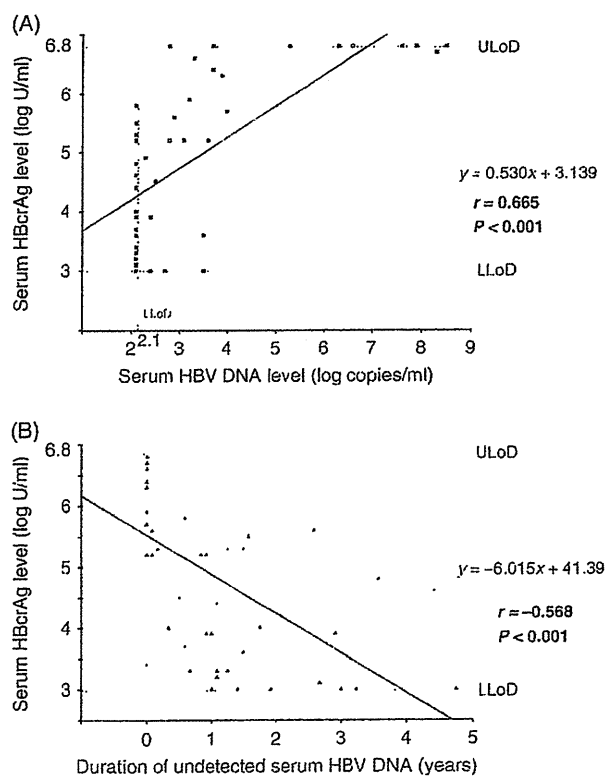
ADV, adefovir dipivoxil; ETV, entecavir; HBV DNA, hepatitis B virus DNA; HCC, hepatocellular carcinoma; LAM, lamivudine; NA, nucleot(s)ide analogues.

was detected in the NA-naïve patients receiving ETV monotherapy.

### Correlation between serum HBcrAg and serum HBV DNA levels at the incidence of HCC

The median serum HBcrAg value was 6.6log U/ml (range, 3.3 to > 6.8) at the start of NA therapy and 5.0log U/ml (range, < 3.0 to > 6.8) at the time of HCC diagnosis. We observed a positive correlation ( $P < 0.001$ ;  $r = 0.610$ ) between the levels of HBcrAg and HBV DNA in serum at the time of HCC diagnosis (Fig. 2A).

HBcrAg was detectable in 23 (82%) of 28 patients with undetectable HBV DNA levels using TaqMan assay and was > 4.8log U/ml in eight (29%) of 28 patients. In contrast, serum HBV DNA was detectable in spite of undetected HBcrAg in only two patients. Then, we examined the correlation between the serum HBcrAg levels at the time of HCC diagnosis and the antiviral effect. The median duration of on-treatment undetected serum HBV DNA was 1.1 years (range, 0.1–4.8) before the first diagnosis of HCC. As shown in Figure 2B, we observed a significant negative correlation between the levels of HBcrAg in serum at the time of HCC diagnosis and the duration of undetected HBV DNA in



**Fig. 2.** (A) Correlation between serum HBcrAg and hepatitis B virus DNA (HBV DNA) levels at the time of hepatocellular carcinoma (HCC) diagnosis for each patient. (B) Correlation between serum HBcrAg levels at the time of HCC diagnosis and the duration of undetected serum HBV DNA (< 2.6log copies/ml).

serum just before the first diagnosis of HCC ( $P < 0.001$ ;  $r = -0.568$ ).

### Factors associated with HCC recurrence

Hepatocellular carcinoma recurred in 21 (38%) of the 55 patients, 17 (46%) of 37 patients who had undergone resection and four (22%) of 18 patients who had undergone ablation. Because a proportion of patients who had undergone resection with TNM Stage II or over (24 of 37 patients) was greater than ablation (six of 18), there were more patients who had HCC recurrence after resection than ablation. Eight factors were associated with the recurrence in univariate analysis: HBeAg positivity at the start of NA therapy, HBV DNA  $\geq 2.1$ log copies/ml, HBcrAg level  $\geq 4.8$ log U/ml, AST level  $\geq 50$  IU/L, ALT level  $\geq 40$  IU/L, tumour multiplicity, portal vein invasion at the time of HCC diagnosis and HCC treatment. In the multivariate analysis, HBcrAg level  $\geq 4.8$ log U/ml and portal vein invasion were independent risk factors for the recurrence of HCC (Table 2). The cumulative recurrence-free survival rates in patients with  $\geq 4.8$ log U/ml HBcrAg levels at the time of HCC diagnosis were 70% at 1 year, 35% at 3 years and 28% at 5 years. In contrast, the rates in patients with < 4.8log U/ml HBcrAg levels were 96% at 1 year, 89% at 3 years and 89% at 5 years. The recurrence-free survival rates of the high HBcrAg group ( $\geq 4.8$ log U/ml) were significantly lower than those of the low HBcrAg group (< 4.8log U/ml;  $P < 0.001$ ), as shown in Figure 3A. Then, the cumulative recurrence-free survival rates in patients with  $\geq 2.1$ log copies/ml HBV DNA levels at the time of HCC diagnosis were 70% at 1 year, 44% at 3 years and 39% at 5 years. In contrast, the rates in patients with < 2.1log copies/ml HBV DNA levels were 93% at 1 year, 76% at 3 years and 76% at 5 years. The recurrence-free survival rates of the positive HBV DNA group ( $\geq 2.1$ log copies/ml) were significantly lower than those of the negative HBV DNA group (< 2.1log copies/ml;  $P = 0.007$ ), as shown in Figure 3B. The cumulative recurrence-free survival rates were 33% at 1 year and 33% at 2 years with portal vein invasion, and 87% at 1 year, 73% at 2 years and 64% at 3 years without invasion. Three of the six patients with portal vein invasion died of recurrent HCC.

### Correlation between intrahepatic cccDNA and serum HBV DNA levels at the incidence of HCC

We measured intrahepatic cccDNA using liver specimens from 22 of 37 patients who underwent resection. The median intrahepatic cccDNA value was 4.2log copies/ $\mu$ g (range, 3.0–5.0). As shown in Figure 4A and B, we observed significant positive correlations between the levels of intrahepatic cccDNA and HBV DNA in serum ( $P = 0.019$ ;  $r = 0.486$ ) and between the levels of intrahepatic cccDNA and HBcrAg in serum at the time of HCC diagnosis ( $P = 0.028$ ;  $r = 0.479$ ). Twenty-eight patients who underwent resection had early- or intermediate-stage



**Table 2.** Risk factors for hepatocellular carcinoma recurrence

Factors	Univariate analysis		Multivariate analysis	
	Hazard ratio (95% CI)	P	Hazard ratio (95% CI)	P
Start of NA therapy				
Age ( $\geq 50$ years)	1.79 (0.65–4.91)	0.257		
Gender (female)	0.98 (0.32–2.97)	0.981		
HBeAg(+)	2.85 (1.03–7.88)	<b>0.044</b>		
HBV DNA ( $\geq 6.0$ log copies/ml)	1.75 (0.50–6.07)	0.378		
AST level ( $\geq 50$ IU/L)	1.09 (0.42–2.85)	0.862		
ALT level ( $\geq 70$ IU/L)	1.09 (0.42–2.85)	0.862		
Platelet count ( $< 1.2 \times 10^5$ cells/mm <sup>3</sup> )	2.56 (0.96–6.85)	0.061		
$\alpha$ -fetoprotein level ( $\geq 100$ ng/ml)	0.99 (0.13–7.66)	0.996		
Time of HCC diagnosis				
Duration of NA therapy ( $\geq 2$ years)	1.19 (0.49–2.88)	0.698		
HBeAg(+)	1.53 (0.63–3.70)	0.343		
HBV DNA ( $\geq 2.1$ log copies/ml)	3.36 (1.32–8.55)	<b>0.011</b>		
HBcrAg level ( $\geq 4.8$ log U/ml)	10.6 (2.45–46.1)	<b>0.002</b>	<b>8.96 (1.94–41.4)</b>	<b>0.005</b>
YMDD mutants (present:absent)	0.84 (0.35–2.03)	0.838		
AST level ( $\geq 50$ IU/L)	2.44 (1.01–5.89)	<b>0.047</b>		
ALT level ( $\geq 40$ IU/L)	2.44 (1.01–5.87)	<b>0.047</b>		
Platelet count ( $< 10^5$ cells/mm <sup>3</sup> )	2.20 (0.81–6.02)	0.123		
Serum albumin level ( $< 3.5$ g/dl)	1.39 (0.53–3.63)	0.505		
Serum bilirubin level ( $\geq 1.5$ mg/dl)	1.11 (0.62–2.00)	0.713		
Prothrombin time ( $< 80\%$ )	2.23 (0.51–9.82)	0.286		
Child–Pugh (B)	0.70 (0.16–3.04)	0.634		
Indocyanine green retention rate at 15 min ( $\geq 30\%$ )	0.58 (0.17–1.99)	0.389		
$\alpha$ -fetoprotein level ( $\geq 100$ ng/ml)	1.81 (0.74–4.44)	0.194		
Des- $\gamma$ -carboxylprothrombin level ( $\geq 100$ mAU/ml)	2.09 (0.81–5.39)	0.129		
Tumour size ( $\geq 21$ mm)	2.02 (0.81–5.07)	0.133		
Tumour number (multiple)	3.94 (1.29–12.1)	<b>0.016</b>		
Portal vein invasion	5.39 (1.69–17.2)	<b>0.004</b>	<b>3.94 (1.25–12.4)</b>	<b>0.019</b>
TNM stage ( $\geq$ II)	2.08 (0.85–5.10)	0.110		
HCC treatment (resection)	3.10 (1.05–9.09)	<b>0.041</b>		

The bolded numbers: statically significant.

ALT, alanine transaminase; AST, aspartate aminotransferase; CI, confidence interval; HBV DNA, hepatitis B virus DNA; NA, nucleot(s)ide analogues; YMDD, thymosine–methionine–aspartic acid–aspartic acid.

HCC (tumour diameter  $< 50$  mm, absence of vascular invasion and well/moderately differentiated). In 17 of these patients, the intrahepatic cccDNA levels were measured using the resected specimens. The recurrence-free survival rates of the high cccDNA group ( $\geq 4.3$ log copies/ $\mu$ g) were significantly lower than those of the low cccDNA group ( $< 4.3$ log copies/ $\mu$ g;  $P=0.0438$ ), as shown in Figure 4C.

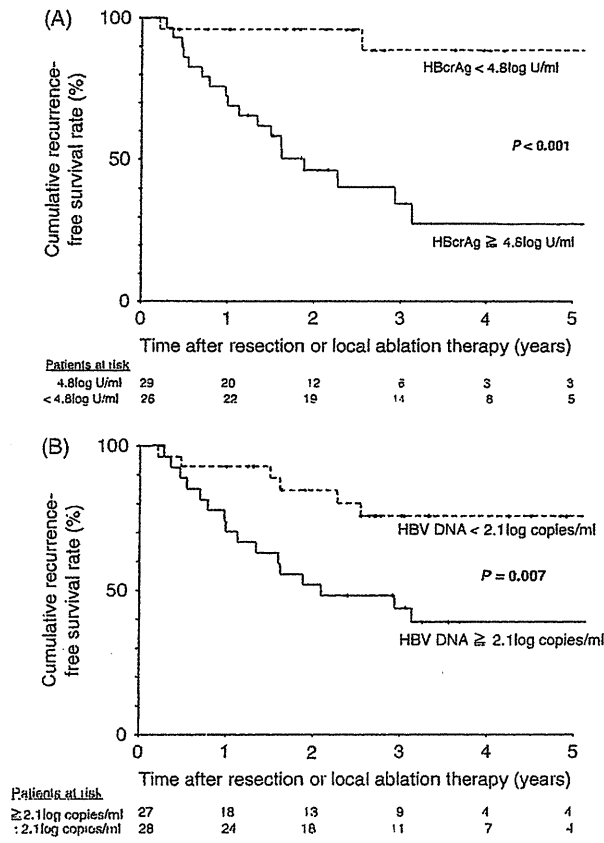
#### Comparison of the serum HBcrAg levels and the patient characteristics

We examined whether the serum HBcrAg levels at the time of HCC diagnosis were correlated with the baseline parameters before antiviral therapy. The HBcrAg levels were compared with the baseline HBeAg-positive and HBeAg-negative status and with the baseline HBV DNA levels  $\geq 6.0$ log and  $< 6.0$ log copies/ml (Fig. 5). The HBcrAg levels were significantly higher in patients who were positive for HBeAg (median value: 5.6 vs. 3.6log U/ml;  $P=0.001$ ) and the baseline HBV DNA levels  $\geq 6.0$ log copies/ml (median value: 5.2 vs. 3.3log U/ml;

$P=0.012$ ). There was no correlation between the other baseline parameters at the start of NA therapy and the serum HBcrAg levels at the time of HCC diagnosis. Then, we examined whether the serum HBcrAg levels at the time of HCC diagnosis were associated with on-treatment drug resistance during antiviral therapy. Figure 6 shows the comparison of the serum HBcrAg levels at the time of HCC diagnosis with or without the emergence of YMDD mutants and VBT before the development of HCC. The HBcrAg levels were marginally higher in patients with emergent YMDD mutants (median value: 5.2 vs. 3.8log U/ml;  $P=0.051$ ) and significantly higher in those with VBT (median value: 5.2 vs. 3.9log U/ml;  $P=0.006$ ). There was no correlation between serum HBcrAg at the time of HCC diagnosis and age of patients or tumour factors.

#### Discussion

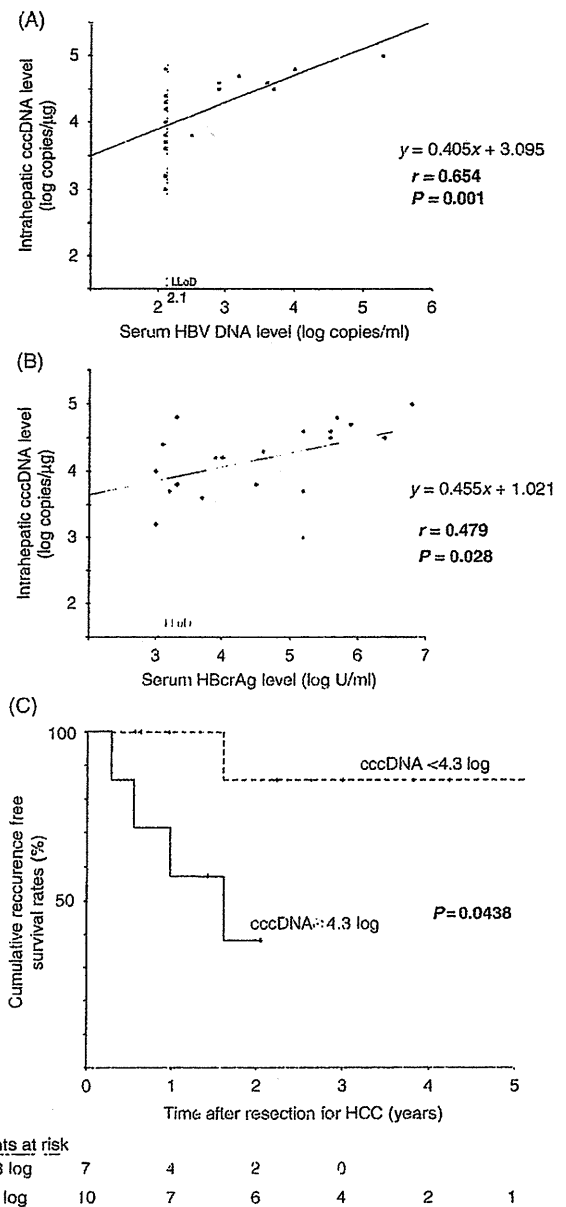
In this study, we examined whether the intrahepatic cccDNA and HBcrAg levels as substitutes for cccDNA are associated with HCC recurrence in patients who



**Fig. 3.** (A) Kaplan-Meier life table for the cumulative recurrence-free survival rates by the serum HBcrAg levels and comparison by the log-rank test. (B) Kaplan-Meier life table for the cumulative recurrence-free survival rates by the serum hepatitis B virus DNA (HBV DNA) levels at the time of hepatocellular carcinoma (HCC) diagnosis for each patient and comparison by the log-rank test.

developed HCC after the commencement of NA therapy and underwent radical therapy for HCC. The recurrence rates of HCC were high in patients with high levels of intrahepatic cccDNA and serum HBcrAg. In particular, HBcrAg levels were measurable by using serum samples and clinically useful.

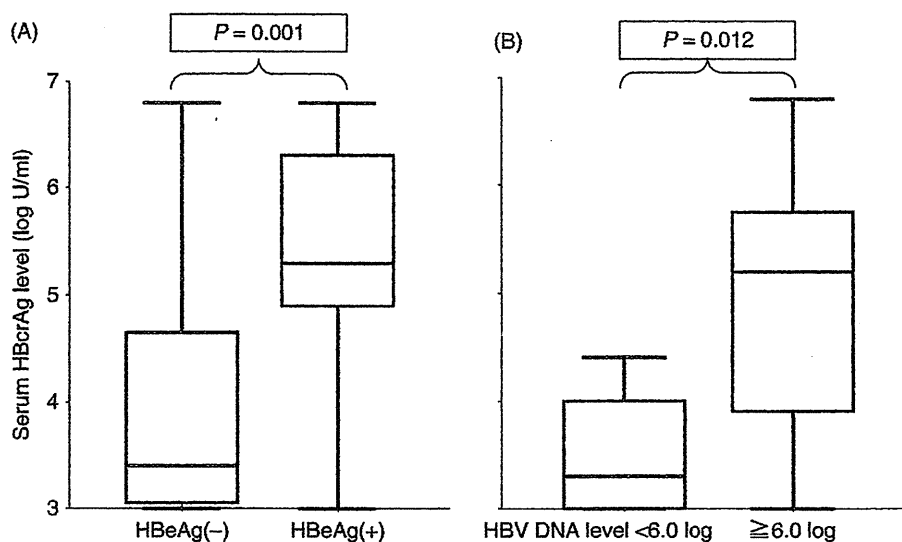
Nucleot(s)ide analogues, including LAM, ADV and ETV, are widely used for the treatment of chronic hepatitis B, and reportedly reduce the development of HCC in such patients (22, 23). Although few events of HCC development occur during NA therapy (24–26), analysis of a large number of patients is needed to examine the risk factors for HCC. We could clarify the risk factors associated with the development of primary HCC after radical therapy by enrolling patients who underwent radical therapy for HCC in spite of their small number. High HBV loads in serum have been reported to be associated with HCC recurrence after resection or radical therapy in NA-naïve patients (27–31), but no study has demonstrated the viral risk factors of recurrence in patients receiving NAs. The novel finding of this study is that serum HBcrAg and



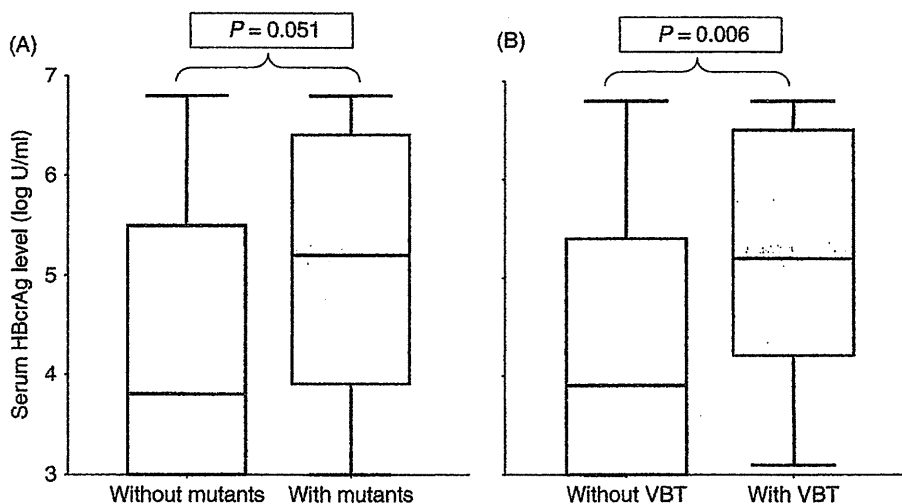
**Fig. 4.** (A) Correlation between intrahepatic covalently closed circular DNA (cccDNA) and serum hepatitis B virus DNA (HBV DNA) levels at the time of hepatocellular carcinoma (HCC) diagnosis for each patient who underwent resection ( $n = 22$ ). (B) Correlation between intrahepatic cccDNA and serum HBcrAg levels at the time of HCC diagnosis. (C) Kaplan-Meier life table for the cumulative recurrence-free survival rates by the intrahepatic cccDNA levels in patients with early- or intermediate-stage HCC ( $n = 17$ ).

intrahepatic cccDNA levels are predictors of HCC recurrence in patients radically treated for HCC during NA therapy.

In this study, the serum HBV DNA levels at the time of HCC diagnosis were associated with recurrence by univariate analysis. However, the serum HBcrAg level was the only viral factor associated with recurrence in multivariate analysis. There are two possible reasons for the



**Fig. 5.** Comparison of serum HBcrAg levels at the time of hepatocellular carcinoma diagnosis by the characteristics at the start of nucleot(s)ide analogue therapy (A) in patients with or without HBeAg and (B) in those with hepatitis B virus DNA (HBV DNA) levels < 6.0 log or  $\geq 6.0$  log copies/ml.



**Fig. 6.** Comparison of serum HBcrAg levels at the time of hepatocellular carcinoma (HCC) diagnosis (A) with or without thyrosine-methionine-aspartic acid-aspartic acid mutants and (B) virological breakthrough (VBT) before the development of HCC.

different results between past studies and the current study. Although serum HBV DNA was undetectable using TaqMan assay at the time of HCC diagnosis in 51% of the patients, who received NAs, serum HBcrAg was undetectable in only 18% of these patients. The other reason is that it was easy to identify the viral risk factors (e.g. HBeAg positivity) by measuring the serum HBcrAg level because the detection of HBcrAg enables the detection of HBcAg, HBeAg and the 22 kDa precore protein coded with the precore/core gene. The high recurrence rate of HCC after curative resection and ablation is attributable to two principal characteristics: intrahepatic metastasis and *de novo* multicentric carcinogenesis (32). It is assumed that a high viral load increases the risk of

multicentric recurrence in the liver remnant in patients without optimal viral suppression by NA therapy. Recently, it was reported that the HBV load is associated with late recurrence over 2 years (30). On examining our cohort as per the recent report, high HBcrAg levels were found to be associated with late recurrence (data not shown). Consequently, we consider that HBcrAg is a more useful marker of HBV-related HCC recurrence than HBV DNA during NA therapy.

Nucleot(s)ide analogues are potent inhibitors of HBV replication, and can induce a rapid and drastic reduction in peripheral HBV DNA, seroclearance of HBeAg and remission of hepatic inflammation. Because of the stability of cccDNA in infected cells, the decline of

intrahepatic cccDNA levels is slower than that of serum HBV DNA levels during NA administration (15, 16). We found that suppression of cccDNA by NAs could prevent the development of recurrent primary HCC. Because cccDNA provides the template for pregenomic and viral messenger RNA-encoded viral proteins (33–35), the transcriptional activity of cccDNA may induce carcinogenesis. Further research is required to validate this hypothesis. Serum HBcrAg can be a surrogate marker of the intrahepatic cccDNA pool because of the viral proteins transcribed through messenger RNA from cccDNA (20, 21). Therefore, we consider that serum HBcrAg reflects the intrahepatic viral status more accurately than serum HBV DNA. Recently, Chan *et al.* (36) showed that serum HBsAg quantification could reflect intrahepatic cccDNA in patients treated with peginterferon and LAM combination therapy. They also indicated that reduction in HBsAg had good correlation with reduction in cccDNA. We tried to measure HBsAg levels at the start of NA therapy and the time of HCC diagnosis using a commercial assay (chemiluminescent immunoassay). However, HBsAg levels declined very slowly during NAs monotherapy in this study (data not shown). Brunetto *et al.* (37) showed that mean reduction for 48 weeks in HBsAg was 0.02logIU/ml in patients treated with LAM monotherapy, different from peginterferon therapy. Meanwhile, the median reduction from the start of NA to the diagnosis of HCC in HBcrAg was 1.4logU/ml in this study (Table 1). It seems that HBcrAg is a superior on-treatment risk predictor (e.g. tumour recurrence) to HBsAg during NAs monotherapy in terms of reduction of titres in each assay. HBcrAg is also more useful in terms of needless to serum sample dilution. As HBcrAg levels can be measured from serum samples, they are clinically useful, compared with the measurement of cccDNA, which requires liver specimens. It is not practical to carry out liver biopsy and the measurement of cccDNA for patients who have normal AST/ALT levels and viral suppression during antiviral therapy. Liver specimens cannot be also taken from patients who undergo ablation therapy for HCC. The measurement of serum HBcrAg levels in these patients is helpful to indirectly estimate the status of intrahepatic cccDNA. In the future, it is necessary to investigate whether HBcrAg in patients receiving NAs can be a predictor of primary carcinogenesis.

Previous studies have indicated that the rates of intrahepatic cccDNA loss and serum HBcrAg loss differ from serum HBV DNA loss under NA therapy, with the former two being much slower (15, 16, 19). In this study, the period of serum HBV DNA loss was longer, with lower intrahepatic cccDNA and serum HBcrAg levels (Fig. 2B). Therefore, these findings suggest that a long period of time is required to prevent the development of recurrent primary HCC by viral suppression under antiviral therapy. In contrast, the serum HBcrAg levels at the time of HCC diagnosis were higher in patients with emergent LAM-resistant mutants and subsequent VBT

than in patients without mutants and VBT (Fig. 6). This result suggests that it is important to administer a potent NA early for drug-resistant strains and suppress viral replication to prevent subsequent carcinogenesis. Although we evaluated the relationship between the development of primary HCC and serum HBcrAg levels by a case-control study, the serum HBcrAg levels at the commencement of NA therapy and 1 year later were not associated with the development of primary HCC (unpublished data). This finding is attributable to the slow decline of the serum HBcrAg levels during antiviral therapy. The measurement of HBcrAg at intervals of 3–6 months may be helpful to predict the development of HCC. However, further studies are needed to confirm the finding.

In summary, HBcrAg is a predictor of the post-treatment recurrence of HCC during antiviral therapy. Measurement of the serum HBcrAg level is simple and useful because it reflects the intrahepatic viral status. Further, intrahepatic cccDNA and serum HBcrAg suppression by NAs is important to prevent HCC recurrence.

#### Acknowledgements

None of the authors received any funding from the manufacturers of the drugs or laboratory reagents used in this study. This research was partly supported by grants from the Ministry of Health, Labour and Welfare of Japan.

#### References

1. Lee WM. Hepatitis B virus infection. *N Engl J Med* 1997; 337: 1733–45.
2. Ganem D, Prince AM. Hepatitis B virus infection – natural history and clinical consequences. *N Engl J Med* 2004; 350: 1118–29.
3. Lai CL, Chien RN, Leung NW, *et al.* A one-year trial of lamivudine for chronic hepatitis B. Asia Hepatitis Lamivudine Study Group. *N Engl J Med* 1998; 339: 61–8.
4. Dienstag JL, Schiff ER, Wright TL, *et al.* Lamivudine as initial treatment for chronic hepatitis B in the United States. *N Engl J Med* 1999; 341: 1256–63.
5. Marcellin P, Chang TT, Lim SG, *et al.* Adefovir dipivoxil for the treatment of hepatitis B e antigen-positive chronic hepatitis B. *N Engl J Med* 2003; 348: 808–16.
6. Hadziyannis SJ, Tassopoulos NC, Heathcote EJ, *et al.* Adefovir dipivoxil for the treatment of hepatitis B e antigen-negative chronic hepatitis B. *N Engl J Med* 2003; 348: 800–7.
7. Chang TT, Gish RG, de Man R, *et al.* A comparison of entecavir and lamivudine for HBeAg-positive chronic hepatitis B. *N Engl J Med* 2006; 354: 1001–10.
8. Lai CL, Shouval D, Lok AS, *et al.* Entecavir versus lamivudine for patients with HBeAg-negative chronic hepatitis B. *N Engl J Med* 2006; 354: 1011–20.