

図1 Pillaによる物理刺激統一機序の提案

刺激下に、転写・翻訳レベルでの亢進、DNA・蛋白合成の増加といった核内の遺伝子発現に至る。その具体的機序は未だ不明であるものの、細胞膜の電気的特性とイオンなどの荷電粒子との関連で、超音波治療などの効果も包含した物性物理学の法則に基づく理論モデルも提案されている<sup>1)</sup>。電気刺激、超音波、低出力レーザーの臨床応用に関するメタアナリシスの報告もある<sup>2-4)</sup>。

### 脊髄損傷の不全麻痺改善の試み —制御系としての神経回路・システムの機能—

その後、関心は骨・関節や靭帯といった機械系から、softwareとしての神経制御系、システムとしての神経系回路の改変、言い換えれば可塑性に移っていった。中枢神経系の可塑性と言えはまず脳が対象になるのであろうが、四肢を対象にあれこれ実験をしていたせいも、同じ中枢神経系でも脊髄を対象とすることになった。多くの脊髄損傷患者と接する機会があったためでもあろう。そうするうちに再生医学、脳科学など関連する医学領域での発展は目覚ましく、中枢神経系での可塑性に注目し、リハビリ訓練と結びつくことで新たな可能性を示すようになった。細胞レベルの修復が機能改善につながるためには、その後の神経回路の再構築が不可欠である。反復訓練による運動学習やリハビリ訓練が神経回路の再構築、すなわち“可塑性”、“再学習”を促すことが判ってきたのであった<sup>5)</sup>。

不全脊髄損傷に対する歩行訓練において、ヒト

の歩行動作における脊髄内の歩行中枢（central pattern generator：CPG）の存在が前提となっている<sup>6)</sup>。幸いにして本邦第一例としてLokomatという訓練装置を導入できた。こうした体重免荷式歩行訓練装置はCPGを賦活化する手法として考えられている。しかしながら、現在行われている体重免荷式歩行訓練には、①訓練方法（Lokomatの使用手法も含め）にばらつきがある、②CPGを賦活化するというコンセプトはあるものの、それ以上のメカニズムが明らかでない、③受傷後1年以内の訓練効果は自然回復の影響があり、他の訓練効果と識別しにくい、④受傷後1年以降だと訓練効果が出にくい、などの課題がある<sup>7-9)</sup>。そこで、体重免荷式歩行訓練のメカニズムを明らかにするために

- ・受傷後1年以上経過した症例を対象とする。
- ・CPG賦活化の方法を検討する。
- ・訓練前後で得られる歩行の変化を詳細に解析する。

との手法で研究を進めている。

健常者、小児、対麻痺患者での知見から、荷重や股関節周囲からの求心性入力がある歩行中の下肢筋活動パターンに必須とされており、伸筋からの固有受容器入力と足底からの荷重情報としての力学受容器入力とそれらを担っているであろう。荷重レセプターからの信号は多シナプス脊髄反射路へ統合され、床面の状態にプログラムされた歩行パターンを適合させる。しかし皮質脊髄路における上位との結合性の強弱、中枢における随意努力の有無といった制御的な要素も関連するらしい（図2）。なかでも中枢からの下降指令における「集中」の存在はそれまでの訓練プロトコルの変換を迫るものであった。我々はCPGを賦活するのに留まらず、皮質脊髄路全体の促通を図っているようである。

部分免荷式歩行訓練が不全脊髄損傷患者の歩行機能に及ぼす作用メカニズムを解明することで、その適応が明確になり、また訓練技術の向上につながることを期待できよう。

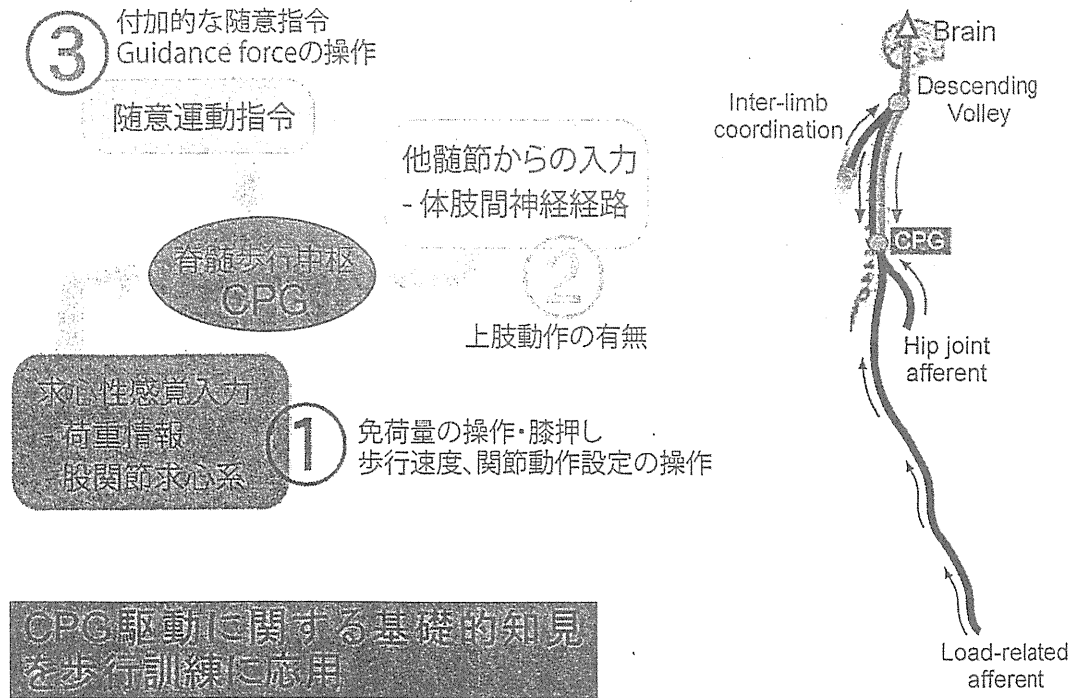


図2 歩行回復に関与する神経機序

おわりに

従来からリハビリ医学では、その介入対象として中枢神経系疾患が多くを占めていたこともあって、機能回復はあまり期待できず、もっぱら代償手段を多用する傾向があったことは否めない。早期の社会復帰に向けて、そうした方向性が不適切であったとは思わないが、やはり患者は機能障害そのものへの対応を強く求めていることも事実である。

私の研究活動の一端を示したが、「impairmentに切り込みリハビリを目指して」というテーマを掲げた趣旨をご理解の上、今後更なる研究の進展を期待したいものである。

今回の第48回日本リハビリテーション医学会学術集会の開催に当たっては、震災の影響とは申せ、会員各位の多大なご理解とご協力により、11月に延期の上、今日に至っております。ここに厚く御礼申し上げます。また、ご紹介した過去の研究は、これまで在籍した医療機関における上司、同僚のご協力・ご支援があったものです。ここに重ねて深謝申し上げます。

文 献

- 1) Pilla AA : Low-intensity electromagnetic and mechanical modulation of bone growth and repair : are they equivalent? J Orthop Sci 2002 ; 7 : 420-428 (物理刺激の統一理論)
- 2) Mollon B, da Silva V, Busse JW, Einhorn TA, Bhandari M : Electrical stimulation for long-bone fracture-healing : a meta-analysis of randomized controlled trials. JBJS 2008 ; 90-A : 2322-2330 (電気刺激の骨折治療効果)
- 3) Busse JW, Bhandari M, Kulkarni AV, Tunks E : The effect of low-intensity pulsed ultrasound therapy on time to fracture healing; a meta-analysis. CMAJ 2002 ; 166 : 437-441 (超音波の骨折治療効果)
- 4) Brosseau L, Welch V, Wells G, Tugwell P, de Bie R, Gam A, Harman K, Shea B, Morin M : Low level laser therapy for osteoarthritis and rheumatoid arthritis; a meta-analysis. J Rheumatol 2000 ; 27 : 1961-1969 (低出力レーザーの治療効果)
- 5) Wernig A, Müller S, Nanassy A, Cagol E : Laufband therapy based on 'rules of spinal locomotion' is effective in spinal cord injured persons. Eur J Neurosci 1995 ; 7 : 823-829 (トレッドミル訓練による不全脊髄損傷者の歩行能力向上)
- 6) Wickelgren I : Teaching the spinal cord to walk. Science 1998 ; 279 : 319-321 (BWSTの作用機序)
- 7) Dobkin B, Apple D, Barbeau H, Basso M, Behrman A, Deforge D, Ditunno J, Dudley G, Elashoff R, Fugate L, Harkema S, Saulino M, Scott M ; Spinal Cord Injury Locomotor Trial Group : Weight-supported treadmill vs over-ground training for walking after acute incomplete SCI. Neurology 2006 ; 66 : 484-493 (歩行訓練法の大規模)

## 模無作為化比較試験)

- 8) Wirz M, Zemon DH, Rupp R, Scheel A, Colombo G, Dietz V, Hornby TG. Effectiveness of automated locomotor training in patients with chronic incomplete spinal cord injury : a multicenter trial. *Arch Phys Med Rehabil* 2005 ; 86 : 672-680 (Lokomatの臨床試験報告)
- 9) Wessels M, Lucas C, Eriks I, de Groot S : Body weight-supported gait training for restoration of walking in people with an incomplete spinal cord injury : a systematic review. *J Rehabil Med* 2010 ; 42 : 513-519 (体重免荷式訓練に関するSystematic review)

## 参考文献

- 1) Akai M, Yabuki T, Tateishi T, Shirasaki Y : Mechanical properties of the electrically stimulated callus ; an experiment with constant direct current in rabbit fibulae. *Clin Orthop Relat Res* 1984 ; 188 : 293-302
- 2) Akai M, Oda H, Tateishi T, Shirasaki Y : Electrical stimulation of ligament healing ; an experimental study of the patellar ligament of rabbits. *Clin Orthop Relat Res* 1988 ; 235 : 296-301
- 3) Sato O, Akai M : Effect of direct-current stimulation on the growth plate ; in vivo study with rabbits. *Arch Orthop Trauma Surg* 1989 ; 109 : 9-13
- 4) Takei N, Akai M : Effect of direct current stimulation on triradiate physeal cartilage ; in vivo study in young rabbits. *Arch Orthop Trauma Surg* 1993 ; 112 : 159-162
- 5) Akai M, Shirasaki Y, Tateishi T : Electrical stimulation on joint contracture ; an experiment in rat model with direct current. *Arch Phys Med Rehabil* 1997 ; 78 : 405-409
- 6) Akai M, Usuba M, Maeshima T, Shirasaki Y, Yasuoka S : Laser's effect on bone and cartilage change induced by joint immobilization ; an experiment with animal model. *Lasers Surg Med* 1997 ; 21 : 480-484
- 7) Usuba M, Akai M, Shirasaki Y : Effect of Low-Level Laser Therapy (LLLT) on viscoelasticity of the contracted knee joint ; comparison with whirlpool treatment in rats. *Lasers Surg Med* 1998 ; 22 : 81-85
- 8) Hong B, Kuwaki T, Ju K, Kumada M, Akai M, Ueno S : Changes in blood pressure and heart rate by repetitive transcranial magnetic stimulation in rats. *Neurosci Lett* 2002 ; 329 : 57-60
- 9) Akai M, Hayashi K : Effect of electrical stimulation on musculoskeletal systems ; a meta-analysis of controlled clinical trials. *Bioelectromagnetics* 2002 ; 23 : 132-143
- 10) Akai M, Kawashima N, Kimura T, Hayashi K : Electrical stimulation as an adjunct to spinal fusions ; a meta-analysis of clinical controlled trials. *Bioelectromagnetics* 2002 ; 23 : 496-504
- 11) Kawashima N, Sekiguchi H, Miyoshi T, Nakazawa K, Akai M : Inhibition of the human soleus Hoffman reflex during standing without descending commands. *Neurosci Lett* 2003 ; 345 : 41-44
- 12) Kawashima N, Sone Y, Nakazawa K, Akai M, Yano H : Energy expenditure during walking with weight-bearing control orthosis (WBC) in thoracic level of paraplegic patients. *Spinal Cord* 2003 ; 41 : 506-510
- 13) Nozaki D, Kawashima N, Aramaki Y, Akai M, Nakazawa K, Nakajima Y, Yano H : Sustained muscle contractions maintained by autonomous neuronal activity within the human spinal cord. *J Neurophysiol* 2003 ; 90 : 2090-2097
- 14) Kawashima K, Nakazawa K, Ishii N, Akai M, Yano H : Potential impact of orthotic gait exercise on natural killer cell activities in thoracic level of spinal cord-injured patients. *Spinal Cord* 2004 ; 42 : 420-424
- 15) Nakazawa K, Kakihana W, Kawashima N, Akai M, Yano H : Induction of locomotor-like EMG activity in paraplegic persons by orthotic gait training. *Exp Brain Res* 2004 ; 157 : 117-123
- 16) Kawashima N, Nozaki D, Akai M, Nakazawa K : Alternate leg movement amplifies locomotor-like muscle activity in spinal cord injured persons. *J Neurophysiol* 2005 ; 93 : 777-785
- 17) Kawashima N, Akai M, Nakazawa K : Muscle oxygenation of the paralyzed lower limb in spinal cord-injured persons. *Med Sci Sports Exerc* 2005 ; 37 : 915-921
- 18) Nakazawa K, Kawashima N, Akai M : Enhanced stretch reflex excitability of the soleus muscle in persons with incomplete rather than complete chronic spinal cord injury. *Arch Phys Med Rehabil* 2006 ; 87 : 71-75
- 19) Miyoshi T, Hotta K, Yamamoto S, Nakazawa K, Akai M : Somatosensory graviception inhibits soleus H-reflex gain in humans during walking. *Exp Brain Res* 2006 ; 169 : 135-138
- 20) Kawashima N, Taguchi D, Nakazawa K, Akai M : Effect of lesion level on the orthotic gait performance in individuals with complete paraplegia. *Spinal Cord* 2006 ; 44 : 487-494
- 21) Kawashima N, Nakazawa K, Akai M : Characteristics of the locomotor-like muscle activity during orthotic gait in paraplegic persons. *Neurol Res* 2008 ; 30 : 36-45
- 22) Nakajima T, Kamibayashi K, Takahashi M, Komiyama T, Akai M, Nakazawa K : Load-related modulation of cutaneous reflexes in the tibialis anterior muscle during passive walking in humans. *Eur J Neurosci* 2008 ; 27 : 1566-1576
- 23) Takahashi M, Kamibayashi K, Nakajima T, Akai M, Nakazawa K : Changes in corticospinal excitability during observation of walking in humans. *Neuroreport* 2008 ; 19 : 727-731
- 24) Kamibayashi K, Nakajima T, Takahashi M, Akai M, Nakazawa K : Facilitation of corticospinal excitability in the tibialis anterior muscle during robot-assisted passive stepping in humans. *Eur J Neurosci* 2009 ; 30 : 100-109
- 25) Kamibayashi K, Nakajima T, Fujita M, Takahashi M, Ogawa T, Akai M, Nakazawa K : Effect of sensory inputs on the soleus H-reflex amplitude during robotic passive stepping in humans. *Exp Brain Res* 2010 ; 202 : 385-395

ORIGINAL ARTICLE

# Phosphorylated neurofilament subunit NF-H as a biomarker for evaluating the severity of spinal cord injury patients, a pilot study

K Hayakawa<sup>1,2</sup>, R Okazaki<sup>1,2</sup>, K Ishii<sup>3</sup>, T Ueno<sup>1,2</sup>, N Izawa<sup>3</sup>, Y Tanaka<sup>3</sup>, S Toyooka<sup>3</sup>, N Matsuoka<sup>3</sup>, K Morioka<sup>1</sup>, Y Ohori<sup>1,2</sup>, K Nakamura<sup>2</sup>, M Akai<sup>4</sup>, Y Tobimatsu<sup>4</sup>, Y Hamabe<sup>3</sup> and T Ogata<sup>1</sup>

**Study design:** A pilot cross-sectional study of patients with acute cervical spinal cord injury (SCI).

**Objectives:** The precise evaluation of the severity of SCI is important for developing novel therapies. Although several biomarkers in cerebrospinal fluid have been tested, few analyses of blood samples have been reported. A novel biomarker for axonal injury, phosphorylated form of the high-molecular-weight neurofilament subunit NF-H (pNF-H), has been reported to be elevated in blood from rodent SCI model. The aim of this study is to investigate whether pNF-H values in blood can serve as a biomarker to evaluate the severity of patients with SCI.

**Setting:** Tokyo Metropolitan Bokutoh Hospital and National Rehabilitation Center, Japan.

**Methods:** This study enrolled 14 patients with acute cervical SCI. Sequential plasma samples were obtained from 6 h to 21 days after injury. Patients were classified according to American Spinal Injury Association impairment scale (AIS) at the end of the follow-up (average, 229.1 days). Plasma pNF-H values were compared between different AIS grades.

**Results:** In patients with complete SCI, pNF-H became detectable at 12 h after injury and remained elevated at 21 days after injury. There was a statistically significant difference between AIS A (complete paralysis) patients and AIS C (incomplete paralysis) patients.

**Conclusions:** Plasma pNF-H was elevated in accordance with the severity of SCI and reflected a greater magnitude of axonal damage. Therefore, pNF-H is a potential biomarker to independently distinguish AIS A patients (complete SCI) from AIS C–E patients (incomplete SCI). However, further studies are required to evaluate its utility in predicting prognosis of patients in the incomplete category.

*Spinal Cord* advance online publication, 24 January 2012; doi:10.1038/sc.2011.184

**Keywords:** spinal cord injury; biomarkers; neurofilament; ELISA; clinical trial

## INTRODUCTION

The pathophysiology of spinal cord injury (SCI) comprises both the initial mechanical insult and secondary damage caused by inflammation, hypoxia and excitotoxicity.<sup>1,2</sup> Attempts have been made to establish an efficient therapeutic protocol either to reduce the tissue damage by preventing secondary damage or to restore the neural tissue. It has been accepted that such intervention would be more efficient at an early time point after injury rather than during the chronic stage.<sup>3</sup> Therefore, many pharmacological and tissue-engineering therapies are now designed to be applied within the first month after injury.<sup>4,5</sup>

One of the obstacles against the innovation of novel therapies for SCI is the difficulty of determining the baseline severity of the injury. During the early period after injury when novel therapies would be applied, unstable conditions of patients, including the phenomenon of spinal shock, prevent precise evaluation of neurological status.<sup>6</sup> Therefore, a novel system that evaluates markers other than neurological symptoms would be expected to increase the accuracy of the initial evaluation of severity. One of the ways is to assess the amount of tissue

damaged by traumatic insult.<sup>7</sup> Because the central nervous tissue releases various structural proteins into the cerebral spinal fluid or peripheral blood flow upon trauma, attempts have been made to measure the concentration of a specific protein in samples of blood or cerebrospinal fluid after SCI.<sup>8–11</sup> However, the utility of any proteins from blood samples as biomarkers for evaluating the severity of SCI patients has not yet been confirmed. A recent report by Shaw *et al.*<sup>12</sup> introduced a novel biomarker, the phosphorylated form of the high-molecular-weight neurofilament subunit NF-H (pNF-H). As pNF-H is one of the structural proteins of axon fibers that are not detectable in blood of healthy animals, elevation of this protein in blood implies the breakdown of axons. Ueno *et al.*<sup>13</sup> reported the correlation between plasma pNF-H level at 3 days after injury and hind-limb functions at 4 weeks after injury in the rat contusion model. Regarding human patients, pNF-H level in blood has been reported to be elevated in patients with subarachnoid hemorrhage, traumatic brain injury and amyotrophic lateral sclerosis.<sup>14–16</sup> However, pNF-H has not been evaluated in a series of human patients with SCI.

<sup>1</sup>Department of Rehabilitation for the Movement Functions, Research Institute, National Rehabilitation Center for Persons with Disabilities, Saitama, Japan; <sup>2</sup>Department of Orthopaedic Surgery, Graduate School of Medicine, The University of Tokyo, Tokyo, Japan; <sup>3</sup>Trauma and Critical Care Center, Tokyo Metropolitan Bokutoh Hospital, Tokyo, Japan and <sup>4</sup>Rehabilitation Hospital, National Rehabilitation Center for Persons with Disabilities, Saitama, Japan  
Correspondence: Dr T Ogata, Department of Rehabilitation for the Movement Functions, National Rehabilitation Center for Persons with Disabilities, Toru Ogata, 4-1 Namiki, Tokorozawa, Saitama, Japan.  
E-mail: ogata-toru@rehab.go.jp

Received 30 June 2011; revised 14 November 2011; accepted 3 December 2011

In this report, we attempted to measure pNF-H in peripheral blood from patients with SCI, as a pilot study. Our primary aims were to determine whether (1) pNF-H is detectable in blood samples of patients with SCI and (2) the pNF-H level reflects the severity of the injury.

## METHODS

### Patients

We performed a cross-sectional study at a trauma and critical care medical center, and a research institute after obtaining approval from both institutional ethical review boards. Patients with traumatic cervical SCI dating from October 2009 were included in this study. We performed initial physical examination within 12 h after injury and followed up to at least 30 days from admission. Patients whose radiographic examination confirmed intracranial hemorrhage were excluded.

### Samples

Blood samples of 5 ml were collected at 6, 12, 18, 24, 48, 72 and 96 h, and 6, 8, 10, 14 and 21 days after the injury. Some samples were not collected at several time points. The plasma samples were collected after centrifugal separation, then frozen and stored until assay.

### Clinical evaluation

The severity of neurological impairment was graded according to the American Spinal Injury Association impairment scale (AIS) by trained medical doctors. We confirmed that sacral-sparing was absent in the patients classified as AIS A. After the initial evaluation, the assessment was performed 7 and 30 days after injury. After discharge from the hospitals, the symptoms of patients were followed at an outpatient clinic. In some cases, their symptoms were confirmed by telephone interview by the doctors.

### Assay of pNF-H

The pNF-H assay was carried out with a commercially available enzyme-linked immunosorbent assay kit (Human Phosphorylated Neurofilament H ELISA; BioVendor, Modrice, Czech Republic). The frozen plasma samples were allowed to thaw and were then diluted threefold with a dilution buffer. The assay was performed according to the manufacturer's protocol. The standard curve was constructed by plotting the mean absorbance of the standards against the known concentration of the standards on a logarithmic scale with the four-parameter algorithm. The concentration of the sample was calculated from the standard curve. Assays for which the pNF-H level exceeded the highest standard (4000 pg ml<sup>-1</sup>) were repeated with more diluted samples. The limit of detection (23.5 pg ml<sup>-1</sup>) was calculated from the mean absorbance of the blank (dilution buffer only) plus three standard deviations of the absorbance of blank. We defined the actual limit of detection as 70 pg ml<sup>-1</sup> because the sample was

diluted threefold. All samples were tested in duplicate, and the average value of each sample was calculated.

### Statistical analysis

Values of pNF-H below the limit of detection (70 pg ml<sup>-1</sup>) were treated as 0 for statistical analysis. For comparison of plasma pNF-H values between AIS C patients and AIS D patients, repeated measure analysis of variance (ANOVA) was used. On the other hand, we used Mann-Whitney's U test to compare pNF-H values of AIS A patients and AIS C patients because variance of pNF-H value in AIS A patients was much larger than that in AIS C patients. We performed a two-sided test, and differences with a *P*-value of <0.05 were considered statistically significant.

## RESULTS

### pNF-H was detectable in blood samples of patients with SCI

As shown in Table 1, the average age of the patients was 57.9 (30–88) years. The follow-up period ranged from 43 to 556 days (average 229.1 days) after injury. At the final follow-up, four patients were classified as AIS A, zero as AIS B, five as AIS C, four as AIS D and one as AIS E. Among 14 cases in the current study, pNF-H was detected (>70 pg ml<sup>-1</sup>) in 11 cases within 96 h after injury. Two of pNF-H negative cases were AIS D and the other case was AIS C. The plasma pNF-H levels of four patients who were graded as AIS A at the final follow-up are shown in Figure 1. In those patients, pNF-H was detectable in plasma from 12 h after injury (221–825 pg ml<sup>-1</sup>), and it increased until 96 h after injury (1919–8023 pg ml<sup>-1</sup>). Thus, pNF-H is detectable in blood samples from patients with severe SCI and the pNF-H value shows increasing pattern in early period.

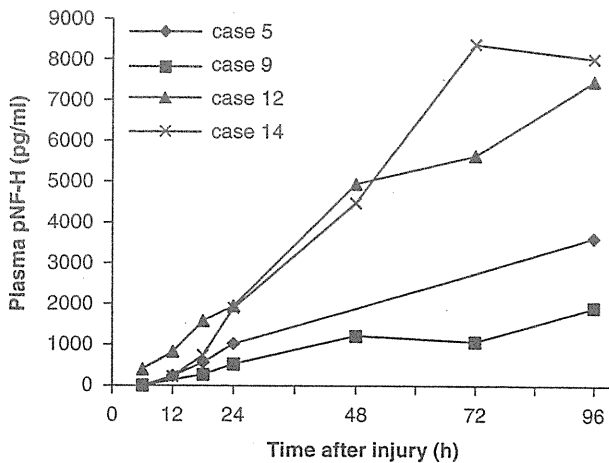
### Plasma pNF-H level was elevated in accordance with the severity of the injury

As a biomarker for SCI, one of the expectations for pNF-H is that its concentration should be useful for predicting the prognosis of each patient. Therefore, we investigated if there was a difference in pNF-H levels depending on injury severity. Figure 2a shows average pNF-H values of each AIS grade at each time point from 6 h to 96 h after injury. There is a marked difference between AIS A patients (complete SCI) and AIS C–E patients (incomplete SCI), with statistical significance from 18 h to 96 h after injury between AIS A and AIS C (average pNF-H value at 96 h: AIS A patients, 5260 pg ml<sup>-1</sup>; AIS C patients, 449 pg ml<sup>-1</sup>). In terms of predictive usage of pNF-H, we

Table 1 Patients

Case	Age	Mechanism of injury	Level	AIS at initial examination	AIS at final examination	Follow-up period (day post injury)	Complications	Steroid treatment	Decompression surgery
1	69	Fall from standing height	C6	C	C	199	OPLL	No	No
2	39	MVA	C5	C	D	556	None	No	No
3	69	Fall	C5	D	D	435	None	Yes	No
4	56	Fall down the stairs	C5	D	E	282	None	Yes	No
5	60	Fall down the stairs	C6	A	A	60	None	Yes	No
6	58	Fall	C5	D	D	497	Gastric ulcer	Yes	No
7	59	MVA	C6	D	D	43	DM	No	No
8	88	MVA	C6	C	C	60	DM, RF	No	No
9	30	Fall	C6	A	A	60	Spleen injury	No	No
10	56	Fall from standing height	C5	B	C	52	None	No	No
11	65	MVA	C6	A	C	167	OPLL	Yes	Yes
12	68	Fall down the stairs	C5	A	A	330	Concussion	No	Yes
13	59	Fall from standing height	C6	B	C	295	Gastric ulcer	No	No
14	35	Sport	C5	A	A	172	None	Yes	Yes

Abbreviations: DM, diabetes mellitus; MVA, motor vehicle accident; OPLL, ossification of the posterior longitudinal ligament; RF, renal failure.



**Figure 1** Time courses of plasma pNF-H values of 4 patients (Case 5, 9, 12 and 14) who were presented as AIS A at the final follow-up. The pNF-H was detectable in blood samples from 12h after injury and showed an increase until 96h after injury in all four cases.

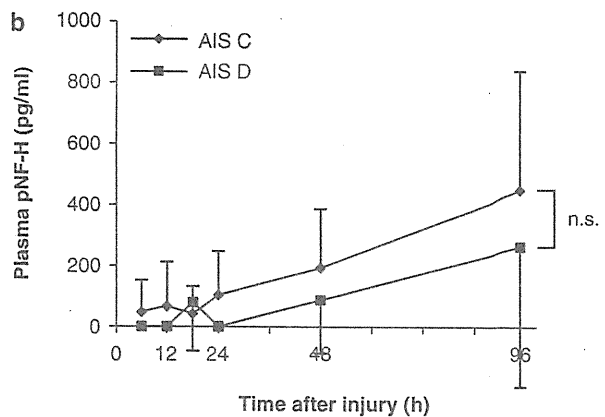
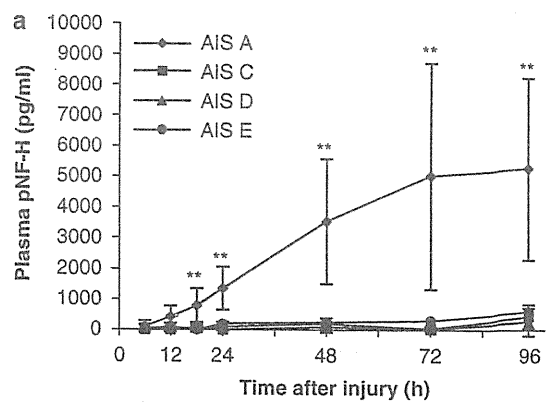
observed one particular case, Case 11 (AIS C), who was initially evaluated as AIS A on admission and then showed improvement to become AIS C by 7 days after injury. In this 'eventual' AIS C case, we confirmed that the pNF-H value was much lower (86 pg ml<sup>-1</sup> at 48h and 689 pg ml<sup>-1</sup> at 96h after injury) than 'eventual' AIS A patients (Case 5, 9, 12 and 14: ranging from 1210 to 4935 pg ml<sup>-1</sup> at 48h and from 1919 to 8023 pg ml<sup>-1</sup> at 96h after injury). As for less severe SCI, we observed that the pNF-H value tended to be higher in AIS C patients compared with AIS D patients (264 pg ml<sup>-1</sup> in average at 96h), even if not statistically different (Figure 2b). It should be noted that the only one patient who was graded as AIS E presented relatively high pNF-H value (606 pg ml<sup>-1</sup> at 96h). His symptom was assessed as AIS D with central cord syndrome on admission, and then he recovered to be asymptomatic within 9 months.

Taken together, although we did not have any AIS B patients in our series, we assume that plasma pNF-H level is higher in AIS A patients (complete SCI) compared with AIS C-E patients (incomplete SCI), while the significance of pNF-H value in evaluating the severity of incomplete SCI remain undetermined.

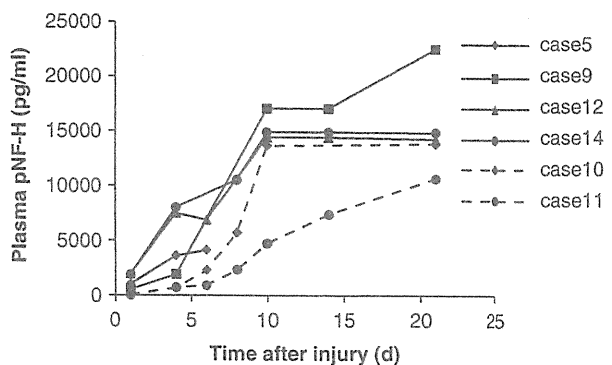
**Plasma pNF-H level remained elevated up to 21 days after injury**  
In contrast to the rodent SCI model in which plasma pNF-H decreases after 3 days post injury, we found that pNF-H values in human SCI increase up to 96h after injury. For a longer period of observation, we collected blood samples from four cases of AIS A and two cases of AIS C up to 21 days after injury. Figure 3 shows pNF-H values of each case, revealing that pNF-H values remained elevated at 21 days after injury in all cases examined. Therefore, we assume that the kinetics of pNF-H are different between human and rodent SCI.

## DISCUSSION

In the present pilot study, we analyzed blood samples from 14 patients with cervical SCI. Although the number of the patients and observational period were limited, we found that pNF-H was detectable in patients with SCI and that the pNF-H levels were significantly greater in AIS A patients (complete SCI) compared with AIS C-E patients (incomplete SCI). Therefore, we assume that pNF-H can be regarded as a potential biomarker to assess the severity of SCI.



**Figure 2** (a) Time courses of the average pNF-H values of each AIS grade (A,C,D and E) at each time point from 6h to 96h after injury. The difference between AIS A patients and AIS C patients was statistically significant from 18h to 96h after injury (\*\* $P < 0.01$ , Mann-Whitney's U test). (b) Time courses of the average pNF-H values of AIS grade C and D at each time point from 6h to 96h after injury. The pNF-H value tended to be higher in AIS C patients than in AIS D patients, though the difference was not statistically significant. Error bars indicate s.d.



**Figure 3** Time courses of plasma pNF-H values of 4 AIS A patients (Case 5, 9, 12 and 14; solid line) and 2 AIS C patients (Case 10 and 11; dashed line) until 21 days (for Case 5 until 6 days) after injury. Even at 21 days after injury, the pNF-H value remained elevated in all cases examined.

## pNF-H as a biomarker for central nervous system disorders

The present study is the first report of plasma pNF-H measurement in a series of patients with SCI. The striking difference between the rat model and human patients is that the pNF-H values from patients

remained elevated even at 21 days after injury, whereas the concentration of pNF-H in the rat has its peak at 3 days and returns to the baseline 14 days after injury.<sup>12</sup> It remains unclear whether the difference is related to different patterns of axonal degeneration between humans and rats or to the difference in the condition of the blood–spinal cord barrier. Sustained elevation of pNF-H has also been reported in studies of subarachnoid hemorrhage and traumatic brain injury.<sup>15,16</sup> The prolonged elevation of plasma pNF-H in patients with central nervous system disorders suggests the involvement of a continuous axonal degeneration, such as Wallerian degeneration or secondary axonal damage. In either case, it would be safe to conclude that the pNF-H level in blood represents the amount of axonal degeneration as a whole.

#### Comparison to other biomarkers

There have been several reports on the use of biomarkers to estimate prognosis among patients with SCI. For example, blood levels of S100B and NSE have been measured in experimental SCI.<sup>8,9,17</sup> S100B is a calcium-binding protein localized predominantly in astrocytes and Schwann cells, and NSE is a glycolytic enzyme predominantly localized in the cytoplasm of neurons and cells of neuroendocrine lineage.<sup>9</sup> Loy *et al.*<sup>8</sup> reported that both S100B and NSE present monomodal patterns over time; S100B and NSE have their peak values at 6 h after injury and return to baseline at 24 h. Such rapid changes require accurate timing of blood sampling, which is not always easy in the course of intensive care for SCI. Therefore, one of the favorable characteristics of pNF-H compared with those other markers is that the pNF-H can be stably detected at a later time point. On the other hand, pNF-H is barely detectable at 6 h after injury when S100B and NSE are already elevated in the blood. Taken together, these results suggest it could be beneficial to combine the use of S100B or NSE as ‘early markers’ and pNF-H as a ‘delayed marker’, depending on the type and timing of intervention applied.

#### Limitations of the current study and future perspectives

As the diagnosis is not definitive in the early stages after SCI because of the multiple traumas, sedation, spontaneous recovery etc., it is difficult to prove that a treatment that is administered during this period significantly improves neurological status. Therefore, the ideal biomarker is the one that enables the discrimination of, for example, definite AIS A patients from temporary AIS A patients, who would improve in neurological status with conventional therapies (as we observed in Case 11). Although the current study suggested that pNF-H has a potential for such biomarkers, further case-control studies are required to identify a possible threshold value to discriminate definite AIS A, and then to determine the predictive value of this biomarker. As for incomplete SCI, even though we observe the tendency of higher pNF-H values in AIS C compared with AIS D SCI, one case out of five cases of AIS C patients did not show an increase in pNF-H value. As there is a broad variation in limb functions among AIS C patients, we assume that further studies should include more detailed assessments for clinical symptoms, such as ASIA motor score, Spinal Cord Independence Measure (SCIM) and Walking Index for Spinal Cord Injury (WISCI) with a sufficient length of follow-up period.

Further studies are also required to obtain information about the influence of brain trauma, which may be a concomitant condition in SCI and may obscure the predictive ability of the biomarker. The data of the non-injured patients or patients without neuronal damages are also required to evaluate the specificity of this biomarker. In conclusion, we think the development of useful biomarkers for central nervous system trauma requires the accumulation of precise clinical follow-up data together with determination of the values of a variety of biomarkers in the acute phase.

#### DATA ARCHIVING

There was no data to deposit.

#### CONFLICT OF INTEREST

The authors declare no conflict of interest.

#### ACKNOWLEDGEMENTS

This study is funded by KAKENHI 22591649, a Grant-in-Aid for Scientific Research, Japan.

- McDonald JW, Sadowsky C. Spinal-cord injury. *Lancet* 2002; 359: 417–425.
- Crowe MJ, Bresnahan JC, Shuman SL, Masters JN, Beattie MS. Apoptosis and delayed degeneration after spinal cord injury in rats and monkeys. *Nat Med* 1997; 3: 73–76.
- Houle JD, Tessier A. Repair of chronic spinal cord injury. *Exp Neurol* 2003; 182: 247–260.
- Kwon BK, Okon E, Hillyer J, Mann C, Baptiste D, Weaver LC *et al.* A systematic review of non-invasive pharmacologic neuroprotective treatments for acute spinal cord injury. *J Neurotrauma* 2011; 28: 1545–1588.
- Tetzlaff W, Okon EB, Karimi-Abdolrezaee S, Hill CE, Sparling JS, Plemel JR *et al.* A systematic review of cellular transplantation therapies for spinal cord injury. *J Neurotrauma* 2011; 28: 1611–1682.
- Bach-y-Rita P, Illis LS. Spinal shock: possible role of receptor plasticity and non synaptic transmission. *Paraplegia* 1993; 31: 82–87.
- Kochanek PM, Berger RP, Bayir H, Wagner AK, Jenkins LW, Clark RS. Biomarkers of primary and evolving damage in traumatic and ischemic brain injury: diagnosis, prognosis, probing mechanisms, and therapeutic decision making. *Curr Opin Crit Care* 2008; 14: 135–141.
- Loy DN, Sroufe AE, Pelt JL, Burke DA, Cao QL, Talbott JF *et al.* Serum biomarkers for experimental acute spinal cord injury: rapid elevation of neuron-specific enolase and S-100beta. *Neurosurgery* 2005; 56: 391–397.
- Cao F, Yang XF, Liu WG, Hu WW, Li G, Zheng XJ *et al.* Elevation of neuron-specific enolase and S-100beta protein level in experimental acute spinal cord injury. *J Clin Neurosci* 2008; 15: 541–544.
- Pouw MH, Hosman AJ, van Middendorp JJ, Verbeek MM, Vos PE, van de Meent H. Biomarkers in spinal cord injury. *Spinal Cord* 2009; 47: 519–525.
- Kwon BK, Stammers AM, Belanger LM, Bernardo A, Chan D, Bishop CM *et al.* Cerebrospinal fluid inflammatory cytokines and biomarkers of injury severity in acute human spinal cord injury. *J Neurotrauma* 2010; 27: 669–682.
- Shaw G, Yang C, Ellis R, Anderson K, Parker Mickle J, Scheff S *et al.* Hyperphosphorylated neurofilament NF-H is a serum biomarker of axonal injury. *Biochem Biophys Res Commun* 2005; 336: 1268–1277.
- Ueno T, Otori Y, Ito J, Hoshikawa S, Yamamoto S, Nakamura K *et al.* Hyperphosphorylated neurofilament NF-H as a biomarker of the efficacy of minocycline therapy for spinal cord injury. *Spinal Cord* 2011; 49: 333–336.
- Boylan K, Yang C, Crook J, Overstreet K, Heckman M, Wang Y *et al.* Immunoreactivity of the phosphorylated axonal neurofilament H subunit (pNF-H) in blood of ALS model rodents and ALS patients: evaluation of blood pNF-H as a potential ALS biomarker. *J Neurochem* 2009; 111: 1182–1191.
- Lewis SB, Wolper RA, Miralía L, Yang C, Shaw G. Detection of phosphorylated NF-H in the cerebrospinal fluid and blood of aneurysmal subarachnoid hemorrhage patients. *J Cereb Blood Flow Metab* 2008; 28: 1261–1271.
- Zurek J, Bartlova L, Fedora M. Hyperphosphorylated neurofilament NF-H as a predictor of mortality after brain injury in children. *Brain Inj* 2011; 25: 221–226.
- Ma J, Novikov LN, Karlsson K, Kellerth JO, Wiberg M. Plexus avulsion and spinal cord injury increase the serum concentration of S-100 protein: an experimental study in rats. *Scand J Plast Reconstr Surg Hand Surg* 2001; 35: 355–359.

