

Role of NK Cells and Invariant NKT Cells in Multiple Sclerosis

- Shi F, Ljunggren H, Sarventnick N (2001) Innate immunity and autoimmunity: from self-protection to self-destruction. *Trends Immunol* 22:97–101
- Shimamura M, Huang YY, Okamoto N, Suzuki N, Yasuoka J, Morita K, et al (2007) Modulation of V α 19 NKT cell immune responses by α -mannosyl ceramide derivatives consisting of a series of modified sphingosines. *Eur J Immunol* 37:1836–1844
- Singh A, Wilson M, Hong S, Olivares-Villagomez D, Du C, Stanic A, et al (2001) Natural killer T cell activation protects mice against experimental autoimmune encephalomyelitis. *J Exp Med* 194:1801–1811
- Skulina C, Schmidt S, Dormair K, Babbe H, Roers A, Rajewsky K, Wekerle H, Hohlfeld R, Goebels N (2004) Multiple sclerosis: brain-infiltrating CD8⁺ T cells persist as clonal expansions in the cerebrospinal fluid and blood. *Proc Natl Acad Sci U S A* 101:2428–2433
- Smeltz R, Wolf N, Swanborg R (1999) Inhibition of autoimmune T cell response in the DA rat by bone marrow-derived NK cells in vitro: implication for autoimmunity. *J Immunol* 163:1390–1397
- Smyth M, Swann J, Cretny E, Zerafa N, Yokoyama W, Hayakawa Y (2005) NKG2D function protects the host from tumor initiation. *J Exp Med* 202:583–588
- Sospedra M, Martin R (2005) Immunology of multiple sclerosis. *Annu Rev Immunol* 23:683–747
- Speak A, Salio M, Neville D, Fontaine J, Priestman DP, Platt N, Heare T, et al (2007) Implications for invariant natural killer T cell ligands due to the restricted presence of isoglobotrihexosylceramide in mammals. *Proc Natl Acad Sci U S A* 104:5971–5976
- Stacker S, Springer T (1991) Leukocyte intergrin P150, 95 (CD11c/CD18) function as an adhesion molecule binding to a counter-receptor on stimulated endothelium. *J Immunol* 146:648–655
- Steinman L (2001) Multiple sclerosis: a two-stage disease. *Nat Immunol* 2:762–764
- Takahashi K, Miyake S, Kondo T, Terao K, Hatakenaka M, Hashimoto S, et al (2001) Natural killer type 2 bias in remission of multiple sclerosis. *J Clin Invest* 107:R23–R29
- Takahashi K, Aranami T, Endoh M, Miyake S, Yamamura T (2004) The regulatory role of natural killer cells in multiple sclerosis. *Brain* 127:1917–1927
- Takeda K, Hayakawa Y, Smyth M, Kayagaki N, Yamaguchi N, Kakuta S, et al (2001) Involvement of tumor necrosis factor-related apoptosis-inducing ligand in surveillance of tumor metastasis by liver natural killer cells. *Nat Med* 7:94–100
- Taniguchi M, Harada M, Kojo S, Nakayama T, Wakao H (2003) The regulatory role of Va14 NKT cells in innate and acquired immune response. *Annu Rev Immunol* 21:483–513
- Treiner E, Duban L, Bahram S, Radosavljevic M, Wanner V, Tilloy F, et al (2003) Selection of evolutionary conserved mucosal-associated invariant T cell by MR1. *Nature* 422:164–169
- Treiner E, Duban L, Moura I, Hansen T, Gilfillan S, Lantz O (2005) Mucosal-associated invariant T (MAIT) cells: an evolutionarily conserved T cell subset. *Microbes Infect* 7:552–559
- Trinchieri G (1989) Biology of natural killer cells. *Adv Immunol* 47:187–193
- Vranes Z, Poljakovic Z, Marusic M (1989) Natural killer cell number and activity in multiple sclerosis. *J Neurol Sci* 94:115–123
- Walker L, Abbas A (2002) Keeping self-reactive T cells at bay in the periphery. *Nat Rev Immunol* 2:11–19
- Warren H, Smyth M (1999) NK cells and apoptosis. *Immunol Cell Biol* 77:64–75
- Yamamura T, Sakuishi K, Illes Z, Miyake S (2007) Understanding the behavior of invariant NKT cells in autoimmune disease. *J Neuroimmunol* 191:8–15
- Yoshimoto T, Bendelac A, Hu-Li J, Paul W (1995) Defective IgE production by SJL mice is linked to the absence of CD4⁺ NK1.1⁺ T cells that promptly produce interleukin 4. *Proc Natl Acad Sci U S A* 92:11931–11934
- Yu K, Im J, Molano A, Dutronc Y, Illarionov P, Forestier C, et al Modulation of CD1d-restricted NKT cell responses by using N-acyl variants of α -galactosylceramides. *Proc Natl Acad Sci U S A* (2005) 102:3383–3388
- Zhang B, Yamamura T, Kondo T, Fujiwara M, Tabira T (1997) Regulation of experimental autoimmune encephalomyelitis by natural killer (NK) cells. *J Exp Med* 186:1677–1687
- Zhou D, Mattner J, Cantu 3rd C, Schrantz N, Yin N, Gao Y, et al (2004) Lysosomal glycosphingolipid recognition by NKT cells. *Science* 306:1786–1789

1. 脳神経 — c. 多発性硬化症

a. 概念・定義

多発性硬化症 (multiple sclerosis ; MS) は中枢神経系 (脳・脊髄・視神経) にリンパ球浸潤, 抗体沈着, 補体活性化などを伴う炎症病変が多発し, 多彩な神経症状を呈する慢性疾患である。

b. 疫学

欧米では若年成人を侵す神経疾患の中で最も多い (北欧や北米では人口 10 万人当たりの有病率は 50~200 人)。有病率は白人 > アジア人 > 黒人の順である。わが国の有病率は従来 3~5 人/10 万と報告されてきたが, 近年増加傾向にあり, 現在の患者数は 12,000 人以上と推定される。他の免疫・アレルギー疾患と同様, 遺伝的要因と環境要因の両者の関与する疾患である。一般的には高緯度地域で有病率が高く, 日照時間や衛生環境との関連が推測される。発症年齢は 30 歳前後で, 3 歳以前あるいは 70 歳以降に発症することはまれで, 女性に多い傾向がある (男女比 = 1 : 3)。

c. 病因

原因は明らかでないが, 自己抗原に対する免疫反応を本態とする自己免疫疾患であるという理解が一般的である。活動性病巣には T 細胞, マクロファージ, B 細胞などの浸潤と脱髄 (髄鞘崩壊) を認める。標的となる自己抗原として, ミエリン塩基性タンパク, プロテオリピッドタンパクなどが推定されている。自己免疫反応は患者ごとに均一ではなく, 病期によっても異なる。

近年では大規模な遺伝子解析により, HLA-DR や IL-2 受容体遺伝子などの多型と

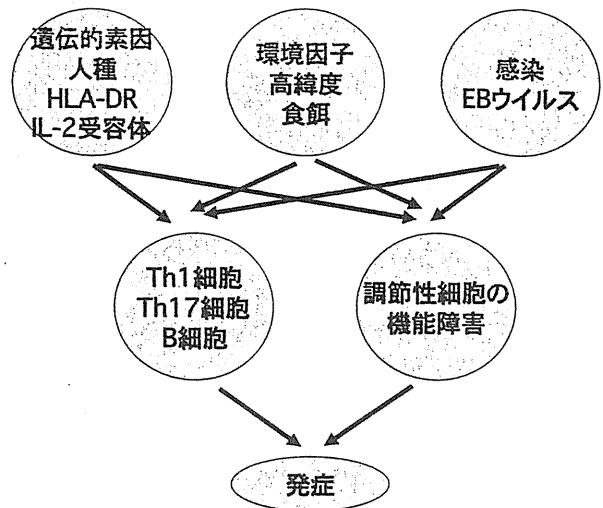


図1 MSの発症に至る道筋

遺伝的素因, 環境因子, 感染因子が重なることにより, 病原性細胞 (Th1 細胞, Th17 細胞, B 細胞など) の活性化と調節性細胞の機能障害が誘導され, 最終的に自己破壊的な免疫応答の活性化が起こる。

MS 感受性の相関が報告されている。しかし, 一卵性双生児の MS 発症一致率は 30 % 程度であり, 遺伝的素因に加えて, 環境因子や感染因子も重要な役割を果たすことは明白である。ウイルス感染の意義については否定的な意見もあるが, 最近 EB ウイルスの関与が注目されている。これらの要因が複雑に絡み合って MS が発症すると考えられる (図 1)。

MS の動物モデルである実験的自己免疫性脳脊髄炎 (experimental autoimmune encephalomyelitis ; EAE) では, インターフェロン γ (interferon- γ ; IFN- γ) を産生する Th1 細胞およびインターロイキン 17 (interleukin-17 ; IL-17) を産生する Th17 細胞が, 脳実質内で炎症性サイトカインやケモカインを産生して炎症を誘導する (図 2)。ヒト MS の病態では Th1 細胞の重要性が強調されているが, これは IFN- γ やミエリン塩基性タンパクアナロ

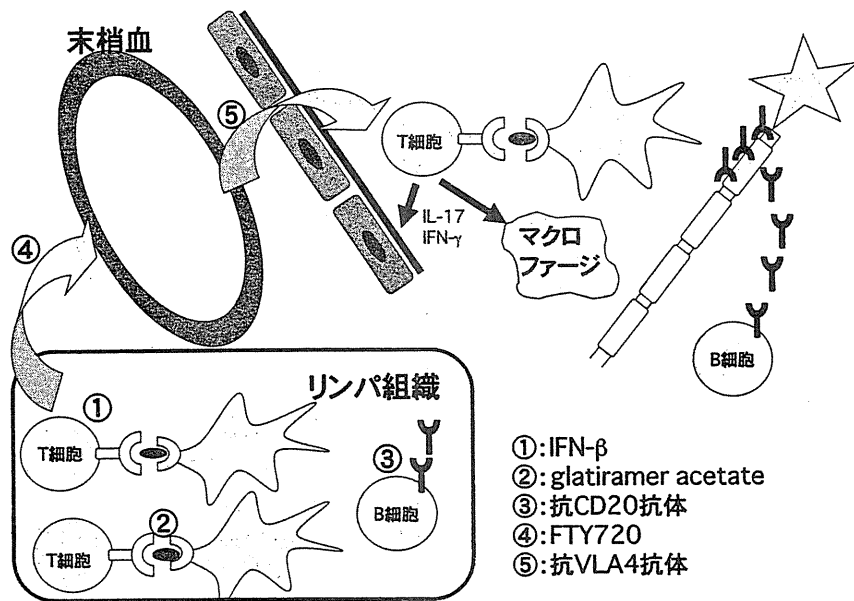


図2 MS治療薬の主な作用点

末梢リンパ組織において抗原刺激で活性化したT細胞は、末梢血を経由して血液脳関門を通過する。さらに中枢神経内で再活性化され、IFN- γ 、IL-17などのサイトカインや炎症性ケモカインを産生して、炎症反応を惹起する。

① IFN- β ：自己抗原提示の抑制，② glatiramer acetate：制御性T細胞の誘導，③ 抗CD20抗体：B細胞の殺傷，④ FTY720：末梢リンパ組織からのT細胞移動阻害，⑤ 抗VLA4抗体：T細胞血管内皮接着抑制。

グ・ペプチドの試験的投与に引き続いて、Th1細胞活性化に伴うMSの増悪が認められたという事実に基づいた推論である。しかし、Th17細胞やCD8陽性T細胞の重要性を示唆する報告もあり、自己抗体やB細胞も病態の形成に影響を及ぼす。また、病原性T細胞を制御する調節性細胞（CD25陽性T細胞、NKT細胞など）の異常も報告されている。

d. MSの病型

1) 臨床経過による分類

およそ8割の患者が急性増悪と寛解を繰り返す。この病型を再発・寛解型MSという。再発・寛解型MSでも罹病期間が長くなると、途中から明瞭な寛解を示すことなく、徐々に病状が進行する例が出てくる。これが二次進行型MSである。また、発症時から持続的に進行するMSを一次進行型MSという。

2) 病変分布による分類

大脳、小脳、脳幹、視神経、脊髄など中枢神

経内に病巣が広く分布するMSを、古典型MS（西洋型、通常型）と呼ぶ。欧米ではMSといえばこの病型を指す。これに対して、視神経脊髓型MSは、視神経炎と脊髄炎を繰り返して進行する病型で、日本に比較的多い。最近、この病型において、水チャンネルであるアクアポリン4に対する自己抗体が検出されることが明らかになった。病理像や治療に対する反応性が古典型MSとはかなり異なることから、MSとは区別してneuromyelitis optica (NMO)と呼ぶことが多い。

e. 臨床症状、検査所見

病変部位に応じて、視力障害、複視、小脳失調、運動麻痺、感覚障害、膀胱直腸障害などが出現する。精神症状、高次脳機能低下などが問題になることもある。髄液検査では、総タンパクおよびIgG比が上昇し、オリゴクローナルバンドが陽性になる（陽性率は欧米で90%以上。わが国では50~60%）。病変はMRIの

T2 強調像および FLAIR 像で高頻度に検出できる。また、急性期の病巣はガドリニウムで増強される。2001 年に発表された McDonald の国際診断基準は、MRI 検査を重視している。広く用いられているが、わが国においては、この診断基準に当てはまらない症例も多い。

f. 治療

急性期の治療としては、ステロイド大量点滴静注療法（パルス療法）が一般的である。慢性期には、再発を防止するためにインターフェロンβ（IFN-β）製剤が処方されるが、IFN-β の有効な患者は全体の 30% といわれる。IFN-β の副作用の強い例や無効例では、免疫グロブリン大量点滴静注療法（IVIg）、定期的ステロイドパルス療法、免疫吸着・血漿交換療法、ミトキサントロンなどが試みられる。日本では未だ

使用不可能であるが、ミエリン塩基性タンパクに多く含まれる 4 種類のアミノ酸のランダムなポリマーである glatiramer acetate（copolymer-1）と、リンパ球の血管内皮への接着を阻害する抗 VLA4（ $\alpha 4$ インテグリン）抗体が、欧米では広く使われている。また B 細胞を除去する抗 CD20 抗体の有効性が報告されている。

g. 将来的な治療

現在、さまざまな治療法が臨床試験の段階である。FTY720 は sphingosine-1-phosphate (S1P) 受容体のアゴニストで、T 細胞が二次リンパ組織から出るのを阻害する。その他、抗 CD52 抗体などが検討されている。

[荒浪利昌, 山村 隆]

REVIEW ARTICLE

Mind over cytokines: Crosstalk and regulation between the neuroendocrine and immune systems

Sachiko Miyake

Department of Immunology, National Institute of Neuroscience, National Centre of Neurology and Psychiatry, Tokyo, Japan

Keywords

autonomic nervous system; cytokine; hypothalamic–pituitary–adrenal axis; neuropeptide; neurotransmitter

Correspondence

Sachiko Miyake, MD, PhD, Department of Immunology, National Institute of Neuroscience, NCNP, 4-1-1 Ogawahigashi, Kodaira, Tokyo 187-8502, Japan.
 Tel: +81-42-341-2711 (5244)
 Fax: +81-42-346-1753
 Email: miyake@ncnp.go.jp

Received: 7 April 2011; revised: 13 May 2011; accepted: 30 May 2011.

Abstract

Crosstalk between the neuroendocrine and immune systems is essential for the maintenance of homeostasis in our bodies. Recent advances in neuroscience and immunology have elucidated the cellular and molecular basis for these bidirectional interactions. Neuronal and immune cells share a variety of neurotransmitters and cytokines as well as receptors, which enable these complex interactions. Individual hormones, neurotransmitters and neuropeptides have their own specific spatial and temporal niches, and these overlap to facilitate crosstalk with each other. The neuroendocrine system has multi-level modulatory properties that affect the functions of the immune system, contributing to both activation and suppression. Neural regulation of immune responses is accomplished systemically by hormones, regionally by innervation and locally by neurotransmitters. In turn, immune cells regulate neural function and integrity directly through cytokines or through the vagus nerve. In the present review, these complex, multifaceted interactions at the molecular level are explained based on current knowledge. (Clin. Exp. Neuroimmunol. doi: 10.1111/j.1759-1961.2011.00023.x, January 2012)

Introduction

Interactions between the immune and neuroendocrine systems were discovered by Hans Selye et al. in the 1930s. Since then, we have come to appreciate that integration between these two systems is essential in order to maintain homeostasis and overall health; the immune and neuroendocrine systems work in harmony with all other physiological systems at the level of the whole organism. These two systems reciprocally regulate each other, and share common ligands and receptors. Neuroendocrine regulation of immune responses is important for survival during both physiological and mental stress, and is accomplished systemically through hormonal cascades, regionally through nerve pathways into lymphoid organs and locally through neurotransmitters. In turn, the immune system regulates the central nervous system (CNS) through cytokines (Fig. 1). Herein, an updated overview of these complex interactions will be discussed.

Neuroendocrine regulation of the immune system

Systemic regulation of the immune system through hormones

Neuroendocrine systems systemically control immunological functions at the level of the hypothalamic–pituitary–adrenal (HPA) axis through glucocorticoids (GC), the hypothalamic–pituitary–gonadal (HPG) axis through sex hormones and the hypothalamic–pituitary–thyroidal (HPT) axis through thyroid hormones.¹ In addition to these classical pathways, the renin–angiotensin–aldosterone system (RAAS) and feeding regulatory hormones are also involved in the regulation of immune functions.

The hypothalamic–pituitary–adrenal axis

On various physical and psychological stimuli, corticotrophin-releasing hormone (CRH) is secreted from the paraventricular nucleus of the hypothalamus into the hypophyseal portal blood supply and stimulates the release of adrenocorticotropin hormone

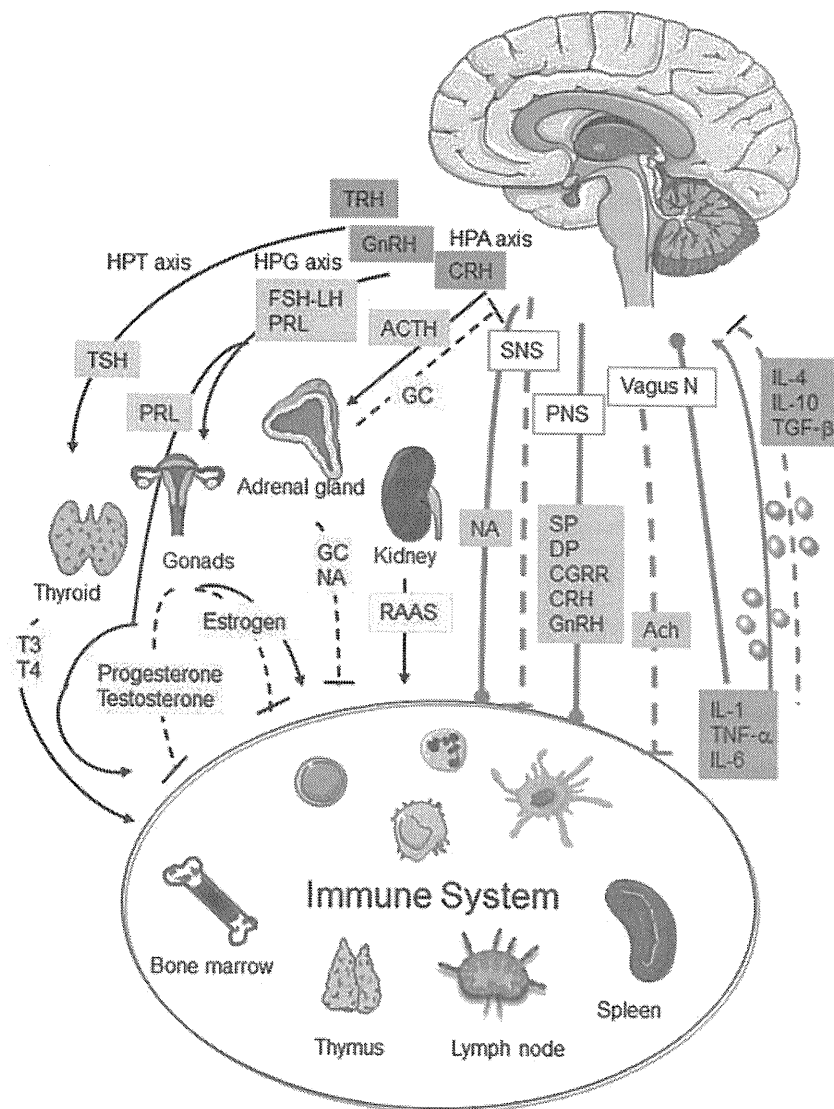


Figure 1 Crosstalk and regulation between the neuroendocrine and immune systems. The interactions between the immune system and the neuroendocrine system are regulated on the level of systemic routes by hormones and cytokines, regional routes by innervation of the sympathetic, parasympathetic and peripheral nervous systems, and local routes by neurotransmitters and cytokines. The hypothalamic-pituitary axis (black lines) controls the release of glucocorticoids, sex hormones and thyroid hormones. The autonomic and peripheral nervous systems participate in regional and local control of the immune system (green lines). In turn, immune cells produce cytokines on activation and affect neural functions (pink lines). Dashed lines indicate inhibitory signals. Red boxes indicate cytokines, green boxes indicate neurotransmitters, yellow boxes indicate hormones from peripheral endocrine organs, gray boxes indicate hormones from pituitary gland, purple boxes indicate hormones from the hypothalamus. Ach, acetylcholine; ACTH, adrenocorticotropin hormone; CGRR, calcitonin gene-regulated peptide; CRH, corticotrophin-releasing hormone; DP, dopamine; FSH, follicle stimulating hormone; GC, glucocorticoids; GnRH, gonadotropin releasing hormone; HPG, hypothalamic-pituitary-gonadal; HPT, hypothalamic-pituitary-thyroidal; IL, interleukin; LH, luteinizing hormone; NA, noradrenaline; PNS, peripheral nerve system; PRL, prolactin; RAAS, renin-angiotensin-aldosterone system; SNS, sympathetic nervous system; SP, substance P; TGF- β , transforming growth factor- β ; TNF- α , tumor necrosis factor- α ; TRH, thyrotropin-releasing hormone; TSH, thyroid stimulating hormone.

(ACTH) from the anterior pituitary gland. ACTH then stimulates the adrenal cortex to produce GC. The secretion of CRH is upregulated by dopamine, serotonin, noradrenaline and histamine, and down-regulated by opiates and γ -aminobutyric acid (GABA) as well as hormones downstream of CRH, such as GC and ACTH, through negative feedback.² GC bind to cytoplasmic glucocorticoid receptors (GCR), and modulate the transcription and protein synthesis of genes, such as activating protein-1 (AP-1) and nuclear factor κ B (NF κ B).³⁻⁵ Although GC play various roles in modulating immune responses, their overall effect is suppressive for both innate and acquired immunity through the inhibition of differentiation, maturation, proliferation and functions of immune cells.⁵ GC inhibit the production of pro-inflammatory (interleukin [IL]-1, IL-6, tumor

necrosis factor [TNF]- α) and Th1-related cytokines (IL-2, IL-12, γ -interferon [IFN- γ], granulocyte macrophage colony-stimulating factor [GM-CSF]), as well as inflammatory mediators, such as prostaglandin and nitric oxide, and enhance the production of anti-inflammatory cytokines (IL-4, IL-10). GC also suppress the proliferation and function of cytotoxic T cells. GC inhibit antigen presentation by suppressing the maturation of dendritic cells and reducing the expression of major histocompatibility complex (MHC) class II molecules.¹ GC suppress cell trafficking by inhibiting the production of chemoattractants (IL-5, IL-8, regulated on activation, normal T cell expressed and secreted [RANTES], eotaxin, monocyte chemoattractant protein-1 [MCP-1]) and the expression of cell adhesion molecules (intercellular adhesion molecule-1 [ICAM-1], vascular cell adhesion

molecule-1 [VCAM-1], E-selectin). Furthermore, GC induce the apoptosis of T cells and thymocytes through increasing the expression of Bad, Bcl-XS and Bcl-XL genes.

CRH is released from nerve endings at sites of inflammation, as well as from immune cells, and CRH receptors are expressed on immune cells including macrophages, T cells, B cells, mast cells and eosinophiles.⁶⁻⁹ The local effect of CRH is inflammatory rather than anti-inflammatory. CRH receptor antagonists suppress the production of IL-6, IL-1 and TNF- α from macrophages resulting in disease inhibition in a model of endotoxin shock.¹⁰

Hypothalamic-pituitary-gonadal axis

Females show greater humoral and cellular immune responses than males. The importance of sex hormones on immune reactions has been inferred from the higher frequency of many autoimmune diseases in females. Gonadotropin releasing hormone (GnRH) released from the hypothalamus stimulates gonadotropins including follicle stimulating hormone (FSH) and luteinizing hormone (LH) in the anterior pituitary gland, and subsequently stimulates the release of estrogen and progesterone from ovary glands. Immune cells express GnRH and GnRH receptors.^{11,12} GnRH enhances T cell development, proliferation, cytokine production (including IFN- γ) as well as IgG production,¹² and is therefore immunostimulatory. In agreement with this, administration of GnRH antagonist in a murine lupus model ameliorates disease by reducing autoantibody production, whereas administration of GnRH agonists exacerbates disease severity.¹³

Estrogen binds to two forms of cytoplasmic estrogen receptors (ER), ER α and ER β . ER α is expressed on the endometrium, ovarian stromal cells, breast and hypothalamus, whereas ER β is widely expressed in tissues including brain, kidney, bone, heart, lungs, intestine and endothelial cells¹⁴. Estrogen has dual roles in the modulation of immune responses depending on the plasma levels. High levels of estrogen suppress macrophages to produce TNF- α and IL-12, and promote them to produce IL-10.¹⁵ In addition, estrogen promotes the HPA axis and noradrenaline (NA) production, resulting in further inhibition of inflammation, and favors a Th2 pattern of cytokines.¹⁶ Estrogen has a potent modulatory effect on B cell development and survival, interfering with B cell tolerance and enhancing autoantibody production.¹⁷⁻¹⁹ Consistent with these findings, hyperestrogenic states, such as an ingestion of oral contraceptives and pregnancy, are associated with

disease flare-up of systemic lupus erythematosus (SLE), in which a humoral immune response is an important pathogenic factor.¹¹ In contrast, pregnancy has been reported with decreased disease activities in rheumatoid arthritis or multiple sclerosis, which are Th1/Th17-mediated responses that dominate in the pathogenesis.¹¹ Several studies in experimental autoimmune encephalomyelitis (EAE), an animal model of multiple sclerosis (MS) that is mainly mediated by myelin reactive T cells, have shown the inhibitory effects of estrogens on disease activities.²⁰⁻²⁵ The mechanisms that underlie the inhibition of EAE include suppression of myelin-specific Th1 and Th17 immune suppression, increased Th2 responses, induction of CD4⁺CD25⁺ regulatory T cells (T regs) and downregulation of inflammation. The studies using knockout mice and a specific ligand for ER α or ER β suggest that the suppressive effects of estrogen in EAE are mediated by ER α ,²⁶⁻²⁸ although ER β seems to be involved in neuroprotection.^{29,30} More recently, G-protein coupled estrogen receptor (GPR30), a membrane estrogen receptor, has been shown to be important in the inhibition of EAE by estrogen.³¹⁻³³ Based on these findings and a promising pilot trial of oral estriol, there are several clinical trials of estrogens in MS underway.³⁴⁻³⁶ Progesterone shows anti-inflammatory effects through the inhibition of NF κ B.^{15,37} Testosterone inhibits both innate and acquired immunity.¹¹ Dihydrotestosterone decreases immunoglobulin and cytokine production and lymphocyte proliferation.³⁸

Prolactin (PRL) is released from the anterior pituitary gland and stimulates mammary growth and differentiation. PRL and PRL receptor, members of a cytokine receptor superfamily, are expressed on immune cells. PRL is stimulated by suckling and stress, and inhibited by dopamine. The production of PRL in T cells is inhibited by IL-2 and IL-4.³⁹ The effects of PRL on immune responses are immunostimulatory and PRL enhances production of cytokines, such as IFN- γ , IL-12 and IL-10, as well as T cell proliferation. PRL also alters the functions and selection of B cells, resulting in the breaking of tolerance of autoreactive B cells.⁴⁰⁻⁴² Consistent with this, bromocriptine administration abrogates the estradiol-induced breakdown of B cell tolerance.⁴³

Hypothalamic-pituitary-thyroidal axis

Thyrotropin-releasing hormone (TRH) secreted from the paraventricular nucleus of the hypothalamus stimulates the release of thyroid stimulating hormone (TSH) in the anterior pituitary gland and subsequently stimulates the release of thyroid hormones

from the thyroid gland. The existence of receptors for thyrotropic and thyroid hormones in immune cells, and the production of TSH by immune cells established the presence of interactions between pituitary-thyroid hormones and the immune system. Studies using mice deficient in thyroid hormone receptors suggested that B cells, macrophages and granulocytes were decreased in the spleens of these mice.⁴⁴ Experimentally-induced hypothyroidism resulting from propylthiouracil (PTU) treatment in rodents, as well as hypothyroidism in humans, reduces thymic activity and humoral and cell-mediated immune responses, and this suppression was relieved by the administration of thyroid hormones.⁴⁵⁻⁴⁷ Consistent with these results, lymphocytes from hyperthyroid mice treated with thyroxin showed higher T and B cell mitogen-induced proliferation. Recall responses to sheep red blood cell immunization showed increased or decreased IL-2 and IFN- γ production in hyper- or hypothyroid mice, respectively. In addition, the production of IL-6 and IFN- γ on stimulation with lipopolysaccharide (LPS) was upregulated in hyperthyroid mice, suggesting enhancement of innate immune responses.⁴⁷ Furthermore, proliferative responses and cytotoxic activity were reduced in chronically stressed mice in which the levels of thyroid hormones, but not GC and NA, were reduced, and thyroxin replacement reversed the reduction in T cell responses.⁴⁸ These findings suggest that stress induces an alteration of the HPT axis leading to modulation of immune responses.

Renin-angiotensin-aldosterone systems

In addition to the aforementioned pathways, other systems, such as RAAS, are important modulators of immune functions. RAAS regulates blood pressure and body fluid homeostasis. Renin converts angiotensin (Ang) to AngI, and Ang-converting enzyme (ACE) catalyzes the conversion of AngI to AngII. Although there are two subclasses of receptors for AngII, AngII type 1 receptor (AT1R) and AngII type 2 receptor, AT1R mediates the major effects of AngII. RAAS is also expressed in immune cells like the other hormones described earlier. Monocytes and dendritic cells produce AngII and AT1R.⁴⁹⁻⁵¹ AngII stimulation promotes the production of inflammatory mediators, including cytokines, chemokines and adhesion molecules, through the activation of NF κ B.^{52,53} These mediators also promote the differentiation of dendritic cells and accumulation of neutrophils, which then drives diseases, such as atherosclerosis and inflammation.^{51,54,55} Inhibition of ACE or AT1R suppresses the production of

inflammatory cytokines, including TNF- α , IL-1, IL-6, IL-12 and IL-18,⁵⁶⁻⁵⁸ leading to disease suppression in arthritis models.^{59,60} Inhibition of RAAS regulates not only innate immunity, but also adaptive immunity, as antigen-specific Th1 responses are suppressed in collagen-induced arthritis and experimental autoimmune uveitis.^{60,61} More recently, suppression of both Th1 and Th17 responses, and induction of Tregs and transforming growth factor- β (TGF- β) by the blockade of ACE or AT1R were shown in EAE.^{62,63}

Leptin, ghrelin, neuropeptide Y

Recent studies have shed light on the immunomodulatory potency of feeding regulatory hormones, such as leptin, neuropeptide Y (NPY) and ghrelin. Leptin is predominantly produced by adipocytes and is actively transported through the blood-brain barrier (BBB) and acts on the hypothalamic satiety center to decrease food intake. The receptors for leptin (OB-R) belong to the class I cytokine receptor family, which includes the IL-2 receptors, and have at least six isoforms. The short leptin receptor isoform (OB-Ra) and the long leptin receptor isoform (OB-Rb) are the main leptin signaling receptors, and are expressed in the hypothalamus and other cells including immune cells.⁶⁴ Leptin induces the release of inflammatory cytokines, such as TNF- α and IL-6, as well as CC-chemokine ligand 2 (CCL2) and vascular endothelial growth factor (VEGF).⁶⁵ Leptin also stimulates the production of chemokines by eosinophils⁶⁶ and neutrophils.^{67,68} Serum leptin is decreased after acute starvation in parallel with immunosuppression or Th2 bias, whereas exogenous leptin enhances proliferation of T cells and skews cytokine balance towards Th1, leading to the suppression of EAE.^{69,70} Serum levels of leptin correlate with body fat mass. In contrast, serum levels of adiponectin, another hormone secreted from adipocytes, are markedly decreased in individuals with visceral obesity and insulin resistance. Interestingly, adiponectin inhibits the ability of macrophages to produce inflammatory cytokines and chemokines, and carry out phagocytosis.^{71,72}

NPY is increased after starvation. NPY regulates a variety of physiological activities, including energy balance and feeding, anxiety, neuroendocrine secretion, neuronal excitability and vasoconstriction. NPY is synthesized and released with NA from sympathetic nerves, the adrenal medulla and immune cells.⁷³ NPY receptors are G-protein-coupled receptors and consist of five subsets (Y1-5), which are differentially expressed in tissues. Y1 receptors are

rather ubiquitous and are also expressed in immune cells. Exposure of macrophages to NPY suppresses the production of IL-6 *in vitro*.⁷⁴ Exogenous NPY shifts the Th1/Th2 balance towards Th2 through NPY receptor 1 and ameliorates the severity of EAE.⁷⁵ In contrast, studies using NPY1 receptor-deficient mice have shown that NPY promotes APC activation in addition to its role in downregulating Th1-responses.⁷⁶ Leptin and NPY are linked to ghrelin, as ghrelin is increased after starvation, it potently stimulates the release of NPY in the CNS⁷⁷ and antagonizes the effects of leptin.⁷⁸

Ghrelin is predominantly secreted from the mucosal endocrine cells of the stomach and the ghrelin receptor, a G protein-coupled receptor called GH secretagogue receptor (GHS-R), is widely distributed throughout various organs. Ghrelin stimulates GH release, increases food intake, regulates energy homeostasis and decreases energy expenditure by lowering the catabolism of fat.^{79,80} Ghrelin and the GHS-R have been detected in immune cells and lymphoid tissues. Ghrelin induced increases in peripheral blood lymphocytes, as well as thymic cellularity and differentiation; the resulting increases in cytotoxic lymphocytes reduce tumor initiation and subsequent metastases.⁸¹ More recent studies have highlighted the anti-inflammatory functions of ghrelin. Ghrelin inhibits the nuclear translocation of NF κ B and suppresses the production of inflammatory cytokines from macrophages and T cells.^{82,83} As a consequence, ghrelin inhibits bowel disease,⁸⁴ arthritis,^{85,86} sepsis and endotoxemia.^{82,86,87} Furthermore, ghrelin inhibits the production of inflammatory cytokines from microglia and subsequently suppresses EAE.^{88,89}

Regional regulation of the immune system through the autonomic nervous system

Regional control of immune responses is mediated by innervation of primary and secondary lymphoid organs. Nerve terminals lie adjacent to T cells, B cells and dendritic cells, with the neuroimmune junction measuring approximately 6-nm wide, in contrast to a typical CNS synapse, which is 20-nm wide. Innervation of lymphoid organs changes depending on the pathological conditions. Innervation to the lymph node increases under psychosocial stress in primates,^{90,91} whereas it decreases under conditions of viral infection or inflammation, such as arthritis.^{92,93} The predominant nerve fibers are sympathetic, but in addition, acetylcholine (ACh), calcitonin gene-regulated peptide (CGRP), vasoactive intestinal

polypeptide (VIP), dopamine, substance P and somatostatin can be found at these sites. In this section, sympathetic and parasympathetic effects are discussed. Other neurotransmitters will be discussed in the next section.

Sympathetic nervous system control of immune responses

The sympathetic nervous system (SNS) contains regions of the brain, as well as sympathetic nerves, that innervate primary and secondary immune organs and release noradrenaline (NA) from their nerve terminals on stimulation. In addition, adrenaline is systemically released from chromaffin cells in the adrenal medulla. Most studies show that activation of the SNS inhibits the immune system, although some studies show the opposite effects including induction of chemokines, such as CXCL8.^{1,74} Catecholamines bind to α - and β -adrenergic receptors, seven-transmembrane domain G protein-coupled receptors composed of heterodimers of two different subunits that form multiple subtypes. Immune cells predominantly express β 2-adrenergic receptors (β 2AR). The signals through β 2AR on dendritic cells and macrophages upregulate cyclic AMP (cAMP), activate protein kinase A and inhibit NF κ B. These intracellular events attenuate the production of inflammatory cytokines, such as TNF- α , IL-1, IL-6 and IL-12, and upregulate IL-10 production,⁹⁴⁻⁹⁶ resulting in the suppression of Th1 responses. Interestingly, β 2AR are expressed on naïve CD4⁺ T cells and Th1 cells, but not Th2 cells. Suppression of the Th1 response seems to be influenced by the time-point, as IFN- γ production decreases if NA is added before activation, but increases when NA is added after activation.^{97,98} In addition to the suppression of Th1 responses, chemical sympathectomy increased splenic and lymph node CD4⁺FoxP3 Treg cells through a TGF- β -dependent mechanism to further suppress excess immune responses.⁹⁹

Although several pieces of conflicting data exist concerning the effects of sympathectomy on cytotoxic T cells, it has been reported recently that chemical sympathectomy by 6-hydroxydopamine or treatment with β 2-blockers (but not β 1- or α -blockers) enhanced CD8⁺ T cell responses to viral and cellular antigens in mice, suggesting that the sympathetic nervous system plays an inhibitory role in CD8⁺ T cell responses.¹⁰⁰ In humoral responses, β 2-adrenergic stimulation or cAMP accumulation enhances B cell proliferation, B7-2 expression, differentiation to antibody-secreting cells and antibody production.¹⁰¹ Inhibition of Th1 responses might also

contribute to enhanced humoral responses. However, antibody production seems to depend on the duration of cAMP accumulation. Short-term elevation enhances, whereas long-term elevation suppresses antibody production. Consistent with these results, high level spinal cord injury (T3) caused sustained increases in splenic NA and GC along with impaired antibody production, and these immunosuppressive effects were reversed by β 2AR blockers.¹⁰² Catecholamines affect other innate immune cells, and induce acute mobilization of NK cells and chronic inhibition of NK-cell activity directly and indirectly through the inhibition of IL-12 and IFN- γ . In addition, catecholamines suppress the migration, phagocytosis and degranulation of neutrophils.^{103,104}

Parasympathetic control of immune responses

The parasympathetic nervous system uses Ach as a primary neurotransmitter and modulates immune responses through the efferent and afferent fibers of the vagus nerve. Inflammatory cytokines, such as IL-1, stimulate paraganglia cells resulting in signals through afferent fibers, which activate the parasympathetic brainstem regions to release Ach from efferent vagus nerves to control inflammation through negative feedback. Vagotomy shuts down the signals to the brain and the subsequent negative feedback resulting in enhanced inflammatory conditions, such as toxic shock¹⁰⁵ and CIA,¹⁰⁶ whereas electrical vagus nerve stimulation acts to ameliorate disease using a model of sepsis.¹⁰⁷ Ach binds to two types of receptors – nicotinic and muscarinic cholinergic receptors. Both types of receptors consist of many different subunits, thus comprising a variety of receptors. Among them, α 7-nicotinic AChR (nAChR), expressed on macrophages, lymphocytes and neutrophils, is essential for the anti-inflammatory effects of vagal nerve signaling.¹⁰⁸ Activation of nicotinic AChR inhibits NF κ B transcriptional activity and the production of inflammatory cytokines and high mobility group box 1 (HMGB1).^{108,109} In agreement, stimulation of α 7-nAChR by nicotine or Ach leads to the attenuation of inflammation in conditions such as sepsis or CIA through the suppression of inflammatory cytokines.^{106–108} In addition, nicotine administration inhibited aspects of acquired immunity, including antigen-specific Th1 and Th17 responses and the subsequent development of EAE.^{110,111} Furthermore, in α 7-nAChR-deficient mice, the production of TNF- α , IFN- γ and IL-6, as well as antigen-specific IgG1 antibodies by spleen cells, was significantly facilitated.¹¹² Besides the effect on cytokine secretion, nAChR activation also modulates endocytosis and phagocytosis

by macrophages. This effect, however, is mediated through α 4 β 2-nAChR.¹¹³ Interestingly, miR-132 has recently been shown to target acetylcholinesterase (AChE), a functional regulator of the cholinergic system.¹¹⁴ Inflammatory stimuli induced overexpression of miR-132 in lymphocytes, and miR-132 attenuates inflammation by reducing AChE levels.

Local regulation of the immune system through neurotransmitters

Neurotransmitters are synthesized in neurons and reside in presynaptic terminals. They act on the postsynaptic neurons and other organs. Amino acids, such as glutamate and GABA, amines such as dopamine, NA and serotonin, and peptides termed neuropeptides, such as somatostatin, substance P, NPY, opioid, GnRH, CRH, CGRP and VIP, are all neurotransmitters. These molecules are released from the peripheral nervous system, as well as from immune cells including T cells, B cells, macrophages, dendritic cells, granulocytes,^{6–9,11,12,73,115–130} and, therefore, contribute to the modulation of immune responses. Due to space limitations, only some of these neurotransmitters will be discussed here.

Glutamate

Glutamate is a primary excitatory neurotransmitter in the CNS and regulates motor, sensory and affective functions, as well as cognition, memory and learning. Glutamate binds to two families of multiple receptors, ionotropic glutamate receptors (iGluR) and G protein-coupled metabotropic glutamate receptors (mGluR). iGluR are subdivided into three groups based on their amino acid sequence and selective activation by the agonists N-methyl-D-aspartate (NMDA) and kainate or α -amino-3-hydroxy-5-methyl-4-isoxazolepropionic acid (AMPA). mGluR include eight subtypes and are classified into three subgroups according to their sequence homology and G protein coupling. Group I consists of mGluR1 and mGluR5, which are coupled to the Gq protein. Group II consists of mGluR2 and mGluR3, which are coupled with Gi and Go proteins, and L-2-amino-4-phosphonobutyric acid is their most potent agonist. Group III consists of mGluR4, mGluR6, mGluR7 and mGluR8, which are coupled with Gi and Go proteins, and for which L-2-(carboxycyclopropyl)-glycine is the most potent agonist. Even though iGluR3 signals have been reported to impair IL-10 production, but enhance the chemotactic migration and integrin-mediated adhesion of resting T cells,¹³¹ administration of AMPA/kainate antagonist to mice

suffering EAE increased oligodendrocyte survival with no reduction of inflammation, suggesting a minor effect of iGluR on immune cells.¹³² In contrast, some mGluR have recently been reported to be involved in immune responses. Regarding group I GluR, the expression of mGlu1R is induced after T cell activation in contrast to mGlu5R, which is constitutively expressed on T cells. Signals through mGlu5R inhibit T-cell proliferation through suppression of IL-6 production,¹³³ whereas signals through mGlu1R enhance the secretion of IL-2, IL-6, IL-10, TNF- α and IFN- γ , and counteract the mGlu5R-mediated inhibitory effect on T-cell proliferation.^{133,134} Recent studies using mGluR4, a member of group III GluR, showed that mGluR4-deficient mice were vulnerable to EAE and that this was associated with enhanced Th1 and Th17 responses. These mice showed increased production of inflammatory cytokines, such as IL-6, IL-12 and IL-23, as well as anti-inflammatory cytokines including IL-10 and TGF- β .¹³⁵ In accordance with these findings, administration of N-phenyl-7-(hydroxyimino) cyclopropa[b] chromen-1a-carboxamide (PHCCC), an mGluR4 selective enhancer, increased EAE resistance by inducing Tregs, showing the immunosuppressive effect of mGluR4-mediated signaling.¹³⁵

Dopamine

Dopamine is an important neurotransmitter in the CNS and plays a key role in the control of movement, endocrine regulation and cardiovascular function. Dopamine also plays an important function outside of the CNS in peripheral nerve systems, as dopamine is released from peripheral nerve terminals that innervate lymphoid organs, as well as from immune cells. Dopamine has been shown to inhibit proliferation of human lymphocytes, and even to induce apoptosis in peripheral mononuclear cells.^{136,137} Dopamine receptors are seven-transmembrane G protein-coupled receptors with five subtypes (D1R-D5R) classified into two subgroups – D1-like receptors and D2-like receptors.¹³⁸ Murine and human lymphocytes express all subtypes of these receptors. D1-like receptors, including D1R and D5R, are coupled to G α s, whose increases in cAMP are often linked to inhibitory effects. In contrast, D2-like receptors, including D2R, D3R and D4R, are coupled to G α i, which decreases cAMP and is often linked to immunostimulation. Signals through D1-like receptors inhibit the function of cytotoxic T cells and Tregs.^{119,139,140} In contrast, signals through D2R trigger integrin activation and IL-10 production.¹⁴¹ Furthermore, signals through D3R induce the secretion

of TNF- α from T cells¹⁴² and induce the migration of naïve CD8⁺ T cells.¹⁴³ However, recent *in vivo* studies showed that administration of D1-like receptor antagonists ameliorated EAE in association with a reduction of IL-17 and an increase in IFN- γ , whereas administration of D2-like receptor antagonists worsened EAE.¹⁴⁴ Furthermore, in an arthritis model, the D2-like receptor antagonist, haloperidol, significantly induced accumulation of IL-6+ and IL-17+ T cells, and exacerbated cartilage destruction, whereas D1-like receptor antagonists suppressed these responses,¹⁴⁵ suggesting that dopamine signals through D1-like receptors enhance Th17-mediated diseases by promoting the IL-6/Th17 axis in conjunction with the suppression of Tregs.

Substance P

Substance P (SP) is produced by the primary afferent neuronal terminals of the CNS and peripheral nerve endings, as well as by immune cells including monocytes, dendritic cells and lymphocytes. The diverse functions of SP include a role as a neuronal sensory transmitter associated with pain, stress, anxiety, secretion stimulation, smooth muscle contraction and immune stimulation. SP binds to both the neurokinin-1 (NK1R) and neurokinin-2 receptor, but the effects of SP are mainly mediated by NK1R, a G protein-coupled receptor. In the immune system, SP enhances the production of inflammatory cytokines, such as IL-1 β , IL-6 and TNF- α , by activating NF κ B from monocytes. SP also increases NK cell activity and induces the release of CXCL8 and CCL2 from leukocytes and vasoactive mediators, such as serotonin and histamine, from mast cells.¹⁴⁶ In terms of T cells, SP potentiates acquired immune cell responses by enhancing T cell proliferation. Furthermore SP augments the generation of Th1 and Th1/Th17 cells from memory T cells by inducing IL-1 β , TNF- α and IL-23 production by monocytes leading to the control of infections.^{147–149} Consistent with these findings, NK1R antagonists are effective for the treatment of sepsis.^{150–152}

Immune regulation of neuroendocrine systems

The neural regulation of immune responses has been extensively studied as aforementioned. However, the interactions between the neuroendocrine and immune systems are bidirectional and, recently, increased attention has been given to the immunological regulation of the neural system through cytokines. Activation of innate immune responses, not just by pathogens but also by

damage-associated molecules, such as HMGB1, heat shock protein and ATP, leads to the release of inflammatory cytokines. IL-1, TNF- α and, to a lesser extent, IL-6 stimulate the HPA axis at the level of vagus afferent nerves, the hypothalamus, the pituitary and the adrenal glands to release GC as well as the SNS to release NA, providing a negative feedback loop to stop inflammation. Cytokines produced in the periphery activate primary afferent nerves, such as the vagus nerves, enter the brain through the areas with a poorly developed blood-brain barrier, such as the circumventricular region or are actively transported. In addition, neurons, glial cells and endothelial cells produce these cytokines in the CNS.¹⁵³ In contrast to HPA axis, inflammatory cytokines have negative effects on the HPG axis, leading to the reduction of gonadal functions.¹⁵⁴

The effects of cytokines on the CNS are not limited to the HPA axis and SNS, but are also involved in behavior induced by sickness including changes in behaviour that occur in ill patients, and even in depression. Systemic or intrathecal administration of IL-1 β or TNF- α induces signs of behavior resulting from sickness, such as decreased motor activity, social withdrawal, altered cognition and fatigue. Although administration of IL-6 does not induce these behavioral changes, LPS-induced sickness behaviors are reduced in IL-6^{-/-} mice, suggesting its involvement in these behavioral changes, although the degree is less compared with IL-1 β or TNF- α . In contrast, anti-inflammatory cytokines, such as IL-10, attenuate LPS-induced sickness behaviors.¹⁵⁵⁻¹⁵⁸

Type I interferon, IFN- α and IFN- β , are used for the treatment of hepatitis C and MS, respectively. These cytokines show neuropsychiatric complications, including sleep disorders and depression, which serves as evidence of the cytokine-mediated modulation of neural activities. The potential link between inflammatory cytokines and depression is tryptophan metabolism. Tryptophan is an essential amino acid and is a source of serotonin, as it is metabolized to serotonin and kynurenine. In the latter pathway, tryptophan is metabolized by tryptophan 2,3 dioxygenase (TDO) and indoleamine 2,3 dioxygenase (IDO) to kynurenine, and then metabolized either to 3-hydroxykynurenine or kynurenic acid, an antagonist of NMDA receptors. 3-Hydroxykynurenine is further metabolized to 3-hydroxyanthranilic acid and quinolinic acid, an agonist of NMDA receptors. TDO is primarily located in the liver and is activated by GC, whereas IDO is widely expressed and is activated by inflammatory cytokines and downregulated by IL-4.^{153,159} In patients treated

with type I IFN, plasma levels of kyurenic acid as well as serotonin are decreased, suggesting that the behavior and depression caused by inflammatory cytokines including IFN might be a result of an alteration in glutamatergic neurotransmission.

Although much of the focus on T cells in a variety of pathogenic conditions, has been on classical immune-mediated inflammation, including infection and autoimmune disorders, in diseases newly related to inflammation, such as ischemia, neurodegenerative and psychiatric disorders, a neuroprotective role has emerged as an important task for T cells. The production of neurotrophic factors, such as brain-derived neurotrophic factor (BDNF) from T cells,¹⁶⁰ reduced learning capacity in T cell-deficient mice and its restoration by passive T cell transfer¹⁶¹ and enhanced hippocampal neurogenesis by T cells,^{162,163} suggest a fundamental function of T cells in the maintenance of cognitive functions. Anti-inflammatory cytokines, such as IL-4 and TGF- β , are detectable in the CNS, and IL-4 is downregulated in a mouse model of Alzheimer's disease.¹⁶⁴ These cytokines, in addition to BDNF, might contribute to the maintenance of homeostasis of the CNS. Although the precise mechanisms remain elusive, T cells might serve as important players in the maintenance of neuronal integrity.

Future directions

Acute stress responses in the autonomic and peripheral nervous systems amplify local immune responses to eliminate pathogens and other dangerous occurrences. Subsequent to these initial responses, the neuroendocrine and autonomic systems act to inhibit immune responses and terminate inflammation. In contrast, chronically sustained stress induces unusual conditions, such as inadequate secretion of GC, as well as resistance to GC, increased sympathetic tone propelling the RAAS, functional loss of sympathetic nerve fibers at the inflammation site and a local β to α adrenergic shift.^{165,166} Further studies to clarify the consequences of stress on chronic inflammatory conditions will provide novel strategies for the control of complex pathogenic conditions including autoimmune diseases, and neurodegenerative and psychiatric disorders.

References

1. Sternberg EM. Neural regulation of innate immunity: a coordinated nonspecific host response to pathogens. *Nat Rev Immunol.* 2006; **6**: 318-28.

2. Calogero AE, Gallucci WT, Gole PW, Chrousos GP. Multiple feedback regulatory loops upon rat hypothalamic corticotrophin-releasing hormone secretion. Potential clinical implications. *J Clin Invest.* 1998; **82**: 767–74.
3. Schule R, Rangarajan P, Kliewer S, Ransone LJ, Bolado J, Yang N, et al. Functional antagonism between oncoprotein c-Jun and the glucocorticoid receptor. *Cell.* 1990; **62**: 1217–26.
4. Ghosh S, Ma MJ, Kopp EB. NF- κ B and Rel proteins: evolutionarily conserved mediators of immune responses. *Annu Rev Immunol.* 1998; **16**: 225–60.
5. Webster JI, Tonelli L, Sternberg EM. Neuroendocrine regulation of immunity. *Annu Rev Immunol.* 2002; **20**: 125–63.
6. Baker C, Richards LJ, Dayan CM, Jessop DS. Corticotropin-releasing hormone immunoreactivity in human T and B cells and macrophages: co-localization with arginine vasopressin. *J Neuroendocrinol.* 2003; **15**: 1070–4.
7. Crofford LJ, Sano H, Karalis K, Webster EL, Goldmuntz EA, Chrousos GP, et al. Local secretion of corticotropin-releasing hormone in the joints of Lewis rats with inflammatory arthritis. *J Clin Invest.* 1992; **90**: 2555–64.
8. Kempuraj D, Papadopoulou NG, Lytinas M, Huang M, Kandere-Grzybowska K, Madhappan B, et al. Corticotropin-releasing hormone and its structurally related urocortin are synthesized and secreted by human mast cells. *Endocrinology.* 2004; **145**: 43–8.
9. Zheng PY, Feng BS, Oluwole C, Struiksma S, Chen X, Li P, et al. Psychological stress induces eosinophils to produce corticotropin releasing hormone in the intestine. *Gut.* 2009; **58**: 1473–9.
10. Agelaki S, Tsatsanis C, Gravanis A, Margioris AN. Corticotropin-releasing hormone augments proinflammatory cytokine production from macrophages in vitro and in lipopolysaccharide-induced endotoxin shock in mice. *Infect Immun.* 2002; **70**: 6068–74.
11. Tanriverdi F, Silveira LF, MacColl GS, Bouloux PM. The hypothalamic-pituitary-gonadal axis: immune function and autoimmunity. *J Endocrinol.* 2003; **176**: 293–304.
12. Chen A, Ganor Y, Rahimipour S, Ben-Aroya N, Koch Y, Levite M. The neuropeptides GnRH-II and GnRH-I are produced by human T cells and trigger laminin receptor gene expression, adhesion, chemotaxis and homing to specific organs. *Nat Med.* 2002; **8**: 1421–6.
13. Jacobson JD, Ansari MA, Kinealy M, Muthukrishnan V. Gender-specific exacerbation of murine lupus by gonadotropin-releasing hormone: potential role of G alpha q/11. *Endocrinology.* 1999; **140**: 3429–37.
14. Cheskis BJ, Greger JG, Ngpal S, Freedman LP. Signaling by estrogens. *J Cell Physiol.* 2007; **213**: 610–7.
15. Wilder RL, Elenkov IJ. Hormonal regulation of tumor necrosis factor- α , interleukin-12 and interleukin-10 production by activated macrophages. *Ann NY Acad Sci.* 1999; **876**: 14–31.
16. Chrousos PG, Torpy DJ, Gold PW. Interactions between the hypothalamic-pituitary-adrenal axis and the female reproductive system: clinical implications. *Ann Intern Med.* 1998; **129**: 229–40.
17. Bynoe MS, Grimaldi CM, Diamond B. Estrogen up-regulates Bcl-2 and blocks tolerance induction of naïve B cells. *Proc Natl Acad Sci USA.* 2000; **97**: 2703–8.
18. Grimaldi CM, Michael DJ, Diamond B. Expansion and activation of a population of autoreactive marginal zone B cells in a model of estrogen-induced lupus. *J Immunol.* 2001; **167**: 1886–90.
19. Grimaldi CM, Cleary J, Dagtas AS, Moussai D, Diamond B. Estrogen alters thresholds for B cell apoptosis and activation. *J Clin Invest.* 2002; **109**: 1625–33.
20. Jansson L, Olsson T, Holmdahl R. Estrogen induces a potent suppression of experimental autoimmune encephalomyelitis and collagen-induced arthritis in mice. *J Neuroimmunol.* 1994; **53**: 203–7.
21. Kim S, Liva SM, Dalal MA, Verity MA, Voskuhl RR. Estriol ameliorates autoimmune demyelinating disease: implications for multiple sclerosis. *Neurology.* 1999; **52**: 1230–8.
22. Bebo BF Jr, Fyfe-Johnson A, Adlard K, Beam AG, Vandenberg AA, Offner H. Low-dose estrogen therapy ameliorates experimental autoimmune encephalomyelitis in two different inbred mouse strains. *J Immunol.* 2001; **166**: 2080–9.
23. Lin HB, Loo KK, Palasynski K, Ashouri J, Lubahn DB, Voskuhl RR. Estrogen receptor alpha mediates estrogen's immune protection in autoimmune disease. *J Immunol.* 2003; **171**: 6936–40.
24. Palasynski KM, Liu H, Loo KK, Voskuhl RR. Estriol treatment ameliorates disease in males with experimental autoimmune encephalomyelitis: implications for multiple sclerosis. *J Neuroimmunol.* 2004; **149**: 84–9.
25. Wang C, Dehghani B, Li Y, Laurie J, Kaler J, Arthur A, et al. Oestrogen modulates experimental autoimmune encephalomyelitis and interleukin-17 production via programmed death-1. *Immunology.* 2009; **126**: 329–35.
26. Polanczyk M, Zamora A, Subramanian S, Matejuk A, Hess DL, Blankenhorn EP, et al. The protective effect of 17 β -estradiol on experimental autoimmune encephalomyelitis is mediated through estrogen receptor- α . *Am J Pathol.* 2003; **163**: 1599–605.
27. Elloso MM, Phiel K, Henderson RA, Harris HA, Adelman SJ. Suppression of experimental autoimmune encephalomyelitis using estrogen receptor-selective ligands. *J Endocrinol.* 2005; **185**: 243–52.
28. Morales LB, Loo KK, Liu H-b, Peterson C, Tiwari-Woodruff S, Voskuhl RR. Treatment with an estrogen receptor α ligand is neuroprotective in experimental

- autoimmune encephalomyelitis. *J Neurosci.* 2006; **26**: 6823–33.
29. Tiwari-Woodruff S, Morales LB, Lee R, Voskuhl RR. Differential neuroprotective and anti-inflammatory effects of estrogen receptor (ER)alpha and ERbeta ligand treatment. *Proc Natl Acad Sci USA.* 2007; **104**: 14813–8.
 30. Crawford DK, Mangiardi M, Song B, Patel R, Du S, Sofroniew MV, et al. Oestrogen receptor β ligand: a novel treatment to enhance endogenous functional remyelination. *Brain.* 2010; **133**: 2999–3016.
 31. Wang C, Dehghani B, Li Y, Kaler LJ, Proctor T, Vandenberg AA. Membrane estrogen receptor regulates EAE through upregulation of programmed death 1. *J Immunol.* 2009; **182**: 3294–303.
 32. Blasko E, Haskell CA, Leung S, Gualtieri G, Halks-Miller M, Mahmoudi M, et al. Beneficial role of the GPR30 agonist G-1 in an animal model of multiple sclerosis. *J Neuroimmunol.* 2009; **214**: 67–77.
 33. Yates MA, Li Y, Chlebeck PJ, Offner H. GPR30, but not estrogen receptor- α , is crucial in the treatment of experimental autoimmune encephalomyelitis by oral ethinyl estradiol. *BMC Immunol.* 2010; **11**: 20.
 34. Gold SM, Voskuhl RR. Estrogen treatment in multiple sclerosis. *J Neurol Sci.* 2009; **86**: 99–103.
 35. Sicotte NL, Liva SM, Klutch R, Pfeiffer P, Bouvier S, Odesa S, et al. Treatment of multiple sclerosis with the pregnancy hormone estriol. *Ann Neurol.* 2002; **52**: 421–8.
 36. Vukusic S, Ionescu I, El-Etr M, Schumacher M, Baulieu EE, Cornu C, et al. The Prevention of Post-Partum Relapses with Progesterone and Estradiol in Multiple Sclerosis (POPARTMUS) trial: rationale, objectives and state of advancement. *J Neurol Sci.* 2009; **286**: 114–8.
 37. Kalkhoven E, Wissink S, van der Saag PT, van der Burg B. Negative interaction between the RelA(p65) subunit of the NF-kappaB and the progesterone receptor. *J Biol Chem.* 1996; **271**: 6217–24.
 38. Araneo BA, Dowell T, Diegel M, Daynes RA. Dihydrotestosterone exerts a depressive influence on the production of interleukin-4 (IL-4), IL-5, and gamma-interferon, but not IL-2 by activated murine T cells. *Blood.* 1991; **78**: 688–99.
 39. Gerlo S, Verdood P, Hooghe-Peters EL, Kooijman R. Modulation of prolactin expression in human T lymphocytes by cytokines. *J Neuroimmunol.* 2005; **162**: 190–3.
 40. Matalka KZ. Prolactin enhances production of interferon- γ , interleukin-12, and interleukin-10, but not of tumor necrosis factor-alpha, in a stimulus-specific manner. *Cytokine.* 2003; **21**: 187–94.
 41. Peeva E, Michael D, Cleary J, Rice J, Chen X, Diamond B. Prolactin modulates the naïve B cell repertoire. *J Clin Invest.* 2003; **111**: 275–83.
 42. Peeva E, Grimaldi C, Spatz L, Diamond B. Bromocriptine restores tolerance in estrogen-treated mice. *J Clin Invest.* 2000; **106**: 1373–9.
 43. Saha S, Gonzalez J, Rosenfeld G, Keiser H, Peeva E. Prolactin alters the mechanisms of B cell tolerance induction. *Arthritis Rheum.* 2009; **60**: 1743–52.
 44. Arpin C, Pihlgren M, Fraichard A, Aubert D, Samarut J, Chassande O, et al. Effects of T3Ra1 and T3Ra2 gene deletion on T and B lymphocyte development. *J Immunol.* 2000; **164**: 152–60.
 45. Schoenfeld PS, Myers JW, Myers L, LaRocque JC. Suppression of cell-mediated immunity in hypothyroidism. *South Med J.* 1995; **88**: 347–9.
 46. Klecha AJ, Genaro AM, Lysionek AE, Caro LA, Coluccia AG, Cremaschi GA. Experimental evidence pointing to the bidirectional interaction between the immune system and the thyroid axis. *Int J Immunopharmacol.* 2000; **22**: 491–500.
 47. Klecha AJ, Genaro AM, Gorelik G, Arcos MLB, Silberman DM, Schuman M, et al. Integrative study of hypothalamus-pituitary-thyroid-immune system interaction: thyroid hormone-mediated modulation of lymphocyte activity through the protein kinase C signaling pathway. *J Endocrinol.* 2006; **189**: 45–55.
 48. Frick LR, Rapanelli M, Bussmann UA, Klecha AJ, Arcos ML, Genaro AM, et al. Involvement of thyroid hormones in the alterations of T-cell immunity and tumor progression induced by chronic stress. *Biol Psychiatry.* 2009; **65**: 935–42.
 49. Kitazono T, Padgett RC, Armstrong M, Tompkins PK, Heistad DD. Evidence that angiotensin II is present in human monocytes. *Circulation.* 1995; **91**: 1129–34.
 50. Okamura A, Rakugi H, Ohishi M, Yanagitani Y, Takiuchi S, Moriguchi K, et al. Upregulation of renin-angiotensin system during differentiation of monocytes to macrophages. *J Hypertens.* 1999; **17**: 537–45.
 51. Nahmod KA, Vermeulen ME, Raiden S, Salamone G, Gamberale R, Fernández-Calotti P, et al. Control of dendritic cell differentiation by angiotensin II. *FASEB J.* 2003; **17**: 491–3.
 52. Ruiz-Ortega M, Bustos C, Hernandez-Presa MA, Lorenzo O, Plaza JJ, Egido J. Angiotensin II participates in mononuclear cell recruitment in experimental immune complex nephritis through nuclear factor-kappa B activation and monocyte chemoattractant protein-1 synthesis. *J Immunol.* 1998; **161**: 430–9.
 53. Kranzhofer R, Browatzki M, Schmidt J, Kubler W. Angiotensin II activates the proinflammatory transcription factor nuclear factor-kappa B in human monocytes. *Biochem Biophys Res Commun.* 1999; **257**: 826–8.
 54. Potter DD, Sobey CG, Tompkins PK, Rossen JD, Heistad DD. Evidence that macrophages in atherosclerotic lesions contain angiotensin II. *Circulation.* 1998; **98**: 800–7.
 55. Nabah YNA, Mateo T, Estellés R, Mata M, Zagorski J, Sarau H, et al. Angiotensin II induces neutrophil accumulation in vivo through generation and release of CXC chemokines. *Circulation.* 2004; **110**: 3581–6.

56. Fukuzawa M, Satoh J, Sagara M, Muto G, Muto Y, Nishimura S, et al. Angiotensin converting enzyme inhibitors suppress production of tumor necrosis factor- α in vitro and in vivo. *Immunopharmacology*. 1997; **36**: 49–55.
57. Lapteva N, Ide K, Nieda M, Ando Y, Hatta-Ohashi Y, Minami M, et al. Activation and suppression of rennin-angiotensin system in human dendritic cells. *Biochem Biophys Res Commun*. 2002; **296**: 194–200.
58. Sánchez-Lemus E, Benicky J, Pavel J, Saavedra JM. In vivo angiotensin II AT1 receptor blockade selectively inhibits LPS-induced innate immune response and ACTH release in rat pituitary gland. *Brain Behav Immun*. 2009; **23**: 945–57.
59. Dalbeth N, Edwards J, Fairchild S, Callan M, Hall FC. The non-thiol-angiotensin-converting enzyme inhibitor quinapril suppresses inflammatory arthritis. *Rheumatology*. 2005; **44**: 24–31.
60. Sagawa K, Nagatani K, Komagata Y, Yamamoto K. Angiotensin receptor blockers suppress antigen-specific T cell responses and ameliorate collagen-induced arthritis in mice. *Arthritis Rheum*. 2005; **52**: 1920–8.
61. Okunuki Y, Usui Y, Nagai N, Kezuka T, Ishida S, Takeuchi M, et al. Suppression of experimental autoimmune uveitis by angiotensin II type 1 receptor blocker telmisartan. *Invest Ophthalmol Vis Sci*. 2009; **50**: 2255–61.
62. Platten M, Youssef S, Hur EM, Ho PP, Han MH, Lanz TV, et al. Blocking angiotensin-converting enzyme induces potent regulatory T cells and modulates TH1- and TH17-mediated autoimmunity. *Proc Natl Acad Sci USA*. 2009; **106**: 14948–53.
63. Lanz TV, Ding Z, Ho PP, Luo J, Agrawal AN, Srinagesh H, et al. Angiotensin II sustains brain inflammation in mice via TGF- β . *J Clin Invest*. 2010; **120**: 2782–94.
64. Guzik TJ, Mangalath D, Korbut R. Adipocytokines – novel link between inflammation and vascular function? *J Physiol Pharmacol*. 2006; **57**: 505–28.
65. Tilg H, Moschen AR. Adipocytokines: mediators linking adipose tissue, inflammation and immunity. *Nat Rev Immunol*. 2006; **6**: 772–83.
66. Wong CK, Cheung PF, Lam CW. Leptin-mediated cytokine release and migration of eosinophils: implications for immunopathophysiology of allergic inflammation. *Eur J Immunol*. 2007; **37**: 2337–48.
67. Caldefie-Chezet F, Poulin A, Vasson MP. Leptin regulates functional capacities of polymorphonuclear neutrophils. *Free Radic Res*. 2003; **37**: 809–14.
68. Montecucco F, Bianchi G, Gnerre P, Bertolotto M, Dall'egri F, Ottonello L. Induction of neutrophil chemotaxis by leptin: crucial role for p38 and Src kinases. *Ann NY Acad Sci*. 2006; **1069**: 463–71.
69. Lord GM, Matarese G, Howard JK, Baker RJ, Bloon SR, Lechler RI. Leptin modulates the T-cell immune response and reverses starvation-induced immunosuppression. *Nature*. 1998; **394**: 897–901.
70. Sanna V, Di Giacomo A, La Cava A, Lechler RI, Fontana S, Zappacosta S, et al. Leptin surge precedes onset of autoimmune encephalomyelitis and correlates with development of pathogenic T cell responses. *J Clin Invest*. 2003; **111**: 241–50.
71. Okamoto Y, Folco EJ, Minami M, Wara AK, Feinberg MW, Sukhova GK, et al. Adiponectin inhibits the production of CXC receptor 3 chemokine ligands in macrophages and reduces T-lymphocyte recruitment in atherosclerosis. *Circ Res*. 2008; **102**: 218–25.
72. Yokota T, Oritani K, Takahashi I, Ishikawa J, Matsuyama A, Ouchi N, et al. Adiponectin, a new member of the family of soluble defense collagens, negatively regulates the growth of myelomonocytic progenitors and the functions of macrophages. *Blood*. 2000; **96**: 1723–32.
73. Shwarz H, Villiger PM, von Kempis J, Lotz M. Neuropeptide Y is an inducible gene in the human immune system. *J Neuroimmunol*. 1994; **51**: 53–61.
74. Straub RH, Schaller T, Miller LE, von Hörsten S, Jessop DS, Falk W, et al. Neuropeptide Y cotransmission with norepinephrine in the sympathetic nerve-macrophage interplay. *J Neurochem*. 2000; **7**: 2464–71.
75. Bedoui S, Miyake S, Lin Y, Miyamoto K, Oki S, Kawamura N, et al. Neuropeptide Y (NPY) suppresses experimental autoimmune encephalomyelitis: NPY1 receptor-specific inhibition of autoreactive Th1 responses in vivo. *J Immunol*. 2003; **171**: 3451–8.
76. Wheway J, Mackay CR, Newton RA, Sainsbury A, Boey D, Herzog H, et al. A fundamental bimodal role for neuropeptide Y1 receptor in the immune system. *J Exp Med*. 2005; **202**: 1527–38.
77. Cowley MA, Smith RG, Diano S, Tschöp M, Pronchuk N, Grove KL, et al. The distribution and mechanism of action of ghrelin in the CNS demonstrates a novel hypothalamic circuit regulating energy homeostasis. *Neuron*. 2003; **37**: 649–61.
78. Kalra SP, Ueno N, Kalra PS. Stimulation of appetite by ghrelin is regulated by leptin restraint: peripheral and central sites of action. *J Nutr*. 2005; **135**: 1331–5.
79. Nakazato M, Murakami N, Date Y, Kojima M, Matsuo H, Kangawa K, et al. A role for ghrelin in the central regulation of feeding. *Nature*. 2001; **409**: 194–8.
80. Wu JTR, Dral J. Ghrelin integrative neuroendocrine peptide in health and disease. *Ann Surg*. 2004; **239**: 464–74.
81. Koo GC, Huang C, Camacho R, Trainor C, Blake JT, Sirtina-Meisher A, et al. Immune enhancing effect of a growth hormone secretagogue. *J Immunol*. 2001; **16**: 4195–201.
82. Li WG, Gavrila D, Liu X, Wang L, Gunnlaugsson S, Stoll LL, et al. Ghrelin inhibits proinflammatory responses and nuclear factor- κ B activation in human endothelial cells. *Circulation*. 2004; **109**: 2221–6.
83. Dixit VD, Schaffer EM, Pyle RS, Collins GD, Sakthivel SK, Palaniappan R, et al. Ghrelin inhibits leptin- and

- activation-induced proinflammatory cytokine expression by human monocytes and T cells. *J Clin Invest*. 2004; **114**: 57–66.
84. Gonzalez-Rey E, Chorny A, Delgado M. Therapeutic action of ghrelin in a mouse model of colitis. *Gastroenterology*. 2006; **130**: 1707–20.
 85. Granado M, Priego T, Martin AI, Villanua A, Lopez-Caldron A. Anti-inflammatory effect of the ghrelin agonist growth hormone-releasing peptide-2 (GHRP-2) in arthritic rats. *Am J Physiol Endocrinol Metab*. 2005; **288**: E486–92.
 86. Chorny A, Anderson P, Gonzalez-Rey E, Delgado M. Ghrelin protects against experimental sepsis by inhibiting high-mobility group box 1 release and by killing bacteria. *J Immunol*. 2008; **180**: 8369–77.
 87. Wu R, Dong W, Cui X, Zhou M, Simms HH, Ravikumar TS, et al. Ghrelin down-regulates proinflammatory cytokines in sepsis through activation of the vagus nerve. *Ann Surg*. 2007; **245**: 480–6.
 88. Theil M-M, Miyake S, Mizuno M, Tomi C, Croxford JL, Hosoda H, et al. Suppression of experimental autoimmune encephalomyelitis by ghrelin. *J Immunol*. 2009; **183**: 2859–66.
 89. Miyake S, Yamamura T. Ghrelin: friend or foe for neuroinflammation. *Discov Med*. 2009; **8**: 64–7.
 90. Sloan EK, Capitanio JP, Tarara RP, Mendoza SP, Mason WA, Cole SW. Social stress enhances sympathetic innervation of primate lymph nodes: mechanisms and implications for viral pathogenesis. *J Neurosci*. 2007; **27**: 8857–65.
 91. Sloan EK, Capitanio JP, Cole SW. Stress-induced remodeling of lymphoid innervation. *Brain Behav Immun*. 2008; **22**: 15–21.
 92. Straub RH, Rauch L, Fassold A, Lowin T, Pongratz G. Neuronally released sympathetic neurotransmitters stimulate splenic interferon-gamma secretion from T cells in early type II collagen-induced arthritis. *Arthritis Rheum*. 2008; **58**: 3450–60.
 93. Sloan EK, Nguyen CT, Cox BF, Tarara RP, Capitanio JP, Cole SW. SIV infection decreases sympathetic innervation of primate lymph nodes: the role of neurotrophins. *Brain Behav Immun*. 2008; **22**: 185–94.
 94. Elenkov IJ, Papanicolaou DA, Wilder RL, Chrousos GP. Modulatory effects of glucocorticoids and catecholamines on human interleukin-12 and interleukin-10 production: clinical implications. *Proc Assoc Am Physicians*. 1996; **108**: 374–81.
 95. Le Tulzo Y, Shenkar R, Kaneko D, Moine P, Fantuzzi G, Dinarello CA, et al. Hemorrhage increases cytokine expression in lung mononuclear cells in mice: involvement of catecholamines in nuclear factor-kappaB regulation and cytokine expression. *J Clin Invest*. 1997; **99**: 1516–24.
 96. Panina-Bordignon P, Mazzeo D, Lucia PD, D'Ambrosio D, Lang R, Fabbri L, et al. Beta2-agonists prevent Th1 development by selective inhibition of interleukin 12. *J Clin Invest*. 1997; **100**: 1513–9.
 97. Kin NW, Sanders VM. It takes nerve to tell T and B cells what to do. *J Leukoc Biol*. 2006; **79**: 1093–104.
 98. Strell C, Sievers A, Bastian P, Lang K, Niggemann B, Zänker KS, et al. Divergent effects of norepinephrine, dopamine and substance P on the activation, differentiation and effector functions of human cytotoxic T lymphocytes. *BMC Immunol*. 2009; **8**: 10.
 99. Bhowmick S, Singh A, Flavell RA, Clark RB, O'Rourke J, Cone RE. The sympathetic nervous system modulates CD4(+)FoxP3(+) regulatory T cells via a TGF-beta-dependent mechanism. *J Leukoc Biol*. 2009; **86**: 1275–83.
 100. Grebe KM, Hickman HD, Irvine KR, Takeda K, Bennink JR, Yewdell JW. Sympathetic nervous system control of anti-influenza CD8+ T cell responses. *Proc Natl Acad Sci USA*. 2009; **106**: 5300–5.
 101. Kohm AP, Sanders VM. Norepinephrine and beta 2-adrenergic receptor stimulation regulate CD4+ T and B lymphocyte function in vitro and in vivo. *Pharm Rev*. 2001; **53**: 487–525.
 102. Lucin KM, Sanders VM, Jones TB, Malarkey WB, Popovich PG. Impaired antibody synthesis after spinal cord injury is level dependent and is due to sympathetic nervous system dysregulation. *Exp Neurol*. 2007; **207**: 75–84.
 103. Harvath L, Robbins JD, Russell AA, Seamon KB. cAMP and human neutrophil chemotaxis. Elevation of cAMP differentially affects chemotactic responsiveness. *J Immunol*. 1991; **146**: 224–32.
 104. Barnett CC, Moore EE, Partrick DA, Silliman CC. Beta-adrenergic stimulation down-regulates neutrophil priming for superoxide generation, but not elastase release. *J Surg Res*. 1997; **70**: 166–70.
 105. Layé S, Bluthé RM, Kent S, Combe C, Médina C, Parnet P, et al. Subdiaphragmatic vagotomy blocks induction of IL-1 beta mRNA in mice brain in response to peripheral LPS. *Am J Physiol*. 1995; **268**: R1327–31.
 106. van Maanen MA, Lebre MC, van der Poll T, LaRosa GJ, Elbaum D, Vervoordeldonk MJ, et al. Stimulation of nicotinic acetylcholine receptors attenuates collagen-induced arthritis in mice. *Arthritis Rheum*. 2009; **60**: 114–22.
 107. Borovikova LV, Ivanova S, Zhang M, Yang H, Botchkina GI, Watkins LR, et al. Vagus nerve stimulation attenuates the systemic inflammatory response to endotoxin. *Nature*. 2000; **405**: 458–62.
 108. Wang H, Yu M, Ochani M, Amella CA, Tanovic M, Susara S, et al. Nicotinic acetylcholine receptor $\alpha 7$ subunit is an essential regulator of inflammation. *Nature*. 2003; **421**: 384–8.
 109. Wang H, Liao H, Ochani M, Justiniani M, Lin X, Yang L, et al. Cholinergic agonists inhibit HMGB1 release and improve survival in experimental sepsis. *Nat Med*. 2004; **10**: 1216–21.

110. Shi FD, Piao WH, Kuo YP, Campagnolo DI, Vollmer TL, Lukas RJ. Nicotinic attenuation of central nervous system inflammation and autoimmunity. *J Immunol.* 2009; **182**: 1730–9.
111. Nizri E, Irony-Tur-Sinai M, Lory O, Orr-Urtreger A, Lavi E, Brenner T. Activation of the cholinergic anti-inflammatory system by nicotine attenuates neuroinflammation via suppression of Th1 and Th17 responses. *J Immunol.* 2009; **183**: 6681–8.
112. Fujii YX, Fujigaya H, Moriwaki Y, Misawa H, Kasahara T, Grando SA, et al. Enhanced serum antigen-specific IgG₁ and proinflammatory cytokine production in nicotinic acetylcholine receptor $\alpha 7$ subunit gene knockout mice. *J Neuroimmunol.* 2007; **189**: 69–74.
113. van der Zanden EP, Snoek SA, Heinsbroek SE, Stanisor OI, Verseijden C, Boeckstaens GE, et al. Vagus nerve activity augments intestinal macrophage phagocytosis via nicotinic acetylcholine receptor $\alpha 4\beta 2$. *Gastroenterology.* 2009; **189**: 1029–39.
114. Shaked I, Meerson A, Wolf Y, Avni R, Greenberg D, Gilboa-Geffen A, et al. MicroRNA-132 potentiates cholinergic anti-inflammatory signaling by targeting acetylcholinesterase. *Immunity.* 2009; **131**: 965–73.
115. Levite M. Neurotransmitters activate T-cells and elicit crucial functions via neurotransmitter receptors. *Curr Opin Pharmacol.* 2008; **8**: 460–71.
116. Nakano K, Higashi T, Takagi R, Hashimoto K, Tanaka Y, Matsushita S. Dopamine released by dendritic cells polarizes Th2 differentiation. *Int Immunol.* 2009; **21**: 645–54.
117. Bergquist J, Tarkowski A, Ekman R, Ewing A. Discovery of endogenous catecholamines in lymphocytes and evidence for catecholamine regulation of lymphocyte function via an autocrine loop. *Proc Natl Acad Sci USA.* 1994; **91**: 12912–6.
118. Flierl MA, Rittirsch D, Nadeau BA, Chen AJ, Sarma V, Zetoune F, et al. Phagocyte-derived catecholamines enhance acute inflammatory injury. *Nature.* 2007; **449**: 721–6.
119. Cosentino M, Fietta AM, Ferrari M, Rasini E, Bombelli R, Carcano E, et al. Human CD4⁺CD25⁺ regulatory T cells selectively express tyrosine hydroxylase and contain endogenous catecholamines subserving an autocrine/paracrine inhibitory functional loop. *Blood.* 2007; **109**: 632–42.
120. Agulia MC, Dees WL, Haensly WE, McCann M. Evidence that somatostatin is localized and synthesized in lymphoid organs. *Proc Natl Acad Sci USA.* 1991; **88**: 11485–9.
121. De Giorgio R, Tazzari PL, Barbara G, Stanhellini V, Corinaldesi R. Detection of substance P immunoreactivity in human peripheral leukocytes. *J Neuroimmunol.* 1998; **82**: 175–81.
122. Li Y, Tian S, Douglas SD, Ho WZ. Morphine up-regulates expression of substance P and its receptor in human blood mononuclear phagocytes and lymphocytes. *Cell Immunol.* 2000; **205**: 120–7.
123. Qian BF, Zhou GQ, Hammarstrom ML, Danielsson A. Both substance P and its receptor are expressed in mouse intestinal T lymphocytes. *Neuroendocrinology.* 2001; **73**: 358–68.
124. Arsenescu R, Blum AM, Metwali A, Elliott DE, Weinstock JV. IL-12 induction of mRNA encoding substance P in murine macrophages from the spleen and sites of inflammation. *J Immunol.* 2005; **174**: 3906–11.
125. Mousa SA, Straub R, Schafer M, Stein C. Beta-endorphin, Met-enkephalin and corresponding opioid receptors within synovium of patients with joint trauma, osteoarthritis and rheumatoid arthritis. *Ann Rheum Dis.* 2007; **66**: 871–9.
126. Bracci-Laudiero L, Aloe L, Buanne P, Finn A, Stenfors C, Vigneti E, et al. NGF modulates CGRP synthesis in human B-lymphocytes: a possible anti-inflammatory action on NGF? *J Neuroimmunol.* 2002; **123**: 58–65.
127. Bracci-Laudiero L, Aloe L, Caroleo MC, Buanne P, Costa N, Starace G, et al. Endogenous NGF regulates CGRP expression in human monocytes, and affects HLA-DR and CD86 expression and IL-10 production. *Blood.* 2005; **106**: 3507–14.
128. Xing L, Guo J, Wang X. Induction and expression of β -calcitonin gene-related peptide in rat T lymphocytes and its significance. *J Immunol.* 2000; **165**: 4359–66.
129. Gomariz RP, Leceta J, Garrido E, Garrido T, Delgado M. Vasoactive intestinal peptide (VIP) mRNA expression in rat T and B lymphocytes. *Regul Pept.* 1994; **50**: 177–84.
130. Martinez C, Delgado M, Abad C, Gomariz RP, Ganea D, Leceta J. Regulation of VIP production and secretion by murine lymphocytes. *J Neuroimmunol.* 1999; **93**: 126–38.
131. Ganor Y, Besser M, Ben-Zakay N, Unger T, Levite M. Human T cells express a functional ionotropic glutamate receptor GluR3, and glutamate by itself triggers integrin-mediated adhesion to laminin and fibronectin and chemotactic migration. *J Immunol.* 2003; **170**: 4362–72.
132. Pitt D, Werner P, Paine CS. Glutamate excitotoxicity in a model of multiple sclerosis. *Nat Med.* 2000; **6**: 67–70.
133. Pacheco R, Oliva H, Martinez-Navio JM, Climent N, Ciruela F, Gatell JM, et al. Glutamate released by dendritic cells as a novel modulator of T cell activation. *J Immunol.* 2006; **177**: 6695–704.
134. Pacheco R, Ciruela F, Casado V, Mallol J, Gallart T, Lluís C, et al. Group I metabotropic glutamate receptors mediate a dual role of glutamate in T cell activation. *J Biol Chem.* 2004; **279**: 33352–8.
135. Fallarino F, Volpi C, Fazio F, Notartomaso S, Vacca C, Busceti C, et al. Metabotropic glutamate receptor-4 modulates adaptive immunity and restrains neuroinflammation. *Nat Med.* 2010; **16**: 897–902.
136. Bergquist J, Josefsson E, Tarkowski A, Ekman R, Ewing A. Measurements of catecholamine-mediated apoptosis of immunocompetent cells by capillary electrophoresis. *Electrophoresis.* 1997; **18**: 1760–6.

137. Ghosh MC, Mondal AC, Basu S, Banerjee S, Majumdar J, Bhattacharya D, et al. Dopamine inhibits cytokine release and expression of tyrosine kinases, Lck and Fyn in activated T cells. *Int Immunopharmacol.* 2003; **3**: 1019–26.
138. Missale C, Nash SR, Robinson SW, Jaber M, Caron MG. Dopamine receptors: from structure to function. *Physiol Rev.* 1998; **78**: 189–225.
139. Saha B, Mondal AC, Majumdar J, Basu S, Dasgupta PS. Physiological concentrations of dopamine inhibit the proliferation and cytotoxicity of human CD4+ and CD8+ T cells in vitro: a receptor-mediated mechanism. *Neuroimmunomodulation.* 2001; **9**: 23–33.
140. Kipnis J, Cardon M, Avidan H, Lewitus GM, Mordechay S, Rolls A, et al. Dopamine, through the extracellular signal regulated kinase pathway, downregulates CD4+CD25+ regulatory T-cell activity: implications for neurodegeneration. *J Neurosci.* 2004; **4**: 6133–43.
141. Levite M, Chowers Y, Ganor Y, Besser M, Hershkovits R, Cahalon L. Dopamine interacts directly with its D3 and D2 receptors on normal human T cells, and activates beta1 integrin function. *Eur J Immunol.* 2001; **31**: 3504–12.
142. Besser MJ, Ganor Y, Levite M. Dopamine by itself activates either D2, D3 or D1/D5 dopaminergic receptors in normal human T-cells and triggers the selective secretion of either IL-10, TNFalpha or both. *J Neuroimmunol.* 2005; **169**: 161–71.
143. Watanabe Y, Nakayama T, Nagakubo D, Hieshima K, Jin Z, Katou F, et al. Dopamine selectively induces migration and homing of naive CD8+ T cells via dopamine receptor D3. *J Immunol.* 2006; **176**: 848–56.
144. Nakano K, Higashi T, Hashimoto K, Takagi Ri, Tanaka Y, Matsushita S. Antagonizing dopamine D1-like receptor inhibits Th17 cell differentiation: preventive and therapeutic effects on experimental autoimmune encephalomyelitis. *Biochem Biophys Res Commun.* 2008; **373**: 286–91.
145. Nakano K, Yamaoka K, Hanami K, Saito K, Sasaguri Y, Yanagihara N, et al. Dopamine induces IL-6-dependent IL-17 production via D1-like receptor on CD4 Naïve T cells and D1-like receptor antagonist SCH-23390 inhibits cartilage destruction in a human rheumatoid arthritis/SCID mouse chimera model. *J Immunol.* 2011; **186**: 3745–52.
146. Lotz M, Vaughan JH, Carson DA. Effects of neuropeptides on production of inflammatory cytokines by human monocytes. *Science.* 1988; **241**: 1218–21.
147. Calvo CF, Chavanel G, Senik A. Substance P enhances IL-2 expression in activated human T cells. *J Immunol.* 1992; **148**: 3498–504.
148. Mathers AR, Tckacheva OA, Janelsins BM, Shufesky WJ, Morelli AE, Larregina AT. In vivo signaling through the neurokinin 1 receptor favors transgene expression by Langerhans cells and promotes the generation of Th1- and Tc1-biased immune responses. *J Immunol.* 2007; **178**: 7006–17.
149. Cunin P, Caillon A, Corvaisier M, Garo E, Scotet M, Blanchard S, et al. The tachykinins substance P and hemokinin-1 favor the generation of human memory Th17 cells by inducing IL-1 β , IL-23, and TNF-like 1A expression by monocytes. *J Immunol.* 2011; **186**: 4175–82.
150. Hegde A, Zhang H, Moochhala SM, Bhatia M. Neurokinin-1 receptor antagonist treatment protects mice against lung injury in polymicrobial sepsis. *J Leukoc Biol.* 2007; **82**: 678–85.
151. Gad M, Pedersen AE, Kristensen NN, Fernandez Cde F, Claesson MH. Blockage of the neurokinin 1 receptor and capsaicin-induced ablation of the enteric afferent nerves protect SCID mice against T-cell-induced chronic colitis. *Inflamm Bowel Dis.* 2009; **15**: 1174–82.
152. Hegde A, Koh YH, Moochhala SM, Bhatia M. Neurokinin-1 receptor antagonist treatment in polymicrobial sepsis: molecular insights. *Int J Inflamm.* 2010; **2010**: 601098.
153. Dantzer R, O'Connor JC, Freund GG, Johnson RW, Kelley KW. From inflammation to sickness and depression: when the immune system subjugates the brain. *Nat Rev Neurosci.* 2008; **9**: 46–57.
154. Rettori V, Gimeno MF, Karara A, Gonzalez MC, McCann SM. Interleukin 1 alpha inhibits prostaglandin E2 release to suppress pulsatile release of luteinizing hormone but not follicle-stimulating hormone. *Proc Natl Acad Sci USA.* 1991; **88**: 2763–7.
155. Bluthé RM, Kelley KW, Dantzer R. Effects of insulin-like growth factor-I on cytokine-induced sickness behavior in mice. *Brain Behav Immun.* 2006; **20**: 57–63.
156. Dantzer R, Gheusi G, Johnson RW, Kelley KW. Central administration of insulin-like growth factor-1 inhibits lipopolysaccharide-induced sickness behavior in mice. *Neuroreport.* 1999; **10**: 289–92.
157. Dantzer R, Gheusi G, Johnson RW, Kelley KW. Central injection of IL-10 antagonizes the behavioural effects of lipopolysaccharide in rats. *Psychoneuroendocrinology.* 1999; **24**: 301–11.
158. Leon LR, Kozak W, Rudolph K, Kluger MJ. An antipyretic role for interleukin-10 in LPS fever in mice. *Am J Physiol.* 1999; **276**: R81–9.
159. Perkins MN, Stone TW. An iontophoretic investigation of actions of convulsant kynurenes and their interaction with endogenous excitant quinolinic acid. *Brain Res.* 1982; **247**: 184–7.
160. Kerschensteiner M, Gallmeier E, Behrens L, Leal VV, Misgeld T, Klinkert WE, et al. Activated human T cells, B cells, and monocytes produce brain-derived neurotrophic factor in vitro and in inflammatory brain lesions: a neuroprotective role of inflammation? *J Exp Med.* 1999; **189**: 865–70.
161. Kipnis J, Cohen H, Cardon M, Ziv Y, Schwartz M. T cell deficiency leads to cognitive dysfunction: implications

- for therapeutic vaccination for schizophrenia and other psychiatric conditions. *Proc Natl Acad Sci USA*. 2004; **101**: 8180–5.
162. Ziv Y, Ron N, Butovsky O, Landa G, Sudai E, Greenberg N, et al. Immune cells contribute to the maintenance of neurogenesis and spatial learning abilities in adulthood. *Nat Neurosci*. 2006; **9**: 268–75.
163. Wolf SA, Steiner B, Akpinarli A, Kammertoens T, Nasenstein C, Braun A, et al. CD4-positive T lymphocytes provide a neuroimmunological link in the control of adult hippocampal neurogenesis. *J Immunol*. 2009; **182**: 3979–84.
164. Abbas N, Bednar I, Mix E, Marie S, Paterson DL, Jungberg A, et al. Up-regulation of the inflammatory cytokines IFN-gamma and IL-12 and down-regulation of IL-4 in cerebral cortex regions of APP(SWE) transgenic mice. *J Neuroimmunol*. 2002; **126**: 50–7.
165. Straub RH, Dhabhar FS, Bijlsma WJ, Cutolo M. How psychological stress via hormones and nerve fibers may exacerbate rheumatoid arthritis. *Arthritis Rheum*. 2005; **52**: 16–26.
166. Jara LJ, Navarro C, Medina G, Vera-Lastra O, Blanco F. Immune-neuroendocrine interactions and autoimmune diseases. *Clin Dev Immunol*. 2006; **13**: 109–23.

Mucosal-Associated Invariant T Cells Promote Inflammation and Exacerbate Disease in Murine Models of Arthritis

Asako Chiba, Ryohsuke Tajima, Chiharu Tomi, Yusei Miyazaki, Takashi Yamamura, and Sachiko Miyake

Objective. The function of mucosal-associated invariant T (MAIT) cells remains largely unknown. We previously reported an immunoregulatory role of MAIT cells in an animal model of multiple sclerosis. The aim of this study was to use animal models to determine whether MAIT cells are involved in the pathogenesis of arthritis.

Methods. $MR1^{-/-}$ and $MR1^{+/+}$ DBA/1J mice were immunized with bovine type II collagen (CII) in complete Freund's adjuvant to trigger collagen-induced arthritis (CIA). To assess CII-specific T cell recall responses, lymph node cells from mice with CIA were challenged with CII *ex vivo*, and cytokine production and proliferation were evaluated. Serum levels of CII-specific antibodies were measured by enzyme-linked immunosorbent assay. Collagen antibody-induced arthritis (CAIA) was induced in $MR1^{-/-}$ and $MR1^{+/+}$ C57BL/6 mice by injection of anti-CII antibodies followed by injection of lipopolysaccharide. To demonstrate the involvement of MAIT cells in arthritis, we induced CAIA in $MR1^{-/-}$ C57BL/6 mice that had been reconstituted with adoptively transferred MAIT cells. MAIT cell activation in response to cytokine stimulation was investigated.

Results. The severity of CIA was reduced in $MR1^{-/-}$ DBA/1J mice. However, T and B cell responses

to CII were comparable in $MR1^{-/-}$ and $MR1^{+/+}$ DBA/1J mice. $MR1^{-/-}$ C57BL/6 mice were less susceptible to CAIA, and reconstitution with MAIT cells induced severe arthritis in $MR1^{-/-}$ C57BL/6 mice, demonstrating an effector role of MAIT cells in arthritis. MAIT cells became activated upon stimulation with interleukin-23 (IL-23) or IL-1 β in the absence of T cell receptor stimuli.

Conclusion. These results indicate that MAIT cells exacerbate arthritis by enhancing the inflammation.

Rheumatoid arthritis (RA) is an autoimmune disease characterized by chronic inflammation in the joints. It has been suggested that environmental factors influence autoimmunity, and in particular, increasing evidence highlights the important role of gut flora in the development of autoimmune diseases (1), including arthritis. For example, differences in the intestinal microbiota of patients with early RA have been described, and tetracycline treatment was shown to reduce disease activity in RA (2,3). In addition, oral vancomycin treatment significantly decreased the severity of adjuvant-induced arthritis (4). More recently, it was demonstrated that germ-free conditions strongly inhibit arthritis in the K/BxN arthritis model and that the introduction of segmented filamentous bacteria induced severe arthritis in germ-free K/BxN mice (5). Thus, mucosal immunity plays an important role in the development and progression of arthritis.

Natural killer (NK) cells, invariant NK T (iNKT) cells, γ/δ T cells, mucosal-associated invariant T (MAIT) cells, B-1 B cells, and marginal-zone B cells are categorized as innate-like lymphocytes. Such lymphocytes reside in unique locations, including the marginal zone of the spleen and epithelial and mucosal tissues and rapidly exert effector functions in the absence of clonal expansion (6–15). Therefore, these innate-like lymphocytes are thought to play important roles in “first-line” im-

Supported by the Japan Foundation for Neuroscience and Mental Health (to Dr. Chiba), the Japan Rheumatism Foundation (to Dr. Chiba), the Japan Society for the Promotion of Science (Grants-in-Aid for Scientific Research B: 20390284 and 23390261 to Dr. Miyake), and the Ministry of Health, Labor, and Welfare of Japan (Health and Labor Sciences Research Grants on Intractable Diseases).

Asako Chiba, MD, PhD, Ryohsuke Tajima, MS, Chiharu Tomi, Yusei Miyazaki MD, PhD, Takashi Yamamura MD, PhD, Sachiko Miyake MD, PhD: National Institute of Neuroscience, National Centre of Neurology and Psychiatry, Tokyo, Japan.

Address correspondence to Sachiko Miyake MD, PhD, Department of Immunology, National Institute of Neuroscience, National Centre of Neurology and Psychiatry, 4-1-1 Ogawahigashi, Kodaira, Tokyo 187-8502, Japan. E-mail: miyake@ncnp.go.jp.

Submitted for publication May 15, 2011; accepted in revised form August 25, 2011.