

during brisk walking in the elderly. This was also apparent in middle-aged women. The interpretation was limited qualitatively and should be further explored.

Step frequencies also decreased with age and this decrease was found even in middle-aged women during brisk walking. Previous studies in step frequency reported no age-related changes,<sup>16,17,21</sup> age-related decrease<sup>8,18–20,25</sup> and age-related increase.<sup>26</sup> Moreover, the current age- and sex-related decrease depending on required walking pace was not previously reported.<sup>16,17</sup> One explanation of these conflicts was that degree of the age-related reduction in step frequency was relatively less than that in other gait parameters such as velocity or step length.<sup>8,17,19,20</sup> Therefore, sample size, subject characteristics and measuring instruments may affect the age-related decrease in the step frequency.<sup>16,25</sup> Double support times in the present study did not increase with age, with the exception of women's comfortable data. On the other hand, exploratory analyses of actual values of double support times showed age-related increases in both sexes during both walking paces (data not shown,  $P$  for trend  $<0.001$ ,  $<0.022$ ). This shows that the double support as a percentage of one gait cycle remained almost constant in middle-aged and elderly subjects. Ferrandez *et al.*<sup>32</sup> found that double support time increased as velocity decreased, and that prolonged double support time was affected more by walking velocity than age.

The present study found brisk COM velocity and step length to be greater in men than in women. By contrast, step frequencies and double support times were greater in women than in men. This is characteristic of sex differences and is supported by previous findings.<sup>8,17,21</sup> Although the comfortable COM velocity was faster in women than in men, this is believed to be a result of the difference in body size as the actual comfortable COM velocity was significantly faster in men than in women (men,  $1.46 \pm 0.18$  m/s; women,  $1.43 \pm 0.20$  m/s;  $P < 0.001$ ). The comfortable step length did not differ significantly between either sex group, perhaps because of the slower men's COM velocity.

The present gait data may give some insight into gait assessment and preventive walking exercise programs for older persons as previously reported.<sup>42,44,45</sup> The values for the gait parameters during one gait cycle may be useful to clinicians judging the ambulatory ability of patients from a short indoor walk.<sup>7,42</sup> Patients whose gait parameters are lower than that of their appropriate age group are at increased risk of ADL difficulties.<sup>8,11</sup> Comfortable and brisk walking velocities are predictive of adverse outcomes such as loss of physical function, requirement of caregivers, hospitalization and increased mortality in elderly persons.<sup>8,10–12</sup> Decreased step length and prolonged double support time are correlated with fear of falling and/or future fall risk.<sup>4,5,9</sup> Also, the other gait parameters such as gait velocity,<sup>9,11</sup> stride-to-stride

variability<sup>4</sup> and lateral sway<sup>3,5,6,46</sup> are associated with the falling events. We did not directly ascertain whether the participants had a history of falls and/or a fear of falling in our gait parameters. Further work should confirm which gait measure is the best independent predictor for future fall risk in a large sample.

A moderate workload prescription in walking exercise programs should be given by controlling both step length and step frequency during comfortable walking in the elderly. Brisk walking, which is recommended for moderately vigorous endurance training and has a high impact compared to comfortable pace walking, might be considered for middle-aged women and the elderly to improve physical functions such as muscle strength<sup>7,40,43</sup> and/or cardiovascular fitness.<sup>33,41</sup>

This study has some limitations. Some previous gait investigations used the results of several trials or mean values of gait, while we used gait data from one trial of each participant. This was done because of technical difficulties in the automatically computed 3-D gait parameters. Next, the conjunction of our excluding criteria with the potential diseases might overestimate gait disorders: the elderly subjects were more likely to be healthy and physically fit. Moreover, patients with dementia were considered to be less in the present sample. The general comparability of the present gait variables with previously reported data is limited because of the lack of data for young adults in their 20s and 30s. Furthermore, our cross-sectional analysis approach could not demonstrate a cause-and-effect relationship from aging. We are planning longitudinal studies to further determine the effects of aging on gait. The present study included regional limitations such as race, culture, lifestyle, genetics and socioeconomic status which also may be important. However, the findings did permit age- and sex-related differences in gait to be clarified in the elderly.

In conclusion, age- and sex-related gait alterations were apparent in one gait cycle of walking in a large sample of community-dwelling, middle-aged and elderly Japanese men and women, when analyzed by a 3-D gait system. There were marked age-related gait differences in subjects aged 70 years and over compared to subjects aged 40–69 years during comfortable walking, and subtle differences were also observed in subjects aged 40–69 years during brisk walking. The earlier age-related changes were clearer in women than in men. These results may guide the assessment of gait patterns attributed to usual aging and to develop moderate exercise programs for the elderly.

## Acknowledgments

The authors would like to thank the participants and their colleagues involved in the NLS-LSA. This study

was supported by a Grant-in-Aid for Exploratory Research from the Ministry of Education, Culture, Sports, Science and Technology of Japan (no. 18650203).

## References

- Bloem BR, Haan J, Lagaay AM, van Beek W, Wintzen AR, Roos RA. Investigation of gait in elderly subjects over 88 years of age. *J Geriatr Psychiatry Neurol* 1992; **5**: 78–84.
- Marchetti GF, Whitney SL, Blatt PJ, Morris LO, Vance JM. Temporal and spatial characteristics of gait during performance of the Dynamic Gait Index in people with and people without balance or vestibular disorders. *Phys Ther* 2008; **88**: 640–651.
- Tinetti ME, Speechley M, Ginter SF. Risk factors for falls among elderly persons living in the community. *N Engl J Med* 1988; **319**: 1701–1707.
- Maki BE. Gait changes in older adults: predictors of falls or indicators of fear. *J Am Geriatr Soc* 1997; **45**: 313–320.
- Barak Y, Wagenaar RC, Holt KG. Gait characteristics of elderly people with a history of falls: a dynamic approach. *Phys Ther* 2006; **86**: 1501–1510.
- Chiba H, Ebihara S, Tomita N, Sasaki H, Butler JP. Differential gait kinematics between fallers and non-fallers in community-dwelling elderly people. *Geriatr Gerontol Int* 2005; **5**: 127–134.
- Bohannon RW. Comfortable and maximum walking speed of adults aged 20–79 years: reference values and determinants. *Age Ageing* 1997; **26**: 15–19.
- Callisaya ML, Blizzard L, Schmidt MD, McGinley JL, Srikanth VK. Sex modifies the relationship between age and gait: a population-based study of older adults. *J Gerontol A Biol Sci Med Sci* 2008; **63**: 165–170.
- Verghese J, Holtzer R, Lipton RB, Wang C. Quantitative gait markers and incident fall risk in older adults. *J Gerontol A Biol Sci Med Sci* 2009; **64A**: 896–901.
- Shinkai S, Watanabe S, Kumagai S et al. Walking speed as a good predictor for the onset of functional dependence in a Japanese rural community population. *Age Ageing* 2000; **29**: 441–446.
- Montero-Odasso M, Schapira M, Soriano ER et al. Gait velocity as a single predictor of adverse events in healthy seniors aged 75 years and older. *J Gerontol A Biol Sci Med Sci* 2005; **60A**: 1304–1309.
- Krishnamurthy M, Verghese J. Gait characteristics in non-disabled community-residing nonagenarians. *Arch Phys Med Rehabil* 2006; **87**: 541–545.
- Verghese J, LeValley A, Hall CB, Katz MJ, Ambrose AF, Lipton RB. Epidemiology of gait disorders in community-residing older adults. *J Am Geriatr Soc* 2006; **54**: 255–261.
- Berlau DJ, Corrada MM, Kawas C. The prevalence of disability in the oldest-old is high and continues to increase with age: findings from The 90+ Study. *Int J Geriatr Psychiatry* 2009; **24**: 1217–1225.
- Demura S, Yamada T, Shin S. Age and sex differences in various stepping movements of the elderly. *Geriatr Gerontol Int* 2008; **8**: 180–187.
- Oberg T, Karsznia A, Oberg K. Basic gait parameters: reference data for normal subjects, 10–79 years of age. *J Rehabil Res Dev* 1993; **30**: 210–223.
- Auvinet B, Berrut G, Touzard C et al. Reference data for normal subjects obtained with an accelerometric device. *Gait Posture* 2002; **16**: 124–134.
- Murray MP, Kory RC, Clarkson BH. Walking patterns in healthy old men. *J Gerontol* 1969; **24**: 169–178.
- Himann JE, Cunningham DA, Rechnitzer PA, Peterson DB. Age-related changes in speed of walking. *Med Sci Sports Exerc* 1988; **20**: 161–166.
- Kaneko M, Morimoto Y, Kimura M, Fuchimoto K, Fuchimoto T. A kinematic analysis of walking and physical fitness testing in elderly women. *Can J Sports Sci* 1991; **16**: 223–228.
- Blanc Y, Balmer C, Landis T, Vingerhoets F. Temporal parameters and patterns of the foot roll over during walking: normative data for healthy adults. *Gait Posture* 1999; **10**: 97–108.
- Winter DA. *Biomechanics and Motor Control of Human Movement*, 2nd edn. New York: John Wiley and Sons, 1991.
- Pai Y-C, Patton J. Center of mass velocity-position predictions for balance control. *J Biomech* 1997; **30**: 347–354.
- Riley PO, Della Croce U, Kerrigan DC. Effect of age on lower extremity joint moment contributions to gait speed. *Gait Posture* 2001; **14**: 264–270.
- Prince F, Corriveau H, Hebert R, Winter DA. Gait in the elderly. *Gait Posture* 1997; **5**: 128–135.
- Judge JO, Ounpuu S, Davis RB. Effects of age on the biomechanics and physiology of gait. *Clin Geriatr Med* 1996; **12**: 659–678.
- Jansen EC, Vittas D, Helberg S, Hansen J. Normal gait of young and old men and women Ground reaction force measurement on a treadmill. *Acta Orthop Scand* 1982; **53**: 193–196.
- Shimokata H, Ando F, Niino N. A new comprehensive study on aging – National Institute for Longevity Sciences, Longitudinal Study of Aging (NILS-LSA). *J Epidemiol* 2000; **10** (1 Suppl): S1–S9.
- Kozakai R, Tsuzuku S, Yabe K, Ando F, Niino N, Shimokata H. Age-related changes in gait velocity and leg extension power in middle-aged and elderly people. *J Epidemiol* 2000; **10** (1 Suppl): S77–S81.
- Perry J. *Gait Analysis: Normal and Pathological Function*. Thorofare, NJ: Slack, Inc., 1992.
- Dobbs RJ, Charlett A, Bowes SG et al. Is this walk normal? *Age Ageing* 1993; **22**: 27–30.
- Ferrandez A-M, Pailhouse J, Durup M. Slowness in elderly gait. *Exp Ageing Res* 1990; **16**: 79–89.
- Tully MA, Cupples ME, Chan WS, McGlade K, Young IS. Brisk walking, fitness, and cardiovascular risk: a randomized controlled trial in primary care. *Prev Med* 2005; **41**: 622–628.
- Clinical Gait Analysis Forum of Japan. *DIFF Manual*, ver. 1992.06, 1999.
- Chandler RF, Clauser CE, McConville JT, Reynolds HM, Young JW. *Investigation of Inertial Properties of the Human Body*. Technical Report AMRL-TR-74-137. Dayton, OH: Wright-Patterson Air Force Base, 1975.
- SAS Institute. *Base SAS 9.1.3 Procedures Guide*. Cary, NC: SAS Institute, 2006.
- Hof AL. Scaling gait data to body size. *Gait Posture* 1996; **4**: 222–223.
- Graham JE, Ostir GV, Kuo YF, Fisher SR, Ottenbacher KJ. Relationship between test methodology and mean velocity in timed walk tests: a review. *Arch Phys Med Rehabil* 2008; **89**: 865–872.
- Liu MQ, Anderson FC, Schwartz MH, Delp SL. Muscle contributions to support and progression over a range of walking speeds. *J Biomech* 2008; **41**: 3243–3252.
- Goldberg EJ, Neptune RR. Compensatory strategies during normal walking in response to muscle weakness and increased hip joint stiffness. *Gait Posture* 2007; **25**: 360–367.

- 41 Fleg JL, Morrell CH, Bos AG *et al.* Accelerated longitudinal decline of aerobic capacity in healthy older adults. *Circulation* 2005; **112**: 674–682.
- 42 Dobkin BH. Short-distance walking speed and timed walking distance: redundant measures for clinical trials? *Neurology* 2006; **66**: 584–586.
- 43 Kozakai R, Doyo W, Tsuzuku S *et al.* Relationships of muscle strength and power with leisure-time physical activity and adolescent exercise in middle-aged and elderly Japanese women. *Geriatr Gerontol Int* 2005; **5**: 182–188.
- 44 Oh-Park M, Zohman LR, Abraham C. A simple walk test to guide exercise programming of the elderly. *Am J Phys Med Rehabil* 1997; **76**: 208–212.
- 45 Morris JN, Hardman AE. Walking to health. *Sports Med* 1997; **23**: 306–332.
- 46 Gabell BA, Nayak US. The effect of age on variability in gait. *J Gerontol* 1984; **39**: 662–666.

# 運動器疾患の長期縦断疫学研究

Longitudinal epidemiological study on locomotive organ disease



下方浩史(写真) 安藤富士子

Hiroshi SHIMOKATA<sup>1</sup> and Fujiko ANDO<sup>2</sup>

国立長寿医療研究センター予防開発部<sup>1</sup>, 愛知淑徳大学健康医療科学部<sup>2</sup>

◎運動器症候群の予防方法を解明するためには、その危険因子を明らかにすることが必要である。一般住民を対象とした長期縦断疫学研究により、運動器疾患罹患の実態を明らかにするとともに、栄養や運動、疾病罹患、飲酒や喫煙などの生活習慣、遺伝的素因などと加齢にかかわる運動器疾患の発症との関連を解明することができる。国立長寿医療研究センターでは無作為抽出された一般地域住民を対象に、老化・老年病に関する基礎データの収集のための長期にわたる集団の大規模な縦断研究「老化に関する長期縦断疫学研究(NILS-LSA)」を平成9年度(1997)より行っている。NILS-LSAでの調査から、日本人全体で骨粗鬆症は1,000万人、変形性膝関節症は3,000万人を超える患者がいると推計された。現在、遺伝子や生活習慣、体力、栄養などさまざまな要因についての縦断的な解析から高齢者の運動器疾患のリスク要因を明らかにし、予防方法を開発するための研究を行っている。

**Key word** : 長期縦断疫学, 老化, 骨粗鬆症, 変形性関節症

運動器症候群(ロコモティブシンドローム)とは、運動器の障害により要介護になるリスクの高い状態になることである。実際に要介護となる要因として関節疾患、転倒・骨折が大きな割合を占めている。高齢者における関節疾患のほとんどは変形性関節症であり、また高齢者の骨折は骨粗鬆症がおもな要因となっている。変形性関節症と骨粗鬆症に限っても、運動器症候群の推計患者数は4,700万人(男性2,100万人、女性2,600万人)に達するという<sup>1)</sup>。日本社会の高齢化に伴って、今後さらに急速にこれらの患者数は増大していくものと推定されている。また、運動器症候群は認知症の要因となるとも考えられており、運動器症候群の予防に関する研究は、日本において今後の進展が強く望まれる分野である<sup>2)</sup>。

運動器症候群の予防方法を解明するためには、その危険因子を明らかにすることが必要である。無作為抽出された一般住民を対象とした長期にわたる観察研究は、一般住民の間での運動器疾患罹患の実態を明らかにするとともに、栄養や運動、

疾病罹患、飲酒や喫煙などの生活習慣、遺伝的素因などと加齢にかかわる運動器疾患の発症との関連を解明するために不可欠である。こうした研究により、どのような素因をもち生活を送っている人が、どのような確率で運動器疾患に罹患しているのか、どのように対策を取れば、どのくらいの確率で予防できるのかを明らかにすることができる<sup>2)</sup>。

## 長期縦断疫学研究

国立長寿医療研究センターでは老化・老年病に関する基礎データの収集のために長期にわたる集団の大規模な縦断研究「老化に関する長期縦断疫学研究(NILS-LSA)」を平成9年度(1997)より行っている(図1)<sup>3-7)</sup>。対象は地域住民から年齢・性別に層化し無作為抽出された、観察開始年齢が40~79歳の男女である。抽出によって選定された人を説明会に招いて、検査の目的や方法などを十分に説明し、インフォームドコンセントを得たうえで検査を実施している。追跡中のドロップアウト

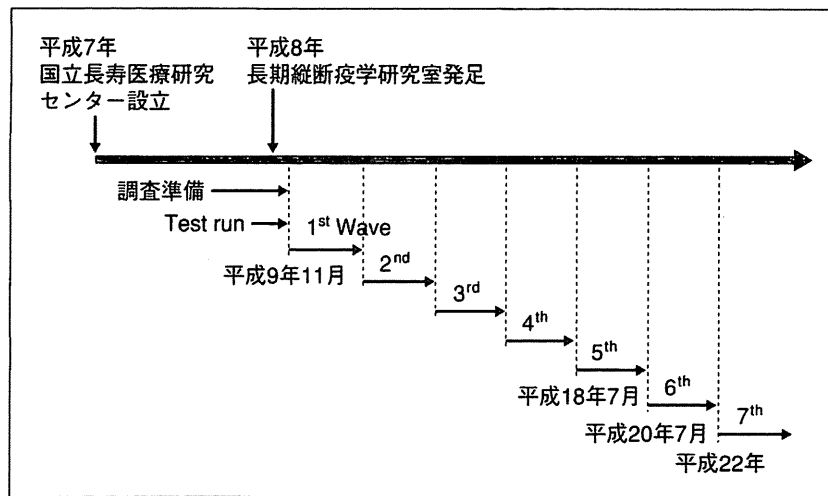


図 1 国立長寿医療研究センター・老化に関する長期縦断疫学研究(NILS-LSA)の経緯

NILS-LSA では地域在住の中高齢者約 2,400 人の 10 年以上にわたるデータが蓄積されている。

トは、同じ人数のあらたな補充を行い、定常状態として約 2,400 人のダイナミックコホートをめざしている。

施設内に設けられた専用の検査センターで朝 9 時から夕方 4 時までの間に分刻みでスケジュールを組んで、1 日 7 名、週 4 日、年間を通して詳細な老化に関連する検査を行っている。平成 12 年(2000)4 月に 2,267 名の基礎集団が完成し、以後は 2 年ごとに検査を繰り返し行っており、現在は第 7 次調査を行っている。調査項目は頭部 MRI や超音波断層、骨密度測定、腹部 CT など最新の機器を利用した医学検査のみならず、詳細な生活調査、栄養調査、運動機能調査、心理検査など広汎で精度の高い内容である(図 2)。運動器疾患に関連した検査としては、DXA 法による全身骨、腰椎、左右大腿骨頸部の 4 スキャンでの骨密度測定、末梢骨定量 CT 検査法(pQCT)による橈骨 16 スキャン、左右膝 X 線撮影、胸椎腰椎 X 線撮影、膝関節機能検査、転倒調査、膝痛調査、腰痛調査、骨折調査、骨代謝マーカー検査などを実施している。調査開始当初より、調査参加者のほぼ全員からの血液サンプルを用いて DNA を蓄積している。これほど背景因子が詳細に検討されている一般住民の DNA 試料の蓄積は、国内外でもほかにはほとんどないと思われる<sup>8,9)</sup>。

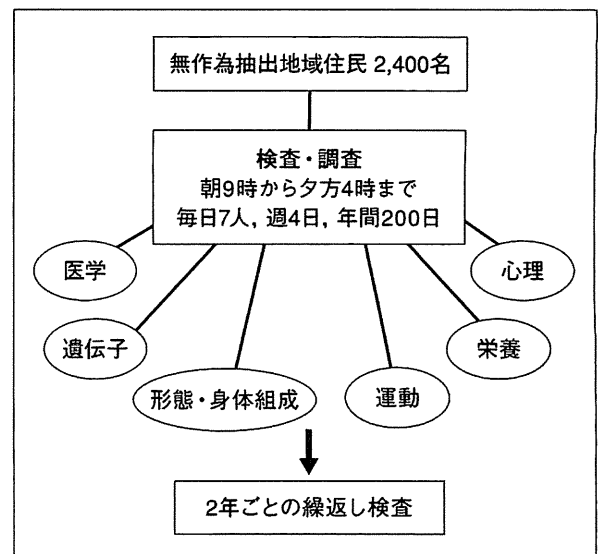


図 2 国立長寿医療研究センター・老化に関する長期縦断疫学研究(NILS-LSA)の概要

### 加齢に伴う運動器疾患罹患の実態

NILS-LSA の第 5 次調査に参加した 40~88 歳の男性 1,200 名、女性 1,219 名の合計 2,419 名を対象として、立位で両膝の X 線写真を撮影し、Kellgren-Lawrence 分類(KL 分類)<sup>10)</sup>にて変形性膝関節症を grade 0 から grade IV までに分類し、grade II 以上を変形性膝関節症と診断した。また、grade III 以上を膝関節高度変形として、10 歳ごとの年齢別および性別に有病率を算定した。図 3 に示すように、変形性膝関節症は男性よりも女性に多く、年

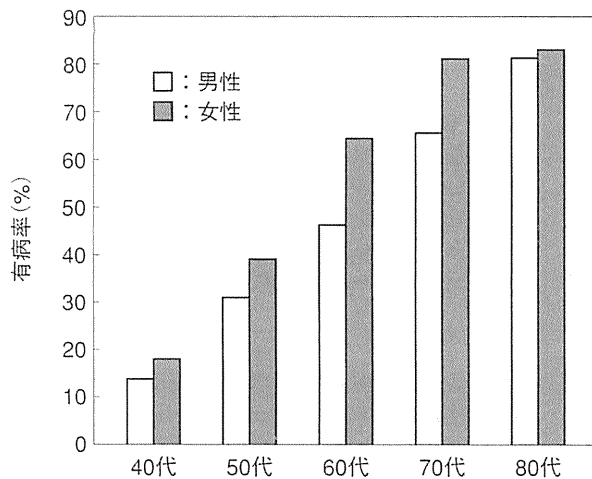


図3 年代別、性別の膝変形性関節症の有病率 (Kellgren-Lawrence 分類 grade II 以上)

年齢とともに有病率は上昇する。40歳以上の女性全体での有病率は52.3%、男性で43.5%であった。また、KL分類 grade III以上の膝高度変形保有率は女性のほうが男性よりも2倍以上多く、また女性では年齢とともにその率は大きく上昇していた。上記の有病率を用いて日本人全体の人口構成から有病率を計算すると、男性1,278万人、女性1,950万人の合計3,228万人と推定された。

日本骨代謝学会の診断基準<sup>11)</sup>を用いて、DXA法で計測した腰椎骨密度(第2, 3, 4腰椎の平均骨密度)および右大腿骨頸部骨密度により、性別、年齢別に骨粗鬆症の有病率を算定した(図4)。50歳以上の女性の有病率は、腰椎BMDの判定の場合26.1%、大腿骨頸部BMD判定の場合21.3%であった。骨粗鬆症・骨量減少の年代別有病率は、どちらの部位の判定でも加齢で高くなり、とくに60歳代で急に高くなった。腰椎に比べ、大腿骨頸部判定の場合、50, 60歳代での有病率は低かった。50歳以上の男性の骨粗鬆症有病率は、腰椎BMDの判定の場合7.6%、大腿骨頸部BMD判定の場合10.3%であった。骨粗鬆症・骨量減少の年代別有病率は、大腿骨頸部の判定において60歳代以降、男性でも加齢で高くなっていった。この結果をもとに、今回得られた骨粗鬆症有病率から見積もられる骨粗鬆症患者数は、腰椎骨密度による有病率を用いると50歳以上の女性で約811万人、50歳以上の男性で189万人と推計され、大腿骨頸部では女性685万人、男性250万人となる。男女合

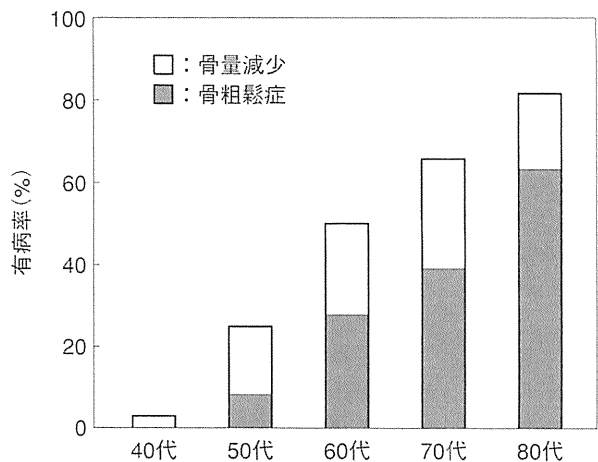


図4 女性の年代別の骨粗鬆症および骨量減少の有病率(日本骨代謝学会診断基準による腰椎骨密度からの判定)

計で骨粗鬆症患者数は900万~1,000万人と推定された。

### 骨粗鬆症疾患ゲノム研究

骨粗鬆症は生活習慣病であり、カルシウム摂取の不足ややせ、運動不足などの危険因子が指摘されている<sup>2)</sup>。一方で、骨粗鬆症の危険因子として家族歴がある。他の多くの生活習慣病や老年病と同じように、骨粗鬆症は遺伝的素因と生活習慣や加齢などが複雑に影響しあって発症する多因子疾患であると考えられている。疾患によって遺伝的要因の影響の強さは異なる。人種差や環境、生活習慣による違いはあるだろうが、アメリカのFraminghamスタディの報告では、骨密度の遺伝率(heritability)は約60%と推定されており、遺伝的な要因は比較的大きいと思われる<sup>12)</sup>。NILS-LSAでは、これまでに骨密度と有意な関連のあった31種類の遺伝子多型についてあらたに発見、あるいは確認の報告を行っている(表1)<sup>7)</sup>。

骨粗鬆症や骨密度への遺伝子多型の影響は、直接的な影響よりもむしろ生活習慣や環境因子による骨への影響を遺伝子多型が修飾する部分が大い可能性がある。図5は著者らの調査の解析結果である。閉経女性のDXA法による骨密度と除脂肪体重との関係へのエストロゲン受容体(ER $\alpha$ )遺伝子Xba I多型の影響について検討した<sup>13)</sup>。除脂肪体重として求めた筋量が多ければ骨密度は高いが、その影響はAA型よりもAG/GG型のほうが

表 1 NILS-LSAにおいて骨密度との関連をあらたに発見または確認した遺伝子多型

略号	遺伝子多型	骨密度への影響
<b>カルシウム向性ホルモンおよび受容体</b>		
<i>VDR</i>	vitamin D receptor (A-3731G)	男性の CC 型で大腿骨頸部の骨密度が高い
<i>ESR1</i>	estrogen receptor $\alpha$ (PP/pp)	高齢女性の CC 型で骨密度が低い
<i>ESR1</i>	estrogen receptor $\alpha$ (XX/xx)	高齢女性の GG 型で骨密度が低い
<i>OST</i>	osteocalcin (C298T)	閉経女性の TT 型で骨密度が低い
<i>ADR</i>	androgen receptor (CAG repeat)	未閉経女性の CAG リピートが多いと骨密度が低い
<i>CYP17A1</i>	cytochrome P450, family 17, subfamily A, polypeptide 1 (T-34C)	閉経女性の CC 型で骨密度が低い
<b>サイトカイン, 成長ホルモンおよび受容体</b>		
<i>IL-6</i>	interleukin-6 (C-634G)	閉経女性の GG 型で橈骨遠位の骨密度が低い
<i>TGF-<math>\beta</math></i>	transforming growth factor- $\beta$ 1 (T29C)	高齢女性の TT/TC 型で橈骨の骨密度が低い
<i>OPG</i>	osteoprotegerin (T950C)	未閉経女性の CC 型で橈骨近位の骨密度が低い
<i>OPG</i>	osteoprotegerin (T245G)	閉経女性の GG 型で大腿骨頸部骨密度が低い
<i>CCR</i>	chemokine receptor 2 (G190A)	若年男性と閉経女性の GG/GA で骨密度が低い
<b>骨基質関連蛋白</b>		
<i>MMP1</i>	matrix metalloproteinase-1 (1G/2G at-1607)	閉経女性の GG/GG 型で橈骨遠位骨密度が低い
<i>MMP9</i>	matrix metalloproteinase-9 (C-1562T)	男性の CT/TT 型で骨密度が低い
<i>COL</i>	collagen type 1 (G-1997T)	閉経女性の GG 型で骨密度が低い
<i>ICAM-1</i>	intercellular adhesion molecule-1 (Lys469Glu)	閉経女性の AA 型で骨密度が低い
<i>PLOD1</i>	procollagen-lysine 2-oxyglutarate 5-dioxygenase (Ala99Thr)	未閉経・閉経女性の GA/AA 型で骨密度が低い
<i>CX37</i>	connexin 37 (Pro319Ser)	男性の TT 型で骨密度が低い
<b>その他</b>		
<i>KLOT</i>	klotho (G-395A)	閉経・未閉経女性の GG 型で骨密度が低い
<i>MTP</i>	microsomal triglyceride transfer protein (G-493T)	未閉経女性の TT 型で骨密度が高い
<i>VLDLR</i>	VLDL receptor (triplet repeat)	男性の CGG リピート 8 以上で骨密度が高い
<i>ALAP</i>	adipocyte-derived leucine aminopeptidase (Lys528Arg)	未閉経女性の GA/AA 型で骨密度が低い
<i>LIPC</i>	hepatic lipase (C-514T)	閉経女性の TT 型で骨密度が低い
<i>CNR2</i>	cannabinoid receptor 2 gene (A/G, rs2501431)	未閉経・閉経女性の AA/AG 型で骨密度が低い
<i>PON1</i>	paraoxonase-1 (Gln192Arg)	閉経女性の GG 型で骨密度が低い
<i>PON1</i>	paraoxonase-1 (Met55Leu)	閉経女性の TT 型で骨密度が低い
<i>PON2</i>	paraoxonase-2 (Cys311Ser)	閉経女性の CC 型で骨密度が低い
<i>DRD4</i>	dopamine D4 receptor (C-521T)	男性の CC 型で骨密度が低い
<i>FOXC2</i>	forkhead box C2 (C-512T)	男女ともに T アリルで骨密度が低い
<i>PLN</i>	perilipin (C1243T)	男性の C アリルで骨密度が低い
<i>MAOA</i>	monoamine oxidase A (uVNTR)	未閉経・閉経女性のリピート 4 未満で骨密度低い
<i>SH2B1</i>	Src-homology-2-B (Ala484Thr)	未閉経・閉経女性の A アリルで骨密度が低い

強い。AG/GG 型の多型をもつ人は筋量を増やすことが、AA 型の人よりも骨粗鬆症の予防には効果的であることがわかる。筋量が少ない集団では AA 型のほうが骨密度は高いが、筋量が多い集団では AG/GG 型のほうが骨密度は高いという逆転が生じており、このため対象集団の筋量が異なれば、遺伝子多型の骨密度との関係はまったく逆になってしまう。遺伝子以外の個体差が十分に検討されていないことが、ゲノム研究での再現性が乏しいことの要因のひとつになっている可能性がある。

感受性遺伝子多型をもついても発症しない人

もいる。その要因を探るというアプローチもある。感受性遺伝子多型をもつていて発症した人、発症していない人について生活習慣などの要因を詳細に比較検討することで、感受性遺伝子をもつても骨粗鬆症をどうすれば予防できるかを明らかにすることができる。さらに生活習慣などの修飾可能な危険要因については、その縦断的变化についての検討も必要である。特定の遺伝子多型をもつ人が、たとえば身体活動量を 2 倍にしたとき骨密度はどう変化するのか、遺伝子多型によってその効果にどのような差があるのかを明らかにする

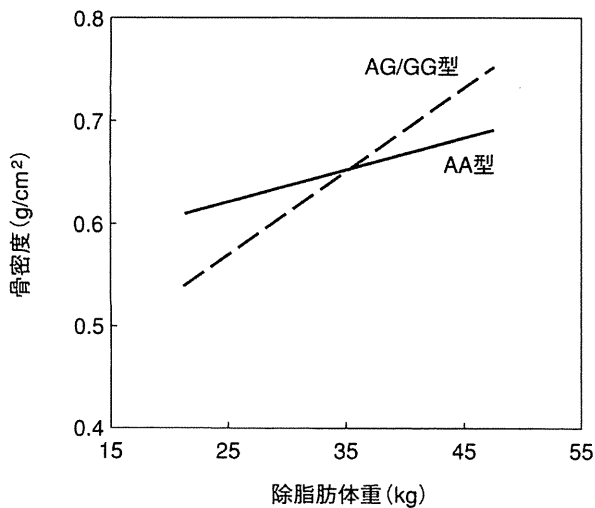


図 5 閉経女性のDXA法による骨密度と除脂肪体重との関係へのエストロゲン受容体(ER $\alpha$ )遺伝子Xba I 多型の影響<sup>13)</sup>  
 除脂肪体重, すなわち筋量が多ければ骨密度は高いが, その影響はAA型よりもAG/GG型のほうが強い。

ことが, 遺伝子多型を利用した実際の予防指導の際には重要である。こうしたデータを蓄積するためには, 多数の集団で長期にわたった詳細な生活習慣や環境要因の調査が必要である(「サイドメモ」参照)。

### 運動器疾患のリスク予想と予防

骨代謝マーカー測定によって骨粗鬆症や骨量減少の予測ができるかをNILS-LSAで検討した。骨代謝マーカーとしてオステオカルシン(OC), 骨型アルカリホスファターゼ(BAP), 尿中I型コラーゲン架橋N-ペプチド(NTx), デオキシピリジノリン(DPD)を測定したところ, 女性の腰椎でOC, BAP, NTxが, 女性の大腿骨頸部でDPD, BAP, NTxが, 男性の大腿骨頸部でBAPが6年後の骨粗鬆症や骨量減少の発症に有意に関連しており, これらのマーカーから将来の骨粗鬆症や骨量減少の発症を予測できる可能性が示された<sup>14)</sup>。

NILS-LSAでは, 生活習慣や環境要因との相互関係を考慮した骨粗鬆症の遺伝要因の検討も順次進めている。DXA法による骨粗鬆症診断結果と, 握力, 脚筋力など運動・体力に関する要因, カルシウム, ビタミンDなど栄養に関する要因, BMI, 除脂肪体重など体格・体型に関する要因, そのほか嗜好, 閉経, 骨代謝マーカーを含む血液尿検査

結果などの項目の追跡による縦断的なデータについて網羅的に検討を行うことで, それぞれ骨粗鬆症と関連の強い要因を抽出する。抽出された要因と遺伝子多型との相互作用を網羅的に検討し, その結果から最終的に骨粗鬆症と関連する生活習慣要因, 遺伝子多型, 生活習慣要因と遺伝子多型の交互作用を抽出し, 骨粗鬆症の予測を行う総合的なシステムの構築を行っている。長期縦断研究によりこうしたシステムが完成すれば, 骨粗鬆症の医療や予防の実用化へ一歩前進するものと期待される。

### おわりに

高齢化が急速に進む日本の社会において, 高齢者の健康維持・増進はきわめて重要な課題である。高齢者が健康に長生きできることは国民の共通の願いであり, これを実現することが急務である。高齢者の運動器疾患は直接の死因とはならない場合がほとんどではあるが, 高齢者のQOLを阻害し, 寝たきりや廃用症候群を引き起こし, 認知症や肺炎の要因ともなる。高齢者の運動器疾患の予防と治療は高齢者の健康長寿を考える場合には欠かすことができない。そのためのエビデンスを集積する研究として, 疾患そのものだけでなく,

#### サイドメモ

#### 縦断研究

加齢による変化を検討する方法には大きく分けて, 横断的方法と縦断的方法の2つがある。縦断的研究は同一の個人を継続して観察し, 加齢による実際の心身の変化, 加齢に関連する要因, 発育, 発達, 老化, 寿命などをとらえようとするものである<sup>1-4)</sup>。一方, さまざまな年齢を含む集団を設定して種々の検査を一度に実施し, 1歳ごとの, あるいは5歳, 10歳ごとの年齢群で検査値がどのように異なるのかを検討し, その差を加齢変化とする方法が横断的研究である。一度の調査で終了してしまう横断研究に比べて経時的な追跡を行う縦断研究は, 結論が出るまでに一般に数年から10年以上もの期間を要し, 調査を継続するための費用や人材の確保も必要である。しかし, 加齢変化の観察を行うためには横断的観察のみでは加齢による変化を正確にとらえることができない。



遺伝子や栄養，運動までを含めた学際的な長期縦断疫学研究の進展が望まれる。

### 文献

- 1) Yoshimura, N. et al. : *J. Bone Miner. Metab.*, **27** : 620-628, 2009.
- 2) 下方浩史 : 新老年学改訂第3版(大内尉義, 秋山弘子編), 東京大学出版会, 2010, pp.333-346.
- 3) 安藤富士子, 下方浩史 : *Medicina*, **45** : 430-433, 2008.
- 4) Shimokata, H. et al. : *J. Epidemiol.*, **10** : S1-S9, 2000.
- 5) 下方浩史 : *Geriatric Med.*, **36** : 21-26, 1998.
- 6) 下方浩史 : *Geriatric Med.*, **45** : 13-17, 2007.
- 7) 下方浩史, 安藤富士子 : 日本老年医学会雑誌, **45** : 563-572, 2008.
- 8) 下方浩史・他 : *Mol. Med.*, **39** : 576-581, 2002.
- 9) 下方浩史, 安藤富士子 : *Clin. Calcium*, **18** : 155-161, 2008.
- 10) Kellgren, J. H. and Lawrence, J. S. : *Ann. Rheum. Dis.*, **15** : 1-11, 1956.
- 11) 折笠 肇・他 : 日本骨代謝学会雑誌, **18** : 76-82, 2001.
- 12) Karasik, D. et al. : *J. Bone Miner. Res.*, **179** : 1718-1727, 2002.
- 13) Kitamura, I. et al. : *Bone*, **40** : 1623-1629, 2007.
- 14) 竹村真理枝・他 : *Osteoporos. Jpn.*, **15** : 28-32, 2007.

\* \* \*

# Impact of Caregiver Burden on Adverse Health Outcomes in Community-Dwelling Dependent Older Care Recipients

Masafumi Kuzuya, M.D., Ph.D., Hiromi Enoki, Ph.D.,  
Jun Hasegawa, M.D., Sachiko Izawa, Ph.D.,  
Yoshibisa Hirakawa, M.D., Ph.D., Hiroshi Shimokata, M.D., Ph.D.,  
Akibisa Iguchi, M.D., Ph.D.

---

**Objective:** To determine whether caregiver burden is associated with subsequent all-cause mortality or hospitalization among dependent community-dwelling older care recipients. **Methods:** A prospective cohort study of 1,067 pairs of community-dwelling 65-year-old or older care recipients and their informal caregivers was conducted. The 1,067 pairs completed the baseline assessment including caregiver burden assessed by the Zarit Burden Interview and a 3-year follow-up for all-cause mortality and hospitalization. **Results:** During the 3-year follow-up, 268 recipients died and 455 were admitted to hospitals. The multivariate Cox proportional hazards model revealed that the recipients with caregivers with a baseline ZBI score in the highest quartile were 1.54 and 1.51 times more likely to show increased risks of all-cause mortality and hospitalization, respectively, in comparison with those with caregivers in the lowest quartile after adjustment for potential confounders. The highest quartile of caregiver burden was associated with all-cause mortality and hospitalization within nonusers of respite services including day-care services, home-help services, and nursing-home respite stay services. No apparent association was observed within the users of these services except for day-care services, for which users showed a statistically significant association between the highest quartile and the risk of hospitalization. **Conclusions:** Heavy caregiver burden is associated with mortality and hospitalization among community-dwelling dependent older adults, even after adjusting for potential confounders. The reduction of caregiver burden and improvement of caregiver well-being may not only prevent the deterioration of caregiver health but also reduce adverse health outcomes for care recipients. (Am J Geriatr Psychiatry 2011; 19:382–391)

**Key Words:** Caregiver burden, mortality, hospitalization, adverse health outcomes of care recipient

---

Received August 16, 2009; revised April 24, 2010; accepted April 26, 2010. From the Department of Geriatrics, Nagoya University Graduate School of Medicine, Nagoya (MK, HE, JH, SI, YH); Department of Epidemiology, National Institute for Longevity Sciences, Aichi Prefecture (HS); and Faculty of Medical Welfare Department of Community Care Philanthropy, Aichi Shukutoku University, Aichi (AD), Japan. Send correspondence and reprint requests to Masafumi Kuzuya, M.D., Ph.D., Department of Geriatrics, Nagoya University Graduate School of Medicine, 65 Tsuruma-cho, Showa-ku, Nagoya 466-8550, Japan. e-mail: kuzuya@med.nagoya-u.ac.jp.

© 2011 American Association for Geriatric Psychiatry

DOI: 10.1097/JGP.0b013e3181e9b98d

The current trend toward a community-based healthcare system means that when older people require care, much of it is provided at home. Thus, family members are providing care for ill or disabled older relatives. Family caregiving has been intensively studied in the past decade, particularly the impact on caregivers of providing home care to a family member. Caregiver burden has been defined as a negative reaction to the impact of providing care on the caregiver's social, occupational, and personal roles.<sup>1-3</sup> It is well documented that informal care for the disabled elderly places heavy burdens on family caregivers.<sup>1-3</sup> Previous studies demonstrated that caregiver burden is associated with the substantial care needs of seriously ill patients, which are in turn associated with the presence of dementia, behavioral problems, poorer physical functioning, and factors that are not readily modifiable.<sup>4-7</sup> Caregiver burden can lead to a chronic stress response that can worsen caregiver health, contribute to psychiatric morbidity in the form of increased depression,<sup>8</sup> contribute to the risk of health problems such as wound healing impairment, elevated blood pressure, and coronary heart disease risk and immune function impairment,<sup>9-11</sup> and is an independent risk factor for mortality.<sup>12</sup>

Thus, most of the previous studies on caregiver burden have focused on examining its cause(s) and extensively examining caregiver health. However, conversely, much less attention has been paid to the impact of caregiver burden or distress on the health of the partner, the care recipient. In fact, it remains uncertain whether caregiver burden or distress has any influence on the health-related outcomes of care recipients, although the association of caregiver burden with long-term care placement has been well demonstrated.<sup>13,14</sup> In this study, we investigated whether caregiver burden is associated with adverse health outcomes of the care recipients, including all-cause mortality and hospitalization for acute illness, during a 3-year study period. In addition, we examined the effect of community-based respite care services, including day-care, home-help, and nursing-home respite stay services on the adverse outcomes of care recipients.

---

## METHODS

### Study Setting and Cohort Participants

In this study, we employed baseline data on the care recipient and caregiver pairs in the Nagoya Longitudinal Study for Frail Elderly (NLS-FE) and data on the mortality and hospitalization of the care recipients during the 3-year follow-up period. Japan introduced a universal-coverage long-term care insurance (LTCI) program in 2000. Under the LTCI program, each applicant's care levels are determined according to eligibility criteria. Eligibility status is classified into six levels ("needs support" and care levels 1-5) by the estimation of care needs based on an assessment of the current physical and mental status of the patient and their use of medical procedures.<sup>15</sup> The NLS-FE was designed to compare the outcomes of different uses of community-based care services provided by the LTCI program.<sup>16,17</sup> The study sample consisted of 1,875 community-dwelling elderly (632 men and 1,243 women, age 65 years or older) with some degree of physical or mental disability. They were eligible for the LTCI program, lived in Nagoya City, Japan, and received various kinds of community-based services from the Nagoya City Health Care Service Foundation for Older People, which has 17 visiting nursing stations associated with care-managing centers. These 1,875 NLS-FE participants and 1,502 caregivers (373 of the 1,875 participants lacked a primary caregiver), who were enrolled between December 1, 2003, and January 31, 2004, were scheduled to undergo comprehensive in-home assessments by trained nurses at the baseline and at 6, 12, and 24 months. At 3-month intervals, data were collected about any important events in the lives of the participants, including mortality and admission to the hospital for acute illness during the 3-year follow-up. Written informed consent for participation was obtained from the participants, care recipients, and caregivers, or, for those with substantial cognitive impairment, from a surrogate (usually the closest relative or legal guardian), according to procedures approved by the Institutional Review Board of Nagoya University Graduate School of Medicine.

### **Data Collection**

The data were collected at the clients' homes through structured interviews with care recipients or surrogates and caregivers and from care-managing center records taken by trained nurses. The data included each participant's demographic characteristics, general socioeconomic status, living arrangements, subjective economic status, use of medical services, and the utilization of a total of seven community-based services available under LTCI programs, including the day-care service, visiting nurse service, home-help service, visiting bathing service, visiting rehabilitation, assistive device leasing, and nursing-home respite stay (overnight respite, temporary stays at nursing facilities). The data also included depressive symptoms as assessed by the 15-item Geriatric Depression Scale (GDS-15) (range: 0–15, with higher values indicating more depressive symptoms)<sup>18</sup> and a rating for eight basic activities of daily living (bADL) using summary scores ranging from 0 (total disability) to 20 (no disability). The information on the following physician-diagnosed chronic conditions was obtained from care-managing center records: ischemic heart disease, congestive heart failure, cerebrovascular disease, diabetes mellitus, dementia, chronic obstructive pulmonary disease, cancer, hypertension, and other diseases comprising the Charlson Comorbidity Index,<sup>19</sup> which represents a sum of weighted indexes that takes into account the number and seriousness of preexisting comorbid conditions (range: 0–19, with a higher value indicating higher comorbidity).

Data were also obtained from caregivers concerning their own personal demographic characteristics including caregiver relationship to care recipient (spouse or not), and the presence of behavioral disturbance of the care recipient according to the primary assessment dataset of the public LTCI, including wandering, hallucinations, physically aggressive behaviors, verbal aggression, delusions, altered sleep-wake cycles, sexually disinhibited behaviors, aberrant behaviors, abnormal eating behaviors, and resistance to care. Depressive symptoms were assessed by the GDS-15, and the caregiver's subjective burden was assessed by the Japanese version of the Zarit Burden Interview (ZBI), which is a 22-item self-report inventory that examines the burden associated with functional behavioral impairments in the home care situation (range: 0–88, with higher values

indicating a greater burden). The primary caregivers were also asked to rate their current overall health in three categories of subjective health status (poor, fair, and good to excellent).

### **Subjects for the Analysis**

Among the original 1,502 pairs at baseline, 276 caregivers could not complete or refused to assess the ZBI, and the data on comorbidity condition or sociodemographic characteristics were lacking for 159 participants. The study sample, therefore, consisted of 1,067 community-dwelling disabled elderly (387 men, 680 women, age range: 65–104 years) and paired caregivers (256 men, 811 women, age range: 31–90 years). There were no statistical differences in mortality and hospitalization rates during the follow-up period between participants with and without caregiver ZBI measurements among the 1,502 participants. Of these 1,067 pairs, 259 care recipients could not complete the GDS-15 because of severe cognitive impairment or communication impairment, and 101 caregivers because of refusal to do the assessment.

### **Statistical Analysis**

The ZBI score was categorized into quartiles (quartile 1: score, 0–15, N = 284; quartile 2: 16–26, N = 253; quartile 3: 27–39, N = 269; quartile 4: 40–84, N = 261). Baseline characteristics of the study participants, including both care recipients and caregivers, were examined using the Jonckheere–Terpstra test or the General Linear Models for trends across the quartiles of the ZBI score. Analysis of variance for multiple comparisons was used to determine differences among the quartiles of the ZBI score for continuous variables, and the Pearson  $\chi^2$  test was used to test categorical variables. The end point of this study was defined as the time to all-cause death or hospitalization because of acute illness, whichever occurred first, during follow-up. Cox proportional hazard models and the Kaplan–Meier method (differences between strata of the ZBI score levels determined using log-rank tests) were used to assess the association of quartiles of the ZBI score with those adverse outcomes after enrollment during a 3-year period (3-month intervals). To create an ideal model for a multivariate Cox proportional hazards model, we first evaluated the association between

each covariate and all-cause death or hospitalization, using the univariate Cox proportional hazards model. Covariates included, for the recipient, sociodemographic characteristics, the presence or absence of regular medical checkups, the number of community-based services, economic status, bADL score, the Charlson comorbidity index, and the presence or absence of selected major comorbidities and behavioral problems. Covariates also included, for the caregiver, sociodemographic characteristics, subjective health status, and categorized ZBI score. In the multivariate analysis, the covariates included were variables associated with each event with  $p < 0.05$  in univariate analysis. In models considering the quartiles of the caregiver ZBI score, we compared hazard ratios (HRs) with a corresponding 95% confidence interval (CI) in the second, third, and fourth quartiles with those in the first quartile (referent).

Additional analyses stratified by the use or nonuse of community-based respite care services including day-care, home-help, and nursing-home respite stay services were also performed using a consistent set of covariates to examine the data for possible interactions of these variables with the adverse health outcomes of care recipients. Student's *t*-test and analysis of covariance (ANCOVA) were used to compare the caregiver ZBI score according to the service use and nonuse groups. Covariates of ANCOVA included recipient gender, age, bADL score, the Charlson comorbidity index, the presence or absence of dementia and behavior problems, caregiver gender, and caregiver age.

The data were analyzed using the SAS, Release 9.13. Probability value of  $< 0.05$  was considered significant.

## RESULTS

The baseline distribution of the sociodemographic characteristics of the care recipients and caregivers according to the quartiles of the ZBI score is shown in Table 1. We used analysis of variance or Pearson  $\chi^2$  test to evaluate differences among the quartiles of the ZBI score. The bADL score decreased, and the number of community-based services used, the Charlson comorbidity index, and recipient GDS-15 score increased as the level of the ZBI quartile increased. The care recipients whose caregivers' ZBI

scores were in higher quartiles were more likely to show a higher prevalence of dementia ( $\chi^2$  test:  $\chi^2 = 61.09$ , degrees of freedom [*df*] = 3,  $p < 0.001$ ; Jonckheere-Terpstra test: *z* statistics, *Z* value = 7.51,  $N = 1,067$ ,  $p < 0.001$ ), behavioral problems ( $\chi^2 = 14.75$ ,  $df = 3$ ,  $p = 0.002$ ; Jonckheere-Terpstra test, *Z* value = 8.58,  $N = 1,067$ ,  $p < 0.001$ ) and a history of cerebrovascular disease ( $\chi^2 = 10.31$ ,  $df = 3$ ,  $p = 0.016$ ; Jonckheere-Terpstra test, *Z* value = 2.37,  $N = 1,067$ ,  $p = 0.018$ ). The caregiver's GDS-15 score increased (General Linear Model, *F* value = 313.48,  $df = 1,964$ ,  $p < 0.001$ ), and the prevalence of good to excellent subjective health status of the caregiver decreased with increasing quartiles of the ZBI score (Jonckheere-Terpstra test, *Z* value = 5.37,  $N = 1,067$ ,  $p < 0.001$ ). There were no differences in the rate of regular medical checkups ( $\chi^2$  test,  $\chi^2 = 5.66$ ,  $df = 3$ ,  $p = 0.130$ ), living arrangements (living alone or with one person versus living with two or more,  $\chi^2 = 1.46$ ,  $df = 3$ ,  $p = 0.692$ ), and three categories of economic status ( $\chi^2 = 6.70$ ,  $df = 3$ ,  $p = 0.349$ ) among the quartiles of the ZBI score.

During the 3-year period, 268 care recipients died and 455 were admitted to hospitals (Table 2). The participants whose caregivers' ZBI scores were in the higher quartiles were more likely to die and be hospitalized during the follow-up period than those whose caregivers' scores were in the lower quartile categories ( $\chi^2$  test,  $\chi^2 = 9.78$ ,  $df = 3$ ,  $p = 0.020$ ;  $\chi^2 = 11.09$ ,  $df = 3$ ,  $p = 0.007$ , respectively).

Kaplan-Meier curves of survival and the cumulative incidence of hospitalization during the 3-year period among care recipients according to the quartile of the caregivers' ZBI scores demonstrated that all-cause mortality and hospitalization increased with higher quartiles of caregiver ZBI at baseline (log-rank  $\chi^2$  test, mortality:  $\chi^2 = 17.29$ ,  $df = 3$ ,  $p < 0.001$ ; hospitalization:  $\chi^2 = 23.61$ ,  $df = 3$ ,  $p < 0.001$ ; Fig. 1).

The univariate Cox proportional hazards model revealed that the recipients whose caregivers' ZBI scores were in the highest quartile were 1.93 times and 1.86 times more likely to suffer all-cause mortality and hospitalization, respectively, during the 3-year period than those in the lowest quartile (95% CI: 1.38–2.71, Wald  $\chi^2$  test,  $\chi^2 = 14.80$ ,  $df = 1$ ,  $p < 0.001$ ; 95% CI: 1.43–2.42, Wald  $\chi^2 = 21.16$ ,  $df = 1$ ,  $p < 0.001$ ). The GDS-15 score of the care recipients and caregivers was not associated with mortality and hospitalization in univariate analysis (mortality: HR: 1.03; 95% CI: 0.98–1.07, Wald  $\chi^2$

# Impact of Caregiver Burden on Adverse Health Outcomes

**TABLE 1. Baseline Characteristics of Study Participants According to ZBI Score Quartile of Caregivers**

	Quartile Group of Caregiver ZBI Score				F	p
	1st, Score: 0–15, n = 284	2nd, Score: 16–26, n = 253	3rd, Score: 27–39, n = 269	4th, Score: 40–84, n = 261		
<b>Care recipients (n = 1067)</b>						
Men/women, N (% of men)	89/195 (31.3)	88/165 (34.8)	100/169 (37.2)	110/151 (42.1)		0.065
Age, M (SD), year <sup>a</sup>	81.0 (7.1)	81.1 (7.7)	81.2 (7.8)	80.8 (8.5)	0.10	0.962
Basic ADL (range: 0–20), M (SD) <sup>a</sup>	14.2 (6.1)	12.5 (6.2)	11.0 (6.5)	10.4 (6.3)	20.07	<0.001
Charlson comorbidity index, M (SD) <sup>a</sup>	1.8 (1.5)	2.2 (1.5)	2.3 (1.5)	2.4 (1.7)	7.06	<0.001
GDS-15 (range: 0–15), M (SD) <sup>a,b</sup>	5.4 (3.4)	6.2 (3.2)	6.6 (3.4)	8.1 (3.7)	21.19	<0.001
No. of service uses (range: 0–7), M (SD) <sup>a</sup>	2.0 (1.1)	2.2 (1.2)	2.4 (1.3)	2.5 (1.3)	8.97	<0.001
Presence of chronic disease, no. (%)						
Ischemic heart disease	36 (12.7)	31 (12.3)	36 (13.4)	29 (11.1)		0.882
Congestive heart failure	17 (6.0)	20 (7.9)	22 (8.2)	27 (10.3)		0.321
Cerebrovascular disease	93 (32.7)	110 (43.5)	120 (44.6)	111 (42.5)		0.016
COPD	11 (3.9)	11 (4.3)	14 (5.2)	18 (6.9)		0.400
Dementia	66 (23.2)	92 (36.4)	135 (50.2)	135 (51.7)		<0.001
Cancer	29 (10.2)	22 (8.7)	14 (5.2)	28 (10.7)		0.098
Presence of behavioral problems, no. (%)	8 (2.8)	11 (4.3)	21 (7.8)	26 (10.0)		0.002
<b>Caregiver variables (n = 1067)</b>						
Men/women, no. (% of men)	71/213 (25.0)	69/184 (27.3)	56/213 (20.3)	60/201 (23.0)		0.350
Age, M (SD), year <sup>a</sup>	64.1 (13.0)	65.4 (12.2)	63.5 (12.6)	65.8 (11.3)	2.05	0.106
GDS-15 (range: 0–15), M (SD) <sup>a,c</sup>	3.4 (3.0)	4.7 (3.2)	5.8 (3.5)	8.5 (3.4)	107.98	<0.001
Relationship to care recipient, no. (%)						
Spouse	115 (40.5)	119 (47.0)	106 (39.4)	128 (49.0)		0.061
Nonspouse	169 (59.5)	134 (53.0)	163 (60.6)	133 (51.0)		
Health status, no. (%)						
Good to excellent	150 (52.8)	101 (39.9)	98 (36.4)	80 (26.2)		<0.001
Fair	103 (36.3)	127 (50.2)	148 (55.0)	169 (55.4)		
Poor	31 (10.9)	25 (9.9)	23 (8.6)	56 (18.4)		
ZBI score (range: 0–88), M (SD) <sup>a</sup>	9.4 (4.7)	21.0 (3.1)	32.6 (4.0)	52.5 (9.8)	2553.05	<0.001

Notes: M: mean; SD: standard deviation; COPD: chronic obstructive pulmonary disease.

<sup>a</sup>Analysis of variance for multiple comparisons was used to determine differences among the quartiles of the ZBI score for continuous variables (*df* = 3,1063 except for recipient GDS-15 [*df* = 3, 804] and caregiver GDS-15 [*df* = 3,962]), and the Pearson  $\chi^2$  test was used to test categorical variables (*df* = 3).

<sup>b</sup>*n* = 808.

<sup>c</sup>*n* = 966.

**TABLE 2. Adverse Events During 3-year Period According to the Quartile Group of ZBI Score**

	Quartile Group of ZBI Score				Total, n = 1,067	p <sup>a</sup>
	1st, n = 284	2nd, n = 253	3rd, n = 269	4th, n = 261		
<b>Adverse outcomes, no. (% of each quartile)</b>						
All-cause death	58 (20.4)	63 (24.9)	64 (23.8)	83 (31.8)	268 (25.1)	0.020
Hospitalization	98 (34.5)	111 (43.9)	119 (44.2)	127 (48.7)	455 (42.6)	0.007

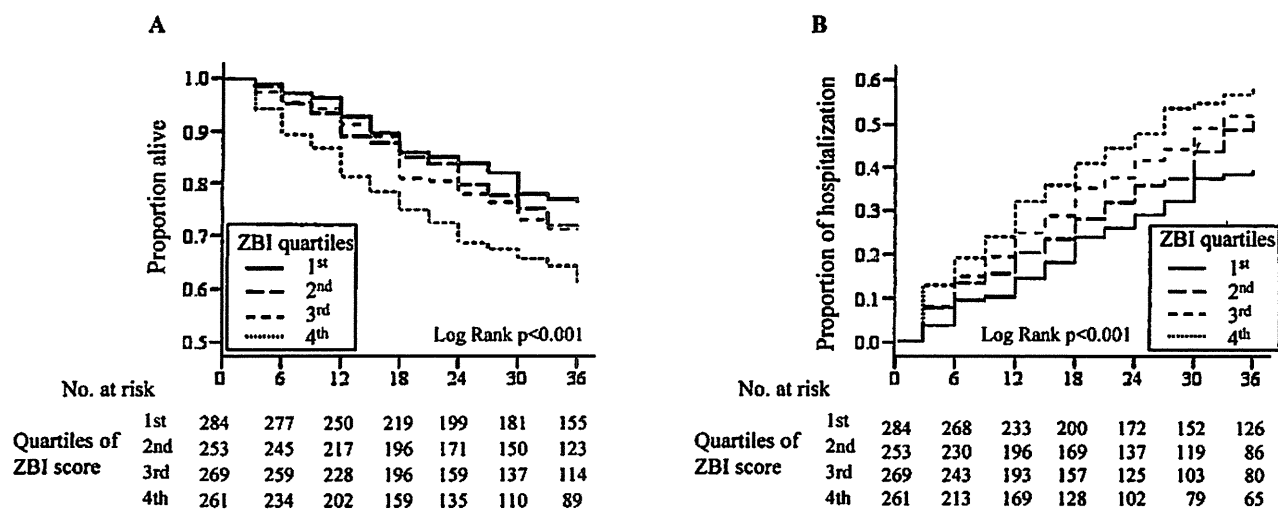
<sup>a</sup>Pearson  $\chi^2$  test. Degree of freedom is equal to 3.

test,  $\chi^2 = 1.52$ , *df* = 1, *p* = 0.218, and HR: 1.02; 95% CI: 0.98–1.05, Wald  $\chi^2 = 1.072$ , *df* = 1, *p* = 0.301, respectively; hospitalization: HR: 1.02; 95% CI: 0.99–1.05; Wald  $\chi^2$  test,  $\chi^2 = 1.54$ , *df* = 1, *p* = 0.215, and HR: 1.01; 95% CI: 0.99–1.04; Wald  $\chi^2 = 0.81$ , *df* = 1, *p* = 0.369, respectively).

As shown in Table 3, multivariate adjustment for confounders, including recipient gender and age,

bADL score, number of community-based services used, the Charlson comorbidity index, caregiver gender and age, presence or absence of behavioral problems (only for all-cause mortality analysis), and the subjective health status of the caregiver (only for hospitalization analysis), showed that the highest quartile of caregivers' ZBI scores (compared with the lowest quartile) was associated with a 1.54-fold risk

**FIGURE 1.** Kaplan–Meier Plot for Probability of Event-Free Survival (A) and Probability of Hospital Admission (B) According to Increasing Quintiles of the Zarit Burden Interview Score



Log-rank  $\chi^2$  test, mortality (A):  $\chi^2 = 17.29$ ,  $df = 3$ ,  $p < 0.001$ ; hospitalization (B):  $\chi^2 = 23.61$ ,  $df = 3$ ,  $p < 0.001$ .

of all-cause death and a 1.51-fold risk of recipient hospitalization. When the analyses were conducted using the ZBI score as a continuous variable, the recipients who had caregivers with higher ZBI scores were associated with higher risk of mortality and hospitalization (HR: 1.01, 95% CI: 1.00–1.02, Wald  $\chi^2$  test,  $\chi^2 = 6.92$ ,  $df = 1$ ,  $p = 0.009$ , and HR: 1.01, 95% CI: 1.00–1.01, Wald  $\chi^2 = 8.86$ ,  $df = 1$ ,  $p = 0.003$ , respectively). The HRs of the top quartile were similar when the comorbidity index score was replaced with the presence or absence of chronic diseases that were identified as risk factors by univariate analysis in each event (Table 3).

Based on ANCOVA adjusted for recipient gender, age, bADL score, the Charlson comorbidity index, the presence or absence of dementia and behavior problems, caregiver gender, and caregiver age, no differences in the adjusted average ZBI scores were detected between users and nonusers of these services (ANCOVA, adjusted mean ZBI score (standard deviation): day-care service, nonuse, 27.9 (16.4) versus use, 29.3 (16.5),  $F$  value = 1.92,  $df = 1, 1057$ ,  $p = 0.166$ ; home-help service: nonuse, 29.0 (16.4) versus use, 27.9 (16.4),  $F$  value = 1.06,  $df = 1, 1057$ ,  $p = 0.304$ ) except for the nursing-home respite service, for which users showed higher ZBI scores than nonusers (nonuse, 28.1 [16.4], versus use, 32.1 [16.8],  $F$  value = 5.26,  $df = 1, 1057$ ,  $p = 0.022$ ).

In Table 4, using the multivariate Cox proportional hazards model, we examined the association between higher versus lowest quartile of the ZBI score and care recipient all-cause mortality and hospitalization within subgroups of various community-based respite service use status. Overall, within nonusers of these respite care services, the highest quartile of caregiver burden was associated with all-cause mortality and hospitalization. No apparent association was observed within users of these services except for users of the day-care service, who showed a statistically significant association between the highest quartile and the risk of hospitalization (HR: 1.56, 95% CI: 1.03–2.36, Wald  $\chi^2$  test,  $\chi^2 = 4.50$ ,  $df = 1$ ,  $p = 0.034$ ).

## DISCUSSION

In the present study, we observed that the recipients with caregivers with a baseline ZBI score in the highest quartile were 1.54 and 1.51 times more likely to show increased risk of all-cause mortality and hospitalization during a 3-year follow-up period, respectively, in comparison with those with caregivers in the lowest. These relationships existed independently of various other risk factors for mortality and hospitalization, including gender, age, number of community-based services used, ADL status, and

TABLE 3. Multivariate Cox Proportional Hazards Models and Association Between Baseline Characteristics and Risk of Mortality and Hospitalization During 3-year Follow-up

	All Death						Hospitalization					
	Model 1 <sup>a</sup>			Model 2 <sup>b</sup>			Model 1 <sup>c</sup>			Model 2 <sup>d</sup>		
	Wald $\chi^2$	p	HR (95% CI)	Wald $\chi^2$	p	HR (95% CI)	Wald $\chi^2$	p	HR (95% CI)	Wald $\chi^2$	p	HR (95% CI)
<b>Care recipient variables</b>												
Men (versus women)	22.41	<0.001	1.98 (1.49-2.63)	24.25	<0.001	2.06 (1.54-2.75)	3.39	0.065	1.23 (0.99-1.54)	3.05	0.081	1.22 (0.98-1.52)
Age <sup>e</sup>	66.21	<0.001	1.07 (1.05-1.09)	45.71	<0.001	1.06 (1.04-1.08)	6.08	0.014	1.02 (1.00-1.03)	3.24	0.072	1.01 (1.00-1.03)
Basic ADL score <sup>e</sup>	26.01	<0.001	0.94 (0.92-0.96)	32.04	<0.001	0.93 (0.91-0.96)	7.89	0.005	0.97 (0.96-0.99)	12.95	<0.001	0.97 (0.95-0.99)
No. of service uses <sup>e</sup>	0.84	0.360	0.94 (0.83-1.05)	0.90	0.343	0.93 (0.83-1.05)	2.28	0.131	1.07 (0.97-1.17)	1.75	0.186	1.06 (0.97-1.16)
Charlson comorbidity index <sup>e</sup>	8.84	0.003	1.12 (1.04-1.22)			—	2.13	0.145	1.05 (0.98-1.12)			—
<b>Chronic disease (versus absence)</b>												
Congestive heart failure		—		5.16	0.023	1.54 (1.06-2.23)		—			—	
COPD		—				—		—	3.090	0.079	1.40 (0.96-2.03)	
Dementia		—		4.298	<0.001	1.33 (1.02-1.74)		—			—	
Cancer		—		14.64	<0.001	1.99 (1.40-2.82)		—		18.10	<0.001	1.84 (1.39-2.44)
Behavioral problems (versus absence)	0.20	0.657	1.11 (0.72 to 1.70)	0.23	0.629	1.12 (0.72-1.74)		—			—	
<b>Caregiver's variables</b>												
Men (versus women)	0.03	0.863	1.02 (0.74-1.42)	0.01	0.984	0.99 (0.71-1.38)	0.01	0.942	0.99 (0.77-1.27)	0.13	0.714	0.95 (0.74-1.22)
Age <sup>e</sup>	0.36	0.551	1.00 (0.99-1.02)	0.47	0.492	1.00 (0.99-1.02)	0.07	0.788	1.00 (0.99-1.01)	0.04	0.847	1.00 (0.99-1.01)
<b>Subjective caregiver health status (versus good to excellent)</b>												
Fair		—				—	2.95	0.086	1.21 (0.97-1.50)	2.52	0.113	1.19 (0.96-1.48)
Poor		—				—	2.99	0.084	1.32 (0.96-1.82)	2.69	0.101	1.31 (0.95-1.80)
<b>ZBI score (versus 1st quartile)</b>												
2nd	0.13	0.717	1.07 (0.75-1.53)	0.23	0.629	1.09 (0.76-1.57)	2.06	0.151	1.22 (0.93-1.61)	2.51	0.113	1.25 (0.95-1.64)
3rd	0.01	0.942	1.01 (0.71-1.46)	0.06	0.809	1.05 (0.73-1.51)	2.93	0.087	1.27 (0.97-1.68)	3.95	0.047	1.32 (1.00-1.75)
4th	5.80	0.016	1.54 (1.09-2.17)	4.44	0.035	1.45 (1.03-2.05)	8.62	0.003	1.51 (1.15-1.98)	8.29	0.004	1.50 (1.14-1.97)

Notes: Degree of freedom is equal to 1. COPD: chronic obstructive pulmonary disease.

<sup>a</sup>Model 1 included gender, age, bADL score, number of community-based services used, regular medical checkups, Charlson comorbidity index, behavioral problems, caregiver's age and gender, the Zarit categories that are associated with mortality in univariate analysis.

<sup>b</sup>Model 2 for analysis of all-death, which included variables used in Model 1 plus presence or absence of heart failure, dementia, and cancer, which are associated with all-death in univariate analysis, instead of Charlson comorbidity index.

<sup>c</sup>Model 1 included gender, age, bADL score, number of community-based services used, regular medical checkups, Charlson comorbidity index, caregiver's age and gender, subjective caregiver health status, and the Zarit categories that are associated with mortality in univariate analysis.

<sup>d</sup>Model 2 for analysis of hospitalization, which included variables used in Model 1 plus presence or absence of cancer and COPD, which are associated with all-death in univariate analysis, instead of Charlson comorbidity index.

<sup>e</sup>Continuous variables.



TABLE 4. Subgroup Cox Hazard Analysis According to Quartiles of the ZBI Score

Use or Nonuse	No. of Case Total	Quartile Group of ZBI Score (1st: Reference)								
		2nd			3rd			4th		
		Wald $\chi^2$	p	HR (95% CI)	Wald $\chi^2$	p	HR (95% CI)	Wald $\chi^2$	p	HR (95% CI)
<b>All death<sup>a</sup></b>										
<b>Day-care service</b>										
Nonuse	165/573	1.03	0.310	1.26 (0.81-1.96)	0.07	0.791	0.95 (0.58-1.54)	5.06	0.024	1.66 (1.07-2.59)
Use	103/494	0.31	0.579	0.84 (0.45-1.58)	0.15	0.695	1.12 (0.64-1.97)	0.75	0.387	1.29 (0.72-2.31)
<b>Home-help service</b>										
Nonuse	155/618	0.76	0.382	1.25 (0.76-2.05)	0.16	0.688	1.11 (0.67-1.85)	12.7	<0.001	2.32 (1.46-3.69)
Use	113/449	0.10	0.757	0.92 (0.54-1.57)	0.23	0.633	0.88 (0.52-1.49)	0.63	0.426	0.80 (0.46-1.39)
<b>Nursing-home respite stay service</b>										
Nonuse	237/959	0.34	0.558	1.12 (0.76-1.65)	0.09	0.768	1.06 (0.72-1.56)	9.75	0.002	1.79 (1.24-2.58)
Use	31/108	0.42	0.517	0.70 (0.24-1.79)	0.77	0.381	0.63 (0.23-1.76)	1.86	0.173	0.46 (0.15-1.41)
<b>Hospitalization<sup>b</sup></b>										
<b>Day-care service</b>										
Nonuse	250/573	1.72	0.189	1.27 (0.89-1.82)	3.46	0.063	1.43 (0.98-2.10)	5.07	0.024	1.54 (1.06-2.24)
Use	205/494	0.86	0.353	1.23 (0.80-1.88)	0.93	0.334	1.22 (0.81-1.84)	4.50	0.034	1.56 (1.03-2.36)
<b>Home-help service</b>										
Nonuse	260/618	3.56	0.059	1.45 (0.99-2.14)	4.88	0.027	1.54 (1.05-2.25)	18.00	<0.001	2.25 (1.55-3.27)
Use	195/449	0.01	0.945	1.01 (0.68-1.51)	0.01	0.930	1.02 (0.67-1.54)	0.40	0.528	0.87 (0.57-1.33)
<b>Nursing-home respite stay service</b>										
Nonuse	400/959	2.30	0.130	1.25 (0.94-1.67)	2.09	0.148	1.24 (0.93-1.67)	9.32	0.002	1.57 (1.18-2.10)
Use	55/108	0.21	0.646	1.26 (0.47-3.34)	0.65	0.419	1.43 (0.60-3.41)	0.02	0.891	1.06 (0.44-2.56)

Notes: Multivariate Cox proportional hazard models. Degree of freedom for all variables is equal to 1.

<sup>a</sup>Model included gender, age, basic activities of daily living (bADL) score, number of community-based services used, Charlson comorbidity index, behavioral problems, caregiver's age and gender, and the Zarit categories.

<sup>b</sup>Model included gender, age, bADL score, number of community-based services used, Charlson comorbidity index, caregiver's age and gender, subjective caregiver health status, and the Zarit categories.

comorbidity. To our knowledge, this is the first report addressing the relationships between caregiver burden and mortality or hospitalization for dependent older care recipients living in the community.

In addition, subgroup analysis revealed that the association between a high caregiver burden and adverse health outcomes of care recipients was mainly observed in nonusers of community-based respite services, including day-care, home help, or nursing-home respite stay services. No association was found between high caregiver burden and adverse health outcomes of care recipients among users of these services except for users of day-care services with a hospitalization risk.

There are a number of possible mechanisms for these associations. Previous research has found caregiver burden to be a factor in determining the quality of care given and, specifically, a negative indicator of the willingness of caregivers to continue in the caregiving role.<sup>2,20</sup> The caregiver burden may lead to a lower quality of care, leading over time to abuse or neglect and, ultimately, to negative health outcomes for the care recipient.<sup>21,22</sup> In fact, it has been demon-

strated that a lack of needed care for disabled older individuals or a decreased quality of family caregiving results in poor outcomes for care recipients.<sup>23-25</sup> Thus, caregiver burden and emotional distress can be a detriment to the health and well-being of care recipients through inadequate provision of care.

In this study, we demonstrated that the GDS-15 score of the caregiver as well as the care recipient increased as the level of the ZBI quartile increased. These results may indicate that caregiver burden is associated with depressive symptoms in the care recipients and that there may be interrelationships between the emotional distress of the caregiver and depressive symptoms in care recipients. A number of reports have suggested that depressive symptoms have been shown to be an important risk factor for mortality and to increase the risk of physical disability through poorer adherence to healthy life styles.<sup>26-28</sup> However, the GDS-15 scores of care recipients were not associated with all-cause mortality and hospitalization in this cohort. There are several possible reasons for this difference between our cohort and others. The subjects of the current

## *Impact of Caregiver Burden on Adverse Health Outcomes*

investigation had multiple medical problems and functional limitations and were probably at higher mortality and hospitalization risk than those in these prior studies.<sup>26-28</sup>

It has been demonstrated that the death or serious illness of a spouse increases the risk of death or affects the health of a partner.<sup>29,30</sup> A possible mechanism of this association is that spousal illness or death may deprive a partner of social, emotional, or other practical support.<sup>29,30</sup> In the present study, subjective poor health status of the caregiver was associated with risk of hospitalization for the care recipient but not with mortality in this cohort. The highest level of caregiver burden was associated with hospitalization for dependent elderly care recipients, even after adjustment for the subjective health status of the caregivers, making it unlikely that our findings were confounded by the poor health status of the caregiver, at least at baseline.

Community-based long-term care services are believed to relieve stress on family caregivers and enable older people with disabilities to remain at home for a longer period of time.<sup>31</sup> However, the usefulness of these services for reducing caregiver burden is still controversial. Some studies have demonstrated a positive effect of respite service on caregiver burden, but others have shown no effect or a negative relationship between respite service use and caregiver burden.<sup>32-36</sup> In our cohort, no difference in the caregiver ZBI score was observed between users and nonusers of day-care services and home-help services, and a rather higher average ZBI score in users of nursing-home respite stay services compared with nonusers was observed, although cross-sectional determination of respite care service use and the ZBI measurement do not allow evaluation of the causal and consequent relationships between service use and caregiver burden. However, the present study found that the adverse outcome for care recipients with caregivers with the highest burden is more evident in nonusers of respite services than in service users. It is possible that the use of these long-term care services decreased the adverse health outcomes of care recipients through other factors beyond caregiver burden.

Our study has several strengths, including the relatively large number of paired participants and outcome events, a prospective design, and a well-defined population. Our analyses took into account potential confounders including age, gender, bADL,

comorbidity, and subjective health status of the caregiver. We also adjusted for the number of community-based services used and conducted an analysis stratified by the use or nonuse of community-based respite care services.

This study has potential limitations. Subjects with acute illness at enrollment were excluded from participating in the NLS-FE, and the present study used statistical control of potential confounding variables to rule out third factors that might produce an association between caregiver burden and care recipient adverse health outcomes during the follow-up period. However, because of the observational design of the present study, differences in unmeasured factors, including social circumstances, caregiver's competence in caring for a disabled recipient, the health condition of the caregivers during the study period not at baseline, and the length of caregiving may in part account for the findings. We used only the presence or absence of selected major comorbidities and behavioral problems as covariates in the analyses. The lack of assessment of the severity of the recipient's medical illness or significant behavioral problems, both of which would require more time for care providing, may have influenced the results in the present study. The present findings may not be generalizable to other populations, given that health practices, a variety of social and economic factors, ethnic attitudes about caring for very old people, and the cost of healthcare may have influenced these results. It should be noted that multiple analyses in the present study increased the chances of making high likelihood of Type I errors.

We demonstrated high caregiver burden as an important risk of the adverse health outcomes of care recipients, including all-cause mortality and hospitalization. This risk of care recipient adverse health outcomes associated with a heavy caregiver burden was attenuated in community-based respite care service users. In the community setting, interventions directed toward the reduction of caregiver burden and improving caregiver well-being may not only delay long-term care placement and prevent the deterioration of caregiver health but also reduce care recipient adverse health outcomes. A community-based service may thus yield benefits for care recipients and may favorably affect the complex and interrelated variables of the caregiver and the recipient. These efforts may facilitate the continuation of home care of the disabled elderly.

The authors thank all the patients, caregivers, and the many nurses participating in the study, and the Nagoya City Health Care Service Foundation for Older People for their vigorous cooperation.

This study was supported by a Grant-in Aid for the Comprehensive Research on Aging and Health from the Ministry of Health, Labor, and Welfare of Japan and a grant from Mitsui Sumitomo Insurance Welfare Foundation.

## References

- George LK, Gwyther LP: Caregiver well-being: a multidimensional examination of family caregivers of demented adults. *Gerontologist* 1986; 26:253-259
- Zarit SH, Todd PA, Zarit JM: Subjective burden of husbands and wives as caregivers. *Gerontologist* 1986; 26:260-266
- Schulz R, Visintainer P, Williamson GM: Psychiatric and physical morbidity effects of caregiving. *J Gerontol* 1990; 45:181-191
- Torti FM Jr, Gwyther LP, Reed SD, et al: A multinational review of recent trends and reports in dementia caregiver burden. *Alzheimer Dis Assoc Disord* 2004; 18:99-109
- Covinsky KE, Goldman L, Cook EF, et al: The impact of serious illness on patients' families. SUPPORT Investigators. Study to Understand Prognoses and Preferences for Outcomes and Risks of Treatment. *JAMA* 1994; 272:1839-1844
- Scholte op Reimer WJ, de Haan RJ, et al: The burden of caregiving in partners of long-term stroke survivors. *Stroke* 1998; 29:1605-1611
- Vitaliano PP, Katon W, Unützer J: Making the case for caregiver research in geriatric psychiatry. *Am J Geriatr Psychiatry* 2005; 13:834-843
- Gallicchio L, Siddiqi N, Langenberg P, et al: Gender differences in burden and depression among informal caregivers of demented elders in the community. *Int J Geriatr Psychiatry* 2002; 17:154-163
- Kiecolt-Glaser JK, Marucha PT, Malarkey WB, et al: Slowing of wound healing by psychological stress. *Lancet* 1995; 346:1194-1196
- Kiecolt-Glaser JK, Glaser R, Gravenstein S, et al: Chronic stress alters the immune response to influenza virus vaccine in older adults. *Proc Natl Acad Sci USA* 1996; 93:3043-3047
- von Känel R, Mausbach BT, Patterson TL, et al: Increased Framingham Coronary Heart Disease Risk Score in dementia caregivers relative to non-caregiving controls. *Gerontology* 2008; 54:131-137
- Schulz R, Beach SR: Caregiving as a risk factor for mortality: the Caregiver Health Effects Study. *JAMA* 1999; 282:2215-2219
- Yaffe K, Fox P, Newcomer R, et al: Patient and caregiver characteristics and nursing home placement in patients with dementia. *JAMA* 2002; 287:2090-2097
- Gaugler JE, Kane RL, Kane RA, et al: Caregiving and institutionalization of cognitively impaired older people: utilizing dynamic predictors of change. *Gerontologist* 2003; 43:219-229
- Tsutsui T, Muramatsu N: Care-needs certification in the long-term care insurance system of Japan. *J Am Geriatr Soc* 2005; 53:522-527
- Kuzuya M, Masuda Y, Hirakawa Y, et al: Day care service use is associated with lower mortality in community-dwelling frail older people. *J Am Geriatr Soc* 2006; 54:1364-1371
- Kuzuya M, Masuda Y, Hirakawa Y, et al: Underuse of medications for chronic diseases in the oldest of community-dwelling older frail Japanese. *J Am Geriatr Soc* 2006; 54:598-605
- Yesavage JA: Geriatric Depression Scale. *Psychopharmacol Bull* 1988; 24:709-711
- Charlson ME, Pompei P, Ales KL, et al: A new method of classifying prognostic comorbidity in longitudinal studies: development and validation. *J Chronic Dis* 1987; 40:373-383
- Pearlin LI, Mullan JT, Semple SJ, et al: Caregiving and the stress process: an overview of concepts and their measures. *Gerontologist* 1990; 30:583-594
- Lachs MS, Pillemer K: Abuse and neglect of elderly persons. *N Engl J Med* 1995; 332:437-443
- Beach SR, Schulz R, Williamson GM, et al: Risk factors for potentially harmful informal caregiver behavior. *J Am Geriatr Soc* 2005; 53:255-261
- Blazer DG, Sachs-Ericsson N, Hybels CF: Perception of unmet basic needs as a predictor of mortality among community-dwelling older adults. *Am J Public Health* 2005; 95:299-304
- Sands LP, Wang Y, McCabe GP, et al: Rates of acute care admissions for frail older people living with met versus unmet activity of daily living needs. *J Am Geriatr Soc* 2006; 54:339-344
- Lachs MS, Williams CS, O'Brien S, et al: The mortality of elder mistreatment. *JAMA* 1998; 280:428-432
- Schulz R, Drayer RA, Rollman BL: Depression as a risk factor for non-suicide mortality in the elderly. *Biol Psychiatry* 2002; 52:205-225
- Cronin-Stubbs D, de Leon CF, Beckett LA, et al: Six-year effect of depressive symptoms on the course of physical disability in community-living older adults. *Arch Intern Med* 2000; 160:3074-3080
- Williams LS, Ghose SS, Swindle RW: Depression and other mental health diagnoses increase mortality risk after ischemic stroke. *Am J Psychiatry* 2004; 161:1090-1095
- Martikainen P, Valkonen T: Mortality after the death of a spouse: rates and causes of death in a large Finnish cohort. *Am J Public Health* 1996; 86:1087-1093
- Christakis NA, Allison PD: Mortality after the hospitalization of a spouse. *N Engl J Med* 2006; 354:719-730
- Zarit SH, Gaugler JE, Jarrott SE: Useful services for families: research findings and directions. *Int J Geriatr Psychiatry* 1999; 14:165-177
- Sörensen S, Pinquart M, Duberstein P: How effective are interventions with caregivers? An updated meta-analysis. *Gerontologist* 2002; 42:356-372
- Shaw C, McNamara R, Abrams K, et al: Systematic review of respite care in the frail elderly. *Health Technol Assess* 2009; 13:1-224
- Cox C: Findings from a statewide program of respite care: a comparison of service users, stoppers, and nonusers. *Gerontologist* 1997; 37:511-517
- Baumgarten M, Lebel P, Laprise H, et al: Adult day care for the frail elderly: outcomes, satisfaction, and cost. *J Aging Health* 2002; 14:237-259
- Grant I, McKibbin CL, Taylor MJ, et al: In-home respite intervention reduces plasma epinephrine in stressed Alzheimer caregivers. *Am J Geriatr Psychiatry* 2003; 11:62-72



# 老年内科

## Geriatrics 標榜をめざして

下方浩史 国立長寿医療研究センター  
予防開発部長

## 2. 高齢者の疾病 —疫学，臨床的特徴

### はじめに

日本では平均寿命の延長が続き、高齢者、特に75歳以上の後期高齢者あるいは85歳以上、90歳以上の超高齢者の人口が急速に増加しつつある。医療機関を受診する患者の多くが高齢者となり、高齢者疾患の特性を理解した上での診断・治療が日常の医療を行う際の重要な課題となっている。老年内科の診療には、高齢者に多い疾患や症状、高齢者疾患の臨床的特徴や、検査値を判定する際の留意点などの理解が必要である。

### 高齢者と超高齢者の健康状況・疾病

国民生活基礎調査では、3年ごとに世帯員の健康状況や介護状況の調査を行っている。平成19年度の国民生活基礎調査では、要介護者のうち、94.7%が65歳以上の高齢者であった。特に80歳代で要介護になっている者が43.0%と半数近くを占めていた<sup>1)</sup>。自分自

身の健康状態を良いと思っている人は65歳以上で20.0%、85歳以上では13.7%にすぎない。日常生活への影響がある者は65歳以上で22.6%、85歳以上で39.5%に及ぶ。影響のある日常生活活動としては、外出が高頻度になっていた。

65歳以上の63.8%、85歳以上の61.8%が病気のために医療機関に通院していた。65歳以上の高齢通院患者の罹患疾病は男女ともに第1位は高血圧症、第2位は眼疾患であった(表1)。高血圧症は男性で通院者の24.0%、女性で25.3%を占めている。

自覚症状については、65歳以上では1位は「腰痛」であり、これは85歳以上でも同じである。「手足の関節が痛む」、「手足の動きが悪い」などの整形外科的な症状が多い。次いで「咳や痰」、「頻尿」が多くなっている。85歳以上では「もの忘れ」、「聞こえにくい」が多くなっているのが特徴である。

一人あたりの症状数は65歳以上で平均5.2個、85歳以上で5.8個となっており、一人が同時に多くの症状を持っている。高齢者の健