

Invasive Carcinoma Derived From Intestinal-Type Intraductal Papillary Mucinous Neoplasm Is Associated With Minimal Invasion, Colloid Carcinoma, and Less Invasive Behavior, Leading to a Better Prognosis

Kohei Nakata, MD, PhD,*† Kenoki Ohuchida, MD, PhD,† Shinichi Aishima, MD, PhD,* Yoshihiko Sadakari, MD, PhD,† Tadashi Kayashima, MD,† Yoshihiro Miyasaka, MD, PhD,† Eishi Nagai, MD, PhD,† Kazuhiro Mizumoto, MD, PhD,† Masao Tanaka, MD, PhD, FACS,† Masazumi Tsuneyoshi, MD, PhD,* and Yoshinao Oda, MD, PhD*

Objectives: Although intestinal-type intraductal papillary mucinous carcinoma (IPMC) is reported to have a better prognosis, few studies have addressed its invasive pattern. The meaning of “minimal invasion” (MI) in IPMC also remains unclear. We investigated the prognosis of intraductal papillary mucinous neoplasm (IPMN) focusing on MI and subtypes. **Methods:** We evaluated 71 patients with IPMC among a total of 179 patients with resected IPMN.

Results: Although 2 of 10 MI-IPMC patients had lymph node metastasis, there were no disease-specific deaths among the MI-IPMC patients. Minimally invasive IPMCs were more frequently observed in intestinal-type IPMC (23/33 cases) than in non-intestinal-type IPMCs (16/38 cases; $P = 0.019$). Among 32 patients with massively invasive IPMC, the prognosis was significantly better for patients with intestinal-type IPMC than for patients with non-intestinal-type IPMC ($P = 0.013$). When confined to massively invasive IPMC, tubular invasion ($P < 0.001$) and lymphatic ($P = 0.001$) or serosal ($P = 0.021$) invasion were less frequently observed in intestinal-type IPMC than in non-intestinal-type IPMC.

Conclusions: Invasive carcinoma derived from intestinal-type IPMN is associated with MI, colloid carcinoma, and less invasive behavior.

Key Words: IPMN, minimal invasion, intestinal-type IPMN, prognosis, pancreatic cancer

(*Pancreas* 2011;40: 581–587)

Intraductal papillary mucinous neoplasm (IPMN) is a pancreatic exocrine tumor characterized by cystic dilatation of the main and/or branch pancreatic ducts and is lined with mucin-producing atypical epithelium that often proliferates in a papillary fashion.^{1–4} Intraductal papillary mucinous neoplasm is considered to be one of the precursors for invasive carcinoma. It shows a wide spectrum of histological differentiation, and the existence of an adenoma-carcinoma sequence is documented.^{1,5,6} We previously reported the expressions of several genes correlated with this adenoma-carcinoma sequence.^{7–9}

The invasive component of IPMN is divided into either tubular ductal adenocarcinoma or colloid (mucinous noncystic) carcinoma.^{10–13} The intraductal lesions of IPMN are differentiated into subtypes based on their morphological features.⁹

Intestinal-type IPMNs frequently show moderate to severe dysplasia and tend to develop into an invasive colloid carcinoma.^{14–17} Meanwhile, most gastric-type IPMNs show low-grade dysplasia and are rarely associated with invasive cancer.^{2,5,12} Pancreatobiliary-type IPMNs show severe dysplasia corresponding to in situ carcinoma and are often associated with an invasive tubular type of ductal adenocarcinoma.⁹ These findings suggest that each type of IPMN follows a different pathway of carcinogenesis.⁸

It is already clear that the prognosis of patients with invasive IPMC is significantly worse than that of patients with noninvasive IPMC.^{13,18–22} On the other hand, the prognostic significance of minimally invasive intraductal papillary mucinous carcinoma (MI-IPMC) is poorly understood, and there have only been a few reports on MI-IPMC.^{18,20} The notion of “minimal invasion” was first introduced for cervical carcinoma of the uterus and has become an important factor for deciding operative procedures. According to the Japan Pancreas Society classification, minimally invasive IPMC refers to IPMC with “slight stromal invasion” beyond the pancreatic duct, and this definition is vague and unclear. On the other hand, minimal invasion is not described in the World Health Organization (WHO) classification.

There have been several reports comparing the prognoses of patients with IPMN and patients with conventional invasive ductal carcinoma (IDC),²³ and we previously reported that the prognosis is poorer for patients with IDC derived from non-intestinal-type IPMN than for patients with IDC derived from intestinal-type IPMN.²⁴ However, few studies have analyzed the prognosis of IPMN, with consideration of pathological factors such as the degree and type of invasion in each IPMN subtype. Furthermore, no studies have compared the aggressiveness of invasive carcinomas derived from intestinal-type IPMN and non-intestinal-type IPMN.

In this study, we evaluated the propriety of a previously reported definition of minimal invasion¹⁸ and examined the prognostic differences between intestinal-type IPMC and non-intestinal-type IPMC, taking the degree and type of invasion into account. Finally, we demonstrate that intestinal-type IPMC is less aggressive, even with respect to massively invasive IPMC.

MATERIALS AND METHODS

Patients

A total of 179 patients with IPMN underwent surgical resection at Kyushu University Hospital (Fukuoka, Japan) and its affiliated hospitals between 1986 and 2008. All the patients received a curative surgical resection macroscopically. The end date of the surveillance was August 1, 2008. Histological diagnosis of IPMN was performed according to the WHO

From the Departments of *Anatomic Pathology and †Surgery and Oncology, Graduate School of Medical Sciences, Kyushu University, Fukuoka, Japan. Received for publication May 3, 2010; accepted October 22, 2010.

Reprints: Eishi Nagai, MD, PhD, Department of Surgery and Oncology, Graduate School of Medical Sciences, Kyushu University, 3-1-1 Maidashi, Fukuoka 812-8582, Japan (e-mail: eishi@surg1.med.kyushu-u.ac.jp).

This study was supported by a grant-in-aid from the Research Fellowships of the Japan Society for the Promotion of Science for Young Scientists. There are no financial disclosures from any of the authors.

Copyright © 2011 by Lippincott Williams & Wilkins

TABLE 1. Relationship Between Histological Grades and Subtype of IPMN

Morphological Subtype	No. Cases	Histological Grade		
		IPMA	IPMB	IPMC
I type	58	5	20	33
G type	92	63	20	9
PB type	16	0	0	16
O type	5	0	0	5
U type	8	0	0	8
Total	179	68	40	71

I type indicates intestinal type; G type, gastric type; PB type, pancreatobiliary type; O type, oncocytic type; U type, unclassified type.

classification system⁴: IPMNs with slight or no dysplasia as adenoma (IPMA), IPMNs with moderate dysplasia as borderline neoplasm (IPMB), IPMNs with severe dysplastic epithelial

change without invasion as carcinoma in situ (CIS), and invasive carcinoma derived from IPMN (invasive IPMC). Information regarding the prognosis was available in 136 of 179 IPMN patients (82 of 108 IPMA or IPMB patients, 16 of 29 CIS patients, 38 of 42 invasive IPMC patients) (Table 1). We also analyzed the prognosis of 158 patients with conventional IDC who underwent resection in our institution from 1993 to 2007 (clinical information according to the UCAA: T1/T2/T3/T4, 8/9/137/4; N0/N1, 51/107; stage IA/IB/IIA/IIB/III/IV, 8/5/38/96/4/7).

The patients consisted of 110 men and 69 women with a median age of 68 years (range, 46–85 years). All the specimens were cut into 5-mm stepwise tissue sections, and the pathological findings were rereviewed by three investigators (K.N., S.A., and M. Tsuneyoshi). All the sections were evaluated independently without any clinical knowledge of the patients, and if the opinion differed, we discussed and decided the final diagnosis. The IPMNs were also classified into the following four groups (Fig. 1, A–E) in accordance to a recently suggested subclassification system¹⁶: gastric type (n = 92, 51.4%), intestinal-type (n = 58, 32.4%), pancreatobiliary-type (n = 16, 8.9%), or

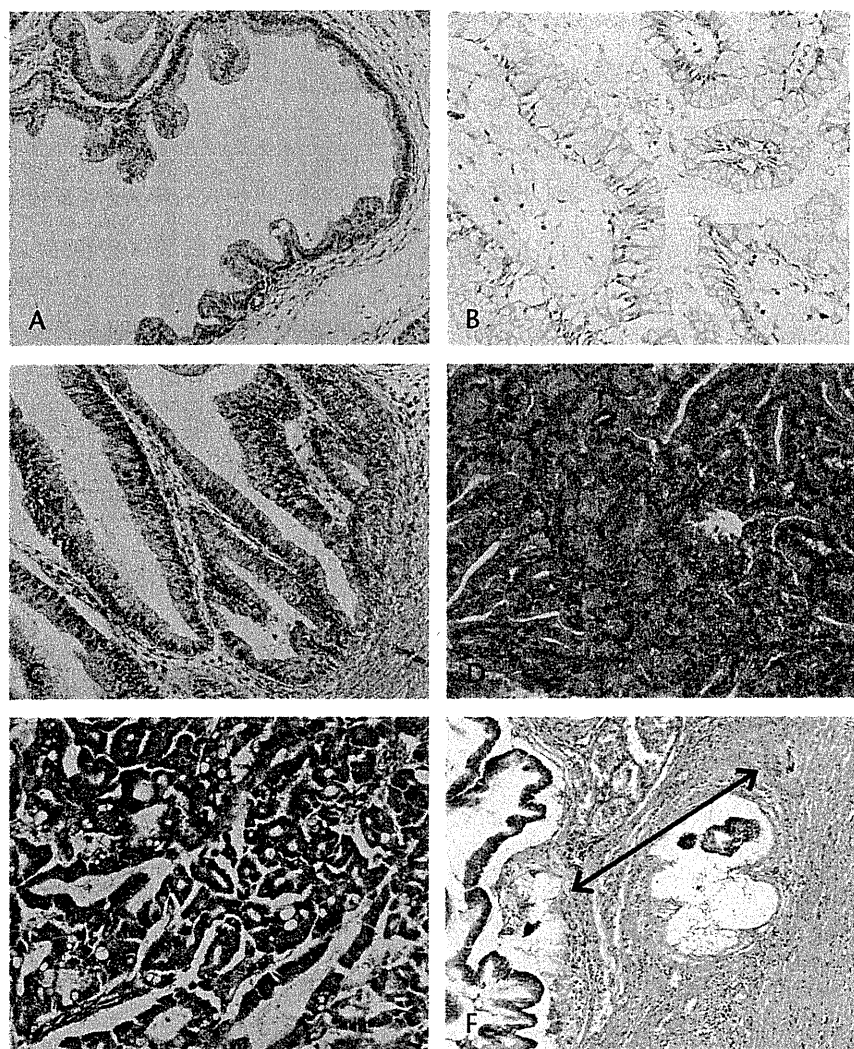


FIGURE 1. Representative images of each type of IPMN (A–E) and minimally invasive IPMC (F). Images of gastric-type IPMN (A), gastric-type IPMC (B), intestinal-type IPMC (C), pancreatobiliary-type IPMC (D), and oncocytic-type IPMC (E) are shown. The depth of invasion was evaluated from the pancreatic duct to the front side of the invasive cells (arrow) and defined as minimally invasive when the depth of invasion was within 5 mm (F).

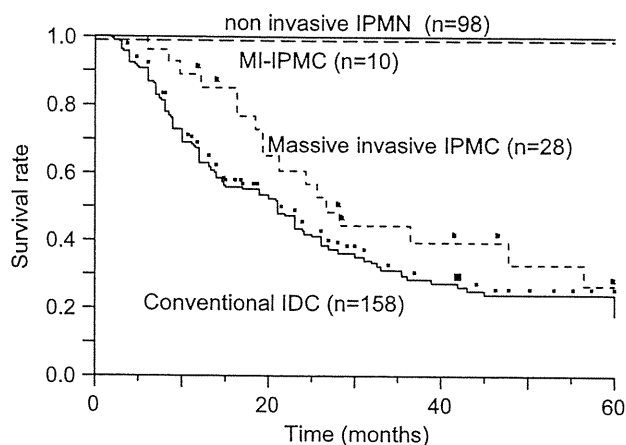


FIGURE 2. Kaplan-Meier survival curves of patients with all types of IPMC and conventional IDC. $P = 0.067$, minimally invasive IPMC versus massively invasive IPMC; $P = 0.115$, massively invasive IPMC versus conventional IDC. Noninvasive IPMN includes IPMA, IPMB, and CIS.

oncocytic-type IPMN ($n = 5$, 2.8%). Intraductal papillary mucinous neoplasms that could not be specifically categorized into any of the above subtypes were segregated as unclassified ($n = 8$, 4.5%). Most of the gastric-type IPMNs were adenomas or borderline tumors, and a large number of the intestinal-type IPMNs were borderline tumors or carcinomas. On the other hand, the oncocytic and pancreatobiliary-type IPMNs were only carcinomas (Table 1). The invasive components of the IPMCs were classified as either tubular or colloid carcinoma, and colloid carcinoma was defined as a tumor consisting of colloid differentiation in 80% of the infiltrating carcinoma or greater.¹⁰ Other pathological variables (lymphatic invasion, vascular invasion, and perineural invasion) were recorded based on the Japan

TABLE 2. Univariate Analyses Using Cox Proportional Hazards Model in Invasive IPMC

Variable	Risk Ratio	95% Confidence Interval	<i>P</i>
Age, y			
≥ 60 / <60	0.486	0.172–1.570	0.212
Sex			
Male/female	0.475	0.180–1.280	0.137
Subtype			
Intestinal/nonintestinal	0.174	0.039–0.550	0.002
Invasive pattern			
Tubular/colloid	5.031	1.387–32.32	0.011
Lymph node metastasis			
Positive/negative	3.227	1.181–3.728	0.022
Invasive degree			
Minimal/massive	0.000		0.014
Venous invasion			
Positive/negative	0.933	0.262–2.646	0.903
Lymphatic invasion			
Positive/negative	4.183	1.486–12.062	0.008
Serosal invasion			
Positive/negative	3.281	0.733–10.778	0.109
Retroperitoneal invasion			
Positive/negative	12.726	4.050–48.292	<0.001

Pancreas Society classification.²⁵ The definition of minimal invasion in this study was stromal invasion of 5 mm or less beyond the pancreatic duct (Fig. 1F), as described previously.¹⁸ We described cases as having massive invasion if the stromal invasion was greater than 5 mm. We sometimes observed cases with a mucus lake without cancer cells in the stroma and considered such lesions to be noninvasive IPMCs. Clinical data were obtained from a combination of medical record reviews, reports of outside medical records, and communication with patients. The study was approved by the ethics committee of Kyushu University and conducted according to the Ethical Guidelines for Human Genome/Gene Research enacted by the Japanese Government and the principles embodied in the Declaration of Helsinki.

Statistical Analysis

All statistical calculations were carried out using JMP 7.0.1 software (SAS Institute, Cary, NC). The disease-specific survival rates were calculated by the Kaplan-Meier method, and differences between curves were analyzed by the log-rank test. All deaths from causes other than IPMN were censored at the time of the last follow-up. The clinicopathologic parameters were compared using the χ^2 test. We also conducted univariate analyses of the prognostic factors with a survival analysis using Cox proportional hazards model. All differences were considered to be statistically significant if $P < 0.05$.

RESULTS

Patient Outcomes and Prognostic Factors in All IPMNs

There were no disease-specific deaths in the IPMA, IPMB, and CIS groups (Fig. 2). We focused only on invasive IPMC in this study. Univariate analyses for disease-specific survival in invasive IPMC identified lymph node metastasis ($P = 0.022$), subtype ($P = 0.002$), massive invasion ($P = 0.014$), tubular carcinoma ($P = 0.011$), retroperitoneal invasion ($P < 0.001$), and lymphatic invasion ($P = 0.008$) as significant prognostic factors for a poor prognosis (Table 2).

Pathological Features of Minimally Invasive IPMC

Among the 42 patients with invasive IPMC, 10 patients (23.8%) showed minimal invasion, and the average depth of tumor invasion was 2.6 mm in this subgroup (Table 3). The

TABLE 3. Characteristics of All Patients With Minimally Invasive Carcinoma

Case	Age, y	Sex	Invasive Type	Invasive Size, mm	Invasive Prognosis, mo	Dead or Alive	Subtype
1	75	M	Colloid	4.0	24.7	Alive	I
2	63	M	Tubular	4.5	1.4	Alive	I
3	74	M	Tubular	0.3	13.4	Alive	I
4	77	M	Tubular	0.7	12.5	Alive	I
5	69	M	Tubular	4.8	14.5	Alive	I
6	72	M	Tubular	0.6	7.5	Alive	I
7	62	F	Tubular	3.0	120.5	Alive	I
8	65	F	Tubular	2.0	10.3	Alive	PB
9	59	F	Colloid	4.5	21.5	Alive	I
10	58	M	Tubular	3.0	20.6	Alive	PB

F indicates female; I, intestinal type; M, male; PB, pancreatobiliary type.

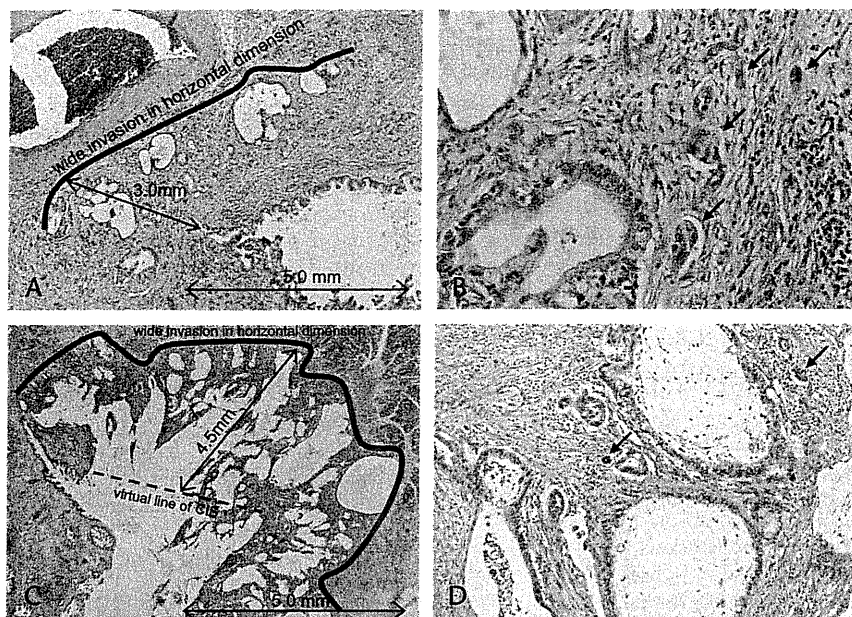


FIGURE 3. Histopathologic features in 2 patients with MI-IPMC with lymph node metastasis. The bold and broken lines indicate the invasive border and depth of invasion, respectively. Both tumors show wide invasion in the horizontal dimension (A, C) and poorly differentiated carcinoma cells (arrow; B, D).

5-year disease-specific survival rate of MI-IPMC was 100% (Fig. 2), and none of these patients showed postoperative recurrence. Venous, lymphatic, serosal, and retroperitoneal invasions were not detected in MI-IPMC.

Lymph node metastasis was detected in 2 (20%) of 10 patients with MI-IPMC and 17 (53.1%) of 32 patients with massively invasive IPMC, compared with none of the patients with CIS. There were significant differences in the frequencies of lymph node metastasis between patients with CIS and patients with MI-IPMC ($P = 0.016$) and between patients with MI-IPMC and patients with massively invasive IPMC ($P < 0.001$), although there was no significant difference in the frequencies of lymph node metastasis between patients with MI-IPMC and patients with massively invasive IPMC ($P = 0.058$). Of the 2 MI-IPMCs with lymph node metastasis, one was pancreatobiliary type

and showed 3.0-mm invasion of a tubular carcinoma and neural invasion (Fig. 3A), and the other was intestinal type and showed 4.5-mm-deep invasion of a colloid carcinoma (Fig. 3C). Both patients showed a poorly differentiated carcinoma with sprouting growth and wide invasion in the horizontal dimension (Fig. 3, B and D).

Surgical Outcomes of Patients With Colloid and Tubular Invasive IPMCs

The survival rate was significantly higher for patients with colloid carcinoma derived from IPMN than for patients with tubular carcinoma derived from IPMN ($P = 0.019$; Fig. 4A). Even in the analyses of massively invasive IPMC, the prognosis was significantly better for patients with colloid carcinoma

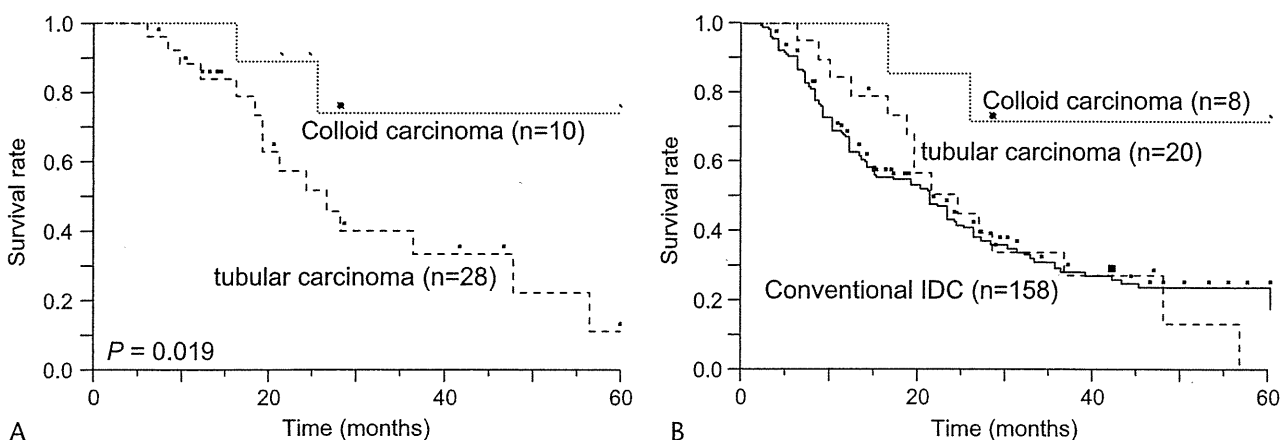


FIGURE 4. Kaplan-Meier survival curves for patients with colloid carcinoma and patients with tubular carcinoma. Survival curves for invasive IPMC (A) and massively invasive IPMC (B) are shown. A, $P = 0.019$, colloid carcinoma versus tubular carcinoma. B, $P = 0.013$, colloid carcinoma versus tubular carcinoma; $P = 0.015$, colloid carcinoma versus conventional IDC; $P = 0.898$, tubular carcinoma versus conventional IDC.

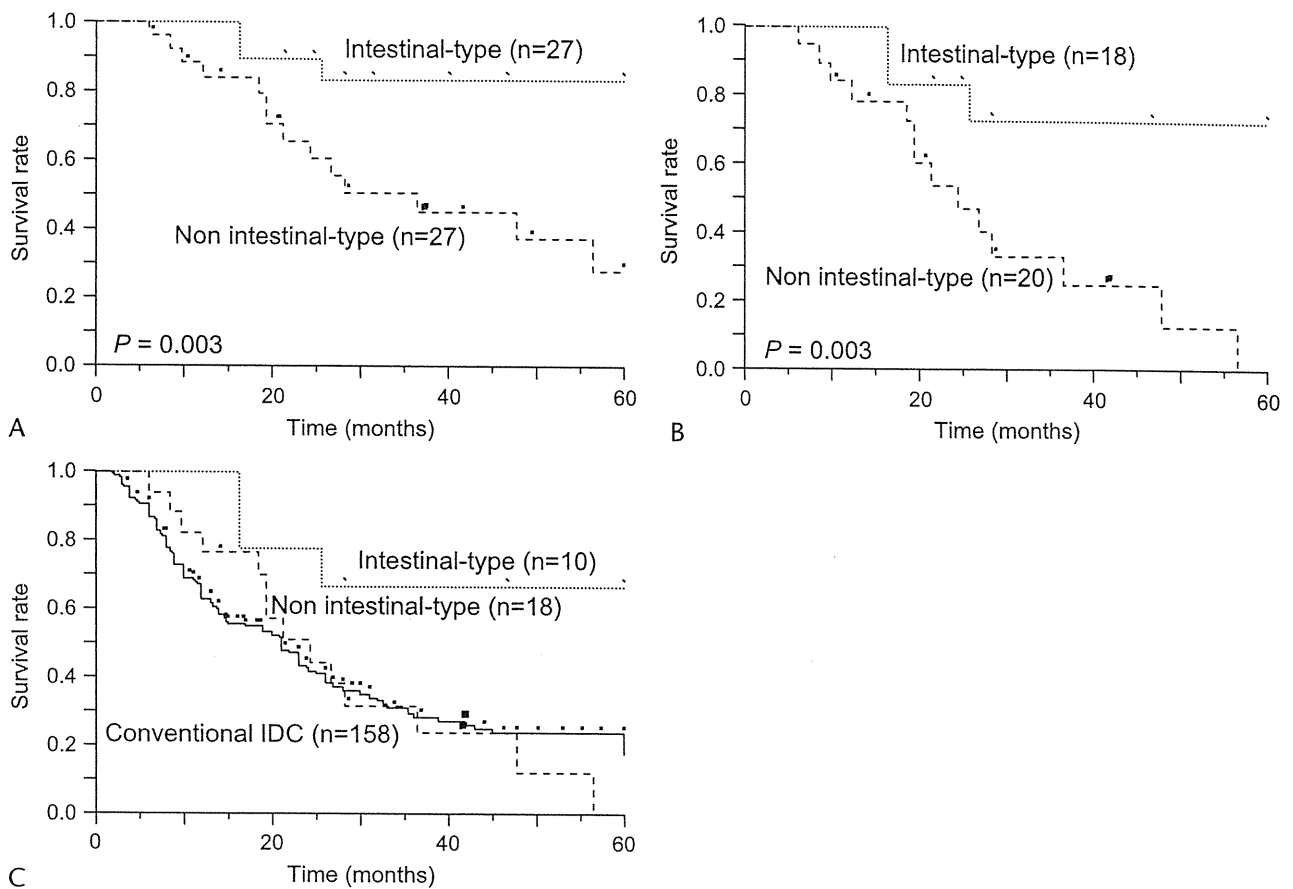


FIGURE 5. Kaplan-Meier survival curves for patients with IPMC divided by subtypes or conventional IDC. Survival curves for all types of IPMC (A), invasive IPMC (B), and massively invasive IPMC (C) are shown. A, $P = 0.003$, intestinal-type IPMC versus non-intestinal-type IPMC. B, $P = 0.003$, intestinal-type IPMC versus non-intestinal-type IPMC. C, $P = 0.013$, intestinal-type IPMC versus non-intestinal-type IPMC; $P = 0.012$, intestinal-type IPMC versus conventional IDC; $P = 0.907$, non-intestinal-type IPMC versus conventional IDC.

derived from IPMN than for patients with tubular carcinoma derived from IPMN ($P = 0.013$; Fig. 4B). For a comparison with conventional IDC ($n = 158$), we excluded MI-IPMC patients, because there were no cases of conventional IDC with invasion of less than 5 mm in our series. The disease-specific survival rate was significantly higher in patients with colloid carcinoma derived from IPMN than in patients with conventional IDC ($P = 0.015$), but there was no significant difference between patients with tubular carcinoma derived from IPMN and patients with conventional IDC ($P = 0.898$; Fig. 4B).

Surgical Outcomes of IPMC Based on Subtype

In the analyses of invasive and noninvasive IPMCs, patients with intestinal-type IPMC showed a significantly higher survival rate than patients with non-intestinal-type IPMC ($P = 0.003$; Fig. 5A). In the analyses of invasive carcinoma only (including minimally and massively invasive cases), the disease-specific survival rate was significantly higher in patients with invasive carcinoma derived from intestinal-type IPMN than in patients with invasive carcinoma derived from non-intestinal-type IPMN ($P = 0.003$; Fig. 5B). Carcinomas in situ or MI-IPMCs were more frequently observed in intestinal-type IPMC (23 of 33 cases, 69.7%) than in non-intestinal-type IPMC (16 of 38 cases, 42.1%) ($P = 0.019$; Table 4). Therefore, we analyzed only patients with massively invasive IPMC and found that the sur-

vival rate was significantly higher in patients with invasive carcinoma derived from intestinal-type IPMN than in patients with invasive carcinoma derived from non-intestinal-type IPMN or conventional IDC ($P = 0.013$ and $P = 0.012$, respectively; Fig. 5C). On the other hand, there was no significant difference between the survival rates of patients with invasive carcinoma derived from non-intestinal-type IPMN and patients with conventional IDC ($P = 0.903$).

TABLE 4. Relationship Between Invasive Degree and Subtype of IPMN

	CIS	MI-IPMC	Massive	
Intestinal type	15	8	10	* $P = 0.019$
Nonintestinal type	14	2	22	
G type	2	0	7	
PB type	3	2	11	
O type	4	0	1	
U type	5	0	3	

*CISs or MI-IPMCs were observed more frequently in intestinal-type IPMC than in non-intestinal-type IPMC.

I type indicates intestinal type; G type, gastric type; PB type, pancreaticobiliary type; O type, oncocytic type; U type, unclassified type.

TABLE 5. Relationship Between Subtypes of Massive Invasive IPMC and Pathological Features

	Intestinal (n = 10)	Nonintestinal (n = 22)	
Invasive pattern			
Colloid	8	0	<0.001
Tubular	2	22	
Lymph node metastasis			
Positive	6	9	0.315
Negative	4	13	
Lymphatic invasion			
Positive	1	12	0.001
Negative	9	10	
Venous invasion			
Positive	3	7	0.918
Negative	7	15	
Neural invasion			
Positive	5	11	1.000
Negative	5	11	
Serosal invasion			
Positive	0	6	0.021
Negative	10	15	
Retroperitoneal invasion			
Positive	2	12	0.060
Negative	8	10	
Distant metastasis			
Positive	1	0	0.122
Negative	9	22	

Histological Comparisons of Massively Invasive Carcinomas Derived From Intestinal-Type and Non-Intestinal-Type IPMNs

Among the 32 patients with massively invasive IPMC, colloid carcinoma was more frequently detected in the invasive components derived from intestinal-type IPMN (8 of 10 cases, 80.0%) than in those derived from non-intestinal-type IPMN (0 of 22 cases, 0%) ($P < 0.001$; Table 5). Lymphatic ($P = 0.001$) and serosal ($P = 0.021$) invasions were less frequently observed in the invasive components of intestinal-type IPMC than in those of non-intestinal-type IPMC (Table 5).

DISCUSSION

In this study, we evaluated the propriety of the previous definition of MI-IPMC and investigated the prognosis of colloid carcinoma for a subsequent precise analysis of the prognosis of patients with intestinal and non-intestinal-type IPMCs. The present analyses focusing on different morphological subtypes revealed that the high frequencies of minimal invasion and colloid carcinoma in intestinal-type IPMC contributed to higher survival rates compared with those in non-intestinal-type IPMC. Interestingly, we also found that, even when confined to massively invasive IPMC only, the prognosis of patients with invasive carcinoma derived from intestinal-type IPMN was significantly better than that of patients with invasive carcinoma derived from non-intestinal-type IPMN and patients with conventional IDC. These differences were caused by the less aggressive nature of intestinal-type IPMC.

There is no generally accepted agreement with regard to the definition of minimal invasion in IPMC. Recently, Nara et al¹⁸

defined MI-IPMC using a threshold of 5 mm, even if the invasive carcinoma cells were above the “scant” level, and reported that their patients with minimal invasion had no lymph node metastases and a better prognosis than that of patients with massively invasive IPMC. However, our present series included 2 MI-IPMC patients with lymph node metastasis, and both of these patients had invasion in the horizontal dimension. In uterine cervical cancer, the upper limit of the depth of invasion is 3 to 5 mm, and the definition of “microinvasion” includes the horizontal dimension of the tumor in addition to the depth of invasion.²⁶ Furthermore, the diagnosis of microinvasion is accurately performed by cervical conization, whereas in pancreatic cancer, preoperative pathological diagnosis of the depth of invasion is impossible and can only be estimated using radiologic images.

The threshold of 5 mm for the definition of MI-IPMC seems to be reasonable, considering its favorable prognosis, and we used this definition in the present study. However, considering the rate of lymph node metastasis in this study and the difficulty in making a preoperative diagnosis, omitting lymph node dissection in patients with suspected MI-IPMC may not be reasonable. The number of patients with minimal invasion in our study was small, and further examinations will be needed to define MI-IPMC based on the volume of invasive carcinoma cells in addition to the depth of invasion.

When we compared the prognoses of patients with invasive IPMC and patients with conventional IDC, we excluded patients with MI-IPMC and colloid carcinoma, neither of which is seen in conventional IDC. We found no significant difference in the prognoses between patients with tubular carcinoma derived from IPMN and patients with conventional IDC. These data suggest that the favorable prognosis of IPMC reported previously may be caused by the existence of colloid carcinoma and MI-IPMC. This is the first report to describe the prognoses of patients with invasive IPMC and patients with conventional IDC, taking both colloid carcinoma and minimal invasion into account.

Finally, we compared the prognoses of patients with different morphological subtypes of invasive IPMC. Adsay et al¹⁴ reported that intestinal-type IPMN may have a distinct indolent pathway of carcinogenesis. We observed a high frequency of minimal invasion in the invasive components of intestinal-type IPMC as well as in the invasive components of CIS. Interestingly, even when confined to massively invasive IPMC, invasive carcinoma derived from intestinal-type IPMN showed a better prognosis and less aggressive behavior than invasive carcinoma derived from non-intestinal-type IPMN. These findings suggest that intestinal-type IPMN may have an indolent nature and that the biological behavior of intestinal-type IPMC may be less aggressive, even when it has proceeded to massive invasion.

Based on the results of the present study, we conclude that the definition of MI-IPMC using the invasion criterion of 5 mm is reasonable, considering its better prognosis, although lymph node dissection cannot be omitted, and further investigations are necessary to elucidate the significance of the volume of invasion. The better prognosis of invasive carcinoma derived from intestinal-type IPMN was associated with the high frequencies of the minimally invasive form of the disease and colloid carcinoma, and the less invasive nature regarding lymphatic and pancreatic invasions.

REFERENCES

1. Tanaka M, Kobayashi K, Mizumoto K, et al. Clinical aspects of intraductal papillary mucinous neoplasm of the pancreas. *J Gastroenterol.* 2005;40:669–675.

2. Tanaka M, Chari S, Adsay V, et al. International consensus guidelines for management of intraductal papillary mucinous neoplasms and mucinous cystic neoplasms of the pancreas. *Pancreatology*. 2006;6:17–32.
3. Hruban RH, Takaori K, Klimstra DS, et al. An illustrated consensus on the classification of pancreatic intraepithelial neoplasia and intraductal papillary mucinous neoplasms. *Am J Surg Pathol*. 2004;28:977–987.
4. Longnecker DSAG, Hruban RH, Kloppel G. *World Health Organization Classification of Tumors, Pathology and Genetics of Tumours of the Digestive System*. Lyon, France: IARC; 2000.
5. Sessa F, Solcia E, Capella C, et al. Intraductal papillary-mucinous tumours represent a distinct group of pancreatic neoplasms: an investigation of tumour cell differentiation and K-ras, p53 and c-erbB-2 abnormalities in 26 patients. *Virchows Arch*. 1994;425:357–367.
6. Nagai E, Ueki T, Chijiwa K, et al. Intraductal papillary mucinous neoplasms of the pancreas associated with so-called “mucinous ductal ectasia”. Histochemical and immunohistochemical analysis of 29 cases. *Am J Surg Pathol*. 1995;19:576–589.
7. Miyasaka Y, Nagai E, Yamaguchi H, et al. The role of the DNA damage checkpoint pathway in intraductal papillary mucinous neoplasms of the pancreas. *Clin Cancer Res*. 2007;13:4371–4377.
8. Nakata K, Nagai E, Ohuchida K, et al. REG4 is associated with carcinogenesis in the ‘intestinal’ pathway of intraductal papillary mucinous neoplasms. *Mod Pathol*. 2009;22:460–468.
9. Yamaguchi H, Inoue T, Eguchi T, et al. Fascin overexpression in intraductal papillary mucinous neoplasms (adenomas, borderline neoplasms, and carcinomas) of the pancreas, correlated with increased histological grade. *Mod Pathol*. 2007;20:552–561.
10. Adsay NV, Pierson C, Sarkar F, et al. Colloid (mucinous noncystic) carcinoma of the pancreas. *Am J Surg Pathol*. 2001;25:26–42.
11. Adsay NV, Merati K, Andea A, et al. The dichotomy in the preinvasive neoplasia to invasive carcinoma sequence in the pancreas: differential expression of MUC1 and MUC2 supports the existence of two separate pathways of carcinogenesis. *Mod Pathol*. 2002;15:1087–1095.
12. Adsay NV, Longnecker DS, Klimstra DS. Pancreatic tumors with cystic dilatation of the ducts: intraductal papillary mucinous neoplasms and intraductal oncocytic papillary neoplasms. *Semin Diagn Pathol*. 2000;17:16–30.
13. Chari ST, Yadav D, Smyrk TC, et al. Study of recurrence after surgical resection of intraductal papillary mucinous neoplasm of the pancreas. *Gastroenterology*. 2002;123:1500–1507.
14. Adsay NV, Merati K, Basturk O, et al. Pathologically and biologically distinct types of epithelium in intraductal papillary mucinous neoplasms: delineation of an “intestinal” pathway of carcinogenesis in the pancreas. *Am J Surg Pathol*. 2004;28:839–848.
15. Ban S, Naitoh Y, Mino-Kenudson M, et al. Intraductal papillary mucinous neoplasm (IPMN) of the pancreas: its histopathologic difference between 2 major types. *Am J Surg Pathol*. 2006;30:1561–1569.
16. Furukawa T, Kloppel G, Adsay NV, et al. Classification of types of intraductal papillary-mucinous neoplasm of the pancreas: a consensus study. *Virchows Arch*. 2005;447:794–799.
17. Luttgies J, Zamboni G, Longnecker D, et al. The immunohistochemical mucin expression pattern distinguishes different types of intraductal papillary mucinous neoplasms of the pancreas and determines their relationship to mucinous noncystic carcinoma and ductal adenocarcinoma. *Am J Surg Pathol*. 2001;25:942–948.
18. Nara S, Shimada K, Kosuge T, et al. Minimally invasive intraductal papillary-mucinous carcinoma of the pancreas: clinicopathologic study of 104 intraductal papillary-mucinous neoplasms. *Am J Surg Pathol*. 2008;32:243–255.
19. Sohn TA, Yeo CJ, Cameron JL, et al. Intraductal papillary mucinous neoplasms of the pancreas: an updated experience. *Ann Surg*. 2004;239:788–797.
20. Nakagohri T, Kinoshita T, Konishi M, et al. Surgical outcome of intraductal papillary mucinous neoplasms of the pancreas. *Ann Surg Oncol*. 2007;14:3174–3180.
21. Niedergethmann M, Grutzmann R, Hildenbrand R, et al. Outcome of invasive and noninvasive intraductal papillary-mucinous neoplasms of the pancreas (IPMN): a 10-year experience. *World J Surg*. 2008;32:2253–2260.
22. Raut CP, Cleary KR, Staerckel GA, et al. Intraductal papillary mucinous neoplasms of the pancreas: effect of invasion and pancreatic margin status on recurrence and survival. *Ann Surg Oncol*. 2006;13:582–594.
23. Woo SM, Ryu JK, Lee SH, et al. Survival and prognosis of invasive intraductal papillary mucinous neoplasms of the pancreas: comparison with pancreatic ductal adenocarcinoma. *Pancreas*. 2008;36:50–55.
24. Sadakari Y, Ohuchida K, Nakata K, et al. Invasive carcinoma derived from non-intestinal type intraductal papillary mucinous neoplasm of the pancreas have a poorer prognosis than that derived from intestinal type. *Surgery*. 2010;147:812–817.
25. Japan Pancreas Society. *Classification of Pancreatic Carcinoma*. 1st English ed. Society JP, ed. Tokyo, Japan: Kanehara & Company, Ltd; 1996.
26. Tavassoli FA DP, eds. *World Health Organization Classification of Tumors, Pathology and Genetics of Tumours of the Breast and Female Genital Organs*. Lyon, France: IARC; 2003.

***Claudin-4* Expression Predicts Survival in Pancreatic Ductal Adenocarcinoma**

Kosuke Tsutsumi, MD, PhD¹, Norihiro Sato, MD, PhD¹, Reiko Tanabe, MD¹, Kazuhiro Mizumoto, MD, PhD¹, Katsuya Morimatsu, MD², Tadashi Kayashima, MD¹, Hayato Fujita, MD, PhD¹, Kenoki Ohuchida, MD, PhD¹, Takao Ohtsuka, MD, PhD¹, Shunichi Takahata, MD, PhD¹, Masafumi Nakamura, MD, PhD¹, and Masao Tanaka, MD, PhD, FACS¹

¹Department of Surgery and Oncology, Graduate School of Medical Sciences, Kyushu University, Fukuoka, Japan;

²Department of Anatomic Pathology, Graduate School of Medical Sciences, Kyushu University, Fukuoka, Japan

ABSTRACT

Background. Identification of prognostic markers would be useful in the clinical management of patients with pancreatic ductal adenocarcinoma (PDAC). The clinical relevance of claudin-4 (CLDN4), recently identified as overexpressed in PDAC, is unknown.

Methods. Using quantitative real-time reverse transcription-polymerase chain reaction (qRT-PCR), we analyzed *CLDN4* mRNA expression in a panel of 9 pancreatic cancer cell lines and formalin-fixed paraffin-embedded (FFPE) tissues from 100 patients with PDAC. The *CLDN4* expression levels were then correlated with clinicopathological variables and patient outcome. We also performed immunohistochemical analysis in 20 FFPE samples of PDAC to investigate the expression of CLDN4 protein.

Results. Increased expression of *CLDN4* was confirmed in all the pancreatic cancer cell lines tested compared with normal ductal epithelial cells and fibroblasts. We found that low expression of *CLDN4* was significantly associated with shorter survival in patients with PDAC (hazard ratio; 1.362, 95% confidence interval; 1.011–1.873, $P = 0.0419$). Patients with high *CLDN4* expression survived longer for a median of 63.0 months, compared with 14.7 months in patients with low *CLDN4* expression ($P = 0.0067$). In immunohistochemical analysis, the level of *CLDN4* mRNA expression was significantly correlated with the expression of CLDN4 protein ($P = 0.0168$).

Conclusion. Increased expression of *CLDN4* mRNA predicts better prognosis in PDAC.

Pancreatic ductal adenocarcinoma (PDAC) is one of the most aggressive cancers, representing the fourth leading cause of cancer-related death in the industrialized world.^{1,2} According to a recent report, the 5-year survival rate of PDAC remains extremely low, at less than 5%.³ This is partly because the majority of patients with PDAC are diagnosed at an advanced stage, with only 15–20% presenting with resectable tumors. Even after surgical resection, the 5-year survival rate is only 15–25% because of the high incidence of local recurrence and/or disseminated disease.^{4–6} Despite recent advances in multimodal therapeutic approaches including surgery, chemoradiotherapy, and immunotherapy, the fatal prognosis of PDAC has remained essentially unchanged over the last few decades. Stratification of the patients according to the prognostic information helps with a therapeutic decision. Therefore, efforts are underway to identify novel markers, such as molecular biological markers, to predict outcome and, ultimately, to identify a subset of patients with a favorable prognosis who benefit from surgery and/or chemoradiotherapy.

The most commonly used tumor marker, CA19-9, has been shown to be associated with prognosis in patients with pancreatic cancer.^{7–9} However, in the clinical setting we often experience that CA19-9 level is unreliable to predict the response to therapy and overall survival of patients with pancreatic cancer. In addition to the commonly used tumor markers, previous studies have demonstrated prognostic relevance of a number of molecular genetic markers in pancreatic cancer, including p53, p21, SMAD4, transforming growth factor- β (TGF- β),

Bcl-2, matrix-metalloproteinases (MMP), p16, β -catenin/E-cadherin, vascular endothelial derived growth factor, platelet-derived endothelial growth factor, basic fibroblast growth factor (bFGF), human equilibrative nucleoside transporter-1, and S100A4.^{10–21} The prognostic relevance of these molecular markers, however, remains largely unknown and should be investigated in prospective studies.

Claudin-4 (CLDN4), encoding a transmembrane protein involved in tight junction formation and function, has recently attracted considerable interest for its widespread involvement in human cancers. CLDN4 has been shown to be overexpressed in a variety of cancers, including ovarian cancer, prostate cancer, and breast cancer.^{22–24} CLDN4 has been identified as overexpressed in pancreatic cancers by gene expression profiling.^{25–27} We have recently shown that *CLDN4* expression is associated with neoplastic progression of intraductal papillary mucinous neoplasms (IPMNs) of the pancreas, a precursor to pancreatic cancer, and, especially, with a distinct pathway to intestinal differentiation. Functionally, expression of CLDN4 decreases the invasive capacity and metastatic potential of pancreatic cancer cells.²⁸ Therefore, it is highly probable that CLDN4 may play a role in pancreatic ductal carcinogenesis and aggressive phenotype of this highly lethal neoplasm. However, the prognostic implication of CLDN4 in PDAC remains unknown.

In an attempt to elucidate the clinicopathological implication of CLDN4 in PDAC, we used quantitative real-time reverse transcription-polymerase chain reaction (qRT-PCR) to determine *CLDN4* mRNA expression in formalin-fixed paraffin-embedded (FFPE) tissues from a large series of PDAC.

MATERIALS AND METHODS

Cultured Cells

A total of 9 pancreatic cancer cell lines, BxPC-3, KP-2, PANC-1, SUI-2 (provided by Dr. H. Iguchi, National Shikoku Cancer Center, Matsuyama, Japan), CAPAN-1, CFPAC-1, HS766T, SW1990 (American Type Culture Collection, Manassas, VA), MIA PaCa-2 (Japanese Cancer Resource Bank, Tokyo, Japan), 3 primary cultures of pancreatic fibroblasts derived from patients with PDAC (established in our laboratory), and a primary culture of normal human pancreatic ductal epithelial cells (Cell Systems, Applied Cell Biology Research Institute, Kirkland, WA) were used in the present study. Cells were maintained, and primary cultures of pancreatic fibroblasts were produced using the outgrowth method as described previously.^{29,30}

Clinical Samples of PDAC; Patient Demographics and Clinicopathological Characteristics

A total of 100 FFPE tissue samples of histology-proven PDAC obtained from patients undergoing grossly curative resection at our department (Kyushu University Hospital, Fukuoka, Japan) from 1992 to 2007 were selected for the present study simply based on the availability of sufficient quantities of cancer cells and capability of PCR amplification. Mixed neoplasms and histological variants of PDAC (including adenosquamous carcinoma, signet ring cell carcinoma, medullary carcinoma, hepatoid carcinoma, and colloid carcinoma) were excluded from this study because of their peculiar biological behaviors. Invasive carcinomas derived from intraductal papillary mucinous neoplasm (IPMN) were also eliminated. These PDAC patients comprised 67 males and 33 females with a median age of 66 years (range, 36–82 years). Of these, 63 patients had PDAC in their pancreatic head, 17 patients in pancreatic body, and 20 patients in pancreatic tail. Pancreaticoduodenectomy (conventional Whipple operation or pylorus-preserving procedure) was performed in 62 patients, distal pancreatectomy in 37 patients, and total pancreatectomy in 1 patient. Regional lymph node dissection was performed in all patients. There were 26 patients who received no postoperative chemotherapy because of their poor performance status, while 71 patients received postoperative chemotherapy that based 5-fluorouracil and/or gemcitabine. Survival was measured from the time of pancreatic resection, and death was the endpoint. The median observation time for overall survival was 15 months, ranging from 1 to 101 months. A total of 65 patients died during the follow-up, and the other patients were alive and censored. In all samples, histological findings were evaluated according to the criteria of the World Health Organization.³¹ The stage of cancers was determined according to the UICC classification.³² The clinicopathological characteristics are noted in Table 1.

Written informed consent was obtained from all patients, and this study was approved by our institution's surveillance committee and conducted according to the Ethical Guidelines for Human Genome/Gene Research enacted by the Japanese Government and the Helsinki Declaration.

Isolation of RNA

Total RNA was extracted from cultured cells using a High Pure RNA Isolation Kit (Roche Diagnostics, Mannheim, Germany) with DNase I (Roche Diagnostics) treatment according to the manufacturer's instructions. As far as the isolation of total RNA from FFPE samples of PDAC, we firstly performed macrodissection of cancer

TABLE 1 Clinicopathological characteristics of the patients ($n = 100$)

Median age	66 years (range, 36–82 years)
Gender (male/female)	67/33
Tumor location	
Head	63
Body	17
Tail	20
pT category	
pT1	6
pT2	3
pT3	90
pT4	1
pN category	
pN0	32
pN1	68
UICC stage	
I	8
II	88
III	1
IV	3
Histological grade	
G1	22
G2	40
G3	38
Lymphatic invasion	
Positive	78
Negative	22
Vessel invasion	
Positive	69
Negative	31
Neural invasion	
Positive	86
Negative	14
Residual tumor category	
R0	65
R1	35
Postoperative chemotherapy	
Yes	71
No	26
Unknown	3

tissue using a small blade. By cutting into the outer edge of tumor marginally and removing the noncancerous component with a small quantity of the cancer cell, only the cancerous component was selectively isolated to obtain a high cancerous cellularity of ~75%. Meanwhile, the FFPE samples of normal pancreatic tissue were macrodissected to enrich the population of normal ductal cells by removing the surrounding connective tissue, fat tissue, large vessel, lymph node, and acinar and islet cells, as possible. Total

RNA was extracted from the isolated cells using the RNeasy FFPE Kit (Qiagen, Tokyo, Japan) according to kit instructions. The extracted RNA was quantified by reading the absorbance at 260 nm, and its purity was evaluated from the 260/280 ratio of absorbance with a NanoDrop ND-1000 spectrophotometer (NanoDrop Technologies, Rockland, DE).

Quantitative Assessment of CLDN4 mRNA Level by Real-Time RT-PCR

One-step quantitative real-time RT-PCR was performed using a LightCycler 480 II Real-Time PCR System (Roche Diagnostics, Mannheim, Germany) for 40 cycles of 15 seconds at 95°C and 1 minute at 55°C with the QuantiTect SYBR Green Reverse Transcription-PCR kit (Qiagen, Tokyo, Japan) according to the manufacturer's instructions.³³ In addition, we designed specific primers—*CLDN4*, 5'-GAG GGC CTA TGG ATG AAC TG-3' (forward) and 5'-AGC AGC GAG TCG TAC ACC TT-3' (reverse); *18S* rRNA, 5'-CTT TCG AGG CCC TGT AAT TG-3' (forward) and 5'-CCT CCA ATG GAT CCT CGT TA-3' (reverse)—using Primer 3 and performed BLASTN searches to ensure the primer specificities. The PCR product sizes of these primers were small (*CLDN4*; 71 base pairs [bp] and *18S* rRNA; 63 bp, respectively), which allowed accurate and sensitive qRT-PCR despite the fragmented RNA extracted from FFPE tissue specimens.^{34,35} The level of *CLDN4* mRNA expression was calculated from a standard curve generated with total RNA from SUIT-2, a human pancreatic cancer cell line. The expression of *CLDN4* mRNA was normalized to that of *18S* rRNA. PCR was repeated at least twice in all samples and three times if the sample showed more than 10% deviation in RT-PCR values. Standard deviation and coefficient of variation were low for both intra-assay and inter-assay variability.

Immunohistochemical Staining

A rabbit anti-CLDN4 antibody (working dilution, 1:100; blocking, normal goat serum; Zymed Laboratories, South San Francisco, CA) was used as the primary antibody. Sections were cut at 4- μ m thickness from 20 FFPE materials of PDAC, then deparaffinized in xylene and rehydrated through a graded series of ethanol. After inhibition of endogenous peroxidase and antigen retrieval (microwave irradiation in a citrate buffer), sections were exposed to the primary antibody at 4°C overnight and stained with a streptavidinbiotin-peroxidase kit (Nichirei, Tokyo, Japan). The sections were then finally reacted in 3,3'-diaminobenzidine, counterstained with hematoxylin,

and mounted. Negative controls were prepared by omitting the primary antibody.

Membranous staining was considered positive for CLDN4 protein as described recently.³⁶ Negative expression was defined as the percentage of stained cells <25%, while positive expression as the percentage of stained cells \geq 25%, according to the recent report.³⁶ All slides were evaluated independently by 2 investigators (K.M. and K.T.) without any knowledge of background of each case.

Statistical Analysis

All statistical analyses were performed with JMP statistical software (version 6.0.3; SAS, Inc., Cary, NC). The expression of *CLDN4* mRNA was classified into either high or low expression group using recursive descent partition analysis, as described by Hoffmann and coworkers.³⁷ Categorical variables were compared with a chi-square test (Fisher exact probability test). Continuous variables were analyzed by Wilcoxon test (Mann-Whitney *U* test) because normal distributions were not obtained. Survival curves were constructed with the Kaplan-Meier product-limit method and compared by log-rank test. To evaluate independent prognostic factors associated with survival, multivariate Cox proportional hazards regression analysis was used. Statistical differences were considered significant when *P* value was less than 0.05.

RESULTS

Comparison of *CLDN4* mRNA Levels Between Pancreatic Cancer Cells and Fibroblasts and Normal Ductal Epithelial Cells

Using quantitative real time RT-PCR, we first confirmed the *CLDN4* mRNA expression level in a panel of 9 pancreatic cancer cell lines, 3 primary cultures of pancreatic fibroblasts derived from PDAC, and 1 primary culture of normal pancreatic ductal epithelial cells. The relative expression levels of *CLDN4* mRNA in all the pancreatic cancer cell lines tested were much higher than those in normal ductal epithelial cells and fibroblasts (Fig. 1).

Quantitative Analysis of *CLDN4* mRNA Expression in Clinical Samples of PDAC, Chronic Pancreatitis, and Normal Pancreatic Tissue

Total RNA was isolated from FFPE tissues from a total of 113 patients. PCR amplification was successfully achieved in 113 of the 118 RNA samples (95.8%). We then analyzed *CLDN4* mRNA in these 113 RNA samples (including 100 PDACs, 7 normal pancreatic tissues, and 6

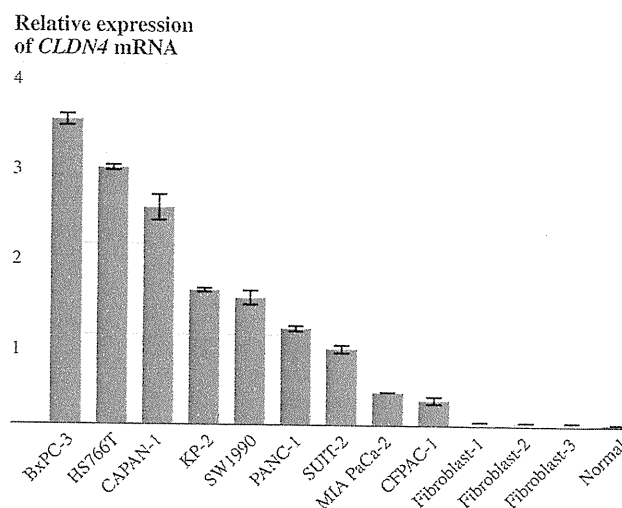


FIG. 1 Comparison of *CLDN4* mRNA expression between 9 pancreatic cancer cell lines and 3 primary cultures of fibroblasts derived from PDAC (fibroblast-1, 2, 3) and 1 primary culture of normal pancreatic ductal epithelial cells (normal). Expression of *CLDN4* mRNA is normalized to that of *18S* rRNA. The relative expression levels of *CLDN4* mRNA in all the pancreatic cancer cell lines tested are much higher than those in normal ductal epithelial cells and fibroblasts

chronic pancreatitis samples). The expression levels of *CLDN4* mRNA were significantly higher in PDAC (relative value of 0.03) than in normal pancreatic tissue (0.003, $P < 0.0001$) and chronic pancreatitis (0.01, $P = 0.0144$) (Fig. 2). Furthermore, *CLDN4* mRNA levels were significantly higher in chronic pancreatitis than in normal pancreatic tissue, although the sample number was relatively small (Fig. 2, $P = 0.0152$).

Relationship Between *CLDN4* mRNA Expression and Clinicopathological Factors in PDAC

In an attempt to investigate the correlation of *CLDN4* expression with clinicopathological features, we first divided all the PDAC patients into 2 groups, a high *CLDN4* expression group ($n = 43$) and low *CLDN4* expression group ($n = 57$), using recursive descent partition analysis (cutoff value: 0.034). We then compared the clinicopathological variables between the groups (Table 2). The clinicopathological variables analyzed included patient's age (≥ 65 years vs. < 65 years), tumor location (pancreatic head vs. pancreatic body or tail), pT category (pT1/pT2 vs. pT3/pT4), pN category (pN0 vs. pN1), UICC stage (I vs. II vs. III/IV), histological grade (G1 vs. G2 vs. G3), lymphatic invasion, vessel invasion, neural invasion, residual tumor category (R0 vs. R1), and postoperative chemotherapy received. There were no significant difference in age, tumor location, pT status, pN status, UICC stage, histological grade, R factor, and postoperative chemotherapy between

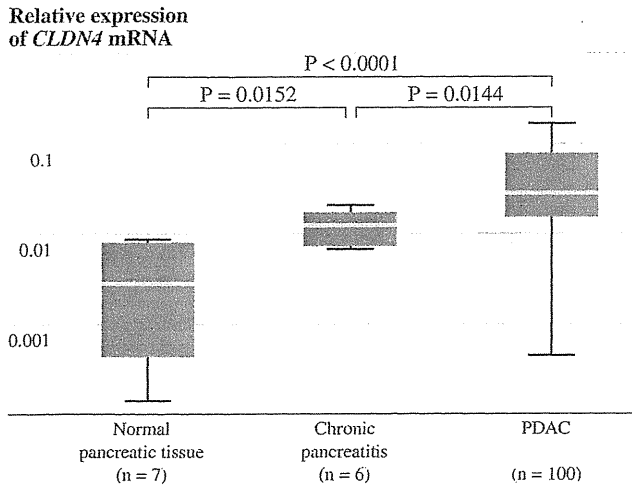


FIG. 2 Expression levels of *CLDN4* mRNA in clinical samples of normal pancreatic tissue ($n = 7$), chronic pancreatitis ($n = 6$), and PDAC ($n = 100$). Results are presented as a *box-and-whisker* plot. Expression of *CLDN4* mRNA is normalized to that of *18S* rRNA. The expression levels of *CLDN4* mRNA in PDAC (median, 0.03) are significantly higher than those in normal pancreatic tissue (median, 0.003) and chronic pancreatitis (median, 0.01) (PDAC vs normal pancreatic tissue; $P < 0.0001$, PDAC vs chronic pancreatitis; $P = 0.0144$, Wilcoxon test). *CLDN4* mRNA levels are also significantly higher in chronic pancreatitis than in normal pancreatic tissue (chronic pancreatitis vs normal pancreatic tissue; $P = 0.0152$, Wilcoxon test)

the high *CLDN4* expression group and low *CLDN4* expression group. However, lymphatic invasion (ly), vessel invasion (v), and neural invasion (ne) by histopathological examinations were observed more frequently in the low *CLDN4* expression group than in the high *CLDN4* expression group (ly; $P = 0.0014$, v; $P = 0.0133$, ne; $P = 0.0205$).

Relationship Between CLDN4 mRNA Expression and Survival in PDAC

We then explored the correlation between *CLDN4* mRNA expression and survival of patients with PDAC. Survival analysis revealed a significantly longer postoperative survival in the high *CLDN4* expression group (median survival time of 63.0 months and 5-year survival time of 53.7%, Table 3) compared with the low *CLDN4* expression group (median survival time of 14.7 months and 5-year survival time of 14.4%, Table 3) (Fig. 3, log-rank test; $P = 0.0067$, Wilcoxon test; $P = 0.0217$).

Univariate and Multivariate Analyses for Factors Influencing Survival in Patients with PDAC

To further determine the prognostic value of *CLDN4* mRNA expression for PDAC, clinicopathological variables

TABLE 2 Relationship between *CLDN4* mRNA expression and various clinicopathological factors

	<i>CLDN4</i> mRNA expression		<i>P</i> value
	High expression group ($n = 43$)	Low expression group ($n = 57$)	
Age			0.3058
≥ 65 years	22	35	
< 65 years	21	22	
Tumor location			0.1961
Head	24	39	
Body/Tail	19	18	
pT category			0.9269
pT1/pT2	4	5	
pT3/pT4	39	52	
pN category			0.7421
pN0	13	19	
pN1	30	38	
UICC stage			0.8726
I	4	4	
II	37	51	
III/IV	2	2	
Histological grade			0.7759
G1	8	14	
G2	18	22	
G3	17	21	
Lymphatic invasion			0.0014
Positive	27	51	
Negative	16	6	
Vessel invasion			0.0133
Positive	24	45	
Negative	19	12	
Neural invasion			0.0205
Positive	33	53	
Negative	10	4	
Residual tumor category			0.1965
R0	31	34	
R1	12	23	
Postoperative chemotherapy			0.1318
Yes	34	37	
No	8	18	

as well as *CLDN4* expression status were analyzed using Cox proportional hazard model. Univariate analysis demonstrated significant prognostic factors in addition to *CLDN4* expression ($P = 0.0067$), including significant prognostic factors included pN status ($P = 0.0101$), lymphatic invasion ($P = 0.0047$), vessel invasion ($P = 0.0035$), residual tumor status ($P < 0.0001$), and postoperative chemotherapy ($P < 0.0001$) (Table 3).

TABLE 3 Univariate survival analysis of conventional prognostic factors and *CLDN4* mRNA expression

	Median survival time (months)	5-year survival rate	<i>P</i> value
<i>CLDN4</i> mRNA expression			
High (<i>n</i> = 43)	63.0	53.7%	0.0067
Low (<i>n</i> = 57)	14.7	14.4%	
Age			
≥65 years (<i>n</i> = 57)	20	18.6%	0.4741
<65 years (<i>n</i> = 43)	22	32.2%	
Tumor location			
Head (<i>n</i> = 63)	19	23.6%	0.4300
Body/Tail (<i>n</i> = 37)	26	25.4%	
pT category			
pT1/pT2 (<i>n</i> = 9)	63	62.2%	0.1797
pT3/pT4 (<i>n</i> = 91)	19	21.0%	
pN category			
pN0 (<i>n</i> = 32)	43	35.3%	0.0101
pN1 (<i>n</i> = 68)	13.7	20.5%	
UICC stage			
I (<i>n</i> = 8)	63	70.0%	0.0589
II (<i>n</i> = 88)	19	21.9%	
III/IV (<i>n</i> = 4)	12	0.0%	
Histological grade			
G1/2 (<i>n</i> = 62)	26	26.7%	0.0701
G3 (<i>n</i> = 38)	12	22.4%	
Lymphatic invasion			
Positive (<i>n</i> = 78)	14.7	17.5%	0.0047
Negative (<i>n</i> = 22)	63	59.1%	
Vessel invasion			
Positive (<i>n</i> = 69)	13.7	16.0%	0.0035
Negative (<i>n</i> = 31)	45	45.6%	
Neural invasion			
Positive (<i>n</i> = 86)	20	21.6%	0.4154
Negative (<i>n</i> = 14)	24.2	46.8%	
Residual tumor category			
R0 (<i>n</i> = 65)	32.7	37.0%	<0.0001
R1 (<i>n</i> = 35)	11	6.4%	
Postoperative chemotherapy			
Yes (<i>n</i> = 71)	26	34.1%	<0.0001
No (<i>n</i> = 26)	9	0.0%	

Multivariate analysis revealed *CLDN4* mRNA expression (hazard ratio [HR], 1.362; 95% confidence interval [95% CI], 1.011–1.873; *P* = 0.0419), histological grade (HR, 1.526; 95% CI, 1.137–2.037; *P* = 0.0052), residual tumor (HR, 1.804; 95% CI, 1.356–2.412; *P* < 0.0001), and postoperative chemotherapy (HR, 1.660; 95% CI, 1.226–2.238; *P* = 0.0012) to be independent prognostic factors (Table 4).

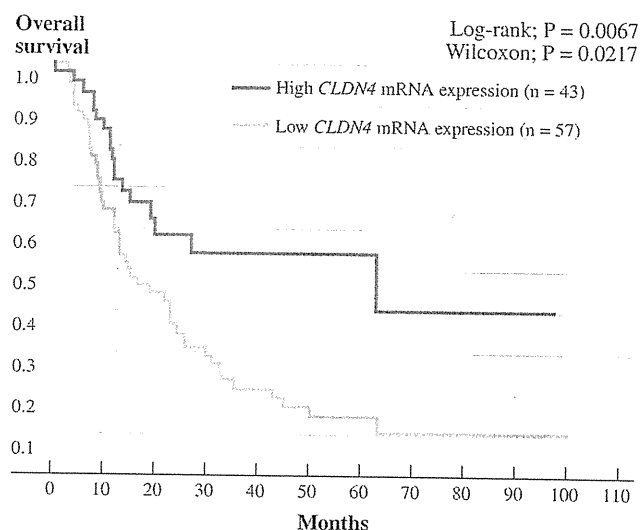


FIG. 3 Overall survival after resection of PDAC with high *CLDN4* mRNA expression versus low *CLDN4* mRNA expression. Results are presented as Kaplan–Meier actuarial survival curves. The patients with PDAC are categorized into 2 groups, a high *CLDN4* mRNA expression group (*n* = 43) and low *CLDN4* mRNA expression group (*n* = 57), using recursive descent partition analysis (cutoff value: 0.034). Low expression of *CLDN4* mRNA is significantly associated with shorter survival than that of high expression of *CLDN4* mRNA (Log-rank test: *P* = 0.0067, Wilcoxon test: *P* = 0.0217).

Correlation Analysis Between *CLDN4* mRNA Level and the Protein Expression in PDAC

We performed immunohistochemical analysis in 20 FFPE samples of PDAC to investigate the expression pattern of *CLDN4* protein. The immunohistochemical analysis indicated 8 samples with positive expression of *CLDN4* and 12 samples with negative expression of *CLDN4* (Fig. 4a). When the relationship between protein and mRNA expression levels was investigated in these cases, the positive protein expression group had significantly higher *CLDN4* mRNA levels than those of the negative protein expression group (Fig. 4b, *P* = 0.0168).

DISCUSSION

Molecular biomarkers that could be used as prognostic indicators of outcome would be useful in determining an individualized treatment plan for a patient. In the present study, we have demonstrated, for the first time, that increased *CLDN4* mRNA expression is significantly associated with better survival in patients with PDAC. Therefore, *CLDN4* mRNA expression could be used to select a subset of patient who can benefit from aggressive treatment including surgical resection and adjuvant chemotherapy. Although further studies are warranted to confirm the prognostic relevance of *CLDN4* in larger prospective studies, our present results suggest that this

TABLE 4 Multivariate survival analysis (Cox regression model) of conventional prognostic factors and *CLDN4* mRNA expression

	Hazard ratio (HR)	95% confidence interval (95% CI)	P value
Low <i>CLDN4</i> expression	1.362	1.011–1.873	0.0419
pN category (pN1)	1.136	0.828–1.598	0.4388
UICC stage (III/IV) ^a	–	–	0.6473
Histological grade (G3)	1.526	1.137–2.037	0.0052
Lymphatic invasion (+)	1.036	0.656–1.714	0.8842
Vessel invasion (+)	1.117	0.779–1.659	0.5591
Residual tumor (R1)	1.804	1.356–2.412	<0.0001
Postoperative chemotherapy (–)	1.660	1.226–2.238	0.0012

^a HR and 95% CI of UICC stage were not shown because of 3 parameters

molecule may serve as a novel prognostic marker in PDAC.

CLDN4 contributes to maintaining epithelial cell polarity and establishing the intercellular barrier as a transmembrane protein involved in tight junction formation and function. Therefore, it has been thought that the reduction of CLDN4 expression in endothelial cells decreases paracellular resistance and facilitates invasion of epithelial cancer cells through endothelial cell layers, similar to the mechanism of E-cadherin.^{16,38–41} The functional consequence of CLDN4 expression in PDAC remains poorly understood, but a previous report showed that CLDN4 overexpression decreased invasiveness and metastatic potential of pancreatic cancer cells.²⁸ This finding is in agreement with our present results showing that increased expression of *CLDN4* mRNA is associated with less invasive pathology and significantly longer survival.

Previous studies have demonstrated prognostic implication of CLDN4 expression in human cancers. In nasopharyngeal cancer, decreased CLDN4 expression independently predicted shorter distant metastasis-free survival by Cox regression analysis.⁴² Similarly, a recent immunohistochemical study of a large series of gastric cancer demonstrated that overall survival was significantly shorter in patients with low CLDN4 expression.⁴³ These findings are consistent with our results in PDAC, further highlighting the prognostic relevance of CLDN4 in a wide range of human cancers.

Frequent overexpression of CLDN4 in cancer has led to an idea that this molecule could be a target for cancer therapy. In fact, *Clostridium perfringens* enterotoxins, for which CLDN4 is the receptor, has been shown to result in an acute dose-dependent cytotoxic effect in pancreatic cancer xenografts.⁴⁴ More recently, a monoclonal antibody

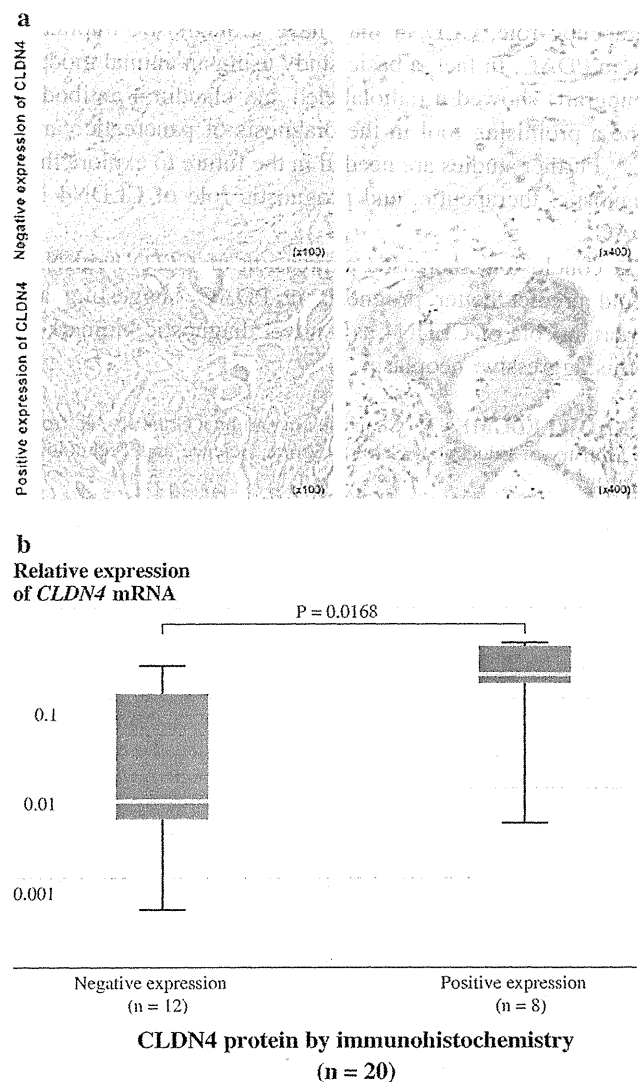


FIG. 4 **a** Representative micrographs of CLDN4 immunostaining in PDAC. The *upper line* shows negative expression of CLDN4. Meanwhile, the *lower line* shows positive expression of CLDN4. The original magnifications are, respectively, shown on the pictures (left side, 100 \times ; right side, 400 \times). **b** Relationship between the expression of CLDN4 protein and *CLDN4* mRNA level. Results are presented as a *box-and-whisker* plot. Expression of *CLDN4* mRNA is normalized to that of *18S* rRNA. Immunohistochemical study in 20 FFPE samples indicates 12 samples with negative expression of CLDN4 and 8 samples with positive expression of CLDN4. The positive protein expression group has significantly higher *CLDN4* mRNA levels than those of the negative protein expression group ($P = 0.0168$, Wilcoxon test)

against CLDN4 and C-terminal fragment of *Clostridium perfringens* enterotoxin has been demonstrated to have antitumor activity in pancreatic cancer.^{45,46} These findings and our present results suggest that CLDN4 represents a promising therapeutic target for PDAC especially in a subset of patients with high CLDN4 expression and a relatively better prognosis. In addition to its prognostic and

therapeutic role, CLDN4 may have a diagnostic implication in PDAC. In fact, a basic study using an animal model (xenograft) showed a radiolabeled anti-claudin 4 antibody to be a promising tool in the diagnosis of pancreatic cancer.⁴⁷ Further studies are needed in the future to explore the diagnostic, therapeutic, and prognostic role of CLDN4 in PDAC.

In conclusion, increased expression of *CLDN4* mRNA would predict better prognosis in PDAC, suggesting an important role of CLDN4 as a novel diagnostic biomarker in this aggressive neoplasm.

ACKNOWLEDGMENT Supported in part by a Grant-in-Aid from the Ministry of Education, Culture, Sports, Science and Technology of Japan.

CONFLICT OF INTEREST The authors declare no conflict of interest.

REFERENCES

- Eskelinen MJ, Haglund UH. Prognosis of human pancreatic adenocarcinoma: review of clinical and histopathological variables and possible uses of new molecular methods. *Eur J Surg.* 1999;165:292–306.
- Yeo TP, Hruban RH, Leach SD, Wilentz RE, Sohn TA, Kern SE, et al. Pancreatic cancer. *Curr Probl Cancer.* 2002;26:176–275.
- Jemal A, Siegel R, Ward E, Hao Y, Xu J, Thun MJ. Cancer statistics, 2009. *CA Cancer J Clin.* 2009;59:225–49.
- Wagner M, Redaelli C, Lietz M, Seiler CA, Friess H, Buchler MW. Curative resection is the single most important factor determining outcome in patients with pancreatic adenocarcinoma. *Br J Surg.* 2004;91:586–94.
- Carpelan-Holmstrom M, Nordling S, Pukkala E, Sankila R, Luttges J, Kloppel G, et al. Does anyone survive pancreatic ductal adenocarcinoma? A nationwide study re-evaluating the data of the Finnish Cancer Registry. *Gut.* 2005;54:385–7.
- Cameron JL, Riall TS, Coleman J, Belcher KA. One thousand consecutive pancreaticoduodenectomies. *Ann Surg.* 2006;244:10–5.
- Ferrone CR, Finkelstein DM, Thayer SP, Muzikansky A, Fernandez-delCastillo C, Warshaw AL. Perioperative CA19-9 levels can predict stage and survival in patients with resectable pancreatic adenocarcinoma. *J Clin Oncol.* 2006;24:2897–902.
- Muller MW, Friess H, Koninger J, Martin D, Wente MN, Hinz U, et al. Factors influencing survival after bypass procedures in patients with advanced pancreatic adenocarcinomas. *Am J Surg.* 2008;195:221–8.
- Kondo N, Murakami Y, Uemura K, Hayashidani Y, Sudo T, Hashimoto Y, et al. Prognostic impact of perioperative serum CA 19-9 levels in patients with resectable pancreatic cancer. *Ann Surg Oncol.* 2010;17:2321–9.
- Blackford A, Serrano OK, Wolfgang CL, Parmigiani G, Jones S, Zhang X, et al. SMAD4 gene mutations are associated with poor prognosis in pancreatic cancer. *Clin Cancer Res.* 2009;15:4674–9.
- Sinicrope FA, Evans DB, Leach SD, Cleary KR, Fenoglio CJ, Lee JJ, et al. bcl-2 and p53 expression in resectable pancreatic adenocarcinomas: association with clinical outcome. *Clin Cancer Res.* 1996;2:2015–22.
- Nio Y, Dong M, Iguchi C, Yamasawa K, Toga T, Itakura M, et al. Expression of Bcl-2 and p53 protein in resectable invasive ductal carcinoma of the pancreas: effects on clinical outcome and efficacy of adjuvant chemotherapy. *J Surg Oncol.* 2001;76:188–96.
- Yamamoto H, Itoh F, Iku S, Adachi Y, Fukushima H, Sasaki S, et al. Expression of matrix metalloproteinases and tissue inhibitors of metalloproteinases in human pancreatic adenocarcinomas: clinicopathologic and prognostic significance of matrilysin expression. *J Clin Oncol.* 2001;19:1118–27.
- Jones LE, Humphreys MJ, Campbell F, Neoptolemos JP, Boyd MT. Comprehensive analysis of matrix metalloproteinase and tissue inhibitor expression in pancreatic cancer: increased expression of matrix metalloproteinase-7 predicts poor survival. *Clin Cancer Res.* 2004;10:2832–45.
- Gerdes B, Ramaswamy A, Ziegler A, Lang SA, Kersting M, Baumann R, et al. p16INK4a is a prognostic marker in resected ductal pancreatic cancer: an analysis of p16INK4a, p53, MDM2, and Rb. *Ann Surg.* 2002;235:51–9.
- Joo YE, Rew JS, Park CS, Kim SJ. Expression of E-cadherin, alpha- and beta-catenins in patients with pancreatic adenocarcinoma. *Pancreatol.* 2002;2:129–37.
- Niedergethmann M, Hildenbrand R, Wostbrock B, Hartel M, Sturm JW, Richter A, et al. High expression of vascular endothelial growth factor predicts early recurrence and poor prognosis after curative resection for ductal adenocarcinoma of the pancreas. *Pancreas.* 2002;25:122–9.
- Kuwahara K, Sasaki T, Kuwada Y, Murakami M, Yamasaki S, Chayama K. Expressions of angiogenic factors in pancreatic ductal carcinoma: a correlative study with clinicopathologic parameters and patient survival. *Pancreas.* 2003;26:344–9.
- Garcea G, Neal CP, Pattenden CJ, Steward WP, Berry DP. Molecular prognostic markers in pancreatic cancer: a systematic review. *Eur J Cancer.* 2005;41:2213–36.
- Giovannetti E, Del Tacca M, Mey V, Funel N, Nannizzi S, Ricci S, et al. Transcription analysis of human equilibrative nucleoside transporter-1 predicts survival in pancreas cancer patients treated with gemcitabine. *Cancer Res.* 2006;66:3928–35.
- Ikenaga N, Ohuchida K, Mizumoto K, Yu J, Fujita H, Nakata K, et al. S100A4 mRNA is a diagnostic and prognostic marker in pancreatic carcinoma. *J Gastrointest Surg.* 2009;13:1852–8.
- Hough CD, Sherman-Baust CA, Pizer ES, Montz FJ, Im DD, Rosenshein NB, et al. Large-scale serial analysis of gene expression reveals genes differentially expressed in ovarian cancer. *Cancer Res.* 2000;60:6281–7.
- Long H, Crean CD, Lee WH, Cummings OW, Gabig TG. Expression of Clostridium perfringens enterotoxin receptors claudin-3 and claudin-4 in prostate cancer epithelium. *Cancer Res.* 2001;61:7878–81.
- Kominsky SL, Vali M, Korz D, Gabig TG, Weitzman SA, Argani P, et al. Clostridium perfringens enterotoxin elicits rapid and specific cytolysis of breast carcinoma cells mediated through tight junction proteins claudin 3 and 4. *Am J Pathol.* 2004;164:1627–33.
- Ryu B, Jones J, Hollingsworth MA, Hruban RH, Kern SE. Invasion-specific genes in malignancy: serial analysis of gene expression comparisons of primary and passaged cancers. *Cancer Res.* 2001;61:1833–8.
- Iacobuzio-Donahue CA, Maitra A, Olsen M, Lowe AW, van Heek NT, Rosty C, et al. Exploration of global gene expression patterns in pancreatic adenocarcinoma using cDNA microarrays. *Am J Pathol.* 2003;162:1151–62.
- Hewitt KJ, Agarwal R, Morin PJ. The claudin gene family: expression in normal and neoplastic tissues. *BMC Cancer.* 2006;6:186.
- Michl P, Barth C, Buchholz M, Lerch MM, Rolke M, Holzmann KH, et al. Claudin-4 expression decreases invasiveness and metastatic potential of pancreatic cancer. *Cancer Res.* 2003;63:6265–71.

29. Ohuchida K, Mizumoto K, Murakami M, Qian LW, Sato N, Nagai E, et al. Radiation to stromal fibroblasts increases invasiveness of pancreatic cancer cells through tumor-stromal interactions. *Cancer Res.* 2004;64:3215–22.
30. Bachem MG, Schneider E, Gross H, Weidenbach H, Schmid RM, Menke A, et al. Identification, culture, and characterization of pancreatic stellate cells in rats and humans. *Gastroenterology.* 1998;115: 421–32.
31. Hruban RH, Boffetta P, Hiraoka N, et al. Ductal adenocarcinoma of the pancreas. In: Bosman FT, Carneiro F, Hruban RH, Theise ND, editors. WHO classification of tumours of the digestive system. Lyon, France: IARC Press; 2010. p. 281–91.
32. Sobin L, Wittekind C. Union Internationale Contre le Cancer and the American Joint Committee on Cancer. In: TNM Classification of Malignant Tumors. 6th ed. New York: Wiley-Liss; 2002.
33. Ohuchida K, Mizumoto K, Ogura Y, Ishikawa N, Nagai E, Yamaguchi K, et al. Quantitative assessment of telomerase activity and human telomerase reverse transcriptase messenger RNA levels in pancreatic juice samples for the diagnosis of pancreatic cancer. *Clin Cancer Res.* 2005;11:2285–92.
34. Abrahamson HN, Steiniche T, Nexø E, Hamilton-Dutoit SJ, Sorensen BS. Towards quantitative mRNA analysis in paraffin-embedded tissues using real-time reverse transcriptase-polymerase chain reaction: a methodological study on lymph nodes from melanoma patients. *J Mol Diagn.* 2003;5:34–41.
35. Antonov J, Goldstein DR, Oberli A, Baltzer A, Pirota M, Fleischmann A, et al. Reliable gene expression measurements from degraded RNA by quantitative real-time PCR depend on short amplicons and a proper normalization. *Lab Invest.* 2005;85:1040–50.
36. Jung H, Jun KH, Jung JH, Chin HM, Park WB. The expression of Claudin-1, Claudin-2, Claudin-3, and Claudin-4 in gastric cancer tissue. *J Surg Res.* 2011;167:e185–91.
37. Hoffmann AC, Mori R, Vallbohmer D, Brabender J, Klein E, Drebber U, et al. High expression of HIF1a is a predictor of clinical outcome in patients with pancreatic ductal adenocarcinomas and correlated to PDGFA, VEGF, and bFGF. *Neoplasia.* 2008;10:674–9.
38. Kinugasa T, Sakaguchi T, Gu X, Reinecker HC. Claudins regulate the intestinal barrier in response to immune mediators. *Gastroenterology.* 2000;118:1001–11.
39. Martin TA, Mansel RE, Jiang WG. Antagonistic effect of NK4 on HGF/SF induced changes in the transendothelial resistance (TER) and paracellular permeability of human vascular endothelial cells. *J Cell Physiol.* 2002;192:268–75.
40. Ren J, Hamada J, Takeichi N, Fujikawa S, Kobayashi H. Ultrastructural differences in junctional intercellular communication between highly and weakly metastatic clones derived from rat mammary carcinoma. *Cancer Res.* 1990;50:358–62.
41. Rajasekaran SA, Palmer LG, Quan K, Harper JF, Ball WJ Jr, Bander NH, et al. Na,K-ATPase beta-subunit is required for epithelial polarization, suppression of invasion, and cell motility. *Mol Biol Cell.* 2001;12:279–95.
42. Hsueh C, Chang YS, Tseng NM, Liao CT, Hsueh S, Chang JH, et al. Expression pattern and prognostic significance of claudins 1, 4, and 7 in nasopharyngeal carcinoma. *Hum Pathol.* 2010;41: 944–50.
43. Ohtani S, Terashima M, Satoh J, Soeta N, Saze Z, Kashimura S, et al. Expression of tight-junction-associated proteins in human gastric cancer: downregulation of claudin-4 correlates with tumor aggressiveness and survival. *Gastric Cancer.* 2009;12:43–51.
44. Michl P, Buchholz M, Rolke M, Kunsch S, Löhr M, McClane B, et al. Claudin-4: a new target for pancreatic cancer treatment using *Clostridium perfringens* enterotoxin. *Gastroenterology.* 2001;121:678–84.
45. Suzuki M, Kato-Nakano M, Kawamoto S, Furuya A, Abe Y, Misaka H, et al. Therapeutic antitumor efficacy of monoclonal antibody against Claudin-4 for pancreatic and ovarian cancers. *Cancer Sci.* 2009;100:1623–30.
46. Kakutani H, Kondoh M, Saeki R, Fujii M, Watanabe Y, Mizuguchi H, et al. Claudin-4-targeting of diphtheria toxin fragment A using a C-terminal fragment of *Clostridium perfringens* enterotoxin. *Eur J Pharm Biopharm.* 2010;75:213–7.
47. Foss CA, Fox JJ, Feldmann G, Maitra A, Iacobuzio-Donohue C, Kern SE, et al. Radiolabeled anti-claudin 4 and anti-prostate stem cell antigen: initial imaging in experimental models of pancreatic cancer. *Mol Imaging.* 2007;6:131–9.

Follow-up study after resection of intraductal papillary mucinous neoplasm of the pancreas; special references to the multifocal lesions and development of ductal carcinoma in the remnant pancreas

Takao Ohtsuka, M.D.^a, Hiroshi Kono, M.D.^a, Reiko Tanabe, M.D.^a,
Yosuke Nagayoshi, M.D.^a, Yasuhisa Mori, M.D.^a, Yoshihiko Sadakari, M.D.^a,
Shunichi Takahata, M.D.^a, Yasunori Oda, M.D.^b, Shinichi Aishima, M.D.^b,
Hisato Igarashi, M.D.^c, Tetsuhide Ito, M.D.^c, Kousei Ishigami, M.D.^d,
Masafumi Nakamura, M.D.^a, Kazuhiro Mizumoto, M.D.^a, Masao Tanaka, M.D.^{a,*}

^aDepartment of Surgery and Oncology, Graduate School of Medical Sciences, Kyushu University, 3-1-1 Maidashi, Higashi-ku, Fukuoka 8128582, Japan; ^bDepartment of Anatomic Pathology, ^cDepartment of Medicine and Bioregulatory Science, and ^dDepartment of Clinical Radiology, Graduate School of Medical Sciences, Kyushu University, Fukuoka, Japan

KEYWORDS:

IPMN;
Multifocal;
Pancreatic ductal
adenocarcinoma

Abstract

BACKGROUND: Frequency and characteristics of metachronous occurrence of multifocal intraductal papillary mucinous neoplasms (IPMNs) or distinct pancreatic ductal adenocarcinomas (PDACs) in the remnant pancreas during follow-up evaluation after pancreatectomy for IPMNs have not been well known. The aim of this study was to investigate the outcomes after resection of IPMNs, especially focusing on the metachronous occurrence of multifocal IPMNs and distinct PDACs.

METHODS: Medical records of 172 patients who underwent resection of IPMNs were reviewed retrospectively, and the data regarding the occurrence of metachronous IPMNs or PDACs in the remnant pancreas during a mean postoperative follow-up period of 64 months were collected.

RESULTS: The incidence including synchronous and metachronous multifocal occurrence of IPMNs was 20% (34 of 172), and that of distinct PDACs was 9.9% (17 of 172). Ten metachronous IPMNs developed in the remnant pancreas after a mean time of 23 postoperative months (range, 12–84 mo), and 2 with main duct IPMNs (both were carcinoma in situ) required remnant pancreatectomy. Six distinct PDACs developed in the remnant pancreas after a mean time of 84 postoperative months (range, 12–150 mo). Four of them were found to have a tumor with a size of less than 2 cm, whereas the remaining 2 PDACs were found to be unresectable more than 10 years after resection of IPMNs.

CONCLUSIONS: Intense long-term follow-up evaluation is necessary for the early detection of metachronous occurrence of distinct PDACs as well as malignant IPMNs after resection of IPMNs.

© 2011 Elsevier Inc. All rights reserved.

* Corresponding author. Tel.: +81-92-642-5441; fax: +81-92-642-5458.
E-mail address: masaotan@med.kyushu-u.ac.jp
Manuscript received January 18, 2011; revised manuscript April 4, 2011

Recent intense investigations regarding intraductal papillary mucinous neoplasms (IPMNs) of the pancreas have provided us with much information about their unique clinical and biological characteristics.^{1–16} One of them is that IPMNs have a wide spectrum from adenoma to invasive

carcinoma, and therefore it is important to determine the malignant potential of IPMNs preoperatively. We recently were able to treat most patients with IPMNs appropriately according to international consensus guidelines,¹ which suggest several predictive factors for malignant IPMNs, and, as a result, outcomes after the treatment of IPMNs seem to be satisfactory.²⁻⁵

There are 2 types of recurrence after resection of IPMNs: metastatic or local recurrence of invasive carcinoma and metachronous multifocal occurrence of IPMNs in the remnant pancreas. In addition, recent reports have shown that distinct pancreatic ductal adenocarcinomas (PDACs) occur synchronously or metachronously during management of IPMNs, with a frequency of approximately 10%, and IPMNs thus have been recognized recently as one of the predictors for PDAC.⁶⁻¹¹ Several reports have shown the long-term outcome after resection of IPMNs; however, they have not distinguished such various types of recurrent diseases.³⁻⁵ Therefore, the frequency and characteristics of metachronous occurrence of multifocal IPMNs or distinct PDACs in the remnant pancreas after pancreatectomy for IPMNs have been unclear, and we do not know how frequent and how long we should check the patients after resection of IPMNs. The aim of this study was to investigate the outcomes after resection of IPMNs, especially focusing on the metachronous occurrence of multifocal IPMNs and concomitant PDACs.

Patients and Methods

Medical records of 172 patients who underwent pancreatectomy for IPMN at the Department of Surgery and Oncology at Kyushu University Hospital between 1987 and 2010 were reviewed retrospectively. There were 105 men and 67 women, with a mean age of 66 years (range, 33–85 y). Surgical indication was determined based on the suggestions described in the international consensus guidelines¹; all the cases of main-duct IPMNs, and branch-duct IPMNs with symptoms such as abdominal pain, jaundice, and pancreatitis, the presence of mural nodule, cyst size 30 mm or larger, and dilation of the main pancreatic duct throughout the study period. However, several patients with branch-duct IPMNs without any of the earlier-listed factors underwent pancreatectomy at the initial period of this study. IPMNs were classified into main-duct and branch-duct types based on the preoperative radiologic findings as described in our previous reports.^{15,16} The lesions having no predictive factors usually were left in the remnant pancreas in the patient with multifocal IPMNs. Pathologic results were determined by the World Health Organization criteria published in 2010¹⁷: low-grade, intermediate-grade, and high-grade dysplasia (carcinoma in situ), and invasive carcinoma. The highest degree of pathologic grade was determined in multifocal lesions. Staging of PDAC was defined according to the Japanese General Rules for pancreatic

cancer.¹⁸ In all cases, resection margins of the pancreas were checked histologically by frozen sections during surgery as well as permanent sections postoperatively. Pancreatectomy would be completed for negative margin status of main pancreatic duct in frozen section, whereas additional resection would be considered for the presence of tumor cells at the cut margin of the main pancreatic duct.

Follow-up evaluation by physical examination and radiologic studies was performed according to the pathologic results. Routine radiologic examination included computed tomography (CT) and/or magnetic resonance imaging (MRI)/magnetic resonance cholangiopancreatography (MRCP). If there were positive findings in these modalities such as the presence of a new lesion, dilation of the main pancreatic duct, or morphologic changes of residual IPMNs, endoscopic ultrasound sonography (EUS) and endoscopic retrograde pancreatography (ERP) with pancreatic juice cytology were added. EUS-guided fine-needle aspiration has not been performed to date at our institution because of the apprehension of seeding of the tumor cells when malignant. Surveillance was performed every 6 months for noninvasive IPMNs (low- to high-grade dysplasia) using CT and MRI/MRCP during the initial 2 years after surgery, and every 12 months after that. Recently, surveillance for noninvasive IPMNs has been changed to alternating CT and MRI/MRCP every 6 months. For invasive IPMNs and IPMNs with distinct PDACs, surveillance was performed every 3 months using CT during the initial 2 years to focus on the detection of recurrent metastatic/local diseases, and then every 6 months using CT and MRI/MRCP after that for the detection of metachronous IPMNs/PDACs as well as recurrent diseases. Our recent surveillance flow chart is shown in Fig. 1. Recurrent IPMNs were defined as metastatic lesions in the liver, lung, or distant lymph node; dissemination; or local recurrence owing to microscopic residual cancer cells. Metachronous occurrence of IPMNs or PDACs was defined as new occurrence of the tumor in the remnant pancreas after complete resection of the tumor. In such cases, surgical margin of the

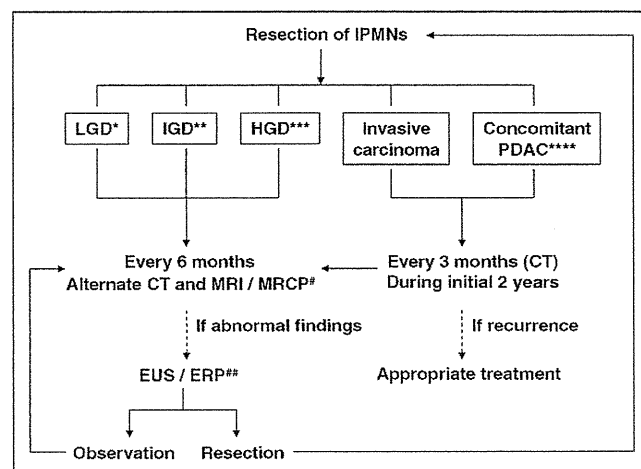


Figure 1 Flow diagram of surveillance after resection of IPMNs of the pancreas according to pathologic grade. HGD, high-grade dysplasia; IGD, intermediate-grade dysplasia; LGD, low-grade dysplasia.

Table 1 Characteristics of 172 patients with intraductal papillary mucinous neoplasms (IPMNs) of the pancreas

	LGD (n = 77)	IMGD (n = 33)	HGD (n = 26)	Invasive carcinoma (n = 36)	Total (n = 172)
At the initial assessment and operation					
Location (pancreas head/pancreas body to tail)	35/42	8/25	16/10	25/11	84/88
Type (Main duct/Branch duct)	8/69	7/26	13/13	16/20	44/128
Synchronous multifocal IPMNs*	13 (10)	4 (0)	2 (1)	5 (5)	24 (16)
Synchronous distinct PDACs	9	2	0	3	14
During follow-up period†					
Recurrent IPMNs	0	0	0	16	16
Recurrent PDAC	6	1	0	2	9
Metachronous IPMNs†	1	5 (1)	3 (1)	1	10 (2)
Metachronous distinct PDACs††	4 (3)	1	0	1	6 (3)
Comprehensive assessments					
Multifocal IPMNs	14	9	5	6	34
Distinct PDACs††	13 (3)	3	0	4	17 (3)
Disease-specific survival rate (%) (5-/10-year)	94/91	96/89	100/100	31/24	83/78

LGD = low grade dysplasia; IMGD = intermediate grade dysplasia; HGD = high grade dysplasia; PDAC = pancreatic ductal adenocarcinoma.

*The number in parenthesis indicates the number of patients having residual IPMNs in the remnant pancreas after operation.

†The number in parenthesis indicates the number of patients who underwent remnant total pancreatectomy for metachronous IPMNs.

††The number in parenthesis indicates the number of patients having both synchronous and metachronous PDACs, and thus, a total of 17 patients had distinct PDACs synchronously and/or metachronously.

pancreas at the initial surgery was free from tumor cells, and the new lesion usually developed apart from the surgical margin.

Death related to invasive IPMNs or concomitant PDACs was considered disease specific, and a disease-specific survival rate was calculated using the Kaplan–Meier method.

Results

Table 1 shows the characteristics of the study population. There were 44 main-duct and 128 branch-duct types. Twenty patients (12%) had a history of pancreatitis preoperatively. There were 77 patients with low-grade dysplasia, 33 patients with intermediate-grade dysplasia, 26 patients with high-grade dysplasia, and 36 patients with invasive carcinoma. Eight branch-duct IPMNs did not have any malignant predictors described in consensus guidelines,¹ all of which were low-grade dysplasia, whereas the other 164 had at least one of the predictors. Seventy-seven patients had pathologically mural nodules, and 45 of them were malignant (58%; 20 noninvasive and 25 invasive carcinomas). The mean follow-up period of this study population was 64 months (range, 1–283 mo), and 5-year/10-year disease-specific survival rates of low-grade dysplasia, intermediate-grade dysplasia, high-grade dysplasia, invasive carcinoma, were 94%/91%, 96%/89%, 100%/100%, and 31%/24%, respectively (Table 1).

There were 24 multiple IPMNs at the time of initial diagnosis (Table 1). Complete resection of IPMNs including 5 cases of total pancreatectomy was achieved in 156 patients, whereas IPMNs were left in the remnant pancreas in the remaining 16 patients (Table 1). In the latter group, 14

lesions were branch-duct IPMNs without any predictive factor for malignancy described in the consensus guidelines,¹ and the remaining 2 were low-grade dysplasia left at the cut margin of the main pancreatic duct. IPMNs and synchronous concomitant PDACs were resected in 14 patients. In these 14 patients with PDACs, there was 1 patient in stage 0, 4 patients in stage I, 2 patients in stage II, 5 patients in stage III, and 2 patients in stage IVa.

There were 16 and 9 patients having local or distant metastatic recurrence after resection of invasive IPMNs and distinct PDACs, respectively, and there was no recurrence in low- to high-grade dysplasia of IPMNs (Table 1). Ten metachronous IPMNs occurred in the remnant pancreas after a mean of 23 postoperative months (range, 12–84 mo). They were 6 branch-duct type and 4 main-duct types. In all 10 patients, the pancreatic cut margins were negative for tumor cells at the initial surgery. All 6 branch-duct IPMNs were small size cysts without any sign of mural nodule or clinical symptom, and did not require resection. Two of the 4 main-duct IPMNs were resected by remnant total pancreatectomy, and their pathologic results were both noninvasive carcinomas. The other 2 metachronous main-duct IPMNs were observed without resection because of the absence of informed consent.

Of 16 patients with IPMN left in place in the remnant pancreas, 2 patients had recurrence of invasive IPMNs. The other 14 lesions showed no morphologic change during the mean follow-up period of 47 months (range, 6–156 mo). No patients had a metachronous occurrence of new IPMNs in the remnant pancreas in this group. The prevalence of multifocal IPMNs including both synchronous and metachronous in this study population was 20% (34 of 172) (Table 1).

All 14 IPMNs with concomitant PDACs were branch-duct type. In these patients, 3 metachronous PDACs developed after resection of low-grade dysplasia of IPMNs and concomitant PDACs (Table 1). In addition, 3 PDACs metachronously occurred after resection of IPMNs. Therefore, occurrence of PDACs after resection of IPMNs was observed in 6 patients after a mean time of 84 postoperative months (range, 12–150 mo), and thus the prevalence of distinct PDACs in the resected IPMNs was 9.9% (17 of 172) (Table 1). Three patients with metachronous PDACs had branch-duct IPMNs as well, and thus all 17 patients who had distinct PDACs had branch-duct IPMNs. By contrast, metachronous PDACs developed irrespective of the pathologic grade and tumor location (head or body to tail) of IPMNs and there seemed to be no predisposing time point after the initial surgery. Three of 6 metachronous PDACs were found by CT with a tumor size of less than 2 cm, whereas the remaining 2 PDACs were found as unresectable cancers with liver metastases after more than 10 years after resection of IPMNs. The intervals between a prior normal imaging study and detection of PDACs in 2 patients with unresectable PDACs were 8 and 13 months. The remaining 1 PDAC (noninvasive) was diagnosed by pancreatic juice cytology obtained by ERP, which was detected by neither CT nor MRI/MRCP.

Fifty-three extrapancreatic malignancies were found in 47 patients (27%) before ($n = 28$), at the time of ($n = 18$), and after initial surgery ($n = 7$). There were 16 colorectal, 11 gastric, 6 prostate, 4 gynecologic, 3 lung, 3 bladder, 2 breast, 2 renal, and 6 other malignancies.

Comments

The present study focusing on the metachronous occurrence of IPMNs or distinct PDACs in the remnant pancreas after resection of IPMNs has shown that strict surveillance would provide a chance to detect noninvasive IPMNs and early stage PDACs. Those metachronous lesions developed even long term after initial surgery irrespective of pathologic grade, and thus all the patients should be strictly followed up for a long time after resection of IPMNs. By contrast, there still have been unresolved issues regarding diagnostic modalities and intervals of surveillance.

The incidence of multifocal occurrence of IPMNs in this study is consistent with that in previous reports, ranging from 14.6% to 36%.^{3–5} In patients with synchronous multifocal IPMNs, the international consensus guidelines¹ recommend that only those having predictive factors for malignancy should be resected, and those without predictive factors might be left in the remnant pancreas. We basically have followed the recommendation of the guidelines,¹ and we have not experienced any cases showing morphologic changes in IPMNs left in the remnant pancreas during the follow-up period. We also have experienced metachronous occurrence of IPMNs after complete resection of initial

IPMNs, and all of them could be managed surgically or nonsurgically. Surgical management for multifocal IPMNs described in the guidelines¹ seem to be appropriate; however, long-term strict follow-up evaluation is necessary to detect metachronous occurrence of IPMNs.

Several recent reports^{9–11} have investigated the development of distinct PDACs during follow-up evaluation of branch-duct IPMNs, which are not an indication for surgery, and reported an incidence ranging from 4.5% to 8%. This report focuses on the metachronous occurrence of PDACs in the remnant pancreas after resection of IPMNs. Uehara et al⁷ found 5 PDACs during follow-up evaluation of 60 cases of branch-duct IPMNs, and 4 of them were resectable. Thus, branch-duct IPMNs would be a good predictor for early detection of PDACs during observations of small branch-duct IPMNs or after resection of branch-duct IPMNs with malignant predictors.

By contrast, some metachronous PDACs were found as unresectable cancers more than 10 years after the initial surgery for IPMNs. A noteworthy fact is that annual examination was not sufficient to detect all the cases of resectable PDACs. This finding suggests the possibility of the rapid growth of distinct PDACs. Therefore, we are now checking all the patients on follow-up evaluation at least every 6 months by imaging even long term after resection of IPMNs, as shown in Fig. 1. However, prospective surveillance is necessary to confirm whether this algorithm would be adequate or not.

One of the metachronous PDACs was found as carcinoma in situ by pancreatic juice cytology obtained during ERP, although CT and MRI showed no morphologic abnormality. ERP is not usually included in the routine follow-up modalities in our department; however, the present case shows the use of pancreatic juice cytology for the detection of early pancreatic cancer during management of IPMNs. EUS fine-needle aspiration cytology recently has taken the place of pancreatic juice cytology by ERP in terms of definitive pathologic diagnosis of pancreatic cancer.¹⁹ By contrast, we recently reported a patient with multiple IPMNs with concomitant noninvasive and invasive PDACs, which were detected by pancreatic juice cytology during preoperative ERP.²⁰ In this patient, multiple PDACs could not be detected by either CT/MRI or EUS, and we consider that pancreatic juice cytology during ERP has an important role to detect early pancreatic cancers, which cannot be detected by regular imaging modalities. Further investigation is necessary to determine whether ERP should be included in routine follow-up diagnostic modalities, and how frequently ERP should be performed during follow-up evaluation of the remnant pancreas after resection of IPMNs.

Another important issue during management of IPMNs is the occurrence of extrapancreatic malignancies. The prevalence of extrapancreatic malignancies in this study is consistent with those in previous reports, ranging from 24% to 32%,^{1,21} and various organs seem to be involved. Therefore, careful attention should be paid to extrapancreatic diseases