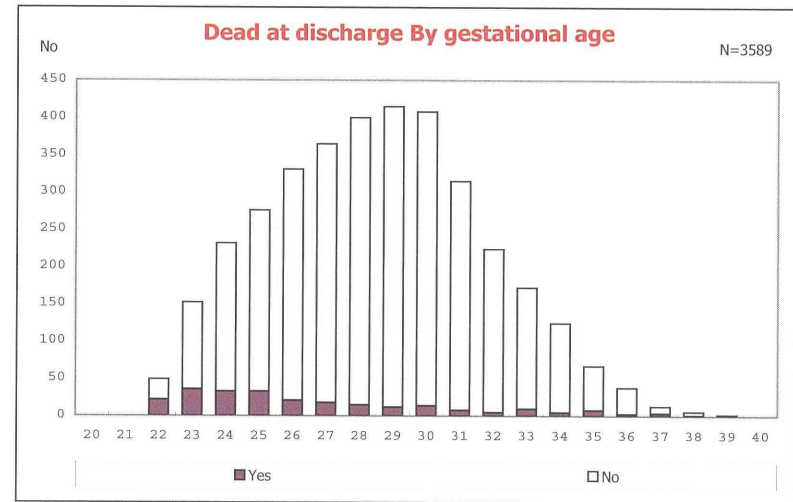
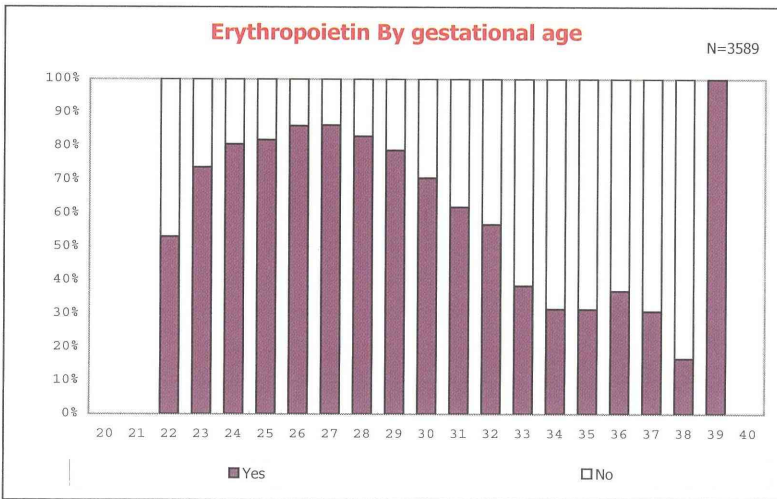


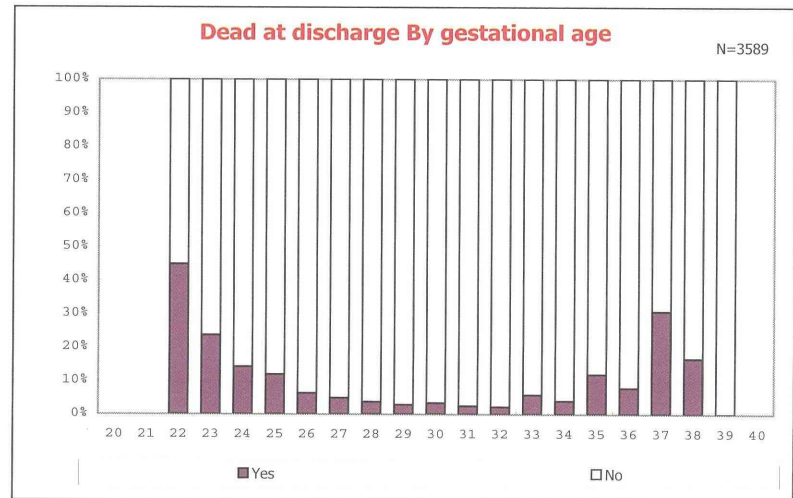
among infants with live birth and remained



among infants with live birth and remained



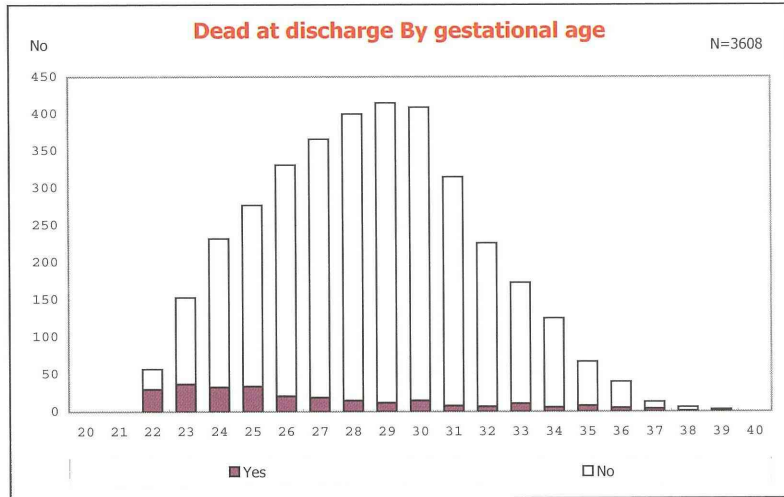
among infants with live birth and remained



among infants with live birth and remained

Analysis results on infants born in 2010

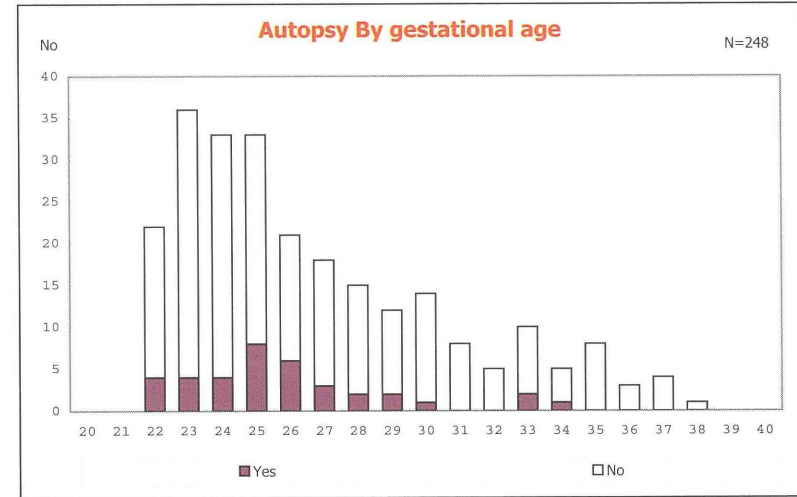
IV-49/53



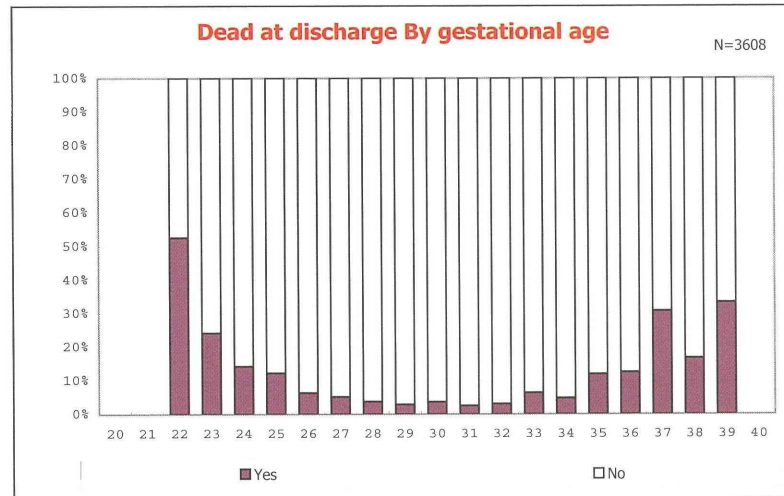
among infants with live birth

Analysis results on infants born in 2010

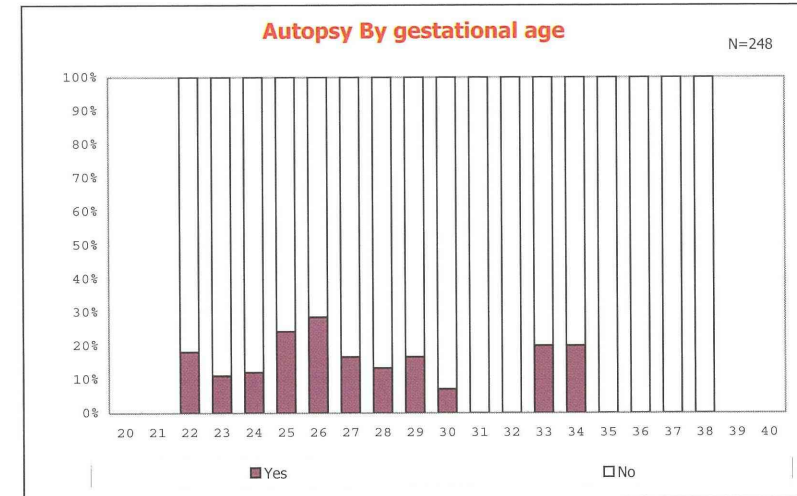
IV-50/53



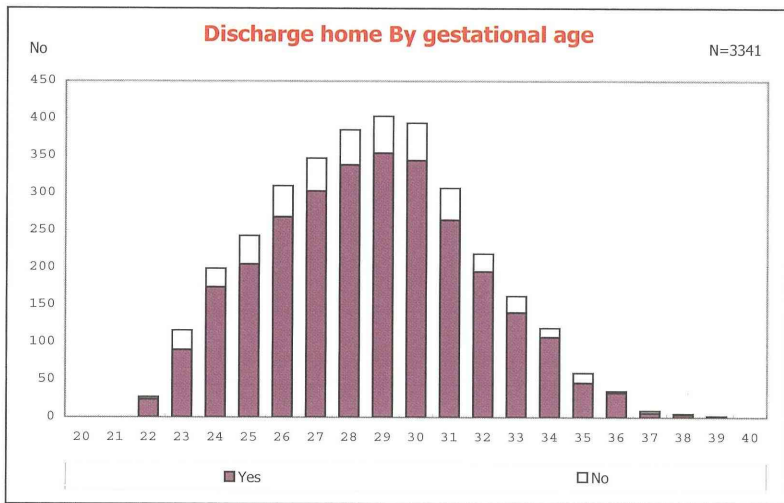
among infants with live birth, remained and dead at discharge



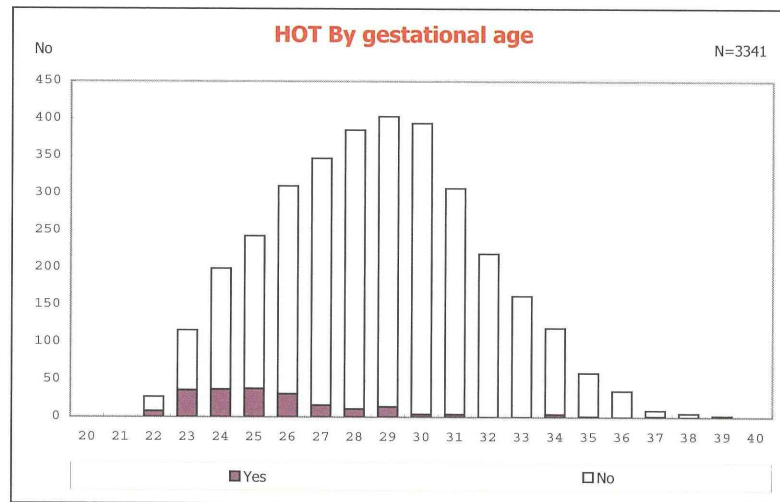
among infants with live birth



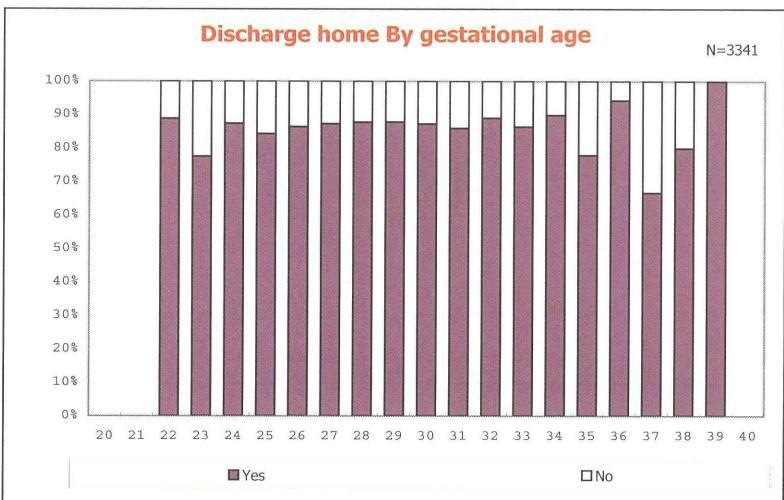
among infants with live birth, remained and dead at discharge



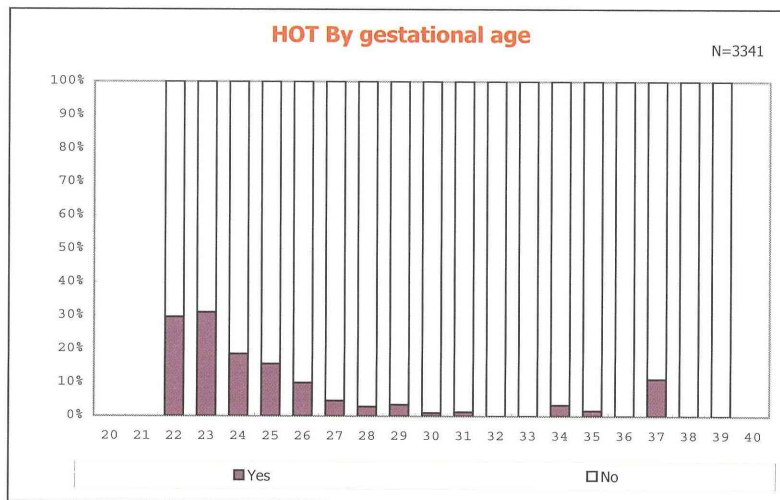
among infants with live birth, remained and alive at discharge



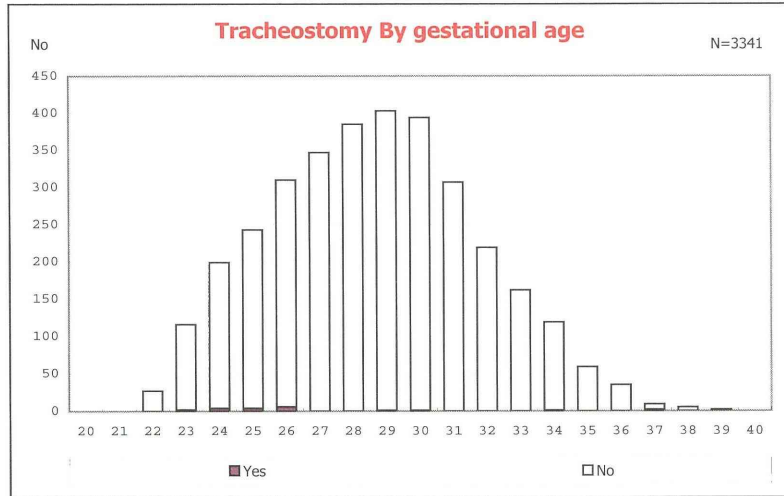
among infants with live birth, remained and alive at discharge



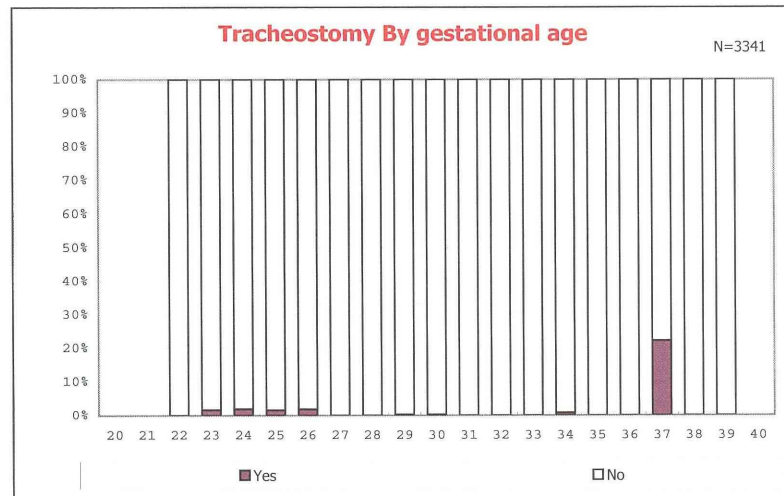
among infants with live birth, remained and alive at discharge



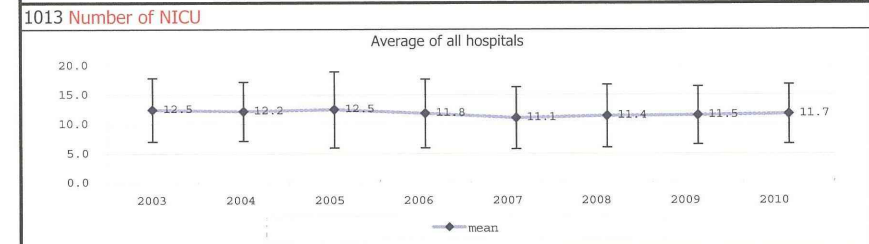
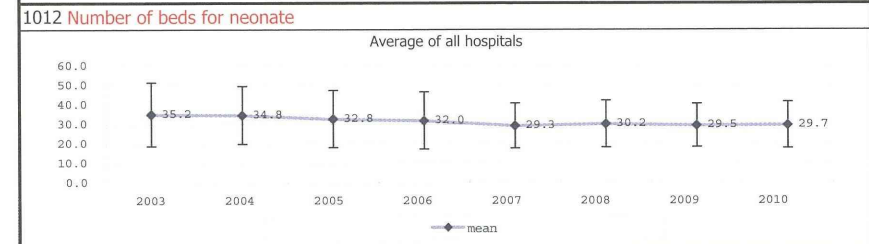
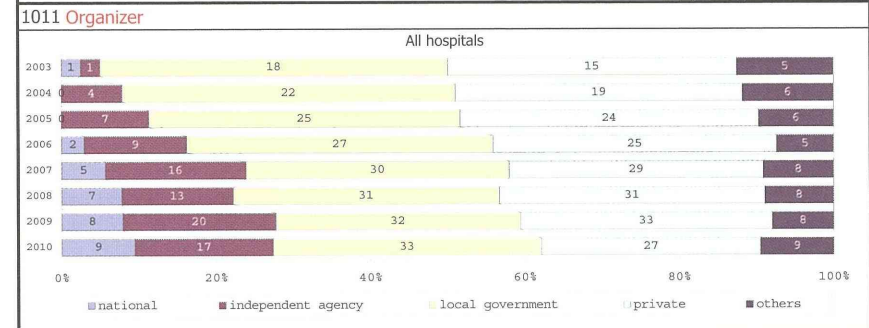
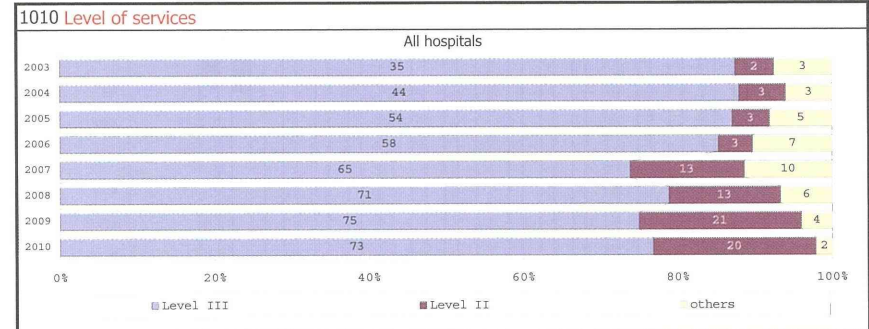
among infants with live birth, remained and alive at discharge

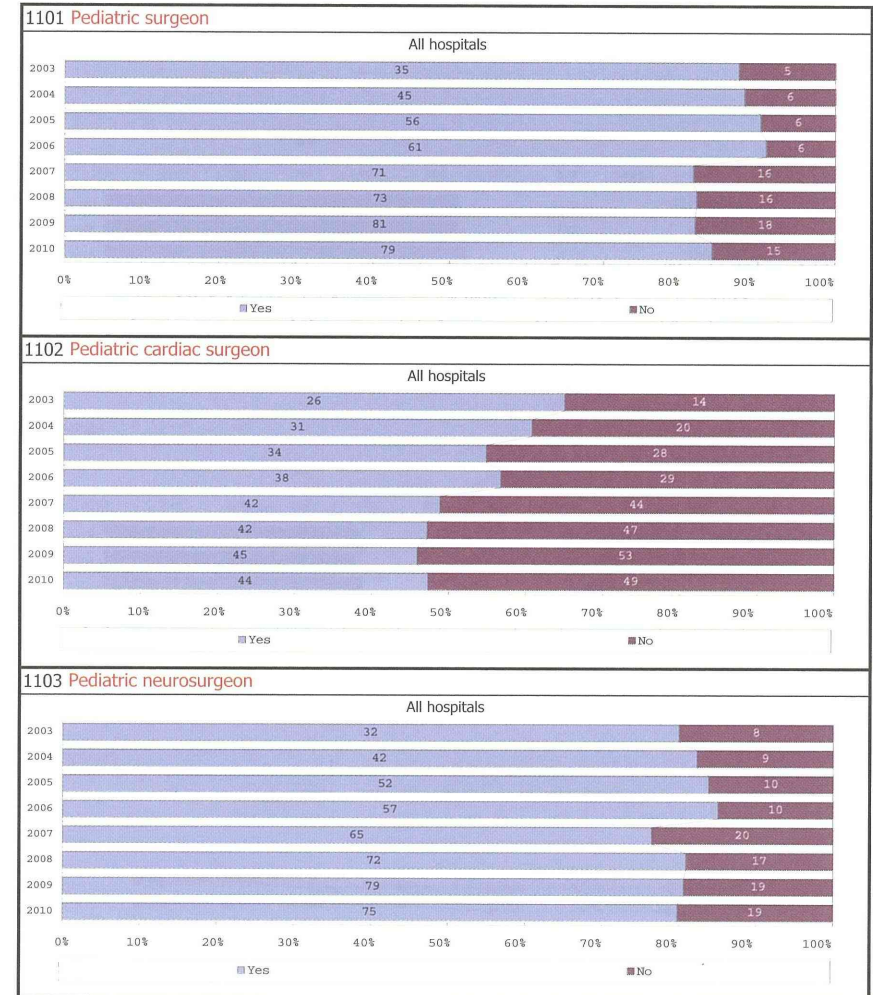
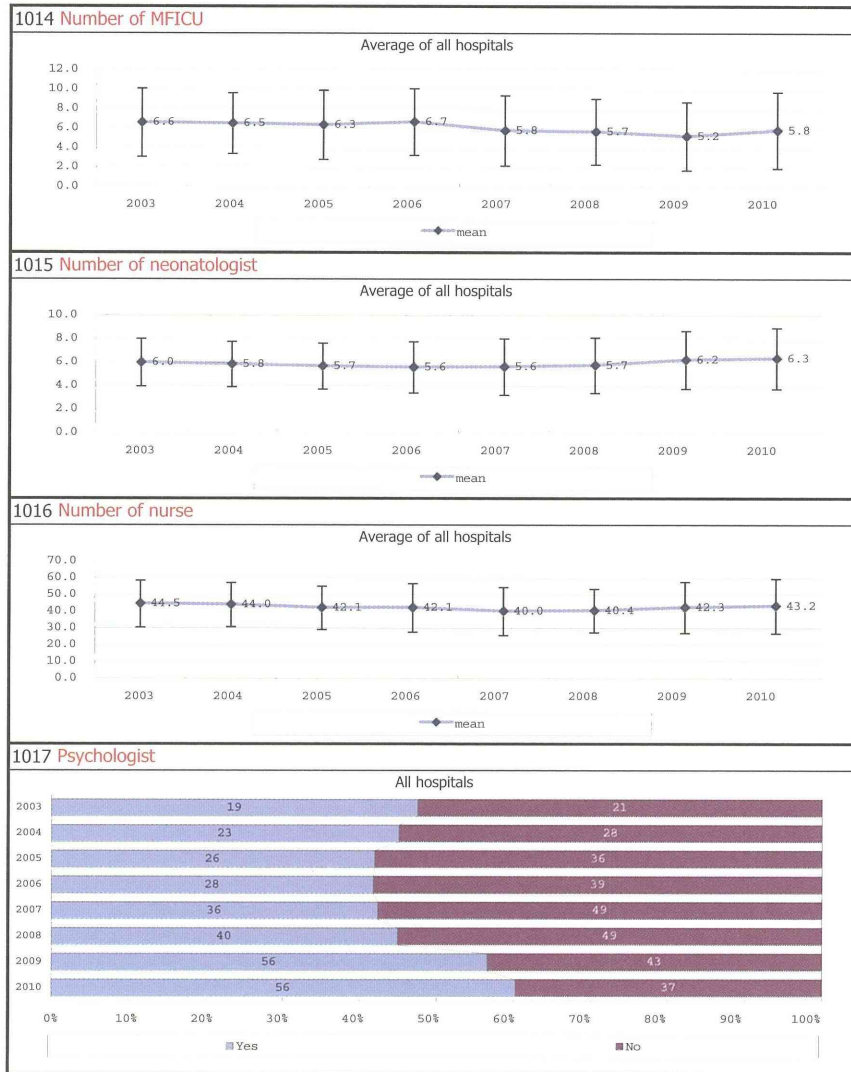


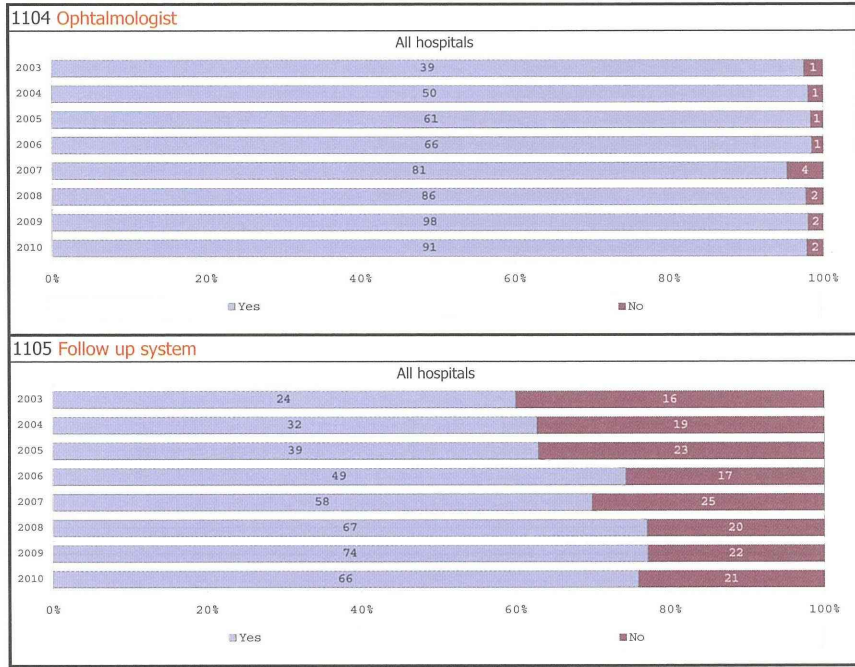
among infants with live birth and alive at discharge

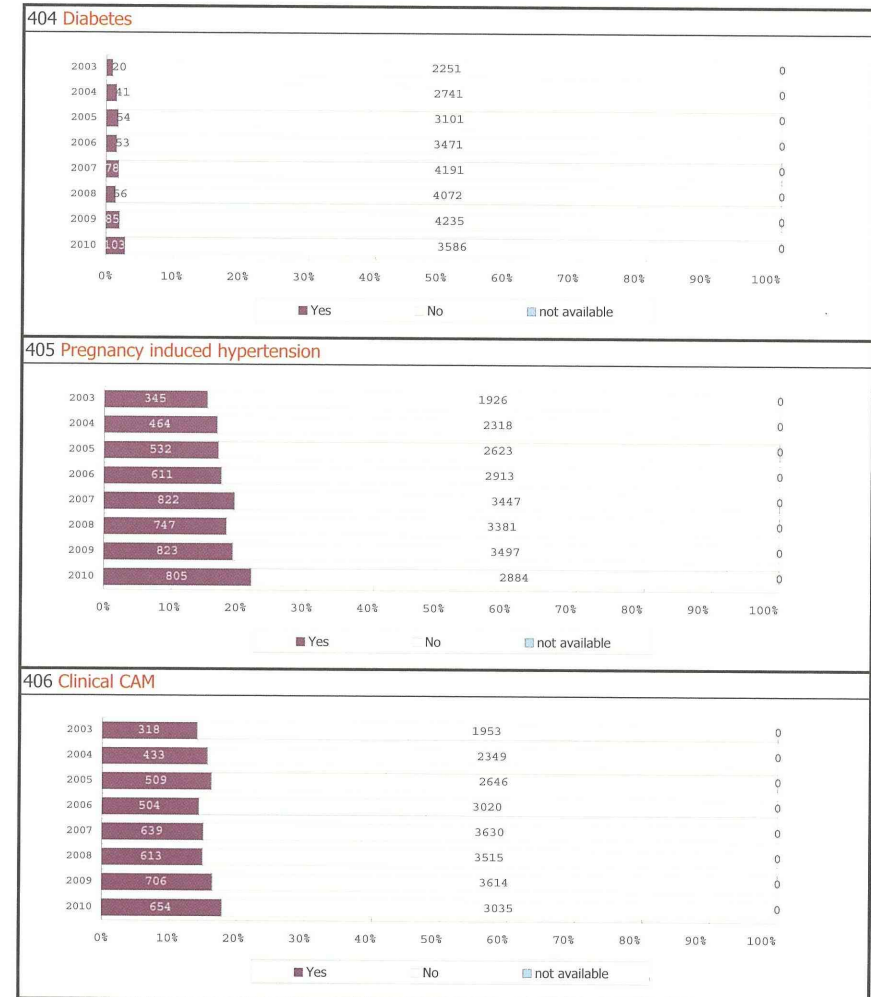


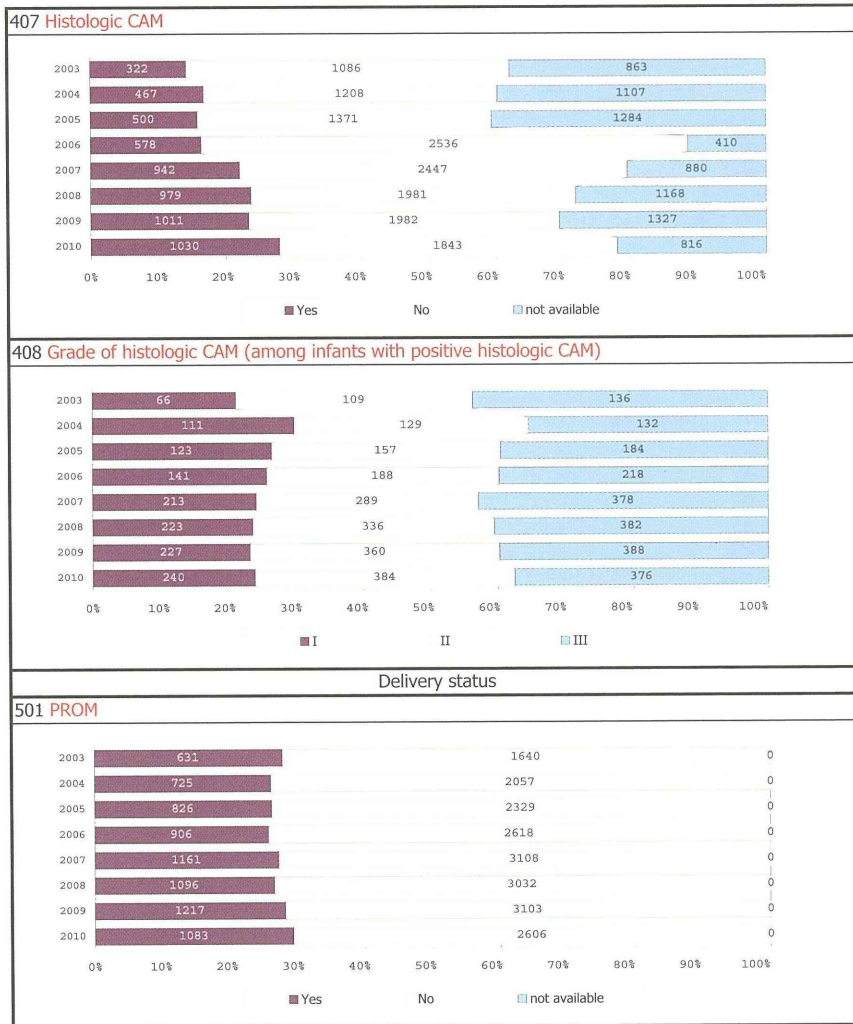
among infants with live birth and alive at discharge



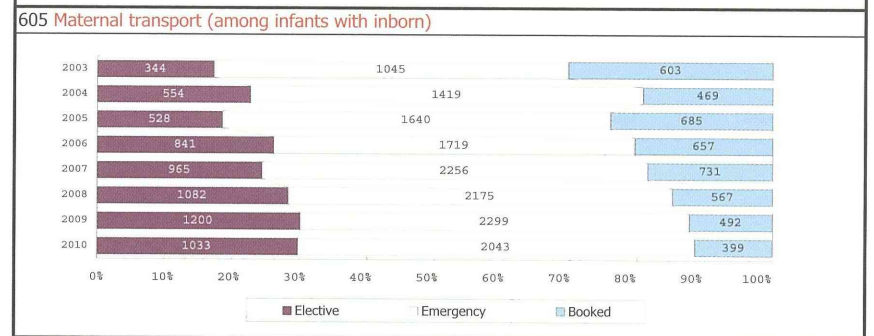
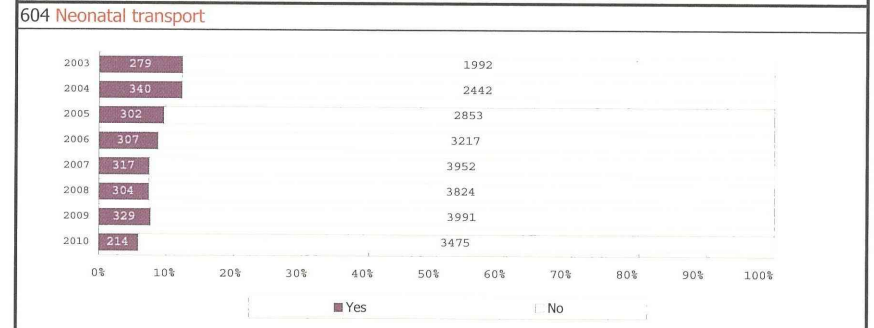
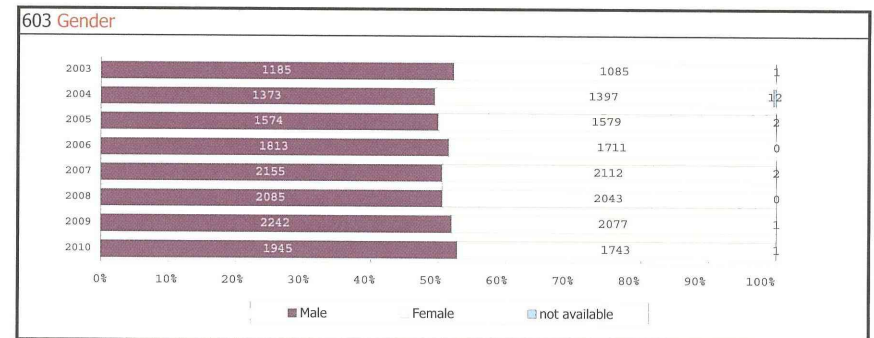
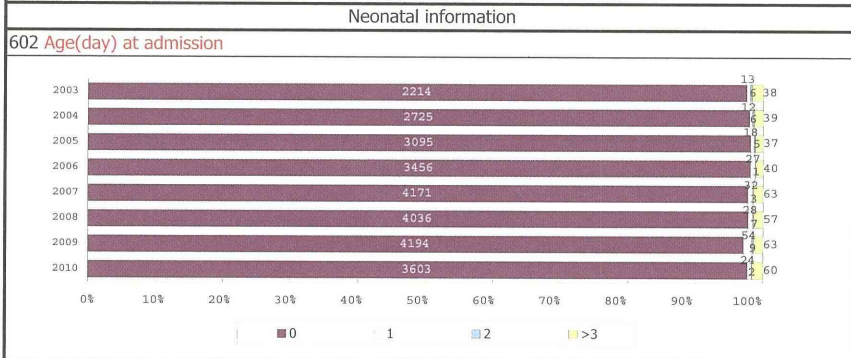
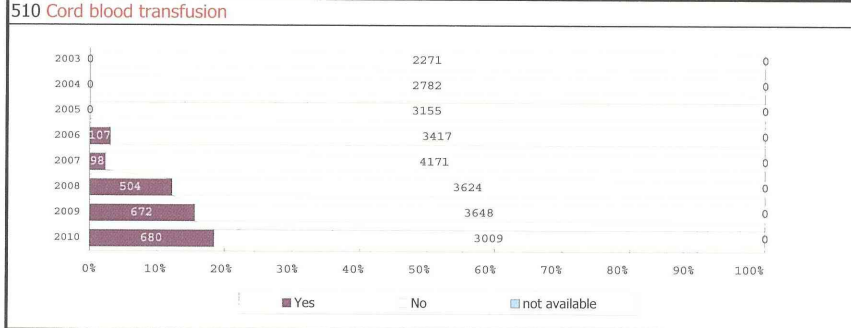
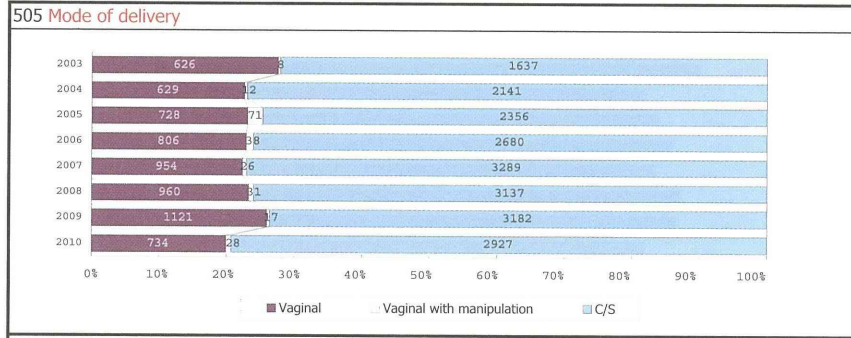


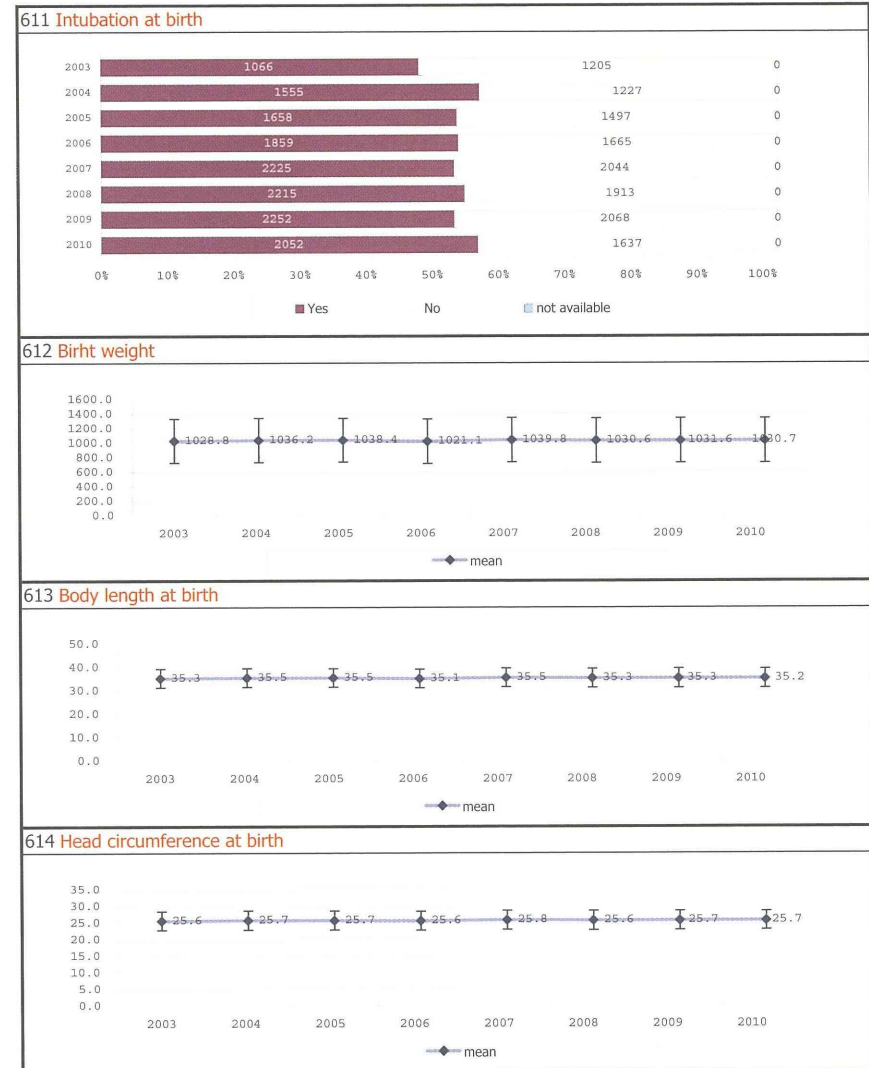


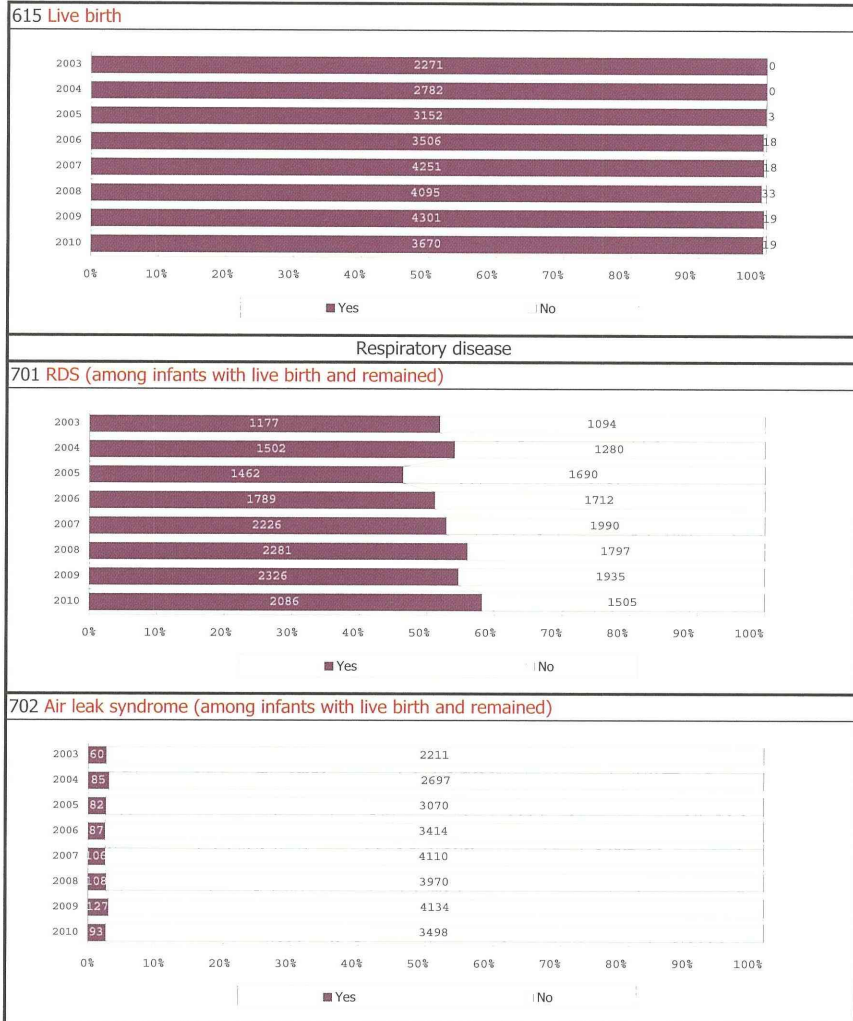


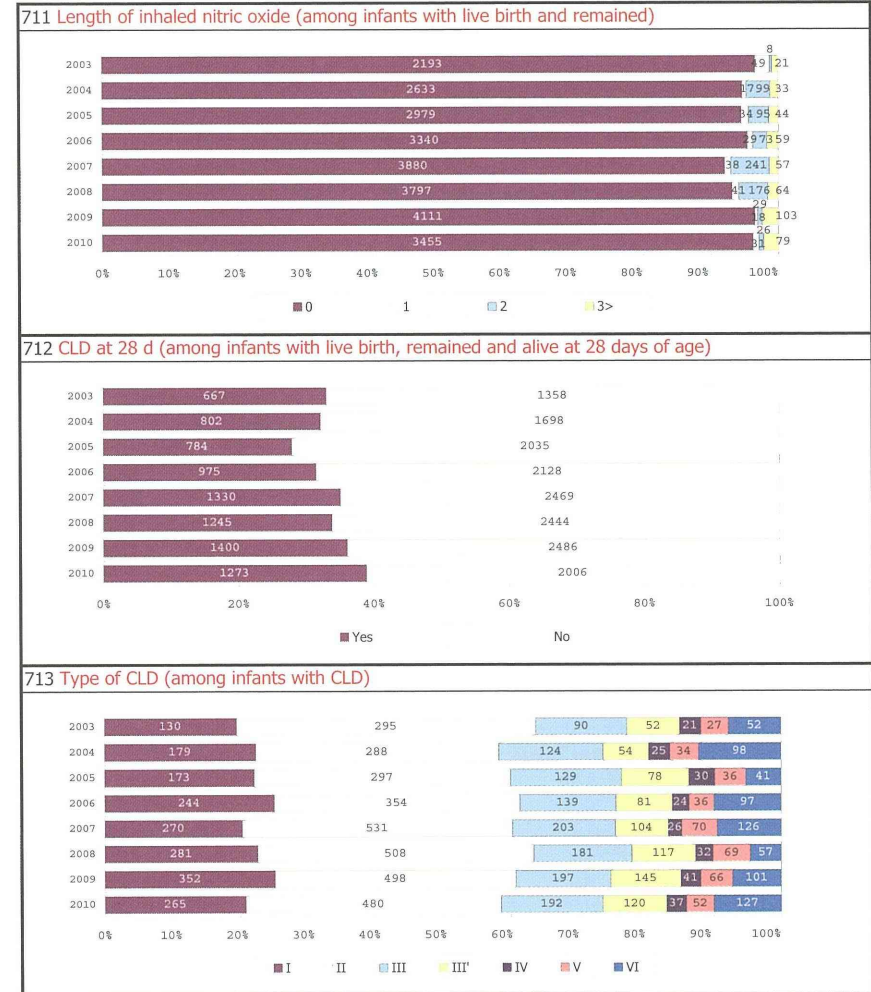


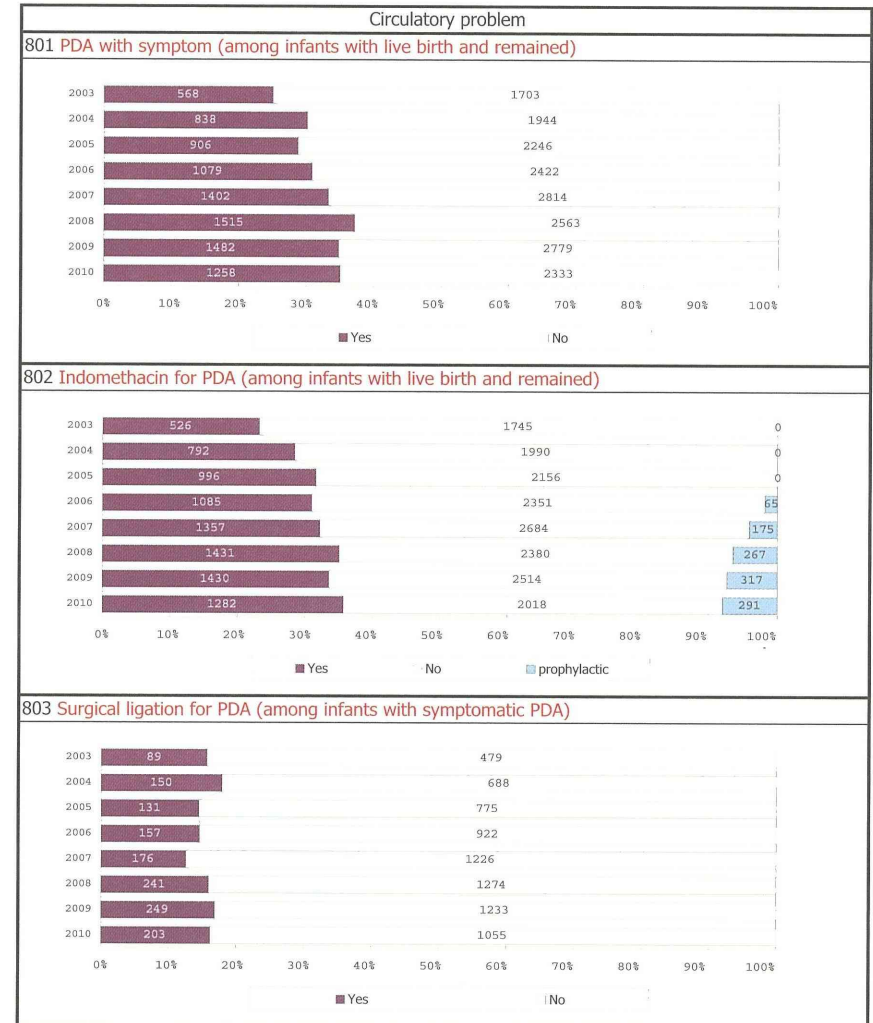


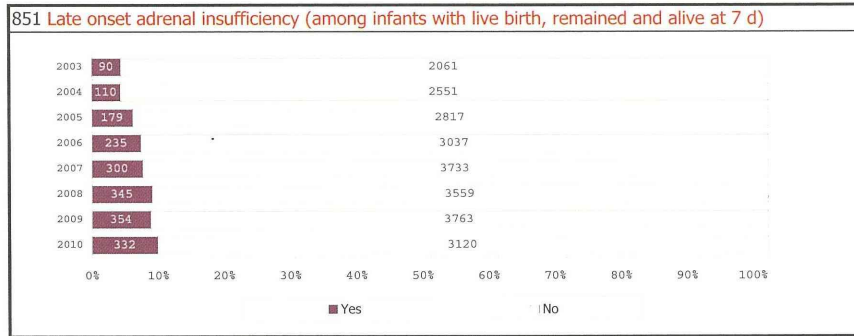




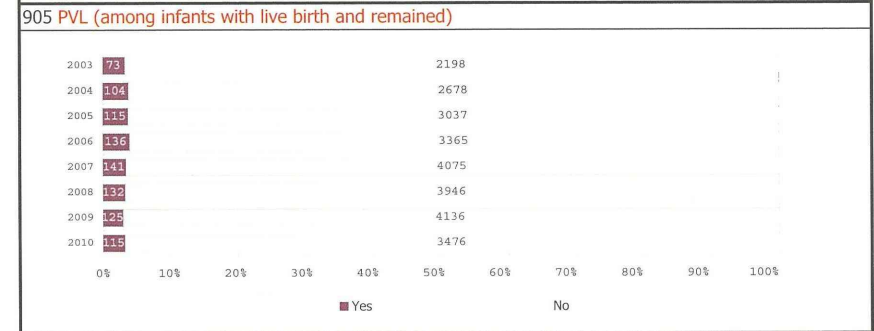
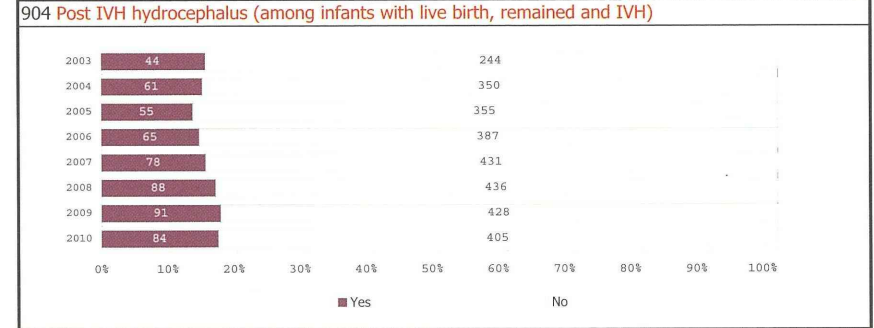
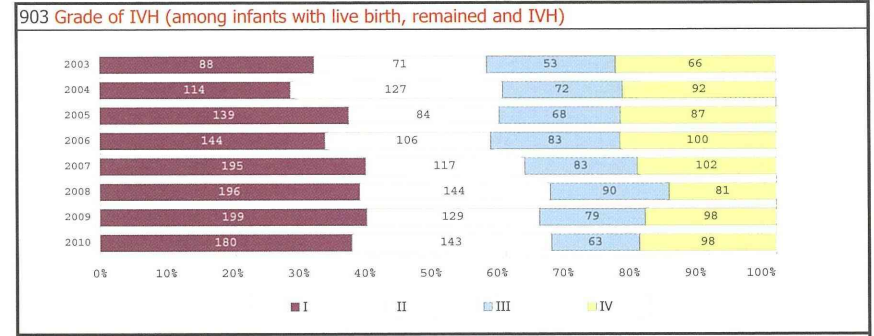
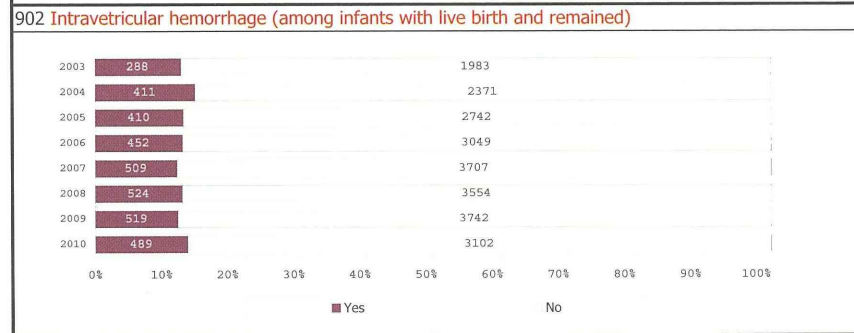
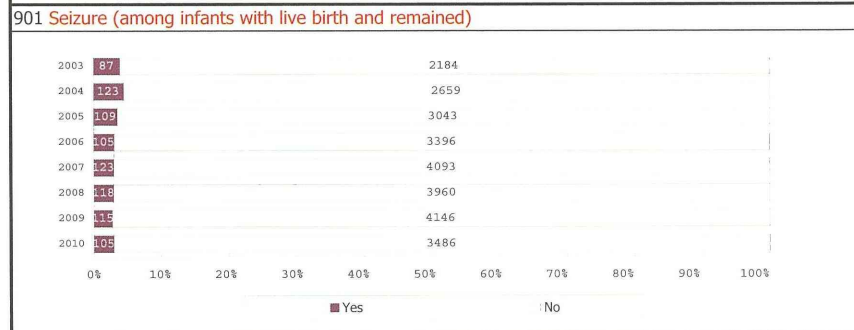


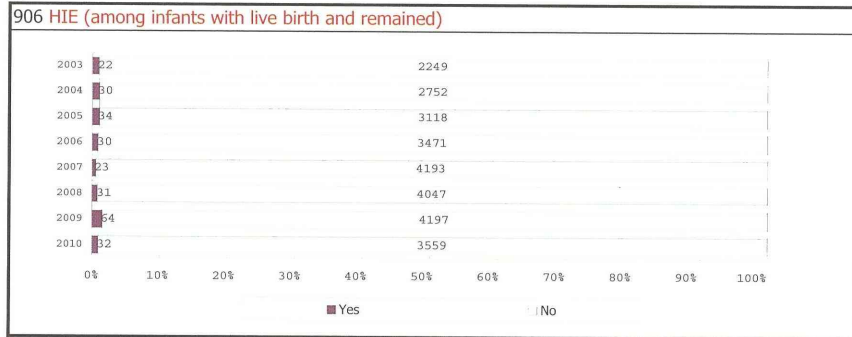




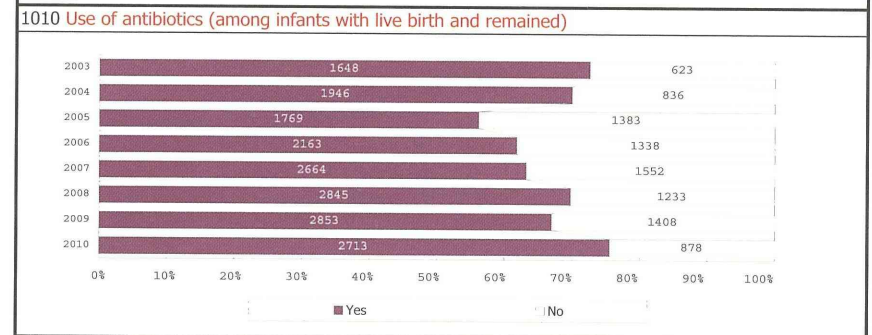
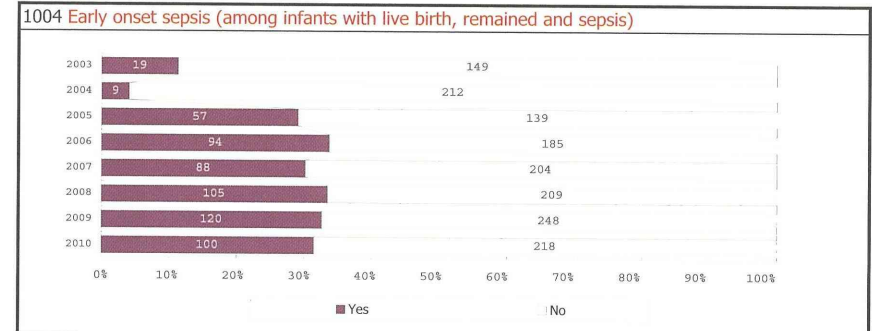
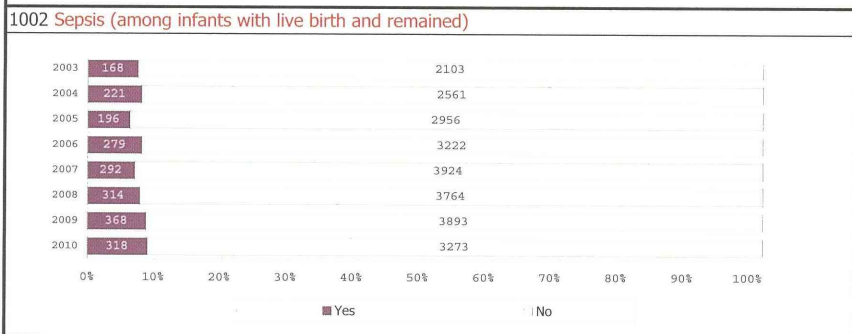
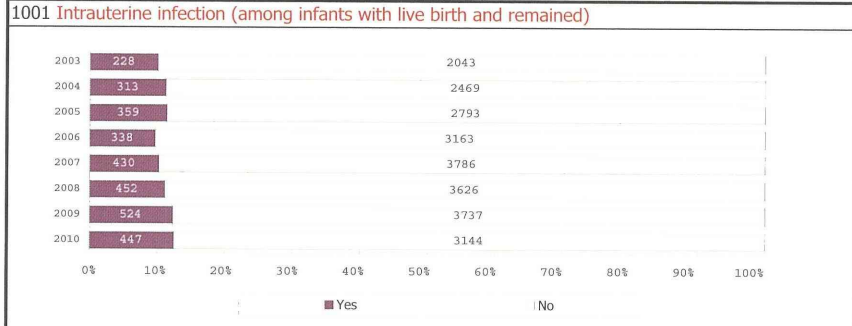


Neurological problem

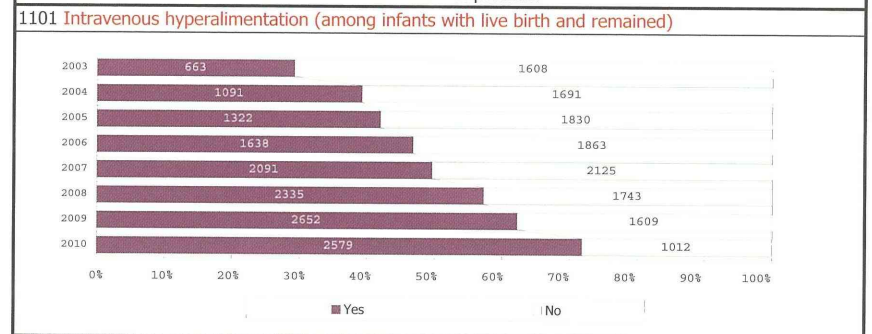


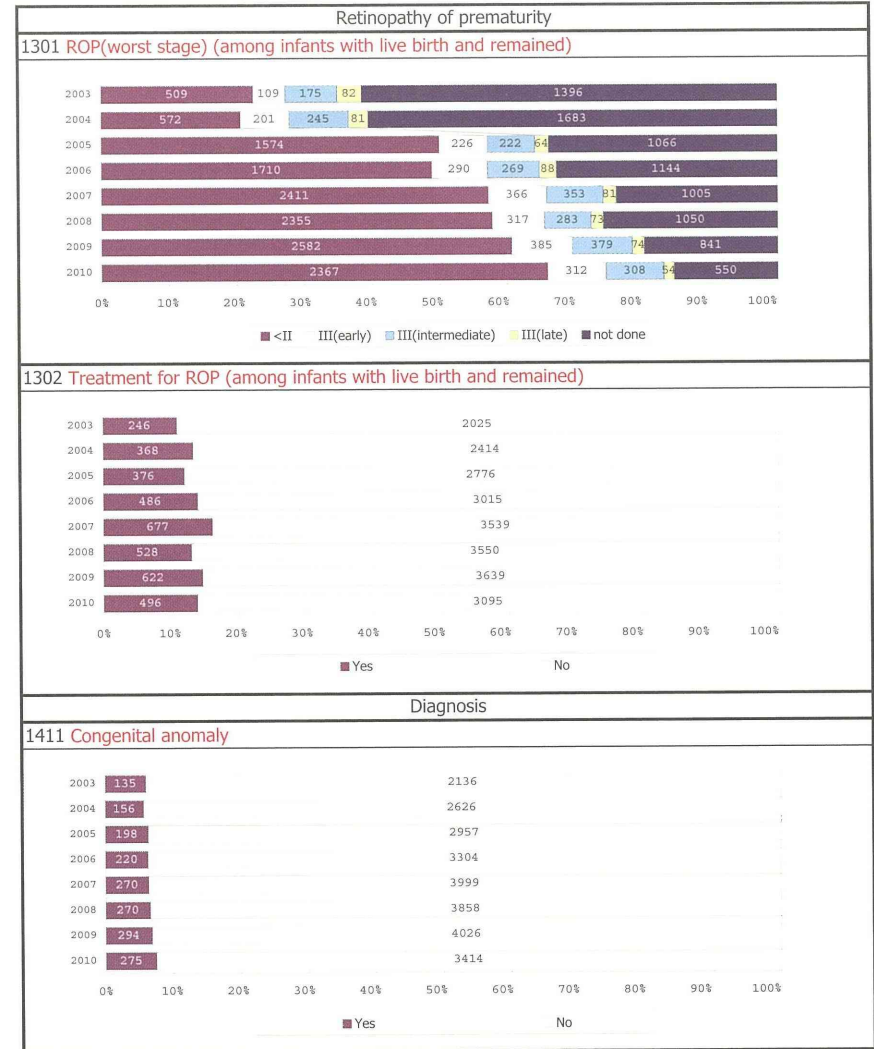
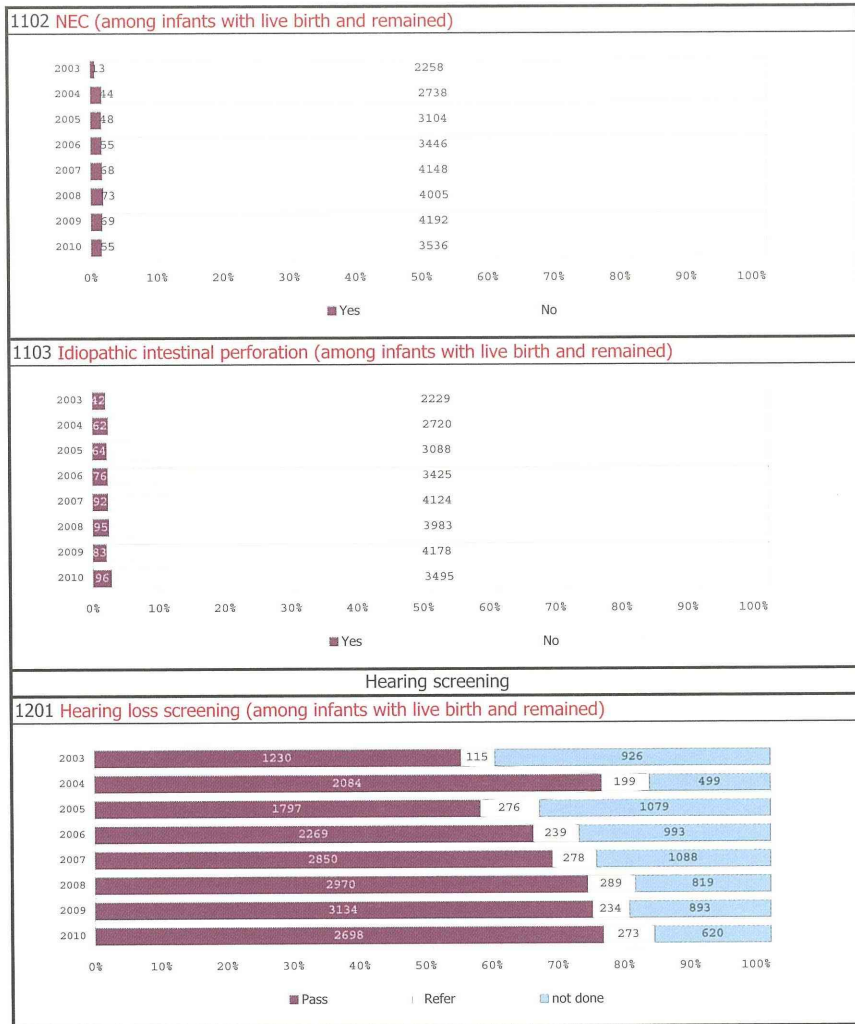


Infection



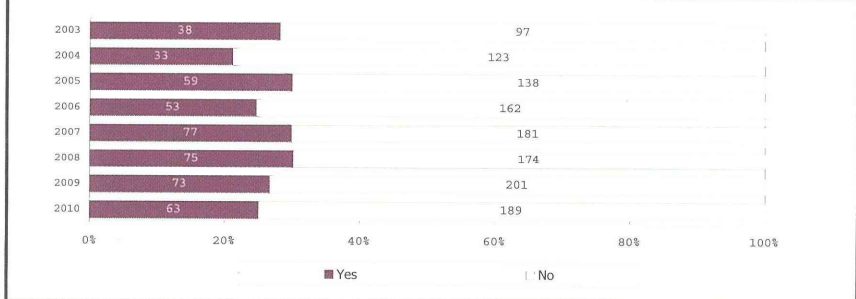
Gastrointestinal problem





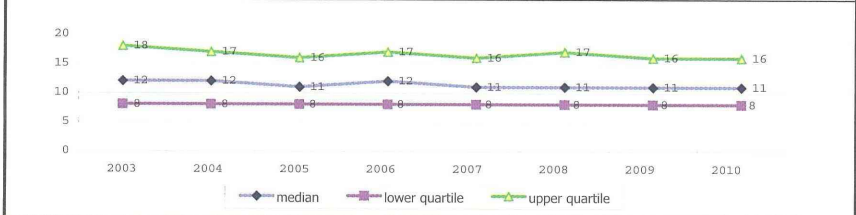


1413 Operation for congenital anomaly (among infants with live birth, remained and congenital anomaly)

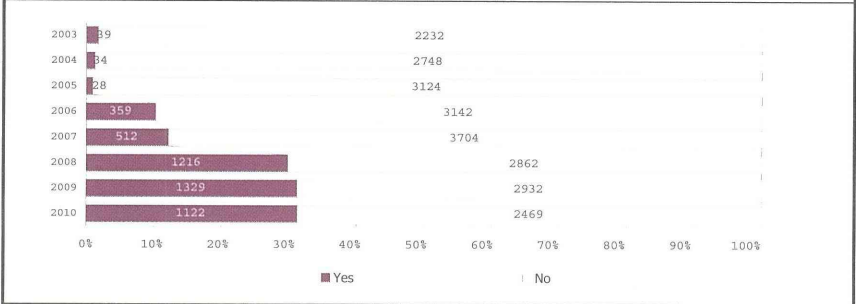


Summary

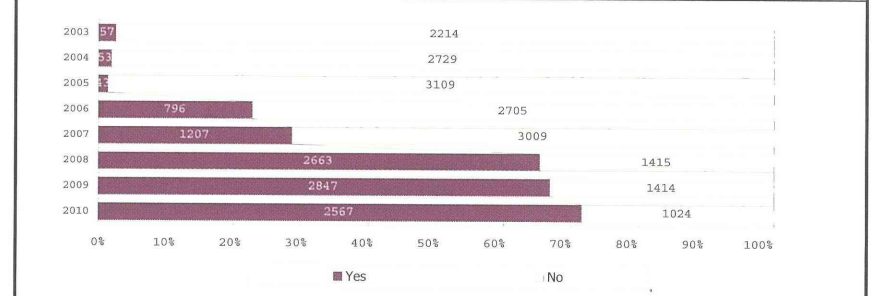
1501 Age at enteral feeding exceed 100ml/kg (among infants with live birth and remained)



1511 Blood transfusion (among infants with live birth and remained)

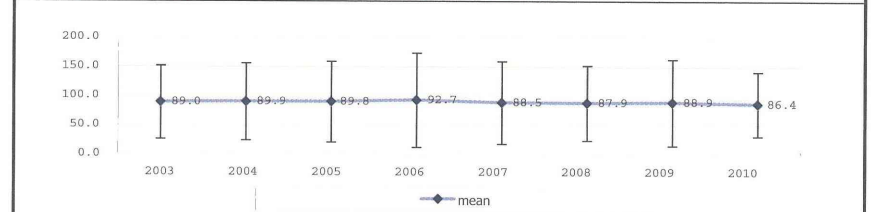


1512 Erythropoietin (among infants with live birth and remained)

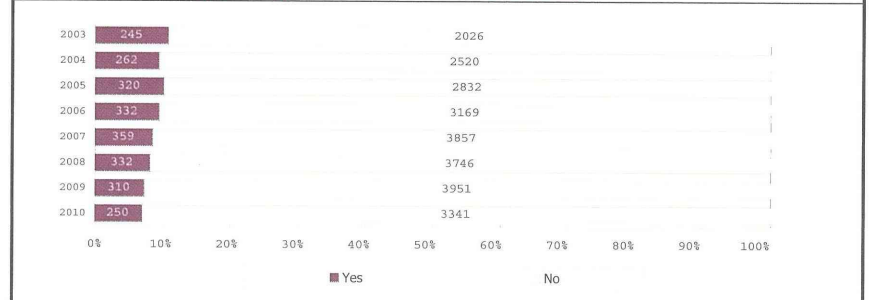


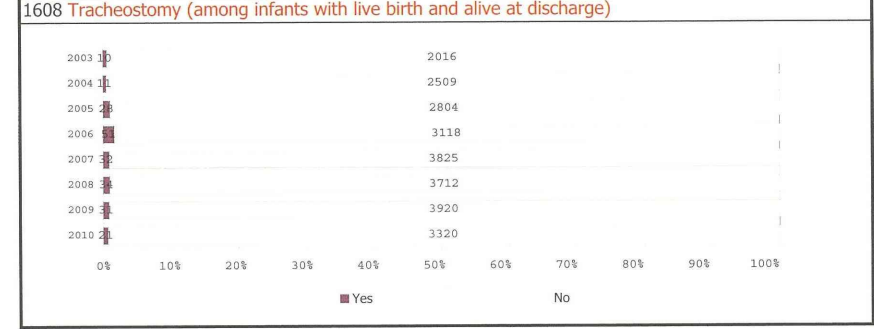
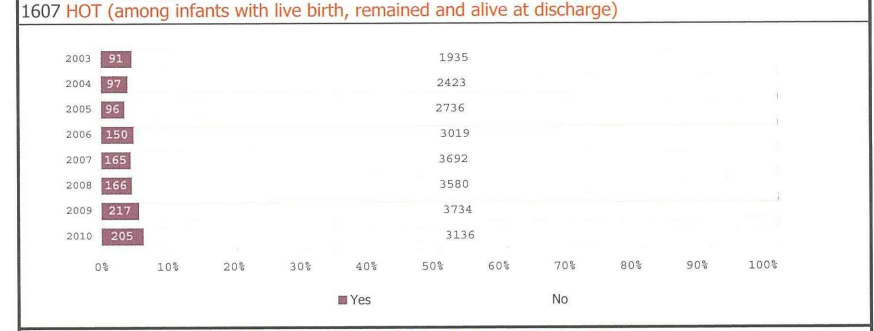
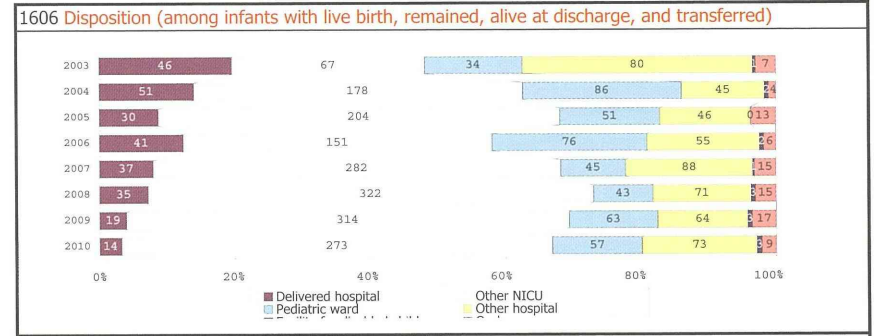
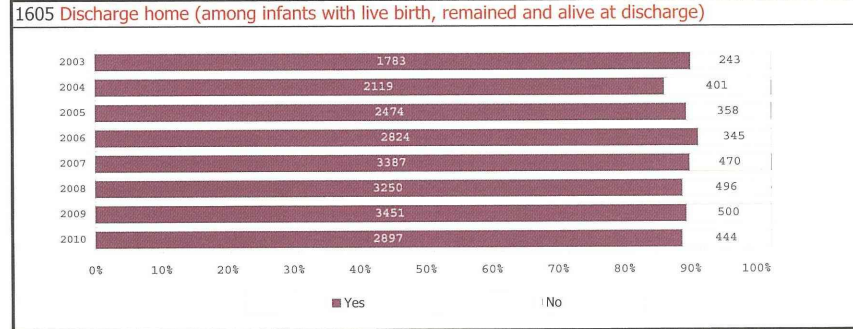
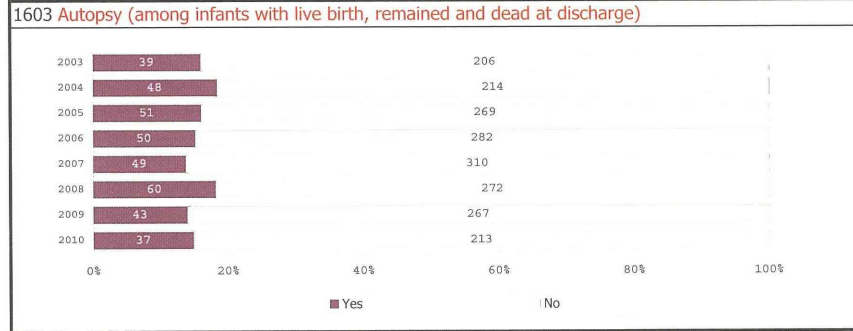
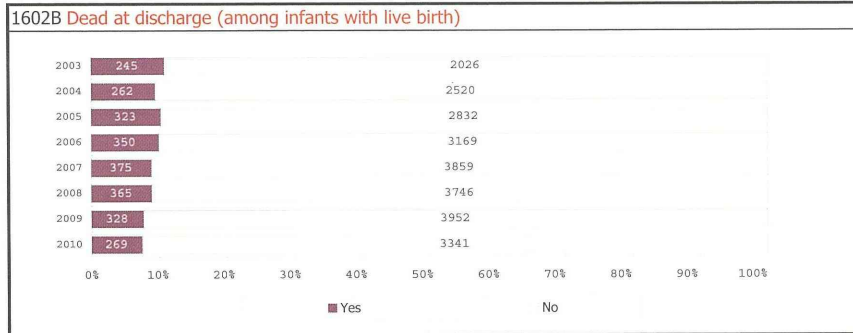
Condition at discharge

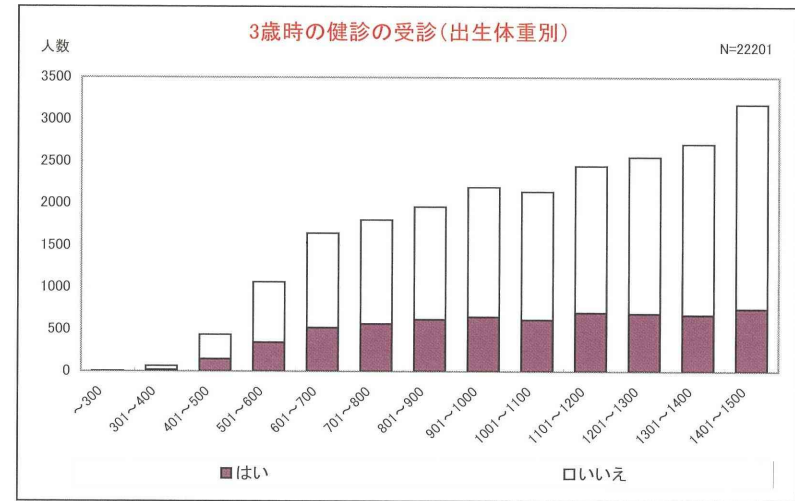
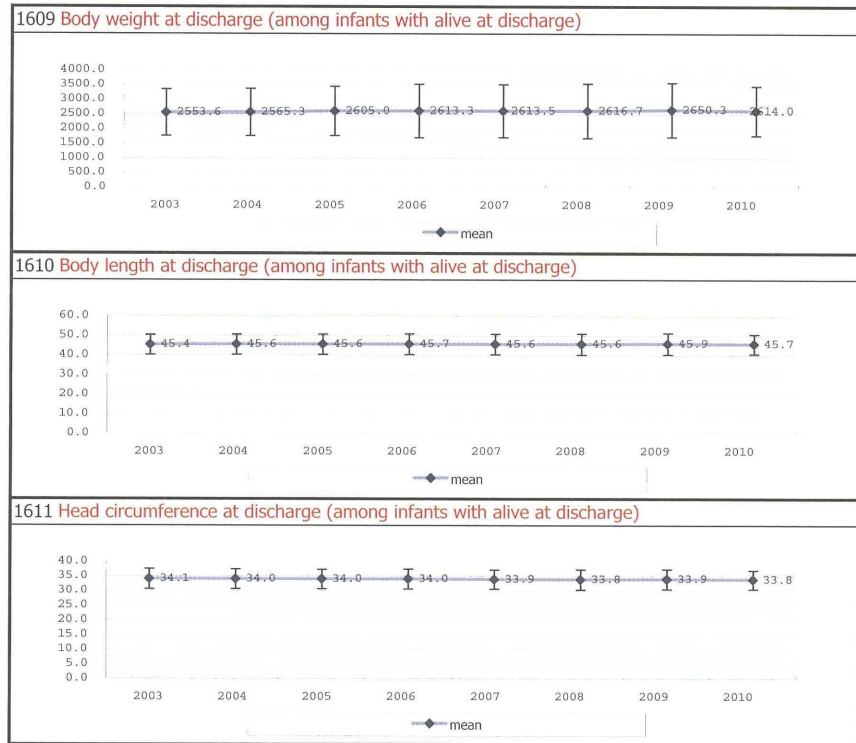
1601 Age at discharge (among infants with live birth and remained)



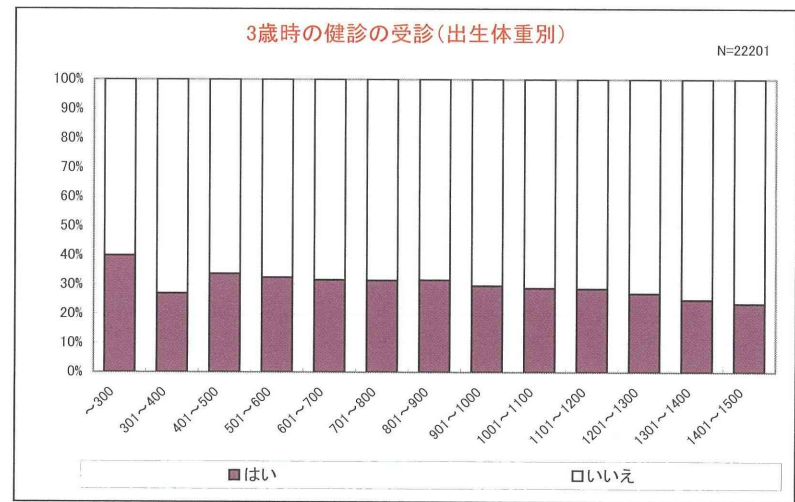
1602A Dead at discharge (among infants with live birth and remained)







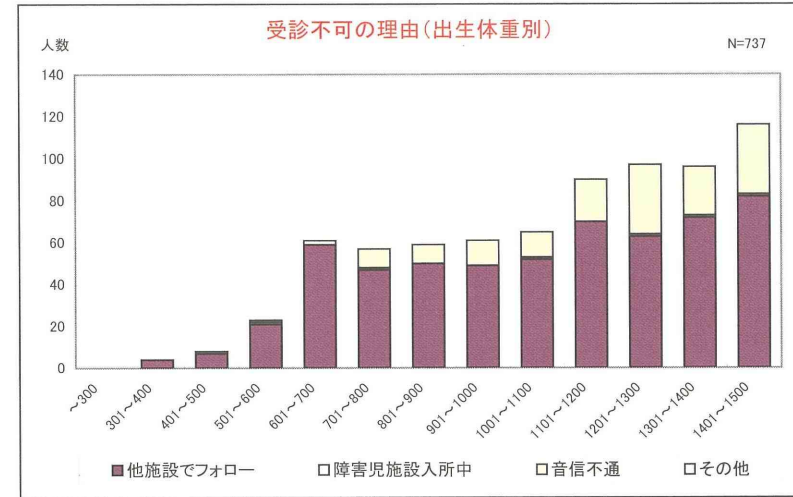
分母=死亡退院が「いいえ」、ただし無回答を除く



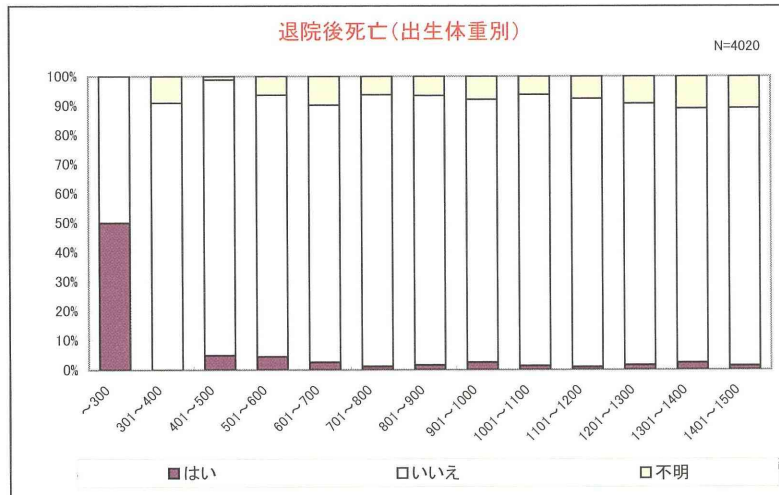
分母=死亡退院が「いいえ」、ただし無回答を除く



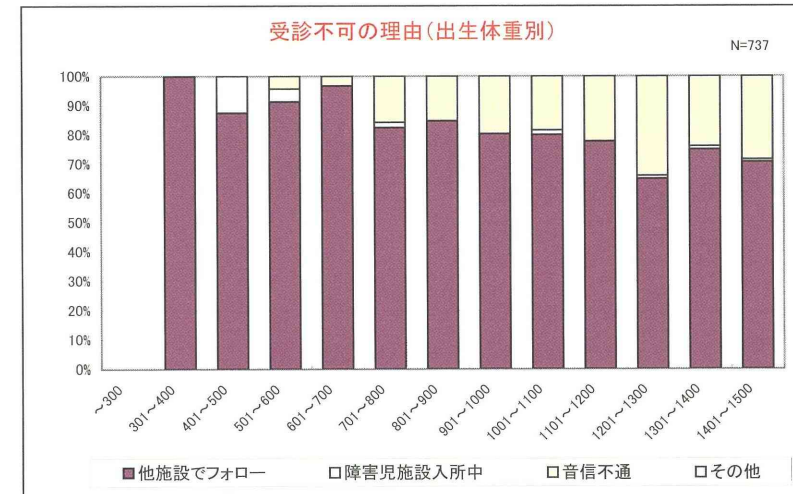
分母=死亡退院が「いいえ」、ただし無回答を除く



分母=死亡退院が「いいえ」、ただし無回答を除く



分母=死亡退院が「いいえ」、ただし無回答を除く



分母=死亡退院が「いいえ」、ただし無回答を除く