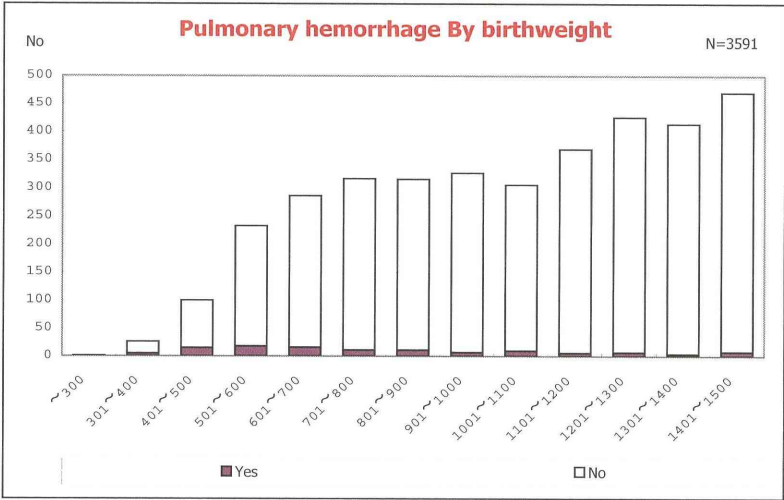
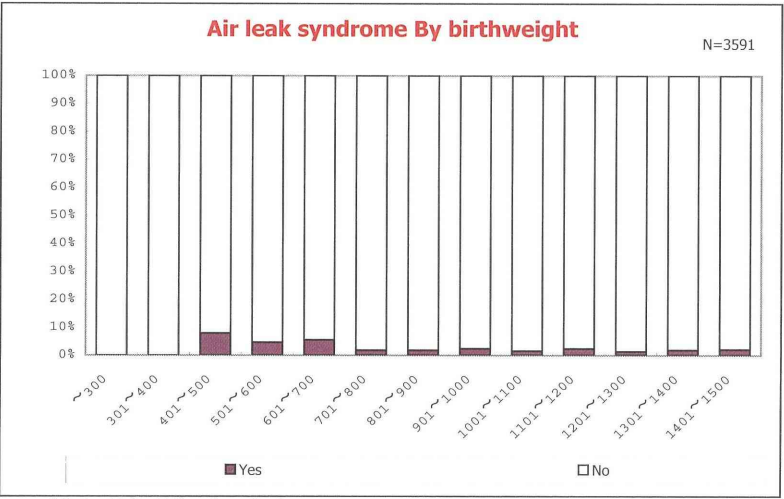


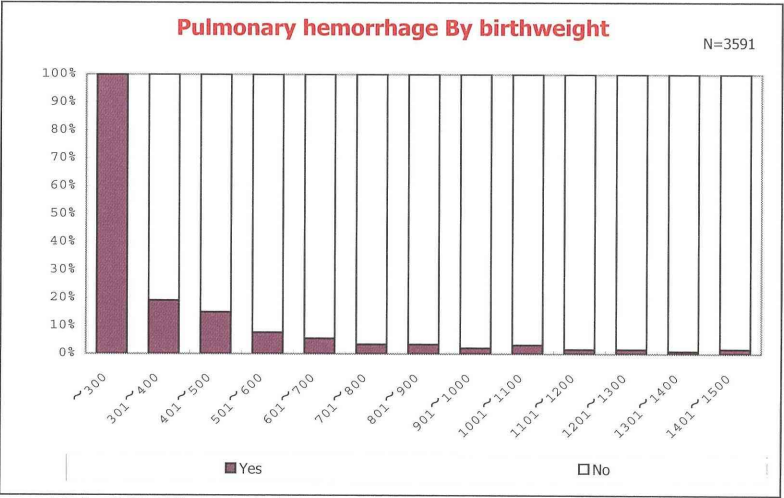
among infants with live birth and remained



among infants with live birth and remained



among infants with live birth and remained

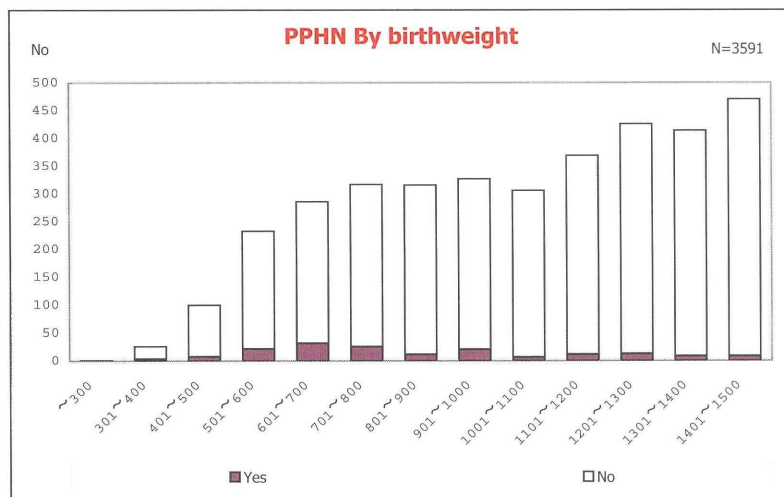


among infants with live birth and remained

資料95

Analysis results on infants born in 2010

III-22/53

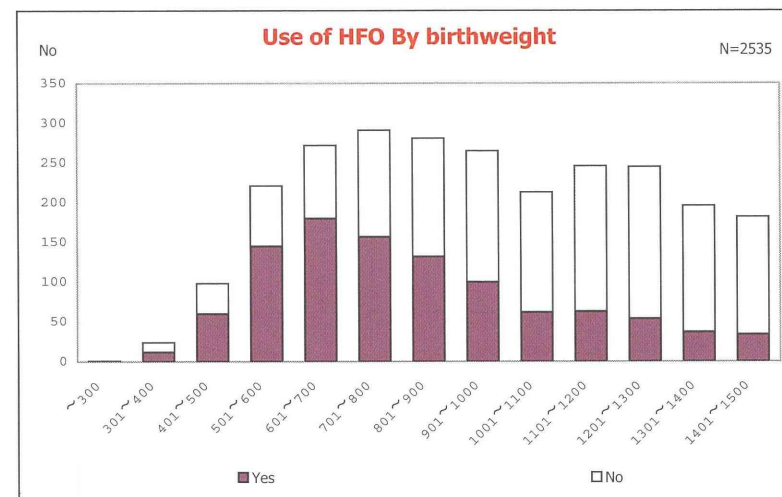


among infants with live birth and remained

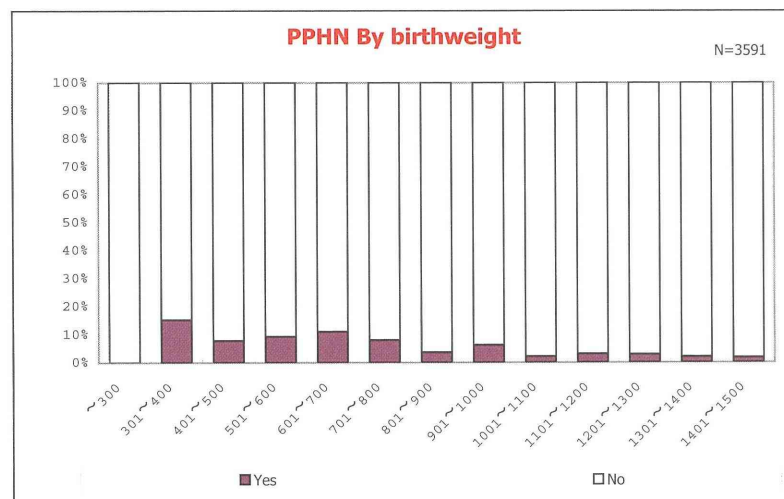
資料96

Analysis results on infants born in 2010

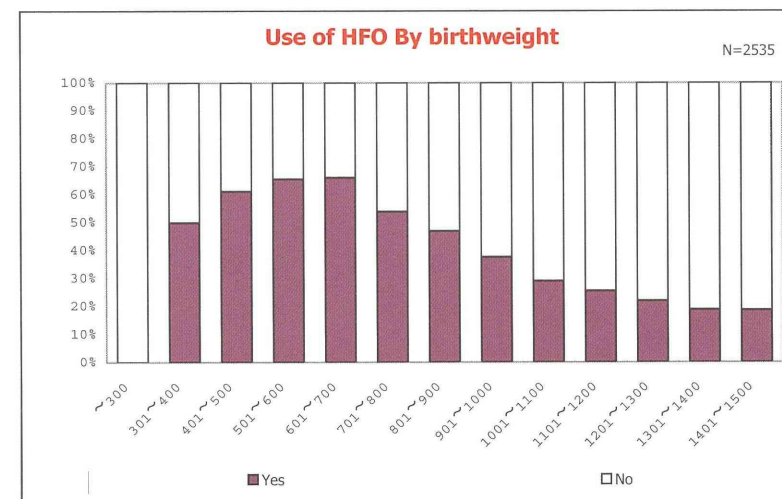
III-23/53



among infants with live birth, remained and mechanical ventilation



among infants with live birth and remained

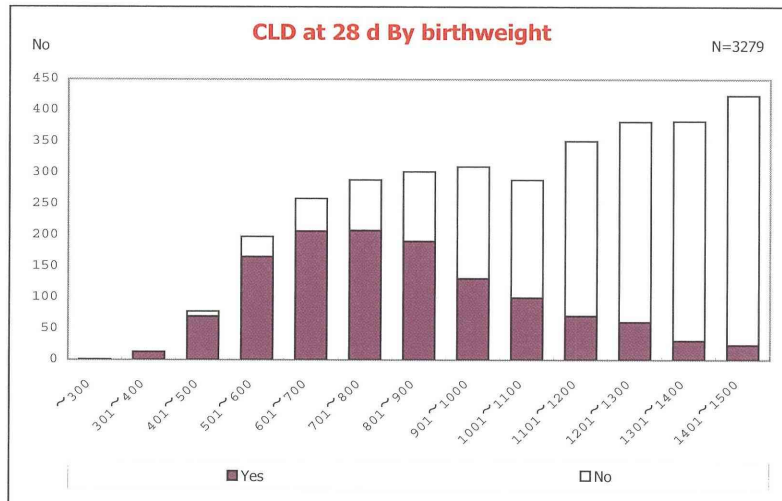


among infants with live birth, remained and mechanical ventilation

資料97

Analysis results on infants born in 2010

III-24/53

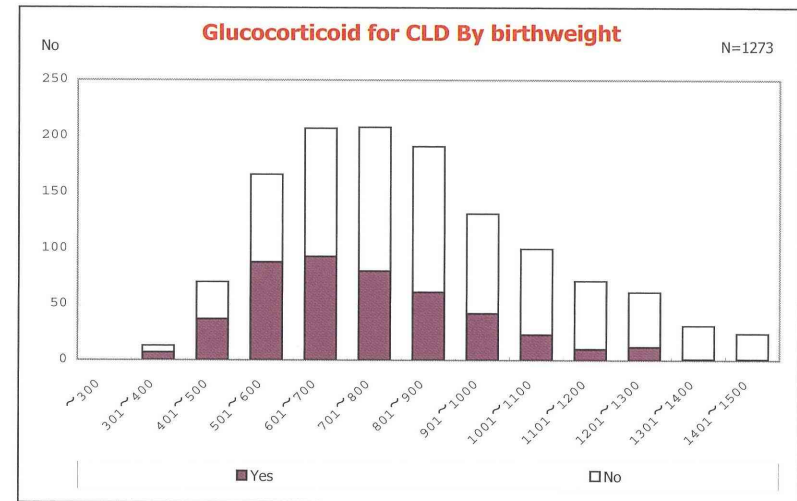


among infants with live birth, remained and alive at 28 days of age

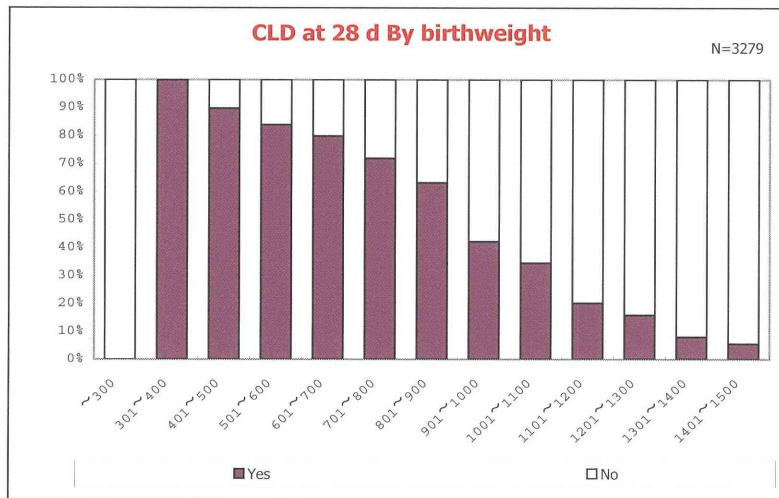
資料98

Analysis results on infants born in 2010

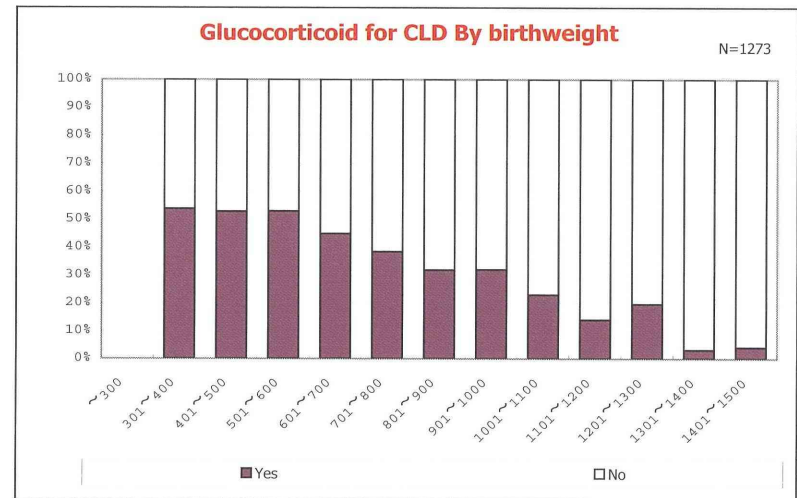
III-25/53



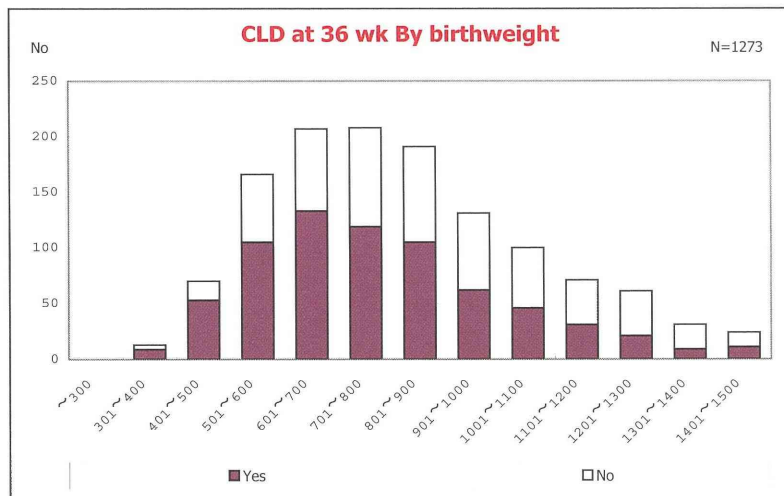
among infants with CLD



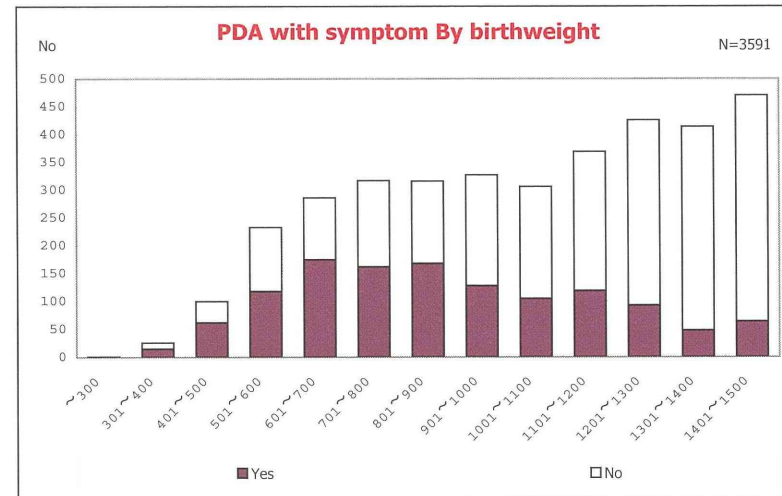
among infants with live birth, remained and alive at 28 days of age



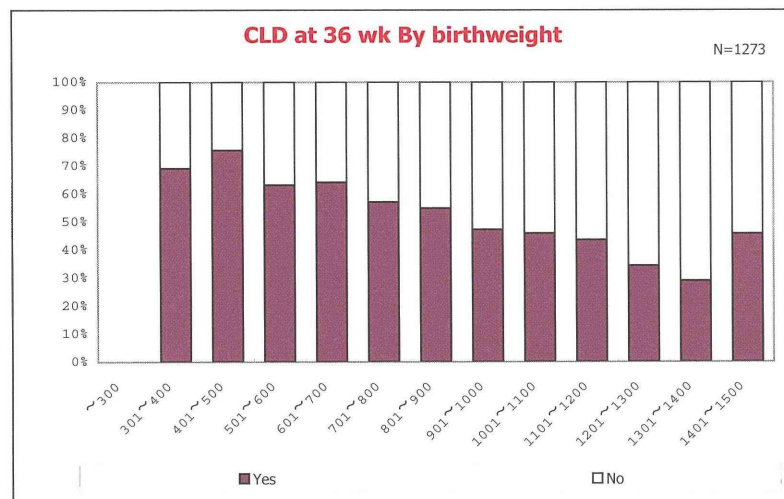
among infants with CLD



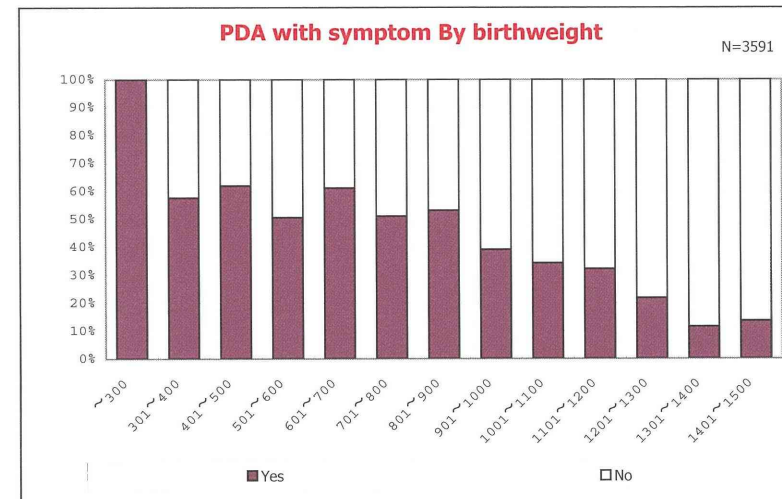
among infants with live birth, remained, alive at 36 wk(corrected age), and CLD



among infants with live birth and remained

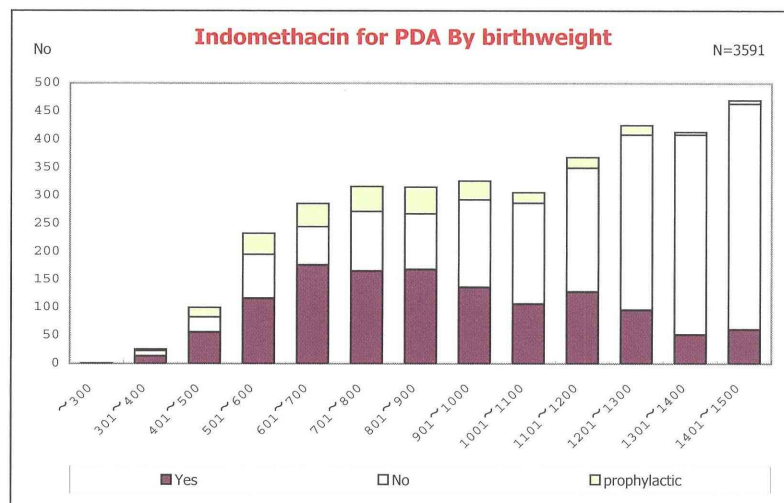


among infants with live birth, remained, alive at 36 wk(corrected age), and CLD

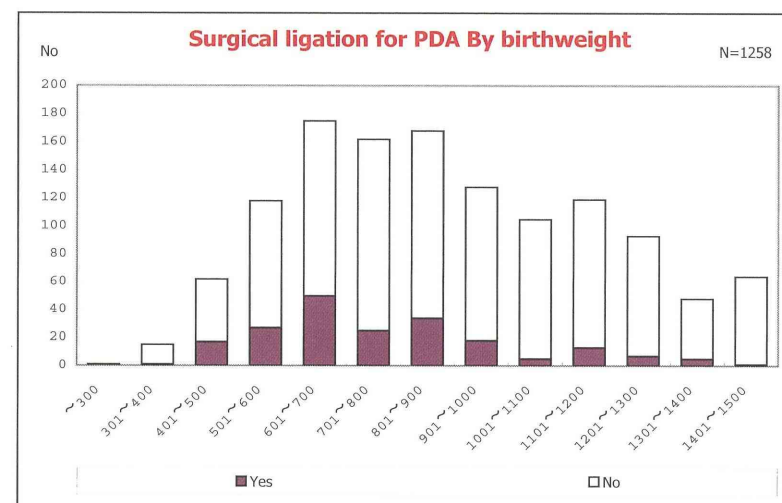


among infants with live birth and remained

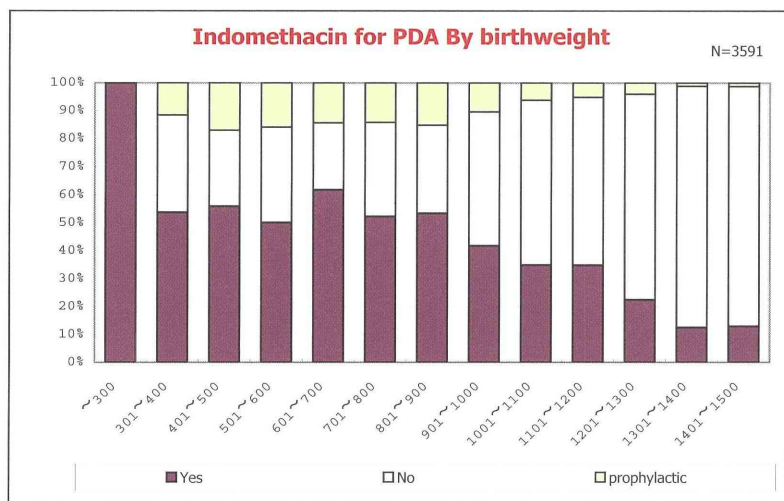




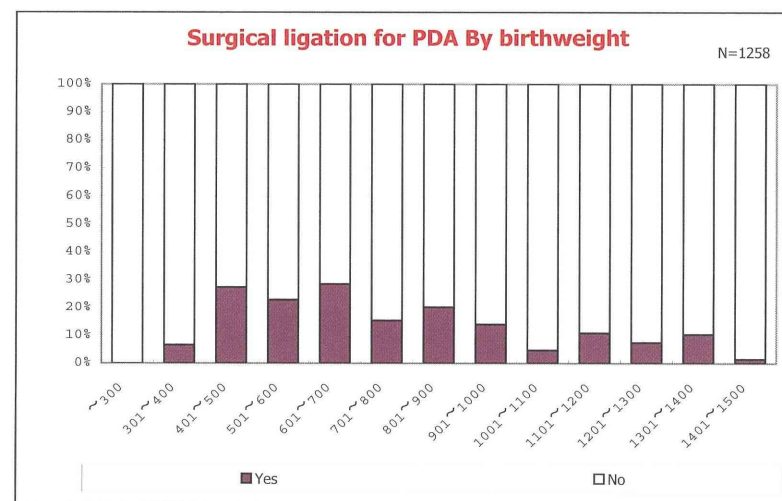
among infants with live birth and remained



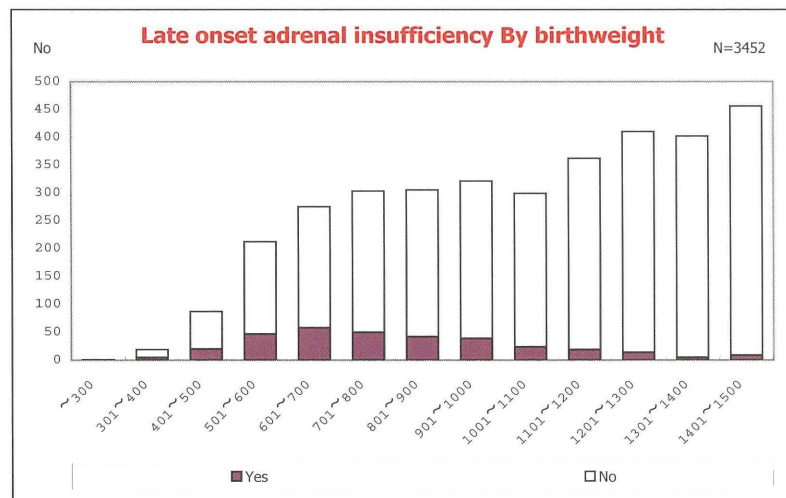
among infants with symptomatic PDA



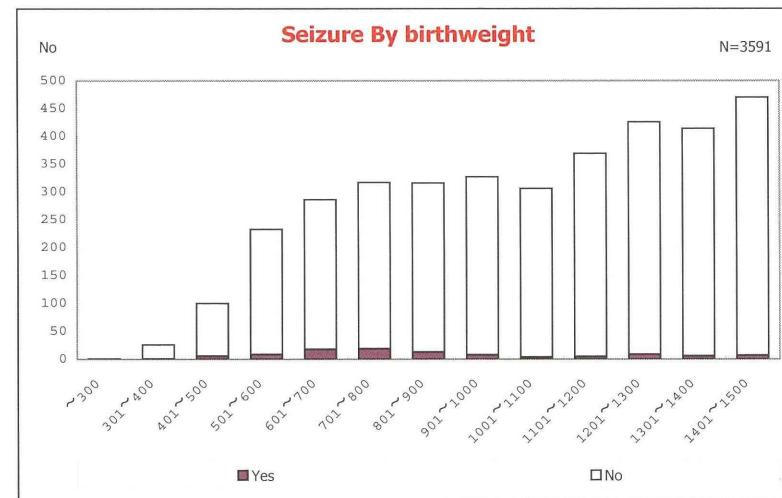
among infants with live birth and remained



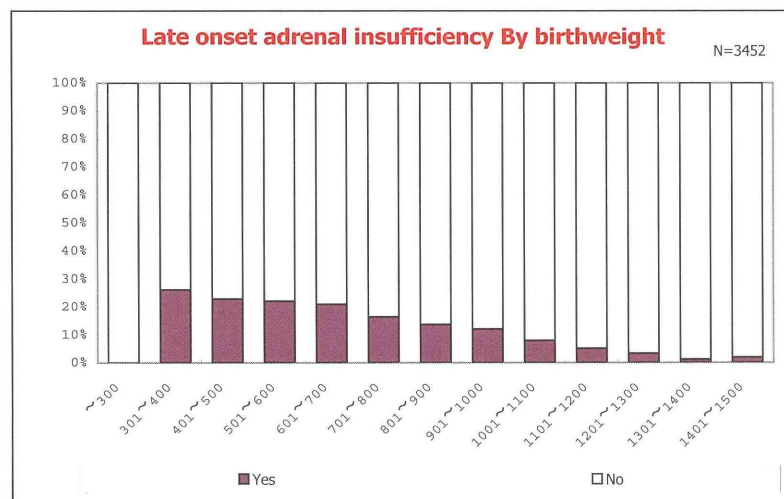
among infants with symptomatic PDA



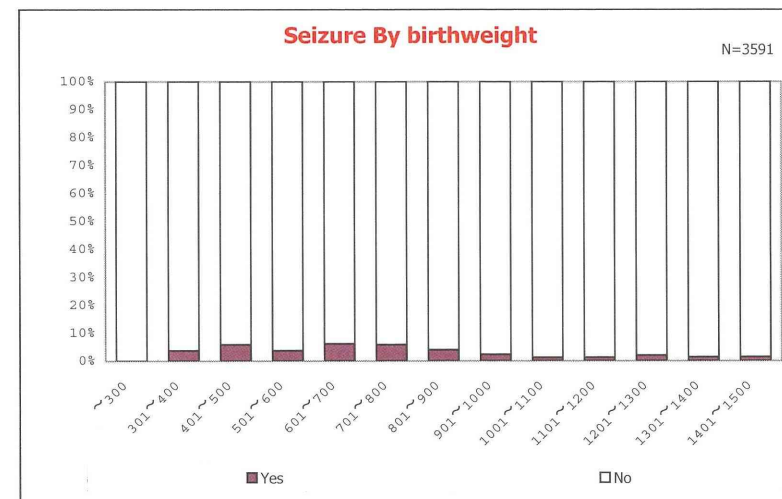
among infants with live birth, remained and alive at 7 d



among infants with live birth and remained



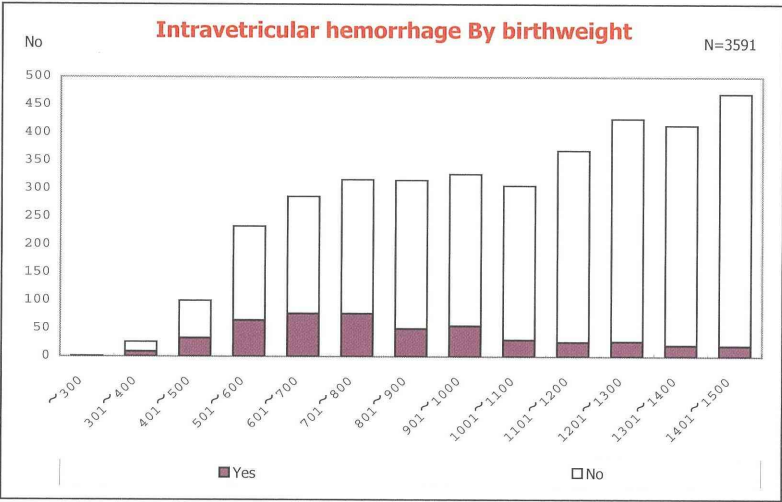
among infants with live birth, remained and alive at 7 d



among infants with live birth and remained

Analysis results on infants born in 2010

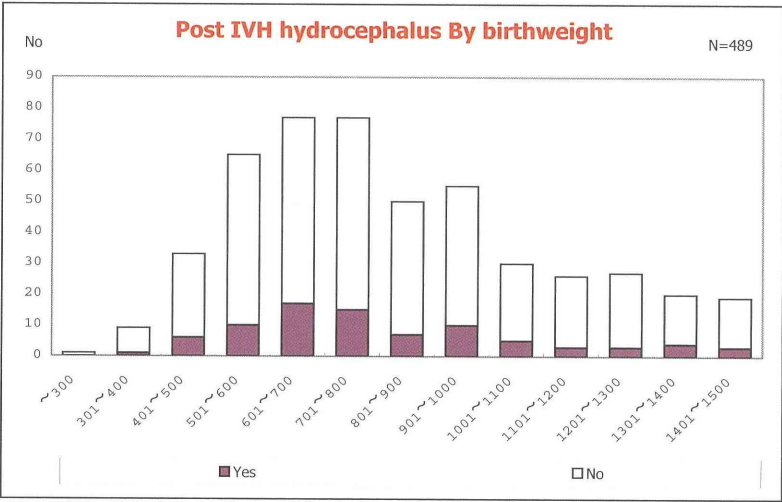
III-32/53



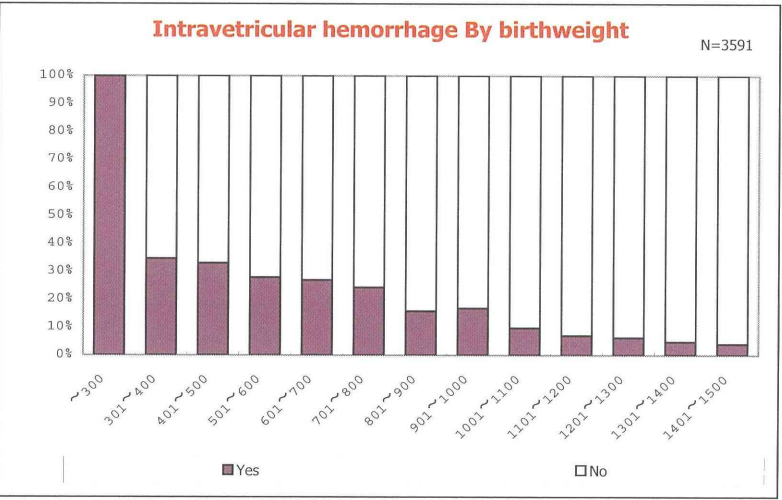
among infants with live birth and remained

Analysis results on infants born in 2010

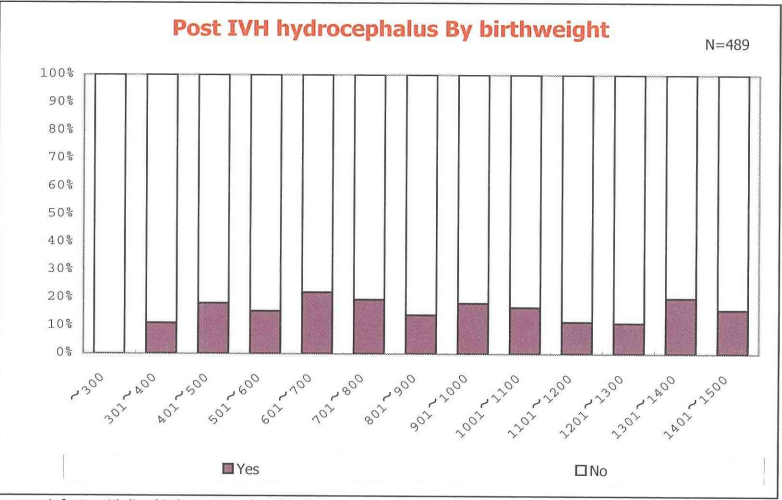
III-33/53



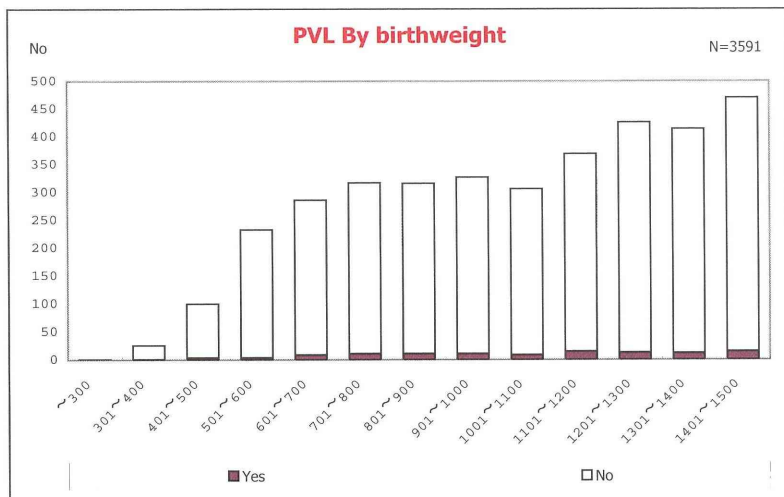
among infants with live birth, remained and IVH



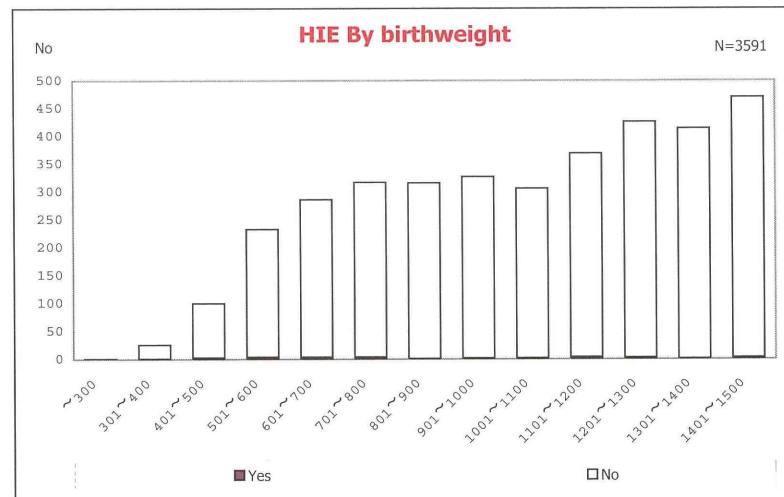
among infants with live birth and remained



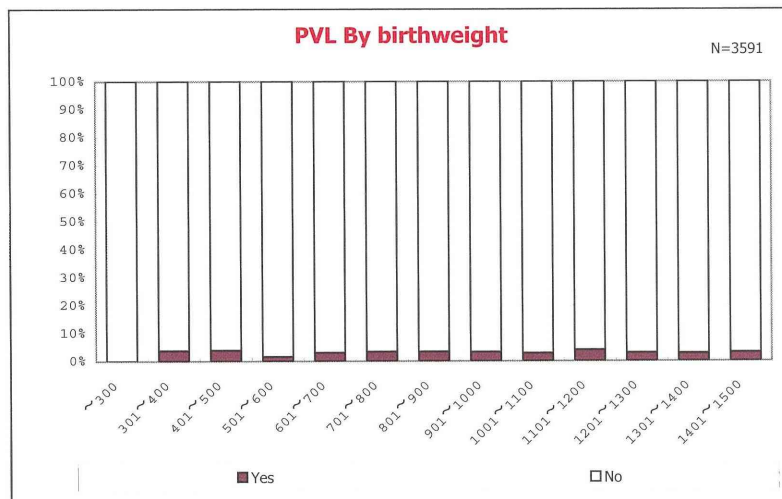
among infants with live birth, remained and IVH



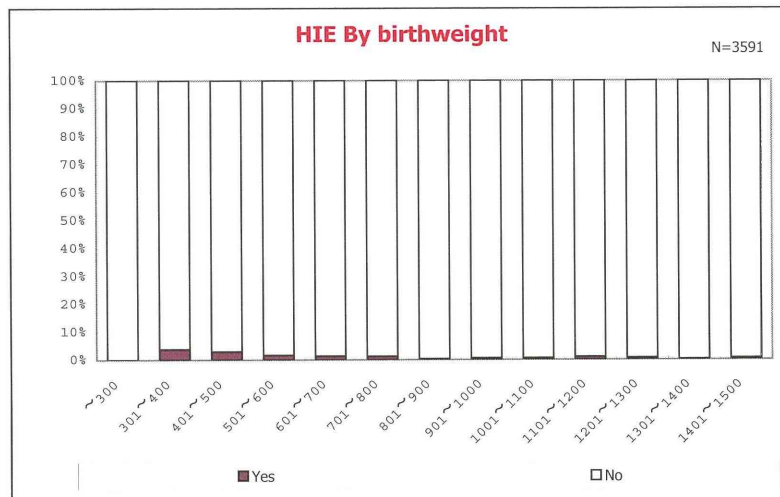
among infants with live birth and remained



among infants with live birth and remained



among infants with live birth and remained

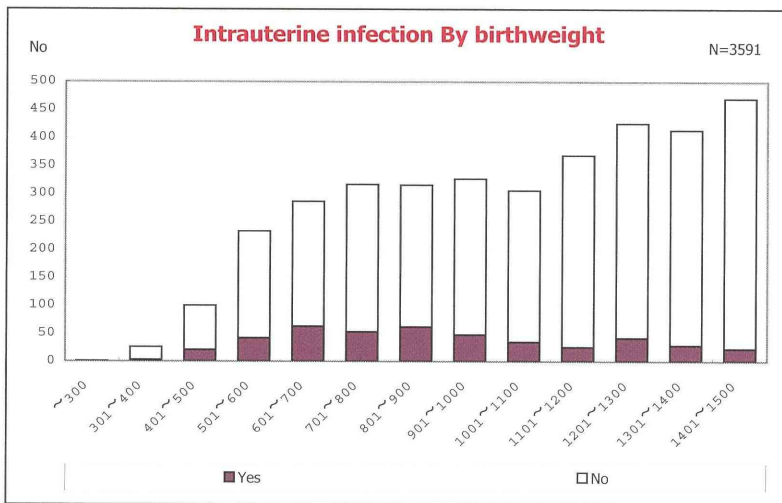


among infants with live birth and remained

資料109

Analysis results on infants born in 2010

III-36/53

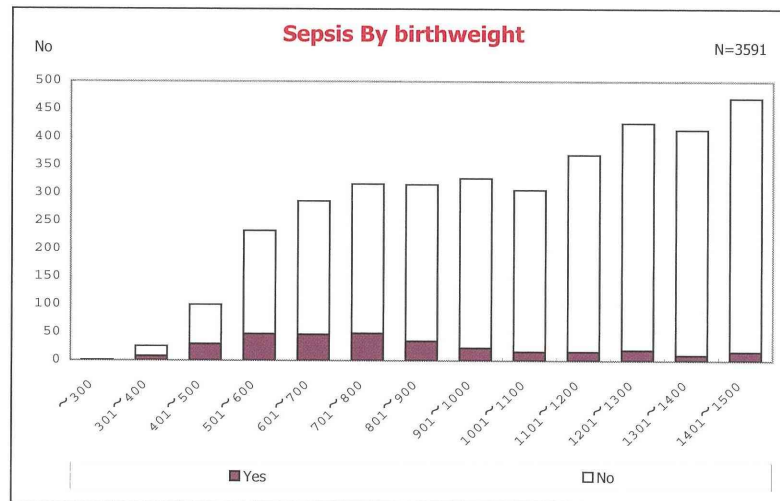


among infants with live birth and remained

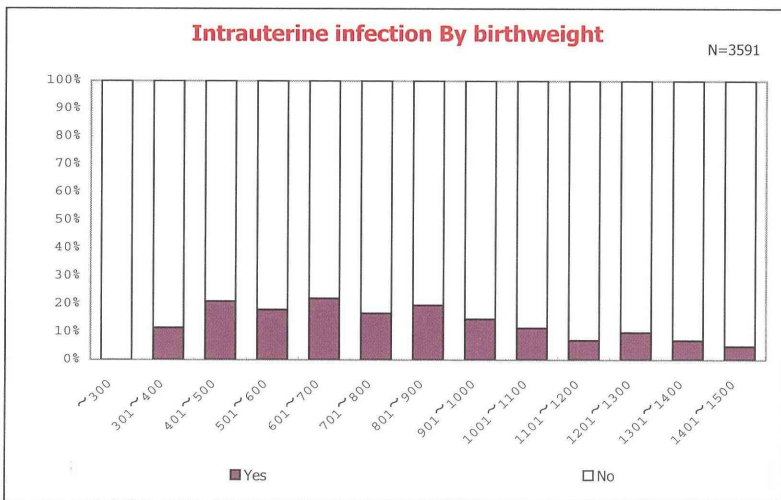
資料110

Analysis results on infants born in 2010

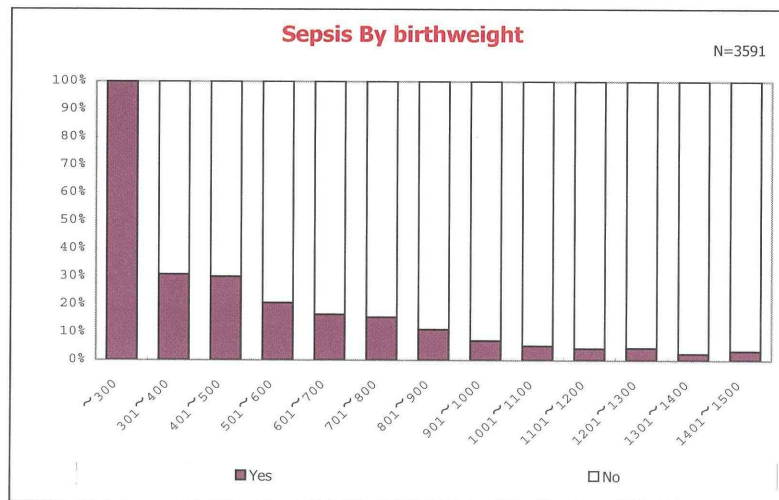
III-37/53



among infants with live birth and remained

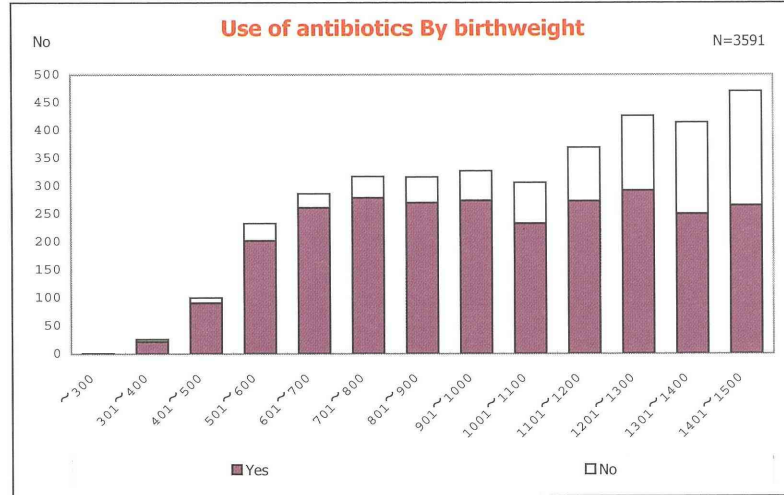


among infants with live birth and remained

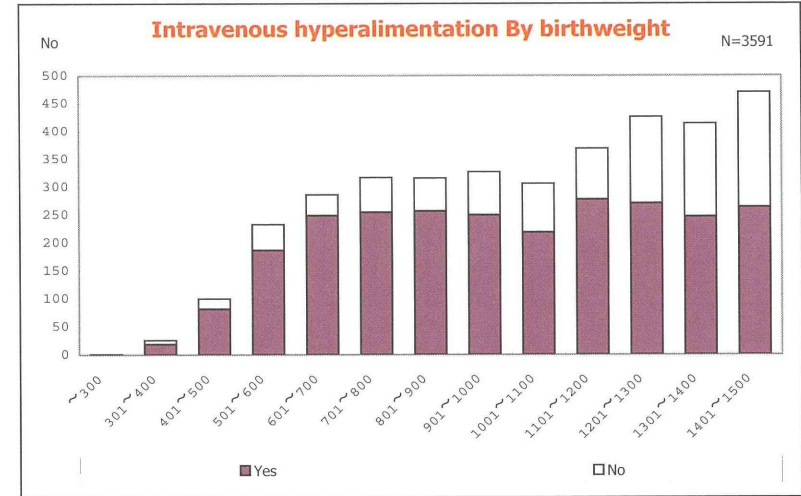


among infants with live birth and remained

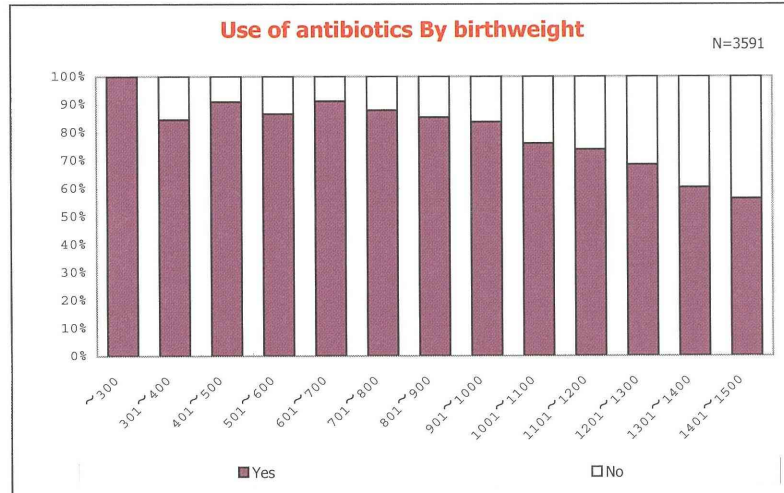




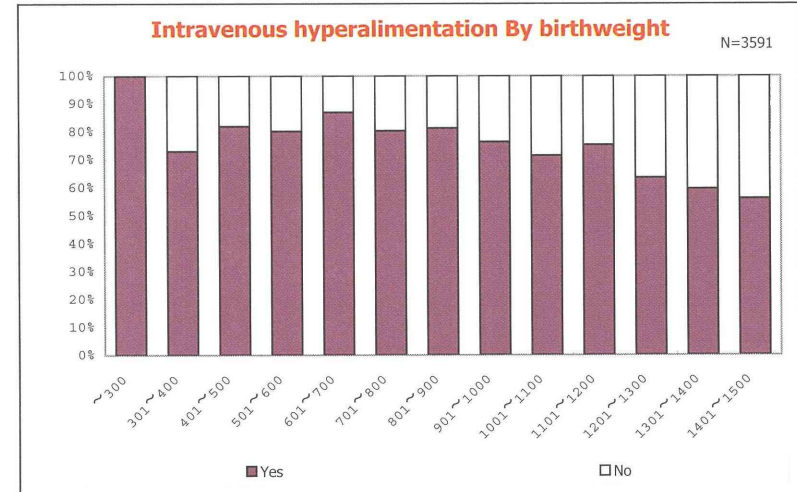
among infants with live birth and remained



among infants with live birth and remained



among infants with live birth and remained

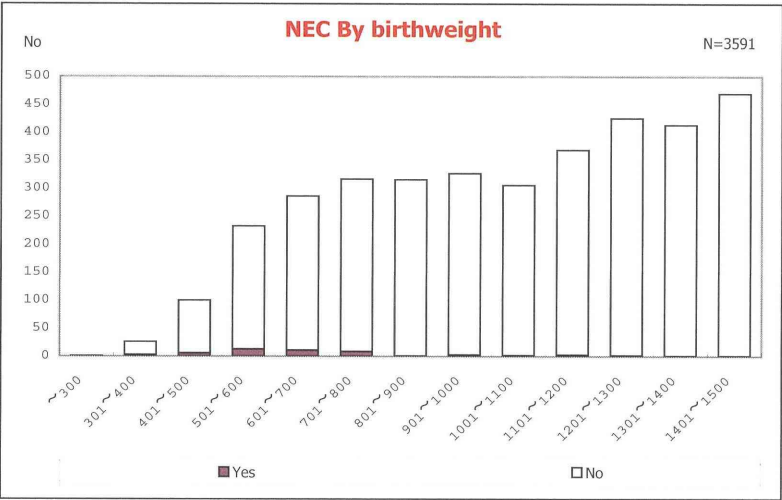


among infants with live birth and remained

資料113

Analysis results on infants born in 2010

III-40/53

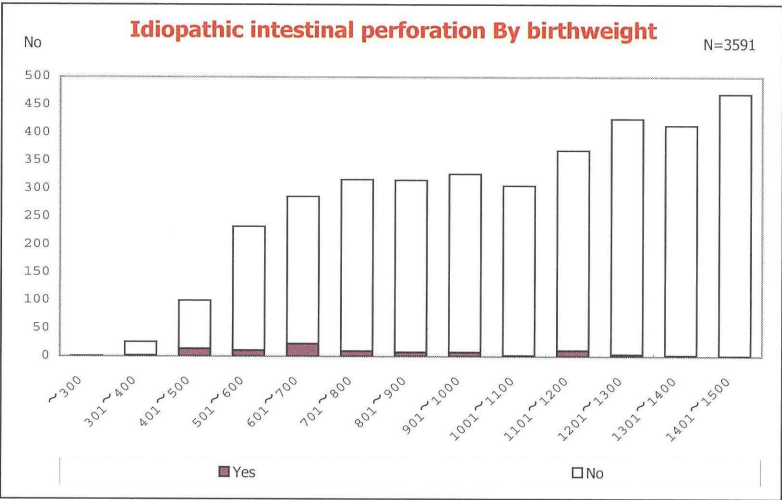


among infants with live birth and remained

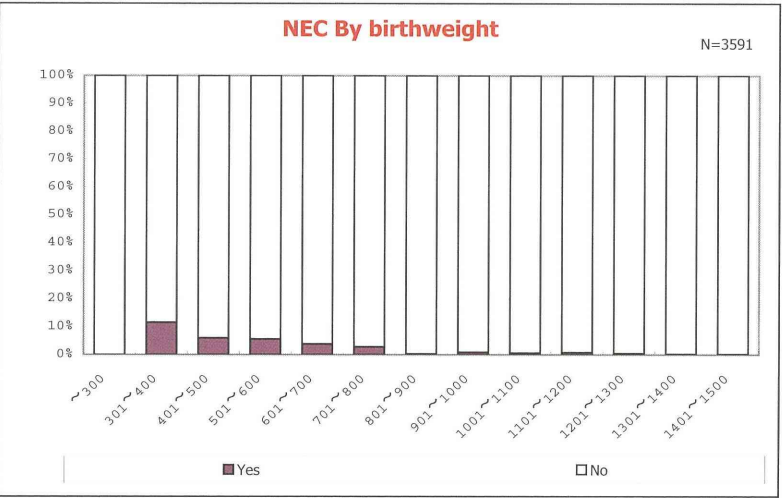
資料114

Analysis results on infants born in 2010

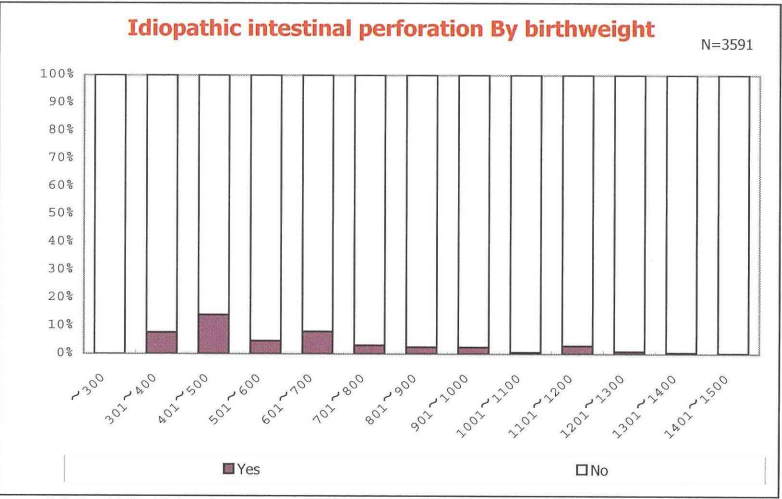
III-41/53



among infants with live birth and remained



among infants with live birth and remained

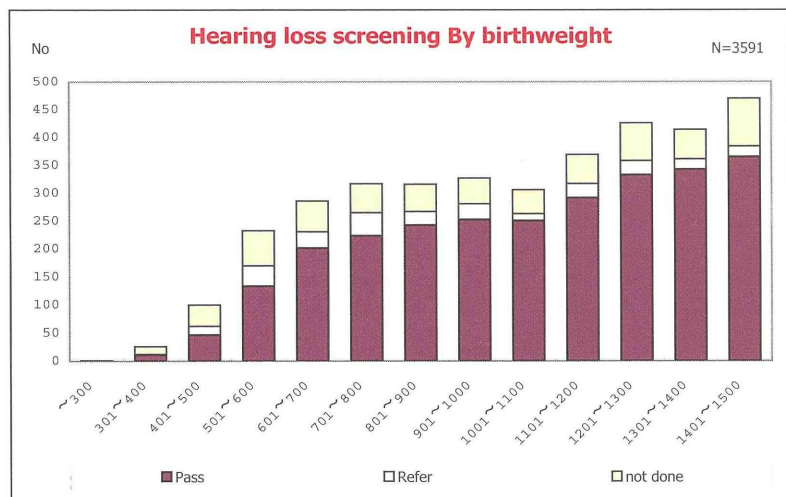


among infants with live birth and remained

資料115

# Analysis results on infants born in 2010

III-42/53

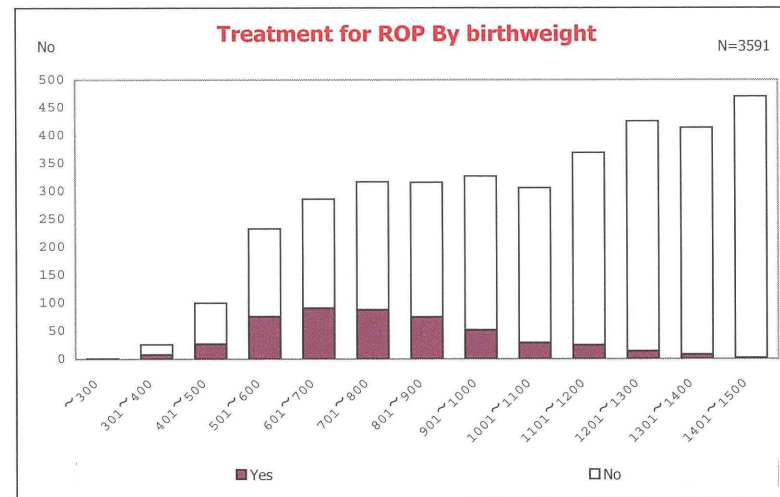


among infants with live birth and remained

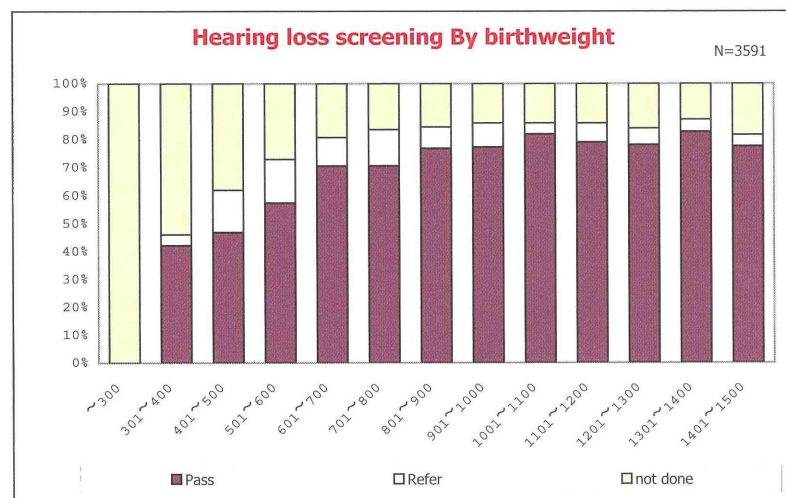
資料116

# Analysis results on infants born in 2010

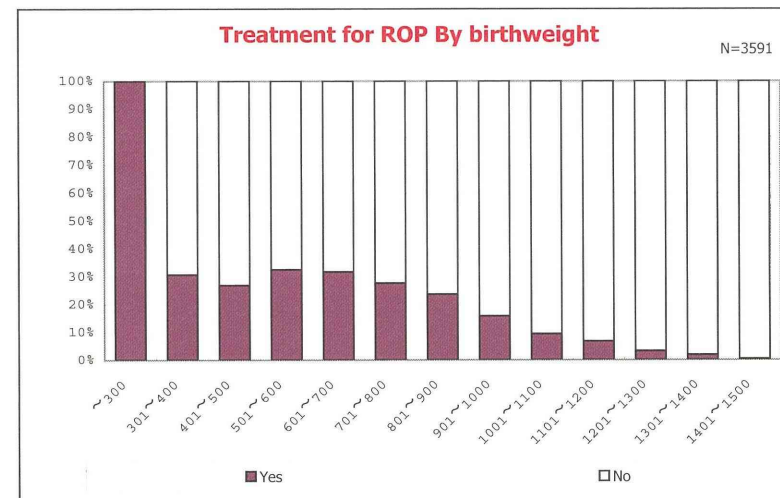
III-43/53



among infants with live birth and remained



among infants with live birth and remained

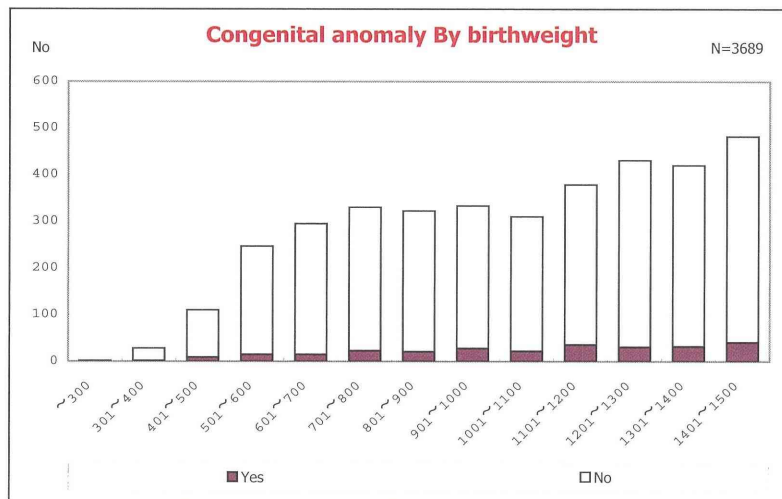


among infants with live birth and remained

資料117

Analysis results on infants born in 2010

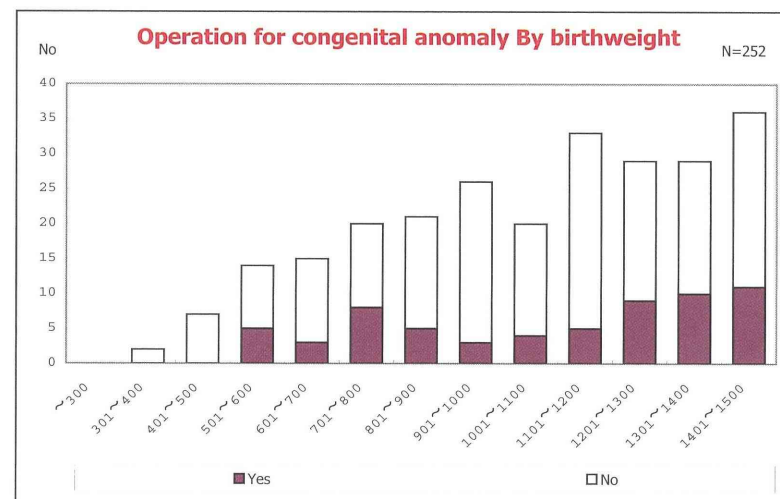
III-44/53



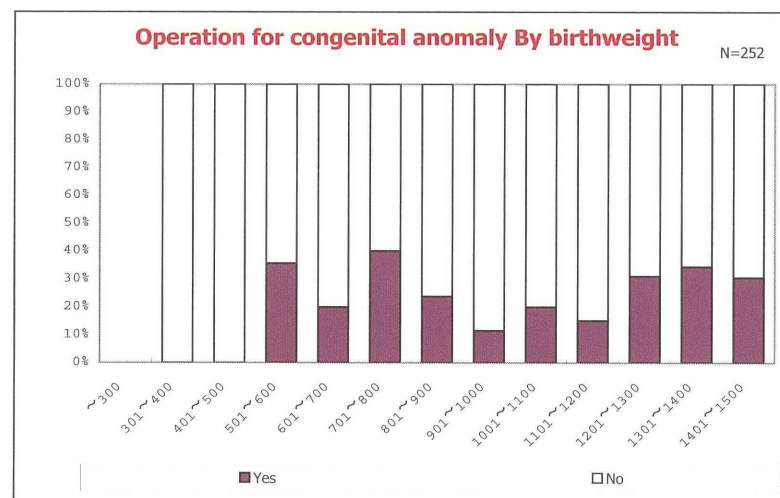
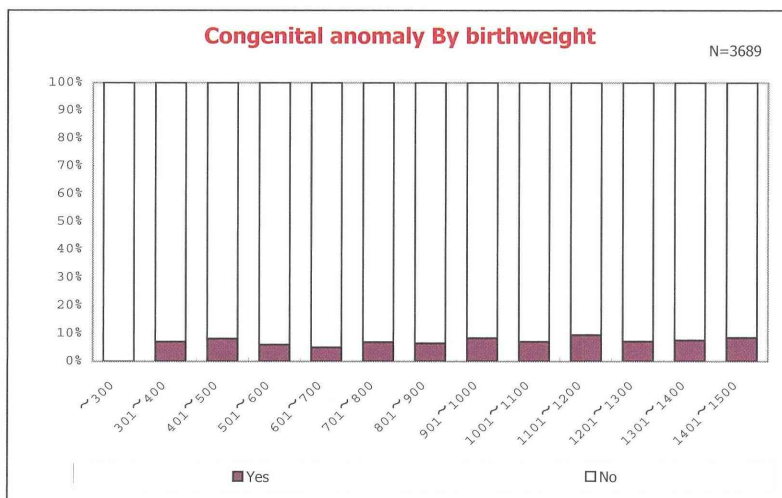
資料118

Analysis results on infants born in 2010

III-45/53



among infants with live birth, remained and congenital anomaly



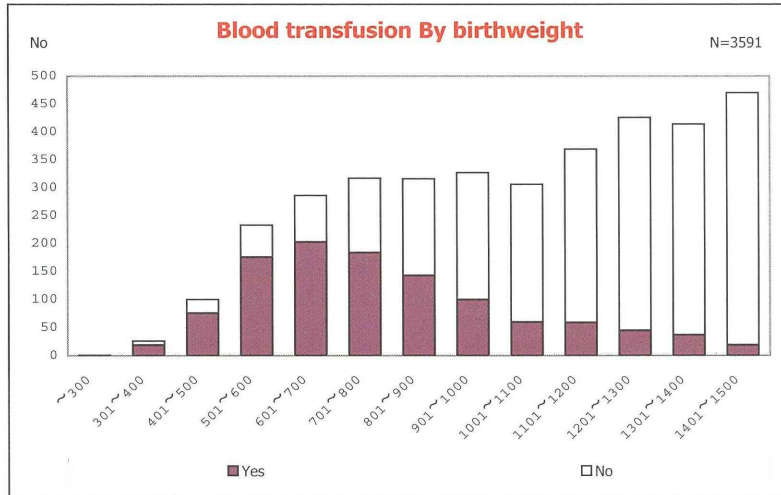
among infants with live birth, remained and congenital anomaly



資料119

Analysis results on infants born in 2010

III-46/53

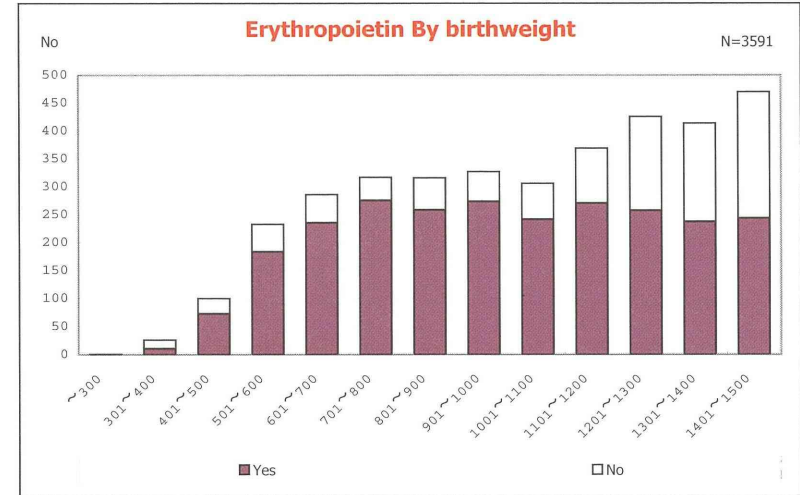


among infants with live birth and remained

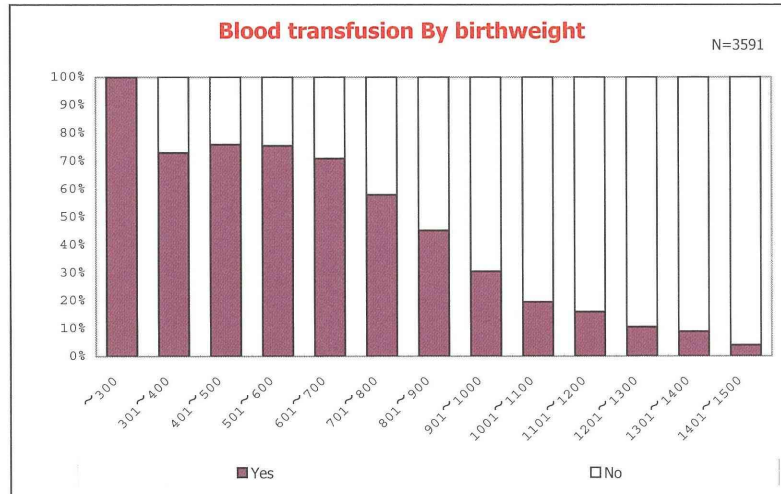
資料120

Analysis results on infants born in 2010

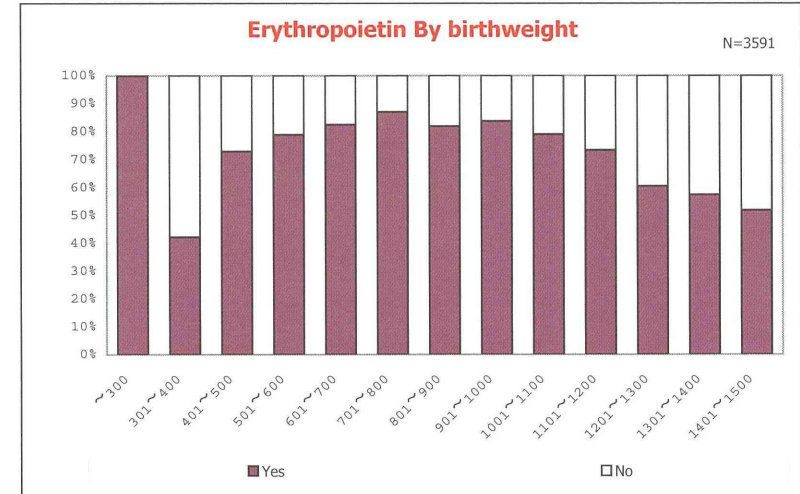
III-47/53



among infants with live birth and remained

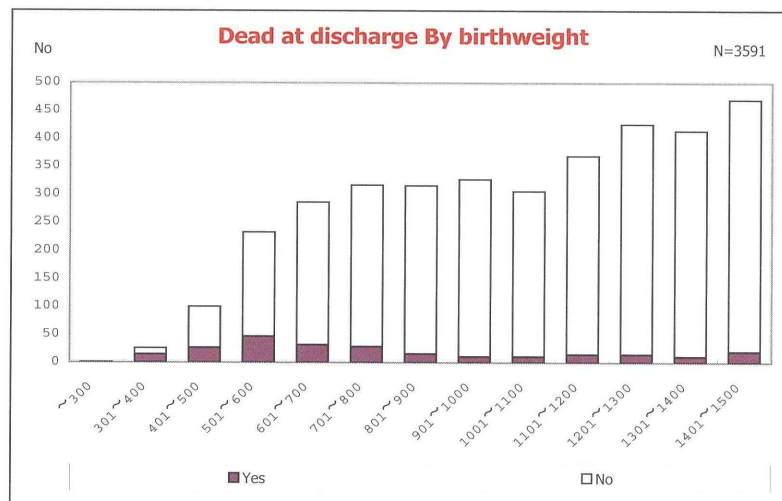


among infants with live birth and remained

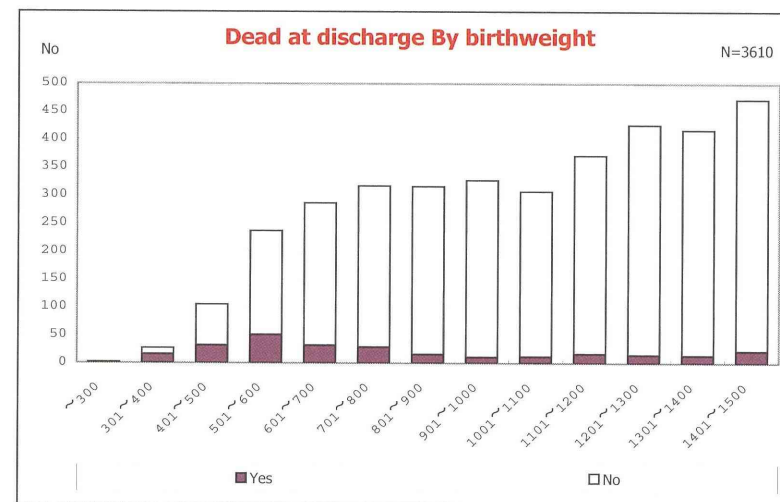


among infants with live birth and remained

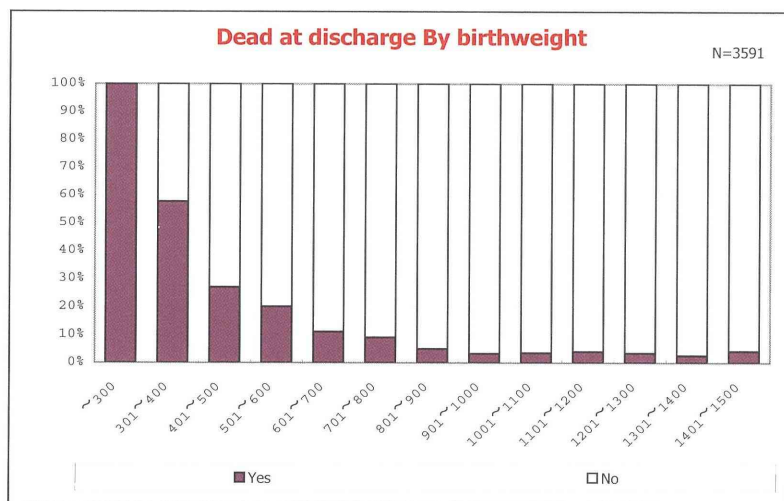




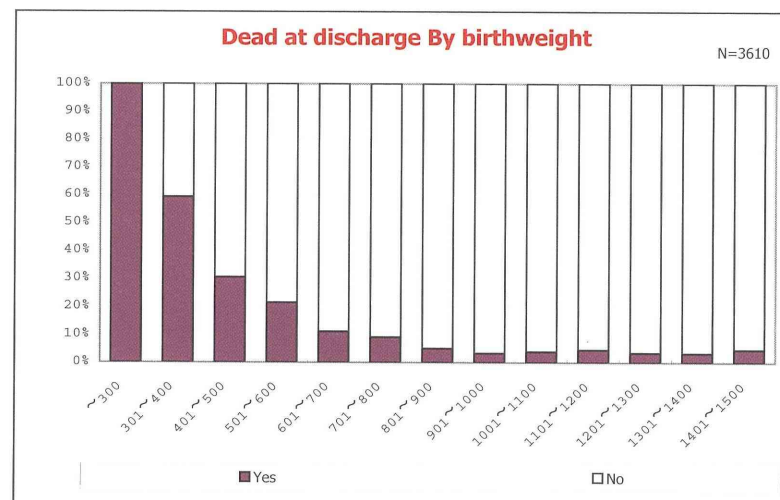
among infants with live birth and remained



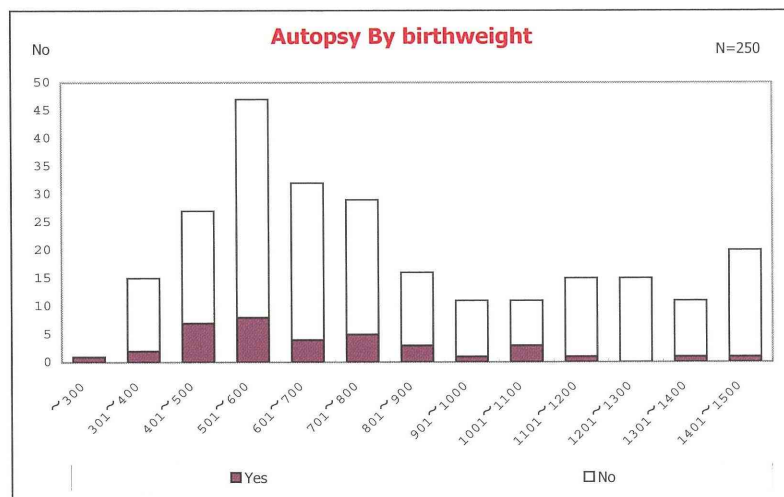
among infants with live birth



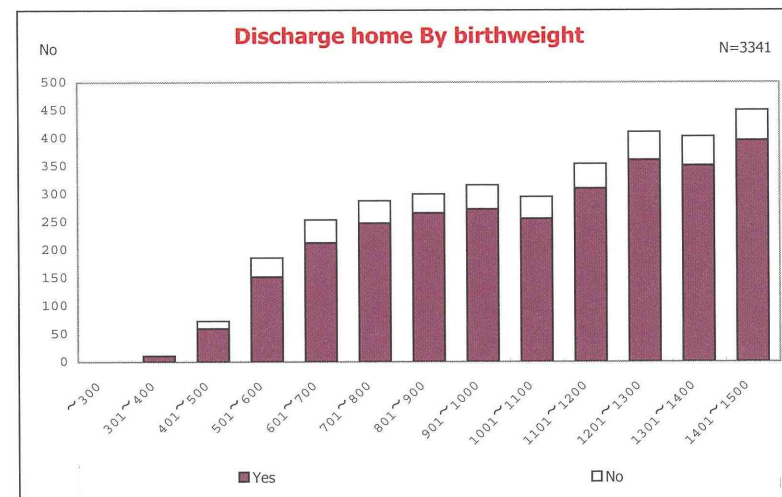
among infants with live birth and remained



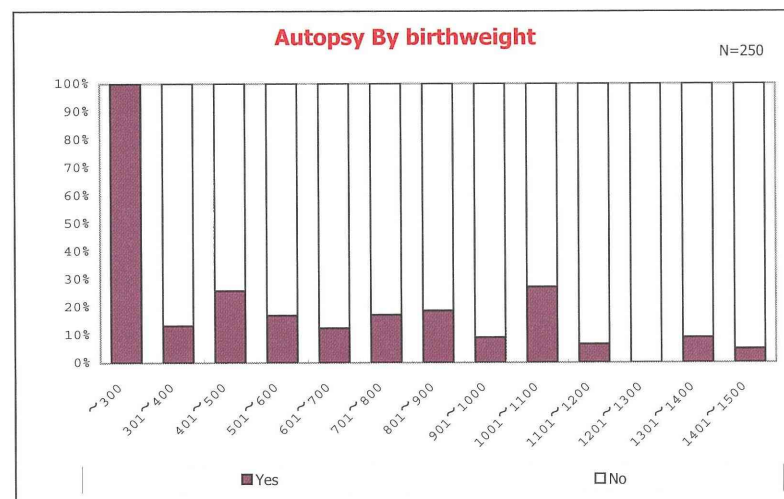
among infants with live birth



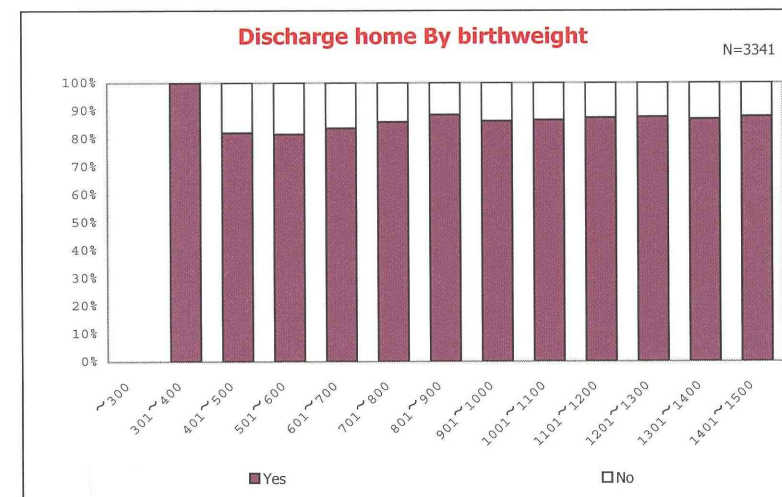
among infants with live birth, remained and dead at discharge



among infants with live birth, remained and alive at discharge



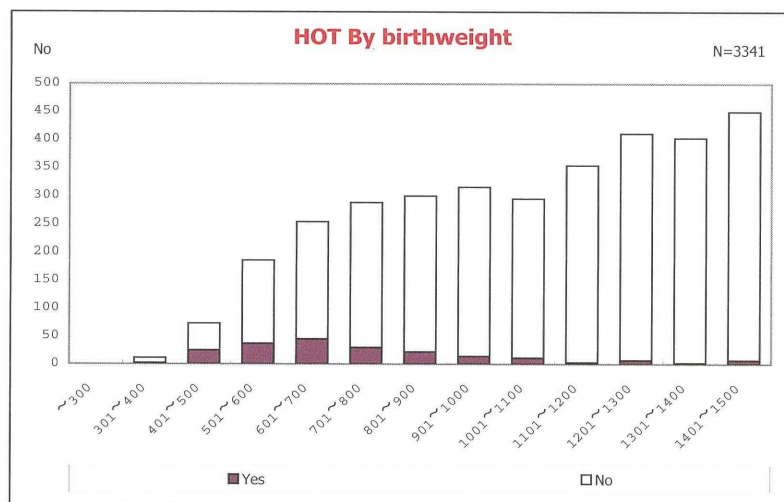
among infants with live birth, remained and dead at discharge



among infants with live birth, remained and alive at discharge

## Analysis results on infants born in 2010

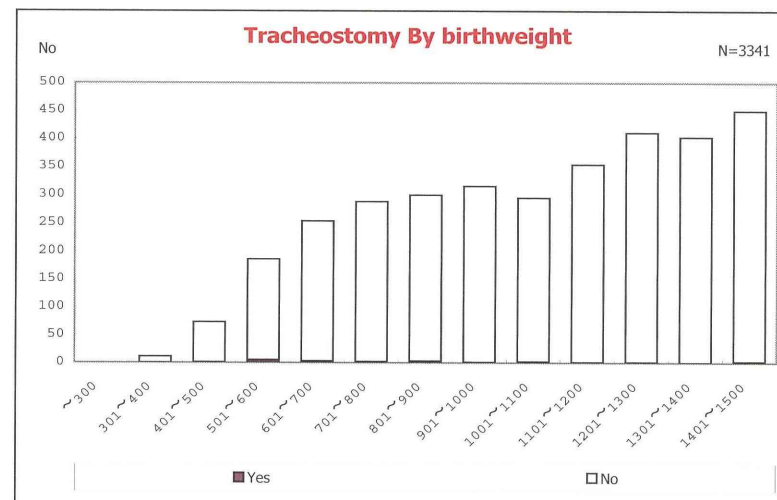
III-52/53



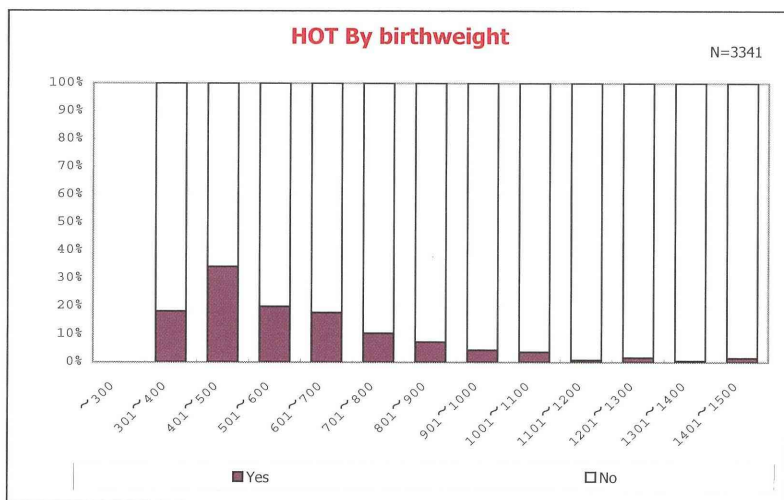
among infants with live birth, remained and alive at discharge

## Analysis results on infants born in 2010

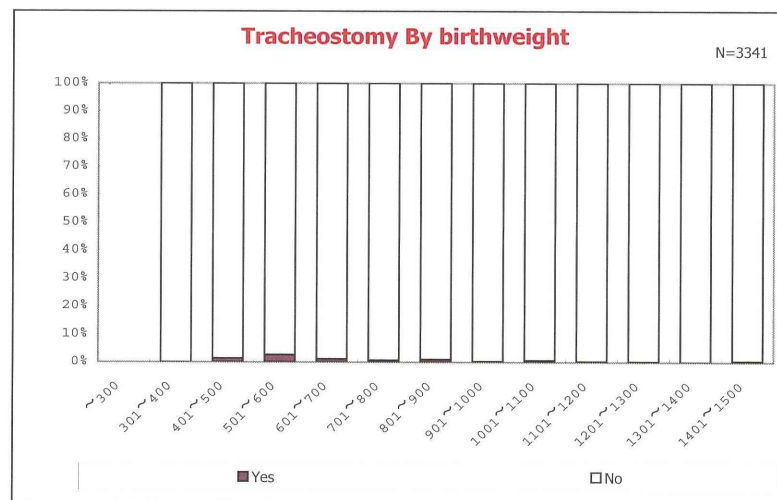
III-53/53



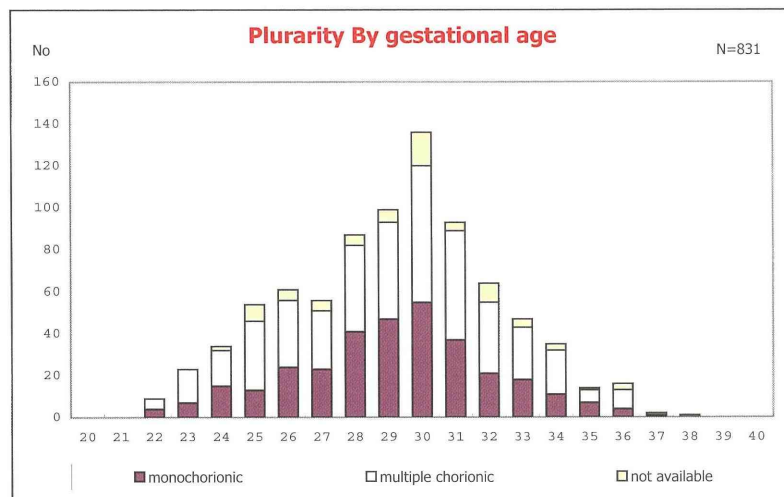
among infants with live birth and alive at discharge



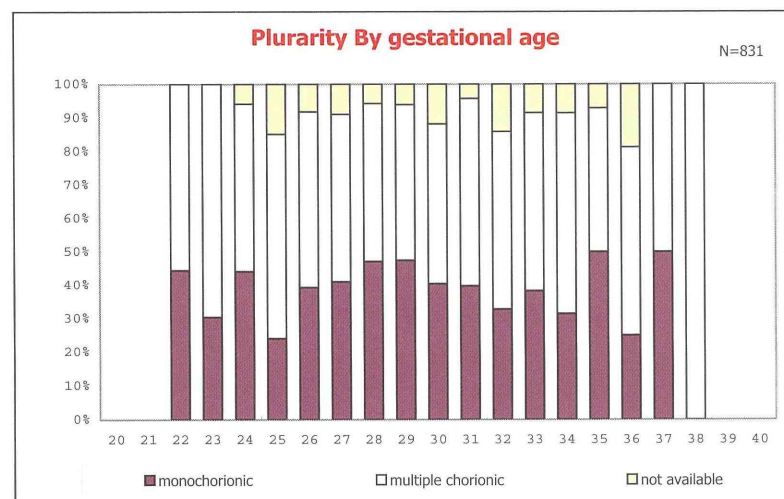
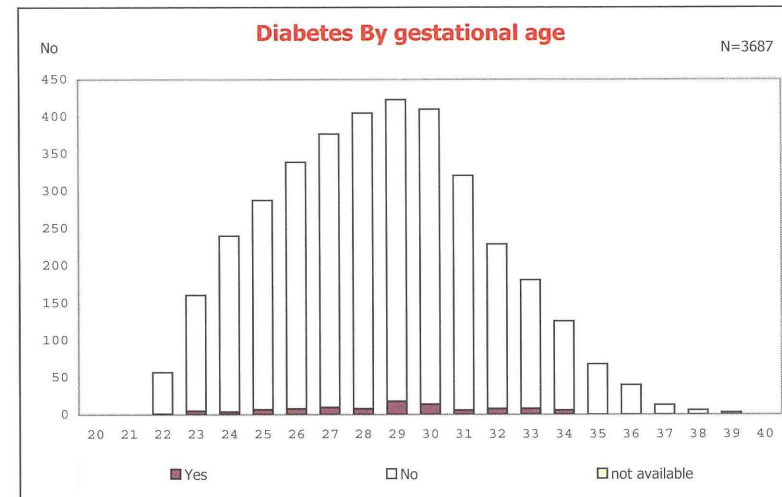
among infants with live birth, remained and alive at discharge



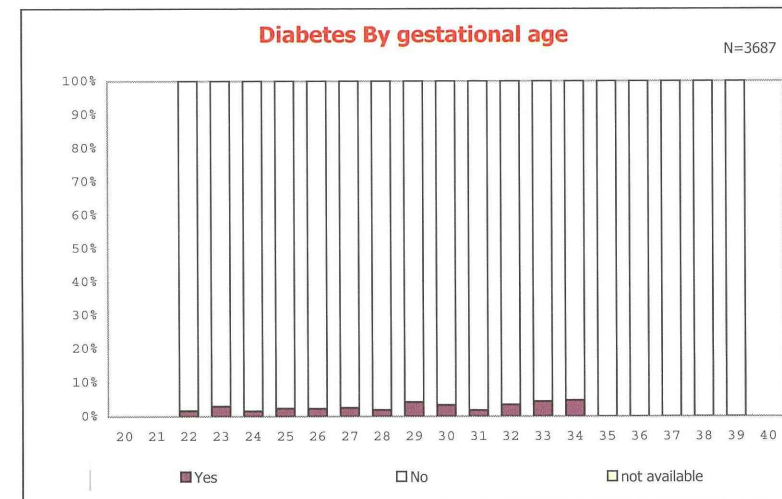
among infants with live birth and alive at discharge



among infants with number of fetus 2&gt;



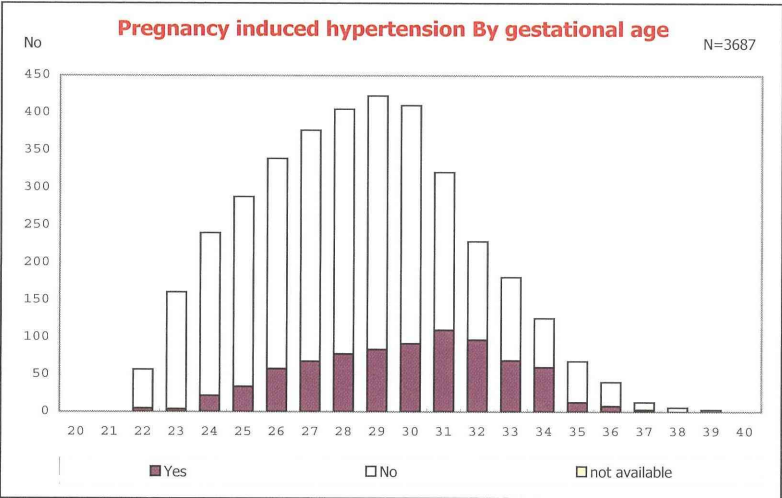
among infants with number of fetus 2&gt;



資料129

Analysis results on infants born in 2010

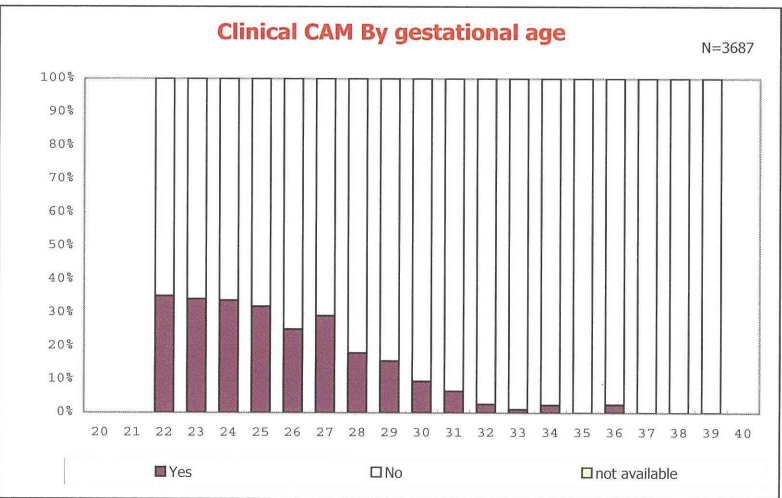
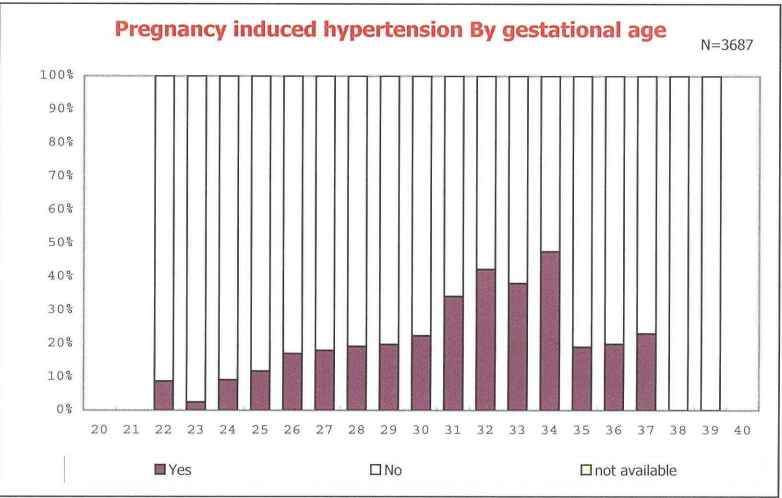
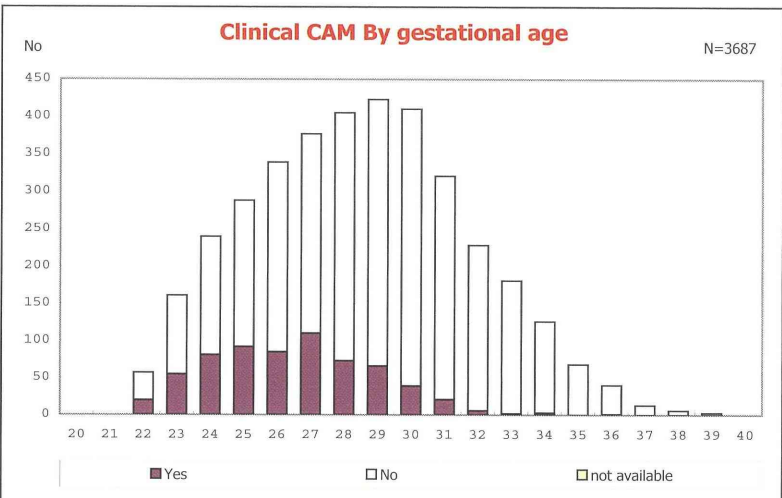
IV-3/53



資料130

Analysis results on infants born in 2010

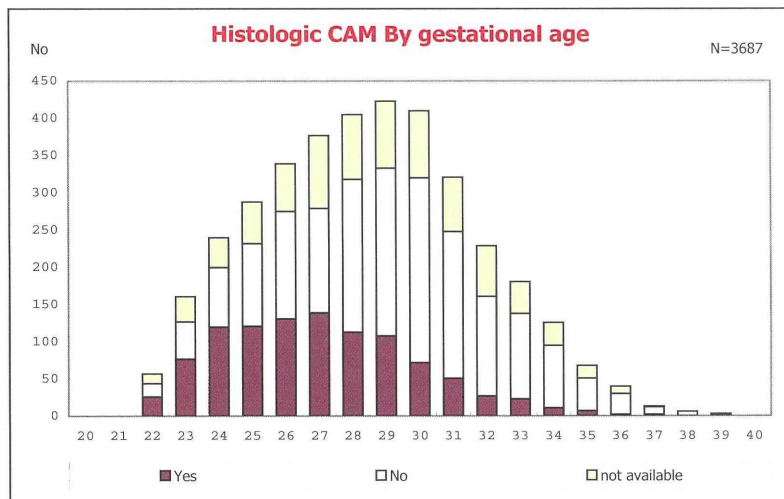
IV-4/53





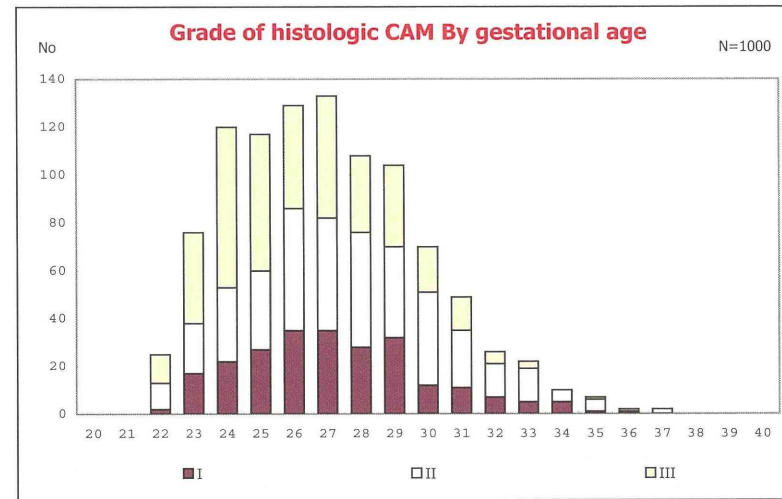
資料131  
Analysis results on infants born in 2010

IV-5/53

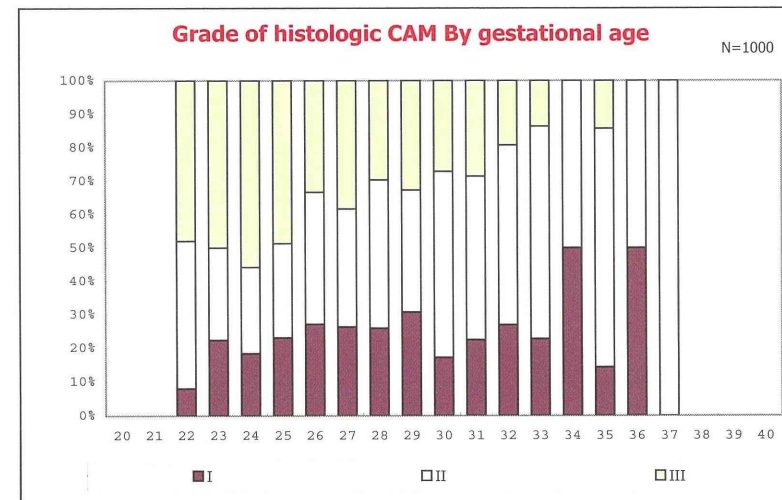
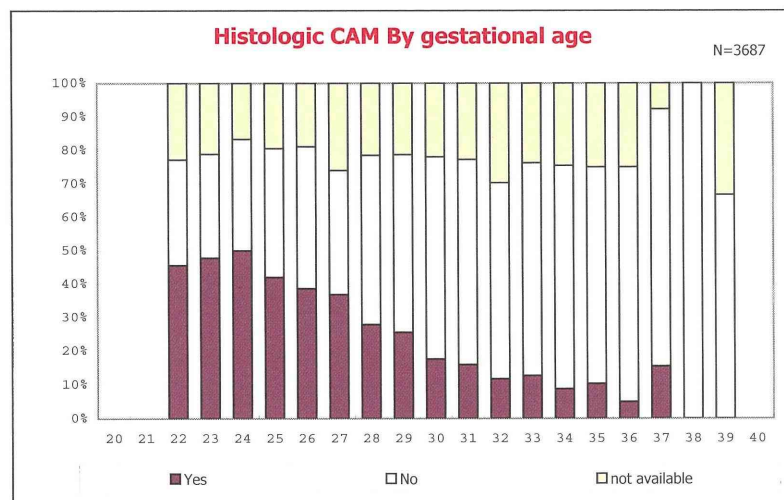


資料132  
Analysis results on infants born in 2010

IV-6/53



among infants with positive histologic CAM



among infants with positive histologic CAM