

Fig. 3. A schematic model of the diverse cAMP signaling pathway. Both Epac and PKA synergistically promoted intimal cushion formation in the DA, but they work in two distinct ways: Epac-mediated (acute) and PKA-mediated (chronic) promotion. AC: adenylyl cyclase.

2-3. Extracellular matrix in the DA

Vascular cells are defined by the ways in which they regulate their extracellular matrix, and changes in the extracellular matrix, in turn, determine vascular cell phenotype, *i.e.*, the ability to differentiate, proliferate, and migrate (Rabinovitch, 1996). It has been reported that DA smooth muscle cells produce two-fold more fibronectin than aortic smooth muscle cells (Rabinovitch, 1996). Mason *et al.* have demonstrated that preventing fibronectin-dependent intimal thickening would be a feasible manipulation to cause patent DA as a mode of treatment of congenital heart diseases (Mason *et al.*, 1999). Our previous study also demonstrated that maternally administered vitamin A increased fibronectin production and intimal thickening in the rat DA (Yokoyama *et al.*, 2007). Transforming growth factor beta and NO induce extracellular matrix including hyaluronan and fibronectin in DA smooth muscle cell (Rabinovitch, 1996).

Versican, an hyaluronan binding proteoglycan, plays an important role in proliferation and migration of vascular smooth muscle cells (Evanko *et al.*, 1999). Tanacin, a hexameric glycoprotein, also has been known to regulate vascular smooth muscle cell proliferation (Cowan *et al.*, 2000). Therefore, fibronectin and hyaluronan may not be the sole constituents of extracellular matrix in DA intimal thickening.

Closing remarks

The ductal closure occurs in two phases. During first few hours after birth in term newborns, there is acute and functional closure as a result of smooth muscle contraction of the

DA, which is triggered by an increase in oxygen tension and a decline in levels of circulating PGE₂. Importantly, prior to this, anatomical luminal narrowing develops through intimal thickening that occludes the vascular lumen and results in permanent closure after birth. Both PGE₂-EP4-cAMP downstream targets, Epac and PKA, induce intimal thickening in the DA. Chronic activation of EP4 induces hyaluronan-mediated smooth muscle cell migration via PKA, resulting in intimal thickening. Epac has an acute promoting effect on smooth muscle cell migration without hyaluronan production and thus intimal thickening in the DA.

Acknowledgements

This work was supported by grants from the Grant-in-Aid for Scientific Research (KAKENHI) (U.Y.), the Ministry of Health Labor and Welfare (S.M., Y.I.), the Ministry of Education, Culture, Sports, Science and Technology of Japan (S.M., Y.I.), the Yokohama Foundation for Advanced Medical Science (U.Y., S.M.), the Kanae Foundation for the Promotion for Medical Science (U.Y.), the Miyata Cardiology Research Promotion Funds (U.Y., S.M.), the Takeda Science Foundation (U.Y., S.M.), the Sumitomo Foundation (U.Y.), the Japan Heart Foundation Research Grant (U.Y.), the Kowa Life Science Foundation (U.Y.), the Cosmetology Research Foundation (Y.I.), the Uehara Memorial Foundation (U.Y.), the Kitsuen Research Foundation (Y.I.), "High-Tech Research Center" Project for Private Universities: MEXT (S.M.), Waseda University Grant for Special Research Projects (S.M.), The Vehicle Racing Commemorative Foundation (S.M.), and the Japan Space Forum (Y.I.).

References

- Akaike, T., Jin, M.H., Yokoyama, U., Izumi-Nakaseko, H., Jiao, Q., Iwasaki, S., Iwamoto, M., Nishimaki, S., Sato, M., Yokota, S., Kamiya, Y., Adachi-Akahane, S., Ishikawa, Y. and Minamisawa, S. (2009). T-type Ca²⁺ channels promote oxygenation-induced closure of the rat ductus arteriosus not only by vasoconstriction but also by neointima formation. *J. Biol. Chem.* **284**: 24025–24034.
- Archer, S.L., Wu, X.C., Thebaud, B., Moudgil, R., Hashimoto, K. and Michelakis, E.D. (2004). O₂ sensing in the human ductus arteriosus: redox-sensitive K⁺ channels are regulated by mitochondria-derived hydrogen peroxide. *Biol. Chem.* **385**: 205–216.
- Bos, J.L. (2003). Epac: a new cAMP target and new avenues in cAMP research. *Nat. Rev. Mol. Cell Biol.* **4**: 733–738.
- Bouayad, A., Kajino, H., Waleh, N., Fouron, J.C., Andelfinger, G., Varma, D.R., Skoll, A., Vazquez, A., Gobeil, F., Jr., Clyman, R.I. and Chemtob, S. (2001). Characterization of PGE₂ receptors in fetal and newborn lamb ductus arteriosus. *Am. J. Physiol.* **280**: H2342–H2349.
- Clyman, R.I. (2006). Mechanisms regulating the ductus arteriosus. *Biol. Neonate* **89**: 330–335.
- Clyman, R.I., Mauray, F., Roman, C. and Rudolph, A.M. (1978). PGE₂ is a more potent vasodilator of the lamb ductus arteriosus than is either PGI₂ or 6 keto PGF₁alpha. *Prostaglandins* **16**: 259–264.
- Coceani, F., Bodach, E., White, E., Bishai, I. and Olley, P.M. (1978). Prostaglandin I₂ is less relaxant than prostaglandin E₂ on the lamb ductus arteriosus. *Prostaglandins* **15**: 551–556.
- Coceani, F. and Kelsey, L. (1991). Endothelin-1 release from lamb ductus arteriosus: relevance to postnatal closure of the vessel. *Can. J. Physiol. Pharmacol.* **69**: 218–221.
- Coceani, F., Kelsey, L. and Seidlitz, E. (1992). Evidence for an effector role of endothelin in closure of the ductus arteriosus at birth. *Can. J. Physiol. Pharmacol.* **70**: 1061–1064.

- Coceani, F., Liu, Y., Seidlitz, E., Kelsey, L., Kuwaki, T., Ackerley, C. and Yanagisawa, M. (1999). Endothelin A receptor is necessary for O₂ constriction but not closure of ductus arteriosus. *Am. J. Physiol.* **277**: H1521–H1531.
- Colbert, M.C., Kirby, M.L. and Robbins, J. (1996). Endogenous retinoic acid signaling colocalizes with advanced expression of the adult smooth muscle myosin heavy chain isoform during development of the ductus arteriosus. *Circ. Res.* **78**: 790–798.
- Cowan, K.N., Jones, P.L. and Rabinovitch, M. (2000). Elastase and matrix metalloproteinase inhibitors induce regression, and tenascin-C antisense prevents progression, of vascular disease. *J. Clin. Invest.* **105**: 21–34.
- De Reeder, E.G., Girard, N., Poelmann, R.E., Van Munsteren, J.C., Patterson, D.F. and Gittenberger-De Groot, A.C. (1988). Hyaluronic acid accumulation and endothelial cell detachment in intimal thickening of the vessel wall. The normal and genetically defective ductus arteriosus. *Am. J. Pathol.* **132**: 574–585.
- de Rooij, J., Zwartkruis, F.J., Verheijen, M.H., Cool, R.H., Nijman, S.M., Wittinghofer, A. and Bos, J.L. (1998). Epac is a Rap1 guanine-nucleotide-exchange factor directly activated by cyclic AMP. *Nature* **396**: 474–477.
- Evanko, S.P., Angello, J.C. and Wight, T.N. (1999). Formation of hyaluronan- and versican-rich pericellular matrix is required for proliferation and migration of vascular smooth muscle cells. *Arterioscler. Thromb. Vasc. Biol.* **19**: 1004–1013.
- Fay, F.S. and Cooke, P.H. (1972). Guinea pig ductus arteriosus. II. Irreversible closure after birth. *Am. J. Physiol.* **222**: 841–849.
- Gittenberger-de Groot, A.C., Strengers, J.L., Mentink, M., Poelmann, R.E. and Patterson, D.F. (1985). Histologic studies on normal and persistent ductus arteriosus in the dog. *J. Am. Coll. Cardiol.* **6**: 394–404.
- Gittenberger-de Groot, A.C., van Ertbruggen, I., Moulart, A.J. and Harinck, E. (1980). The ductus arteriosus in the preterm infant: histologic and clinical observations. *J. Pediatr.* **96**: 88–93.
- Hermes-DeSantis, E.R. and Clyman, R.I. (2006). Patent ductus arteriosus: pathophysiology and management. *J. Perinatol.* **26 Suppl. 1**: S14–18; discussion S22–13.
- Heymann, M.A. and Rudolph, A.M. (1975). Control of the ductus arteriosus. *Physiol. Rev.* **55**: 62–78.
- Hong, Z., Hong, F., Olschewski, A., Cabrera, J.A., Varghese, A., Nelson, D.P. and Weir, E.K. (2006). Role of store-operated calcium channels and calcium sensitization in normoxic contraction of the ductus arteriosus. *Circulation* **114**: 1372–1379.
- Leonhardt, A., Glaser, A., Wegmann, M., Schranz, D., Seyberth, H. and Nusing, R. (2003). Expression of prostanoid receptors in human ductus arteriosus. *Br. J. Pharmacol.* **138**: 655–659.
- Loftin, C.D., Trivedi, D.B., Tiano, H.F., Clark, J.A., Lee, C.A., Epstein, J.A., Morham, S.G., Breyer, M.D., Nguyen, M., Hawkins, B.M., Goulet, J.L., Smithies, O., Koller, B.H. and Langenbach, R. (2001). Failure of ductus arteriosus closure and remodeling in neonatal mice deficient in cyclooxygenase-1 and cyclooxygenase-2. *Proc. Natl. Acad. Sci. USA* **98**: 1059–1064.
- Mason, C.A., Bigras, J.L., O'Blenes, S.B., Zhou, B., McIntyre, B., Nakamura, N., Kaneda, Y. and Rabinovitch, M. (1999). Gene transfer in utero biologically engineers a patent ductus arteriosus in lambs by arresting fibronectin-dependent neointimal formation. *Nat. Med.* **5**: 176–182.
- Michelakis, E., Rebeyka, I., Bateson, J., Olley, P., Puttagunta, L. and Archer, S. (2000). Voltage-gated potassium channels in human ductus arteriosus. *Lancet* **356**: 134–137.
- Mitchell, S.C., Korones, S.B. and Berendes, H.W. (1971). Congenital heart disease in 56,109 births. Incidence and natural history. *Circulation* **43**: 323–332.
- Nakanishi, T., Gu, H., Hagiwara, N. and Momma, K. (1993). Mechanisms of oxygen-induced contraction of ductus arteriosus isolated from the fetal rabbit. *Circ. Res.* **72**: 1218–1228.
- Nguyen, M., Camenisch, T., Snouwaert, J.N., Hicks, E., Coffman, T.M., Anderson, P.A., Malouf, N.N. and Koller, B.H. (1997). The prostaglandin receptor EP4 triggers remodelling of the

- cardiovascular system at birth. *Nature* **390**: 78–81.
- Rabinovitch, M. (1996). Cell-extracellular matrix interactions in the ductus arteriosus and perinatal pulmonary circulation. *Semin. Perinatol.* **20**: 531–541.
- Reeve, H.L., Tolarova, S., Nelson, D.P., Archer, S. and Weir, E.K. (2001). Redox control of oxygen sensing in the rabbit ductus arteriosus. *J. Physiol. (Lond.)* **533**: 253–261.
- Segi, E., Sugimoto, Y., Yamasaki, A., Aze, Y., Oida, H., Nishimura, T., Murata, T., Matsuoka, T., Ushikubi, F., Hirose, M., Tanaka, T., Yoshida, N., Narumiya, S. and Ichikawa, A. (1998). Patent ductus arteriosus and neonatal death in prostaglandin receptor EP4-deficient mice. *Biochem. Biophys. Res. Commun.* **246**: 7–12.
- Seidner, S.R., Chen, Y.Q., Oprysko, P.R., Mauray, F., Tse, M.M., Lin, E., Koch, C. and Clyman, R.I. (2001). Combined prostaglandin and nitric oxide inhibition produces anatomic remodeling and closure of the ductus arteriosus in the premature newborn baboon. *Pediatr. Res.* **50**: 365–373.
- Slomp, J., Gittenberger-de Groot, A.C., Glukhova, M.A., Conny van Munsteren, J., Kockx, M.M., Schwartz, S.M. and Kotliansky, V.E. (1997). Differentiation, dedifferentiation, and apoptosis of smooth muscle cells during the development of the human ductus arteriosus. *Arterioscler. Thromb. Vasc. Biol.* **17**: 1003–1009.
- Smith, G.C. (1998). The pharmacology of the ductus arteriosus. *Pharmacol. Rev.* **50**: 35–58.
- Smith, G.C. and McGrath, J.C. (1988). Indomethacin, but not oxygen tension, affects the sensitivity of isolated neonatal rabbit ductus arteriosus, but not aorta, to noradrenaline. *Cardiovasc. Res.* **22**: 910–915.
- Smith, G.C. and McGrath, J.C. (1993). Characterisation of the effect of oxygen tension on response of fetal rabbit ductus arteriosus to vasodilators. *Cardiovasc. Res.* **27**: 2205–2211.
- Smith, G.C. and McGrath, J.C. (1994). Interactions between indomethacin, noradrenaline and vasodilators in the fetal rabbit ductus arteriosus. *Br. J. Pharmacol.* **111**: 1245–1251.
- Tada, T., Wakabayashi, T., Nakao, Y., Ueki, R., Ogawa, Y., Inagawa, A., Shibata, T. and Kishimoto, H. (1985). Human ductus arteriosus. A histological study on the relation between ductal maturation and gestational age. *Acta Pathol. Jpn.* **35**: 23–34.
- Takahashi, Y., Roman, C., Chemtob, S., Tse, M.M., Lin, E., Heymann, M.A. and Clyman, R.I. (2000). Cyclooxygenase-2 inhibitors constrict the fetal lamb ductus arteriosus both in vitro and in vivo. *Am. J. Physiol.* **278**: R1496–R1505.
- Toyoshima, K., Takeda, A., Imamura, S., Nakanishi, T. and Momma, K. (2006). Constriction of the ductus arteriosus by selective inhibition of cyclooxygenase-1 and -2 in near-term and preterm fetal rats. *Prostaglandins Other. Lipid Mediat.* **79**: 34–42.
- Tristani-Firouzi, M., Reeve, H.L., Tolarova, S., Weir, E.K. and Archer, S.L. (1996). Oxygen-induced constriction of rabbit ductus arteriosus occurs via inhibition of a 4-aminopyridine-, voltage-sensitive potassium channel. *J. Clin. Invest.* **98**: 1959–1965.
- Trivedi, D.B., Sugimoto, Y. and Loftin, C.D. (2006). Attenuated cyclooxygenase-2 expression contributes to patent ductus arteriosus in preterm mice. *Pediatr. Res.* **60**: 669–674.
- Van Overmeire, B., Allegaert, K., Casaer, A., Debauche, C., Decaluwe, W., Jespers, A., Weyler, J., Harrewijn, I. and Langhendries, J.P. (2004). Prophylactic ibuprofen in premature infants: a multicentre, randomised, double-blind, placebo-controlled trial. *Lancet* **364**: 1945–1949.
- Wu, G.R., Jing, S., Momma, K. and Nakanishi, T. (2001). The effect of vitamin A on contraction of the ductus arteriosus in fetal rat. *Pediatr. Res.* **49**: 747–754.
- Yokoyama, U., Minamisawa, S., Adachi-Akahane, S., Akaike, T., Naguro, I., Funakoshi, K., Iwamoto, M., Nakagome, M., Uemura, N., Hori, H., Yokota, S. and Ishikawa, Y. (2006a). Multiple transcripts of Ca²⁺ channel α 1-subunits and a novel spliced variant of the α 1C-subunit in rat ductus arteriosus. *Am. J. Physiol.* **290**: H1660–H1670.
- Yokoyama, U., Minamisawa, S., Quan, H., Akaike, T., Suzuki, S., Jin, M., Jiao, Q., Watanabe, M., Otsu, K., Iwasaki, S., Nishimaki, S., Sato, M. and Ishikawa, Y. (2008). Prostaglandin E2-activated Epac

promotes neointimal formation of the rat ductus arteriosus by a process distinct from that of cAMP-dependent protein kinase A. *J. Biol. Chem.* **283**: 28702–28709.

- Yokoyama, U., Minamisawa, S., Quan, H., Ghatak, S., Akaike, T., Segi-Nishida, E., Iwasaki, S., Iwamoto, M., Misra, S., Tamura, K., Hori, H., Yokota, S., Toole, B.P., Sugimoto, Y. and Ishikawa, Y. (2006b). Chronic activation of the prostaglandin receptor EP4 promotes hyaluronan-mediated neointimal formation in the ductus arteriosus. *J. Clin. Invest.* **116**: 3026–3034.
- Yokoyama, U., Sato, Y., Akaike, T., Ishida, S., Sawada, J., Nagao, T., Quan, H., Jin, M., Iwamoto, M., Yokota, S., Ishikawa, Y. and Minamisawa, S. (2007). Maternal vitamin A alters gene profiles and structural maturation of the rat ductus arteriosus. *Physiol. Genomics* **31**: 139–157.

Hypertension

JOURNAL OF THE AMERICAN HEART ASSOCIATION



Learn and Live SM

Cardiac-Specific Activation of Angiotensin II Type 1 Receptor Associated Protein Completely Suppresses Cardiac Hypertrophy in Chronic Angiotensin II Infused Mice

Hiromichi Wakui, Kouichi Tamura, Yutaka Tanaka, Miyuki Matsuda, Yunzhe Bai, Toru Dejima, Shin-ichiro Masuda, Atsu-ichiro Shigenaga, Akinobu Maeda, Masaki Mogi, Naoaki Ichihara, Yusuke Kobayashi, Nobuhito Hirawa, Tomoaki Ishigami, Yoshiyuki Toya, Machiko Yabana, Masatsugu Horiuchi, Susumu Minamisawa and Satoshi Umemura

Hypertension 2010;55;1157-1164; originally published online Mar 15, 2010;

DOI: 10.1161/HYPERTENSIONAHA.109.147207

Hypertension is published by the American Heart Association, 7272 Greenville Avenue, Dallas, TX 75214

Copyright © 2010 American Heart Association. All rights reserved. Print ISSN: 0194-911X. Online ISSN: 1524-4563

The online version of this article, along with updated information and services, is located on the World Wide Web at:

<http://hyper.ahajournals.org/cgi/content/full/55/5/1157>

Data Supplement (unedited) at:

<http://hyper.ahajournals.org/cgi/content/full/HYPERTENSIONAHA.109.147207/DC1>

Subscriptions: Information about subscribing to Hypertension is online at <http://hyper.ahajournals.org/subscriptions/>

Permissions: Permissions & Rights Desk, Lippincott Williams & Wilkins, a division of Wolters Kluwer Health, 351 West Camden Street, Baltimore, MD 21202-2436. Phone: 410-528-4050. Fax: 410-528-8550. E-mail: journalpermissions@lww.com

Reprints: Information about reprints can be found online at <http://www.lww.com/reprints>

Cardiac-Specific Activation of Angiotensin II Type 1 Receptor–Associated Protein Completely Suppresses Cardiac Hypertrophy in Chronic Angiotensin II–Infused Mice

Hiromichi Wakui, Kouichi Tamura, Yutaka Tanaka, Miyuki Matsuda, Yunzhe Bai, Toru Dejima, Shin-ichiro Masuda, Atsu-ichiro Shigenaga, Akinobu Maeda, Masaki Mogi, Naoaki Ichihara, Yusuke Kobayashi, Nobuhito Hirawa, Tomoaki Ishigami, Yoshiyuki Toya, Machiko Yabana, Masatsugu Horiuchi, Susumu Minamisawa, Satoshi Umemura

Abstract—We cloned a novel molecule interacting with angiotensin II type 1 receptor, which we named ATRAP (for angiotensin II type 1 receptor–associated protein). Previous *in vitro* studies showed that ATRAP significantly promotes constitutive internalization of the angiotensin II type 1 receptor and further attenuates angiotensin II–mediated hypertrophic responses in cardiomyocytes. The present study was designed to investigate the putative functional role of ATRAP in cardiac hypertrophy by angiotensin II infusion *in vivo*. We first examined the effect of angiotensin II infusion on endogenous ATRAP expression in the heart of C57BL/6J wild-type mice. The angiotensin II treatment promoted cardiac hypertrophy, concomitant with a significant decrease in cardiac ATRAP expression, but without significant change in cardiac angiotensin II type 1 receptor expression. We hypothesized that a downregulation of the cardiac ATRAP to angiotensin II type 1 receptor ratio is involved in the pathogenesis of cardiac hypertrophy. To examine this hypothesis, we next generated transgenic mice expressing ATRAP specifically in cardiomyocytes under control of the α -myosin heavy chain promoter. In cardiac-specific ATRAP transgenic mice, the development of cardiac hypertrophy, activation of p38 mitogen-activated protein kinase, and expression of hypertrophy-related genes in the context of angiotensin II treatment were completely suppressed, in spite of there being no significant difference in blood pressure on radiotelemetry between the transgenic mice and littermate control mice. These results demonstrate that cardiomyocyte-specific overexpression of ATRAP *in vivo* abolishes the cardiac hypertrophy provoked by chronic angiotensin II infusion, thereby suggesting ATRAP to be a novel therapeutic target in cardiac hypertrophy. (*Hypertension*. 2010;55:1157-1164.)

Key Words: basic science ■ receptors ■ gene expression/regulation ■ hypertrophy/remodeling ■ angiotensin receptors

Evidence suggests that the activation of angiotensin II (Ang II) type 1 receptor (AT₁R) through the tissue renin-angiotensin system may play an important role in the development of cardiac hypertrophy. The carboxyl-terminal portion of AT₁R is involved in the control of AT₁R internalization independent of G protein coupling, and it plays an important role in linking receptor-mediated signal transduction to the specific biological response to Ang II.^{1,2}

We previously cloned a novel AT₁R-associated protein (ATRAP) that specifically interacts with the carboxyl-terminal domain of AT₁R.^{3–6} We showed that ATRAP is broadly expressed in many tissues, as is AT₁R, and suppresses Ang II–mediated pathological responses in cardiomyocytes and vascular smooth muscle cells by promoting the constitutive internalization of AT₁R.^{7–9} However, the func-

tion of ATRAP in cardiac hypertrophy *in vivo* still remains to be demonstrated. Thus, the present study was carried out to investigate whether there is a role for ATRAP in the cardiac hypertrophy induced by chronic Ang II treatment *in vivo*. We first examined an effect of chronic Ang II infusion on endogenous cardiac expression of ATRAP in C57BL/6J wild-type (Wt) mice. Next, we examined whether cardiac ATRAP attenuates the pathological hypertrophic response provoked by chronic Ang II infusion using transgenic (Tg) mice with cardiomyocyte-specific overexpression of ATRAP.

Materials and Methods

This study was performed in accordance with the National Institutes of Health guidelines for the use of experimental animals. All of the animal studies were reviewed and approved by the animal studies committee of Yokohama City University.

Received November 4, 2009; first decision November 23, 2009; revision accepted February 11, 2010.

From the Department of Medical Science and Cardiorenal Medicine (H.W., K.T., M.M., Y.B., T.D., S.M., A.S., A.M., N.I., Y.K., N.H., T.I., Y.T., M.Y., S.U.), Yokohama City University Graduate School of Medicine, Yokohama, Japan; Department of Molecular Cardiovascular Biology and Pharmacology (M.M., M.H.), Ehime University, Graduate School of Medicine, Ehime, Japan; Department of Life Science and Medical Bio-science (S.M.), Waseda University, Tokyo, Japan.

Correspondence to Kouichi Tamura, Department of Medical Science and Cardiorenal Medicine, Yokohama City University Graduate School of Medicine, 3-9 Fukuura, Kanazawa-ku, Yokohama 236-0004, Japan. E-mail tamukou@med.yokohama-cu.ac.jp

© 2010 American Heart Association, Inc.

Hypertension is available at <http://hyper.ahajournals.org>

DOI: 10.1161/HYPERTENSIONAHA.109.147207

Animals and Treatment

Male Wt mice were purchased from Charles River Laboratories. Tg mice expressing the ATRAP specifically in cardiomyocytes were generated on a C57BL/6J background using standard techniques. Littermates genotyped as Wt were used as the littermate control (LC) mice in this study. Mice aged 8 to 12 weeks were used in the present study.

Ang II (200 ng/kg per minute) or vehicle was continuously infused into mice subcutaneously via an osmotic minipump (model 1003D, 2001, 2001D, 2002; ALZET) for 0, 15, 30, and 60 minutes and 3 and 14 days. Olmesartan (RNH6270) was provided by Sankyo Pharmaceuticals. It was dissolved in drinking water for oral administration and given to Wt mice for 2 weeks. The olmesartan dosage (10 mg/kg per day) was determined from previous reports.¹⁰

Blood Pressure Measurements by Tail-Cuff Method and Echocardiography

Systolic blood pressure (BP; SBP) and heart rate were measured indirectly by the tail-cuff method (BP-monitor MK-2000; Muromachi Kikai Co), as described.^{7,11} Under anesthesia with an intraperitoneal injection of Avertin, transthoracic echocardiography was performed with an echo cardiographic system equipped with a 12.0-MHz phase-array transducer (Aplio SSA-700A; Toshiba), as described previously.^{12,13} Left ventricular (LV) diameter, wall thickness, and the ejection fraction were measured using M-mode tracings and averaged for 3 cycles.

BP Measurements by Radiotelemetry

Direct BP measurement was performed by a radiotelemetric method in which a BP transducer (PA-C10, Data Sciences International) was inserted into the left carotid artery. Ten days after transplantation, each mouse was housed individually in a standard cage on a receiver under a 12-hour light-dark cycle. Direct BP was recorded every minute by radiotelemetry, as described previously.¹⁴

Western Blot Analysis of ATRAP and AT₁R

The characterization and specificity of the antimouse ATRAP antibody was described previously.⁷⁻⁹ The anti-AT₁R antibody (sc-1173, lot E2508) was purchased from Santa Cruz Biotechnology, Inc.⁷ To examine the specificity of the antibody, an AT₁R-selective blocking peptide (sc-1173p) was used. Western blot showed a single protein band of ≈42 kDa, which was abolished by an AT₁R-selective blocking peptide (Figure S1, available in the online Data Supplement at <http://hyper.ahajournals.org>). Western blot analysis was performed as described previously.^{7,8} Briefly, tissue extracts were used for electrophoresis, and membranes (Millipore) were incubated with an anti-ATRAP antibody or an anti-AT₁R antibody and subjected to enhanced chemiluminescence (Amersham Biosciences). The images were analyzed quantitatively using FUJI LAS3000 Image Analyzer (FUJI Film) for determination of the ATRAP and AT₁R protein levels. To measure the cardiac expression ratio of ATRAP/AT₁R, each ATRAP protein level was divided by the corresponding AT₁R protein level obtained by reprobing and, thus, derived from the same extract.

Histological Analysis

After 2 weeks of vehicle or Ang II infusion, both the LC and Tg mice hearts were cleared by perfusion with PBS at 70 mm Hg through the coronary arteries and then fixed by perfusion with 4% paraformaldehyde. Tissue sections were stained with hematoxylin/eosin and immunohistochemical antibody (antidystrophin monoclonal antibody, Novocastra) for cell size measurement, because this antibody binds to myocardial cellular membranes. Cross-sectional area of cardiomyocytes in the LV free wall was measured digitally using Image-Pro Plus software, as described previously.¹⁵

Real-Time Quantitative RT-PCR Analysis

Total RNA was extracted from the LV with ISOGEN (Nippon Gene), and cDNA was synthesized using the SuperScript III First-

Strand System (Invitrogen). Real-time quantitative RT-PCR was performed by incubating the reverse transcription product with TaqMan PCR Master Mix and a designed TaqMan probe (Applied Biosystems).¹¹ RNA quantity was expressed relative to the 18S rRNA control.

Determination of Mitogen-Activated Protein Kinase Activity

Western blot analysis was performed for phosphorylated p38, extracellular signal-regulated protein kinase 1/2 (ERK), and c-Jun N-terminal kinase (JNK) using antiphospho-p38 antibody (V1211, Promega), antiphospho-ERK antibody (4370, Cell Signaling Technology), and antiphospho-JNK antibody (4668, Cell Signaling Technology), which recognize only activated p38, ERK1/2, and JNK, respectively, as described previously.⁸ To detect total p38, ERK, and JNK, the anti-p38 mitogen-activated protein kinase (MAPK) antibody (sc-728, Santa Cruz Biotechnology), anti-ERK antibody (4695, Cell Signaling Technology), and anti-JNK antibody (sc-571, Santa Cruz Biotechnology), were used.

Statistical Analysis

For the statistical analysis of differences among groups, unpaired Student *t* test or ANOVA followed by Scheffe *F* test was used. All of the quantitative data are expressed as mean±SE. Values of *P*<0.05 were considered statistically significant.

Results

Effects of Ang II Infusion on Cardiac Hypertrophy in Wt Mice

In the first experiment, age-matched Wt mice were divided into 3 groups: (1) a vehicle-infused group; (2) an Ang II (200 ng/kg per minute)-infused group without ARB treatment; and (3) an Ang II (200 ng/kg per minute)-infused group with ARB treatment. Ang II infusion significantly increased diastolic intraventricular septum and diastolic LV posterior wall thickness, as estimated by echocardiography and heart weight (HW)/body weight (BW) ratio, and these hypertrophic responses to Ang II treatment were completely prevented by angiotensin receptor blocker (ARB) treatment (Table 1). Ang II infusion also increased cardiac hypertrophy-related gene

Table 1. BP, BW, Heart Rate, Tissue Weight, and Echocardiographic Measurements 14 Days After Ang II Infusion in Wt Mice

Variable	Vehicle	Ang II	Ang II+ARB
SBP, mm Hg	112±6	120±5	110±7
BW, g	27.0±0.6	27.0±0.4	26.9±0.4
HR, bpm	685±19	693±32	715±22
HW/BW, mg/g	4.05±0.05	4.58±0.13*	3.94±0.06
KW/BW, mg/g	5.59±0.07	5.80±0.10	5.85±0.18
Echocardiography			
IVSd, mm	0.60±0.01	0.75±0.03*	0.58±0.02
LVPWd, mm	0.58±0.01	0.75±0.05*	0.60±0.02
LVEDD, mm	3.96±0.07	3.78±0.12	3.95±0.12
LVESD, mm	2.70±0.06	2.43±0.12	2.81±0.12
EF, %	68.4±0.9	73.3±3.1	65.6±2.9

HR indicates heart rate; IVSd, intraventricular septum, diastolic; LVPWd, left ventricular posterior wall, diastolic; LVEDD, left ventricular end diastolic diameter; LVESD, left ventricular end systolic diameter; EF, ejection fraction. All of the values are mean±SE (n=6 to 8).

**P*<0.05 vs vehicle group.

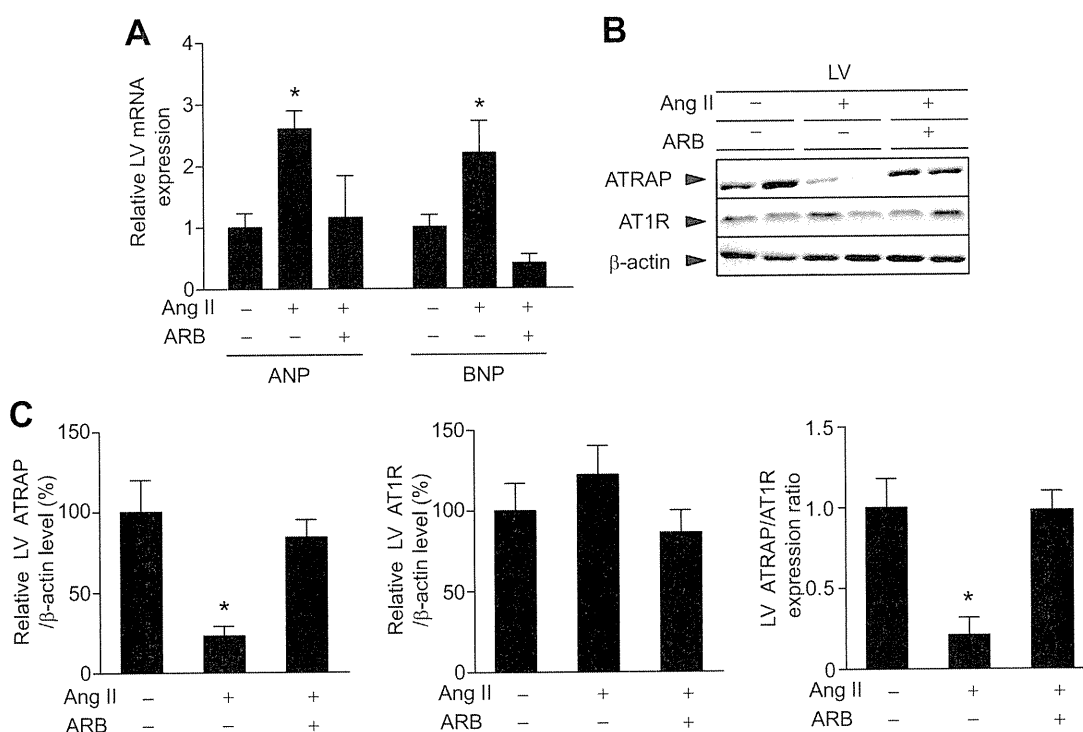


Figure 1. Expression of cardiac hypertrophy-related mRNAs and cardiac ATRAP and AT₁R proteins by Ang II infusion into Wt mice. **A**, Effects of Ang II infusion and the AT₁R antagonist olmesartan (ARB) on cardiac atrial natriuretic peptide (ANP) and brain natriuretic peptide (BNP) mRNA expression in Wt mice. Values are calculated relative to those achieved with extracts in the vehicle-infused group (Ang II and ARB) and expressed as the mean ± SE (n=6 in each group). *P<0.05 vs vehicle. **B**, Representative Western blot analysis of the effects of Ang II infusion and the AT₁R antagonist olmesartan (ARB) on cardiac ATRAP and AT₁R protein expression in Wt mice. **C**, Quantitative analysis of the effects of Ang II infusion and the AT₁R antagonist olmesartan (ARB) on cardiac ATRAP and AT₁R protein expression in Wt mice. Values are calculated relative to those achieved with extracts in the vehicle-infused group (Ang II and ARB) and expressed as the mean ± SE (n=6 in each group). *P<0.05 vs vehicle.

expression in Wt mice (Figure 1A). LV mRNA levels of atrial natriuretic peptide (ANP) and brain natriuretic peptide were increased 2.2- and 2.6-fold by Ang II infusion, respectively, and the mRNA upregulation of these peptides was abolished by ARB treatment.

Effects of Ang II Infusion on Cardiac ATRAP and AT₁R Expression in Wt Mice

We also examined the effects of Ang II infusion on endogenous ATRAP and AT₁R protein expression in the hearts of Wt mice. With respect to the regulation of cardiac AT₁R

Table 2. BP, BW, Heart Rate, Tissue Weight, and Echocardiographic Measurements 14 Days After Ang II Infusion in LC, Tg46, and Tg52 Mice

Variable	LC		Tg46		Tg52	
	Vehicle	Ang II	Vehicle	Ang II	Vehicle	Ang II
BW, g	23.5±0.4	23.8±0.9	24.5±0.9	23.7±0.6	24.1±1.0	24.7±0.6
HW/BW, mg/g	4.15±0.11	4.79±0.12*	4.19±0.21	4.24±0.13	4.17±0.15	3.97±0.13
KW/BW, mg/g	5.88±0.27	5.85±0.23	5.40±0.23	5.89±0.26	5.75±0.17	5.69±0.06
Echocardiography						
IVSd, mm	0.56±0.02	0.75±0.03*	0.61±0.02	0.63±0.03	0.64±0.05	0.67±0.02
LVPWd, mm	0.59±0.02	0.74±0.07*	0.64±0.03	0.61±0.03	0.63±0.05	0.63±0.02
LVEDD, mm	4.05±0.12	4.0±0.15	3.85±0.15	3.86±0.13	4.18±0.60	4.25±0.11
LVESD, mm	2.64±0.09	2.65±0.21	2.42±0.17	2.56±0.12	2.95±0.10	2.99±0.11
EF, %	68.4±0.9	67.5±1.6	71.3±2.9	70.7±1.8	65.8±1.9	63.8±1.7

IVSd indicates intraventricular septum, diastolic; LVPWd, left ventricular posterior wall, diastolic; LVEDD, left ventricular end diastolic diameter; LVESD, left ventricular end systolic diameter; EF, ejection fraction. All of the values are mean ± SE (n=6 to 8).

*P<0.05 vs vehicle-infused LC mice.

expression by Ang II infusion, previous studies reported increased, decreased, or unaltered cardiac AT₁R levels after Ang II infusion, probably because of differences in the dose and duration of the Ang II infusion.^{16–18} In the present study, treatment with Ang II did not affect cardiac AT₁R protein or mRNA levels (Figure 1B and 1C and data not shown). On the other hand, Ang II infusion significantly decreased the cardiac ATRAP protein level, thereby resulting in downregulation of the cardiac ATRAP/AT₁R ratio (Figure 1B and 1C). However, ARB treatment by olmesartan (10 mg/kg per day) recovered the cardiac expression ratio of ATRAP to AT₁R so as to be comparable with the vehicle-infused group.

Effects of Ang II Infusion on Cardiac Hypertrophy in Cardiac-Specific ATRAP Tg Mice

Because chronic Ang II treatment significantly decreased the endogenous ATRAP expression in the heart concomitant with the development of cardiac hypertrophy in Wt mice, we hypothesized that an increase in cardiac ATRAP expression might suppress it in vivo. Thus, to validate the antihypertrophic properties of ATRAP in vivo, we generated Tg mice with cardiac-specific overexpression of ATRAP by the use of mouse ATRAP cDNA linked to the α -major histocompatibility complex promoter.¹⁹ Quantitative analysis of ATRAP expression at the protein level revealed the highest and a moderate expression level of ATRAP in lines 52 and 46 (Tg52 and Tg46), respectively, among 10 obtained lines of Tg mice, and these 2 lines of Tg mice are characterized in Figure S2.

Age-matched LC and 2 independent lines of Tg mice (Tg46 and Tg52) were divided into 6 groups: (1) vehicle-infused LC mice; (2) Ang II (200 ng/kg per minute)-infused LC mice; (3) vehicle-infused Tg46 mice; (4) Ang II (200 ng/kg per minute)-infused Tg46 mice; (5) vehicle-infused Tg52 mice; and (6) Ang II (200 ng/kg per minute)-infused Tg52 mice. Although Ang II infusion significantly increased the diastolic intraventricular septum and diastolic LV posterior wall thickness, as estimated by echocardiography and HW/BW ratio in LC mice, these cardiac hypertrophic responses to Ang II infusion were completely suppressed in both Tg52 mice and Tg46 mice (Table 2). Thus, Tg52 mice were further characterized in comparison with LC mice.

The results of SBP measurement by the tail-cuff method did not result in significant Ang II-mediated BP responses in the LC or Tg mice (Table S1). Thus, to examine diurnal BP profiles and strictly compare the effects of Ang II infusion on BP, direct BP measurement by radiotelemetric devices was performed in LC and Tg mice. In LC mice, Ang II infusion for 2 weeks tended to increase SBP in the light period (118.2 ± 4.0 versus 132.7 ± 3.7 mm Hg; $P=0.075$) and significantly increased SBP in the dark period (129.3 ± 2.7 versus 144.7 ± 4.1 mm Hg; $P<0.05$; Figure 2A). Similarly, in Tg52 mice, Ang II infusion significantly increased SBP in both the light (115.2 ± 2.8 versus 130.5 ± 5.0 mm Hg; $P<0.05$) and dark (128.7 ± 2.0 versus 143.3 ± 4.6 mm Hg; $P<0.05$) periods. Although radiotelemetric SBP of the vehicle-infused Tg52 mice was significantly lower than that of the vehicle-infused LC mice at 12:00 AM (107.2 ± 2.7 versus 116.2 ± 4.5 mm Hg; $P<0.05$) and 3:00 PM (112.0 ± 2.0 versus

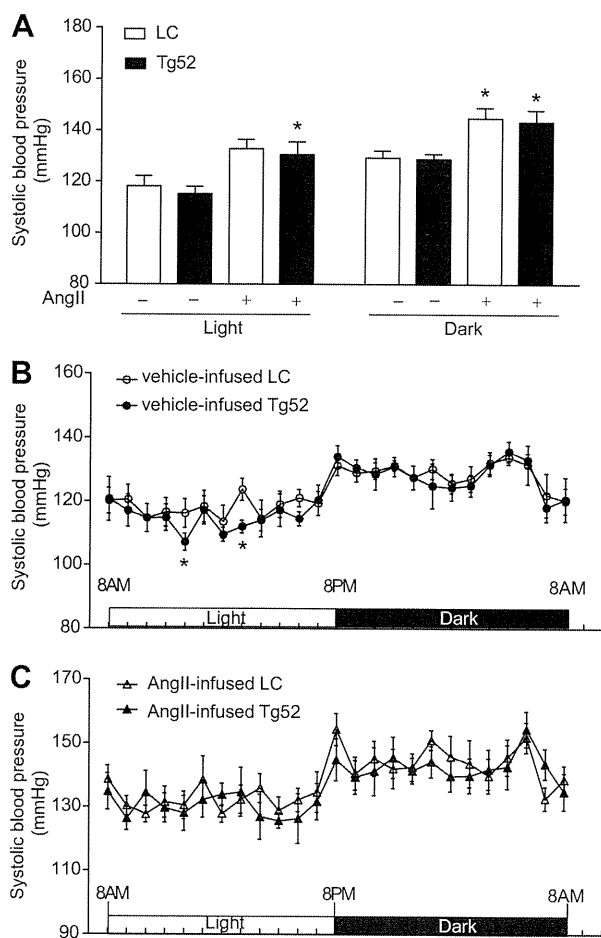


Figure 2. Diurnal BP profiles and effects of Ang II infusion analyzed by the radiotelemetric method in LC mice and cardiac-specific ATRAP transgenic (Tg52) mice. **A**, Effects of Ang II infusion on SBP measured by the radiotelemetric method in LC and Tg52 mice in the light and dark periods. Values are expressed as the mean \pm SE ($n=6$ in each group). * $P<0.05$ vs vehicle. **B**, Diurnal SBP profile of LC and Tg52 mice infused with vehicle. Values are expressed as the mean \pm SE ($n=6$ in each group). * $P<0.05$ vs LC mice. **C**, Diurnal BP profile of LC and Tg52 mice infused with Ang II. Values are expressed as the mean \pm SE ($n=6$ in each group).

123.7 ± 3.5 mm Hg; $P<0.05$; Figure 2B), SBP of the Ang II-infused Tg52 mice was comparable to that of the Ang II-infused LC mice throughout the light-dark cycle (Figure 2C). Regarding other parameters obtained by radiotelemetry, the mean BP and heart rate of Tg52 mice were comparable to those of LC mice with or without Ang II infusion (Figure S3).

These results of direct BP measurement by the radiotelemetric method confirmed no significant BP difference between the LC and Tg52 mice after Ang II infusion. With respect to histological analysis, Ang II infusion significantly increased the cross-sectional area of LC mice (251.5 ± 6.7 versus 302.0 ± 10.4 μm^2 ; $P<0.01$) but not Tg52 mice (267.7 ± 11.2 versus 277.3 ± 11.5 μm^2 ; Figure 3A). There were no significant increases in interstitial fibrosis in either the LC mice or Tg52 mice on Masson staining at this stage (data not shown). These results indicate that the cardiac hypertrophy effects induced by Ang II infusion were com-

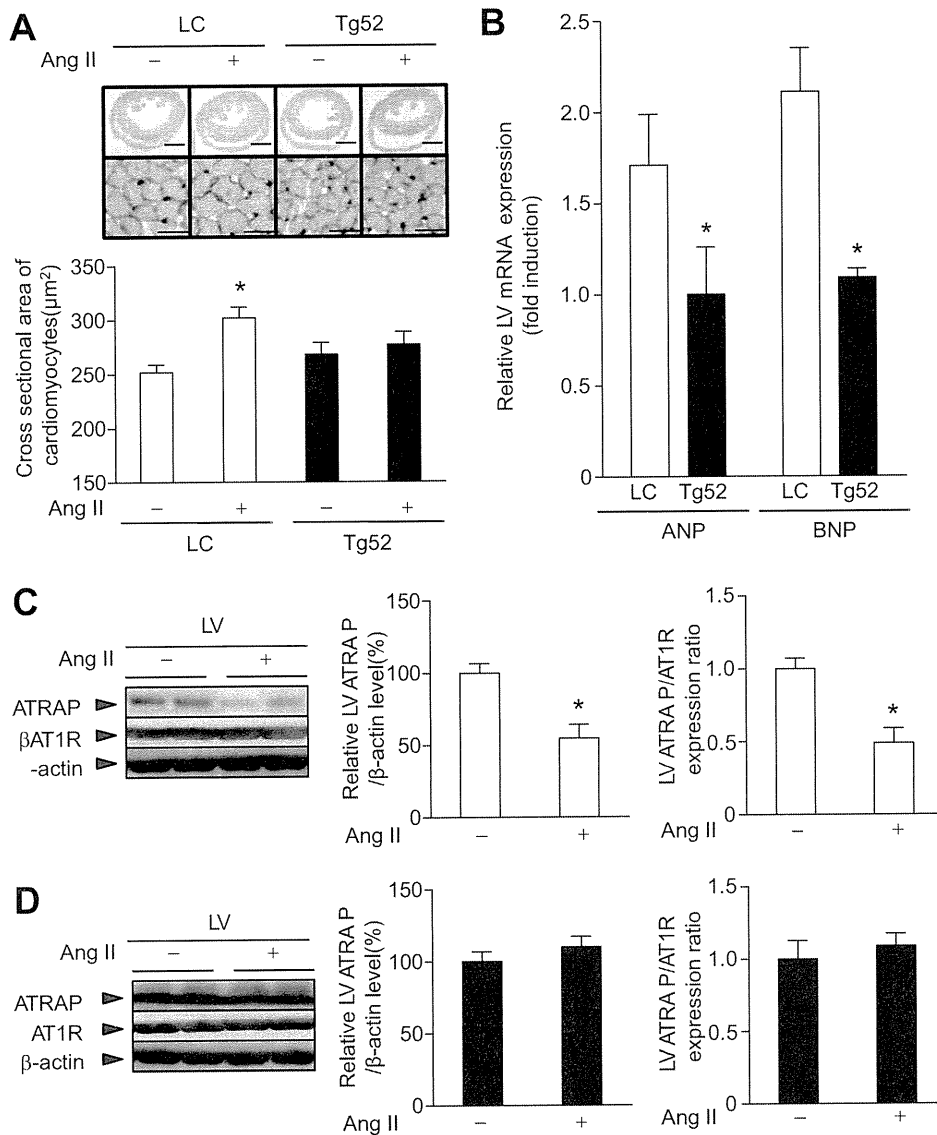


Figure 3. Cardiac hypertrophic responses by Ang II infusion into cardiac-specific ATRAP transgenic (Tg52) mice and LC mice. **A**, Effects of Ang II infusion on cardiac hypertrophy in Tg mice and LC mice. Representative images of hematoxylin and eosin-stained section of the hearts of all 4 groups examined (top, bar: 1 mm), representative images of antidystrophin monoclonal antibody-stained section of the LV for cell size measurement in all 4 groups (middle, magnification: $\times 400$; bar: $20 \mu\text{m}$), and quantitative analysis of a cardiomyocyte cross-sectional area of the LV (bottom). $*P < 0.01$ vs vehicle. **B**, Effects of Ang II infusion on cardiac atrial natriuretic peptide (ANP) and brain natriuretic peptide (BNP) mRNA expression in LC and Tg52 mice. Values are calculated as the fold induction of those achieved with extracts in the vehicle-infused group and expressed as the mean \pm SE ($n = 6$ in each group). $*P < 0.05$ vs LC. **C**, Representative Western blot and quantitative analysis of the effects of Ang II infusion on LV ATRAP and AT₁R protein expression in LC mice. Values are calculated relative to those achieved with extracts in the vehicle-infused group (Ang II) and expressed as the mean \pm SE ($n = 6$ in each group). $*P < 0.05$ vs vehicle. **D**, Representative Western blot and quantitative analysis of the effects of Ang II infusion on LV ATRAP and AT₁R protein expression in Tg52 mice. Values are calculated relative to those achieved with extracts in the vehicle-infused group (Ang II) and expressed as the mean \pm SE ($n = 6$ in each group). $*P < 0.05$ vs vehicle.

pletely suppressed in Tg52 mice with cardiac-specific overexpression of ATRAP.

Effects of Ang II Infusion on Hypertrophy-Related Gene Expression in Cardiac-Specific ATRAP Tg Mice

We examined whether cardiac-specific overexpression of ATRAP attenuates the cardiac hypertrophy-related gene expression induced by chronic Ang II infusion. Although Ang II infusion in LC mice increased the LV mRNA expression

levels of atrial natriuretic peptide and brain natriuretic peptide by 1.7- and 2.1-fold induction, the upregulation of these mRNAs in response to Ang II infusion was completely suppressed in Tg52 mice (Figure 3B). With respect to the inhibitory effect of Ang II treatment on the cardiac ATRAP/AT₁R ratio, although Ang II infusion significantly decreased the cardiac ATRAP/AT₁R ratio through suppression of cardiac ATRAP expression in LC mice (Figure 3C), Ang II treatment did not affect the ratio at all in Tg52 mice (Figure 3D).

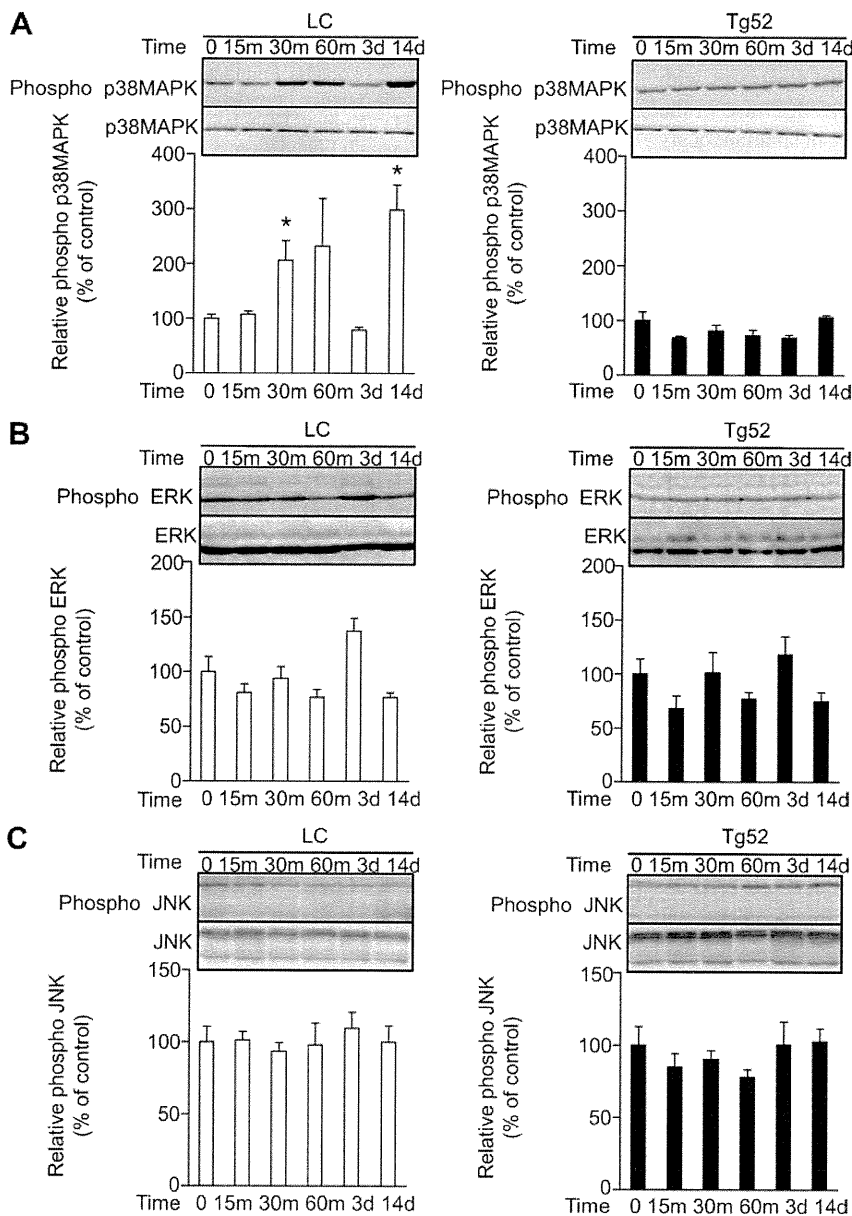


Figure 4. Effects of Ang II infusion on MAPK activation in cardiac-specific ATRAP transgenic (Tg52) mice. Representative Western blots (top) and quantitative analysis (bottom) of the effects of Ang II infusion for 0, 15, 30, and 60 minutes and 3 and 14 days on phosphorylated and total MAPK (A, p38; B, ERK; and C, JNK) in LC mice (left, LC) and Tg52 mice (right). Values are calculated relative to those achieved with extracts in the mice at baseline (time 0) and expressed as the mean \pm SE ($n=6$ in each group). m indicates minutes; d, days. * $P<0.05$ vs baseline.

Effects of Ang II Infusion on MAPK Activation in Cardiac-Specific ATRAP Tg Mice

As the downstream effector of the AT₁R signaling pathway, MAPK plays an important role in the development of cardiac hypertrophy.^{20–22} Thus, ultimately we examined the time course of LV MAPK activation in LC and Tg52 mice during Ang II treatment. LV p38 was significantly activated after 30 minutes and 14 days of Ang II infusion in LC mice (Figure 4A). However, LV p38 was not at all activated in Tg52 mice during Ang II treatment. On the other hand, LV JNK and ERK were not significantly activated by Ang II infusion in either LC or Tg52 mice (Figure 4B and 4C).

Discussion

This is the first report to our knowledge of a novel inhibitory function of cardiac ATRAP on cardiac hypertrophy in vivo. Activation of AT₁R signaling through the tissue renin-angioten-

sin system provokes sequential activation of signaling pathways, which leads to cardiac hypertrophy,^{23–26} and chronic elevation of circulating Ang II causes sustained hypertension and associated cardiac hypertrophy.²⁷ The carboxyl-terminal portion of AT₁R is important for receptor internalization and activation of downstream signaling pathways.^{28,29} ATRAP was cloned as a specific interacting molecule with the carboxyl-terminal domain of the AT₁ receptor by a yeast 2 hybrid screening system.³ The results of in vitro studies showed that ATRAP suppresses Ang II-induced hypertrophic and proliferative responses by promoting a constitutive internalization of AT₁R and decreasing the p38 activity and transforming growth factor β production in cardiomyocytes and vascular smooth muscle cells, respectively, thereby suggesting that ATRAP is an endogenous inhibitor of AT₁R signaling.^{8,9}

In the present study, we first showed that chronic infusion of Ang II significantly decreased the cardiac expression ratio

of ATRAP/AT₁R with the development of cardiac hypertrophy, for which the effect was completely inhibited by an AT₁R antagonist. We observed recently that treatment with an AT₁R antagonist recovered a constitutive decrease in the ratio of cardiac expression of ATRAP/AT₁R in spontaneously hypertensive rats, which was accompanied by a decrease in cardiac p38 activity and a suppression of cardiac hypertrophy.³⁰ Previous studies have shown that increases in cardiac p38 activity through the activation of AT₁R signaling are profoundly involved in cardiac hypertrophy and the damage incurred in genetic and experimental hypertension models, including spontaneously hypertensive rats and Ang II infusion.^{31,32}

Because we had hypothesized that cardiac-specific upregulation of the ATRAP/AT₁R ratio suppresses the cardiac hypertrophy induced by Ang II infusion, we produced the cardiomyocyte-specific ATRAP Tg mice, with a constitutively high expression of cardiac ATRAP and a resultant upregulation of the cardiac ATRAP/AT₁R ratio, to examine this hypothesis. We obtained *in vivo* evidence that ATRAP attenuates the cardiac hypertrophy by chronic Ang II infusion concomitant with a suppression of cardiac p38 activation. Because the physiological parameters, such as BW, heart rate, radiotelemetric BP, cardiac functions, and HW/BW ratio, are comparable at baseline in LC and Tg mice, the effect of cardiac-specific overexpression of ATRAP is likely to be exerted only in the context of a hypertensive challenge.

The present study shows the enhancement of cardiomyocyte-specific ATRAP expression *in vivo* protects against the hypertrophic responses in mice induced by an Ang II-induced BP increase. Nevertheless, a limitation of the present study is that the results do not allow us to dissociate the direct effect of ATRAP enhancement on cardiac hypertrophy from the influence of pressure overload. In fact, several previous studies have indicated that cardiac hypertrophy can occur even in the absence of cardiac AT₁R,^{33,34} that high doses of Ang II-released specifically in the heart do not result in cardiac hypertrophy,³⁵ and that if the kidneys do not express AT₁R, infusion of a very high dose of Ang II does not result in cardiac hypertrophy.³⁶ Therefore, the role of ATRAP in the regulation of cardiac hypertrophy *in vivo* needs to be further investigated in other models of hypertension and/or pressure or volume overload.

Perspectives

Because the results obtained in this study are essentially derived from Tg mice, it is important to exercise caution in interpreting the finding to be relevant to the pathophysiology of human cardiac hypertrophy. Nevertheless, the findings of the present study provide important information for the further investigation of the *in vivo* functional roles of ATRAP in the pathogenesis of cardiac hypertrophy and suggest the potential benefit of an ATRAP activation strategy. Additional studies to elucidate the molecular mechanisms of the antihypertrophic properties of cardiac ATRAP may enable a clinical application of ATRAP in the near future, such as the use of activating ligands for more efficient inhibition of AT₁R signaling in combination with inhibitors of the renin-angiotensin system.

Sources of Funding

This study was supported by grants from the Japan Society for the Promotion of Science; Yokohama Foundation for Advancement of Medical Science; Takeda Science Foundation; Salt Science Research Foundation (No. 0911); Kidney Foundation, Japan (JKFB09-25); Mitsubishi Pharma Research Foundation; and the Strategic Research Project of Yokohama City University. S.M. was supported by the High-Tech Research Center Project for Private Universities with a matching fund subsidy from the Ministry of Education, Culture, Sports, Science and Technology.

Disclosures

None.

References

1. Miura S, Saku K, Karnik SS. Molecular analysis of the structure and function of the angiotensin II type 1 receptor. *Hypertens Res*. 2003;26:937-943.
2. Hein L, Meinel L, Pratt RE, Dzau VJ, Kobilka BK. Intracellular trafficking of angiotensin II and its AT1 and AT2 receptors: evidence for selective sorting of receptor and ligand. *Mol Endocrinol*. 1997;11:1266-1277.
3. Daviet L, Lehtonen JY, Tamura K, Griese DP, Horiuchi M, Dzau VJ. Cloning and characterization of ATRAP, a novel protein that interacts with the angiotensin II type 1 receptor. *J Biol Chem*. 1999;274:17058-17062.
4. Lopez-Illasaca M, Liu X, Tamura K, Dzau VJ. The angiotensin II type 1 receptor-associated protein, ATRAP, is a transmembrane protein and a modulator of angiotensin II signaling. *Mol Biol Cell*. 2003;14:5038-5050.
5. Tamura K, Tanaka Y, Tsurumi Y, Azuma K, Shigenaga A, Wakui H, Masuda S, Matsuda M. The role of angiotensin AT1 receptor-associated protein in renin-angiotensin system regulation and function. *Curr Hypertens Rep*. 2007;9:121-127.
6. Mogi M, Iwai M, Horiuchi M. Emerging concepts of regulation of angiotensin II receptors: new players and targets for traditional receptors. *Arterioscler Thromb Vasc Biol*. 2007;27:2532-2539.
7. Tsurumi Y, Tamura K, Tanaka Y, Koide Y, Sakai M, Yabana M, Noda Y, Hashimoto T, Kihara M, Hirawa N, Toya Y, Kiuchi Y, Iwai M, Horiuchi M, Umemura S. Interacting molecule of AT1 receptor, ATRAP, is colocalized with AT1 receptor in the mouse renal tubules. *Kidney Int*. 2006;69:488-494.
8. Tanaka Y, Tamura K, Koide Y, Sakai M, Tsurumi Y, Noda Y, Umemura M, Ishigami T, Uchino K, Kimura K, Horiuchi M, Umemura S. The novel angiotensin II type 1 receptor (AT1R)-associated protein ATRAP downregulates AT1R and ameliorates cardiomyocyte hypertrophy. *FEBS Lett*. 2005;579:1579-1586.
9. Azuma K, Tamura K, Shigenaga A, Wakui H, Masuda S, Tsurumi-Ikeya Y, Tanaka Y, Sakai M, Matsuda M, Hashimoto T, Ishigami T, Lopez-Illasaca M, Umemura S. Novel regulatory effect of angiotensin II type 1 receptor-interacting molecule on vascular smooth muscle cells. *Hypertension*. 2007;50:926-932.
10. Yuan Z, Nimata M, Okabe TA, Shioji K, Hasegawa K, Kita T, Kishimoto C. Olmesartan, a novel AT1 antagonist, suppresses cytotoxic myocardial injury in autoimmune heart failure. *Am J Physiol Heart Circ Physiol*. 2005;289:H1147-H1152.
11. Sakai M, Tamura K, Tsurumi Y, Tanaka Y, Koide Y, Matsuda M, Ishigami T, Yabana M, Tokita Y, Hiroi Y, Komuro I, Umemura S. Expression of MAK-V/Hunk in renal distal tubules and its possible involvement in proliferative suppression. *Am J Physiol Renal Physiol*. 2007;292:F1526-F1536.
12. Shimura M, Minamisawa S, Yokoyama U, Umemura S, Ishikawa Y. Mechanical stress-dependent transcriptional regulation of sarcolipin gene in the rodent atrium. *Biochem Biophys Res Commun*. 2005;334:861-866.
13. Yoshida M, Minamisawa S, Shimura M, Komazaki S, Kume H, Zhang M, Matsumura K, Nishi M, Saito M, Saeki Y, Ishikawa Y, Yanagisawa T, Takeshima H. Impaired Ca²⁺ store functions in skeletal and cardiac muscle cells from sarcalumenin-deficient mice. *J Biol Chem*. 2005;280:3500-3506.
14. Mills PA, Huettnerman DA, Brockway BP, Zwiers LM, Gelsema AJ, Schwartz RS, Kramer K. A new method for measurement of blood pressure, heart rate, and activity in the mouse by radiotelemetry. *J Appl Physiol*. 2000;88:1537-1544.

15. Sah VP, Minamisawa S, Tam SP, Wu TH, Dorn GW II, Ross J Jr, Chien KR, Brown JH. Cardiac-specific overexpression of RhoA results in sinus and atrioventricular nodal dysfunction and contractile failure. *J Clin Invest.* 1999;103:1627–1634.
16. Kato M, Egashira K, Takeshita A. Cardiac angiotensin II receptors are downregulated by chronic angiotensin II infusion in rats. *Jpn J Pharmacol.* 2000;84:75–77.
17. Tambascia RC, Fonseca PM, Corat PD, Moreno H Jr, Saad MJ, Franchini KG. Expression and distribution of NOS1 and NOS3 in the myocardium of angiotensin II-infused rats. *Hypertension.* 2001;37:1423–1428.
18. Hu C, Dandapat A, Sun L, Marwali MR, Inoue N, Sugawara F, Inoue K, Kawase Y, Jishage K, Suzuki H, Hermonat PL, Sawamura T, Mehta JL. Modulation of angiotensin II-mediated hypertension and cardiac remodeling by lectin-like oxidized low-density lipoprotein receptor-1 deletion. *Hypertension.* 2008;52:556–562.
19. Subramaniam A, Jones WK, Gulick J, Wert S, Neumann J, Robbins J. Tissue-specific regulation of the α -myosin heavy chain gene promoter in transgenic mice. *J Biol Chem.* 1991;266:24613–24620.
20. Hunter JJ, Chien KR. Signaling pathways for cardiac hypertrophy and failure. *N Engl J Med.* 1999;341:1276–1283.
21. Yamazaki T, Komuro I, Yazaki Y. Signalling pathways for cardiac hypertrophy. *Cell Signal.* 1998;10:693–698.
22. Izumiya Y, Kim S, Izumi Y, Yoshida K, Yoshiyama M, Matsuzawa A, Ichijo H, Iwao H. Apoptosis signal-regulating kinase 1 plays a pivotal role in angiotensin II-induced cardiac hypertrophy and remodeling. *Circ Res.* 2003;93:874–883.
23. Baker KM, Booz GW, Dostal DE. Cardiac actions of angiotensin II: role of an intracardiac renin-angiotensin system. *Annu Rev Physiol.* 1992;54:227–241.
24. Hein L, Stevens ME, Barsh GS, Pratt RE, Kobilka BK, Dzau VJ. Overexpression of angiotensin AT1 receptor transgene in the mouse myocardium produces a lethal phenotype associated with myocyte hyperplasia and heart block. *Proc Natl Acad Sci U S A.* 1997;94:6391–6396.
25. Paradis P, Dali-Youcef N, Paradis FW, Thibault G, Nemer M. Overexpression of angiotensin II type I receptor in cardiomyocytes induces cardiac hypertrophy and remodeling. *Proc Natl Acad Sci U S A.* 2000;97:931–936.
26. Zhai P, Yamamoto M, Galeotti J, Liu J, Masurekar M, Thaisz J, Irie K, Holle E, Yu X, Kupersmidt S, Roden DM, Wagner T, Yatani A, Vatner DE, Vatner SF, Sadoshima J. Cardiac-specific overexpression of AT1 receptor mutant lacking G α /G α i coupling causes hypertrophy and bradycardia in transgenic mice. *J Clin Invest.* 2005;115:3045–3056.
27. Frank D, Kuhn C, van Eickels M, Gehring D, Hanselmann C, Lippel S, Will R, Katus HA, Frey N. Calsarcin-1 protects against angiotensin-II induced cardiac hypertrophy. *Circulation.* 2007;116:2587–2596.
28. Hunyady L, Bor M, Balla T, Catt KJ. Identification of a cytoplasmic Ser-Thr-Leu motif that determines agonist-induced internalization of the AT1 angiotensin receptor. *J Biol Chem.* 1994;269:31378–31382.
29. Tang H, Guo DF, Porter JP, Wanaka Y, Inagami T. Role of cytoplasmic tail of the type IA angiotensin II receptor in agonist- and phorbol ester-induced desensitization. *Circ Res.* 1998;82:523–531.
30. Shigenaga A, Tamura K, Wakui H, Masuda S, Azuma K, Tsurumi-Ikeya Y, Ozawa M, Mogi M, Matsuda M, Uchino K, Kimura K, Horiuchi M, Umemura S. Effect of olmesartan on tissue expression balance between angiotensin II receptor and its inhibitory binding molecule. *Hypertension.* 2008;52:672–678.
31. Bao W, Behm DJ, Nerurkar SS, Ao Z, Bentley R, Mirabile RC, Johns DG, Woods TN, Doe CP, Coatney RW, Ohlstein JF, Douglas SA, Willette RN, Yue TL. Effects of p38 MAPK inhibitor on angiotensin II-dependent hypertension, organ damage, and superoxide anion production. *J Cardiovasc Pharmacol.* 2007;49:362–368.
32. Park JK, Fischer R, Dechend R, Shagdarsuren E, Gajek A, Wellner M, Meiners S, Gratz P, Al-Saadi N, Feldt S, Fiebeler A, Madwed JB, Schirdewan A, Haller H, Luft FC, Muller DN. p38 mitogen-activated protein kinase inhibition ameliorates angiotensin II-induced target organ damage. *Hypertension.* 2007;49:481–489.
33. Harada K, Komuro I, Shiojima I, Hayashi D, Kudoh S, Mizuno T, Kijima K, Matsubara H, Sugaya T, Murakami K, Yazaki Y. Pressure overload induces cardiac hypertrophy in angiotensin II type IA receptor knockout mice. *Circulation.* 1998;97:1952–1959.
34. Kudoh S, Komuro I, Hiroi Y, Zou Y, Harada K, Sugaya T, Takekoshi N, Murakami K, Kadowaki T, Yazaki Y. Mechanical stretch induces hypertrophic responses in cardiac myocytes of angiotensin II type Ia receptor knockout mice. *J Biol Chem.* 1998;273:24037–24043.
35. van Kats JP, Methot D, Paradis P, Silversides DW, Reudelhuber TL. Use of a biological peptide pump to study chronic peptide hormone action in transgenic mice: direct and indirect effects of angiotensin II on the heart. *J Biol Chem.* 2001;276:44012–44017.
36. Crowley SD, Gurley SB, Herrera MJ, Ruiz P, Griffiths R, Kumar AP, Kim HS, Smithies O, Le TH, Coffman TM. Angiotensin II causes hypertension and cardiac hypertrophy through its receptors in the kidney. *Proc Natl Acad Sci U S A.* 2006;103:17985–17990.

Online Supplement

Original research article:

Cardiac-specific activation of AT1 receptor-associated protein completely suppresses cardiac hypertrophy in chronic angiotensin II-infused mice

Running title:

Cardiac ATRAP enhancement inhibits hypertrophy

Hiromichi Wakui, Kouichi Tamura, Yutaka Tanaka, Miyuki Matsuda, Yunzhe Bai, Toru Dejima, Shin-ichiro Masuda, Atsu-ichiro Shigenaga, Akinobu Maeda, Masaki Mogi, Naoaki Ichihara, Yusuke Kobayashi, Nobuhito Hirawa, Tomoaki Ishigami, Yoshiyuki Toya, Machiko Yabana, Masatsugu Horiuchi, Susumu Minamisawa, Satoshi Umemura

From the Department of Medical Science and Cardiorenal Medicine (H.W., K.T., M.M., Y.B., T.D., S.M., A.S., A.M., N.I., Y.K., N.H., T.I., Y.T., M.Y., S.U.), Yokohama City University Graduate School of Medicine, Japan; Department of Molecular Cardiovascular Biology and Pharmacology (M.M., M.H.), Ehime University, Graduate School of Medicine, Japan; Department of Life Science and Medical Bio-science (S.M.), Waseda University, Japan.

Correspondence to:

Kouichi Tamura, M.D., Ph.D., F.A.C.P., F.A.H.A.
Department of Medical Science and Cardiorenal Medicine,
Yokohama City University Graduate School of Medicine,
3-9 Fukuura, Kanazawa-ku,
Yokohama 236-0004, Japan.
Tel: 81-45-787-2635,
Fax: 81-45-701-3738,
E-mail: tamukou@med.yokohama-cu.ac.jp

Supplemental References

1. Subramaniam A, Jones WK, Gulick J, Wert S, Neumann J, Robbins J. Tissue-specific regulation of the alpha-myosin heavy chain gene promoter in transgenic mice. *J Biol Chem*. 1991;266:24613-24620.
2. Daviet L, Lehtonen JY, Tamura K, Griese DP, Horiuchi M, Dzau VJ. Cloning and characterization of ATRAP, a novel protein that interacts with the angiotensin II type 1 receptor. *J Biol Chem*. 1999;274:17058-17062.
3. Tanaka Y, Tamura K, Koide Y, Sakai M, Tsurumi Y, Noda Y, Umemura M, Ishigami T, Uchino K, Kimura K, Horiuchi M, Umemura S. The novel angiotensin II type 1 receptor (AT1R)-associated protein ATRAP downregulates AT1R and ameliorates cardiomyocyte hypertrophy. *FEBS Lett*. 2005;579:1579-1586.

Table S1. Blood Pressure and Heart Rate 14 Days after Ang II Infusion in LC, Tg46, and Tg52 Mice

Variable	LC		Tg46		Tg52	
	Vehicle	Ang II	Vehicle	Ang II	Vehicle	Ang II
SBP, mmHg	112±6	121±6	109±5	120±6	105±5	112±4
HR, bpm	652±44	657±22	673±24	648±29	572±54	612±22

SBP indicates systolic blood pressure; HR, heart rate. All of the values are mean±SE (n=6 to 8).

Fig. S1

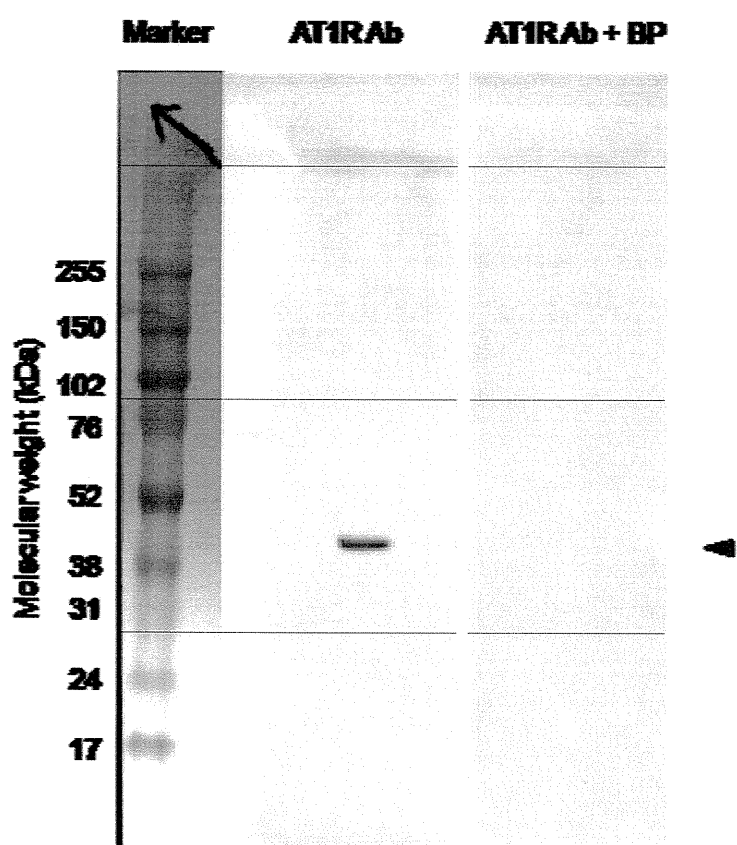


Figure S1. Western Blot Analysis of AT1R Protein in the Mouse Heart

The result of Western blot analysis showed a single protein band of approximately 42kDa in tissue extracts derived from heart of C57BL/6J wild-type mice at baseline. This single band was not observed when the antibody was preabsorbed with an AT1R-selective blocking peptide. These results demonstrate the specificity of AT1R antibody used in the present study. Ab, antibody; BP, blocking peptide.

Fig. S2

