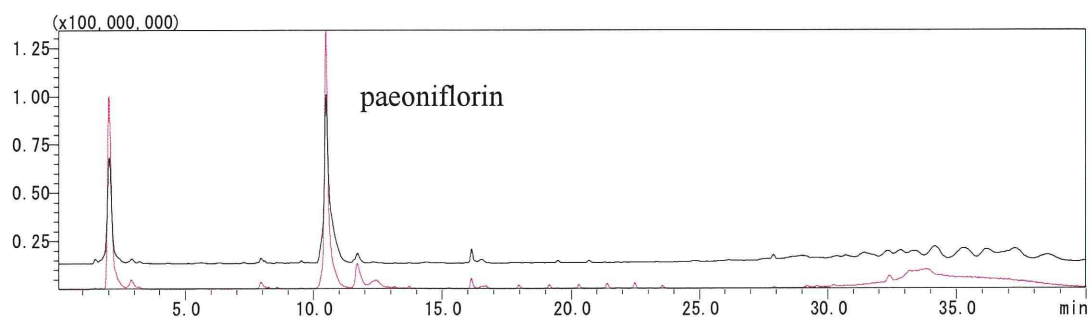
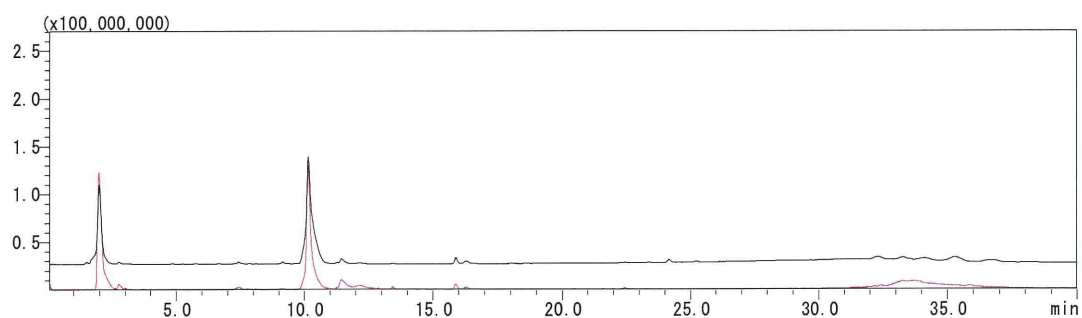


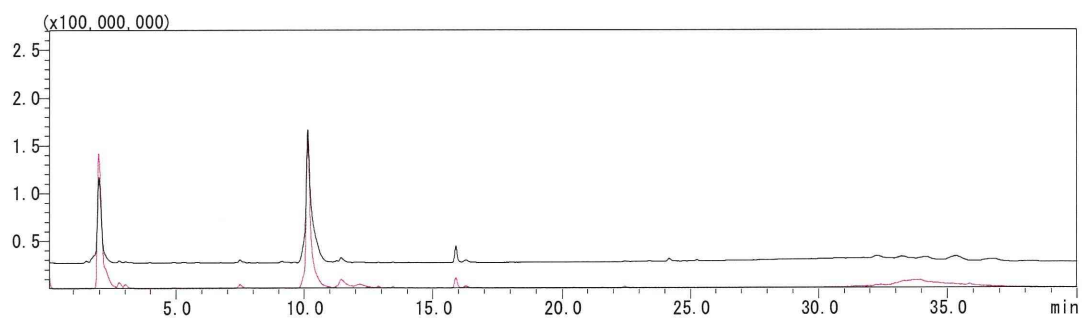
シャクヤク 13 試料を混合して調製した試料の LC-MS クロマトグラム



NIB-023



NIB-024



NIB-046

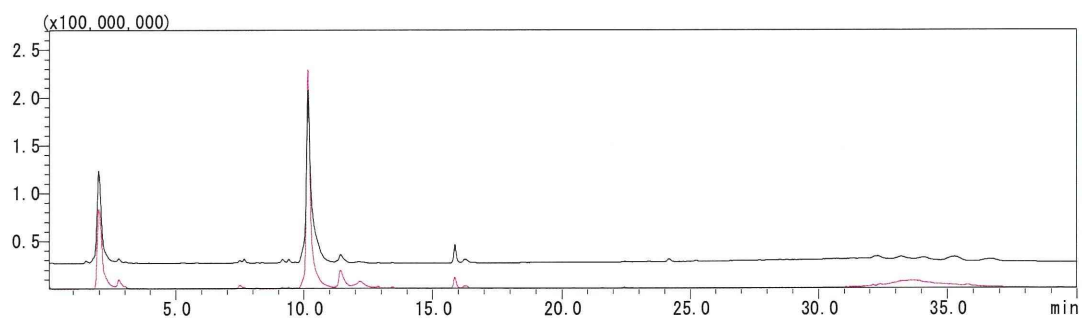
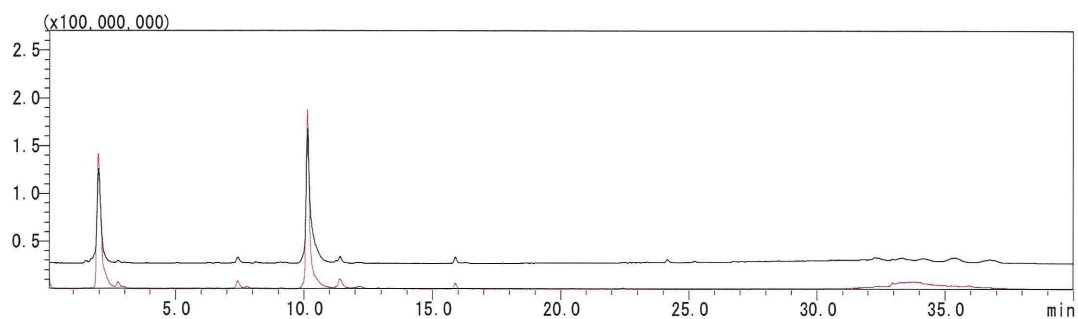
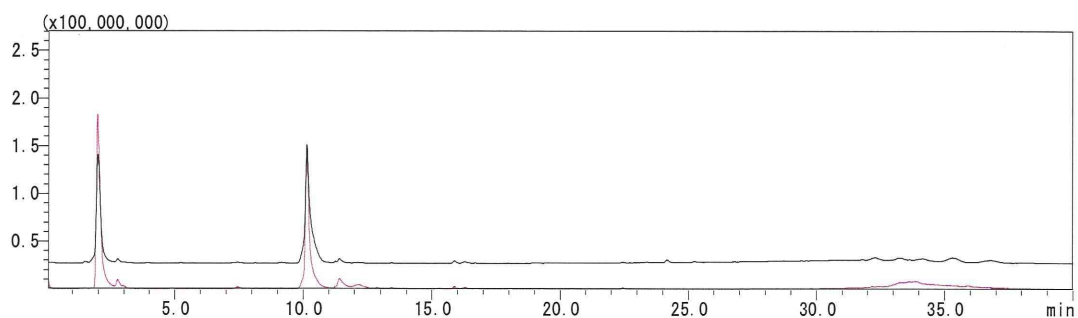


図 4 シャクヤク 13 試料の正負イオン LC-MS クロマトグラム及びシャクヤク 13 試料を混合して調製した試料の LC-MS クロマトグラム 黒線：正イオン，赤線：負イオン

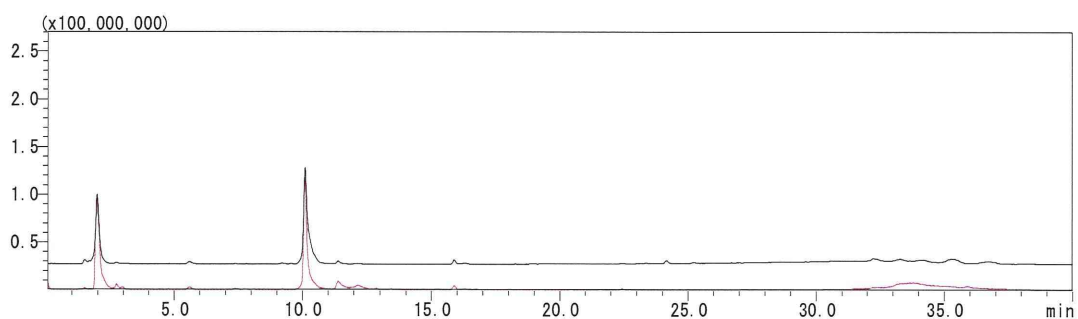
NIB-063



NIB-072



NIB-082



NIB-083

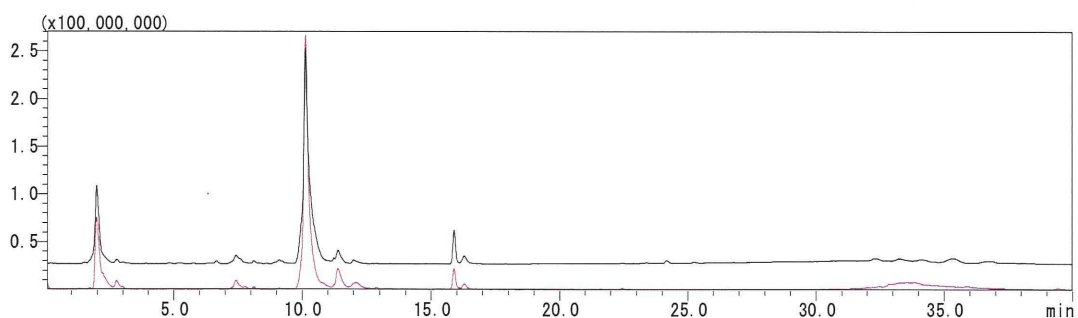
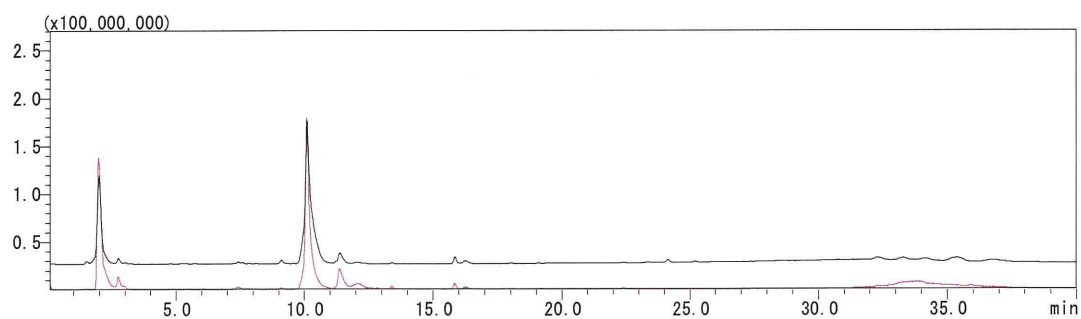
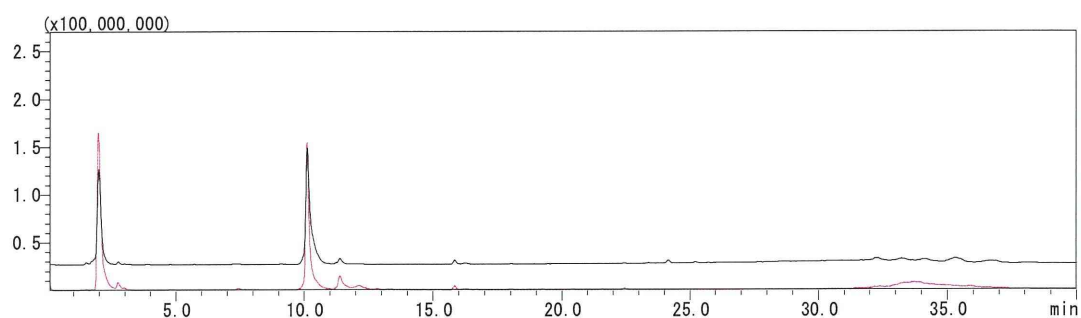


図4 (続き) 黒線：正イオン，赤線：負イオン

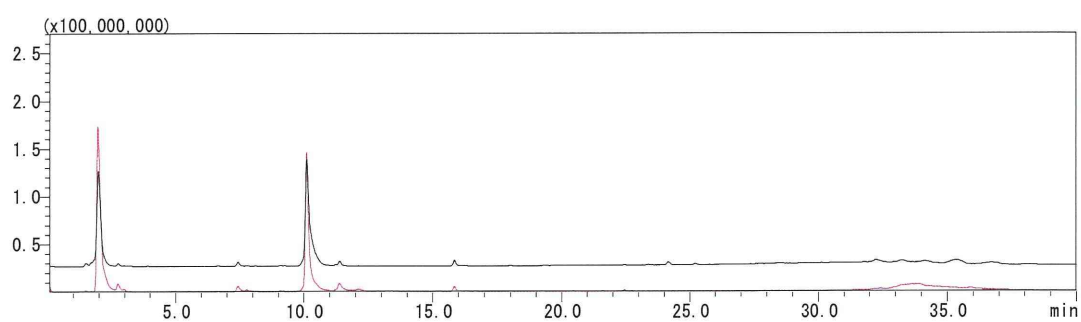
NIB-098



NIB-128



NIB-129



NIB-157

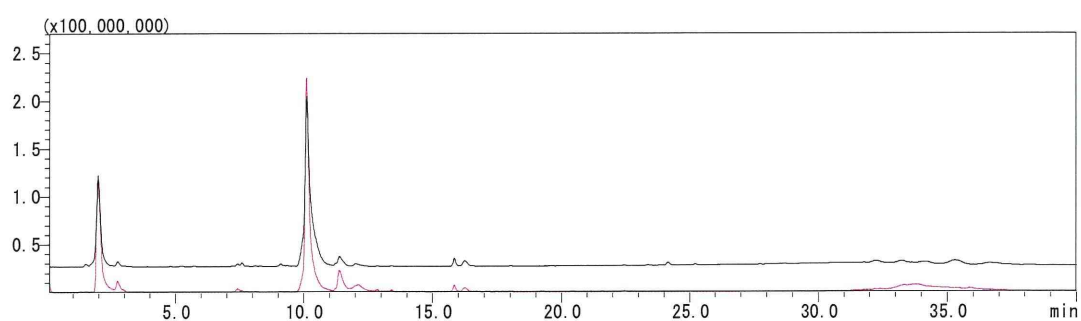
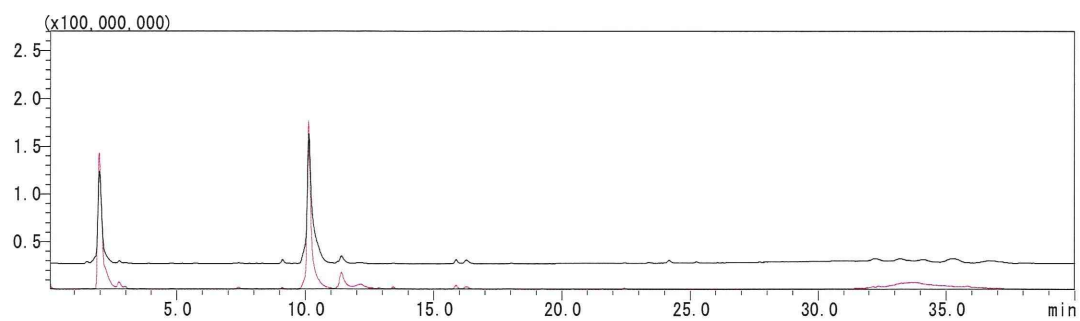


図4 (続き) 黒線：正イオン，赤線：負イオン

NIB-172



NIB-225

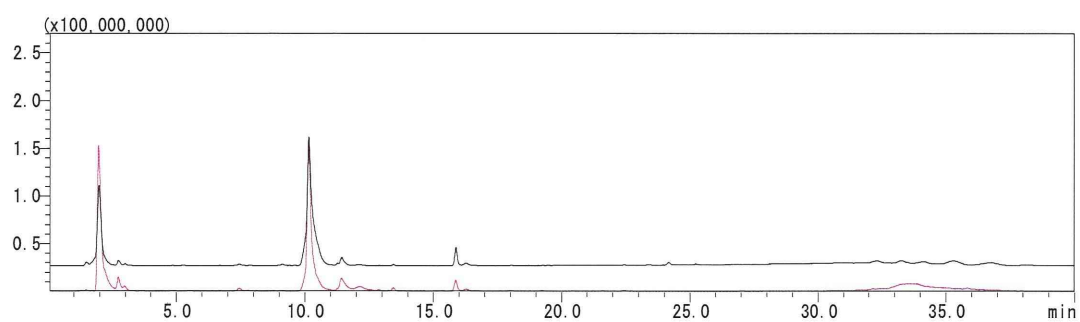
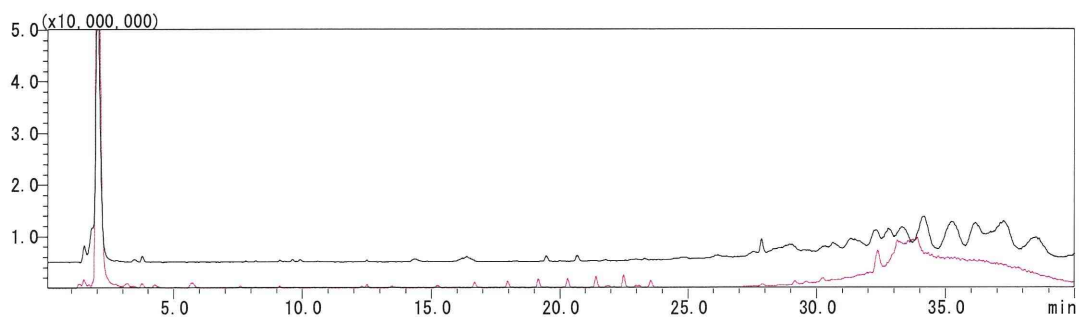
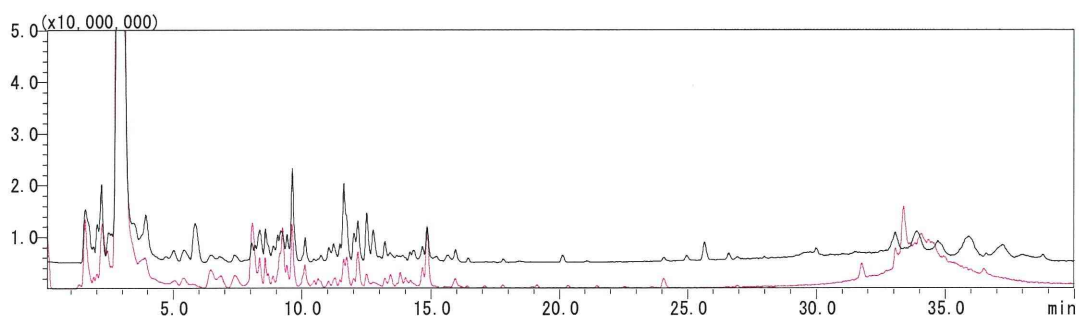


図4 (続き) 黒線：正イオン，赤線：負イオン

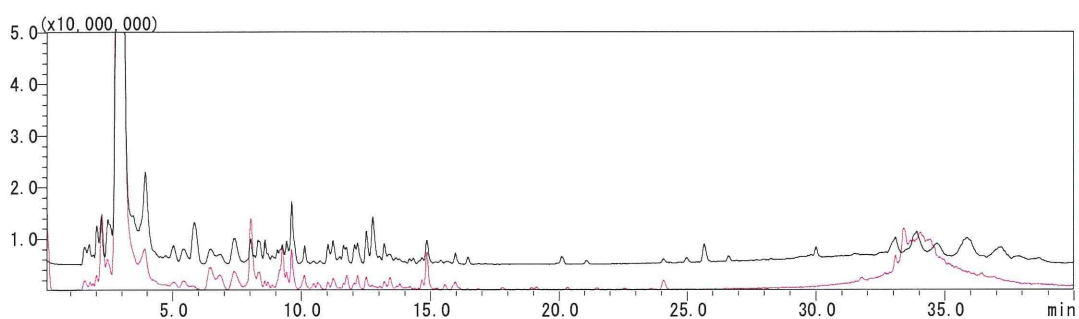
トウキ 12 試料を混合して調製した試料の LC-MS クロマトグラム



NIB-029



NIB-065



NIB-066

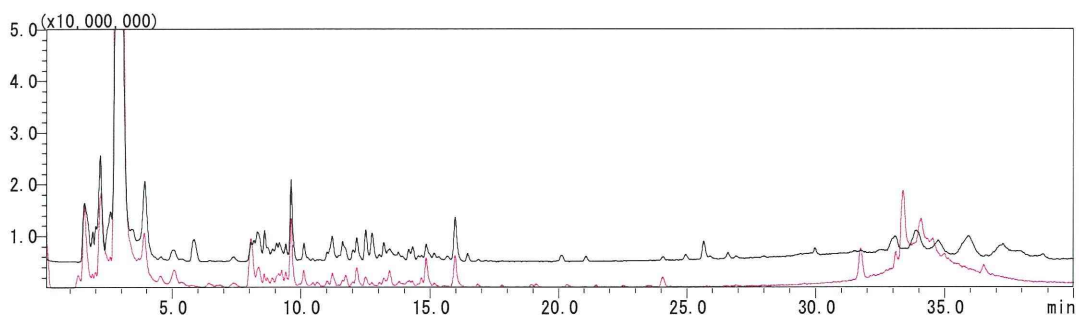
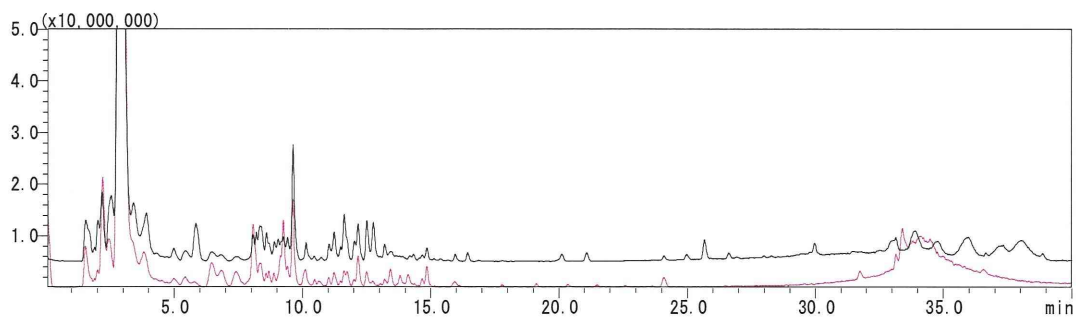
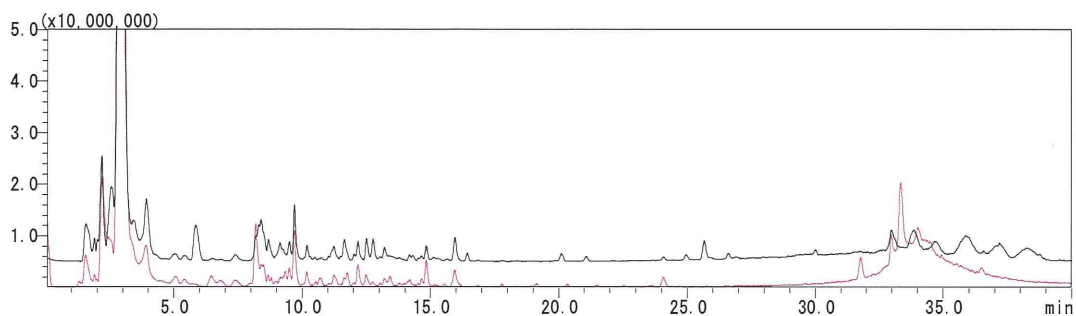


図 5 トウキ 12 試料の正負イオン LC-MS クロマトグラム及びトウキ 12 試料を混合して調製した試料の LC-MS クロマトグラム 黒線：正イオン，赤線：負イオン

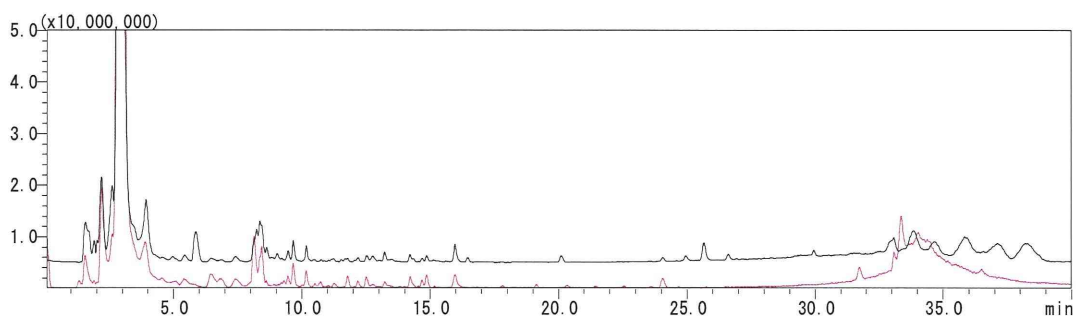
NIB-085



NIB-102



NIB-136



NIB-137

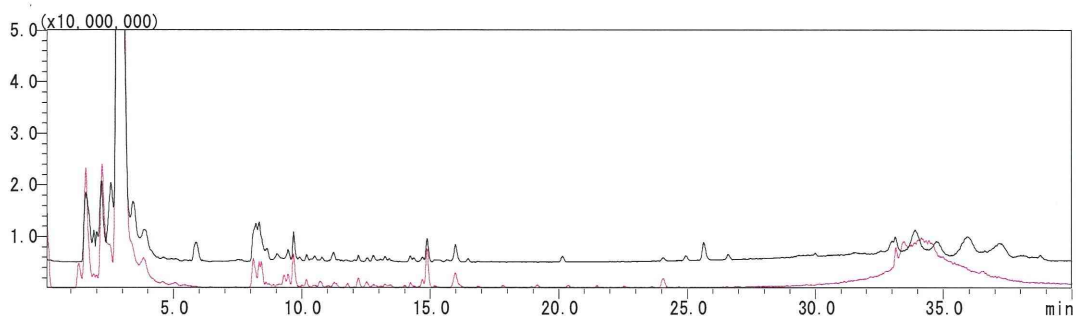
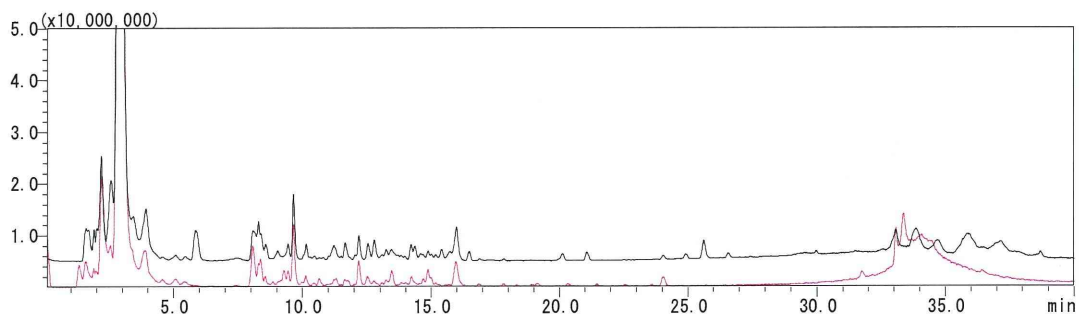
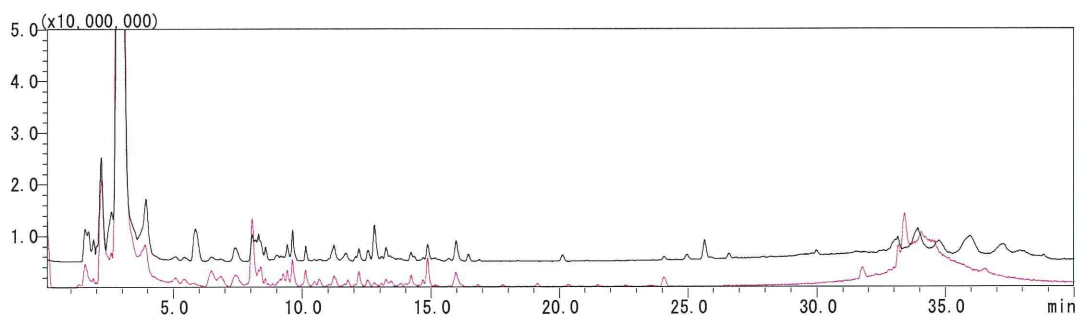


図5 (続き) 黒線：正イオン，赤線：負イオン

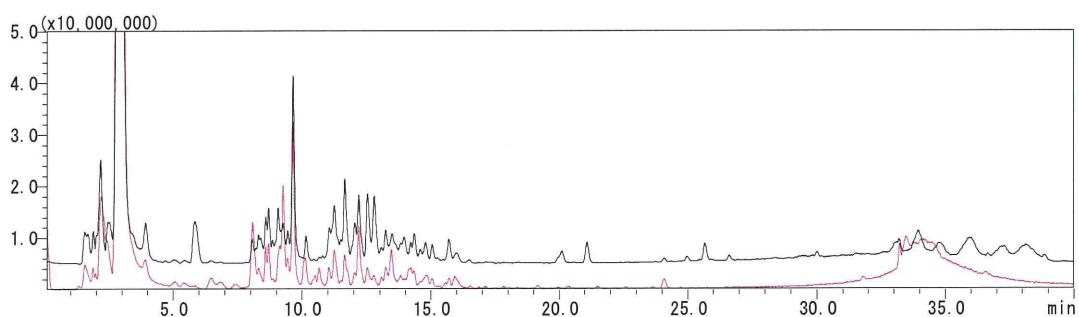
NIB-138



NIB-162



NIB-173



NIB-204

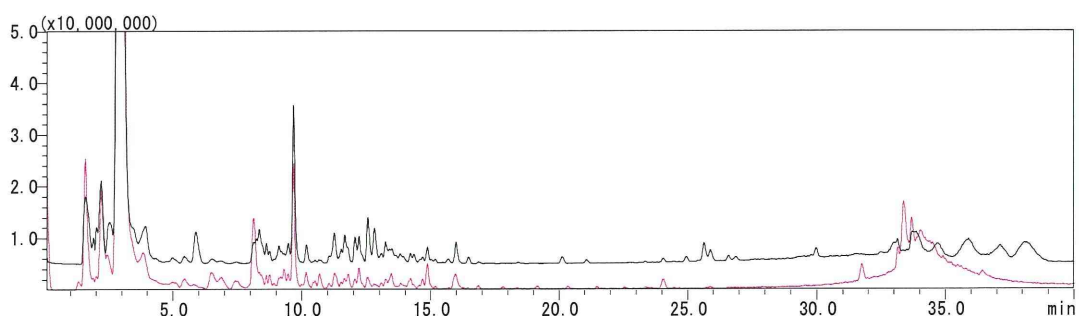


図5 (続き) 黒線：正イオン，赤線：負イオン

NIB-218

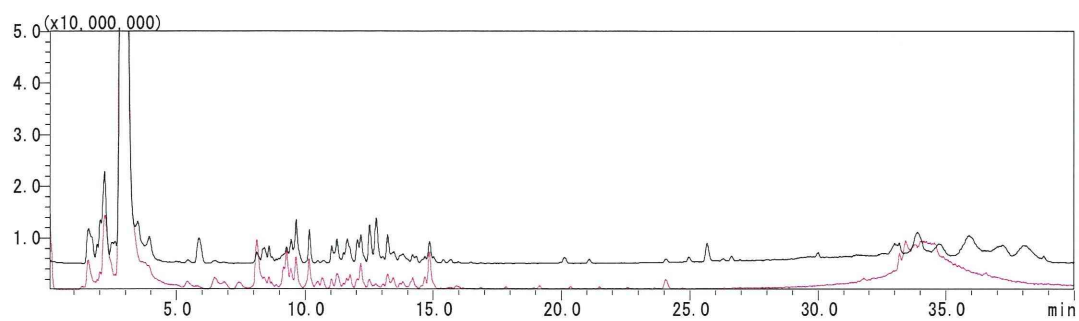
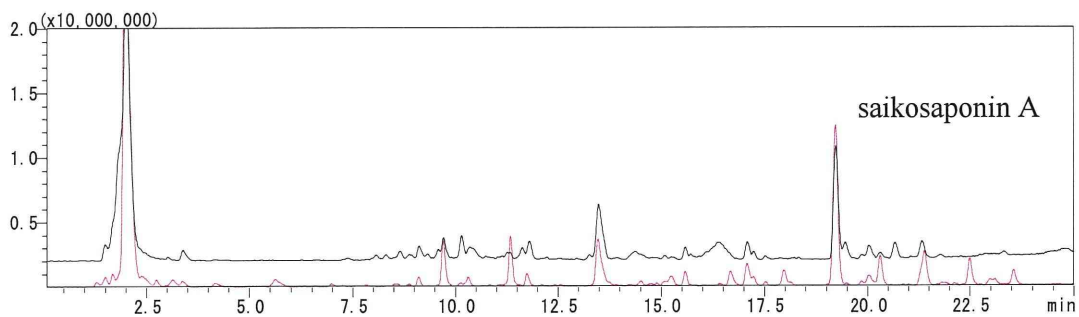
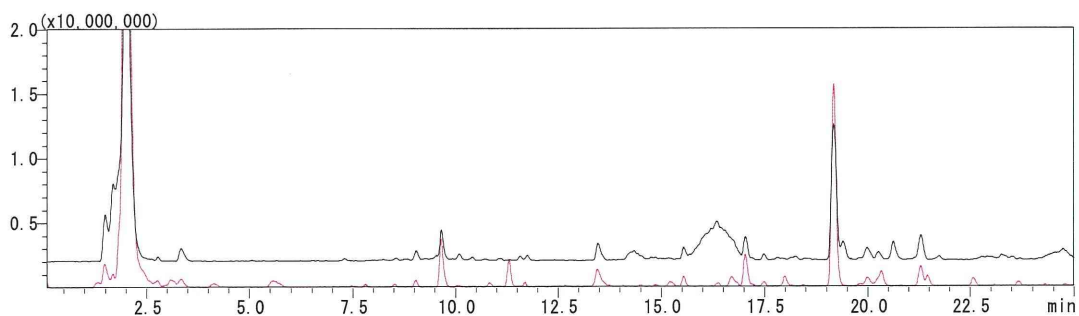


図5 (続き) 黒線：正イオン，赤線：負イオン

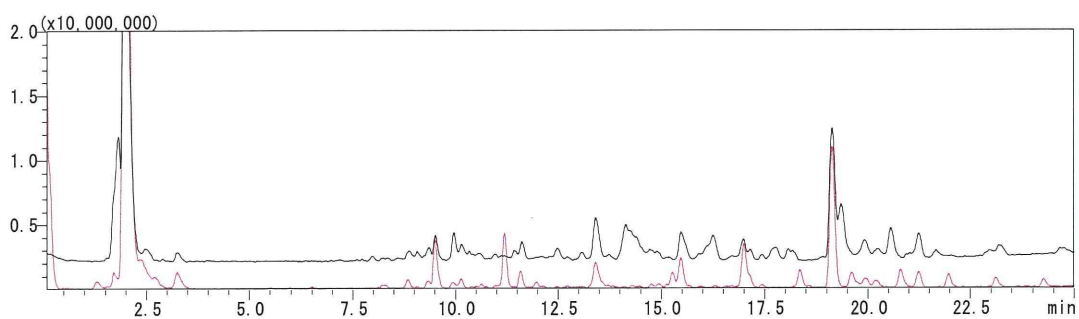
サイコ 10 試料を混合して調製した試料の LC-MS クロマトグラム



NIB-017



NIB-018



NIB-080

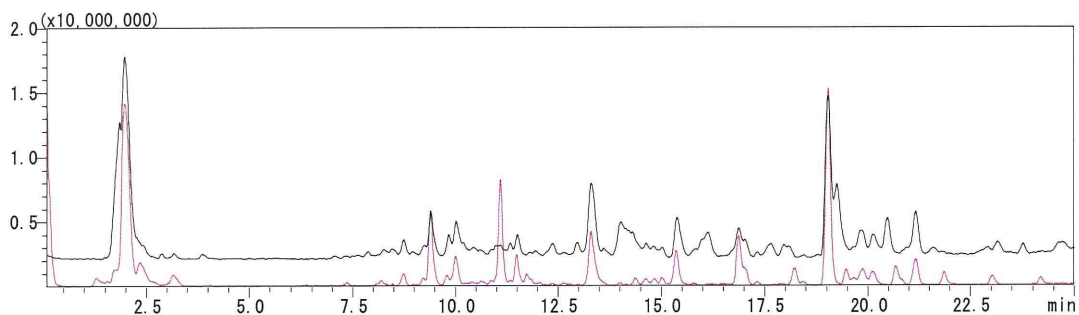
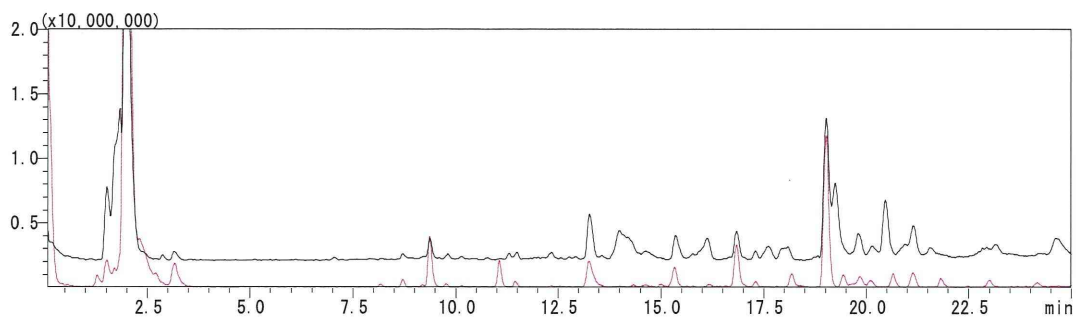
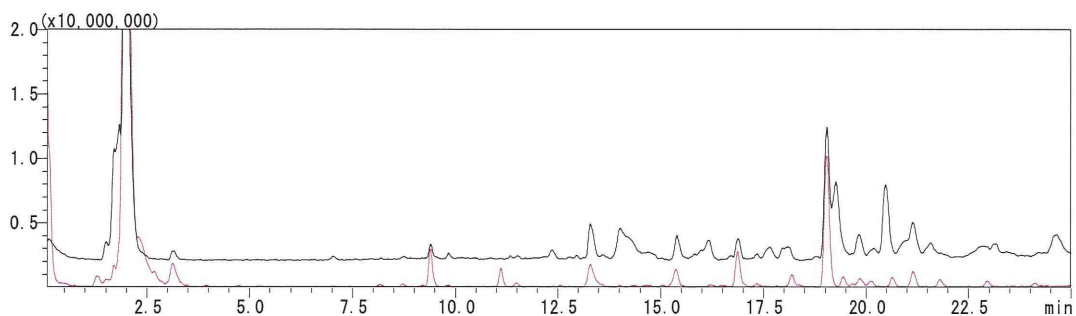


図 6 サイコ 10 試料の正負イオン LC-MS クロマトグラム及びサイコ 10 試料を混合して調製した試料の LC-MS クロマトグラム 黒線：正イオン，赤線：負イオン

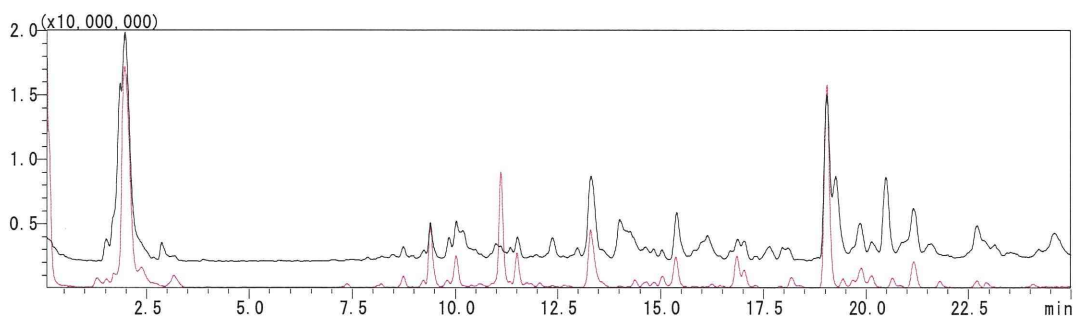
NIB-121



NIB-122



NIB-123



NIB-153

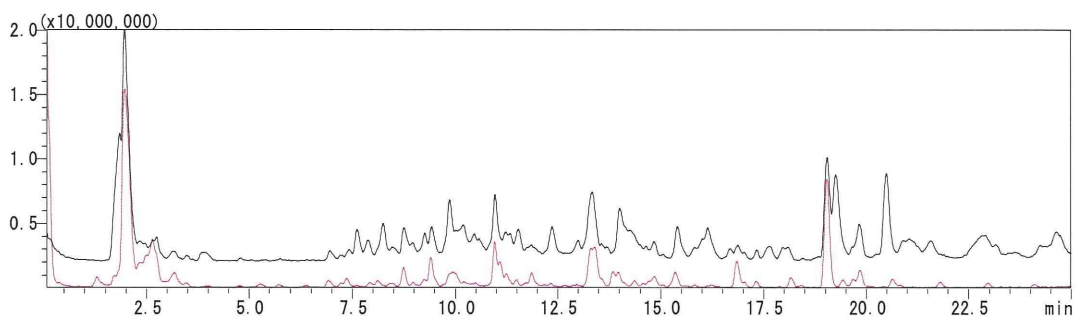
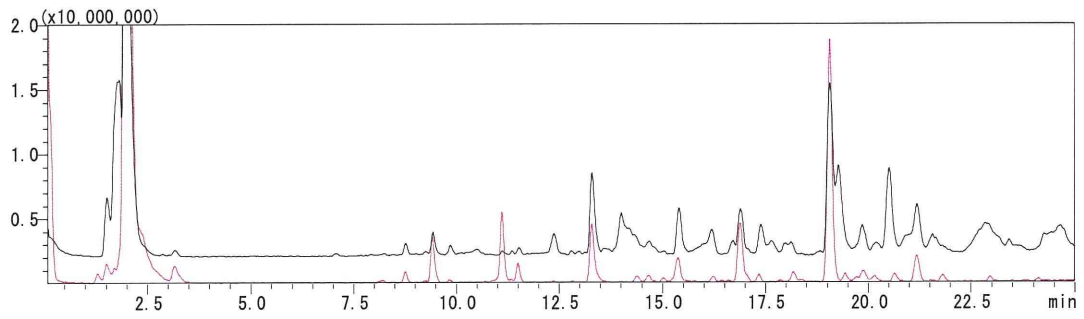
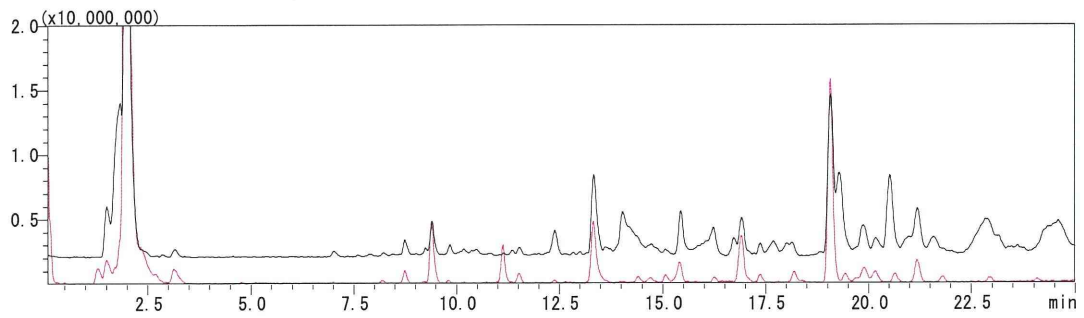


図6 (続き) 黒線：正イオン，赤線：負イオン

NIB-190



NIB-191



NIB-220

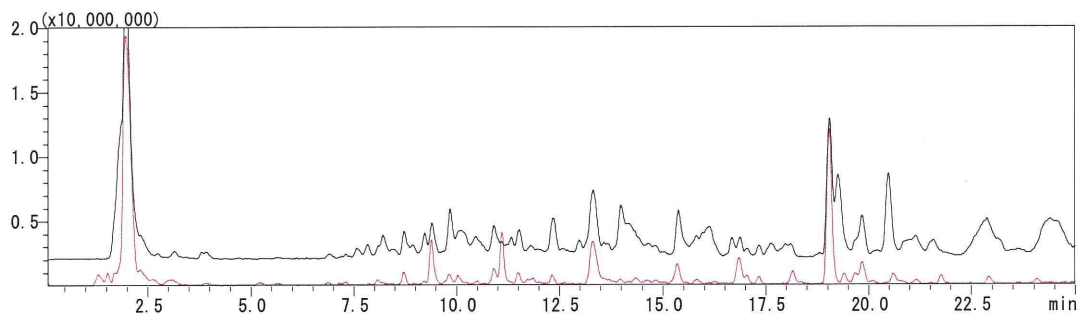
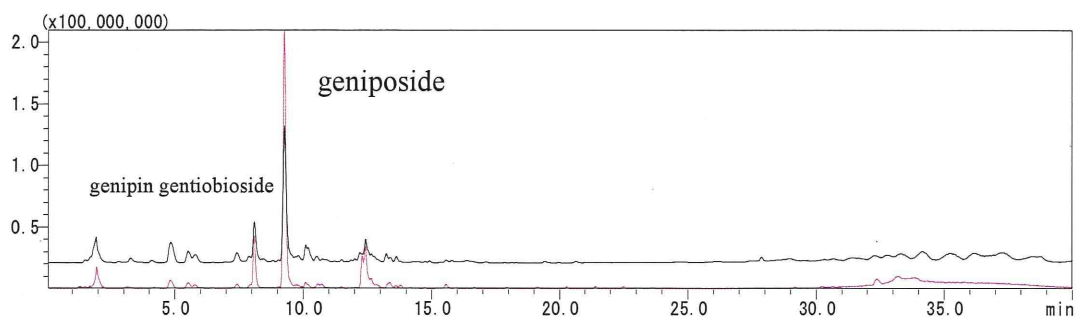
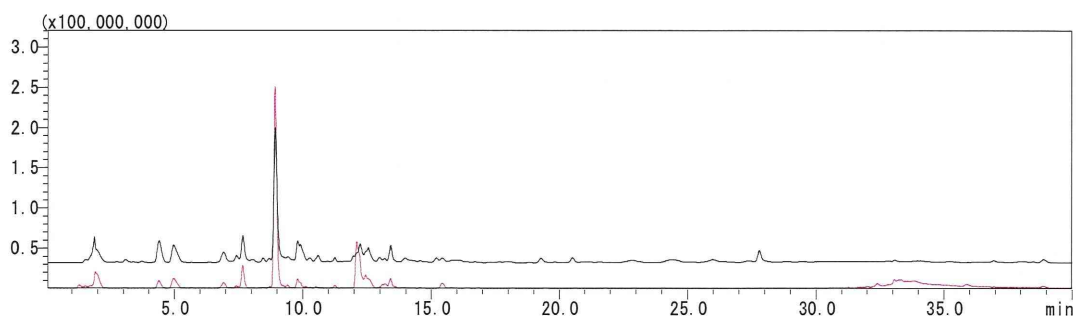


図6 (続き) 黒線：正イオン，赤線：負イオン

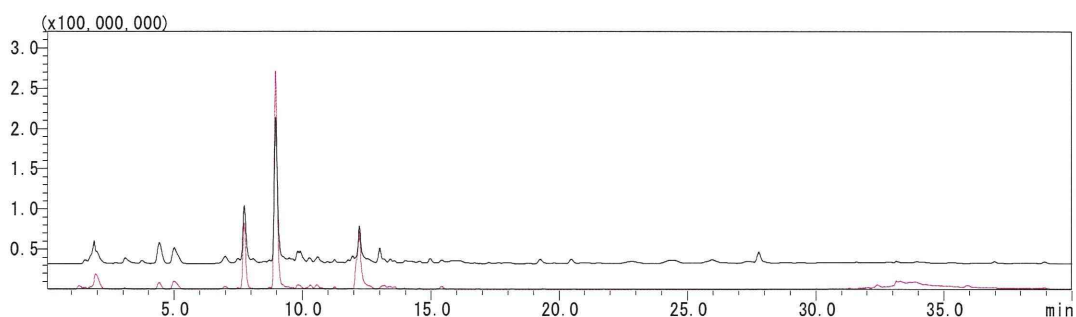
サンシシ 11 試料を混合して調製した試料の LC-MS クロマトグラム



NIB-019



NIB-020



NIB-044

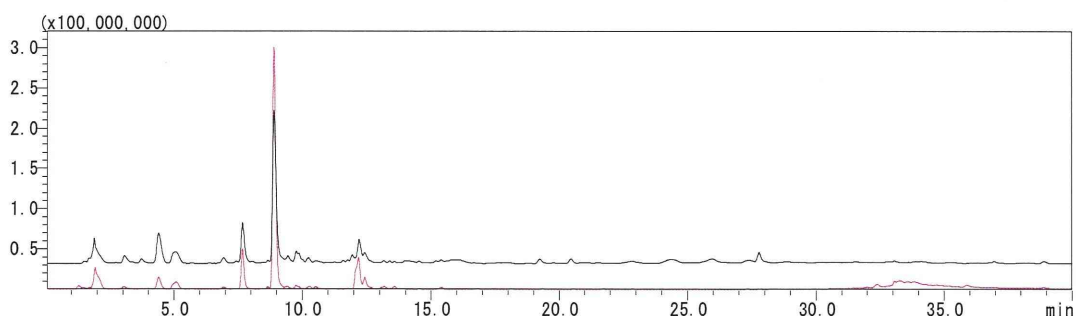
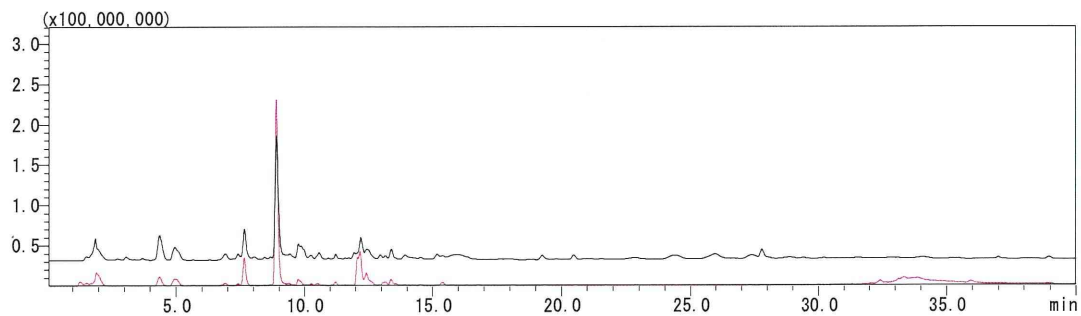
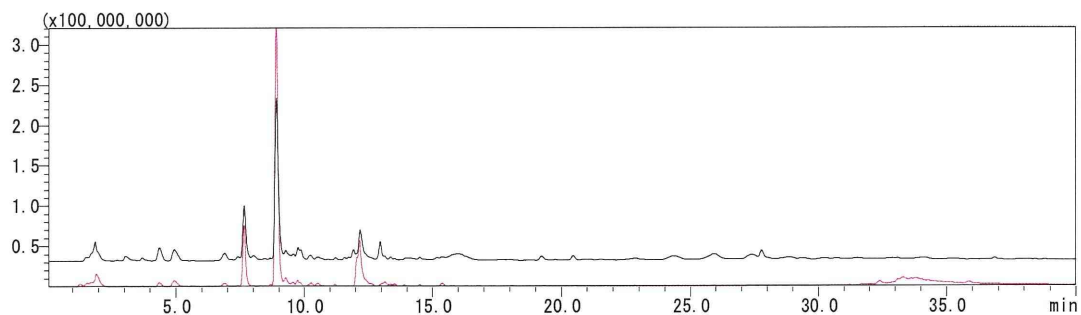


図 7 サンシシ 11 試料の正負イオン LC-MS クロマトグラム及びサンシシ 11 試料を混合して調製した試料の LC-MS クロマトグラム 黒線：正イオン，赤線：負イオン

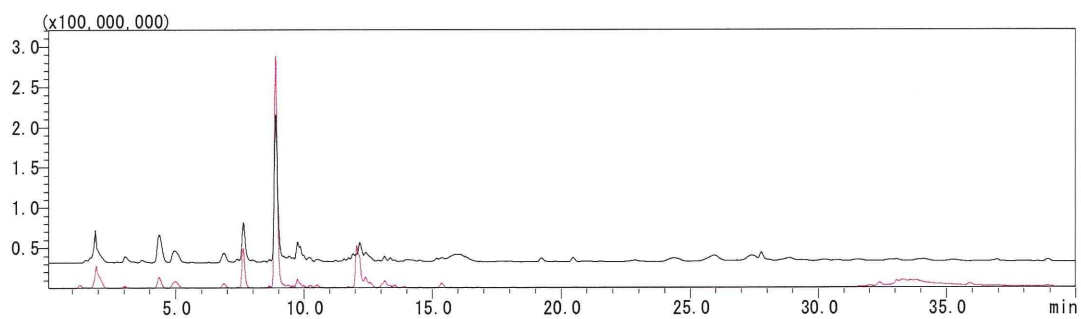
NIB-081



NIB-097



NIB-124



NIB-125

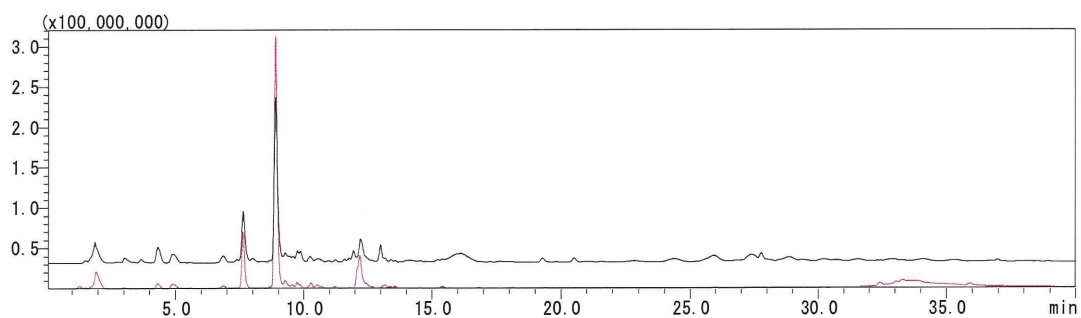
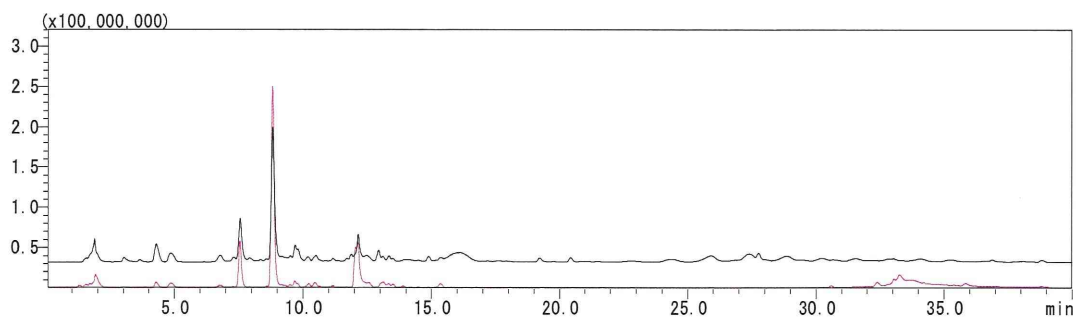
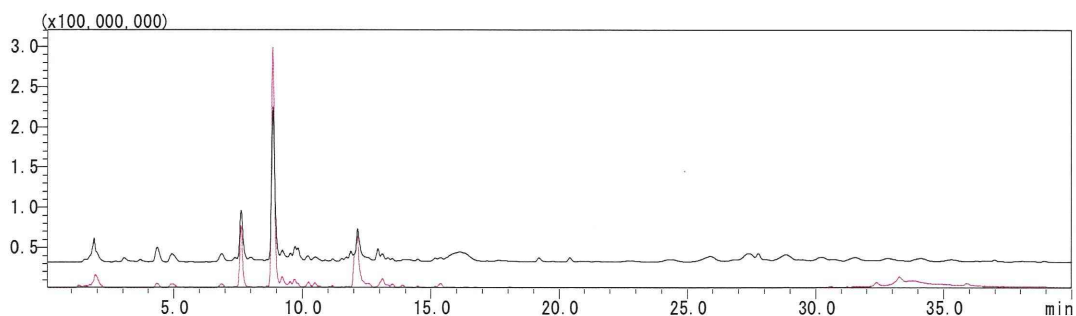


図7 (続き) 黒線：正イオン，赤線：負イオン

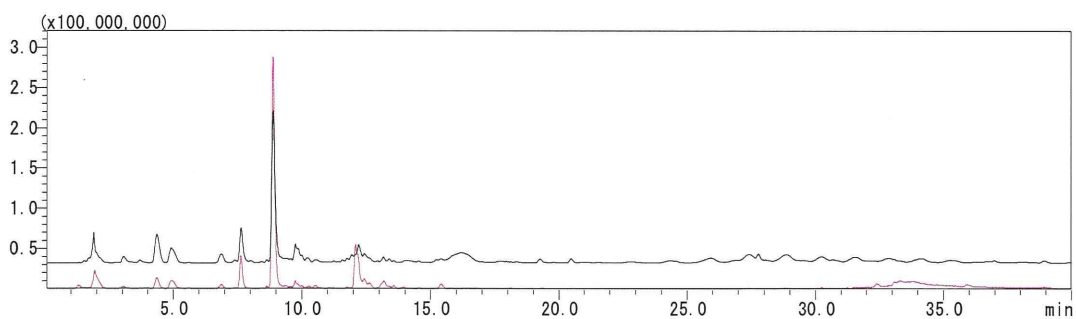
NIB-154



NIB-192



NIB-193



NIB-224

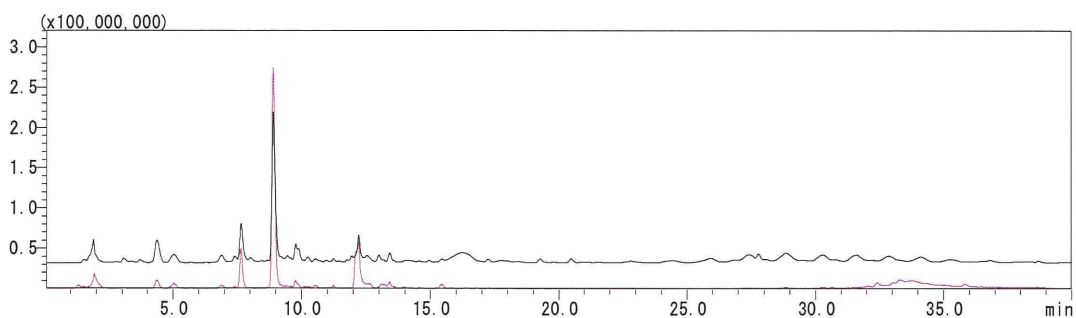
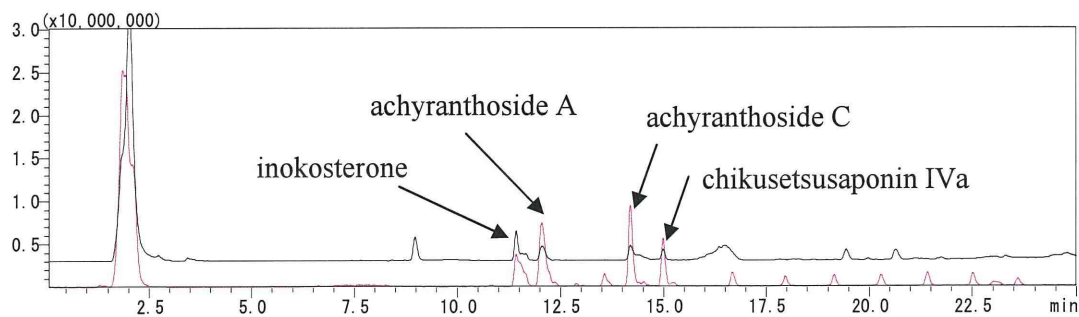
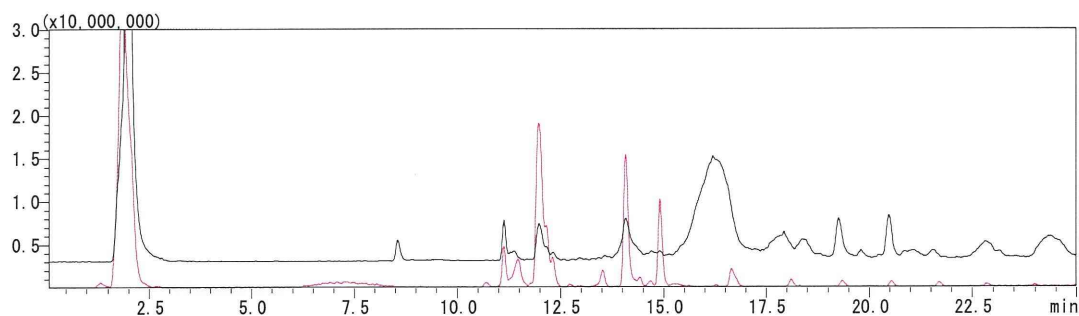


図7 (続き) 黒線：正イオン，赤線：負イオン

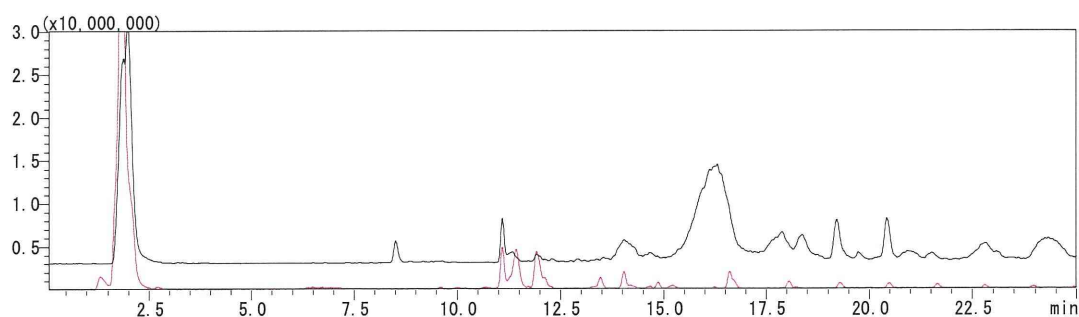
ゴシツ 7 試料を混合して調製した試料の LC-MS クロマトグラム



NIB-016



NIB-079



NIB-096

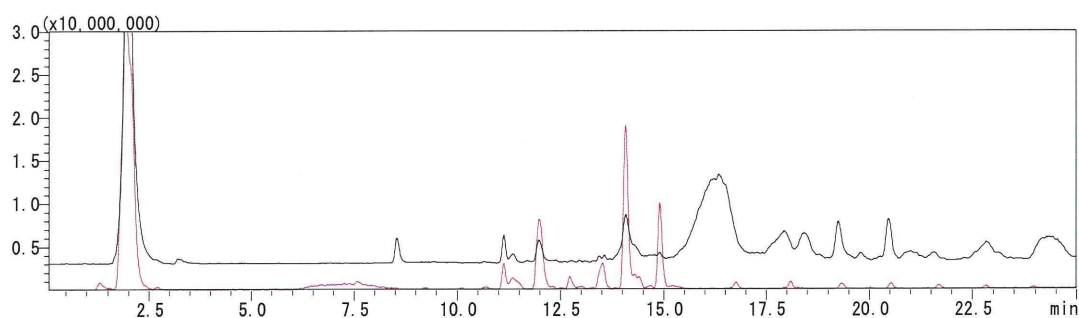
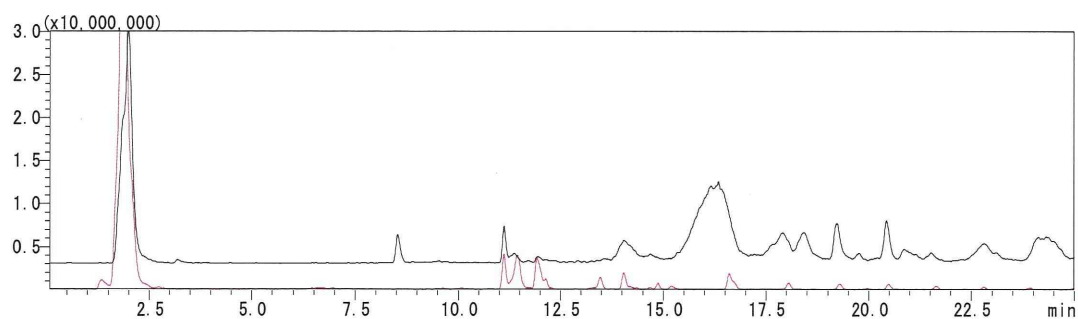
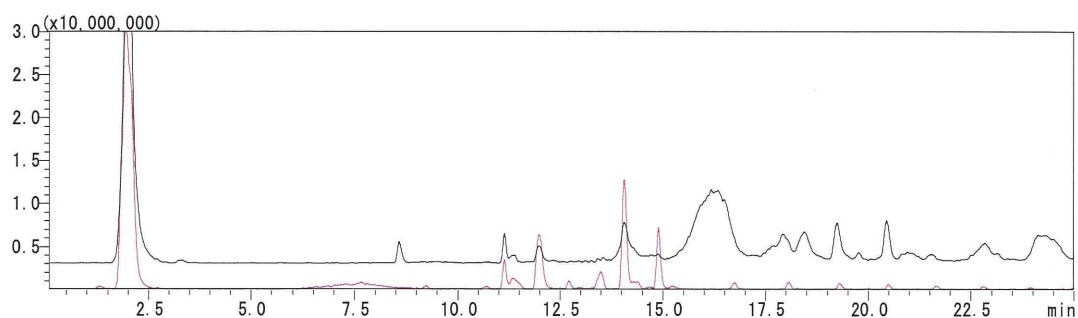


図 8 ゴシツ 7 試料の正負イオン LC-MS クロマトグラム及びゴシツ 7 試料を混合して調製した試料の LC-MS クロマトグラム 黒線：正イオン，赤線：負イオン

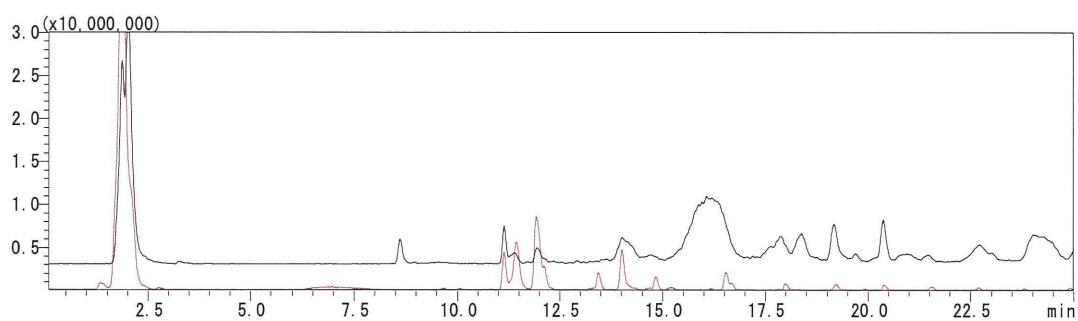
NIB-120



NIB-152



NIB-189



NIB-212

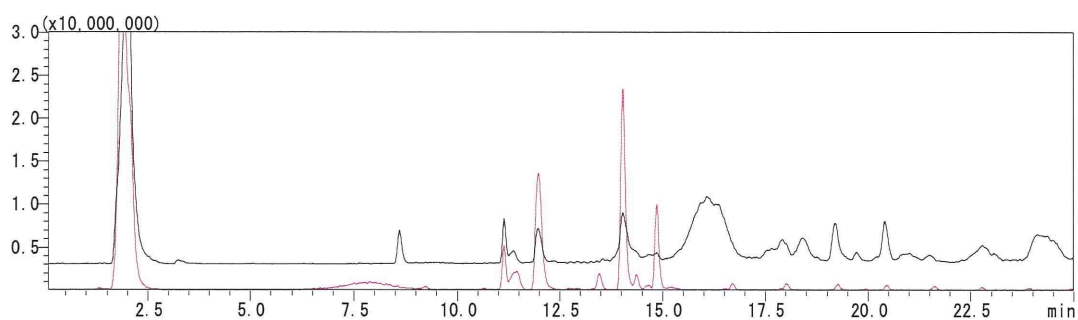
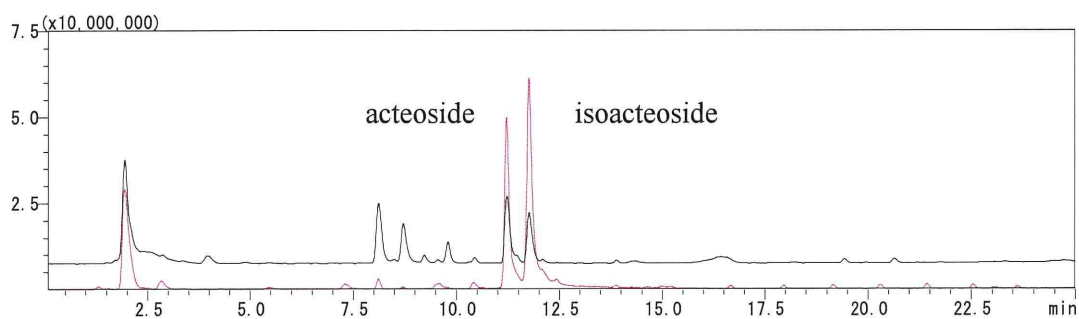
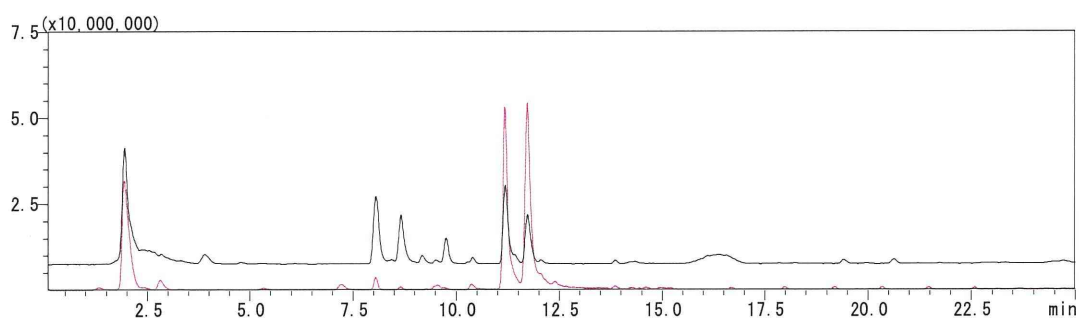


図 8 (続き) 黒線：正イオン，赤線：負イオン

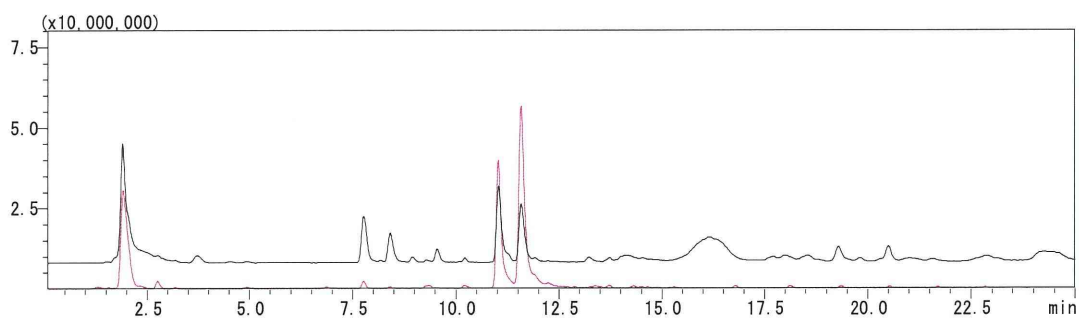
シャゼンシ7試料を混合して調製した試料のLC-MSクロマトグラム



NIB-025



NIB-047



NIB-099

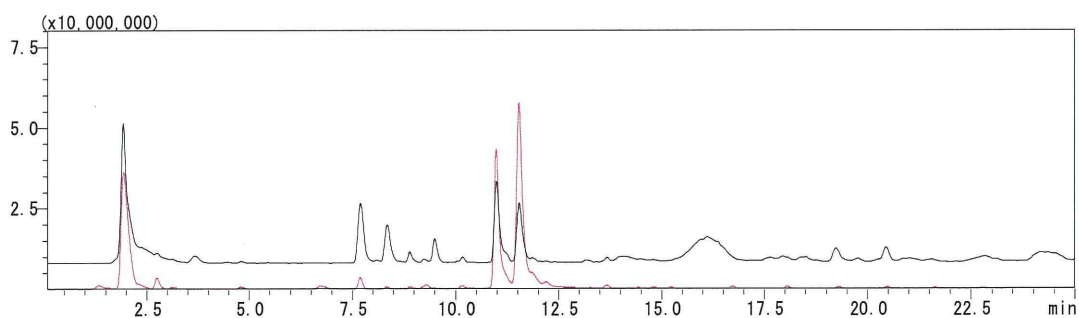
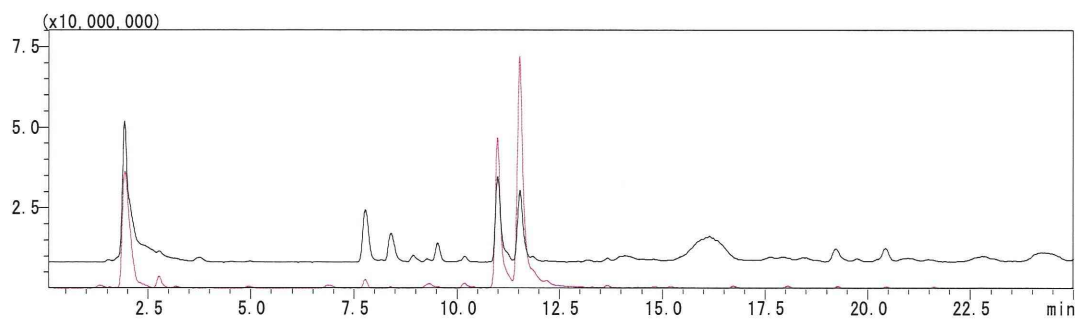
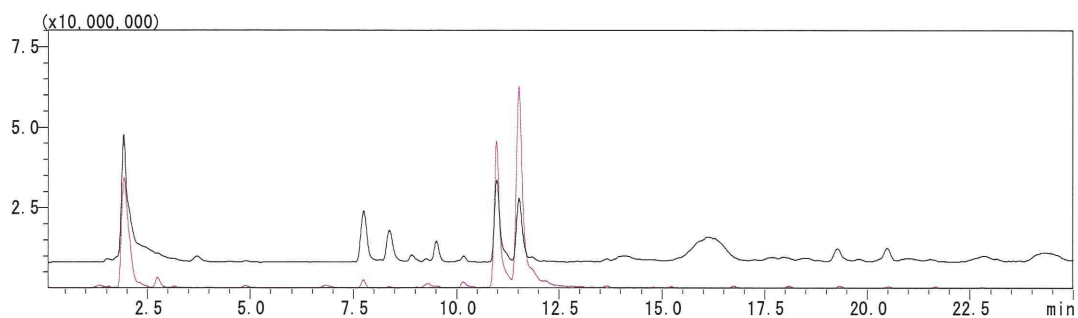


図9 シャゼンシ7試料の正負イオンLC-MSクロマトグラム及びシャゼンシ7試料を混合して調製した試料のLC-MSクロマトグラム 黒線：正イオン，赤線：負イオン

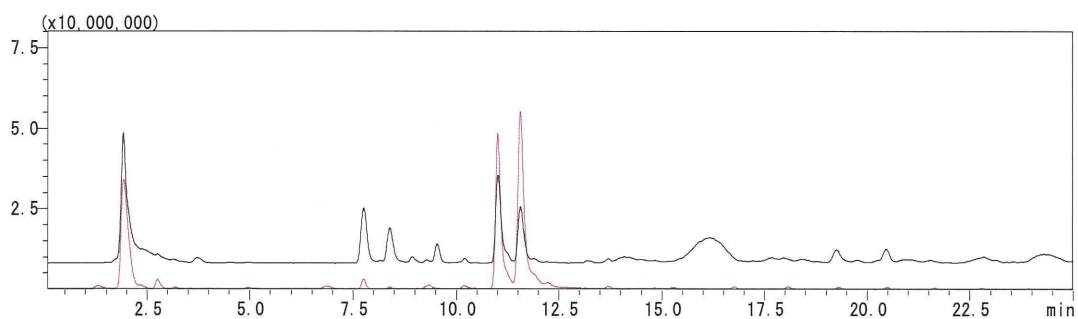
NIB-131



NIB-158



NIB-198



NIB-213

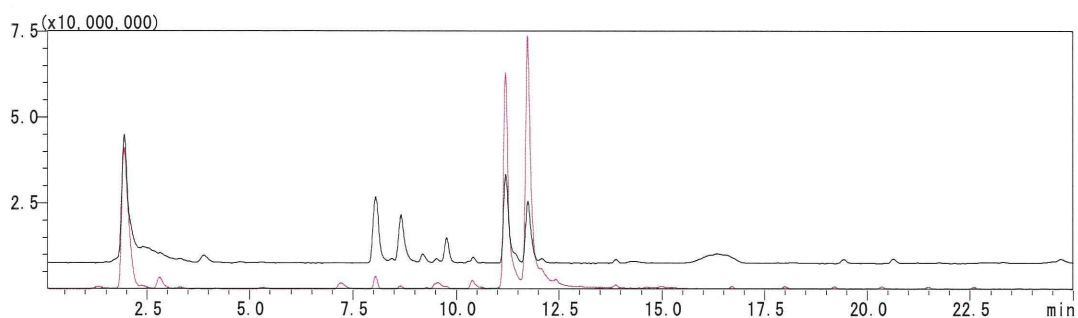
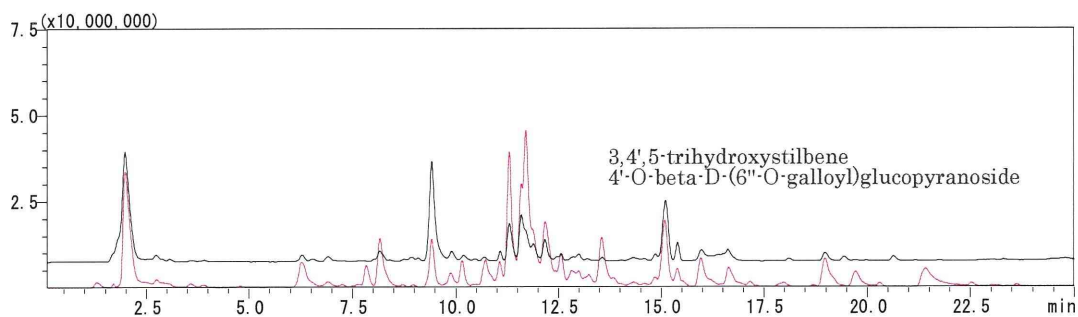
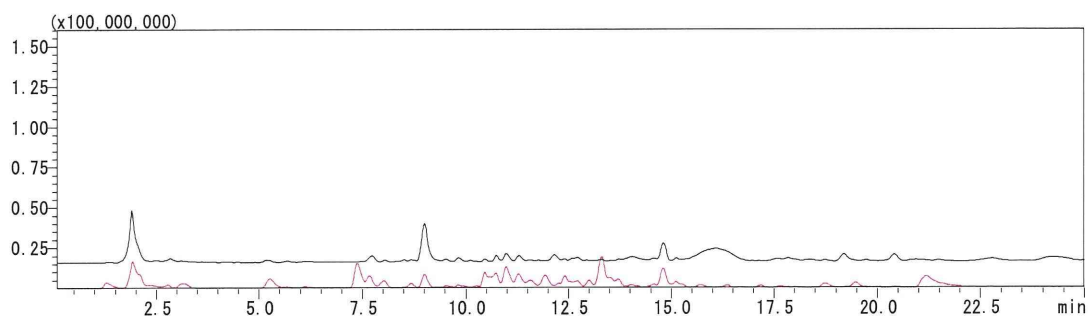


図9 (続き) 黒線：正イオン，赤線：負イオン

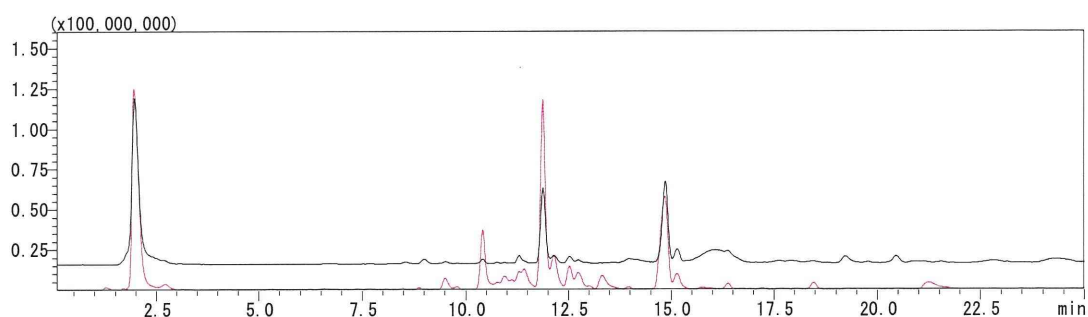
ダイオウ 9 試料を混合して調製した試料の LC-MS クロマトグラム



NIB-028



NIB-049



NIB-101

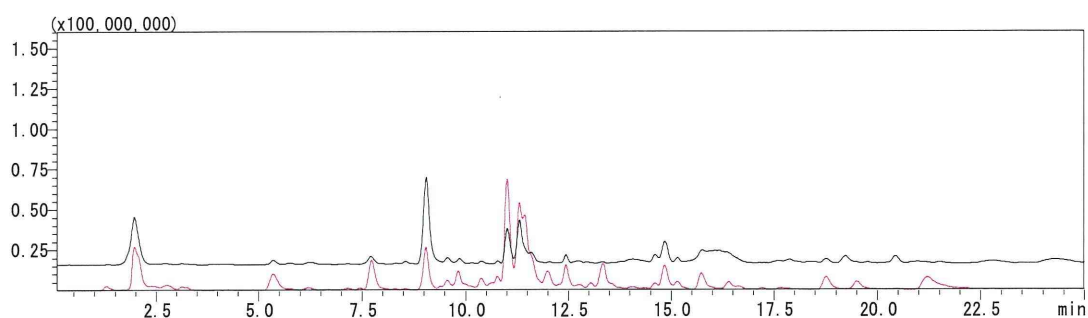
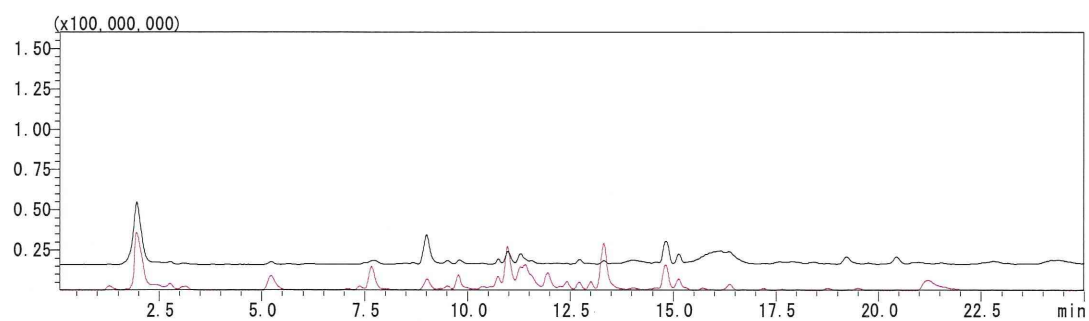
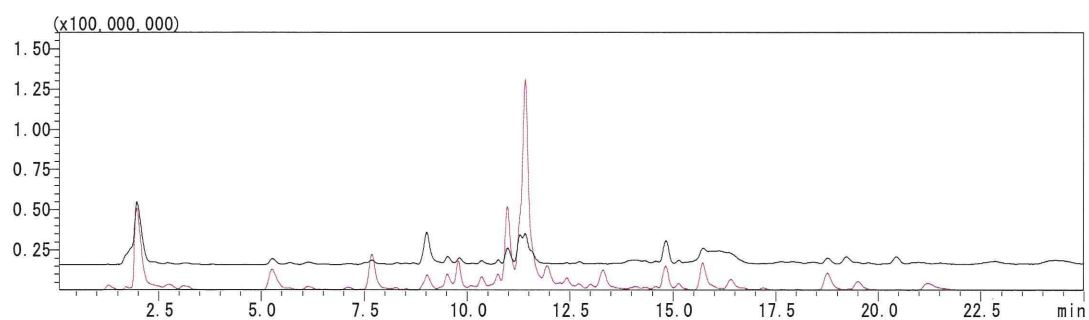


図 10 ダイオウ 9 試料の正負イオン LC-MS クロマトグラム及びダイオウ 9 試料を混合して調製した試料の LC-MS クロマトグラム 黒線：正イオン，赤線：負イオン

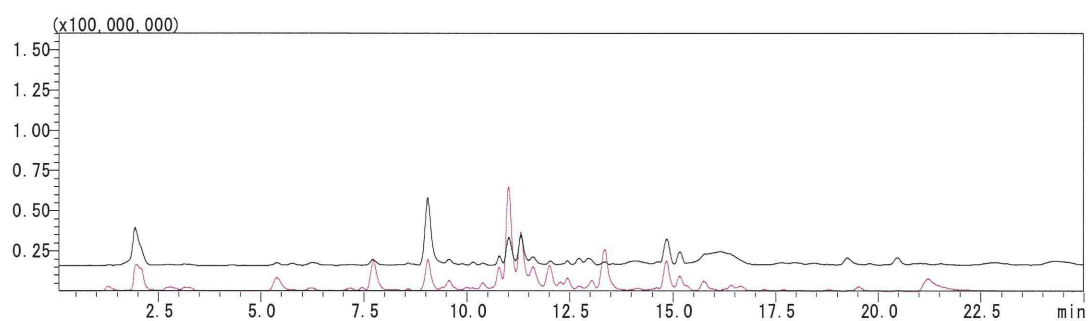
NIB-134



NIB-135



NIB-161



NIB-201

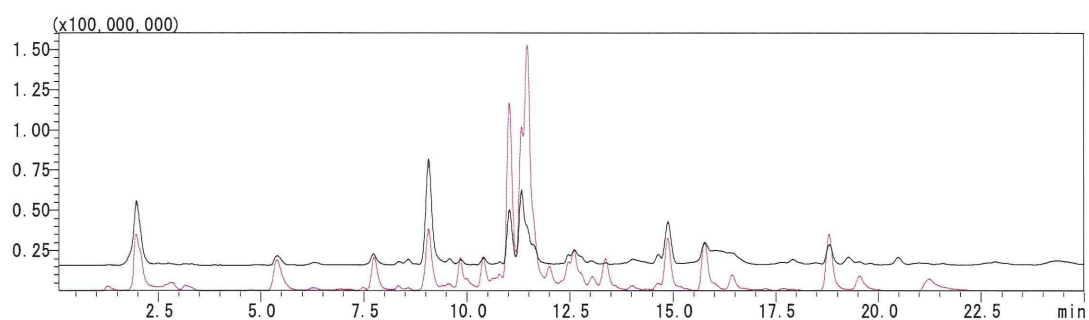


図 10 (続き) 黒線：正イオン，赤線：負イオン