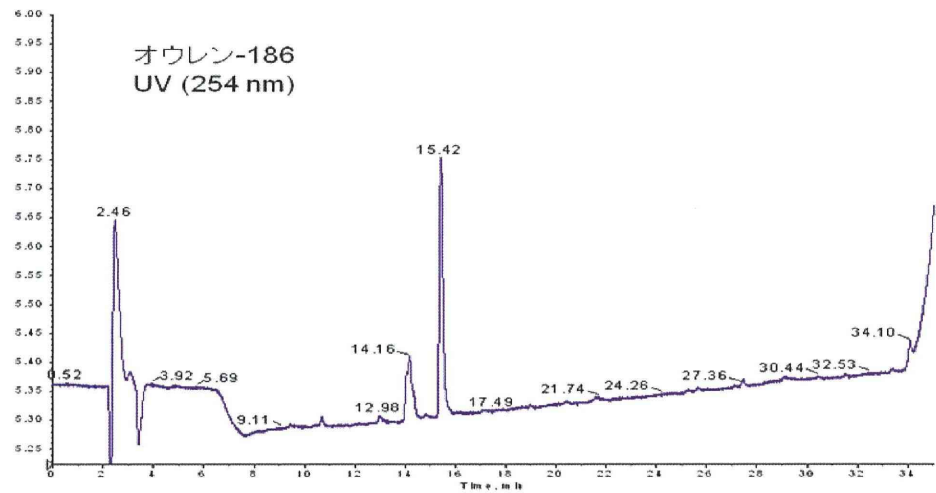


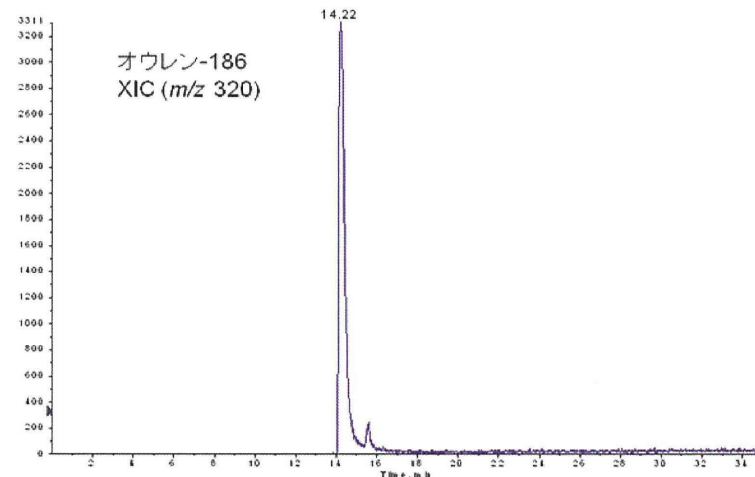
A/D Converter Channel 11 Nom: 20110531_Ouren-Pos_09.wiff

Max: 7.0%



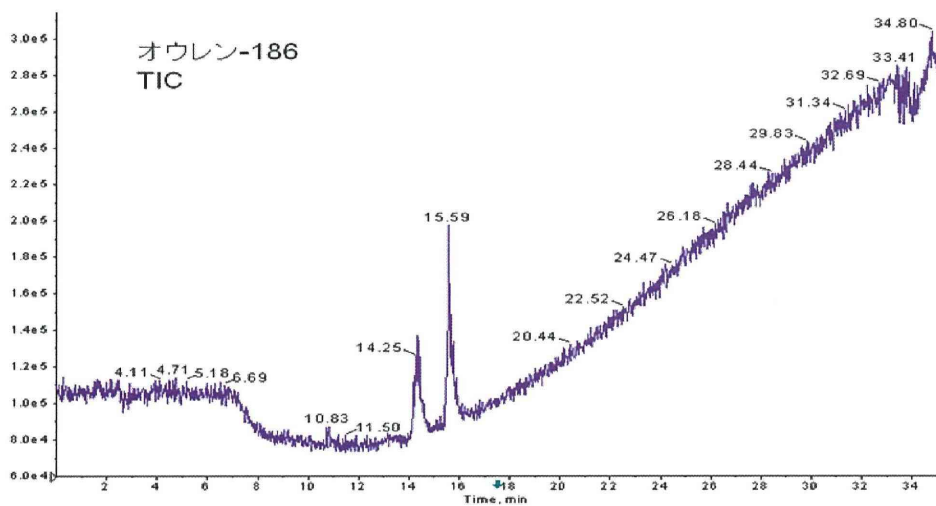
XIC of+TOF MS: Experiment 1, 319.950 to 320.150 amu from 20110531_Ouren-Pos_09.wiff

Max: 3311.0 cps.



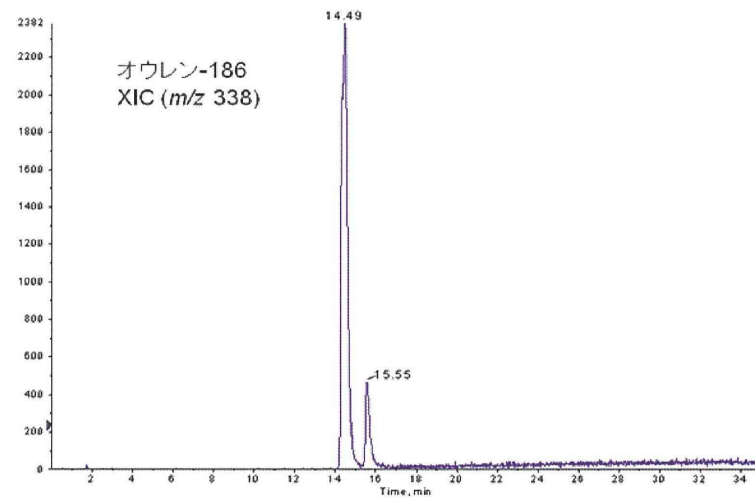
TIC: from 20110531_Ouren-Pos_09.wiff

Max: 3.5e5 cps.

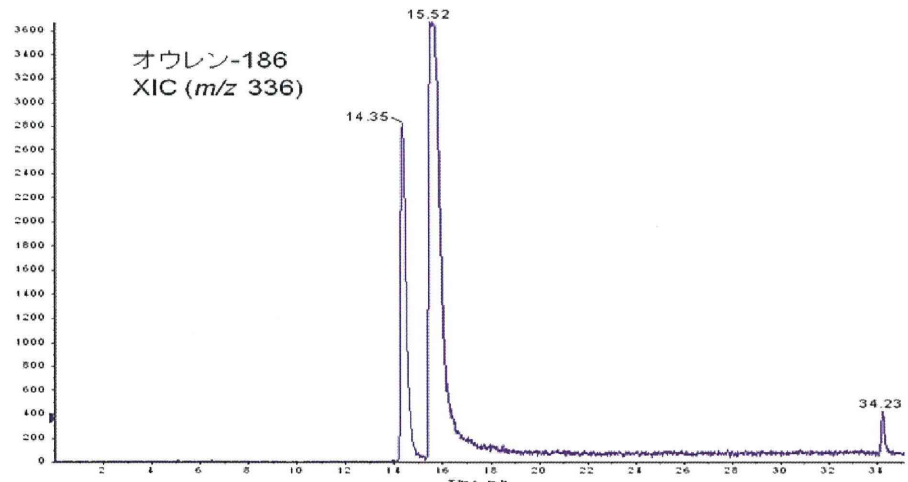


XIC of+TOF MS: Experiment 1, 330.031 to 330.240 amu from 20110531_Ouren-Pos_09.wiff

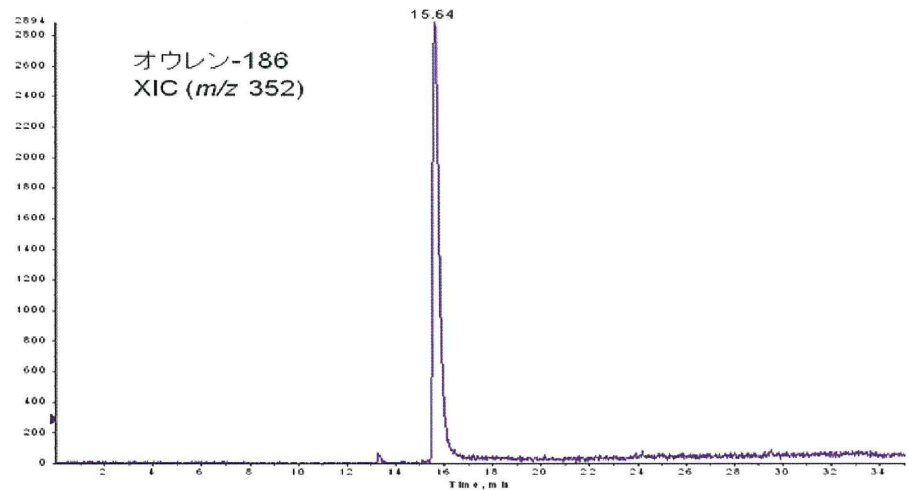
Max: 2392.0 cps.



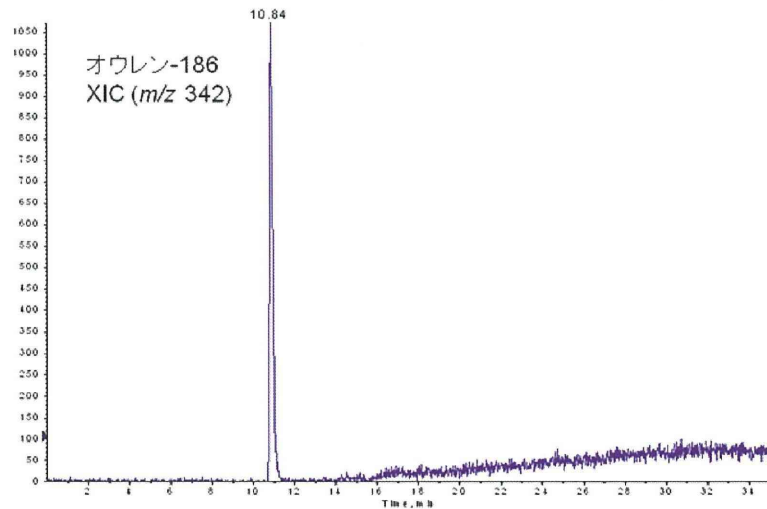
■ XIC of+TOF MS: Experiment 1, 336.018 to 336.245 amu from 20110531_04101-P01_09.wiff Max. 3663.0 cps.



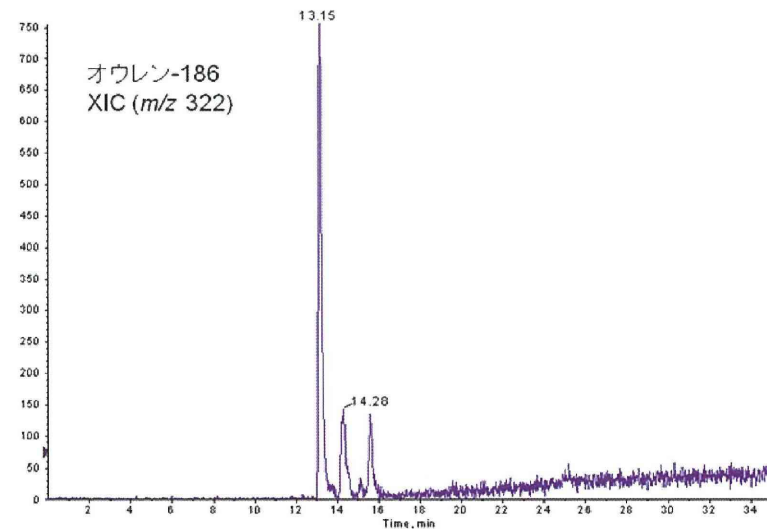
■ XIC of+TOF MS: Experiment 1, 352.023 to 352.342 amu from 20110531_04101-P01_09.wiff Max. 2894.0 cps.

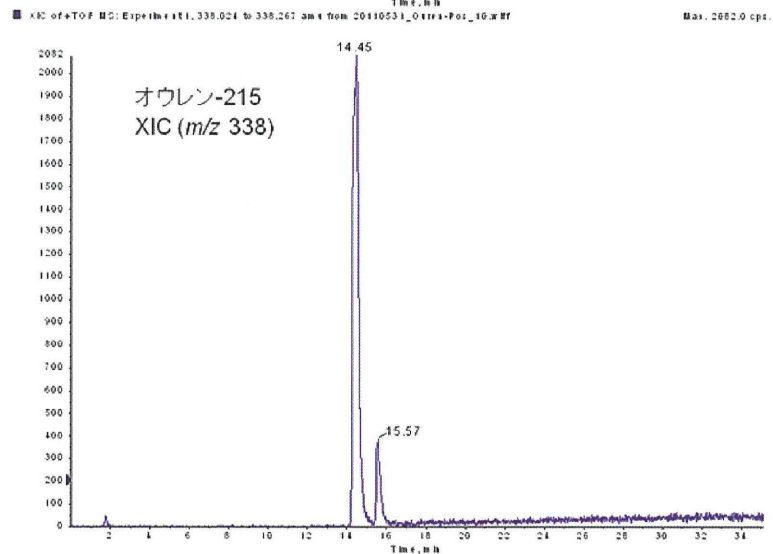
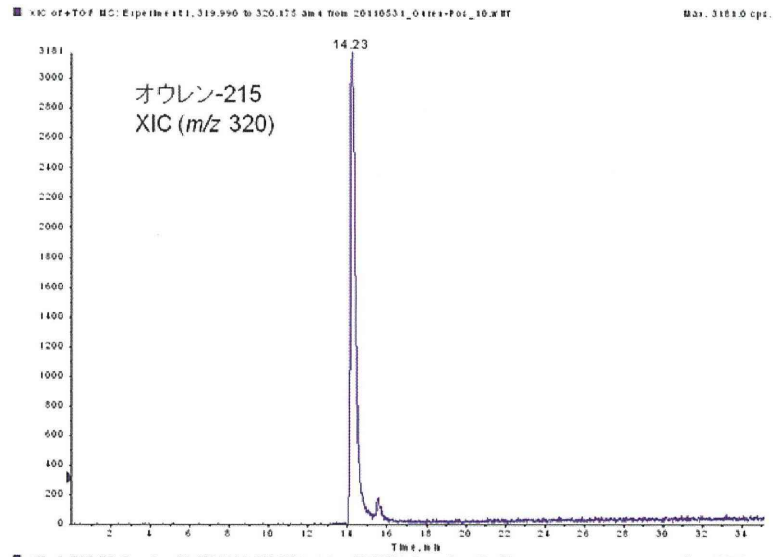
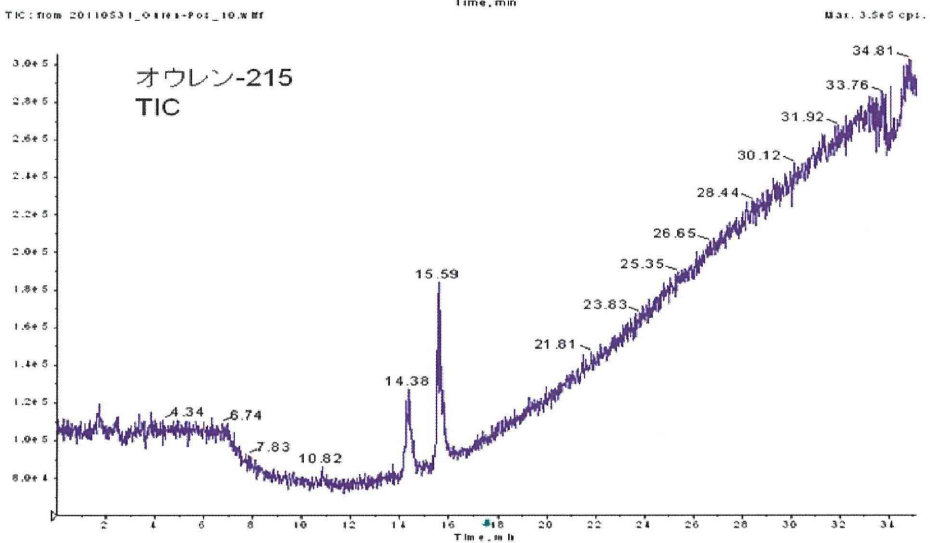
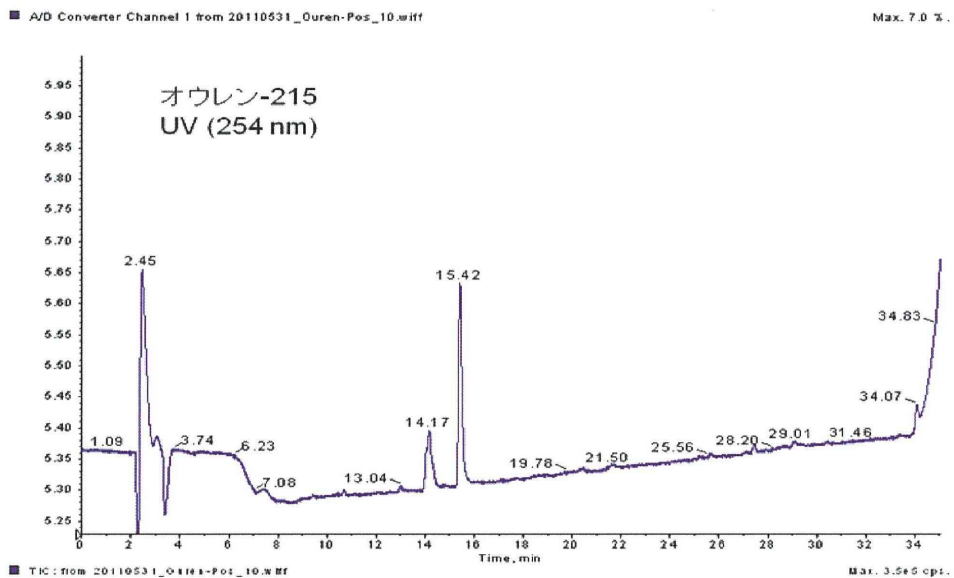


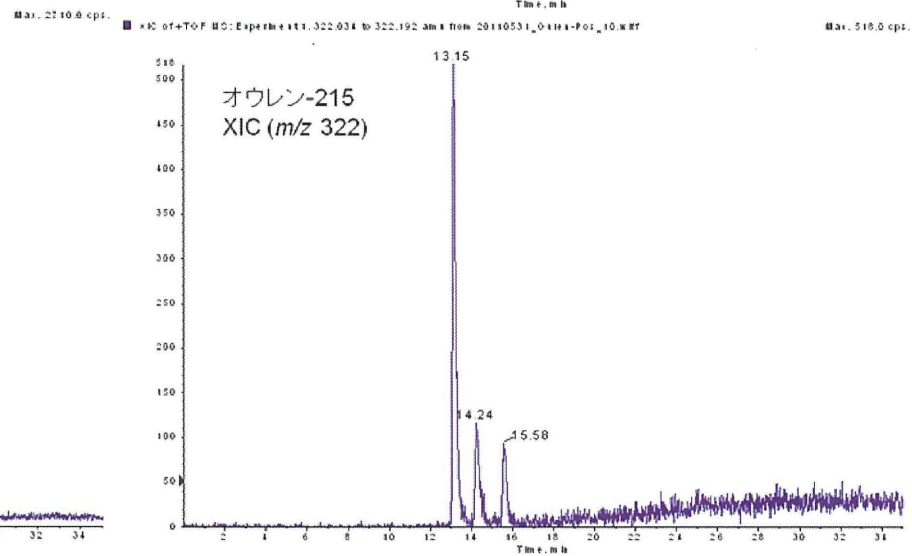
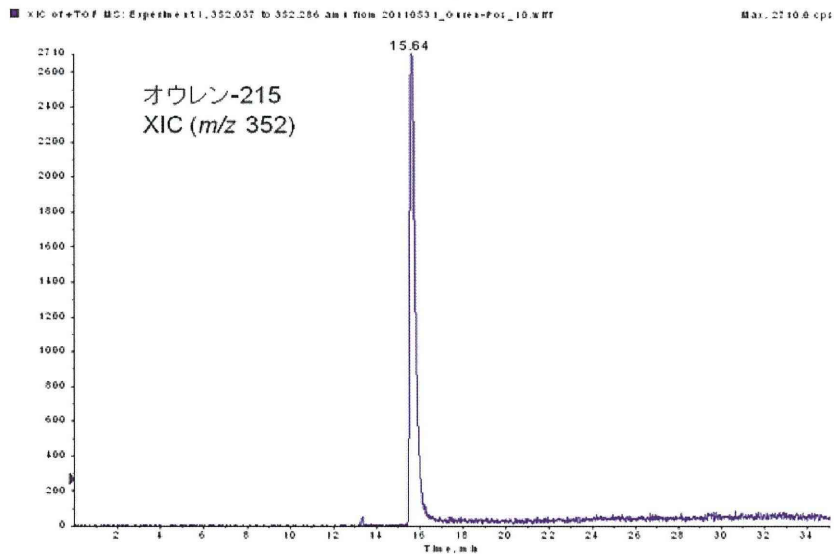
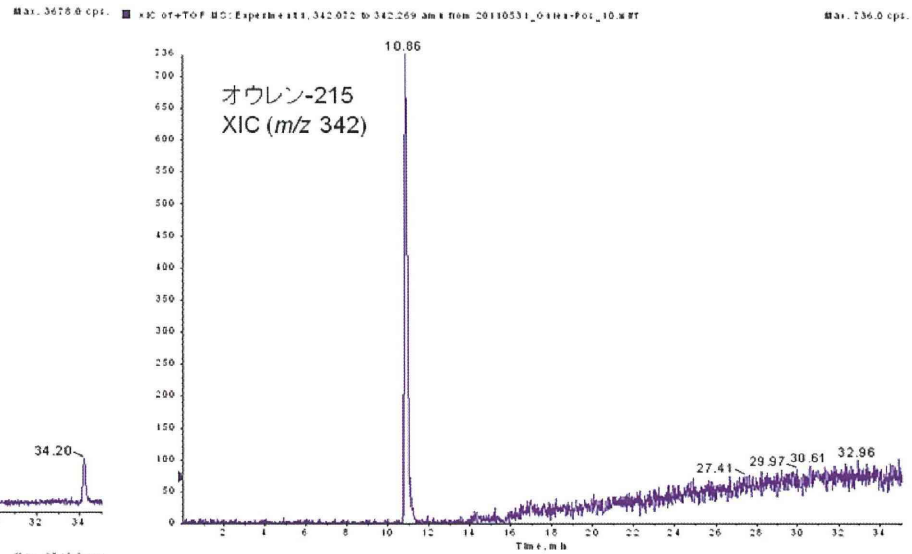
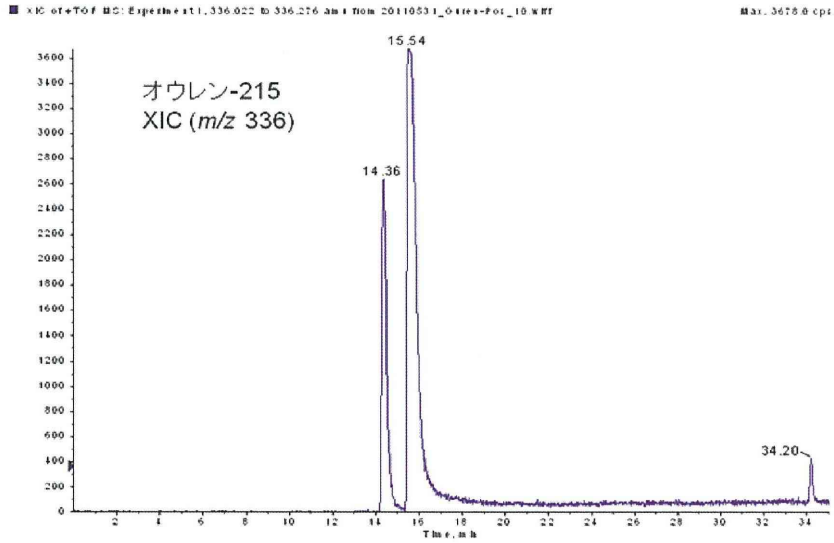
■ XIC of+TOF MS: Experiment 1, 342.069 to 342.267 amu from 20110531_04101-P01_09.wiff Max. 1013.0 cps.



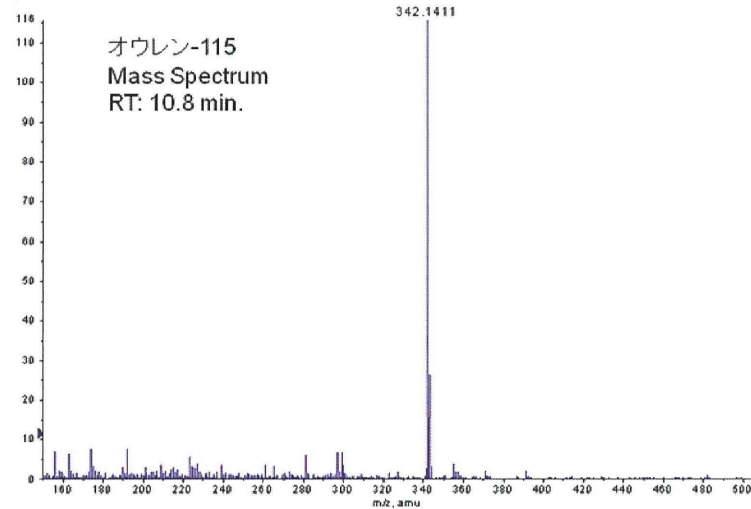
■ XIC of+TOF MS: Experiment 1, 322.035 to 322.223 amu from 20110531_04101-P01_09.wiff Max. 756.0 cps.



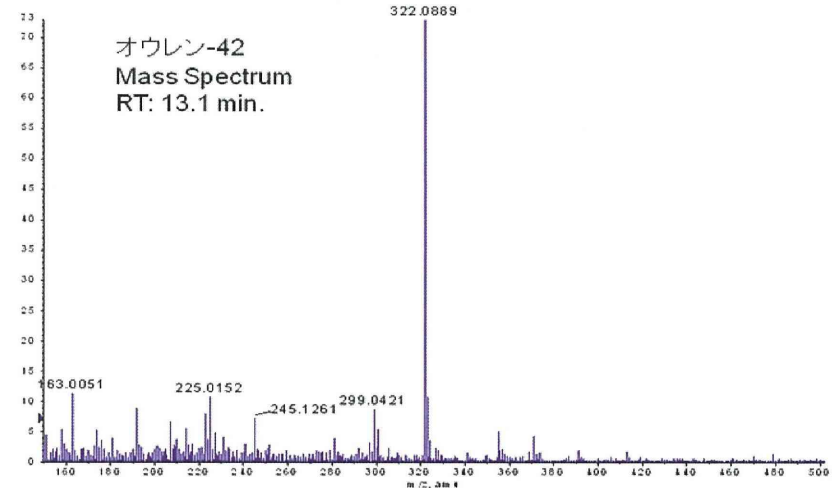




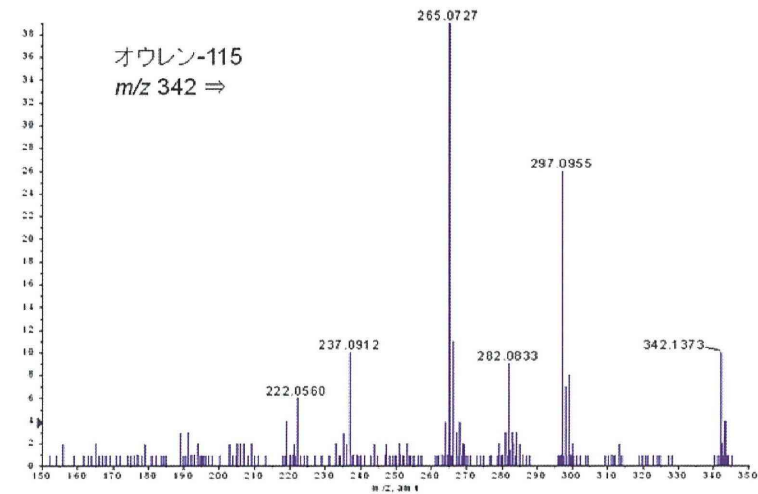
+TOF MS: Experiment 1, 10.791 to 10.897 min from 20110531_Ouren-Pos_05.wiff
a=3.57553524054059080e-004, 10--1.15705727821041360e+001, subtracted (10.471 to 1...
Max. 115.9 counts.



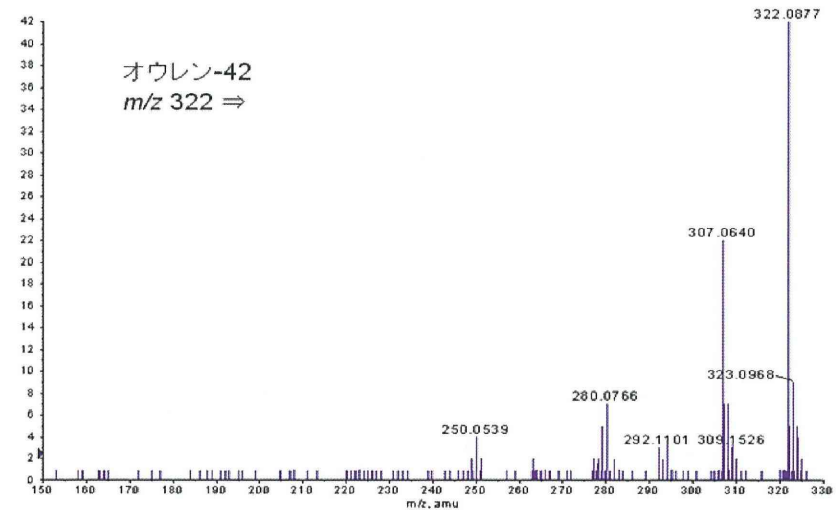
+TOF MS: Experiment 1, 13.074 to 13.145 min from 20110531_Ouren-Pos_03.wiff
a=3.57553524054059080e-004, 10--1.15705727821041360e+001, subtracted (12.843 to 12...
Max. 73.2 counts.

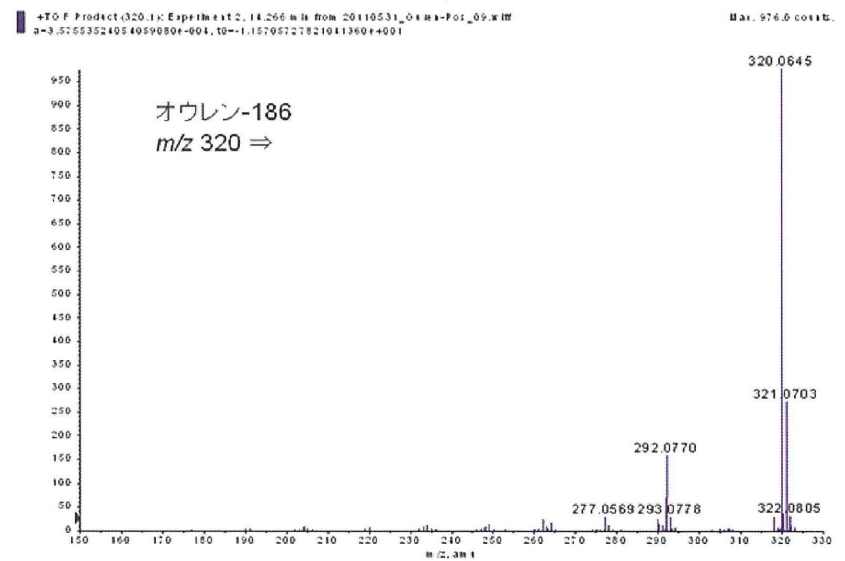
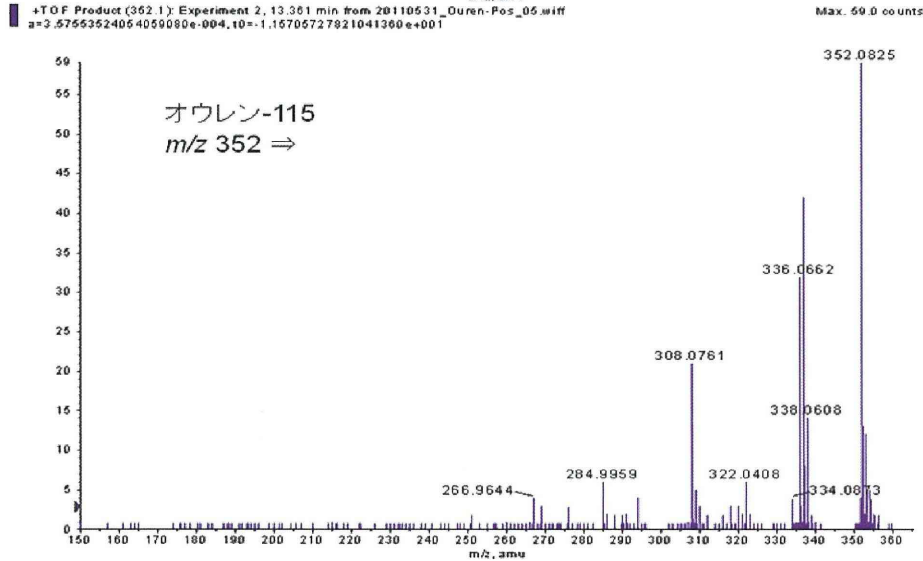
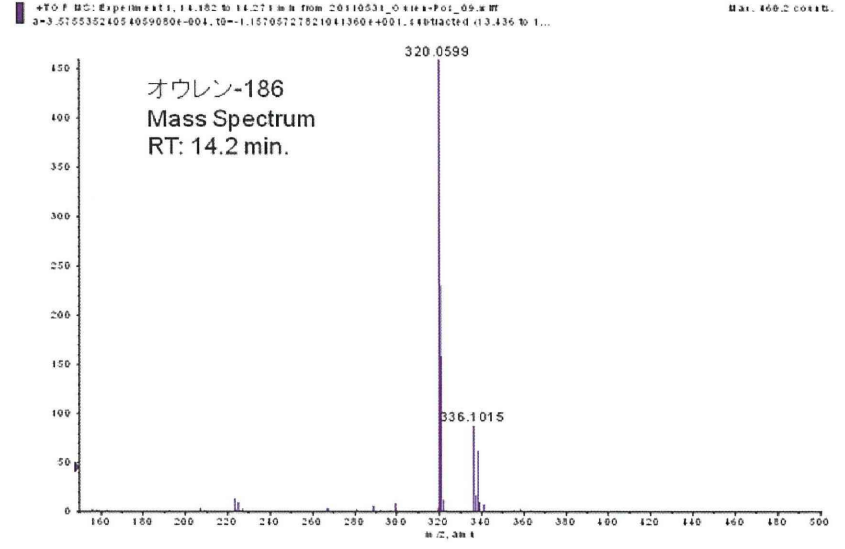
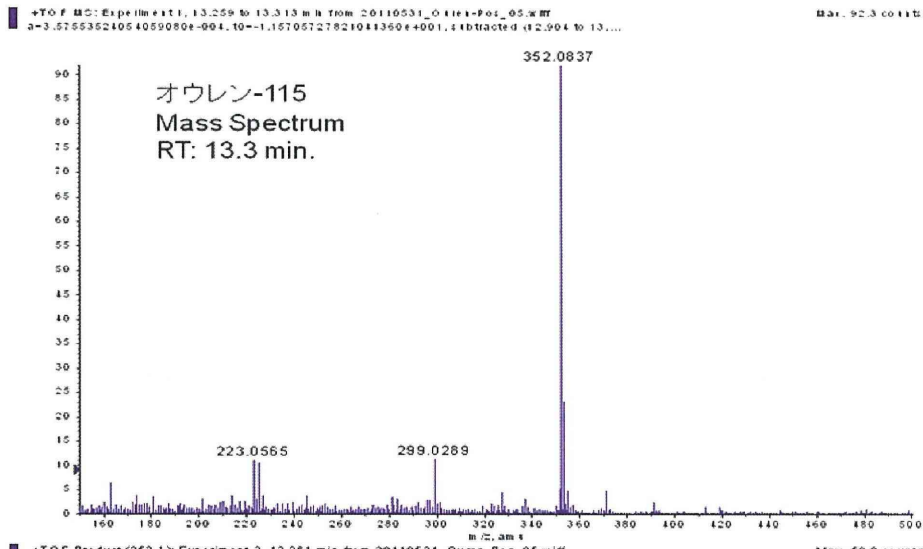


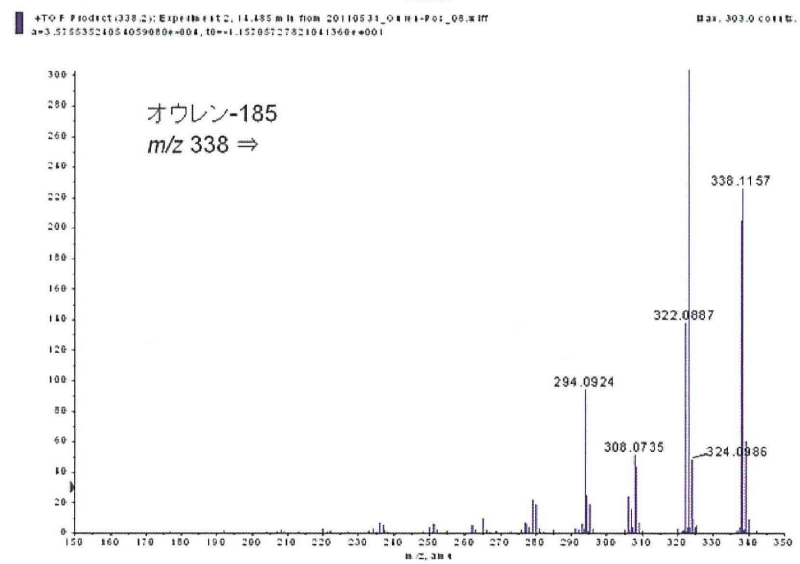
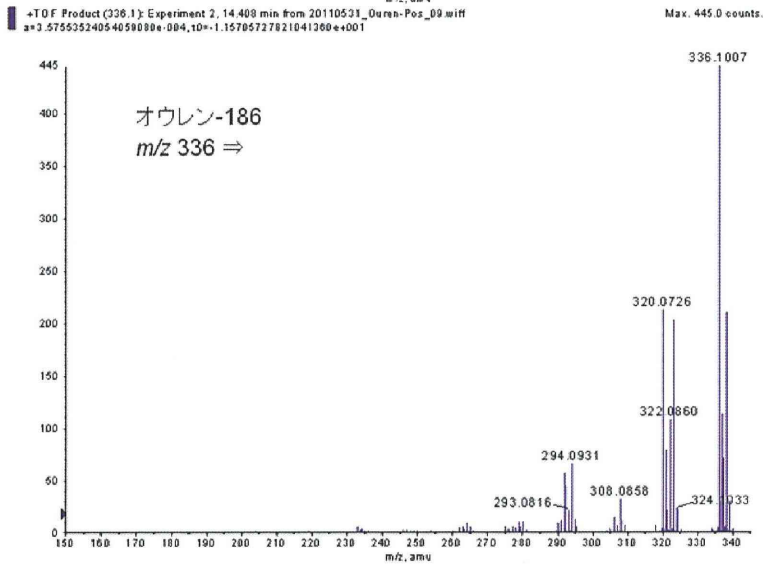
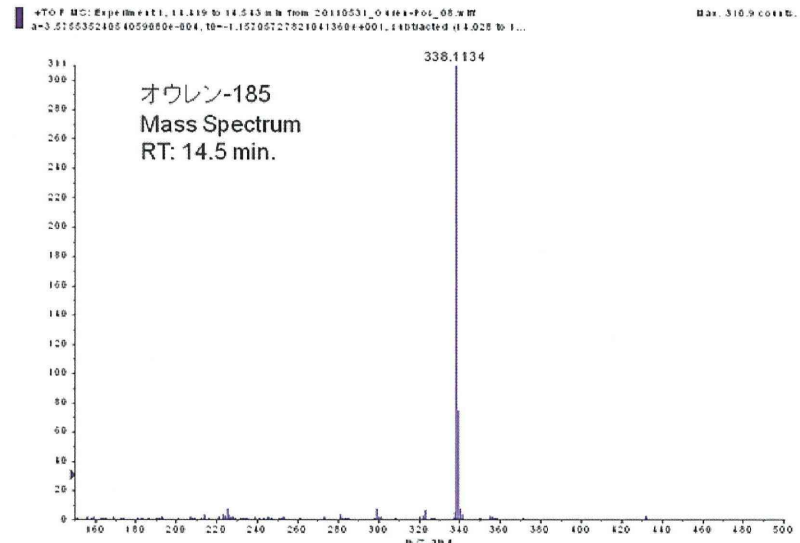
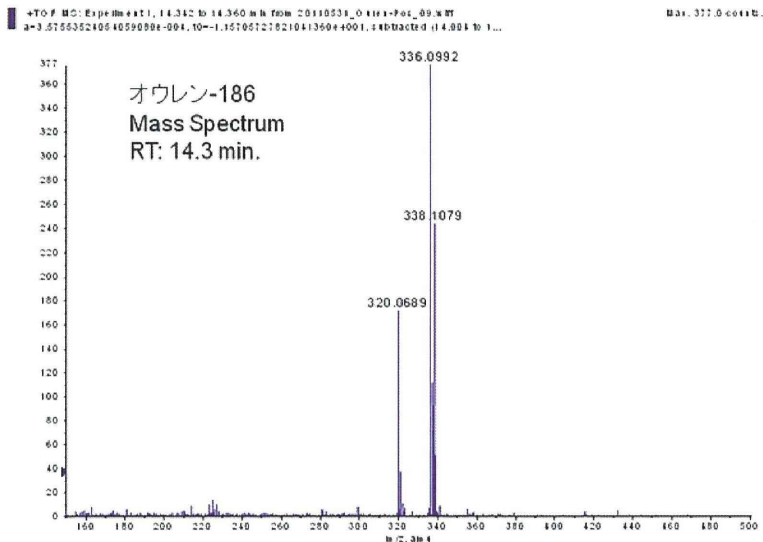
+TOF Product (342.1): Experiment 2, 10.892 min from 20110531_Ouren-Pos_05.wiff
a=3.57553524054059080e-004, 10--1.15705727821041360e+001
Max. 39.0 counts.

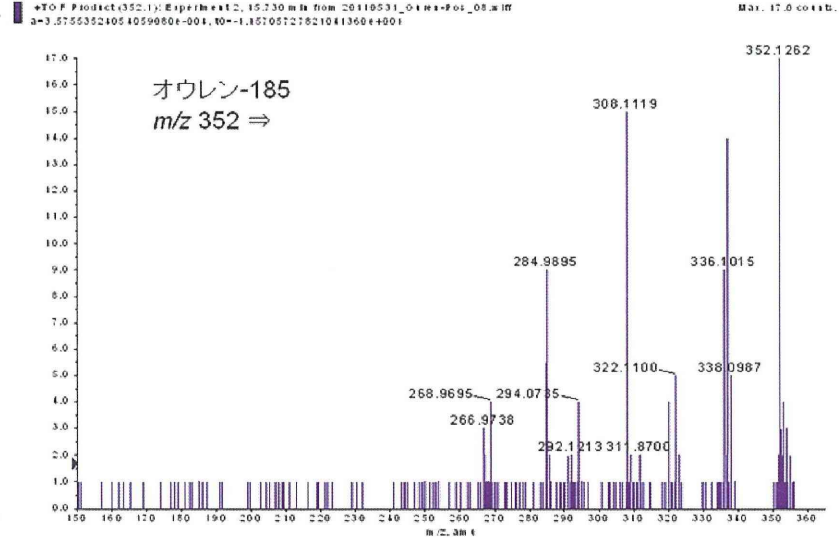
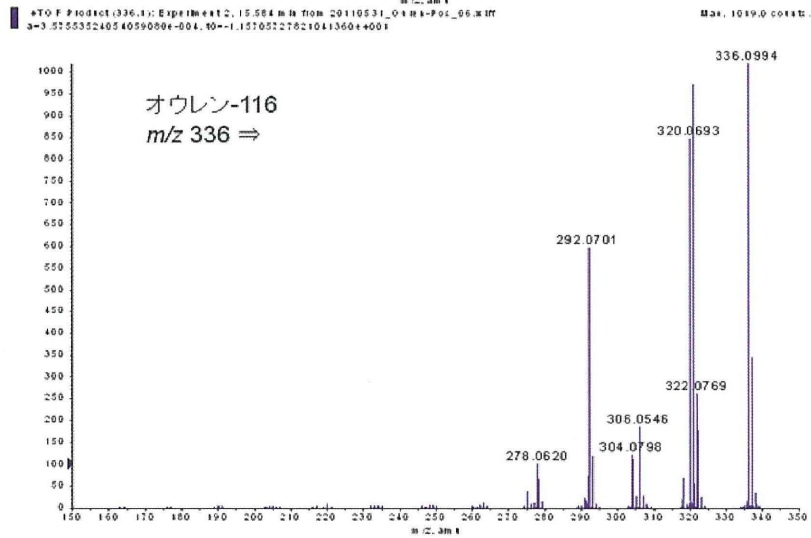
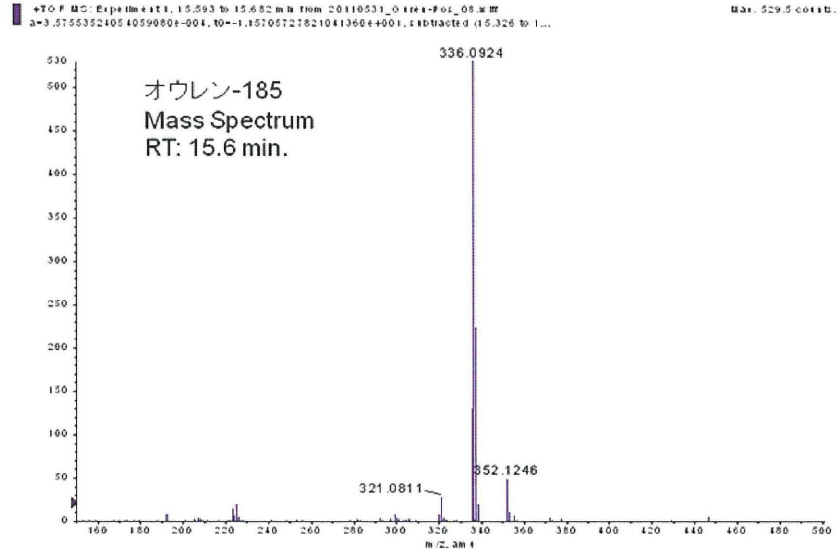
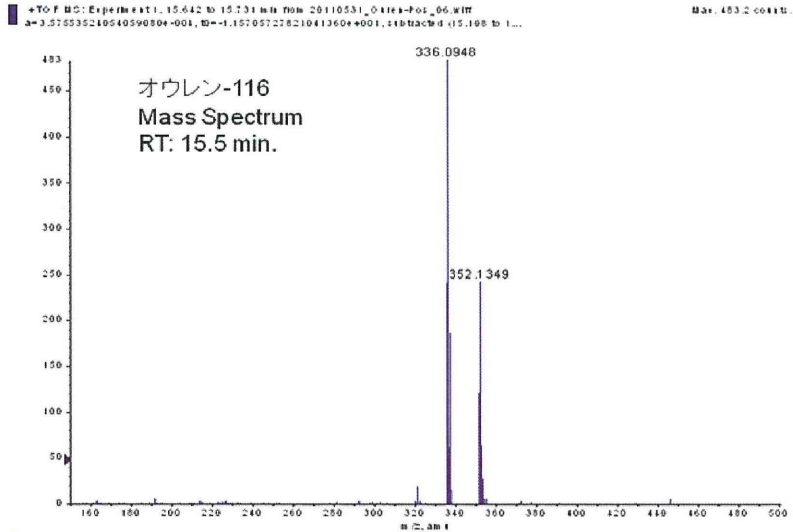


+TOF Product (322.1): Experiment 2, 13.193 min from 20110531_Ouren-Pos_03.wiff
a=3.57553524054059080e-004, 10--1.15705727821041360e+001
Max. 42.0 counts.









サンシシ LCMS データ(positive mode)

