

研究成果の刊行に関する一覧表

雑誌

発表者氏名	論文タイトル名	発表誌名	巻号	ページ	出版年
M. Murata, S. Narahara, K. Umezaki, R. Toita, S. Tabata, J. S. Piao, K. Abe, J.-H. Kang, K. Oouchida, L. Cui, M. Hashizume	Liver cell specific targeting by the preS1 domain of hepatitis B virus surface antigen displayed on protein nanocages	<i>International Journal of Nanomedicine</i>	in press	in press	in press
R. Toita, M. Murata, S. Tabata, K. Abe, S. Narahara, J. S. Piao, J.-H. Kang, M. Hashizume	Development of Human Hepatocellular Carcinoma Cell-Targeted Protein Cages	<i>Bioconjugate Chemistry</i>	in press	in press	in press
A. Tsuchiya, Y. Naritomi, S. Kushio, J.-H. Kang, M. Murata, M. Hashizume, T. Mori, T. Niidome, Y. Katayama	Improvement in the colloidal stability of protein kinase-responsive polyplexes by PEG modification	<i>Journal of Biomedical Materials Research A</i>	100A	1136-1141	2012
T. Ihara, T. Wasano, R. Nakatake, P. Arslan, A. Futamura, A. Jyo	Electrochemical Signal Modulation in Homogeneous Solutions Using the Formation of an Inclusion Complex between Ferrocene and B-cyclodextrin on DNA Scaffold	<i>Chemical Communications</i>	47	12388-12390	2011

IV. 研究成果の刊行物・別刷

Title : Liver cell specific targeting by the preS1 domain of hepatitis B virus surface antigen displayed on protein nanocages

Authors : Masaharu Murata^{a,b,*}, Sayoko Narahara^{a,b}, Kaori Umezaki^a, Riki Toita^{a,b}, Shigekazu Tabata^a, Jing Shu Piao^a, Kana Abe^a, Jeong-Hun Kang^c, Kenoki Oouchida^{a,d}, Lin Cui^d, Makoto Hashizume^{a,b}

^a Department of Advanced Medical Initiatives, Faculty of Medical Science, Kyushu University, 3-1-1 Maidashi, Higashi-ku, Fukuoka 812-8582, Japan

^b Innovation Center for Medical Redox Navigation, Kyushu University, 3-1-1 Maidashi, Higashi-ku, Fukuoka 812-8582, Japan

^c Department of Biomedical Engineering, National Cerebral and Cardiovascular Center Research Institute, Osaka 565-8565, Japan

^d Department of Surgery and Oncology, Graduate School of Medical Sciences, Kyushu University, 3-1-1 Maidashi, Higashi-ku, Fukuoka 812-8582, Japan

* Corresponding author Tel.: +81-92-642-6251; Fax: +81-92-642-6252
E-mail address: m-murata@dem.med.kyushu-u.ac.jp (M. Murata)

ABSTRACT

Protein nanocages are self-organized complexes of oligomers whose three-dimensional architecture can be determined in detail. These structures possess nanoscale inner cavities into which a variety of molecules, including therapeutic or diagnostic agents, can be encapsulated. These properties yield these particles suitable for a new class of drug delivery carrier, or as a bioimaging reagent, that might respond to biochemical signals in many different cellular processes. We report here the design, synthesis, and biological characterization of a hepatocyte specific nanocage carrying small heat-shock protein (sHSP). These nanoscale protein cages, with a targeting peptide, composed of a preS1 derivative from the hepatitis B virus, on their surfaces, were prepared by genetic engineering techniques. PreS1-carrying nanocages showed lower cytotoxicity and significantly higher specificity for human hepatocyte cell lines than other cell lines *in vitro*. These results suggested that sHSP-based nanocages present great potential for the development of effective targeted delivery of various agents to specific cells.

Keywords

Protein nanocages, drug delivery system, hepatocyte cell lines specific, hepatitis B virus

Introduction

As most drugs have beneficial as well as unfavorable effects which might also be tissue dependent, for effective chemotherapy, it is necessary to deliver therapeutic agents selectively to their target sites¹⁻⁴. Conventional chemotherapeutic agents diffuse nonspecifically throughout the body where they affect both malignant and normal cells; unfortunately, 95% of all new potential therapeutics have poor pharmacokinetic and biopharmaceutical properties⁵. To overcome these problems, there is a serious need to develop effective drug delivery systems (DDS) that distribute therapeutically active drug molecules only to the desired site of action, without affecting healthy organs and tissues.

Various strategies for site-specific drug delivery have led to the development of drug carriers. In particular, DDS based on liposomes^{6,7} and synthetic polymers⁸⁻¹¹ have been extensively studied as novel drug-packaging strategies for cancer chemotherapy. In the last decade, nanotechnological innovations have played an important role in size control and surface modification of nanomaterials, and the resulting properties play a critical role in target specificity for tumor tissues via improved pharmacokinetics and pharmacodynamics and in allowing active intracellular delivery characteristics¹². Traditional DDS materials, including liposomes and synthetic polymers, can be manufactured in bulk at low cost and with a wide diversity of backbones, surface chemistries, and molecular weights; however, their aggregate structure and compositional sequence cannot be accurately controlled and, thus, such materials offer disadvantages in their poor responsiveness to cellular behavior that requires sequence specificity and structural stringency to be sensitive to signals exhibited by certain cell biochemical processes or states.

On the other hand, natural or recombinant protein-based nanocapsules or nanocages are also being actively investigated as new types of nanomaterial¹³⁻¹⁶. These nanocapsules are self-organized protein oligomer complexes with nanoscale inner cavities and whose three-dimensional architecture can be specified in great detail^{17,18}. Thus, they have the potential to offer special advantages in developing new functions that are responsive to biochemical signals exhibited by various cellular processes. Such specific interactions derive from the incorporated amino acid sequences that can be designed to address multiple functional requirements for biomaterial applications. Recently, we constructed a stimulus-responsive nanomaterial by incorporating a genetically engineered small heat shock protein (sHSP) that can change its conformation in response to dual stimuli, a protease signal and temperature, in contrast to the wild type¹⁹.

Here, a novel targeted drug delivery method is presented involving a protein-based nanocage composed of HSP16.5, a sHSP from a hyperthermophilic archaeon²⁰⁻²². This protein forms a 400 kDa homogeneous complex comprised of 24 subunits that self-organizes under physiological conditions to form a nanoscale, hollow, spherical capsule with small pores, very high thermal stability, and the potential for a variety of molecules, including drugs and MRI contrast agents, to be encapsulated in the cavity. These unique properties yield HSP16.5 suitable for a drug carrier, but this protein exhibits no significant organ or tissue specificity in body distribution following intravenous administration in mice²³. To address this problem, a recombinant fusion protein was constructed from HSP16.5 and a target specific peptide using genetic engineering. Examinations of the crystal structure of the HSP16.5 complex has revealed that the C-terminal region is on the exterior surface of the capsule-like structure²⁴. Thus, a recombinant HSP16.5 was designed and produced by an in-frame fusion, with the sequence for a targeting peptide added in this region. Specificity for liver cells-targeted delivery of the nanocapsule was achieved using a preS1 peptide for the targeting peptide (Figure 1)²⁵⁻²⁷. This peptide is derived from the envelope proteins of the hepatitis B virus (HBV), with a known affinity for primary hepatocytes and hepatocyte cell lines^{28,29}. The mechanism of hepatocyte infection induced by HBV is not absolutely clear, however, specific attachment of viruses to cells is the essential first step in virus entry into cells. Several studies suggested that amino acids 21–47 of preS1 plays a major role in the cell attachment³⁰⁻³³. For example, S. Dash reported that this 27-mer PreS1 peptide (21-47) binds to HepG2 cells in a dose-dependent manner with high affinity³³. Furthermore, This binding is possibly tissue specific, since only weak to insignificant levels of binding were obtained with Vero cells, HeLa cells, and human peripheral lymphocytes. This paper describes the characterization of 27-mer preS1 peptide-carrying

nanocapsules and their potential for biomedical applications, including targeted drug delivery and bioimaging.

Materials and Methods

DNA cloning and expression

Plasmid pET-HSPG41C-preS1, a bacterial expression vector containing the *preS1* gene fused in frame with the HSP16.5 variant (HSPG41C), was cloned by PCR. The HSPG41C mutant presents unique reactive cysteine residues on the interior surface of the assembled cage for the attachment of cargo molecules. This mutant was constructed according to a previous paper¹⁹, and used as a PCR template. The primers for HSPG41C-preS1 were 5'-taatacagactcactataggg-3' (forward primer), 5'-cgcggatccCTACGGGTTGAAGTCCCAGTCCGGGTTGTTAGAGTTAGCACCGAAAGCCGGGTC CAGCTGGTGGTCCGGGAAGAAACCCAGCGGGCTAGCttcaatggtgattcctttcttaattgagga-3' (reverse primer), and the latter primer contained a *preS1* gene coding region (capital letters) and *BamHI* restriction site (underlined). The PCR-generated 0.63-kb fragment was digested with *NdeI* and *BamHI* and the resulting DNA fragment ligated into *NdeI* and *BamHI*-digested pET21a vector (Novagen, Merck, Ltd., Tokyo, Japan). Correct insertion of the fragment was verified by DNA sequencing and plasmids then amplified and purified by standard techniques.

The resulting vector was allowed to express HSPG41C-preS1 in *Escherichia coli* BL21-Gold(DE3) cells (Novagen) using a T7 expression system. Bacterial cells of BL21 gold (DE3) containing pET-HSPG41C-preS1 were grown in 2× YT medium (Sigma-Aldrich, St. Louis, MO, USA) with 100 mg/mL ampicillin at 37 °C. Recombinant protein production was initiated by addition of isopropyl thiogalactopyranoside (IPTG; Wako Pure Chemical Industries, Ltd., Osaka, Japan) to a final 1 mM concentration and incubation at 37 °C for 4 h.

Protein purification and characterization

Cells were pelleted by centrifugation at 4 °C, the pellet resuspended in 8 mL of sample buffer (20 mM KH₂PO₄-KOH, pH 7.0, 2 mM DTT, and 1 mM EDTA), and the resulting suspension sonicated on ice (200 W, 45 s). DNase I and RNase A were then added to final concentrations of 5 and 1 mg/mL, respectively, the cell lysate mixture incubated at 4 °C for 30 min, and the insoluble material removed by centrifugation (20 000g, 20 min) at 4 °C. Purification of the recombinant protein was performed by ion-exchange chromatography, in which the supernatant was loaded on a HiLoad 26/10 Q Sepharose HP™ anion-exchange column (Amersham Pharmacia Biotech Inc., Piscataway, NJ, USA) and HSPG41C-preS1 eluted with sample buffer containing 1M NaCl. Fractions containing HSPG41C-preS1, confirmed by SDS-PAGE, were loaded onto a silica-based GPC column TSKgel G3000SW (Tosoh Corp., Tokyo, Japan) and HSPG41C-preS1 eluted with storage buffer (25 mM NaH₂PO₄/Na₂HPO₄, pH 7.0, and 0.1 M NaCl). The resulting purified HSPG41C-preS1 fractions were analyzed by SDS-polyacrylamide gel electrophoresis (PAGE) using 12% gel according to standard protocol. The recombinant HSPG41C-preS1 protein cages were characterized by matrix-assisted laser desorption/ionization time-of-flight (MALDI-TOF) mass spectrometry (Autoflex III, Bruker Daltonics, Bremen, Germany) and dynamic light scattering (DLS; Malvern Nanosizer ZS, Malvern Instruments, Malvern, UK).

Cytotoxicity assays

HepG2, Huh-7, and HeLa cells were cultured in Dulbecco's modified Eagle medium (DMEM; Wako Pure Chemical Industries, Osaka, Japan), supplemented with 1% (v/v) antibiotic-antimycotic mix (Gibco 15240-062, Life Technologies, Grand Island, NY, USA) and 10% (v/v) fetal bovine serum (FBS; PAA Laboratories, Pasching, Austria). MCF-7 cells were cultured in RPMI-1640 (Sigma-Aldrich) with 1% (v/v) antibiotics and 10% FBS and at 37 °C in a humidified 5% CO₂ atmosphere.

The cellular toxicity of the nanocages *in vitro* was assessed using the CellTiter-Glo® luminescent cell viability assay (Promega Corp., Madison, WI, USA) according to the manufacturer's instructions. This assay is a homogeneous method designed to determine the viable cell numbers in culture based on quantitation of available ATP, signaling the presence of metabolically active cells at the assay end point. Cells (1×10^4 cells/well) were cultured in 96-well microtiter plates in complete growth medium in the presence of increasing nanocapsule concentrations. For chronic toxicity assessment, nanocapsules were applied to cells at various concentrations and incubated for 16 h prior to assay for viable cells.

Fluorescence assay

Prior to a fluorescence assay, HSPG41C-preS1 and HSPG41C, the latter as a control, were labeled with fluorescent dye. Briefly, nanocapsules were incubated with a 5-fold molar excess of Alexa488-maleimide (Invitrogen, Life Technol.) in pH 8.0 phosphate buffer at 50 °C overnight and then excess dye removed by ultrafiltration. Uptake or transfection was assessed by seeding 1×10^4 cells in 100 μ L of complete growth medium per well in 96-well microtiter plates 12 h before nanocage addition, to allow for cell attachment. After cell culture medium exchange, the cells were incubated for various times with dye-labeled nanocapsules at a final 1 μ M concentration. In inhibition experiments, synthetic preS1 peptide (PLGFFPDHQLDPAFGANSNNPDWDFNP; final concentration, 25 μ M) was added, as a competitive inhibitor, to the culture medium 3 h prior to nanocage addition. After incubation, the cells were washed twice with PBS, the medium changed to a phenol red-free medium, and dye-labeled nanocapsule cellular uptake quantified using a multilabel counter ARVO MX (Perkin Elmer, Inc., Yokohama, Japan; excitation and emission, 485 and 535 nm, respectively). Nanocapsule transfection efficiencies were calculated by dividing the total fluorescence intensity in each well by the total number of viable cells in the well, as determined by the cell viability assay.

For investigating nanocapsule cellular localization, HepG2, Huh-7, HeLa, and MCF-7 cells were seeded at 1×10^4 cells/well in μ -Slides (μ -Slide 6 well, Ibidi, Munich, Germany), incubated with colorless DMEM containing 1% antibiotic-antimycotic mix and 10% FBS (PAA Lab.) overnight. Then, fluorescent-labeled nanocages of HSPG41C-preS1 or HSPG41C control were added to wells at a final 1 μ M concentration and, after additional 6 h incubation, non-incorporated nanocapsules removed by washing cells twice with PBS and adding fresh medium. Fluorescence confocal laser scanning microscopy (CLSM) was performed with a Bio-Rad Radiance 2100 CLSM system (Bio-Rad Laboratories, Philadelphia, PA, USA) attached to a Nikon TE2000-U microscope (Nikon Corp., Tokyo, Japan). All fluorescence images were acquired under the same conditions of objective lens, laser excitation intensity, photomultiplier gain, and imaging size. Statistical significances of the differences were determined by Student's t test.

Results and Discussion

Expression and characterization of preS1-carrying protein nanocages

Expression vectors encoding the HSPG41C-preS1 or HSPG41C were constructed and recombinant sHSP16.5 proteins produced in *E. coli* BL21-Gold(DE3) and purified by sequential anion exchange chromatography followed by size exclusion chromatography under native conditions (Figure S1). Purified proteins, separated by SDS-PAGE, appeared as a single band by Coomassie blue staining. The observed molecular weight of purified HSPG41C-preS1 ($m/z = 19676.2$ Da), analyzed by MALDI-TOF/MS with a sinapic acid matrix, was largely in agreement with calculations ($m/z = 19668.2$ Da) (Figure S2). The protein nanocage size range and distribution were measured by means of DLS. These results indicated that the average nanocage diameter of the HSPG41C-preS1 and HSPG41C were 14.4 and 12.7 nm, respectively, with a narrow size distribution (Figure 2), and demonstrated that HSPG41C-preS1 cages were slightly larger than HSPG41C parent cages lacking the targeting peptide.

In vitro cellular cytotoxicity of nanocages

As cell cytotoxicity is an important factor in selecting materials for drug carriers, the nanocages produced here were characterized regarding their effect on cell viability under the same conditions as used for fluorescence assay of cellular uptake experiments. Neither HSPG41C nor HSPG41C-preS1 had any appreciable cytotoxic effect under these conditions (Figure 3); similar results were obtained from wild type HSP16.5 protein under the same conditions (data not shown). These results showed that the single amino acid substitution mutation, contained in HSPG41C, and the cage surface modification with the preS1 peptide of wild type HSP16.5, contained on HSPG41C-preS1, did not significantly affect their cytotoxicity.

Hepatocyte specific delivery of protein nanocages *in vitro*

The mechanism for the entry of HBV particles into target cells, in particular into hepatocytes, is not yet understood. However, the preS1 surface antigen of HBV is known to play an important role in initial HBV attachment to hepatic cell lines, with the preS1 domain N-terminal segment believed to be essential. To demonstrate that preS1 fusion into the HSP16.5 protein nanocage produced a new nanocage binding affinity towards hepatocyte cell lines, the specific target cells of HBV preS1 molecule, transfection assays were performed.

Fluorescent-labeled HSPG41C-preS1 nanocages were observed to efficiently internalize to human hepatoma cell lines HepG2 and Huh-7, which bear specific HBV receptors, compared to internalization to the other cell lines (Figure 4). Incubation with these nanocages resulted in specific accumulation of these proteins in hepatic cell cytoplasm but not in the nucleus. On the other hand, the control fluorescent-labeled HSPG41C nanocages were slightly taken up by Huh-7, HepG2 and MCF-7 under the same conditions (Figure 5). Nanoparticles are mostly internalized into cells by endocytosis. Endocytosis can be classified into four groups: clathrin-mediated endocytosis (CME), caveolae-mediated endocytosis, macropinocytosis and clathrin- and caveolae-independent endocytosis^{34,35}. We investigated the endocytic pathway of HSPG41C-preS1 nanocages using three types of chemical compound that inhibited specific endocytic pathways (Figure S3). Chlorpromazine (CPZ) inhibits CME³⁶, Amiloride (Amil) inhibits macropinocytosis³⁷ and Filipin III (Filip) inhibits caveolae-mediated endocytosis³⁸. When HepG2 cells were treated with Amil and Filip, 5% and 6% decreases in cellular uptake of HSPG41C-preS1 nanocages were detected compared with untreated cells. CPZ treatment showed a marked decrease (23%) in uptake of HSPG41C-preS1 nanocages. These results suggest that HSPG41C-preS1 nanocage was taken up by HepG2 cells by various types of endocytosis but the main uptake pathway was CME.

To determine the HSPG41C-preS1 nanocage internalization process into hepatoma cells, competition assays using synthetic preS1 peptide, encompassing amino acid residues 21–47 of preS1, were performed. Fluorescent-labeled HSPG41C-preS1 nanocage incorporation in the presence of various concentrations

of synthetic preS1 peptides was intensity normalized to 100 for untreated Huh-7 (Figure 6). In the case of human hepatoma derived cell lines HepG2 and Huh-7, synthetic preS1 peptides inhibited incorporation of labeled HSPG41C-preS1 nanocages in a dose-dependent manner. On the other hand, the presence of synthetic preS1 peptides did not significantly influence interaction between these nanocages and HeLa cells. These results suggested that the cell binding observed for these nanocages was due specifically to the presence of the preS1 moiety on their surfaces and the internalization of the nanocages was achieved by interaction with preS1 receptors on the hepatocyte cell lines.

Conclusion

In summary, genetic incorporation of hepatocyte binding PreS1 peptide onto the exterior surface of nanocages conferred cell-specific targeting capabilities to this protein cage architecture. This protein nanocages were efficiently internalized into hepatocyte cell lines, mainly through clathrin-mediated endocytosis, without cytotoxicity, and are localized at cytoplasm. Furthermore, the binding of HSPG41C-preS1 nanocages to HepG2 cells was prevented by synthetic preS1-(21–47) peptide in a dose-dependent manner, suggesting that this sequence could be directly responsible for nanocages attachment to the cellular surface. In fact, it is known that the preS1 domain of HBV is modified with myristic acid at the N-terminal region and that this modification is important for efficient infectivity^{27,28}, and thus, it appears that it would be necessary to conjugate the HSPG41C-preS1 nanocages with a similar lipid to enhance specificity in hepatocyte targeting *in vivo*. This strategy was effective for producing suitable nanocages that were directed to and taken up by specific cell types, target organs, or cancer cells, which is an important development in such applications, as ligand-mediated active binding to sites and cellular uptake are particularly valuable to therapeutic agents that are not easily taken up by cells. Furthermore, these nanocages are self-organized complexes of protein oligomers and possess nanoscale inner cavities, whose 3-D architecture can be specified in detail and into which a variety of molecules, including therapeutic or diagnostic agents, could be encapsulated.

Acknowledgements

This work was supported by a Health Labour Sciences Research Grant (Research on Publicly Essential Drugs and Medical Devices) from the Ministry of Health Labour and Welfare of Japan and a Grant-in-Aid for Scientific Research (21300190, 23650288) from the Ministry of Education, Culture, Sports, Science and Technology of Japan.

Figure captions

Figure 1. Schematic illustration of genetically engineered nano-cages for hepatocyte selective targeting.

Figure 2. Dynamic light scattering analysis of protein nanocages. A, HSPG41C nanocage controls; B, HSPG41C-preS1 nanocages.

Figure 3. Cell viability measurements after treatment with protein nanocages against various cell lines. A, HSPG41C nanocage controls; B, HSPG41C-preS1 nanocages.

Figure 4. Fluorescence confocal laser scanning microscopy of various cells with fluorescently-labeled HSPG41C-preS1 nanocages. Alexa488-labeled HSPG41C-preS1 nanocages added to culture media with 1×10^4 cells of Huh-7 (a), HepG2 (b), HeLa (c), and MCF7 (d) and extensively washed with PBS before CLSM analysis.

Figure 5. Fluorescence confocal laser scanning microscopy of various cells with fluorescently-labeled HSPG41C nanocages. Alexa488-labeled HSPG41C nanocages added to culture media with 1×10^4 cells of Huh-7 (a), HepG2 (b), HeLa (c), and MCF7 (d) and extensively washed with PBS before CLSM analysis.

Figure 6. Inhibitory effects of preS1 peptide against transfection of HSPG41C-preS1 nanocages. Cell lines HeLa, HepG2, and Huh-7, a–c, respectively; statistical significance of differences in fluorescence intensities in absence and presence of preS1 peptide assessed by Student's *t*-test; *, $p < 0.05$; **, $p < 0.01$).

References

1. Kang JH, Oishi J, Kim JH, et al. Hepatoma-targeted gene delivery using a tumor cell-specific gene regulation system combined with a human liver cell-specific bionanocapsule. *Nanomed-Nanotechnol.* Aug 2010; 6: 583-589.
2. Pridgen EM, Langer R, Farokhzad OC. Biodegradable, polymeric nanoparticle delivery systems for cancer therapy. *Nanomedicine.* 2007; 2: 669-680.
3. Sawant RM, Hurley JP, Salmaso S, et al. "SMART" Drug Delivery Systems: Double-Targeted pH-Responsive Pharmaceutical Nanocarriers. *Bioconjug. Chem.* 2006; 17: 943-949.
4. Wang M, Thanou M. Targeting nanoparticles to cancer. *Pharmacol. Res.* Aug 2010; 62: 90-99.
5. Brayden DJ. Controlled release technologies for drug delivery. *Drug Discov. Today.* 2003; 8: 976-978.
6. Allen TM, Cullis PR. Drug delivery systems: entering the mainstream. *Science.* Mar 19 2004; 303: 1818-1822.
7. Aso S, Ise H, Takahashi M, et al. Effective uptake of N-acetylglucosamine-conjugated liposomes by cardiomyocytes in vitro. *J. Control. Release.* Sep 26 2007; 122: 189-198.
8. Khandare J, Minko T. Polymer-drug conjugates: Progress in polymeric prodrugs. *Prog. Polym. Sci.* 2006; 31: 359-397.
9. Toita R, Kang JH, Kim JH, et al. Protein kinase C alpha-specific peptide substrate graft-type copolymer for cancer cell-specific gene regulation systems. *J. Control. Release.* Oct 15 2009; 139: 133-139.
10. Tsuchiya A, Naritomi Y, Kushio S, et al. Improvement in the colloidal stability of protein kinase-responsive polyplexes by PEG modification. *J. Biomed. Mater. Res. Part A.* in press.
11. Matsuoka Y, Murata M, Fujisaki Y, Narahara S, Shinzato N, Hashidume M. Molecular imaging contrast media for visualization of liver function. *Magn. Reson. Imaging.* Jun 2010; 28: 708-715.
12. Davis ME, Chen ZG, Shin DM. Nanoparticle therapeutics: an emerging treatment modality for cancer. *Nat. Rev. Drug Discov.* Sep 2008; 7: 771-782.
13. Flenniken ML, Willits DA, Harmsen AL, et al. Melanoma and lymphocyte cell-specific targeting incorporated into a heat shock protein cage architecture. *Chem. Biol.* Feb 2006; 13: 161-170.
14. Kasuya T, Kuroda S. Nanoparticles for human liver-specific drug and gene delivery systems: in vitro and in vivo advances *Expert Opin. Drug Deliv.* . 2009; 6: 39-52.
15. Sao K, Murata M, Fujisaki Y, et al. A novel protease activity assay using a protease-responsive chaperone protein. *Biochem. Biophys. Res. Commun.* Jun 5 2009; 383: 293-297.
16. Uchida M, Klem MT, Allen M, et al. Biological Containers: Protein Cages as Multifunctional Nanoplatfoms. *Adv. Mater.* 2007; 19: 1025-1042.
17. MacRae TH. Structure and function of small heat shock/a-crystallin proteins: established concepts and emerging ideas. *Cell. Mol. Life Sci.* 2000; 57: 899-913.
18. Sun Y, MacRae TH. Small heat shock proteins: molecular structure and chaperone function. *Cell. Mol. Life Sci.* Nov 2005; 62: 2460-2476.
19. Sao K, Murata M, Umezaki K, et al. Molecular design of protein-based nanocapsules for stimulus-responsive characteristics. *Biorg. Med. Chem.* Jan 1 2009; 17: 85-93.
20. Kim DR, Lee I, Ha SC, Kim KK. Activation mechanism of HSP16.5 from *Methanococcus jannaschii*. *Biochem. Biophys. Res. Commun.* 2003; 307: 991-998.
21. Kim R, Kim KK, Yokota H, Kim S-H. Small heat shock protein of *Methanococcus jannaschii*, a hyperthermophile. *Proc. Natl. Acad. Sci. USA.* 1998; 95: 9129-9133.
22. Nakamoto H, Vigh L. The small heat shock proteins and their clients. *Cell. Mol. life Sci.* Feb 2007; 64: 294-306.
23. Kaiser CR, Flenniken ML, Gillitzer E, et al. Biodistribution studies of protein cage nanoparticles demonstrate broad tissue distribution and rapid clearance in vivo. *Int. J. Nanomed.* 2007; 2: 715-733.
24. Kim KK, Kim R, Kim S-H. Crystal structure of a small heat-shock protein. *Nature.* 1998; 394: 595-599.

25. Argnani R, Boccafogli L, Marconi PC, Manservigi R. Specific targeted binding of herpes simplex virus type 1 to hepatocytes via the human hepatitis B virus preS1 peptide. *Gene Ther.* 2004; 11: 1087-1098.
26. De Falco S, Ruvoletto MG, Verdoliva A, et al. Cloning and expression of a novel hepatitis B virus-binding protein from HepG2 cells. *J. Biol. Chem.* Sep 28 2001; 276: 36613-36623.
27. Paran N, Cooper A, Shaul Y. Interaction of hepatitis B virus with cells. *Rev. Med. Virol.* May-Jun 2003; 13: 137-143.
28. Barrera A, Guerra B, Notvall L, Lanford RE. Mapping of the hepatitis B virus pre-S1 domain involved in receptor recognition. *J. Virol.* Aug 2005; 79: 9786-9798.
29. Glebe D, Urban S. Viral and cellular determinants involved in hepadnaviral entry. *World J. Gastroenterol.* 2007; 13: 22-38.
30. Neurath AR, Kent SBH, Strick N, Parker K. Identification and chemical synthesis of a host cell receptor binding site on hepatitis B virus. *Cell.* 1986; 46: 429-436.
31. Qiao M, Macnaughton TB, Gowans EJ. Adsorption and penetration of hepatitis B virus in a nonpermissive cell line. *Virology.* 1994; 201: 356-363.
32. Falco SD, Ruvoletto MG, Verdoliva A, et al. Cloning and expression of a novel hepatitis B virus-binding protein from HepG2 cells. *J. Biol. Chem.* 2001; 276: 36613-36623.
33. Dash S, Rao KVS, Panda SK. Receptor for Pre-S1(21-47) Component of hepatitis B virus on the liver cell: role in virus cell interaction. *J. Med. Virol.* 1992; 37: 116-121.
34. Sahay G, Alakhova DY, Kabanov AV. Endocytosis of nanomedicines. *J. Controlled Release.* 2010; 145: 182-195.
35. Conner SD, Schmid SL. Regulated portals of entry into the cell. *Nature.* 2003; 422: 37-44.
36. Wang L-H, Rothberg KG, Anderson RGW. Mis-Assembly of Clathrin Lattices on Endosomes Reveals a Regulatory Switch for Coated Pit Formation. *J. Cell Biol.* 1993; 123: 1107-1117.
37. Hewlett LJ, Prescott AR, Watts C. The Coated Pit and Macropinocytic Pathways Serve Distinct Endosome Populations. *J. Cell Biol.* 1994; 124: 689-703.
38. Lamaze C, Schmid SL. The emergence of clathrin-independent pinocytic pathways. *Curr. Opin. Cell Biol.* 1995; 7: 573-580.

Figure 1

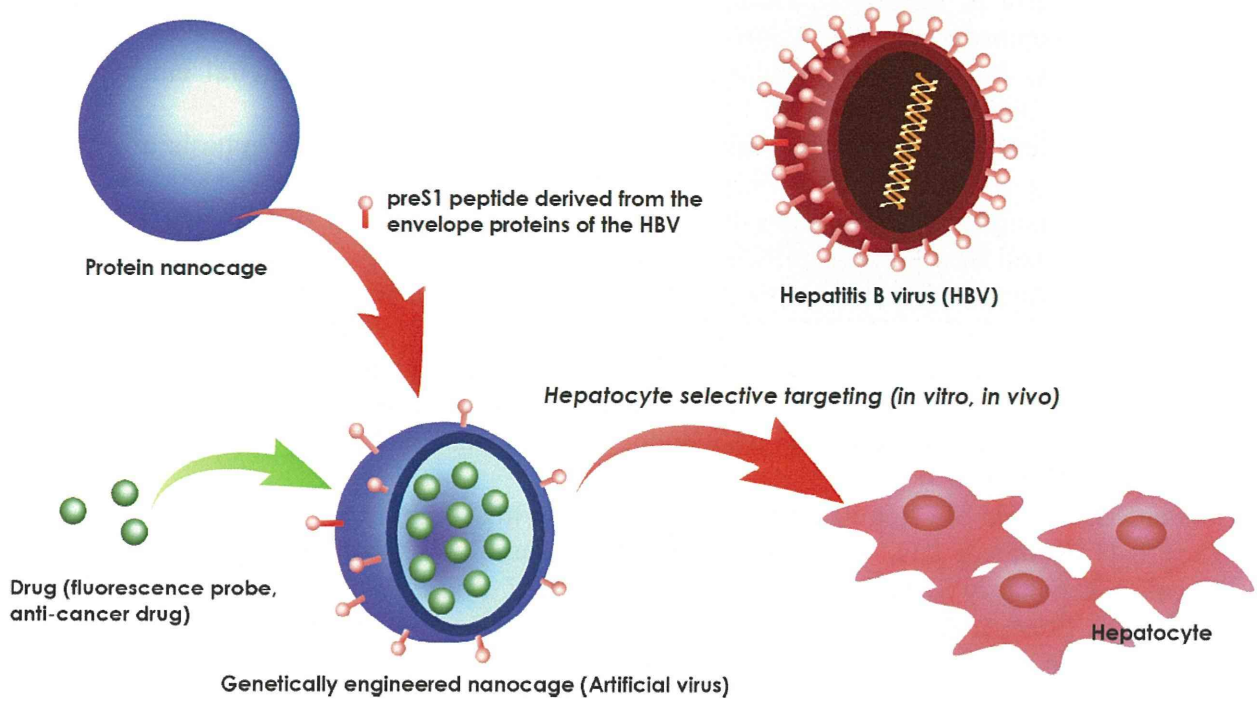
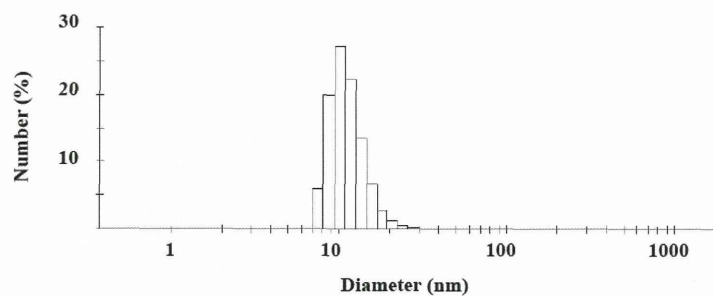


Figure 2

A) HSPG41C nanocages



B) HSPG41C-preS1 nanocages

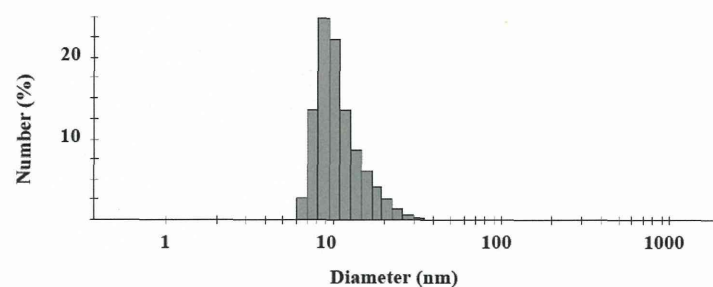
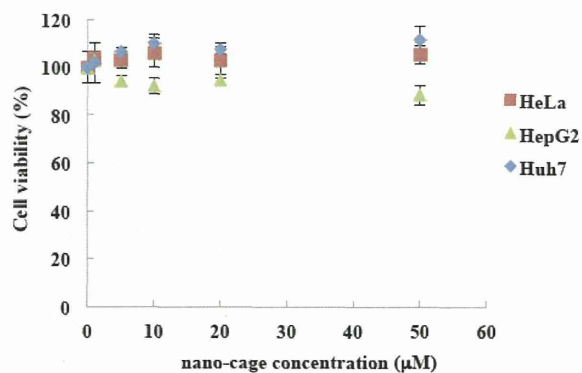


Figure 3

A) HSPG41C nanocages



B) HSPG41C-preS1 nanocages

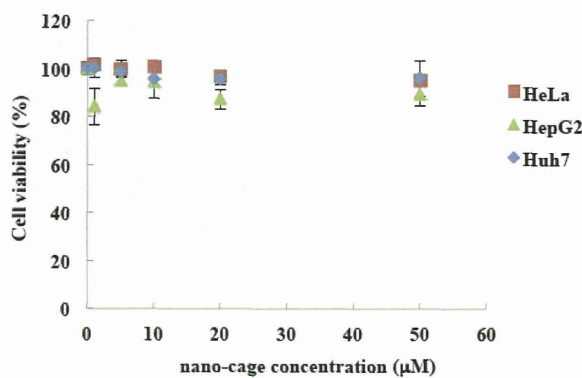


Figure 4

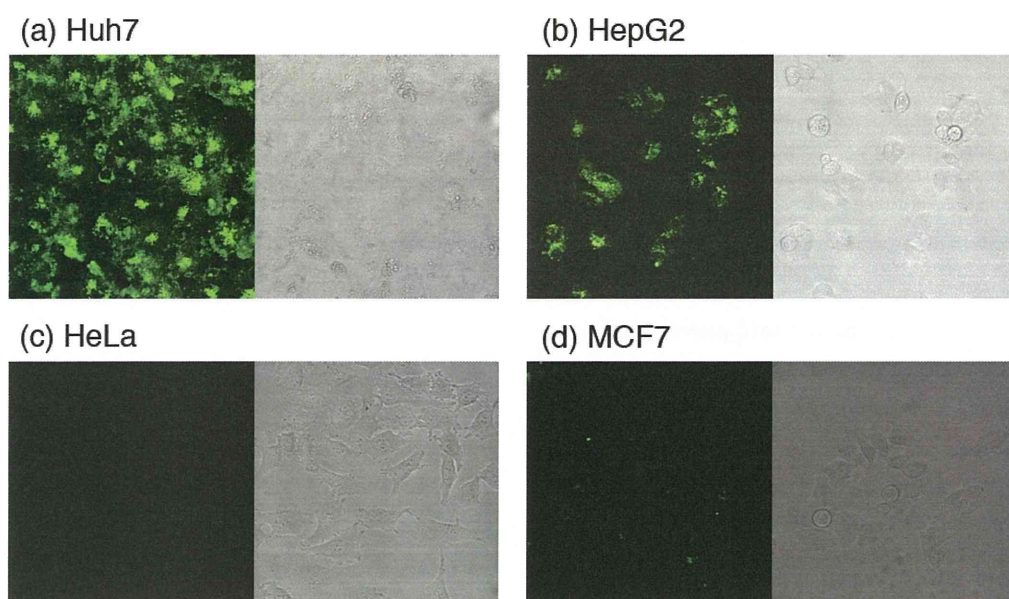


Figure 5

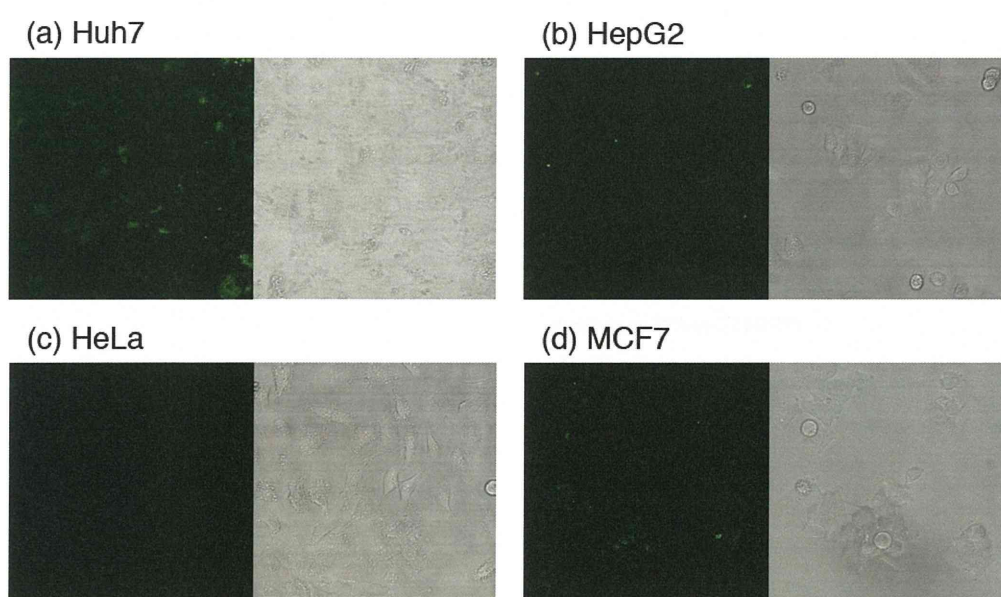
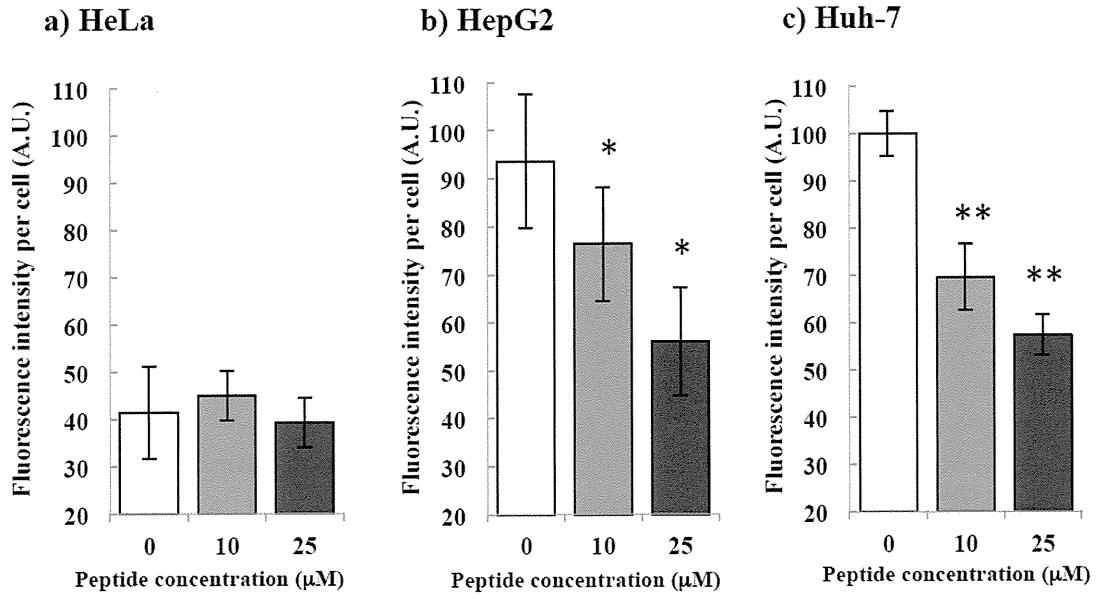


Figure 6



Supporting Information

Title : Liver cell specific targeting by the preS1 domain of hepatitis B virus surface antigen displayed on protein nanocages

Authors : Masaharu Murata^{a,b,*}, Sayoko Narahara^{a,b}, Kaori Umezaki^a, Riki Toita^{a,b}, Shigekazu Tabata^a, Jing Shu Piao^a, Kana Abe^a, Jeong-Hun Kang^c, Kenoki Oouchida^{a,d}, Lin Cui^d, Makoto Hashizume^{a,b}

^a Department of Advanced Medical Initiatives, Faculty of Medical Science, Kyushu University, 3-1-1 Maidashi, Higashi-ku, Fukuoka 812-8582, Japan

^b Innovation Center for Medical Redox Navigation, Kyushu University, 3-1-1 Maidashi, Higashi-ku, Fukuoka 812-8582, Japan

^c Department of Biomedical Engineering, National Cerebral and Cardiovascular Center Research Institute, Osaka 565-8565, Japan

^d Department of Surgery and Oncology, Graduate School of Medical Sciences, Kyushu University, 3-1-1 Maidashi, Higashi-ku, Fukuoka 812-8582, Japan

* Corresponding author Tel.: +81-92-642-6251; Fax: +81-92-642-6252

E-mail address: m-murata@dem.med.kyushu-u.ac.jp (M. Murata)

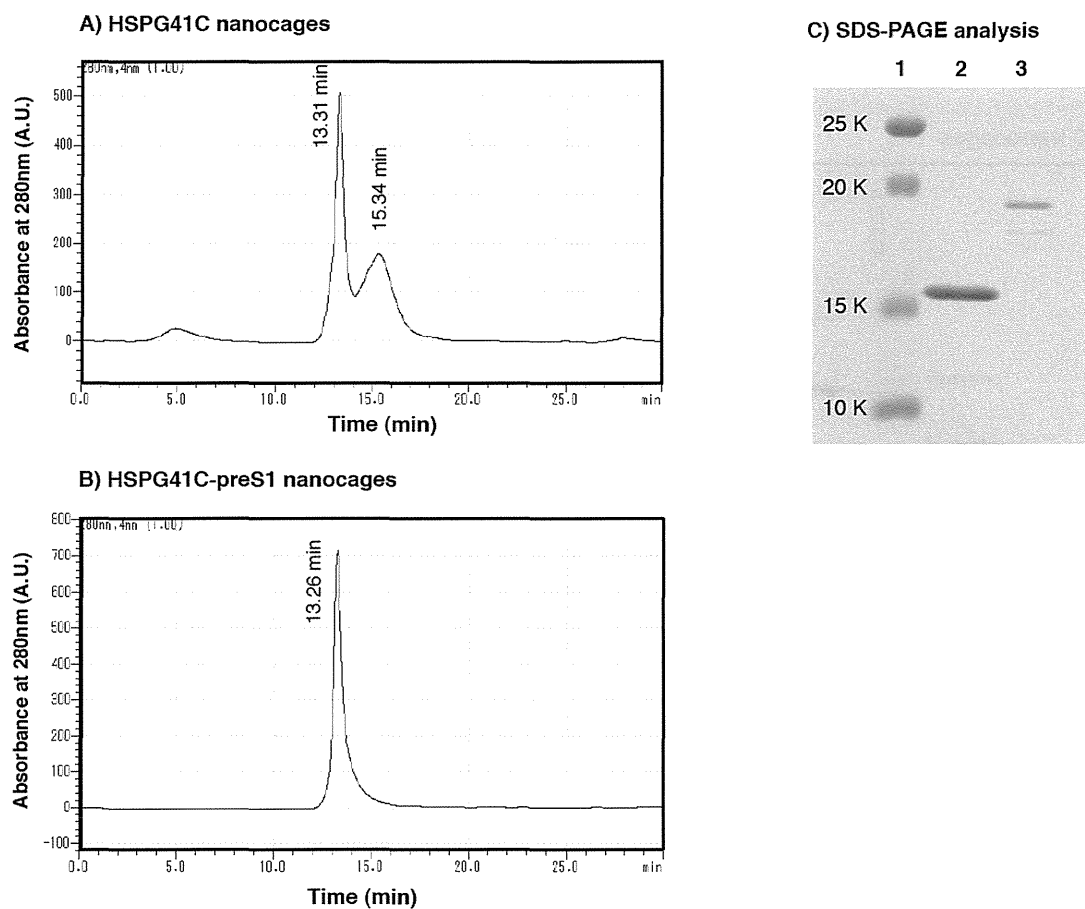
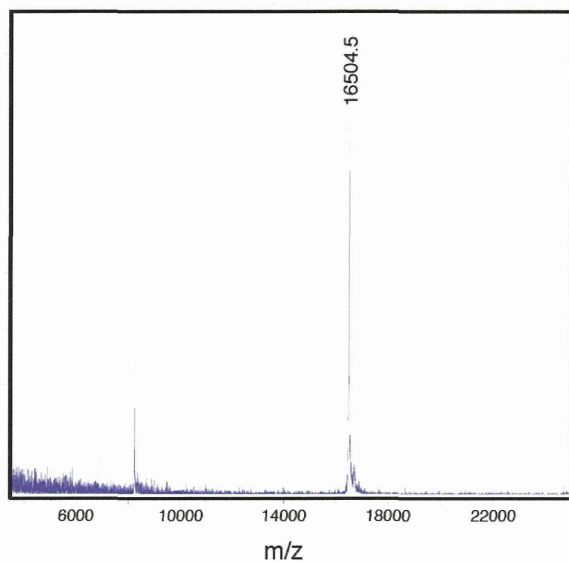


Figure S1. Gel permeation chromatography (GPC) purification of HSPG41C nanocages (A) and HSPG41C-preS1 nanocages (B). The peaks observed at 13.31 min in A and 13.26 min in B were collected individually. The collected fractions were then analyzed by SDS-PAGE using 12% gel according to standard protocol (C). Lane 1, molecular weight standards; lane 2, HSPG41C nanocages; lane 3, HSPG41C-preS1 nanocages.

A) HSPG41C nanocages



B) HSPG41C-preS1 nanocages

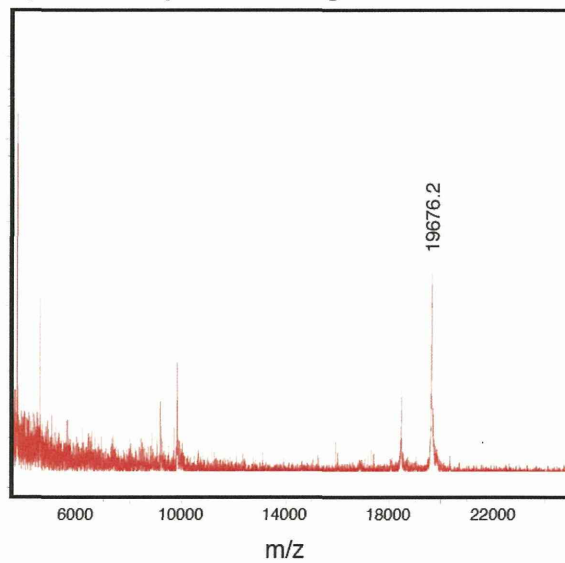


Figure S2. MALDI-TOF mass spectrum of HSPG41C nanocages (A) and HSPG41C-preS1 nanocages (B).

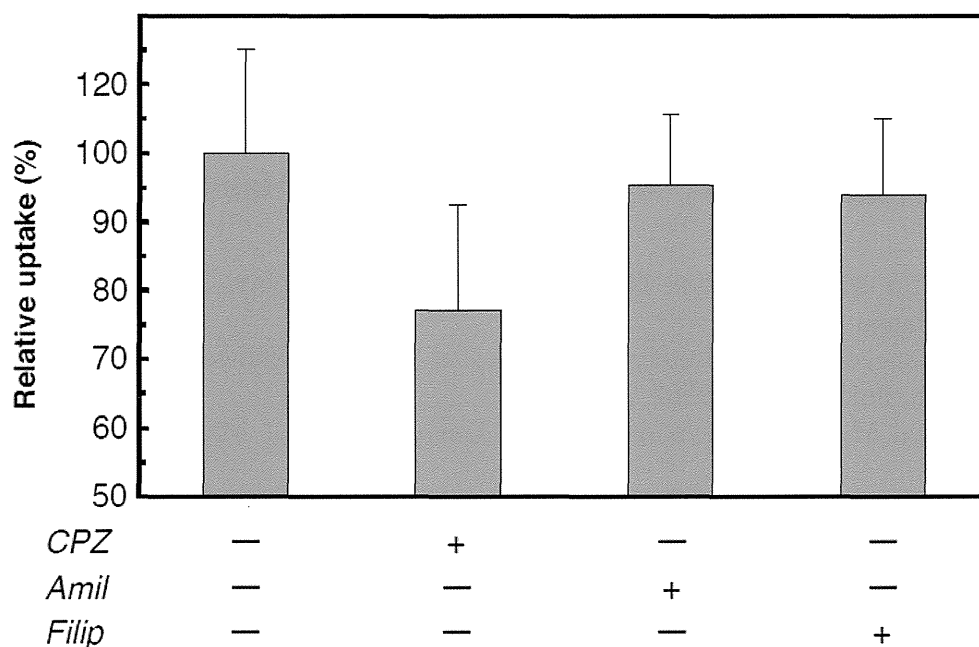


Figure S3. Inhibition of cellular uptake of HSPG41C-preS1 nanocages by endocytosis inhibitors. HepG2 cells were harvested on poly-*L*-lysine-coated 48-well plates at an initial density of 50,000 cells/well and grown overnight. Cells were treated with DMEM containing chlorpromazine (10 $\mu\text{g}/\text{mL}$), Amiloride (500 μM) or Filipin III (10 $\mu\text{g}/\text{mL}$) for 1 h (all from Sigma-Aldrich, St. Louis, MO, USA). Then 84 nM of fluorescent-labeled HSPG41C-preS1 nanocages solution containing the above inhibitors was added to cells. Two hours after transfection, cells were rinsed three times with PBS and then lysed in lysis buffer (pH 7.5, 20 mM Tris-HCl, 2 mM EDTA, and 0.05% Triton-X 100). Lysate solutions were replaced on black-bottomed 96 well-plates and the fluorescence intensity of each sample measured using a Microplate Reader (ARVO MX 1420; Perkin Elmer Inc., Waltham, MA, USA). Data are means \pm SEM of three independent experiments.

Development of Human Hepatocellular Carcinoma Cell-Targeted Protein Cages

Riki Toita,[†] Masaharu Murata,^{*,†,‡,||} Shigekazu Tabata,[‡] Kana Abe,^{||} Sayuko Narahara,[†] Jing Shu Piao,[‡] Jeong-Hun Kang,[#] and Makoto Hashizume,^{†,‡,||}

[†]Innovation Center for Medical Redox Navigation, Kyushu University, 3-1-1 Maidashi, Higashi-ku, Fukuoka 812-8582, Japan

[‡]Department of Advanced Medical Initiatives, Faculty of Medical Sciences, Kyushu University, 3-1-1 Maidashi, Higashi-ku, Fukuoka 812-8582, Japan

^{||}Center for Advanced Medical Innovation, Kyushu University, 3-1-1 Maidashi, Higashi-ku, Fukuoka 812-8582, Japan

[#]Department of Biomedical Engineering, National Cerebral and Cardiovascular Center Research Institute, 5-7-1 Fujishirodai, Suita, Osaka 565-8565, Japan

E-mail addresses

tiki0710@dem.med.kyushu-u.ac.jp (Dr. R. Toita)

stabata@dem.med.kyushu-u.ac.jp (Dr. S. Tabata)

kana-abe@dem.med.kyushu-u.ac.jp (Ms. K. Abe)

narahara@dem.med.kyushu-u.ac.jp (Ms. S. Narahara)

jingshu@dem.med.kyushu-u.ac.jp (Dr. J. S. Piao)

mhashi@dem.med.kyushu-u.ac.jp (Prof. Dr. M. Hashizume)

m-murata@dem.med.kyushu-u.ac.jp (*Dr. M. Murata)

*To whom correspondence should be addressed. Tel: +81-92-642-6251. Fax: +81-92-642-6252.

Abstract

We described herein a human hepatocellular carcinoma (HCC) cell-targeted protein cage that was modified the HCC-binding peptide termed SP94 at surface of a naturally occurred heat shock protein (Hsp) cages. Six types of HCC-targeted Hsp cages were chemically synthesized using two types of heterobifunctional linker (SM(PEG)_n) with different lengths and two types of SP94 peptide which contained a unique Cys residue at the *N*- or *C*- terminus of the peptide. These Hsp cages were characterized using matrix-assisted laser desorption/ionization-time of flight mass spectrometry (MALDI-ToF MS) analyses, sodium dodecyl sulfate-polyacrylamide gel electrophoresis (SDS-PAGE) analyses and dynamic light scattering (DLS) measurement. Fluorescence microscopic observations revealed all the engineered protein cages to bind selectively to HCC cells but not to the other cell lines tested (including normal liver cells). Moreover, the number of SP94 peptides on Hsp cages, conjugation site of SP94 peptide, and linker length between a Hsp cage and a SP94 peptide had important effects upon the binding of engineered Hsp cages to HCC cells. An engineered Hsp cage conjugated to the *N*-terminus of SP94 peptide *via* a longer linker molecule and containing high SP94 peptide levels showed greater binding towards HCC cells. Surprisingly, through optimization of these three factors, up to tenfold greater affinity towards HCC cells was achieved. These results are critically important not only for the development of HCC cell-targeting devices using SP94 peptide, but also to create other cell-targeting materials that utilize other peptide ligands.

Keywords

Proteins; drug delivery systems; peptides; conjugated proteins; fluorescence imaging