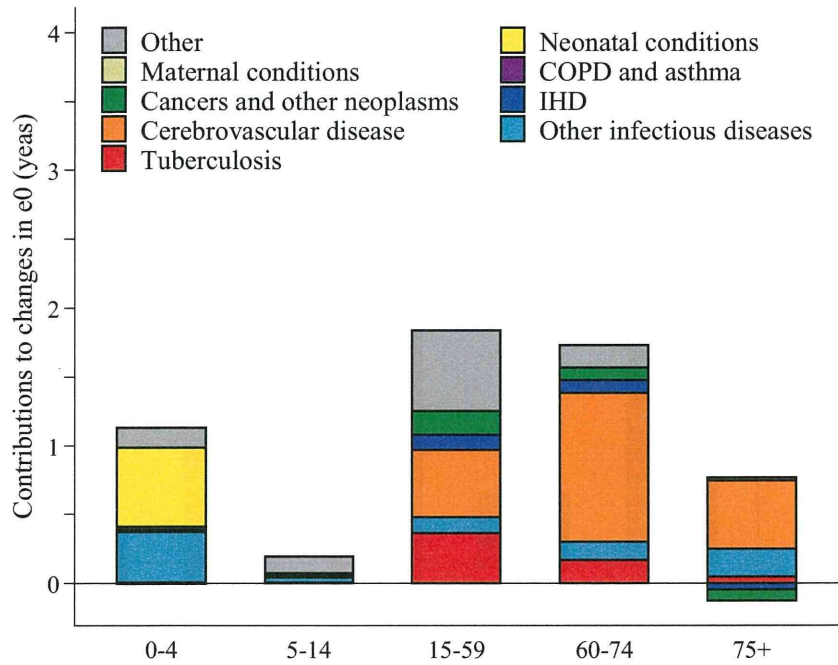
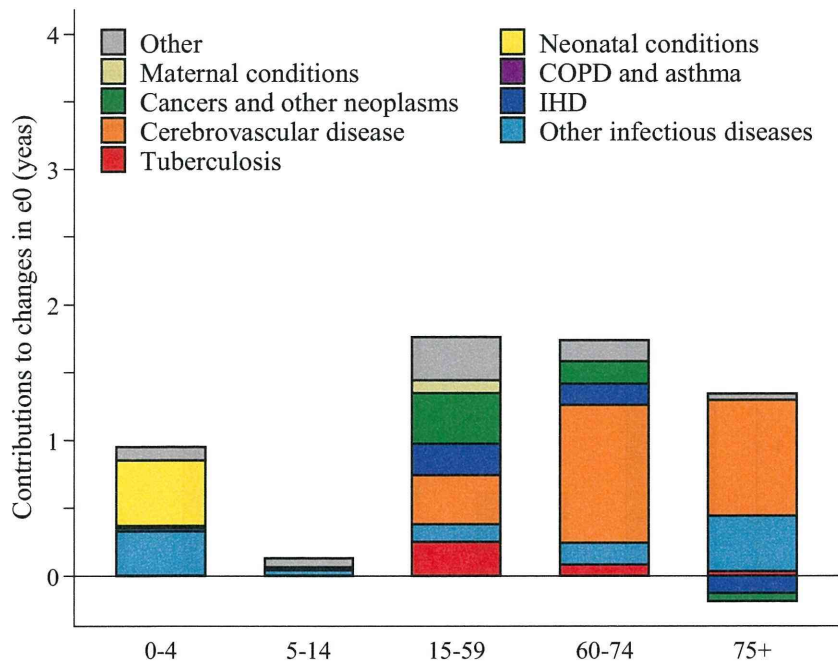


B) 1965~1980 年
男性

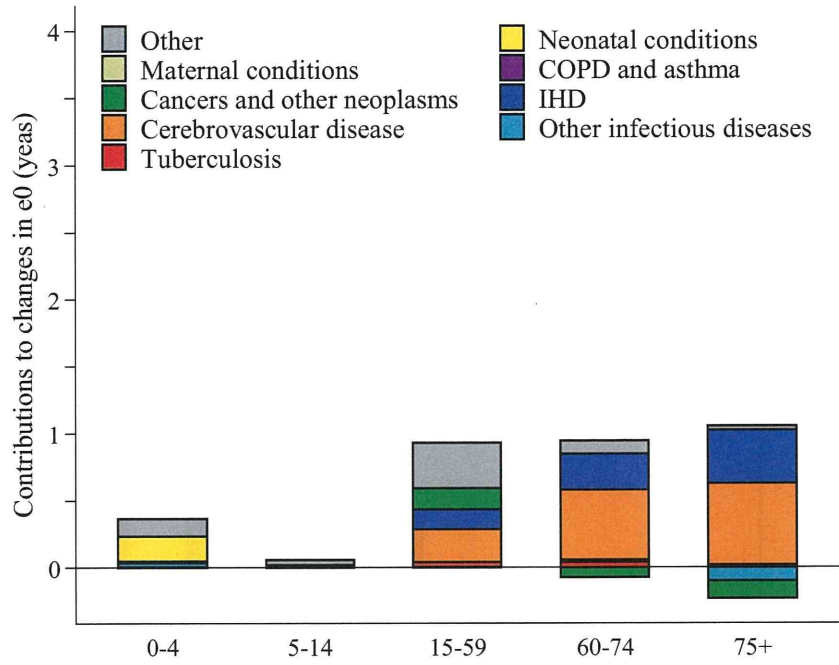


女性

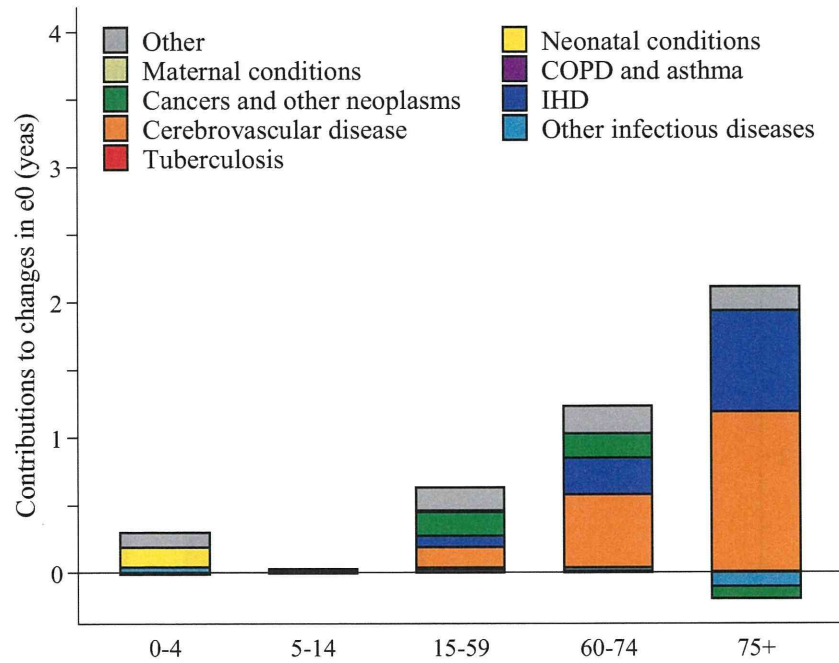


C) 1980~1995 年

男性

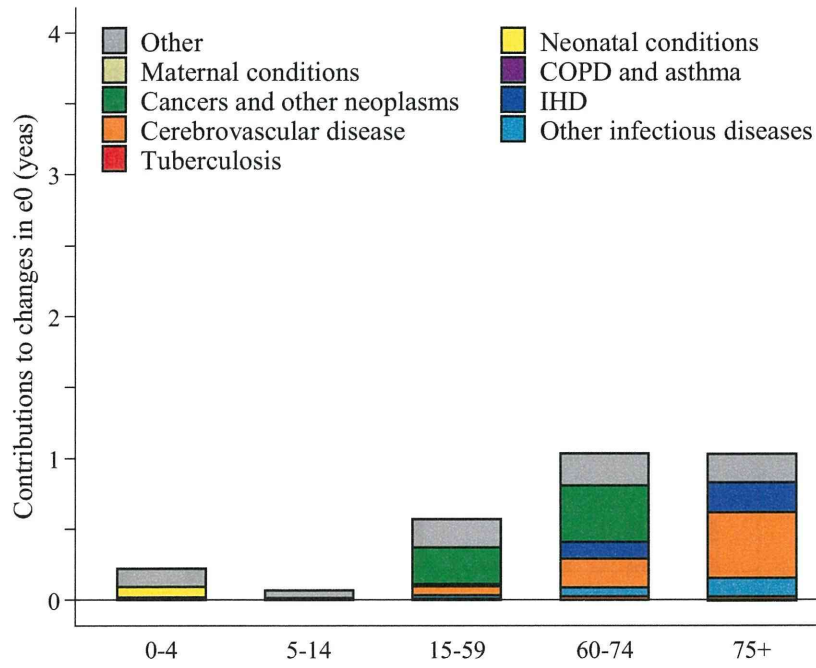


女性



D) 1995~2008 年

男性



女性

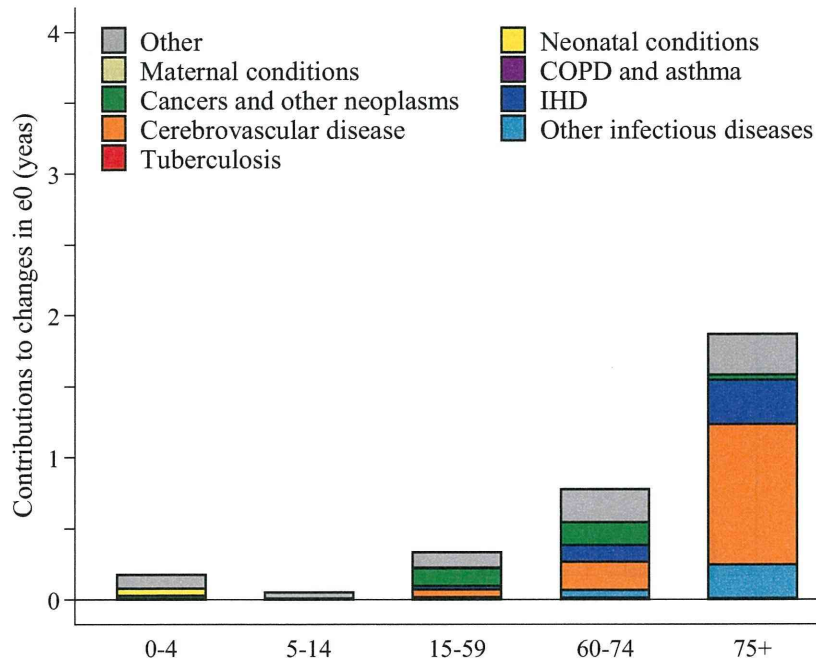
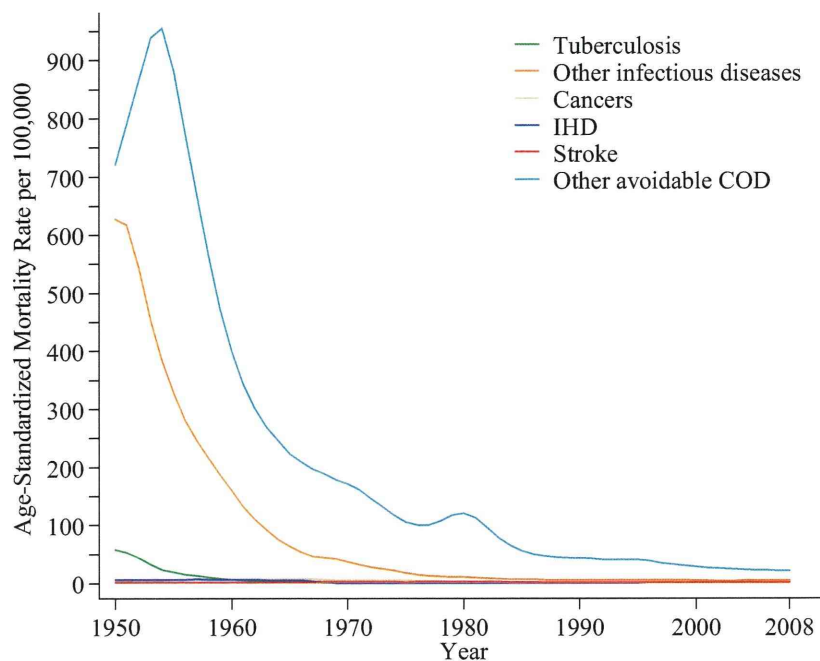
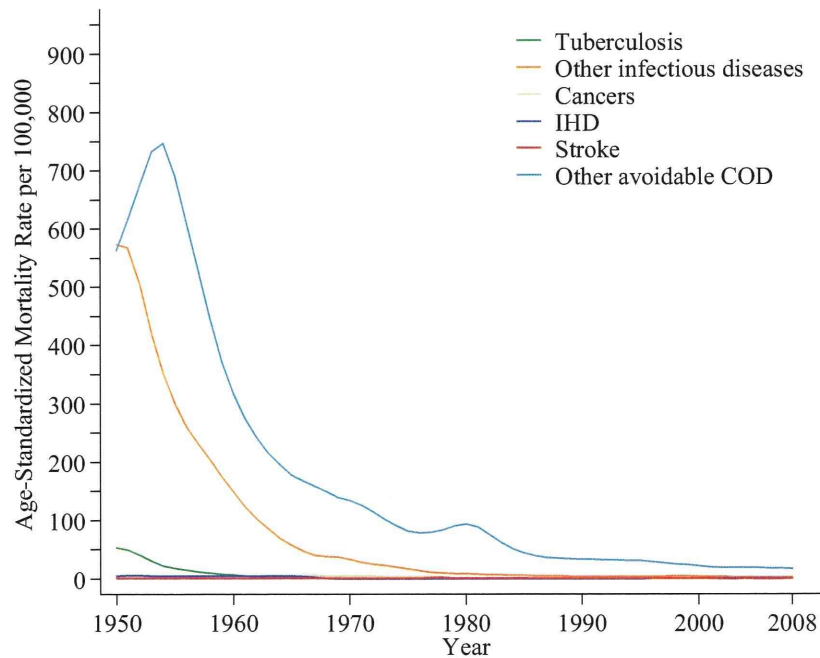


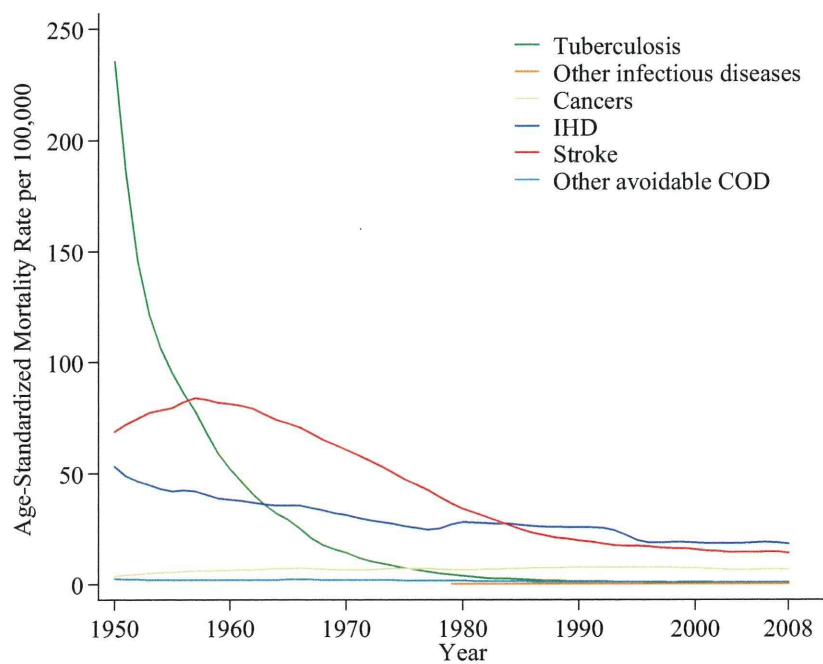
図4. 1950～2008年における日本人の医療で回避可能な死因による年齢調整死亡率
 A) 5歳未満
 男児



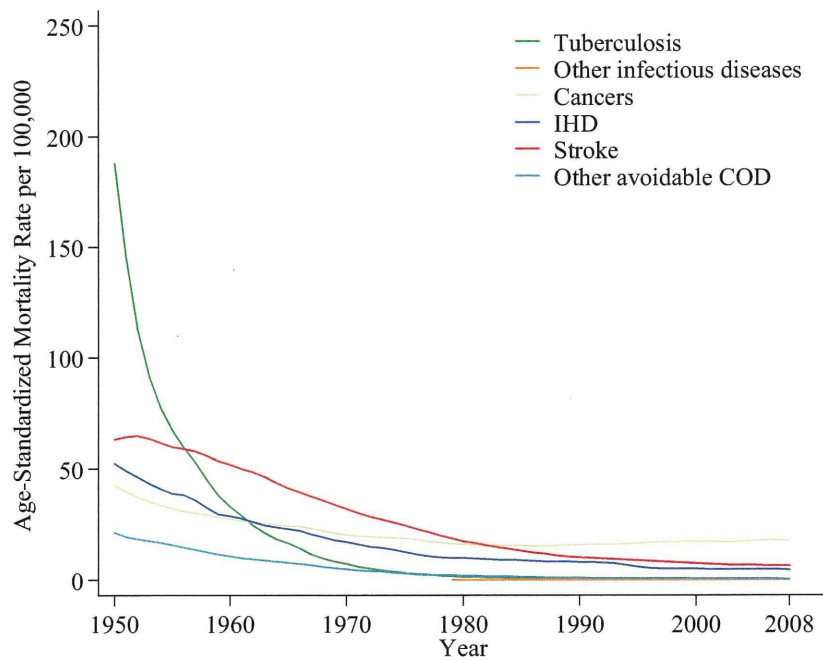
女児



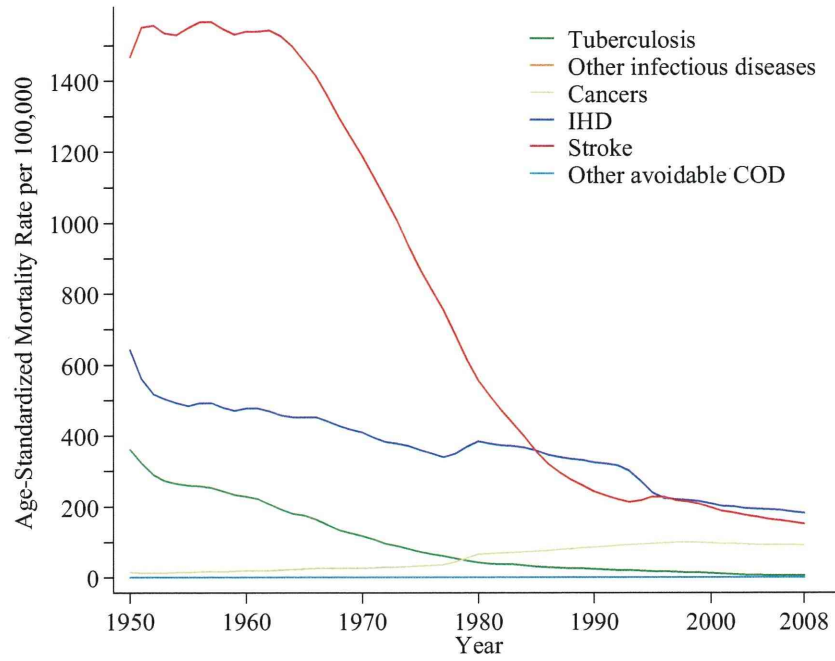
B) 15~59 歳
男性



女性



C) 60~74 歳
男性



女性

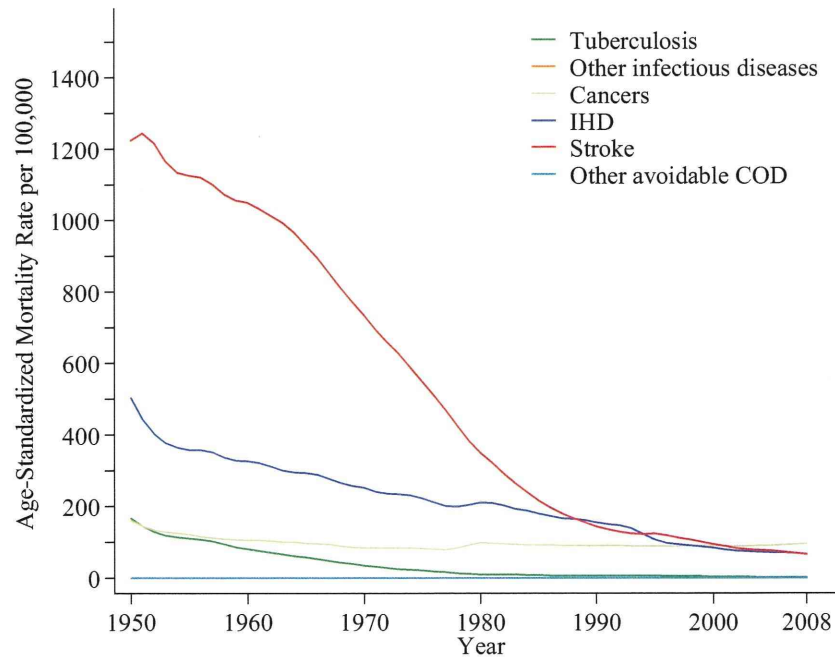
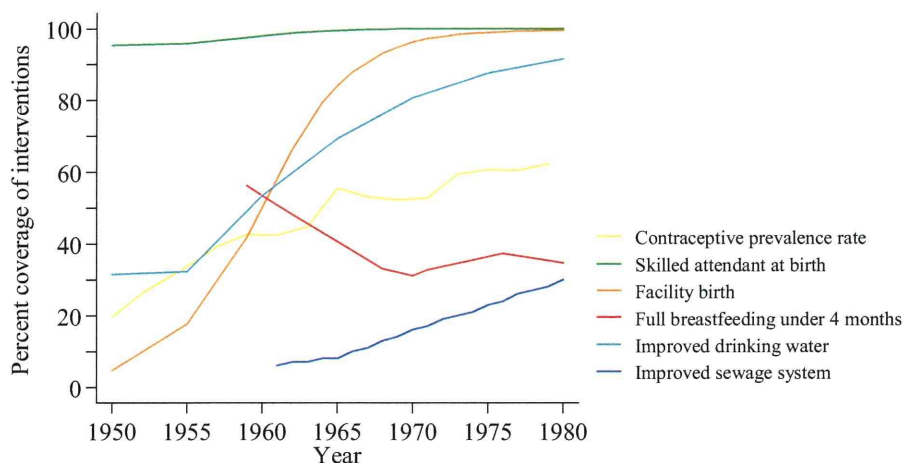


図 5. 1950～1980 年の日本における衛生と母子保健介入の普及率



Skilled attendant at birth includes the births attended by physicians and midwives inside and outside facilities.

Full breastfeeding for 1968, 1971 and 1976 is the coverage of full breastfeeding within 3 months of age.

Improved drinking water through 1955 is the diffusion rate of population having water supply planning to the total population. The data after 1956 is the diffusion rate of the covered population to the total population.

Data sources:

Contraceptive prevalence rate: Japan's Population - Tracking the Post-war 50 Years - Results from the 1st to the 24th Mainichi Newspaper Nationwide Family Planning Surveys. Mainichi Newspaper Population Research Committee.

Skilled attendant at birth: Maternal and child health statistics of Japan, 1960-73, 1975-83. Mother's and Children's Health Organization.

Facility birth: Maternal and child health statistics of Japan, 1960-73, 1975-83. Mother's and Children's Health Organization.

Expectant and nursing mothers care visits: Maternal and child health statistics of Japan, 1960-73, 1975-83. Mother's and Children's Health Organization.

Full breastfeeding at under 4 months: Maternal and child health statistics of Japan, 1960-73, 1975-83. Mother's and Children's Health Organization.

Improved drinking water: Japan Water Works Association. Water Supply Division, Health Service Bureau, Ministry of Health, Labour and Welfare.

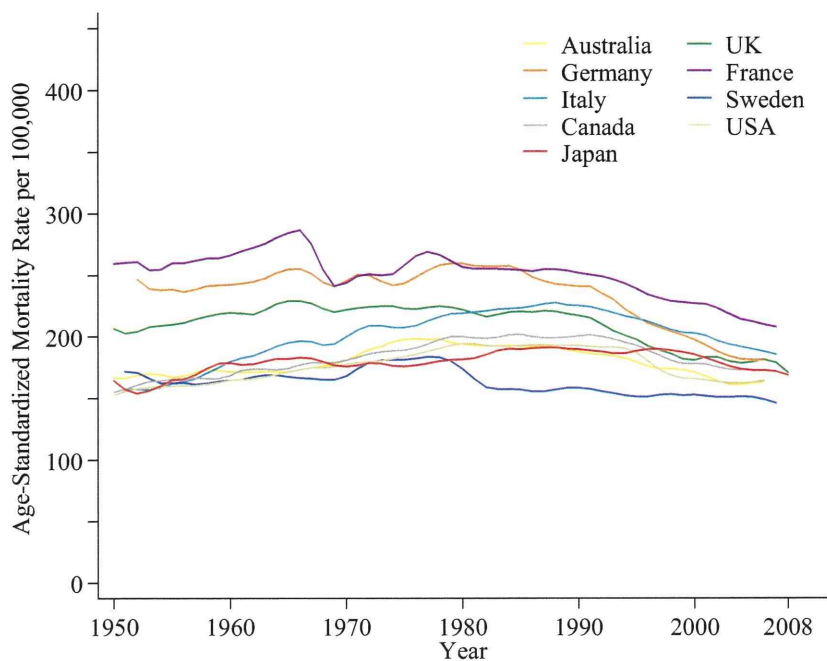
Improved sewer system: Prevalence of water sewage. Japan Sewage Works Association.

Retrieved on 22 of July, 2010 from http://www.jswa.jp/05_arekore/07_fukyu/index.html

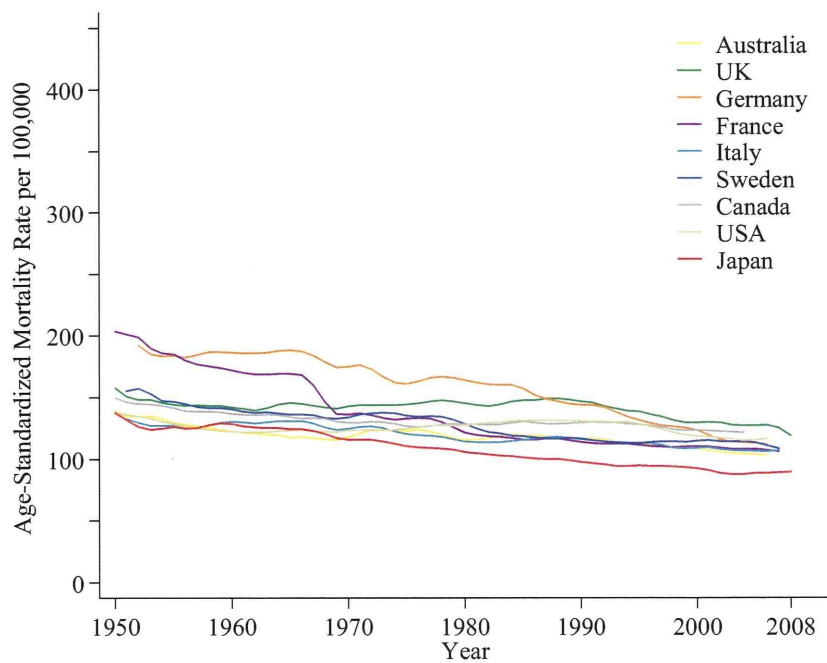
図 6. 日本と一部の先進国における非感染性疾患による死亡率の推移

A) 悪性新生物

男性

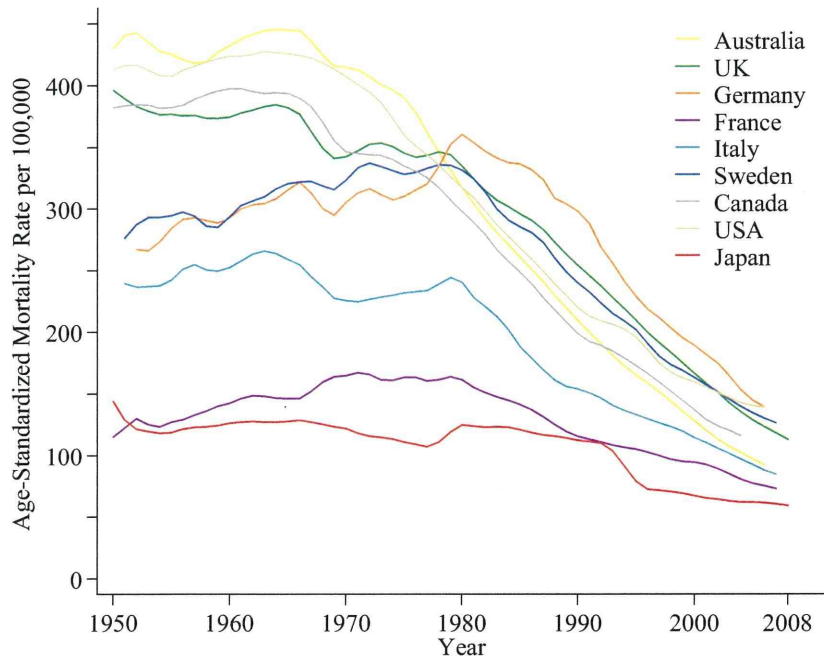


女性

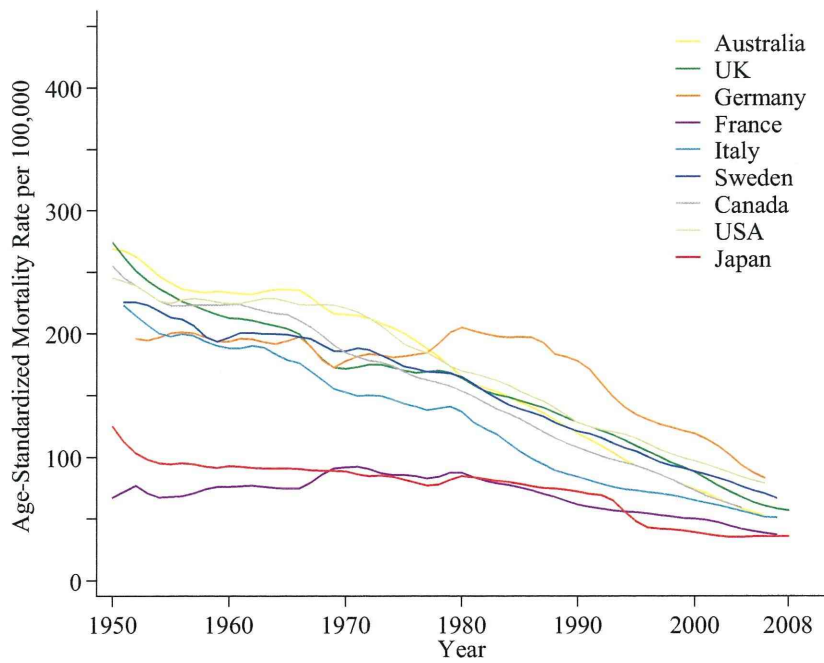


B) 虚血性心疾患

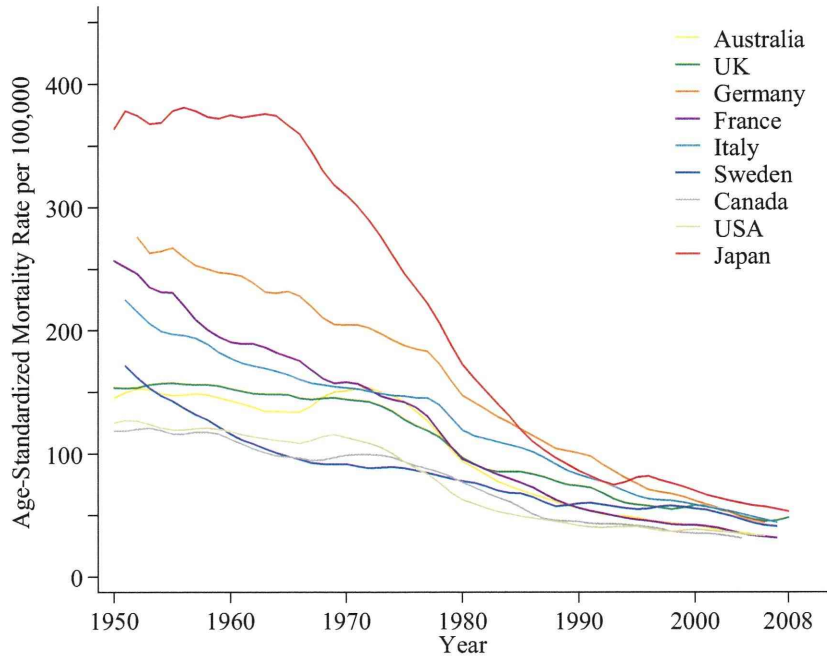
男性



女性



C) 脳血管疾患
男性



女性

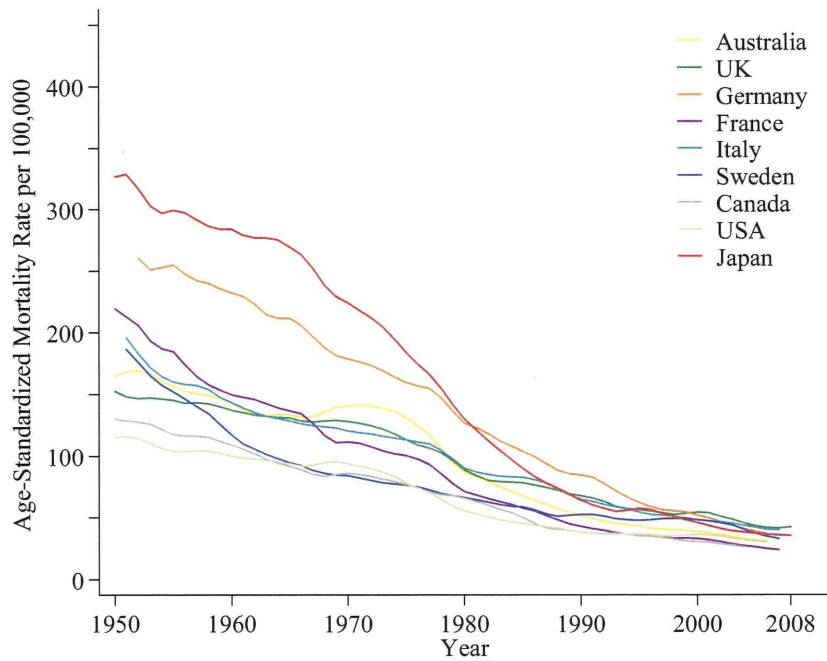


図 7. 30～59 歳日本人男性における全死因による職業別年齢調整死亡率の推移

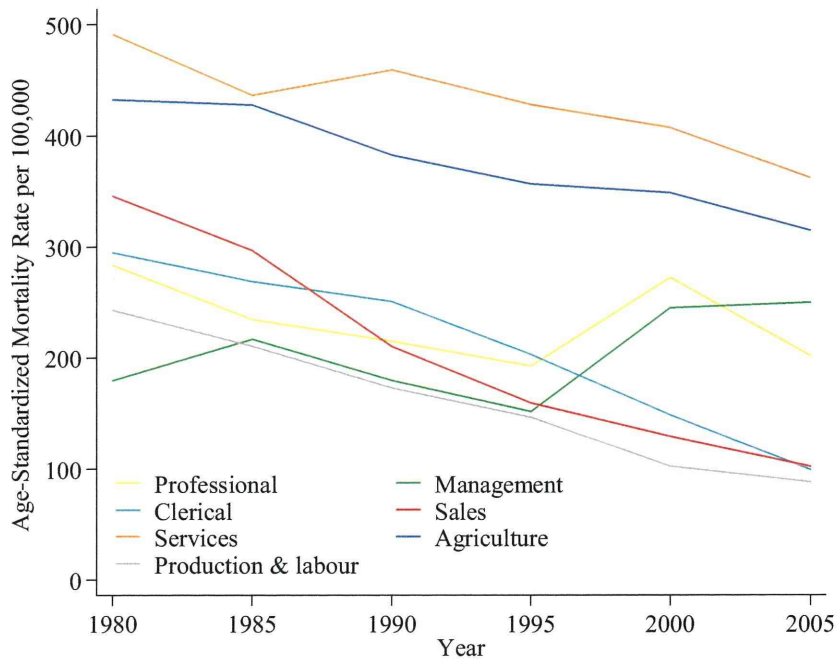
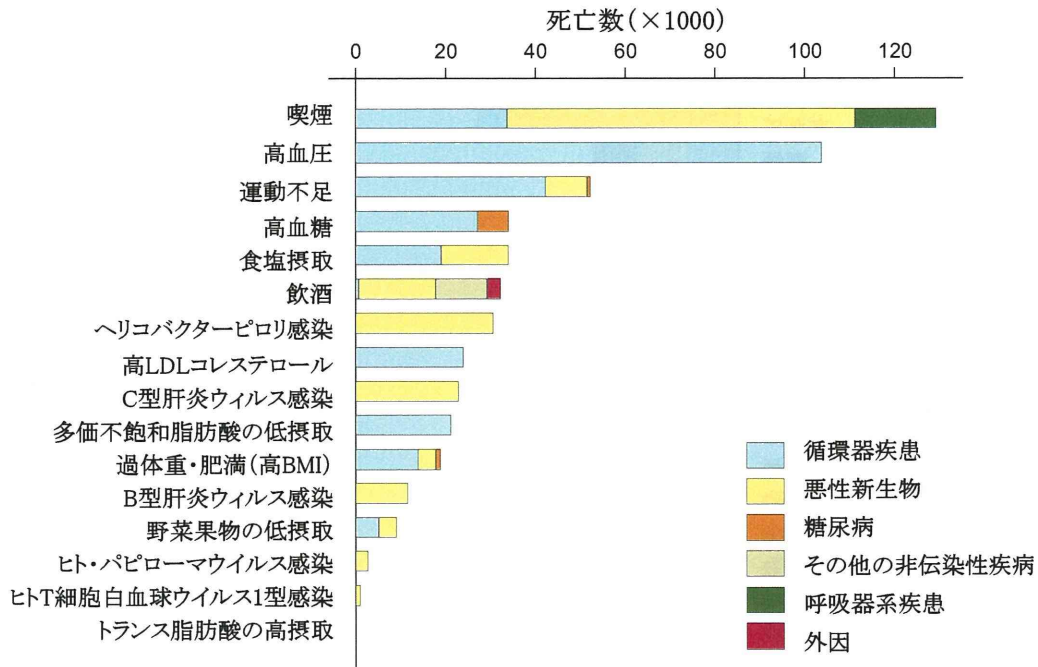
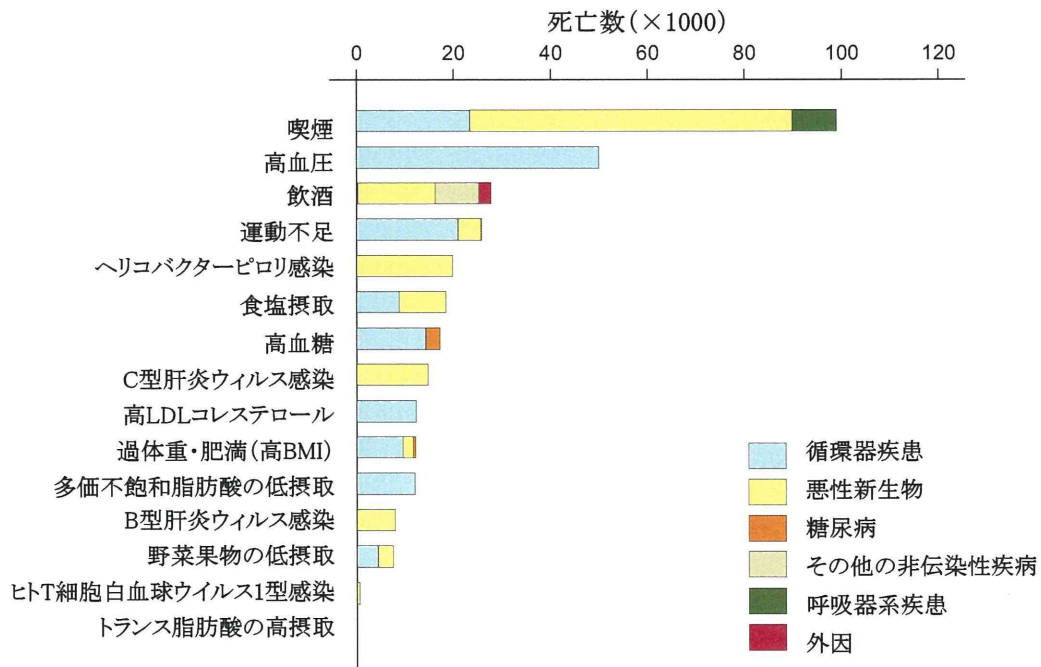


図 8. 2007 年の我が国における危険因子に関連する非伝染性疾病と外因による死亡数

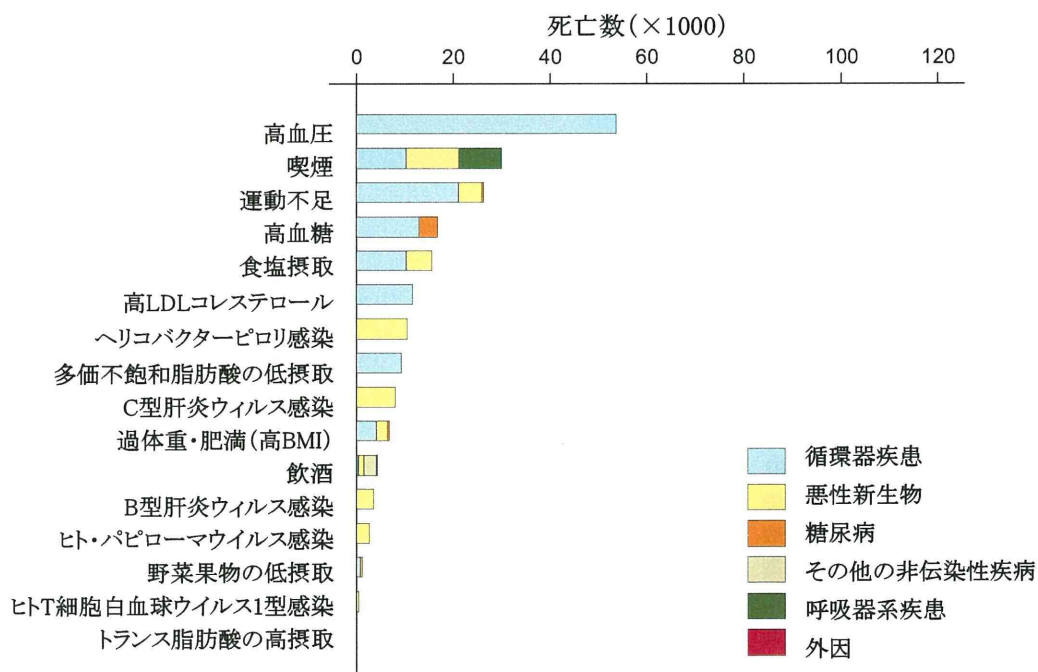
A) 男女計



B) 男性



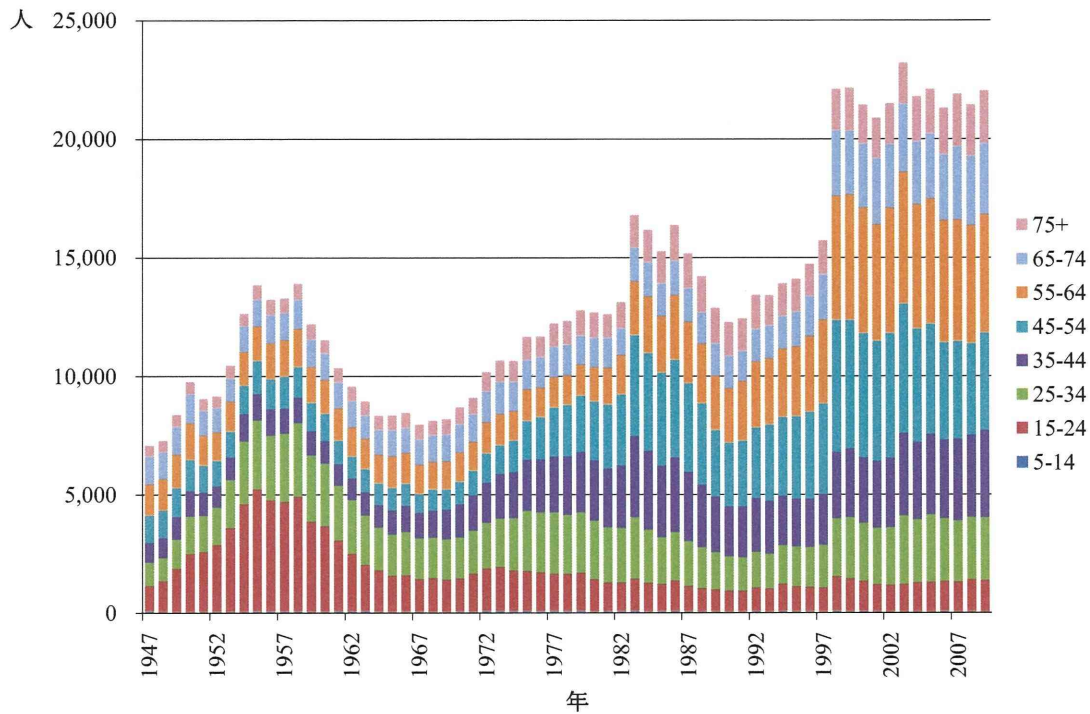
C) 女性



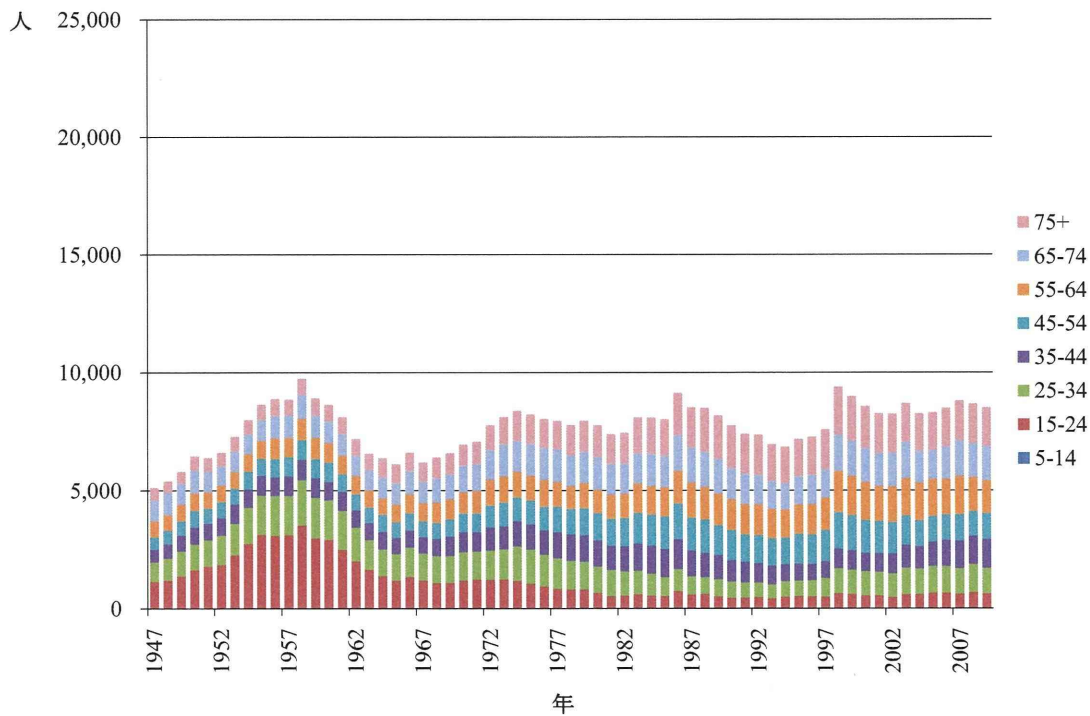
資料：渋谷健司 (37) より作成

図 9. 1947～2009 年の我が国の年齢階級別自殺死亡者数

A) 男性



B) 女性



資料：厚生労働省（62）より作成

VI章

研究成果の刊行に関する一覧表

研究成果の刊行に関する一覧表

(2009年4月1日～2012年3月31日迄)

2009年4月1日～2010年3月31日迄

発表者氏名	論文タイトル名	発表誌名	巻号	ページ	出版年
Masuno K, Xaysomphoo D, Phengsavanh A, Douangmalala S, Kuroiwa C	Scaling up interventions to eliminate neonatal tetanus: factors associated with the coverage of tetanus toxoid and clean deliveries among women in Vientiane, Lao PDR	Vaccine	27(32)	4284-8	2009
Mori R, Fitzgerald A, Williams C, Tullus K, Verrier-Jones K, Lakhanpal M	Antibiotic prophylaxis for children at risk of developing urinary tract infection: a systematic review	Acta Paediatrica	98(11)	1781-6	2009
Koyanagi A, Humphrey JH, Moulton LH, et al	Effect of early exclusive breastfeeding on morbidity among infants born to HIV-negative mothers in Zimbabwe	American Journal of Clinical Nutrition	89(5)	1375-82	2009

2010年4月1日～2011年3月31日迄

発表者氏名	論文タイトル名	発表誌名	巻号	ページ	出版年
Matsuoka S, Aiga H, Rasmey LC, Rathavy T, Okitsu A	Perceived barriers to utilization of maternal health services in rural Cambodia	Health Policy	95(2-3)	255-63	2010

Mori R, Khanna R, Pledge D, Nakayama T	A meta-analysis of physiological effects by skin-to-skin contact for newborns and mothers	Pediatrics International	52(2)	161-70	2010
Nagai S, Andrianarimanana D, Rabesandratana N, Yonemoto N, Nakayama T, Mori R	Earlier versus Later Continuous Kangaroo Mother Care for stable Low-birth-weight Infants: A Randomized Controlled Trial	Acta Paediatrica	99(6)	826-835	2010
Mori R, Yonemoto N, Fitzgerald A, Tullus K, Verrier-Jones K, and Lakhanpaul M	Diagnostic performance of urine dipstick testing in children with suspected UTI: A systematic review of relationship with age and comparison with microscopy	Acta Paediatrica	99(4)	581-584	2010
Lumbiganon P, Laoapaiboon M, Gülmözoglu AM, Souza JP, Taneepanichskul S, Ruyan P, Attygalle DE, Shrestha N, Mori R, et al.	Method of delivery and pregnancy outcomes in Asia: The WHO Global Survey on Maternal and Perinatal Health 2007-08	Lancet	375(9713)	490-99	2010
Koyanagi A, Ruff AJ, Moulton LH, Ntozini R, Mutasa K, Iliff P, Humphrey JH; ZVI TAMBO Study Group	Postpartum plasma CD4 change in HIV-positive women: implications for timing of HAART initiation	AIDS Research and Human Retroviruses	26(5)	547-52	2010
Ullman R, Smith LA, Burns E, Mori R, Dowswell T	Parenteral opioids for maternal pain relief in labour	Cochrane Database of Systematic Reviews	9	CD007396	2010
Tobe RG, Mori R, Shinozuka N, Kubo T, Itabashi K.	Birthweight discordance, risk factors and its impact on perinatal mortality among Japanese twins: data from a national project during 2001-2005	Twin Research and Human Genetics	13(5)	490-4	2010

Matsuzaki M, Haruna M, Ota E, Yeo SA, Murayama R, Murashima S	Translation and cross-cultural adaptation of the Pregnancy Physical Activity Questionnaire (PPAQ) to Japanese	BioScience Trends	4(4)	170-7	2010
Shiraishi M, Haruna M, Matsuzaki M, Ota E, Murayama R, Murashima S	Association between the serum folate levels and tea consumption during pregnancy	BioScience Trends	4(5)	225-230	2010
Togoobaatar G, Ikeda N, Ali M, Sodnomjamts M, Daschdemberel S, Moroi R, Shibuya K	Survey of non-prescribed use of antibiotics for children in an urban community in Mongolia	Bulletin of the World Health Organization	88(12)	930-6	2010

2011年4月1日～2012年3月31日迄

発表者氏名	論文タイトル名	発表誌名	巻号	ページ	出版年
Zhang X, Shirayama Y, Zhang Y, Ba W, Ikeda N, Mori R, Shibuya K.	Duration of maternally derived antibody against measles: A seroepidemiological study of infants aged under 8 months in Qinghai, China.	Vaccine	30(4)	752-7	2011
Reich MR, Ikegami N, Shibuya K, Takemi K	50 years of pursuing a healthy society in Japan	Lancet	378(9796)	1051-3	2011
Kario K, Nishizawa M, Satoshi Hoshida, Shimpo M, Ishibashi Y, Kunii O, Shibuya K	Development of a disaster cardiovascular prevention network	Lancet	378(9797)	1125-7	2011
Ikeda N, Saito E, Kondo N, Inoue M, Ikeda S, Satoh T, Wada K, Stickley A, Katano da K, Mizoue T, Noda M, Iso H, Fujino Y, Sobue T, Tsugane S, N	What has made the population of Japan healthy?	Lancet	378(9796)	1094-105	2011

Ikegami N, Yoo BK, Hashimoto H, Matsumoto M, Ogata H, Babazono A, Watanabe R, Shibuya K, Yang BM, Reich MR, Kobayashi Y	Japanese universal health coverage: evolution, achievements, and challenges	Lancet	378(9796)	1106-15	2011
Mori R, Takemi K, Fineberg HV	Science and consensus for health policy making in Japan	Lancet	379(9810)	12-2	2012
Inoue M, Sawada N, Matsuda T, Iwasaki M, Sasazuki S, Shimazu T, Shibuya K, Tsugane S.	Attributable causes of cancer in Japan in 2005--systematic assessment to estimate current burden of cancer attributable to known preventable risk factors in Japan.	Annals of Oncology.	23(5)	1362-9	2012
Hosoda M, Inoue H, Miyazawa Y, Kusumi E, Shibuya K	Vaccine-associated paralytic poliomyelitis in Japan. (Correspondence)	Lancet	379(9815)	520	2012
Hirayama F, Koyanagi A, Mori R, Zhang J, Souza JP, Gülmezoglu AM.	Prevalence and risk factors for 3rd and 4th degree perineal laceration during vaginal delivery: A multi-country study.	BJOG	119(3)	340-7	2012
Takemoto N, Koyanagi A, Yamamoto H.	Comparison between endoscope-assisted partial mastectomy with filling of dead space using absorbable mesh and conventional conservative method on cosmetic outcome in patients with stage I or II breast cancer.	Surg Laparosc Endosc Percutan Tech	22(1)	68-72	2012

VII章.

代表的関連刊行物・別刷