

Research Article

with poor tolerability for Peg-IFN plus ribavirin combination therapy among aged patients.

Conflict of interest

The authors who have taken part in this study declared that they do not have anything to disclose regarding funding or conflict of interest with respect to this paper.

Acknowledgments

Other institutions and participants in the Osaka Liver Forum are: Higashiosaka City Central Hospital, S. Iio; Osaka Medical Center for Cancer and Cardiovascular Diseases, K. Imanaka; Kinki Central Hospital of Mutual Aid Association of Public School Teachers, E. Hayashi; Sumitomo Hospital, A. Yamada; Itami City Hospital, T. Kitada; Otemae Hospital, Y. Doi; Suita Municipal Hospital, T. Nagase; NTT West Osaka Hospital, A. Kaneko; National Hospital Organization Minami Wakayama Medical Center, K. Fujimoto; Nishinomiya Municipal Central Hospital, H. Ogawa; Saiseikai Senri Hospital, K. Suzuki; Osaka Kaisei Hospital, N. Imaizumi; Kano General Hospital, S. Kubota; Saso Hospital, M. Nishiuchi; and Meiwa Hospital, Y. Hayakawa.

This work was supported by a Grant-in-Aid for Research on Hepatitis and BSE from Ministry of Health Labour and Welfare of Japan, and Scientific Research from the Ministry of Education, Science, and Culture of Japan.

References

- Ghany MG, Strader DB, Thomas DL, Seeff LB. Diagnosis, management, and treatment of hepatitis C: an update. *Hepatology* 2009;49:1335-1374.
- Hayashi N, Takehara T. Antiviral therapy for chronic hepatitis C: past, present, and future. *J Gastroenterol* 2006;41:17-27.
- Manns MP, McHutchison JG, Gordon SC, Rustgi VK, Shiffman M, Reindollar R, et al. Peginterferon alfa-2b plus ribavirin compared with interferon alfa-2b plus ribavirin for initial treatment of chronic hepatitis C: a randomized trial. *Lancet* 2001;358:958-965.
- Fried MW, Shiffman ML, Reddy KR, Smith C, Marinos G, Goncalves Jr FL, et al. Peginterferon alfa-2a plus ribavirin for chronic hepatitis C virus infection. *N Engl J Med* 2002;347:975-982.
- Antonucci G, Longo MA, Angeletti C, Vairo F, Oliva A, Comandini UV, et al. The effect of age on response to therapy with peginterferon alpha plus ribavirin in a cohort of patients with chronic HCV hepatitis including subjects older than 65 yr. *Am J Gastroenterol* 2007;102:1383-1391.
- Reddy KR, Messinger D, Popescu M, Hadziyannis SJ. Peginterferon alpha-2a (40 kDa) and ribavirin: comparable rates of sustained virological response in sub-sets of older and younger HCV genotype 1 patients. *J Viral Hepat* 2009;16:724-731.
- Sezaki H, Suzuki F, Kawamura Y, Yatsuji H, Hosaka T, Akuta N, et al. Poor response to pegylated interferon and ribavirin in older women infected with hepatitis C virus of genotype 1b in high viral loads. *Dig Dis Sci* 2009;54:1317-1324.
- Hiramatsu N, Oze T, Tsuda N, Kurashige N, Koga K, Toyama T, et al. Should aged patients with chronic hepatitis C be treated with interferon and ribavirin combination therapy? *Hepatol Res* 2006;35:185-189.
- Iwasaki Y, Ikeda H, Araki Y, Osawa T, Kita K, Ando M, et al. Limitation of combination therapy of interferon and ribavirin for older patients with chronic hepatitis C. *Hepatology* 2006;43:54-63.
- McHutchison JG, Everson GT, Gordon SC, Jacobson IM, Sulkowski M, Kauffman R, et al. Telaprevir with peginterferon and ribavirin for chronic HCV genotype 1 infection. *N Engl J Med* 2009;360:1827-1838.
- Hezode C, Forestier N, Dusheiko G, Ferenci P, Pol S, Goeser T, et al. Telaprevir and peginterferon with or without ribavirin for chronic HCV infection. *N Engl J Med* 2009;360:1839-1850.
- Poynard T, Bedossa P, Opolon P. Natural history of liver fibrosis progression in patients with chronic hepatitis C. The OBSVIRC, METAVIR, CLINIVIR, and DOSVIRC groups. *Lancet* 1997;349:825-832.
- Taura N, Yatsuhashi H, Hamasaki K, Nakao K, Daikoku M, Ueki T, et al. Increasing hepatitis C virus-associated hepatocellular carcinoma mortality and aging: long term trends in Japan. *Hepatol Res* 2006;34:130-134.
- Hamada H, Yatsuhashi H, Yano K, Daikoku M, Arisawa K, Inoue O, et al. Impact of aging on the development of hepatocellular carcinoma in patients with posttransfusion chronic hepatitis C. *Cancer* 2002;95:331-339.
- Hiramatsu N, Hayashi N, Kasahara A, Hagiwara H, Takehara T, Haruna Y, et al. Improvement of liver fibrosis in chronic hepatitis C patients treated with natural interferon alpha. *J Hepatol* 1995;22:135-142.
- Kasahara A, Hayashi N, Mochizuki K, Takayanagi M, Yoshioka K, Kakumu S, et al. Risk factors for hepatocellular carcinoma and its incidence after interferon treatment in patients with chronic hepatitis C. *Osaka Liver Disease Study Group. Hepatology* 1998;27:1394-1402.
- Ikeda K, Saitoh S, Arase Y, Chayama K, Suzuki Y, Kobayashi M, et al. Effect of interferon therapy on hepatocellular carcinogenesis in patients with chronic hepatitis type C: a long-term observation study of 1,643 patients using statistical bias correction with proportional hazard analysis. *Hepatology* 1999;29:1124-1130.
- Imai Y, Tamura S, Tanaka H, Hiramatsu N, Kiso S, Doi Y, et al. Reduced risk of hepatocellular carcinoma after interferon therapy in aged patients with chronic hepatitis C is limited to sustained virological responders. *J Viral Hepat* 2010;17:185-191.
- Kurokawa M, Hiramatsu N, Oze T, Mochizuki K, Yakushijin T, Kurashige N, et al. Effect of interferon alpha-2b plus ribavirin therapy on incidence of hepatocellular carcinoma in patients with chronic hepatitis. *Hepatol Res* 2009;39:432-438.
- Kasahara A, Tanaka H, Okanoue T, Imai Y, Tsubouchi H, Yoshioka K, et al. Interferon treatment improves survival in chronic hepatitis C patients showing biochemical as well as virological responses by preventing liver-related death. *J Viral Hepat* 2004;11:148-156.
- Imai Y, Kasahara A, Tanaka H, Okanoue T, Hiramatsu N, Tsubouchi H, et al. Interferon therapy for aged patients with chronic hepatitis C: improved survival in patients exhibiting a biochemical response. *J Gastroenterol* 2004;39:1069-1077.
- Yoshizawa H. Trends of hepatitis virus carriers. *Hepatol Res* 2002;24:S28-S39.
- Afdhal NH, Dieterich DT, Pockros PJ, Schiff ER, Shiffman ML, Sulkowski MS, et al. Epoetin alfa maintains ribavirin dose in HCV-infected patients: a prospective, double-blind, randomized controlled study. *Gastroenterology* 2004;126:1302-1311.
- Benhamou Y, Afdhal NH, Nelson DR, Shiffman ML, Halliman DG, Heise J, et al. A phase III study of the safety and efficacy of virmidine versus ribavirin in treatment-naïve patients with chronic hepatitis C: VISER1 results. *Hepatology* 2009;50:717-726.
- Oze T, Hiramatsu N, Yakushijin T, Kurokawa M, Igura T, Mochizuki K, et al. Pegylated interferon alpha-2b (Peg-IFN alpha-2b) affects early virologic response dose-dependently in patients with chronic hepatitis C genotype 1 during treatment with Peg-IFN alpha-2b plus ribavirin. *J Viral Hepat* 2009;16:578-585.
- Hiramatsu N, Oze T, Yakushijin T, Inoue Y, Igura T, Mochizuki K, et al. Ribavirin dose reduction raises relapse rate dose-dependently in genotype 1 patients with hepatitis C responding to pegylated interferon alpha-2b plus ribavirin. *J Viral Hepat* 2009;16:586-594.
- Thomas DL, Thio CL, Martin MP, Qi Y, Ge D, O'Huigin C, et al. Genetic variation in IL28B and spontaneous clearance of hepatitis C virus. *Nature* 2009;461:798-801.
- Suppiah V, Moldovan M, Ahlenstiel G, Berg T, Weltman M, Abate ML, et al. IL28B is associated with response to chronic hepatitis C interferon-alpha and ribavirin therapy. *Nat Genet* 2009;41:1100-1104.
- Tanaka Y, Nishida N, Sugiyama M, Kurosaki M, Matsuura K, Sakamoto N, et al. Genome-wide association of IL28B with response to pegylated interferon-alpha and ribavirin therapy for chronic hepatitis C. *Nat Genet* 2009;41:1105-1109.
- Inoue Y, Hiramatsu N, Oze T, Yakushijin T, Mochizuki K, Hagiwara H, et al. Factors affecting efficacy in patients with genotype 2 chronic hepatitis C treated by pegylated interferon alpha-2b and ribavirin: reducing drug doses has no impact on rapid and sustained virological responses. *J Viral Hepat* 2009;17:336-344.

Amino Acid Substitution in the Core Protein has no Impact on Relapse in Hepatitis C Genotype 1 Patients Treated With Peginterferon and Ribavirin

Yuko Inoue,¹ Naoki Hiramatsu,^{1*} Tsugiko Oze,¹ Takayuki Yakushijin,¹ Kiyoshi Mochizuki,¹ Kazuto Fukuda,² Eiji Mita,³ Yoshimichi Haruna,⁴ Atsuo Inoue,⁴ Yasuharu Imai,² Atsushi Hosui,¹ Takuya Miyagi,¹ Yuichi Yoshida,¹ Tomohide Tatsumi,¹ Shinichi Kiso,¹ Tatsuya Kanto,¹ Akinori Kasahara,¹ Tetsuo Takehara,¹ and Norio Hayashi⁵

¹Department of Gastroenterology and Hepatology, Osaka University Graduate School of Medicine, Suita, Japan

²Ikeda Municipal Hospital, Ikeda, Japan

³National Hospital Organization Osaka National Hospital, Osaka, Japan

⁴Osaka General Medical Center, Osaka, Japan

⁵Kansai Rousai Hospital, Amagasaki, Japan

Previous reports demonstrated that amino acid (aa) substitutions in the hepatitis C virus (HCV) core protein are predictors of non-virological responses to pegylated interferon (Peg-IFN) and ribavirin combination therapy. The aim of this study was to investigate the impact of core aa substitutions on viral kinetics during the treatment and relapse after the treatment. The 187 patients with HCV genotype 1 enrolled in this study were categorized into four groups according to core aa substitution patterns: double-wild group (n=92), Arg70/Leu91; 70-mutant group (n=42), Gln70/Leu91; 91-mutant group (n=31), Arg70/Met91; and double-mutant group (n=22), Gln70/Met91. The relationship between the core aa substitutions and the virological response was examined. Multivariate logistic regression analyses showed that substitution at aa 70 was significantly associated with a poor virological response during the first 12 weeks (decline of <1 log from baseline at week 4, <2 log at week 12), and substitution at aa 91 was significantly associated with detectable HCV RNA at week 24. With respect to relapse, only the ribavirin exposure (odds ratio (OR), 0.77; 95% confidence interval (CI), 0.60–0.98) and HCV RNA disappearance between weeks 13 and 24 (OR, 23.69; 95% CI, 5.44–103.08) were associated independently with relapse, with no correlation being found with the core aa substitutions and relapse. In conclusion, the results showed that core aa substitutions can be strong predictive factors at pretreatment of the non-response, but not for relapse, for virological responders with HCV RNA disappearance during treatment. **J.**

Med. Virol. 83:419–427, 2011. © 2011 Wiley-Liss, Inc.

KEY WORDS: amino acid substitution; core protein; hepatitis C virus; peginterferon and ribavirin combination therapy; relapse

INTRODUCTION

The current standard of care for chronic hepatitis C patients is combination therapy using pegylated interferon (Peg-IFN) and ribavirin [Anonymous, 2002; Strader et al., 2004; Dienstag and McHutchison, 2006]. However, the treatment outcome in response to this combination therapy among patients infected with hepatitis C virus (HCV) genotype 1 is still unsatisfactory and the chance of sustained virological response ranges from 42% to 52% [Manns et al., 2001; Fried et al., 2002; Hadziyannis et al., 2004]. Therefore, tailoring treatment regimens for individual patients has become an important issue.

Grant sponsor: Ministry of Health Labor and Welfare of Japan (Research on Hepatitis and BSE); Grant sponsor: Scientific Research from the Ministry of Education, Science, and Culture of Japan.

*Correspondence to: Naoki Hiramatsu, MD, PhD, Department of Gastroenterology and Hepatology, Osaka University Graduate School of Medicine, 2-2 Yamadaoka, Suita, Osaka 565-0871, Japan. E-mail: hiramatsu@gh.med.osaka-u.ac.jp

Accepted 20 September 2010

DOI 10.1002/jmv.21975

Published online in Wiley Online Library (wileyonlinelibrary.com).

Outcome of therapy is influenced by various factors. Some host factors, such as age, sex, body weight, insulin resistance, and liver fibrosis have been reported as pretreatment factors affecting virological response to this combination therapy [Manns et al., 2001; Fried et al., 2002; Hadziyannis et al., 2004; Romero-Gomez et al., 2005]. Recently, several genome-wide association studies identified single nucleotide polymorphisms (SNPs) near the interleukin (IL)-28B gene, which encodes interferon (IFN) lambda-3, as associated with response to Peg-IFN plus ribavirin treatment among patients infected with HCV of European [Suppiah et al., 2009], African [Ge et al., 2009], and Asian ancestry [Tanaka et al., 2009]. These studies suggest that host genetic variants may be associated strongly with response to IFN-alpha-based therapy. However, the ethical problem to perform host genetic search for all patients remains, and the sustained virological response rate is only 48–69% in patients having favorable IL-28B genotype to this combination therapy [Thompson et al., 2010].

Response-guided therapy is a dynamic approach to management of chronic hepatitis C patients based on the virological response at weeks 4 and 12 of treatment. At present, it is regarded as an excellent strategy for optimizing the treatment duration for individual patients. Earlier HCV RNA disappearance has been shown to lead to a higher sustained virological response rate [Ferenci et al., 2005; Berg et al., 2006; McHutchison et al., 2009], while patients without an early virological response, defined as showing an at least 2 log decrease from the baseline of HCV RNA levels at week 12 is recommended for discontinuing the treatment under the current guidelines [Anonymous, 2002; Strader et al., 2004; Dienstag and McHutchison, 2006].

In addition to viral kinetics during treatment, other viral factors have also been reported to be associated with this combination therapy outcome [Manns et al., 2001; Fried et al., 2002; Hadziyannis et al., 2004; Shirakawa et al., 2008]. Previous studies indicated that amino acid (aa) 70 and/or 91 substitutions in the HCV core protein were independent pretreatment predictors of null or weak response to this combination therapy in genotype 1 patients [Akuta et al., 2007b,c]. The HCV core protein has been reported to inhibit signal transducer and activator of transcription (STAT)-1 phosphorylation, and disrupt the normal IFN-stimulated transcriptional response to viral infection [Lin et al., 2006]. It is supposed that the HCV core region might be associated with resistance to IFN therapy involving the Janus activated kinase (Jak)-STAT signaling cascade [Blindenbacher et al., 2003; Bode et al., 2003; Melen et al., 2004; de Lucas et al., 2005]. Recently, Okanoue et al. [2009] have demonstrated that wild type of core aa 70 and 91 are important for positive prediction of the virological response. However, the impact of core aa substitutions on the extent of HCV RNA decline during the treatment or virological relapse after completion of treatment has not yet been investigated in detail. Approximately 30% of genotype 1 patients who become

HCV RNA negative at the end of the treatment will experience relapse [Hadziyannis et al., 2004]. Being able to distinguish between end-of-treatment responders with a high probability of relapse and those with a low probability of relapse will be useful in reducing relapse rates and improving treatment outcome.

The aim of this study was to evaluate the impact of aa substitutions in the HCV core protein on viral kinetics and virological relapse in patients with HCV genotype 1 treated by Peg-IFN alpha-2b and ribavirin combination therapy.

PATIENTS AND METHODS

Patient Selection and Study Design

Patients considered to be eligible for this study were those who were infected with HCV genotype 1, had a viral load more than 10^5 IU/ml, had started Peg-IFN alpha-2b (Schering-Plough K.K. Tokyo, Japan) and ribavirin (Schering-Plough K.K.) combination therapy from December 2005 to June 2008 at Osaka University Hospital and three other medical institutions taking part in the Osaka Liver Forum, and had been examined with respect to the aa sequences at positions 70 and 91 in the HCV core protein with pretreatment serum samples. Patients with the following criteria were excluded: hepatitis B virus or human immunodeficiency virus coinfection; decompensated liver disease; severe cardiac, renal, hematological, or chronic pulmonary disease; poorly controlled psychiatric disease; poorly controlled diabetes; and immunologically mediated disease. As a result of screening at the institutions concerned, 187 patients with HCV genotype 1 were enrolled in this study. Liver biopsy had been performed within 12 months prior to the treatment, and histological results were classified according to the METAVIR scoring system [Bedossa and Poynard, 1996].

Written informed consent was obtained from each patient, and the study protocol was reviewed and approved according to the ethical guidelines of the 1975 Declaration of Helsinki by Institutional Review Boards at the respective sites.

Peg-IFN alpha-2b and ribavirin dosages were based on body weight according to the manufacturer's instructions: Peg-IFN alpha-2b was given subcutaneously weekly (45 kg or less, 60 µg/dose; 46–60 kg, 80 µg/dose; 61–75 kg, 100 µg/dose; 76–90 kg, 120 µg/dose; and 91 kg or more, 150 µg/dose), and ribavirin was given orally daily (60 kg or less, 600 mg/day; 61–80 kg, 800 mg/day; and 81 kg or more, 1,000 mg/day). The drug doses were also modified based on the manufacturer's instructions according to the severity of the adverse hematologic effects.

Detection of Amino Acid Substitutions in Core Region

The nucleotide sequence encoding aa 1–191 (the core protein of HCV) was analyzed by direct sequencing as described by Akuta et al. [2005, 2007b]. In brief, HCV

RNA was extracted from the serum samples and converted to cDNA and two nested rounds of polymerase chain reaction (PCR) were performed. Primers used in the PCR were as follows: the first PCR was performed using cc11 (sense, 5'-GCC ATA GTG GTC TGC GGA AC-3') and e14 (antisense, 5'-GGA GCA GTC CTT CGT GAC ATG-3') primers. The second PCR was performed using cc9 (sense, 5'-GCT AGC CGA GTA GTG TT-3') and e14 (antisense) primers. All samples were denatured initially at 95°C for 15 min. The 35 cycles of amplification were set as follows: denaturation for 1 min at 94°C, annealing of primers for 2 min at 55°C, and extension for 3 min at 72°C with an additional 7 min for extension. Then 1 µl of the first PCR product was transferred to the second PCR reaction. The conditions for the second PCR were the same as the first PCR, except that the second PCR primers were used instead of the first PCR primers. The amplified PCR products were purified by the QIA quick PCR Purification Kit (Qiagen, Tokyo, Japan) after agarose gel electrophoresis and then used for direct sequencing. Dideoxynucleotide termination sequencing was performed with the Big Dye Deoxy Terminator Cycle Sequencing Kit (Perkin-Elmer, Tokyo, Japan). The obtained nucleotide and amino acid sequences were compared with the prototype sequence of genotype 1b HCV-J (GenBank Accession No. D90208) [Kato et al., 1990]. Wild types virus encoded arginine (Arg) and leucine (Leu) at aa 70 and 91, respectively, and the aa substitutions were glutamine (Gln) or histidine (His) at aa 70 and methionine (Met) at aa 91. If the intensities of the band were similar, the case was regarded as competitive. Two patterns of mutant and competitive were labeled as mutant. In this study, patients were categorized into four groups according to aa substitution patterns: double-wild group, Arg70/Leu91; 70-mutant group, Gln or His70/Leu91; 91-mutant group, Arg70/Met91; and double-mutant group, Gln or His70/Met91.

Virological Tests

Serum HCV RNA level was quantified by PCR assay (COBAS Amplicor HCV Monitor Test v2.0, Chugai-Roche Diagnostics, Tokyo, Japan), with a sensitivity limit of 5,000 IU/ml and a dynamic range from 5,000 to 5,000,000 IU/ml.

Serum HCV RNA was assessed by qualitative PCR assay (COBAS Amplicor HCV Test v2.0, Chugai-Roche Diagnostics), with a detection limit of 50 IU/ml.

Efficacy Assessments

Patients who achieved negative HCV RNA at week 12 were defined as having a complete early virological response. Patients who became HCV RNA negative between weeks 13 and 24 were defined as having a late virological response. According to the established guidelines, the treatment was considered to have failed if the patients showed an insufficient virological response at week 12 (a detectable HCV RNA and a decrease of <2 log from the baseline level) or at week 24 (a detectable

HCV RNA), and therapy was discontinued. The end-of-treatment response was defined as undetectable HCV RNA at week 48. Patients with end-of-treatment response and undetectable HCV RNA 24 weeks after completion of therapy were defined as having sustained virological response. Relapse was defined as a case in which HCV RNA had been undetectable at the end-of-treatment, but detectable during the 24-week follow-up after the treatment.

Drug Exposure

The amounts of Peg-IFN alpha-2b and ribavirin actually taken by each patient during the treatment period were evaluated by reviewing the medical records. The mean doses of both drugs were calculated individually as averages on the basis of body weight at baseline; Peg-IFN alpha-2b expressed as µg/kg/week and ribavirin as mg/kg/day.

Data Collection

The medical records were retrospectively reviewed and the factors necessary for this examination were extracted: age, sex, body weight, body mass index (BMI), basic laboratory assessments, liver histology, quantitative and qualitative HCV RNA, dose of Peg-IFN alpha-2b and ribavirin received at each administration, and the response to treatment.

Statistical Analysis

Continuous variables are reported as the mean with standard deviation (SD) or median level, while categorical variables are shown as the count and proportion. In univariate analysis, the Mann-Whitney *U*-test (between two groups) or Kruskal-Wallis test (among more than three groups) was used to analyze continuous variables, while chi-squared and Fisher's exact tests were used for analysis of categorical data. For all tests, two-sided *P* values were calculated, and the results were considered statistically significant if *P* < 0.05. Variables that achieved statistical significance (*P* < 0.05) or marginal significance (*P* < 0.10) on univariate analysis were subjected to multivariate logistic regression analysis. Stepwise and multivariate logistic regression models were used to explore the independent factors that could be used to predict a virological response. Statistical analysis was performed using the SPSS program for Windows, version 15.0J (SPSS, Chicago, IL).

RESULTS

Baseline Characteristics of Study Groups

The total study population was predominately male (55.6%), with a mean age of 56.2 years. The baseline characteristics of all patients and the four study groups according to core aa substitution patterns are shown in Table I. Mean age of patients in the double-mutant group was higher than the other three groups (*P* = 0.003). More patients in the double-wild group had

TABLE I. Baseline Demographic and Viral Characteristics of Patients

Characteristic	Total (n = 187)	Double-wild (n = 92)	70-Mutant (n = 42)	91-Mutant (n = 31)	Double-mutant (n = 22)	P value ^a
Age (years)	56.2 ± 9.3	55.7 ± 9.2	57.0 ± 9.8	52.4 ± 9.9	61.8 ± 4.7	0.003
Sex (male/female)	104/83	51/41	26/16	18/13	9/13	0.444
Body weight (kg)	60.9 ± 11.6	60.9 ± 11.7	62.2 ± 11.7	62.5 ± 13.2	56.0 ± 7.5	0.193
Body mass index (kg/m ²)	22.8 ± 3.1	22.8 ± 3.0	22.8 ± 3.1	23.1 ± 3.6	22.1 ± 2.4	0.627
Past IFN therapy (naïve/experienced)	118/69	45/47	34/8	20/11	19/3	<0.001
HCV RNA (×10 ⁵ IU/ml) ^b	1,700	2,100	1,400	1,500	1,230	0.122
Fibrosis (0–2/3–4) ^c	105/29	56/11	22/6	14/7	13/5	0.366
Activity (0–1/2–3) ^d	83/50	42/24	18/10	11/10	12/6	0.771
White blood cell (×10 ⁶ /l)	4,980 ± 1,520	4,990 ± 1,420	5,180 ± 1,760	4,890 ± 1,430	4,660 ± 1,560	0.795
Red blood cell (×10 ¹² /l)	4.34 ± 0.46	4.33 ± 0.46	4.41 ± 0.52	4.39 ± 0.42	4.18 ± 0.32	0.145
Hemoglobin (g/dl)	13.9 ± 1.4	13.9 ± 1.4	14.0 ± 1.7	14.2 ± 1.4	13.5 ± 1.1	0.253
Platelet (×10 ⁹ /l)	161 ± 54	167 ± 49	165 ± 65	154 ± 60	138 ± 30	0.067
ALT (IU/l)	74 ± 61	73 ± 67	79 ± 56	81 ± 64	57 ± 37	0.263
γ-GTP (IU/l)	62 ± 74	47 ± 54	81 ± 89	70 ± 93	78 ± 78	0.032

IFN, interferon; HCV, hepatitis C virus; ALT, alanine aminotransferase; γ-GTP, gamma-glutamyl transpeptidase.

^aP value for comparison among double-wild, 70-mutant, 91-mutant, and double-mutant.

^bValues expressed as median.

^cData for 53 patients are missing.

^dData for 54 patients are missing.

been treated previously for HCV infection ($P < 0.001$). Patients in the double-wild group had significantly lower gamma-glutamyl transpeptidase (γ-GTP) levels ($P = 0.032$).

Progress of Patients

The progress of patients in this study is shown in Figure 1. Of the 187 patients, 183 completed 4 weeks of treatment. Among them, 133 were assessed based on HCV RNA dynamics between baseline and week 4.

Those completing 12 weeks of treatment totaled 181, of which 154 were assessed for HCV RNA dynamics between baseline and week 12. Those completing 24 weeks of treatment totaled 153, and all were assessed for HCV RNA quantitatively or qualitatively at week 24. Those completing 48 weeks of treatment totaled 114. These 114 patients and the 55 patients who had discontinued treatment because of treatment failure entered a follow-up period. Among these 169 patients, 164 completed 24 weeks follow-up and the sustained virological response (SVR) rate

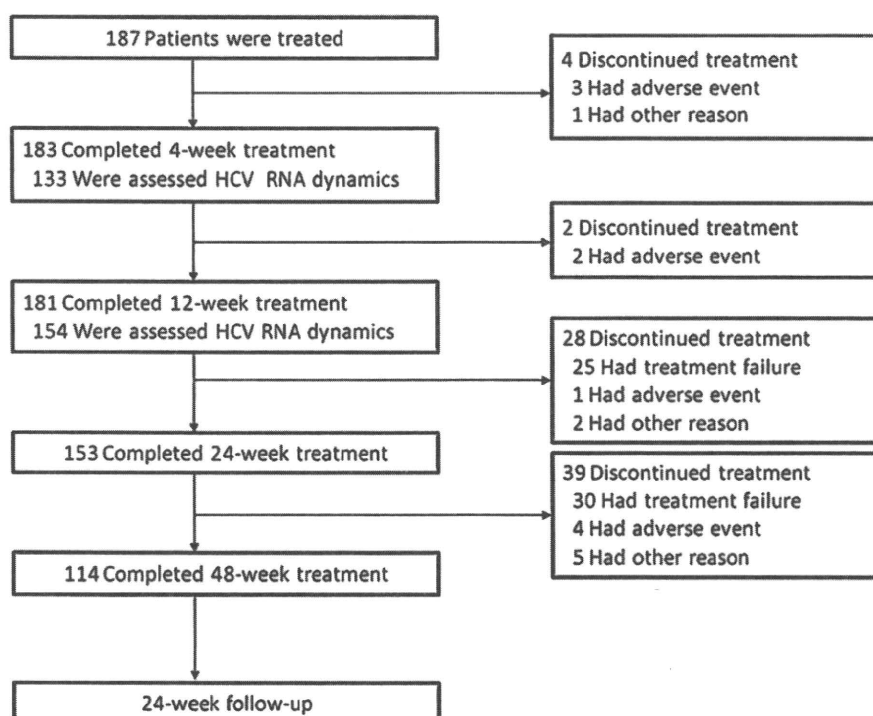


Fig. 1. Treatment and follow-up of the study patients. Treatment was discontinued for patients with <2 log decrease from the baseline HCV RNA level at week 12 or detectable HCV RNA at week 24.

TABLE II. Multivariate Analysis for Factors Associated With <1 log Decrease in HCV RNA Level at Week 4, <2 log Decrease at Week 12, Detectable HCV RNA at Week 24, and Relapse After Treatment

Factor	Category	Odds Ratio	95% CI	P value
HCV RNA <1 log decrease at week 4				
White blood cells ($\times 10^6/l$)	<5,000/5,000 \leq	—	—	NS
γ -GTP (IU/l)	<40/40 \leq	—	—	NS
Peg-IFN dose (μ g/kg/week)	By 0.1 μ g/kg/week	0.80	0.67–0.97	0.020
Core aa 70	Wild/mutant	1/2.80	1.16–6.75	0.022
HCV RNA <2 log decrease at week 12				
γ -GTP (IU/l)	<40/40 \leq	—	—	NS
Peg-IFN dose (μ g/kg/week)	By 0.1 μ g/kg/week	—	—	NS
Core aa 70	Wild/mutant	1/2.72	1.09–6.78	0.032
Detectable HCV RNA at week 24				
Platelet ($\times 10^9/l$)	<150/150 \leq	—	—	NS
γ -GTP (IU/l)	<40/40 \leq	1/2.46	1.02–5.95	0.045
Core aa 91	Wild/mutant	1/4.11	1.73–9.78	0.001
Relapse after treatment				
Ribavirin dose (mg/kg/day)	By 1 mg/kg/day	0.77	0.60–0.98	0.036
Virological response	Complete early virological response/late virological response	1/23.69	5.44–103.08	<0.001

CI, confidence interval; NS, not significant difference; γ -GTP, gamma-glutamyl transpeptidase; Peg-IFN, pegylated interferon; aa, amino acid.

was 48.2% (79/164), based on per-protocol set. Among the 106 patients who had an end-of-treatment response and completed follow-up, 27 showed relapse during the follow-up period; the relapse rate was 25.5% (27/106).

IMPACT OF CORE-RELAPSE AFTER TREATMENT (TABLE II)

Impact of core aa substitutions on <1 log viral decrease rate at week 4, <2 log at week 12, detectable HCV RNA at week 24, and virological relapse after treatment (Table II).

The impact of core aa substitutions on <1 log viral decrease rate at week 4, <2 log at week 12, detectable HCV RNA at week 24, and virological relapse after treatment (Table II).

The impact of the core aa substitutions on <1 log viral decrease at week 4, which is a predictor of non-sustained virological response; fewer than 5% of patients without 1 log decrease at week 4 had an sustained virological response [McHutchison et al., 2009] was examined. Among the 133 patients who completed 4 weeks of treatment, 31 failed to show a ≥ 1 log decrease of HCV RNA level at week 4. Univariate analysis for factors associated with <1 log decrease of HCV RNA level at week 4 was performed on the following variables: age, sex, body weight, BMI, history of past IFN therapy, baseline HCV RNA level, histological fibrosis and activity, white blood cell count, red blood cell count, hemoglobin level, platelet count, alanine aminotransferase (ALT) level, γ -GTP level, dose exposure of Peg-IFN and ribavirin, and aa substitutions in the HCV core protein. The results indicated that pretreatment white blood cell count, γ -GTP level, the mean dose of Peg-IFN during the first 4 weeks of treatment and single-spot substitution in the HCV RNA core position at aa 70 contributed to a <1 log decrease of HCV RNA level at week 4. Analysis of

these factors by multivariate logistic regression analysis showed that substitution of aa 70 (odds ratio (OR) 2.80, 95% confidence interval (CI) 1.16–6.75, $P = 0.022$) as well as the mean dose of Peg-IFN (OR 0.80, 95% CI 0.67–0.97, $P = 0.020$) was independently associated with viral decline (<1 log) at week 4.

Next, the impact of the core aa substitutions on <2 log viral decrease rate at week 12, which is presently considered to be the most reliable predictor of non-sustained virological response [Fried et al., 2002; Davis et al., 2003] was examined. Among the 154 patients who completed 12 weeks of treatment, 25 failed to show a ≥ 2 log decrease of HCV RNA level at week 12. Univariate analysis was performed on the same factors in the preceding examination. As a result, pretreatment γ -GTP level, the mean dose of Peg-IFN during the first 12 weeks of treatment and single-spot substitution in the HCV RNA core position at aa 70 contributed to a <2 log decrease of the HCV RNA level. These factors were then analyzed by multivariate logistic regression analysis; only substitution of aa 70 (OR 2.72, 95% CI 1.09–6.78, $P = 0.032$) was found to be independently associated with an insufficient virological response (<2 log HCV RNA decrease from baseline level) at week 12.

The impact of the core aa substitutions on detectable HCV RNA at week 24, which is another non-sustained virological response predictor [Davis et al., 2003] was also examined. Among 153 patients who completed 24 weeks of treatment, 30 still had detectable HCV RNA at week 24. Univariate analysis revealed that pretreatment platelet count, γ -GTP level, and single-spot substitution in the HCV RNA core position at aa 91 contributed to the HCV RNA remaining positive. Multivariate logistic regression analysis, using these factors, indicated that substitution of aa 91 (OR 4.11, 95% CI 1.73–9.78, $P = 0.001$) as well as γ -GTP level (>40 IU/l) (OR 2.46, 95% CI 1.02–5.95, $P = 0.045$) was

independently associated with detectable HCV RNA at week 24.

Next, the factors associated with virological relapse after the treatment was examined. Univariate analysis was performed on the virological response (complete early virological response or late virological response) in addition to the factors in the preceding examination, revealing the mean dose of ribavirin during the full treatment period and a late virological response, but not aa substitutions (single-spot substitution in the HCV RNA core position at aa 70, $P = 0.467$; aa 91, $P = 0.776$).

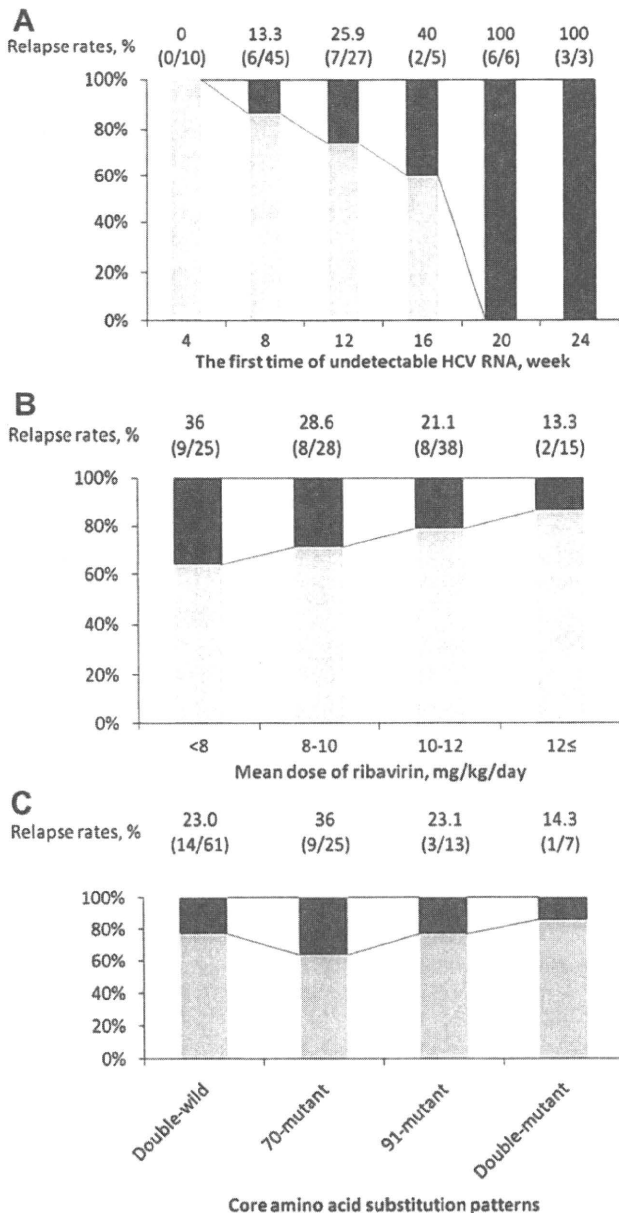


Fig. 2. Relapse rates according to the timing of HCV RNA disappearance (A), mean ribavirin dose (B), and core amino acid substitution patterns (C) in patients who had end-of-treatment response and completed 24-week follow-up. Relapse rates are shown as percentages and the number of patients with relapse in relation to the total number of patients examined is shown at the top of each column. Gray bar, sustained virological response; black bar, relapse.

These factors were analyzed by multivariate logistic regression analysis. This analysis revealed that the mean ribavirin dose (OR 0.77, 95% CI 0.60–0.98, $P = 0.036$) and a late virological response (OR 23.69, 95% CI 5.44–103.08, $P < 0.001$) were independently associated with relapse.

Relapse Rates According to the Timing of HCV RNA Disappearance, Ribavirin Dose, and Core aa Substitution Patterns

The relapse rates were indicated according to the time to the first non-detection of HCV RNA, mean ribavirin dose and core aa substitution patterns (Fig. 2). The relapse rate was 0% (0/10) in patients with undetectable HCV RNA during 1–4 weeks, and increased 13.3% (6/45) during 5–8 weeks, 25.9% (7/27) during 9–12 weeks, 40% (2/5) during 13–16 weeks, 100% (6/6) during 17–20 weeks, and 100% (3/3) during 21–24 weeks (Fig. 2A). Similarly, the relapse rates increased as the mean ribavirin dose decreased; 13.3% (2/15) in patients receiving ≥ 12 mg/kg/day of ribavirin, 21.1% (8/38) at 10–12 mg/kg/day, 28.6% (8/28) at 8–12 mg/kg/day, and 36% (9/25) at < 8 mg/kg/day (Fig. 2B). On the other hand, the relapse rates were similar among the four core aa substitution patterns; 23.0% (14/61) in patients in the double-wild group, 36% (9/25) in 70-mutant group, 23.1% (3/13) in 91-mutant group, and 14.3% (1/7) in double-mutant group (Fig. 2C). In the subgroup of patients receiving < 10 mg/kg/day of ribavirin, no significant difference of the relapse rates was observed between double-wild group and 70-mutant and/or 91-mutant group (31.3% (10/32) in double-wild group vs. 33.3% (7/21) in 70-mutant and/or 91-mutant group), and also in the patients receiving ≥ 10 mg/kg/day of ribavirin (13.8% (4/29) in double-wild group vs. 25% (6/24) in 70-mutant and/or 91-mutant group) (Fig. 3). Among patients with complete early virological response, the relapse rates were also similar between double-wild group and 70-mutant and/or 91-mutant group (13.7% (7/51) in double-wild vs. 18.4% (7/38) in 70-mutant and/or 91-mutant group). The impact of core aa substitutions on relapse rates in patients with late virological response could not be assessed because of the small number of patients.

DISCUSSION

Kobayashi et al. [2010] investigated the clinical and virological factors influencing these core aa substitutions in patients infected with HCV genotype 1 who had not received antiviral therapy, and found that HCV variants with wild type of core aa 70 and 91 significantly decreased with age, while those with the mutant type of core aa 70 and/or 91 significantly increased with age. Furthermore, they demonstrated that the proportion of patients with the mutant type of core aa 70 HCV variant significantly increased with an elevated γ -GTP level and a decrease in platelet counts. In this study, the significant differences of baseline demographics between patient groups according to core aa substitution pat-

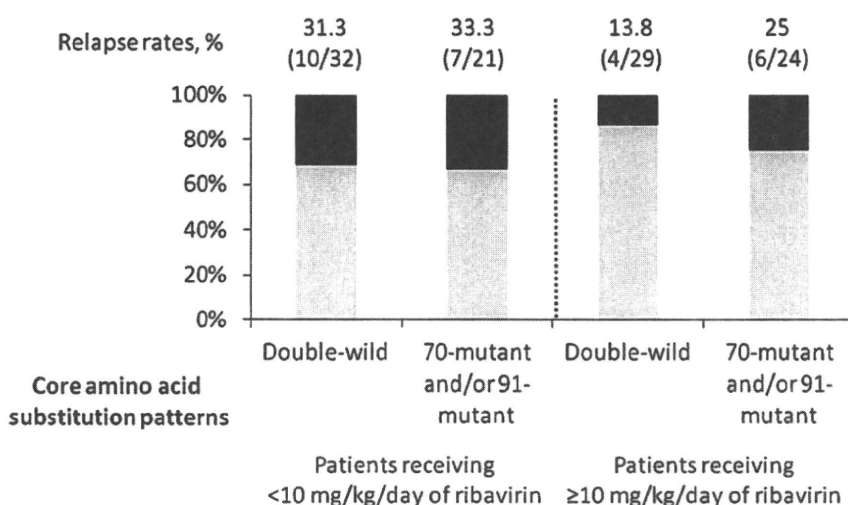


Fig. 3. Relapse rates according to core amino acid substitution patterns in patients receiving <10 mg/kg/day and receiving ≥ 10 mg/kg/day of ribavirin. Relapse rates are shown as percentages and the number of patients with relapse in relation to the total number of patients examined is shown at the top of each column. Gray bar, sustained virological response; black bar, relapse.

terns were similarly found in age, platelet count, and γ -GTP level. Accordingly, this study cohort had no specific bias and seems to reflect the natural background of the patients according to the HCV variance. In this study, the impact of HCV core aa substitutions on the virological response were evaluated by multivariate analysis, in order to resolve the bias of patient background factors among the groups classified according to the core aa substitution patterns. Recently, Abe et al. [2010] reported that the human genotype of the rs8099917 SNP at the IL28B locus was associated with lower γ -GTP level and viral wild type of core aa 70 and 91. Possibly these differences of IL28B genotype may influence the difference of patient background factors. Further studies are needed to clarify the relationship between human genetic variation and HCV core amino acid substitutions.

The HCV core protein has been reported to have an effect on a variety of cellular functions [Lai and Ware, 2000; Joo et al., 2005; Ariumi et al., 2007; Waris et al., 2007; Osna et al., 2008]. Currently, aa substitutions in the HCV core region has been thought to be related with outcome of antiviral therapy [Akuta et al., 2005; Donlin et al., 2007] and also the development of hepatocellular carcinoma [Akuta et al., 2007a; Hu et al., 2009]. Importance of core aa substitutions, especially at aa 70 and 91, comes to be recognized, and the new method to detect these substitutions easily has been proposed [Nakamoto et al., 2009]. As for the mechanism of antiviral activity on core aa substitutions, Ikeda et al. [2010] showed that core aa substitutions were not associated with intracellular antiviral response to IFN-alpha by in vitro analysis. The mechanism of antiviral activity and hepatocarcinogenesis on core aa substitutions has not been elucidated enough, so far. Further in vitro studies will be needed to clarify this.

Previous studies showed that patients with substitution of core aa 70 often had slow or no decrease in HCV RNA levels during the early phase of IFN-alpha treatment [Akuta et al., 2005, 2007b,c; Donlin et al., 2007]. Consistent with these reports, multivariate analysis in this study revealed that substitution of core aa 70 could be independently associated with insufficient viral decline during the first 12 weeks after the treatment (decline of <1 log from baseline at week 4, <2 log at week 12). This suggests that patients with substitution of core aa 70 are likely to fail to have a sustained virological response. On the other hand, dose exposure of Peg-IFN during the first 4 weeks of treatment was also independently linked to a minimal decline in HCV RNA (<1 log) at week 4 in this study. This suggests that maintaining the dose of Peg-IFN as high as possible until the disappearance of HCV RNA can help avoid treatment failure [McHutchison et al., 2002; Oze et al., 2009], especially in patients with substitution of core aa 70. On the other hand, substitution of core aa 91 was independently associated with detectable HCV RNA at week 24. This suggests that patients with substitution of core aa 91 are likely to achieve non-sustained virological response even if they had a ≥ 2 log decline in the HCV RNA level at week 12. The reason for the difference of the impact on virological response is not yet clear.

Multivariate logistic regression analysis also showed that the dose exposure of ribavirin during the full treatment period and having late virological response were independently associated with relapse. As for ribavirin exposure, it has been previously demonstrated that the relapse rate among patients responding to the treatment showed a decline in relation to the increase in the dose of ribavirin [Hiramatsu et al., 2009]. In this study, relapse rates were also decreased from 36% to 13.3% with increasing dose exposure of ribavirin among patients with end-of-treatment response. These results

confirm that maintaining a sufficient dose of ribavirin during the full treatment period could reduce the possibility of relapse, and that an extended duration of therapy for patients with late virological response could increase the chance of achieving sustained virological response, regardless of core aa substitution patterns [Berg et al., 2006; Pearlman et al., 2007; Ferenci et al., 2010].

In this study, the COBAS Amplicor HCV Test v2.0, with a lower limit of detection of 50 IU/ml, was used to assess the serum HCV RNA. Recently, real-time PCR-based HCV RNA assays with a higher sensitivity, COBAS TaqMan HCV assay (Chugai-Roche Diagnostics), with a lower limit of detection of 15 IU/ml, have been introduced. Sarrazin et al. [2010] compared virological response rates that were originally tested by COBAS Amplicor assay with those retested by COBAS TaqMan assay, using the same cohort. Among genotype 1 patients, complete early virological response and sustained virological response rates were similar when virological responses were defined as <50 IU/ml by Amplicor assay (77% and 87%) and <15 IU/ml by TaqMan assay (76% and 88%). Therefore, measuring HCV RNA by the Amplicor assay in this study would have little effects on the results.

In conclusion, the results have demonstrated that substitution of core aa 70 could be independently associated with an insufficient decline in HCV RNA level during first 12 weeks, and substitution of core aa 91 was independently associated with detectable HCV RNA at week 24, all of which were considered to be important negative predictors of attaining sustained virological response in patients with HCV genotype 1 treated with Peg-IFN plus ribavirin. On the other hand, only dose exposure of ribavirin and no complete early virological response was independent predictors of virological relapse among patients with end-of-treatment response, not substitution of core aa 70 or 91. The aa substitution patterns of the HCV core protein can be an important pretreatment predictor for non-response in patients with HCV genotype 1 treated with Peg-IFN plus ribavirin, but not for relapse after the completion of therapy.

REFERENCES

- Abe H, Ochi H, Maekawa T, Hayes CN, Tsuge M, Miki D, Mitsui F, Hiraga N, Imamura M, Takahashi S, Ohishi W, Arihiro K, Kubo M, Nakamura Y, Chayama K. 2010. Common variation of IL28 affects gamma-GTP levels and inflammation of the liver in chronically infected hepatitis C virus patients. *J Hepatol* 53:439–443.
- Akuta N, Suzuki F, Sezaki H, Suzuki Y, Hosaka T, Someya T, Kobayashi M, Saitoh S, Watahiki S, Sato J, Matsuda M, Arase Y, Ikeda K, Kumada H. 2005. Association of amino acid substitution pattern in core protein of hepatitis C virus genotype 1b high viral load and non-virological response to interferon-ribavirin combination therapy. *Intervirology* 48:372–380.
- Akuta N, Suzuki F, Kawamura Y, Yatsuji H, Sezaki H, Suzuki Y, Hosaka T, Kobayashi M, Arase Y, Ikeda K, Kumada H. 2007a. Amino acid substitutions in the hepatitis C virus core region are the important predictor of hepatocarcinogenesis. *Hepatology* 46:1357–1364.
- Akuta N, Suzuki F, Kawamura Y, Yatsuji H, Sezaki H, Suzuki Y, Hosaka T, Kobayashi M, Arase Y, Ikeda K, Kumada H. 2007b. Predictive factors of early and sustained responses to peginterferon plus ribavirin combination therapy in Japanese patients infected with hepatitis C virus genotype 1b: Amino acid substitutions in the core region and low-density lipoprotein cholesterol levels. *J Hepatol* 46:403–410.
- Akuta N, Suzuki F, Kawamura Y, Yatsuji H, Sezaki H, Suzuki Y, Hosaka T, Kobayashi M, Arase Y, Ikeda K, Kumada H. 2007c. Predictors of viral kinetics to peginterferon plus ribavirin combination therapy in Japanese patients infected with hepatitis C virus genotype 1b. *J Med Virol* 79:1686–1695.
- Anonymous. 2002. National Institutes of Health Consensus Development Conference Statement: Management of hepatitis C: 2002—June 10–12, 2002. *Hepatology* 36:S3–S20.
- Ariumi Y, Kuroki M, Abe K, Dansako H, Ikeda M, Wakita T, Kato N. 2007. DDX3 DEAD-box RNA helicase is required for hepatitis C virus RNA replication. *J Virol* 81:13922–13926.
- Bedossa P, Poynard T. 1996. An algorithm for the grading of activity in chronic hepatitis C. The METAVIR Cooperative Study Group. *Hepatology* 24:289–293.
- Berg T, von Wagner M, Nasser S, Sarrazin C, Heintges T, Gerlach T, Buggisch P, Goeser T, Rasenack J, Pape GR, Schmidt WE, Kallinowski B, Klinker H, Spengler U, Martus P, Alshuth U, Zeuzem S. 2006. Extended treatment duration for hepatitis C virus type 1: Comparing 48 versus 72 weeks of peginterferon-alfa-2a plus ribavirin. *Gastroenterology* 130:1086–1097.
- Blindenbacher A, Duong FH, Hunziker L, Stutvoet ST, Wang X, Terracciano L, Moradpour D, Blum HE, Alonzi T, Tripodi M, La Monica N, Heim MH. 2003. Expression of hepatitis C virus proteins inhibits interferon alpha signaling in the liver of transgenic mice. *Gastroenterology* 124:1465–1475.
- Bode JG, Ludwig S, Ehrhardt C, Albrecht U, Erhardt A, Schaper F, Heinrich PC, Haussinger D. 2003. IFN-alpha antagonistic activity of HCV core protein involves induction of suppressor of cytokine signaling-3. *FASEB J* 17:488–490.
- Davis GL, Wong JB, McHutchison JG, Manns MP, Harvey J, Albrecht J. 2003. Early virologic response to treatment with peginterferon alfa-2b plus ribavirin in patients with chronic hepatitis C. *Hepatology* 38:645–652.
- de Lucas S, Bartolome J, Carreno V. 2005. Hepatitis C virus core protein down-regulates transcription of interferon-induced antiviral genes. *J Infect Dis* 191:93–99.
- Dienstag JL, McHutchison JG. 2006. American Gastroenterological Association medical position statement on the management of hepatitis C. *Gastroenterology* 130:225–230.
- Donlin MJ, Cannon NA, Yao E, Li J, Wahed A, Taylor MW, Belle SH, Di Bisceglie AM, Aurora R, Tavis JE. 2007. Pretreatment sequence diversity differences in the full-length hepatitis C virus open reading frame correlate with early response to therapy. *J Virol* 81:8211–8224.
- Ferenci P, Fried MW, Shiffman ML, Smith CI, Marinos G, Goncales FL, Jr., Haussinger D, Diago M, Carosi G, Dhumeaux D, Craxi A, Chanac M, Reddy KR. 2005. Predicting sustained virological responses in chronic hepatitis C patients treated with peginterferon alfa-2a (40 KD)/ribavirin. *J Hepatol* 43:425–433.
- Ferenci P, Laferl H, Scherzer TM, Maieron A, Hofer H, Stauber R, Gschwantler M, Brunner H, Wenisch C, Bischof M, Strasser M, Datz C, Vogel W, Loschenberger K, Steindl-Munda P. 2010. Peginterferon alfa-2a/ribavirin for 48 or 72 weeks in hepatitis C genotypes 1 and 4 patients with slow virologic response. *Gastroenterology* 138:503–512 e501.
- Fried MW, Shiffman ML, Reddy KR, Smith C, Marinos G, Goncales FL, Jr., Haussinger D, Diago M, Carosi G, Dhumeaux D, Craxi A, Lin A, Hoffman J, Yu J. 2002. Peginterferon alfa-2a plus ribavirin for chronic hepatitis C virus infection. *N Engl J Med* 347:975–982.
- Ge D, Fellay J, Thompson AJ, Simon JS, Shianna KV, Urban TJ, Heinzen EL, Qiu P, Bertelsen AH, Muir AJ, Sulkowski M, McHutchison JG, Goldstein DB. 2009. Genetic variation in IL28B predicts hepatitis C treatment-induced viral clearance. *Nature* 461:399–401.
- Hadziyannis SJ, Sette H, Jr., Morgan TR, Balan V, Diago M, Marcellin P, Ramadori G, Bodenheimer H, Jr., Bernstein D, Rizzetto M, Zeuzem S, Pockros PJ, Lin A, Ackrill AM. 2004. Peginterferon-alpha2a and ribavirin combination therapy in chronic hepatitis C: A randomized study of treatment duration and ribavirin dose. *Ann Intern Med* 140:346–355.
- Hiramatsu N, Oze T, Yakushijin T, Inoue Y, Igura T, Mochizuki K, Imanaka K, Kaneko A, Oshita M, Hagiwara H, Mita E, Nagase T,

- Ito T, Inui Y, Hijioka T, Katayama K, Tamura S, Yoshihara H, Imai Y, Kato M, Yoshida Y, Tatsumi T, Ohkawa K, Kiso S, Kanto T, Kasahara A, Takehara T, Hayashi N. 2009. Ribavirin dose reduction raises relapse rate dose-dependently in genotype 1 patients with hepatitis C responding to pegylated interferon alpha-2b plus ribavirin. *J Viral Hepat* 16:586–594.
- Hu Z, Muroyama R, Kowatari N, Chang J, Omata M, Kato N. 2009. Characteristic mutations in hepatitis C virus core gene related to the occurrence of hepatocellular carcinoma. *Cancer Sci* 100:2465–2468.
- Ikeda F, Dansako H, Nishimura G, Mori K, Kawai Y, Ariumi Y, Miyake Y, Takaki A, Nouse K, Iwasaki Y, Ikeda M, Kato N, Yamamoto K. 2010. Amino acid substitutions of hepatitis C virus core protein are not associated with intracellular antiviral response to interferon-alpha in vitro. *Liver Int* 30:1324–1331.
- Joo M, Hahn YS, Kwon M, Sadikot RT, Blackwell TS, Christman JW. 2005. Hepatitis C virus core protein suppresses NF-kappaB activation and cyclooxygenase-2 expression by direct interaction with IkappaB kinase beta. *J Virol* 79:7648–7657.
- Kato N, Hijikata M, Ootsuyama Y, Nakagawa M, Ohkoshi S, Sugimura T, Shimotohno K. 1990. Molecular cloning of the human hepatitis C virus genome from Japanese patients with non-A, non-B hepatitis. *Proc Natl Acad Sci USA* 87:9524–9528.
- Kobayashi M, Akuta N, Suzuki F, Hosaka T, Sezaki H, Suzuki Y, Arase Y, Ikeda K, Watahiki S, Mineta R, Iwasaki S, Miyakawa Y, Kumada H. 2010. Influence of amino-acid polymorphism in the core protein on progression of liver disease in patients infected with hepatitis C virus genotype 1b. *J Med Virol* 82:41–48.
- Lai MM, Ware CF. 2000. Hepatitis C virus core protein: Possible roles in viral pathogenesis. *Curr Top Microbiol Immunol* 242:117–134.
- Lin W, Kim SS, Yeung E, Kamegaya Y, Blackard JT, Kim KA, Holtzman MJ, Chung RT. 2006. Hepatitis C virus core protein blocks interferon signaling by interaction with the STAT1 SH2 domain. *J Virol* 80:9226–9235.
- Manns MP, McHutchison JG, Gordon SC, Rustgi VK, Shiffman M, Reindollar R, Goodman ZD, Koury K, Ling M, Albrecht JK. 2001. Peginterferon alfa-2b plus ribavirin compared with interferon alfa-2b plus ribavirin for initial treatment of chronic hepatitis C: A randomised trial. *Lancet* 358:958–965.
- McHutchison JG, Manns M, Patel K, Poynard T, Lindsay KL, Trepo C, Dienstag J, Lee WM, Mak C, Garaud JJ, Albrecht JK. 2002. Adherence to combination therapy enhances sustained response in genotype-1-infected patients with chronic hepatitis C. *Gastroenterology* 123:1061–1069.
- McHutchison JG, Lawitz EJ, Shiffman ML, Muir AJ, Galler GW, McCone J, Nyberg LM, Lee WM, Ghalib RH, Schiff ER, Galati JS, Bacon BR, Davis MN, Mukhopadhyay P, Koury K, Noviello S, Pedicone LD, Brass CA, Albrecht JK, Sulkowski MS. 2009. Peginterferon alfa-2b or alfa-2a with ribavirin for treatment of hepatitis C infection. *N Engl J Med* 361:580–593.
- Melen K, Fagerlund R, Nyqvist M, Keskinen P, Julkunen I. 2004. Expression of hepatitis C virus core protein inhibits interferon-induced nuclear import of STATs. *J Med Virol* 73:536–547.
- Nakamoto S, Kanda T, Yonemitsu Y, Arai M, Fujiwara K, Fukai K, Kanai F, Imazeki F, Yokosuka O. 2009. Quantification of hepatitis C amino acid substitutions 70 and 91 in the core coding region by real-time amplification refractory mutation system reverse transcription-polymerase chain reaction. *Scand J Gastroenterol* 44:872–877.
- Okano T, Itoh Y, Hashimoto H, Yasui K, Minami M, Takehara T, Tanaka E, Onji M, Toyota J, Chayama K, Yoshioka K, Izumi N, Akuta N, Kumada H. 2009. Predictive values of amino acid sequences of the core and NS5A regions in antiviral therapy for hepatitis C: A Japanese multi-center study. *J Gastroenterol* 44:952–963.
- Osna NA, White RL, Krutik VM, Wang T, Weinman SA, Donohue TM, Jr. 2008. Proteasome activation by hepatitis C core protein is reversed by ethanol-induced oxidative stress. *Gastroenterology* 134:2144–2152.
- Oze T, Hiramatsu N, Yakushijin T, Kurokawa M, Igura T, Mochizuki K, Imanaka K, Yamada A, Oshita M, Hagiwara H, Mita E, Ito T, Inui Y, Hijioka T, Tamura S, Yoshihara H, Hayashi E, Inoue A, Imai Y, Kato M, Yoshida Y, Tatsumi T, Ohkawa K, Kiso S, Kanto T, Kasahara A, Takehara T, Hayashi N. 2009. Pegylated interferon alpha-2b (Peg-IFN alpha-2b) affects early virologic response dose-dependently in patients with chronic hepatitis C genotype 1 during treatment with Peg-IFN alpha-2b plus ribavirin. *J Viral Hepat* 16:578–585.
- Pearlman BL, Ehleben C, Saifee S. 2007. Treatment extension to 72 weeks of peginterferon and ribavirin in hepatitis c genotype 1-infected slow responders. *Hepatology* 46:1688–1694.
- Romero-Gomez M, Del Mar Vilorio M, Andrade RJ, Salmeron J, Diago M, Fernandez-Rodriguez CM, Corpas R, Cruz M, Grande L, Vazquez L, Munoz-De-Rueda P, Lopez-Serrano P, Gila A, Gutierrez ML, Perez C, Ruiz-Extremera A, Suarez E, Castillo J. 2005. Insulin resistance impairs sustained response rate to peginterferon plus ribavirin in chronic hepatitis C patients. *Gastroenterology* 128:636–641.
- Sarrazin C, Shiffman ML, Hadziyannis SJ, Lin A, Colucci G, Ishida H, Zeuzem S. 2010. Definition of rapid virologic response with a highly sensitive real-time PCR-based HCV RNA assay in peginterferon alfa-2a plus ribavirin response-guided therapy. *J Hepatol* 52:832–838.
- Shirakawa H, Matsumoto A, Joshita S, Komatsu M, Tanaka N, Umemura T, Ichijo T, Yoshizawa K, Kiyosawa K, Tanaka E. 2008. Pretreatment prediction of virological response to peginterferon plus ribavirin therapy in chronic hepatitis C patients using viral and host factors. *Hepatology* 48:1753–1760.
- Strader DB, Wright T, Thomas DL, Seeff LB. 2004. Diagnosis, management, and treatment of hepatitis C. *Hepatology* 39:1147–1171.
- Suppiah V, Moldovan M, Ahlenstiel G, Berg T, Weltman M, Abate ML, Bassendine M, Spengler U, Dore GJ, Powell E, Riordan S, Sheridan D, Smedile A, Fragomeli V, Muller T, Bahlo M, Stewart GJ, Booth DR, George J. 2009. IL28B is associated with response to chronic hepatitis C interferon-alpha and ribavirin therapy. *Nat Genet* 41:1100–1104.
- Tanaka Y, Nishida N, Sugiyama M, Kurosaki M, Matsuura K, Sakamoto N, Nakagawa M, Korenaga M, Hino K, Hige S, Ito Y, Mita E, Tanaka E, Mochida S, Murawaki Y, Honda M, Sakai A, Hiasa Y, Nishiguchi S, Koike A, Sakaida I, Imamura M, Ito K, Yano K, Masaki N, Sugauchi F, Izumi N, Tokunaga K, Mizokami M. 2009. Genome-wide association of IL28B with response to pegylated interferon-alpha and ribavirin therapy for chronic hepatitis C. *Nat Genet* 41:1105–1109.
- Thompson AJ, Muir AJ, Sulkowski MS, Ge D, Fellay J, Shianna KV, Urban T, Afdhal NH, Jacobson IM, Esteban R, Poordad F, Lawitz EJ, McCone J, Shiffman ML, Galler GW, Lee WM, Reindollar R, King JW, Kwo PY, Ghalib RH, Freilich B, Nyberg LM, Zeuzem S, Poynard T, Vock DM, Pieper KS, Patel K, Tillmann HL, Noviello S, Koury K, Pedicone LD, Brass CA, Albrecht JK, Goldstein DB, McHutchison JG. 2010. Interleukin-28B polymorphism improves viral kinetics and is the strongest pretreatment predictor of sustained virologic response in hepatitis C virus-1 patients. *Gastroenterology* 139:120–129 e118.
- Waris G, Felmler DJ, Negro F, Siddiqui A. 2007. Hepatitis C virus induces proteolytic cleavage of sterol regulatory element binding proteins and stimulates their phosphorylation via oxidative stress. *J Virol* 81:8122–8130.

Original Article

Hepatitis C virus-specific CD8+ T cell frequencies are associated with the responses of pegylated interferon- α and ribavirin combination therapy in patients with chronic hepatitis C virus infection

Tomohide Tatsumi,¹ Tetsuo Takehara,¹ Takuya Miyagi,¹ Shoichi Nakazuru,² Eiji Mita,² Tatsuya Kanto,¹ Naoki Hiramatsu¹ and Norio Hayashi^{1,3}

¹Department of Gastroenterology and Hepatology, Osaka University Graduate School of Medicine, Suita, and

²Department of Gastroenterology, National Hospital Organization Osaka National Hospital, Chuo-ku, Japan, and

³Kansai-Rosai Hospital, Amagasaki, Hyogo, Japan

Aim: Hepatitis C virus (HCV)-specific cytotoxic T lymphocytes (CTLs) play critical roles in elimination of the HCV-infected hepatocytes. However, the mechanism of HCV elimination by pegylated interferon- α (peg-IFN α) plus ribavirin is not fully understood. We examined HCV-specific CTL responses during this combination therapy.

Methods: CD8+ T cells were isolated from 16 HCV infected patients treated by this combination therapy and were subjected to IFN- γ enzyme-linked immunospot (ELISPOT) assay.

Results: The numbers of IFN- γ spots against HCV Core or NS3 protein-derived peptides in HCV patients before treatment were similar to those in healthy donors, and those in HCV patients significantly increased 4 weeks after the initiation of combination therapy. All HCV Core or NS3 proteins-derived peptides specific CD8+ T cells responses in pre-treated patients were not associated with ALT levels and HCV viral loads of HCV patients before treatment. And those

in pre-treated patients were similar between sustained virologic responder (SVR) patients and non-SVR patients. Significant increase of HCV Core or NS3 proteins-derived peptides specific CD8+ T cells responses between before and 4 weeks after this combination therapy were observed in SVR patients, but not in non-SVR patients.

Conclusions: These results demonstrated that significant increase of HCV-specific CD8+ T cells at 4 weeks after the initiation of IFN treatment might be associated with the elimination of HCV. Our findings suggest that the reactivity against HCV Core and NS3 proteins-derived peptides might be useful in predicting the clinical outcome of the combination therapy of peg-IFN α and ribavirin.

Key words: chronic hepatitis C, HCV-specific CTL, IFN- γ ELISPOT, peg-IFN α , ribavirin

INTRODUCTION

CHRONIC INFECTION OF Hepatitis C virus (HCV) often leads to cirrhosis and hepatocellular carcinoma (HCC), which causes the poor prognosis of HCV-infected patients.^{1,2} Combination therapy of pegylated interferon- α (Peg-IFN α) plus ribavirin is standard treat-

ment for patients with chronic hepatitis C (CH-C), and sustained virologic response (SVR) in this combination therapy occurs in about 40–60% of genotype 1 patients,^{1,2} which can improve the prognosis of HCV-infected patients. HCV-specific cytotoxic T lymphocytes (CTLs) is believed to play essential roles in determining the course of chronic infection,³ and the insufficient activation, dysfunction, suppression of CTLs may cause persistent infection of HCV.^{4–6} The elimination of HCV by HCV-specific CTLs is believed to consist of second slope of decay after viral decay during the first 24–48 h of IFN therapy.⁷ However, the detail immune mechanism of HCV elimination by this combination therapy is not fully understood. In addition to direct antiviral

Correspondence: Dr Tomohide Tatsumi, Department of Gastroenterology and Hepatology, Osaka University Graduate School of Medicine, 2-2 Yamadaoka, Suita, Osaka 565-0871, JAPAN.

Email: tatsumit@gh.med.osaka-u.ac.jp

Received 28 June 2010; revised 20 August 2010; accepted 24 August 2010.

property of Peg-IFN α and ribavirin against HCV infection, this combination therapy might have immunomodulatory activity. IFN- α enhances the maturation of antigen-presenting cells and CD4+ T cell function, but with little effect on CTLs. In contrast, ribavirin could induce a switch from Th2 to Th1 profile.⁸ Although the base line immune responses of CTLs have been reported to be associated with the achievement of SVR in a few reports^{7,8}, even now there are relatively little reports examining the detail of HCV-specific CTL responses during this combination therapy.

IFN- γ enzyme-linked immunospot (ELISPOT) assay allows detection of finally differentiated effector CTLs, which means the ELISPOT data reflect the *in vivo* situation.^{9–11} In the current study, we evaluated the HCV Core and NS3 proteins-derived peptides specific CD8+ T cells responses of the HCV infected patients by IFN- γ ELISPOT assay and examined the relationship between CTL activity and the clinical outcome of the combination therapy of Peg-IFN α plus ribavirin. The frequencies of HCV-specific CD8+ T cells in pre-treated HCV patients were not associated with antiviral activity of this combination therapy in SVR. However, the significant increase of HCV-specific CD8+ T cells at 4 weeks after the starting of IFN treatment could be observed in SVR patients, but not in non-SVR patients. Our findings suggest that the reactivity against HCV Core and NS3 proteins-derived peptides might be useful in predicting the clinical outcome of this combination therapy.

MATERIALS AND METHODS

Patients

SIXTEEN PATIENTS CHRONICALLY infected with HCV were examined for HCV specific CTL responses during the combination therapy of Peg-IFN α plus ribavirin. All patients enrolled in this study were infected with HCV genotype 1b with a high viral load and were HLA-A2 positive. The patients who were infected with other viruses (Hepatitis B virus, Human immunodeficiency virus) or had other forms of liver disease (alcohol liver disease, autoimmune hepatitis) were excluded from this study. Informed consent, under an Institutional Review Board-approved protocol, was obtained from each patient. All patients received Peg-IFN α -2b (PEGINTRON, Schering-Plough, Kenilworth, NJ) plus ribavirin (REBETOL, Schering-Plough) for the duration of the study of 48–72 weeks. In only one patient (Patients#11), treatment was stopped at 24 weeks because this patient remained HCV-RNA positive after

24 weeks and developed significant side effect. To evaluate the antiviral activity, serum HCV RNA levels were quantified during the combination treatment. Serum HCV RNA level was quantified using the COBAS AMPLI-CORE HCV MONITOR test (version 2.0; Roche Diagnostics, Branchburg, NJ). SVR was defined as the absence of detectable serum HCV RNA at 24 weeks after the end of the combination therapy. All treated patients were assessed the antiviral responses (SVR or non-SVR) as previously described.¹² The characteristics of patients with chronic HCV infection were summarized in Table 1.

CD8+ T cells isolation from peripheral blood mononuclear cells (PBMC)

PBMC was obtained from 16 treated HCV infected patients before IFN treatment (pre-IFN) and 4 weeks after starting of this combination therapy (IFN-4week) and six healthy donors. CD8+ T cells were isolated from PBMC by magnetic cell sorting using CD8 MicroBeads according to the manufacturer's instructions (Miltenyl Biotech, Auburn, CA). More than 95% of the cells were CD8+ lymphocytes.

IFN- γ ELISPOT assays for HCV Core and NS3 protein-derived peptide-specific CD8+ T cells responses

To evaluate the frequencies of CD8+ T cells recognizing peptide epitopes, IFN- γ ELISPOT assay were performed as previously described.¹¹ Briefly, 96-well multiscreen hemagglutinin antigen plates (Millipore, Billerica, MA) were coated with 10 μ g/mL of anti-human IFN- γ mAb (1-D1K; Mabtech, Stockholm) in phosphate-buffered saline (PBS) overnight at 4 °C. Unbound antibody was removed by four successive washing with PBS. After blocking the plates with RPMI 1640/10% human serum (1 h, 37 °C), 1×10^5 CD8+ T cells were co-cultured with 2×10^4 T2.DR4 cells (HLA-A2 positive peptide-presenting cells generously provided from Dr Walter J. Storkus, University of Pittsburgh, School of Medicine, Pittsburgh, PA) pulsed with HCV Core and NS3 derived peptides (a final concentration of 10 μ g/mL). HLA-A2-restricted HCV Core protein derived peptides (Core_{35–44}, YLLPRPGPRL, Core_{131–140}, ADLMGYIPLV) or NS3 protein derived peptides (NS3_{1073–1081}, CINGVCWTV, NS3_{1406–1415}, KLVALGINAV) were synthesized as previously described.¹³ Negative control wells contained CD8+ T cells with T2.DR4 cells pulsed with HIV-nef_{190–198} peptide (AFHHVAREL). After 24 h incubation of the plates, cells were removed from the ELISPOT well by washing and captured cytokine was detected at sites of their secretion

Table 1 Characteristics of patients with chronic hepatitis C virus (HCV) infection

Subject	Age	Sex	HCV-RNA (KIU)	ALT (U/l)	Treatment duration	SVR
1	43	F	440	17	48 week	SVR
2	56	M	2000	146	48 week	non
3	49	F	1200	31	72 week	SVR
4	49	M	340	106	48 week	SVR
5	65	F	3800	24	72 week	SVR
6	58	M	320	25	48 week	SVR
7	56	M	2551	24	48 week	non
8	55	M	939	43	48 week	SVR
9	46	M	1200	64	48 week	SVR
10	46	M	1059	42	48 week	SVR
11	43	M	407	91	24 week	non
12	63	F	1621	61	48 week	non
13	63	F	1841	63	48 week	non
14	47	M	458	41	48 week	SVR
15	36	M	1024	79	48 week	non
16	61	F	677	148	48 week	non

ALT, alanine aminotransferase; F, female; M, male; non, non-SVR; SVR, sustained virologic response.

by incubation for 2 h with biotinylated mAb anti-human IFN- γ (7-6B-1, Mabtech) at 2 μ g/mL. Plates were washed six times and avidin-peroxidase complex (Vectastain Elite Kit, Vector Laboratories, Burlingame, CA) were added for 1 h. Unbound complex was removed by washing and 3-Amino-9-ethylcarbazole substrate (Sigma, St Louis, MO) was added for 5 min. The data are represented as mean IFN- γ spots per 100 000 T cells analyzed.

Statistics

All values were expressed as the mean and standard deviation (SD). The statistical significance of differences between the groups was determined by applying Mann-Whitney *U*-test. We defined statistical significance as $P < 0.05$.

RESULTS

Analysis of HCV derived peptide-specific IFN- γ release of peripheral blood CD8+ T cells in ELISPOT assay

WE ASSESSED PERIPHERAL blood CD8+ T cell responses against HCV derived peptides (Core₃₅₋₄₄, Core₁₃₁₋₁₄₀, NS3₁₀₇₃₋₁₀₈₁, NS3₁₄₀₆₋₁₄₁₅) in 16 HLA-A2+ HCV patients and 6 healthy donors. As shown in Figure 1, the numbers of IFN- γ spots (per 100 000 CD8+ T cells) observed for T cell responses against HCV peptides in pre-IFN patients were as low as those observed in healthy HLA-A2+ donors. In contrast, significant eleva-

tions of ELISPOT reactivity to three peptides (Core₁₃₁₋₁₄₀, NS3₁₀₇₃₋₁₀₈₁, NS3₁₄₀₆₋₁₄₁₅) were observed in IFN-4week patients compared with healthy donors. The number of IFN- γ spots against Core₃₅₋₄₄ peptides in IFN-4week patients also tended to be higher than those in healthy donors. In treated HCV patients, the numbers of IFN- γ spots against all four HCV derived peptides in IFN-4week patients were significantly higher than those in pre-IFN patients (Fig. 1). We also examined whether the frequencies of HCV-specific CD8+ T cell responses were associated with sex difference. The frequencies of CTLs against all four peptides were similar between males and females before and 4 weeks after starting treatment (data not shown).

HCV-specific CD8+ T cell responses in pre-IFN patients were not associated with the antiviral activity of the combination therapy of Peg-IFN α -2b plus ribavirin

We examined the association between HCV-specific CD8+ T cell responses in pre-IFN patients and ALT levels or HCV viral load before treatment. No association was observed between the frequencies of HCV-specific CD8+ T cells in pre-IFN patients and ALT levels or HCV viral load of pre-treated patients (Fig. 2).

We next examined whether HCV-specific CD8+ T cell responses in pre-IFN patients were associated with the antiviral activity of this combination therapy. As shown in Figure 3, the frequencies of CD8+ T cell responses against all four HCV proteins-derived peptides in

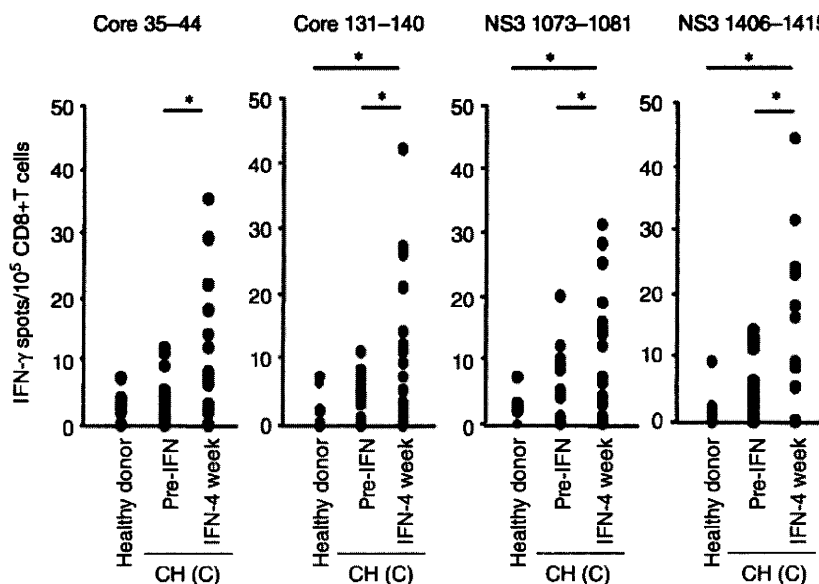


Figure 1 Interferon (IFN)- γ enzyme-linked immunospot (ELISPOT) analysis of hepatitis C virus (HCV)-specific CD8+ T cell responses in HCV patients treated with the combination therapy of peg-IFN α plus ribavirin. Peripheral blood CD8+ T cells were isolated from HLA-A2+ healthy donors and chronic hepatitis C (CH-C) patients. The CH-C patients were treated with the combination therapy of peg-IFN α plus ribavirin and PBMC were isolated from pre-treated patients (Pre-IFN) and treated patients 4 weeks after starting treatment (IFN-4week). HCV-specific CD8+ T cell responses were evaluated by IFN- γ ELISPOT as outlined in "Materials and Methods". Data are reported as IFN- γ spots/ 100 000 CD8+ T cells and represent the mean of triplicate determinations. T cell reactivity against T2.DR4 cells pulsed with HLA-A2-presenting HIV-nef_{190–196} epitope served as the negative control in all cases, and this value was subtracted from all experimental determinations to determine HCV specific spots numbers. Each symbol within a panel represents the response of an individual donor to the indicated HLA-A2-presenting HCV Core- or NS3-peptides. * $P < 0.05$.

pre-IFN patients were not significantly different between SVR, the group of the patients who were observed SVR, and non-SVR, the group of the patients who were not observed SVR. These results suggested that the baseline HCV-specific CD8+ T cell responses in HCV patients were not associated with the antiviral activity of this combination therapy.

Significant early elevation of HCV-specific CD8+ T cell responses were associated with the antiviral activity of the combination therapy of Peg-IFN α plus ribavirin

We examined the association between early elevation of HCV-specific CD8+ T cell responses and the antiviral activity of this combination therapy. We evaluated the frequencies of CD8+ T cell responses against HCV proteins-derived peptides before and 4 weeks after starting treatment. As shown in Figure 4, in SVR patients, the frequencies of CD8+ T cell responses against all four HCV peptides (Core_{35–44}, Core_{131–140}, NS3_{1073–1081}, NS3_{1406–1415}) increased significantly 4 weeks

after starting treatment. In contrast, the frequencies of CD8+ T cell responses against all four HCV peptides did not increase in non-SVR patients. These results demonstrated that significant early elevation of HCV-specific CD8+ T cell responses were associated with the antiviral activity of this combination therapy.

DISCUSSION

HCV-SPECIFIC CD8+ CTLs have been reported to play a significant role in the elimination of HCV in acute hepatitis of HCV.^{4,9} In contrast, in chronic infection of HCV, HCV-specific CD8+ T cell responses were weak and were directed against a limited series of epitopes compared with acute hepatitis.⁹ These might cause persistent infection of HCV in the HCV infected host. However, conflicting results have been reported with respect to HCV-specific CD8+ T cell responses on the antiviral activity of IFN therapy. IFN α monotherapy may promote viral clearance by enhancing the host CTL responses.^{14,15} But Rehermann et al. reported that CTL

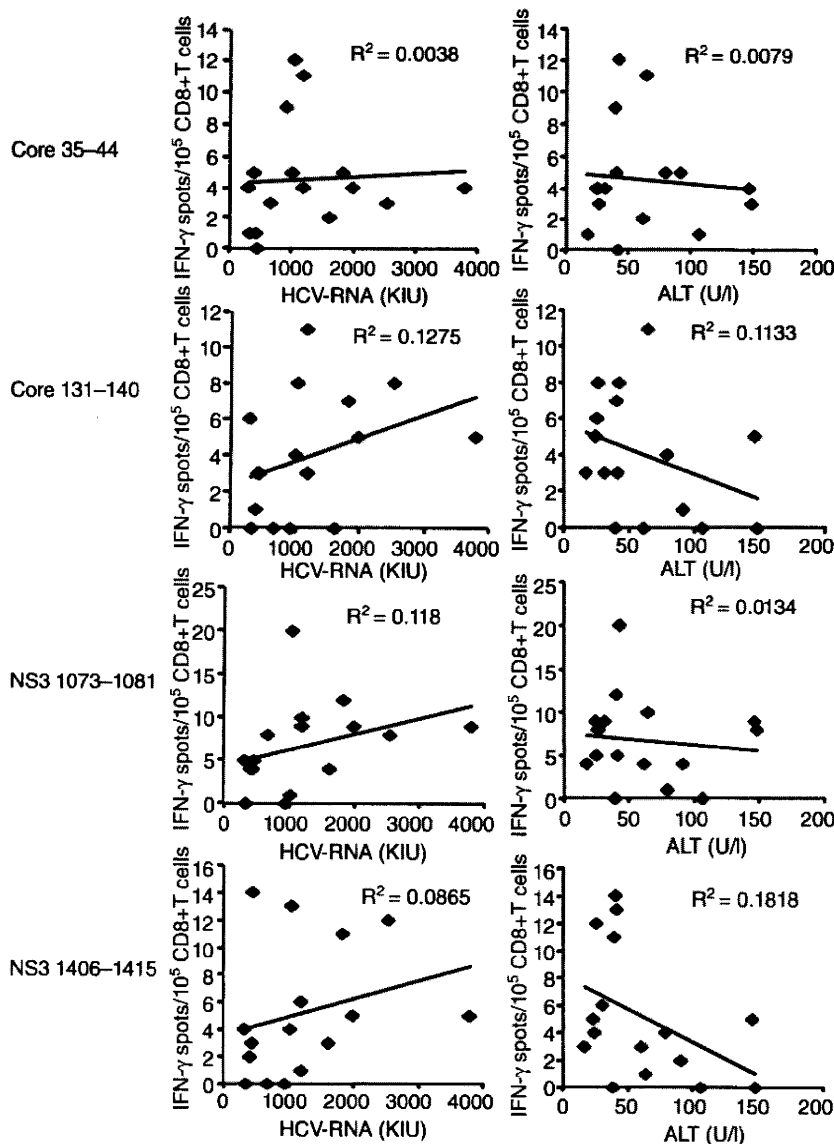


Figure 2 The association between the hepatitis C virus (HCV)-specific CD8+ T cell responses of pre-IFN patients and the serum alanine aminotransferase (ALT) levels or the HCV viral load of patients before treatment. The frequencies of HCV Core and NS3 proteins-derived peptides specific CD8+ T cell responses in pre-IFN HCV patients were evaluated by interferon (IFN)- γ enzyme-linked immunospot (ELISPOT). We examined the association between the frequencies of HCV Core and NS3 proteins-derived peptides specific CD8+ T cell responses in pre-IFN HCV patient and the serum ALT levels or HCV viral loads of patients before treatment.

precursor frequencies against a range of HCV epitopes did not change during or after the course of IFN α monotherapy.¹³ Recently, the combination therapy of PegIFN α plus ribavirin is standard treatment in the treatment of HCV infected patients with the better results of viral clearance compared with IFN α monotherapy. This suggested that this combination therapy might modify the HCV specific CD8+ T cell responses. We evaluated HCV-specific CD8+ T cell responses by IFN- γ ELISPOT assay, a functional assay of T cells. Significant increase of the frequencies of HCV-specific CD8+ T cells between pre-IFN and IFN-4week could be

observed in SVR patients, but not in non SVR patients. This is consistent with the previous report of evaluating the frequencies of HCV-specific CTLs by direct ex vivo staining with HCV-specific pentamers.¹⁶ Thus the evaluation of reactivity against HCV Core and NS3 proteins-derived peptides might be useful in predicting the clinical outcome of this combination therapy.

It has been reported that complete early virologic response (cEVR), which means HCV RNA negativity at week 12, is strongly related to SVR in the combination therapy of Peg-IFN α plus ribavirin.^{12,17} cEVR itself has been reported to be an independent predictive factor of

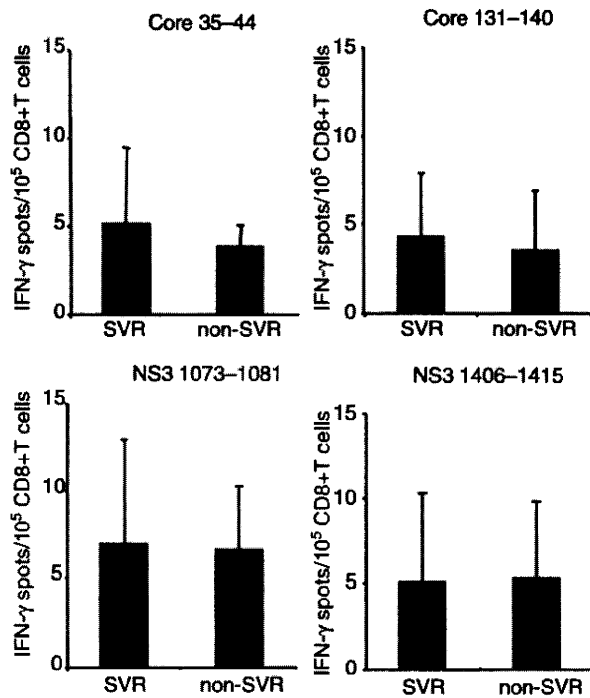


Figure 3 Comparison of the frequencies of hepatitis C virus (HCV)-specific CD8+ T cells in pre-treated HCV patients between sustained virologic response (SVR) and non-SVR. HCV Core and NS3 proteins-derived peptides specific CD8+ T cell responses in pre-treated HCV patients were evaluated by interferon (IFN)- γ enzyme-linked immunospot (ELISPOT). We analyzed the association between the HCV-specific CD8+ T cell responses and the achieving of SVR. SVR: patients who were observed SVR, non-SVR: patients who were not observed SVR.

SVR.^{1,12} We also examined the association between cEVR and early elevation of HCV-specific CD8+ T cell responses. The frequencies of CD8+ T cell responses against all four HCV derived peptides in pre-IFN patients were not significantly different between pre-IFN and non-cEVR (Tatsumi T, unpublished data). In cEVR patients, the frequencies of CD8+ T cell responses against three HCV peptides Core_{35–44}, Core_{131–140}, NS3_{1406–1415}) increased significantly 4 weeks after the starting treatment and those against NS3_{1073–1081} peptide tended to increase although these were not significant. In contrast, the frequencies of CD8+ T cell responses against all four HCV peptides did not increase in non-cEVR patients (Tatsumi T, unpublished data). The cEVR results were almost similar to those of the SVR results. Although we could not evaluate the HCV RNA levels at 4 week after starting treatment, the cEVR results sug-

gested that early elevation of the frequencies of HCV-specific CD8+ T cell responses might reflect the decrease of viral load of HCV.

CD8+ CTL activities in pre-treated HCV patients have been reported to be very low.^{7,18,19} Consistent with the previous observations, the frequencies of HCV specific CD8+ T cell in pre-treated patients were also low in our study. The frequencies of HCV-specific CD8+ T cells in pre-treated patients were not associated with the HCV viral load and the serum ALT levels of patients before treatment. Several reports demonstrated that the baseline presence of HCV-specific CTLs prior to treatment was associated with viral clearance.^{7,18} However, the frequencies of HCV-specific CD8+ T cells in pre-treated patients were not associated with the achievement of SVR in our study. In previous other reports, whole PBMC isolated from treated patients were used to evaluate the antiviral activity of HCV-specific CD8+ T cells. In our study, enriched CD8+ T cells obtained by magnetic sorting methods were used to enhance the sensitivity for the detection of HCV-specific CD8+ T cells. Both ELISPOT and staining with tetramers/pentamers could be applied for immunological monitoring for peptide-specific CTLs.²⁰ ELISPOT can detect activated functional CTLs, and tetramers/pentamers staining can detect peptide-specific CTLs.²⁰ In our study, we assessed the HCV-specific CD8+ T cell responses by IFN- γ ELISPOT, which is the most well-established methods and has already applied for immunological monitoring in cancer patients.¹¹ Recently perforin- or granzyme B-ELISPOT assays have also been reported. However, due to limitations in cell numbers of PBMC isolated from HCV patients, we were unable to apply another system of immunological monitoring and test other functional molecules. If we can apply these ELISPOT assays, we could directly evaluate the cytotoxic activity of HCV-specific CTLs.

In our study, the frequencies of HCV-specific CD8+ T cells in pre-treated patients were similar between SVR and non-SVR patients. In contrast, significant increase of the frequencies of HCV-specific CD8+ T cells between pre-IFN and IFN-4week could be observed in SVR patients, but not in non SVR patients. Caetano et al. evaluated the HCV-specific CD8+ T cells by HLA class I pentamers specific for the one HCV-Core epitope and one NS3 epitope which were same as we used.¹⁶ They demonstrated that the increase of the frequencies of HCV-specific CTLs at 1 month after starting treatment was mainly due to terminally differentiated cells as well as, to a lesser extent, central memory cells in SVR patients and, in contrast, the increase of HCV-specific

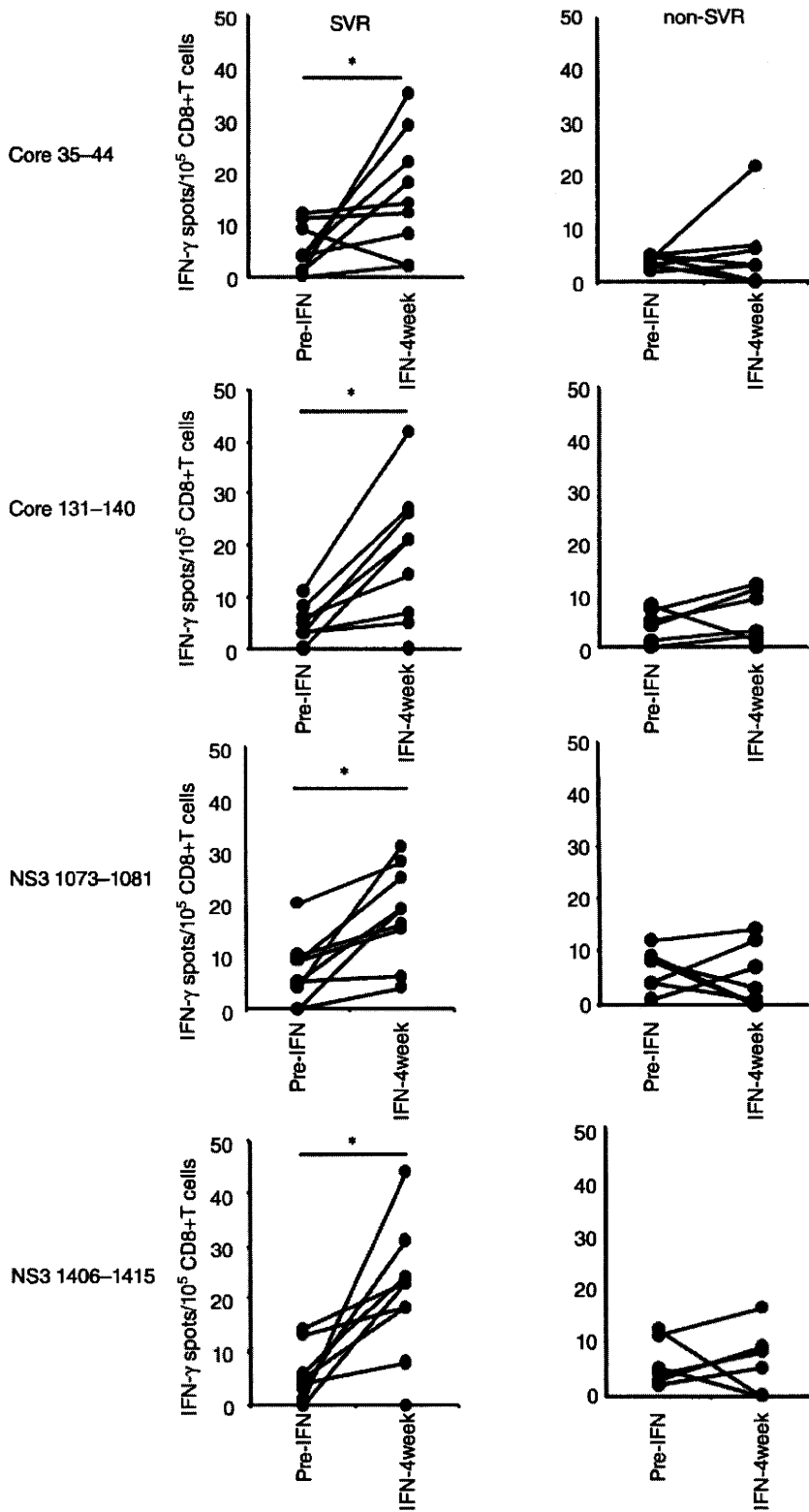


Figure 4 Analysis of the association of the change of hepatitis C virus (HCV)-specific CD8+ T cell responses between pre-IFN and IFN-4week chronic hepatitis C (CH-C) patients with the achieving sustained virologic response (SVR). Peripheral blood CD8+ T cells were isolated from pre-IFN and IFN-4week patients. HCV-specific CD8+ T cell responses were evaluated by interferon (IFN)- γ enzyme-linked immunospot (ELISPOT) assay. We analyzed the association of HCV-specific CD8+ T cell responses in treated CH-C patients with the achieving SVR. Each symbol within a panel represents the response of an individual donor to the indicated HLA-A2-presenting HCV Core or NS3 protein-derived peptides. The treated patients were divided into two groups; SVR group and non-SVR group. * $P < 0.05$.

pre-terminally differentiated CD8+ T cells was also observed in non-SVR patients.¹⁶ These results suggested that CTLs maturation efficiently occurred in SVR patients. HCV or HCV-gene products have been reported to inhibit the maturation pathway of CTLs.^{5,21} Thus the decrease of viral load during this combination therapy may induce CTL maturation.

We demonstrated that the achievement of SVR in this combination therapy was associated with the early elevation of HCV-specific CD8+ T cell responses, but not with the pre-treated levels of HCV-specific CD8+ T cell responses. These results suggested, at least, that the enhancement of HCV-specific CD8+ T cell responses might play critical roles in the second slope of viral clearance by this combination therapy. The increasing frequencies of HCV-specific CD8+ T cells have also been reported to be associated with SVR during the combination therapy by evaluating with pentamers of HCV-specific peptides.¹⁶ Ribavirin has immunomodulatory effect with a switch from Th2 to Th1 cytokine profile.²² The combined use of pegIFN α and ribavirin might have more immunomodulatory effect to generate HCV specific CTLs. However, even now, this should be elucidated to develop better treatment of chronic hepatitis C.

Although CTL responses to HCV are multi-specific,^{13,23} we and others tested only small part of the known CTL epitopes of HCV, which do not comprise all potential HLA A2-restricted CTL epitopes of HCV. HCV may have mutated and escaped from the CTL responses to the corresponding epitopes in the chronically infected patients. The epitopes used in our study have been applied to the detection of HCV-specific CTLs in several other previous studies,^{5,15,16} which support the usefulness of the selected epitopes. Our results demonstrated that the increases of the frequencies of CD8+ T cells against four synthesized peptides were associated with the antiviral activity of this combination therapy. Thus the selected epitopes used in our experiments were probably stable, at least, during the 4 weeks after starting treatment.

In spite of recent progress for HCV treatment, there remains significant room for improvement. To date, a variety of viral factors and host factors that correlate with SVR in the combination therapy have been noted. Recently, in addition to viral factors and host factors, response and adherence to treatment have been noted.² To establish the better treatment, the detail mechanism of HCV elimination should be elucidated. In the present study, we demonstrated that early enhancement of HCV-specific CD8+ T cell responses was associated with the achieving SVR in this combination therapy. These

suggest that activation of antiviral CTLs might be involved in the elimination of HCV. The early elevation of HCV-specific CTL responses in treated HCV patients may be a candidate for predicting SVR in this combination therapy.

ACKNOWLEDGEMENTS

THE FORMER INSTITUTION of Nakazuru S and Mita E was Saiseikai-Senri Hospital (Suita, Japan). This work was supported by a Grant-in-Aid from the Ministry of Education, Culture, Sports, Science and Technology of Japan (Hiramatsu N) and a Grant-in-Aid from Viral Hepatitis Research Foundation of Japan (Tatsumi T).

REFERENCES

- 1 Kumada H, Okanoue T, Onji M *et al.* Guidelines for the treatment of chronic hepatitis and cirrhosis due to hepatitis C virus infection for the fiscal year 2008 in Japan. *Hepatol Res* 2010; **40**: 8–13.
- 2 Hayashi N, Takehara T. Antiviral therapy for chronic hepatitis C: past, present, and future. *J Gastroenterol* 2006; **41**: 17–27.
- 3 Price DA, Klenerman P, Booth BL, Phillip RE, Sewell AL. Cytotoxic T lymphocytes, chemokines and antiviral immunity. *Annu Rev Immunol* 1999; **14**: 207–32.
- 4 Gruener NH, Lechner F, Jung MC *et al.* Sustained dysfunction of antiviral CD8+ T lymphocytes after infection with hepatitis C virus. *J Virol* 2001; **75**: 5550–8.
- 5 Wedemeyer H, He XS, Nascimbeni M *et al.* Impaired effector function hepatitis C virus-specific CD8+ T cells in chronic hepatitis C virus infection. *J Immunol* 2002; **169**: 3447–58.
- 6 Takaki A, Wiese M, Maertens G *et al.* Cellular immune responses persist, humoral responses decrease two decade after recovery from a single source outbreak of hepatitis C. *Nat Med* 2000; **6**: 578–82.
- 7 Pilli M, Zerbini A, Penna A *et al.* HCV-specific T-cell response in relation to viral kinetics and treatment outcome (DITTO-HCV project). *Gastroenterology* 2007; **133**: 1132–43.
- 8 Ishii S, Koziel MJ. Immune responses during acute and chronic infection with hepatitis C virus. *Clin Immunol* 2008; **128**: 133–47.
- 9 Altman JD, Moss PAH, Goulder PJR *et al.* Phenotypic analysis of antigen-specific T lymphocytes. *Science* 1996; **274**: 94–6.
- 10 Lalvani A, Brookes R, Hambleton S, Britton WJ, Hill AV, McMicheal AJ. Rapid effector function in CD8+ memory T cells. *J Exp Med* 1997; **186**: 859–65.
- 11 Tatsumi T, Herrem CJ, Olson WC *et al.* Disease stage variation in CD4+ and CD8+ T-cell reactivity to the receptor

- tyrosine kinase EphA2 in patients with renal cell carcinoma. *Cancer Res* 2003; 63: 4481–9.
- 12 Oze T, Hiramatsu N, Yakushijin T *et al.* Pegylated interferon alpha-2b (Peg-IFN α -2b) affects early virologic response dose-dependently in patients with chronic hepatitis C genotype 1 during treatment with Peg-IFN α -2b plus ribavirin. *J Viral Hepat* 2009; 16: 578–85.
 - 13 Rehermann B, Chang KM, McHutchinson JG, Kokka R, Houghton M, Chisari FV. Quantitative analysis of the peripheral blood cytotoxic T lymphocytes response in patients with chronic hepatitis C virus infection. *J Clin Invest* 1996; 98: 1432–40.
 - 14 Nelson DR, Marousis CG, Ohno T, Davis GL, Lau JY. Intrahepatic hepatitis C virus-specific cytotoxic T lymphocytes activity and response to interferon alfa therapy in chronic hepatitis C. *Hepatology* 1998; 28: 225–30.
 - 15 Lohr HF, Schmitz D, Arenz M, Weyer S, Gerken G, Meyer zum Buschenfelde KH. The viral clearance in interferon-treated chronic hepatitis C is associated with increased cytotoxic T cell frequencies. *J Hepatol* 1999; 31: 407–15.
 - 16 Caetano J, Martinho A, Paiva A, Pais B, Valente C, Luxo C. Differences in hepatitis C virus (HCV)-specific CD8 T-cell phenotype during pegylated alpha interferon and ribavirin treatment are related to response to antiviral therapy in patients chronically infected with HCV. *J Virol* 2008; 82: 7567–77.
 - 17 Fried MW, Schifman ML, Reddy KR *et al.* Peginterferon alpha-2a plus ribavirin for chronic hepatitis C virus infection. *N Eng J Med* 2002; 347: 975–82.
 - 18 Freeman AJ, Marinos G, French RA, Lloyd AR. Intrahepatic and peripheral blood virus-specific cytotoxic T lymphocyte activity is associated with a response to combination IFN- α and ribavirin treatment among patients with chronic hepatitis C virus infection. *J Viral Hepat* 2005; 12: 125–9.
 - 19 Barnes E, Harcourt G, Brown D *et al.* The dynamics of T-lymphocyte responses during combination therapy for chronic hepatitis C virus infection. *Hepatology* 2002; 36: 743–54.
 - 20 Sato N, Hirohashi Y, Tsukahara T *et al.* Molecular pathological approaches to human tumor immunology. *Pathol Int* 2009; 59: 205–17.
 - 21 Lechner W, Wong DK, Dubar PR *et al.* Analysis of successful immune responses in persons infected with hepatitis C virus. *J Exp Med* 2000; 191: 1499–512.
 - 22 Tam RC, Pai B, Bard J *et al.* Ribavirin polarizes human T cell responses toward a type 1 cytokine profile. *J Hepatol* 1999; 30: 376–82.
 - 23 He XS, Rehermann B, Lopez-Labradoe XL *et al.* Quantitative analysis of chronic hepatitis C virus-specific CD8+ T cells in peripheral blood and liver using peptide-MHC tetramers. *Proc Natl Acad Sci USA* 1999; 96: 5692–7.

Re-evaluation of the Serum Alanine Aminotransferase Upper Normal Limit in Chronic Hepatitis C Patients

Michiyasu Yagura¹, Akihisa Tanaka¹, Hiroshi Kamitsukasa¹, Hiroki Otsuka²,
Sotaro Kanno² and Toshihisa Aoyama³

Abstract

Objective The aim of this study was to re-evaluate the upper limit of normal range (ULN) for serum alanine aminotransferase (ALT) in chronic hepatitis C (CH-C) patients who achieved sustained virological response (SVR) to interferon therapy.

Methods Enrolled in this study were 136 consecutive patients, 84 males and 52 females, mean age 52.1±14.8 years, with CH-C who received interferon therapy during 1992 to 2008 and achieved SVR. AST and ALT levels (3 serial measurements) were measured every 3 to 4 months over one year after termination of interferon therapy and then the measurements were averaged for each patient.

Results The distribution of AST and ALT showed normal distribution. Overall, AST levels were 19.7±3 IU/L and ALT levels were 13.8±3.1 IU/L in all patients, AST levels were 19.8±3 IU/L and 12.9±2.9 IU/L and ALT levels were 14.4±3.2 IU/L and 9.9±3.5 IU/L in male and female patients, respectively. AST level was the highest in the 6th decade and ALT level was in the 5th decade.

Conclusion In this study on CH-C patients with SVR to interferon therapy, ULN of serum ALT and AST were far lower than the current accepted value. We propose that a suitable ULN of serum AST is <25 IU/L and ALT is <20 IU/L in CH-C patients.

Key words: chronic hepatitis C, upper limit of the normal range for serum ALT, sustained virological response, interferon, healthy volunteers

(*Inter Med* 49: 525-528, 2010)

(DOI: 10.2169/internalmedicine.49.2653)

Introduction

The combination therapy of peginterferon and rivabirin has been recommended as a first choice for chronic hepatitis C (CH-C) patients with viral genotype 1 and a high titer of HCV-RNA. The sustained virological response (SVR) rate after 48 weeks of treatment at a standard dose is approximately 40 to 50% (1, 2). We often experience that the alanine aminotransferase (ALT) level becomes less than 20 to 25 IU/L after undertaking SVR to interferon therapy. However, the currently accepted ULN for ALT were set on an average of 30 to 50 IU/L. Hence, it is expected that suitable ULN for serum ALT were less than 30 to 50 IU/L. So, we attempted to re-evaluate the ULN for serum ALT in CH-

C patients.

Materials and Methods

Patients

Enrolled in this study were 136 consecutive patients, 84 males and 52 females, mean age 52.1±14.8 years (range 24-75 years) with CH-C who achieved SVR after interferon therapy (interferon α -2b; 56 patients, interferon α -2a; 32 patients, peginterferon α -2b; 22 patients, peginterferon α -2b and rivabirin; 23 patients, peginterferon α -2a and rivabirin; 3 patients) during 1992 to 2008 and were followed up thereafter. Pre-treatment characteristics of patients were as follows; body mass index (BMI) was 22.8±3.4 (range 16.1-

¹Department of Gastroenterology, National Hospital Organization, Tokyo National Hospital, Kiyose, ²The Center of Health Promotion, Sekishinkai Sayama General Clinic, Sayama and ³Sekishinkai Sayama Hospital, Sayama
Received for publication July 3, 2009; Accepted for publication November 24, 2009
Correspondence to Dr. Michiyasu Yagura, myagura.tokyo.hosp@rivo.mediatti.net