

HCC cells in these CH and LC patients. This suggested that GPC3-specific CTLs could serve as a marker for the early diagnosis of imaging invisible HCC. Therefore, in this study, we tried to identify the HCC producing protein in the serum of CH and LC patients who were positive for GPC3-specific CTLs.

ProteinChip, based on surface-enhanced laser desorption-ionization time-of-flight mass spectrometry (SELDI-TOF-MS) has recently been shown to be useful in discovering biomarkers for the diagnosis of breast, liver and various other cancers (17-21). In order to establish the possibility of early diagnosis of imaging invisible HCC, we analyzed plasma from patients with CH and LC patients with or without GPC3-specific CTLs and HCC patients using ProteinChip Arrays.

## Materials and methods

**Plasma samples.** Plasma samples were obtained from 6 patients with HCC at National Cancer Center Hospital East, 16 patients with CH or LC at Tokyo Rosai Hospital and 8 healthy volunteers after obtaining their written consent. CH and LC patients who were confirmed to be HCV-RNA (+) or HBs antigen (+) within six months prior to registration were eligible for the study. The diagnosis of CH or LC was made clinically by imaging and laboratory data. The patients had no medical history of HCC and no evidence of HCC on ultrasonography, CT or MRI conducted prior to registration. All plasma samples were stored at -80°C until analysis.

**SELDI-TOF-MS analysis.** For SELDI-TOF-MS analysis, we used CM10 ProteinChip (weak cation-exchange) with anionic surface chemistry. The chips were washed twice with shaking for 5 min in 150  $\mu$ l binding buffer (50 mM sodium acetate, pH 4.0) per well. Plasma samples diluted 1:10 with PBS buffer and then diluted 1:10 with pH adjusted buffer. One hundred microliters of all diluted plasma samples were applied on each ProteinChips. The samples were applied in duplicate. Binding was allowed to proceed for 1 h with shaking at room temperature. The chips were then washed twice using 150  $\mu$ l of binding buffer (5 min with shaking), rinsed, dried and then added 0.5  $\mu$ l of a matrix solution (50% acetonitrile, 0.5% trifluoroacetic acid) to each spot. Matrix solution was repeatedly put to each spot. These ProteinChip Arrays were analyzed using a ProteinChip reader (ProteinChip Biology Systems II; Bio-Rad Laboratories, Inc., Tokyo, Japan).

**High performance liquid chromatography (HPLC) analysis.** Plasma samples were analyzed by the HPLC (Shimadzu, Kyoto, Japan). All samples were fractionated by size-exclusion HPLC chromatography equipped on a shodex protein KW-802.5 column (Showa Denko, Tokyo, Japan). One hundred microliters of the sample was loaded into the column: a mobile phase composed of A solution (20 mM NaH<sub>2</sub>PO<sub>4</sub>·2H<sub>2</sub>O 300 mM NaCl) and B solution (20 mM NaH<sub>2</sub>PO<sub>4</sub>·2H<sub>2</sub>O); a flow rate of 1.0 ml/min; UV detection at 280 nm. Appropriate fractions were concentrated in Vivaspin 2 column (3 kDa cut off) (GE Healthcare, UK Ltd.). The search for retention time of  $\beta$ 2-MG of purified standard protein (Biocode Hycel, Liege, Belgium), fractionated using the same method for all plasma samples.

Table I. Characteristics of patients involved in this study.

	Male/ Female	Average age	HBV/HCV
GPC3-specific CTL			
Negative patients	5/1	60.3 (51-75)	1/5
GPC3-specific CTL			
Negative patients	3/3	67.7 (59-74)	2/4
HCC patients	2/4	66.1 (48-77)	2/4

**Detection of  $\beta$ 2-microglobulin ( $\beta$ 2-MG) in plasma by latex agglutination immunoassay (LAIA).** The concentration of  $\beta$ 2-MG in plasma samples was measured using a latex agglutination immunoassay (LAIA) at SRL, Tokyo, Japan. The normal range of healthy donor plasma levels of  $\beta$ 2-MG was 0.9-2.0 mg/l.

**Western blot analysis.** Plasma samples were measured by Bradford protein assay and adjusted to equal concentration for Tris-tricine SDS-polyacrylamide gel electrophoresis (PAGE). The samples in each were separated on 16.5% gels and transferred to polyvinylidene difluoride (PVDF) membrane (Millipore). The membrane was blocked by 5% milk powder in TBS-0.5% Tween-20 buffer (TBS-T) for 1 h at room temperature and then incubated with mouse anti- $\beta$ 2-MG antibody (1:1000, Hokudo, Sapporo, Japan) overnight at 4°C, followed by reaction with horseradish peroxidase (HRP)-conjugated anti-mouse IgG antibody (1:20000, Jackson ImmunoResearch, USA). The signal was developed using ELC plus Western Blotting Detection Reagent (GE Healthcare, UK).

## Results

**Selection of the candidate protein for detecting invisible HCC using SELDI-TOF-MS.** To search for novel markers for detecting invisible HCC by CT or MRI, we performed proteomic analysis using ProteinChip Array. At first, we compared the protein profiling in the plasma between 6 HCC patients and 6 healthy donors (Table I). We found four peaks (2.7, 11.7, 51.7 and 118.6 kDa) to be significantly higher in HCC patients than in healthy donors (Fig. 1). Intensity of the peaks discriminated significantly between HCC patients and healthy donors, P=0.01 (2.7 kDa), P=0.006 (11.7 kDa), P=0.04 (51.7 kDa), P=0.001 (118.6 kDa).

For further analyses, the protein expression profiles in the plasma between 6 CH, LC patients with GPC3-specific CTLs and 6 CH, LC patients without GPC3-specific CTLs were compared (Table I, Fig. 2A and B). The intensity of two peaks (11.7 and 51.7 kDa) were significantly higher than in the plasma of GPC3-specific CTLs positive patients as compared with GPC3-specific CTLs negative patients. A protein peak of 11.7 or 51.7 kDa discriminated significantly between GPC-specific CTLs negative patients and HCC patients (P=0.002 or P=0.007), as well as between GPC3-

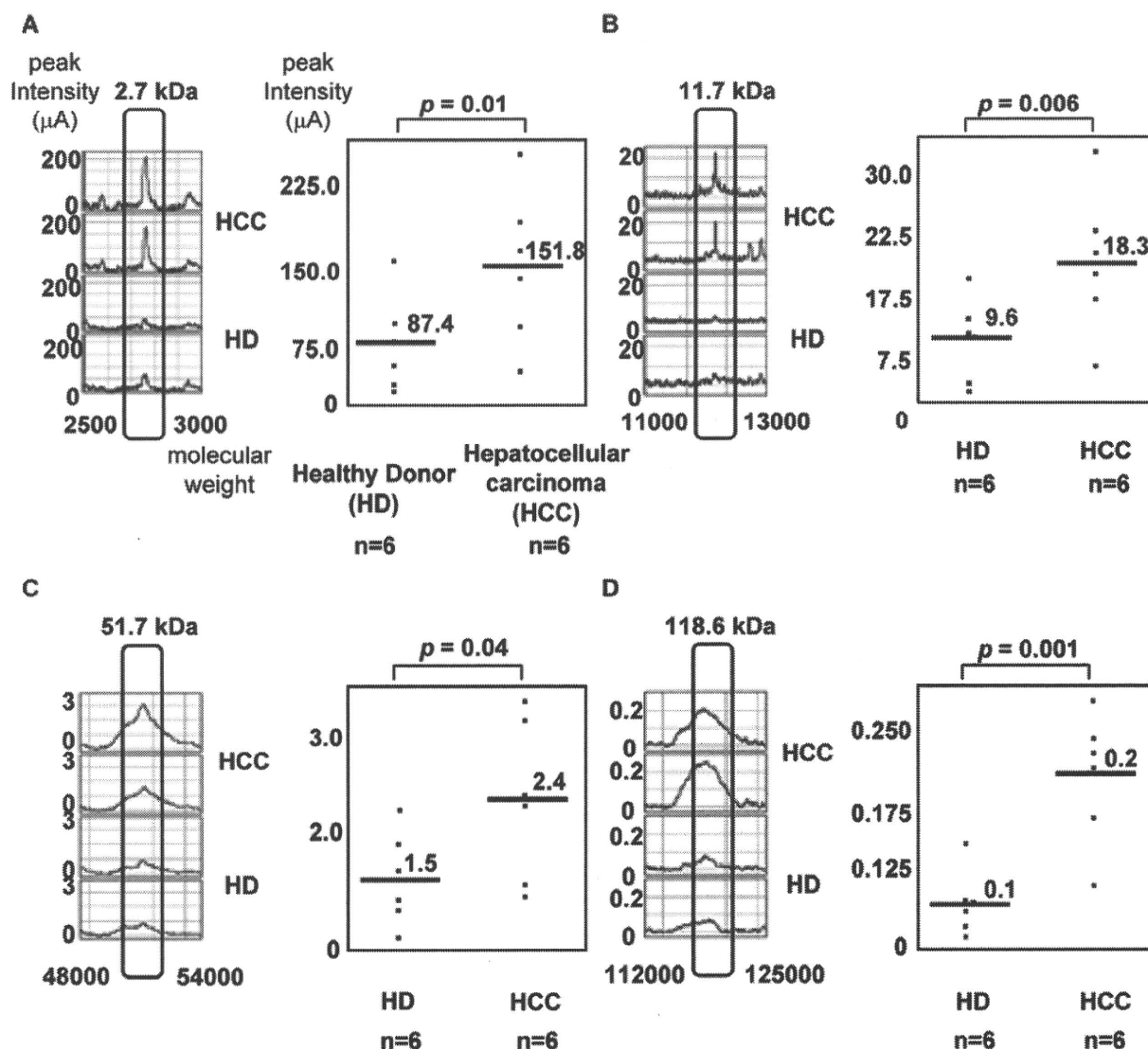


Figure 1. Comparison of the intensity of different expressed peaks in hepatocellular carcinoma (HCC) patients and healthy donors (HD). The spectra were obtained using CM10 ProteinChip (weak cation-exchange) arrays. Distribution of the intensity of different expressed peaks in plasma samples. Distribution of signal intensities for the 2.7 kDa protein (A), the 11.7 kDa protein (B), the 51.7 kDa protein (C) and the 118.6 kDa protein (D) were shown. Black bars indicate mean intensity.

Table II. Search results from SELDI-TOF-MS analysis data using ExPASy TagIdent.

Molecular weight	Entry name	Protein name	Accession no.
11731	B2-MG_HUMAN	$\beta$ 2-microglobulin	P61769
11684	NRTN_HUMAN	Neurturin	Q99748
11710	KCNE3_HUMAN	Potassium voltage-gated channel subfamily E member 3	Q9Y6H6

specific CTLs positive patients and HCC ( $P=0.04$  or  $P=0.02$ ).

*Prediction of  $\beta$ 2-microglobulin ( $\beta$ 2-MG) as a 11740 kDa protein using ExPASy server.* To identify the 11740 kDa protein, we used the TagIdent tool from the ExPASy proteomic server (<http://www.expasy.ch/tools/tagident.html>). By entering the molecular mass unknown protein, this tool will search in

the TrEMBL and Swiss-Prot protein database for proteins that will match with the requested molecular mass. From the results of the search from ExPASy TagIdent, we focused on  $\beta$ 2-MG. Peak of 11.7 kDa was predicted to be  $\beta$ 2-MG by molecular mass (Table II).

*Identification of the  $\beta$ 2-microglobulin ( $\beta$ 2-MG).* We examined the plasma level of  $\beta$ 2-MG in six novel donors (HD-1, 2, CH-

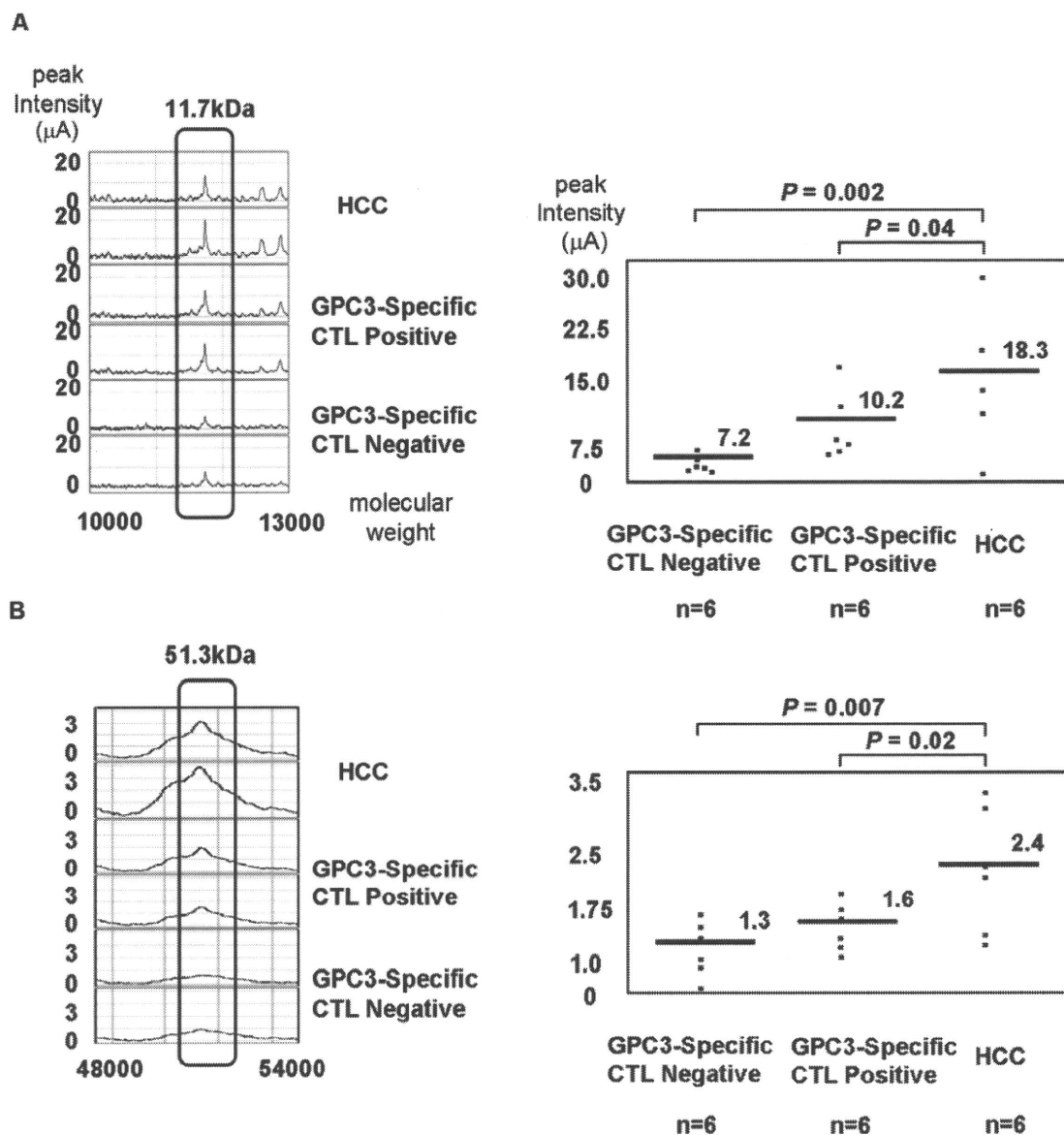


Figure 2. Comparison of the intensity of different expressed peaks in CH/LC patients who are positive for Glypican-3 (GPC3)-specific CTLs. CH/LC patients who are negative and HCC. Data were obtained using CM10 arrays. Distribution of signal intensities for the 11.7 kDa protein (A) and the 51.7 kDa protein (B) are shown.

1, 2 and LC-1, 2) by LAIA. To see whether relative peak intensity of 11.7 kDa protein in SELDI-TOF-MS analysis was correlated with plasma  $\beta$ 2-MG levels determined by an LAIA or not (Fig. 3). As shown in Fig. 3A and B, there was a positive correlation between the peak intensity and the concentration of  $\beta$ 2-MG. To further confirm our results, Western blot analysis with mouse anti- $\beta$ 2-MG antibody was performed on the plasma (HD-1, 2, CH-1, 2, LC-1, 2, in Fig. 3A). As expected, a specific band at 11.7 kDa was clearly detected in plasma samples (Fig. 3C). These results suggest that 11.7 kDa band should be  $\beta$ 2-MG.

*Fractionation of the 11.7 kDa protein peak,  $\beta$ 2-MG.* To confirm 11.7 kDa protein as  $\beta$ 2-MG, the plasma was fractionated by gel filtration and HPLC. We fractionated  $\beta$ 2-

MG standard using size-exclusion chromatography. The peak eluted for the  $\beta$ 2-MG standard at retention time 20.049 min (Fig. 4A). Fractions were collected at retention times from 15 to 18 min (Fr. 1), 18 to 24 min (Fr. 2: the same retention time as the fraction of  $\beta$ 2-MG standard), 24 to 31 min (Fr. 3), 31 to 34 min (Fr. 4) and  $\beta$ 2-MG standard (Fig. 4B). Western blot analysis with mouse anti- $\beta$ 2-MG antibody was performed to a set of collected fractions. As expected, only a single specific band at  $\sim$ 12 kDa was detected with unpurified plasma, Fr. 2 and  $\beta$ 2-MG standard (Fig. 4C).

## Discussion

SELDI-TOF-MS has been successfully applied in biomarker detection and identification in ovarian, lung, colon and

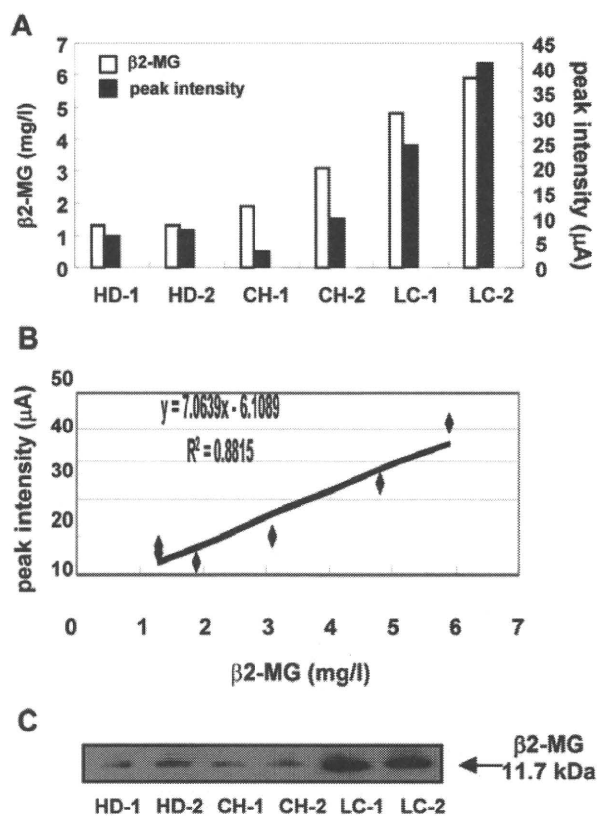


Figure 3. Prediction of 11.7 kDa protein peak as  $\beta$ 2-microglobulin ( $\beta$ 2-MG). (A) Correlation between peak intensity of 11.7 kDa in healthy donors (HD)-1, 2, patients with chronic hepatitis (CH)-1, 2, liver cirrhosis (LC)-1, 2 by SELDI-TOF-MS and concentration of  $\beta$ 2-MG by latex agglutination immunoassay (LAIA). (B) Correlation between 11.7 kDa proteins intensity by SELDI-TOF-MS and concentration of  $\beta$ 2-MG by LAIA are shown. The values are well correlated. (C) Western blot analysis of  $\beta$ 2-MG in two pairs of healthy donors (HD) and patients (CH, LC) plasma. The band of  $\beta$ 2-MG is shown with an arrow.

various cancers (22-25). In this study, in order to search for new biomarkers of CH and LC, we analyzed plasma using ProteinChip Array. We have identified  $\beta$ 2-MG as a new biomarker in CH and LC patients who have GPC3-specific CTLs.

$\beta$ 2-MG is a non-glycosylated polypeptide composed of 99 amino acids (26). It is one of the components of major histocompatibility complex HLA class I molecules on the cell surface of all nucleated cells (27). Increased serum levels of  $\beta$ 2-MG also occur in a variety of multiple myeloma, lymphoma, Sjögren's syndrome and amyloid fibrils in patients receiving hemodialysis for long periods (28-30). It has been reported that the level of serum  $\beta$ 2-MG was elevated in patients with chronic hepatitis C, HCV-related HCC when compared to HCV-negative patients or healthy donors (31,32). However, it has not yet been reported that the detection of  $\beta$ 2-MG in plasma may show the invisible HCC by CT or MRI and that high  $\beta$ 2-MG in the plasma is a risk factor for developing HCC.

The mechanism of the increase of  $\beta$ 2-MG in amyloid fibrils in patients receiving hemodialysis for long periods has been elucidated, but previously the relationship between mechanism in  $\beta$ 2-MG and risk for the developing of HCC has not been reported.

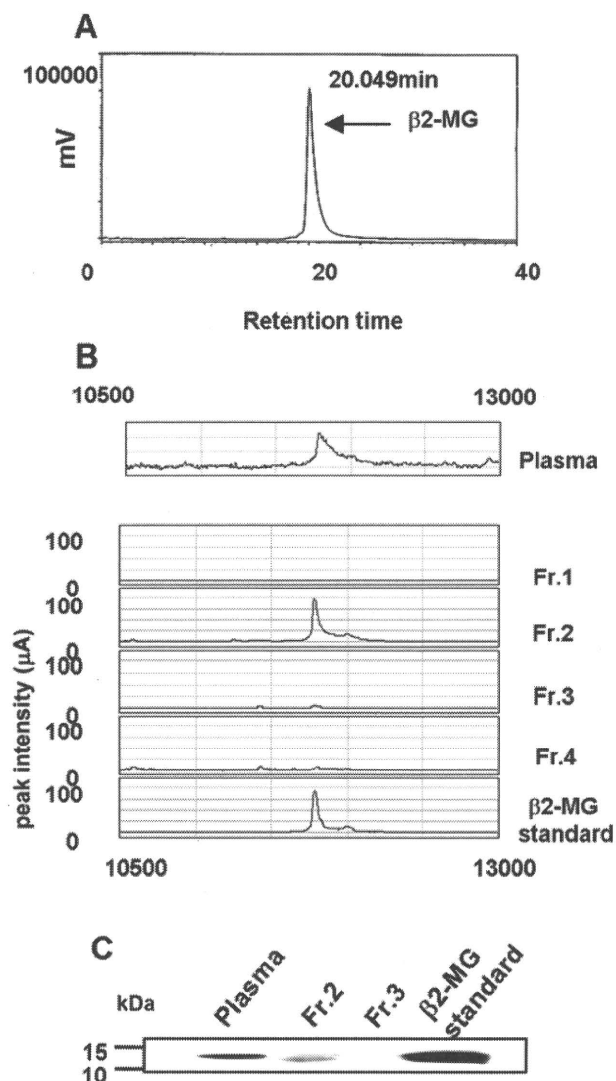


Figure 4. Fractionation of 11.7 kDa protein peak as  $\beta$ 2-MG. (A) High performance liquid chromatography (HPLC) of  $\beta$ 2-MG standard, absorbance at 280 nm. (B) Fractionation of HPLC by SELDI-TOF-MS. (C) Western blot analysis of each fractionation of HPLC and  $\beta$ 2-MG standard.

In this study, we showed that  $\beta$ 2-MG in plasma increased in CH and LC patients with GPC3-specific CTLs, and suggested that the  $\beta$ 2-MG in plasma could be a marker to detect imaging-invisible HCC. To confirm these results, we will evaluate the correlation between level of  $\beta$ 2-MG and risk for developing HCC in a large-scale analysis using many plasma samples of CH and LC patients. In addition, we aim at identifying a good diagnostic marker for imaging-invisible HCC.

#### Acknowledgements

We thank Ms. Kaori Matsuzawa for technical assistance and Ms. Frances Gleeson for assisting in the preparation of this manuscript. This study was supported in part by Health and Labor Science Research Grants for Research on Hepatitis from the Ministry of Health, Labor and Welfare, Japan.

## References

- Filmus J: The contribution of in vivo manipulation of gene expression to the understanding of the function of glypicans. *Glycoconj J* 19: 319-323, 2002.
- Nakatsura T, Yoshitake Y, Senju S, *et al*: Glypican-3, overexpressed specifically in human hepatocellular carcinoma, is a novel tumor marker. *Biochem Biophys Res Commun* 306: 16-25, 2003.
- Shirakawa H, Kuronuma T, Nishimura Y, *et al*: Glypican-3 is a useful diagnostic marker for a component of hepatocellular carcinoma in human liver cancer. *Int J Oncol* 34: 649-656, 2009.
- Hippo Y, Watanabe K, Watanabe A, *et al*: Identification of soluble NH2-terminal fragment of glypican-3 as a serological marker for early-stage hepatocellular carcinoma. *Cancer Res* 64: 2418-2423, 2004.
- Nakatsura T and Nishimura Y: Usefulness of the novel oncofetal antigen glypican-3 for diagnosis of hepatocellular carcinoma and melanoma. *BioDrugs* 19: 71-77, 2005.
- Shirakawa H, Suzuki H, Shimomura M, *et al*: Glypican-3 expression is correlated with poor prognosis in hepatocellular carcinoma. *Cancer Sci* 100: 1403-1407, 2009.
- Nakatsura T, Komori H, Kubo T, *et al*: Mouse homologue of a novel human oncofetal antigen, glypican-3, evokes T-cell-mediated tumor rejection without autoimmune reactions in mice. *Clin Cancer Res* 10: 8630-8640, 2004.
- Motomura Y, Senju S, Nakatsura T, *et al*: Embryonic stem cell-derived dendritic cells expressing glypican-3, a recently identified oncofetal antigen, induce protective immunity against highly metastatic mouse melanoma, B16-F10. *Cancer Res* 66: 2414-2422, 2006.
- Motomura Y, Ikuta Y, Kuronuma T, *et al*: HLA-A2 and -A24-restricted glypican-3-derived peptide vaccine induces specific CTLs: preclinical study using mice. *Int J Oncol* 32: 985-990, 2008.
- Parkin DM, Bray F, Ferlay J and Pisani P: Estimating the world cancer burden: Globocan 2000. *Int J Cancer* 94: 153-156, 2001.
- Schafer DF and Sorrell MF: Hepatocellular carcinoma. *Lancet* 353: 1253-1257, 1999.
- Williams R, Melia WM and Johnson PJ: Serum alpha-fetoprotein in hepatocellular carcinoma-value in diagnosis, and prognosis. *Ann Acad Med Singapore* 9: 245-250, 1980.
- Fujiyama S, Morishita T, Sagara K, Sato T, Motohara K and Matsuda I: Clinical evaluation of plasma abnormal prothrombin (PIVKA-II) in patients with hepatocellular carcinoma. *Hepatogastroenterology* 33: 201-205, 1986.
- Suehiro T, Sugimachi K, Matsumata T, Itasaka H, Taketomi A and Maeda T: Protein induced by vitamin K absence or antagonist II as a prognostic marker in hepatocellular carcinoma. Comparison with alpha-fetoprotein. *Cancer* 73: 2464-2471, 1994.
- Sherman M: Alpha-fetoprotein: an obituary. *J Hepatol* 34: 603-605, 2001.
- Hayashi E, Motomura Y, Shirakawa H, *et al*: Detection of glypican-3-specific CTLs in chronic hepatitis and liver cirrhosis. *Oncol Rep* 22: 149-154, 2009.
- Li J, Zhao J, Yu X, *et al*: Identification of biomarkers for breast cancer in nipple aspiration and ductal lavage fluid. *Clin Cancer Res* 11: 8312-8320, 2005.
- Zinkin NT, Grall F, Bhaskar K, *et al*: Serum proteomics and biomarkers in hepatocellular carcinoma and chronic liver disease. *Clin Cancer Res* 14: 470-477, 2008.
- Ishida Y, Yamashita K, Sasaki H, *et al*: Activation of transthyretin down-regulation in adult T-cell leukemia (ATL) occurs mainly through lectin pathway: a serum proteomic approach using mass spectrometry. *Cancer Lett* 271: 167-177, 2008.
- Liu L, Wang J, Liu B, *et al*: Serum levels of variants of complement system in adult T-cell leukemia (ATL) occurs mainly through lectin pathway: a serum proteomic approach using mass spectrometry. *Cancer Lett* 271: 167-177, 2008.
- Liu L, Wang J, Liu B, *et al*: Serum levels of variants of complement system in adult T-cell leukemia (ATL) occurs mainly through lectin pathway: a serum proteomic approach using mass spectrometry. *Cancer Lett* 271: 167-177, 2008.
- Navaglia F, Fogar P, Basso D, *et al*: Pancreatic cancer biomarkers discovery by surface-enhanced laser desorption and ionization time-of-flight mass spectrometry. *Clin Chem Lab Med* 47: 713-723, 2009.
- Kozak KR, Su F, Whitelegge JP, Faull K, Reddy S and Farias-Eisner R: Characterization of serum biomarkers for detection of early stage ovarian cancer. *Proteomics* 5: 4589-4596, 2005.
- Ward DG, Suggett N, Cheng Y, *et al*: Identification of serum biomarkers for colon cancer by proteomic analysis. *Br J Cancer* 94: 1898-1905, 2006.
- Ueda K, Fukase Y, Katagiri T, *et al*: Targeted serum glycoproteomics for the discovery of lung cancer-associated glycosylation disorders using lectin-coupled ProteinChip arrays. *Proteomics* 9: 2182-2192, 2009.
- Hegedus CM, Gunn L, Skibola CF, *et al*: Proteomic analysis of childhood leukemia. *Leukemia* 19: 1713-1718, 2005.
- Berggard I and Bearn AG: Isolation and properties of a low molecular weight beta-2-globulin occurring in human biological fluids. *J Biol Chem* 243: 4095-4103, 1968.
- Bjorkman PJ, Saper MA, Samraoui B, Bennett WS, Strominger JL and Wiley DC: Structure of the human class I histocompatibility antigen, HLA-A2. *Nature* 329: 506-512, 1987.
- Bataille R, Grenier J and Sany J: Beta-2-microglobulin in myeloma: optimal use for staging, prognosis, and treatment - a prospective study of 160 patients. *Blood* 63: 468-476, 1984.
- Ryu OH, Atkinson JC, Hoehn GT, Illei GG and Hart TC: Identification of parotid salivary biomarkers in Sjogren's syndrome by surface-enhanced laser desorption/ionization time-of-flight mass spectrometry and two-dimensional difference gel electrophoresis. *Rheumatology* 45: 1077-1086, 2006.
- Hagberg H, Killander A and Simonsson B: Serum beta 2-microglobulin in malignant lymphoma. *Cancer* 51: 2220-2225, 1983.
- Malaguarnera M, Restuccia S, Di Fazio I, Zoccolo AM, Trovato BA and Pistone G: Serum beta2-microglobulin in chronic hepatitis C. *Dig Dis Sci* 42: 762-766, 1997.
- Elgendy SM, Hessien M, Elsherbiny MM, Abd El-Salam IM, El-Attar IA and El-Asser Ael B: A panel of molecular markers in hepatitis C virus-related hepatocellular carcinoma. *J Egypt Natl Cancer Inst* 17: 270-278, 2005.

## Pluripotent stem cell-derived dendritic cells for immunotherapy

Satoru Senju<sup>1,2,3</sup>, Yusuke Matsunaga<sup>1,2</sup>, Satoshi Fukushima<sup>1,2</sup>, Shinya Hirata<sup>1</sup>, Hidetake Matsuyoshi<sup>1</sup>, Yasuharu Nishimura<sup>1</sup>

<sup>1</sup>The Department of Immunogenetics, Graduate School of Medical Sciences, Kumamoto University, Kumamoto, Japan, <sup>2</sup>Japan Science and Technology Agency, CREST, Tokyo, Japan, <sup>3</sup>iPS Cell Research Laboratory, Division of Stem Cell Research, Institute of Embryology and Genetics, Kumamoto University, Kumamoto, Japan

### TABLE OF CONTENTS

1. Abstract
2. Physiological functions and medical application of dendritic cells
3. Generation of dendritic cells from mouse ES cells
4. Mouse studies on the induction of anti-cancer immunity by genetically engineered ES-DC
5. Studies on the treatment of experimental autoimmune encephalomyelitis by ES-DC
6. Generation of DC from human es cells
7. Generation of DC from ips cells
8. Summary
9. References

## 1. ABSTRACT

Dendritic cell (DC) is regarded as a powerful means for anti-cancer immunotherapy. Clinical trials of cancer therapy with DC loaded with cancer antigens, such as tumor cell-lysates or HLA class I-binding antigenic peptides, have been conducted. Antigen-specific negative manipulation of the immune response by DC is a potential treatment for autoimmune diseases and also for control of allo-reactive immune responses in transplantation medicine. Currently, DC for clinical use are generated from peripheral blood monocytes of the patients. However, the number of monocytes obtained from the patients is limited and the potential of monocytes to differentiate into DC varies depending on the blood donor. Thus, the issue of limited cells is a serious obstacle for DC therapy. ES cells and iPS cells have pluripotency and unlimited propagation capacity and may be an ideal cell source for DC-therapy. Several groups, including us, have developed methods to generate DC from ES cells or iPS cells. This review introduces the studies on generation, characterization, and genetic modification of DC derived from ES cells or iPS cells.

## 2. PHYSIOLOGICAL FUNCTIONS AND MEDICAL APPLICATION OF DENDRITIC CELLS

Dendritic cells (DC) are the most potent antigen presenting cells and they are known to play a pivotal role in the development of immune responses. DC, a type of hematopoietic cell, exist in various tissues in the body. Upon invasion of exogenous antigens to the tissues, tissue-localized DC capture the antigen through phagocytosis, receptor-mediated endocytosis, or pinocytosis. DC digest the ingested protein antigen to produce oligo peptides. In the steady state, DC are efficient in capturing antigens and similar to macrophages. However, after exposure to the constituents of exogenous micro-organisms, such as bacteria and fungi, that transduce danger signals, DC become potent T cell-stimulators. Accompanying this functional change termed "maturation", their morphology changes and DC begin to form dendritic protrusions. At the molecular level, they up-regulate the cell surface expression of MHC class I and class II, CD80, CD86, and CD40, molecules involved in the T-cell stimulation or DC-T cell interaction, and they produce cytokines such as TNF- $\alpha$  and IL-12.

## Pluripotent stem cell-derived dendritic cells

After antigen capture, DC migrate to the draining lymphoid tissues such as the lymph nodes. In the lymphoid tissues, DC present the antigenic peptides in the context of MHC class I and MHC class II. Circulating T cells migrate from the blood stream into the T-cell area of the lymph nodes and recognize the complex of MHC plus peptide on the cell surface of DC. Importantly, mature DC are very potent in stimulating T cells, and can prime naive T cells that have not yet experienced antigenic stimulation. Antigen-specific T cells stimulated by DC proliferate vigorously and produce various kinds of cytokines that stimulate immune cells, consequently resulting in the development of an antigen-specific immune response. Therefore, the stimulation of naive antigen-specific T cells by antigen-presenting DC is a crucial step for the initiation of immune responses.

In addition, several studies have indicated that DC are involved also in the induction and maintenance of immunological self-tolerance (1). The mechanisms of negative regulation of immune response by DC include expansion of CD4<sup>+</sup> CD25<sup>+</sup> regulatory T cells (2) (3) and catabolism of tryptophan (4). Collectively, DC physiologically regulate immunity both positively and negatively.

Because DC are immune-regulating cells, the application of DC for clinical immunotherapy is an attractive option. Studies in mice have demonstrated that cellular vaccination with antigen-bearing DC is efficient in stimulating antigen-specific T cell responses (5). DC are now regarded as a powerful tool for anti-cancer immunotherapy. Genetically engineered DC with enhanced T cell-stimulating capacity should yield an even more powerful anti-cancer therapy. To treat patients who suffer from autoimmune or inflammatory diseases, it is desirable to down-modulate immune responses in an antigen-specific manner without causing systemic immune suppression. GVHD and graft rejection are the most serious problems in transplantation medicine, and control of allo-reactive immune response is the key to overcome them. Antigen-specific negative regulation by DC is considered to be a promising means also in the field of transplantation medicine (6).

Within the past decade, various clinical anti-cancer therapy trials using DC have been conducted. Cancer antigens such as tumor cell-lysates or HLA class I-binding antigenic peptides are loaded onto DC and transferred to the patients, where a cancer antigen-specific T cell response is expected, in particular a cytotoxic T lymphocyte (CTL) response. DC used for clinical anti-cancer therapy are generated from peripheral blood monocytes of cancer patients. In order to obtain sufficient number of monocytes, apheresis procedure is used to isolate white blood cells from a large volume of patient blood, and subsequently monocytes are isolated from the white blood cell population. However, the number of monocytes obtained from the peripheral blood is limited even with apheresis. In addition, the DC-differentiation potential of monocytes varies depending on the blood donor. Therefore, this continuing cell source limitation remains one of the major obstacles for DC therapy.

## 3. GENERATION OF DENDRITIC CELLS FROM MOUSE ES CELLS

ES cells are characterized by pluripotency and infinite propagation capacity. Therefore, if we can use ES cells as a source of DC, the cell source limitation for DC therapy can be overcome. We and others developed methods to generate DC from mouse ES cells, and the functions of ES cell-derived DC (esDC or ES-DC), including the stimulation of allogeneic T cells, processing and presentation of antigenic proteins, and migration upon *in vivo* transfer, were comparable to those of DC generated *in vitro* from bone marrow cells (7) (8).

For hematopoietic differentiation of ES cells *in vitro*, Embryoid Body (EB)-mediated methods and the feeder-coculture method have been established. OP9 is a bone marrow stromal cell line that originated from a Macrophage Colony Stimulating Factor (M-CSF)-defective *op/op* mouse, and generation of various hematopoietic cells from ES cells using OP9 cells as feeder cells has been reported, with ES cells yielding granulocytes, erythrocytes, and B lymphocytes (9). The method has been applied to a number of molecular and cellular analyses for investigations of hematopoiesis.

In 2000, Fairchild and colleagues reported the first study on the generation of functional dendritic cells from mouse ES cells (7). Their method is based on the formation of EB. At the initiation of the differentiation, ES cells were grown in suspension to allow EB formation. After culturing for 14 days, EB were cultured in medium supplemented with Granulocyte/Macrophage Colony Stimulating Factor (GM-CSF) and Interleukin (IL)-3. The combination of these 2 cytokines uniquely supported the development of cells with an appearance suggestive of DC within 4 days of culture. These cells expanded rapidly over the following 7–10 days to form lightly adherent clusters, reminiscent of those observed in cultures of immature DC derived from bone marrow cells. The cells released from these clusters seeded uncolonised areas of the dish and displayed typical dendritic morphology, and they were designated as esDC.

A flowcytometry analysis showed that esDC expressed CD11c, MHC class II, CD40, CD54, CD80, and CD86. On the other hand, expression of CD8 and Dec-205 (CD205) was not observed, thus suggesting that esDC were derived from a myeloid lineage. RT-PCR analysis revealed that esDC expressed mRNAs for IL-20, IL-18, and IL-1 $\beta$  converting enzyme (ICE). They possessed a potent capacity to process a protein antigen, Hen Egg Lysozyme (HEL), and present the resultant epitope in the context of H-2E<sup>k</sup>, as demonstrated by the response of co-cultured antigen-specific T cell hybridoma. Upon co-culture with allogeneic T cells, esDC stimulated the T cells to vigorously proliferate, indicating that esDC had a strong T cell-stimulating capacity. Collectively, the ES cell-derived cells with DC-like morphology were fully functional in antigen-presentation and T cell-stimulation.

Hematopoietic differentiation of mouse ES cells by co-culture with M-CSF-deficient mouse stromal

## Pluripotent stem cell-derived dendritic cells

cells, OP9, was developed by Nakano and colleagues in 1994 (9). Similarly, we established a method to generate dendritic cells from mouse ES cells by aid of OP9 stromal cells (8).

In our method, mouse ES cells were transferred onto the OP9 cell layers and cultured in  $\alpha$ MEM medium containing fetal calf serum without exogenous cytokines. ES cell colonies changed their morphology from undifferentiated dome-like structure to a differentiated flattened morphology in 4 to 5 days. To induce DC differentiation, the mesodermally differentiated ES cell-derived cells harvested from a 5 or 6 -day culture on OP9 feeder layers were cultured on fresh OP9 cell layers in the presence of exogenous GM-CSF. In comparison to the culture without exogenous GM-CSF, addition of this cytokine resulted in appearance of a larger number of floating cells in a few days, indicating that cells grew in response to GM-CSF.

At day 3 following transfer, we observed many round and relatively homogenous floating cells, most of which expressed CD11b, thus suggesting their commitment to the myeloid cell lineage. On day 10 or 11, we recovered the cells floating or loosely adherent to feeder cells and transferred them to bacteriologic Petri dishes without feeder cells. After this passage, approximately half of the transferred cells adhered to the dish surface and resembled macrophages. In addition, clusters of floating cells were observed after days 17 to 19, and the cell clusters gradually increased. The cells were of irregular shape and possessed protrusions. We designated them ES-DC. Addition of maturation stimuli, IL-4, TNF- $\alpha$ , plus anti-CD40 antibody or LPS, to the cells resulted in typical morphology of mature DC with long protrusions.

ES-DC were positive for MHC class I, MHC class II, CD80, CD86, CD40, DEC205, and CD11c. They had the capacity to process and present protein antigens to T cells. After exposure to maturation stimuli, the expression of MHC class I, MHC class II, CD80, CD86 and CD40 were increased. Mature ES-DC were highly competent in stimulating T cells, based on the proliferative response of the allogeneic T cells co-cultured with ES-DC. ES-DC were positive for F4/80 and CD11b and negative for CD8, thereby suggesting that they were of myeloid lineage.

### 4. MOUSE STUDIES ON THE INDUCTION OF ANTI-CANCER IMMUNITY BY GENETICALLY ENGINEERED ES-DC

Non-virus-mediated methods for gene transfer, including targeted gene integration and procedures for isolation of appropriate transfectant cell clones, have been established for ES cells. We developed a strategy for the genetic modification of mouse ES-DC. Expression vectors were introduced into ES cells by electroporation and subsequently the transfected ES cell clones were induced to differentiate into ES-DC. The capacity of ES-DC introduced with an ovalbumin (OVA)-expression vector to prime OVA-specific T cells *in vivo* was demonstrated (8).

In anti-cancer immunotherapy with administration of DC, the efficiency of T cell-priming *in vivo* by transferred DC is critical. T cell-priming *in vivo* by injected DC should depend on their encounter with T cells. When exogenous antigen was injected intracutaneously, about 25% of the DC capturing the antigen migrated to the T cell area of draining lymph nodes (10), where they presented the antigen to prime naive T cells specific to the antigen. On the contrary, when BM-DC or splenic DC were transferred exogenously by s.c. or i.p. injection, the absolute number of the DC found within the draining lymph nodes represented only a small proportion (0.1-1%) (11) (12). It has been also reported that almost all the transferred DC remained at the s.c. immunization site up to 24 hours after transfer in the patients who received DC therapy (13). The inefficient migration of the exogenous DC to lymphoid organs may lower the frequency of their encounter with T cells. It may be possible to improve the efficacy of exogenously transferred DC to prime immune responses by augmenting their encounter with T cells. We attempted to improve the capacity of DC to prime T cells *in vivo* by genetic modification to express a chemokine with T cell-attracting properties. We generated double-transfectant DC expressing a chemokine along with OVA by sequential transfection of ES cells with 2 kinds of expression vectors and then induction of DC differentiation (14).

Several kinds of chemokines with the capacity to attract T cells are produced by different cell types. CCL21 (Secondary lymphoid tissue chemokine, SLC) is produced in T cell regions of lymph nodes and spleen and also by high endothelial venules in lymph nodes. SLC chemoattracts T cells, NK cells, B cells, and DC. CXCL9 (Monokine induced by IFN- $\gamma$ , Mig) is produced by macrophages and binds to the chemokine receptor CXCR3, which mediates the recruitment of predominantly Th1 cells and activated NK cells. XCL1 (Lymphotactin, Lptn), produced by activated T cells, has chemoattractive properties on CD4<sup>+</sup> and CD8<sup>+</sup> T cells and on NK cells. We comparatively evaluated the effect of these 3 kinds of chemokines.

All three types of double-transfected ES-DC primed OVA-specific CTL *in vivo* more efficiently than did ES-DC expressing only OVA, and co-expression of SLC or Lptn was more effective than that of Mig. Immunization with DC expressing OVA plus SLC or Mig provided protection from OVA-expressing tumor cells more potently than that with OVA only, and SLC was more effective than Mig. Conversely, the co-expression of Lptn gave no additive effect on protection from the tumor. Collectively, among the three chemokines, expression of SLC was the most effective in enhancing anti-tumor immunity by transferred ES-DC *in vivo*.

NKT cells are a group of T cells expressing invariant T cell receptors and recognize lipid ligands, for example  $\alpha$ -galactosylceramide ( $\alpha$ GalCer), in the context of CD1d, a nonclassical MHC class I molecule. On stimulation with  $\alpha$ GalCer, NKT cells rapidly produce large amount of cytokines, resulting in activation of conventional T cells and NK cells. ES-DC loaded with  $\alpha$ GalCer potently



## Pluripotent stem cell-derived dendritic cells

stimulated NKT cells, and  $\alpha$ GalCer-loaded ES-DC expressing OVA elicited anti-tumor activity against peritoneally injected tumor cells expressing the OVA antigen (15). Expression of SLC with OVA further enhanced the anti-tumor activity of  $\alpha$ GalCer-loaded ES-DC expressing OVA. These results suggest that  $\alpha$ GalCer-loaded ES-DC expressing tumor-associated antigen along with SLC can stimulate multiple subsets of effector cells to induce a potent therapeutic effect against peritoneally disseminated tumor cells.

The anti-tumor immunity obtained by ES-DC directed to natural tumor antigens was examined. Glypican-3 is a tumor antigen expressed in hepatocellular carcinoma and melanoma (16) (17). ES-DC expressing Glypican-3 could induce anti-tumor activity against Glypican-3-transfected tumor cells and also against the mouse melanoma B16-F10, which endogenously expresses Glypican-3 (18). Immunization of mice with a mixture of ES-DC expressing GP100, SPARC, and Tyrosinase-related protein-2 induced potent immunity against B16-BL6 melanoma in the peritoneal dissemination model and also lung metastasis models (19). Collectively, we have demonstrated that genetically modified ES-DC are highly potent in induction of anti-tumor immunity in mouse models.

## 5. STUDIES ON THE TREATMENT OF EXPERIMENTAL AUTOIMMUNE ENCEPHALOMYELITIS BY ES-DC

We investigated whether we could negatively modulate immune responses with genetically modified ES-DC expressing specific antigen along with immune-suppressive molecules. Experimental Autoimmune Encephalomyelitis (EAE), characterized by neurological impairment resulting from de-myelination in the central nervous system caused by activated myelin antigen-reactive CD4<sup>+</sup> T cells, is induced by immunization with myelin antigens such as Myelin Oligodendrocyte Glycoprotein (MOG) or Myelin Basic Protein (MBP). We attempted to prevent MOG-induced EAE by pre-treating mice with genetically modified DC presenting a MOG peptide in the context of MHC class II molecules and simultaneously expressing molecules with T cell-suppressive property (20).

For efficient presentation of the MOG peptide in the context of MHC class II molecules, we used a previously devised expression vector in which cDNA for human MHC class II-associated invariant chain (Ii) was mutated to contain antigenic peptide in the CLIP (class II-associated invariant chain peptide) region. An epitope inserted in this vector is efficiently presented in the context of co-expressed MHC class II molecules (21).

The T cell-suppressive molecules we tested were TNF-Related Apoptosis-Inducing Ligand (TRAIL) and Programmed Death-1 Ligand (PD-L1). TRAIL is a member of the TNF superfamily and is constitutively expressed in a variety of cell types including lymphocytes, NK cells, and neural cells. TRAIL<sup>-/-</sup> mice are hypersensitive to collagen-induced arthritis and streptozotocin-induced diabetes. PD-L1, a ligand for PD-1

and member of the CD28/CTLA-4 family, is expressed on DC, IFN- $\gamma$ -treated monocytes, activated T cells, placental trophoblasts, myocardial endothelium, and cortical thymic epithelial cells. PD-1<sup>-/-</sup> mice spontaneously develop a lymphoproliferative / autoimmune disease, a lupus-like disease, arthritis, and cardiomyopathy (22). Thus, abrogation of either of these two molecules make mice autoimmune-prone, suggesting that these molecules play significant roles in maintaining immunological self-tolerance in physiological situations.

ES cells were sequentially transfected with an expression vector for TRAIL or PD-L1 and an MHC class II-associated invariant chain-based MOG epitope-presenting vector. Subsequently, double-transfectant ES cell clones were induced to differentiate into ES-DC expressing the introduced genes, ES-DC-TRAIL/MOG and PDL1/MOG.

The severity of MOG peptide-induced EAE was significantly reduced in mice pre- or post-treated with ES-DC-TRAIL/MOG or ES-DC-PDL1/MOG. The severity of myelin basic protein-induced EAE was also reduced by ES-DC-TRAIL/MOG but not by PD-L1/MOG. In addition, adoptive transfer of CD4<sup>+</sup> T cells from ES-DC-TRAIL/MOG-treated mice protected the recipient mice from subsequent induction of EAE, thus suggesting the involvement of CD4<sup>+</sup> T cells with immune-regulatory function in the disease-preventative effect of ES-DC-TRAIL-MOG (23). These results demonstrate the prevention of autoimmune disease by treatment with ES-DC expressing target antigen along with immune-suppressive molecules, and also suggest the potential benefits of future clinical application of this technology.

Currently, corticosteroids and other immune suppressants are commonly used for treatment of subjects with autoimmune diseases. The medication with these drugs often leads to systemic immune suppression and consequent opportunistic infections. Thus, it is desirable to develop a therapeutic means to down-modulate immune responses in an antigen-specific manner without causing systemic immune suppression. Our results demonstrated that genetically modified ES-DC expressing antigenic protein along with immune-regulatory molecules control autoimmunity without causing general immune suppression.

In the clinical settings, a larger number of immune cells may be necessary to control autoimmunity by administration of immune regulatory cells. Although *in vitro* expanded antigen-specific T cells with regulatory function (Treg cells) may be useful for such purpose, it is currently difficult to expand human Treg cells specific to a certain antigen. On the other hand, unlimited number of DC with immune regulatory functions can be generated by using pluripotent stem cells as cell source.

## 6. GENERATION OF DC FROM HUMAN ES CELLS

In 2004, Zhan and colleagues reported the generation of functional antigen presenting cells from

## Pluripotent stem cell-derived dendritic cells

human ES cells (24). Similar to the method of generating dendritic cells from mouse ES cells as described by Fairchild and colleagues, Zhan and colleagues induced the formation of EB by suspension cultures of human ES cells, and then cultured the EB in the presence of hematopoietic cytokines to generate leukocytes with antigen presenting functions.

In their method, human ES cells were cultured at a high density on Matrigel before induction of differentiation. After reaching confluency, undifferentiated ES cell colonies were harvested with dispase. Cell colonies were cultured in medium for induction of differentiation with fetal calf serum and without basic Fibroblast Growth Factor (bFGF). To inhibit adherence to the plastic surface of the culture plates, ES cell colonies were plated in low-attachment plates. Cystic embryonic bodies emerged after 5-20 days in the suspension culture. When harvested at days 10-20, 50-80% of EB were cystic, each EB containing approximately 10,000 cells.

Whole EB formed in suspension were transferred onto tissue culture plates and allowed to differentiate into hematopoietic and other cell types. To stimulate production of hematopoietic progenitor cells and also dendritic cells, they added Stem Cell Factor (SCF), FLT3-ligand, and Thrombopoietin (TPO), cytokines widely used to maintain human postnatal hematopoietic stem cells. To expand dendritic cell-committed progenitor cells, IL-3, GM-CSF, and IL-4 were added. A part of the resulting leukocytes expressed MHC class II, CD80, CD86, CD40, and CD83. The MHC class II<sup>+</sup> leukocytes resembled dendritic cells and macrophages. They functioned as stimulator cells capable of eliciting allogeneic T-cell responses in culture.

After the above study was published, Su and colleagues and Tseng and colleagues reported similar methods of EB-mediated generation of DC from human ES cells (25) (26).

We generated ES-DC from human ES cells by using OP9 feeder layers (27). The protocol for the differentiation culture to generate ES-DC from human ES cells developed in our study is composed of 3 steps. At the beginning of the differentiation culture, undifferentiated ES cells were plated on OP9 feeder cell layers. Thereafter, the ES cells grew and formed clusters composed mainly of epithelial cell-like large flat cells. Clusters of round, cobble stone-like cells also appeared at about day 8. The size and number of round cell clusters gradually increased, and, by around day 15, covered 20-30 % of the surface area.

On days 15-18 of step 1, cells were recovered from the dishes using trypsin/EDTA and non-adherent cells were isolated, and then the cells were seeded onto freshly prepared OP9 cell layers, beginning step 2. The culture medium containing GM-CSF and M-CSF was used in this step. Thereafter, small round cells, floating or loosely adhering to the feeder layer, appeared and gradually increased in number. The growth of the round cells depended primarily upon GM-CSF, thus suggesting that

they grew in response to that factor. These cells expressed CD31, CD43, and CD11b, thus collectively indicating a commitment to a myeloid cell lineage.

On days 7-10 of step 2, the floating or loosely adherent cells were harvested by pipetting and they were transferred to Petri dishes without feeder cells and cultured in the presence of GM-CSF and IL-4 (step 3). Following this passage, the cells changed their morphology from round to irregular shape, and some cells displayed protrusions. Cells with protrusions gradually increased and more than 50% of the cells exhibited a DC-like irregular shape after 2-3 days. The floating cells expressed CD86 and CD40, but scarcely expressed CD80 and CD83.

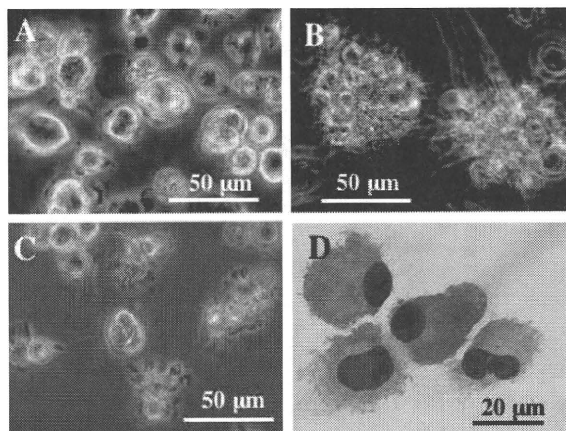
The simultaneous addition of TNF- $\alpha$ , LPS, soluble CD40-ligand, and IL-4 to the cells induced maturation. Flow cytometric analysis revealed increased expression of CD86 and the expression of CD80, CD83, and HLA-DR. Collectively, the cells exhibited the characteristics of DC in morphology and expression of surface molecules, and thus they were designated as human ES-DC. OK-432 is a Streptococcus-derived immunotherapeutic agent and known to be very potent in stimulating dendritic cells to produce IL-12. The production of TNF- $\alpha$  was profoundly induced by either LPS or OK432. OK432 but not LPS induced the production of IL-12, consistent with reports that OK432 is an efficient inducer of IL-12 (28) (29). Generation of ES-DC from the non-human primate, cynomolgus monkey, ES cells was also achieved by this method (27).

Slukvin and colleagues preceded us in reporting a method for generation of human ES cell-derived DC using OP9 feeder layers (30). Slukvin's method is also composed of 3 steps and is different from ours in that OP9 feeders were used only in the first step.

The capacity of the human ES-DC to stimulate T cells was examined based on the proliferative response of allogeneic T cells co-cultured with ES-DC. ES cell-derived floating cells recovered from the 2nd step (pre-ES-DC) showed little capacity to induce a response of T cells. In contrast, ES-DC following the 3rd step before the addition of maturation stimuli (immature ES-DC) showed a weak but definite stimulation, and following exposure to maturation stimuli (mature ES-DC) showed a strong capacity to stimulate allogeneic T cells to proliferate. The antigen presenting capacity of ES-DC was confirmed by their ability to present Glutamic Acid Decarboxylase 65 (GAD65) antigen to GAD65-specific HLA-DR53-restricted human T cell clone, SA32.5 (31).

Su and colleagues introduced mRNA for green fluorescence protein (GFP) or prostate-specific antigen (PSA) into DC generated from human ES cells (25). They showed induction of CTL specific to the antigens by the *in vitro* stimulation of semi-allogeneic HLA-A\*0201<sup>+</sup> donor-derived T cells with genetically modified DC.

## Pluripotent stem cell-derived dendritic cells



**Figure 1.** Morphology of mouse iPS-DC. Phase-contrast images of immature iPS-DC (A) and mature iPS-DC (B, C) are shown. (D) Mature iPS-DC on a glass slide stained with May-Grunwald-Giemsa are shown.

### 7. GENERATION OF DC FROM IPS CELLS

As described so far, we can generate ES-DC from both mouse and human ES cells. Mouse systems have demonstrated the induction of anti-cancer immunity and the prevention of autoimmune disease by *in vivo* administration of genetically engineered ES-DC.

Considering the future clinical application of ES-DC technology, however, the unavailability of human ES cells genetically identical to the patients to be treated is a problem. Alloreactivity caused by differences in the genetic background between human ES cell lines and the recipients is a critical problem in medical application of ES-DC. In addition, ethical concerns related to the use of human ES cells are anticipated to be serious obstacles, which will hinder the realization of the medical use of human ES-DC.

It was recently revealed that ES cell-like pluripotent stem cells, designated as induced pluripotent stem (iPS) cells, can be generated by the simultaneous introduction of several factors into somatic cells, for both mice and humans (32) (33) (34). The issue of histoincompatibility between patients to be treated and ES cells may be overcome by the generation of iPS cells from somatic cells of the patients such as fibroblasts or blood cells. The major ethical issues related to human ES cells may be avoided by the use of iPS cell-technology, because the use of human embryos is not necessary for the generation of iPS cells.

We recently reported the generation and characterization of DC derived from mouse iPS cells (35). The iPS cell-derived DC (iPS-DC) possessed the characteristics of DC including morphology (Figure 1), the capacity for T cell-stimulation, antigen-processing and presentation, and cytokine production. There was some delay in the kinetics of differentiation process of iPS cells, in comparison to the mouse ES cell lines that we have tested. On the other hand, the yield of differentiated cells

was higher than that in the cases of most mouse ES cell lines. Genetically modified iPS-DC expressing antigenic protein primed T cells specific to the antigen *in vivo* and elicited efficient antigen-specific anti-tumor immunity.

Using the OP9-co-culture-based method, Choi and colleagues generated various myelomonocytic cells including DC, macrophages, osteoclasts, neutrophils, and eosinophils from human iPS cells (36). We have also recently generated iPS-DC from human iPS cells. Human iPS-DC exhibited characteristics of DC, as human ES-DC do, in morphology, surface molecules, and T cell-stimulating capacity. Theoretically, we can now generate an infinite number of DC genetically identical to the patients by using iPS cells generated from relatively small numbers of somatic cells of the patients, such as dermal fibroblasts or blood cells.

The iPS cell technology provides unlimited cell source of DC for immune therapy. However, safety issues related to tumor formation need to be clearly resolved before clinical applications. Currently, we are using mouse-derived OP9 feeder cells and culture media containing fetal calf serum in the differentiation culture to generate DC from human iPS cells or ES cells. For the clinical application of iPS-DC, it is also desirable to develop a fully xeno-free culture procedure to generate iPS-DC.

We will circumvent the issue of histocompatibility between patients and DC to be used for the treatment, if iPS cell lines are generated from somatic cells of the patients. However, generation of clinical grade iPS cells for individual patients may be too costly, time consuming, and labor-intensive to be broadly applied. This may be resolved by the establishment of banks of iPS cells covering major HLA-haplotypes in each ethnic group (37). A bank of iPS cells with specific HLA-A, HLA-B, and HLA-DR haplotypes is feasible and may be more realistic resolution of the issue of histocompatibility than “fully personalized” iPS cells. According to the calculation by Nakatsuji and colleagues, a cell bank size of 30 iPS cell lines homozygous for the HLA haplotype would be able to find a three-locus match in 82.2 % of the Japanese population. Their calculation also indicates that at least one homozygote for each of 30 different haplotypes can be identified by examining 15,000 individuals in an HLA-type database.

### 8. SUMMARY

Because of the activity of DC as immune-regulatory cells, immune-modulation therapy by transfer of DC is regarded as promising to treat various diseases. In particular, DC-based cellular vaccination is considered to be a powerful means for active immunization therapy for cancer. ES cells possess a potential to differentiate into various kinds of cells and also an unlimited propagation capacity. Several groups including us have established methods to generate DC from mouse or human ES cells. Using mouse models, we have demonstrated the usefulness of genetically modified ES cell-derived DC in the induction of anti-cancer immunity and also in the control of

## Pluripotent stem cell-derived dendritic cells

autoimmune disease. Recently, it has been discovered that ES cell-like pluripotent stem cells can be generated by introduction of several reprogramming factors into somatic cells, yielding iPS cells. DC can be generated from mouse and human iPS cells by the methods developed for ES cells. By the use of iPS cells instead of ES cells as the cell source of DC, we can overcome the issues of histoincompatibility and resolve ethical concerns related to human ES cells. For the clinical application of iPS cell-derived DC, it is necessary to develop a xeno-free culture procedure to generate iPS-DC.

### 9. REFERENCES

1. Belz GT, GM Behrens, CM Smith, JF Miller, C Jones, K Lejon, CG Fathman, SN Mueller, K Shortman, FR Carbone, WR Heath: The CD8alpha(+) dendritic cell is responsible for inducing peripheral self-tolerance to tissue-associated antigens. *J Exp Med* 196, 1099-1104 (2002)
2. Yamazaki S, T Iyoda, K Tarbell, K Olson, K Velinzon, K Inaba, R M Steinman: Direct expansion of functional CD25+ CD4+ regulatory T cells by antigen-processing dendritic cells. *J Exp Med* 198, 235-247 (2003)
3. Yamazaki S, K Inaba, K V Tarbell, RM Steinman: Dendritic cells expand antigen-specific Foxp3+ CD25+ CD4+ regulatory T cells including suppressors of alloreactivity. *Immunol Rev* 212, 314-329 (2006)
4. Fallarino F, U Grohmann, KW Hwang, CO Rabona, CVacca, R Bianchi, ML Belladonna, MC Fioretti, ML Alegre, P Puccetti: Modulation of tryptophan catabolism by regulatory T cells. *Nat Immunol* 4, 1206-1212 (2003)
5. Banchereau J, AK Palucka: Dendritic cells as therapeutic vaccines against cancer. *Nat Rev Immunol* 5, 296-306 (2005)
6. Steinman RM, J Banchereau: Taking dendritic cells into medicine *Nature* 449, 419-426 (2007)
7. Fairchild PJ, FA Brook, RL Gardner, L Graca, V Strong, Y Tone, M Tone, K F Nolan, H Waldmann: Directed differentiation of dendritic cells from mouse embryonic stem cells. *Curr Biol* 10, 1515-1518 (2000)
8. Senju S, S Hirata, H Matsuyoshi, M Masuda, Y Uemura, K Araki, K Yamamura, Y Nishimura: Generation and genetic modification of dendritic cells derived from mouse embryonic stem cells. *Blood* 101, 3501-3508 (2003)
9. Nakano T, H Kodama, T Honjo: Generation of lymphohematopoietic cells from embryonic stem cells in culture. *Science* 265, 1098-1101 (1994)
10. Randolph GJ, K Inaba, DF Robbiani, RM Steinman, WA Muller: Differentiation of phagocytic monocytes into lymph node dendritic cells *in vivo*. *Immunity* 11, 753-761 (1999)
11. Eggert AA, MW Schreurs, OC Boerman, WJ Oyen, AJ de Boer, CJ Punt, CG Figdor, GJ Adema: Biodistribution and vaccine efficiency of murine dendritic cells are dependent on the route of administration. *Cancer Res* 59, 3340-3345 (1999)
12. Smith A L, B Fazekas de St Groth: Antigen-pulsed CD8alpha+ dendritic cells generate an immune response after subcutaneous injection without homing to the draining lymph node. *J Exp Med* 189, 593-598 (1999)
13. Morse MA, RE Coleman, G Akabani, N Niehaus, D Coleman, HK Lyerly: Migration of human dendritic cells after injection in patients with metastatic malignancies. *Cancer Res* 59, 56-58 (1999)
14. Matsuyoshi H, S Senju, S Hirata, Y Yoshitake, Y Uemura, Y Nishimura: Enhanced priming of antigen-specific CTLs *in vivo* by embryonic stem cell-derived dendritic cells expressing chemokine along with antigenic protein, application to antitumor vaccination. *J Immunol* 172, 776-786 (2004)
15. Matsuyoshi H, S Hirata, Y Yoshitake, Y Motomura, D Fukuma, A Kurisaki, T Nakatsura, Y Nishimura, S Senju: Therapeutic effect of alpha-galactosylceramide-loaded dendritic cells genetically engineered to express SLC/CCL21 along with tumor antigen against peritoneally disseminated tumor cells. *Cancer Sci* 96, 889-896 (2005)
16. Nakatsura T, Y Yoshitake, S Senju, M Monji, H Komori, Y Motomura, S Hosaka, T Beppu, T Ishiko, H Kamohara, H Ashihara, T Katagiri, Y Furukawa, S Fujiyama, M Ogawa, Y Nakamura, Y Nishimura: Glypican-3, overexpressed specifically in human hepatocellular carcinoma, is a novel tumor marker. *Biochem Biophys Res Commun* 306, 16-25 (2003)
17. Nakatsura T, T Kageshita, S Ito, K Wakamatsu, M Monji, Y Ikuta, S Senju, T Ono, Y Nishimura: Identification of glypican-3 as a novel tumor marker for melanoma. *Clin Cancer Res* 10, 6612-6621 (2004)
18. Motomura Y, S Senju, T Nakatsura, H Matsuyoshi, S Hirata, M Monji, H Komori, D Fukuma, H Baba, Y Nishimura: Embryonic stem cell-derived dendritic cells expressing glypican-3, a recently identified oncofetal antigen, induce protective immunity against highly metastatic mouse melanoma, B16-F10. *Cancer Res* 66, 2414-2422 (2006)
19. Fukushima S, S Hirata, Y Motomura, D Fukuma, Y Matsunaga, Y Ikuta, T Ikeda, T Kageshita, H Ihn, Y Nishimura, S Senju: Multiple antigen-targeted immunotherapy with alpha-galactosylceramide-loaded and genetically engineered dendritic cells derived from embryonic stem cells. *J Immunother* 32, 219-231 (2009)
20. Hirata S, S Senju, H Matsuyoshi, D Fukuma, Y Uemura, Y Nishimura: Prevention of Experimental Autoimmune Encephalomyelitis by Transfer of Embryonic Stem Cell-Derived Dendritic Cells Expressing Myelin Oligodendrocyte Glycoprotein Peptide along with TRAIL or Programmed Death-1 Ligand. *J Immunol* 174, 1888-1897 (2005)

## Pluripotent stem cell-derived dendritic cells

21. Fujii S, S Senju, Y Z Chen, M Ando, S Matsushita, Y Nishimura: The CLIP-substituted invariant chain efficiently targets an antigenic peptide to HLA class II pathway in L cells. *Hum Immunol* 59, 607-614 (1998)
22. Okazaki T, T Honjo: The PD-1-PD-L pathway in immunological tolerance. *Trends Immunol* 27, 195-201 (2006)
23. Hirata S, H Matsuyoshi, D Fukuma, A Kurisaki, Y Uemura, Y Nishimura, S Senju: Involvement of regulatory T cells in the experimental autoimmune encephalomyelitis-preventive effect of dendritic cells expressing myelin oligodendrocyte glycoprotein plus TRAIL. *J Immunol* 178, 918-925 (2007)
24. Zhan X, G Dravid, Z Ye, H Hammond, M Shamblott, J Gearhart, L Cheng: Functional antigen-presenting leucocytes derived from human embryonic stem cells *in vitro*. *Lancet* 364, 163-171 (2004)
25. Su Z, C Frye, KM Bae, V Kelley, J Vieweg: Differentiation of human embryonic stem cells into immunostimulatory dendritic cells under feeder-free culture conditions. *Clin Cancer Res* 14, 6207-6217 (2008)
26. Tseng SY, KP Nishimoto, KM Silk, AS Majumdar, GN Dawes, H Waldmann, PJ Fairchild, JS Lebkowski, A Reddy: Generation of immunogenic dendritic cells from human embryonic stem cells without serum and feeder cells. *Regen Med* 4, 513-526 (2009)
27. Senju S, H Suemori, H Zembutsu, Y Uemura, S Hirata, D Fukuma, H Matsuyoshi, M Shimomura, M Haruta, S Fukushima, Y Matsunaga, T Katagiri, Y Nakamura, M Furuya, N Nakatsuji, Y Nishimura: Genetically manipulated human embryonic stem cell-derived dendritic cells with immune regulatory function. *Stem Cells* 25, 2720-2729 (2007)
28. Itoh T, Y Ueda, K Okugawa, H Fujiwara, N Fuji, T Yamashita, H Fujiki, S Harada, T Yoshimura, H Yamagishi: Streptococcal preparation OK432 promotes functional maturation of human monocyte-derived dendritic cells. *Cancer Immunol Immunother* 52, 207-214 (2003)
29. Nakahara S, T Tsunoda, T Baba, S Asabe, H Tahara: Dendritic cells stimulated with a bacterial product, OK-432, efficiently induce cytotoxic T lymphocytes specific to tumor rejection peptide *Cancer Res* 63, 4112-4118 (2003)
30. Slukvin II, MA Vodyanik, JA Thomson, ME Gumenyuk, KD Choi: Directed differentiation of human embryonic stem cells into functional dendritic cells through the myeloid pathway. *J Immunol* 176, 2924-2932 (2006)
31. Tabata H, T Kanai, H Yoshizumi, S Nishiyama, S Fujimoto, I Matsuda, M Yasukawa, S Matsushita, Y Nishimura: Characterization of self-glutamic acid decarboxylase 65-reactive CD4<sup>+</sup> T-cell clones established from Japanese patients with insulin-dependent diabetes mellitus. *Hum Immunol* 59, 549-560 (1998)
32. Takahashi K, S Yamanaka: Induction of pluripotent stem cells from mouse embryonic and adult fibroblast cultures by defined factors. *Cell* 126, 663-676 (2006)
33. Okita K, T Ichisaka, S Yamanaka: Generation of germline-competent induced pluripotent stem cells. *Nature* 448, 313-317 (2007)
34. Takahashi K, K Tanabe, M Ohnuki, M Narita, T Ichisaka, K Tomoda, S Yamanaka: Induction of pluripotent stem cells from adult human fibroblasts by defined factors. *Cell* 131, 861-872 (2007)
35. Senju S, M Haruta, Y Matsunaga, S Fukushima, T Ikeda, K Takahashi, K Okita, S Yamanaka, Y Nishimura: Characterization of dendritic cells and macrophages generated by directed differentiation from mouse induced pluripotent stem cells. *Stem Cells* 27, 1021-1031 (2009)
36. Choi KD, MA Vodyanik, II Slukvin: Generation of mature human myelomonocytic cells through expansion/differentiation of pluripotent stem cell-derived lin-CD34<sup>+</sup>CD43<sup>+</sup>CD45<sup>+</sup> progenitors. *J Clin Invest* 119, 2818-2829 (2009)
37. Nakatsuji N, F Nakajima, K Tokunaga: HLA-haplotype banking iPS cells. *Nat Biotechnol* 26, 739-740 (2008)

**Key Words:** Dendritic Cells, Embryonic Stem Cells, iPS Cells, Cell Therapy, Review

**Send correspondence to:** Satoru Senju, Department of Immunogenetics, Graduate School of Medical Sciences, Kumamoto University, 1-1-1 Honjo, Kumamoto 860-8556, Japan, Tel: 81-96-373-5313, Fax: 81-96-373-5314, E-mail: senjusat@gpo.kumamoto-u.ac.jp

## Pluripotent stem cells as source of dendritic cells for immune therapy

Satoru Senju · Shinya Hirata · Yutaka Motomura ·  
Daiki Fukuma · Yusuke Matsunaga · Satoshi Fukushima ·  
Hidetake Matsuyoshi · Yasuharu Nishimura

Received: 29 October 2009 / Revised: 24 November 2009 / Accepted: 26 November 2009 / Published online: 13 February 2010  
© The Japanese Society of Hematology 2010

**Abstract** Dendritic cells (DC) are the most potent antigen-presenting cells. *In vivo* transfer of antigen-bearing DC has proven efficient in priming T cell responses specific to the antigen. DC-based cellular vaccination is now regarded as a powerful means for immunotherapy, especially for anti-cancer immunotherapy. Clinical trials of therapy with DC pulsed with peptide antigens or genetically modified to present antigens are currently carried out in many institutions. In addition, antigen-specific negative regulation of immune response by DC is considered to be a promising approach for treatments of autoimmune diseases and also for regulation of allo-reactive immune response causing graft rejection and GVHD in transplantation medicine. DC for transfer therapy are now generated by *in vitro* differentiation of peripheral blood monocytes of the patients. However, there is a limitation in the number of available monocytes, and the DC-differentiation potential of monocytes varies depending on the blood donor. Embryonic stem (ES) cells possess both pluripotency and infinite propagation capacity. We consider ES cells to be an ideal source for DC to be used in immunotherapy. Several groups, including us, have developed methods to generate

DC from ES cells. This review introduces the studies on generation, characterization, and genetic modification of DC derived from ES cells or induced pluripotent stem (iPS) cells. The issues to be resolved before clinical application of pluripotent stem cell-derived DC will also be discussed.

**Keywords** Dendritic cells · Embryonic stem cells · iPS cells · Cell therapy

### 1 Introduction

Dendritic cells (DC) are the most potent antigen-presenting cells responsible for priming of naive T cells in the immune response. DC are also involved in the maintenance of immunologic self-tolerance in the periphery, inducing regulatory T cells or anergy of autoreactive T cells. We can say that DC physiologically play a central role in immune-regulation. Manipulation of functions of DC by genetic modification and *in vivo* transfer of DC with modified property is considered a promising means to therapeutically manipulate immune responses in an antigen-specific manner.

Embryonic stem (ES) cells are characterized by pluripotency and infinite propagation capacity. Non-virus-mediated methods for gene transfer, including targeted gene integration and procedures for isolation of appropriate transfectant cell clones, have been established for ES cells. Genetic modification of ES cells and their subsequent *in vitro* differentiation to DC would be an attractive strategy for genetic manipulation of DC and for analysis of gene functions in DC.

For hematopoietic differentiation of ES cells *in vitro*, embryoid body (EB)-mediated methods and the feeder cell-coculture method have been established. OP9 is a bone marrow stromal cell line that originated from macrophage

---

S. Senju (✉) · S. Hirata · Y. Motomura · D. Fukuma ·  
Y. Matsunaga · S. Fukushima · H. Matsuyoshi · Y. Nishimura  
Department of Immunogenetics, Graduate School  
of Medical Sciences, Kumamoto University, 1-1-1 Honjo,  
Kumamoto 860-8556, Japan  
e-mail: senjusat@gpo.kumamoto-u.ac.jp

S. Senju  
Japan Science and Technology Agency, CREST, Tokyo, Japan

S. Senju  
iPS Cell Research Laboratory, Division of Stem Cell Research,  
Institute of Embryology and Genetics, Kumamoto University,  
Kumamoto, Japan

colony stimulating factor-defective op/op mouse, and generation of various hematopoietic cells from ES cells using OP9 cells as feeder cells has been reported, including granulocytes, erythrocytes, and B lymphocytes [1]. The method has been applied to a number of molecular and cellular analyses for investigations of hematopoiesis.

We and others developed methods to generate DC from mouse ES cells, and the functions of ES cell-derived DC (esDC or ES-DC), including stimulation of allogeneic T cells, processing and presentation of antigenic proteins, and migration upon *in vivo* transfer, were comparable to those of DC generated *in vitro* from bone marrow cells [2, 3]. We have also established a strategy for the genetic modification of mouse ES-DC. Expression vectors were introduced into ES cells by electroporation and subsequently the transfectant ES cell clones were induced to differentiate to ES-DC. The studies using mice have demonstrated that *in vivo* transfer of genetically engineered mouse ES-DC is very effective for modulation of immune responses both positively and negatively. It is possible to induce anti-cancer immunity [4–9] and prevent autoimmune disease [10, 11] in mouse models with genetically engineered ES-DC. Looking toward the future clinical application of ES-DC technology, a method was developed to generate ES-DC also from human ES cells [12].

## 2 Generation of dendritic cells from mouse ES cells

### 2.1 Generation of dendritic cells from mouse ES cells by embryoid body-mediated hematopoietic differentiation

In 2000, Fairchild and his colleagues reported the first study on the generation of functional DC from mouse ES cells [2]. They used ESF116 mouse ES cell line derived from a CBA/Ca blastocyst. In their method, at first, EB were formed, and subsequently differentiation of DC was induced by addition of specific cytokines.

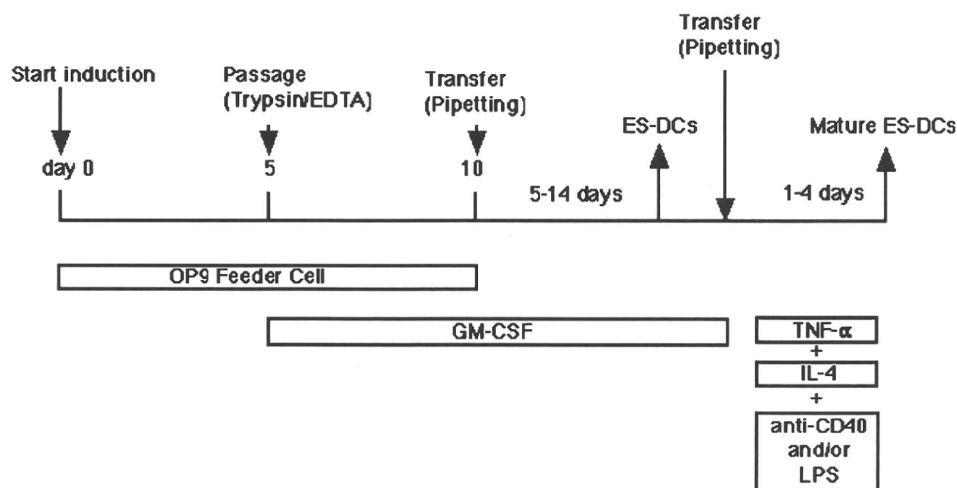
At the initiation of the differentiation, ES cells were grown in suspension to allow EB formation. After culture for 14 days, EB were cultured in medium supplemented with granulocyte/macrophage colony stimulating factor (GM-CSF) and interleukin (IL)-3. Fairchild and colleagues observed that the combination of the cytokines uniquely supported the development of cells with an appearance suggestive of DC within 4 days of culture. These cells expanded rapidly over the following 7–10 days to form lightly adherent clusters, reminiscent of those observed in cultures of immature DC derived from bone marrow cells. Cells released from these clusters seeded uncolonised areas of the dish and displayed typical dendritic morphology, and they were designated as esDC.

Flowcytometric analysis showed that esDC expressed CD11c, MHC class II, CD40, CD54, CD80, and CD86. On the other hand, expression of CD8 and Dec-205 (CD205) was not observed, suggesting esDC were of myeloid lineage. RT-PCR analysis revealed that esDC expressed mRNA for IL-20, IL-18, and IL-1 $\beta$  converting enzyme (ICE). They possessed a potent capacity to process a protein antigen, hen egg lysozyme (HEL), and present the resultant epitope in the context of H-2E<sup>k</sup>, shown by the response of co-cultured antigen-specific T cell hybridoma cells. Upon co-culture with allogeneic T cells, esDC stimulated the T cells to proliferate vigorously, indicating strong T cell-stimulating capacity of esDC. Collectively, the ES cell-derived cells with DC-like morphology were fully functional in antigen-presentation and T cell-stimulation.

### 2.2 Generation of dendritic cells from mouse ES cells by aid of OP9-coculture-based hematopoietic differentiation

We established a method to generate DC from mouse ES cells using OP9 stromal cells and our protocol is shown in Fig. 1 [3]. Mouse ES cells, maintained on primary mouse embryonic fibroblast feeder layers in the presence of leukemia inhibitory factor (LIF), were transferred onto the OP9 cell layers and cultured in  $\alpha$ MEM medium containing fetal calf serum without exogenous cytokines. ES cell colonies changed their morphology from undifferentiated dome-like to a differentiated flattened one in 4–5 days (Fig. 2a, b). To induce differentiation to DC, the mesodermally differentiated ES cell-derived cells harvested from a 5 or 6-day culture on OP9 feeder layers were cultured on fresh OP9 cell layers in the presence of exogenous GM-CSF. In comparison with the culture without exogenous GM-CSF, addition of this cytokine resulted in appearance of a larger number of floating cells in a few days, indicating that cells grew responding to GM-CSF. Culture without GM-CSF at this step resulted in generation of relatively small numbers of various types of hematopoietic cells (Fig. 2c–e).

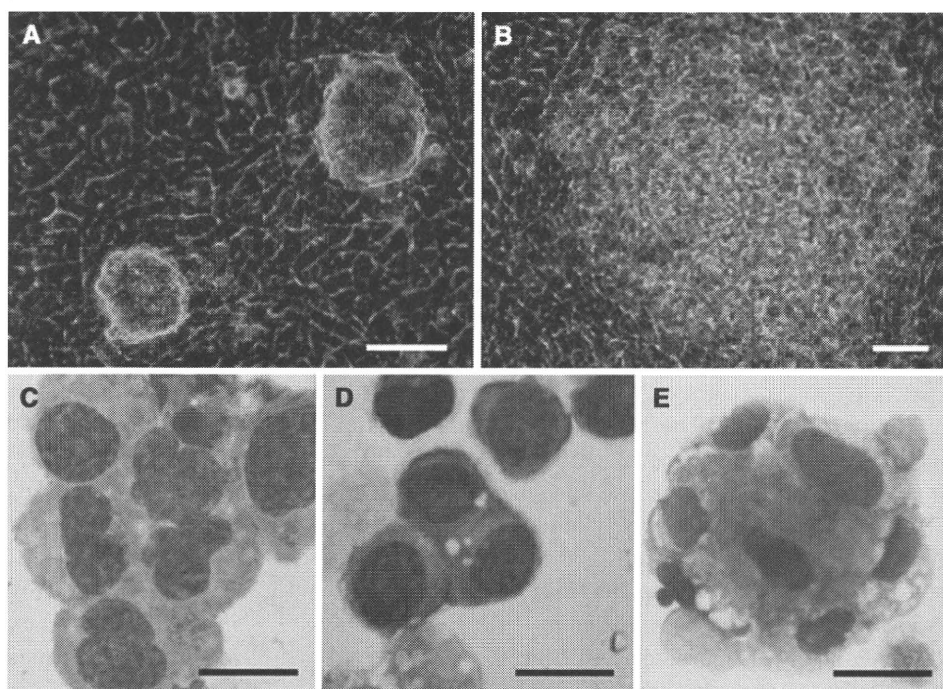
On days 8–9 (3 days after the transfer), we observed many round and relatively homogenous floating cells (Fig. 3a), and most of them expressed CD11b, suggesting their commitment to myeloid cell lineage. On day 10 or 11, we recovered the cells floating or loosely adherent to feeder cells and transferred to bacteriologic Petri dishes without feeder cells. After this passage, some of the transferred cells adhered to the dish surface and resembled macrophages. On days 15–18, floating cells could be divided roughly into 2 types, 1 with a round shape and of a larger size and the other smaller and irregularly shaped with protrusions (Fig. 3b–d). In addition, clusters of floating cells (Fig. 3e) of the latter type were observed after days



**Fig. 1** Schema of the culture protocol for generation of mouse ES-DC. To initiate differentiation, undifferentiated ES cells were suspended in  $\alpha$ -MEM supplemented with 20% fetal calf serum (FCS) and seeded onto OP9 cell layers. On days 5–6, cells were harvested using trypsin/EDTA, reseeded onto fresh OP9 cell layers, and cultured in  $\alpha$ -MEM supplemented with FCS and GM-CSF. 5–6 days after the transfer, floating cells were recovered by pipetting. At this step, 100–200 times more numbers of cells as compared with

undifferentiated ES cells was recovered. The recovered cells were transferred to bacteriologic Petri dishes without feeder cells and cultured in RPMI-1640 medium supplemented with 10% FCS, GM-CSF. After 5–10 days, floating or loosely adherent cells were recovered by pipetting (ES-DC). To induce a complete maturation of ES-DC, cells cultured for longer than 10 days in Petri dishes were transferred to fresh Petri dishes and IL-4, TNF- $\alpha$ , plus anti-CD40 mAb, or IL-4, TNF- $\alpha$ , plus lipopolysaccharide were added

**Fig. 2** Hematopoietic differentiation of TT2 ES cells on feeder cell layers of OP9. Phase-contrast micrographs of TT2 ES cell colonies on OP9 feeder cell layers on day 3 (a) and day 5 (b) are shown. c–e May–Giemsa staining of cytospin specimens of hematopoietic cells derived from TT2 ES cells. TT2 cells were cultured on OP9 feeder cell layer for 15 days in total, without addition of exogenous cytokines. Floating cells were applied to cytospin preparations and stained with May–Giemsa. Cells of myeloid (c), erythroid (d), and megakaryocytic (e) lineages are shown. Scale bars represent 50  $\mu$ m (a, b) and 20  $\mu$ m (c–e) (the photo images were originally published in [3])

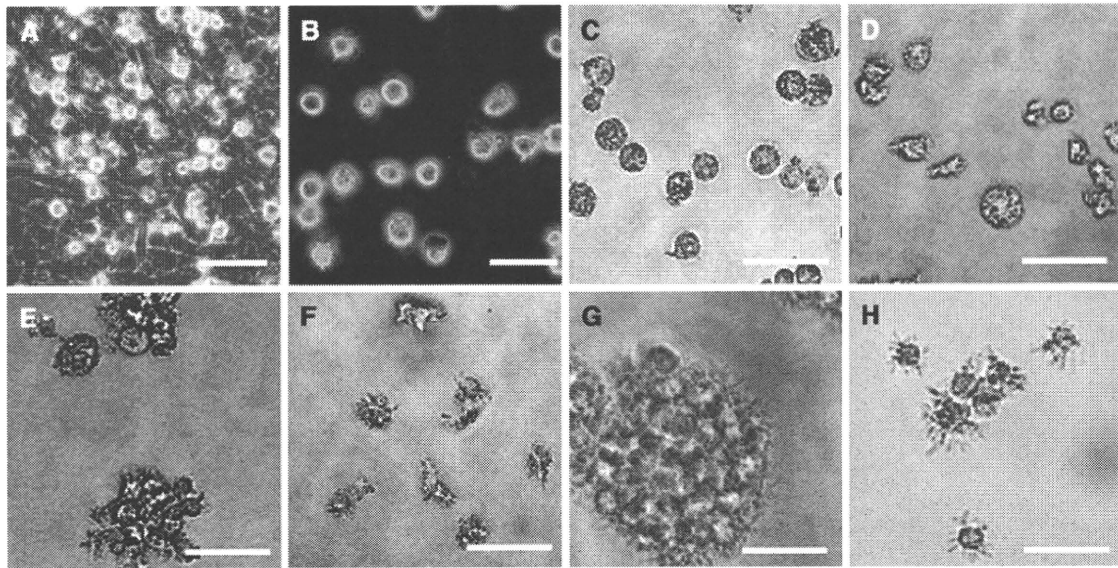


17–19, and the cell clusters gradually increased. Addition of maturation stimuli, IL-4, TNF- $\alpha$ , plus anti-CD40 antibody or LPS, to the cells resulted in typical morphology of mature DC (Fig. 3f–h).

Floating cells were positive for MHC class I, MHC class II, CD80, CD86, DEC205, and CD11c. Upon stimulation with LPS they matured and became highly competent to

stimulate T cells. Characteristics of the EB-derived esDC seemed to be similar to those of our ES-DC. The cells had capacity to process and present protein antigen to T cells. They were very potent in stimulating allogeneic T cells to proliferate (primary mixed lymphocyte reaction). Based on the morphology, surface phenotype, and function, we referred to the cells with protrusions as ES-DC. ES-DC





**Fig. 3** Morphology of ES-DC. ES cell-derived cells on day 8 (a), day 12 (b, c), day 17 (d, e), and day 27 (f) of differentiation culture are shown. Cells on day 24 were recovered and stimulated for 2 days

were positive for F4/80 and CD11b and negative for CD8, suggesting that they were of myeloid lineage.

On days 5–10 of the differentiation culture (2nd step), DC could also differentiate when PA6 or ST2 cells were used as feeder cells. However, the number of generated DC was fewer and the phenotype of the generated DC somewhat differed. With PA6 or ST2, generated DC did not express CD80 and CD205, and their activity to stimulate MLR was weaker than that of DC produced with OP9. The use of dishes treated for tissue culture after transfer from the OP9 feeder cell layer (after day 10 in Fig. 1) gave rise to a fewer number and a lower purity of ES-DC than did the use of bacterial-quality Petri dishes. If we used dishes of tissue-culture grade, many cells firmly adhered to the dish surface, resembling macrophages or fibroblasts, and inhibited the generation of ES-DC. The beneficial effect of bacterial-quality Petri dishes to DC-development has been noted also in generation of DC from mouse bone marrow cells. GM-CSF has been reported to be essential for *in vitro* generation of DC from hematopoietic cells and is also necessary for generation of ES-DC. We applied this culture protocol to various mouse ES cell lines, including TT2, E14, J1, D3, R1, CCE, and NOD mouse-derived ES cells, and observed that all of these lines also differentiated to ES-DC.

### 3 Studies on immune-therapy with ES-DC

#### 3.1 Priming of antigen-specific cytotoxic T cells with genetically modified ES-DC

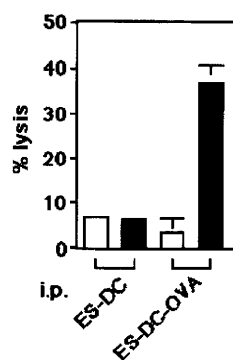
Genetic modification of ES-DC can readily be done by gene-introduction into undifferentiated ES cells, isolation

with IL-4, TNF- $\alpha$ , plus agonistic anti-CD40 mAb (g), or with IL-4, TNF- $\alpha$ , plus LPS (h). a, b Phase-contrast micrographs. Scale bars represent 20  $\mu$ m (the photo images were originally published in [3])

of proper transfectant ES clones, and subsequent induction of differentiation into ES-DC. The capacity of TT2 ES cell-derived ES-DC introduced with an ovalbumin (OVA)-expression vector to prime OVA-specific T cells *in vivo* was analyzed [3]. ES-DC with or without OVA expression vector were injected intraperitoneally into syngeneic (C57BL/6  $\times$  CBA) F1 mice twice with a 7-day interval. Splenocytes were isolated 7 days after the second injection and cultured *in vitro* in the presence of OVA257–264 peptide, the major H-2K<sup>b</sup>-restricted epitope derived from OVA protein. After 5 days, cultured cells were assayed for their capacity to kill EL-4 thymoma cells (H-2<sup>b</sup>) prepulsed with the OVA peptide. The results shown in Fig. 4 indicated that cytotoxic T cells (CTL) specific to the OVA epitope were primed *in vivo* with ES-DC expressing OVA protein (ES-DC-OVA), but not with ES-DC without OVA expression. These results demonstrate that ES-DC genetically engineered to express an antigenic protein have the capacity to prime antigen-specific CTL *in vivo*.

#### 3.2 Enhanced priming of antigen-specific CTL *in vivo* by ES-DC expressing chemokine along with antigenic protein

In immunotherapy by using DC, such as anti-cancer immunotherapy, the efficiency of T cell-priming *in vivo* by transferred DC is critical. T cell-priming *in vivo* by injected DC should depend on their encounter with T cells. When exogenous antigen was injected intracutaneously, about 25% of the DC capturing the antigen migrated to the T cell area of draining lymph nodes, where they present antigen to prime naive T cells specific to the antigen.



**Fig. 4** Priming of OVA-specific CTL by ES-DC expressing OVA in vivo. ES-DC with (ES-DC-OVA) or without (ES-DC) expression of OVA protein were injected intraperitoneally on days 0 and 7 into syngeneic F1 mice. Splenocytes from the injected mice were harvested on day 14 and cultured in the presence of OVA257–264 (0.1  $\mu$ M) for 5 days. The resultant cells were assayed for the capacity to lyse EL-4 tumor cells either pulsed with 10  $\mu$ M OVA peptide (closed bars) or left unpulsed (open bars)

On the contrary, when BM-DC or splenic DC are transferred exogenously by s.c. or i.p. injection, the absolute number of the DC found within the draining lymph nodes represented only a small proportion (0.1–1%). It has been also reported that almost all of transferred DC remained at the s.c. immunization site 24 h after transfer. The inefficient migration of the exogenous DC to lymphoid organs may lower the frequency of their encounter with T cells. It may be possible to improve the efficacy of exogenously transferred DC to prime immune responses by augmenting their encounter with T cells. For example, if transferred DC produce chemokines to intensively attract T cells, they may prime immune response efficiently, even though the DC do not migrate to lymphoid organs. We attempted to improve the capacity of DC to prime T cells in vivo by genetic modification to express chemokine with T cell-attracting property. We generated double-transfectant DC expressing a chemokine along with the model antigen, OVA, by sequential transfection of ES cells with 2 kinds of expression vectors and then inducing differentiation to DC [4].

Several kinds of chemokines with capacity to attract T cells are produced by different cell types. CCL21 (secondary lymphoid tissue chemokine, SLC) is produced in T cell regions of lymph nodes and spleen and also by high endothelial venules in lymph nodes. SLC chemoattracts T cells, NK cells, B cells, and DC. CXCL9 (monokine induced by IFN- $\gamma$ , Mig) is produced by macrophages and binds to the chemokine receptor CXCR3, which mediates the recruitment of predominantly Th1 cells and activated NK cells. XCL1 (Lymphotactin, Lptn), produced by activated T cells, has chemoattractive properties on CD4<sup>+</sup> and CD8<sup>+</sup> T cells and on NK cells. We comparatively evaluated the effect of these 3 kinds of chemokines.

All three types of double transfectant ES-DC primed OVA-specific CTL in vivo more efficiently than did ES-DC expressing only OVA, and co-expression of SLC or Lptn was more effective than that of Mig. Immunization with DC expressing OVA plus SLC or Mig provided protection from OVA-expressing tumor cells more potently than that with OVA only, and SLC was more effective than Mig. On the other hand, co-expression of Lptn gave no additive effect on protection from the tumor. collectively, among the three chemokines, expression of SLC was the most effective in enhancing anti-tumor immunity by transferred ES-DC in vivo.

### 3.3 Negative manipulation of immune response for the treatment of autoimmune disease

For the treatment of subjects with autoimmune or inflammatory diseases, it is desirable to down-modulate immune responses in an antigen-specific manner and without causing systemic immune suppression. GVHD and graft rejection are the most serious problems in transplantation medicine, and control of allo-reactive immune response is the key to overcome them. Antigen-specific negative regulation by DC is considered to be promising means in these fields. We investigated whether we could negatively manipulate immune response with genetically modified ES-DC expressing specific antigen along with immune-suppressive molecules.

Experimental autoimmune encephalomyelitis (EAE), characterized by neurological impairment resulting from de-myelination in the central nervous system caused by activated myelin antigen-reactive CD4<sup>+</sup> T cells, is induced by immunization with myelin antigens such as myelin oligodendrocyte glycoprotein (MOG) or myelin basic protein (MBP). We tried to prevent MOG-induced EAE by pre-treatment of mice with genetically modified DC presenting MOG peptide in the context of MHC class II molecules and simultaneously expressing molecules with T cell-suppressive property [10].

For efficient presentation of MOG peptide in the context of MHC class II molecules, we used a previously devised expression vector in which cDNA for human MHC class II-associated invariant chain (Ii) was mutated to contain antigenic peptide in the class II-associated invariant chain peptide (CLIP) region. An epitope inserted in this vector is efficiently presented in the context of co-expressed MHC class II molecules [13].

As T cell-suppressive molecules, we tested TNF-related apoptosis-inducing ligand (TRAIL) and programmed death-1 ligand (PD-L1). TRAIL as a member of the TNF superfamily is constitutively expressed in a variety of cell types, including lymphocytes, NK cells, and neural cells. TRAIL<sup>-/-</sup> mice are hypersensitive to collagen-induced

arthritis and streptozotocin-induced diabetes. PD-L1, a ligand for PD-1 and member of the CD28/CTLA-4 family, is expressed on DC, IFN- $\gamma$ -treated monocytes, activated T cells, placental trophoblasts, myocardial endothelium, and cortical thymic epithelial cells. PD-1<sup>-/-</sup> mice spontaneously develop a lymphoproliferative/autoimmune disease, a lupus-like disease, arthritis, and cardiomyopathy [14]. Thus, abrogation of either of these two molecules makes mice autoimmune-prone, suggesting that these molecules play significant roles in maintaining immunological self-tolerance in physiological situations.

ES cells were sequentially transfected with an expression vector for TRAIL or PD-L1 and an MHC class II-associated invariant chain-based MOG epitope presenting vector. Subsequently, double-transfectant ES cell clones were induced to differentiate into ES-DC expressing the introduced genes, ES-DC-TRAIL/MOG, and PDL1/MOG.

Severity of MOG peptide-induced EAE was significantly reduced in mice pre- or post-treated with ES-DC-TRAIL/MOG or ES-DC-PDL1/MOG. The severity of MBP-induced EAE was also reduced by ES-DC-TRAIL/MOG but not PD-L1/MOG. In addition, adoptive transfer of CD4<sup>+</sup> T cells from ES-DC-TRAIL/MOG-treated mice protected the recipient mice from subsequent induction of EAE [11]. These results demonstrate the prevention of an autoimmune disease by the treatment with ES-DC expressing target antigen along with immune-suppressive molecules, and implicate future clinical application of this technology.

## 4 Generation of DC from human ES cells

### 4.1 Generation of DC from human ES cells based on EB formation

As for the generation of DC from human ES cells, the report by Zhan and colleagues [15] is the first. Similar to the method of generation of DC from mouse ES cells by Fairchild and colleagues, they induced formation of EB by suspension culture of human ES cells, and then cultured the EB in the presence of hematopoietic cytokines to generate leukocytes with antigen presenting function.

In their method, human ES cells were cultured at a high density onto Matrigel (Becton Dickson) before induction of differentiation. After reaching the full size or confluency, undifferentiated ES cell colonies were harvested with dispase. The cell colonies were cultured in medium for differentiation induction with fetal calf serum and without basic fibroblast growth factor (bFGF). To inhibit the adherence to the plastic surface of the culture plates, ES colonies were plated in special low-attachment plates. Cystic embryonic bodies emerged after 5–20 days

in the suspension culture. When harvested on days 10–20, 50–80% of EB were cystic, each EB containing about 10,000 cells on average.

Whole EB formed in suspension were transferred onto tissue culture plates and allowed to differentiate into hemopoietic and other cell types. To stimulate production of hemopoietic progenitor cells and also DC, they added stem cell factor (SCF), FLT3-ligand, and thrombopoietin (TPO), cytokines widely used to maintain human postnatal haemopoietic stem cells. To expand DC-committed progenitor cells IL-3, GM-CSF, and IL-4 were added.

A part of the resulting leucocytes expressed MHC class II, CD80, CD86, CD40, and CD83. The MHC class II<sup>+</sup> leucocytes resembled DC and macrophages. They functioned as stimulator cells capable of eliciting allogeneic T cell responses in culture.

After this report, Su and colleagues [16] and also Tseng and colleagues [17] reported similar methods of EB-mediated generation of DC from human ES cells.

### 4.2 Generation of human ES-DC based on OP9-co-culture

Considering future clinical application of ES-DC, we also tried to generate ES-DC from human ES cells [12]. Based on experience in the generation of DC from mouse ES cells and also based on the findings in a preliminary study using cynomolgus monkey ES cells [18], feeder cell-co-culture method was adopted for the generation of DC from human ES cells, instead of the EB based method. The human ES cell line selected was KhES-1 which exhibited the highest growth rate and stability among the 3 lines of human ES cell lines established by Suemori and colleagues [19] at Kyoto University. For feeder cells, 3 lines of mouse stromal cell lines, ST2, OP9, and PA6 were evaluated for their capacity to induce hematopoietic differentiation of KhES-1 ES cells, and OP9 had the best yield among them.

The protocol for the differentiation culture to generate ES-DC from human ES cells developed in our study is composed of 3 steps. At the beginning of the differentiation culture, undifferentiated ES cells maintained on mouse PEF feeders were harvested using dissociation solution, CTK, and plated on OP9 feeder cell layers (step 1). Next, the ES cells grew and formed clusters composed mostly of epithelial cell-like large flat cells. Clusters of round, cobble stone-like cells also appeared on about day 8. The size and number of round cell clusters gradually increased, and, around day 15, covered 20–30% of the surface area.

On days 15–18 of the step 1 culture, cells were recovered from the dishes using trypsin/EDTA and isolated non-adherent cells, and then they were seeded onto freshly prepared OP9 cell layers, to begin step 2. Culture medium containing GM-CSF and M-CSF was used in this step.

Thereafter, small round cells, floating or loosely adhering to the feeder layer, appeared and gradually increased in number. The growth of the round cells depended primarily upon GM-CSF, thus suggesting that they grew in response to that factor. The cells expressed CD34 and CD45, thus indicating that they followed a hematopoietic cell lineage. They also expressed CD31, CD43, and CD11b, thus collectively indicating a commitment to a myeloid cell lineage.

On days 7–10 of the step 2 culture the floating or loosely adherent cells were harvested by pipetting, and they were transferred to Petri dishes without feeder cells and cultured in the presence of GM-CSF and IL-4 (step 3). Following this passage, the cells changed their morphology from round to irregular shape, and some had protrusions. Cells with protrusions gradually increased and more than 50% of the cells exhibited DC-like irregular shape after 2–3 days. The floating cells expressed CD86 and CD40, but scarcely expressed CD80 and CD83.

Simultaneous addition of TNF- $\alpha$ , LPS, soluble CD40-ligand, and IL-4 to the cells induced maturation. Many of the cells formed aggregates. Flowcytometric analysis showed the increased expression of CD86 and the expression of CD80, CD83, and HLA-DR. Collectively, the cells exhibited the characteristics of DC in their morphology and expression of surface molecules, and thus they were designated as human ES-DC. Production of TNF- $\alpha$  was profoundly induced by either LPS or OK432. OK432, but LPS did not induce the production of IL-12, consistent with the reports that OK432 is an efficient inducer of IL-12.

ES-cell-derived floating cells first appeared during the 2nd step of the culture for differentiation (pre-ES-DC) and could readily be isolated by pipetting procedure. Their morphology, pattern of expression of surface molecules, and T cell-stimulation capacity continuously changed until the final maturation. To determine the change in gene expression associated with such changes in the phenotypes, the gene expression profiles of pre-ES-DC, immature ES-DC, and mature ES-DC were analyzed using cDNA microarrays. Consistent with the results of flowcytometric analysis, up-regulation of the expression of genes encoding for cell surface molecules such as HLA class I, HLA class II, CD86, and CD40 along with differentiation of ES-DC was observed. In addition, expression of the genes related to DC function including CD74/invariant chain, CCR7, and CCL17/TARC was increased during the differentiation. Clustering analysis indicates similarity between change of the gene expression pattern from monocytes to immature Mo-DC and that from pre-ES-DC to immature ES-DC as well as that from immature Mo-DC to mature Mo-DC and that from immature ES-DC to mature ES-DC.

The protocol of differentiation culture described to this point was originally developed using the KhES-1 line of

human ES cells. This differentiation procedure was also applied to KhES-3, another human ES cell line. KhES-3 differentiation was similar to KhES-1 except that KhES-3 differentiated slightly more quickly than KhES-1, and a first step culture of 14–15 days was sufficient for the differentiation of KhES-3. Generation of ES-DC from non-human primate, cynomolgus monkey, ES cells was also achieved by this method [12].

Slukvin and colleagues [20] also reported a method using OP9. Slukvin's method is also composed of 3 steps and is different from ours in that OP9 feeders were used only in the first step. Recently, extending this study, they demonstrated generation of various myelomonocytic cells including DC, macrophages, osteoclasts, neutrophils, and eosinophils from human ES cells or induced pluripotent stem (iPS) cells [21].

#### 4.3 Function of human ES-DC as antigen presenting cells

The capacity of the human ES-DC to stimulate T cells was examined based on the proliferative response of allogeneic T cells co-cultured with ES-DC. ES cell-derived floating cells recovered from the second step (pre-ES-DC) showed little capacity to induce a response of T cells. In contrast, ES-DC following the third step before the addition of maturation stimuli (immature ES-DC) showed a weak but definite stimulation, and following exposure to the maturation stimuli (mature ES-DC) showed a strong capacity to stimulate allogeneic T cells to proliferate.

Next, the antigen-presenting capacity of ES-DC was examined. KhES-1 is positive for the HLA-DRB4\*0103 gene encoding  $\beta$  chain of HLA-DR53 molecule. Presumably, ES-DC derived from KhES-1 should express the DR53 molecule, and their ability to present antigen to DR53-restricted CD4<sup>+</sup> T cells was determined. KhES-1-derived ES-DC pre-loaded with GAD65-derived synthetic peptide stimulated GAD65-specific DR53-restricted human T cell clone, SA32.5 [22], to proliferate. To examine the capacity to process antigenic protein and present epitope, recombinant protein was used as the antigen. The SA32.5 T cell clone co-cultured with the ES-DC in the presence of recombinant GAD65 protein also showed proliferative response, thus indicating that ES-DC processed the antigenic protein and presented the epitope derived from the protein in the context of HLA class II molecules.

#### 4.4 Genetic modification of human ES-DC

We applied the strategy for the genetic modification of ES-DC established by using mouse ES cells to human ES cells. Briefly, the expression vectors were introduced into ES