

Figure 2. Kinetic profiles of photocurrents. A–C. Photocurrent traces of ChR1-*fg*₂ (ChRGR, A), ChR1 (B) and ChR2 (C) evoked by green LED with various strengths (505±15 nm, 1 s pulse, 0.064–0.77 mWmm⁻²). All experiments were done at 34°C. Each photocurrent was normalized to the peak value evoked by the maximal level. D–F. Parameters of photocurrent kinetics. All experiments were done at 34°C. (D) The apparent ON time constant (τ_{ON})-light power density (L) relationships. Each relationship was fitted to a function, $\tau_{ON} = (a + bL)^{-1}$ [28]. (E) The desensitization-light power density relationships. Each relationship was fitted to a Michaelis-Menten-type kinetics [22]. (F) The effective OFF time constant (τ_{OFF})-light power density relationships. Each relationship was fitted to a first order function. G. Typical traces of ChRGR photocurrents in response to double light pulse stimulation by green LED (505±15 nm, 1 s pulse, 0.77 mWmm⁻²). H. The recovery time course of the peak current (I_{peak}). I. The recovery time course of the steady-state current (I_{ss}). J. The recovery time course of the desensitizing component. The process was fitted to a single exponential relationship (time constant, 1.3 s).
doi:10.1371/journal.pone.0012893.g002

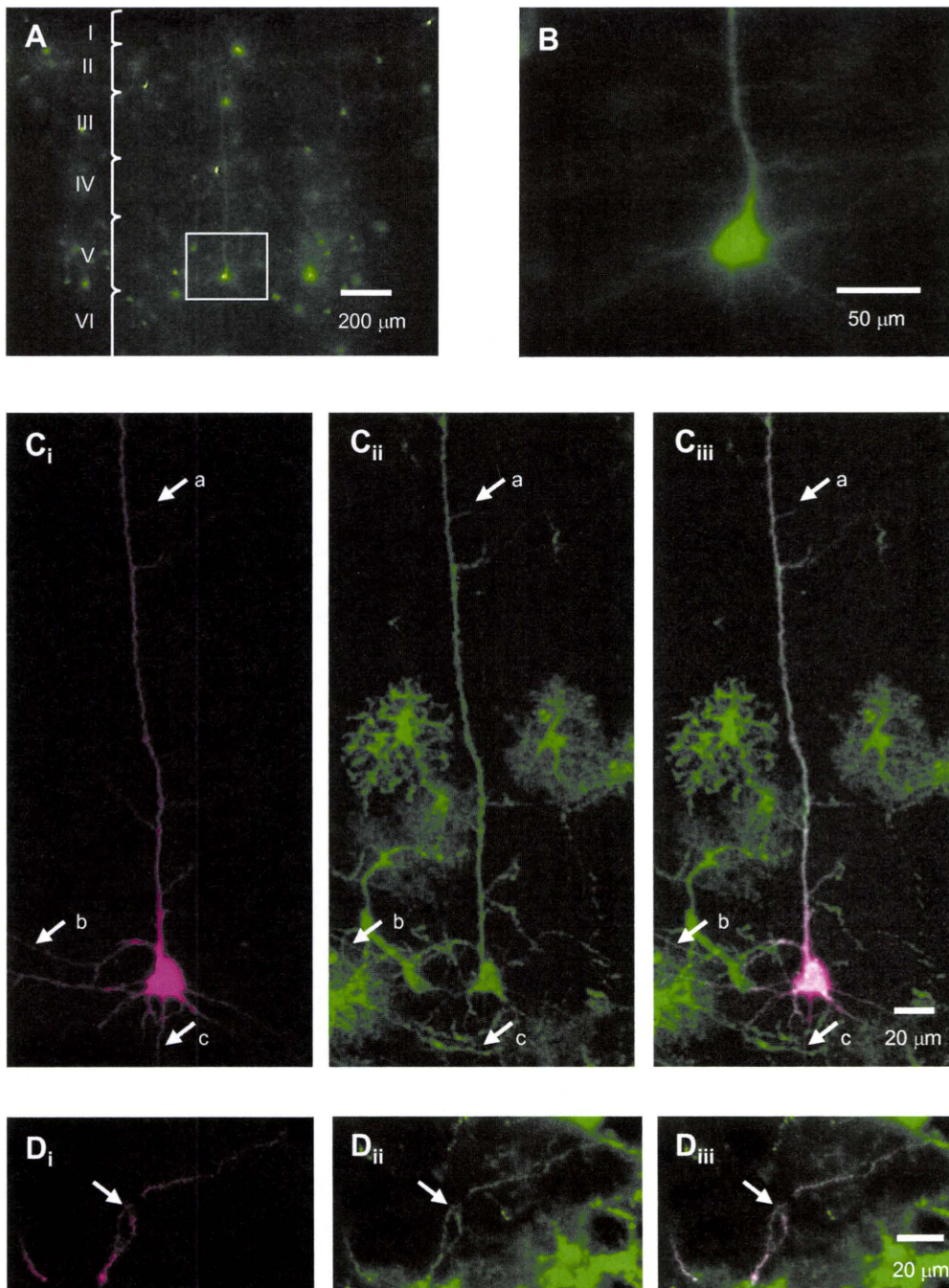


Figure 3. Neuronal expression. **A.** Neurons expressing ChRGR-Venus in a cortical slice. **B.** A typical L5 pyramidal neuron shown in **A**. **C.** Morphology of biocytin-filled neuron (**C_i**), its expression of ChRGR-Venus (**C_{ii}**) and the merged image of **C_i** and **C_{ii}** (**C_{iii}**). The arrows indicate the apical dendrite and its branches (a), the basal dendrites (b) and the axon (c). **D.** Morphology of tufted dendrites (indicated by an arrow) of a L5 pyramidal neuron in cortical layer I (**D_i**), its expression of ChRGR-Venus (**D_{ii}**) and the merged image of **D_i** and **D_{ii}** (**D_{iii}**). doi:10.1371/journal.pone.0012893.g003

desensitization under voltage-clamp of an L5 pyramidal neuron (Figure 4A). Under current-clamp, it depolarized the neuron in a light power density-dependent manner (see also Figure S2C). Just above the threshold the neuron fired at 3–10 Hz with a regular interval (Figure 4A). Almost the same frequency-light power density relationship was observed in other L5 pyramidal neurons ($n = 11$) (Figure 4B). We next generated an oscillatory LED light signal that sweeps through frequencies between 0.1 and 100 Hz over 2s (Figure 4C, the top trace, the rectified sinusoidal sweep of

light, RSSL) [26,27]. Since both the ON and the OFF kinetics of the ChRGR photocurrent are fast, the RSSL was expected to evoke an oscillatory photocurrent. As shown in Figure 4C, trace *I* (see also Figure S3), an oscillatory photocurrent was actually evoked between 0.1 and 100 Hz, although the amplitude was reduced at high frequency. The waveform was also distorted as the photocurrent amplitude follows a non-linear relationship of the light power density [22,28] (Figure S4). The RSSL is useful to investigate the input responsiveness of a neuron or a neuronal

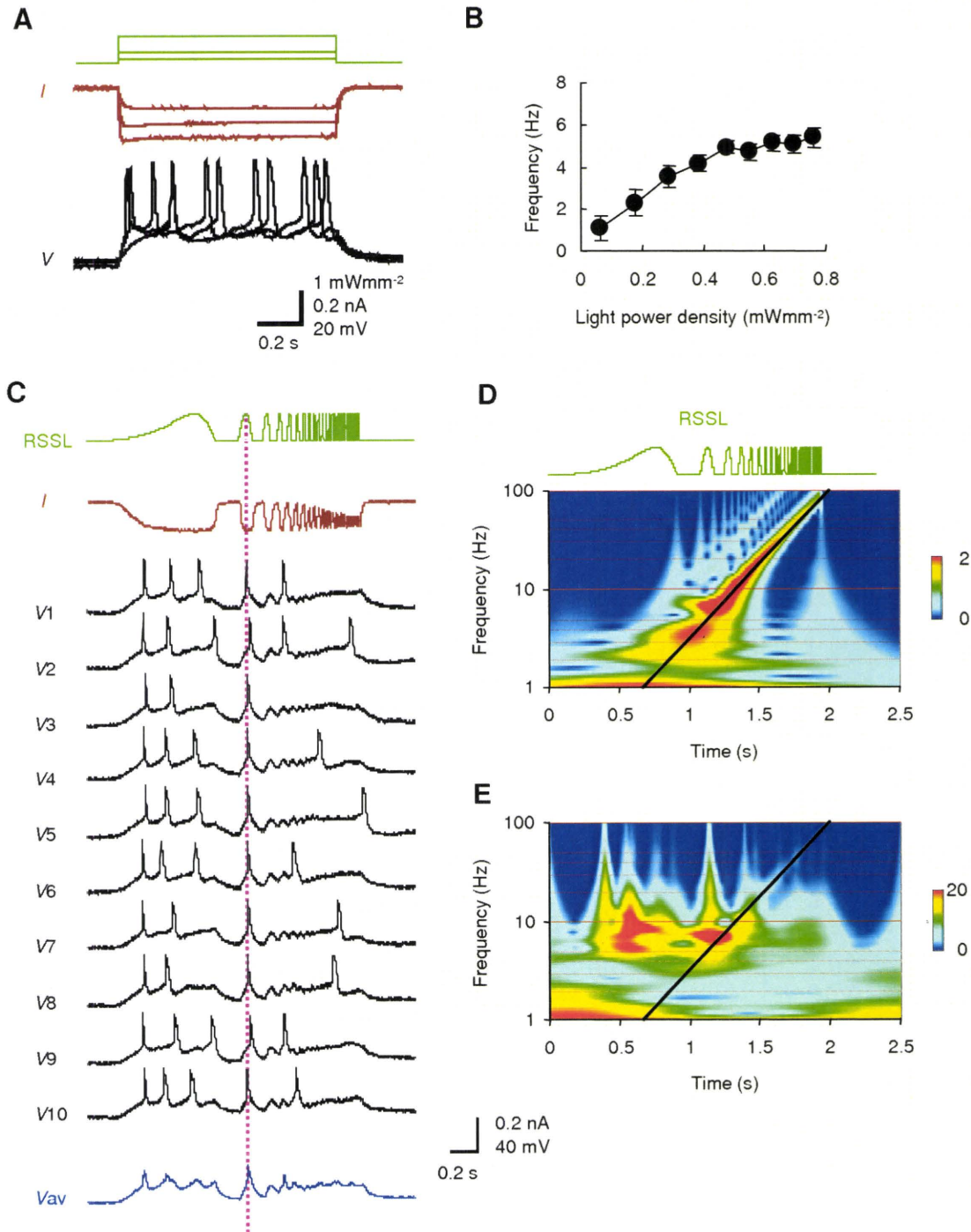


Figure 4. Opto-current clamp of a cortical neuron. **A.** Membrane currents under voltage clamp (brown traces) and potentials under current clamp (black traces) in response to the green LED pulses (green traces) applied on the whole visual field. **B.** Frequency of action potentials as a function of light power density. **C.** The rectified sinusoidal sweep of light (RSSL) from 0.1 to 100 Hz (top green), the photocurrent response of an L5 pyramidal neuron under voltage clamp (*I*, brown), the trial-to-trial responses of the membrane potential under current clamp (V1–V10, black) and the averaged membrane potential (*V_{av}*, blue). **D.** Wavelet analysis of voltage-clamp response. The relative level of energy coefficient is indicated by the pseudocolor scaling. The line indicates the time-frequency relationship of the RSSL. **E.** Wavelet analysis of current-clamp response. doi:10.1371/journal.pone.0012893.g004

network. In the presence of 1 μ M TTX, it oscillated the membrane potential between the resting potential and the depolarized potential at low frequency region (Figure S3, trace *I*) under current clamp. However, at high frequency region, the relative change of membrane potential was smaller than the relative change of photocurrent under voltage clamp (Figure S3)

because of the large membrane time constant of L5 pyramidal neurons (50 ± 11 ms, $n = 6$). In the absence of TTX, it robustly evoked action potentials within a narrow time window (Figure 4C, V1–V10). The robustness of a response to the oscillatory change of light power density was clearly demonstrated by applying wavelet analysis. If the response of an issue changes its amplitude in

synchronous with the RSSL, the high energy coefficient values of wavelet analysis would be expected to distribute along the time-frequency relationship of the RSSL. Actually, the photocurrent response under voltage clamp followed the oscillatory change of light power density in a wide frequency range during RSSL (Figure 4D). On the other hand, the membrane potential response under current clamp response did not well follow the oscillatory change of light power density at a high-frequency region (Figure 4E). Rather, the energy coefficient value was relatively high at two time windows, one at the onset of slow depolarization and the other synchronized to the RSSL at 5–10 Hz. The robustness was also evaluated by the averaged current-clamp response (Figure 4C, V_{av}). It peaked at 1.2 s from the onset, which corresponded to 6.3 Hz. The frequency evoking robust firing of L5 pyramidal neurons was on average 6.1 ± 1.0 Hz ($n=11$ neurons).

The ChR2-expressing neurons were shown previously to be activated by blue light even *in vivo* [10–20]. To examine whether ChRGR-expressing neurons are able to be activated *in vivo*, the local field potential (LFP) was recorded from the motor-cortical region close to the site where the Sindbis pseudovirion vectors were injected. The green LED light was focused on this site and reached the injected site through the dura mater (Figure 5A). The illumination to the contralateral non-injected site was used as a control (Figure 5B). The opto-current-clamp by RSSL evoked some LFP responses in the cortex. It also evoked electromyogram (EMG) responses in the contralateral lower limb muscles where the topographic projections of activated cortical neurons were expected. Each LFP response consisted of either positive-to-negative or negative-to-positive biphasic waves reminiscent of the population spikes of neurons. Sometimes, these LFP waves were accompanied by EMG waves. To find the frequency preferences, the wavelet analysis was applied to the LFP recordings. The frequency preference of the light-evoked responses was shown to be at 3–10 Hz (Figure 5C). Some LFP responses were evoked in-phase during the RSSL, whereas they were frequently evoked out-phase during the dark period. The RSSL also enhanced both the in-phase and out-phase responses of EMG (Figure 5D). In each animal the power spectrum was analyzed for the LFP responses (Figure 5E). In summary, the RSSL to the cortex enhanced the LFP activity preferentially at 3–10 Hz (Figure 5F).

When a neuron is repetitively fired, the expression of some immediate early gene products such as Arc, c-Fos and Zif268 are enhanced through Ca^{2+} -dependent mechanisms [29,30,31]. The expression of c-Fos was immunohistochemically identified after repetitive RSSL tests. Some of the ChRGR-expressing neurons also expressed c-Fos at a relatively high level but others did not (Figure 6A–6C and Figure S5). The expression of c-Fos was also enhanced distinctively in the cells that did not express ChRGR.

Discussion

When some of the transmembrane helices of ChR2 was replaced by the counterparts of ChR1 and produced chimera channelrhodopsins, the exchange distinctively affected photocurrent properties such as the wavelength sensitivity, conductance, desensitization and ON-OFF kinetics [23]. For example, if a chimera channelrhodopsin consists of the first to fifth transmembrane helices from ChR2 and the sixth to seventh helices from ChR1, the photocurrent was enhanced in whole-cell conductance. On the other hand, by further replacement of the sixth transmembrane domain (“*f*”-to-“*F*” replacement) reduced the effective conductance to as small as that of ChR1. It is thus

predicted that the domain “*F/f*” is involved in the conductance; high with “*f*” and low with “*F*”. In the present study we did the reverse experiment, that is, replaced “*F*” of ChR1 with its counterpart from ChR2, and produced a chimera, ChR1-*f*. When expressed in HEK293 cells, this replacement enhanced the effective conductance without changing the reversal potential and the action spectrum. It is, thus, suggested that the “*F/f*” segment is one of the molecular determinants of photocurrent conductance by either regulating the expression of the molecule to the plasma membrane or regulating the ion flux per a molecule.

The seventh transmembrane domain has been suggested to be involved in the color tuning of channelrhodopsins [23]. Actually, the “*G*”-to-“*g*” replacement definitely blue-shifted the action spectrum of ChR1. This was also the same in the present study using ChR1-*f*. We further subdivided the “*G/g*” domain into two subdomains; the N-terminal 20 amino acids before the retinal-binding Lys (“*G*₁/*g*₁”) and the C-terminal 49 amino acids after it (“*G*₂/*g*₂”). We found the “*G*₁”-to-“*g*₁” replacement blue-shifted the action spectrum, whereas the “*G*₂”-to-“*g*₂” replacement had no effect. These results clearly suggest that the “*G*₁/*g*₁” subdomain is one of the molecular determinants involved in the wavelength sensitivity.

When expressed in HEK293 cells, the photocurrent amplitude of ChR1-*fg*₂ (ChRGR) was relatively large in response to the green light if compared to that of ChR2 or ChR2-H134R (Figure S1). Therefore, it is the first practical optogenetic molecule with the ChR1 backbone. It was also preferentially sensitive to green light as one of the *Volvox*-derived channelrhodopsins (VChR1). Its average photocurrent evoked by 520 nm light was even larger than that of VChR1 probably because of its efficient membrane expression. The ON and OFF kinetics of ChRGR photocurrent was as fast as other ChR variants with fast photocurrent kinetics [23,32] and even faster than ChR2 or ChR2-H134R [9,14,22] (Figure S6). Remarkably, the ChRGR photocurrent was small in the desensitization and was even smaller than ChR1. It was also rapid in the recovery from desensitization. Its recovery time constant was 1.3 s at room temperature (27–30°C), which was smaller than the corresponding value of ChR1, ChR2 or ChR2-H134R (3–20 s) (Figure S6) [14,21,22,33]. These kinetic properties of ChRGR appeared to be optimal for optogenetic injection of the patterned current into a neuron (opto-current clamp). Similar to ChR1 [21], the ChRGR was sensitive to pH (Figure S7). The reversal potential was pH-dependent and was positively shifted with the reduction of pH. The τ_{OFF} was also pH-dependent although τ_{ON} and desensitization were not. Therefore, the fast kinetics of ChRGR appears to be optimized at pH 7.4.

In our experiments with the L5 pyramidal neurons the ChRGR molecules were not detectable in the spines within twelve hours after transfection although they distributed to the distal end of tufted dendrites. It is possible that it would take additional hours for the molecules to distribute in spines. Alternatively, the molecules might have some regional preferences. In either case it may be, the green light should depolarized the distal dendritic region to a certain level which is a function of the regional density of the ChRGR, the light power density at the region and the local input resistance. Since ChRGR was also distributed in the axonal membrane, the effects of simultaneous depolarization of a region including soma, dendrites and axon were investigated by the opto-current clamp of L5 pyramidal neurons. Our results suggested that an individual neuron has its unique firing frequency where the probability of action potential generation is expected to be highest [34]. This frequency was 3–10 Hz when a square light pulse was applied. The robust firing time window of RSSL also corresponded to this frequency band.

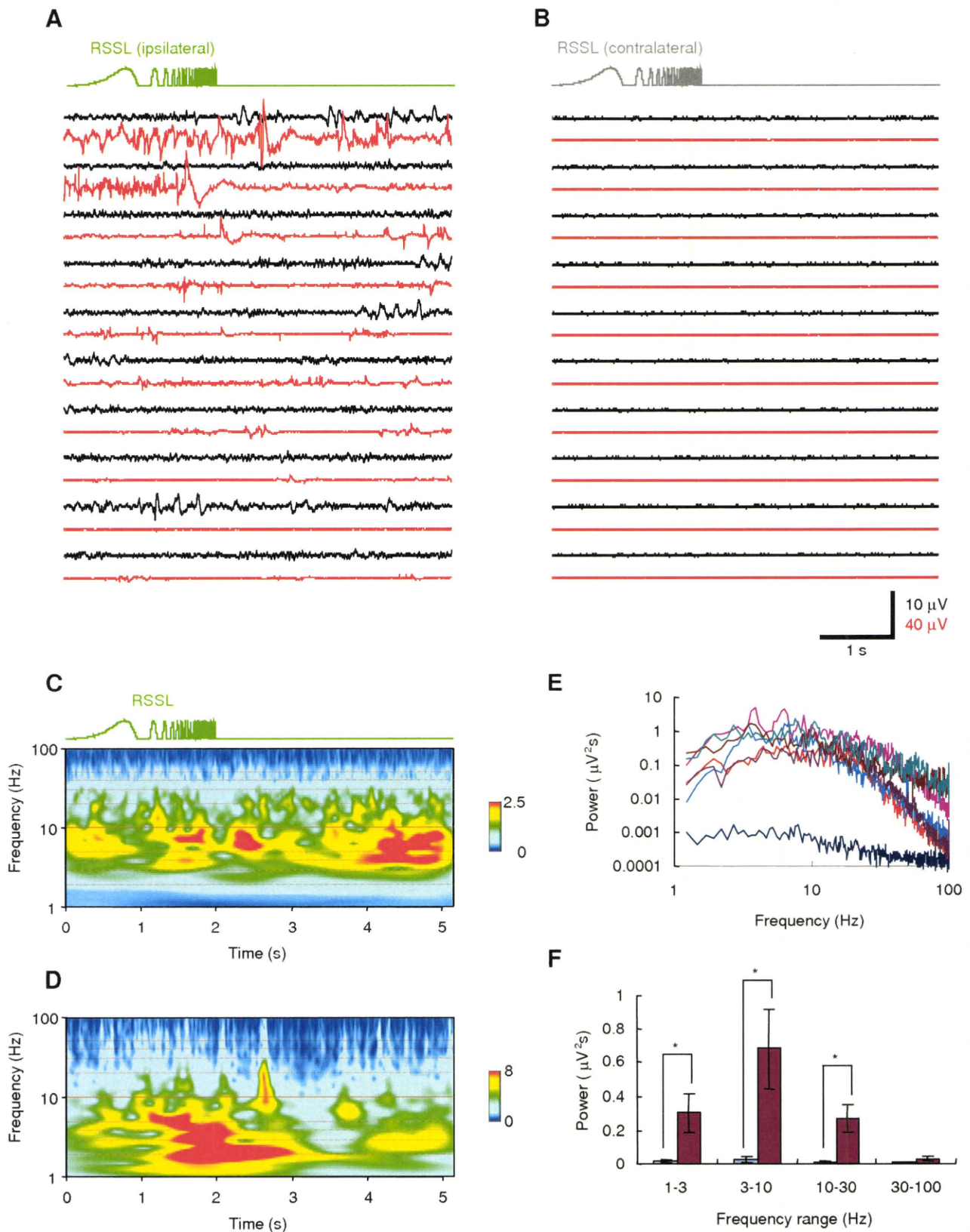


Figure 5. Opto-current clamp of the cortical network in living mice. **A.** The trial-to-trial responses of LFP (black lines) and EMG (red lines) under opto-current clamp by the RSSL. **B.** Control LFP and EMG traces by the RSSL on the contralateral cortex. **C.** Wavelet analysis of the LFP. **D.** Wavelet analysis of the EMG. **E.** Power spectra of opto-current-clamp responses of LFP from each animal. **F.** Summary of the LFP power spectrum analysis: control (contralateral RSSL, blue columns, left) and test (ipsilateral RSSL, crimson column, right). Asterisks indicate statistical significances ($P < 0.05$, Wilcoxon signed-ranks test). doi:10.1371/journal.pone.0012893.g005

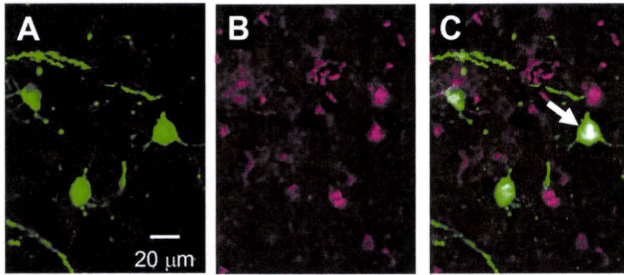


Figure 6. Spreading activity. A–C. The expression of c-Fos in the cortical neurons after a series of experiments; ChRGR-Venus (A), anti-c-Fos immunoreactivity (B) and merge (C). The white arrow indicates the ChRGR-expressing L5 pyramidal neuron which also expressed c-Fos at a relatively high level.

doi:10.1371/journal.pone.0012893.g006

When the motor cortex was exposed to the light, it was expected that the neurons in the superficial layers would be depolarized to fire directly (Figure 7A). This is consistent with our finding that some of the ChRGR-expressing neurons in these layers were also immunoreactive to anti-c-Fos. Although these neurons would fire asynchronously during RSSL and consist of both excitatory and inhibitory traits [35,36], their transmissions would be integrated in the major output neurons [37]. It was also expected that light would depolarize directly the tufted apical dendrites of a ChRGR-expressing L5 pyramidal neuron (Figure 7B). The probability of evoking action potentials would be enhanced during the depolarizing phase of the light-evoked membrane oscillation because of the asynchronous bombardments from intrinsic synaptic inputs [38]. Light-evoked depolarization also facilitates the dendrite to evoke action potentials that are dependent on either Ca^{2+} channels or NMDA receptors [39]. Consistent with this notion, some of the ChRGR-expressing L5 pyramidal neurons were also immunoreactive to anti-c-Fos. It is possible that above two responses in concern enhanced the LFP response at a preferential frequency of 3–10 Hz. Long-range as well as local recurrent circuits also appear to be involved since the LFP

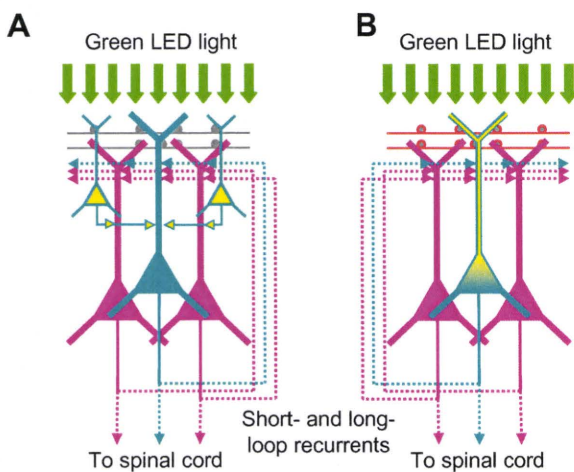


Figure 7. Two hypotheses on the opto-current-clamp actuation of the cortical circuits. A. The green LED light may directly fire the neurons in the surface layers (yellow), but not those in the deep layers (dark green). B. The green LED light may directly drive the ChRGR-expressing L5 pyramidal neuron with the intrinsic synaptic bombardments (red boutons) on the tufted apical dendrites.

doi:10.1371/journal.pone.0012893.g007

response does not always coincide with the light illumination [40,41]. The spread of activity was evidenced by the fact that there were many c-Fos neurons that were negative for ChRGR in a region of the motor cortex. Some of them are suggested to project to spinal cord motor neurons directly or indirectly [42,43] as the light-evoked cortical responses were accompanied by enhanced EMG responses.

The LFP power was indeed small at any frequency band under anesthesia. Therefore, the local network appears to be in a stable basin state where the afferent inputs, if any, hardly shift it to the activated semistable state [44]. Our opto-current-clamp study suggests that the depolarization of a small number of neurons wakes up the motor cortical network over some critical point to the activated state where the positive feedback implemented by the recurrent connections maintains a high probability of firing and generates the efferent output to the spinal cord [45].

Materials and Methods

Ethics Statement

All animal experiments were approved by the Tohoku University Committee for Animal Experiments (Approval No. 21LsA-44) and were carried out in accordance with the Guidelines for Animal Experiment and Related Activities in Tohoku University as well as the guiding principles of the Physiological Society of Japan and the NIH.

Plasmid Construction and Expression

Chimeric channelopsins (chops) between chop1 (amino acids 1–345; accession number, [AB058890/AF385748](#), a generous gift from Dr. T. Takahashi, Toho University, Japan) and chop2(1–315) (accession number, [AB058891/AF461397](#), a generous gift from Dr. G. Nagel, Universität Würzburg, Germany) with 5'-EcoRI and 3'-BamHI restriction sites were constructed by overlap extension PCR as described previously [23] using KOD plus DNA polymerase (Toyobo, Osaka, Japan). A chimeric chop fragment was obtained, purified, digested by EcoRI and BamHI and subcloned in-frame into the plasmid pVenus-N1 which has the Venus construct (a generous gift from Dr. A. Miyawaki, RIKEN BSI, Japan) [22]. Coding regions in all constructed plasmids were fully sequenced to verify that no undesired mutations had been introduced by PCR. HEK293 cells were cultured at 37°C and 5% CO₂ in D-MEM (Wako, Osaka, Japan) supplemented with 10% fetal bovine serum and transfected using Effectene Transfection Reagent (Qiagen, Tokyo, Japan) according to the manufacturer's instructions. Twenty-four hours post transfection, the cells were replated onto the collagen-coated glass coverslips for the electrophysiology. We did not supplement the culture and experimental media with retinal, but observed enough large photocurrents for the following experiments.

Evaluation of photocurrents

HEK cells were prepared for electrophysiological recordings 48 hours after transfection. Fluorescence-labeled isolated cells were identified under conventional epi-fluorescence microscopy (BH2-RFC, Olympus, Tokyo, Japan) equipped with a 60× water-immersion objective (LUMplanPI/IR60x, Olympus). The photocurrents were recorded under the whole-cell patch clamp of a conventional system consisting of an amplifier (EPC 8, HEKA Elektronik Dr. Schulze GmbH, Germany) and A/D converter (Digidata 1200B, Molecular Devices Co., Sunnyvale, CA) The standard patch pipette solution contained (in mM), 120 CsOH, 100 glutamate, 50 HEPES, 2.5 MgCl, 2.5 MgATP, 5 Na₂EGTA, 1.2 leupeptin (Sigma) and pH 7.2, adjusted by 1N CsOH. The

access resistance was 10–20 M Ω and was monitored throughout the recording. The cells were continuously superfused (1–2 ml/min) by standard Tyrode solution (in mM: 138 NaCl, 3 KCl, 1 CaCl₂, 1 MgCl₂, 10 HEPES, 4 NaOH, 11 glucose, pH 7.4 by 1N HCl). Most of the experiments were performed at room temperature (27–30°C) unless otherwise noted. For studying the I–V relationship, Cs in the patch pipette solution was replaced with Na, and the liquid junctional potentials of –8 mV were corrected for. For the wavelength-response relationship monochromatic light at 400–560 nm (width, 10 nm) of 1 s duration was applied every 20 s under a conventional epifluorescence system equipped with a Xenon lamp and electromagnetic shutter (CAM-230, JASCO, Tokyo, Japan). Usually the photocurrent was measured by 2–3 repeats of a protocol, in which the wavelength was changed in the order of 460, 480, 500, 520, 540, 560, 560, 540, 520, 500, 480, 460, 440, 420, 400, 400, 420, 440 and 460, and was averaged for each wavelength. The light power density at each wavelength was directly measured by a thermopile (MIR-100Q, Mitsubishi Oil Chemicals, Tokyo, Japan), and was (in mWmm⁻²) 0.021 (400 nm), 0.018 (420 nm), 0.027 (440 nm), 0.027 (460 nm), 0.018 (480 nm), 0.021 (500 nm), 0.015 (520 nm), 0.014 (540 nm) or 0.012 (560 nm), respectively. To investigate the action spectrum, the amplitude of the peak photocurrent at each wavelength was divided by the light power density, multiplied by the wavelength and normalized to the value at 480 nm. For analysis of the photocurrent (*I*)-voltage (*V*) relationship and the photocurrent kinetics we used a green LED (505±15 nm, LXHL-NE98, Lumileds Lighting Inc. San Jose, CA) regulated by a pulse generator (SEN-7203, Nihon Kohden, Tokyo, Japan) and computer software (pCLAMP 9, Molecular Devices Co.). The maximal light power density of LED light was 0.77 mWmm⁻² at the focus. The effective conductance was calculated for each cell by dividing the slope of the *I*–*V* relationship between –48 and 32 mV by the input capacitance. The effective conductance was compared as relative to that of ChR1. The turning-on (ON) and -off (OFF) transitions were analyzed by fitting the photocurrent using the simplex method of non-linear least-squares protocol of the appropriate software (Clampfit 9.2 and 10.1 Molecular Devices Co.).

Sindbis pseudovirions transfection

A fragment of ChRGR-Venus was generated by PCR and subcloned into pSinRep5 (Invitrogen). The recombinant Sindbis pseudovirion was generated according to the manufacturer's instructions. Briefly, RNAs were transcribed from this plasmid and DH(26S) helper DNA using MEGAscript SP6 Kit (Ambion, Austin, TX). BHK cells were electroporated with these RNAs and were grown for 24 hr at 37°C, 5% CO₂ in α -MEM containing 5% fetal bovine serum before collecting the supernatant. The titer tested on BHK cells, determined after counting the fluorescent cells infected with serial dilution of the virus stocks, was 1.9×10⁶ infectious particles per ml. Recombinant viral stocks were stored at –80°C.

All experiments were done using male C57BL/6J mice (2–3 weeks-old, 7–10 gBW) under anaesthetized by intraperitoneal injection of ketamine-xylazine mixture (50 mg/kgBW ketamine, Daiichi Sankyo Co. Ltd., Tokyo, Japan and 10 mg/kgBW xylazine, Sigma-Aldrich, St. Louis, MO, USA). The viral solution was stereotaxically injected into the primary motor area of the right hemisphere with the following coordinates: anteroposterior from bregma 0.33 mm, lateral from bregma 1.58 mm and ventral 0.5 mm. The body temperature was kept at 37°C by a chemical bedding heater during whole surgery.

Electrophysiology of L5 pyramidal neurons

Twelve hours after injection of the Sindbis pseudovirion vectors, the mice were ether-anesthetized, killed and the cerebral cortex was quickly removed. Sagittal brain slices 250 μ m in thickness were prepared using a vibratome (Leica, VT1000s, Wetzlar, Germany) in ice-cold cutting buffer (in mM: 229 Mannitol, 3 KCl, 26 NaHCO₃, 1 H₃PO₄, 7 MgCl₂ and 11 glucose) bubbled with mixed gas containing 95% O₂ and 5% CO₂. Brain slices were further incubated in artificial cerebrospinal fluid (in mM: 114 NaCl, 2.5 KCl, 26 NaHCO₃, 1 NaH₂PO₄, 10 Mannitol, 1.25 MgCl₂, 2.5 CaCl₂ and 11 glucose) bubbled with the above described mixed gas at 34°C for one hour for the recovery. Although high levels of acetylcholine have been suggested to set the L5 pyramidal neurons to the appropriate dynamics in an awake animal [46,47], the cholinergic tone was absent in the slice. Therefore, it was artificially restored by bath application of the nonhydrolyzable cholinergic agonist carbachol (5 μ M, Nacalai Tesque, Kyoto, Japan).

The ChRGR-Venus-expressing layer 5 (L5) pyramidal neurons were visually identified in an acute slice of cerebral cortex under conventional epi-fluorescent microscopy system (BH-2, Olympus Optical Co., Tokyo, Japan) equipped with a 60 \times water-immersion objective (LUMplanPI/IR60x, Olympus) and a conventional filter cube (excitation, 495 nm; dichroic mirror, 505 nm; barrier filter, 515 nm). Electrophysiological recording was performed at 34±2°C (UTC-1000, Ampere Inc., Tokyo, Japan) under the whole-cell patch clamp from the soma using an amplifier (EPC 8, HEKA Elektronik Dr. Schulze GmbH, Germany). The patch pipette solution was composed of (in mM) 115 potassium gluconate, 20 KCl, 10 HEPES, 2 MgCl₂, 0.2 Na₂EGTA, 2.5 MgATP, 0.3 Na₂GTP and 1.2 leupeptin (Sigma-Aldrich) (pH 7.2 by 1 N KOH). In some experiments, biocytin (2 mg/mL, Sigma-Aldrich) was included for the following morphological studies. The pipette resistance, measured directly, was 3.09±0.30 M Ω (n=16). The liquid junction potential, directly measured, was –9.0 mV and was compensated for. To illuminate the light on the L5 pyramidal neuron under the patch clamp we used the same green LED system as for HEK293 cells. The oscillatory LED light was generated according to the following voltage change [48]:

$$V(t) = V_{\min} + V_{\max} \sin[2\pi f(t)t], \quad (1)$$

where V_{\min} and V_{\max} are the minimal and the maximal voltages driving the LED. The oscillation frequency is swept from the minimal frequency, f_{\min} , to the maximal frequency, f_{\max} , following the equation [27]:

$$f(t) = f_{\min} (e^{Lt} - 1) / L, \quad (2)$$

where

$$L = \log(f_{\max}/f_{\min}). \quad (3)$$

However, since the LED light power density was 0 during $V < V_{\min}$, only a positive range of the above function was employed (the rectified sinusoidal sweep of light, RSSL).

Data were low-pass filtered at 1 kHz, sampled digitally at 2 kHz using an A/D converter (Digidata 1200B, Molecular Devices Co.) with a software (Clampex 9.2, Molecular Devices Co.) and analyzed by other software (Clampfit 10.2, Molecular Devices Co.).

Local field potentials (LFP) and electromyogram (EMG)

All the experiments were performed 12 hours after viral injection. At first, mice were anesthetized by intraperitoneal

injection of ketamine-xylazine mixture (50 mg/kgBW ketamine, Daiichi Sankyo Co. Ltd. and 10 mg/kgBW xylazine, Sigma-Aldrich). The anesthesia was maintained during the recording by adding small amounts of ketamine-xylazine mixture every 30 min. The head of each mouse was fixed on the stage of the microscope (Labophoto, Nikon, Tokyo, Japan) using tooth and ear bars. A small area (diameter, 2 mm) was craniotomized using a dental drill while the dura was kept intact. A recording electrode was made from coated stainless steel wire (0.1 mm), inserted stereotaxically into the injected site at the right hemisphere, while the reference electrode was inserted into the left hemisphere according to stereotaxial coordinates (anteroposterior -0.42 mm from bregma; lateral -1.58 mm from bregma). Both LFP electrodes were fixed on the skull using dental cement (Fuji I, GC Co., Tokyo, Japan). To record the EMG, two coated stainless steel wires with straight bared ends (0.1 mm) were directly inserted into extensor muscles of the left forelimb, triceps brachii and carpi radialis brevis, respectively. Another wire was inserted into the triceps brachii muscle of the right forelimb as control. A green LED (505 ± 15 nm, LXHL-NE98, Lumileds Lighting Inc.) was driven by a custom-made booster and computer software (pCLAMP 9, Molecular Devices Co.) and focused on the dura membrane through a microscope objective (WPlan 10, Olympus). The maximal LED light power density was 1.12 mWmm $^{-2}$ on the focal plane. Both LFP and EMG signals were band-pass-filtered (1–300 Hz) by a custom-made amplifier ($\times 100,000$) sampled at 1 kHz and stored in the computer by software (Clampex 9, Molecular Devices Co.). The power spectra of LFP or EMG were extracted from 10 repetitive traces using Clampfit 10.2 software and averaged for the statistical analysis.

We analyzed the time-frequency energy distribution of the stimulation-evoked response by continuous wavelet transformation [49]. We used the following equation:

$$Gw(b,a) = \int \frac{1}{\sqrt{a}} \overline{\Psi\left(\frac{t-b}{a}\right)} x(t) dt \quad (4)$$

$$\Psi(t) = \frac{1}{2\sqrt{\pi}\sigma} e^{-t^2/\sigma^2} e^{-jt} \quad (5)$$

where $x(t)$ is the evoked response in time (t) domain, $\Psi(t)$ is the mother wavelet, a and b are the scaling factor and translation, respectively. For the mother wavelet, we used the Gabor function in equation (2) with σ being the central frequency of 2 Hz. We varied the scaling factor a to explore frequencies ranging from 1 to 100 Hz. The above equation (1) yielded a series of coefficients that represent the temporal evolution of the frequency content, which were plotted on a pseudocolored 2D graph.

Immunohistochemistry

To investigate the morphological features of the recorded neurons, the cortical slices were immediately fixed after a series of experiments with 4% paraformaldehyde (PFA) in PBS (0.1 M, pH 7.4) for 30 min at 4°C and then washed in PBS. After replacing with 30% sucrose (w/v), each of them was further sliced into 20 μ m-thick sections using a freezing microtome (CM 3050S, Leica). The slices were blocked in PBS including 5% normal donkey serum, 0.1% Triton X-100 and 0.25% λ -carrageenan overnight, then treated with the following primary antibodies in PBS including 5% donkey serum and 0.1% Triton X-100. They were reacted with rabbit anti-EGFP IgG (1:1,000; a generous gift from Drs T. Kaneko and K. Nakamura, Kyoto University, Japan)

at 4°C for 24 hours and then with anti rabbit IgG (Alexa Fluor 488 conjugate, 1:500, Molecular Probes, Oregon, USA) and streptavidin (Alexa Fluor 546 conjugate, 1:500, Molecular Probes, Oregon USA) at room temperature for 5–6 hours. Finally the slices were mounted with Permafluor (Immunotech, Marseille, France) and coverslipped.

To investigate the c-Fos expression, the anesthetized mice were transcardially perfused with 0.01M PBS, then with 4% paraformaldehyde (PFA) in PBS immediately after the above electrophysiological recordings. The pre-fixed brains were removed, and post-fixed overnight in 4% PFA at 4°C. For cryoprotection, the brains were kept overnight in a PBS solution each with graded concentrations of sucrose from 10 to 30% (w/v). The slices were cut into 16- μ m-thick coronal sections on a freezing microtome (CM 3050S, Leica). The sections were washed in 0.025 M PBS followed by blocking buffer (2.5% normal goat serum, 0.1% Triton X-100 and 0.25% λ -carrageenan in PBS), incubated with anti-c-Fos rabbit antibody (Ab-5, 1:1,000, Calbiochem-Merk KGaA, Darmstadt, Germany) and anti-GFP rat antibody (1:500, Nacalai Tesque Inc. Kyoto, Japan) for 48 hours at 4°C. Then, the sections were incubated for 3 hours with biotinylated anti-rabbit-IgG goat antibody (1:200, Jackson, PA, USA). Finally, the slices were treated with streptavidin (Alexa Fluor 546 conjugate, 1:200, Molecular Probes) and anti-rat IgG (Alexa Fluor 488 conjugate, 1:200, Molecular Probes) for fluorescence visualization. The incubation was carried out at room temperature in the blocking buffer, followed by a rinse with PBS. Thereafter, the slices were mounted with Permafluor (Immunotech) and coverslipped.

Each specimen was analyzed three-dimensionally with a z-axis interval of 0.60–0.64 μ m under conventional confocal laser-microscopy (LSM510META, Carl Zeiss, Oberkochen, Germany) equipped with a 40 \times objective unless otherwise noted. The images were corrected for brightness and contrast using conventional software (LSM Image Browser and ImageJ, <http://rsb.info.nih.gov/ij/>).

Statistics

All data in the text and figures are presented as means \pm S.E.M. (number of observations). Statistical significance was tested by the Wilcoxon signed-ranks test for paired data and by the Mann-Whitney U -test for unpaired data. The significance limit was set at $P = 0.05$ in all tests.

Supporting Information

Table S1 Basic electrophysiological parameters of L5 pyramidal neurons.

Found at: [doi:10.1371/journal.pone.0012893.s001](https://doi.org/10.1371/journal.pone.0012893.s001) (0.04 MB PDF)

Figure S1 Photocurrent amplitude of ChRGR. ChRGR (ChR1-fg2) was expressed in a HEK cell and its photocurrent was measured at each wavelength. Here, the ChRGR photocurrent (green diamond) was compared with the corresponding photocurrent of either ChR2 (blue circle), ChR2-H134R (light blue triangle), or VChR1 (yellow square). A, C, E. the peak currents (I_{peak}). B, D, F. the steady-state photocurrents (I_{ss}). Each symbol and bars are mean and SEM of data, $n = 8$ (ChRGR), $n = 8$ (ChR2), $n = 9$ (ChR2-H134R) and $n = 6$ (VChR1). * indicates that the difference was significant ($P < 0.05$, Mann-Whitney U -test). The light power density at each wavelength was (in mWmm $^{-2}$) 0.021 (400 nm), 0.018 (420 nm), 0.027 (440 nm), 0.027 (460 nm), 0.018 (480 nm), 0.021 (500 nm), 0.015 (520 nm), 0.014 (540 nm) or 0.012 (560 nm), respectively. It was relatively small at 480 nm

and over 520 nm because of the spectral properties of the light source (Xenon arc lamp).

Found at: doi:10.1371/journal.pone.0012893.s002 (0.06 MB PDF)

Figure S2 Membrane properties of ChRGR-Venus-expressing neurons. A. Membrane potential responses (bottom traces) to current injections from the patch electrode (top). B. Frequency of action potentials as a function of injected current; ChRGR-Venus-expressing neurons and non-expressing controls. C. Typical current-clamp responses of a L5 pyramidal neuron to the green LED pulses. The external solution included 1 μ M TTX to suppress the generation of action potentials. The resting potential was -73 mV and the membrane time constant was 104 ms.

Found at: doi:10.1371/journal.pone.0012893.s003 (0.06 MB PDF)

Figure S3 Frequency responsiveness of neuronal membrane potential. The rectified sinusoidal sweep of light (RSSL) from 0.1 to 100 Hz (top green), the photocurrent response of an L5 pyramidal neuron under voltage clamp (I , brown), and the membrane potential (V , blue) from the same neuron. To suppress the generation of action potentials, TTX (1 μ M) was included in the external solution. Note that the membrane potential change became small with the increase of frequency because of the large membrane time constant of this neuron (33 ms).

Found at: doi:10.1371/journal.pone.0012893.s004 (0.05 MB PDF)

Figure S4 Non-linear photocurrent responses. The peak (magenta diamond) and steady-state photocurrent amplitude (closed circle) as functions of green LED power density. The lines were drawn fitting to Michaelis-Menten relationship: peak (K_D , 0.10 mWmm $^{-2}$; I_{max} , 0.19 nA) and steady-state (K_D , 0.10 mWmm $^{-2}$; I_{max} , 0.17 nA). Recorded from ChRGR-expressing L5 pyramidal neurons (mean \pm SEM, $n = 4$).

Found at: doi:10.1371/journal.pone.0012893.s005 (0.04 MB PDF)

Figure S5 Distribution of ChRGR-expressing neurons. (Left) The number of neurons expressing ChRGR-Venus was estimated for each depth. The ChRGR-expressing neurons which also expressed c-Fos at higher levels were counted as indicated in white columns. (Right) The LFP (black lines) and EMG (red lines) recorded from each animal. The data from mouse #2 was typical and used in the text-figure 3. Methods: The post-fixed mouse brain was sliced into 16-mm-thick coronal sections on a freezing microtome (CM 3050S, Leica) and immunohistochemically labeled with anti-EGFP and anti-c-Fos. The numbers of fluorescent neurons were counted under confocal microscopy (LSM510META, Oberkochen, Germany) using one of every 5 slices (80 μ m). Total numbers of neurons were estimated for each depth window by linear estimation. As for anti-c-Fos, the intensity of fluorescence was variable from one cell to another. The cell

expressing c-Fos at a higher level was visually identified relative to the background fluorescence.

Found at: doi:10.1371/journal.pone.0012893.s006 (0.32 MB PDF)

Figure S6 Photocurrent kinetics of ChR2-H134R. A–C. ChR2-H134R was expressed in a HEK cell and its photocurrent was evoked by 1s pulse of green LED of various strength (light blue triangle, mean and SEM). (A) The apparent ON time constant (τ_{ON})-light power density relationships. (B) The effective OFF time constant (τ_{OFF})-light power density relationships. (C) The desensitization-light power density relationships. D. The recovery time course of the desensitizing component. The process was fitted to a single exponential relationship (time constant, 3 s). Each green line is the relationship obtained from ChRGR that is copied from text-figure 2D–F or 2J.

Found at: doi:10.1371/journal.pone.0012893.s007 (0.05 MB PDF)

Figure S7 Sensitivity to pH. A and B. ChRGR (ChR1-*fg2*) was expressed in a HEK cell and its photocurrent was measured at each membrane potential of -48 (blue), -28 (magenta), -8 (brown), 12 (green) or 32 mV (purple). The pH of external solution was adjusted to 7.4 (A) or 6.0 (B). C and D. The peak currents (I_{peak} , open diamond) and the steady-state photocurrents (I_{ss} , closed circle) as functions of membrane potential (V). pH 7.4 (C) and 6.0 (D). E. The pH sensitivity of τ_{OFF} . The difference was significant ($P < 0.01$, Mann-Whitney U -test). F. The pH sensitivity of τ_{ON} . G. The pH sensitivity of desensitization.

Found at: doi:10.1371/journal.pone.0012893.s008 (0.05 MB PDF)

Acknowledgments

We thank G. Nagel and T. Takahashi for the channelrhodopsin cDNA, K. Deisseroth for the *Volvox* channelrhodopsin plasmid, M. Prigge and P. Hegemann for the ChR2-H134R plasmid, A. Miyawaki for the Venus cDNA, S. Sakai for experimental assistance and discussion, M. Osanai and H. Ohta for comments on the manuscript and B. Bell for the language assistance.

Author Contributions

Conceived and designed the experiments: TI HY. Performed the experiments: LW HW ST RE. Analyzed the data: LW HW. Contributed reagents/materials/analysis tools: YM HM. Wrote the paper: TI HY. Electrophysiological experiments using the cortical slices and the in vivo animal, data analysis, immunohistochemistry, image analysis: LW. Molecular biology of channelrhodopsins, electrophysiological experiments using the expression system, data analysis: HW. Electrophysiological experiments using the expression system: ST RE. Wavelet analysis: YM. Organization of the research group involved in the wavelet analysis: HM. Planning, organization and fund management of research group involved in the molecular biology: TI. Planning, organization and fund management of all research groups: HY. Preparation of the paper: LW HW TI HY.

References

- Callaway EM, Yuste R (2002) Stimulating neurons with light. *Curr Opin Neurobiol* 12: 587–592.
- Miesenböck G (2004) Genetic methods for illuminating the function of neural circuits. *Curr Opin Neurobiol* 14: 395–402.
- Callaway EM (2005) A molecular and genetic arsenal for systems neuroscience. *Trends Neurosci* 28: 196–201.
- Kramer RH, Fortin DL, Trauner D (2009) New photochemical tools for controlling neuronal activity. *Curr Opin Neurobiol* 19: 544–552.
- Miesenböck G (2009) The optogenetic catechism. *Science* 326: 395–399.
- Sineshchekov OA, Jung KH, Spudis JL (2002) Two rhodopsins mediate phototaxis to low- and high-intensity light in *Chlamydomonas reinhardtii*. *Proc Natl Acad Sci U S A* 99: 8689–8694.
- Suzuki T, Yamasaki K, Fujita S, Oda K, Iseki M, et al. (2003) Archaeal-type rhodopsins in *Chlamydomonas*: model structure and intracellular localization. *Biochem Biophys Res Commun* 301: 711–717.
- Nagel G, Ollig D, Fuhrmann M, Kateriya S, Musti AM, et al. (2002) Channelrhodopsin-1: a light-gated proton channel in green algae. *Science* 296: 2395–2398.
- Nagel G, Szellas T, Huhn W, Kateriya S, Adelsvili N, et al. (2003) Channelrhodopsin-2, a directly light-gated cation-selective membrane channel. *Proc Natl Acad Sci U S A* 100: 13940–13945.
- Li X, Gutiérrez DV, Hanson MG, Han J, Mark MD, et al. (2005) Fast noninvasive activation and inhibition of neural and network activity by vertebrate rhodopsin and green algae channelrhodopsin. *Proc Natl Acad Sci U S A* 102: 17816–17821.

11. Huber D, Petreanu L, Ghitani N, Ranade S, Hromádka T, et al. (2008) Sparse optical microstimulation in barrel cortex drives learned behaviour in free moving mice. *Nature* 451: 61–64 (2007).
12. Zhang YP, Oertner TG (2007) Optical induction of synaptic plasticity using a light-sensitive channel. *Nat Methods* 4: 139–141.
13. Han X, Qian X, Bernstein JG, Zhou HH, Franzesi GT, et al. (2009) Millisecond-timescale optical control of neural dynamics in the nonhuman primate brain. *Neuron* 62: 191–198.
14. Nagel G, Brauner M, Liewald JF, Adeishvili N, Bamberg E, et al. (2005) Light activation of channelrhodopsin-2 in excitable cells of *Caenorhabditis elegans* triggers rapid behavioral responses. *Curr Biol* 15: 2279–2284 (2005).
15. Douglass AD, Kraves S, Deisseroth K, Schier AF, Engert F (2008) Escape behavior elicited by single, channelrhodopsin-2-evoked spikes in zebrafish somatosensory neurons. *Curr Biol* 18: 1133–1137.
16. Arenkiel BR, Peca J, Davison IG, Feliciano C, Deisseroth K, et al. (2007) In vivo light-induced activation of neural circuitry in transgenic mice expressing channelrhodopsin-2. *Neuron* 54: 205–218.
17. Tomita H, Sugano E, Fukazawa Y, Isago H, Sugiyama Y, et al. (2009) Visual properties of transgenic rats harboring the channelrhodopsin-2 gene regulated by the thy-1.2 promoter. *PLoS One* 4: e7679.
18. Bi A, Cui J, Ma YP, Olshevskaya E, Pu M, et al. (2006) Ectopic expression of a microbial-type rhodopsin restores visual responses in mice with photoreceptor degeneration. *Neuron* 50: 23–33.
19. Lagali PS, Balya D, Awatramani GB, Münch TA, Kim DS, et al. (2008) Light-activated channels targeted to ON bipolar cells restore visual function in retinal degeneration. *Nat Neurosci* 11: 667–675.
20. Tomita H, Sugano E, Yawo H, Ishizuka T, Isago H, et al. (2007) Restoration of visual response in aged dystrophic RCS rats using AAV-mediated channelrhodopsin-2 gene transfer. *Invest Ophthalmol Vis Sci* 48: 3821–3826.
21. Hegemann P, Ehlbeck S, Gradmann D (2005) Multiple photocycles of channelrhodopsin. *Biophys J* 89: 3911–3918.
22. Ishizuka T, Kakuda M, Araki R, Yawo H (2006) Kinetic evaluation of photosensitivity in genetically engineered neurons expressing green algae light-gated channels. *Neurosci Res* 54: 85–94.
23. Wang H, Sugiyama Y, Hikima T, Sugano E, Tomita H, et al. (2009) Molecular determinants differentiating photocurrent properties of two channelrhodopsins from *Chlamydomonas*. *J Biol Chem* 284: 5685–5696.
24. Nagel G, Szellas T, Kateriya S, Adeishvili N, Hegemann P, et al. (2005) Channelrhodopsins: directly light-gated cation channels. *Biochem Soc Trans* 33: 863–866 (2005).
25. Zhang F, Prigge M, Beyrière F, Tsunoda SP, Mattis J, et al. (2008) Red-shifted optogenetic excitation: a tool for fast neural control derived from *Vavox carteri*. *Nat Neurosci* 11: 631–633.
26. Gutfreund Y, Yarom Y, Segev I (1995) Subthreshold oscillations and resonant frequency in guinea-pig cortical neurons: physiology and modeling. *J Physiol* 483: 621–640.
27. Tohidi V, Nadim F (2009) Membrane resonance in bursting pacemaker neurons of an oscillatory network is correlated with network frequency. *J Neurosci* 29: 6427–6435.
28. Sugiyama Y, Wang H, Hikima T, Sato M, Kuroda J, et al. (2009) Photocurrent attenuation by a single polar-to-nonpolar point mutation of channelrhodopsin-2. *Photochem Photobiol Sci* 8: 328–336.
29. Sheng M, Greenberg ME (1990) The regulation and function of c-fos and other immediate early genes in the nervous system. *Neuron* 4: 477–485.
30. Guzowski JF, Setlow B, Wagner EK, McLaugh JL (2001) Experience-dependent gene expression in the rat hippocampus after spatial learning: a comparison of the immediate-early genes Arc, c-fos, and zif268. *J Neurosci* 21: 5089–5098.
31. Schoenberger P, Gerosa D, Oertner TG (2009) Temporal control of immediate early gene induction by light. *PLoS One* 4: e8185.
32. Gunaydin LA, Yizhar O, Berndt A, Sohal VS, Deisseroth K, et al. (2010) Ultrafast optogenetic control. *Nat Neurosci* 13: 387–392.
33. Boyden ES, Zhang F, Bamberg E, Nagel G, Deisseroth K (2005) Millisecond-timescale, genetically targeted optical control of neural activity. *Nat Neurosci* 8: 1263–1268.
34. Hutcheon B, Yarom Y (2000) Resonance, oscillation and the intrinsic frequency preferences of neurons. *Trends Neurosci* 23: 216–222.
35. Cardin JA, Carlén M, Meleis K, Knoblich U, Zhang F, et al. (2009) Driving fast-spiking cells induces gamma rhythm and controls sensory responses. *Nature* 459: 663–667.
36. Sohal VS, Zhang F, Yizhar O, Deisseroth K (2009) Parvalbumin neurons and gamma rhythms enhance cortical circuit performance. *Nature* 459: 698–702.
37. Weiler N, Wood L, Yu J, Solla SA, Shepherd GM (2008) Top-down laminar organization of the excitatory network in motor cortex. *Nat Neurosci* 11: 360–366.
38. Destexhe A, Contreras D (2006) Neuronal computations with stochastic network states. *Science* 314: 85–90.
39. Larkum ME, Nevian T, Sandler M, Polsky A, Schiller J (2009) Synaptic integration in tuft dendrites of layer 5 pyramidal neurons: a new unifying principle. *Science* 325: 756–760.
40. Striade M (2000) Corticothalamic resonance, states of vigilance and mentation. *Neuroscience* 101: 243–276.
41. Douglas RJ, Martin KA (2004) Neuronal circuits of the neocortex. *Annu Rev Neurosci* 27: 419–451.
42. Kalil K (1984) Development and regrowth of the rodent pyramidal tract. *Trends Neurosci* 7: 394–398.
43. Terashima T (1995) Anatomy, development and lesion-induced plasticity of rodent corticospinal tract. *Neurosci Res* 22: 139–161.
44. Rolls ET, Loh M, Deco G (2008) An attractor hypothesis of obsessive-compulsive disorder. *Eur J Neurosci* 28: 782–793.
45. Haider B, McCormick DA (2009) Rapid neocortical dynamics: cellular and network mechanisms. *Neuron* 62: 171–189.
46. Hasselmo ME, Giocomo LM (2006) Cholinergic Modulation of Cortical Function. *J Mol Neurosci* 30: 133–135.
47. van der Zee EA, Luiten PG (1999) Muscarinic acetylcholine receptors in the hippocampus, neocortex and amygdala: a review of immunocytochemical localization in relation to learning and memory. *Prog Neurobiol* 58: 409–471 (1999).
48. Paul E, Gimbarzevsky B, Miura RM (1986) Quantification of membrane properties of trigeminal root ganglion neurons in guinea pigs. *J Neurophysiol* 55: 995–1016.
49. Sutoh T, Yabe H, Sato Y, Hiruma T, Kaneko S (2000) Event-related desynchronization during an auditory oddball task. *Clin Neurophysiol* 111: 858–862.

*1 網膜色素変性症

光受容に関係する遺伝子の変異が原因となって生じる網膜変性疾患の一つ。4000～8000人に1人の割合で発症するといわれている。

*2 加齢黄斑変性症

網膜色素上皮細胞の加齢性変化のほか、遺伝子変異、環境要因も発症原因と考えられている網膜変性疾患。50歳以上の発症頻度は0.87%とされる。

*3 ロドプシン

脊椎動物の光受容細胞に存在する色素タンパク質。哺乳類の場合、網膜の視細胞にあって、最初に光を受容する機能を担っている。

緑藻の光受容体遺伝子の導入による網膜色素変性ラットの視力回復

富田浩史 東北大学国際高等研究教育機構准教授

東北大学の富田浩史准教授らは、クラミドモナスの光受容体(チャネルロドプシン-2)の遺伝子を、網膜色素変性モデルラットの神経節細胞に導入することで、失明ラットの視力を回復することに成功した。さらに、色覚再生を視野に入れた研究が進められている。

増加傾向にある 網膜変性による中途失明

網膜色素変性症^{*1}や加齢黄斑変性症^{*2}などの網膜変性疾患は、遺伝子の異常や加齢が原因で網膜の視細胞が障害をうける疾患である。加齢黄斑変性症は、欧米において中途失明の最大の原因となっている。日本では、糖尿病網膜症、緑内障がその二大原因であるが、生活習慣の欧米化に伴い、増加傾向にあるという。

いまのところ、網膜変性疾患に対する根治療法はなく失明すると再び視力を取り戻すことは不可能だ。そのため国内外の研究機関において、網膜変性疾患の新たな治療法の研究開発が二つのアプローチで進められている。

まず、網膜や脳の視覚野に電極を留置し、外部のカメラが捉えた映像を伝える“人工眼”の研究が進められていて、臨床研究が実施されている。また、再生医療により視細胞を蘇らせる治療法の開発も進められている。

これらにくわえ、東北大学国際高等研究機構准教授の富田浩

史らは、新たなアプローチによる治療法の開発に取り組んでいる。

「視細胞が受けた光刺激を脳に伝える内顆粒層や神経節細胞層の細胞が健全でも、網膜変性疾患で視細胞が障害を受けると、視覚は失われてしまう。ならば、光受容体の遺伝子を神経節細胞に導入し、神経節細胞が視細胞の代わりに光を感受できるようにすればよいと考えました(図1)」(富田)

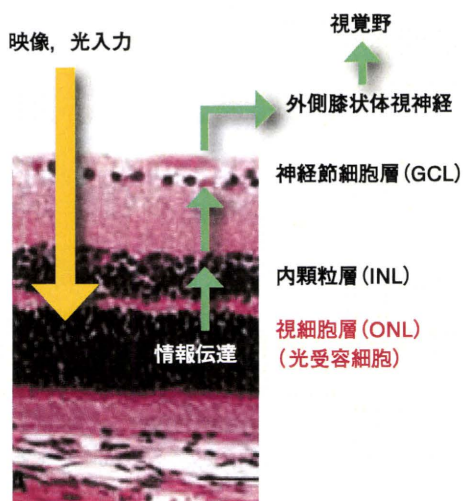
なぜヒトではなく、 緑藻の遺伝子なのか

富田が活用したのは、2002年にクラミドモナス(*Chlamydomonas reinhardtii*)という緑藻から発見されたチャネルロドプシン-2(ChR2)の遺伝子。なぜ、ヒトの遺伝子ではなく、緑藻の遺伝子だったのか。

そもそもヒトの視細胞で起こっている光の感受は、まずロドプシン^{*3}が光を受けた後、種々の酵素反応を経て、通常開いているNa⁺チャンネルが閉じて、Na⁺の流入が止まることで、その後の視神経、脳への情報伝達が始まる。そのため、本来、光感受性のない神経節細胞にその役目を担わせるには、複数種の遺伝子を共発現させてやらなけ

図1 網膜の構造

眼が受けた光を、網膜の下層にある視細胞が受容し、その情報は内顆粒層、神経節細胞層などの細胞、視神経を介して脳の視覚野に伝えられる。網膜色素変性症、加齢黄斑変性症などで視細胞が障害を受けると、他の細胞が健全でも視覚は失われてしまう。



ればならず、均質かつ高効率に発現させるのは決して簡単なことではない。実際、ロドプシンを導入した培養細胞を用いた *in vitro* 実験では光感受性が低く、患者を対象とした治療に利用するのは困難だという。

いっぽうクラミドモナスの ChR2 は、一分子で光受容から細胞内への Na⁺ 取込みまでの機能をもっている。視細胞では、Na⁺ の流入が止まることで視覚情報の伝達が始まるのに対して、神経節細胞では Na⁺ が流入すると神経細胞が発火する。つまり、ChR2 だけを導入すれば、神経節細胞に光受容の機能を付加できる可能性がある (図2)。

そこで富田は、先天的に視細胞に障害が生じる網膜色素変性症のモデルラット、RCS (Royal College of Surgeons) ラットを対象に、アデノ随伴ウイルスベクターを用いて神経節細胞への ChR2 遺伝子の導入を試みた。CAG プロモーター^{*4} の下流に、ChR2 と蛍光タンパク質 Venus 遺伝子を組み込み、そのラットの目の硝子体内に投与した。すると、1回の投与で約30万個もの神経節細胞で発現が確認されたという。

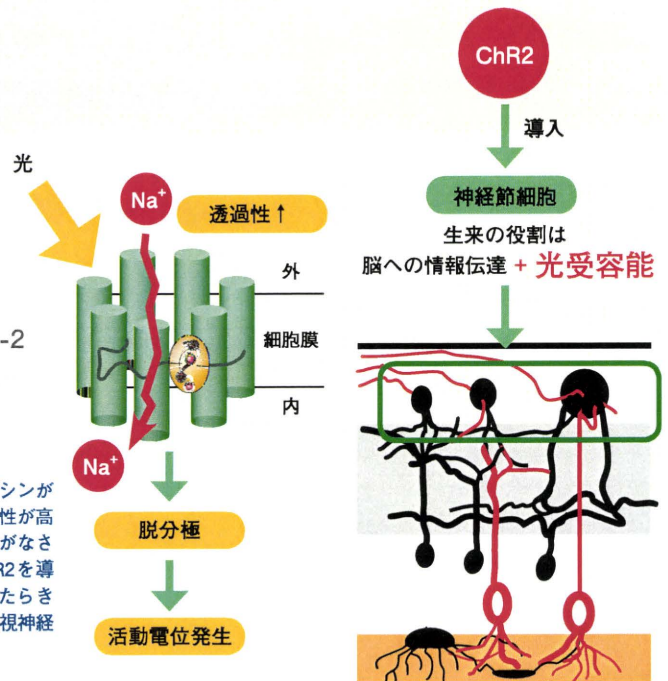
「現在、臨床研究に用いられている人工眼の電極は16個。今後、研究が進んでも1000個が精一杯といわれています。これでは高精細な視覚を再生することはむずかしい。これに対して、ChR2 の遺伝子治療なら、1回の投与で30万個の神経節細胞に遺伝子導入できるのだから、解像度を飛躍的に向上させる可能性があります」(富田)

遺伝子導入をした RCS ラットでは、

図2

チャンネルロドプシン-2 (ChR2) による神経節細胞への光受容機能の付加

ヒトの視細胞では、ロドプシンが光をうけると種々の酵素活性が高まり、視神経への情報伝達が始まるが、神経節細胞に ChR2 を導入すれば、この1分子のはたらきだけで、Na⁺ が取り込まれ視神経での情報伝達が始まる。



導入前には生じなかった視覚誘発電位が得られ、かつ、青色の縞模様動く環境に置くと、その回転に合わせて首を振る動作が確認された (図3)。

コントラスト感度は正常視覚よりも鋭敏に

次に富田は、Thy-1 プロモーター^{*5} の下流に ChR2 と Venus^{*6} を組み込んだ遺伝子を、視覚が正常なラットの胚に導入し、トランスジェニックラットを作成。ChR2 導入による視覚への影響をたしかめた。なぜ、疾患モデル生物 (RCS ラット) への遺伝子導入による回復実験だけでは足りないのか。

「網膜変性疾患になったからといって、一気に全ての視細胞がつぶれてしまうわけではありません。正常な視細胞が残る可能性もある。将来、ChR2 遺伝子の導入によって視覚を再生させる治療法を患者に用いるためには、ChR2 遺伝子が導入された神経節細胞の光受容が、正常な細胞による視覚にどのような影響をおよぼすかを確認しなければなりません」(富田)

ラットの場合、3000lux の強い光を7日間、連続照射すれば視細胞に障害を与え失明させることができる。こうして作られたラットを、青黒の縞模様が動くディスプレイで囲まれた部屋に入れて、その視機能が調べられた (図4)。

主に評価したのはコントラスト感度と空間周波数の2項目。コントラスト感度は、青黒の縞模様の明暗の差で、コントラスト感度が強くなれば明暗の差は大きく視認しやすくなり、弱くなれば明暗の差は小さく視認しにくくなる。空間周波数は1度の感覚に示される縞模様の本数を示しており、本数が増えれば増えるほど視認しにくくなる。

こうした実験を行った結果、視細胞が障害されていない場合、ChR2 を導入した神経節細胞での光受容が加わっても、視覚が乱されないことが確認された。また、縞模様が少ないとき (低空間周波数) は、視覚が正常なラットよりも、視細胞が障害されたラットのコントラスト感度のほうが高かったという結果も得られた。

「コントラスト感度が高まった理由は

***4 CAGプロモーター**

ウイルスベクターによる遺伝子導入で利用される遺伝子プロモーター。

***5 Thy-1プロモーター**

神経細胞で特異的に発現するプロモーター。

***6 Venus**

緑色蛍光タンパク質 (GFP) を改変して作られた蛍光発色タンパク質。非常に明るく発色することから、金星にちなんでVenusと名づけられた。

図3

ChR2 遺伝子を導入して得られた視覚

先天的に視細胞が機能不全に陥るRCSラットの神経節細胞に、アデノ随伴ウイルスベクターを用いてChR2遺伝子を導入すると、遺伝子導入前には生じなかった視覚誘発電位が確認された。また、青色の縞模様を描いた幕が回転する環境に置いて、その行動を観察したところ、幕の回転速度に合わせて首を振ることが確認された。回転方向とは逆に動かすときは、首の動かしか方は回転速度と同期していなかった。

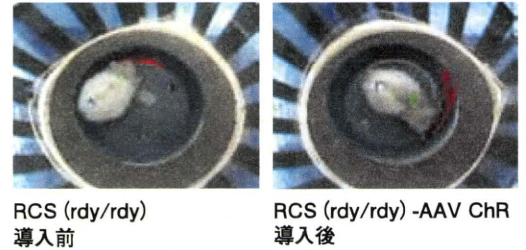
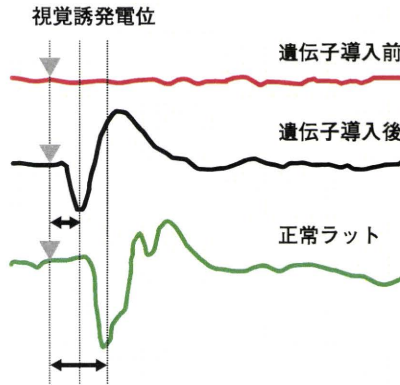
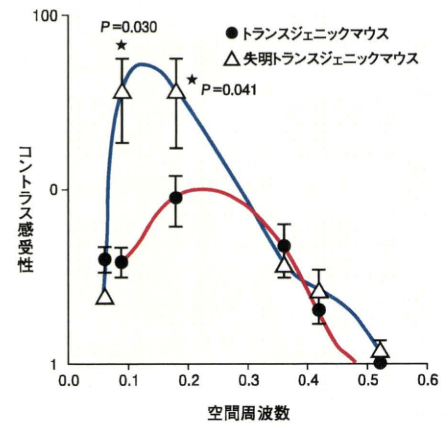
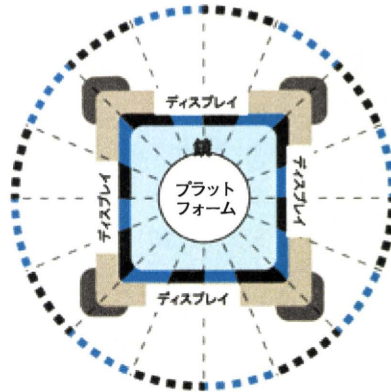


図4

ChR2の導入により回復した視機能

縞模様を表示するディスプレイで取り囲んだ環境に、ChR2とVenusを導入したマウスを入れて、その行動を観察した。ディスプレイに写される縞模様のコントラストと縞の数(空間周波数)は任意に変えられるようになっている。トランスジェニックラットの視覚能力を調べると、縞模様が少ない時(低空間周波数)、正常なラットよりも障害を受けたラットでコントラスト感度が高まることわがたしかめられた。



まだ明らかになっていません。しかし、ChR2は神経節細胞にまんべんなく導入されたので、通常であれば色覚を担う視細胞(錐体)からの情報を伝達するはずの神経節細胞も光受容の役目は果たしたことで、コントラスト感度が高まったのかもしれない(富田)

ただし、ChR2遺伝子の導入だけでは、青い光の認識しか望めない。失明した患者にすれば、青い光を感じられるだけでもQOLの向上につながると思えるが、富田は色覚の再生も視野に入れて、研究を進めている。

「2009年に、クラミドモナスと同じ緑藻に分類されるボルボックス(*Volvox carteri*)にも、ChR2に類似した分子

(VChR1)があることが報告されています。しかも、ボルボックスの分子が受容する光の波長は、クラミドモナスとは、ずれていることも明らかになっている。受容できる光の波長が異なる複数種の光受容分子を利用すれば、色覚再生も可能になるのではないかと考えています(富田)

しかし、自然に存在する光受容分子だけで十分ではない可能性がある。クラミドモナスやボルボックスのChR2をもとに人為的な改変を加えるなどすることで、受容可能な波長の拡張が期待できるだろう。

今後、ヒトを対象とした臨床研究を実施するには、効果や安全性の検証を慎重

に進めていく必要があるが、人工眼や再生医療と比べ遺伝子治療は低侵襲であるといえる。今後の研究次第では、失明者にとって光を取り戻す治療法の切り札になるかもしれない。(文中敬称略)

齊藤勝司(サイエンライター)

Profile

とみた・ひろし

1966年生まれ。1992年、京都府立大学大学院農学研究科修士課程修了。参天製薬研究員、東北大学大学院医学系研究科助手を経て、2002年～2004年、長寿科学振興財団海外派遣研究員として、オクラホマ大学眼科学講座にて網膜変性疾患の薬剤治療の研究に従事。2008年より現職。2010年より同大学院医学系研究科附属創生応用医学研究センター准教授を兼任。

参考文献

Tomita H et al : Plos One 4 (2009) e7379

