

Table 1 Profile of the case

Pt No	Exam No	Sex	Age	Site of injection	intra or extra-cyst
1	1	F	8M	rt. cheek	E
	2			lt. supraclavicule	I
2	3	F	2Y4M	lt. mandibule	E
3	4	F	7M	lt. submandibule	I
4	5	F	5Y7M	rt. subscapula	I
	6			rt. axilla	I
5	7	F	2Y6M	rt. submandibule	I
6	8	M	1Y3M	lt. lat. chest	I
7	9	M	17Y	rt. cheek	E
	10			lt. cheek	E
8	11	F	1Y11M	lt. lat. chest	I
9	12	M	3Y	lt. cheek	E

Abbreviations: *E*, extra-cystic injection *I*, intra-cystic injection
lt., left *rt.*, right *lat.*, lateral

Table 2 Profile of the control

Case No	Exam No	Sex	Age	Site of injection
1-1	1	F	1Y2M	rt. foot*
	2			lt. foot*
1-2	3	F	1Y2M	rt. hand*
	4			lt. hand*
1-3	5	F	1Y6M	rt. temporal portion
	6			lt. parietal portion

Case No. 1 is the same patient of Pt No.1 in Table 1.
The patients underwent 3 separate sintigraphies.
Tracer was injected subcutaneously in all examination.
*: web space between the 1st and 2nd digit

Table 3 Studies of lymphatic flow in lymphangioma using scintigraphy

No	Author	Radiotracer	Summary of the scintigraphy	Compatibility with our study	Ref No
1	Takes	^{99m}Tc nanocoloid	Slow fluid drainage from the lesion	Compatible	13
2	Barrand	Iodine labelled albumin	Slow fluid drainage from the lesion	Compatible	6
3	Boxen	$^{99m}\text{Tc-Sb}_2\text{S}_3$	Rapid flow into the lesion	Not comparable because of the draining tube	12
4	Wells	$^{99m}\text{Tc-Sb}_2\text{S}_3$	Rapid flow into and out of the lesion	Incompatible	14
5	Touloukian	Xe^{133}	Existence of abnormal L-V circulation	Not comparable because of the diffusion of Xe^{133}	11

Abbreviations; fluid: lymphatic fluid, flow: lymphatic flow, L-V: lymphatico-venous

Figure 1

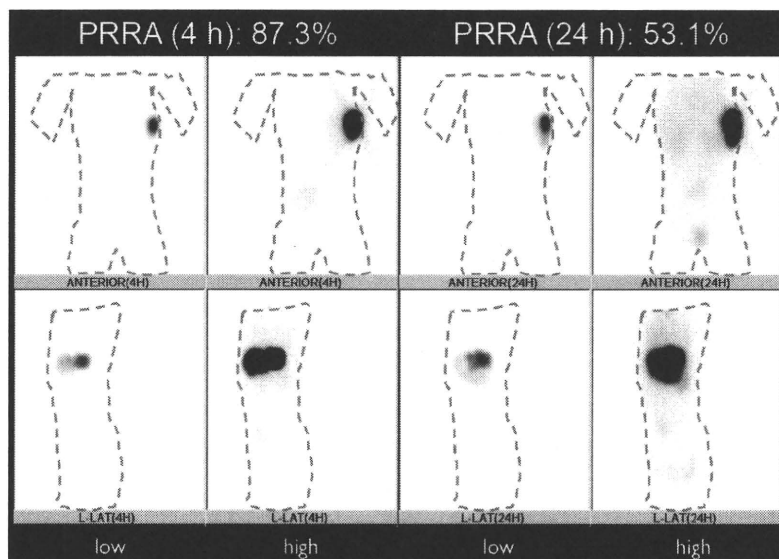


Figure 2

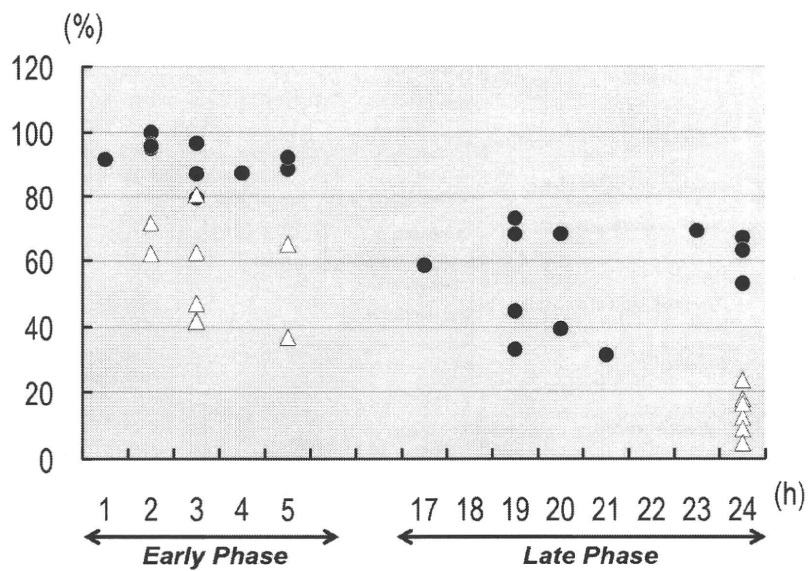


Figure 3

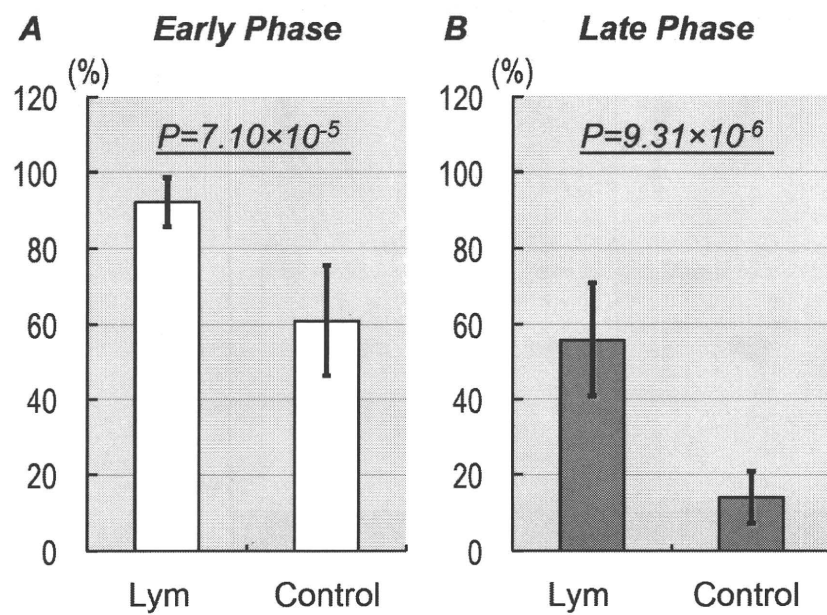
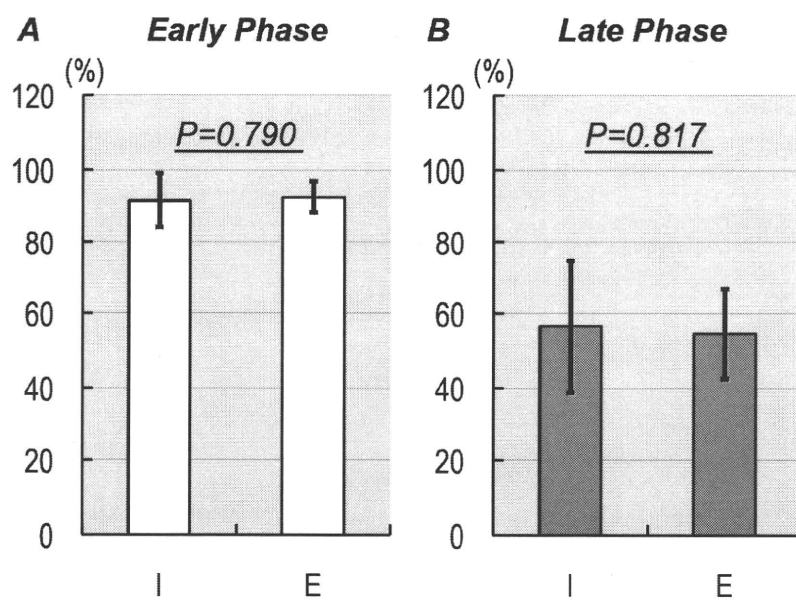


Figure 4



リンパ管腫情報ステーション

<http://www.lymphangioma.net/>

The screenshot shows the homepage of the Lymphangioma Information Station. At the top left is the logo 'LIS Lymphangioma Information Station' and the site title 'リンパ管腫情報ステーション'. A navigation bar contains three tabs: '一般・患者向け' (General/Patient), '医療関係者向け' (For Medical Professionals), and '研究' (Research). The '一般・患者向け' tab is active. The main content area features a large image of a stethoscope on the left and a text box on the right titled 'このホームページの目的' (Purpose of this homepage). The text box contains two numbered points: 1. '「リンパ管腫」に関する国内外のあらゆる情報を集め、患者さん及び医療者に提供すること' (Collect all information about lymphangioma from home and abroad and provide it to patients and medical professionals); 2. '「リンパ管腫」の原因を解明し、より良い治療法を探し出すこと' (Clarify the cause of lymphangioma and find better treatment methods). A button '詳しくはこちら' (More details here) is located below the text. Below the main content are sections for 'お知らせ' (Notice) with a sub-heading '2010.3.8 ホームページ開設' (Homepage launched on 2010.3.8) and 'リンパ管腫研究会による全国調査結果' (National survey results by the Lymphangioma Research Society). A sidebar on the left contains a 'Home' menu with links to 'お知らせ', 'リンパ管腫研究会による全国調査結果', 'お問い合わせ', and 'このサイトについて'. Below the sidebar is a '会員登録はこちら' (Register here) button. At the bottom, there is a footer with a copyright notice: 'Copyright ©2010 リンパ管腫情報ステーション All Rights Reserved. | サイトマップ |'.

