

图 3B

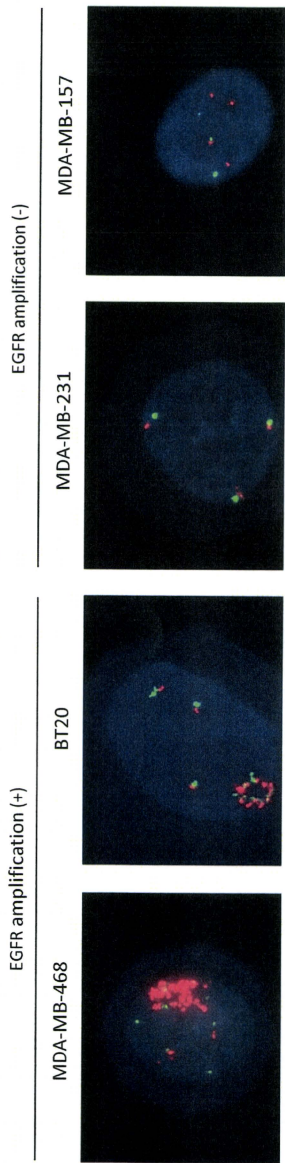


图 3C

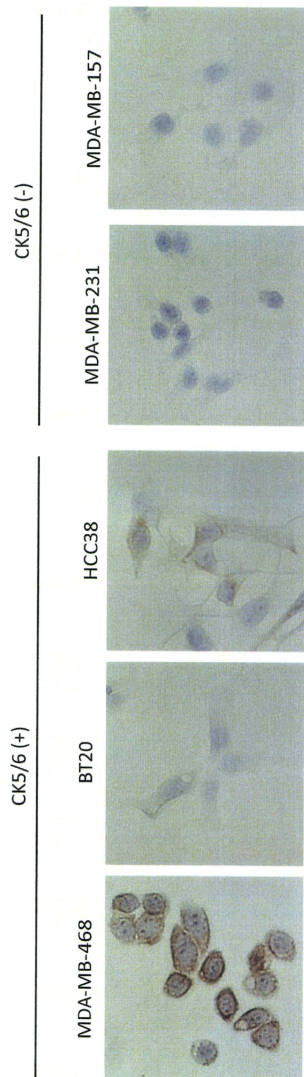


图4A

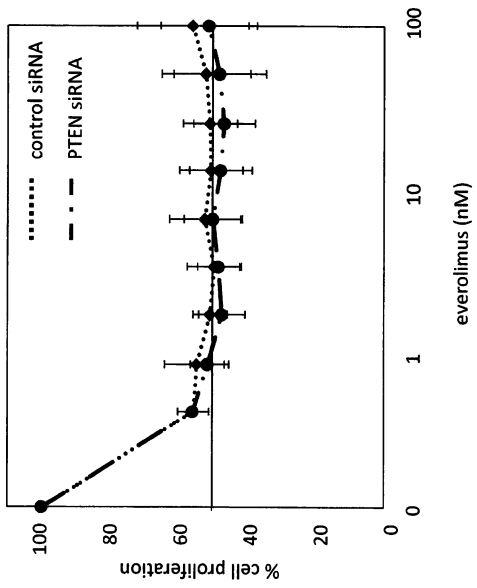
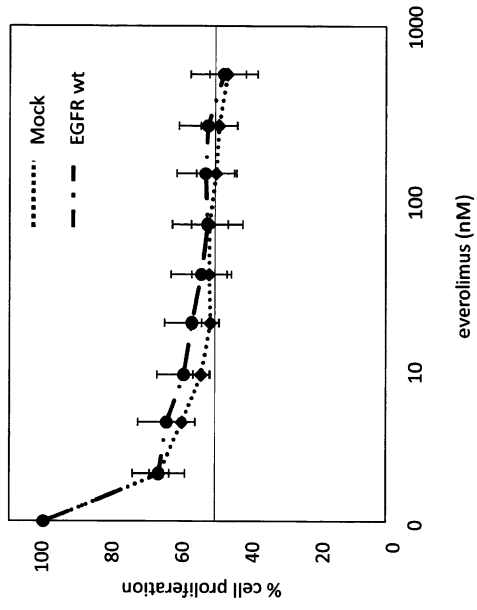


图4B



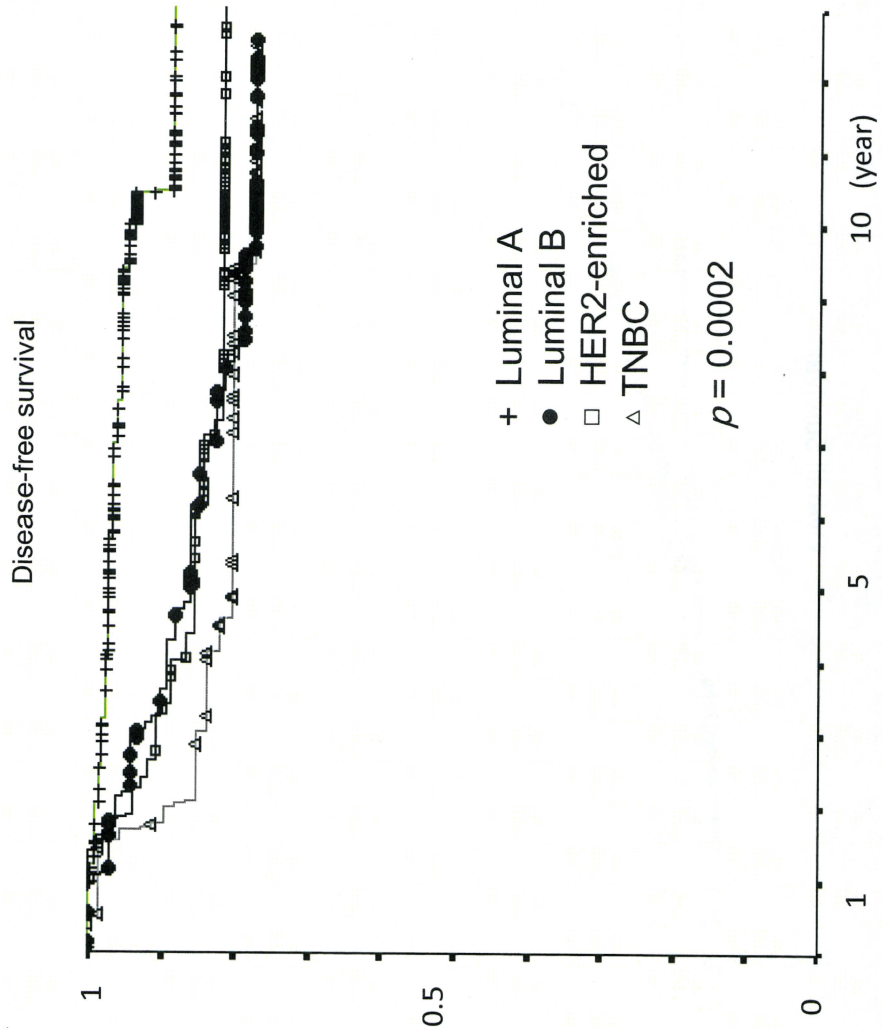
Patients' characteristics-1

	No. of patients (%) (n = 530)
Age	
≤ 50	196 (37)
> 50	334 (63)
Menopausal	
pre	200 (42)
post	330 (58)
Pathological T size	
T1	380 (72)
T2	146 (27)
T3	4 (1)
Nuclear grade	
1	169 (32)
2	114 (22)
3	240 (46)
NSAS criteria	
eligible	351 (66)
ineligible	177 (34)
chemotherapy	
CMF	154 (29)
UFT	82 (15)
none	293 (56)

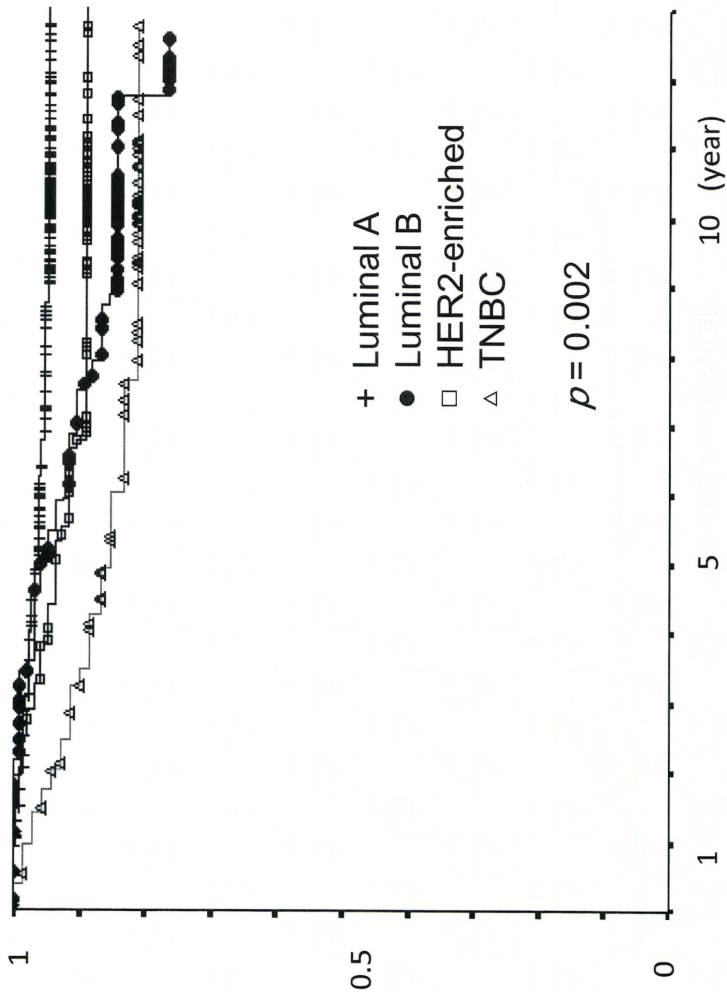
Patients' characteristics-2

		No. patients (%)
Hormone receptor (HR)	+	409 (78)
	-	116 (22)
HER2 (3+ or 2+/FISH+)	+	106 (20)
	-	424 (80)
Ki 67 (≥20%)	+	243 (46)
	-	286 (54)
Subtype	Luminal A (HR+/HER2-/Ki67-)	242 (46)
	Luminal B (HR+/HER2-/Ki67+, or HR+/HER+)	111 (21)
	HER2-enriched (HR-/HER2+)	101 (19)
	TNBC (HR-/HER2-)	73 (14)
lymph node invasion	+	163 (31)
	-	366 (69)

图16A



Overall Survival



Cox univariate and multivariate analysis - Disease-free survival

Univariate analysis	Hazard ratio	95% CI	p value
ER - vs. +	1.88	1.12 - 3.17	0.02
Ki67 <20 vs. ≥20%	0.36	0.21 - 0.61	0.0001
nuclear grade (1 vs. 2, 3)	0.42	0.22 - 0.81	0.009
NSAS criteria	0.27	0.13 - 0.57	0.0006
Multivariate analysis			
Ki67 <20 vs. ≥20%	0.45	0.24 - 0.84	0.01
NSAS criteria	0.22	0.07 - 0.67	0.008

乳癌組織におけるリンパ球浸潤の程度と術前化学療法に対する効果の相関

Subtype of breast cancer and response to NAC	No. of patients (%)				<i>p</i>
	Total	TIL score			
		0-2	3-5		
TNBC					
pCR (NSABP B-18)	Yes	29 (32)	4 (16)	25 (37)	0.05
	No	63 (68)	21 (84)	42 (63)	
QpCR (JBCRG)	Yes	35 (38)	4 (16)	31 (46)	0.008
	No	57 (62)	21 (84)	36 (54)	
pCR (primary + lymph nodes)	Yes	26 (28)	4 (16)	22 (33)	0.11
	No	66 (72)	21 (84)	45 (67)	

図9

組織マイクロアレイ構築によるER、HER2検索

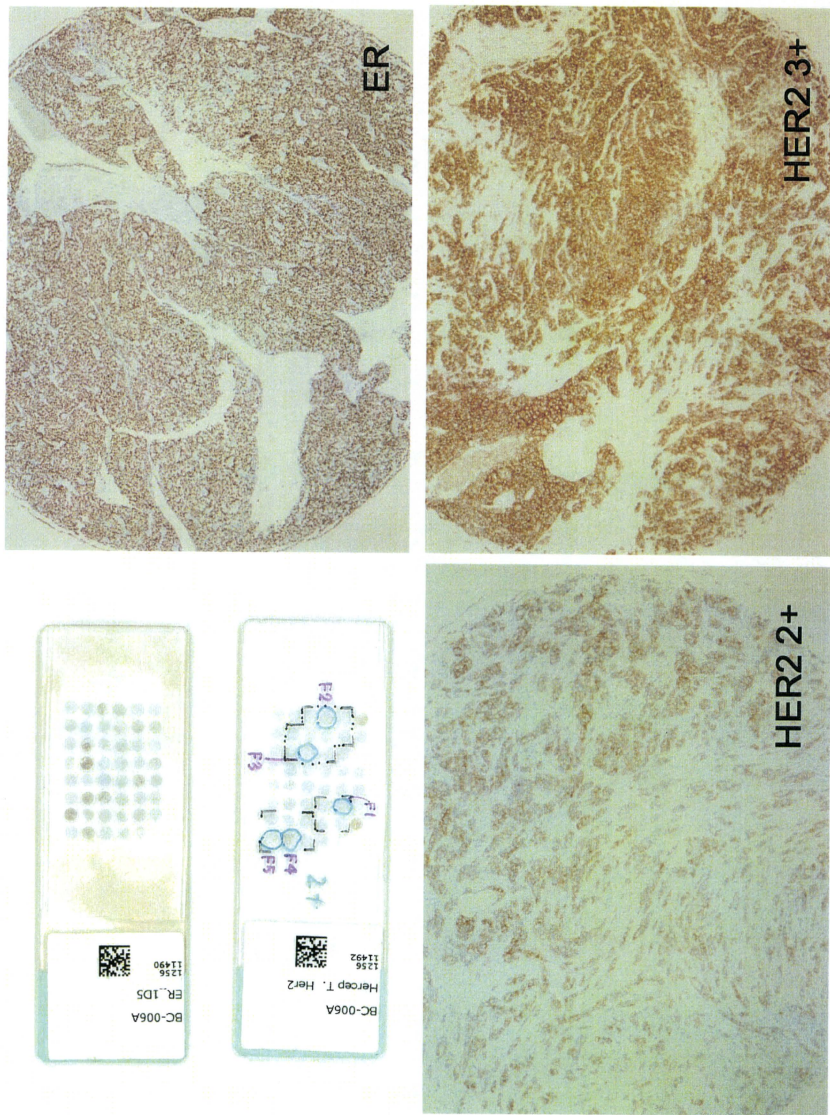
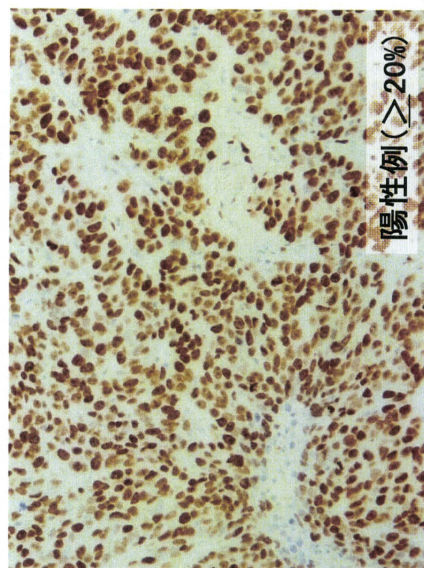
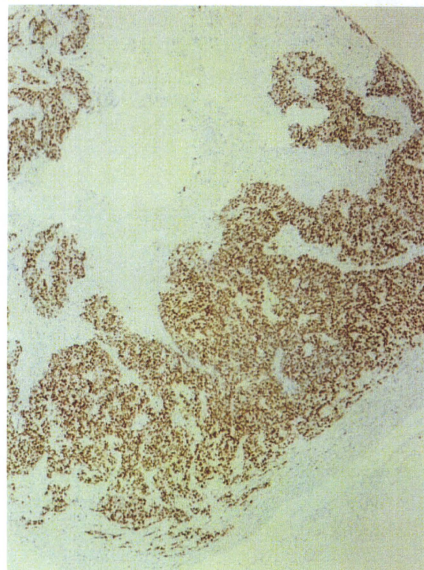
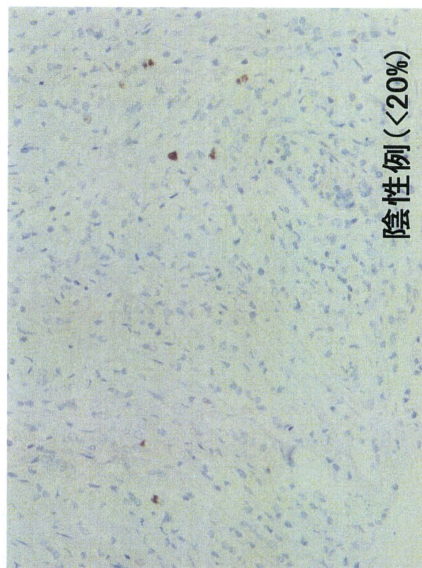
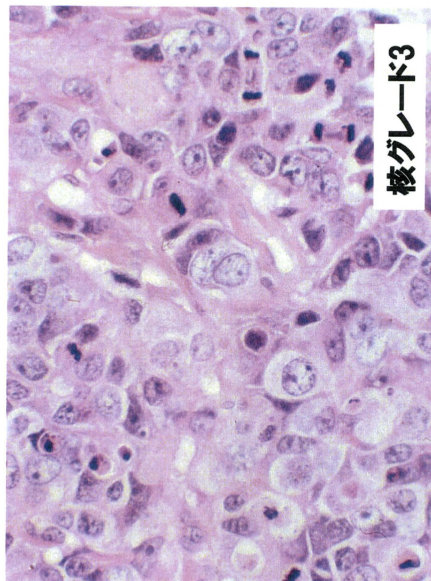
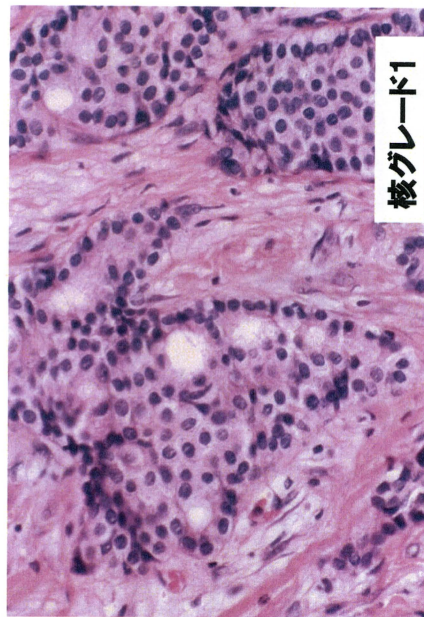


图10

Ki67 免疫染色





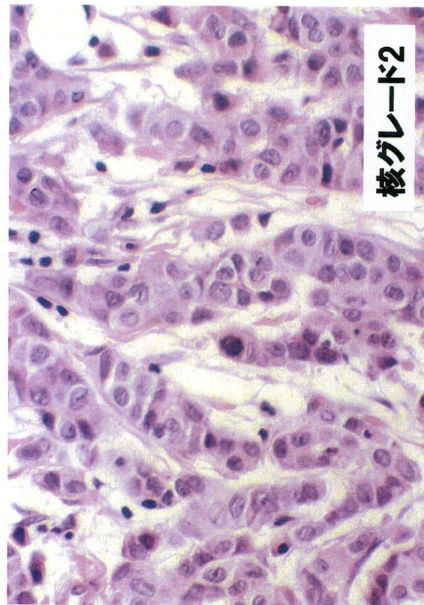
浸潤径とグレード、組織型に基づく

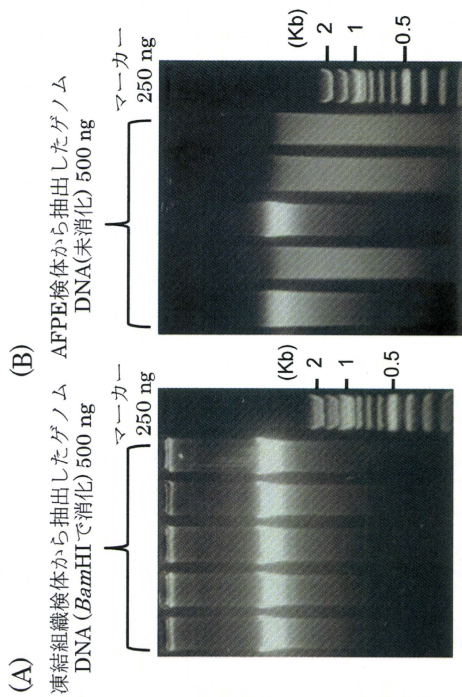
低リスク

1. 非浸潤性乳管癌、非浸潤性小葉癌
2. 浸潤径5mm以下の浸潤癌
3. 核グレード1の浸潤性乳管癌
4. 浸潤性小葉癌、化生を伴う癌以外の特殊型

ハイリスク

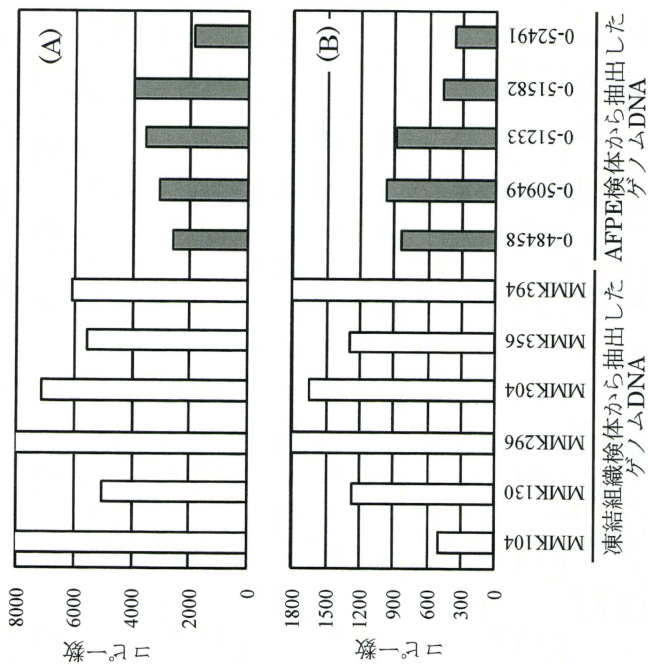
1. 浸潤径5mm以上で核グレード2, 3の浸潤性乳管癌
2. 浸潤性小葉癌、化生を伴う癌





抽出したゲノムDNAの電気泳動

(A) 凍結組織検体から抽出し、*Bam*HIで消化したゲノムDNA 5検体 (B) AFPE検体から抽出したゲノムDNA 5検体(未消化)



乳がん検体の定量MSPにおいて検出された非メチル化DNA及びメチル化DNAのコピー数の総和
 (A) BRCA1遺伝子 (B) AKR1B1遺伝子

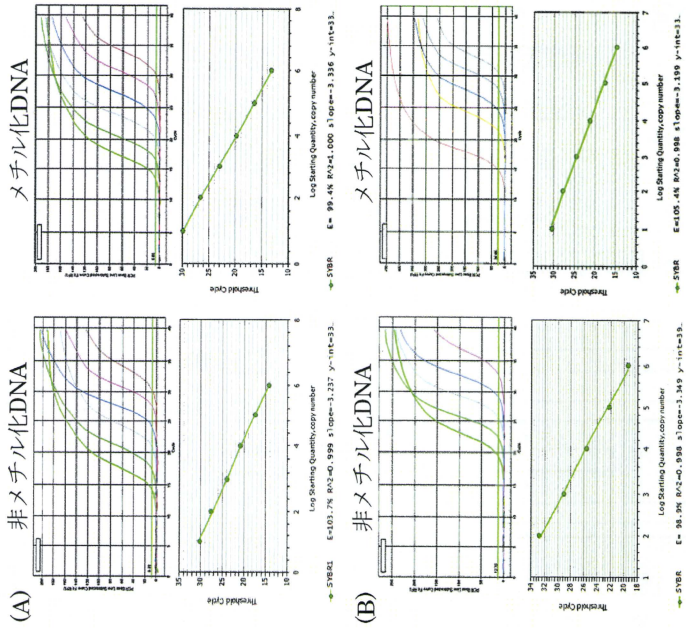
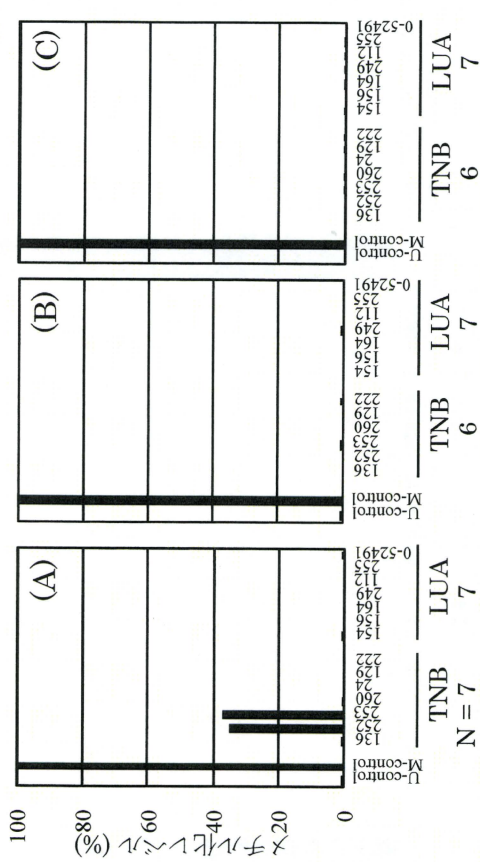


図 4 qMSPにおける標準DNAの増幅曲線及び検量線

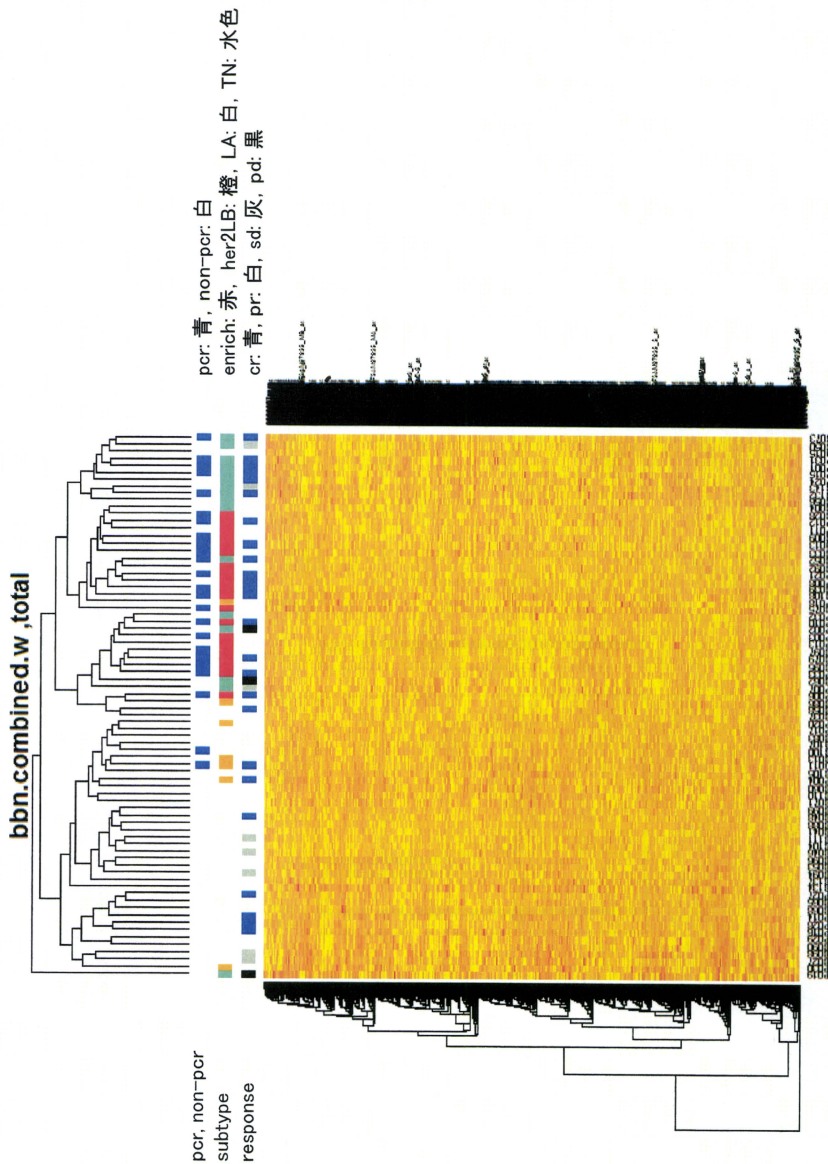
(A) *BRCA2*遺伝子 (B) *PTEN*遺伝子



TNB及びLUA乳がん検体におけるDNAメチル化レベル
 (A) *BRCA1*遺伝子 (B) *BRCA2*遺伝子 (C) *PTEN*遺伝子

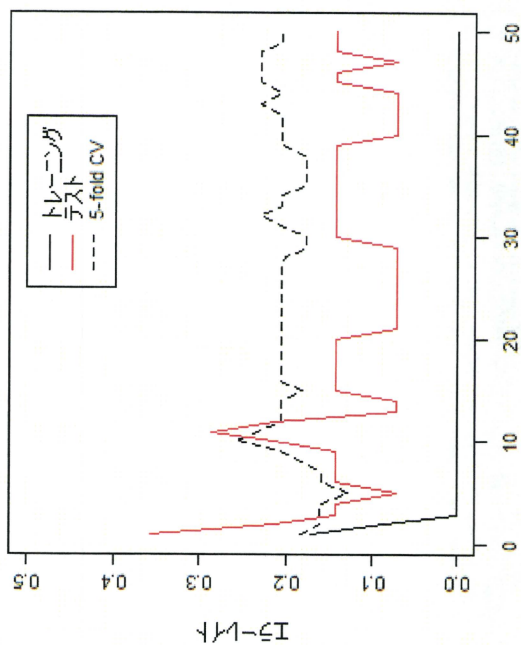
図16

腫瘍検体 約8千プローブ (N.E.J.M.のfiltering後の全プローブ)



Her2陰性腫瘍検体

トレニンガ: BH_bbn.n.w # pcr= 4 non= 31
 テスト: bbn.n.w # pcr= 3 non= 11



プローブ数
 テスト= 0.071 判別マーカー数= 5 グループ Wilcoxon

判別に用いるマーカー

- 1 . Subtype (TN=1, LA=0)
- 2 . STAT
- 3 . PML
- 4 . WARS
- 5 . GHKA

テストエラー 7%

腫瘍Her2陰性 KEGG

BH_bbn.n.w total: 1428 selected: 152 ### Gene to KEGG test for over-representation

KEGGID	Pvalue	OddsRatio	ExpCount	Count	Size	Term
04062	0.001	2.855	7	16	69	Chemokine signaling pathway
04060	0.004	2.248	10	19	99	Cytokine-cytokine receptor interaction
05120	0.007	4.545	2	6	18	Epithelial cell signaling in Helicobacter pylori infection
04650	0.008	2.787	4	10	43	Natural killer cell mediated cytotoxicity
00760	0.027	4.487	1	4	12	Nicotinate and nicotinamide metabolism
05142	0.028	2.510	4	8	37	Chagas disease
04210	0.035	2.855	3	6	25	Apoptosis
00601	0.040	5.372	1	3	8	Glycosphingolipid biosynthesis - lacto and neolacto series
00480	0.045	3.002	2	5	20	Glutathione metabolism
05330	0.045	3.002	2	5	20	Allograft rejection

腫瘍Her2陰性, KEGG:04060

パスウェイマップ

