

Asian vs. non-Asian NSCLC patients, or in early-stage operable NSCLC patients vs. NSCLC patients with advanced/metastatic disease (Jackman et al. 2006). Recent reports from Asia demonstrated that there was no significant difference in OS between gefitinib-first group and chemotherapy-first group (Morita et al. 2009; Wu et al. 2008).

Because our study population consisted of NSCLC patients screened for EGFR mutation in order to select patients for gefitinib treatment, only three patients who were EGFR wild-type received gefitinib treatment. Therefore, it is difficult to assess whether gefitinib treatment affects clinical outcomes according to EGFR mutation status of NSCLC patients. Nevertheless, we observed similar PFS in patients treated with first- or second-line cytotoxic chemotherapy, regardless of the EGFR mutation status of the patients (Fig. 3a, b). Thus, the longer PFS seen in EGFR mutation-positive patients treated with gefitinib than in patients treated with cytotoxic chemotherapy (Fig. 2a, b) might be attributable to a superior OS than that exhibited by patients who were EGFR wild-type. Our finding is consistent with a subset analysis of a recently completed phase III study (Iressa Pan-Asia Study) showing that gefitinib monotherapy significantly improved the PFS of EGFR mutation-positive patients compared with carboplatin and paclitaxel in the first-line setting (Mok et al. 2009).

Our multivariate analysis indicated that PS and EGFR mutations were significant prognostic factors (Table 4 and Fig. 4), which is consistent with the first report of prospective EGFR mutation screening for NSCLC patients by Sutani et al. (2006). Many investigators believe that patients with EGFR mutations who are treated with EGFR TKIs have significantly longer survival than do patients with EGFR wild-type who are treated with EGFR TKIs (Han et al. 2005; Mitsudomi et al. 2005; Takano et al. 2005). However, this point is still controversial, because some researchers demonstrated that chemotherapy patients with EGFR mutations survived for a longer period than did chemotherapy patients who were EGFR wild-type (Bell et al. 2005; Eberhard et al. 2005). Takano et al. (2008) reported that EGFR mutations are both prognostic and predictive factors. Furthermore, after approval of gefitinib in Japan, median survival of EGFR mutation-positive patients with advanced lung adenocarcinoma was 27.2 months. The median survival time, which was similar to that observed in our study, was never observed in advanced/metastatic NSCLC patients treated with conventional chemotherapy. According to Takano et al. (2008), the favorable median survival time was caused mainly by gefitinib treatment.

Several recent studies have reported that patients with exon 19 deletions had superior response rates, PFS, and OS, as compared with patients with the L858R mutations (Jackman et al. 2006; Mitsudomi et al. 2005; Riely et al. 2006). In this study, clinical outcomes in patients with exon

19 deletions, compared with outcomes in patients with the L858R mutation, did not differ significantly (data not shown). This finding is consistent with previous reports from East Asia showing almost the same survival benefit of gefitinib in patients with either type of mutation (Morita et al. 2009; Takano et al. 2008; Wu et al. 2008).

Recently, a Japanese phase II trial of first-line gefitinib for patients with advanced NSCLC harboring EGFR mutations without indication for chemotherapy demonstrated the benefit of first-line gefitinib for EGFR mutation-positive patients with extremely poor PS and/or with high age, yielding a favorable response rate of 66%, median survival time of 17.8 months and 1-year survival rate of 63% (Inoue et al. 2009). However, we cannot make a conclusion with respect to the timing of gefitinib therapy in the gefitinib-first group and chemotherapy-first group for EGFR mutation-positive patients with good PS and an age <75 years. Our results suggest that EGFR mutation-positive patients benefit from either first- or second-line gefitinib monotherapy. Currently in Japan, two ongoing, prospective, randomized trials are exploring treatment with gefitinib or standard chemotherapy (cisplatin + docetaxel in the trial conducted by the West Japan Oncology Group; carboplatin + paclitaxel in the trial conducted by the North-East Japan Gefitinib Study Group), with the primary endpoint of PFS in patients with EGFR mutations. Results from these trials will provide conclusive results with respect to gefitinib timing for NSCLC patients with EGFR mutations in terms of both PFS and OS.

Acknowledgment We thank Noriko Shibata for her excellent technical assistance with the molecular genetic analysis of the EGFR mutations.

Conflict of interest statement All authors have no financial or personal relationships with other people or organizations that could inappropriately influence our work.

References

- Asahina H, Yamazaki K, Kinoshita I, Sukoh N, Harada M, Yokouchi H, Ishida T, Ogura S, Kojima T, Okamoto Y, Fujita Y, Dosaka-Akita H, Isobe H, Nishimura M (2006) A phase II trial of gefitinib as first-line therapy for advanced non-small cell lung cancer with epidermal growth factor receptor mutations. *Br J Cancer* 95:998–1004
- Bell DW, Lynch TJ, Haserlat SM, Harris PL, Okimoto RA, Brannigan BW, Sgroi DC, Muir B, Riemenschneider MJ, Iacona RB, Krebs AD, Johnson DH, Giaccone G, Herbst RS, Manegold C, Fukuoka M, Kris MG, Baselga J, Ochs JS, Haber DA (2005) Epidermal growth factor receptor mutations and gene amplification in non-small-cell lung cancer: molecular analysis of the IDEAL/INTACT gefitinib trials. *J Clin Oncol* 23:8081–8092
- Cappuzzo F, Hirsch FR, Rossi E, Bartolini S, Ceresoli GL, Bemis L, Haney J, Witta S, Danenberg K, Domenichini I, Ludovini V, Magrini E, Gregorc V, Doglioni C, Sidoni A, Tonato M, Franklin WA, Crino L, Bunn PA Jr, Varella-Garcia M (2005) Epidermal

- growth factor receptor gene and protein and gefitinib sensitivity in non-small-cell lung cancer. *J Natl Cancer Inst* 97:643–655
- Cappuzzo F, Ligorio C, Janne PA, Toschi L, Rossi E, Trisolini R, Paioli D, Holmes AJ, Magrini E, Finocchiaro G, Bartolini S, Cancellieri A, Ciardiello F, Patelli M, Crino L, Varella-Garcia M (2007) Prospective study of gefitinib in epidermal growth factor receptor fluorescence in situ hybridization-positive/phospho-Akt-positive or never smoker patients with advanced non-small-cell lung cancer: the ONCOBELL trial. *J Clin Oncol* 25:2248–2255
- Cortes-Funes H, Gomez C, Rosell R, Valero P, Garcia-Giron C, Velasco A, Izquierdo A, Diz P, Camps C, Castellanos D, Alberola V, Cardenal F, Gonzalez-Larriba JL, Vieitez JM, Maeztu I, Sanchez JJ, Queralt C, Mayo C, Mendez P, Moran T, Taron M (2005) Epidermal growth factor receptor activating mutations in Spanish gefitinib-treated non-small-cell lung cancer patients. *Ann Oncol* 16:1081–1086
- Eberhard DA, Johnson BE, Amler LC, Goddard AD, Heldens SL, Herbst RS, Ince WL, Janne PA, Januario T, Johnson DH, Klein P, Miller VA, Ostland MA, Ramies DA, Sebisano D, Stinson JA, Zhang YR, Seshagiri S, Hillan KJ (2005) Mutations in the epidermal growth factor receptor and in KRAS are predictive and prognostic indicators in patients with non-small-cell lung cancer treated with chemotherapy alone and in combination with erlotinib. *J Clin Oncol* 23:5900–5909
- Fukuoka M, Yano S, Giaccone G, Tamura T, Nakagawa K, Douillard JY, Nishiwaki Y, Vansteenkiste J, Kudoh S, Rischin D, Eek R, Horai T, Noda K, Takata I, Smit E, Averbuch S, Macleod A, Feyereislova A, Dong RP, Baselga J (2003) Multi-institutional randomized phase II trial of gefitinib for previously treated patients with advanced non-small-cell lung cancer (The IDEAL 1 Trial). *J Clin Oncol* 21:2237–2246
- Greulich H, Chen TH, Feng W, Janne PA, Alvarez JV, Zappaterra M, Bulmer SE, Frank DA, Hahn WC, Sellers WR, Meyerson M (2005) Oncogenic transformation by inhibitor-sensitive and -resistant EGFR mutants. *PLoS Med* 2:e313
- Han SW, Kim TY, Hwang PG, Jeong S, Kim J, Choi IS, Oh DY, Kim JH, Kim DW, Chung DH, Im SA, Kim YT, Lee JS, Heo DS, Bang YJ, Kim NK (2005) Predictive and prognostic impact of epidermal growth factor receptor mutation in non-small-cell lung cancer patients treated with gefitinib. *J Clin Oncol* 23:2493–2501
- Han SW, Kim TY, Jeon YK, Hwang PG, Im SA, Lee KH, Kim JH, Kim DW, Heo DS, Kim NK, Chung DH, Bang YJ (2006) Optimization of patient selection for gefitinib in non-small cell lung cancer by combined analysis of epidermal growth factor receptor mutation, K-ras mutation, and Akt phosphorylation. *Clin Cancer Res* 12:2538–2544
- Hirsch FR, Varella-Garcia M, Bunn PA Jr, Franklin WA, Dziadziuszko R, Thatcher N, Chang A, Parikh P, Pereira JR, Ciuleanu T, von Pawel J, Watkins C, Flannery A, Ellison G, Donald E, Knight L, Parums D, Botwood N, Holloway B (2006) Molecular predictors of outcome with gefitinib in a phase III placebo-controlled study in advanced non-small-cell lung cancer. *J Clin Oncol* 24:5034–5042
- Hotta K, Kiura K, Toyooka S, Takigawa N, Soh J, Fujiwara Y, Tabata M, Date H, Tanimoto M (2007) Clinical significance of epidermal growth factor receptor gene mutations on treatment outcome after first-line cytotoxic chemotherapy in Japanese patients with non-small cell lung cancer. *J Thorac Oncol* 2:632–637
- Huang SF, Liu HP, Li LH, Ku YC, Fu YN, Tsai HY, Chen YT, Lin YF, Chang WC, Kuo HP, Wu YC, Chen YR, Tsai SF (2004) High frequency of epidermal growth factor receptor mutations with complex patterns in non-small cell lung cancers related to gefitinib responsiveness in Taiwan. *Clin Cancer Res* 10:8195–8203
- Ichihara S, Toyooka S, Fujiwara Y, Hotta K, Shigematsu H, Tokumo M, Soh J, Asano H, Ichimura K, Aoe K, Aoe M, Kiura K, Shimizu K, Date H, Shimizu N (2007) The impact of epidermal growth factor receptor gene status on gefitinib-treated Japanese patients with non-small-cell lung cancer. *Int J Cancer* 120:1239–1247
- Inoue A, Suzuki T, Fukuhara T, Maemondo M, Kimura Y, Morikawa N, Watanabe H, Saijo Y, Nukiwa T (2006) Prospective phase II study of gefitinib for chemotherapy-naïve patients with advanced non-small-cell lung cancer with epidermal growth factor receptor gene mutations. *J Clin Oncol* 24:3340–3346
- Inoue A, Kobayashi K, Usui K, Maemondo M, Okinaga S, Mikami I, Ando M, Yamazaki K, Saijo Y, Gemma A, Miyazawa H, Tanaka T, Ikebuchi K, Nukiwa T, Morita S, Hagiwara K (2009) First-line gefitinib for patients with advanced non-small-cell lung cancer harboring epidermal growth factor receptor mutations without indication for chemotherapy. *J Clin Oncol* 27:1394–1400
- Jackman DM, Yeap BY, Sequist LV, Lindeman N, Holmes AJ, Joshi VA, Bell DW, Huberman MS, Halmos B, Rabin MS, Haber DA, Lynch TJ, Meyerson M, Johnson BE, Janne PA (2006) Exon 19 deletion mutations of epidermal growth factor receptor are associated with prolonged survival in non-small cell lung cancer patients treated with gefitinib or erlotinib. *Clin Cancer Res* 12:3908–3914
- Kelly K, Crowley J, Bunn PA Jr, Presant CA, Grevstad PK, Moinpour CM, Ramsey SD, Wozniak AJ, Weiss GR, Moore DF, Israel VK, Livingston RB, Gandara DR (2001) Randomized phase III trial of paclitaxel plus carboplatin versus vinorelbine plus cisplatin in the treatment of patients with advanced non-small-cell lung cancer: a Southwest Oncology Group trial. *J Clin Oncol* 19:3210–3218
- Kim KS, Jeong JY, Kim YC, Na KJ, Kim YH, Ahn SJ, Baek SM, Park CS, Park CM, Kim YI, Lim SC, Park KO (2005) Predictors of the response to gefitinib in refractory non-small cell lung cancer. *Clin Cancer Res* 11:2244–2251
- Kris MG, Natale RB, Herbst RS, Lynch TJ Jr, Prager D, Belani CP, Schiller JH, Kelly K, Spiridonidis H, Sandler A, Albain KS, Cella D, Wolf MK, Averbuch SD, Ochs JJ, Kay AC (2003) Efficacy of gefitinib, an inhibitor of the epidermal growth factor receptor tyrosine kinase, in symptomatic patients with non-small cell lung cancer: a randomized trial. *JAMA* 290:2149–2158
- Lynch TJ, Bell DW, Sordella R, Gurubhagavatula S, Okimoto RA, Brannigan BW, Harris PL, Haserlat SM, Supko JG, Haluska FG, Louis DN, Christiani DC, Settleman J, Haber DA (2004) Activating mutations in the epidermal growth factor receptor underlying responsiveness of non-small-cell lung cancer to gefitinib. *N Engl J Med* 350:2129–2139
- Miller VA, Kris MG, Shah N, Patel J, Azzoli C, Gomez J, Krug LM, Pao W, Rizvi N, Pizzo B, Tyson L, Venkatraman E, Ben-Porat L, Memoli N, Zakowski M, Rusch V, Heelan RT (2004) Bronchioloalveolar pathologic subtype and smoking history predict sensitivity to gefitinib in advanced non-small-cell lung cancer. *J Clin Oncol* 22:1103–1109
- Mitsudomi T, Kosaka T, Endoh H, Horio Y, Hida T, Mori S, Hataoka S, Shinoda M, Takahashi T, Yatabe Y (2005) Mutations of the epidermal growth factor receptor gene predict prolonged survival after gefitinib treatment in patients with non-small-cell lung cancer with postoperative recurrence. *J Clin Oncol* 23:2513–2520
- Mok T, Wu Y, Thongprasert S, Yang C, Chu D, Saijo N, Sunpaweravong P, Han B, Margono B, Ichinose Y, Nishiwaki Y, Ohe Y, Yang J, Chewaskulyong B, Jiang H, Duffield E, Watkins C, Armour A, Fukuoka M (2009) Gefitinib or carboplatin-paclitaxel in pulmonary adenocarcinoma. *N Engl J Med* 361:947–957
- Morita S, Okamoto I, Kobayashi K, Yamazaki K, Asahina H, Inoue A, Hagiwara K, Sunaga N, Yanagitani N, Hida T, Yoshida K, Hirashima T, Yasumoto K, Sugio K, Mitsudomi T, Fukuoka M, Nukiwa T (2009) Combined survival analysis of prospective clinical trials of gefitinib for non-small cell lung cancer with EGFR mutations. *Clin Cancer Res* 15:4493–4498
- Paez JG, Janne PA, Lee JC, Tracy S, Greulich H, Gabriel S, Herman P, Kaye FJ, Lindeman N, Boggon TJ, Naoki K, Sasaki H, Fujii Y,

- Eck MJ, Sellers WR, Johnson BE, Meyerson M (2004) EGFR mutations in lung cancer: correlation with clinical response to gefitinib therapy. *Science* 304:1497–1500
- Pao W, Miller V, Zakowski M, Doherty J, Politi K, Sarkaria I, Singh B, Heelan R, Rusch V, Fulton L, Mardis E, Kupfer D, Wilson R, Kris M, Varmus H (2004) EGF receptor gene mutations are common in lung cancers from “never smokers” and are associated with sensitivity of tumors to gefitinib and erlotinib. *Proc Natl Acad Sci USA* 101:13306–13311
- Riely GJ, Pao W, Pham D, Li AR, Rizvi N, Venkatraman ES, Zakowski MF, Kris MG, Ladanyi M, Miller VA (2006) Clinical course of patients with non-small cell lung cancer and epidermal growth factor receptor exon 19 and exon 21 mutations treated with gefitinib or erlotinib. *Clin Cancer Res* 12:839–844
- Schiller JH, Harrington D, Belani CP, Langer C, Sandler A, Krook J, Zhu J, Johnson DH (2002) Comparison of four chemotherapy regimens for advanced non-small-cell lung cancer. *N Engl J Med* 346:92–98
- Sequist LV, Martins RG, Spigel D, Grunberg SM, Spira A, Janne PA, Joshi VA, McCollum D, Evans TL, Muzikansky A, Kuhlmann GL, Han M, Goldberg JS, Settleman J, Iafrate AJ, Engelman JA, Haber DA, Johnson BE, Lynch TJ (2008) First-line gefitinib in patients with advanced non-small-cell lung cancer harboring somatic EGFR mutations. *J Clin Oncol* 26:2442–2449
- Sone T, Kasahara K, Kimura H, Nishio K, Mizuguchi M, Nakatsumi Y, Shibata K, Waseda Y, Fujimura M, Nakao S (2007) Comparative analysis of epidermal growth factor receptor mutations and gene amplification as predictors of gefitinib efficacy in Japanese patients with nonsmall cell lung cancer. *Cancer* 109:1836–1844
- Sugio K, Uramoto H, Onitsuka T, Mizukami M, Ichiki Y, Sugaya M, Yasuda M, Takenoyama M, Oyama T, Hanagiri T, Yasumoto K (2009) Prospective phase II study of gefitinib in non-small cell lung cancer with epidermal growth factor receptor gene mutations. *Lung Cancer* 64:314–318
- Sunaga N, Tomizawa Y, Yanagitani N, Iijima H, Kaira K, Shimizu K, Tanaka S, Suga T, Hisada T, Ishizuka T, Saito R, Dobashi K, Mori M (2007) Phase II prospective study of the efficacy of gefitinib for the treatment of stage III/IV non-small cell lung cancer with EGFR mutations, irrespective of previous chemotherapy. *Lung Cancer* 56:383–389
- Sutani A, Nagai Y, Udagawa K, Uchida Y, Koyama N, Murayama Y, Tanaka T, Miyazawa H, Nagata M, Kanazawa M, Hagiwara K, Kobayashi K (2006) Gefitinib for non-small-cell lung cancer patients with epidermal growth factor receptor gene mutations screened by peptide nucleic acid-locked nucleic acid PCR clamp. *Br J Cancer* 95:1483–1489
- Takano T, Ohe Y, Sakamoto H, Tsuta K, Matsuno Y, Tateishi U, Yamamoto S, Nokihara H, Yamamoto N, Sekine I, Kunitoh H, Shibata T, Sakiyama T, Yoshida T, Tamura T (2005) Epidermal growth factor receptor gene mutations and increased copy numbers predict gefitinib sensitivity in patients with recurrent non-small-cell lung cancer. *J Clin Oncol* 23:6829–6837
- Takano T, Fukui T, Ohe Y, Tsuta K, Yamamoto S, Nokihara H, Yamamoto N, Sekine I, Kunitoh H, Furuta K, Tamura T (2008) EGFR mutations predict survival benefit from gefitinib in patients with advanced lung adenocarcinoma: a historical comparison of patients treated before and after gefitinib approval in Japan. *J Clin Oncol* 26:5589–5595
- Tamura K, Okamoto I, Kashii T, Negoro S, Hirashima T, Kudoh S, Ichinose Y, Ebi N, Shibata K, Nishimura T, Katakami N, Sawa T, Shimizu E, Fukuoka J, Satoh T, Fukuoka M (2008) Multicentre prospective phase II trial of gefitinib for advanced non-small cell lung cancer with epidermal growth factor receptor mutations: results of the West Japan Thoracic Oncology Group trial (WJTOG0403). *Br J Cancer* 98:907–914
- Taron M, Ichinose Y, Rosell R, Mok T, Massuti B, Zamora L, Mate JL, Manegold C, Ono M, Queralt C, Jahan T, Sanchez JJ, Sanchez-Ronco M, Hsue V, Jablons D, Sanchez JM, Moran T (2005) Activating mutations in the tyrosine kinase domain of the epidermal growth factor receptor are associated with improved survival in gefitinib-treated chemorefractory lung adenocarcinomas. *Clin Cancer Res* 11:5878–5885
- Therasse P, Arbuck SG, Eisenhauer EA, Wanders J, Kaplan RS, Rubinstein L, Verweij J, Van Glabbeke M, van Oosterom AT, Christian MC, Gwyther SG (2000) New guidelines to evaluate the response to treatment in solid tumors. European Organization for Research and Treatment of Cancer, National Cancer Institute of the United States, National Cancer Institute of Canada. *J Natl Cancer Inst* 92:205–216
- Tokumo M, Toyooka S, Kiura K, Shigematsu H, Tomii K, Aoe M, Ichimura K, Tsuda T, Yano M, Tsukuda K, Tabata M, Ueoka H, Tanimoto M, Date H, Gazdar AF, Shimizu N (2005) The relationship between epidermal growth factor receptor mutations and clinicopathologic features in non-small cell lung cancers. *Clin Cancer Res* 11:1167–1173
- Tsao MS, Sakurada A, Cutz JC, Zhu CQ, Kamel-Reid S, Squire J, Lorimer I, Zhang T, Liu N, Daneshmand M, Marrano P, da Cunha Santos G, Lagarde A, Richardson F, Seymour L, Whitehead M, Ding K, Pater J, Shepherd FA (2005) Erlotinib in lung cancer—molecular and clinical predictors of outcome. *N Engl J Med* 353:133–144
- Uramoto H, Mitsudomi T (2007) Which biomarker predicts benefit from EGFR-TKI treatment for patients with lung cancer? *Br J Cancer* 96:857–863
- Wu JY, Yu CJ, Yang CH, Wu SG, Chiu YH, Gow CH, Chang YC, Hsu YC, Wei PF, Shih JY, Yang PC (2008) First- or second-line therapy with gefitinib produces equal survival in non-small cell lung cancer. *Am J Respir Crit Care Med* 178:847–853
- Yang CH, Yu CJ, Shih JY, Chang YC, Hu FC, Tsai MC, Chen KY, Lin ZZ, Huang CJ, Shun CT, Huang CL, Bean J, Cheng AL, Pao W, Yang PC (2008) Specific EGFR mutations predict treatment outcome of stage IIIB/IV patients with chemotherapy-naive non-small-cell lung cancer receiving first-line gefitinib monotherapy. *J Clin Oncol* 26:2745–2753
- Yatabe Y, Hida T, Horio Y, Kosaka T, Takahashi T, Mitsudomi T (2006) A rapid, sensitive assay to detect EGFR mutation in small biopsy specimens from lung cancer. *J Mol Diagn* 8:335–341
- Yoshida K, Yatabe Y, Park JY, Shimizu J, Horio Y, Matsuo K, Kosaka T, Mitsudomi T, Hida T (2007) Prospective validation for prediction of gefitinib sensitivity by epidermal growth factor receptor gene mutation in patients with non-small cell lung cancer. *J Thorac Oncol* 2:22–28

Analysis of *ERBB4* Mutations and Expression in Japanese Patients with Lung Cancer

Kenji Tomizawa, MD,*† Kenichi Suda, MD,* Ryoichi Onozato, MD,† Hiroyuki Kuwano, MD,† Yasushi Yatabe, MD,‡ and Tetsuya Mitsudomi, MD*

Abstract: Only the kinase domain of *ERBB4* has been analyzed in East Asian populations, but a recent large-scale mutation analysis has indicated a higher incidence of mutations in the extracellular domain. Mutations in the extracellular and kinase domains of *ERBB4* were examined by direct sequencing in 72 patients with primary lung cancer and 8 cell lines. In addition, *ERBB4* expression was determined in 60 patients by quantitative real-time polymerase chain reaction. We investigated the relationship between *ERBB4* expression and clinicopathologic characteristics including prognosis. One patient possessed Q793Q polymorphism in the kinase domain. However, we detected no mutations in extracellular or kinase domains of *ERBB4*. There was no significant difference in the clinicopathologic characteristics including prognosis of patients with high or low expression of *ERBB4*. The clinical significance of *ERBB4* in lung cancers is negligible.

Key Words: *ERBB4* mutation, Extracellular domain, Lung cancer, Expression, Prognosis.

(*J Thorac Oncol.* 2010;5: 1859–1861)

The ERBB family of tyrosine kinase receptors consists of four members: epidermal growth factor receptor (*EGFR*), *ERBB2*, *ERBB3*, and *ERBB4*.¹ According to the NCBI database, the sequences of the kinase domains of *EGFR* and *ERBB4* are 79% identical, and *EGFR* and *ERBB4* have common ligands: heparin-binding epidermal growth factor, betacellulin, and epiregulin.¹ *EGFR* mutation has been revealed to play an important role in non-small cell lung cancer (NSCLC).

Two mutation analyses of the *ERBB4* kinase domain in East Asian patients with NSCLC have been reported: 5 of 217 (2.3%) in Korean patients² and none of 105 in Japanese patients.³ Conversely, a large-scale mutation analysis in 188 patients with lung adenocarcinoma detected nine *ERBB4* muta-

tions: two in the kinase domain, one in the transmembrane domain, and six in the extracellular domains (Figure 1A).⁴

The extracellular domains of the *ERBB* family are consisted of four distinct protein domains. There are two homologous large (L) domains and two cysteine-rich (CR) domains, which occur in the order L1–CR1–L2–CR2 (Figure 1A).⁵ The L1 and L2 domains form the ligand binding pocket and the CR1 and CR2 domains are deeply involved in receptor dimerization.⁵ Mutations in the *ERBB4* gene are more frequently present in the extracellular domain, especially the CR1 domain, than in the kinase domain.⁴ However, only the kinase domain has been analyzed in East Asian populations.^{2,3} We considered that analysis of mutations in the extracellular domains and the kinase domain of *ERBB4* would be of value.

In this study, we searched for mutations in the CR1 domain and kinase domain of *ERBB4*. We also analyzed *ERBB4* mRNA expression by real-time polymerase chain reaction and examined the relationship between the expression and clinicopathologic characteristics including prognosis.

PATIENTS AND METHODS

Cell Lines

Eight lung cancer cell lines were available. These comprised six adenocarcinomas (NCI-H23, NCI-H358, NCI-H3255, HCC78, A549, and ACC-LC-319), one adenosquamous cell carcinoma (NCI-H596), and one large cell carcinoma (ACC-LC-91). ACC-LC-319 and ACC-LC-91 were established in our institution. A549 and NCI-H596 were purchased from the American Type Culture Collection (Manassas, VA). The others were gifts from Dr. Adi F. Gazdar.

Patients

We studied 72 Japanese patients with lung cancer who underwent pulmonary resection at our institution. Tumor samples were rapidly frozen, and total RNA were extracted and genomic DNA was extracted from the blood sample using the Gene Tapping by Liquid Extraction kit (TAKARA BIO Inc., Otsu, Japan) after obtaining appropriate approval from the review board and written informed consent from the patients. The clinicopathologic characteristics of the patients were as follows: 44 were men and 28 were women, and the median age was 67 years at diagnosis (range, 38–85 years). Thirty-nine patients had pathologic stage I disease, 7 had stage II, 23 had stage III, and 3 had stage IV (TNM Classification of Malignant tumor, 6th Edition). There were 55 adenocarcinomas, 10 squamous cell

*Department of Thoracic Surgery, Aichi Cancer Center Hospital, Nagoya; †Department of General Surgical Science, Graduate School of Medicine, Gunma University, Maebashi, Gunma; and ‡Department of Pathology and Molecular Diagnostic, Aichi Cancer Center Hospital, Nagoya, Japan.

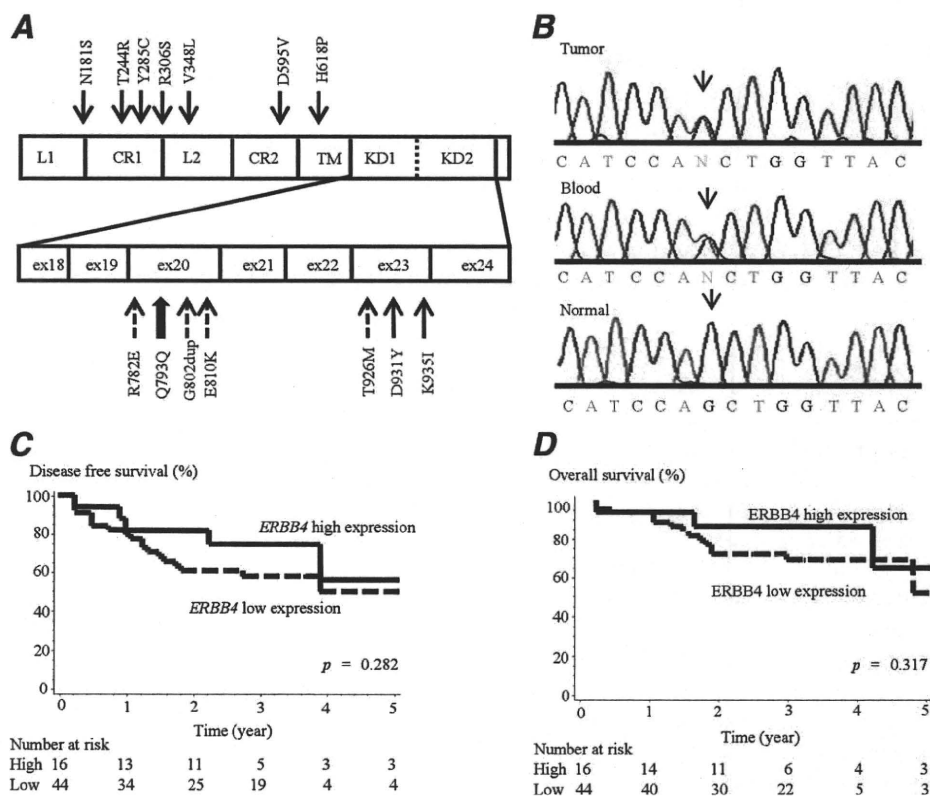
Disclosure: The authors declare no conflicts of interest.

Address for correspondence: Tetsuya Mitsudomi, MD, Department of Thoracic Surgery, Aichi Cancer Center Hospital, 1-1 Kanokoden, Chikusa-ku, Nagoya 464-8681, Japan. E-mail: mitsudom@aichi-cc.jp

Copyright © 2010 by the International Association for the Study of Lung Cancer

ISSN: 1556-0864/10/0511-1859

FIGURE 1. A, *ERBB4* mutations from the previous reports of Ding et al.⁴ (arrow) and Soung et al.² (dotted arrow) and the Q793Q polymorphism identified in this study (thick arrow) are illustrated. *ERBB4* consists of four extracellular domains, a transmembrane domain (TM), and a kinase domain. The kinase domain is divided into two regions. L1, 2: large domain 1, 2 CR1; 2; CR domain 1, 2. B, Sequencing chromatograms for the synonymous mutation identified in exon 20 of *ERBB4* in the tumor and blood from the same patient. The nucleotide change was c.2379G>A, which did not lead to substitution of glutamine at position 793. C and D, Kaplan–Meier estimates of disease-free survival and overall survival in patients with high and low *ERBB4* expression. The median disease-free survival time and overall survival time were not significantly different among the two groups.



carcinomas, 1 adenosquamous cell carcinomas, 5 large cell carcinomas, and 1 small cell carcinoma. Twenty-four patients had never smoked, and 48 were current or former smokers.

Analysis of *ERBB4* Mutations

The *ERBB4* extracellular region and kinase domain, which was divided into C-terminal side (KD1) and N-terminal side (KD2; Figure 1A), were analyzed for mutations. By using total RNA or genomic DNA, *ERBB4* was analyzed by direct. Primer sequences were as follows: extracellular region, 5'-TCCTT-TGTTATGCAGACACCAT-3' and 5'-TTGTAAGGGTCCCC-ATGAATAC-3'; KD1, 5'-GGTGAACCATTAACCTCCAGT-3' and 5'-CAATGCTGATGGAGGAAAGATG-3'; and KD2, 5'-CAATGCTGATGGAGGAAAGATG-3' and 5'-TGATCG-TATGAAGCTTCCAG-3'.

Analysis of *ERBB4* Expression

Total RNA from 60 patients and 2 normal lung tissue samples were reverse transcribed using the High Capacity cDNA Reverse Transcription kit (Applied Biosystems, Foster City, CA). We analyzed *ERBB4* expressions according to the protocol of the TaqMan Gene Expression assay, using 18S rRNA as the internal reference gene. The primer IDs for *ERBB4* and 18S rRNA were Hs00171783_m1 and Hs99999901_s1 (Applied Biosystems), respectively. The 60 patients were divided into 2 groups on the basis of the average *ERBB4* expression value of 2 normal lung tissue samples.

Statistical Analysis

For comparison of proportions, a χ^2 test or Fisher's exact test was applied. For quantitative variables, Student *t* test was

used. Disease-free survival (DFS) was measured from the date of first operation until the date of radiologic recurrence or death. Overall survival (OS) was measured from the date of first operation until the date of death. The Kaplan–Meier method was used to estimate the probability of survival as a function of time, and survival differences were analyzed by the log-rank test. We defined the significance level at $p < 0.05$.

RESULTS

In the *ERBB4* mutation analysis, one patient with adenocarcinoma had a c.2379G>A synonymous genetic change resulting in Q793Q in the *ERBB4* kinase domain (exon 20). The synonymous change was confirmed as a polymorphism by DNA sequencing a matched blood sample (Figure 1B). However, somatic mutation of *ERBB4* was not detected in this study.

The average *ERBB4* expression level was not significantly different between tumor samples and normal lung tissue samples ($p = 0.384$). The high- and low-expression groups were 27% (16 of 60 patients) and 73% (44 of 60 patients), respectively. The two groups were compared for clinicopathologic characteristics (Table 1), but we did not identify any significant difference. In the survival analysis, the median DFS and OS time was not significantly different between the patients with high and low *ERBB4* expression (Figures 1C, D).

DISCUSSION

We have previously analyzed *EGFR*, *KRAS*, *MET*, and *ERBB2* mutations and *MET* amplification, which are mutually

TABLE 1. Clinicopathologic Data for 60 Patients with Lung Cancer

Characteristic	ERBB4 Expression (%)		p
	High (n = 16)	Low (n = 44)	
Age (yr)			
>67	7 (43.8)	23 (52.3)	0.559
≤67	9 (56.2)	21 (47.7)	
Sex			
Male	8 (50.0)	31 (70.5)	0.142
Female	8 (50.0)	13 (29.5)	
Pathologic stage			
I, II	13 (81.3)	25 (56.8)	0.130
III, IV	3 (18.7)	19 (43.2)	
Smoking			
Never	6 (37.5)	12 (27.3)	0.445
Current or former	10 (62.5)	32 (72.7)	
Tumor size (cm)			
>3	6 (43.8)	28 (63.6)	0.071
≤3	10 (56.2)	16 (36.4)	
Histology			
Adenocarcinoma	11 (68.9)	32 (72.7)	0.763
Nonadenocarcinoma	5 (31.1)	12 (27.3)	

exclusive, in lung cancers.^{6,7} The aims of this study were to identify mutations of the *ERBB4* extracellular and kinase domains in lung cancers and to confirm their mutual exclusivity with mutations in the above genes. Recently, activating point mutations at the *EGFR* extracellular domains were found in 12.9% of glioblastoma.⁸ Mutations of the *ERBB4* extracellular domain also have been reported in NSCLC.⁴ We considered that there was need for analysis of mutations of the *ERBB4* extracellular domain in East Asian patients with lung cancer. In this mutation analysis, only a Q793Q polymorphism was detected in the *ERBB4* kinase domain. The *ERBB4* polymorphism was analogous to the Q787Q polymorphism of *EGFR*. In East Asia, two mutation analyses of *ERBB4* have been reported.^{2,3} Considering those together with this study, 5 of 394 patients with lung cancer (1.3%) harbored *ERBB4* mutations, all of which were present in the *ERBB4* kinase domain.

Gene amplification and expression of the *ERBB* family have been reported in lung cancer. *EGFR* gene amplifications are frequently observed in squamous cell carcinoma with poor prognosis.^{9,10} Synchronous protein overexpression of *EGFR* and *ERBB2* significantly predicted increased recurrence risk and decreased survival.¹¹ In *ERBB4* expression assays of lung cancers, the expression levels are remarkably lower than those of other members of the *ERBB* family, and there is no relationship between *ERBB4* expression and metastasis.¹² Conversely, Starr et al.¹³ reported that the proliferation of the *ERBB4*-transfected human adenocarcinoma cell line H1299 was 2-fold higher than that of the parental cells, and in mice injected with the *ERBB4*-transfected cells, the tumors were larger,¹³ suggesting that *ERBB4* is associated with metastasis and inferior survival.¹³

As indicated earlier, opinions vary concerning the relationship of *ERBB4* expression with metastasis and prognosis in

lung cancers. In this study, the patients with regional lymph node or distant metastasis at diagnosis made up 40% (6 of 16 patients) of the *ERBB4* high-expression group and 44% (20 of 44 patients) of the *ERBB4* low-expression group ($p = 0.582$). The DFS and OS were not significantly different between the high- and low-expression groups. There was no significant relationship between *ERBB4* expression and metastasis or prognosis, and we did not detect a significant relationship between *ERBB4* expression and any clinicopathologic factors.

In conclusion, mutation of the *ERBB4* kinase domain and CR1 domain were not detected. High *ERBB4* expression was infrequent in Japanese patients with lung cancer, and the clinical significance of *ERBB4* was negligible.

ACKNOWLEDGMENTS

Supported in part by a Grant-in-Aid for Scientific Research from the Japan Society for the Promotion of Science (18390386) and a grant from the Kobayashi Institute for Innovative Cancer Chemotherapy.

The authors thank Drs. Toyoaki Hida and Adi F. Gazdar for providing cell lines. They also thank Dr. Matthew Meyerson for providing information about the *ERBB4* mutations.

REFERENCES

- Olayioye MA, Neve RM, Lane HA, et al. The ErbB signaling network: receptor heterodimerization in development and cancer. *Embo J* 2000; 19:3159–3167.
- Soung YH, Lee JW, Kim SY, et al. Somatic mutations of the *ERBB4* kinase domain in human cancers. *Int J Cancer* 2006;118:1426–1429.
- Sasaki H, Okuda K, Kawano O, et al. ErbB4 expression and mutation in Japanese patients with lung cancer. *Clin Lung Cancer* 2007;8:429–433.
- Ding L, Getz G, Wheeler DA, et al. Somatic mutations affect key pathways in lung adenocarcinoma. *Nature* 2008;455:1069–1075.
- Burgess AW, Cho HS, Eigenbrot C, et al. An open-and-shut case? Recent insights into the activation of EGF/ErbB receptors. *Mol Cell* 2003;12:541–552.
- Kosaka T, Yatabe Y, Endoh H, et al. Mutations of the epidermal growth factor receptor gene in lung cancer: biological and clinical implications. *Cancer Res* 2004;64:8919–8923.
- Onozato R, Kosaka T, Kuwano H, et al. Activation of MET by gene amplification or by splice mutations deleting the juxtamembrane domain in primary resected lung cancers. *J Thorac Oncol* 2009;4:5–11.
- Lee JC, Vivanco I, Beroukhi R, et al. Epidermal growth factor receptor activation in glioblastoma through novel missense mutations in the extracellular domain. *PLoS Med* 2006;3:e485.
- Hirsch FR, Varella-Garcia M, Bunn PA Jr, et al. Epidermal growth factor receptor in non-small-cell lung carcinomas: correlation between gene copy number and protein expression and impact on prognosis. *J Clin Oncol* 2003;21:3798–3807.
- Jeon YK, Sung SW, Chung JH, et al. Clinicopathologic features and prognostic implications of epidermal growth factor receptor (EGFR) gene copy number and protein expression in non-small cell lung cancer. *Lung Cancer* 2006;54:387–398.
- Onn A, Correa AM, Gilcrease M, et al. Synchronous overexpression of epidermal growth factor receptor and HER2-neu protein is a predictor of poor outcome in patients with stage I non-small cell lung cancer. *Clin Cancer Res* 2004;10:136–143.
- Muller-Tidow C, Diederichs S, Bulk E, et al. Identification of metastasis-associated receptor tyrosine kinases in non-small cell lung cancer. *Cancer Res* 2005;65:1778–1782.
- Starr A, Greif J, Vexler A, et al. ErbB4 increases the proliferation potential of human lung cancer cells and its blockage can be used as a target for anti-cancer therapy. *Int J Cancer* 2006;119:269–274.

Biological and clinical significance of *KRAS* mutations in lung cancer: an oncogenic driver that contrasts with *EGFR* mutation

Kenichi Suda · Kenji Tomizawa · Tetsuya Mitsudomi

Published online: 28 January 2010
© Springer Science+Business Media, LLC 2010

Abstract *KRAS* and epidermal growth factor receptor (*EGFR*) are the two most frequently mutated proto-oncogenes in adenocarcinoma of the lung. The occurrence of these two oncogenic mutations is mutually exclusive, and they exhibit many contrasting characteristics such as clinical background, pathological features of patients harboring each mutation, and prognostic or predictive implications. Lung cancers harboring the *EGFR* mutations are remarkably sensitive to EGFR tyrosine kinase inhibitors such as gefitinib or erlotinib. This discovery has dramatically changed the clinical treatment of lung cancer in that it almost doubled the duration of survival for lung cancer patients with an *EGFR* mutation. In this review, we describe the features of *KRAS* mutations in lung cancer and contrast these with the features of *EGFR* mutations. Recent strategies to combat lung cancer harboring *KRAS* mutations are also reviewed.

Keywords Lung cancer · Oncogene addiction · Targeted therapy · Personalized medicine

1 Discovery of RAS in human cancers

In the search for the molecular basis of human cancer, an activity that transforms the mouse NIH 3T3 cell line *in vitro*

was detected in DNA from human cancer cell lines [1–3]. Later, it turned out that this activity is present in the human homologues of oncogenes of retroviruses found earlier [4–6]. These genes were named *HRAS* or *KRAS* according to the names of these viruses, Harvey- or Kirsten-rat sarcoma viruses. What was most intriguing about these early studies was that the difference between the *RAS* gene present in normal tissue and that in cancer tissue was usually a single missense point mutation at codon 12 [7–9] and less frequently at codons 13 or 61 [10]. The third member of the *RAS* family gene, *NRAS*, was identified 1 year later in a human neuroblastoma cell line, although its viral homologue was not identified [11, 12]. A certain type of cancer tends to involve a specific type of *RAS* gene; e.g., most *RAS* mutations in lung, colorectal or pancreatic cancer occur in the *KRAS* gene, whereas most *RAS* mutations in bladder cancer occur in the *HRAS* gene [10].

2 Biology of RAS

The *RAS* gene encodes for a small protein with a molecular weight of 21,000 Da with guanosine triphosphatase (GTPase) activity. Because of this activity, *RAS* protein toggles the guanosine diphosphate (GDP)-bound inactive form to and from the GTP-bound active form. Guanine nucleotide-exchange factors, including *SOS1*, are recruited to the plasma membrane, where *RAS* is located, after growth factor binding to cell-surface receptors and stimulate guanine nucleotide dissociation from *RAS*, which results in increased levels of *RAS*-GTP. By contrast, *RAS* is negatively regulated by the catalytic reaction of *RAS* GTPase-activating proteins (*RAS*-GAPs), which enhances *RAS* GTPase activity. The tumor suppressor gene of neurofibromatosis I, *NFI*, also encodes for protein with

Supported in part by a Grant-in-Aid for Scientific Research (B) from the Japan Society for the Promotion of Science (20903076) and grant from the Kobayashi Institute for Innovative Cancer Chemotherapy

K. Suda · K. Tomizawa · T. Mitsudomi (✉)
Department of Thoracic Surgery, Aichi Cancer Center Hospital,
1-1 Kanokoden,
Chikusa-ku, Nagoya 464-8681, Japan
e-mail: mitsudom@aichi-cc.jp

RAS-GAP activity [13]. Oncogenic point mutations impair the intrinsic GTPase activity of RAS and confer resistance to GAPs, thereby causing RAS to accumulate in its active GTP-bound state, which sustains the activation of RAS signaling [14]. GTP-bound active RAS binds to more than 20 effector proteins and stimulates downstream signaling cascades (Fig. 1a, b).

To acquire their biological and transforming activities, RAS proteins must be bound to the inner surface of the plasma membrane by appropriate posttranslational modification [15–17]. Briefly, farnesyltransferase (FTase) catalyzes the reaction that adds a farnesyl isoprenoid lipid to the C-terminal CAAX (where C is cysteine, A is an aliphatic amino acid, and X is any amino acid) motif of RAS, which induces the association between RAS and the intracellular membrane via the farnesyl group. After several other processing steps, one or two palmitic acids are finally added to HRAS, NRAS, or KRAS-4A by palmitoyltransferase just upstream of the CAAX motif [18]. By contrast, the C-terminal electropositive Lys residues in KRAS-4B are sufficient to anchor it in the membrane without being modified by palmitic acid. KRAS-4A and -4B are two splice variants of KRAS protein that are produced by alternative splicing at the C-terminal region of KRAS. The transforming effect of mutant KRAS during lung carcinogenesis *in vivo* is thought to be mediated primarily through Kras-4A because transgenic mice that express only Kras-4B are highly resistant to urethane- or *N*-methyl-*N*-nitrosourea-induced lung tumor formation [19, 20].

Although mutated *RAS* transforms immortalized cell lines such as NIH3T3, it cannot transform primary rat embryo fibroblasts. However, in cooperation with so-called “immortalizing genes”, such as *MYC*, *simian virus 40 large T*, or *adenovirus E1A* oncogene, mutated *RAS* can transform cells in primary culture [21–23]. This observation is relevant to the finding that oncogenic RAS has been shown to cause senescence or cell-cycle arrest in primary cells through activation of the TP53 and/or p16INK4A-RB tumor-suppressor pathways [24]. It is thought that p16 is the key factor in determining whether cells become senescent or are transformed in response to RAS activation [25]. The RAS-induced RAF-mitogen-activated protein kinase (MAPK) pathway might also feed into the TP53 pathway by activating the p38 MAPK pathway. RAS activation may also cause p38 activation by increasing the reactive oxygen species level [26] (Fig. 1b). However, *in vivo* expression of oncogenic Kras at levels comparable to those of its endogenous counterparts causes cellular transformation [27], developing multiple lung adenomas (pre-malignant tumors) and a few lung adenocarcinomas. One solution of this discrepancy is that moderate activation of Ras, such as that mimicked in the endogenous Kras mouse models, does not cause an acute p16 response,

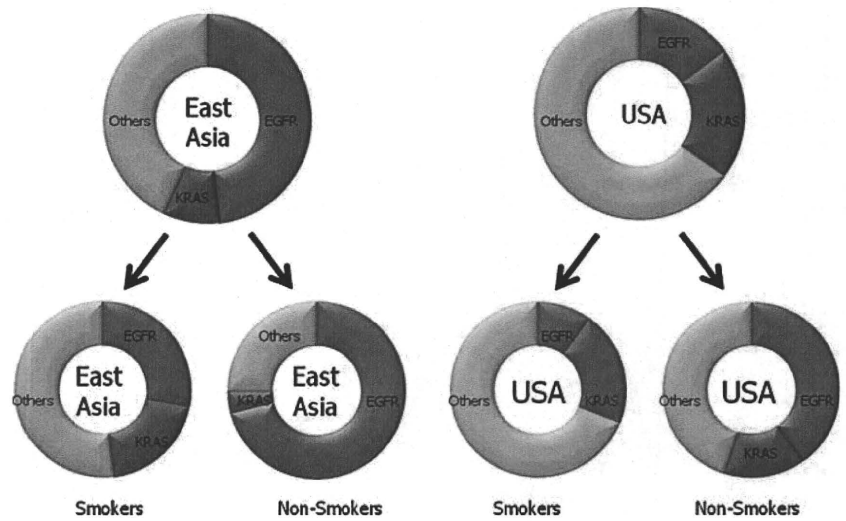
Fig. 1 EGFR- and KRAS-signaling pathways. **a** Binding of specific ligands to the extracellular domain of the EGFR leads to formation of a dimer with another EGFR or another ERBB family member. Dimerization consequently stimulates intrinsic tyrosine kinase activity of the receptors and triggers autophosphorylation of specific tyrosine residues within the cytoplasmic regulatory domain. These phosphorylated tyrosines serve as specific binding sites for several adaptor proteins such as GRB2 and p85 (catalytic subunit of PI3K). Several signal transducers then bind to these adaptors to initiate multiple signaling pathways. The GRB2/SOS complex, brought into the vicinity of the plasma membrane, catalyzes guanine nucleotide exchange of membrane-binding RAS, and GTP-bound RAS activates its downstream signaling cascades presented by the RAS-RAF-MAPK/ERK kinase (MEK)-extracellular signal-regulated kinase (ERK) pathway. Activated ERK is recruited into the nucleus and, finally, a Fos-Jun dimer that makes up the AP1 transcription factor is activated to simulate gene transcription-related cell proliferation such as expression of Cyclin D. The other important downstream pathways are the PI3K-AKT, STAT3, and STAT5 pathways, which mainly confer antiapoptotic effects. **b** RAS-GTP binds to more than 20 effector proteins and stimulates downstream signaling cascades. In addition to the RAF-MEK-ERK pathway, the PI3K-AKT pathway is activated by RAS through the direct interaction of the PI3K catalytic subunit with RAS. Then, 3-phosphoinositide-dependent protein kinase-1 (PDK1) and AKT are activated to transmit antiapoptotic signals. Other effectors include Ral guanine nucleotide-dissociation stimulator (RALGDS) and phospholipase C ϵ (for review see [75, 96–98]). By contrast, the RAS downstream pathways also include effectors with reported tumor-suppressor activities. We have mentioned the senescence and cell-cycle arrest effects of RAS in the text. Another RAS effector protein RINI is reported to trigger endocytosis of growth factor receptors, such as the EGFR, thereby inhibiting RAS signaling (**b**). This figure is based on modifications of figures from Schubert et al. [99], Downward et al. [100], and Karnoub et al. [25]

contrasting with high level Ras ectopic expression in cultured cells, allowing Ras-induced transformation [25]. On the other hand, Collado et al. reported the existence of senescence cells in premalignant tumors but not in malignant ones of Kras transgenic mouse models, suggesting that substantial number of cells in pre-malignant tumors undergo oncogene-induced senescence, but that cells in malignant tumors are unable to do this owing to the loss of oncogene-induced senescence effectors such as p16INK4A or TP53 [28].

3 RAS gene activation in lung cancer

Frequent somatic mutation of the *KRAS* gene in lung cancer was first identified in 1984 [29]. Mutation of the *RAS* gene usually occurs in adenocarcinoma [30], rarely in squamous cell carcinoma, and never in small cell lung cancer [31]. *KRAS* mutation in lung cancer usually occurs at codon 12, occasionally at codon 13 and rarely at codon 61 [30]. Rare instances of *HRAS* or *NRAS* mutations have been reported in lung cancers [31]. *KRAS* mutations occur predominantly in Caucasian patients rather than in East Asians; the incidence of *KRAS* mutation is ~30% in Caucasian patients

Fig. 2 Incidence of *EGFR* or *KRAS* mutations according to ethnicity and smoking status. Data on ethnicity are from Shigematsu et al. [33]. Data on smoking in Asia are from Kosaka et al. [35] and Tam et al. [101], and those on smoking in the USA are based on Rudin et al. [102]



although a trend toward a higher incidence of *KRAS* mutations was observed in smokers [37–39]. The *KRAS* mutation at codon 12 in lung cancer is characterized by the frequent G-to-T transversions, in contrast to the frequent G-to-A transitions found in colorectal cancer [40]. These transversion mutations of the *KRAS* gene are associated strongly with smoking status even when restricted to Caucasian populations, whereas the transition mutations occur in both former or current and never smokers [39].

Mutant allele specific imbalance (MASI) is a genetic aberration observed often in tumors harboring mutations in proto-oncogenes. The *KRAS* chromosomal locus at 12p12.1 or the *epidermal growth factor receptor* (*EGFR*) locus at 7p11.2 have both been identified as frequent regions of gene amplification in lung cancer by two independent genome-wide studies [41, 42]. Soh et al. reported recently that MASI is frequently (58%) observed in lung cancer with *KRAS* mutation [43]. Of interest, MASI in *KRAS* occurs mainly because of uniparental disomy resulting from the complete loss of the wild-type allele without copy number gain (CNG), whereas MASI in *EGFR* occurs mainly because of CNG [43]. These differences in MASI mechanisms may be relevant to the observation that the wild-type RAS acts like a tumor suppressor in some models [44–46]. *KRAS* mutations or MASI are significantly associated with increased GTP-bound active RAS protein [43].

In terms of histological types, *KRAS* mutations are associated more with mucinous bronchioloalveolar cell carcinoma (BAC) or lung cancer with goblet cell morphology than with non-mucinous BAC [47–50]. For example, Marchetti et al. found *KRAS* mutations in ten of ten mucinous BACs, but in only 34 of 98 non-mucinous adenocarcinomas [49]. Yatabe et al. demonstrated further that a subset of lung adenocarcinomas frequently shows

expression of CK20 and CDX2, *KRAS* mutations, and/or goblet cell morphology [50]. These phenotypes are observed commonly in colorectal, pancreatobiliary, and ovarian mucinous carcinomas, suggesting that adenocarcinomas with these features represent one prototype that is independent of the organ of origin [50].

4 Discovery of the *EGFR* mutation in lung cancer

In 2004, activating mutations of the *EGFR* gene were found in a subset of non-small cell lung cancers (NSCLCs), and tumors harboring *EGFR* mutations were shown to be highly sensitive to *EGFR* tyrosine kinase inhibitors (TKIs) [51–53]. *EGFR* mutations are present mainly in the first four exons of the tyrosine kinase domain of the *EGFR* gene. About 90% of *EGFR* mutations are either small deletions encompassing five amino acids from codons 746 through 750 (ELREA) or missense mutations resulting in leucine-to-arginine substitution at codon 858 (L858R) [54]. There are >20 variant types of deletion: larger deletion, deletion plus point mutation, deletion plus insertion, etc. About 3% of *EGFR* mutations occur at codon 719 and cause substitution of glycine to cysteine, alanine, or serine (G719X) [54]. In addition, about 3% are in-frame insertion mutations in exon 20. It is unusual for more than one type of the common forms of mutation to be present in an individual carcinoma, although there are many examples of rare point mutations, some of which occur with L858R mutation.

EGFR mutations are found predominantly in female, non-smoking patients of East Asian origin with adenocarcinoma. Data on 2,880 patients compiled from the literature show that the presence of *EGFR* mutations is highly dependent on ethnicity (East Asians, 32% compared with

Caucasians, 7%), sex (male, 10% compared with female, 38%), smoking history (never smoked, 47% compared with ever smoked, 7%), and histological type (adenocarcinoma, 30% compared with other types of lung cancer, 2%) [54]. A recent report also showed that African Americans are significantly less likely to harbor *EGFR* mutations (2%), whereas the frequency of *KRAS* mutations (23%) does not differ from that in Caucasians [55].

Although *EGFR* and *KRAS* are both proto-oncogenes associated with lung adenocarcinoma, lung cancer harboring *EGFR* mutations and those harboring *KRAS* mutations differ markedly (Table 1 and Fig. 2). Our group and others have reported that the occurrence of *EGFR* and *KRAS* mutations is strictly mutually exclusive [33, 35]. This finding may be relevant to the fact that the *KRAS*–MAPK pathway is an important downstream signaling pathway of *EGFR*.

It is of particular interest that *EGFR* mutations are the first molecular aberrations found predominantly in lung cancers in never-smoking patients than those in smoking patients. In contrast to *KRAS* mutations, *EGFR* mutations are frequently inversely associated with cumulative smok-

ing dosage. Our analysis, mentioned earlier, showed that the incidence of *EGFR* mutations decreases as smoking dose increases (68%, 55%, 27%, and 22%, for 0, <20, 20–50, and >50 PY, respectively) [35]. These findings should not be construed to mean that smoking has a preventive effect on *EGFR* mutations; rather, they suggest that *EGFR* mutations are caused by carcinogen(s) other than those contained in tobacco smoke and that the apparent negative correlation with smoking dose results from diluting the number of tumors with *EGFR* mutations with an increasing number of tumors without these mutations as smoking dose increases. This idea is supported by our case–control study [56], in which we enrolled 152 NSCLC patients harboring *EGFR* mutations, 283 NSCLC patients without *EGFR* mutations, and 2,175 age- and sex-matched controls. When cumulative smoking exposure was classified into three groups, the cumulative amount showed a linear increased risk for lung cancer only in patients without *EGFR* mutations (trend $P < 0.001$). The odds ratios (OR) for 1–40 PY and >40 PY were 2.72 (1.79–4.14; $P < 0.001$) and 10.0 (6.33–15.8; $P < 0.001$), respectively [56]. By contrast, the risk did not increase in patients harboring *EGFR*

Table 1 Summary of recent studies comparing gefitinib with chemotherapy in patients according to *EGFR* mutational status

Study	Design	Line	<i>EGFR</i> mutated				<i>EGFR</i> wild-type			
			PFS		OS		PFS		OS	
			G	CTx	G	CTx	G	CTx	G	CTx
Takano (64)	Retrospective	All	–	–	27.2	13.6	–	–	13.2	10.4
	Japanese, observational, no crossover									
I-CAMP ^a (92)	P II	1st	10.7	6.0	27.7	25.7	–	–	–	–
	Nonrandomized, pooled analysis, crossover CTx→G 100%, G→CTx?									
INTEREST ^b (93)	P III	2nd	7.0	4.1	14.2	16.6	1.7	2.6	6.4	6.0
	Global, gefitinib vs. docetaxel, crossover CTx→G 37%, G→CTx 46%									
V15-32 ^b (94)	P III	2nd	~8	~9	–	–	~3	~3	–	–
	Japanese, gefitinib vs. docetaxel, crossover CTx→G 53%, G→CTx 60%									
IPASS (66)	P III	1st	9.5	6.3	~20	~20	~1.5	~5.5	~13	~13
	Asians, gefitinib vs. carboplatin-paclitaxel, crossover CTx→G 39%, G→CTx 49%									
NEJ002 (67)	P III	1st	10.4	5.5	28.0	23.6				
	Japanese, gefitinib vs. carboplatin-paclitaxel, patients selected by activating mutation of <i>EGFR</i> , crossover CTx→G 94%, G→CTx 73%									
WJTOG3405 (68)	P III	1st	9.2	6.3	N/A	N/A				
	Japanese, gefitinib vs. cisplatin-docetaxel, activating mutation of <i>EGFR</i>									

G Gefitinib, CTx chemotherapy, P II phase II, P III phase III.

^a I-CAMP is the pooled analyses from seven Japanese phase II studies that prospectively evaluated the efficacy of gefitinib for patients with *EGFR* mutations. Gefitinib was administered to 87 patients as the first-line therapy and to 61 patients as the second-line or later therapy [92].

^b The INTEREST and V15-32 studies are comparative studies of gefitinib versus docetaxel as second-line or later treatment for advanced or recurrent non-small cell lung cancer. The non-inferiority of gefitinib was not demonstrated in the V15-32 study conducted in Japan [93], but was demonstrated in the INTEREST study conducted overseas [94]. The subset analysis of the INTEREST study showed that *EGFR* mutation-positive patients had longer PFS with gefitinib than with chemotherapy, but no difference in OS was observed [94]. By contrast, in the V15-32 study, patients with *EGFR* mutations had a favorable prognosis overall, but no differences were demonstrated between docetaxel and gefitinib [93]. Interpretation of these analyses is difficult because only a portion of the patients were analyzed retrospectively.

mutations (OR, 0.68 (0.42–1.12, $P=0.134$) for 1–40 PY; OR, 0.79 (0.42–1.46, $P=0.45$) for > 40 PY) [56].

5 Clinical significance of *KRAS* and *EGFR* mutations in lung cancer

5.1 Prognostic implications

In 1990, Slebos et al. reported that the presence of a *KRAS* mutation is a significant poor prognostic marker in patients with adenocarcinoma of the lung who underwent potential curative surgery [57]. Mascaux et al. performed a meta-analysis of 53 published studies that assessed the prognostic value of mutations in the *KRAS* gene. They identified *KRAS* mutations as a negative prognostic factor with a hazard ratio for death of 1.50 (95% confidence interval (CI), 1.26–1.80) in lung adenocarcinoma [58]. In our recent analysis, *KRAS* mutations were associated with poor prognosis, whereas *EGFR* mutations were associated with good prognosis by univariate analysis. However, multivariate analysis revealed that smoking status and stage were significant predictors, whereas none of the mutations, *EGFR*, *KRAS*, or *TP53*, was an independent prognostic factor [59].

On the other hand, Soh et al. found that gene dosage is associated with prognostic impact [43]. In the paper mentioned earlier, *KRAS* mutations ($P=0.2$) or CNG ($P=0.1$) alone showed a non-significant trend for poor prognosis. However, of 237 lung adenocarcinoma patients, six patients who harbored both a *KRAS* mutation and CNG had significantly shortened survival ($P=0.04$) [43].

5.2 Predictive implications

Small molecules with an anilino-quinazoline structure that specifically inhibit the tyrosine kinase activity of the EGFR, such as gefitinib and erlotinib, are the first molecular targeted drugs for lung cancer. It became evident that non-smoking Asian women with adenocarcinoma are highly likely to respond to EGFR-TKIs during early clinical development of the drugs [60, 61]. In 2004, somatic mutations of the *EGFR* gene were found in a subset of patients with lung cancer predominantly with the above-mentioned clinical backgrounds; it was also found that tumors with *EGFR* mutations are highly sensitive to EGFR-TKIs [51–53], providing a molecular basis for the earlier clinical observations. Activating mutations of the *EGFR* gene increase and sustain the phosphorylation of EGFR and other human EGF receptor (HER) family proteins without ligand stimulation [62]. Mutant EGFR selectively activates the AKT- and signal-transducer and activator of transcription protein (STAT)-signaling pathways, which promote

cell survival [62]. These cells become highly dependent on these aberrant signals, and when the oncogenic activated protein is inhibited by short hairpin RNA (shRNA) or EGFR-TKIs, they undergo extensive apoptosis [62].

About 70–80% of patients harboring *EGFR* mutations respond to EGFR-TKIs, whereas 10% of patients without *EGFR* mutations do so [54]. Patients with *EGFR* mutations have a significantly longer survival than those without *EGFR* mutations when treated with EGFR-TKIs [63, 64]. However, the clinical significance of *EGFR* mutation as a predictor of survival in patients treated with EGFR-TKIs was initially controversial. Some investigators claimed that *EGFR* mutations are not predictive of better survival upon EGFR-TKI treatment but are prognostic only (i.e. *EGFR* mutation defines a subset of patients with good prognosis irrespective of the treatment) [65]. Instead, it was thought that the *EGFR* gene copy number is more important [65]. This controversy continued until the molecular subset analysis of the IPASS study was reported [66].

IPASS is a phase III trial that compared gefitinib with standard chemotherapy as a first-line treatment for Asian patients with lung adenocarcinoma and with no smoking history or only light use [66]. The progression-free survival (PFS) was significantly better in patients in the gefitinib group, although the PFS curves crossed at six months (chemotherapy was better initially but later the gefitinib therapy was better), suggesting the presence of two or more qualitatively different subgroups. Molecular subset analysis showed that the benefit was limited to the patients with *EGFR* mutations and that gefitinib therapy was even detrimental in those without mutations [66]. Two recent Japanese phase III trials (NEJ002 and WJTOG3405) that compared gefitinib with platinum-doublet chemotherapy for patients selected according to the presence of *EGFR* mutations confirmed the predictive impact of these mutations in patients treated with EGFR-TKIs [67, 68].

However, the overall survival in the gefitinib group and in the chemotherapy group did not differ significantly in the IPASS trial or in NEJ002, although the final analyses have not been reported yet. This lack of effect is probably related to a high rate of crossover of the treatment; i.e. a considerable fraction of patients in the chemotherapy arm had been given gefitinib after disease progression and vice versa. Takano et al. classified lung cancer patients into those treated from 1999 to 2001, which was before approval of gefitinib in Japan, and those treated from 2002 to 2004. Gefitinib was administered to only 15% of the former group, but to 91% of the latter group. When the prognosis was examined according to the presence or absence of *EGFR* mutations, the median survival time was 27.2 months in the 2002–2004 cohort with *EGFR* mutations but only about 1 year in the other three groups [64]. Although this is not a randomized trial, it indicates

clearly that gefitinib treatment doubled the survival of lung cancer patients harboring *EGFR* mutations. Table 1 summarizes the recent clinical studies that compared gefitinib with standard chemotherapy in patients with lung cancer according to *EGFR* mutational status.

In addition, for patients treated with carboplatin/paclitaxel chemotherapy in the IPASS trial, the response rate was higher (47.3% vs. 23.5%) and PFS was longer (6.3 vs. 5.5 months) in patients with *EGFR* mutations than in those without *EGFR* mutations. This result suggests that *EGFR* mutations may also be predictive for the response to cytotoxic chemotherapy [66].

By contrast, lung cancers harboring *KRAS* mutations are resistant to EGFR-TKIs. The response rate for patients with *KRAS* mutations to EGFR-TKIs is virtually zero [69]. A recent meta-analysis of data on 165 patients with *KRAS* mutations from 17 studies confirmed that the presence of *KRAS* mutations is significantly associated with an absence of response to TKIs [70]. In the analysis, the pooled estimate of the specificity (number of *KRAS* wild-type patients / number of patients with objective response by RECIST) was 0.94 (95% CI, 0.89–0.97). However, because an *EGFR* mutation is a strong predictor of the response to EGFR-TKI therapy and because *EGFR* mutations and *KRAS* mutations have a mutual exclusionary relationship, it is not clear whether the response to EGFR-TKIs differs between tumors harboring *KRAS* mutations and those harboring neither *KRAS* nor *EGFR* mutations. In an analysis of 223 patients from five studies who were treated with EGFR-TKIs as a first-line therapy, Jackman et al. found no impact of *KRAS* mutations on the overall survival in patients without *EGFR* mutations [71]. The presence of a *KRAS* mutation in a given tumor may merely indicate that the tumor does not have an *EGFR* mutation. In addition, the role of *KRAS* mutations as a negative predictor of the response of lung cancer to treatment with anti-EGFR antibody, cetuximab, is not clear [72, 73], in contrast to the established role of anti-EGFR antibody in the treatment of colorectal cancer [74].

6 Novel strategies to circumvent *KRAS*-mutated tumors

Because *RAS* genes are the most frequently mutated oncogenes in various types of human cancers, researchers and clinicians are interested in developing efficient treatment strategies for tumors harboring mutant *RAS*. The first strategy was to inhibit farnesylation of RAS, which is essential for membrane localization and thus for RAS function. Some of these farnesyltransferase inhibitors (FTIs) are active *in vitro* or in animal models; however, all clinical trials failed mainly because alternative geranylgeranylation of the *KRAS* protein occurs, which can also support the biological activity of *KRAS* [75]. The concur-

rent inhibition of farnesyltransferase and geranylgeranyltransferase was too toxic [75].

Cancer cells usually contain multiple genetic and epigenetic abnormalities. For example, about 40% of adenocarcinomas harboring an *EGFR* mutation also have a *TP53* mutation [35]. Despite this complexity, their growth and survival can often be impaired by the inactivation of a single oncogene, the phenomenon known as “oncogene addiction” [76]. A typical example is the effect of EGFR-TKIs, as described above. However, not all cancers with *RAS* mutations are addicted to mutant RAS. Upon treatment of shRNAs to deplete *KRAS* in lung cancer cell lines harboring *KRAS* mutations, half of the cell lines maintained viability without expressing *KRAS*, whereas the cell density of the other half was reduced to one-fourth at most [77]. Even this sole observation illustrates the difficulties of RAS-targeted therapy. Comparing *KRAS*-independent and *KRAS*-dependent cancer cells reveals that *KRAS*-dependency is correlated with *KRAS* CNG and *KRAS* protein overexpression [77]. In addition, a gene-expression signature reveals that well-differentiated epithelial phenotype is also correlated with *KRAS*-dependency [77], showing that epithelial–mesenchymal transition (EMT) is associated with RAS independence. In this respect, it is noteworthy that RAS and transforming growth factor (TGF) β -Smad signaling cooperate selectively in the induction of Snail, a transcription factor that represses the expression of E-cadherin and induces EMT when overexpressed [78].

Because inhibition of *KRAS* by itself was insufficient to kill cancer cells with a *KRAS* mutation in the experiments mentioned above, one alternative approach might be to use the combined inhibition of two main downstream pathways of the RAS-RAF-MAPK/ERK kinase (MEK)–extracellular signal-regulated kinase (ERK) pathway and the phosphatidylinositol 3 kinase (PI3K)–AKT pathway. When an artificial mutation was introduced to the RAS-binding domain of the *PIK3CA* gene, tumor formation was inhibited in a *Kras* 12D mouse model [79], showing the importance of PI3K in the RAS-signaling pathway. Another study also showed that the PI3K inhibitor, PX866, blocks both the development of new *Kras* G12D-induced tumors and the growth of *Kras* G12D-driven AAHs and early adenomas [80]. However, NVP-BEZ235, a potent dual pan-PI3K–mammalian target of rapamycin (mTOR) inhibitor, could not shrink established *Kras* G12D-driven tumors, suggesting that suppression of PI3K signaling is insufficient [81]. Although treatment of *Kras* G12D mice with the MEK inhibitor, ARRY-142886, alone led to only modest tumor regression, the combination of MEK and PI3K inhibitors led to marked synergistic tumor regression, and pathological analysis at the completion of treatment revealed only scant remnants of tumor nodules [81]. A recent cell line-based study revealed that *KRAS* gene-mutant cancers

exhibit variable responses to MEK inhibition and that PI3K pathway activation strongly influences the sensitivity of *KRAS* gene-mutant cells to MEK inhibitors. Activating mutations in the *PIK3CA* gene reduces the sensitivity to MEK inhibition, whereas *PTEN* mutations cause complete resistance [82]. In this study, the dual inhibition of the PI3K and MEK pathways was required for complete inhibition of the downstream mTOR and induction of cell death [82].

The second approach is the systematic prediction of drug activity using a genomically validated large cohort of cell lines [83]. In that study, 84 genomically validated cell lines were treated with erlotinib and with 11 other inhibitors that were under either clinical or preclinical evaluation [83], and they found that *KRAS* mutations conferred enhanced heat shock protein (HSP) 90 dependency. This finding was validated in mice with *Kras*-driven lung adenocarcinoma, showing these mice exhibited dramatic tumor regression when treated with an HSP90 inhibitor, 17-(dimethylamino-ethylamino)-17-demethoxygeldanamycin (17-DMAG).

The most recent approach is to identify synthetic lethal interactions in cancer cells harboring *KRAS* mutations using genome-wide RNA interference screening. In other words, this approach investigates which genes that, when silenced, kill cells harboring mutant *RAS* genes but not cells without this mutation. Using this approach, Scholl et al. identified serine threonine kinase, STK33 [84]. On the other hand, Luo et al. identified a diverse set of proteins whose depletion selectively impaired the viability of *RAS* mutant cells. In particular, they observed a strong enrichment of genes with mitotic functions including a mitotic kinase, polo-like kinase 1 [85]. More recently, Barbie et al. showed

that TBK1, an upstream regulator of the nuclear factor- κ B (NF- κ B) pathway, was most effective in selectively killing *RAS* gene mutant cells [86]. TBK1 activates NF- κ B by inhibiting I κ B, an inhibitor of NF- κ B. TBK1 also plays an important role downstream of RAS (Fig. 1b) [87]. In addition, inhibition of NF- κ B by treatment with a non-phosphorylatable, dominant-negative form of I κ B (I κ B-DR) markedly decreased both the number and the size of lung tumors induced by concomitant loss of *TP53* and expression of oncogenic *Kras* (G12D) [88]. These findings provide support for the development of novel strategies to explore targeted therapies for the treatment of patients with mutated *RAS* gene.

7 Conclusion

We have described the clinical and biological significance of *KRAS* and *EGFR* mutations in lung cancer. The two mutant proto-oncogenes contrast sharply in terms of their epidemiological, pathological, biological, and clinical aspects in lung cancer (Table 2). Although *EGFR* mutation testing almost becomes a must for selecting patients who would most benefit from treatment with EGFR-TKIs, the role of *KRAS* mutations and their clinical applications are unclear. Specific treatment strategies that target activated *KRAS* are awaited eagerly. In addition to *KRAS* and *EGFR*, recent evidence suggests that some adenocarcinomas of the lung are dependent on or addicted to the HER2 [89] or anaplastic lymphoma kinase pathway [90, 91] although the incidence is low.

Table 2 Comparison of *KRAS* with *EGFR* mutations in human lung cancer

	<i>KRAS</i>	<i>EGFR</i>
Discovery of mutation	1982	2004
Biochemical function	Small GTP-binding protein	Receptor tyrosine kinase
Common mutation	Missense mutation at codons 12, 13 or 61	Exon 19 deletion, missense mutation at codon 858 (L858R) in tyrosine kinase domain
Allele-specific imbalance	Present (uniparental disomy common)	Present (copy number gain common)
Mutation in tumors other than lung cancer	Common (pancreas, colon, bile duct, etc.)	Absent ^a
Smoking status	Smokers	Non-smokers
Ethnicity	Caucasians>East Asians	East Asians>Caucasians
Sex	Male>female	Female>male
Histology	Adenocarcinoma (mucinous BAC ^b)	Adenocarcinoma (non-mucinous BAC ^b)
Prognostic impact	Poorer	Better
Response rate for EGFR-TKI therapy	0%	70–80%

^a Mutations in the extracellular domain are reported in glioblastomas [95]

^b Peripheral arising adenocarcinomas with partial or complete bronchiolealveolar growth component

We have treated NSCLC as one disease, although it is actually an aggregate of many genetically different diseases. Development of translational science involving close cooperation among clinicians, researchers, and pharmaceutical companies should make it possible to personalize lung cancer treatment, to turn this fatal disease into a chronic disorder and, eventually, to cure it.

References

- Shih, C., Padhy, L. C., Murray, M., & Weinberg, R. A. (1981). Transforming genes of carcinomas and neuroblastomas introduced into mouse fibroblasts. *Nature*, *290*, 261–264.
- Perucho, M., Goldfarb, M., Shimizu, K., Lama, C., Fogh, J., & Wigler, M. (1981). Human-tumor-derived cell lines contain common and different transforming genes. *Cell*, *27*, 467–476.
- Krontiris, T. G., & Cooper, G. M. (1981). Transforming activity of human tumor DNAs. *Proceedings of the National Academy of Sciences of the United States of America*, *78*, 1181–1184.
- Der, C. J., Krontiris, T. G., & Cooper, G. M. (1982). Transforming genes of human bladder and lung carcinoma cell lines are homologous to the ras genes of Harvey and Kirsten sarcoma viruses. *Proceedings of the National Academy of Sciences of the United States of America*, *79*, 3637–3640.
- Goldfarb, M., Shimizu, K., Perucho, M., & Wigler, M. (1982). Isolation and preliminary characterization of a human transforming gene from T24 bladder carcinoma cells. *Nature*, *296*, 404–409.
- Parada, L. F., Tabin, C. J., Shih, C., & Weinberg, R. A. (1982). Human EJ bladder carcinoma oncogene is homologue of Harvey sarcoma virus ras gene. *Nature*, *297*, 474–478.
- Tabin, C. J., Bradley, S. M., Bargmann, C. I., Weinberg, R. A., Papageorge, A. G., Scolnick, E. M., et al. (1982). Mechanism of activation of a human oncogene. *Nature*, *300*, 143–149.
- Reddy, E. P., Reynolds, R. K., Santos, E., & Barbacid, M. (1982). A point mutation is responsible for the acquisition of transforming properties by the T24 human bladder carcinoma oncogene. *Nature*, *300*, 149–152.
- Taparowsky, E., Suard, Y., Fasano, O., Shimizu, K., Goldfarb, M., & Wigler, M. (1982). Activation of the T24 bladder carcinoma transforming gene is linked to a single amino acid change. *Nature*, *300*, 762–765.
- Bos, J. (1988). The ras gene family and human carcinogenesis. *Mutation Research*, *195*, 255–271.
- Shimizu, K., Goldfarb, M., Suard, Y., Perucho, M., Li, Y., Kamata, T., et al. (1983). Three human transforming genes are related to the viral ras oncogenes. *Proceedings of the National Academy of Sciences of the United States of America*, *80*, 2112–2116.
- Hall, A., Marshall, C. J., Spurr, N. K., & Weiss, R. A. (1983). Identification of transforming gene in two human sarcoma cell lines as a new member of the ras gene family located on chromosome 1. *Nature*, *303*, 396–400.
- DeClue, J. E., Papageorge, A. G., Fletcher, J. A., Diehl, S. R., Ratner, N., Vass, W. C., et al. (1992). Abnormal regulation of mammalian p21ras contributes to malignant tumor growth in von Recklinghausen (type 1) neurofibromatosis. *Cell*, *69*, 265–273.
- Trahey, M., & McCormick, F. (1987). A cytoplasmic protein stimulates normal *N-ras* p21 GTPase, but does not affect oncogenic mutants. *Science*, *1987*(238), 542–545.
- Willumsen, B. M., Norris, K., Papageorge, A. G., Hubbert, N. L., & Lowy, D. R. (1984). Harvey murine sarcoma virus p21 ras protein: biological and biochemical significance of the cysteine nearest the carboxy terminus. *The EMBO Journal*, *3*, 2581–2585.
- Casey, P. J., Solski, P. A., Der, C. J., & Buss, J. E. (1989). p21ras is modified by a farnesyl isoprenoid. *Proceedings of the National Academy of Sciences of the United States of America*, *86*, 8323–8327.
- Schaber, M. D., O'Hara, M. B., Garsky, V. M., Mosser, S. C., Bergstrom, J. D., Moores, S. L., et al. (1990). Polyisoprenylation of Ras *in vitro* by a farnesyl-protein transferase. *The Journal of Biological Chemistry*, *265*, 14701–14704.
- Hancock, J. F., Paterson, H., & Marshall, C. J. (1990). A polybasic domain or palmitoylation is required in addition to the CAAX motif to localize p21ras to the plasma membrane. *Cell*, *63*, 133–139.
- Patek, C. E., Arends, M. J., Wallace, W. A., Luo, F., Hagan, S., Brownstein, D. G., et al. (2008). Mutationally activated K-ras 4A and 4B both mediate lung carcinogenesis. *Experimental Cell Research*, *314*, 1105–1114.
- To, M. D., Wong, C. E., Karnezis, A. N., Del Rosario, R., Di Lauro, R., & Balmain, A. (2008). Kras regulatory elements and exon 4A determine mutation specificity in lung cancer. *Nature Genetics*, *40*, 1240–1244.
- Newbold, R. F., & Overell, R. W. (1983). Fibroblast immortality is a prerequisite for transformation by EJ c-Ha-ras oncogene. *Nature*, *304*, 648–651.
- Land, H., Parada, L. F., & Weinberg, R. A. (1983). Tumorigenic conversion of primary embryo fibroblasts requires at least two cooperating oncogenes. *Nature*, *304*, 596–602.
- Ruley, H. E. (1983). Adenovirus early region 1A enables viral and cellular transforming genes to transform primary cells in culture. *Nature*, *304*, 602–606.
- Serrano, M., Lin, A. W., McCurrach, M. E., Beach, D., & Lowe, S. W. (1997). Oncogenic ras provokes premature cell senescence associated with accumulation of p53 and p16INK4a. *Cell*, *88*, 593–602.
- Karnoub, A. E., & Weinberg, R. A. (2008). Ras oncogenes: split personalities. *Nature Reviews Molecular Cell Biology*, *9*, 517–531.
- Sun, P., Yoshizuka, N., New, L., Moser, B. A., Li, Y., Liao, R., et al. (2007). PRAK is essential for ras-induced senescence and tumor suppression. *Cell*, *128*, 295–308.
- Tuveson, D. A., Shaw, A. T., Willis, N. A., Silver, D. P., Jackson, E. L., Chang, S., et al. (2004). Endogenous oncogenic K-ras (G12D) stimulates proliferation and widespread neoplastic and developmental defects. *Cancer Cell*, *5*, 375–387.
- Collado, M., Gil, J., Efeyan, A., Guerra, C., Schuhmacher, A. J., Barradas, M., et al. (2005). Tumour biology: senescence in premalignant tumours. *Nature*, *436*, 642.
- Santos, E., Martin-Zanca, D., Reddy, E. P., Pierotti, M. A., Della Porta, G., & Barbacid, M. (1984). Malignant activation of a K-ras oncogene in lung carcinoma but not in normal tissue of the same patient. *Science*, *223*, 661–664.
- Rodenhuis, S., van de Wetering, M. L., Mooi, W. J., Evers, S. G., van Zandwijk, N., & Bos, J. L. (1987). Mutational activation of the K-ras oncogene. A possible pathogenetic factor in adenocarcinoma of the lung. *The New England Journal of Medicine*, *317*, 929–935.
- Mitsudomi, T., Viallet, J., Linnoila, R. I., Mulshine, J. L., Minna, J. D., & Gazdar, A. F. (1991). Mutations of ras genes distinguish a subset of non-small cell lung cancer cell lines from small cell lung cancer cell lines. *Oncogene*, *6*, 1353–1362.
- Shigematsu, H., Takahashi, T., Nomura, M., Majumdar, K., Suzuki, M., Lee, H., et al. (2005). Somatic mutations of the HER2 kinase domain in lung adenocarcinomas. *Cancer Research*, *65*, 1642–1646.
- Shigematsu, H., Lin, L., Takahashi, T., Nomura, M., Suzuki, M., Wistuba, I. I., et al. (2005). Clinical and biological features associated with epidermal growth factor receptor gene mutations

- in lung cancers. *Journal of the National Cancer Institute*, 97, 339–346.
34. Slebos, R. J., Hruban, R. H., Dalesio, O., Mooi, W. J., Offerhaus, G. J., & Rodenhuis, S. (1991). Relationship between K-*ras* oncogene activation and smoking in adenocarcinoma of the human lung. *Journal of the National Cancer Institute*, 83, 1024–1027.
 35. Kosaka, T., Yatabe, Y., Endoh, H., Kuwano, H., Takahashi, T., & Mitsudomi, T. (2004). Mutations of the epidermal growth factor receptor gene in lung cancer: biological and clinical implications. *Cancer Research*, 64, 8919–8923.
 36. Ding, L., Getz, G., Wheeler, D. A., Mardis, E. R., McLellan, M. D., Cibulskis, K., et al. (2008). Somatic mutations affect key pathways in lung adenocarcinoma. *Nature*, 455, 1069–1075.
 37. Gealy, R., Zhang, L., Siegfried, J. M., Luketich, J. D., & Keohavong, P. (1999). Comparison of mutations in the p53 and K-*ras* genes in lung carcinomas from smoking and nonsmoking women. *Cancer Epidemiology, Biomarkers & Prevention*, 8, 297–302.
 38. Vahakangas, K. H., Bennett, W. P., Castren, K., Welsh, J. A., Khan, M. A., Blomeke, B., et al. (2001). p53 and K-*ras* mutations in lung cancers from former and never-smoking women. *Cancer Research*, 61, 4350–4356.
 39. Riely, G. J., Kris, M. G., Rosenbaum, D., Marks, J., Li, A., Chitale, D. A., et al. (2008). Frequency and distinctive spectrum of KRAS mutations in never smokers with lung adenocarcinoma. *Clinical Cancer Research*, 14, 5731–5734.
 40. Bos, J. L. (1989). *ras* oncogenes in human cancer: a review. *Cancer Research*, 49, 4682–4689.
 41. Weir, B. A., Woo, M. S., Getz, G., Perner, S., Ding, L., Beroukhi, R., et al. (2007). Characterizing the cancer genome in lung adenocarcinoma. *Nature*, 450, 893–898.
 42. Kendall, J., Liu, Q., Bakleh, A., Krasnitz, A., Nguyen, K. C., Lakshmi, B., et al. (2007). Oncogenic cooperation and coamplification of developmental transcription factor genes in lung cancer. *Proceedings of the National Academy of Sciences of the United States of America*, 104, 16663–16668.
 43. Soh, J., Okumura, N., Lockwood, W. W., Yamamoto, H., Shigematsu, H., Zhang, W., et al. (2009). Oncogene mutations, copy number gains and mutant allele specific imbalance (MASI) frequently occur together in tumor cells. *PLoS One*, 4, e7464.
 44. Zhang, Z., Wang, Y., Vikis, H. G., Johnson, L., Liu, G., Li, J., et al. (2001). Wildtype Kras2 can inhibit lung carcinogenesis in mice. *Nature Genetics*, 29, 25–33.
 45. Diaz, R., Lue, J., Mathews, J., Yoon, A., Ahn, D., Garcia-Espana, A., et al. (2005). Inhibition of Ras oncogenic activity by Ras protooncogenes. *International Journal of Cancer*, 113, 241–248.
 46. To, M. D., Perez-Losada, J., Mao, J. H., Hsu, J., Jacks, T., & Balmain, A. (2006). A functional switch from lung cancer resistance to susceptibility at the Pas1 locus in Kras2LA2 mice. *Nature Genetics*, 38, 926–930.
 47. Kobayashi, T., Tsuda, H., Noguchi, M., Hirohashi, S., Shimosato, Y., Goya, T., et al. (1990). Association of point mutation in c-Ki-*ras* oncogene in lung adenocarcinoma with particular reference to cytologic subtypes. *Cancer*, 66, 289–294.
 48. Tsuchiya, E., Furuta, R., Wada, N., Nakagawa, K., Ishikawa, Y., Kawabuchi, B., et al. (1995). High K-*ras* mutation rates in goblet-cell-type adenocarcinomas of the lungs. *Journal of Cancer Research and Clinical Oncology*, 121, 577–581.
 49. Marchetti, A., Butti, F., Pellegrini, S., Chella, A., Bertacca, G., Filardo, A., et al. (1996). Bronchioloalveolar lung carcinomas: K-*ras* mutations are constant events in the mucinous subtype. *The Journal of Pathology*, 179, 254–259.
 50. Yatabe, Y., Koga, T., Mitsudomi, T., & Takahashi, T. (2004). CK20 expression, CDX2 expression, K-*ras* mutation, and goblet cell morphology in a subset of lung adenocarcinomas. *The Journal of Pathology*, 203, 645–652.
 51. Paez, J. G., Janne, P. A., Lee, J. C., Tracy, S., Greulich, H., Gabriel, S., et al. (2004). EGFR mutations in lung cancer: correlation with clinical response to gefitinib therapy. *Science*, 304, 1497–1500.
 52. Lynch, T. J., Bell, D. W., Sordella, R., Gurubhagavatula, S., Okimoto, R. A., Brannigan, B. W., et al. (2004). Activating mutations in the epidermal growth factor receptor underlying responsiveness of non-small-cell lung cancer to gefitinib. *The New England Journal of Medicine*, 350, 2129–2139.
 53. Pao, W., Miller, V., Zakowski, M., Doherty, J., Politi, K., Sarkaria, I., et al. (2004). EGF receptor gene mutations are common in lung cancers from “never smokers” and are associated with sensitivity of tumors to gefitinib and erlotinib. *Proceedings of the National Academy of Sciences of the United States of America*, 101, 13306–13311.
 54. Mitsudomi, T., & Yatabe, Y. (2007). Mutations of the epidermal growth factor receptor gene and related genes as determinants of epidermal growth factor receptor tyrosine kinase inhibitors sensitivity in lung cancer. *Cancer Science*, 98, 1817–1824.
 55. Leidner, R. S., Fu, P., Clifford, B., Hamdan, A., Jin, C., Eisenberg, R., et al. (2009). Genetic abnormalities of the EGFR pathway in African American patients with non-small-cell lung cancer. *Journal of Clinical Oncology*, 27, 5620–5626.
 56. Matsuo, K., Ito, H., Yatabe, Y., Hiraki, A., Hirose, K., Wakai, K., et al. (2007). Risk factors differ for non-small-cell lung cancers with and without EGFR mutation: assessment of smoking and sex by a case-control study in Japanese. *Cancer Science*, 98, 96–101.
 57. Slebos, R. J., Kibbelaar, R. E., Dalesio, O., Kooistra, A., Stam, J., Meijer, C. J., et al. (1990). K-*ras* oncogene activation as a prognostic marker in adenocarcinoma of the lung. *The New England Journal of Medicine*, 323, 561–565.
 58. Mascaux, C., Iannino, N., Martin, B., Paesmans, M., Berghmans, T., Dusart, M., et al. (2005). The role of RAS oncogene in survival of patients with lung cancer: a systematic review of the literature with meta-analysis. *British Journal of Cancer*, 92, 131–139.
 59. Kosaka, T., Yatabe, Y., Onozato, R., Kuwano, H., & Mitsudomi, T. (2009). Prognostic implication of EGFR, KRAS, and TP53 gene mutations in a large cohort of Japanese patients with surgically treated lung adenocarcinoma. *Journal of Thoracic Oncology*, 4, 22–29.
 60. Fukuoka, M., Yano, S., Giaccone, G., Tamura, T., Nakagawa, K., Douillard, J. Y., et al. (2003). Multi-institutional randomized phase II trial of gefitinib for previously treated patients with advanced non-small-cell lung cancer. *Journal of Clinical Oncology*, 21, 2237–2246.
 61. Kris, M. G., Natale, R. B., Herbst, R. S., Lynch, T. J., Jr., Prager, D., Belani, C. P., et al. (2003). Efficacy of gefitinib, an inhibitor of the epidermal growth factor receptor tyrosine kinase, in symptomatic patients with non-small cell lung cancer: a randomized trial. *The Journal of the American Medical Association*, 290, 2149–2158.
 62. Sordella, R., Bell, D. W., Haber, D. A., & Settleman, J. (2004). Gefitinib-sensitizing EGFR mutations in lung cancer activate anti-apoptotic pathways. *Science*, 305, 1163–1167.
 63. Mitsudomi, T., Kosaka, T., Endoh, H., Horio, Y., Hida, T., Mori, S., et al. (2005). Mutations of the epidermal growth factor receptor gene predict prolonged survival after gefitinib treatment in patients with non-small-cell lung cancer with postoperative recurrence. *Journal of Clinical Oncology*, 23, 2513–2520.
 64. Takano, T., Fukui, T., Ohe, Y., Tsuta, K., Yamamoto, S., Nokihara, H., et al. (2008). EGFR mutations predict survival benefit from gefitinib in patients with advanced lung adenocarcinoma: a historical comparison of patients treated before and after gefitinib approval in Japan. *Journal of Clinical Oncology*, 26, 5589–5595.

65. Cappuzzo, F., Hirsch, F. R., Rossi, E., Bartolini, S., Ceresoli, G. L., Bemis, L., et al. (2005). Epidermal growth factor receptor gene and protein and gefitinib sensitivity in non-small-cell lung cancer. *Journal of the National Cancer Institute*, *97*, 643–655.
66. Mok, T. S., Wu, Y. L., Thongprasert, S., Yang, C. H., Chu, D. T., Saijo, N., et al. (2009). Gefitinib or carboplatin-paclitaxel in pulmonary adenocarcinoma. *The New England Journal of Medicine*, *361*, 947–957.
67. Kobayashi, K., Inoue, A., Maemondo, M., Sugawara, S., Isobe, H., Oizumi, S., et al. (2009). First-line gefitinib versus first-line chemotherapy by carboplatin (CBDCA) plus paclitaxel (TXL) in non-small cell lung cancer (NSCLC) patients (pts) with EGFR mutations: a phase III study (002) by North East Japan Gefitinib Study Group. *Journal of Clinical Oncology*, *27*, 15s (suppl; abstr 8016).
68. Tsurutani, J., Mitsudomi, T., Mori, S., Okamoto, I., Nozaki, K., Tada, H., et al. (2009). A phase III, first-line trial of gefitinib versus cisplatin plus docetaxel for patients with advanced or recurrent non-small cell lung cancer (NSCLC) harboring activating mutation of the epidermal growth factor receptor (EGFR) gene: a preliminary results of WJTOG 3405. *European Journal of Cancer*, *7(Suppl)*, 505(abstr O-9002).
69. Pao, W., Wang, T. Y., Riely, G. J., Miller, V. A., Pan, Q., Ladanyi, M., et al. (2005). KRAS mutations and primary resistance of lung adenocarcinomas to gefitinib or erlotinib. *PLoS Medicine*, *2*, e17.
70. Murray, S., Dahabreh, I. J., Linardou, H., Manoloukos, M., Bafaloukos, D., & Kosmidis, P. (2008). Somatic mutations of the tyrosine kinase domain of epidermal growth factor receptor and tyrosine kinase inhibitor response to TKIs in non-small cell lung cancer: an analytical database. *Journal of Thoracic Oncology*, *3*, 832–839.
71. Jackman, D. M., Miller, V. A., Cioffredi, L. A., Yeap, B. Y., Janne, P. A., Riely, G. J., et al. (2009). Impact of epidermal growth factor receptor and KRAS mutations on clinical outcomes in previously untreated non-small cell lung cancer patients: results of an online tumor registry of clinical trials. *Clinical Cancer Research*, *15*, 5267–5273.
72. O'Byrne, K. J., Bondarenko, I., Barrios, C., Eschbach, C., Martens, U., Hotko, Y., et al. (2009). Molecular and clinical predictors of outcome for cetuximab in non-small cell lung cancer (NSCLC): Data from the FLEX study. *Journal of Clinical Oncology*, *27*, 15s (suppl; abstr 8007).
73. Lynch, T. J., Patel, T., Dreisbach, L., McCleod, M., Heim, W. J., Robert, H., et al. (2007). A randomized multicenter phase III study of cetuximab in combination with taxane/carboplatin versus taxane/carboplatin alone as first-line treatment for patients with advanced/metastatic non-small cell lung cancer. *Journal of Thoracic Oncology*, *2*, s340.
74. Cutsem, E. V., Lang, I., D'haens, G., Moiseyenko, V., Zaluski J., Folprecht G., et al. (2008). KRAS status and efficacy in the first-line treatment of patients with metastatic colorectal cancer (mCRC) treated with FOLFIRI with or without cetuximab: The CRYSTAL experience. *Journal of Clinical Oncology*, *26*, abstr 2.
75. Downward, J. (2003). Targeting RAS signalling pathways in cancer therapy. *Nature Reviews Cancer*, *3*, 11–22.
76. Weinstein, I. B., & Joe, A. (2008). Oncogene addiction. *Cancer Research*, *68*, 3077–80. discussion 80.
77. Singh, A., Greninger, P., Rhodes, D., Koopman, L., Violette, S., Bardeesy, N., et al. (2009). A gene expression signature associated with "K-Ras addiction" reveals regulators of EMT and tumor cell survival. *Cancer Cell*, *15*, 489–500.
78. Horiguchi, K., Shirakihara, T., Nakano, A., Imamura, T., Miyazono, K., & Saitoh, M. (2009). Role of Ras signaling in the induction of snail by transforming growth factor-beta. *The Journal of Biological Chemistry*, *284*, 245–253.
79. Gupta, S., Ramjaun, A. R., Haiko, P., Wang, Y., Wame, P. H., Nicke, B., et al. (2007). Binding of ras to phosphoinositide 3-kinase p110alpha is required for ras-driven tumorigenesis in mice. *Cell*, *129*, 957–968.
80. Yang, Y., Iwanaga, K., Raso, M. G., Wislez, M., Hanna, A. E., Wieder, E. D., et al. (2008). Phosphatidylinositol 3-kinase mediates bronchioalveolar stem cell expansion in mouse models of oncogenic K-ras-induced lung cancer. *PLoS One*, *3*, e2220.
81. Engelman, J. A., Chen, L., Tan, X., Crosby, K., Guimaraes, A. R., Upadhyay, R., et al. (2008). Effective use of PI3K and MEK inhibitors to treat mutant Kras G12D and PIK3CA H1047R murine lung cancers. *Nature Medicine*, *14*, 1351–1356.
82. Wee, S., Jagani, Z., Xiang, K. X., Loo, A., Dorsch, M., Yao, Y. M., et al. (2009). PI3K pathway activation mediates resistance to MEK inhibitors in KRAS mutant cancers. *Cancer Research*, *69*, 4286–4293.
83. Sos, M. L., Michel, K., Zander, T., Weiss, J., Frommolt, P., Peifer, M., et al. (2009). Predicting drug susceptibility of non-small cell lung cancers based on genetic lesions. *The Journal of Clinical Investigation*, *119*, 1727–1740.
84. Scholl, C., Frohling, S., Dunn, I. F., Schinzel, A. C., Barbie, D. A., Kim, S. Y., et al. (2009). Synthetic lethal interaction between oncogenic KRAS dependency and STK33 suppression in human cancer cells. *Cell*, *137*, 821–834.
85. Luo, J., Emanuele, M. J., Li, D., Creighton, C. J., Schlabach, M. R., Westbrook, T. F., et al. (2009). A genome-wide RNAi screen identifies multiple synthetic lethal interactions with the Ras oncogene. *Cell*, *137*, 835–848.
86. Barbie, D. A., Tamayo, P., Boehm, J. S., Kim, S. Y., Moody, S. E., Dunn, I. F., et al. (2009). Systematic RNA interference reveals that oncogenic KRAS-driven cancers require TBK1. *Nature*, *462*, 108–112.
87. Chien, Y., Kim, S., Bumeister, R., Loo, Y. M., Kwon, S. W., Johnson, C. L., et al. (2006). RalB GTPase-mediated activation of the I κ B family kinase TBK1 couples innate immune signaling to tumor cell survival. *Cell*, *127*, 157–170.
88. Meylan, E., Dooley, A. L., Feldser, D. M., Shen, L., Turk, E., Ouyang, C., et al. (2009). Requirement for NF-kappaB signalling in a mouse model of lung adenocarcinoma. *Nature*, *462*, 104–107.
89. Shimamura, T., Ji, H., Minami, Y., Thomas, R. K., Lowell, A. M., Shah, K., et al. (2006). Non-small-cell lung cancer and Ba/F3 transformed cells harboring the ERBB2 G776insV_G/C mutation are sensitive to the dual-specific epidermal growth factor receptor and ERBB2 inhibitor HKI-272. *Cancer Research*, *66*, 6487–6491.
90. Soda, M., Choi, Y. L., Enomoto, M., Takada, S., Yamashita, Y., Ishikawa, S., et al. (2007). Identification of the transforming EML4-ALK fusion gene in non-small-cell lung cancer. *Nature*, *448*, 561–566.
91. Koivunen, J. P., Mermel, C., Zejnullahu, K., Murphy, C., Lifshits, E., Holmes, A. J., et al. (2008). EML4-ALK fusion gene and efficacy of an ALK kinase inhibitor in lung cancer. *Clinical Cancer Research*, *14*, 4275–4283.
92. Morita, S., Okamoto, I., Kobayashi, K., Yamazaki, K., Asahina, H., Inoue, A., et al. (2009). Combined Survival Analysis of Prospective Clinical Trials of Gefitinib for Non-Small Cell Lung Cancer with EGFR Mutations. *Clinical Cancer Research*, *15*, 4493–4498.
93. Kim, E. S., Hirsh, V., Mok, T., Socinski, M. A., Gervais, R., Wu, Y. L., et al. (2008). Gefitinib versus docetaxel in previously treated non-small-cell lung cancer (INTEREST): a randomised phase III trial. *Lancet*, *372*, 1809–1818.
94. Maruyama, R., Nishiwaki, Y., Tamura, T., Yamamoto, N., Tsuboi, M., Nakagawa, K., et al. (2008). Phase III study, V-15-32, of gefitinib versus docetaxel in previously treated Japanese

- patients with non-small-cell lung cancer. *Journal of Clinical Oncology*, 26, 4244–4252.
95. Lee, J. C., Vivanco, I., Beroukhi, R., Huang, J. H., Feng, W. L., DeBiasi, R. M., et al. (2006). Epidermal growth factor receptor activation in glioblastoma through novel missense mutations in the extracellular domain. *PLoS Medicine*, 3, e485.
96. Hynes, N. E., & Lane, H. A. (2005). ERBB receptors and cancer: the complexity of targeted inhibitors. *Nature Reviews Cancer*, 5, 341–354.
97. Mitin, N., Rossman, K. L., & Der, C. J. (2005). Signaling interplay in Ras superfamily function. *Current Biology*, 15, R563–574.
98. Repasky, G. A., Chenette, E. J., & Der, C. J. (2004). Renewing the conspiracy theory debate: does Raf function alone to mediate Ras oncogenesis? *Trends in Cell Biology*, 14, 639–647.
99. Schubert, S., Shannon, K., & Bollag, G. (2007). Hyperactive Ras in developmental disorders and cancer. *Nature Reviews Cancer*, 7, 295–308.
100. Downward, J. (2009). Cancer: A tumour gene's fatal flaws. *Nature*, 462, 44–45.
101. Tam, I. Y., Chung, L. P., Suen, W. S., Wang, E., Wong, M. C., Ho, K. K., et al. (2006). Distinct epidermal growth factor receptor and KRAS mutation patterns in non-small cell lung cancer patients with different tobacco exposure and clinicopathologic features. *Clinical Cancer Research*, 12, 1647–1653.
102. Rudin, C. M., Avila-Tang, E., Harris, C. C., Herman, J. G., Hirsch, F. R., Pao, W., et al. (2009). Lung cancer in never smokers: molecular profiles and therapeutic implications. *Clinical Cancer Research*, 15, 5646–5661.

Reciprocal and Complementary Role of *MET* Amplification and *EGFR* T790M Mutation in Acquired Resistance to Kinase Inhibitors in Lung Cancer

Kenichi Suda^{1,4}, Isao Murakami⁵, Tatsuya Katayama¹, Kenji Tomizawa¹, Hirotaka Osada³, Yoshitaka Sekido³, Yoshihiko Maehara⁴, Yasushi Yatabe², and Tetsuya Mitsudomi¹

Abstract

Purpose: In epidermal growth factor receptor (EGFR) tyrosine kinase inhibitor (TKI) therapy for lung cancer patients, acquired resistance develops almost inevitably and this limits the improvement in patient outcomes. *EGFR* T790M mutation and *MET* amplification are the two main mechanisms underlying this resistance, but the relationship between these two mechanisms is unclear. In this study, we explored their relationship using *in vitro* models and autopsy specimens.

Experimental Design: Erlotinib-resistant HCC827 (HCC827ER) cells were developed by chronic exposure to erlotinib at increasing concentrations. HCC827EPR cells were also developed by chronic exposure to erlotinib in the presence of PHA-665,752 (a *MET* TKI). The erlotinib-resistant mechanisms of these cells were analyzed. In addition, 33 autopsy tumor samples from 6 lung adenocarcinoma patients harboring multiple gefitinib-refractory tumors were analyzed.

Results: HCC827ER developed *MET* amplification, and clinically relevant resistance occurred at ≥ 4 -fold *MET* gene copy number gain (CNG). By contrast, HCC827EPR developed T790M without *MET* CNG. Of six patients harboring gefitinib-refractory tumors, three exhibited T790M only, one exhibited *MET* amplification only, and the other two exhibited T790M and/or *MET* amplification depending on the lesion sites. In these gefitinib-refractory tumors, T790M developed in 93% (14 of 15) of tumors without *MET* gene CNGs, in 80% (4 of 5) of tumors with moderate *MET* gene CNGs (< 4 -fold), and in only 8% (1 of 13) of tumors with *MET* amplification (≥ 4 -fold).

Conclusions: These results indicate a reciprocal and complementary relationship between T790M and *MET* amplification and the necessity of concurrent inhibition of both for further improving patient outcomes. *Clin Cancer Res*; 16(22); 5489–98. ©2010 AACR.

Non-small cell lung cancers harboring activating mutations of the epidermal growth factor receptor (*EGFR*) gene are addicted to the EGFR pathway and are very sensitive to small molecule EGFR tyrosine kinase inhibitors (TKI), such as gefitinib and erlotinib (1–7). Despite dramatic initial responses, however, acquired resistance develops almost inevitably after a median of ~ 10 months (8), and this limits the improvement in patient outcomes. The secondary *EGFR* mutation, substitution of threonine to methionine at codon 790 (the “gatekeeper” residue,

T790M), and the amplification of the *MET* gene are the two main molecular mechanisms responsible for acquired resistance to EGFR-TKIs (9–12).

This resistance is postulated to develop from the selection of pre-existing minor resistant clones harboring either the T790M mutation (13) or the *MET* amplification (14), although therapy-naïve tumors rarely harbor these alterations (15–17). In this context, it seems that these cells are destined to develop each resistant mechanism even before EGFR-TKI treatment begins. For example, the HCC827 lung adenocarcinoma cell line reproducibly acquires resistance by *MET* amplification to gefitinib (11) or an irreversible pan-ERBB kinase inhibitor, PF00299804 (14). By contrast, different laboratories have shown that the PC9 cell line always develops resistance because of T790M secondary mutations (18–20). To delay or to avoid the emergence of resistance, it is reasonable to treat patients with agents that are effective against specific resistant mechanisms as part of the initial systemic therapies (14).

In the present study, we chronically exposed HCC827 lung adenocarcinoma cells to increasing concentrations of erlotinib in the absence or the presence of a *MET*-TKI.

Authors' Affiliations: Departments of ¹Thoracic Surgery and ²Pathology and Molecular Diagnostics, Aichi Cancer Center Hospital, and ³Division of Molecular Oncology, Aichi Cancer Center Research Institute, Nagoya, Japan; ⁴Department of Surgery and Science, Graduate School of Medical Science, Kyushu University, Fukuoka, Japan; and ⁵Department of Respiratory Medicine, Higashihiroshima Medical Center, Higashihiroshima, Japan

Corresponding Author: Tetsuya Mitsudomi, Department of Thoracic Surgery, Aichi Cancer Center Hospital, 1-1 Kanokoden, Chikusa-ku, Nagoya 464-8681, Japan. Phone: 81-52-(762)-6111; Fax: 81-52-(764)-2963; E-mail: mitsudom@aichi-cc.jp.

doi: 10.1158/1078-0432.CCR-10-1371

©2010 American Association for Cancer Research.

Translational Relevance

EGFR T790M mutation and *MET* amplification are the two main molecular mechanisms responsible for acquired resistance to gefitinib or erlotinib in patients with non-small cell lung cancer harboring a mutation in the *EGFR* gene. The present study is the first to observe a reciprocal and complementary relationship between these resistant mechanisms. In *in vitro* analyses we show that the HCC827 lung adenocarcinoma cell line could develop either of the resistant mechanisms against erlotinib. In addition, 33 tumors from 6 patients who died after developing acquired resistance to gefitinib were analyzed. In these gefitinib-refractory tumors, the T790M mutation developed in 93% (14 of 15) of tumors without *MET* gene copy number gains (CNG), in 80% (4 of 5) of tumors with moderate *MET* gene CNGs (<4-fold), and in only 8% (1 of 13) of tumors with *MET* amplification (≥4-fold). These results indicate that concurrent inhibition of both mechanisms seems to be essential for improving patient outcomes further.

We also examined multiple sites of recurrent tumors for *EGFR* T790M mutation and *MET* amplification in samples from autopsies of six patients who had showed acquired resistance to gefitinib after an initial good response to identify any *in vivo* relationship between these two mechanisms responsible for resistance.

Materials and Methods

Cell culture and reagents

The *EGFR* mutant human lung adenocarcinoma cell line HCC827 (del E746_A750) was the kind gift of Dr. Adi F. Gazdar (Hamon Center for Therapeutic Oncology Research, University of Texas Southwestern Medical Center at Dallas, Dallas, Texas) and was cultured in RPMI1640 medium supplemented with 5% fetal bovine serum (FBS)

and 1× antibiotic-antimycotic solution (Invitrogen) at 37°C in a humidified incubator with 5% CO₂.

Erlotinib was kindly provided by Hoffmann-La Roche, Inc. (Nutley, NJ). The selective *MET* inhibitor PHA-665,752 and the irreversible *EGFR*-TKI CL-387,785 were purchased from Tocris Bioscience and Calbiochem, respectively.

Generation of *in vitro* drug-resistant HCC827 cells

Erlotinib-resistant HCC827 (HCC827ER) cells were developed by chronic, repeated exposure to erlotinib at increasing concentration from 5 nmol/L to 2 μmol/L as described previously (11). The erlotinib concentration was increased stepwise when the cells resumed proliferation, similar to the pattern in untreated parental cells. Erlotinib/PHA-665,752-resistant HCC827 (HCC827EPR) cells were also developed by chronic, repeated exposure to erlotinib at increasing concentrations in the presence of 1 μmol/L PHA-665,752. The identity of the HCC827ER cells and HCC827EPR cells was confirmed by analyzing the short tandem repeat (STR) profile using the Cell ID System (Promega).

Cell proliferation assay

Cell proliferation was measured using TetraColor ONE (Seikagaku-kogyo) according to the manufacturer's instructions. Briefly, tumor cells (3 × 10³) were plated into each well of 96-well flat-bottomed plates and grown in RPMI1640 with 5% FBS. After 24 hours, DMSO, erlotinib, PHA-665,752, CL-387,785, or a combination of these drugs was added to achieve the indicated drug concentration, and the cells were incubated for an additional 72 hours. A colorimetric assay was done after addition of 10 μL TetraColor ONE in each well, and the plates were incubated at 37°C for 1 hour. The absorbance was read at 450 nm using a multiplate reader. Percent growth was determined relative to untreated controls.

Phospho-receptor tyrosine kinase array analysis

A Human Phospho-RTK Array Kit (R&D Systems) was used to measure the relative level of tyrosine phosphorylation of receptor tyrosine kinases (RTK). The membranes contained spotted antibodies corresponding to 42 distinct

Table 1. Clinical characteristics of patients treated with gefitinib

Patient	Age	Sex	PY	Disease status	Lines	Response	TTF (months)	OS (months)
1	57	F	0	Stage IV*	3	PR	13.8	48.5
2	48	F	0	Stage IV	1	PR	11.0	12.2
3	58	M	34	Stage IV	2	PR	14.5	23.7
4	75	M	0	Stage IV	2	PR	43.9	63.0
5	93	F	0	Stage IV	1	PR	14.8	30.9
6	62	M	26	Stage IV	2	PR	9.1	32.9

Abbreviations: PY, pack years (smoking status); TTF, time to treatment failure; OS, overall survival; PR, partial response.

*Postsurgical recurrence.