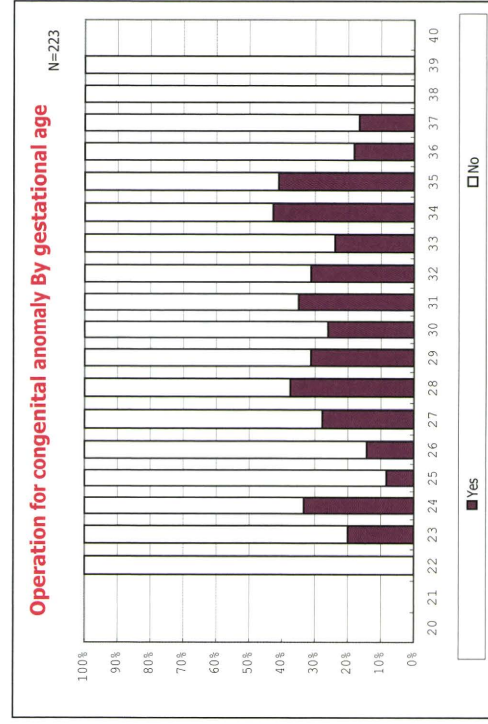
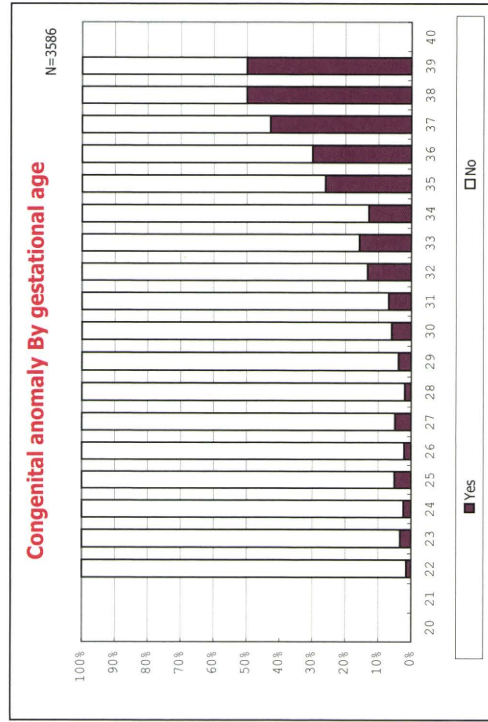
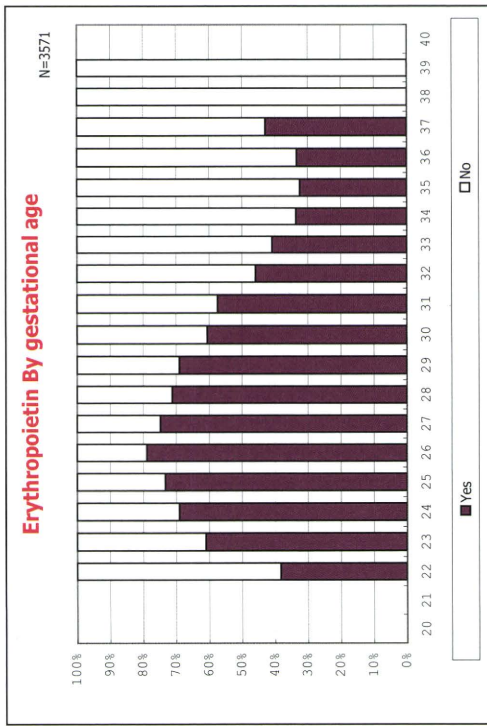
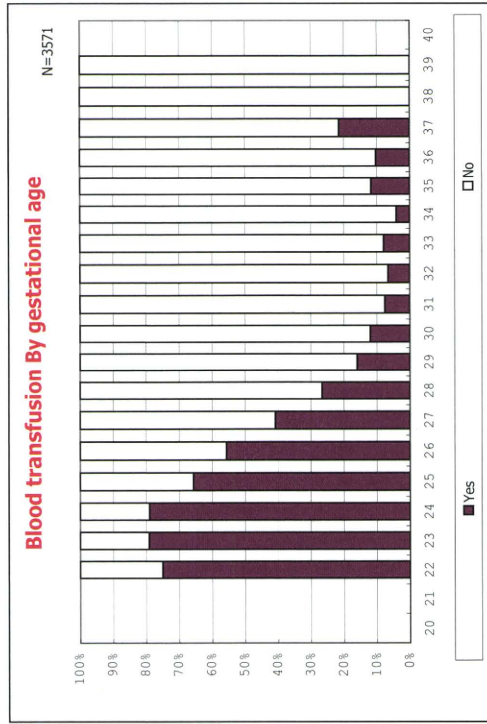
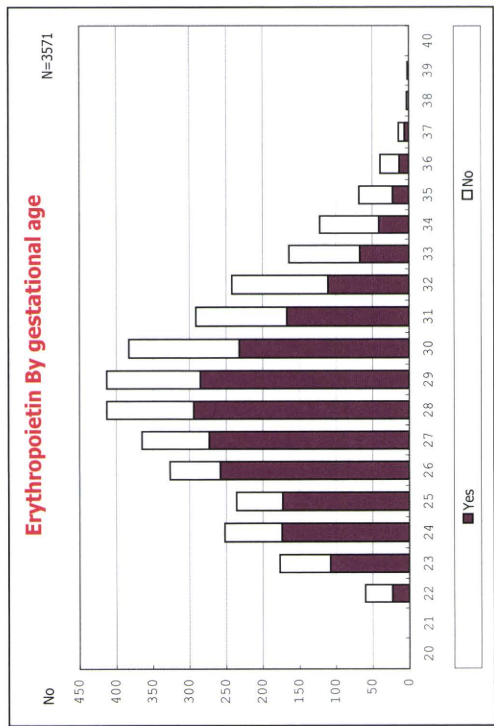
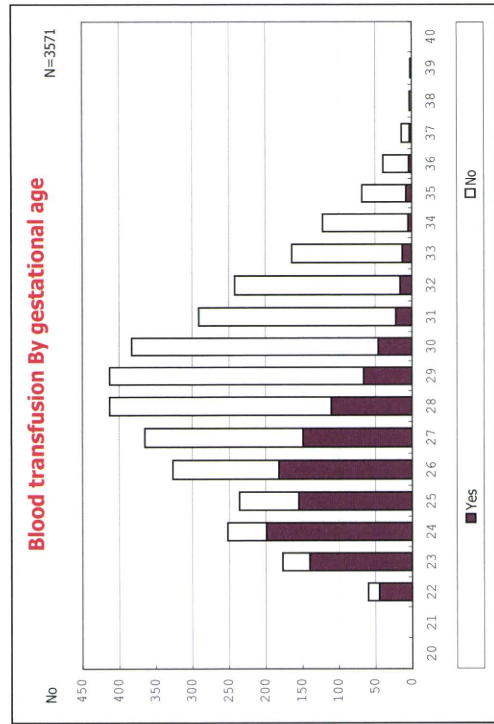
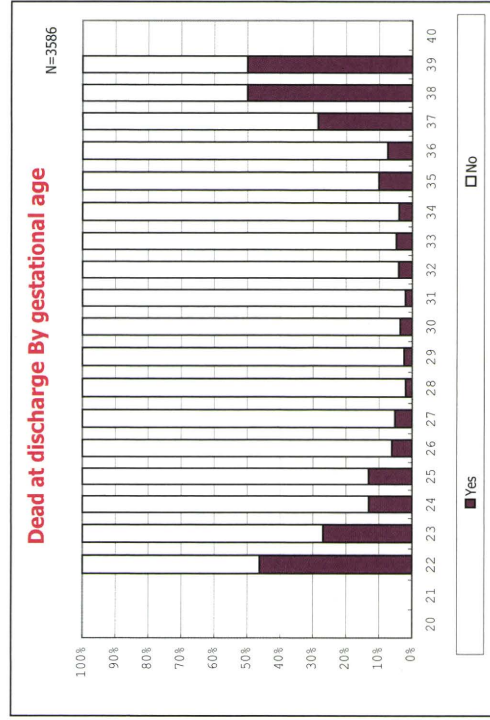
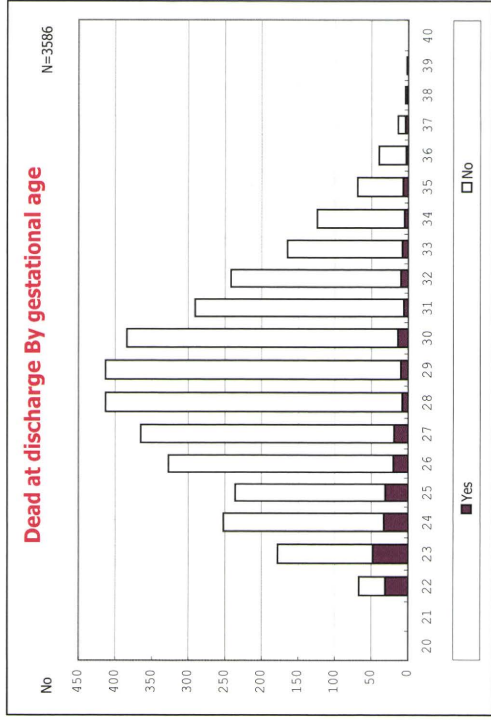
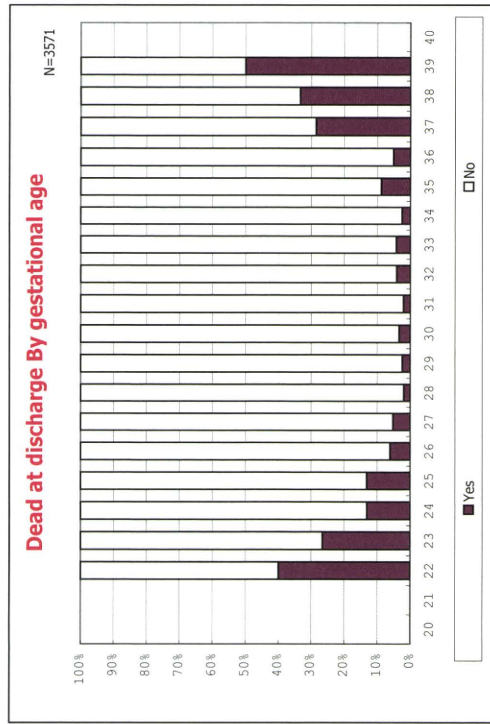
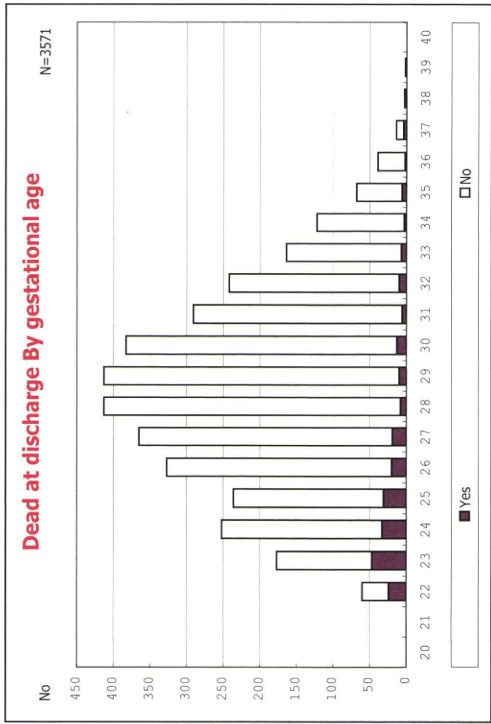
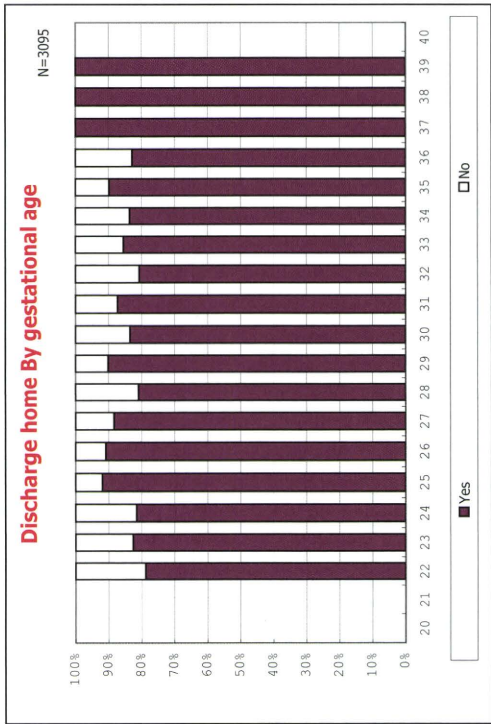
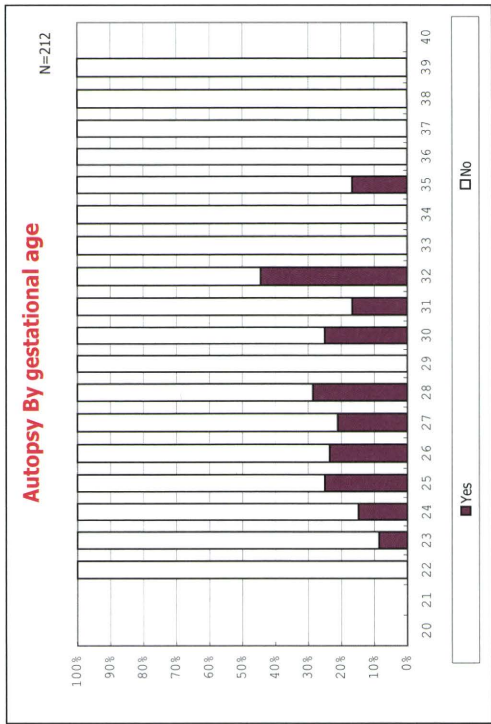
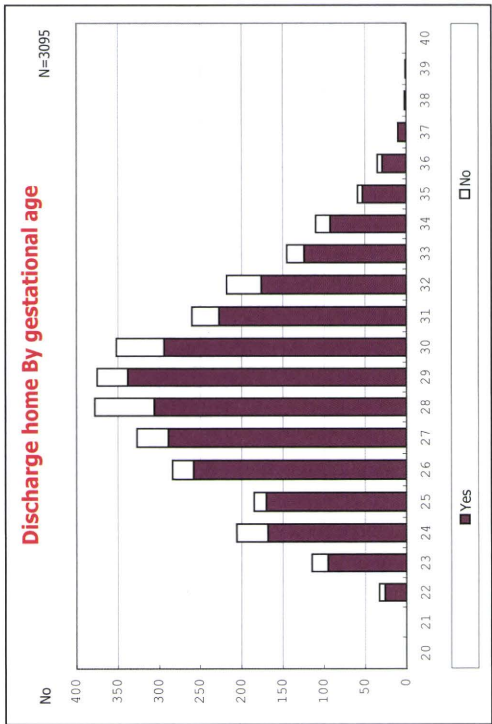
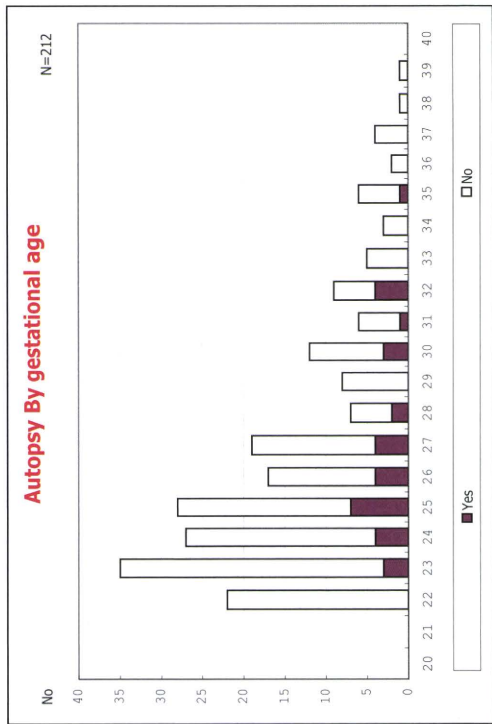


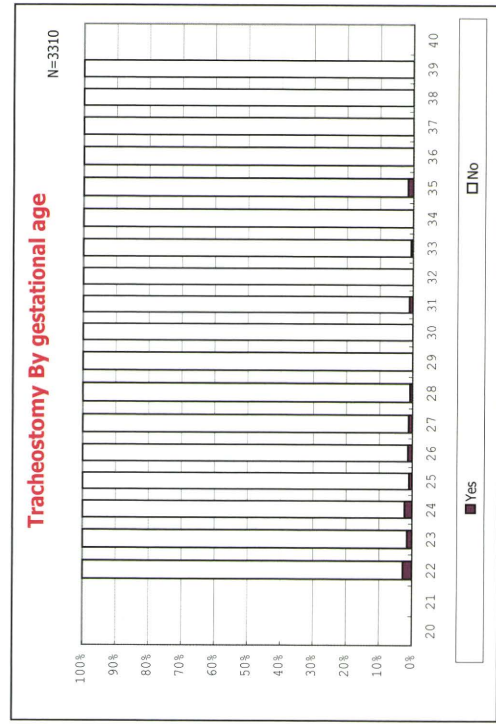
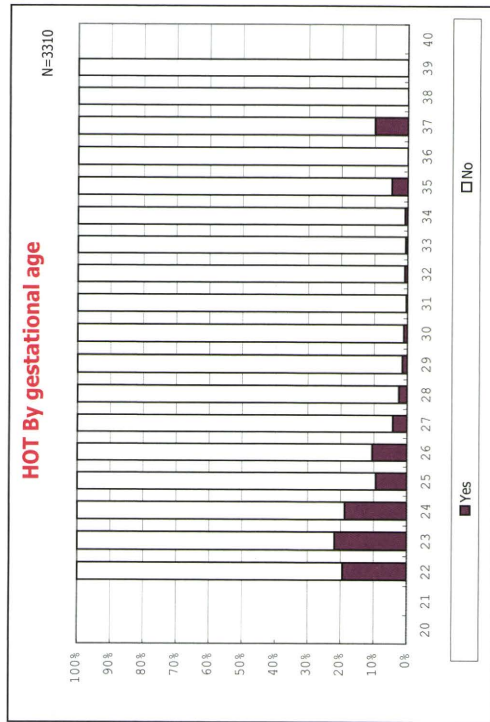
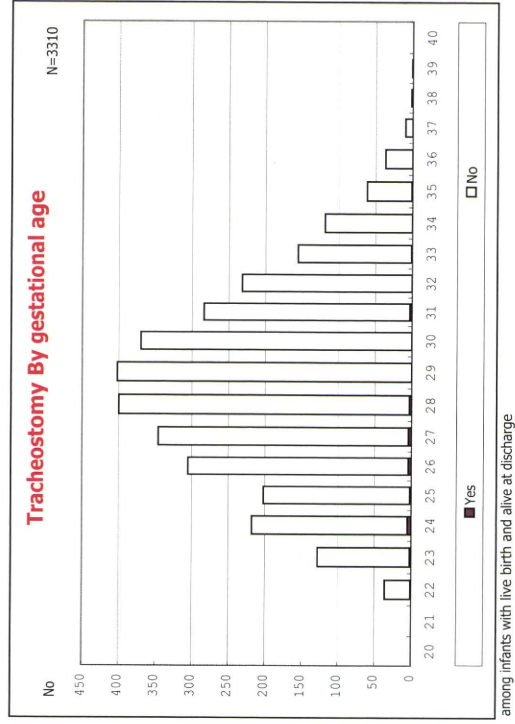
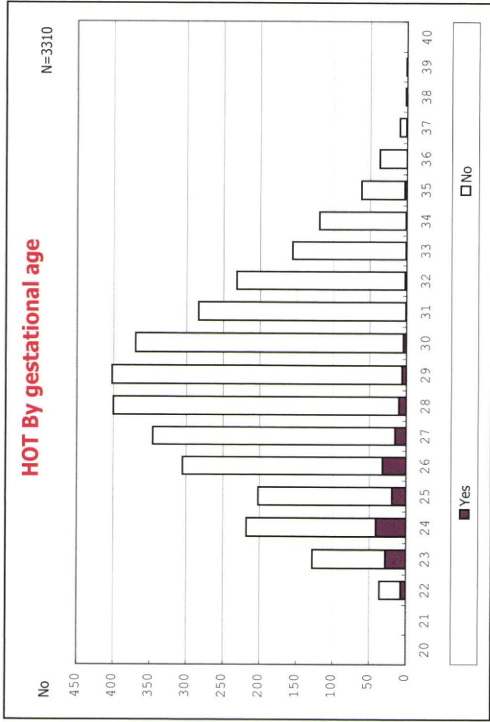
among infants with live birth, remained and congenital anomaly



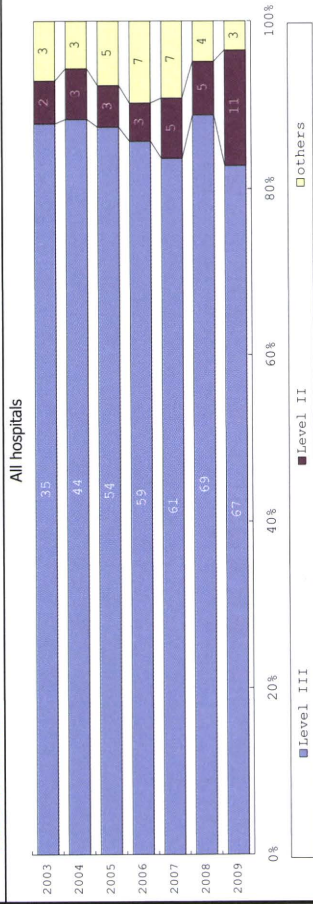




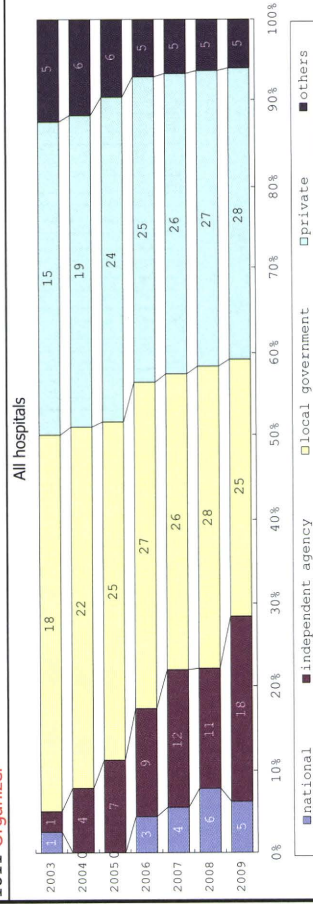




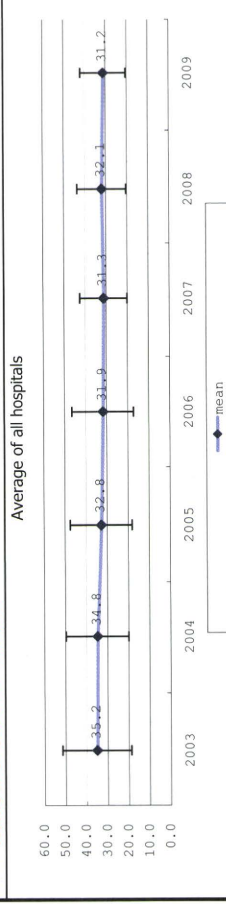
1010 Level of services



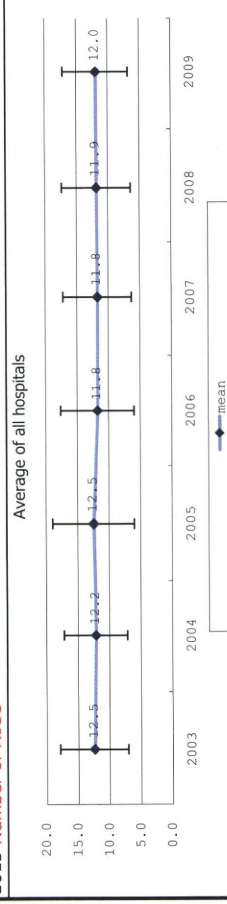
1011 Organizer



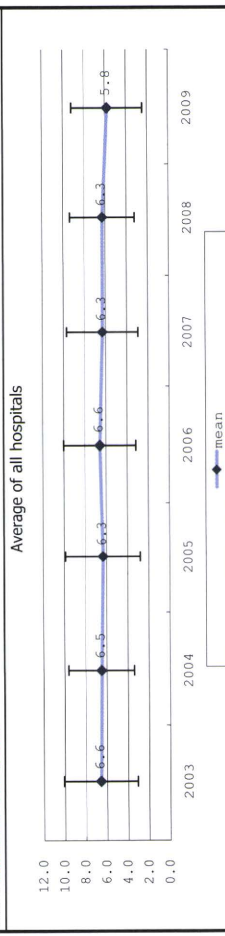
1012 Number of beds for neonate



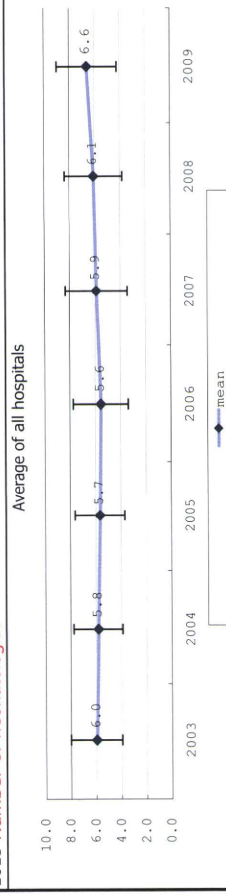
1013 Number of NICU



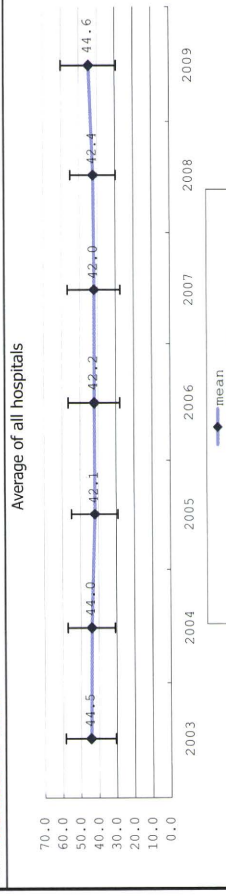
1014 Number of MFCU



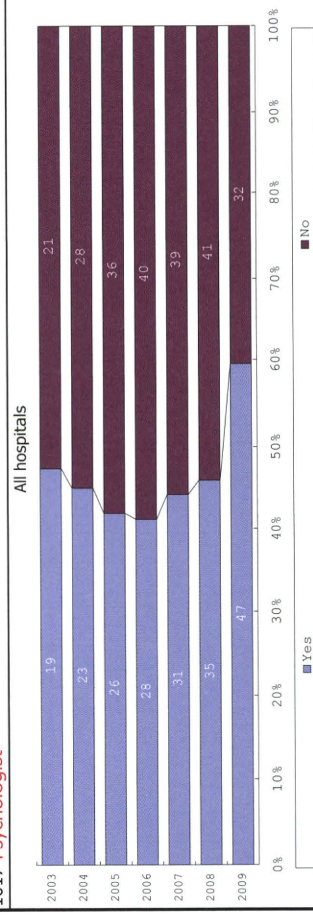
1015 Number of neonatologist

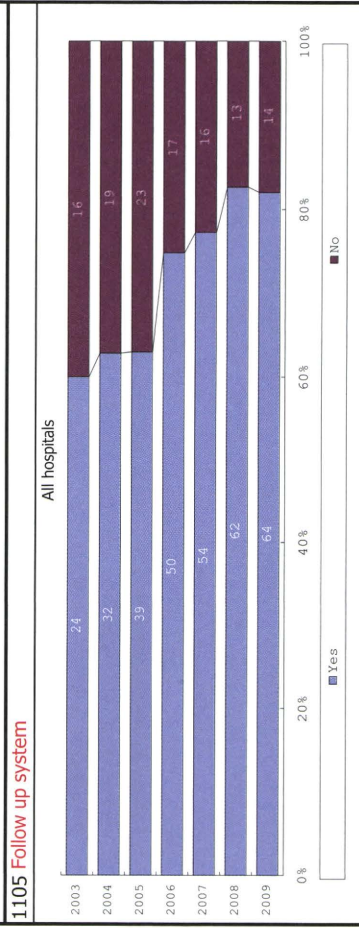
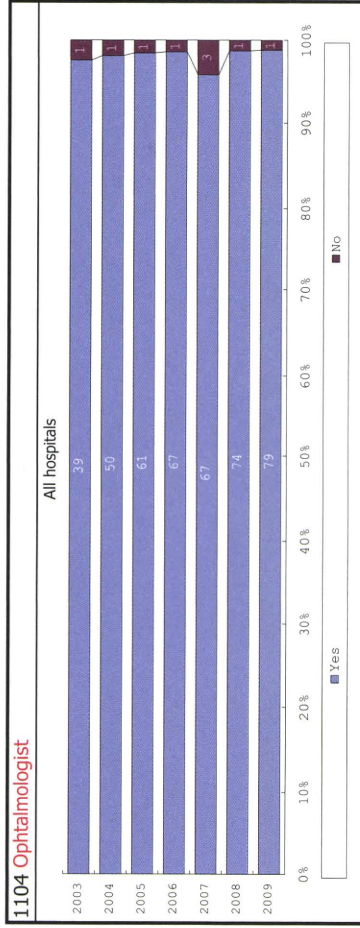
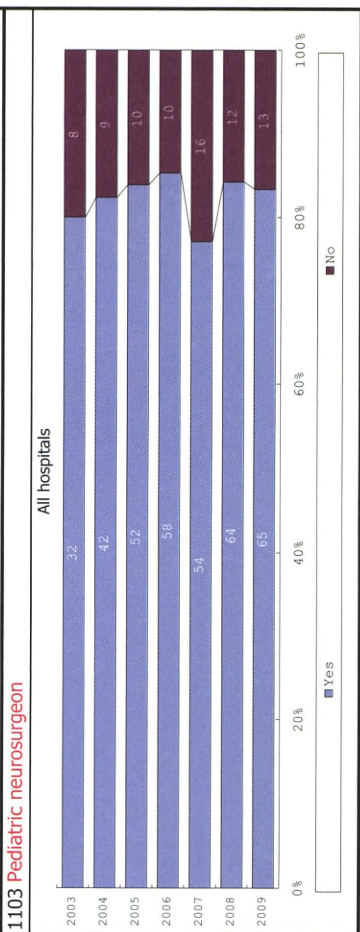
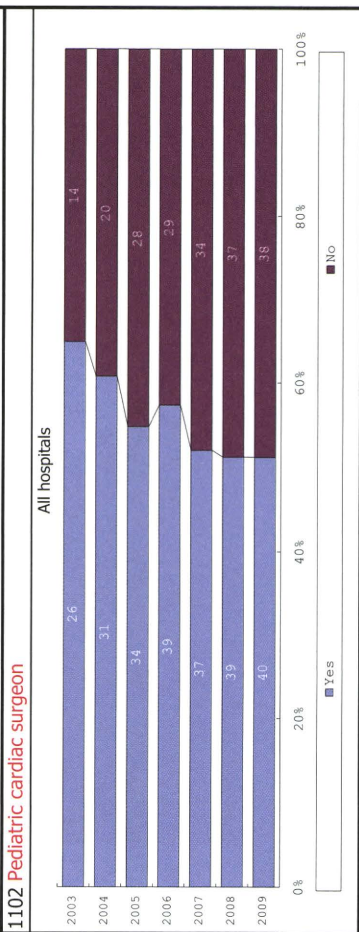
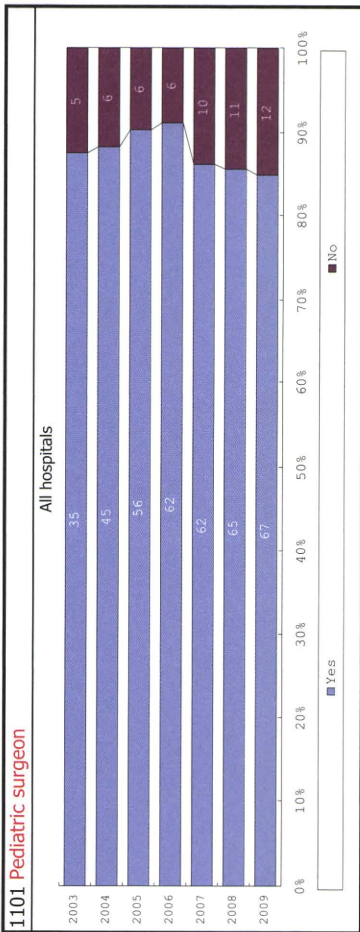


1016 Number of nurse



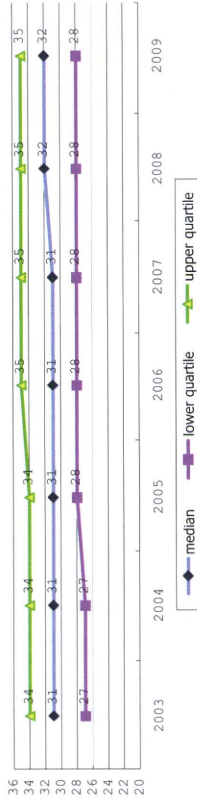
1017 Psychologist



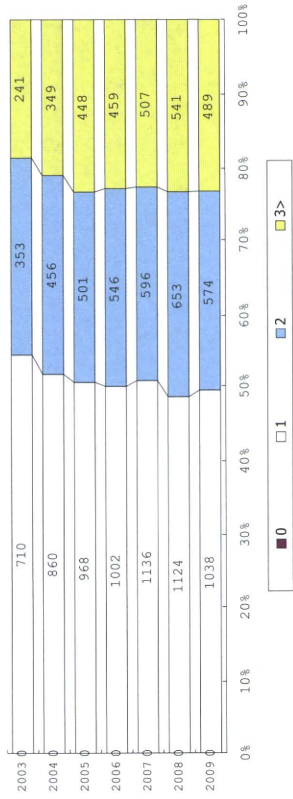


Maternal information

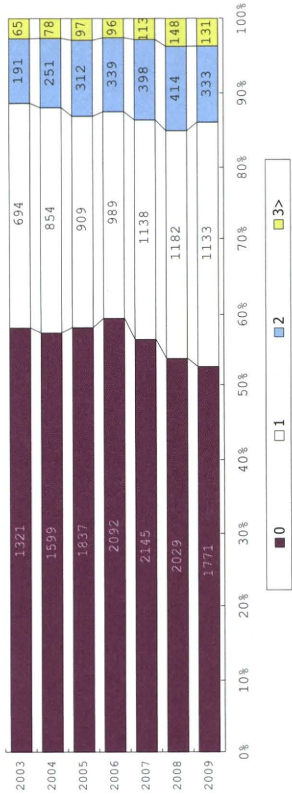
301 Maternal age



302 Gravida

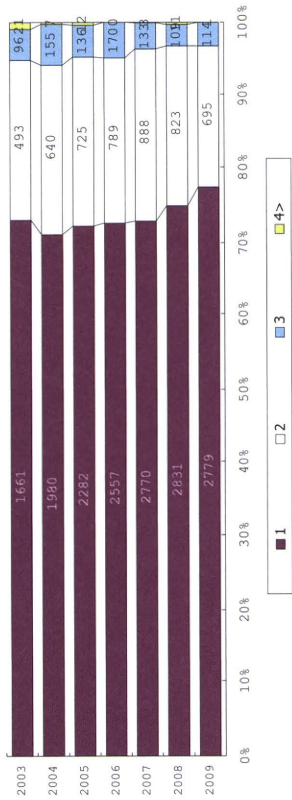


303 Parity

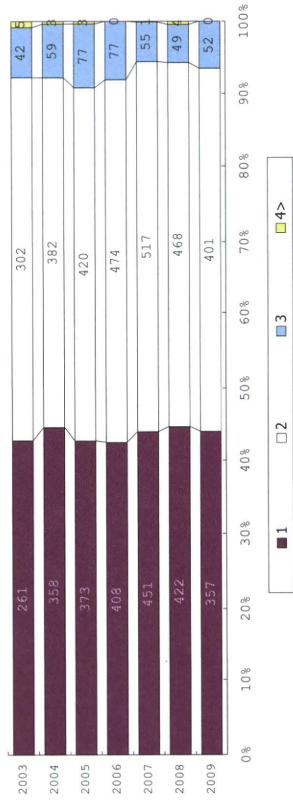


Pregnancy complication

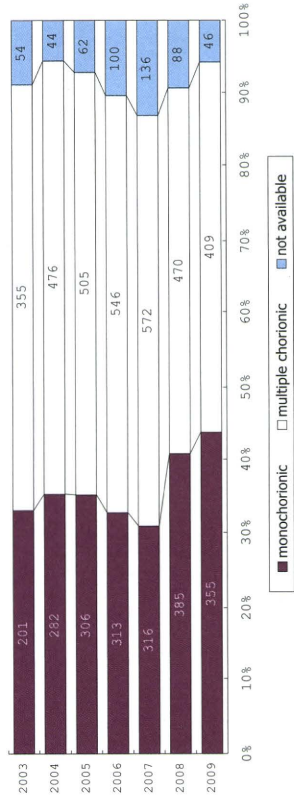
401 Number of fetus

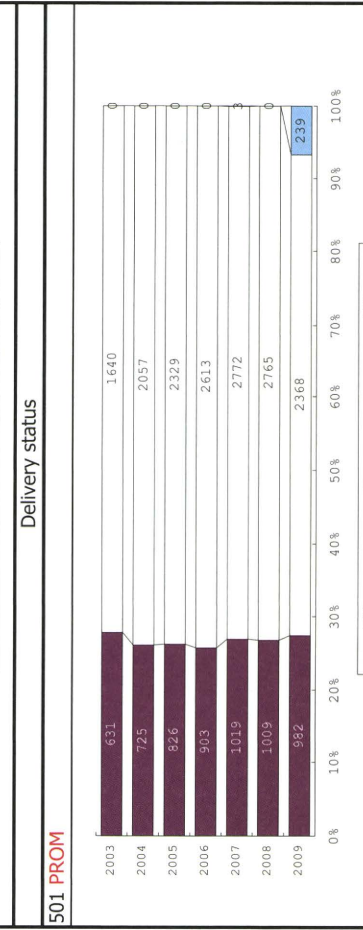
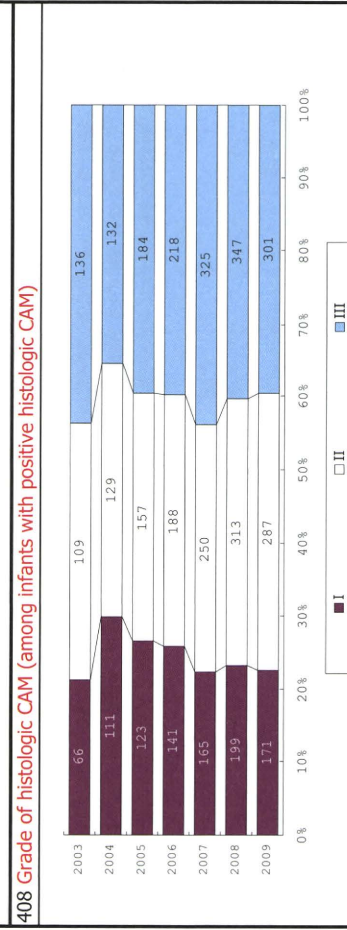
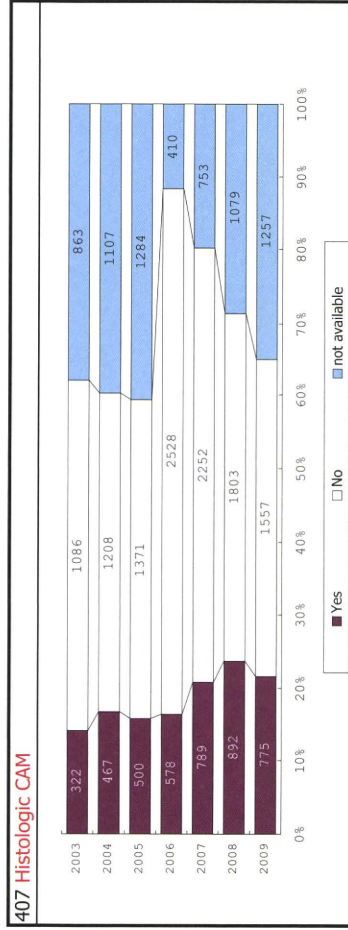
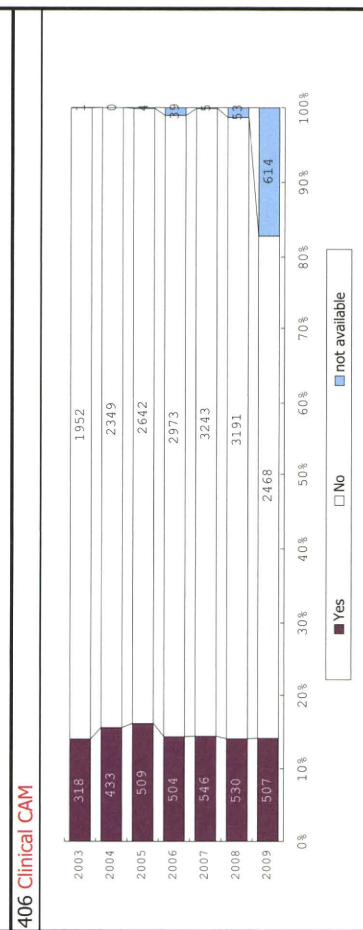
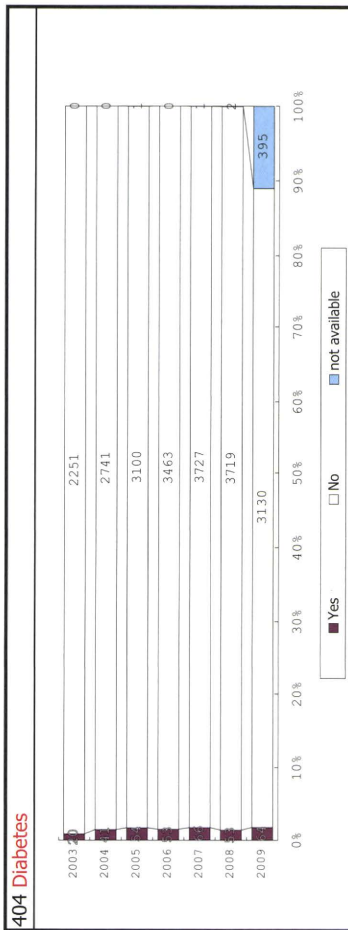


402 Birth order (among infants with number of fetus 2>)

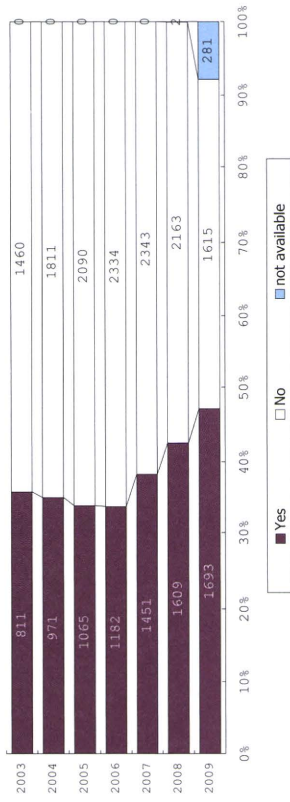


403 Plurality (among infants with number of fetus 2>)

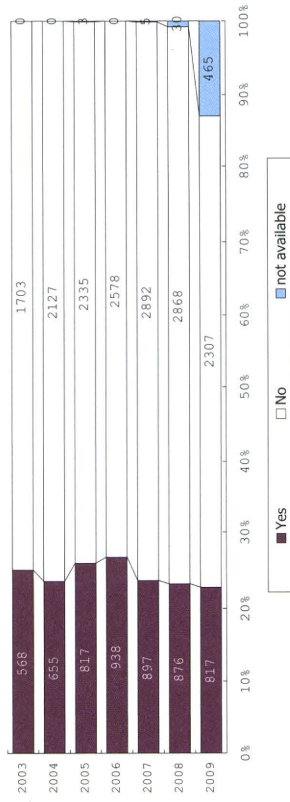




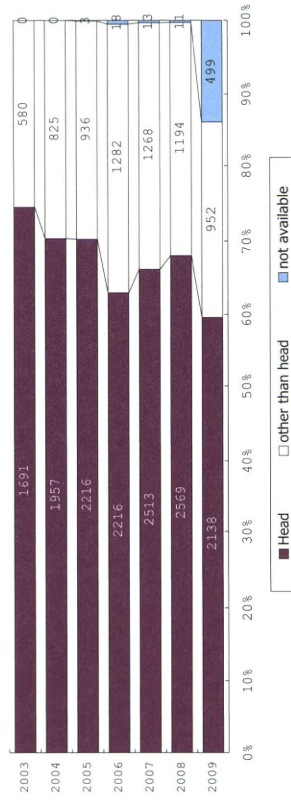
502 Maternal steroid



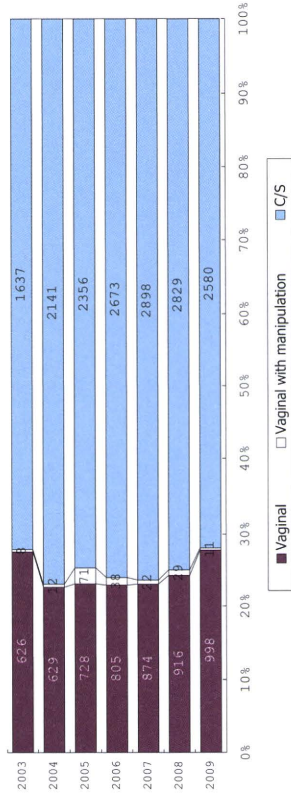
503 NRFS



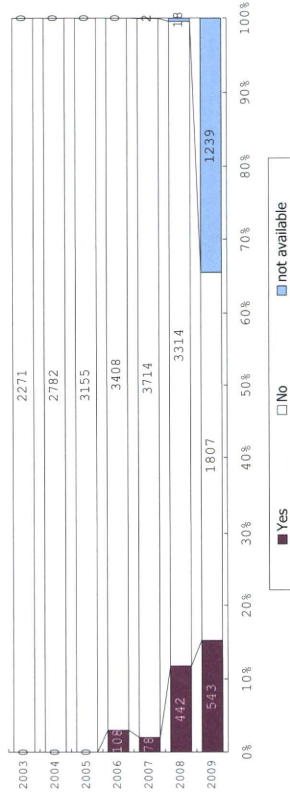
504 Presentation



505 Mode of delivery

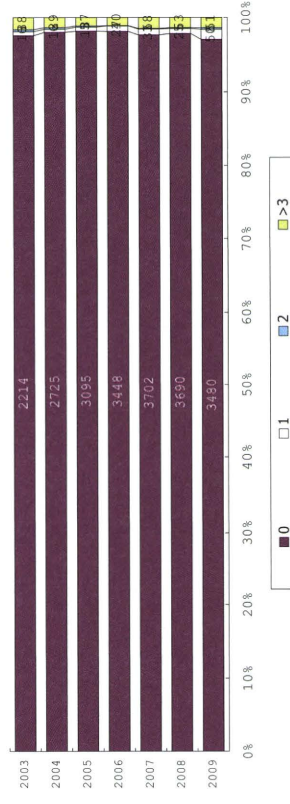


510 Cord blood transfusion

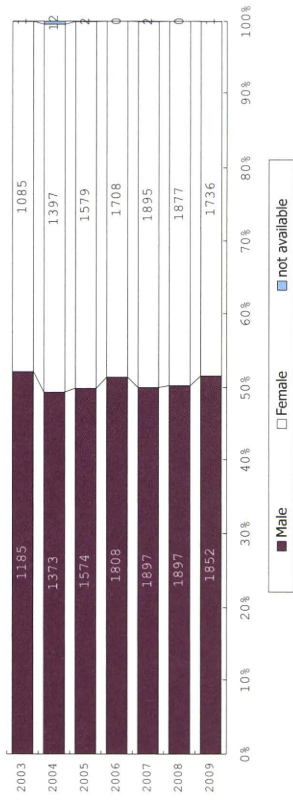


Neonatal information

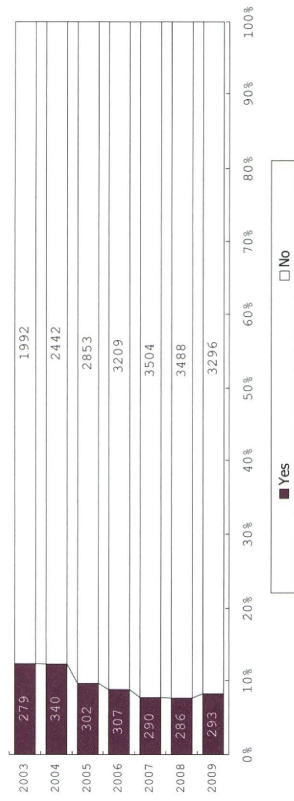
602 Age(day) at admission



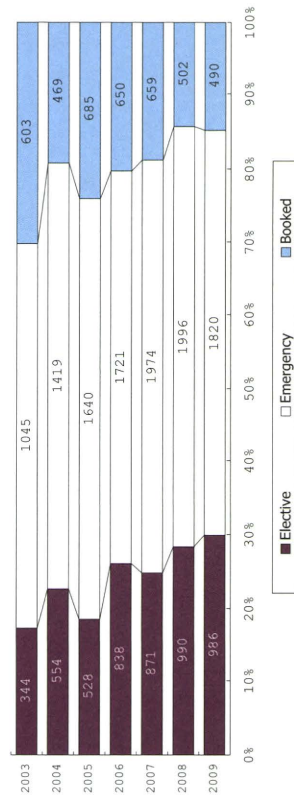
603 Gender



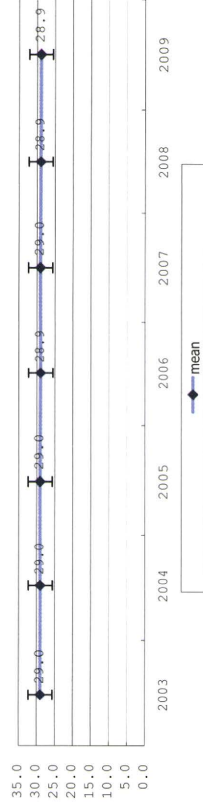
604 Neonatal transport



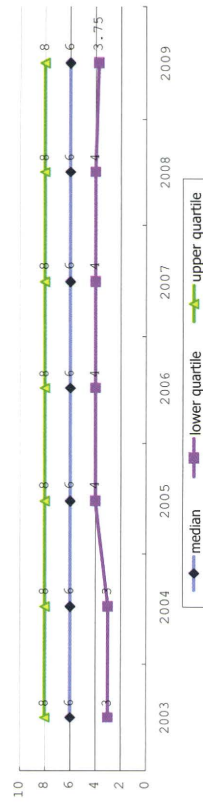
605 Maternal transport (among infants with inborn)



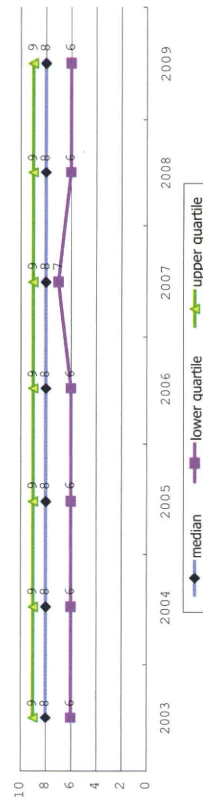
606 Gestational age



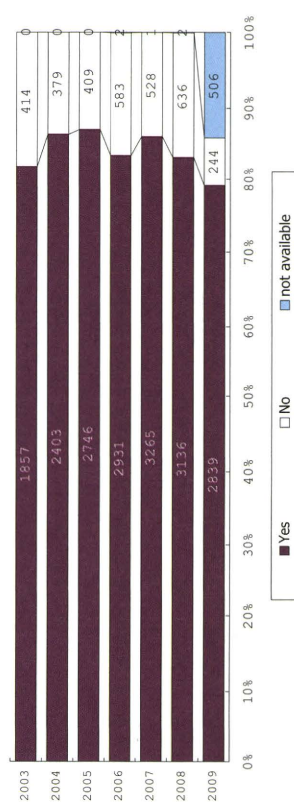
608 Apgar(1min)



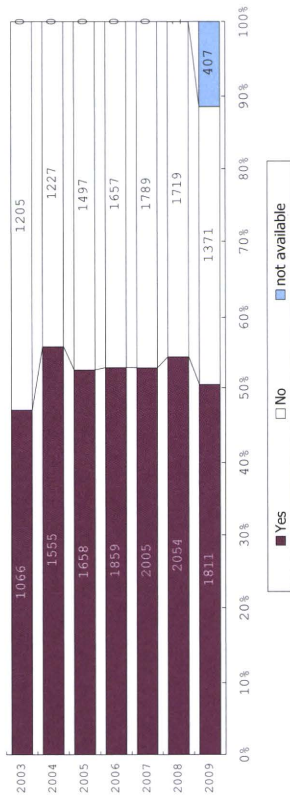
609 Apgar(5min)



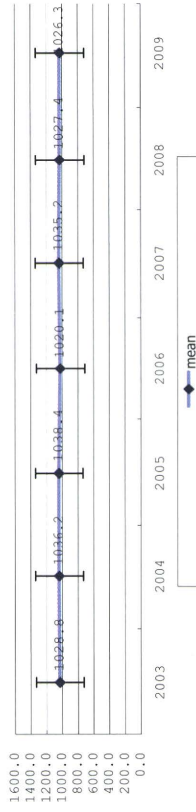
610 Oxygen use at birth



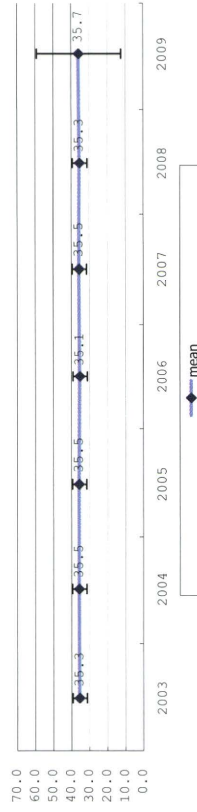
611 Intubation at birth



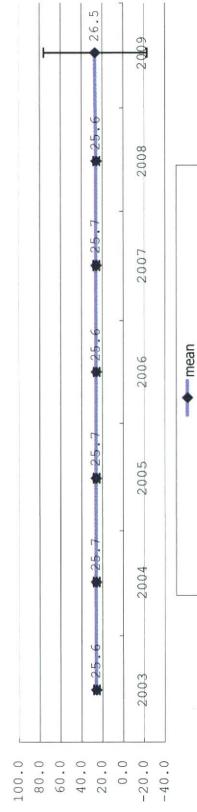
612 Birth weight



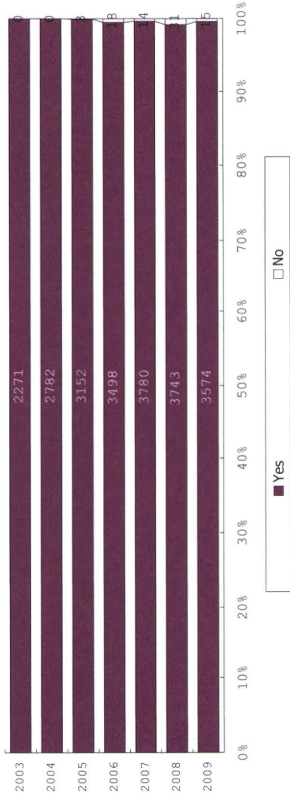
613 Body length at birth



614 Head circumference at birth

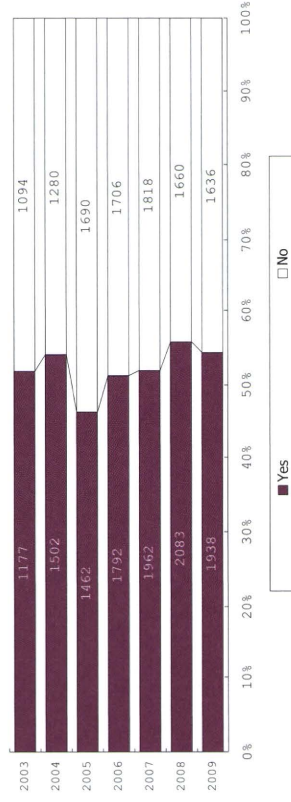


615 Live birth

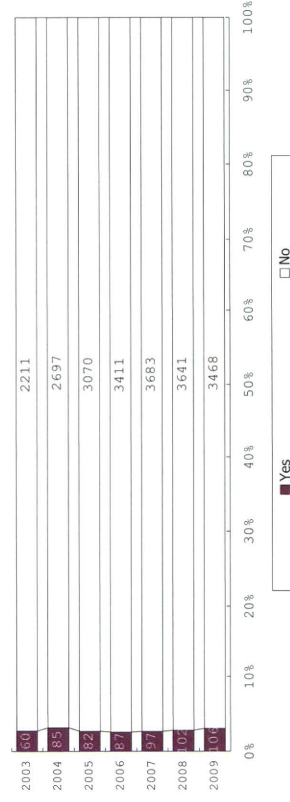


Respiratory disease

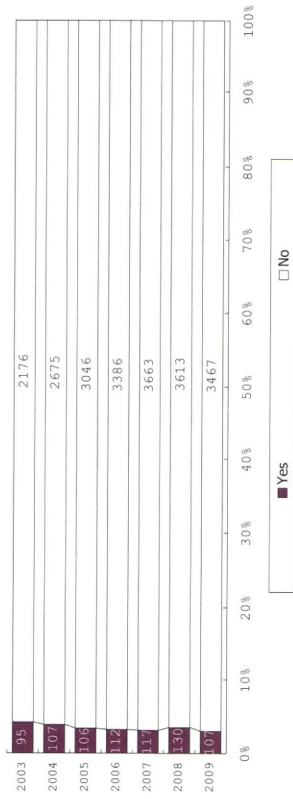
701 RDS (among infants with live birth and remained)



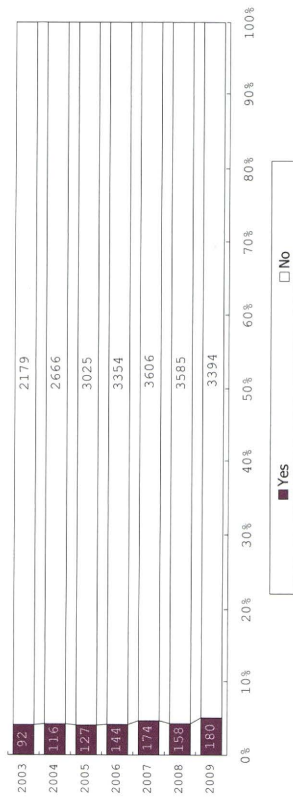
702 Air leak syndrome (among infants with live birth and remained)



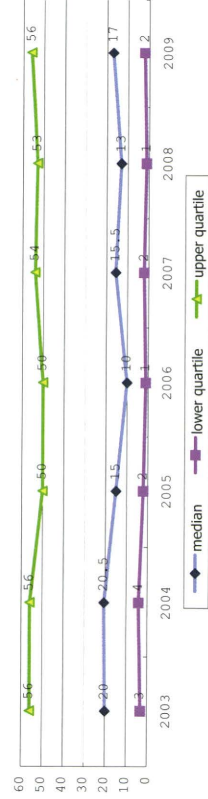
703 Pulmonary hemorrhage (among infants with live birth and remained)



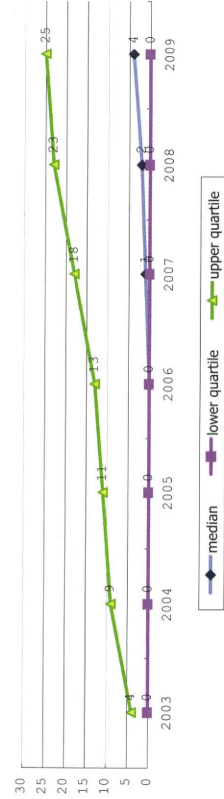
705 PPHN (among infants with live birth and remained)



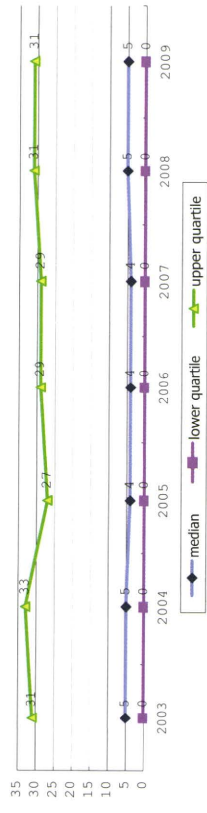
706 Length of oxygen use (among infants with live birth and remained)



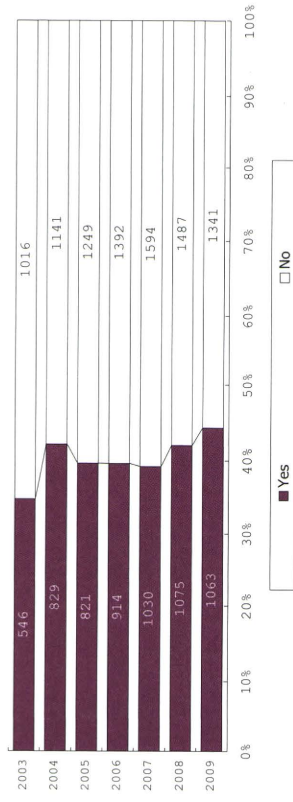
707 Length of CPAP (among infants with live birth and remained)



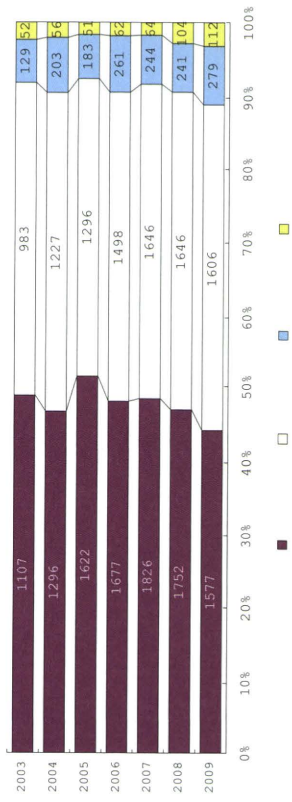
708 Length of mechanical ventilation (among infants with live birth and remained)



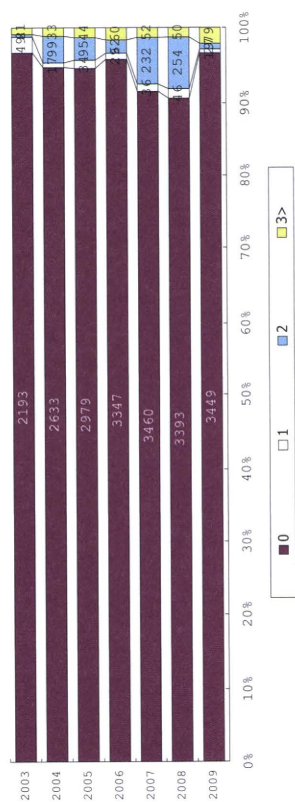
709 Use of HFO (among infants with live birth, remained and mechanical ventilation)



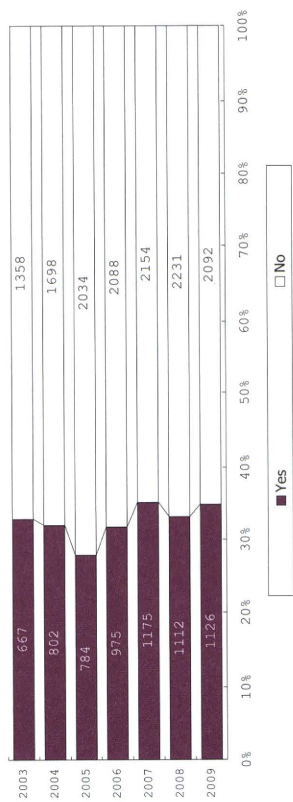
710 Dose of surfactant (among infants with live birth and remained)



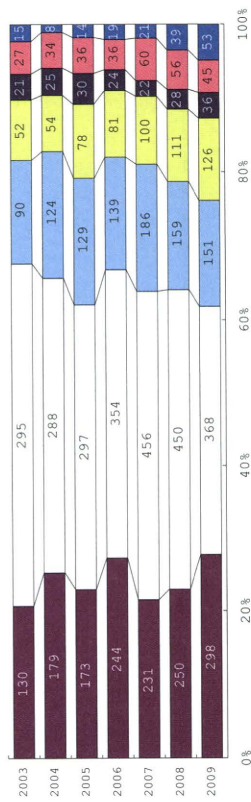
711 Length of inhaled nitric oxide (among infants with live birth and remained)



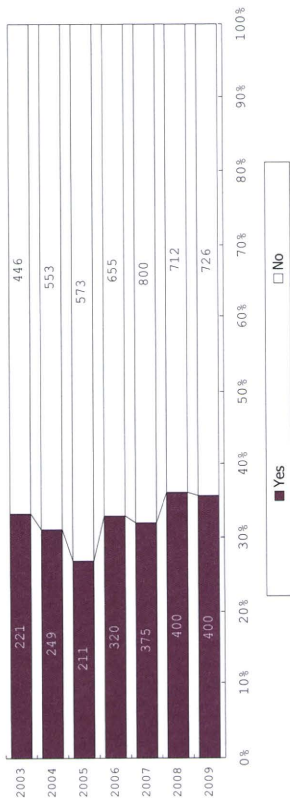
712 CLD at 28 d (among infants with live birth, remained and alive at 28 days of age)



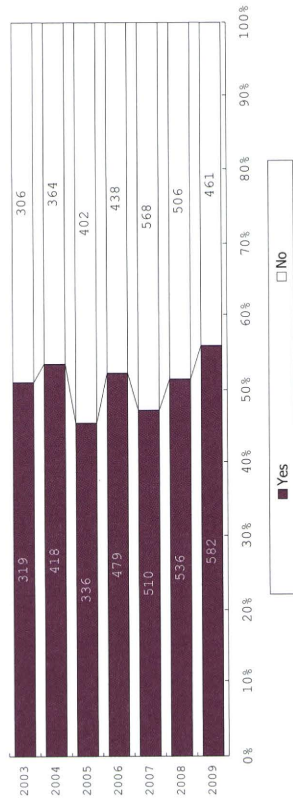
713 Type of CLD (among infants with CLD)



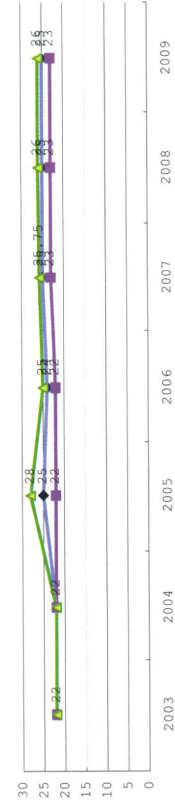
714 Glucocorticoid for CLD (among infants with CLD)

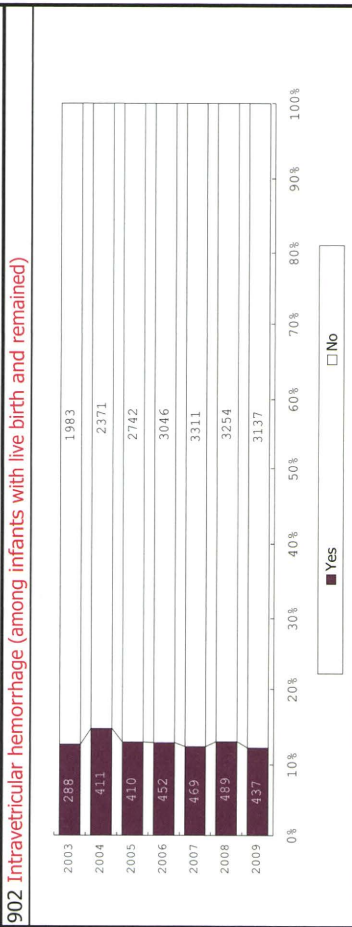
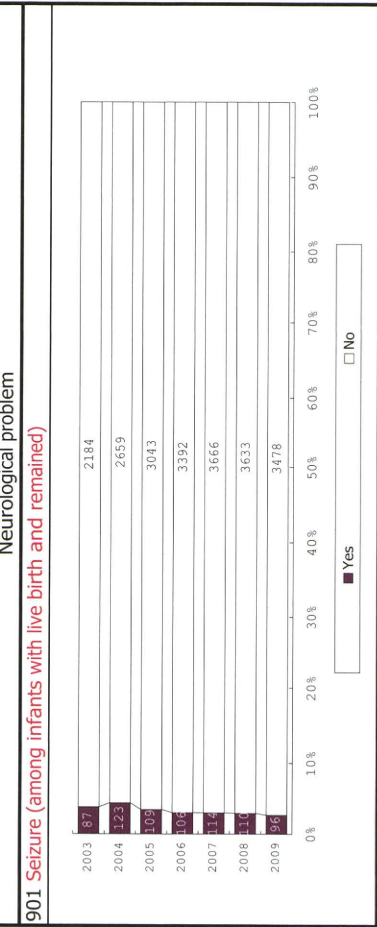
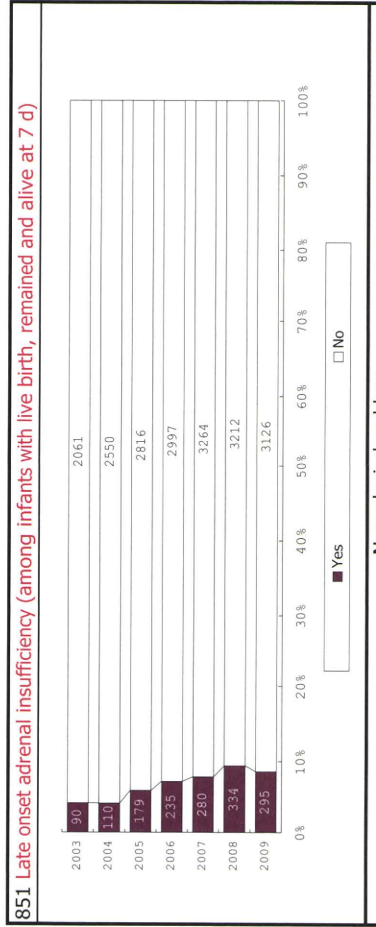
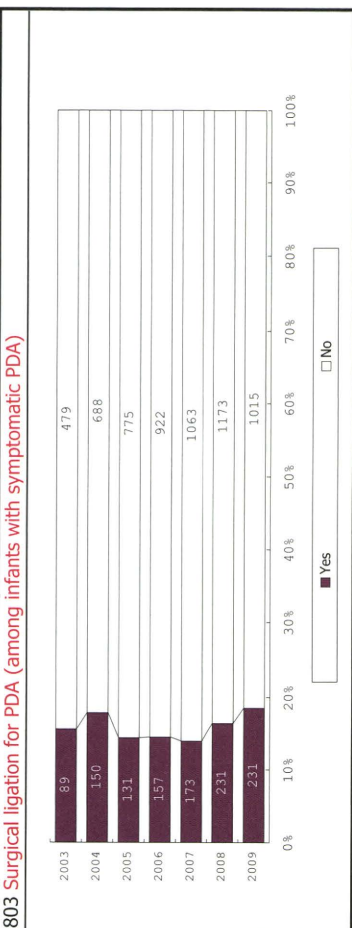
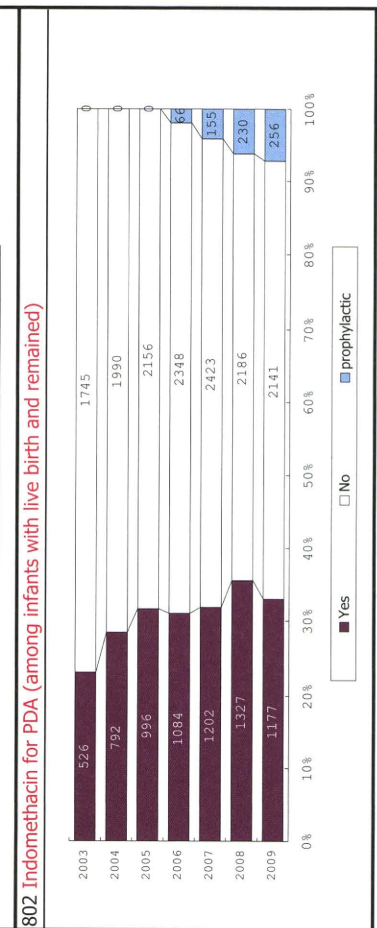
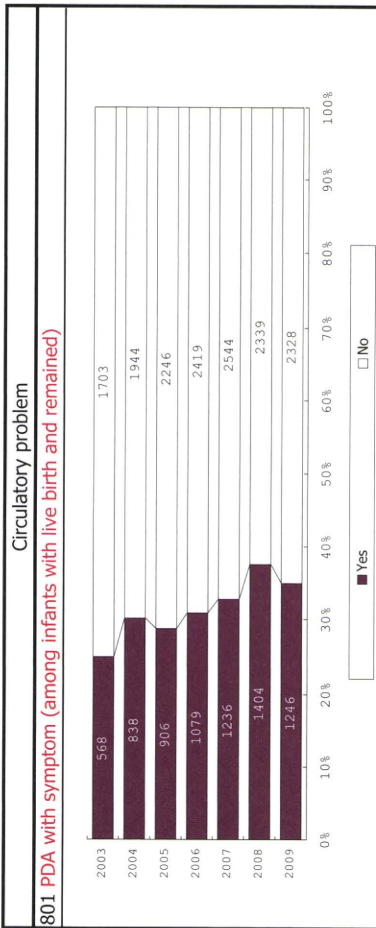


715 CLD at 36 wk (among infants with live birth, remained, alive at 36 wk(corrected age), and CLD)

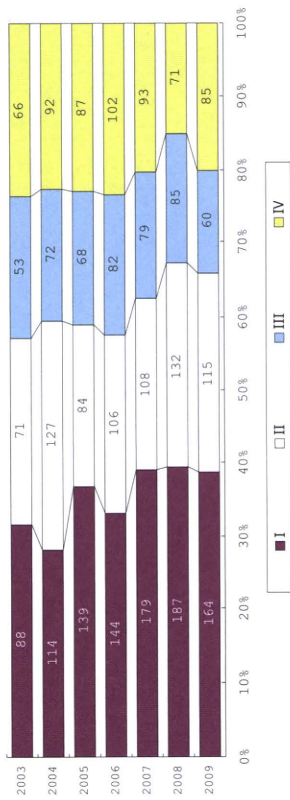


716 Oxygen concentration at 36 wk (among infants with CLD at 36 wk)

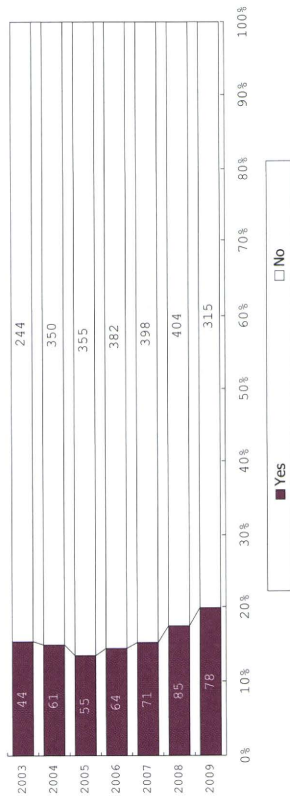




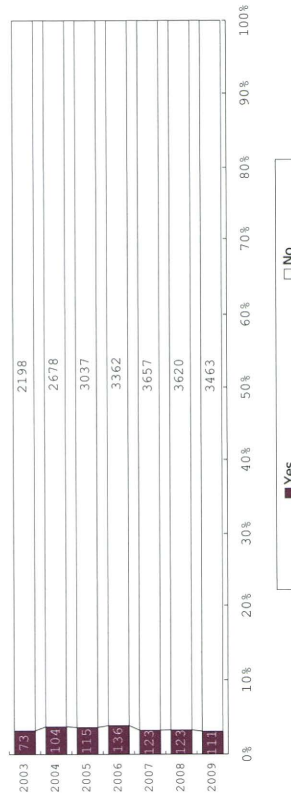
903 Grade of IVH (among infants with live birth, remained and IVH)



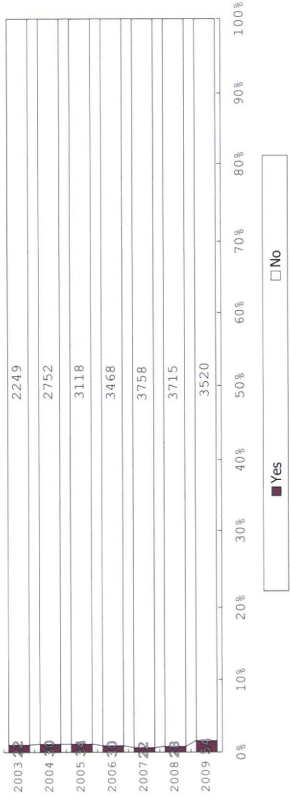
904 Post-IVH hydrocephalus (among infants with live birth, remained and IVH)



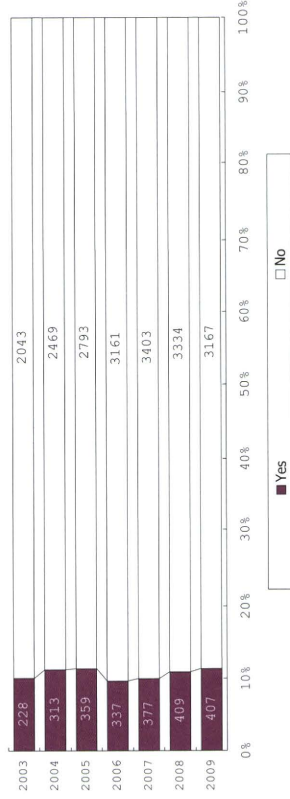
905 PVL (among infants with live birth and remained)



906 HIE (among infants with live birth and remained)



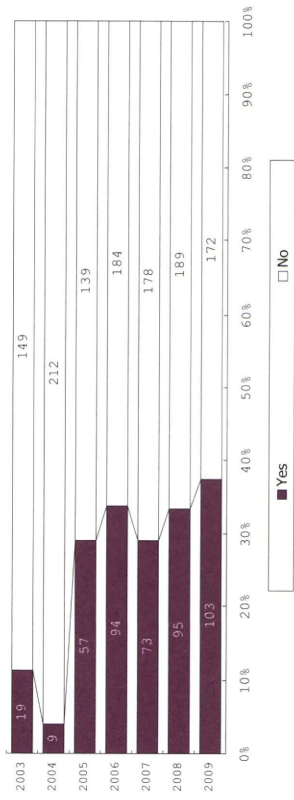
1001 Intrauterine infection (among infants with live birth and remained)



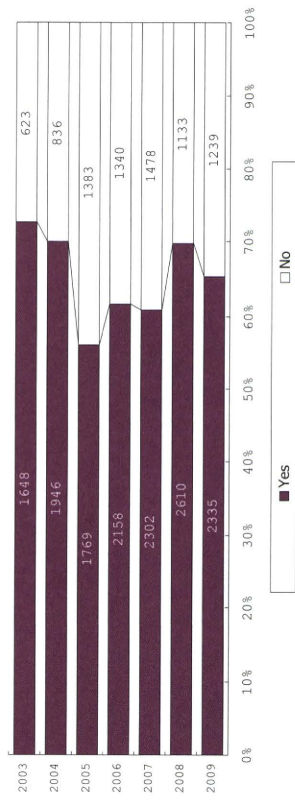
1002 Sepsis (among infants with live birth and remained)



1004 Early onset sepsis (among infants with live birth, remained and sepsis)

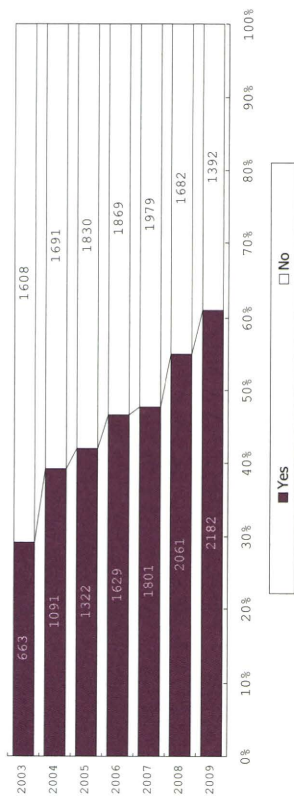


1010 Use of antibiotics (among infants with live birth and remained)

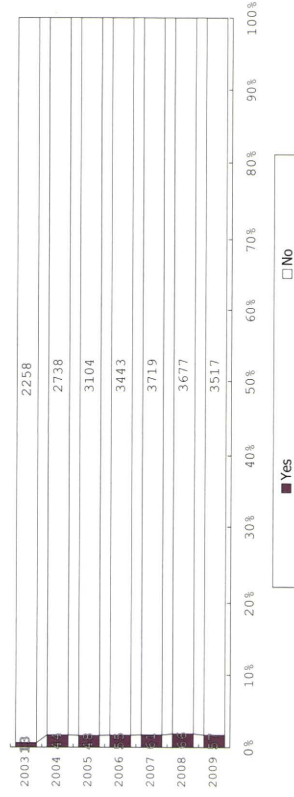


Gastrointestinal problem

1101 Intravenous hyperalimentation (among infants with live birth and remained)



1102 NEC (among infants with live birth and remained)



1103 Idiopathic intestinal perforation (among infants with live birth and remained)



Hearing screening

1201 Hearing loss screening (among infants with live birth and remained)

