

- を有する生体適合性MPCゲルの開発. 東京大学生命科学研究ネットワークシンポジウム. 2008. 9. 23 (東京)
6. 石山典幸、茂呂徹、三浦俊樹、大江隆史、中村耕三、川口浩：腱癒着防止効果を有する生体内解離性 MPC ゲルの開発. 第 23 回日本整形外科学会基礎学術集会. 2008. 10. 23-24 (京都).
 7. 茂呂徹、川口浩、石原一彦、京本政之、山本基、荻田達郎、伊藤英也、齊藤貴志、中村耕三、高取吉雄：人工股関節ライナー表面の MPC グラフト処理による摩耗抑制効果：ライナーの架橋の有無および骨頭の材質による比較. 第 23 回日本整形外科学会基礎学術集会. 2008. 10. 23-24 (京都).
 8. 石山典幸、茂呂徹、三浦俊樹、大江隆史、伊藤祥三、森崎裕、大山但、吉河美都奈、金野智浩、中村耕三、川口浩、石原一彦：生体内解離性ポリマーハイドロゲルの癒着防止効果の組織学的・分子生物学的検討. 日本バイオマテリアル学会シンポジウム 2008. 2008. 11. 17-18. (東京)
 9. 京本政之、茂呂徹、岩崎泰彦、宮路史明、金野智浩、川口浩、高取吉雄、中村耕三、石原一彦：リン脂質グラフトポリマーによる超潤滑性 Co-Cr-Mo 合金表面の創製. 日本バイオマテリアル学会シンポジウム 2008. 2008. 11. 17-18. (東京)
 10. 伊藤英也、荻田達郎、高取吉雄、茂呂徹、齊藤貴志、中村耕三：セメントレス臼蓋コンポーネントによる人工股関節再置換術の長期成績. 第 35 回日本股関節学会. 2008. 12. 5-6. (大阪)
 11. 伊藤英也、荻田達郎、高取吉雄、茂呂徹、齊藤貴志、中村耕三：セメントレス臼蓋コンポーネントによる人工股関節再置換術の長期成績. 第 35 回日本股関節学会. 2008. 12. 5-6. (大阪)
 12. 高橋寛、赤坂嘉之、伊藤英也、茂呂徹、門野夕峰、河野博隆、荻田達郎、高取吉雄、中村耕三：非典型的な画像所見を示した滑膜骨軟骨腫症に対する人工股関節全置換術の経験. 第 49 回関東整形外科災害外科学会. 2009. 3. 20-21. (東京)
 13. 茂呂徹、高取吉雄、荻田達郎、伊藤英也、赤坂嘉之、齊藤貴志、中村耕三：前・初期股関節症に対する寛骨臼回転骨切り術の術後 30 年成績. 第 81 回日本整形外科学会学術総会, 福岡, 2009. 5. 14-17.
 14. 伊藤英也、荻田達郎、茂呂徹、高取吉雄：ねじ込み式人工股関節寛骨臼コンポーネントに対する再置換術. 第 36 回日本股関節学会大会. 京都, 2009. 10. 30-31.
 15. 京本政之、茂呂徹、高取吉雄、石原一彦：ポリ芳香族ケトン表面からの自己開始光グラフト重合による生体親和性ポリマー層の構築. 第 31 回日本バイオマテリアル学会大会. 京都, 2009. 11. 16-17.
 16. 伊藤英也、荻田達郎、茂呂徹、高取吉雄、：ねじ込み式人工股関節寛骨臼コンポーネントに対する再置換術. 第 37 回日本関節病学会. 東京, 2009. 11. 19-20.
 17. 伊藤英也、荻田達郎、高取吉雄、茂呂徹、角田俊治、馬淵昭彦、中村耕三：Metal-on-metal THA で hypersensitivity による広範な骨溶解を生じた 1 例. 第 40 回日本人工関節学会. 沖縄, 2010. 2. 26-27.
 18. 高取吉雄、茂呂徹、荻田達郎、伊藤英也、, 赤坂義之、角田俊治、馬淵昭彦：Q5LP カップと摺動面を傷つけないライナー固定法の開発. 第 50 回関東整形外科学会. 東京, 3. 19-20, 2010.

19. 赤坂義之, 高取吉雄, 荻田達郎, 伊藤英也, 茂呂徹, 馬淵昭彦, 中村耕三: 臼蓋形成不全股における寛骨臼縁の骨性欠損 —3D-CTを用いて—. 第82回日本整形外科学会学術総会. 2010. 5. 27-30 (東京)
20. 中村洋, 角田俊治, 田中健之, 伊藤英也, 荻田達郎, 茂呂徹, 高取吉雄, 中村耕三: 股関節に発症した色素性絨毛結節性滑膜炎の1例. 関東整形外科学会月例会 第654回整形外科集談会. 2010. 6. 26 (東京)
21. 高取吉雄, 荻田達郎, 馬淵昭彦, 中村耕三: 人工股関節で用いる寛骨臼コンポーネント「Q5LPカップ」の初期固定性. 第59回東日本整形災害外科学会. 2010. 9. 17-18 (盛岡)
22. 角田俊治, 田中健之, 伊藤英也, 中村耕三, 茂呂徹, 高取吉雄: 重度臼蓋形成不全を伴う前・初期股関節症に対する寛骨臼回転骨切り術の長期成績. 第37回日本股関節学会学術集会. 2010. 10. 1-2 (福岡)
23. 伊藤英也, 高取吉雄, 茂呂徹, 馬淵昭彦, 角田俊治, 田中健之, 中村耕三: シンポジウム「寛骨臼回転骨切り術」 寛骨臼回転骨切り術の長期成績. 第37回日本股関節学会学術集会. 2010. 10. 1-2 (福岡)
24. 高取吉雄, 石原一彦, 茂呂徹, 川口浩, 中村耕三: シンポジウム「パフォーマンスの良い運動器基礎研究立案への官産学からの提言」 学の立場から 人工股関節開発の経験. 第25回日本整形外科学会基礎学術集会. 2010. 10. 14-15 (京都)
25. 京本政之, 茂呂徹, 石原一彦, 雑賀健一, 川口浩, 中村耕三, 高取吉雄: 生体親和性リン脂質ポリマーをコバルトクロムモリブデン合金表面にグラフトする技術の開発. 第25回日本整形外科学会基礎学術集会. 2010. 10. 14-15 (京都)
26. 茂呂徹: ナノテクノロジーを応用した新しい人工関節の開発. 第8回埼玉整形外科トピック・リエゾンセミナー. 2010. 10. 21 (さいたま)
27. 茂呂徹: ナノ表面制御による新しい人工関節の開発. 第33回股関節懇話会. 2010. 10. 30 (東京)
28. 角田俊治, 高取吉雄, 茂呂徹, 伊藤英也, 田中健之, 中村耕三: 股関節外転拘縮をきたした大理石骨病の1例. 第33回股関節懇話会. 2010. 10. 30 (東京)
29. 雑賀健一, 京本政之, 茂呂徹, 石原一彦: 繰り返し衝撃—摺動環境下におけるポリエチレンの摺動面・背面摩耗. 第37回日本臨床バイオメカニクス学会. 2010. 11. 1-2 (京都)
30. 茂呂徹: 長寿命化を目指した新しい人工関節摺動面の開発. 第120回西日本整形災害外科学会. 2010. 11. 14 (佐賀)
31. 京本政之, 茂呂徹, 雑賀健一, 立石崇晴, 高取吉雄, 石原一彦: 自己開始光グラフト重合を用いた生体軟骨模倣PEEK摺動面の創製. 第32回日本バイオマテリアル学会大会. 2010. 11. 29-30 (広島)
32. 茂呂徹, 高取吉雄, 石原一彦, 京本政之, 荻田達郎, 伊藤英也, 角田俊治, 田中健之, 山脇昇, 雑賀健一, 中村耕三, 川口浩: ポリエチレンライナー表面のMPCグラフト処理による長寿命型人工関節の開発 —粗面化した骨頭がMPC処理に与える影響の検討—. 第41回人工関節学会. 2011. 2. 25-26 (東京)
33. 雑賀健一, 京本政之, 茂呂徹, 伊藤英也, 川口浩, 中村耕三, 石原一彦, 高取吉雄: ポリエチレン厚さがライナーの摩耗・破壊に与える影響—ピンオンディスク型試験機による繰り返し衝撃—摺動試験. 第41回人工関節学会. 2011. 2. 25-26 (東京)

34. 茂呂徹, 高取吉雄, 石原一彦, 京本政之, 雑賀健一, 中村耕三, 川口浩: 人工膝関節の脛骨コンポーネント摺動面に対する MPC ポリマー処理. 第 41 回人工関節学会. 2011. 2. 25-26 (東京)
 35. 角田俊治, 伊藤英也, 田中健之, 馬淵昭彦, 中村耕三, 高取吉雄, 茂呂徹: セメントレス人工股関節におけるデジタルテンプレートの信頼性. 第 41 回人工関節学会. 2011. 2. 25-26 (東京)
 36. 田中健之, 伊藤英也, 角田俊治, 馬淵昭彦, 中村耕三, 高取吉雄, 茂呂徹: bipolar 型人工股関節に対しセメントレス寛骨臼コンポーネントを用いた再置換術の検討. 第 41 回人工関節学会. 2011. 2. 25-26 (東京)
 37. 伊藤英也, 角田俊治, 田中健之, 高取吉雄, 茂呂徹, 中村耕三: 両側再置換手術を行った metal-on-metal THA の 1 例. 第 41 回人工関節学会. 2011. 2. 25-26 (東京)
 38. 田中健之, 伊藤英也, 角田俊治, 茂呂徹, 高取吉雄: OSMED の両側股関節症に対する治療経験. 第 34 回 関東股関節懇話会. 2011. 3. 5 (東京)
- ② 国際学会
1. Moro T, Takatori Y, Ishihara K, Konno T, Kyomoto M, Yamamoto M, Karita T, Ito H, Nakamura K, Kawaguchi H: Grafting of biocompatible polymer on the liner surface for extending longevity of artificial hip joints. 8th World Biomaterials Congress (WBC) 2008. 5. 28-6. 1 (Amsterdam, The Netherlands)
 2. Kyomoto M, Moro T, Kawaguchi H, Takatori Y, Nakamura K, Ishihara K: Nanometer-scale high lubricious surface modification extends the durability of artificial joint. 8th World Biomaterials Congress (WBC) 2008. 5. 28-6. 1 (Amsterdam, The Netherlands)
 3. Ishiyama N, Moro T, Miura T, Ohe T, Ito S, Konno T, Yoshikawa M, Ohyama T, Ishihara K, Nakamura K, Kawaguchi H: Investigation of biodissociated phospholipid polymer hydrogel that prevents tissue adhesion without impairing healing. 8th World Biomaterials Congress (WBC) 2008. 5. 28-6. 1 (Amsterdam, The Netherlands)
 4. Moro T, Takatori Y, Kyomoto M, Ishihara K, Nakamura K, Kawaguchi H: Biocompatible phospholipid polymer grafting on liner surface of artificial hip joints enhances the wear resistance independently of liner cross-linking of femoral head material. 2008 World Congress on Osteoarthritis (OARSI). 2008. 9. 18-21 (Rome, Italy).
 5. Moro T, Takatori Y, Ishihara K, Kyomoto M, Karita T, Ito H, Nakamura K, Kawaguchi H: The effect of biocompatible polymer grafting onto polyethylene liner surface: Improvement of lubricity regardless of the characteristics of bearing materials. The 55th Annual Meeting of the Orthopaedic Research Society (ORS). 2009. 2. 22-25 (Las Vegas, USA)
 6. Ishiyama N, Moro T, Miura T, Ohe T, Ito S, Konno T, Yoshikawa M, Ohyama T, Ishihara K, Nakamura K, Kawaguchi H: Anti-adhesion effect without impairing healing of biocompatible phospholipid polymer hydrogel. The 55th Annual Meeting of the Orthopaedic

- Research Society (ORS).
2009. 2. 22-25 (Las Vegas, USA)
7. Kyomoto M, Moro T, Miyaji F, Kawaguchi H, Takatori Y, Nakamura K, Ishihara K: Brush-like structure only gives high durability to cross-linked polyethylene among various surface-modified layers with MPC polymer. The 55th Annual Meeting of the Orthopaedic Research Society (ORS). 2009. 2. 22-25 (Las Vegas, USA)
 8. Higashikawa A, Saito T, Kamekura S, Ikeda T, Kan A, Moro T, Ohba S, Ogata N, Nakamura K, Chung UI, Kawaguchi H: Transcriptional Regulation of Type X Collagen Expression and Hypertrophic Differentiation of Chondrocytes by Runx2 during Osteoarthritis Progression. The 55th Annual Meeting of the Orthopaedic Research Society (ORS). 2009. 2. 22-25 (Las Vegas, USA)
 9. Moro T, Takatori Y, Kyomoto M, Ishihara K, Karita T, Ito H, Nakamura K, Kawaguchi H: Biocompatible Poly(MPC) Grafting on the Liner Surface of Artificial Hip Joints Enhances the Wear Resistance Independently of Femoral Head Material. 22nd Annual conference of the European Society for Biomaterials (ESB). Lausanne, Switzerland, 2009. 9. 7-11.
 10. Kyomoto M, Moro T, Miyaji F, Yamawaki N, Kawaguchi H, Takatori Y, Nakamura K, Ishihara K: Cross-linked brush-like structure of surface-modified layers gives high durability to joint replacement. 22nd Annual conference of the European Society for Biomaterials (ESB). Lausanne, Switzerland, 2009. 9. 7-11.
 11. Kyomoto M, Moro T, Miyaji F, Kawaguchi H, Takatori Y, Nakamura K, Ishihara K: High-density brush-like structure mimicking cartilage gives high durability to cross-linked polyethylene. 4th UHMWPE International Meeting. Torino, Italy, 2009. 9. 16-18.
 12. Kyomoto M, Moro T, Takatori Y, Kawaguchi H, Nakamura K, Ishihara K: Self-initiated surface graft polymerization of poly(2-methacryloyloxyethyl phosphorylcholine) on PEEK and carbon fiber reinforced PEEK for orthopaedic and spinal applications. 56th Annual Meeting of the Orthopaedic Research Society (ORS). New Orleans, USA, 2010. 3. 6-9.
 13. Kyomoto M, Moro T, Saiga K, Miyaji F, Kawaguchi H, Takatori Y, Nakamura K, Ishihara K: Biocompatible polymer layer on Co-Cr-Mo surface for hemi-arthroplasty prevents degeneration of cartilage. 56th Annual Meeting of the Orthopaedic Research Society (ORS). New Orleans, USA, 2010. 3. 6-9.
 14. Moro T, Takatori Y, Ishihara K, Kyomoto M, Karita T, Ito H, Tsunoda T, Saiga K, Nakamura K, Kawaguchi H: Biocompatible phospholipid polymer grafting improves the wear resistance of artificial hip joints regardless of the degree of cross-linking. 2010 Annual Meeting & Exposition of the Society for Biomaterials (SFB). 2010. 4. 21-24

(Seattle, USA)

15. Kyomoto M, Moro T, Saiga K, Onomoto H, Takatori Y, Ishihara K: Self-initiated surface graft polymerization from PEEK brings smart orthopaedic biomaterials. 2010 Annual Meeting & Exposition of the Society for Biomaterials (SFB). 2010. 4. 21-24 (Seattle, USA)
16. Moro T, Takatori Y, Ishihara K, Kyomoto M, Saiga K, Nakamura K, Kawaguchi H: Surface grafting of biocompatible phospholipid polymer MPC provides wear resistance of tibial polyethylene insert in artificial knee joints. 57th Annual Meeting of the Orthopaedic Research Society (ORS). 2011. 1. 13-17 (Long Beach, USA)
17. Kyomoto M, Moro T, Takatori Y, Hashimoto M, Kawaguchi H, Nakamura K, Ishihara K: Smart PEEK by self-initiated surface graft polymerization of MPC for orthopaedic applications. 57th Annual Meeting of the Orthopaedic Research Society (ORS). 2011. 1. 13-17 (Long Beach, USA)
18. Kyomoto M, Moro T, Saiga K, Hashimoto M, Kawaguchi H, Takatori Y, Nakamura K, Ishihara K: Controlled biocompatible phospholipid polymer-brush mimicking cartilage gives high durability to joint replacement. 57th Annual Meeting of the Orthopaedic Research Society (ORS). 2011. 1. 13-17 (Long Beach, USA)

③ シンポジウム

1. 茂呂徹、川口浩、石原一彦、金野智浩、京本政之、山脇昇、橋本雅美、荻田達郎、伊藤英也、齋藤貴志、中

村耕三、高取吉雄: MPC ポリマーの表面処理による低摩耗型人工関節. 日本バイオマテリアル学会シンポジウム 2008. 2008. 11. 17-18. (東京)

2. 茂呂徹, 高取吉雄, 石原一彦, 山脇昇, 京本政之, 川口浩: ミニシンポジウム「骨のバイオマテリアルと医工連携」MPC ポリマーのナノ表面修飾による新しい人工股関節の開発. **第27回日本骨代謝学会学術集会**. 大阪, 7. 23-25, 2009.
3. 茂呂徹, 川口浩, 石原一彦, 京本政之, 雑賀健一, 山脇昇, 橋本雅美, 荻田達郎, 伊藤英也, 角田俊治, 中村耕三, 高取吉雄: シンポジウム「人工関節新規摺動面材料への挑戦」リン脂質ポリマーナノグラフトを基盤とした人工関節の長寿命化. **第31回日本バイオマテリアル学会大会**. 京都, 11. 16-17, 2009.
4. 高取吉雄, 石原一彦, 茂呂徹, 金野智浩, 川口浩, 中村耕三; シンポジウム「医工連携の実践」医工連携—マテリアル工学と人工股関節での経験. **第18回日本コンピューター外科学会大会**. 東京, 2009. 11. 21-23.
5. 高取吉雄, 茂呂徹, 石原一彦, 京本政之, 橋本雅美, 荻田達郎, 伊藤英也, 赤坂義之, 角田俊治, 雑賀健一, 川口浩, 中村耕三: シンポジウム「近未来の人工関節とは? ~固定法、摺動面、デザインを科学する~」新しい摺動面への課題と展望. **第40回日本人工関節学会**. 沖縄, 2. 26-27, 2010.
6. 茂呂徹: 関節摺動面の MPC ポリマー処理による新しい人工股関節の開発. **第29回整形外科セラミック・インプラント研究会**. 名古屋, 2009. 12. 12.
7. 茂呂徹: MPC ポリマーナノグラフトを基盤にした新しい人工股関節の開発. **第5回超長期耐用をめざしたイ**

インプラントと骨との固着を語る会。
大阪, 2010. 3. 20.

- H. 知的財産権の出願・登録状況
1. 特願 2009-242683 人工股関節用ライナー及びそれを用いた人工股関節
2009年10月21日出願
 2. 特願 2009-190852 高潤滑性摺動部材およびそれを用いた人工関節
2009年6月24日出願
 3. 国際特許 PCT/JP2009/71614 ポリマー摺動材料および人工関節部材
2009年12月25日出願
 4. 国際特許 PCT/JP2009/69734 グラフト重合方法およびその生成物 2009年11月20日出願

研究成果の刊行に関する一覧表レイアウト

雑誌

発表者氏名	論文タイトル名	発表誌名	巻号	ページ	出版年
Kyomoto M, Moro T, Miyaji F, Konno T, Hashimoto M, Kawaguchi H, Takatori Y, Nakamura K, Ishihara K	Enhanced wear resistance of orthopaedic bearing due to the cross-linking of poly(MPC) graft chains induced by gamma-ray irradiation.	<i>J Biomed Mater Res B Appl Biomater</i>	84	320-327	2008
Kyomoto M, Moro T, Miyaji F, Hashimoto M, Kawaguchi H, Takatori Y, Nakamura K, Ishihara K	Effect of 2-methacryloyloxyethyl phosphorylcholine concentration on photo-induced graft polymerization of polyethylene in reducing the wear of orthopaedic bearing surface.	<i>J Biomed Mater Res A</i>	86	439-447	2008
Seo JH, Matsuno R, Konno T, Takai M, Ishihara K	Surface Tethering of Phosphorylcholine Groups onto Poly(dimethylsiloxane) through Swelling-deswelling Methods with Phospholipids Moiety Containing ABA-type Block Copolymers.	<i>Biomaterials</i>	29	1367 -1376	2008
Futamura K, Matsuno R, Konno T, Takai M, Ishihara K	Rapid Development of Hydrophilicity and Protein Adsorption Resistance by Polymer Surfaces Bearing Phosphorylcholine and Naphthalene Groups.	<i>Langmuir</i>	24	10340 -10344	2008
Hoshi T, Matsuno R, Sawaguchi T, Konno T, Takai M, Ishihara K	Protein adsorption resistant surface on polymer composite based on 2D/3D controlled grafting of phospholipid polymers.	<i>Appl Surf Sci</i>	255	379 -383	2008
Choi J, Konno T, Matsuno R, Takai M, Ishihara K	Surface Immobilization of Biocompatible Phospholipid Polymer Multilayered Hydrogel on Titanium Alloy. ,	<i>Colloid and Surfaces B : Biointerfaces</i>	67	216 -223	2008
Goto K, Hashimoto M, Takadama H, Tamura J, Fujibayashi S, Kawanabe K, Kokubo T Nakamura T	Mechanical, setting and biological properties of bone cements containing micron-sized titania particles.	<i>J Biomed Mater Sci</i>	19	1009 -1016	2008
Koyama Y, Miyashita M, Irie S, Yamamoto M, Karita T, Moro T, Takatori Y, Kazuma K	A study of disease management activities of hip osteoarthritis patients under conservative treatment.	<i>J Orthop Nurs</i>	12	75-83	2008

Kyomoto M, Moro T, Iwasaki Y, Miyaji F, Kawaguchi H, Takatori Y, Nakamura K, Ishihara K	Superlubricious surface mimicking articular cartilage by grafting poly(2-methacryloyloxyethyl phosphorylcholine) on orthopaedic metal bearings.	<i>J Biomed Mater Res A</i>	91	730-41	2009
Moro T, Kawaguchi H, Ishihara K, Kyomoto M, Karita T, Ito H, Nakamura K, Takatori Y	Wear resistance of artificial hip joints with poly(2-methacryloyloxyethyl phosphorylcholine) grafted polyethylene.	<i>Biomaterials</i>	30	2995-3001	2009
Kyomoto M, Moro T, Miyaji F, Hashimoto M, Kawaguchi H, Takatori Y, Nakamura K, Ishihara K	Effects of mobility/immobility of surface modification by 2-methacryloyloxyethyl phosphorylcholine polymer on the durability of polyethylene for artificial joints.	<i>J Biomed Mater Res A</i>	90	362-371	2009
Xu Y, Takai M, Ishihara K	Suppression of Protein Adsorption on a Charged Phospholipid Polymer Interface.	<i>Biomacromolecules</i>	10(2)	267-274	2009
Kyomoto M, Ishihara K	Self-initiated Surface Graft Polymerization of 2-methacryloyloxyethyl Phosphorylcholine on Poly(ether-ether-ketone) by Photoirradiation.	<i>ACS Appl. Mater. Interfaces</i>	1(3)	537-542	2009
Xu Y, Takai T, Ishihara K	Protein Adsorption and Cell Adhesion on Cationic, Neutral, and Anionic 2-Methacryloyloxyethyl Phosphorylcholine Copolymer Surfaces.	<i>Biomaterials</i>	30	4930-4938	2009
Seo JH, Matsuno R, Takai M, Ishihara K	Cell Adhesion on Phase-separated Surface of Block Copolymer Composed of Poly(2-methacryloyloxyethyl phosphorylcholine) and Poly(dimethylsiloxane).	<i>Biomaterials</i>	30	5330-5340	2009
Ye SH, Johnson CA, Woolley JR, Oh H, Gamble LJ, Ishihara K, Wagner WR	Surface Modification of a Titanium Alloy with a Phospholipid Polymer Prepared by a Plasma-Induced Grafting Technique to Improve Surface Thromboresistance.	<i>Colloid Surf B: Biointerface</i>	74	96-102	2009
Kitano K, Inoue Y, Konno T, Matsuno R, Takai M, Ishihara K	Nanoscale Evaluation of Lubricity on Well-defined Polymer Brush Surfaces Using QCM-D and AFM.	<i>Colloid Surf B: Biointerface</i>	74	350-357	2009
Hashimoto M, Mizuno M, Kitaoka S, Takadama H, Ueno M	Effect of lubricant on wear behavior of ultrahigh-molecular-weight polyethylene cups against zirconia Head in hip joint simulator.	<i>Nano Biomedicine</i>	1(1)	41-50	2009

Liu G, Iwata K, Ogasawara T, Watanabe J, Fukazawa K, Ishihara K, Asawa Y, Fujihara Y, Chung UL, Moro T, Takatori Y, Takato T, Nakamura K, Kawaguchi H, Hoshi K	Selection of highly osteogenic and chondrogenic cells from bone marrow stromal cells in biocompatible polymer-coated plates.	<i>J Biomed Mater Res A</i>	92	1273 -1282	2010
茂呂徹, 高取吉雄, 石原一彦, 京本政之, 中村耕三, 川口浩	人工臓器 最近の進歩 人工関節.	人工臓器	38	152-154	2009
茂呂徹, 高取吉雄, 石原一彦, 京本政之, 中村耕三, 川口浩	変形関節症 Up-to-date 長寿命型人工関節の開発.	<i>Clin Calcium</i>	19	1629 -1637	2009
Kyomoto K, Moro T, Iwasaki Y, Miyaji F, Kawaguchi H, Takatori Y, Nakamura K, Ishihara K	Lubricity and stability of poly(2-methacryloyloxyethyl phosphorylcholine) polymer layer on Co-Cr-Mo surface for hemi-arthroplasty to prevent degeneration of articular cartilage.	<i>Biomaterials</i>	31	658-68	2010
Kyomoto M, Moro T, Takatori Y, Kawaguchi H, Nakamura K, Ishihara K	Self-initiated surface grafting with poly(2-methacryloyloxyethyl phosphorylcholine) on poly(ether-ether-ketone).	<i>Biomaterials</i>	31	1017-24	2010
Goda T, Goto Y, Ishihara K	Cell-penetrating macromolecules: direct penetration of amphipatic phospholipid polymers across plasma membrane of living cells.	<i>Biomaterials</i>	31	2380-7	2010
Ukawa M, Akita H, Masuda T, Hayashi Y, Konno T, Ishihara K, Harashima H	2-Methacryloyloxyethyl phosphorylcholine polymer (MPC)-coating improves the transfection activity of GALA-modified lipid nanoparticles by assisting the cellular uptake and intracellular dissociation of plasmid DNA in primary hepatocytes.	<i>Biomaterials</i>	31	6355-62	2010
Xu Y, Jang K, Konno T, Ishihara K, Mawatari K, Kitamori T	The biological performance of cell-containing phospholipid polymer hydrogels in bulk and microscale form.	<i>Biomaterials</i>	31	8839-46	2010

Ye SH, Johnson CA, Woolley JR, Murata H, Gamblee LJ, Ishihara K, Wagner WR	Simple surface modification of a titanium alloy with silanated zwitterionic phosphorylcholine or sulfobetaine modifiers to reduce thrombogenicity.	<i>Colloid Surf B: Biointerface</i>	79	357-64	2010
Tanaka Y, Matsuo Y, Komiya T, Tsutsumi Y, Doi H, Yoneyama T, Hanawa T	Characterization of the spatial immobilization manner of poly(ethylene glycol) to a titanium surface with immersion and electrodeposition and its effects on platelet adhesion.	<i>J Biomed Mater Res</i>	92A	350-58	2010
Oya K, Tanaka Y, Moriyama M, Yoshioka Y, Kimura T, Tsutsumi Y, Doi H, Nomura N, Noda K, Kishida A, Hanawa T	Differences in the bone differentiation properties of MC3T3-E1 cells on polished bulk and sputter-deposited titanium specimens.	<i>J Biomed Mater Res</i>	94A	611-8	2010
Tanaka Y, Matin K, Gyo M, Okada A, Tsutsumi Y, Doi H, Nomura N, Tagami J, Hanawa T	Effects of electrodeposited poly(ethylene glycol) on biofilm adherence to titanium.	<i>J Biomed Mater Res</i>	95A	1105-13	2010
Iwasaki Y, Yamaguchi E	Synthesis of well-defined thermoresponsive polyphosphoester macroinitiators using organocatalysts.	<i>Macromolecules</i>	43	2664-6	2010
Dong CX, Zhu SJ, Mizuno M, Hashimoto M	Compressive creep behavior of silane treated TiO ₂ /high-density polyethylene.	<i>Journal Mater Sci</i>	45	1796-802	2010
Ishihara K, Kyomoto M	Photo-induced Functionalization on Biomaterials Surfaces.	<i>J Photopolym Sci Technol</i>	23	161-6	2010
Ishihara K, Goto G, Matsuno R, Inoue Y, Konno T	Novel polymer biomaterials and interfaces inspired from cell membrane functions.	<i>Biochim Biophys Acta-General</i>	1810	268-75	2010
Saito T, Fukai A, Mabuchi A, Ikeda T, Yano F, Ohba S, Nishida N, Akune T, Yoshimura N, Nakagawa T, Nakamura K, Tokunaga K, Chung UI, Kawaguchi H	Transcriptional regulation of endochondral ossification by HIF-2 α during skeletal growth and osteoarthritis development.	<i>Nat Med</i>	16	678-686	2010

<p>Takatori Y, Ito K, Sofue M, Hirota Y, Itoman M, Matsumoto T, Hamada Y, Shindo H, Yamada H, Yasunaga Y, Ito H, Mori S, Owan I, Fujii G, Ohashi H, Mawatari T, Iga T, Takahira N, Sugimori T, Sugiyama H, Okano K, Karita T, Ando K, Hamaki T, Hirayama T, Iwata K, Matsuura M, Jingushi S</p>	<p>Analysis of interobserver reliability for radiographic staging of coxarthrosis and indexes of acetabular dysplasia: a preliminary study.</p>	<p><i>J Orthop Sci</i></p>	<p>15</p>	<p>14-9</p>	<p>2010</p>
<p>Jingushi S, Ohfuji S, Sofue M, Hirota Y, Itoman M, Matsumoto T, Hamada Y, Shindo H, Takatori Y, Yamada H, Yasunaga Y, Ito H, Mori S, Owan I, Fujii G, Ohashi H, Iwamoto Y, Miyanishi K, Iga T, Takahira N, Sugimori T, Sugiyama H, Okano K, Karita T, Ando K, Hamaki T, Hirayama T, Iwata K, Nakasone S, Matsuura M, Mawatari T</p>	<p>Multiinstitutional epidemiological study regarding osteoarthritis of the hip in Japan.</p>	<p><i>J Orthop Sci</i></p>	<p>15</p>	<p>626-31</p>	<p>2010</p>
<p>Jingushi S, Ohfuji S, Sofue M, Hirota Y, Itoman M, Matsumoto T, Hamada Y, Shindo H, Takatori Y, Yamada H, Yasunaga Y, Ito H, Mori S, Owan I, Fujii G,</p>	<p>Osteoarthritis hip joints in Japan: involvement of acetabular dysplasia.</p>	<p><i>J Orthop Sci</i></p>	<p>16</p>	<p>156-64</p>	<p>2011</p>

Ohashi H, Iwamoto Y, Miyanishi K, Iga T, Takahira N, Sugimori T, Sugiyama H, Okano K, Karita T, Ando K, Hamaki T, Hirayama T, Iwata K, Nakasone S, Matsuura M, Mawatari T					
石原一彦、 井上祐貴、 松野亮介	細胞膜模倣ポリマーマテリアルのナ ノバイオ機能.	膜	35	217-23	2010
京本政之	生体の構造・機能模倣がもたらす長寿 命人工関節.	バイオマテリアル	28	177-8	2010
Kyomoto M, Moro T, Takatori Y, Kawaguchi H, Ishihara K	Cartilage-mimicking, high-density brush structure improves wear resistance of crosslinked polyethylene: a pilot study.	<i>Clin Orthop Relat Res</i>			in press

201011019B (2/2)

厚生労働科学研究費補助金

医療機器開発推進研究事業

高齢者の寝たきり予防に役立つ
ナノ表面構築型人工股関節の開発に関する研究

平成20年度～22年度 総合研究報告書

第2分冊 (2/2)

主任研究者 高取吉雄

平成23 (2011) 年 4月

Enhanced Wear Resistance of Orthopaedic Bearing Due to the Cross-Linking of Poly(MPC) Graft Chains Induced by Gamma-Ray Irradiation

Masayuki Kyomoto,^{1,2} Toru Moro,³ Fumiaki Miyaji,¹ Tomohiro Konno,² Masami Hashimoto,⁴ Hiroshi Kawaguchi,³ Yoshio Takatori,³ Kozo Nakamura,³ Kazuhiko Ishihara²

¹ Research Division, Japan Medical Materials Corporation, Osaka, Japan

² Department of Materials Engineering, School of Engineering and Center for NanoBio Integration, The University of Tokyo, Tokyo, Japan

³ Department of Orthopaedic Surgery, School of Medicine, The University of Tokyo, Tokyo, Japan

⁴ Materials Research and Development Laboratory, Japan Fine Ceramics Center, Nagoya, Japan

Received 17 January 2007; revised 31 March 2007; accepted 30 April 2007

Published online 22 June 2007 in Wiley InterScience (www.interscience.wiley.com). DOI: 10.1002/jbm.b.30874

Abstract: We assumed that the extra energy supplied by gamma-ray irradiation produced cross-links in 2-methacryloyloxyethyl phosphorylcholine (MPC) polymer grafted cross-linked polyethylene (CLPE-g-MPC) and investigated its effects on the tribological properties of CLPE-g-MPC. In this study, we found that the gamma-ray irradiation produced cross-links in three kinds of regions of CLPE-g-MPC: poly(MPC) layer, CLPE-MPC interface, and CLPE substrate. The dynamic coefficient of friction of CLPE-g-MPC slightly increased with increasing irradiation doses. After the simulator test, both the nonsterilized and gamma-ray sterilized CLPE-g-MPC cups exhibited lower wear than the untreated CLPE ones. In particular, the gamma-ray sterilized CLPE-g-MPC cups showed extremely low and stable wear. As for the nonsterilized CLPE-g-MPC cups, the weight change varied with each cup. When the CLPE surface is modified by poly(MPC) grafting, the MPC graft polymer leads to a significant reduction in the sliding friction between the surfaces that are grafted because water thin films formed can behave as extremely efficient lubricants. Such a cross-link of poly(MPC) slightly increases the friction of CLPE by gamma-ray irradiation but provides a stable wear resistant layer on the friction surface. The cross-links formed by gamma-ray irradiation would give further longevity to the CLPE-g-MPC cups. © 2007 Wiley Periodicals, Inc. *J Biomed Mater Res Part B: Appl Biomater* 84B: 320–327, 2008

Keywords: joint replacements; polyethylene; phosphorylcholine; sterilization

INTRODUCTION

The number of primary and revised artificial hip and knee joints used are substantially increasing in the world every year.¹ This means that the quality of artificial joints has been becoming increasingly important. Most of the patients who receive an artificial joint experience a dramatic pain relief and enjoy a rapid improvement in the quality of life. The most popular artificial joint system is a bearing couple composed of an ultra-high molecular weight polyethylene

(UHMWPE) and Co-Cr-Mo alloy. However, osteolysis caused by wear particles of UHMWPE has emerged as a serious issue.^{2–4} The reduction in the number of UHMWPE wear particles is a method to prevent osteolysis. From this viewpoint, different combinations of bearing surfaces and improvement in the bearing materials have been focused upon.

We have recently developed a novel artificial joint system with 2-methacryloyloxyethyl phosphorylcholine (MPC) polymer grafted onto the surface of cross-linked polyethylene (CLPE-g-MPC),^{5–7} aiming to reduce wear and avoid bone resorption. MPC is a methacrylate monomer that has a phospholipid polar group in a side chain and is used to make novel biomaterials as designed by Ishihara et al., who were inspired by the natural phospholipids of biomembranes.⁸ MPC can be a good polymer biomaterial owing to

Correspondence to: M. Kyomoto (e-mail: kyomotom@jmmc.jp)

Contract grant sponsor: Japanese Ministry of Education, Culture, Sports, Science, and Technology; Contract grant number: 15390449

Contract grant sponsor: Japanese Ministry of Health, Labour, and Welfare

© 2007 Wiley Periodicals, Inc.

the reduction of protein adsorption and cell adhesion.^{9–18} On the basis of the biocompatibility and hydrophilicity of MPC polymers, we have been developing new artificial joints with highly lubricated bearing surfaces that are produced by photo-induced radical graft polymerization.¹⁹ This technique grafts MPC directly onto CLPE, forming C—C covalent bonds between the CLPE substrate and the MPC polymer.

Medical devices, including artificial joints, are normally sterilized by using several methods, for example, gamma-ray sterilization, ethylene oxide gas sterilization, and gas plasma sterilization. In particular, gamma-ray irradiation is the sterilization method typically used for the UHMWPE components of artificial joints. However, gamma-ray sterilization probably influences the properties of medical devices. Generally, when a high energy beam generated by gamma-ray sterilization is irradiated on to a polymer, free radicals are formed by the scission of the molecular chains. This is followed by the retermination and cross-linking of the molecules. The irradiation of high-dose gamma-rays onto UHMWPE severs the C—C or C—H bonds, and it then produces cross-linking and subsequent chemical bonding involving C=O and C—C.²⁰ It has been reported that gamma-ray sterilized UHMWPE sometimes exhibits improved wear resistance due to the formation of many cross-links. Several investigators have reported that wear resistance is better in gamma-ray sterilized UHMWPE than that in ethylene oxide sterilized UHMWPE.^{21–24}

The purpose of this study is to investigate the dependence of gamma-ray irradiation on the tribological (friction and *in vitro* wear) properties of CLPE-*g*-MPC and to examine the possibility of controlling the longevity of artificial joints by using this material. This is based on the hypothesis that the extra energy supplied by gamma-ray irradiation could produce cross-links in CLPE-*g*-MPC.

MATERIALS AND METHODS

Chemicals and MPC Graft Polymerization

Benzophenone and acetone were purchased from Wako Pure Chemical Industries (Osaka, Japan). MPC was industrially synthesized using the method reported by Ishihara et al.⁸ and was supplied by Ai Bio-Chips (Tokyo, Japan).

A compression-molded UHMWPE (GUR1020 resin, Poly Hi-Solidur, IN) bar stock was treated with a dose of 50 kGy gamma irradiation in N₂ gas and annealed at 120°C for 7.5 h in N₂ gas in order to attain cross-linking. The CLPE specimens were machined from this bar stock after cooling. They were immersed in an acetone solution containing 10 mg/mL benzophenone for 30 s and then dried in the dark at room temperature to remove acetone. The amount of benzophenone adsorbed on the surface was 3.5×10^{-11} mol/cm².²⁵ The MPC monomer was dissolved in pure degassed water up to a concentration of 0.5 mol/L. The CLPE specimens coated with benzophenone were

immersed in the aqueous MPC solution. The photo-induced graft polymerization on the CLPE surface was carried out with an ultraviolet irradiation (UVL-400HA ultra-high pressure mercury lamp, Riko-Kagaku Sangyo, Funabashi, Japan) of 5 mW/cm² at 60°C for 90 min using a filter (Model D-35; Toshiba, Tokyo, Japan) to pass only ultraviolet light with a wavelength of 350 ± 50 nm. After the polymerization, the CLPE-*g*-MPC specimens were removed, washed with pure water and ethanol, and dried at room temperature. The CLPE and CLPE-*g*-MPC specimens were sterilized by gamma-ray irradiation of 25 or 50 kGy in N₂ gas.

Surface Analysis by Fourier-Transform Infrared and X-ray Photoelectron Spectroscopies and Water-Contact Angle Measurement

The functional group vibrations of both the nonsterilized and gamma-ray sterilized CLPE and CLPE-*g*-MPC surfaces were examined by Fourier-transform infrared (FTIR) spectroscopy using attenuated total reflection (ATR) equipment. The FTIR/ATR spectra were obtained in 32 scans over a range of 800–2000 cm⁻¹ using an FTIR analyzer (FT/IR-615; JASCO International, Tokyo, Japan) at a resolution of 4.0 cm⁻¹.

The surface elemental conditions of CLPE before and after MPC grafting were analyzed by X-ray photoelectron spectroscopy (XPS). The XPS spectra were obtained using an XPS spectrophotometer (AXIS Hsi 165; Kratos Analytical, UK) equipped with an Mg-K α radiation source at 15 kV at the anode. The take-off angle of the photoelectrons was kept at 90°. Each sample was scanned five times.

The static water-contact angles of CLPE-*g*-MPC with various photo-polymerization periods were measured by a sessile drop method using an optical bench-type contact angle goniometer (Model DM300; Kyowa Interface Science, Saitama, Japan). Drops of purified water (1 μ L) were deposited onto the surface of CLPE-*g*-MPC, and the contact angles were directly measured by using a microscope after 60 s according to the ISO 15989 standard.²⁶ Fifteen replicate measurements were performed on each sample, and the average values were taken as contact angles.

Friction Test

The friction test was performed using a ball-on-plate machine (Tribostation 32; Shinto Scientific, Tokyo, Japan). Six sample pieces were prepared using each of the sterilization methods. The Co-Cr-Mo alloy ball was 9 mm in diameter and its surface roughness was $R_a \geq 0.01$ —as smooth as a femoral ball. The friction tests were carried out with a load of 0.98 N and a sliding distance of 25 mm with a frequency of 1 Hz at room temperature. The measurements were performed using pure water as lubricant. The friction tests were performed up to a maximum of 100 cycles. The mean static (μ_s) and dynamic (μ_d) coefficients of friction were determined by averaging five data points in 10 (8–12) and 100 (96–100) cycle measurements.

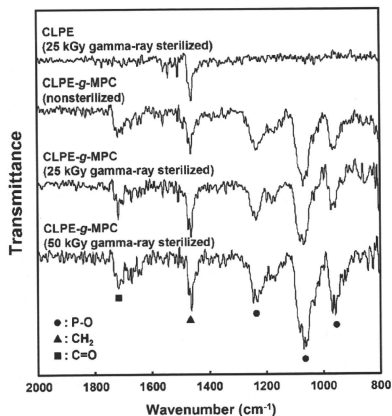


Figure 1. FTIR/ATR spectra for nonsterilized and gamma-ray sterilized CLPE and CLPE-g-MPC.

Statistical Analysis

For the water-contact angle measurement and friction test, the results derived from each measurement were expressed as mean values and the standard deviation. The statistical significance ($p < 0.05$) was judged by the Student's *t*-test.

Hip Joint Simulator Test

The inner and outer diameters of the CLPE and CLPE-g-MPC cups used in the hip joint simulator were 26 and 52 mm, respectively. Four pieces for each condition was prepared. The wear test was performed using a 12-station hip joint simulator (MTS Systems, MN). A Co-Cr-Mo alloy femoral ball component with a size of 26 mm (Japan Medical Materials, Osaka, Japan) was used as a femoral component. A mixture of 25 vol % bovine serum, 20 mM/L of ethylene diamine tetraacetic acid (EDTA), and 0.1 mass % sodium azide was used as lubricant, according to the ISO 14242-1 standard.²⁷ The lubricant was replaced every 0.5

$\times 10^6$ cycles. Loads simulating a physiologic loading curve with double peaks of 1793 and 2744 N loads were applied with a frequency of 1 Hz. The wear was determined by weighing the polyethylene cups. Load-soak controls ($n = 2$) were used to compensate the fluid absorption of specimens. The weights of the cups were measured every 0.5×10^6 cycles. Then, the testing was continued until a total of 5.0×10^6 cycles were completed.²⁸

To evaluate the wear conditions, the surface features of the bearing surfaces of the cups were observed with a confocal laser scanning microscope (OLS1200; Olympus, Tokyo, Japan) after a simulator test with 5.0×10^6 cycles.

RESULTS

Figure 1 shows the FTIR/ATR spectra for the nonsterilized and gamma-ray sterilized CLPE and CLPE-g-MPC. An absorption peak was observed at 1460 cm^{-1} for both CLPE and CLPE-g-MPC. This peak is attributed mainly to the methylene chain in the CLPE substrate and MPC graft polymer. However, the transmission absorptions at $1240, 1080, \text{ and } 970 \text{ cm}^{-1}$ were observed only for the CLPE-g-MPC. These peaks are due to the phosphate group in the MPC unit. Similarly, an absorption peak at 1720 cm^{-1} observed for CLPE-g-MPC only corresponds to the carbonyl group in the MPC unit. The FTIR/ATR spectra did not differ significantly between the nonsterilized and gamma-ray sterilized CLPE-g-MPC.

Table I summarizes the elemental compositions of the untreated CLPE and the nonsterilized and gamma-ray sterilized CLPE-g-MPC surfaces. Both the elemental composition of nitrogen and phosphorus in the nonsterilized and gamma-ray sterilized CLPE-g-MPC surface were approximately 5.2. It should be noted that the contents of nitrogen and phosphorus in the CLPE-g-MPC surface remained unchanged after gamma-ray sterilization. The elemental composition of the CLPE-g-MPC surface was almost equivalent to the theoretical elemental composition ($N = 5.3, P = 5.3$) of poly(MPC). On the other hand, the carbon content in the gamma-ray sterilized CLPE-g-MPC slightly increased as compared with that of the nonsterilized one.

Figure 2 shows the static water-contact angle of the untreated CLPE and the nonsterilized and gamma-ray sterilized CLPE-g-MPC surfaces. The static water-contact angle

TABLE I. Surface Elemental Composition (%) of Gamma-Ray Sterilized CLPE and CLPE-g-MPC

Sample (Sterilization Method)	Surface Elemental Composition (%) ($n = 5$)			
	C	O	N	P
CLPE (nonsterilized)	99.8 (0.3) ^a	0.2 (0.3)	0.0 (0.0)	0.0 (0.0)
CLPE (25 kGy γ -sterilized)	99.5 (0.2)	0.6 (0.2)	0.0 (0.0)	0.0 (0.0)
CLPE (50 kGy γ -sterilized)	99.1 (0.2)	0.9 (0.2)	0.0 (0.0)	0.0 (0.0)
CLPE-g-MPC (nonsterilized)	58.0 (0.2)	31.5 (0.2)	5.2 (0.1)	5.3 (0.1)
CLPE-g-MPC (25 kGy γ -sterilized)	63.7 (2.3)	26.0 (2.3)	5.2 (0.1)	5.1 (0.2)
CLPE-g-MPC (50 kGy γ -sterilized)	65.0 (0.6)	24.6 (0.5)	5.2 (0.1)	5.2 (0.1)
MPC polymer ^b	57.9	31.6	5.3	5.3

^a The standard deviation is in parentheses.

^b Theoretical elemental composition of MPC polymer.

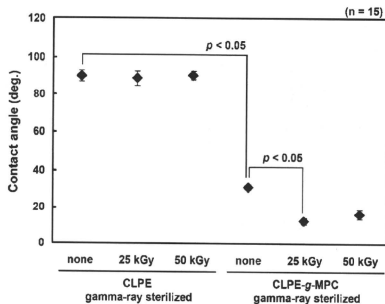


Figure 2. Static water-contact angle of the untreated CLPE and the nonsterilized and the gamma-ray sterilized CLPE-g-MPC surfaces. Bar; Standard deviations.

of the untreated CLPE was approximately 90° before and after gamma-ray sterilization, and it drastically decreased (approximately 30°) because of MPC grafting. Furthermore, the static water-contact angles of CLPE-g-MPC decreased to 15° after gamma-ray sterilization.

The static and dynamic coefficients of friction of gamma-ray sterilized CLPE and nonsterilized and gamma-ray sterilized CLPE-g-MPC are shown in Figures 3 and 4. Both the static and dynamic coefficients of friction of CLPE-g-MPC decreased drastically when compared with those of untreated CLPE. The degree of reduction in the coefficient was larger in the latter as compared to the former. Considering the gamma-ray sterilized CLPE-g-MPC, regardless of the dose of the gamma-ray sterilization and the cycles, approximately 50% reduction (i.e., 46–65%) was observed in the static coefficients of friction for both the 10 and 100 cycles when com-

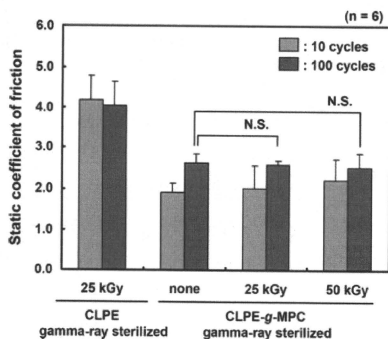


Figure 3. Static coefficients of friction of the gamma-ray sterilized CLPE surfaces and nonsterilized and gamma-ray sterilized CLPE-g-MPC surfaces. Bar; Standard deviations.

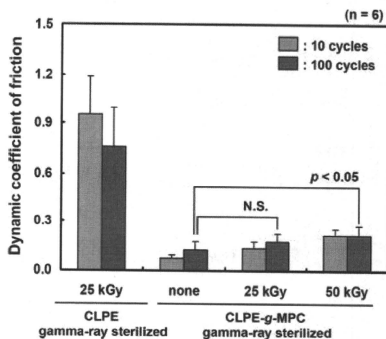


Figure 4. Dynamic coefficients of friction of gamma-ray sterilized CLPE surfaces and nonsterilized and gamma-ray sterilized CLPE-g-MPC surfaces. Bar; Standard deviations.

pared with those of untreated CLPE. On the other hand, the dose of gamma-ray sterilization affected the dynamic coefficient of friction of CLPE-g-MPC. That is, it slightly increased from 0.007 (none) to 0.021 (50 kGy) with an increase in the gamma-ray sterilization dose for 10 cycles. The dynamic coefficient of friction of CLPE-g-MPC with gamma-ray sterilization of 50 kGy was 75% greater ($p < 0.05$) than that of CLPE-g-MPC with nonsterilization.

Figure 5 shows the weight change (gravimetric wear) of the gamma-ray sterilized CLPE cups and nonsterilized and gamma-ray sterilized CLPE-g-MPC cups in the hip joint simulation test. When the gravimetric method is used, the weight loss was corrected for the fluid absorption by sub-

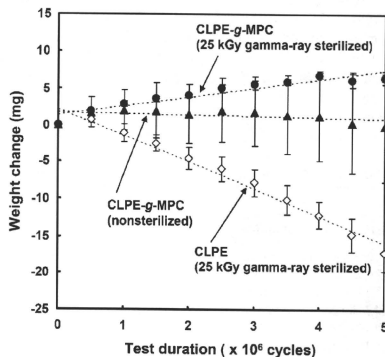


Figure 5. Weight change (gravimetric wear) of gamma-ray sterilized CLPE cups and nonsterilized and gamma-ray sterilized CLPE-g-MPC cups in the hip joint simulation test. Bar; Standard deviations.

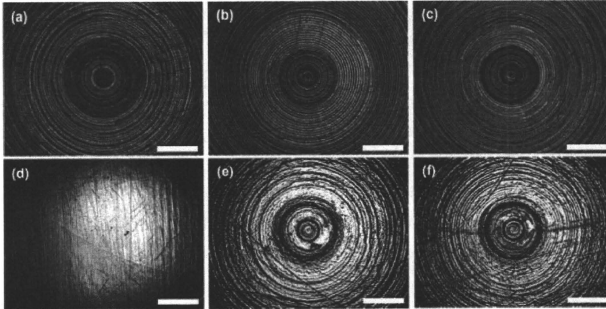


Figure 6. Confocal laser scanning microscope images of the CLPE and CLPE-g-MPC bearing surfaces before and after the hip simulator test. (a) CLPE (gamma-ray sterilized), (b) CLPE-g-MPC (nonsterilized), (c) CLPE-g-MPC (gamma-ray sterilized) before the hip simulator test, (d) CLPE (gamma-ray sterilized), (e) CLPE-g-MPC (nonsterilized), and (f) CLPE-g-MPC (gamma-ray sterilized) after the hip simulator test. The bar indicates 500 μm .

tracking the weight gain that occurred in the load-soak controls. Since the tested cups are subjected to a motion and load, such a "load-soak" correction is not necessarily satisfactory. Therefore, the tested cups absorb slightly more fluid than their load-soak controls. Consequently, the correction for using the load-soak control data may result in a slight underestimation of the actual weight loss. After 5.0×10^6 cycles of the simulator test, both the CLPE-g-MPC cups were found to undergo lesser wear than the untreated CLPE cups. In particular, the gamma-ray sterilized CLPE-g-MPC cups showed extremely low and stable wear. As for the nonsterilized CLPE-g-MPC cups, the weight change varied for each cup (standard deviation = 7.6 mg, $n = 4$). Figure 5 indicates that certain gamma-ray sterilized CLPE-g-MPC cups exhibit a slight increase in weight because of slightly enhanced fluid absorption when compared with that in the load-soak controls.

Figure 6 shows the confocal laser scanning microscope images of the bearing surfaces of the untreated gamma-ray sterilized CLPE cups and nonsterilized and gamma-ray sterilized CLPE-g-MPC cups before and after the simulator test. Before the simulator test, regular circular machining marks were seen on all the bearing surfaces of the CLPE and CLPE-g-MPC cups. After the simulator test, the machining marks on these surfaces of the CLPE cups disappeared completely. On the contrary, clear machining marks with regular circles were observed on the surface of the nonsterilized and gamma-ray sterilized CLPE-g-MPC cups, indicating almost no wear on the surface.

DISCUSSION

We have developed an artificial hip joint using CLPE-g-MPC on the bearing surface with an objective of reducing

wear and avoiding bone resorption. The static and dynamic coefficients of friction of CLPE-g-MPC reduced by >50% and >90%, respectively, as compared to those of the untreated CLPE, as shown in Figures 3 and 4. These friction coefficients were much lower than those usually found for the measurable shear interactions between UHMWPE and the Co-Cr-Mo alloy.^{29,30} The significant reduction in the coefficients of friction of the grafted MPC polymer resulted in a substantial improvement in wear resistance, as shown in Figure 5. We assumed that the bearing surface of the artificial hip joint combined with the MPC polymer layer 100–200 nm thick exhibited the fluid film lubrication (or mixed lubrication) of the intermediate hydrated layer.^{5,7,19}

These sterilizations may affect the properties of medical devices. Generally, when a high energy beam by gamma-ray sterilization is irradiated on a polymer, free radicals are formed by the scission of molecular chains.²⁰ This is followed by the retermination and cross-linking of the molecules. In this study, we therefore assumed that the extra energy supplied by gamma-ray irradiation produced cross-links in three kinds of regions of the CLPE-g-MPC: poly (MPC) layer, CLPE-MPC interface, and CLPE substrate, as shown in Figure 7.

As shown in Table I, the contents of nitrogen and phosphorus in the CLPE-g-MPC surface were hardly different between the nonsterilized CLPE-g-MPC and the gamma-ray sterilized CLPE-g-MPC. On the other hand, the contents of carbon and oxygen of CLPE-g-MPC slightly increased and decreased (as a trade-off), respectively, with an increase in the gamma-ray irradiation dose. It was assumed that the energy by gamma-ray irradiation would be used in the scission of C=O in the MPC structure by the degassing of O₂ and subsequently produce cross-links of poly(MPC) with chemical bonding involving C—C.^{31,32} The extra energy supplied by gamma-ray sterilization of 25–50 kGy is clearly responsible for producing more cross-links.

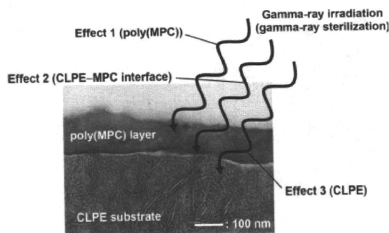


Figure 7. Schematic diagram of the effects of gamma-ray irradiation on CLPE-g-MPC.

The dose of gamma-ray sterilization influences the friction response since the dynamic coefficient of friction of CLPE-g-MPC slightly increased from 0.007 to 0.021 within the low friction region with an increase in the gamma-ray sterilization dose. It was previously reported that as the polymer concentration (viscosity) increases with the increase in the friction coefficient in the mixed lubrication regime.³³ It was therefore assumed that an ultra-low friction of CLPE-g-MPC that appeared during sliding is related to the effective viscosity of poly(MPC) in the mixed lubrication of the intermediate hydrated layer. The viscosity of poly(MPC) reflects the mobility of the free end groups of the MPC polymer or MPC polymer chains themselves; this mobility was limited by the cross-linking of poly(MPC) layer.^{34,35} These results seem to suggest that the cross-link corresponds to the viscosity of the poly(MPC) in the bearing interface, the viscosity of the poly(MPC) increases by gamma-ray irradiation, and the poly(MPC) would act as a boundary lubricant in mixed lubrication. These effects are represented as "Effect 1" in Figure 7.

After 5.0×10^6 cycles of the simulator test, the gamma-ray sterilized CLPE-g-MPC cups showed low and stable wear (Figure 5). On the contrary, with the nonsterilized CLPE-g-MPC cups, the weight change varied in each cup. In the previous study, when a high energy beam was irradiated onto a polymer with a grafted layer, strong bindings were formed between the grafted layer and polymer substrate.³⁶ Lewis et al. reported that the force required to remove the coating with cross-linking was greater than that without cross-linking.³⁷ In addition, much more cross-linking and perhaps adhesion to the substrate was induced by the gamma-ray irradiation (gamma-ray sterilization) when compared with the nonsterilized CLPE-g-MPC. It is therefore assumed that the higher energy radiation in gamma-ray sterilization induced cross-links not only within the grafting MPC polymer but also between the grafting MPC polymer and CLPE substrate. Then, a much stronger and stable MPC polymer grafted layer was produced on the bearing surface ("Effect 2" in Figure 7).

McKellop et al. reported on the wear performance of UHMWPE in a contemporary hip simulator following gamma-ray irradiation in air as well as in an inert gas and ethylene oxide gas sterilization or gas plasma sterilization.²¹ Between 2 and 5×10^6 cycles, the wear rate of the gamma-ray sterilized UHMWPE was significantly lower than that of the UHMWPE sterilized either by gas plasma or ethylene oxide. A similar trend has been reported by Wang et al. who observed more than 50% drop in the hip simulator wear rate after single 25 kGy doses of gamma-ray sterilization.²² These studies have reported that the wear resistance is better in gamma-ray sterilized UHMWPE than in ethylene oxide sterilized UHMWPE.²¹⁻²⁴ It is therefore assumed that gamma-ray irradiation improved the wear resistance of the CLPE substrate ("Effect 3" in Figure 7).

In the cross-link process of this study, the UHMWPE bar stock was irradiated with a dose of 50 kGy, and then CLPE and CLPE-g-MPC were gamma-ray sterilized with a nominal dose of 25 kGy. Thus, the total dosage for the gamma-ray sterilized CLPE and CLPE-g-MPC was 75 kGy. The nonsterilized CLPE-g-MPC received a total dose of 50 kGy only; this would be a disadvantage for the anti-wear property.³⁸⁻⁴⁰ However, as shown in Figure 6, clear machining marks with regular circles remained on the surfaces of the nonsterilized as well as gamma-ray sterilized CLPE-g-MPC cups even after the simulator test. The observed CLPE-g-MPC cups were virtually unworn, which is consistent with the relatively low wear in the hip joint simulator tests, as shown in Figure 5. In contrast, the machining marks disappeared from the surface of the gamma-ray sterilized CLPE cups [Figure 6(b)]. In other words, the presence of poly(MPC) on the CLPE surface by MPC grafting would have a greater effect on the wear resistance than the additional cross-links of the CLPE substrate by the gamma-ray irradiation of 25 kGy. The CLPE surface with the poly(MPC) exhibited considerably higher lubricity than that without the poly(MPC) (Figures 2-4). The significant reduction in the coefficient of friction of the grafted poly(MPC) resulted in a substantial improvement in wear resistance. The bearing surface of the artificial hip joint combined with poly(MPC) might exhibit the fluid film lubrication (or mixed lubrication) of the intermediate hydrated layer. This means that artificial hip joints utilizing CLPE-g-MPC mimic the natural joint cartilage.^{41,42}

The concern about the degradation of polyethylene during shelf aging prompted several orthopedic manufacturers to adopt the sterilization method using gas plasma or ethylene oxide gas for conventional UHMWPE.^{43,44} These sterilization methods admittedly generate no free radicals that could be subsequently oxidized during shelf storage. However, UHMWPE sterilized using these methods did not receive the tribological benefit associated with radiation-induced cross-linking. Moreover, the oxidation index of the degraded polyethylene was lower *in vivo* than *in vitro*.^{21,45} It has also been reported that the oxygen content might be almost zero in the body.^{44,46} Thus, although the oxidation