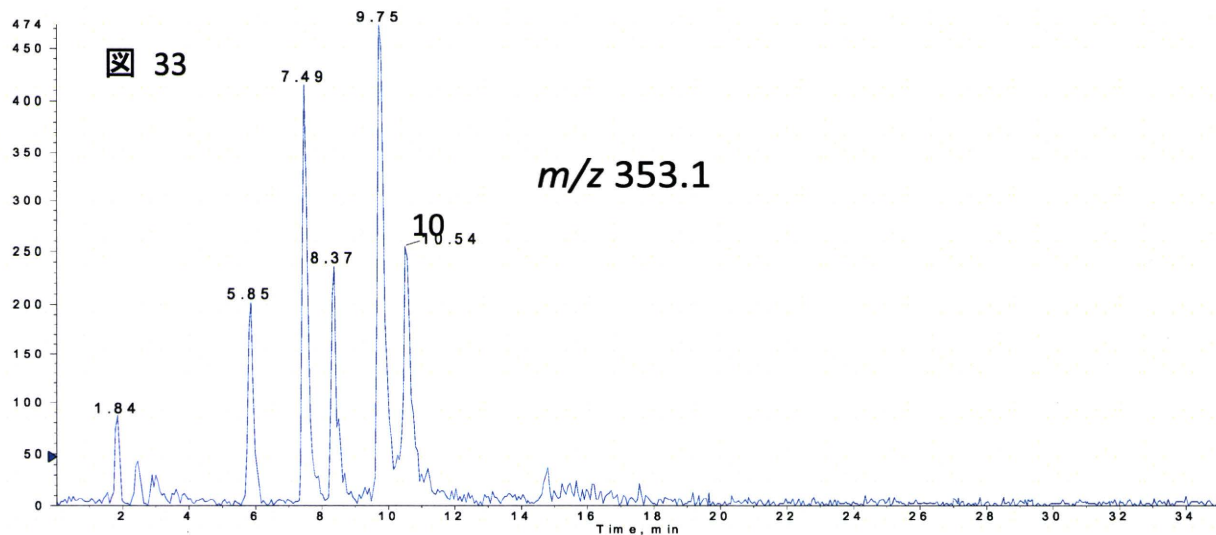


図 33～34 ソウジュツ(Negative)  $m/z$ 353 の抽出イオンクロマトおよび MS

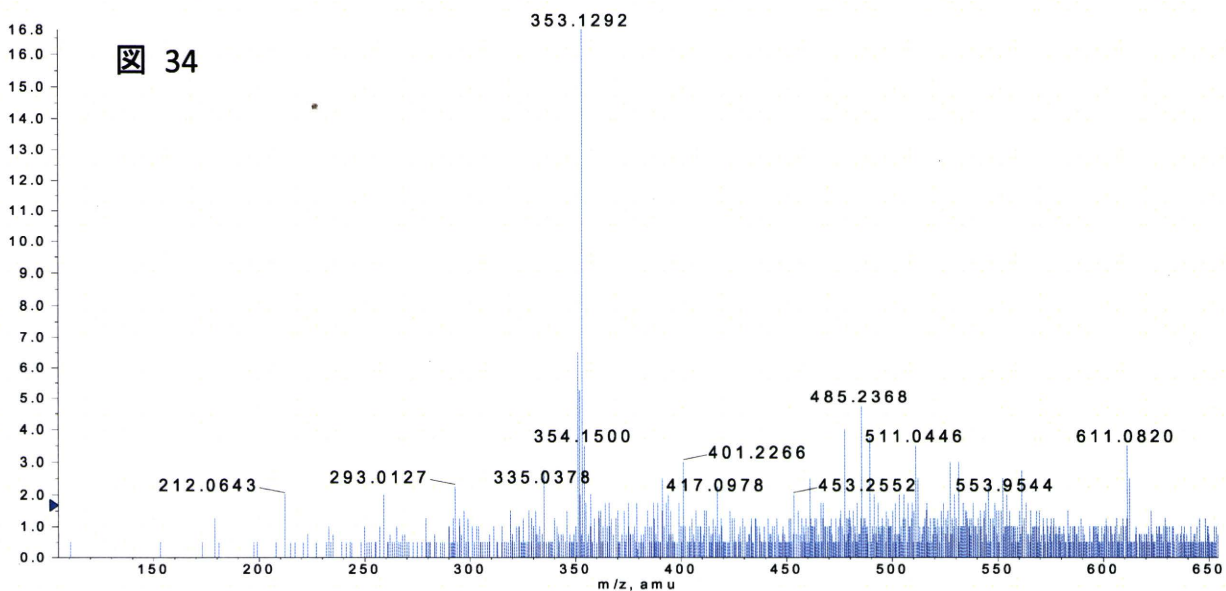
XIC of -TOF MS: Experiment 1, 352.997 to 353.246 amu from 20101124\_Neg\_006.wiff

Max. 474.0 cps.



-TOF MS: Experiment 1, 10.455 to 10.638 min from 20101124\_Neg\_006.wiff  
 $a=3.57538153066371930e-004$ ,  $t_0=-2.80192555123358030e+000$ , subtracted (9.299 to 9.48...

Max. 16.8 counts.



### 図 35～36 ソウジュツ(Negative) $m/z$ 635 の抽出イオンクロマトおよび MS

■ XIC of -TOF MS: Experiment 1, 635.248 to 635.416 amu from 20101124\_Neg\_006.wiff

Max. 190.0 cps.

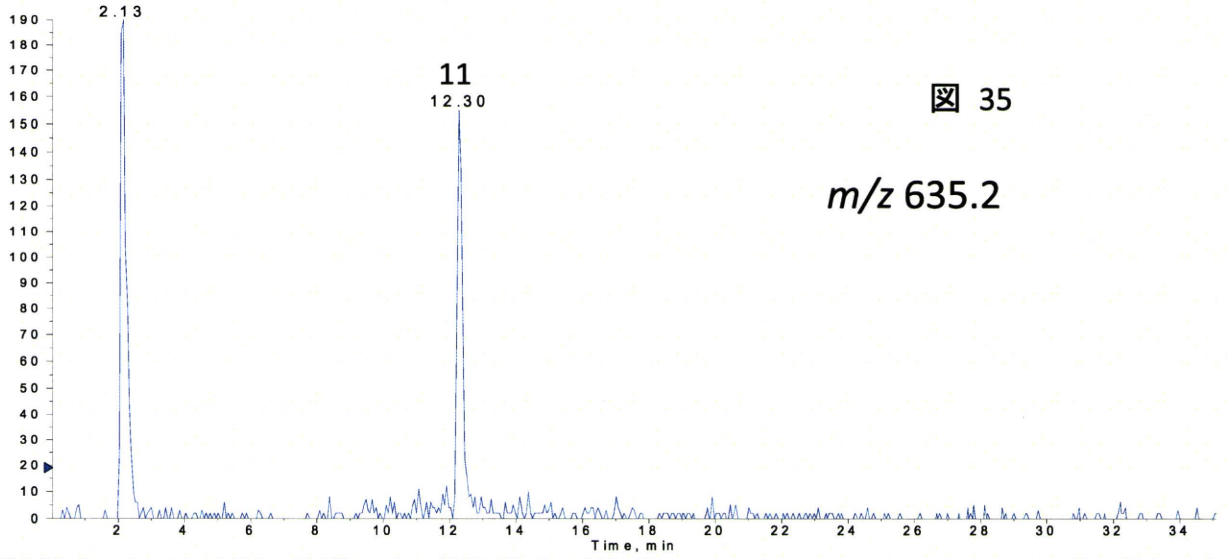


図 35

$m/z$  635.2

■ -TOF MS: Experiment 1, 12.219 to 12.402 min from 20101124\_Neg\_006.wiff  
a=3.57538153066371930e-004, t0=-2.80192555123358030e+000, subtracted (11.915 to 12....

Max. 17.3 counts.

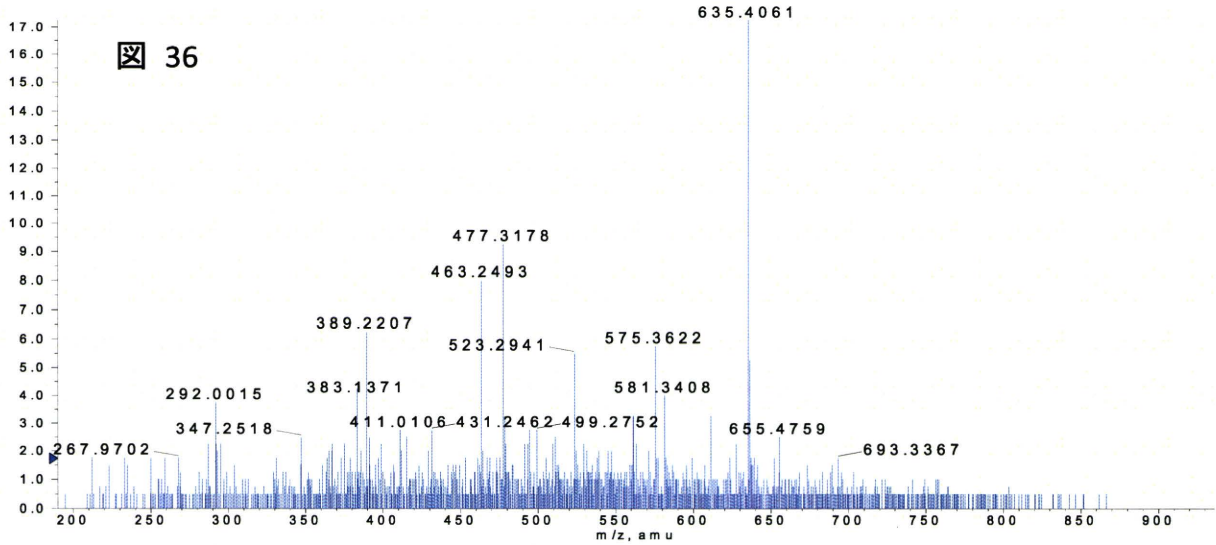
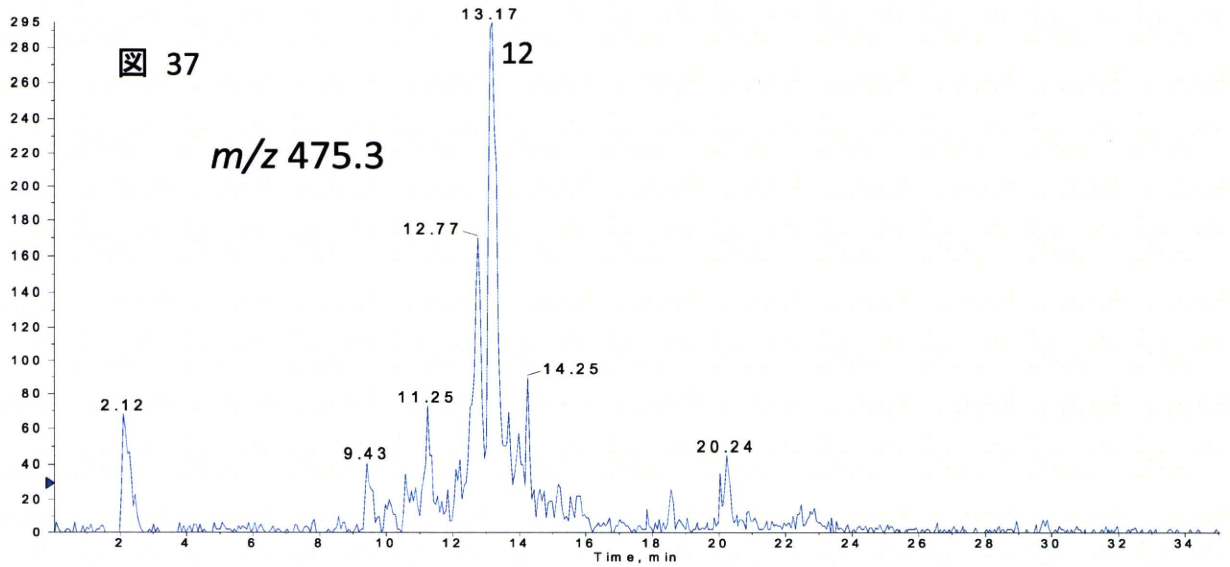


図 36

図 37~38 ソウジュツ(Negative)  $m/z$ 475 の抽出イオンクロマトおよびMS

XIC of -TOF MS: Experiment 1, 475.208 to 475.488 amu from 20101124\_Neg\_006.wiff

Max. 295.0 cps.



-TOF MS: Experiment 1, 13.071 to 13.375 min from 20101124\_Neg\_006.wiff  
 $a=3.57538153066371930e-004$ ,  $t_0=-2.80192555123358030e+000$ , subtracted (11.976 to 12....

Max. 17.8 counts.

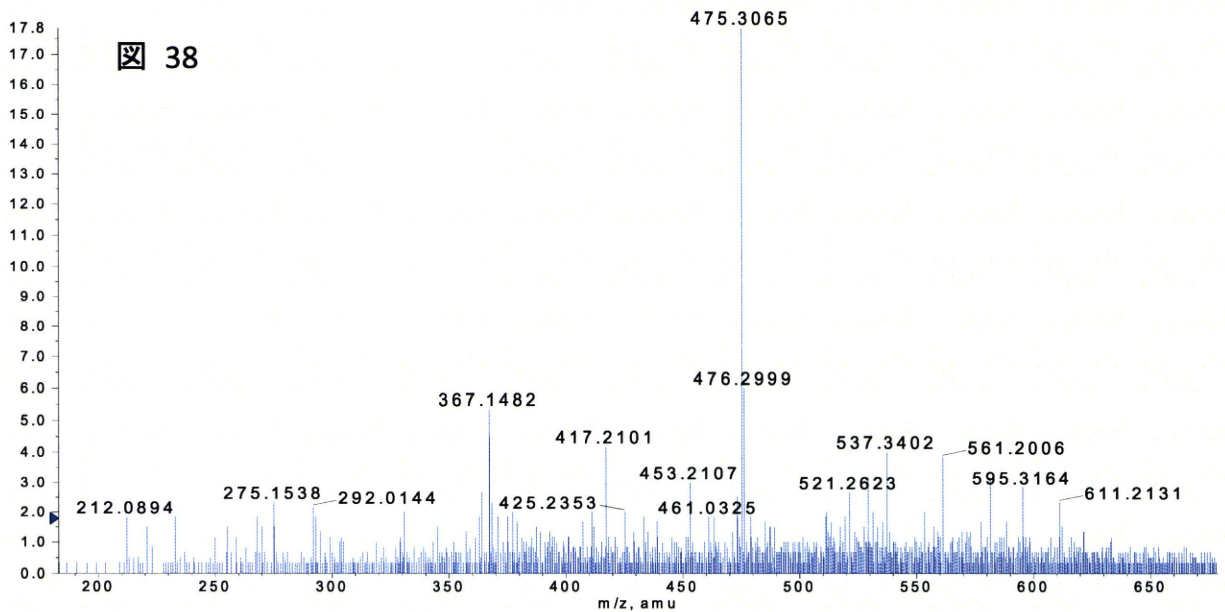
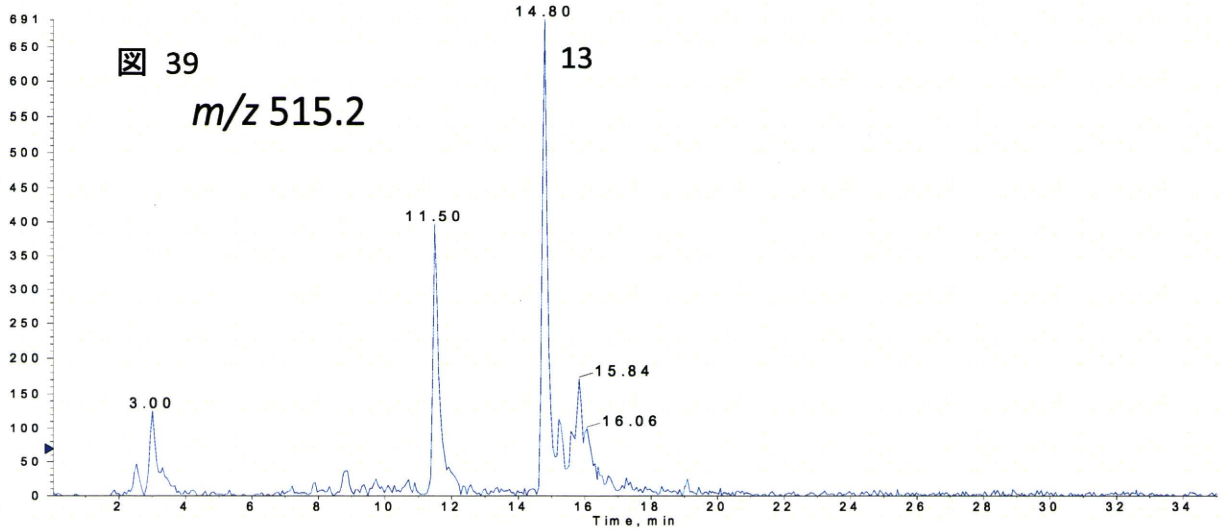
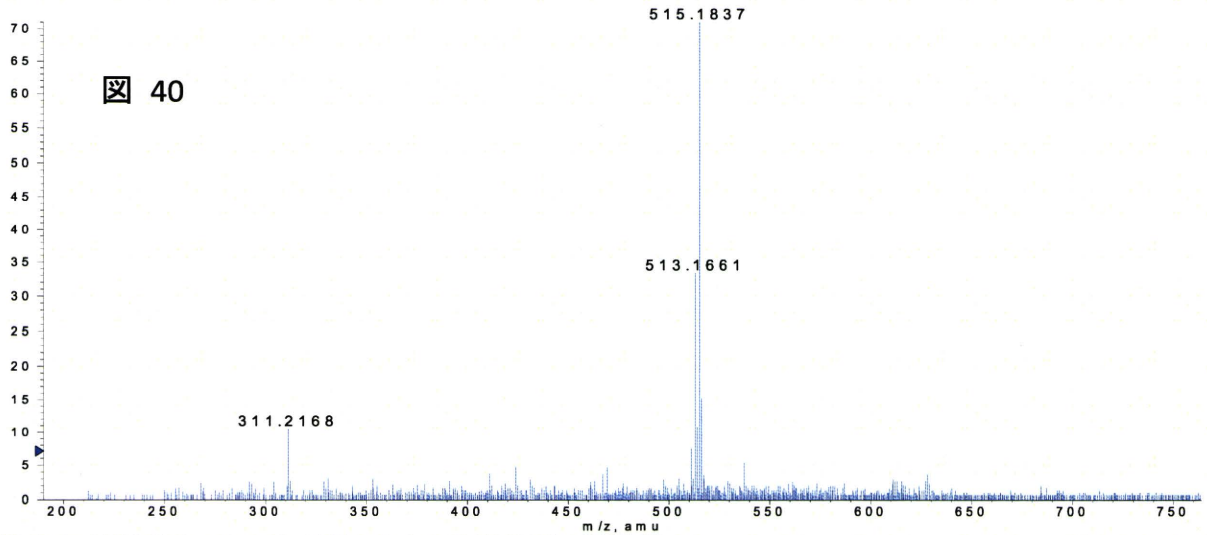


図 3 9 ~ 4 1 ソウジュツ(Negative)  $m/z$  515 の抽出イオンクロマトおよび MS, MS/MS

XIC of -TOF MS: Experiment 1, 515.124 to 515.243 amu from 20101124\_Neg\_006.wiff Max. 691.0 cps.



-TOF MS: Experiment 1, 14.740 to 14.862 min from 20101124\_Neg\_006.wiff Max. 71.0 counts.  
 $a=3.57538153066371930e-004$ ,  $t_0=-2.80192555123358030e+000$ , subtracted (14.436 to 14....



-TOF Product (515.2): Experiment 2, 14.774 min from 20101124\_Neg\_006.wiff Max. 4.0 counts.  
 $a=3.57538153066371930e-004$ ,  $t_0=-2.80192555123358030e+000$ , subtracted (4.745 to 5.171...

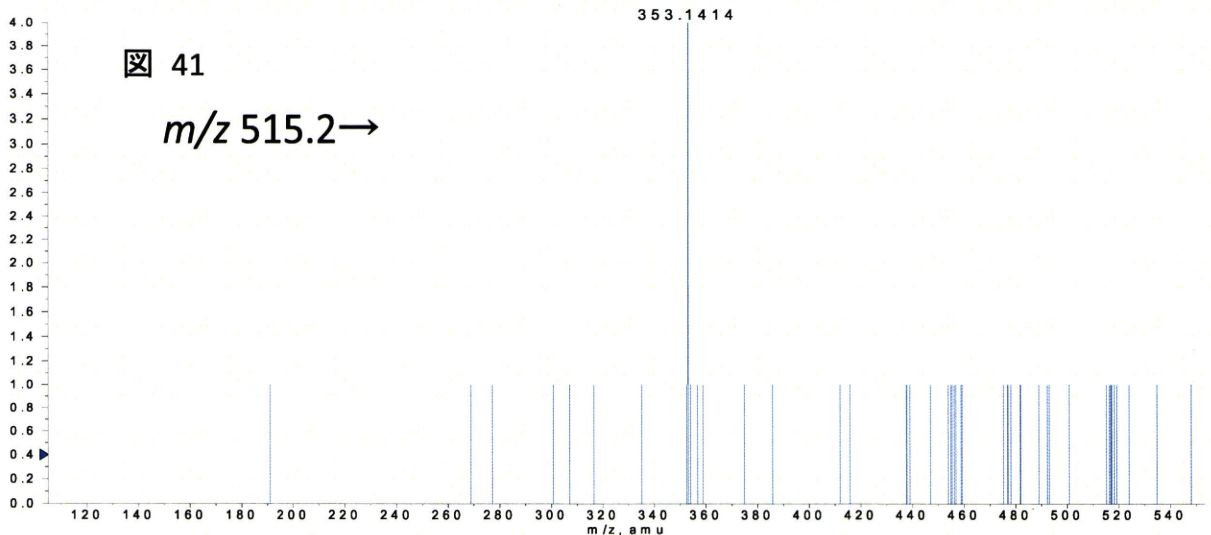
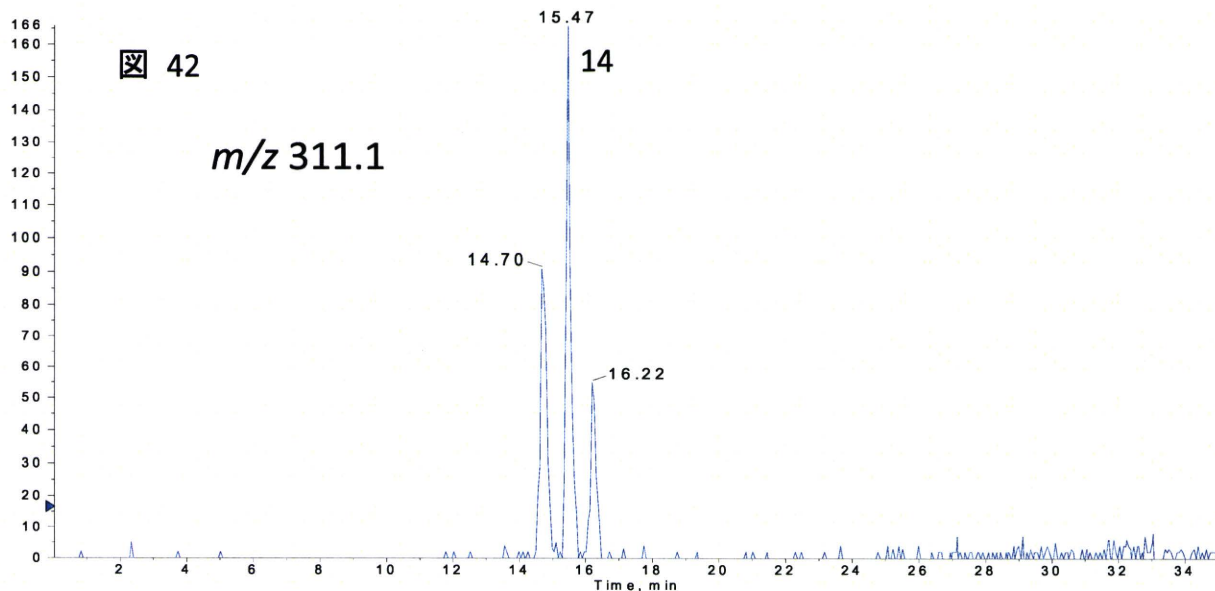




図 4 2 ~ 4 3 ソウジュツ(Negative)  $m/z$  311 の抽出イオンクロマトおよび MS

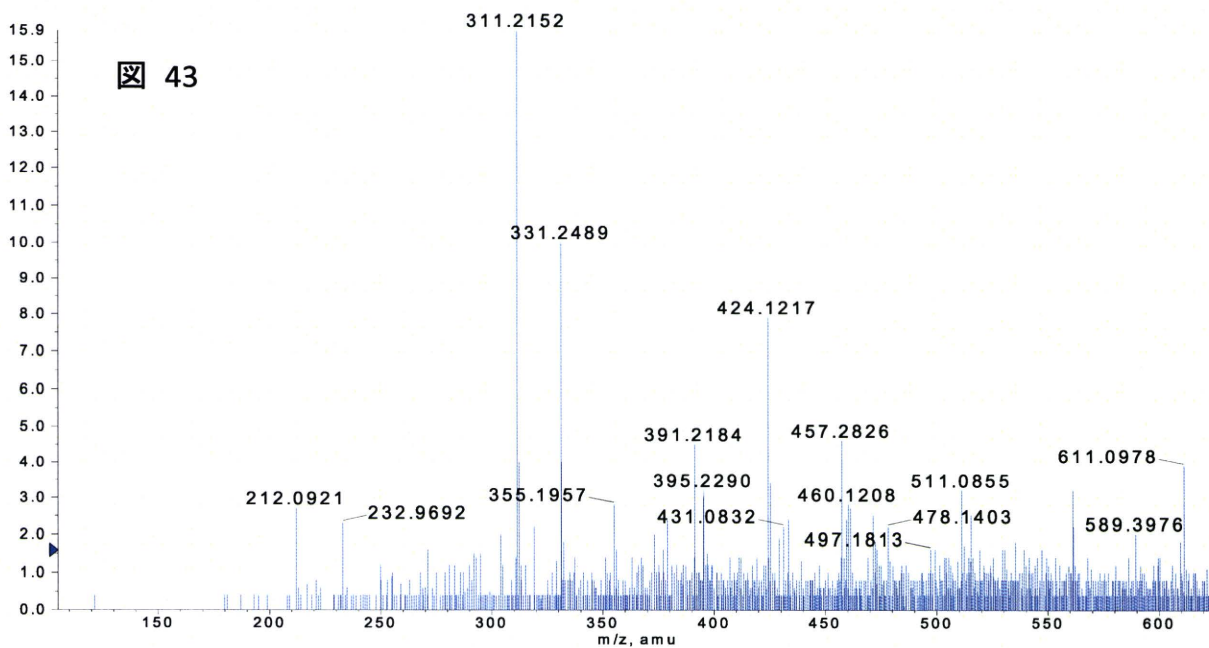
XIC of -TOF MS: Experiment 1, 311.201 to 311.238 amu from 20101124\_Neg\_006.wiff

Max. 166.0 cps.



-TOF MS: Experiment 1, 15.348 to 15.591 min from 20101124\_Neg\_006.wiff  
 $a=3.57538153066371930e-004$ ,  $t_0=-2.80192555123358030e+000$ , subtracted (15.105 to 15....

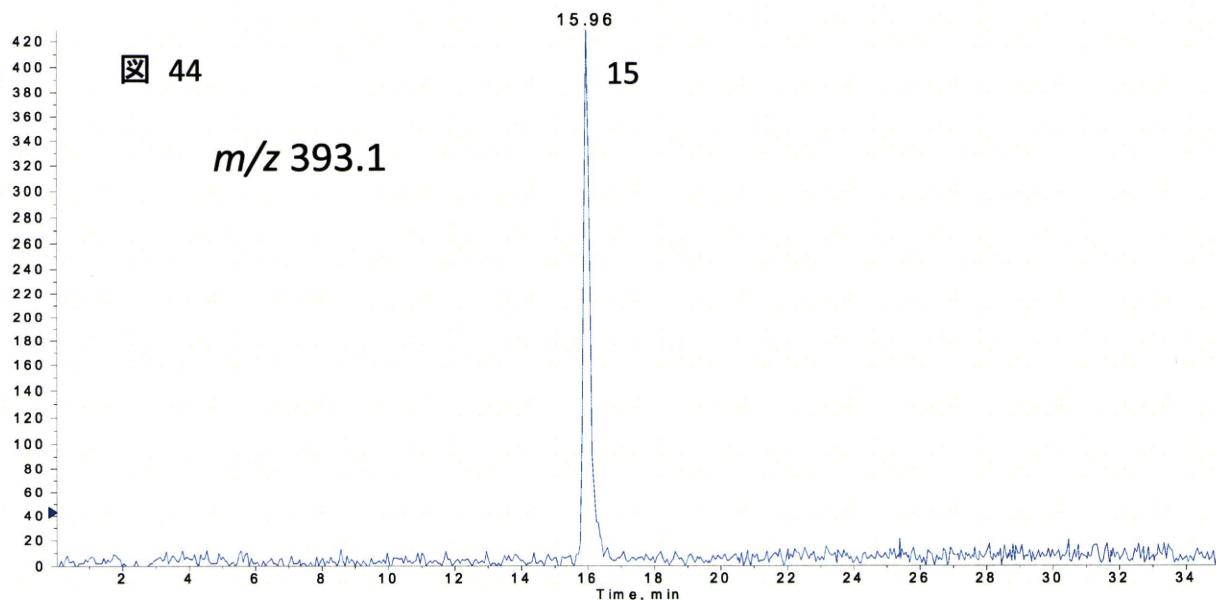
Max. 15.9 counts.



# 図 4 4 ~ 4 5 ソウジュツ(Negative) $m/z$ 393 の抽出イオンクロマトおよび MS

■ XIC of -TOF MS: Experiment 1, 393.015 to 393.061 amu from 20101124\_Neg\_006.wiff

Max. 429.0 cps.



■ -TOF MS: Experiment 1, 15.956 to 16.078 min from 20101124\_Neg\_006.wiff  
a=3.57538153066371930e-004, t0=-2.80192555123358030e+000, subtracted (15.044 to 15....

Max. 65.8 counts.

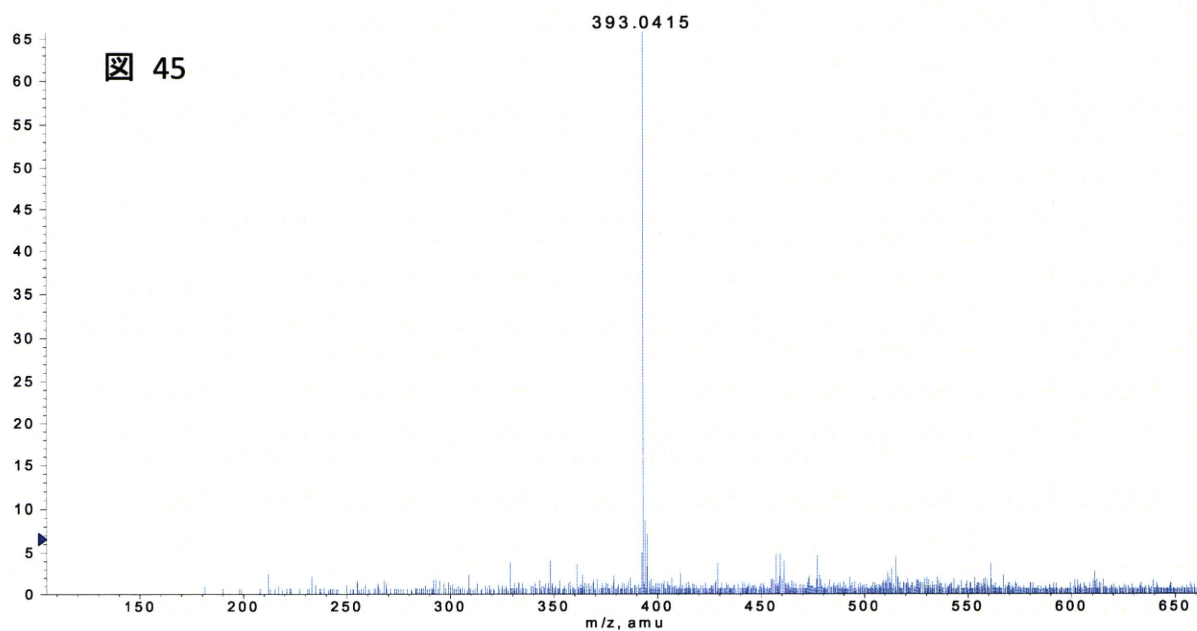
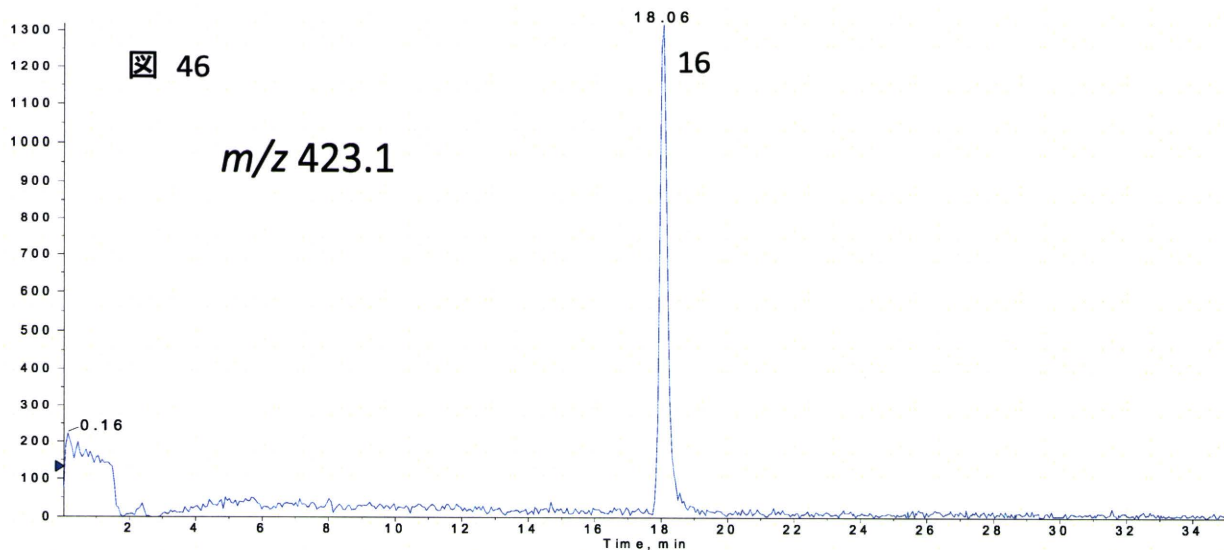


図 4 6 ~ 4 8 ソウジュツ(Negative)  $m/z$  423 の MS, MS/MS

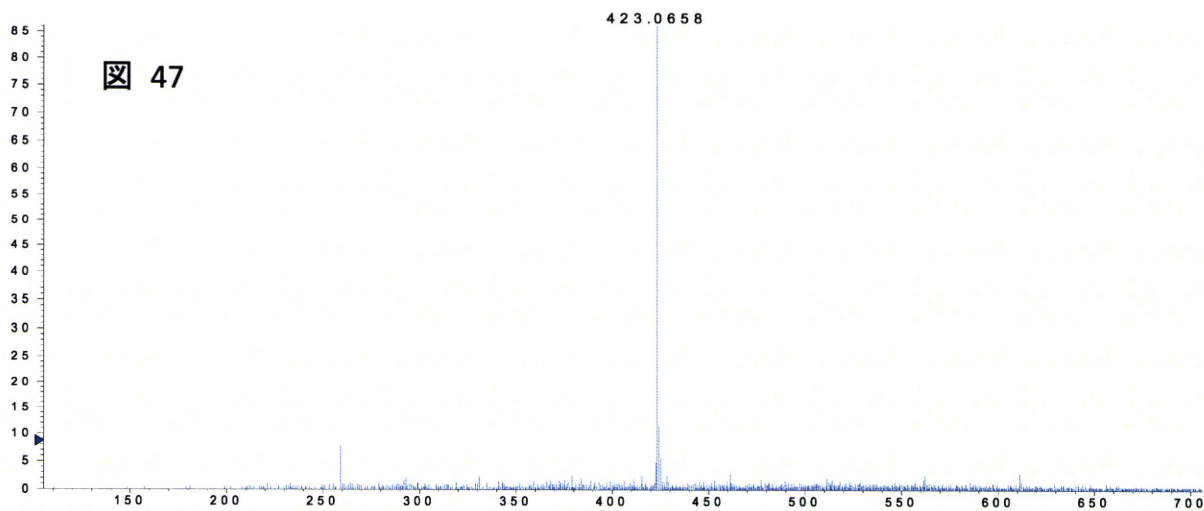
XIC of -TOF MS: Experiment 1, 422.808 to 423.308 amu from 20101124\_Neg\_006.wiff

Max. 1318.0 cps.



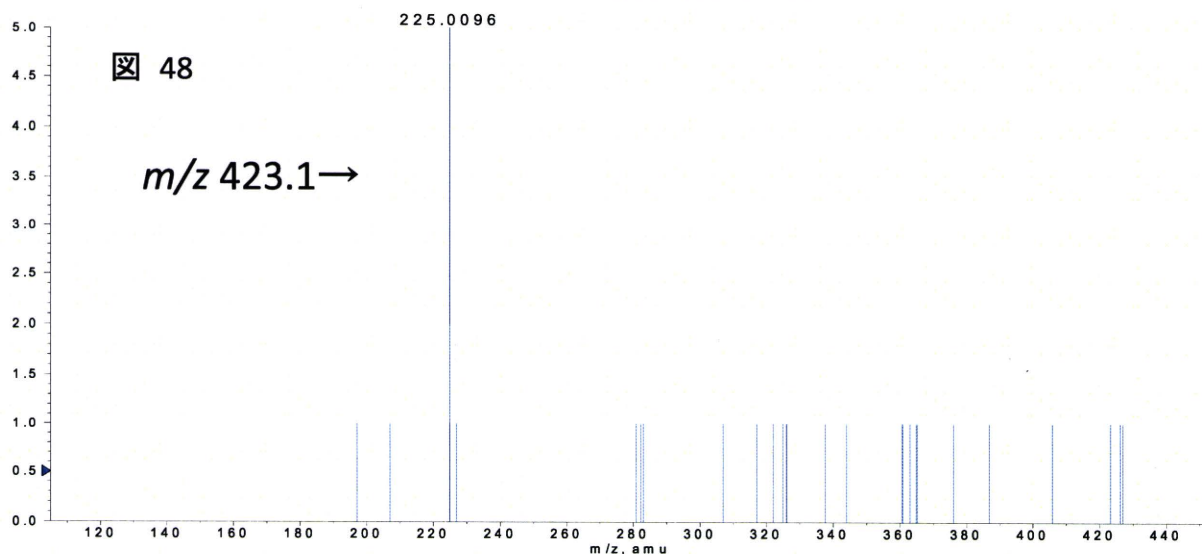
-TOF MS: Experiment 1, 17.956 to 18.199 min from 20101124\_Neg\_006.wiff  
 $a=3.57538153066371930e-004$ ,  $t_0=-2.80192555123358030e+000$ , subtracted (17.260 to 17....

Max. 86.2 counts.



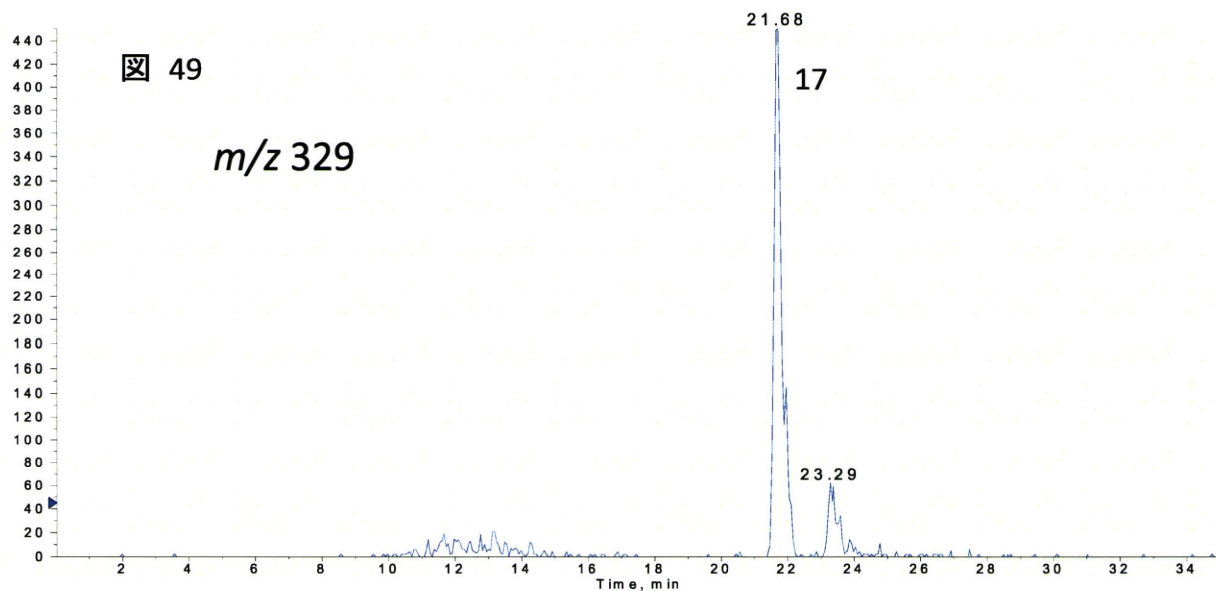
-TOF Product (423.1): Experiment 2, 18.112 min from 20101124\_Neg\_006.wiff  
 $a=3.57538153066371930e-004$ ,  $t_0=-2.80192555123358030e+000$ , subtracted (16.504 to 16.8...

Max. 5.0 counts.



# 図 49～50 ソウジュツ(Negative) $m/z$ 329 の抽出イオンクロマトおよび MS

■ XIC of -TOF MS: Experiment 1, 329.218 to 329.308 amu from 20101124\_Neg\_006.wiff Max. 450.0 cps.



■ -TOF MS: Experiment 1, 21.530 to 21.834 min from 20101124\_Neg\_006.wiff  
a=3.57538153066371930e-004, t0=-2.80192555123358030e+000, subtracted (21.199 to 21.... Max. 38.7 counts.

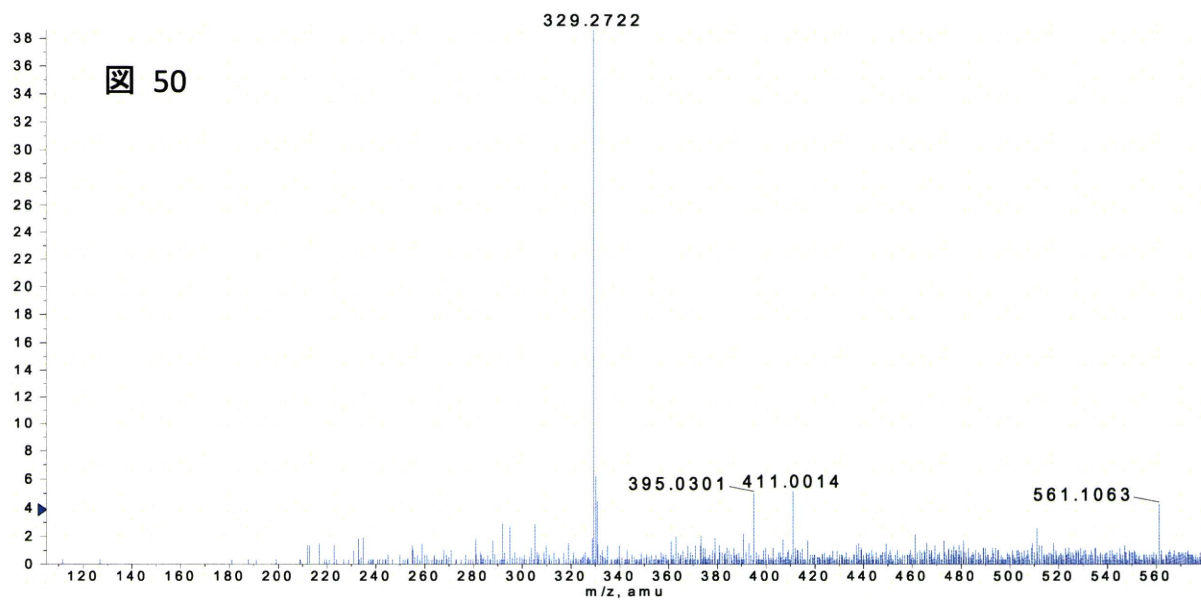
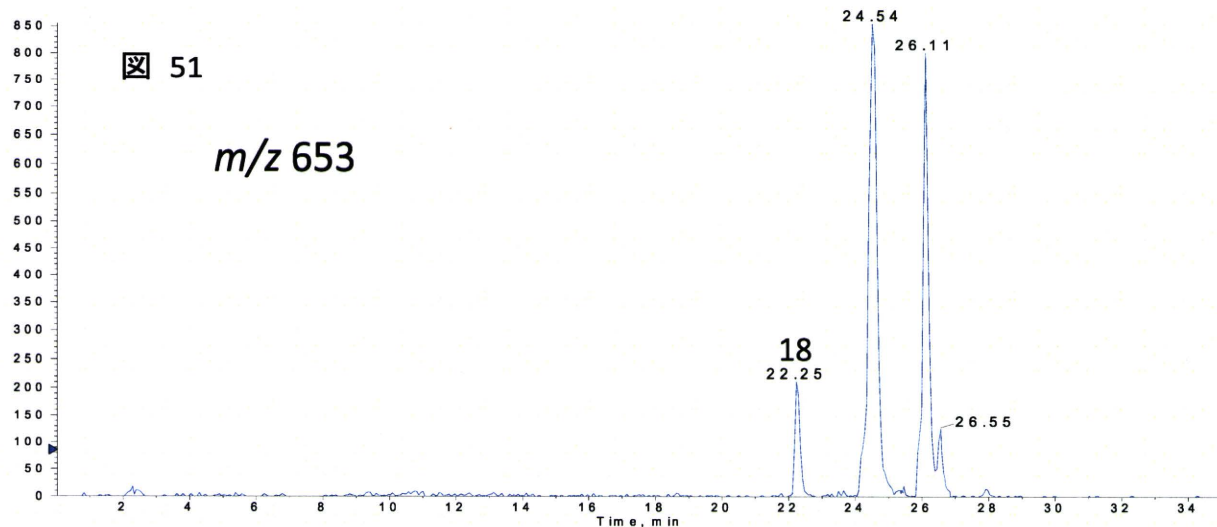




図 5 1 ~ 5 3 ソウジュツ(Negative)  $m/z$  653 の抽出イオンクロマトおよび MS, MS/MS

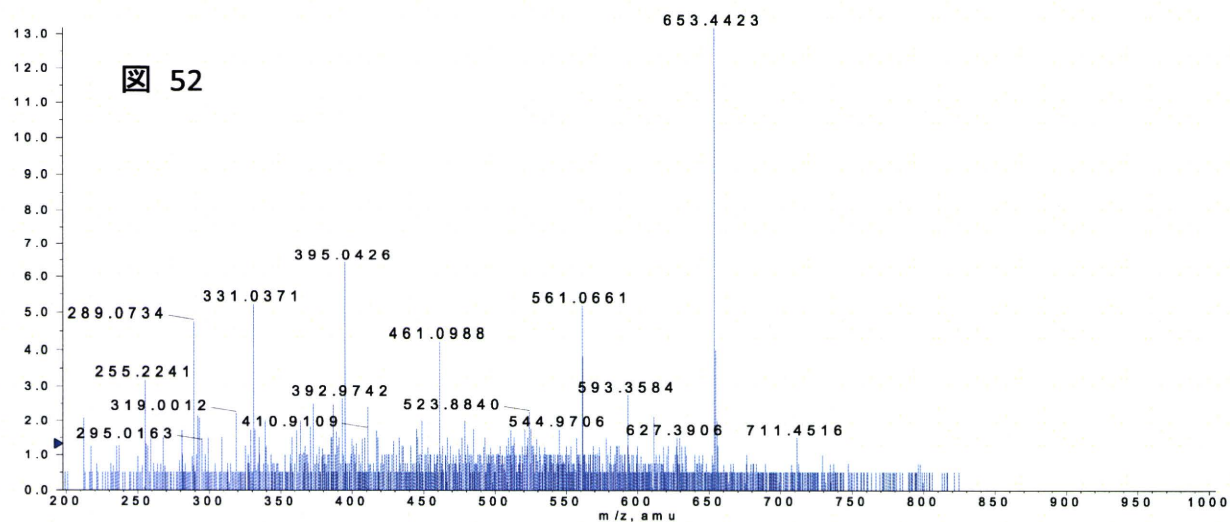
XIC of -TOF MS: Experiment 1, 653.355 to 653.530 amu from 20101124\_Neg\_006.wiff

Max. 855.0 cps.



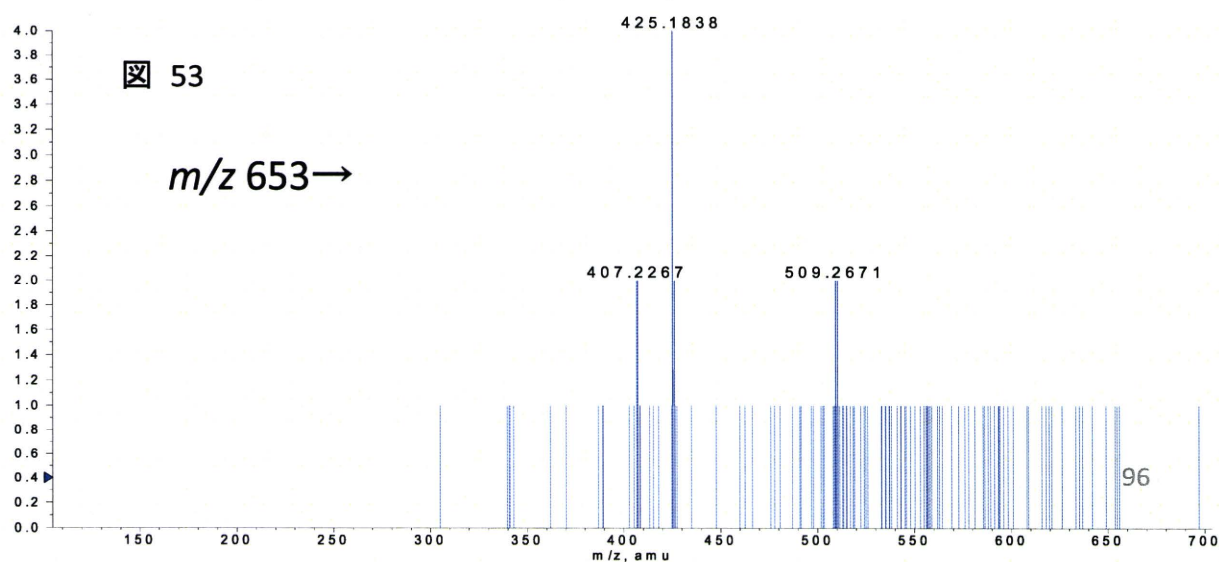
-TOF MS: Experiment 1, 22.165 to 22.347 min from 20101124\_Neg\_006.wiff  
 $a=3.57538153066371930e-004$ ,  $t_0=-2.80192555123358030e+000$ , subtracted (21.591 to 21....

Max. 13.2 counts.



-TOF Product (653.4): Experiment 2, 22.199 min from 20101124\_Neg\_006.wiff  
 $a=3.57538153066371930e-004$ ,  $t_0=-2.80192555123358030e+000$ , subtracted (20.361 to 20.7...

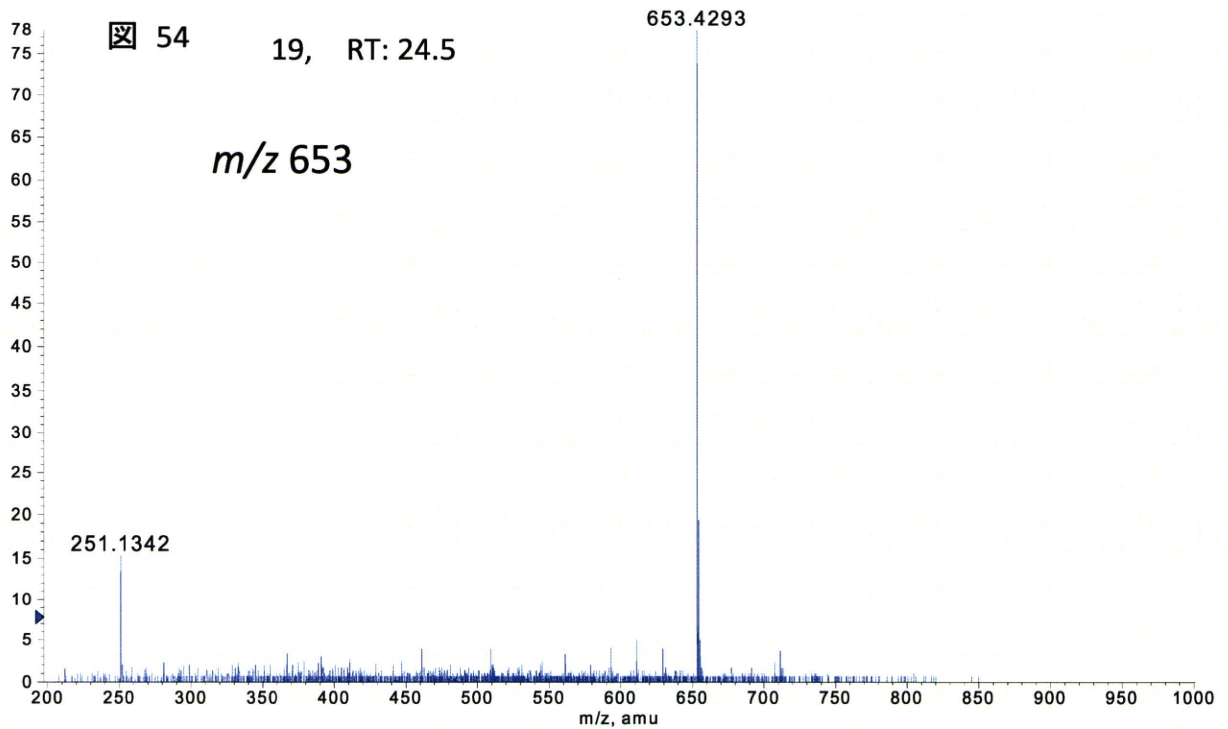
Max. 4.0 counts.



☒ 5 4 ~ 5 5 ソウジュツ(Negative) r.t. 24.5 min, m/z 653 の MS, MS/MS

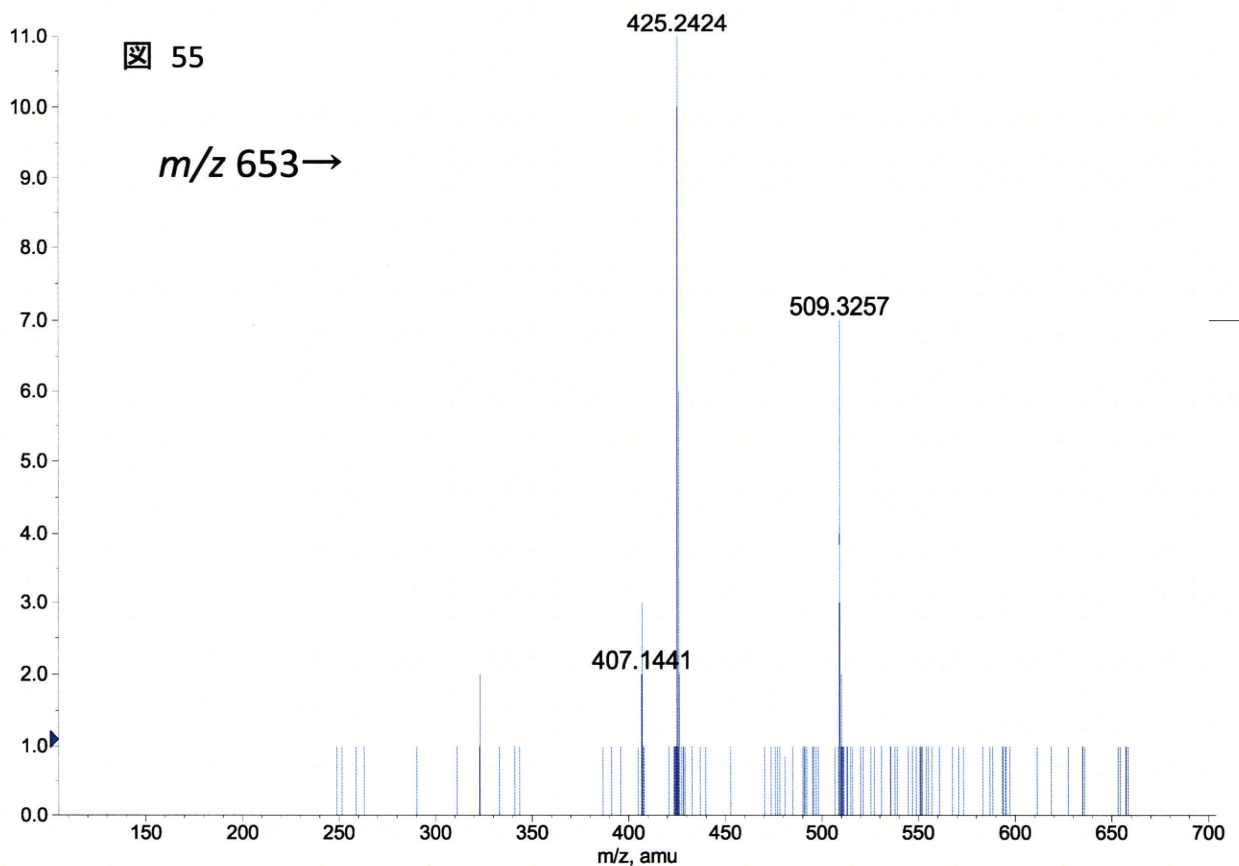
-TOF MS: Experiment 1, 24.461 to 24.583 min from 20101124\_Neg\_006.wiff  
a=3.57538153066371930e-004, t0=-2.80192555123358030e+000, subtracted (23.522 to 23....

Max. 77.9 counts.



-TOF Product (653.4): Experiment 2, 24.617 min from 20101124\_Neg\_006.wiff  
a=3.57538153066371930e-004, t0=-2.80192555123358030e+000, subtracted (20.361 to 20....

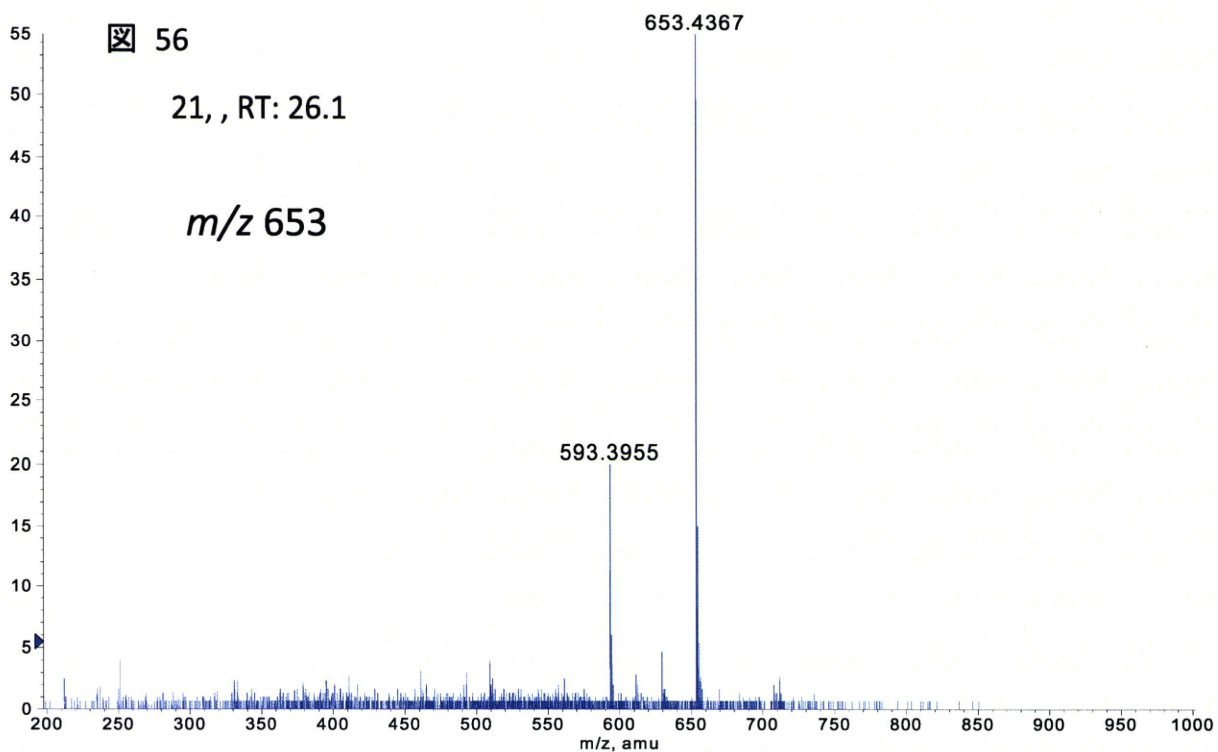
Max. 11.0 counts.



# ☒ 56 ~ 57 ソウジュツ(Negative) r.t. 26.1 min, m/z 653 の MS, MS/MS

-TOF MS: Experiment 1, 26.049 to 26.170 min from 20101124\_Neg\_006.wiff  
a=3.57538153066371930e-004, t0=-2.80192555123358030e+000, subtracted (25.448 to 25....

Max. 54.7 counts.



-TOF Product (653.4): Experiment 2, 26.143 min from 20101124\_Neg\_006.wiff  
a=3.57538153066371930e-004, t0=-2.80192555123358030e+000, subtracted (20.361 to 20.7...

Max. 9.0 counts.

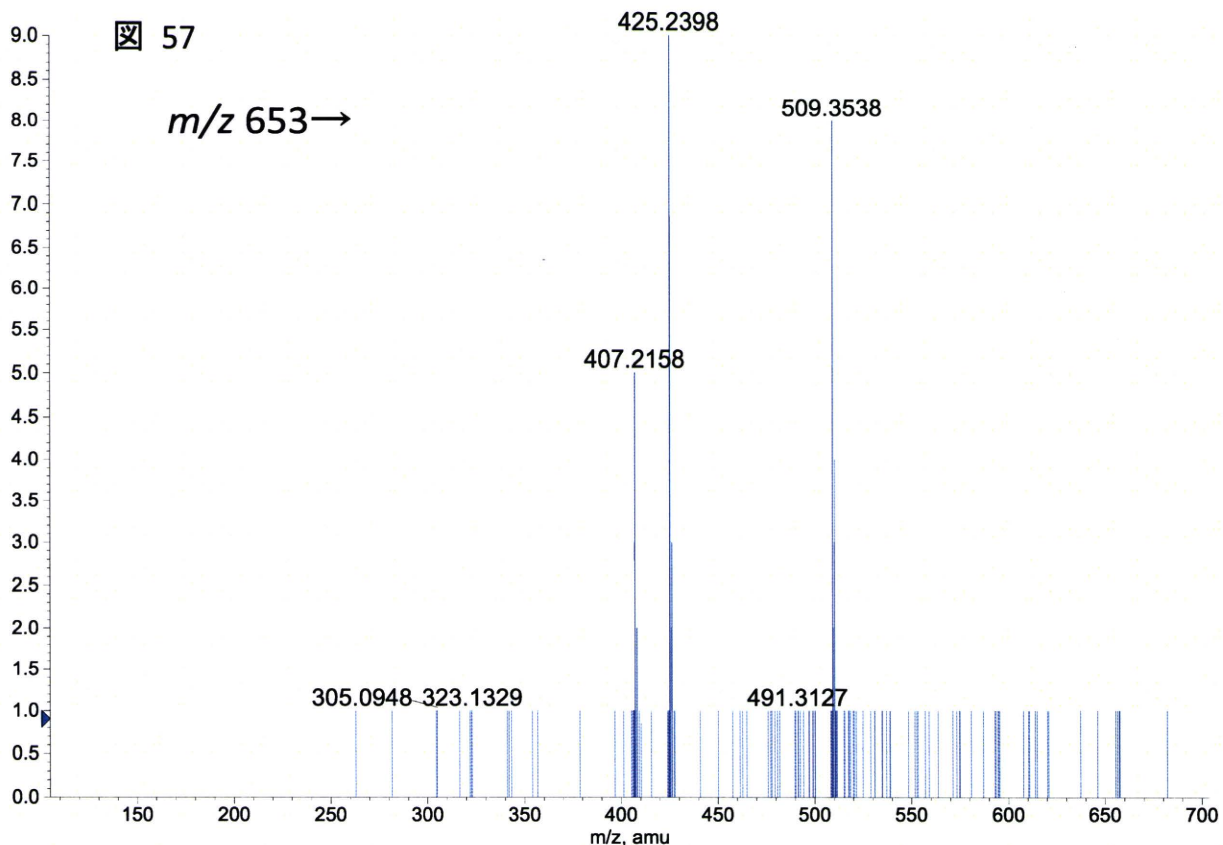
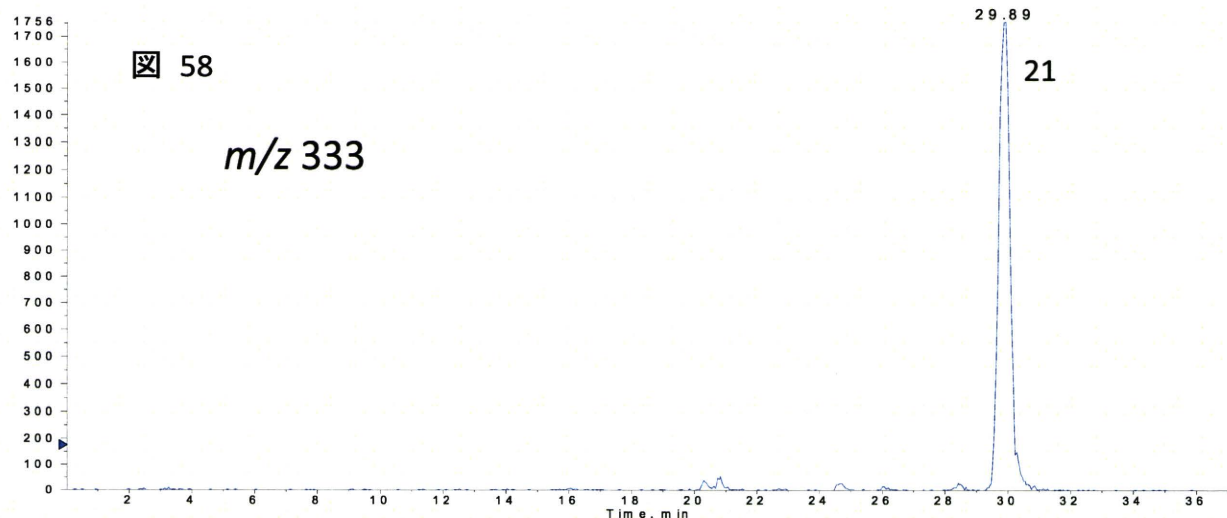


図 58~60 ソウジュツ(Negative)  $m/z$  333 の抽出イオンクロマトおよび MS, MS/MS

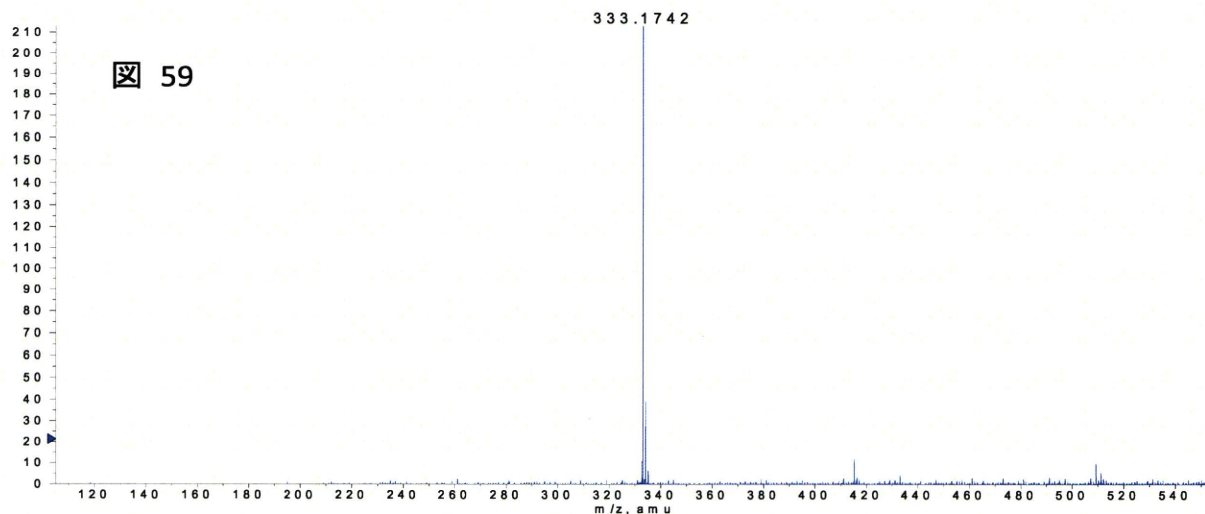
XIC of -TOF MS: Experiment 1, 333.137 to 333.220 amu from 20101124\_Neg\_006.wiff

Max. 1756.0 cps.



-TOF MS: Experiment 1, 29.859 to 30.041 min from 20101124\_Neg\_006.wiff  
 a=3.57538153066371930e-004, t0=-2.80192555123358030e+000, subtracted (28.670 to 2...

Max. 212.9 counts.



-TOF Product (333.2): Experiment 2, 29.893 min from 20101124\_Neg\_006.wiff  
 a=3.57538153066371930e-004, t0=-2.80192555123358030e+000, subtracted (29.119 to 29.4...

Max. 3.0 counts.

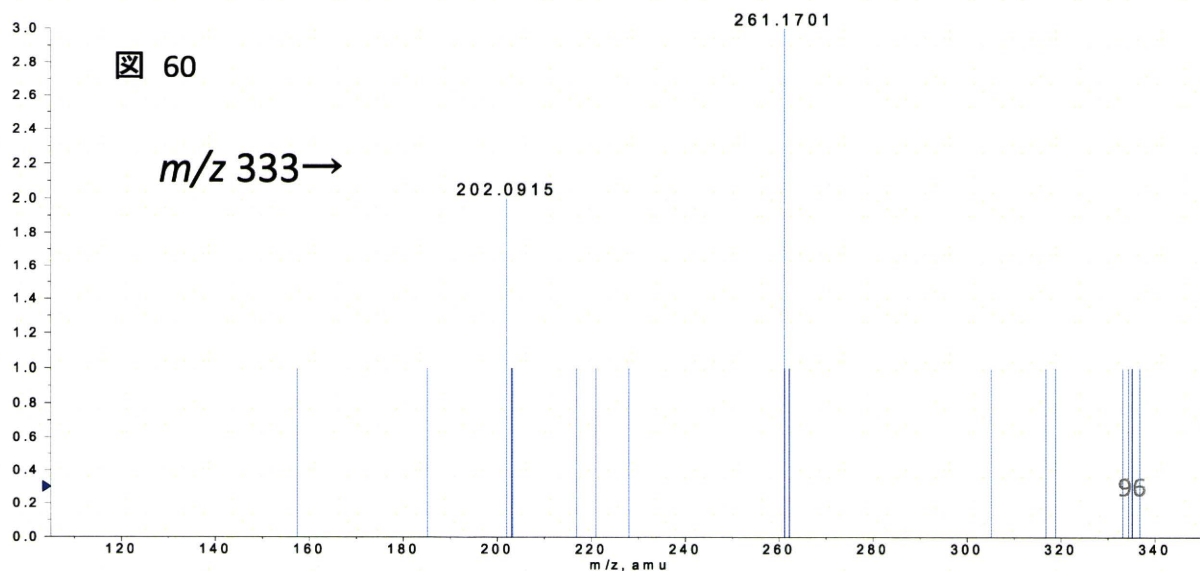




図 1-1 ショウキョウ(Positive) UV チャート

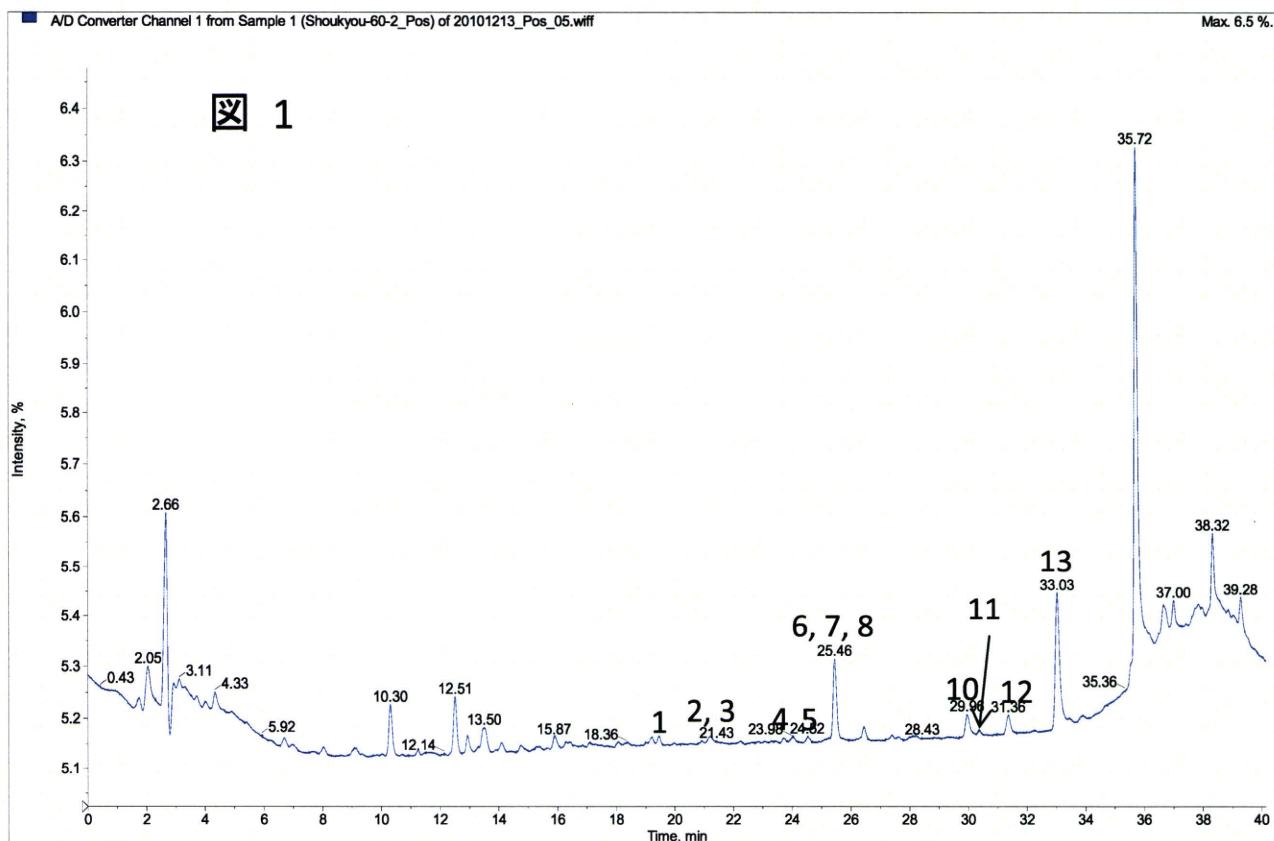


図 1-2 ショウキョウ(Negative) UV チャート

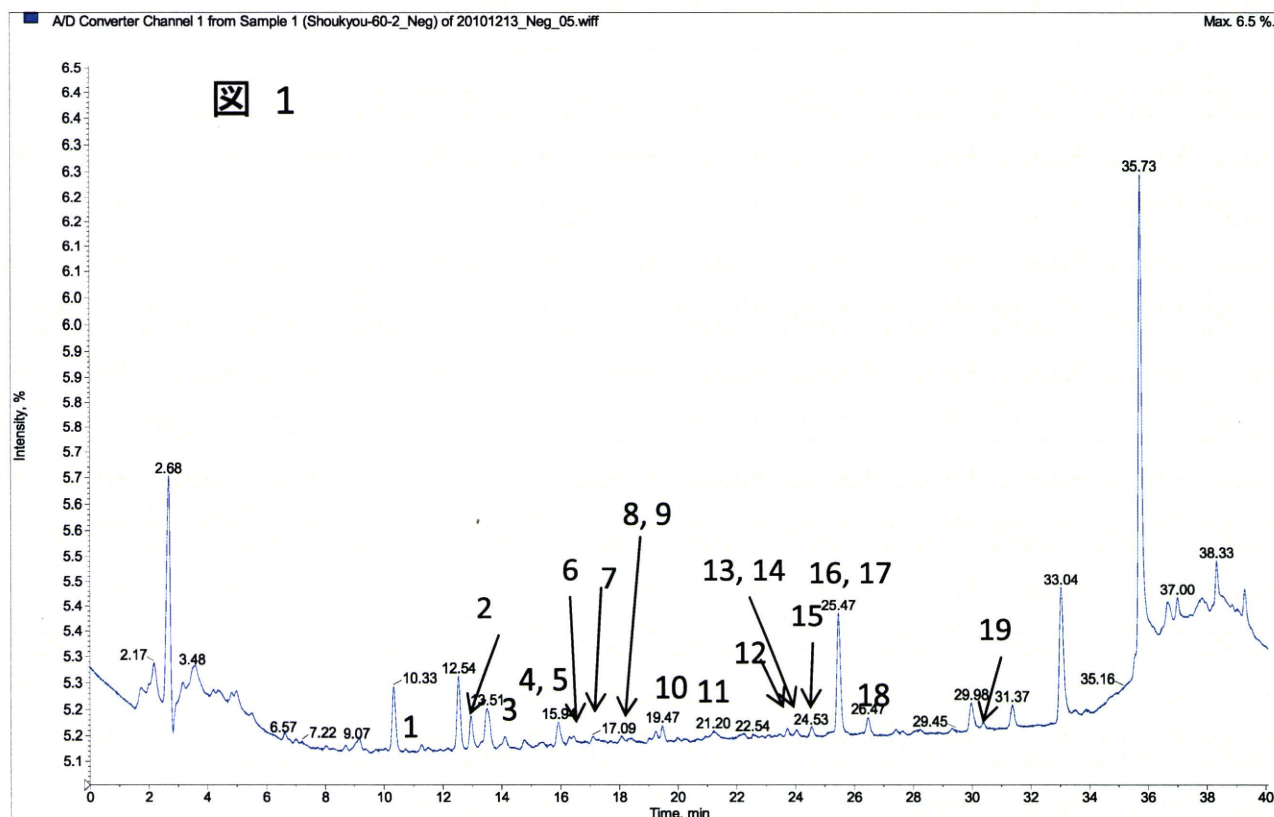


図 2-1 ショウキョウ(Positive) TIC チャート

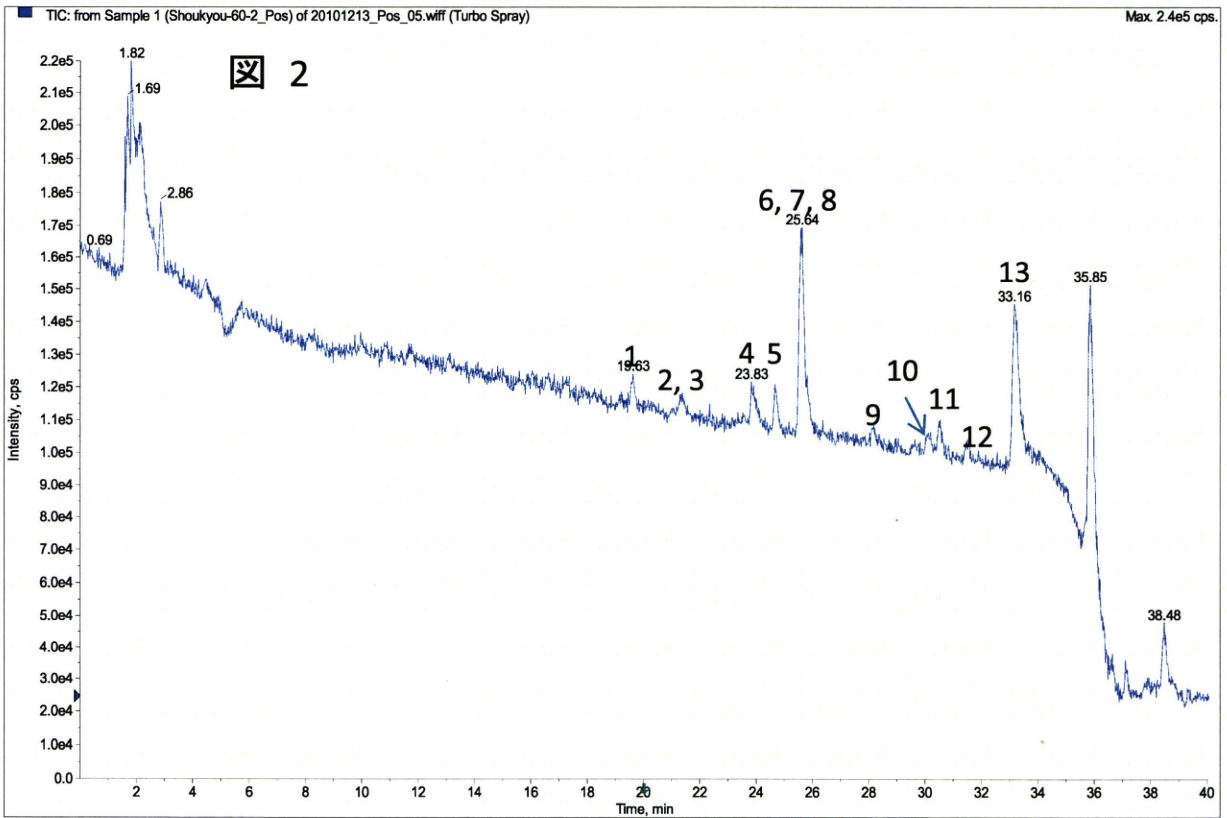


図 2-2 ショウキョウ(Negative) TIC チャート

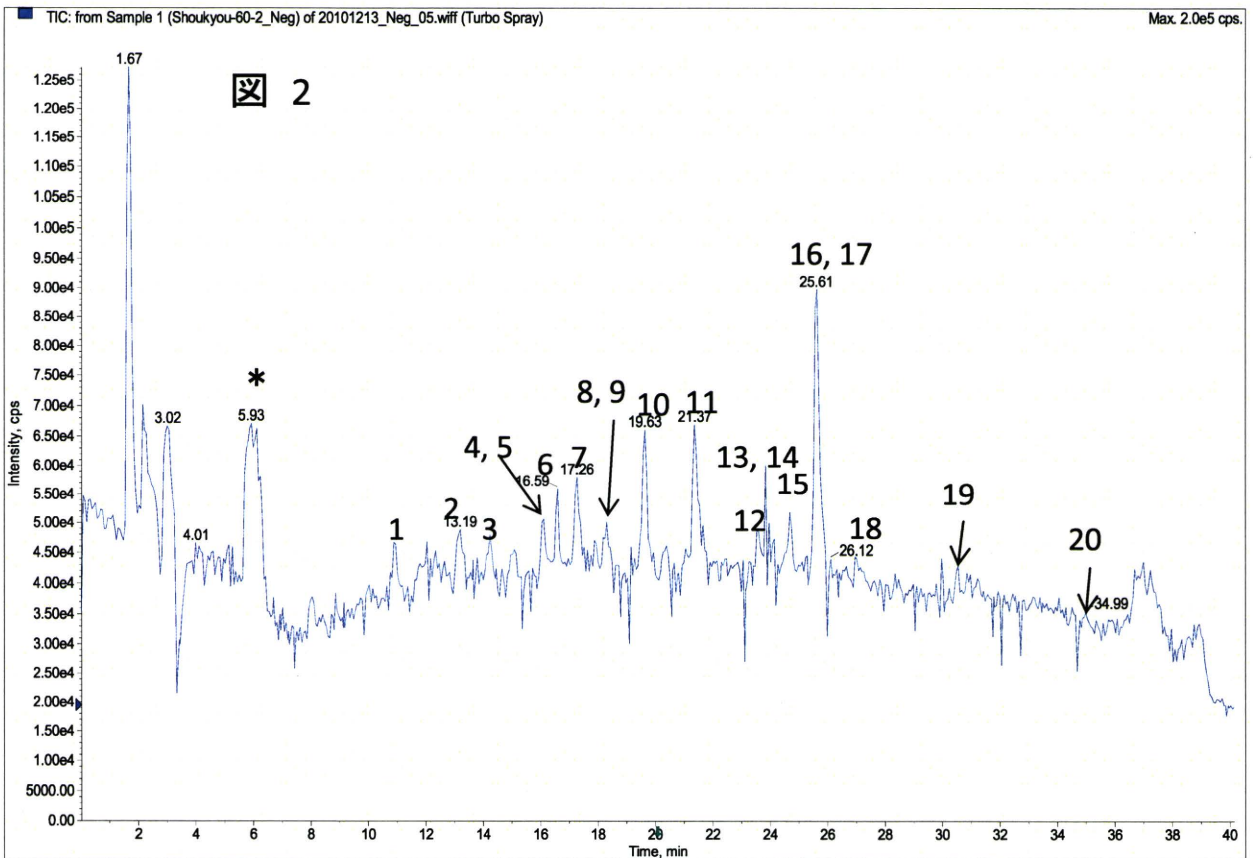


図3～5 ショウキョウ(Positive) m/z 357の抽出イオンクロマトおよびMS, MS/MS

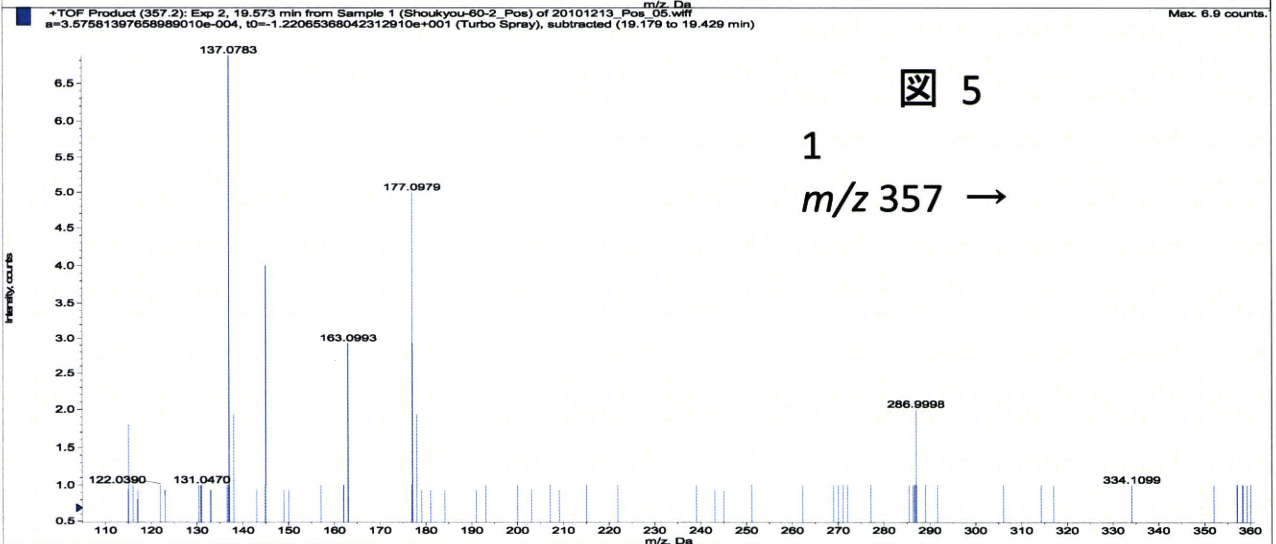
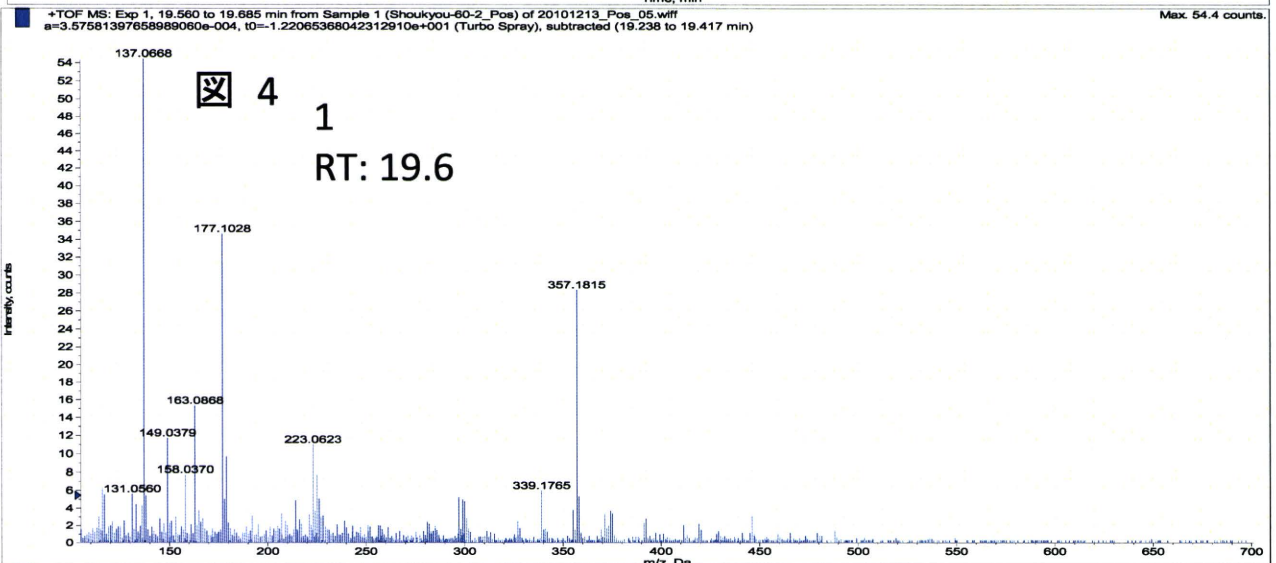
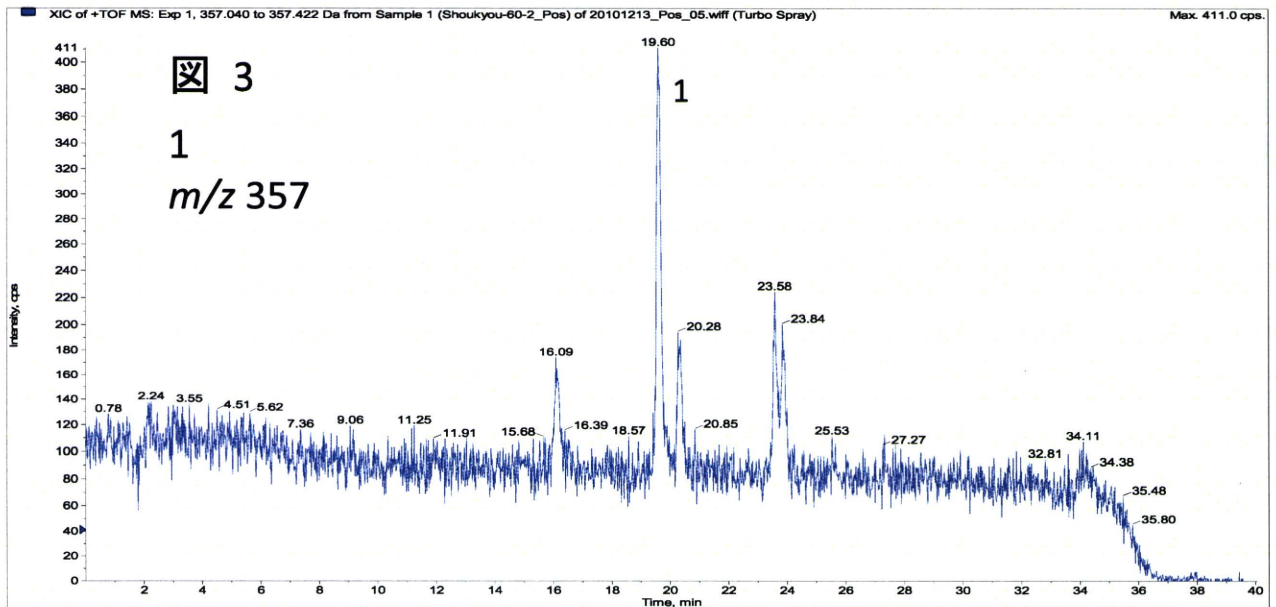




図6～8 ショウキョウ(Positive) m/z 450,373 の抽出イオンクロマトおよび r.t.21.3 min の MS

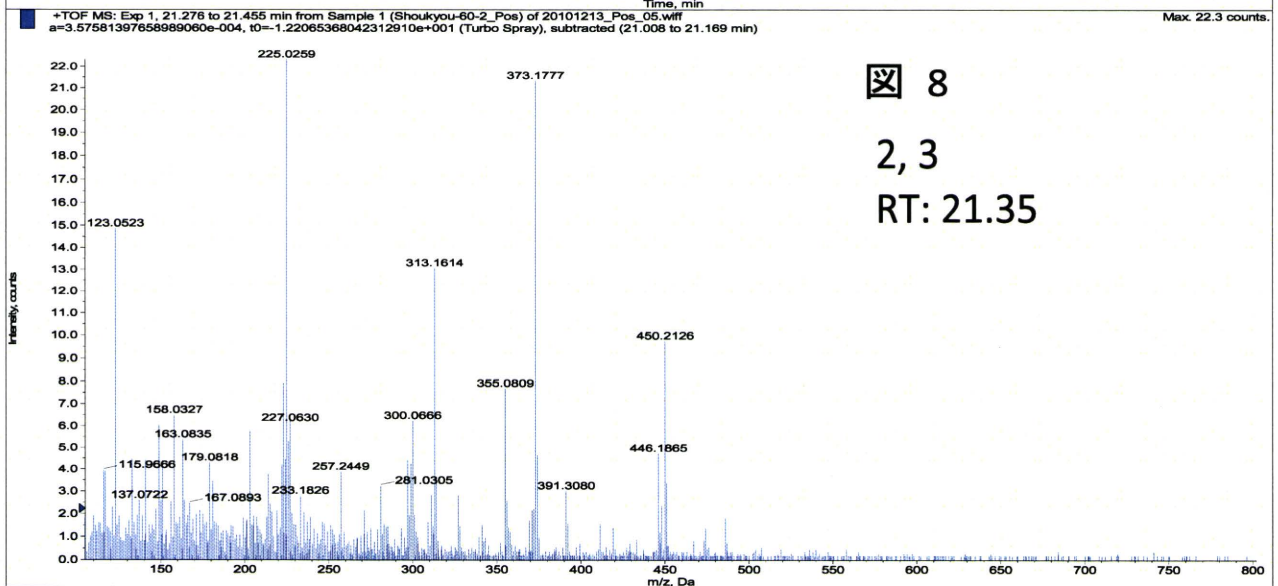
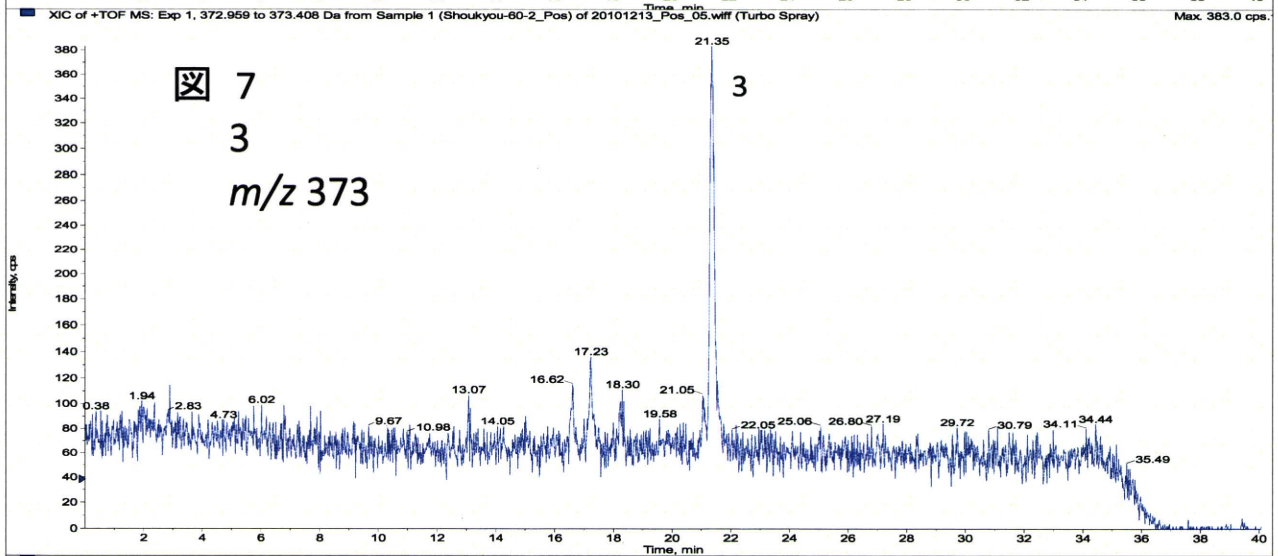
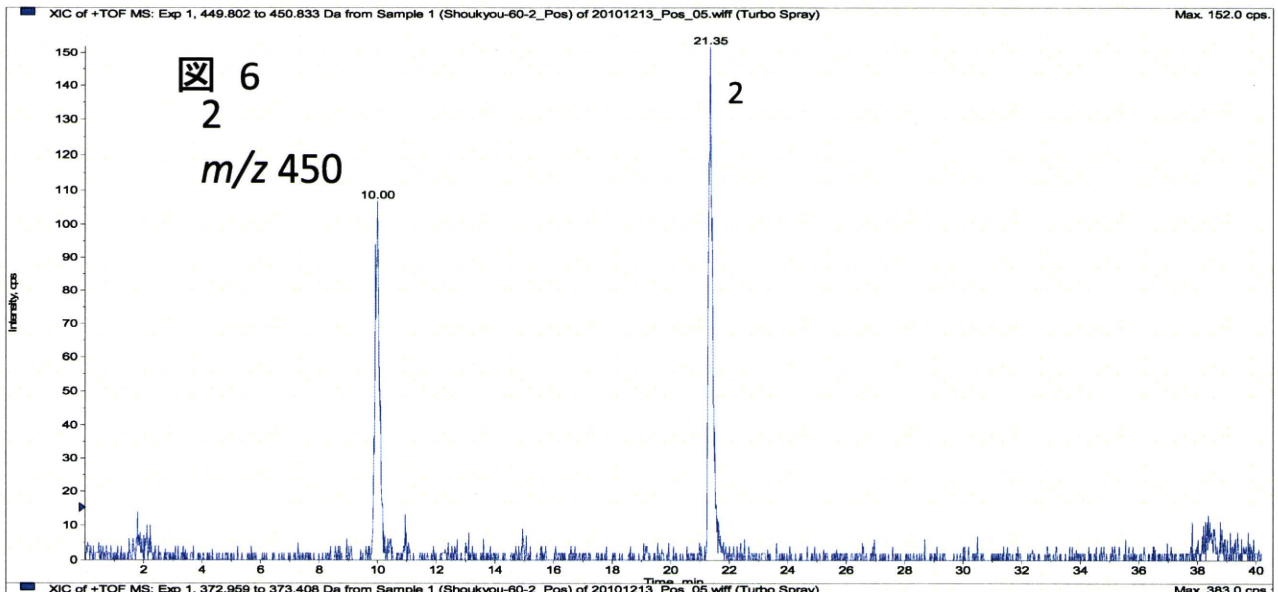




図 9～10 ショウキョウ(Positive) m/z 450, 373 の MS/MS

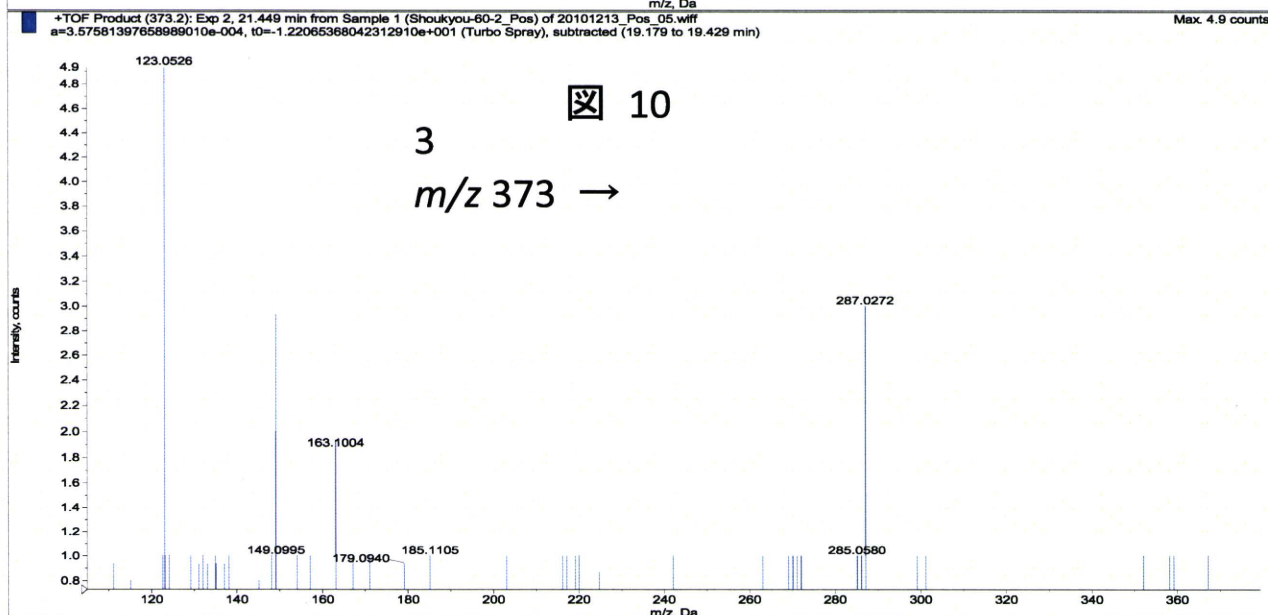
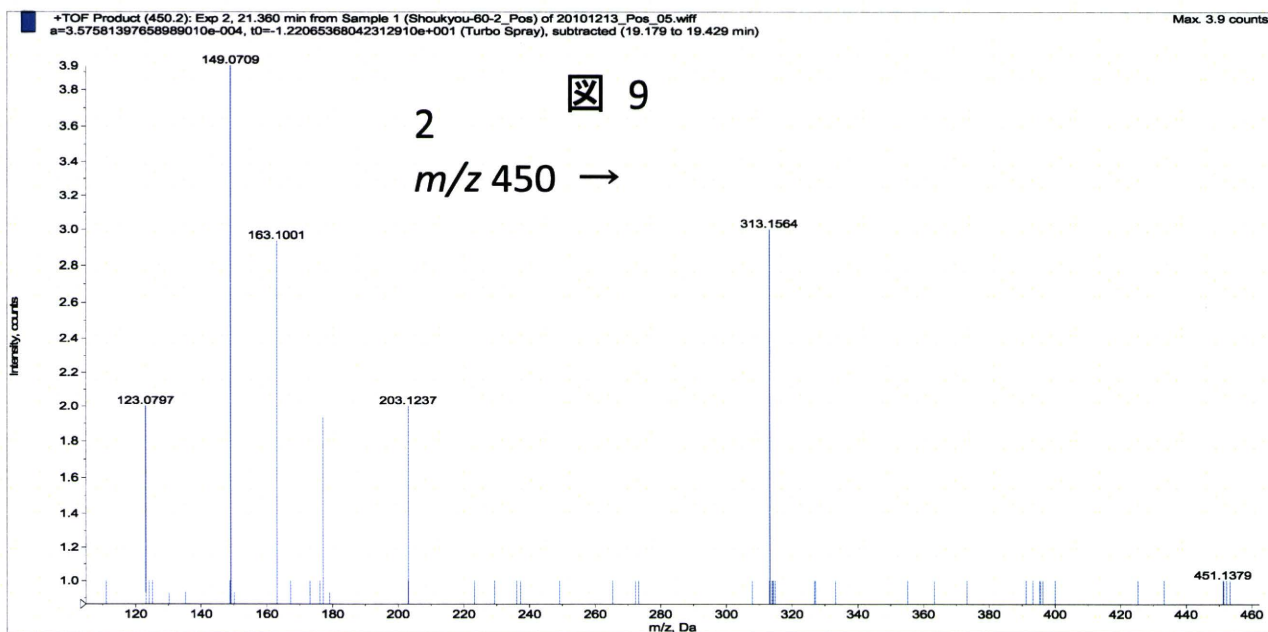


図 11~13 ショウキョウ(Positive)  $m/z$  261 の抽出イオンクロマトおよび MS, MS/MS

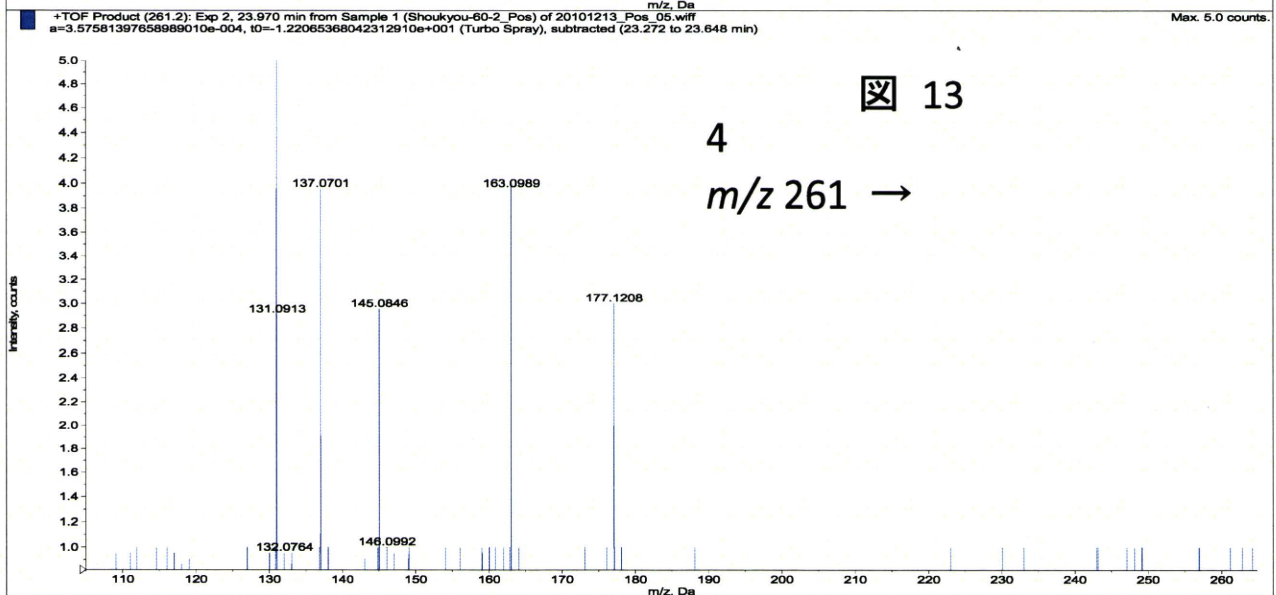
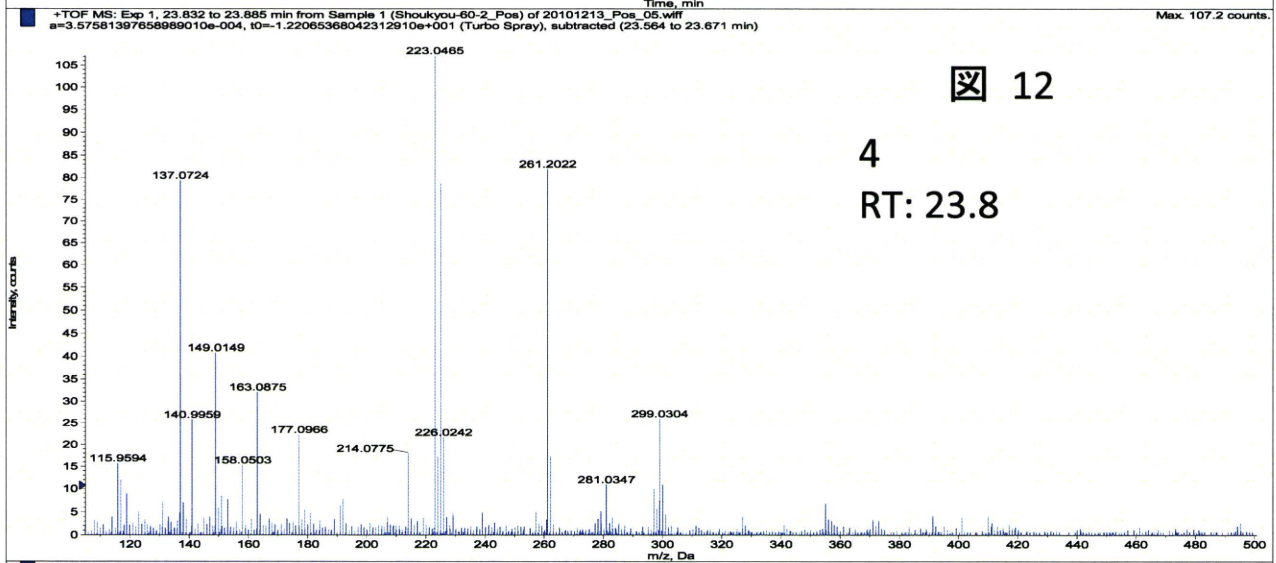
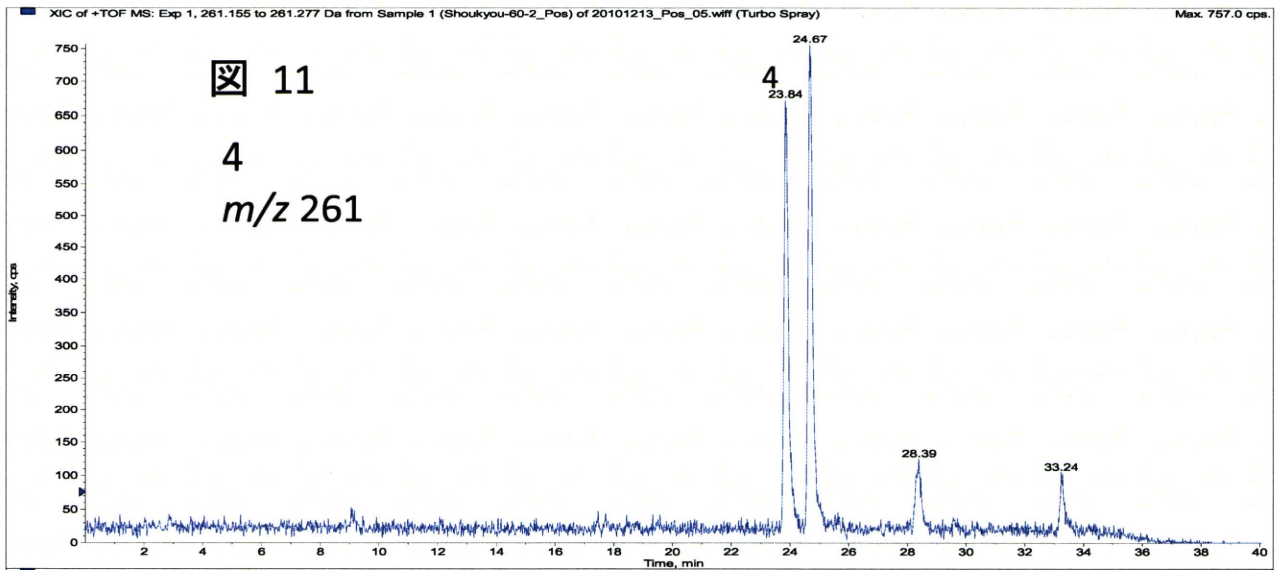


図 14~16 ショウキョウ(Positive)  $m/z$  261 の抽出イオンクロマトおよび MS, MS/MS

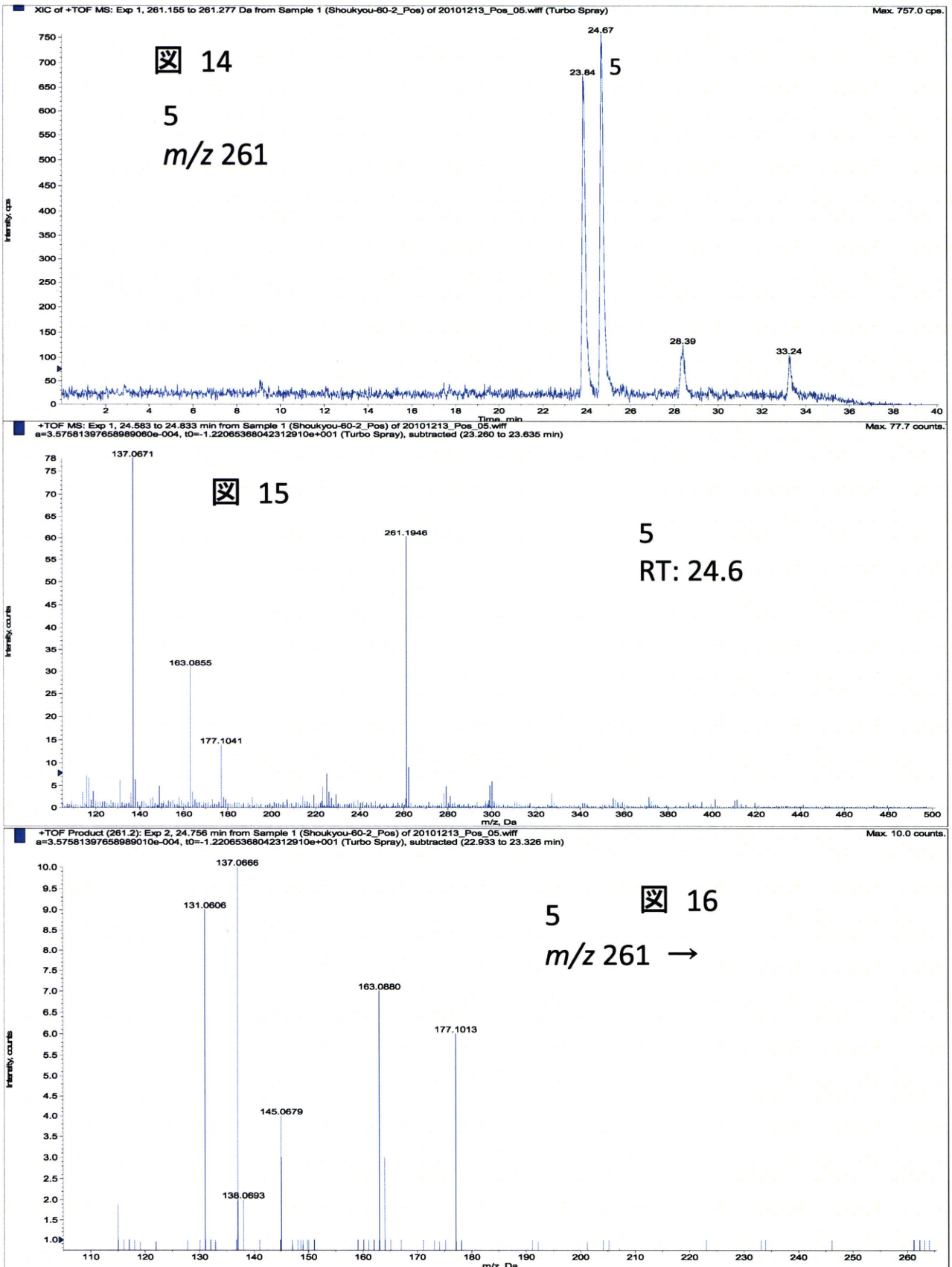


図 17~19 ショウキョウ(Positive)  $m/z$  587, 470, 277 の抽出イオンクロマト

