

図 2 6 ソウジュツ(Positive) m/z 253 の抽出イオンクロマト

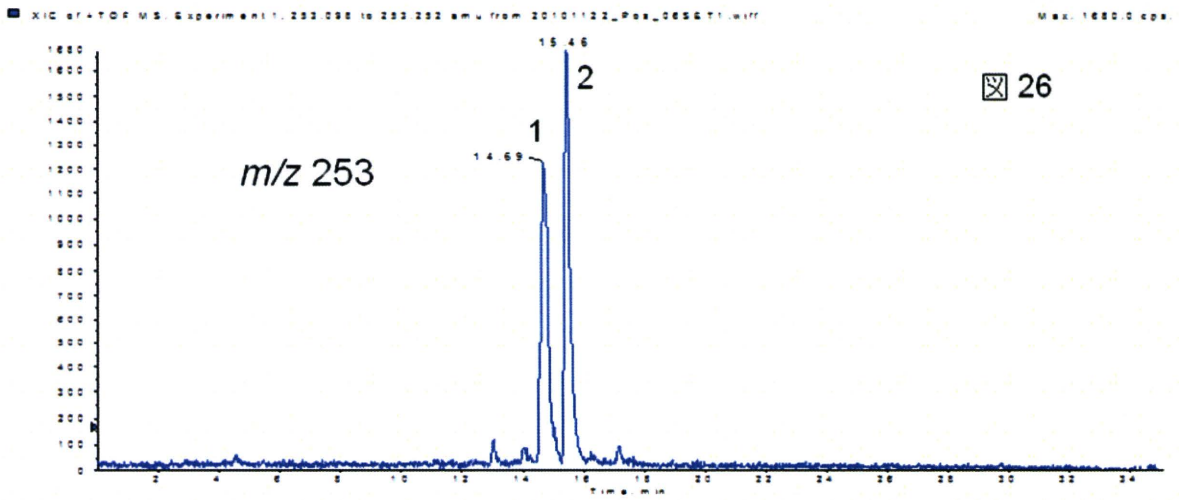


図 2 7 ソウジュツ(Positive) r.t.14.6-14.8min のMS

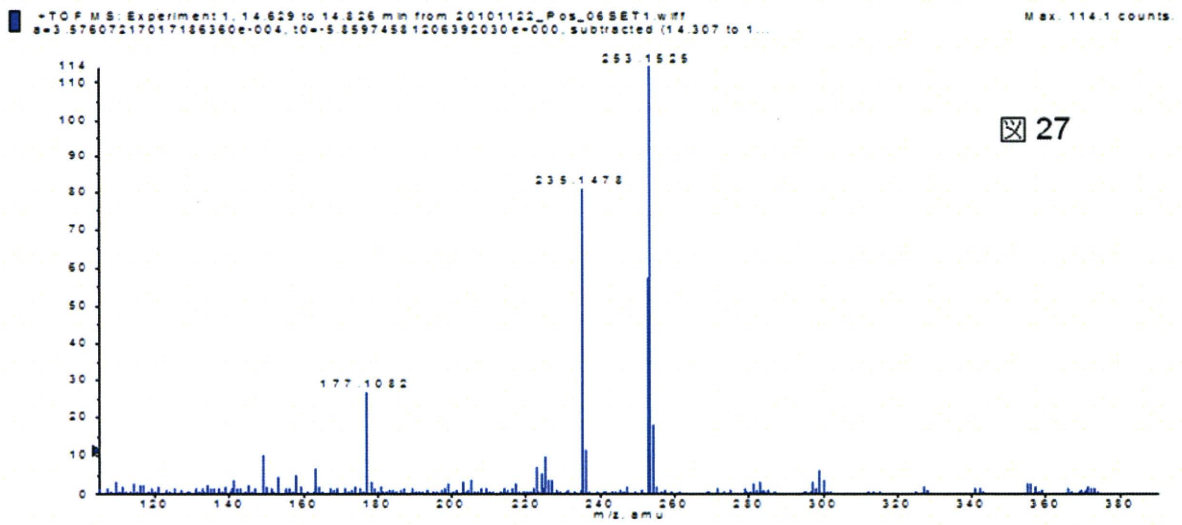


図 2 8 ソウジュツ(Positive) m/z 253 の MS/MS

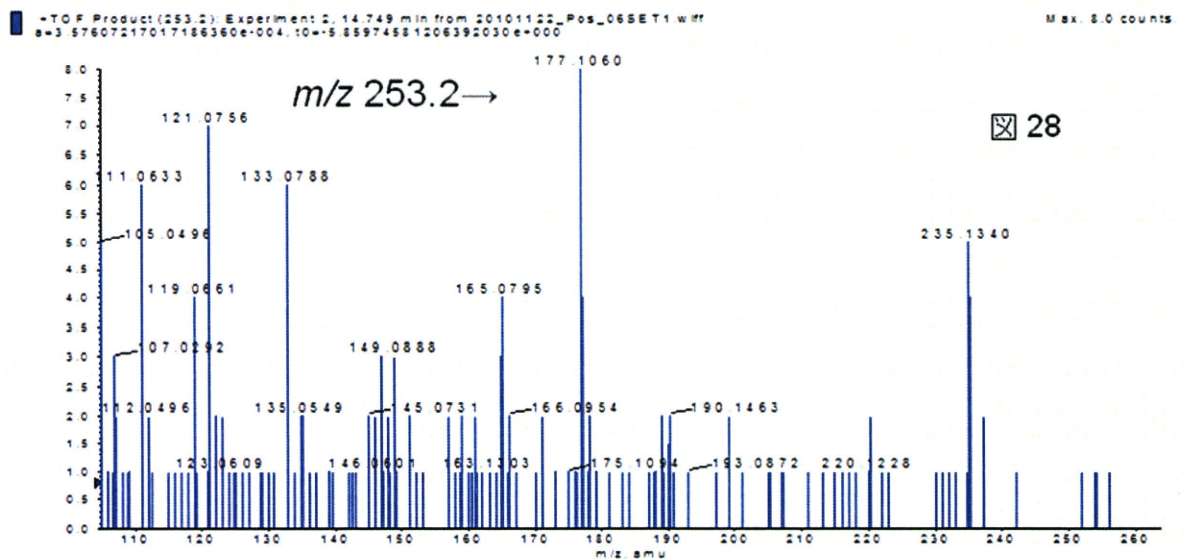


図 29 ソウジュツ(Positive) r.t.15.4min のMS

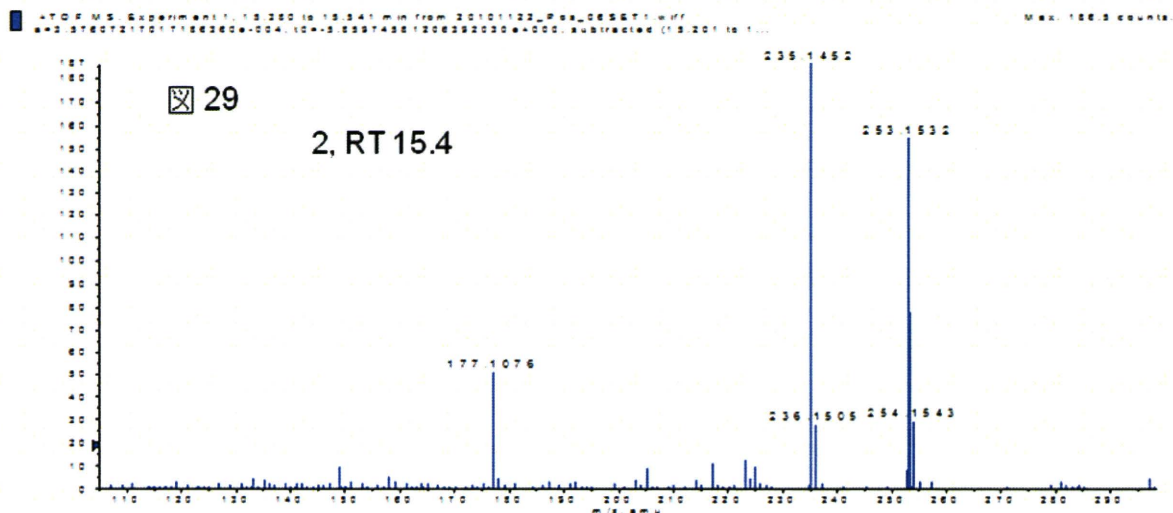


図 30~31 ソウジュツ(Positive) m/z235, 253 の MS/MS

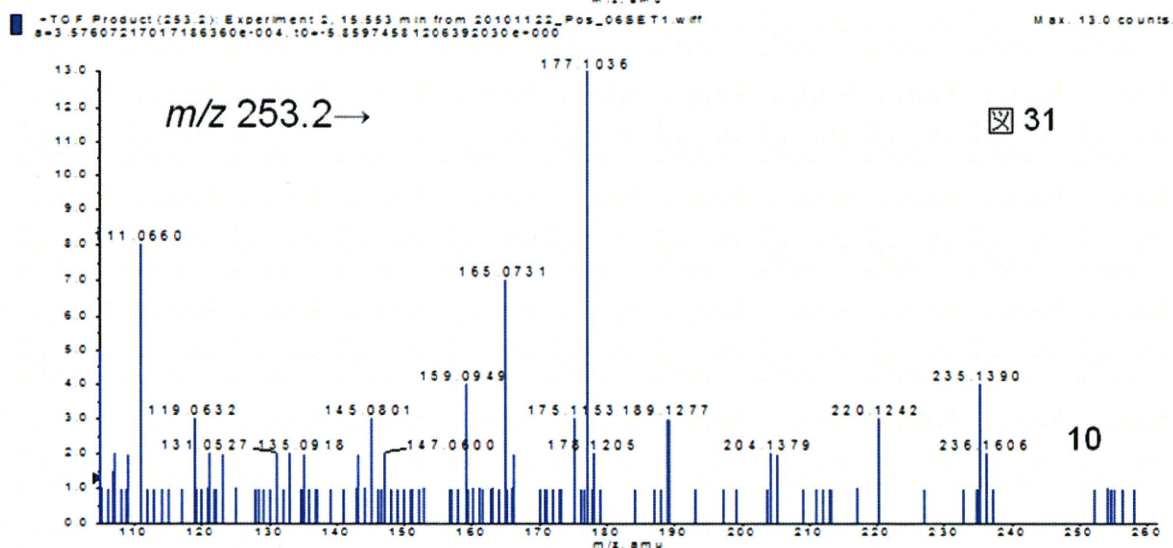
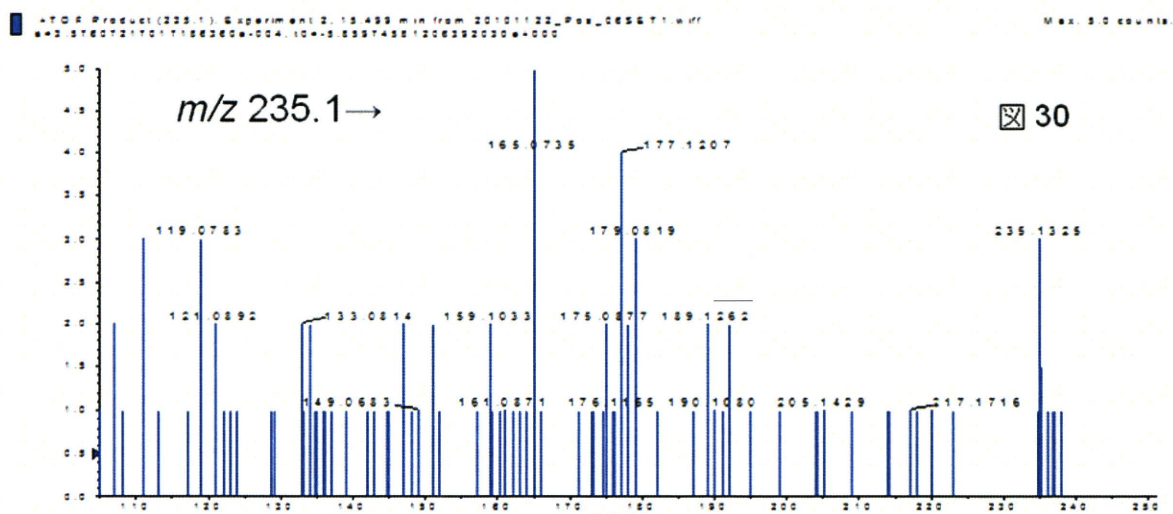


図 3 2 ソウジュツ(Positive) m/z 235 の抽出イオンクロマト

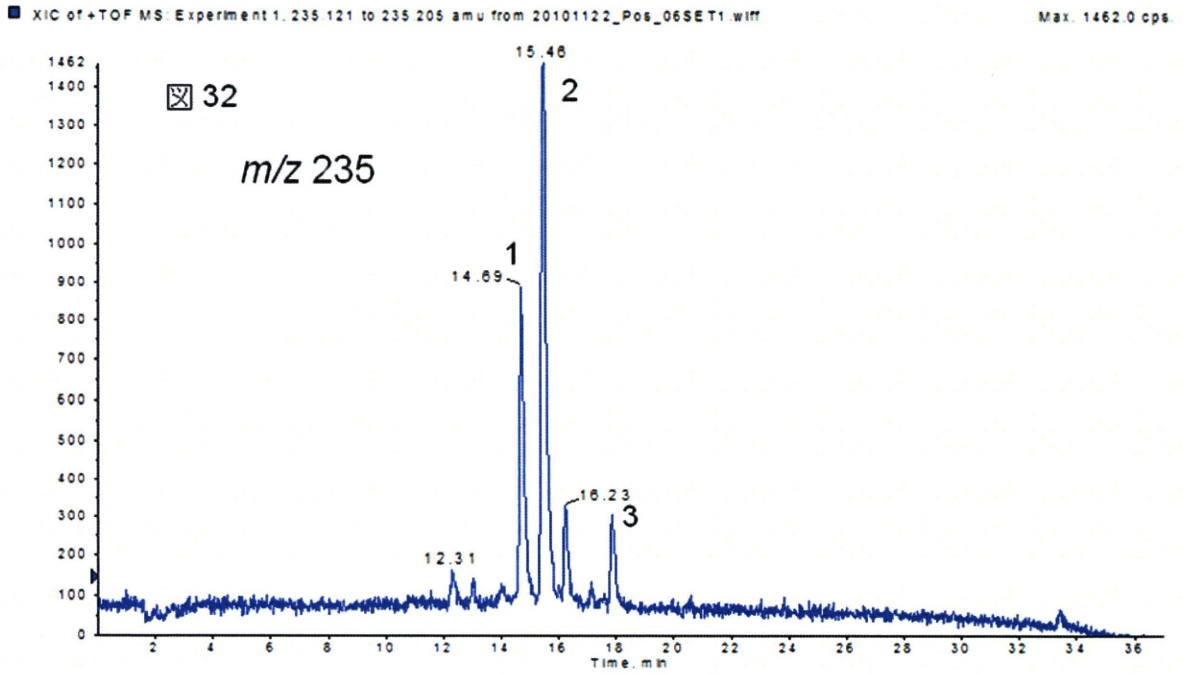


図 3 3 ソウジュツ(Positive) m/z 235, r.t.17.8-17.9min のMS

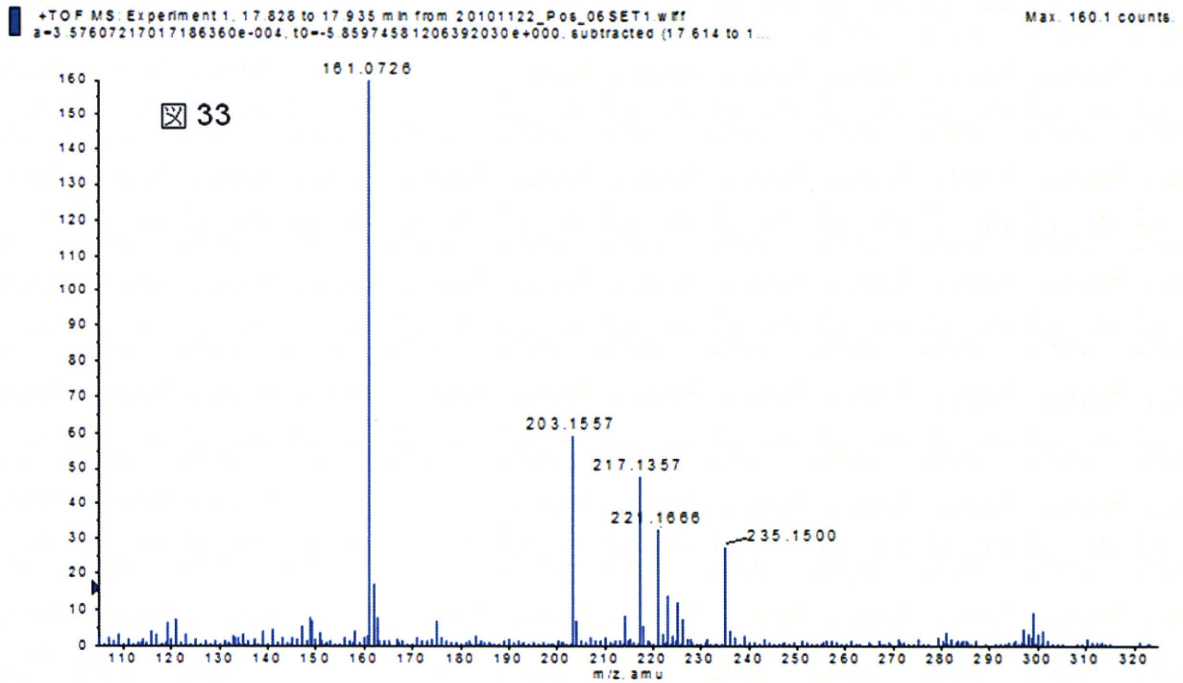
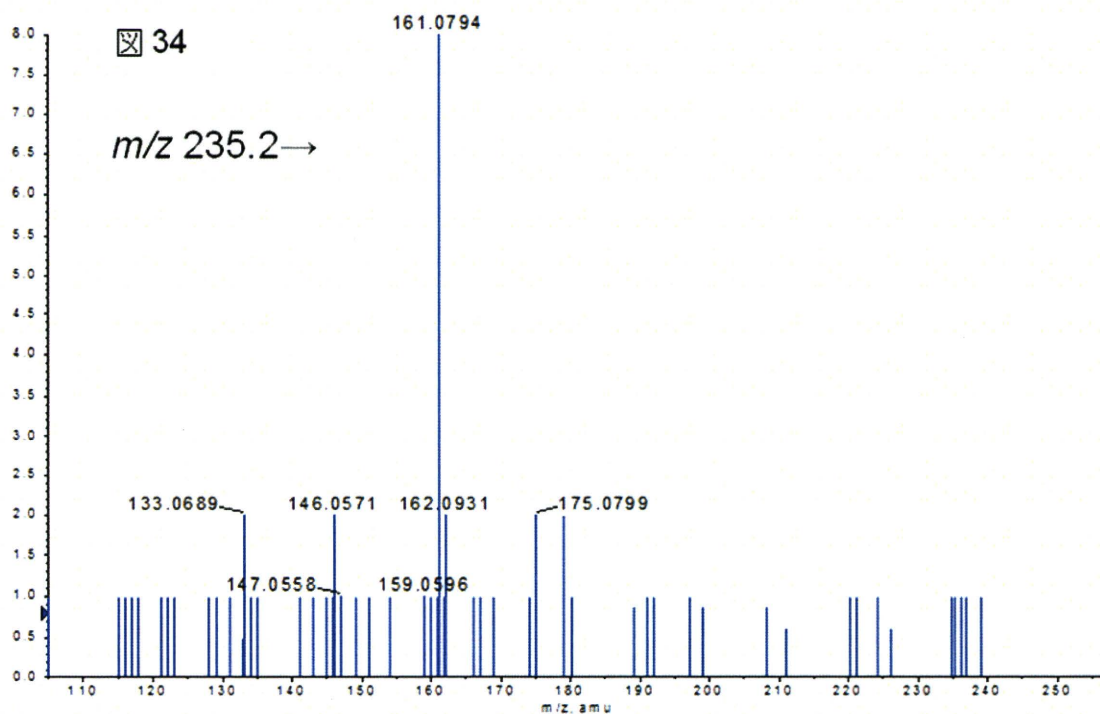


図 3 4 ~ 3 5 ソウジュツ(Positive) m/z 235, 161 の MS/MS

+TOF Product (235.2): Experiment 2, 17.805 min from 20101122_Pos_06SET1.wiff Max. 8.0 counts.
 a=3.57607217017186360e-004, t0=-5.85974581206392030e+000, subtracted (17.555 to 17.6...



+TOF Product (161.1): Experiment 2, 17.948 min from 20101122_Pos_06SET1.wiff Max. 9.0 counts.
 a=3.57607217017186360e-004, t0=-5.85974581206392030e+000, subtracted (17.555 to 17.6...

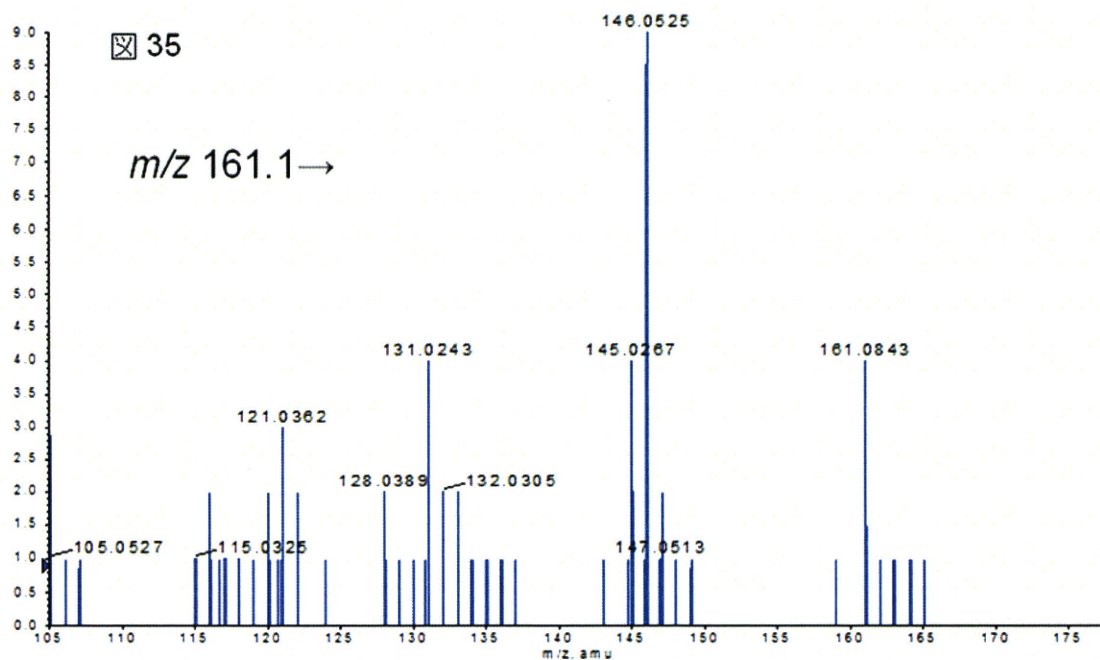


図 3 6 ソウジュツ(Positive) m/z 237 の抽出イオンクロマト

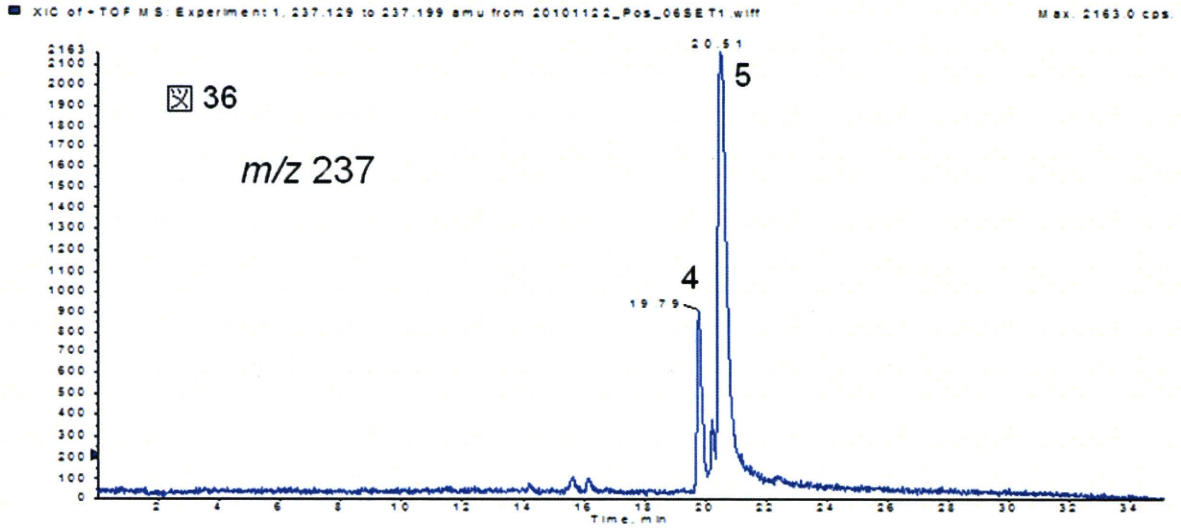


図 3 7 ソウジュツ(Positive) r.t.19.8min, m/z 237 のMS

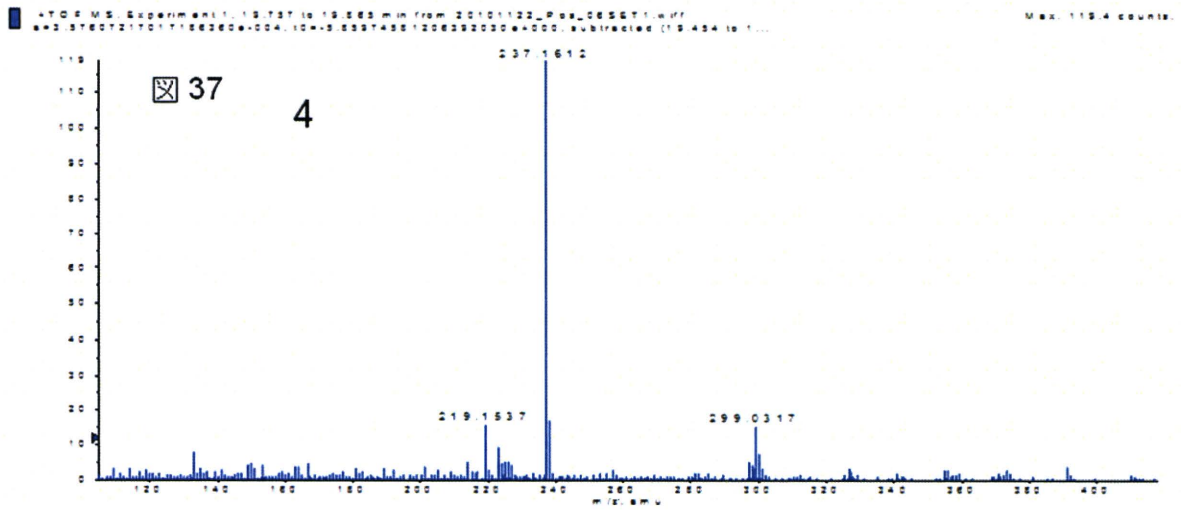


図 3 8 ソウジュツ(Positive) m/z 237 のMS/MS

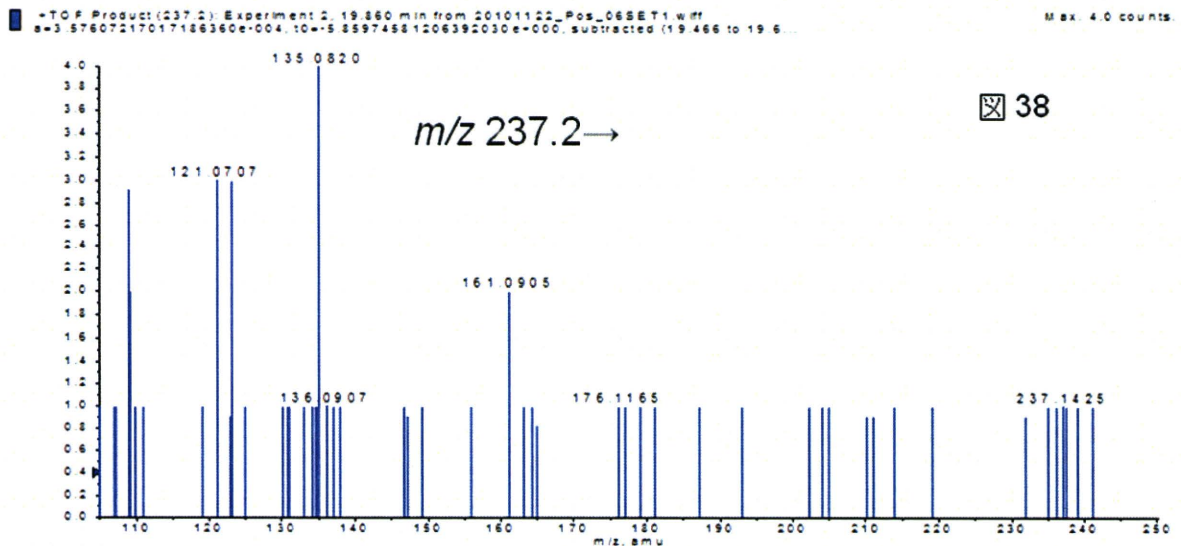


図 39 ソウジュツ(Positive) r.t.20.5min のMS

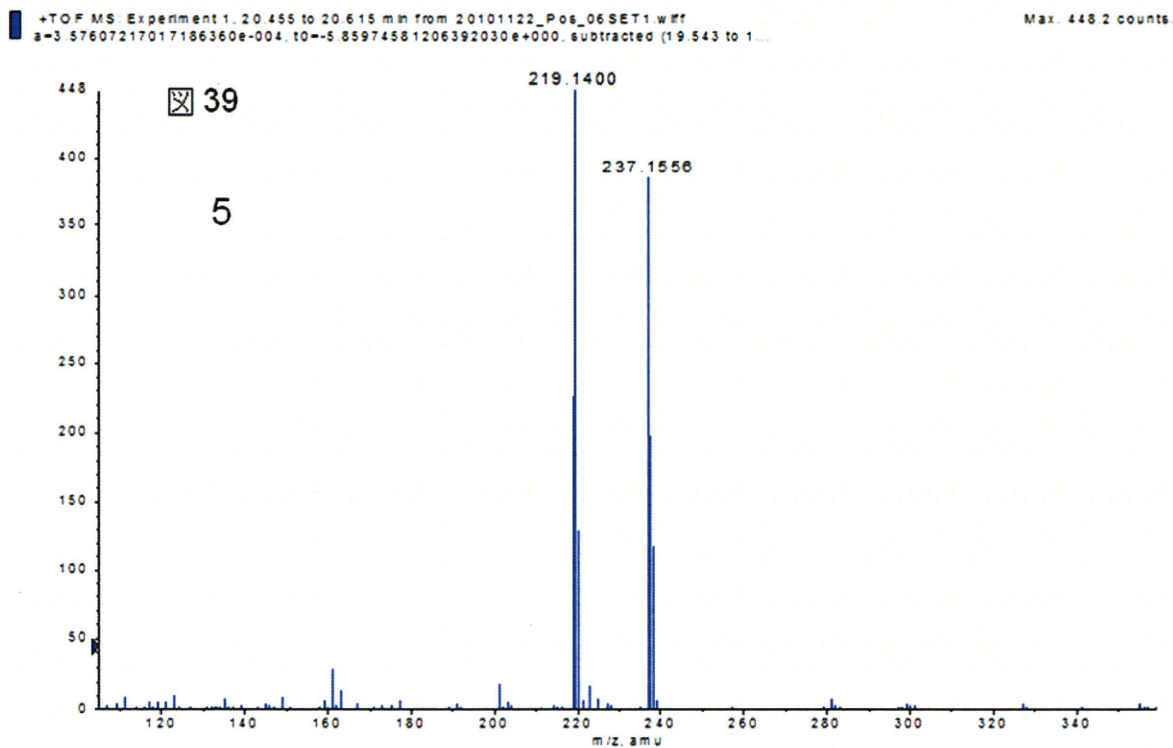


図 40 ソウジュツ(Positive) m/z237 の MS/MS

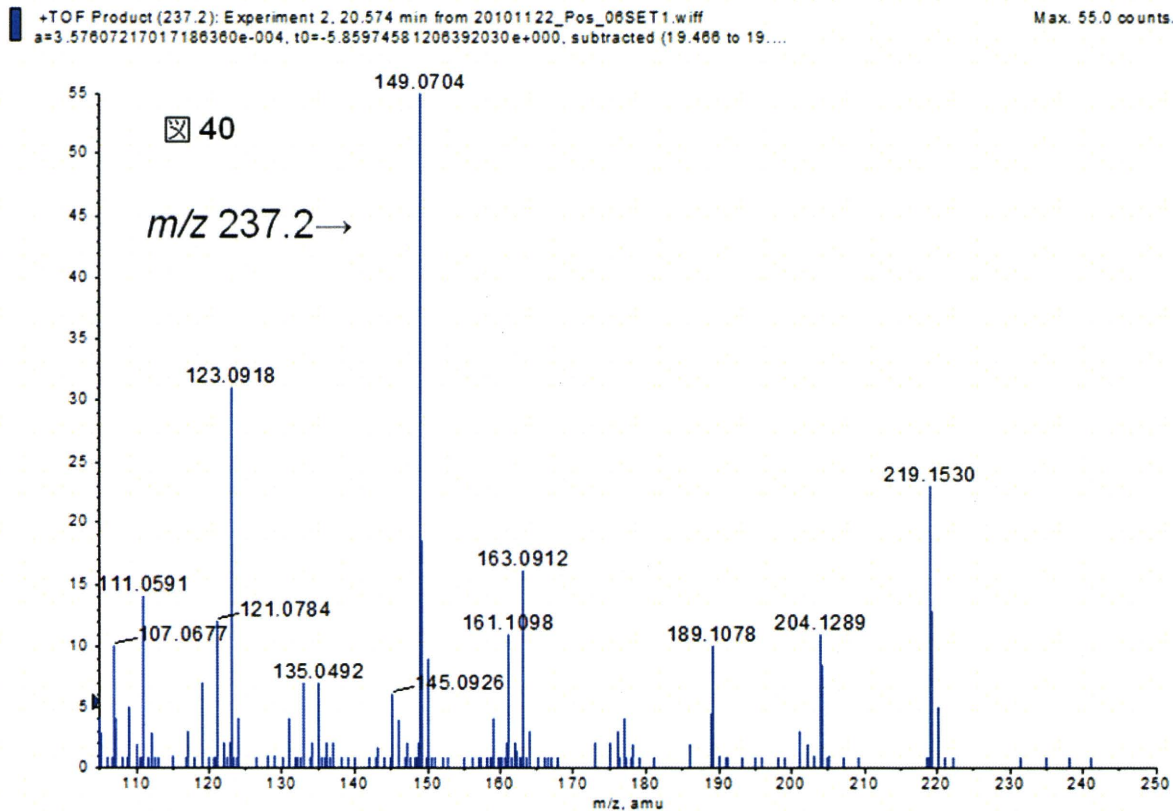


図 4 1 ソウジュツ(Positive) $m/z279$ の抽出イオンクロマト

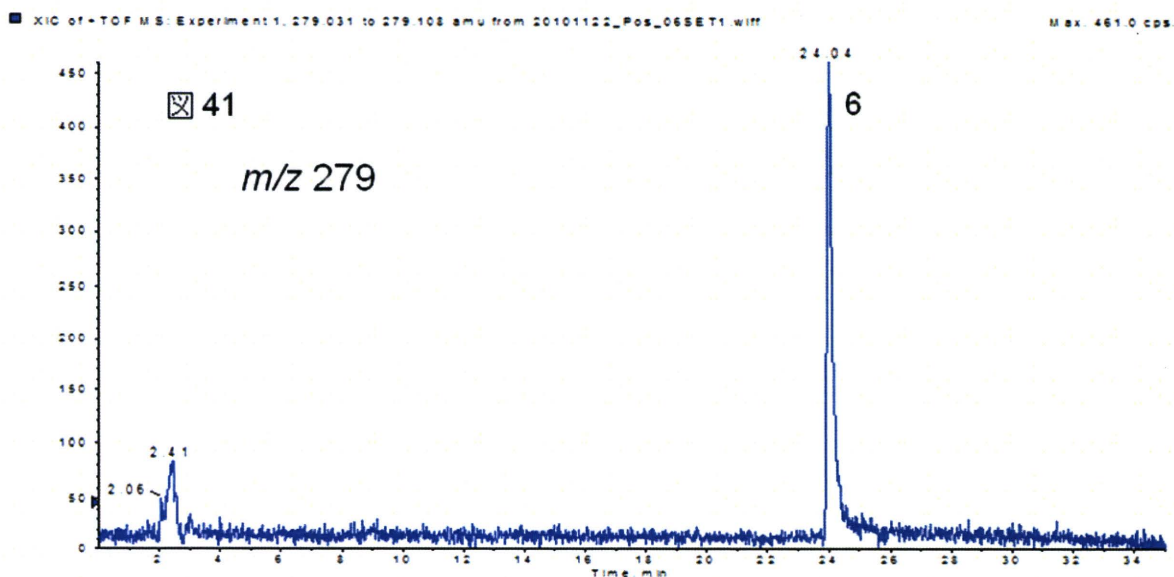


図 4 2 ソウジュツ(Positive)r.t.24min, $m/z279$ のMS

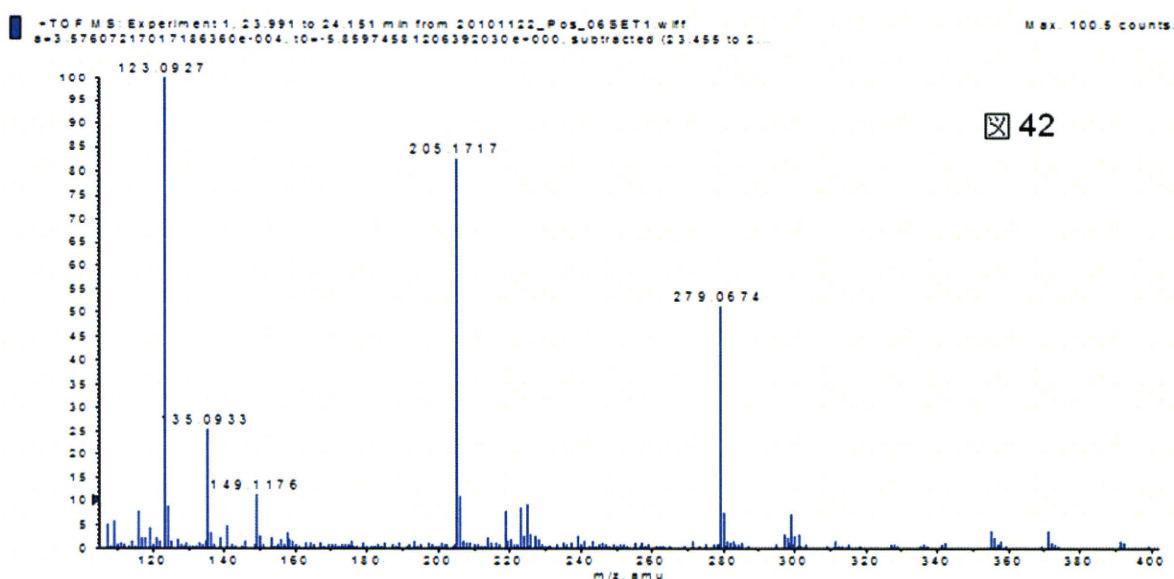


図 4 3 ソウジュツ(Positive) $m/z170$ の抽出イオンクロマト

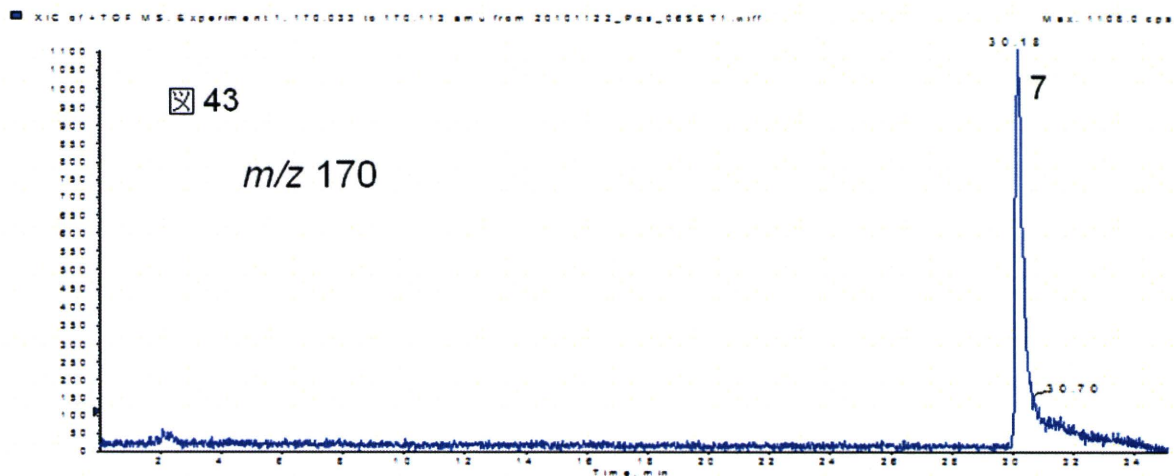
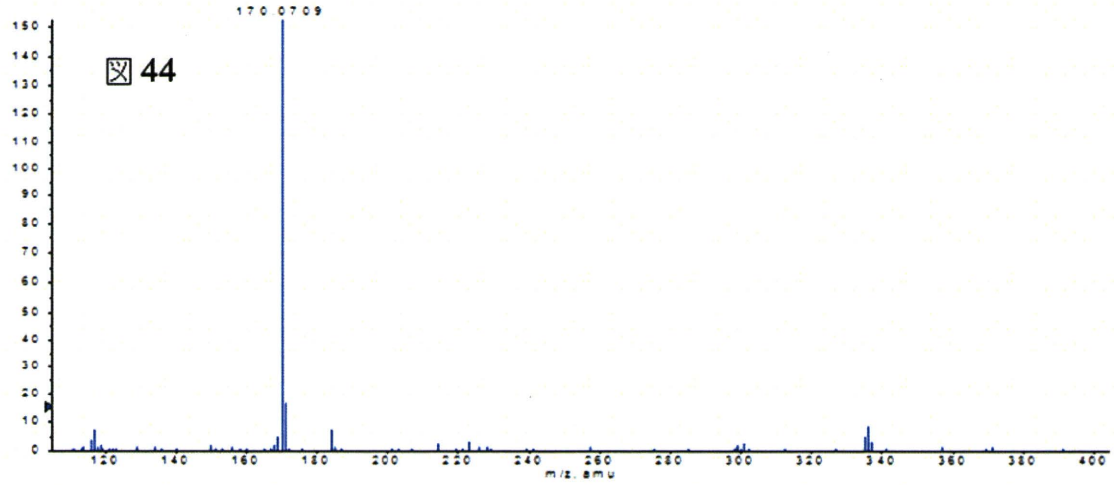


図 4 4 ~ 4 5 ソウジュツ(Positive) r.t.30min, m/z170 のMS

および MS/MS

-TOF MS: Experiment 1: 30.119 to 30.333 min from 20101122_Pos_06SET1.wiff
a=3.57607217017186360e-004, t0=-5.85974581206392030e-000, subtracted (29.275 to 2... Max. 152.9 counts



-TOF Product: (170.1): Experiment 2: 30.238 min from 20101122_Pos_06SET1.wiff
a=3.57607217017186360e-004, t0=-5.85974581206392030e-000, subtracted (22.414 to 22.7... Max. 3.0 counts

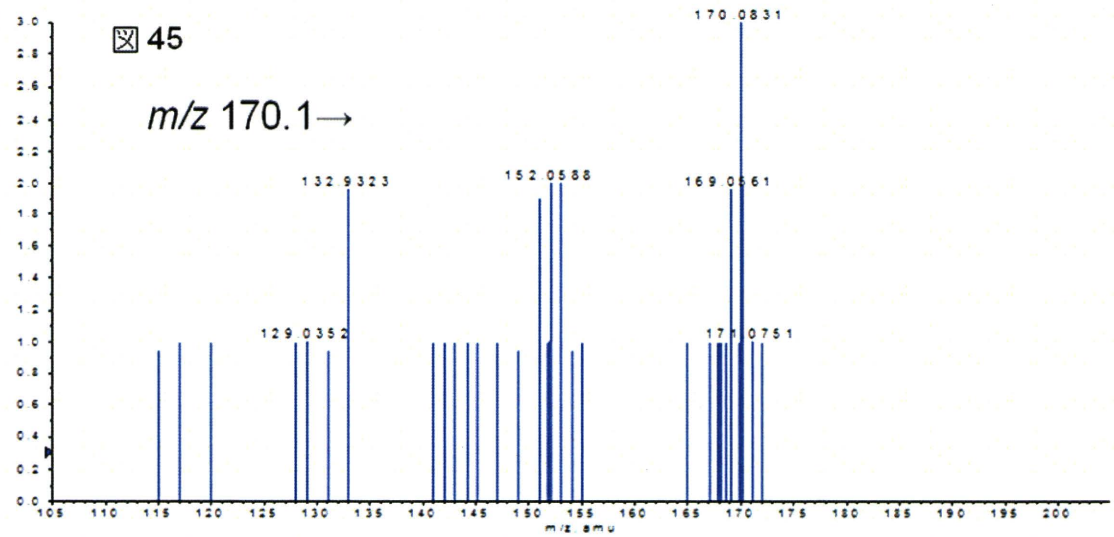


図3～6 ソウジュツ(Negative) m/z 375, 517, 341, 827の抽出イオンクロマト

XIC of -TOF MS: Experiment 1, 374.960 to 375.110 amu from 20101124_Neg_006.wiff Max. 1688.0 cps.

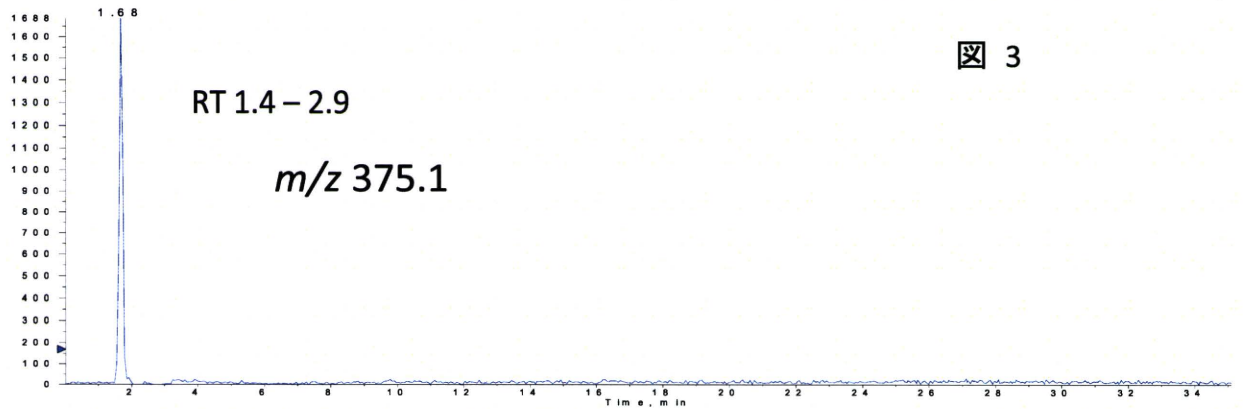


図 3

XIC of -TOF MS: Experiment 1, 516.908 to 517.213 amu from 20101124_Neg_006.wiff Max. 1148.0 cps.

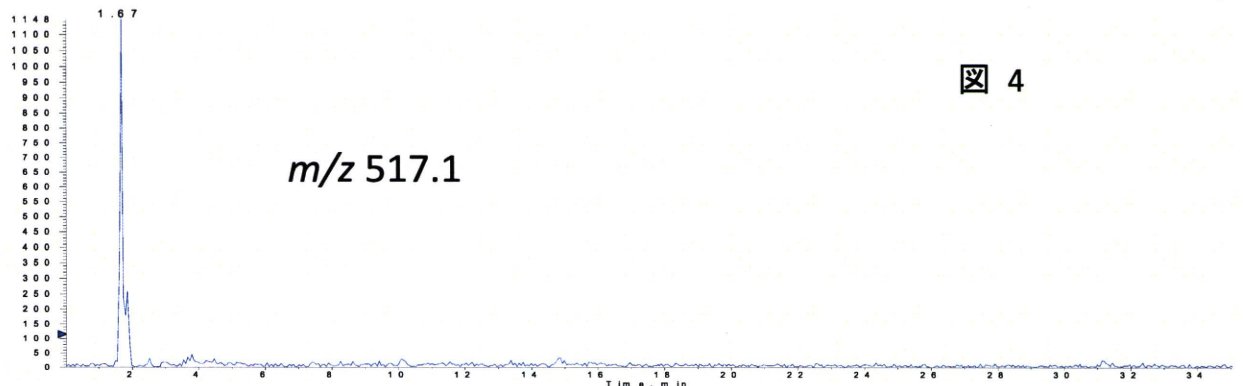


図 4

XIC of -TOF MS: Experiment 1, 341.130 to 341.184 amu from 20101124_Neg_006.wiff Max. 1412.0 cps.

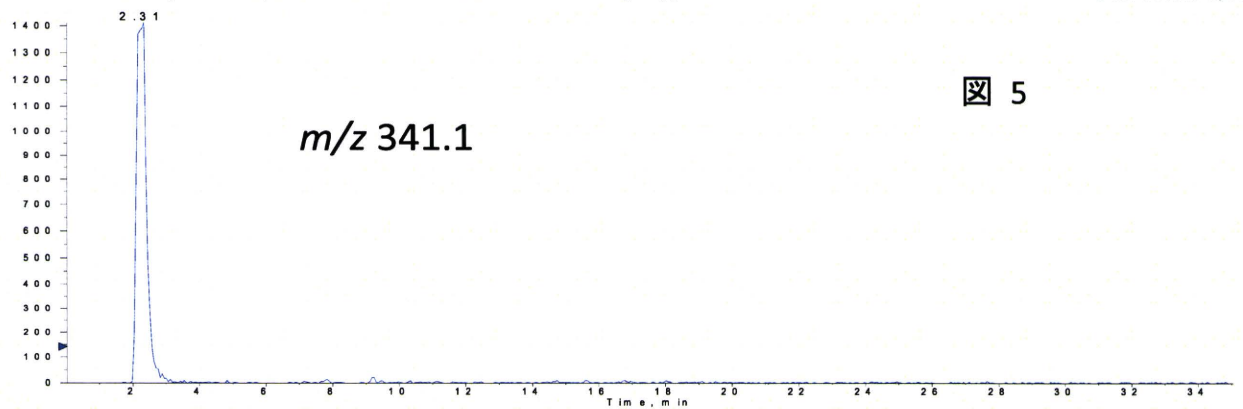


図 5

XIC of -TOF MS: Experiment 1, 827.328 to 827.671 amu from 20101124_Neg_006.wiff Max. 1565.0 cps.

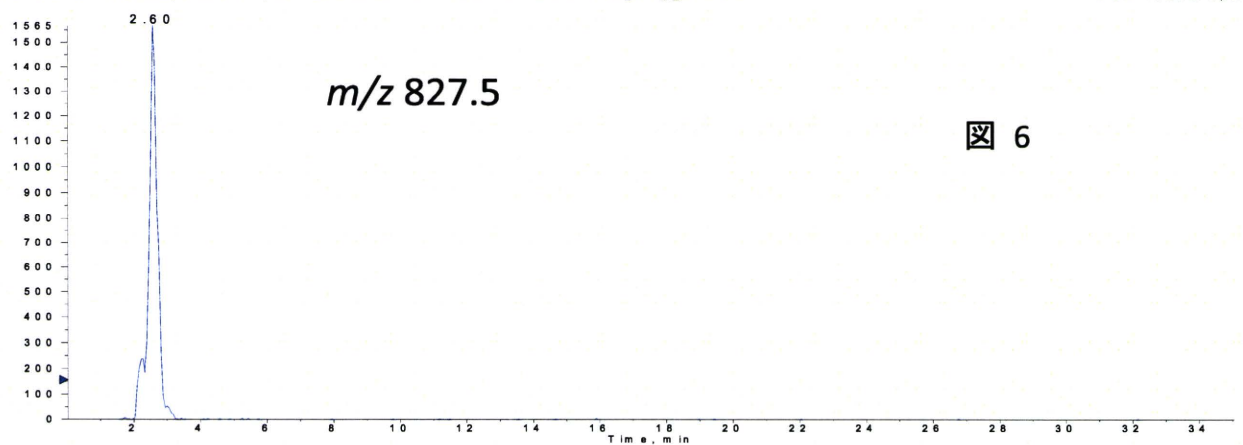


図 6

図7 ソウジュツ(Negative) r.t.1.4-2.0min のMS

-TOF MS: Experiment 1, 1.365 to 1.852 min from 20101124_Neg_006.wiff
 a=3.57538153066371930e-004, t0=-2.80192555123358030e+000, subtracted (0.513 to 1.06...

Max. 32.8 counts.

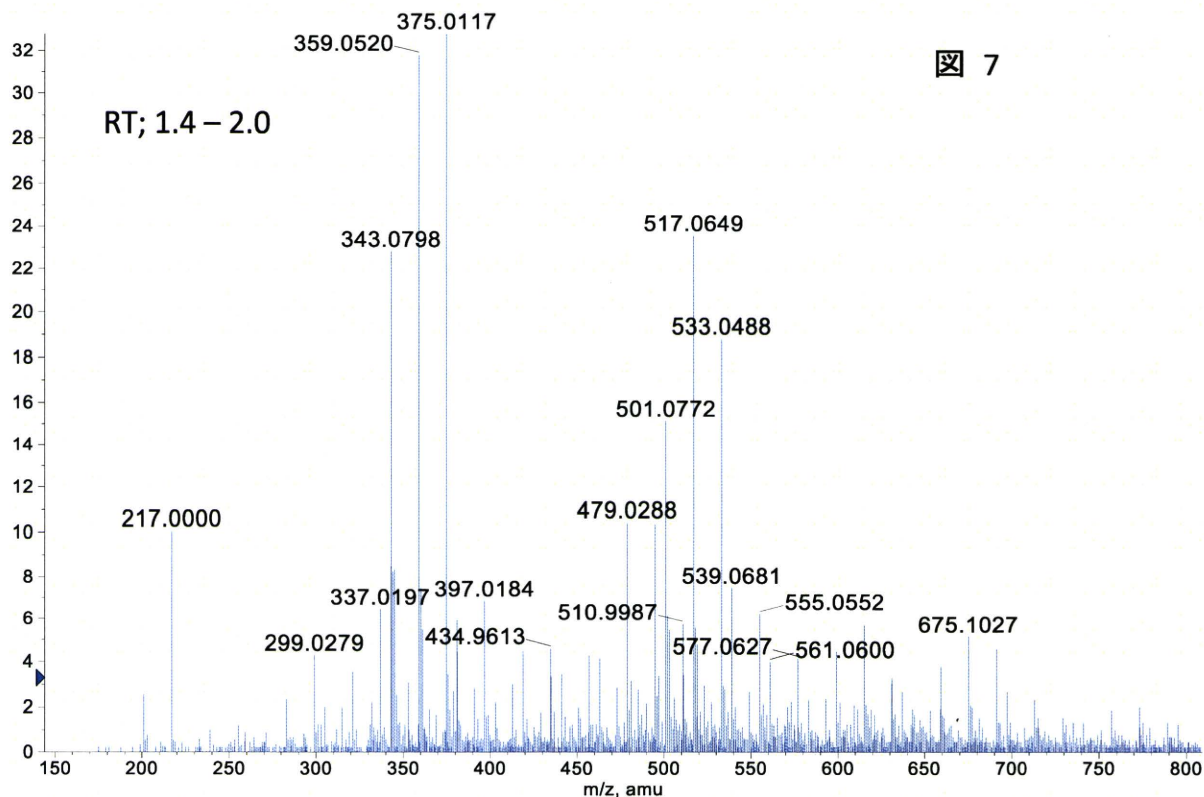


図 7

図8 ソウジュツ(Negative) r.t.2.0-3.0 min のMS

-TOF MS: Experiment 1, 1.974 to 3.007 min from 20101124_Neg_006.wiff
 a=3.57538153066371930e-004, t0=-2.80192555123358030e+000, subtracted (0.513 to 1.06...

Max. 77.9 counts.

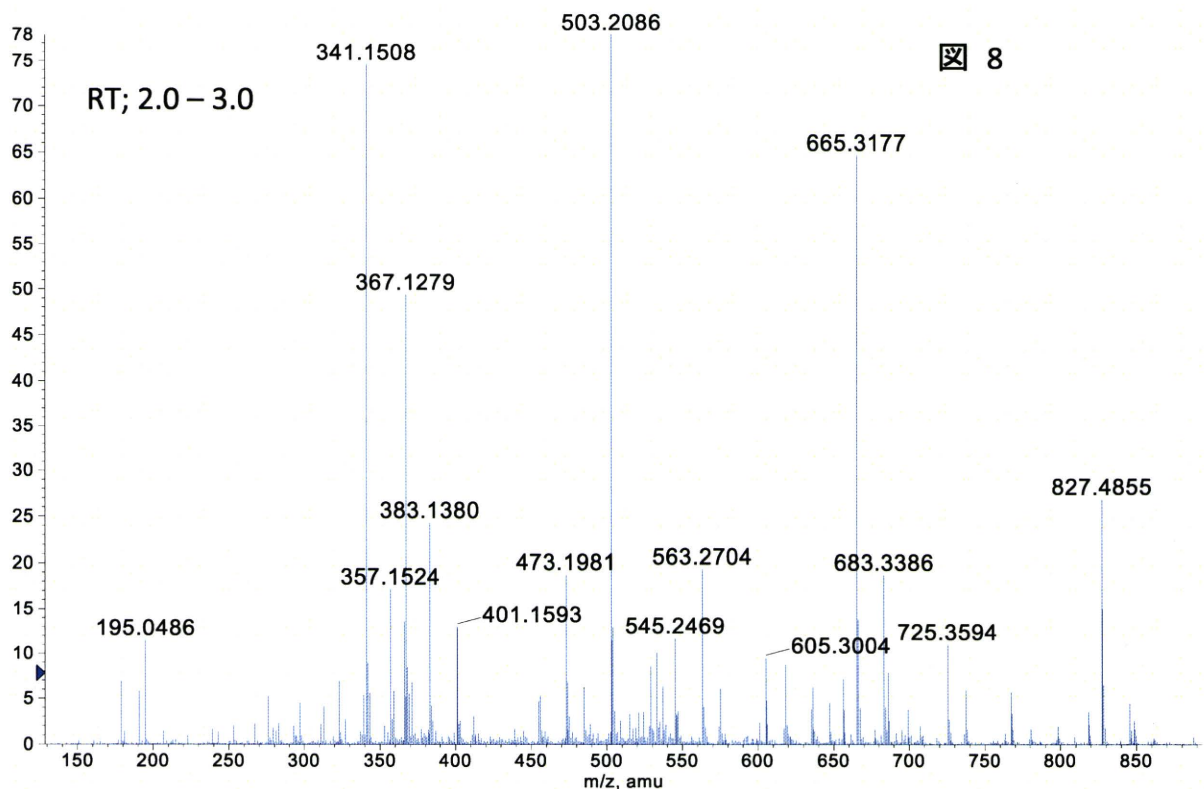


図 8

図9 ソウジュツ(Negative) m/z 665 の MS/MS

-TOF Product (665.3): Experiment 2, 2.372 min from 20101124_Neg_006.wiff
 a=3.57538153066371930e-004, t0=-2.80192555123358030e+000, subtracted (0.547 to 1.09...

Max. 14.0 counts.

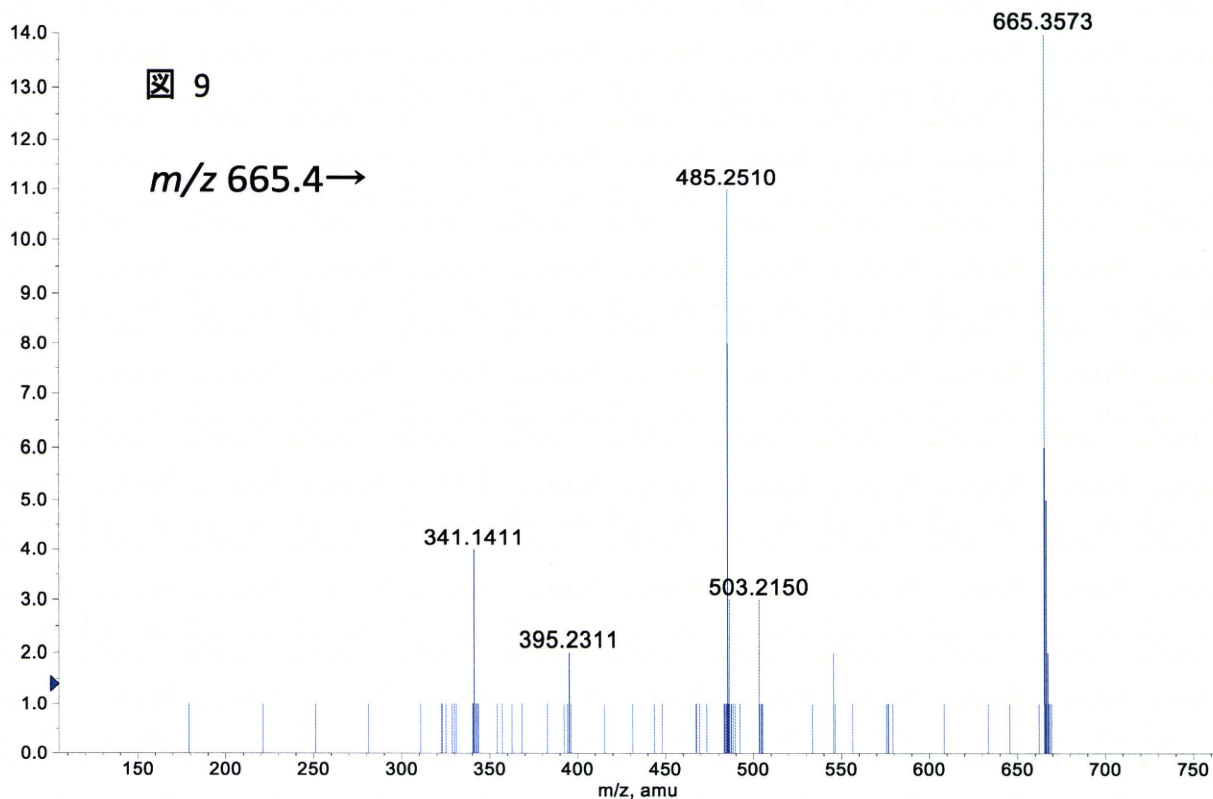


図10 ソウジュツ(Negative) m/z 827 の MS/MS

-TOF Product (827.5): Experiment 2, 2.616 min from 20101124_Neg_006.wiff
 a=3.57538153066371930e-004, t0=-2.80192555123358030e+000, subtracted (0.547 to 1.09...

Max. 26.0 counts.

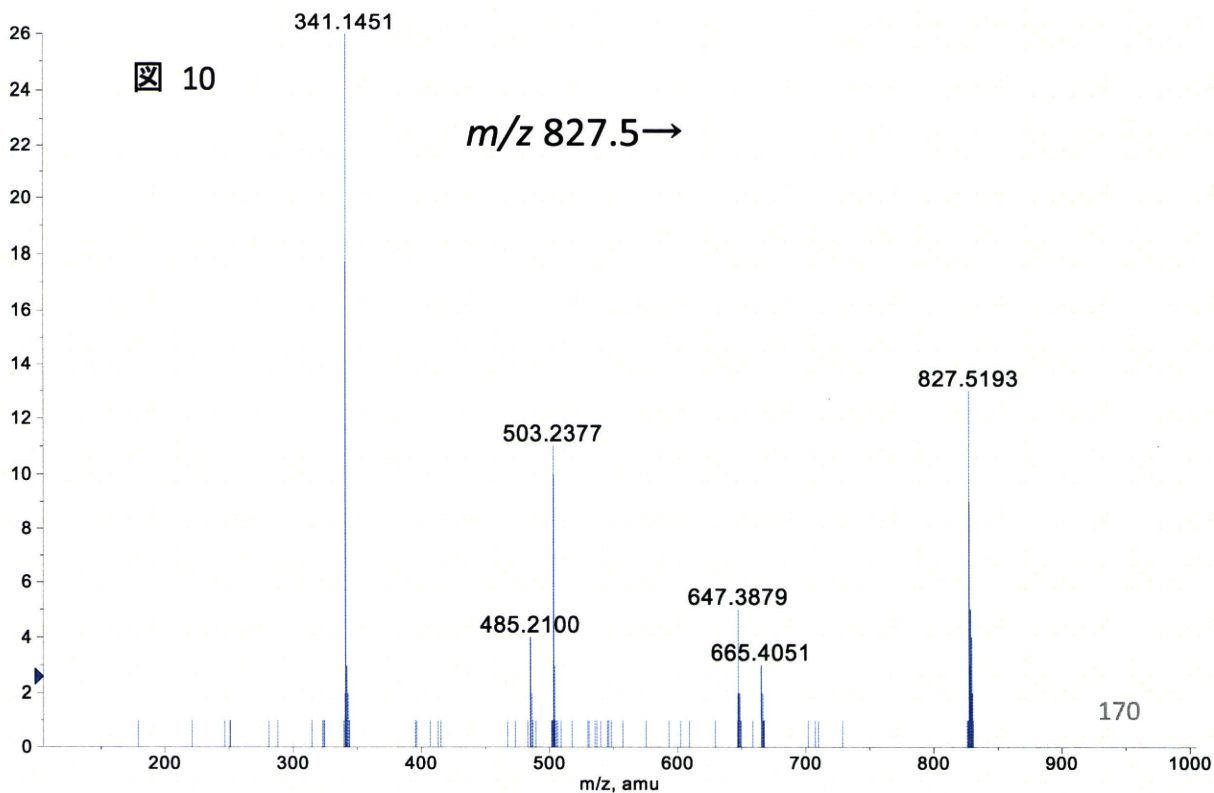
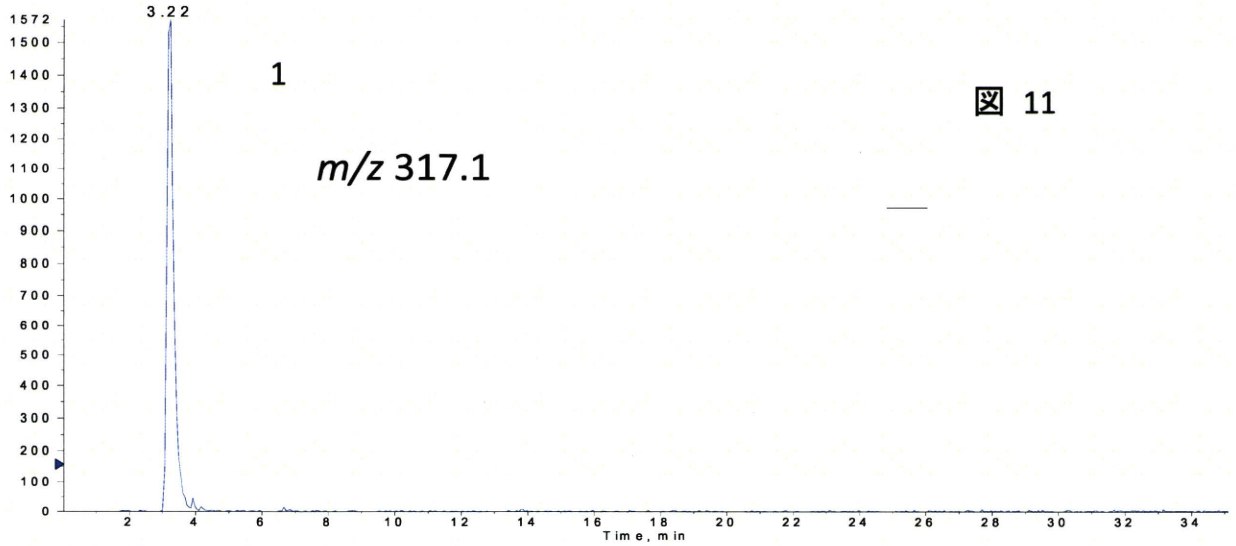
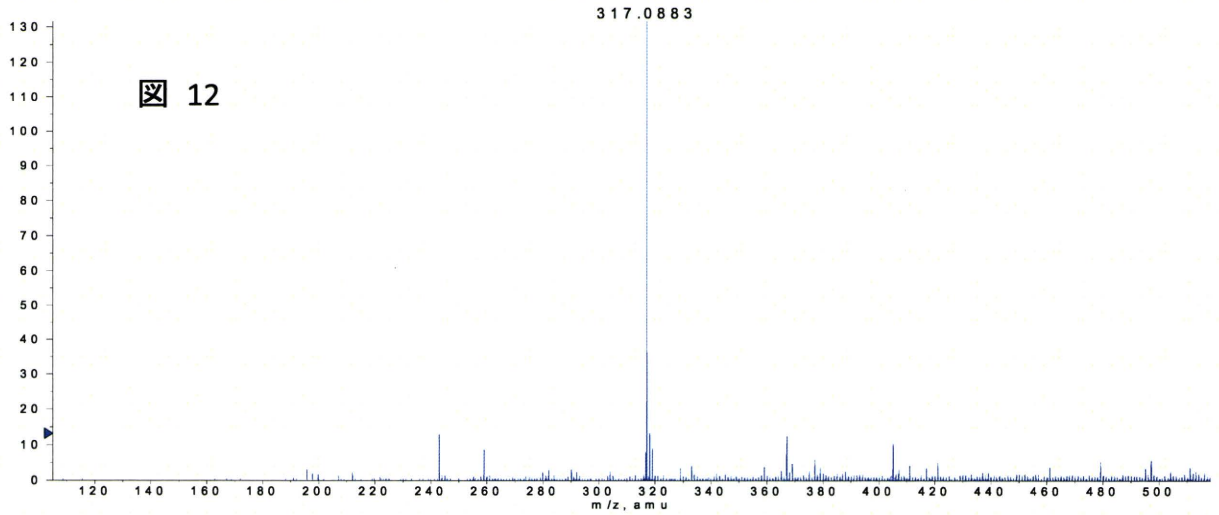


図 1 1 ~ 1 3 ソウジュツ(Negative) m/z 317 の抽出イオンクロマトと MS および MS/MS

XIC of -TOF MS: Experiment 1, 317.030 to 317.154 amu from 20101124_Neg_006.wiff Max. 1572.0 cps.



-TOF MS: Experiment 1, 3.129 to 3.372 min from 20101124_Neg_006.wiff
 $a=3.57538153066371930e-004$, $t_0=-2.80192555123358030e+000$, subtracted (2.764 to 3.0... Max. 131.6 counts.



-TOF Product (317.1): Experiment 2, 3.284 min from 20101124_Neg_006.wiff
 $a=3.57538153066371930e-004$, $t_0=-2.80192555123358030e+000$, subtracted (0.547 to 1.09... Max. 17.0 counts.

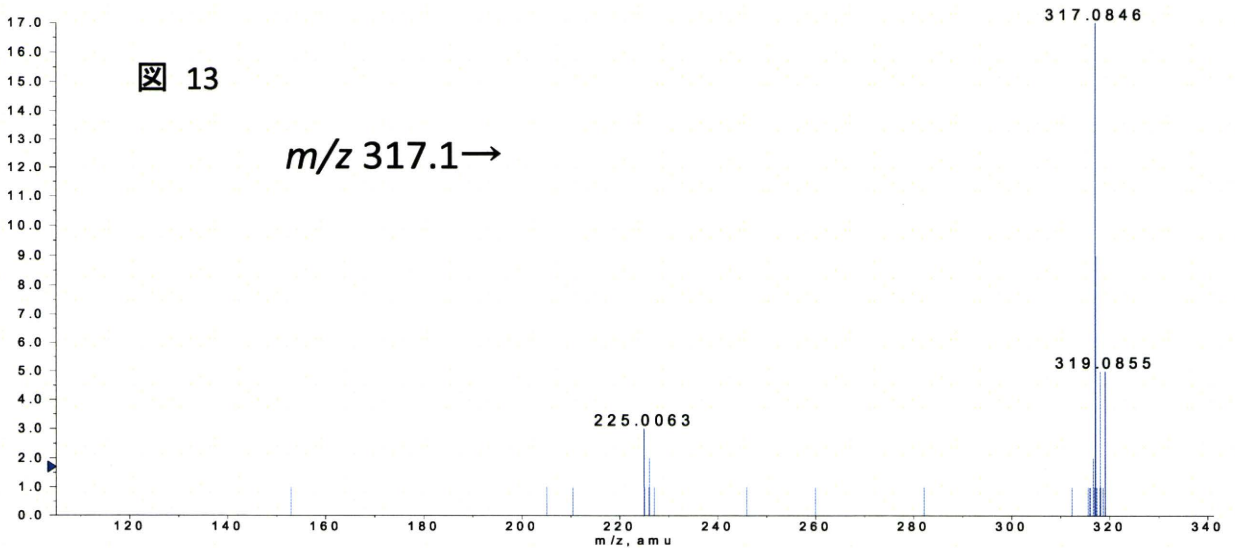
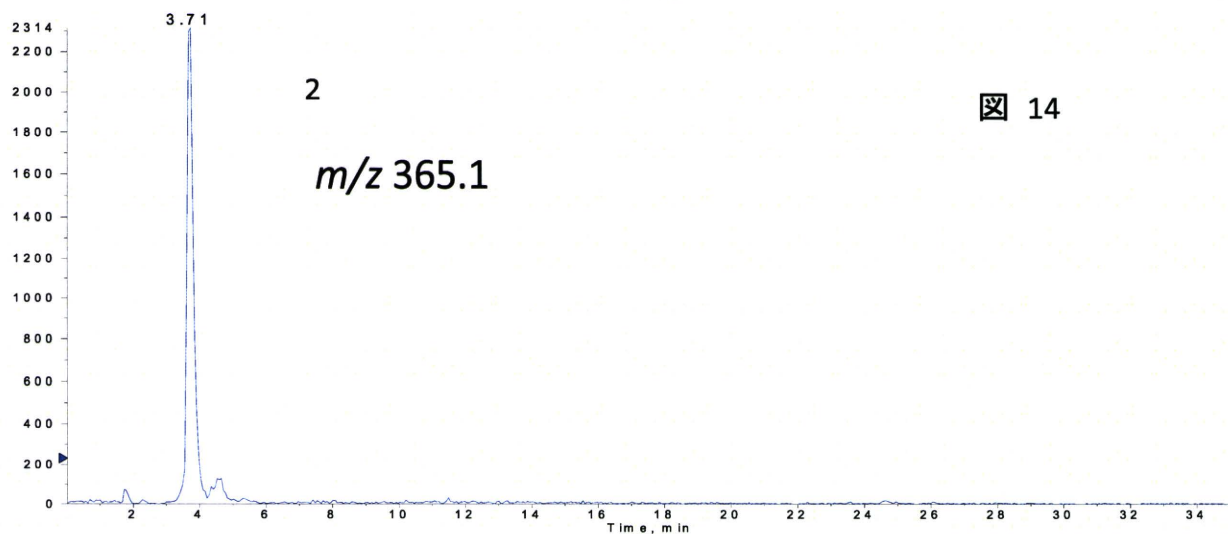


図 14~15 ソウジュツ(Negative) m/z 365 の抽出イオンクロマトおよび MS

XIC of -TOF MS: Experiment 1, 364.998 to 365.203 amu from 20101124_Neg_006.wiff

Max. 2314.0 cps.



-TOF MS: Experiment 1, 3.555 to 3.859 min from 20101124_Neg_006.wiff
a=3.57538153066371930e-004, t0=-2.80192555123358030e+000, subtracted (2.764 to 3.1...

Max. 109.9 counts.

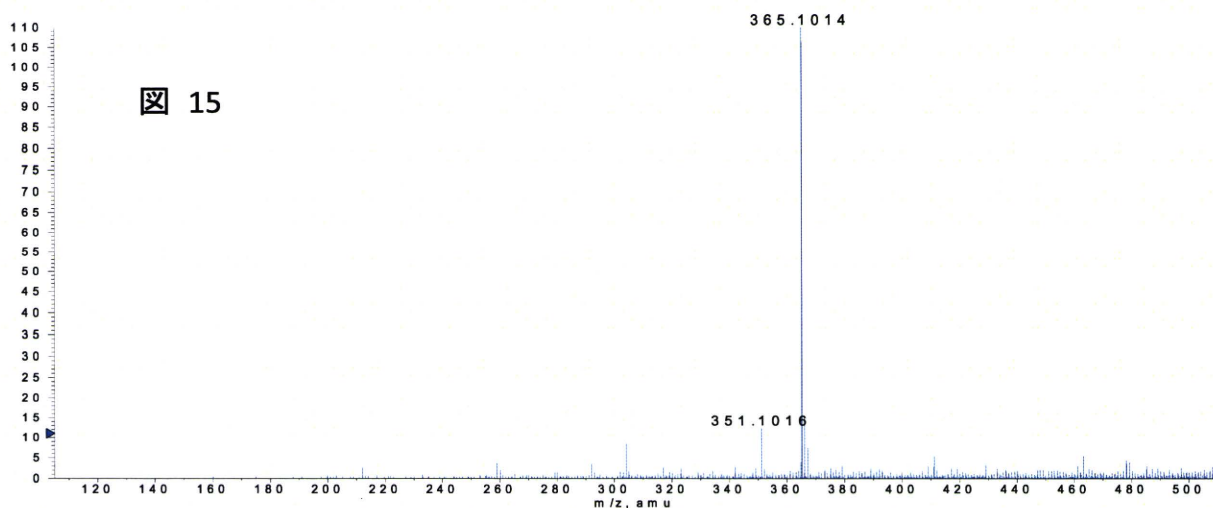
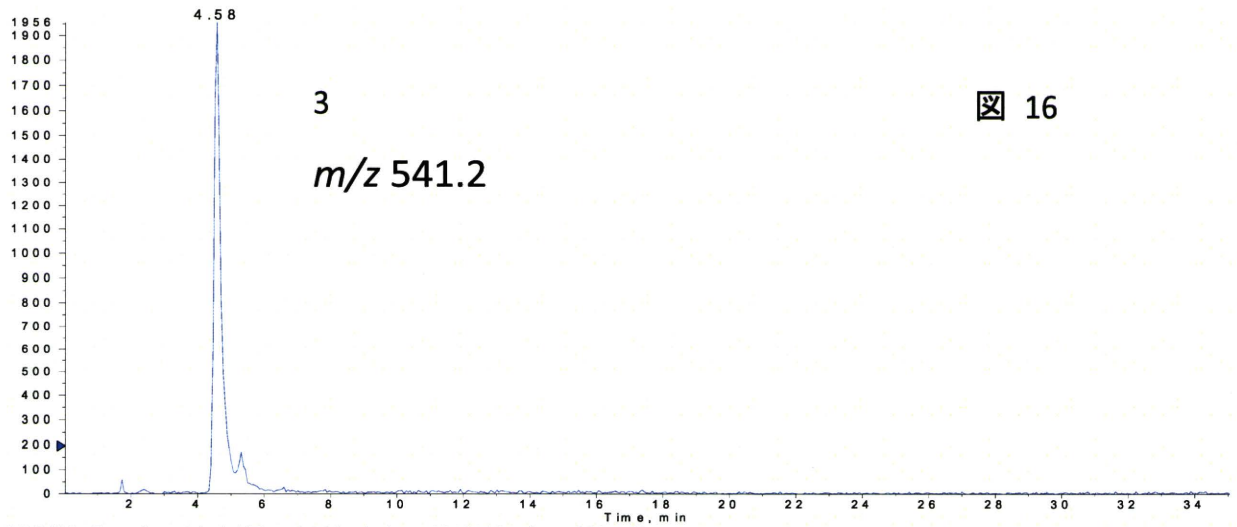


図 16～17 ソウジュツ(Negative) m/z 541 の抽出イオンクロマトおよび MS と MS/MS

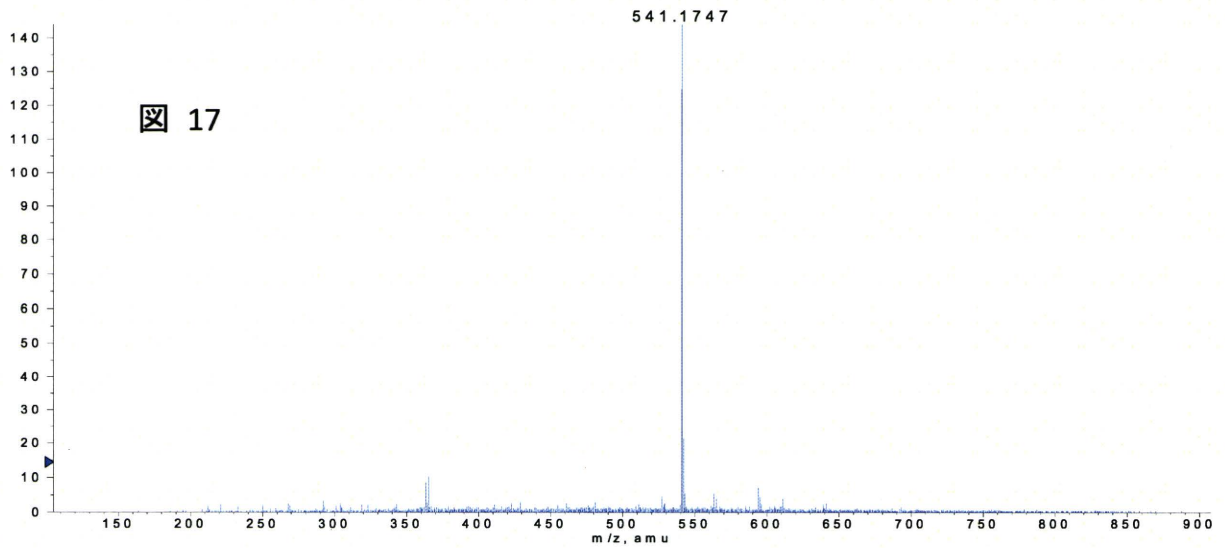
XIC of -TOF MS: Experiment 1, 541.092 to 541.291 amu from 20101124_Neg_006.wiff

Max. 1956.0 cps.



-TOF MS: Experiment 1, 4.468 to 4.711 min from 20101124_Neg_006.wiff
 a=3.57538153066371930e-004, t0=-2.80192555123358030e+000, subtracted (4.163 to 4.2...

Max. 144.0 counts.



-TOF Product (541.2): Experiment 2, 4.623 min from 20101124_Neg_006.wiff
 a=3.57538153066371930e-004, t0=-2.80192555123358030e+000, subtracted (0.547 to 1.095...

Max. 3.0 counts.

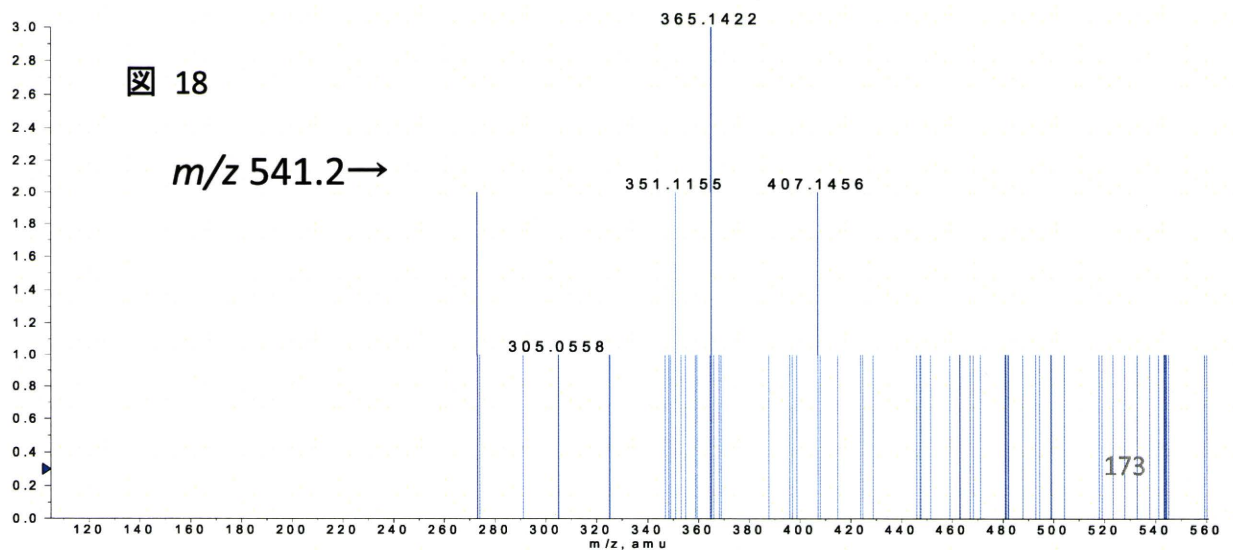


図 19～20 ソウジュツ(Negative) m/z 539 の抽出イオンクロマトおよびMS

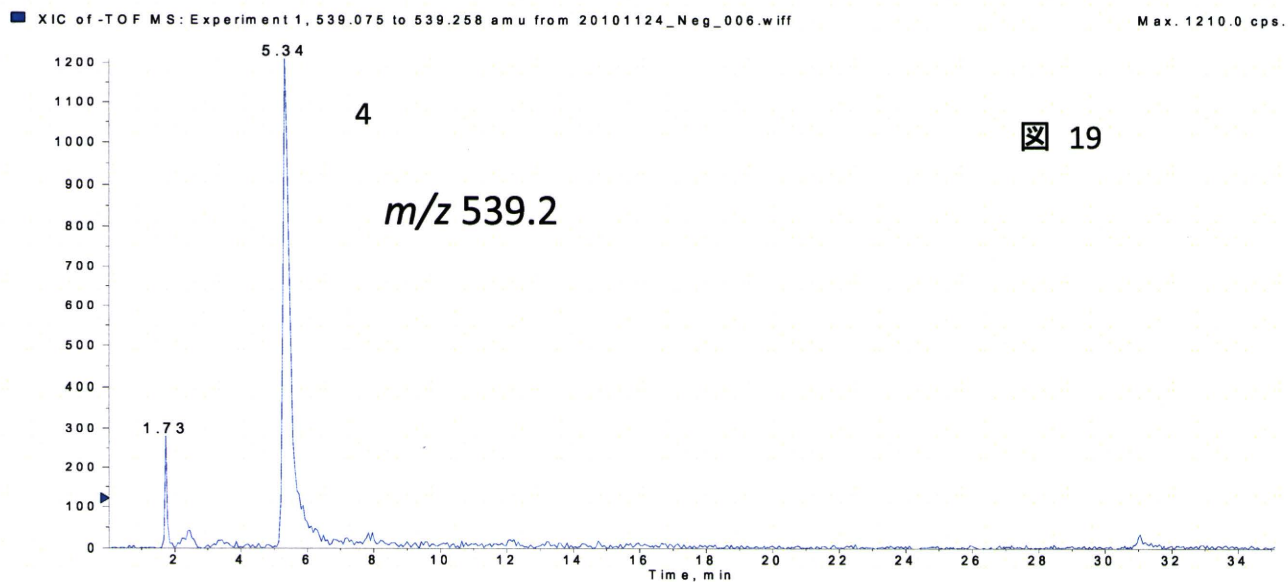


図 19

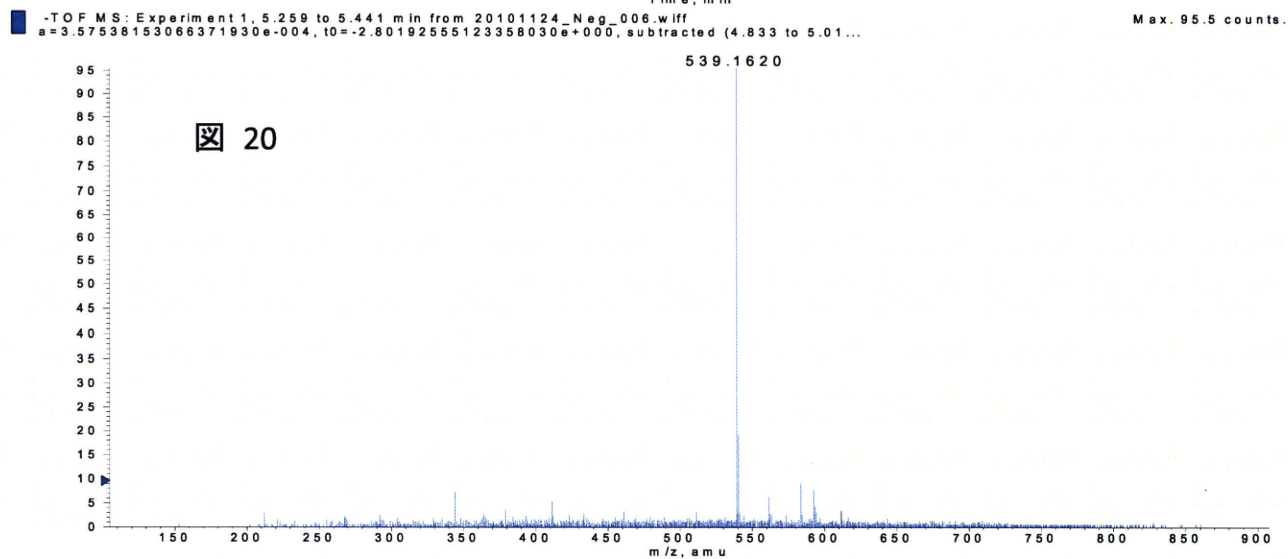
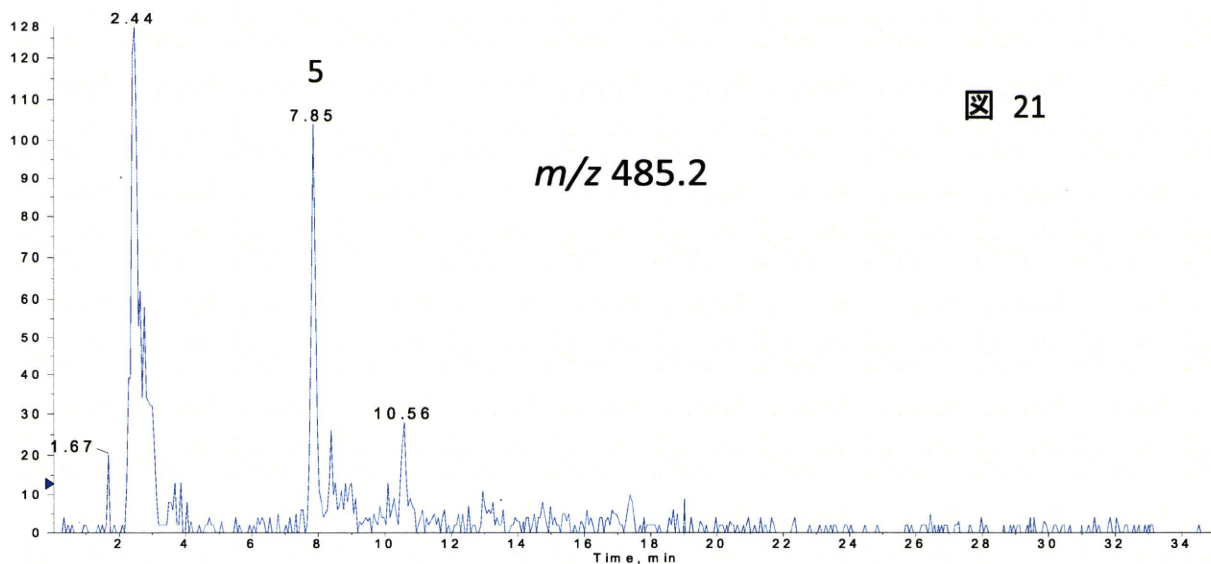


図 20

図 2 1 ~ 2 3 ソウジュツ(Negative) m/z 485 の抽出イオンクロマトおよび MS と MS/MS

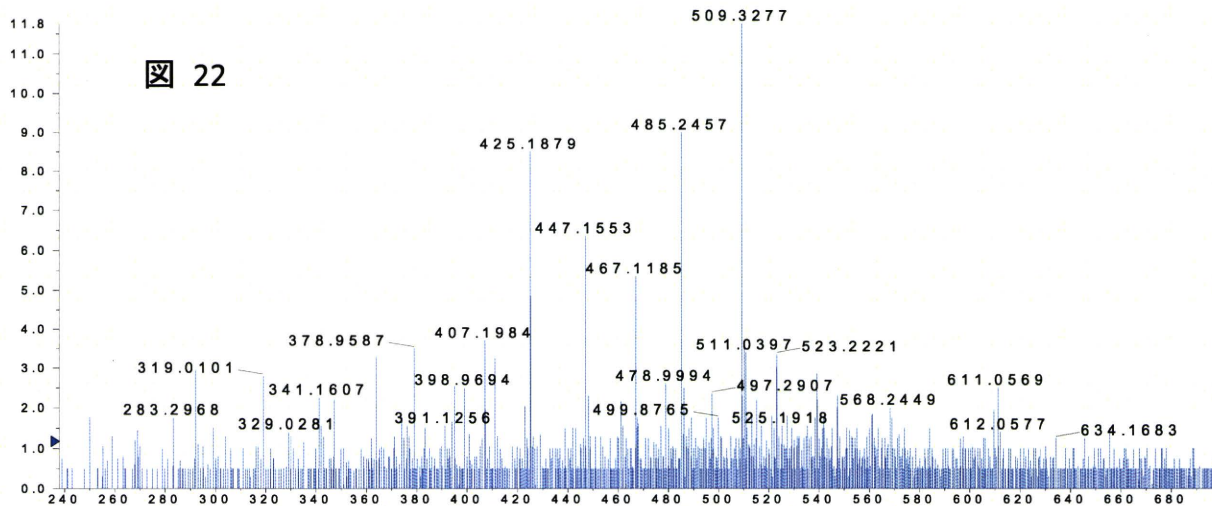
XIC of -TOF MS: Experiment 1, 485.188 to 485.277 amu from 20101124_Neg_006.wiff

Max. 128.0 cps.



-TOF MS: Experiment 1, 7.779 to 7.961 min from 20101124_Neg_006.wiff
 $a=3.57538153066371930e-004$, $t_0=-2.80192555123358030e+000$, subtracted (7.144 to 7.65...

Max. 11.8 counts.



-TOF Product (485.2): Experiment 2, 7.874 min from 20101124_Neg_006.wiff
 $a=3.57538153066371930e-004$, $t_0=-2.80192555123358030e+000$, subtracted (4.745 to 5.171...

Max. 5.0 counts.

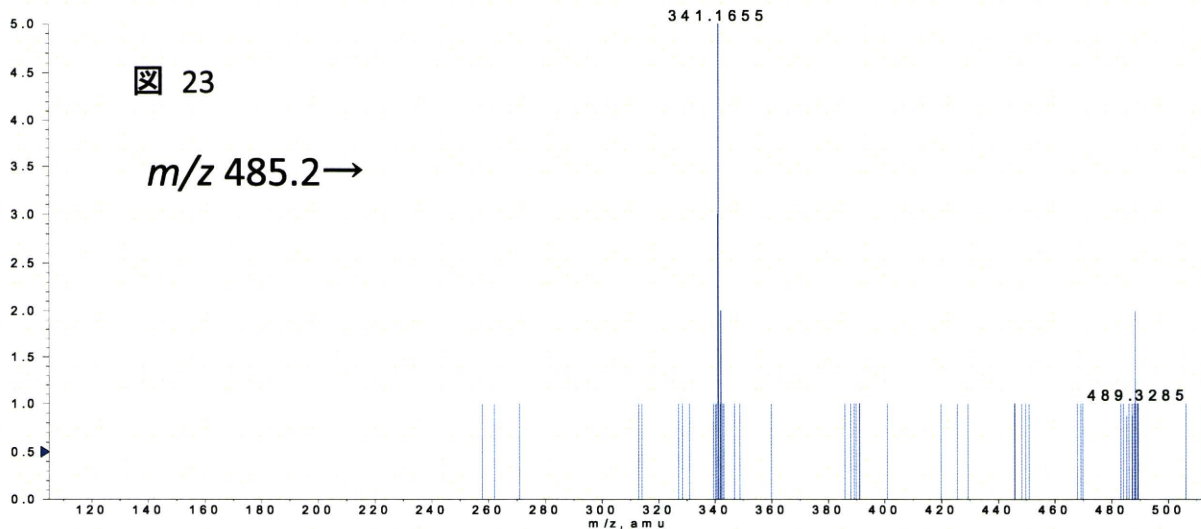


図 24～25 ソウジュツ(Negative) m/z 447 の抽出イオンクロマトおよびMS

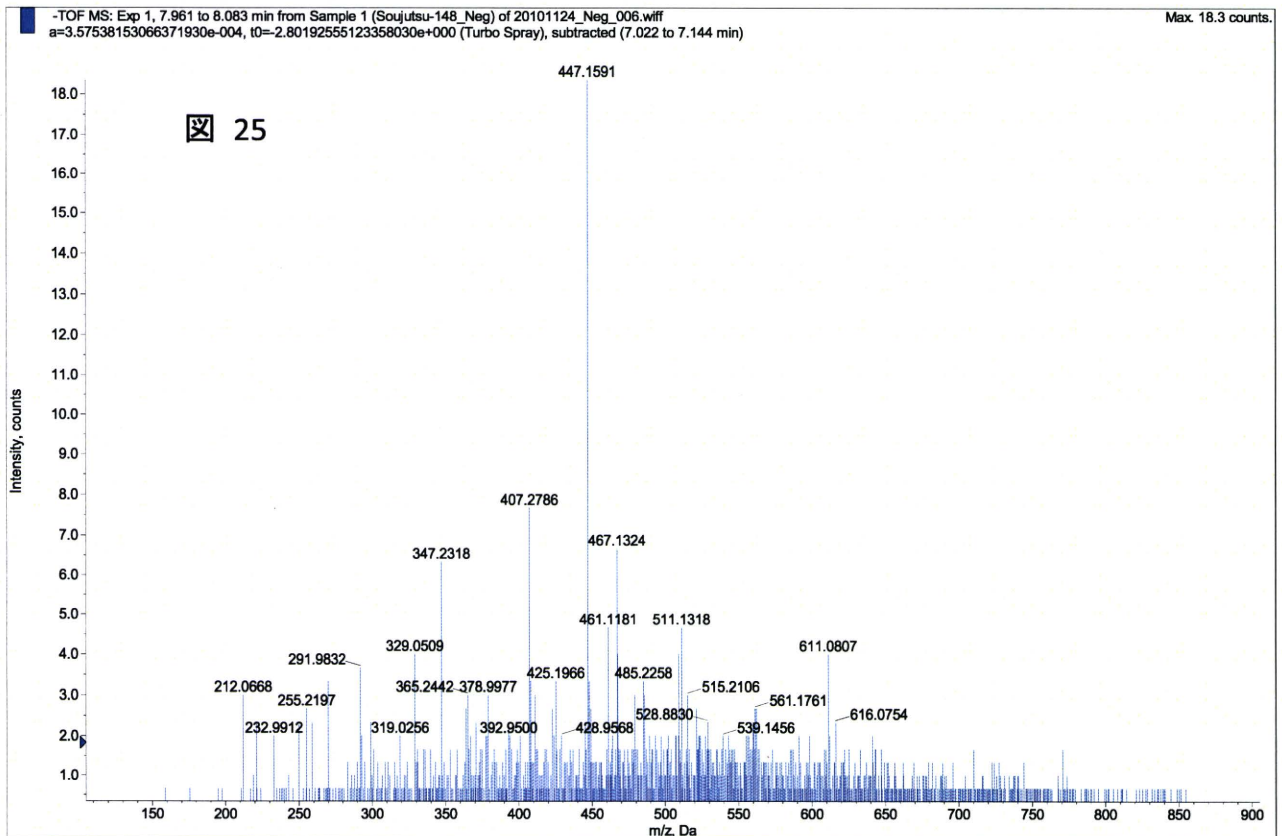
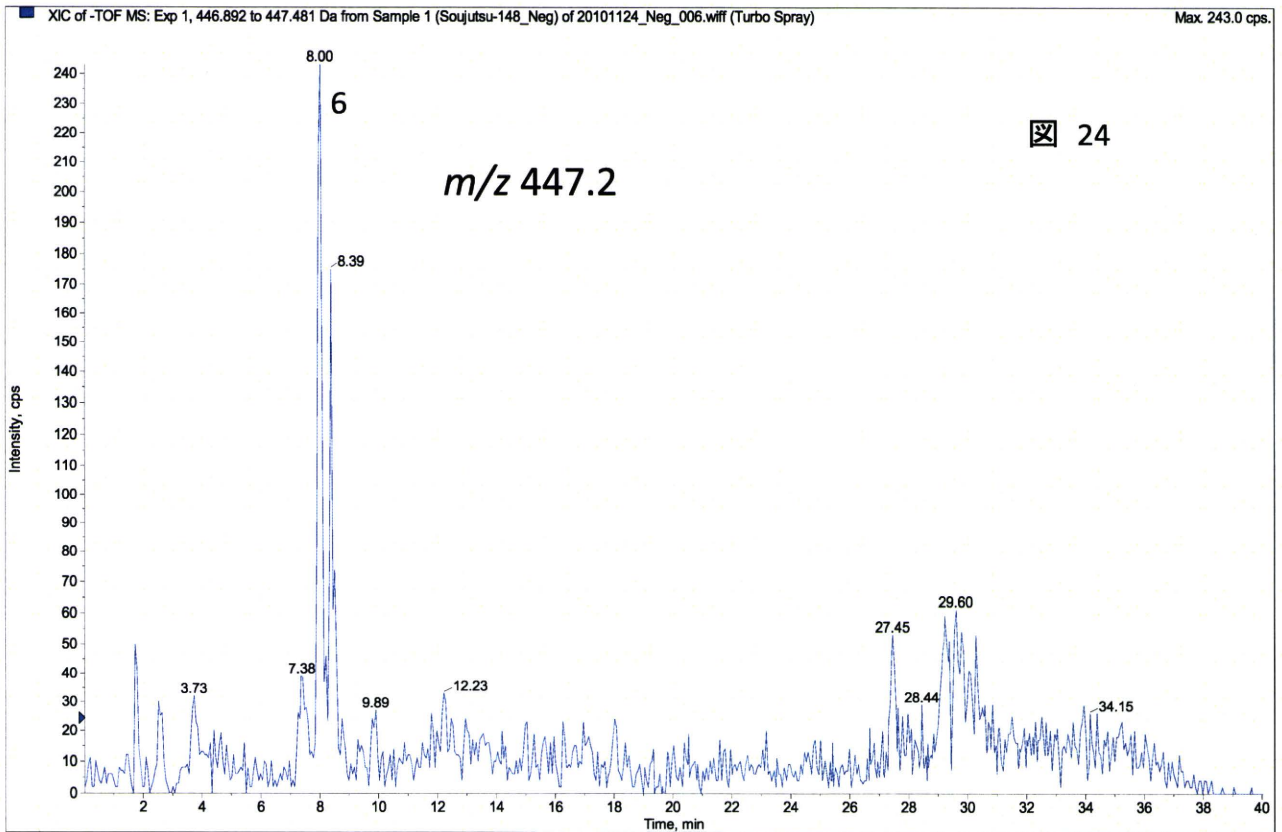
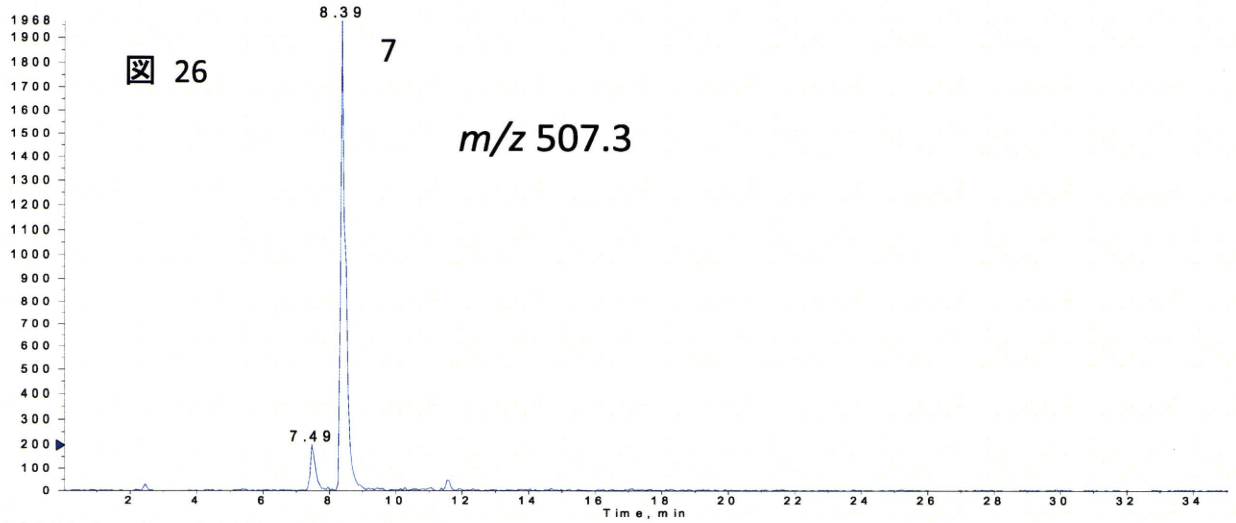
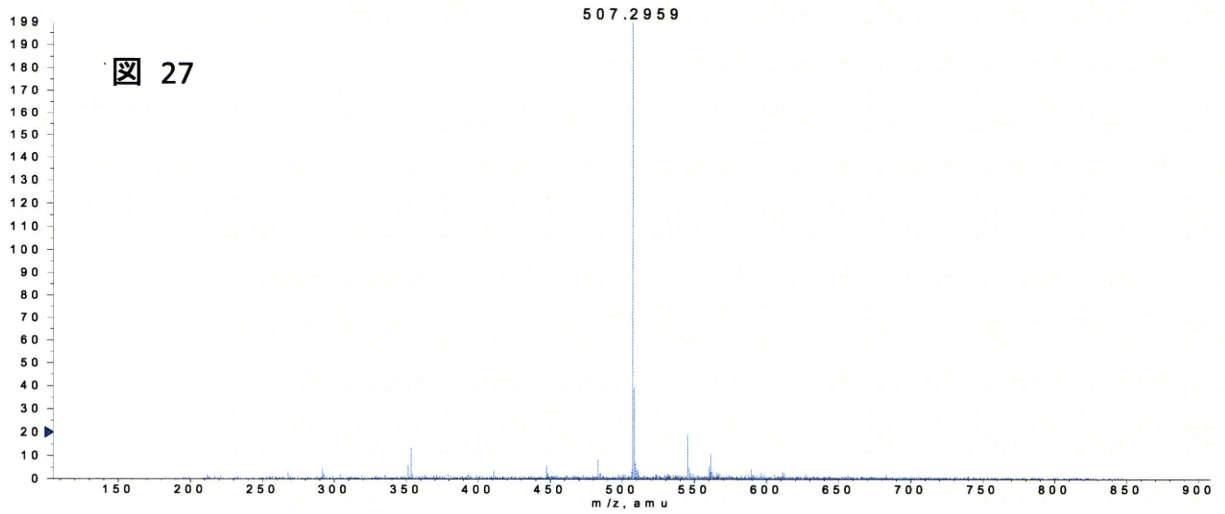


図 26~28 ソウジュツ(Negative) m/z 507 の抽出イオンクロマトおよび MS, MS/MS

XIC of -TOF MS: Experiment 1, 507.253 to 507.336 amu from 20101124_Neg_006.wiff Max. 1968.0 cps.



-TOF MS: Experiment 1, 8.326 to 8.509 min from 20101124_Neg_006.wiff Max. 199.4 counts.
 $a=3.57538153066371930e-004$, $t_0=-2.80192555123358030e+000$, subtracted (8.022 to 8.2...



-TOF Product (507.3): Experiment 2, 8.543 min from 20101124_Neg_006.wiff Max. 9.0 counts.
 $a=3.57538153066371930e-004$, $t_0=-2.80192555123358030e+000$, subtracted (4.745 to 5.171...

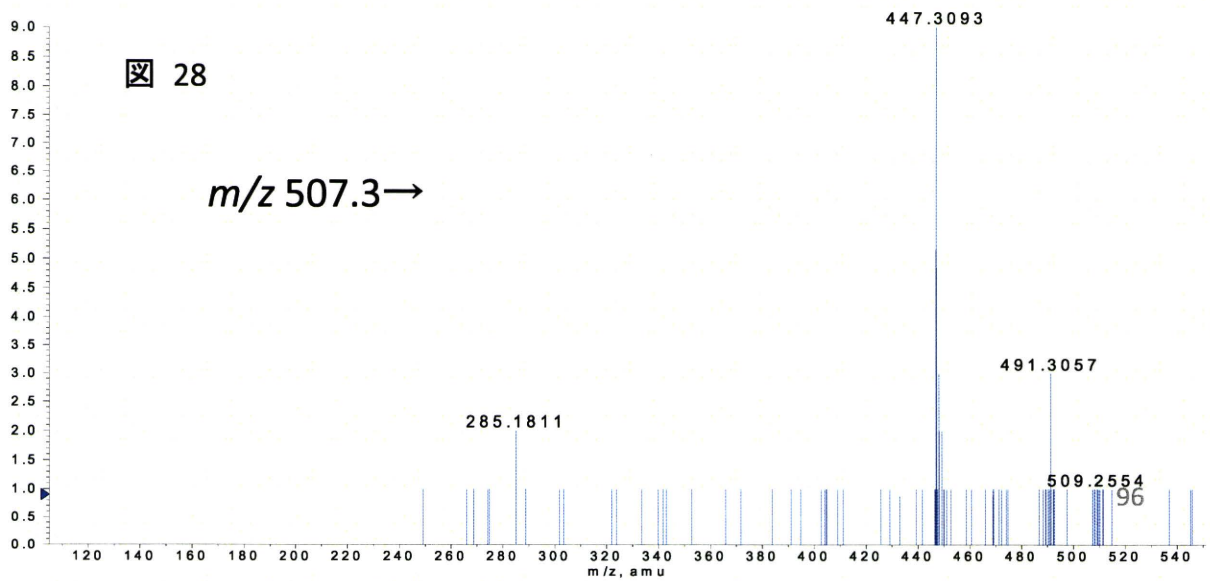


図 29～30 ソウジュツ(Negative) m/z 353 の抽出イオンクロマトおよび MS

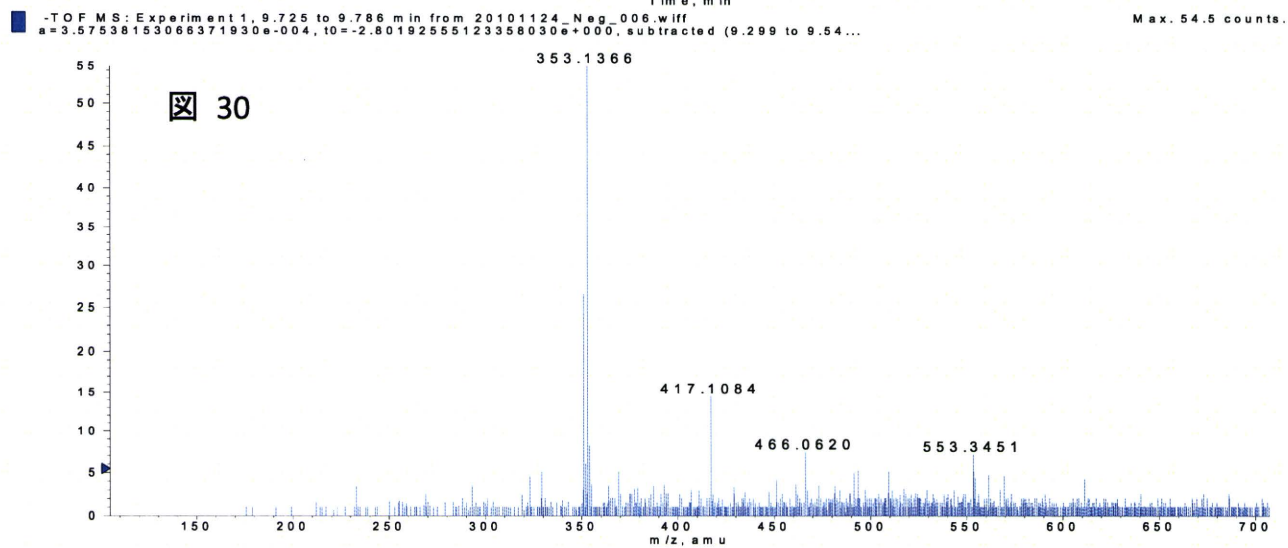
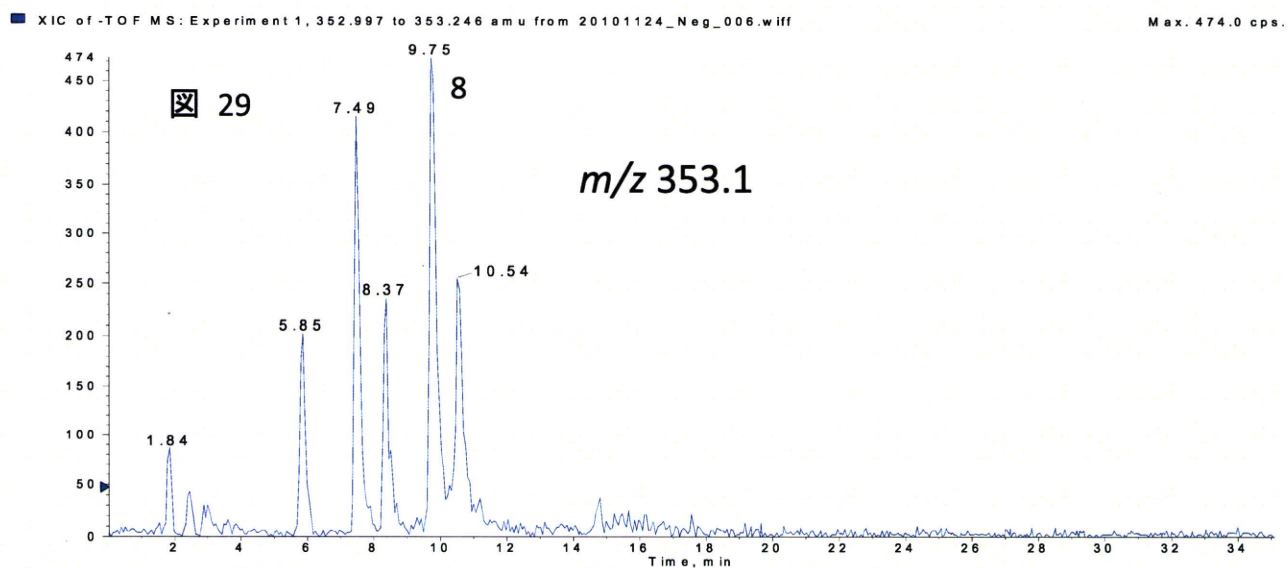
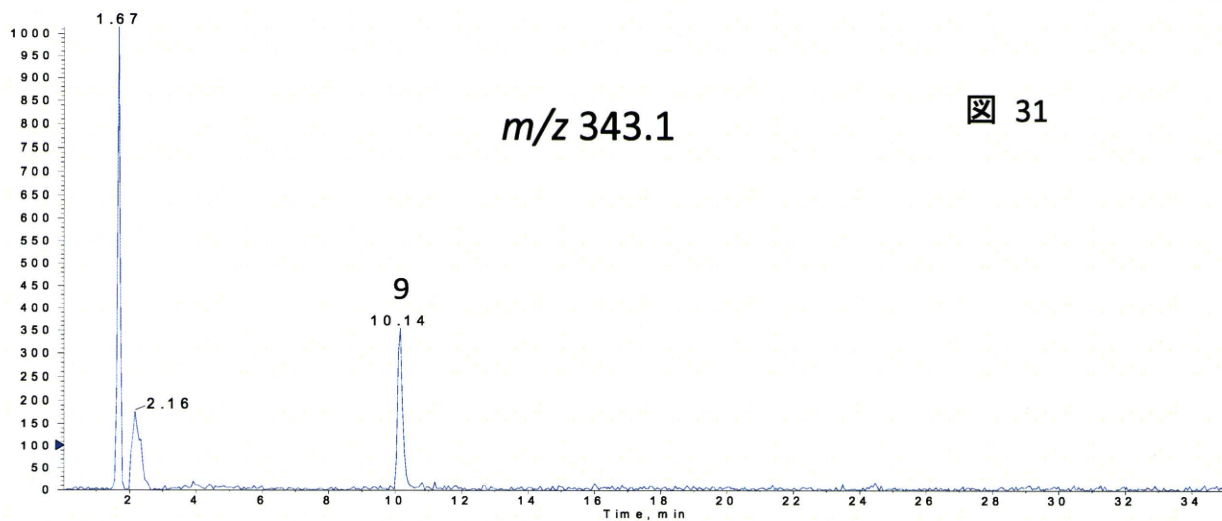


図 31 ~ 32 ソウジュツ(Negative) m/z 343 の抽出イオンクロマトおよび MS

XIC of -TOF MS: Experiment 1, 343.042 to 343.216 amu from 20101124_Neg_006.wiff

Max. 1015.0 cps.



m/z 343.1

図 31

-TOF MS: Experiment 1, 10.090 to 10.212 min from 20101124_Neg_006.wiff
a=3.57538153066371930e-004, t0=-2.80192555123358030e+000, subtracted (9.786 to 9.90...

Max. 34.7 counts.

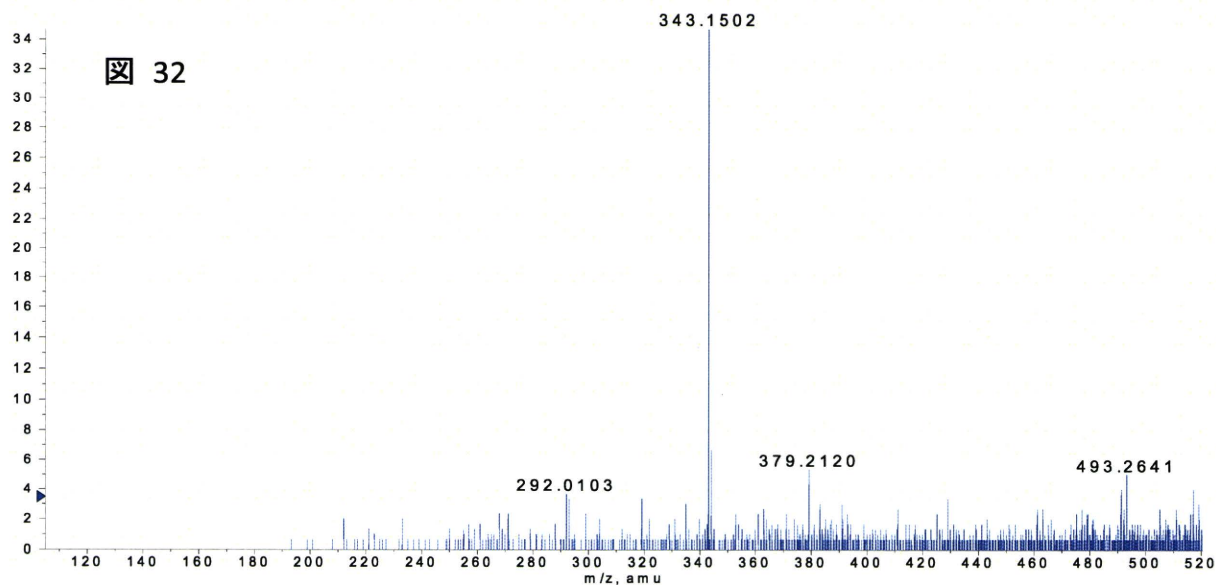


図 32