

図185 献血構成比(20歳代)(立川)

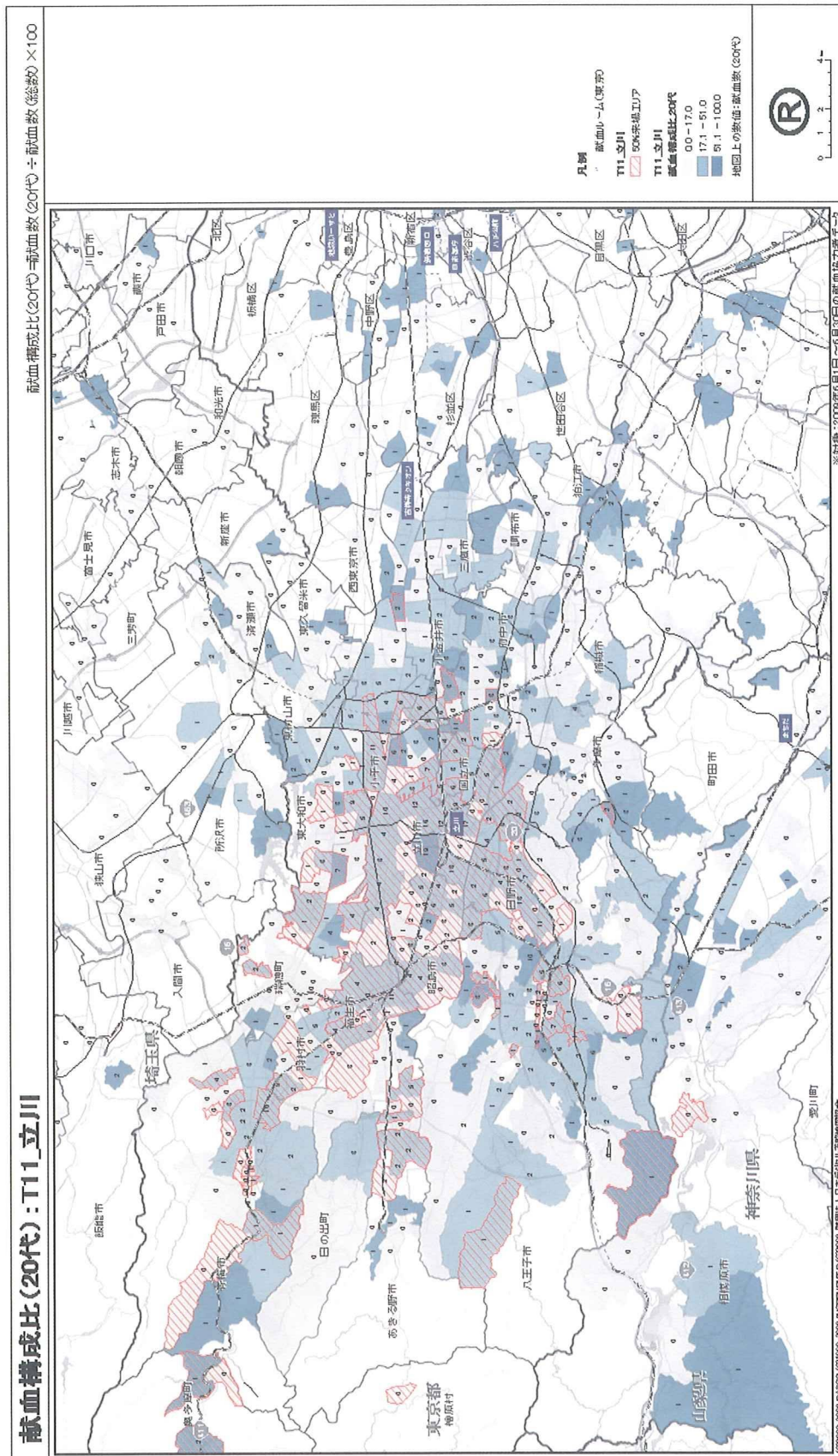


図 1 8 6 献血構成比 (30 歳代) (立川)

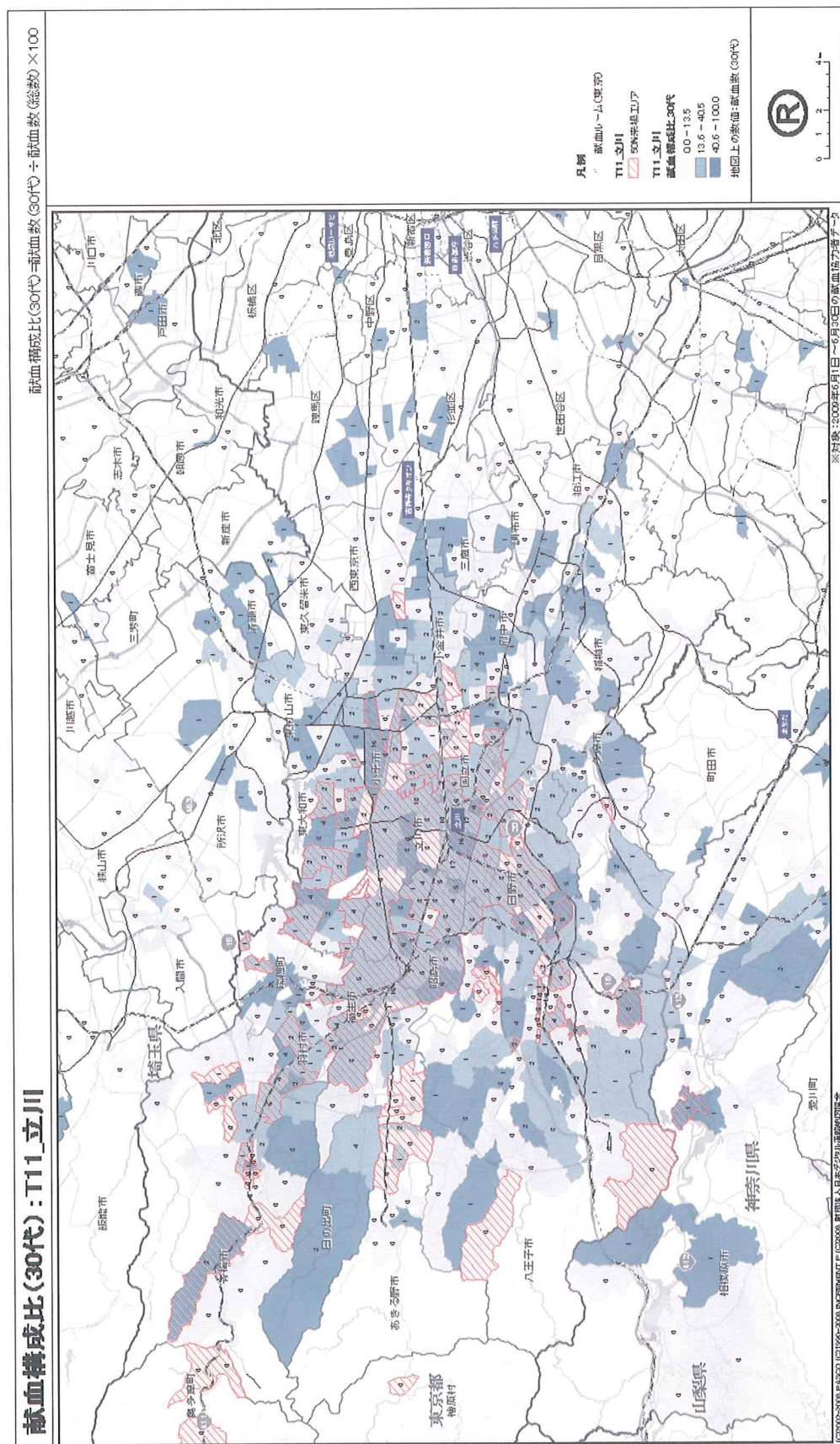




図187 献血構成比(40歳代)(立川)

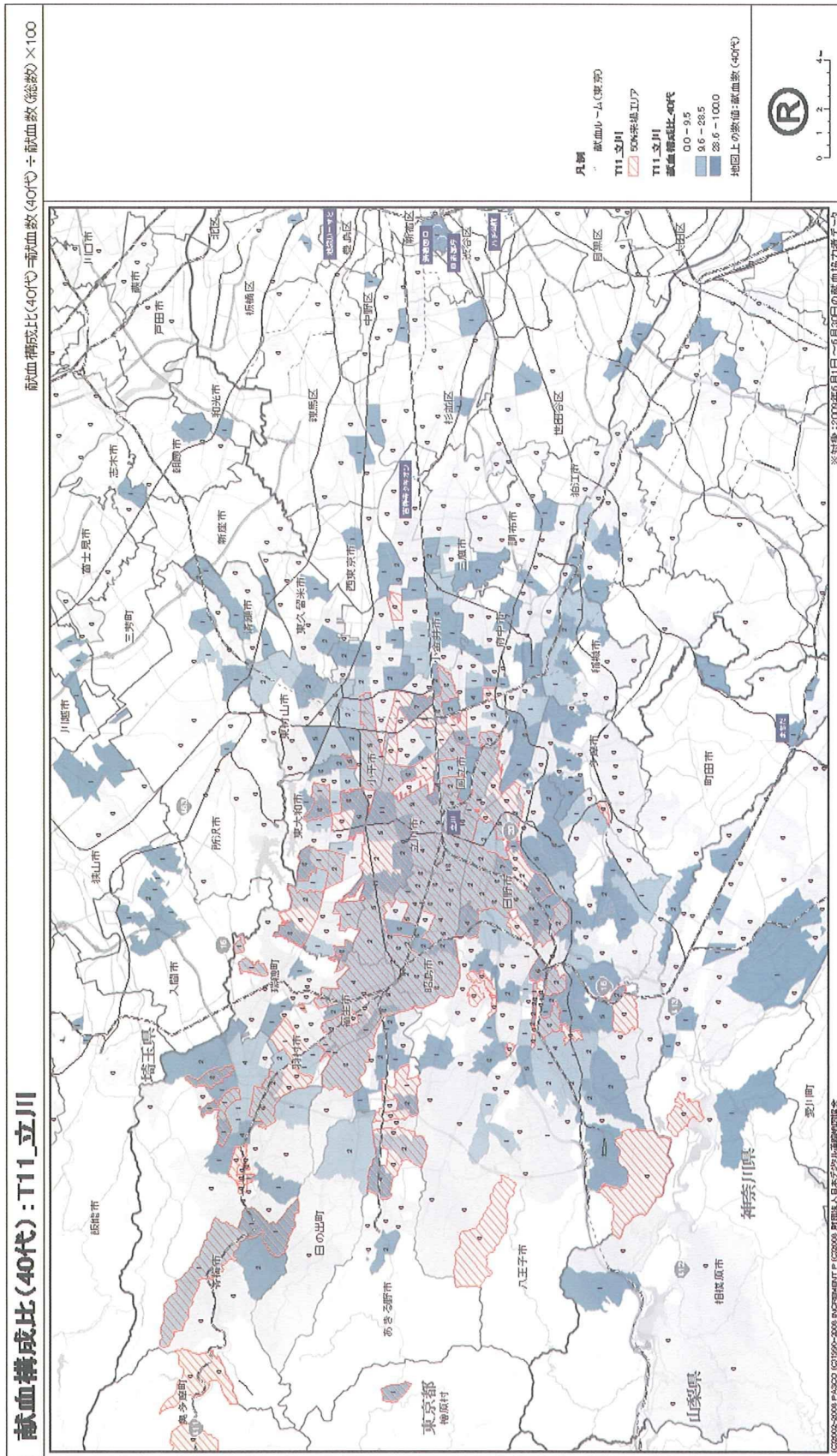


図188 献血構成比(50歳代)(立川)

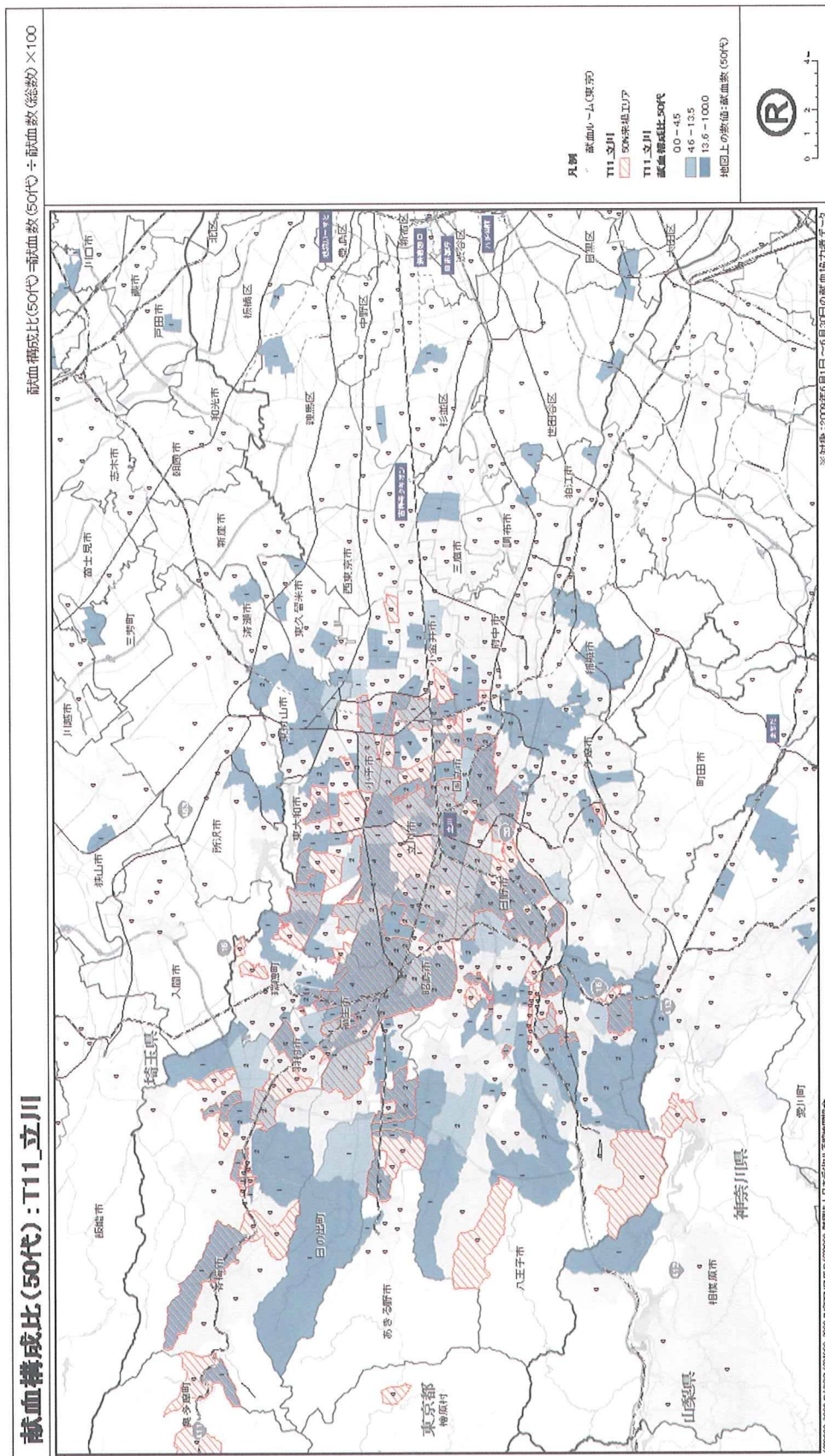




図189 献血構成比(60歳代)(立川)

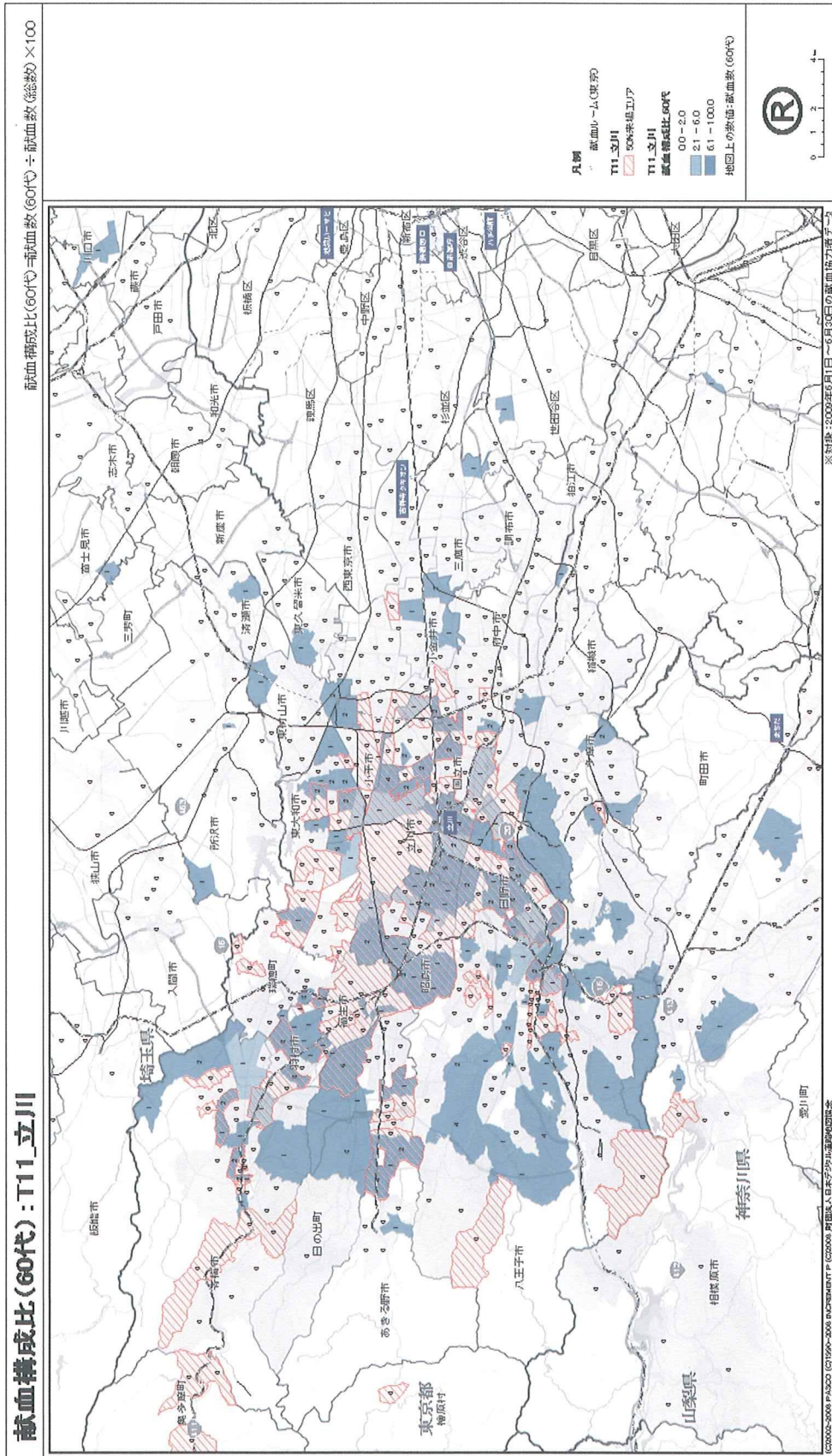


図190 献血構成比（就業者）（立川）

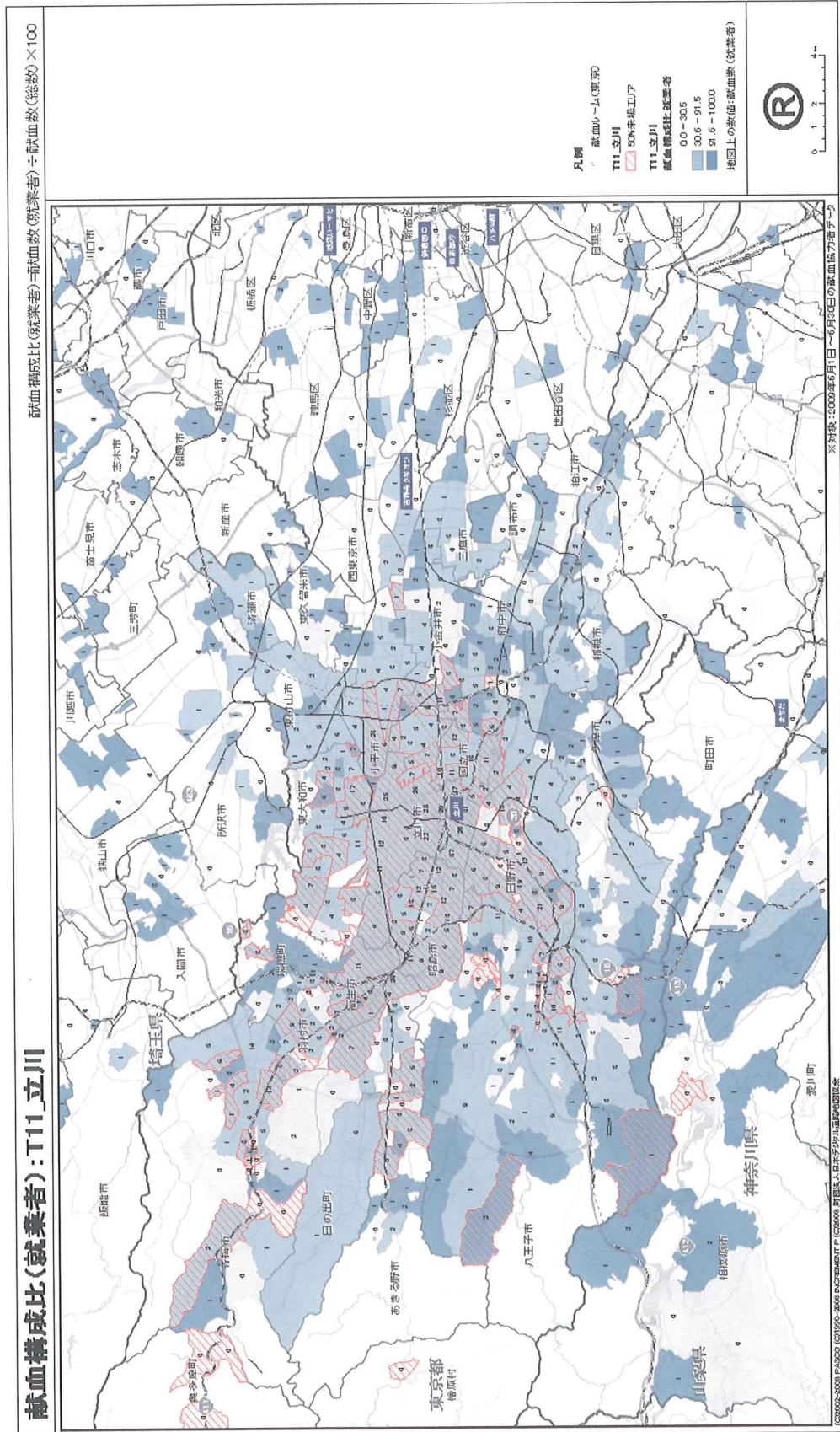




図191 献血構成比(学生)(立川)

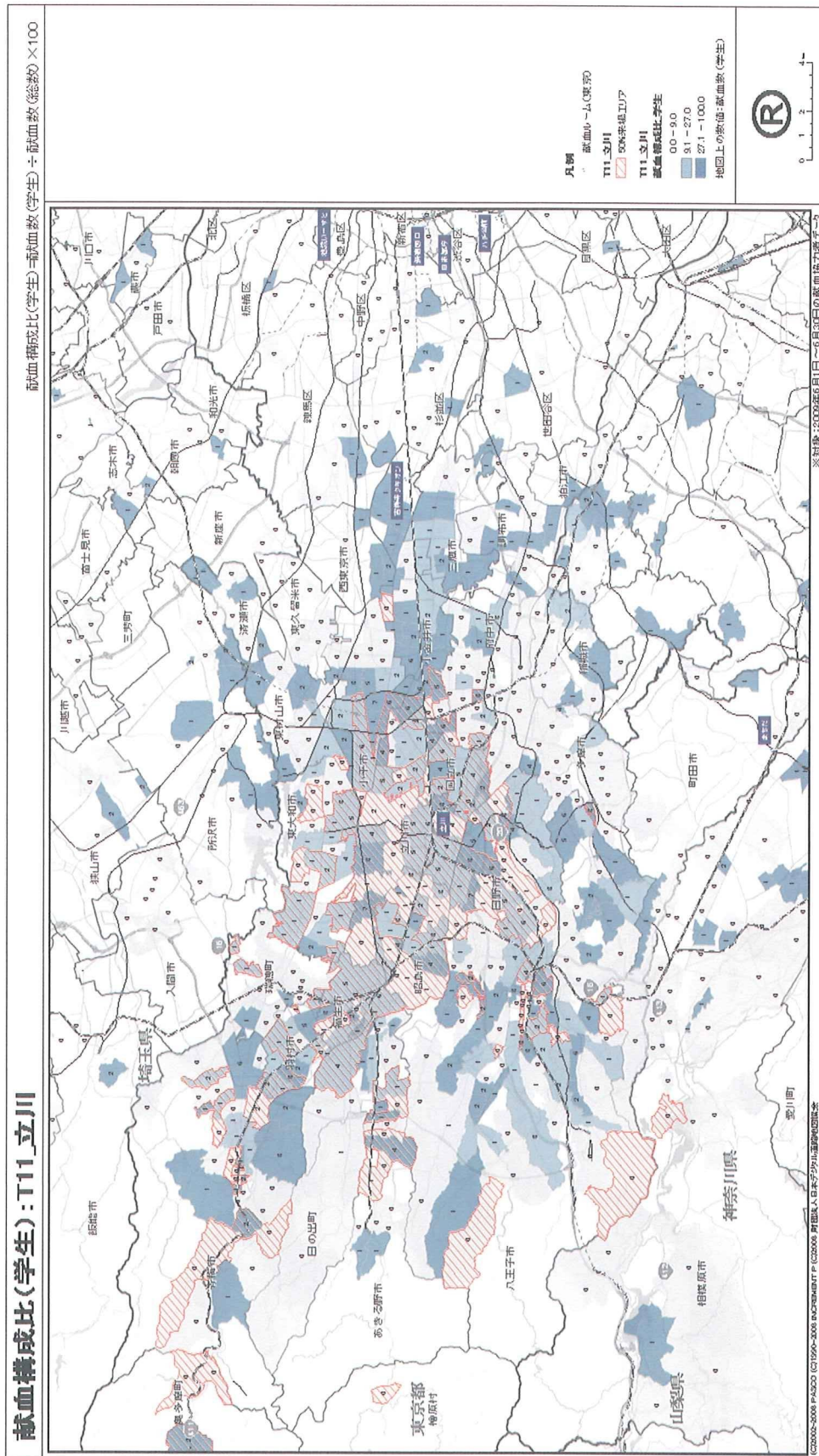


図192 献血構成比(主婦)(立川)

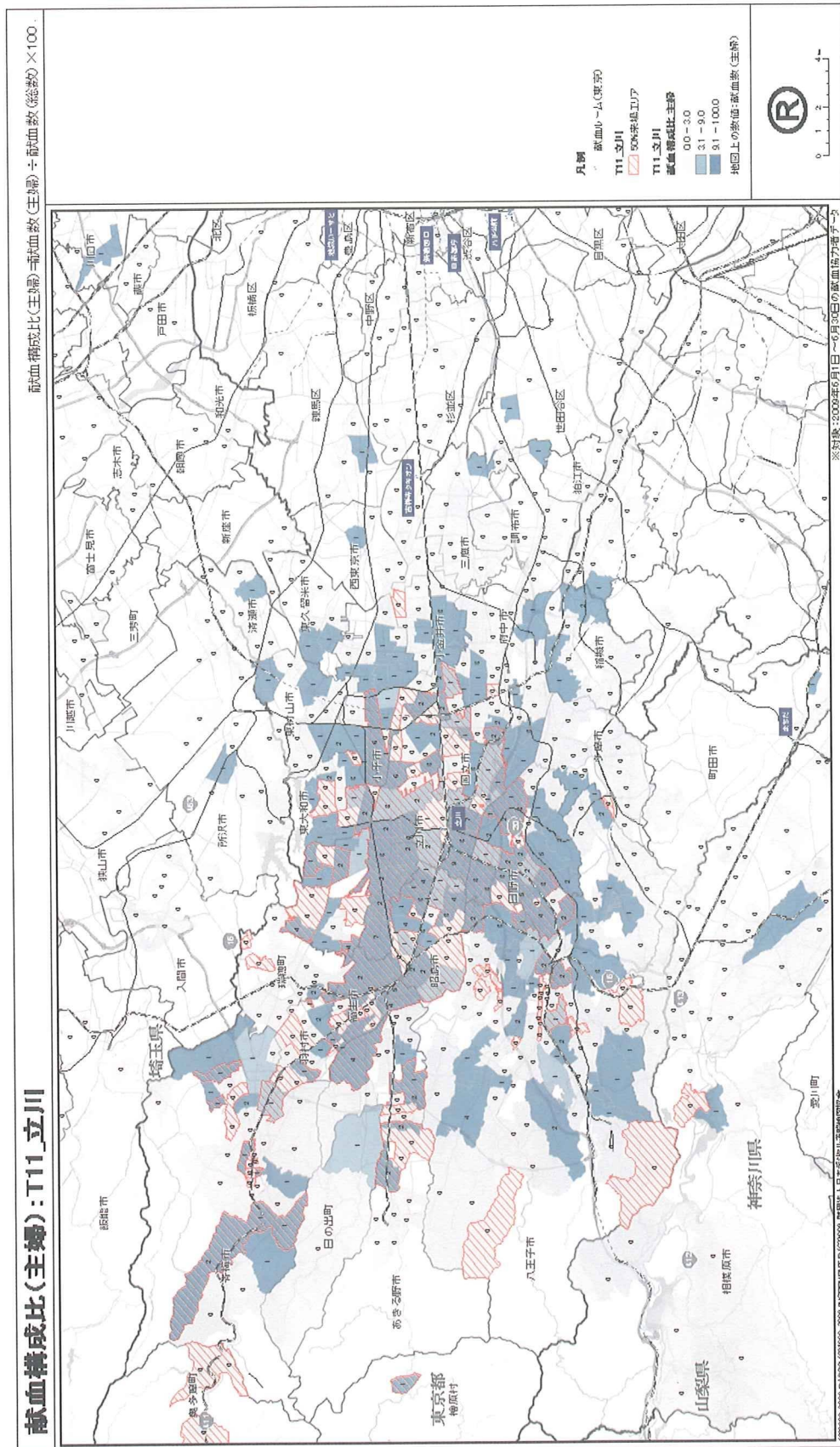




図193 献血構成比（その他職業）（立川）

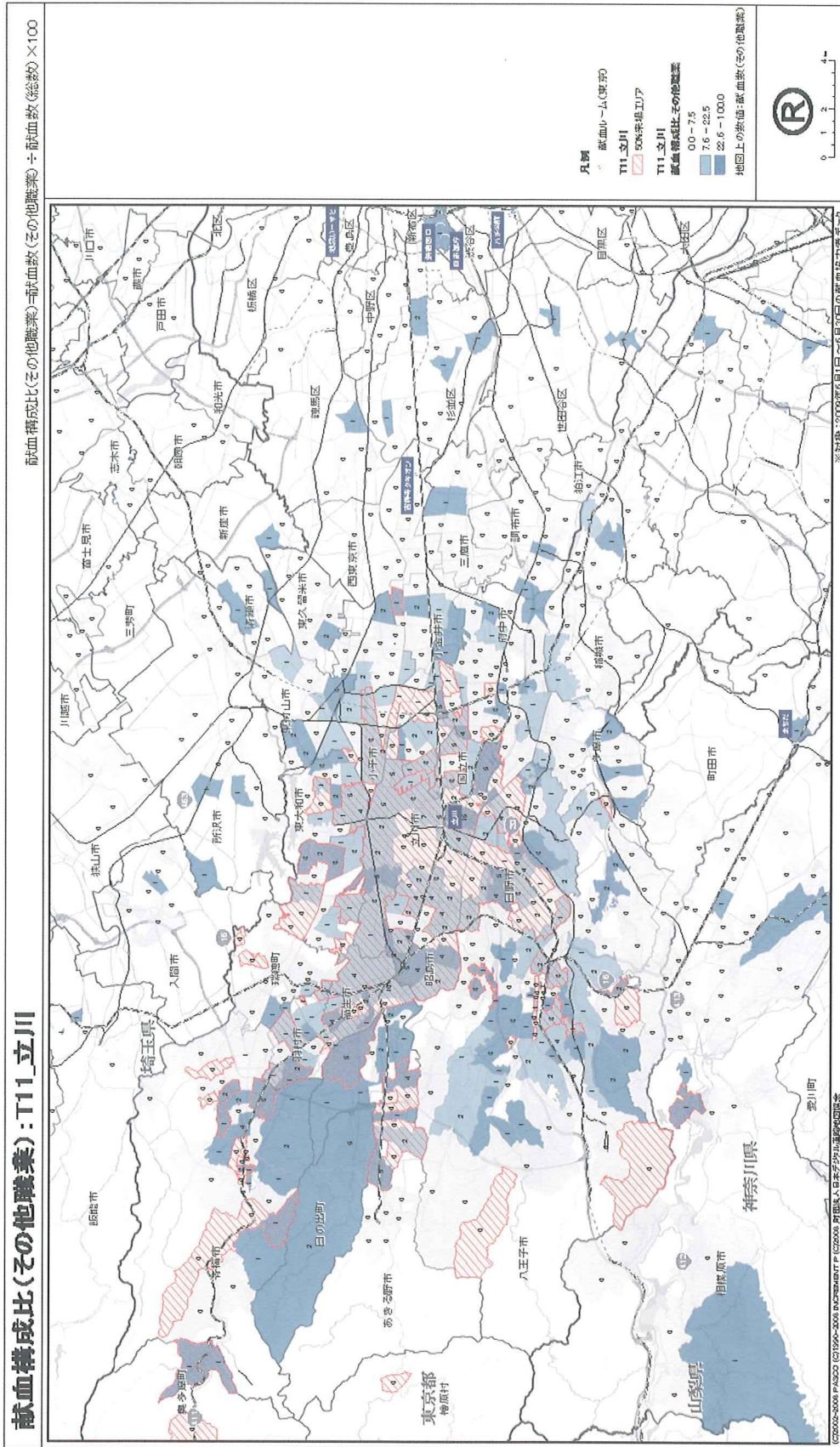


図 1 9 4 献血構成比 (200mL 献血希望) (立川)

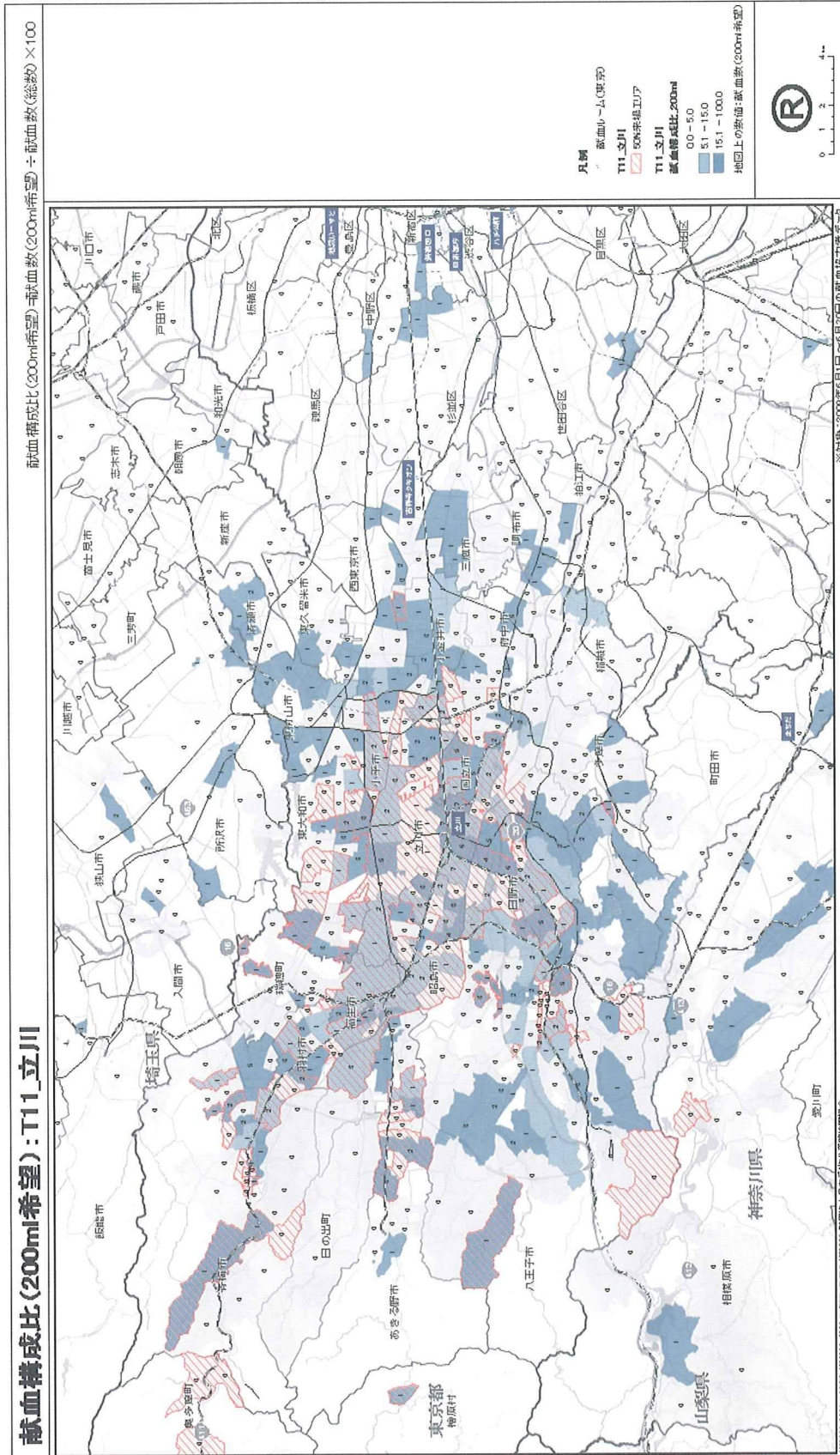




図 1 9 5 献血構成比 (400ml 献血希望) (立川)

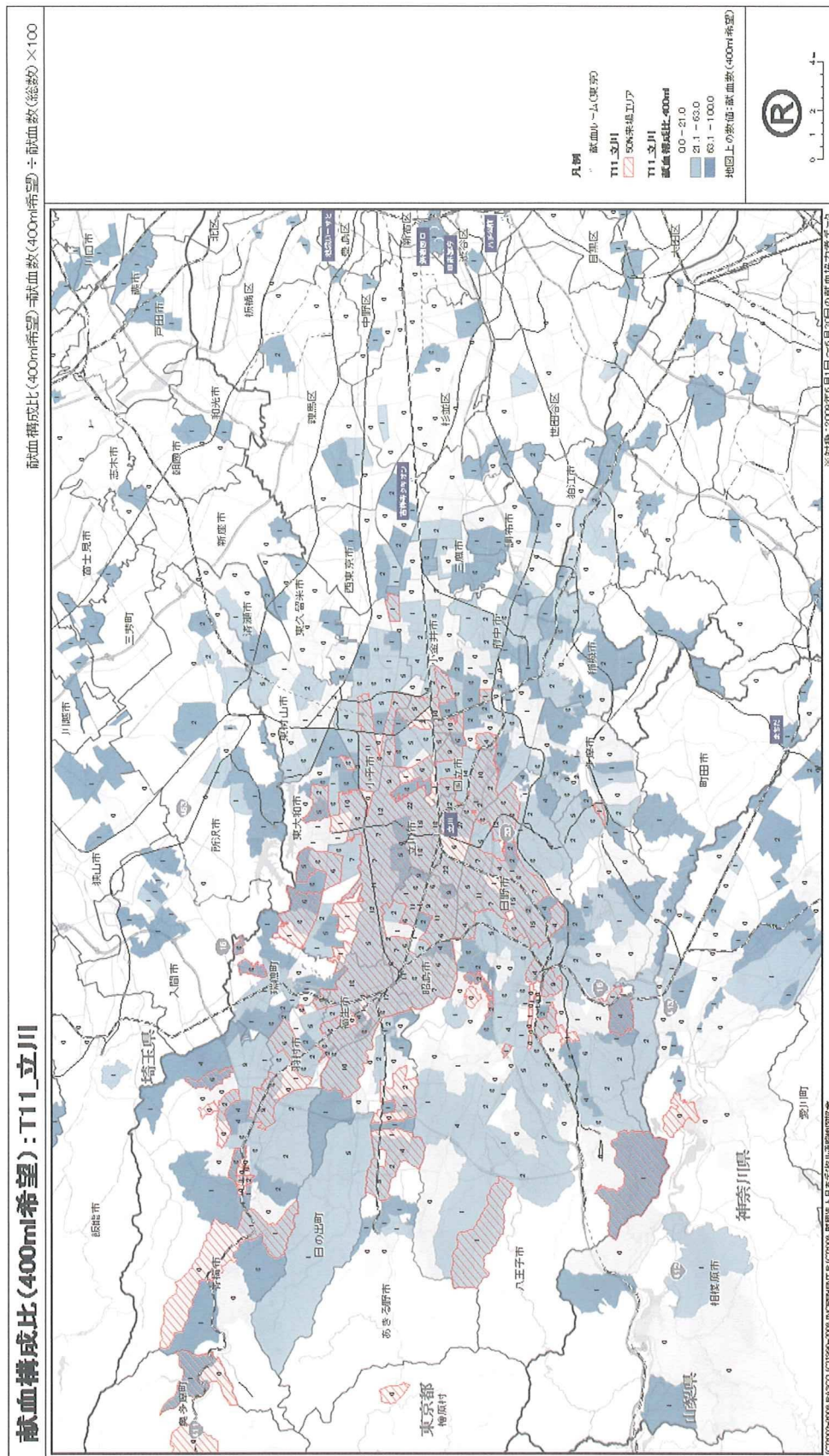


図196 献血構成比（血小板献血希望）（立川）

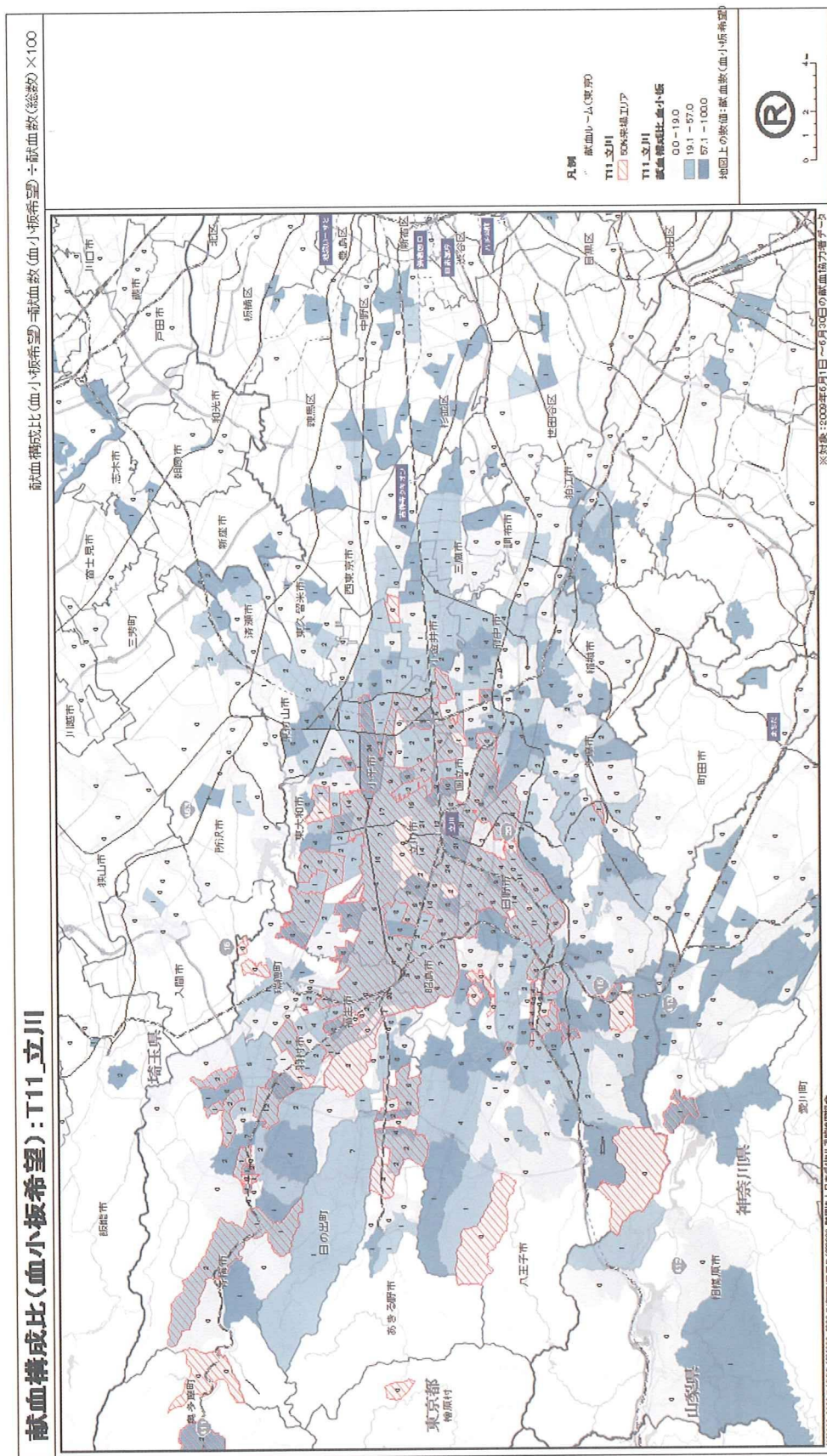




図197 献血構成比(血漿献血希望)(立川)

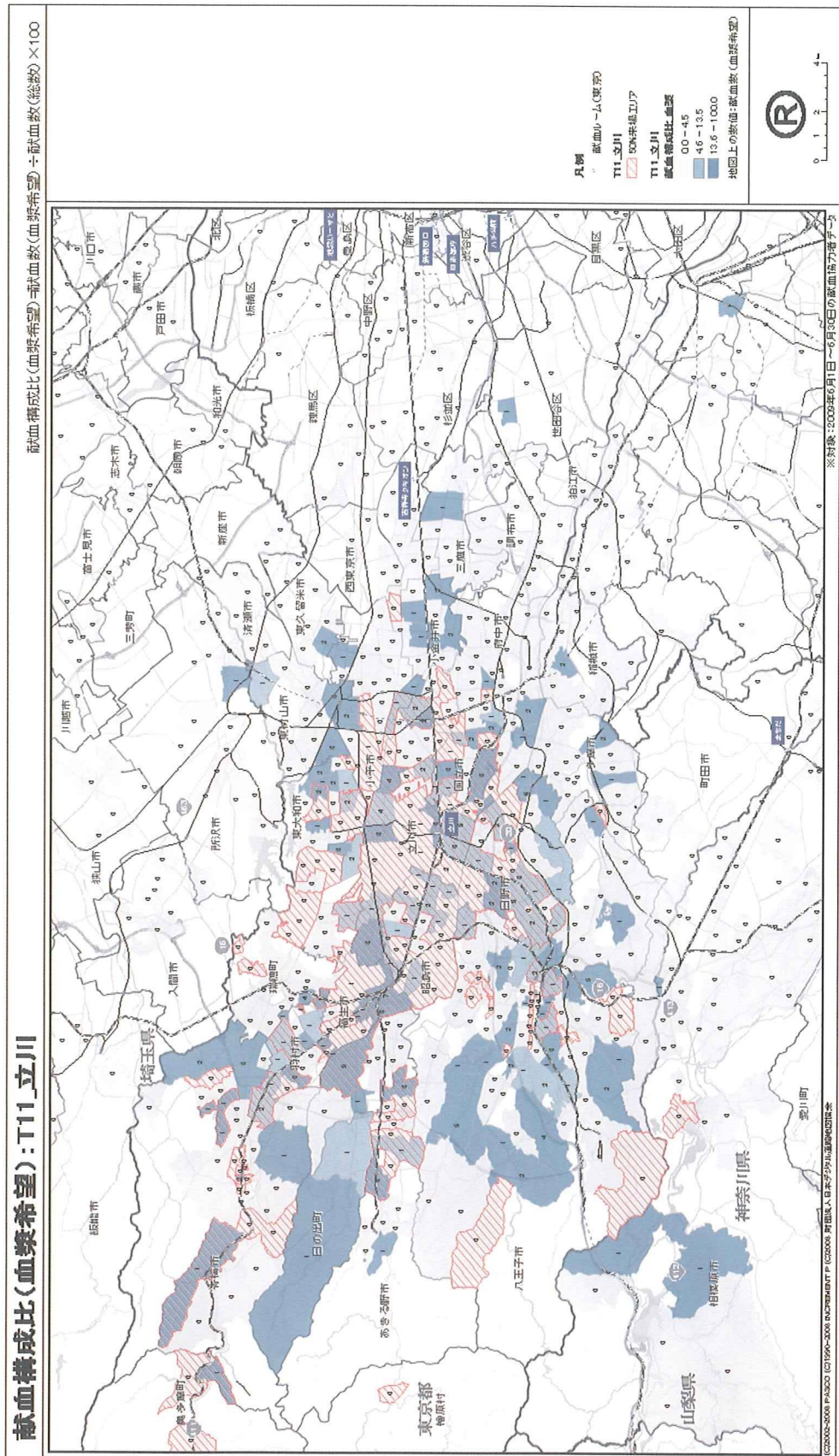


図198 休日／平日割合 (立川)

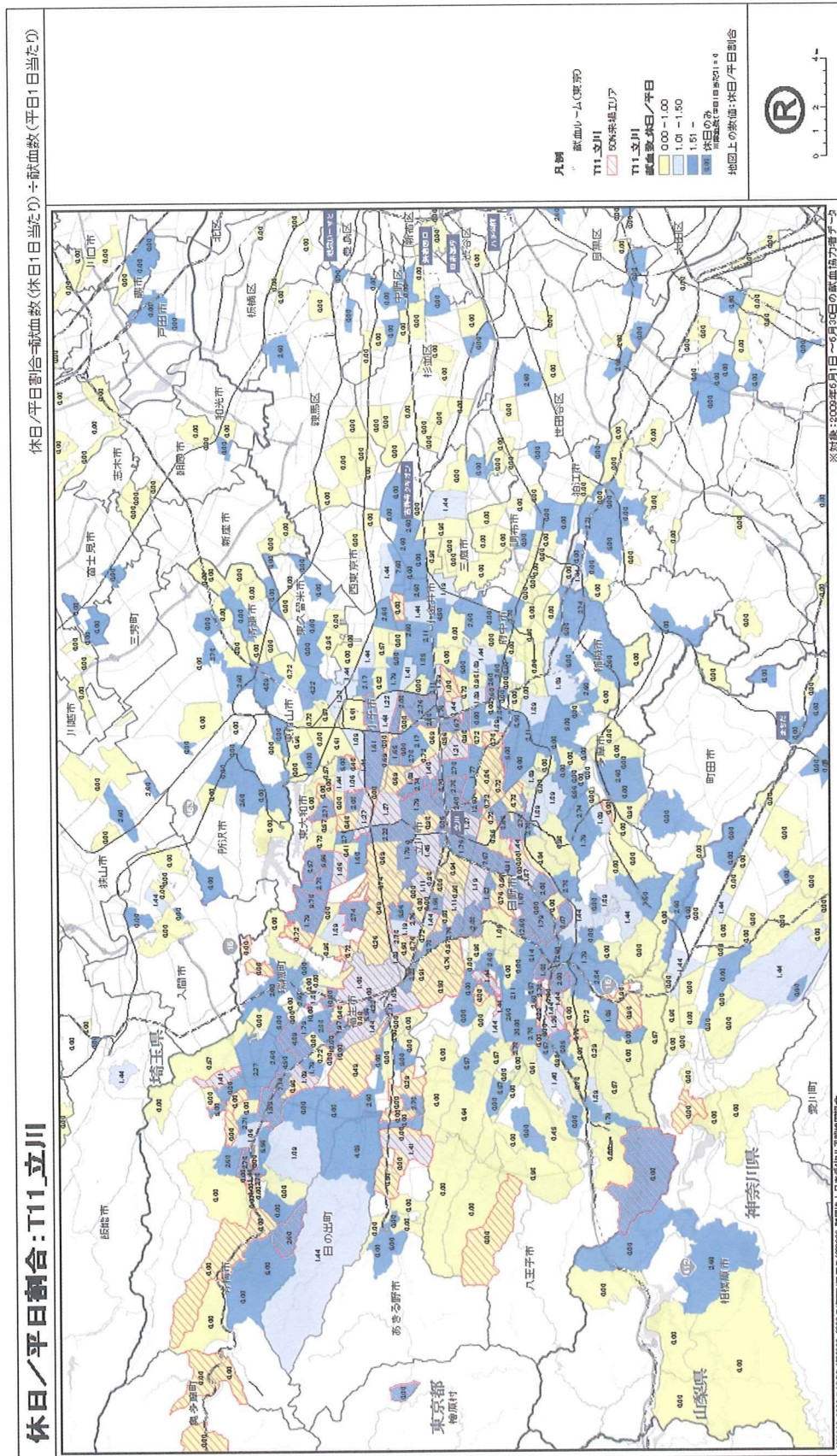




図199 献血可能人口1万人あたりの献血者数（町田）

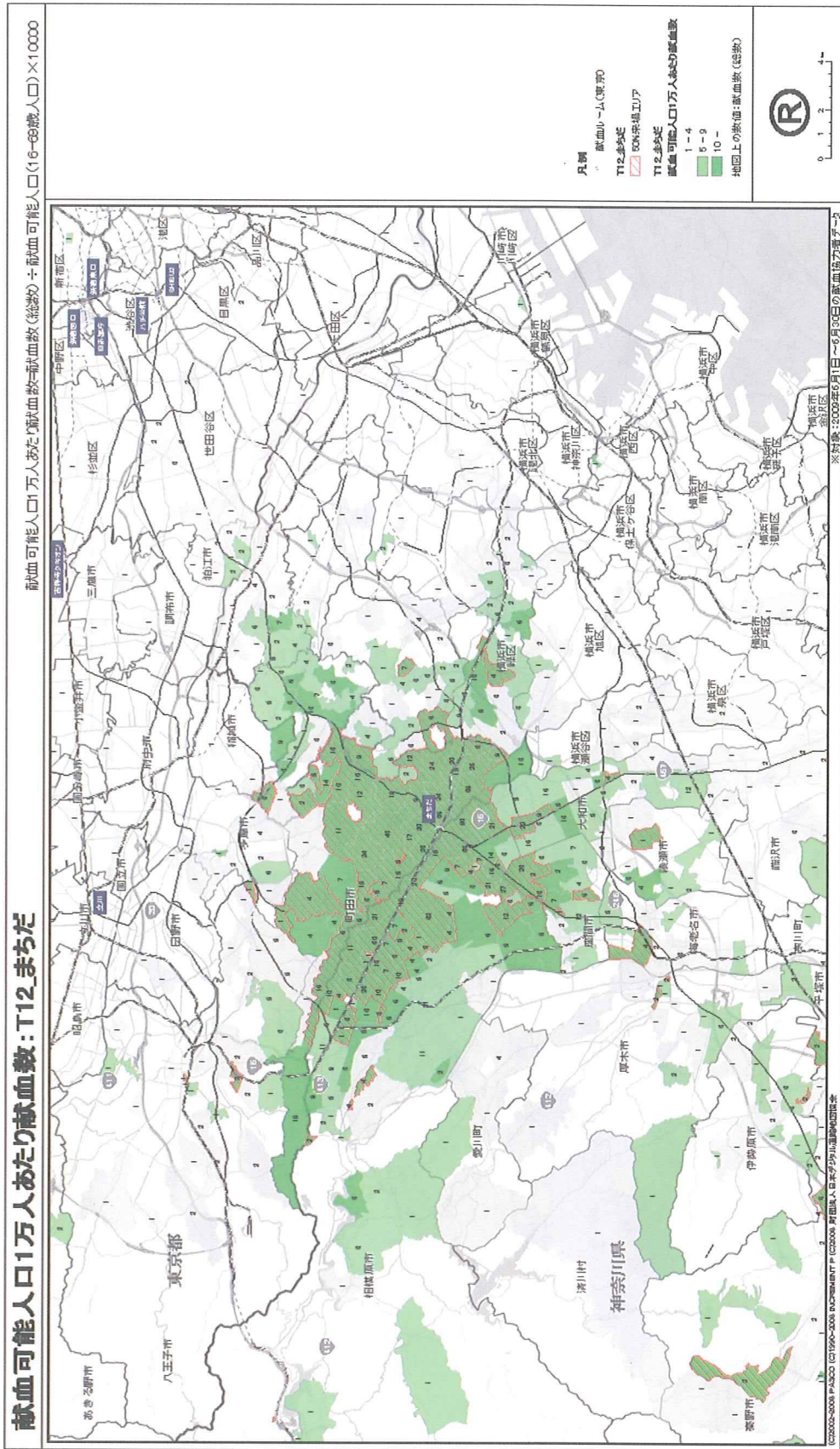


図 200 献血構成比（男性）（町田）

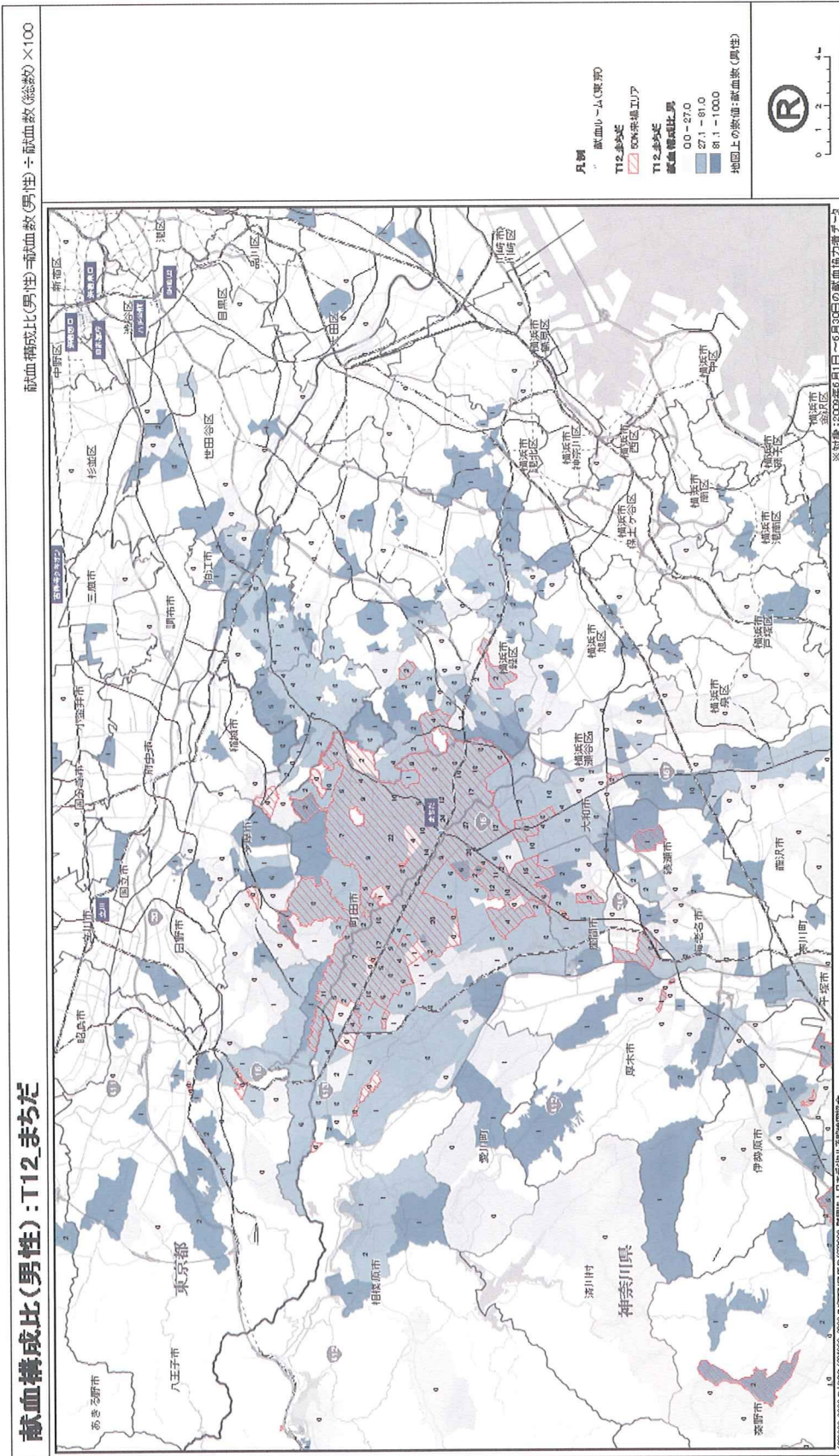




図 201 献血構成比（女性）（町田）

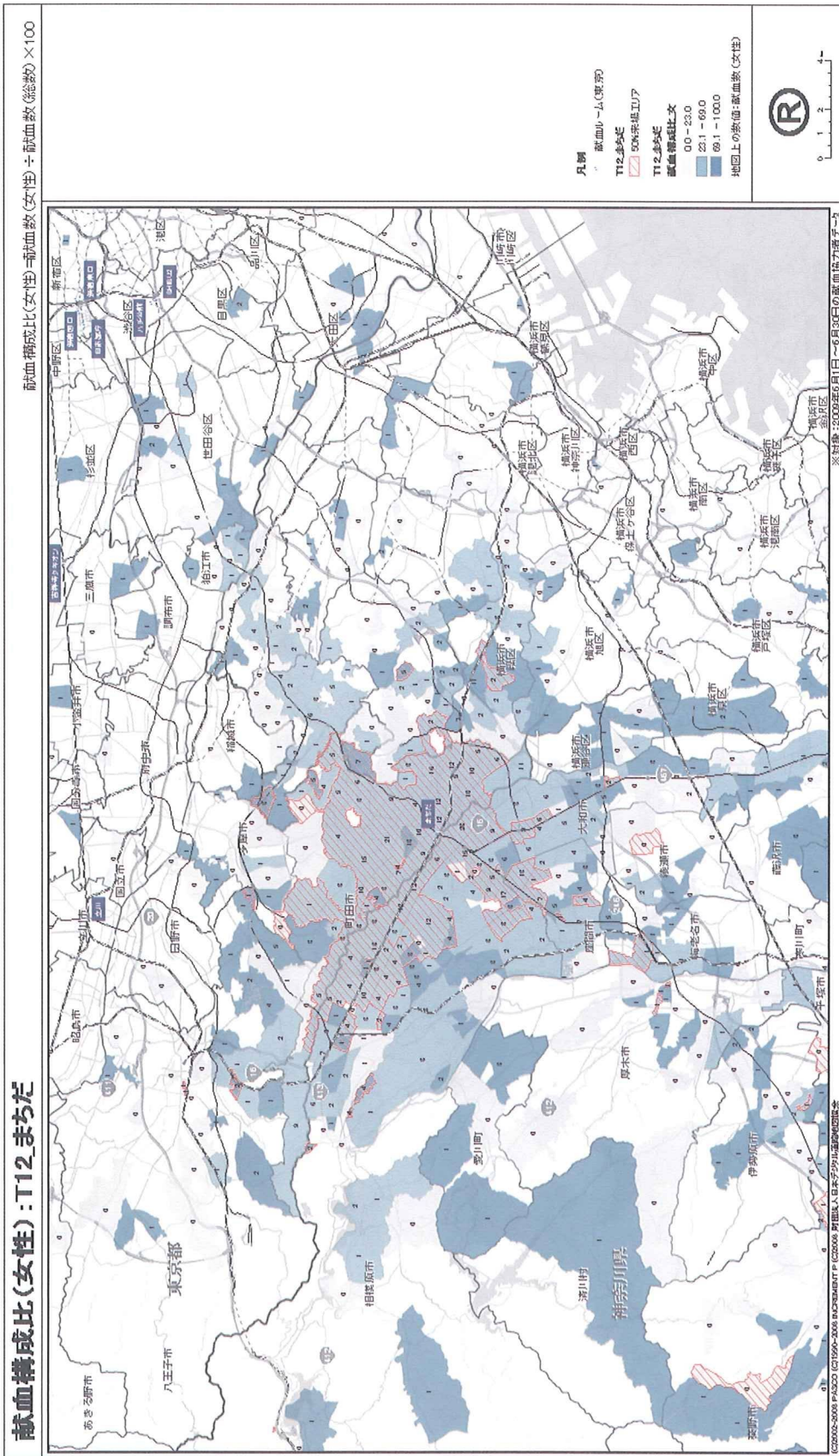


図 2.0.2 献血構成比 (10 歳代) (町田)

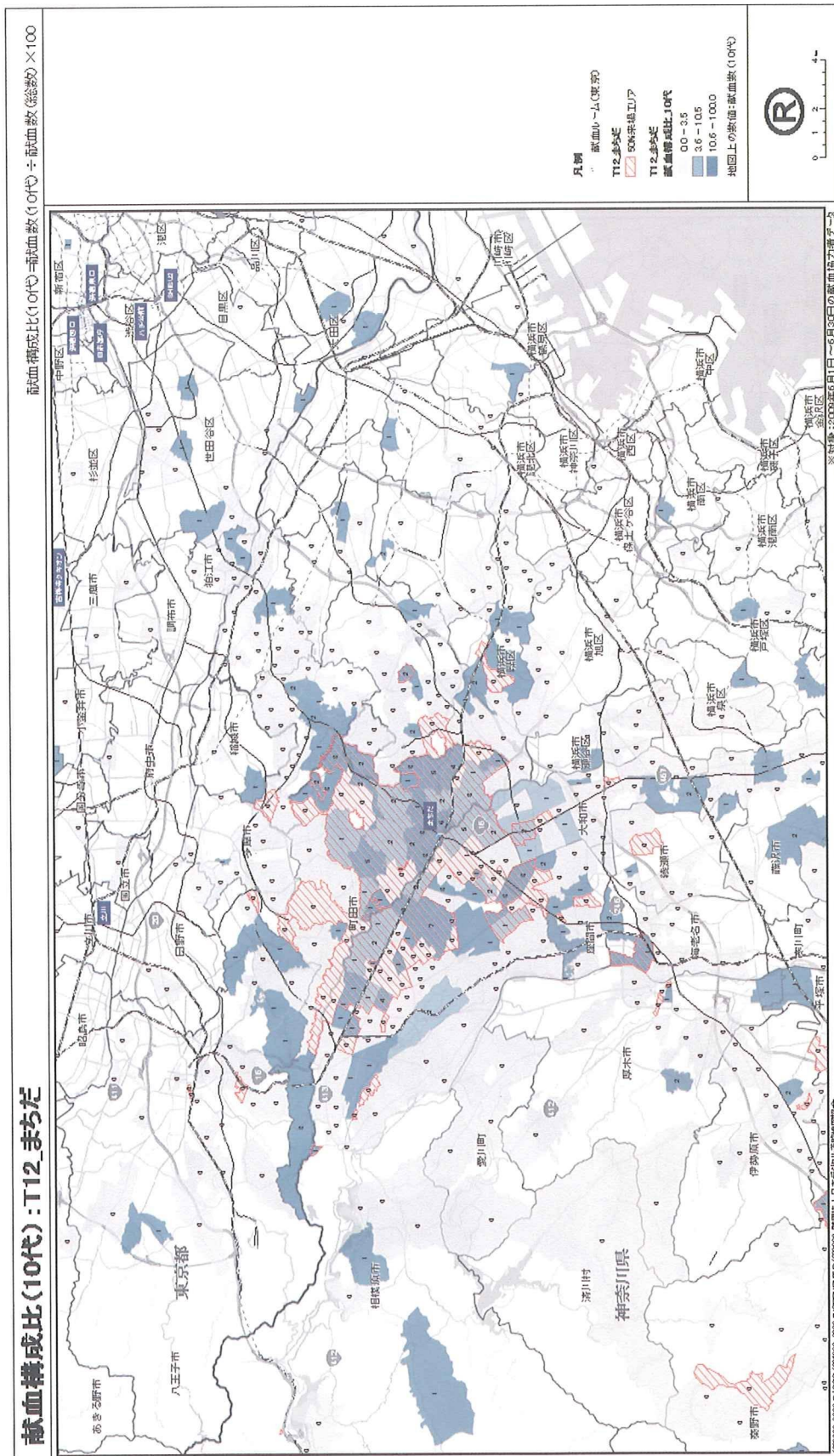




図 2 0 3 献血構成比 (20 歳代) (町田)

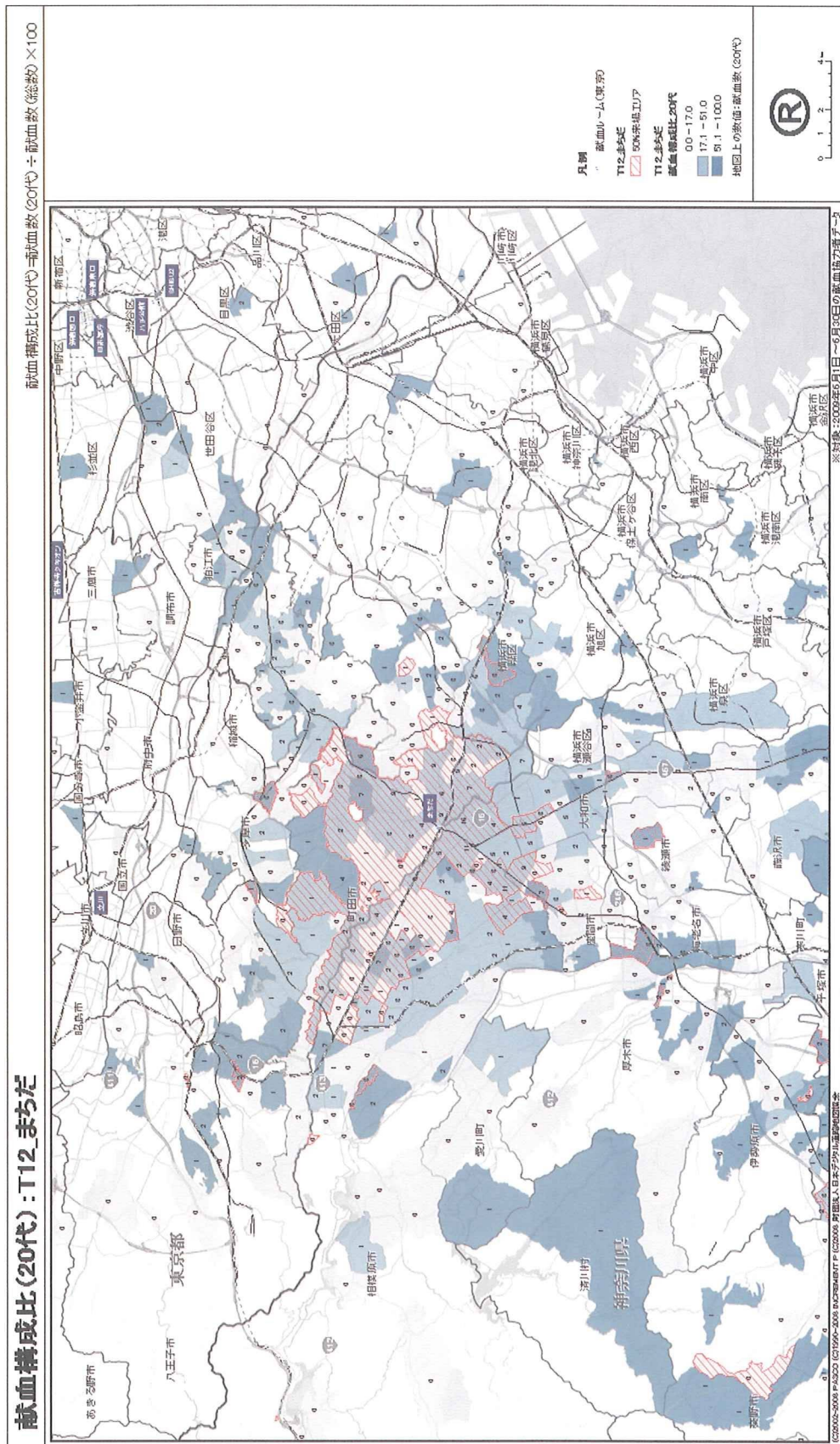


図 2 0 4 献血構成比 (30 歳代) (町田)

