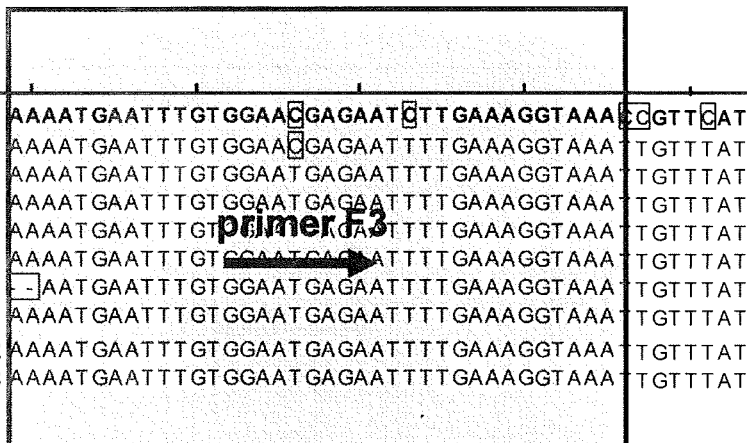


O. sativa ゲノム配列

KN100325_A01_1_008.seq
 KN100325_C01_3_006.seq
 KN100325_D01_4_005.seq
 KN100325_E01_5_004.seq
 KN100325_G01_7_002.seq
 KN100325_A03_9_016.seq
 KN100325_B03_10_015.seq
 KN100325_C03_11_014.seq
 KN100325_D03_12_013.seq

種子1
 種子2
 種子3



GTGTTAAAGTTTATTTGTATATAAGT TTTT GAGATTGGT GTGGTGTGTATATTAGTGTAGAAT
 GTGTTAAAGTTTATTTGTATATAAGT TTTT GAGATTGGT GTGGTGTGTATATTAGTGTAGAAT
 GTGTTAAAGTTTATTTGTATATAAGT TTTT GAGATTGGT GTGGTGTGTATATTAGTGTAGAAT
 GTGTTAAAGTTTATTTGTATATAAGT TTTT GAGATTGGT GTGGTGTGTATATTAGTGTAGAAT
 GTGTTAAAGTTTATTTGTATATAAGT TTTT GAGATTGGT GTGGTGTGTATATTAGTGTAGAAT
 GTGTTAAAGTTTATTTGTATATAAGT TTTT GAGATTGGT GTGGTGTGTATATTAGTGTAGAAT
 GTGTTAAAGTTTATTTGTATATAAGT TTTT GAGATTGGT GTGGTGTGTATATTAGTGTAGAAT
 GTGTTAAAGTTTATTTGTATATAAGT TTTT GAGATTGGT GTGGTGTGTATATTAGTGTAGAAT
 GTGTTAAAGTTTATTTGTATATAAGT TTTT GAGATTGGT GTGGTGTGTATATTAGTGTAGAAT



Fig.17. 日本晴Bisulfite mapping解析
 (シーケンス領域①)

O. sativa ゲノム配列

```

YCAAAAAGTAGGGGGATAGATGAATAGTATGGCCATTGGATTGGAGTTGAGATGG
KN100305_A01_1_008.seq TTCAAAAAGTAGGGGGATAGATGAATAGTATGGTTATTGGATTTGAGGTTTGGAGTTGGATATGTTG
KN100305_A05_17_024.seq TTCAAAAAGTAGGGGGATAGATGAATAGTATGGTTATTGGATTTGAGGTTTGGAGTTGGATATGTTG
KN100305_B01_2_007.seq TTCAAAAAGTAGGGGGATAGATGAATAGTATGGTTATTGGATTTGAGGTTTGGAGTTGGATATGTTG
KN100305_B05_18_023.seq TTCAAAAAGTAGGGGGATAGATGAATAGTATGGTTATTGGATTTGAGGTTTGGAGTTGGATATGTTG
KN100305_C03_11_014.seq TTCAAAAAGTAGGGGGATAGATGAATAGTATGGTTATTGGATTTGAGGTTTGGAGTTGGATATGTTG
KN100305_C05_19_022.seq TTCAAAAAGTAGGGGGATAGATGAATAGTATGGTTATTGGATTTGAGGTTTGGAGTTGGATATGTTG
KN100305_D01_4_005.seq TTCAAAAAGTAGGGGGATAGATGAATAGTATGGTTATTGGATTTGAGGTTTGGAGTTGGATATGTTG
KN100305_D03_12_013.seq TTCAAAAAGTAGGGGGATAGATGAATAGTATGGTTATTGGATTTGAGGTTTGGAGTTGGATATGTTG
KN100305_D05_20_021.seq TTCAAAAAGTAGGGGGATAGATGAATAGTATGGTTATTGGATTTGAGGTTTGGAGTTGGATATGTTG
KN100305_E01_5_004.seq TTCAAAAAGTAGGGGGATAGATGAATAGTATGGTTATTGGATTTGAGGTTTGGAGTTGGATATGTTG
KN100305_F01_6_003.seq TTCAAAAAGTAGGGGGATAGATGAATAGTATGGTTATTGGATTTGAGGTTTGGAGTTGGATATGTTG
KN100305_F03_14_011.seq TTCAAAAAGTAGGGGGATAGATGAATAGTATGGTTATTGGATTTGAGGTTTGGAGTTGGATATGTTG
KN100305_G01_7_002.seq TTCAAAAAGTAGGGGGATAGATGAATAGTATGGTTATTGGATTTGAGGTTTGGAGTTGGATATGTTG
KN100305_G03_15_010.seq TTCAAAAAGTAGGGGGATAGATGAATAGTATGGTTATTGGATTTGAGGTTTGGAGTTGGATATGTTG
KN100305_H01_8_001.seq TTCAAAAAGTAGGGGGATAGATGAATAGTATGGTTATTGGATTTGAGGTTTGGAGTTGGATATGTTG
KN100305_H03_16_009.seq TTCAAAAAGTAGGGGGATAGATGAATAGTATGGTTATTGGATTTGAGGTTTGGAGTTGGATATGTTG

```

```

CAAAAGTAGGGGGATAGATGAATAGTATGGCCATTGGATTGGAGTTGAGATGG
TAATAATTTTGTAGATTAATAGGGATAGTAGTGT TGGT GATGAGTTCAGGAGTGAAGAGTTGCAGTAACTGG AT
TAATAATTTTGTAGATTAATAGGGATAGTAGTGT TGGT GATGAGTTCAGGAGTGAAGAGTTGCAGTAACTGG AT
TAATAATTTTGTAGATTAATAGGGATAGTAGTGT TGGT GATGAGTTCAGGAGTGAAGAGTTGCAGTAACTGG AT
TAATAATTTTGTAGATTAATAGGGATAGTAGTGT TGGT GATGAGTTCAGGAGTGAAGAGTTGCAGTAACTGG AT
TAATAATTTTGTAGATTAATAGGGATAGTAGTGT TGGT GATGAGTTCAGGAGTGAAGAGTTGCAGTAACTGG AT
TAATAATTTTGTAGATTAATAGGGATAGTAGTGT TGGT GATGAGTTCAGGAGTGAAGAGTTGCAGTAACTGG AT
TAATAATTTTGTAGATTAATAGGGATAGTAGTGT TGGT GATGAGTTCAGGAGTGAAGAGTTGCAGTAACTGG AT
TAATAATTTTGTAGATTAATAGGGATAGTAGTGT TGGT GATGAGTTCAGGAGTGAAGAGTTGCAGTAACTGG AT
TAATAATTTTGTAGATTAATAGGGATAGTAGTGT TGGT GATGAGTTCAGGAGTGAAGAGTTGCAGTAACTGG AT
TAATAATTTTGTAGATTAATAGGGATAGTAGTGT TGGT GATGAGTTCAGGAGTGAAGAGTTGCAGTAACTGG AT
TAATAATTTTGTAGATTAATAGGGATAGTAGTGT TGGT GATGAGTTCAGGAGTGAAGAGTTGCAGTAACTGG AT
TAATAATTTTGTAGATTAATAGGGATAGTAGTGT TGGT GATGAGTTCAGGAGTGAAGAGTTGCAGTAACTGG AT
TAATAATTTTGTAGATTAATAGGGATAGTAGTGT TGGT GATGAGTTCAGGAGTGAAGAGTTGCAGTAACTGG AT
TAATAATTTTGTAGATTAATAGGGATAGTAGTGT TGGT GATGAGTTCAGGAGTGAAGAGTTGCAGTAACTGG AT
TAATAATTTTGTAGATTAATAGGGATAGTAGTGT TGGT GATGAGTTCAGGAGTGAAGAGTTGCAGTAACTGG AT
TAATAATTTTGTAGATTAATAGGGATAGTAGTGT TGGT GATGAGTTCAGGAGTGAAGAGTTGCAGTAACTGG AT

```

Fig.18. 日本晴Bisulfite mapping解析 (シーケンス領域②)

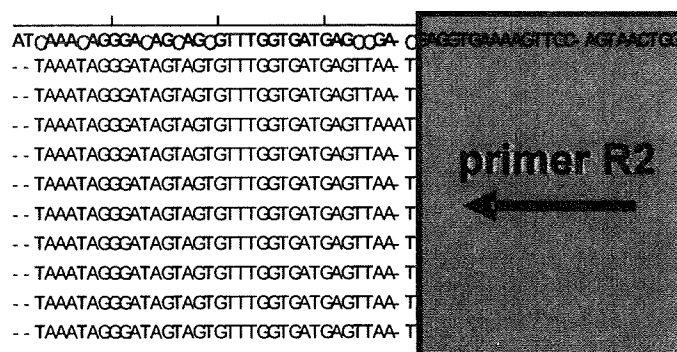
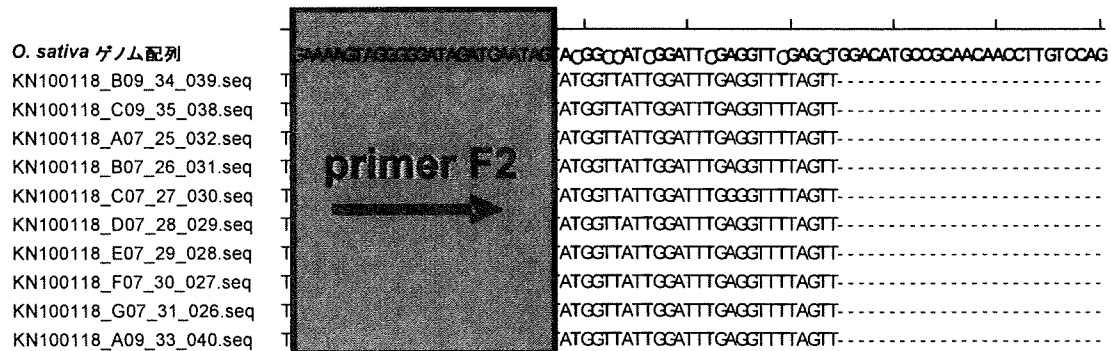


Fig.19. ささにしきBisulfite mapping解析
(シーケンス領域②)

研究成果の刊行に関する一覧表

書籍

著者氏名	論文タイトル名	書籍全体の編集者名	書籍名	出版社名	出版地	出版年	ページ
手島玲子	新開発食品の安全性 1. 遺伝子組換え食品とは	米谷民雄	食品中の化学物質と安全性	日本食品衛生協会	東京	2009	132-137
手島玲子	遺伝子組換え農作物のアレルゲン性評価	林 裕造 大野泰雄	食品安全ハンドブック	丸善	東京	2010	574-577

雑誌

発表者氏名	論文タイトル名	発表誌名	巻名	ページ	出版年
Nakamura R., Satoh R, Nakajima Y., Kawasaki N., Yamaguchi T., Sawada J., Nagoya H., Teshima R	Comparative Study of GH-Transgenic and Non-Transgenic Amago Salmon Allergenicity and Proteomic Analysis of Amago Salmon Allergens.	Reg. Toxicol. Pharmacol.	55	300-308	2009
Kezuka Y., Itagaki T., Satoh R., Teshima R., Nonaka T.	Crystallization and preliminary X-ray analysis of a deletion mutant of major buckwheat allergen.	Acta Cryst.	F65	1267-1270	2009
Nakamura, R., Uchida, Y., Higuchi, M., Teshima, R.	Development of a novel allergy test using a cultured mast cell line.	ImmunoTox Letter	14(2)	2-5	2009
Akiyama H, Nakamura F, Yamada C, Nakamura K, Nakajima O, Kawakami H, Harikai N, Furui S, Kitta K, Teshima R.	A screening method for the detection of the 35S promoter and the nopaline synthase terminator in genetically modified organisms in a real-time multiplex polymerase chain reaction using high-resolution melting-curve analysis.	Biol Pharm Bull.	32	1824-1829	2009
Hashimoto H, Ito K, Tanaka H, Akiyama H, Teshima R, Makabe Y, Nakanishi K, Miyamoto F.	Detection of wheat as an allergenic substance in models of processed foods by a nested PCR methods.	Shokuhin Eiseigaku Zasshi.	50	178-183	2009
Nakajima O, Akiyama H, Teshima R.	Real-time polymerase chain reaction method for detecting contamination of beef by material from genetically engineered cattle.	Biol Pharm Bull.	32	1313-1316	2009
Harikai N, Saito S, Abe M, Kondo K, Kitta K, Akiyama H, Teshima R, Kinoshita K.	Optical detection of specific genes for genetically modified soybean and maize using multiplex PCR coupled with primer extension on a plastic plate.	Biosci Biotechnol Biochem.	73	1886-1889	2009
Mano J, Oguchi T, Akiyama H, Teshima R, Hino A, Furui S, Kitta K.	Simultaneous detection of recombinant DNA segments introduced into genetically modified crops with multiplex ligase chain reaction coupled with multiplex polymerase chain reaction.	J Agric Food Chem.	57	2640-2646	2009
Oguchi T, Onishi M, Minegishi Y, Kurosawa Y, Kasahara M, Akiyama H, Teshima R, Futo S, Furui S, Hino A, Kitta K.	Development of quantitative duplex real-time PCR method for screening analysis of genetically modified maize.	Shokuhin Eiseigaku Zasshi.	50	117-125	2009
Oguchi T, Onishi M, Chikagawa Y, Kodama T, Suzuki E, Kasahara M, Akiyama H, Teshima R, Futo S, Hino A, Furui S, Kitta K.	Investigation of residual DNAs in sugar from sugar beet (<i>Beta vulgaris</i> L.).	Shokuhin Eiseigaku Zasshi.	50	41-46	2009

発表者氏名	論文タイトル名	発表誌名	巻名	ページ	出版年
Kajikawa A., Masuda K., Katoh M., and Igimi S.	Adjuvant effects for oral immunization provided by recombinant Lactobacillus casei secreting biologically active murine interleukin-1 beta.	Clinical and Vaccine Immunology.	17(1)	43-48	2010
Kajikawa A., Ichikawa E., and Igimi S.	Development of a Highly Efficient Protein-secreting System in Recombinant Lactobacillus casei.	Journal of Microbiology and Biotechnology.	20(2)	375-382	2010
Kajikawa A. and Igimi S.	Innate and acquired immune responses induced by recombinant Lactobacillus casei displaying flagellin-fusion antigen on the cell-surface.	Vaccine	28 (19)	3409-3415	2010
Asakawa N, Sakiyama N, Teshima R, Mitaku S.	Characteristic amino acid distribution around segments unique to allergens.	J. Biochem.	147	127-133	2010
Satoh R., Koyano S., Takagi K., Nakamura R., Teshima R.	Identification of an IgE-binding epitope of a major buckwheat allergen, BWP16, by spot assay and mimotope screening.	Int. Arch. Allergy Immunol.	153	133-140	2010
Nakajima O., Koyano S., Akiyama H., Sawada J., Teshima R.	Confirmation of a predicted lack of IgE binding to Cry3Bb1 from genetically modified (GM) crops.	Regul. Toxicol. Pharmacol.	56	306-311	2010
Nakamura R, Nakamura R, Nakano M, Arisawa K, Ezaki R, Horiuchi H, Teshima R.	Allergenicity study of EGFP-transgenic chicken meat by serological and 2D-DIGE analysis.	Food Chem Toxicol.	48	1302-1310	2010
Nakamura K, Akiyama H, Yamada C, Satoh R, Makiyama D, Sakata K, Kawakami H, Mano J, Kitta K, Teshima R.	Novel method to detect a construct-specific sequence of the acetolactate synthase gene in genetically-modified flax CDC Triffid (FP967).	Biol Pharm Bull.	33	532-534	2010
Mano J, Yanaka Y, Akiyama H, Teshima R, Furui S, Kitta K.	Improvement of polymerase chain reaction-based btl1 maize detection method by reduction of non-specific amplification.	Shokuhin Eiseigaku Zasshi.	51	32-36	2010
Shimizu E, Futo S, Masubuchi T, Minegishi Y, Kasahara M, Akiyama H, Teshima R, Hino A, Mano J, Furui S, Kitta K.	Selection of suitable polypropylene tubes for DNA testing using real-time PCR	Shokuhin Eiseigaku Zasshi.	51	43-47	2010
Fukushima, Y., Sato, M., Matsuda, H., Furusawa, S. and Horiuchi, H.	Construction of an insertion vector for gene targeting of chicken lens-specific gene.	J. Poult. Sci.	47(2)		2010 in press
五十君静信	遺伝子組換え乳酸菌を用いた経口粘膜ワクチン開発の試み。	日本臨床腸内微生物学会誌	11	34-40	2009
渡辺伸也	体細胞クローン家畜に関する欧州の意識調査	日本胚移植学雑誌	31	69-74	2009
中村亮介、中村里香、手島玲子	アレルギーデータベースAllergen Database for Food Safety (ADFS) のデータ改訂とアレルギー性予測ツールの信頼性評価	国立医薬品食品衛生研究所報告第127号	127	44-49	2009
穂山浩、佐々木伸大、大木果林、中村文美、坂田こずえ、中村公亮、大森清美、中島安基江、古井聡、橘田和美、小関良宏、手島玲子	PCR法を用いた米加工品の安全性未審査遺伝子組換え米の検知法	日本食品化学会誌	16	147-151	2009

発表者氏名	論文タイトル名	発表誌名	巻名	ページ	出版年
堀内浩幸, 江崎僚	アレルギーフリーの卵開発は可能か	養鶏の友	575	29-31	2010
堀内浩幸	アレルギーフリーのたまご開発が可能か	鶏の研究 (臨時増刊)	5	5-7	2010
堀内浩幸, 有澤謙二郎	ニワトリの万能細胞“ES細胞”とその遺伝子組換え	化学と生物	48(4)	237-242	2010
手島玲子, 中村亮介	食品中のアレルゲンの予測	日本食品衛生学会誌			submitted

