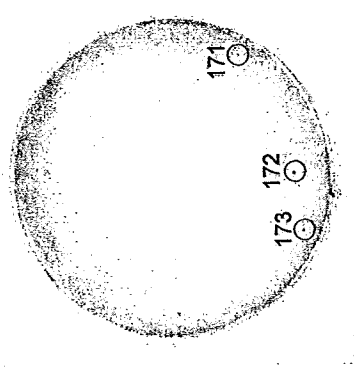
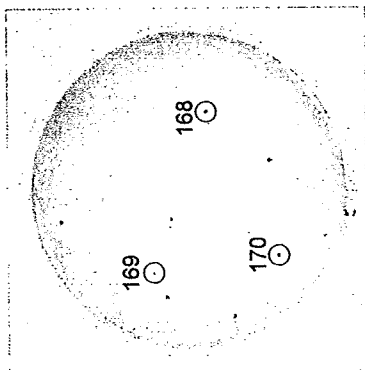


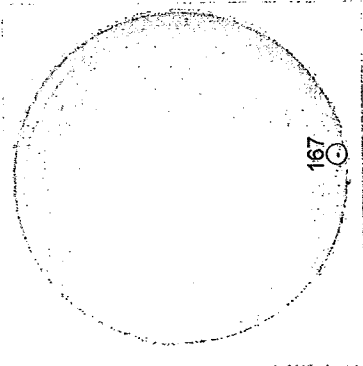
NO.9:おしんこ(白菜・胡瓜)
(塗抹法 VRB 典型集落)



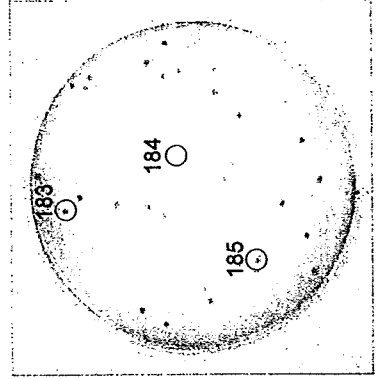
NO.9:おしんこ(白菜・胡瓜)
(塗抹法 DESO 典型集落)



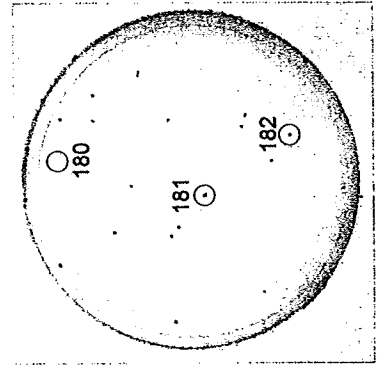
NO.9:おしんこ(白菜・胡瓜)
(混釈法 VRBD 典型集落)



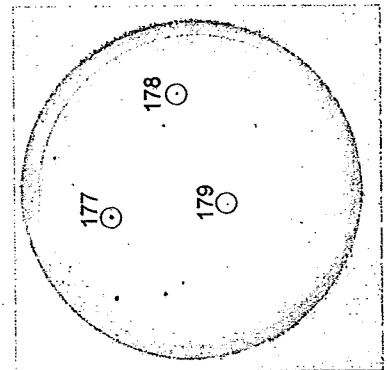
NO.10:料理用だしパック
(塗抹法 DESO 典型集落)



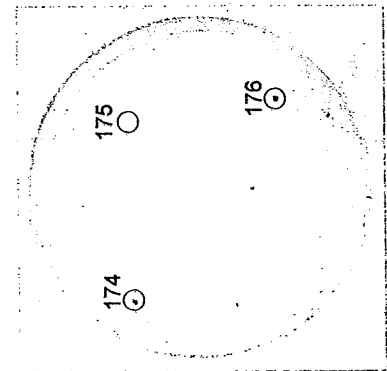
NO.10:料理用だしパック
(混釈法 VRBD 典型集落)



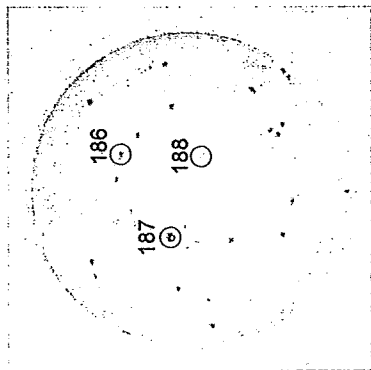
NO.10:料理用だしパック
(混釈法 VRB 典型集落)



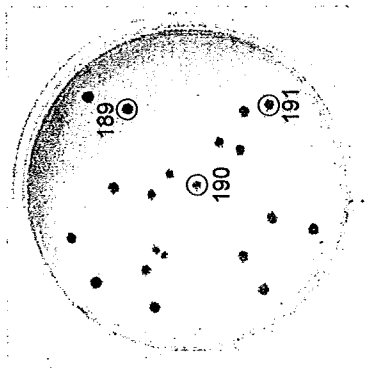
NO.10:料理用だしパック
(混釈法 DESO 典型集落)



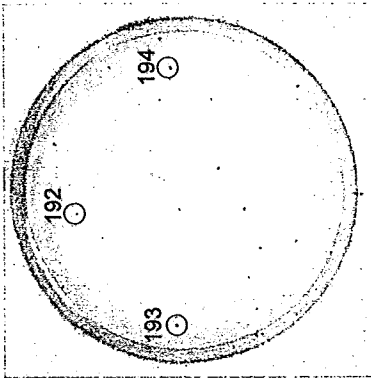
NO.10:料理用だしパック
(塗抹法 VRB 典型集落)



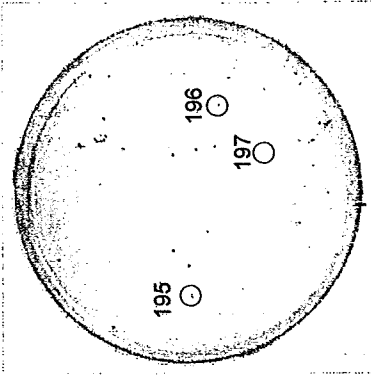
NO.10:料理用だしパック
(塗抹法 VRBD 典型集落)



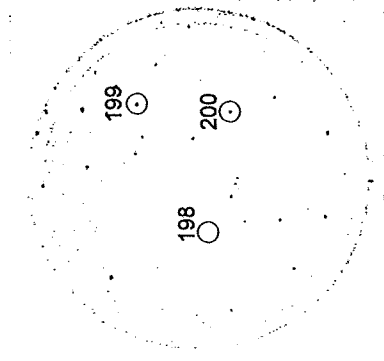
NO.11:真だこぶつ切り
(湿釈法 DESO 典型集落)



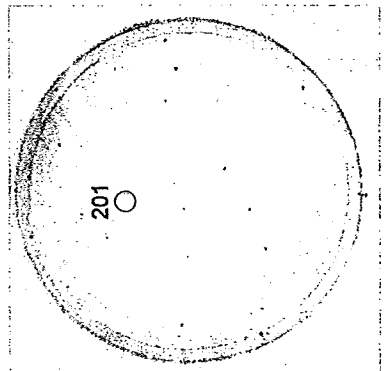
NO.11:真だこぶつ切り
(湿釈法 VRB 典型集落)



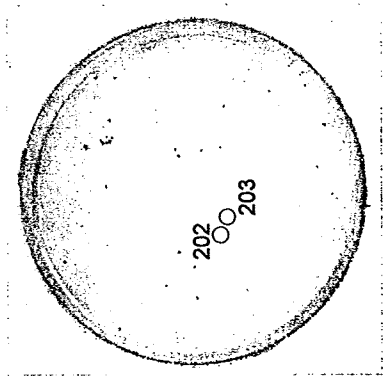
NO.11:真だこぶつ切り
(湿釈法 VRBD 典型集落)



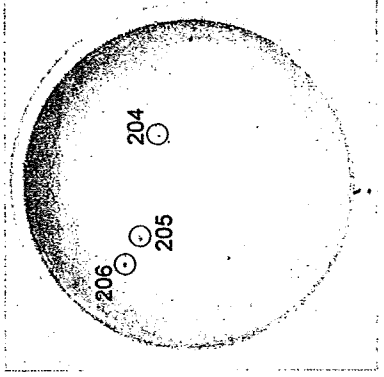
NO.11:真だこぶつ切り
(湿釈法 DESO 非典型集落)



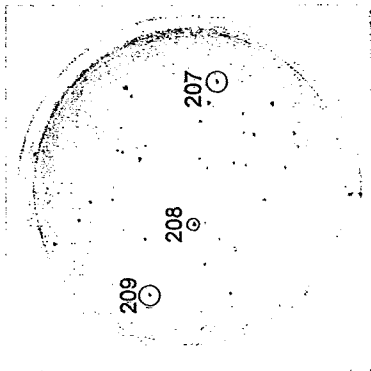
NO.11:真だこぶつ切り
(湿釈法 VRB 非典型集落)



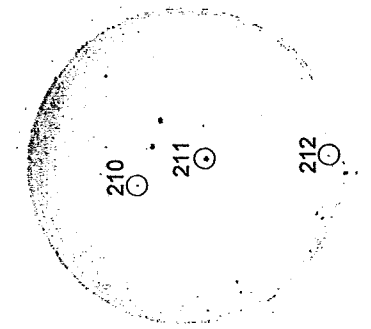
NO.11:真だこぶつ切り
(塗抹法 DESO 典型集落)



NO.11: 真だこぶつ切り
(塗抹法 VRB 典型集落)



NO.11: 真だこぶつ切り
(塗抹法 VRBD 典型集落)



NO.11: 真だこぶつ切り
(塗抹法 DESO 非典型集落)

