

31日以上滞在症例(4,521例)の年齢区分

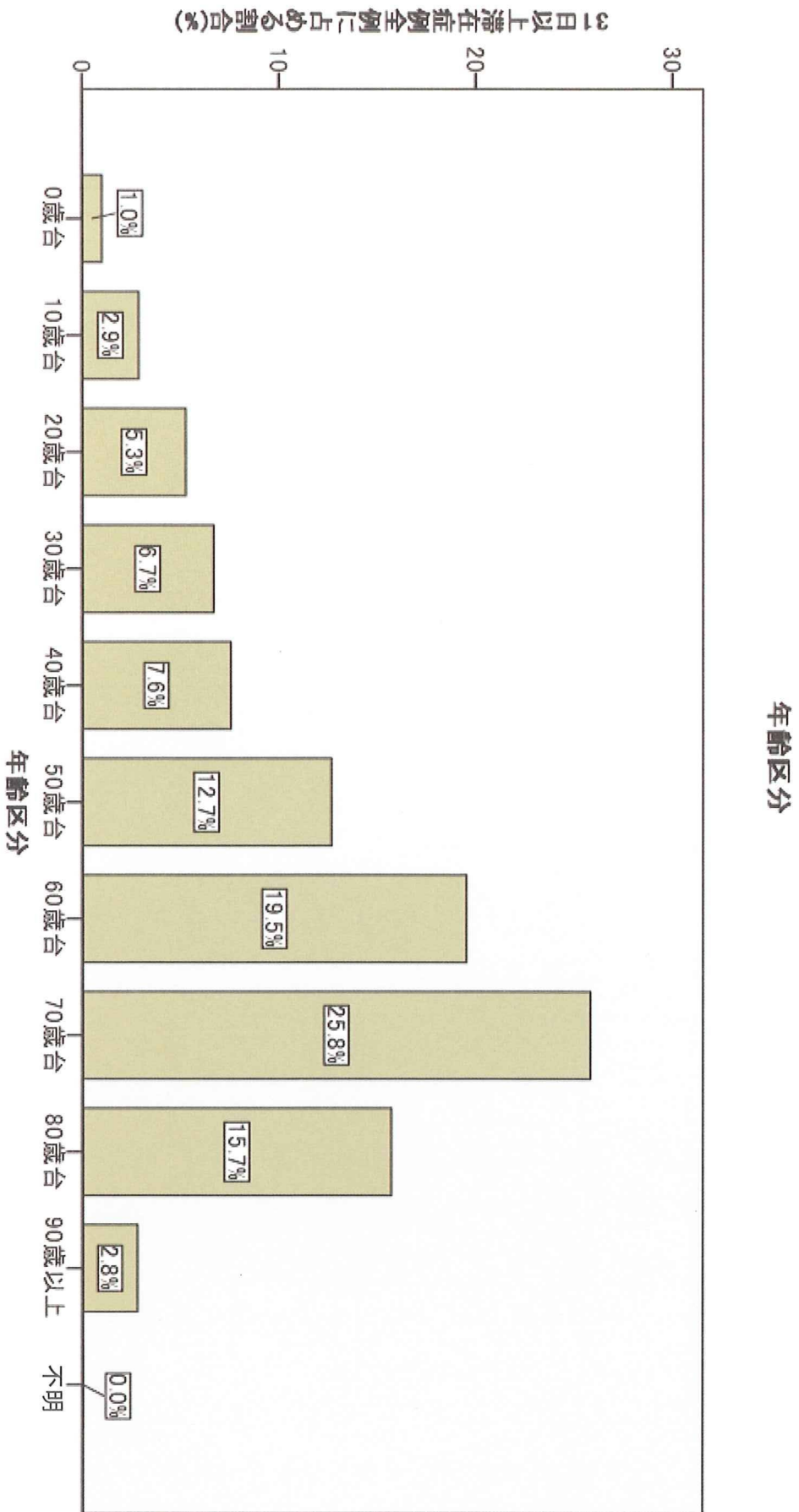


図11

施設別死亡率

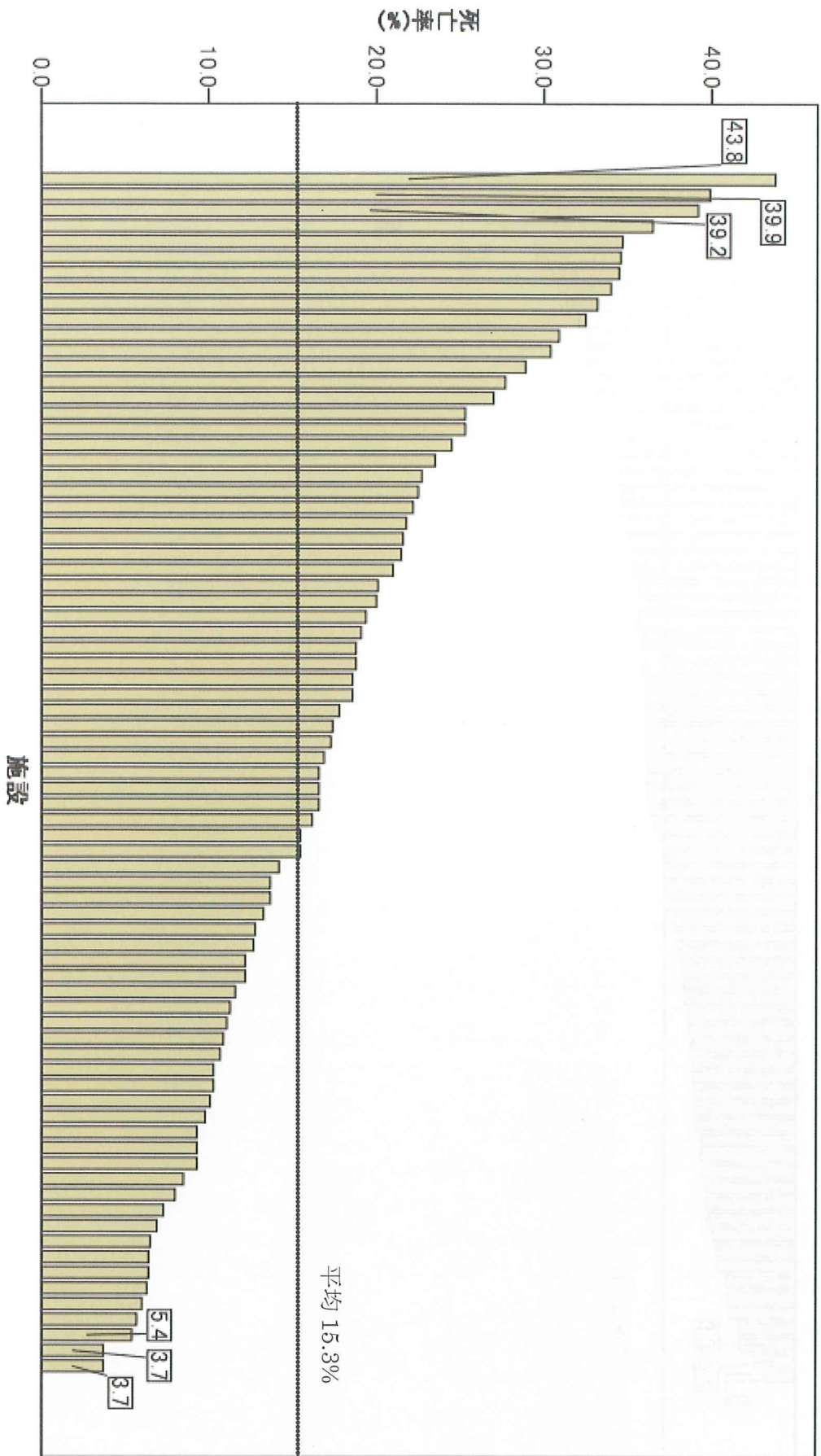


図13

施設別死亡率(CPAを除いた場合)

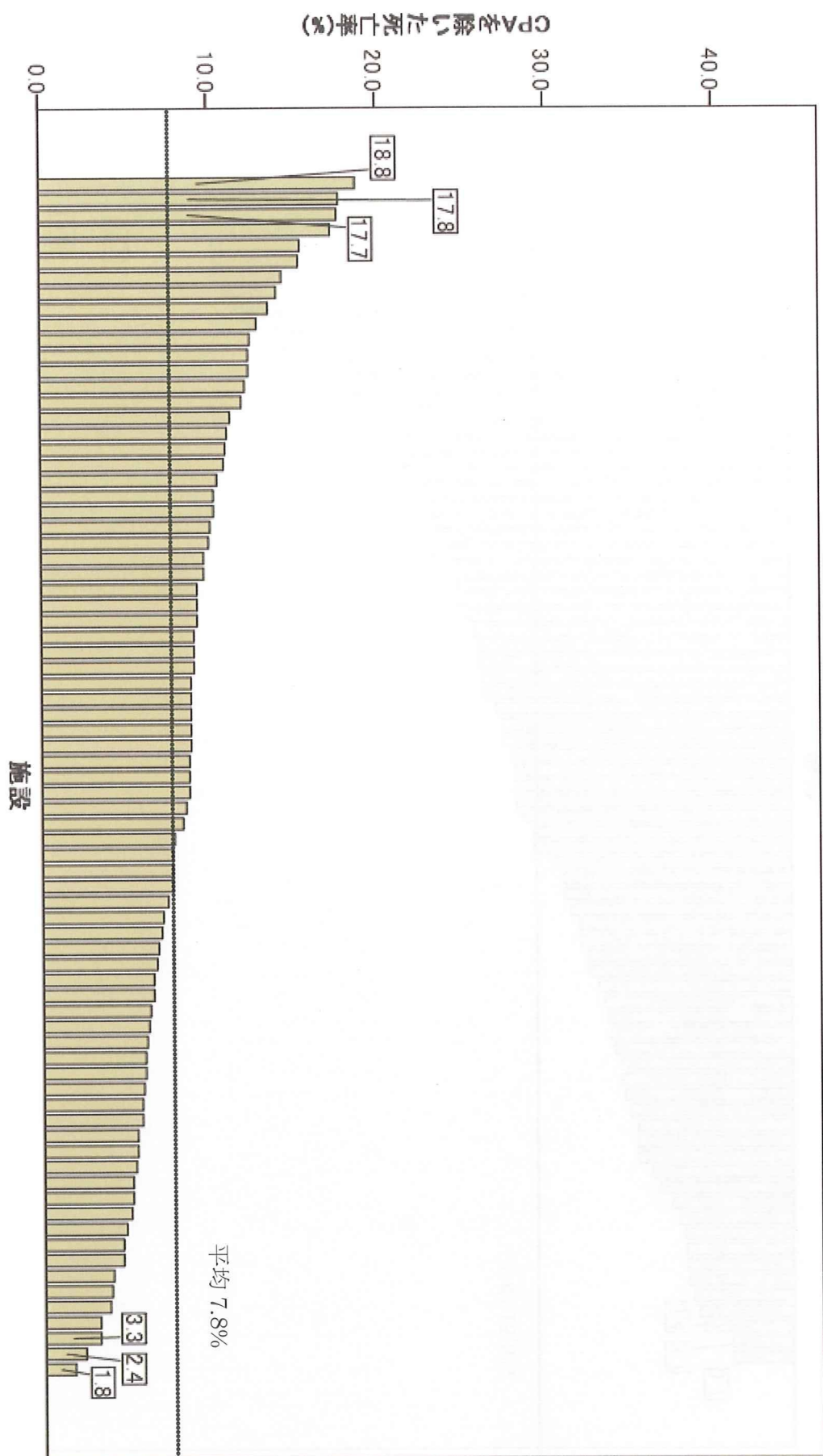


図14

施設別平均滞在日数

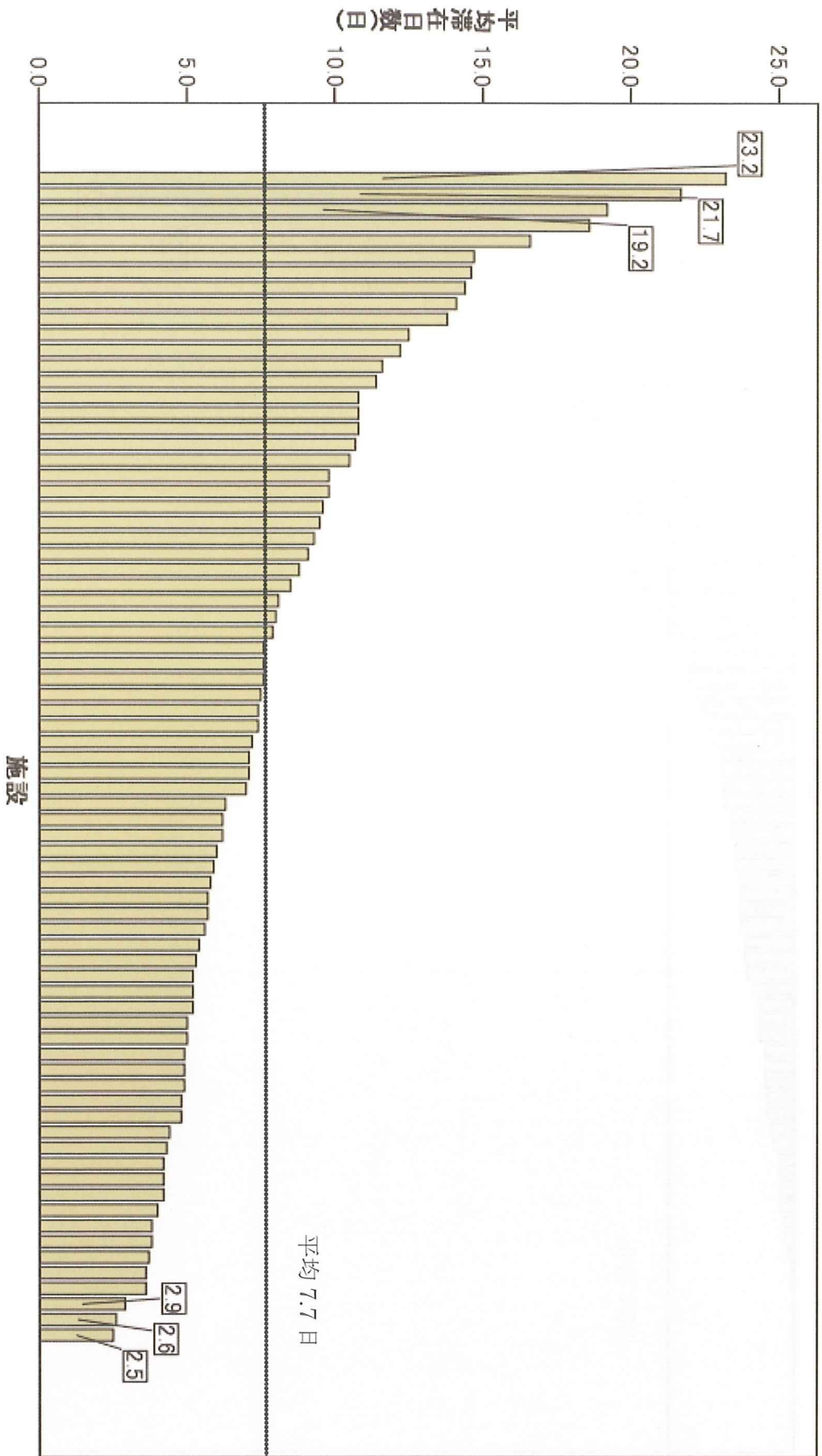


図15

施設別31日以上滞在する割合

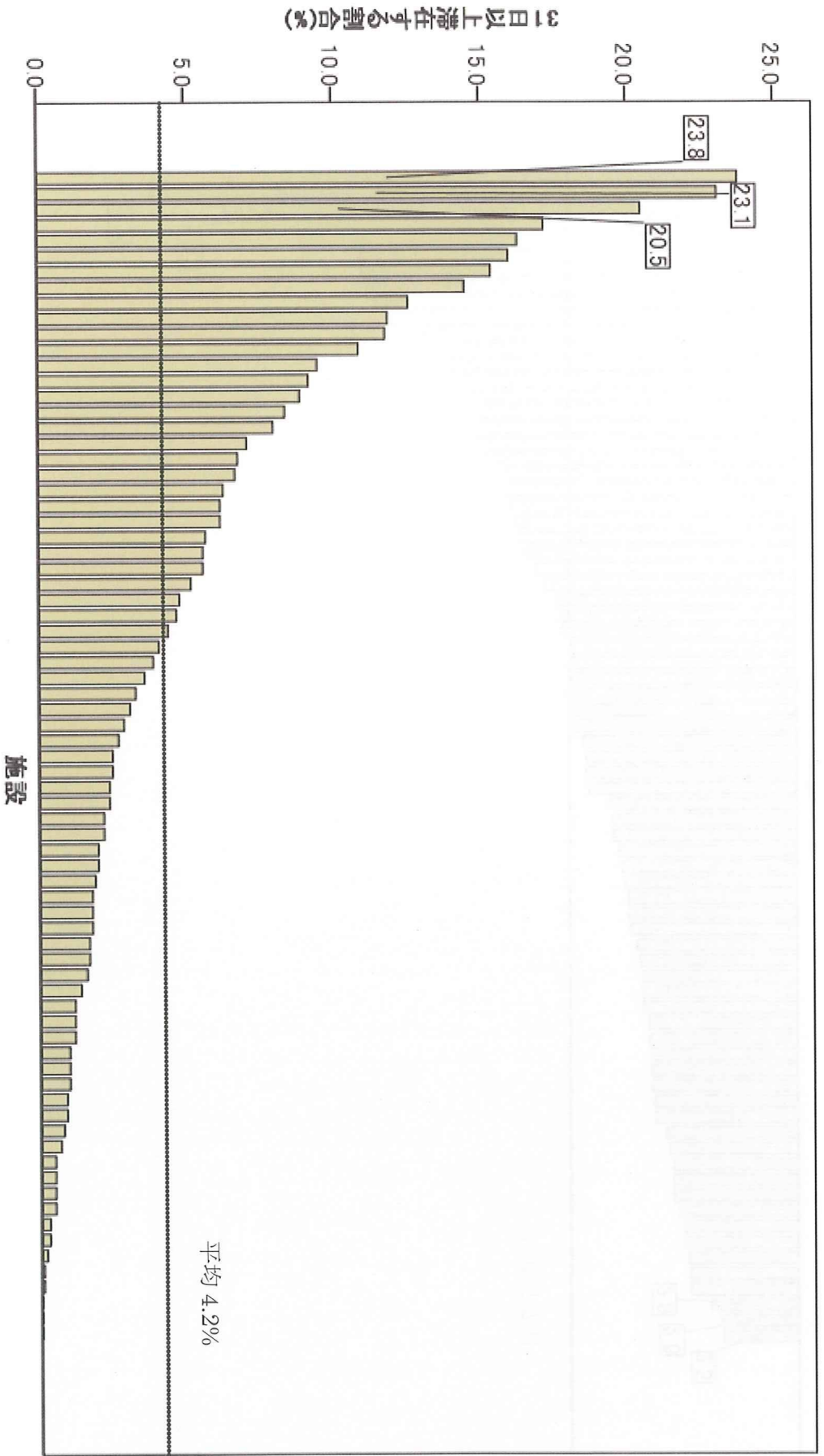


図16

施設別外傷症例数のグラフ

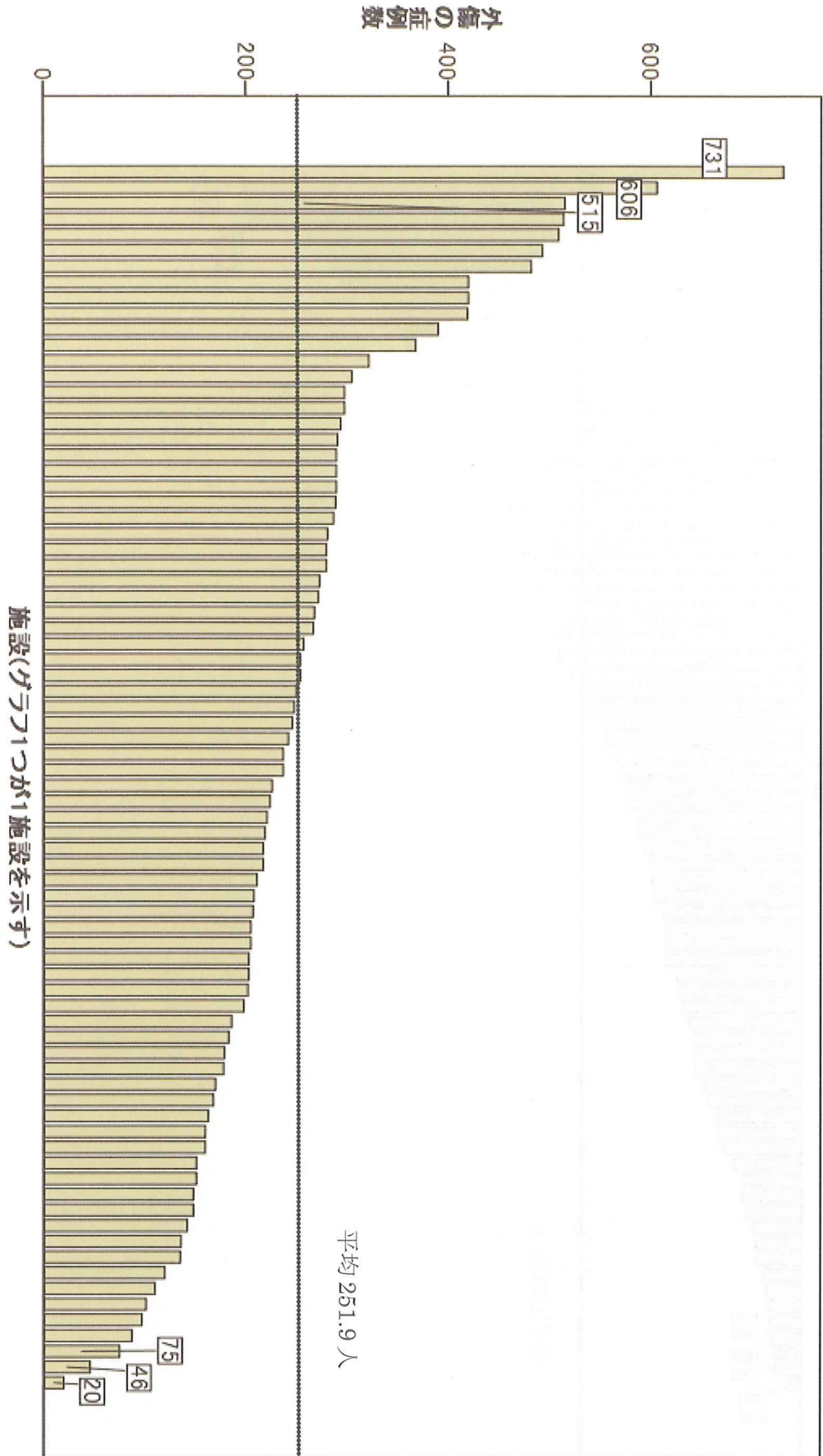


図17

施設別脳血管・脳神経疾患患症例数

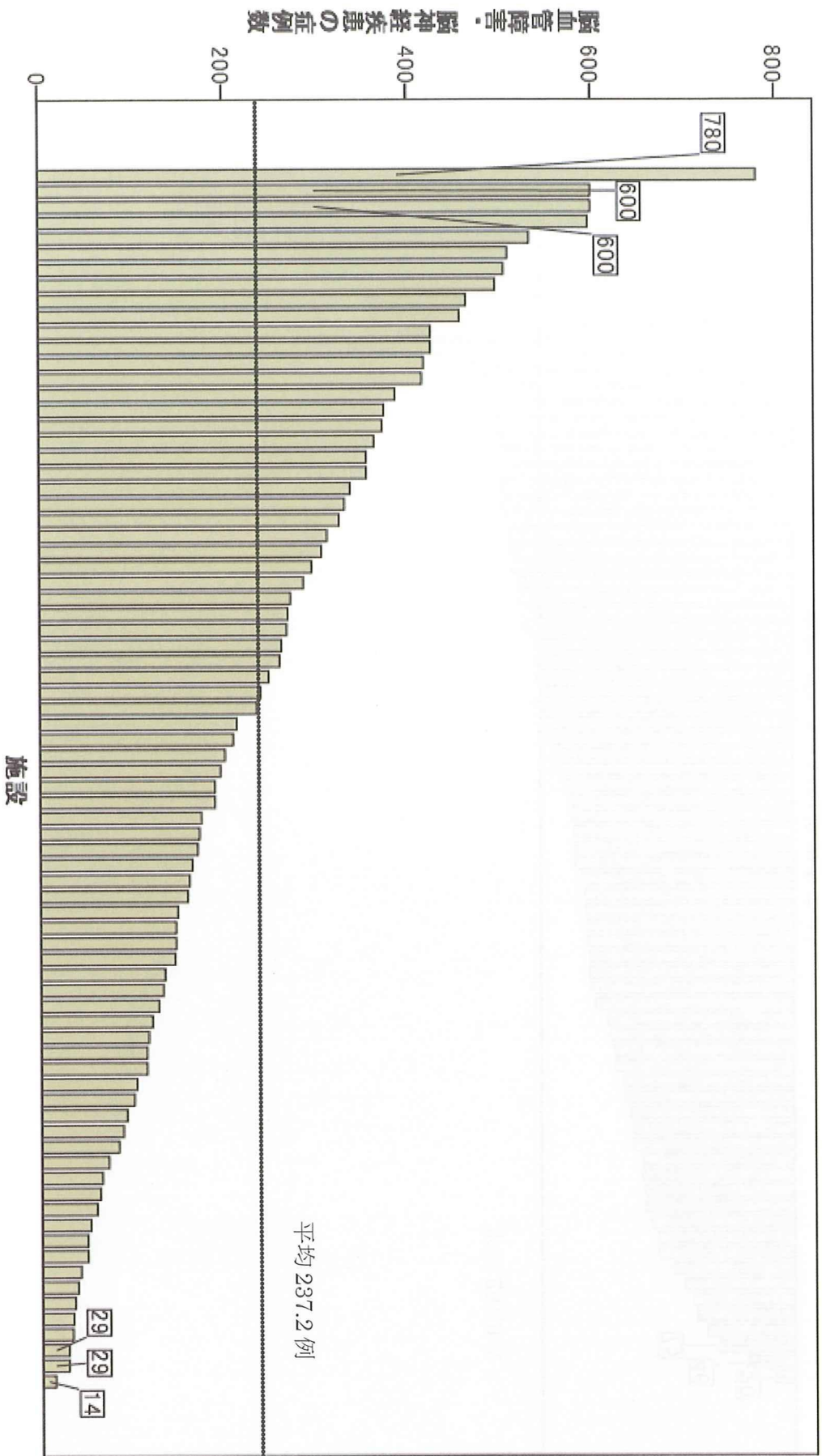


図18

31日以上滞在症例(4,521例)の年齢区分

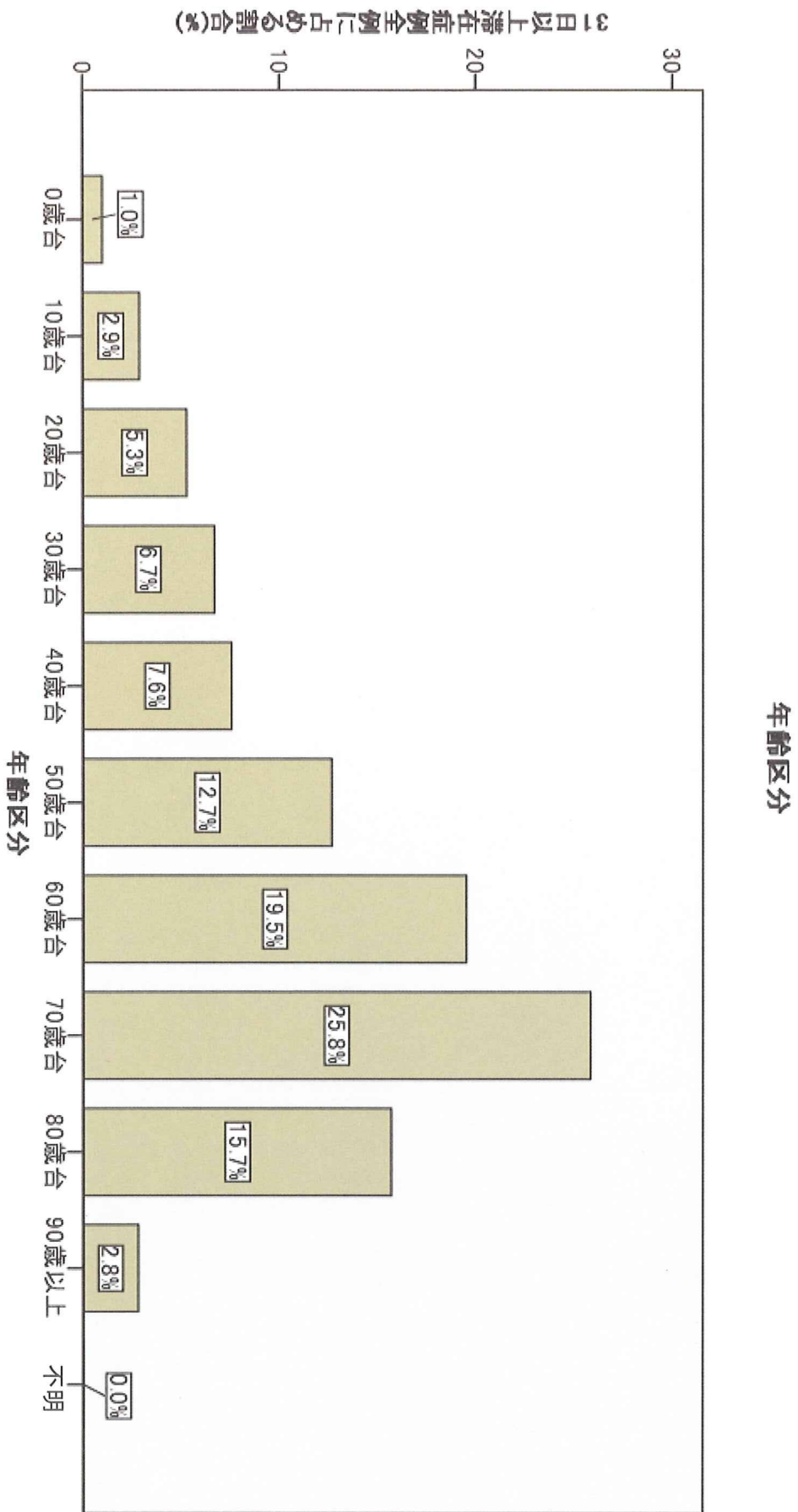


図11

施設別死亡率

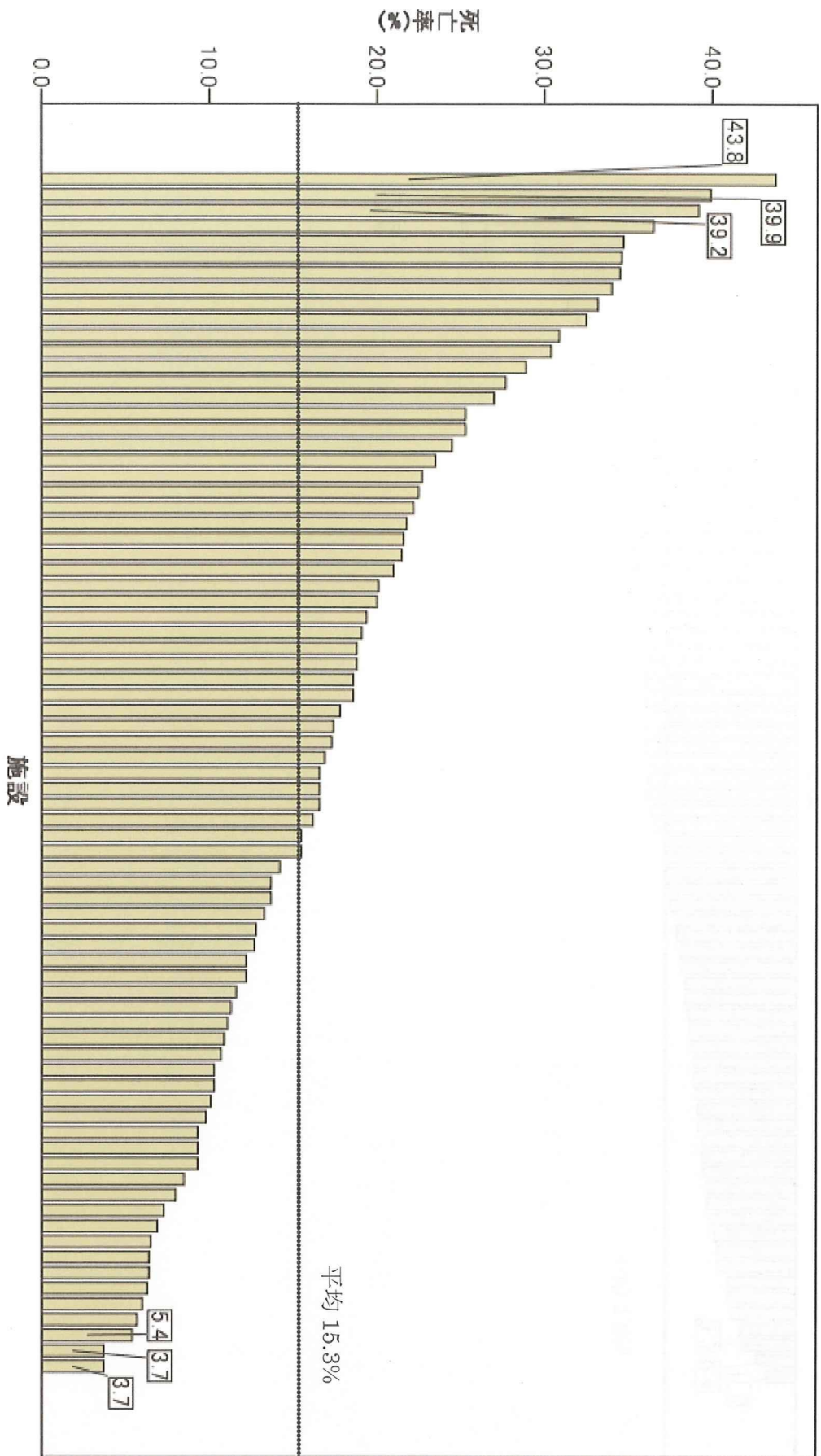


図13

施設別死亡率(CPAを除いた場合)

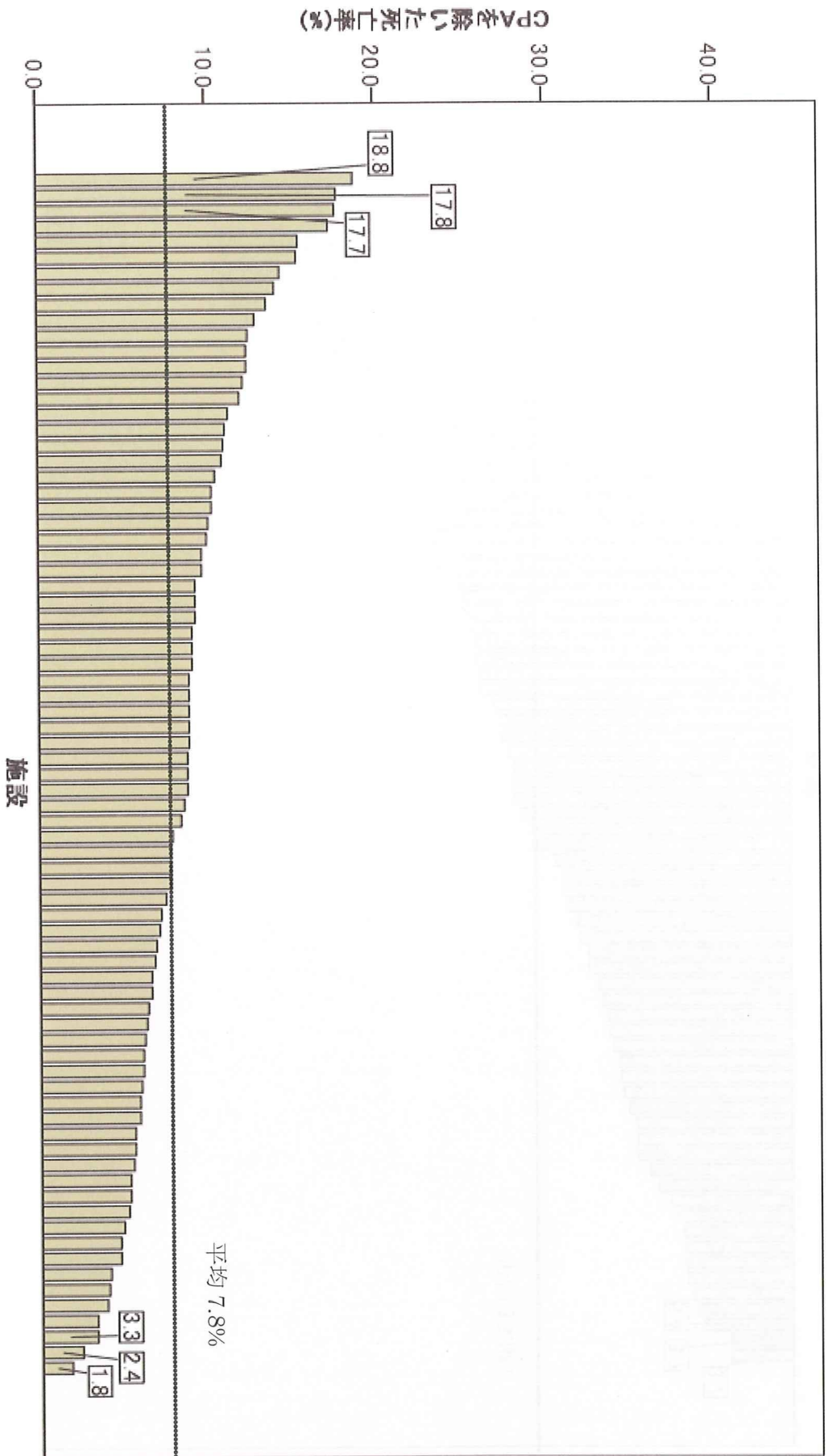


図14

施設別平均滞在日数

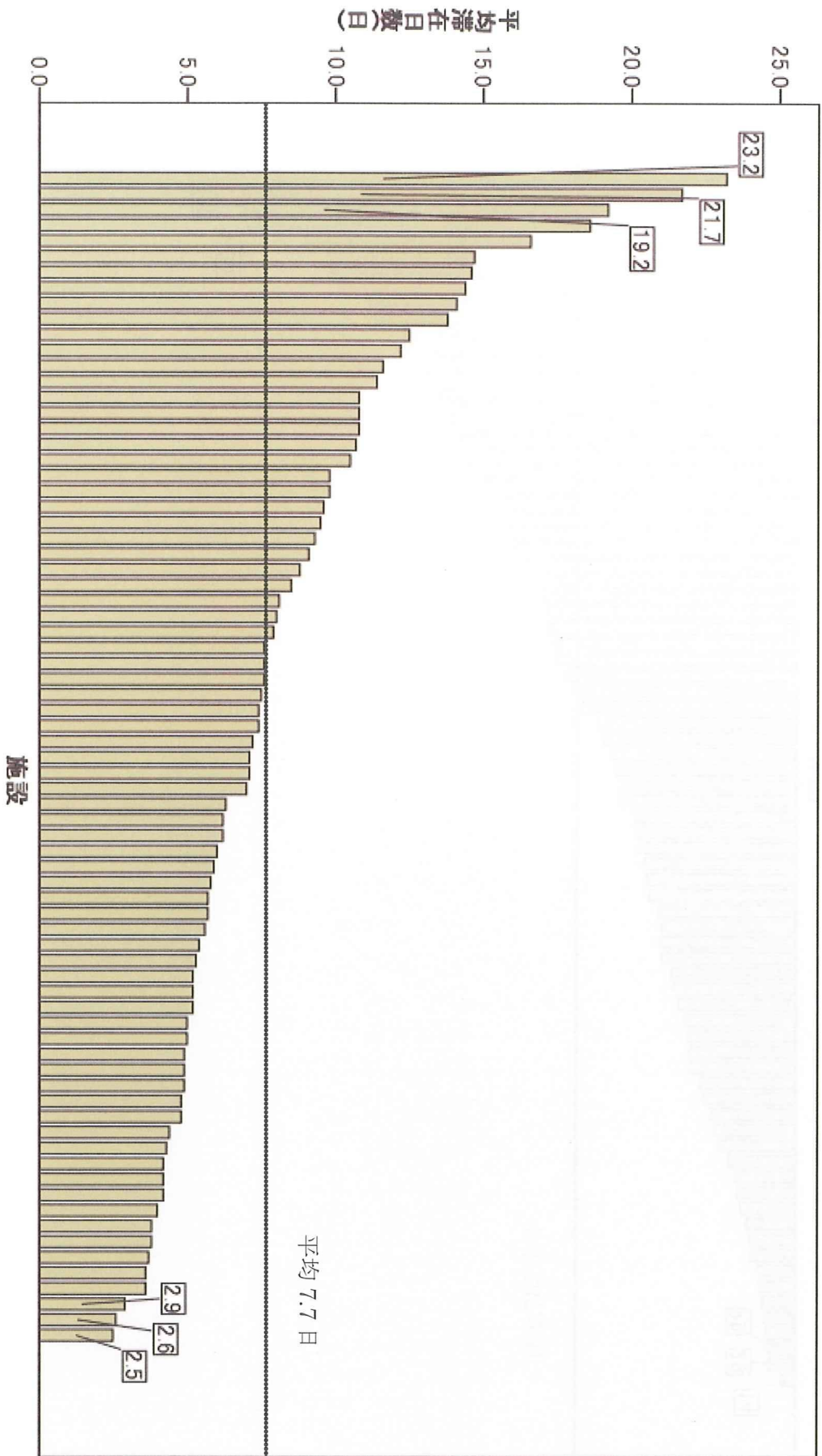


図15

施設別脳血管・脳神経疾患患者症例数

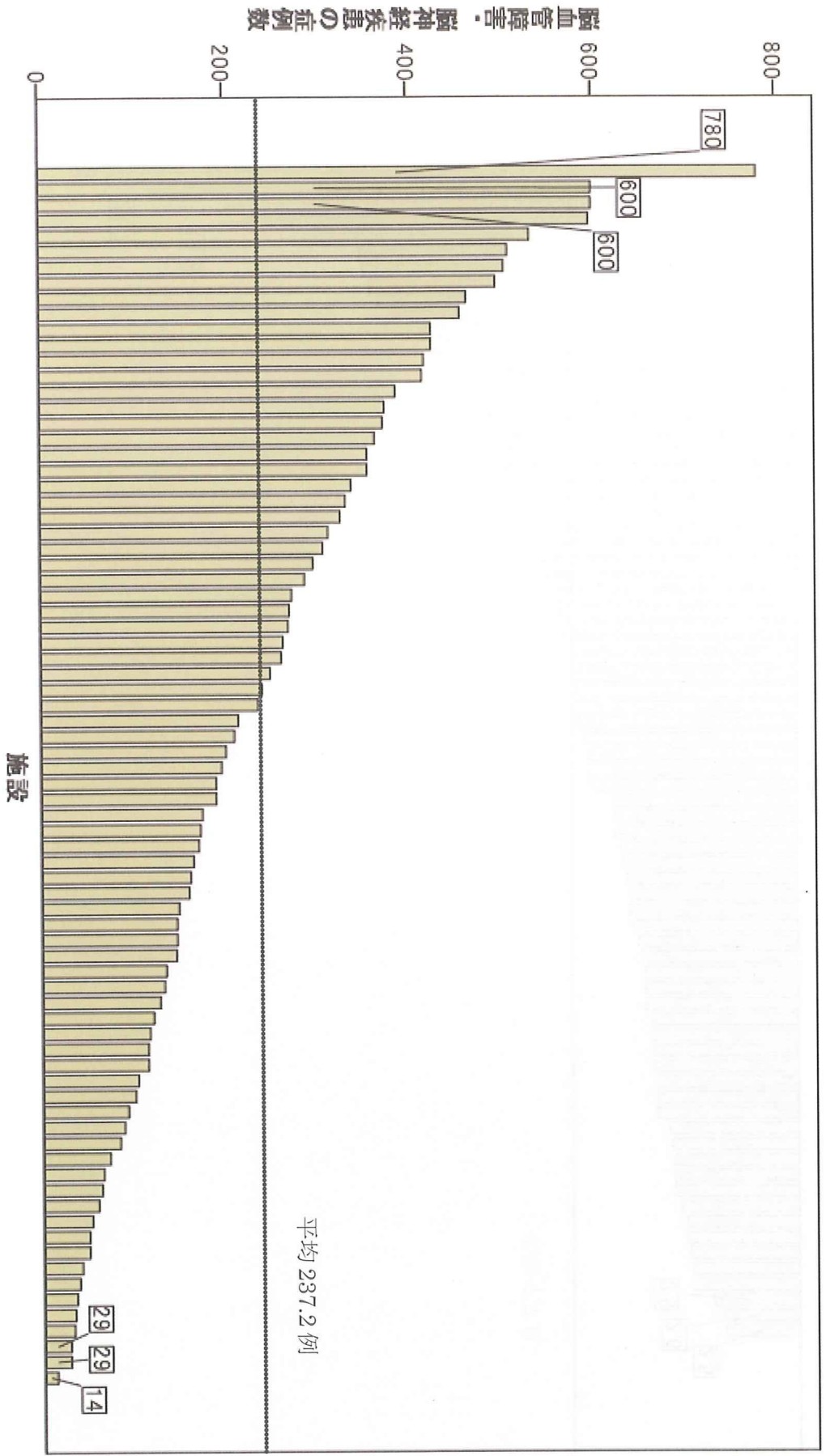


図18

施設別心・循環器疾患患者数

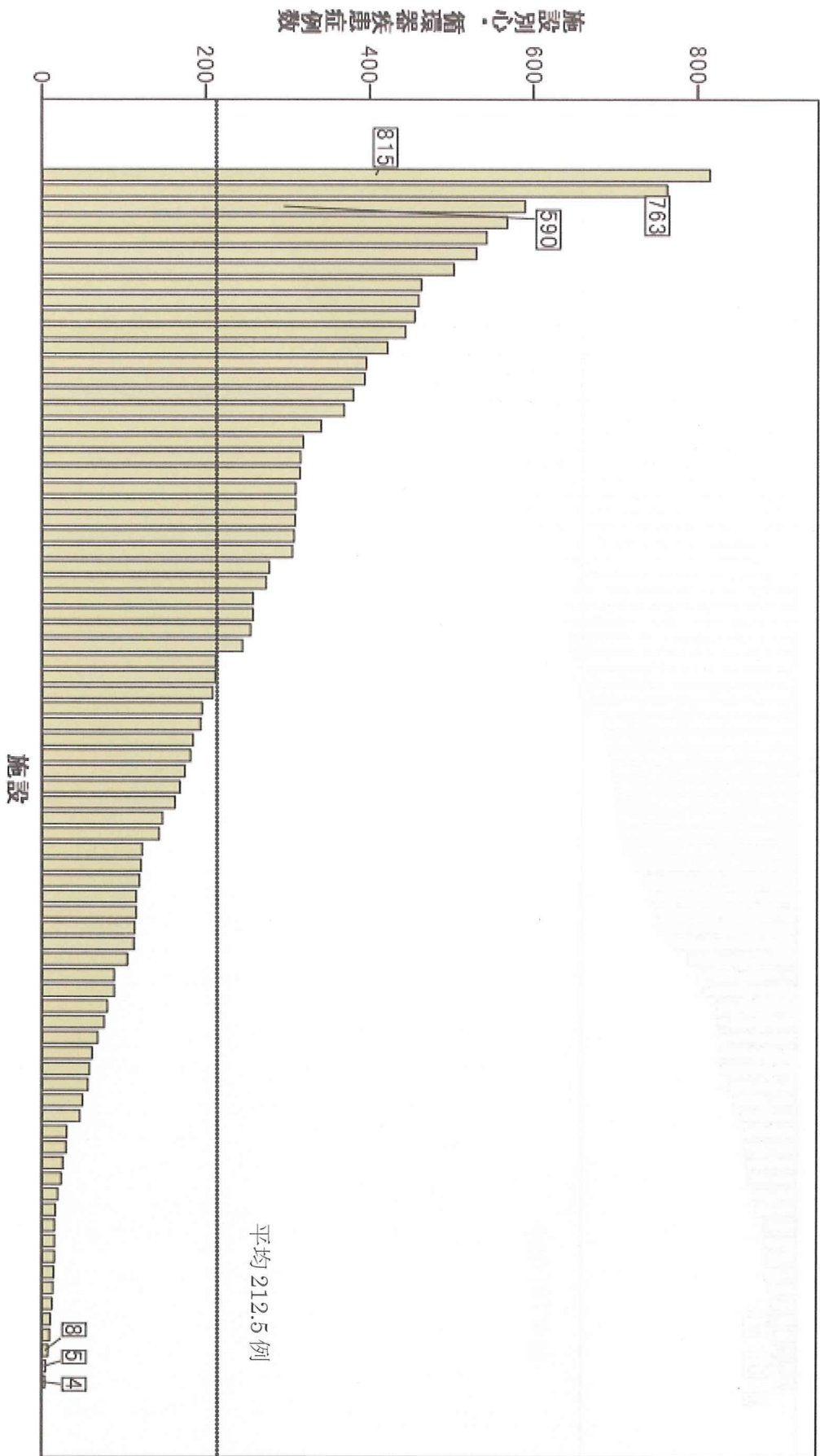


図19

施設別CPA症例数

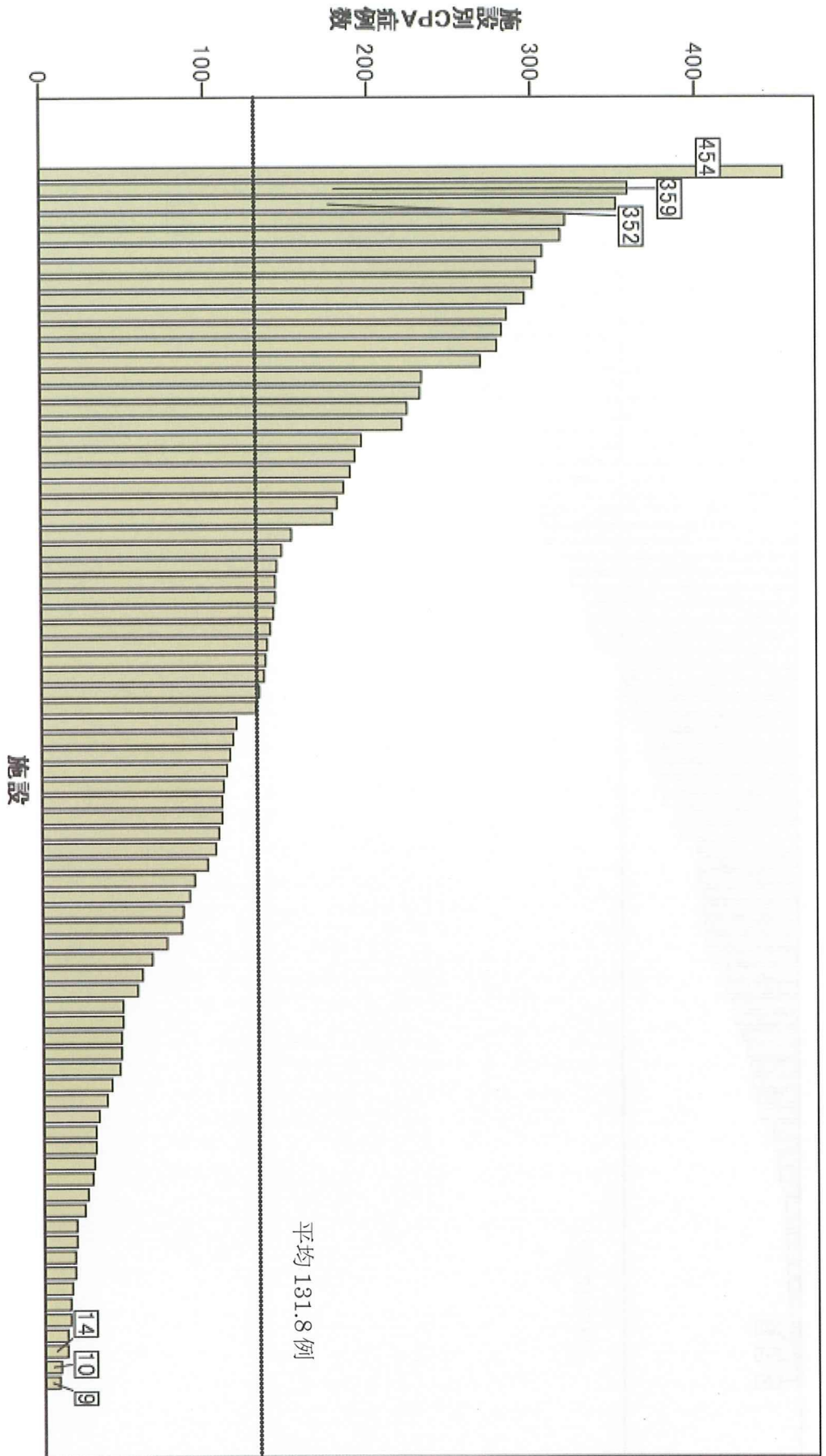


図20

施設別心・循環器疾患症例数

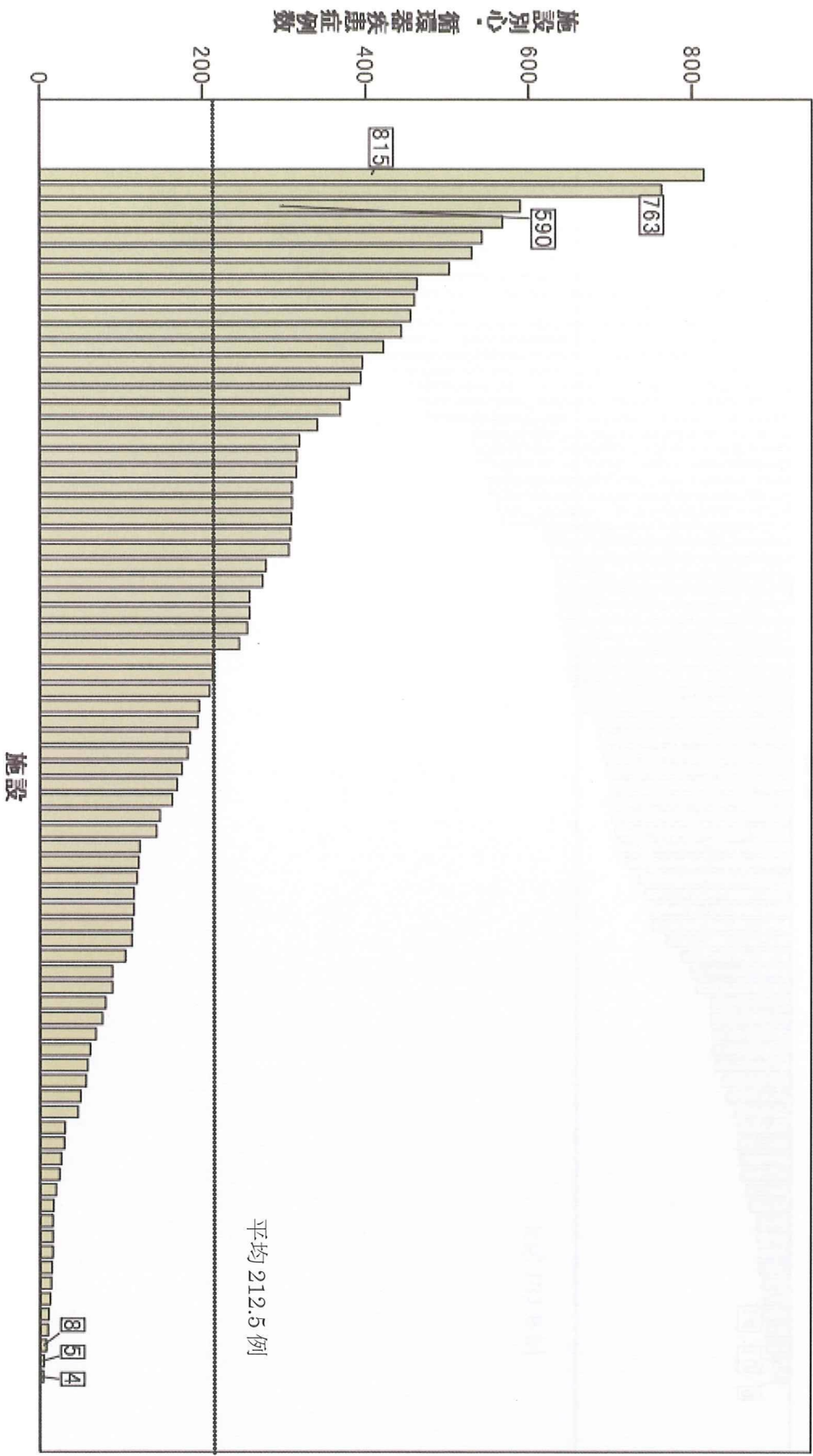


図19

施設別CPA症例数

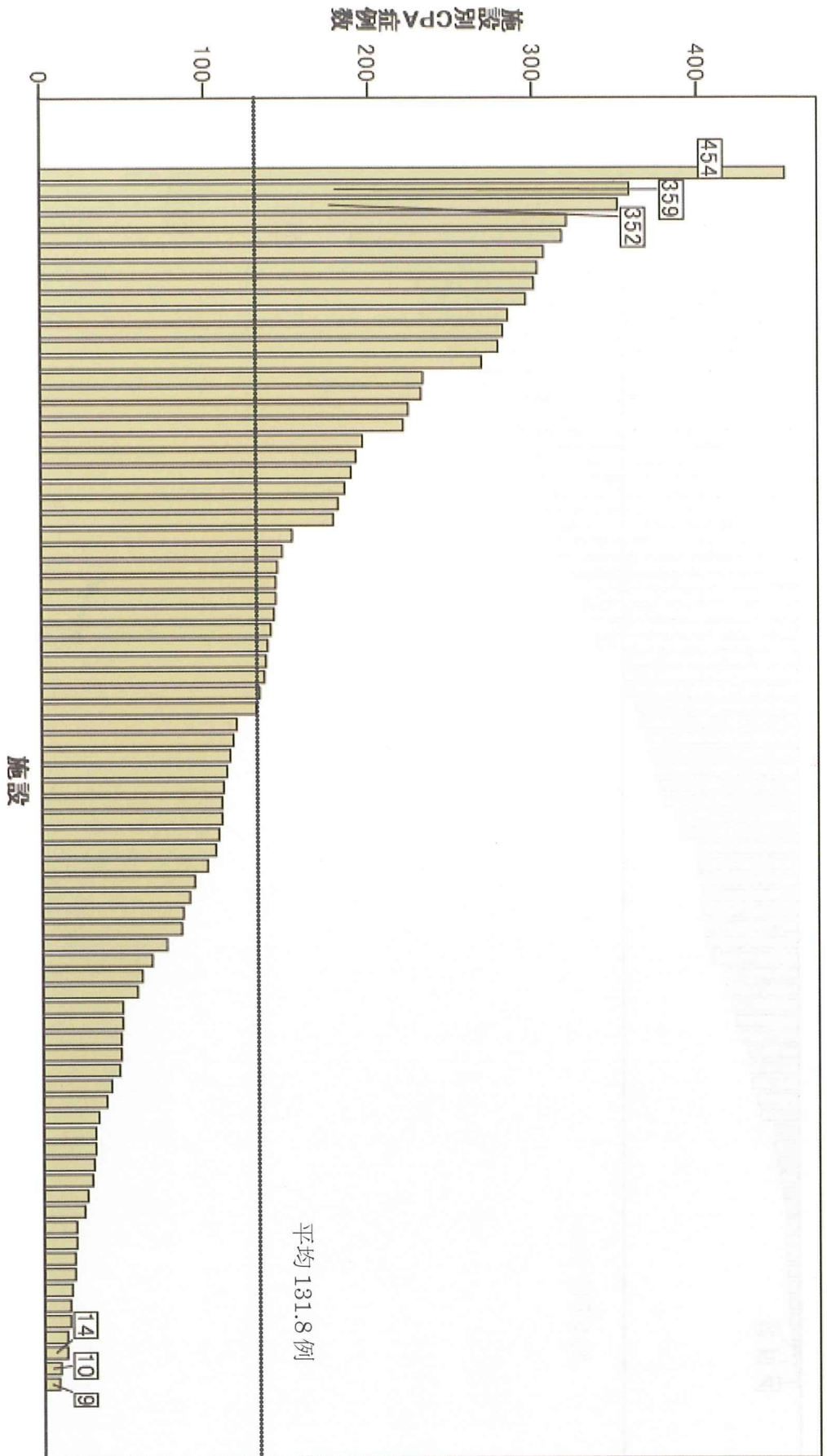


図20

施設別産科疾患症例数

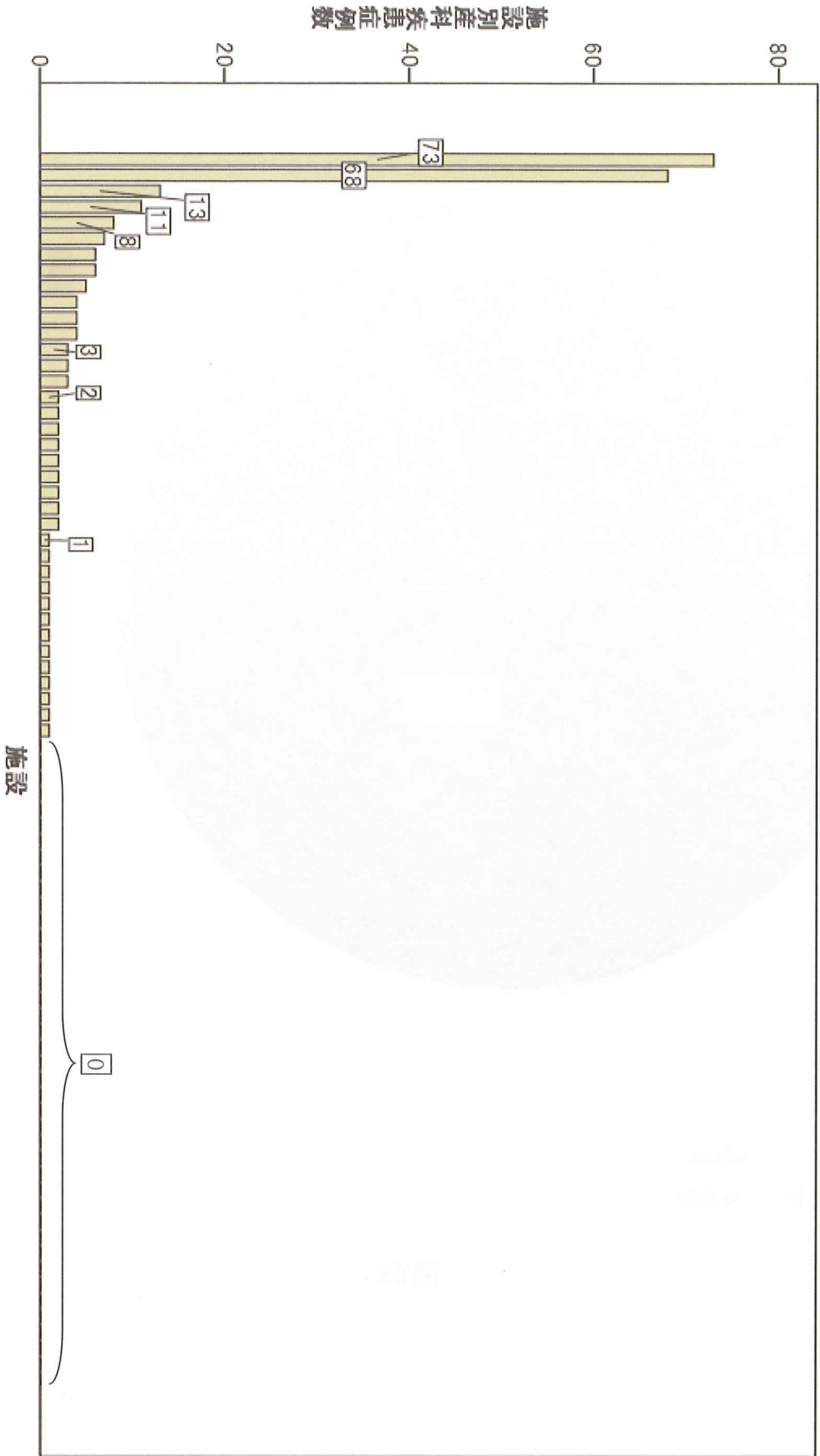
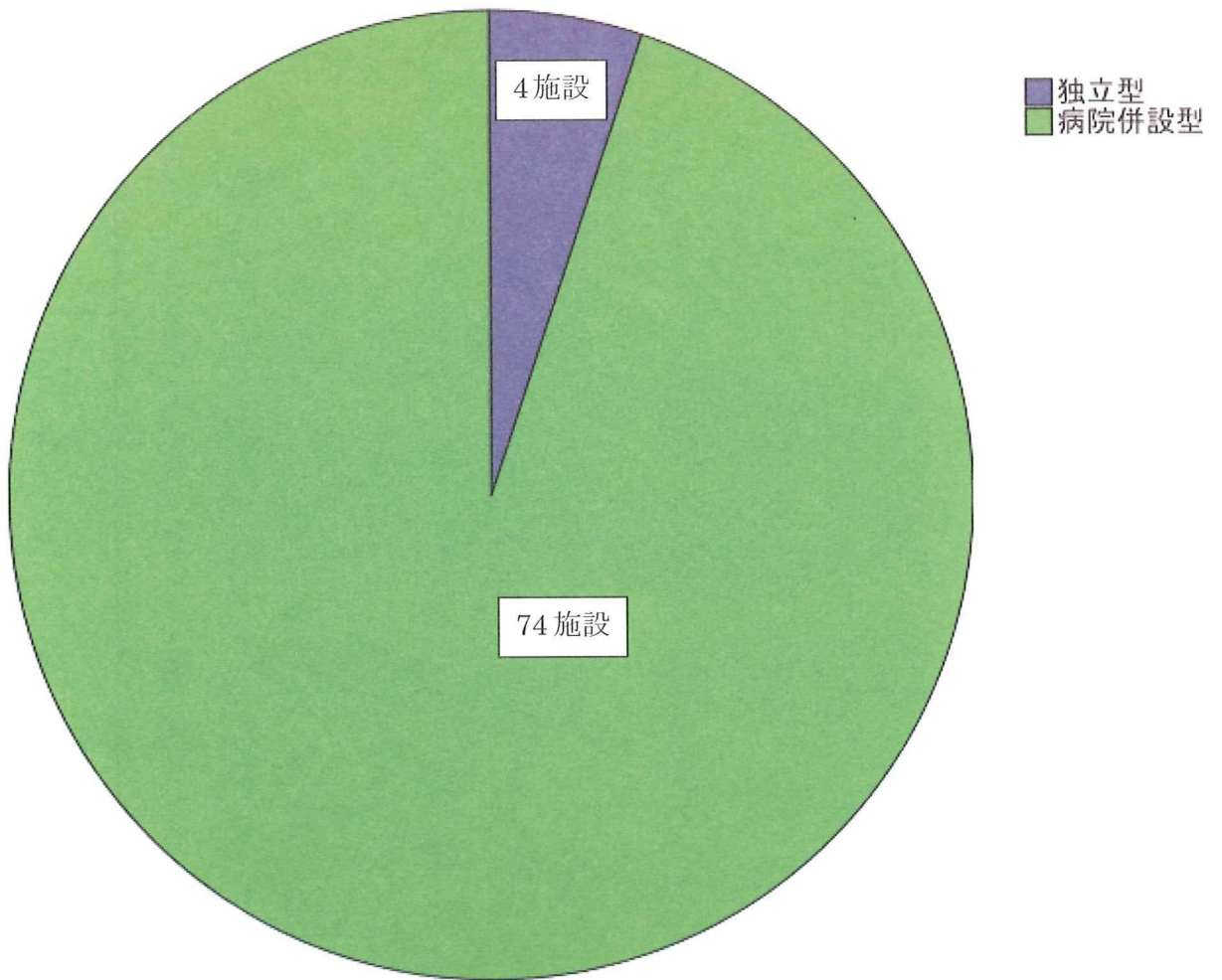


図21

救命救急センター運営形態



独立型	4施設
病院併設型	74施設

図 22