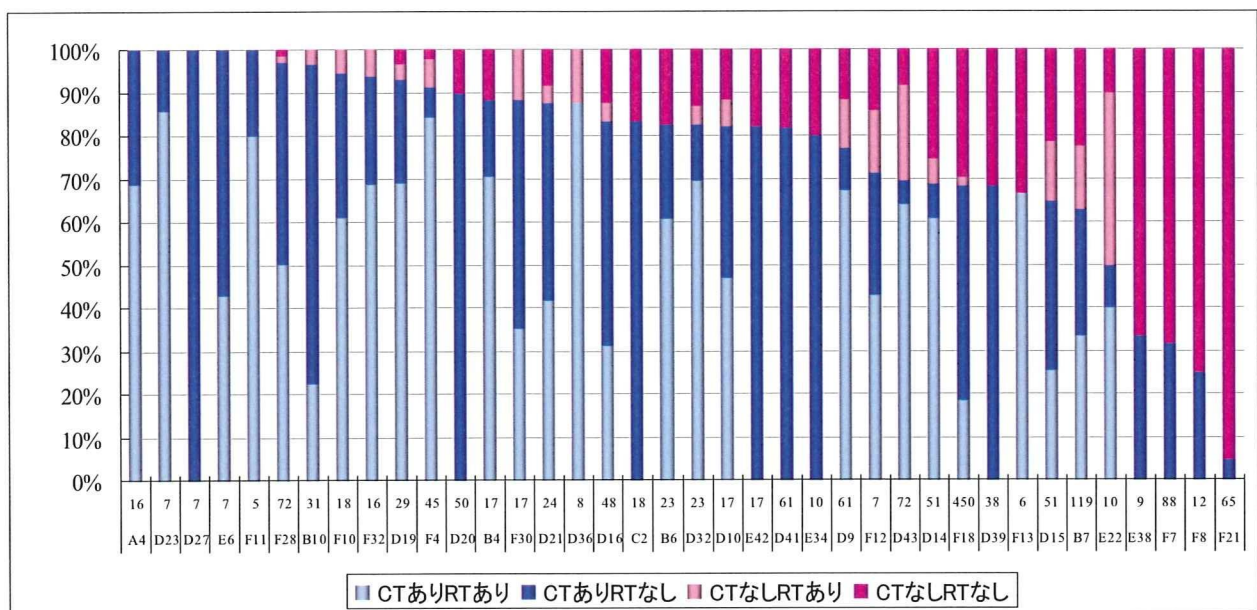


2.5. 結果：化学療法の実施状況

2.5.1. 化学療法の実施割合

解析対象症例数が5件に満たない20病院を除いた38病院を対象に乳房温存術実施症例に対する化学療法の実施割合を示しました。

38病院平均で、77%の症例に対して化学療法が実施されていることがわかりました。その一方で、化学療法の実施割合が小さい病院が認められますが、放射線療法が実施されていないことから、当該病院では、補助療法を他の病院と連携して実施している可能性が考えられます。また、St.Gallenコンセンサスによれば、低リスク患者群に対しては「ホルモン療法のみ実施」という治療法が記述されていることから、そもそも患者側要因によって化学療法が不必要になっていることも考えられます。



※X軸の数値は、解析対象症例数を示しています。
 ※RT:放射線療法, CT:化学療法

2.5. 結果：化学療法の実施状況 《データ》

| 2.5.1. 化学療法の実施割合 | | | | |
|------------------|--------------|--------------|--------------|--------------|
| 病院ID | RTあり CTなし | RTあり CTあり | RTなし CTあり | RTなし CTなし |
| A4 | 69% | 31% | 0% | 0% |
| B4 | 71% | 18% | 0% | 12% |
| B6 | 61% | 22% | 0% | 17% |
| B7 | 34% | 29% | 14% | 23% |
| B10 | 23% | 74% | 3% | 0% |
| C2 | 0% | 83% | 0% | 17% |
| D9 | 67% | 10% | 11% | 11% |
| D10 | 47% | 35% | 6% | 12% |
| D14 | 61% | 8% | 6% | 25% |
| D15 | 25% | 39% | 14% | 22% |
| D16 | 31% | 52% | 4% | 13% |
| D19 | 69% | 24% | 3% | 3% |
| D20 | 0% | 90% | 0% | 10% |
| D21 | 42% | 46% | 4% | 8% |
| D23 | 86% | 14% | 0% | 0% |
| D27 | 0% | 100% | 0% | 0% |
| D32 | 70% | 13% | 4% | 13% |
| D36 | 88% | 0% | 13% | 0% |
| D39 | 0% | 68% | 0% | 32% |
| D41 | 0% | 82% | 0% | 18% |
| D43 | 64% | 6% | 22% | 8% |
| E6 | 43% | 57% | 0% | 0% |
| E22 | 40% | 10% | 40% | 10% |
| E34 | 0% | 80% | 0% | 20% |
| E38 | 0% | 33% | 0% | 67% |
| E42 | 0% | 82% | 0% | 18% |
| F4 | 84% | 7% | 7% | 2% |
| F7 | 0% | 32% | 0% | 68% |
| F8 | 0% | 25% | 0% | 75% |
| F10 | 61% | 33% | 6% | 0% |
| F11 | 80% | 20% | 0% | 0% |
| F12 | 43% | 29% | 14% | 14% |
| F13 | 67% | 0% | 0% | 33% |
| F18 | 18% | 50% | 2% | 30% |
| F21 | 0% | 5% | 0% | 95% |
| F28 | 50% | 47% | 1% | 1% |
| F30 | 35% | 53% | 12% | 0% |
| F32 | 69% | 25% | 6% | 0% |

※RT:放射線療法, CT:化学療法

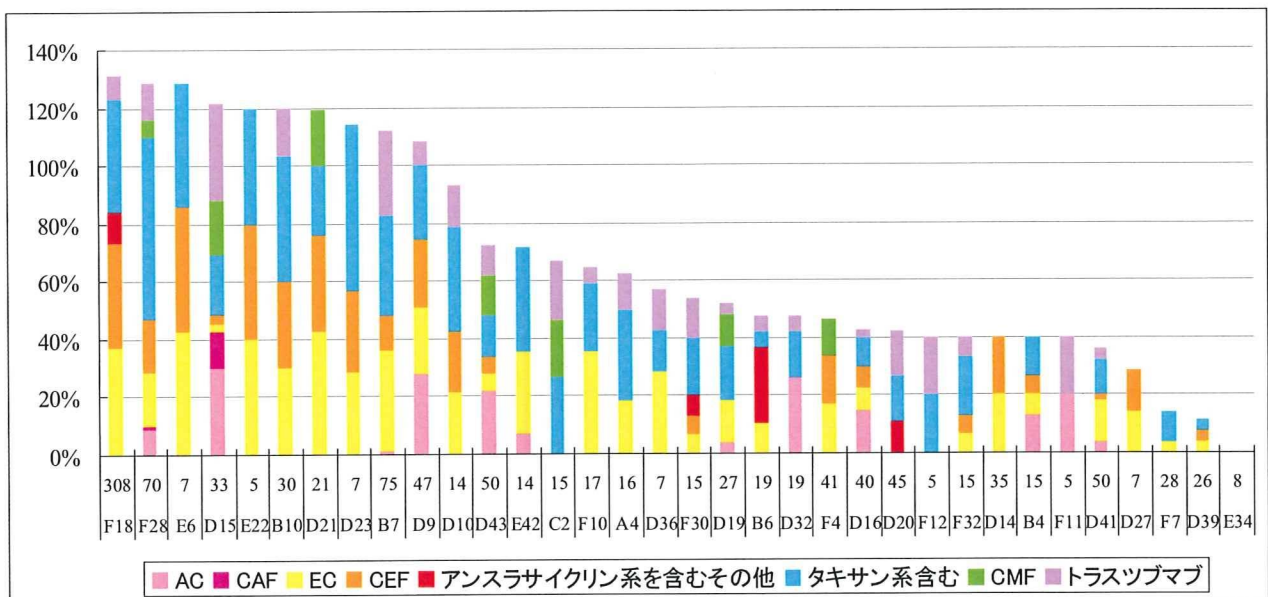
2.5. 結果：化学療法の実施状況

2.5.2. レジメン（経静脈投与）の内訳

化学療法（経静脈投与）を併用している症例を対象に、病院別のレジメンの内訳を分析しました。なお、解析対象症例数が5件以上の病院を対象にしています。1症例に対して複数のレジメンを投与していることがあるため、本解析では100%を超える病院も生じています。

アンスラサイクリン系あるいはタキサン系の薬剤の有効性は総じて認められているところですが、下図に示すように、多くの病院において両薬剤を含むレジメンの投与割合が高いことがわかりました。

なお、本解析では薬剤の組み合わせのみに基づいて分類しているために、結果の解釈には注意する必要があります。



※X軸の数値は、解析対象症例数を示しています。

【AC】ドキシソルビシン + シクロホスファミド
 【CAF】シクロホスファミド + ドキシソルビシン + フルオロウラシル
 【EC】エピルビシン + シクロホスファミド
 【CEF】シクロホスファミド + エピルビシン + フルオロウラシル
 【アンスラサイクリン系を含むその他】「AC」、「EC」を除いたアンスラサイクリン系を含む薬剤
 【タキサン系を含む】タキサン系を含む薬剤
 【CMF】シクロホスファミド + メトトレキサート + フルオロウラシル
 【トラスツブマブ】トラスツブマブを含む薬剤

《注意》本解析では、「投与方法」、「投与日」、「治療間隔」、「サイクル数」を考慮せず、薬剤の組み合わせにのみしたがって分類いたしました。

2.5. 結果：化学療法の実施状況《データ》

| 2.5.2. レジメン(経静脈投与)の内訳 | | | | | | | | |
|-----------------------|-----|-----|-----|-----|--------------------------|-------------|-----|-------------|
| 病院ID | AC | CAF | EC | CEF | アンスラサイ クリン系を含 むその他 | タキサン 系含む | CMF | トラスツブ マブ |
| A4 | 0% | 0% | 19% | 0% | 0% | 31% | 0% | 13% |
| B4 | 13% | 0% | 7% | 7% | 0% | 13% | 0% | 0% |
| B6 | 0% | 0% | 11% | 0% | 26% | 5% | 0% | 5% |
| B7 | 1% | 0% | 35% | 12% | 0% | 35% | 0% | 29% |
| B10 | 0% | 0% | 30% | 30% | 0% | 43% | 0% | 17% |
| C2 | 0% | 0% | 0% | 0% | 0% | 27% | 20% | 20% |
| D9 | 28% | 0% | 23% | 23% | 0% | 26% | 0% | 9% |
| D10 | 0% | 0% | 21% | 21% | 0% | 36% | 0% | 14% |
| D14 | 0% | 0% | 20% | 20% | 0% | 0% | 0% | 0% |
| D15 | 30% | 12% | 3% | 3% | 0% | 21% | 18% | 33% |
| D16 | 15% | 0% | 8% | 8% | 0% | 10% | 0% | 3% |
| D19 | 4% | 0% | 15% | 0% | 0% | 19% | 11% | 4% |
| D20 | 0% | 0% | 0% | 0% | 11% | 16% | 0% | 16% |
| D21 | 0% | 0% | 43% | 33% | 0% | 24% | 19% | 0% |
| D23 | 0% | 0% | 29% | 29% | 0% | 57% | 0% | 0% |
| D27 | 0% | 0% | 14% | 14% | 0% | 0% | 0% | 0% |
| D32 | 26% | 0% | 0% | 0% | 0% | 16% | 0% | 5% |
| D36 | 0% | 0% | 29% | 0% | 0% | 14% | 0% | 14% |
| D39 | 0% | 0% | 4% | 4% | 0% | 4% | 0% | 0% |
| D41 | 4% | 0% | 14% | 2% | 0% | 12% | 0% | 4% |
| D43 | 22% | 0% | 6% | 6% | 0% | 14% | 14% | 10% |
| E6 | 0% | 0% | 43% | 43% | 0% | 43% | 0% | 0% |
| E22 | 0% | 0% | 40% | 40% | 0% | 40% | 0% | 0% |
| E34 | 0% | 0% | 0% | 0% | 0% | 0% | 0% | 0% |
| E42 | 7% | 0% | 29% | 0% | 0% | 36% | 0% | 0% |
| F4 | 0% | 0% | 17% | 17% | 0% | 0% | 12% | 0% |
| F7 | 0% | 0% | 4% | 0% | 0% | 11% | 0% | 0% |
| F10 | 0% | 0% | 35% | 0% | 0% | 24% | 0% | 6% |
| F11 | 20% | 0% | 0% | 0% | 0% | 0% | 0% | 20% |
| F12 | 0% | 0% | 0% | 0% | 0% | 20% | 0% | 20% |
| F18 | 0% | 0% | 37% | 36% | 11% | 39% | 0% | 8% |
| F28 | 9% | 1% | 19% | 19% | 0% | 63% | 6% | 13% |
| F30 | 0% | 0% | 7% | 7% | 7% | 20% | 0% | 13% |
| F32 | 0% | 0% | 7% | 7% | 0% | 20% | 0% | 7% |

※RT:放射線療法, CT:化学療法

6. 成人市中肺炎の入院治療の分析

成人市中肺炎は日本人の死因の第4位、8%を占めており、年間の肺炎にかかる医療費は2000億円を超えと言われます。市中肺炎の適切な診療が患者にとって大切なことはもちろんですが、DPC病院として診療に当たるとき、検査や抗菌薬の適切な選択は、限られた医療資源の有効活用を考える時に重要な意味を持つといえます。成人市中肺炎の診療ガイドラインはこれまでに国内外で改訂が重ねられてきていますが、中でも正しい病原体診断に基づく適切な抗菌薬治療の重要性が強調されるようになりました。

喀痰のグラム染色に始まり、適切な培養検査や尿中抗原の提出は、入院時診断のみならずその後の治療効果の判定にも大きな役割を果たします。また、入院時の治療法選択に当たってはグラム染色が有用であるほか、各施設におけるこれまでの病原微生物の分離頻度や感受性パターンのデータがあれば、不必要に広域抗菌薬を使わずに治療を始めることができるでしょう。

このような視点から、本特集では昨年に引き続き、検査・抗菌薬選択のパターンを病院間で比較し、それらが在院日数に及ぼす影響について評価を試みました。

■ 本報告書の解析対象

- ・ データ期間 : 2008年4月～2009年3月
- ・ 20歳以上
- ・ 「主傷病名」あるいは「医療資源を最も投入した傷病名」に「肺炎」が含まれる

■ただし下記を除外しました。

- ・ 予定入院症例
- ・ 本入院の90日前以内に入院歴のある症例
- ・ 入院後24時間以内の死亡
- ・ 提出されたデータのうち、2008年度の該当症例が10件に満たない施設の症例

解説

QIP への数多くのご参加を反映し、昨年を大きく上回る170 施設23055 名のDPC データを解析しました。

施設によってデータ提出期間が異なりますので、これを単純に12 ヶ月に変換したものが「グラフ1」です。800 例近い大規模な施設がある一方、単科専門病院を中心にほとんど診療実績のない施設もありました。男女比1.33、平均年齢は76.9 歳で、既存の患者調査とほぼ一致しています。

まず検査提出状況から見た起因菌診断の比較を行いました。

入院当初3 日間に血液培養提出が記録されていた症例が1 例でも見られたのは155 施設で、提出頻度は全症例中で31%、施設により93%から0%まで大きな幅があります（グラフ2）。特にガイドラインが推奨する2 セット以上の採取が算定されていたのは全体の3.8%に過ぎませんでした。

一方、入院当初3 日間の喀痰培養は78 施設にとどまっており、全症例における提出割合は14%、施設により85%から0%まで大きな開きがあります（グラフ3）。

尿中肺炎球菌抗原・肺炎球菌莢膜抗原の算定は全症例の36%に（グラフ4・5）、レジオネラ抗原は26%に見られ（グラフ6）見られ、それぞれ昨年の23%、15%から大きく上昇しています。採取の簡便性を反映してか、普及の様子が見て取れます。

注射・点滴による抗菌薬投与は94%に見られ、大きな開きはありませんでした（グラフ7）。

広域抗菌薬※の選択には重症度・過去の入院歴・その地域における感受性パターンなどが影響しますが、ガイドラインの普及に関連して重症例への投与が増えている可能性があります。多剤耐性菌を減少させるためには、引き続き広域抗菌薬の適正使用を観察する必要があります。今回の解析では、入院当初3 日以内に抗緑膿菌作用を有する広域抗菌薬で治療開始されたのは全症例の26%（グラフ8）で、参加施設が異なるので単純比較はできませんが、昨年度の22%から上昇しています。狭域抗菌薬で開始されたのは64%でした。

注射抗菌薬の総投与日数の中央値については、4日間から14日間まで施設によって開きがあります（グラフ9）。病状が安定して経口摂取が可能になれば、早期に経口の抗菌薬に切り替えることで、退院を加速できる可能性があります。

在院日数の中央値の分布についてはグラフ10 に示しました。

※ 抗緑膿菌作用を有する抗菌薬：ABK, AMK, BIPM, CAZ, CFPM, CFX, CPR, CPZ, CZOP, DKB, DOR, FOM, GM, IPM/CS, ISP, LVFX, MEPM, MINO, NFLX, OFLX, PAM/BP, PIPC, PZFX, TAZ/PIPC, TOB

患者背景と検査資源

| 病院 | グラフ1 | | グラフ2 | グラフ3 | グラフ4 | グラフ5 | グラフ6 |
|-----|-------|--------|-------------|-------------|---------------|---------------|----------------|
| | 提出症例数 | 12ヶ月換算 | 血液培養採取症例の割合 | 喀痰培養採取症例の割合 | 尿中肺炎球菌抗原の提出割合 | 尿中肺炎荚膜抗原の提出割合 | 尿中レジオネラ抗原の提出割合 |
| A1 | 55 | 73 | 5% | 0% | 25% | 0% | 7% |
| A2 | 100 | 133 | 70% | 0% | 19% | 45% | 54% |
| A3 | 46 | 138 | 0% | 0% | 0% | 28% | 28% |
| A4 | 68 | 90 | 12% | 0% | 0% | 49% | 47% |
| A5 | 54 | 72 | 2% | 13% | 0% | 0% | 0% |
| A6 | 42 | 84 | 45% | 0% | 12% | 0% | 0% |
| B1 | 71 | 284 | 27% | 3% | 68% | 0% | 65% |
| B2 | 52 | 104 | 13% | 0% | 8% | 8% | 31% |
| B3 | 24 | 144 | 46% | 0% | 46% | 0% | 0% |
| B4 | 224 | 224 | 0% | 2% | 0% | 32% | 32% |
| B5 | 192 | 192 | 91% | 0% | 0% | 79% | 18% |
| B6 | 331 | 361 | 93% | 0% | 64% | 0% | 62% |
| B7 | 218 | 218 | 78% | 0% | 38% | 0% | 27% |
| B8 | 140 | 140 | 55% | 0% | 0% | 38% | 34% |
| B9 | 79 | 158 | 28% | 0% | 0% | 0% | 0% |
| B10 | 116 | 116 | 12% | 64% | 67% | 0% | 59% |
| B11 | 177 | 177 | 10% | 49% | 24% | 2% | 18% |
| B12 | 230 | 230 | 6% | 2% | 26% | 0% | 19% |
| B13 | 17 | 204 | 41% | 0% | 0% | 24% | 24% |
| B14 | 271 | 271 | 75% | 64% | 7% | 33% | 35% |
| B15 | 252 | 336 | 78% | 27% | 70% | 0% | 53% |
| B16 | 65 | 130 | 34% | 0% | 0% | 40% | 11% |
| B17 | 166 | 332 | 30% | 69% | 52% | 0% | 45% |
| B18 | 6 | 36 | 50% | 0% | 0% | 33% | 17% |
| B19 | 252 | 336 | 12% | 0% | 2% | 31% | 18% |
| B20 | 114 | 152 | 21% | 45% | 0% | 58% | 54% |
| B21 | 168 | 168 | 32% | 1% | 0% | 58% | 39% |
| B22 | 115 | 153 | 37% | 0% | 32% | 0% | 25% |
| B23 | 11 | 26 | 55% | 64% | 0% | 73% | 64% |
| B24 | 86 | 86 | 7% | 0% | 0% | 41% | 40% |
| B25 | 86 | 114 | 48% | 0% | 0% | 51% | 29% |
| B26 | 128 | 128 | 35% | 0% | 0% | 69% | 63% |
| B27 | 194 | 388 | 34% | 0% | 0% | 52% | 24% |
| B28 | 75 | 100 | 71% | 0% | 40% | 0% | 35% |
| C1 | 96 | 128 | 1% | 0% | 0% | 0% | 1% |
| C2 | 217 | 217 | 6% | 28% | 47% | 0% | 47% |
| C3 | 69 | 92 | 1% | 3% | 0% | 42% | 41% |
| C4 | 44 | 88 | 0% | 48% | 61% | 0% | 61% |
| C5 | 23 | 92 | 35% | 52% | 0% | 65% | 48% |
| C6 | 59 | 78 | 37% | 0% | 34% | 0% | 8% |
| C7 | 134 | 201 | 3% | 0% | 0% | 4% | 2% |
| C8 | 42 | 84 | 7% | 0% | 0% | 57% | 52% |
| C9 | 99 | 198 | 28% | 0% | 1% | 32% | 32% |
| C10 | 39 | 78 | 33% | 0% | 0% | 33% | 23% |
| C11 | 151 | 201 | 19% | 81% | 54% | 0% | 52% |
| C12 | 117 | 234 | 26% | 8% | 45% | 0% | 16% |
| C13 | 51 | 102 | 10% | 6% | 2% | 27% | 18% |
| C14 | 71 | 94 | 38% | 6% | 0% | 39% | 20% |
| C15 | 55 | 60 | 11% | 16% | 0% | 0% | 0% |
| C16 | 109 | 145 | 2% | 2% | 8% | 0% | 6% |
| C17 | 47 | 94 | 17% | 6% | 28% | 0% | 26% |
| C18 | 135 | 180 | 13% | 0% | 26% | 0% | 1% |
| C19 | 112 | 112 | 21% | 0% | 38% | 0% | 38% |
| C20 | 101 | 134 | 26% | 0% | 0% | 0% | 0% |
| C21 | 29 | 58 | 0% | 72% | 0% | 0% | 0% |
| C22 | 39 | 78 | 13% | 59% | 0% | 23% | 28% |
| C23 | 50 | 66 | 0% | 0% | 4% | 0% | 0% |
| C24 | 63 | 63 | 6% | 0% | 0% | 43% | 29% |

患者背景と検査資源

| 病院 | グラフ1 | | グラフ2 | グラフ3 | グラフ4 | グラフ5 | グラフ6 |
|-----|-------|--------|-------------|-------------|---------------|---------------|----------------|
| | 提出症例数 | 12ヶ月換算 | 血液培養採取症例の割合 | 喀痰培養採取症例の割合 | 尿中肺炎球菌抗原の提出割合 | 尿中肺炎荚膜抗原の提出割合 | 尿中レジオネラ抗原の提出割合 |
| D1 | 177 | 177 | 44% | 0% | 63% | 0% | 55% |
| D2 | 39 | 156 | 13% | 62% | 0% | 38% | 8% |
| D3 | 156 | 156 | 6% | 1% | 21% | 0% | 14% |
| D4 | 82 | 164 | 29% | 74% | 0% | 0% | 9% |
| D5 | 87 | 116 | 21% | 0% | 0% | 57% | 56% |
| D6 | 110 | 146 | 17% | 0% | 0% | 4% | 0% |
| D7 | 132 | 264 | 8% | 0% | 0% | 34% | 33% |
| D8 | 150 | 150 | 16% | 47% | 41% | 0% | 35% |
| D9 | 273 | 273 | 33% | 0% | 0% | 63% | 67% |
| D10 | 229 | 229 | 42% | 0% | 0% | 39% | 28% |
| D11 | 476 | 476 | 43% | 0% | 0% | 0% | 0% |
| D12 | 51 | 102 | 53% | 6% | 2% | 37% | 20% |
| D14 | 195 | 260 | 43% | 58% | 50% | 0% | 44% |
| D15 | 238 | 238 | 22% | 0% | 52% | 0% | 45% |
| D16 | 223 | 223 | 37% | 1% | 0% | 50% | 46% |
| D17 | 114 | 152 | 32% | 0% | 0% | 39% | 34% |
| D18 | 78 | 156 | 0% | 0% | 13% | 0% | 5% |
| D19 | 371 | 371 | 47% | 1% | 6% | 0% | 8% |
| D20 | 84 | 84 | 6% | 0% | 0% | 0% | 1% |
| D21 | 145 | 145 | 40% | 3% | 38% | 0% | 39% |
| D22 | 105 | 105 | 31% | 0% | 0% | 59% | 50% |
| D23 | 172 | 229 | 41% | 1% | 0% | 0% | 0% |
| D24 | 114 | 114 | 32% | 1% | 0% | 19% | 19% |
| D26 | 216 | 216 | 8% | 0% | 1% | 4% | 4% |
| D27 | 73 | 97 | 16% | 67% | 0% | 51% | 49% |
| D28 | 58 | 116 | 19% | 26% | 0% | 31% | 19% |
| D29 | 46 | 46 | 57% | 0% | 13% | 0% | 4% |
| D30 | 163 | 217 | 1% | 32% | 12% | 0% | 6% |
| D31 | 268 | 268 | 46% | 0% | 0% | 51% | 38% |
| D32 | 306 | 306 | 26% | 0% | 0% | 55% | 53% |
| D33 | 221 | 241 | 58% | 67% | 0% | 33% | 27% |
| D34 | 83 | 166 | 16% | 37% | 6% | 19% | 1% |
| D35 | 58 | 232 | 12% | 0% | 0% | 36% | 21% |
| D36 | 232 | 232 | 84% | 1% | 55% | 0% | 52% |
| D37 | 63 | 126 | 0% | 0% | 0% | 8% | 8% |
| D38 | 235 | 235 | 0% | 0% | 24% | 0% | 7% |
| D39 | 38 | 76 | 18% | 0% | 0% | 5% | 8% |
| D40 | 134 | 134 | 0% | 0% | 1% | 0% | 4% |
| D41 | 282 | 282 | 37% | 63% | 0% | 72% | 72% |
| D42 | 63 | 126 | 35% | 0% | 56% | 0% | 56% |
| D43 | 252 | 252 | 14% | 0% | 0% | 49% | 37% |
| D44 | 120 | 160 | 40% | 0% | 0% | 51% | 53% |
| D45 | 134 | 268 | 42% | 1% | 31% | 0% | 29% |
| D46 | 247 | 247 | 35% | 2% | 2% | 38% | 17% |
| E1 | 174 | 189 | 1% | 0% | 3% | 6% | 6% |
| E2 | 75 | 300 | 13% | 0% | 0% | 25% | 17% |
| E3 | 201 | 201 | 59% | 0% | 78% | 0% | 9% |
| E5 | 93 | 186 | 40% | 0% | 18% | 1% | 16% |
| E6 | 16 | 38 | 44% | 0% | 50% | 0% | 13% |
| E7 | - | - | - | - | - | - | - |
| E8 | 44 | 88 | 30% | 0% | 5% | 0% | 5% |
| E9 | - | - | - | - | - | - | - |
| E10 | 107 | 107 | 2% | 37% | 0% | 4% | 4% |
| E11 | 83 | 90 | 12% | 0% | 0% | 40% | 8% |
| E12 | 36 | 48 | 0% | 0% | 6% | 0% | 3% |
| E13 | 41 | 82 | 2% | 0% | 0% | 0% | 0% |
| E14 | 27 | 54 | 11% | 0% | 0% | 4% | 4% |
| E15 | 120 | 160 | 8% | 1% | 63% | 0% | 16% |

患者背景と検査資源

| 病院 | グラフ1 | | グラフ2 | グラフ3 | グラフ4 | グラフ5 | グラフ6 |
|-----|-------|--------|-------------|-------------|---------------|---------------|----------------|
| | 提出症例数 | 12ヶ月換算 | 血液培養採取症例の割合 | 喀痰培養採取症例の割合 | 尿中肺炎球菌抗原の提出割合 | 尿中肺炎荚膜抗原の提出割合 | 尿中レジオネラ抗原の提出割合 |
| E16 | 50 | 100 | 20% | 0% | 0% | 0% | 2% |
| E17 | 78 | 104 | 12% | 0% | 0% | 0% | 0% |
| E18 | - | - | - | - | - | - | - |
| E19 | 49 | 53 | 24% | 86% | 0% | 2% | 4% |
| E20 | 71 | 71 | 4% | 24% | 0% | 0% | 0% |
| E21 | - | - | - | - | - | - | - |
| E22 | 112 | 149 | 22% | 0% | 0% | 33% | 29% |
| E23 | 145 | 290 | 15% | 43% | 1% | 50% | 30% |
| E24 | 224 | 244 | 3% | 0% | 0% | 0% | 0% |
| E25 | 80 | 106 | 59% | 16% | 46% | 0% | 40% |
| E26 | 315 | 315 | 26% | 68% | 0% | 66% | 23% |
| E27 | 55 | 73 | 38% | 62% | 56% | 0% | 47% |
| E28 | 207 | 276 | 3% | 0% | 0% | 14% | 4% |
| E29 | - | - | - | - | - | - | - |
| E30 | 37 | 74 | 3% | 30% | 0% | 0% | 0% |
| E31 | 102 | 136 | 13% | 0% | 58% | 0% | 36% |
| E32 | 62 | 148 | 13% | 0% | 0% | 16% | 2% |
| E33 | 49 | 98 | 12% | 51% | 0% | 24% | 8% |
| E34 | 150 | 163 | 63% | 77% | 3% | 55% | 44% |
| E35 | 69 | 69 | 0% | 12% | 0% | 0% | 0% |
| E36 | 14 | 33 | 0% | 0% | 0% | 0% | 0% |
| E37 | 103 | 103 | 42% | 0% | 0% | 66% | 65% |
| E38 | 152 | 364 | 5% | 60% | 0% | 0% | 0% |
| E39 | 48 | 48 | 6% | 0% | 0% | 8% | 10% |
| E40 | 121 | 161 | 38% | 0% | 0% | 40% | 12% |
| E41 | - | - | - | - | - | - | - |
| E42 | 98 | 98 | 30% | 47% | 0% | 0% | 7% |
| E43 | 71 | 71 | 17% | 4% | 0% | 0% | 0% |
| E44 | 43 | 46 | 2% | 23% | 0% | 0% | 0% |
| E45 | 217 | 289 | 2% | 65% | 0% | 26% | 24% |
| E46 | 200 | 200 | 22% | 0% | 0% | 37% | 12% |
| F1 | 98 | 196 | 5% | 35% | 0% | 4% | 0% |
| F2 | 232 | 232 | 22% | 0% | 0% | 49% | 4% |
| F4 | 93 | 93 | 0% | 60% | 0% | 54% | 1% |
| F5 | 280 | 373 | 30% | 14% | 0% | 41% | 11% |
| F6 | 146 | 146 | 79% | 0% | 0% | 0% | 12% |
| F7 | 289 | 289 | 70% | 9% | 0% | 36% | 32% |
| F8 | 269 | 269 | 31% | 0% | 1% | 28% | 2% |
| F9 | 121 | 121 | 31% | 79% | 81% | 0% | 63% |
| F10 | 205 | 410 | 64% | 57% | 0% | 59% | 53% |
| F12 | 83 | 166 | 46% | 0% | 0% | 57% | 31% |
| F13 | 86 | 344 | 22% | 0% | 0% | 45% | 16% |
| F14 | 115 | 230 | 0% | 68% | 0% | 51% | 42% |
| F15 | 194 | 194 | 0% | 7% | 0% | 59% | 49% |
| F16 | 228 | 228 | 40% | 68% | 0% | 22% | 17% |
| F17 | 156 | 312 | 29% | 1% | 0% | 53% | 52% |
| F18 | 425 | 425 | 68% | 0% | 0% | 60% | 56% |
| F19 | 97 | 232 | 32% | 9% | 0% | 63% | 12% |
| F21 | 418 | 418 | 57% | 1% | 37% | 0% | 28% |
| F22 | 34 | 68 | 44% | 0% | 0% | 65% | 62% |
| F23 | 180 | 240 | 21% | 78% | 0% | 14% | 14% |
| F25 | 178 | 178 | 73% | 0% | 0% | 57% | 40% |
| F26 | 46 | 92 | 28% | 0% | 54% | 0% | 24% |
| F27 | 128 | 128 | 17% | 0% | 0% | 36% | 33% |
| F28 | 286 | 286 | 6% | 0% | 0% | 4% | 0% |
| F29 | 127 | 217 | 50% | 0% | 0% | 72% | 67% |
| F30 | 776 | 776 | 6% | 0% | 0% | 11% | 12% |
| F31 | 147 | 147 | 16% | 0% | 0% | 10% | 5% |
| F32 | 365 | 486 | 52% | 0% | 0% | 44% | 40% |

治療資源と治療の結果

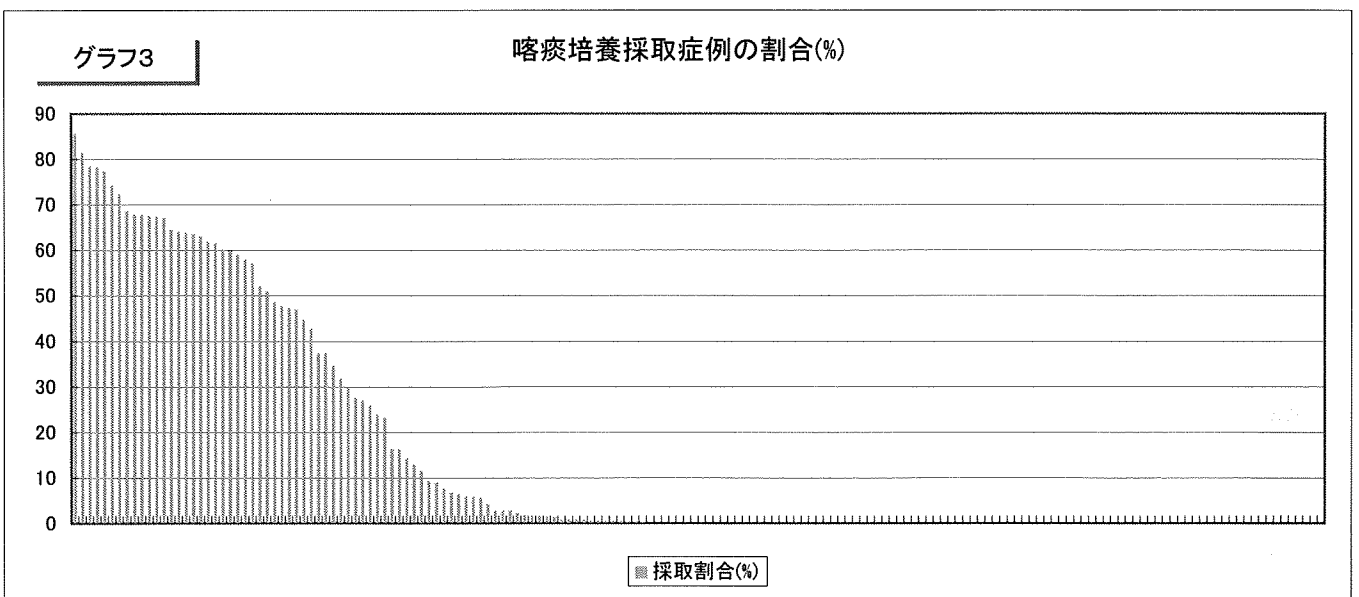
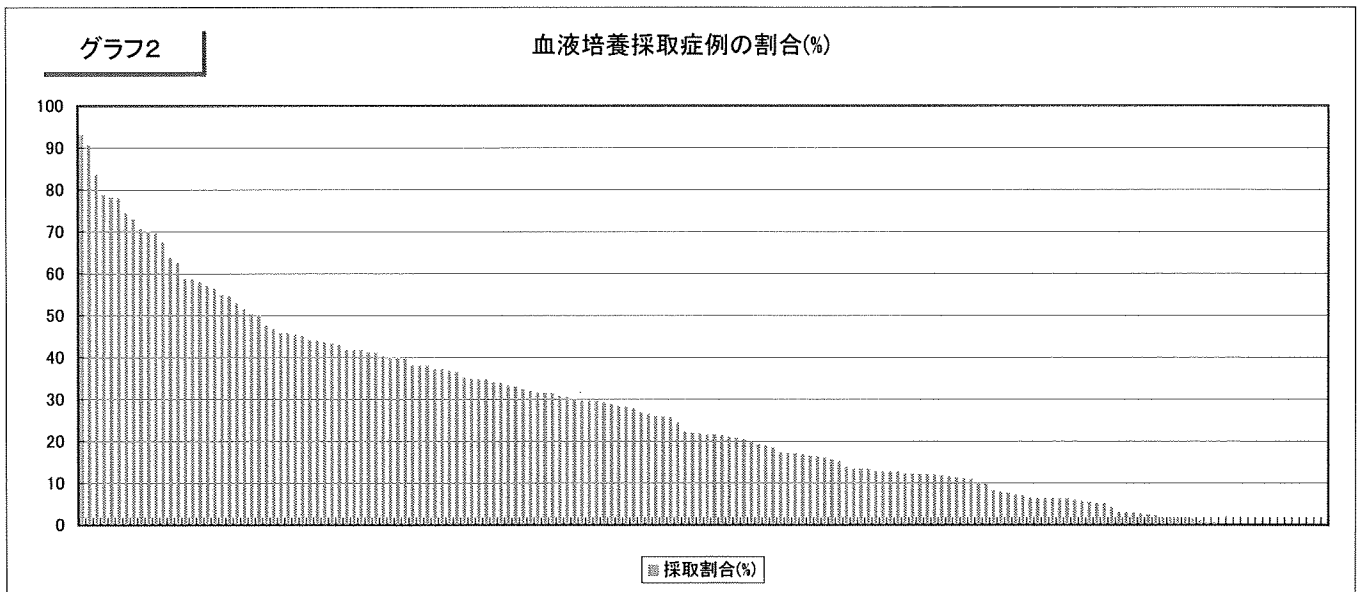
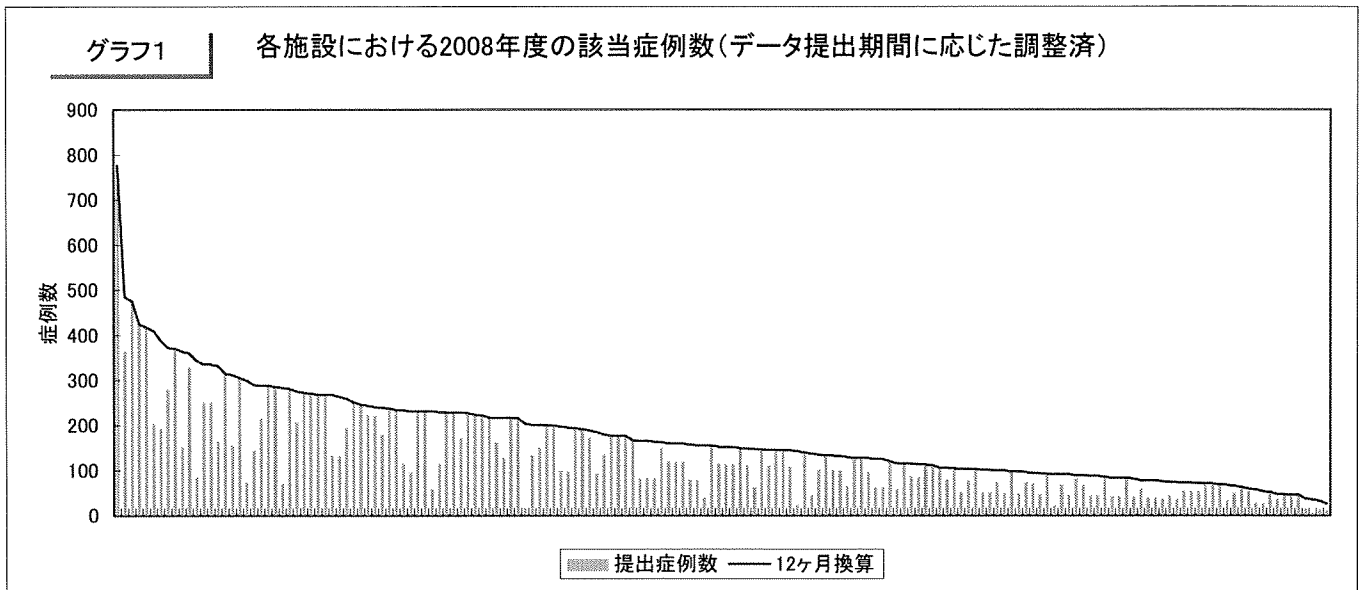
| 病院 | グラフ7 | グラフ8 | グラフ9 | グラフ10 |
|-----|-----------|-------------------------|-----------------------------------|----------|
| | 点滴抗菌薬使用割合 | 3日以内に広域注射薬 で治療開始した割合 | 点滴抗菌薬初回投与日から 終了日までの日数(中央 値) | 在院日数の中央値 |
| A1 | 93% | 0% | 25% | 11 |
| A2 | 89% | 0% | 19% | 16 |
| A3 | 98% | 0% | 0% | 16 |
| A4 | 94% | 0% | 0% | 12 |
| A5 | 83% | 13% | 0% | 10 |
| A6 | 88% | 0% | 12% | 17 |
| B1 | 92% | 3% | 68% | 18 |
| B2 | 100% | 0% | 8% | 10 |
| B3 | 83% | 0% | 46% | 15 |
| B4 | 98% | 2% | 0% | 15 |
| B5 | 95% | 0% | 0% | 10 |
| B6 | 98% | 0% | 64% | 10 |
| B7 | 96% | 0% | 38% | 12 |
| B8 | 94% | 0% | 0% | 14 |
| B9 | 97% | 0% | 0% | 15 |
| B10 | 97% | 64% | 67% | 14 |
| B11 | 80% | 49% | 24% | 16 |
| B12 | 95% | 2% | 26% | 16 |
| B13 | 100% | 0% | 0% | 18 |
| B14 | 96% | 64% | 7% | 15 |
| B15 | 96% | 27% | 70% | 12 |
| B16 | 97% | 0% | 0% | 14 |
| B17 | 94% | 69% | 52% | 13 |
| B18 | 83% | 0% | 0% | 11 |
| B19 | 62% | 0% | 2% | 15 |
| B20 | 98% | 45% | 0% | 13 |
| B21 | 96% | 1% | 0% | 11 |
| B22 | 97% | 0% | 32% | 13 |
| B23 | 100% | 64% | 0% | 16 |
| B24 | 99% | 0% | 0% | 13 |
| B25 | 99% | 0% | 0% | 17 |
| B26 | 92% | 0% | 0% | 14 |
| B27 | 98% | 0% | 0% | 15 |
| B28 | 96% | 0% | 40% | 16 |
| C1 | 94% | 0% | 0% | 16 |
| C2 | 99% | 28% | 47% | 22 |
| C3 | 96% | 3% | 0% | 12 |
| C4 | 91% | 48% | 61% | 12 |
| C5 | 100% | 52% | 0% | 11 |
| C6 | 98% | 0% | 34% | 28 |
| C7 | 93% | 0% | 0% | 15 |
| C8 | 88% | 0% | 0% | 11 |
| C9 | 88% | 0% | 1% | 15 |
| C10 | 97% | 0% | 0% | 14 |
| C11 | 99% | 81% | 54% | 17 |
| C12 | 97% | 8% | 45% | 13 |
| C13 | 94% | 6% | 2% | 14 |
| C14 | 94% | 6% | 0% | 28 |
| C15 | 98% | 16% | 0% | 15 |
| C16 | 89% | 2% | 8% | 14 |
| C17 | 94% | 6% | 28% | 13 |
| C18 | 98% | 0% | 26% | 15 |
| C19 | 93% | 0% | 38% | 14 |
| C20 | 94% | 0% | 0% | 16 |
| C21 | 100% | 72% | 0% | 20 |
| C22 | 100% | 59% | 0% | 19 |
| C23 | 94% | 0% | 4% | 12 |
| C24 | 90% | 0% | 0% | 15 |

治療資源と治療の結果

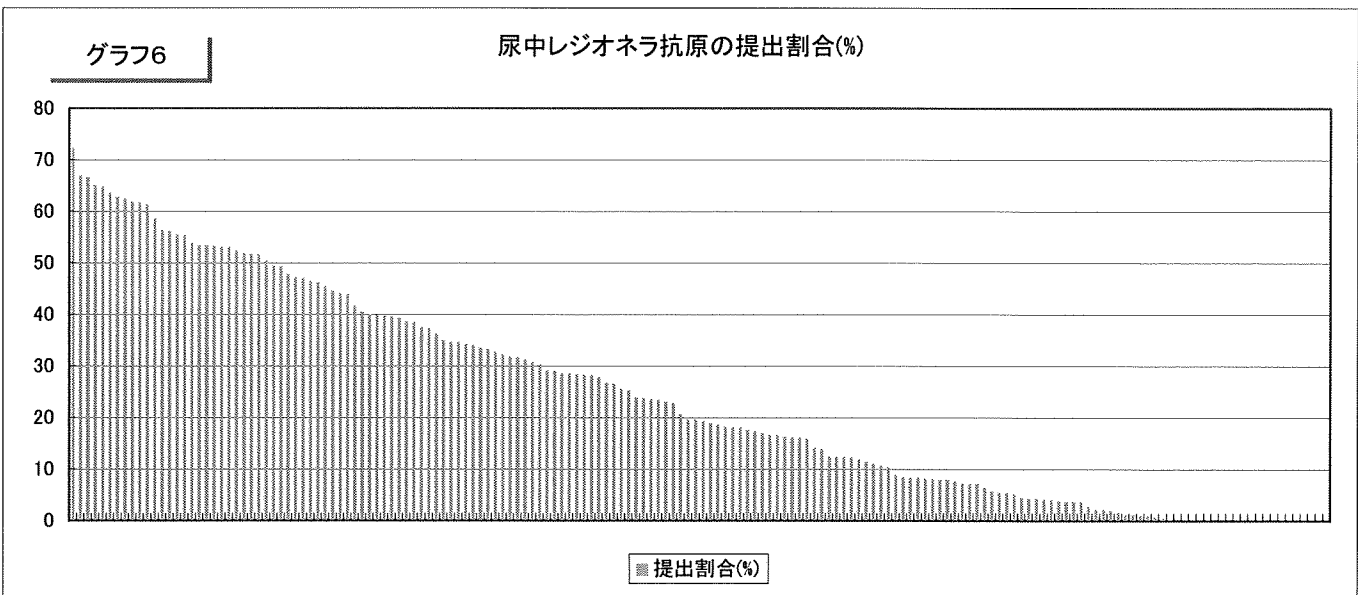
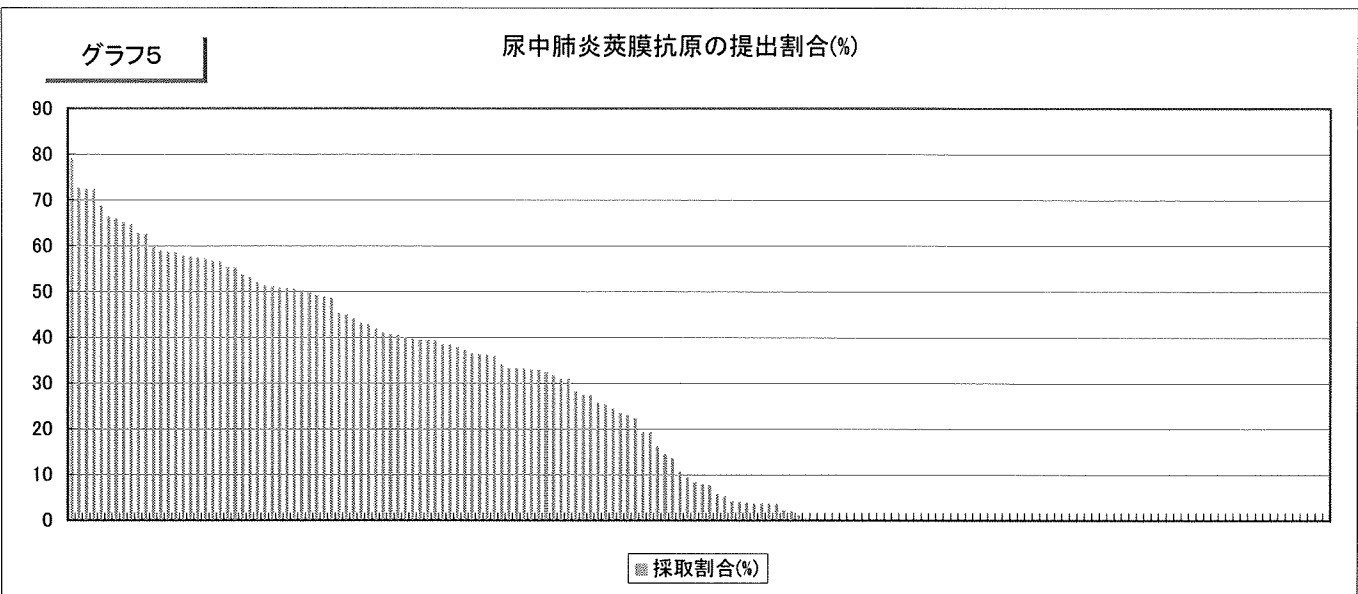
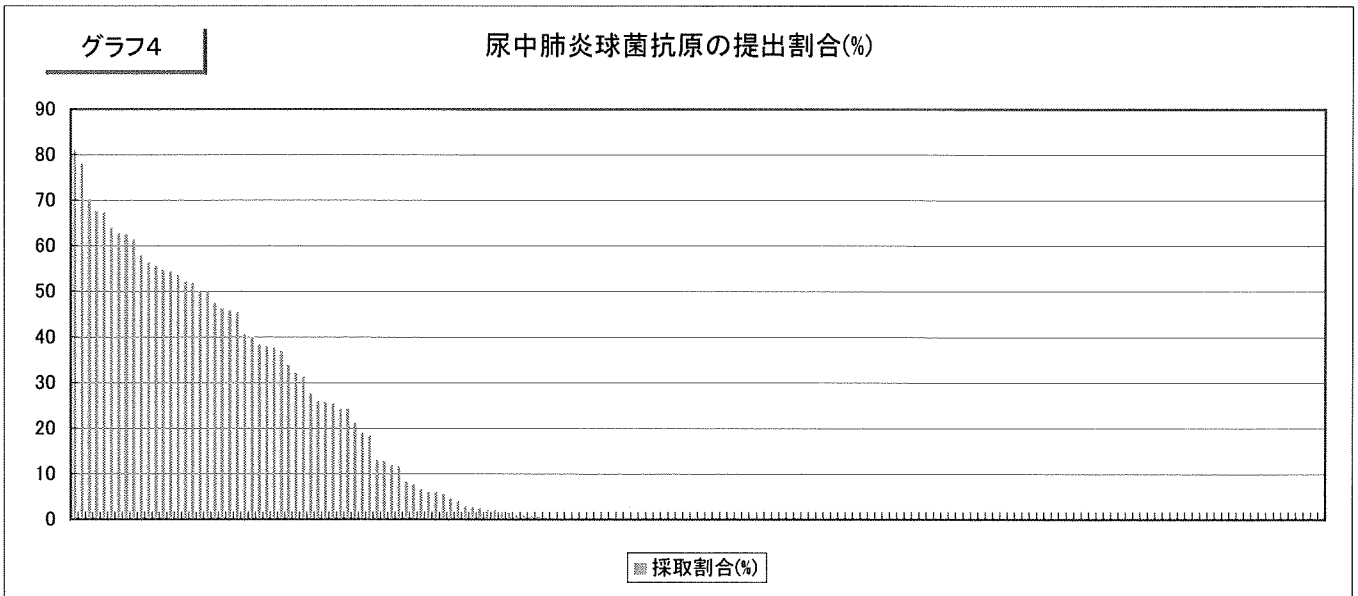
| 病院 | グラフ7 | グラフ8 | グラフ9 | グラフ10 |
|-----|-----------|----------------------|---------------------------|----------|
| | 点滴抗菌薬使用割合 | 3日目以内に広域注射薬で治療開始した割合 | 点滴抗菌薬初回投与日から終了日までの日数(中央値) | 在院日数の中央値 |
| D1 | 92% | 0% | 63% | 16 |
| D2 | 100% | 62% | 0% | 20 |
| D3 | 97% | 1% | 21% | 14 |
| D4 | 100% | 74% | 0% | 15 |
| D5 | 94% | 0% | 0% | 13 |
| D6 | 99% | 0% | 0% | 17 |
| D7 | 95% | 0% | 0% | 16 |
| D8 | 95% | 47% | 41% | 11 |
| D9 | 98% | 0% | 0% | 13 |
| D10 | 93% | 0% | 0% | 13 |
| D11 | 99% | 0% | 0% | 15 |
| D12 | 92% | 6% | 2% | 17 |
| D14 | 95% | 58% | 50% | 12 |
| D15 | 85% | 0% | 52% | 12 |
| D16 | 96% | 1% | 0% | 15 |
| D17 | 96% | 0% | 0% | 14 |
| D18 | 97% | 0% | 13% | 20 |
| D19 | 97% | 1% | 6% | 15 |
| D20 | 95% | 0% | 0% | 15 |
| D21 | 96% | 3% | 38% | 16 |
| D22 | 97% | 0% | 0% | 14 |
| D23 | 94% | 1% | 0% | 12 |
| D24 | 93% | 1% | 0% | 12 |
| D26 | 95% | 0% | 1% | 16 |
| D27 | 88% | 67% | 0% | 13 |
| D28 | 93% | 26% | 0% | 10 |
| D29 | 93% | 0% | 13% | 16 |
| D30 | 91% | 32% | 12% | 16 |
| D31 | 92% | 0% | 0% | 13 |
| D32 | 96% | 0% | 0% | 14 |
| D33 | 94% | 67% | 0% | 15 |
| D34 | 73% | 37% | 6% | 14 |
| D35 | 91% | 0% | 0% | 12 |
| D36 | 94% | 1% | 55% | 13 |
| D37 | 97% | 0% | 0% | 17 |
| D38 | 95% | 0% | 24% | 15 |
| D39 | 92% | 0% | 0% | 20 |
| D40 | 96% | 0% | 1% | 13 |
| D41 | 71% | 63% | 0% | 11 |
| D42 | 100% | 0% | 56% | 11 |
| D43 | 97% | 0% | 0% | 16 |
| D44 | 98% | 0% | 0% | 15 |
| D45 | 93% | 1% | 31% | 17 |
| D46 | 79% | 2% | 2% | 15 |
| E1 | 98% | 0% | 3% | 20 |
| E2 | 91% | 0% | 0% | 13 |
| E3 | 94% | 0% | 78% | 11 |
| E5 | 96% | 0% | 18% | 17 |
| E6 | 100% | 0% | 50% | 15 |
| E7 | - | - | - | - |
| E8 | 89% | 0% | 5% | 11 |
| E9 | - | - | - | - |
| E10 | 99% | 37% | 0% | 16 |
| E11 | 96% | 0% | 0% | 15 |
| E12 | 83% | 0% | 6% | 11 |
| E13 | 95% | 0% | 0% | 12 |
| E14 | 96% | 0% | 0% | 14 |
| E15 | 83% | 1% | 63% | 13 |

治療資源と治療の結果

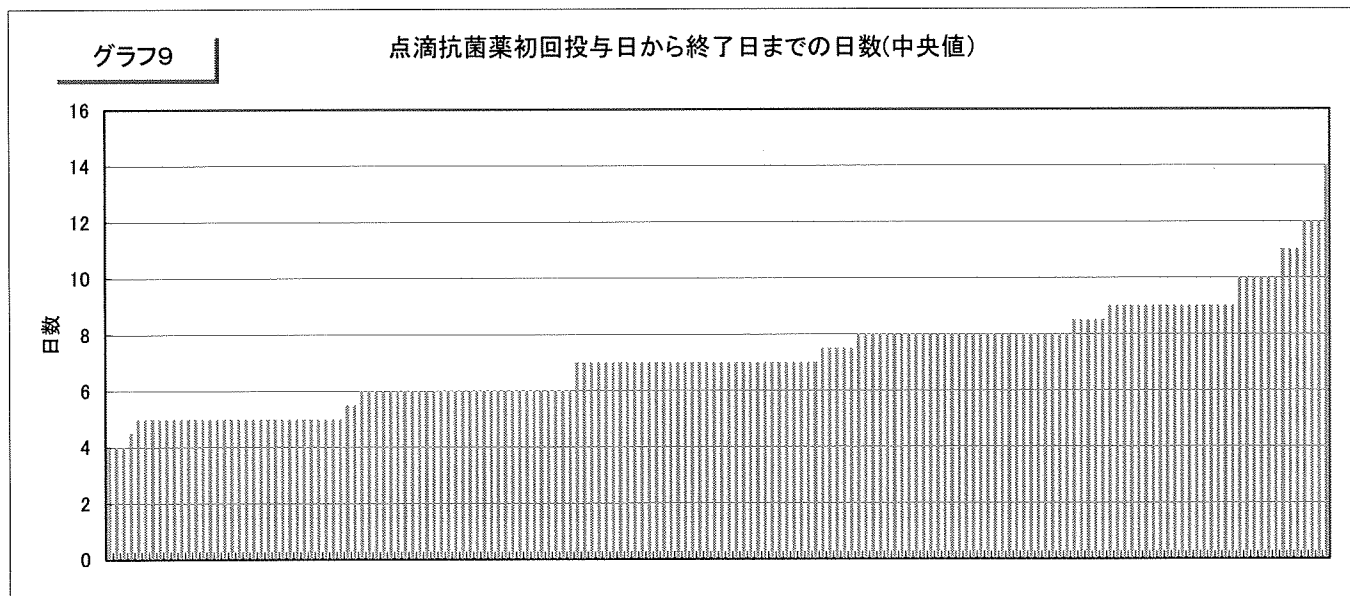
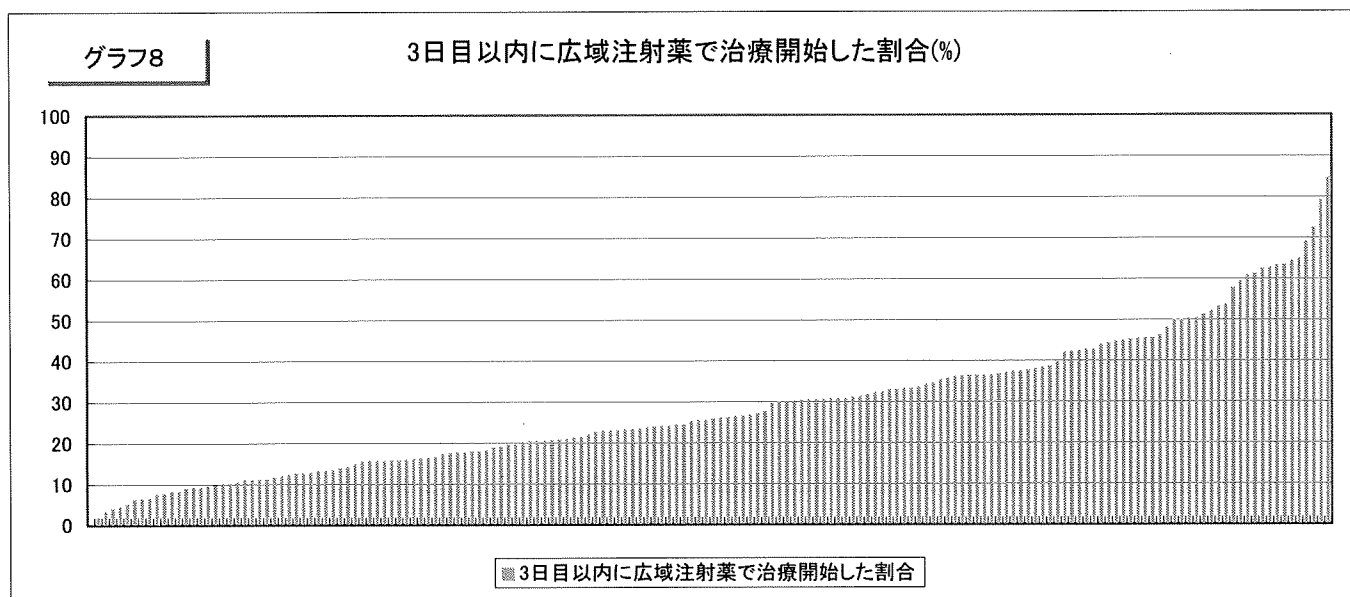
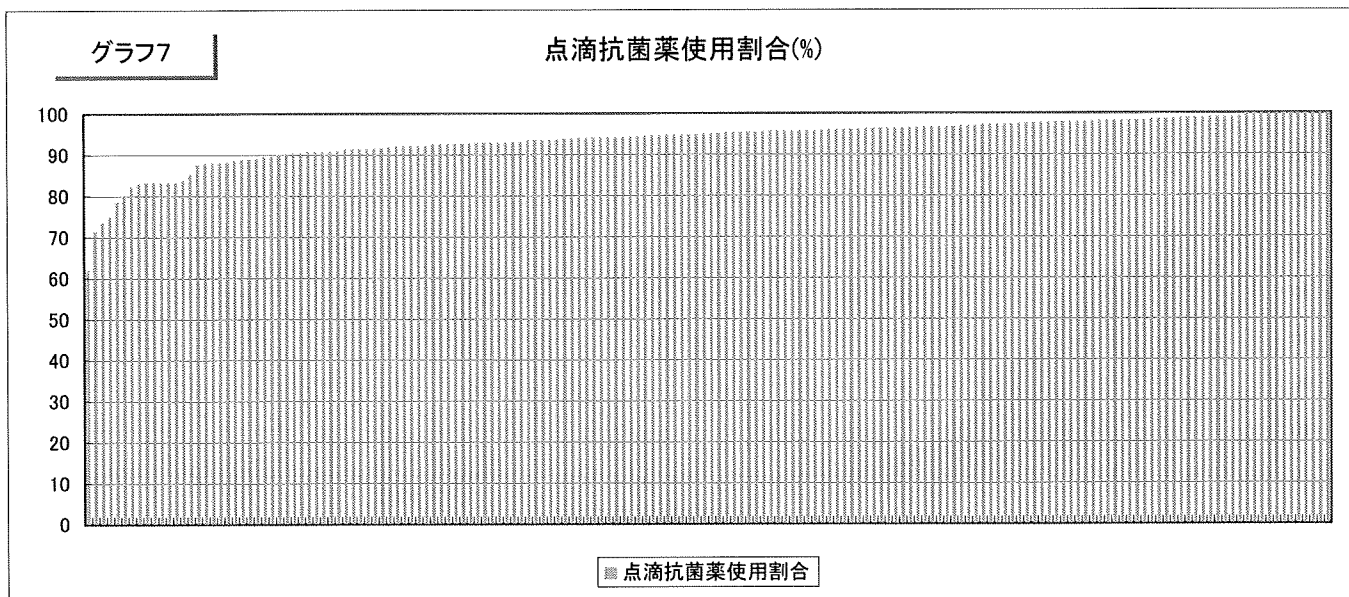
| 病院 | グラフ7 | グラフ8 | グラフ9 | グラフ10 |
|-----|-----------|----------------------|---------------------------|----------|
| | 点滴抗菌薬使用割合 | 3日目以内に広域注射薬で治療開始した割合 | 点滴抗菌薬初回投与日から終了日までの日数(中央値) | 在院日数の中央値 |
| E16 | 96% | 0% | 0% | 12 |
| E17 | 95% | 0% | 0% | 17 |
| E18 | - | - | - | - |
| E19 | 98% | 86% | 0% | 16 |
| E20 | 96% | 24% | 0% | 17 |
| E21 | - | - | - | - |
| E22 | 97% | 0% | 0% | 13 |
| E23 | 90% | 43% | 1% | 12 |
| E24 | 93% | 0% | 0% | 14 |
| E25 | 99% | 16% | 46% | 15 |
| E26 | 98% | 68% | 0% | 13 |
| E27 | 96% | 62% | 56% | 11 |
| E28 | 98% | 0% | 0% | 22 |
| E29 | - | - | - | - |
| E30 | 84% | 30% | 0% | 13 |
| E31 | 82% | 0% | 58% | 15 |
| E32 | 95% | 0% | 0% | 13 |
| E33 | 100% | 51% | 0% | 23 |
| E34 | 95% | 77% | 3% | 12 |
| E35 | 93% | 12% | 0% | 15 |
| E36 | 93% | 0% | 0% | 11 |
| E37 | 98% | 0% | 0% | 16 |
| E38 | 99% | 60% | 0% | 15 |
| E39 | 90% | 0% | 0% | 14 |
| E40 | 90% | 0% | 0% | 22 |
| E41 | - | - | - | - |
| E42 | 99% | 47% | 0% | 15 |
| E43 | 96% | 4% | 0% | 12 |
| E44 | 98% | 23% | 0% | 16 |
| E45 | 99% | 65% | 0% | 16 |
| E46 | 96% | 0% | 0% | 15 |
| F1 | 96% | 35% | 0% | 18 |
| F2 | 93% | 0% | 0% | 10 |
| F4 | 90% | 60% | 0% | 14 |
| F5 | 99% | 14% | 0% | 19 |
| F6 | 97% | 0% | 0% | 10 |
| F7 | 94% | 9% | 0% | 10 |
| F8 | 91% | 0% | 1% | 13 |
| F9 | 97% | 79% | 81% | 13 |
| F10 | 91% | 57% | 0% | 11 |
| F12 | 93% | 0% | 0% | 14 |
| F13 | 93% | 0% | 0% | 16 |
| F14 | 92% | 68% | 0% | 15 |
| F15 | 91% | 7% | 0% | 20 |
| F16 | 96% | 68% | 0% | 15 |
| F17 | 96% | 1% | 0% | 15 |
| F18 | 88% | 0% | 0% | 13 |
| F19 | 96% | 9% | 0% | 13 |
| F21 | 89% | 1% | 37% | 9 |
| F22 | 100% | 0% | 0% | 13 |
| F23 | 97% | 78% | 0% | 14 |
| F25 | 83% | 0% | 0% | 12 |
| F26 | 93% | 0% | 54% | 13 |
| F27 | 89% | 0% | 0% | 17 |
| F28 | 98% | 0% | 0% | 24 |
| F29 | 91% | 0% | 0% | 11 |
| F30 | 99% | 0% | 0% | 17 |
| F31 | 92% | 0% | 0% | 16 |
| F32 | 91% | 0% | 0% | 12 |



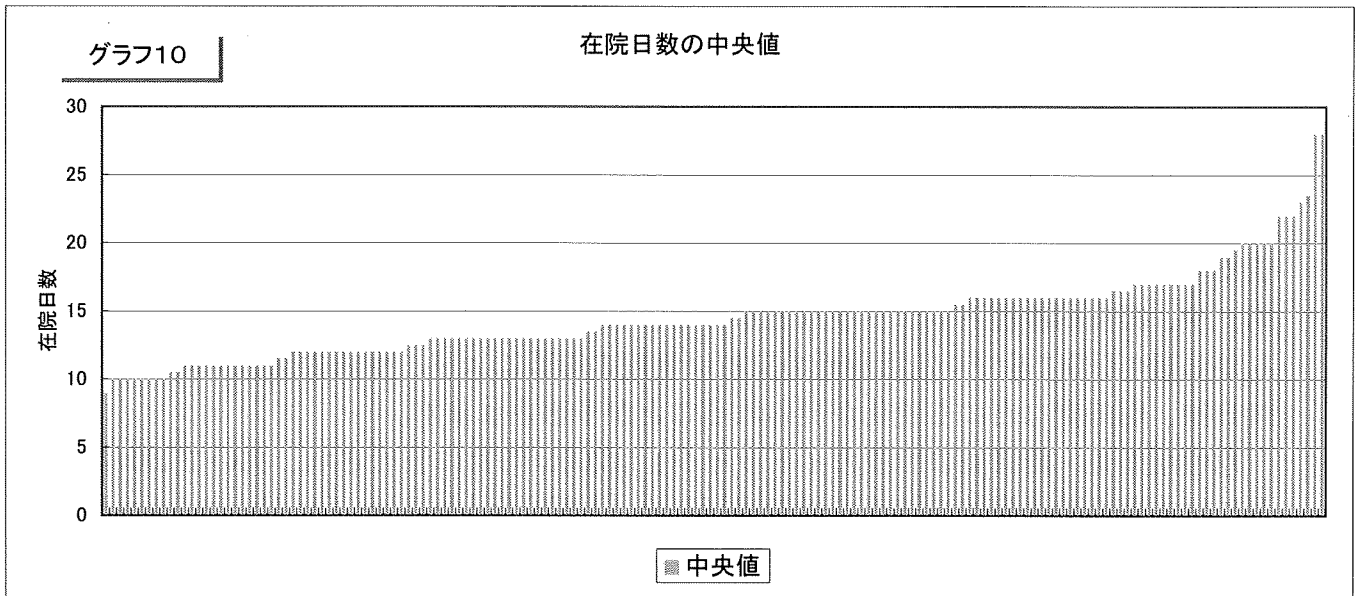
※あなたの病院の具体的な数値は前頁の表でご確認いただき、上記グラフの位置づけをご確認下さい。



※あなたの病院の具体的な数値は前頁の表でご確認いただき、上記グラフの位置づけをご確認下さい。



※あなたの病院の具体的な数値は前頁の表でご確認いただき、上記グラフの位置づけをご確認下さい。



7. 急性胆嚢炎の治療の変化

急性胆嚢炎の治療に関して、さまざまな議論がされてきました。議論の主なトピックスは、手術の時期と術式です。現在欧米では、発症早期の腹腔鏡下胆嚢摘出術が主流です。一方わが国では、いったん抗生剤で炎症を抑えてから手術を行なう「遅延手術」や、経皮的胆嚢ドレナージなどが行なわれていました。

しかし近年DPCに基づく包括評価の支払い制度の影響により、手術の選択や時期、在院日数、医療費などにも変化が見られることが予想されます。

「急性胆管炎・胆嚢炎の診療ガイドライン」は2005年9月に刊行され、次いで2007年2月には本邦発の国際的な診療指針を目指した「TOKYO Guidelines for the management of acute cholangitis and cholecystitis」が報告されました。このガイドラインでは、早期の腹腔鏡下胆嚢摘出術が推奨されています。

今回、急性胆嚢炎の診療プロセス（手術術式の選択や手術時期など）・患者アウトカム（死亡率・再入院率・合併症発生率など）・医療資源消費（在院日数・医療費）の経時的変化を検討し、ガイドラインが診療パターンの変化に与える影響を考察を加えて、報告致します。2008年10月～2009年9月に対象病院を退院した急性胆嚢炎の症例を同定し、同じ患者の最後の入院から遡って半年間の入院データを全て結合しました。全ての入院データを結合することにより、入院回数（一回入院治療なのか、分割入院治療なのか）や最初の入院から手術までの日数などを解析することができます。

表：急性胆嚢炎の診療（I）

| | レコード数 | ①1年当たり 症例数 | ②性別 (男性) | ③平均年齢 | ④手術実施 の割合 | ⑤手術の内訳 | | ⑥術前・術後 在院日数の中央値 | |
|-----|-------|---------------|-------------|-------|--------------|-----------------|------------------|--------------------|----|
| | | | | | | 胆嚢摘出術 (開腹OC) | 胆嚢摘出術 (腹腔鏡LC) | 術前 | 術後 |
| A1 | 104 | 104 | 41 (56.2%) | 66 | 55 (75.3%) | 4 (7.3%) | 51 (92.7%) | 4 | 5 |
| A3 | 3 | 36 | 1 (50%) | 89 | 0 (0%) | 0 - | 0 - | - | - |
| A4 | 43 | 43 | 17 (48.6%) | 66 | 22 (62.9%) | 6 (27.3%) | 16 (72.7%) | 6 | 10 |
| A5 | 44 | 75 | 14 (60.9%) | 64 | 18 (78.3%) | 2 (11.1%) | 16 (88.9%) | 1 | 5 |
| A6 | 38 | 91 | 1 (33.3%) | 71 | 3 (100%) | 0 (0%) | 3 (100%) | 2 | 12 |
| A7 | 17 | 34 | - | - | - | - | - | - | - |
| A8 | 22 | 44 | 4 (30.8%) | 62 | 10 (76.9%) | 1 (10%) | 9 (90%) | 4 | 8 |
| A9 | 25 | 50 | 6 (75%) | 64 | 6 (75%) | 1 (16.7%) | 5 (83.3%) | 2 | 7 |
| B1 | 26 | 28 | 20 (80%) | 63 | 16 (64%) | 1 (6.3%) | 15 (93.8%) | 2 | 5 |
| B2 | 26 | 31 | 16 (66.7%) | 66 | 13 (54.2%) | 4 (30.8%) | 9 (69.2%) | 3 | 9 |
| B4 | 29 | 58 | 2 (50%) | 65 | 4 (100%) | 1 (25%) | 3 (75%) | 1 | 5 |
| B5 | 48 | 48 | 12 (34.3%) | 71 | 23 (65.7%) | 7 (30.4%) | 16 (69.6%) | 1 | 9 |
| B6 | 139 | 139 | 54 (48.6%) | 63 | 59 (53.2%) | 13 (22%) | 46 (78%) | 2 | 5 |
| B7 | 57 | 57 | 26 (68.4%) | 67 | 26 (68.4%) | 3 (11.5%) | 23 (88.5%) | 9 | 9 |
| B8 | 5 | 20 | - | - | - | - | - | - | - |
| B9 | 22 | 53 | 9 (60%) | 63 | 9 (60%) | 3 (33.3%) | 6 (66.7%) | 8 | 5 |
| B10 | 50 | 67 | 11 (57.9%) | 77 | 16 (84.2%) | 16 (100%) | 0 (0%) | 0 | 13 |
| B11 | 56 | 134 | 7 (87.5%) | 66 | 5 (62.5%) | 1 (20%) | 4 (80%) | 1 | 8 |
| B12 | 128 | 140 | 67 (54%) | 66 | 84 (67.7%) | 19 (22.6%) | 65 (77.4%) | 1 | 6 |
| B13 | 3 | 12 | 0 (0%) | 34 | 1 (100%) | 0 (0%) | 1 (100%) | 1 | 12 |
| B16 | 145 | 158 | 92 (63.4%) | 67 | 79 (54.5%) | 23 (29.1%) | 56 (70.9%) | 1 | 5 |
| B17 | 35 | 38 | 25 (71.4%) | 67 | 28 (80%) | 14 (50%) | 14 (50%) | 0 | 8 |
| B18 | 17 | 68 | 0 (0%) | 66 | 1 (33.3%) | 0 (0%) | 1 (100%) | 4 | 10 |
| B19 | 61 | 61 | 33 (54.1%) | 65 | 40 (65.6%) | 0 (0%) | 40 (100%) | 2 | 6 |
| B20 | 117 | 117 | 47 (51.1%) | 63 | 36 (39.1%) | 5 (13.9%) | 31 (86.1%) | 2 | 5 |
| B21 | 47 | 51 | 24 (61.5%) | 68 | 17 (43.6%) | 2 (11.8%) | 15 (88.2%) | 14 | 10 |
| B22 | 80 | 87 | 35 (46.1%) | 64 | 52 (68.4%) | 20 (38.5%) | 32 (61.5%) | 2 | 8 |
| B23 | 78 | 104 | 45 (57.7%) | 68 | 42 (53.8%) | 1 (2.4%) | 41 (97.6%) | 1 | 7 |
| B24 | 59 | 59 | 37 (62.7%) | 65 | 38 (64.4%) | 0 (0%) | 38 (100%) | 1 | 8 |
| B25 | 27 | 65 | 8 (42.1%) | 62 | 17 (89.5%) | 3 (17.6%) | 14 (82.4%) | 2 | 8 |
| B26 | 40 | 48 | 15 (53.6%) | 64 | 12 (42.9%) | 2 (16.7%) | 10 (83.3%) | 1 | 8 |
| B27 | 55 | 132 | 11 (73.3%) | 61 | 14 (93.3%) | 3 (21.4%) | 11 (78.6%) | 1 | 9 |
| B28 | 12 | 24 | 7 (100%) | 69 | 4 (57.1%) | 0 (0%) | 4 (100%) | 8 | 8 |
| B29 | 29 | 70 | 4 (44.4%) | 69 | 9 (100%) | 0 (0%) | 9 (100%) | 1 | 5 |
| B31 | 75 | 75 | 42 (56%) | 70 | 23 (30.7%) | 5 (21.7%) | 18 (78.3%) | 1 | 7 |
| B32 | 128 | 140 | 85 (69.1%) | 67 | 38 (30.9%) | 2 (5.3%) | 36 (94.7%) | 1 | 5 |
| B33 | 28 | 31 | 16 (59.3%) | 70 | 14 (51.9%) | 1 (7.1%) | 13 (92.9%) | 2 | 8 |
| B34 | 82 | 82 | 50 (61%) | 65 | 28 (34.1%) | 7 (25%) | 21 (75%) | 1 | 6 |
| B35 | 44 | 59 | 22 (88%) | 71 | 9 (36%) | 3 (33.3%) | 6 (66.7%) | 1 | 4 |
| C1 | 39 | 78 | 17 (68%) | 64 | 16 (64%) | 3 (18.8%) | 13 (81.3%) | 1 | 7 |
| C2 | 3 | 4 | 2 (66.7%) | 69 | 2 (66.7%) | 0 (0%) | 2 (100%) | 10 | 24 |
| C3 | 17 | 68 | 1 (25%) | 71 | 3 (75%) | 0 (0%) | 3 (100%) | 1 | 8 |
| C4 | 10 | 40 | 1 (100%) | 72 | 0 (0%) | 0 - | 0 - | - | - |
| C5 | 40 | 96 | 8 (53.3%) | 71 | 10 (66.7%) | 0 (0%) | 10 (100%) | 7 | 10 |
| C6 | 25 | 50 | 14 (73.7%) | 72 | 12 (63.2%) | 1 (8.3%) | 11 (91.7%) | 1 | 7 |
| C7 | 17 | 23 | 5 (41.7%) | 70 | 5 (41.7%) | 2 (40%) | 3 (60%) | 9 | 10 |
| C8 | 46 | 61 | 14 (37.8%) | 65 | 20 (54.1%) | 1 (5%) | 19 (95%) | 1 | 8 |
| C9 | 43 | 57 | 12 (38.7%) | 69 | 11 (35.5%) | 2 (18.2%) | 9 (81.8%) | 10 | 9 |
| C10 | 10 | 20 | 3 (50%) | 72 | 4 (66.7%) | 1 (25%) | 3 (75%) | 3 | 9 |
| C11 | 9 | 22 | 1 (25%) | 56 | 2 (50%) | 0 (0%) | 2 (100%) | 6 | 7 |
| C12 | 10 | 20 | 3 (50%) | 65 | 1 (16.7%) | 0 (0%) | 1 (100%) | 1 | 8 |
| C13 | 11 | 22 | 1 (25%) | 78 | 0 (0%) | 0 - | 0 - | - | - |
| C14 | 13 | 17 | 3 (37.5%) | 65 | 3 (37.5%) | 0 (0%) | 3 (100%) | 7 | 39 |
| C16 | 19 | 46 | 3 (75%) | 63 | 2 (50%) | 2 (100%) | 0 (0%) | 7 | 21 |
| C17 | 7 | 28 | - | - | - | - | - | - | - |
| C18 | 20 | 40 | 6 (60%) | 64 | 7 (70%) | 1 (14.3%) | 6 (85.7%) | 7 | 8 |
| C19 | 14 | 56 | 2 (66.7%) | 53 | 3 (100%) | 0 (0%) | 3 (100%) | 1 | 5 |
| C20 | 17 | 23 | 8 (66.7%) | 68 | 8 (66.7%) | 5 (62.5%) | 3 (37.5%) | 4 | 22 |
| C21 | 21 | 84 | 3 (75%) | 83 | 2 (50%) | 1 (50%) | 1 (50%) | 9 | 12 |
| C22 | 8 | 11 | 5 (62.5%) | 64 | 3 (37.5%) | 1 (33.3%) | 2 (66.7%) | 31 | 34 |
| C23 | 20 | 80 | 2 (40%) | 58 | 5 (100%) | 2 (40%) | 3 (60%) | 1 | 5 |
| C24 | 2 | 3 | 1 (50%) | 65 | 1 (50%) | 0 (0%) | 1 (100%) | 2 | 8 |
| C25 | 6 | 24 | - | - | - | - | - | - | - |
| C26 | 9 | 36 | 1 (100%) | 80 | 0 (0%) | 0 - | 0 - | - | - |
| C27 | 34 | 45 | 22 (64.7%) | 70 | 14 (41.2%) | 2 (14.3%) | 12 (85.7%) | 1 | 6 |

表：急性胆嚢炎の診療(I)

| | レコード数 | ①1年当たり 症例数 | ②性別 (男性) | ③平均年齢 | ④手術実施 の割合 | ⑤手術の内訳 | | ⑥術前・術後 在院日数の中央値 | |
|-----|-------|---------------|-------------|-------|--------------|-----------------|------------------|--------------------|-----|
| | | | | | | 胆嚢摘出術 (開腹OC) | 胆嚢摘出術 (腹腔鏡LC) | 術前 | 術後 |
| D1 | 30 | 60 | 14 (48.3%) | 65 | 25 (86.2%) | 3 (12%) | 22 (88%) | 1 | 6 |
| D2 | 89 | 89 | 50 (56.8%) | 67 | 35 (39.8%) | 10 (28.6%) | 25 (71.4%) | 2 | 6 |
| D3 | 195 | 195 | 97 (50.3%) | 63 | 157 (81.3%) | 2 (1.3%) | 155 (98.7%) | 1 | 4 |
| D5 | 11 | 44 | 3 (100%) | 61 | 3 (100%) | 0 (0%) | 3 (100%) | 1 | 6 |
| D6 | 64 | 85 | 35 (59.3%) | 64 | 37 (62.7%) | 3 (8.1%) | 34 (91.9%) | 3 | 6 |
| D7 | 9 | 36 | 1 (33.3%) | 65 | 3 (100%) | 0 (0%) | 3 (100%) | 1 | 8 |
| D8 | 8 | 32 | 1 (50%) | 76 | 1 (50%) | 0 (0%) | 1 (100%) | 2 | 7 |
| D9 | 7 | 28 | - | - | - | - | - | - | - |
| D10 | 101 | 135 | 59 (58.4%) | 68 | 59 (58.4%) | 10 (16.9%) | 49 (83.1%) | 1 | 5 |
| D11 | 60 | 65 | 28 (48.3%) | 67 | 41 (70.7%) | 5 (12.2%) | 36 (87.8%) | 0 | 6 |
| D12 | 115 | 230 | 14 (38.9%) | 76 | 27 (75%) | 1 (3.7%) | 26 (96.3%) | 1 | 4 |
| D13 | 62 | 68 | 21 (51.2%) | 64 | 27 (65.9%) | 1 (3.7%) | 26 (96.3%) | 2 | 6 |
| D14 | 59 | 101 | 23 (59%) | 65 | 25 (64.1%) | 6 (24%) | 19 (76%) | 1 | 5 |
| D15 | 20 | 80 | 1 (20%) | 68 | 5 (100%) | 1 (20%) | 4 (80%) | 1 | 17 |
| D16 | 93 | 124 | 13 (35.1%) | 70 | 25 (67.6%) | 3 (12%) | 22 (88%) | 1 | 6 |
| D18 | 23 | 46 | 5 (50%) | 63 | 6 (60%) | 2 (33.3%) | 4 (66.7%) | 2 | 12 |
| D19 | 45 | 180 | 11 (64.7%) | 66 | 15 (88.2%) | 4 (26.7%) | 11 (73.3%) | 1 | 7 |
| D20 | 59 | 79 | 34 (57.6%) | 62 | 33 (55.9%) | 5 (15.2%) | 28 (84.8%) | 1 | 7 |
| D21 | 71 | 142 | 8 (72.7%) | 66 | 6 (54.5%) | 4 (66.7%) | 2 (33.3%) | 1 | 9 |
| D22 | 64 | 85 | 37 (60.7%) | 64 | 45 (73.8%) | 16 (35.6%) | 29 (64.4%) | 1 | 7 |
| D23 | 40 | 80 | 5 (50%) | 78 | 3 (30%) | 1 (33.3%) | 2 (66.7%) | 1 | 6 |
| D24 | 69 | 69 | 41 (59.4%) | 69 | 19 (27.5%) | 4 (21.1%) | 15 (78.9%) | 2 | 9 |
| D25 | 43 | 57 | 24 (63.2%) | 64 | 13 (34.2%) | 6 (46.2%) | 7 (53.8%) | 27 | 5 |
| D26 | 26 | 35 | 10 (71.4%) | 71 | 7 (50%) | 3 (42.9%) | 4 (57.1%) | 2 | 12 |
| D27 | 41 | 82 | 15 (65.2%) | 63 | 17 (73.9%) | 3 (17.6%) | 14 (82.4%) | 1 | 9 |
| D28 | 64 | 85 | 29 (56.9%) | 66 | 24 (47.1%) | 3 (12.5%) | 21 (87.5%) | 1 | 5 |
| D29 | 71 | 71 | 37 (52.1%) | 70 | 38 (53.5%) | 16 (42.1%) | 22 (57.9%) | 1 | 8 |
| D30 | 66 | 88 | 28 (45.9%) | 65 | 56 (91.8%) | 1 (1.8%) | 55 (98.2%) | 1 | 7 |
| D31 | 30 | 120 | 6 (66.7%) | 65 | 8 (88.9%) | 1 (12.5%) | 7 (87.5%) | 1 | 4 |
| D32 | 56 | 75 | 21 (60%) | 64 | 26 (74.3%) | 4 (15.4%) | 22 (84.6%) | 1 | 6 |
| D33 | 74 | 148 | 33 (46.5%) | 64 | 27 (38%) | 3 (11.1%) | 24 (88.9%) | 1 | 6 |
| D34 | 23 | 55 | 10 (66.7%) | 71 | 7 (46.7%) | 3 (42.9%) | 4 (57.1%) | 1 | 9 |
| D35 | 51 | 56 | 29 (58%) | 73 | 18 (36%) | 4 (22.2%) | 14 (77.8%) | 5 | 9 |
| D36 | 30 | 60 | 13 (50%) | 67 | 21 (80.8%) | 13 (61.9%) | 8 (38.1%) | 1 | 8 |
| D37 | 59 | 64 | 34 (64.2%) | 67 | 32 (60.4%) | 27 (84.4%) | 5 (15.6%) | 1 | 11 |
| D38 | 133 | 266 | 67 (51.1%) | 68 | 82 (62.6%) | 14 (17.1%) | 68 (82.9%) | 1 | 6 |
| D40 | 41 | 55 | 21 (52.5%) | 71 | 21 (52.5%) | 6 (28.6%) | 15 (71.4%) | 6 | 10 |
| D41 | 74 | 74 | 36 (49.3%) | 67 | 48 (65.8%) | 5 (10.4%) | 43 (89.6%) | 1 | 9 |
| D42 | 34 | 45 | 23 (69.7%) | 68 | 26 (78.8%) | 8 (30.8%) | 18 (69.2%) | 4 | 8 |
| D43 | 82 | 82 | 35 (55.6%) | 63 | 33 (52.4%) | 11 (33.3%) | 22 (66.7%) | 2 | 7 |
| D44 | 117 | 156 | 72 (62.1%) | 66 | 65 (56%) | 22 (33.8%) | 43 (66.2%) | 3 | 5 |
| D45 | 49 | 65 | 22 (64.7%) | 63 | 16 (47.1%) | 2 (12.5%) | 14 (87.5%) | 3 | 6 |
| D46 | 24 | 96 | 13 (54.2%) | 68 | 16 (66.7%) | 5 (31.3%) | 11 (68.8%) | 1 | 7 |
| D47 | 30 | 40 | 13 (59.1%) | 70 | 13 (59.1%) | 2 (15.4%) | 11 (84.6%) | 6 | 6 |
| D48 | 35 | 35 | 15 (42.9%) | 65 | 26 (74.3%) | 5 (19.2%) | 21 (80.8%) | 1 | 9 |
| D49 | 87 | 116 | 29 (46.8%) | 64 | 42 (67.7%) | 5 (11.9%) | 37 (88.1%) | 1 | 5 |
| D50 | 19 | 25 | 6 (33.3%) | 67 | 11 (61.1%) | 0 (0%) | 11 (100%) | 8 | 8 |
| D51 | 37 | 37 | 17 (48.6%) | 67 | 18 (51.4%) | 0 (0%) | 18 (100%) | 5 | 9 |
| D52 | 19 | 38 | 1 (100%) | 55 | 1 (100%) | 1 (100%) | 0 (0%) | 2 | 12 |
| D53 | 191 | 191 | 98 (51.3%) | 65 | 157 (82.2%) | 4 (2.5%) | 153 (97.5%) | 1 | 4 |
| D54 | 92 | 92 | 59 (64.1%) | 69 | 52 (56.5%) | 14 (26.9%) | 38 (73.1%) | 1 | 7 |
| D55 | 34 | 82 | 1 (16.7%) | 79 | 3 (50%) | 0 (0%) | 3 (100%) | 1 | 10 |
| D56 | 30 | 72 | 5 (62.5%) | 72 | 3 (37.5%) | 0 (0%) | 3 (100%) | 2 | 4 |
| E1 | 11 | 44 | 2 (66.7%) | 74 | 2 (66.7%) | 1 (50%) | 1 (50%) | 1 | 111 |
| E2 | 3 | 12 | - | - | - | - | - | - | - |
| E3 | 6 | 12 | 5 (83.3%) | 69 | 2 (33.3%) | 2 (100%) | 0 (0%) | 2 | 10 |
| E4 | 25 | 60 | 0 (0%) | 69 | 3 (75%) | 0 (0%) | 3 (100%) | 6 | 11 |
| E5 | 13 | 13 | 4 (36.4%) | 73 | 3 (27.3%) | 2 (66.7%) | 1 (33.3%) | 3 | 8 |
| E6 | 15 | 15 | 7 (46.7%) | 69 | 10 (66.7%) | 5 (50%) | 5 (50%) | 8 | 10 |
| E7 | 13 | 52 | 1 (50%) | 74 | 2 (100%) | 1 (50%) | 1 (50%) | 5 | 11 |
| E8 | 67 | 67 | 32 (64%) | 63 | 21 (42%) | 4 (19%) | 17 (81%) | 1 | 5 |
| E9 | 45 | 60 | 15 (40.5%) | 69 | 30 (81.1%) | 3 (10%) | 27 (90%) | 1 | 5 |
| E10 | 3 | 12 | - | - | - | - | - | - | - |
| E11 | 8 | 48 | 1 (100%) | 76 | 0 (0%) | 0 - | 0 - | - | - |
| E12 | 33 | 33 | 12 (40%) | 75 | 5 (16.7%) | 3 (60%) | 2 (40%) | 1 | 12 |
| E13 | 2 | 8 | - | - | - | - | - | - | - |

表：急性胆嚢炎の診療（I）

| | レコード数 | ①1年当たり 症例数 | ②性別 (男性) | ③平均年齢 | ④手術実施 の割合 | ⑤手術の内訳 | | ⑥術前・術後 在院日数の中央値 | |
|-----|-------|---------------|-------------|-------|--------------|-----------------|------------------|--------------------|----|
| | | | | | | 胆嚢摘出術 (開腹OC) | 胆嚢摘出術 (腹腔鏡LC) | 術前 | 術後 |
| E15 | 8 | 16 | 4 (100%) | 69 | 2 (50%) | 0 (0%) | 2 (100%) | 1 | 5 |
| E16 | 47 | 56 | 25 (53.2%) | 65 | 19 (40.4%) | 3 (15.8%) | 16 (84.2%) | 14 | 5 |
| E17 | 5 | 5 | 2 (40%) | 86 | 0 (0%) | 0 - | 0 - | - | - |
| E18 | 39 | 39 | 19 (48.7%) | 71 | 8 (20.5%) | 1 (12.5%) | 7 (87.5%) | 2 | 8 |
| E19 | 79 | 79 | 40 (50.6%) | 67 | 36 (45.6%) | 4 (11.1%) | 32 (88.9%) | 1 | 5 |
| E20 | 26 | 39 | 4 (44.4%) | 82 | 0 (0%) | 0 - | 0 - | - | - |
| E21 | 1 | 2 | 0 (0%) | 67 | 0 (0%) | 0 - | 0 - | - | - |
| E22 | 32 | 32 | 22 (68.8%) | 65 | 17 (53.1%) | 2 (11.8%) | 15 (88.2%) | 1 | 8 |
| E23 | 19 | 46 | 3 (75%) | 68 | 3 (75%) | 0 (0%) | 3 (100%) | 1 | 8 |
| E24 | 47 | 51 | 14 (43.8%) | 68 | 12 (37.5%) | 1 (8.3%) | 11 (91.7%) | 1 | 5 |
| E25 | 6 | 12 | - - | - | - - | - - | - - | - | - |
| E26 | 1 | 6 | - - | - | - - | - - | - - | - | - |
| E27 | 10 | 11 | 3 (75%) | 80 | 0 (0%) | 0 - | 0 - | - | - |
| E31 | 56 | 56 | 26 (48.1%) | 62 | 42 (77.8%) | 2 (4.8%) | 40 (95.2%) | 7 | 9 |
| E32 | 10 | 40 | 1 (100%) | 103 | 0 (0%) | 0 - | 0 - | - | - |
| E33 | 10 | 40 | 0 (0%) | 68 | 1 (100%) | 0 (0%) | 1 (100%) | 0 | 12 |
| E34 | 2 | 2 | 2 (100%) | 80 | 0 (0%) | 0 - | 0 - | - | - |
| E36 | 18 | 43 | 11 (61.1%) | 67 | 13 (72.2%) | 0 (0%) | 13 (100%) | 3 | 4 |
| E37 | 76 | 76 | 49 (65.3%) | 64 | 37 (49.3%) | 4 (10.8%) | 33 (89.2%) | 3 | 5 |
| E39 | 11 | 22 | 1 (100%) | 77 | 0 (0%) | 0 - | 0 - | - | - |
| E40 | 28 | 28 | 11 (39.3%) | 61 | 11 (39.3%) | 1 (9.1%) | 10 (90.9%) | 2 | 8 |
| E41 | 72 | 72 | 34 (47.2%) | 61 | 51 (70.8%) | 2 (3.9%) | 49 (96.1%) | 1 | 8 |
| E42 | 3 | 4 | 1 (33.3%) | 88 | 0 (0%) | 0 - | 0 - | - | - |
| E44 | 6 | 7 | 4 (66.7%) | 75 | 0 (0%) | 0 - | 0 - | - | - |
| E45 | 54 | 59 | 17 (45.9%) | 70 | 17 (45.9%) | 10 (58.8%) | 7 (41.2%) | 8 | 9 |
| E46 | 10 | 24 | 1 (50%) | 82 | 1 (50%) | 1 (100%) | 0 (0%) | 10 | 98 |
| E47 | 23 | 92 | 3 (75%) | 76 | 0 (0%) | 0 - | 0 - | - | - |
| E48 | 2 | 5 | - - | - | - - | - - | - - | - | - |
| E49 | 9 | 9 | 3 (42.9%) | 47 | 6 (85.7%) | 0 (0%) | 6 (100%) | 1 | 6 |
| E50 | 15 | 36 | 1 (20%) | 62 | 4 (80%) | 0 (0%) | 4 (100%) | 7 | 11 |
| E51 | 22 | 53 | 3 (100%) | 62 | 3 (100%) | 0 (0%) | 3 (100%) | 7 | 8 |
| E52 | 5 | 30 | - - | - | - - | - - | - - | - | - |
| E53 | 7 | 17 | 2 (66.7%) | 86 | 2 (66.7%) | 1 (50%) | 1 (50%) | 7 | 18 |
| E54 | 1 | 1 | 1 (100%) | 93 | 0 (0%) | 0 - | 0 - | - | - |
| E55 | 39 | 39 | 18 (56.3%) | 68 | 15 (46.9%) | 5 (33.3%) | 10 (66.7%) | 3 | 9 |
| E56 | 104 | 104 | 61 (58.7%) | 66 | 69 (66.3%) | 13 (18.8%) | 56 (81.2%) | 1 | 7 |
| E57 | 16 | 38 | 2 (66.7%) | 61 | 2 (66.7%) | 0 (0%) | 2 (100%) | 5 | 6 |
| E59 | 2 | 8 | 2 (100%) | 60 | 2 (100%) | 0 (0%) | 2 (100%) | 8 | 15 |
| E60 | 36 | 36 | 10 (37%) | 74 | 10 (37%) | 2 (20%) | 8 (80%) | 2 | 7 |
| E61 | 2 | 4 | 2 (100%) | 70 | 0 (0%) | 0 - | 0 - | - | - |
| E62 | 16 | 32 | 8 (61.5%) | 65 | 9 (69.2%) | 3 (33.3%) | 6 (66.7%) | 4 | 6 |
| E63 | 34 | 34 | 12 (57.1%) | 62 | 3 (14.3%) | 0 (0%) | 3 (100%) | 1 | 6 |
| E64 | 17 | 34 | 3 (37.5%) | 65 | 4 (50%) | 0 (0%) | 4 (100%) | 1 | 7 |
| F1 | 76 | 76 | 37 (48.7%) | 65 | 50 (65.8%) | 10 (20%) | 40 (80%) | 3 | 5 |
| F3 | 112 | 122 | 44 (41.5%) | 65 | 65 (61.3%) | 7 (10.8%) | 58 (89.2%) | 2 | 7 |
| F4 | 19 | 23 | 12 (63.2%) | 69 | 8 (42.1%) | 2 (25%) | 6 (75%) | 1 | 10 |
| F5 | 63 | 151 | 13 (54.2%) | 72 | 17 (70.8%) | 1 (5.9%) | 16 (94.1%) | 2 | 6 |
| F6 | 102 | 245 | 21 (70%) | 60 | 23 (76.7%) | 0 (0%) | 23 (100%) | 2 | 12 |
| F7 | 82 | 82 | 42 (51.2%) | 65 | 65 (79.3%) | 12 (18.5%) | 53 (81.5%) | 1 | 4 |
| F8 | 44 | 88 | 17 (70.8%) | 57 | 18 (75%) | 1 (5.6%) | 17 (94.4%) | 1 | 6 |
| F9 | 42 | 56 | 23 (62.2%) | 60 | 22 (59.5%) | 7 (31.8%) | 15 (68.2%) | 2 | 9 |
| F10 | 60 | 60 | 27 (46.6%) | 63 | 46 (79.3%) | 2 (4.3%) | 44 (95.7%) | 1 | 9 |
| F11 | 22 | 66 | 7 (77.8%) | 64 | 7 (77.8%) | 1 (14.3%) | 6 (85.7%) | 2 | 6 |
| F12 | 91 | 99 | 50 (54.9%) | 68 | 54 (59.3%) | 2 (3.7%) | 52 (96.3%) | 2 | 8 |
| F13 | 31 | 124 | 2 (20%) | 62 | 10 (100%) | 1 (10%) | 9 (90%) | 2 | 5 |
| F14 | 50 | 50 | 18 (46.2%) | 62 | 19 (48.7%) | 2 (10.5%) | 17 (89.5%) | 1 | 7 |
| F16 | 44 | 75 | 19 (47.5%) | 63 | 25 (62.5%) | 2 (8%) | 23 (92%) | 2 | 8 |
| F17 | 36 | 72 | 19 (52.8%) | 69 | 29 (80.6%) | 10 (34.5%) | 19 (65.5%) | 6 | 9 |
| F18 | 46 | 46 | 24 (52.2%) | 72 | 16 (34.8%) | 6 (37.5%) | 10 (62.5%) | 7 | 15 |
| F19 | 81 | 88 | 41 (50.6%) | 68 | 36 (44.4%) | 5 (13.9%) | 31 (86.1%) | 1 | 5 |
| F20 | 48 | 192 | 6 (75%) | 64 | 6 (75%) | 3 (50%) | 3 (50%) | 1 | 7 |
| F21 | 15 | 60 | 3 (50%) | 61 | 3 (50%) | 2 (66.7%) | 1 (33.3%) | 1 | 10 |
| F22 | 44 | 88 | 7 (50%) | 71 | 5 (35.7%) | 0 (0%) | 5 (100%) | 6 | 8 |
| F23 | 42 | 84 | 28 (66.7%) | 65 | 31 (73.8%) | 3 (9.7%) | 28 (90.3%) | 2 | 5 |
| F25 | 44 | 88 | 9 (60%) | 60 | 11 (73.3%) | 3 (27.3%) | 8 (72.7%) | 1 | 8 |
| F27 | 28 | 67 | 7 (87.5%) | 59 | 7 (87.5%) | 2 (28.6%) | 5 (71.4%) | 2 | 9 |