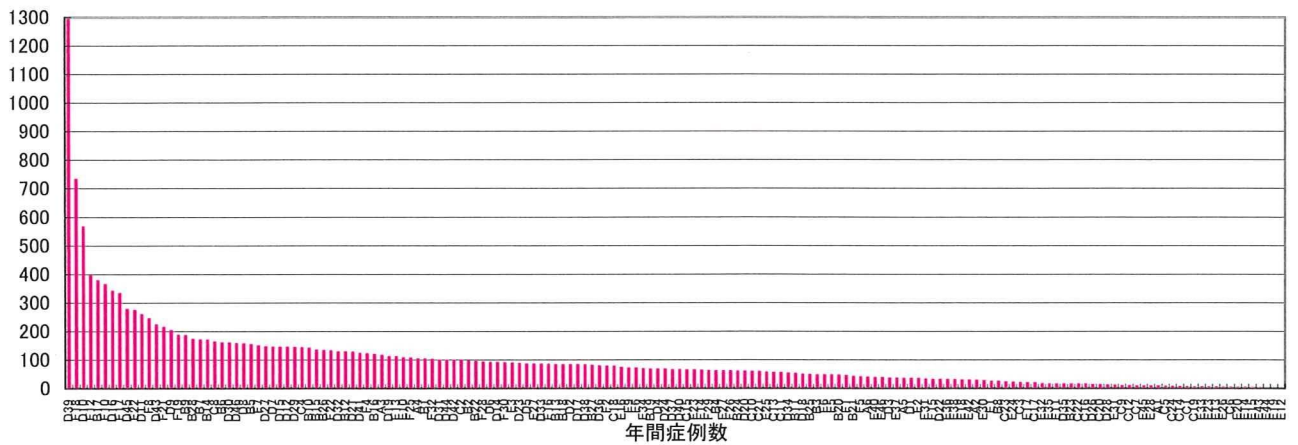
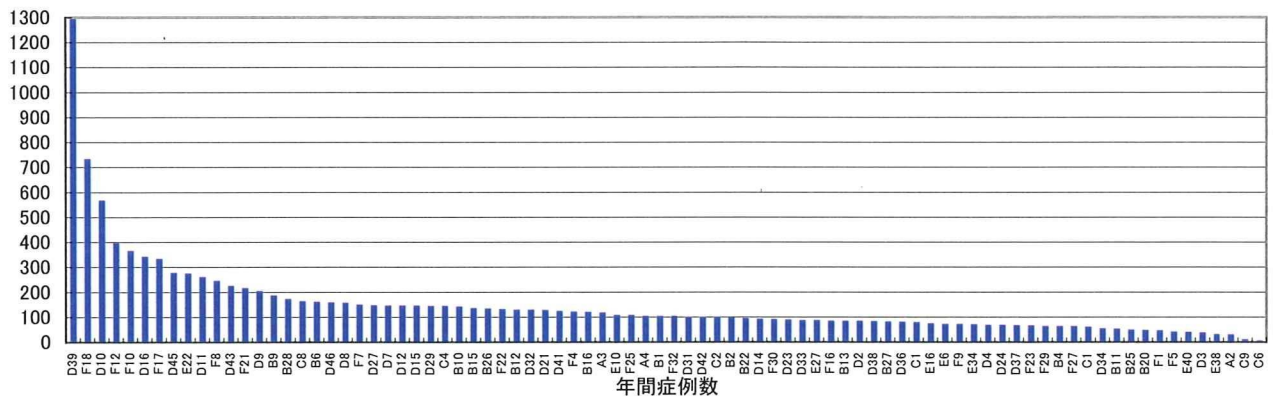


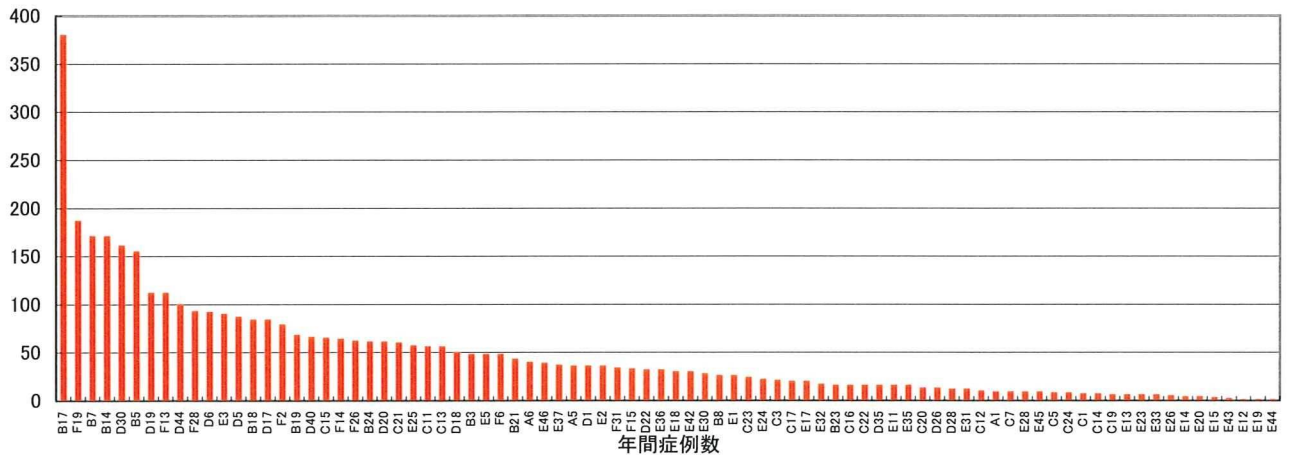
年間症例数(全体)



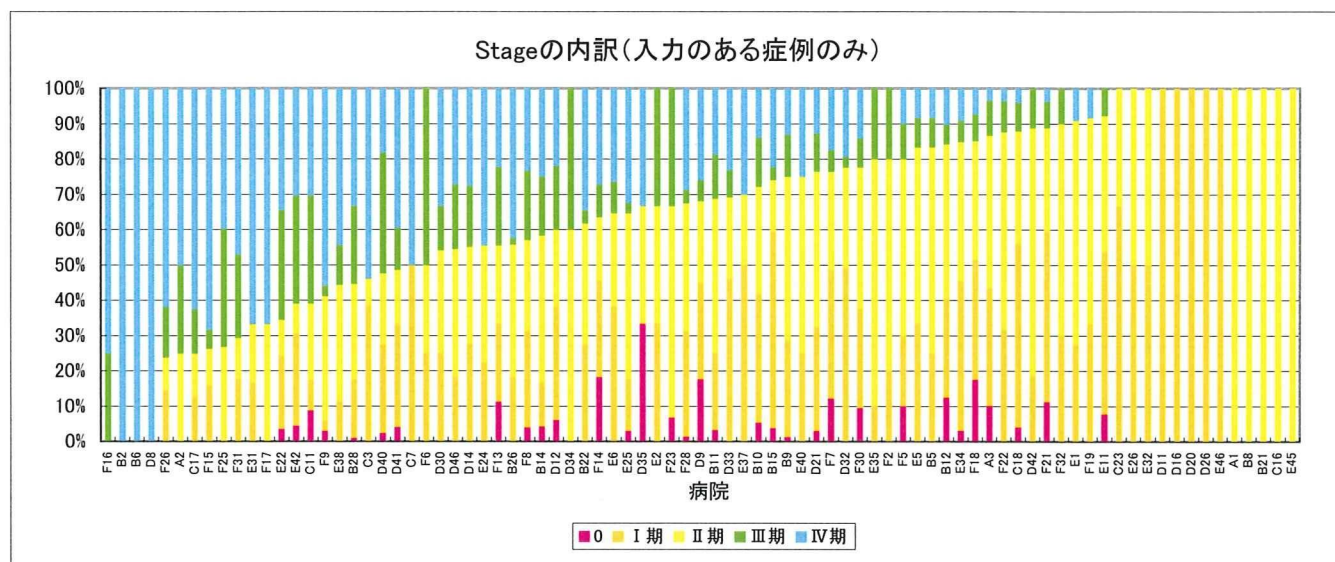
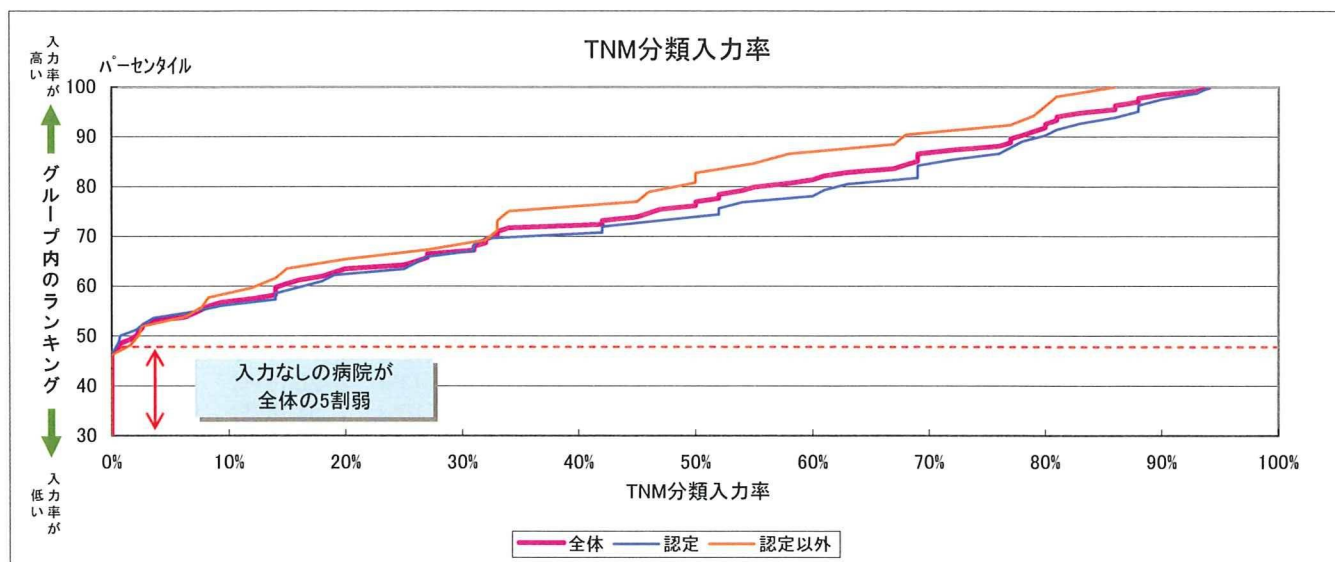
年間症例数(認定)



年間症例数(認定以外)



※あなたの病院の具体的数値は前頁の表でご確認いただき、上記グラフの位置づけをご確認下さい。



※あなたの病院の具体的な数値は前頁の表でご確認いただき、上記グラフの位置づけをご確認下さい。  
 ※解析の対象となった症例数が年間20未満の施設はグラフに表示していません。

## 手術術式：乳房温存術の施行状況

## 日本乳癌学会認定・関連施設

病院	レコード数	手術なし	非根治手術	根治手術			
				全症例	温存	全摘出	温存(Stage I II)
A2	22	18 (82%)	0 (0%)	4	2 (50%)	2 (50%)	1 (100%)
A3	39	7 (18%)	0 (0%)	32	19 (59%)	13 (41%)	16 (73%)
A4	78	43 (55%)	2 (2.6%)	33	28 (85%)	5 (15%)	
B1	26	5 (19%)	3 (12%)	18	14 (78%)	4 (22%)	
B2	48	26 (54%)	1 (2.1%)	21	11 (52%)	10 (48%)	
B4	62	27 (44%)	0 (0%)	35	29 (83%)	6 (17%)	
B6	148	89 (60%)	2 (1.4%)	57	16 (28%)	41 (72%)	
B9	93	44 (47%)	0 (0%)	49	28 (57%)	21 (43%)	25 (61%)
B10	142	59 (42%)	3 (2.1%)	80	72 (90%)	8 (10%)	54 (87%)
B11	53	32 (60%)	0 (0%)	21	17 (81%)	4 (19%)	15 (94%)
B12	129	78 (61%)	3 (2.3%)	48	35 (73%)	13 (27%)	24 (83%)
B13	7	1 (14%)	0 (0%)	6	2 (33%)	4 (67%)	
B15	101	43 (43%)	0 (0%)	58	47 (81%)	11 (19%)	15 (88%)
B16	60	25 (42%)	0 (0%)	35	21 (60%)	14 (40%)	
B20	35	20 (57%)	0 (0%)	15	3 (20%)	12 (80%)	
B22	71	35 (49%)	0 (0%)	36	14 (39%)	22 (61%)	13 (41%)
B25	37	16 (43%)	1 (2.7%)	20	13 (65%)	7 (35%)	
B26	134	93 (69%)	3 (2.2%)	38	24 (63%)	14 (37%)	23 (70%)
B27	41	19 (46%)	1 (2.4%)	21	10 (48%)	11 (52%)	
B28	130	106 (82%)	0 (0%)	24	13 (54%)	11 (46%)	12 (57%)
C2	99	28 (28%)	0 (0%)	71	33 (47%)	38 (54%)	
C4	72	48 (67%)	0 (0%)	24	16 (67%)	8 (33%)	
C6	4	1 (25%)	0 (0%)	3	1 (33%)	2 (67%)	
C8	82	73 (89%)	0 (0%)	9	3 (33%)	6 (67%)	
C9	5	3 (60%)	0 (0%)	2	1 (50%)	1 (50%)	
C10	30	17 (57%)	0 (0%)	13	7 (54%)	6 (46%)	
C18	59	39 (66%)	2 (3.4%)	18	9 (50%)	9 (50%)	7 (54%)
D2	21	9 (43%)	0 (0%)	12	7 (58%)	5 (42%)	
D3	37	23 (62%)	0 (0%)	14	6 (43%)	8 (57%)	
D4	34	14 (41%)	0 (0%)	20	8 (40%)	12 (60%)	
D7	73	33 (45%)	1 (1.4%)	39	25 (64%)	14 (36%)	
D8	157	98 (62%)	8 (5.1%)	51	24 (47%)	27 (53%)	
D9	204	101 (50%)	6 (2.9%)	97	59 (61%)	38 (39%)	39 (59%)
D10	568	516 (91%)	1 (0.2%)	51	31 (61%)	20 (39%)	
D11	261	130 (50%)	3 (1.1%)	128	21 (16%)	107 (84%)	1 (14%)
D12	73	40 (55%)	0 (0%)	33	22 (67%)	11 (33%)	16 (80%)
D14	69	33 (48%)	0 (0%)	36	19 (53%)	17 (47%)	8 (62%)
D15	146	73 (50%)	1 (0.7%)	72	35 (49%)	37 (51%)	
D16	342	219 (64%)	7 (2%)	116	84 (72%)	32 (28%)	1 (100%)
D21	128	49 (38%)	3 (2.3%)	76	61 (80%)	15 (20%)	54 (87%)
D23	67	36 (54%)	0 (0%)	31	17 (55%)	14 (45%)	
D24	68	51 (75%)	0 (0%)	17	6 (35%)	11 (65%)	
D27	110	75 (68%)	0 (0%)	35	20 (57%)	15 (43%)	
D29	145	54 (37%)	2 (1.4%)	89	49 (55%)	40 (45%)	
D31	100	69 (69%)	0 (0%)	31	6 (19%)	25 (81%)	
D32	129	62 (48%)	1 (0.8%)	66	45 (68%)	21 (32%)	39 (83%)
D33	80	44 (55%)	2 (2.5%)	34	11 (32%)	23 (68%)	2 (22%)
D34	27	21 (78%)	0 (0%)	6	3 (50%)	3 (50%)	0 (0%)
D36	80	55 (69%)	3 (3.8%)	22	10 (46%)	12 (55%)	
D37	33	15 (46%)	0 (0%)	18	14 (78%)	4 (22%)	
D38	83	47 (57%)	1 (1.2%)	35	18 (51%)	17 (49%)	
D39	647	454 (70%)	6 (0.9%)	187	126 (67%)	61 (33%)	
D41	124	88 (71%)	1 (0.8%)	35	23 (66%)	12 (34%)	19 (73%)
D42	50	6 (12%)	0 (0%)	44	24 (55%)	20 (46%)	13 (54%)
D43	225	108 (48%)	2 (0.9%)	115	58 (50%)	57 (50%)	
D45	139	74 (53%)	1 (0.7%)	64	30 (47%)	34 (53%)	
D46	158	94 (60%)	1 (0.6%)	63	60 (95%)	3 (4.8%)	5 (100%)

## 手術術式:乳房温存術の施行状況

## 日本乳癌学会認定・関連施設

病院	レコード数	手術なし	非根治手術	根治手術			
				全症例	温存	全摘出	温存(Stage I II)
E6	36	10 (28%)	1 (2.8%)	25	19 (76%)	6 (24%)	16 (76%)
E10	108	57 (53%)	1 (0.9%)	50	37 (74%)	13 (26%)	
E16	37	18 (49%)	2 (5.4%)	17	9 (53%)	8 (47%)	
E22	206	147 (71%)	1 (0.5%)	58	50 (86%)	8 (14%)	8 (89%)
E27	65	19 (29%)	0 (0%)	46	27 (59%)	19 (41%)	
E34	64	40 (63%)	0 (0%)	24	12 (50%)	12 (50%)	9 (56%)
E38	13	6 (46%)	0 (0%)	7	1 (14%)	6 (86%)	1 (25%)
E40	29	18 (62%)	1 (3.4%)	10	6 (60%)	4 (40%)	1 (33%)
F1	23	6 (26%)	1 (4.3%)	16	3 (19%)	13 (81%)	
F4	122	90 (74%)	3 (2.5%)	29	17 (59%)	12 (41%)	
F5	31	9 (29%)	1 (3.2%)	21	16 (76%)	5 (24%)	4 (57%)
F7	12378	47 (31%)	0 (0%)	103	78 (76%)	25 (24%)	62 (79%)
F8	246	160 (65%)	2 (0.8%)	84	25 (30%)	59 (70%)	10 (32%)
F9	72	65 (90%)	0 (0%)	7	2 (29%)	5 (71%)	2 (40%)
F10	183	114 (62%)	0 (0%)	69	37 (54%)	32 (46%)	
F12	198	117 (59%)	1 (0.5%)	80	62 (78%)	18 (23%)	
F16	85	39 (46%)	1 (1.2%)	45	5 (11%)	40 (89%)	
F17	167	148 (89%)	1 (0.6%)	18	9 (50%)	9 (50%)	0 (0%)
F18	734	420 (57%)	25 (3.4%)	289	138 (48%)	151 (52%)	88 (55%)
F21	216	80 (37%)	9 (4.2%)	127	75 (59%)	52 (41%)	27 (68%)
F22	66	22 (33%)	0 (0%)	44	33 (75%)	11 (25%)	29 (83%)
F23	49	17 (35%)	0 (0%)	32	9 (28%)	23 (72%)	5 (63%)
F25	108	93 (86%)	1 (0.9%)	14	4 (29%)	10 (71%)	1 (25%)
F27	62	31 (50%)	0 (0%)	31	15 (48%)	16 (52%)	
F29	37	13 (35%)	2 (5.4%)	22	7 (32%)	15 (68%)	
F30	91	22 (24%)	1 (1.1%)	68	42 (62%)	26 (38%)	35 (64%)
F32	77	26 (34%)	1 (1.3%)	50	37 (74%)	13 (26%)	13 (72%)

## 手術術式:乳房温存術の施行状況

日本乳癌学会認定・関連施設以外

病院	レコード数	手術なし	非根治手術	根治手術			
				全症例	温存	全摘出	温存(Stage I II)
A1	7	5 (71%)	1 (14%)	1	0 (0%)	1 (100%)	0 (0%)
A5	27	21 (78%)	0 (0%)	6	4 (67%)	2 (33%)	
A6	20	15 (75%)	0 (0%)	5	2 (40%)	3 (60%)	
B3	8	3 (38%)	0 (0%)	5	4 (80%)	1 (20%)	
B5	155	65 (42%)	1 (0.6%)	89	47 (53%)	42 (47%)	3 (75%)
B7	171	62 (36%)	0 (0%)	109	86 (79%)	23 (21%)	
B8	26	15 (58%)	0 (0%)	11	2 (18%)	9 (82%)	0 (0%)
B14	171	85 (50%)	2 (1.2%)	84	41 (49%)	43 (51%)	2 (25%)
B17	190	53 (28%)	1 (0.5%)	136	92 (68%)	44 (32%)	
B18	14	5 (36%)	1 (7.1%)	8	5 (63%)	3 (38%)	
B19	51	14 (28%)	1 (2%)	36	18 (50%)	18 (50%)	
B21	43	16 (37%)	0 (0%)	27	8 (30%)	19 (70%)	0 (0%)
B23	8	7 (88%)	0 (0%)	1	0 (0%)	1 (100%)	
B24	61	45 (74%)	1 (1.6%)	15	1 (6.7%)	14 (93%)	
C1	5	3 (60%)	0 (0%)	2	1 (50%)	1 (50%)	
C3	16	8 (50%)	0 (0%)	8	7 (88%)	1 (13%)	5 (83%)
C5	2	2 (100%)	0 (0%)	0	-	-	
C7	6	4 (67%)	0 (0%)	2	1 (50%)	1 (50%)	0 (0%)
C11	42	18 (43%)	1 (2.4%)	23	12 (52%)	11 (48%)	4 (80%)
C12	5	4 (80%)	0 (0%)	1	1 (100%)	0 (0%)	
C13	28	20 (71%)	0 (0%)	8	3 (38%)	5 (63%)	
C14	5	5 (100%)	0 (0%)	0	-	-	
C15	60	11 (18%)	1 (1.7%)	48	13 (27%)	35 (73%)	
C16	12	6 (50%)	0 (0%)	6	0 (0%)	6 (100%)	0 (0%)
C17	10	10 (100%)	0 (0%)	0	-	-	0 (0%)
C19	6	4 (67%)	0 (0%)	2	1 (50%)	1 (50%)	
C20	10	7 (70%)	0 (0%)	3	0 (0%)	3 (100%)	
C21	30	17 (57%)	1 (3.3%)	12	2 (17%)	10 (83%)	
C22	8	3 (38%)	0 (0%)	5	1 (20%)	4 (80%)	
C23	18	12 (67%)	0 (0%)	6	4 (67%)	2 (33%)	3 (60%)
C24	8	2 (25%)	0 (0%)	6	1 (17%)	5 (83%)	
D1	36	29 (81%)	0 (0%)	7	1 (14%)	6 (86%)	
D5	65	32 (49%)	1 (1.5%)	32	9 (28%)	23 (72%)	
D6	69	48 (70%)	1 (1.4%)	20	8 (40%)	12 (60%)	
D17	63	10 (16%)	3 (4.8%)	50	13 (26%)	37 (74%)	
D18	25	13 (52%)	0 (0%)	12	3 (25%)	9 (75%)	
D19	112	82 (73%)	1 (0.9%)	29	20 (69%)	9 (31%)	
D20	61	30 (49%)	0 (0%)	31	25 (81%)	6 (19%)	1 (100%)
D22	32	28 (88%)	0 (0%)	4	0 (0%)	4 (100%)	
D26	13	5 (39%)	0 (0%)	8	5 (63%)	3 (38%)	1 (100%)
D28	6	5 (83%)	0 (0%)	1	0 (0%)	1 (100%)	
D30	121	89 (74%)	1 (0.8%)	31	11 (36%)	20 (65%)	6 (46%)
D35	4	2 (50%)	0 (0%)	2	0 (0%)	2 (100%)	0 (0%)
D40	66	30 (46%)	0 (0%)	36	14 (39%)	22 (61%)	13 (77%)
D44	75	40 (53%)	0 (0%)	35	16 (46%)	19 (54%)	
E1	24	10 (42%)	0 (0%)	14	3 (21%)	11 (79%)	3 (30%)
E2	9	5 (56%)	1 (11%)	3	1 (33%)	2 (67%)	1 (50%)
E3	90	22 (24%)	1 (1.1%)	67	39 (58%)	28 (42%)	
E5	24	13 (54%)	0 (0%)	11	9 (82%)	2 (18%)	9 (90%)
E11	16	4 (25%)	0 (0%)	12	8 (67%)	4 (33%)	8 (73%)
E12	1	0 (0%)	0 (0%)	1	0 (0%)	1 (100%)	
E13	3	3 (100%)	0 (0%)	0	-	-	
E14	2	2 (100%)	0 (0%)	0	-	-	
E15	2	1 (50%)	0 (0%)	1	0 (0%)	1 (100%)	
E17	15	10 (67%)	0 (0%)	5	2 (40%)	3 (60%)	
E18	30	30 (100%)	0 (0%)	0	-	-	
E19	1	1 (100%)	0 (0%)	0	-	-	
E20	4	3 (75%)	0 (0%)	1	0 (0%)	1 (100%)	
E23	3	0 (0%)	1 (33%)	2	1 (50%)	1 (50%)	
E24	20	15 (75%)	0 (0%)	5	2 (40%)	3 (60%)	2 (50%)
E25	43	30 (70%)	0 (0%)	13	7 (54%)	6 (46%)	6 (50%)
E26	5	3 (60%)	0 (0%)	2	2 (100%)	0 (0%)	2 (100%)

## 手術術式:乳房温存術の施行状況

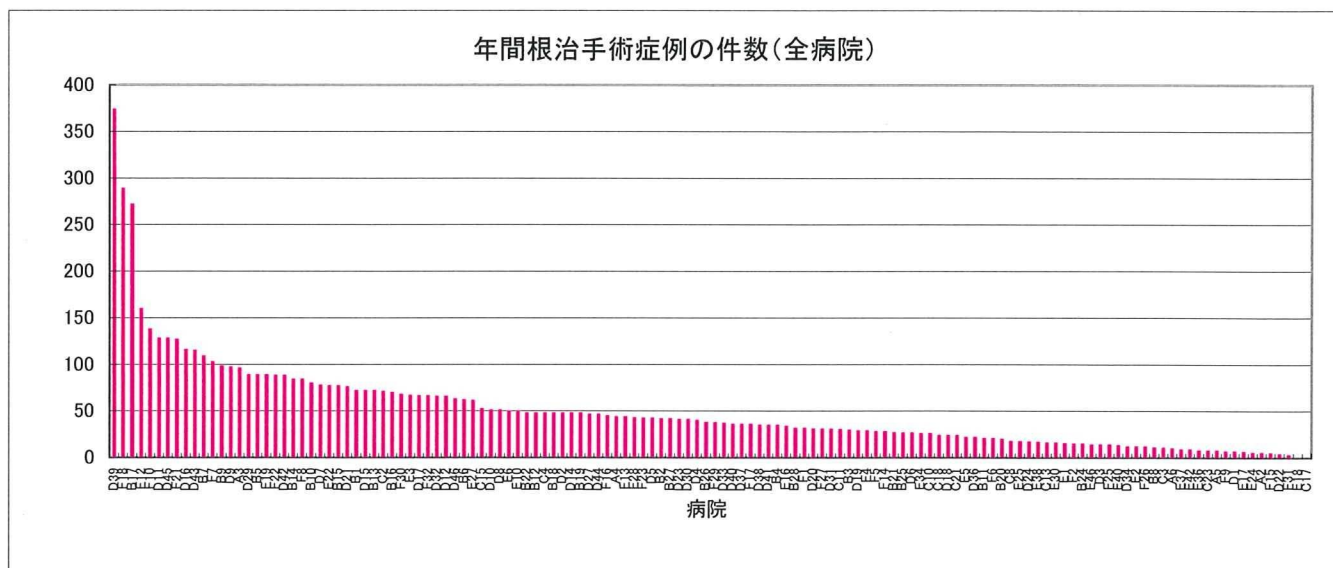
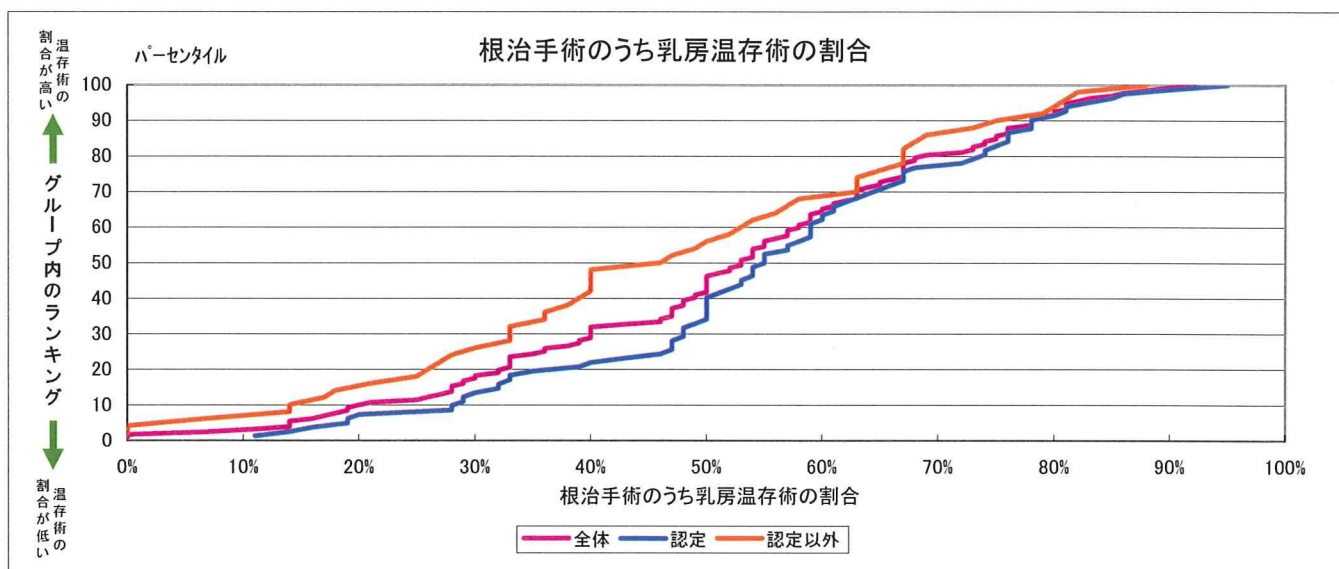
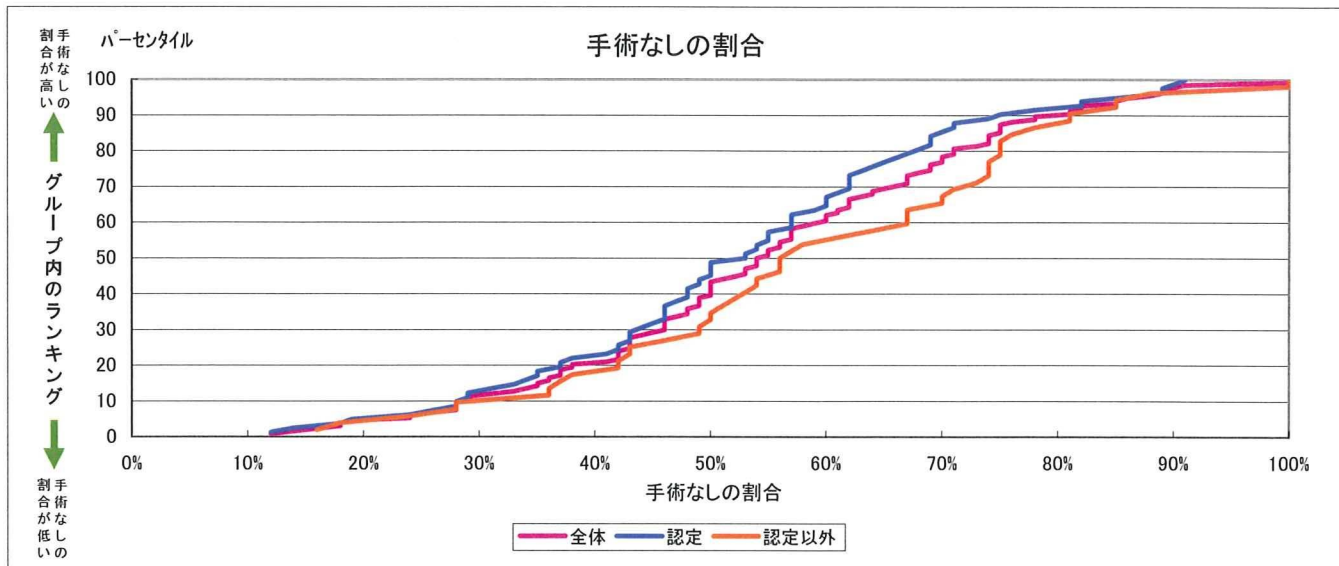
## 日本乳癌学会認定・関連施設以外

病院	レコード数	手術なし	非根治手術	根治手術			
				全症例	温存	全摘出	温存(Stage I II)
E28	7	4 (57%)	1 (14%)	2	0 (0%)	2 (100%)	
E30	14	6 (43%)	0 (0%)	8	5 (63%)	3 (38%)	
E31	9	8 (89%)	0 (0%)	1	0 (0%)	1 (100%)	0 (0%)
E32	7	3 (43%)	0 (0%)	4	0 (0%)	4 (100%)	0 (0%)
E33	3	0 (0%)	0 (0%)	3	1 (33%)	2 (67%)	
E35	16	11 (69%)	0 (0%)	5	2 (40%)	3 (60%)	1 (33%)
E36	16	12 (75%)	0 (0%)	4	3 (75%)	1 (25%)	
E37	37	28 (76%)	0 (0%)	9	6 (67%)	3 (33%)	4 (100%)
E42	30	20 (67%)	1 (3.3%)	9	5 (56%)	4 (44%)	5 (83%)
E43	2	2 (100%)	0 (0%)	0	-	-	
E44	1	1 (100%)	0 (0%)	0	-	-	
E45	7	4 (57%)	1 (14%)	2	0 (0%)	2 (100%)	0 (0%)
E46	39	25 (64%)	0 (0%)	14	8 (57%)	6 (43%)	1 (100%)
F2	79	64 (81%)	0 (0%)	15	7 (47%)	8 (53%)	2 (67%)
F6	48	27 (56%)	0 (0%)	21	3 (14%)	18 (86%)	0 (0%)
F13	28	17 (61%)	0 (0%)	11	8 (73%)	3 (27%)	3 (100%)
F14	32	18 (56%)	0 (0%)	14	5 (36%)	9 (64%)	2 (40%)
F15	33	28 (85%)	0 (0%)	5	0 (0%)	5 (100%)	0 (0%)
F19	78	40 (51%)	1 (1.3%)	37	24 (65%)	13 (35%)	7 (70%)
F26	31	23 (74%)	2 (6.5%)	6	2 (33%)	4 (67%)	2 (50%)
F28	93	50 (54%)	0 (0%)	43	27 (63%)	16 (37%)	22 (63%)
F31	34	29 (85%)	2 (5.9%)	3	1 (33%)	2 (67%)	1 (33%)

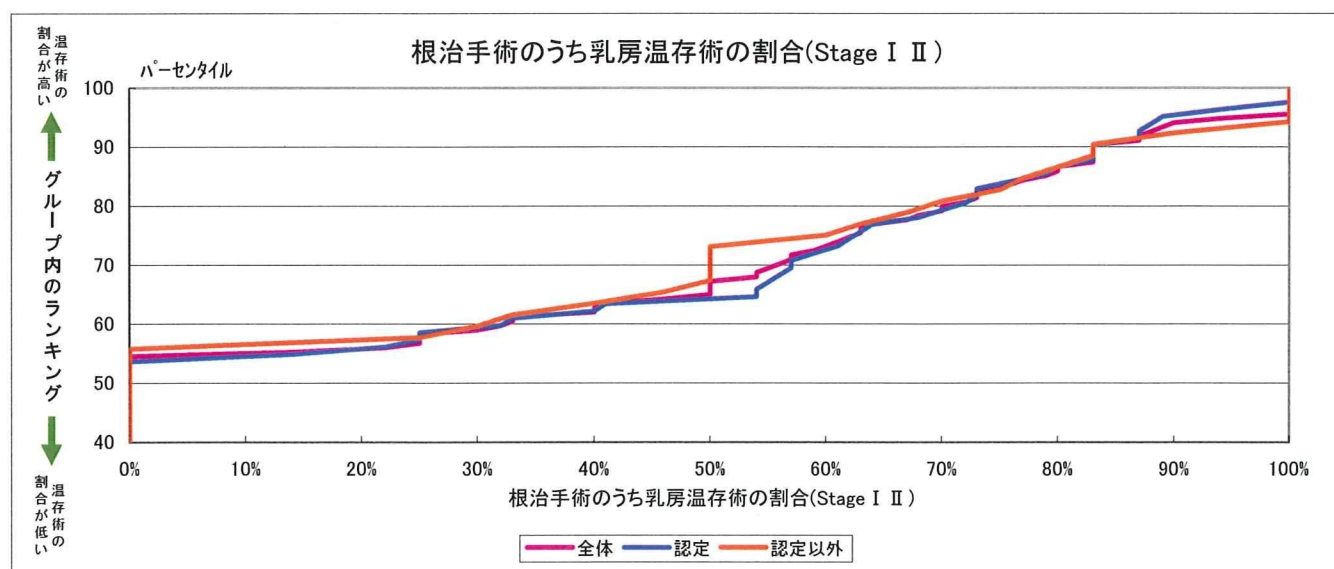
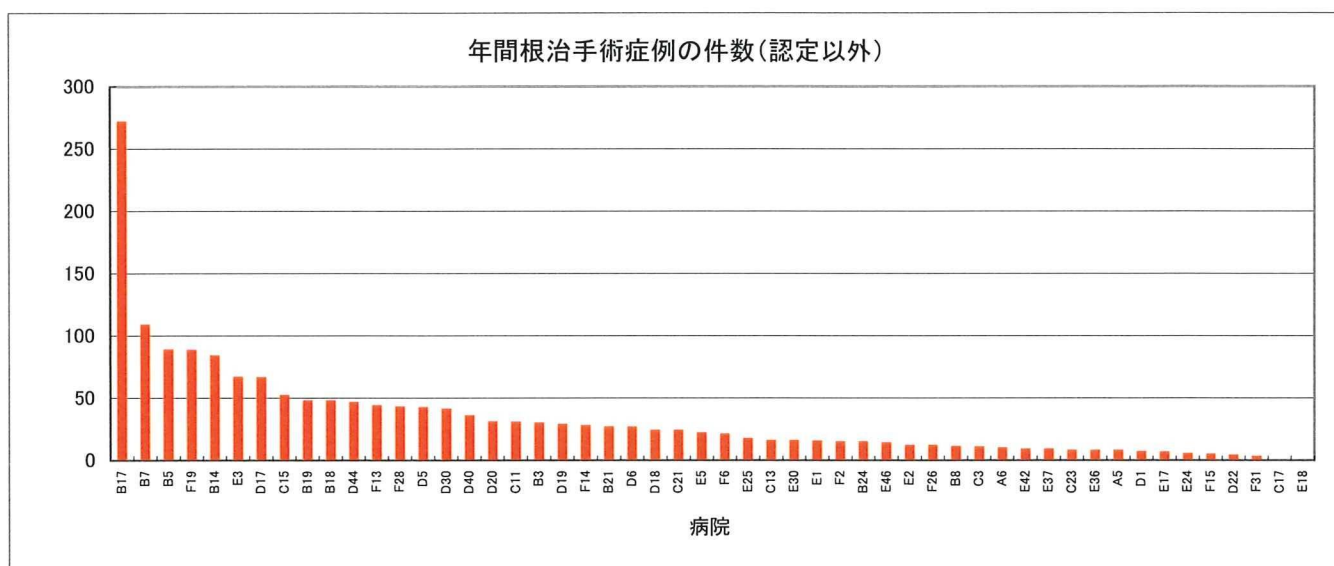
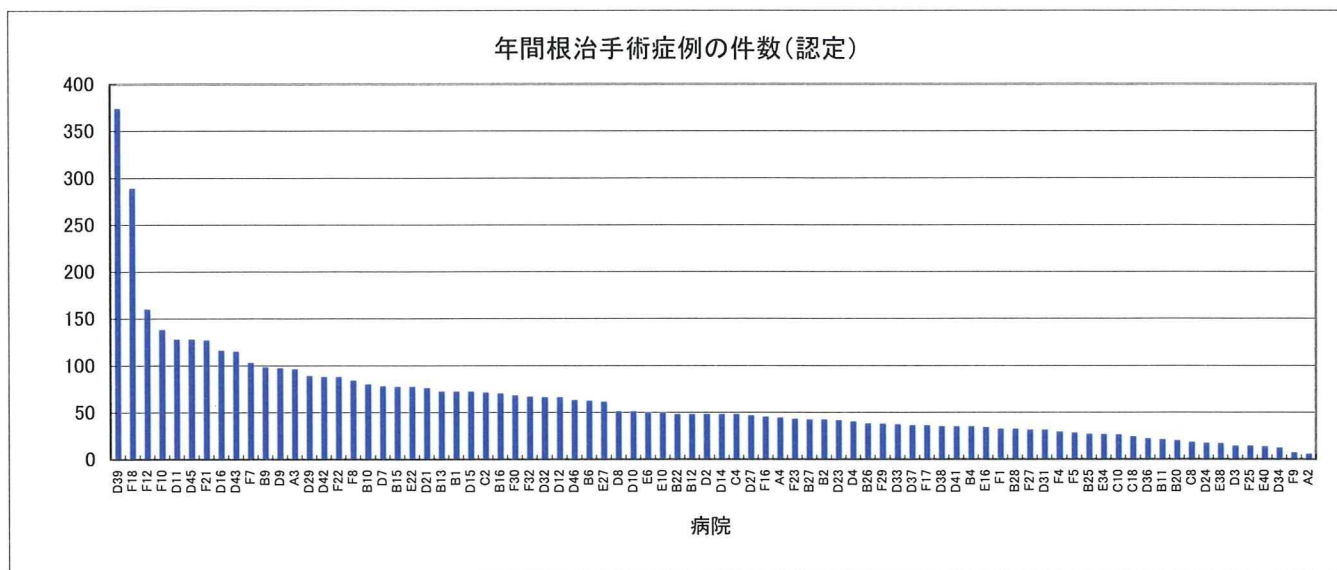
## ■ 手術数・術式

病院	手術なしの割合	非根治手術の割合	根治手術の内訳		
			温存	全摘出	Stage I IIに対する温存手術
認定施設	25%	0.6%	57%	43%	67%
認定以外	54%	1%	50%	50%	58%





※あなたの病院の具体的な数値は前頁の表でご確認いただき、上記グラフの位置づけをご確認下さい。  
 ※解析の対象となった症例数が年間20未満の施設はグラフに表示していません。



※あなたの病院の具体的な数値は前頁の表でご確認いただき、上記グラフの位置づけをご確認下さい。  
 ※解析の対象となった症例数が年間20未満の施設はグラフに表示していません。



## 入院化学療法の実施状況

## 日本乳癌学会認定・関連施設

病院	Stage別				手術別	
	0	I～II	III	IV	なし	手術あり※
A2			100%	50%	56%	
A3		8.7%	67%		71%	9.7%
A4					84%	
B1					80%	
B2				100%	77%	9.5%
B4					41%	5.7%
B6				100%	51%	5.4%
B9		32%	50%	36%	75%	
B10	17%	7.8%	25%	38%	34%	1.3%
B11		29%	75%	67%	81%	5.3%
B12	9.1%	55%	80%	67%	78%	11%
B13						
B15				17%	9.3%	
B16					48%	
B20					30%	13%
B22		2.9%		26%	17%	
B25					63%	20%
B26		32%	50%	70%	57%	14%
B27					47%	4.8%
B28		34%	44%	50%	45%	8.3%
C2					46%	
C4					79%	4.2%
C6						
C8					93%	44%
C9					33%	50%
C10					88%	7.7%
C18		33%			64%	
D2					67%	8.3%
D3					43%	7.1%
D4					64%	5%
D7					36%	
D8					61%	
D9		7.7%	33%	35%	23%	
D10					88%	2%
D11		57%			32%	31%
D12		11%	33%	91%	55%	12%
D14			80%	38%	39%	
D15						
D16					76%	
D21		2.7%	45%	38%	31%	
D23					78%	
D24					63%	5.9%
D27					76%	2.9%
D29					30%	
D31					74%	37%
D32				31%	18%	
D33					52%	5.9%
D34		100%			52%	17%
D36					53%	
D37					53%	
D38					64%	6.3%
D39					95%	57%
D41		12%	11%	27%	18%	2.9%
D42					50%	
D43					39%	
D45					66%	1.6%
D46		20%			19%	1.8%

※ 温存あるいは全摘

## 入院化学療法の施行状況

## 日本乳癌学会認定・関連施設

病院	Stage別				手術別	
	0	I ~ II	III	IV	なし	手術あり※
E6				67%	70%	
E10					61%	2%
E16					44%	
E22			78%	80%	67%	5.2%
E27					37%	
E34		44%	100%		58%	4.2%
E38		25%		25%		29%
E40					28%	10%
F1					50%	19%
F4					74%	30%
F5					33%	
F7	25%	26%	38%	17%	21%	25%
F8		22%	60%	56%	58%	
F9		38%		37%	32%	
F10					91%	10%
F12					84%	3.8%
F16			50%	67%	44%	
F17				100%	77%	28%
F18	3.7%	5.1%	5.7%	47%	15%	3.5%
F21		2.4%	50%	50%	34%	5.4%
F22		28%	20%	100%	82%	
F23		11%	40%		35%	
F25		62%	96%	55%	70%	7.1%
F27					39%	
F29					31%	
F30				25%	14%	
F32			50%		12%	

※ 温存あるいは全摘

## 入院化学療法の実施状況

## 日本乳癌学会認定・関連施設以外

病院	Stage別				手術別	
	0	I～II	III	IV	なし	手術あり※
A1						
A5					24%	
A6					33%	
B3					67%	
B5		40%		100%	35%	2.3%
B7					52%	28%
B8						
B14		31%		33%	44%	3.6%
B17					28%	0.74%
B18						13%
B19					71%	
B21					31%	
B23					29%	
B24					40%	
C1					33%	50%
C3				71%	63%	
C5					50%	
C7		100%				50%
C11				57%	22%	4.5%
C12					25%	
C13					45%	
C14						
C15					45%	57%
C16		100%				83%
C17		50%	100%	20%	30%	
C19					50%	
C20					86%	67%
C21					76%	
C22					33%	40%
C23		17%			25%	17%
C24						
D1					34%	
D5					53%	25%
D6					65%	
D17					10%	6.5%
D18					54%	17%
D19					48%	
D20					40%	10%
D22					38%	
D26					20%	
D28					20%	100%
D30			33%	75%	75%	13%
D35				100%	50%	
D40		10%	20%	38%	37%	8.6%
D44					13%	
E1		20%			30%	29%
E2						
E3					50%	
E5		40%	100%	100%	38%	45%
E11						
E12						
E13						
E14						
E15					100%	
E17					60%	
E18					6.7%	
E19					100%	
E20						
E23						50%
E24		20%		75%	20%	20%
E25		38%	100%	91%	73%	
E26						

※ 温存あるいは全摘

## 入院化学療法の施行状況

## 日本乳癌学会認定・関連施設以外

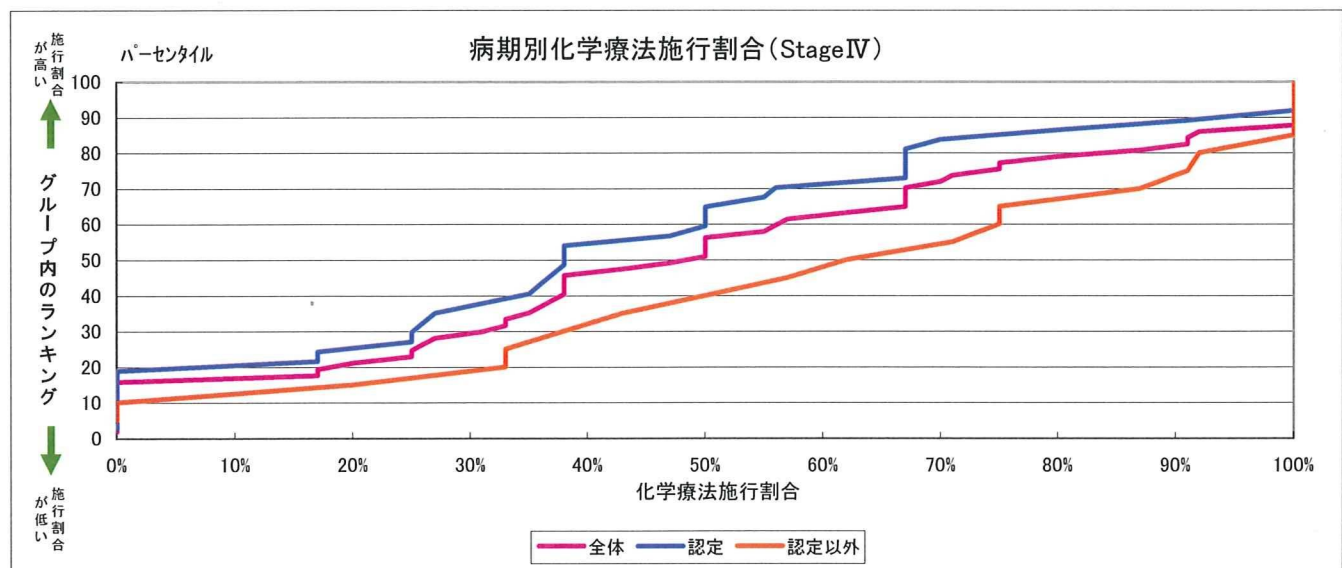
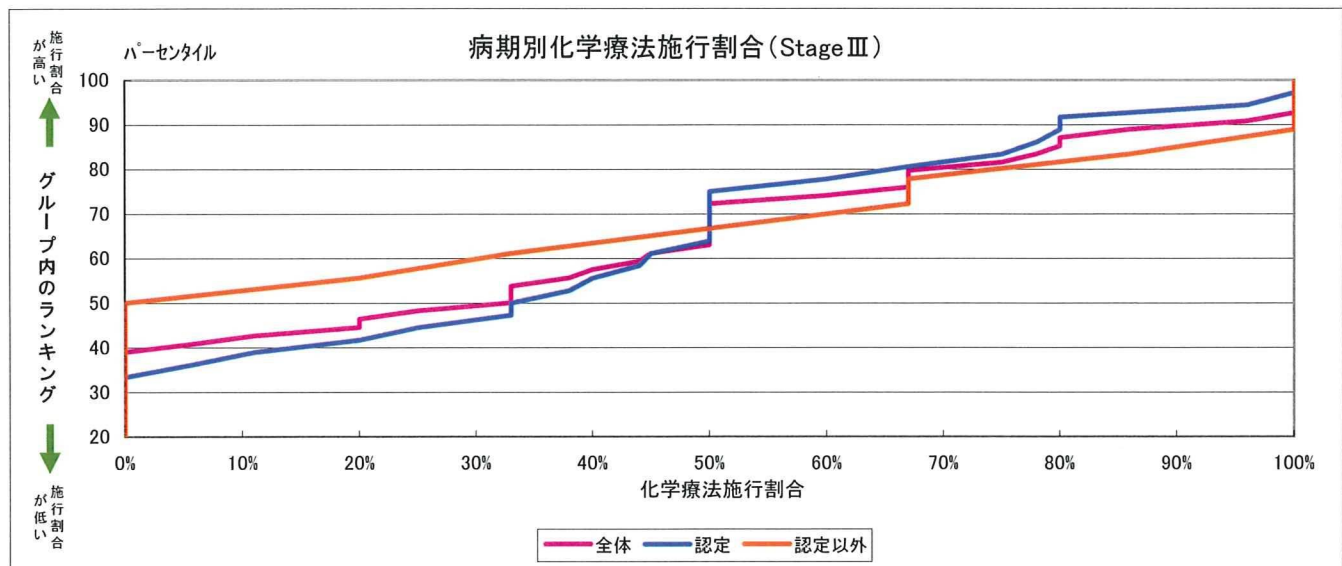
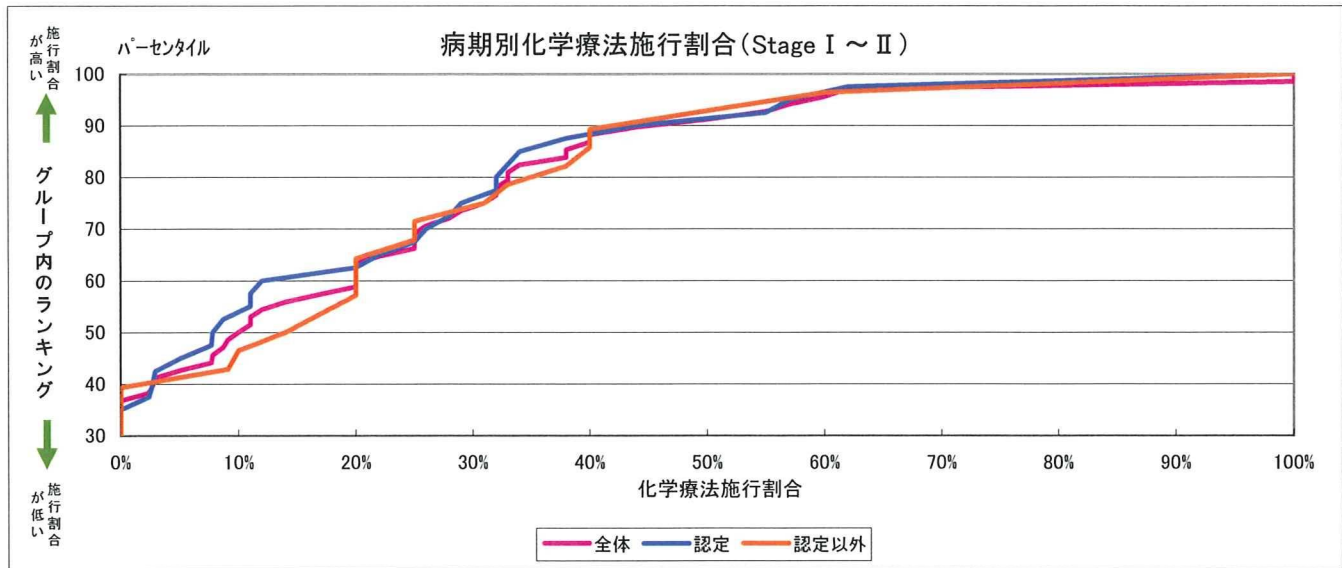
病院	Stage別				手術別	
	0	I ~ II	III	IV	なし	手術あり※
E28					25%	50%
E30					33%	25%
E31					13%	
E32					100%	
E33						67%
E35		88%	100%		73%	40%
E36					33%	50%
E37		14%			21%	11%
E42			86%	43%	45%	
E43						
E44						
E45					100%	
E46		100%			64%	57%
F2		25%			52%	
F6					41%	
F13				100%	24%	
F14				33%	17%	
F15		60%		62%	54%	60%
F19		9.1%		100%	83%	5.4%
F26		20%	67%	92%	70%	17%
F28		25%	67%	87%	74%	2.4%
F31			50%	50%	21%	

## ■ 入院化学療法を受けた患者の割合

病院	Stage別				手術別	
	0	I ~ II	III	IV	なし	手術あり※
認定施設	5%	16%	41%	46%	58%	8%
認定以外	0%	21%	34%	64%	44%	11%

※ 温存あるいは全摘

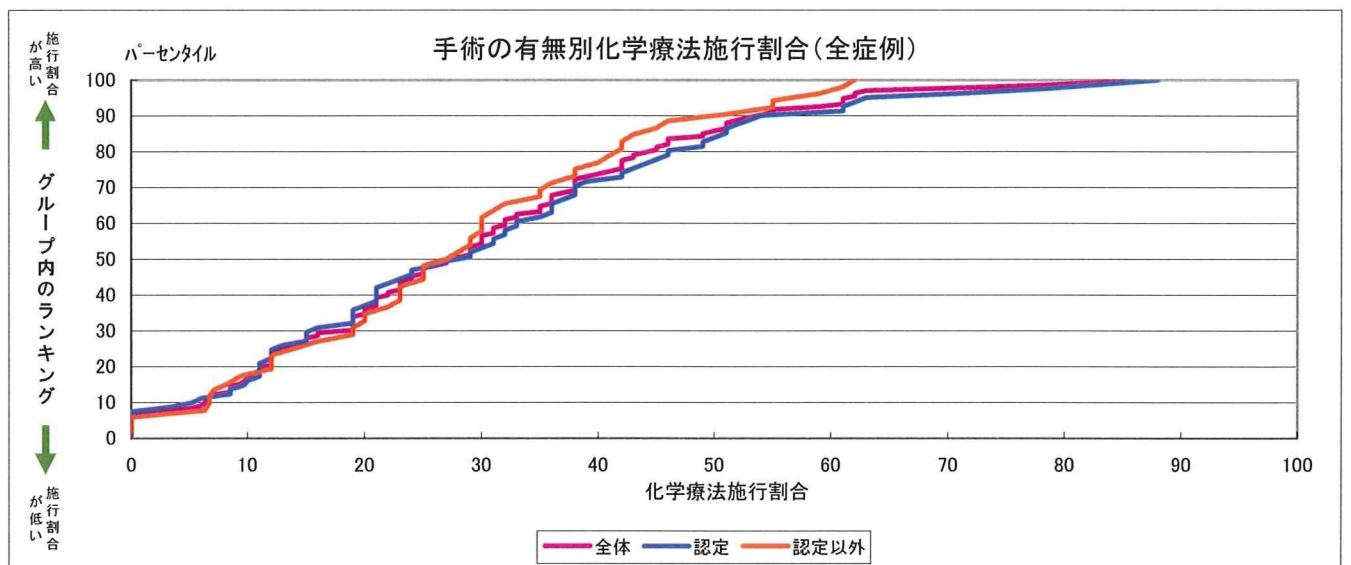
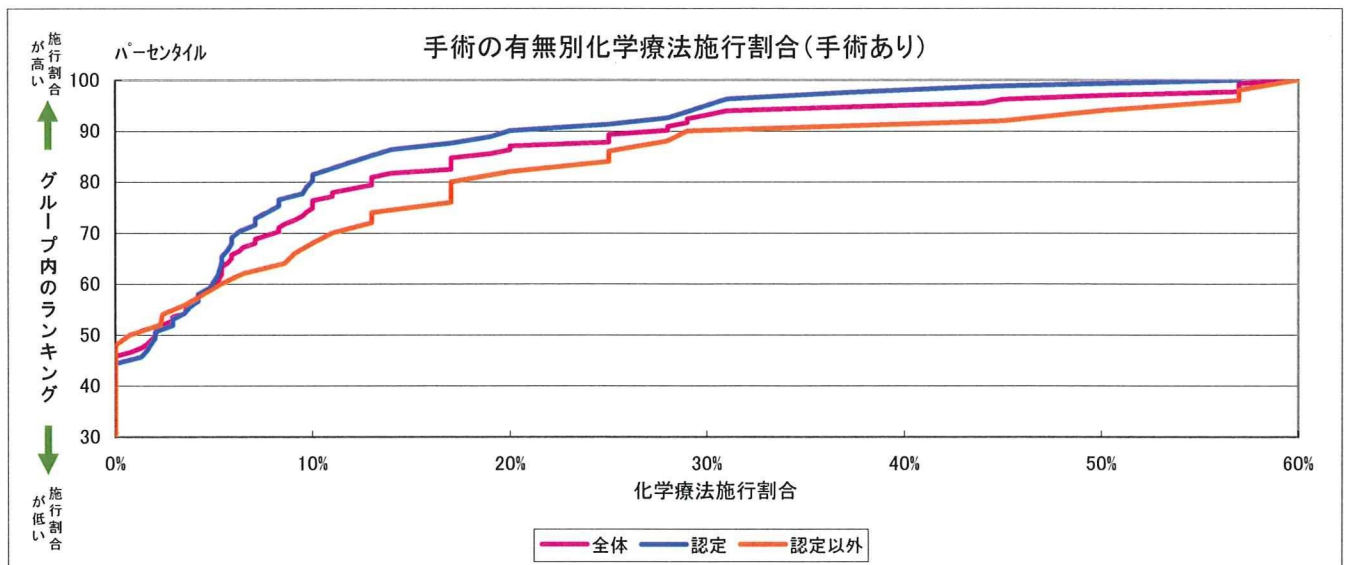
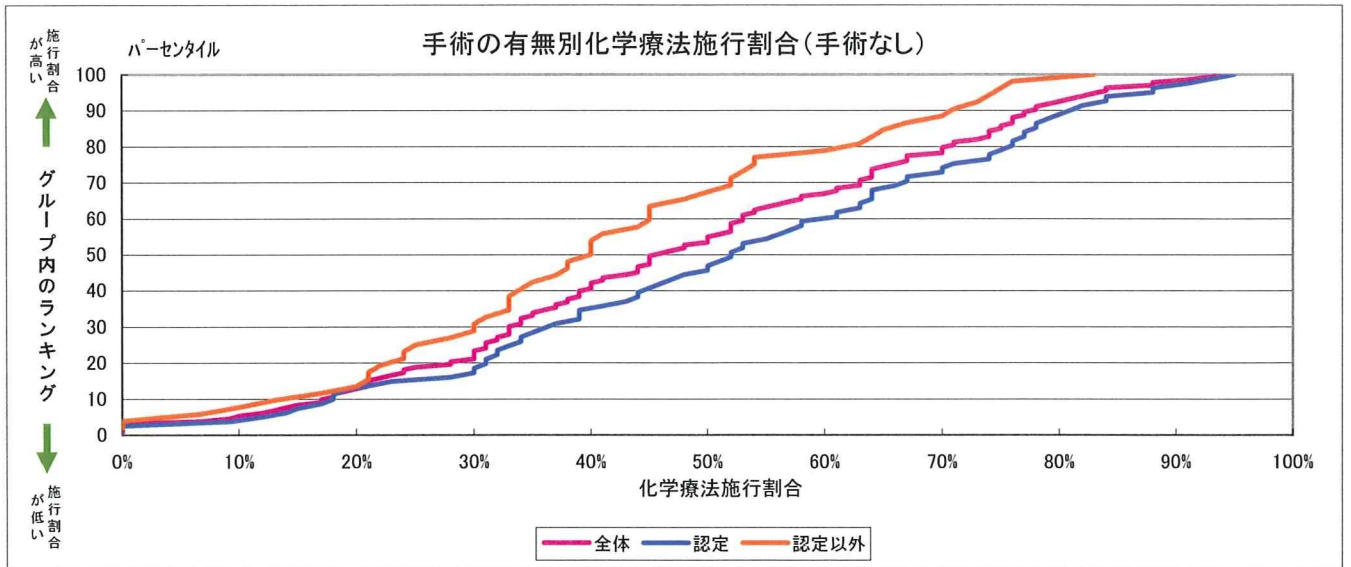
## 病期別化学療法施行割合



※あなたの病院の具体的な数値は前頁の表でご確認いただき、上記グラフの位置づけをご確認下さい。  
 ※解析の対象となった症例数が年間20未満の施設はグラフに表示していません。



手術の有無別化学療法施行割合



※あなたの病院の具体的な数値は前頁の表でご確認いただき、上記グラフの位置づけをご確認下さい。

※解析の対象となった症例数が年間20未満の施設はグラフに表示していません。

## 病期別在院日数

日本乳癌学会認定・関連施設

単位:日

病院	Stage別				手術別			
	0	I ~ II	III	IV	なし	手術あり※	温存	全摘
A2		29	11	23	10	21	18	24
A3	12	13	15	9	10	11	13	10
A4					9	7	13	6
B1					10	9	14	8
B2				51	25	17	22	14
B4					17	13	26	10
B6				1	10	10	10	9
B9	10	9	8	21	8	12	13	12
B10	6	9	11	30	22	7	7	7
B11	15	15	11	29	34	17	15	18
B12	14	13	18	21	15	12	13	12
B13					4	11	13	8
B15	6	14	2	19	23	11	23	8
B16					13	13	16	11
B20					9	17	19	11
B22		9	11	20	23	9	10	8
B25					25	22	24	21
B26		12	17	30	19	20	35	10
B27					11	11	12	10
B28	4	13	12	20	16	16	17	15
C2					27	10	10	9
C4					8	13	14	13
C6					6	19	21	16
C8					6	36	42	24
C9					13	20	25	14
C10					21	18	23	15
C18	9	10	132	12	18	10	11	10
D2					30	18	28	10
D3					28	35	53	11
D4					39	14	13	15
D7					14	9	9	8
D8				18	9	11	15	7
D9	7	8	9	32	21	8	10	7
D10					5	10	11	9
D11		39			27	22	22	21
D12	8	15	23	32	27	14	21	10
D14		11	10	20	20	11	13	10
D15					12	11	12	10
D16		11			13	10	13	9
D21	8	13	14	24	27	12	12	12
D23					6	10	13	8
D24					14	9	9	9
D27					10	17	19	15
D29					24	10	14	7
D31					12	21	22	21
D32		7	33	25	21	9	15	6
D33		9	8	8	14	14	16	9
D34		6	21		14	11	11	12
D36					24	16	17	15
D37					13	16	24	14
D38					20	10	11	10
D39					5	15	19	13
D41	5	8	13	12	11	9	13	6
D42		8	8		12	8	8	8
D43					16	8	8	8
D45					9	12	14	10
D46		10	11	12	18	9	8	9

※ 根治手術のみ(=温存あるいは全摘)

## 病期別在院日数

日本乳癌学会認定・関連施設

単位:日

病院	Stage別				手術別			
	0	I ~ II	III	IV	なし	手術あり※	温存	全摘
E6		13	11	16	37	12	16	11
E10					11	10	14	9
E16					36	21	28	15
E22	9	9	9	11	11	9	13	9
E27					10	7	8	6
E34	6	8	2	37	10	12	14	10
E38		20	25	22	38	18	19	18
E40		9		5	12	21	36	11
F1					12	17	17	17
F4					16	20	25	17
F5	11	15	16	2	17	14	17	13
F7	6	7	9	11	11	7	10	6
F8	10	6	9	17	15	7	7	7
F9	32	10	65	25	21	14	16	10
F10					9	10	14	6
F12					11	6	11	5
F16			38	22	23	10	10	7
F17		3		62	9	22	32	12
F18	12	9	9	18	10	12	13	10
F21	5	8	11	42	16	9	14	6
F22		6	7	1	5	7	9	6
F23	7	11	13		17	13	13	11
F25		7	4	46	21	16	19	8
F27					20	15	17	14
F29					17	12	13	8
F30	5	6	11	11	11	6	7	6
F32		11	102		31	10	12	9

※ 根治手術のみ (= 温存あるいは全摘)

## 病期別在院日数

日本乳癌学会認定・関連施設以外

単位:日

病院	Stage別				手術別			
	0	I~II	III	IV	なし	手術あり※	温存	全摘
A1		24			12	24	24	
A5					22	14	14	15
A6					10	25	31	16
B3					8	8	9	8
B5		11	11	2	14	11	14	7
B7					21	8	14	6
B8								
B14	11	10	15	24	20	15	15	15
B17					34	10	13	8
B18					16	11	13	9
B19					24	9	9	9
B21		11			14	15	17	12
B23					14	31	31	
B24					18	15	16	9
C1					29	16	17	15
C3		11		27	24	11	7	12
C5					49			
C7		64		35	27	47	64	29
C11	11	10	7	14	16	12	13	10
C12					29	9		9
C13					42	14	18	9
C14					8			
C15					9	11	11	8
C16		42			40	30	30	
C17		44	17	24	24			
C19					183	29	40	18
C20					34	29	29	
C21					17	14	15	9
C22					33	15	16	11
C23		15			24	16	26	12
C24					7	11	10	17
D1					29	15	15	13
D5					33	16	17	15
D6					21	12	13	9
D17					20	8	9	6
D18					30	28	33	15
D19					15	13	26	8
D20		7			29	15	19	15
D22					14	8	8	
D26		3			16	13	26	5
D28					7	12	12	
D30		9	24	46	12	12	14	9
D35	14	14		7	8	14	14	
D40	11	12	23	21	22	12	14	10
D44					11	11	11	10
E1		17		12	31	18	20	12
E2		8	11		11	9	11	6
E3					17	9	11	7
E5		12	6	20	23	11	7	12
E11	9	5	7		23	6	6	5
E12						1720	1720	
E13					53			
E14					72			
E15					14	17	17	
E17					4	7	7	7
E18					38			
E19					23			
E20					28	53	53	
E23						14	17	10
E24		12		37	17	13	12	14
E25	14	11	5	8	10	16	19	13
E26		9			4	9		9

※ 根治手術のみ(=温存あるいは全摘)

## 病期別在院日数

日本乳癌学会認定・関連施設以外

単位:日

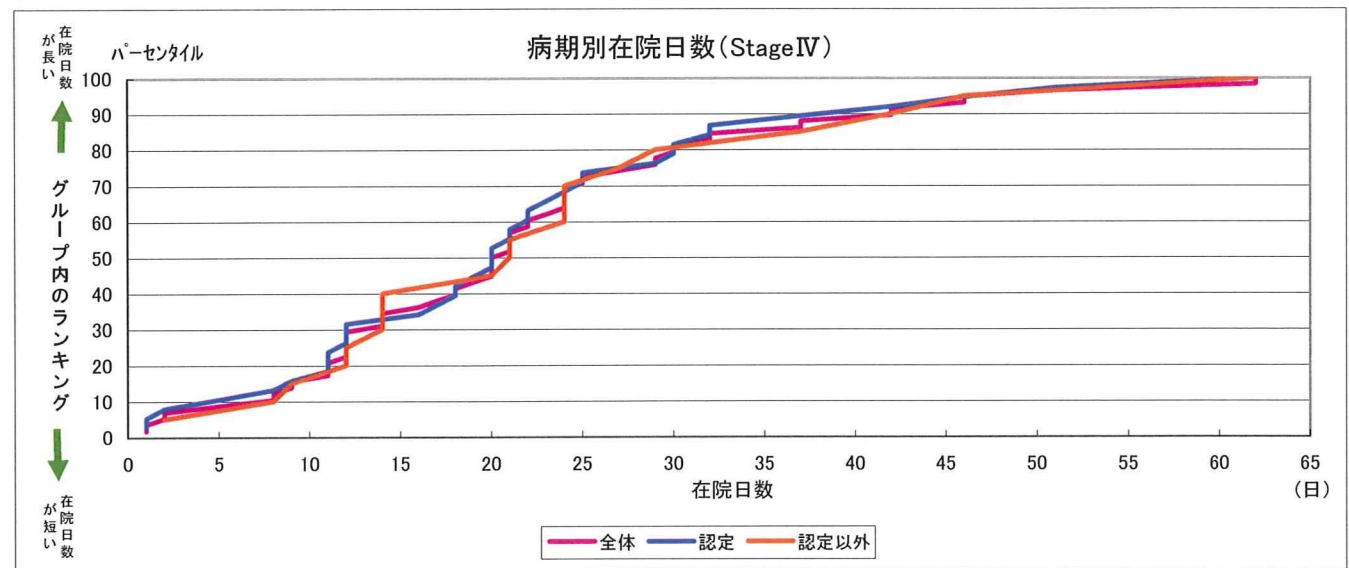
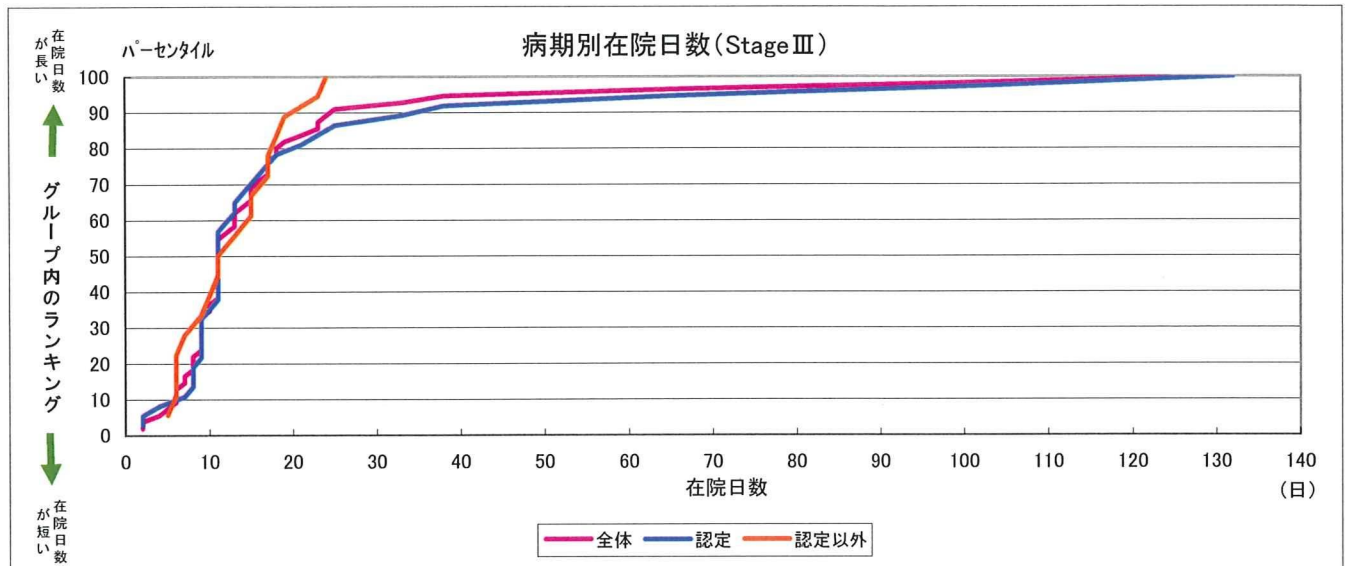
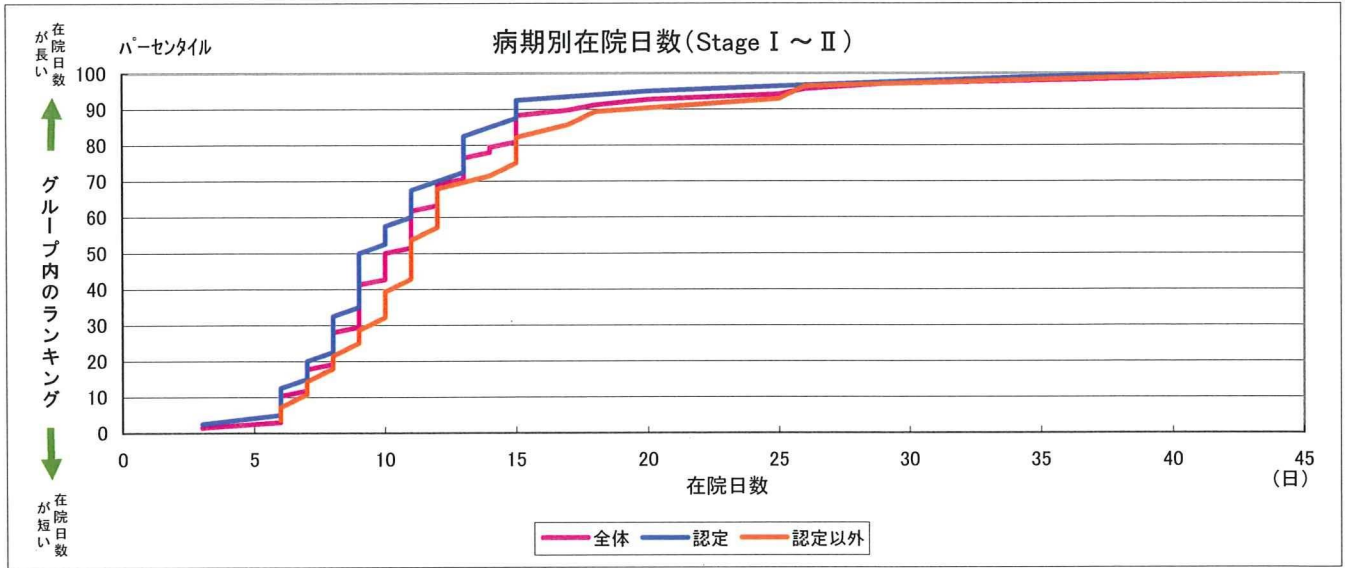
病院	Stage別				手術別			
	0	I～II	III	IV	なし	手術あり※	温存	全摘
E28					12	17	17	
E30					21	33	24	38
E31		19		13	15	30	30	
E32		21			18	20	20	
E33						28	30	24
E35		13	8		23	18	20	16
E36					11	25	28	24
E37		8		9	15	14	17	13
E42	10	12	19	62	32	13	16	10
E43					3			
E44					2			
E45		20			24	17	17	
E46		26			35	13	13	12
F2		15	9		13	13	12	14
F6		14	13		30	13	13	8
F13	17	6	10	24	32	8	14	6
F14	14	15	6	29	21	14	15	12
F15		25	18	12	23	25	25	
F19		6		42	11	7	7	7
F26		9	17	14	17	15	17	12
F28	13	7	15	14	13	8	7	9
F31		10	6	21	14	12	11	16

病院	Stage別在院日数の中央値				手術別在院日数の中央値			
	0	I～II	III	IV	なし	手術あり※	温存	全摘
認定施設	8.5	8	9	13	5	10	8	12
認定以外	11.5	9	11	12	10	9	8	12

※ 根治手術のみ(=温存あるいは全摘)

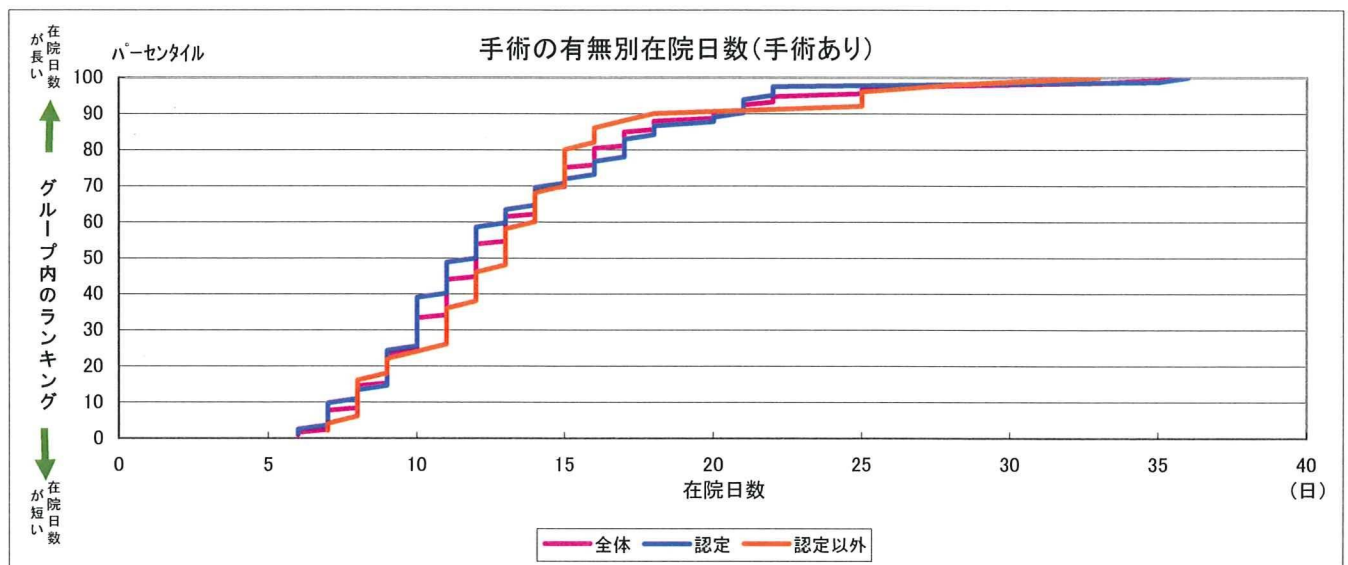
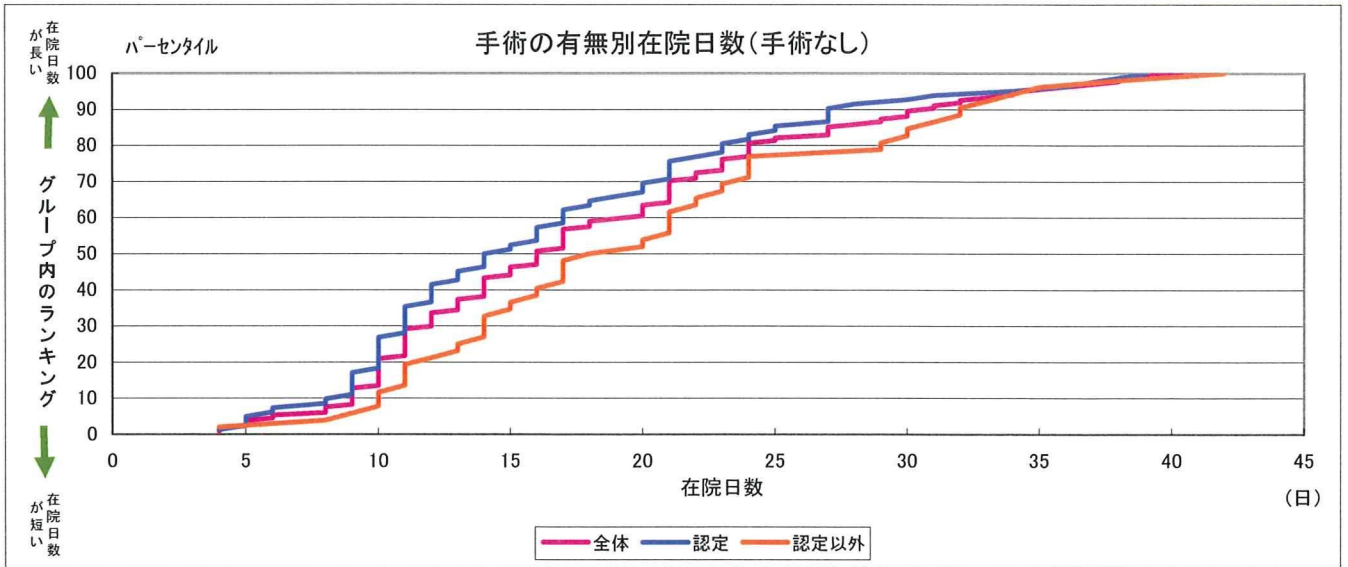


病期別在院日数



※あなたの病院の具体的な数値は前頁の表でご確認いただき、上記グラフの位置づけをご確認下さい。  
 ※解析の対象となった症例数が年間20未満の施設はグラフに表示していません。

### 手術の有無別在院日数



※あなたの病院の具体的数値は前頁の表でご確認いただき、上記グラフの位置づけをご確認下さい。  
 ※解析の対象となった症例数が年間20未満の施設はグラフに表示していません。