

of NC (n = 4), ALS (n = 6), PD (n = 4), and AD (n = 7) by qRT-PCR. The levels of NAV3 mRNA are standardized against those of G3PDH mRNA detected in identical cDNA samples. REF indicates a universal reference derived from the human frontal cortex total RNA (AM6810, Ambion).

Figure 4. NAV3 protein expression levels in the brains of neurodegenerative diseases. The expression of NAV3 protein was studied in frozen frontal cortex tissues of NC, ALS, PD, and AD by western blot. The panels (a, b) indicate (a) NAV3 protein and (b) 14-3-3 protein, an internal control for protein loading. The lanes (1-21) represent (1-4) NC, (5-10) ALS, (11-14) PD, and (15-21) AD. Eighty microgram of protein was loaded in each lane.

Figure 5. NAV3 immunohistochemistry of the brains of neurodegenerative diseases. The expression of NAV3, PHF-tau, and A β was studied in the frontal cortex tissue sections of AD, ALS, and PD by immunohistochemistry. The panels (a-f) represent (a) NAV3 in AD-case 3, (b) NAV3 in AD-case 1, (c) NAV3 in ALS-case 4, (d) NAV3 in PD-case 3, (e) NAV3 (brown) and PHF-tau (red) double immunolabeling of AD-case 1 where the coexpression is indicated by arrows, and (f) NAV3 (brown) and A β (red) double immunolabeling of AD-case 3. In all the cases, large and medium-sized pyramidal neurons in layers III and V express strong NAV3 immunoreactivity located in the cytoplasm, axons and dendrites. Notably, NAV3 immunoreactivity is the most intense in neurons with degenerating morphology bearing pyknotic nuclei in AD brains as shown in panels (a, b, f).

Table 1. Three microRNAs upregulated in ALS brains identified by microarray analysis

<i>MicroRNA name</i>	<i>Accession no.</i>	<i>Mature miR sequence</i>	<i>Chromosome location</i>	<i>Genome context</i>	<i>Fold change in ALS-case 1</i>	<i>Fold change in ALS-case 2</i>	<i>Fold change in ALS-case 4</i>
hsa-miR-29a	MIMAT0000086	UAGCACCAUCUGAAAUCGGUUA	7q32.3	AC016831.7; intron 2	7.5	11.7	6.3
hsa-miR-29b	MIMAT0000100	UAGCACCAUUUGAAAUCAGUGUU	7q32.3	AC016831.7; intron 2	26.5	41.3	24.2
hsa-miR-338-3p	MIMAT0000763	UCCAGCAUCAGUGAUUUUGUUG	17q25.3	AA TK; intron 6, intron 7	15.3	16.0	12.7

RNA samples isolated from frozen frontal cortex tissues of three ALS patients (cases 1, 2, and 4) and a universal reference were processed for miRNA expression profiling on a microarray. The fold change is expressed as the signal of ALS divided by the signal of the universal reference.

1
2
3
4
5
6
7
8
9
10
11
12
13
14
15
16
17
18
19
20
21
22
23
24
25
26
27
28
29
30
31
32
33
34
35
36
37
38
39
40
41
42
43
44
45
46
47

Table 2. Predicted miR-29a target genes identified by TargetScan, PicTar, and miRBase Target database search

Gene ID	Gene symbol	Gene name	TargetScan context score	PicTar score	miRBase Target p-value
2200	FBN1	fibrillin 1	-0.74	8.2288	5.99E-06
89795	NAV3	neuron navigator 3	-0.68	9.1594	1.15E-04
50509	COL5A3	collagen, type V, alpha 3	-0.67	12.5665	1.20E-06
1301	COL11A1	collagen, type XI, alpha 1	-0.65	10.916	5.12E-06
1278	COL1A2	collagen, type I, alpha 2	-0.63	10.8218	2.80E-04
4678	NASP	nuclear autoantigenic sperm protein	-0.62	9.5118	1.88E-04
4591	TRIM37	tripartite motif-containing 37	-0.44	5.6973	2.50E-05
27315	PGAP2	post-GPI attachment to proteins 2	-0.42	6.0952	1.28E-05
1293	COL6A3	collagen, type VI, alpha 3	-0.4	6.9128	2.47E-07
29851	ICOS	inducible T-cell co-stimulator	-0.38	7.9789	9.64E-05
116931	MED12L	mediator complex subunit 12-like	-0.34	9.9157	1.16E-04

MIR-29a target genes were searched on TargetScan, PicTar, and miRBase Target databases. The common genes listed within top 200 by each program are shown following the significance of TargetScan context score.

1
2
3
4
5
6
7
8
9
10
11
12
13
14
15
16
17
18
19
20
21
22
23
24
25
26
27
28
29
30
31
32
33
34
35
36
37
38
39
40
41
42
43
44
45
46
47

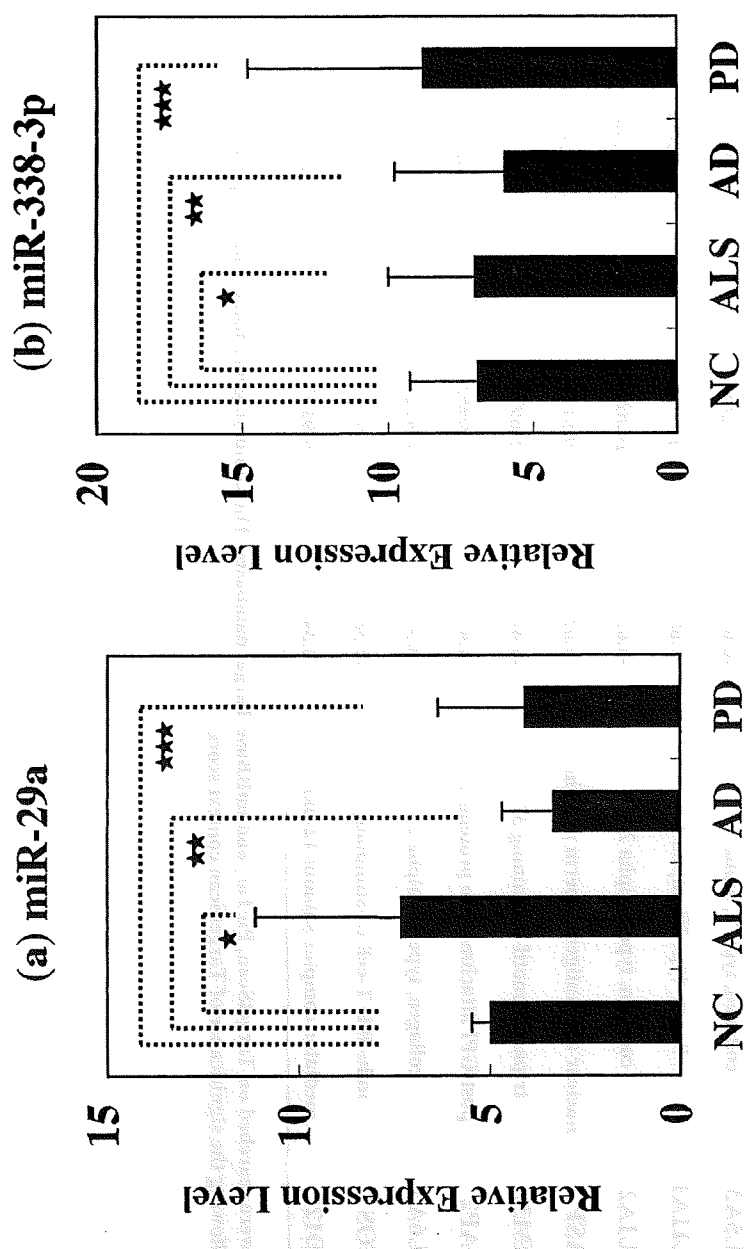


Figure 1

1
2
3
4
5
6
7
8
9
10
11
12
13
14
15
16
17
18
19
20
21
22
23
24
25
26
27
28
29
30
31
32
33
34
35
36
37
38
39
40
41
42
43
44
45
46
47

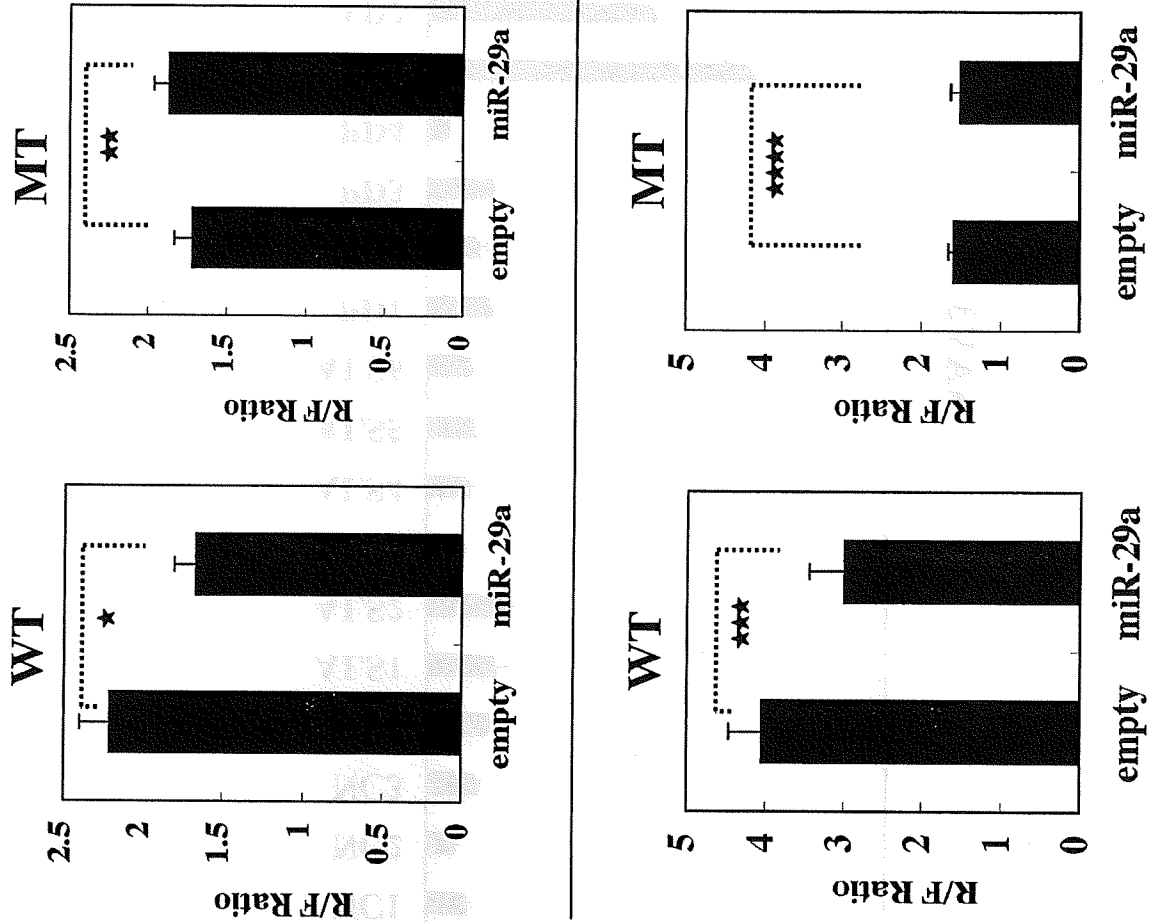


Figure 2

1
2
3
4
5
6
7
8
9
10
11
12
13
14
15
16
17
18
19
20
21
22
23
24
25
26
27
28
29
30
31
32
33
34
35
36
37
38
39
40
41
42
43
44
45
46
47

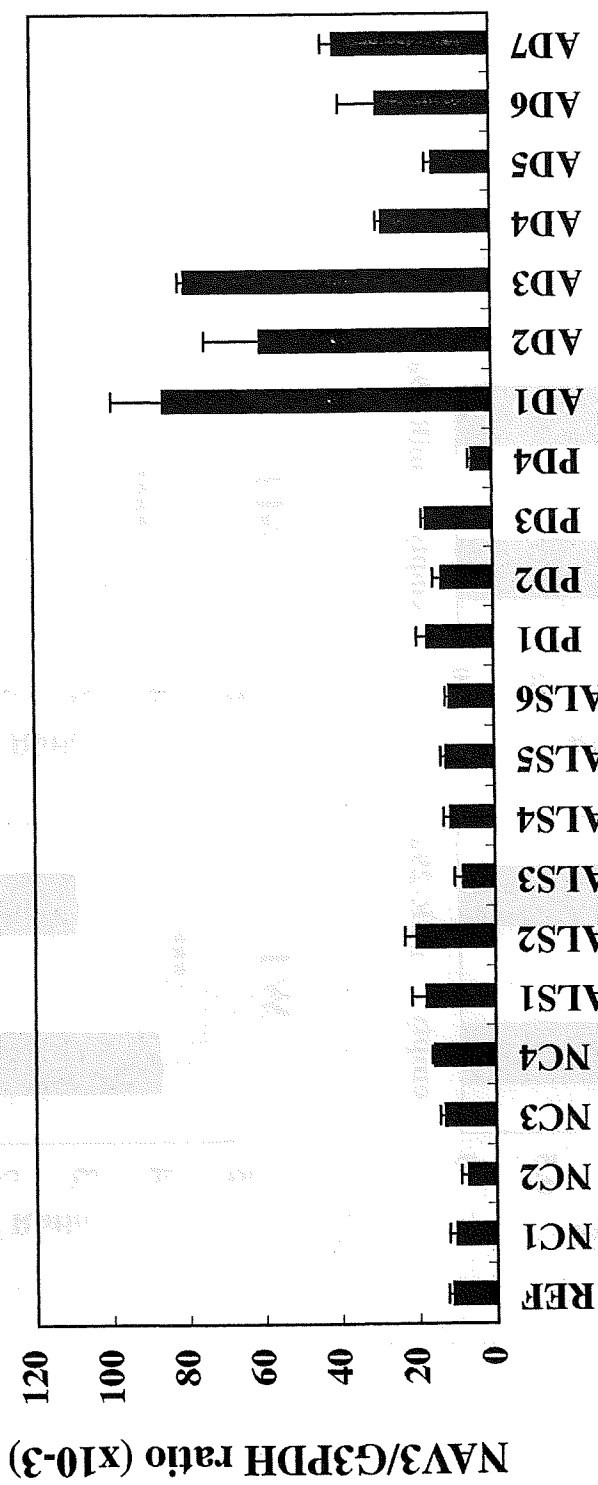


Figure 3

1
2
3
4
5
6
7
8
9
10
11
12
13
14
15
16
17
18
19
20
21
22
23
24
25
26
27
28
29
30
31
32
33
34
35
36
37
38
39
40
41
42
43
44
45
46
47

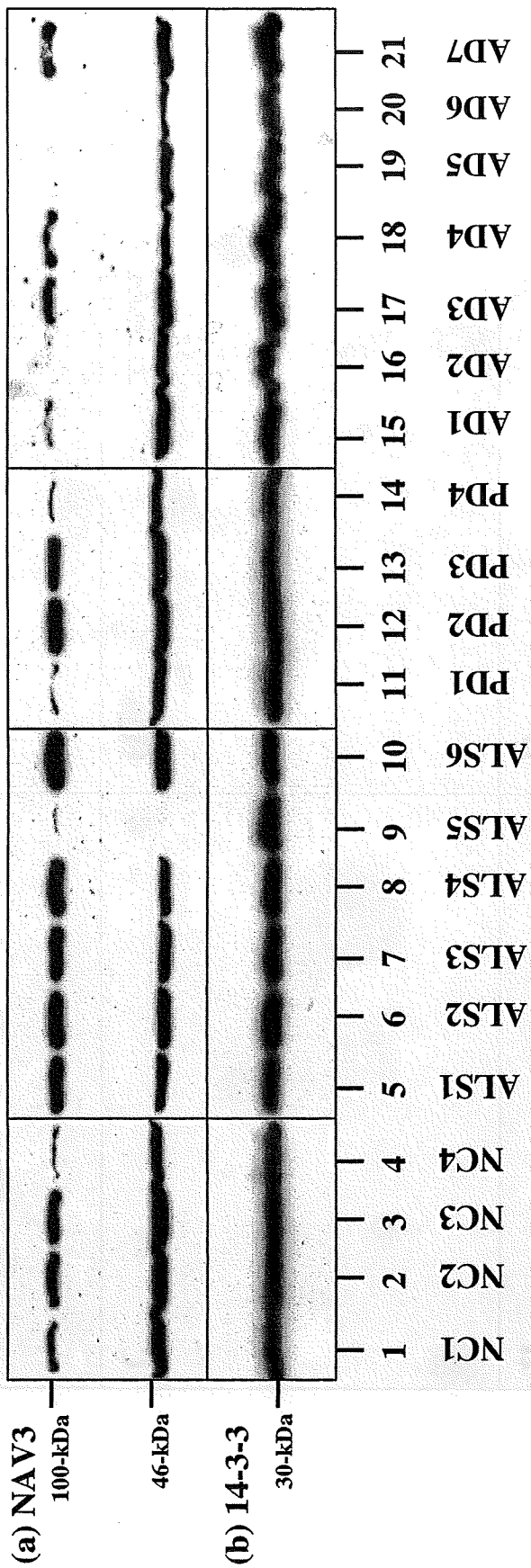


Figure 4

1
2
3
4
5
6
7
8
9
10
11
12
13
14
15
16
17
18
19
20
21
22
23
24
25
26
27
28
29
30
31
32
33
34
35
36
37
38
39
40
41
42
43
44
45
46
47

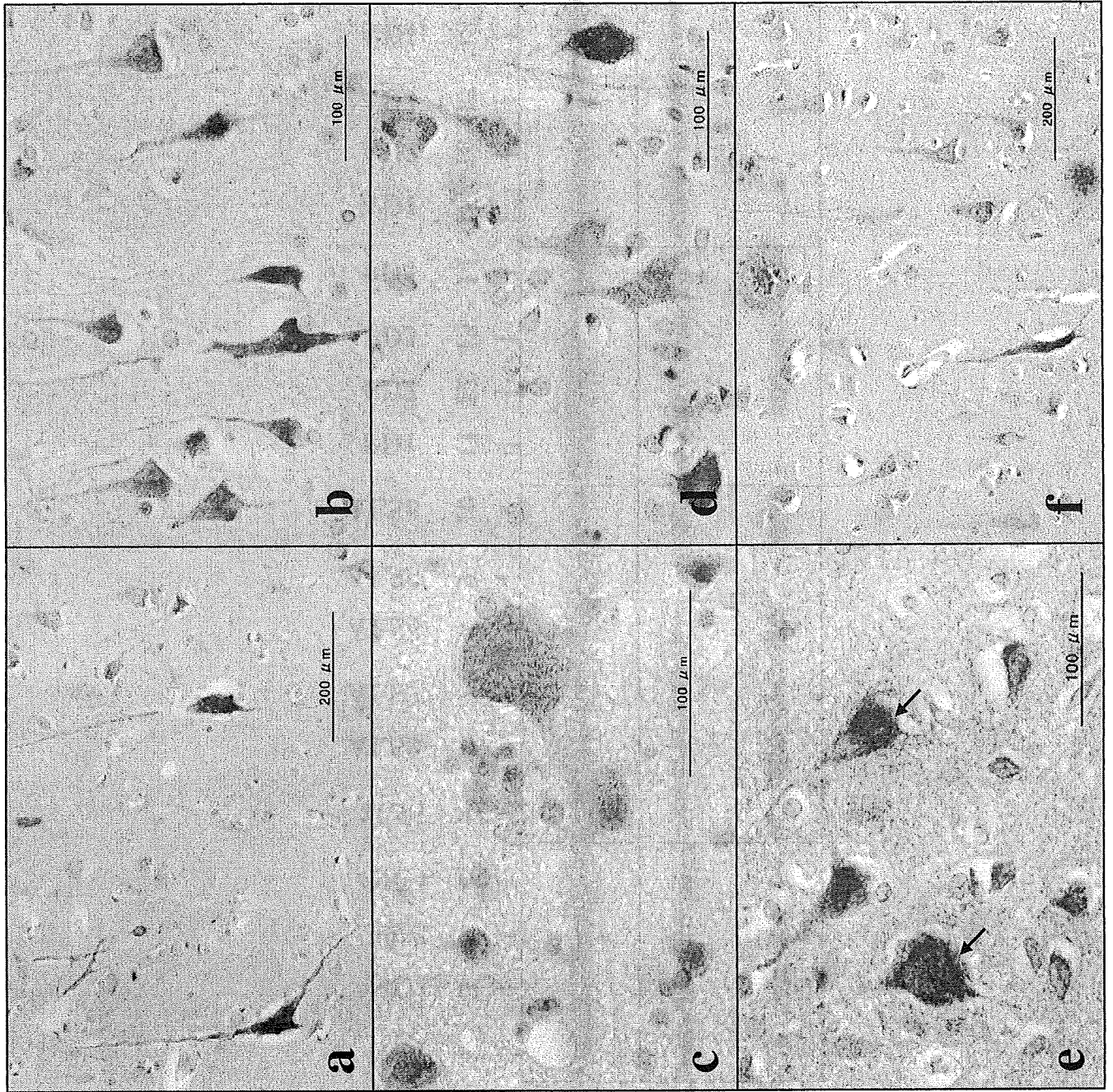


Figure 5

Supplementary Table 1. Characteristics of the study population

Case No.	Age (Year-Old)	Sex (M: Male; F: Female)	Cause of Death	Brain Weight (Gram)	Postmortem Interval (Hour)	RNA Quality (A260/A280 Ratio)	Braak Staging (Amyloid Deposition/Neurofibrillary Degeneration)
NC1	88	F	acute myocardial infarction	1130	1.4	1.78	A/II
NC2	84	M	acute myocardial infarction	1350	1.6	1.77	0/II
NC3	77	M	lung cancer	1060	3.9	1.72	A/II
NC4	67	M	dissecting aortic aneurysm	1400	4.8	1.76	A/I
AD1	68	F	pneumonia	1000	1.1	2.13	C/VI
AD2	56	M	pneumonia	1230	14	2.04	C/VI
AD3	59	M	pneumonia	1220	10.5	2.02	C/VI
AD4	72	M	pneumonia	1240	8.1	1.90	C/VI
AD5	82	F	lung cancer	1090	4.5	1.99	C/VI
AD6	77	F	pulmonary infarction	840	3	2.01	C/VI
AD7	70	M	respiratory failure by aspiration	1200	3.8	2.04	B/IV
PD1	86	F	pneumonia	1330	9.5	2.03	B/IV
PD2	83	F	pneumonia	1130	2.5	2.04	B/II
PD3	76	F	respiratory failure by aspiration	910	2.5	2.03	B/II
PD4	56	M	colon cancer	1430	4	2.06	A/I
ALS1	70	M	respiratory failure	1480	10.5	2.02	0/0
ALS2	75	F	respiratory failure	1090	1.3	2.03	0/I
ALS3	66	M	respiratory failure	1560	3	2.02	0/I
ALS4	61	F	respiratory failure	1320	10	2.02	0/II
ALS5	61	M	respiratory failure	1360	2.5	2.06	B/I
ALS6	74	M	respiratory failure	1600	13	2.07	B/I

The clinical and pathological characteristics of the study population are shown with the case number, age, sex, the cause of death, brain weight, the postmortem interval, the quality of RNA, and the Braak Staging (amyloid deposition/neurofibrillary degeneration) [Ref. 16].

Supplementary Table 2. MicroRNA expression profiling of the frontal cortex of three ALS patients on a human miRNA microarray

Probeset ID	Reference Value	Reference Signal	Reference Detection	ALS1 Signal Value	ALS1 Signal Detection	ALS2 Signal Value	ALS2 Signal Detection	ALS4 Signal Value	ALS4 Signal Detection	Fold Change (ALS1/Reference)	Fold Change (ALS2/Reference)	Fold Change (ALS4/Reference)	Mature miRNA Accession No.
hsa-let-7a	725.925	1	0	1981.94	0	3088	1	1735.17	1	2.73023	4.14368	2.39029	MIMAT0000062
hsa-let-7b	0.01	0	0	0.339	0	2.05	1	1.3	0	33.9303	204.992	130.047	MIMAT0004481
hsa-let-7b*	1122.12	1	0	1951.49	1	2800.66	1	1252.24	1	1.73911	2.49586	1.11596	MIMAT0000063
hsa-let-7c	7.977	0	0	13.208	1	11.37	1	14.5	1	1.65167	1.4219	1.81322	MIMAT0000482
hsa-let-7c*	343.326	1	0	761.049	1	1098.95	1	566.973	1	2.21669	3.20089	1.65141	MIMAT0000064
hsa-let-7d	0.01	0	0	0.01	0	0.01	0	0.01	0	1	1	1	MIMAT0004483
hsa-let-7d*	116.037	1	0	298.847	1	462.997	1	238.368	1	2.57545	3.99008	2.05424	MIMAT0000065
hsa-let-7e	4.928	0	0	617.514	1	796.272	1	433.913	1	0.96658	0.79707	1.56204	MIMAT0004484
hsa-let-7e*	368.835	1	0	4.763	0	3.928	0	3.708	0	1.67423	2.15888	1.17644	MIMAT0000066
hsa-let-7f	319.936	1	0	1111.62	1	1622.27	1	1034.29	1	0.52932	1.43637	3.83682	MIMAT0004485
hsa-let-7f*	8.143	0	0	12.379	1	11.597	1	12.385	1	3.47451	5.07061	3.2328	MIMAT0000067
hsa-let-7g	170.292	1	0	647.72	1	937.74	1	569.945	1	0.38263	1.96072	0.0083	MIMAT0004486
hsa-let-7g*	0.01	0	0	0.387	0	0.558	0	0.01	0	3.80358	5.59666	3.34687	MIMAT0004487
hsa-let-7h	131.061	1	0	451.483	1	694.823	1	388.856	1	3.44483	5.30152	2.73793	MIMAT0004488
hsa-let-7i	0.01	0	0	0.95	0	15.094	1	16.562	1	94.9671	1	1	MIMAT0004489
hsa-miR-1	89.787	0	0	22.278	0	15.094	0	174.33	1	2227.78	1509.37	1686.24	MIMAT0004490
hsa-miR-100	0.01	0	0	199.449	1	237.763	1	181.337	1	2.22135	3.20494	1.94159	MIMAT0004491
hsa-miR-101	4.894	0	0	184.459	0	0.01	0	0.01	0	37.089	56.116	37.05519	MIMAT0004492
hsa-miR-101*	0.01	0	0	0.067	0	275.162	1	1.116	0	1.7489	0.7616	1.35784	MIMAT0004493
hsa-miR-103	305.702	1	0	581.1	1	145.54	1	55.086	1	0.7607	0.87607	1.80272	MIMAT0000101
hsa-miR-105	0.702	0	0	0.01	0	0.01	0	0.389	0	1.9087	3.32864	0.55469	MIMAT0000102
hsa-miR-105*	0.01	0	0	0.01	0	0.01	0	0.01	0	0.04425	5.08435	1	MIMAT0004516
hsa-miR-106*	0.01	0	0	0.01	0	0.01	0	0.01	0	1	1	1	MIMAT0000103
hsa-miR-106b	19.272	1	0	119.988	1	147.533	1	92.995	1	6.22396	7.65522	4.82554	MIMAT0004517
hsa-miR-106b*	0.01	0	0	0.01	0	0.01	0	0.01	0	1	1	1	MIMAT0006680
hsa-miR-107	266.548	1	0	609.814	1	940.593	1	571.209	1	2.28782	3.52879	2.14299	MIMAT0004672
hsa-miR-10a	1.917	0	0	0.102	0	1.237	0	0.818	0	0.05311	0.64532	0.42703	MIMAT0000104
hsa-miR-10a*	0.01	0	0	0.01	0	0.01	0	0.01	0	1	1	1	MIMAT0000253
hsa-miR-10b*	0.01	0	0	0.181	0	0.735	0	0.268	0	18.0636	73.4723	26.751	MIMAT0004555
hsa-miR-10b*	0.01	0	0	0.01	0	0.01	0	0.368	0	1	1	1	MIMAT0000254
hsa-miR-122	0.637	0	0	0.01	0	7.895	0	0.078	0	0.01456	11.49282	0.1338	MIMAT0004556
hsa-miR-122*	0.01	0	0	0.47	0	0.01	0	1.106	0	46.9835	1	36.7729	MIMAT0000421
hsa-miR-122a-3p	0.302	0	0	14.7	1	13.196	1	21.675	1	1	1	110.585	MIMAT0004590
hsa-miR-122a-5p	4.906	1	0	7.159	1	10.483	1	31.018	1	48.75331	43.76588	71.88692	MIMAT0004591
hsa-miR-1225-3p	13.201	1	0	20.374	1	17.497	1	20.2	1	1.45922	2.15668	6.32215	MIMAT0004592
hsa-miR-1225-5p	118.01	1	0	320.928	1	256.266	1	842.7	1	1.54339	1.32541	1.53017	MIMAT0005572
hsa-miR-1226*	0.01	0	0	0.573	0	0.553	0	0.01	0	2.7195	2.17156	71.4892	MIMAT0005577
hsa-miR-1226*	0.202	0	0	0.339	0	0.01	0	7.387	0	57.2885	55.3107	36.52069	MIMAT0005577
hsa-miR-1227	4.812	1	0	7.985	1	6.796	1	8.654	1	1.67452	0.04994	1.7985	MIMAT0004580
hsa-miR-1228*	23.129	1	0	30.948	1	29.803	1	39.543	1	1.69538	1.41237	1.7985	MIMAT0004580
hsa-miR-1228*	0.01	0	0	2.078	0	4.243	0	6.506	1	1.33905	1.28857	1.7985	MIMAT0004580
hsa-miR-1229	4.359	1	0	7.027	1	4.742	0	6.741	0	20.7768	424.357	650.246	MIMAT0004583
hsa-miR-1231	0.01	0	0	0.01	0	0.01	0	0.01	0	1.02114	1.08794	1.54689	MIMAT0004584
hsa-miR-1233	0.01	0	0	0.01	0	0.01	0	0.01	0	1	1	1	MIMAT0005588
hsa-miR-1234	21.595	1	0	33.477	1	27.265	1	35.074	1	1.55096	1.36249	1.62449	MIMAT0005589
hsa-miR-1236	2.457	0	0	4.211	1	7.285	1	17.183	1	1.24922	1.24922	2.15617	MIMAT0005591
hsa-miR-1237	7.625	1	0	11.11	1	9.144	0	14.5718	1	1.45718	1.52633	1.63917	MIMAT0005592
hsa-miR-1238	13.846	1	0	18.11	1	17.119	1	14.3084	1	1.36654	1.63395	1.63395	MIMAT0005593
hsa-miR-124	7431.76	1	0	10309	1	14478.1	1	13947.4	1	1.94291	1.94291	1.84571	MIMAT0004422
hsa-miR-125a-3p	8.902	1	0	30.354	1	23.883	1	21.874	0	525.616	275.831	275.831	MIMAT0004591
hsa-miR-125a-5p	68.833	1	0	88.806	1	123.805	1	55.027	1	3.37555	6.1994	6.1994	MIMAT0004603
hsa-miR-125b-1*	1582.53	1	0	1790.1	1	2845.53	1	1.29015	1	1.79862	1.24248	1.24248	MIMAT0000443
hsa-miR-125b-1*	0.01	0	0	0.01	0	0.01	0	2097.99	1	1.12902	1.79469	1.32321	MIMAT0004592
hsa-miR-125b-2*	10.511	0	0	24.8	0	0.01	0	1	0	2.35949	2.32848	1.90276	MIMAT0004603
hsa-miR-126	79.766	1	0	388.329	1	561.872	1	375.709	1	4.86835	7.044	4.71014	MIMAT0004603
hsa-miR-126*	1.942	0	0	4.964	0	6.12	0	7.225	0	2.55646	3.15177	3.72062	MIMAT0000444

1 2 3 4 5 6 7 8 9 10 11 12 13 14 15 16 17 18 19 20 21 22 23 24 25 26 27 28 29 30 31 32 33 34 35 36 37 38 39 40 41 42 43 44 45 46 47

hsa-miR-181a*	4.53	20.083	1	1	1	1	17.658	4.61566	5.33885	4.05657	MIMAT000270
hsa-miR-181b-2*	1.852	3.97	0	0	0	1.825	2.17647	2.39346	2.39346	1.10273	MIMAT000458
hsa-miR-181b	17.78	241.787	1	1	1	156.186	1.38398	1.93673	1.25106	1.25106	MIMAT000257
hsa-miR-181c*	29.505	70.486	1	1	1	61.788	3.25232	2.09445	2.09445	2.09445	MIMAT000258
hsa-miR-181a*	5.002	20.866	1	1	1	14.745	4.17163	6.35661	2.94793	2.94793	MIMAT000459
hsa-miR-181a	13.515	28.666	1	1	1	29.504	2.12113	3.35554	2.1831	2.1831	MIMAT000281
hsa-miR-182	0.01	0.01	0	0	0	0.01	1	1	1	1	MIMAT0000259
hsa-miR-182*	0.01	0.01	0	0	0	0.01	1	1	1	1	MIMAT0000260
hsa-miR-183	0.01	0.01	0	0	0	0.01	1	1	1	1	MIMAT0000261
hsa-miR-183*	0.01	0.01	0	0	0	0.01	1	1	1	1	MIMAT0000262
hsa-miR-184	0.01	0.01	0	0	0	0.01	1	1	1	1	MIMAT0000263
hsa-miR-184*	0.01	0.01	0	0	0	0.01	1	1	1	1	MIMAT0000264
hsa-miR-185	13.223	0.622	1	1	1	1.194	62.2294	177.034	119.384	119.384	MIMAT000454
hsa-miR-185*	0.525	54.997	0	0	0	4.7053	5.51481	3.55848	3.55848	3.55848	MIMAT000455
hsa-miR-186	2.196	0.01	0	0	0	0.01	4.15919	5.51481	0.01905	0.01905	MIMAT000461
hsa-miR-186*	0.01	6.965	1	1	1	10.305	3.17104	4.4062	4.69175	4.69175	MIMAT000456
hsa-miR-187	0.01	0.01	0	0	0	0.01	1	1	1	1	MIMAT000462
hsa-miR-187*	0.01	0.01	0	0	0	0.01	1	1	1	1	MIMAT000463
hsa-miR-188-3p	0.01	0.01	0	0	0	0.01	1	1	1	1	MIMAT000464
hsa-miR-188-5p	8.405	13.472	0	0	0	50.009	1.60289	26.5487	33.6273	33.6273	MIMAT000465
hsa-miR-188a	0.01	0.091	0	0	0	0.01	1.8312	5.94981	1	1	MIMAT000467
hsa-miR-188a*	0.01	0.01	0	0	0	0.01	9.09552	97.3613	1	1	MIMAT000468
hsa-miR-188b	0.01	1.067	0	0	0	0.766	106.665	76.518	76.518	76.518	MIMAT000469
hsa-miR-188b*	3.217	4.597	0	0	0	4.438	0.9712	1.37035	0.9712	0.9712	MIMAT000470
hsa-miR-190	0.132	0.706	0	0	0	0.01	0.01	0.01	0.01	0.01	MIMAT000471
hsa-miR-190b	2.425	0.706	0	0	0	0.01	0.01	0.01	0.01	0.01	MIMAT000472
hsa-miR-191	0.01	0.01	0	0	0	0.01	1.29543	1.09543	1.28774	1.28774	MIMAT000473
hsa-miR-191*	12.021	15.581	1	1	1	15.48	7.35269	10.66233	6.13606	6.13606	MIMAT000474
hsa-miR-192	2.99	21.986	0	0	0	18.438	1.8949	1473.61	2132.88	2132.88	MIMAT000475
hsa-miR-192*	0.01	0.01	0	0	0	0.01	1.041	69.0144	69.0144	69.0144	MIMAT000476
hsa-miR-193a-5p	48.147	28.985	1	1	1	27.697	0.72198	1.041	0.6899	0.6899	MIMAT000477
hsa-miR-193a*	0.01	0.01	0	0	0	0.01	478.599	727.901	399.18	399.18	MIMAT000478
hsa-miR-194	0.01	4.786	0	0	0	3.992	0	0	0	0	MIMAT000479
hsa-miR-194*	0.01	0.01	0	0	0	0.84	1	1	83.9948	83.9948	MIMAT000480
hsa-miR-195	87.035	366.949	1	1	1	209.113	4.2161	5.57955	2.40263	2.40263	MIMAT000481
hsa-miR-195*	0.01	2.851	0	0	0	3.126	184.885	312.564	312.564	312.564	MIMAT000482
hsa-miR-196a	0.861	0.997	0	0	0	0.167	1.45761	1.83211	1.12305	1.12305	MIMAT000483
hsa-miR-196a*	0.01	0.01	0	0	0	0.01	0.86	0.32422	0.32422	0.32422	MIMAT000484
hsa-miR-196b	2.208	1.737	0	0	0	0.86	0.78656	0.32422	0.32422	0.32422	MIMAT000485
hsa-miR-197	66.421	160.114	1	1	1	195.397	2.41061	2.69847	2.94182	2.94182	MIMAT000486
hsa-miR-198	0.01	8.405	1	1	1	4.411	2.53101	2.01146	2.01146	2.01146	MIMAT000487
hsa-miR-198a-5p	3.321	6.68	1	1	1	12.988	3.19145	2.96658	2.96658	2.96658	MIMAT000488
hsa-miR-198b-3p	6.333	20.213	0	0	0	2.426	0.70307	0.6389	0.6389	0.6389	MIMAT000489
hsa-miR-198b-5p	2.474	34.136	0	0	0	32.11	33.20248	47.03397	31.23197	31.23197	MIMAT000490
hsa-miR-199a	1.028	0.01	0	0	0	0.01	7.45813	20.8272	5.4693	5.4693	MIMAT000491
hsa-miR-199a*	23.541	175.574	1	1	1	133.407	10.90654	10.90654	10.90654	10.90654	MIMAT000492
hsa-miR-199b-1*	0.01	5.697	1	1	1	3.483	569.702	445.654	388.28	388.28	MIMAT000493
hsa-miR-199b-2*	0.48	1.379	0	0	0	0.58	2.6719	6.8345	1.89561	1.89561	MIMAT000494
hsa-miR-200a	0.01	0.01	0	0	0	0.01	1	1	1	1	MIMAT000495
hsa-miR-200b	0.01	0.01	0	0	0	0.01	1	1	1	1	MIMAT000496
hsa-miR-200c	0.01	0.01	0	0	0	0.01	1	1	1	1	MIMAT000497
hsa-miR-200c*	0.01	0.01	0	0	0	0.01	1	1	1	1	MIMAT000498
hsa-miR-202	0.01	15.839	0	0	0	0.647	6.58285	7.52298	64.7088	64.7088	MIMAT000499
hsa-miR-202*	2.987	0.639	0	0	0	26.538	0.01333	0.00344	11.02915	11.02915	MIMAT000500
hsa-miR-203	0.01	2.789	0	0	0	3.619	229.854	507.377	0.38482	0.38482	MIMAT000501
hsa-miR-204	35.025	33.63	1	1	1	79.43	2.38771	3.28922	361.945	361.945	MIMAT000502
hsa-miR-205	0.01	0.422	0	0	0	0.01	42.1648	1	2.26781	2.26781	MIMAT000503
hsa-miR-206	0.01	0.577	0	0	0	2.282	57.6597	1	228.151	228.151	MIMAT000504
hsa-miR-208	0.01	0.01	0	0	0	0.01	1	1	1	1	MIMAT000505
hsa-miR-208a	0.01	0.01	0	0	0	0.01	1	1	1	1	MIMAT000506
hsa-miR-208b	26.597	93.825	1	1	1	59.267	3.52765	4.86525	2.22835	2.22835	MIMAT000507
hsa-miR-208a*	0.01	0.916	0	0	0	0.104	28.8604	28.8604	10.3915	10.3915	MIMAT000508
hsa-miR-208b*	5.71	22.303	1	1	1	13.501	3.906	4.07352	2.36453	2.36453	MIMAT000509
hsa-miR-209	0.01	0.01	0	0	0	0.01	1	1	1	1	MIMAT000510
hsa-miR-209*	138.062	489.44	1	1	1	79.771	3.54507	4.15089	5.74214	5.74214	MIMAT000511
hsa-miR-21*	0.01	0.01	0	0	0	2.625	1	1	202.471	202.471	MIMAT000512
hsa-miR-210	12.097	17.214	1	1	1	11.707	1.42299	2.12746	0.9677	0.9677	MIMAT000513

1 2 3 4 5 6 7 8 9 10 11 12 13 14 15 16 17 18 19 20 21 22 23 24 25 26 27 28 29 30 31 32 33 34 35 36 37 38 39 40 41 42 43 44 45 46 47

Table with 5 columns: Identifier (e.g., hsa-miR-30b*), Value (e.g., 9.034), Flag (e.g., 1), Value (e.g., 49.268), Flag (e.g., 1), Value (e.g., 25.755), Flag (e.g., 1), Value (e.g., 4.20643), Value (e.g., 5.45366), Value (e.g., 2.85094), Identifier (e.g., MIMAT0000488).

1 2 3 4 5 6 7 8 9 10 11 12 13 14 15 16 17 18 19 20 21 22 23 24 25 26 27 28 29 30 31 32 33 34 35 36 37 38 39 40 41 42 43 44 45 46 47

Table with columns: hsa-miR-588, hsa-miR-589, hsa-miR-590, hsa-miR-590-3p, hsa-miR-591, hsa-miR-592, hsa-miR-593, hsa-miR-593*, hsa-miR-595, hsa-miR-596, hsa-miR-597, hsa-miR-598, hsa-miR-599, hsa-miR-600, hsa-miR-601, hsa-miR-602, hsa-miR-603, hsa-miR-604, hsa-miR-605, hsa-miR-606, hsa-miR-607, hsa-miR-608, hsa-miR-609, hsa-miR-610, hsa-miR-611, hsa-miR-612, hsa-miR-615, hsa-miR-614, hsa-miR-615*, hsa-miR-616, hsa-miR-617, hsa-miR-618, hsa-miR-619, hsa-miR-620, hsa-miR-621, hsa-miR-622, hsa-miR-623, hsa-miR-624, hsa-miR-624*, hsa-miR-625, hsa-miR-625*, hsa-miR-626, hsa-miR-627, hsa-miR-628-3p, hsa-miR-628-3p, hsa-miR-629, hsa-miR-630, hsa-miR-631, hsa-miR-632, hsa-miR-633, hsa-miR-634, hsa-miR-635, hsa-miR-636, hsa-miR-638, hsa-miR-639, hsa-miR-640, hsa-miR-641, hsa-miR-642, hsa-miR-643, hsa-miR-644, hsa-miR-645, hsa-miR-647, hsa-miR-648, hsa-miR-649, hsa-miR-650

Table with columns: MIMAT0003255, MIMAT0004799, MIMAT0003256, MIMAT0004801, MIMAT0003258, MIMAT0003259, MIMAT0003260, MIMAT0004802, MIMAT0003261, MIMAT0003263, MIMAT0003265, MIMAT0003266, MIMAT0003267, MIMAT0003268, MIMAT0003269, MIMAT0003270, MIMAT0003271, MIMAT0003272, MIMAT0003273, MIMAT0003274, MIMAT0003275, MIMAT0003276, MIMAT0003277, MIMAT0003278, MIMAT0003279, MIMAT0003280, MIMAT0003281, MIMAT0003282, MIMAT0003283, MIMAT0004804, MIMAT0004805, MIMAT0003284, MIMAT0003285, MIMAT0003287, MIMAT0003288, MIMAT0003289, MIMAT0003290, MIMAT0003291, MIMAT0004807, MIMAT0003292, MIMAT0003293, MIMAT0003294, MIMAT0004808, MIMAT0003295, MIMAT0003296, MIMAT0003297, MIMAT0004809, MIMAT0004810, MIMAT0003298, MIMAT0003299, MIMAT0003300, MIMAT0003302, MIMAT0003303, MIMAT0003304, MIMAT0003305, MIMAT0003306, MIMAT0003307, MIMAT0003308, MIMAT0003309, MIMAT0003310, MIMAT0003311, MIMAT0003312, MIMAT0003313, MIMAT0003314, MIMAT0003315, MIMAT0003316, MIMAT0003317, MIMAT0003318, MIMAT0003319, MIMAT0003320

Table with 11 columns of numerical values representing expression levels or fold changes for each miRNA-target pair.

Table with 11 columns of numerical values representing expression levels or fold changes for each miRNA-target pair.

