

98th percentile of all the probes. Probes with no NCBI accession number were excluded. Probes under significant influence of gender ($p < 0.05$, unpaired t -test) were also excluded. This procedure reduced the number of probes included in the analysis from 54,847 to 19,121.

2.4. Overrepresentation analysis

The gene expression data were imported into ArrayAssist ver5.5.1 (Stratagene, Cedar Creek, TX). Differentially regulated probes between the two groups were analyzed by unpaired t -tests. Probes with $p < 0.01$ were considered to be differentially expressed. A correction for multiple testing was tried by calculating the false discovery rate (FDR), the rate at which significant features are truly null, using the QVALUE program (Storey and Tibshirani, 2003). For estimating q values, π_0 was determined with automated choice of λ based on the distribution of 19,121 p values using a smoothing method. FDR ≤ 0.05 was considered as significant.

Functional overrepresentation of differentially expressed genes was analyzed with the gene annotation tool DAVID, which integrates almost all major bioinformatics resources (Huang da et al., 2007). DAVID calculates the p value for the extent of overrepresentation of a given biological meaning by performing Fisher's exact test.

2.5. Artificial neural network construction and testing

For the purpose of hold-out cross-validation, subjects were subdivided into training and testing sets. The training set included 35 patients with schizophrenia (29.9 years: 14 males, 21 females) and 33 normal controls (30.9 years: 23 males, 10 females). The remaining 17 patients (32.8 years: 7 males, 10 females) and 16 controls (33.5 years: 12 males, 4 females) were held out for the testing. Mean age was similar but gender ratio was significantly different within each set ($p = 0.014$ and $p = 0.049$ in the training and testing sets, respectively).

We constructed artificial neural networks (ANNs) using the ArrayAssist program. Our ANNs were three-layer back propagation networks trained with a learning rate of 0.5, a momentum rate of 0.3, and 100 iterations (Fig. 1). The program was implemented with algorithms of stepwise forward selection to enable the determination of optimal gene features for the ANN model (Lancashire et al., 2008). Selected 127 probe datasets were used as an input for forward selection. The ideal outputs were set at 0 for controls and 1 for schizophrenia. Beginning from an empty set of features, the forward selection algorithm added a single probe that produced the best performance as a predictor at each step of 3-fold cross-validations. After determining an optimal feature size, ANNs trained 100 times to adjust weights of links. The constructed ANN model was then applied to testing samples.

2.6. Clustering analysis

To compare supervised and unsupervised methods, clustering analysis was performed on training set samples that were used for ANN construction. The ArrayAssist program was used to perform principal component analysis (PCA) clustering and agglomerative hierarchical clustering.

The method employed for hierarchical clustering was complete linkage and Euclidean distance.

3. Results

3.1. Characteristics and annotation of a blood-based gene expression signature

Among 19,121 quality filtered probes, 792 probes were identified as differentially expressed; 256 probes were down-regulated and 536 probes were up-regulated in patients with schizophrenia compared with controls. Since the gender ratio was different between the two groups, our filtering process excluded probes with significant gender differences. Down-regulated and up-regulated probes were separately profiled by DAVID. Among 256 down-regulated probes, 167 genes were annotated. Top-ranked Gene Ontology terms included cell adhesion, nervous system development, and neurotransmitter binding and receptor activity (Table 2, Table S1, S2). Unigene EST annotated 73 of these genes as expressed in brain tissue (Table S3). On the other hand, among 536 up-regulated probes, 381 genes were annotated but their association with central nervous system was not clear. The annotated genes contained 11 genes that were reported to be associated with schizophrenia (*NRG1*, *NTF3*, *CHRN2*, *CCKAR*, *DAOA*, *DAO*, *L1CAM*, *NEUROG1*, *ZNF74*, *PRODH*, and *CHGA*).

As the main purpose of the study was to find the usefulness of microarray data in a clinical practice, probes suitable for laboratory testing were required. Calculation of the q value revealed that among 792 differentially expressed probes, only 17 passed a q value threshold of 0.05, which was too conservative to

Table 2
Top 10 biological process and molecular function Gene Ontology terms overrepresented by down-regulated genes.

Term	Count	%	p value
<i>Biological process</i>			
Biological adhesion	16	9.58%	0.0011
Cell adhesion	16	9.58%	0.0011
Nervous system development	16	9.58%	0.0012
Multicellular organismal process	45	26.95%	0.0023
Ion transport	16	9.58%	0.0024
Generation of neurons	8	4.79%	0.0079
Neurogenesis	8	4.79%	0.0118
Neuron differentiation	7	4.19%	0.0142
Sodium ion transport	5	2.99%	0.0167
Developmental process	37	22.16%	0.0169
<i>Molecular function</i>			
Photoreceptor activity	3	1.80%	0.0061
Alkali metal ion binding	7	4.19%	0.0063
Neurotransmitter receptor activity	5	2.99%	0.0079
Neurotransmitter binding	5	2.99%	0.0090
Calcium ion binding	16	9.58%	0.0112
Cation binding	44	26.35%	0.0154
Ion binding	47	28.14%	0.0185
Metal ion binding	46	27.54%	0.0209
Lipid binding	9	5.39%	0.0323
Gated channel activity	7	4.19%	0.0365

Count of genes involved in the term is listed, together with the percentage of involved genes in total genes. The smaller the Fisher's exact p value, the more enriched the term.

Please cite this article as: Takahashi, M., et al., Diagnostic classification of schizophrenia by neural network analysis of blood-based gene expression signatures, Schizophr. Res. (2010), doi:10.1016/j.schres.2009.12.024

be used as a criterion for ANN input data. We therefore conducted additional filtering based on coefficient of variation (CV) and average signal intensity. CV, defined as the ratio of the standard deviation to the mean, is a measure of dispersion of probability distribution. As smaller CV is indispensable for the precise laboratory testing, we considered probes with CV less than 30% are acceptable. This resulted in an exclusion of probes with large fold change (FC) in the mean expression level, since larger FC accompanied larger CV (Fig. 2A, C). On the other hand, in spite of normal distribution of FCs (Fig. 2A), the distribution of average signal intensities was largely skewed (Fig. 2B). The large skewness of our data might lead to the construction of a less reproducible ANN model. We performed a pilot study by constructing ANNs with shifting the threshold window of average signal intensities around a median of differentially expressed probes (4.0). ANNs were most reproducible with the threshold window of 1.0 to 3.0, and therefore it was introduced as the second criterion. This procedure of additional filtering reduced the number of probes included in the further analysis from 792 to 127 (Fig. 2D).

3.2. Feature selection through ANN training and model construction

We used ANNs to examine whether a blood-based gene expression signature can distinguish patients with schizophrenia from normal controls. Forward selection (Lancashire et al., 2008) was performed using the training set of samples to identify a subset of differentially expressed probes that were important for the distinction. Among 127 probes, maximal classification accuracy was obtained with 14 probes (Fig. 3A) for 8 known genes and 6 expressed sequence tags (ESTs). Eight genes and two ESTs were expressed in the brain (UniGene), and only *DAOA* (G72) was associated with schizophrenia (OMIM) (Fig. 3B).

Since FC values in 14 predictors were relatively small, we carried out unsupervised standard methods to see to what extent these predictors separate patients from controls. Hierarchical clustering grouped one patient into controls and grouped 20 controls together with 34 patients (Fig. 4A), suggesting that one-dimensional Euclidean distance by 14 predictors was too close among samples to separate patients

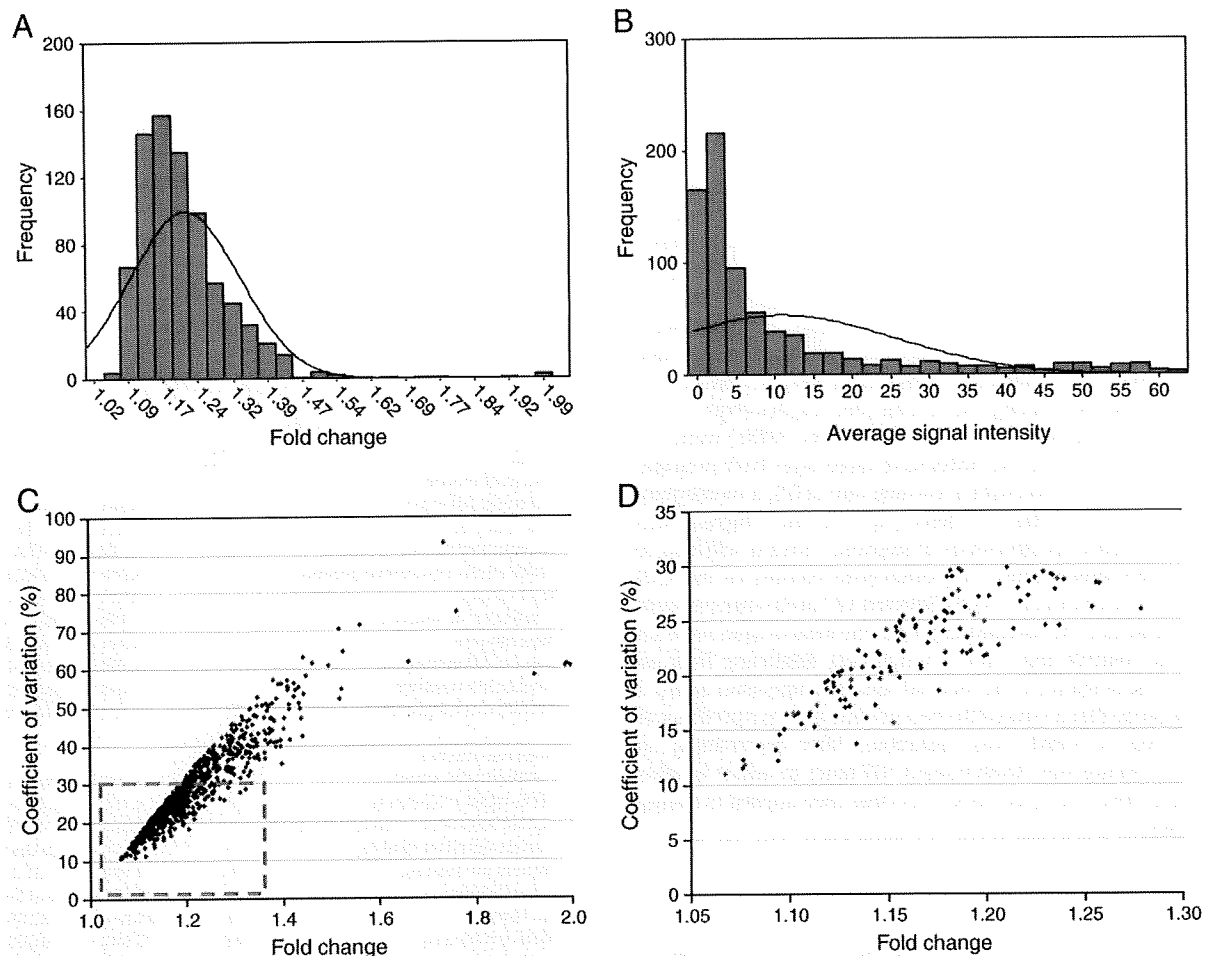


Fig. 2. Descriptive statistics of 792 differentially expressed probes identified by unpaired *t*-tests with a *p* value cut-off of 0.01. Shown are the frequencies of absolute fold change (A) and average signal intensity (B). The normal distribution curve was overlaid. (C) Values of the coefficient of variation were plotted against absolute fold change values. Probes with less than 30% CV (red dashed square) were filtered with an average signal intensity threshold of 1.0–3.0 (D). Probes selected as predictors are highlighted in red.

Please cite this article as: Takahashi, M., et al., Diagnostic classification of schizophrenia by neural network analysis of blood-based gene expression signatures, *Schizophr. Res.* (2010), doi:10.1016/j.schres.2009.12.024

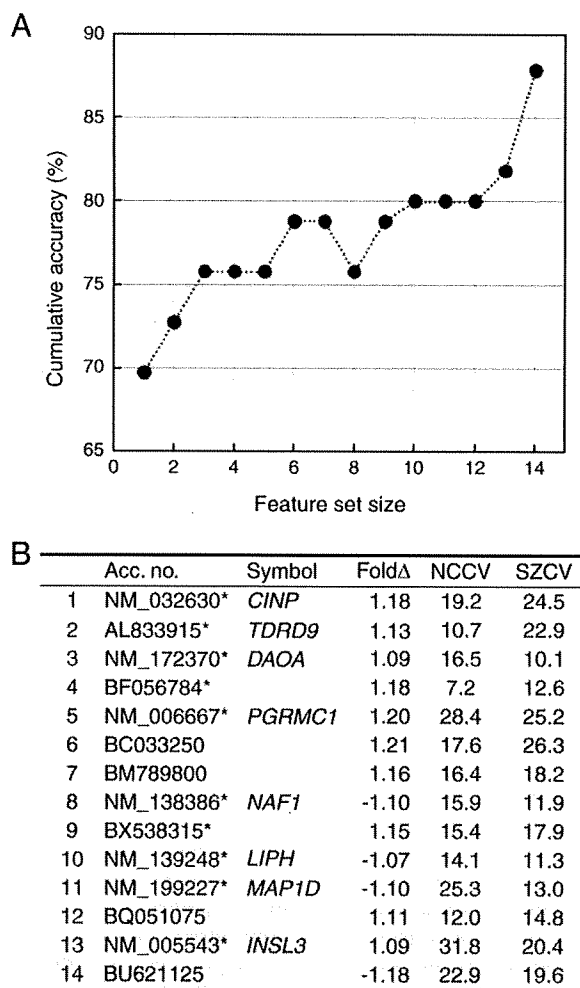


Fig. 3. Identification of predictor genes by a stepwise forward selection ANN model. **A.** Each round of 3-fold cross-validation finds one probe that performs best as a predictor for classification. The cycle was repeated until selected features achieved maximal accuracy. **B.** Predictors in order of their appearance in the selection algorithm. Positive and negative values in fold change (Fold Δ) represents up- and down-regulation in schizophrenia patients, respectively. *Presence of expression in the brain (UniGene). *CINP*, cyclin-dependent kinase 2-integrating protein; *TDRD9*, Tudor domain containing 9; *DAOA* (*G72*), D-amino acid oxidase activator; *PGRMC1*, progesterone receptor membrane component 1; *NAF1*, nuclear assembly factor 1 homolog; *LIPH*, lipase member H; *MAP1D*, methionine aminopeptidase 1D; *INSL3*, insulin-like 3 (Leidig cell); NCCV, CV in normal controls; and SZCV, CV in patients with schizophrenia.

from controls by this type of method. PCA clustering was also done to generate a three-dimensional plot from 14 dimensions (predictors). Visualization of 68 training samples demonstrated some segregation according to the clinical diagnosis (Fig. 4B), but it was difficult to find linearly separable space between the two groups.

ANNs were then trained with the training set of samples. The constructed ANN model correctly predicted 31 of 35 patients and 31 of 33 controls (Fig. 4C). Finally, performance of the model was tested using hold-out samples. Our ANN modeling was validated by correctly predicting 14 of 17 patients and 15 of 16 controls. This corresponded to 87.9% accuracy with 82.4% sensitivity and 93.8% specificity. In

addition, we subdivided all the samples again into four subsets and classified them by the ANN, respectively. Diagnosis of each set was predicted with 80.0 to 96.2% accuracy, indicating robustness of the ANN to different groupings (Table 3).

4. Discussion

Using supervised method, ANN, we found that schizophrenia can be classified by blood-based gene expression signature. Accuracy of the ANN model was 91.2%, which was not so high as similar reports in cancer research (Khan et al., 2001; Lin et al., 2007; O'Neill and Song, 2003). However, in contrast to the use of tumor samples in those studies, we are not able to obtain tissues from the brain. Considering the use of peripheral whole blood as a material, we feel that the performance of our ANN model is acceptable. In schizophrenia, Tsuang et al. (2005) presented a diagnostic equation obtained from logistic regression of eight gene expression levels in isolated peripheral blood cells. They adopted ANN to verify their finding, but their report did not describe the accuracy of it. Middleton et al. (2005) provided a list of genes expressed in peripheral blood cells that predicted diagnosis of schizophrenia with 95% or greater accuracy using two types of supervised classifiers. However, they did not cross-validated their list. The larger sample size of the present study allowed us to conduct hold-out cross-validation, which revealed that the testing set accuracy was comparable to the training set one.

Hold-out method is one of the standard cross-validation methods that are widely used to evaluate prediction by computer-based learning (Li, 2007). In ANN modeling of microarray datasets, the method is utilized by partitioning samples into training and testing sets after the identification of differentially expressed probes (Khan et al., 2001; Xu et al., 2002). Purpose of the method is to confirm that constructed ANN model does not come from overfitting of model parameters to features in the training set, which will result in poor predictive accuracy in the testing set. Therefore, validation of our ANN model does not mean to show replicated data in an independent cohort. It simply suggests that the model can be generalized to other subset of samples that are not included for the model construction.

Predictors in our ANN model were chosen by forward selection to minimize error in supervised learning. As a result, FCs in selected predictors were so small that hierarchical or PCA clustering could not discriminate between patients and controls. In postmortem brain studies of schizophrenia, top-ranked genes with 1.3-fold or greater change were shown to separate patients well from controls (Hakak et al., 2001; Iwamoto et al., 2004). We were not sure, however, whether top-ranked genes expressed in whole blood represent important biological pathways of the brain that are involved in schizophrenia. Previous research has demonstrated that the selection of top-ranked genes might lose essential information for the purpose of classification, since they are usually highly correlated (Jaeger et al., 2003; Liu et al., 2004). Low-ranked genes are sometimes necessary for classifiers to achieve greater accuracy (Li et al., 2003). We therefore consider that it is reasonable for the forward selection algorithms to identify probes with relatively small FC as predictors for classification.

In peripheral blood, variations in transcription level among individuals are attributed to genetic or epigenetic components

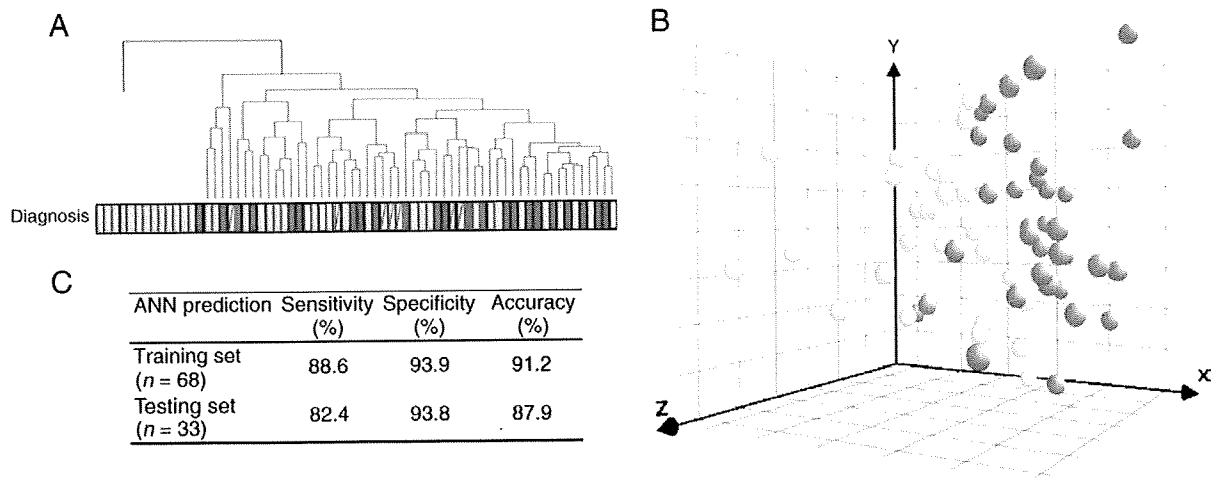


Fig. 4. Classification by 14 predictors identified with stepwise forward selection. A. Hierarchical clustering resulted in two ambiguous clusters. One patient was grouped into controls, and 20 controls were grouped together with patients. Closed green square, normal controls; closed red square, drug-naïve patients with schizophrenia; open red square, drug-free patients with schizophrenia; and open red square with a slash, antipsychotic-naïve patients with schizophrenia. Note that past exposure to antipsychotics or current medication status did not affect the expression pattern of the predictors. B. Plot of the three principal components generated from 14 selected predictors revealed segregation by diagnosis but with some overlap. Green sphere, normal controls; red sphere, patients with schizophrenia. C. Performance of ANN prediction in training set and testing set samples.

and cellular composition (Cheung et al., 2003; Eady et al., 2005; Radich et al., 2004; Whitney et al., 2003). For convenience as a diagnostic tool and to minimize technical fluctuations (Debey et al., 2004; Ohmori et al., 2005), we stabilized RNA as blood was withdrawn into PAXgene Blood RNA Tubes instead of isolating a specific type of cells with time delay (Rainen et al., 2002). It has been shown that homeostasis of cellular composition in healthy individuals keeps consistent patterns of global gene expression as compared with individuals with lymphoma or bacterial infection (Whitney et al., 2003). Our forward selection algorithm did not choose genes associated with specific blood cell types. Therefore, so far as excluding samples with physiological illness, we assume that variations by cellular composition are maximally suppressed by supervised training in ANNs.

Among 14 predictors, *DAOA* (*G72*) was the only gene associated with schizophrenia (Chumakov et al., 2002). Selective degradation of D-serine by *DAOA* and D-amino acid oxidase results in attenuated neurotransmission via NMDA receptor (Mothet et al., 2000), which probably links the up-regulation of *DAOA* (*G72*) in the present study to the earlier finding of decreased D-serine levels in the serum of patients with schizophrenia (Hashimoto et al., 2003). However, we should investigate how 14 genes are expressed in the brain and

whether they are associated with schizophrenia before discussing the biological significance of them in peripheral blood.

We demonstrate here that by using the ANN method we can classify schizophrenia based on gene expression signature obtained from whole peripheral blood. Since we constructed the ANN model using antipsychotics-free patients without comorbidity, ANN-based classification may be applied only for a subset of patients, especially with first-episode psychosis. There are several limitations in the present study: small sample size compared to the large scale microarray, gender difference between the two groups, and absence of quantitative reverse transcription-PCR (RT-PCR) results to corroborate microarray data. Statistical power of our sample size (50) was about 22% by computation at web-based bioinformatics service (<http://bioinformatics.mdanderson.org/MicroarraySampleSize/>). Therefore, our results, in terms of the predictor selection, should be interpreted cautiously. Before replicating the differential expression by RT-PCR, we are currently developing a custom array with less than several hundred probes. This will increase statistical power even with the same sample size. Moreover, high accuracy of our ANN model needs to be replicated by independent cohort with gender-matched groups before applying it to clinical practice.

Table 3

Performance of ANN prediction in regrouped sample sets.

Sample set	Group	Age (mean ± SD)	Sex (M/F)	Sensitivity (%)	Specificity (%)	Accuracy (%)
A	NC	31.3 ± 10.6	8/4	76.9	83.3	80.0
	SZ	36.8 ± 9.2	5/8			
B	NC	32.6 ± 11.0	9/3	84.6	100.0	92.0
	SZ	27.0 ± 10.9	5/8			
C	NC	32.6 ± 11.1	10/2	92.3	91.7	92.0
	SZ	28.8 ± 7.7	6/7			
D	NC	28.5 ± 4.6	8/5	92.3	100.0	96.2
	SZ	32.8 ± 14.8	5/8			

Role of funding source

This work was supported by the Contract Development Program of Japan Science and Technology Agency; the agency had no further role in study design; in the collection, analysis and interpretation of data; in the writing of the report; and in the decision to submit the paper for publication.

Contributors

Someya, Aoshima and Watanabe Y designed the study and wrote the protocol. Takahashi, Sawamura, Fukui, Watanabe J, Kitajima, Yamanouchi, Iwata, Mizukami, Hori, Shimoda, Ujiike and Ozaki recruited subjects. Iijima and Takemura performed gene expression profiling, and Hayashi undertook the statistical analysis. Takahashi wrote the first draft of the manuscript. All authors contributed to and have approved the final manuscript.

Please cite this article as: Takahashi, M., et al., Diagnostic classification of schizophrenia by neural network analysis of blood-based gene expression signatures, *Schizophr. Res.* (2010), doi:10.1016/j.schres.2009.12.024

Conflict of interest

Hayashi, Iijima, Takamura and Aoshima work for R&D Department of SRL Inc. All other authors declare that they have no conflicts of interest.

Acknowledgement

We thank Dr. Hiroyuki Nawa for the helpful discussions.

Appendix A. Supplementary data

Supplementary data associated with this article can be found, in the online version, at doi:10.1016/j.schres.2009.12.024.

References

- Aston, C., Jiang, L., Sokolov, B.P., 2004. Microarray analysis of postmortem temporal cortex from patients with schizophrenia. *J. Neurosci. Res.* 77 (6), 858–866.
- Cheung, V.G., Conlin, L.K., Weber, T.M., Arcaro, M., Jen, K.Y., Morley, M., Spielman, R.S., 2003. Natural variation in human gene expression assessed in lymphoblastoid cells. *Nat. Genet.* 33 (3), 422–425.
- Chumakov, I., Blumenfeld, M., Guerassimenko, O., Cavarec, L., Palicio, M., Abderrahim, H., Bougueleret, L., Barry, C., Tanaka, H., La Rosa, P., Puech, A., Tahri, N., Cohen-Akenine, A., Delabrosse, S., Lissarrague, S., Picard, F.P., Maurice, K., Essioux, L., Milasseau, P., Grel, P., Debailleul, V., Simon, A.M., Caterina, D., Dufaure, I., Malekzadeh, K., Belova, M., Luan, J.J., Bouillot, M., Sambucy, J.L., Primas, G., Saumier, M., Boubkiri, N., Martin-Saumier, S., Nasroune, M., Peixoto, H., Delaye, A., Pinchot, V., Bastucci, M., Guillou, S., Chevillon, M., Sainz-Fuertes, R., Meguenni, S., Aurich-Costa, J., Cherif, D., Gimalac, A., Van Duijn, C., Gauvreau, D., Ouellette, G., Fortier, I., Raelson, J., Sherbatich, T., Riazanskaia, N., Rogaeve, E., Raeymaekers, P., Aerssens, J., Konings, F., Luyten, W., Macciardi, F., Sham, P.C., Straub, R.E., Weinberger, D.R., Cohen, N., Cohen, D., 2002. Genetic and physiological data implicating the new human gene G72 and the gene for D-amino acid oxidase in schizophrenia. *Proc. Natl. Acad. Sci. U. S. A.* 99 (21), 13,675–13,680.
- De Bruyne, V., Al-Mulla, F., Pot, B., 2007. Methods for microarray data analysis. *Methods Mol. Biol.* 382, 373–391.
- Debey, S., Schoenbeck, U., Hellmich, M., Gathof, B.S., Pillai, R., Zander, T., Schultze, J.L., 2004. Comparison of different isolation techniques prior gene expression profiling of blood derived cells: impact on physiological responses, on overall expression and the role of different cell types. *Pharmacogenomics J.* 4 (3), 193–207.
- Eady, J.J., Wortley, G.M., Wormstone, Y.M., Hughes, J.C., Astley, S.B., Foxall, R.J., Doleman, J.F., Elliott, R.M., 2005. Variation in gene expression profiles of peripheral blood mononuclear cells from healthy volunteers. *Physiol. Genomics* 22 (3), 402–411.
- Hakak, Y., Walker, J.R., Li, C., Wong, W.H., Davis, K.L., Buxbaum, J.D., Haroutunian, V., Fienberg, A.A., 2001. Genome-wide expression analysis reveals dysregulation of myelination-related genes in chronic schizophrenia. *Proc. Natl. Acad. Sci. U. S. A.* 98 (8), 4746–4751.
- Hashimoto, K., Fukushima, T., Shimizu, E., Komatsu, N., Watanabe, H., Shinoda, N., Nakazato, M., Kumakiri, C., Okada, S., Hasegawa, H., Imai, K., Iyo, M., 2003. Decreased serum levels of D-serine in patients with schizophrenia: evidence in support of the N-methyl-D-aspartate receptor hypofunction hypothesis of schizophrenia. *Arch. Gen. Psychiatry* 60 (6), 572–576.
- Hemby, S.E., Ginsberg, S.D., Brunk, B., Arnold, S.E., Trojanowski, J.Q., Eberwine, J.H., 2002. Gene expression profile for schizophrenia: discrete neuron transcription patterns in the entorhinal cortex. *Arch. Gen. Psychiatry* 59 (7), 631–640.
- Huang da, W., Sherman, B.T., Tan, Q., Kir, J., Liu, D., Bryant, D., Guo, Y., Stephens, R., Baseler, M.W., Lane, H.C., Lempicki, R.A., 2007. DAVID Bioinformatics Resources: expanded annotation database and novel algorithms to better extract biology from large gene lists. *Nucleic Acids Res.* 35, W169–W175 Web Server issue.
- Iwamoto, K., Kato, T., 2006. Gene expression profiling in schizophrenia and related mental disorders. *Neuroscientist* 12 (4), 349–361.
- Iwamoto, K., Kakiuchi, C., Bundo, M., Ikeda, K., Kato, T., 2004. Molecular characterization of bipolar disorder by comparing gene expression profiles of postmortem brains of major mental disorders. *Mol. Psychiatry* 9 (4), 406–416.
- Iwamoto, K., Bundo, M., Kato, T., 2005. Altered expression of mitochondria-related genes in postmortem brains of patients with bipolar disorder or schizophrenia, as revealed by large-scale DNA microarray analysis. *Hum. Mol. Genet.* 14 (2), 241–253.
- Jaeger, J., Sengupta, R., Ruzzo, W.L., 2003. Improved gene selection for classification of microarrays. *Pac. Symp. Biocomput.* 53–64.
- Khan, J., Wei, J.S., Ringner, M., Saal, L.H., Ladanyi, M., Westermann, F., Berthold, F., Schwab, M., Antonescu, C.R., Peterson, C., Meltzer, P.S., 2001. Classification and diagnostic prediction of cancers using gene expression profiling and artificial neural networks. *Nat. Med.* 7 (6), 673–679.
- Lancashire, L.J., Rees, R.C., Ball, G.R., 2008. Identification of gene transcript signatures predictive for estrogen receptor and lymph node status using a stepwise forward selection artificial neural network modelling approach. *Artif. Intell. Med.* 43 (2), 99–111.
- Li, Q., 2007. Improvement of bias and generalizability for computer-aided diagnostic schemes. *Comput. Med. Imaging Graph.* 31 (4–5), 338–345.
- Li, J., Liu, H., Ng, S.K., Wong, L., 2003. Discovery of significant rules for classifying cancer diagnosis data. *Bioinformatics* 19 (Suppl 2), ii93–ii102.
- Lin, Y.H., Friederichs, J., Black, M.A., Mages, J., Rosenberg, R., Guilford, P.J., Phillips, V., Thompson-Fawcett, M., Kasabov, N., Toro, T., Merrie, A.E., van Rij, A., Yoon, H.S., McCall, J.L., Siewert, J.R., Holzmann, B., Reeve, A.E., 2007. Multiple gene expression classifiers from different array platforms predict poor prognosis of colorectal cancer. *Clin. Cancer Res.* 13 (2), 498–507.
- Liu, B., Cui, Q., Jiang, T., Ma, S., 2004. A combinational feature selection and ensemble neural network method for classification of gene expression data. *BMC Bioinformatics* 5 (136), 1–12.
- Middleton, F.A., Pato, C.N., Gentile, K.L., McGann, L., Brown, A.M., Trauzzi, M., Diab, H., Morley, C.P., Medeiros, H., Macedo, A., Azevedo, M.H., Pato, M.T., 2005. Gene expression analysis of peripheral blood leukocytes from discordant sib-pairs with schizophrenia and bipolar disorder reveals points of convergence between genetic and functional genomic approaches. *Am. J. Med. Genet. B Neuropsychiatr. Genet.* 136B (1), 12–25.
- Mirnic, K., Middleton, F.A., Marquez, A., Lewis, D.A., Levitt, P., 2000. Molecular characterization of schizophrenia viewed by microarray analysis of gene expression in prefrontal cortex. *Neuron* 28 (1), 53–67.
- Mirnic, K., Middleton, F.A., Stanwood, G.D., Lewis, D.A., Levitt, P., 2001. Disease-specific changes in regulator of G-protein signaling 4 (RGS4) expression in schizophrenia. *Mol. Psychiatry* 6 (3), 293–301.
- Mothet, J.P., Parent, A.T., Wolosker, H., Brady Jr., R.O., Linden, D.J., Ferris, C.D., Rogawski, M.A., Snyder, S.H., 2000. D-serine is an endogenous ligand for the glycine site of the N-methyl-D-aspartate receptor. *Proc. Natl. Acad. Sci. U. S. A.* 97 (9), 4926–4931.
- Ohmori, T., Morita, K., Saito, T., Ohta, M., Ueno, S., Rokutan, K., 2005. Assessment of human stress and depression by DNA microarray analysis. *J. Med. Invest.* 52, 266–271 Suppl.
- Vawter, M.P., Ferran, E., Galke, B., Cooper, K., Bunney, W.E., Byerley, W., 2004. Microarray screening of lymphocyte gene expression differences in a multiplex schizophrenia pedigree. *Schizophr. Res.* 67 (1), 41–52.
- O'Neill, M.C., Song, L., 2003. Neural network analysis of lymphoma microarray data: prognosis and diagnosis near-perfect. *BMC Bioinformatics* 4 (13), 1–12.
- Radich, J.P., Mao, M., Stepaniants, S., Biery, M., Castle, J., Ward, T., Schimack, G., Kobayashi, S., Carleton, M., Lampe, J., Linsley, P.S., 2004. Individual-specific variation of gene expression in peripheral blood leukocytes. *Genomics* 83 (6), 980–988.
- Rainen, L., Oelmueller, U., Jurgensen, S., Wyrich, R., Ballas, C., Schram, J., Herdman, C., Bankaitis-Davis, D., Nicholls, N., Trollinger, D., Tryon, V., 2002. Stabilization of mRNA expression in whole blood samples. *Clin. Chem.* 48 (11), 1883–1890.
- Rhodes, D.R., Yu, J., Shanker, K., Deshpande, N., Varambally, R., Ghosh, D., Barrette, T., Pandey, A., Chinnaiyan, A.M., 2004. Large-scale meta-analysis of cancer microarray data identifies common transcriptional profiles of neoplastic transformation and progression. *Proc. Natl. Acad. Sci. U. S. A.* 101 (25), 9309–9314.
- Schwarz, E., Bahn, S., 2008. The utility of biomarker discovery approaches for the detection of disease mechanisms in psychiatric disorders. *Br. J. Pharmacol.* 153 (Suppl 1), S133–S136.
- Storey, J.D., Tibshirani, R., 2003. Statistical significance for genomewide studies. *Proc. Natl. Acad. Sci. U. S. A.* 100 (16), 9440–9445.
- Sugai, T., Kawamura, M., Iritani, S., Araki, K., Makifuchi, T., Imai, C., Nakamura, R., Kakita, A., Takahashi, H., Nawa, H., 2004. Prefrontal abnormality of schizophrenia revealed by DNA microarray: impact on glial and neurotrophic gene expression. *Ann. N.Y. Acad. Sci.* 1025, 84–91.
- Sullivan, P.F., Fan, C., Perou, C.M., 2006. Evaluating the comparability of gene expression in blood and brain. *Am. J. Med. Genet. B Neuropsychiatr. Genet.* 141B (3), 261–268.
- Tkachev, D., Mimmack, M.L., Ryan, M.M., Wayland, M., Freeman, T., Jones, P.B., Starkey, M., Webster, M.J., Yolken, R.H., Bahn, S., 2003. Oligodendrocyte dysfunction in schizophrenia and bipolar disorder. *Lancet* 362 (9386), 798–805.
- Tsuang, M.T., Nossova, N., Yager, T., Tsuang, M.M., Guo, S.C., Shyu, K.G., Glatt, S.J., Liew, C.C., 2005. Assessing the validity of blood-based gene expression profiles for the classification of schizophrenia and bipolar disorder: a preliminary report. *Am. J. Med. Genet. B Neuropsychiatr. Genet.* 133B (1), 1–5.

Please cite this article as: Takahashi, M., et al., Diagnostic classification of schizophrenia by neural network analysis of blood-based gene expression signatures, *Schizophr. Res.* (2010), doi:10.1016/j.schres.2009.12.024

ARCHIVAL REPORT

Brain Cannabinoid CB2 Receptor in Schizophrenia

Hiroki Ishiguro, Yasue Horiuchi, Maya Ishikawa, Minori Koga, Keiko Imai, Yoshimi Suzuki, Miyuki Morikawa, Toshiya Inada, Yuichiro Watanabe, Makoto Takahashi, Toshiyuki Someya, Hiroshi Ujike, Nakao Iwata, Norio Ozaki, Emmanuel S. Onaivi, Hiroshi Kunugi, Tsukasa Sasaki, Masanari Itokawa, Makoto Arai, Kazuhiro Niizato, Shyuji Iritani, Izumi Naka, Jun Ohashi, Akiyoshi Kakita, Hitoshi Takahashi, Hiroyuki Nawa, and Tadao Arinami

Background: Neural endocannabinoid function appears to be involved in schizophrenia. Two endocannabinoid receptors, CB1 and CB2, are found in the brain and elsewhere in the body. We investigated roles of CB2 in schizophrenia.

Materials and Methods: An association study was performed between tag single nucleotide polymorphisms (SNPs) in the *CNR2* gene encoding the CB2 receptor and schizophrenia in two independent case-control populations. Allelic differences of associated SNPs were analyzed in human postmortem brain tissues and in cultured cells. Prepulse inhibition and locomotor activity in C57BL/6JMsSlc mice with CB2 receptor antagonist AM630 administration was examined.

Results: The analysis in the first population revealed nominally significant associations between schizophrenia and two SNPs, and the associations were replicated in the second population. The R63 allele of rs2501432 (R63Q) ($p = .001$), the C allele of rs12744386 ($p = .005$) and the haplotype of the R63-C allele ($p = 5 \times 10^{-6}$) were significantly increased among 1920 patients with schizophrenia compared with 1920 control subjects in the combined population. A significantly lower response to CB2 ligands in cultured CHO cells transfected with the R63 allele compared with those with Q63, and significantly lower CB2 receptor mRNA and protein levels found in human brain with the CC and CT genotypes of rs12744386 compared with TT genotype were observed. AM630 exacerbated MK-801- or methamphetamine-induced disturbance of prepulse inhibition and hyperactivity in C57BL/6JMsSlc mice.

Conclusions: These findings indicate an increased risk of schizophrenia for people with low CB2 receptor function.

Key Words: Association, cAMP, cannabinoid, G protein coupled receptor, gene, methamphetamine, MK-801, mouse, postmortem brain, schizophrenia

Tetrahydrocannabinol (THC) in marijuana acts on cannabinoid receptors, and natural endocannabinoids are important regulators of various aspects of psychobehavioral, immunologic, and metabolic functions. Many relationships be-

tween marijuana use and schizophrenia have been reported: a dose-response relationship has been found between the amount of cannabis used in adolescence and the subsequent risk of developing schizophrenia (1,2), more psychotic symptoms are experienced by schizophrenic patients who use cannabis (3), schizophrenia-like symptoms can occur in nonschizophrenic people after cannabis use (4), and there is a decrease in gray matter density in the right posterior cingulate cortex in first-episode schizophrenics who use cannabis compared with those who do not use cannabis (5). Further, biological phenomena related to endogenous cannabinoids such as significantly higher amounts of the endocannabinoid anandamide in the blood occur more frequently in patients with acute schizophrenia than in healthy volunteers (6), and significantly higher levels of anandamide are detected in the cerebrospinal fluid (CSF) of first-episode schizophrenic patients than that of healthy volunteers (7,8).

Endogenous cannabinoids bind to and activate two G protein-coupled receptors, the predominantly central cannabinoid receptor type 1 (CB1) and predominantly peripherally expressing cannabinoid receptor type 2 (CB2). CB1 receptor has mainly been investigated in the endogenous cannabinoid system in the central nervous system (CNS) (9–11). In schizophrenic patients, the cannabinoid CB1 receptor agonist CP-55940 disrupts sensory gating and neuronal oscillation (12). Some studies have also suggested an association between microsatellite and single nucleotide polymorphism (SNP) genetic markers in the *CNR1* gene (encoding the CB1 receptor) and the incidence of schizophrenia (13–16). However, neither nonsynonymous polymorphisms nor polymorphisms in the *CNR1* gene that influence the full-length *CNR1* transcript expression have been reported.

In addition to human studies, prepulse inhibition (PPI) is frequently used in pharmacobehavioral studies of animal models. Prepulse inhibition refers to the reduction in amplitude of the

From the Department of Medical Genetics (HI, YH, MIs, MK, KI, YS, MM, TA), Graduate School of Comprehensive Human Sciences, University of Tsukuba, Tsukuba, Ibaraki; Core Research for Evolutional Science and Technology (HI, YH, MK, MIt, TA), Japan Science and Technology Agency, Kawaguchi-shi, Saitama; Seiwa Hospital (TI), Institute of Neuropsychiatry, Tokyo; Department of Psychiatry (YW, MT, TSo), Niigata University, Graduate School of Medical and Dental Sciences, Niigata; Department of Neuropsychiatry (HU), Okayama University, Graduate School of Medicine, Dentistry & Pharmaceutical Sciences, Shikata-cho, Okayama; Department of Psychiatry (NI), Fujita Health University School of Medicine, Toyoake, Aichi; and Department of Psychiatry (NO), School of Medicine, Nagoya University, Nagoya, Aichi, Japan; Department of Biology (ESO), William Paterson University, Wayne, New Jersey; National Center of Neurology and Psychiatry (HK), Tokyo; Health Service Center (TSa), University of Tokyo, Tokyo; Department of Schizophrenia Research (MIt, MA), Tokyo Institute of Psychiatry, Tokyo; Tokyo Metropolitan Matsuzawa Hospital (MIt, KN, SI), Department of Psychiatry, Tokyo; Department of Human Genetics (IN), Graduate School of Medicine, University of Tokyo, Tokyo; Department of Genome Epidemiology (JO), Graduate School of Comprehensive Human Sciences, University of Tsukuba, Tsukuba, Ibaraki; and Brain Research Institute (AK, HT, HN), Niigata University, Niigata, Japan.

Address correspondence to Hiroki Ishiguro, M.D., Ph.D., Department of Medical Genetics, Graduate School of Comprehensive Human Sciences, University of Tsukuba, 1-1-1 Tennoudai, Tsukuba, Ibaraki 305-8575, Japan.
E-mail: hishigur@md.tsukuba.ac.jp.

Received Jan 6, 2009; revised Sep 17, 2009; accepted Sep 18, 2009.

startle reflex that occurs when a brief, subthreshold stimulus immediately precedes a startle stimulus (17). Deficits in PPI are observed in several psychiatric disorders, particularly in schizophrenia (18), and it has been postulated that this impairment of sensorimotor gating reflects at least some portion of the cognitive dysfunction observed in patients with schizophrenia (19,20). In relation to the cannabinoid system, Long *et al.* (21) reported that cannabidiol reverses MK-801-induced disruption of PPI in mice.

Recently, attention has been drawn to the expression of the CB2 receptor in the CNS (22–24). This receptor has been reported to be involved in alcohol preference in mice and in human alcoholism (25). Clinical remission of schizophrenia has been reported to be accompanied by significant decreases in anandamide and *CNR2* mRNA levels, which encode the CB2 receptor, in peripheral blood mononuclear cells (6). Thus, CB2 receptors may play a role in psychiatric disorders.

In this study, we investigated genetic associations between *CNR2* gene polymorphisms and schizophrenia and functions of potentially associated SNPs in cultured cells and human post-mortem brain. The effects of CB2 receptor inverse agonist on mouse behavior were also investigated.

Materials and Methods

Participants in the Association Study

Consensual diagnosis of schizophrenia was made according to the DSM-IV. Control subjects had no history of mental illness, and second-degree relatives were free of psychosis in a brief psychiatric interview. The first screening group of subjects (East Japan) comprised 1152 unrelated Japanese patients with schizophrenia and 1194 control subjects. The second group of subjects (West Japan) for replication analysis comprised 768 unrelated Japanese patients with schizophrenia and 726 control subjects (see details in Methods and Materials section of Supplement 1). HapMap Yoruba subjects were also genotyped because the allele frequency of rs2501432 was not known.

SNP Analysis

Five tag SNPs [rs9424339, rs2502959, rs2501432 (R63Q), rs2229579 (H316T), and rs12744386] were selected using the Haploview version 3.32 software (<http://www.broad.mit.edu/>

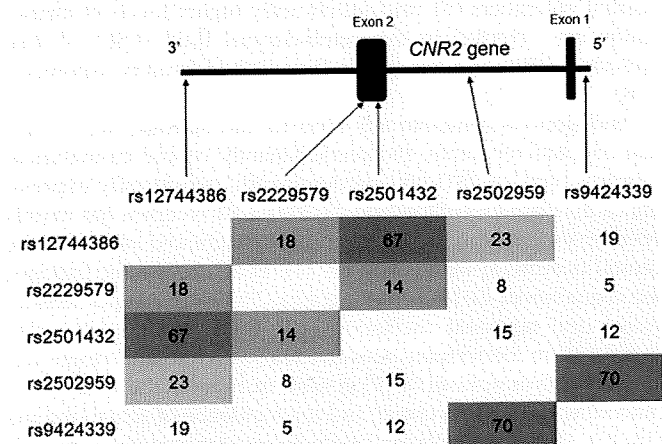


Figure 1. *CNR2* tag single nucleotide polymorphisms and the genetic structure. The genetic structure of *CNR2* is shown at top; the gene consists of two exons, and only the second exon encodes amino acids. Location and linkage disequilibrium (r^2 values) of five single nucleotide polymorphisms, including two functional polymorphisms, are shown.

mpg/haploview/) from the Japanese subject data in the in the HapMap database (Figure 1). These SNPs contain two common nonsynonymous polymorphisms, and rs12744386, which was associated with different *CNR2* gene expression by *cis*-acting fashion (C allele, effect = -0.490 , $H^2 = 11.64$, logarithm of odds (LOD) = 8.819) in lymphoblast cells, as listed in the SNP browser 1.01 database (26) (Figure 2A).

Genotypes were determined using TaqMan SNP genotyping assay (Applied Biosystems, Foster City, California) or by polymerase chain reaction-restriction fragment length polymorphism (PCR-RFLP) method (see details in Methods and Materials of Supplement 1).

Human Postmortem Brains

Brain tissue of gray matter in an area of the prefrontal cortex (Brodmann's area 9 [BA9]) was received from two tissue banks and one research institute (Table S1 and Methods and Materials in Supplement 1).

CNR2 Gene and Protein Expression Analysis

Expression of the *CNR2* gene was analyzed using the TaqMan Realtime PCR system with the TaqMan gene expression assays Hs00361490-m1. TaqMan *GAPDH* Control Reagent and TaqMan β -actin Control Reagents were used to normalize the data, respectively (Applied Biosystems). Expression of the *CNR2* protein was analyzed with the Western blot method. Human CB2 Receptor Polyclonal Antibody (1:1000 dilution) (#101550, Lot. 165113, Cayman Chemical, Ann Arbor, Michigan) was used as the primary antibody, or polyclonal antibody to beta-Actin (1:500 dilution; IMG-5142A, Lot. 03,231,897B-04, Imgenex, San Diego, California), for normalization (see details in Methods and Materials of Supplement 1).

Functional Analysis of the *CNR2* Gene in Comparison Between R63 and Q63

CB2 receptors with either the *CNR2* R63 or Q63 allele were expressed in cultured CHO cells (see details in Methods and Materials of Supplement 1). One millimolar forskolin as final concentration was added to the culture medium for 15 min, and then the endocannabinoid 2-arachidonoylglycerol (2-AG; 1 μ mol/L, final concentration; Cayman Chemical), CB2 selective agonist JWH-015 (50 μ mol/L, final concentration; Cayman Chemical) or CB2 selective inverse agonist AM630 (100 μ mol/L, final concentration) (Tocris Bioscience, Ellisville, Missouri) was administered to the cells. cAMP level was measured 15 min after the administration using the camp-Screen System (Applied Biosystems, Bedford, MA). Effects of those ligands on the cyclic adenosine monophosphate (cAMP) levels were examined in each allele type of CB2 receptor expressed CHO cells (see details in Methods and Materials of Supplement 1). Because the CB2 receptor is a Gi-type G protein-coupled receptor, decreased or increased levels of cAMP were considered the proper response to the agonists or inverse agonists, respectively.

Prepulse Inhibition and Locomotor Tests in Mice

Effects of pretreatment with CB2 ligand AM630 (3 mg/kg or 30 mg/kg intraperitoneally) on drug (either MK-801 or methamphetamine)-induced prepulse inhibition (PPI) and locomotor activity were evaluated in C57BL/6JmSlc male mice (Japan SLC, Shizuoka, Japan). Experimental procedures are described in Methods and Materials of Supplement 1.

All animal procedures were performed according to protocols approved by the Animal Care and Use Committee of the University of Tsukuba.

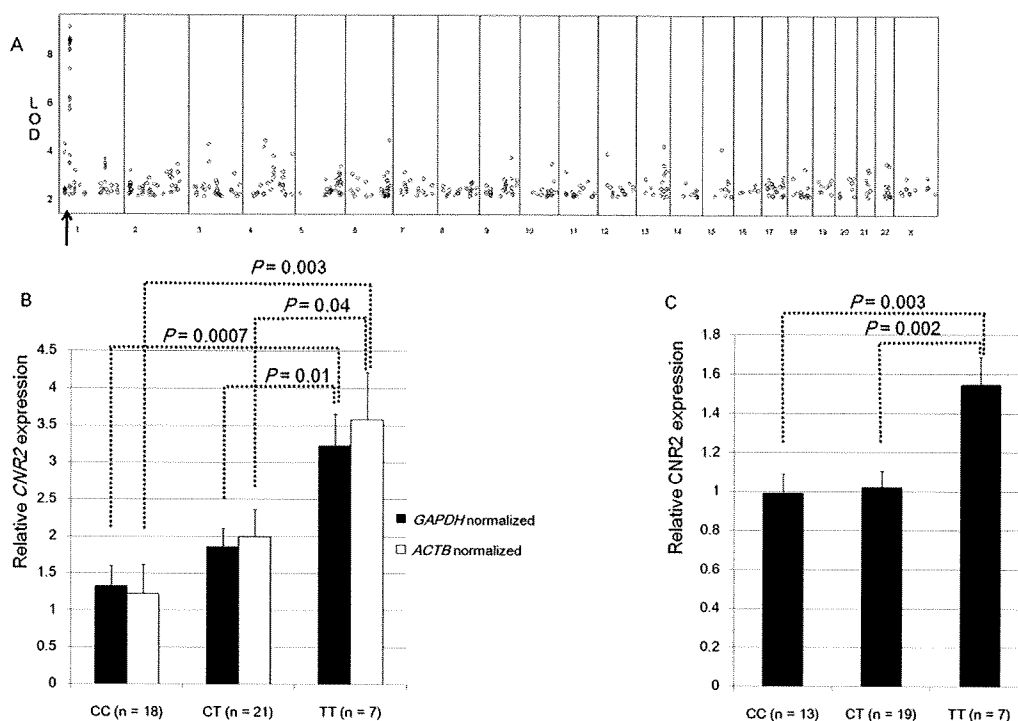


Figure 2. Analysis of cannabinoid CB2 receptor expression. **(A)** A *cis*-acting gene expression change of *CNR2* in lymphoblasts. Results of the search for polymorphisms in the *CNR2* gene locus from the mRNA by single nucleotide polymorphism browser (<http://www.sph.umich.edu/csg/liang/asthma/>). The genetic markers indicated by the red arrow are correlated with *CNR2* expression in lymphoblasts. One of the strongest effects on *CNR2* gene expression was induced by rs12744386. **(B)** Correlation between *CNR2* gene expression and rs12744386 genotype in the human postmortem brain. The vertical axis shows the relative *CNR2* expression level in each of the three genotype groups, compared with mean gene expression in the total samples. **(C)** Correlation between *CNR2* protein expression and rs12744386 genotype in human postmortem brain. The vertical axis shows the relative *CNR2* protein expression in each of the three genotype groups, compared with mean gene expression in the total samples. Five subjects with the CC genotype and two subjects with the CT genotype were not available for the analysis. LOD, logarithm of odds.

Statistics

Deviation from predicted Hardy-Weinberg frequencies, allelic associations, and linkage disequilibrium (LD) between SNPs were evaluated with Haploview software, version 3.11. Because two-stage analyses were performed for genetic associations, SNPs showing nominally significant allelic association ($p < .05$) were subsequently analyzed in an independent population. A significant association was defined when the given p value for allelic tests was less than 5% after permutation analysis in the second and combined populations. Haplotype associations were also evaluated by permutation analysis using Haploview software version 3.11. The global haplotype association was tested with COCAPHASE from the UNPHASED software 2.403 (27).

The relationship between *CNR2* gene expression levels and diagnosis of schizophrenia was analyzed by t test. Relationships between *CNR2* gene expression or protein expression levels and rs12744386 genotypes were analyzed using one-way analysis of variance (ANOVA), followed by post hoc analysis using a Student's t test. The correlation between *CNR2* gene expression and *CNR2* protein expression levels was analyzed by linear regression analysis. The correlation between *CNR2* expression levels and either postmortem interval (PMI) or pH in brain tissues was assessed by linear regression analysis. The cAMP levels detected by enzyme-linked immunosorbent assay after treatment with CB2 ligands were analyzed between CHO cells transfected with each allelic type of CB2 receptor by ANOVA, followed by post hoc analysis using a Student's t test. Effects of drug treatment, prepulse, and the interaction on percent PPI were analyzed by ANOVA, followed by post hoc analysis using a

Student's t test to evaluate effect of AM630 pretreatments with two doses on either MK-801 or methamphetamine induced PPI, respectively (Bonferroni correction for two comparisons). The effect was then analyzed at each prepulse intensity. Effects of drug treatment, AM630 pretreatments, and the interaction on locomotor activity were analyzed by ANOVA, followed by post hoc analysis using a Student's t test to evaluate effect of two doses of AM630 pretreatments (Bonferroni correction for two comparisons). ANOVA and Student's t tests were carried out using JMP software version 5.1 (SAS Institute, Japan).

Results

Table 1 shows the distribution of the genotypes of the tag SNPs in the *CNR2* gene region, and Figure 1 shows the LD pattern within those tag SNPs. None of the SNPs deviated significantly from the expected Hardy-Weinberg equilibrium. Nominally, significant differences were found in allele frequencies of rs12744386 ($p = .05$, odds ratio [OR] = 1.13 with 95% confidence interval [CI]: 1.00–1.27) and rs2501432 (R63Q) ($p = .003$, OR = 1.19, 95% CI: 1.06–1.34) between schizophrenic and control subjects from east Japan (Table 1). The significant differences were replicated in subjects from west Japan; rs12744386 (OR = 1.19, 95% CI: 1.03–1.38, permutation $p = .04$) and rs2501432 (R63Q) (OR = 1.19, 95% CI: 1.02–1.37, permutation $p = .04$) between schizophrenic and control subjects from west Japan (Table 1).

In the combined populations, the distributions of allele frequencies between schizophrenic and control subjects were

Table 1. Genotype and Allele Distributions of tag Single Nucleotide Polymorphisms (SNPs) in the *CNR2* in the Case Control Subjects

SNP	Samples (n)	Genotype Count (Frequency)						p	Allele Count (Frequency)				p
First Screening													
rs12744386	East Japan	CC	CT	TT					C	T			
	Schizophrenic	1146	448	39%	537	47%	161	14%	1433	63%	859	37%	
	Control	1185	420	35%	575	49%	190	16%	1415	60%	955	40%	.049
rs2229579	East Japan	AA	AG	GG					A	G			
	Schizophrenic	1147	34	3%	292	25%	821	72%	360	16%	1934	84%	
	Control	1171	27	2%	274	23%	870	74%	328	14%	2014	86%	.11
rs2501432	East Japan	GG/GG (R/R)	GG/AA (R/Q)	AA/AA (Q/Q)					GG (Arg)	AA (Gln)			
	Schizophrenic	1111	432	39%	482	43%	197	18%	1346	61%	876	39%	
	Control	1170	374	32%	569	49%	227	19%	1317	56%	1023	44%	.003
rs2502959	East Japan	AA	AC	CC					A	C			
	Schizophrenic	1149	119	10%	536	47%	494	43%	774	34%	1524	66%	
	Control	1183	108	9%	535	45%	540	46%	751	32%	1615	68%	.16
rs9424339	East Japan	AA	AT	TT					A	T			
	Schizophrenic	1147	131	11%	537	47%	479	42%	799	35%	1495	65%	
	Control	1181	129	11%	525	44%	527	45%	783	33%	1579	67%	.23
Replication Study													
rs12744386	West Japan	CC	CT	TT					C	T			
	Schizophrenic	761	304	40%	355	47%	102	13%	963	63%	559	37%	
	Control	722	252	35%	349	48%	121	17%	853	59%	591	41%	.019
rs2501432	West Japan	GG/GG (R/R)	GG/AA (R/Q)	AA/AA (Q/Q)					GG (Arg)	AA (Gln)			
	Schizophrenic	745	248	33%	370	50%	127	17%	866	58%	624	42%	
	Control	698	217	31%	319	46%	162	23%	753	54%	643	46%	.024
Combined													
rs12744386	Total	CC	CT	TT					C	T			
	Schizophrenic	1907	752	39%	892	47%	263	13%	2396	63%	1418	37%	
	Control	1908	673	35%	924	48%	311	16%	2270	59%	1546	41%	.0028
rs2501432	Total	GG/GG (R/R)	GG/AA (R/Q)	AA/AA (Q/Q)					GG (Arg)	AA (Gln)			
	Schizophrenic	1859	681	37%	852	46%	326	18%	2214	60%	1504	40%	
	Control	1876	591	32%	890	47%	395	21%	2072	55%	1680	45%	.00015

significantly different for rs12744386 (OR = 1.15, 95% CI: 1.05–1.26, permutation $p = .005$) and rs2501432 (R63Q) (OR = 1.19, 95% CI: 1.09–1.31, permutation $p = .001$) (Table 1). Because of the relatively strong LD between rs12744386 and rs2501432 ($r^2 = .67$), the haplotype was constructed with these two SNPs to examine the association between the haplotype and schizophrenia. As a result, the haplotype of the C allele of rs12744386 and R63 allele showed a strong association with schizophrenia in our Japanese subjects (OR = 1.26, 95% CI: 1.15–1.37, permutation $P = 5 \times 10^{-6}$), which was also observed independently in two groups of subjects (Table 2). The global haplotype association p value was 5.1×10^{-9} .

rs12744386 was suggested to be associated with *CNR2* mRNA levels in lymphoblastoid cell lines by SNP Browser (allele C: Effect = $-.49$, $H2 = 11.64$, LOD = 8.819; Figure 2A). This association was confirmed in postmortem prefrontal brain samples. The rs12744386 genotypes were associated with the *CNR2* mRNA levels in the brain [*GAPDH*-normalized, $F(2,45) = 6.7$, $p = .003$; *ACTB*-normalized, $F(2,45) = 4.9$, $p = .01$; Figure 2B], and with the *CNR2* protein levels in the brain [$F(2,38) = 6.3$, $p = .005$; Figure 2C] with the lowest expression in the CC genotype

and the highest expression in the TT genotype. Post hoc analysis showed a significant difference between TT and other genotypes (Figure 2B). There was a significant correlation between results for gene expression normalized by two internal controls, *GAPDH* and *ACTB* [$r^2 = .67$, $F(1,45) = 87.83$, $p < .0001$]. There was also significant correlation between results for gene expression normalized by *ACTB* and protein expression normalized by *ACTB* [$r^2 = .12$, $F(1,33) = 4.2$, $p = .05$]. There were no significant correlations between PMI and *CNR2* expression [*GAPDH*-normalized, $F(1,44) = .6$, NS; β -*actin*-normalized, $F(1,44) = .7$, ns]; pH and *CNR2* expression [*GAPDH*-normalized, $F(1,43) = .4$, NS, *ACTB*-normalized, $F(1,43) = .05$, ns]; or diagnosis of schizophrenia and *CNR2* expression [*GAPDH*-normalized, $F(1,45) = .4$, ns, *ACTB*-normalized, $F(1,45) = 1.4$, NS].

Regarding the rs2501432 (R63Q) polymorphism, residue 63 of the CB2 receptor protein of the mouse (*Mus musculus*), rat (*Rattus norvegicus*), rhesus monkey (*Macaca mulatta*), and chimpanzee (*Pan troglodytes*) is arginine (R63), which is also the major allele of humans (Figure S1 in Supplement 1). A similar allelic frequency for Q63 (of rs2502959) was observed both in Japanese and Caucasian populations (approximately 45%). A

Table 2. Haplotype rs12744386-R63Q Association Between CNR2 and Schizophrenia

Haplotype	East Japan			West			Total			
	Frequency Patients	Frequency Control	χ^2	Frequency Patients	Frequency Control	χ^2	Frequency Patients	Frequency Control	χ^2	Permutation p
C-Arg	.578	.522	10	.574	.504	15	.577	.522	25	7.51×10^{-7}
T-Gln	.346	.373	3.9	.361	.373	.4	.352	.373	4	4.48×10^{-2}
C-Gln	.047	.064	6.8	.058	.086	8.6	.052	.073	15	9.04×10^{-5}
T-Arg	.029	.030	0	.007	.037	33	.02	.033	12	6.0×10^{-4}
										5×10^{-6}
										.1625
										.0005
										.0031

lower frequency was observed in an African population (17.3%; Figure S1 in Supplement 1). Analysis using the GENETYX software (Genetyx Corporation, Tokyo, Japan; <http://www.sdc.co.jp/genetyx/>) predicted a structural change of the receptor by the amino acid substitution and by Chou-Fasman, Robson, or hydrophilic/hydrophobic structure analysis (Figure S2 in Supplement 1).

In this study, responses of relative cAMP levels to saline and 2-AG, AM630, or JWH-015 in Q63- or R63-allele CNR2-transfected CHO cells were measured. CB2 receptor ligands did not change cAMP levels in the untransfected CHO cells. ANOVA revealed significant main effects of allele [$F(1,17) = 7.5, p = .01$] and of the interaction between 2-AG and allele [$F(1,17) = 7.5, p = .01$], but not of 2-AG [$F(1,17) = .4, \text{ns}$]. Further, ANOVA revealed significant main effects of AM630 administration [$F(1,29) = 14.8, p = .0006$], of allele [$F(1,29) = 4.2, p = .05$], and of the interaction between AM630 administration and allele [$F(1,61) = 3.0, p = .09$], JWH-015 administration [$F(1,61) = 3.1, p = .08$], and the interaction between JWH-015 administration and allele [$F(1,61) = 3.0, p = .09$]. Post hoc analysis demonstrated that relative cAMP levels were reduced in CHO cells with the Q63 type of CB2 receptor expressed, in response to both agonists, 2-AG (corrected $p = .09$) and JWH-015 (corrected $p = .03$). No significant reduction of cAMP levels was observed in those with R63 type of CB2 receptor in response to both ligands (Figure 3A,B). Levels of cAMP in CHO cells with the Q63 type of CB2 receptor were significantly less than in those with the R63 type CB2, in response to both agonists, 2-AG (corrected $p = .002$) and JWH-015 (corrected $p = .03$), respectively. The inverse agonist AM630 increased cAMP levels significantly more in CHO cells with the Q63 allelic CB2 receptor (corrected $p = .01$), but it was not significant in those with the R63 allelic CB2 receptor. Levels of cAMP were increased more significantly in CHO cells with the Q63 than in those with the R63 allelic CB2 receptor (corrected $p = .06$; Figure 3C). Unless the CB2 receptor was expressed in CHO cells, cAMP levels did not change in response to JWH-015 and to AM630 (Figure 3B and 3C).

We evaluated the effect of pretreatment with the CB2 receptor inverse agonist AM630 on PPI, combined with MK-801 or methamphetamine treatment separately, in mice. Alone, the CB2 receptor inverse agonist AM630 did not affect PPI in mice. ANOVA revealed significant main effects of prepulse intensity [$F(3,303) = 42.4, p < .0001$] and MK-801 [$F(4,304) = 25.5, p < .0001$], but not of the interaction [$F(12,312) = 1.4, \text{ns}$]. Post hoc analysis revealed pretreatment with AM630 at a dose of 30 mg/kg produced a significantly greater reduction in % PPI than MK-801 treatment alone ($p = .002$), but pretreatment with AM630 at the dose of 3 mg/kg did not significantly reduce % PPI ($p = .2$) compared with saline pretreatment. When analyzed at each prepulse intensity, the reduction of % PPI by pretreatment with AM630 at the dose of 30 mg/kg was observed at 85 dB prepulse intensity ($p = .03$; Figure 4A).

ANOVA revealed significant main effects of prepulse intensity [$F(3,207) = 38.1, p < .0001$] and of methamphetamine [$F(4,208) = 3.3, p = .01$], but not of the interaction [$F(12,216) = .3, \text{ns}$]. Post hoc analysis revealed pretreatment with AM630 at a dose of 3 mg/kg produced a significantly greater reduction in % PPI than methamphetamine treatment alone ($p = .04$), and pretreatment with AM630 at a dose of 30 mg/kg produced a significantly greater reduction in % PPI than methamphetamine treatment

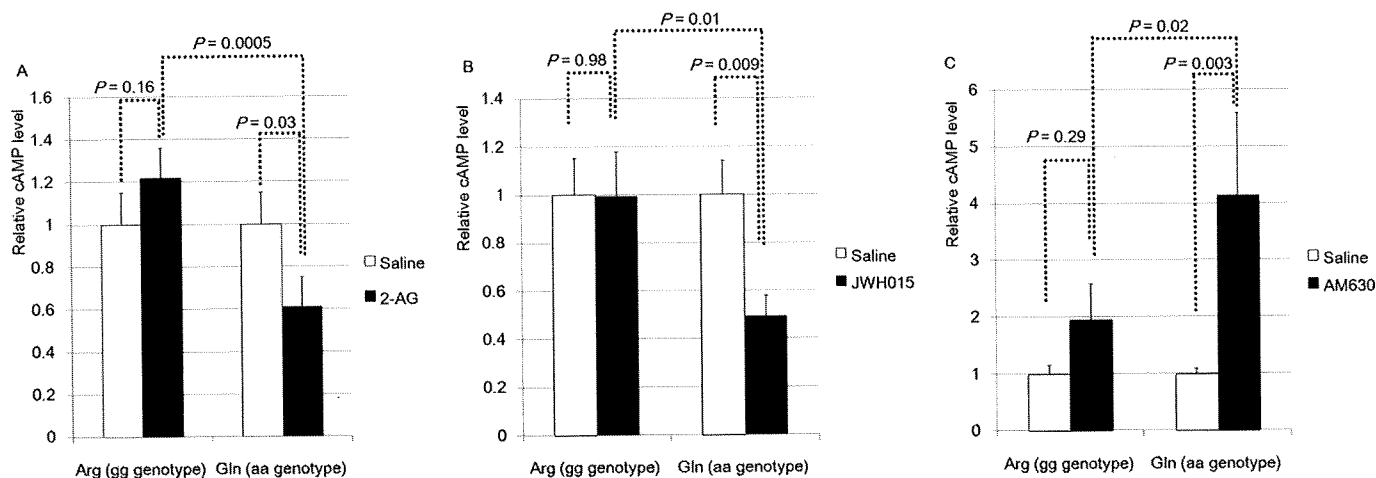


Figure 3. Functional analysis of the cannabinoid CB2 receptor with R63Q polymorphism. In cultured CHO cells expressed cloned human CB2 receptor, forskolin-evoked cyclic adenosine monophosphate (cAMP) level was regulated by three kinds of CB2 receptor ligands in this cell signaling system. CB2 receptor function in response to the ligands between Gln63 and Arg63 in the *CNR2* was analyzed. Black bars present cAMP levels in saline-treated CHO cells, and white bars show those in CHO cells treated with the ligand. Nominal *p* values are shown. **(A)** When endocannabinoid 2-AG binds to CB2 receptor, the evoked cAMP level is downregulated in CHO cells with Gln63 type CB2 receptor but not regulated in those with Arg63 type receptor. **(B)** When CB2 selective agonist JWH-015 binds to CB2 receptor, the evoked cAMP level is downregulated in CHO cells with Gln63 type CB2 receptor but not regulated in those with Arg63 type receptor or in naive CHO cells. **(C)** When CB2 selective inverse agonist AM630 binds to CB2 receptor, the evoked cAMP level is upregulated in CHO cells with Gln63 type CB2 receptor but not regulated in those with Arg63 type receptor or in naive CHO cells.

alone ($p = .03$). Although the overall effect was significant, post hoc tests did not reveal significant differences at individual prepulse intensities (Figure 5A).

ANOVA revealed significant effects of either MK-801 or methamphetamine administration on the locomotor activity of mice in home cages [$F(5,399) = 69.2, p < .0001, F(5,339) = 94.2, p < .001$, respectively, Figures 4B and 5B]. Both drugs produce

significant hyperlocomotion. Post hoc analysis revealed that although AM630 alone did not produce significant hyperlocomotion, AM630 pretreatments at doses of both 3 mg/kg and 30 mg/kg significantly increased methamphetamine-induced locomotion (both $p < .0001$). Also, AM630 pretreatments at a dose of 30 mg/kg significantly increased MK-801-induced locomotion ($p < .0001$) than saline pretreatments.

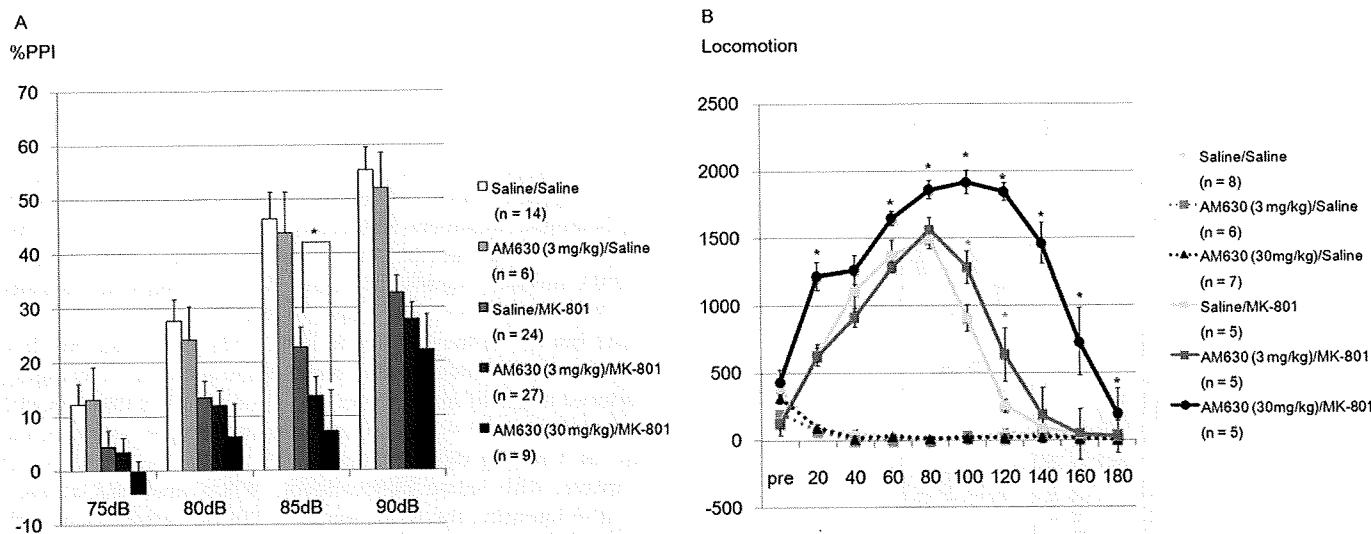


Figure 4. MK-801 induced alteration of prepulse inhibition (PPI) and locomotion influenced by AM630. **(A)** The vertical axis shows %PPI. Saline pretreated and treated before PPI test (Saline/Saline, $n = 14$), AM630 (3 mg/kg intraperitoneal [IP]) pretreated and saline treated before PPI test (AM630 [3 mg/kg]/saline, $n = 6$), saline pretreated and MK-801 (.5 mg/kg IP) treated before PPI test (saline/MK-801, $n = 24$), AM630 (3 mg/kg IP) pretreated and MK-801 (.5 mg/kg IP) treated before PPI test (AM630 [3 mg/kg]/MK-801, $n = 27$), AM630 (30 mg/kg IP) pretreated and MK-801 (.5 mg/kg IP) treated before the PPI test (AM630 [30 mg/kg]/MK-801, $n = 9$). *Nominal $p < .05$ is shown. **(B)** The vertical axis shows locomotion activity in the home cage for every 20-min time period. The horizontal axis shows as follows: pre, 10 min after pretreatment and 20 min before treatment; 20, 40, 60, 80, 100, 120, 140, 160, and 180, minutes from MK-801 injection (.5 mg/kg IP) 30 min after pretreatment. Saline pretreated and treated (Saline/Saline, $n = 8$); 3 mg/kg AM630 pretreated and saline treated (AM630 [3 mg/kg]/saline, $n = 6$); 30 mg/kg AM630 pretreated and saline treated (AM630 [30 mg/kg]/MK-801, $n = 7$); saline pretreated and MK-801 treated (saline/MK-801, $n = 8$); 3 mg/kg (AM630 pretreated and MK-801 treated)AM630 [3 mg/kg]/MK-801, $n = 8$); 30 mg/kg AM630 pretreated and MK-801 treated ($n = 5$). *Nominal $p < .05$ is shown for difference of activity between saline/MK-801 and either AM630 (3 mg/kg)/MK-801 in dark gray or AM630 (30 mg/kg)/MK-801 in black at each time period.

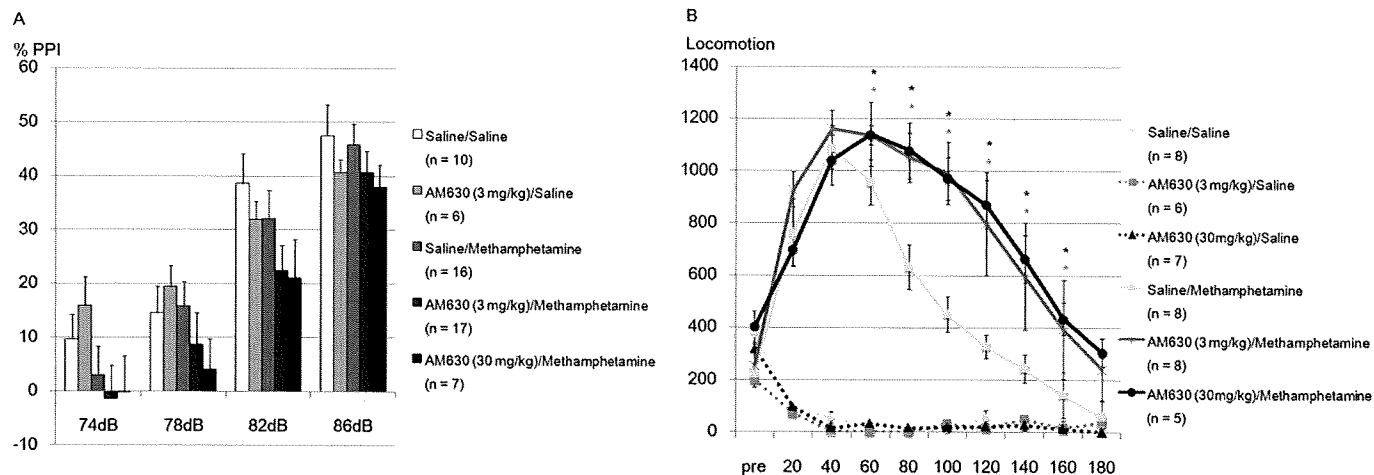


Figure 5. Methamphetamine-induced alteration of prepulse inhibition (PPI) and locomotion influenced by AM630. **(A)** The vertical axis shows % PPI. Saline pretreated and treated before PPI test (Saline/Saline, $n = 10$); AM630 (3 mg/kg intraperitoneal [IP]) pretreated and saline treated before PPI test (AM630 [3 mg/kg]/saline, $n = 6$); saline pretreated and methamphetamine treated (2 mg/kg IP) before PPI test (saline/methamphetamine, $n = 16$); AM630 (3 mg/kg IP) pretreated and methamphetamine treated before PPI test (AM630 [3 mg/kg]/methamphetamine, $n = 17$); AM630 (30 mg/kg IP) pretreated and methamphetamine treated before PPI test (AM630 [30 mg/kg]/methamphetamine, $n = 7$). **(B)** The vertical axis shows locomotion activity in the home cage for every 20 min. The horizontal axis shows as follows: pre, 10 min after pretreatment and 20 min before treatment; 20, 40, 60, 80, 100, 120, 140, 160, and 180, minutes from methamphetamine injection (2.0 mg/kg IP) 30 min after pretreatment. Saline pretreated and treated (Saline/Saline, $n = 8$), 3 mg/kg AM630 pretreated and saline treated (AM630 [3 mg/kg]/saline, $n = 6$), 30 mg/kg AM630 pretreated and saline treated (AM630 [30 mg/kg]/saline, $n = 7$), saline pretreated and methamphetamine treated (saline/methamphetamine, $n = 5$), 3 mg/kg AM630 pretreated and methamphetamine treated (AM630 [3 mg/kg]/methamphetamine, $n = 5$), 30 mg/kg AM630 pretreated and methamphetamine treated (AM630 [30 mg/kg]/methamphetamine, $n = 5$). *Nominal $p < .05$ is shown for difference of activity between saline/methamphetamine and either AM630 (3 mg/kg)/methamphetamine in dark gray or AM630 (30 mg/kg)/methamphetamine in black at each time period.

Discussion

We found two SNPs in and near the *CNR2* gene associated with schizophrenia in Japanese populations. One of these two SNPs, rs12744386, was found to be associated with gene expression levels (the risk allele was associated with low levels of *CNR2*) and another, rs2501432, was a missense R63Q. By the transfection experiments, we showed that, compared with the protective allele, the risk allele of the missense polymorphism had a poor response to CB2 ligands. Therefore, it was thought that both risk alleles of the two SNPs associated with schizophrenia were related to the direction of lower functioning of *CNR2*. Furthermore, these two SNPs were in LD with each other ($r^2 = .67$), and a haplotype composed of these two alleles associated with a lower functioning of *CNR2* had a greater association with schizophrenia than with the allelic association of either SNP alone. These findings provide evidence for the association between the *CNR2* gene and schizophrenia, although, because of the haplotype structure in the Japanese population, there is a possibility that the strength of association of either SNP might be inflated by the other SNP.

This study confirms that rs2501432 (R63Q) of *CNR2* gene is functional. The CB2 receptor is a guanine nucleotide-binding protein (G protein) coupled receptor, which is a member of the G_i-type receptor family. Codon 63 is located at the first intracellular domain immediately after the first transmembrane domain. Alteration of hydrophilic/hydrophobic structure at this point may alter signal transduction efficiency in cells after ligand stimulation. Our finding of a less efficient response to endocannabinoid 2-AG in the common R63 type than in the minor Q63 type is consistent with the findings of endocannabinoid-induced inhibition of lymphocyte proliferation in human peripheral tissue (25,28,29). Our study identifies that rs12744386 is a marker associated with changes in *CNR2* mRNA expression (in *cis*-acting

fashion) both in lymphoblasts and brain tissue. Because the haplotype of the R63 and the C allele was more significantly associated with schizophrenia than each allele alone, it is possible that genetic variations in the *CNR2* genome region related to the reduced function of CB2 receptors may synergistically confer susceptibility to schizophrenia.

The genetic findings of lower functioning of *CNR2* associated with schizophrenia may be supported by the findings of the pharmacologic experiments using the animal model and CB2 antagonists in this study. MK-801- or methamphetamine-induced disturbance of PPI has been used as an animal model of schizophrenia (30–32). MK-801 reduced PPI, and when MK-801 was used in combination with the CB2 inverse-agonist AM630, PPI was further reduced. However, AM630 alone did not have any effect on PPI in any prepulse-pulse sessions. Methamphetamine alone at the dose of 2.0 mg/kg did not show a significant change in PPI; however, when methamphetamine was used in combination with AM630, PPI was significantly reduced. AM630 also enhanced MK-801- and methamphetamine-induced hyperlocomotion in mice, although there was no effect of AM630 alone. Therefore, reduced CB2 functioning itself is not likely to cause schizophrenia, but it is hypothesized that, when combined with other risk factors, it could be harmful for schizophrenia-susceptible individuals. Furthermore, because these pharmacologic models are related with the glutamatergic and dopaminergic neural systems underlying schizophrenia, our study indicates that CB2 function is related to these neural systems.

CB2 receptors perform many functions. An animal model for the neurodevelopmental hypothesis of schizophrenia was demonstrated using neonatal lesions in hippocampus, when pregnant mother rats were exposed to the bacterial endotoxin lipopolysaccharide (33,34). Although the CB2 receptor has been known to be linked to the immune system in the peripheral

body, its function was also involved in neural progenitor proliferation in the hippocampus (35,36). De la Fuente *et al.* (37) proposed an effect of maternal deprivation in neuroimmunoenocrine interactions. Maternal deprivation has also been shown to lead to a disruption of PPI and startle habituation, as well as reduced latent inhibition (38–41). The effect of amphetamine was enhanced in early maternally deprived rats (42). At the same time, early maternal deprivation induced an increase in the number of degenerating hippocampal neurons and astrocytes and increased corticosterone and 2-AG hippocampal levels (43,44). Therefore, this animal model of a specific aspect of schizophrenia also has implications on the endocannabinoid system. Another recent study showed an analysis of the effects of early maternal deprivation on CB1 and CB2 receptors in the hippocampus, indicating a decrease of CB1 receptor expression and an increase of CB2 receptor expression (45). The present study provided further evidence for the involvement of CB2 in schizophrenia.

The present study had some limitations. The possible effect of AM630 on CB1 and interaction between CB1 and CB2 receptors could not be excluded. A further study using *Cnr1* knockout mice is needed to explore this pharmacologic possibility and clarify the functions of *CNR2* in brain. Many genetic association studies have not been replicated and confirmed in other populations, particularly in the case of psychiatric disease. Replication studies in other ethnic populations are needed to confirm whether the CB2 receptor plays a role in susceptibility to schizophrenia. Several genomewide Association studies (GWAS) that have been reported or are being conducted may enable us to compare the allele frequencies of many SNPs in other populations. However, GWAS data sets with Affymetrix 500K or Illumina HumanHap550 platforms did not include the SNPs of rs12744386 or rs2501432, which were found to be associated with schizophrenia in this study. Particularly, the allele frequencies of rs2501432 are not recorded in the dbSNP database.

In conclusion, this study indicates that a genetically predetermined lower functioning of CB2 receptors increases susceptibility to schizophrenia when combined with other risk factors. However, this simple understanding needs to be further elucidated because CB2 receptors perform many functions, and the incidence of the R63 allele is found more commonly in patients who have other psychiatric or physiologic disorders, such as alcoholism, major depression, autoimmune disease, or osteoporosis (25,28,29).

This work was supported by KAKENHI (Grant Nos. 20390098 and 20023006) and a grant from Japan Science and Technology. Australian human brain tissues were received from the New South Wales (NSW) Tissue Resource Centre and/or the Prince of Wales Medical Research Institute Tissue Resource Centre which is supported by the National Health and Medical Research Council of Australia, The University of Sydney, Prince of Wales Medical Research Institute, Neuroscience Institute of Schizophrenia and Allied Disorders, National Institute of Alcohol Abuse and Alcoholism and NSW Department of Health. American tissue/fluid specimens were obtained from the Human Brain and Spinal Fluid Resource Center, VA West Los Angeles Healthcare Center, 11301 Wilshire Boulevard, Los Angeles, California 90073, which is sponsored by NINDS/NIMH, National Multiple Sclerosis Society, and Department of Veterans Affairs. Dr. Hiroki Ishiguro had full access to all of the data in the study and takes responsibility for the integrity of the data and the accuracy of the data analysis.

Competing Interests: The authors reported no biomedical financial interests or potential conflicts of interest.

Supplementary material cited in this article is available online.

1. Andreasson S, Allebeck P, Engstrom A, Rydberg U (1987): Cannabis and schizophrenia. A longitudinal study of Swedish conscripts. *Lancet* 2:1483–1486.
2. Zammit S, Allebeck P, Andreasson S, Lundberg I, Lewis G (2002): Self reported cannabis use as a risk factor for schizophrenia in Swedish conscripts of 1969: Historical cohort study. *BMJ* 325:1199.
3. Giuffrida A, Leweke FM, Gerth CW, Schreiber D, Koethe D, Faulhaber J, *et al.* (2004): Cerebrospinal anandamide levels are elevated in acute schizophrenia and are inversely correlated with psychotic symptoms. *Neuropsychopharmacology* 29:2108–2114.
4. Morgan CJ, Curran HV (2008): Effects of cannabidiol on schizophrenia-like symptoms in people who use cannabis. *Br J Psychiatry* 192:306–307.
5. Bangalore SS, Prasad KM, Montrose DM, Goradia DD, Diwadkar VA, Keshavan MS (2008): Cannabis use and brain structural alterations in first episode schizophrenia—A region of interest, voxel based morphometric study. *Schizophr Res* 99:1–6.
6. De Marchi N, De Petrocellis L, Orlando P, Daniele F, Fezza F, Di Marzo V (2003): Endocannabinoid signalling in the blood of patients with schizophrenia. *Lipids Health Dis* 2:5.
7. Leweke FM, Giuffrida A, Wurster U, Emrich HM, Piomelli D (1999): Elevated endogenous cannabinoids in schizophrenia. *Neuroreport* 10: 1665–1669.
8. Koethe D, Llenos IC, Dulay JR, Hoyer C, Torrey EF, Leweke FM, *et al.* (2007): Expression of CB1 cannabinoid receptor in the anterior cingulate cortex in schizophrenia, bipolar disorder, and major depression. *J Neural Transm* 114:1055–1063.
9. Devane WA, Dysarz FA III, Johnson MR, Melvin LS, Howlett AC (1988): Determination and characterization of a cannabinoid receptor in rat brain. *Mol Pharmacol* 34:605–613.
10. Gerard C, Mollereau C, Vassart G, Parmentier M (1990): Nucleotide sequence of a human cannabinoid receptor cDNA. *Nucleic Acids Res* 18: 7142.
11. Matsuda LA, Lolait SJ, Brownstein MJ, Young AC, Bonner TI (1990): Structure of a cannabinoid receptor and functional expression of the cloned cDNA. *Nature* 346:561–564.
12. Hajos M, Hoffmann WE, Kocsis B (2008): Activation of cannabinoid-1 receptors disrupts sensory gating and neuronal oscillation: Relevance to schizophrenia. *Biol Psychiatry* 63:1075–1083.
13. Chavarría-Siles I, Contreras-Rojas J, Hare E, Walsch-Bass C, Quezada P, Dassori A, *et al.* (2008): Cannabinoid receptor 1 gene (*CNR1*) and susceptibility to a quantitative phenotype for hebephrenic schizophrenia. *Am J Med Genet B Neuropsychiatr Genet* 147:279–284.
14. Leroy S, Griffon N, Bourdel MC, Olie JP, Poirier MF, Krebs MO (2001): Schizophrenia and the cannabinoid receptor type 1 (*CB1*): Association study using a single-base polymorphism in coding exon 1. *Am J Med Genet* 105:749–752.
15. Martinez-Gras I, Hoenicka J, Ponce G, Rodriguez-Jimenez R, Jimenez-Arriero MA, Perez-Hernandez E, *et al.* (2006): (AAT)_n repeat in the cannabinoid receptor gene, *CNR1*: Association with schizophrenia in a Spanish population. *Eur Arch Psychiatry Clin Neurosci* 256:437–441.
16. Ujike H, Takaki M, Nakata K, Tanaka Y, Takeda T, Kodama M, *et al.* (2002): *CNR1*, central cannabinoid receptor gene, associated with susceptibility to hebephrenic schizophrenia. *Mol Psychiatry* 7:515–518.
17. Hoffman HS, Ison JR (1980): Reflex modification in the domain of startle. I. Some empirical findings and their implications for how the nervous system processes sensory input. *Psychol Rev* 87:175–189.
18. Swerdlow NR, Light GA, Cadenhead KS, Sprock J, Hsieh MH, Braff DL (2006): Startle gating deficits in a large cohort of patients with schizophrenia: Relationship to medications, symptoms, neurocognition, and level of function. *Arch Gen Psychiatry* 63:1325–1335.
19. Braff DL, Geyer MA, Swerdlow NR (2001): Human studies of prepulse inhibition of startle: Normal subjects, patient groups, and pharmacological studies. *Psychopharmacology* 156:234–258.
20. Braff DL, Light GA, Ellwanger J, Sprock J, Swerdlow NR (2005): Female schizophrenia patients have prepulse inhibition deficits. *Biol Psychiatry* 57:817–820.
21. Long LE, Malone DT, Taylor DA (2006): Cannabidiol reverses MK-801-induced disruption of prepulse inhibition in mice. *Neuropsychopharmacology* 31:795–803.

22. Onaivi ES, Ishiguro H, Gong JP, Patel S, Perchuk A, Meozzi PA, *et al.* (2006): Discovery of the presence and functional expression of cannabinoid CB2 receptors in brain. *Ann N Y Acad Sci* 1074:514–536.
23. Van Sickle MD, Duncan M, Kingsley PJ, Mouihate A, Urbani P, Mackie K, *et al.* (2005): Identification and functional characterization of brainstem cannabinoid CB2 receptors. *Science* 310:329–332.
24. Gong JP, Onaivi ES, Ishiguro H, Liu QR, Tagliaferro PA, Brusco A, *et al.* (2006): Cannabinoid CB2 receptors: Immunohistochemical localization in rat brain. *Brain Res* 1071:10–23.
25. Ishiguro H, Iwasaki S, Teasenfiz L, Higuchi S, Horiuchi Y, Saito T, *et al.* (2007): Involvement of cannabinoid CB2 receptor in alcohol preference in mice and alcoholism in humans. *Pharmacogenomics J* 7:380–385.
26. Dixon AL, Liang L, Moffatt MF, Chen W, Heath S, Wong KC, *et al.* (2007): A genome-wide association study of global gene expression. *Nat Genet* 39:1202–1207.
27. Dudbridge F (2003): Pedigree disequilibrium tests for multilocus haplotypes. *Genet Epidemiol* 25:115–121.
28. Onaivi ES, Ishiguro H, Gong JP, Patel S, Meozzi PA, Myers L, *et al.* (2008): Brain neuronal CB2 cannabinoid receptors in drug abuse and depression: From mice to human subjects. *PLoS ONE* 3:e1640.
29. Sipe JC, Arbour N, Gerber A, Beutler E (2005): Reduced endocannabinoid immune modulation by a common cannabinoid 2 (CB2) receptor gene polymorphism: Possible risk for autoimmune disorders. *J Leukoc Biol* 78:231–238.
30. Errico F, Rossi S, Napolitano F, Catuogno V, Topo E, Fisone G, *et al.* (2008): D-aspartate prevents corticostriatal long-term depression and attenuates schizophrenia-like symptoms induced by amphetamine and MK-801. *J Neurosci* 28:10404–10414.
31. van den Buuse M, Wischhof L, Xi LR, Martin S, Karl T (2009): Neuregulin 1 hypomorphic mutant mice: Enhanced baseline locomotor activity but normal psychotropic drug-induced hyperlocomotion and prepulse inhibition regulation [published online ahead of print April 29]. *Int J Neuropsychopharmacol*.
32. Gray L, McOmish CE, Scarr E, Dean B, Hannan AJ (2009): Sensitivity to MK-801 in phospholipase C-beta1 knockout mice reveals a specific NMDA receptor deficit [published online ahead of print February 23]. *Int J Neuropsychopharmacol*.
33. Pearce BD (2001): Schizophrenia and viral infection during neurodevelopment: A focus on mechanisms. *Mol Psychiatry* 6:634–646.
34. Fruntes V, Limosin F (2008): Schizophrenia and viral infection during neurodevelopment: A pathogenesis model? *Med Sci Monit* 14:RA71–RA77.
35. Palazuelos J, Aguado T, Egia A, Mechoulam R, Guzman M, Galve-Roperh I (2006): Non-psychoactive CB2 cannabinoid agonists stimulate neural progenitor proliferation. *FASEB J* 20:2405–2407.
36. Cabral GA, Griffin-Thomas L (2009): Emerging role of the cannabinoid receptor CB2 in immune regulation: Therapeutic prospects for neuroinflammation. *Expert Rev Mol Med* 11:e3.
37. De la Fuente M, Llorente R, Baeza I, De Castro NM, Arranz L, Cruces J, *et al.* (2009): Early maternal deprivation in rats: A proposed animal model for the study of developmental neuroimmunoendocrine interactions. *Ann N Y Acad Sci* 1153:176–183.
38. Ellenbroek BA, van den Kroonenberg PT, Cools AR (1998): The effects of an early stressful life event on sensorimotor gating in adult rats. *Schizophr Res* 30:251–260.
39. Ellenbroek BA, Cools AR (2002): Early maternal deprivation and prepulse inhibition: The role of the postdeprivation environment. *Pharmacol Biochem Behav* 73:177–184.
40. Ellenbroek BA, de Bruin NM, van den Kroonenburg PT, van Luijtelaar EL, Cools AR (2004): The effects of early maternal deprivation on auditory information processing in adult Wistar rats. *Biol Psychiatry* 55:701–707.
41. Garner B, Wood SJ, Pantelis C, van den Buuse M (2007): Early maternal deprivation reduces prepulse inhibition and impairs spatial learning ability in adulthood: No further effect of post-pubertal chronic corticosterone treatment. *Behav Brain Res* 176:323–332.
42. Lovic V, Fleming AS, Fletcher PJ (2006): Early life tactile stimulation changes adult rat responsiveness to amphetamine. *Pharmacol Biochem Behav* 84:497–503.
43. Lopez-Gallardo M, Llorente R, Llorente-Berzal A, Marco EM, Prada C, Di Marzo V, *et al.* (2008): Neuronal and glial alterations in the cerebellar cortex of maternally deprived rats: Gender differences and modulatory effects of two inhibitors of endocannabinoid inactivation. *Dev Neurobiol* 68:1429–1440.
44. Llorente R, Llorente-Berzal A, Petrosino S, Marco EM, Guaza C, Prada C, *et al.* (2008): Gender-dependent cellular and biochemical effects of maternal deprivation on the hippocampus of neonatal rats: A possible role for the endocannabinoid system. *Dev Neurobiol* 68:1334–1347.
45. Suárez J, Llorente R, Romero-Zerbo SY, Mateos B, Bermúdez-Silva FJ, de Fonseca FR, Viveros MP (2009): Early maternal deprivation induces gender-dependent changes on the expression of hippocampal CB(1) and CB(2) cannabinoid receptors of neonatal rats. *Hippocampus* 19:623–632.

Association Study of Bromodomain-Containing 1 Gene With Schizophrenia in Japanese Population

Itaru Kushima,^{1,2*} Branko Aleksic,^{1,2} Masashi Ikeda,^{2,3,4} Yoshio Yamanouchi,^{2,3} Yoko Kinoshita,^{2,3} Yoshihito Ito,^{1,2} Yukako Nakamura,^{1,2} Toshiya Inada,⁵ Nakao Iwata,^{2,3} and Norio Ozaki^{1,2}

¹Department of Psychiatry, Graduate School of Medicine, Nagoya University, Aichi, Japan

²CREST, Japan Science and Technology Agency, Saitama, Japan

³Department of Psychiatry, Graduate School of Medicine, Fujita Health University, Aichi, Japan

⁴Department of Psychological Medicine, School of Medicine, Cardiff University, Health Park, Cardiff, UK

⁵Seiwa Hospital, Institute of Neuropsychiatry, Tokyo, Japan

Received 24 March 2009; Accepted 28 September 2009

Chromosome 22q13 region has been implicated in schizophrenia in several linkage studies. Genes within this locus are therefore promising genetic and biologic candidate genes for schizophrenia if they are expressed in the brain or predicted to have some role in brain development. A recent study reported that bromodomain-containing 1 gene (*BRD1*), located in 22q13, showed an association with schizophrenia in a Scottish population. Except for being a putative regulator of transcription, the precise function of *BRD1* is not clear; however, expression analysis of *BRD1* mRNA revealed widespread expression in mammalian brains. In our study, we explored the association of *BRD1* with schizophrenia in a Japanese population (626 cases and 770 controls). In this association analysis, we first examined 10 directly genotyped single-nucleotide polymorphisms (SNPs) and 20 imputed SNPs. Second, we compared the *BRD1* mRNA levels between cases and controls using lymphoblastoid cell lines (LCLs) derived from 29 cases and 30 controls. Although the SNP (rs138880) that previously has been associated with schizophrenia showed the same trend in the Japanese population, no significant association was detected between *BRD1* and schizophrenia in our study. Similarly, no significant differences in *BRD1* mRNA levels in LCLs were detected. Taken together, we could not strongly show that common SNPs in the *BRD1* gene account for a substantial proportion of the genetic risk for schizophrenia in the Japanese population. © 2009 Wiley-Liss, Inc.

Key words: association analysis; imputation; gene expression analysis; meta-analysis

INTRODUCTION

Schizophrenia is a severe, debilitating disorder characterized by delusional beliefs, hallucinations, disordered speech, and deficits in emotional and social behavior. It is strongly familial, and heritability is around 80% based on twin studies [Sullivan et al., 2003]. However, the pattern of inheritance is complex, with most studies suggesting an interaction of multiple genes. There are now several positional candidate regions all over the genome that have been

How to Cite this Article:

Kushima I, Aleksic B, Ikeda M, Yamanouchi Y, Kinoshita Y, Ito Y, Nakamura Y, Inada T, Iwata N, Ozaki N. 2010. Association Study of Bromodomain-Containing 1 Gene With Schizophrenia in Japanese Population. *Am J Med Genet Part B* 153B:786–791.

shown to be related to schizophrenia in genetic studies [Badner and Gershon, 2002; Williams et al., 2003].

One promising region is chromosome 22q. Initial evidence for linkage to chromosome 22q came from three markers spanning ~23 cM in the 22q13.1 region in the Maryland family sample [Pulver et al., 1994]. Additional interest in 22q13 came from a genome scan of catatonic schizophrenia pedigrees, which showed suggestive evidence for linkage ($P = 1.8 \times 10^{-3}$; non-parametric logarithms of the odds [LOD] score 1.85) on 22q13 [Stober et al., 2000]. Furthermore, a multicenter linkage study that evaluated 10 microsatellite markers spanning 22q in 779 schizophrenia pedigrees

Additional Supporting Information may be found in the online version of this article.

Grant sponsor: Ministry of Education, Culture, Sports, Science and Technology of Japan; Grant sponsor: Ministry of Health of Japan, Labor and Welfare; Grant sponsor: MEXT ACADEMIC FRONTIER; Grant sponsor: Japan Health Sciences Foundation; Grant sponsor: Core Research for Evolutional Science and Technology.

Itaru Kushima and Branko Aleksic contributed equally to this work.

*Correspondence to:

Dr. Itaru Kushima, Department of Psychiatry, Nagoya University Graduate School of Medicine, 65 Tsurumai-Cho, Showa-ku, Nagoya, Aichi 466-8550, Japan. E-mail: kushima.itaru@a.mbox.nagoya-u.ac.jp

Published online 11 November 2009 in Wiley InterScience

(www.interscience.wiley.com)

DOI 10.1002/ajmg.b.31048

showed linkage of borderline significance to D22S1169 at 22q13.32 in the total sample when intersample heterogeneity was taken into account [Mowry et al., 2004].

A recent study [Severinsen et al., 2006] looked into this 22q13 region and reported that two single-nucleotide polymorphisms (SNPs) (rs4468 and rs138880) located within bromodomain-containing 1 gene (*BRD1*) were associated with schizophrenia in a single-marker association analysis. This gene, expressed in mammalian brain tissue, encodes a protein of unknown function that contains a bromodomain, a motif often found in transcriptional coactivators. The motif represents an evolutionarily conserved nucleotide sequence found in many chromatin-associated proteins and in nearly all known nuclear histone acetyltransferases. It is therefore thought that *BRD1* is related to transcriptional regulation [Zeng and Zhou, 2002].

BRD1 is an attractive candidate gene for schizophrenia for two reasons. First, *BRD1* as a putative transcriptional cofactor might have functional implications for susceptibility to schizophrenia. Second, it also maps to the 22q13.33 locus, the region with evidence for linkage to schizophrenia.

As mentioned, a single study has implicated genetic variants within *BRD1* locus as contributing factor to schizophrenia in a Scottish population [Severinsen et al., 2006]. To further investigate this possible association, we selected SNPs within the *BRD1* locus and carried out a case-control study in a Japanese population. In terms of understanding the relationship between *BRD1* and schizophrenia, our study brings additional information from a genetic point of view: a larger sample size, a different population, and better coverage (in terms of SNPs selected for analysis).

MATERIALS AND METHODS

Subjects

All subjects were of Japanese descent and recruited from the main island of Japan. For the association analysis, 626 patients with schizophrenia and 770 healthy controls were used (Supplementary Table I). For the expression analysis, 29 patients with schizophrenia and 30 healthy controls were used (Supplementary Table II). All patients were diagnosed according to the Diagnostic and Statistical Manual of Mental Disorders, Fourth Edition, criteria based on the consensus of at least two experienced psychiatrists using an unstructured interview and review of medical records. All healthy controls were psychiatrically screened using an unstructured interview to exclude subjects with any brain disorder or psychotic disorder or who had first-degree relatives with psychotic disorders. The present study was approved by the Ethics Committees of Nagoya University, Fujita Health University. All subjects provided written informed consent after the study was described to them.

Tagging SNP Selection, SNP Genotyping, and Quality Control

The International Haplotype Mapping (HapMap) (www.hapmap.org) SNP database and ABI (Applied Biosystems) SNP browser were used to select tagging SNPs in the *BRD1* locus. The screened region was extended 5 kb upstream of the annotated transcription

start site and downstream at the end of the last *BRD1* exon [Neale and Sham, 2004]. The tagging SNP selection criteria were that polymorphisms had a minor allele frequency >5% in the Japanese population (release #21; phase II; July 2006). Then, we took advantage of observed linkage disequilibrium [Barrett et al., 2005] in the *BRD1* locus to exclude redundant SNPs from genotyping. In other words, if the correlation coefficient between two loci (r^2) was 0.9 or higher, then only one of the two loci was selected for the association study [Barrett et al., 2005]. Based on our criteria, 10 SNPs were selected for the analysis. The promoter SNP rs138880, which was one of the two SNPs associated with schizophrenia in the previous study [Severinsen et al., 2006], was included in these 10 SNPs. The 3' UTR SNP rs4468, the other SNP associated with schizophrenia in the previous study, was also added to the tagging SNPs despite a lack of information on frequency of this polymorphism in a Japanese population in the HapMap database. Therefore, 11 SNPs made up the tagging set. All SNPs were genotyped by TaqMan assay (Applied Biosystems Japan Ltd, Tokyo, Japan). For quality control, three strategies were employed. First, we checked deviation from the Hardy-Weinberg equilibrium (HWE). Second, we genotyped 20 randomly selected samples for each SNP in duplicate in order to evaluate the genotype error rate. Third, we confirmed whether the minor allele frequency for each SNP genotyped in control samples was consistent with that in the Japanese population in the HapMap database.

Imputation of Ungenotyped SNPs

Because tagging SNPs was selected based on r^2 , we included imputation as an exploratory method to compute genotypes of SNPs that were not selected for genotyping (untyped SNPs). The advantage of imputing untyped SNPs is that the coverage of common variants within the locus of interest can be enhanced, boosting the statistical power [Marchini et al., 2007]. The MACH program (<http://www.sph.umich.edu/csg/abecasis/MACH/>) was used to calculate the genotypic prediction of 20 untyped SNPs using directly typed SNP information (10 SNPs used in the screening scan) and the HapMap database (recombination map and haplotype data for the Japanese/Chinese population, release #23a; phase II; March 2008). The MACH program was recently reported to have similar imputation accuracy rates to IMPUTE and to outperform fastPHASE, PLINK, and Beagle [Pei et al., 2008]. The targeted region for imputation was limited to the *BRD1* locus as defined above.

Power Calculation

Power was calculated according to the methods described by Skol et al. [2006]. In brief, for a predefined alpha level, in the disease prevalence and inheritance model, statistical power of any given sample is a function of sample size and effect size. In other words, power is directly proportional to sample size on one side and minor allele frequency and genotype relative risk on the other side.

Statistical Methods for Association Study

Deviation from the HWE was tested by chi-square analysis. All single marker association analyses were done by calculating the

P-values for each SNP marker, and the significance was determined at the 5% level using the chi-square test, as implemented in SPSS v13 (SPSS, Inc., Chicago, IL). All *P*-values were two-sided. Multimarker analysis was carried out by log-likelihood ratio tests for assessing haplotype-wise associations between schizophrenia and a combination of tagging SNPs with a permutation test for calculating empirical significance levels for differences between haplotype frequencies in case and control subsets.

Meta-Analysis

We performed a meta-analysis for rs138880, one of the two SNPs associated with schizophrenia in the previous study [Severinsen et al., 2006]. The other SNP, rs4468, was excluded because it was not polymorphic in our sample. Thus far, only one study has been published regarding an association analysis of the *BRD1* locus [Severinsen et al., 2006]. We used data from Severinsen's study and our study. First, the Q statistic test was performed to assess the possible heterogeneity in the combined studies. Second, a fixed effects model meta-analysis was conducted. The significance of the overall odds ratio (OR) was determined by the Z-test. The analysis was carried out on Comprehensive Meta-Analysis software (Version 2.2.046, Biostat, Englewood, NJ).

Lymphoblastoid Cell Lines (LCLs)

Peripheral blood was drawn into 7-ml plastic tubes containing sodium heparin, and lymphocytes were separated by a standard protocol. The cells were cultured in RPMI-1460 medium containing 20% fetal bovine serum, penicillin, and streptomycin, and filtered supernatant of a B95-8 cell culture infected with Epstein-Barr virus. Cyclosporine A was added until colonies were observed. After colony formation, the cells were passaged three times per week, without the addition of 10% fetal bovine serum and cyclosporine A. The cells were frozen in liquid nitrogen until needed, at which time they were thawed, passaged at least three times, and used within 4 weeks. We paid special attention while establishing and maintaining cell lines to exclude environmental confounders as much as possible.

Real-Time Quantitative Polymerase Chain Reaction (PCR) and Statistical Analysis

Total RNA of LCLs was extracted using RNeasy Plus Mini kit (50) (Qiagen, Valencia, CA). RNA yield and quality were assessed by measuring absorbance at 260 and 280 nm. Integrity and overall quality of the total RNA preparation were determined by native agarose gel electrophoresis (inspection of the 28S and 18S bands). Total RNA was used for cDNA synthesis by High-Capacity cDNA Reverse Transcription Kits (Applied Biosystems Japan Ltd). Real-time quantitative PCR using TaqMan gene expression assays (Applied Biosystems Japan Ltd) was performed with ABI PRISM 7900HT (Applied Biosystems Japan Ltd). Amplification efficiency for each gene-specific primer pair was calculated based on the dilution series method [Livak and Schmittgen, 2001]. In each experiment, the r^2 value of the curve was more than 0.99. Measurement of the cycle threshold was performed in triplicate. The relative

expression of *BRD1* was calculated by the modified $\Delta\Delta$ cycle threshold method as implemented in Relative Expression Software Tool 2008 (REST 2008) [Pfaffl et al., 2002]. The normalization factor was the geometric mean [Vandesompele et al., 2002] of the following genes: tyrosine 3-monooxygenase/tryptophan 5-monooxygenase activation protein, zeta polypeptide (*YWHAZ*), beta-2-microglobulin (*B2M*), and ubiquitin C (*UBC*). These three genes were shown to have high expression stability in leukocytes [Vandesompele et al., 2002]. Bootstrapping techniques were used to provide 95% confidence intervals (CIs) for expression ratios without a normal or symmetrical distribution assumption.

RESULTS

Association Analysis

Regarding quality control, significant deviation from HWE was not observed. The genotypes of the duplicated samples showed complete concordance. Minor allele frequency for each tagging SNP in control samples generally showed a high concordance with that in HapMap database. Assuming a multiplicative model of inheritance and a disease prevalence of 1%, calculations showed that our sample had appropriate power (more than 80%) to detect gene-wide significant associations with genotype relative risk values from 1.24 to 1.55 (minor allele frequency values from 0.05 to 0.45). 3' UTR SNP rs4468, which was associated with schizophrenia in a previous study, was not polymorphic in our Japanese sample, so we excluded rs4468 from subsequent analyses. Regarding the remaining 10 SNPs, no association was detected with schizophrenia in allele-/genotype-wise analyses or in the haplotype-wise analysis (two- to four-marker sliding window fashion; Table I). However, it should be noted that the rs138880 (associated SNP in previous article) showed the same trend in the Japanese population. In addition, haplotype showing the most significant association [Severinsen et al., 2006] was tested in the present study. We could not show a significant difference in the frequency of this haplotype between cases and controls (haplotype frequency in cases and controls: 0.0010 and 0.0010, respectively, $P=0.99$).

Imputation of Ungenotyped SNPs

We used MACH to infer genotypes of 20 untyped SNPs. We provided genotypes for our own data (10 SNPs) as input together with haplotypes from the HapMap Japanese/Chinese population. The imputation method using MACH did not support an association between schizophrenia and the 20 SNPs in the *BRD1* locus (Table II).

Meta-Analysis

The SNP rs138880 that previously has been associated with schizophrenia showed the same trend in the Japanese population although it did not reach significance. The ORs for rs138880 reported in the Severinsen et al. [2006] and in this study were 1.73 and 1.14, respectively (Supplementary Table III). The pooled OR derived from the two studies (in total, 729 cases and 970 controls) was significant in the fixed model (pooled OR = 1.25, 95% CI = 1.03–1.52, $P=0.02$; Supplementary Table III). Homogeneity analysis for the OR

TABLE I. Allele-Wise, Genotype-Wise, and Haplotype-Wise Analyses of 10 Tagging Single-Nucleotide Polymorphisms (SNPs)

dbSNP	Allele frequency (proportion)				Single SNP		Haplotype wise		
	Case		Control		Allele-wise	Genotype-wise	2-window ^a	3-window ^a	4-window ^a
	M	m	M	m					
rs138820	0.78	0.22	0.78	0.22	0.86	0.09			
rs4469	0.77	0.23	0.78	0.22	0.45	0.75	0.83	0.7	
rs6009874	0.92	0.08	0.92	0.08	0.92	0.15	0.29	0.62	0.7
rs138840	0.92	0.08	0.92	0.08	0.82	0.92	1.00	1.00	0.69
rs138844	0.84	0.16	0.84	0.16	0.69	0.37	1.00	1.00	0.47
rs138850	0.59	0.41	0.59	0.41	0.82	0.25	0.54	0.49	0.36
rs138851	0.94	0.06	0.95	0.05	0.14	0.31	0.52	0.46	0.44
rs138863	0.94	0.06	0.95	0.05	0.15	0.38	1.00	0.48	0.81
rs2239848	0.85	0.15	0.86	0.14	0.79	0.72	0.68	0.71	1.00
rs138880	0.86	0.14	0.87	0.13	0.22	0.09	1.00	1.00	

M, major allele; m, minor allele.

^aSliding window analysis, rare haplotype threshold 10%.

revealed no significant evidence for heterogeneity of the OR ($Q = 2.98$, $df = 1$, $P = 0.084$).

TABLE II. Allele-Wise Analysis of 20 Imputed Single-Nucleotide Polymorphisms

dbSNP	P-value	Quality ^a
rs138816	0.97	0.92
rs138821	0.91	0.96
rs2269626	0.72	0.95
rs138823	0.91	0.95
rs916418	0.96	0.99
rs916419	0.85	0.99
rs138827	0.82	0.99
rs138830	0.81	0.99
rs138834	0.87	0.99
rs138841	0.37	0.99
rs138843	0.86	1.00
rs138845	0.34	0.99
rs6009878	1.00	0.99
rs138853	0.14	1.00
rs138861	0.41	1.00
rs138866	0.27	0.99
rs138867	0.27	1.00
rs138870	0.27	0.99
rs138871	0.23	0.99
rs138884	0.23	1.00

^aQuality is the average posterior probability for the most likely genotype.

Expression Analysis

The expression of *BRD1* mRNA was analyzed using LCLs from 29 cases and 30 controls. Cycle threshold values of *BRD1* and three internal controls (*B2M*, *UBC*, and *YWHAZ*) are shown in Supplementary Table IV. We could not detect any significant differences in *BRD1* mRNA levels between cases and controls ($P = 0.46$; Fig. 1).

DISCUSSION

The common disease–common variant hypothesis states that diseases that were evolutionarily neutral (i.e., had little or no effect on reproductive fitness), such as late-onset schizophrenia, during human history may be significantly influenced by common variants [Lander, 1996]. Therefore, if allelic variants at a disease susceptibility locus are responsible for the predisposition to a common complex disease, then allele-, genotype-, or haplotype-wise association tests will detect such variants (or tagging SNPs that are in linkage disequilibrium with the deleterious allele).

The first and only indication that the *BRD1*-related region harbors a variation that might influence susceptibility to schizophrenia was provided by Severinsen et al. [2006], who identified two fairly strong association signals between two SNPs (rs4468 and rs138880) and schizophrenia using a case–control sample from Scotland. The sample in this study consisted of 103 patients with

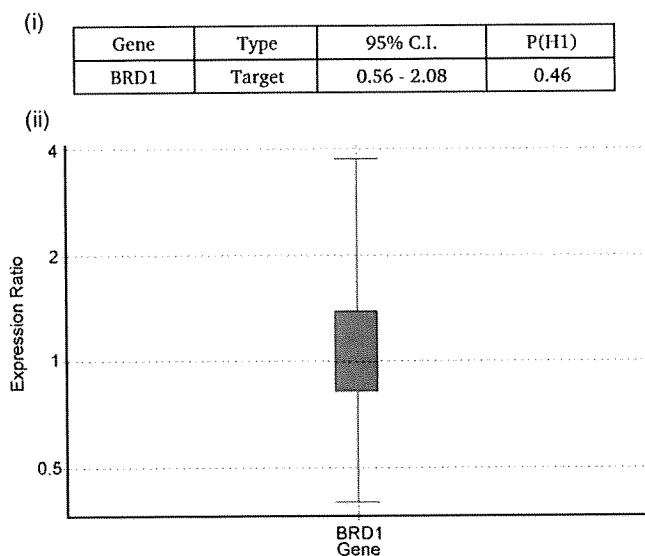


FIG. 1. Relative expression of bromodomain-containing 1 (BRD1) normalized to the geometric mean of three internal controls. i: The relative expression of BRD1 was normalized to the geometric mean of three internal controls (B2M, UBC, and YWHAZ). Bootstrapping techniques were used to provide 95% confidence intervals for expression ratios without normal or symmetric distribution assumption. The number of iterations was 10,000 in this analysis. $P(H1)$ means the probability of the alternate hypothesis that the difference between sample and control groups is due only to chance. **ii:** Boxplot. Expression ratio is the relative expression of BRD1 in cases compared with controls (expression in control is equivalent to 1). Box represents the middle 50% of observations. The dotted line represents the median gene expression. Whiskers represent the minimum and maximum observations.

schizophrenia and 200 controls. Our study did not strongly support an association between schizophrenia and the *BRD1* locus although the only previously associated SNP included in our study (rs138880) showed the same trend, and the meta-analysis of this SNP using a fixed effects model was significant.

Psychiatric disorders are complex diseases that are characterized by the contribution of multiple susceptibility genes and environmental factors. Therefore, *BRD1* might be a population-specific factor for schizophrenia. However, this conclusion should be made only with the following considerations. First, it is possible that our study was still underpowered to reliably detect common low-risk variants. This may be related to etiological heterogeneity or inaccurate diagnoses in schizophrenia, which would attenuate the genetic relative risk. Second, only the hypothesis of an association with common SNPs of *BRD1* has been tested, both here and in the previous study; therefore, future studies using resequencing methods to detect rare variants in the *BRD1* locus will be needed for a complete understanding of relationship between this genetic locus and schizophrenia. Third, even though the Japanese population is relatively homogeneous [Haga et al., 2002], small population stratifications may have affected our findings. A recent analysis

with the use of approximately 140,000 SNPs in 7003 Japanese individuals has shown that local regions within the main island of Japan are genetically differentiated in spite of frequent human migration within Japan in modern times [Yamaguchi-Kabata et al., 2008]. However, we believe that the impact of population stratification on our study is negligible, as our samples were collected in a relatively narrow region in the middle of the main island of Japan. Fourth, regarding the Japanese and the Caucasian populations, comparative linkage disequilibrium analysis of the HapMap data showed a different block structure around the *BRD1* locus [Gabriel et al., 2002]. Compared with the Caucasian population, linkage disequilibrium (LD) blocks in the Japanese population are shorter, and the block structure is coarser, having lower r^2 values. This might influence interpopulation transferability of tagging SNPs in the *BRD1* locus and result in a failure to detect an association with schizophrenia in the Japanese population. Interestingly, selective sweep analysis has provided evidence of recent positive selection on genes associated with schizophrenia, and *BRD1* gene was reported to have been affected by positive selection in Caucasian but not in Asian population [Crespi et al., 2007]. This indicates that the positive selection specific to the Caucasian population might produce the difference in LD structure in *BRD1* locus.

We could not detect significant differences in *BRD1* mRNA levels between cases and controls in the expression analysis. These results are consistent with the findings in the association study. However, there were several limitations in the expression assays. Using non-neuronal samples such as LCLs is based on the assumption that heritable mechanisms associated with the risk of schizophrenia have systemic effects and result in changes to gene expression in various tissues. To validate the use of gene expression data in a more accessible tissue as a surrogate for gene expression in the central nervous system, Sullivan et al. [2006] evaluated the comparability of transcriptional profiling of a variety of human tissues with Affymetrix U133A microarray augmented with a custom microarray. Their analyses suggested that careful use of peripheral gene expression may be a useful surrogate for gene expression in the central nervous system.

In conclusion, we could not strongly show that common SNPs in the *BRD1* gene account for a substantial proportion of the genetic risk for schizophrenia in the Japanese population, although small effects of population stratification or differences in LD structure could not be ruled out. Considering the significance in the meta-analysis for the only previously associated SNP included in our study, further investigations are needed for conclusive results.

ACKNOWLEDGMENTS

We sincerely thank the patients and healthy volunteers for their participation in this study. We also thank Dr. R. Ishihara for the technical assistance. This work was supported in part by research grants from the Ministry of Education, Culture, Sports, Science and Technology of Japan, the Ministry of Health of Japan, Labor and Welfare, Grant-in-Aid for Scientific Research on Pathomechanisms of Brain Disorders from the Ministry of Education, Culture, Sports, Science and Technology of Japan, MEXT ACADEMIC

FRONTEIER, the Japan Health Sciences Foundation (Research on Health Sciences focusing on Drug Innovation), and the Core Research for Evolutional Science and Technology. These groups had no role in study design, in data collection, analysis and interpretation, in the writing, or in the decision to submit the article for publication. Authors Itaru Kushima, Branko Aleksic, and Masashi Ikeda designed the study, wrote the protocol, and drafted the manuscript. Authors Norio Ozaki and Nakao Iwata participated in the design of the study, interpretation of the data, and drafting of the manuscript. All authors contributed to and have approved the final manuscript.

REFERENCES

- Badner JA, Gershon ES. 2002. Meta-analysis of whole-genome linkage scans of bipolar disorder and schizophrenia. *Mol Psychiatry* 7(4): 405–411.
- Barrett JC, Fry B, Maller J, Daly MJ. 2005. Haploview: Analysis and visualization of LD and haplotype maps. *Bioinformatics* 21(2):263–265.
- Crespi B, Summers K, Dorus S. 2007. Adaptive evolution of genes underlying schizophrenia. *Proc Biol Sci* 274(1627):2801–2810.
- Gabriel SB, Schaffner SF, Nguyen H, Moore JM, Roy J, Blumenstiel B, Higgins J, DeFelice M, Lochner A, Faggart M, Liu-Cordero SN, Rotimi C, Adeyemo A, Cooper R, Ward R, Lander ES, Daly MJ, Altshuler D. 2002. The structure of haplotype blocks in the human genome. *Science* 296(5576):2225–2229.
- Haga H, Yamada R, Ohnishi Y, Nakamura Y, Tanaka T. 2002. Gene-based SNP discovery as part of the Japanese Millennium Genome Project: Identification of 190,562 genetic variations in the human genome. Single-nucleotide polymorphism. *J Hum Genet* 47(11):605–610.
- Lander ES. 1996. The new genomics: Global views of biology. *Science* 274(5287):536–539.
- Livak KJ, Schmittgen TD. 2001. Analysis of relative gene expression data using real-time quantitative PCR and the $2^{-\Delta\Delta C(T)}$ method. *Methods* 25(4):402–408.
- Marchini J, Howie B, Myers S, McVean G, Donnelly P. 2007. A new multipoint method for genome-wide association studies by imputation of genotypes. *Nat Genet* 39(7):906–913.
- Mowry BJ, Holmans PA, Pulver AE, Gejman PV, Riley B, Williams NM, Laurent C, Schwab SG, Wildenauer DB, Bauche S, Owen MJ, Wormley B, Sanders AR, Nestadt G, Liang KY, Duan J, Ribble R, Norton N, Soubigou S, Maier W, Ewen-White KR, DeMarchi N, Carpenter B, Walsh D, Williams H, Jay M, Albus M, Nertney DA, Papadimitriou G, O'Neill A, O'Donovan MC, Deleuze JF, Lerer FB, Dikeos D, Kendler KS, Mallet J, Silverman JM, Crowe RR, Levinson DF. 2004. Multicenter linkage study of schizophrenia loci on chromosome 22q. *Mol Psychiatry* 9(8):784–795.
- Neale BM, Sham PC. 2004. The future of association studies: Gene-based analysis and replication. *Am J Hum Genet* 75(3):353–362.
- Pei YF, Li J, Zhang L, Pappasian CJ, Deng HW. 2008. Analyses and comparison of accuracy of different genotype imputation methods. *PLoS ONE* 3(10):e3551.
- Pfaffl MW, Horgan GW, Dempfle L. 2002. Relative expression software tool (REST) for group-wise comparison and statistical analysis of relative expression results in real-time PCR. *Nucleic Acids Res* 30(9):e36.
- Pulver AE, Karayiorgou M, Wolyniec PS, Lasseter VK, Kasch L, Nestadt G, Antonarakis S, Housman D, Kazazian HH, Meyers D, et al. 1994. Sequential strategy to identify a susceptibility gene for schizophrenia: Report of potential linkage on chromosome 22q12-q13.1: Part 1. *Am J Med Genet* 54(1):36–43.
- Severinsen JE, Bjarkam CR, Kiaer-Larsen S, Olsen IM, Nielsen MM, Blechingberg J, Nielsen AL, Holm IE, Foldager L, Young BD, Muir WJ, Blackwood DH, Corydon TJ, Mors O, Borglum AD. 2006. Evidence implicating BRD1 with brain development and susceptibility to both schizophrenia and bipolar affective disorder. *Mol Psychiatry* 11(12):1126–1138.
- Skol AD, Scott LJ, Abecasis GR, Boehnke M. 2006. Joint analysis is more efficient than replication-based analysis for two-stage genome-wide association studies. *Nat Genet* 38(2):209–213.
- Stober G, Saar K, Ruschendorf F, Meyer J, Nurnberg G, Jatzke S, Franzek E, Reis A, Lesch KP, Wienker TF, Beckmann H. 2000. Splitting schizophrenia: Periodic catatonia-susceptibility locus on chromosome 15q15. *Am J Hum Genet* 67(5):1201–1207.
- Sullivan PF, Kendler KS, Neale MC. 2003. Schizophrenia as a complex trait: Evidence from a meta-analysis of twin studies. *Arch Gen Psychiatry* 60(12):1187–1192.
- Sullivan PF, Fan C, Perou CM. 2006. Evaluating the comparability of gene expression in blood and brain. *Am J Med Genet Part B Neuropsychiatr Genet* 141B(3):261–268.
- Vandesompele J, De Preter K, Pattyn F, Poppe B, Van Roy N, De Paepe A, Speleman F. 2002. Accurate normalization of real-time quantitative RT-PCR data by geometric averaging of multiple internal control genes. *Genome Biol* 3(7):RESEARCH0034.
- Williams NM, Norton N, Williams H, Ekholm B, Hamshere ML, Lindblom Y, Chowdari KV, Cardno AG, Zammit S, Jones LA, Murphy KC, Sanders RD, McCarthy G, Gray MY, Jones G, Holmans P, Nimgaonkar V, Adolfson R, Osby U, Terenius L, Sedvall G, O'Donovan MC, Owen MJ. 2003. A systematic genomewide linkage study in 353 sib pairs with schizophrenia. *Am J Hum Genet* 73(6):1355–1367.
- Yamaguchi-Kabata Y, Nakazono K, Takahashi A, Saito S, Hosono N, Kubo M, Nakamura Y, Kamatani N. 2008. Japanese population structure, based on SNP genotypes from 7003 individuals compared to other ethnic groups: Effects on population-based association studies. *Am J Hum Genet* 83(4):445–456.
- Zeng L, Zhou MM. 2002. Bromodomain: An acetyl-lysine binding domain. *FEBS Lett* 513(1):124–128.