

発表者氏名	論文タイトル名	発表誌名	巻号	ページ	出版年
Schulze T, Alda M, Adli M, Akula N, Arda R, Chillotti C, Cichon S, Czerski P, Zompo M, SDetera-Wadleigh S, Grof P, Gruber O, Hashimoto R, Hauser J, Hoban R, Iwata N, Kassem L, Kato T, Kittel-Schneider S, Kliwicki S, Kelsoe J, Kusumi I, Laje G, Leckband S, Manchia M, MacQueen G, Masui T, Ozaki N, Perlis R, Pfennig A, Piccardi P, Richardson S, Rouleau G, Reif A, Rybakowski J, Sasse J, Schumacher J, Severino G, Smoller J, Squassina A, Turecki G, Young T, Yoshikawa T, Bauer M, McMahon F.	The International Consortium on Lithium Genetics (ConLiGen)	An Initiative by the NIMH and IGSLI to Study the Genetic Basis of Response to Lithium Treatment, Neuropsychobiology,	in press	in press	
Numata S, Nakataki M, Iga J, Tanahashi T, Nakadoi Y, Ohi K, Hashimoto R, Takeda M, Itakura M, Ueno S, Ohmori T.	Association study between the pericentrin (PCNT) gene and schizophrenia.	NeuroMolecular Medicine,	in press	in press	
Azechi M, Iwase M, Ikezawa K, Takahashi H, Canuet L, Kurimoto R, Nakahachi T, Ishii R, Fukumoto M, Ohi K, Yasuda Y, Kazui H, Hashimoto R, Takeda M.	Discriminant analysis in schizophrenia and healthy subjects using prefrontal activation during frontal lobe tasks: A near-infrared spectroscopy study.	Schizophr Res,	117(1)	52-60	2010
Hashimoto R, Hashimoto H, Shintani N, Ohi K, Hori H, Saitoh O, Kosuga A, Tatsumi M, Iwata N, Ozaki N, Kamijima K, Baba A, Takeda M, Kunugi H.	Possible association between the pituitary adenylate cyclase-activating polypeptide (PACAP) gene and major depressive disorder.	Neuroscience Lett,	468(3)	300-302	2010

発表者氏名	論文タイトル名	発表誌名	巻号	ページ	出版年
Ohi K, Hashimoto R, Yasuda Y, Yoshida T, Takahashi H, Iike N, Iwase M, Kamino K, Ishii R, Kazui H, Fukumoto M, Takamura H, Azechi M, Ikezawa K, Tanimukai H, Tagami S, Morihara T, Okochi M, Yamada K, Numata S, Ikeda M, Tanaka T, Kudo T, Ueno S, Yoshikawa T, Tetsuro Ohmori T, Iwata N, Ozaki N, Takeda M.	The Chitinase 3-Like 1 gene and schizophrenia: evidence from a multi-center case-control study and meta-analysis.	Schizophre nia Res	116	126-132	2010
Canuet L, Ishii R, Iwase M, Ikezawa K, Kurimoto R, Takahashi H, Currais A, Azechi M, Nakahachi T, Hashimoto R, Takeda M.	Working memory abnormalities in chronic interictal epileptic psychosis and schizophrenia revealed by magnetoencephalography.	Epilepsy Behav	17(1)	109-119	2010
Okuda H, Kuwahara R, Matsuzaki S, Miyata S, Kumamoto N, Hattori T, Shimizu S, Yamada K, Kawamoto K, Hashimoto R, Takeda M, Katayama T, Tohyama M.	Dysbindin regulates the transcriptional level of myristoylated alanine-rich protein kinase C substrate via the interaction with NF-YB in mice brain.	PLoS One	19:5(1) :e8773		2010
Nunokawa A, Watanabe Y, Kaneko N, Sugai T, Yazaki S, Arinami T, Ujike H, Inada T, Iwata N, Kunugi H, Sasaki T, Itokawa M, Ozaki N, Hashimoto R, Someya T.	The dopamine D3 receptor (DRD3) gene and risk of schizophrenia: case-control studies and an updated meta-analysis.	Schizophr Res	116(1)	61-67	2010
Hikita T, Taya S, Fujino Y, Taneichi-Kuroda S, Ohta K, Tsuboi D, Shinoda T, Kuroda K, Funahashi Y, Uraguchi-Asaki J, Hashimoto R, Kaibuchi K.	Proteomic analysis reveals novel binding partners of dysbindin, a schizophrenia-related protein.	J Neurochem	110(5)	1567-1574	2009

発表者氏名	論文タイトル名	発表誌名	巻号	ページ	出版年
Hashimoto R, Ohi K, Okada T, Yasuda Y, Yamamori H, Hori H, Hikita T, Taya S, Saitoh O, Kosuga A, Tatsumi M, Kamijima K, Kaibuchi K, Takeda M, Kunugi H.	Association analysis between schizophrenia and the AP-3 complex genes.	Neuroscience, Res	65 (1)	113-5	2009
Hashimoto R, Hashimoto H, Shintani N, Tanaka K, Yamamoto A, Hatanaka M, Guo X, Morita Y, Tanida M, Nagai K, Takeda M, Baba A.	Depression-like behavior in the forced swimming test in PACAP-deficient mice: amelioration by the atypical antipsychotic risperidone.	J. Neurochem	110(2)	595-602	2009
Hashimoto R, Noguchi H, Hori H, Ohi K, Yasuda Y, Takeda M, Kunugi H.	Association between the dysbindin gene (<i>DTNBP1</i>) and cognitive functions in Japanese subjects.	Psychiatry Clin Neurosci	63 (4)	550-6	2009
Hashimoto R, Noguchi H, Hori H, Nakabayashi T, Suzuki T, Iwata N, Ozaki N, Kosuga A, Tatsumi M, Kamijima K, Harada S, Saitoh O, Takeda M, Kunugi H.	A genetic variation in the dysbindin gene (<i>DTNBP1</i>) is associated with memory performance in healthy controls.	The World Journal of Biological Psychiatry	7	1-8	2009
Hashimoto R, Mori T, Nemoto K, Moriguchi Y, Noguchi H, Nakabayashi T, Hori H, Harada S, Kunugi H, Saitoh O, Ohnishi T., 2009.	Abnormal microstructures of the basal ganglia in schizophrenia revealed by diffusion tensor imaging.	The World Journal of Biological Psychiatry	10(1)	65-69	2009
Ohi K, Hashimoto R, Yasuda Y, Kiribayashi M, Iike N, Yoshida T, Azechi M, Ikezawa K, Takahashi H, Morihara T, Ishi R, Tagami S, Iwase M, Okochi M, Kamino K, Kazui H, Tanaka T, Kudo T, Takeda M.	TATA Box-Binding Protein gene is associated with risk for schizophrenia, age at onset and prefrontal function.	Genes, Brain and Behavior	8(4)	473-80	2009

発表者氏名	論文タイトル名	発表誌名	巻号	ページ	出版年
Ohi K, Hashimoto R, Yasuda Y, Yoshida T, Takahashi H, Iike N, Fukumoto M, Takamura H, Iwase M, Kamino K, Ishii R, Kazui H, Sekiyama R, Kitamura Y, Azechi M, Ikezawa K, Kurimoto R, Kamagata E, Tanimukai H, Tagami S, Morihara T, Ogasawara M, Okochi M, Tokunaga H, Numata S, Ikeda M, Ohnuma T, Ueno S, Fukunaga T, Tanaka T, Kudo T, Arai H, Ohmori T, Iwata N, Ozaki N, Takeda M.	Association study of the G72 gene with schizophrenia in a Japanese population: a multicenter study.	Schizophr Res	109(1-3)	80-85	2009
Ohi K, Hashimoto R, Yasuda Y, Yamamori H, Hori H, Saitoh O, Tatsumi M, Takeda M, Iwata N, Ozaki N, Kamijima K, Kunugi H.	No association between the Bcl2-interacting killer (BIK) gene and schizophrenia.	Neuroscience Lett,	463(1)	60-3	2009
Yanagida K, Okochi M, Tagami S, Nakayama T, Kodama T, Nishitomi K, Jiang J, Mori K, Tatsumi S, Arai T, Ikeuchi T, Kasuga K, Tokuda T, Kondo M, Ikeda K, Deguchi K, Kazui H, Tanaka T, Morihara T, Hashimoto R, Kudo T, Steiner H, Haass C, Tsuchiya K, Kiyama H, Kuwano R, Takeda M.	The 28-amino acid form of an APLP1-derived A β -like peptide is a surrogate marker for A β 42 production in the central nervous system.	EMBO Molecular Medicine	1	223-235	2009
Kubota K, Inoue K, Hashimoto R, Kumamoto N, Kosuga A, Tatsumi M, Kamijima K, Kunugi H, Iwata N, Ozaki N, Takeda M, Tohyama M.	Tumor necrosis factor receptor-associated protein 1 regulates cell adhesion and synaptic morphology via modulation of N-cadherin expression.	J. Neurochem,	110(2):	496-508	2009

発表者氏名	論文タイトル名	発表誌名	巻号	ページ	出版年
Ikezawa, K, Iwase, M, Ishii R, Azechi M, Canuet L, Ohi K, Yasuda Y, Iike N, Kurimoto R, Takahashi H, Nakahachi T, Sekiyama R, Yoshida T, Kazui H, Hashimoto R, Takeda M.	Impaired regional hemodynamic response in schizophrenia during multiple prefrontal activation tasks: a two-channel near-infrared spectroscopy study.	Schizophr Res	108(1-3)	108(1-3)	2009
Kubota K, Kumamoto N, Matsuzaki S, Hashimoto R, Hattori T, Okuda H, Takamura H, Takeda M, Katayama T, Tohyama M.	Dysbindin engages in c-Jun N-terminal kinase activity and cytoskeletal organization.	Biochem Biophys Res Commun	379(2)	191-195	2009
Okamoto N, Furusawa Y, Sakamoto K, Yamamoto T, Kondo Y, Nagafusa Y, Higuchi T.	Major Depression :what caused the crisis?	Lancet	375	346	2010
Tsunoka T, Kishi T, Kitajima T, Okochi T, Okumura T, Yamanouchi Y, Kinoshita Y, Kawashima K, Naitoh H, Inada T, Ujike H, Yamada M, Uchimura N, Sora I, Iyo M, Ozaki N, Iwata N	Association analysis of GRM2 and HTR2A with methamphetamine-induced psychosis and schizophrenia in the Japanese population.	Biol Psychiatry	in press	in press	
Amagane H, Watanabe Y, Kaneko N, Nunokawa A, Muratake T, Ishiguro H, Arinami T, Ujike H, Inada T, Iwata N, Kunugi H, Sasaki T, Hashimoto R, Itokawa M, Ozaki N, Someya T	Failure to find an association between myosin heavy chain 9, non-muscle (MYH9) and schizophrenia: A three-stage case-control association study.	Schizophr Res	in press	in press	
Ohnuma T, Shibata N, Baba H, Ohi K, Yasuda Y, Nakamura Y, Okochi T, Naitoh H, Hashimoto R, Iwata N, Ozaki N, Takeda M, Arai H	No association between DAO and schizophrenia in a Japanese patient population: A multicenter replication study.	Schizophr Res	in press	in press	

発表者氏名	論文タイトル名	発表誌名	巻号	ページ	出版年
Kishi T, Yoshimura R, Okochi T, Fukuo Y, Kitajima T, Okumura T, Tsunoka T, Kawashima K, Yamanouchi Y, Kinoshita Y, Umene-Nakano W, Naitoh H, Nakamura J, Ozaki N, Iwata N	Association analysis of SIGMAR1 with major depressive disorder and SSRI response.	Neuropharmacology	in press	in press	
Aleksic B, Kushima I, Ito Y, Nakamura Y, Ujike H, Suzuki M, Inada T, Hashimoto R, Takeda M, Iwata N, Ozaki N	Genetic association study of KREMEN1 and DKK1 and schizophrenia in a Japanese population.	Schizophr Res	in press	in press	
Kushima I, Aleksic B, Ito Y, Nakamura Y, Nakamura K, Mori N, Kikuchi M, Inada T, Kunugi H, Nanko S, Kato T, Yoshikawa T, Ujike H, Suzuki M, Iwata N, Ozaki N	Association study of ubiquitin-specific peptidase 46 (USP46) with bipolar disorder and schizophrenia in a Japanese population.	J Hum Genet	in press	in press	
Takahashi M, Hayashi H, Watanabe Y, Sawamura K, Fukui N, Watanabe J, Kitajima T, Yamanouchi Y, Iwata N, Mizukami K, Hori T, Shimoda K, Ujike H, Ozaki N, Iijima K, Takemura K, Aoshima H, Someya T	Diagnostic classification of schizophrenia by neural network analysis of blood-based gene expression signatures.	Schizophr Res	in press	in press	
Ishiguro H, Horiuchi Y, Ishikawa M, Koga M, Imai K, Suzuki Y, Morikawa M, Inada T, Watanabe Y, Takahashi M, Someya T, Ujike H, Iwata N, Ozaki N, Onaivi ES, Kunugi H, Sasaki T, Itokawa M, Arai M, Niizato K, Iritani S, Naka I, Ohashi J, Kakita A, Takahashi H, Nawa H, Arinami T	Brain Cannabinoid CB2 Receptor in Schizophrenia.	Biol Psychiatry	in press	in press	

発表者氏名	論文タイトル名	発表誌名	巻号	ページ	出版年
Kushima I, Aleksic B, Ikeda M, Yamanouchi Y, Kinoshita Y, Ito Y, Nakamura Y, Inada T, Iwata N, Ozaki N	Association study of bromodomain-containing 1 gene with schizophrenia in Japanese population.	Am J Med Genet B Neuropsychiatr Genet	in press	in press	
Syu A, Ishiguro H, Inada T, Horiuchi Y, Tanaka S, Ishikawa M, Arai M, Itokawa M, Niizato K, Iritani S, Ozaki N, Takahashi M, Kakita A, Takahashi H, Nawa H, Keino-Masu K, Arikawa-Hirasawa E, Arinami T	Association of the HSPG2 Gene with Neuroleptic-Induced Tardive Dyskinesia.	Neuropsychopharmacology	35(5)	1155-64	2010
Okumura T, Kishi T, Okochi T, Ikeda M, Kitajima T, Yamanouchi Y, Kinoshita Y, Kawashima K, Tsunoka T, Inada T, Ozaki N, Iwata N	Genetic association analysis of functional polymorphisms in neuronal nitric oxide synthase 1 gene (NOS1) and mood disorders and fluvoxamine response in major depressive disorder in the Japanese population.	Neuropsychobiology	61(2)	57-63	2010
Tomida K, Takahashi N, Saito S, Maeno N, Iwamoto K, Yoshida K, Kimura H, Iidaka T, Ozaki N	Relationship of psychopathological symptoms and cognitive function to subjective quality of life in patients with chronic schizophrenia.	Psychiatry Clin Neurosci	64	62-69	2010
Kishi T, Yoshimura R, Kitajima T, Okochi T, Okumura T, Tsunoka T, Yamanouchi Y, Kinoshita Y, Kawashima K, Naitoh H, Nakamura J, Ozaki N, Iwata N.	HTR2A is Associated with SSRI Response in Major Depressive Disorder in a Japanese Cohort.	Neuromolecular Med.	in press	in press	
Ikeda M, Aleksic B, Kirov G, Kinoshita Y, Yamanouchi Y, Kitajima T, Kawashima K, Okochi T, Kishi T, Zaharieva I, Owen MJ, O'Donovan MC, Ozaki N, Iwata N.	Copy Number Variation in Schizophrenia in the Japanese Population.	Biol Psychiatry	in press	in press	

発表者氏名	論文タイトル名	発表誌名	巻号	ページ	出版年
Okuda A, Kishi T, Okochi T, Ikeda M, Kitajima T, Tsunoka T, Okumukura T, Fukuo Y, Kinoshita Y, Kawashima K, Yamanouchi Y, Inada T, Ozaki N, Iwata N.	Translin-Associated Factor X Gene (TSNAX) may be Associated with Female major Depressive Disorder in the Japanese Population.	Neuromolecular Med.	in press	in press	
Kishi T, Tsunoka T, Ikeda M, Kitajima T, Kawashima K, Okochi T, Okumura T, Yamanouchi Y, Kinoshita Y, Ujike H, Inada T, Yamada M, Uchimura N, Sora I, Iyo M, Ozaki N, Iwata N.	Serotonin 1A receptor gene is associated with Japanese methamphetamine-induced psychosis patients.	Neuropharmacology.	in press	in press	
Ikeda M, Tomita Y, Mouri A, Koga M, Okochi T, Yoshimura R, Yamanouchi Y, Kinoshita Y, Hashimoto R, Williams HJ, Takeda M, Nakamura J, Nabeshima T, Owen MJ, O'Donovan MC, Honda H, Arinami T, Ozaki N, Iwata N.	Identification of novel candidate genes for treatment response to risperidone and susceptibility for schizophrenia: integrated analysis among pharmacogenomics, mouse expression, and genetic case-control association approaches.	Biol Psychiatry	67(3)	263-269	2010
Kishi T, Tsunoka T, Ikeda M, Kawashima K, Okochi T, Kitajima T, Kinoshita Y, Okumura T, Yamanouchi Y, Inada T, Ozaki N, Iwata N.	Serotonin 1A receptor gene and major depressive disorder: an association study and meta-analysis.	J Hum Genet.	54	629-633	2009
Moriwaki M, Kishi T, Takahashi H, Hashimoto R, Kawashima K, Okochi T, Kitajima T, Furukawa O, Fujita K, Takeda M, Iwata N.	Prepulse inhibition of the startle response with chronic schizophrenia: a replication study.	Neurosci Res.	65(3)	259-62	2009 Nov.
Kishi T, Kitajima T, Ikeda M, Yamanouchi Y, Kinoshita Y, Kawashima K, Okochi T, Ozaki N, Iwata N.	Orphan Nuclear Receptor Rev-erb Alpha Gene (NR1D1) and Fluvoxamine Response in Major Depressive Disorder in the Japanese Population.	Neuropsychobiology.	59(4)	234-238	2009 Jul 2; [Epub ahead of print]

発表者氏名	論文タイトル名	発表誌名	巻号	ページ	出版年
Hattori M, Kitajima T, Mekata T, Kanamori A, Imamura M, Sakakibara H, Kayukawa Y, Okada T, Iwata N.	Risk factors for obstructive sleep apnea syndrome screening in mood disorder patients.	Psychiatry Clin Neurosci.	3(3)	385-91	2009 Jun, 6
Kishi T, Kitajima T, Tsunoka T, Okumura T, Ikeda M, Okochi T, Kinoshita Y, Kawashima K, Yamanouchi Y, Ozaki N, Iwata N.	Possible association of prokineticin 2 receptor gene (PROKR2) with mood disorders in the Japanese population.	Neuromolecular Med.	11	114-22	2009
Okumura T, Okochi T, Kishi T, Ikeda M, Kitajima T, Yamanouchi Y, Kinoshita Y, Kawashima K, Tsunoka T, Ujike H, Inada T, Ozaki N, Iwata N.	No Association Between Polymorphisms of Neuronal Oxide Synthase 1 Gene (NOS1) and Schizophrenia in a Japanese Population.	Neuromolecular Med.	11(2)	123-7	2009
Kishi T, Kitajima T, Tsunoka T, Ikeda M, Yamanouchi Y, Kinoshita Y, Kawashima K, Okochi T, Okumura T, Inada T, Ozaki N, Iwata N.	Genetic association analysis of serotonin 2A receptor gene (HTR2A) with bipolar disorder and major depressive disorder in the Japanese population.	Neurosci Res	64(2)	231-4	2009
Kishi T, Ikeda M, Kitajima T, Yamanouchi Y, Kinoshita Y, Kawashima K, Okumura T, Tsunoka T, Inada T, Ozaki N, Iwata N.	Association analysis of functional polymorphism in estrogen receptor alpha gene with schizophrenia and mood disorders in the Japanese population	Psychiatric Genetics	19 (4)	217-8	2009
Okochi T, Kishi T, Ikeda M, Kitajima T, Kinoshita Y, Kawashima K, Okumura T, Tsunoka T, Inada T, Yamada M, Uchimura N, Iyo M, Sora I, Ozaki N, Ujike H, Iwata N.	Genetic association analysis of NRG1 with methamphetamine-induced psychosis in a Japanese population.	Prog Neuropsychopharmacol Biol Psychiatry	33	903-905	2009
Kawashima K, Ikeda M, Kishi T, Kitajima T, Yamanouchi Y, Kinoshita Y, Okochi T, Aleksic B, Tomita M, Okada T, Kunugi H, Inada T, Ozaki N, Iwata N.	BDNF is not associated with schizophrenia: Data from a Japanese population study and meta-analysis.	Schizophr Res.	112 (1-3)	72-9	2009

発表者氏名	論文タイトル名	発表誌名	巻号	ページ	出版年
Tsunoka T, Kishi T, Ikeda M, Kitajima T, Yamanouchi Y, Kinoshita Y, Kawashima K, Okochi T, Okumura T, Inada T, Ozaki N, Iwata N.	Association analysis of Group II metabotropic glutamate receptor genes (GRM2 and GRM3) with mood disorders and fluvoxamine response in a Japanese population.	Prog Neuropsychopharmacol Biol Psychiatry .	33	875-879	2009
Kishi T, Ikeda M, Kitajima T, Yamanouchi Y, Kinoshita Y, Kawashima K, Okochi T, Tsunoka T, Okumura T, Inada T, Ujike H, Yamada M, Uchimura N, Sora I, Iyo M, Ozaki N, Iwata N.	A functional polymorphism in estrogen receptor alpha gene is associated with Japanese methamphetamine induced psychosis.	Prog Neuropsychopharmacol Biol Psychiatry .	33	895-898	2009
Kishi T, Kitajima T, Ikeda M, Yamanouchi Y, Kinoshita Y, Kawashima K, Okochi T, Okumura T, Tsunoka T, Ozaki N, Iwata N.	CLOCK may Predict the Response to Fluvoxamine Treatment in Japanese Major Depressive Disorder Patients.	Neuromolecular Med.	11	53-57	2009
Okochi T, Ikeda M, Kishi T, Kawashima K, Kinoshita Y, Kitajima T, Yamanouchi Y, Tomita M, Inada T, Ozaki N, Iwata N.	Meta-analysis of association between genetic variants in COMT and schizophrenia: An update.	Schizophr Res.	110(1-3)	140-8	2009
Kishi T, Kitajima T, Ikeda M, Yamanouchi Y, Kinoshita Y, Kawashima K, Okochi T, Okumura T, Tsunoka T, Inada T, Ozaki N, Iwata N.	Association study of clock gene (CLOCK) and schizophrenia and mood disorders in the Japanese population.	Eur Arch Psychiatry Clin Neurosci.	259 (5)	293-297	2009

Dynamin 2 gene is a novel susceptibility gene for late-onset Alzheimer disease in non-*APOE*- ϵ 4 carriers

Nuripa Jenishbekovna Aidaralieva · Kouzin Kamino · Ryo Kimura · Mitsuko Yamamoto · Takeshi Morihara · Hiroaki Kazui · Ryota Hashimoto · Toshihisa Tanaka · Takashi Kudo · Tomoyuki Kida · Jun-Ichiro Okuda · Takeshi Uema · Hidehisa Yamagata · Tetsuro Miki · Hiroyasu Akatsu · Kenji Kosaka · Masatoshi Takeda

Received: 6 November 2007 / Accepted: 30 December 2007
© The Japan Society of Human Genetics and Springer 2008

Abstract Alzheimer disease (AD) is characterized by progressive cognitive decline caused by synaptic dysfunction and neurodegeneration in the brain, and late-onset AD (LOAD), genetically classified as a polygenetic disease, is the major form of dementia in the elderly. It has been shown that β amyloid, deposited in the AD brain, interacts with dynamin 1 and that the dynamin 2 (*DNM2*) gene homologous to the dynamin 1 gene is encoded at

chromosome 19p13.2 where a susceptibility locus has been detected by linkage analysis. To test the genetic association of LOAD with the *DNM2* gene, we performed a case-control study of 429 patients with LOAD and 438 sex- and age-matched control subjects in a Japanese population. We found a significant association of LOAD with single nucleotide polymorphism markers of the *DNM2* gene, especially in non-carriers of the apolipoprotein E- ϵ 4 allele. Even though subjects with the genotype homozygous for the risk allele at rs892086 showed no mutation in exons of the *DNM2* gene, expression of *DNM2* mRNA in the hippocampus was decreased in the patients compared to non-demented controls. We propose that the *DNM2* gene is a novel susceptibility gene for LOAD.

Electronic supplementary material The online version of this article (doi:10.1007/s10038-008-0251-9) contains supplementary material, which is available to authorized users.

N. J. Aidaralieva · K. Kamino (✉) · R. Kimura · M. Yamamoto · T. Morihara · H. Kazui · R. Hashimoto · T. Tanaka · T. Kudo · M. Takeda
Department of Psychiatry,
Osaka University Graduate School of Medicine,
Suita, Osaka 565-0871, Japan
e-mail: kkamino@psy.med.osaka-u.ac.jp

K. Kamino · T. Kida · J.-I. Okuda
Shoraiso National Hospital, Yamatokoriyama, Nara, Japan

T. Uema
Department of Psychiatry, Osaka General Medical Center,
Osaka, Japan

H. Yamagata
Department of Preventive Medicine,
Ehime University Graduate School of Medicine,
Toon, Ehime, Japan

T. Miki
Department of Geriatric Medicine,
Ehime University Graduate School of Medicine,
Toon, Ehime, Japan

H. Akatsu · K. Kosaka
Choju Medical Institute, Fukushimura Hospital,
Toyohashi, Aichi, Japan

Keywords Alzheimer · Apolipoprotein E · Association · Chromosome 19p · Dynamin 2 · Genetic risk

Introduction

Alzheimer disease (AD) is the most common form of dementia in the elderly and is characterized by progressive cognitive decline with brain atrophy that is most marked in the temporal lobes. It is thought that β amyloid is a causative molecule in AD by disturbing synaptic function, leading to neuronal death (for review, see Selkoe 2002; Yao 2004). Although both early- and late-onset AD (LOAD) exhibit the same neuropathology in the brain, LOAD is genetically classified as a polygenetic disease and is characterized by more heterogeneous conditions than autosomal dominant early-onset AD. Apolipoprotein E (*APOE*) has been shown to be a major risk factor for LOAD (Corder et al. 1993; Farrer et al. 1997). Genome scans of LOAD detected several susceptibility loci, among

which chromosomes 12, 10 and 9 have been the targets of searches for risk genes (Pericak-Vance et al. 1997; Blacker et al. 2003). Multipoint linkage analysis of LOAD families have also demonstrated a susceptibility locus at 19p13.2 between D19S391 and D19S914 (Wijsman et al. 2004).

The major role of the dynamin proteins is in the endocytosis of vesicles, and its functions in vesicle budding have been described as being responsible for the constriction of the lipid neck, fission of lipids and regulation of the scission reaction (for review, see Praefcke and McMahon 2004). Expression of the dynamin 2 (*DNM2*) as well as dynamin 1 (*DNM1*) gene is downregulated by β amyloid in hippocampal neurons (Kelly et al. 2005), suggesting that the dynamin proteins are involved in the cascade of neurodegeneration caused by β amyloid. The dynamin-binding protein (*DNMBP*) gene on chromosome 10 has also been shown to be associated with LOAD (Kuwano et al. 2006). We observed that the *DNM2* gene is located at 19p13.2, within the region where a susceptibility locus was noted (Wijsman et al. 2004). Therefore, the *DNM2* gene could be a positional and functional candidate for a genetic risk for LOAD.

To examine whether the *DNM2* gene is genetically associated with LOAD, we performed an age- and sex-matched case-control study in a Japanese population. We propose herein that the *DNM2* gene is a novel genetic factor for LOAD in non-*APOE-ε4* carriers.

Subjects and methods

Study subjects

Patients with LOAD were diagnosed as having definite or probable AD according to the criteria of the National Institute of Neurological and Communicative Disorders and Stroke-Alzheimer's Disease and Related Disorders Association (NINCDS-ADRDA) (McKhann et al. 1984). Controls consisted of non-demented elderly subjects obtained from the general population. Written informed consent to participate in this study was obtained, and then peripheral blood was drawn and subjected to DNA extraction. For a definite diagnosis of AD, dissections were carried out at the Choju Medical Institute after obtaining the agreement of the patients' guardians for diagnosis and genomic research. In total, 429 (69.9% female) patients participated in the study, of whom 66 had definite AD and 363 had probable AD. The mean age \pm SD of the patient population at onset was 72.3 ± 8.1 years (range 60–94 years), and the mean age at blood drawing was 77.4 ± 8.7 years (range 60–98 years). The controls consisted of 438 individuals (63.7% female). The mean age of the controls at assessment was 74.5 ± 5.5 years (range 60–99 years). The age at onset of the patient was matched to

the age of controls, and the sex composition was not different between the groups. Hippocampal tissue was also obtained from the postmortem brains of 22 patients with AD (age 82.8 ± 8.5 years, 63.6% female) and 12 controls (age 89.0 ± 7.0 years, age at onset 72.9 ± 7.2 years, 58.0% female). DNA was extracted from peripheral blood using a QIAamp DNA Blood Kit (Qiagen, Tokyo, Japan) and from brain tissue by the phenol-chloroform method (Sambrook et al. 1989). The procedure to obtain the specimens was approved by the Genome Ethical Committee of Osaka University Graduate School of Medicine, Ehime University, and the Choju Medical Institute of Fukushima Hospital.

Genotyping and sequencing

Single nucleotide polymorphisms (SNPs) in the *DNM2* gene regions used in this study are listed in Table 1. Genotyping was performed by a quantitative genotyping method using the TaqMan SNP Genotyping System (Applied Biosystems, Foster City, CA). The genotype of the *APOE* gene was determined by a PCR-restriction fragment length polymorphism (RFLP) method (Wenham et al. 1991). DNA obtained from six patients and three controls homozygous for the risk allele at rs892086 of the *DNM2* gene was subjected to direct sequencing of its exons using the primers listed in Electronic Supplementary Material.

Quantitative real-time PCR

Total RNA was isolated from frozen hippocampal tissues using the acid guanidine-phenol-chloroform RNA extraction method provided as ISOGEN (Nippon Gene, Toyama, Japan) and purified using an RNeasy Mini kit (Qiagen, Valencia, CA). RNA samples with an A_{260}/A_{280} absorption ratio over 1.9 were subjected to cDNA synthesis using a High-Capacity cDNA Archive kit (Applied Biosystems). Primers and probe sets for the human *DNM2* and β -actin genes were purchased from TaqMan Gene Expression Assay products (Applied Biosystems), and quantitative real-time PCR was carried out in an ABI PRISM 7900HT (Applied Biosystems). All quantitative PCR reactions were duplicated, and the ratio of the amount of *DNM2* cDNA to that of the β -actin internal control cDNA was determined at the cycle threshold (CT).

Statistical analysis

Linkage disequilibrium (LD) between all pairs of biallelic loci was measured by Lewontin's D' (D') (Hedrick 1987)

Table 1 Single nucleotide polymorphism (SNP) markers in the *DNM2* gene

NCBI SNP reference ID	Location in NCBI (build 36.1)	Location	SNP sequence (allele ½)	Strand/or orientation	Minor allele
rs12974306	10691281	Intron 1	CTCTT[G/T]CCTTT	fwd/B	Allele 2
rs714307	10696405	Intron 1	CGCTA[C/T]TGCTG	fwd/B	Allele 1
rs892086	10698677	Intron 1	GTTAG[A/G]TACCA	rev/T	Allele 1
rs34626880	10701428	Intron 1	AGCTC[C/T]ACCTG	fwd/B	Allele 2
rs10775614	10728219	Intron 1	GGCAC[A/G]TGGCG	fwd/T	Allele 2
rs7246673	10737841	Intron 2	AACCC[G/T]GCTGT	fwd/B	Allele 1
rs3826803	10744126	Intron 2	TTTCT[C/G]ATTTT	fwd/B	Allele 2
rs2043332	10752239	Intron 5	GTGAC[A/C]TCAGG	rev/T	Allele 1
rs873016	10755728	Intron 6	AAATG[A/G]TATTA	rev/T	Allele 1
rs1109376	10775829	Intron 12	AGGAT[A/G]CTTCT	fwd/T	Allele 1
rs3786719	10788100	intron 15	TGGAA[C/G]CTTCC	fwd/T	Allele 2
rs11085748	10788540	intron 15	GTTTT[C/T]CTCAT	fwd/B	Allele 2
rs3760781	10808522	3'UTR	TTGAG[C/T]GCTCA	fwd/B	Allele 2

UTR, Untranslated region; NCBI, National Center for Biotechnology Information

and r^2 . Haplotype blocks, defined as segments with strong LD (Gabriel et al 2002), were calculated using HAPLOVIEW (Barrett et al. 2005). Allele and genotype frequencies were assessed for associations by one-sided chi-squared test for both allele and genotype frequencies in dominant and recessive models, where p values less than 0.05 were tentatively judged to be significant. The effective number of independent marker loci in the *DNM2* gene was calculated to correct for multiple testing, using the software SNPSpD (<http://www.genepi.qimr.edu.au/general/daleN/SNPSpD/>) based on the spectral decomposition of matrices of pair-wise LD between SNPs (Nyholt 2004). The experiment-wide significance threshold required to keep the type I error rate at 5% was used for judging significance to correct for multiple testing. The values obtained by quantitative PCR, having a normal distribution, were compared by Student's t test, and a p value less than 0.05 was considered to be significant.

Results

We genotyped 13 SNPs located from intron 1 to the 3'-untranslated region (UTR) of the *DNM2* gene (Table 1). In total, 429 cases and 438 sex- and age-matched controls were genotyped, and their genotype distributions of both the cases and controls were in Hardy-Weinberg equilibrium. In these datasets, the *APOE-ε4* allele was associated with LOAD ($p < 1 \times 10^{-10}$): compared to non-*APOE-ε4* carriers, the odds ratio for carrying one *APOE-ε4* allele was 4.3 [95% confidence interval (CI) 3.12–6.16] and that for carrying two *APOE-ε4* allele was 28.4 (95% CI 6.75–119). Linkage disequilibrium statistics indicated more than three haplotype blocks in the *DNM2* gene region (Fig. 1). No validated SNPs were available between rs873016 and

rs1109376 at a distance of approximately 20 kb, and no strong evidence of LD was found between these two SNPs. The case-control study showed that p values of less than 0.05 were found in four SNPs located from intron 6 to the 3'UTR in terms of allele distribution, and in seven SNPs from intron 1 to the 3'UTR in terms of genotype frequencies; their odds ratios were between 1.53 and 1.75 (Table 2). Calculations with SNPSpD indicated that the effective number of independent marker loci was 8.3094 and that the experiment-wide significance threshold was 0.006. Therefore, rs3760781 remained significant after the correction for multiple testing ($p = 0.003$). To examine the interaction between the *DNM2* gene and the *APOE* gene, the cases and controls were divided into *APOE-ε4* carriers and non-*APOE-ε4* carriers. In non-*APOE-ε4* carriers, seven markers showed p values of less than 0.05, and the experiment-wide significance threshold (0.0059) supported a significant association at rs892086 ($p = 0.003$) as well as at rs3760781 ($p = 0.004$) (Table 3). However, no association was found in *APOE-ε4* carriers (data not shown), indicating that the association of the *DNM2* gene is specific for non-*APOE-ε4* carriers in our dataset.

To examine whether patients with the risk genotype could harbor any mutations in the *DNM2* gene, we sequenced all exons of the *DNM2* gene in patients and controls homozygous for the risk allele at rs892086, but we did not find any mutations, indicating that no particular mutation resulting in amino acid change is linked to the risk genotype of the *DNM2* gene. To examine the expression of the *DNM2* gene in the AD hippocampal tissue, we measured the amount of *DNM2* cDNA normalized to that of β -actin cDNA using quantitative PCR. Analysis of ten LOAD and eight control subjects revealed that there was significantly lower amounts of *DNM2* mRNA in the AD hippocampal tissue than in the controls ($p < 0.01$) (Fig. 2).

Fig. 1 Linkage disequilibrium coefficients and haplotype blocks in the *DNM2* gene region. Linkage disequilibrium coefficients (D') among *DNM2* single nucleotide polymorphisms (SNPs) and haplotype blocks defined by strong LD are shown

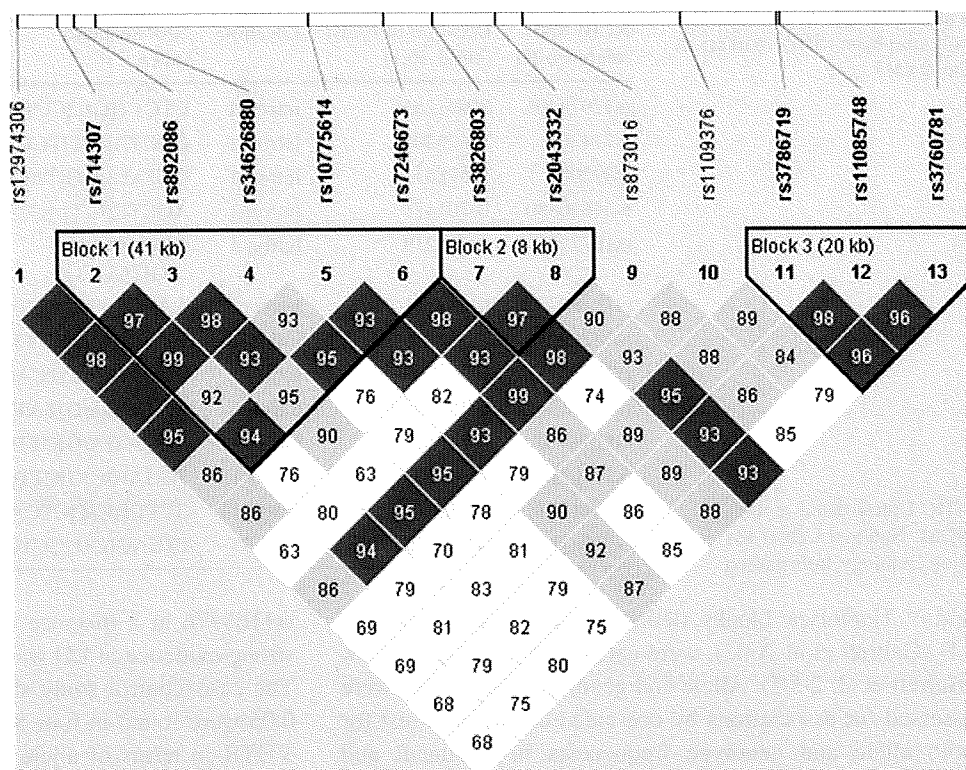


Table 2 Association analysis of late-onset Alzheimer disease in the *DNM2* gene

SNP ID	LOAD			Control			Risk allele	<i>p</i> value	Risk genotype	<i>p</i> value	O.R. (95% CI)		
	Genotype number	MAF		Genotype number	MAF								
Genotype	1/1	2/2	½	1/1	2/2	½							
MArs12974306	174	57	196	0.363	204	46	188	0.320	Allele 2	NS	–	NS	
rs714307	16	285	127	0.186	16	304	117	0.170	Allele 1	NS	–	NS	
rs892086	93	134	202	0.452	67	145	226	0.411	Allele 1	NS	1/1	0.015	1.53 (1.08–2.17)
rs34626880	284	16	129	0.188	306	16	116	0.169	Allele 2	NS	–	NS	
rs10775614	306	11	111	0.155	326	14	95	0.141	Allele 2	NS	–	NS	
rs7246673	78	134	215	0.434	55	150	233	0.392	Allele 1	NS	1/1	0.020	1.56 (1.07–2.26)
rs3826803	132	86	209	0.446	145	58	234	0.400	Allele 2	NS	2/2	0.007	1.65 (1.15–2.37)
rs2043332	15	295	118	0.173	11	309	118	0.160	Allele 1	NS	–	NS	
rs873016	80	135	212	0.436	55	153	230	0.388	Allele 1	0.045	1/1	0.012	1.61 (1.11–2.33)
rs1109376	28	256	144	0.234	19	275	144	0.208	Allele 1	NS	–	NS	
rs3786719	145	85	198	0.430	166	57	215	0.376	Allele 2	0.021	2/2	0.007	1.66 (1.15–2.39)
rs11085748	138	81	209	0.433	160	56	222	0.381	Allele 2	0.027	2/2	0.013	1.59 (1.10–2.31)
rs3760781	141	87	199	0.437	157	56	225	0.385	Allele 2	0.028	2/2	0.003*	1.75 (2.21–2.52)

*Significant for experiment-wide significance threshold ($p < 0.006$)

LOAD, Late-onset Alzheimer disease; MAF, Minor Allele Frequency; O.R., odds ratio; 95% CI, 95% confidence interval

Discussion

We found that the *DNM2* gene is genetically associated with LOAD and that this association was specifically significant in non-*APOE-ε4* carriers. In non-*APOE-ε4* carriers, two SNPs, not in strong LD, were associated with LOAD.

The *DNMBP* gene, which encodes a scaffold protein that binds to DNMI protein, has been shown to be associated with LOAD in *APOE-ε3*3* carriers or non-*APOE-ε4* carriers, but not in *APOE-ε4* carriers (Kuwano et al. 2006). Therefore, DNMBP protein could interact with proteins encoded in or linked to the *APOE-ε3* genotype. It is

Table 3 Association analysis of late-onset Alzheimer disease in the *DNM2* gene in non-*APOE-ε4* carriers

SNP ID	LOAD			MAF	Control			Risk allele	p value	Risk genotype	p value	O.R. (95% CI)	
	Genotype number				Genotype number								
	1/1	2/2	½		1/1	2/2	½						
rs12974306	87	35	97	0.381	174	37	158	0.314	Allele 2	0.019	2/2	0.033	1.71 (1.04–2.80)
rs714307	6	152	63	0.170	12	259	97	0.164	Allele 1	NS		NS	
rs892086	55	64	102	0.480	56	121	192	0.412	Allele 1	0.023	1/1	0.003*	1.85 (1.22–2.81)
rs34626880	152	6	63	0.170	260	12	97	0.164	Allele 2	NS		NS	
rs10775614	164	5	51	0.139	278	11	77	0.135	Allele 2	NS		NS	
rs7246673	41	62	117	0.452	46	127	196	0.390	Allele 1	0.037	1/1	0.041	1.61 (1.02–2.54)
rs3826803	63	42	115	0.452	121	49	198	0.402	Allele 2	NS		NS	
rs2043332	7	149	64	0.177	7	264	98	0.152	Allele 1	NS		NS	
rs873016	42	63	116	0.452	46	130	193	0.386	Allele 1	0.025	1/1	0.031	1.65 (1.04–2.60)
rs1109376	13	138	69	0.216	15	234	120	0.203	Allele 1	NS		NS	
rs3786719	71	45	104	0.441	141	47	181	0.373	Allele 2	0.021	2/2	0.013	1.76 (1.13–2.76)
rs11085748	68	44	109	0.446	136	46	187	0.378	Allele 2	0.022	2/2	0.015	1.75 (1.11–2.74)
rs3760781	73	47	100	0.441	135	46	188	0.379	Allele 2	0.037	2/2	0.004*	1.91 (1.22–2.98)

*Significant for experiment-wide significance threshold ($p < 0.0059$)

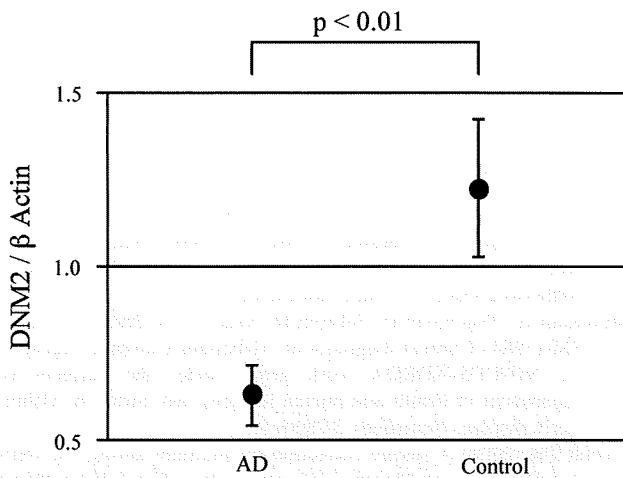


Fig. 2 Expression of *DNM2* mRNA in the hippocampus. The ratio of the amount of *DNM2* cDNA to that of β -actin cDNA is shown. Dots indicate mean value, bars indicate standard error

possible that the causative mechanism of *DNM2* for the development of AD could be different from the lipid transfer proteins involved in lipid metabolism, such as the *APOE* (Strittmatter et al. 1993), *LRP* (Kang et al. 1997) and *CYP46* genes encoding cholesterol 24S-hydroxylase (Kolsch et al. 2002). However, the majority of cases genotyped in our study are still living, and the use of still living controls also warrants caution as the incidence of developing dementia increases with age. Therefore, our results could be misrepresented, as the controls may still develop AD, or we may have misdiagnosed AD patients who may actually have another form of dementia.

The *DNM* gene was first identified as the locus for a paralytic phenotype in *Drosophila melanogaster* (Suzuki et al. 1971) and encodes large GTPases that can associate with microtubules in vitro (Shpetner and Vallee 1989; Obar et al. 1990). The dynamin proteins are distinguished from other GTPases by their low GTP-binding affinities and the ability of many members of the dynamin family to interact with lipid membranes (for review, see Praefcke and McMahon 2004). Mutations of the pleckstrin homology domain of the *DNM2* gene, leading to diminished binding of the *DNM2* protein to membranes, are responsible for Charcot–Marie–Tooth disease (Zuchner et al. 2005). While Charcot–Marie–Tooth disease is clinically characterized by peripheral neuropathy, the relation between aging and *DNM2* gene expression remains undetermined. Disuse muscle atrophy related to decreased daily activity is commonly found in the elderly, but it is unclear whether exercise is effective for the maintenance of cognitive function.

Kelly et al. (2005) showed that β amyloid induces depletion of the *DNM1* as well as *DNM2* protein in cultured hippocampal neurons and the hippocampus of a Tg2576 mouse model of AD. On the other hand, dominant-negative *DNM1*, which selectively inhibits receptor-mediated endocytosis, raises the levels of mature amyloid precursor protein (APP) at the cell-surface, which is consistent with retention of APP on the plasma membrane, and endogenous $A\beta$ secretion was significantly increased (Chyung and Selkoe 2003). It has also been shown that the location of β amyloid can be changed by decreased activity

of the DNMI protein and that endocytosis affects the precision of PS-dependent epsilon-cleavage in cell culture (Fukumori et al. 2006). Whereas the DNMI protein is specific for presynaptic terminals in the central nervous system (CNS), the DNMI2 protein is ubiquitously expressed and, to our knowledge, does not exist in presynaptic terminals in the CNS. However, DNMI2 has a similar structure to DNMI and might also affect the sequestration and scavenging of β amyloid in relation to its axonal transport in peripheral nervous system.

We found that the expression of hippocampal *DNMI2* mRNA was lower in the patients than in the control subjects, but this result should be carefully interpreted. We examined a small number of hippocampal tissue samples and used β -actin cDNA as an internal control; however, quantitative PCR revealed that the β -actin transcript is differently expressed in brain specimens of AD and control subjects (Gutala and Reddy 2004). Therefore, this decrease should be examined in the other brain areas and also in a larger number of samples using another internal control cDNA, such as *GAPDH* (Gutala and Reddy 2004). Alternatively, *DNMI2* gene expression could be depleted in AD due to the widespread devastation of neurons, particularly in the hippocampus, as well as by β amyloid. Therefore, it remains to be determined whether the decrease in *DNMI2* expression is the cause or the outcome of AD.

Acknowledgments We thank Drs. Y. Ikejiri, T. Nishikawa, H. Yoneda, Y. Moto, A. Sawa, S. Fujinaga, T. Matsubayashi, K. Taniguchi, Y. Ikemura and T. Mori for clinical evaluations, and E. Miyamura for assistance. This work was funded by the Future Program and the Japan Society for the Promotion of Science (JSPS), and by a Grant-in-Aid for Scientific Research on Priority Areas "Applied Genomics" from the Ministry of Education, Culture, Sports, Science and Technology of Japan.

References

- Barrett JC, Fry B, Maller J, Daly MJ (2005) Haploview: analysis and visualization of LD and haplotype maps. *Bioinformatics* 21:263–265
- Blacker D, Bertram L, Saunders AJ, Moscarillo TJ, Albert MS, Wiener H, Perry RT, Collins JS, Harrell LE, Go RC, Mahoney A, Beaty T, Fallin MD, Avramopoulos D, Chase GA, Folstein MF, McInnis MG, Bassett SS, Doherty KJ, Pugh EW, Tanzi RE; NIMH Genetics Initiative Alzheimer's Disease Study Group (2003) Results of a high-resolution genome screen of 437 Alzheimer's disease families. *Hum Mol Genet* 12:23–32
- Chyung JH, Selkoe DJ (2003) Inhibition of receptor-mediated endocytosis demonstrates generation of amyloid β -protein at the cell surface. *J Biol Chem* 278:51035–51043
- Corder EH, Saunders AM, Strittmatter WJ, Schmechel DE, Gaskell PC, Small GW, Roses AD, Haines JL, Pericak-Vance MA (1993) Gene dose of apolipoprotein E type 4 allele and the risk of Alzheimer's disease in late onset families. *Science* 261:921–923
- Farrer LA, Cupples LA, Haines JL, Hyman B, Kukull WA, Mayeux R, Myers RH, Pericak-Vance MA, Risch N, van Duijn CM (1997) Effects of age, sex, and ethnicity on the association between apolipoprotein E genotype and Alzheimer disease. A meta-analysis. APOE and Alzheimer disease meta analysis consortium. *JAMA* 278:1349–1356
- Fukumori A, Okochi M, Tagami S, Jiang J, Itoh N, Nakayama T, Yanagida K, Ishizuka-Katsura Y, Morihara T, Kamino K, Tanaka T, Kudo T, Tanii H, Ikuta A, Haass C, Takeda M (2006) Presenilin-dependent gamma-secretase on plasma membrane and endosomes is functionally distinct. *Biochemistry* 45:4907–4914
- Gabriel SB, Schaffner SF, Nguyen H, Moore JM, Roy J, Blumenstiel B, Higgins J, DeFelice M, Lochner A, Faggart M, Liu-Cordero SN, Rotimi C, Adeyemo A, Cooper R, Ward R, Lander ES, Daly MJ, Altshuler D (2002) The structure of haplotype blocks in the human genome. *Science* 296:2225–2229
- Gutala RV, Reddy PH (2004) The use of real-time PCR analysis in a gene expression study of Alzheimer's disease post-mortem brains. *J Neurosci Methods* 132:101–107
- Hedrick PW (1987) Gametic disequilibrium measures: proceed with caution. *Genetics* 117:331–341
- Kang DE, Saitoh T, Chen X, Xia Y, Masliah E, Hansen LA, Thomas RG, Thal LJ, Katzman R (1997) Genetic association of the low-density lipoprotein receptor-related protein (LRP), an apolipoprotein E receptor, with late-onset Alzheimer's disease. *Neurology* 49:56–61
- Kelly BL, Vassar R, Ferreira A (2005) β -amyloid-induced dynamin 1 depletion in hippocampal neurons. *J Biol Chem* 280:31746–31753
- Kolsch H, Lutjohann D, Ludwig M, Schulte A, Ptak U, Jessen F, von Bergmann K, Rao ML, Maier W, Heun R (2002) Polymorphism in the cholesterol 24S-hydroxylase gene is associated with Alzheimer's disease. *Mol Psychiatry* 7:899–902
- Kuwano R, Miyashita A, Arai H, Asada T, Imagawa M, Shoji M, Higuchi S, Urakami K, Kakita A, Takahashi H, Tsukie T, Toyabe S, Akazawa K, Kanazawa I, Ihara Y; The Japanese Genetic Study Consortium for Alzheimer's Disease (2006) Dynamin-binding protein gene on chromosome 10q is associated with late-onset Alzheimer's disease. *Hum Mol Genet* 15:2170–2182
- McKhann G., Drachman D, Folstein M, Katzman R, Price D, Stadlan EM (1984) Clinical diagnosis of Alzheimer's disease; report of the NINCDS-ADRDA work group under the auspices of department of health and human services task force on Alzheimer's disease. *Neurology* 34:939–944
- Nyholt DR (2004) A simple correction for multiple testing for SNPs in linkage disequilibrium with each other. *Am J Hum Genet* 74:765–769
- Obar RA, Collins CA, Hammarback JA, Shpetner HS, Vallee RB (1990) Molecular cloning of the microtubule-associated mechanochemical enzyme dynamin reveals homology with a new family of GTP-binding proteins. *Nature* 347:256–261
- Pericak-Vance MA, Bass MP, Yamaoka LH, Gaskell PC, Scott WK, Terwedow HA, Menold MM, Conneally PM, Small GW, Vance JM, Saunders AM, Roses AD, Haines JL (1997) Complete genomic screen in late-onset familial Alzheimer disease. Evidence for a new locus on chromosome 12. *JAMA* 278:1237–1241
- Praefcke GJ, McMahon HT (2004) The dynamin superfamily: universal membrane tubulation and fission molecules? *Nat Rev Mol Cell Biol* 5:133–147
- Sambrook J, Fritsch EF, Maniatis T (1989) *Molecular cloning: a laboratory manual*. 2nd edn. Cold Spring Harbor Laboratory Press, New York, pp 9.14–9.19
- Selkoe DJ (2002) Alzheimer's disease is a synaptic failure. *Science* 298:789–791

Shpetner HS, Vallee RB (1989) Identification of dynamin, a novel mechanochemical enzyme that mediates interactions between microtubules. *Cell* 59:421–432

Strittmatter WJ, Weisgraber KH, Huang DY, Dong LM, Salvesen GS, Pericak-Vance M, Schmechel D, Saunders AM, Goldgaber D, Roses AD (1993) Binding of human apolipoprotein E to synthetic amyloid beta peptide: isoform-specific effects and implications for late-onset Alzheimer disease. *Proc Natl Acad Sci USA* 90:8098–8102

Suzuki DT, Grigliatti T, Williamson R (1971) Temperature-sensitive mutations in *Drosophila melanogaster*. VII. A mutation (para-ts) causing reversible adult paralysis. *Proc Natl Acad Sci USA* 68:890–893

Wenham PR, Price WH, Blandell G. (1991) Apolipoprotein E genotyping by one-stage PCR. *Lancet* 337:1158–1159

Wijsman EM, Daw EW, Yu CE, Payami H, Steinbart EJ, Nochlin D, Conlon EM, Bird TD, Schellenberg GD (2004) Evidence for a novel late-onset Alzheimer disease locus on chromosome 19p13.2. *Am J Hum Genet* 75:398–409

Yao PJ (2004) Synaptic frailty and clathrin-mediated synaptic vesicle trafficking in Alzheimer's disease. *Trends Neurosci* 27:24–29

Zuchner S, Noureddine M, Kennerson M, Verhoeven K, Claeys K, De Jonghe P, Merory J, Oliveira SA, Speer MC, Stenger JE, Walizada G, Zhu D, Pericak-Vance MA, Nicholson G, Timmerman V, Vance JM (2005) Mutations in the pleckstrin homology domain of dynamin 2 cause dominant intermediate Charcot-Marie-Tooth disease. *Nat Genet* 37:289–294



Failure to replicate the association between *NRG1* and schizophrenia using Japanese large sample

Masashi Ikeda^{a,*}, Nagahide Takahashi^{b,c,1}, Shinichi Saito^c, Branko Aleksic^{a,c},
Yuichiro Watanabe^d, Ayako Nunokawa^d, Yoshio Yamanouchi^a, Tsuyoshi Kitajima^a,
Yoko Kinoshita^a, Taro Kishi^a, Kunihiro Kawashima^a, Ryota Hashimoto^{e,f},
Hiroshi Ujike^g, Toshiya Inada^h, Toshiyuki Someya^d,
Masatoshi Takeda^{e,f}, Norio Ozaki^c, Nakao Iwata^a

^a Department of Psychiatry, Fujita Health University School of Medicine, Aichi, Japan

^b Laboratory of Molecular Neuropsychiatry, Department of Psychiatry, Mount Sinai School of Medicine, New York, USA

^c Department of Psychiatry, Nagoya University Graduate School of Medicine, Nagoya, Japan

^d Department of Psychiatry, Niigata University Graduate School of Medical and Dental Sciences, Niigata, Japan

^e The Osaka-Hamamatsu Joint Research Center For Child Mental Development, Osaka University Graduate School of Medicine, Osaka, Japan

^f Department of Psychiatry, Osaka University Graduate School of Medicine, Osaka, Japan

^g Department of Neuropsychiatry, Okayama University Graduate School of Medicine and Dentistry, Okayama, Japan

^h Seiwa Hospital, Institute of Neuropsychiatry, Tokyo, Japan

Received 10 November 2007; received in revised form 25 December 2007; accepted 4 January 2008

Abstract

Systematic linkage disequilibrium (LD) mapping of 8p12–21 in the Icelandic population identified neuregulin 1 (*NRG1*) as a prime candidate gene for schizophrenia. However, results of replication studies have been inconsistent, and no large sample analyses have been reported. Therefore, we designed this study with the aim of assessing this putative association between schizophrenia and *NRG1* (especially HAP_{ICE} region and exon region) using a gene-based association approach in the Japanese population.

This study was a two-stage association analysis with a different panel of samples, in which the significant association found in the first-set screening samples (1126 cases and 1022 controls) was further assessed in the confirmation samples (1262 cases and 1172 controls, and 166 trio samples). In the first-set scan, 60 SNPs (49 tagging SNPs from HapMap database, four SNPs from other papers, and seven SNPs detected in the mutation scan) were examined.

One haplotype showed a significant association in the first-set screening samples (Global *P*-value=0.0244, uncorrected). However, we could not replicate this association in the following independent confirmation samples. Moreover, we could not find sufficient evidence for association of the haplotype identified as being significant in the first-set samples by imputing ungenotyped SNPs from HapMap database.

Abbreviations: *NRG1*, neuregulin 1; SNP, single nucleotide polymorphism; GGF2, glial growth factor 2; LD, linkage disequilibrium; dHPLC, denaturing high performance liquid chromatography; MAF, minor allele frequency; TDT, transmission disequilibrium test; UTR, untranslated region.

* Corresponding author. Department of Psychiatry, Fujita Health University School of Medicine, Toyoake, Aichi 470-1192, Japan. Tel.: +81 562 93 9250; fax: +81 562 93 1831.

E-mail address: ikeda-ma@fujita-hu.ac.jp (M. Ikeda).

¹ These authors contributed equally to this work.

0920-9964/\$ - see front matter © 2008 Elsevier B.V. All rights reserved.

doi:10.1016/j.schres.2008.01.010

Please cite this article as: Ikeda, M., et al., Failure to replicate the association between *NRG1* and schizophrenia using Japanese large sample, Schizophr. Res. (2008), doi:10.1016/j.schres.2008.01.010

These results indicate that the positionally and functionally attractive regions of *NRG1* are unlikely to contribute to susceptibility to schizophrenia in the Japanese population. Moreover, the nature of our results support that two-stage analysis with large sample size is appropriate to examine the susceptibility genes for common diseases.

© 2008 Elsevier B.V. All rights reserved.

Keywords: Schizophrenia; Neuregulin 1; Association study; False positive; Linkage disequilibrium

1. Introduction

Schizophrenia is a common psychiatric disorder with a lifetime prevalence of 1% worldwide. Family, twin and adoption studies show conclusive evidence of a substantial genetic component in this disorder. Progress towards detecting these genetic elements is now being made (Harrison and Weinberger, 2005).

The neuregulin 1 gene (*NRG1*) was first reported to be a prime candidate gene for schizophrenia in the Icelandic population (Stefansson et al., 2002). The significant association of a haplotype was detected in the 5'-region of glial growth factor 2 (GGF2) isoforms, and this at-risk haplotype, consisting of five single nucleotide polymorphisms (SNPs) and two microsatellites, was named as HAP_{ICE}. Several subsequent studies provided the following evidence to support this association with schizophrenia.

Firstly, the location of this gene corresponds to the linkage regions for schizophrenia (8p12–21, OMIM: SCZ5), which were identified by recent meta-analyses of genome-wide linkage studies (Badner and Gershon 2002; Lewis et al., 2003). Secondly, recent evidence suggests that mutation within the *NRG1* region might give rise to functional alterations that are in line with the neurodevelopmental hypothesis and glutamate/GABA hypothesis of schizophrenia (Corfas et al., 2004).

Thirdly, several independent association studies have replicated the original significant association found by Stefansson et al. (2002). However, the results of replication studies using the identical number or fewer sets of markers have been inconsistent. Thus, while some research groups did not report any association (Iwata et al., 2004), other studies showed a positive association but showed different 'at-risk' haplotypes to be associated with schizophrenia (Harrison and Law, 2006).

These inconsistent results could stem from the possibility that *NRG1* is not involved in the etiology of schizophrenia in all populations. However, this inconsistency could be a consequence of the unique structure of the human genome. In other words, differences in linkage disequilibrium (LD) among populations may also be responsible for the differences in the results, and the negative findings may only indicate a failure to reflect the

actual predisposing variants due to the differences in populations.

Therefore, gene-wide (or region-wide) replication analysis based on LD pattern within the *NRG1* region is essential to detect an association in a certain population setting (Neale and Sham, 2004). In such analyses, particular attention should be paid to selection of genetic variants which adequately reflect the LD background in the targeted population (e.g. tagging SNPs).

Although the above-mentioned LD-based association analysis is based on the common disease–common variant hypothesis, one study reported an association between *NRG1* and schizophrenia from the standpoint of the common disease–rare variant hypothesis (Walss-Bass et al., 2006). The authors scanned the whole exon region, detected a non-synonymous SNP in exon 11, and showed a significant association of this SNP with schizophrenia. Detection of rare but potent functional variants relies on large mutation scan samples; however, such rare variants may also differ among populations (Pritchard, 2001).

Thus, in this study, we first focused on two attractive regions: the 5' regions of GGF2, where the original study showed the association (henceforth referred to as 'HAP_{ICE} region') and the exon region (henceforth referred to as 'exon region'). In the exon region, prior to association analysis of tagging SNPs, we performed a mutation scan in order to detect the existence of possible potent functional variants in the ethnic samples. In addition, this study was a two-stage association analysis with a different panel of samples, in which the significant association in the first-set screening samples (1126 cases and 1022 controls) was further assessed in confirmation samples (1262 cases, 1172 controls, and 166 trio samples). This approach was adopted in order to avoid the possibility of type I or type II error.

2. Methods and materials

2.1. Subjects

Two independent sample sets were used in this study. For the first-set screening analysis, 1126 patients with schizophrenia (627 male and 499 female; mean age± standard deviation (SD) 47.0±15.3 years) and 1022

healthy controls (530 male and 492 female; 38.8 ± 14.5 years) were examined. Confirmation analysis was conducted with three samples consisting of: (a) 1262 patients with schizophrenia (662 male and 600 female; 49.1 ± 14.5 years) (b) 1172 controls (576 male and 596 female; 41.7 ± 14.3 years), and (c) 166 family trios samples (of the patients, 91 male and 75 female; 30.0 ± 8.3 years).

The subjects for mutation search were 96 patients with schizophrenia. These subjects were also included in the first-set samples. 385 cases and 336 controls in the first-set samples, and 349 cases (including 84 cases from family samples) and 424 controls in confirmation samples are identical to those in our previous report (Iwata et al., 2004) and Fukui et al.'s (2006) report, respectively.

Characterization details and psychiatric assessment of these subjects were as follows. The patients were diagnosed according to DSM-IV criteria consensus of at least two experienced psychiatrists on the basis of unstructured interviews and review of medical records. All healthy controls were also psychiatrically screened based on unstructured interviews. All subjects were ethnically Japanese.

After the study had been described to subjects, written informed consent was requested from each. This study was approved by the ethics committees at Fujita Health University, Teikyo University, Okayama University, Osaka University, Niigata University and Nagoya University Graduate School of Medicine.

2.2. Mutation scan

We performed denaturing high performance liquid chromatography (dHPLC) analysis, details of which can be seen in a previous paper (Ikeda et al., 2005). Primer sequences were designed in accordance with another report (Walss-Bass et al., 2006).

2.3. Tagging SNP selection

We included the three signal SNPs (SNP8NRG221533, SNP8NRG241930 and SNP8NRG243177) from the report of Stefansson et al. (2002) (we excluded SNP8NRG221132 and SNP8NRG433E1006 from the first-set analysis due to low minor allele frequencies (MAFs) in the Japanese population), one positive SNP from the report of Walss-Bass et al. (2006), and SNPs we detected in the mutation scan. Next we consulted the HapMap database (release#19, population: Japanese in Tokyo (JPT), MAF: more than 0.05). In this step, we determined the boundaries of the 'HAP_{ICE} regions' that cover 5' regions including 19,425 bp and 155,564 bp downstream (3') from the significant SNPs

(SNP8NRG221132 and SNP8NRG433E1006, respectively) in Stefansson's report (Table 1 and Supplementary Fig. 1) (Stefansson et al., 2002), and of the 'exon regions' that cover 5' regions including 120,576 bp from the first exon and 3510 bp downstream 3' from the last exon (GenBank accession No. NT_007995: Table 2 and Supplementary Fig. 2). Then fifteen and thirty-four 'tagging SNPs' for the HAP_{ICE} regions and exon regions, respectively were selected with the criterion of an r^2 threshold greater than 0.8 in 'Aggressive tagging: use 2- and 3-markers haplotypes' mode of the 'Tagger' program (de Bakker et al., 2005), a function of HAPLOVIEW software (Barrett et al., 2005).

2.4. SNP genotyping

All SNPs were genotyped by TaqMan assay (Applied Biosystems Japan Ltd, Tokyo).

The genotyping of C#5, C#6, C#7 (which were positive SNPs in the first-set screening analysis) was done with 768 randomly selected samples (384 cases and 384 control subjects) with direct sequencing to check for genotyping error. Detailed information including primer sequences of custom TaqMan SNP genotyping assays can be seen in Supplementary Tables 1 and 2.

Table 1
First-set case control analysis of HAP_{ICE} region

Markers	SNP ID	P-values		
		1-window	2-windows	3-windows
HAP _{ICE} #1	rs12674974	.0794	.181	.196
HAP _{ICE} #2	rs4513929	.846	.384	.462
HAP _{ICE} #3	SNP8NRG221533	.188	.397	.620
HAP _{ICE} #4	rs10096573	.200	.414	.462
HAP _{ICE} #5	rs4733263	.310	.616	.267
HAP _{ICE} #6	rs4733263	.274	.399	.578
HAP _{ICE} #7	SNP8NRG241930	.724	.113	.326
HAP _{ICE} #8	SNP8NRG243177	.288	.520	.492
HAP _{ICE} #9	rs4733267	.769	.889	.190
HAP _{ICE} #10	rs13277456	.862	.736	.847
HAP _{ICE} #11	rs13274954	.457	.670	.255
HAP _{ICE} #12	rs12677942	.312	.271	.128
HAP _{ICE} #13	rs4403369	.0803	.268	.548
HAP _{ICE} #14	rs4566990	.625	.628	.525
HAP _{ICE} #15	rs13270788	.541	.730	.699
HAP _{ICE} #16	rs1503491	.813	.866	.0960
HAP _{ICE} #17	rs2202262	.704	.324	.0653
HAP _{ICE} #18	rs10087212	.682		
HAP _{ICE} #4-#5		.414		
HAP _{ICE} #14-#16		.247		
HAP _{ICE} #15-#16		.730		