

(Inclusion criteria)

- Acute respiratory compromise that require emergency assisted ventilation or acute respiratory compromise that requires emergency assisted ventilation leading to CPA that requires chest compressions and/or defibrillation, or CPA that requires chest compression and/or defibrillation, and
- Elicits an emergency resuscitation response by facility personnel, and
- A resuscitation record is completed for the event.

—The 74th Annual Scientific Meeting of JCS 2010—

(Exclusion criteria)

- Events that begin outside the facility with treatment by nonhospital personnel, even if resuscitation is ongoing on arrival in the emergency department (ED) (i.e. out-of-hospital cardiac resuscitation events are excluded)
- Defibrillation of VT or VF only by an implantable cardioverter-defibrillator

—The 74th Annual Scientific Meeting of JCS 2010—

Major categories of variables are:

- 1) Patient demographic data
- 2) Pre-event data
- 3) Event data
- 4) Outcome data

—The 74th Annual Scientific Meeting of JCS 2010—

Patient Characteristics

N	251
Age (Y)	72.4 ± 16.5
Sex	63.4% M
(Illness Category)	
ACS	16.7%
Arrhythmia	14.2%
CVD	14.0%
Pulmonary disease	11.0%
Cardiomyopathy	10.2%
Renal dysfunction	9.3%
Valvular disease	8.1%
TAA/AAA	5.9%
DAA	3.3%
PTE	0.4%
Others	9.8%

—The 74th Annual Scientific Meeting of JCS 2010—

Triggered factors related to event

Cardiac arrhythmia	32.5%
Acute respiratory insufficiency	23.4%
Hypotension	19.5%
ACS	9.3%
Mtabolic/electrolyte disturbance	6.9%
Others and unknown	28.5%

=The 74th Annual Scientific Meeting of JCS 2010 =

Initial Cardiac Arrest Rhythm

VT: n=29 (12%)
VF: n=40 (16%)
PEA: n=100 (40%)
Asystole: n=76 (31%)

=The 74th Annual Scientific Meeting of JCS 2010 =

Demographics and event characteristics

	VT n=29	VF n=40	PEA n=100	Asystole n=76	p
Age(y)	61.5±23.7	62.8±20.7	73.5±14.6	80.0±25.3	p<0.01
	n (%)	n (%)	n (%)	n (%)	
Sex(male)	14 (48)	29 (72)	59 (59)	54 (71)	NS
Event-location					
ICU(including operating-room, catheter-lab)	11(39)	18(46)	27(27)	15(19)	p<0.01
Inpatient ward	9(32)	15(38)	57(57)	55(72)	p<0.01
Others	8(29)	6(15)	15(15)	5(6)	

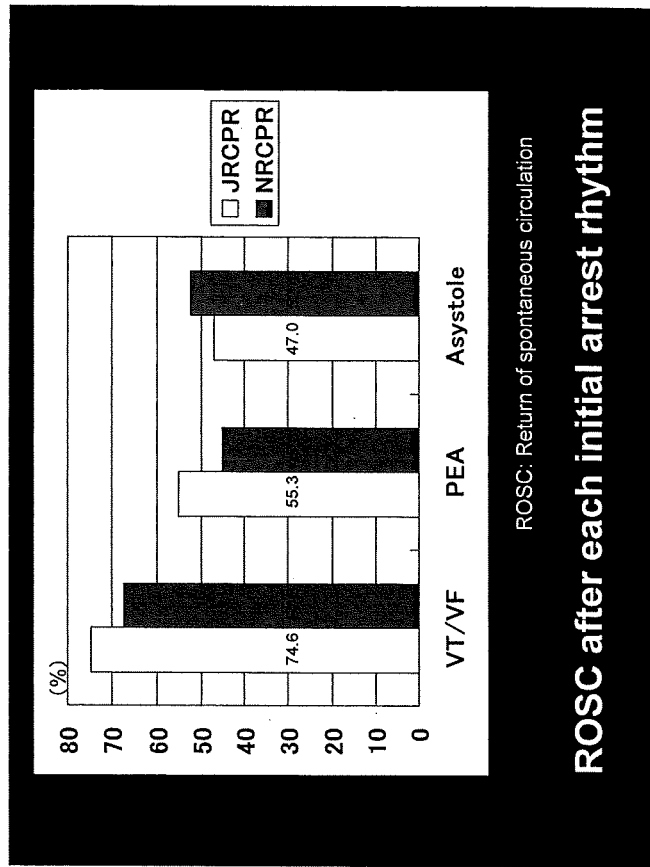
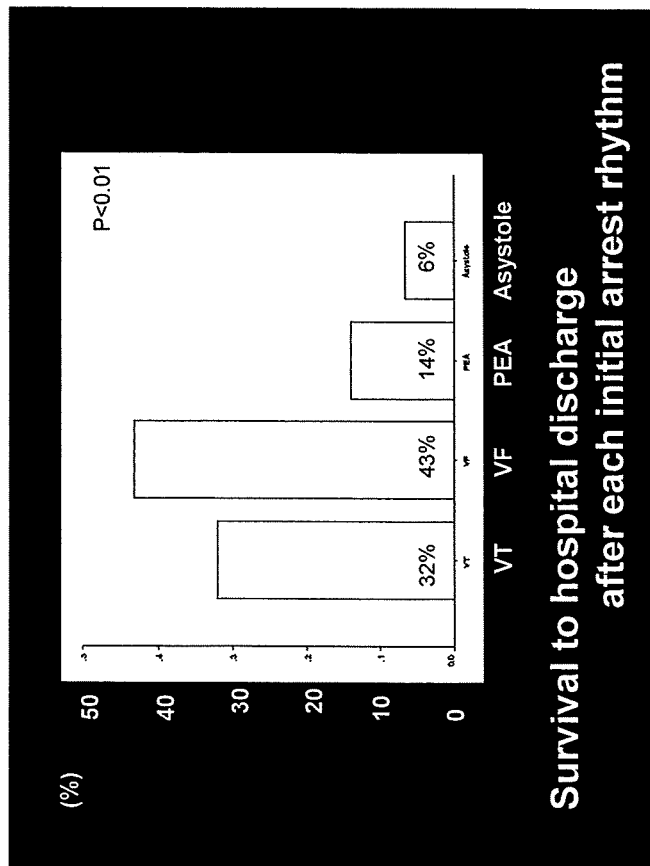
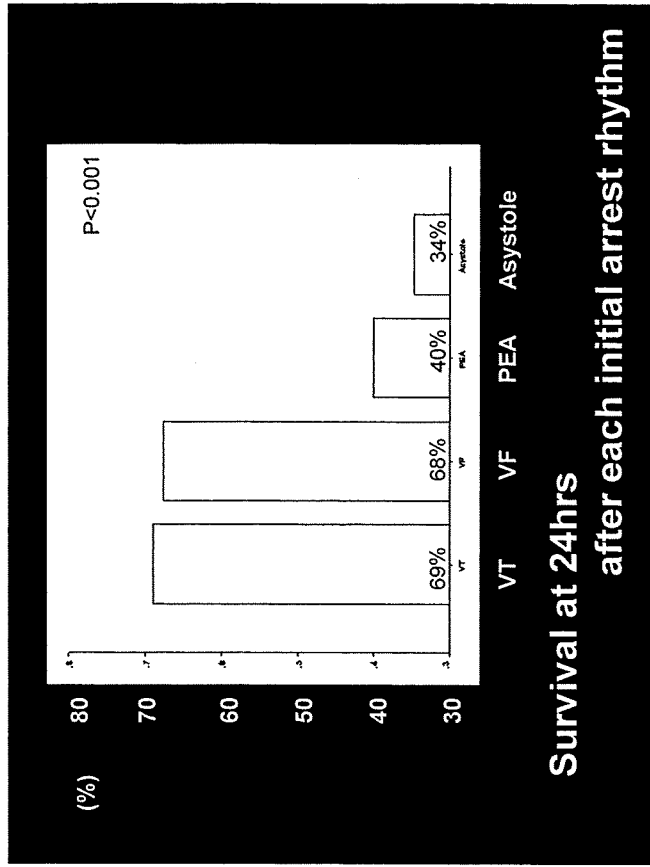
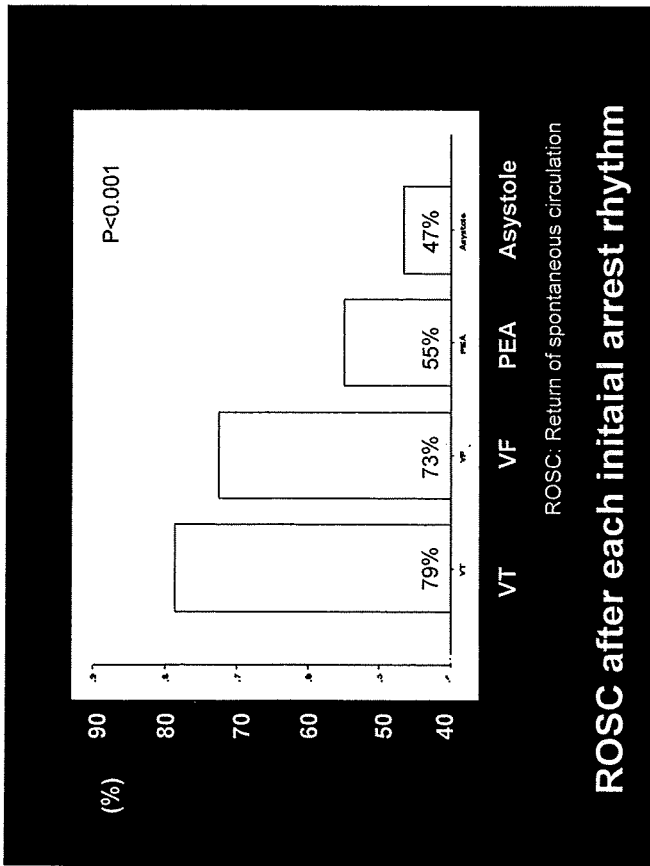
=The 74th Annual Scientific Meeting of JCS 2010 =

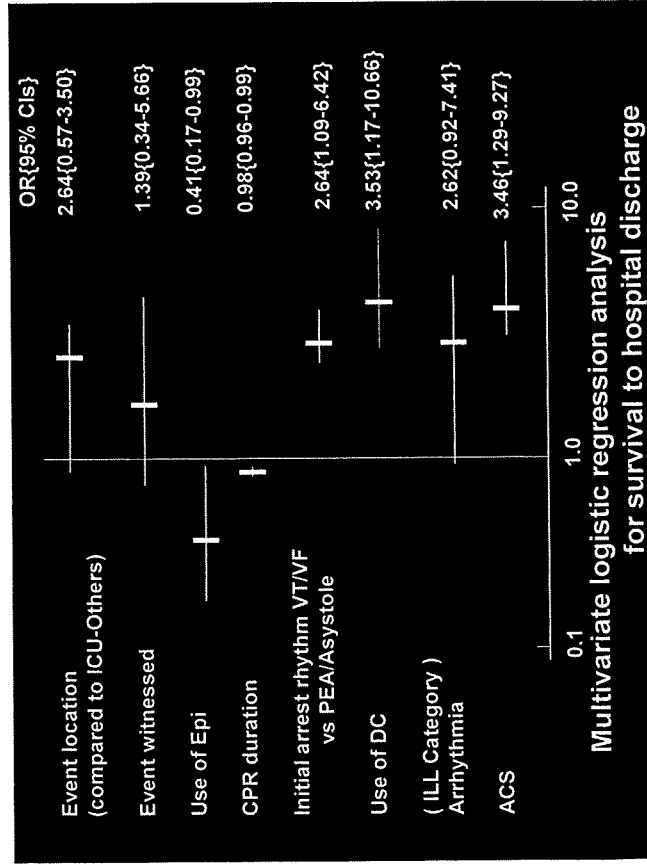
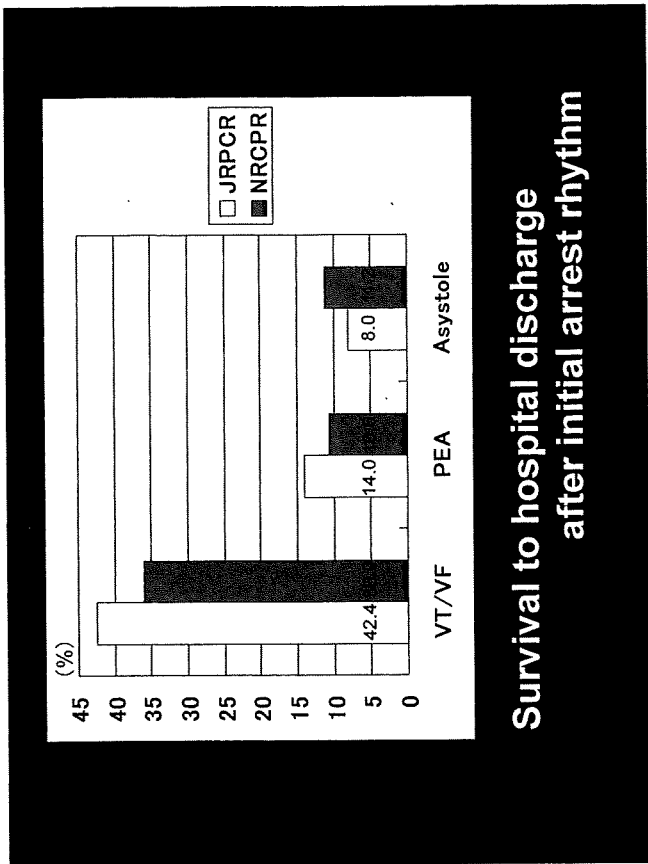
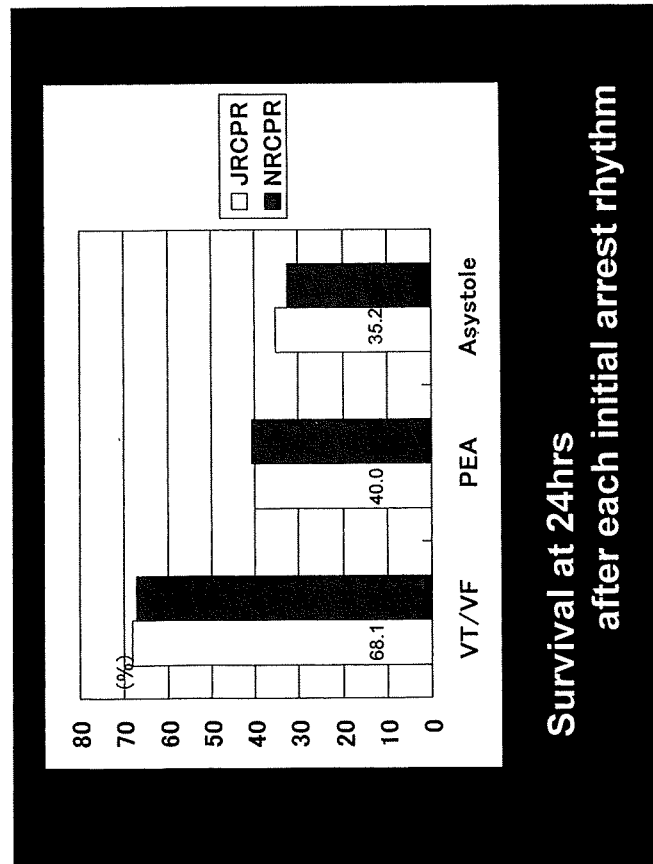
Demographics and event characteristics

Illness Category	VT n=29	VF n=40	PEA n=100	Asystole n=76	p
	n (%)	n (%)	n (%)	n (%)	
Arrhythmia	8 (28)	7 (18)	13 (13)	7 (9)	NS
ACS	6 (21)	13 (33)	17 (17)	5 (7)	p<0.001
Cardiomyopathy	6 (21)	6 (15)	10 (10)	3 (4)	NS
Valvular disease	5 (17)	7 (18)	4 (4)	4 (5)	NS
PTE	0 (0)	0 (0)	0 (0)	1 (1)	NS

ACS: Acute coronary syndrome
PTE: Pulmonary thromboembolism

=The 74th Annual Scientific Meeting of JCS 2010 =



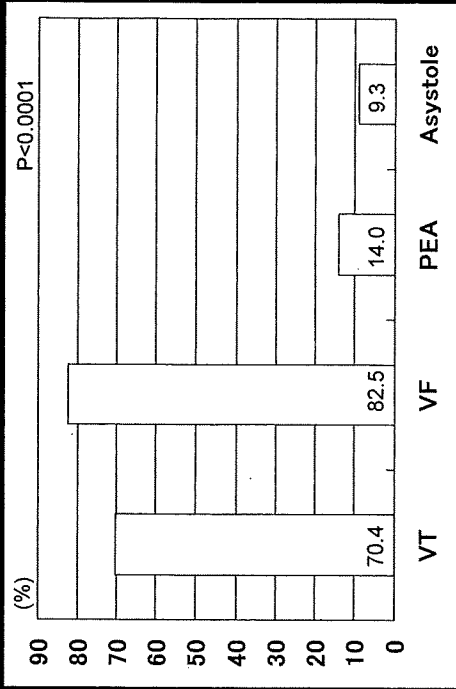


(Conclusion)

- ① This is the first report to evaluate in-hospital CPA in Japan.
- ② Initial arrest rhythm in J-RCPR
VT: 12% VF: 16% PEA: 40% Asystole: 31%
- ③ Better outcome predominancy of VT/VF over PEA/Asystole continued from ROSC to survival to hospital discharge
- ④ Outcome result among initial arrest rhythm are very similar to those of the United State

—The 74th Annual Scientific Meeting of JCS 2010—

Use of DC in each initial arrest rhythm



—The 74th Annual Scientific Meeting of JCS 2010—

