

Table 2. Characteristics of patients who did not received EP with concurrent TRT

Patient	Age/sex	TNM stage	PS	Complications	Treatment	Reason ^a
1	70/M	T4N2M0	1	HT, renal dysfunction	CE and sequential TRT	Complication
2	70/M	T1N0M0	1	HT, DM	Surgery	Physician's decision
3	71/M	T3N2M0	1	HT	Best supportive care	Patient's refusal
4	72/M	T2N1M0	1	DM, renal dysfunction	CE and concurrent TRT	Complication
5	74/M	T3N2M0	1	HT, renal dysfunction	CE and sequential TRT	Complication
6	74/M	T2N1M0	2	DM, IP, chronic renal failure, dialysis, old TB	Chemotherapy	Complication
7	75/M	T3N2M0	3	HCC, chronic HCV	Best supportive care	Complication
8	77/M	T2N1M0	2	renal dysfunction, dementia	Chemotherapy	Complication
9	78/M	T1N1M0	1	SSS, HT, DM	Chemotherapy	Physician's decision
10	81/M	T2N2M0	1	renal dysfunction	Chemotherapy	Patient's refusal
11	82/M	T1N2M0	1	HT	Surgery	Physician's decision
12	84/M	T2N0M0	2	HT	Best supportive care	Patient's refusal
13	84/M	T2N0M0	2	HT, asthma, heart failure, cerebral infarction	Best supportive care	Complication

EP, etoposide and cisplatin; TRT, thoracic radiotherapy; CE, carboplatin and etoposide; IP, interstitial pneumonia; HCC, hepatic cancer; HCV, hepatitis C virus; SSS, sick sinus syndrome.

^aThe reason for not to select the combination therapy of etoposide and cisplatin with early concurrent TRT.

Twice-daily TRT was performed with X-rays at 6–10 MV and with an interval of at least 6 h and a total dose of 45 Gy (1.5 Gy bid) over 3 weeks. TRT was initiated on day 1 of the first cycle of chemotherapy. All patients completed the TRT protocol, with the days of irradiation ranging from 19 to 33 (median of 29). Reasons for a delay in TRT included febrile neutropenia of Grade 3 in eight patients and leukopenia of Grade 4 in three patients. All patients proceeded to consolidation chemotherapy. However, five patients (42%) did not complete the planned three cycles of consolidation chemotherapy because of the development of pneumonitis of Grade 3 in one patient, a decline in renal function in one patient, suspected invasive aspergillosis in one patient and refusal by two patients. A dose reduction was necessary in seven patients because of the development of febrile neutropenia of Grade 3 in three patients, leukopenia of Grade 4 in two patients and nausea–vomiting of Grade 3 in two patients. The actual dose intensities of cisplatin and etoposide were 13.7 mg/m²/week (68.7% of the planned dose intensity) and 52.4 mg/m²/week (69.9% of the planned dose intensity), respectively.

TOXICITIES

Reported toxicities during the concurrent chemoradiotherapy are listed in Table 4. Leukopenia and neutropenia of Grade 3 or 4 were observed in all patients (100%), and eight patients (67%) had febrile neutropenia of Grade 3. Thrombocytopenia of Grade 3 or 4 was apparent in three patients (25%), with one patient requiring platelet transfusion. Reported toxicities during the consolidation chemotherapy are listed in Table 5. Leukopenia and neutropenia of

Grade 3 or 4 were observed in 8 (67%) and 11 (92%) patients, respectively, and 4 patients (33%) developed febrile neutropenia of Grade 3. Anemia and thrombocytopenia of Grade 3 or 4 were each observed in four patients (33%). The major non-hematologic toxicity observed during the entire treatment period was nausea–vomiting. None of the patients developed esophagitis of Grade 3 or 4, but one patient manifested radiation pneumonitis of Grade 3 during consolidation chemotherapy. There were no treatment-related deaths.

RESPONSE AND SURVIVAL

All 12 patients were evaluated for progression-free survival and overall survival. With a median follow-up time of 23.1 months (ranged, 7.2–45.0 months), six patients were still alive. An objective tumor response was observed in all patients: a complete response (CR) in five patients and a partial response in seven patients (Table 3). Prophylactic cranial irradiation was not routinely administered and delivered to three patients who achieved CR after completion of the planned treatment. The median progression-free survival time was 14.2 months, and the median overall survival time was 24.1 months.

PATTERN OF RELAPSE

Seven of the 12 patients relapsed, 3 with local regional failure inside the radiation field and 4 with distant failure. Among the latter four patients, three individuals manifested metastases in the brain as the sole site and the remaining individual had both local and distant failure including the liver.

Table 3. Treatment details and outcome for the study cohort

Patient	Regimen (mg/m ²)	Total no. of cycles	Dose reduction in consolidation chemotherapy	DI of P (mg/m ² /week)	RDI of P (%)	DI of E (mg/m ² /week)	RDI of E (%)	Duration of TRT (days)	V20 (%)	Response	PFS (months)	Survival time (months)
1	E(100) + P(40) ^a + TRT	2	No	5.0	25.0	37.5	50.0	23	21	CR	14.0+	14.0+
2	E(100) + P(80) + TRT	4	Yes	17.2	86.0	73.7	98.2	19	25	CR	7.3+	7.3+
3	E(100) + P(80) + TRT	4	Yes	17.8	89.1	68.7	91.6	27	35	CR	10.7+	10.7+
4	E(100) + P(80) + TRT	4	Yes	15.7	78.4	61.6	82.1	30	13	PR	9.3	22.2
5	E(100) + P(80) + TRT	2	No	9.5	47.5	35.6	47.5	29	20	PR	4.3	11.4
6	E(100) + P(80) + TRT	4	No	19.6	98.2	73.7	98.2	29	30	PR	18.2	48.1+
7	E(100) + P(80) + TRT	4	No	17.2	86.2	64.6	86.2	26	27	PR	13.1	26.1+
8	E(80) ^b + P(80) + TRT	3	Yes	11.4	56.9	39.4	52.5	30	21	PR	8.3	17.1
9	E(100) + P(60) ^a + TRT	4	Yes	14.4	71.8	61.0	81.4	30	25	CR	20.6+	20.6+
10	E(100) + P(80) + TRT	4	Yes	13.1	65.5	49.1	65.5	28	NA	PR	14.4	16.5
11	E(100) + P(80) + TRT	2	Yes	7.9	39.5	30.5	40.6	33	26	PR	3.9	14.8
12	E(100) + P(80) + TRT	2	No	9.9	49.6	37.2	49.6	29	22	CR	14.1	27.2

DI, dose intensity; P, cisplatin; RDI, relative dose intensity; E, etoposide; V20, the percentage of lung volume receiving >20 Gy; PFS, progression-free survival; CR, complete response; +, without event; PR, partial response; NA, not available.

^aDose reduction because of a decline in renal function.

^bDose reduction because of physician's decision.

Table 4. Toxicities during concurrent chemoradiotherapy

Toxicity	Grade 1	Grade 2	Grade 3	Grade 4	Grade 3 or 4 (%)
Leukopenia	0	0	2	10	100
Neutropenia	0	0	0	12	100
Anemia	2	1	0	0	0
Thrombocytopenia	0	2	2	1	25
Febrile neutropenia	—	—	8	0	67
Nausea—vomiting	2	2	2	0	17
Esophagitis	1	3	0	0	0
Appetite loss	5	2	2	0	17

Table 5. Toxicities during consolidation chemotherapy

Toxicity	Grade 1	Grade 2	Grade 3	Grade 4	Grade 3 or 4 (%)
Leukopenia	0	2	4	4	67
Neutropenia	0	0	2	9	92
Anemia	2	4	3	1	33
Thrombocytopenia	2	2	2	2	33
Febrile neutropenia	—	—	4	0	33
Nausea—vomiting	2	5	2	0	17
Appetite loss	4	1	1	0	8
Radiation pneumonitis	3	0	1	0	8

DISCUSSION

Two meta-analyses have shown that the combined modality of chemotherapy and TRT improves the survival of individuals with LD-SCLC in comparison with chemotherapy alone (6,7). The schedule, dose and fractionation of TRT have been extensively investigated in patients with LD-SCLC in several randomized controlled trials (8,9). On the basis of two pivotal Phase III trials (10,11), etoposide and cisplatin chemotherapy with early concurrent twice-daily TRT is currently considered the standard treatment for patients with LD-SCLC. An age-specific subset analysis of one of these Phase III trials (11), in which patients received etoposide—cisplatin with early concurrent TRT, showed that the survival outcomes for individuals aged 70 years or older were similar to those of their younger counterparts, although the elderly patients experienced greater toxicity, in particular hematologic toxicity (12). However, given that the patients in this subgroup analysis were assigned either once- or twice-daily TRT, the significance of early concurrent twice-daily TRT in the management of elderly patients with LD-SCLC has remained undefined. No specific Phase III trial of elderly patients with LD-SCLC has been reported. We therefore retrospectively analyzed the feasibility and antitumor efficacy of etoposide—cisplatin chemotherapy with early concurrent

twice-daily TRT for treatment of LD-SCLC in patients aged 70 years or older.

The median overall survival time of 24.1 months in our cohort is similar to that described for non-elderly patients with LD-SCLC in previous studies (10,11). This favorable survival outcome may be attributable to the strict selection of elderly patients in good general condition; all 12 patients in the present study had normal organ function, an Eastern Cooperative Oncology Group performance status of 0 or 1 and no severe co-morbidity. Given that the elderly are more likely to have reduced organ function as well as concomitant morbidities or medications, the general condition of elderly SCLC patients is worse than that of younger patients (1). Among LD-SCLC patients, increasing age was found to be significantly associated with a lower likelihood of receiving combined chemoradiotherapy (7). Indeed, in the present study, only 12 (48%) of the 25 identified elderly patients with LD-SCLC were treated with etoposide–cisplatin and early concurrent twice-daily TRT.

Despite the strict selection of patients, highly treatment-related toxicity was observed in our cohort. The major adverse events were hematologic toxicities, with neutropenia of Grade 4 being apparent in all patients (100%) and febrile neutropenia of Grade 3 in eight patients (67%) during the first cycle of concurrent chemoradiotherapy. The previous analysis of the outcome of elderly patients in the Phase III study in which individuals received etoposide–cisplatin chemotherapy with early concurrent once- or twice-daily TRT found statistically significant differences not only in the incidence of hematologic toxicity (Grade 4 or 5: 61% in younger patients vs. 84% in patients aged 70 years or older, $P < 0.01$) but also in that of treatment-related deaths (1% vs. 10%, respectively, $P = 0.01$) (12). Although no treatment-related deaths were observed in the present study, severe hematologic toxicity was consistent with that in this foregoing analysis (12). In addition, maintenance of the optimal dose intensity of chemotherapy was difficult in our cohort because of frequent dose reductions or treatment delays due to hematologic or infection-related toxicities. Indeed, the actual dose intensity was $< 70\%$ of the planned dose intensity for both etoposide and cisplatin in the present study, a value much smaller than that for non-elderly patients in a previous Phase III study ($> 90\%$ for both agents) (10). On the other hand, the toxicity of radiotherapy was acceptable in our study, with all patients completing TRT within a median of 29 days (range, 19–33). None of our patients developed radiation esophagitis of Grade 3 or higher. With regard to pulmonary complications, one patient developed radiation pneumonitis of Grade 3. A recent meta-analysis of randomized trials in which patients with LD-SCLC were treated with chemoradiotherapy reported that the time between the first day of chemotherapy and the last day of radiotherapy was an important prognostic factor for LD-SCLC, with the survival advantage being more pronounced if the TRT was completed in < 30 days (13). In the present study, a shorter time to completion of TRT may also

be associated with our favorable survival outcome. However, elderly patients with LD-SCLC must be carefully selected and monitored during treatment because of the increased potential for the development of treatment-related morbidity and mortality.

The optimal therapeutic strategy for elderly patients with LD-SCLC remains a matter of debate. Despite the highly treatment-related toxicity, patients in our cohort derived a survival benefit with no treatment-related deaths, suggesting that the full-dose chemoradiotherapy may represent a valid option for 'fit' elderly patients with adequate organ function. Since the general condition of elderly patients varies widely from patients to patients, prospective evaluation and definition of 'fit' elderly patients who are candidates for full-dose chemoradiotherapy are important. Research is also needed to develop modified chemoradiotherapy regimens that are less toxic for the elderly. A modified chemotherapy schedule designed to reduce toxicity for elderly patients with LD-SCLC was evaluated in a Phase II trial, with two cycles of a chemotherapy regimen (oral etoposide and carboplatin) combined with early concurrent twice-daily TRT being found to have acceptable toxicity and to produce promising results, with a 5-year survival rate of 13% (14). A recent Phase III trial specifically designed for elderly or poor-risk patients with extensive-disease SCLC found that split doses of cisplatin plus etoposide (cisplatin at 25 mg/m^2 and etoposide at 80 mg/m^2 on days 1–3) could be safely administered and were effective (15). Such split-dose chemotherapy might also be suitable for the treatment of patients with LD-SCLC. We are currently conducting a clinical trial to evaluate the feasibility of etoposide at 80 mg/m^2 and cisplatin at 25 mg/m^2 on days 1–3 with early concurrent twice-daily TRT for elderly patients with LD-SCLC.

The overall findings of the present study suggest that administration of full-dose chemotherapy and early concurrent twice-daily TRT is highly myelotoxic for elderly patients with LD-SCLC. Development and assessment of modified treatment regimens with reduced toxicity are thus warranted for such patients.

Conflict of interest statement

None declared.

References

1. Sekine I, Yamamoto N, Kunitoh H, Ohe Y, Tamura T, Kodama T, et al. Treatment of small cell lung cancer in the elderly based on a critical literature review of clinical trials. *Cancer Treat Rev* 2004;30:359–68.
2. Gridelli C, Langer C, Maione P, Rossi A, Schild SE. Lung cancer in the elderly. *J Clin Oncol* 2007;25:1898–907.
3. Morita T. A statistical study of lung cancer in the annual of pathological autopsy cases in Japan, from 1958 to 1997, with reference to time trends of lung cancer in the world. *Jpn J Cancer Res* 2002;93:15–23.
4. Socinski MA, Bogart JA. Limited-stage small-cell lung cancer: the current status of combined-modality therapy. *J Clin Oncol* 2007;25:4137–45.

5. Talarico L, Chen G, Pazdur R. Enrollment of elderly patients in clinical trials for cancer drug registration: a 7-year experience by the US Food and Drug Administration. *J Clin Oncol* 2004;22:4626-31.
6. Pignon JP, Arriagada R, Ihde DC, Johnson DH, Perry MC, Souhami RL, et al. A meta-analysis of thoracic radiotherapy for small-cell lung cancer. *N Engl J Med* 1992;327:1618-24.
7. Ludbrook JJ, Truong PT, MacNeil MV, Lesperance M, Webber A, Joe H, et al. Do age and comorbidity impact treatment allocation and outcomes in limited stage small-cell lung cancer? A community-based population analysis. *Int J Radiat Oncol Biol Phys* 2003;55:1321-30.
8. Bonner JA, Sloan JA, Shanahan TG, Brooks BJ, Marks RS, Krook JE, et al. Phase III comparison of twice-daily split-course irradiation versus once-daily irradiation for patients with limited stage small-cell lung carcinoma. *J Clin Oncol* 1999;17:2681-91.
9. Schild SE, Bonner JA, Shanahan TG, Brooks BJ, Marks RS, Geyer SM, et al. Long-term results of a phase III trial comparing once-daily radiotherapy with twice-daily radiotherapy in limited-stage small-cell lung cancer. *Int J Radiat Oncol Biol Phys* 2004;59:943-51.
10. Turrisi AT, 3rd, Kim K, Blum R, Sause WT, Livingston RB, Komaki R, et al. Twice-daily compared with once-daily thoracic radiotherapy in limited small-cell lung cancer treated concurrently with cisplatin and etoposide. *N Engl J Med* 1999;340:265-71.
11. Takada M, Fukuoka M, Kawahara M, Sugiura T, Yokoyama A, Yokota S, et al. Phase III study of concurrent versus sequential thoracic radiotherapy in combination with cisplatin and etoposide for limited-stage small-cell lung cancer: results of the Japan Clinical Oncology Group Study 9104. *J Clin Oncol* 2002;20:3054-60.
12. Yuen AR, Zou G, Turrisi AT, Sause W, Komaki R, Wagner H, et al. Similar outcome of elderly patients in intergroup trial 0096: cisplatin, etoposide, and thoracic radiotherapy administered once or twice daily in limited stage small cell lung carcinoma. *Cancer* 2000;89:1953-60.
13. De Ruyscher D, Pijls-Johannesma M, Bentzen SM, Minken A, Wanders R, Lutgens L, et al. Time between the first day of chemotherapy and the last day of chest radiation is the most important predictor of survival in limited-disease small-cell lung cancer. *J Clin Oncol* 2006;24:1057-63.
14. Jeremic B, Shibamoto Y, Acimovic L, Milisavljevic S. Carboplatin, etoposide, and accelerated hyperfractionated radiotherapy for elderly patients with limited small cell lung carcinoma: a phase II study. *Cancer* 1998;82:836-41.
15. Okamoto H, Watanabe K, Kunikane H, Yokoyama A, Kudoh S, Asakawa T, et al. Randomised phase III trial of carboplatin plus etoposide vs split doses of cisplatin plus etoposide in elderly or poor-risk patients with extensive disease small-cell lung cancer: JCOG 9702. *Br J Cancer* 2007;97:162-9.

Twenty-Seven Years of Phase III Trials for Patients with Extensive Disease Small-Cell Lung Cancer: Disappointing Results

Isao Oze, Katsuyuki Hotta*, Katsuyuki Kiura, Nobuaki Ochi, Nagio Takigawa, Yoshiro Fujiwara, Masahiro Tabata, Mitsune Tanimoto

Department of Respiratory Medicine, Okayama University Hospital, Okayama, Japan

Abstract

Background: Few studies have formally assessed whether treatment outcomes have improved substantially over the years for patients with extensive disease small-cell lung cancer (ED-SCLC) enrolled in phase III trials. The objective of the current investigation was to determine the time trends in outcomes for the patients in those trials.

Methods and Findings: We searched for trials that were reported between January 1981 and August 2008. Phase III randomized controlled trials were eligible if they compared first-line, systemic chemotherapy for ED-SCLC. Data were evaluated by using a linear regression analysis. Results: In total, 52 trials were identified that had been initiated between 1980 and 2006; these studies involved 10,262 patients with 110 chemotherapy arms. The number of randomized patients and the proportion of patients with good performance status (PS) increased over time. Cisplatin-based regimens, especially cisplatin and etoposide (PE) regimen, have increasingly been studied, whereas cyclophosphamide, doxorubicin, and vincristine-based regimens have been less investigated. Multiple regression analysis showed no significant improvement in survival over the years. Additionally, the use of a PE regimen did not affect survival, whereas the proportion of patients with good PS and the trial design of assigning prophylactic cranial irradiation were significantly associated with favorable outcome.

Conclusions and Significance: The survival of patients with ED-SCLC enrolled in phase III trials did not improve significantly over the years, suggesting the need for further development of novel targets, newer agents, and comprehensive patient care.

Citation: Oze I, Hotta K, Kiura K, Ochi N, Takigawa N, et al. (2009) Twenty-Seven Years of Phase III Trials for Patients with Extensive Disease Small-Cell Lung Cancer: Disappointing Results. PLoS ONE 4(11): e7835. doi:10.1371/journal.pone.0007835

Editor: Joseph Najbauer, City of Hope National Medical Center, United States of America

Received: June 24, 2009; **Accepted:** October 5, 2009; **Published:** November 13, 2009

Copyright: © 2009 Oze et al. This is an open-access article distributed under the terms of the Creative Commons Attribution License, which permits unrestricted use, distribution, and reproduction in any medium, provided the original author and source are credited.

Funding: The authors have no support or funding to report.

Competing Interests: The authors have declared that no competing interests exist.

* E-mail: khotta@md.okayama-u.ac.jp

Introduction

Lung cancer is a leading cause of cancer-related mortality in many industrialized countries. Small-cell lung cancer (SCLC), which accounts for about 15% of all lung cancer cases, is categorized into two clinical stages: limited disease (LD) and extensive disease (ED). For patients with ED-SCLC, combination chemotherapy is the mainstay of treatment.

In the 1980s, the most widely used combination of drugs for initial treatment of ED-SCLC was cyclophosphamide, doxorubicin, and vincristine (CAV), which produced a median survival time of 9 to 11 months [1]. In the late 1980s, a combination regimen of cisplatin and etoposide (PE) was introduced, and an alternating regimen of PE and CAV has been widely investigated in randomized controlled trials [2].

In 1999, the results of a systemic review indicated a modest improvement over the years in the survival time of patients with ED-SCLC treated with chemotherapy between 1972 and 1994 [3]. This improvement was potentially attributable to (i) introduction of the PE regimen in the late 1980s and

(ii) improvements in the supportive care and general management of the patients. However, this included just North American trials and would provide some justification for looking at the world-wide result.

A decade has passed since that systemic review, and recent clinical trials have investigated newer antineoplastic agents such as irinotecan and topotecan. Thus, we performed a literature search to determine whether patient outcomes have improved in the treatment of ED-SCLC.

Materials and Methods

Searching

We searched for trials that were reported between January 1981 and August 2008. To avoid publication bias, we identified both published and unpublished trials through a computer-based search of the PubMed database and abstracts from past conferences of the American Society of Clinical Oncology (1998–2008). We used the following search terms: *lung neoplasm, carcinoma, small-cell, chemotherapy*, and *randomized controlled trial*. The search was guided by a

thorough examination of reference lists from original articles, review articles, relevant books, and the Physician Data Query registry of clinical trials.

Selection

Phase III randomized controlled trials were eligible for inclusion in this study if they compared first-line, systemic chemotherapy for ED-SCLC that contained cytotoxic agents, providing the year of trial initiation. Trials were excluded if they only investigated immunotherapy regimens, or if they enrolled only responders to the initial chemotherapy. Trials initially designed to assess combined-modality treatment, including radiotherapy and surgery concurrently undergone with the initial chemotherapy, were also ineligible, but those optionally designed to conduct these therapies or prophylactic cranial irradiation (PCI) sequentially after the induction chemotherapy were allowed. Some phase III trials incorporated patients with both LD-SCLC and ED-SCLC. These were considered eligible only if survival data for patients with ED-SCLC could be solely obtained. We acknowledge that the definitions for LD-SCLC and ED-SCLC vary somewhat in the different groups compared, and we could not strictly reallocate each patient because we were unable to access the individual patient databases. Instead, we applied the definition described in each original report to this study. If no relevant descriptions were documented, we considered that the definition in that trial would have been based on the guidelines in existence at the time of that trial initiation [4,5]. The control arms in each of the phase III trials were identified based on statements in each trial.

Validity Assessment

To avoid bias in the data abstraction process, four medical oncologists (I.O., N.O., Y.F., and K.H.), one of whom (K.H.) holds a board certificate for medical oncology, independently abstracted the data from the trials and subsequently compared the results. All data were checked for internal consistency, and disagreements were resolved by discussion among the investigators.

Data Abstraction

The following information was obtained from each report: year of trial initiation (i.e., year when the first patient was accrued); number of patients enrolled and randomized; median age of patients; proportion of patients with good performance status (PS); proportion of patients who were male and who had brain metastasis; chemotherapy regimen; definition of ED; description of the administration of sequential thoracic irradiation, surgery, or PCI as one of the trial designs; and median survival time (per treatment arm).

Study Characteristics

All studies included were phase III randomized controlled trials of first-line systemic chemotherapy for ED-SCLC. The study outcomes were median survival time. Variation in study characteristics and clinical heterogeneity between studies were adjusted statistically (see below).

Quantitative Data Synthesis

Data from phase III trials were evaluated by using multiple, stepwise regression analysis (with the following stepping method criteria: probability of F to enter the model, <0.05 ; to remove from the model, >0.10). The data analyzed included year of trial initiation, use of PE regimen, maximal age of patients, proportion of patients with good PS, proportion of male patients, and definition of PCI settings. These data were used to determine whether each factor had an independent impact on the survival of patients with ED-SCLC who were treated in the phase III studies over time. All *P* values corresponded to 2-sided tests, and significance was set at $P<0.05$.

Results

Trial Flow/Flow of Included Studies

Figure 1 shows a flow chart of this study. In total, 52 trials for ED-SCLC were identified as a result of the computer-based and manual searches for relevant articles, abstracts, and references

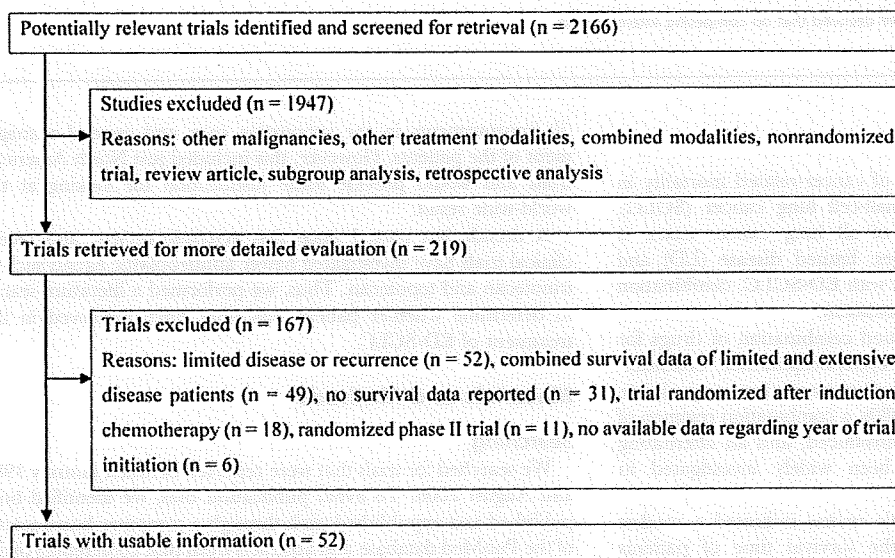


Figure 1. Flow chart showing the progress of trials through the review.
doi:10.1371/journal.pone.0007835.g001

(Please see File S1). A total of 10,262 patients had been allocated randomly to 110 chemotherapy arms.

Study Characteristics

Table 1 lists the baseline characteristics of the trials. Trials were initiated between 1980 and 2006. The number of randomized patients and the proportion of patients with good PS increased over time (13.9 patient increase/year, $P < 0.001$; and 1.32% increase/year, $P < 0.001$, respectively; Figures 2A and 2B), whereas the proportion of male patients remained consistent (0.47% decrease/year, $P = 0.114$; Figure 2C). In 19 trials that assigned PCI, it was planned that patients who achieved a complete response (CR) or CR/partial response (PR) after induction chemotherapy would receive PCI. Thirteen (25%) of the 52 phase III trials showed a statistically significant difference in survival time. Of these, eight were in favor of the patient cohort that received the experimental therapy compared with the control

group, while the remaining five were in favor of that in the control group.

Types of Chemotherapy Arms

There were 110 chemotherapy treatment arms in the 52 phase III trials (Table 2). Cisplatin-based regimens were the most frequently investigated. The PE regimen, currently considered as the standard treatment for patients with ED-SCLC, has increasingly been studied (Figure 1). As expected, the CAV alternating PE regimen was extensively examined in the 1980s, but this decreased in the 1990s.

Trends in Patient Survival

Data on patient survival were available from all 52 trials and 110 chemotherapy arms and analyzed by treatment arm. A scattergram of the two parameters (year of trial initiation and median survival time) revealed that the slope of the fitted line was 0.021, indicating a 0.021 month (0.63 day) increase in median survival time per year ($P = 0.272$; Figure 3). Multiple regression analysis, adjusting for several confounding trial characteristics, also showed no significant association between the two parameters (regression coefficient for year of trial initiation = 0.011, 95% confidence interval = $-0.36-0.38$, $P = 0.950$; Table 3). In this setting, the proportion of patients with good PS was significantly associated with a favorable outcome. The multiple regression analysis also showed a significant influence of PCI setting on survival prolongation. This finding is partly supported by a recent report on the survival advantage of PCI in ED-SCLC patients who responded to initial chemotherapy [6].

Discussion

Our results demonstrate no significant improvement in patient outcomes over the years in phase III trials of systemic chemotherapy for ED-SCLC, with an increase of 0.021 months (0.63 days) per year (univariate analysis; $P = 0.272$; Figure 3) confirmed in the multivariate model ($P = 0.950$; Table 3). However, the proportion of patients with good PS and the trial design of assigning PCI for those with CR or CR/PR significantly influenced survival (Table 3).

The introduction of multiple drug regimens has been a great advance in the treatment of ED-SCLC; indeed, the CAV regimen yielded a survival time approximately twice as long as that of the single-agent therapy frequently used in the early 1970s [1,7]. However, the survival benefit from chemotherapy has reached somewhat of a plateau, even with the introduction of the PE regimen in recent clinical trials, as compared with the CAV regimen or CAV alternating PE [2,8,9,10]. In addition, most of newer antitumour agents introduced after PE (e.g., irinotecan and topotecan) failed to substantially prolong survival in the first-line setting over the standard PE regimen [11,12,13,14,15]. Thus, based on these findings, our main results demonstrate no significant improvement in survival since 1980. In contrast, a 1999 study showed a significant increase in overall survival time [3]. This difference in the time trend in overall survival is mainly attributable to differences in the study period (year of trial initiation: 1972–1994 vs. 1980–2006 in the earlier and present study, respectively; [3]).

In Figure 3, trials between 2000 and 2005 appeared to show extensive clustering with median survival time of around ten months. It would be attributable to some common characteristics among these trials, such as relatively uniformed chemotherapeutic regimens (cisplatin-based ones) and larger number of the registered patients. In contrast, there were other trial arms that yielded the

Table 1. Characteristics of the 52 Randomized Trials.

Variable	Value
No. of trials	52
(No. of randomized patients in all trials 10262)	
No. of treatment arms	
2	47
3	4
4	1
Year of trial initiation	
Median (range)	1990 (1980–2006)
No. of randomized patients (%)	
<100	35
100–200	25
200–300	29
>300	11
Median (range)	158 (34–786)
Proportion of patients with good performance status† (%)	
<80	50
80–90	42
>90	8
Median percentage (range)	80 (35–100)
Male Patients (%)	
<80	54
80–90	35
>90	11
Median percentage (range)	75 (56–93)
Trials assigning PCI for those with CR or CR/PR to the initial chemotherapy	
Yes	37
No	63
Trials with a statistically significant difference in overall survival time (%)	
Yes	25
No	65
Not recorded	10

†Defined as a performance status of 0 or 1.
Abbreviations; PCI, prophylactic cranial irradiation; CR, complete response; PR, partial response.
doi:10.1371/journal.pone.0007835.t001

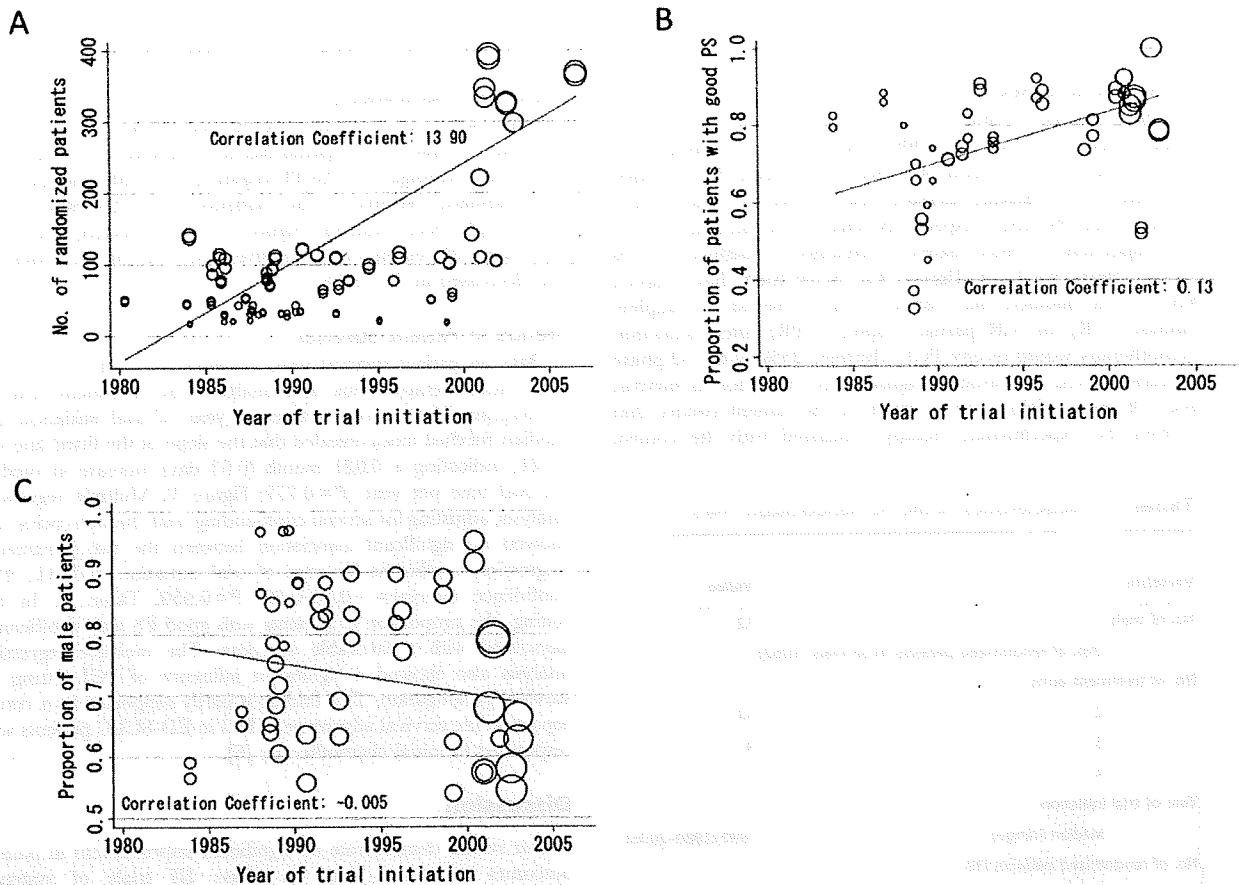


Figure 2. Trends in trial characteristics. These charts show the associations between year of trial initiation and number of randomized patients (A), proportion of patients with good PS (B), and proportion of male patients (C) in each trial. The size of solid circles represents data weighted on the basis of the number of randomized patients. Abbreviations: PS, performance status. doi:10.1371/journal.pone.0007835.g002

longest versus shortest survival times (14–15 months versus 5–6 months). These included less number of the enrolled patients, which possibly resulted in a wide-range distribution in the Figure.

We investigated a similar issue previously [16], namely trends in prognosis over the years in chemo-naïve patients with advanced non-small cell lung cancer (NSCLC) enrolled in phase III trials.

Table 2. Types of Chemotherapy Arms and Treatment Outcomes (Per Treatment Arm).

Chemotherapy Arm	No. of Arms (%)	MST [range], months	
Total no. of arms	110	9.3	[4.9–14.5]
Platinum-based regimens	78 (70.9)	9.5	[4.9–14.5]
Cisplatin-based	64 (58.2)	9.6	[5.8–14.5]
CAV alternating PE	16 (14.5)	9.5	[5.8–14.5]
PE	16 (14.5)	9.4	[7.0–10.2]
Other Cisplatin-based	32 (29.1)	9.8	[6.7–12.8]
Nonplatinum regimens	32 (29.1)	8.5	[5.0–13.0]
CAV-based	10 (9.1)	9.1	[7.5–13.8]
Non-CAV-based combination therapy	19 (17.3)	8.2	[5.0–13.0]
Non-CAV-based monotherapy	3 (2.7)	8.3	[6.0–9.3]

Abbreviations: MST, median survival time; CAV, cyclophosphamide, doxorubicin, and vincristine; PE, cisplatin and etoposide. doi:10.1371/journal.pone.0007835.t002

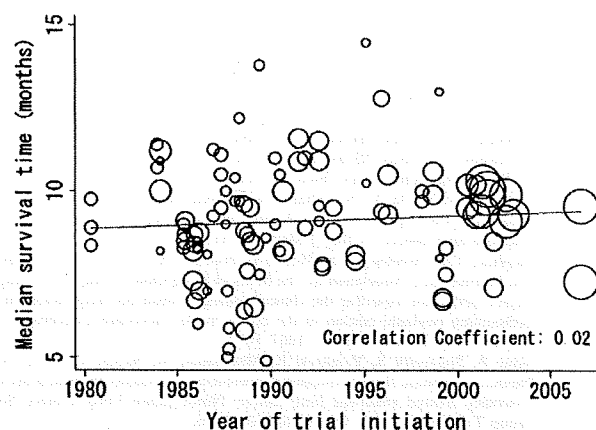


Figure 3. Relationship between year of trial initiation and median survival time. Analysis was weighted by the number of randomized patients. Each trial is represented by a circle; the size of each circle is proportional to the sample size of randomized patients in the given trial.

doi:10.1371/journal.pone.0007835.g003

The analysis similarly revealed a very small increase in patient survival (3.61 days per year) but one that was statistically significant in the multiple regression model ($P < 0.001$; [16]). There may be several potential factors behind such differences in statistical results in SCLC and NSCLC settings. The most important is that new active agents such as taxanes appeared in the treatment of NSCLC [17,18] and few novel agents, including molecular-targeted agents, did in the treatment for SCLC [11,19,20,21] in these study periods. Another hypothesis is that advanced NSCLC might be more influenced than SCLC by lead time bias through early detection with improved imaging techniques, mainly because the growth rate of NSCLC is generally less rapid than that of SCLC throughout its natural history [22]. Progress in supportive care practices would lead to improvements in survival among patients with advanced NSCLC. Those with advanced NSCLC usually have less rapid disease progression and, thus, would likely benefit from its advancement. Finally, the statistical difference between our NSCLC and SCLC studies could have arisen from differences in sample size (number of trials), indicating that the current study may have lacked adequate power to accurately evaluate the association between the year of trial initiation and patient outcome.

The potential influence of second-line chemotherapy should also be considered in assessing the effect of first-line chemotherapy

References

- Smyth JF (1989) Chemotherapy of small cell lung cancer. *Chest* 96: 61S–62S.
- Roth BJ, Johnson DH, Einhorn LH, Schacter LP, Cherng NC, et al. (1992) Randomized study of cyclophosphamide, doxorubicin, and vincristine versus etoposide and cisplatin versus alternation of these two regimens in extensive small-cell lung cancer: a phase III trial of the Southeastern Cancer Study Group. *J Clin Oncol* 10: 282–291.
- Chute JP, Chen T, Feigal E, Simon R, Johnson BE (1999) Twenty years of phase III trials for patients with extensive-stage small-cell lung cancer: perceptible progress. *J Clin Oncol* 17: 1794–1801.
- Stahel RA (1989) Staging and prognostic factors in small cell lung cancer: a consensus report. *Lung Cancer* 5.
- Zelen M (1973) Keynote address on biostatistics and data retrieval. *Cancer Chemother Rep* 4: 31–42.
- Slotman B, Faivre-Finn C, Kramer G, Rankin E, Snee M, et al. (2007) Prophylactic cranial irradiation in extensive small-cell lung cancer. *N Engl J Med* 357: 664–672.
- Ihde DC (1995) Small cell lung cancer. State-of-the-art therapy 1994. *Chest* 107: 243S–248S.
- Baka S, Califano R, Ferraldeschi R, Aschroft L, Thatcher N, et al. (2008) Phase III randomised trial of doxorubicin-based chemotherapy compared with platinum-based chemotherapy in small-cell lung cancer. *Br J Cancer* 99: 442–447.
- Fukuoka M, Furuse K, Saijo N, Nishiwaki Y, Ikegami H, et al. (1991) Randomized trial of cyclophosphamide, doxorubicin, and vincristine versus cisplatin and etoposide versus alternation of these regimens in small-cell lung cancer. *J Natl Cancer Inst* 83: 855–861.
- Sundstrom S, Bremnes RM, Kaasa S, Aasebo U, Hatlevoll R, et al. (2002) Cisplatin and etoposide regimen is superior to cyclophosphamide, epirubicin, and vincristine regimen in small-cell lung cancer: results from a randomized phase III trial with 5 years' follow-up. *J Clin Oncol* 20: 4665–4672.
- Eckardt JR, von Pawel J, Papai Z, Tomova A, Tzekova V, et al. (2006) Open-label, multicenter, randomized, phase III study comparing oral topotecan/cisplatin versus etoposide/cisplatin as treatment for chemotherapy-naïve patients with extensive-disease small-cell lung cancer. *J Clin Oncol* 24: 2044–2051.
- Hanna N, Bunn PA, Jr., Langer C, Einhorn L, Guthrie T Jr, et al. (2006) Randomized phase III trial comparing irinotecan/cisplatin with etoposide/

Table 3. Multiple Stepwise Linear Regression Analysis of Overall Survival (Per Treatment Arm).

Factor	Regression Coefficient*	SE	P†
Year of trial initiation	Excluded		
Use of PE regimen (y or n)	Excluded		
Proportion of patients with good PS	6.65	1.30	<0.001
Proportion of male patients	Excluded		
Median age of patients	Excluded		
Design of the PCI setting (y or n)	2.14	0.742	0.009
Description of definition for ED (y or n)	Excluded		

*Threshold F values for entering and removing from the model were 0.05 and 0.10, respectively.

† $P < 0.05$ was considered significant. This multivariate stepwise regression model excluded the factors "Year of trial initiation," "Use of PE regimen," "Proportion of male patients," "Median age of patients," and "Description of definition for ED" from the model.

Abbreviations: PE, cisplatin and etoposide; PS, performance status; PCI, prophylactic cranial irradiation; ED, extended disease.

doi:10.1371/journal.pone.0007835.t003

because it may contribute to recent improvements in survival [23]. The trials analyzed here rarely provided information about second-line treatment, and we can not assess its exact effect in this setting. There are few positive phase III trials of second-line treatments, and thus it is unlikely that such therapy can significantly confound patient prognosis after the initiation of first-line chemotherapy [24].

In conclusion, the results of our analysis suggest that, regardless of the reason, the survival of patients with ED-SCLC who were enrolled in phase III trials did not improve significantly over the years. Thus, the development of novel targets, newer agents, and comprehensive patient care will be essential in the future fight against lung cancer.

Supporting Information

File S1

Found at: doi:10.1371/journal.pone.0007835.s001 (0.05 MB DOC)

Author Contributions

Conceived and designed the experiments: KH. Performed the experiments: KH. Analyzed the data: IO KH. Wrote the paper: IO KH KK NO NT YF MT MT.

- cisplatin in patients with previously untreated extensive-stage disease small-cell lung cancer. *J Clin Oncol* 24: 2038–2043.
13. Heigener DF, Freitag L, Eschbach C, Huber RM, Fink T, et al. (2008) Topotecan/cisplatin (TP) compared to cisplatin/etoposide (PE) for patients with extensive disease-small cell lung cancer (ED-SCLC): Final results of a randomised phase III trial. 2008 May 20.
 14. Lara PN, Jr., Natale R, Crowley J, Lenz HJ, Redman MW, et al. (2009) Phase III trial of irinotecan/cisplatin compared with etoposide/cisplatin in extensive-stage small-cell lung cancer: clinical and pharmacogenomic results from SWOG S0124. *J Clin Oncol* 27: 2530–2535.
 15. Lally BE, Urbanic JJ, Blackstock AW, Miller AA, Perry MC (2007) Small cell lung cancer: have we made any progress over the last 25 years? *Oncologist* 12: 1096–1104.
 16. Hotta K, Fujiwara Y, Matsuo K, Suzuki T, Kiura K, et al. (2007) Recent improvement in the survival of patients with advanced nonsmall cell lung cancer enrolled in phase III trials of first-line, systemic chemotherapy. *Cancer* 109: 939–948.
 17. Bonomi P, Kim K, Fairclough D, Cella D, Kugler J, et al. (2000) Comparison of survival and quality of life in advanced non-small-cell lung cancer patients treated with two dose levels of paclitaxel combined with cisplatin versus etoposide with cisplatin: results of an Eastern Cooperative Oncology Group trial. *J Clin Oncol* 18: 623–631.
 18. Kubota K, Watanabe K, Kunitoh H, Noda K, Ichinose Y, et al. (2004) Phase III randomized trial of docetaxel plus cisplatin versus vindesine plus cisplatin in patients with stage IV non-small-cell lung cancer: the Japanese Taxotere Lung Cancer Study Group. *J Clin Oncol* 22: 254–261.
 19. Ignatiadis M, Mavroudis D, Veslernes M, Boukovinas J, Syrigos K, et al. (2005) Sequential versus alternating administration of cisplatin/etoposide and topotecan as first-line treatment in extensive-stage small-cell lung cancer: preliminary results of a Phase III Trial of the Hellenic Oncology Research Group. *Clin Lung Cancer* 7: 183–189.
 20. Hotta K, Kiura K, Fujiwara Y, Takigawa N, Oze I, et al. (2009) Association between incremental gains in the objective response rate and survival improvement in phase III trials of first-line chemotherapy for extensive disease small-cell lung cancer. *Ann Oncol* 20: 829–834.
 21. Noda K, Nishiwaki Y, Kawahara M, Negoro S, Sugiura T, et al. (2002) Irinotecan plus cisplatin compared with etoposide plus cisplatin for extensive small-cell lung cancer. *N Engl J Med* 346: 85–91.
 22. Shepherd FA, Crowley J, Van Houtte P, Postmus PE, Carney D, et al. (2007) The International Association for the Study of Lung Cancer lung cancer staging project: proposals regarding the clinical staging of small cell lung cancer in the forthcoming (seventh) edition of the tumor, node, metastasis classification for lung cancer. *J Thorac Oncol* 2: 1067–1077.
 23. Inoue A, Sugawara S, Yamazaki K, Macomondo M, Suzuki T, et al. (2008) Randomized phase II trial comparing amrubicin with topotecan in patients with previously treated small-cell lung cancer: North Japan Lung Cancer Study Group Trial 0402. *J Clin Oncol* 26: 5401–5406.
 24. von Pawel J, Schiller JH, Shepherd FA, Fields SZ, Kleisbauer JP, et al. (1999) Topotecan versus cyclophosphamide, doxorubicin, and vincristine for the treatment of recurrent small-cell lung cancer. *J Clin Oncol* 17: 658–667.

Association between incremental gains in the objective response rate and survival improvement in phase III trials of first-line chemotherapy for extensive disease small-cell lung cancer

K. Hotta*, K. Kiura, Y. Fujiwara, N. Takigawa, I. Oze, N. Ochi, M. Tabata & M. Tanimoto

Department of Respiratory Medicine, Okayama University Hospital, 2-5-1, Shikata-cho, Okayama, Japan

Received 13 November 2008; revised 10 January 2009; accepted 13 January 2009

Background: The duration of, resources required for and cost of clinical trials could be reduced if a surrogate end point was to be used in place of survival. We assessed the extent to which the objective response rate (ORR) is predictive of mortality, how much difference in the ORR is needed to predict an obvious survival difference and what factors could affect the association between the two parameters during the first-line treatment of extensive disease (ED)-small-cell lung cancer (SCLC).

Methods: We used the ORRs and median survival times (MSTs) from 48 phase III trials of first-line chemotherapy involving 8779 randomised patients with ED-SCLC in a linear regression analysis. The MST difference was calculated as the difference in MST between the investigational and reference arms; the ORR difference was similarly defined.

Results: ORR difference between the treatment arms was modestly associated with the MST difference in the overall trials ($R^2 = 0.3314$). In contrast, the relationship was stronger among only trials in which prophylactic cranial irradiation was given to those having an objective response to the initial chemotherapy ($R^2 = 0.6279$). In this trial setting, large differences in ORR were needed to predict a survival advantage (1.2-day survival advantage per 2% increase in ORR).

Conclusions: In the first-line treatment of ED-SCLC, a favourable relationship was detected between the two parameters in the selected trial setting. Large ORR differences were needed to predict a survival benefit, clearly suggesting the need for new chemotherapeutic agents.

Key words: lung cancer, objective response, overall survival

Introduction

Lung cancer is a leading cause of cancer-related death, and small-cell lung cancer (SCLC) accounts for ~15% of all lung cancer cases. SCLC is clinically categorised according to the disease extent as either limited disease (LD)- or extensive disease (ED)-SCLC. The standard first line of treatment of ED-SCLC is platinum-based chemotherapy with cisplatin–etoposide or cisplatin–irinotecan [1, 2]. The outcome, however, is unsatisfactory, with a median survival time (MST) of ~1 year, indicating the need for novel anticancer agents.

In developing new agents, the most important issue is whether they prolong survival. This is usually evaluated in phase III trials, in which the primary end point is traditionally overall survival (OS). Phase III trials, however, are both expensive and time consuming. Moreover, a recent review of all North American phase III randomised trials for patients with ED-SCLC conducted from 1972 to 1990 determined that only 5 (24%) of 21 trials found a significant, but small, survival

advantage, with a survival difference ranging from 0.8 to 3.0 months in the experimental arm compared with the control arm [3]. Considering these findings, early and accurate screening of the agents to be investigated in phase III trials is essential.

As spontaneous cancer regression is a rare event, assuming that tumour regression after treatment is attributable entirely to a treatment effect is reasonable. For this reason, the objective response rate [ORR; complete response (CR) rate and partial response (PR) rate] has historically been considered a clear indicator of antitumour activity and a surrogate for clinical benefit [4]. The ORR has the additional advantage of being an early clinical trial end point, generally reached within just 2–3 months of treatment initiation [5].

The duration, human resources required for and cost of clinical trials could be reduced if a surrogate end point was to be properly used in place of survival. To date, however, (i) the extent to which the OR is predictive of mortality in the first-line treatment of patients with ED-SCLC has not been fully assessed, even though an association itself between OR and OS has been reported [5]. In addition, (ii) how much time of OS increases as ORR increases in this disease has not been formally

*Correspondence to: Dr K. Hotta, Department of Respiratory Medicine, Okayama University Hospital, 2-5-1, Shikata-cho, Okayama 700-8558, Japan. Tel: +81-86-235-7227; Fax: +81-86-232-8226; E-mail: khotta@md.okayama-u.ac.jp

evaluated. Furthermore, (iii) knowing what factors can affect the association between the ORR and OS would be of interest to generate relevant hypotheses in future studies. Here, we investigated the association between ORR and OS to address each of the above-mentioned points.

methods

search for trials

We searched for trials that had been conducted from January 1990 to August 2008, as previous reports relied on studies that had been conducted within the past 15–20 years. To avoid publication bias, published and unpublished trials were identified through a computer-based search of the PubMed database and abstracts from past conferences of the American Society of Clinical Oncology (1998–2008) using the terms lung neoplasm, carcinoma, small cell, chemotherapy and randomised controlled trial. The search was also guided by a thorough examination of reference lists from original articles, review articles, relevant books and the Physician Data Query registry of clinical trials.

selection of trials

Phase III randomised controlled trials were considered if they compared first-line, systemic chemotherapy for ED-SCLC that included cytotoxic agents, providing year of trial initiation. Trials were excluded if they investigated immunotherapeutic regimens or if they enrolled only responders to the initial round of chemotherapy. Trials that were initially designed to assess combined modality treatments, including radiotherapy and surgery concurrently with the initial chemotherapy, were also considered ineligible, whereas those involving the sequential use of these therapies or prophylactic cranial irradiation (PCI) after the induction of chemotherapy were allowed. Some phase III trials included patients with both LD- and ED-SCLC. These were considered eligible only if survival data for the patients with ED-SCLC could be obtained. The definitions of LD- and ED-SCLC varied somewhat in the different groups, but we could not reallocate the patients because of our inability to access each patient database. Instead, we applied the definitions described in each original report to this study. If no relevant descriptions were documented, we assumed that the definitions in the trial were based on the guidelines that existed at the time the trial was initiated [6, 7]. The control arms in each phase III trial were identified based on the statement in each trial.

data abstraction

To avoid bias in the data-abstraction process, four medical oncologists (IO, NO, YF and KH), one of whom holds a board certificate for medical oncology (KH), independently abstracted the data from the trials and subsequently compared the results. The following information was obtained from each report: the year of trial initiation (year when the first patient was accrued), the number of patients enrolled and randomised, the median patient age, the proportion of patients who had a good performance status (PS), the proportion of patients who were male and who had brain metastasis, the chemotherapeutic regimen, the definition of ED, the description of the administration of sequential thoracic irradiation, surgery or PCI as part of the trial design and the MST (per treatment arm). All data were checked for internal consistency, and disagreements were resolved by discussion among the investigators. For trials with more than two treatment arms, we constructed multiple pairs for the investigational and reference arms.

quantitative data synthesis

To investigate the association between differences in ORR and MST, we defined the MST difference as the difference in MST between the

investigation and reference arms; similarly, the ORR difference was defined as the ratio of the ORR in the investigation arm to the ORR in the reference arm (all measures in months). The information from the phase III trials was evaluated using a multiple stepwise regression model (with the following stepping method criteria: probability of F to enter of ≤ 0.05 and to remove of ≥ 0.10) to determine whether the following factors independently affected the MST difference: ORR difference, year of study, definition of ED, ratio of patients with a good PS in the investigational arm to those in the reference arm and a trial design including PCI for those with an OR (CR/PR) to the induction of chemotherapy. All analyses were weighted by trial size. The data were used to determine whether each factor had an independent impact on the survival of patients with ED-SCLC who were treated in the phase III studies. All P values corresponded to two-sided tests; significance was set at $P < 0.05$. The strength of each association was defined a priori using commonly accepted criteria for the proportion of variation (R^2) as follows: 0–0.29, little or no association; 0.30–0.69, moderate or weak association and 0.70–1.00, strong association [8].

results

trials included in the analysis

Of the 2166 trials screened, 48 trials for ED-SCLC were identified as having data regarding OS and ORR (Figure 1). A total of 8779 patients were randomly allocated to 100 chemotherapeutic arms. Of these 48 trials, two had three treatment arms and one had four treatment arms; thus, 52 trial pairs were in the investigational arm versus the reference arm (Table 1). Of these trials, most had high proportions of male patients and patients with a good PS. The response criteria were described in 43 of the 52 trials. Approximately half of the trials used the response criteria of the World Health Organisation (WHO). Regarding the chemotherapeutic regimens, cisplatin plus etoposide-containing regimens were most frequently evaluated in both the investigational and reference arms (25 and 27 arms, respectively), while a cyclophosphamide, adriamycin and vincristine regimen was used in 17 and 23 arms, respectively.

degree of association between the MST and ORR differences

We plotted the MST and ORR differences (Figure 2). A modest relationship was detected between the ORR and MST differences ($R^2 = 0.3314$), suggesting that the ORR difference between the investigational and reference arms could predict 33.1% of the variance in the MST difference between the arms.

Next, we assumed that this association would be closer if the trials were limited to those in which the response criteria were clearly defined; the relationship between the two parameters, however, was not as so different as expected ($n = 43$; $R^2 = 0.1949$). In addition, we assessed whether the association could be affected by the type of response criteria, but it was nearly consistent irrespective of using the WHO criteria for response assessment [$R^2 = 0.1340$ ($n = 23$) versus 0.2765 ($n = 20$) for those trials in which the WHO criteria and other criteria were used, respectively].

To rule out potential confounding variables between the ORR difference and other trial characteristics, we conducted a multiple linear regression analysis for the MST difference. The stepwise multiple regression model used excluded all covariates

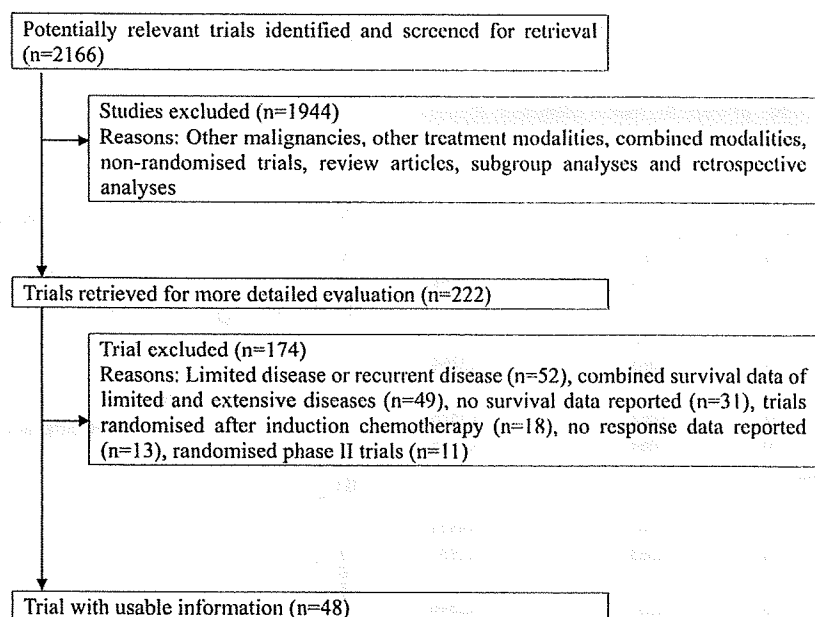


Figure 1. Flowchart showing the review process for the trials.

Table 1. Trial demographics and chemotherapeutic regimens in the 52 trial pairs

Trial characteristics	
Median no. of randomly assigned patients per trial (range)	142 (33–784)
Published year (median, range)	1997 (1990–2008)
Year of trial initiation (median, range)	1990 (1983–2006)
Percentage of patients with a good PS (median, range)	80 (35–100)
Percentage of male patients (median, range)	81 (56–93)
Trials including the administration of PCI to those with an objective response to the initial treatment (yes/no)	20/32
Definition of extensive disease (yes/no)	36/16
Description of the response criteria (yes/no)	43/9
World Health Organisation	23
European Cooperative Oncology Group	2
RECIST	1
Japan Lung Cancer Society	1
Described, but no criteria type documented	16

Good PS was defined as a PS of zero or one.

PS, performance status; PCI, prophylactic cranial irradiation; RECIST, response evaluation criteria in solid tumours.

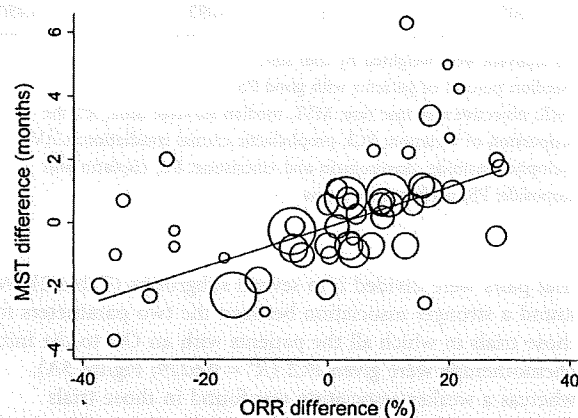


Figure 2. Correlations between the median survival time (MST) difference between the investigational and reference arms and differences in the objective response rate (ORR) in the eligible trial pairs weighted by the number of randomised patients ($R^2 = 0.3314$). The R^2 scores suggest that the ORR difference between the investigational and reference arms could explain 33.1% of the variance in the MST difference between the arms. Each trial is represented by a circle; the size of each circle is proportional to the number of randomised patients.

except the ORR difference. This turned out to be a significant factor affecting the MST difference ($P = 0.003$); however, only 31.6% of the variance in the MST ratio was accounted for even by this model ($R^2 = 0.3156$).

association between the MST and ORR differences in several subgroups

To investigate whether the trial setting could affect the relationship between the MST and ORR differences, eligible

Table 2. Degree of association between the ORR and MST differences in various clinical settings in the simple regression analysis

	No. of trials	Regression coefficient	R ²
Overall	52	0.063	0.3314
Various subgroups			
Trials including PCI for those with an objective response to the initial therapy			
Yes	20	0.083	0.6279
No	32	0.053	0.2254
CAV regimen			
Yes	24	0.062	0.3302
No	28	0.063	0.3264
PE regimen			
Yes	32	0.062	0.3376
No	20	0.064	0.3185
Trial design of additional thoracic irradiation			
Yes	14	0.061	0.4954
No	38	0.063	0.2937
Published year			
1996 or before	26	0.037	0.2346
1997 or later	26	0.094	0.4671
% of good PS patients			
≥80 ^a	12	0.061	0.3351
<80 ^a	13	0.092	0.4505

All analyses were weighted by trial size.

^aMedian percent of patients with good PS.

ORR, objective response rate; MST, median survival time; R², the proportion of variance; PCI, prophylactic cranial irradiation; CAV, cyclophosphamide, doxorubicin and vincristine; PE, cisplatin and etoposide; PS, performance status.

trial pairs were divided into several subgroups (Table 2). We found a stronger association between the two parameters for those trials in which all the patients with an OR to the initial chemotherapy were given PCI (R² = 0.6279; Figure 3A), whereas a weaker association was found in those trials without that type of design (R² = 0.2254; Figure 3B). None of the other characteristics assessed seemed to affect the association (Table 2).

predicted MST difference based on the fitted model for those trials with the PCI setting

We next constructed a fitted formula for predicting the MST difference using the actual ORR difference for those trials that included PCI as part of their design in which a high R² value was obtained:

$$\text{Predicted MST difference between the investigational and reference arms} = 0.083 \times (\text{actual ORR difference}) - 0.125.$$

The predicted MST differences are listed in Table 3 according to the various ORR differences. For example, when the investigational regimen was expected to yield a 10% increase in the ORR as compared with the state-of-the-art regimen, the MST was predicted to increase only by 0.7 months (21.2 days) in the investigational arm.

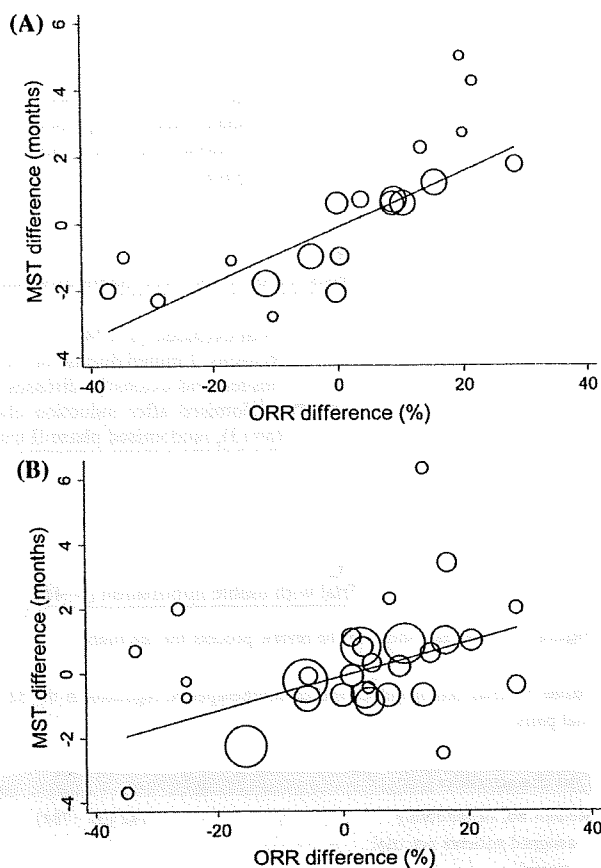


Figure 3. Correlations between the median survival time (MST) difference and objective response rate (ORR) difference between the investigational and reference arms in trials (A) designed to administer prophylactic cranial irradiation (PCI) to those with an objective response to the inductive therapy (R² = 0.6279) or (B) not (R² = 0.2254). The analysis was weighted by the number of randomised patients. The R² scores suggest that the ORR difference between the investigational and reference arms could explain as much as 62.8% of the variance in the MST difference between the arms in trials including PCI, while in the trials without PCI, the MST difference was less exactly accounted for by the ORR difference (22.5%). Each trial is represented by a circle; the size of each circle is proportional to the number of randomised patients.

discussion

In this study, we found a modest association between the ORR and MST differences in the complete trial (R² = 0.3314; Figure 2). In contrast, the design of PCI setting for all responders to the initial chemotherapy favourably affected the relationship (R² = 0.6279; Figure 3A). In this setting, large differences in ORR were needed to predict a survival benefit (1.2-day survival advantage per 2% increase in ORR).

Note that the relationship was stronger only for those trials in which PCI was assigned to all patients with an OR to the initial treatment (R² = 0.6279; Figure 3A). One would postulate that this result is related to the ability of anticancer agents to penetrate the blood-brain barrier (BBB). Apart from clinically

Table 3. Predicted MST difference according to the ORR difference

ORR difference ^a (%)	Predicted MST difference ^a , months (days)
2.5	0.1 (2.5)
5.0	0.3 (8.7)
7.5	0.5 (14.9)
10.0	0.7 (21.2)
12.5	0.9 (27.4)
15.0	1.2 (33.6)
17.5	1.4 (39.8)
20.0	1.6 (46.1)

^aDifference between the investigational and reference arms. For example, when an investigational regimen was expected to yield a 10% increase in the ORR as compared with the standard regimen, the MST was predicted to increase by 0.7 months (21.2 days) in the investigational arm. ORR, objective response rate; MST, median survival time.

obvious cranial metastases, which would be sensitive to systemic chemotherapy because of an impaired BBB [9], radiologically undetected micrometastases in the brain, which are common in patients with ED-SCLC, are generally considered to be insensitive to chemotherapy because they are able to hide behind the still-intact BBB [9]. Thus, even if systemic chemotherapy was effective against detectable extracranial diseases, such small undetectable cranial diseases could continue to grow without the use of PCI, possibly resulting in a poor outcome. That could explain why a tight association was not observed between the radiological response and survival data. However, with the PCI setting for responders to the initial chemotherapy, such a difference in the response pattern between extracranial and intracranial diseases would theoretically be minimised. This may be why a stronger association between the radiological response and survival was observed when only those trials that included PCI as part of their design were assessed in the analysis (Figure 3A). This hypothesis requires further study. Other clinical factors including PS examined did not seem to influence the relationship between ORR and MST (Table 2), while a number of studies have shown that PS has impacts on outcome [10–12]. This would simply reflect that good PS patients can respond well to chemotherapies and survive longer and that poor PS patients hardly respond to them, resulting in the poor outcome.

In addition, knowing how much of a difference in ORR is needed to predict an obvious survival difference in ED-SCLC is also clinically necessary. In their abstracted database study, Johnson et al. [13] investigated the role of ORR as a surrogate marker in the treatment of advanced non-small-cell lung cancer (NSCLC) by comparing incremental differences in MST between the arms with those in ORR. The formula they used to predict the MST difference was nearly identical to ours, except for the difference in cancer type: $MST\ difference = 0.090 \times (the\ ORR\ difference) - 0.048$. Using this formula for patients with NSCLC, if the investigational regimen was expected to yield a 10% increase in the ORR as compared with the standard regimen, the MST was predicted to increase by only 0.9 months (25.6 days) in the investigational arm. Given either formula, one could intuitively predict the survival benefit of a new

therapy by comparing the OR data from their early clinical trials with the ORR for the state-of-the-art therapy. At any rate, both sets of results indicate that, irrespective of the small- or non-small-cell subtype, the survival advantage would be small even if a relatively large ORR difference was obtained.

Few randomised trials of metastatic lung cancer have reported hazard ratios, and predictions based on this measure would not be representative and could be biased. Additionally, differences in follow-up duration between trials could affect the calculated hazard ratios. For these reasons, the MST was used in this study to ensure that all trials were long enough to capture the relevant end points in at least half of the patients. The reason for this pragmatic approach is that the value of a treatment of metastatic disease is usually measured in terms of incremental survival gains rather than the proportional or absolute risk of death [13].

Trial-level surrogacy as described here is not necessarily linked to individual-level surrogacy; thus, our data cannot be used to predict an individual's chance of survival on the basis of their response to treatment. Analyses based on data derived from both sources have strengths and weaknesses [14]. Although the use of individual patient data (IPD) restricts the analysis to a limited number of trials and the analysis is not easily replicated by independent researchers, it allows better characterisation of important covariates that affect survival. Future investigations using IPD could show a more precise relationship between survival and the response to treatment. In addition, as a point to be discussed, assessment of response rate would be variable and unreliable. It is well documented that response rates have dropped in recent years as more rigorous criteria are used. This is borne out by the fact that the correlation dropped in studies with clearly defined response criteria. Using differences in response rates rather than absolute values would help address this.

In conclusion, in this study, we found a favourable relationship between the ORR and MST differences for trials in which those who responded to the initial chemotherapy subsequently received PCI. Given the recent finding of a survival advantage from PCI even in patients with ED-SCLC [15], the frequency at which PCI is used for responders to the initial treatment will likely increase. Considering such circumstances, ORR data may be useful for predicting how much improvement in OS can be obtained. In contrast, large differences in ORR are needed to predict a survival benefit, strongly suggesting the need for the development of new chemotherapeutic agents in ED-SCLC.

funding

There is no funding source in this study.

references

- Hanna N, Bunn PA Jr, Langer C et al. Randomized phase III trial comparing irinotecan/cisplatin with etoposide/cisplatin in patients with previously untreated extensive-stage disease small-cell lung cancer. *J Clin Oncol* 2006; 24: 2038–2043.
- Noda K, Nishiwaki Y, Kawahara M et al. Irinotecan plus cisplatin compared with etoposide plus cisplatin for extensive small-cell lung cancer. *N Engl J Med* 2002; 346: 85–91.

3. Chute JP, Chen T, Feigal E et al. Twenty years of phase III trials for patients with extensive-stage small-cell lung cancer: perceptible progress. *J Clin Oncol* 1999; 17: 1794–1801.
4. Schilsky RL. End points in cancer clinical trials and the drug approval process. *Clin Cancer Res* 2002; 8: 935–938.
5. Saijo N. Strategy for the development of novel anticancer drugs. *Cancer Chemother Pharmacol* 2003; 52 (Suppl 1): S97–S101.
6. Stahel RA, Ginsberg R, Havemann K et al. Staging and prognostic factors in small cell lung cancer: a consensus report. *Lung Cancer* 1989; 5: 119–126.
7. Zelen M. Keynote address on biostatistics and data retrieval. *Cancer Chemother Rep* 3 1973; 4: 31–42.
8. Chu T-M, Weir B, Wolfinger R. A systematic statistical linear modeling approach to oligonucleotide array experiments. *Math Biosci* 2002; 176: 35–51.
9. van den Bent MJ. The role of chemotherapy in brain metastases. *Eur J Cancer* 2003; 39: 2114–2120.
10. Hotta K, Matsuo K, Ueoka H et al. Continued gefitinib treatment after disease stabilisation prolongs survival of patients with non-small-cell lung cancer: Okayama Lung Cancer Study Group Experience. *Ann Oncol* 2005; 16: 1817–1823.
11. Hotta K, Kiura K, Toyooka S et al. Clinical significance of epidermal growth factor receptor gene mutations on treatment outcome after first-line cytotoxic chemotherapy in Japanese patients with non-small-cell lung cancer. *J Thorac Oncol* 2007; 2: 632–637.
12. Hotta K, Kiura K, Takigawa N et al. Sex difference in the influence of smoking status on the responsiveness to gefitinib monotherapy in adenocarcinoma of the lung: Okayama Lung Cancer Study Group Experience. *J Cancer Res Clin Oncol* 2009; 135(1): 117–123.
13. Johnson KR, Ringland C, Stokes BJ et al. Response rate or time to progression as predictors of survival in trials of metastatic colorectal cancer or non-small-cell lung cancer: a meta-analysis. *Lancet Oncol* 2006; 7: 741–746.
14. Berlin JA, Santanna J, Schmid CH et al. Individual patient-versus group-level data meta-regressions for the investigation of treatment effect modifiers: ecological bias rears its ugly head. *Stat Med* 2002; 21: 371–387.
15. Slotman B, Faivre-Finn C, Kramer G et al. Prophylactic cranial irradiation in extensive small-cell lung cancer. *N Engl J Med* 2007; 357: 664–672.

