

Salvage esophagectomy after high-dose chemoradiotherapy for esophageal squamous cell carcinoma

Yuji Tachimori, MD, Norio Kanamori, MD, Norihisa Uemura, MD, Norikazu Hokamura, MD, Hiroyasu Igaki, MD, and Hoichi Kato, MD

Objective: Chemoradiotherapy is a popular definitive therapy for esophageal carcinoma among many patients and oncologists. Although the complete response rates are high and short-term survival is favorable after chemoradiotherapy, persistent or recurrent locoregional disease is frequent. Salvage surgery is the sole curative intent treatment option for this course of the disease. The present study evaluates the safety and value of salvage esophagectomy for locoregional failure after high-dose definitive chemoradiotherapy for esophageal squamous cell carcinoma.

Methods: We reviewed 59 consecutive patients with thoracic esophageal squamous cell carcinoma who underwent salvage esophagectomy after definitive chemoradiotherapy. All patients received more than 60 Gy of radiation plus concurrent chemotherapy for curative intent. The data were compared with those of patients who received esophagectomy without preoperative therapy.

Results: Postoperative morbidity and mortality rates were increased among patients who underwent salvage esophagectomy compared with those who underwent esophagectomy without preoperative therapy (mean hospital stay, 38 vs 33 days; anastomotic leak rates, 31% vs 25%; respiratory complication rates, 31% vs 20%; reintubation within 1 week, 2% vs 2%; hospital mortality rates, 8% vs 2%). Tracheobronchial necrosis and gastric conduit necrosis were highly lethal complications after salvage esophagectomy; 3-year postoperative survivals were 38% and 58%, respectively.

Conclusion: Patients who underwent salvage esophagectomy after definitive high-dose chemoradiotherapy had increased morbidity and mortality. Nevertheless, this is acceptable in view of the potential long-term survival after salvage esophagectomy. Such treatment should be considered for carefully selected patients at specialized centers.

Surgical resection has been the standard treatment for localized esophageal squamous cell and adenocarcinoma for several decades. Despite many efforts to improve surgical resection, the associated mortality and morbidity rates remain high and the postoperative quality of life is unsatisfactory. Management algorithms for patients with esophageal carcinoma have changed during the last 2 decades. Multidisciplinary approaches have included surgery, radiotherapy, and chemotherapy, alone or in combination. The Radiation Therapy Oncology Group trial (RTOG 85-01), which added chemotherapy to radiotherapy for resectable esophageal carcinoma, has established chemoradiotherapy (CRT) without surgery as one standard for definitive treatment.^{1,2} Many patients and oncologists have accepted the nonsurgical approach with CRT as definitive therapy for esophageal carcinoma. Evaluations of consecutive patients with esoph-

ageal cancer accessed using the National Cancer Database of the American College of Surgeons have shown that radiation combined with chemotherapy is the most frequent treatment strategy for all stages of squamous cell carcinoma in the United States.³

Although complete response (CR) rates are high and short-term survival is favorable after definitive CRT, locoregional disease persists or recurs in 40% to 60% of patients.⁴ The only curative intent treatment option for locoregional relapse is salvage surgery.⁵ Such patients are at increased risk for esophagectomy because they have been treated with higher doses of radiation and the treatment is usually completed months beforehand.⁶

The present study evaluates the safety and efficacy of salvage esophagectomy for locoregional failure after high-dose definitive CRT for esophageal squamous cell carcinoma. We retrospectively reviewed all patients who underwent esophageal resection between 2000 and 2006 at the National Cancer Center Hospital and selected all patients undergoing salvage esophagectomy after failed definitive CRT (n = 59). We compared the data with those of patients treated by esophagectomy without preoperative therapy during the same period (n = 553).

MATERIALS AND METHODS

We reviewed 59 consecutive patients with thoracic esophageal squamous cell carcinoma who underwent salvage esophagectomy after high-dose

From the Esophageal Surgery Division, Departments of Surgery, National Cancer Center Hospital, Chuo-ku, Tokyo, Japan.

This work was supported by a Grant-in Aid for Cancer Research from the Ministry of Health, Labour and Welfare, Japan.

Received for publication Dec 5, 2007; revisions received Feb 23, 2008; accepted for publication May 4, 2008.

Address for reprints: Yuji Tachimori, MD, Department of Surgery, National Cancer Center Hospital, Tsukiji 5-1-1, Chuo-ku, Tokyo 104-0045, Japan (E-mail: ytachimo@ncc.go.jp).

J Thorac Cardiovasc Surg 2009;137:49-54

0022-5223/\$36.00

Copyright © 2009 by The American Association for Thoracic Surgery

doi:10.1016/j.jtcvs.2008.05.016

Abbreviations and Acronyms

CR = complete response
 CRT = chemoradiotherapy
 RTOG = Radiation Therapy Oncology Group

definitive CRT between 2000 and 2006 at the National Cancer Center Hospital, Tokyo. All selected patients had received more than 60 Gy of external beam radiation as high-dose definitive CRT without planned surgery. The chemotherapeutic regimens for these patients predominantly comprised 5-fluorouracil and cisplatin concurrently with radiation therapy. These patients included 22 who were initially treated at other hospitals with definitive CRT and who were admitted to the National Cancer Center Hospital after the primary tumor relapsed. We reviewed the other hospital records of these patients to confirm treatment details. Assessments of these patients indicated that 23 had achieved CR after CRT, but disease relapsed later. The remaining 36 patients had not achieved CR and underwent salvage surgery for residual tumors.

The data were compared with those of 553 patients who underwent planned esophagectomy without preoperative therapy during the same period. Long-term outcomes, encompassing overall survival, were obtained from hospital records and the tumor registry. Overall survival was calculated from the day of surgery until death or was censored at the time last known to be alive.

Data were statistically analyzed using the Pearson chi-square test or the Fisher exact test as appropriate. Kaplan–Meier survival curves were estimated with differences based on patient characteristics assessed by the log-rank test to compare the distribution of survival. Survival of the 54 patients who underwent salvage esophagectomy after CRT, excluding perioperative deaths, was examined using univariate and multivariable analyses.

RESULTS

Table 1 compares the clinical characteristics of patients who underwent salvage esophagectomy after CRT (salvage group) with who did not receive preoperative therapy. The salvage group contained more male patients and less advanced pathologic stages, but age and tumor location did not significantly differ. Of 7 patients with no pathologically residual tumors (pT0) in the resected esophagus, analysis of preoperative endoscopic biopsy revealed that 2 had tumor cells. Another 5 patients had stenosis and ulcers with a thickened wall according to computed tomography examinations suggesting recurrence. All patients with M1 had lymph node metastasis in the neck or celiac area. These patients were indicated for 3-field dissections at the National Cancer Center Hospital.⁷ Patients with distant organ metastasis were not candidates for esophagectomy.

Table 2 compares the surgical procedures and results between the 2 groups. Surgical procedures significantly differed, such as in the extent of lymphadenectomy and reconstruction route. The salvage group tended to have fewer cervical anastomoses (75% vs 96%), reflecting a lower proportion of 3-field lymph node dissections (41% vs 91%). Anastomotic techniques in both groups were similar: Neck anastomosis was performed with the single-layer interrupted hand suture technique, and thoracic

TABLE 1. Clinical characteristics and pathologic factors

	Salvage after CRT n = 59	No preoperative therapy n = 553	P value
Gender (No.)			
Male	57 (97%)	483 (87%)	.0330
Female	2 (3%)	70 (13%)	
Age (y)			
Median	63	62	.0821
Range	34–75	41–83	
Location			
Upper	13 (22%)	88 (16%)	.4839
Middle	26 (44%)	261 (47%)	
Lower	20 (34%)	204 (37%)	
pT			
pT0	7 (12%)		
pT1	11 (19%)	176 (32%)	<.0001
pT2	5 (8%)	62 (11%)	
pT3	30 (51%)	277 (50%)	
pT4	6 (10%)	38 (7%)	
pN			
pN0	38 (64%)	161 (29%)	<.0001
pN1	21 (36%)	392 (71%)	
pM			
pM0	52 (88%)	440 (80%)	.1238
pM1 lym	7 (12%)	113 (20%)	
pStage			
pStage 0	6 (10%)		.0006
pStage I	5 (9%)	93 (17%)	
pStage IIA	20 (34%)	58 (11%)	
pStage IIB	5 (9%)	100 (18%)	
pStage III	16 (27%)	189 (34%)	
pStage IVA	2 (3%)	19 (5%)	
pStage IVB	5 (9%)	84 (15%)	

CRT, Chemoradiotherapy.

M1 lym had lymph node metastasis in the neck or in the celiac area.

anastomosis was performed with the stapling technique. The rate of noncurative surgery (R1, R2) tended to be more frequent in the salvage group (15% vs 9%), but the difference did not reach statistical significance.

Postoperative morbidity and mortality rates were increased in the salvage group compared with those who did not receive preoperative therapy (Table 3). The salvage group had more respiratory complications (32% vs 20%), including more empyema, mediastinitis, and tracheobronchial necrosis. Tracheobronchial necrosis developed in 4 patients in the salvage group. Tracheobronchial necrosis without anastomotic leak in the neck developed in 2 patients; 1 patient died and 1 patient survived after an omental patch was grafted onto the tracheobronchial fistula. All patients in both groups were extubated in the operating room immediately after surgery. The ratio of those requiring reintubation and ventilation within 1 week after surgery was not increased in the salvage group (2% vs 2%), whereas rates of anastomotic leakage (31% vs 25%) and wound infection

TABLE 2. Surgical factors

	Salvage after CRT n = 59	No preoperative therapy n = 553	P value
Resection approach			
Right thoracotomy	56 (95%)	539 (97%)	.2740
Left thoracotomy		3 (1%)	
Transhiatal	3 (5%)	11 (2%)	
Lymph node dissection			
3-field	24 (41%)	504 (91%)	<.0001
Others	35 (59%)	49 (9%)	
Reconstruction conduit			
Stomach	56 (95%)	506 (92%)	.6931
Colon	3 (5%)	42 (8%)	
Jejunum		2 (.4%)	
Reconstruction route			
Anterior	26 (44%)	404 (73%)	<.0001
Posterior	31 (53%)	132 (24%)	
Subcutaneous	2 (3%)	17 (3%)	
Anastomosis			
Cervical	44 (75%)	530 (96%)	<.0001
Thoracic	13 (22%)	17 (3%)	
Subcutaneous	2 (3%)	6 (1%)	
Curability			
R0	50 (85%)	505 (91%)	.1018
R1, R2	9 (15%)	48 (9%)	

CRT, Chemoradiotherapy.

(27% vs 15%) were significantly increased in the salvage group.

Mean hospital stay (38 vs 33 days) tended to be increased in the salvage group in parallel with increased postoperative morbidity. The hospital mortality rate (8% vs 2%) was significantly increased in the salvage group. Table 4 lists the causes of postoperative hospital mortality. A reconstruction via the anterior mediastinum with cervical anastomosis is our standard procedure. One patient died of tracheobron-

TABLE 3. Postoperative morbidity and mortality

	Salvage after CRT n = 59	No preoperative therapy n = 553	P value
Respiratory complication	19 (32%)	113 (20%)	.0452
Pneumonia	6 (10%)	46 (8%)	
Empyema and mediastinitis	7 (12%)	27 (5%)	
Tracheobronchial necrosis	4 (7%)	1 (.2%)	
Recurrent nerve paralysis	11 (19%)	127 (23%)	.3396
Ventilation within 1 wk	1 (2%)	10 (2%)	>.9999
Tracheotomy	2 (3%)	6 (1%)	
Anastomotic leak	18 (31%)	138 (25%)	.0034
Conduit necrosis	2 (3%)	1 (.2%)	
Wound infection	16 (27%)	83 (15%)	.0163
Hospital stay (d)	38.3 ± 35.1	31.2 ± 33.8	.1279
Hospital mortality	5 (8%)	10 (2%)	.0099
Operative mortality		1 (.2%)	

CRT, Chemoradiotherapy.

TABLE 4. Causes of postoperative hospital mortality

	Salvage after CRT n = 59	No preoperative therapy n = 553
Tracheobronchial necrosis	1 (2%)	
Conduit necrosis and tracheobronchial necrosis	2 (3%)	1 (0.2%)
Leakage and arterial bleeding	1 (2%)	1 (0.2%)
Radiation pneumonitis and cardiac failure	1 (2%)	
Pneumonia		3 (0.5%)
Leakage and mediastinitis		5 (0.9%)

CRT, Chemoradiotherapy.

chial necrosis without anastomotic leak in the neck. A leak into the posterior mediastinum developed in 1 patient, causing mediastinitis and tracheobronchial necrosis; this patient survived after an omental patch was grafted onto the tracheobronchial fistula. A leak and fatal bleeding from the carotid artery developed in 1 patient. After these events, the reconstruction route was changed to the posterior mediastinum with intrathoracic anastomosis and omental cover onto the tracheobronchus. However, gastric conduit necrosis in the posterior mediastinum caused mediastinitis and tracheobronchial necrosis in 2 patients. After these events, the reconstruction route was returned again to the anterior mediastinum with cervical anastomosis. Neck dissection was canceled in the salvage group, in contrast with the other group who underwent 3-field dissection as a standard procedure. One patient died of interstitial pneumonitis and cardiac failure, which were presumed to have been caused by late toxicity of CRT. Three patients in the salvage group died of respiratory failure and cardiac failure, which were presumed to have been caused by late toxicity of CRT, more than 12 months after salvage surgery.

According to differences in operative morbidity and mortality, overall survival was significantly better in the group who received no preoperative therapy (Figure 1).

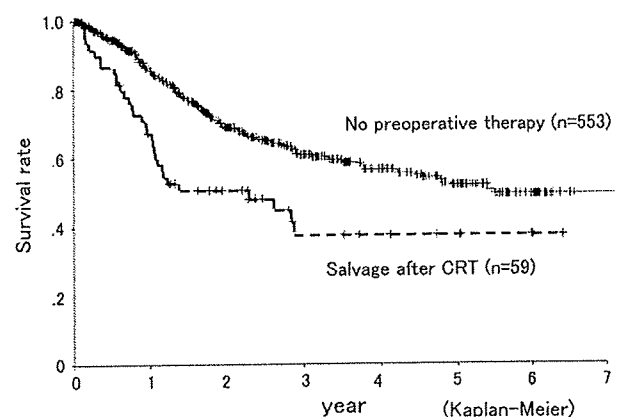


FIGURE 1. Overall survival curves of patients undergoing salvage esophagectomy after definitive CRT (n = 59) or no preoperative therapy (n = 553). CRT, Chemoradiotherapy.

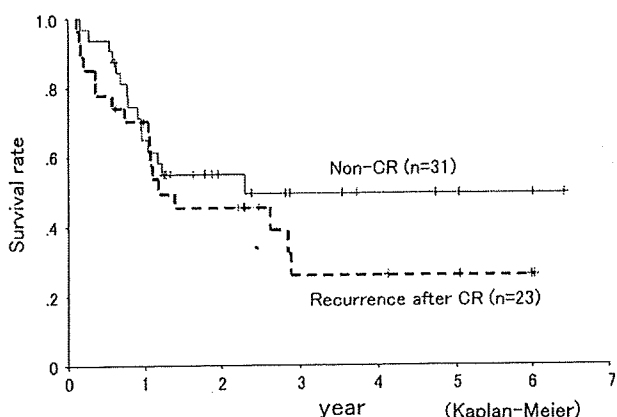


FIGURE 2. Overall survival curves of patients undergoing salvage esophagectomy (n = 54) according to CRT response (excluding perioperative deaths, n = 5). CR, Complete response.

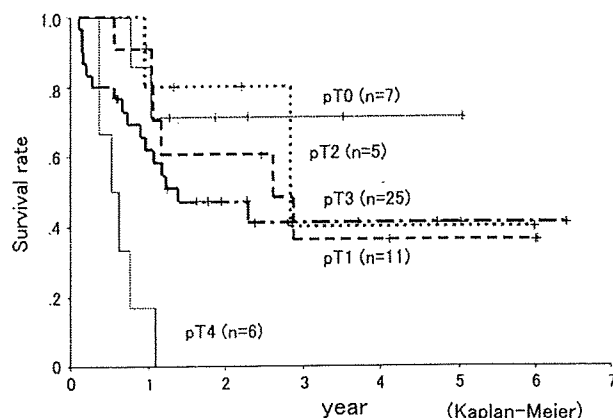


FIGURE 3. Overall survival curves of patients undergoing salvage esophagectomy (n = 54) according to pathologic T factor (excluding perioperative deaths, n = 5).

Three-year postoperative survivals were 37.8% in the salvage group and 60.8% in the group without preoperative therapy.

We evaluated the factors associated with long-term survival after salvage esophagectomy in the 54 patients who survived the perioperative period. Univariate analysis revealed no associations between increased survival and any of gender, age (<60 or ≥60 years), tumor location, CRT response (recurrence after CR or non-CR; Figure 2), time from CRT to salvage esophagectomy (≤12 or >12 months), or pathologic N and M factors (Table 5). Pathologic T factor (T1-3 or T4) and R0 resection (R0 or R1-2) were associated with increased survival (Figures 3 and 4). Patients with pathologic T4 and those with noncurative resection (R1-2) closely overlapped. Of 6 patients with pathologic T4 tumors, R0 resection was performed in only 1 patient via combined resection of the pericardium. Noncurative resection was also completed in 2 patients with peritoneal dissemination and in

1 patient with extended node metastasis. The most significant factor associated with increased survival seemed to be R0 resection.

DISCUSSION

In contrast with Western countries, where the rate of adenocarcinoma is increasing, squamous cell carcinoma persists among most Japanese patients with esophageal cancer.^{8,9} The landmark RTOG 85-01 randomized trials have clearly demonstrated that CRT is a curative approach for squamous cell carcinoma.^{1,2} Medical and radiation oncologists have reported improved survival of patients with esophageal cancer treated by definitive CRT without surgery.¹⁰⁻¹³ Definitive CRT without planned surgery has been offered to patients with potentially resectable esophageal tumors in many Japanese institutions during the past decade.¹⁴ During the period of this analysis, 480 patients received definitive

TABLE 5. Univariate and multivariate analyses of salvage esophagectomy long-term survival

Characteristics	Univariate		Multivariate	
	P value	HR	95% CI	P value
Gender (F/M)	.9288	1.574	0.168-14.710	.6910
Age (≥60 y/<60 y)	.8989	3.471	0.997-12.084	.0505
Location (upper/lower)	.5313	1.114	0.228-5.436	.8942
(middle/lower)	.1773	1.884	0.578-6.140	.2934
CRT response (recurrence after CR/non-CR)	.6371	0.786	0.212-2.918	.7188
Time from CRT to salvage (≤12 mo/>12 mo)	.5534	1.460	0.454-4.698	.5256
pT (T1-3/T4)	<.0001	0.047	0.006-0.364	.0034
pN (N0/N1)	.1517	0.522	0.203-1.342	.1772
pM (M0/M1-lym)	.0694	0.128	0.030-0.557	.0061
R (R0/R1-2)	<.0001	0.421	0.070-2.522	.3437

HR, Hazard ratio; CI, confidence interval; CRT, chemoradiotherapy; CR, complete response.

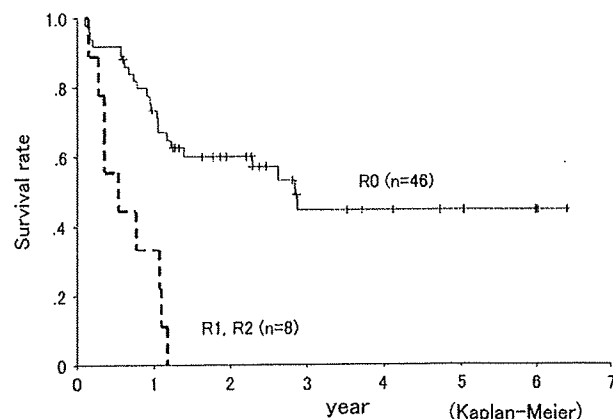


FIGURE 4. Overall survival curves of patients undergoing salvage esophagectomy (n = 54) according to R classification (excluding perioperative deaths, n = 5).



high-dose CRT for stages I to III excluding T4 esophageal squamous cell carcinoma in our institution.

The phase III randomized controlled trial, INT 0123 (RTOG 9405), found no improvement in survival in dose comparisons of high-dose (64.8 Gy) versus standard-dose (50.4 Gy) radiation and the effect on locoregional control did not improve.¹⁵ Thus, the standard radiation dose for definitive CRT has become 50 to 50.4 Gy in the United States. Definitive CRT has mostly comprised combinations with a conventional radiation dose of more than 60 Gy in Japan.¹⁰⁻¹³ Clinical trials for definitive CRT at a dose of 50.4 Gy are ongoing. All patients analyzed in the present study were dosed with more than 60 Gy of external beam radiation as definitive CRT.

Before and during the period of this analysis, 2 consecutive phase III randomized controlled trials at the National Cancer Center Hospital compared the outcomes of postoperative chemotherapy with surgery alone (JCOG9208)¹⁶ and postoperative chemotherapy with preoperative chemotherapy (JCOG9907) for surgical patients. Less than 10 surgical candidates received the preoperative CRT, and 45 patients received preoperative chemotherapy. Patients who received no preoperative treatment, including surgery alone or surgery with postoperative chemotherapy, comprised the control group for analysis in the present study.

The morbidity and mortality rates of patients who underwent salvage esophagectomy after CRT increased because of the effects of the radiation administered to the mediastinum and the tissues used as conduits.¹⁷ Higher doses of radiation are associated with increased morbidity,^{18,19} and irradiation of the esophagus and stomach might affect the blood supply, which might contribute to leakage. Gastric conduit necrosis in the posterior mediastinum caused mortal mediastinitis in 2 patients, necessitating surgical modifications to reduce the impact of leaks into the thoracic cavity. The reconstruction route was changed to the anterior mediastinum with cervical anastomosis.

Ischemic tracheobronchial lesions are serious complications of esophagectomy with extensive lymph node dissection, particularly in patients undergoing preoperative CRT.²⁰ Four patients in the salvage group developed tracheobronchial necrosis, of which 3 of them died. The remaining patient who received an omental patch graft survived. Protective measures to prevent ischemic tracheobronchial lesions include, in addition to careful dissection around the airway, preservation of the bronchial arteries during resection.²¹ We changed our salvage esophagectomy procedure to preserve the right posterior bronchial artery. Neck dissection was also avoided to preserve the blood supply from the inferior thyroidal artery to the trachea. Although our standard surgery for esophageal cancer is right thoracotomy and 3-field dissection, the extent of lymphadenectomy was reduced in salvage esophagectomy because of high operative risk.

The incidence of acute toxicity of CRT seemed to be substantial. However, long-term or late cardiopulmonary toxicity cannot be ignored in patients who survive after CRT^{22,23} or in those who undergo salvage esophagectomy after CRT. One patient in the salvage group died of interstitial pneumonitis and cardiac failure postoperatively, which were supposedly caused by late toxicity of CRT. In addition, 3 patients died of respiratory failure and cardiac failure more than 12 months after salvage surgery. A strategy to minimize the normal tissue toxicity of CRT should be identified.

We reviewed several factors to identify which subset of patients derived a benefit from salvage esophagectomy. Univariate analysis revealed that T1-3 and R0 were significant factors. The most significant factor associated with long-term survival seemed to be R0 resection.^{24,25} Fibrosis is usually promoted in radiation fields, and some cancer cells are likely to be left behind in the deep layer of the esophageal wall after radiotherapy. Therefore, to accurately evaluate the T factor of irradiated patients might be difficult preoperatively, and irradiated tissues are difficult to distinguish from tumors during surgery.

CONCLUSIONS

Patients who underwent salvage esophagectomy after definitive high-dose CRT had higher morbidity and mortality rates than patients undergoing esophagectomy without preoperative therapy. Nevertheless, this is the only established treatment strategy that offers any chance of long-term survival. This morbidity rate is acceptable in view of the potential for long-term survival after salvage esophagectomy. Patients should be carefully selected for salvage esophagectomy after high-dose CRT at referral centers that specialize in esophageal cancers.

References

- Herskovic A, Martz K, al-Sarraf M, Leichman L, Brindle J, Vaitkevicius V, et al. Combined chemotherapy and radiotherapy compared with radiotherapy alone in patients with cancer of the esophagus. *N Engl J Med.* 1992;326:1593-8.
- Al-Sarraf M, Martz K, Herskovic A, Leichman L, Brindle JS, Vaitkevicius VK, et al. Progress report of combined chemoradiotherapy versus radiotherapy alone in patients with esophageal cancer: an intergroup study. *J Clin Oncol.* 1997;15:277-84. Erratum in: *J Clin Oncol.* 1997;15:866.
- Daly JM, Fry WA, Little AG, Winchester DP, McKee RF, Stewart AK, et al. Esophageal cancer: results of an American College of Surgeons Patient Care Evaluation Study. *J Am Coll Surg.* 2000;190:562-73.
- Cooper JS, Guo MD, Herskovic A, Macdonald JS, Martenson JA Jr, Al-Sarraf M, et al. Chemoradiotherapy of locally advanced esophageal cancer: long-term follow-up of a prospective randomized trial (RTOG 85-01). Radiation Therapy Oncology Group. *JAMA.* 1999;281:1623-7.
- Ajani J, Bekaii-Saab T, D'Amico TA, Fuchs C, Gibson MK, Goldberg M, et al. Esophageal cancer clinical practice guidelines. *J Natl Compr Canc Netw.* 2006;4:328-47.
- Urschel JD, Ashiku S, Thurer R, Sellke FW. Salvage or planned esophagectomy after chemoradiation therapy for locally advanced esophageal cancer—a review. *Dis Esophagus.* 2003;16:60-5.
- Tachimori Y, Kato H, Watanabe H. Surgery for thoracic esophageal carcinoma with clinically positive cervical nodes. *J Thorac Cardiovasc Surg.* 1998;116:954-9.

8. The Japanese Esophageal Society. Comprehensive Registry of Esophageal Cancer in Japan 3rd ed. (1998, 1999). Available at: http://esophagus.jp/pdf_files/CREC_JPN_3rd.pdf. Accessed Feb 23, 2008.
9. Tachimori Y. Esophageal adenocarcinoma in Japanese. *J Clin Gastroenterol*. 2006;40:S168-9.
10. Ohtsu A, Yoshida S, Boku N, Fujii T, Miyata Y, Hosokawa K, et al. Concurrent chemotherapy and radiation therapy for locally advanced carcinoma of the esophagus. *Jpn J Clin Oncol*. 1995;25:261-6.
11. Ohtsu A, Boku N, Muro K, Chin K, Muto M, Yoshida S, et al. Definitive chemoradiotherapy for T4 and/or M1 lymph node squamous cell carcinoma of the esophagus. *J Clin Oncol*. 1999;17:2915-21.
12. Kato H, Udagawa H, Togo A, Ando N, Tanaka O, Shinoda M, et al. Japan Clinical Oncology Group (JCOG). A phase II trial of chemo-radiotherapy in patients with stage I esophageal squamous cell carcinoma: Japan Clinical Oncology Group study (JCOG9708) Abstract No: 1147. *Proc Am Soc Clin Oncol*. 2003;22:286.
13. Ishida K, Ando N, Yamamoto S, Ide H, Shinoda M. Phase II study of cisplatin and 5-fluorouracil with concurrent radiotherapy in advanced squamous cell carcinoma of the esophagus: a Japan Esophageal Oncology Group (JEOG)/Japan Clinical Oncology Group trial (JCOG9516). *Jpn J Clin Oncol*. 2004;34:615-9.
14. Hironaka S, Ohtsu A, Boku N, Muto M, Nagashima F, Saito H, et al. Nonrandomized comparison between definitive chemoradiotherapy and radical surgery in patients with T(2-3)N(any)M(0) squamous cell carcinoma of the esophagus. *Int J Radiat Oncol Biol Phys*. 2003;57:425-33.
15. Minsky BD, Pajak TF, Ginsberg RJ, Pisansky TM, Martenson J, Komaki R, et al. INT 0123 (Radiation Therapy Oncology Group 94-05) phase III trial of combined-modality therapy for esophageal cancer: high-dose versus standard-dose radiation therapy. *J Clin Oncol*. 2002;20:1167-74.
16. Ando N, Iizuka T, Ide H, Ishida K, Shinoda M, Nishimaki T, et al. Japan Clinical Oncology Group. Surgery plus chemotherapy compared with surgery alone for localized squamous cell carcinoma of the thoracic esophagus: a Japan Clinical Oncology Group Study—JCOG9204. *J Clin Oncol*. 2003;21:4592-6.
17. Chidel MA, Rice TW, Adelstein DJ, Kupelian PA, Suh JH, Becker M. Resectable esophageal carcinoma: local control with neoadjuvant chemotherapy and radiation therapy. *Radiology*. 1999;213:67-72.
18. Keller SM, Ryan LM, Coia LR, Dang P, Vaught DJ, Diggs C, et al. High dose chemoradiotherapy followed by esophagectomy for adenocarcinoma of the esophagus and gastroesophageal junction: results of a phase II study of the Eastern Cooperative Oncology Group. *Cancer*. 1998;83:1908-16.
19. Swisher SG, Wynn P, Putnam JB, Mosheim MB, Correa AM, Komaki RR, et al. Salvage esophagectomy for recurrent tumors after definitive chemotherapy and radiotherapy. *J Thorac Cardiovasc Surg*. 2002;123:175-83.
20. Bartels HE, Stein HJ, Siewert JR. Tracheobronchial lesions following oesophagectomy: prevalence, predisposing factors and outcome. *Br J Surg*. 1998;85:403-6.
21. Fujita H, Hawahara H, Yamana H, Shirohazu G, Yoshimura Y, Minami T, et al. Mediastinal lymph node dissection procedure during esophageal cancer operation—carefully considered for preserving respiratory function. *Jpn J Surg*. 1988;18:31-4.
22. Ishikura S, Nihei K, Ohtsu A, Boku N, Hironaka S, Mera K, et al. Long-term toxicity after definitive chemoradiotherapy for squamous cell carcinoma of the thoracic esophagus. *J Clin Oncol*. 2003;21:2697-702.
23. Carver JR, Shapiro CL, Ng A, Jacobs L, Schwartz C, Virgo KS, et al. ASCO Cancer Survivorship Expert Panel. American Society of Clinical Oncology clinical evidence review on the ongoing care of adult cancer survivors: cardiac and pulmonary late effects. *J Clin Oncol*. 2007;25:3991-4008.
24. Tomimaru Y, Yano M, Takachi K, Miyashiro I, Ishihara R, Nishiyama K, et al. Factors affecting the prognosis of patients with esophageal cancer undergoing salvage surgery after definitive chemoradiotherapy. *J Surg Oncol*. 2006;93:422-8.
25. Oki E, Morita M, Kakeji Y, Ikebe M, Sadanaga N, Egasira A, et al. Salvage esophagectomy after definitive chemoradiotherapy for esophageal cancer. *Dis Esophagus*. 2007;20:301-4.

Role of salvage esophagectomy after definitive chemoradiotherapy

Yuji Tachimori, MD

Received: 25 June 2008
© The Japanese Association for Thoracic Surgery 2009

Abstract Chemoradiotherapy has become a popular definitive therapy among many patients and oncologists for potentially resectable esophageal carcinoma. Although the complete response rates are high and short-term survival is favorable after chemoradiotherapy, persistent or recurrent locoregional disease is quite frequent. Salvage surgery is the sole curative intent treatment option for this course. As experience with definitive chemoradiotherapy grows, the number of salvage surgeries may increase. Selected articles about salvage esophagectomy after definitive chemoradiotherapy for esophageal carcinoma are reviewed. The number of salvage surgeries was significantly lower than the number of expected candidates. To identify candidates for salvage surgery, patients undergoing definitive chemoradiotherapy should be followed up carefully. Salvage esophagectomy is difficult when dissecting fibrotic masses from irradiated tissues. Patients who underwent salvage esophagectomy had increased morbidity and mortality. Pulmonary complications such as pneumonia and acute respiratory distress syndrome were common. The anastomotic leak rate was significantly increased because of the effects of the radiation administered to the tissues used as conduits. The most significant factor associated with long-term survival appeared to be complete resec-

tion. However, precise evaluation of resectability before operation was difficult. Nevertheless, increased morbidity and mortality will be acceptable in exchange for potential long-term survival after salvage esophagectomy. Such treatment should be considered for carefully selected patients at specialized centers.

Key words Esophageal cancer · Salvage surgery · Definitive chemoradiotherapy · Recurrence · Postoperative morbidity

Introduction

The standard treatment for potentially resectable esophageal carcinoma had been surgical resection. Despite many efforts to improve this method, the associated mortality and morbidity rates remain high and the postoperative quality of life is unsatisfactory. Poor outcome of surgical treatment alone has led to multidisciplinary approaches including radiotherapy and chemotherapy in combination with or without surgery.¹

Preoperative chemoradiotherapy

Several studies showed a benefit of preoperative chemotherapy.^{2,3} A recent meta-analysis showed no significant effect of preoperative chemotherapy on all-cause mortality for patients with squamous cell carcinoma, although there was a significant benefit for those with adenocarcinoma.⁴ The higher pathological complete response rate after chemoradiotherapy (CRT), compared with chemotherapy alone, has led to a proposal of preoperative

This review was submitted at the invitation of the editorial committee.

Y. Tachimori (✉)
Esophageal Surgery Division, Department of Surgery,
National Cancer Center Hospital, Tsukiji 5-1-1, Chuo-ku,
Tokyo 104-0045, Japan
Tel. +81-3-3542-2511; Fax +81-3-3542-3815
e-mail: ytachimo@ncc.go.jp

CRT. Despite the widespread use of preoperative CRT, randomized trials have yielded conflicting outcomes.⁵⁻⁷

A survival benefit has not been satisfactorily demonstrated by means of a powered, prospective, randomized, controlled trial. The Cancer and Leukemia Group B trial (CALGB 9781) pointed to a survival benefit for neoadjuvant CRT compared with surgery alone recently, although only 56 of the expected 500 patients have been included.⁸ The evidence only from meta-analyses had suggested a survival benefit.⁴

Some 15%–36% of surgical specimens have shown complete tumor eradication following preoperative CRT. The only long-term survivors from trials of preoperative CRT were patients who had no cancer in the surgically resected esophagus.⁹ Patients treated with preoperative CRT with a plan to undergo esophagectomy can be conceptually categorized into three groups. The first group has had a pathological complete response after preoperative CRT. They are destined to do well without esophageal resection, and surgical intervention does not add value. The second group has had a partial response. Esophagectomy may cure some of these patients who are otherwise destined to have a recurrence. The third group has had little or no response to preoperative CRT. They are destined to do poorly irrespective of any treatment. This group of patients rarely benefit from additional esophagectomy. In this conceptual model, only a proportion of the second group of patients may benefit from surgery, but all three groups are subjected to the risks of surgery. Preoperative CRT decreases the rate of local failure and increases the rate of curative resection, but it also increases the morbidity rate, hence undercutting the benefit of surgery. If this conceptual model is valid, the addition of surgery to CRT cannot improve survival results of overall patients.

Two large randomized controlled trials examined whether surgery is necessary after CRT. In a German study, patients with locally advanced esophageal squamous cell carcinoma were randomly allocated to either CRT (40 Gy) followed by surgery or CRT (at least 65 Gy) without surgery.¹⁰ Overall survival was equivalent between preoperative CRT with surgery and definitive CRT without surgery. Patients with surgery were less likely to die from cancer but had a significantly higher risk of treatment-related death compared with patients without surgery. A French trial of resectable squamous cell and adenocarcinoma randomized responding patients showing at least a partial response to CRT.¹¹ There was no benefit for the addition of surgery after CRT compared with the continuation of additional CRT. These results support the concept that CRT without planned surgery is as effective as the combination of neoadjuvant CRT followed by surgery.

Definitive chemoradiotherapy without planned surgery

The role of surgery as a curative modality had come into question. Trials that did not include surgery were designed.¹² The landmark Radiation Therapy Oncology Group trial (RTOG 85-01) for potentially resectable esophageal carcinomas has established CRT without surgery as one standard for definitive treatment.¹³⁻¹⁵ Medical and radiation oncologists have reported comparable survival by definitive CRT without surgery with those reported for surgery alone. They have accepted the nonsurgical approach with CRT as definitive therapy for esophageal carcinoma, especially for squamous cell carcinoma. It is not surprising that many patients have chosen to undergo definitive CRT to preserve the upper digestive tract. The National Cancer Database of the American College of Surgeons have shown that radiation combined with chemotherapy is the most frequent treatment strategy for all stages of squamous cell carcinoma in the United States.¹⁶ Also, definitive CRT without planned surgery has been offered to patients with potentially resectable and unresectable esophageal tumors in many Japanese institutions over the past decade.¹⁷⁻²¹

In an attempt to improve local control and overall survival, the chemotherapy and radiation doses were intensified.²² However, adverse events have caused treatment-related deaths, even in complete response patients. The Intergroup 0123 not only found no improvement in survival in dose comparisons of 64.8 Gy versus 50.4 Gy of radiotherapy, respectively, but the effect on locoregional control did not improve.²³ Thus, the standard radiation dose for definitive CRT has become 50.0–50.4 Gy in the United States. Definitive CRT has mostly comprised combinations with a conventional radiation dose of >60.0 Gy in Japan.¹⁷⁻²¹ Clinical trials for definitive CRT at a dose of 50.4 Gy are ongoing.

Candidates for salvage surgery after definitive chemoradiotherapy

Although CR rates are high and long-term survivals are 15%–30% after definitive CRT, locoregional recurrence is not uncommon, occurring in around 40%–60% of patients.¹⁵ All patients with locoregional recurrence will die within 1 year without treatment. Furthermore, these patients have few other curative intent therapeutic options because they had already received maximal amounts of radiation, and additional chemotherapy would not control the recurrent locoregional disease. Many patients who had locoregional failure after definitive CRT also had distant failure, precluding surgical

resection for cure. However, there are patients who have an isolated local failure and may be suitable for surgical resection. The only curative intent treatment option for locoregional relapse is salvage surgery. The RTOG trial of definitive CRT reported that four patients underwent esophagectomy after CRT.¹³

As experience with definitive CRT grows, the number of patients referred to surgical departments for salvage surgery may increase.²⁴ The reported rate of salvage esophagectomy for patients in whom definitive CRT was used with curative intent has ranged from 4% to 29% (Table 1). The number of salvage surgeries was significantly lower than the number of expected candidates. The rate of salvage surgery was variable, reflecting a lack of criteria for the management of local failure in definitive CRT protocols. Wilson et al. planned selective esophagectomy for patients with post-treatment positive endoscopic biopsy or <75% regression on computed tomography (CT) scans and with resectable local recurrence.²⁷ Esophagectomy was performed in 11 of 32 patients after primary CRT. To detect candidates for salvage surgery as soon as possible, patients undergoing definitive CRT for potentially resectable tumors should be followed up carefully. Also, there are few available data on whether any patient declined salvage surgery after being informed of the risks of morbidity and mor-

tality. Chao et al. reported 20 of 47 patients who had locoregional residual/recurrence tumor and underwent chemotherapy/supportive treatment due to unwillingness to receive surgery.³⁵

Selected articles about salvage esophagectomy after definitive CRT for carcinoma of the esophagus are shown in Table 2. Whether a tumor is classified as persistent or recurrent may depend on the quality of the investigations during follow-up. The assessment to diagnose a complete response or persistent disease after CRT remains difficult. Nakamura et al. reported that three patients (11%) from the salvage group pathologically had a complete response.³¹ These three patients complained of dysphasia caused by stricture of the esophagus. Nishimura et al. reported that, among 46 patients, 6 with a pathological complete response underwent salvage surgery.³⁴ Esophagectomy may be unnecessary after a complete response, but its diagnosis by imaging is difficult and possible only by esophageal resection. Endoscopic biopsies are notoriously inconclusive. Endoscopic ultrasonography or CT scans cannot distinguish postinflammatory changes and fibrosis from residual or recurrent carcinoma.^{36,37} Recently, positron-emission tomography using 2-[¹⁸F]-fluoro-2-deoxy-D-glucose (PET-FDG) has been developed as a tool to assess tumor response to CRT,^{36–38} but it cannot

Table 1 Rate of salvage esophagectomy after definitive chemoradiotherapy for esophageal carcinoma

Study	Duration	Histology	Chemotherapy	Radiation (Gy)	No. of CRT	No. of salvage esophagectomies
Leichman ¹²	1983–1985	SCC	Cisplatin + 5-FU	50	20	3 (15%)
Herskovic ¹³	1986–1990	SCC/adeno	Cisplatin + 5-FU	50	61	4 (7%)
Ishida ¹⁹	1992–1994	SCC	Cisplatin + 5-FU	60	45	5 (11%)
Murakami ²⁵	1986–1998	SCC (T1, T2)	Cisplatin + 5-FU	70	32	2 (6%)
Murakami ²⁶	1984–1998	SCC (T3, T4)	Cisplatin + 5-FU	70	23	5 (22%)
Wilson ²⁷	1993–1998	SCC/adeno	Cisplatin + 5-FU	50	56	16 (29%)
Stahl ¹⁰	1994–2002	SCC	Cisplatin + etoposide	50–60	77	5 (6%)
Smithers ²⁸	1988–2005	SCC/adeno	Cisplatin + 5-FU	60	253	11 (4%)

CRT, chemoradiotherapy; SCC, squamous cell carcinoma; adeno, adenocarcinoma; 5-FU, 5-fluorouracil

Table 2 Chemoradiotherapy and indications for salvage esophagectomy

Study	No. of patients	Duration	Histology	Chemotherapy	Radiation (Gy)	Persistent	Recurrent
Meunier ²⁹	6	1991–1995	SCC	Cisplatin + 5-FU	60	2	4
Wilson ²⁷	16	1993–1998	SCC/adeno	Cisplatin + 5-FU	50	10	6
Swisher ³⁰	13	1987–2000	SCC/adeno	Cisplatin + 5-FU	30–90	0	13
Nakamura ³¹	27	1992–2002	SCC	Cisplatin + 5-FU	50–76	13	14
Tomimaru ³²	24	1985–2004	SCC	Cisplatin + adriamycin + 5-FU	62	13	11
Oki ³³	14	1994–2005	SCC	Cisplatin + 5-FU	60–70	5	9
Smithers ²⁸	14	1988–2005	SCC/adeno	Cisplatin + 5-FU	60	8	6
Nishimura ³⁴	46	2000–2006	SCC	Cisplatin + 5-FU	50.4–60.0	33	13
Chao ³⁵	27	1997–2004	SCC	Cisplatin + 5-FU	60	8	19

distinguish a complete response from small foci of residual tumors.³⁷

Difficult aspects of salvage esophagectomy

Salvage esophagectomy after CRT is difficult when dissecting the indistinct planes between tumor and fibrotic masses within the irradiated tissues. Radiation injury causes early inflammation and late fibrosis. High total dose, large treatment fields, and large fractions cause more severe tissue injury. Patients undergoing salvage esophagectomy are treated with higher doses (50–70 Gy) of radiation than in the neoadjuvant setting. Salvage surgery is indicated many months after the completion of radiation therapy. The median interval between completion of CRT and salvage surgery was 4–18 months.

Meunier et al. reported that pleural adhesions and major bleeding from areas of postradiation fibrosis complicated the dissecting procedure so it was impossible to determine intraoperatively whether the procedure was curative or palliative.²⁹ Swisher et al. noted that the only factor found to be associated with perioperative mortal-

ity was the length of time to relapse.³⁰ This may have been due to the increased amount of fibrosis seen with time or to late esophageal changes after definitive CRT. Operative procedures for salvage esophagectomy after definitive CRT are shown in Table 3. The transthoracic approach was preferred for salvage esophagectomy supposed to depend on mediastinal fibrosis after irradiation.

Morbidity and mortality

Morbidity and mortality in salvage esophagectomy after definitive CRT are shown in Table 4. Salvage esophagectomy was associated with higher morbidity rates than esophagectomy after neoadjuvant CRT. Pulmonary complications such as pneumonia and acute respiratory distress syndrome (ARDS) were common. ARDS was associated with a high hospital mortality.^{30,31,35} Tomimaru et al. described the period of time during which the patients fulfilled the systemic inflammatory response syndrome (SIRS) criteria was significantly longer in the salvage group than in the neoadjuvant group.³² Patients

Table 3 Procedure of salvage esophagectomy

Study	No. of patients	Approach		Anastomosis		R0
		Transhiatal	Transthoracic	Thoracic	Cervical	
Meunier ²⁹	6	1	5		6	ND
Wilson ²⁷	16	NR	NR	NR	NR	NR
Swisher ³⁰	13	2	11	5	8	8
Nakamura ³¹	27	4	23		27	18
Tomimaru ³²	24	7	17		24	16
Oki ³³	14	14		3	11	7
Smithers ²⁸	14	1	13	6	8	12
Nishimura ³⁴	46		46		46	46
Chao ³⁵	27		27	19	8	17

ND, not determined; NR, not reported

Table 4 Morbidity and mortality of salvage esophagectomy

Study	No. of patients	Morbidity (%)	Leakage (%)	Pulmonary complication (%)	Hospital stay (days)	30-Day mortality (%)	Hospital mortality (%)	Cause of hospital mortality
Meunier ²⁹	6	50	33	16	47 (mean)		16	Necrosis of the gastric tube
Wilson ²⁷	16		6		14 (median)	6	6	Intraoperative hemorrhage
Swisher ³⁰	13	77	38	38	29.4 (mean)	15	15	ARDS, leakage
Nakamura ³¹	27		22	11	39.9 (mean)	4	7	ARDS, leakage
Tomimaru ³²	24	50	21	21		4	12	Peritonitis, hemoptysis
Oki ³³	14	50	36	21			7	Bleeding from tumor
Smithers ²⁸	14	79	14	57	31.5 (median)	7	7	
Nishimura ³⁴	46	54	22	9	47 (mean)	9	15	Leakage, pneumonia, arterial bleeding, tracheal necrosis, pneumonitis, cardiac
Chao ³⁵	27		15	33	22.4 (mean)	19	22.2	Leakage, ARDS

ARDS, acute respiratory distress syndrome

undergoing salvage esophagectomy had increases in the duration of ventilator support, which was reflected in prolonged stays in the intensive care unit and overall hospital stays.^{28,30} Abou-Jawde et al. found that the diffusion capacity of the lung for carbon monoxide (DLCO) was the only pulmonary function test that changed significantly after preoperative CRT and was worse in the group receiving more radiation; a lower DLCO proved to be a significant predictor of postoperative acute respiratory complications, which in turn significantly reduced survival.³⁹

Ischemic tracheobronchial lesions are serious complications of esophagectomy, particularly in patients undergoing surgery after CRT. Nakamura et al. reported a patient who died of tracheal bleeding caused by anastomotic leakage after reconstruction using the mediastinal route.³¹ Tomimaru et al. reported three hospital deaths due to massive hemoptysis.³² Nishimura et al. reported one hospital death due to trachea necrosis at 5 months.³⁴ Bartels et al. analyzed retrospectively prevalence and predisposing factors of nonmalignant lesions of the trachea or main stem bronchi in a consecutive series of esophagectomies.⁴⁰ On multivariate analysis, transthoracic en bloc resection and preoperative CRT for locally advanced tumors located at or above the level of the tracheal bifurcation predisposed to tracheobronchial fistula. Protective measures include preservation of the bronchial arteries during resection in addition to careful dissection around the airway.⁴¹ For the salvage esophagectomy procedure, the right posterior bronchial artery should be preserved, and neck dissection should be avoided to preserve the blood supply from the inferior thyroidal artery to the trachea.

The anastomotic leak rate was also significantly increased in the salvage esophagectomy patients because of the effects of the radiation administered to the tissues used as conduits. The anastomotic leak rate in the reviewed papers varied between 6% and 38%. Oki et al. noted that leakage occurred more often when irradiation

was performed in the locus used for the anastomosis.³³ Meunier et al. reported that an anterior gastroplasty had to be disconnected due to necrosis of the distal part of the gastric tube.²⁹ Chao et al. noted that three cases of fatal leakages occurred several weeks after surgery and were believed to be due to poor gastric perfusion as a result of high exposure of the proximal stomach to radiation.³⁵ After multivariate analysis, anastomosis leakage was the only independent significant perioperative risk factor. The increased risk of conduit necrosis and leakage may also be caused by patient factors, such as poor nutritional status and immunosuppression.

In an attempt to reduce the leak rates with salvage esophagectomy, possibilities include the use of jejunum with vascular anastomosis in the neck or colonic interposition. This technique would have the advantage of avoiding manipulation of the irradiated stomach. Sakuraba et al. performed an additional microvascular anastomosis at the distal end of the interposed colon. The distal stumps of the ileocolic artery and vein were anastomosed to the cervical vessels.⁴² Subsequently, they had changed their reconstruction procedure, using a gastric tube restoring the short gastric artery and vein in the neck; then they used a gastric tube with only a short gastric vein restoration.³⁴

The enterocutaneous fistulas from cervical anastomoses may be easier to control than mediastinal leaks. Chao et al. noted that three patients died of sepsis resulting from intrathoracic anastomosis leakage.³⁵ Swisher et al. reported a patient with a cervical anastomosis who died because of a leak from the lesser curvature into the thoracic cavity.³⁰ Modifications to reduce the impact of leaks into the thoracic cavity were suggested.

Salvage surgery after chemoradiation has been reported to be associated with a high hospital mortality rate (8%–15%). The causes of in-hospital death are also shown in Table 4. Nakamura et al. reported that because 2 of 14 (14%) patients who underwent three-field lymphadectomy died of postoperative complications less-

Table 5 Survival after salvage esophagectomy

Study	No. of patients	Survival (%)	Median survival (months)
Meunier ²⁹	6	0 (5 years)	7
Wilson ²⁷	16	37 (3 years)	16
Swisher ³⁰	13	25 (5 years)	NR
Nakamura ³¹	27	31 (5 years)	18
Tomimaru ³²	24	33 (5 years)	NR
Oki ³³	14	14 (3 years)	NR
Smithers ²⁸	14	24 (3 years)	25
Nishimura ³⁴	46	17 (3 years)	22
Chao ³⁵	27	25.4 (5 years)	NR

NR, not reported

invasive procedures were performed and no hospital deaths were recorded thereafter.³¹ The survival of patients who underwent less-invasive esophagectomy was similar to that of patients who underwent three-field lymph node dissection. Nishimura et al. reported that the patients who had cervical lymph node metastasis had poor outcomes, with all patients dying within 8 months.³⁴ The use of extended three-field lymphadenectomy should be restrained in salvage surgery.

Nishimura et al. had no hospital deaths after they changed the radiotherapy to 50.4 Gy from 60.0 Gy.³⁴ Swisher et al. noted that it is important that oncologists who choose to treat patients with definitive CRT do not use higher doses of radiation because these higher doses do not improve survival and would presumably increase the risks of salvage esophagectomy if needed.³⁰

The incidence of acute toxicity of CRT seemed to be substantial. Furthermore, long-term or late cardiopulmonary toxicity cannot be ignored in patients who survive after CRT or in those who undergo salvage esophagectomy after CRT.^{43,44} Nishimura et al. had one hospital death due to pneumonitis and another due to cardiac arrest during surgery.³⁴ A strategy to minimize the normal tissue toxicity of CRT should be identified.

Prognostic factors for salvage surgery

Survivals after salvage esophagectomy after definitive CRT are shown in Table 5. The most significant factor associated with long-term survival appeared to be resection without residual tumors (R0). No patient who had an incomplete resection (R1/R2) survived more than 13 months in any series. Swisher et al. reported that multivariate analysis indicated that the most significant factor appeared to be early pathological stage, although this was not statistically significant because of the overlap between early stage and R0 resection.³⁰ Smithers et al. also noted that R0 resection status correlated with improved long-term survival in a multivariate analysis. The survival of R0 patients was significantly better than that of R1/R2 patients.²⁷ Chao et al. also noted that a multivariate analysis revealed that R0 resection was the most important prognosticator for overall survival.³⁵

However, accurate evaluation of the T factor in irradiated patients might be difficult preoperatively, and irradiated tissues are difficult to distinguish from tumors during surgery. Fibrosis is usually promoted in radiation fields, and some cancer cells are likely to be left behind in the deep layer of the esophageal wall after radiotherapy. Oki et al. reported that 7 of 14 patients underwent incomplete resection.³³ All seven cases of incomplete resection were T4 disease. Tomimaru et al. described

eight patients who underwent a noncurative operation had an invaded airway.³² Six patients were assessed by bronchoscopy preoperatively and were diagnosed to have no airway involvement.

There is some evidence of a more favorable cancer prognosis if salvage esophagectomy is done for recurrent disease than for persistent disease. Intuitively, this makes sense. Early salvage esophagectomy for persistent disease means a suboptimal response to CRT. Smithers et al. reported that the group who had recurrent disease had a longer median survival than patients who had residual disease.²⁷ In the M. D. Anderson experience, patients whose tumors were detected 12 months or more after CRT survived longer than those with earlier relapse, but this was not statistically significant on multivariate analysis.³⁰

Conclusion

For esophageal squamous cell carcinoma, there are two options: preoperative chemotherapy or CRT with planned esophagectomy versus definitive CRT with esophagectomy used only if needed for persistent or recurrent local disease (salvage esophagectomy). Patients who underwent salvage esophagectomy after definitive CRT had high morbidity and mortality rates. Nevertheless, this is the only established treatment strategy that offers any chance of long-term survival. Five-year survival rates of up to 25%–35% can be achieved among selected patients treated by salvage esophagectomy. A high morbidity rate is acceptable in view of the potential for long-term survival after salvage esophagectomy. Patients should be carefully selected for salvage esophagectomy after CRT at referral centers that specialize in esophageal cancers.

References

1. National Comprehensive Cancer Network. Esophageal Cancer Version 1. 2008 NCCN Clinical Practice Guidelines in Oncology. http://www.nccn.org/professionals/physician_gls/PDF/esophageal.pdf/.
2. Law S, Fok M, Chow S, Chu KM, Wong J. Preoperative chemotherapy versus surgical therapy alone for squamous cell carcinoma of the esophagus: a prospective randomized trial. *J Thorac Cardiovasc Surg* 1997;114:210–7.
3. Medical Research Council Oesophageal Cancer Working Group. Surgical resection with or without preoperative chemotherapy in oesophageal cancer: a randomised controlled trial. *Lancet* 2002;359:1727–33.
4. GebSKI V, Burmeister B, Smithers BM, Foo K, Zalberg J, Simes J. Survival benefits from neoadjuvant chemoradiotherapy or chemotherapy in oesophageal carcinoma: a meta-analysis. *Lancet Oncol* 2007;8:226–34.

5. Bosset JF, Gignoux M, Triboulet JP, Tiret E, Manton G, Elias D, et al. Chemoradiotherapy followed by surgery compared with surgery alone in squamous-cell cancer of the esophagus. *N Engl J Med* 1997;337:161–7.
6. Walsh TN, Noonan N, Hollywood D, Kelly A, Keeling N, Hennessy TP. A comparison of multimodal therapy and surgery for esophageal adenocarcinoma. *N Engl J Med* 1996;335:462–7.
7. Burmeister BH, Smithers BM, GebSKI V, Fitzgerald L, Simes RJ, Devitt P, et al; Trans-Tasman Radiation Oncology Group; Australasian Gastro-Intestinal Trials Group. Surgery alone versus chemoradiotherapy followed by surgery for resectable cancer of the oesophagus: a randomised controlled phase III trial. *Lancet Oncol* 2005;6:659–68.
8. Tepper J, Krasna MJ, Niedzwiecki D, Hollis D, Reed CE, Goldberg R, et al. Phase III trial of trimodality therapy with cisplatin, fluorouracil, radiotherapy, and surgery compared with surgery alone for esophageal cancer: CALGB 9781. *J Clin Oncol* 2008;26:1086–92.
9. Stahl M, Wilke H, Fink U, Stuschke M, Walz MK, Siewert JR, et al. Combined preoperative chemotherapy and radiotherapy in patients with locally advanced esophageal cancer: interim analysis of a Phase II trial. *J Clin Oncol* 1996;14:829–37.
10. Stahl M, Stuschke M, Lehmann N, Meyer HJ, Walz MK, Seeber S, et al. Chemoradiation with and without surgery in patients with locally advanced squamous cell carcinoma of the esophagus. *J Clin Oncol* 2005;23:2310–7.
11. Bedenne L, Michel P, Bouché O, Milan C, Mariette C, Conroy T, et al. Chemoradiation followed by surgery compared with chemoradiation alone in squamous cancer of the esophagus: FFOCD 9102. *J Clin Oncol* 2007;25:1160–8.
12. Leichman L, Herskovic A, Leichman CG, Lattin PB, Steiger Z, Tapazoglou E, et al. Nonoperative therapy for squamous-cell cancer of the esophagus. *J Clin Oncol* 1987;5:365–70.
13. Herskovic A, Martz K, al-Sarraf M, Leichman L, Brindle J, Vaitkevicius V, et al. Combined chemotherapy and radiotherapy compared with radiotherapy alone in patients with cancer of the esophagus. *N Engl J Med* 1992;326:1593–8.
14. Al-Sarraf M, Martz K, Herskovic A, Leichman L, Brindle JS, Vaitkevicius VK, et al. Progress report of combined chemoradiotherapy versus radiotherapy alone in patients with esophageal cancer: an intergroup study. *J Clin Oncol* 1997;15:277–84.
15. Cooper JS, Guo MD, Herskovic A, Macdonald JS, Martenson JA Jr, Al-Sarraf M, et al. Chemoradiotherapy of locally advanced esophageal cancer: long-term follow-up of a prospective randomized trial (RTOG 85–01); Radiation Therapy Oncology Group. *JAMA* 1999;281:1623–7.
16. Daly JM, Fry WA, Little AG, Winchester DP, McKee RF, Stewart AK, et al. Esophageal cancer: results of an American College of Surgeons Patient Care Evaluation Study. *J Am Coll Surg* 2000;190:562–73.
17. Ohtsu A, Yoshida S, Boku N, Fujii T, Miyata Y, Hosokawa K, et al. Concurrent chemotherapy and radiation therapy for locally advanced carcinoma of the esophagus. *Jpn J Clin Oncol* 1995;25:261–6.
18. Ohtsu A, Boku N, Muro K, Chin K, Muto M, Yoshida S, et al. Definitive chemoradiotherapy for T4 and/or M1 lymph node squamous cell carcinoma of the esophagus. *J Clin Oncol* 1999;17:2915–21.
19. Ishida K, Ando N, Yamamoto S, Ide H, Shinoda M. Phase II study of cisplatin and 5-fluorouracil with concurrent radiotherapy in advanced squamous cell carcinoma of the esophagus: a Japan Esophageal Oncology Group (JEOG)/Japan Clinical Oncology Group trial (JCOG9516). *Jpn J Clin Oncol* 2004;34:615–9.
20. Hironaka S, Ohtsu A, Boku N, Muto M, Nagashima F, Saito H, et al. Nonrandomized comparison between definitive chemoradiotherapy and radical surgery in patients with T(2–3)N(any)M(0) squamous cell carcinoma of the esophagus. *Int J Radiat Oncol Biol Phys* 2003;57:425–33.
21. Kato H, Udagawa H, Togo A, Ando N, Tanaka O, Shinoda M, et al. A Phase II trial of chemo-radiotherapy in patients with stage I esophageal squamous cell carcinoma: Japan Clinical Oncology Group study (JCOG9708). *Proc Am Soc Clin Oncol* 2003;22:286 (abstract 1147).
22. Minsky BD, Neuberg D, Kelsen DP, Pisansky TM, Ginsberg RJ, Pajak T, et al. Final report of Intergroup Trial 0122 (ECOG PE-289, RTOG 90–12): Phase II trial of neoadjuvant chemotherapy plus concurrent chemotherapy and high-dose radiation for squamous cell carcinoma of the esophagus. *Int J Radiat Oncol Biol Phys* 1999;43:517–23.
23. Minsky BD, Pajak TF, Ginsberg RJ, Pisansky TM, Martenson J, Komaki R, et al. INT 0123 (Radiation Therapy Oncology Group 94–05) Phase III trial of combined-modality therapy for esophageal cancer: high-dose versus standard-dose radiation therapy. *J Clin Oncol* 2002;20:1167–74.
24. Urschel JD, Ashiku S, Thurer R, Selke FW. Salvage or planned esophagectomy after chemoradiation therapy for locally advanced esophageal cancer: a review. *Dis Esophagus* 2003;16:60–5.
25. Murakami M, Kuroda Y, Nakajima T, Okamoto Y, Mizowaki T, Kusumi F, et al. Comparison between chemoradiation protocol intended for organ preservation and conventional surgery for clinical T1-T2 esophageal carcinoma. *Int J Radiat Oncol Biol Phys* 1999;45:277–84.
26. Murakami M, Kuroda Y, Matsusue S, Okamoto Y, Nakajima T, Nishimura S, et al. Treatment results of esophageal carcinoma of clinical T3, T4M0: historical comparison between neoadjuvant chemoradiotherapy followed by surgery or definitive radiotherapy and conventional surgery. *Oncol Rep* 2000;7:571–8.
27. Wilson KS, Wilson AG, Dewar GJ. Curative treatment for esophageal cancer: Vancouver Island Cancer Centre experience from 1993 to 1998. *Can J Gastroenterol* 2002;16:361–8.
28. Smithers BM, Cullinan M, Thomas JM, Martin I, Barbour AP, Burmeister BH, et al. Outcomes from salvage esophagectomy post definitive chemoradiotherapy compared with resection following preoperative neoadjuvant chemoradiotherapy. *Dis Esophagus* 2007;20:471–7.
29. Meunier B, Raoul J, Le Prise E, Lakehal M, Launois B. Salvage esophagectomy after unsuccessful curative chemoradiotherapy for squamous cell cancer of the esophagus. *Dig Surg* 1998;15:224–6.
30. Swisher SG, Wynn P, Putnam JB, Mosheim MB, Correa AM, Komaki RR, et al. Salvage esophagectomy for recurrent tumors after definitive chemotherapy and radiotherapy. *J Thorac Cardiovasc Surg* 2002;123:175–83.
31. Nakamura T, Hayashi K, Ota M, Eguchi R, Ide H, Takasaki K, et al. Salvage esophagectomy after definitive chemotherapy and radiotherapy for advanced esophageal cancer. *Am J Surg* 2004;188:261–6.
32. Tomimaru Y, Yano M, Takachi K, Miyashiro I, Ishihara R, Nishiyama K, et al. Factors affecting the prognosis of patients with esophageal cancer undergoing salvage surgery after definitive chemoradiotherapy. *J Surg Oncol* 2006;93:422–8.
33. Oki E, Morita M, Kakeji Y, Ikebe M, Sadanaga N, Egasira A, et al. Salvage esophagectomy after definitive chemoradiotherapy for esophageal cancer. *Dis Esophagus* 2007;20:301–4.

34. Nishimura M, Daiko H, Yoshida J, Nagai K. Salvage esophagectomy following definitive chemoradiotherapy. *Gen Thorac Cardiovasc Surg* 2007;55:461–5.
35. Chao YK, Chan SC, Chang HK, Liu YH, Wu YC, Hsieh MJ, et al. Salvage surgery after failed chemoradiotherapy in squamous cell carcinoma of the esophagus. *Eur J Surg Oncol* 2008 Apr 5 [Epub ahead of print].
36. Cerfolio RJ, Bryant AS, Ohja B, Bartolucci AA, Eloubeidi MA. The accuracy of endoscopic ultrasonography with fine-needle aspiration, integrated positron emission tomography with computed tomography, and computed tomography in restaging patients with esophageal cancer after neoadjuvant chemoradiotherapy. *J Thorac Cardiovasc Surg* 2005;129:1232–41.
37. Swisher SG, Maish M, Erasmus JJ, Correa AM, Ajani JA, Bresalier R, et al. Utility of PET, CT, and EUS to identify pathologic responders in esophageal cancer. *Ann Thorac Surg* 2004;78:1152–60.
38. Kim MK, Ryu JS, Kim SB, Ahn JH, Kim SY, Park SI, et al. Value of complete metabolic response by (18)F-fluorodeoxyglucose-positron emission tomography in oesophageal cancer for prediction of pathologic response and survival after preoperative chemoradiotherapy. *Eur J Cancer* 2007;43:1385–91.
39. Abou-Jawde RM, Mekhail T, Adelstein DJ, Rybicki LA, Mazzone PJ, Carroll MA, et al. Impact of induction concurrent chemoradiotherapy on pulmonary function and postoperative acute respiratory complications in esophageal cancer. *Chest* 2005;128:250–5.
40. Bartels HE, Stein HJ, Siewert JR. Tracheobronchial lesions following oesophagectomy: prevalence, predisposing factors and outcome. *Br J Surg* 1998;85:403–6.
41. Fujita H, Hawahara H, Yamana H, Shirohazu G, Yoshimura Y, Minami T, et al. Mediastinal lymph node dissection procedure during esophageal cancer operation—carefully considered for preserving respiratory function. *Jpn J Surg* 1988;18:31–4.
42. Sakuraba M, Kimata Y, Hishinuma S, Nishimura M, Gotohda N, Ebihara S. Importance of additional microvascular anastomosis in esophageal reconstruction after salvage esophagectomy. *Plast Reconstr Surg* 2004;113:1934–9.
43. Carver JR, Shapiro CL, Ng A, Jacobs L, Schwartz C, Virgo KS, et al. American Society of Clinical Oncology clinical evidence review on the ongoing care of adult cancer survivors: cardiac and pulmonary late effects. *J Clin Oncol* 2007;25:3991–4008.
44. Ishikura S, Nihei K, Ohtsu A, Boku N, Hironaka S, Mera K, et al. Long-term toxicity after definitive chemoradiotherapy for squamous cell carcinoma of the thoracic esophagus. *J Clin Oncol* 2003;21:2697–702.

ORIGINAL ARTICLE

Hiromasa Fujita · Takashi Aikou · Masahiko Tsurumaru
Misao Yoshida · Tadakazu Shimoda · Tatsuyuki Kawano
Atsushi Otsu · Yuji Tachimori · Yutaka Shimada
Harushi Udagawa · Soji Ozawa · Hisahiro Matsubara
Kenji Nemoto

A new N category for cancer in the esophagogastric junction based on lymph node compartments

Received: March 30, 2007 / Accepted: July 27, 2007

Abstract

Background. There remains controversy as to which lymph nodes should be or need to be resected to cure patients with a cancer in the esophagogastric junction (EGJ).

Methods. A series of 1289 patients with a cancer in the EGJ are reviewed in this study. Cancers in the EGJ were divided in two groups, as esophagus-dominant tumors or stomach-dominant tumors, and the regional lymph nodes of each group were classified into three compartments (N category) using a score obtained by multiplication of the metastatic rate by the 5-year survival rate after lymphadenectomy.

Results. The N1 nodes for an esophagus-dominant tumor were the right and left cardiac (1, 2), the lesser curvature (3), the left gastric artery (7), the esophageal hiatus (20), and the lower thoracic paraesophageal nodes (110). The N2 nodes were the anterosuperior group of the common hepatic artery (8a), the celiac (9), the splenic artery (11), the infra-diaphragmatic (19), the middle thoracic paraesophageal (108), the right and left pulmonary hilar (109), and the supradiaphragmatic nodes (111). The N3 nodes were the greater curvature (4sa, 4sb, 4d), the suprapyloric and subpyloric (5, 6), the right and left recurrent nerve (106rec), the infracarinal (107), and posterior mediastinal nodes (112). The N1 nodes for a stomach-dominant tumor were the 1, 2, 3, 7, and 20 nodes. The N2 nodes were the 8a, 9, 11, 4sa, 4sb, and 19 nodes. The N3 nodes were the 4d, 5, 6, the posterior group of the common hepatic artery (8p), the splenic hilar (10), the abdominal paraaortic (16a2/b1), 20, 108, 110, 111, and 112 nodes.

Conclusions. A new N category for cancer in the EGJ was proposed based on the metastatic rates of the lymph nodes and the survival rates.

Key words N category · Cancer in the esophagogastric junction · Cardia cancer · Lymph node compartment · Lymphadenectomy

Introduction

There remains controversy over whether a cancer in the esophagogastric junction (EGJ) should be considered as a distinct clinical entity. Many surgeons now recognize these cancers as a distinct entity different from esophageal cancer or gastric cancer [1,2]. In the *TNM classification of malignant tumors* of the International Union Against Cancer (UICC, 2002) [3], the cardia – the area of the EGJ – is classified as an anatomical subsite of the stomach. In this classification, the regional lymph nodes of the EGJ are defined to be the paracardial, left gastric, celiac, diaphragmatic, and the lower mediastinal paraesophageal nodes, being different from the regional lymph nodes of the stomach. Also, in *Guidelines for clinical and pathologic studies on carcinoma of the esophagus* of the Japanese Society for Esophageal Diseases (JSED, 1999) [4], the regional lymph nodes for a tumor located in the EGJ (EG, E = G, GE) are distinguished from those for esophageal tumors in other locations. There have been many reports that have described the distribution of lymph node metastasis from cancers in the EGJ, or cardia cancers [2,5–8]. On the other hand, others still consider that a cancer in the EGJ is not a distinct entity, because it resembles a proximal gastric cancer (Siewert type III) [6]. Also in *Japanese classification of gastric carcinoma* of the Japanese Research Society for Gastric Cancer (JRSGC, 1995) [9], the cardia – the area of the EGJ – was not specified, and the lymph nodes that should be resected were added to the regional lymph nodes of the upper gastric cancer only when it involved the esophagus. Accordingly, the definitions of the regional lymph nodes of the EGJ remain various, as does the definition of a cancer in the EGJ. There is therefore no consensus yet over what constitutes rational lymphadenectomy for a cancer in the EGJ.

H. Fujita (✉) · T. Aikou · M. Tsurumaru · M. Yoshida · T. Shimoda · T. Kawano · A. Otsu · Y. Tachimori · Y. Shimada · H. Udagawa · S. Ozawa · H. Matsubara · K. Nemoto
Committee of the Guidelines for clinical and pathologic studies on carcinoma of the esophagus, the Japan Esophageal Society
Department of Surgery, Kurume University School of Medicine,
67 Asahi-machi, Kurume 830-0011, Japan
Tel. +81-942-31-7566; Fax +81-942-34-0709
e-mail: fujita@med.kurume-u.ac.jp

We have proposed a new N category for a cancer in the EGJ based on the idea of lymph node compartments [10,11]. This concept is based on the incidence of metastasis to each cluster of regional lymph nodes of cancers in the EGJ and on the survival rates after resection of the lymph nodes in each cluster, as reported by Sasako et al. [12], who proposed their own N category for gastric cancers. The lymph node compartments are defined as follows; compartment-I lymph nodes have frequent metastasis, and patients with metastasis in these nodes have a good prognosis after lymphadenectomy; compartment-III lymph nodes have rare metastasis, and patients with metastasis in these nodes have a poor prognosis even if the lymph nodes are resected; compartment-II lymph nodes have an intermediate frequency of metastasis and prognosis. We consider that the concept of lymph node compartments can be applied as adequate guidelines for lymphadenectomy. The compartment-I lymph nodes should be resected in every case. The compartment-II lymph nodes should be resected as far as practicable, and the compartment-III lymph nodes need not be resected if a patient is at high risk for mortality and morbidity. Compartment-IV lymph nodes, which include all those not in compartments-I-III, rarely present any metastasis, and are not considered to be regional lymph nodes.

The purpose of this study was to propose a new N category for a cancer in the EGJ, using multi-institutional data, that indicated more clearly which cluster(s) of lymph nodes should be resected during resection of a cancer in the EGJ. The new N category for a cancer in the EGJ will be useful to describe the extent of lymph node metastasis, as well as providing guidelines for reasonable lymphadenectomy in cancers in the EGJ [4,9].

Definition of the EGJ and cancer in the EGJ

The EGJ was defined as the portion where the diameter changed from the shorter one of the esophagus to the wider one of the stomach in the resected specimen. A cancer in the EGJ in this study was defined as a tumor that has its center located between 2cm proximal and 2cm distal from the EGJ according to the Nishi classification [13].

Cancers in the EGJ were classified into two groups; an esophagus-dominant tumor, a squamous cell carcinoma (SCC) the center of which was situated in the esophagus or just on the EGJ ($E \geq G$) plus an adenocarcinoma (AD) the center of which was situated in the esophagus ($E > G$); and a stomach-dominant tumor, an AD the center of which was situated in the stomach or just on the EGJ ($E \leq G$) plus a SCC the center of which was situated in the stomach ($E < G$), as shown in Fig. 1.

Patients and methods

Study population

During the 10 years from 1990 to 1999, 2073 patients who underwent resection of a cancer in the EGJ were registered

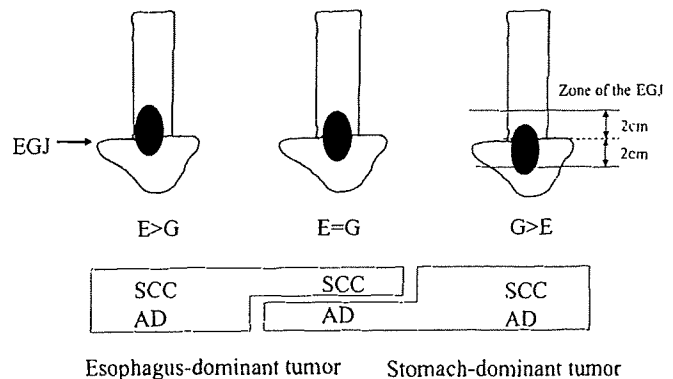


Fig. 1. Definition of the esophagogastric junction (EGJ) and cancers in the EGJ. E, Esophageal portion; G, gastric portion; SCC, squamous cell carcinoma; AD, adenocarcinoma

into our nationwide inquiry research at 98 institutes belonging to the Japanese Society for Esophageal Diseases [7]. Among these, 1532 patients were reviewed when excluding the patients with a tumor of histopathological type other than SCC or AD, those who did not undergo R0 curative resection, and those who did not undergo systemic lymphadenectomy, which meant $D > 0$ lymphadenectomy according to the *Japanese classification of gastric carcinoma* [9] and the *Guidelines for clinical and pathological studies on carcinoma of the esophagus* [4]. In addition, the patients with a tumor more than 7cm in length were excluded. Consequently, the number of subjects in this study was reduced to 1289. Barrett's epithelium was observed in 55 (5.3%) of the patients. There were 465 (36.1%) cases of SCC, and 824 (63.9%) of AD. Neoadjuvant therapy was performed for 6.6% of patients, while adjuvant therapy was performed for 34.1%. The thoracoabdominal approach was adopted for 53.2% of patients, and the mediastinoabdominal or abdominal approach for 46.8%. Subtotal esophagectomy was performed for 25.4% of patients, and lower esophagectomy was done for 65.2% of patients. Total gastrectomy was adopted for 49.0% of patients, and proximal gastrectomy for 48.7%.

The 30-day mortality rate was 0.9% (11/1289), and the hospital mortality rate including the 30-day mortality was 2.0% (25/1279). The cumulative survival rates of all the patients were calculated by Kaplan-Meier analysis. The 5-year survival rate was 57.9%, and the 10-year survival rate was 49.6% (Fig. 2). The clinical characteristics of the esophagus-dominant tumors and the stomach-dominant tumors in the EGJ are shown in the Table 1.

Terminology of the regional lymph nodes of the EGJ

The terminology of the lymph nodes is shown in Table 2, authorized by the Japanese Research Society for Gastric Cancer [9] and the Japanese Society for Esophageal Diseases [4].

Table 1. Clinical characteristics of 1289 patients who underwent resection of a cancer in the EGJ

Characteristic	EG (<i>n</i> = 523)	GE (<i>n</i> = 766)
Average age	63.3 ± 7.7 years	64.3 ± 11.2 years
Male	432	591
Female	90	175
Average length of tumor	4.2 ± 1.6 cm	4.0 ± 1.7 cm
Squamous cell carcinoma	393	72
Adenocarcinoma	130	694
Barrett's epithelium		
+	34	21
-	400	577
nd	89	168
TNM staging ^a		
pT		
TisT1a	26	79
T1b	109	146
T2	85	185
T3	278	328
T4	20	25
n	5	3
pN		
N0	214	364
N1 ^b	307	360
nd	2	42
pM-Org		
M0	487	724
M1 ^c	13	15
nd	23	27
R ^d		
R0	523	766
R1R2	0	0
nd	0	0
Adjuvant therapy		
Preoperative		
+	52	31
-	465	719
nd	6	16
Postoperative		
+	182	225
-	324	461
nd	17	80
Surgical procedures		
Approach		
rtTA	258	64
ltTA	152	209
MA	83	321
Other	26	170
nd	4	2
Esophagectomy		
Subtotal	267	59
Lower	247	590
None	7	114
nd	2	3
Gastrectomy		
Total	144	478
Proximal	351	268
None	12	17
nd	16	3

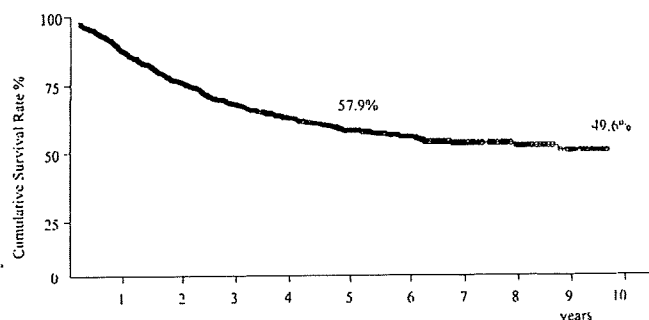
EG, Esophagus-dominant tumor; GE, stomach-dominant tumor. rtTA, right thoracoabdominal; ltTA, left thoracoabdominal; MA, mediastino-abdominal; nd, no data

^aInternational Union Against Cancer [3]

^bIncluding M1-Lym

^cExcluding M1-Lym

^dResidual tumor classification

**Fig. 2.** The cumulative survival curve of 1289 patients who underwent resection of a cancer in the EGJ

Lymph node compartment classification

The frequency of metastasis was examined in each cluster of lymph nodes, and the survival rates for each were calculated by Kaplan-Meier analysis for all patients with metastasis in each cluster of lymph nodes. Based on the simple value obtained by multiplying the percentage rate of positive metastasis (*a*) by the 5-year survival rate (*b*), the lymph nodes were classified into four groups. The lymph nodes with an *a* × *b* value of more than 0.05 were classified as compartment-I; those with an *a* × *b* value between 0.05 and 0.02 were classified as compartment-II; and those with an *a* × *b* value between 0.02 and 0.005 were classified as compartment-III. Compartment-III was divided into two groups; IIIA with an *a* × *b* value between 0.01 and 0.02, and IIIB with an *a* × *b* value between 0.005 and 0.01. The lymph nodes with an *a* × *b* value of less than 0.005 were excluded from being regional nodes in EGJ cancer, and are considered as being distant nodes in compartment-IV (Table 3).

Results

The incidences of lymph node metastasis from esophagus-dominant tumors in the EGJ are shown in Table 4. The metastatic rate for each cluster of lymph nodes was calculated as the ratio of the number of patients with metastasis in each cluster of lymph nodes to the total number of patients (*n* = 523) registered. The lower thoracic paraesophageal nodes (110), the right and left cardiac nodes (1, 2), the lesser curvature nodes (3), and the left gastric artery nodes (7) frequently presented positive metastasis, while the cervical and upper mediastinal nodes, and the abdominal para-aortic nodes were rarely involved. The metastatic rates to those nodes were less than 5%. The 5-year survival rate after resection of the metastatic lymph nodes was high in those patients with metastasis to the upper and lower mediastinal nodes (106–112), the perigastric nodes (1–6), and the abdominal nodes (7–11, 16, 19), while there was rarely 5-year survival in patients with metastasis to the cervical nodes.

The incidences of lymph node metastasis from stomach-dominant tumors in the EGJ (*n* = 766) are shown in

Table 2. Terminology of the regional lymph nodes of a cancer in the esophagogastric junction authorized by the Japanese Gastric Cancer Association and the Japanese Society for Esophageal Diseases

Cervical lymph nodes	Thoracic lymph nodes	Abdominal lymph nodes
100 Superficial cervical	105 Upper thoracic paraesophageal	1 Right cardiac
101 Cervical paraesophageal	106 Thoracic paratracheal	2 Left cardiac
102 Deep cervical	106rec Recurrent nerve	3 Lesser curvature
102u Upper deep cervical	106pre Pretracheal	4 Greater curvature
102m Middle deep cervical	106tb Tracheobronchial	4sa Along the short gastric vessels
103 Peripharyngeal	107 Bifurcational	4sb Along the left gastroepiploic vessels
104 Supraclavicular	108 Middle thoracic paraesophageal	4d Along the right gastroepiploic vessels
	109 Main bronchus	5 Suprapyloric
	110 Lower thoracic paraesophageal	6 Subpyloric
	111 Supradiaphragmatic	7 Left gastric artery
	112 Posterior mediastinal	8 Common hepatic artery
	113 Ligamentum arteriosus	8a Anterosuperior group
	114 Anterior mediastinal	8p Posterior group
		9 Coeliac artery
		10 Splenic hilar
		11 Splenic artery
		12 Hepatoduodenal ligament
		13 Posterior surface of the pancreatic head
		14 Root of the mesentery
		14a Superior mesenteric artery
		14v Superior mesenteric vein
		15 Middle colic vessels
		16 Abdominal paraaortic
		16A Above the renal vein
		16B Below the renal vein
		17 Anterior surface of the pancreatic head
		18 Infrapancreatic
		19 Infradiaphragmatic
		20 Esophageal hiatus

Table 3. Compartment classification using the product of metastatic rate (*a*) in the regional lymph nodes and the 5-year survival rate (*b*) after resection of the nodes

Compartment	<i>a</i> × <i>b</i> score range	Characteristics
I	≥0.05	Frequent metastasis, good prognosis after lymphadenectomy Should be resected in every case
II	0.02–0.05	Intermediate frequency of metastasis and prognosis Should be resected as far as practicable
IIIA	0.01–0.02	Rare metastasis, poor prognosis after lymphadenectomy Need not be resected if a patient is at high risk for mortality and morbidity
IIIB	0.005–0.01	
IV	<0.05	Distant metastasis Need not be resected in any case

Table 5. The right and left cardiac nodes (1, 2), the lesser curvature nodes (3), and the left gastric artery nodes (7) frequently presented positive metastasis, while the cervical nodes, the upper and lower mediastinal nodes, and abdominal paraaortic nodes were rarely involved. The 5-year survival rate after resection of the metastatic lymph nodes was high in those patients with metastasis to the cervical nodes (101), the upper and lower mediastinal nodes (106, 108, 112), the perigastric nodes (1–6), and the abdominal nodes (7–14, 16, 19, 20).

The values obtained by multiplying the metastasis (*a*) by the 5-year survival rate (*b*) are also described in Tables 4 and 5. Figures 3 and 4 illustrate the proposed new N category for a cancer in the EGJ based on the lymph node compartments. For an esophagus-dominant tumor, the com-

partment-I (N1) nodes are the lower thoracic paraesophageal nodes (110), the right and left cardiac nodes (1, 2), the lesser curvature nodes (3), the left gastric artery nodes (7), and the esophageal hiatus nodes (20). The compartment-II (N2) nodes are the middle thoracic paraesophageal nodes (108), the supradiaphragmatic nodes (111), the anterosuperior group of the common hepatic artery nodes (8a), the celiac nodes (9), the splenic artery nodes (11), and the infradiaphragmatic nodes (19). The compartment-III (N3) nodes are the recurrent nerve nodes (106rec), the bifurcational nodes (107), the main bronchus nodes (109), the posterior mediastinal nodes (112), the greater curvature nodes (4sa, 4sb, 4d), and the suprapyloric and subpyloric nodes (5, 6). For a stomach-dominant tumor, the compartment-I (N1) nodes are the right and left cardiac nodes (1, 2), the lesser

Table 4. Incidences of metastasis (*a*) in each cluster of the lymph nodes and the 5-year survival rates (*b*) of patients with metastasis in a particular cluster of the lymph nodes for an esophagus-dominant tumor in the esophagogastric junction

Cluster	Incidence	<i>a</i>	<i>b</i>	<i>a</i> × <i>b</i>	Compartment	Cluster	Incidence	<i>a</i>	<i>b</i>	<i>a</i> × <i>b</i>	Compartment
100R	2	0.4%	0%	0		1	176	33.7%	39.2%	0.132	I
100L	2	0.4	0	0		2	122	23.3	32.7	0.076	I
101R	6	1.1	16.7	0.002		3	116	22.2	36.3	0.081	I
101L	6	1.1	25.0	0.003		4sa	11	2.1	25.6	0.005	IIIB
102uR	3	0.6	0	0		4sb	8	1.5	58.3	0.009	IIIB
102uL	2	0.4	0	0		4d	8	1.5	50.0	0.008	IIIB
102mR	1	0.2	0	0		5	8	1.5	50.0	0.008	IIIB
102mL	2	0.4	0	0		6	6	1.1	83.3	0.010	IIIA
103	2	0.4	0	0		7	99	18.9	36.1	0.068	I
104R	5	1.0	0	0		8a	35	6.7	32.8	0.022	II
104L	6	1.1	0	0		8p	1	0.2	0	0	
105	11	2.1	0	0		9	30	5.7	34.9	0.020	II
106recR	24	4.6	21.6	0.010	IIIA	10	2	0.4	50.0	0.002	
106recL	12	2.3	33.3	0.008	IIIB	11	29	5.5	46.1	0.026	II
106pre	4	0.8	0	0		12	1	0.2	0	0	
106tbL	11	2.1	20.8	0.004		13	0	0	–		
107	20	3.8	25.4	0.010	IIIA	14a	1	0.2	0	0	
108	35	6.7	36.6	0.024	II	14v	1	0.2	0	0	
109R	15	2.9	28.3	0.008	IIIB	15	0	0	–		
109L	12	2.3	30.0	0.007	IIIB	16A	5	1.0	40.0	0.004	
110	75	14.3	35.1	0.050	I	16B	1	0.2	0	0	
111	35	6.7	55.7	0.037	II	17	0	0	–		
112	28	5.4	29.9	0.016	IIIA	18	0	0	–		
113	0	0	–			19	3	0.6	66.7	0.004	
114	0	0	–			20	7	1.3	0	0	

Table 5. Incidences of metastasis (*a*) in each cluster of the lymph nodes and the 5-year survival rates (*b*) of patients with metastasis in a particular cluster of the lymph nodes for a stomach-dominant tumor in the esophagogastric junction

Cluster	Incidence	<i>a</i>	<i>b</i>	<i>a</i> × <i>b</i>	Compartment	Cluster	Incidence	<i>a</i>	<i>b</i>	<i>a</i> × <i>b</i>	Compartment
100R	0	0%	–%			1	230	30.0%	46.6%	0.140	I
100L	0	0	–			2	152	19.8	46.8	0.093	I
101R	1	0.1	100	0.001		3	191	24.9	40.0	0.100	I
101L	0	0	–			4sa	46	6.0	50.2	0.030	II
102uR	0	0	–			4sb	28	3.7	77.2	0.028	II
102uL	0	0	–			4d	20	2.6	59.2	0.015	IIIA
102mR	0	0	–			5	23	3.0	59.9	0.018	IIIA
102mL	0	0	–			6	18	2.3	69.2	0.016	IIIA
103	0	0	–			7	131	17.1	32.3	0.055	I
104R	0	0	–			8a	50	6.5	50.7	0.033	II
104L	0	0	–			8p	7	0.9	19.1	0.002	
105	1	0.1	0	0		9	52	6.8	39.2	0.027	II
106recR	2	0.3	100	0.003		10	30	3.9	32.8	0.013	IIIA
106recL	0	0	–			11	59	7.7	37.2	0.029	II
106pre	0	0	–			12	5	0.7	40.0	0.003	
106tbL	2	0.3	0	0		13	3	0.4	66.7	0.003	
107	0	0	–			14a	1	0.1	100	0.001	
108	11	1.4	43.6	0.006	IIIB	14v	2	0.3	100	0.003	
109R	0	0	–			15	0	0	–		
109L	0	0	–			16A	19	2.5	27.2	0.007	IIIB
110	43	5.6	19.3	0.011	IIIA	16B	10	1.3	29.6	0.004	
111	24	3.1	18.8	0.006	IIIB	17	0	0	–		
112	9	1.2	57.1	0.007	IIIB	18	0	0	–		
113	0	0	–			19	4	0.5	75.0	0.004	
114	0	0	–			20	8	1.0	62.5	0.007	IIIB

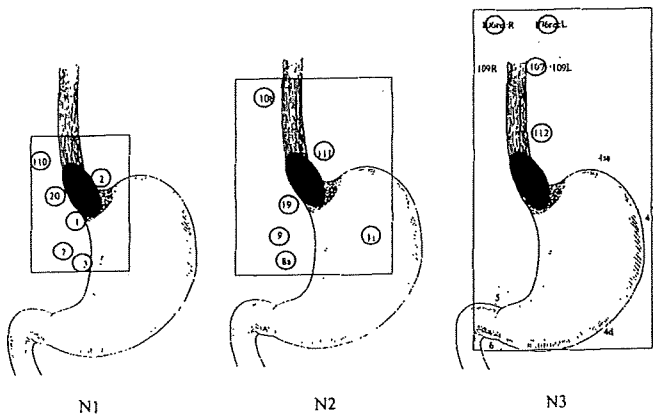


Fig. 3. The new N category for an esophagus-dominant tumor in the EGJ based on lymph node compartments. Dotted circles, lymph nodes for which dissection can be omitted under certain circumstances

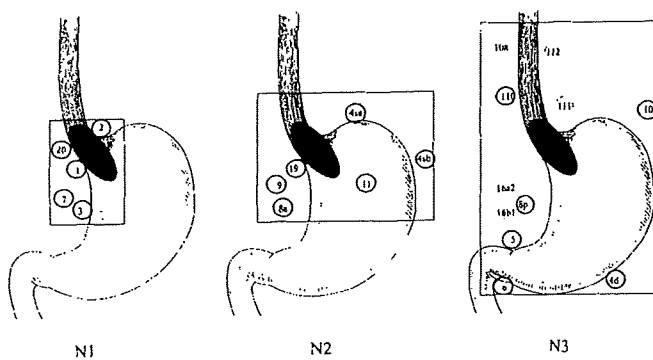


Fig. 4. The new N category for a stomach-dominant tumor in the EGJ based on the lymph node compartments. Dotted circles, lymph nodes for which dissection can be omitted under certain circumstances

curvature nodes (3), the left gastric artery nodes (7), and the esophageal hiatus nodes (20). The compartment-II (N2) nodes are the greater curvature nodes (4sa, 4sb), the antero-superior group of the common hepatic artery nodes (8a), the celiac nodes (9), the splenic artery nodes (11), and the infradiaphragmatic nodes (19). The compartment-III (N3) nodes are the middle and lower paraesophageal nodes (108, 110), the supradiaphragmatic nodes (111), the posterior mediastinal nodes (112), the greater curvature nodes along the right gastroepiploic vein (4d), the suprapyloric and subpyloric nodes (5, 6), the posterior group of the common hepatic artery group (8p), the splenic hilar nodes (10), and the abdominal paraaortic nodes (16a2, 16b1).

Discussion

There remains controversy over how to define a cancer in the EGJ – a cardia cancer. There are two definitions for a cancer in the EGJ: the Siewert classification [14] and the Nishi classification [13]. In the Siewert classification, true cardia cancer is limited to adenocarcinoma with its center situated between 1 cm proximal and 2 cm distal from the anatomical EGJ. On the other hand, according to the Nishi

classification, a cancer in the EGJ is a tumor of any histological type with its center situated between 2 cm proximal and 2 cm distal from the anatomical EGJ. Misumi et al. [15] reported that the cardiac gland area was the buffer zone between the squamous epithelium in the esophagus and the fundic glands area in the stomach, and this was found to straddle the EGJ at the range of 1 cm proximal and 2 cm distal from the junction. They therefore proposed that carcinoma of the gastric cardia be defined as a lesion with its center located within 1 cm proximal and 2 cm distal from the EGJ, for any histological type. On the other hand, because the length of the abdominal esophagus between the upper margin of the esophageal hiatus and the EGJ is around 2 cm, Nishi et al. [13] have supported that the zone of the EGJ, the cardia, was the portion between 2 cm proximal and 2 cm distal from the junction.

In our inquiry research, the average length of cancers in the EGJ was 4.7 ± 1.9 cm. Therefore, we limited the subjects of our investigation to those with cancers of 7 cm or less in diameter. We considered that when the tumor length was too large, lymph node metastasis spread more widely, so that any distinct pattern in lymph node metastasis from a cancer in the EGJ would become unclear. Consequently, the subjects decreased from 1532 to 1289 patients (84.1%), when tumors of more than 7 cm in length were excluded. The conclusion from the present study may be true only for localized cancers in the EGJ, and not for invasive or large cancers.

The present study included only squamous cell carcinoma and adenocarcinoma. This was because we considered that when the tumors were located in the same portion, the patterns of lymph node metastasis and the long-term prognosis were similar for any histopathological type [16]. During the registration period from 1990 to 1999, most Japanese surgeons held a different view from that cited above. Most squamous cell carcinomas in the EGJ were operated on by esophageal surgeons who commonly performed either subtotal esophagectomy through a right thoracotomy or lower esophagectomy through a left thoracotomy with esophageal reconstruction using the stomach. In contrast, most adenocarcinomas in the EGJ were operated on by gastric surgeons who commonly performed partial esophagectomy with total gastrectomy through a mediastinoabdominal approach, and esophageal reconstruction using the jejunum. Accordingly, total or lower mediastinal and upper abdominal lymphadenectomy was performed for a squamous cell carcinoma, and occasionally cervical lymphadenectomy was added, while lower mediastinal and upper abdominal lymphadenectomy was performed for an adenocarcinoma, and occasionally dissection for abdominal paraaortic nodes was added. However, as the incidence of adenocarcinoma in the Barrett esophagus increased, this concept has become unsuitable in practice. Our new concept is that lymphadenectomy should be done according to the tumor location rather than the tumor histology. Therefore, we have proposed a new N category based on tumor locations.

We have accordingly investigated and here have proposed a new N category based on the idea of lymph node